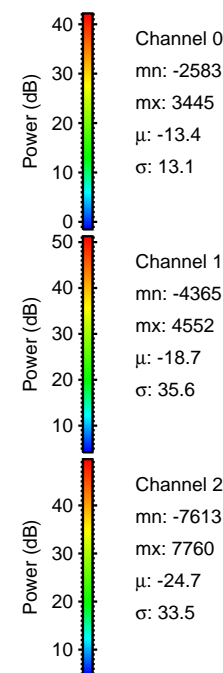
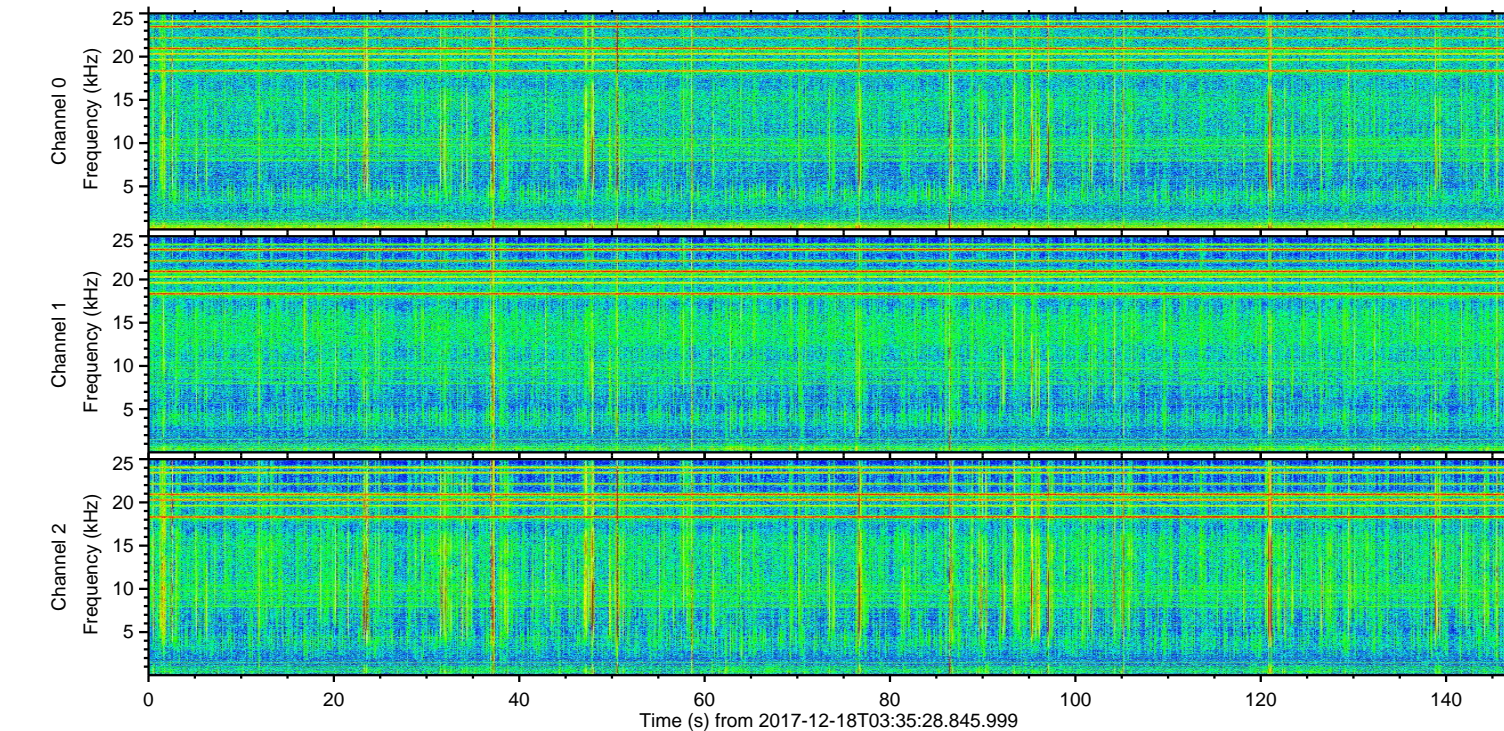
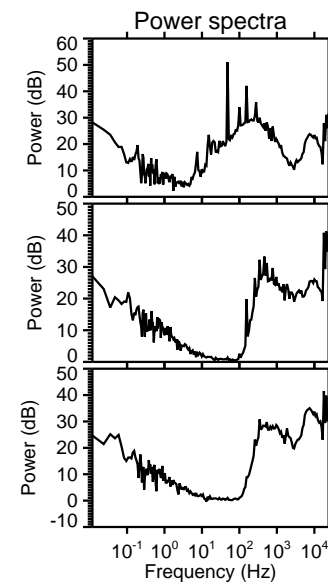
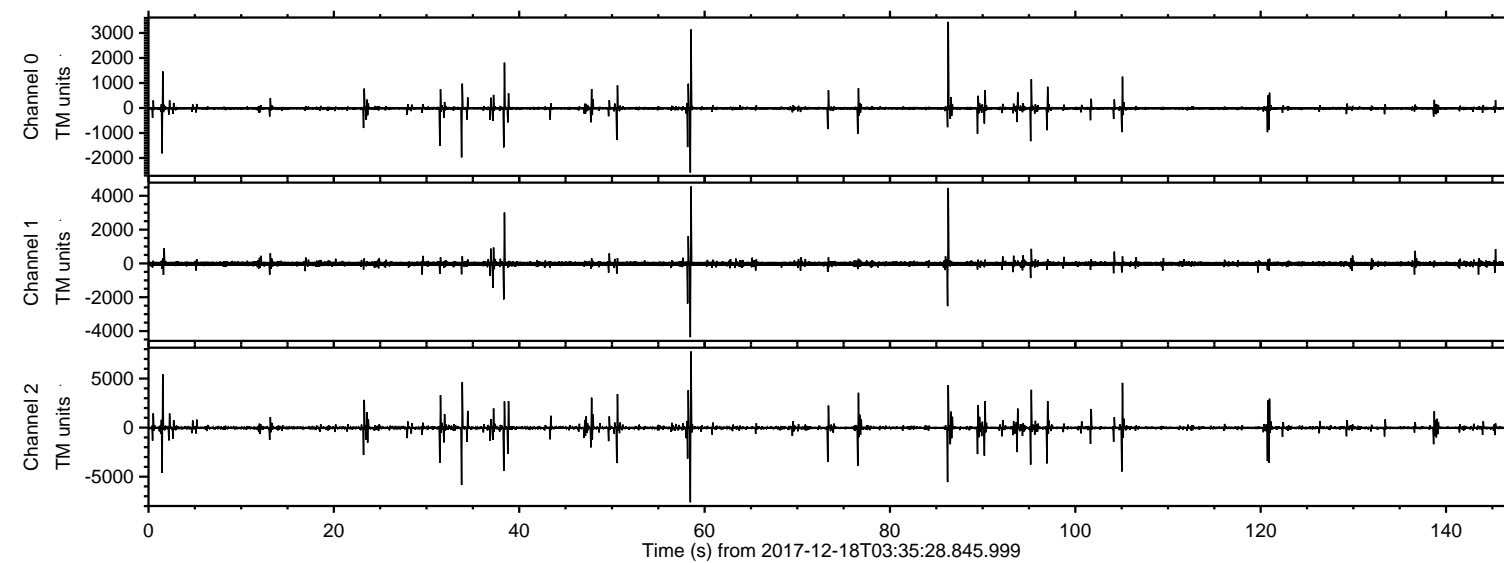
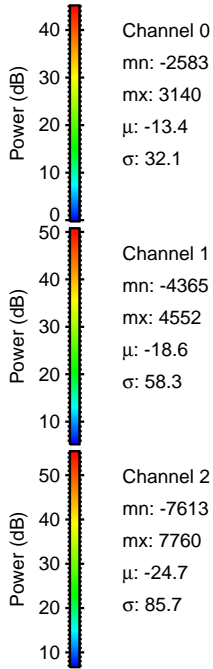
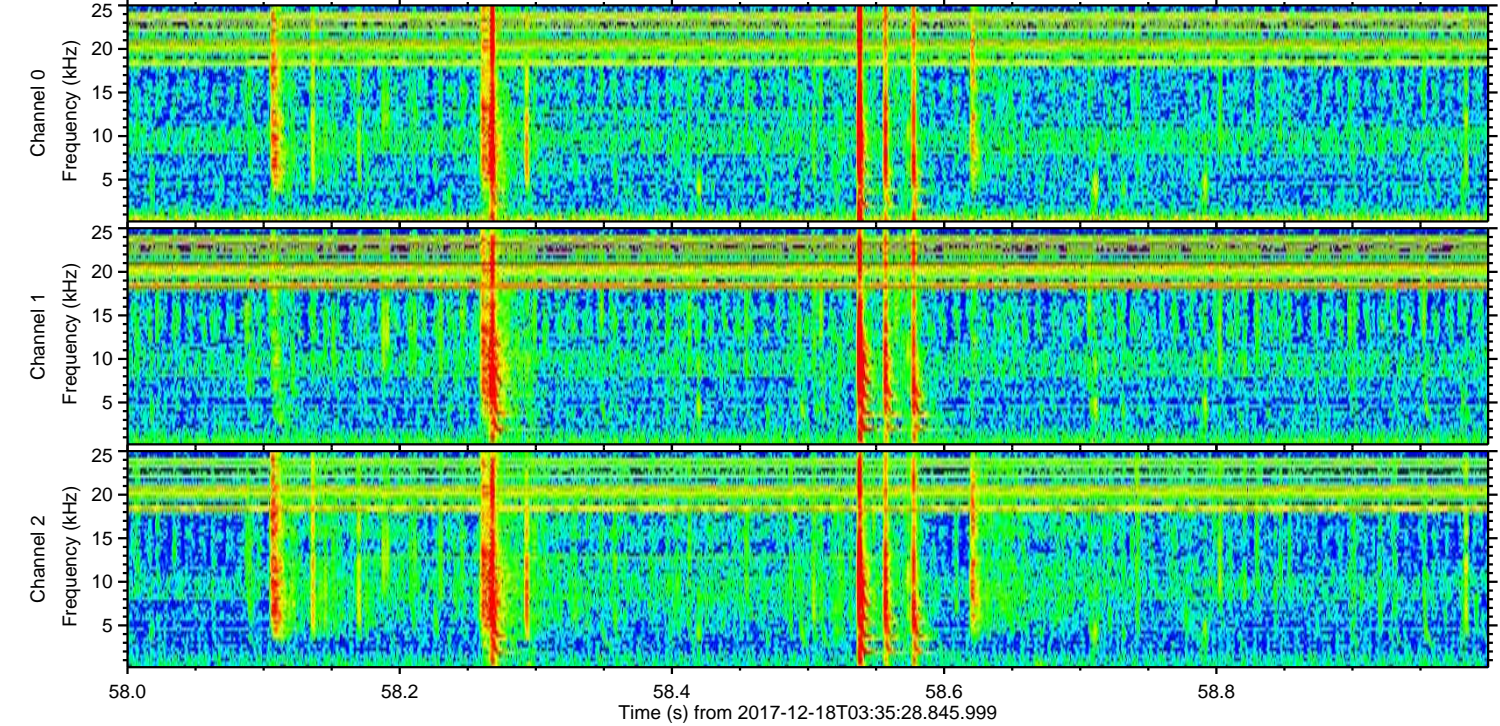
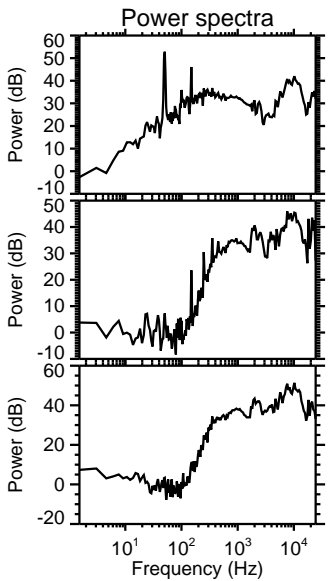
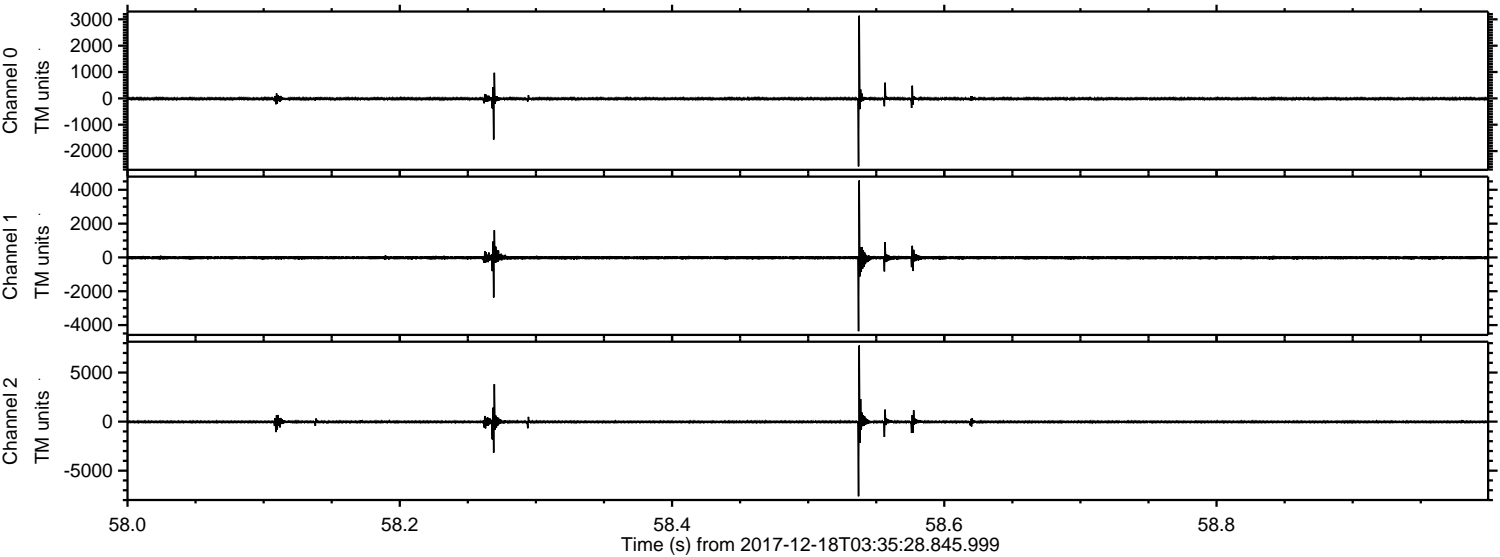


ELMAVAN 3D WAVEFORMS (Measured data sampled at 50 kHz) 51000 packets of 144 samples from 2017-12-18T03:35:28.845.999.

Processed Mon Dec 18 04:44:00 2017 by ELM ver.2012-10-06 from 001__elm20171218_033527__dat00.bin

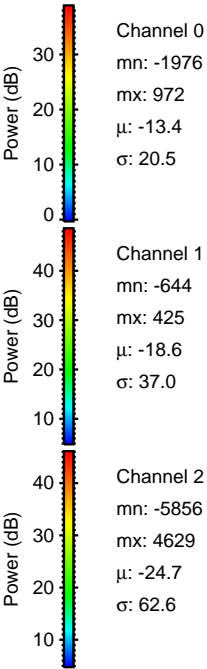
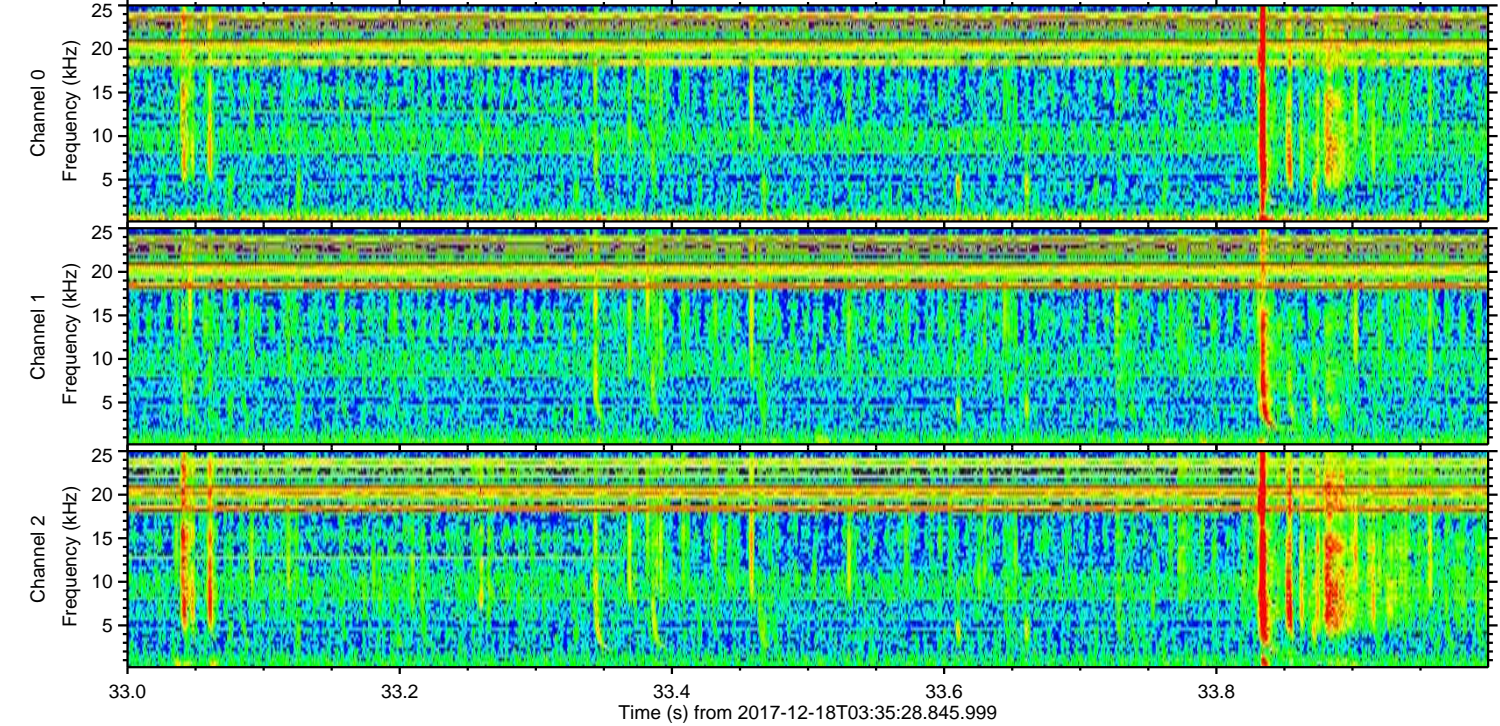
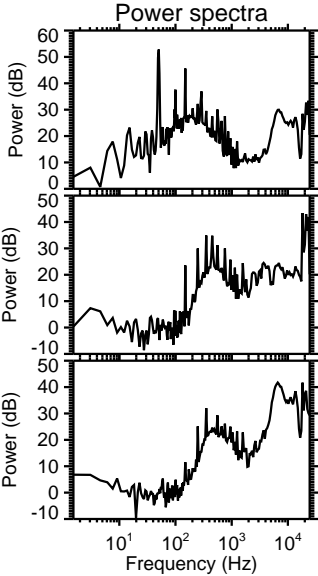
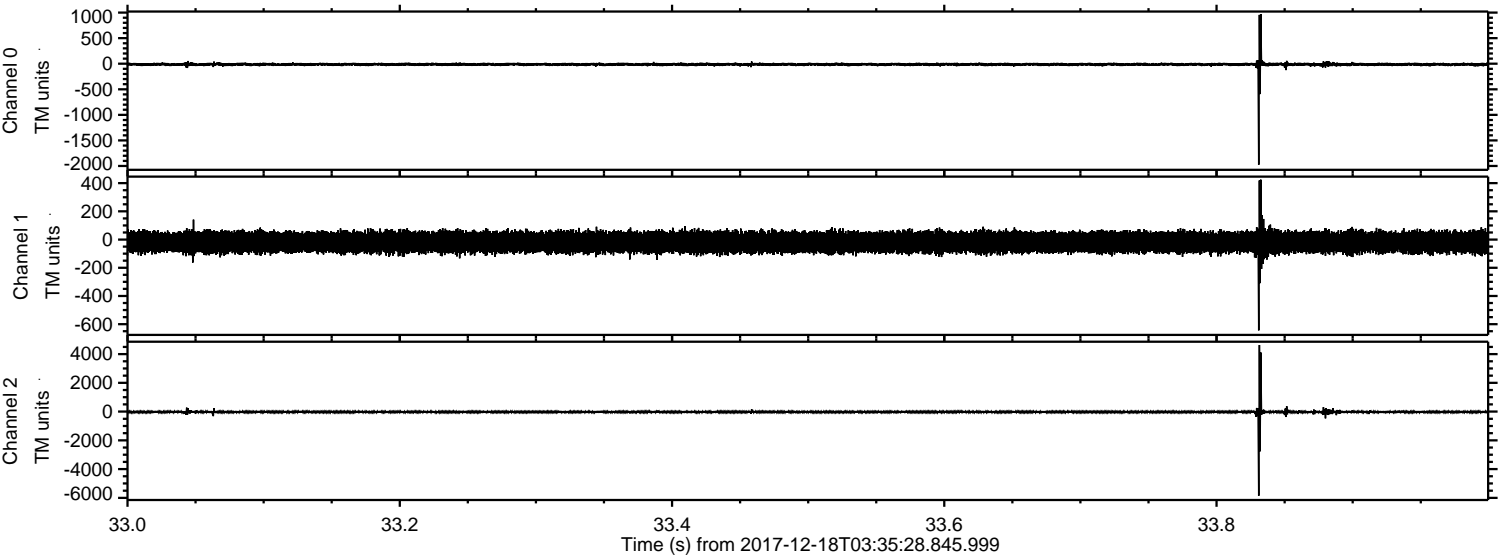


Processed Mon Dec 18 04:44:07 2017 by ELM ver.2012-10-06 from 001__elm20171218_033527__dat00.bin

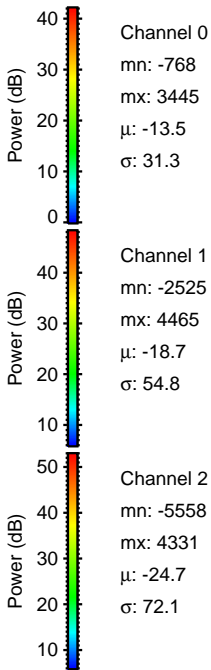
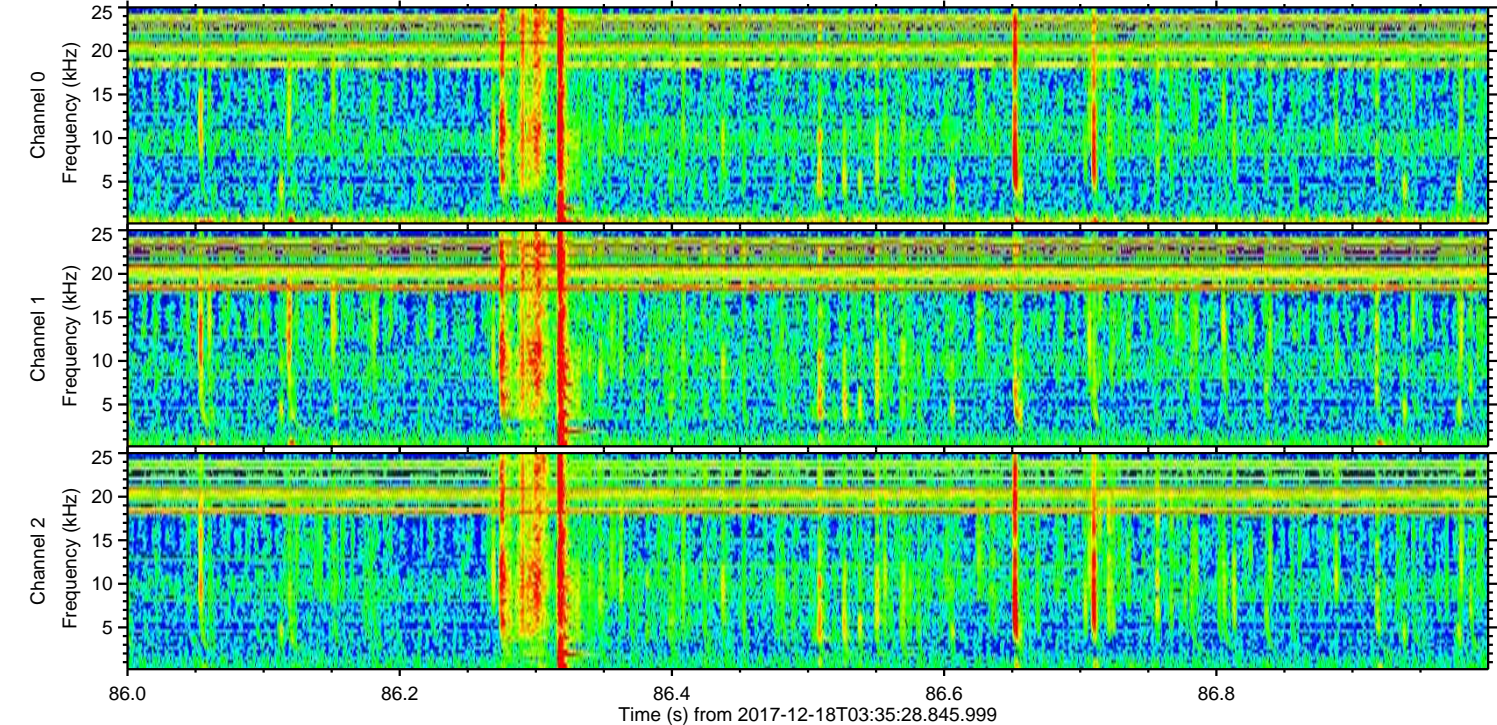
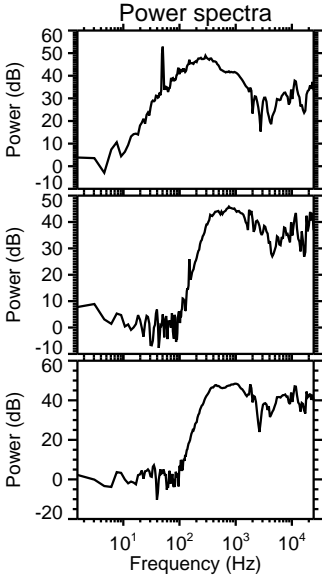
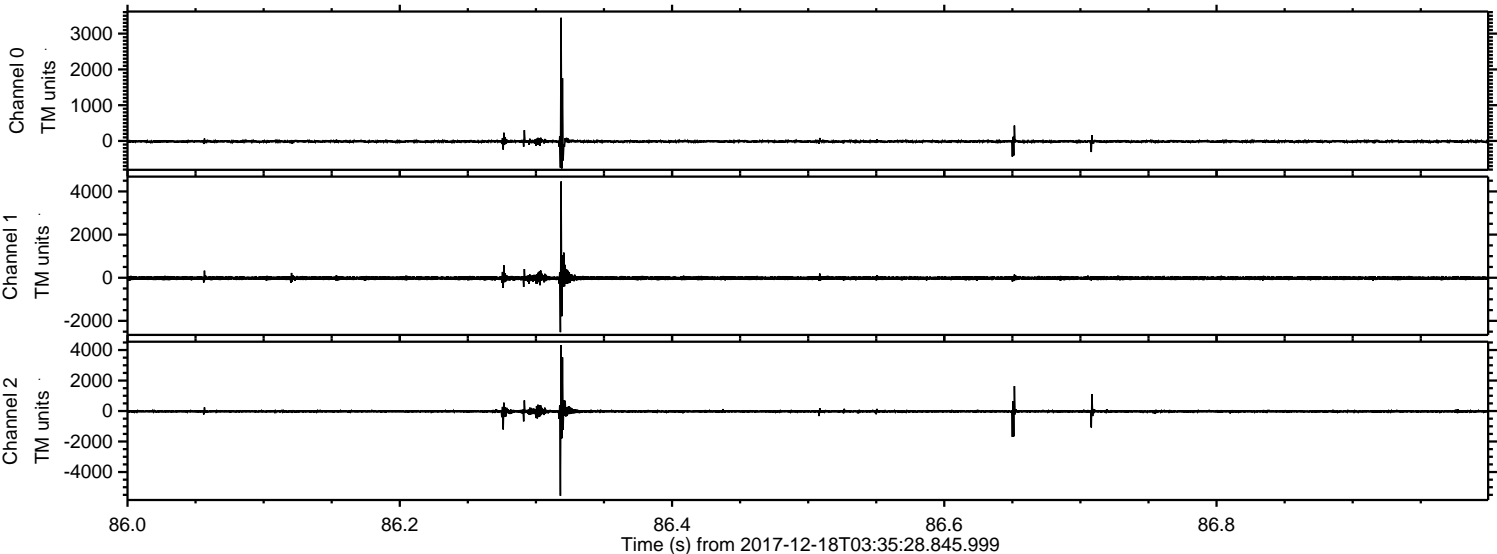


ELMAVAN 3D WAVEFORMS (Measured data sampled at 50 kHz) 51000 packets of 144 samples from 2017-12-18T03:35:28.845.999. Part 34/147

Processed Mon Dec 18 04:44:08 2017 by ELM ver.2012-10-06 from 001__elm20171218_033527__dat00.bin

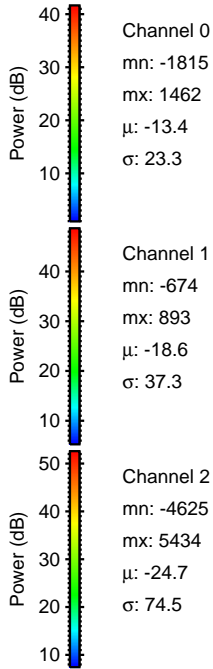
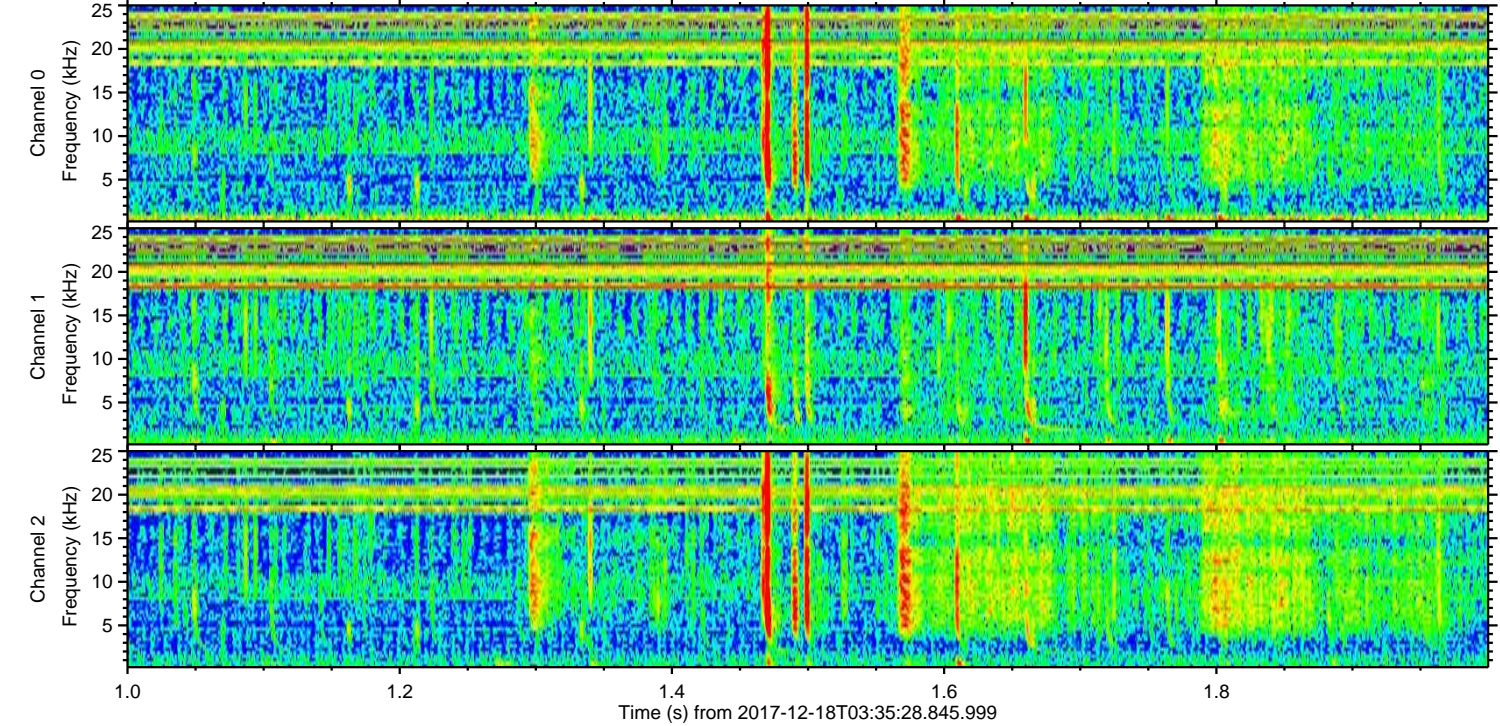
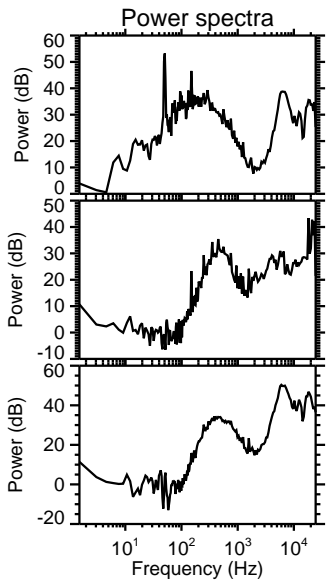
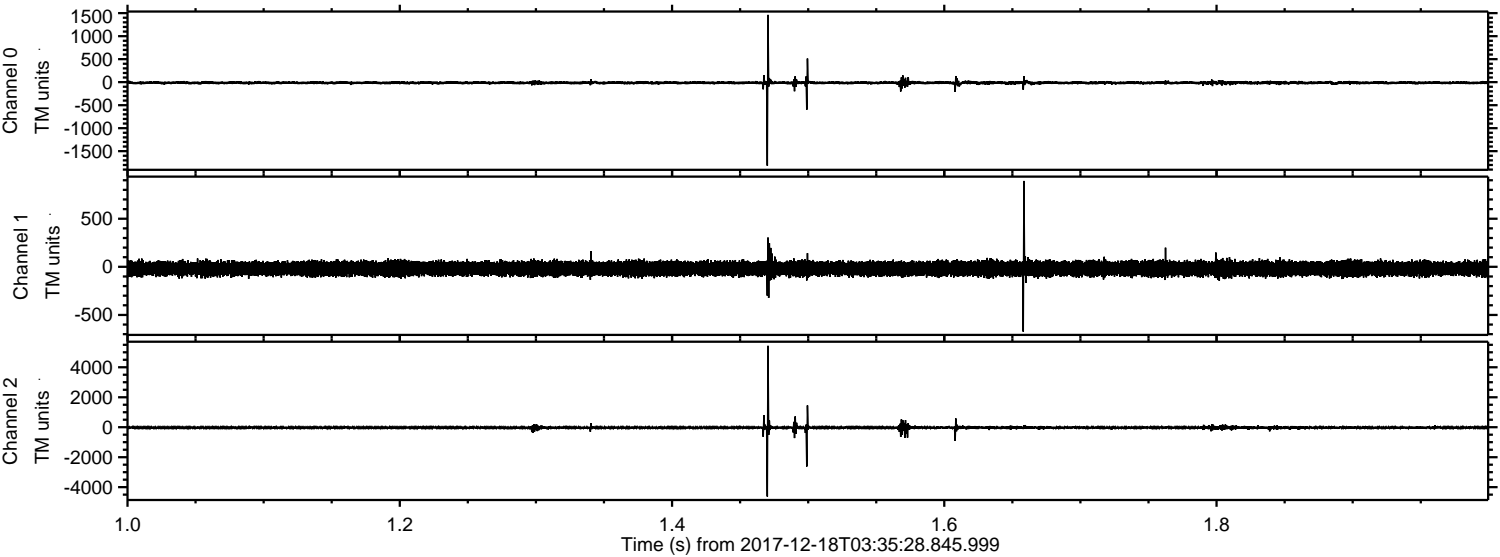


Processed Mon Dec 18 04:44:09 2017 by ELM ver.2012-10-06 from 001__elm20171218_033527__dat00.bin



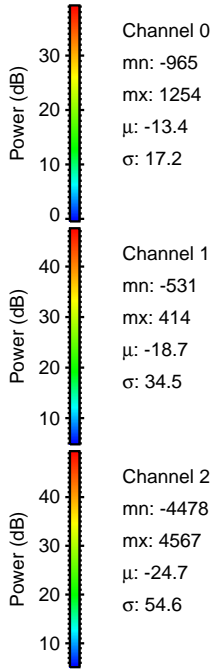
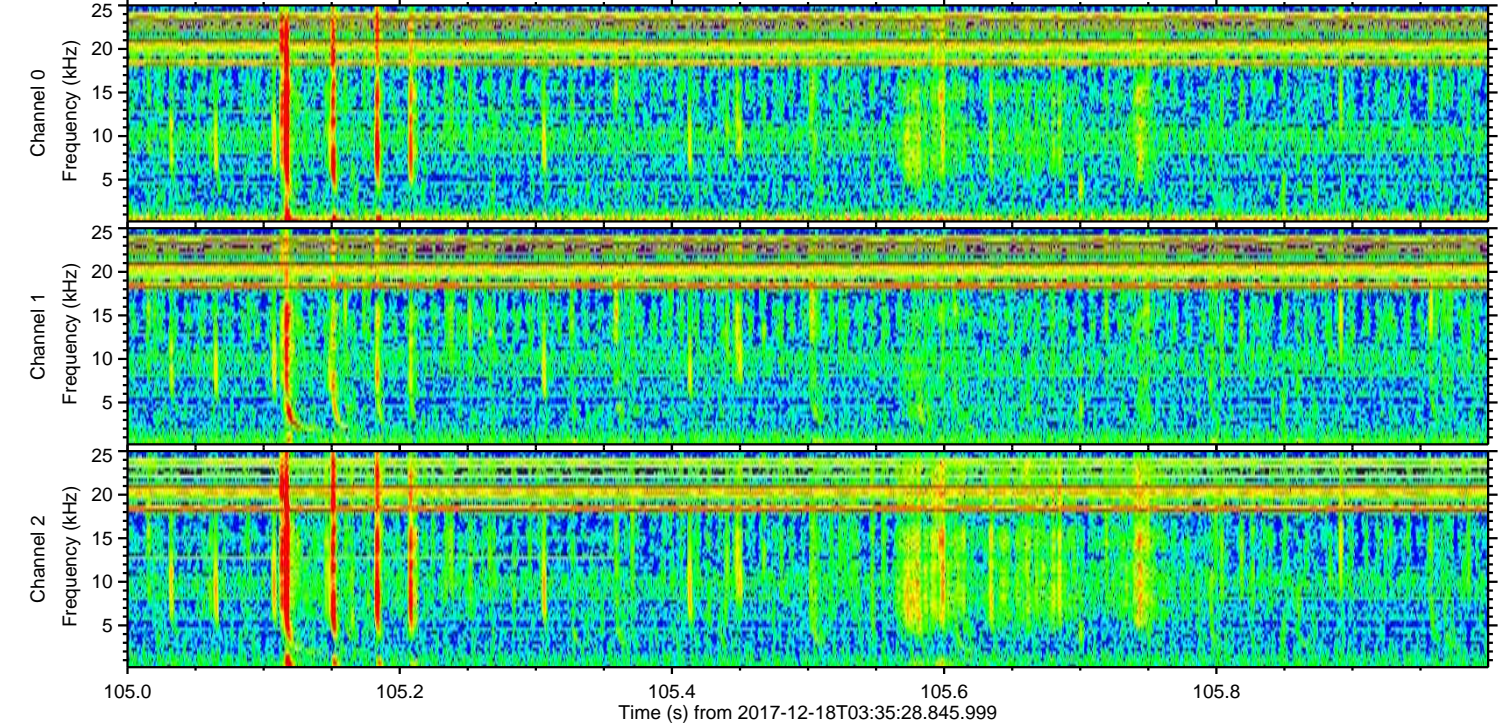
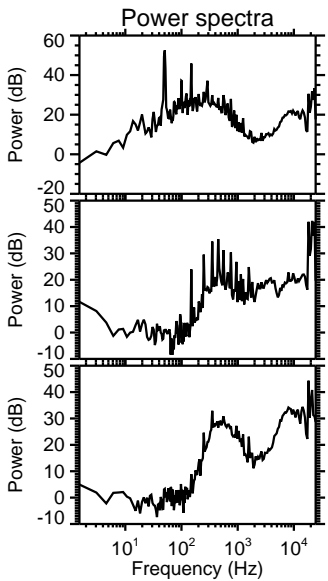
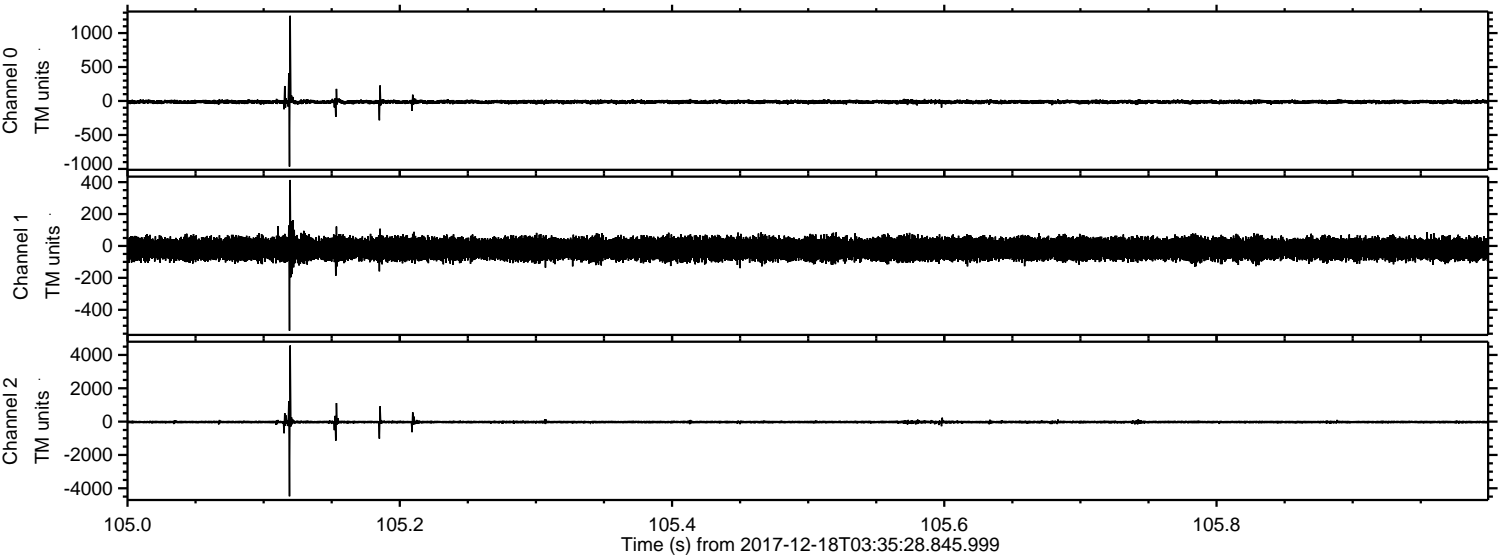
ELMAVAN 3D WAVEFORMS (Measured data sampled at 50 kHz) 51000 packets of 144 samples from 2017-12-18T03:35:28.845.999. Part 2/147

Processed Mon Dec 18 04:44:10 2017 by ELM ver.2012-10-06 from 001__elm20171218_033527__dat00.bin

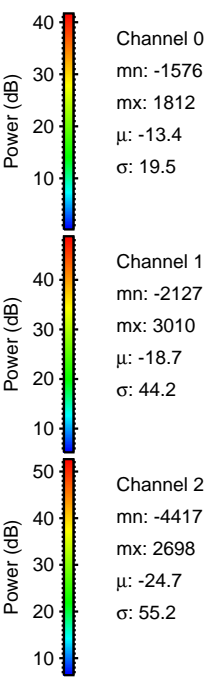
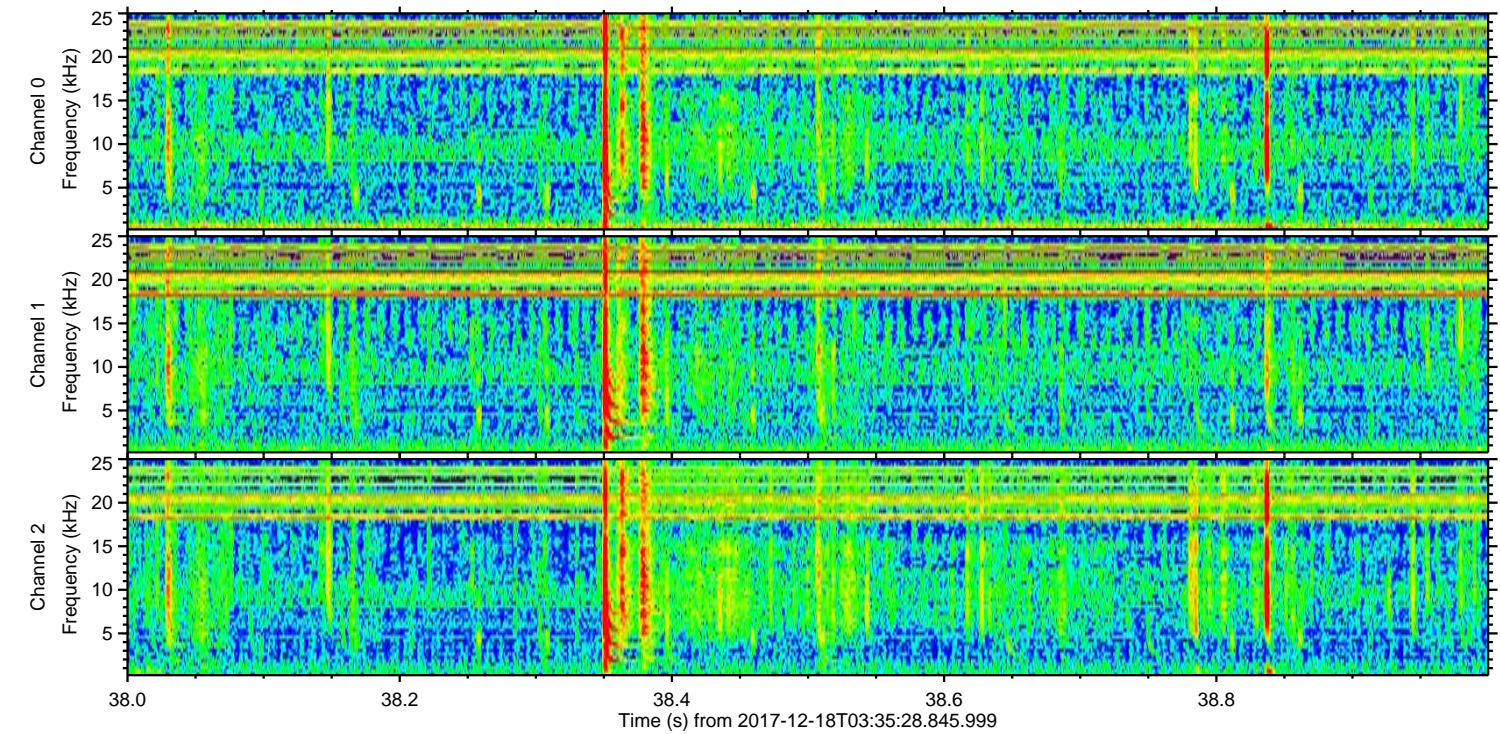
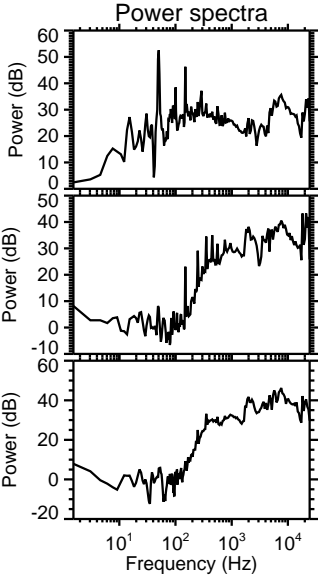
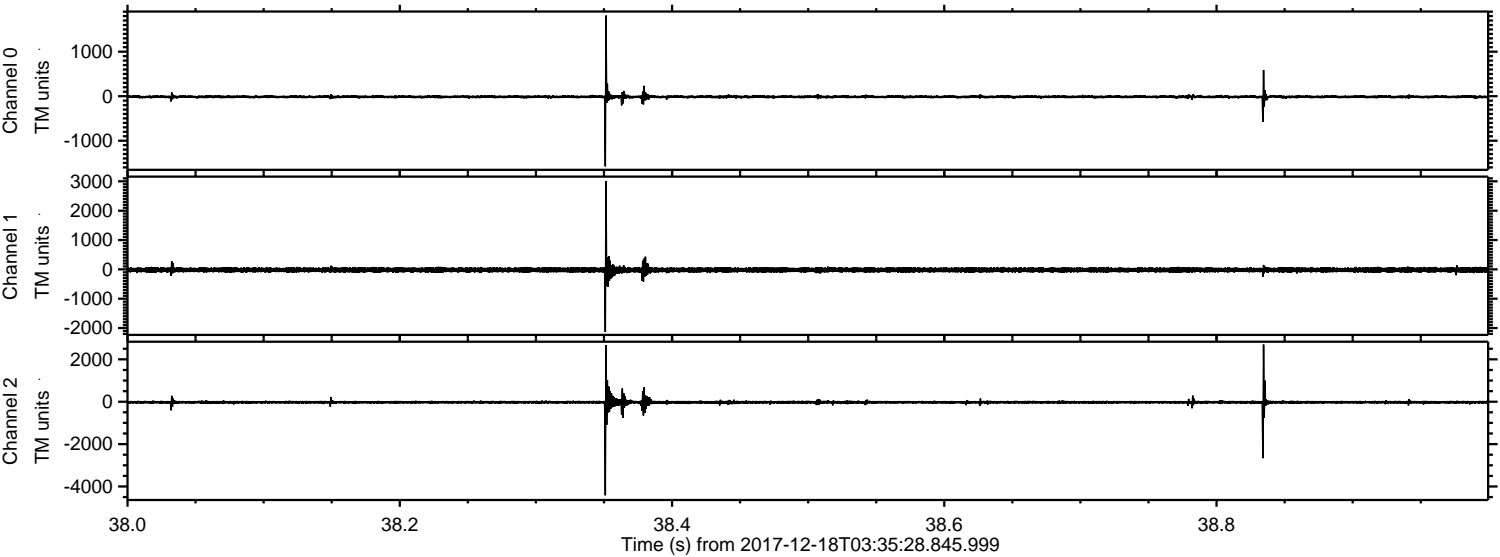


ELMAVAN 3D WAVEFORMS (Measured data sampled at 50 kHz) 51000 packets of 144 samples from 2017-12-18T03:35:28.845.999. Part 106/147

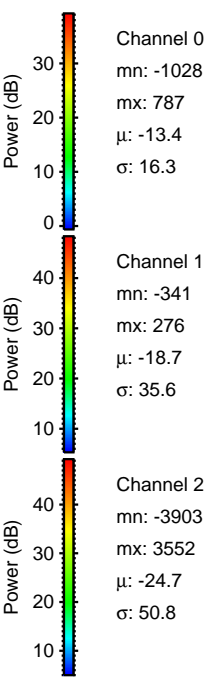
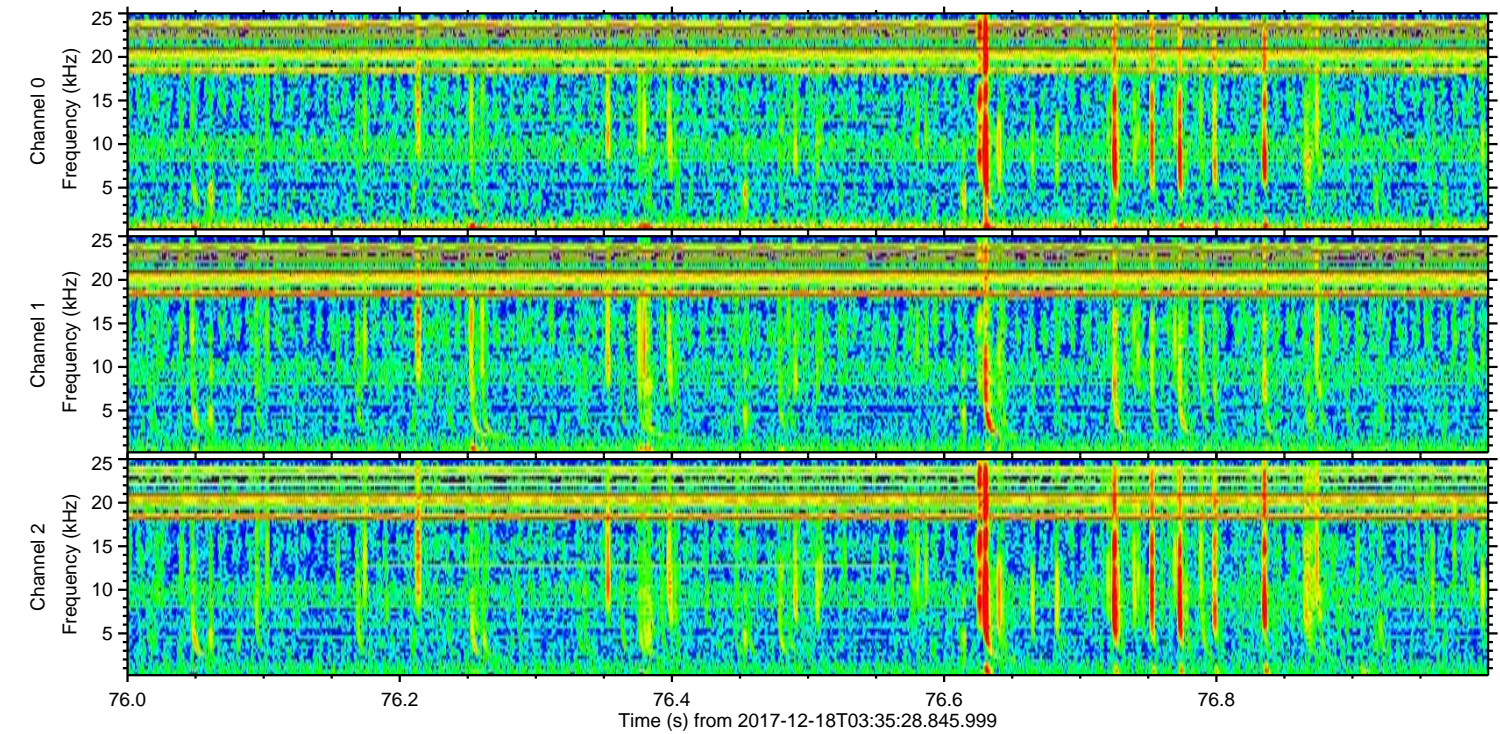
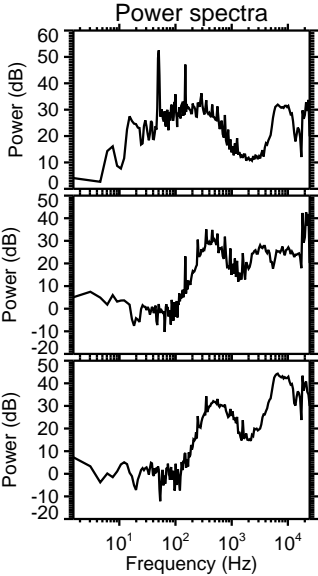
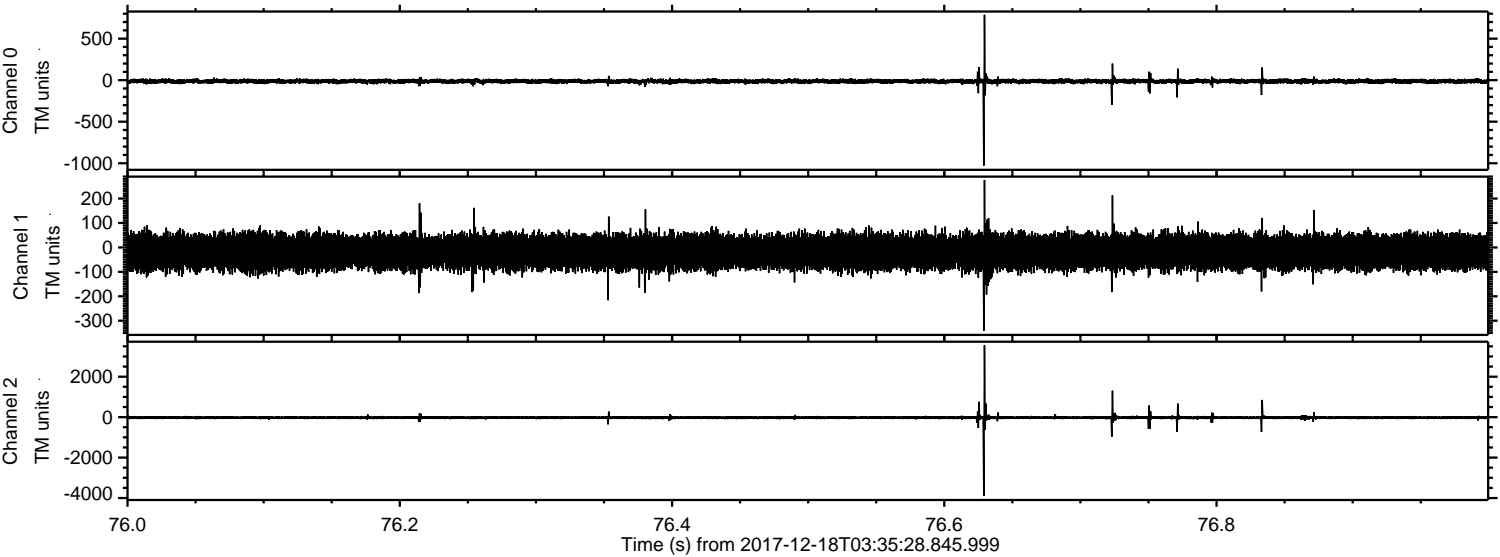
Processed Mon Dec 18 04:44:10 2017 by ELM ver.2012-10-06 from 001__elm20171218_033527__dat00.bin



Processed Mon Dec 18 04:44:11 2017 by ELM ver.2012-10-06 from 001__elm20171218_033527__dat00.bin



Processed Mon Dec 18 04:44:12 2017 by ELM ver.2012-10-06 from 001__elm20171218_033527__dat00.bin

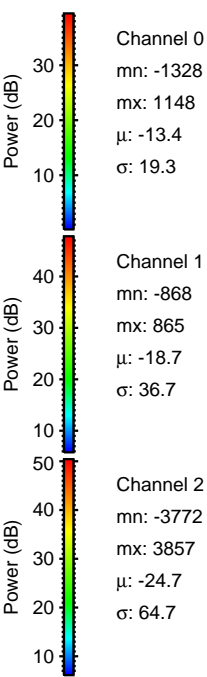
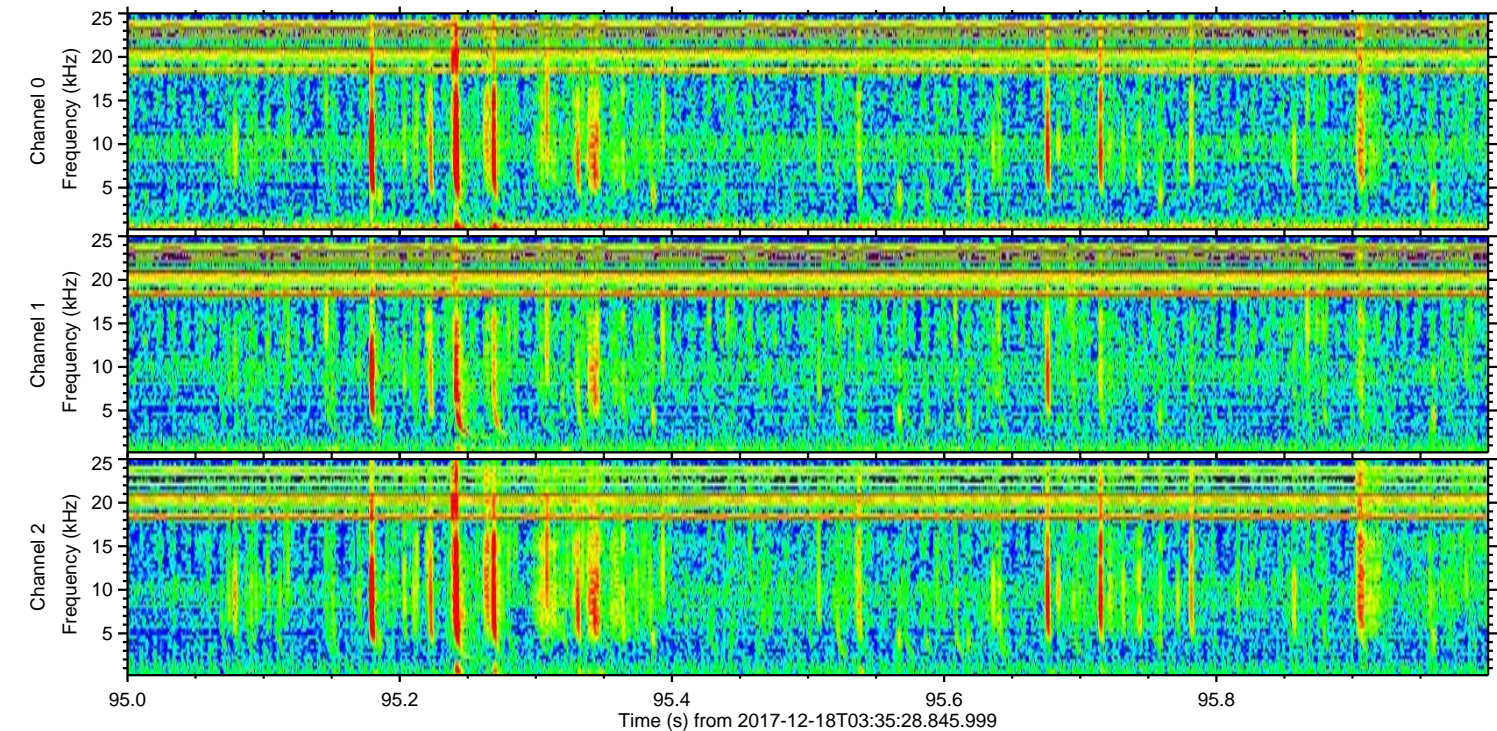
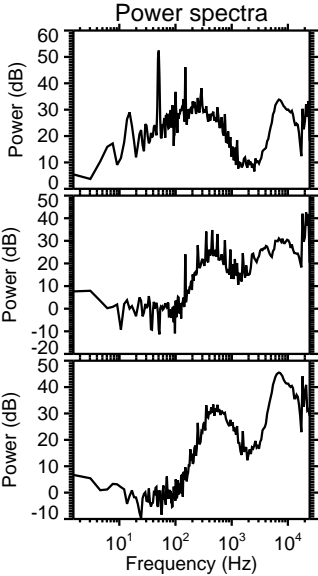
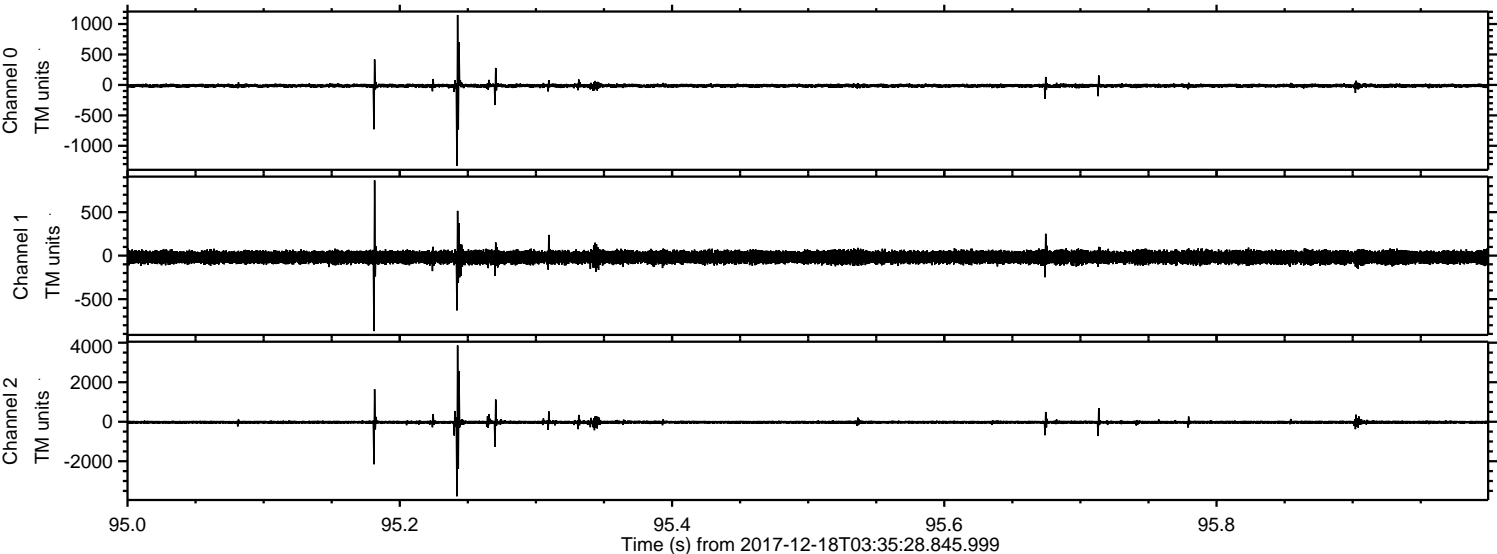


Channel 0
mn: -1028
mx: 787
 μ : -13.4
 σ : 16.3

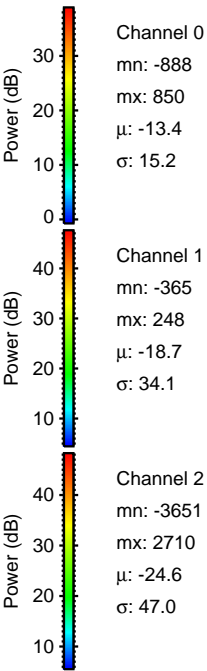
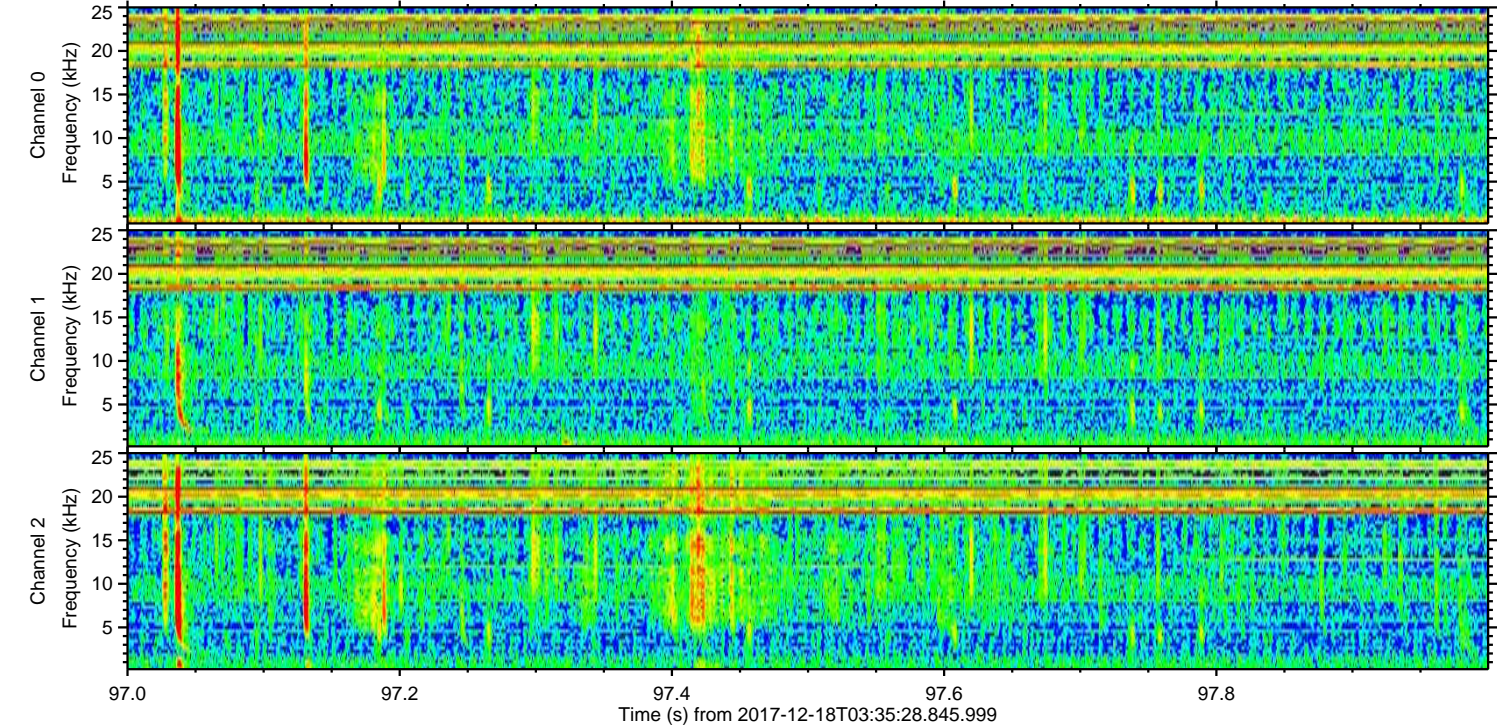
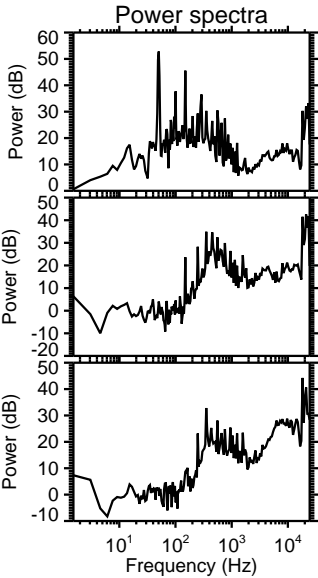
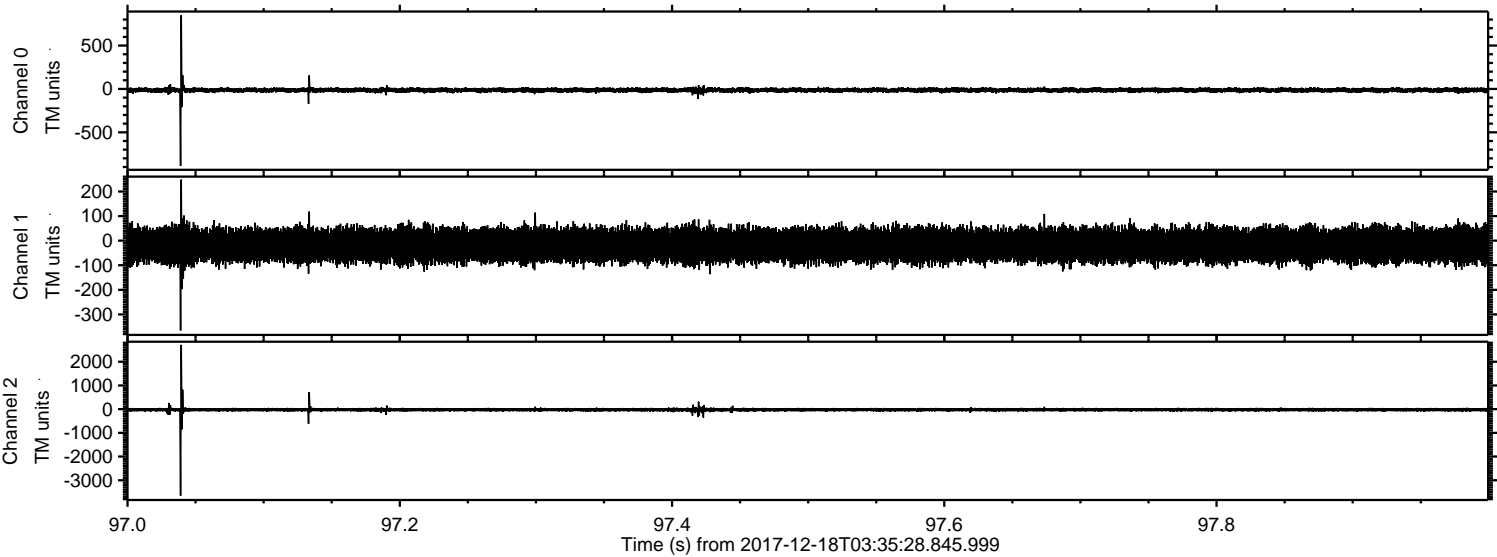
Channel 1
mn: -341
mx: 276
 μ : -18.7
 σ : 35.6

Channel 2
mn: -3903
mx: 3552
 μ : -24.7
 σ : 50.8

Processed Mon Dec 18 04:44:13 2017 by ELM ver.2012-10-06 from 001__elm20171218_033527__dat00.bin



Processed Mon Dec 18 04:44:13 2017 by ELM ver.2012-10-06 from 001__elm20171218_033527__dat00.bin



Processed Mon Dec 18 04:44:14 2017 by ELM ver.2012-10-06 from 001__elm20171218_033527__dat00.bin

