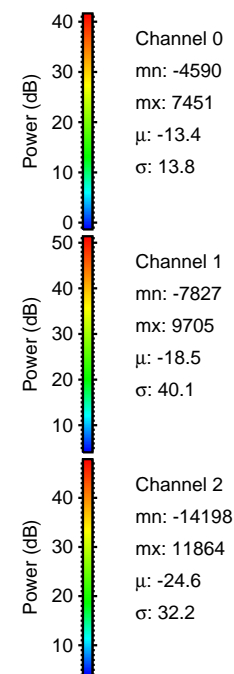
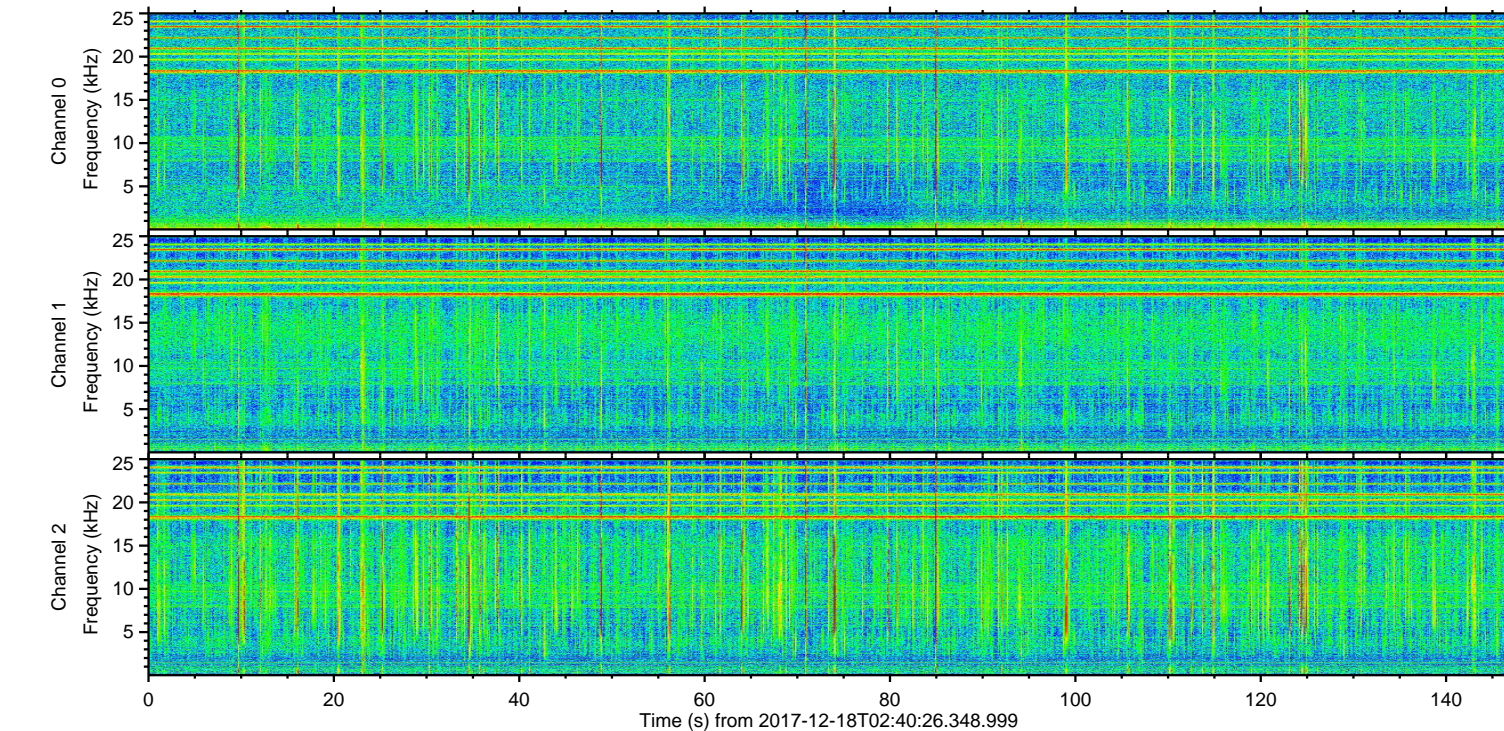
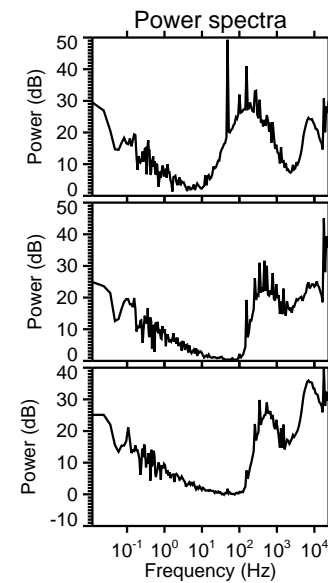
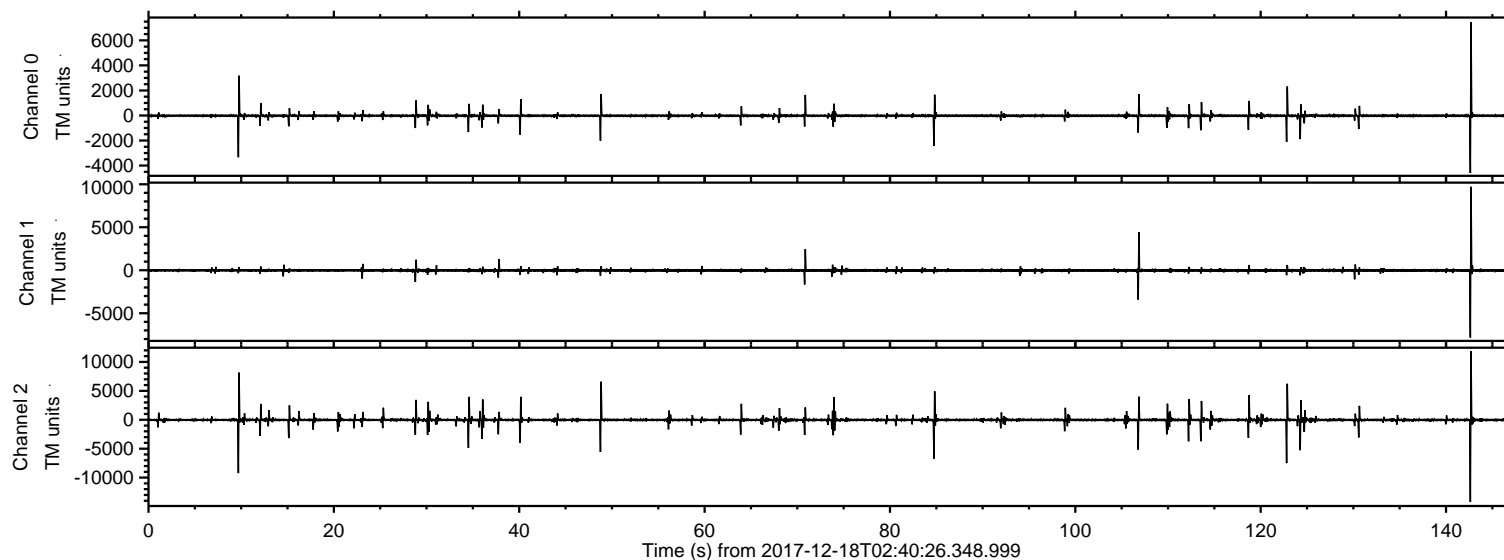


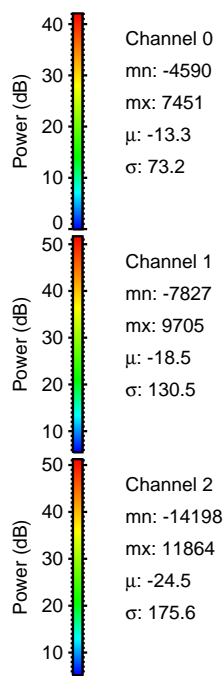
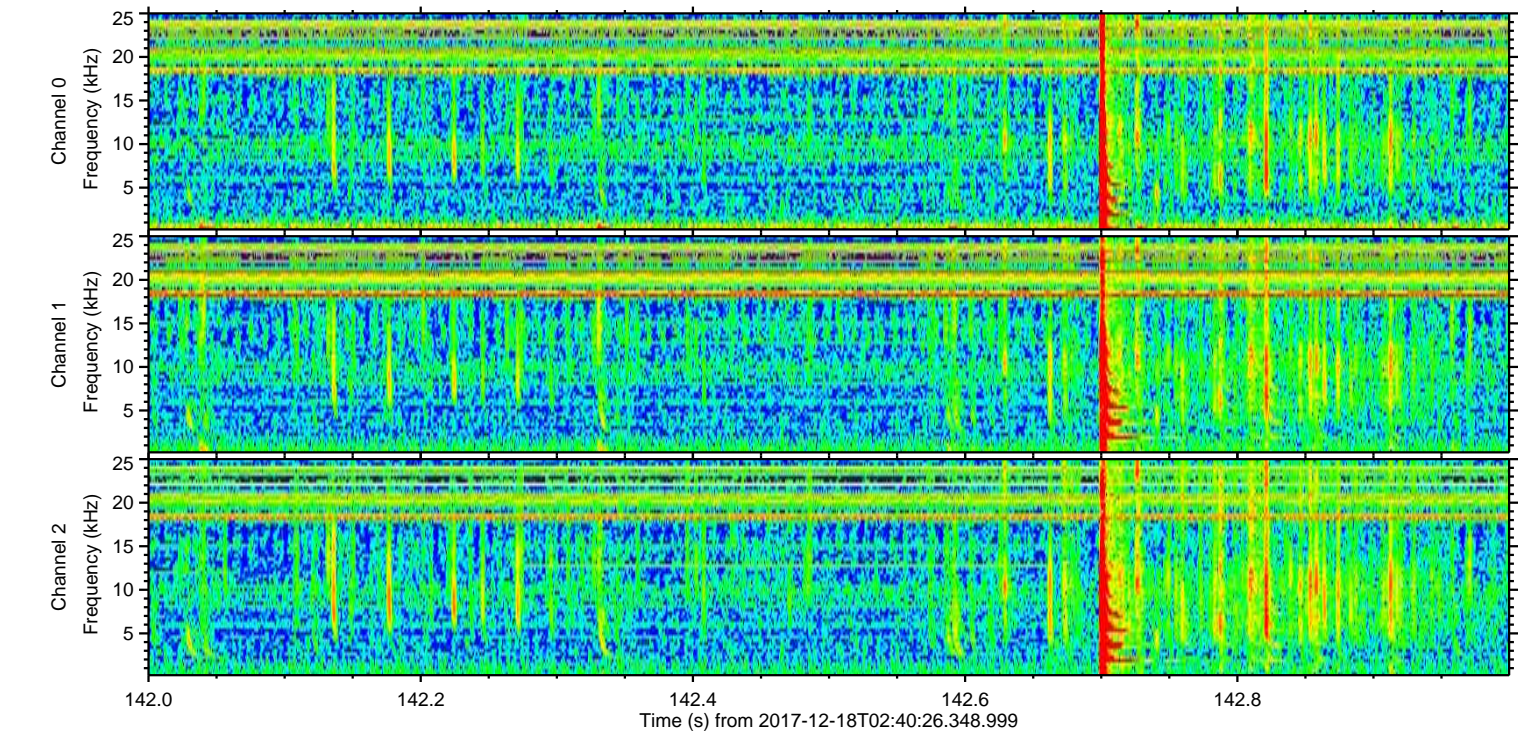
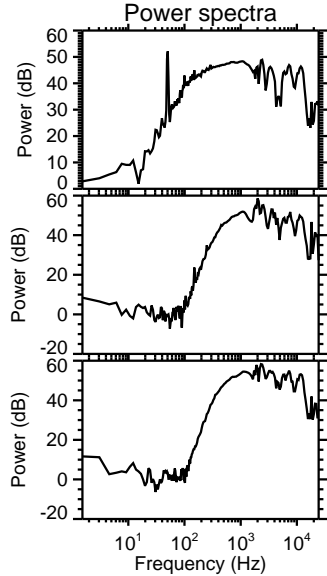
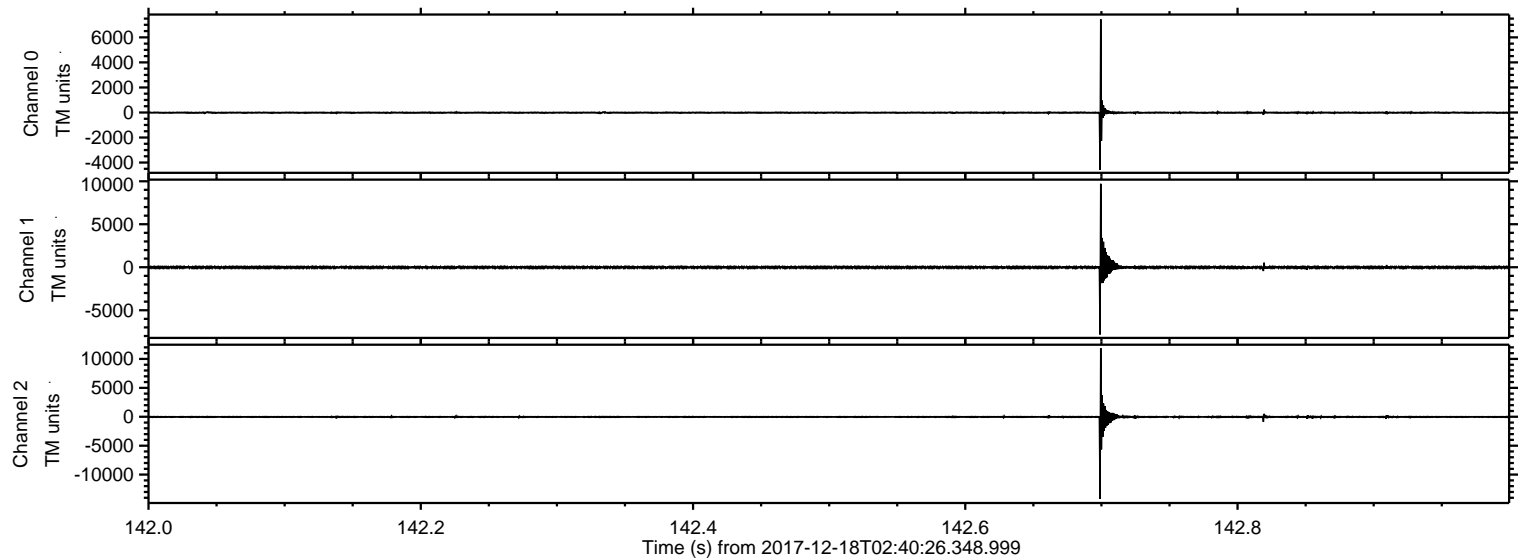
ELMAVAN 3D WAVEFORMS (Measured data sampled at 50 kHz) 51000 packets of 144 samples from 2017-12-18T02:40:26.348.999.

Processed Mon Dec 18 03:49:22 2017 by ELM ver.2012-10-06 from 001__elm20171218_024025__dat00.bin



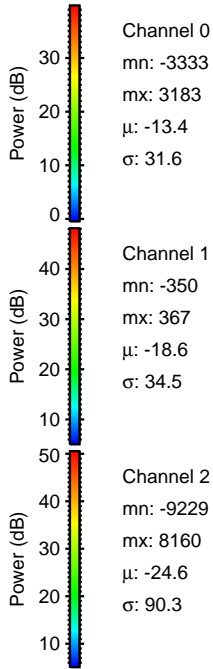
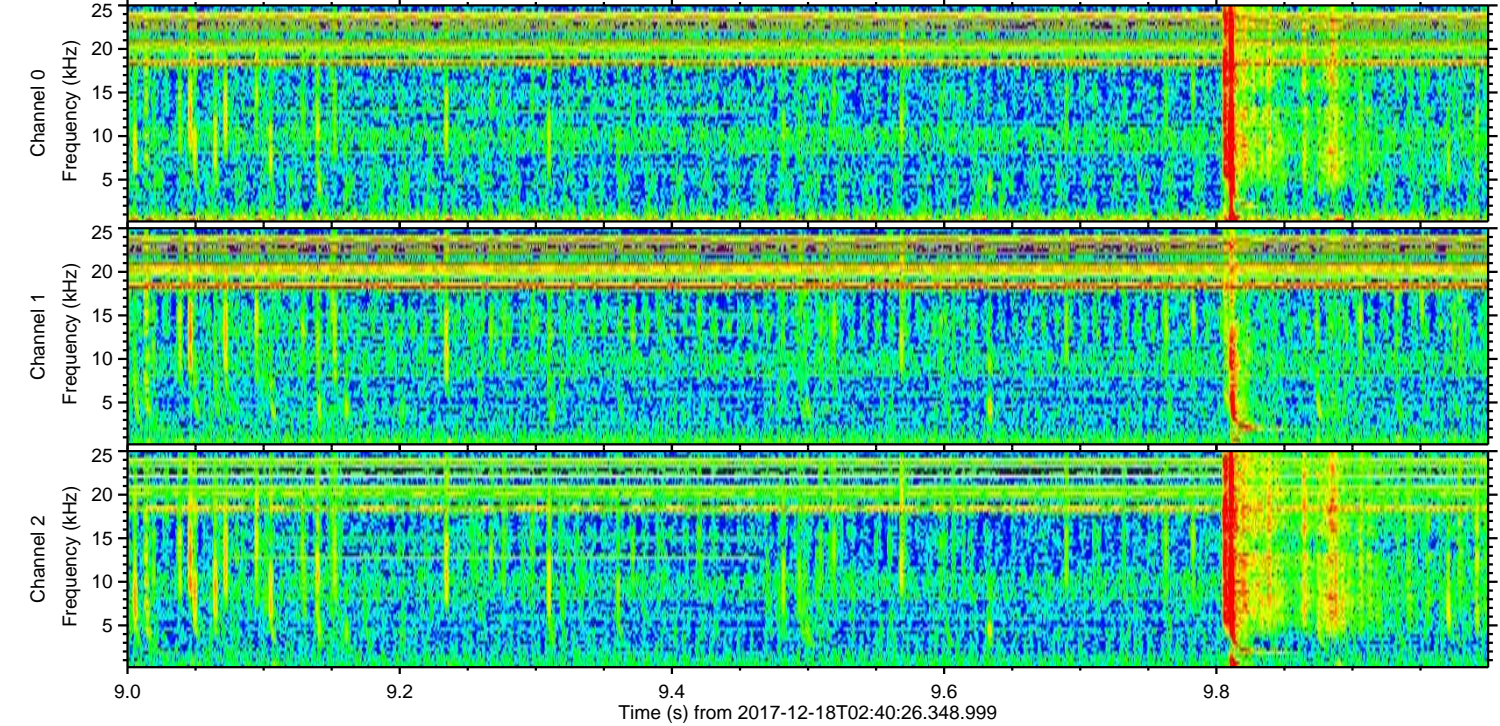
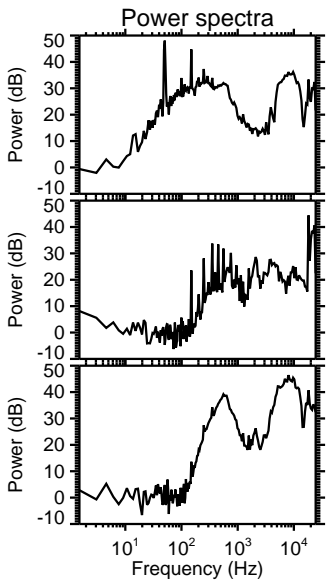
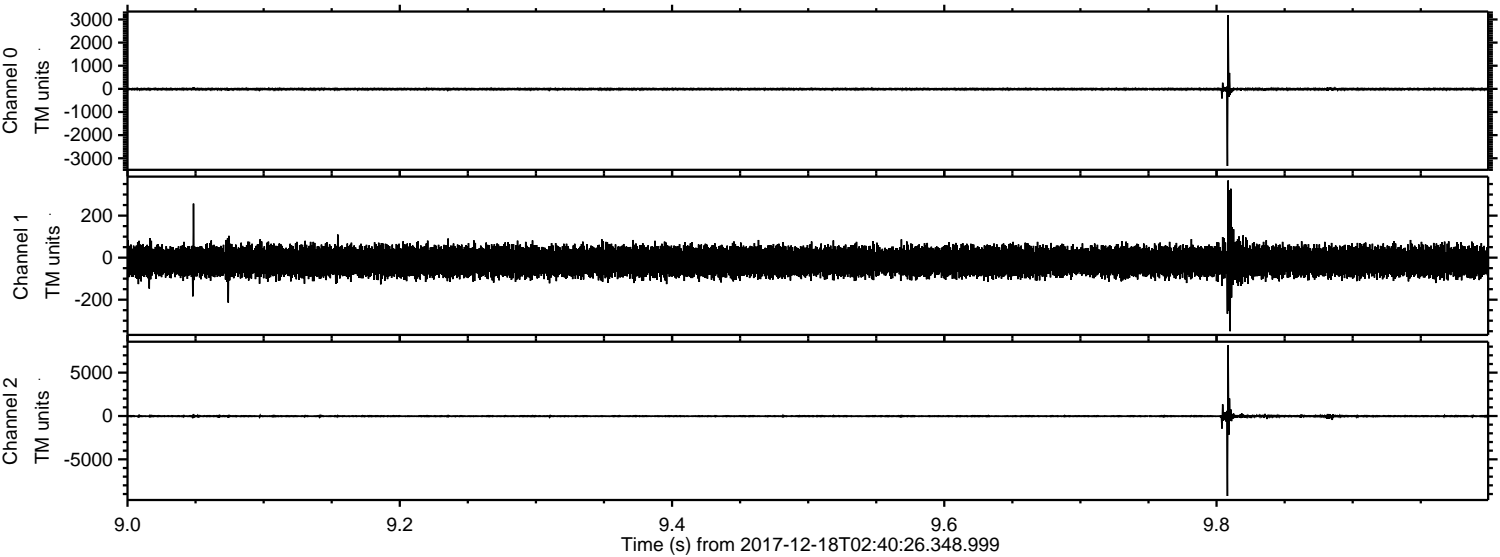
ELMAVAN 3D WAVEFORMS (Measured data sampled at 50 kHz) 51000 packets of 144 samples from 2017-12-18T02:40:26.348.999. Part 143/147

Processed Mon Dec 18 03:49:30 2017 by ELM ver.2012-10-06 from 001__elm20171218_024025__dat00.bin



ELMAVAN 3D WAVEFORMS (Measured data sampled at 50 kHz) 51000 packets of 144 samples from 2017-12-18T02:40:26.348.999. Part 10/147

Processed Mon Dec 18 03:49:31 2017 by ELM ver.2012-10-06 from 001__elm20171218_024025__dat00.bin



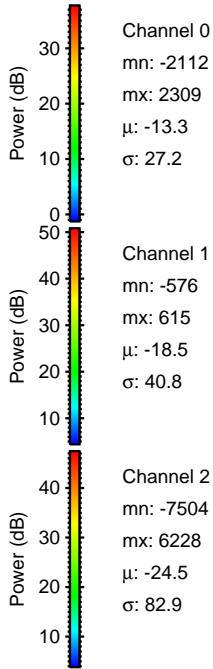
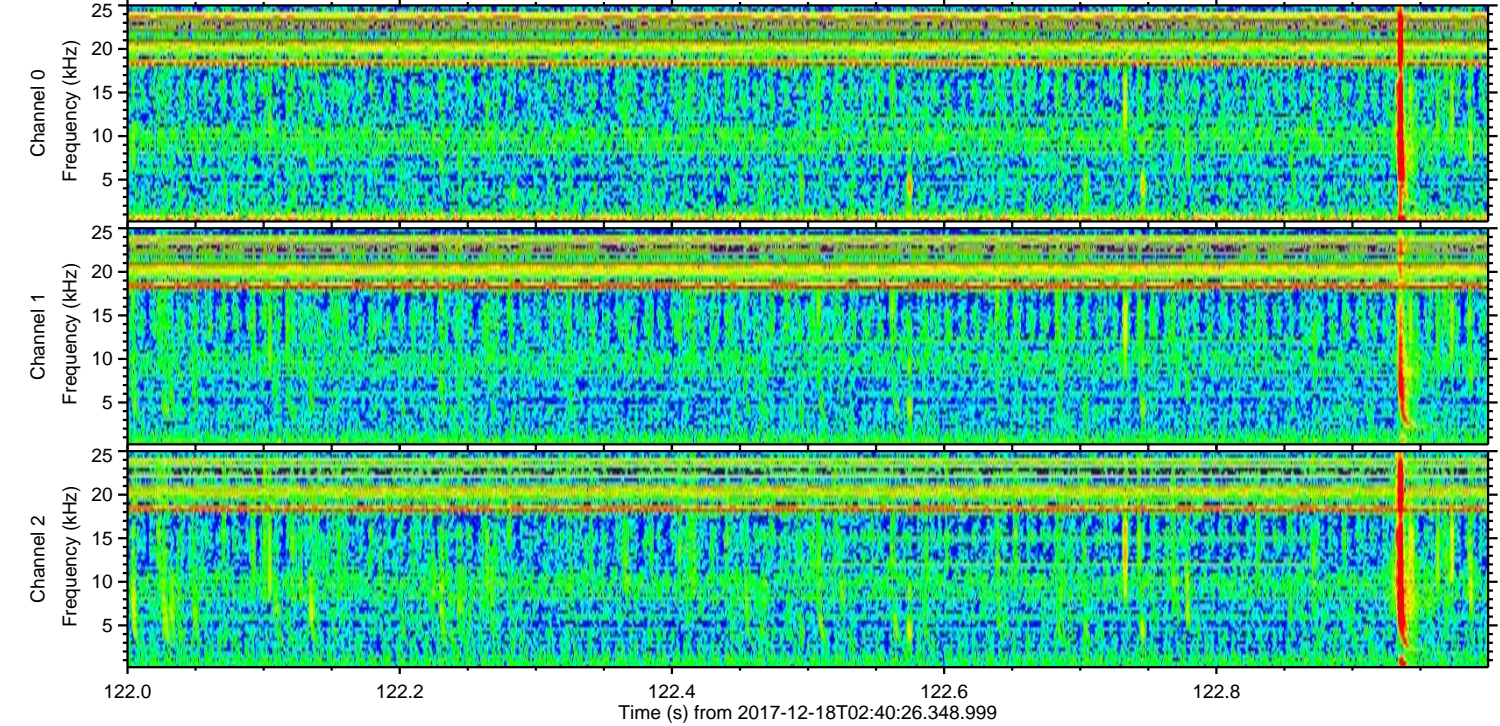
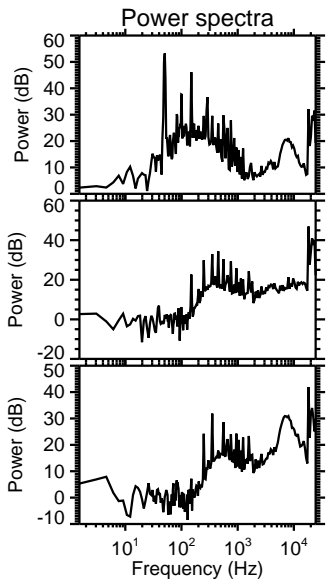
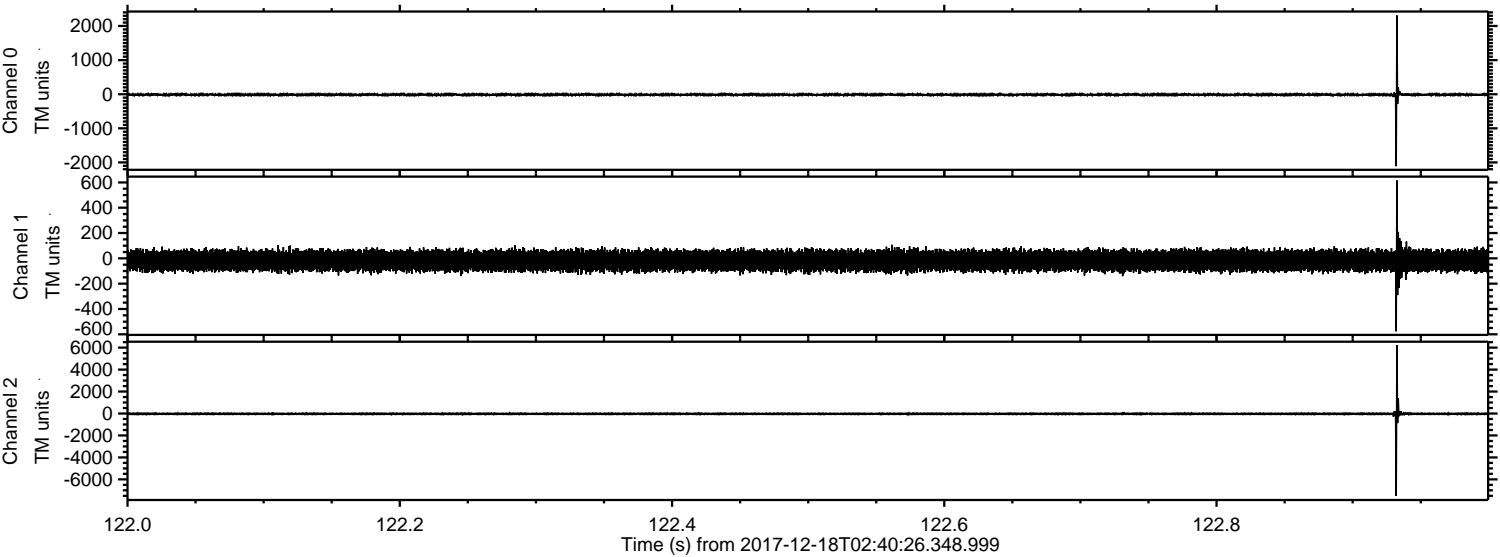
Channel 0
mn: -3333
mx: 3183
 μ : -13.4
 σ : 31.6

Channel 1
mn: -350
mx: 367
 μ : -18.6
 σ : 34.5

Channel 2
mn: -9229
mx: 8160
 μ : -24.6
 σ : 90.3

ELMAVAN 3D WAVEFORMS (Measured data sampled at 50 kHz) 51000 packets of 144 samples from 2017-12-18T02:40:26.348.999. Part 123/147

Processed Mon Dec 18 03:49:31 2017 by ELM ver.2012-10-06 from 001__elm20171218_024025__dat00.bin

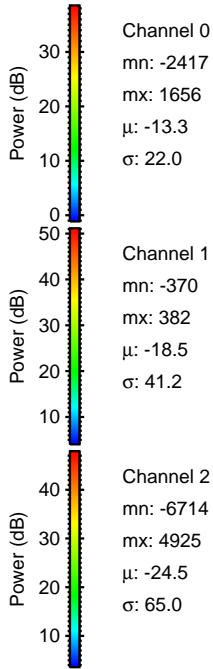
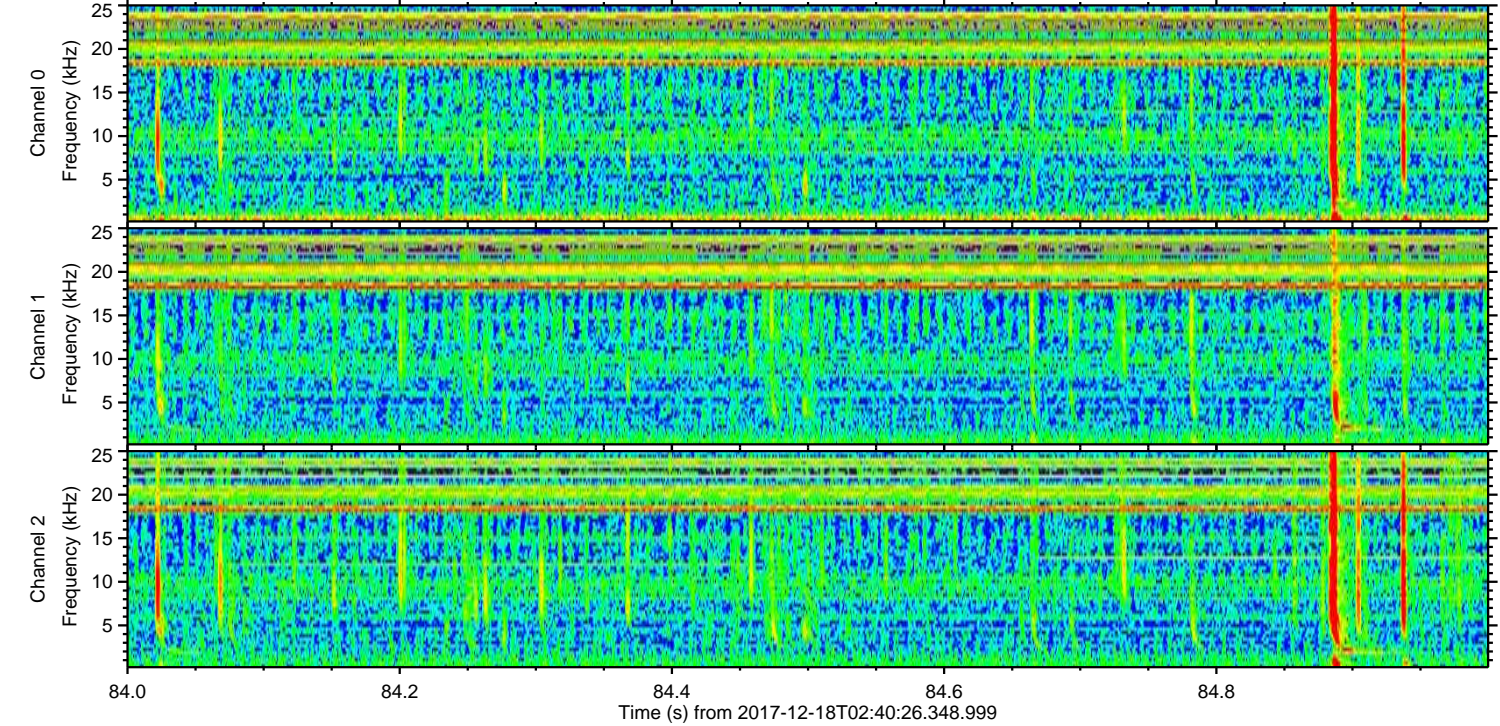
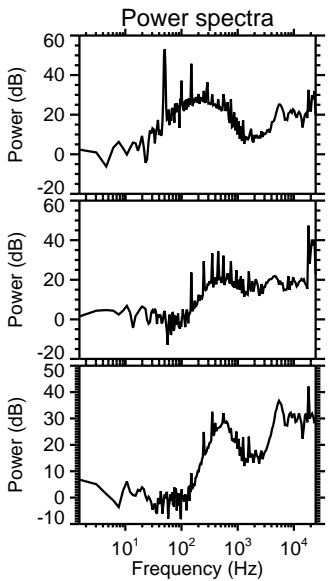
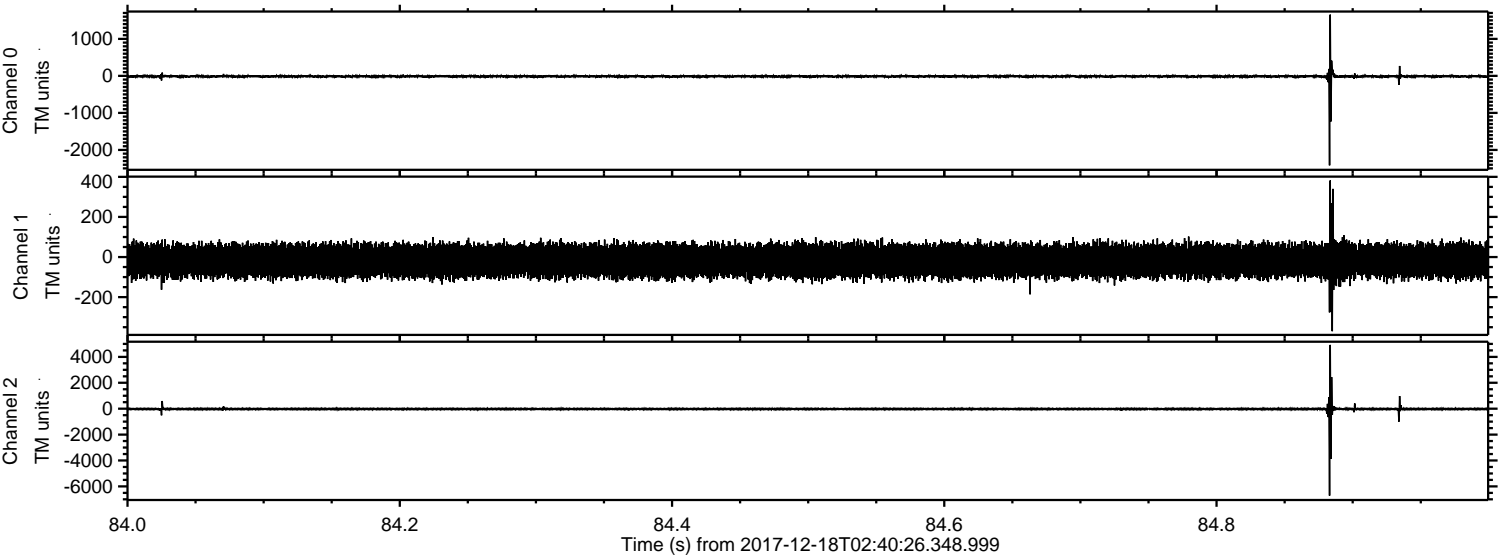


Channel 0
mn: -2112
mx: 2309
 μ : -13.3
 σ : 27.2

Channel 1
mn: -576
mx: 615
 μ : -18.5
 σ : 40.8

Channel 2
mn: -7504
mx: 6228
 μ : -24.5
 σ : 82.9

Processed Mon Dec 18 03:49:32 2017 by ELM ver.2012-10-06 from 001__elm20171218_024025__dat00.bin

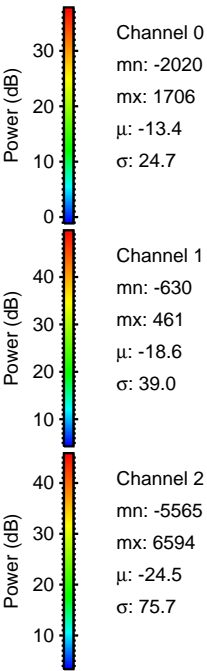
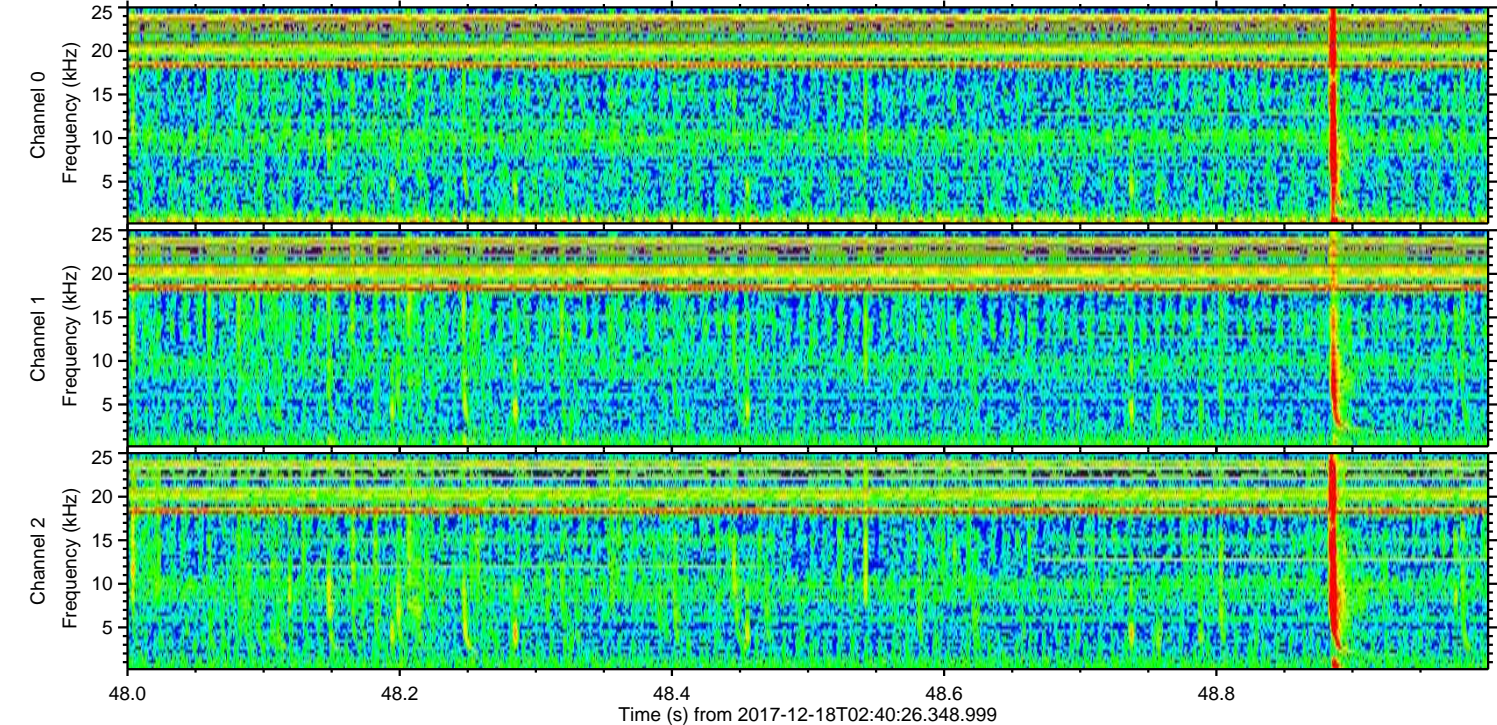
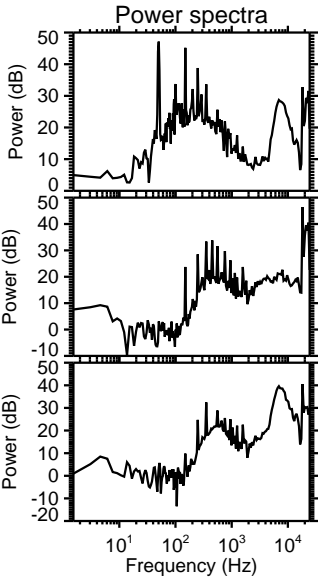
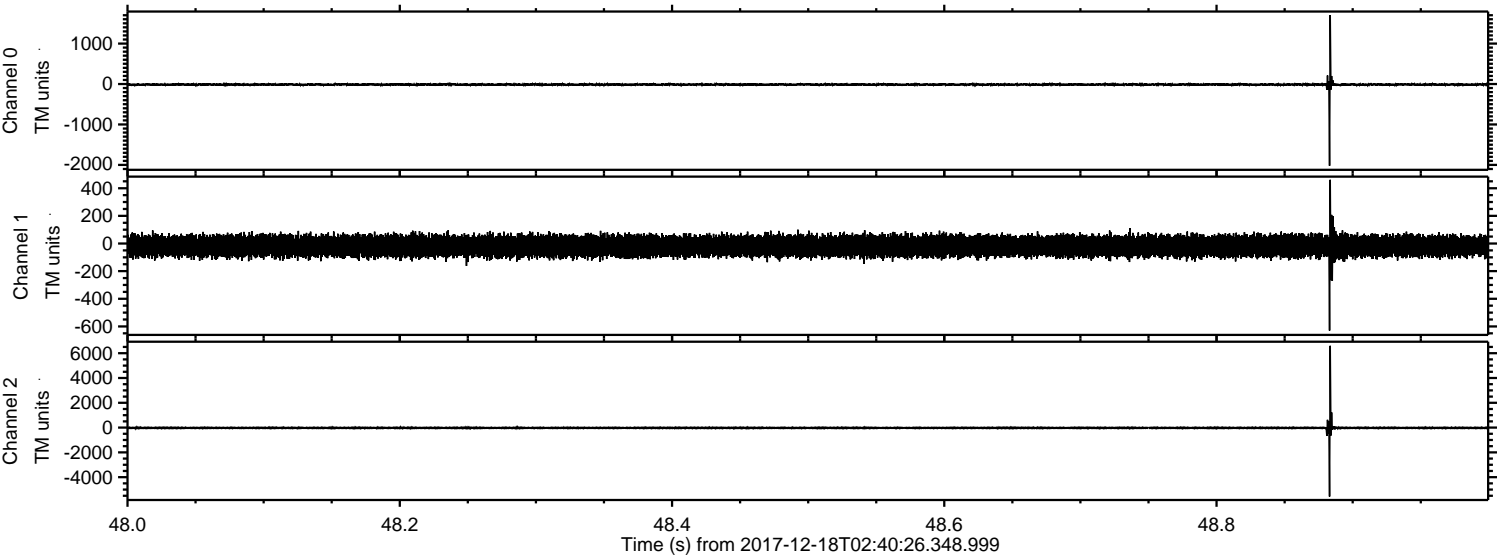


Channel 0
mn: -2417
mx: 1656
 μ : -13.3
 σ : 22.0

Channel 1
mn: -370
mx: 382
 μ : -18.5
 σ : 41.2

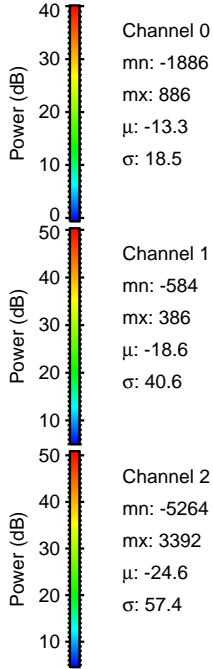
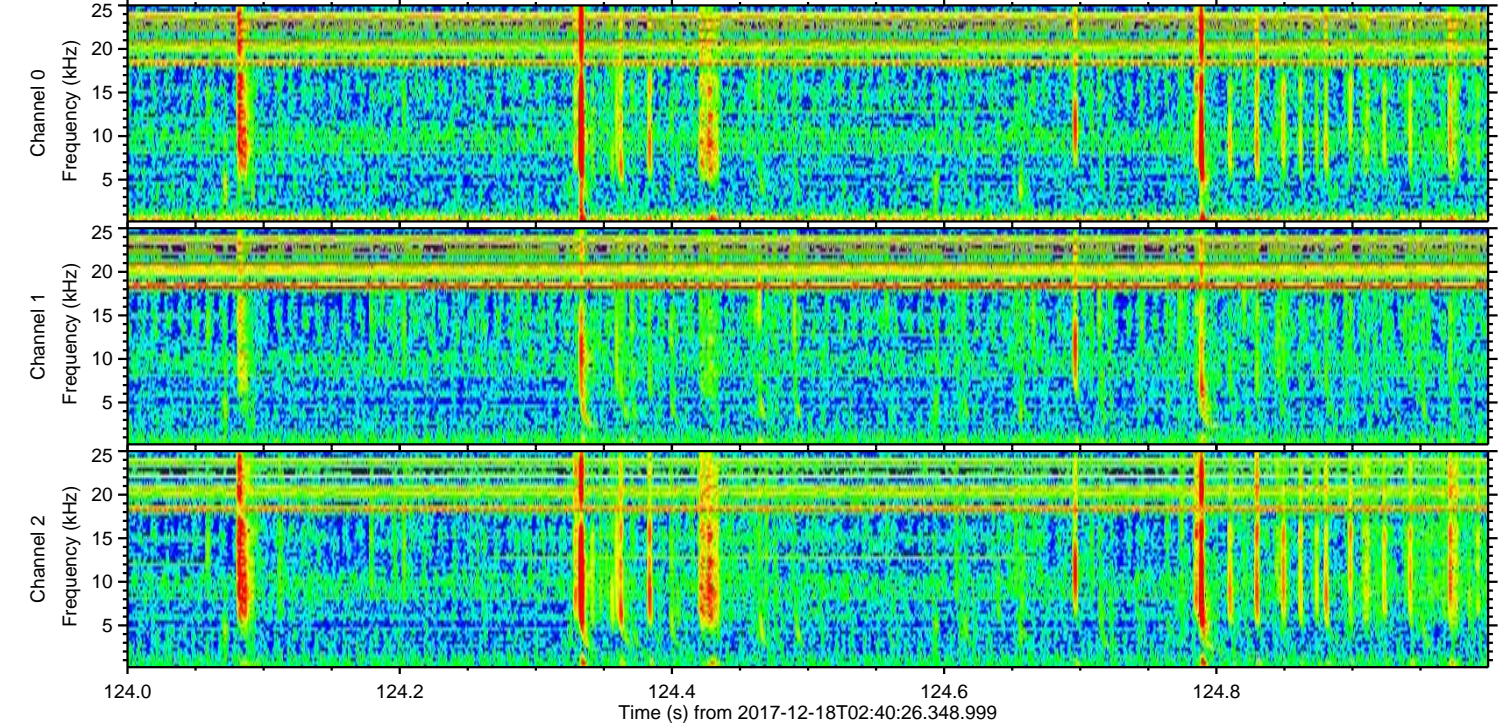
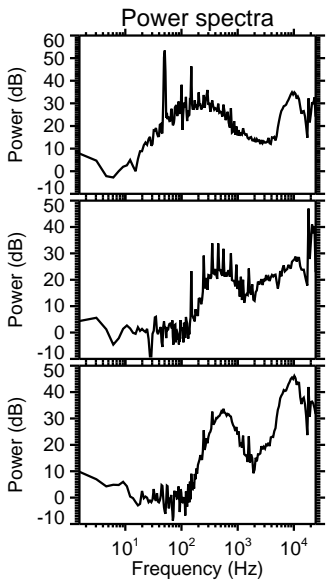
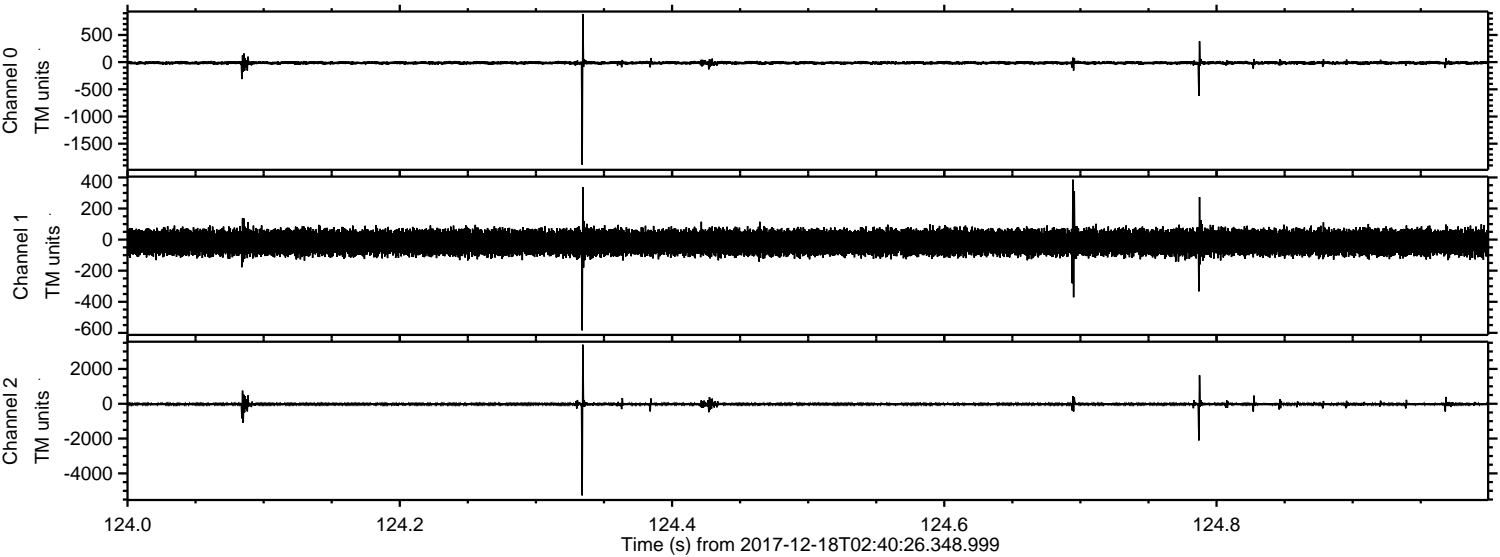
Channel 2
mn: -6714
mx: 4925
 μ : -24.5
 σ : 65.0

Processed Mon Dec 18 03:49:33 2017 by ELM ver.2012-10-06 from 001__elm20171218_024025__dat00.bin



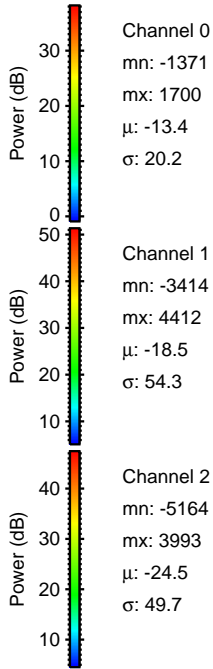
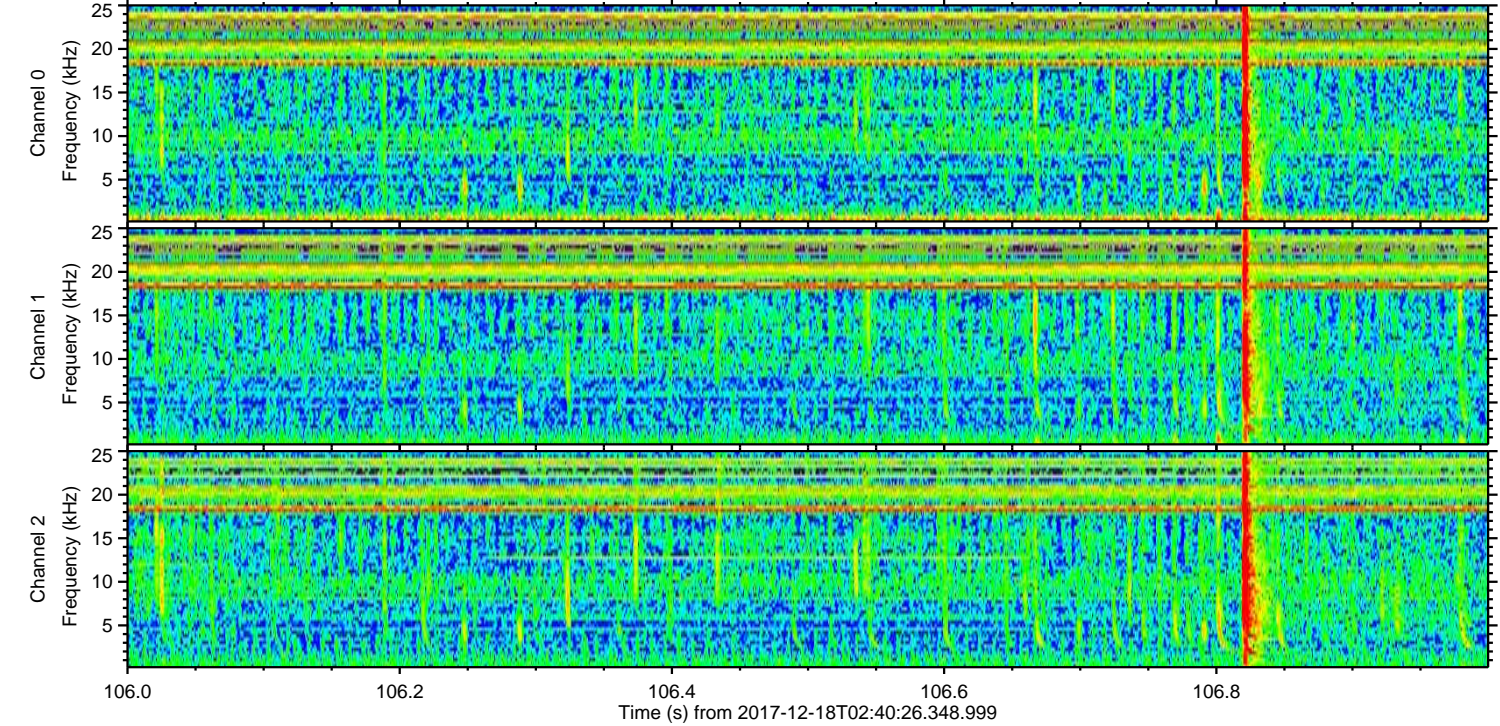
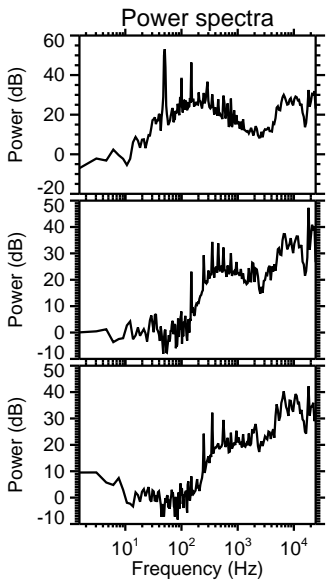
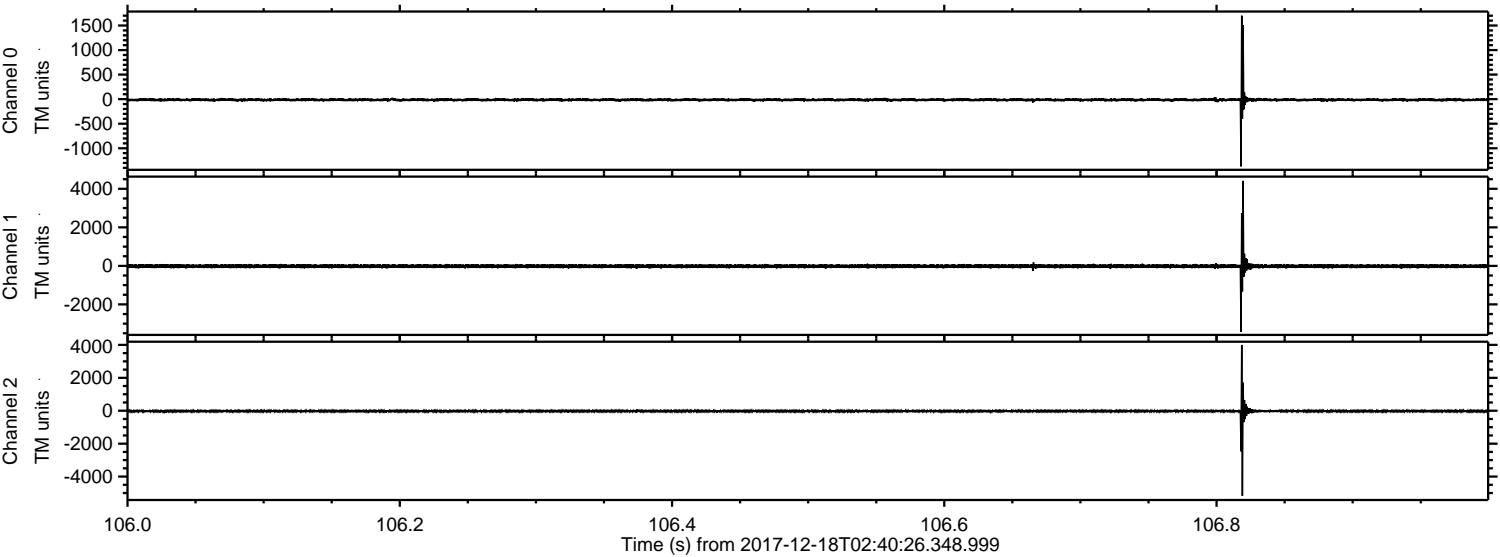
ELMAVAN 3D WAVEFORMS (Measured data sampled at 50 kHz) 51000 packets of 144 samples from 2017-12-18T02:40:26.348.999. Part 125/147

Processed Mon Dec 18 03:49:34 2017 by ELM ver.2012-10-06 from 001__elm20171218_024025__dat00.bin



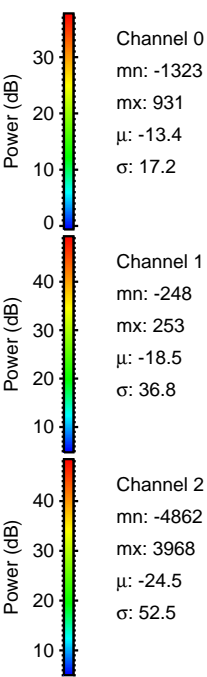
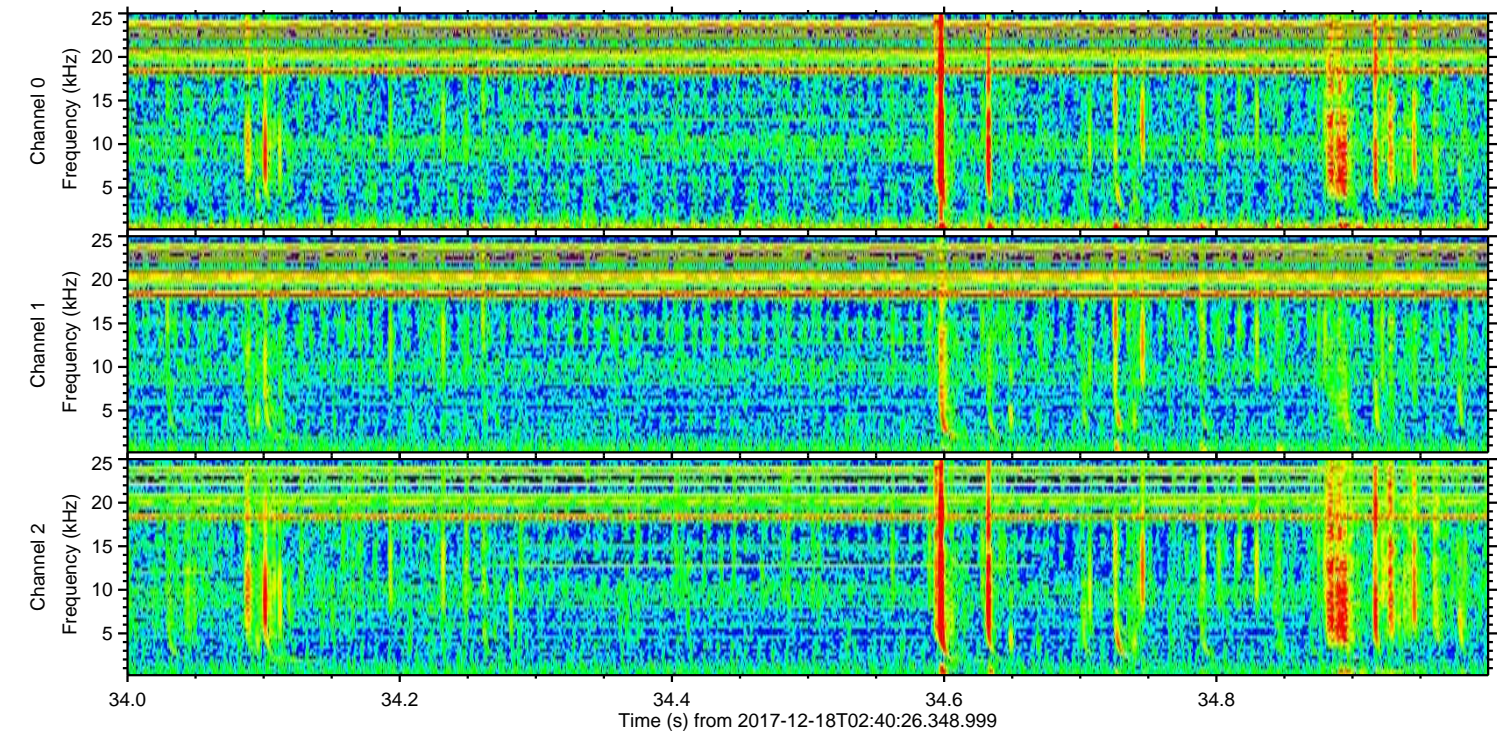
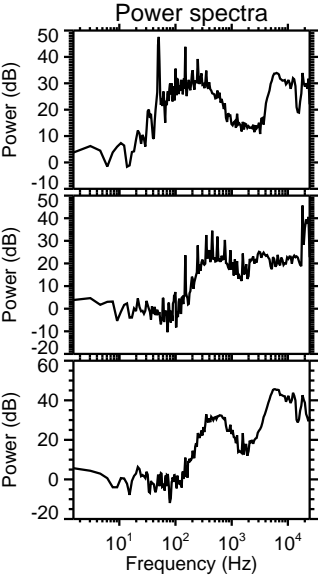
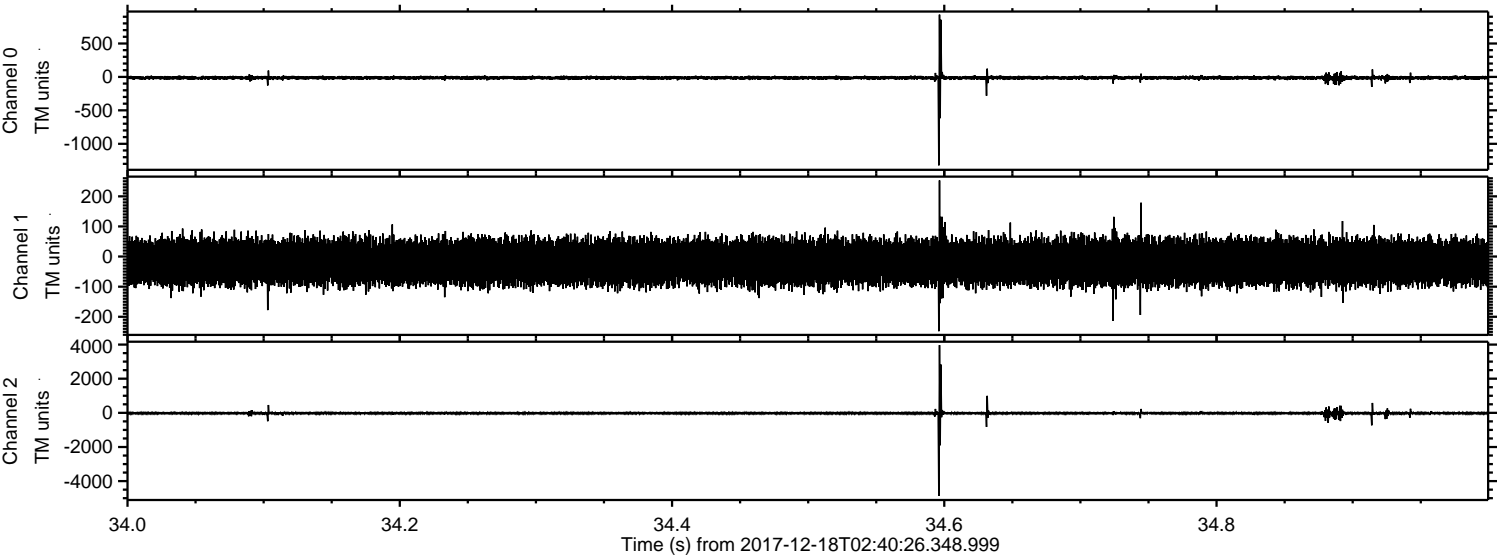
ELMAVAN 3D WAVEFORMS (Measured data sampled at 50 kHz) 51000 packets of 144 samples from 2017-12-18T02:40:26.348.999. Part 107/147

Processed Mon Dec 18 03:49:35 2017 by ELM ver.2012-10-06 from 001__elm20171218_024025__dat00.bin



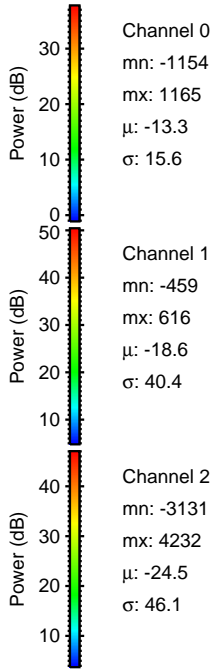
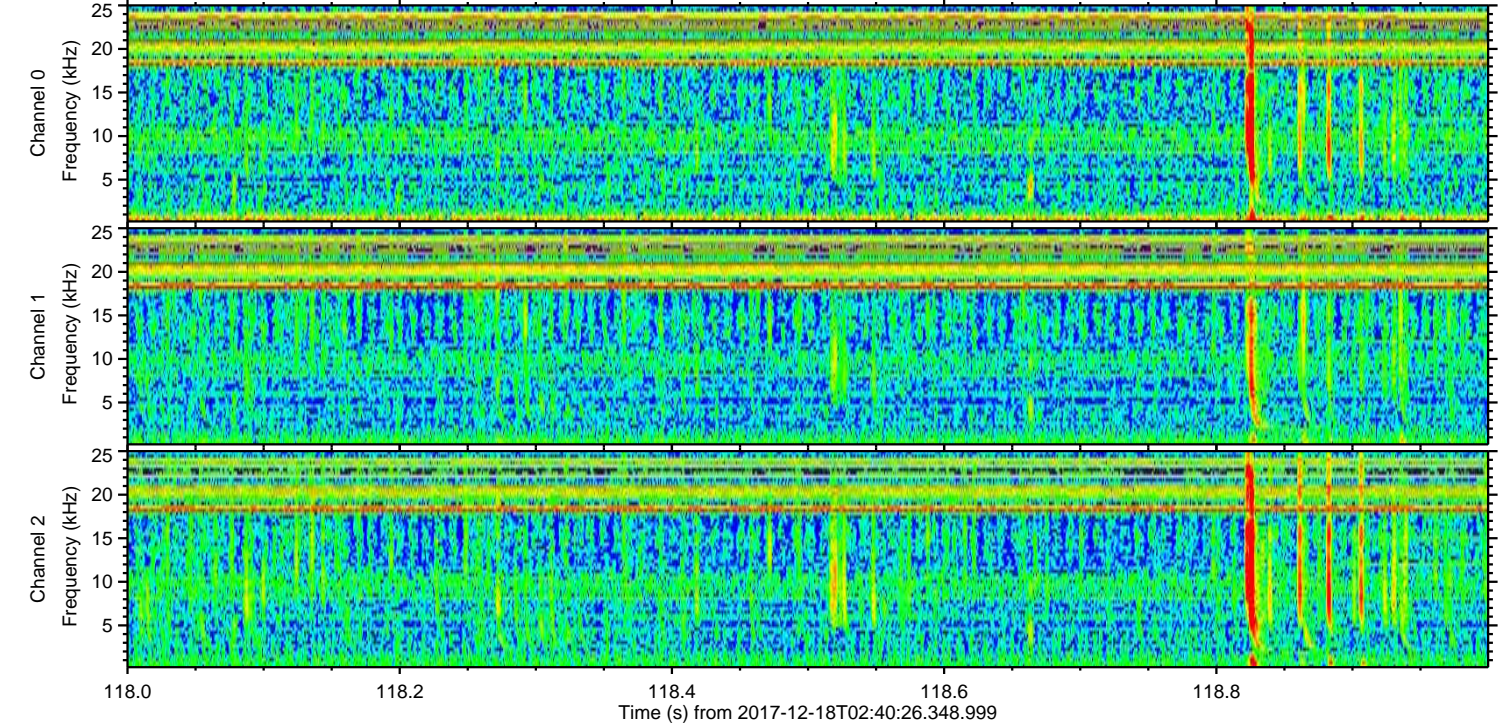
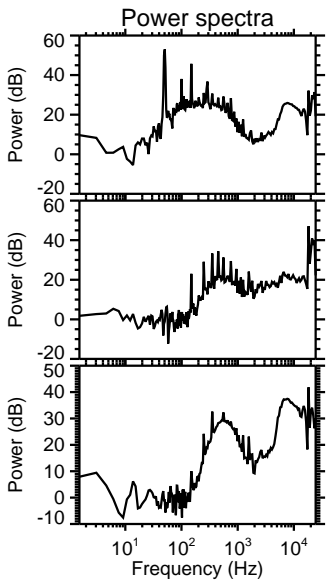
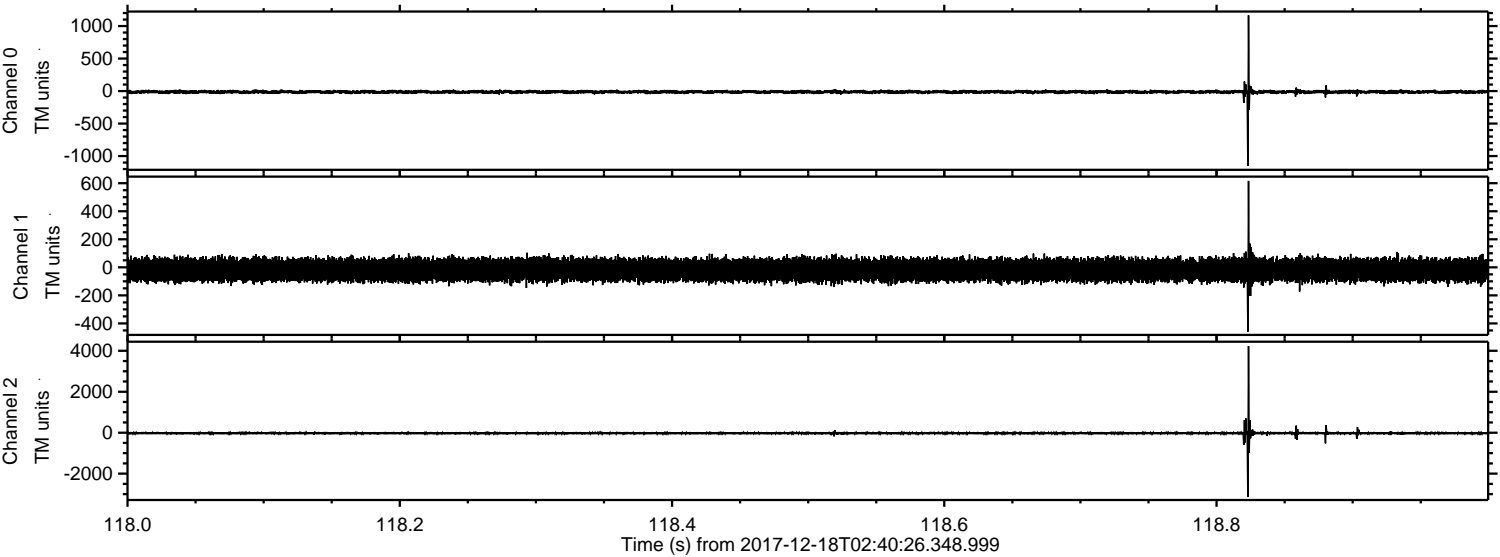
ELMAVAN 3D WAVEFORMS (Measured data sampled at 50 kHz) 51000 packets of 144 samples from 2017-12-18T02:40:26.348.999. Part 35/147

Processed Mon Dec 18 03:49:35 2017 by ELM ver.2012-10-06 from 001__elm20171218_024025__dat00.bin



ELMAVAN 3D WAVEFORMS (Measured data sampled at 50 kHz) 51000 packets of 144 samples from 2017-12-18T02:40:26.348.999. Part 119/147

Processed Mon Dec 18 03:49:36 2017 by ELM ver.2012-10-06 from 001__elm20171218_024025__dat00.bin



Channel 0
mn: -1154
mx: 1165
 μ : -13.3
 σ : 15.6

Channel 1
mn: -459
mx: 616
 μ : -18.6
 σ : 40.4

Channel 2
mn: -3131
mx: 4232
 μ : -24.5
 σ : 46.1

ELMAVAN 3D WAVEFORMS (Measured data sampled at 50 kHz) 51000 packets of 144 samples from 2017-12-18T02:40:26.348.999. Part 33/147

Processed Mon Dec 18 03:49:37 2017 by ELM ver.2012-10-06 from 001__elm20171218_024025__dat00.bin

