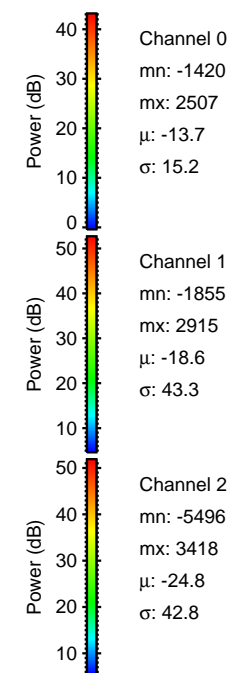
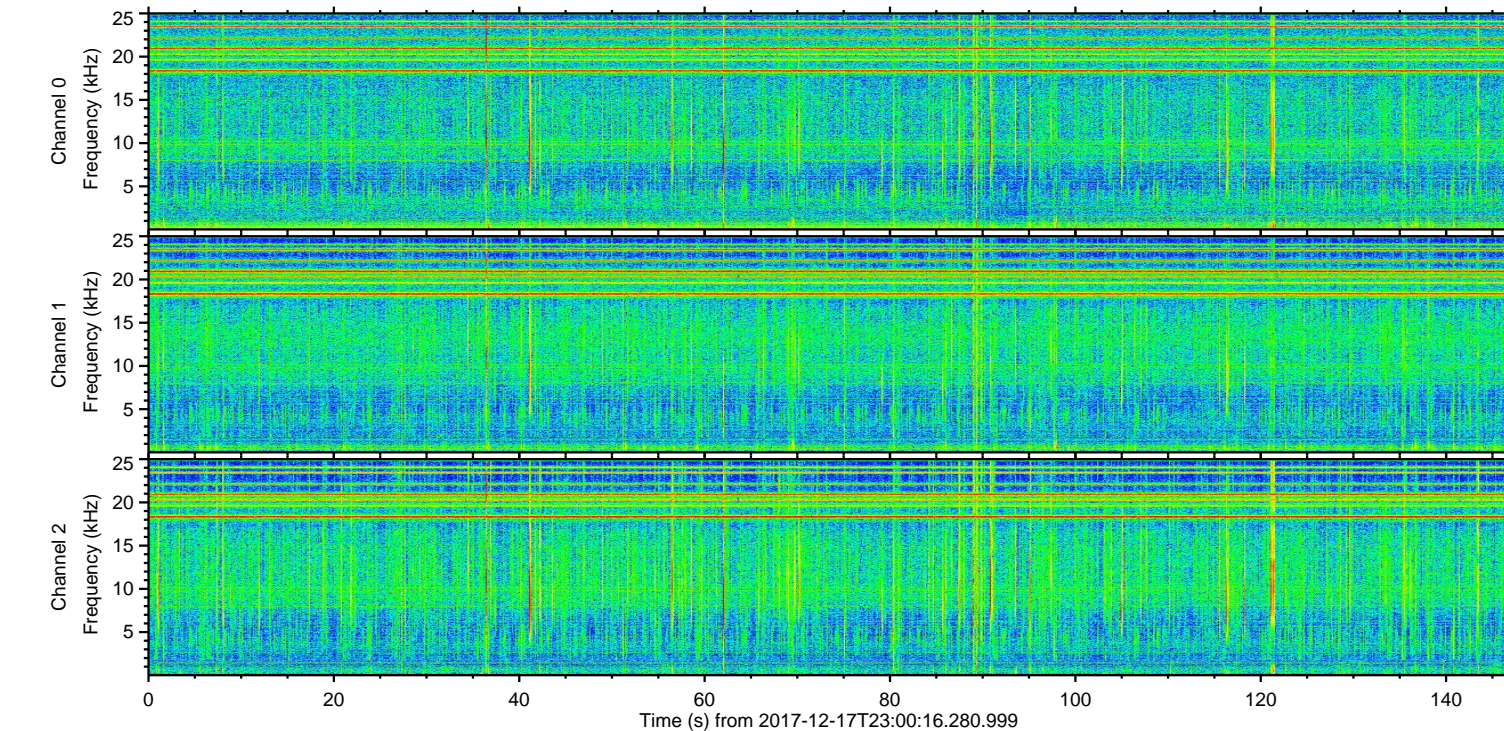
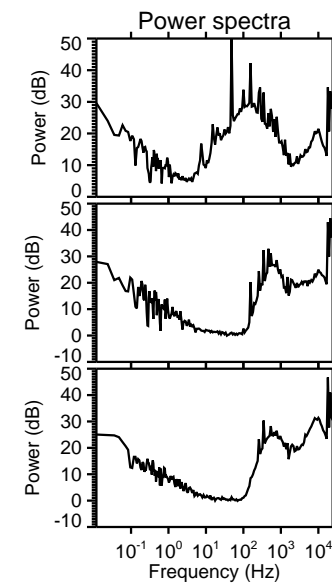
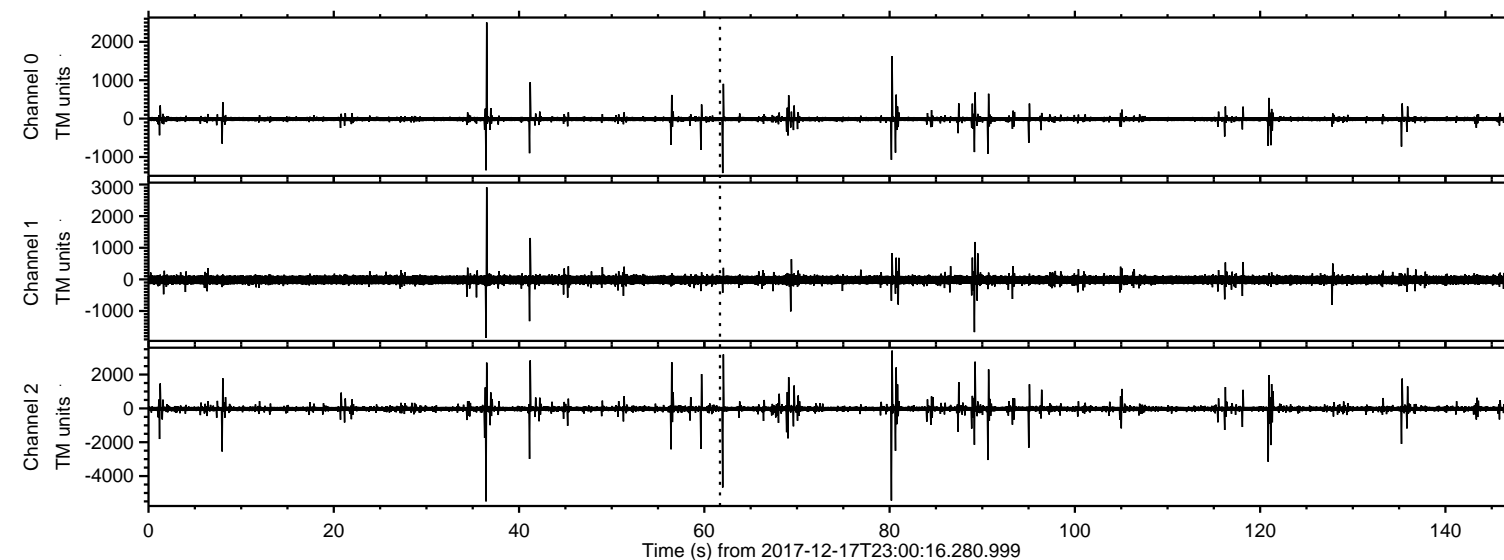


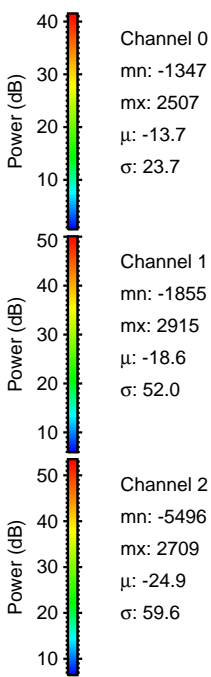
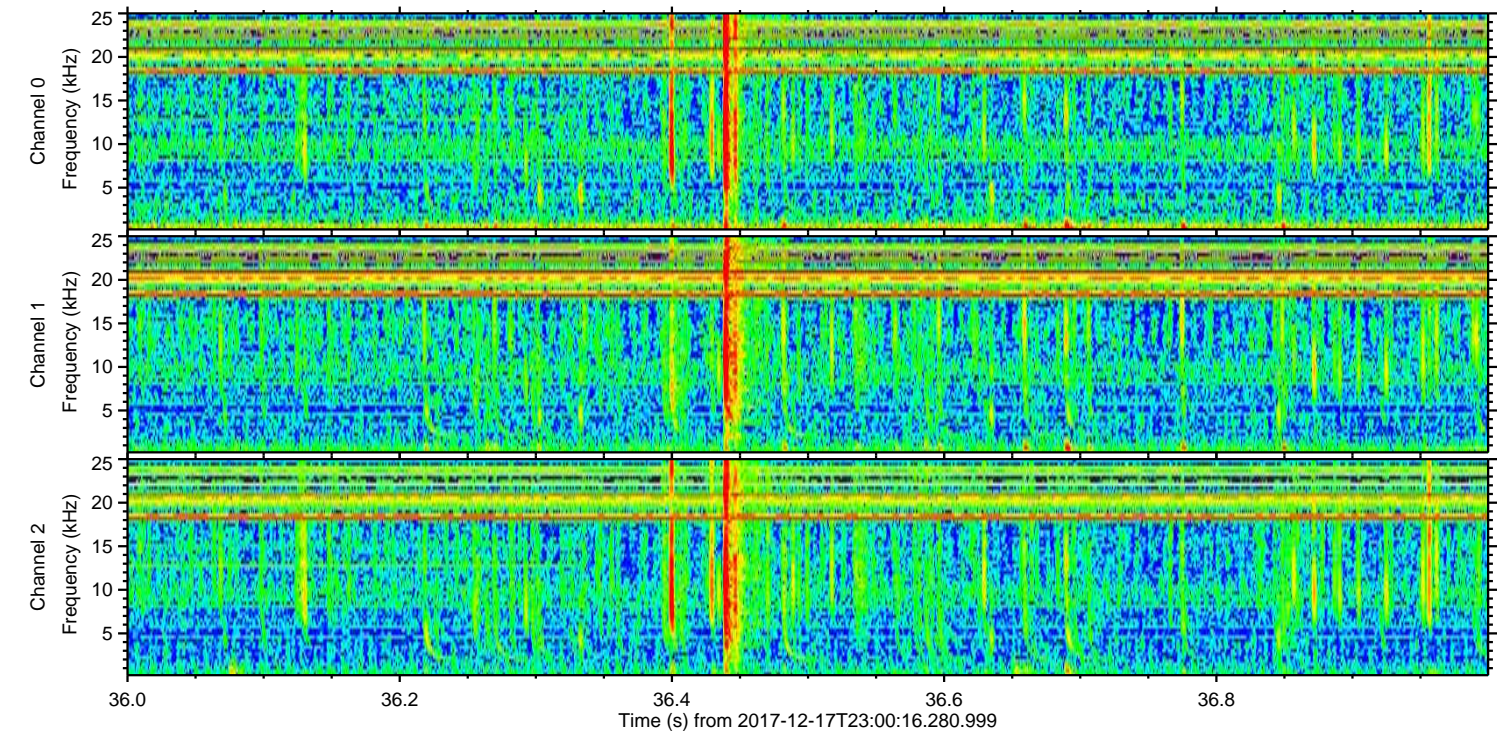
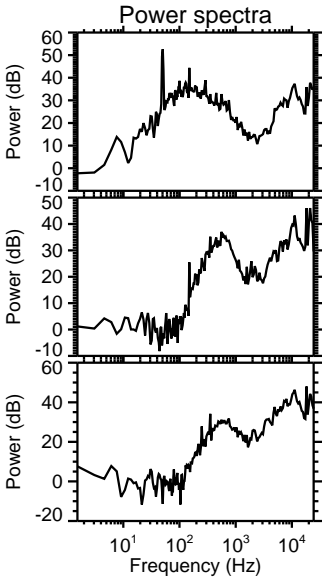
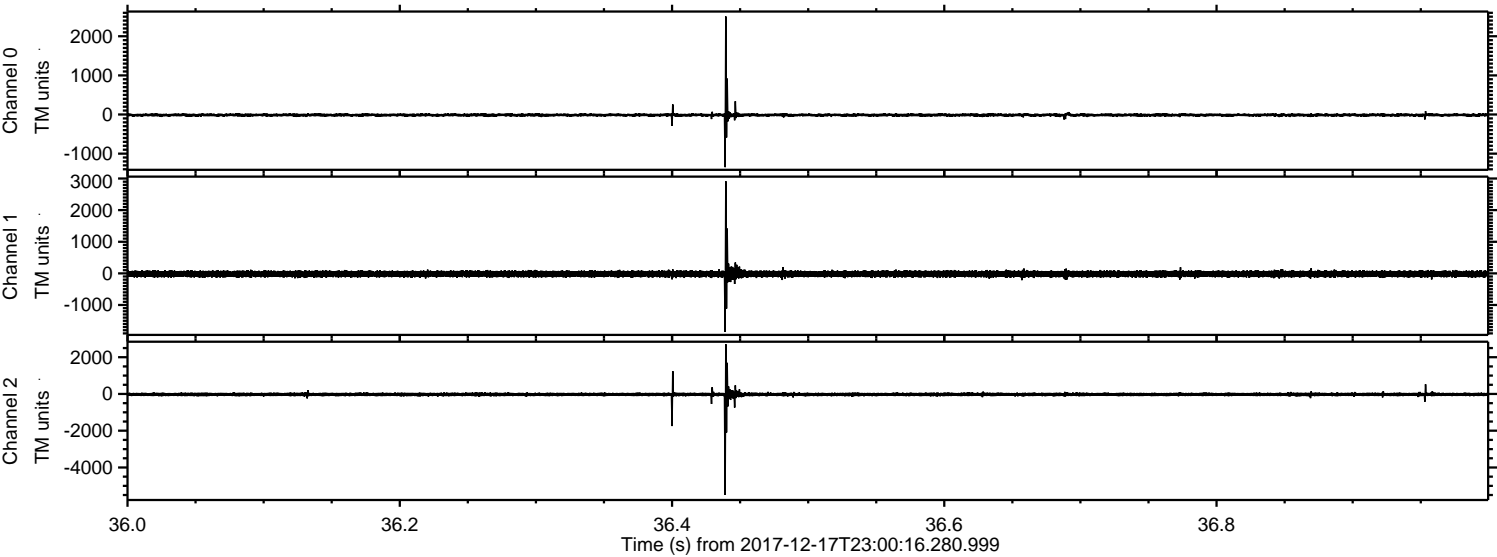
ELMAVAN 3D WAVEFORMS (Measured data sampled at 50 kHz) 50999 packets of 144 samples from 2017-12-17T23:00:16.280.999.

Processed Mon Dec 18 00:08:56 2017 by ELM ver.2012-10-06 from 001__elm20171217_230015__dat00.bin



ELMAVAN 3D WAVEFORMS (Measured data sampled at 50 kHz) 50999 packets of 144 samples from 2017-12-17T23:00:16.280.999. Part 37/147

Processed Mon Dec 18 00:09:04 2017 by ELM ver.2012-10-06 from 001__elm20171217_230015__dat00.bin



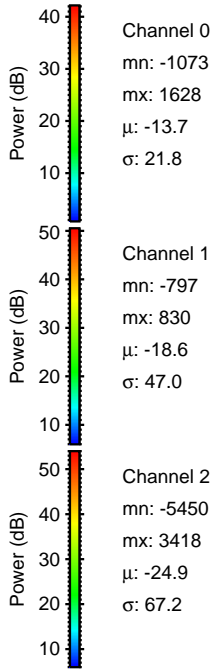
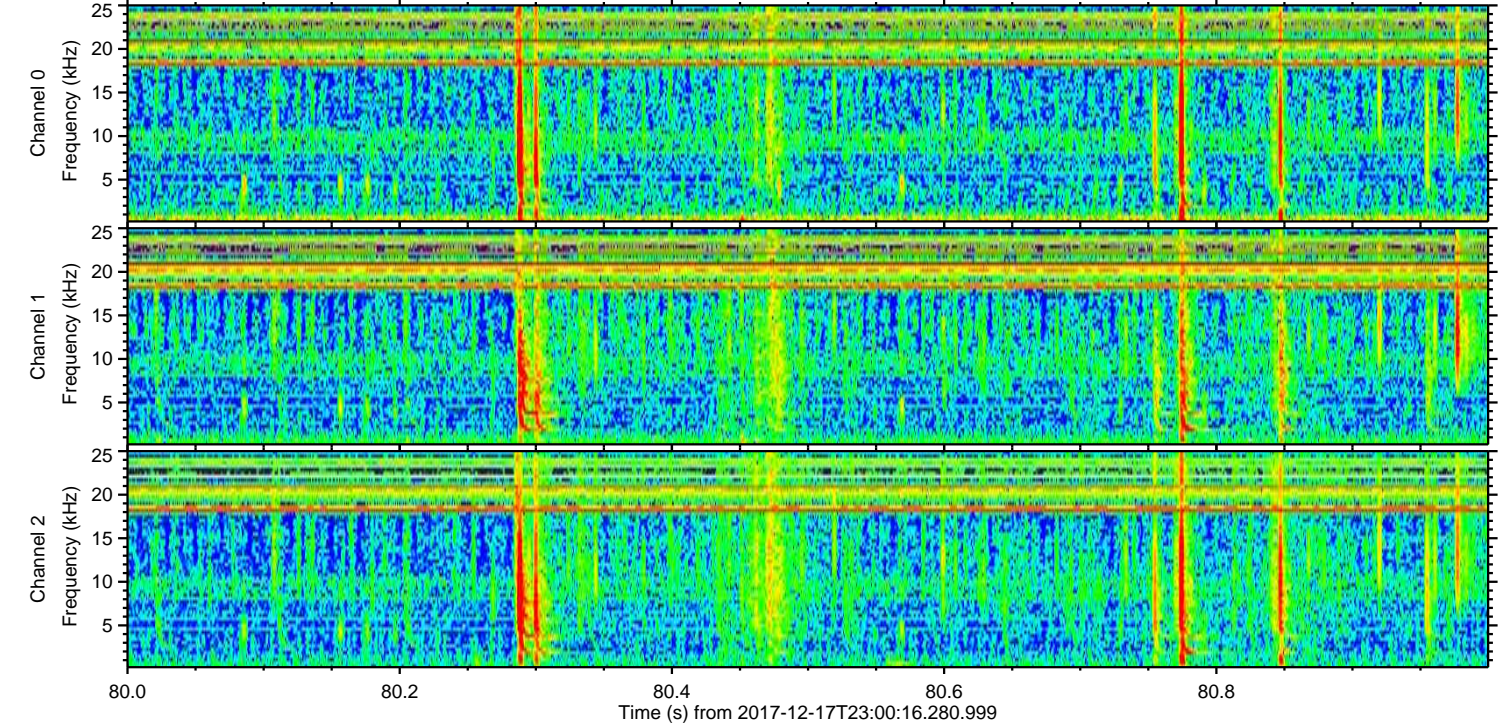
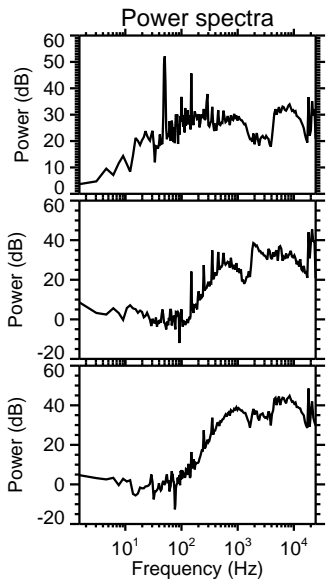
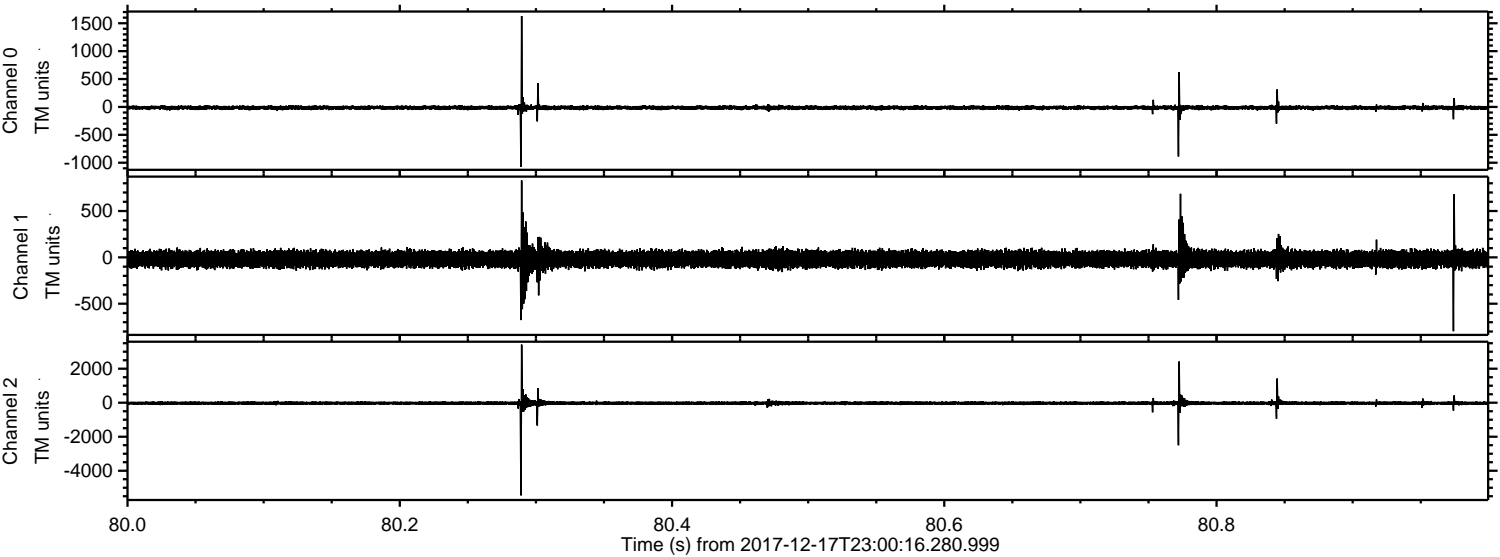
Channel 0
mn: -1347
mx: 2507
 μ : -13.7
 σ : 23.7

Channel 1
mn: -1855
mx: 2915
 μ : -18.6
 σ : 52.0

Channel 2
mn: -5496
mx: 2709
 μ : -24.9
 σ : 59.6

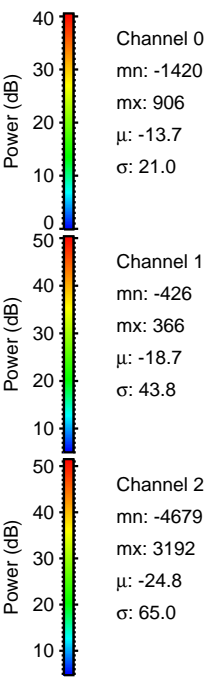
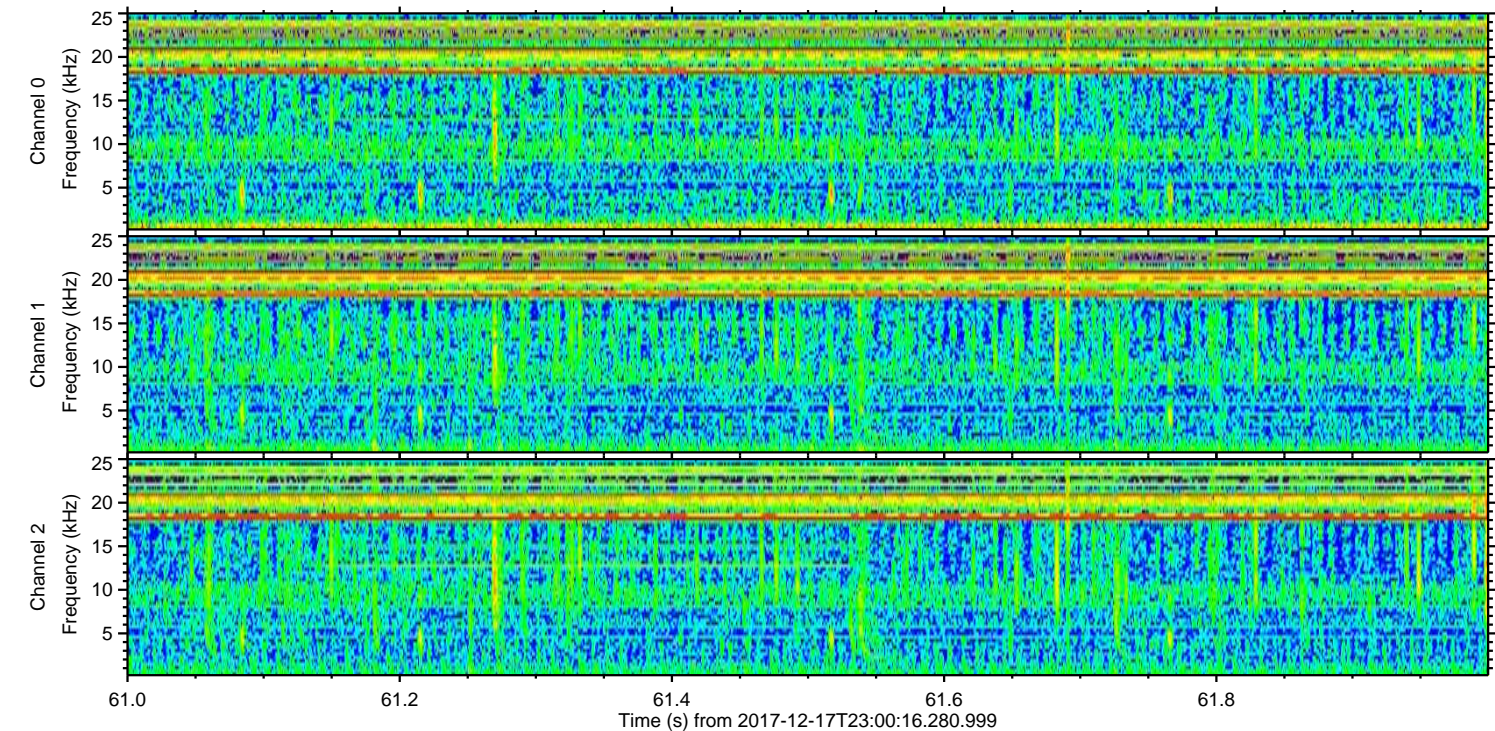
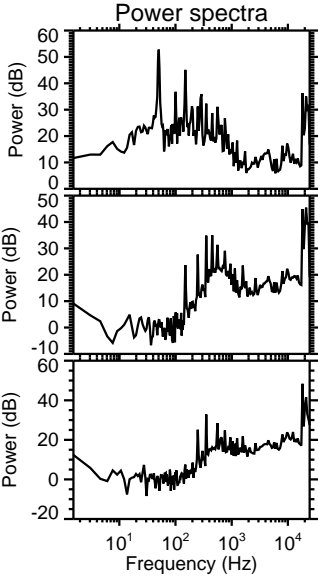
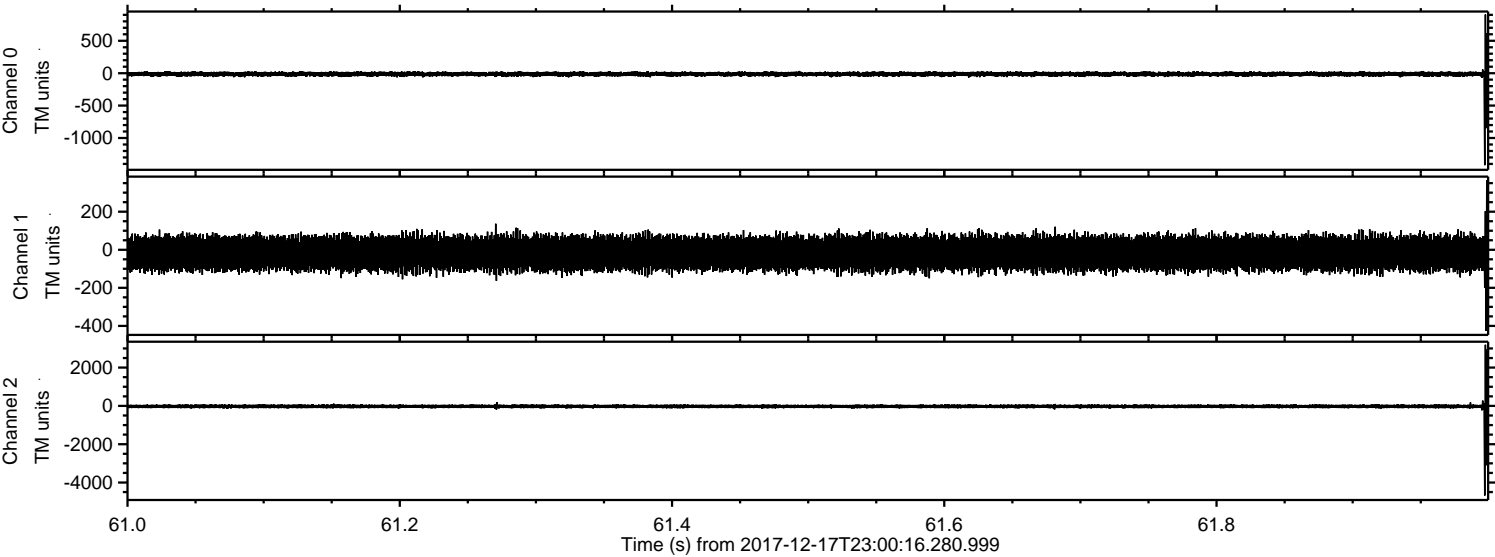
ELMAVAN 3D WAVEFORMS (Measured data sampled at 50 kHz) 50999 packets of 144 samples from 2017-12-17T23:00:16.280.999. Part 81/147

Processed Mon Dec 18 00:09:05 2017 by ELM ver.2012-10-06 from 001__elm20171217_230015__dat00.bin



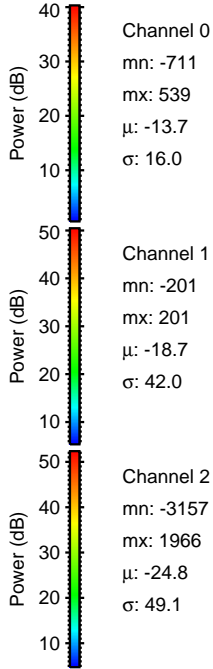
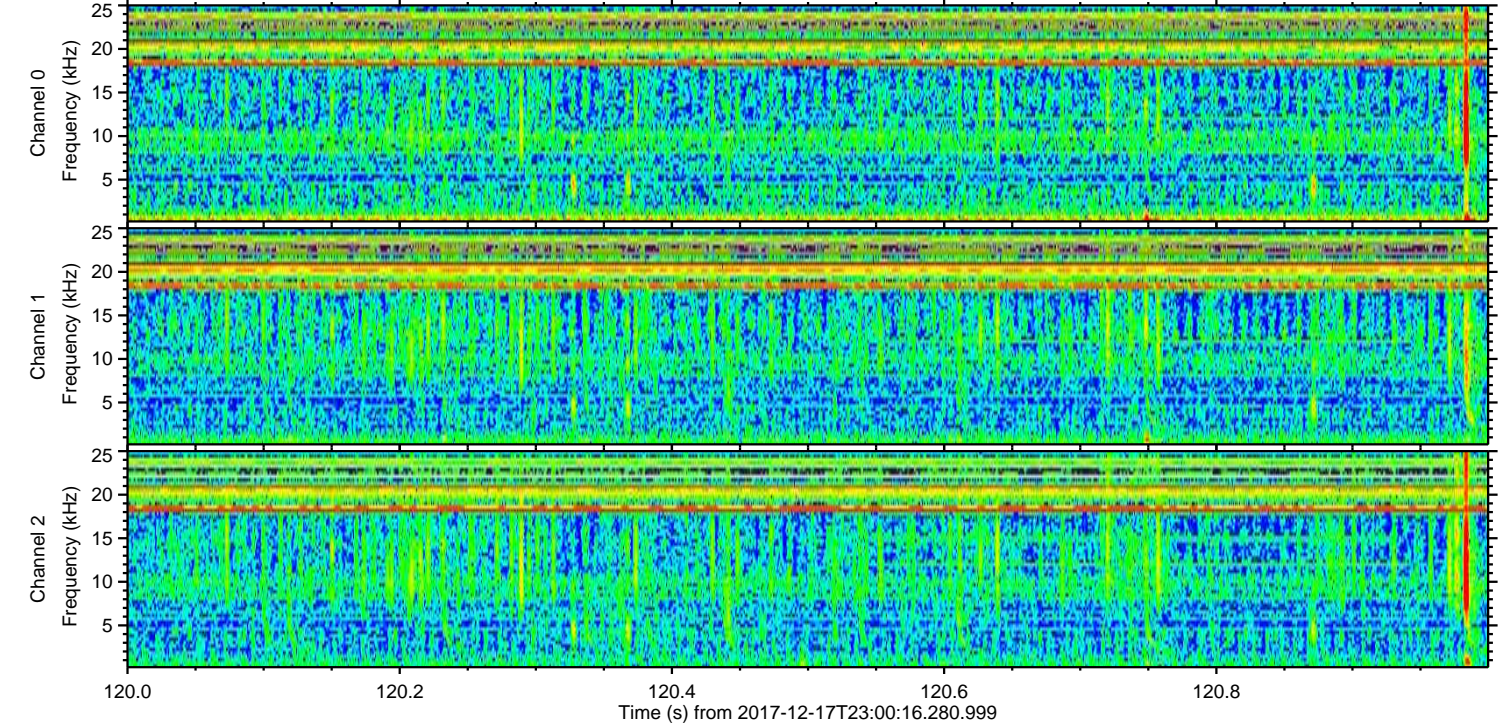
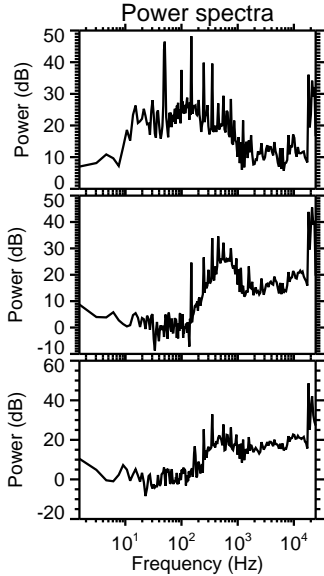
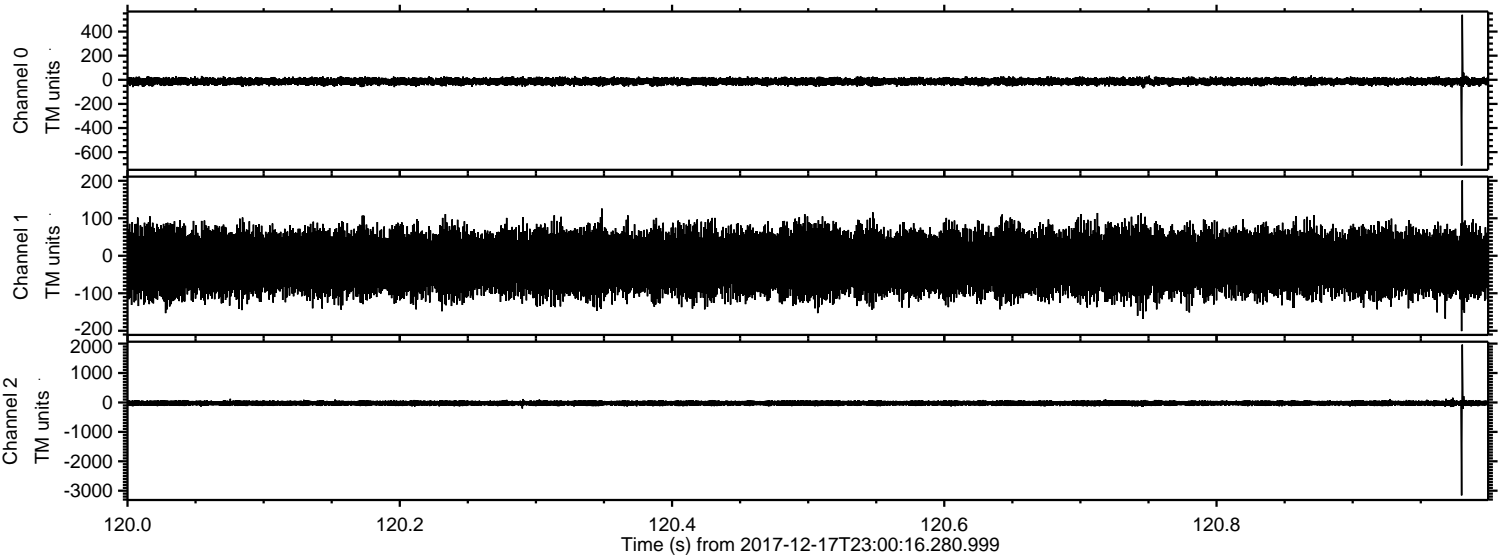
ELMAVAN 3D WAVEFORMS (Measured data sampled at 50 kHz) 50999 packets of 144 samples from 2017-12-17T23:00:16.280.999. Part 62/147

Processed Mon Dec 18 00:09:06 2017 by ELM ver.2012-10-06 from 001__elm20171217_230015__dat00.bin

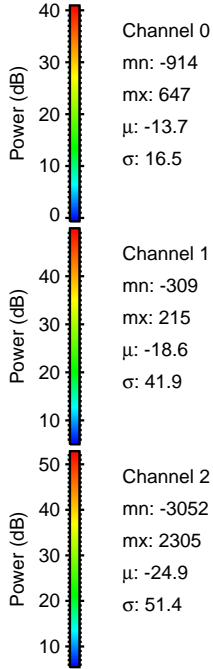
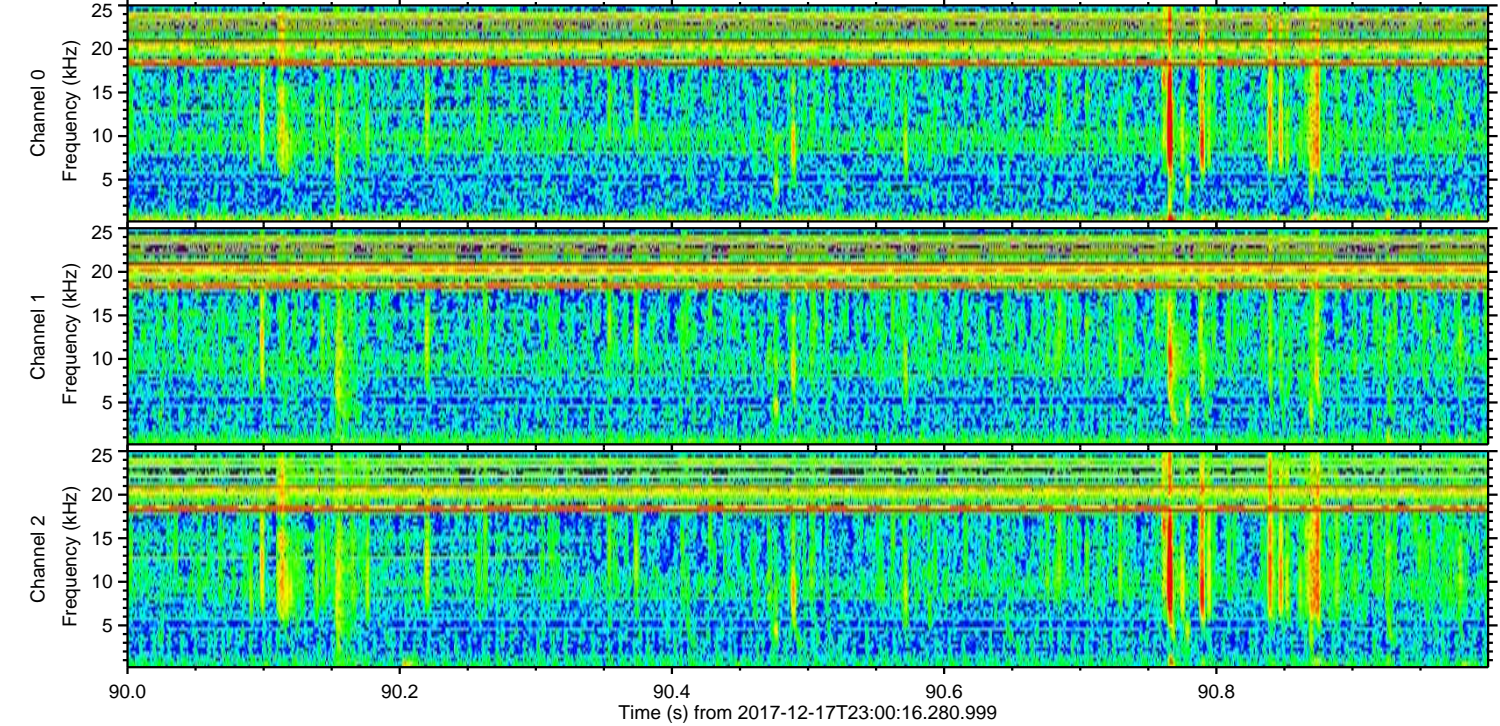
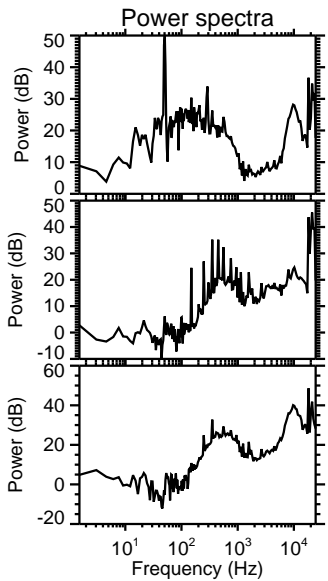
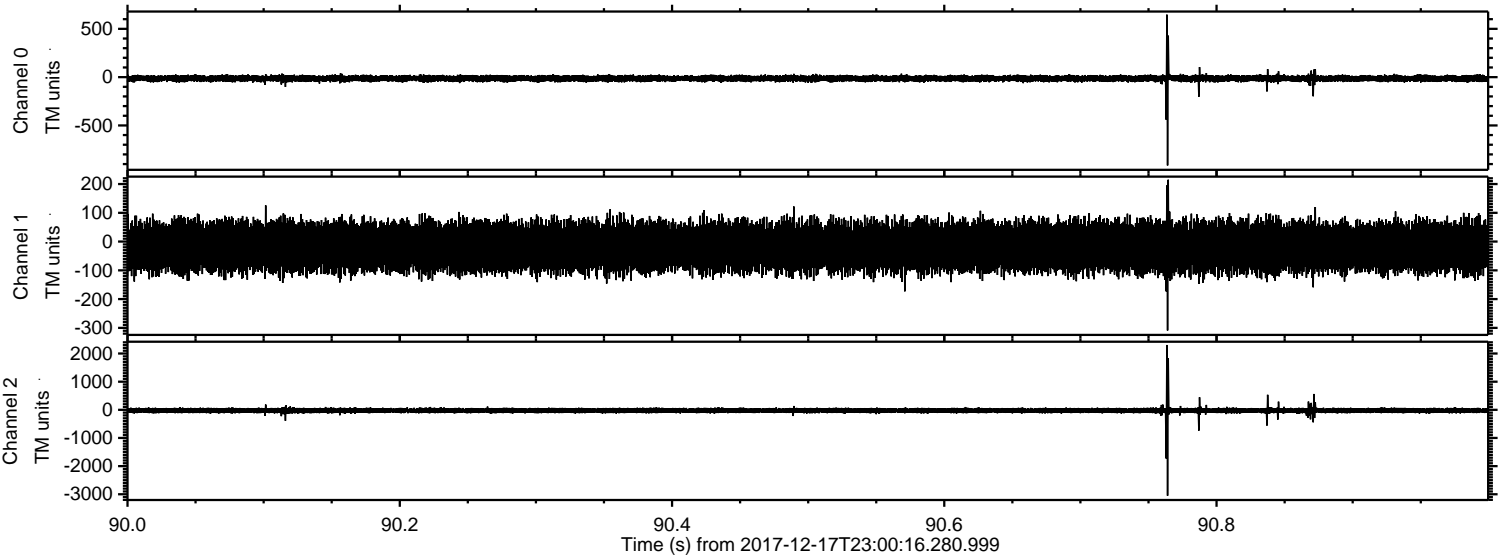


ELMAVAN 3D WAVEFORMS (Measured data sampled at 50 kHz) 50999 packets of 144 samples from 2017-12-17T23:00:16.280.999. Part 121/147

Processed Mon Dec 18 00:09:06 2017 by ELM ver.2012-10-06 from 001__elm20171217_230015__dat00.bin

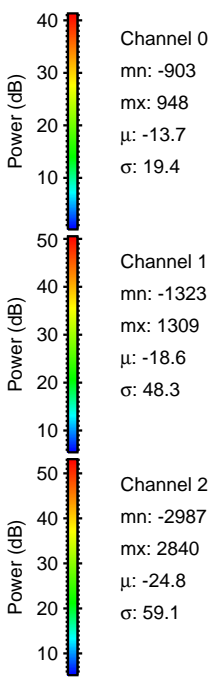
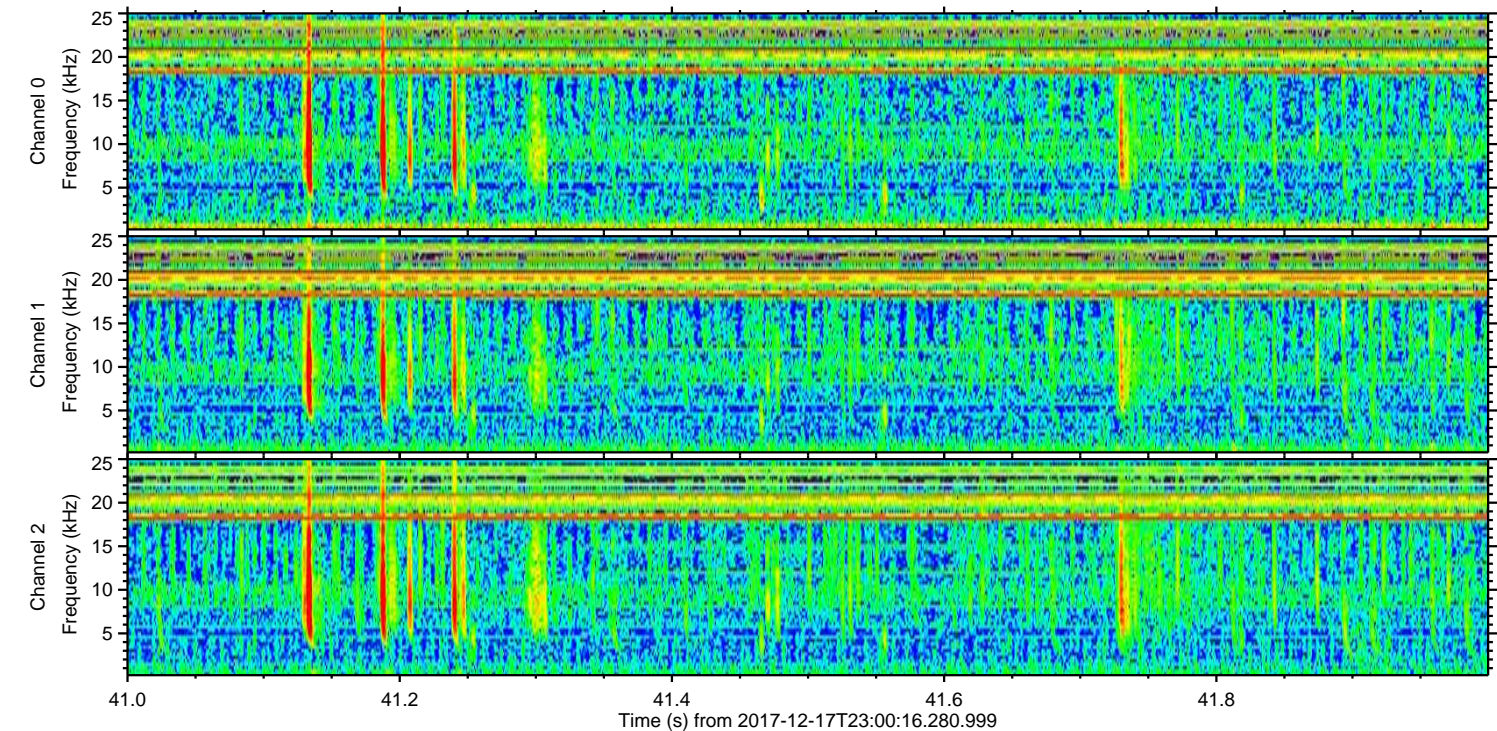
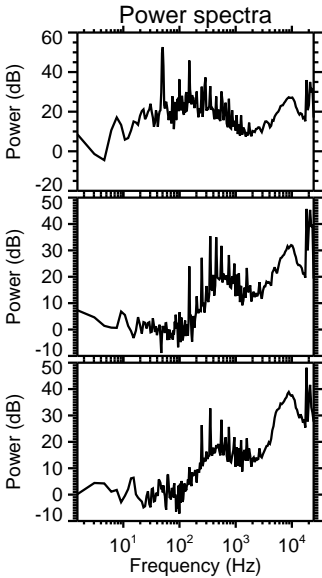
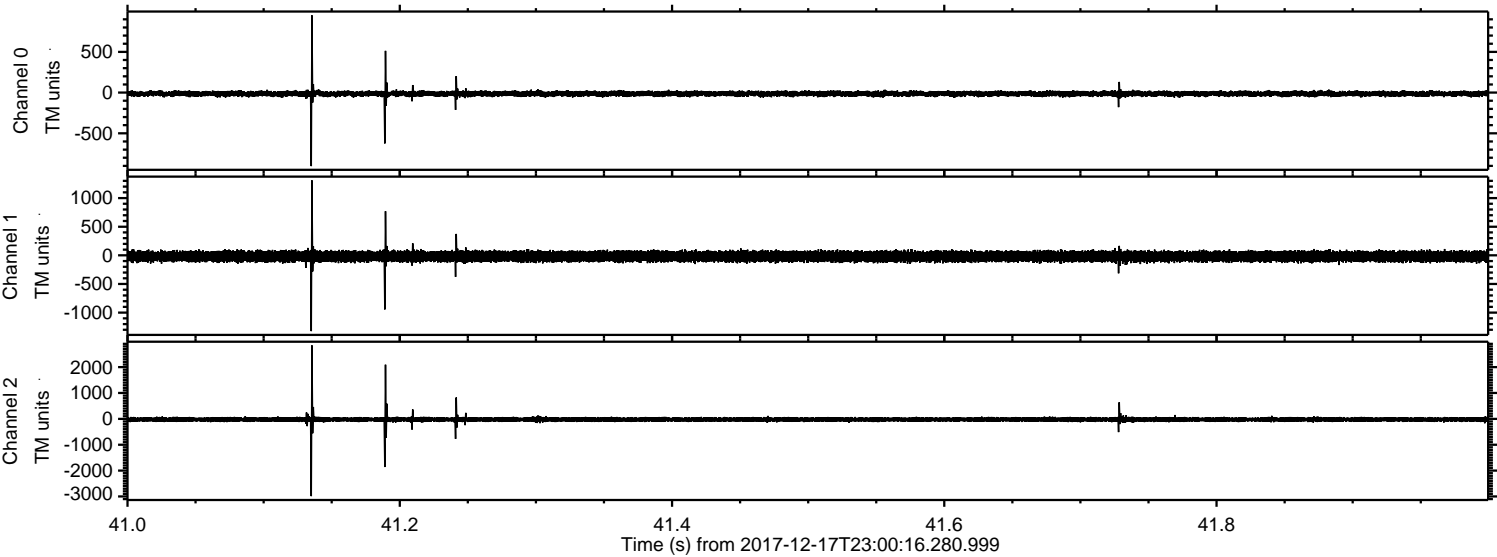


Processed Mon Dec 18 00:09:07 2017 by ELM ver.2012-10-06 from 001__elm20171217_230015__dat00.bin



ELMAVAN 3D WAVEFORMS (Measured data sampled at 50 kHz) 50999 packets of 144 samples from 2017-12-17T23:00:16.280.999. Part 42/147

Processed Mon Dec 18 00:09:08 2017 by ELM ver.2012-10-06 from 001__elm20171217_230015__dat00.bin

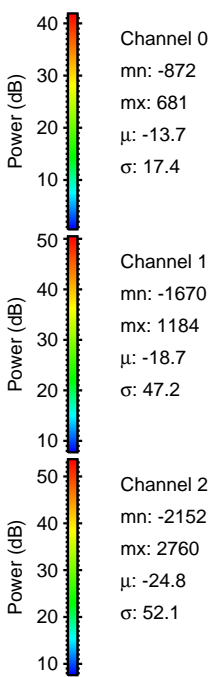
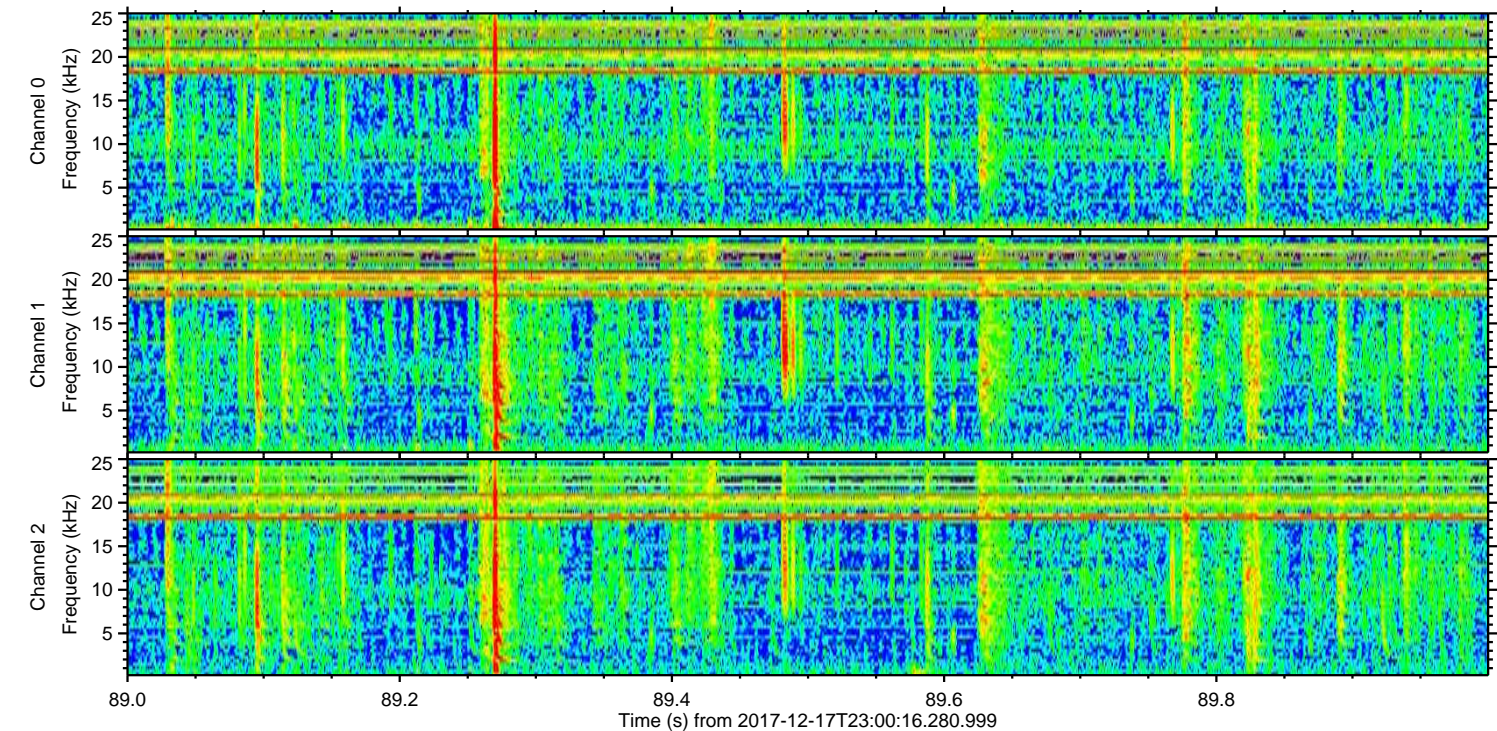
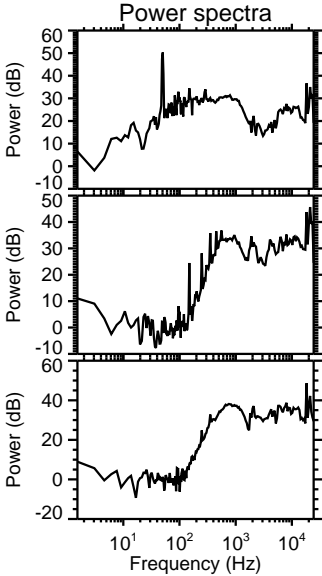
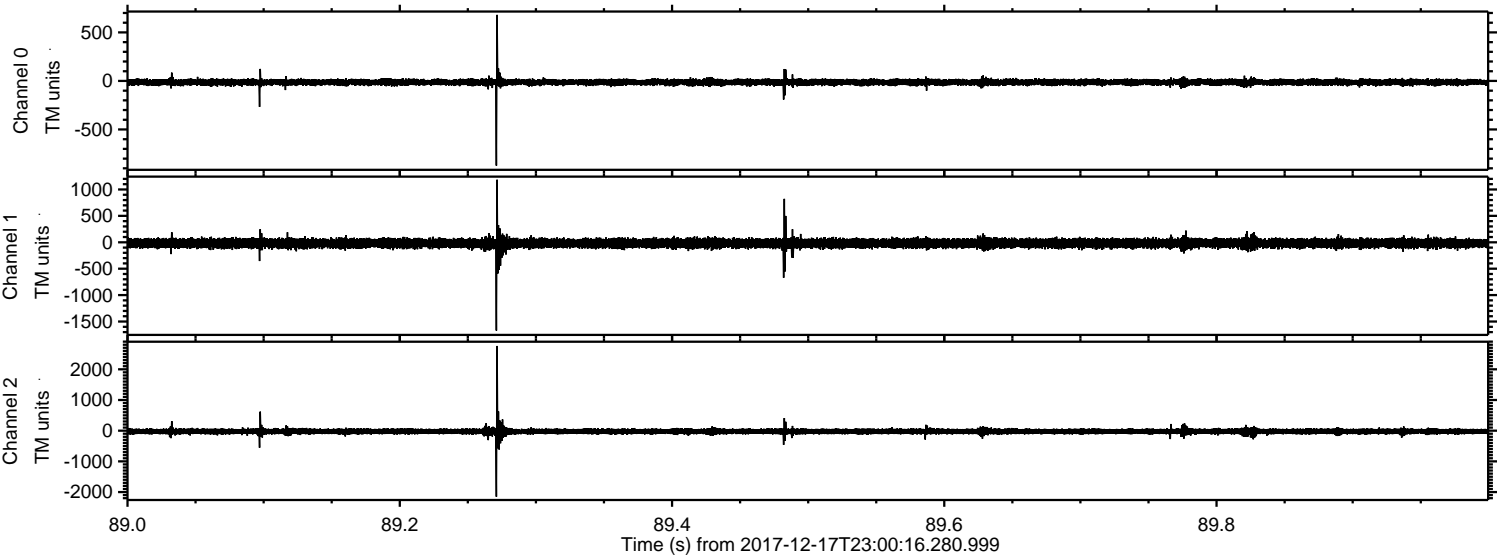


Channel 0
mn: -903
mx: 948
 μ : -13.7
 σ : 19.4

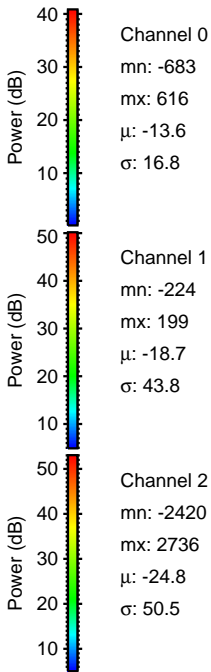
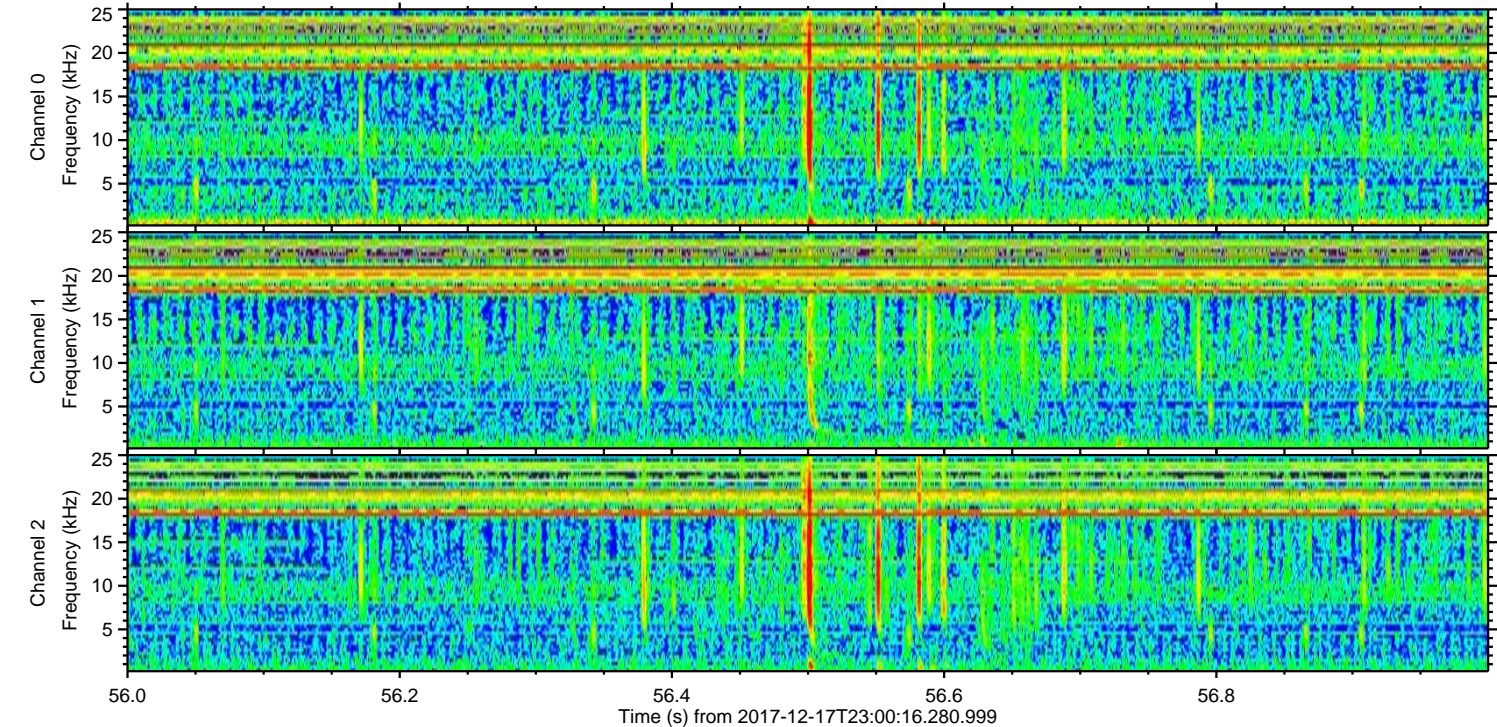
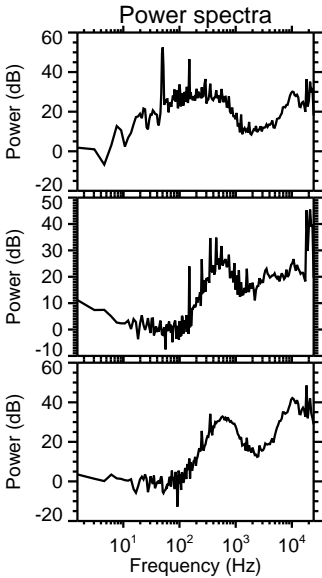
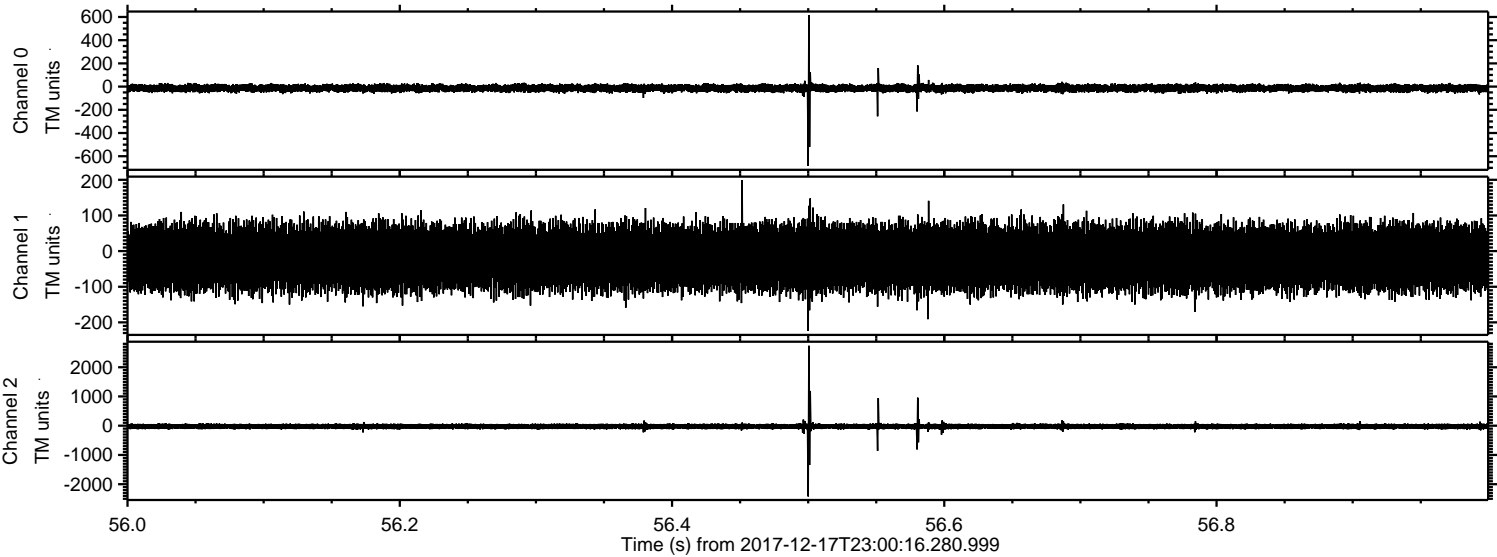
Channel 1
mn: -1323
mx: 1309
 μ : -18.6
 σ : 48.3

Channel 2
mn: -2987
mx: 2840
 μ : -24.8
 σ : 59.1

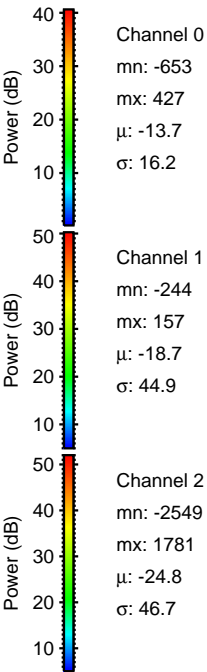
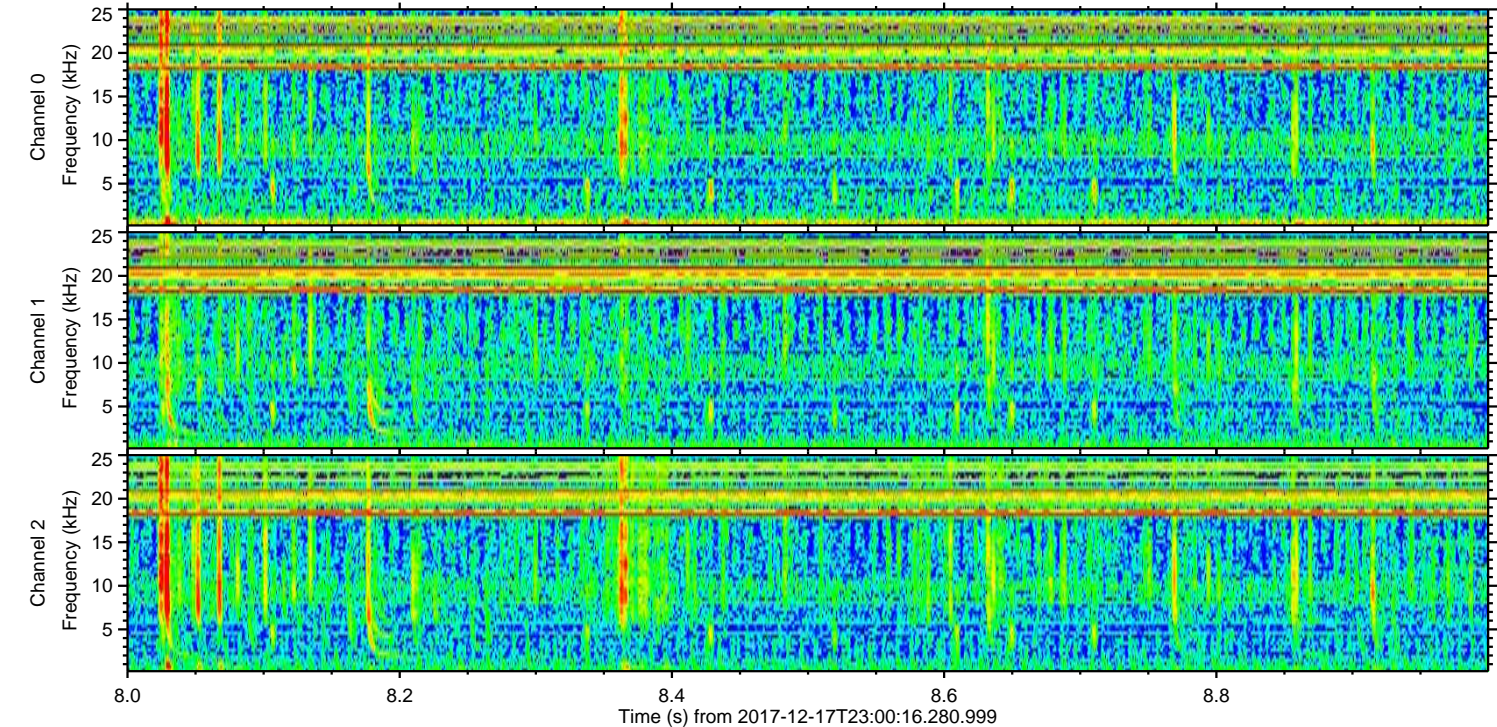
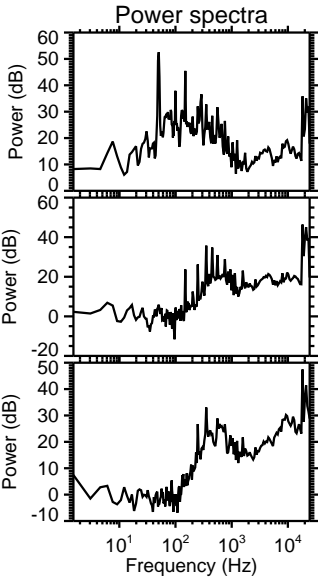
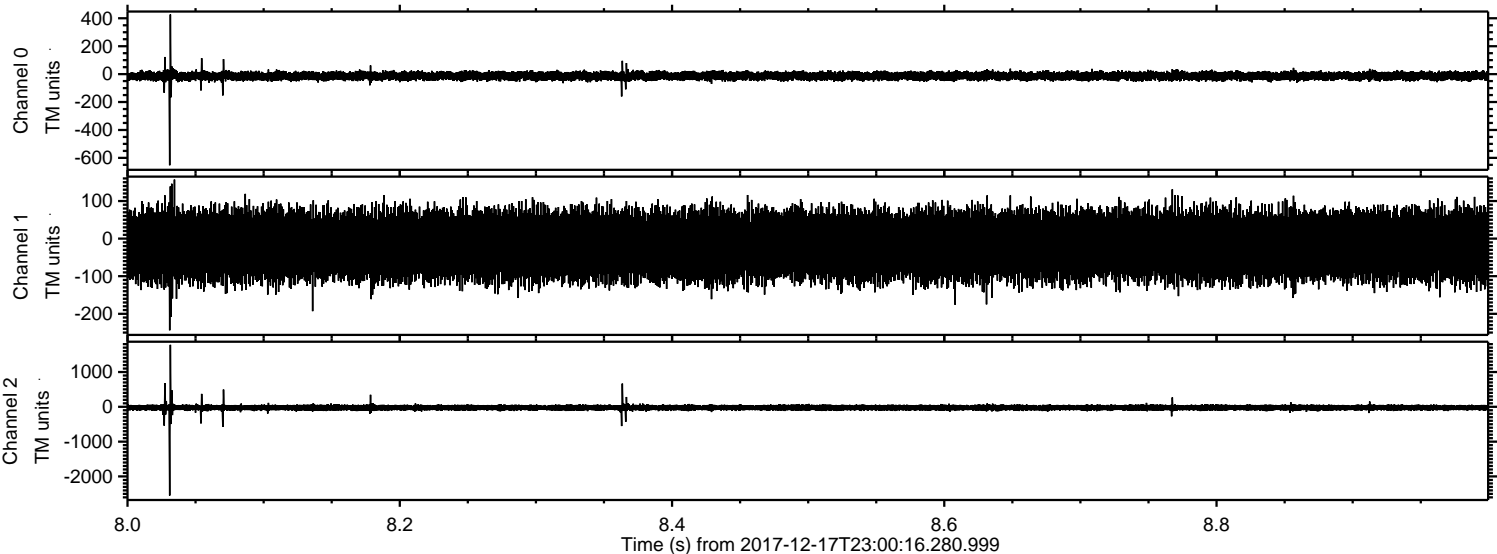
Processed Mon Dec 18 00:09:09 2017 by ELM ver.2012-10-06 from 001__elm20171217_230015__dat00.bin



Processed Mon Dec 18 00:09:09 2017 by ELM ver.2012-10-06 from 001__elm20171217_230015__dat00.bin



Processed Mon Dec 18 00:09:10 2017 by ELM ver.2012-10-06 from 001__elm20171217_230015__dat00.bin



Processed Mon Dec 18 00:09:11 2017 by ELM ver.2012-10-06 from 001__elm20171217_230015__dat00.bin

