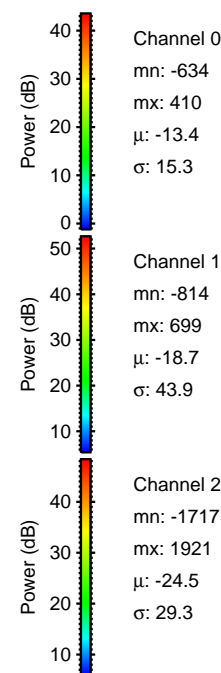
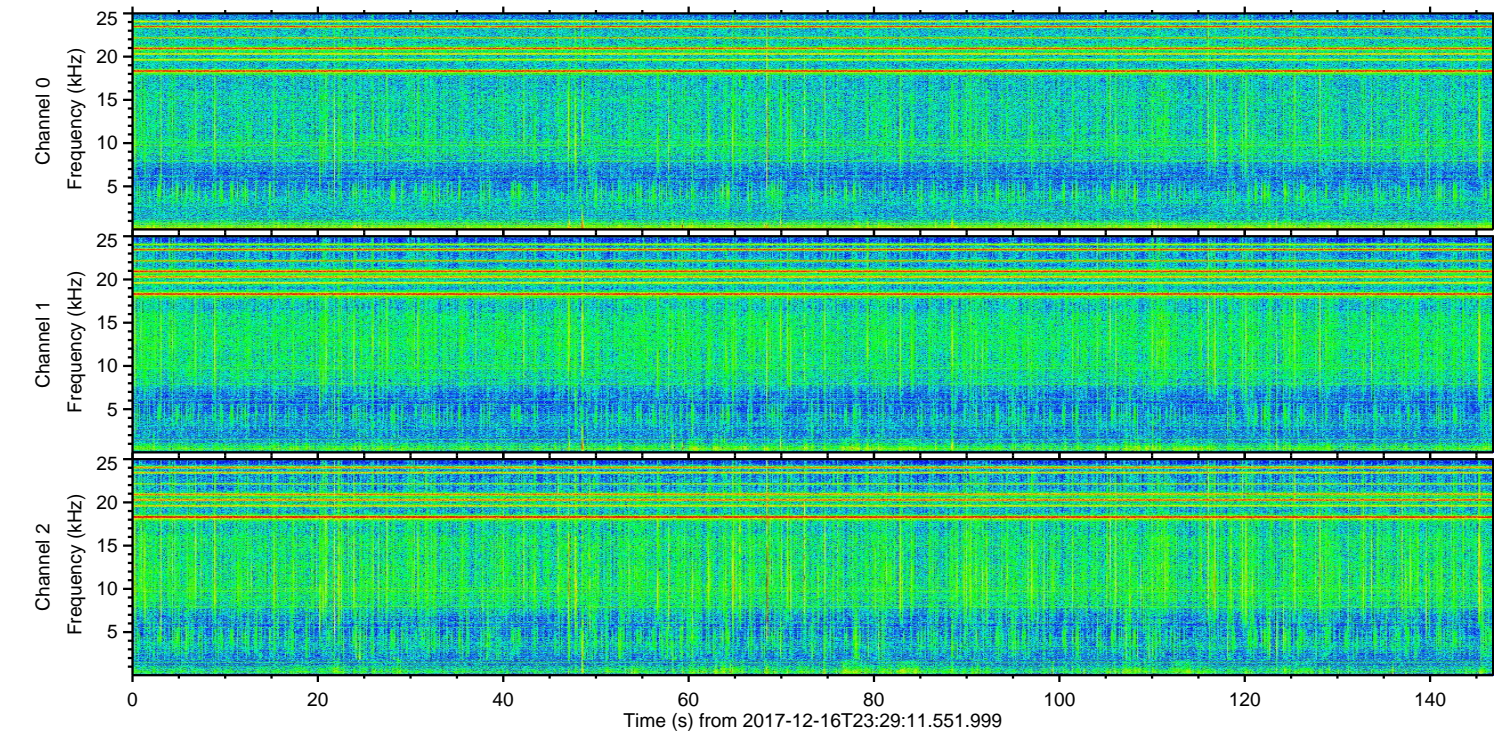
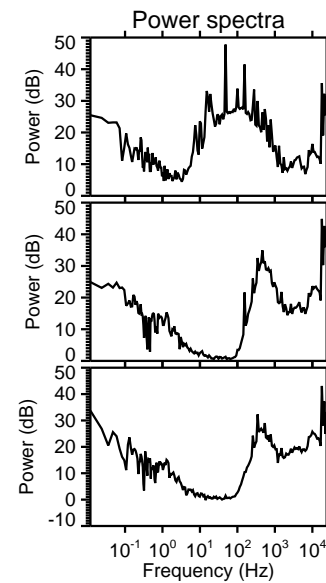
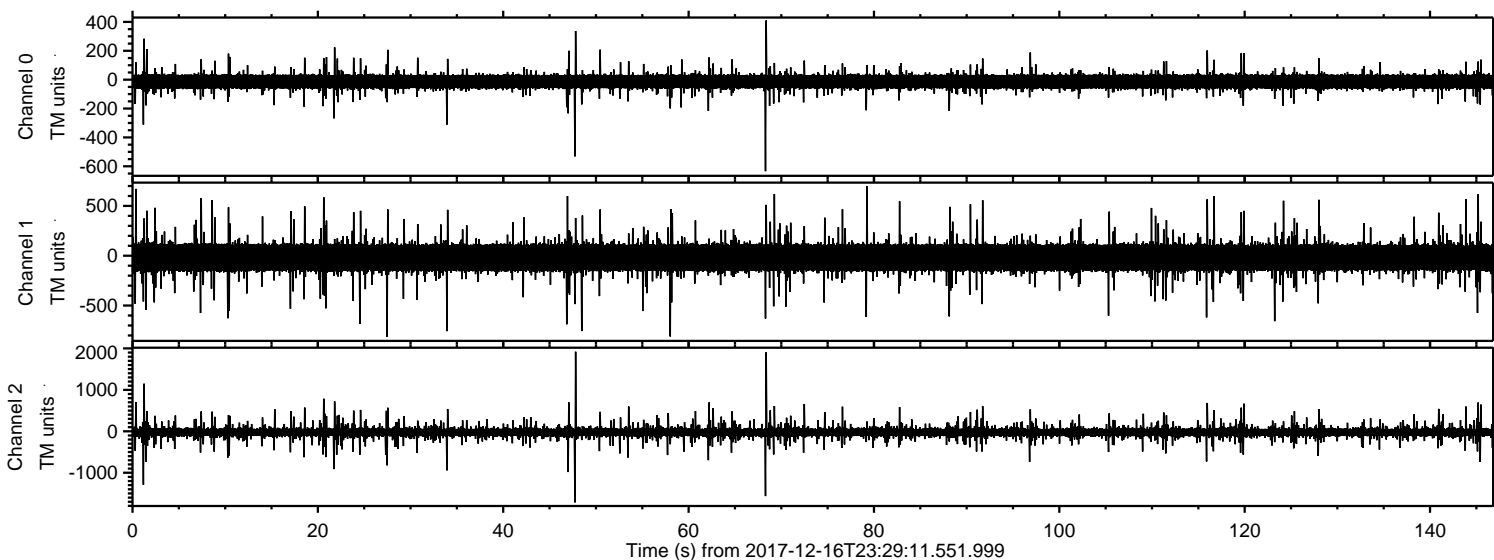


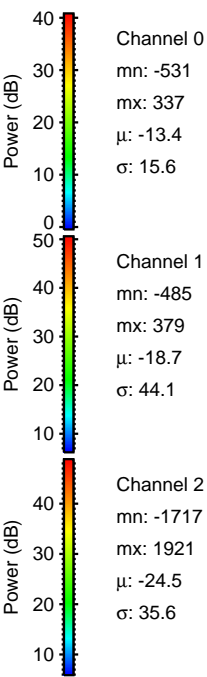
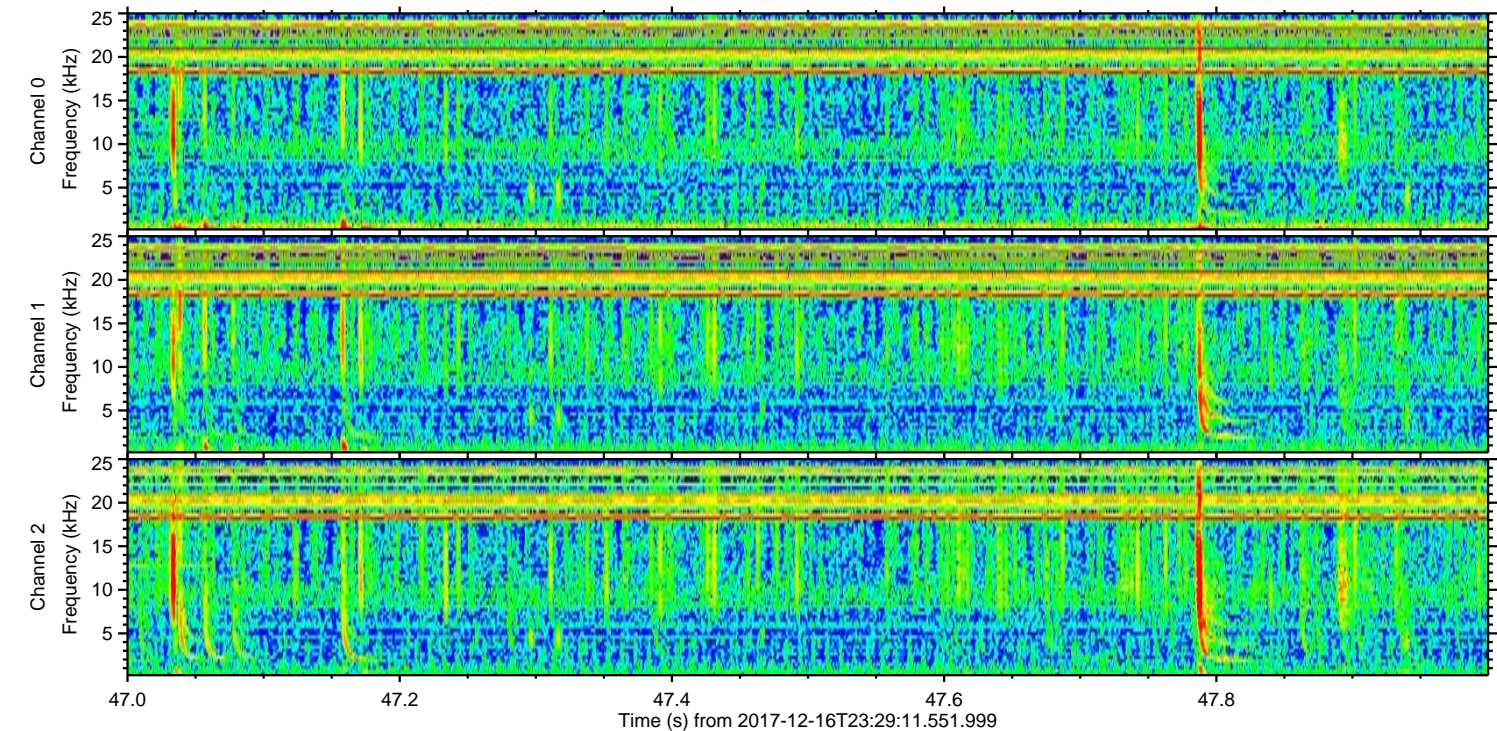
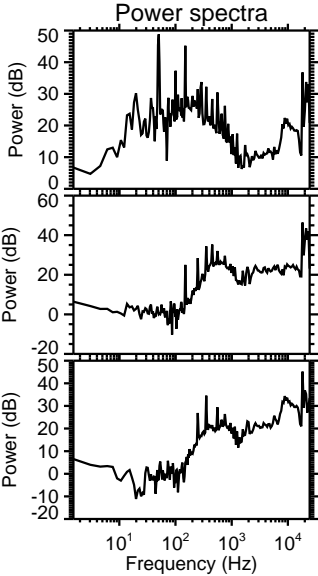
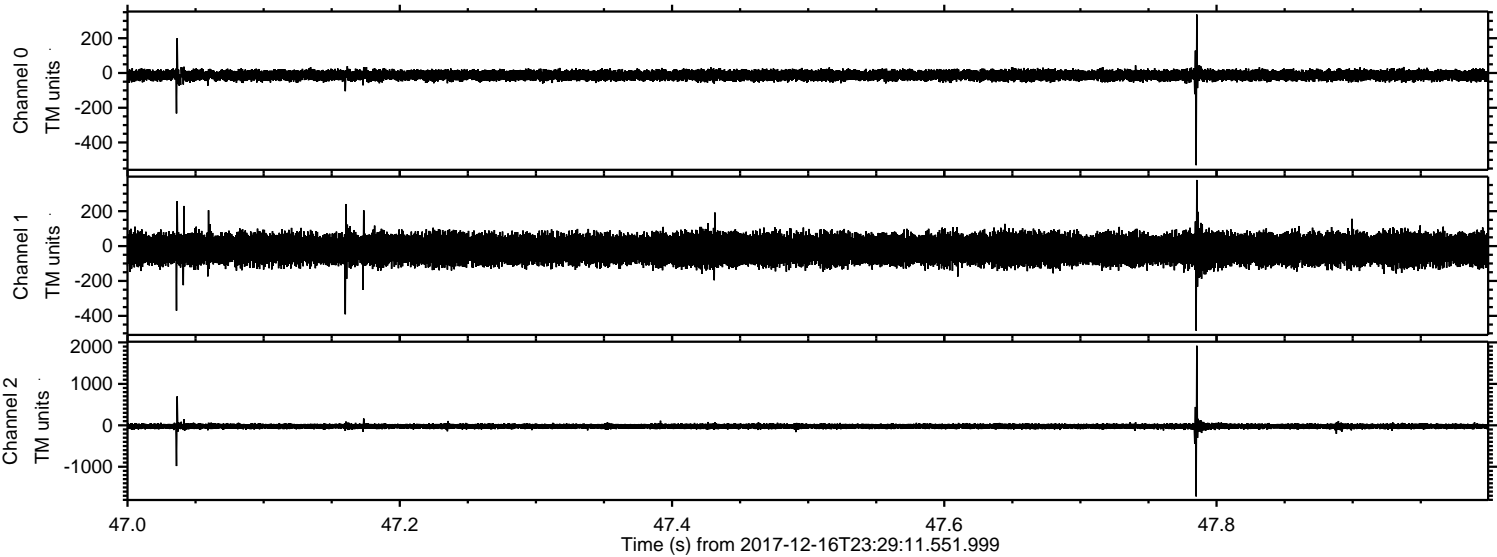
ELMAVAN 3D WAVEFORMS (Measured data sampled at 50 kHz) 51000 packets of 144 samples from 2017-12-16T23:29:11.551.999.

Processed Sun Dec 17 00:36:56 2017 by ELM ver.2012-10-06 from 001__elm20171216_232910__dat00.bin

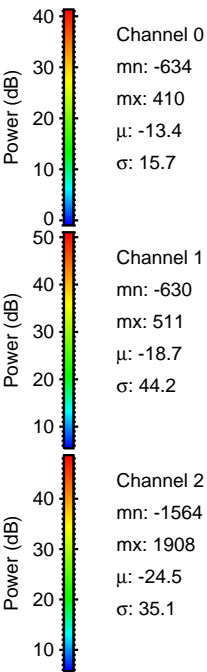
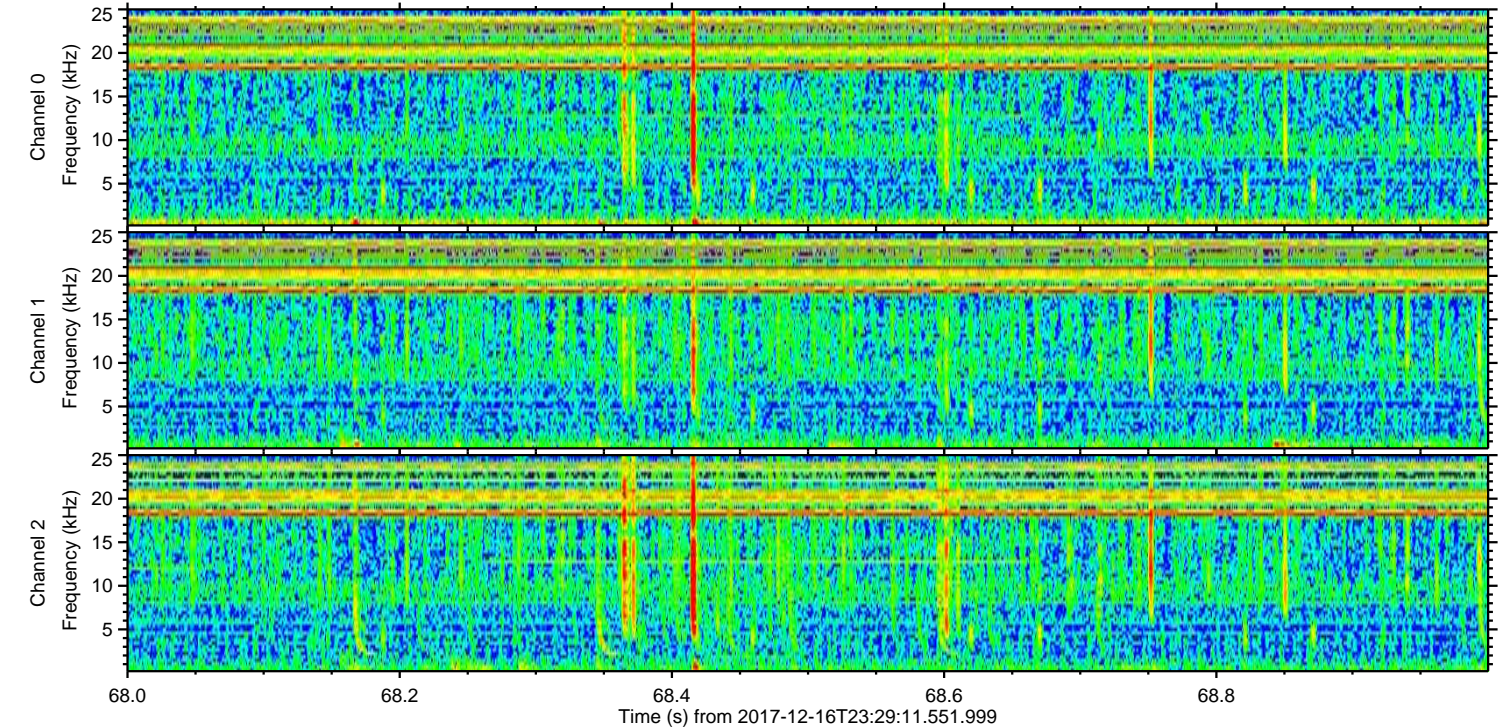
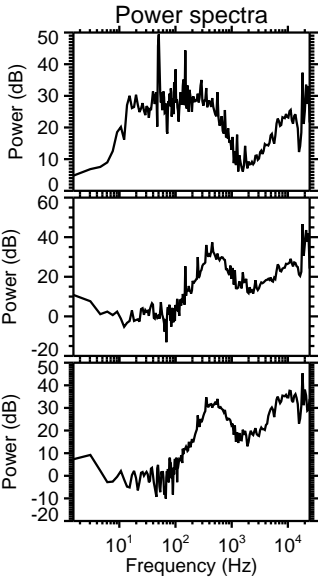
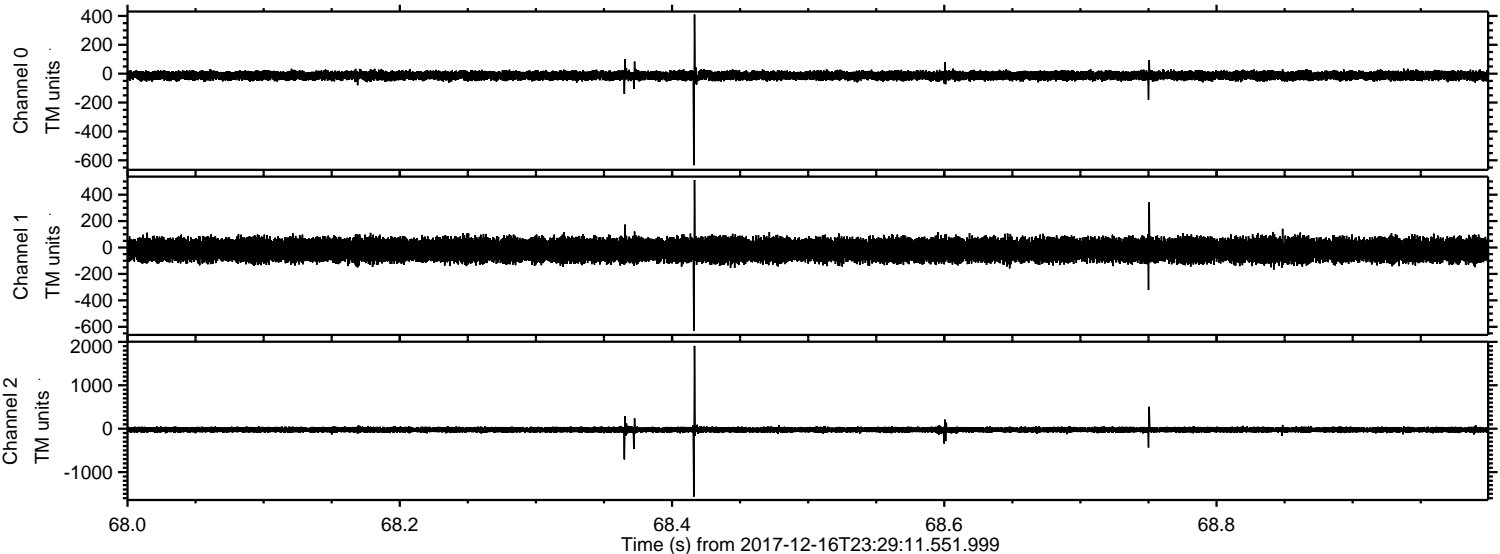


ELMAVAN 3D WAVEFORMS (Measured data sampled at 50 kHz) 51000 packets of 144 samples from 2017-12-16T23:29:11.551.999. Part 48/147

Processed Sun Dec 17 00:37:05 2017 by ELM ver.2012-10-06 from 001__elm20171216_232910__dat00.bin

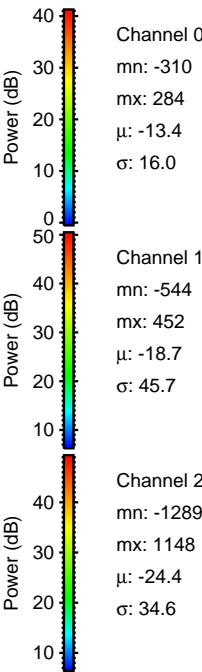
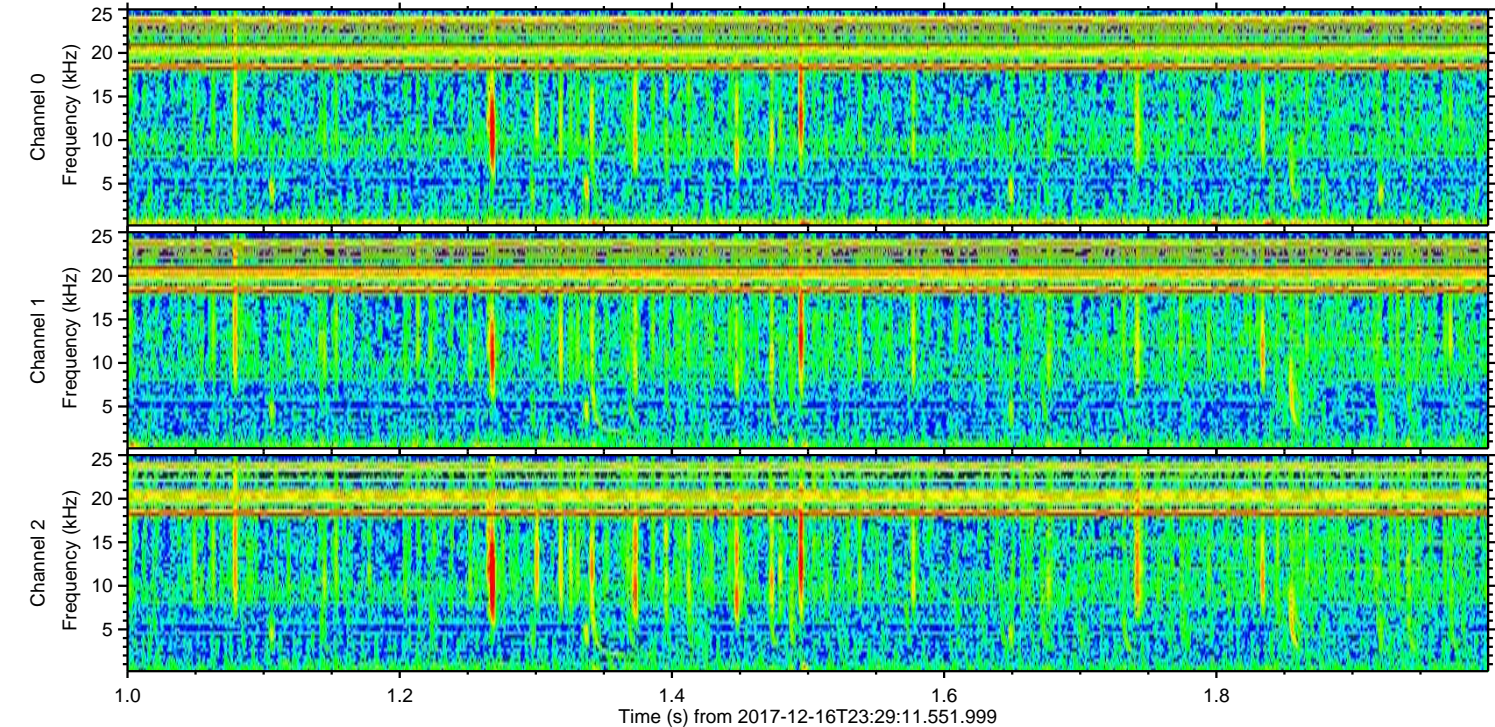
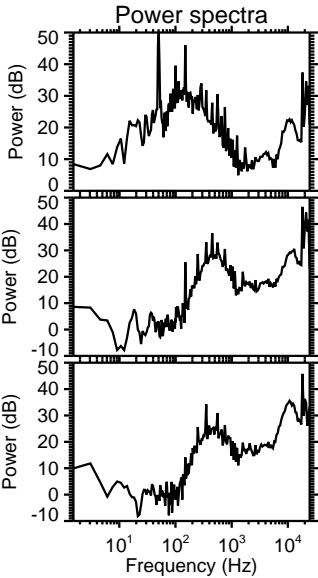
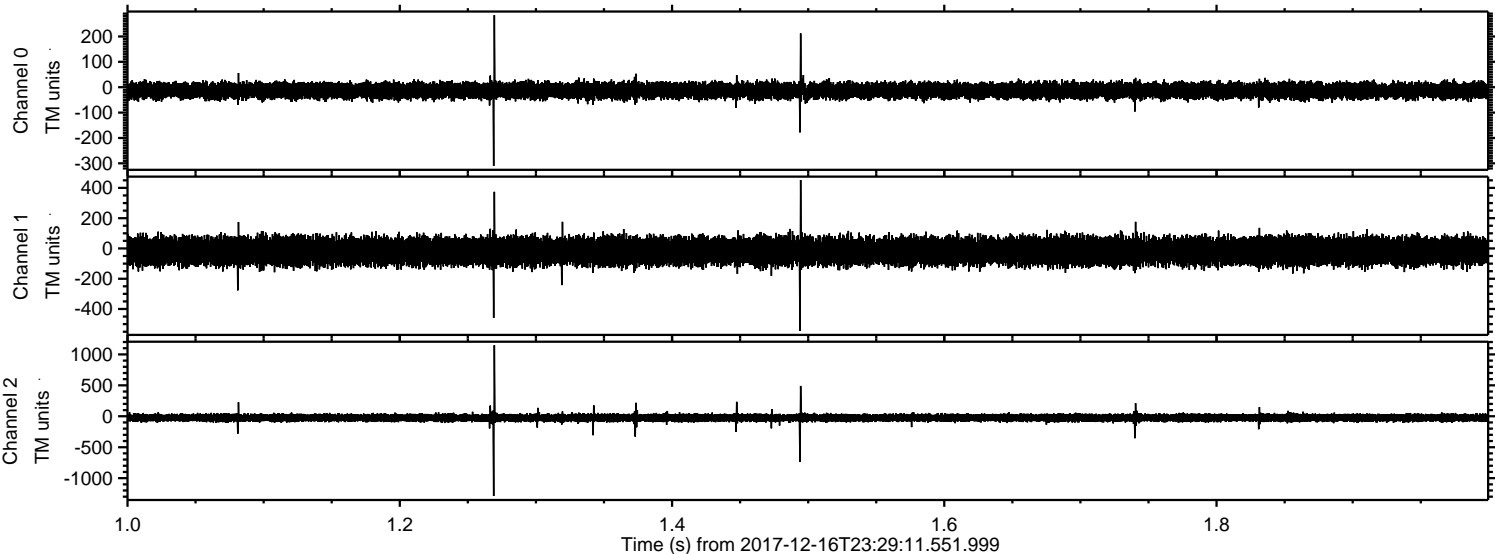


Processed Sun Dec 17 00:37:06 2017 by ELM ver.2012-10-06 from 001__elm20171216_232910__dat00.bin



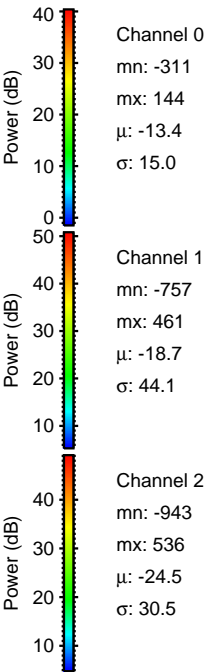
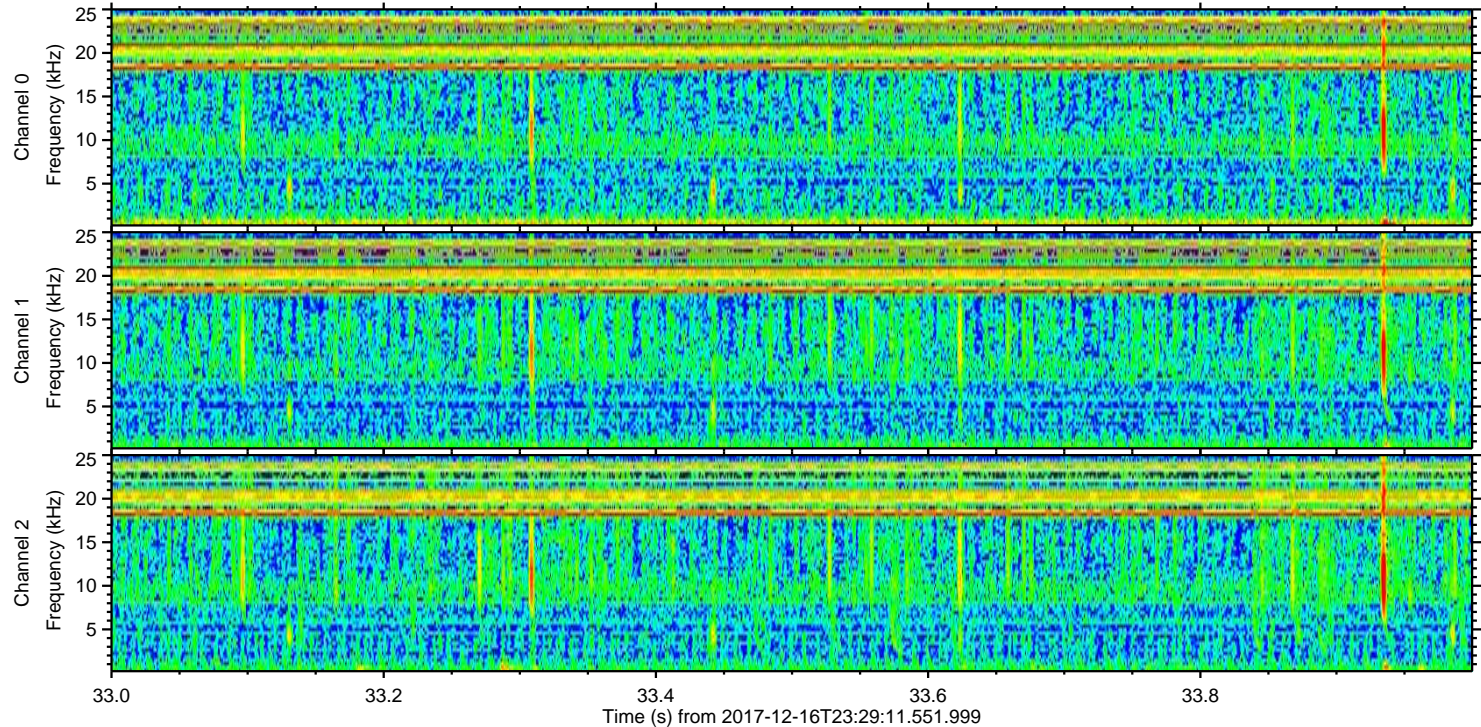
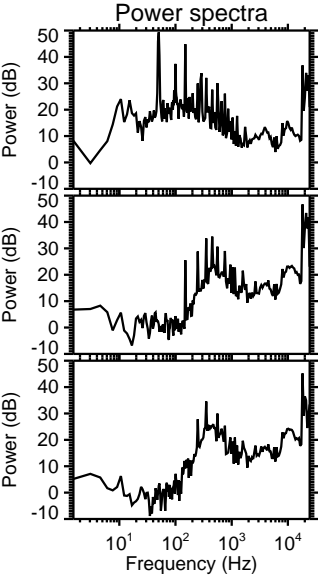
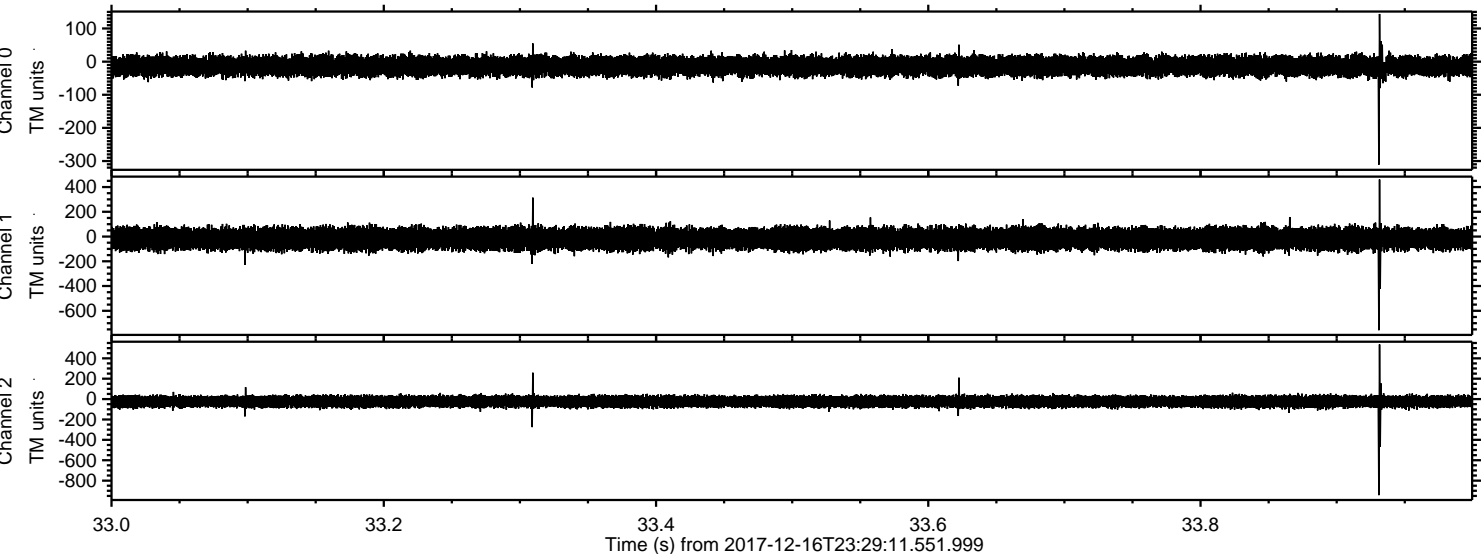
ELMAVAN 3D WAVEFORMS (Measured data sampled at 50 kHz) 51000 packets of 144 samples from 2017-12-16T23:29:11.551.999. Part 2/147

Processed Sun Dec 17 00:37:07 2017 by ELM ver.2012-10-06 from 001__elm20171216_232910__dat00.bin

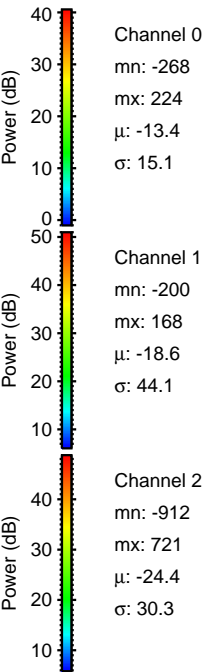
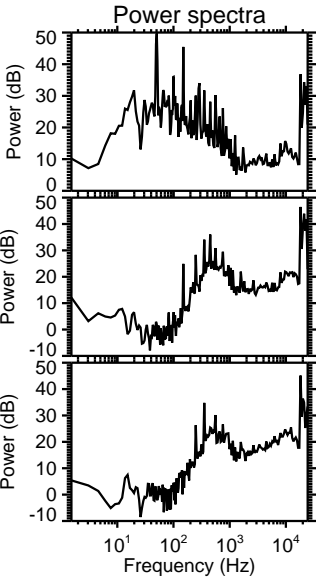
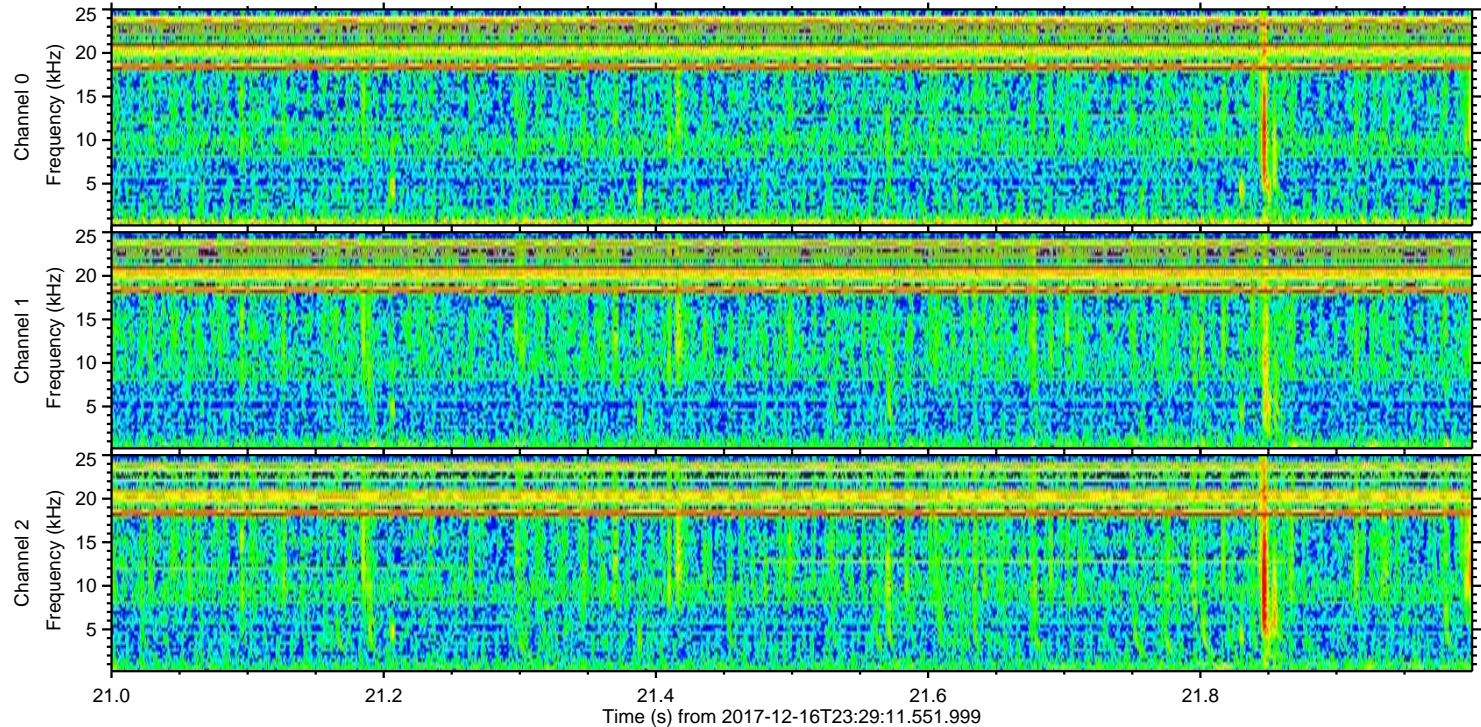
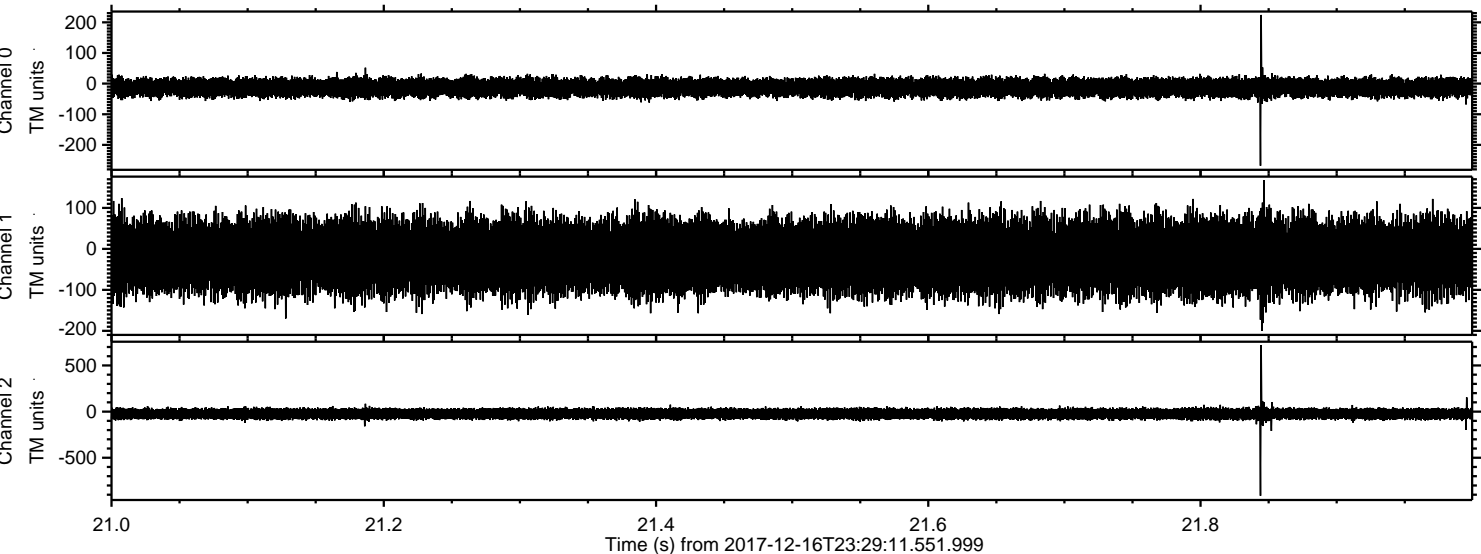


ELMAVAN 3D WAVEFORMS (Measured data sampled at 50 kHz) 51000 packets of 144 samples from 2017-12-16T23:29:11.551.999. Part 34/147

Processed Sun Dec 17 00:37:08 2017 by ELM ver.2012-10-06 from 001__elm20171216_232910__dat00.bin

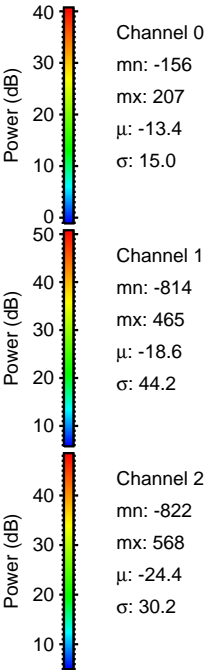
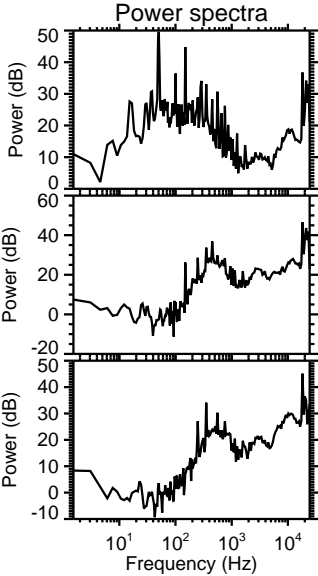
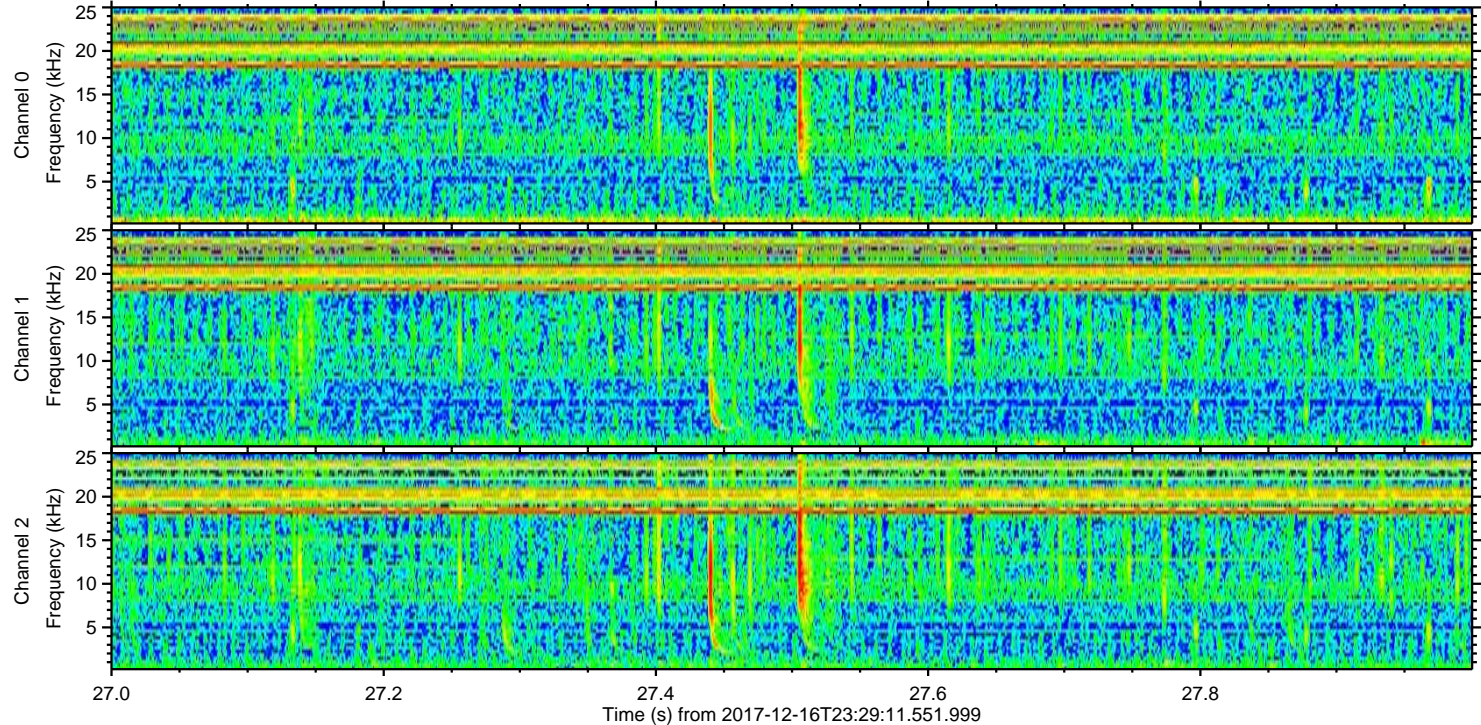
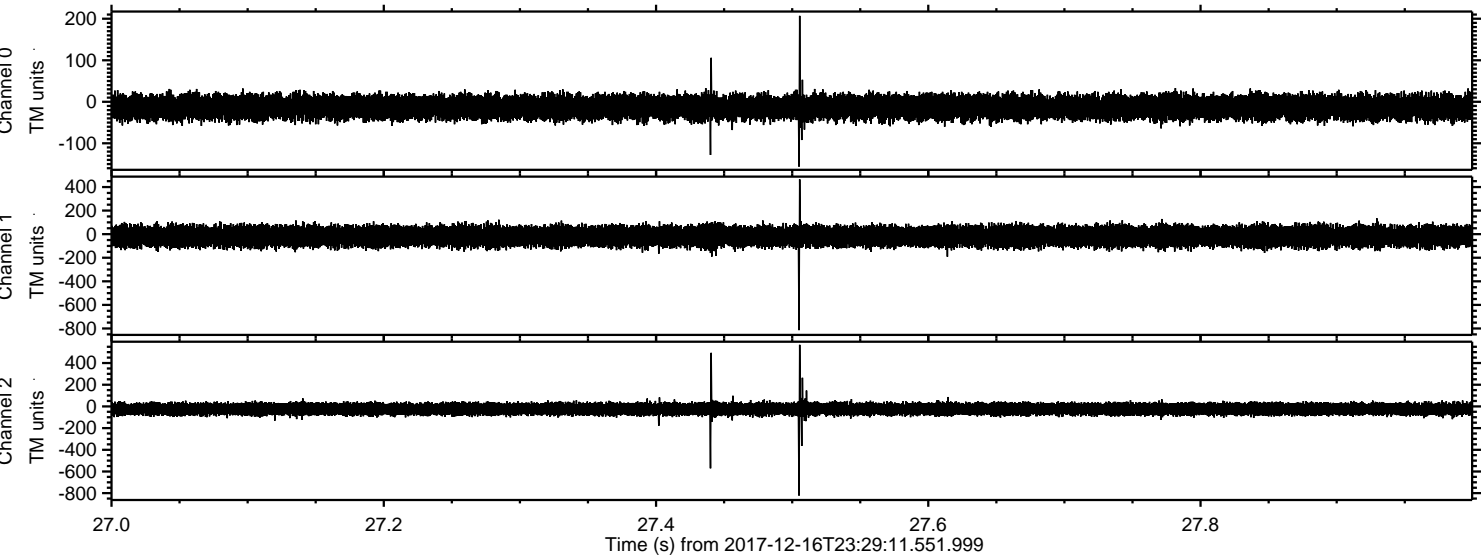


Processed Sun Dec 17 00:37:09 2017 by ELM ver.2012-10-06 from 001__elm20171216_232910__dat00.bin

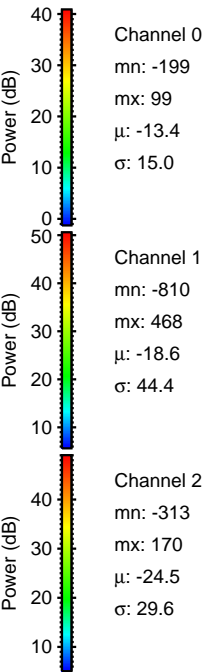
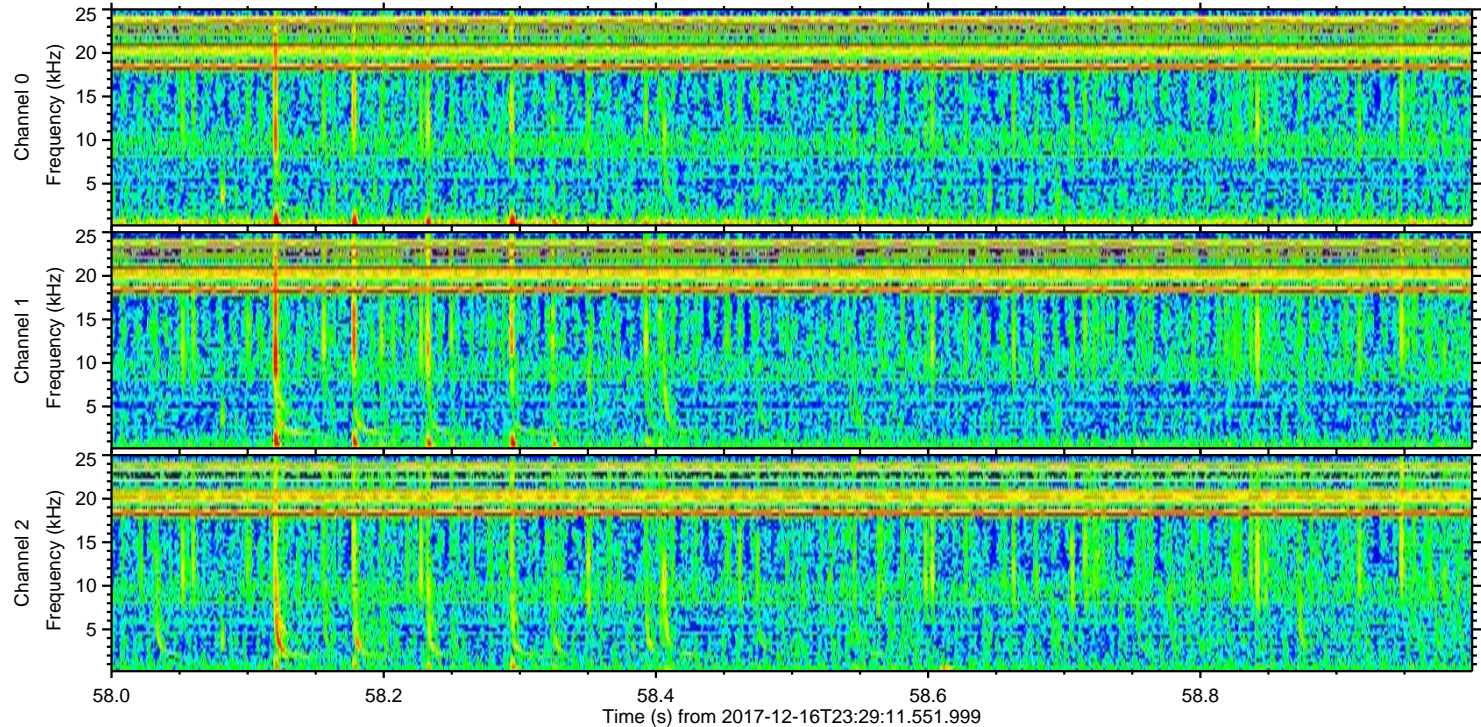
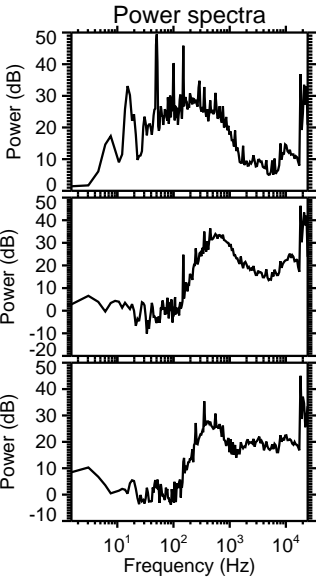
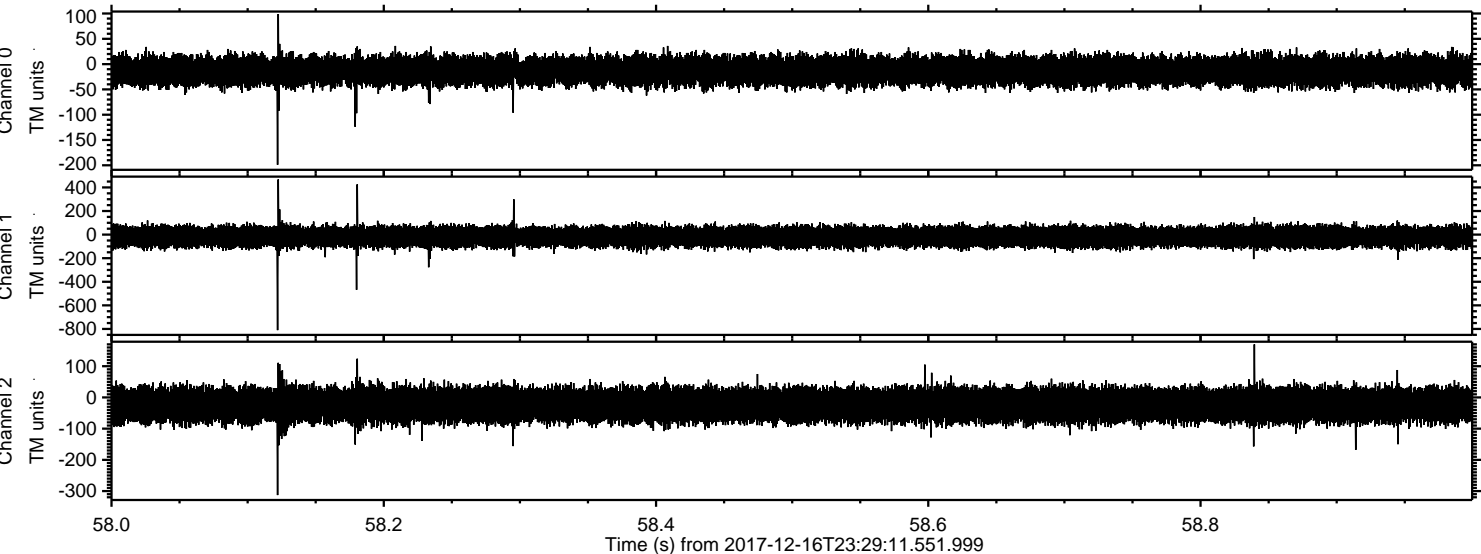


ELMAVAN 3D WAVEFORMS (Measured data sampled at 50 kHz) 51000 packets of 144 samples from 2017-12-16T23:29:11.551.999. Part 28/147

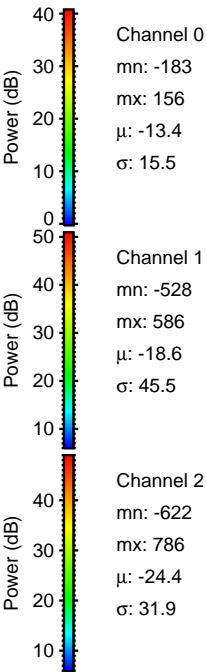
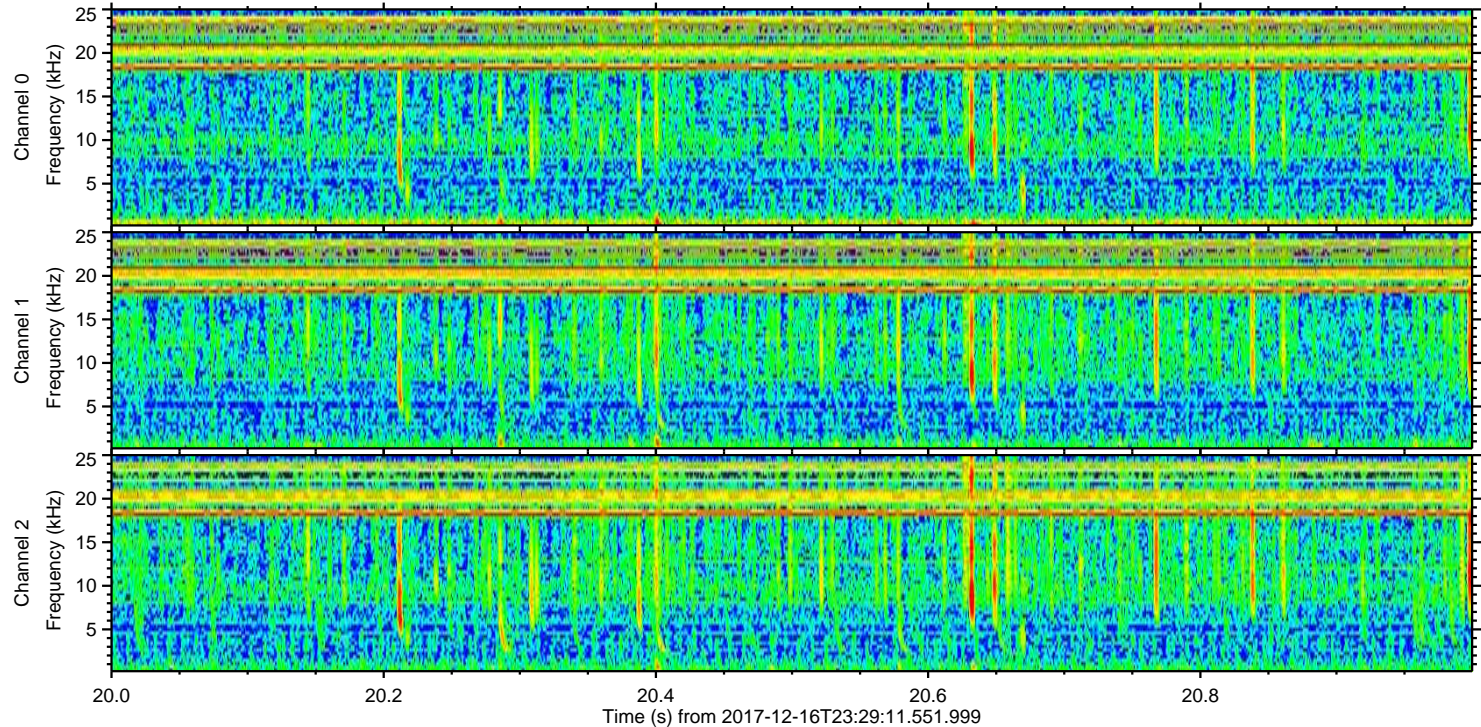
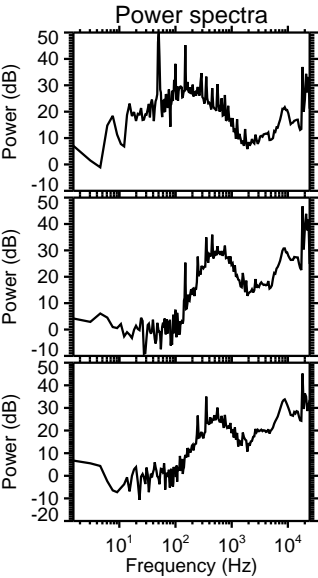
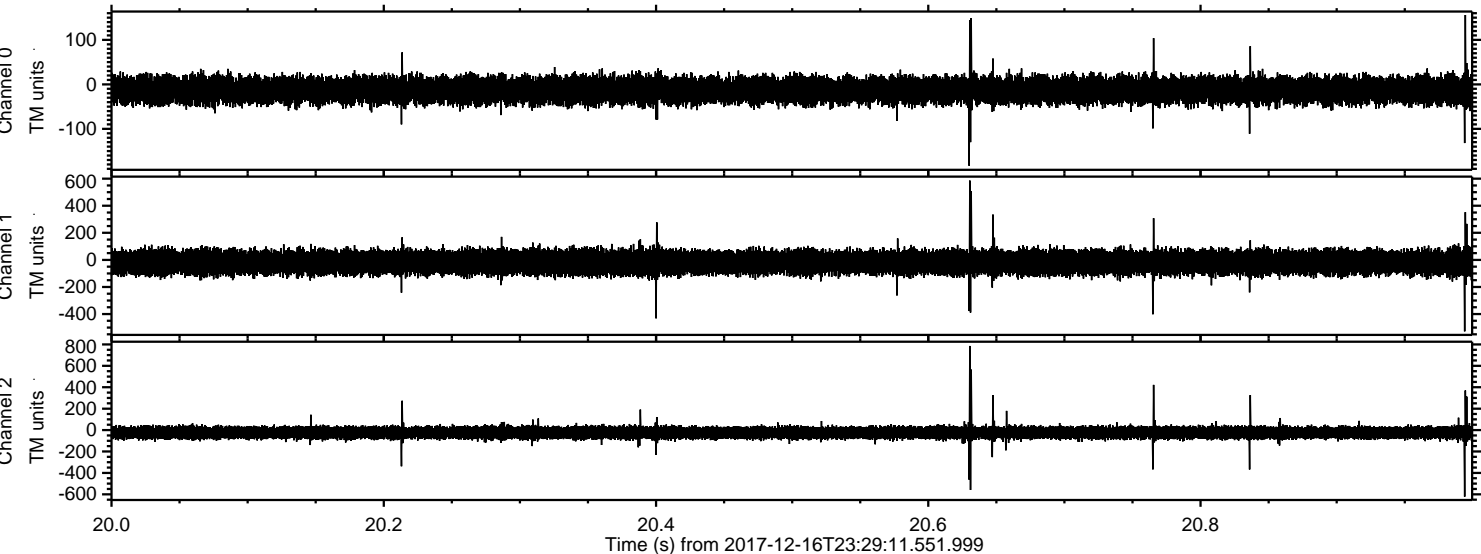
Processed Sun Dec 17 00:37:09 2017 by ELM ver.2012-10-06 from 001__elm20171216_232910__dat00.bin



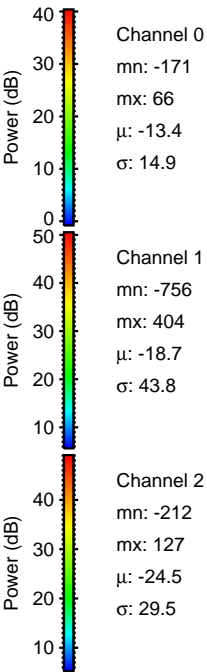
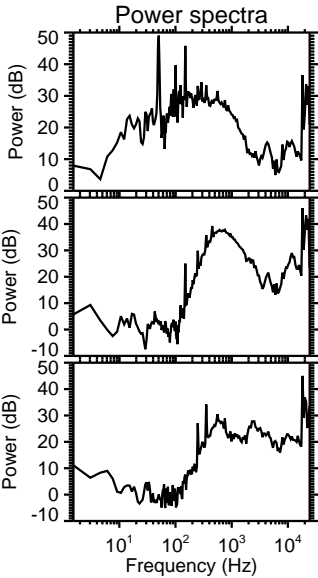
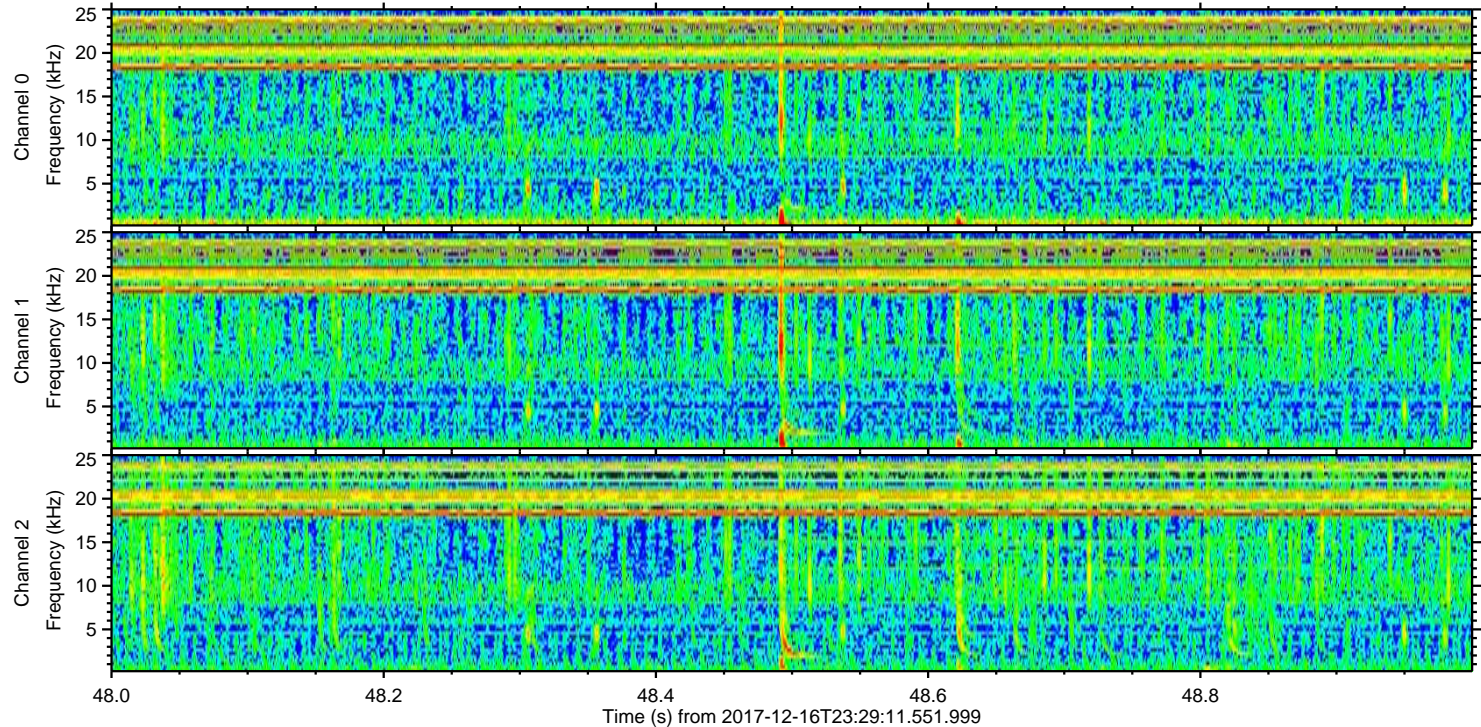
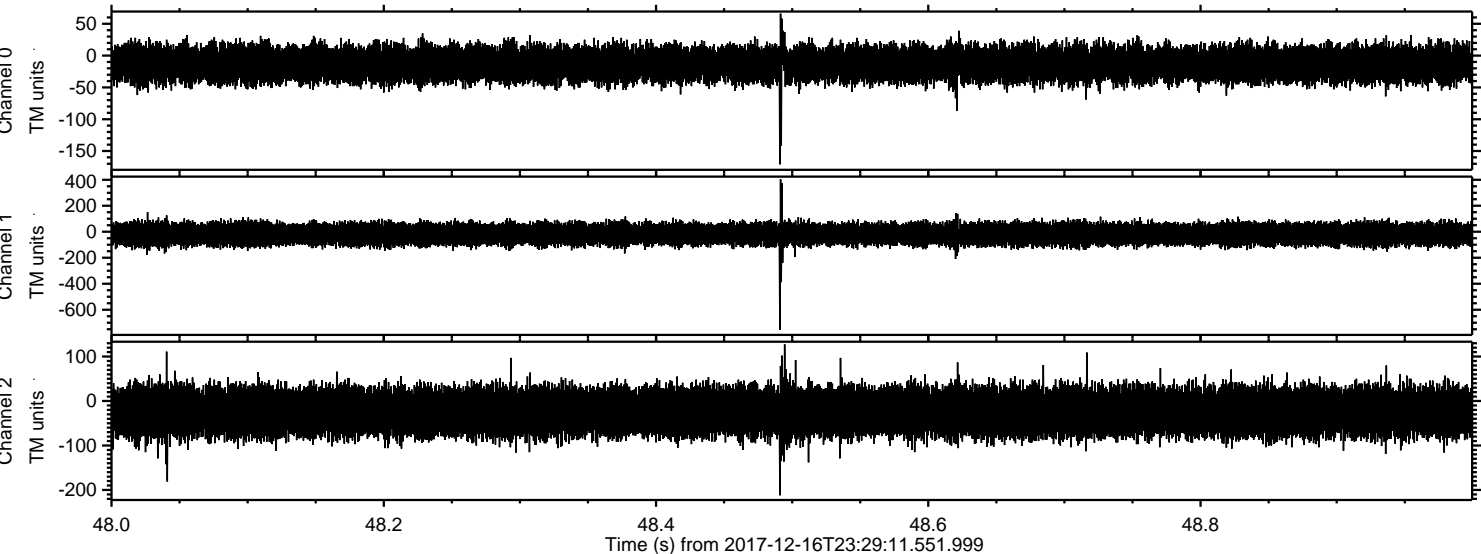
Processed Sun Dec 17 00:37:11 2017 by ELM ver.2012-10-06 from 001__elm20171216_232910__dat00.bin



Processed Sun Dec 17 00:37:11 2017 by ELM ver.2012-10-06 from 001__elm20171216_232910__dat00.bin



Processed Sun Dec 17 00:37:12 2017 by ELM ver.2012-10-06 from 001__elm20171216_232910__dat00.bin



Channel 0
mn: -171
mx: 66
 μ : -13.4
 σ : 14.9

Channel 1
mn: -756
mx: 404
 μ : -18.7
 σ : 43.8

Channel 2
mn: -212
mx: 127
 μ : -24.5
 σ : 29.5

