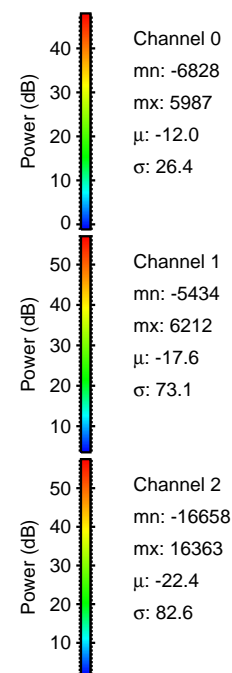
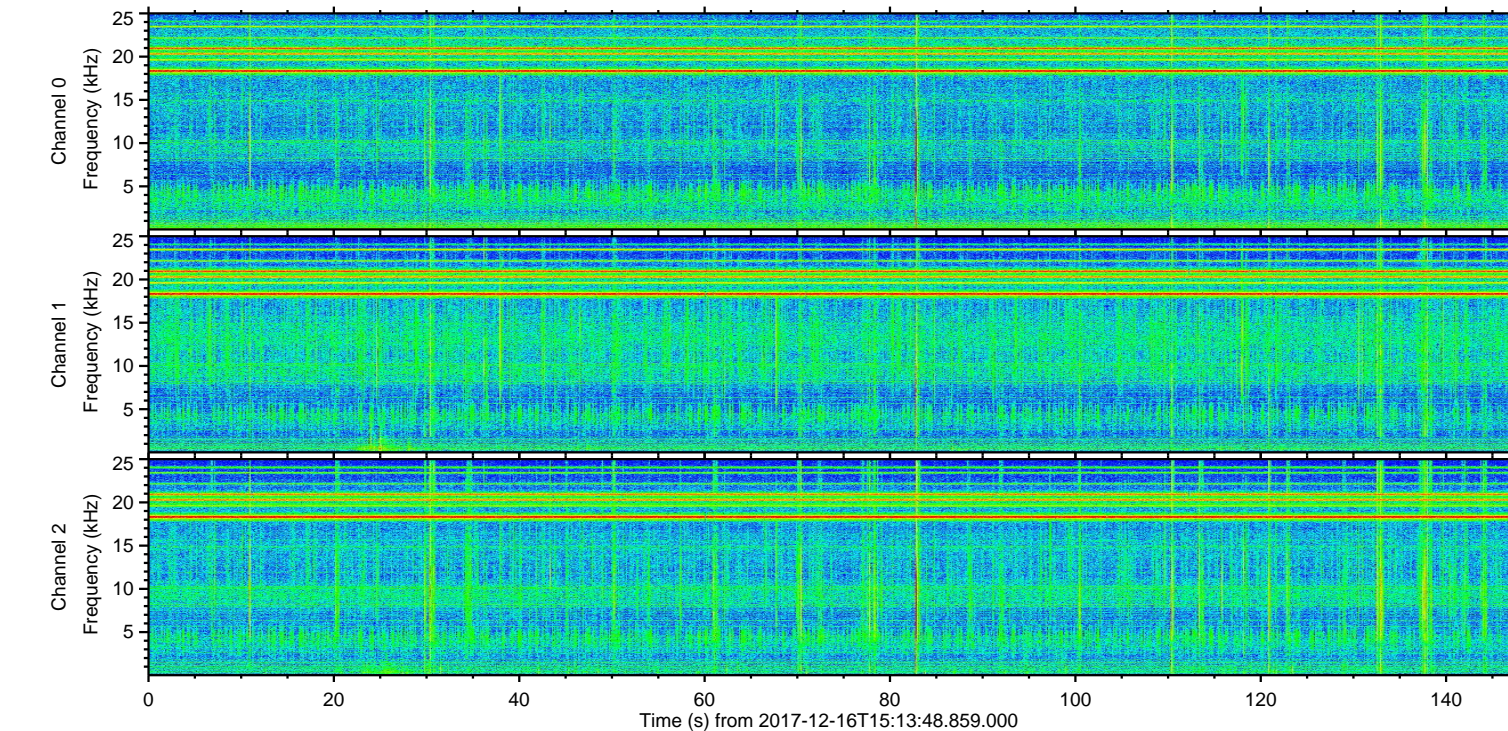
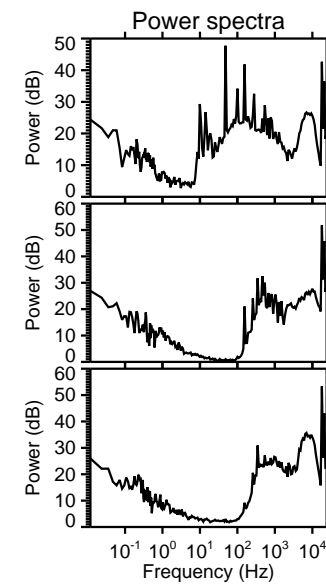
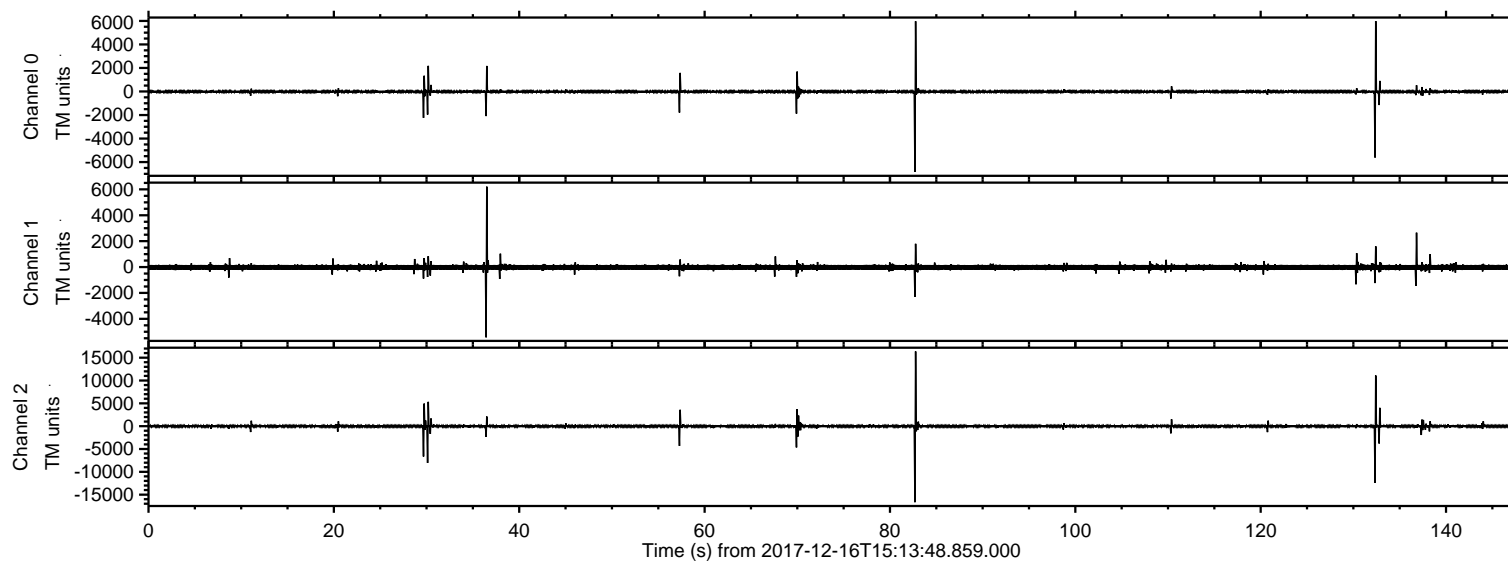


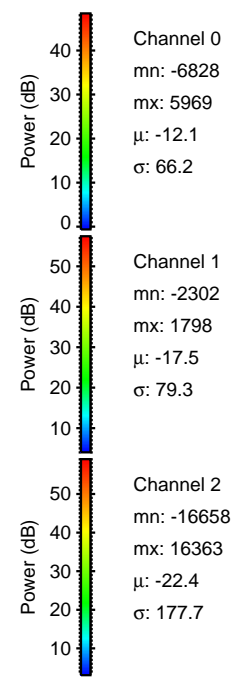
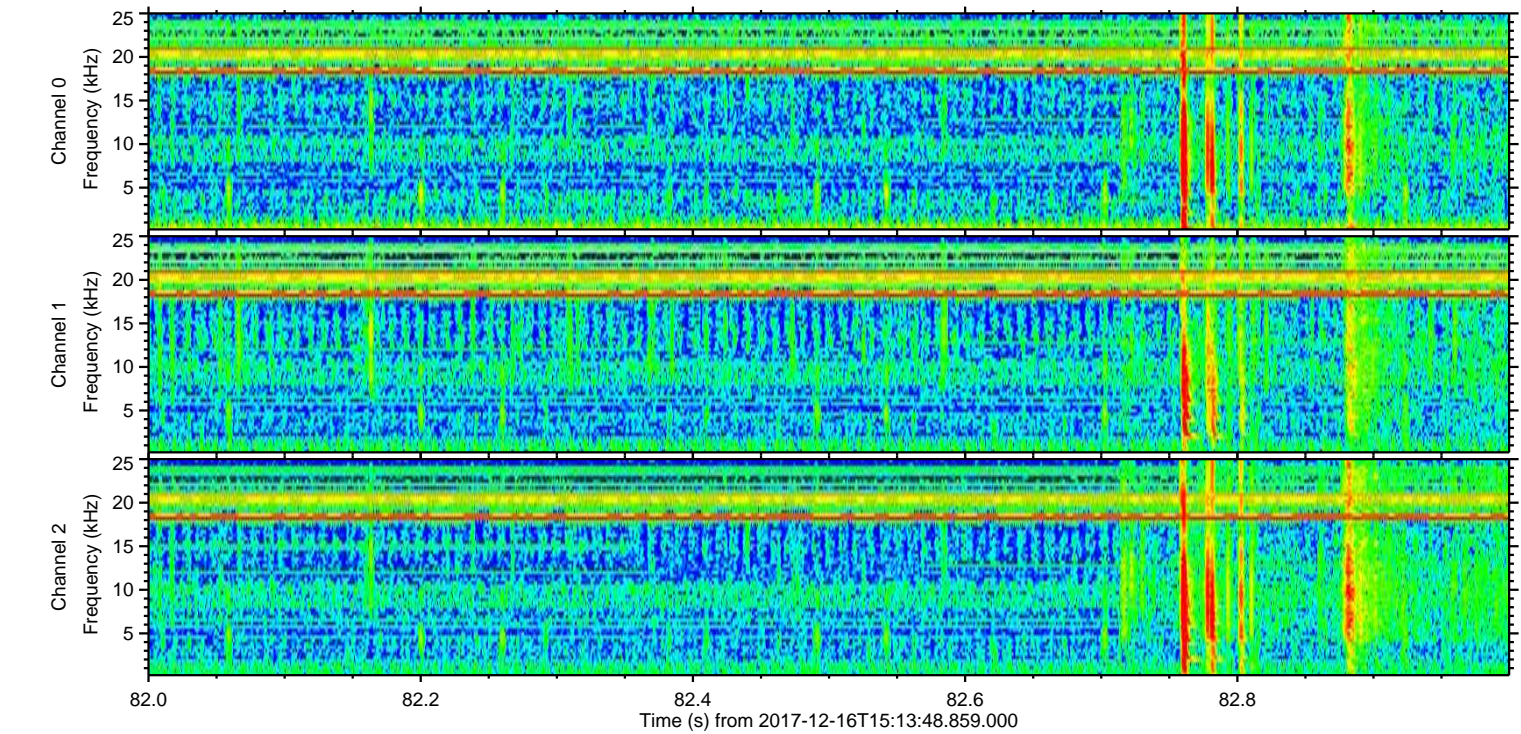
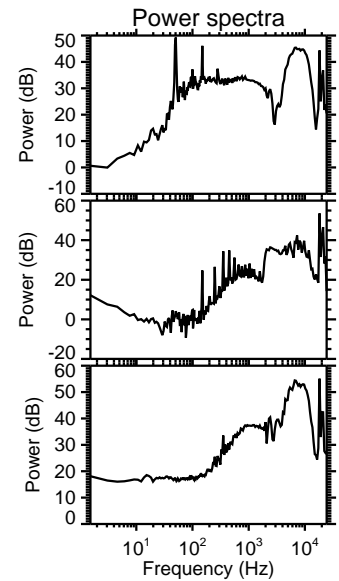
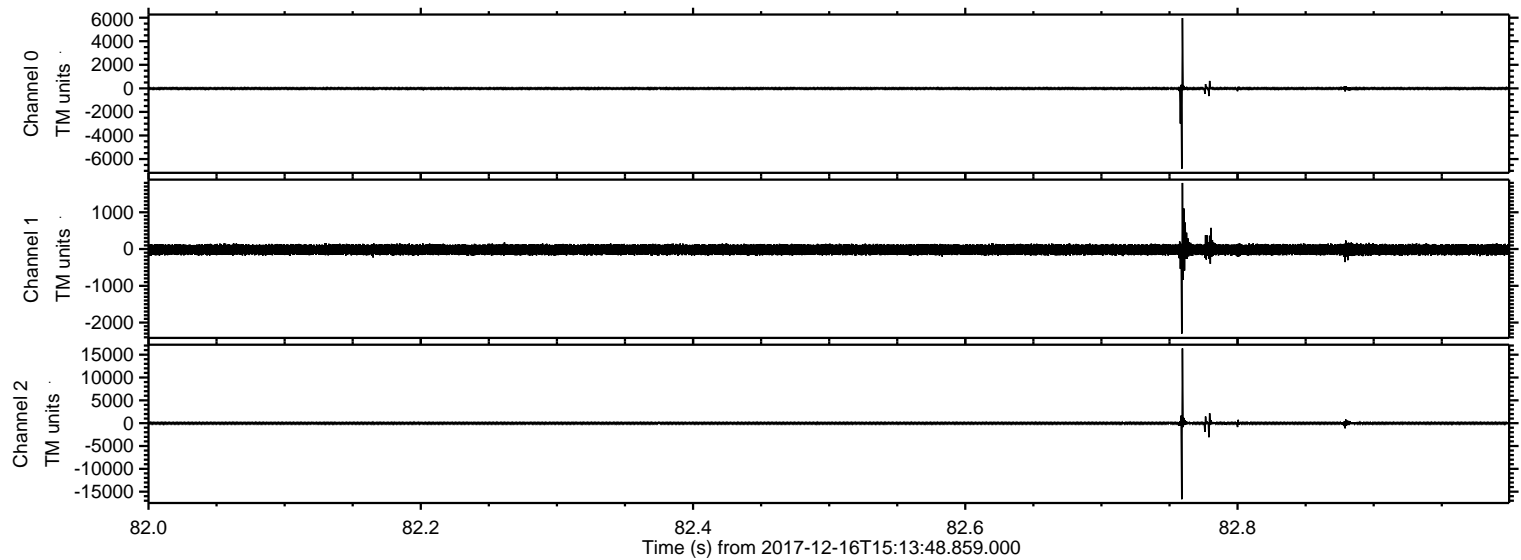
ELMAVAN 3D WAVEFORMS (Measured data sampled at 50 kHz) 51000 packets of 144 samples from 2017-12-16T15:13:48.859.000.

Processed Sat Dec 16 16:21:01 2017 by ELM ver.2012-10-06 from 001__elm20171216_151347__dat00.bin



ELMAVAN 3D WAVEFORMS (Measured data sampled at 50 kHz) 51000 packets of 144 samples from 2017-12-16T15:13:48.859.000. Part 83/147

Processed Sat Dec 16 16:21:08 2017 by ELM ver.2012-10-06 from 001__elm20171216_151347__dat00.bin



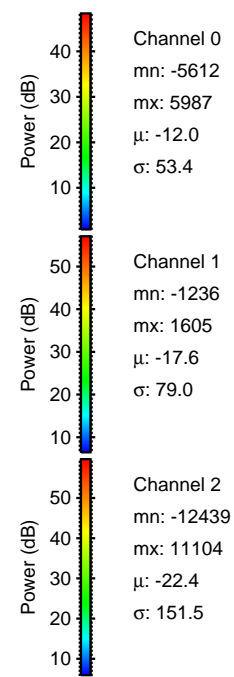
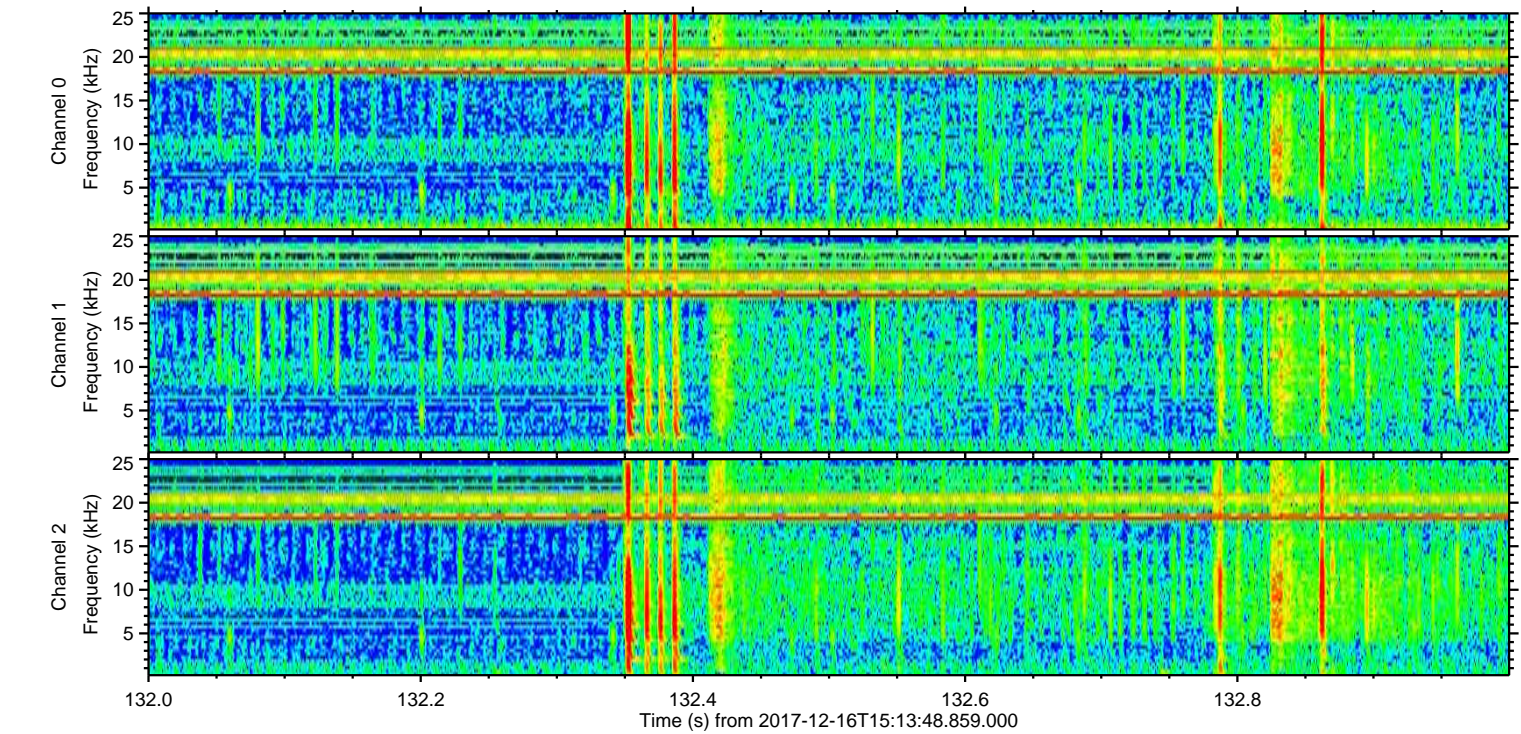
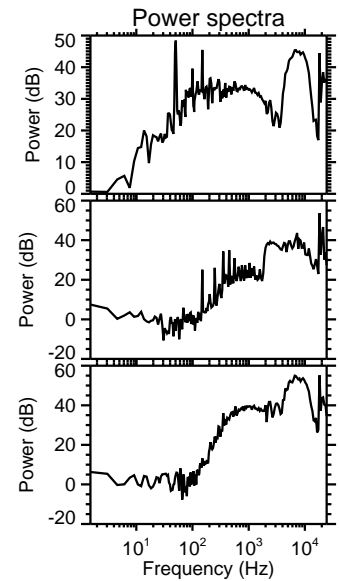
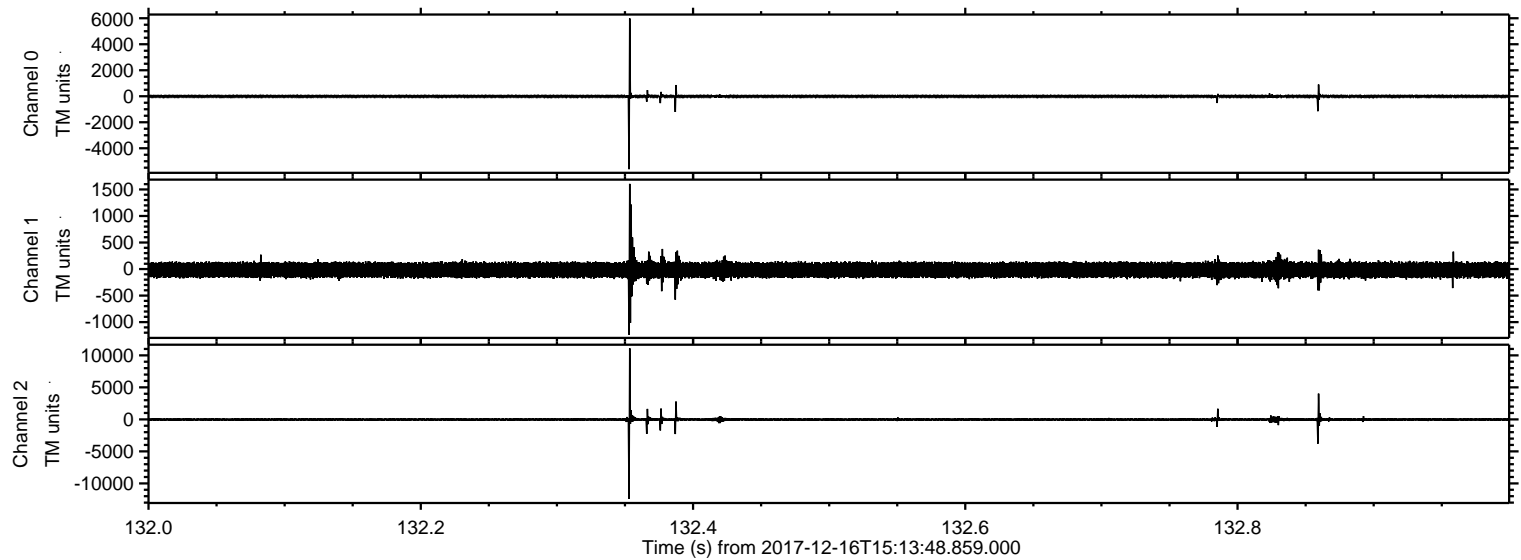
Channel 0
mn: -6828
mx: 5969
 μ : -12.1
 σ : 66.2

Channel 1
mn: -2302
mx: 1798
 μ : -17.5
 σ : 79.3

Channel 2
mn: -16658
mx: 16363
 μ : -22.4
 σ : 177.7

ELMAVAN 3D WAVEFORMS (Measured data sampled at 50 kHz) 51000 packets of 144 samples from 2017-12-16T15:13:48.859.000. Part 133/147

Processed Sat Dec 16 16:21:09 2017 by ELM ver.2012-10-06 from 001__elm20171216_151347__dat00.bin

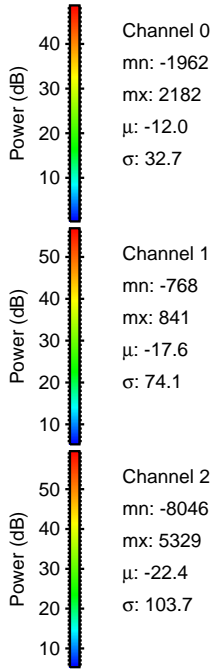
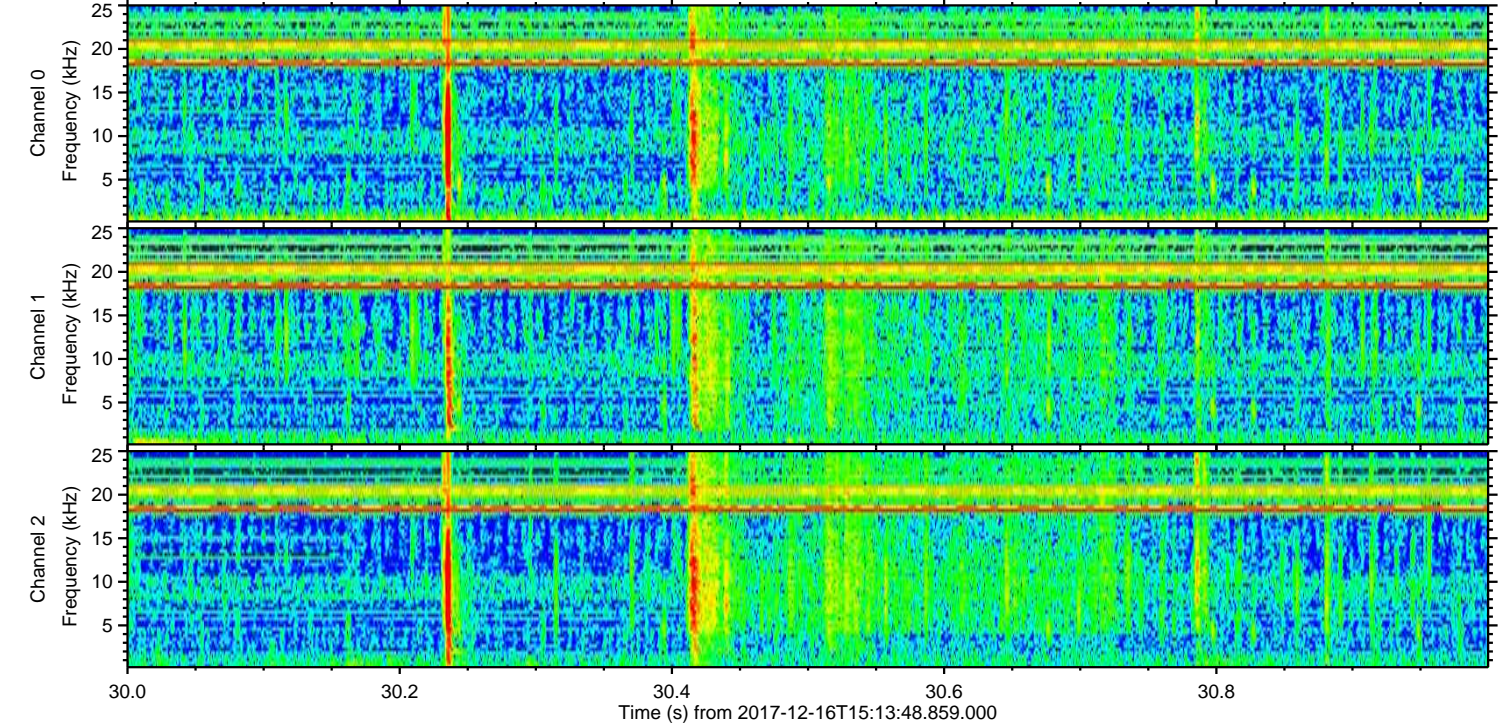
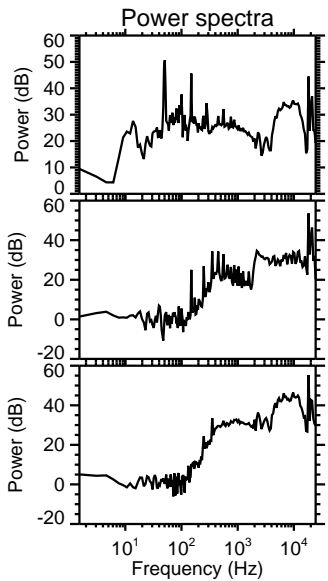
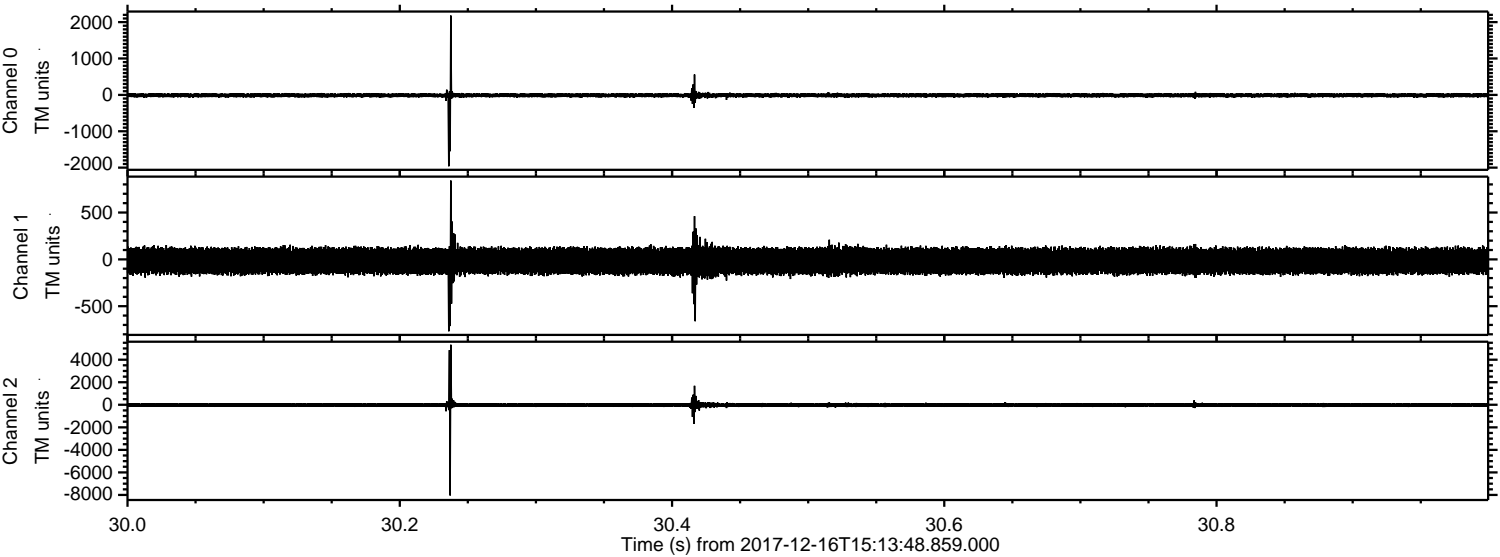


Channel 0
mn: -5612
mx: 5987
 μ : -12.0
 σ : 53.4

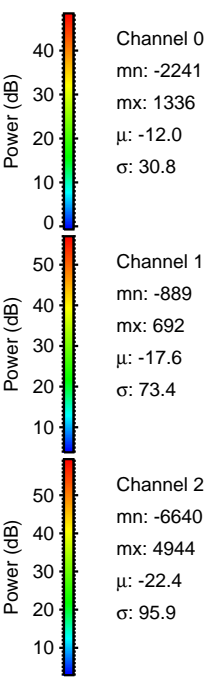
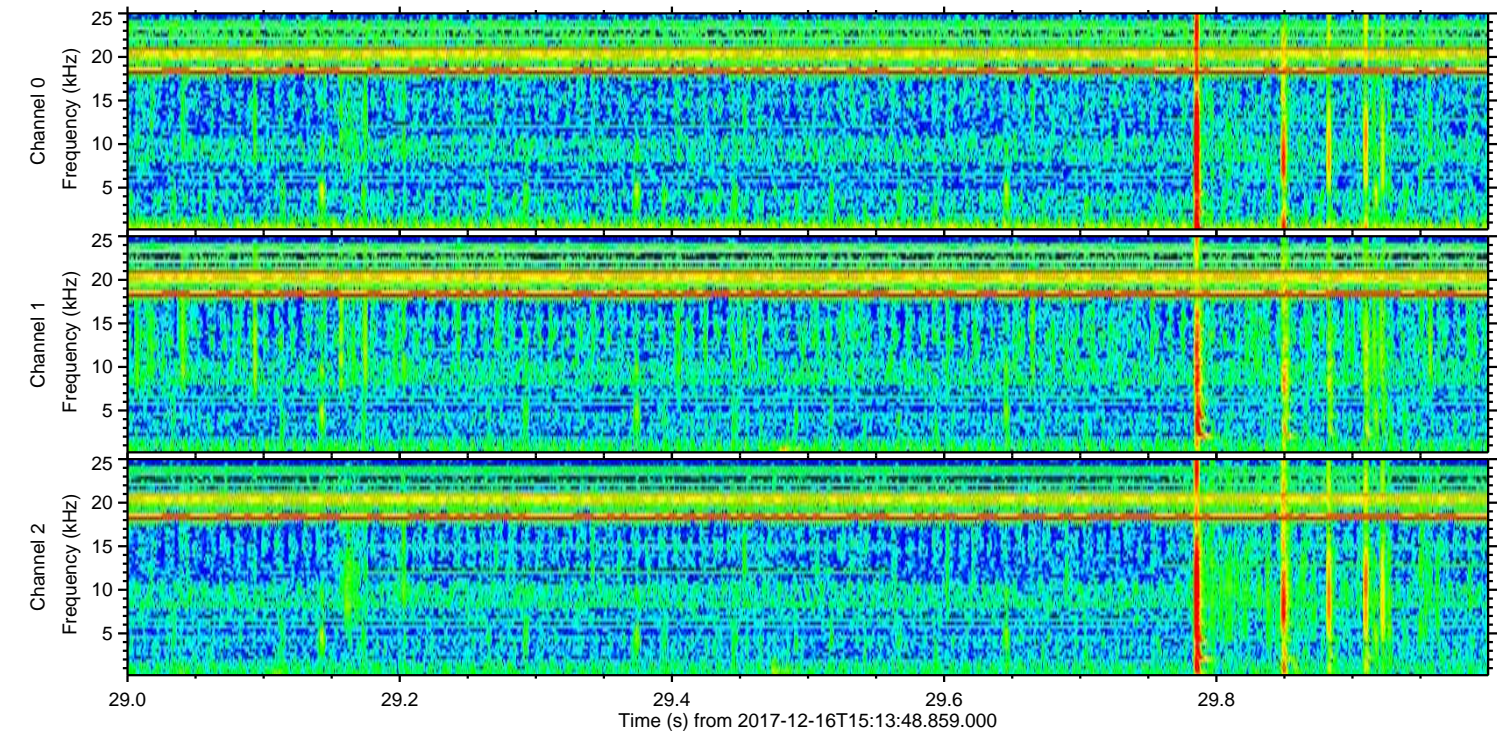
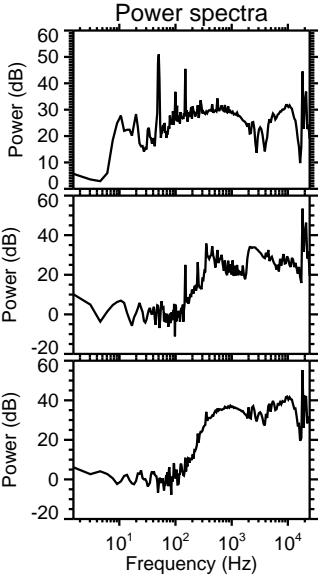
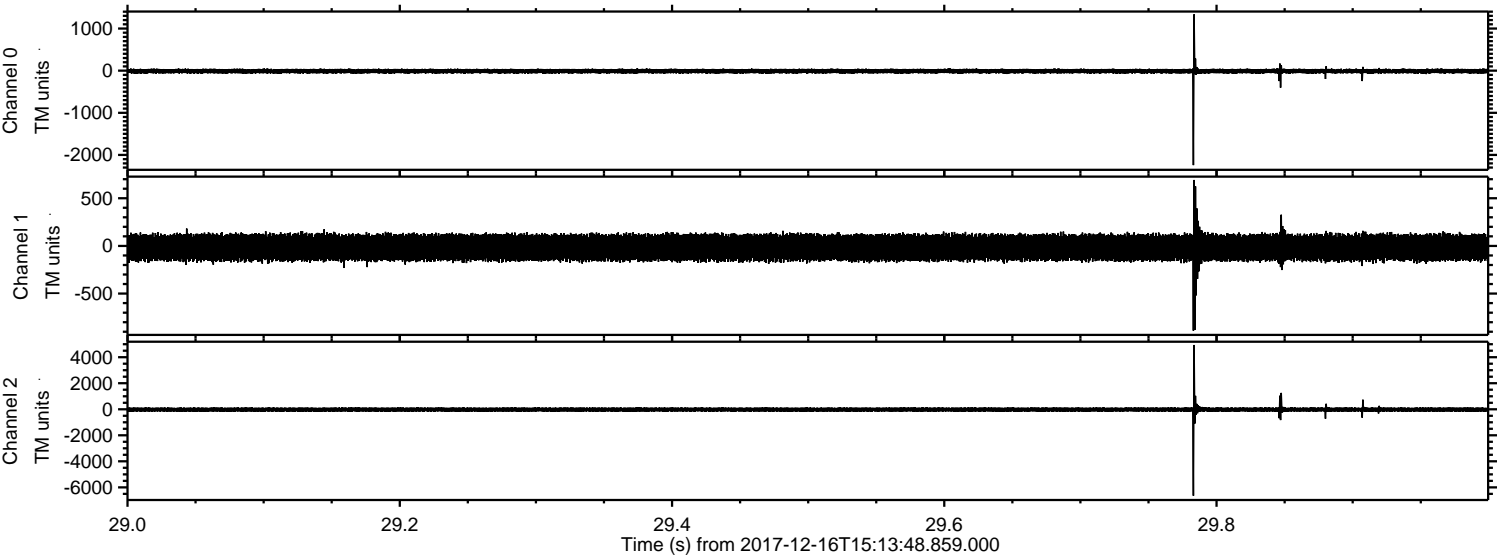
Channel 1
mn: -1236
mx: 1605
 μ : -17.6
 σ : 79.0

Channel 2
mn: -12439
mx: 11104
 μ : -22.4
 σ : 151.5

Processed Sat Dec 16 16:21:10 2017 by ELM ver.2012-10-06 from 001__elm20171216_151347__dat00.bin

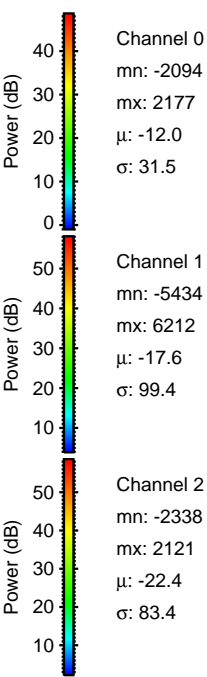
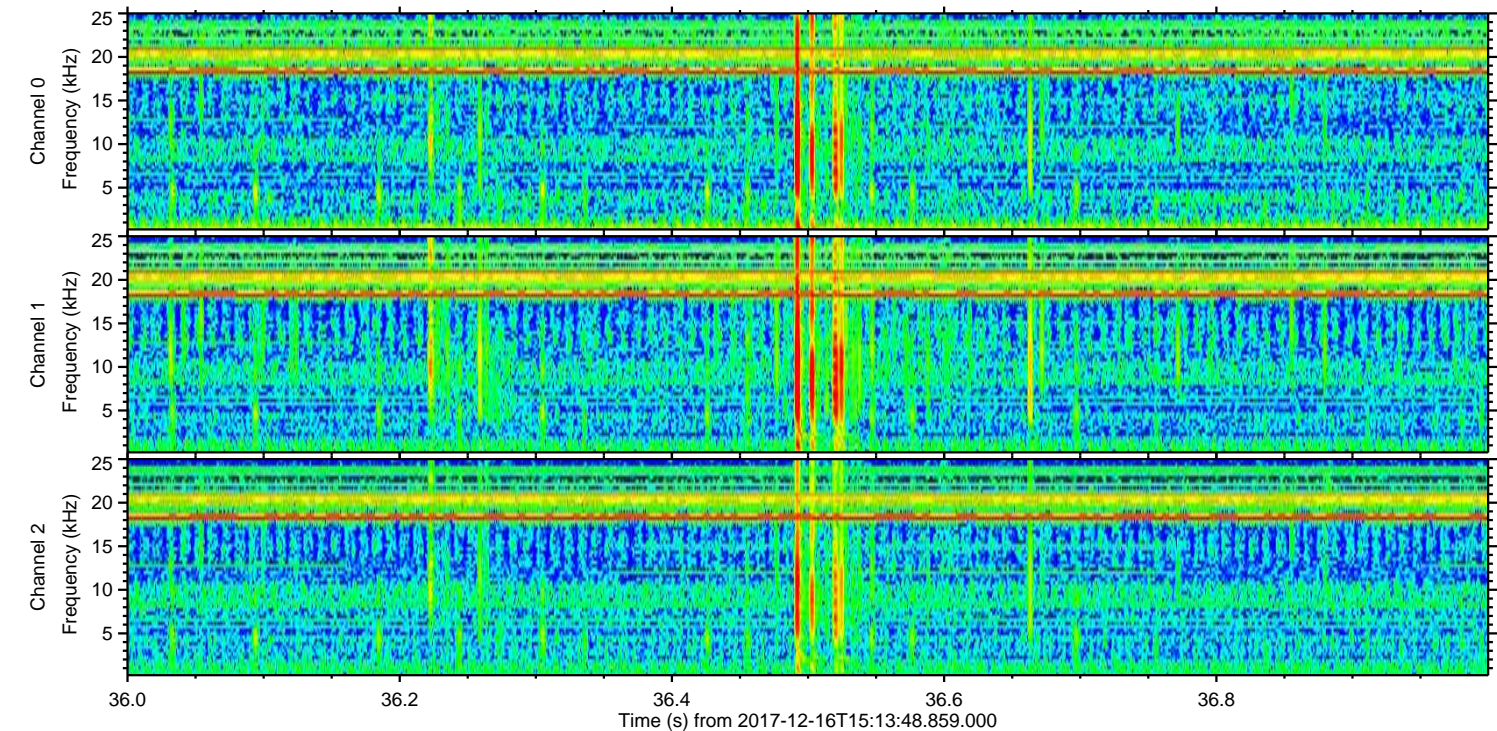
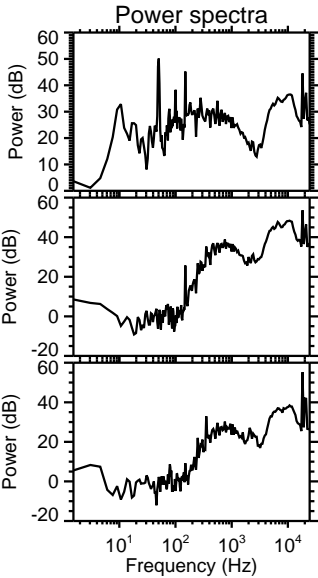
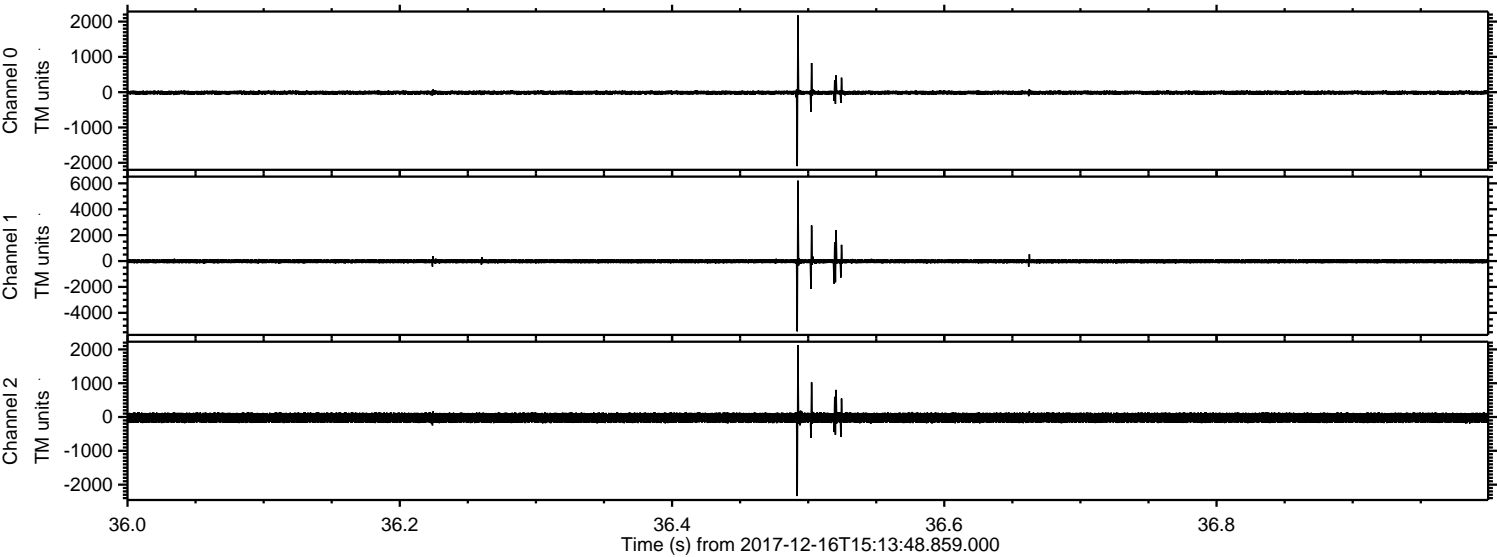


Processed Sat Dec 16 16:21:11 2017 by ELM ver.2012-10-06 from 001__elm20171216_151347__dat00.bin

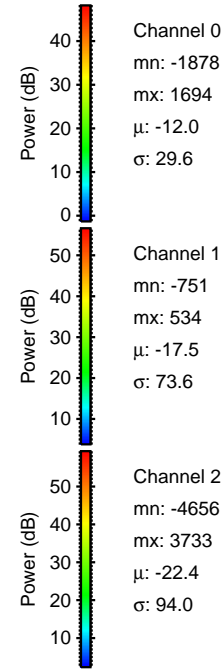
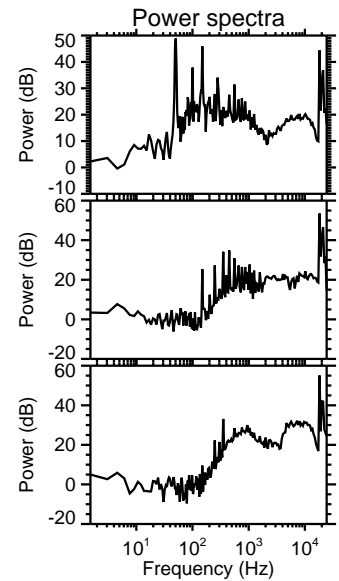
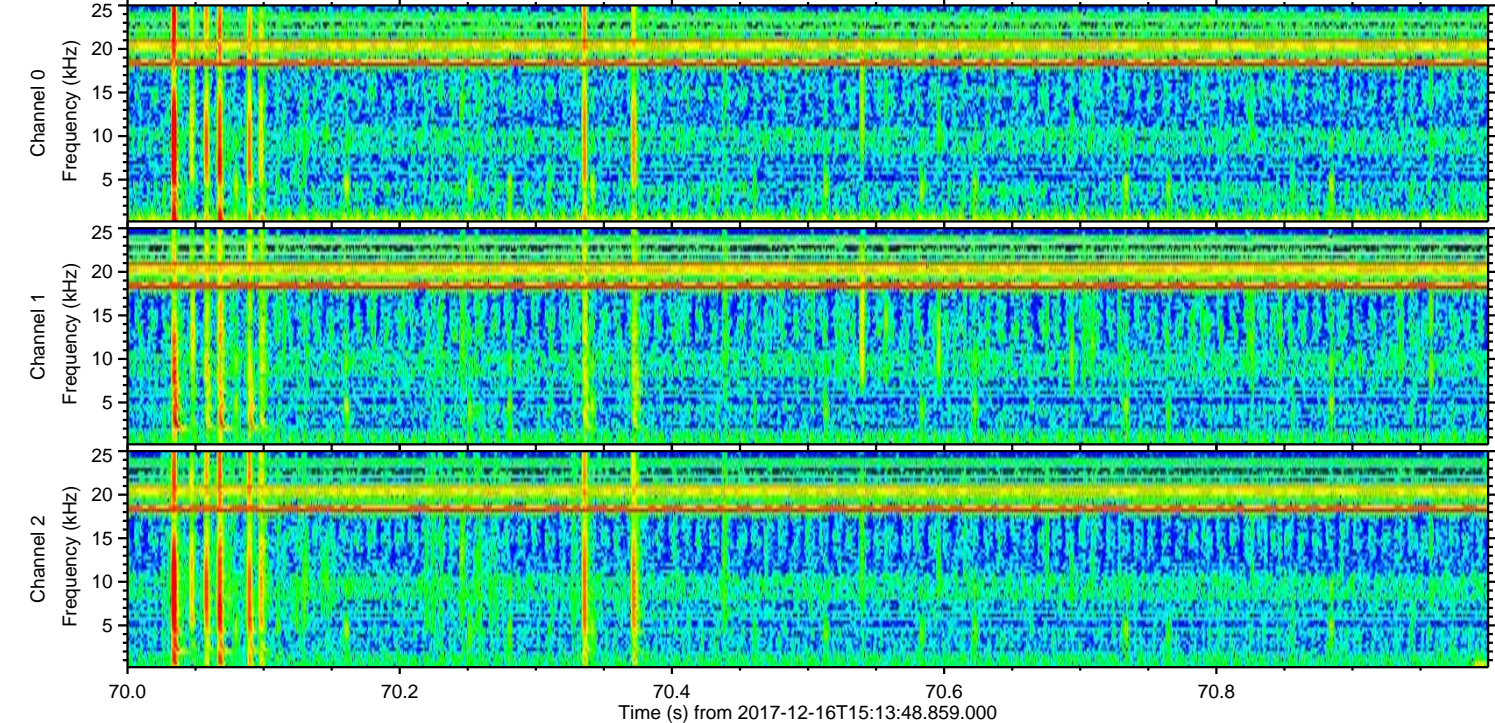
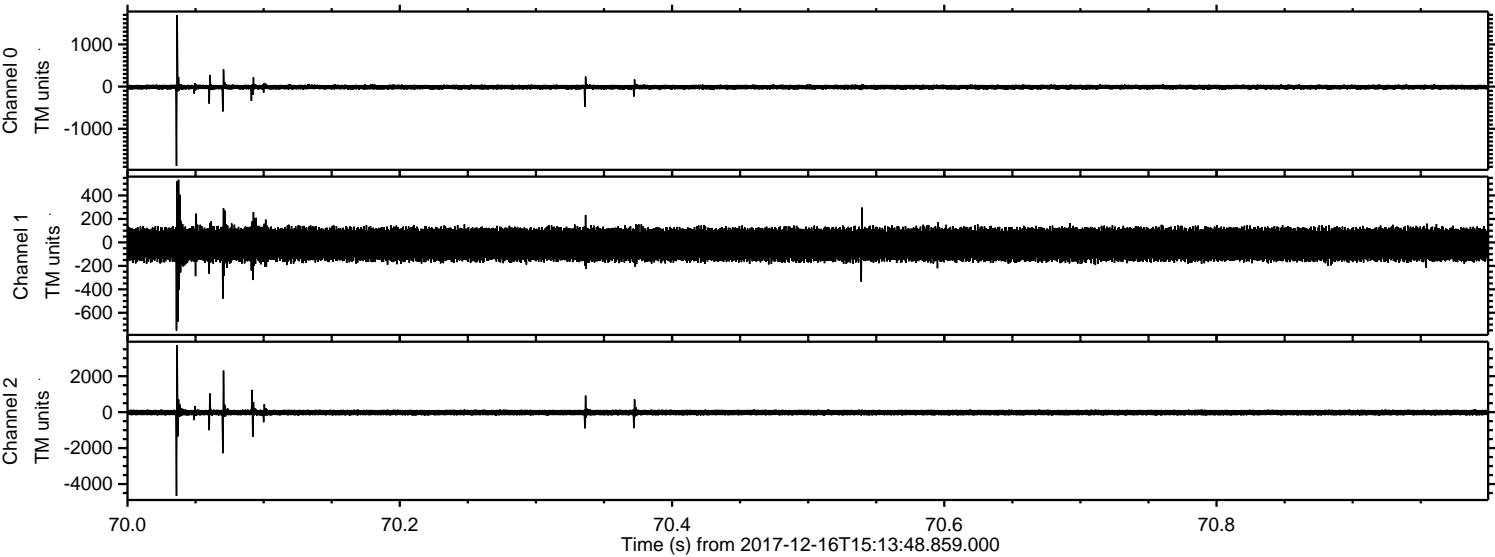


ELMAVAN 3D WAVEFORMS (Measured data sampled at 50 kHz) 51000 packets of 144 samples from 2017-12-16T15:13:48.859.000. Part 37/147

Processed Sat Dec 16 16:21:11 2017 by ELM ver.2012-10-06 from 001__elm20171216_151347__dat00.bin



Processed Sat Dec 16 16:21:13 2017 by ELM ver.2012-10-06 from 001__elm20171216_151347__dat00.bin

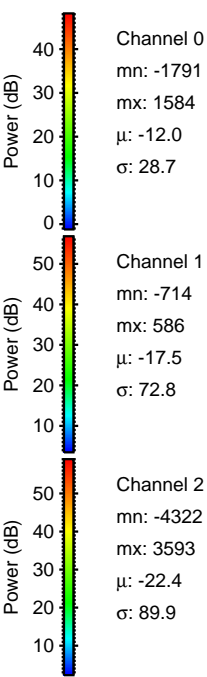
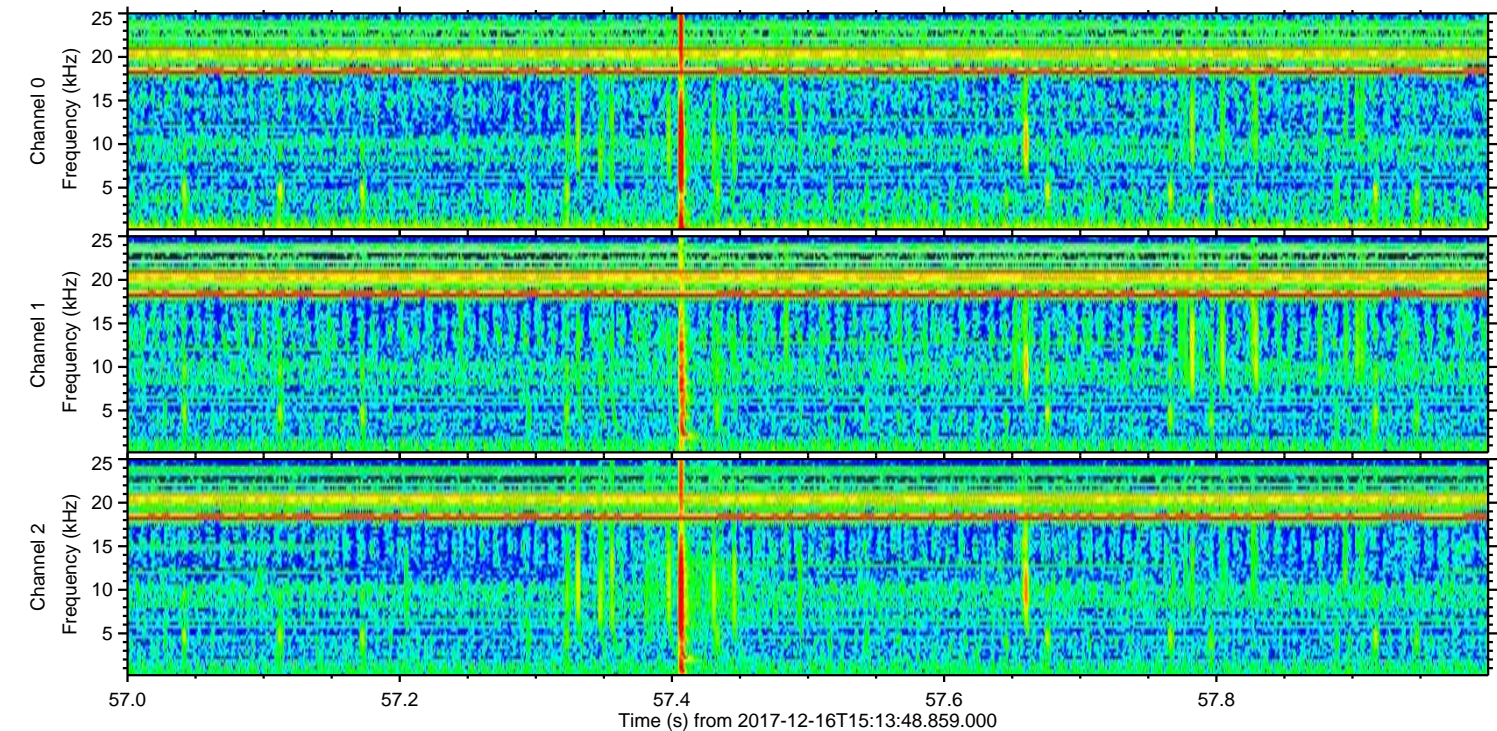
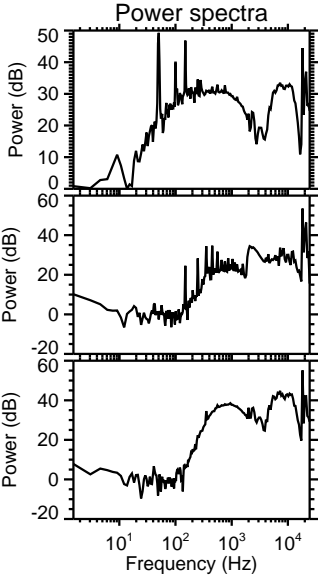
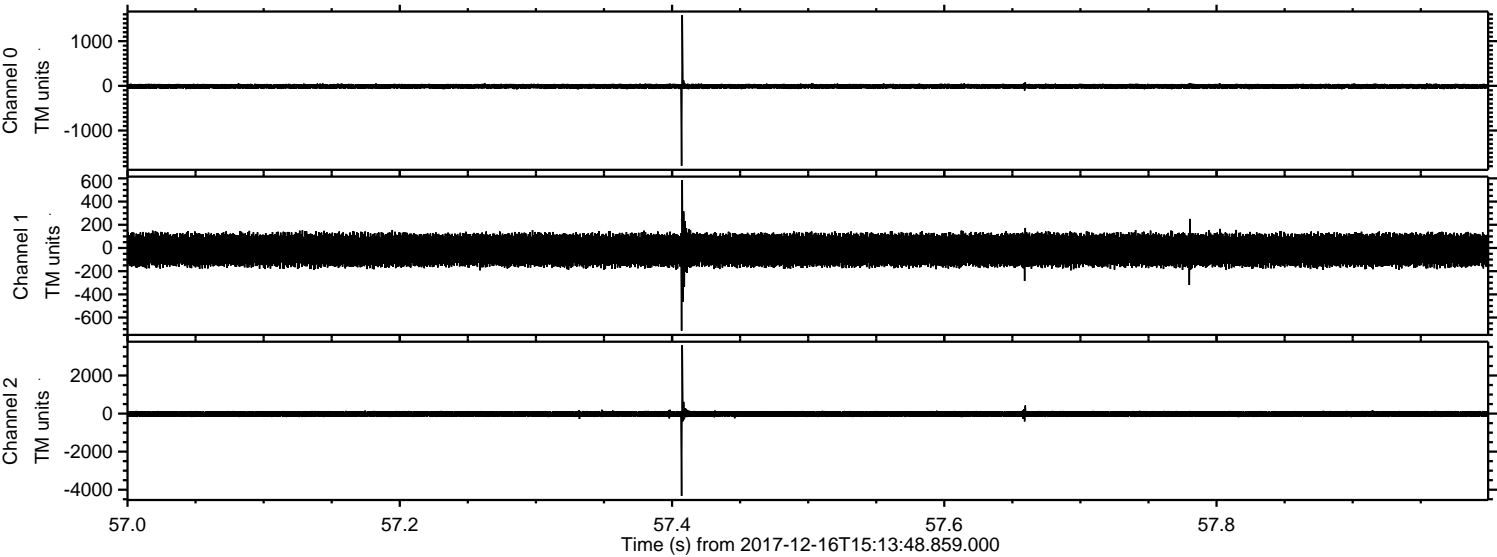


Channel 0
mn: -1878
mx: 1694
 μ : -12.0
 σ : 29.6

Channel 1
mn: -751
mx: 534
 μ : -17.5
 σ : 73.6

Channel 2
mn: -4656
mx: 3733
 μ : -22.4
 σ : 94.0

Processed Sat Dec 16 16:21:14 2017 by ELM ver.2012-10-06 from 001__elm20171216_151347__dat00.bin



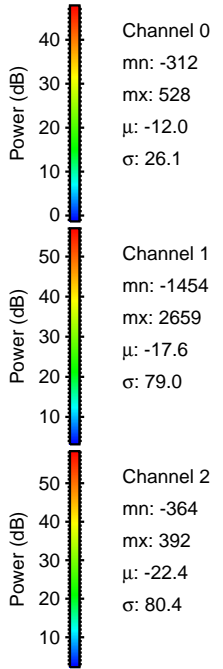
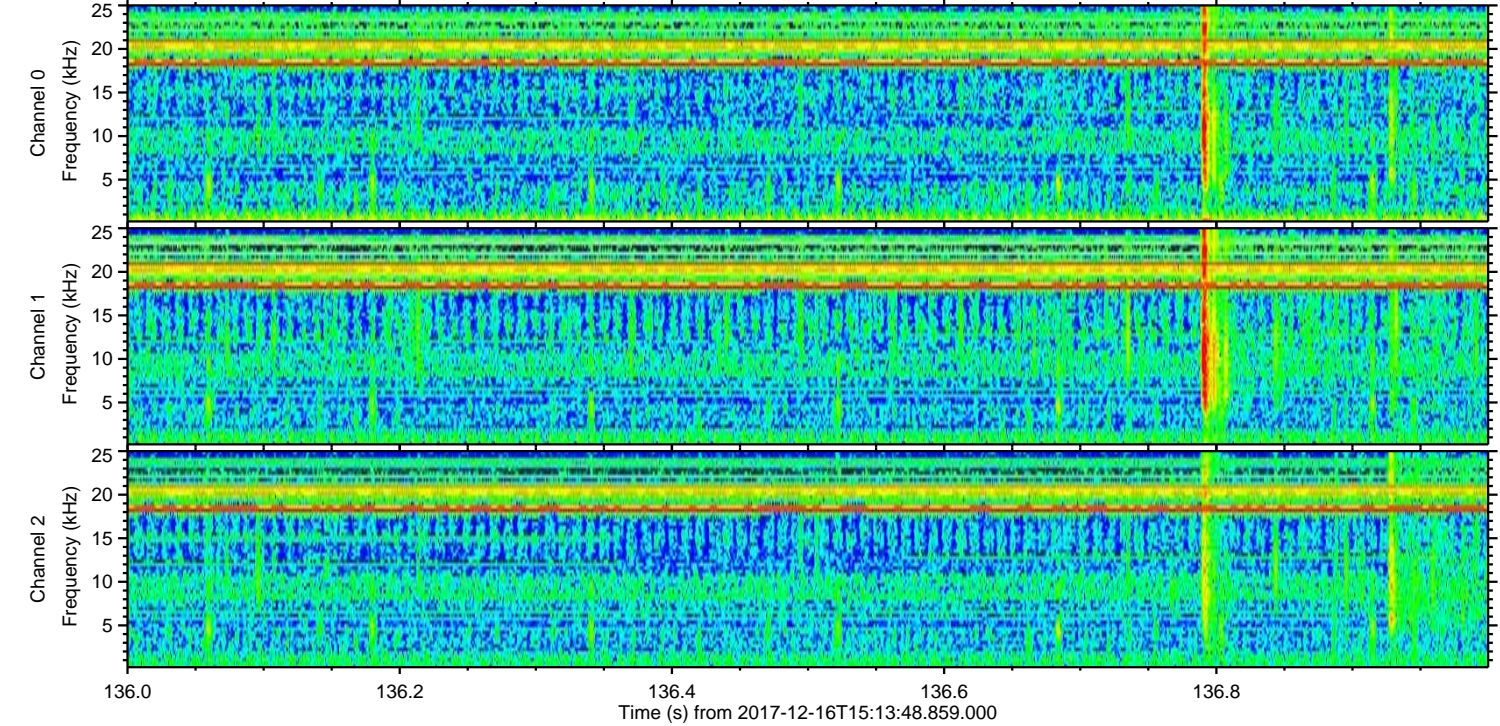
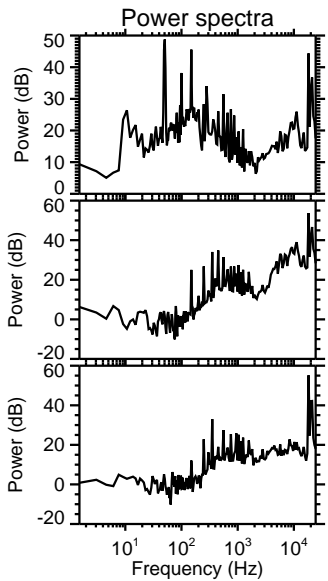
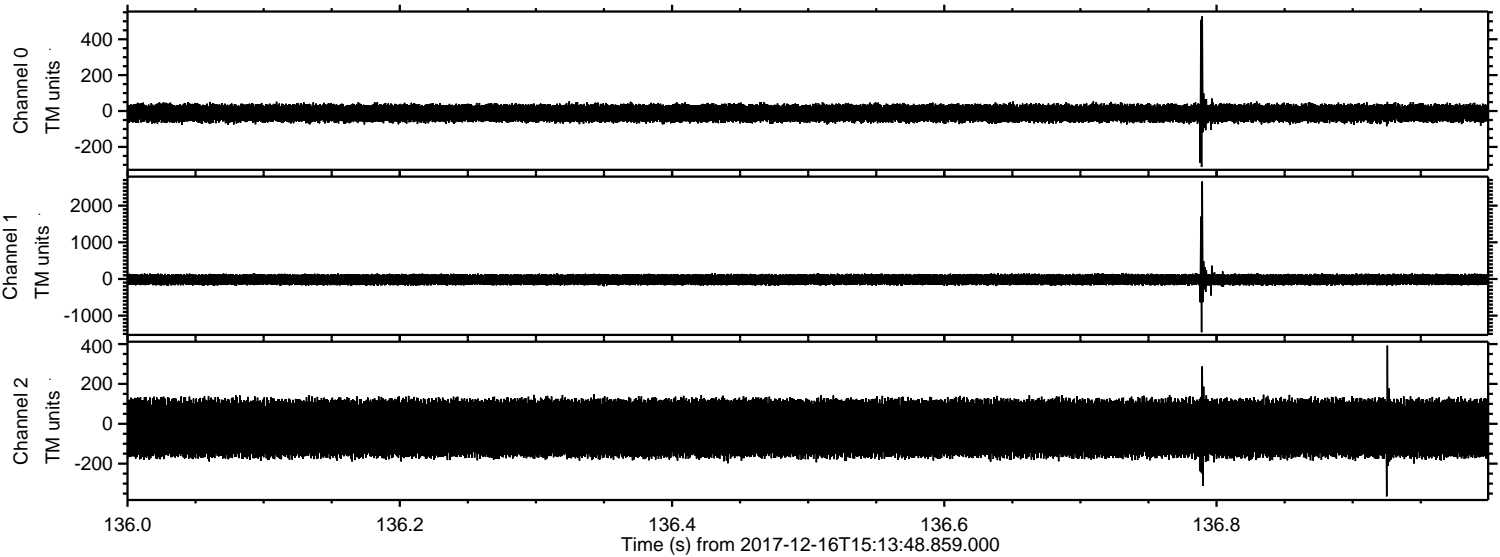
Channel 0
mn: -1791
mx: 1584
 μ : -12.0
 σ : 28.7

Channel 1
mn: -714
mx: 586
 μ : -17.5
 σ : 72.8

Channel 2
mn: -4322
mx: 3593
 μ : -22.4
 σ : 89.9

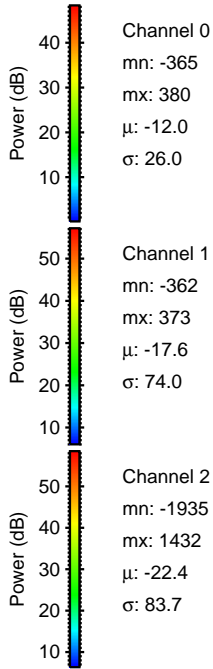
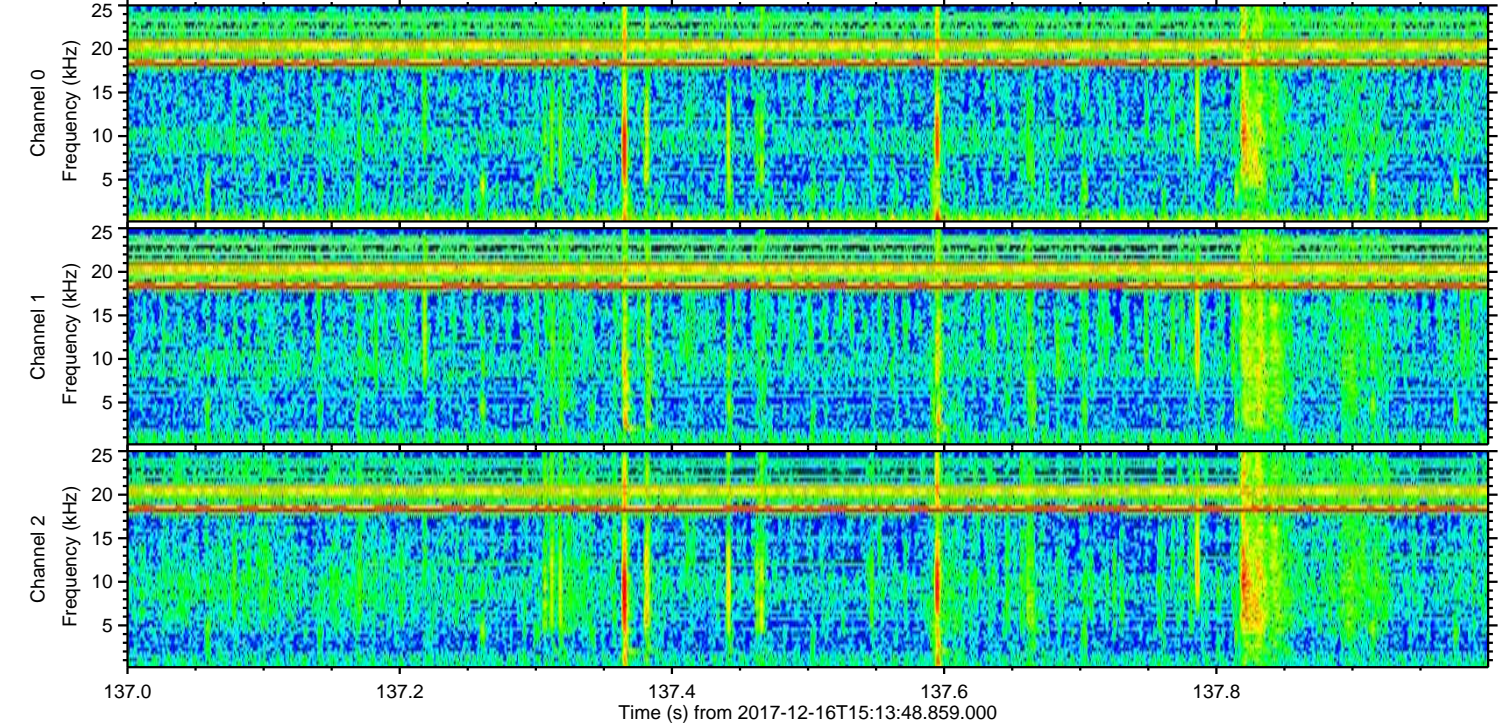
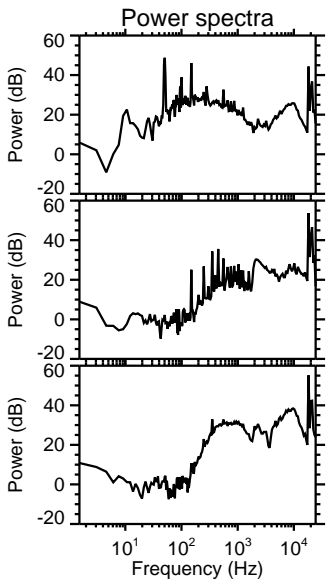
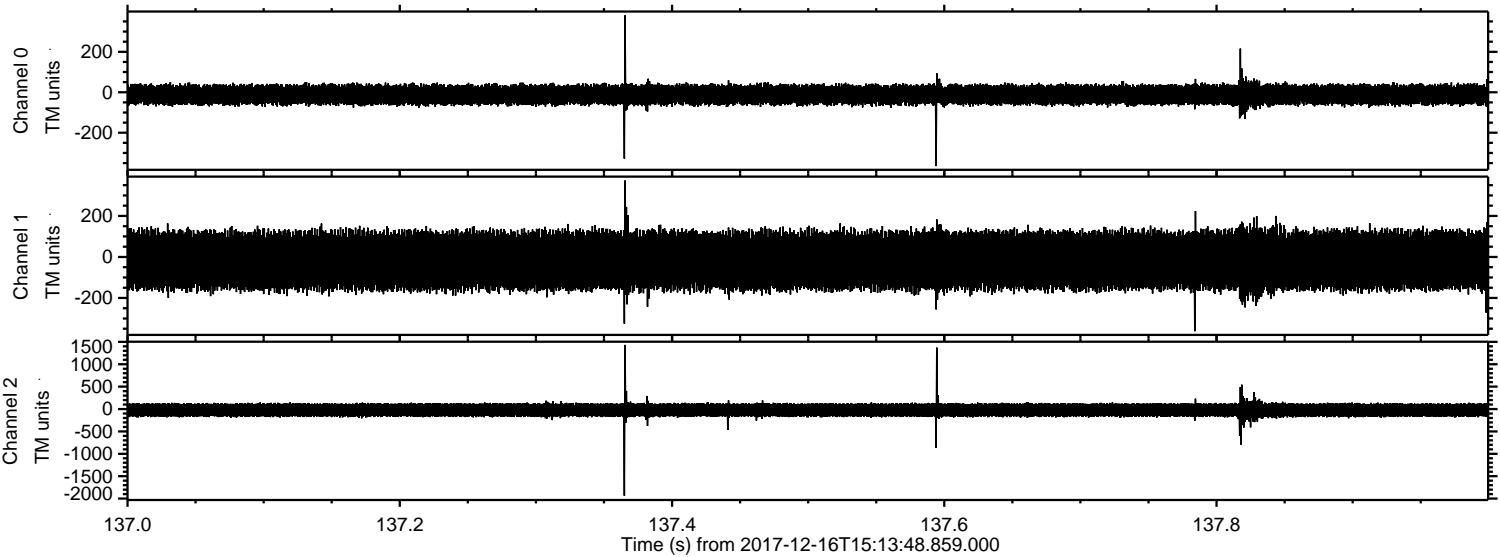
ELMAVAN 3D WAVEFORMS (Measured data sampled at 50 kHz) 51000 packets of 144 samples from 2017-12-16T15:13:48.859.000. Part 137/147

Processed Sat Dec 16 16:21:14 2017 by ELM ver.2012-10-06 from 001__elm20171216_151347__dat00.bin



ELMAVAN 3D WAVEFORMS (Measured data sampled at 50 kHz) 51000 packets of 144 samples from 2017-12-16T15:13:48.859.000. Part 138/147

Processed Sat Dec 16 16:21:15 2017 by ELM ver.2012-10-06 from 001__elm20171216_151347__dat00.bin



ELMAVAN 3D WAVEFORMS (Measured data sampled at 50 kHz) 51000 packets of 144 samples from 2017-12-16T15:13:48.859.000. Part 65/147

Processed Sat Dec 16 16:21:16 2017 by ELM ver.2012-10-06 from 001__elm20171216_151347__dat000.bin

