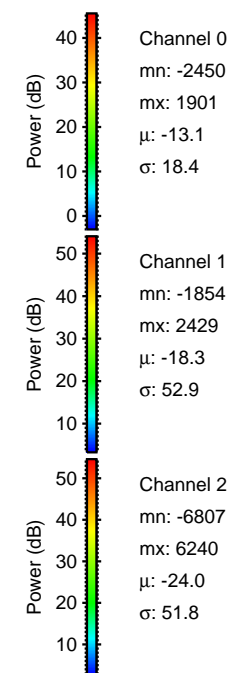
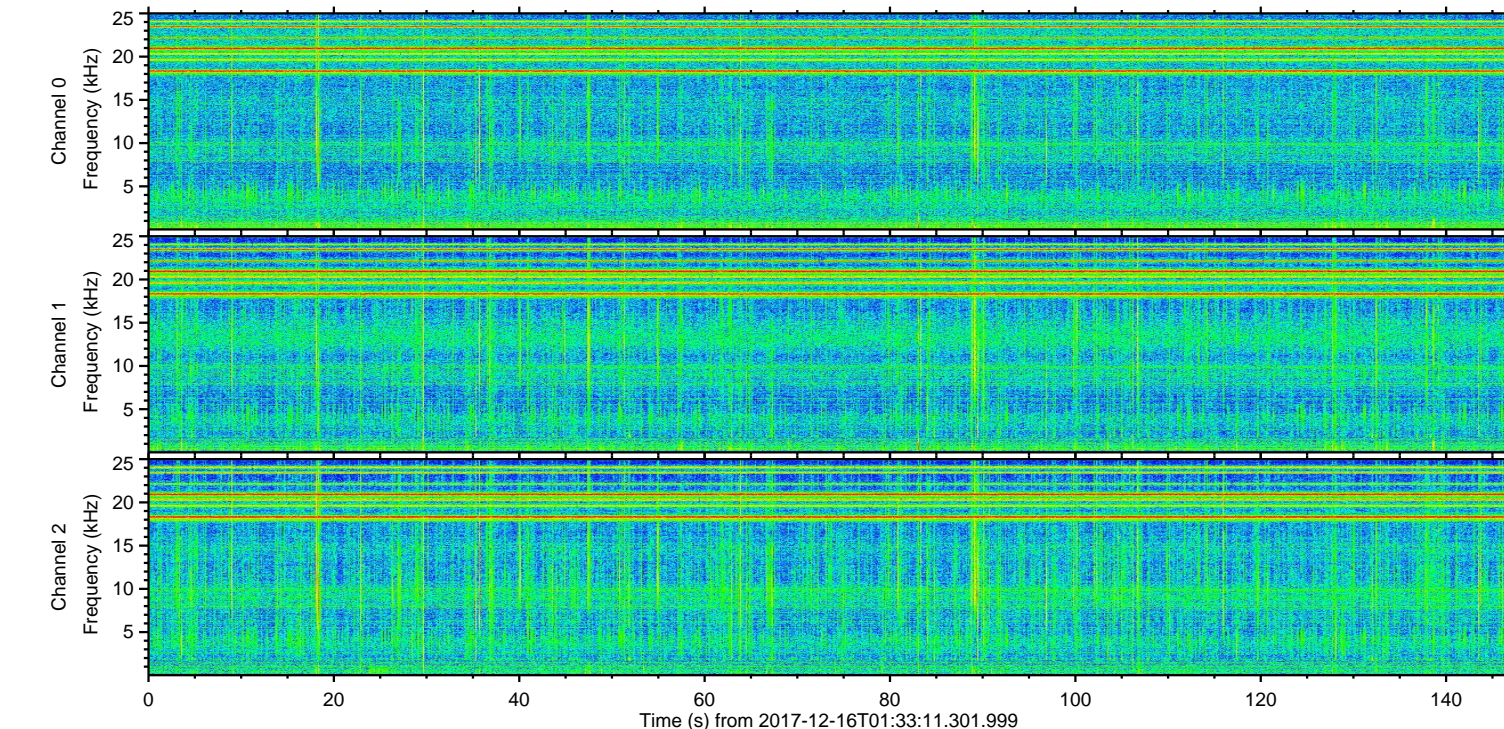
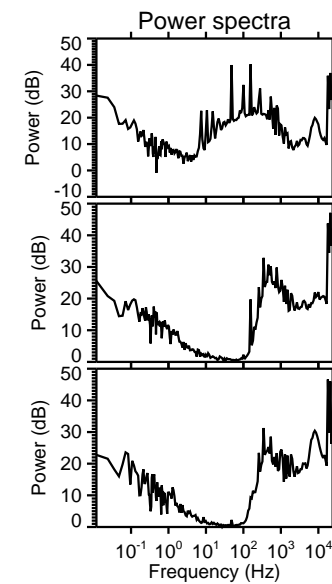
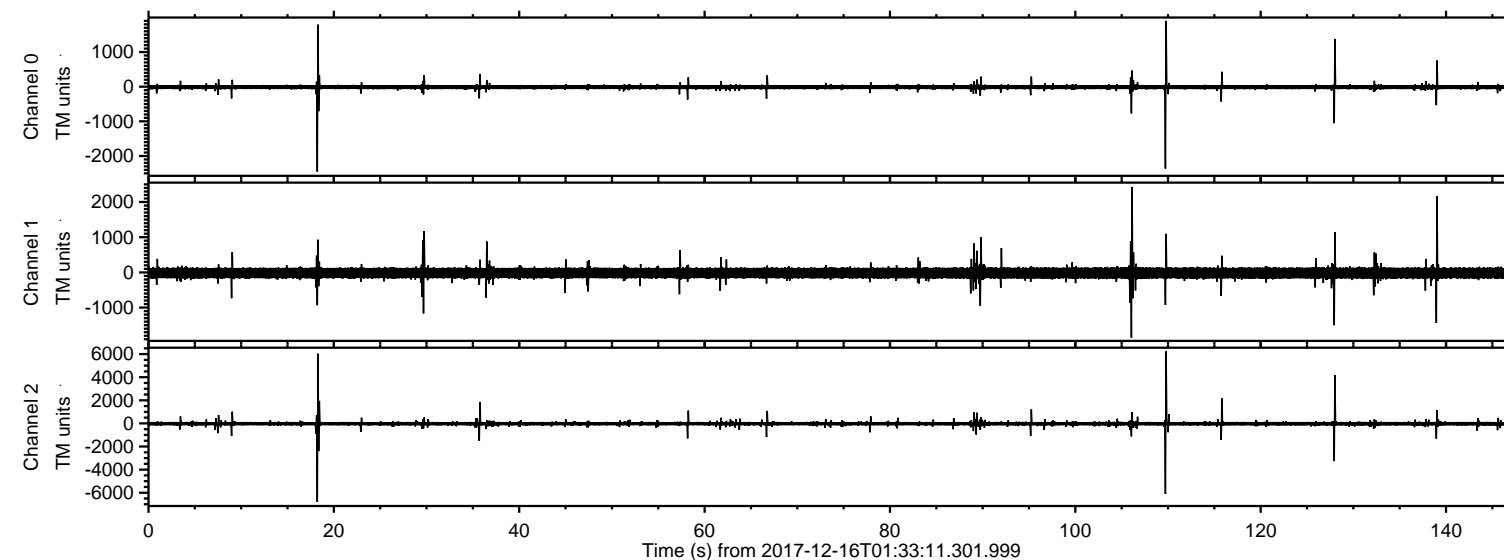


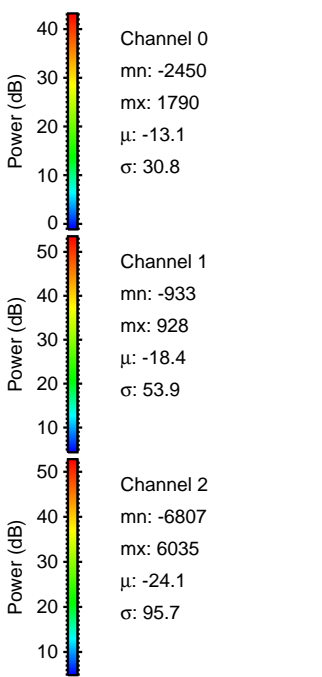
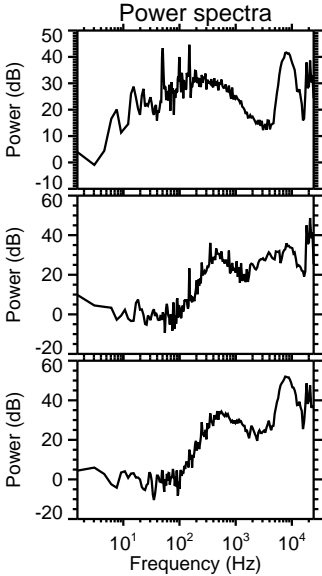
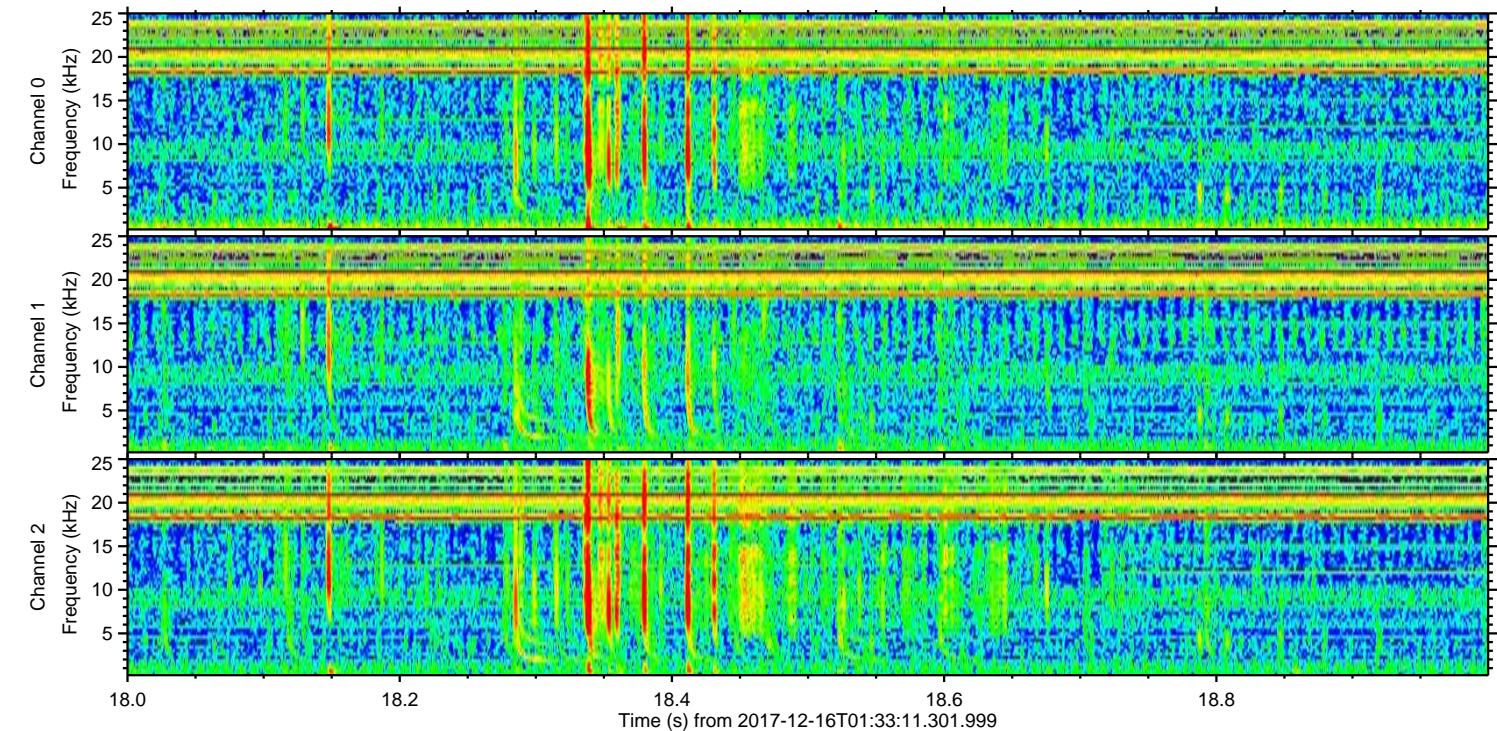
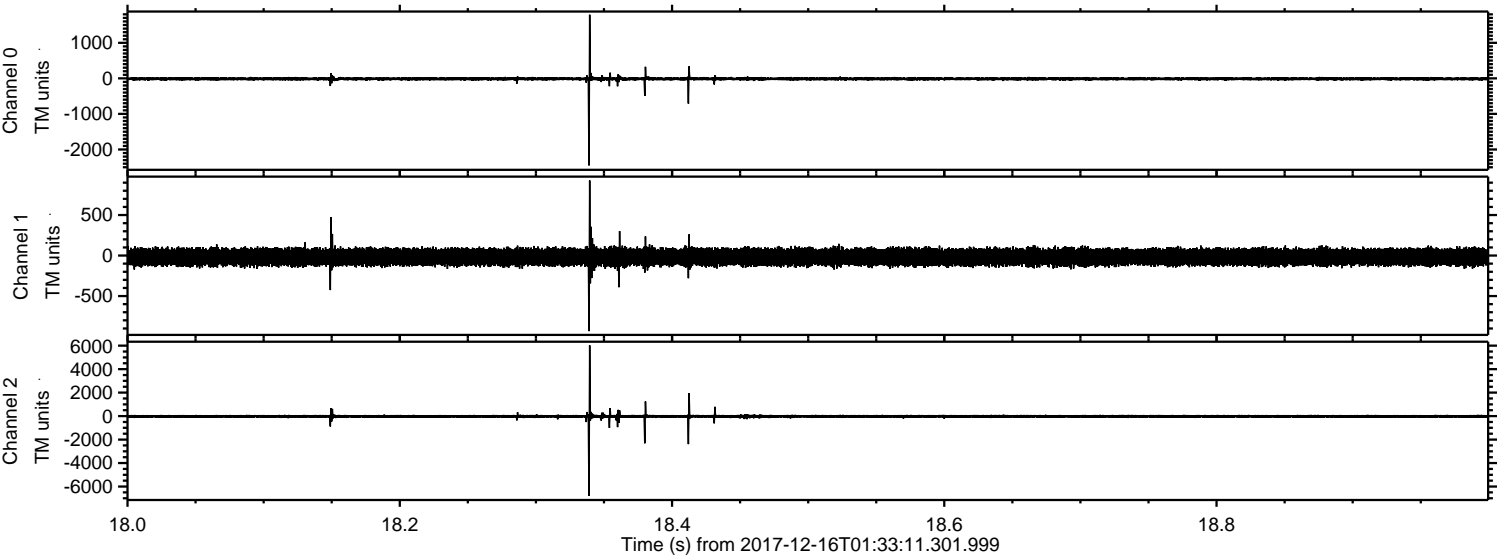
ELMAVAN 3D WAVEFORMS (Measured data sampled at 50 kHz) 51000 packets of 144 samples from 2017-12-16T01:33:11.301.999.

Processed Sat Dec 16 02:40:54 2017 by ELM ver.2012-10-06 from 001__elm20171216_013310__dat00.bin



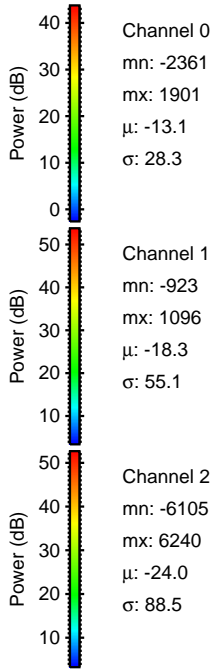
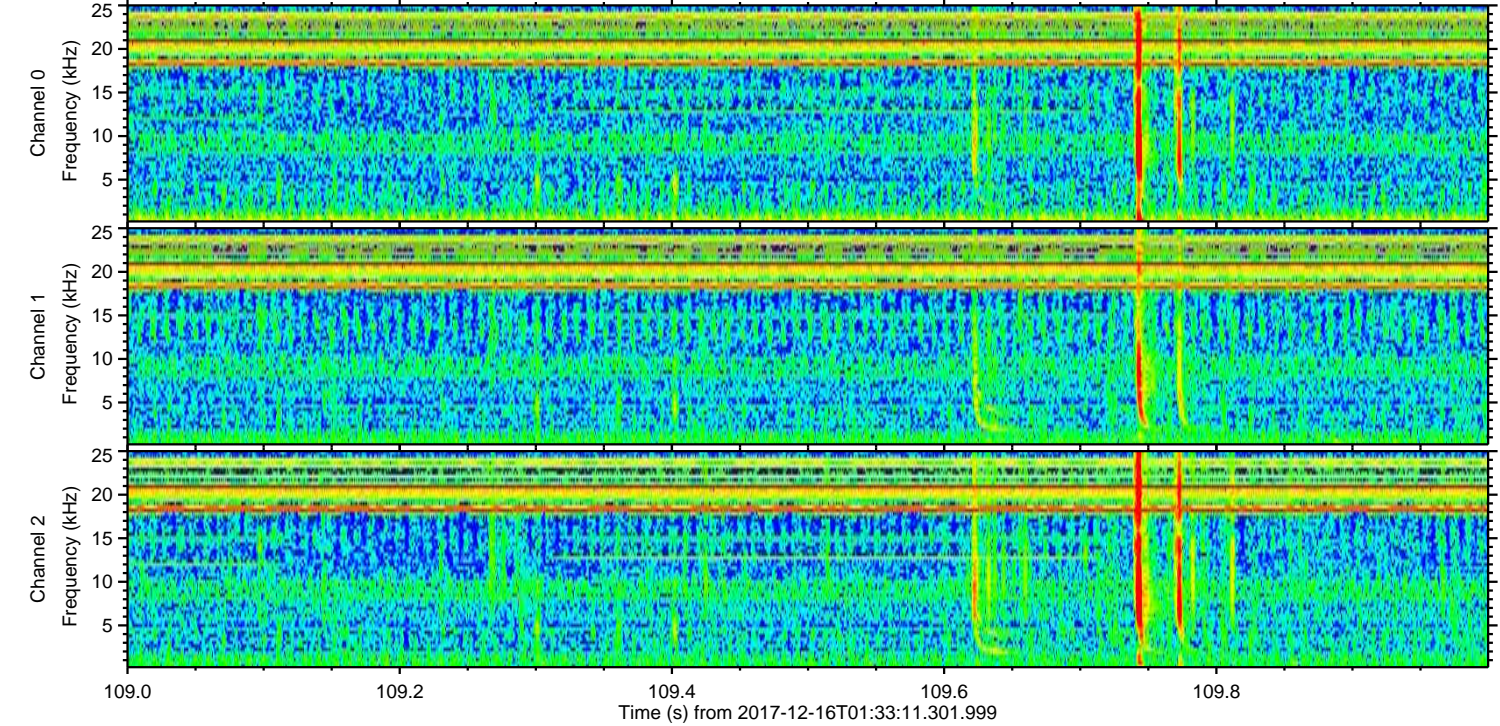
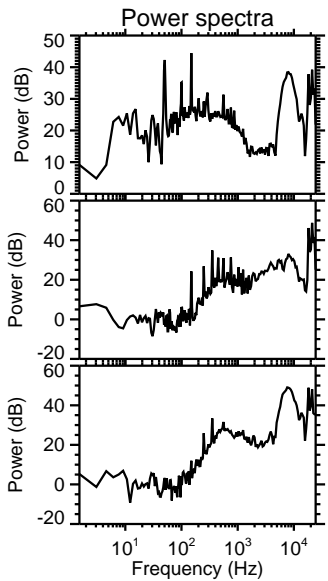
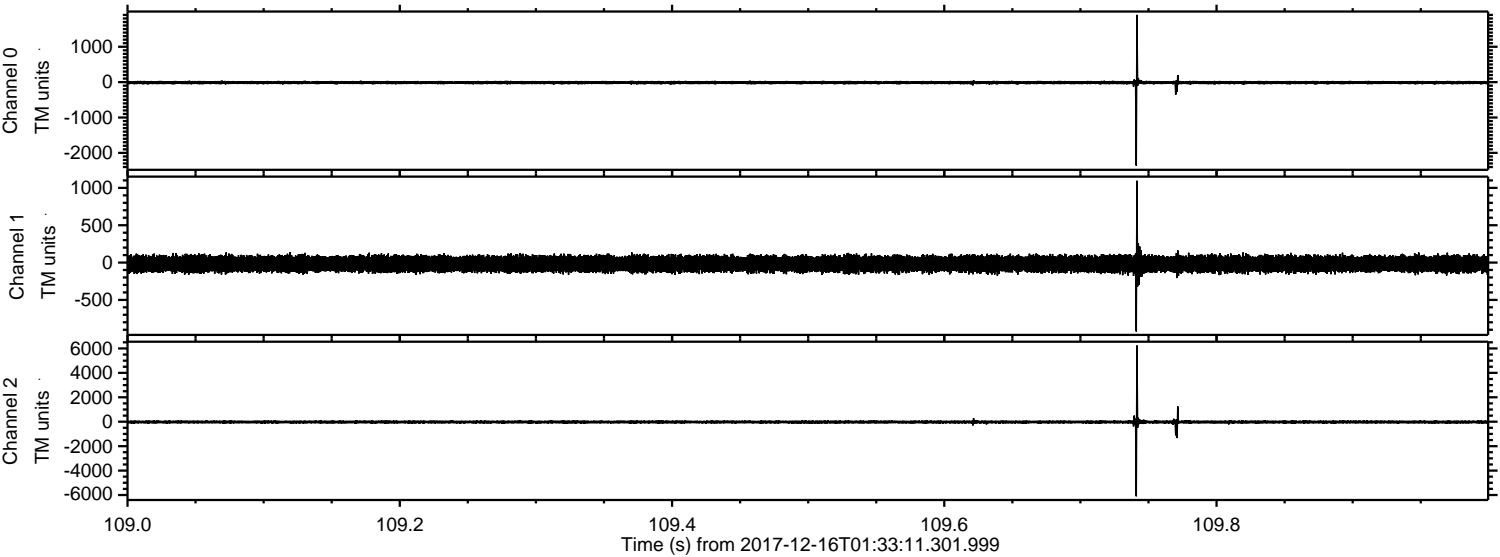
ELMAVAN 3D WAVEFORMS (Measured data sampled at 50 kHz) 51000 packets of 144 samples from 2017-12-16T01:33:11.301.999. Part 19/147

Processed Sat Dec 16 02:41:04 2017 by ELM ver.2012-10-06 from 001__elm20171216_013310__dat00.bin



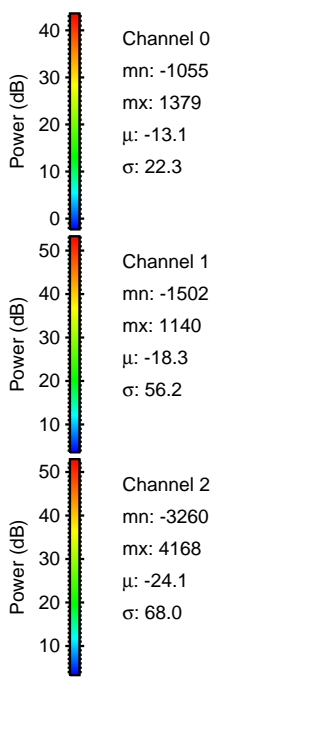
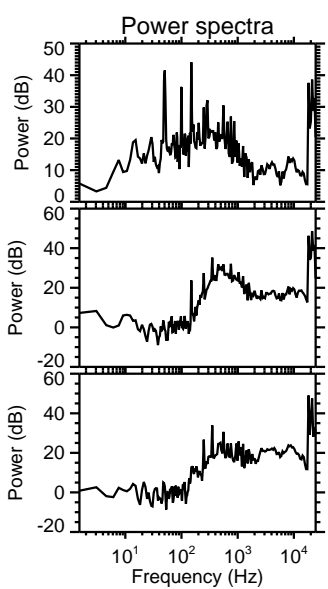
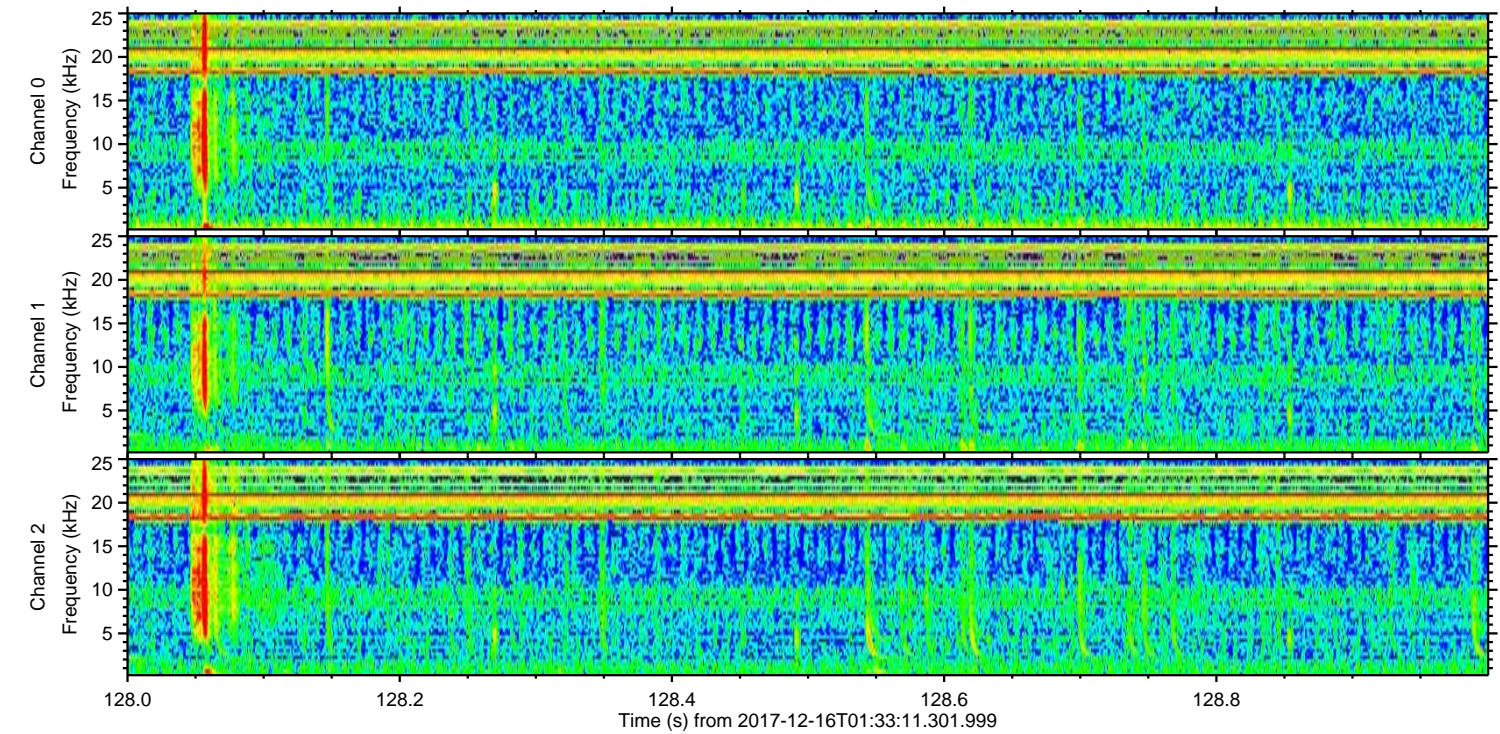
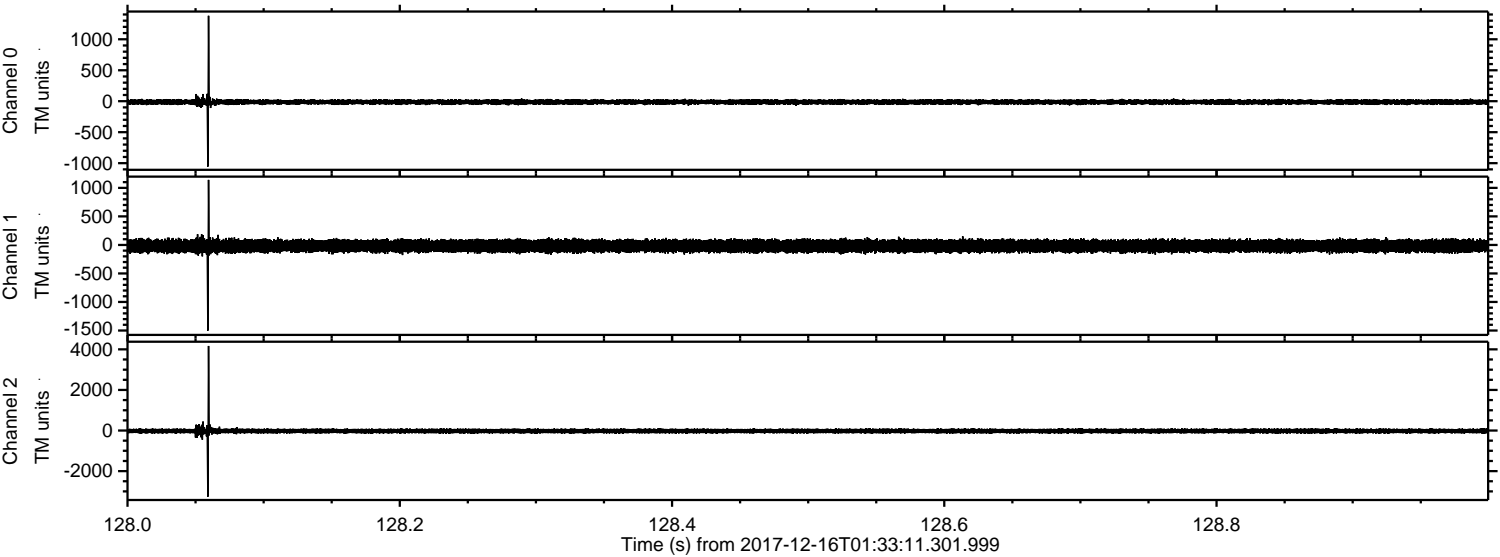
ELMAVAN 3D WAVEFORMS (Measured data sampled at 50 kHz) 51000 packets of 144 samples from 2017-12-16T01:33:11.301.999. Part 110/147

Processed Sat Dec 16 02:41:04 2017 by ELM ver.2012-10-06 from 001__elm20171216_013310__dat00.bin



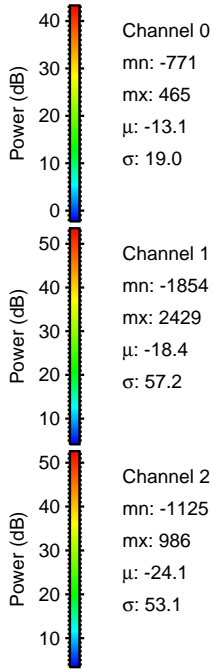
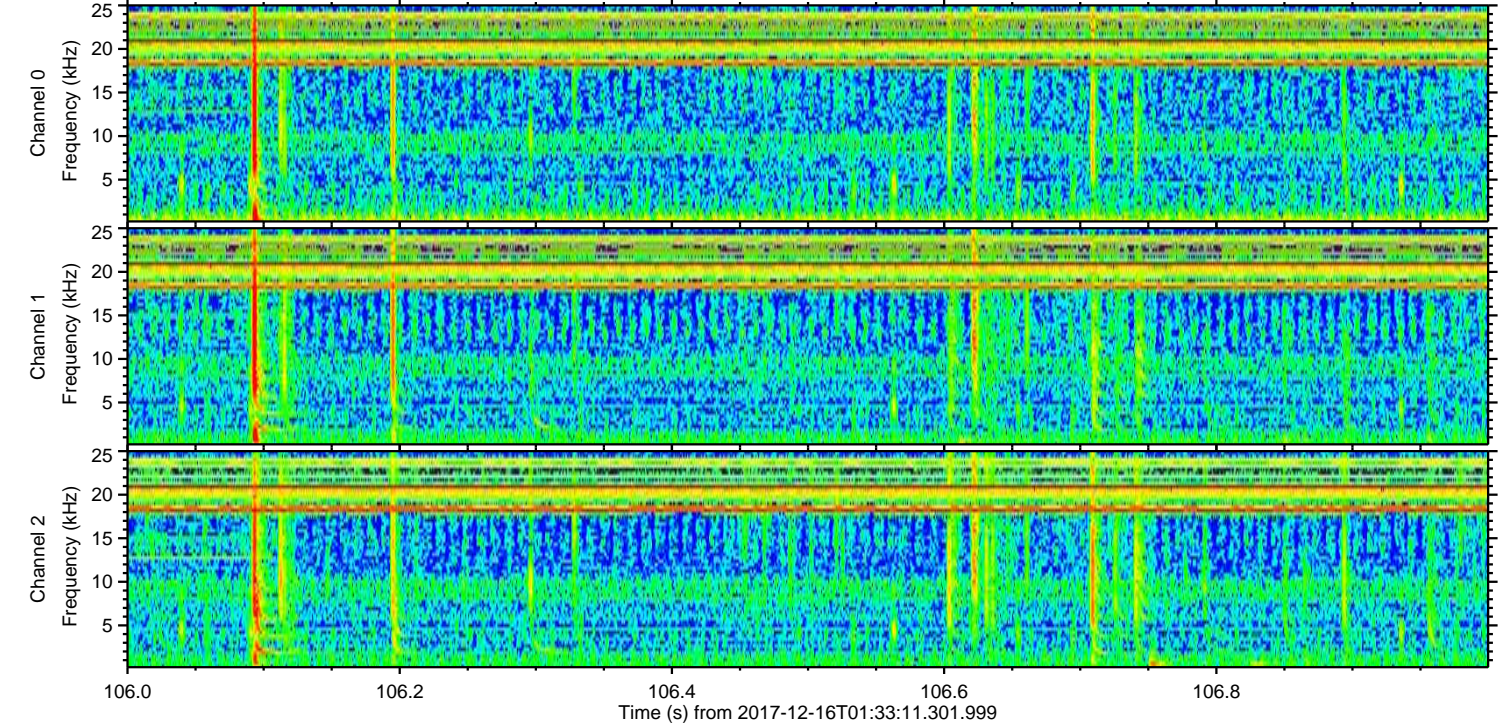
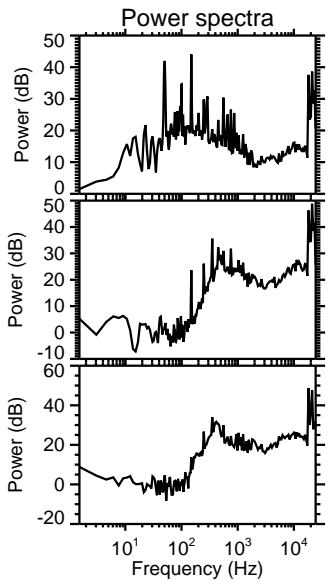
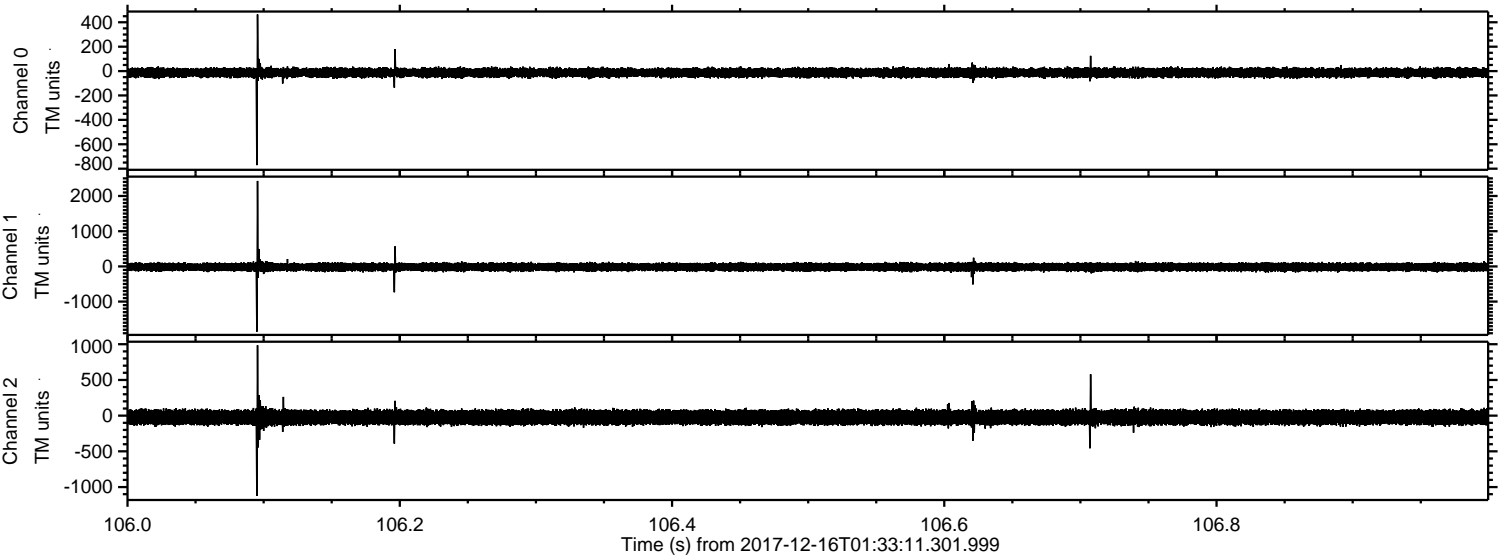
ELMAVAN 3D WAVEFORMS (Measured data sampled at 50 kHz) 51000 packets of 144 samples from 2017-12-16T01:33:11.301.999. Part 129/147

Processed Sat Dec 16 02:41:05 2017 by ELM ver.2012-10-06 from 001__elm20171216_013310__dat00.bin



ELMAVAN 3D WAVEFORMS (Measured data sampled at 50 kHz) 51000 packets of 144 samples from 2017-12-16T01:33:11.301.999. Part 107/147

Processed Sat Dec 16 02:41:06 2017 by ELM ver.2012-10-06 from 001__elm20171216_013310__dat00.bin



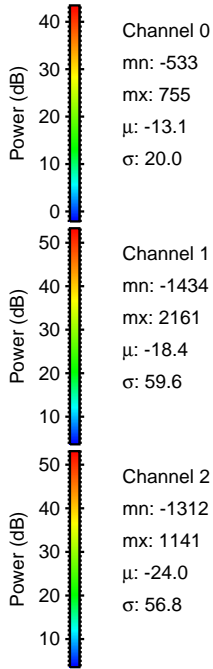
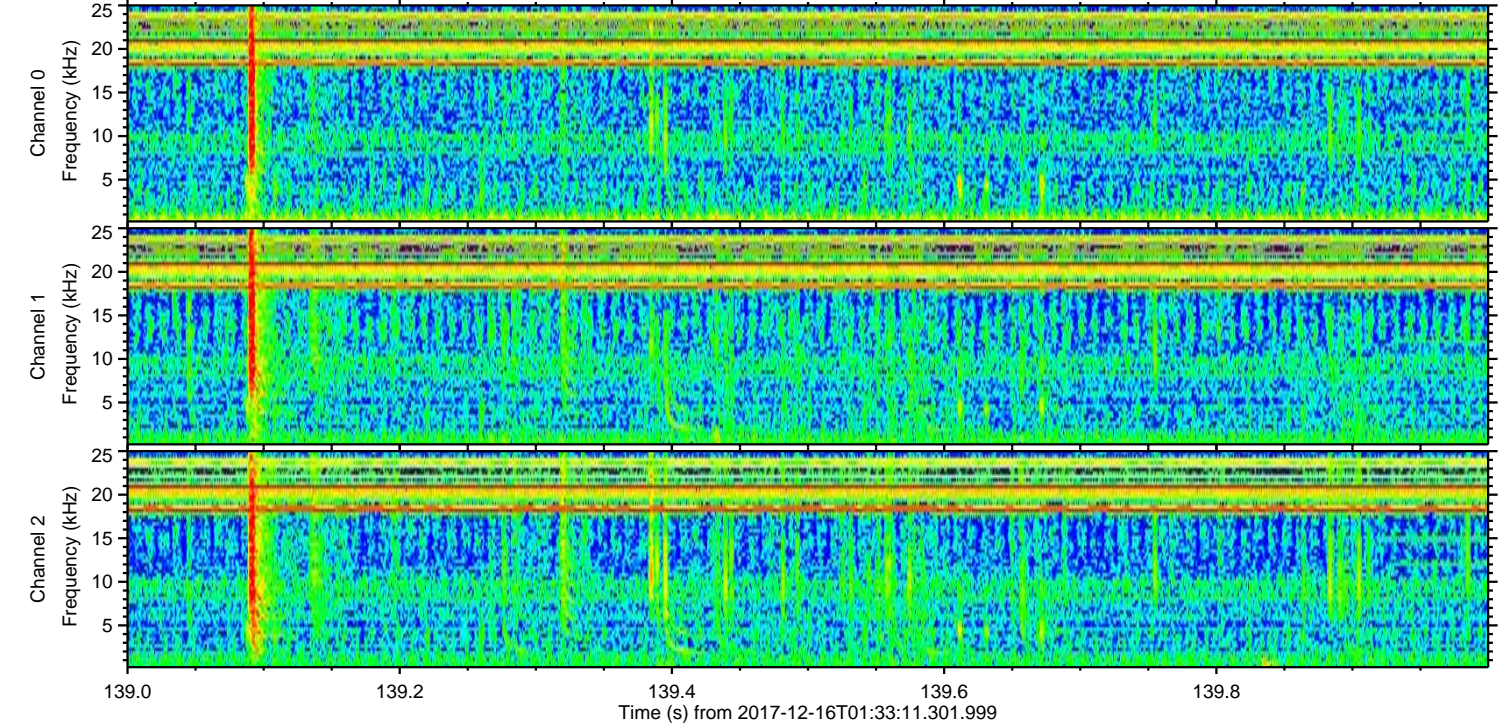
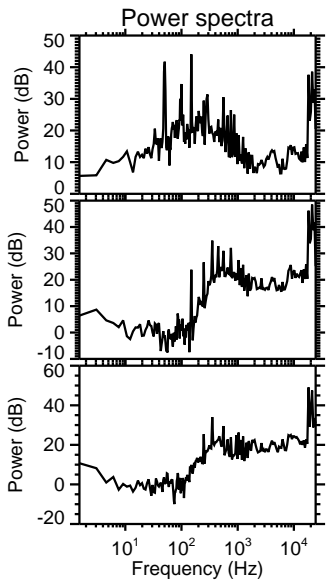
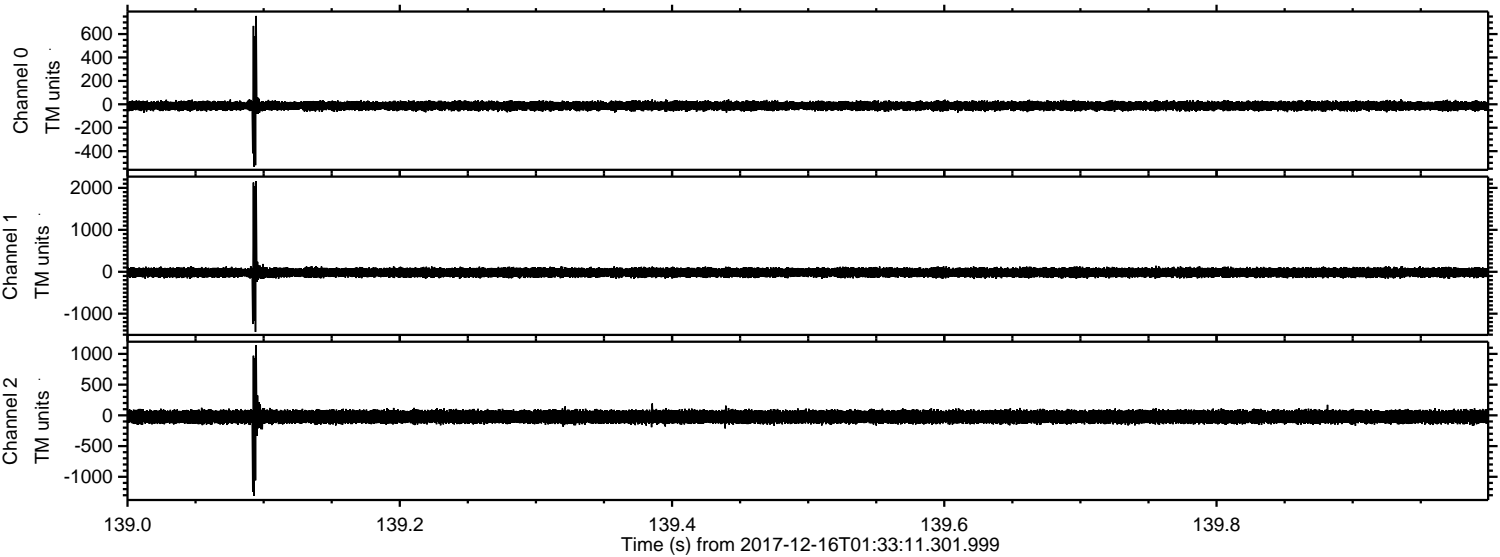
Channel 0
mn: -771
mx: 465
 μ : -13.1
 σ : 19.0

Channel 1
mn: -1854
mx: 2429
 μ : -18.4
 σ : 57.2

Channel 2
mn: -1125
mx: 986
 μ : -24.1
 σ : 53.1

ELMAVAN 3D WAVEFORMS (Measured data sampled at 50 kHz) 51000 packets of 144 samples from 2017-12-16T01:33:11.301.999. Part 140/147

Processed Sat Dec 16 02:41:07 2017 by ELM ver.2012-10-06 from 001__elm20171216_013310__dat00.bin



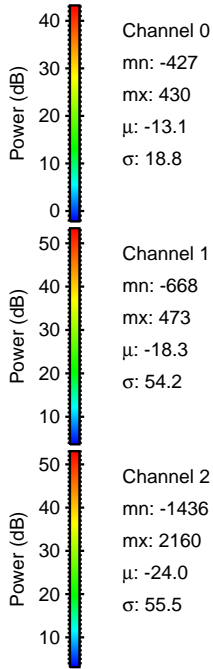
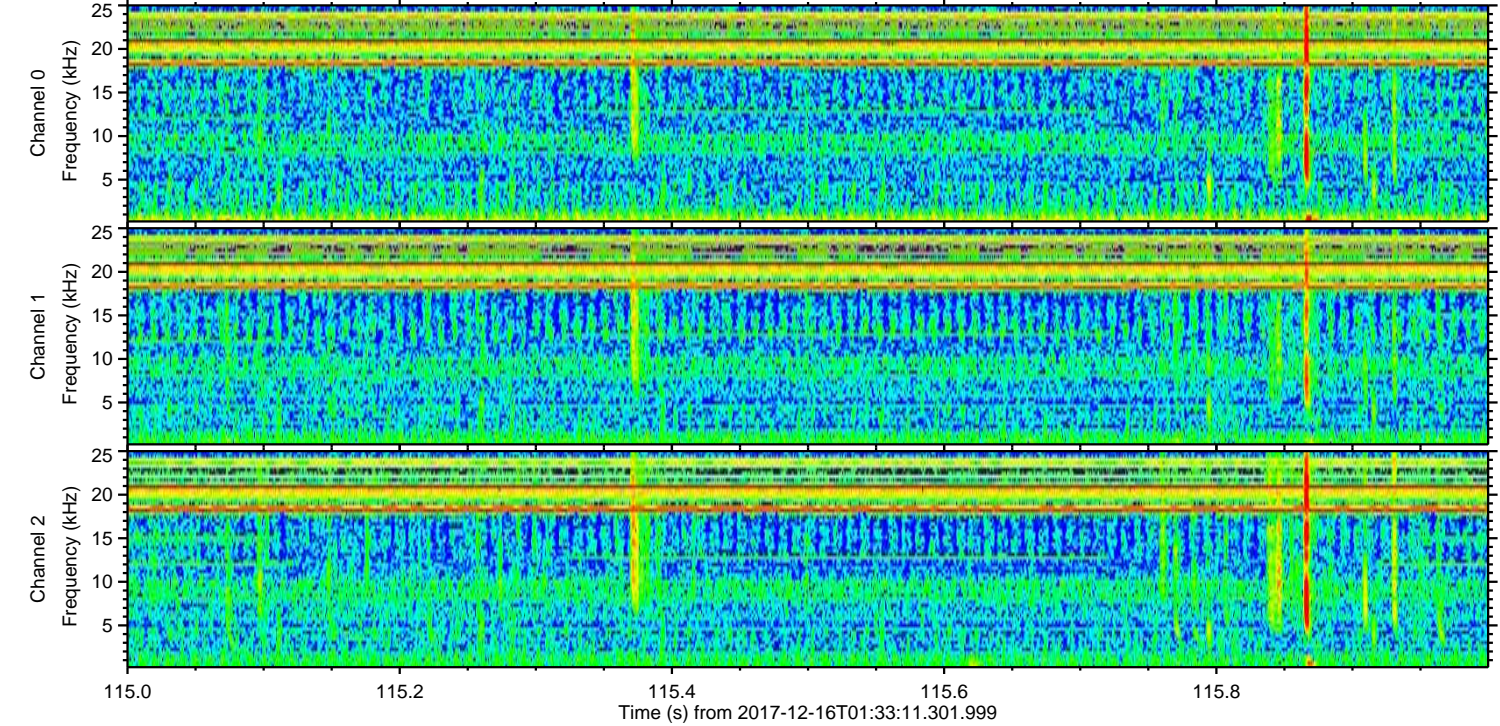
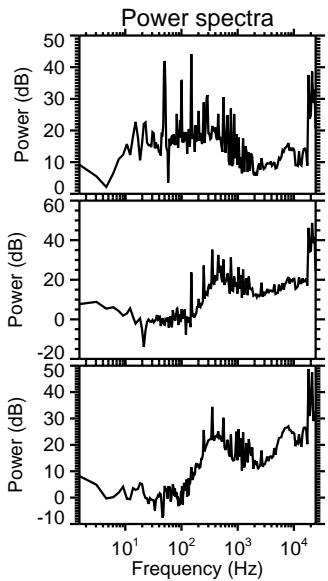
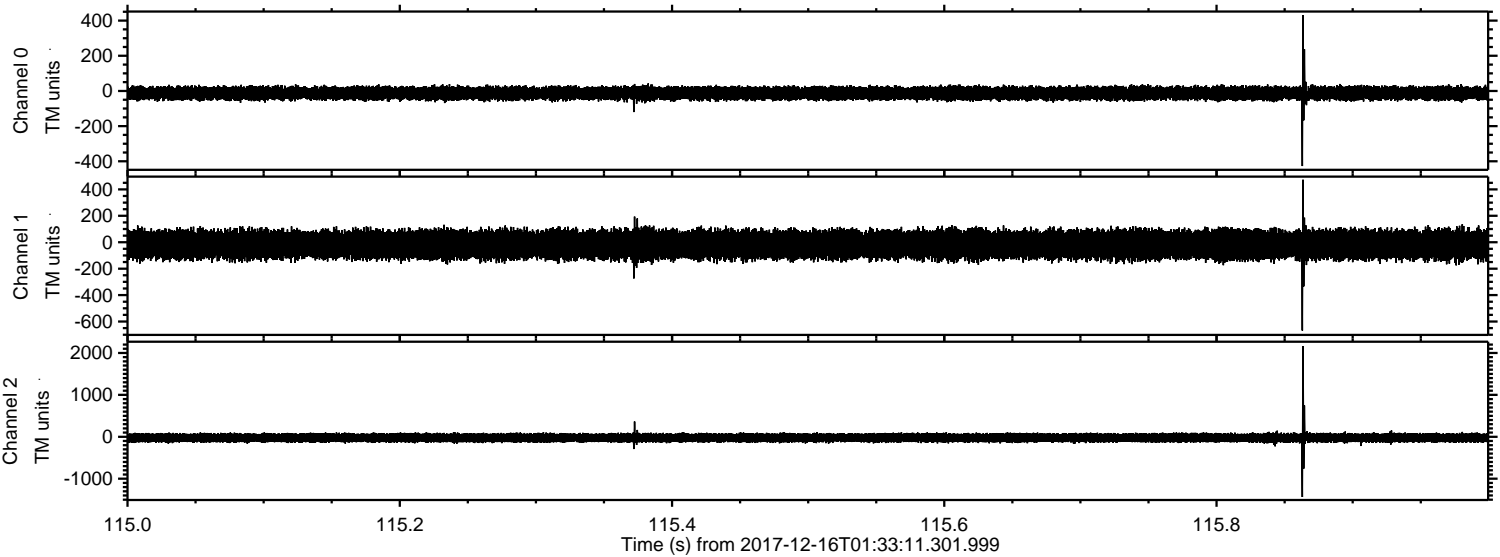
Channel 0
mn: -533
mx: 755
 μ : -13.1
 σ : 20.0

Channel 1
mn: -1434
mx: 2161
 μ : -18.4
 σ : 59.6

Channel 2
mn: -1312
mx: 1141
 μ : -24.0
 σ : 56.8

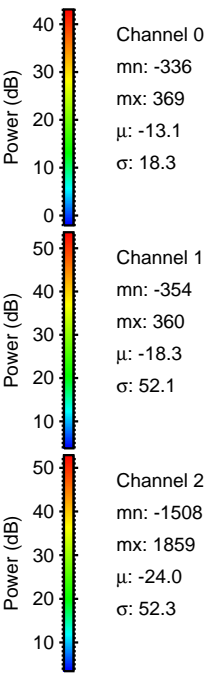
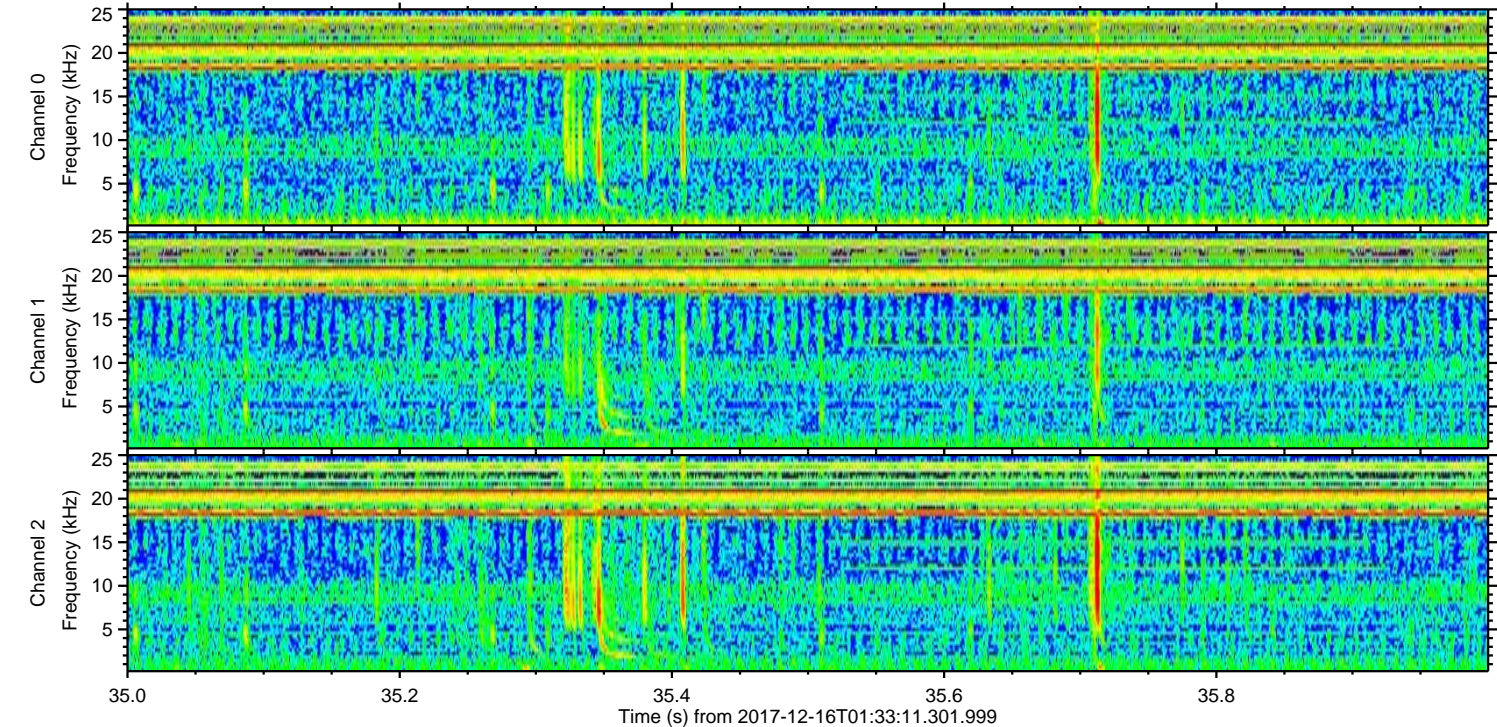
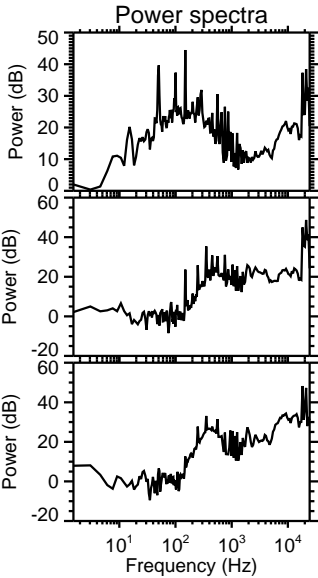
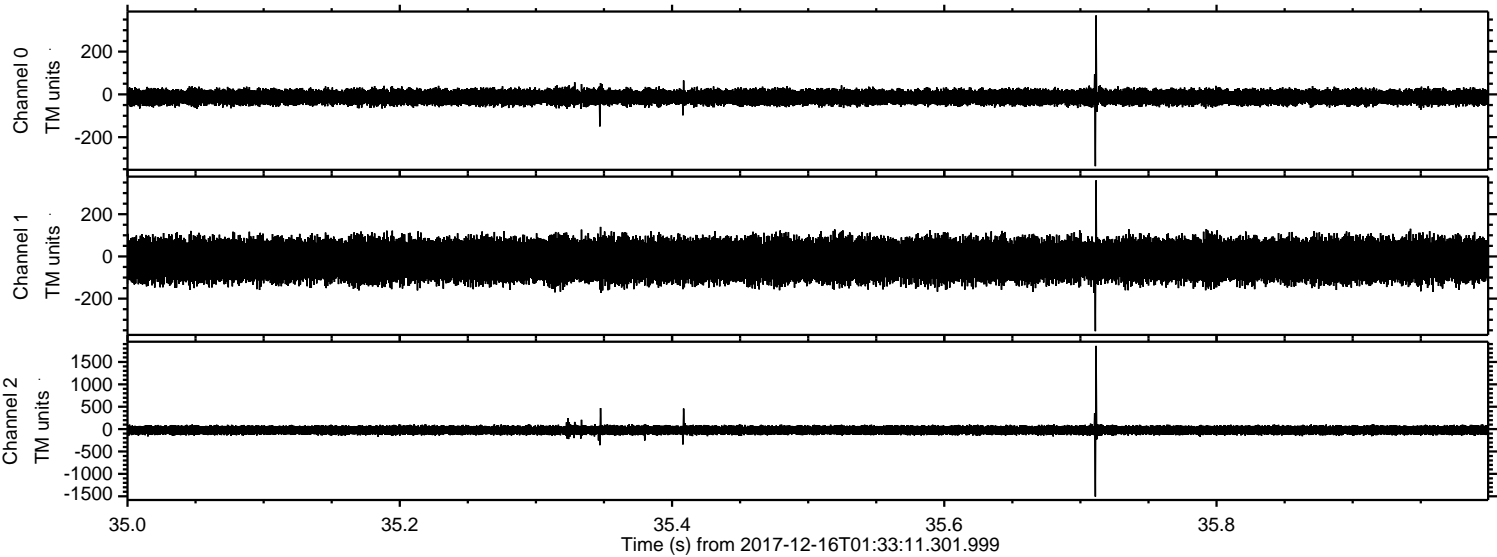
ELMAVAN 3D WAVEFORMS (Measured data sampled at 50 kHz) 51000 packets of 144 samples from 2017-12-16T01:33:11.301.999. Part 116/147

Processed Sat Dec 16 02:41:07 2017 by ELM ver.2012-10-06 from 001__elm20171216_013310__dat00.bin

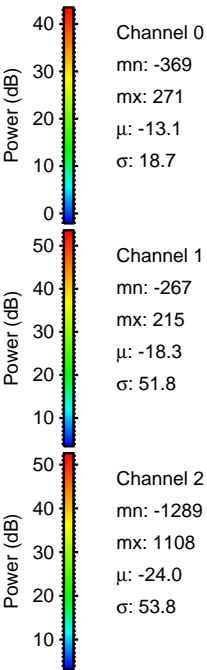
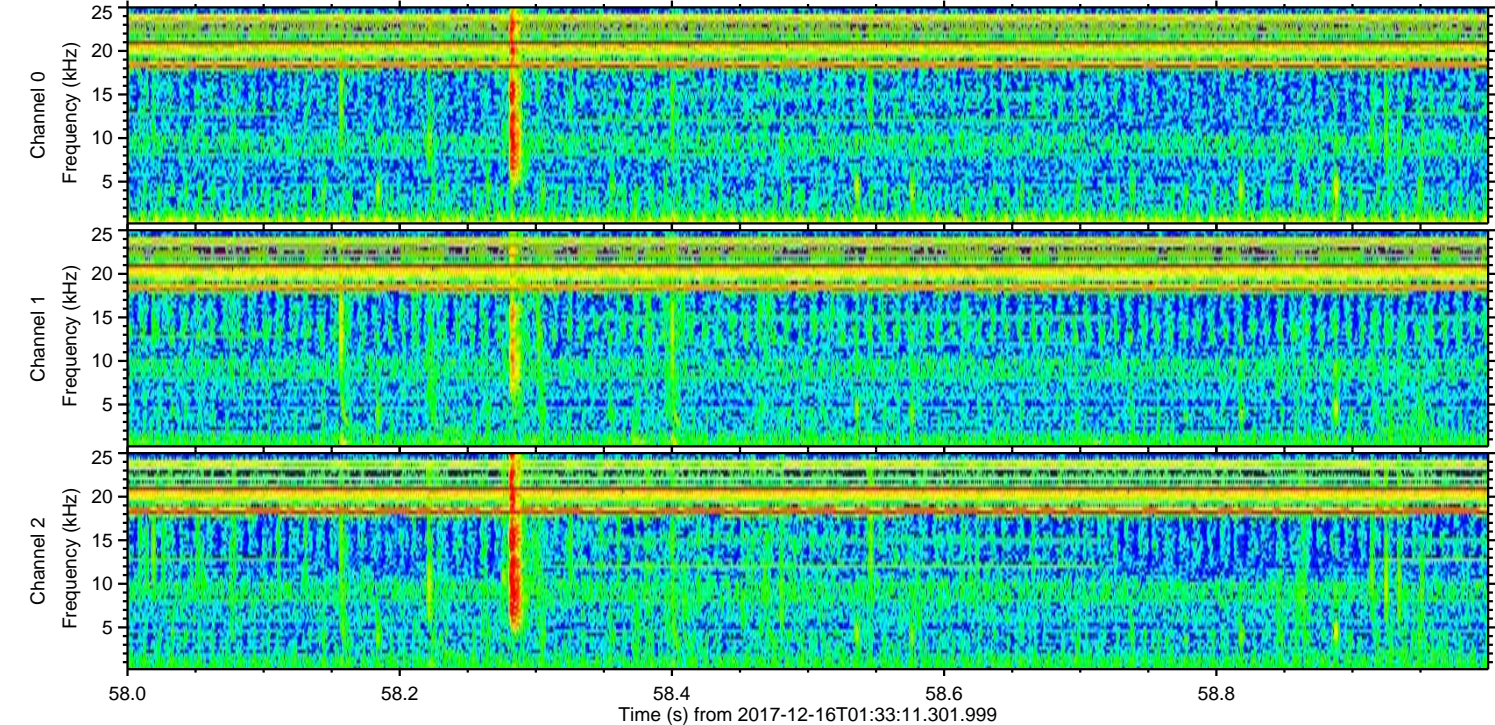
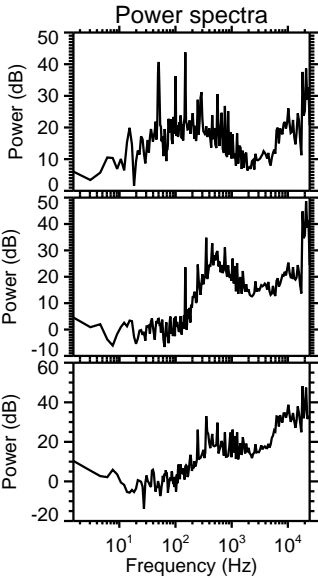
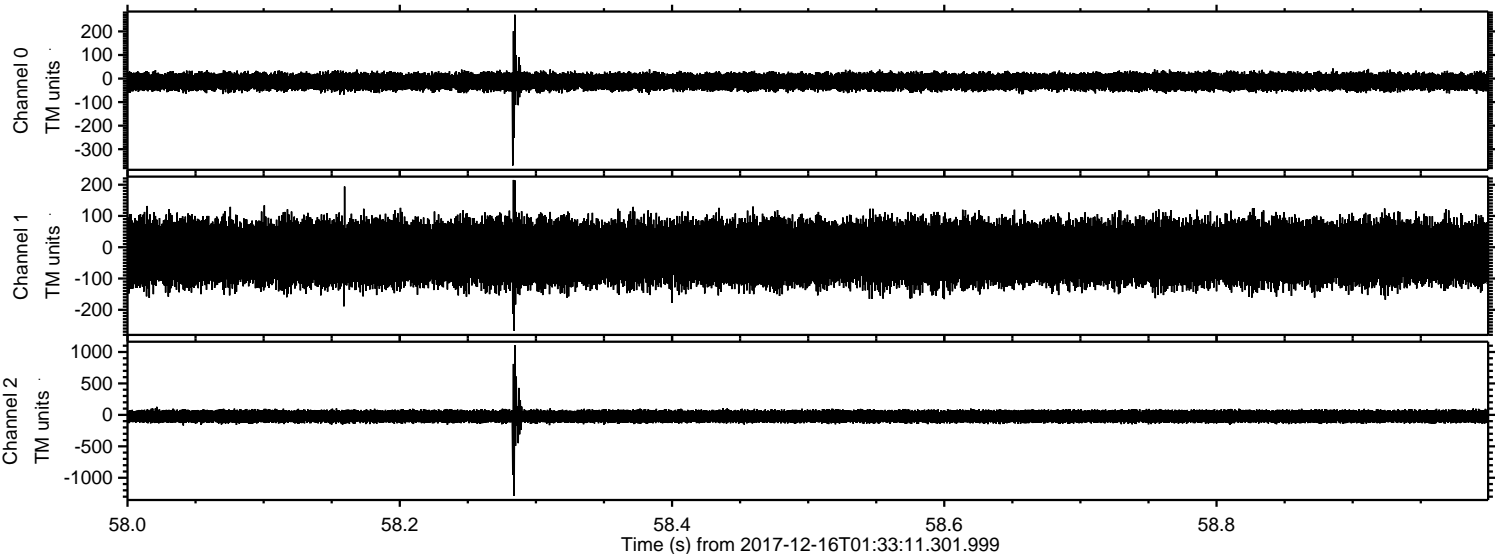


ELMAVAN 3D WAVEFORMS (Measured data sampled at 50 kHz) 51000 packets of 144 samples from 2017-12-16T01:33:11.301.999. Part 36/147

Processed Sat Dec 16 02:41:08 2017 by ELM ver.2012-10-06 from 001__elm20171216_013310__dat00.bin

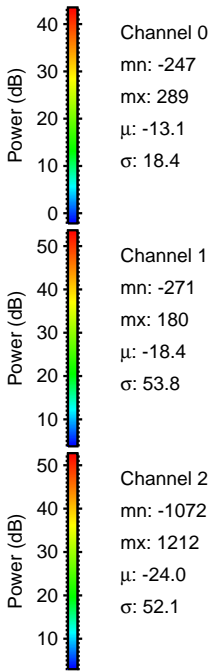
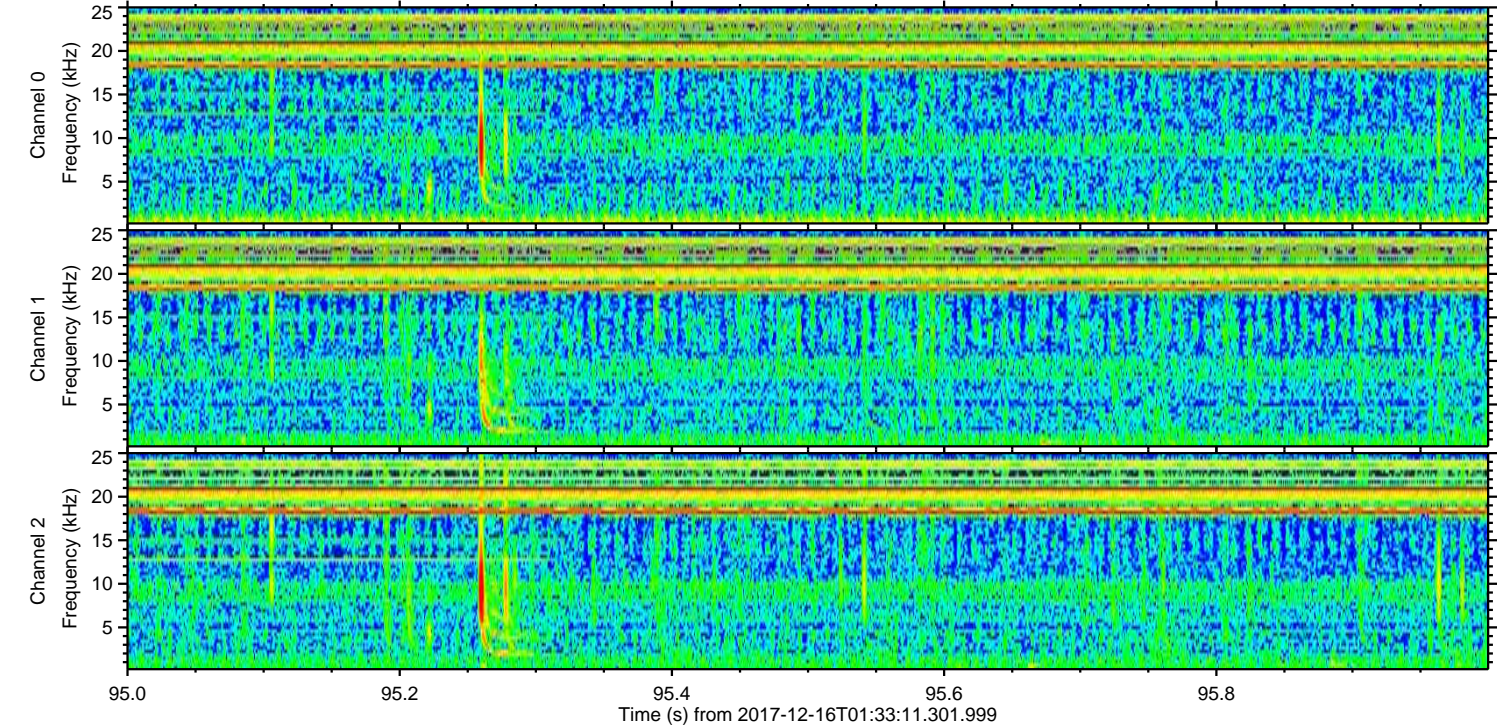
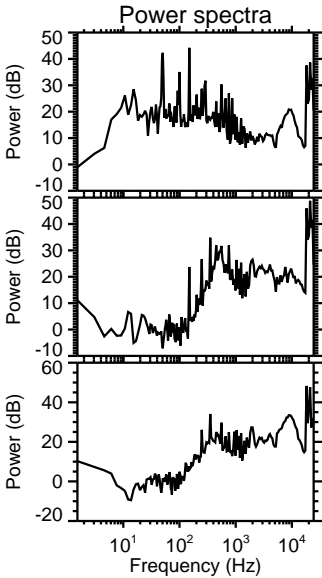
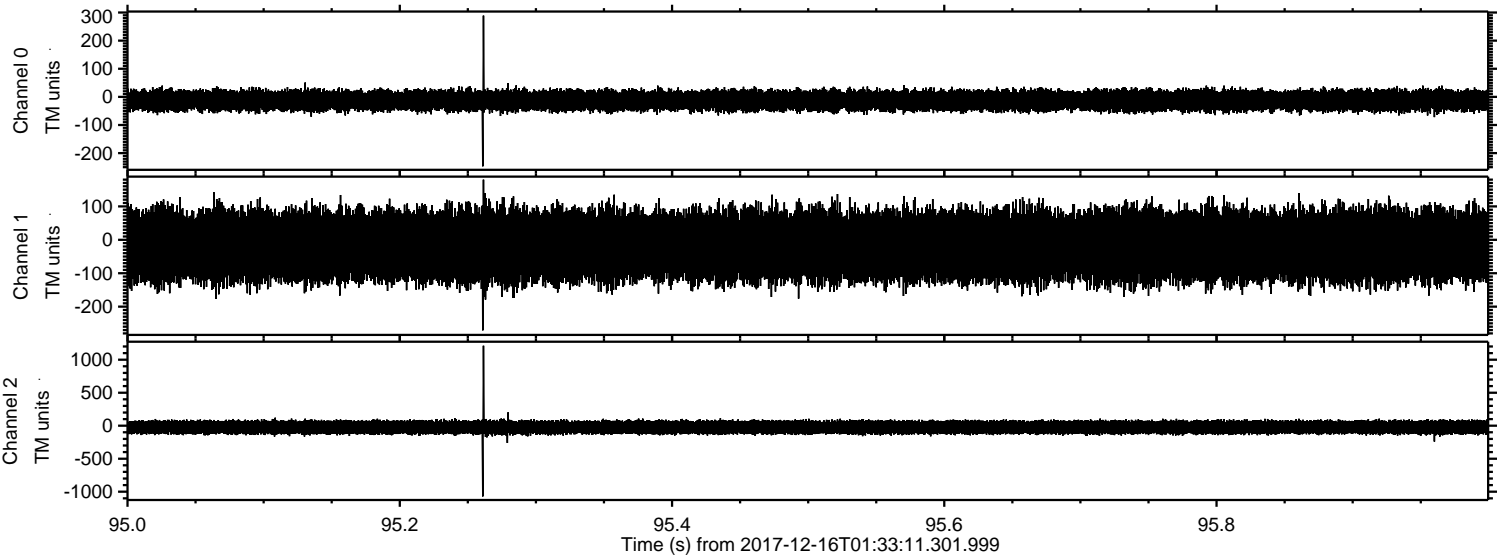


Processed Sat Dec 16 02:41:10 2017 by ELM ver.2012-10-06 from 001__elm20171216_013310__dat00.bin



ELMAVAN 3D WAVEFORMS (Measured data sampled at 50 kHz) 51000 packets of 144 samples from 2017-12-16T01:33:11.301.999. Part 96/147

Processed Sat Dec 16 02:41:10 2017 by ELM ver.2012-10-06 from 001__elm20171216_013310__dat00.bin



Channel 0
mn: -247
mx: 289
 μ : -13.1
 σ : 18.4

Channel 1
mn: -271
mx: 180
 μ : -18.4
 σ : 53.8

Channel 2
mn: -1072
mx: 1212
 μ : -24.0
 σ : 52.1

Processed Sat Dec 16 02:41:11 2017 by ELM ver.2012-10-06 from 001__elm20171216_013310__dat00.bin

