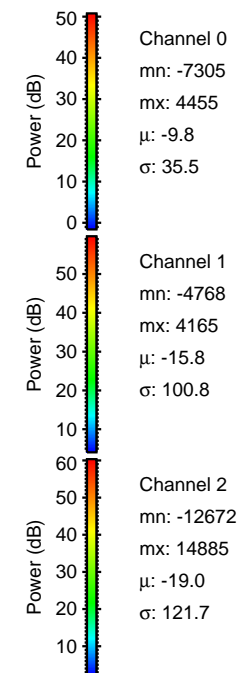
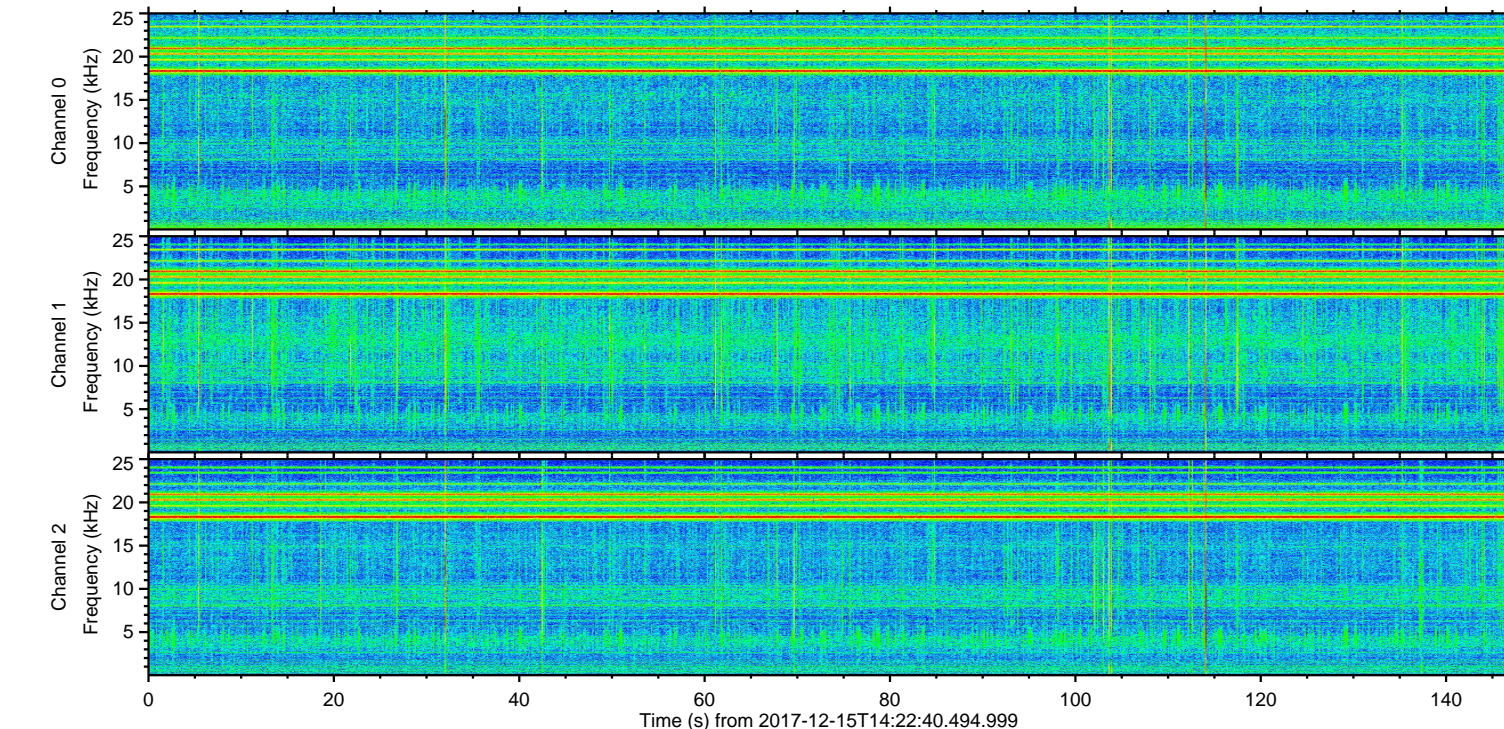
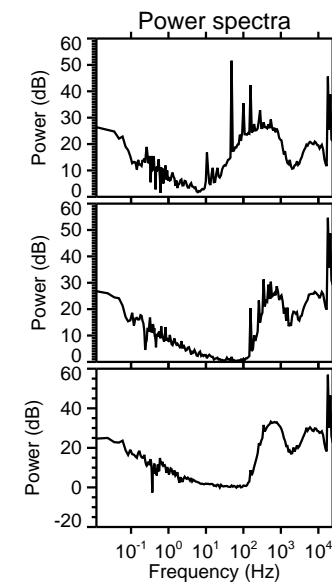
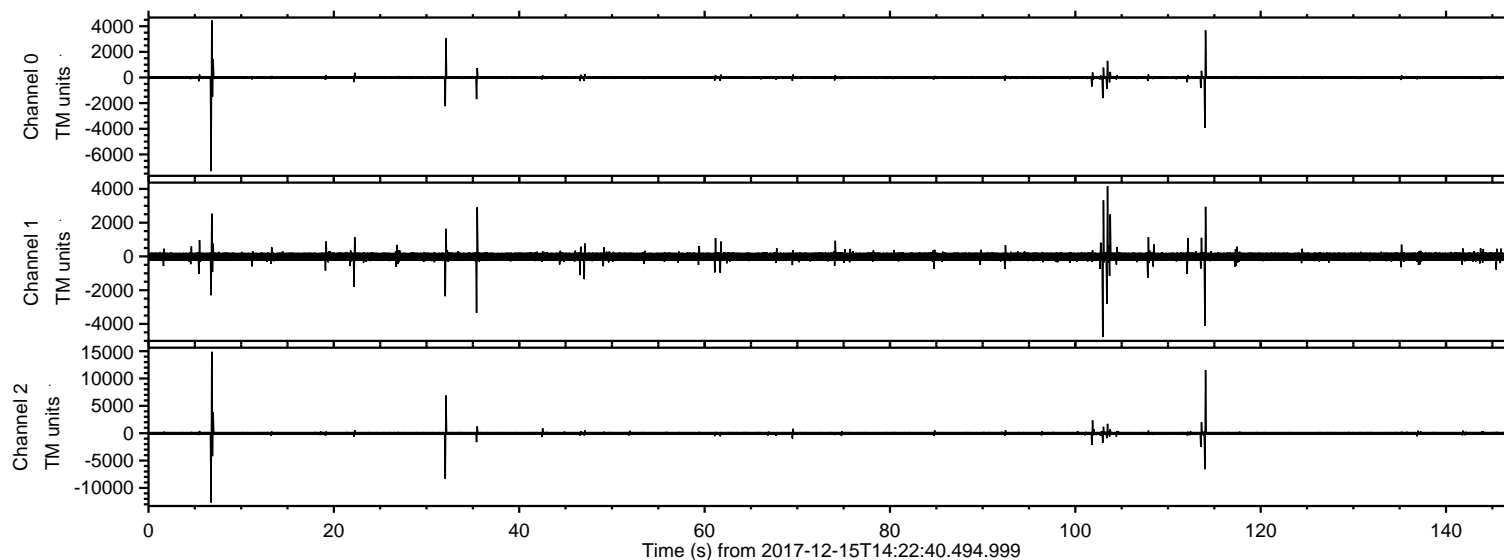


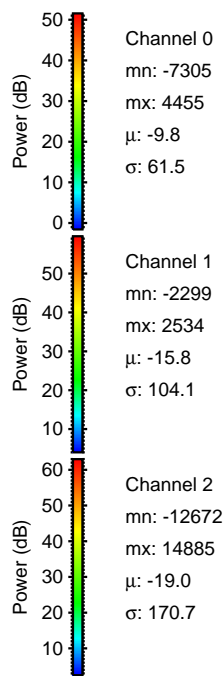
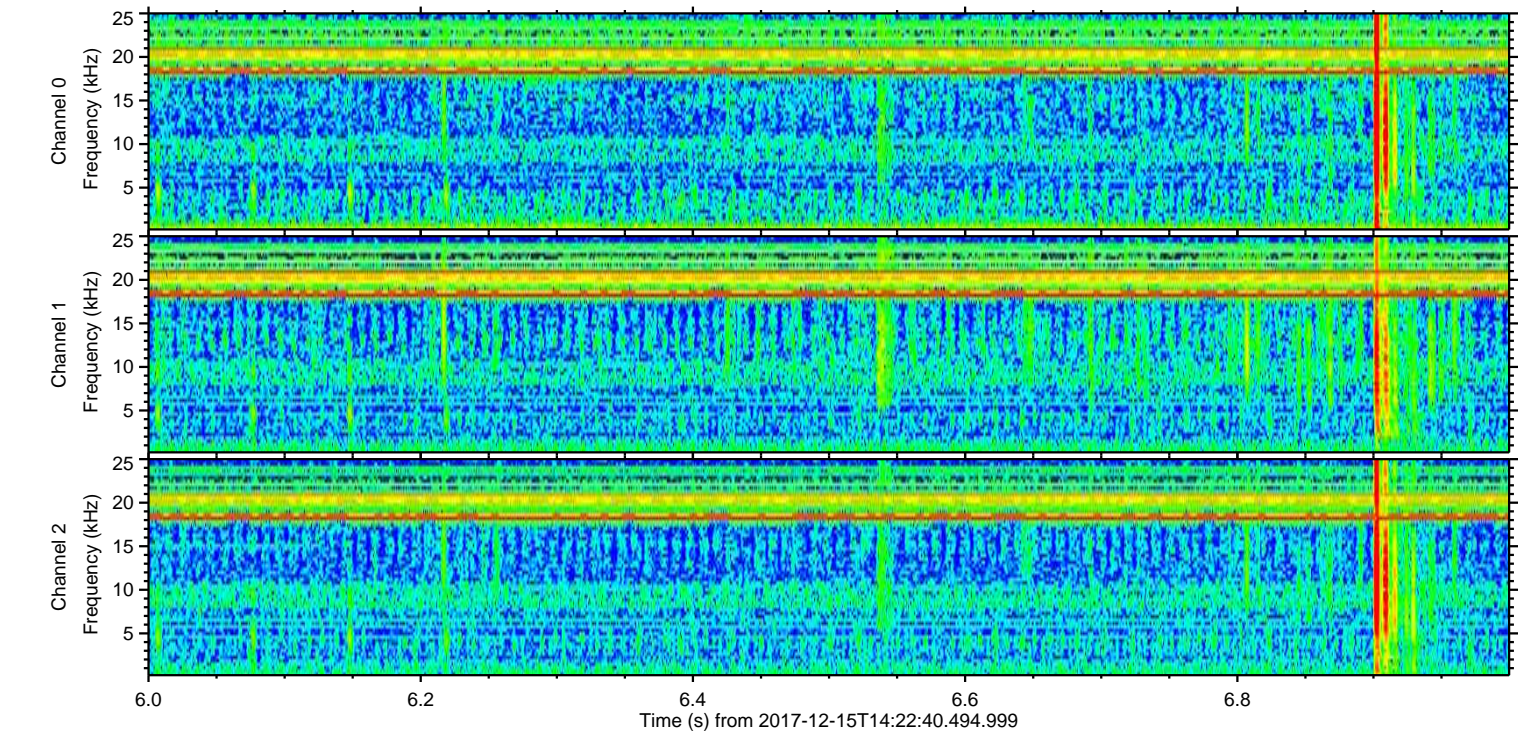
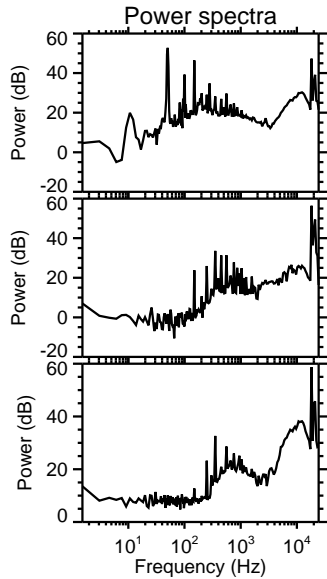
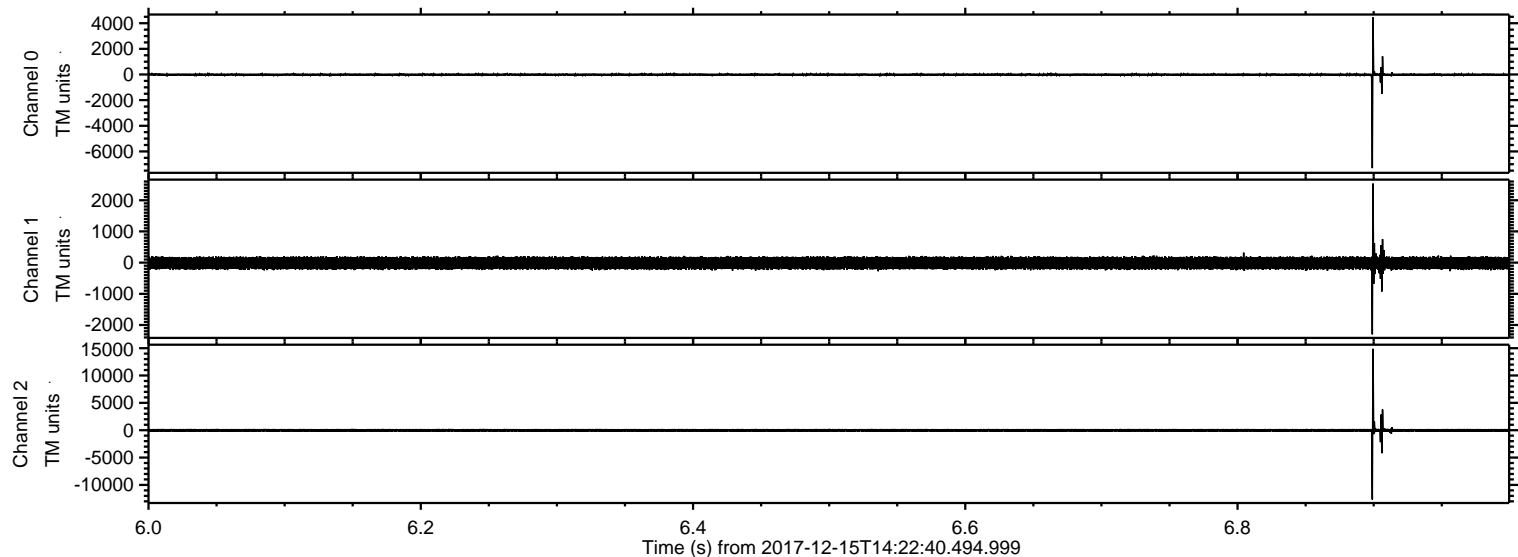
ELMAVAN 3D WAVEFORMS (Measured data sampled at 50 kHz) 51000 packets of 144 samples from 2017-12-15T14:22:40.494.999.

Processed Fri Dec 15 15:30:10 2017 by ELM ver.2012-10-06 from 001__elm20171215_142239__dat00.bin



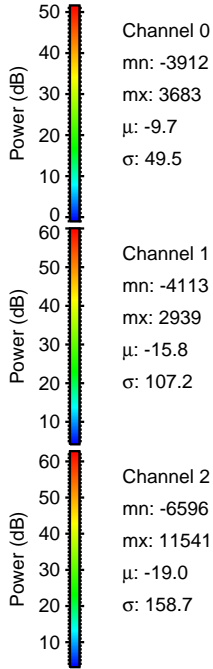
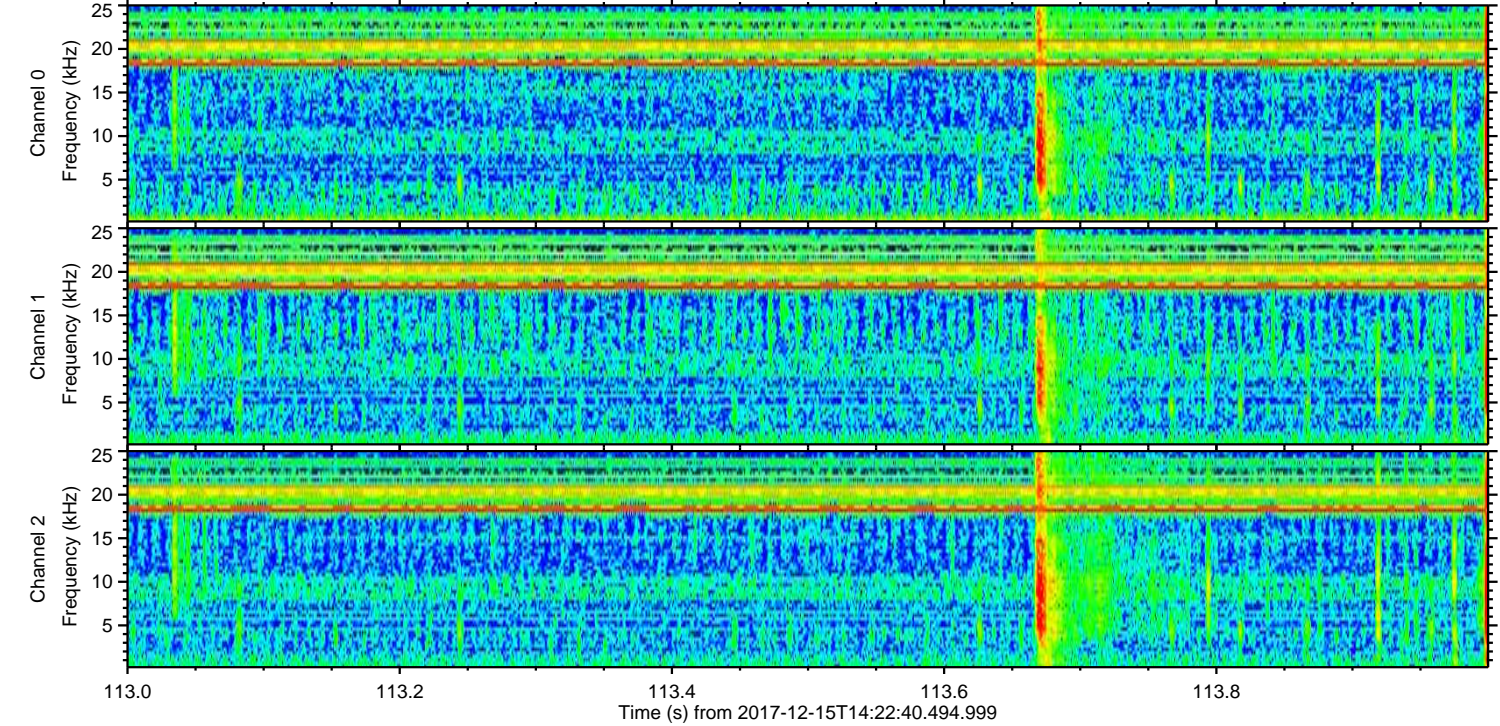
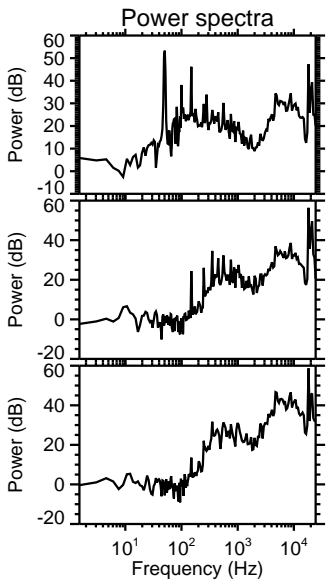
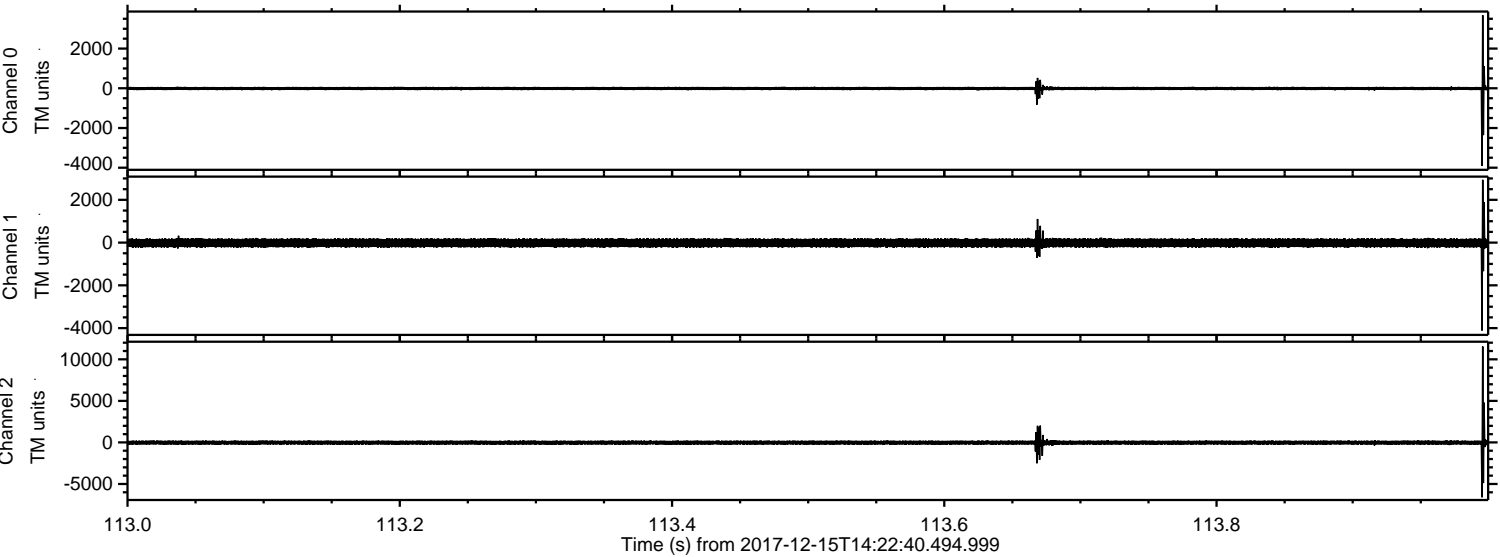
ELMAVAN 3D WAVEFORMS (Measured data sampled at 50 kHz) 51000 packets of 144 samples from 2017-12-15T14:22:40.494.999. Part 7/147

Processed Fri Dec 15 15:30:18 2017 by ELM ver.2012-10-06 from 001__elm20171215_142239__dat00.bin



ELMAVAN 3D WAVEFORMS (Measured data sampled at 50 kHz) 51000 packets of 144 samples from 2017-12-15T14:22:40.494.999. Part 114/147

Processed Fri Dec 15 15:30:18 2017 by ELM ver.2012-10-06 from 001__elm20171215_142239__dat00.bin

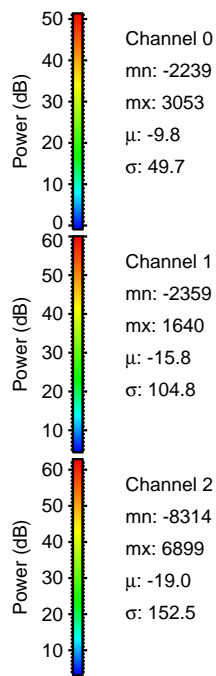
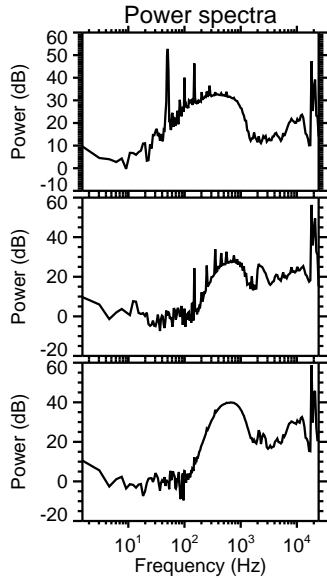
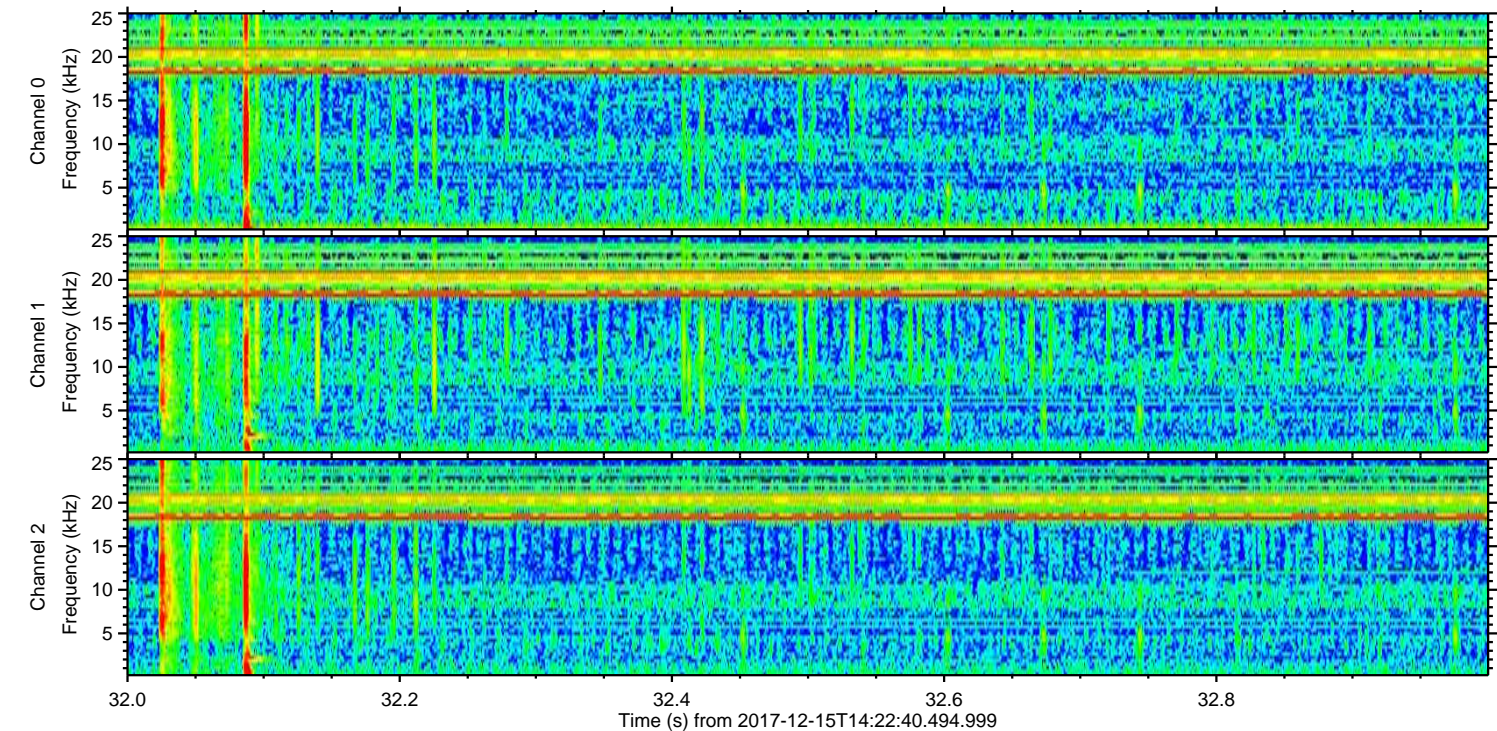
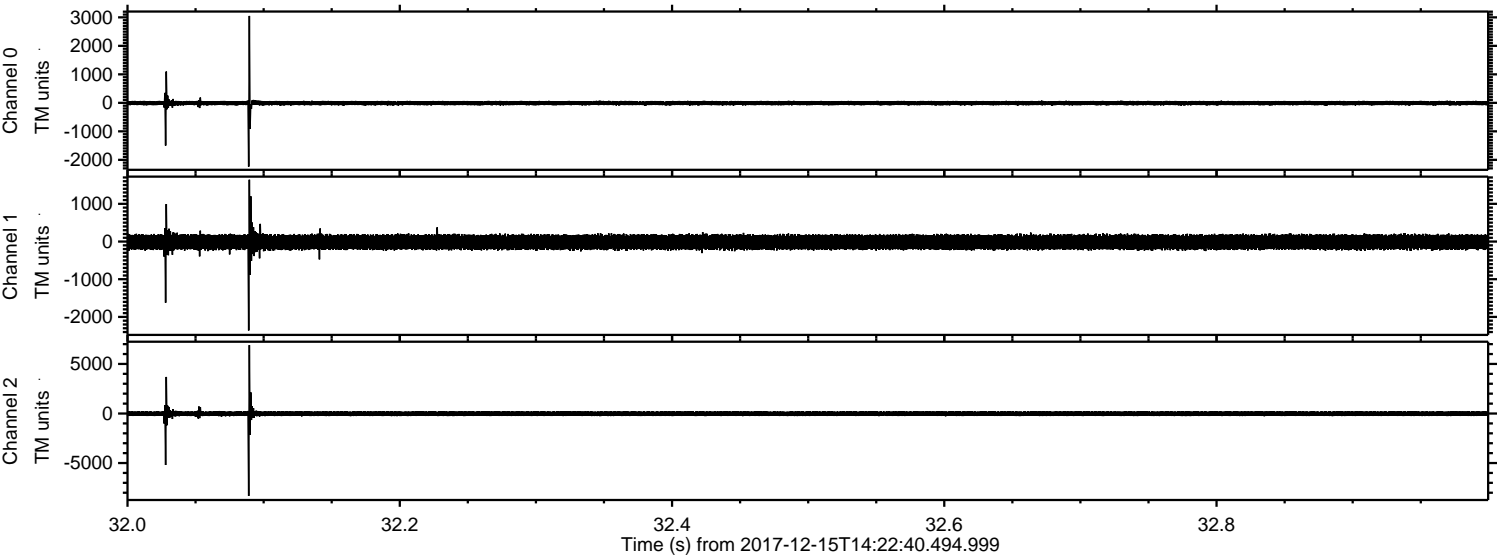


Channel 0
mn: -3912
mx: 3683
 μ : -9.7
 σ : 49.5

Channel 1
mn: -4113
mx: 2939
 μ : -15.8
 σ : 107.2

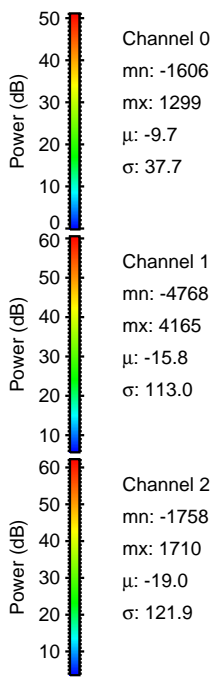
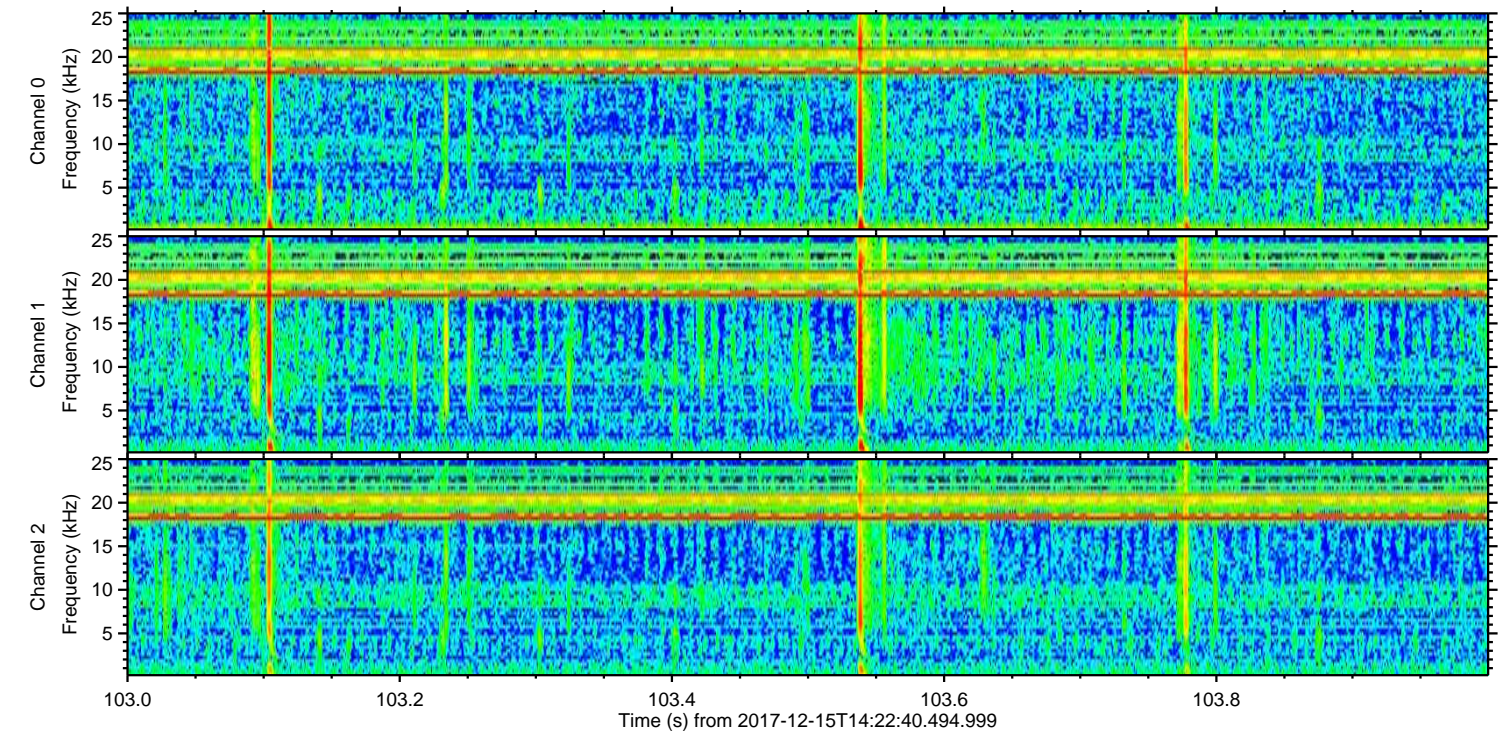
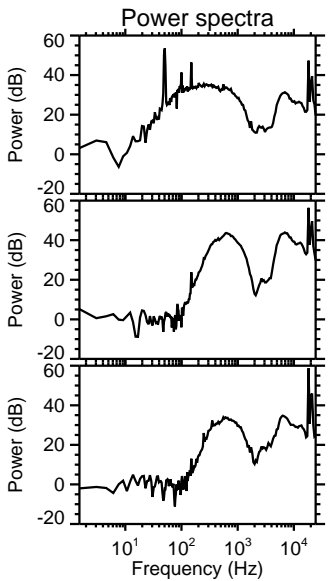
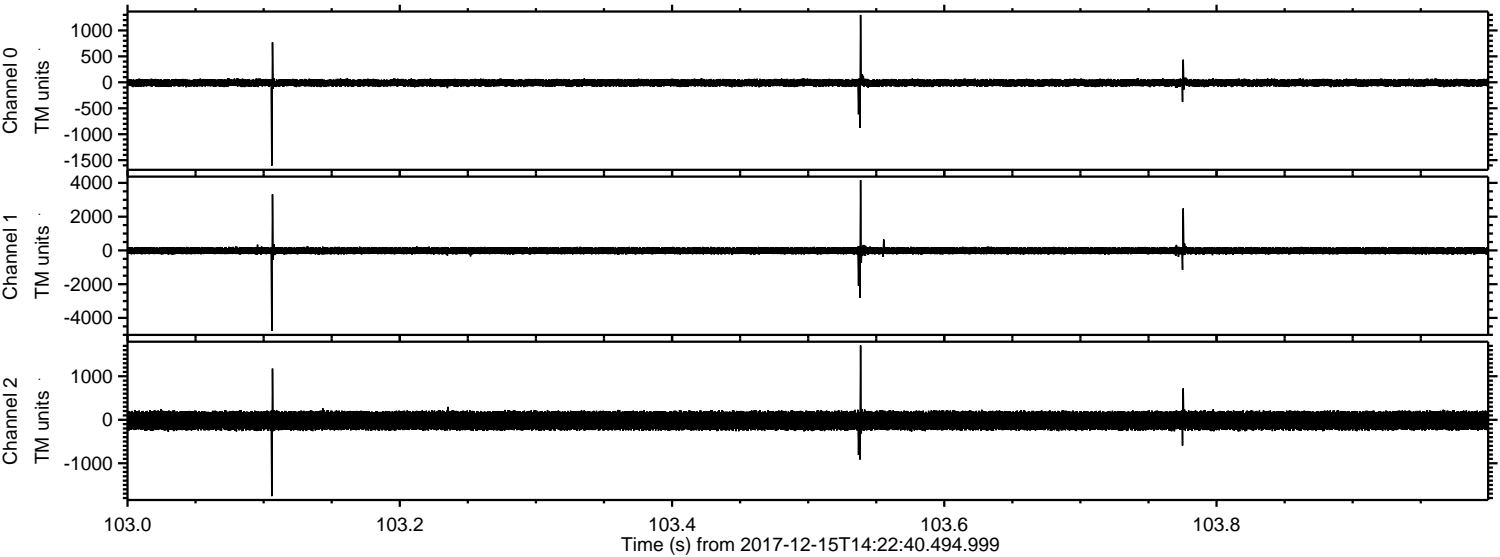
Channel 2
mn: -6596
mx: 11541
 μ : -19.0
 σ : 158.7

Processed Fri Dec 15 15:30:20 2017 by ELM ver.2012-10-06 from 001__elm20171215_142239__dat00.bin

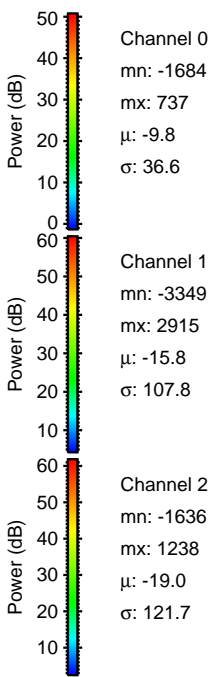
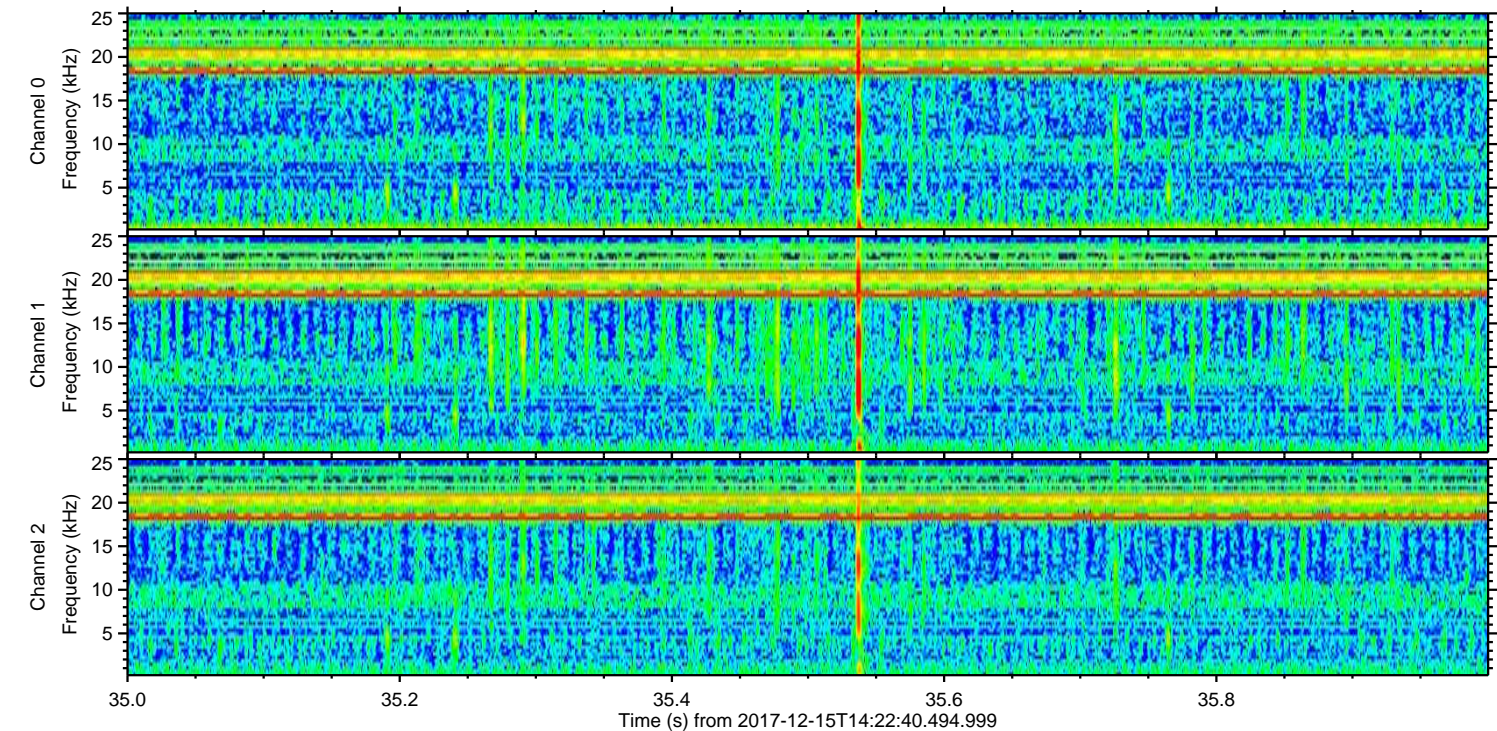
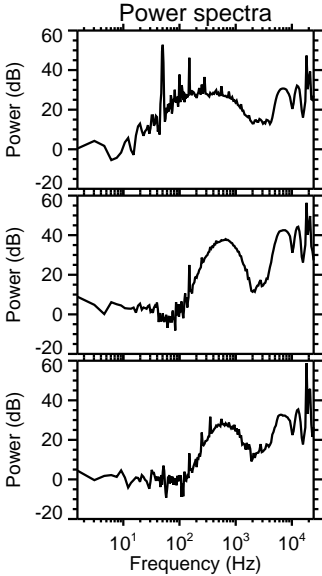
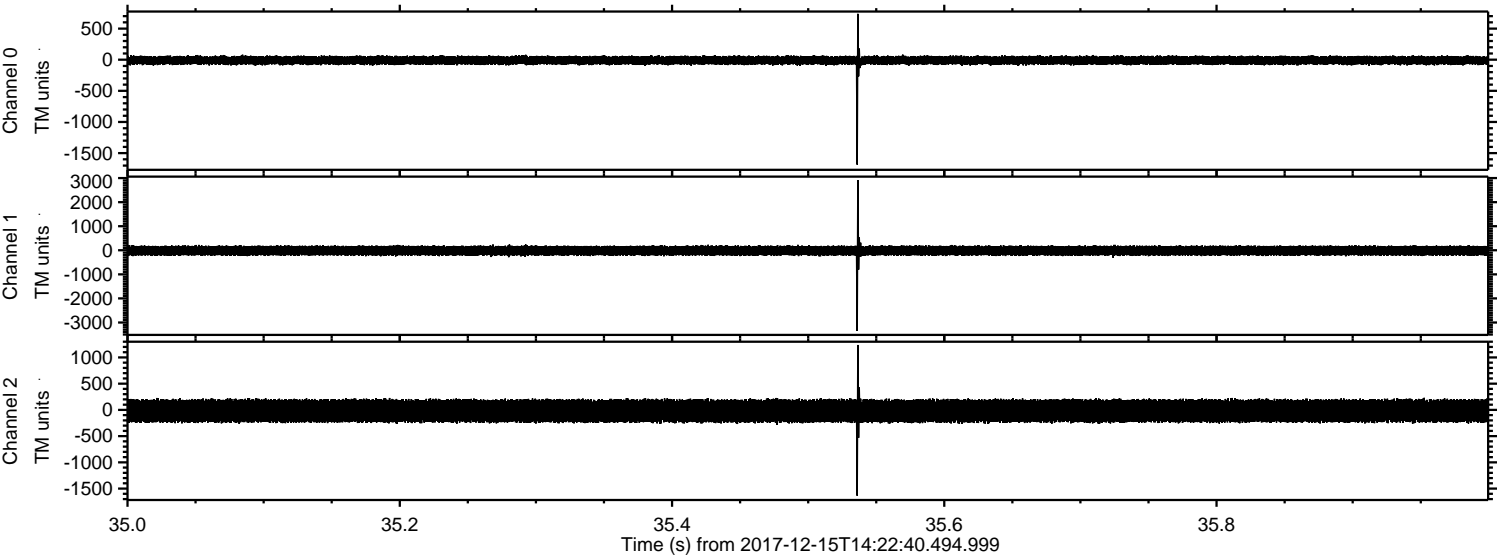


ELMAVAN 3D WAVEFORMS (Measured data sampled at 50 kHz) 51000 packets of 144 samples from 2017-12-15T14:22:40.494.999. Part 104/147

Processed Fri Dec 15 15:30:21 2017 by ELM ver.2012-10-06 from 001__elm20171215_142239__dat00.bin

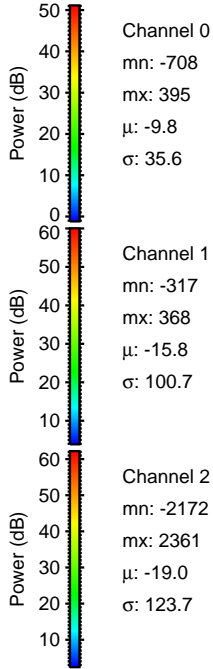
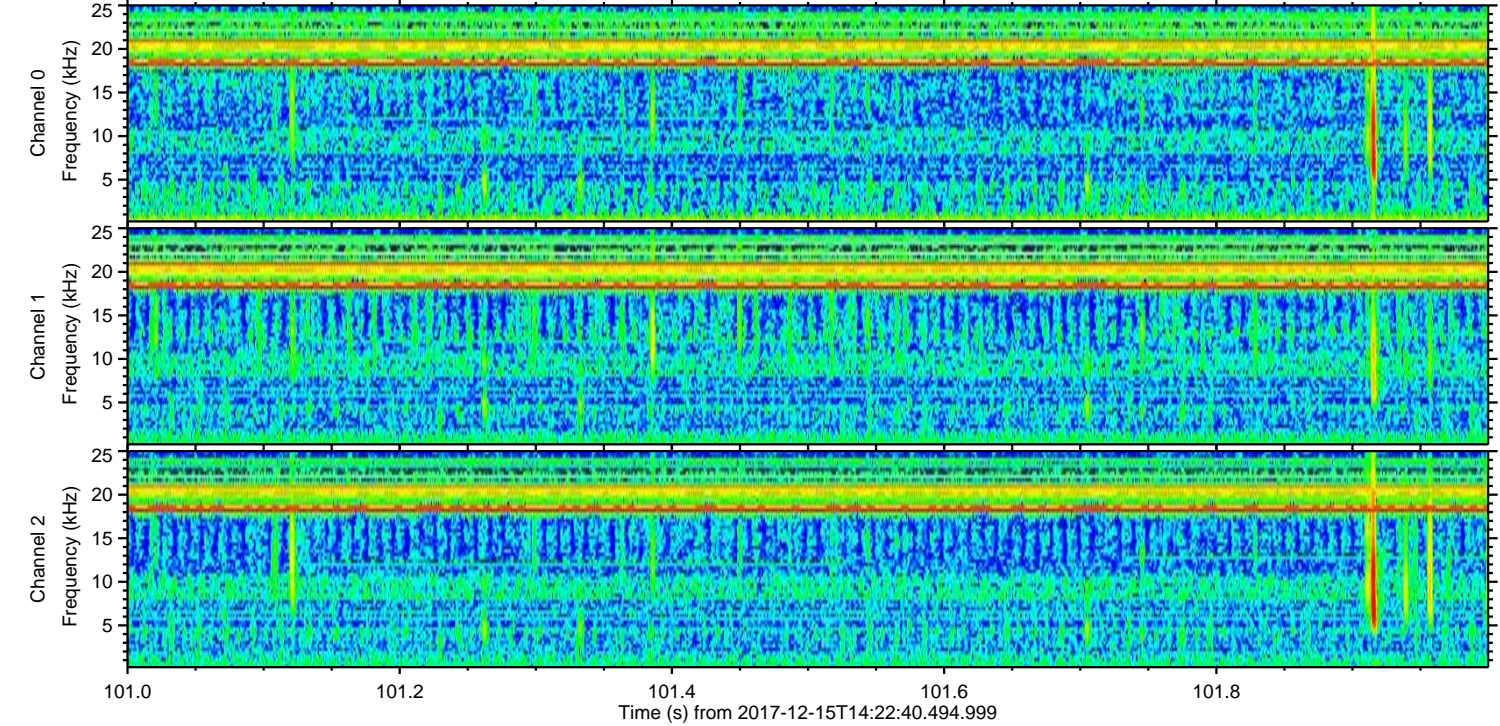
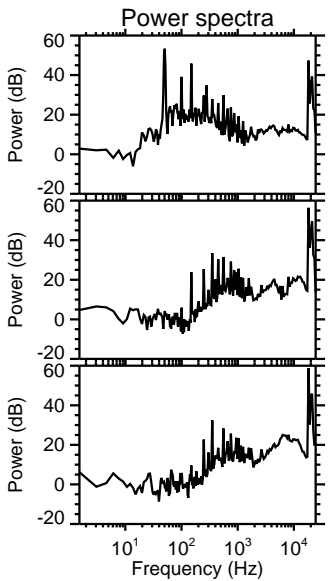
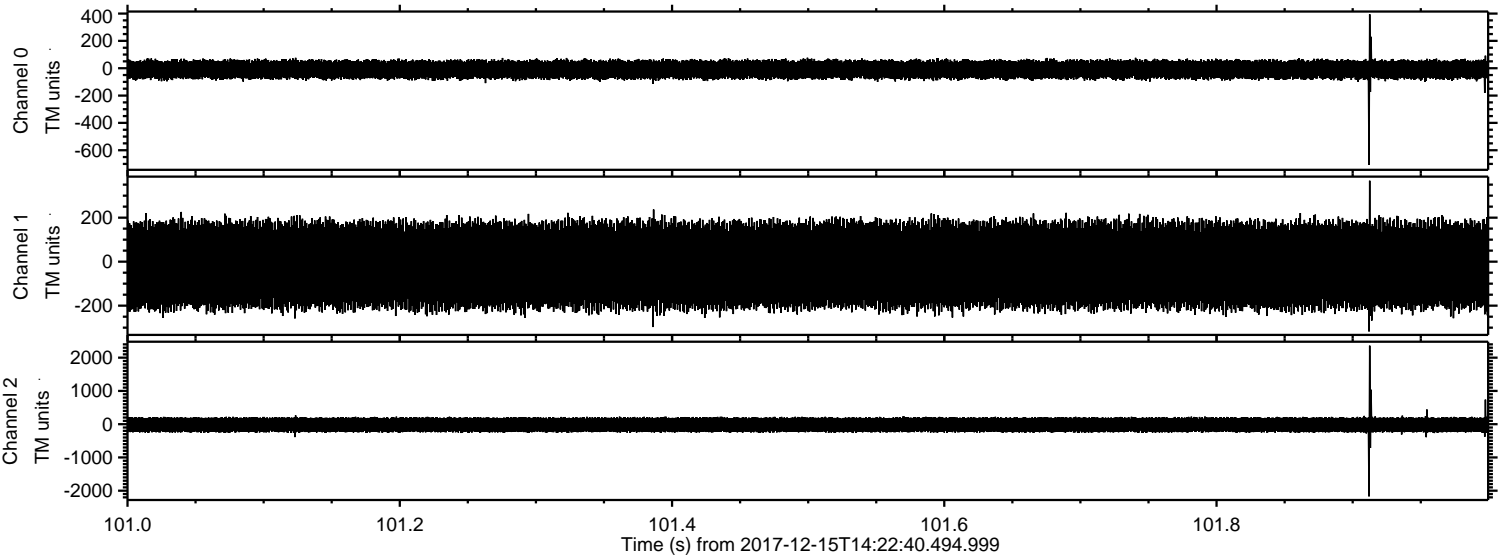


Processed Fri Dec 15 15:30:21 2017 by ELM ver.2012-10-06 from 001__elm20171215_142239__dat00.bin



ELMAVAN 3D WAVEFORMS (Measured data sampled at 50 kHz) 51000 packets of 144 samples from 2017-12-15T14:22:40.494.999. Part 102/147

Processed Fri Dec 15 15:30:22 2017 by ELM ver.2012-10-06 from 001__elm20171215_142239__dat00.bin

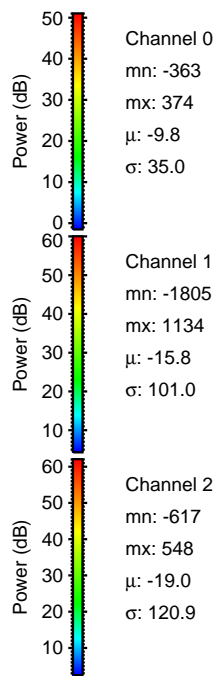
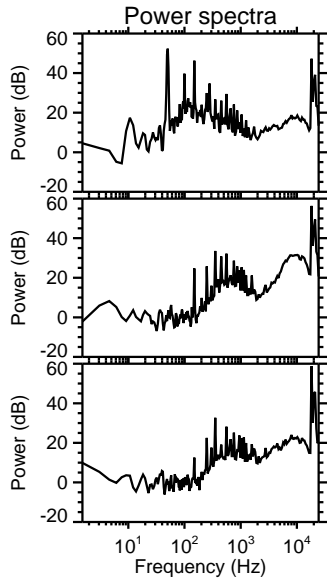
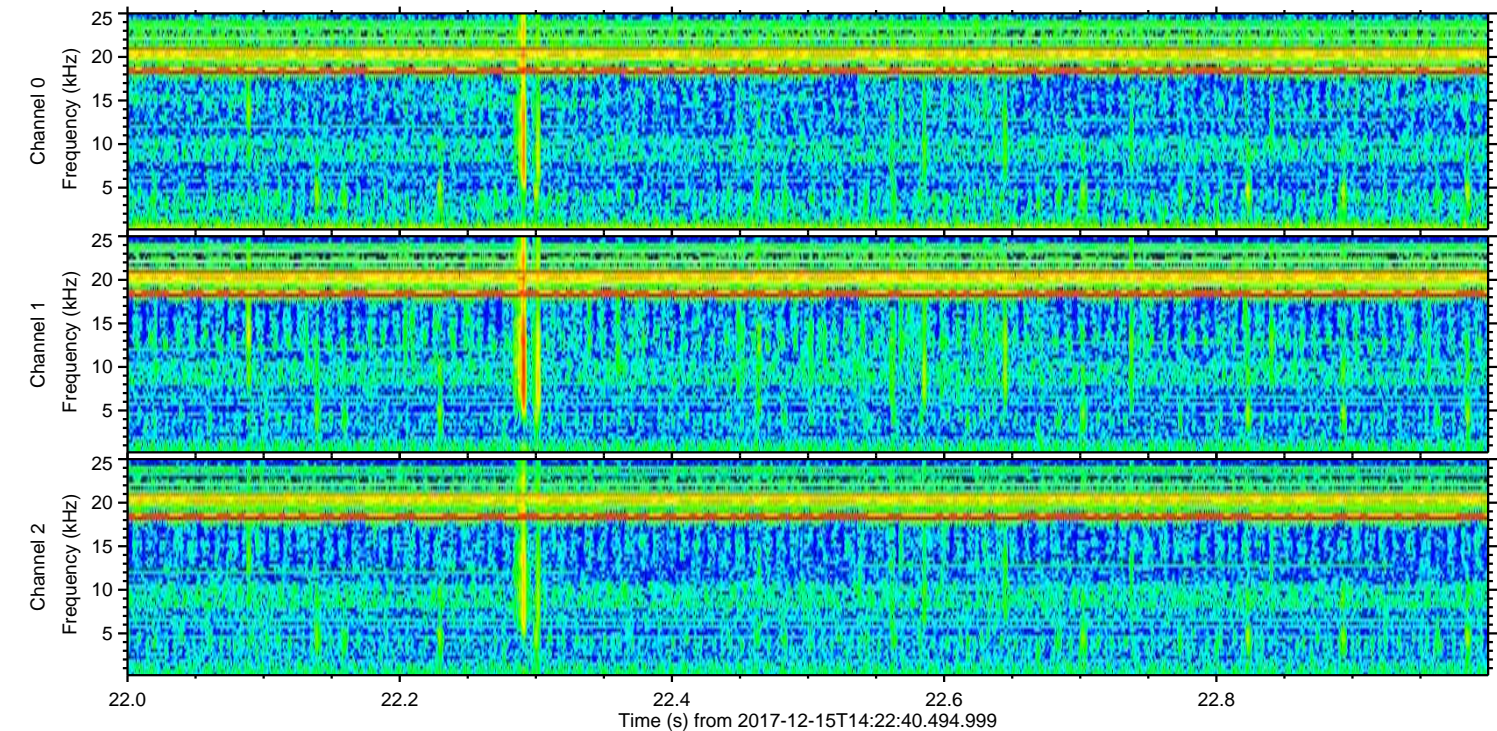
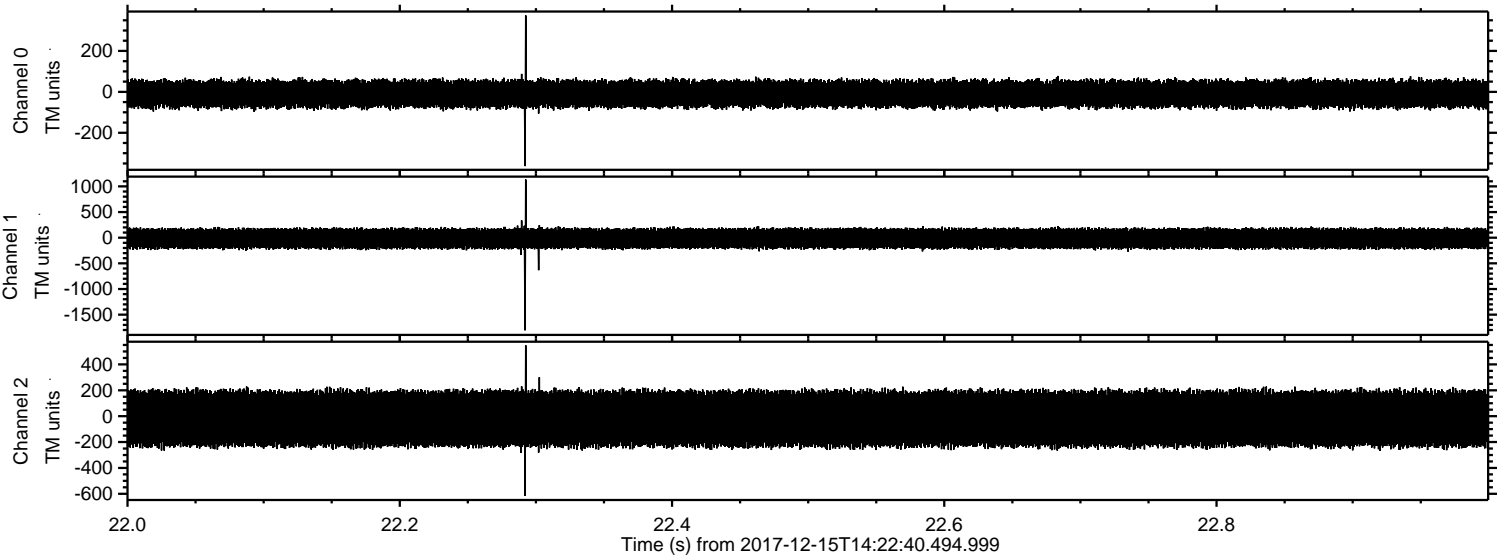


Channel 0
mn: -708
mx: 395
 μ : -9.8
 σ : 35.6

Channel 1
mn: -317
mx: 368
 μ : -15.8
 σ : 100.7

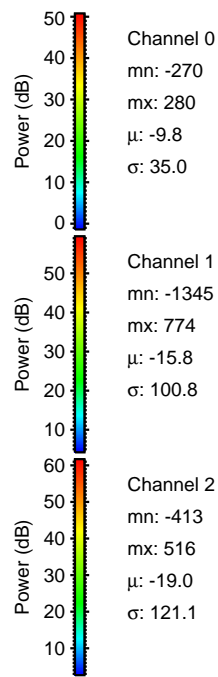
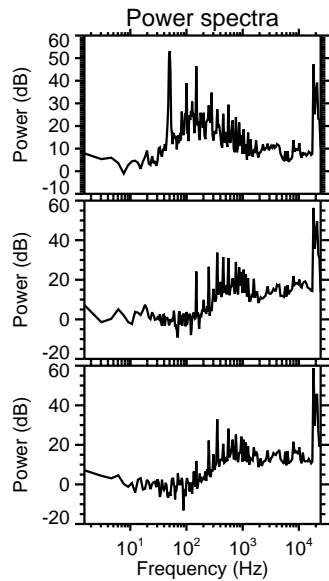
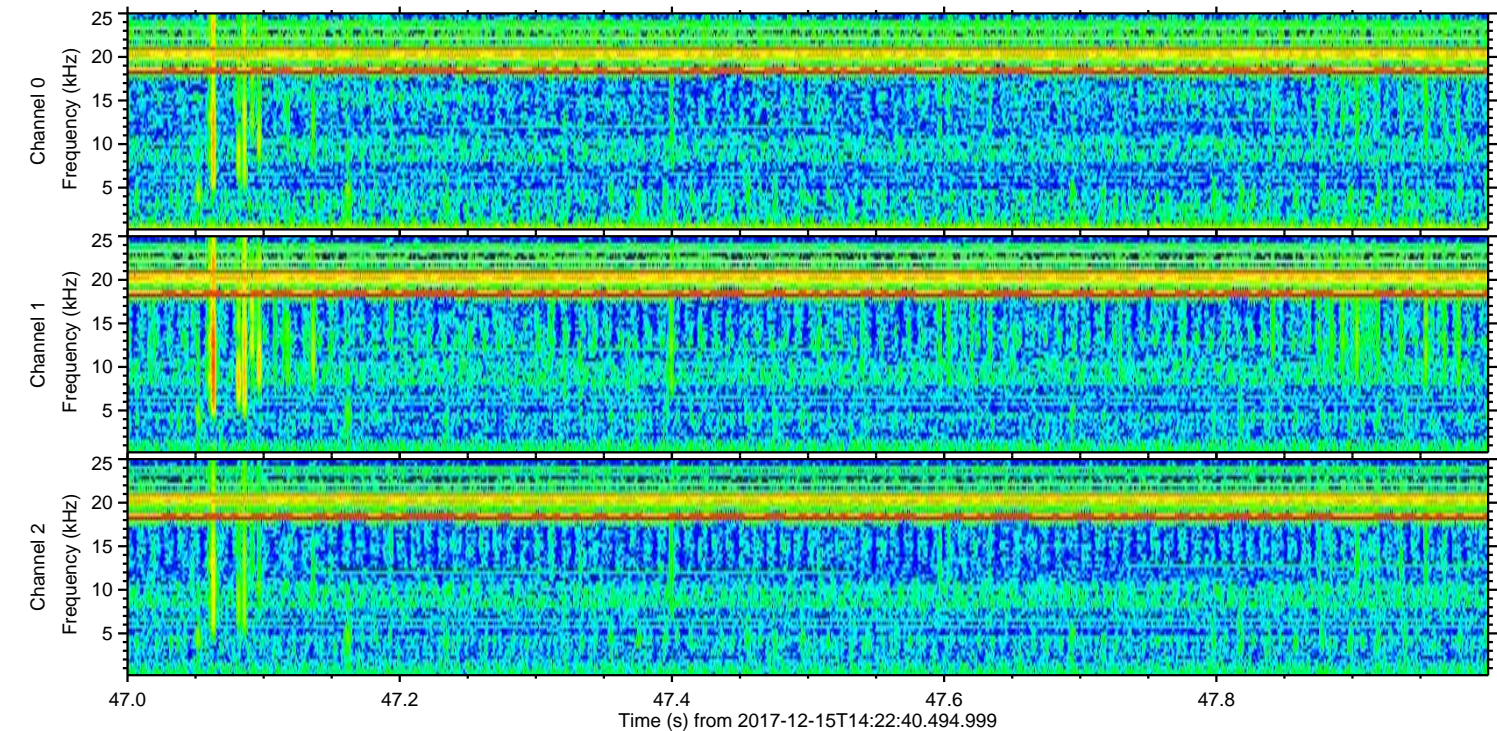
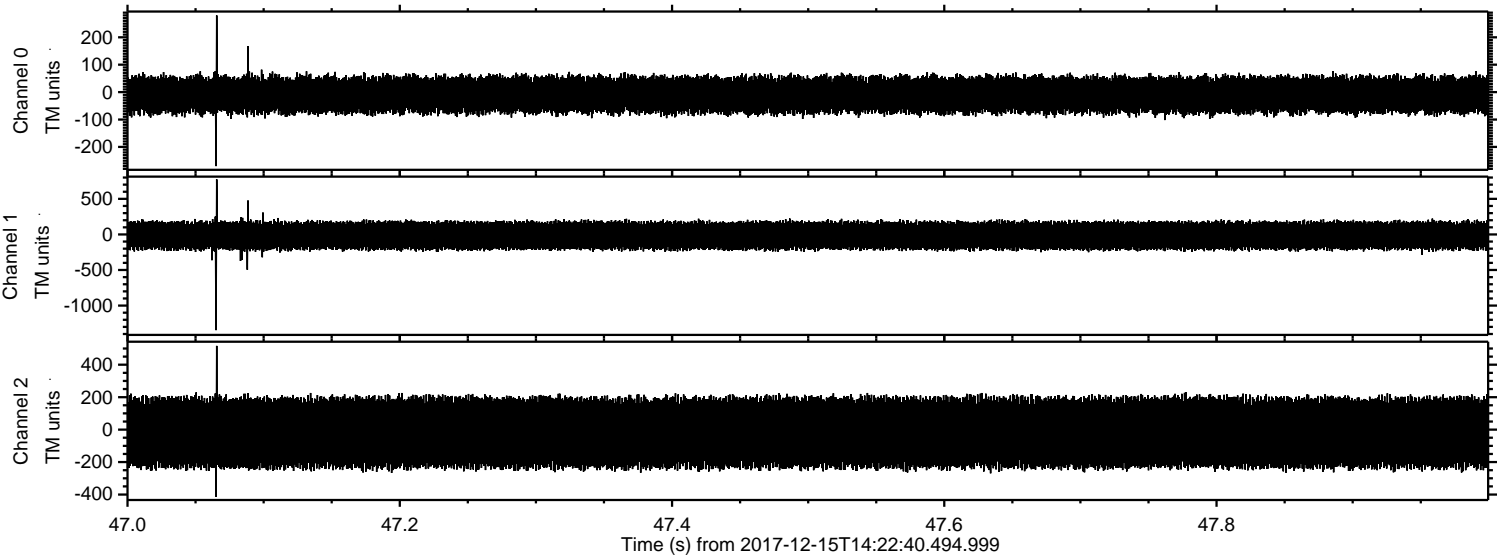
Channel 2
mn: -2172
mx: 2361
 μ : -19.0
 σ : 123.7

Processed Fri Dec 15 15:30:23 2017 by ELM ver.2012-10-06 from 001__elm20171215_142239__dat00.bin



ELMAVAN 3D WAVEFORMS (Measured data sampled at 50 kHz) 51000 packets of 144 samples from 2017-12-15T14:22:40.494.999. Part 48/147

Processed Fri Dec 15 15:30:24 2017 by ELM ver.2012-10-06 from 001__elm20171215_142239__dat00.bin



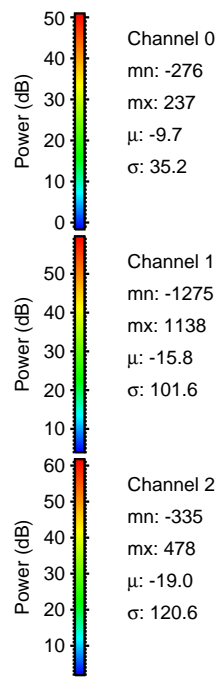
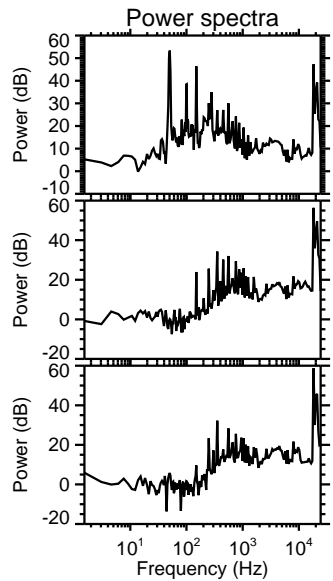
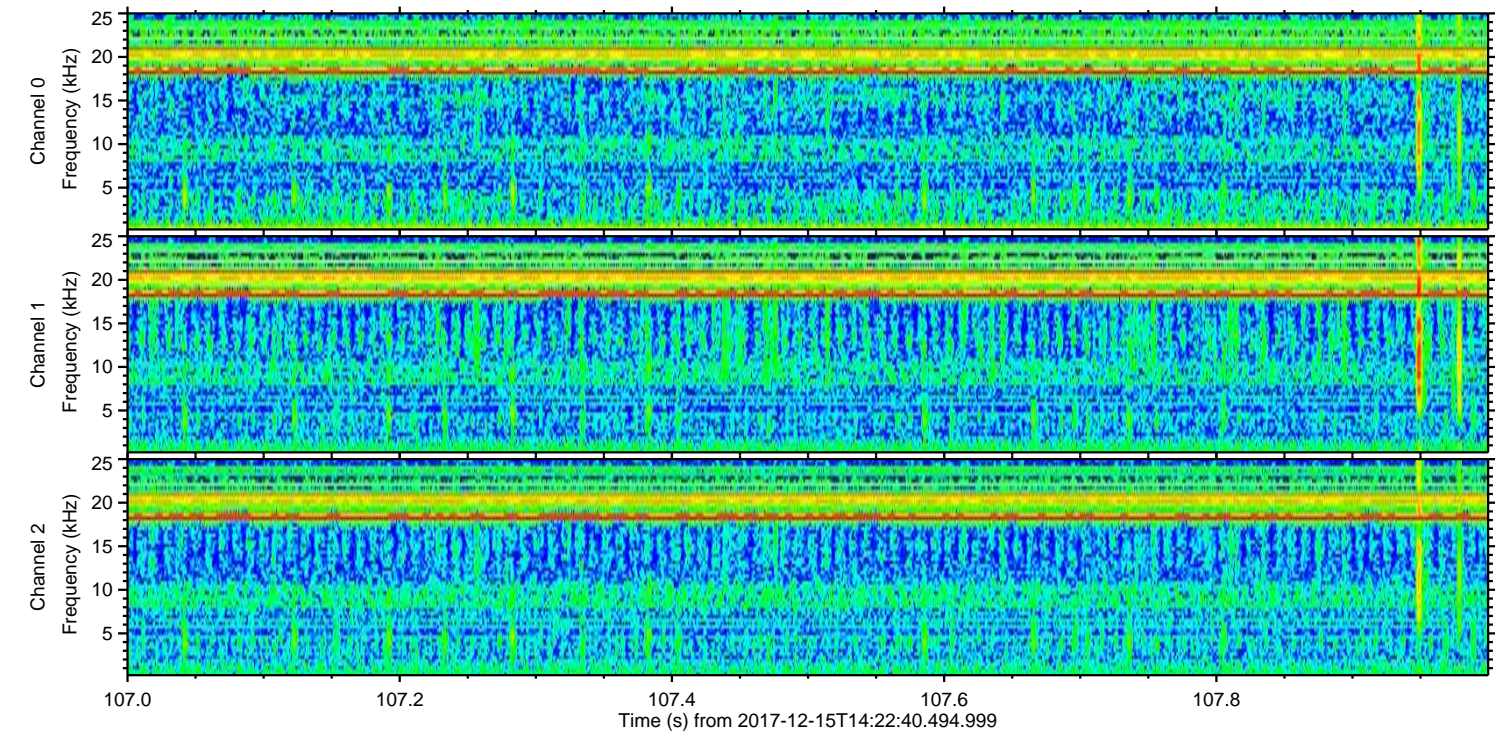
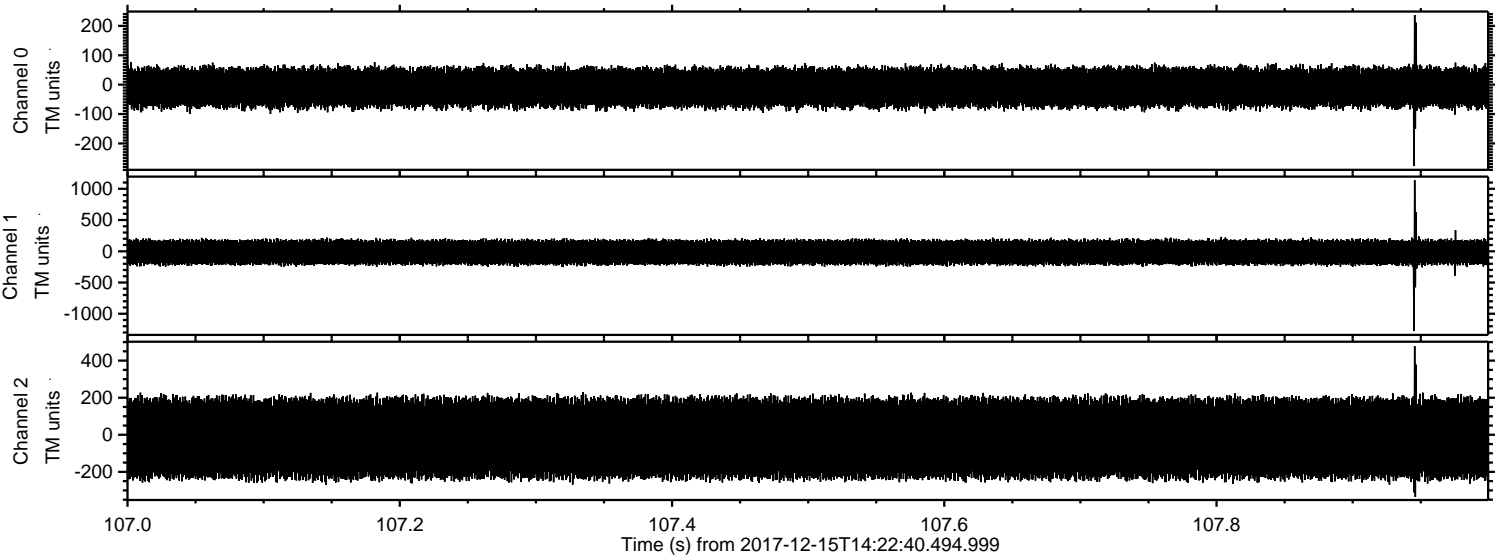
Channel 0
mn: -270
mx: 280
 μ : -9.8
 σ : 35.0

Channel 1
mn: -1345
mx: 774
 μ : -15.8
 σ : 100.8

Channel 2
mn: -413
mx: 516
 μ : -19.0
 σ : 121.1

ELMAVAN 3D WAVEFORMS (Measured data sampled at 50 kHz) 51000 packets of 144 samples from 2017-12-15T14:22:40.494.999. Part 108/147

Processed Fri Dec 15 15:30:25 2017 by ELM ver.2012-10-06 from 001__elm20171215_142239__dat00.bin



Channel 0
mn: -276
mx: 237
 μ : -9.7
 σ : 35.2

Channel 1
mn: -1275
mx: 1138
 μ : -15.8
 σ : 101.6

Channel 2
mn: -335
mx: 478
 μ : -19.0
 σ : 120.6

Processed Fri Dec 15 15:30:26 2017 by ELM ver.2012-10-06 from 001__elm20171215_142239__dat00.bin

