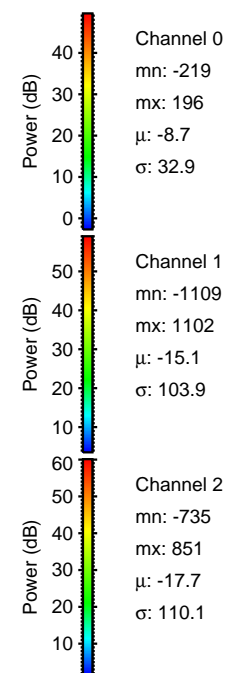
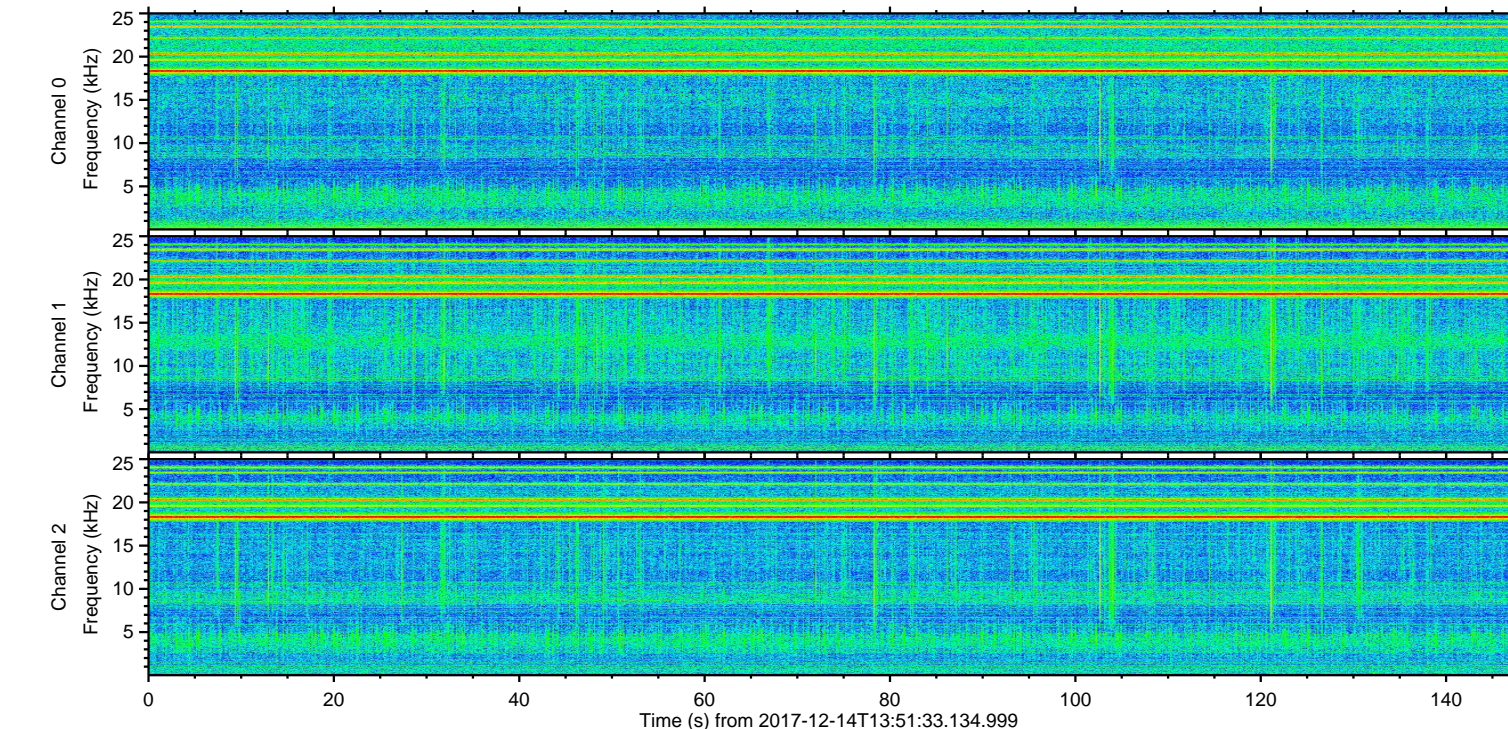
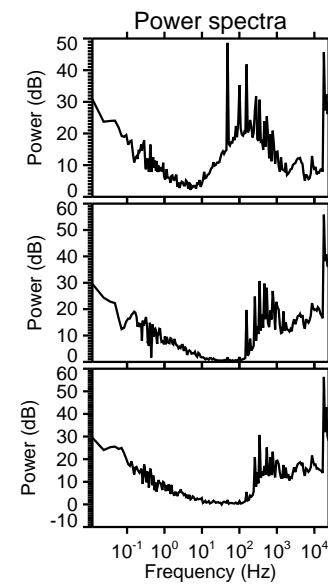
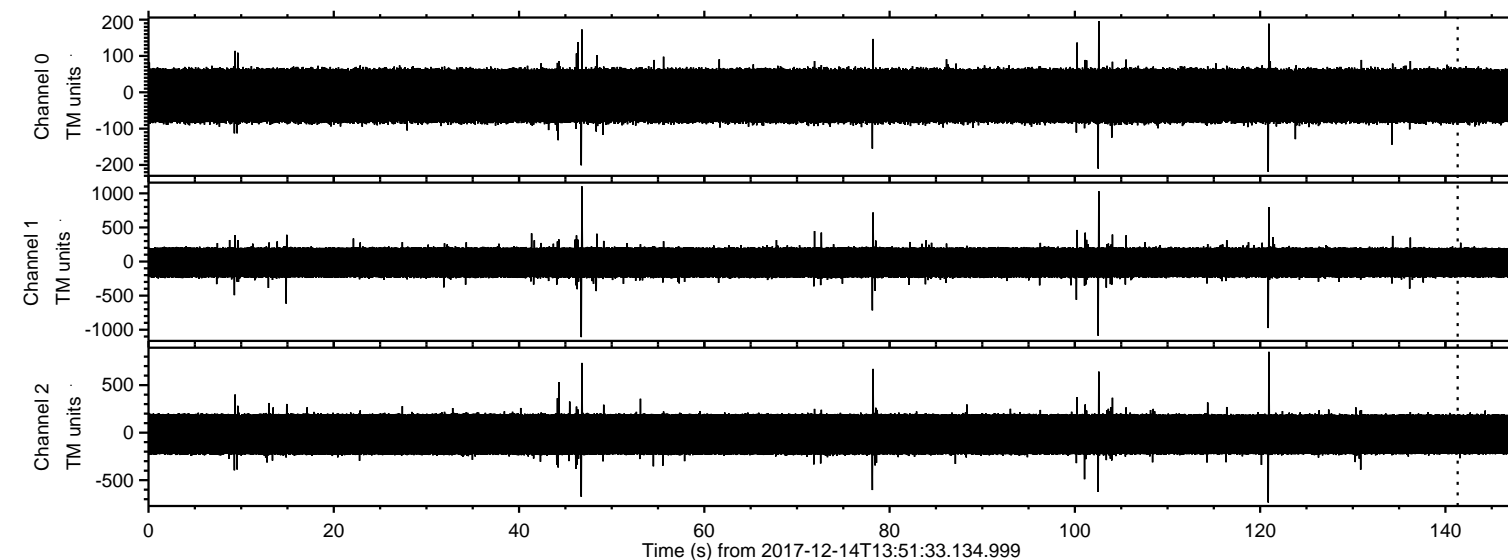


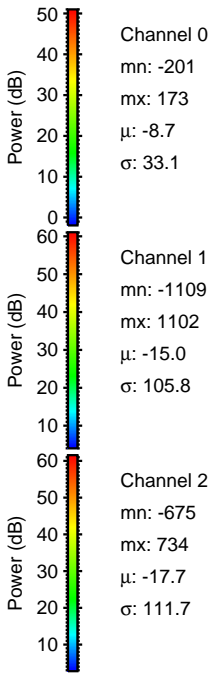
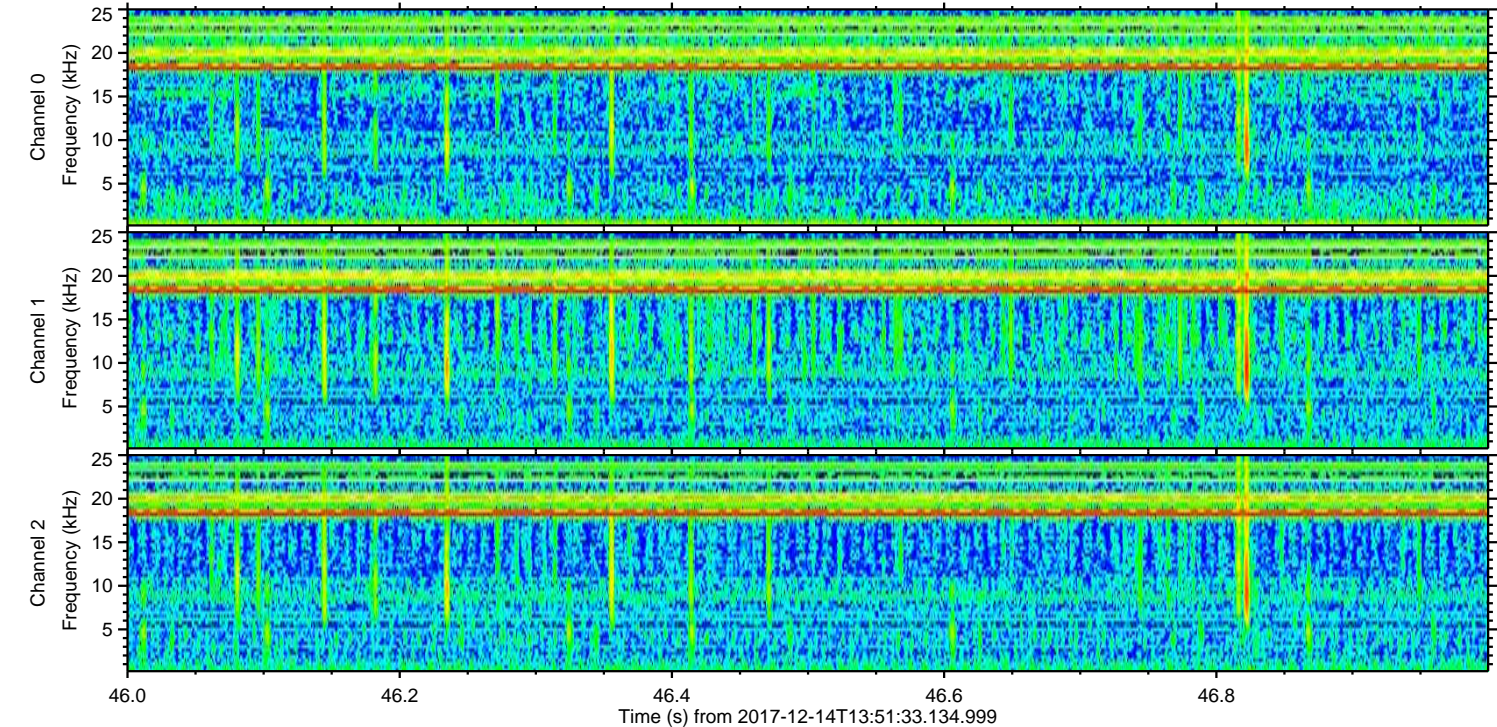
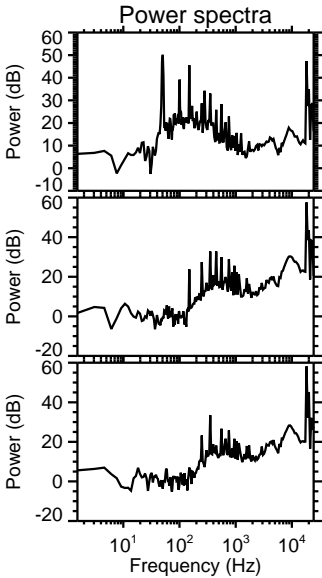
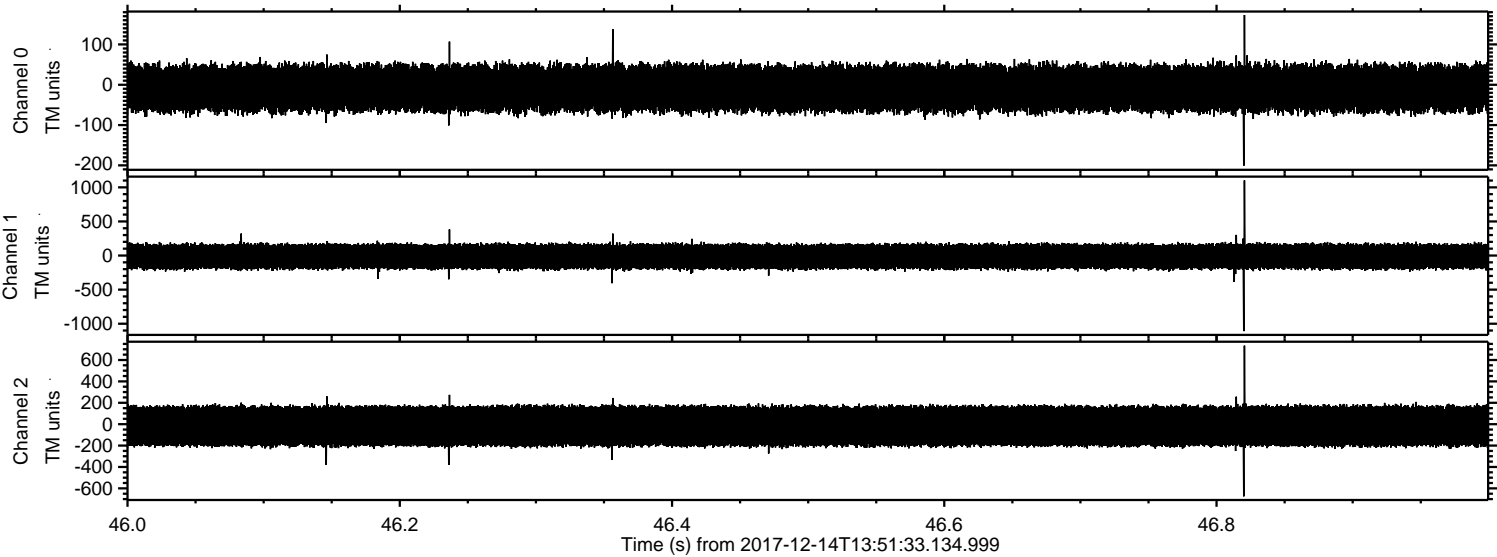
ELMAVAN 3D WAVEFORMS (Measured data sampled at 50 kHz) 50999 packets of 144 samples from 2017-12-14T13:51:33.134.999.

Processed Thu Dec 14 14:59:44 2017 by ELM ver.2012-10-06 from 001__elm20171214_135132__dat00.bin



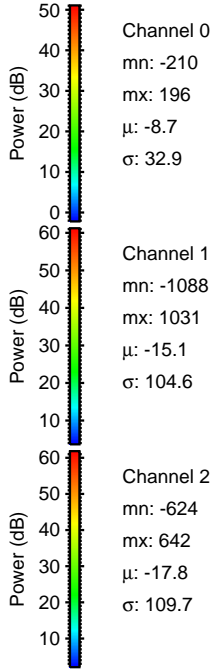
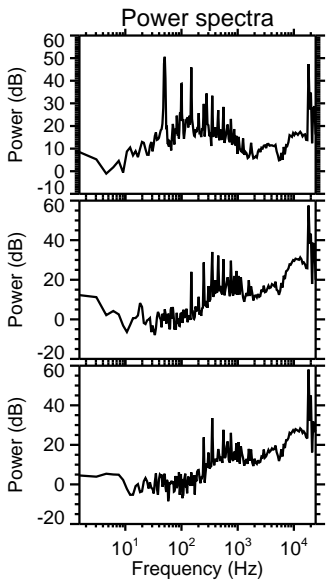
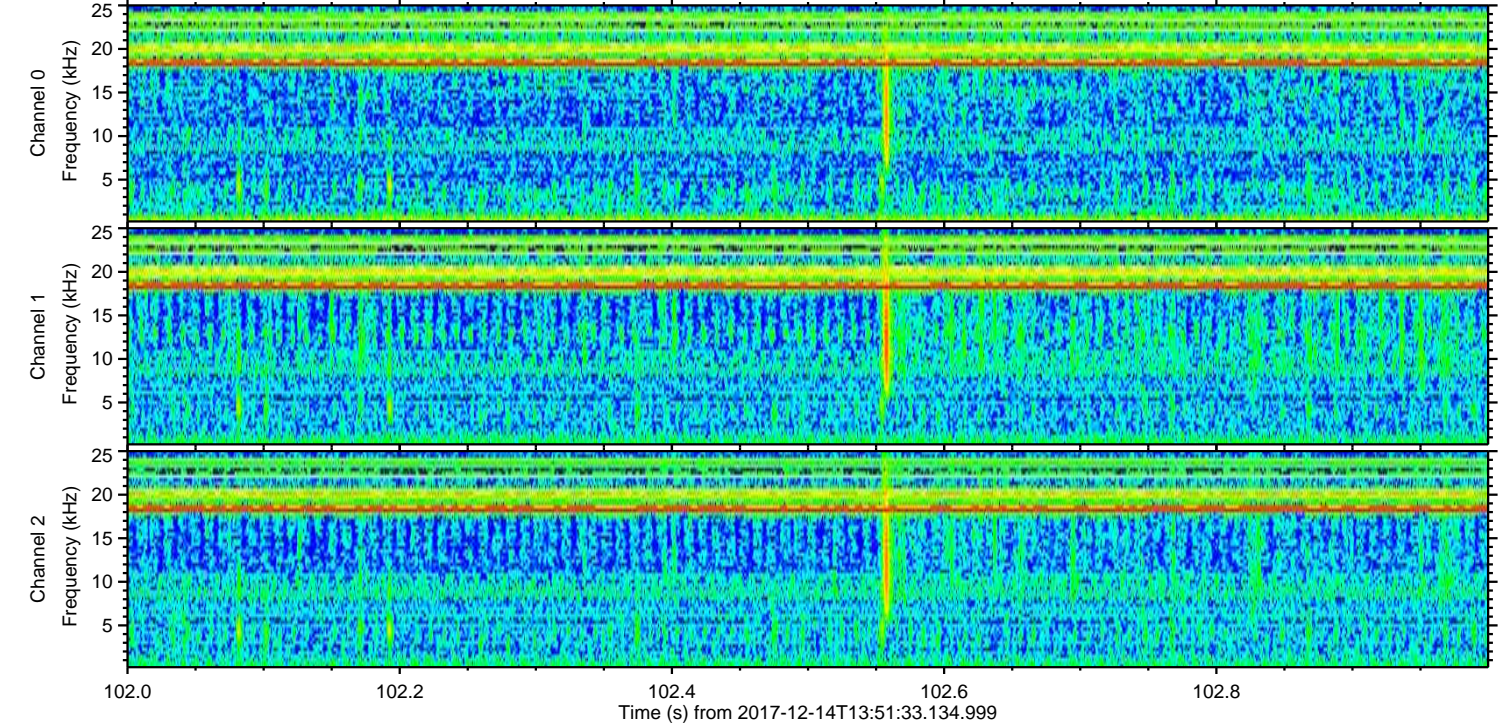
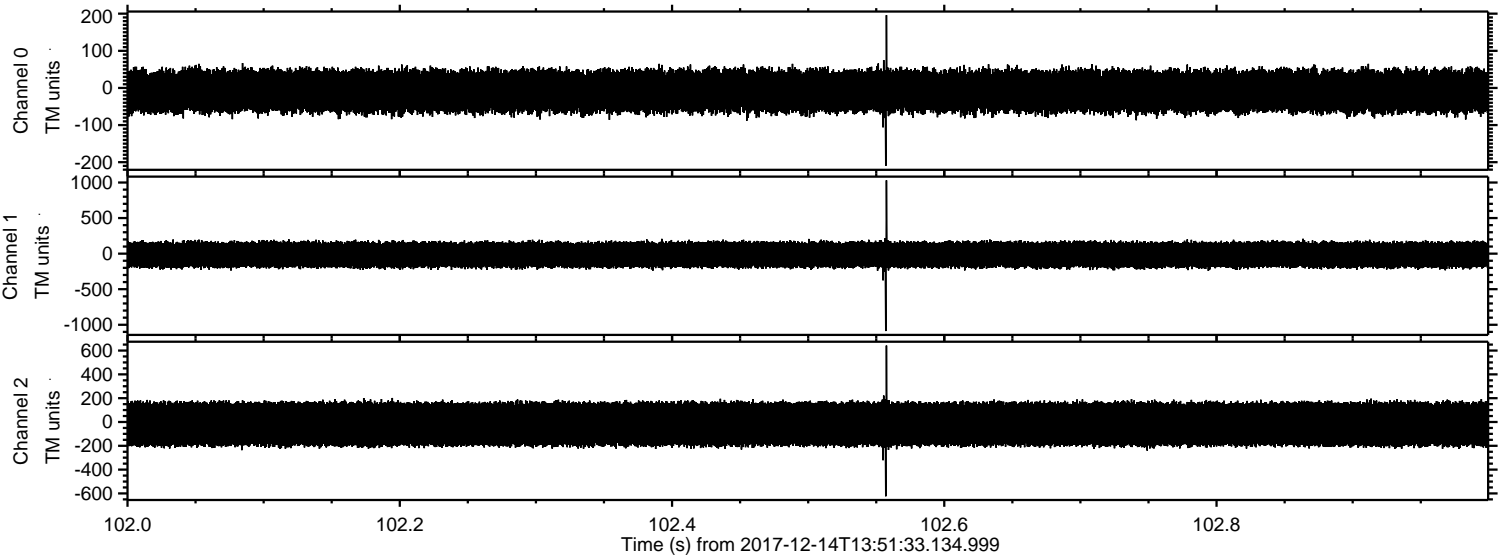
ELMAVAN 3D WAVEFORMS (Measured data sampled at 50 kHz) 50999 packets of 144 samples from 2017-12-14T13:51:33.134.999. Part 47/147

Processed Thu Dec 14 14:59:52 2017 by ELM ver.2012-10-06 from 001__elm20171214_135132__dat00.bin



ELMAVAN 3D WAVEFORMS (Measured data sampled at 50 kHz) 50999 packets of 144 samples from 2017-12-14T13:51:33.134.999. Part 103/147

Processed Thu Dec 14 14:59:53 2017 by ELM ver.2012-10-06 from 001__elm20171214_135132__dat00.bin



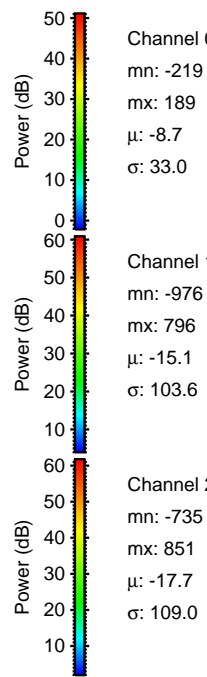
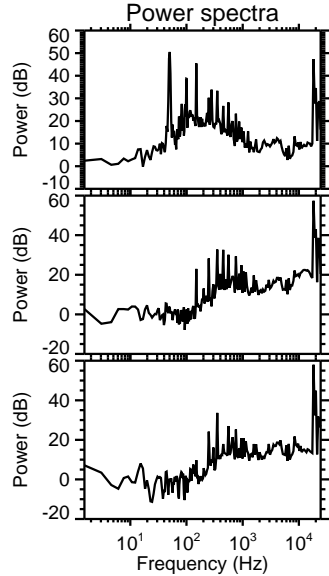
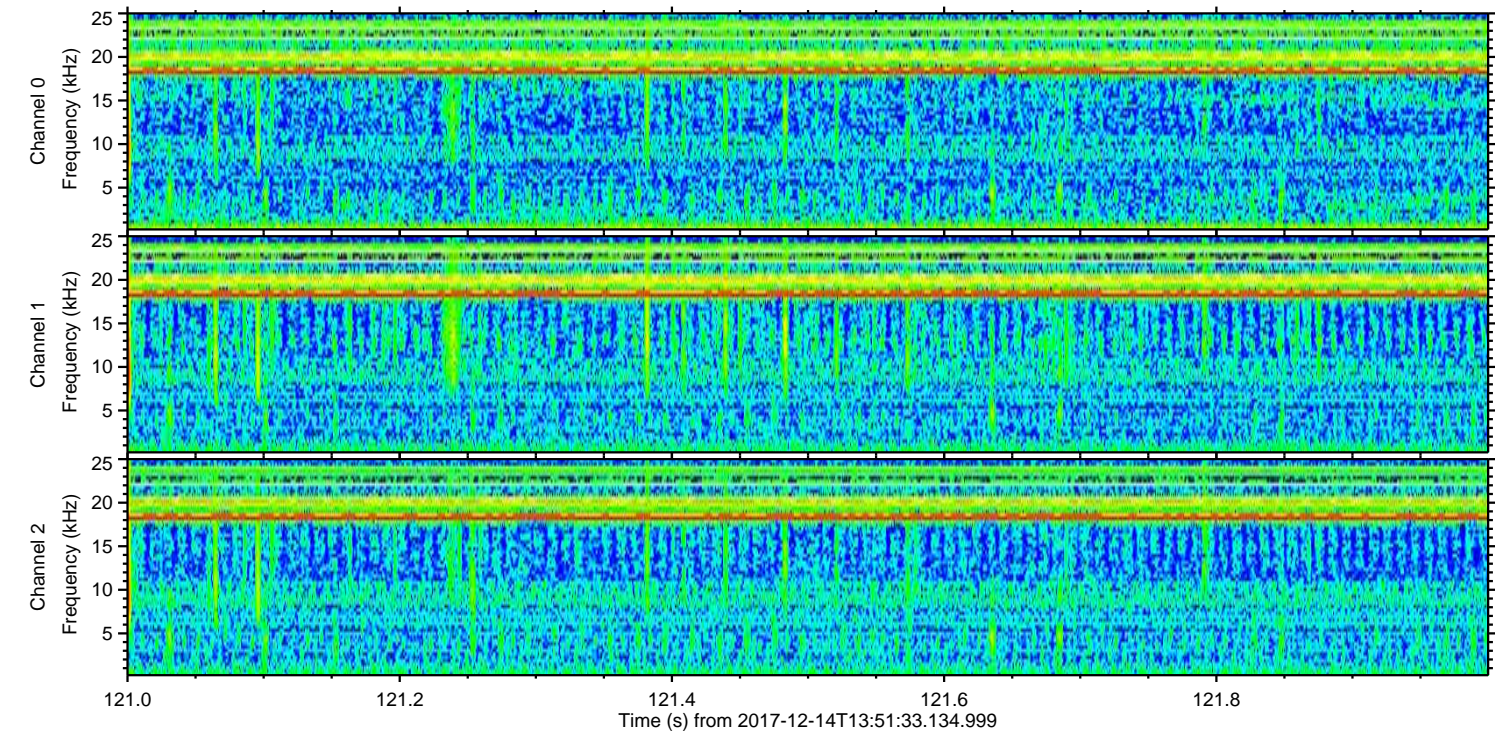
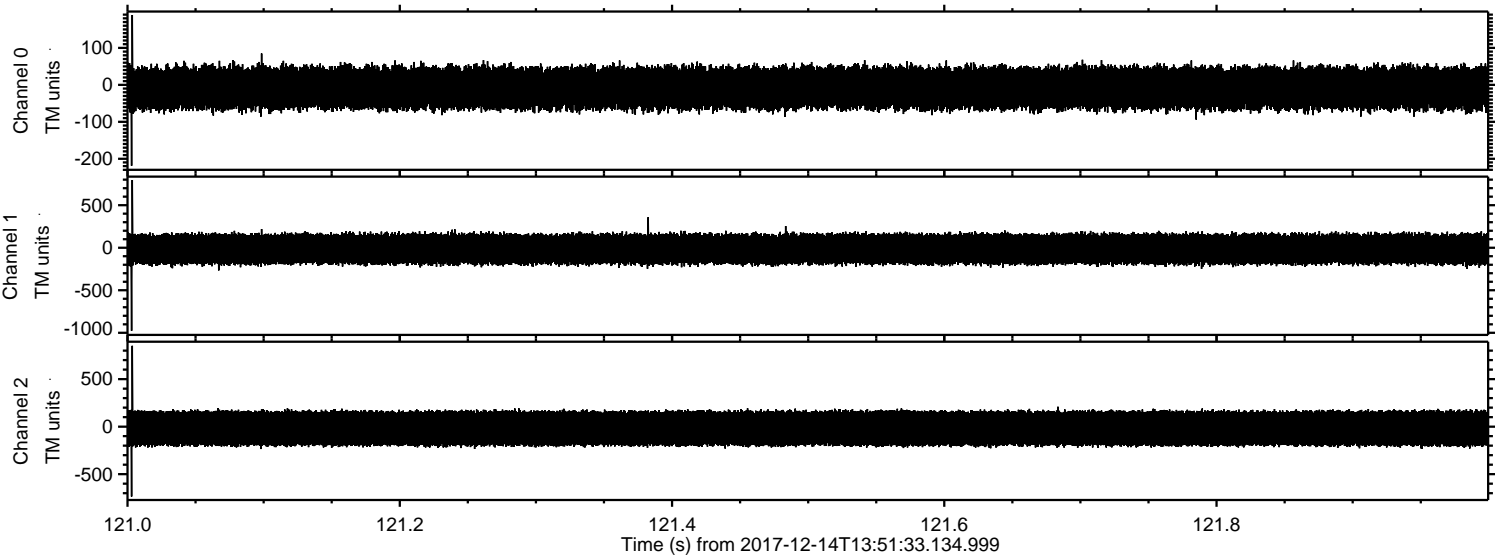
Channel 0
mn: -210
mx: 196
 μ : -8.7
 σ : 32.9

Channel 1
mn: -1088
mx: 1031
 μ : -15.1
 σ : 104.6

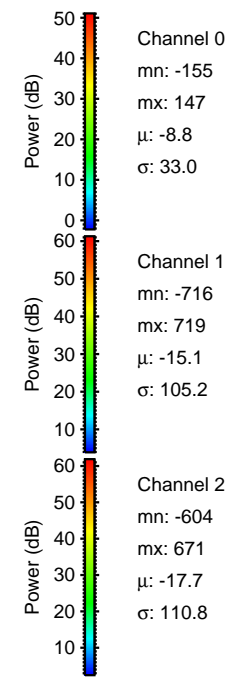
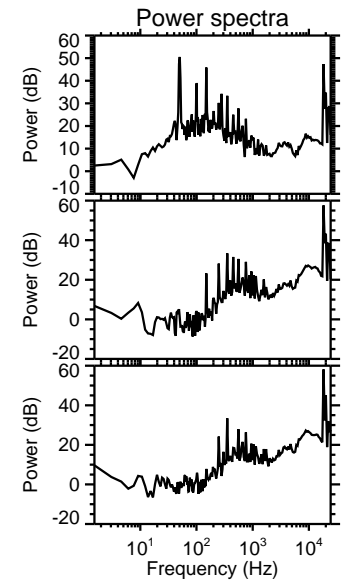
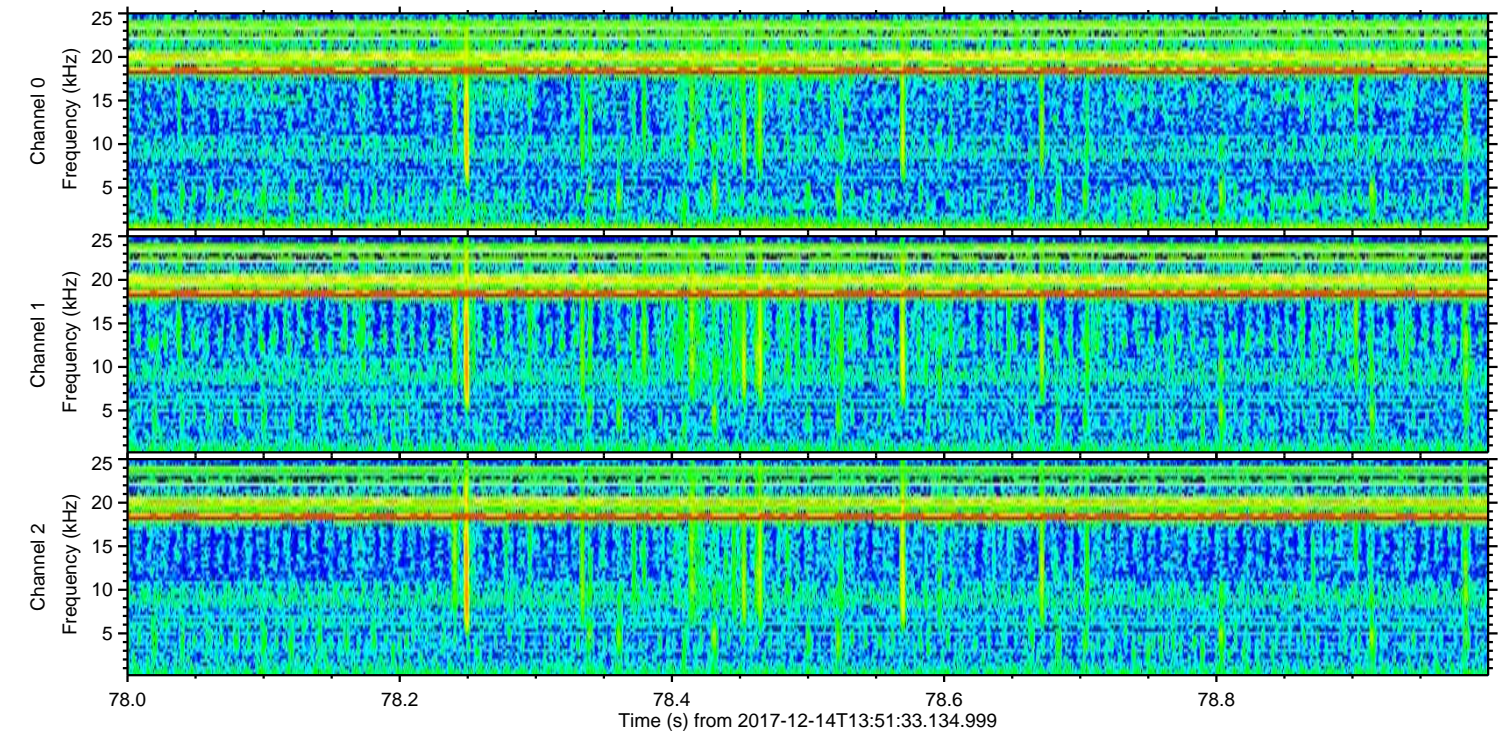
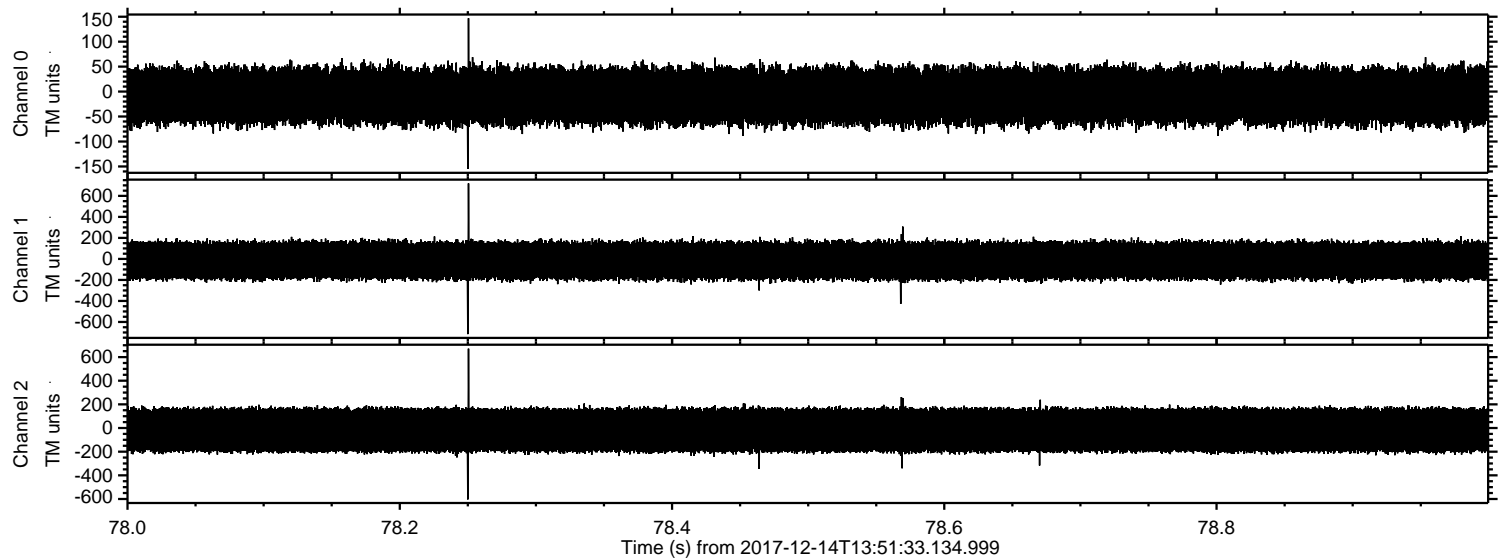
Channel 2
mn: -624
mx: 642
 μ : -17.8
 σ : 109.7

ELMAVAN 3D WAVEFORMS (Measured data sampled at 50 kHz) 50999 packets of 144 samples from 2017-12-14T13:51:33.134.999. Part 122/147

Processed Thu Dec 14 14:59:54 2017 by ELM ver.2012-10-06 from 001__elm20171214_135132__dat00.bin



Processed Thu Dec 14 14:59:54 2017 by ELM ver.2012-10-06 from 001__elm20171214_135132__dat00.bin



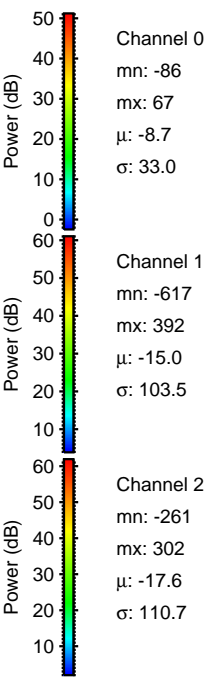
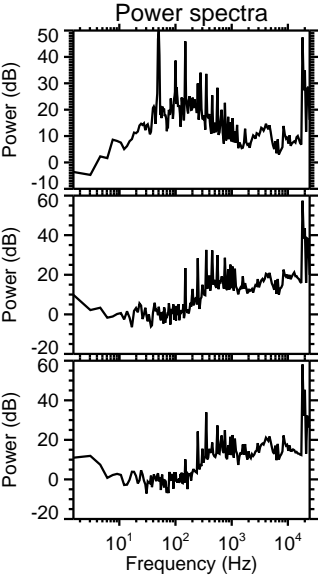
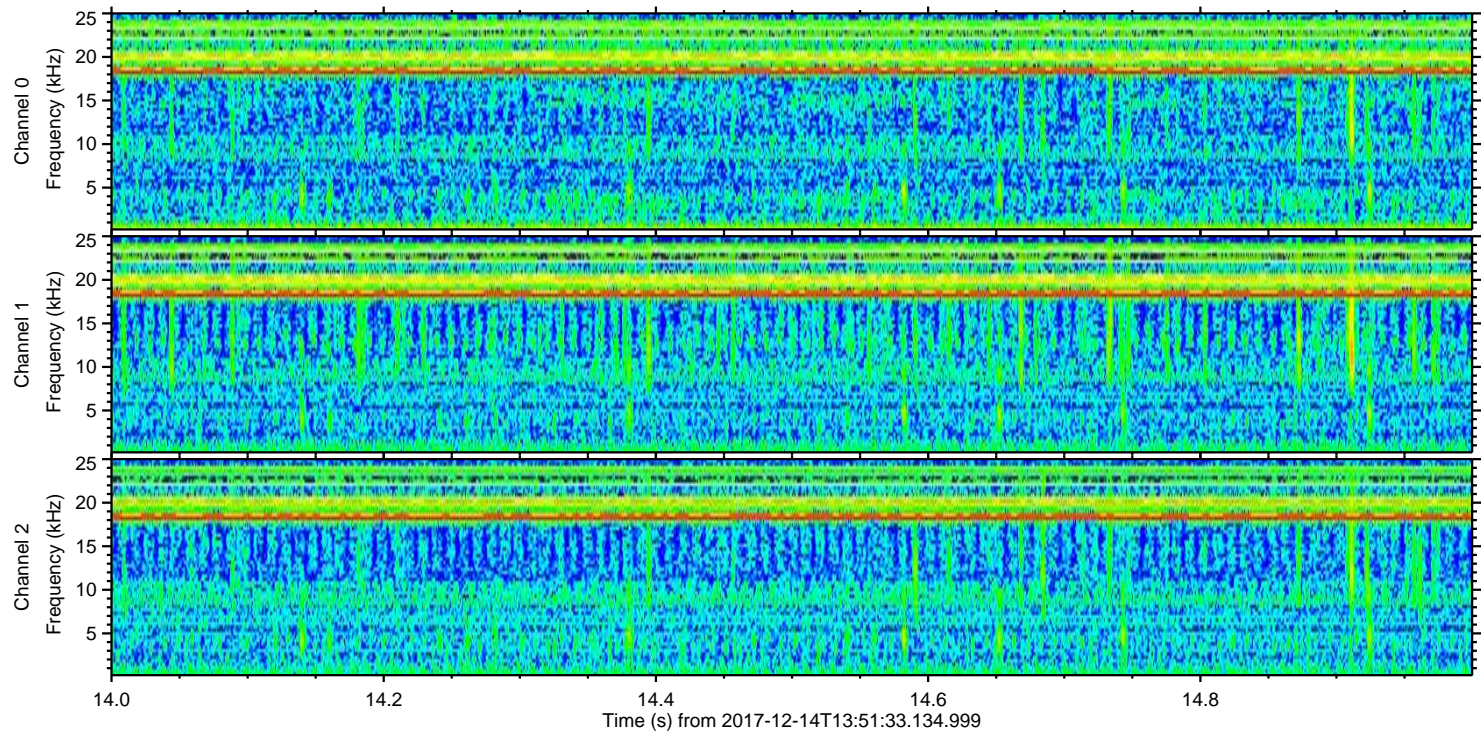
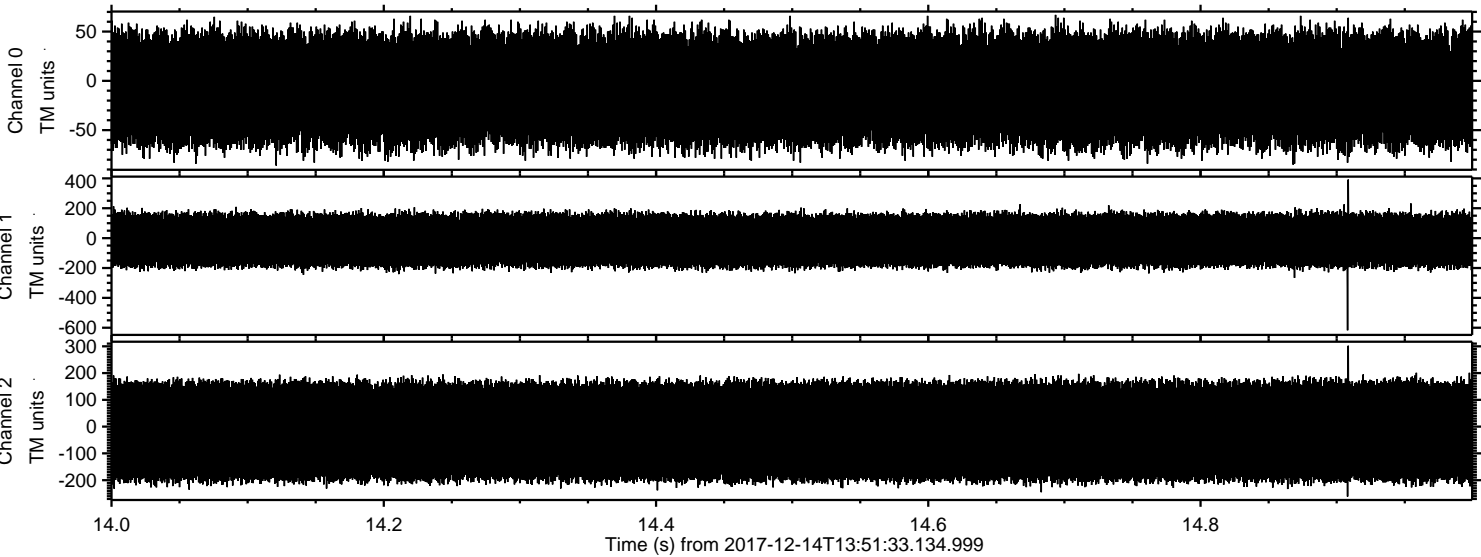
Channel 0
mn: -155
mx: 147
 μ : -8.8
 σ : 33.0

Channel 1
mn: -716
mx: 719
 μ : -15.1
 σ : 105.2

Channel 2
mn: -604
mx: 671
 μ : -17.7
 σ : 110.8

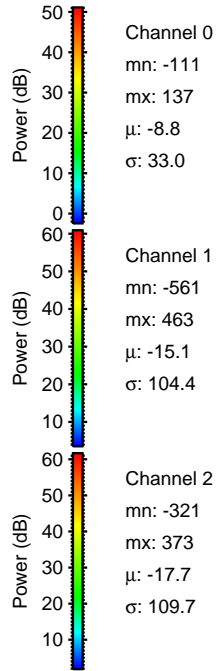
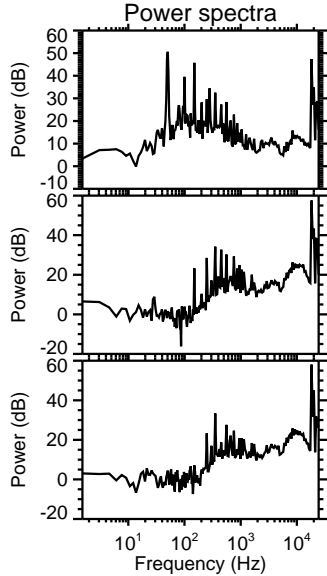
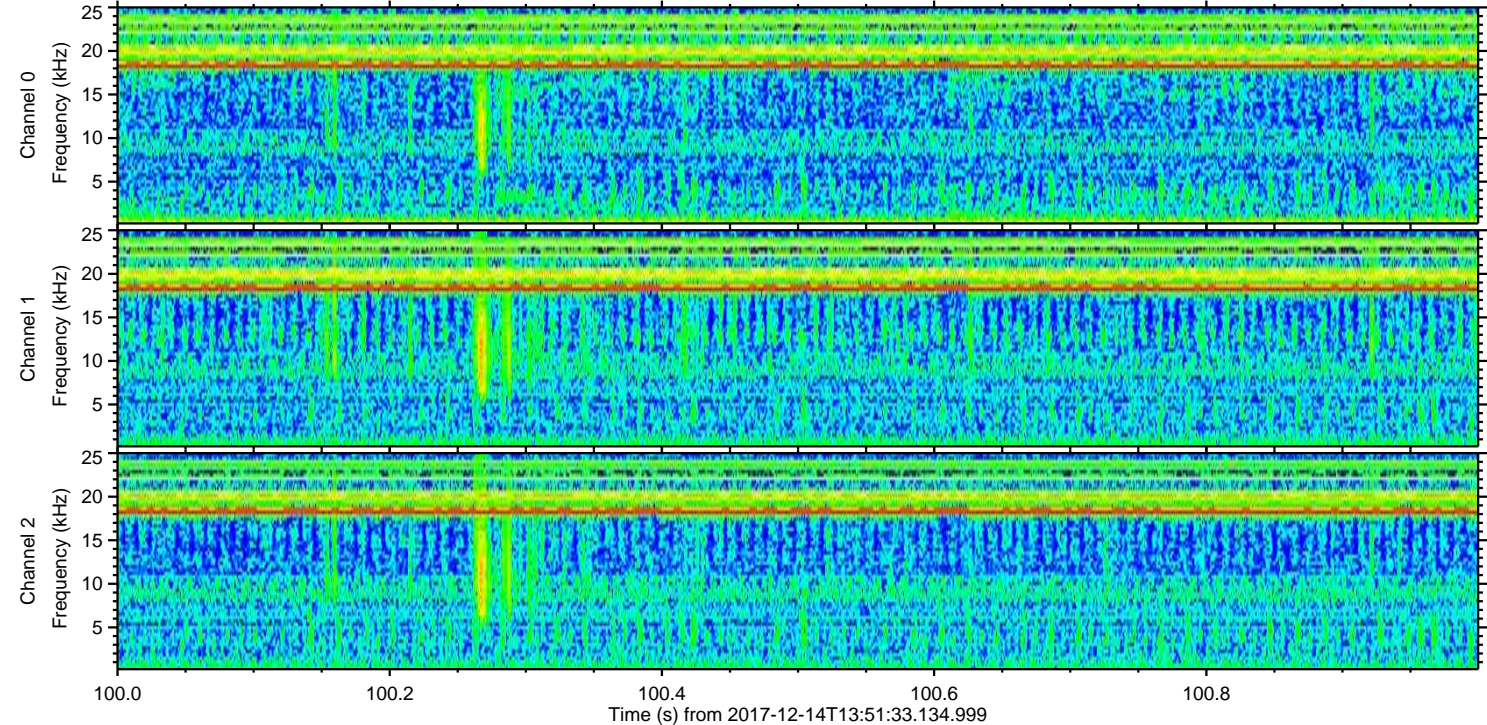
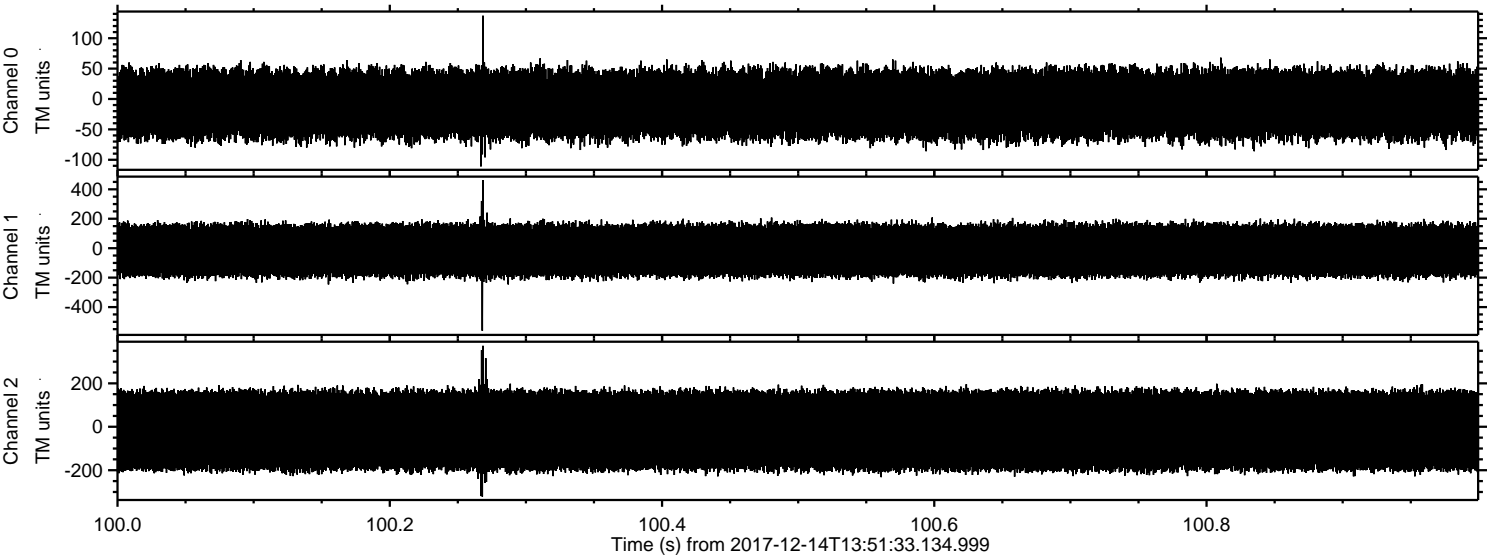
ELMAVAN 3D WAVEFORMS (Measured data sampled at 50 kHz) 50999 packets of 144 samples from 2017-12-14T13:51:33.134.999. Part 15/147

Processed Thu Dec 14 14:59:55 2017 by ELM ver.2012-10-06 from 001__elm20171214_135132__dat00.bin



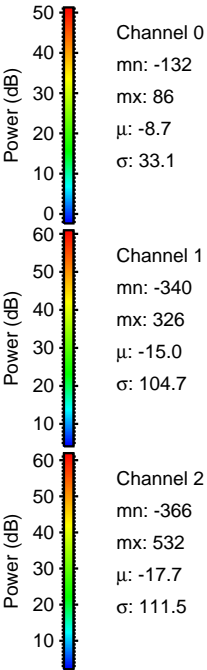
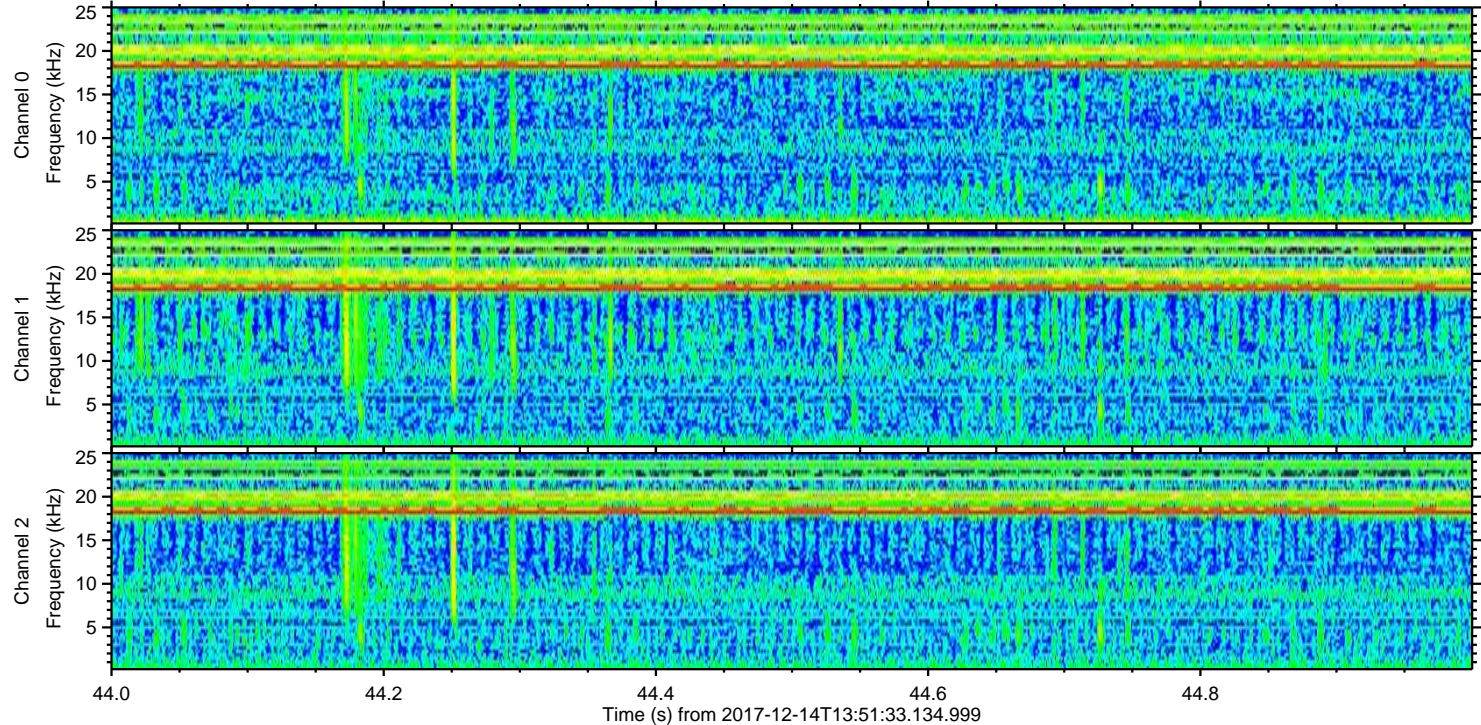
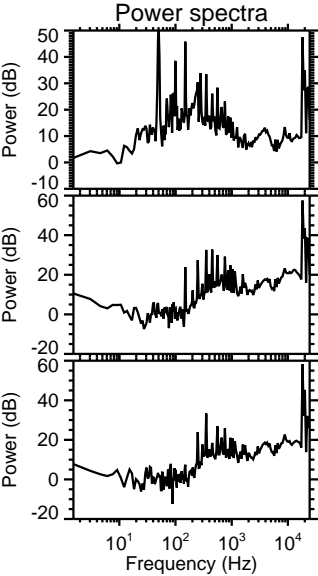
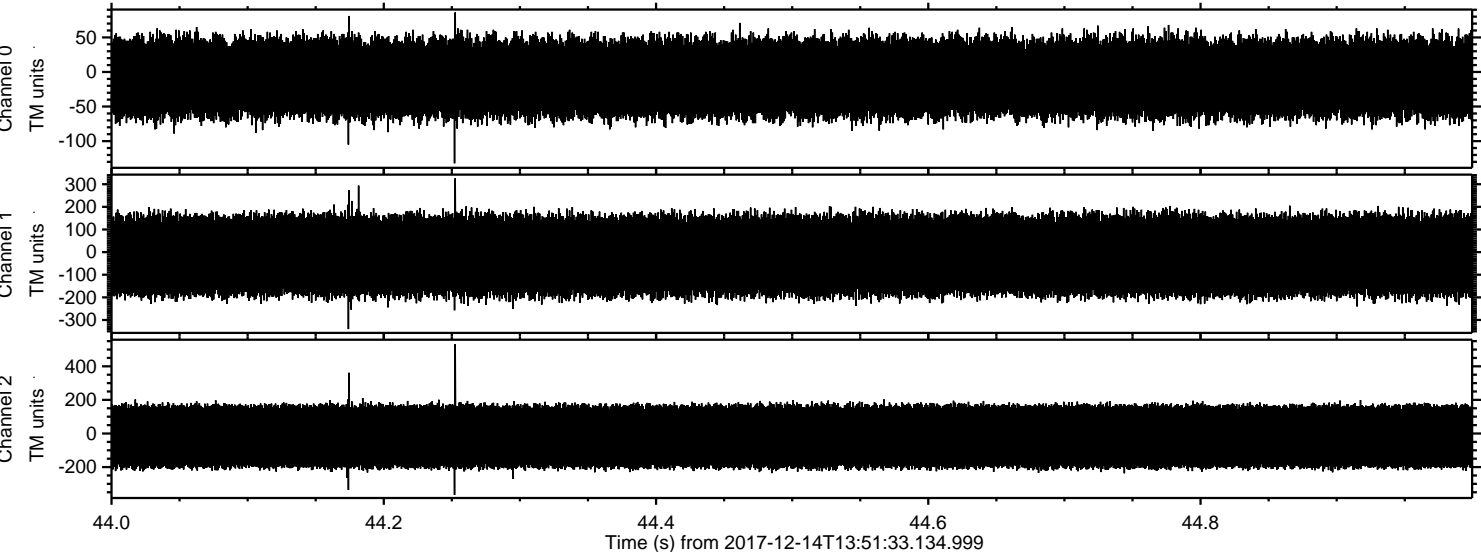
ELMAVAN 3D WAVEFORMS (Measured data sampled at 50 kHz) 50999 packets of 144 samples from 2017-12-14T13:51:33.134.999. Part 101/147

Processed Thu Dec 14 14:59:56 2017 by ELM ver.2012-10-06 from 001__elm20171214_135132__dat00.bin



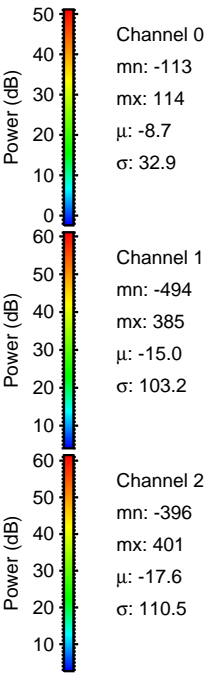
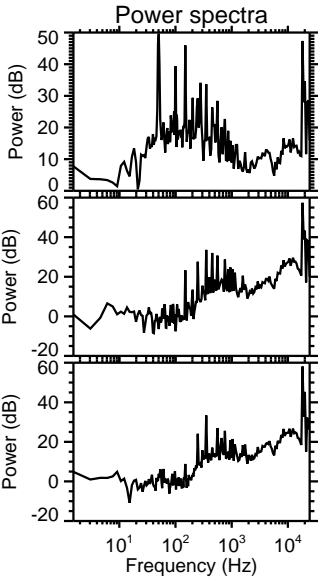
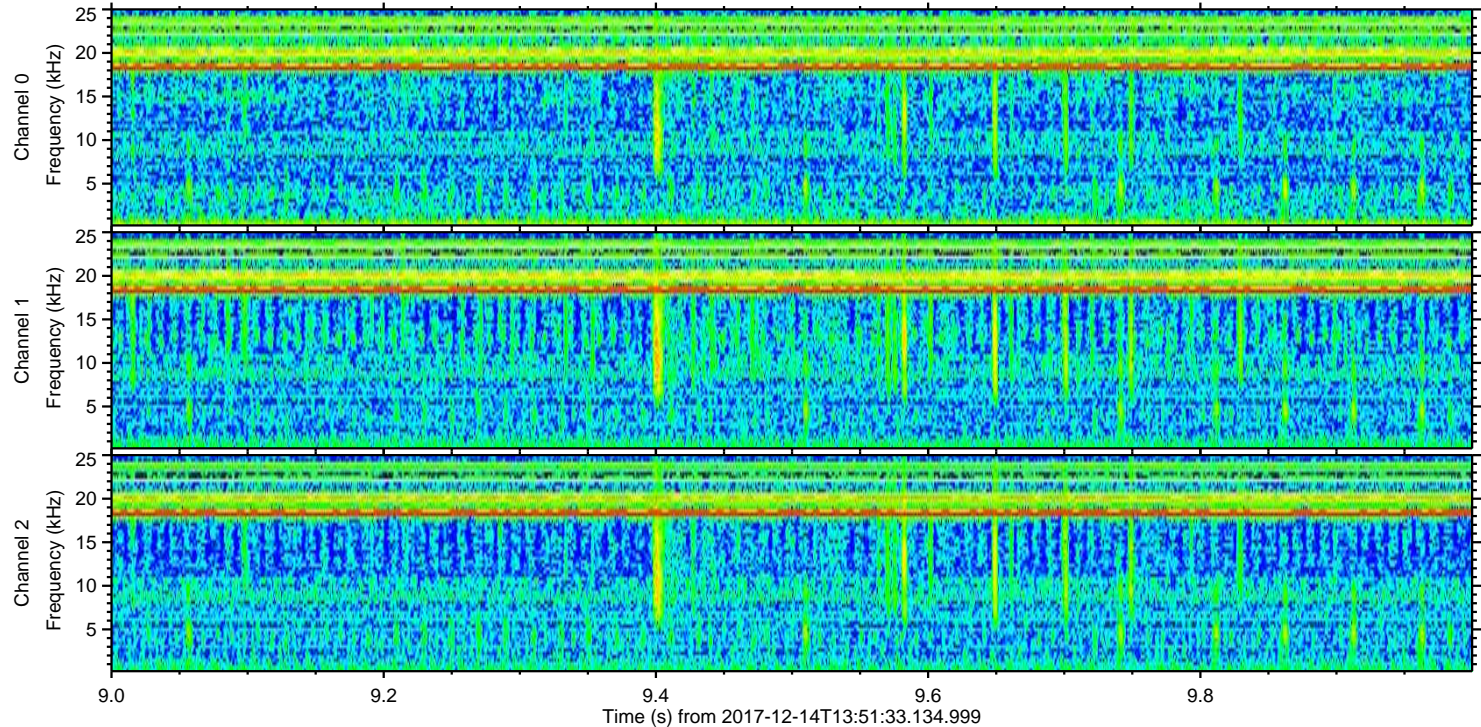
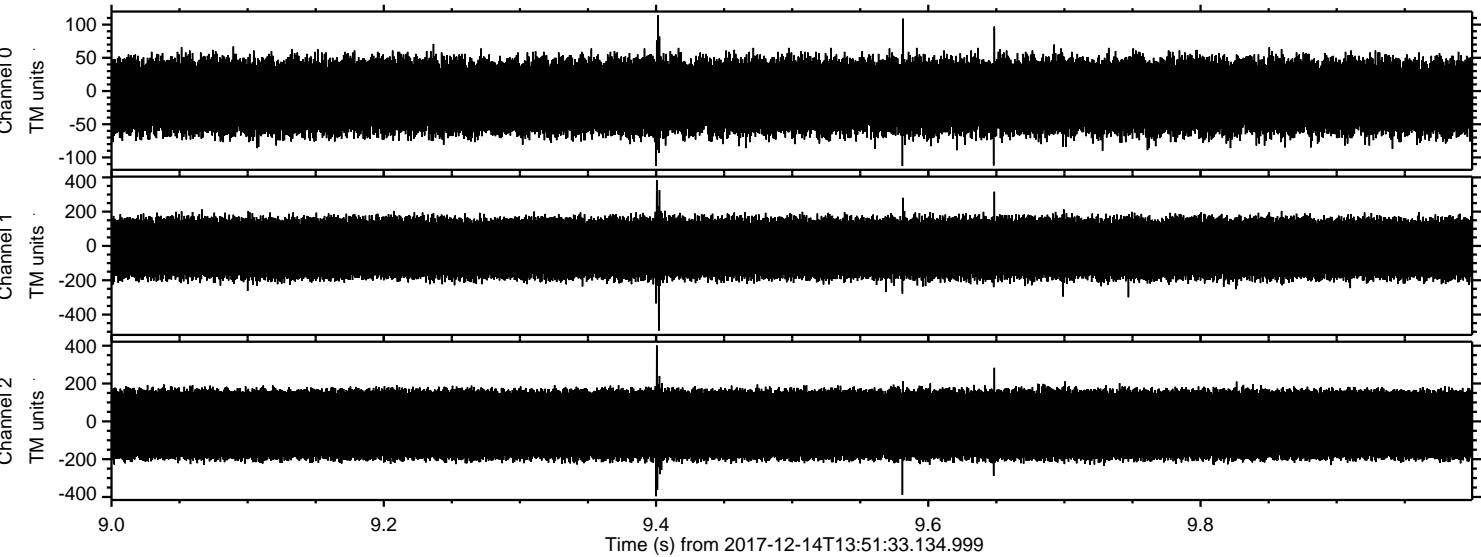
ELMAVAN 3D WAVEFORMS (Measured data sampled at 50 kHz) 50999 packets of 144 samples from 2017-12-14T13:51:33.134.999. Part 45/147

Processed Thu Dec 14 14:59:57 2017 by ELM ver.2012-10-06 from 001__elm20171214_135132__dat00.bin



ELMAVAN 3D WAVEFORMS (Measured data sampled at 50 kHz) 50999 packets of 144 samples from 2017-12-14T13:51:33.134.999. Part 10/147

Processed Thu Dec 14 14:59:58 2017 by ELM ver.2012-10-06 from 001__elm20171214_135132__dat00.bin



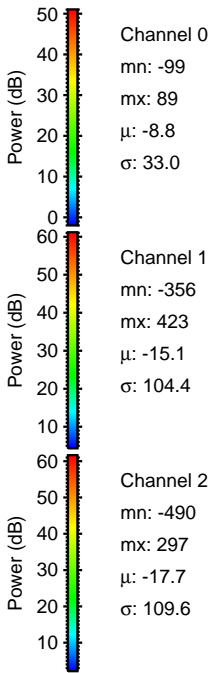
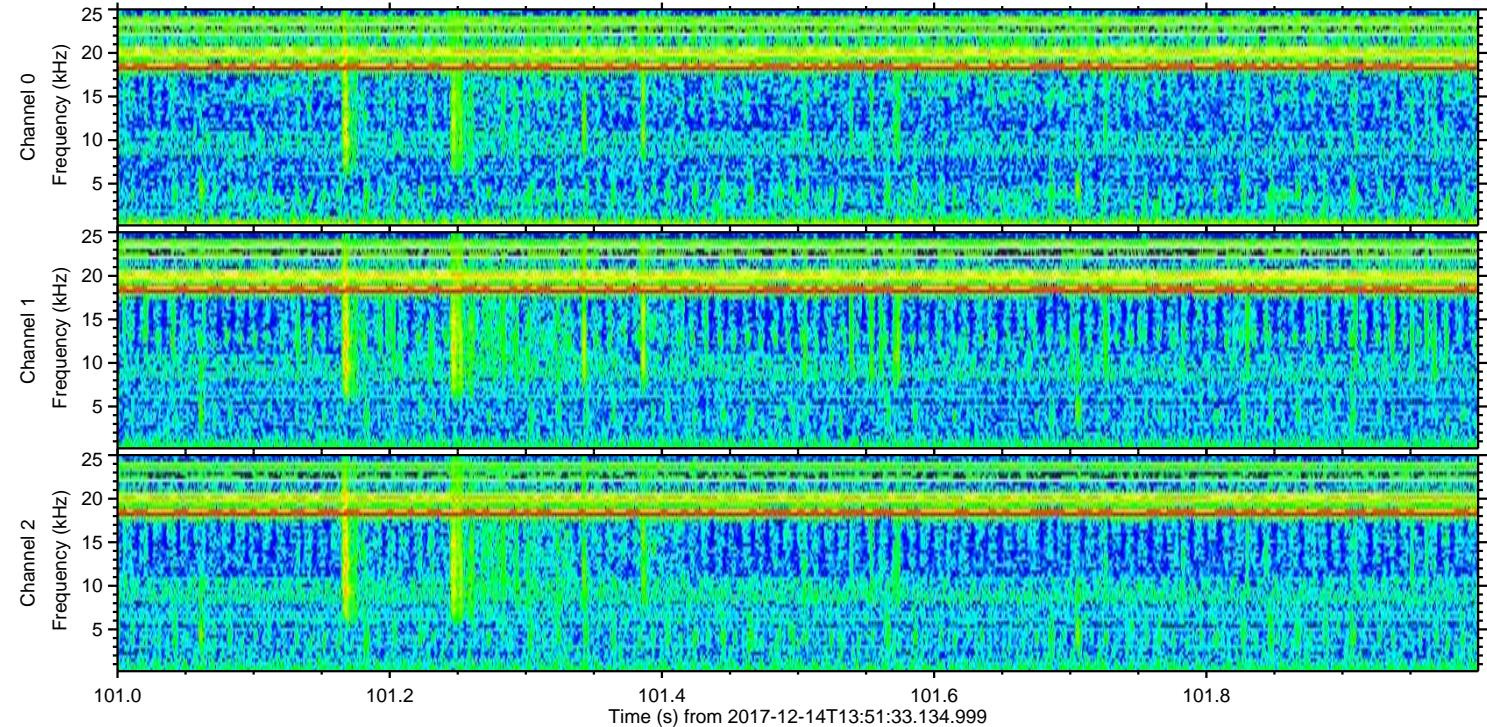
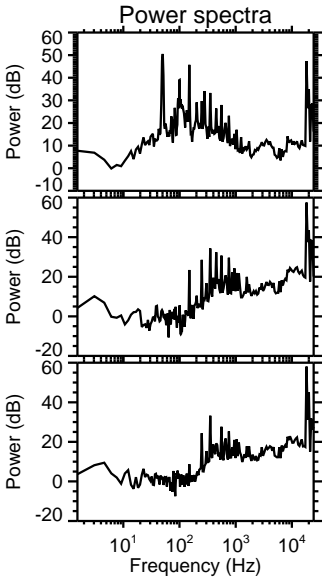
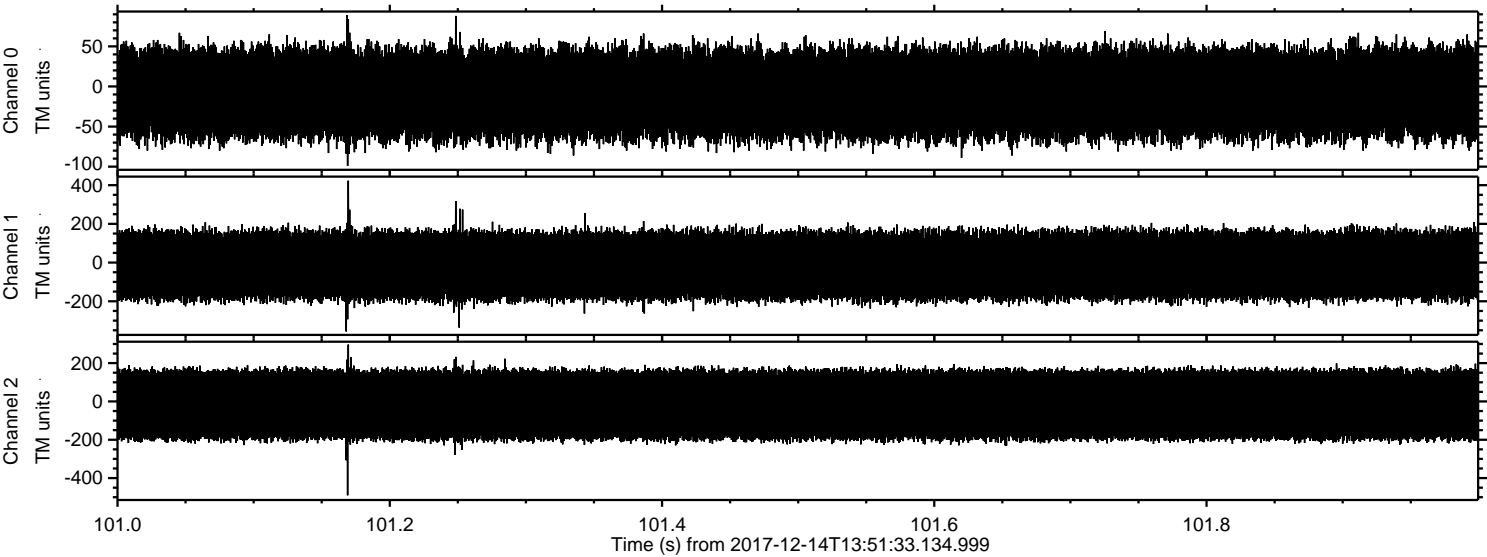
Channel 0
mn: -113
mx: 114
 μ : -8.7
 σ : 32.9

Channel 1
mn: -494
mx: 385
 μ : -15.0
 σ : 103.2

Channel 2
mn: -396
mx: 401
 μ : -17.6
 σ : 110.5

ELMAVAN 3D WAVEFORMS (Measured data sampled at 50 kHz) 50999 packets of 144 samples from 2017-12-14T13:51:33.134.999. Part 102/147

Processed Thu Dec 14 14:59:58 2017 by ELM ver.2012-10-06 from 001__elm20171214_135132__dat00.bin



ELMAVAN 3D WAVEFORMS (Measured data sampled at 50 kHz) 50999 packets of 144 samples from 2017-12-14T13:51:33.134.999. Part 111/147

Processed Thu Dec 14 14:59:59 2017 by ELM ver.2012-10-06 from 001__elm20171214_135132__dat00.bin

