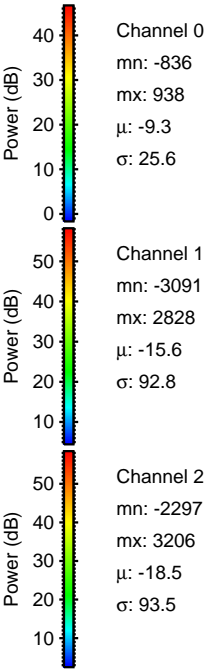
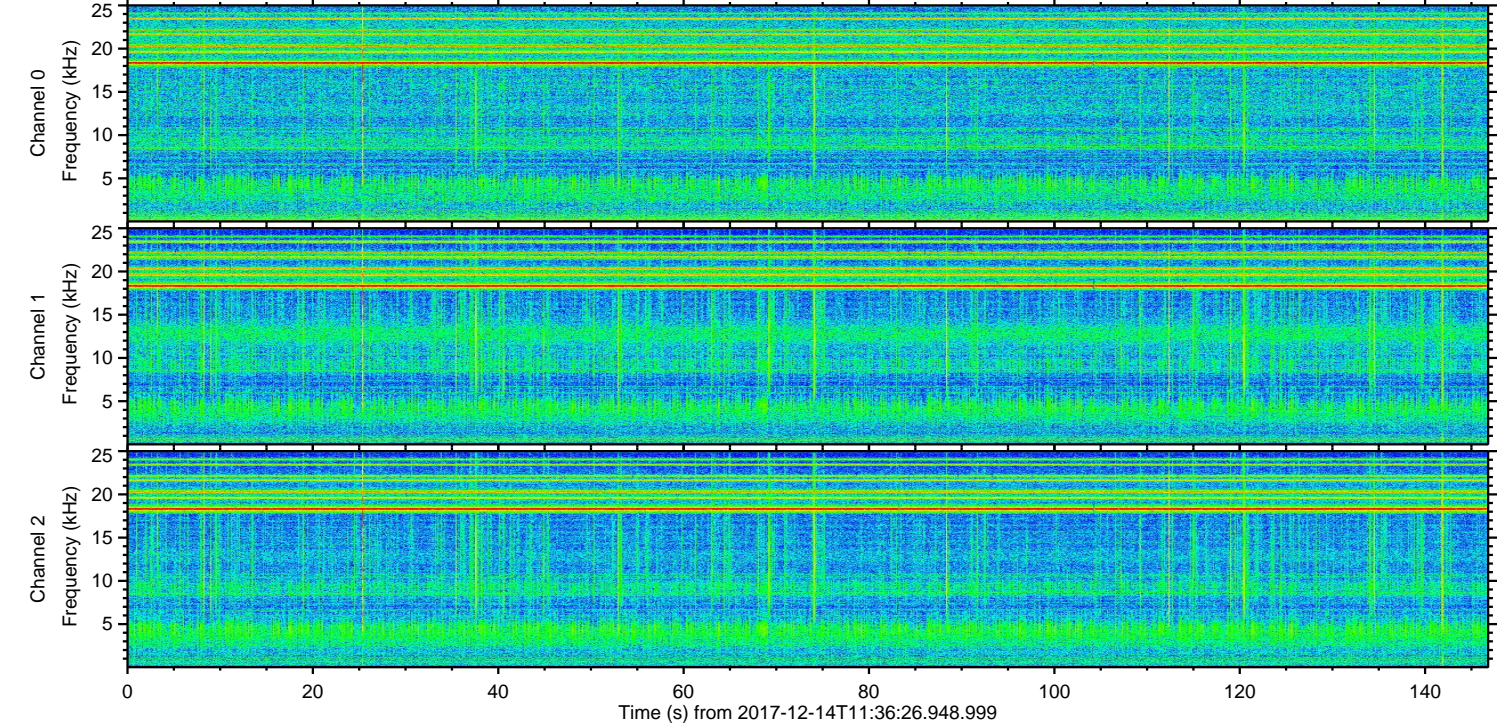
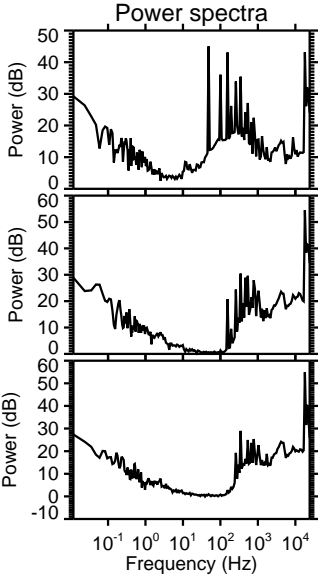
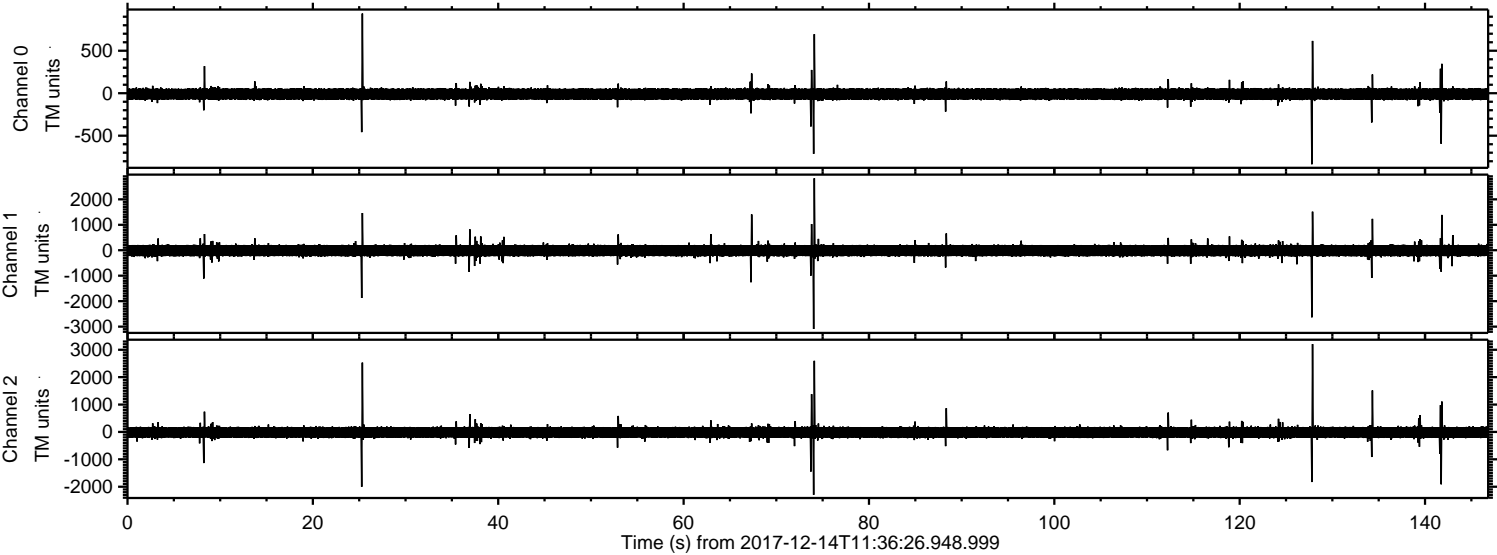


ELMAVAN 3D WAVEFORMS (Measured data sampled at 50 kHz) 51000 packets of 144 samples from 2017-12-14T11:36:26.948.999.

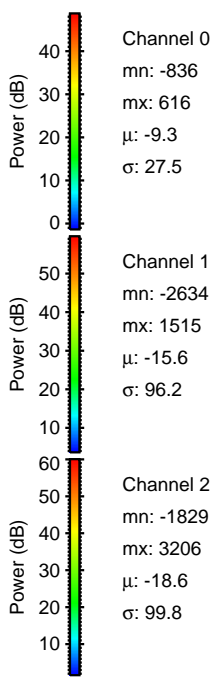
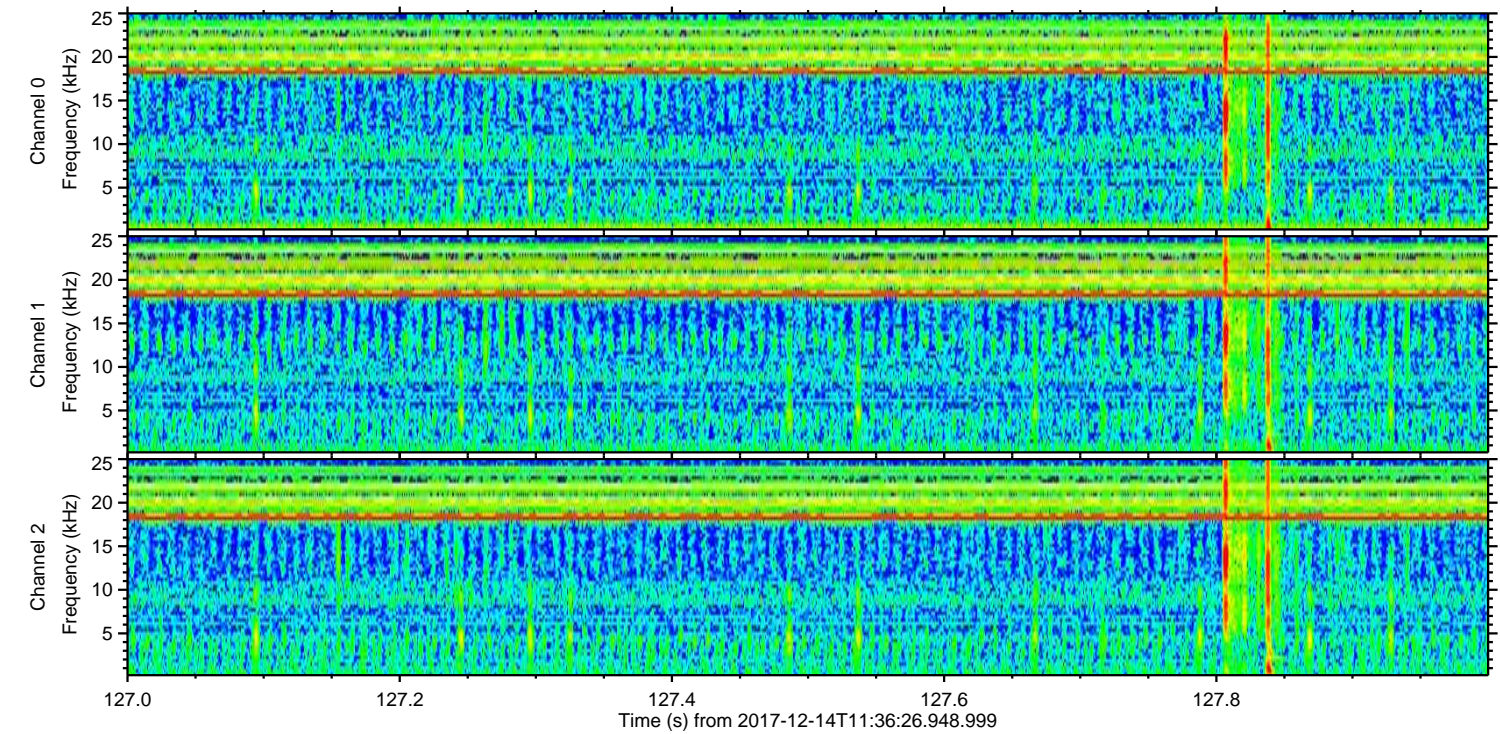
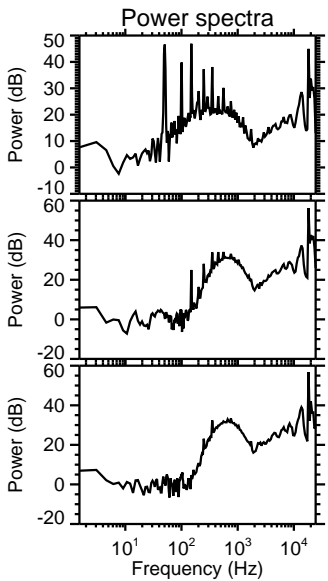
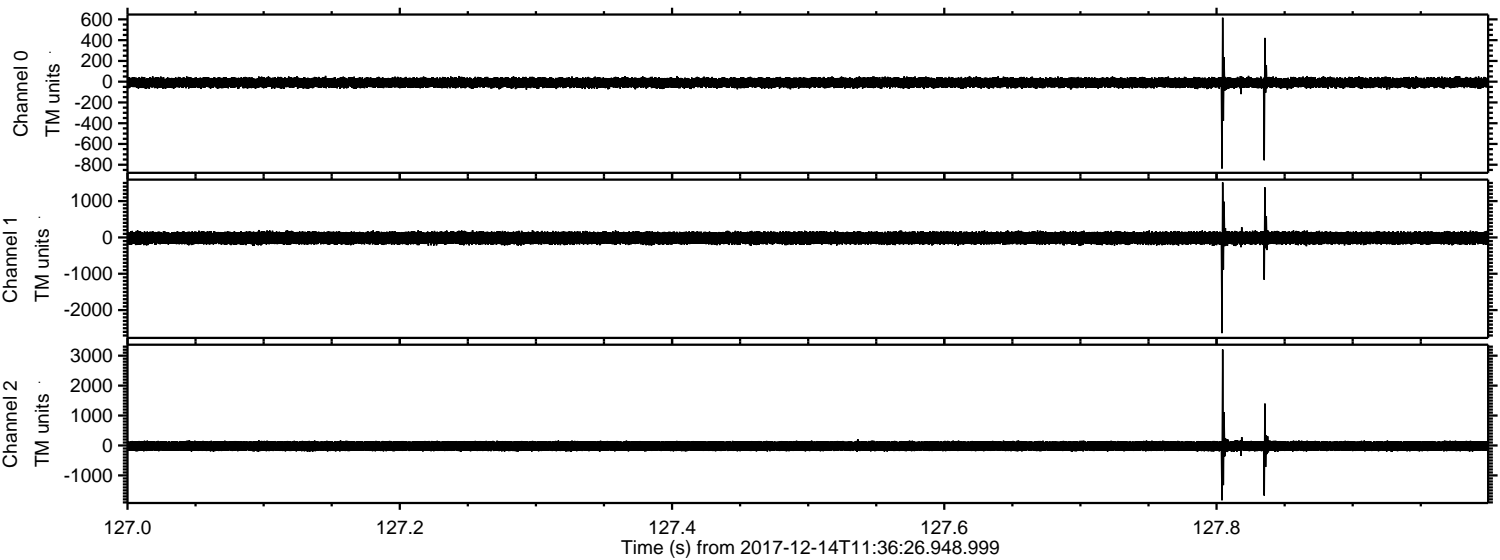
Processed Thu Dec 14 12:44:43 2017 by ELM ver.2012-10-06 from 001\_\_elm20171214\_113625\_\_dat00.bin





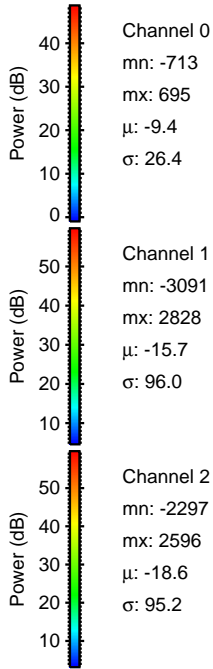
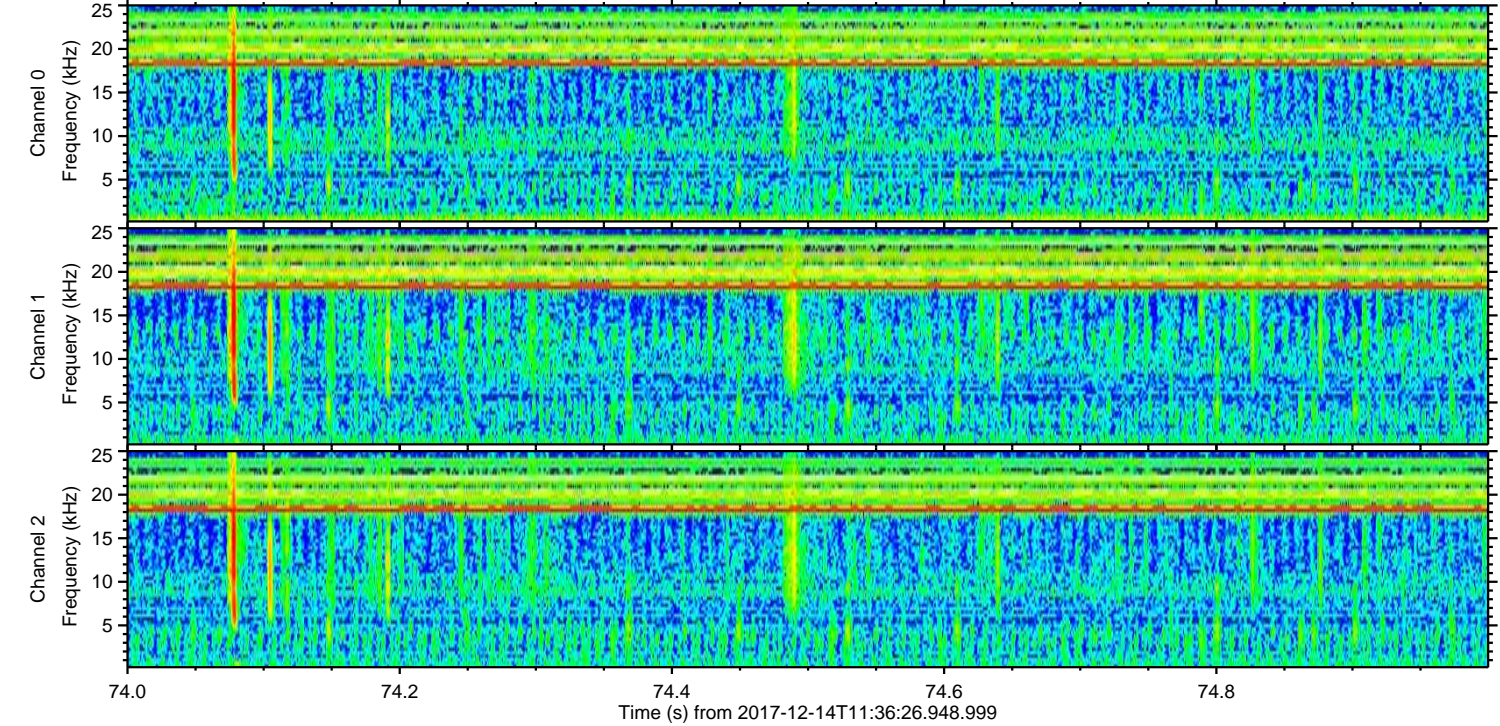
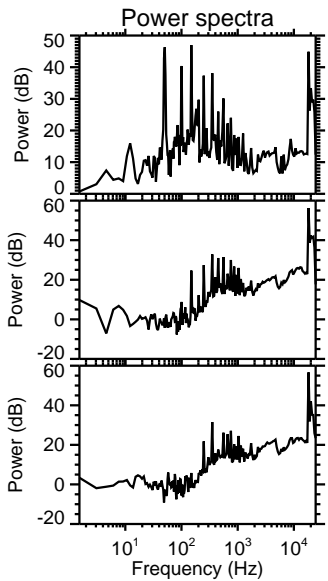
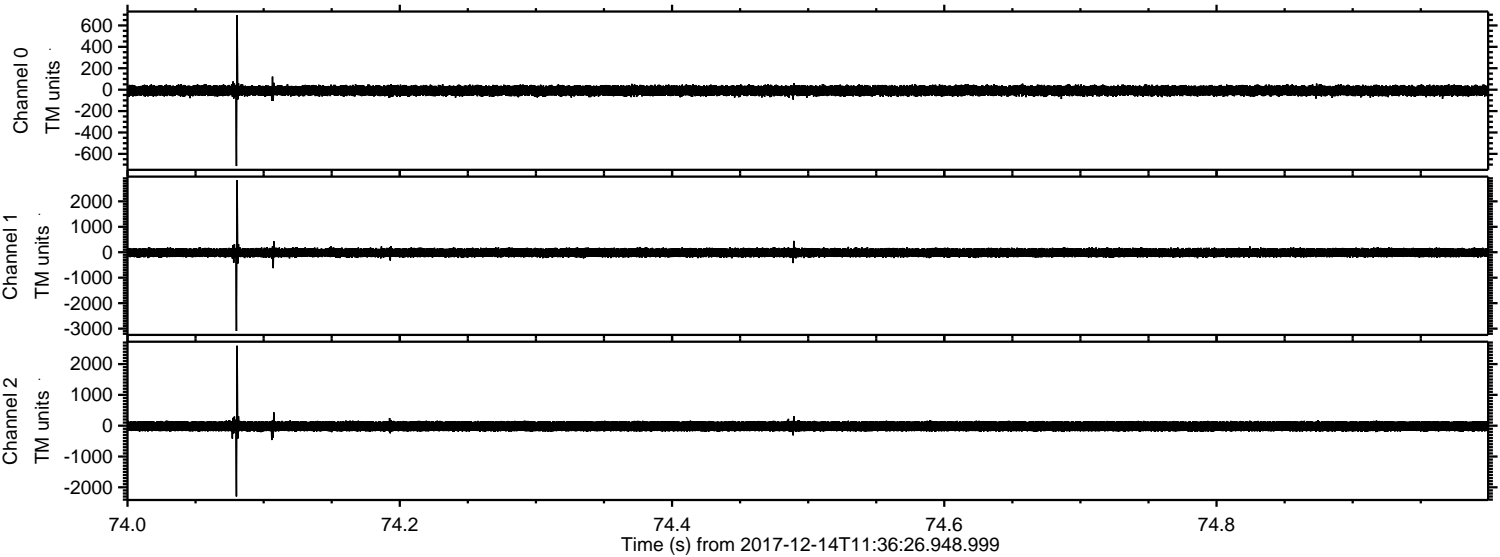
ELMAVAN 3D WAVEFORMS (Measured data sampled at 50 kHz) 51000 packets of 144 samples from 2017-12-14T11:36:26.948.999. Part 128/147

Processed Thu Dec 14 12:44:51 2017 by ELM ver.2012-10-06 from 001\_\_elm20171214\_113625\_\_dat00.bin





Processed Thu Dec 14 12:44:52 2017 by ELM ver.2012-10-06 from 001\_\_elm20171214\_113625\_\_dat00.bin



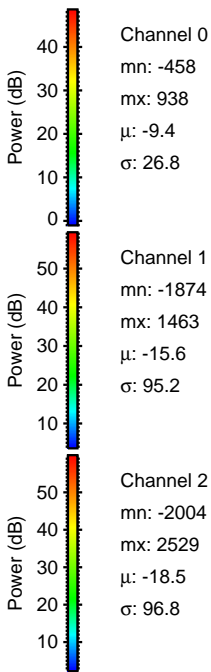
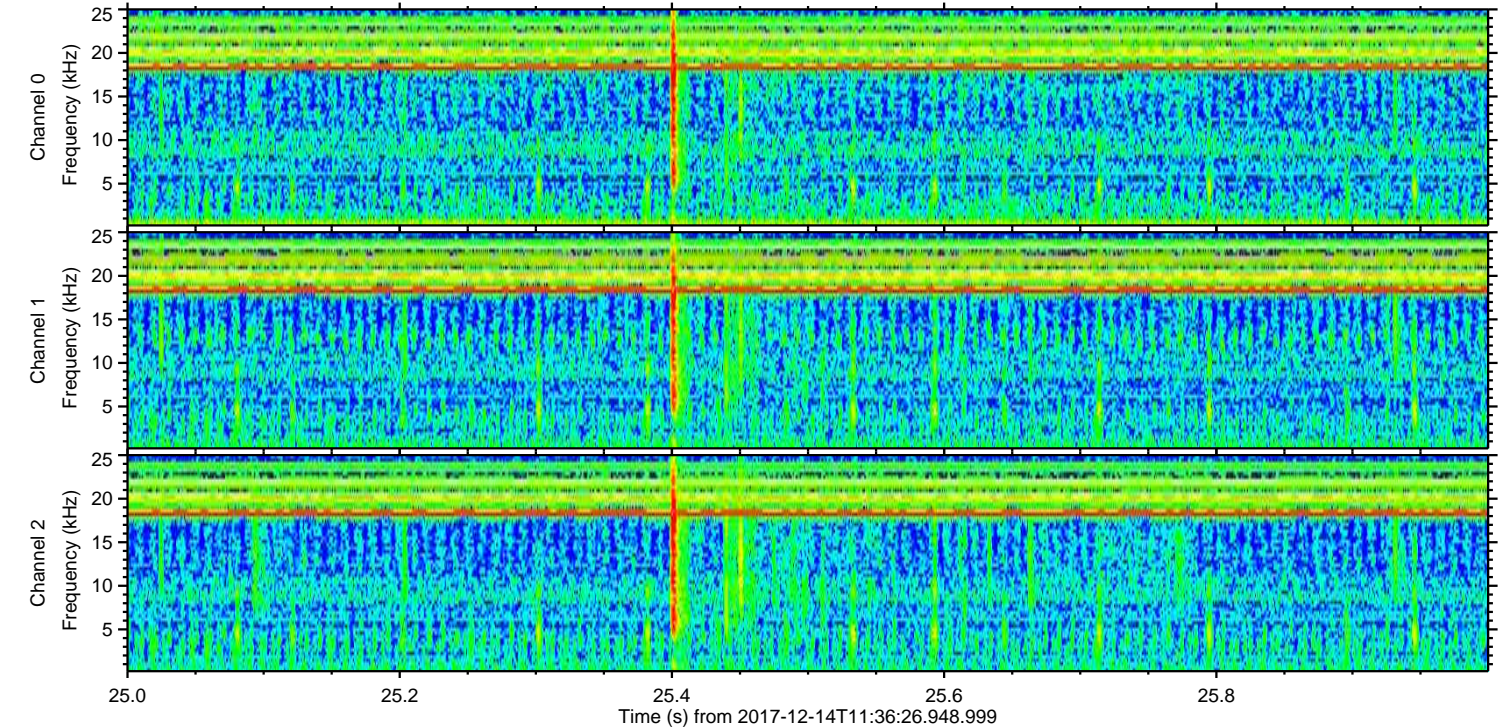
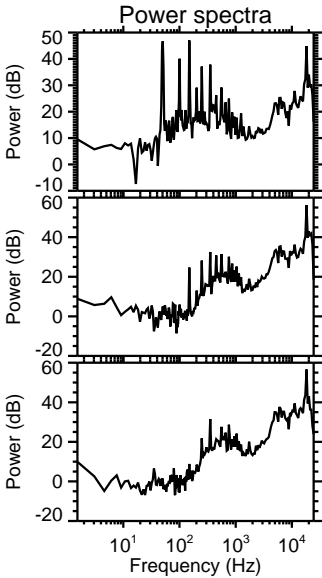
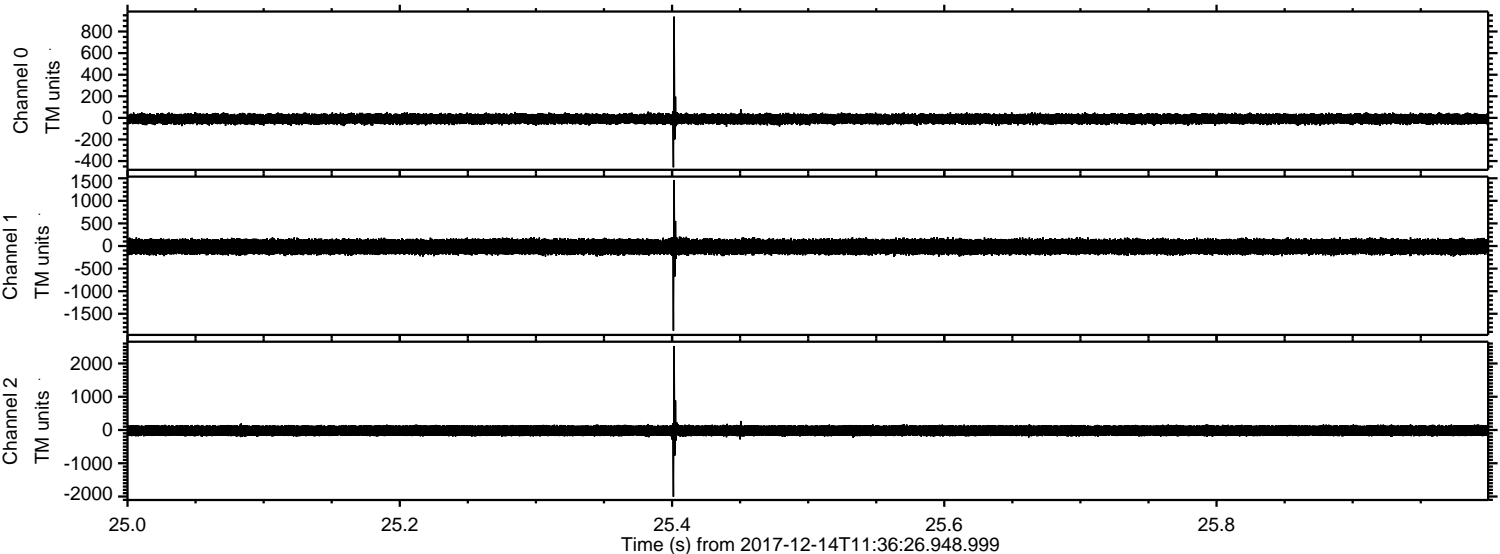
Channel 0  
mn: -713  
mx: 695  
 $\mu$ : -9.4  
 $\sigma$ : 26.4

Channel 1  
mn: -3091  
mx: 2828  
 $\mu$ : -15.7  
 $\sigma$ : 96.0

Channel 2  
mn: -2297  
mx: 2596  
 $\mu$ : -18.6  
 $\sigma$ : 95.2



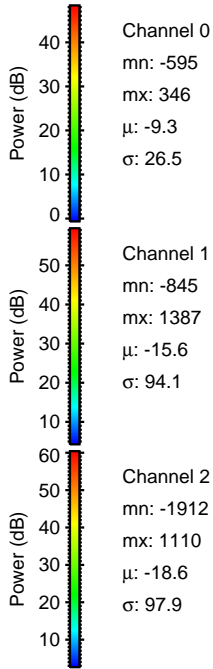
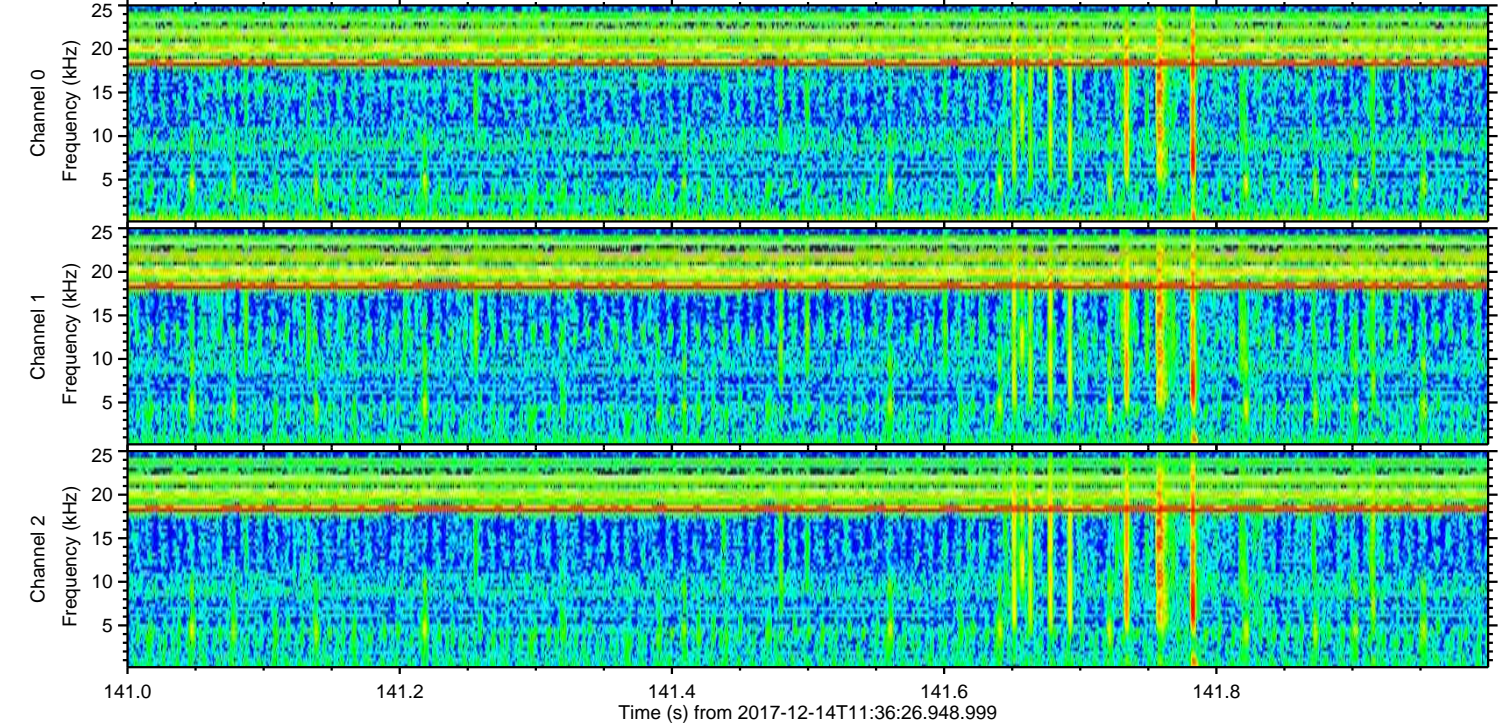
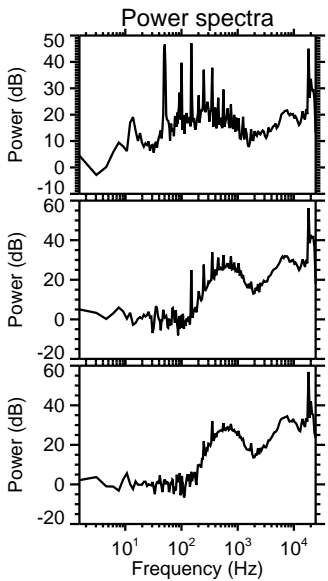
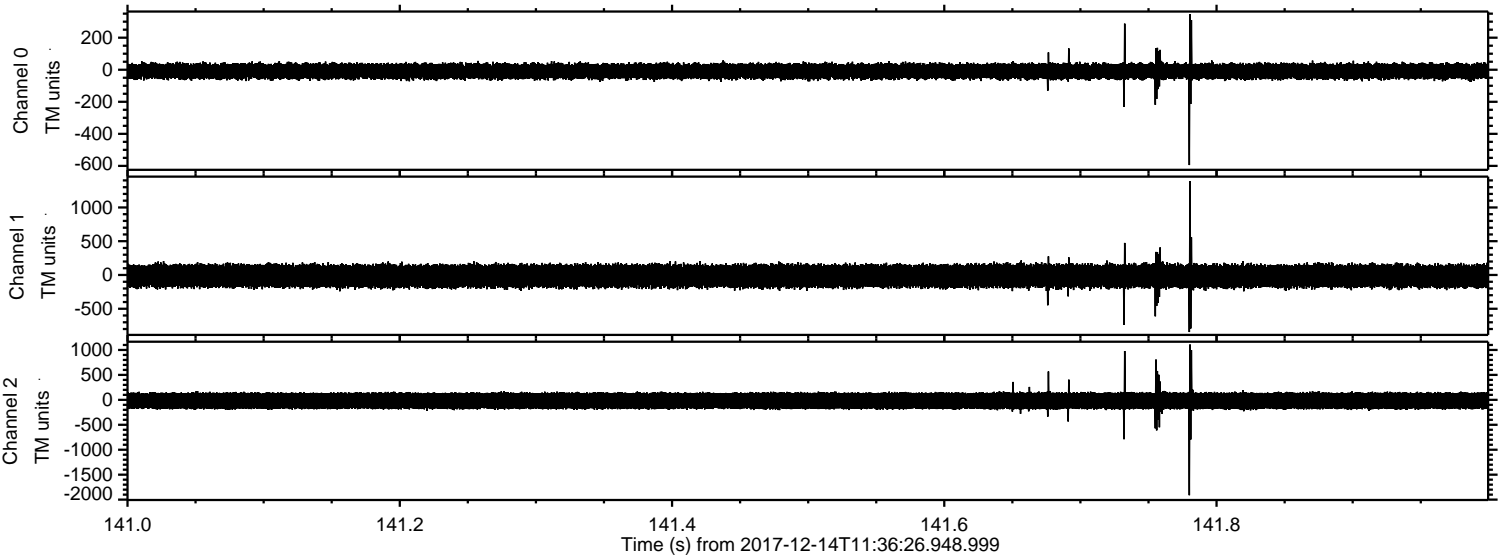
Processed Thu Dec 14 12:44:52 2017 by ELM ver.2012-10-06 from 001\_\_elm20171214\_113625\_\_dat00.bin





ELMAVAN 3D WAVEFORMS (Measured data sampled at 50 kHz) 51000 packets of 144 samples from 2017-12-14T11:36:26.948.999. Part 142/147

Processed Thu Dec 14 12:44:53 2017 by ELM ver.2012-10-06 from 001\_\_elm20171214\_113625\_\_dat00.bin



Channel 0  
mn: -595  
mx: 346  
 $\mu$ : -9.3  
 $\sigma$ : 26.5

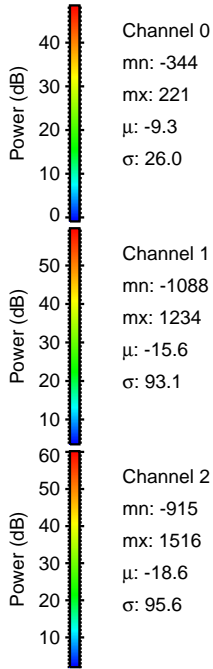
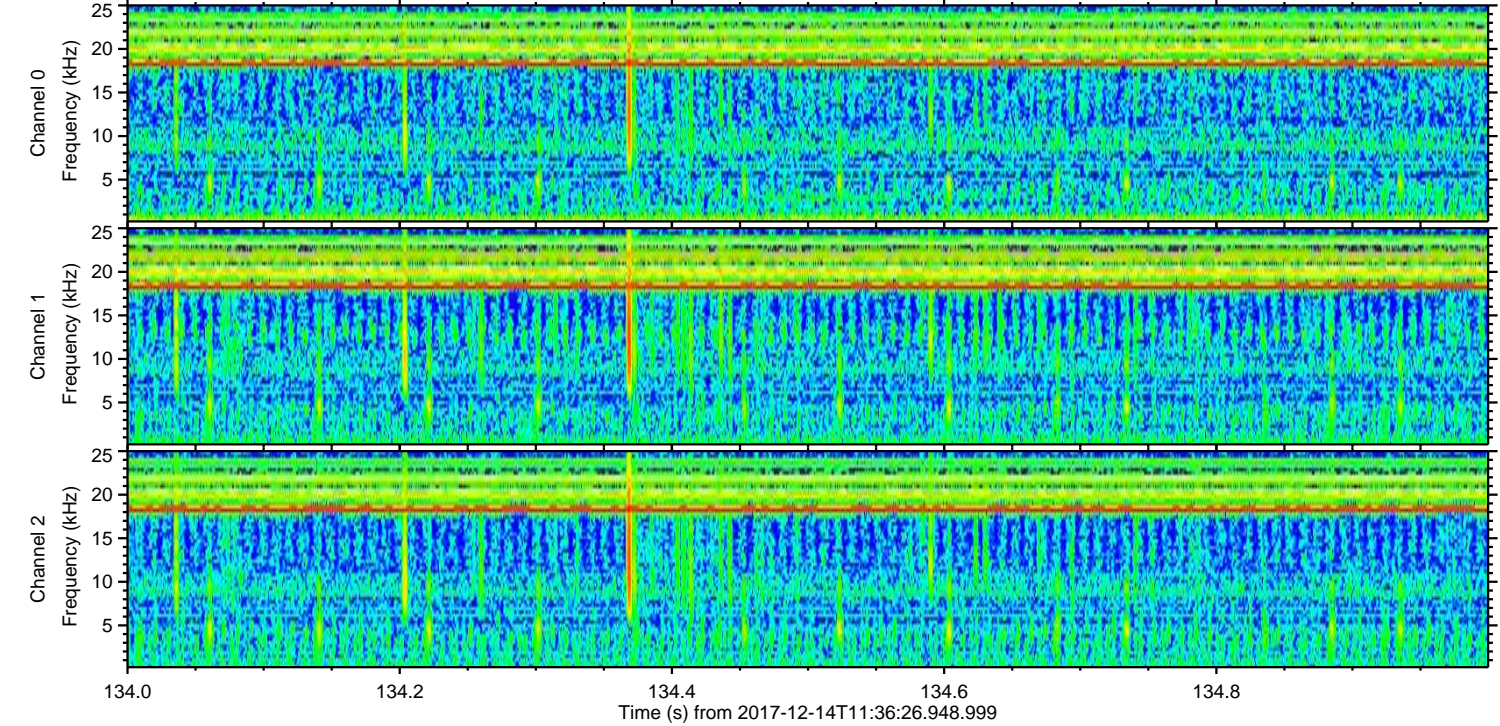
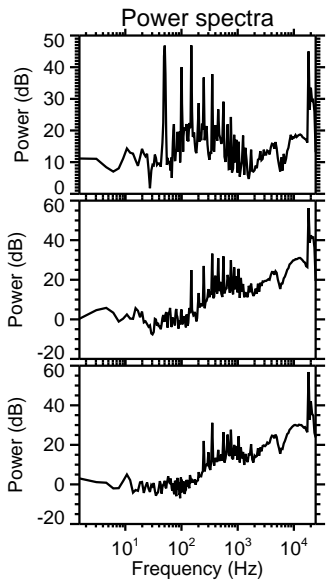
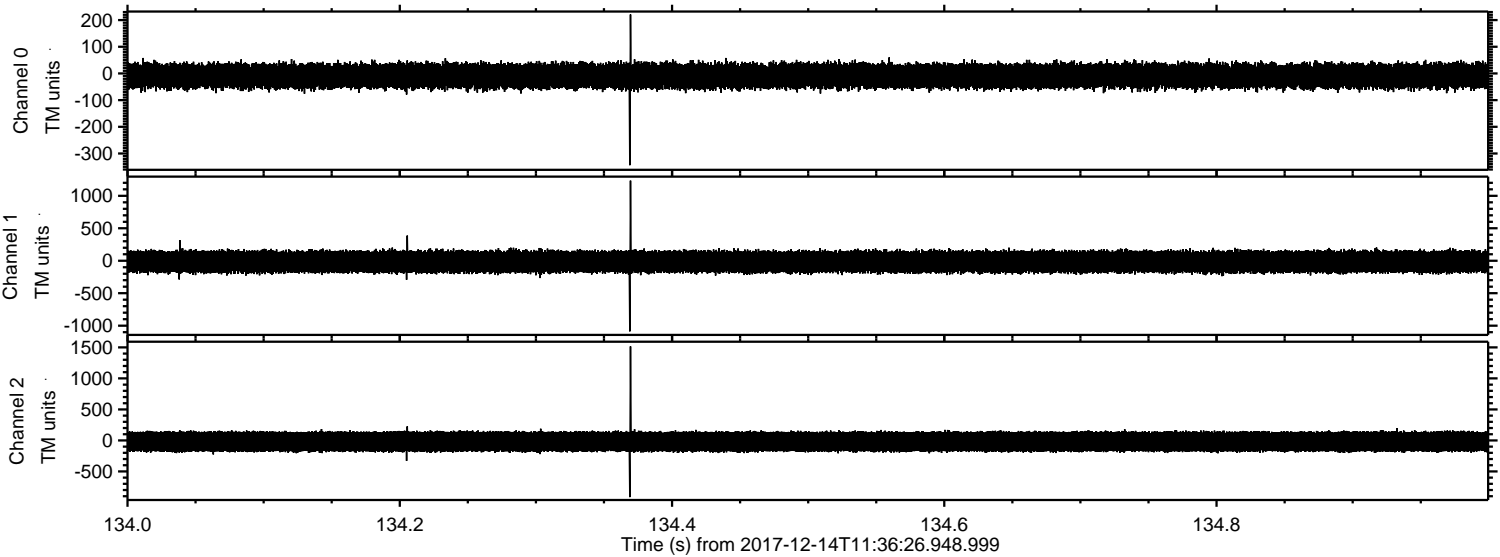
Channel 1  
mn: -845  
mx: 1387  
 $\mu$ : -15.6  
 $\sigma$ : 94.1

Channel 2  
mn: -1912  
mx: 1110  
 $\mu$ : -18.6  
 $\sigma$ : 97.9



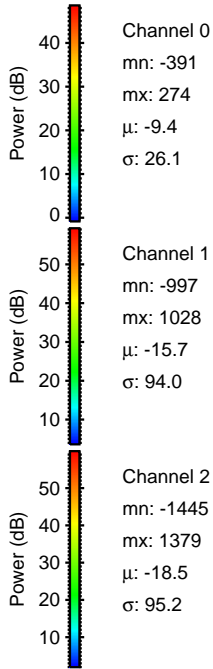
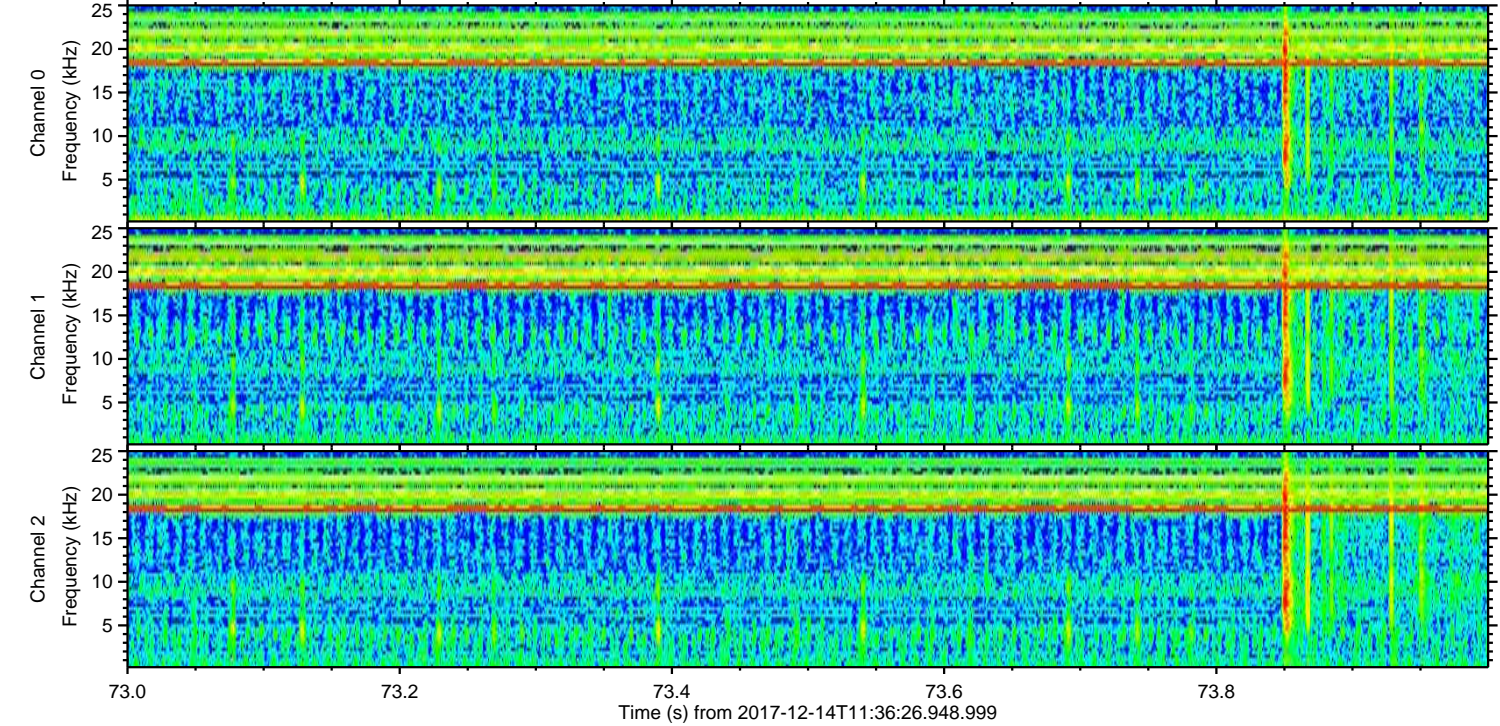
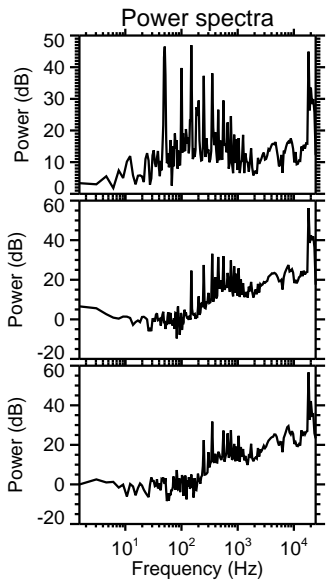
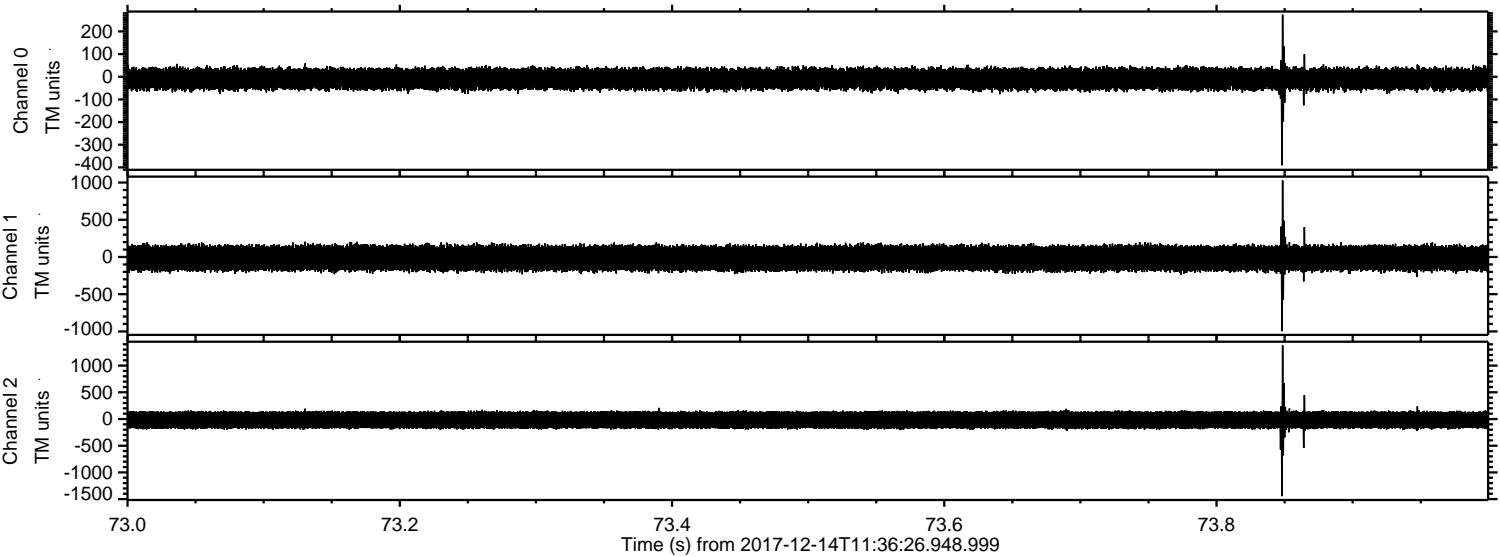
ELMAVAN 3D WAVEFORMS (Measured data sampled at 50 kHz) 51000 packets of 144 samples from 2017-12-14T11:36:26.948.999. Part 135/147

Processed Thu Dec 14 12:44:54 2017 by ELM ver.2012-10-06 from 001\_\_elm20171214\_113625\_\_dat00.bin



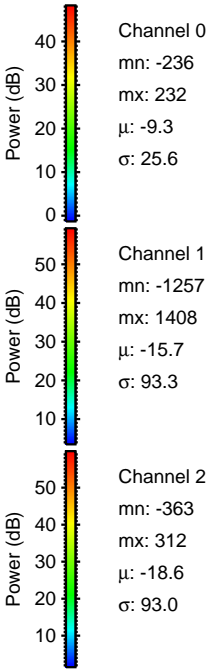
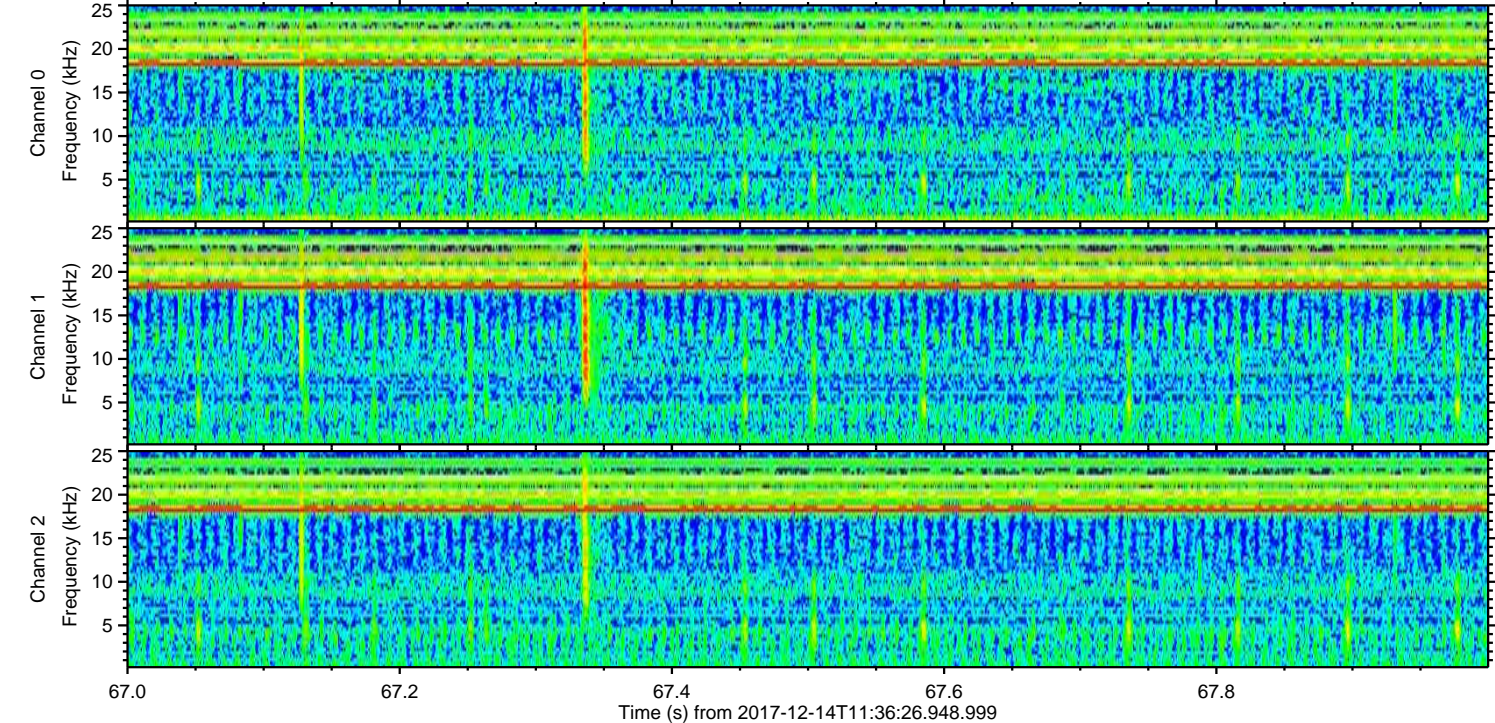
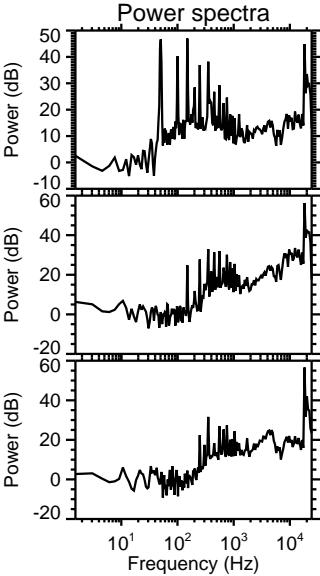
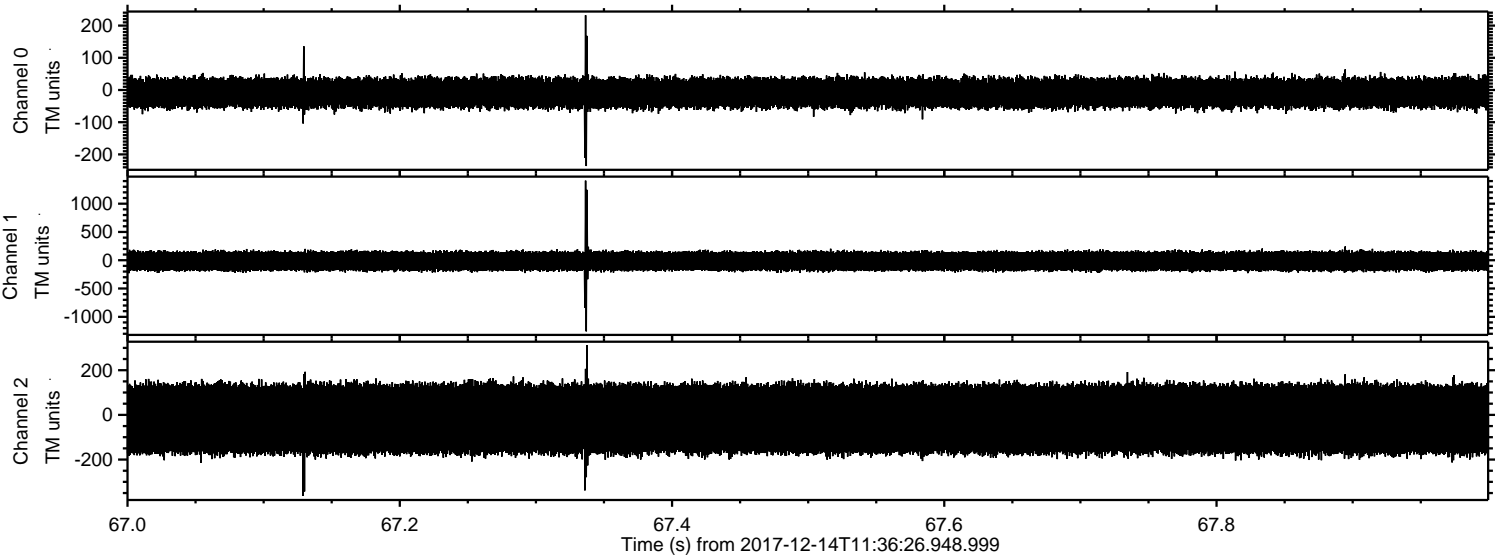


Processed Thu Dec 14 12:44:55 2017 by ELM ver.2012-10-06 from 001\_\_elm20171214\_113625\_\_dat00.bin





Processed Thu Dec 14 12:44:56 2017 by ELM ver.2012-10-06 from 001\_\_elm20171214\_113625\_\_dat00.bin



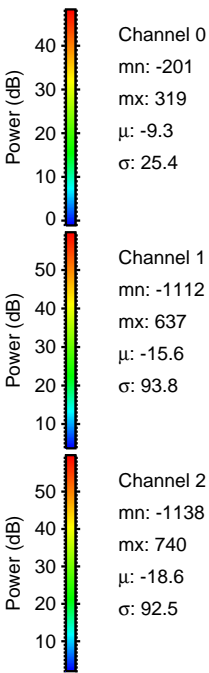
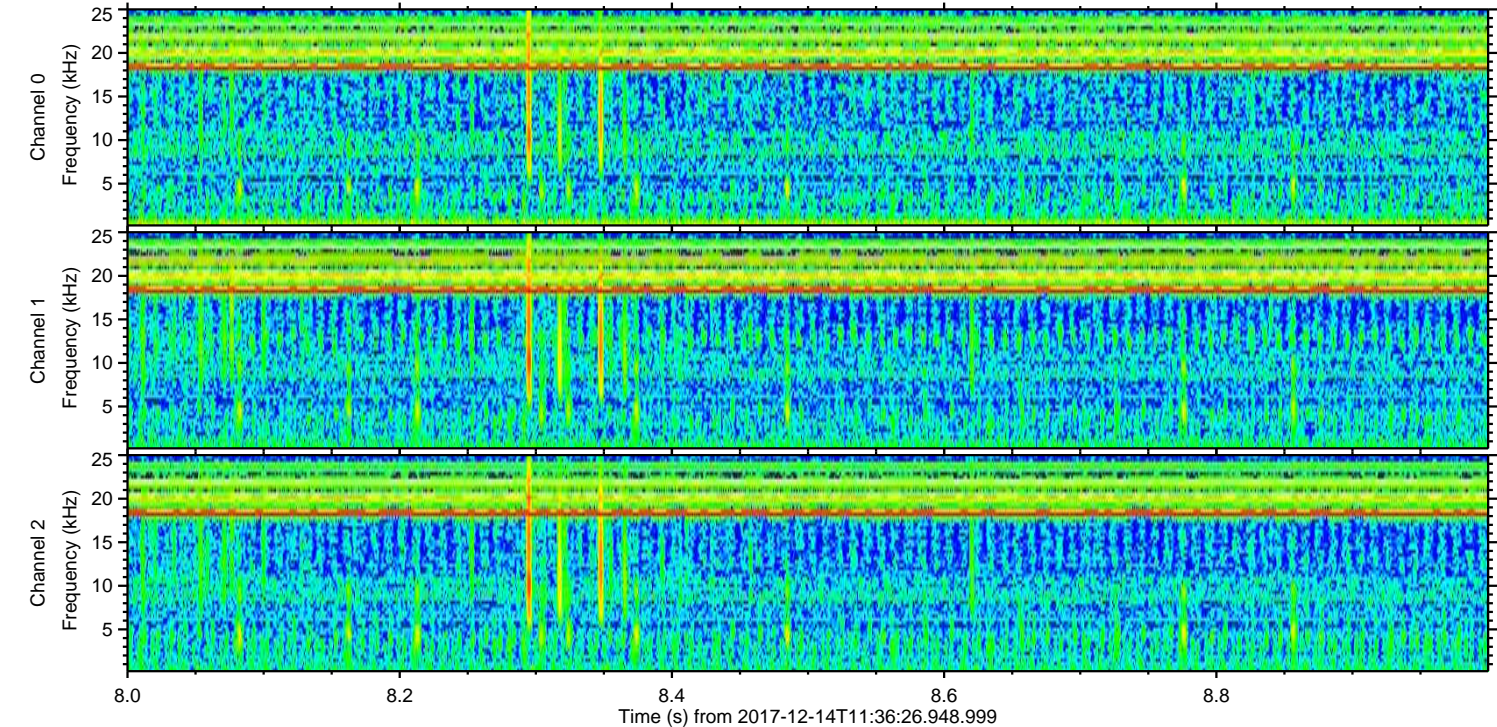
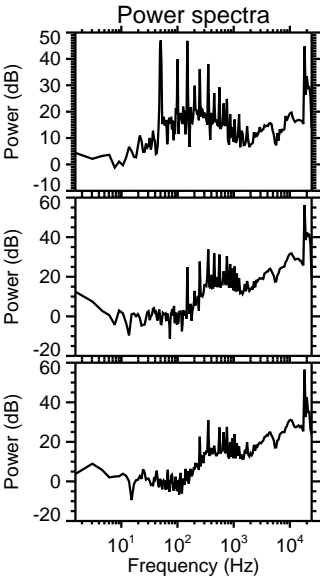
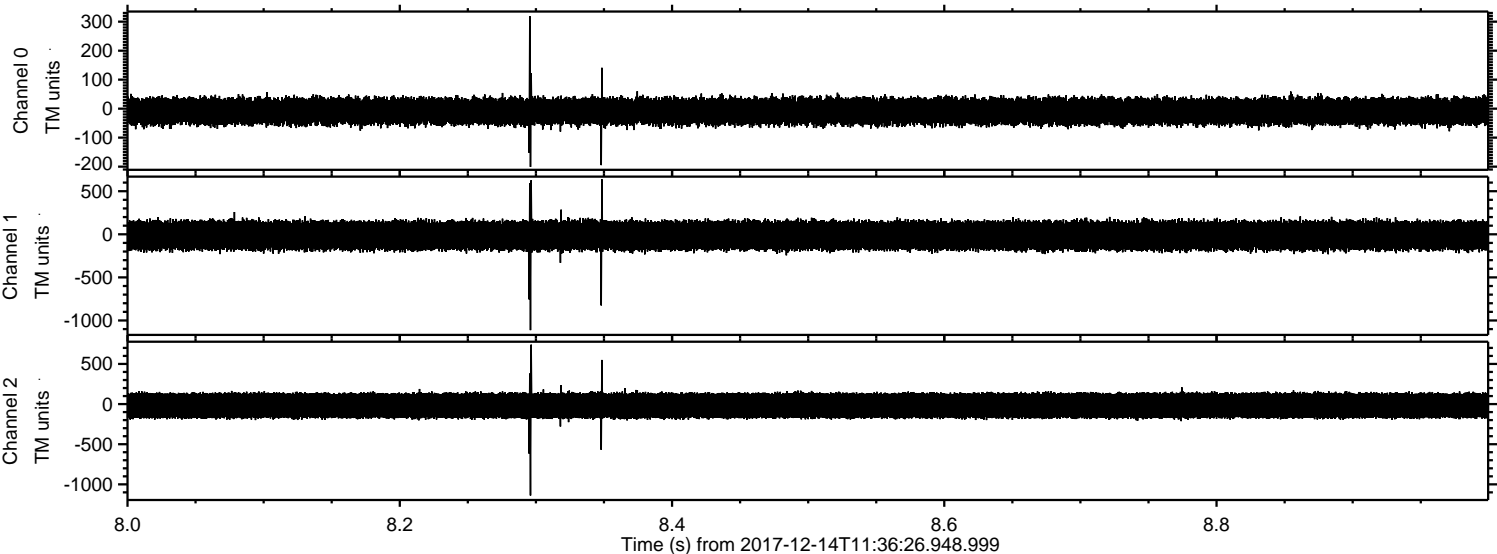
Channel 0  
mn: -236  
mx: 232  
 $\mu$ : -9.3  
 $\sigma$ : 25.6

Channel 1  
mn: -1257  
mx: 1408  
 $\mu$ : -15.7  
 $\sigma$ : 93.3

Channel 2  
mn: -363  
mx: 312  
 $\mu$ : -18.6  
 $\sigma$ : 93.0

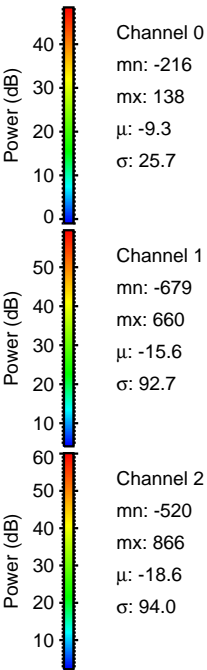
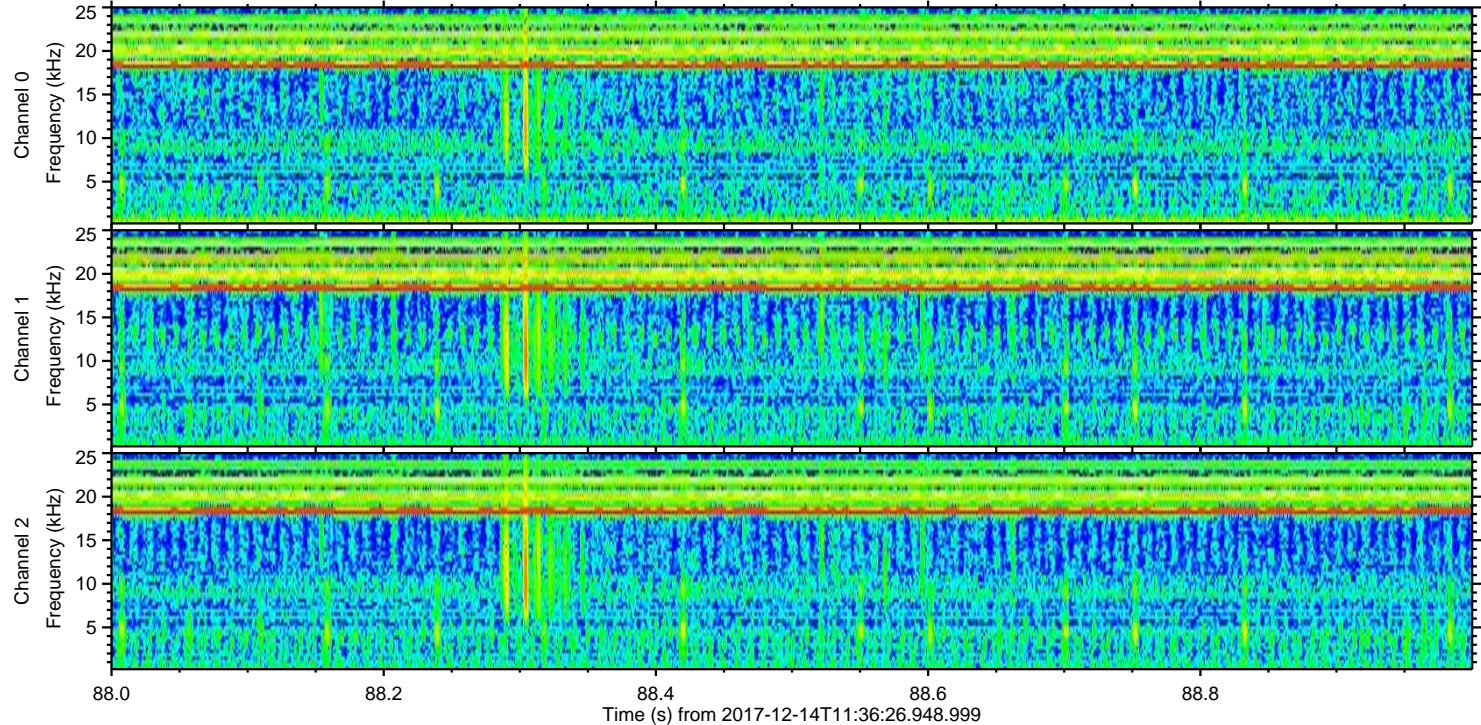
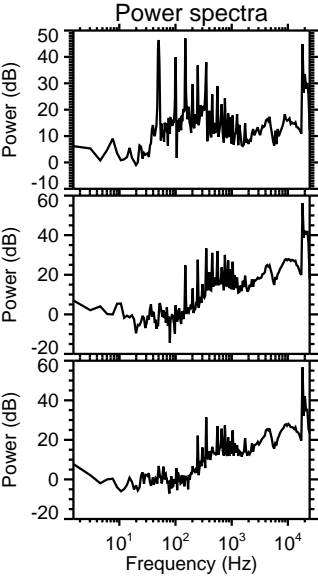
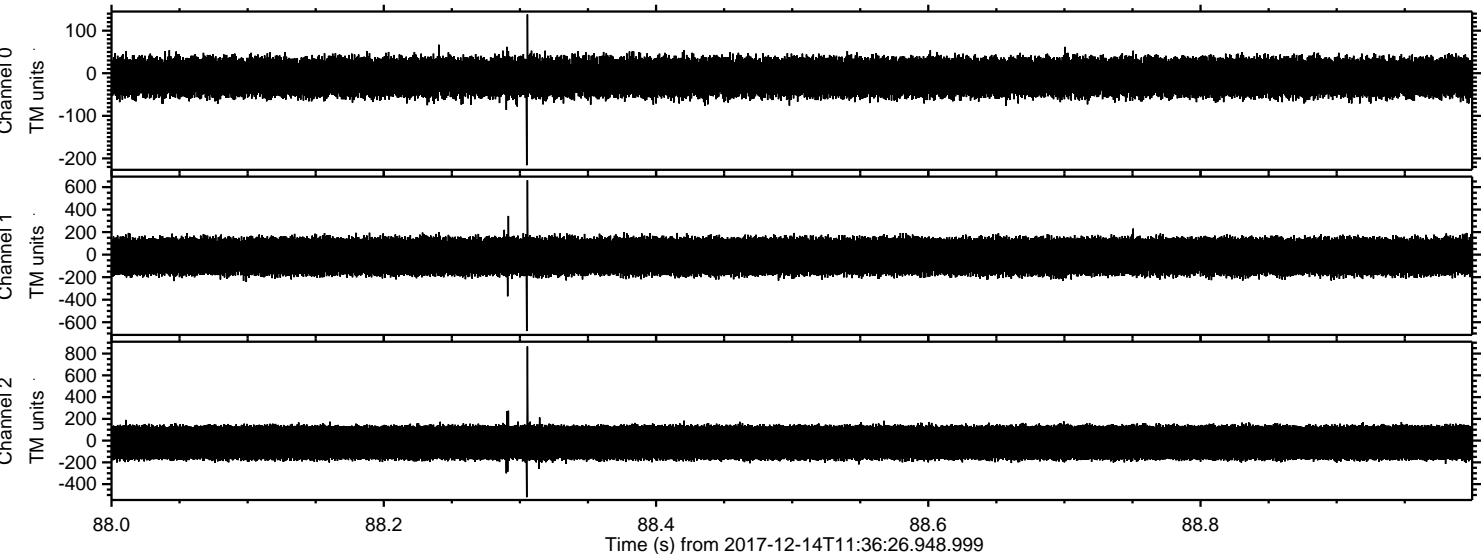


Processed Thu Dec 14 12:44:56 2017 by ELM ver.2012-10-06 from 001\_\_elm20171214\_113625\_\_dat00.bin





Processed Thu Dec 14 12:44:57 2017 by ELM ver.2012-10-06 from 001\_\_elm20171214\_113625\_\_dat00.bin





Processed Thu Dec 14 12:44:58 2017 by ELM ver.2012-10-06 from 001\_\_elm20171214\_113625\_\_dat00.bin

