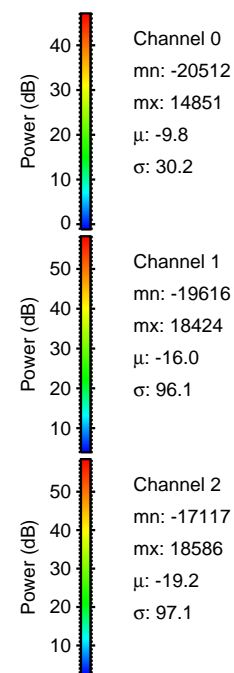
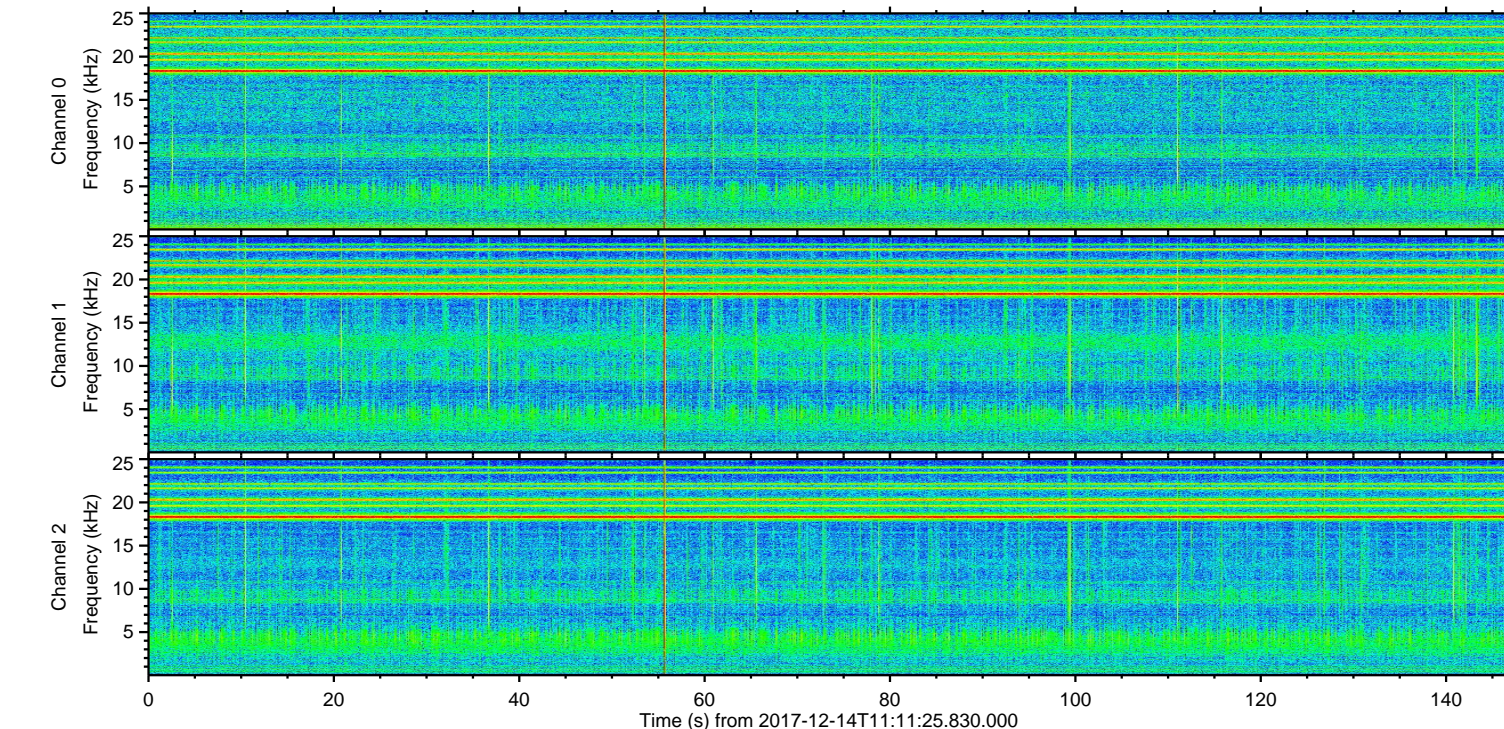
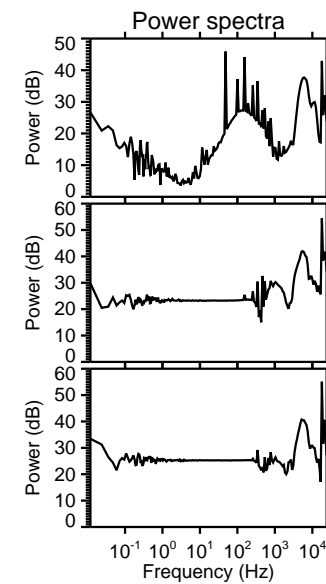
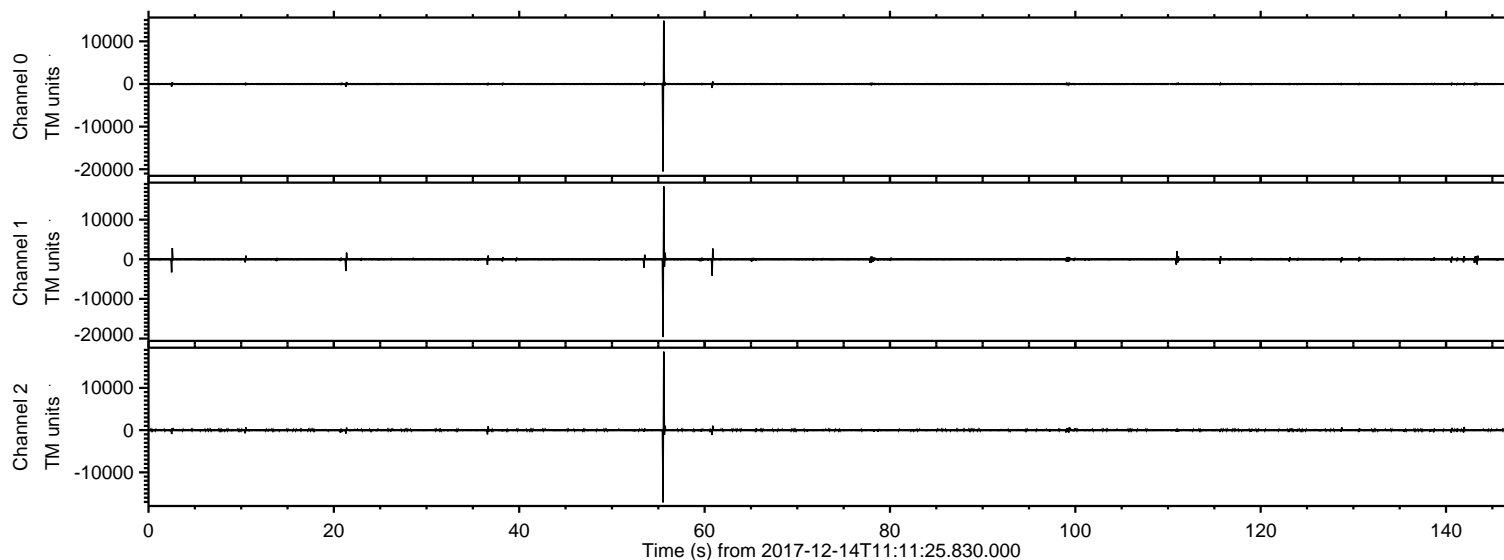
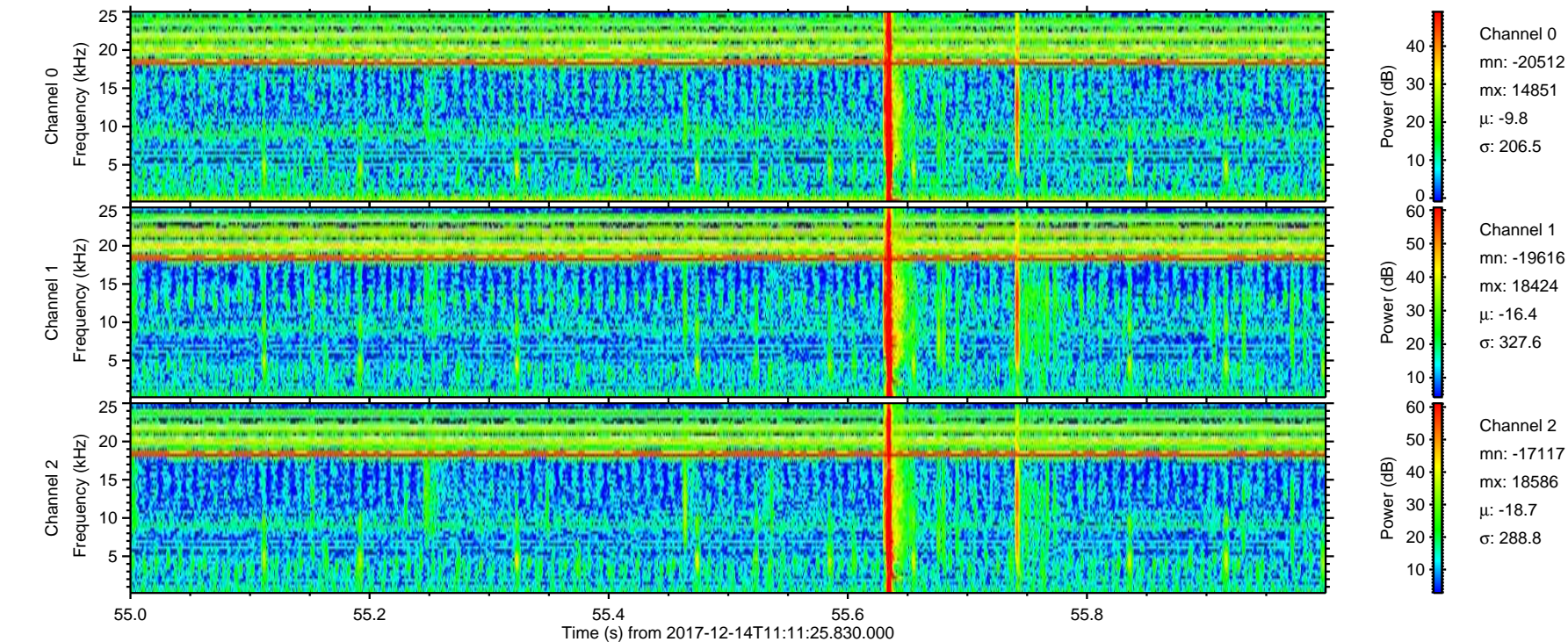
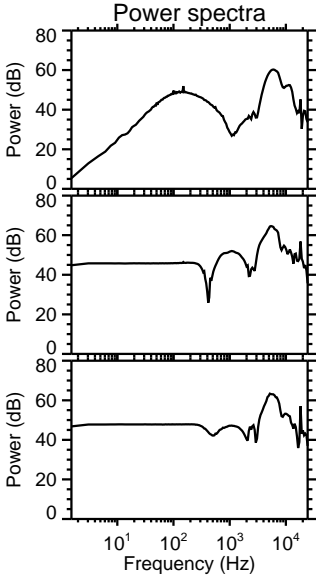
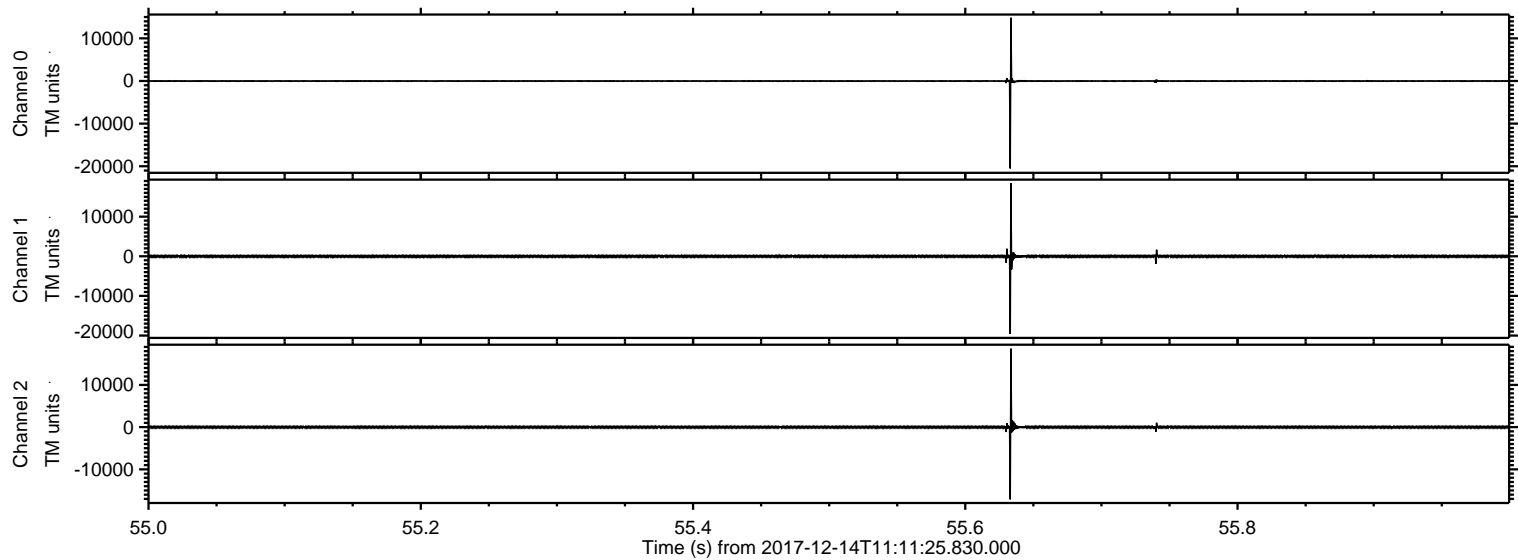


ELMAVAN 3D WAVEFORMS (Measured data sampled at 50 kHz) 51000 packets of 144 samples from 2017-12-14T11:11:25.830.000.

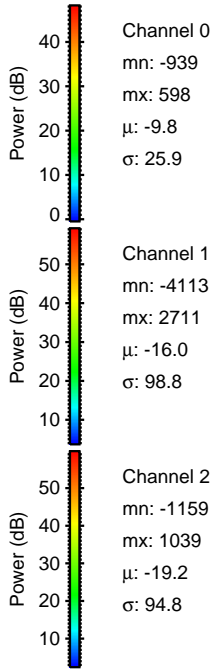
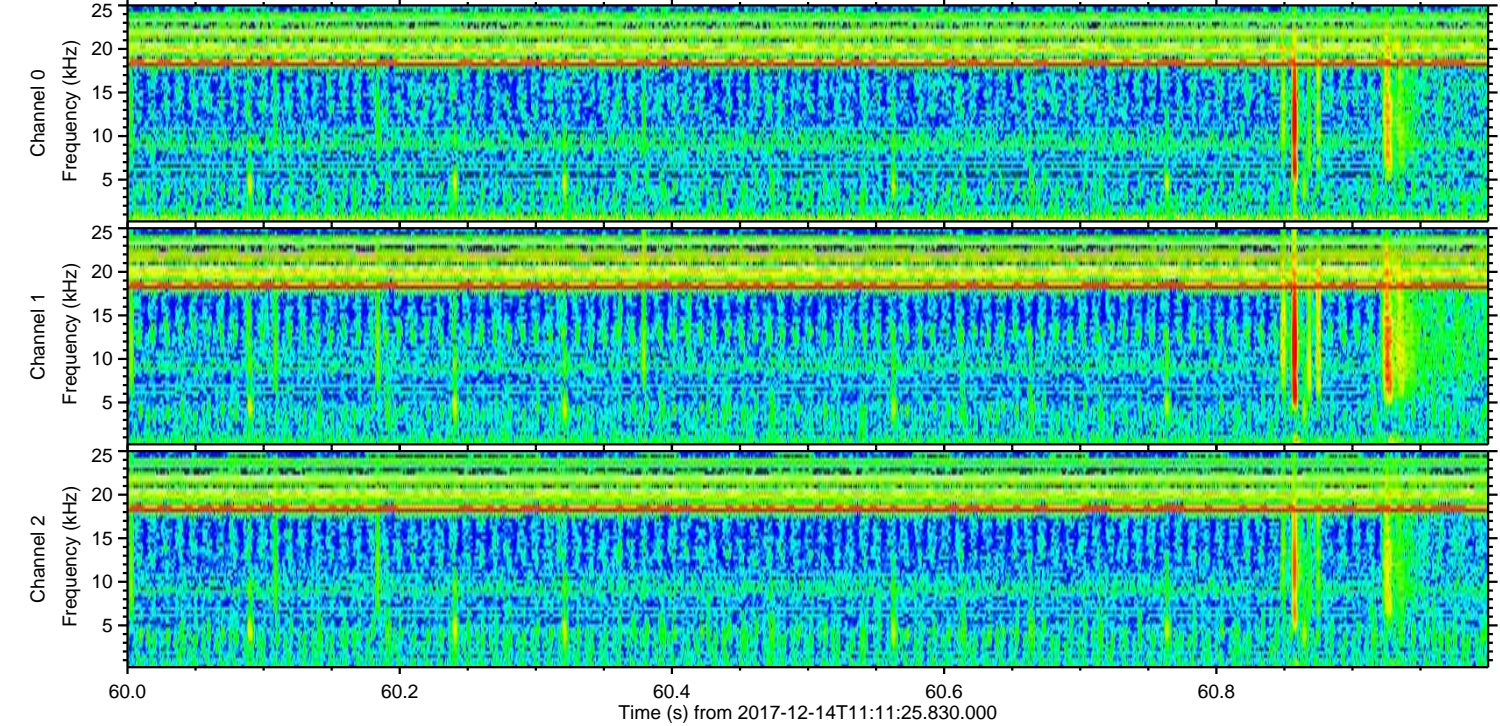
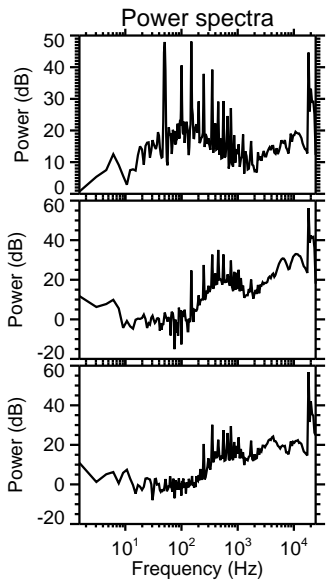
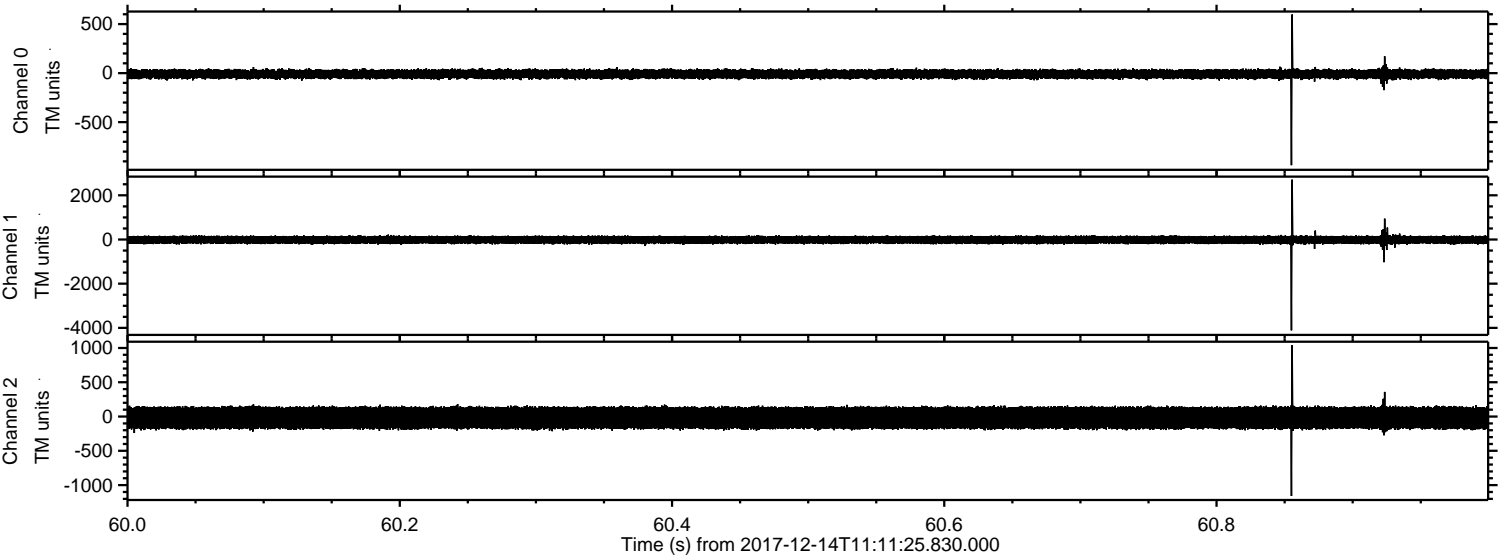
Processed Thu Dec 14 12:19:44 2017 by ELM ver.2012-10-06 from 001__elm20171214_111124__dat00.bin



Processed Thu Dec 14 12:19:52 2017 by ELM ver.2012-10-06 from 001__elm20171214_111124__dat00.bin



Processed Thu Dec 14 12:19:52 2017 by ELM ver.2012-10-06 from 001__elm20171214_111124__dat00.bin



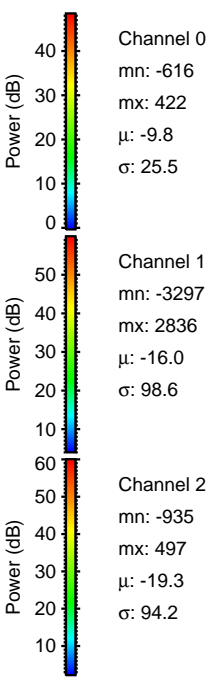
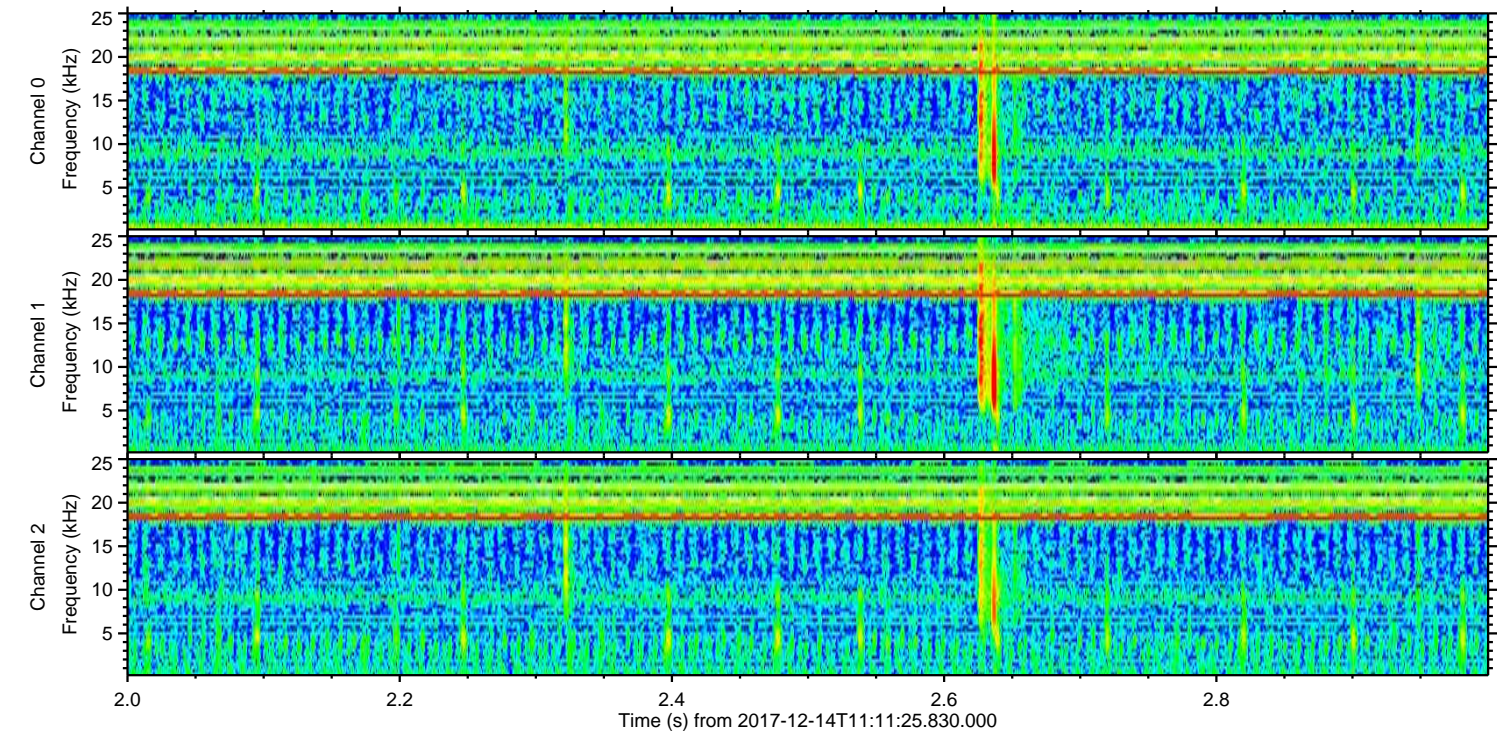
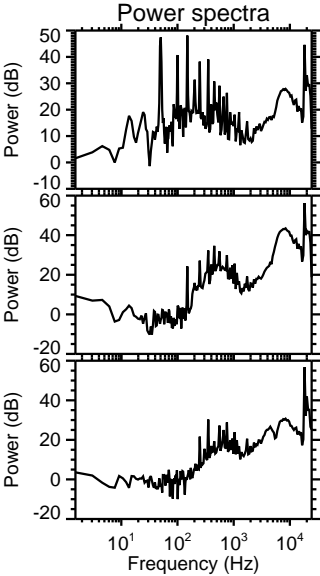
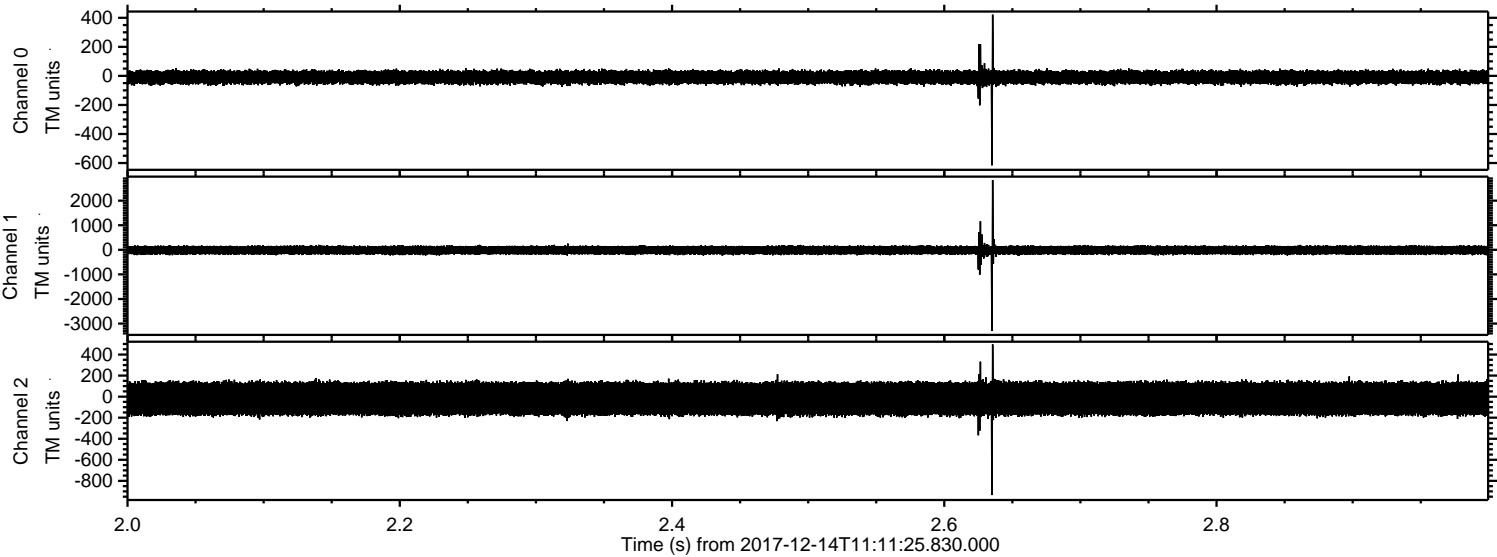
Channel 0
mn: -939
mx: 598
 μ : -9.8
 σ : 25.9

Channel 1
mn: -4113
mx: 2711
 μ : -16.0
 σ : 98.8

Channel 2
mn: -1159
mx: 1039
 μ : -19.2
 σ : 94.8

ELMAVAN 3D WAVEFORMS (Measured data sampled at 50 kHz) 51000 packets of 144 samples from 2017-12-14T11:11:25.830.000. Part 3/147

Processed Thu Dec 14 12:19:53 2017 by ELM ver.2012-10-06 from 001__elm20171214_111124__dat00.bin

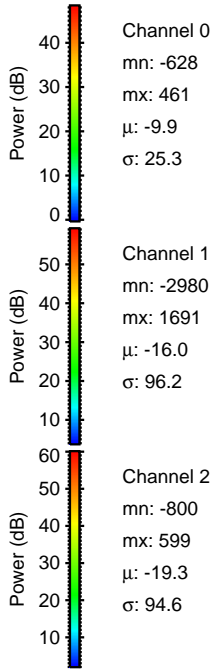
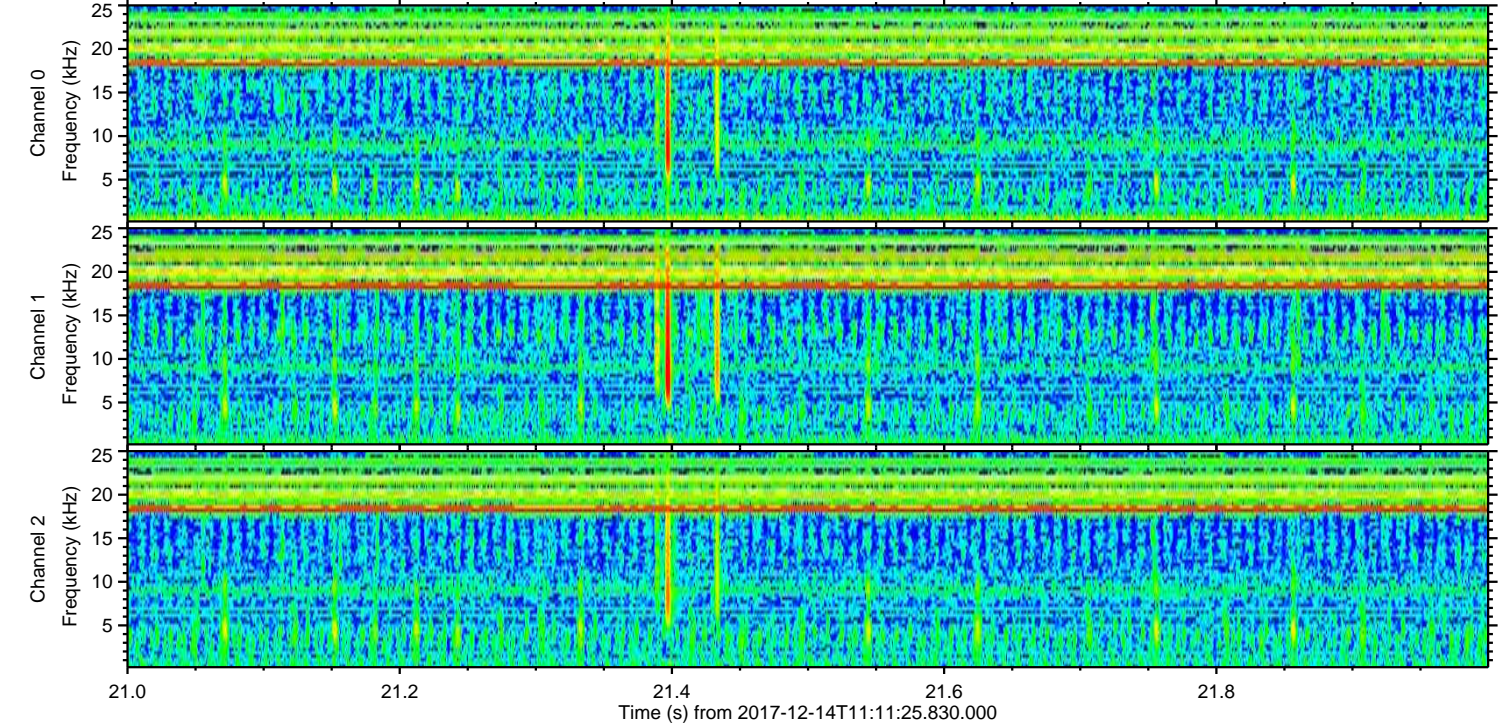
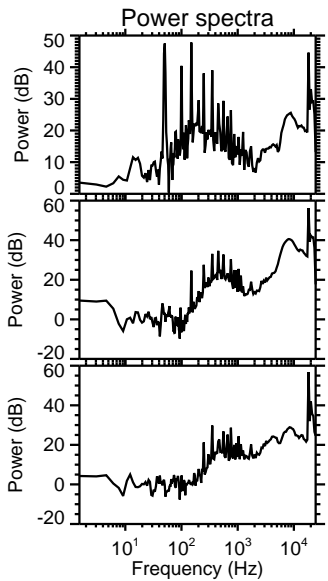
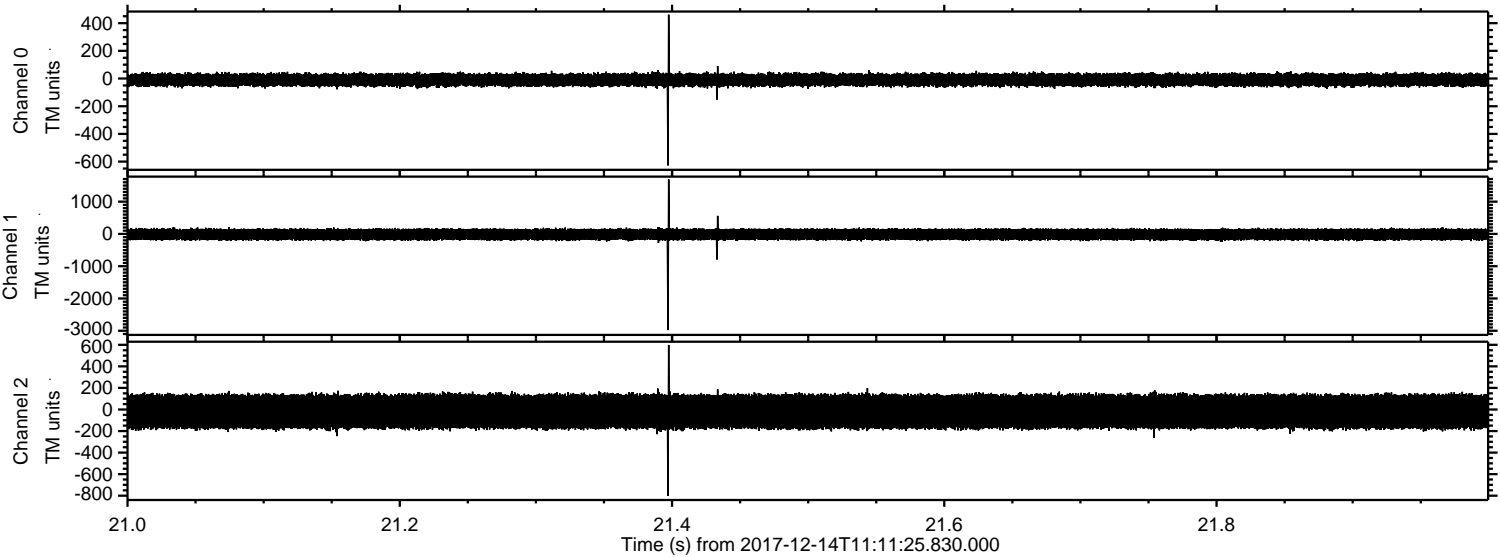


Channel 0
mn: -616
mx: 422
 μ : -9.8
 σ : 25.5

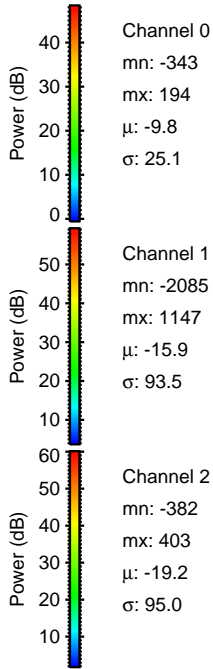
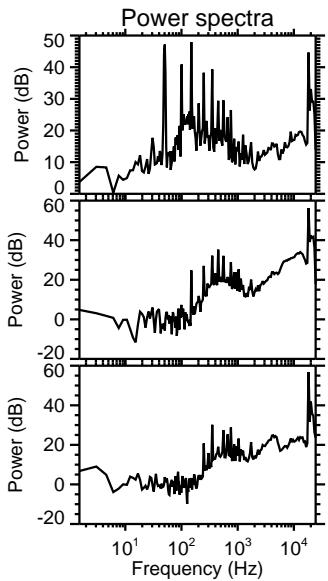
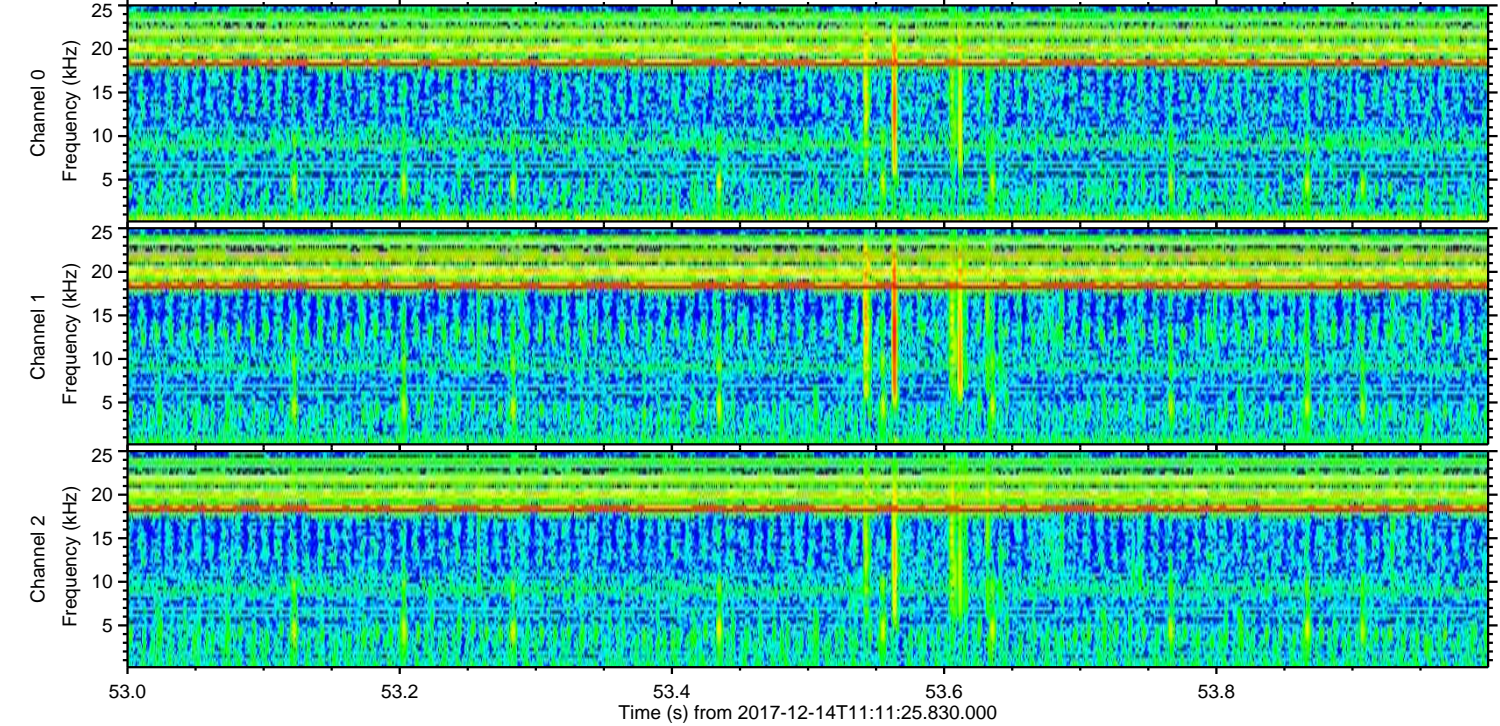
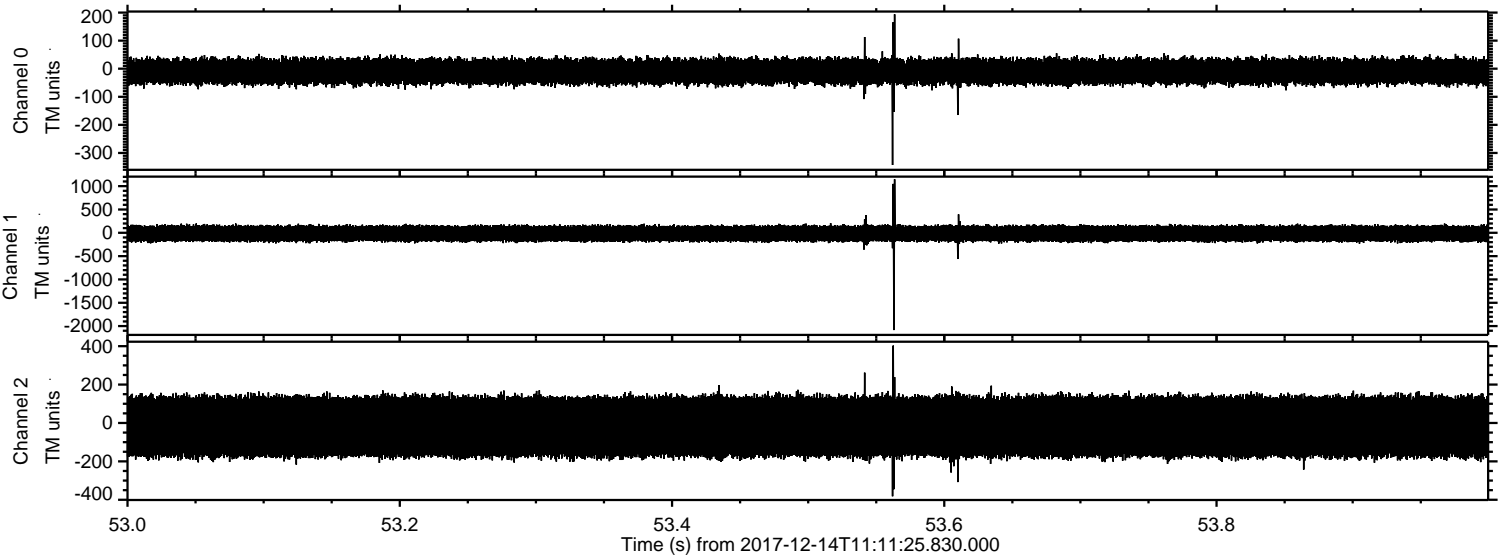
Channel 1
mn: -3297
mx: 2836
 μ : -16.0
 σ : 98.6

Channel 2
mn: -935
mx: 497
 μ : -19.3
 σ : 94.2

Processed Thu Dec 14 12:19:54 2017 by ELM ver.2012-10-06 from 001__elm20171214_111124__dat00.bin



Processed Thu Dec 14 12:19:55 2017 by ELM ver.2012-10-06 from 001__elm20171214_111124__dat00.bin



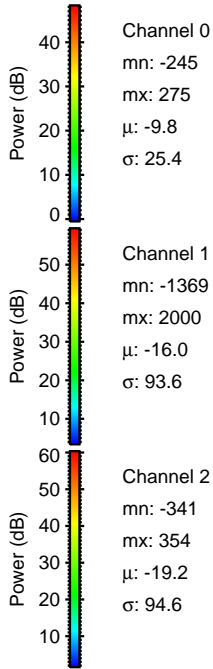
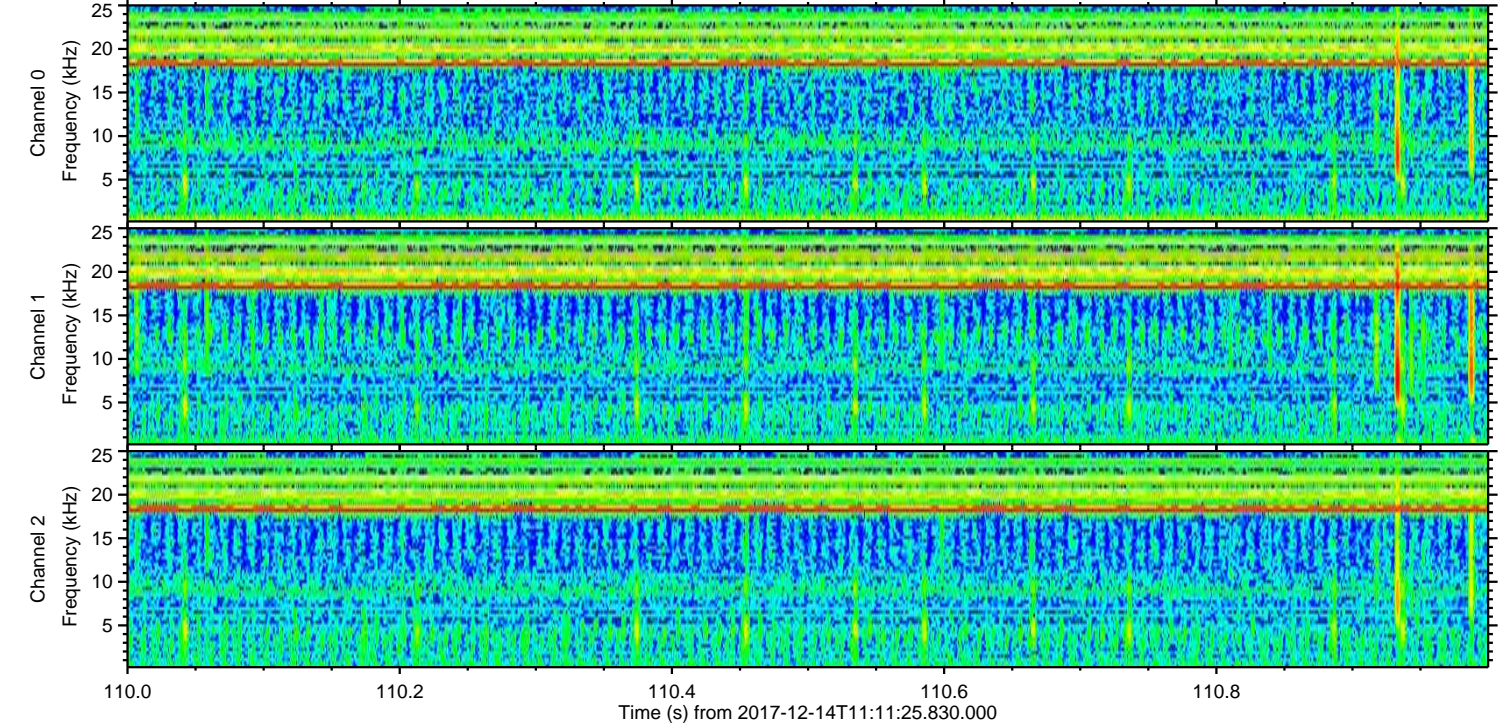
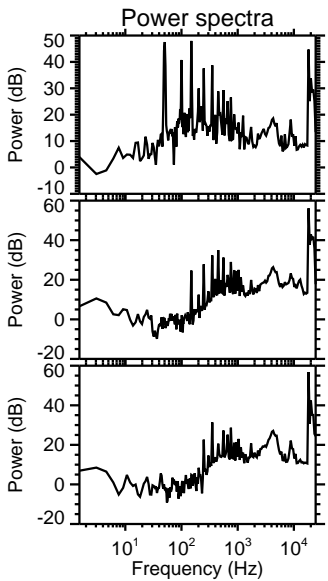
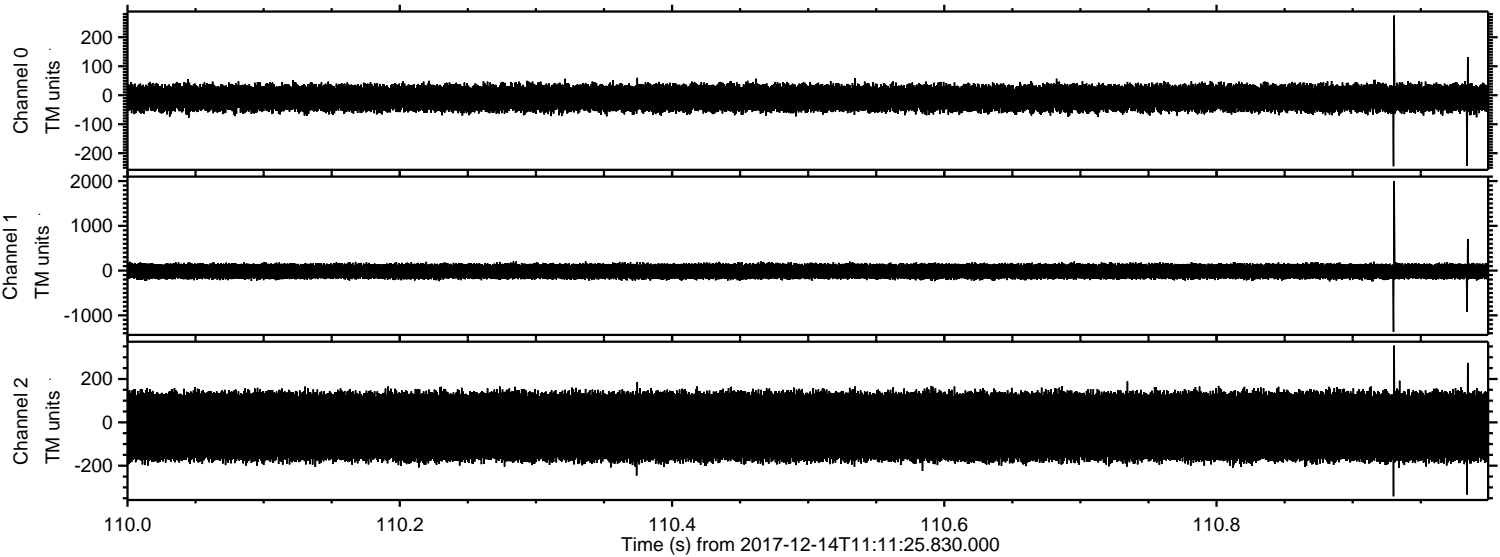
Channel 0
mn: -343
mx: 194
 μ : -9.8
 σ : 25.1

Channel 1
mn: -2085
mx: 1147
 μ : -15.9
 σ : 93.5

Channel 2
mn: -382
mx: 403
 μ : -19.2
 σ : 95.0

ELMAVAN 3D WAVEFORMS (Measured data sampled at 50 kHz) 51000 packets of 144 samples from 2017-12-14T11:11:25.830.000. Part 111/147

Processed Thu Dec 14 12:19:56 2017 by ELM ver.2012-10-06 from 001__elm20171214_111124__dat00.bin

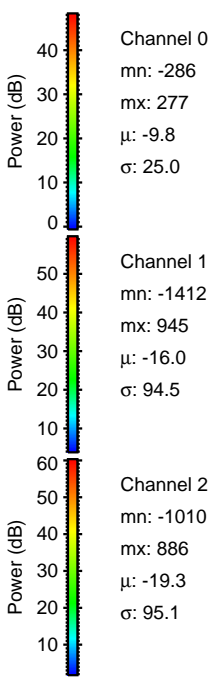
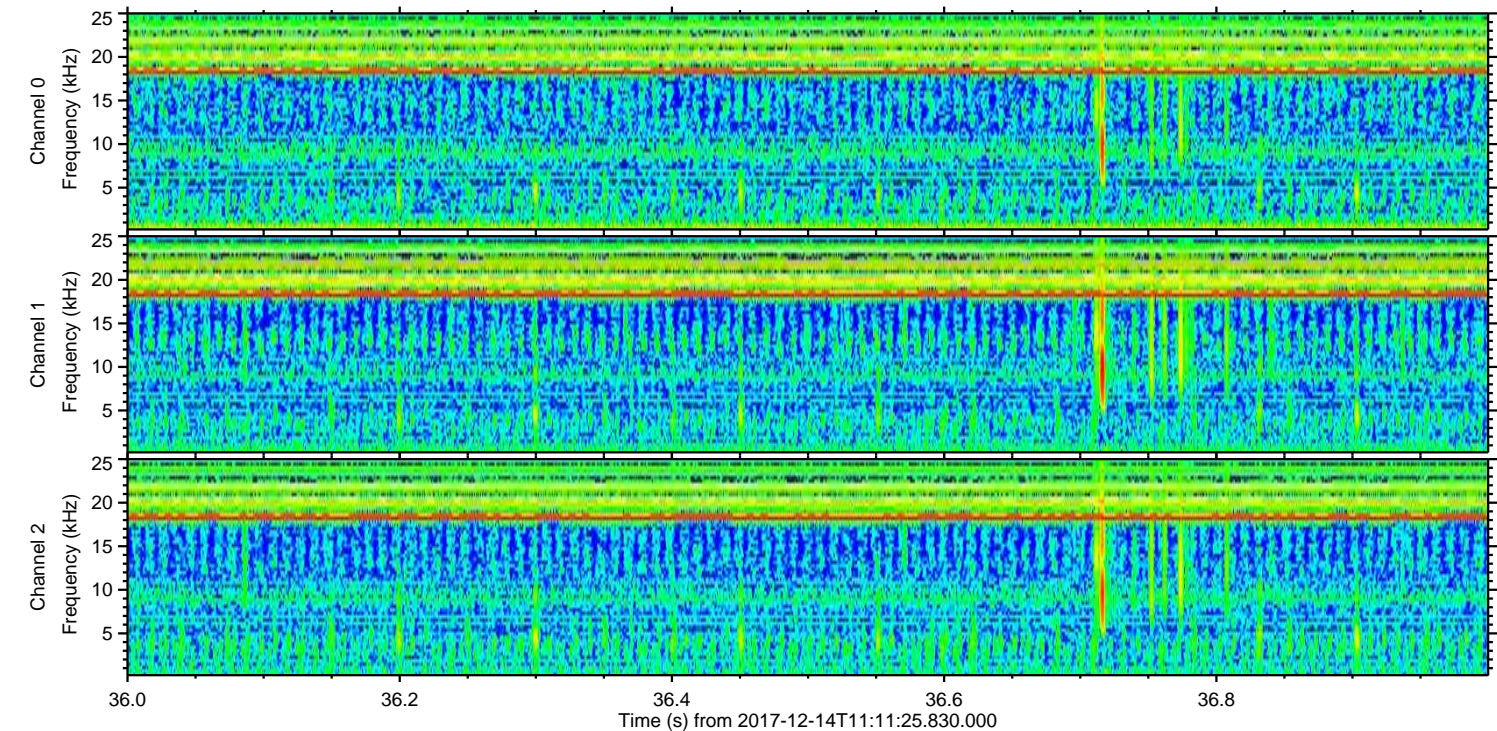
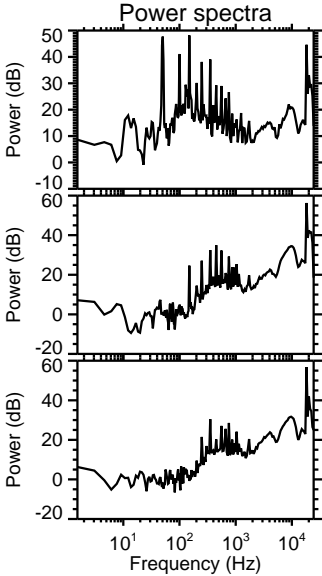
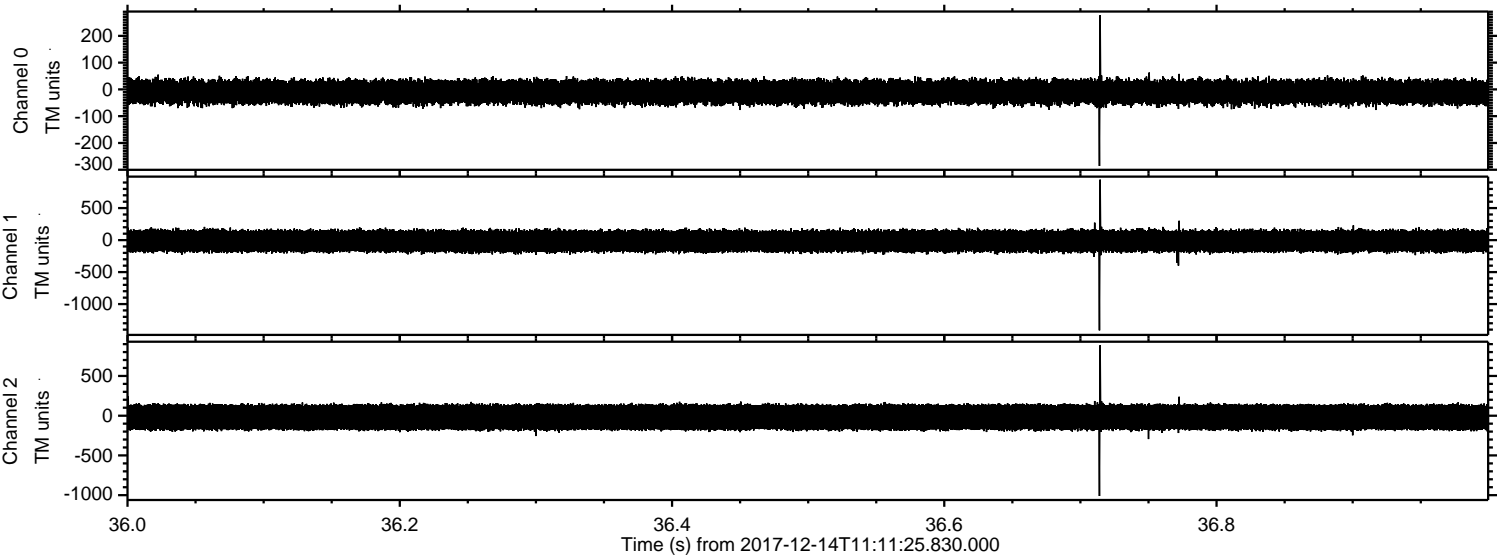


Channel 0
mn: -245
mx: 275
 μ : -9.8
 σ : 25.4

Channel 1
mn: -1369
mx: 2000
 μ : -16.0
 σ : 93.6

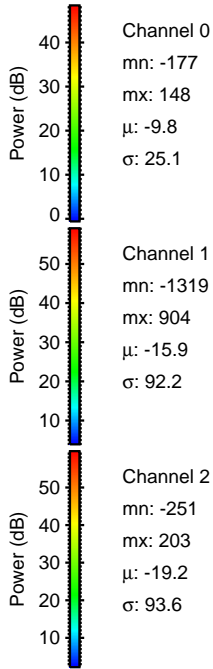
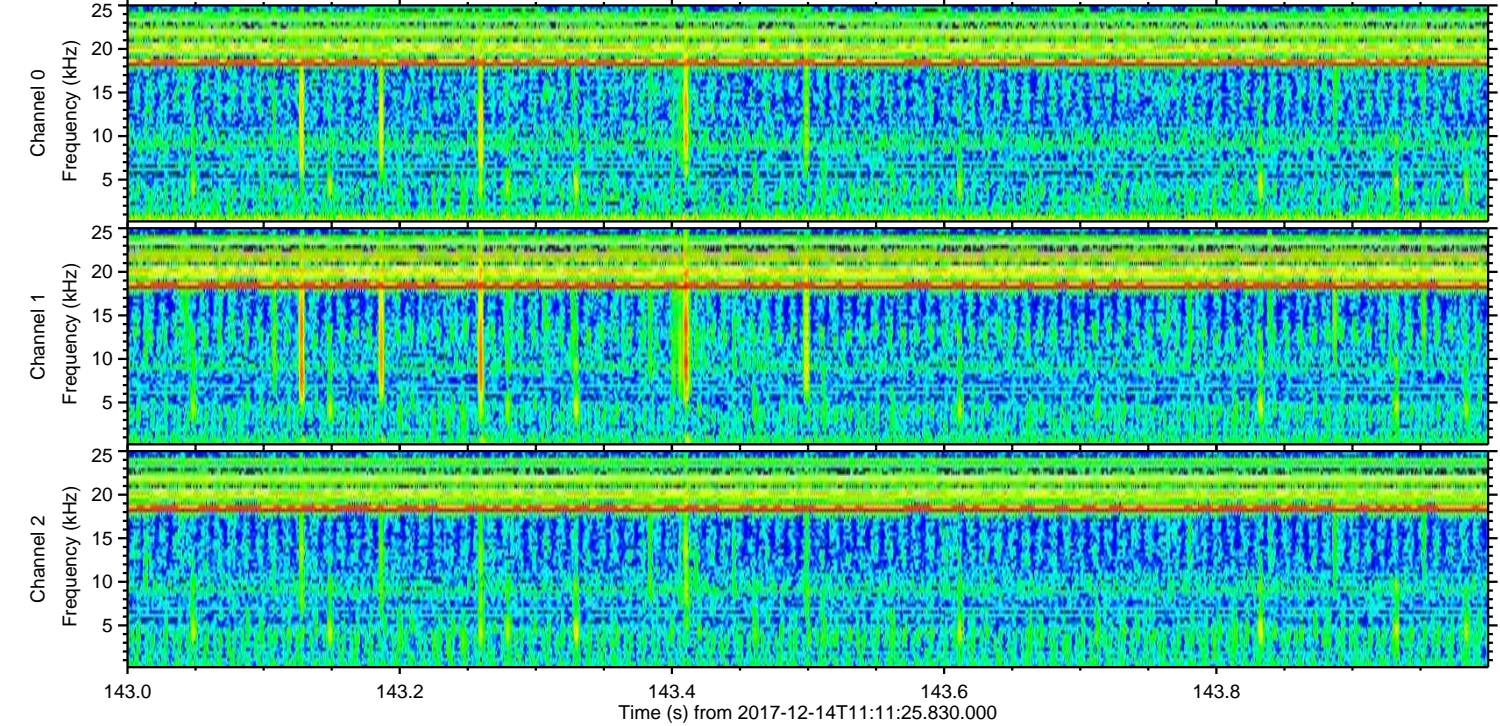
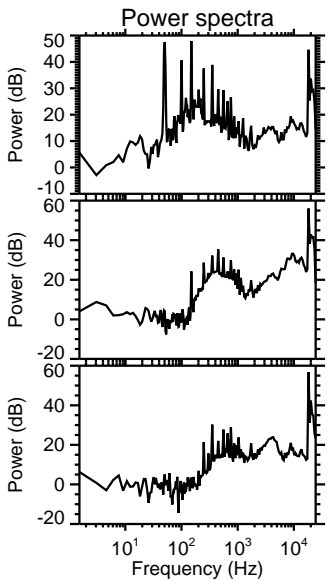
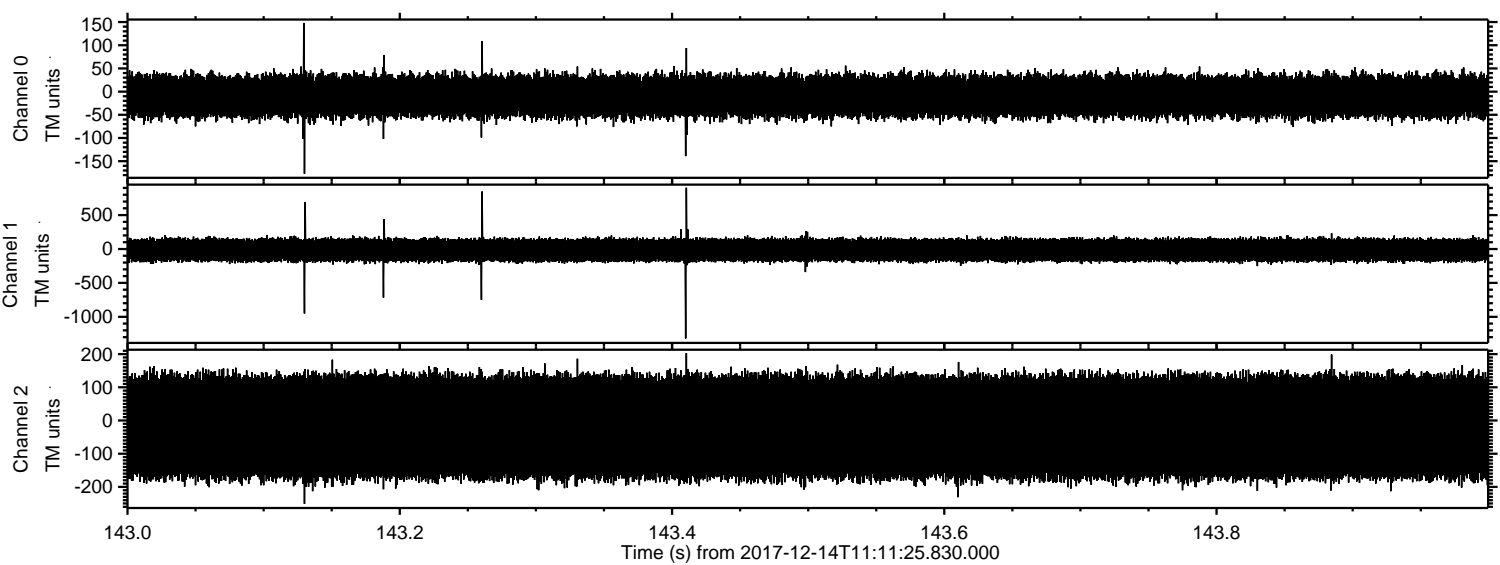
Channel 2
mn: -341
mx: 354
 μ : -19.2
 σ : 94.6

Processed Thu Dec 14 12:19:56 2017 by ELM ver.2012-10-06 from 001__elm20171214_111124__dat00.bin



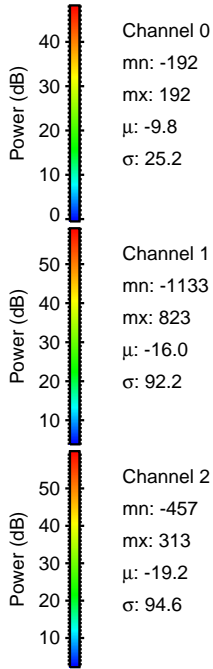
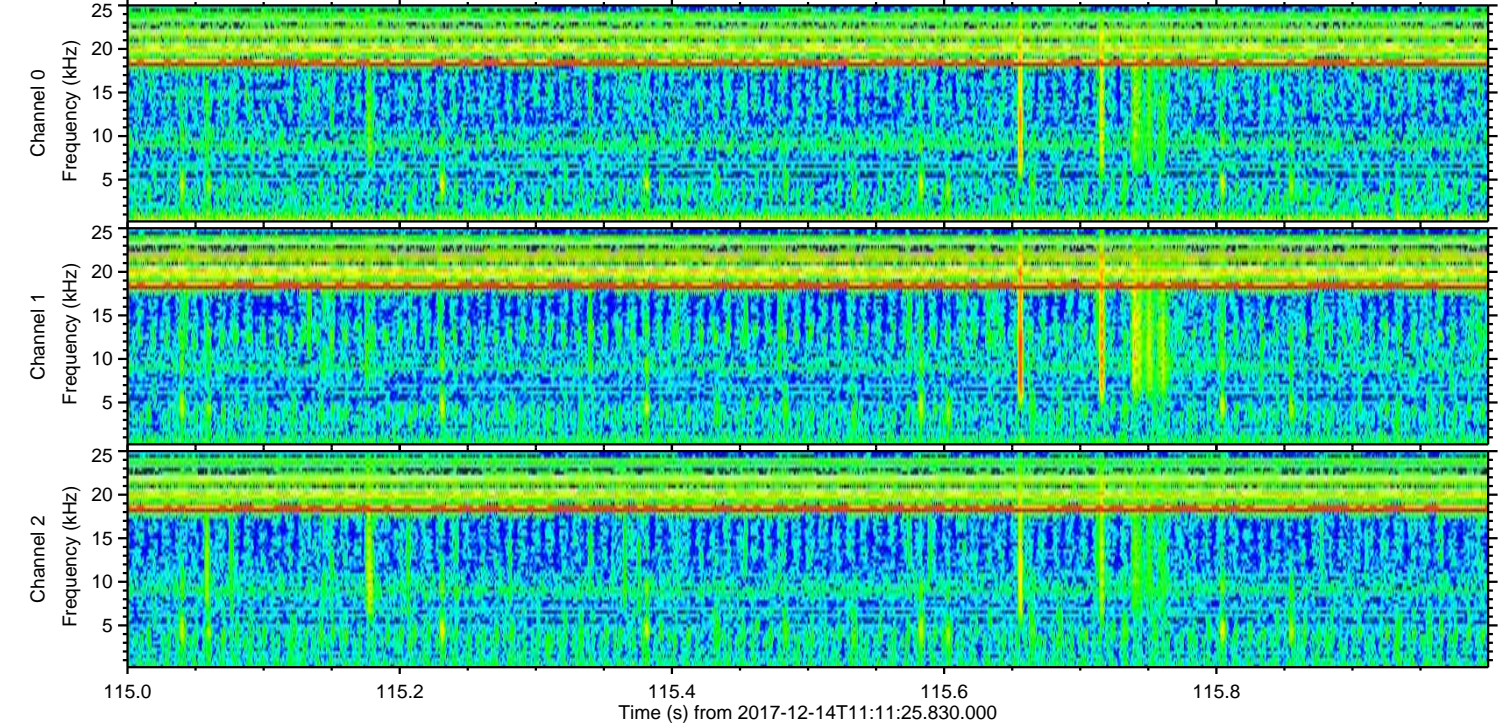
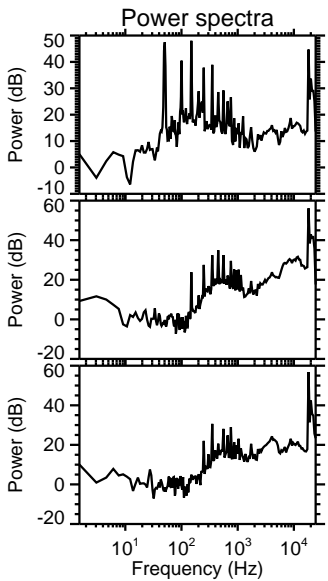
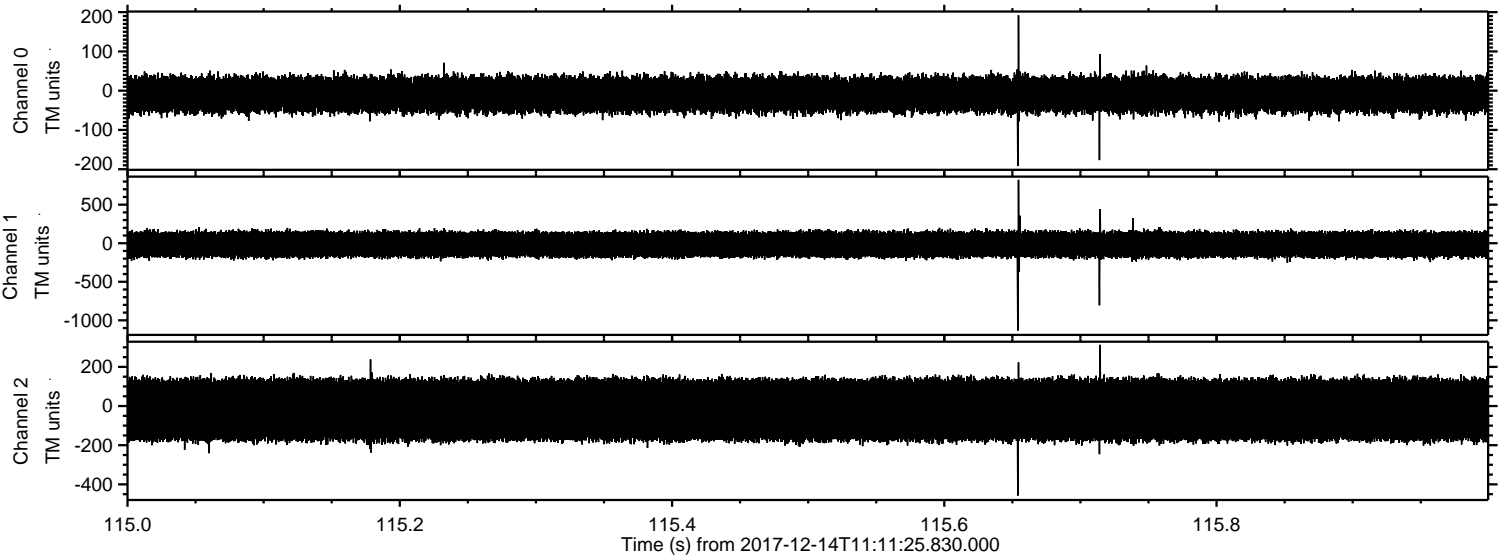
ELMAVAN 3D WAVEFORMS (Measured data sampled at 50 kHz) 51000 packets of 144 samples from 2017-12-14T11:11:25.830.000. Part 144/147

Processed Thu Dec 14 12:19:57 2017 by ELM ver.2012-10-06 from 001__elm20171214_111124__dat00.bin



ELMAVAN 3D WAVEFORMS (Measured data sampled at 50 kHz) 51000 packets of 144 samples from 2017-12-14T11:11:25.830.000. Part 116/147

Processed Thu Dec 14 12:19:58 2017 by ELM ver.2012-10-06 from 001__elm20171214_111124__dat00.bin



ELMAVAN 3D WAVEFORMS (Measured data sampled at 50 kHz) 51000 packets of 144 samples from 2017-12-14T11:11:25.830.000. Part 105/147

