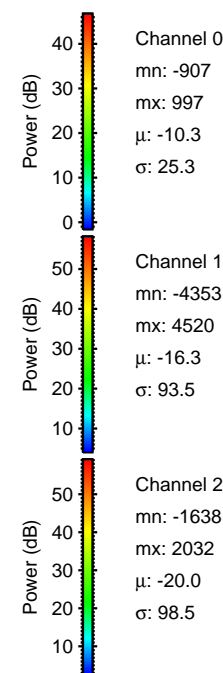
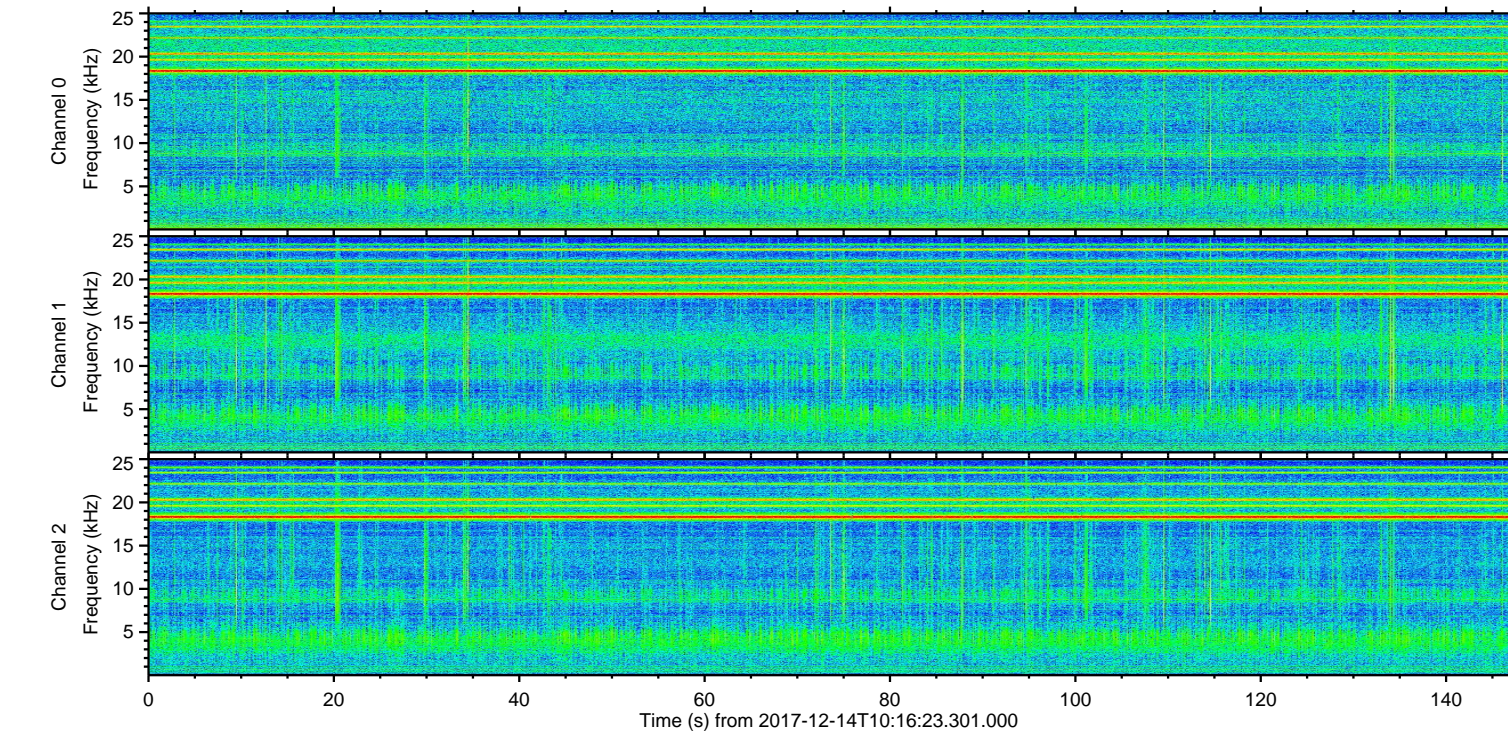
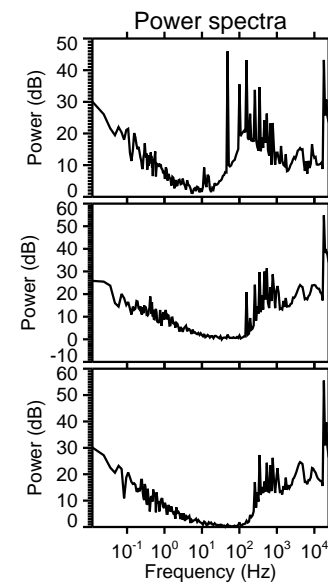
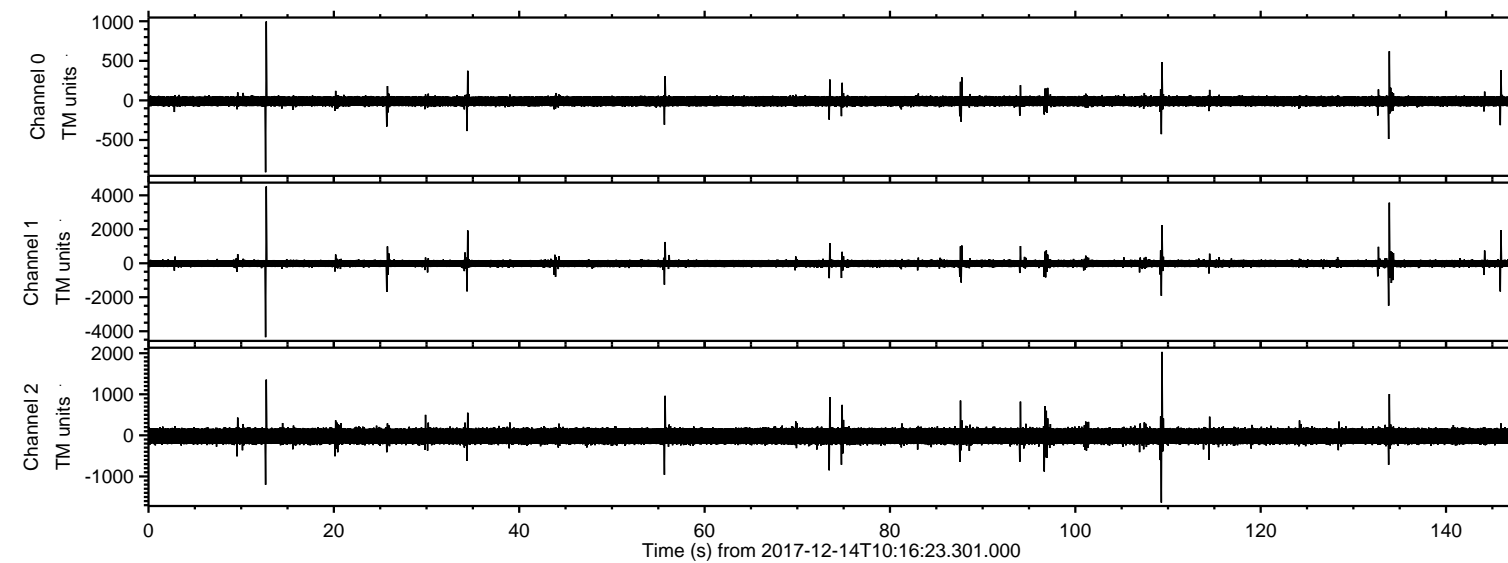


ELMAVAN 3D WAVEFORMS (Measured data sampled at 50 kHz) 51000 packets of 144 samples from 2017-12-14T10:16:23.301.000.

Processed Thu Dec 14 11:24:34 2017 by ELM ver.2012-10-06 from 001__elm20171214_101622__dat00.bin



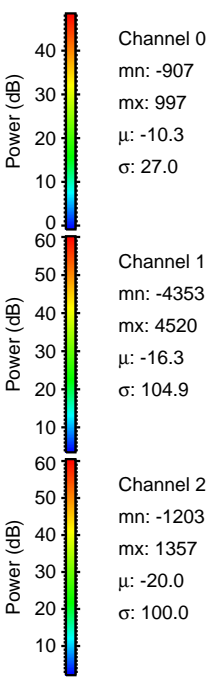
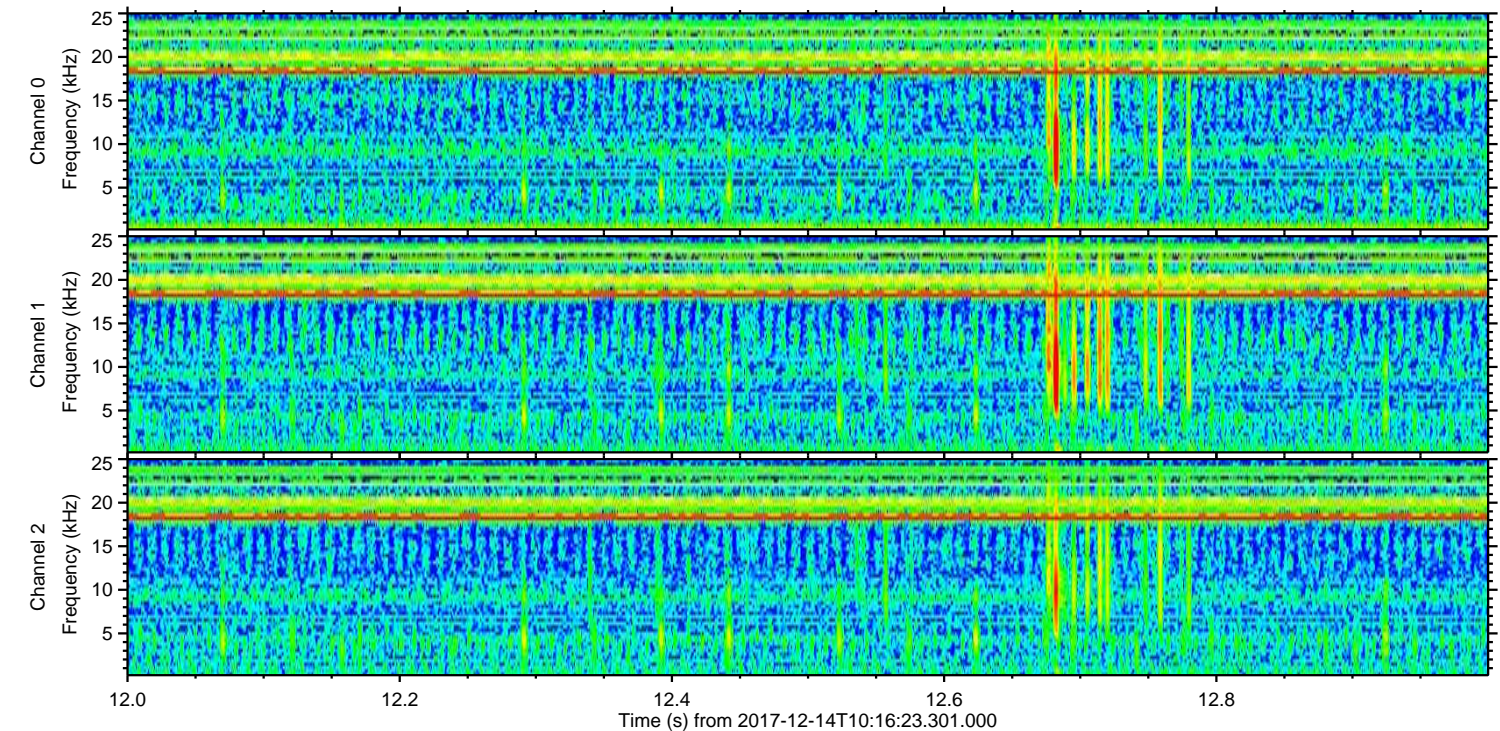
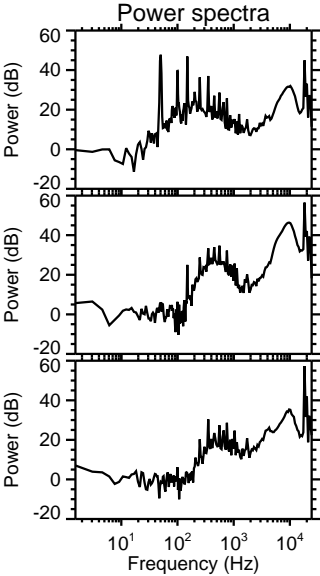
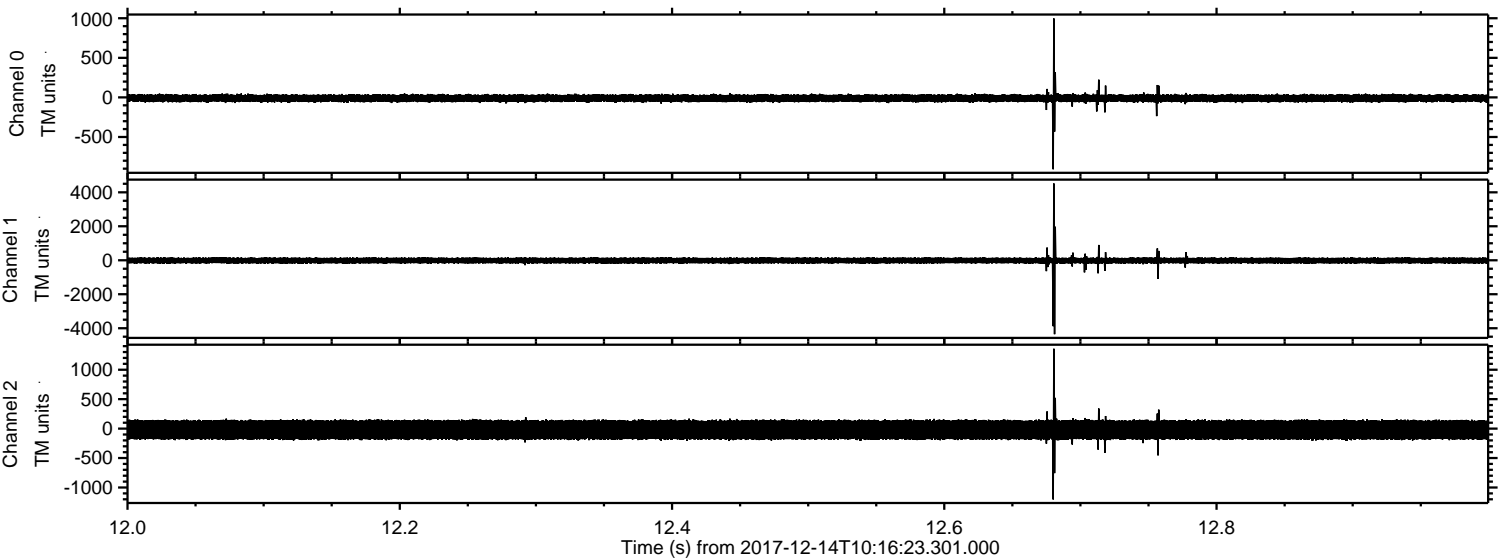
Channel 0
mn: -907
mx: 997
 μ : -10.3
 σ : 25.3

Channel 1
mn: -4353
mx: 4520
 μ : -16.3
 σ : 93.5

Channel 2
mn: -1638
mx: 2032
 μ : -20.0
 σ : 98.5

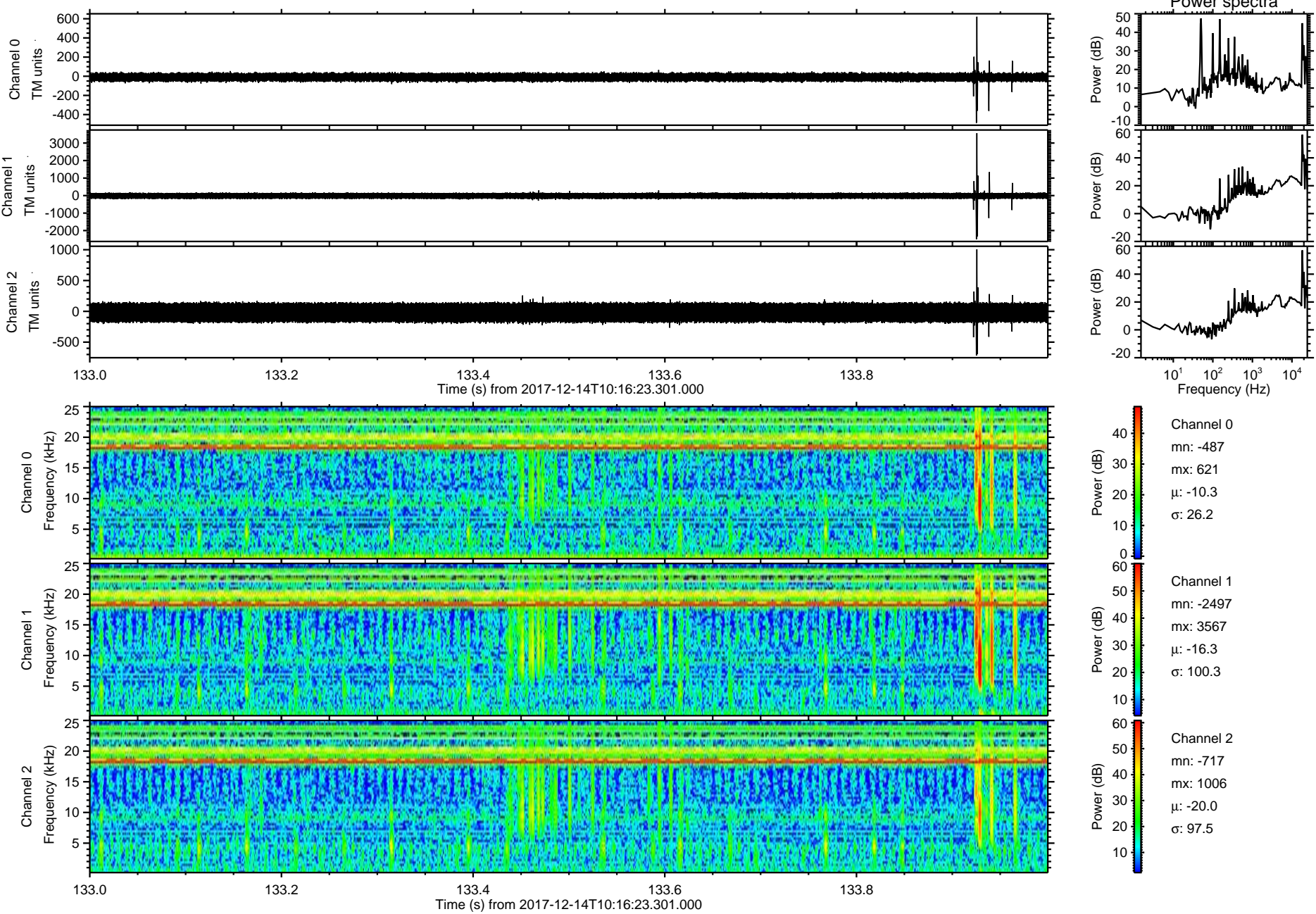
ELMAVAN 3D WAVEFORMS (Measured data sampled at 50 kHz) 51000 packets of 144 samples from 2017-12-14T10:16:23.301.000. Part 13/147

Processed Thu Dec 14 11:24:42 2017 by ELM ver.2012-10-06 from 001__elm20171214_101622__dat00.bin



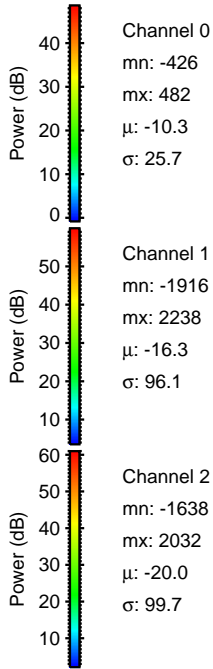
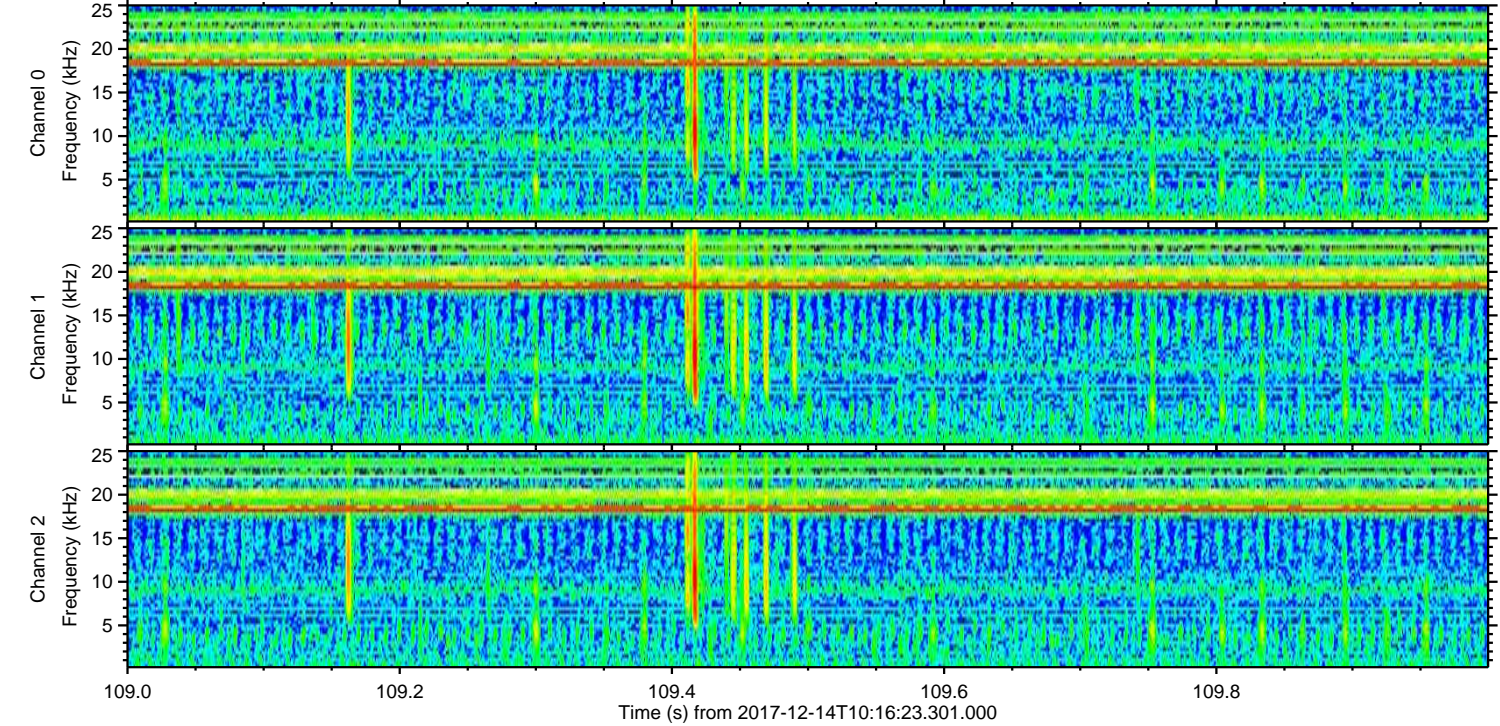
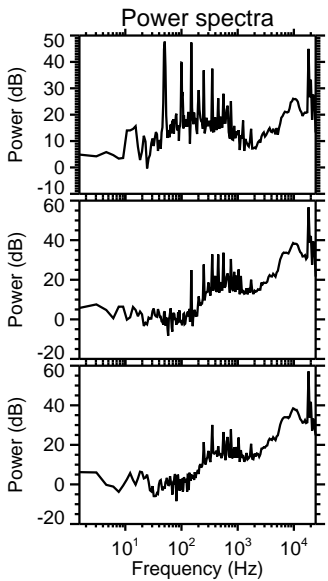
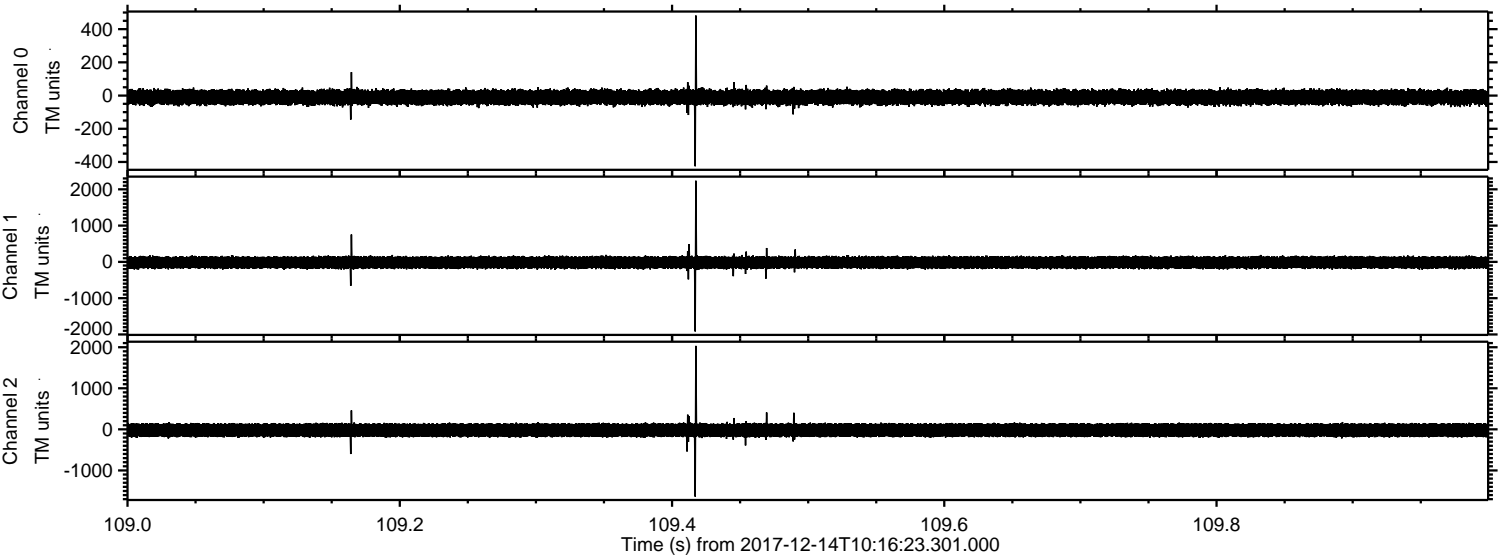
ELMAVAN 3D WAVEFORMS (Measured data sampled at 50 kHz) 51000 packets of 144 samples from 2017-12-14T10:16:23.301.000. Part 134/147

Processed Thu Dec 14 11:24:43 2017 by ELM ver.2012-10-06 from 001__elm20171214_101622__dat00.bin



ELMAVAN 3D WAVEFORMS (Measured data sampled at 50 kHz) 51000 packets of 144 samples from 2017-12-14T10:16:23.301.000. Part 110/147

Processed Thu Dec 14 11:24:44 2017 by ELM ver.2012-10-06 from 001__elm20171214_101622__dat00.bin



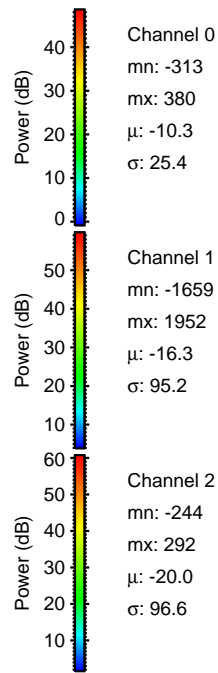
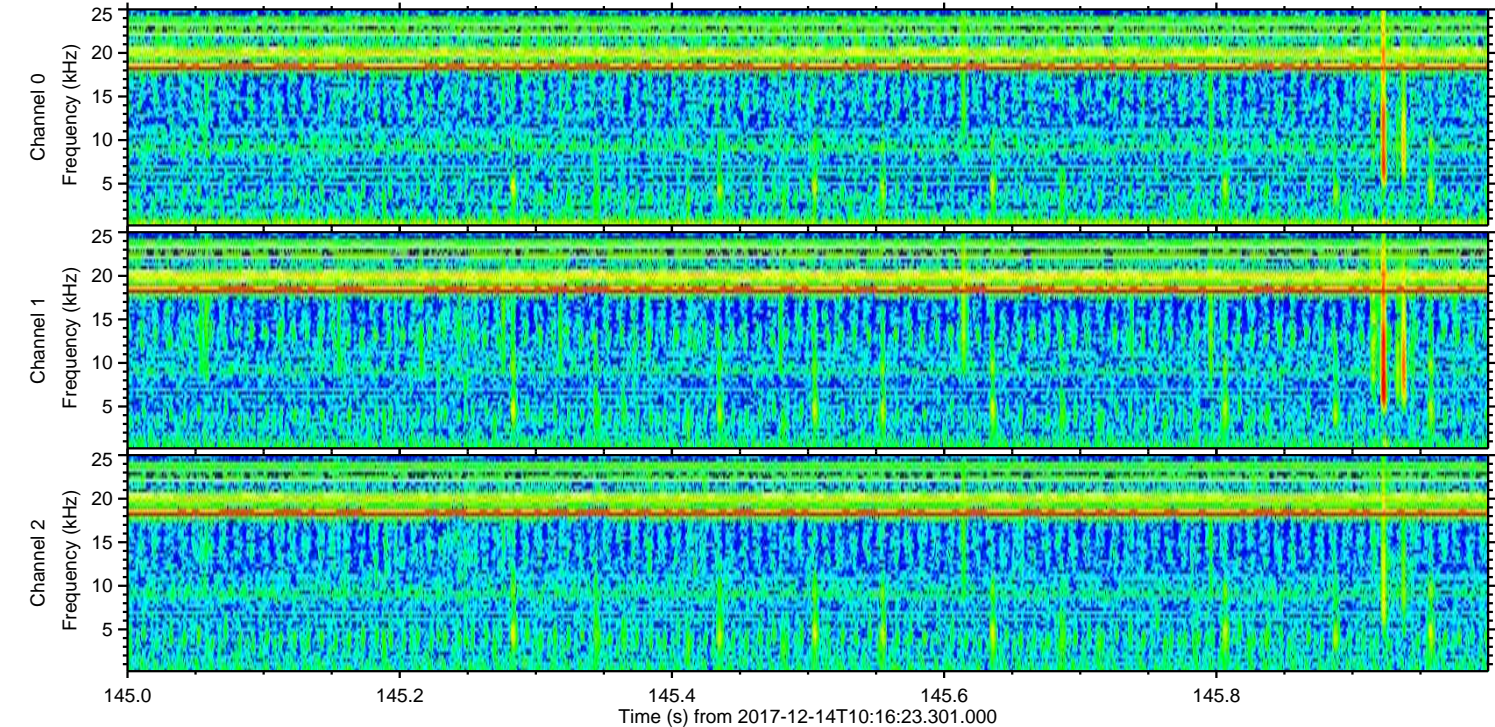
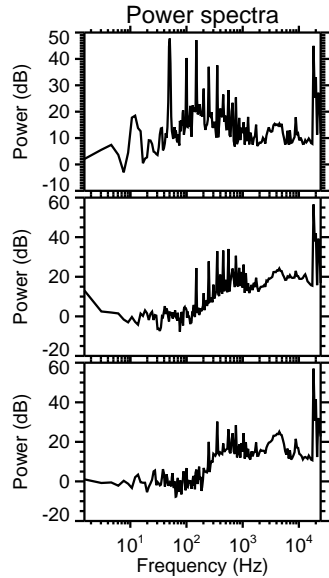
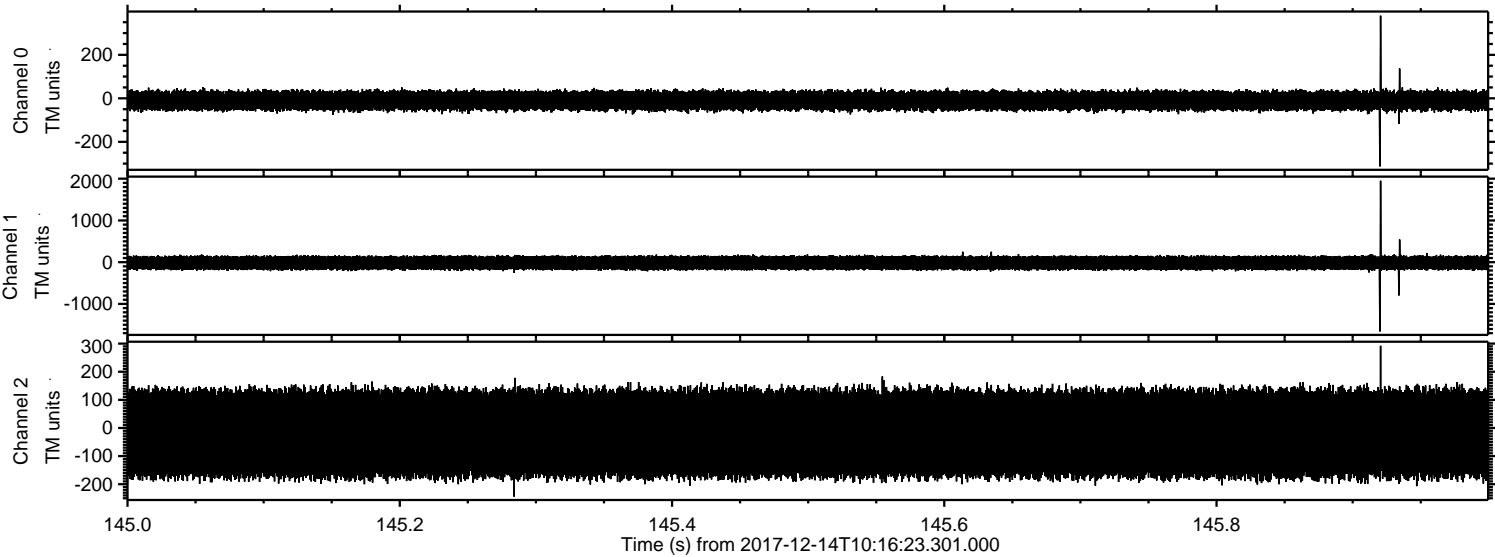
Channel 0
mn: -426
mx: 482
 μ : -10.3
 σ : 25.7

Channel 1
mn: -1916
mx: 2238
 μ : -16.3
 σ : 96.1

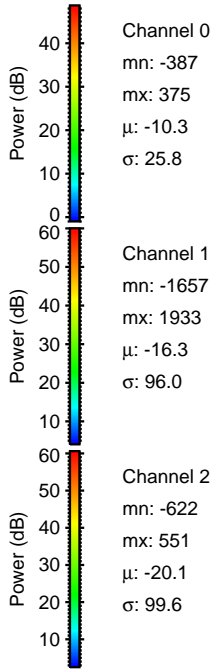
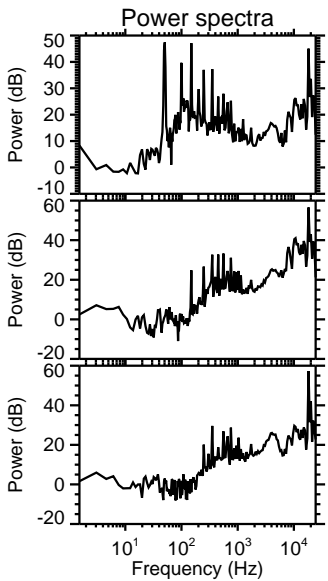
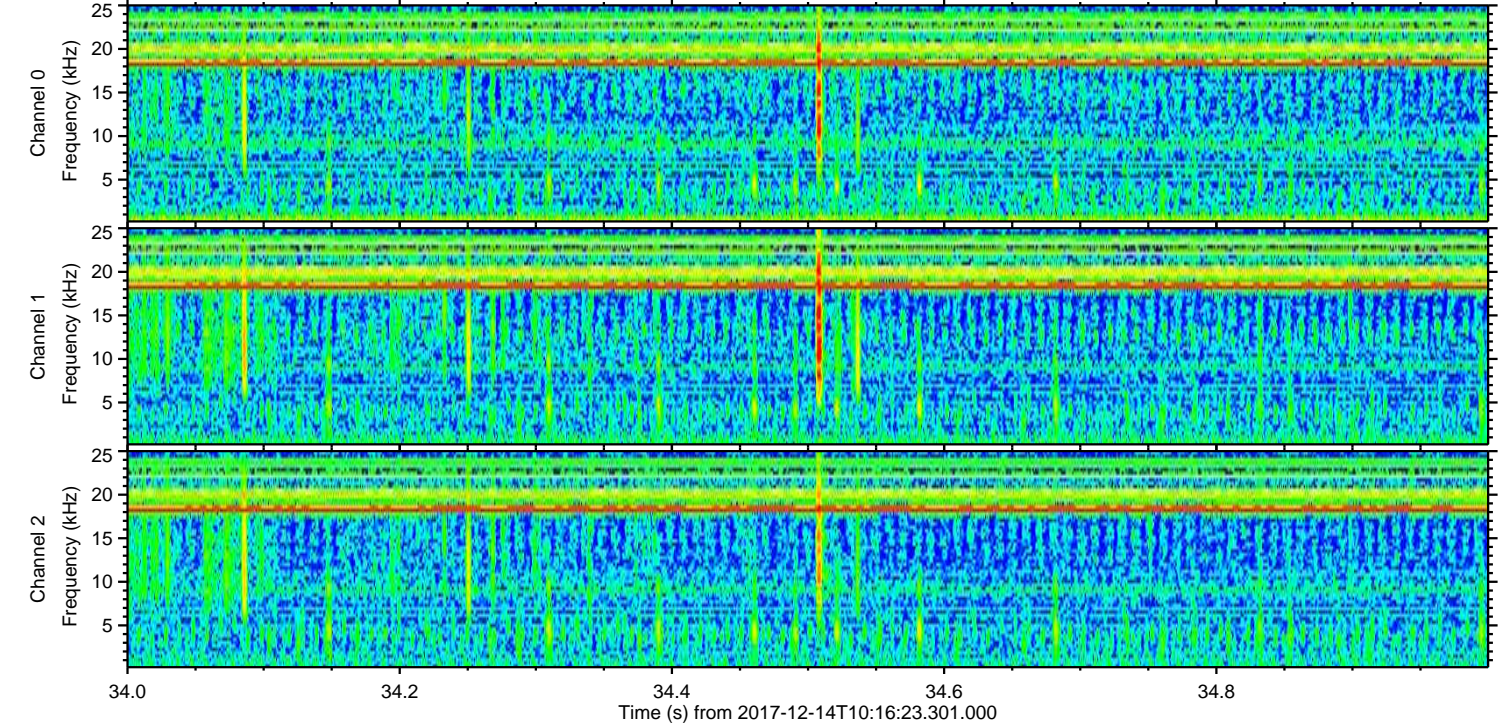
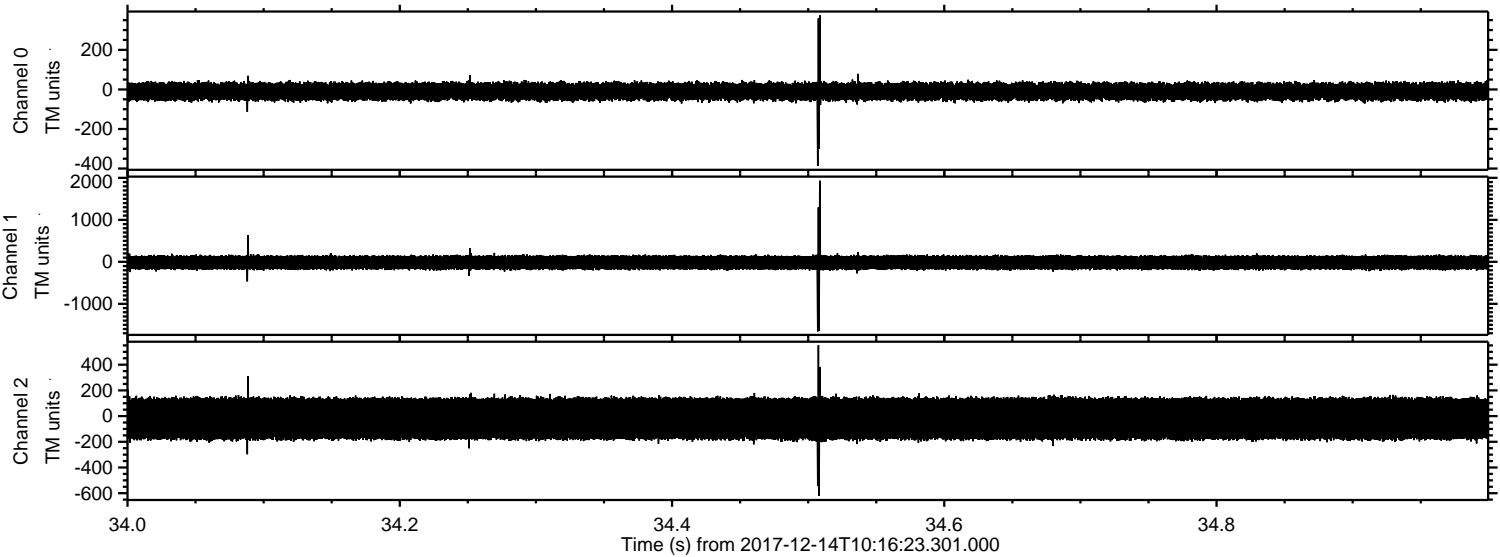
Channel 2
mn: -1638
mx: 2032
 μ : -20.0
 σ : 99.7

ELMAVAN 3D WAVEFORMS (Measured data sampled at 50 kHz) 51000 packets of 144 samples from 2017-12-14T10:16:23.301.000. Part 146/147

Processed Thu Dec 14 11:24:45 2017 by ELM ver.2012-10-06 from 001__elm20171214_101622__dat00.bin



Processed Thu Dec 14 11:24:46 2017 by ELM ver.2012-10-06 from 001__elm20171214_101622__dat00.bin



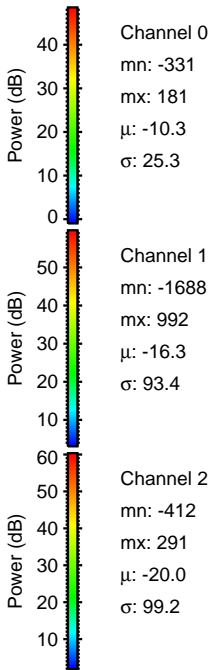
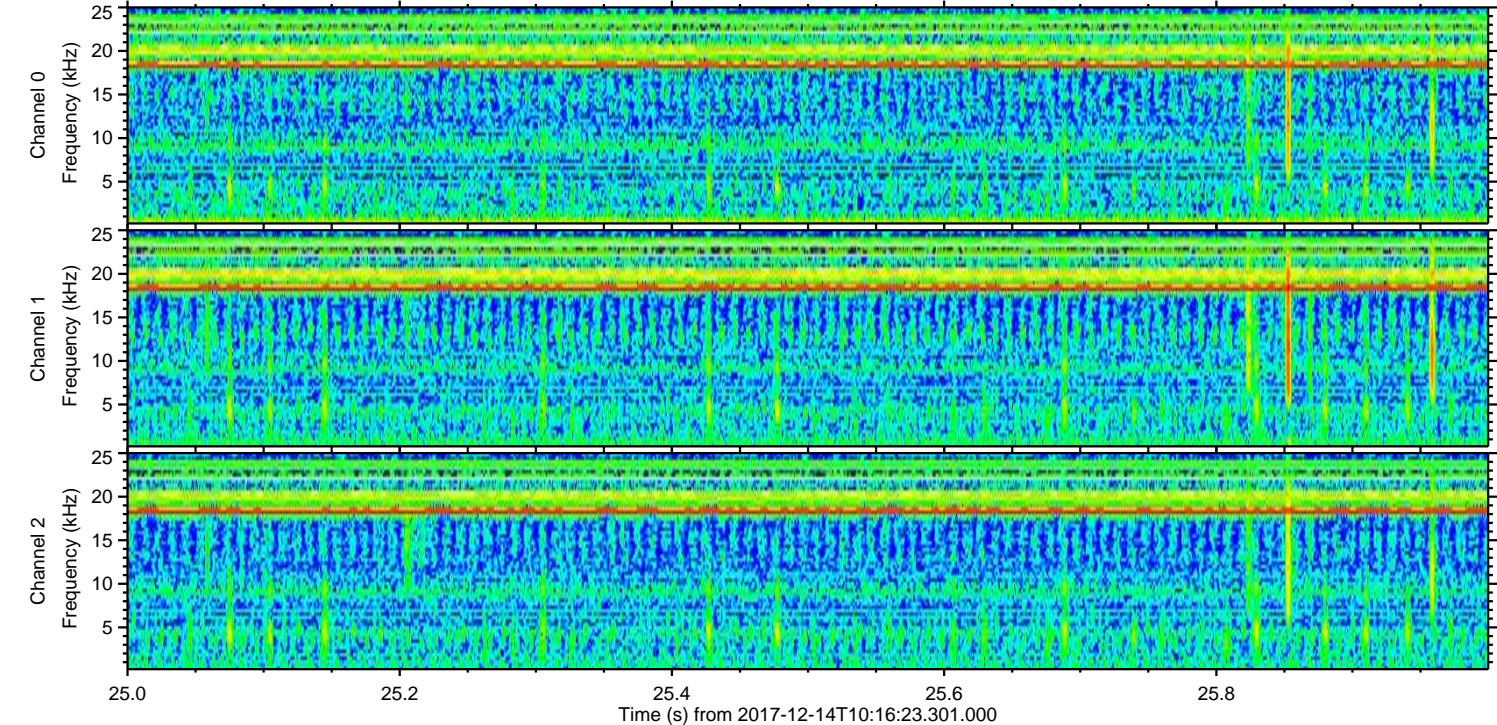
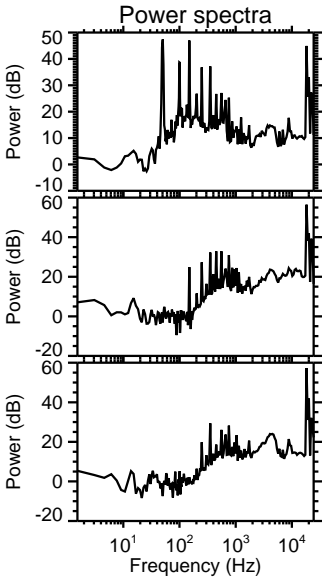
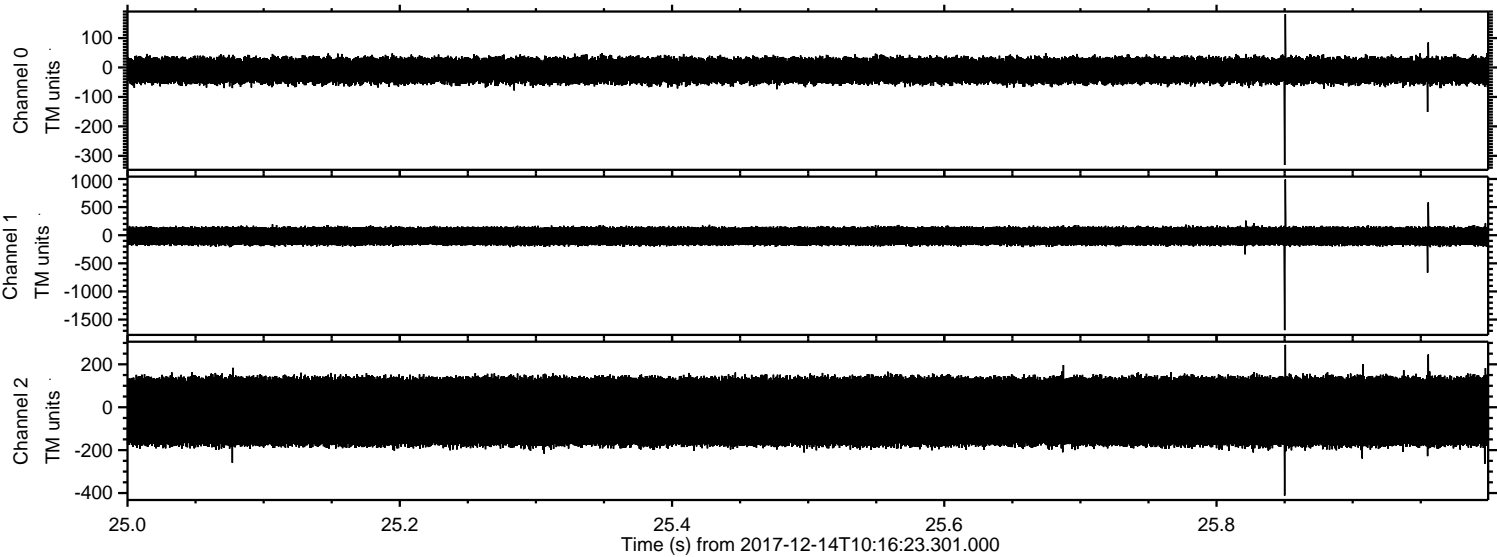
Channel 0
mn: -387
mx: 375
 μ : -10.3
 σ : 25.8

Channel 1
mn: -1657
mx: 1933
 μ : -16.3
 σ : 96.0

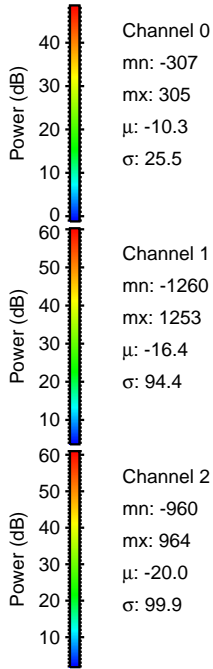
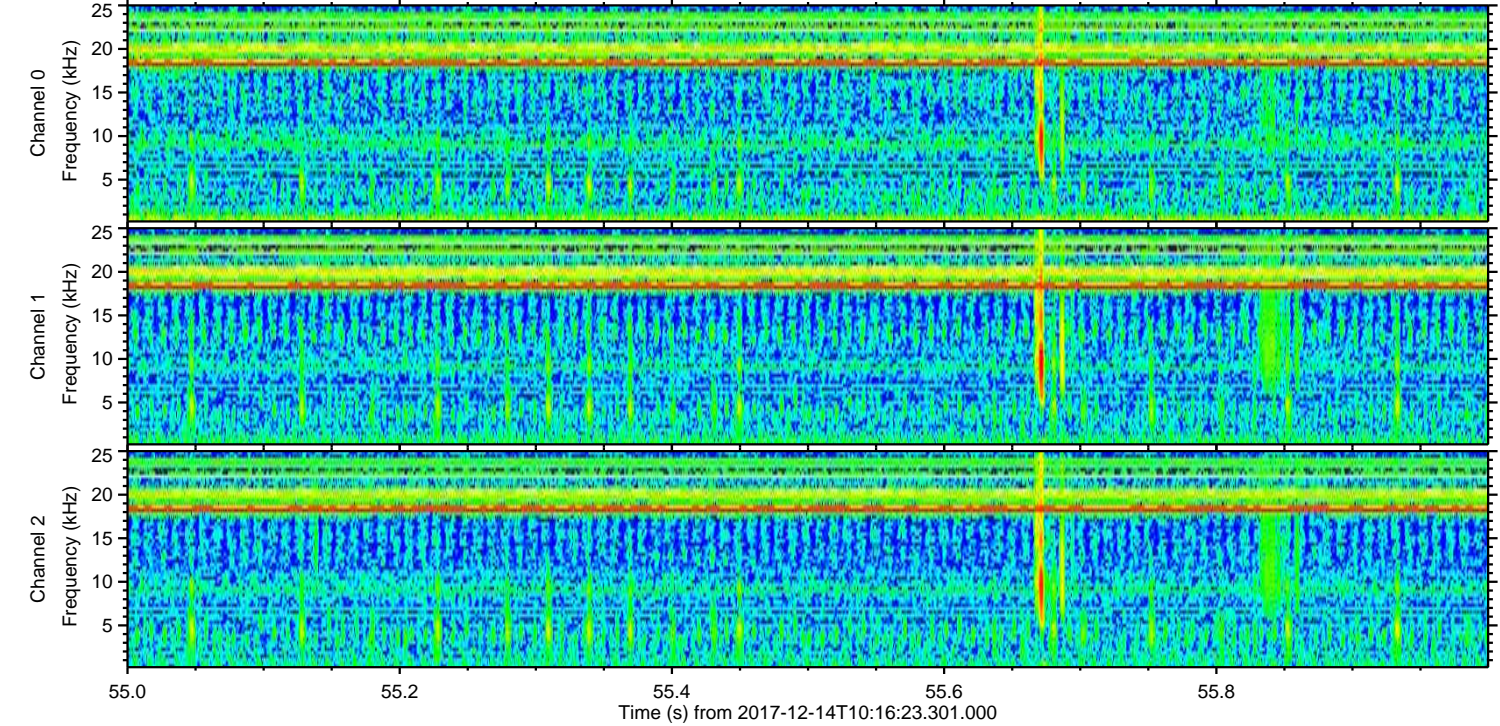
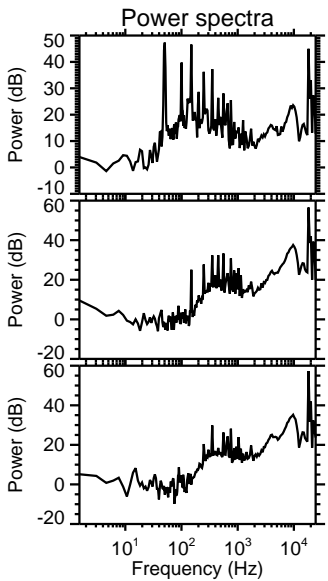
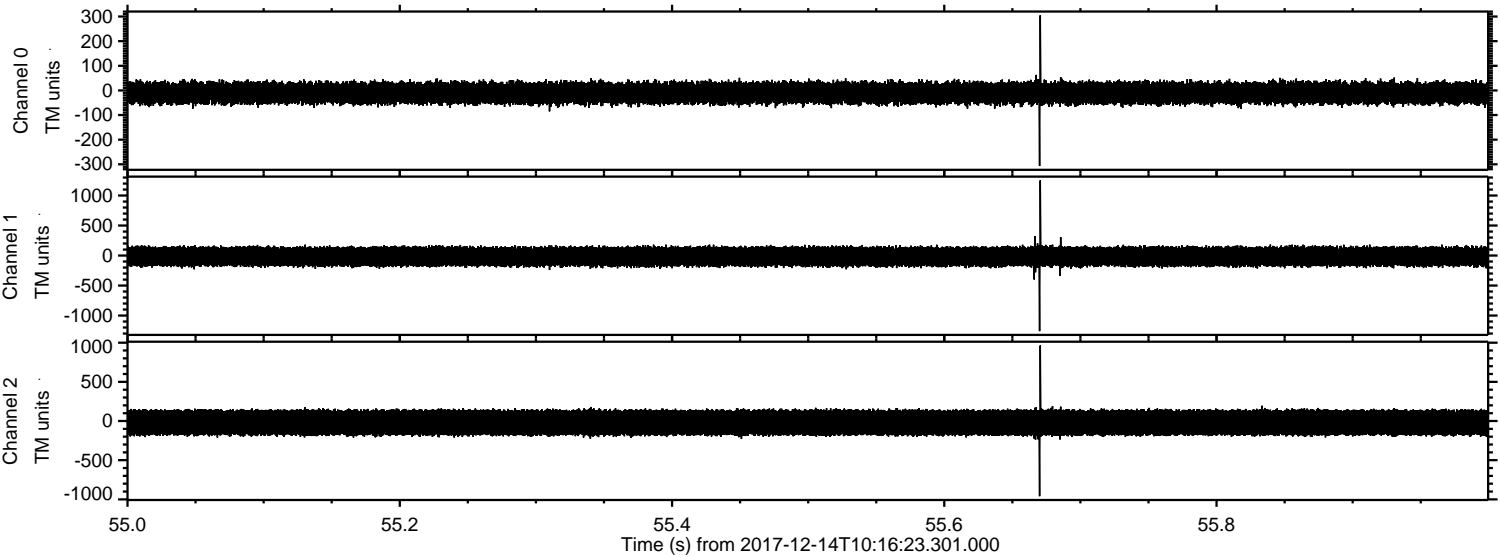
Channel 2
mn: -622
mx: 551
 μ : -20.1
 σ : 99.6

ELMAVAN 3D WAVEFORMS (Measured data sampled at 50 kHz) 51000 packets of 144 samples from 2017-12-14T10:16:23.301.000. Part 26/147

Processed Thu Dec 14 11:24:47 2017 by ELM ver.2012-10-06 from 001__elm20171214_101622__dat00.bin



Processed Thu Dec 14 11:24:47 2017 by ELM ver.2012-10-06 from 001__elm20171214_101622__dat00.bin

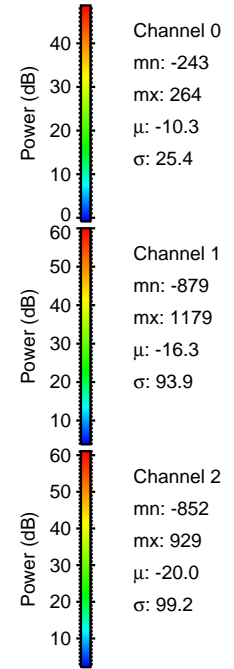
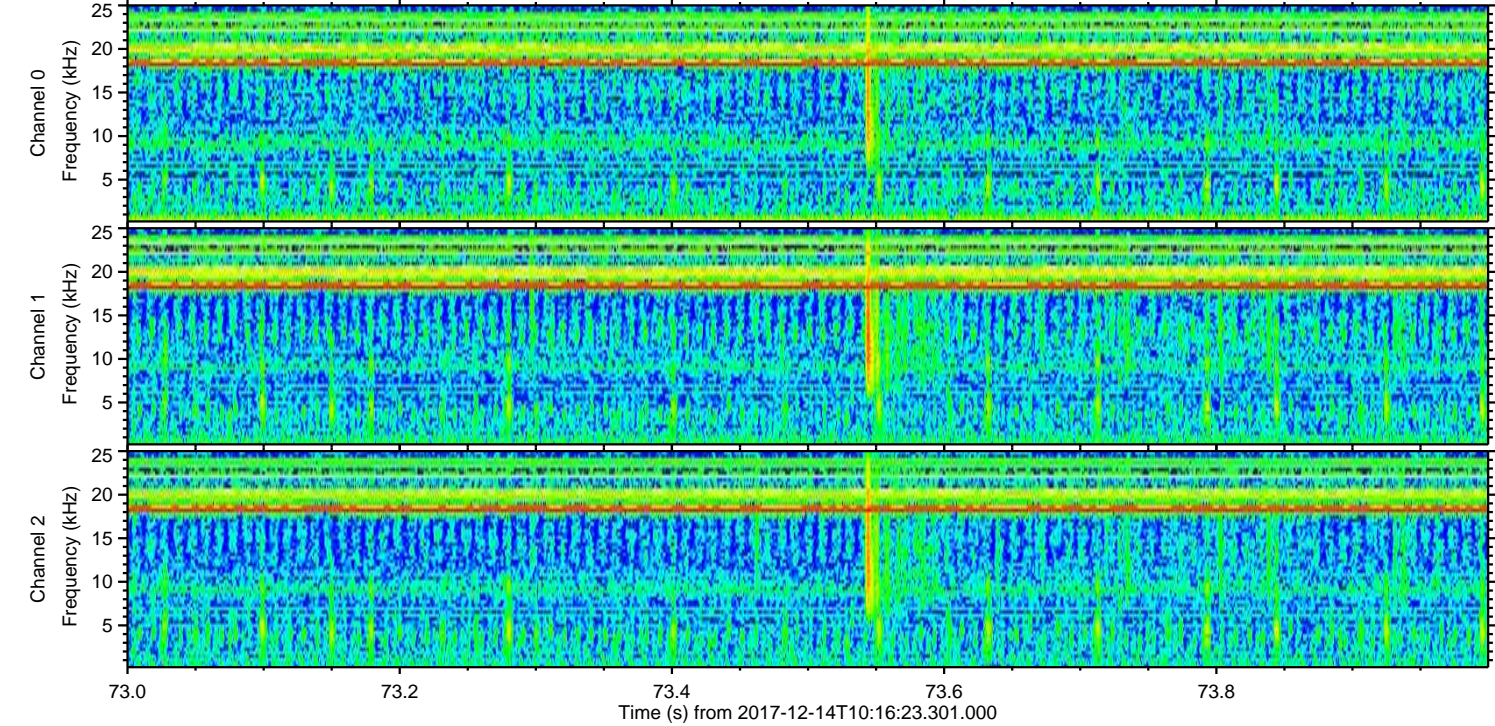
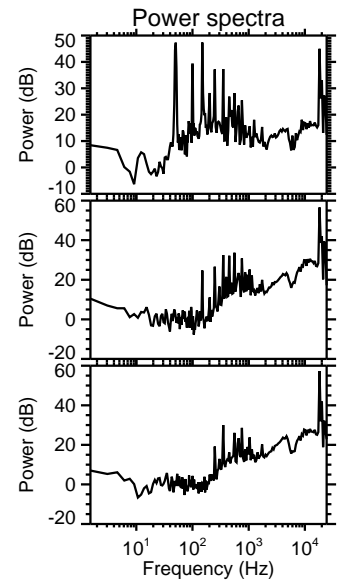
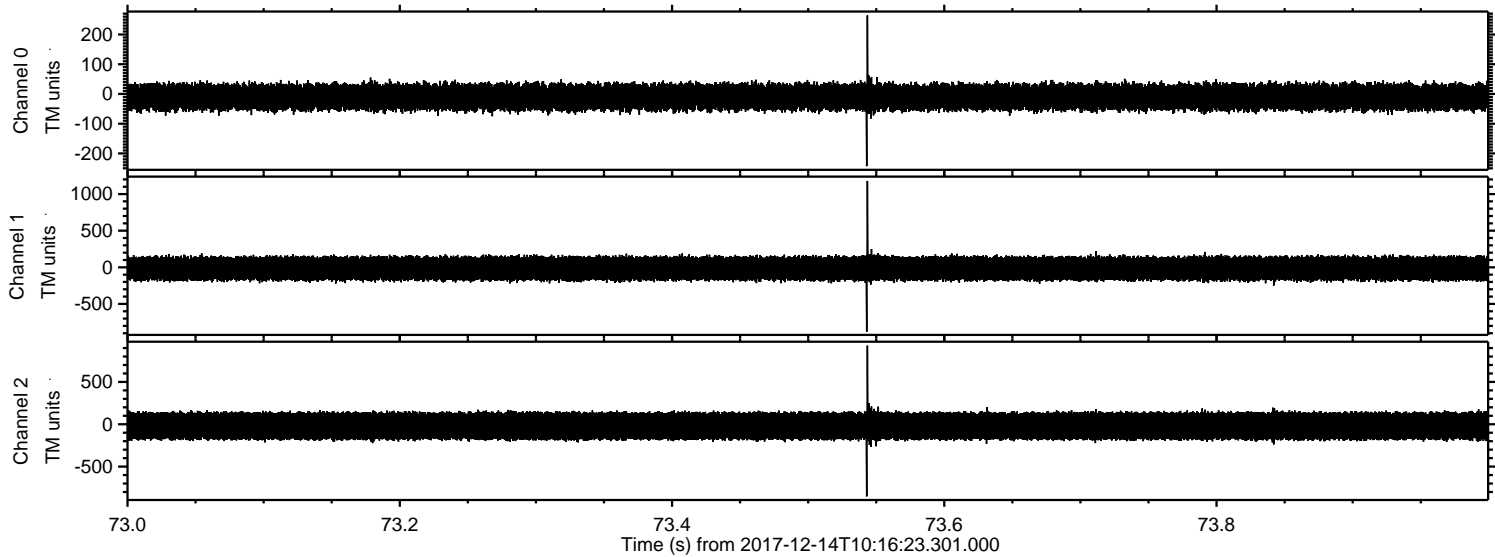


Channel 0
mn: -307
mx: 305
 μ : -10.3
 σ : 25.5

Channel 1
mn: -1260
mx: 1253
 μ : -16.4
 σ : 94.4

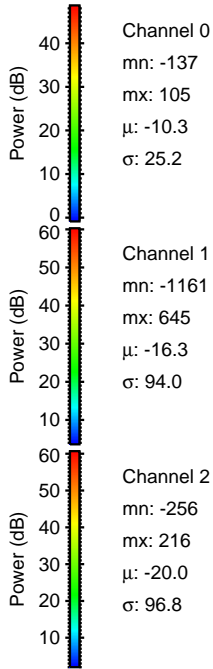
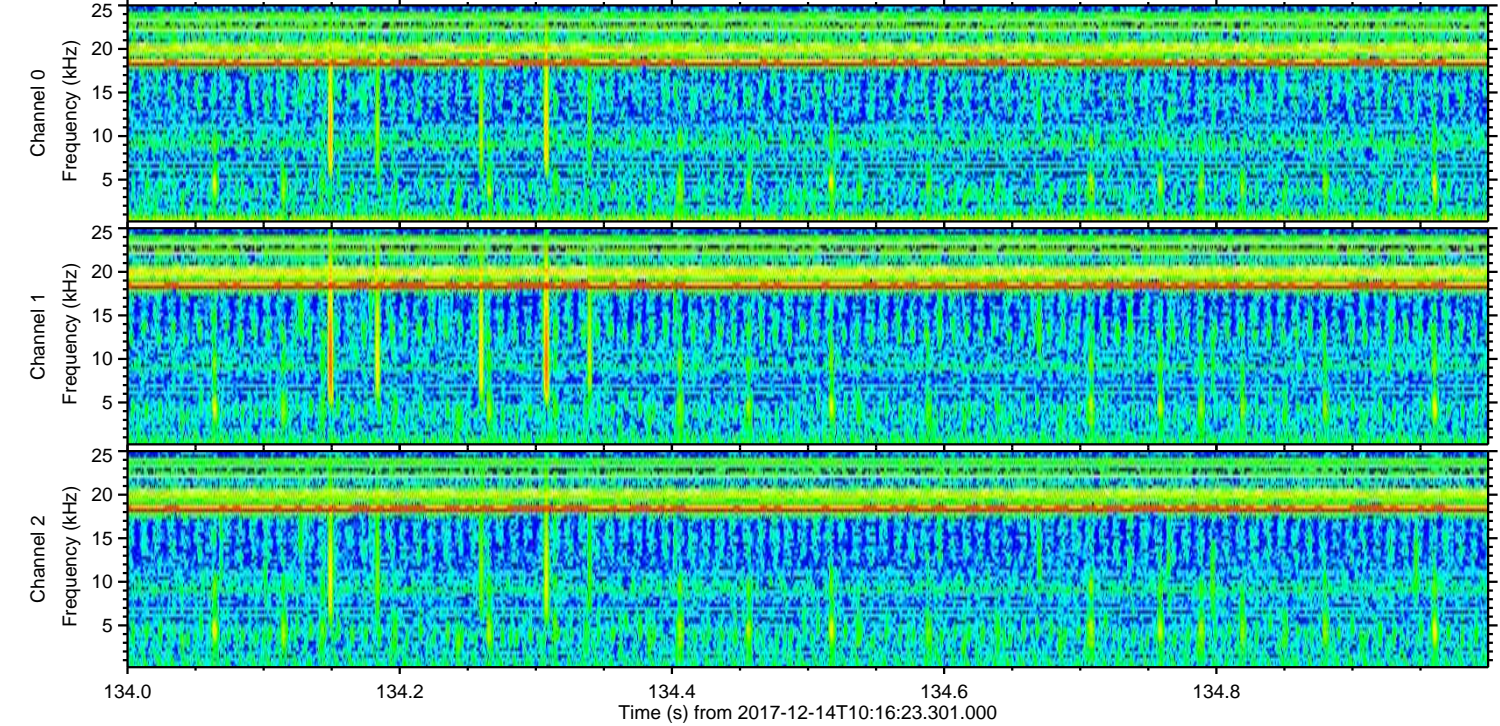
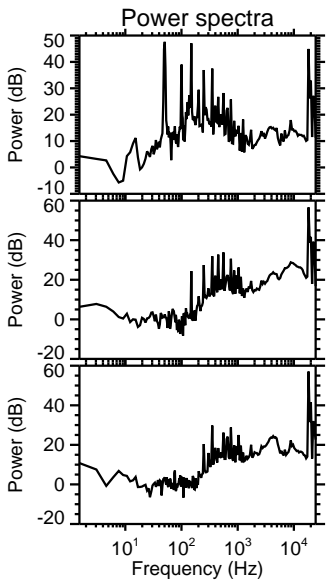
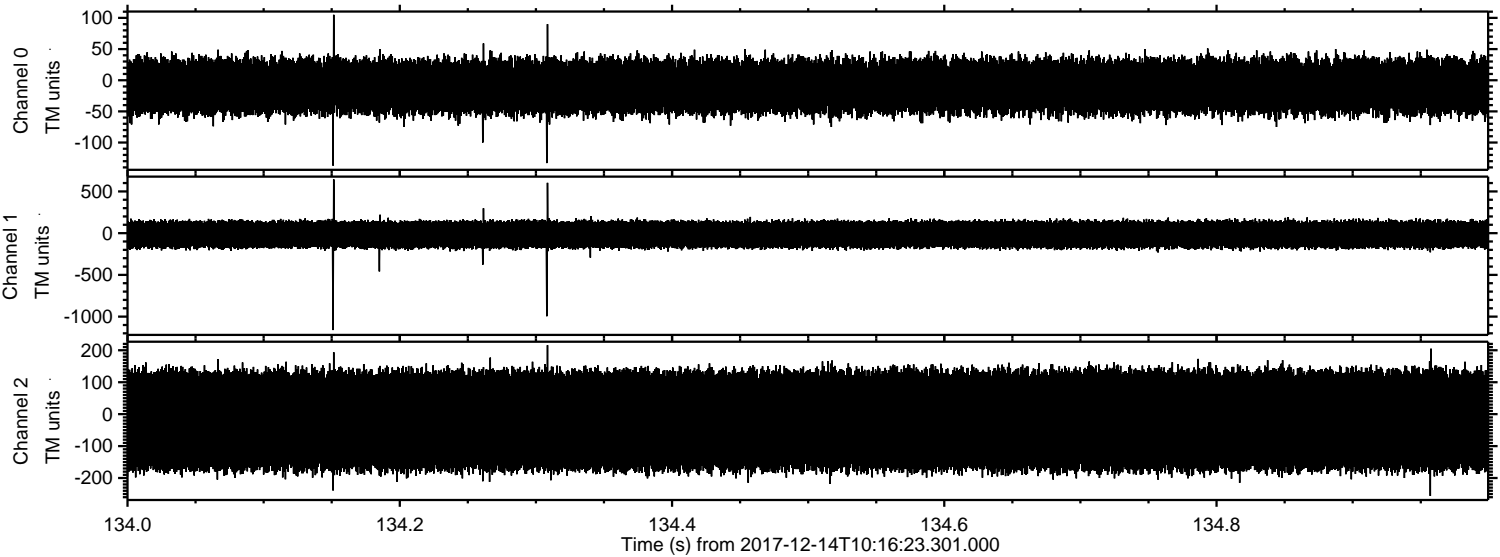
Channel 2
mn: -960
mx: 964
 μ : -20.0
 σ : 99.9

Processed Thu Dec 14 11:24:48 2017 by ELM ver.2012-10-06 from 001__elm20171214_101622__dat00.bin



ELMAVAN 3D WAVEFORMS (Measured data sampled at 50 kHz) 51000 packets of 144 samples from 2017-12-14T10:16:23.301.000. Part 135/147

Processed Thu Dec 14 11:24:49 2017 by ELM ver.2012-10-06 from 001__elm20171214_101622__dat00.bin



Processed Thu Dec 14 11:24:50 2017 by ELM ver.2012-10-06 from 001__elm20171214_101622__dat00.bin

