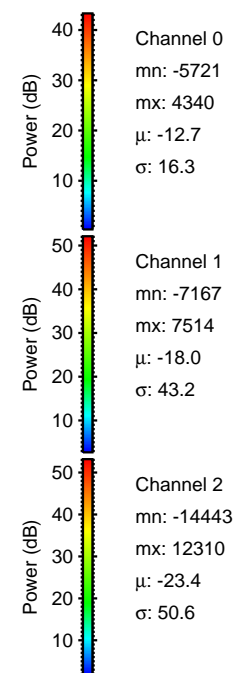
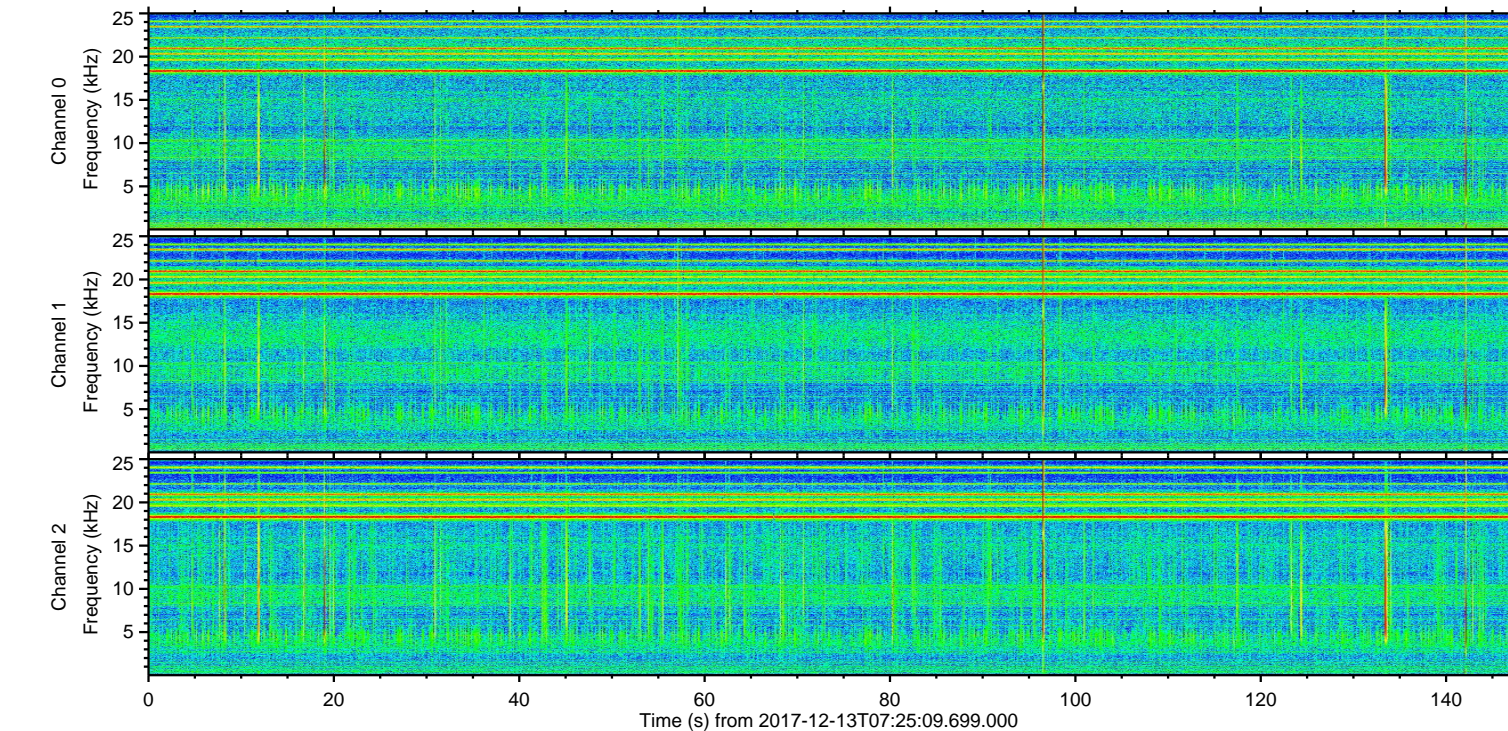
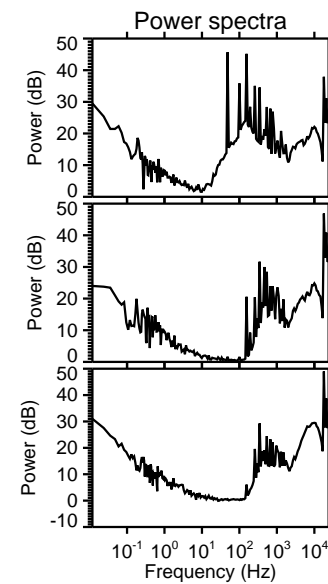
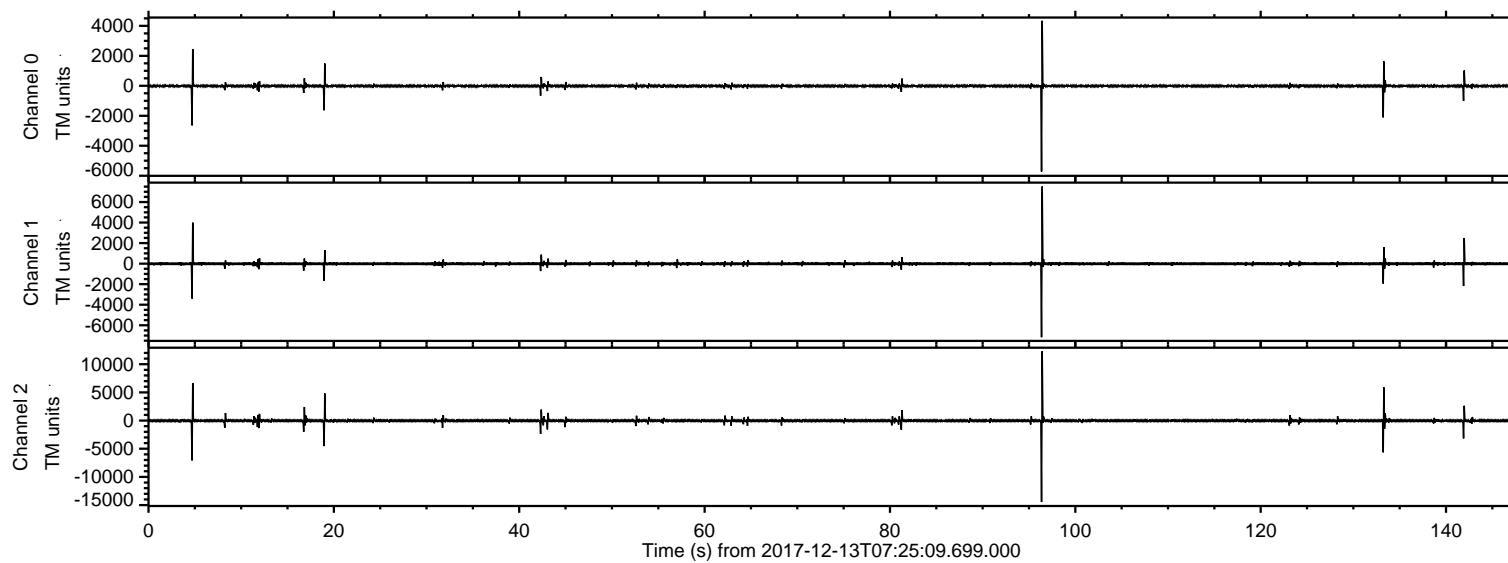
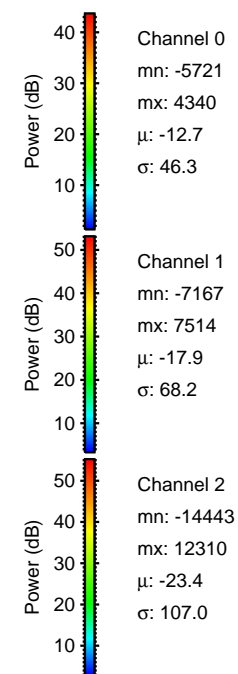
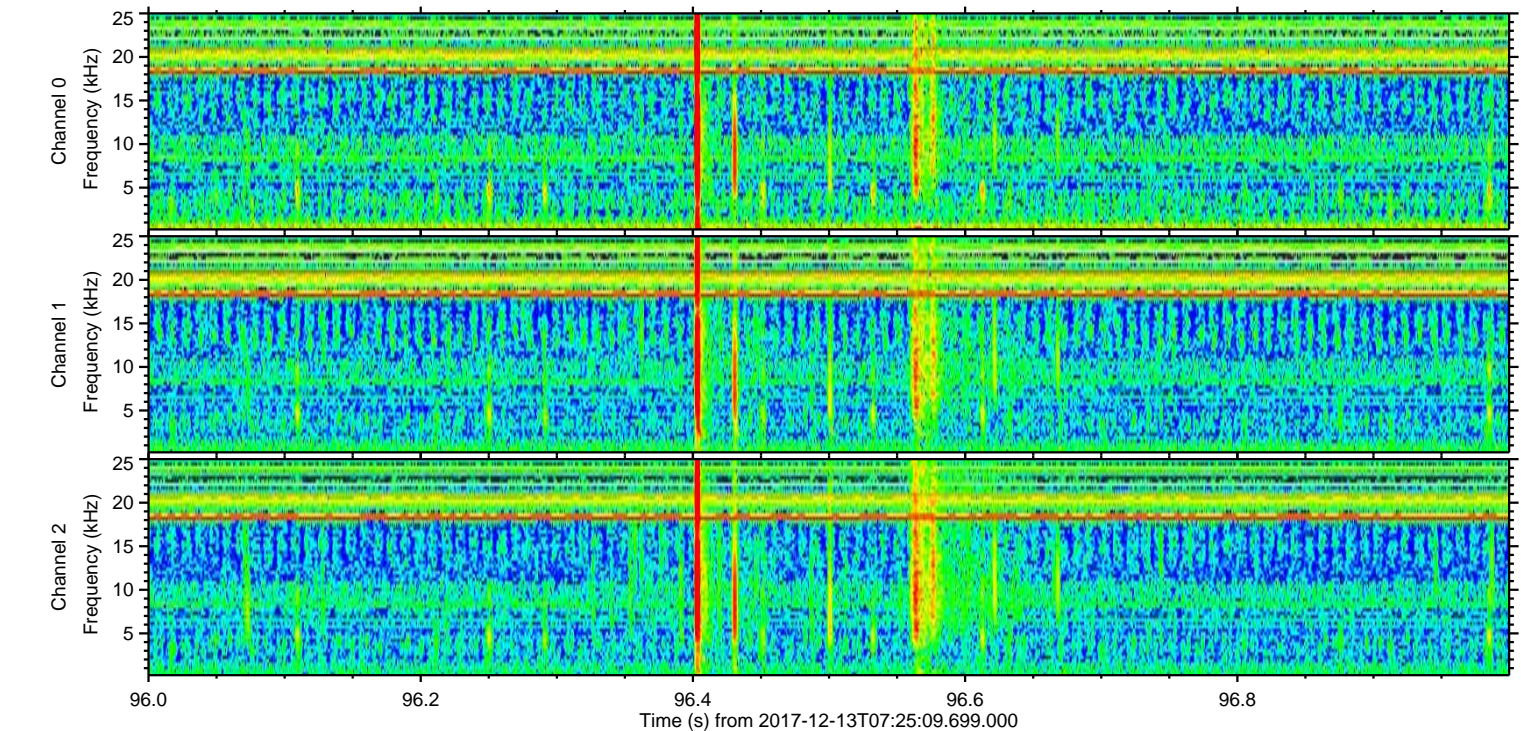
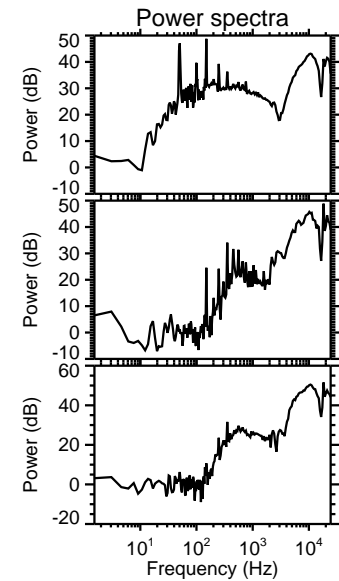
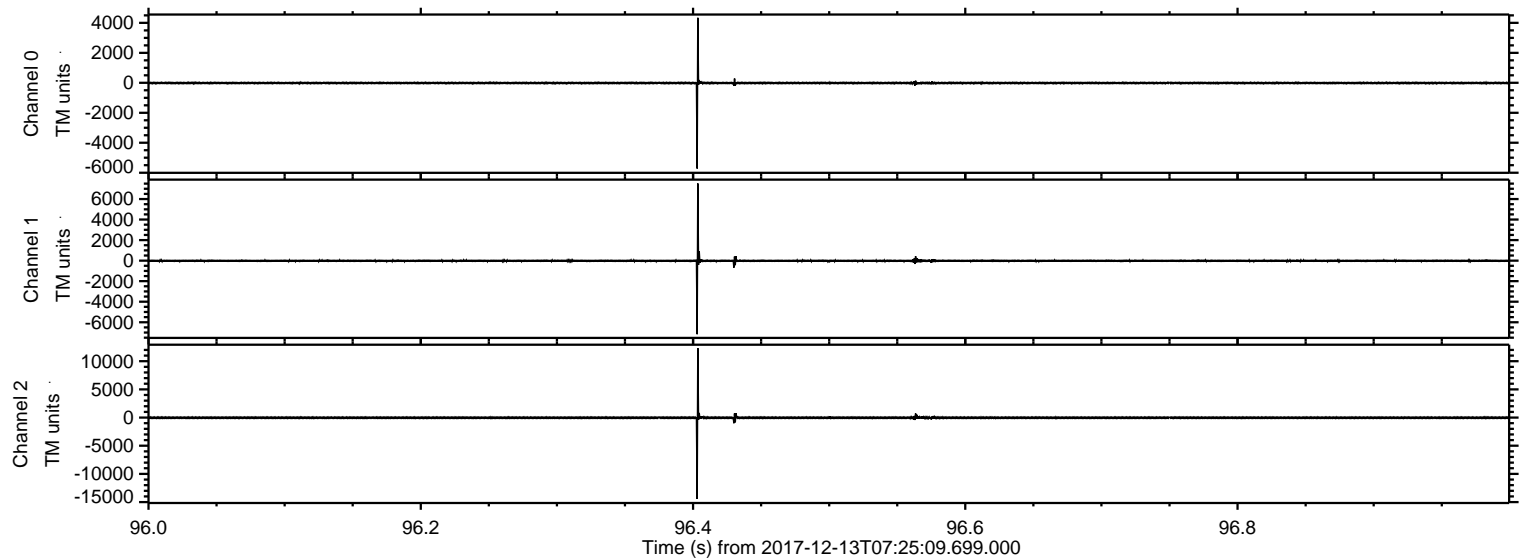


ELMAVAN 3D WAVEFORMS (Measured data sampled at 50 kHz) 51000 packets of 144 samples from 2017-12-13T07:25:09.699.000.

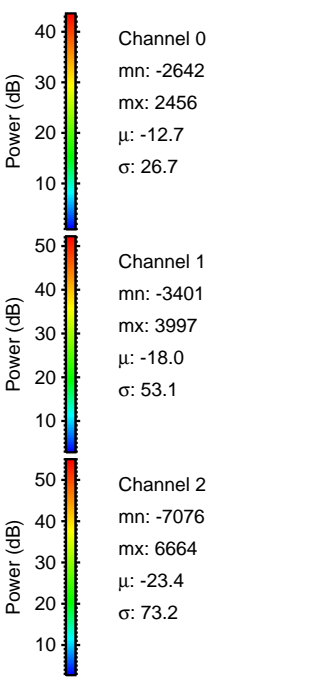
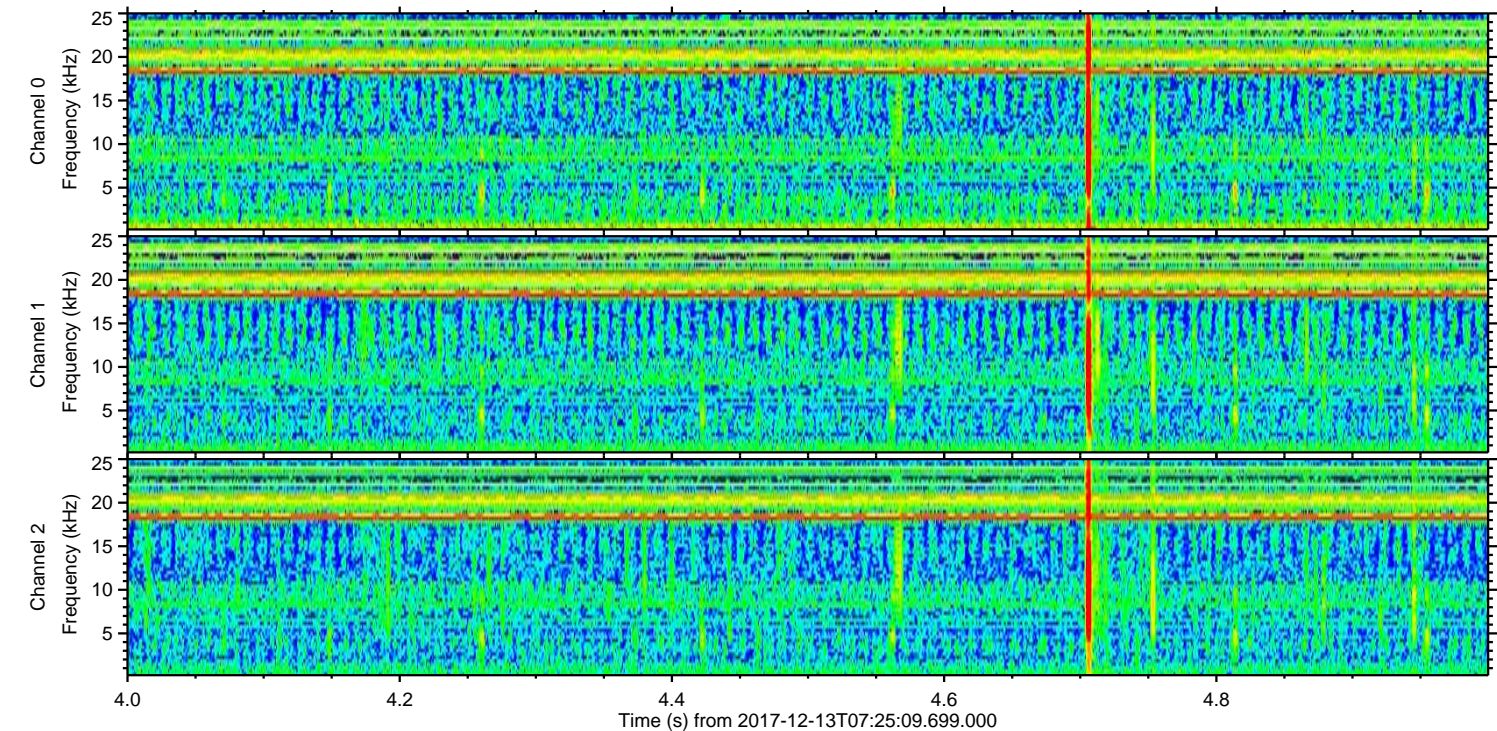
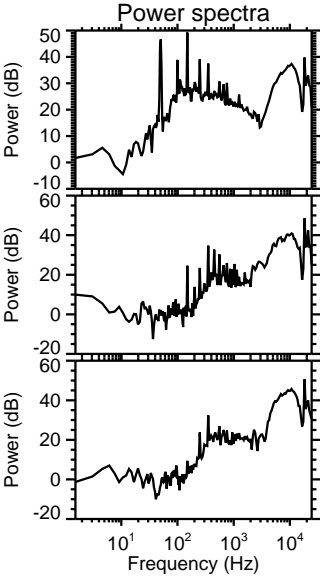
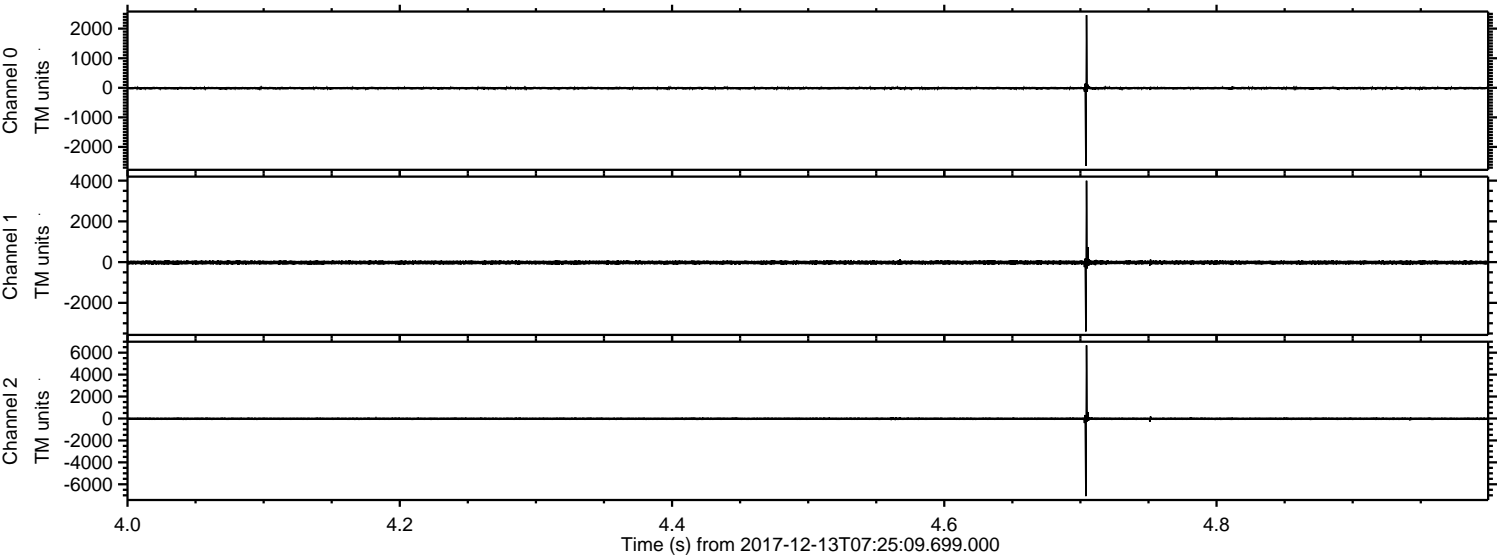
Processed Wed Dec 13 08:33:32 2017 by ELM ver.2012-10-06 from 001__elm20171213_072508__dat00.bin



Processed Wed Dec 13 08:33:40 2017 by ELM ver.2012-10-06 from 001__elm20171213_072508__dat00.bin

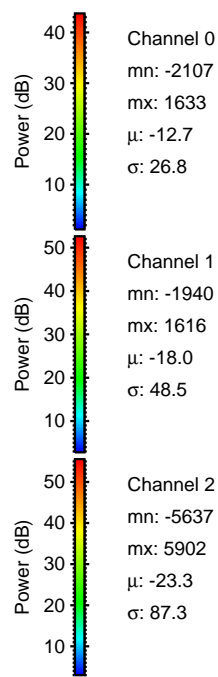
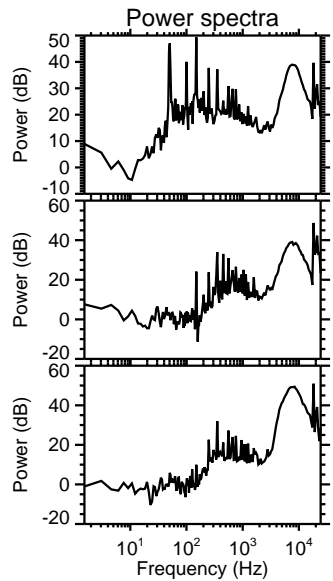
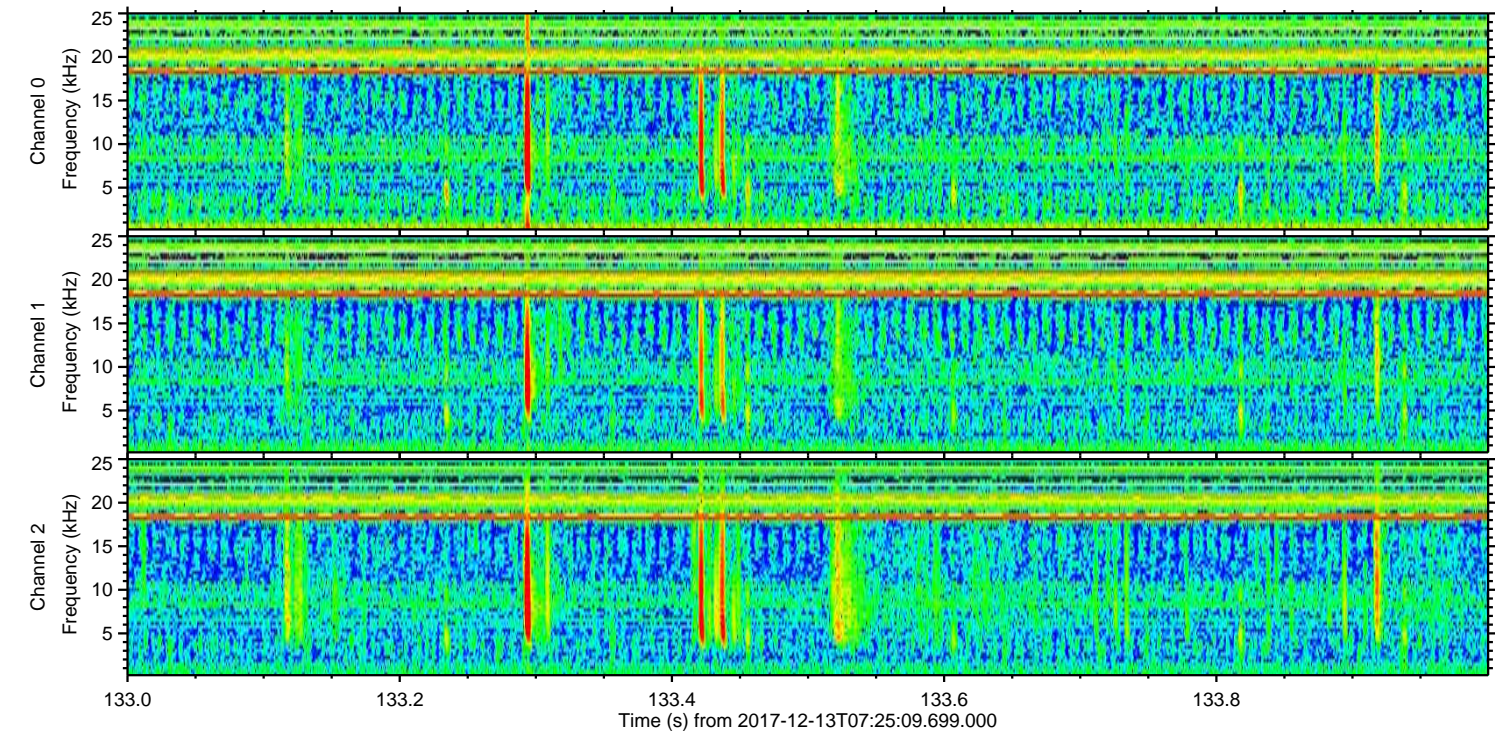
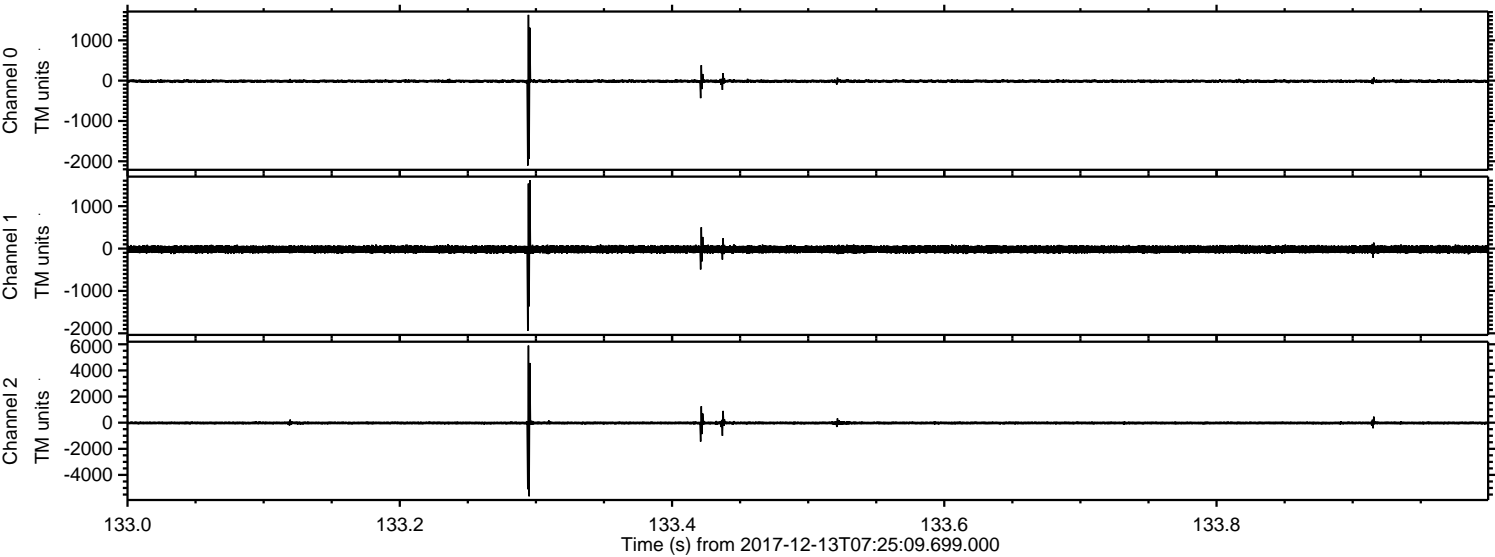


Processed Wed Dec 13 08:33:40 2017 by ELM ver.2012-10-06 from 001__elm20171213_072508__dat00.bin



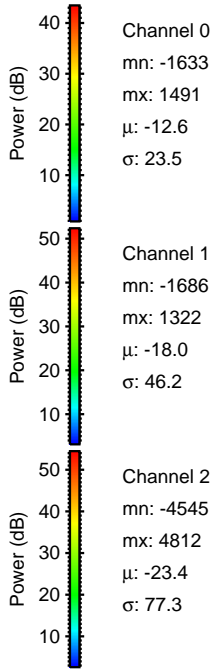
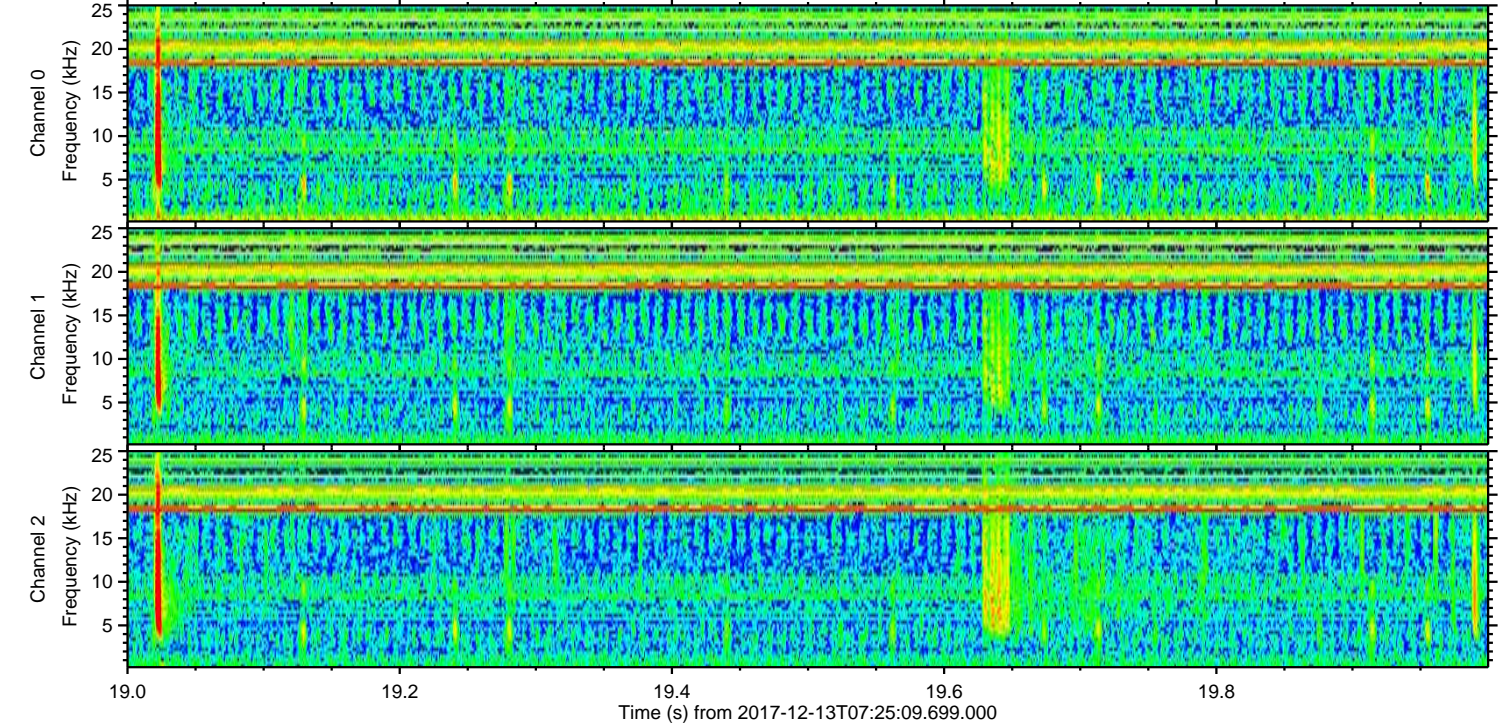
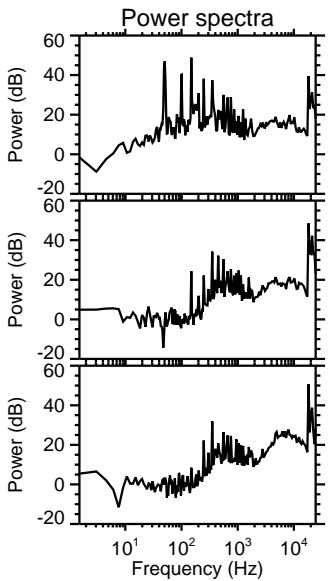
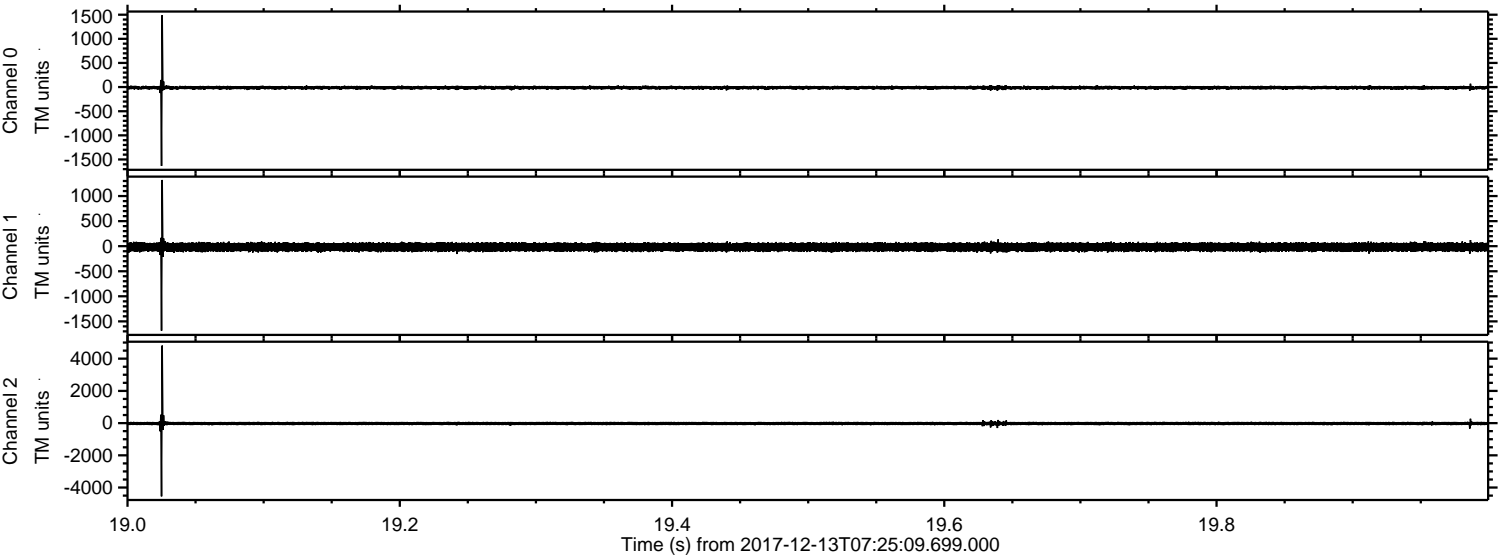
ELMAVAN 3D WAVEFORMS (Measured data sampled at 50 kHz) 51000 packets of 144 samples from 2017-12-13T07:25:09.699.000. Part 134/147

Processed Wed Dec 13 08:33:41 2017 by ELM ver.2012-10-06 from 001__elm20171213_072508__dat00.bin



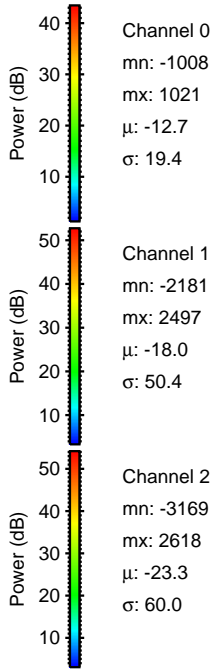
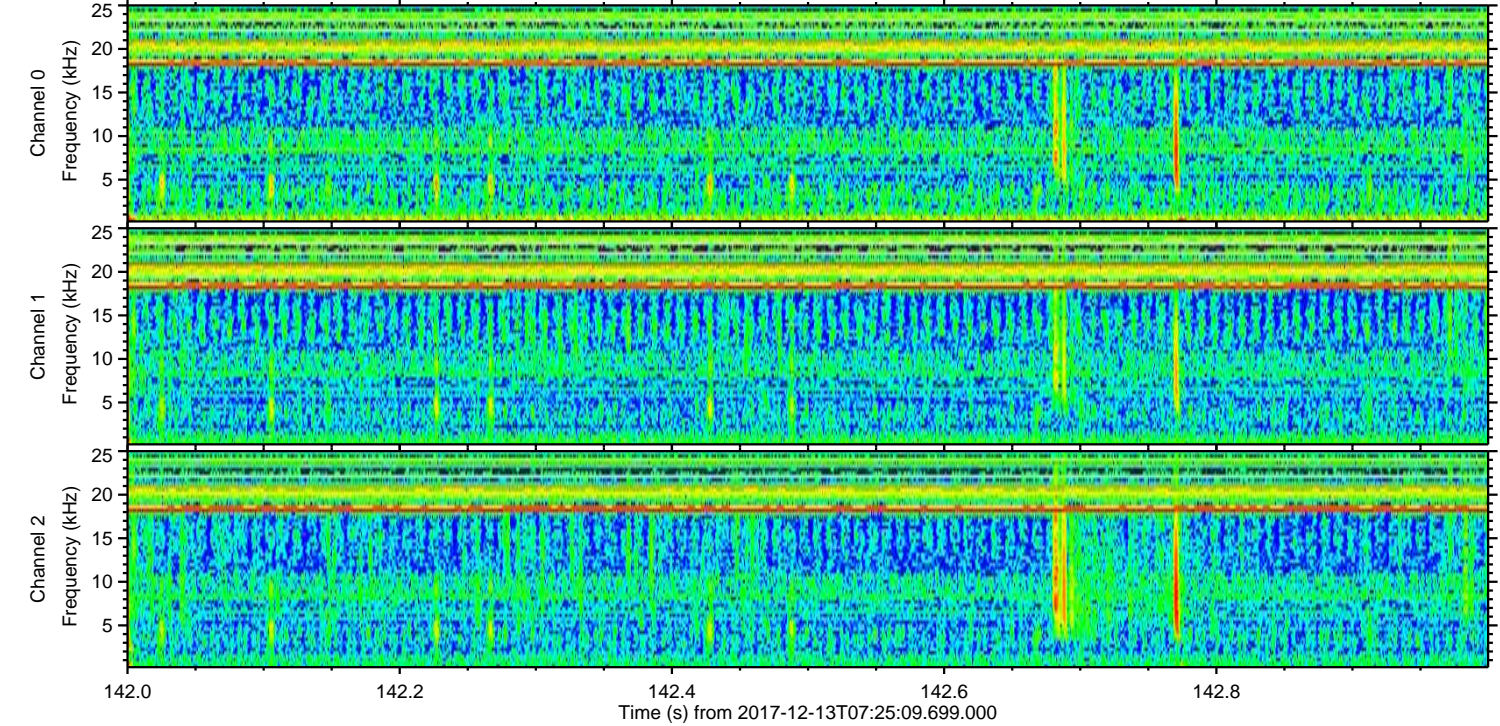
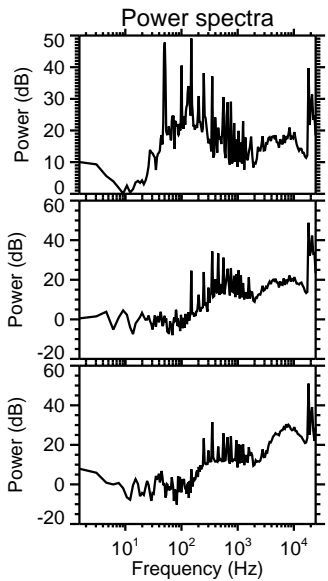
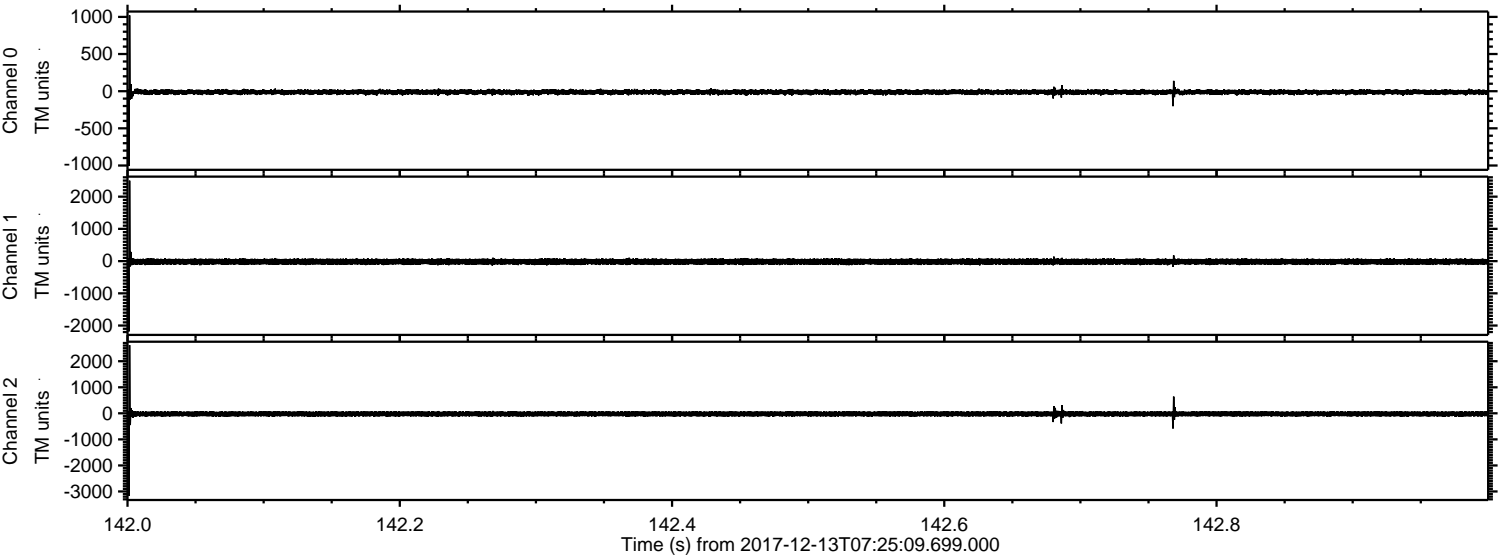
ELMAVAN 3D WAVEFORMS (Measured data sampled at 50 kHz) 51000 packets of 144 samples from 2017-12-13T07:25:09.699.000. Part 20/147

Processed Wed Dec 13 08:33:42 2017 by ELM ver.2012-10-06 from 001__elm20171213_072508__dat00.bin

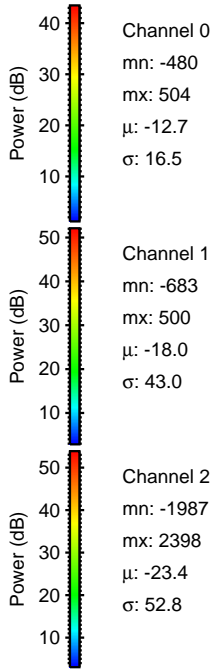
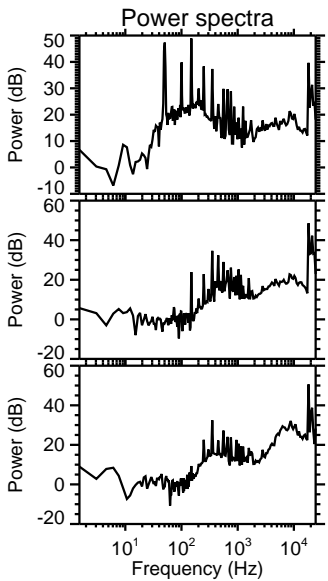
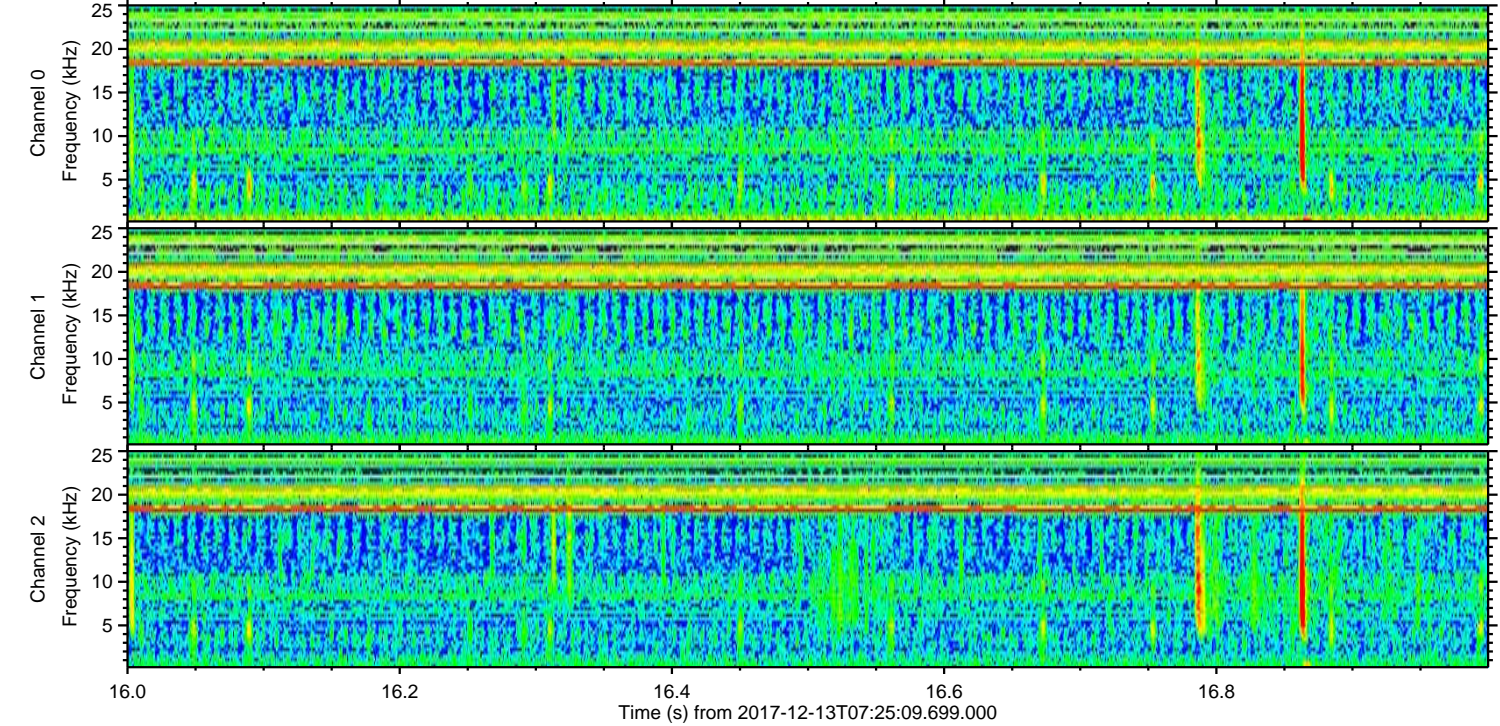
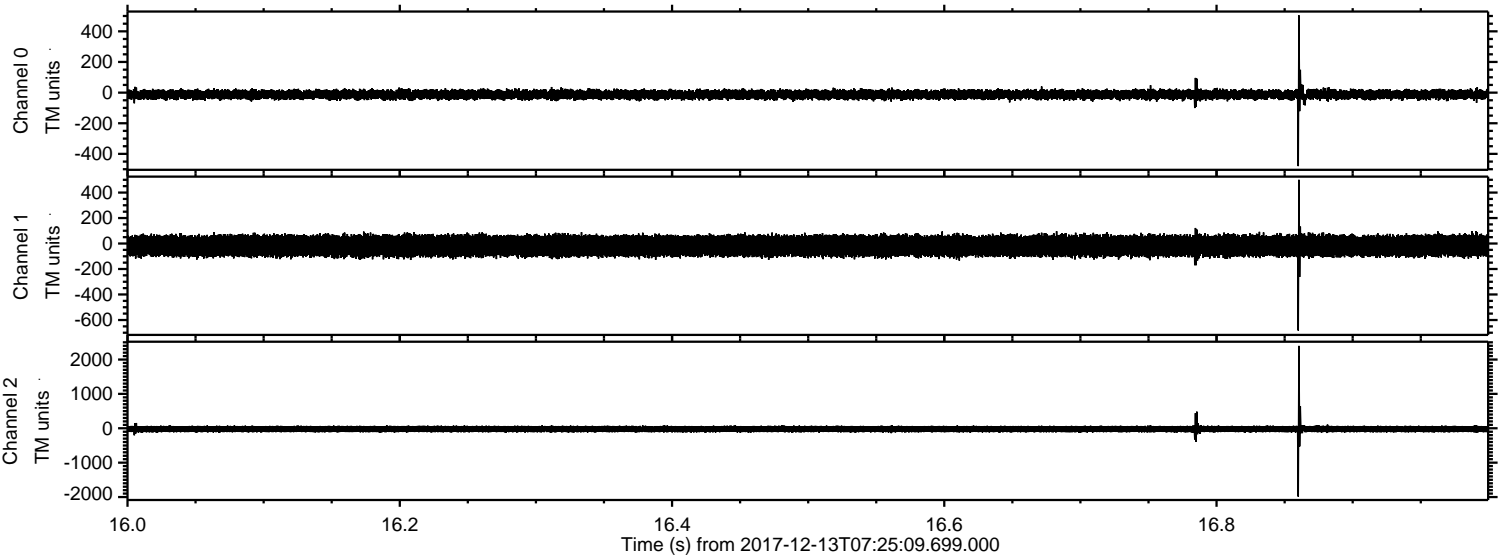


ELMAVAN 3D WAVEFORMS (Measured data sampled at 50 kHz) 51000 packets of 144 samples from 2017-12-13T07:25:09.699.000. Part 143/147

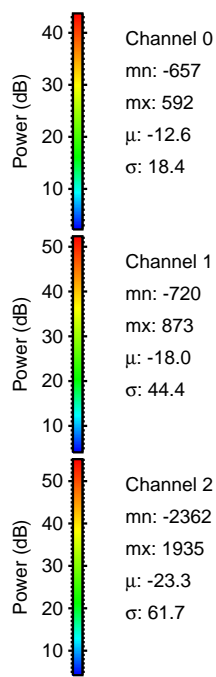
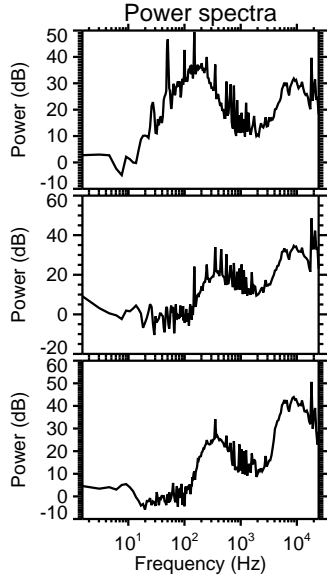
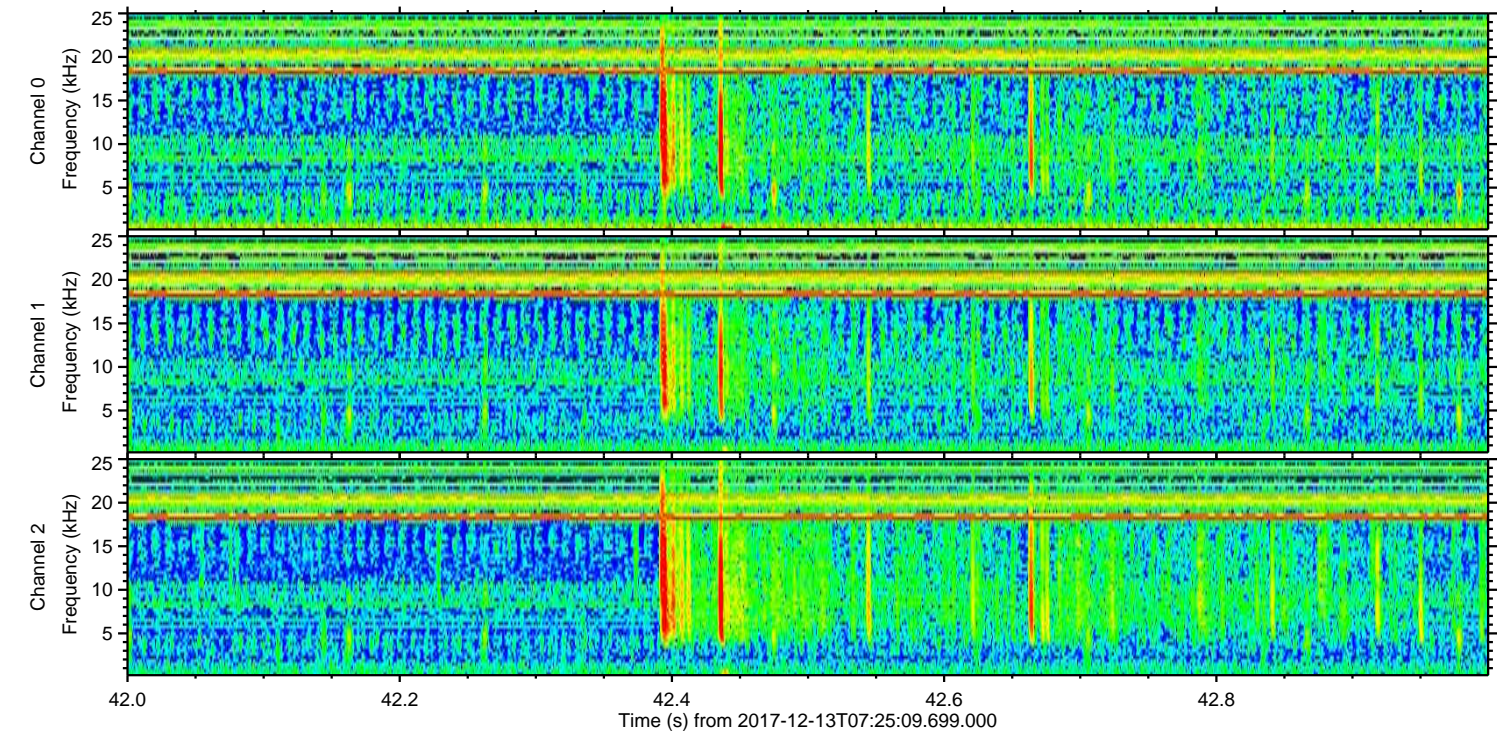
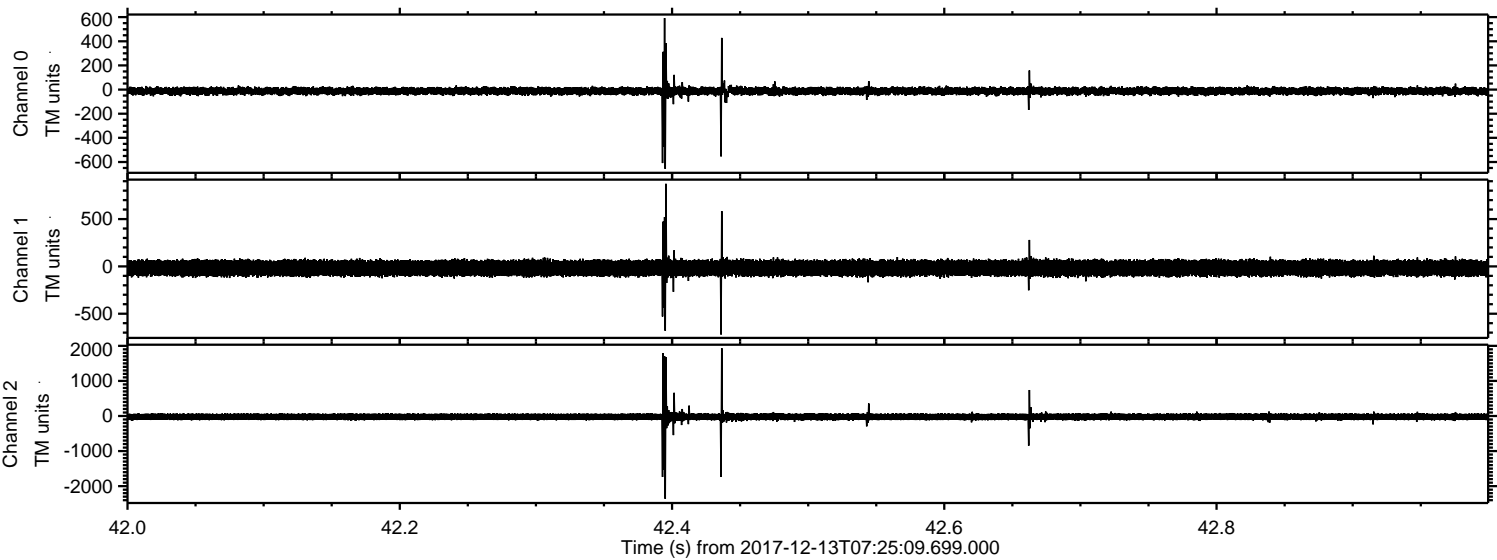
Processed Wed Dec 13 08:33:43 2017 by ELM ver.2012-10-06 from 001__elm20171213_072508__dat00.bin



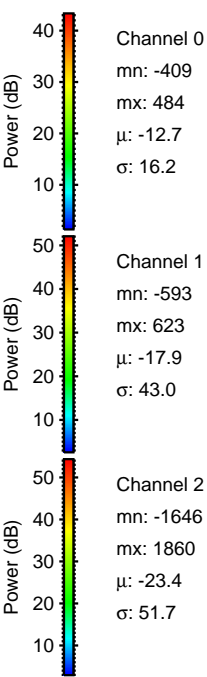
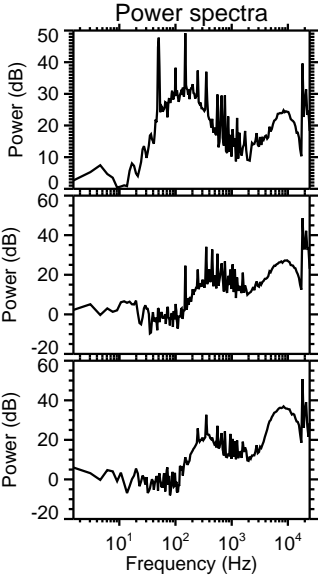
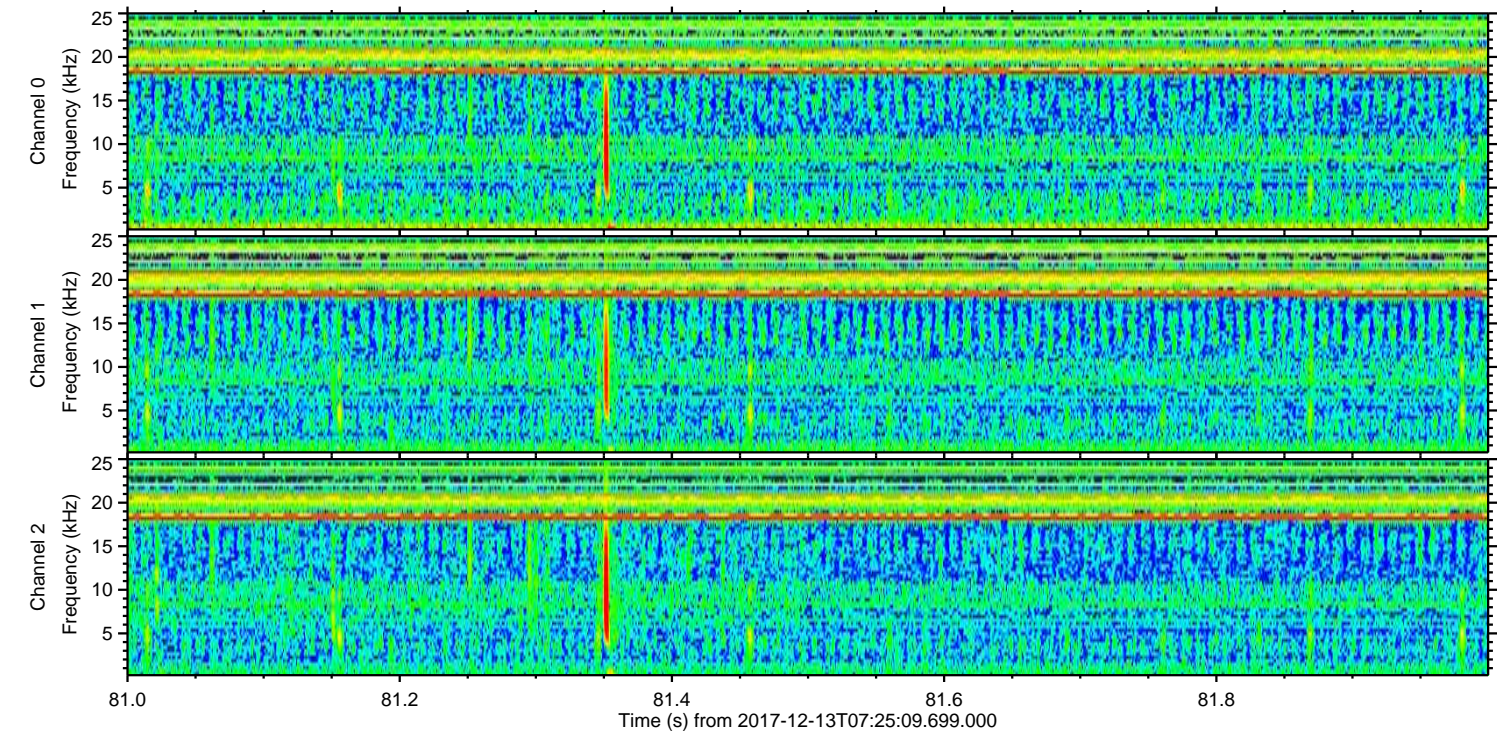
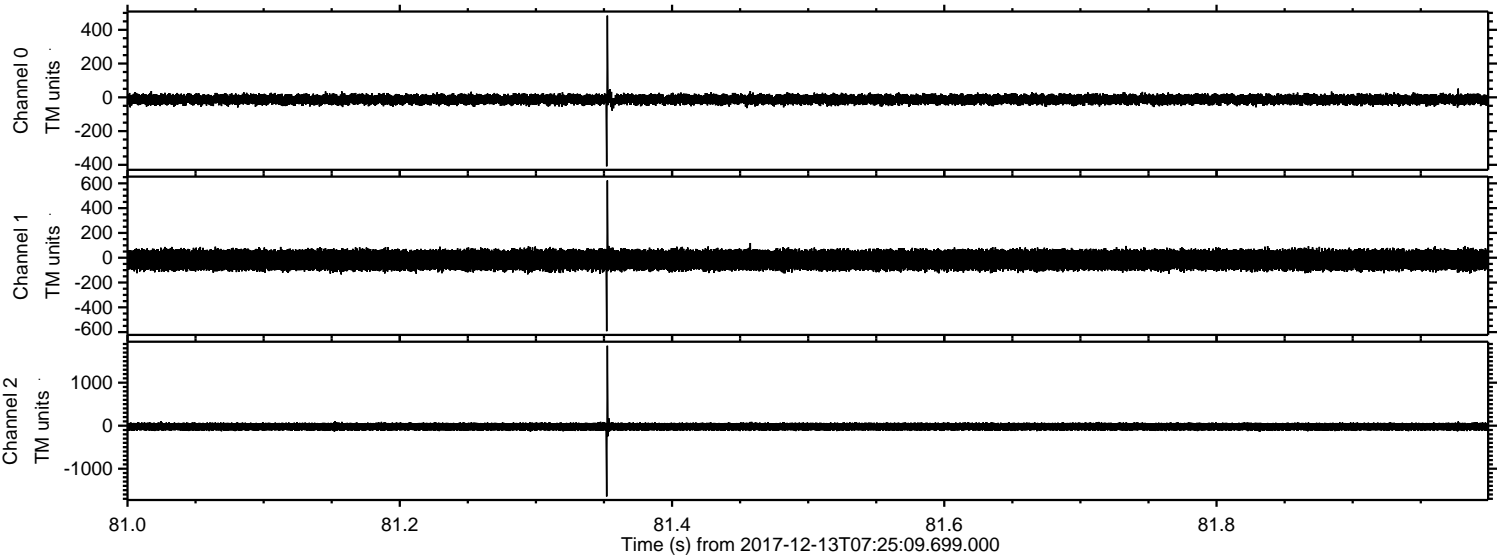
Processed Wed Dec 13 08:33:44 2017 by ELM ver.2012-10-06 from 001__elm20171213_072508__dat00.bin



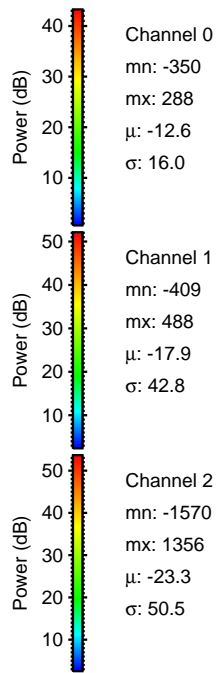
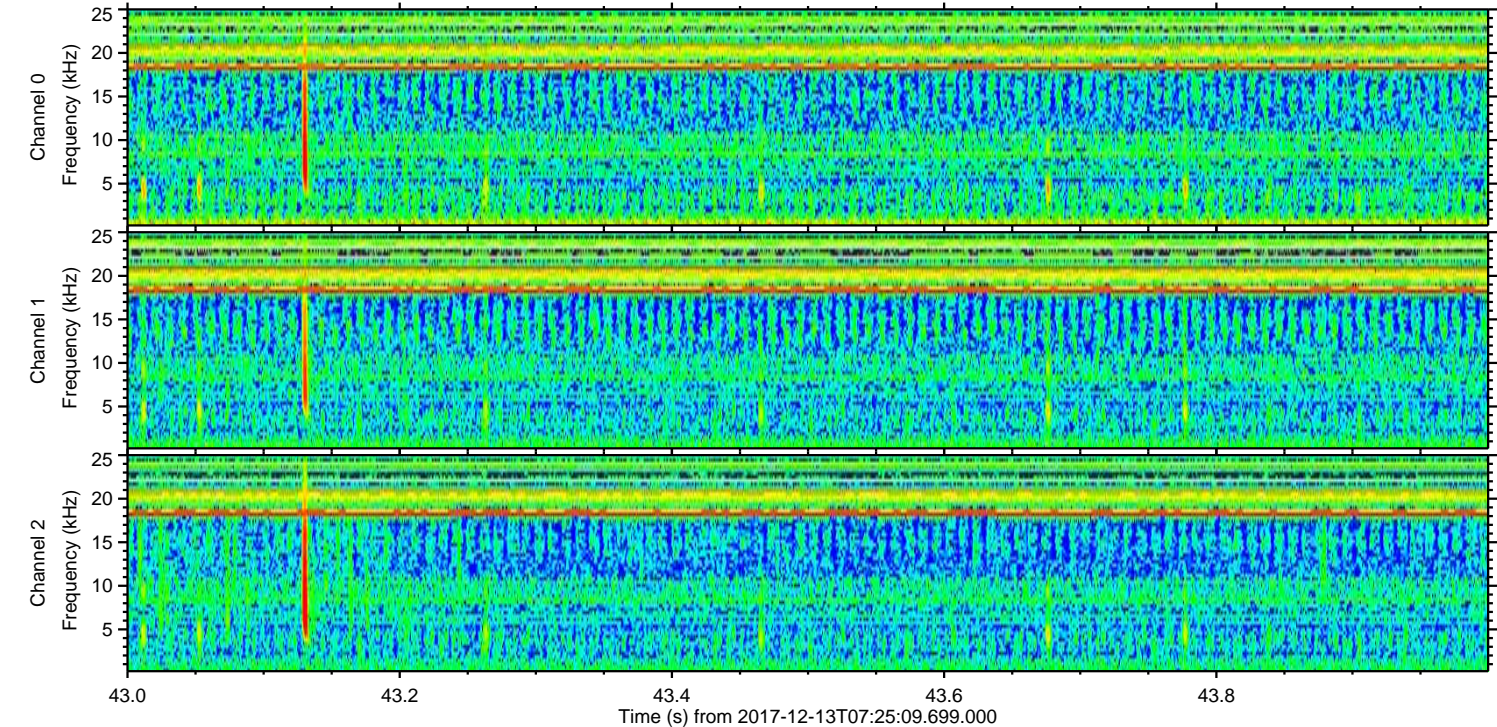
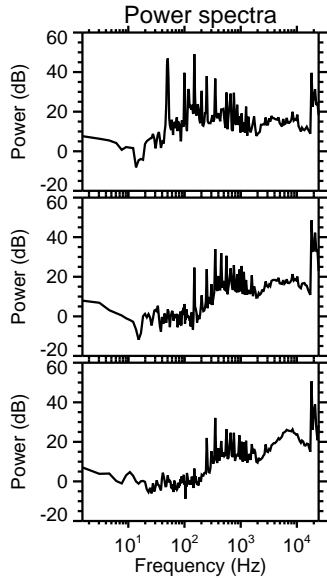
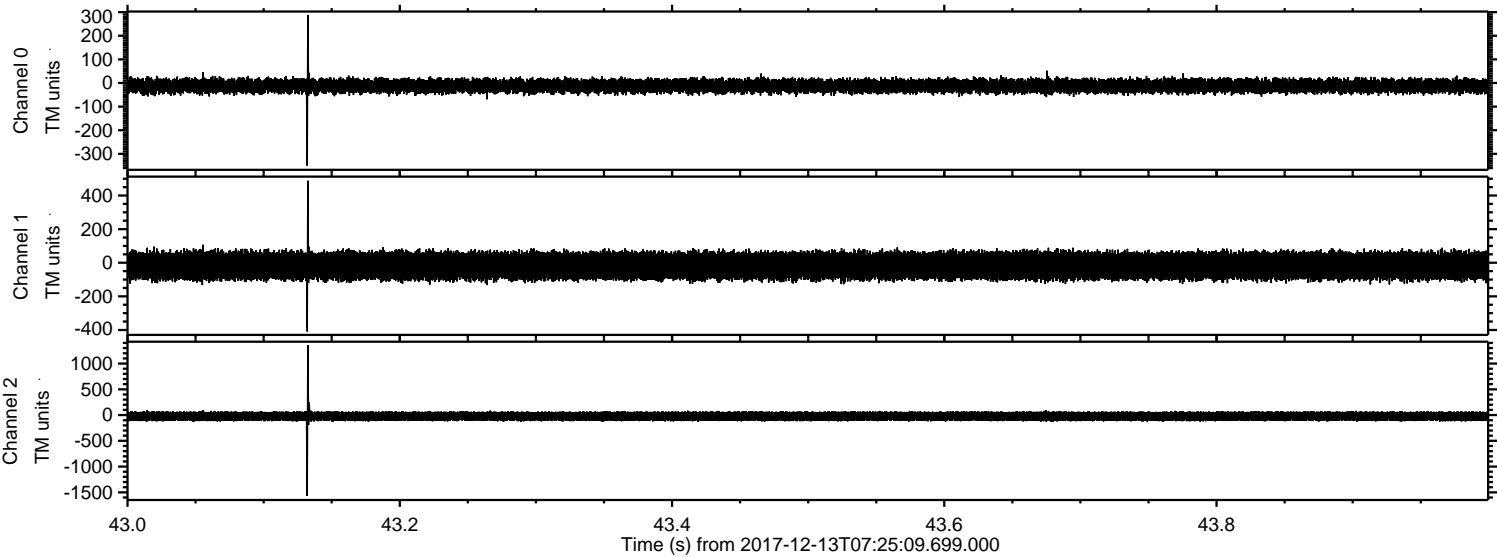
Processed Wed Dec 13 08:33:44 2017 by ELM ver.2012-10-06 from 001__elm20171213_072508__dat00.bin



Processed Wed Dec 13 08:33:45 2017 by ELM ver.2012-10-06 from 001__elm20171213_072508__dat00.bin



Processed Wed Dec 13 08:33:46 2017 by ELM ver.2012-10-06 from 001__elm20171213_072508__dat00.bin



Channel 0
mn: -350
mx: 288
 μ : -12.6
 σ : 16.0

Channel 1
mn: -409
mx: 488
 μ : -17.9
 σ : 42.8

Channel 2
mn: -1570
mx: 1356
 μ : -23.3
 σ : 50.5

Processed Wed Dec 13 08:33:47 2017 by ELM ver.2012-10-06 from 001__elm20171213_072508__dat00.bin

