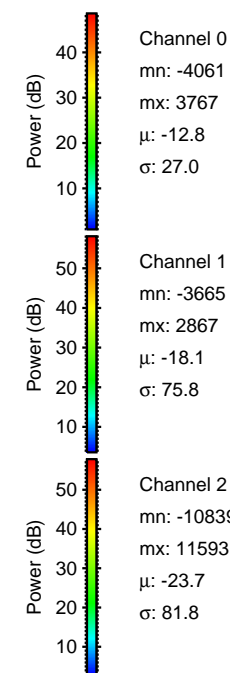
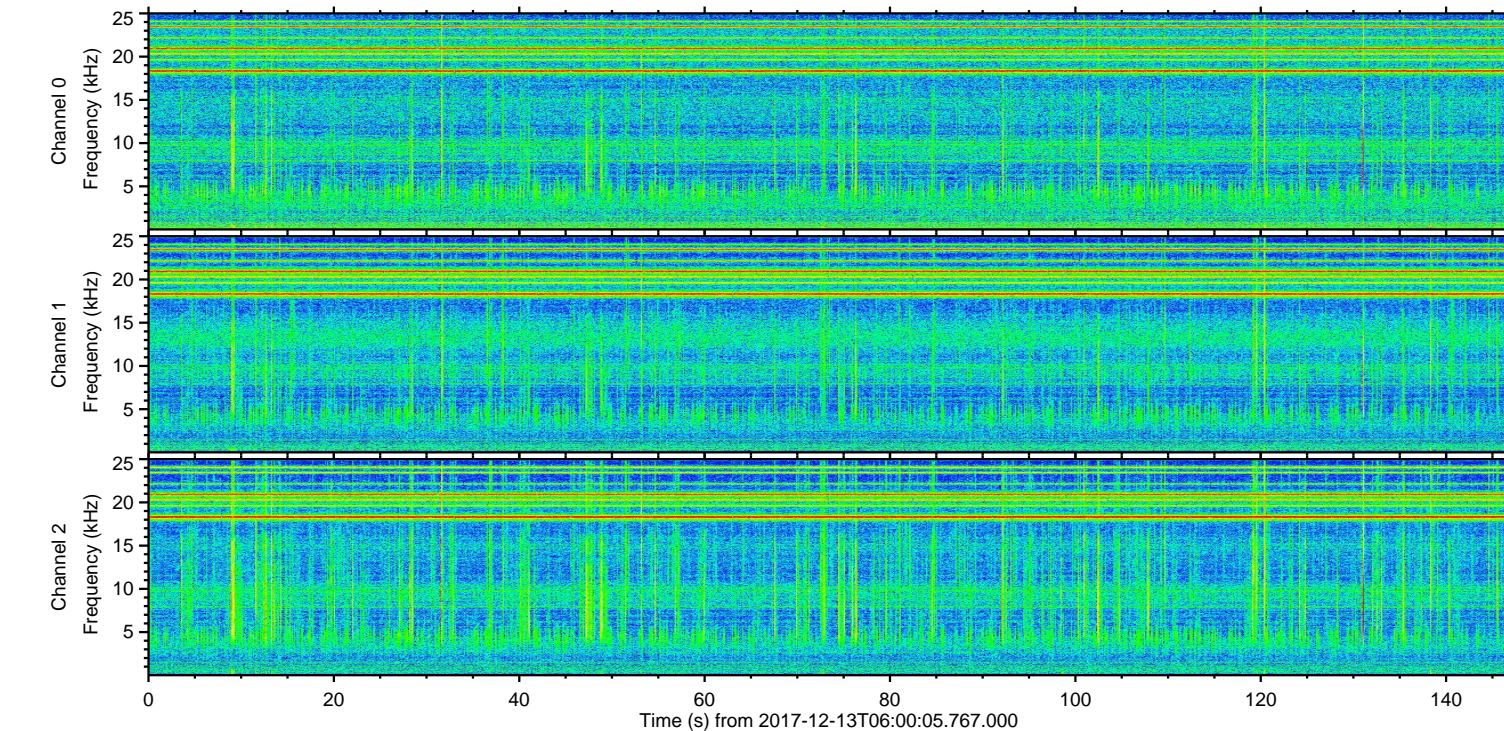
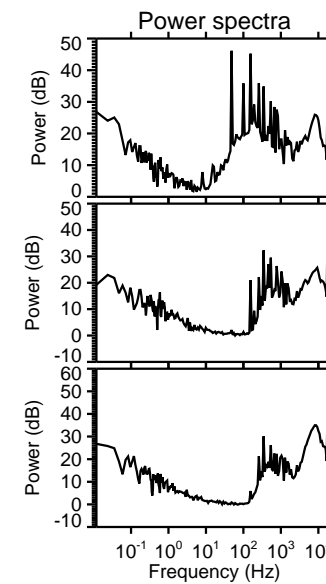
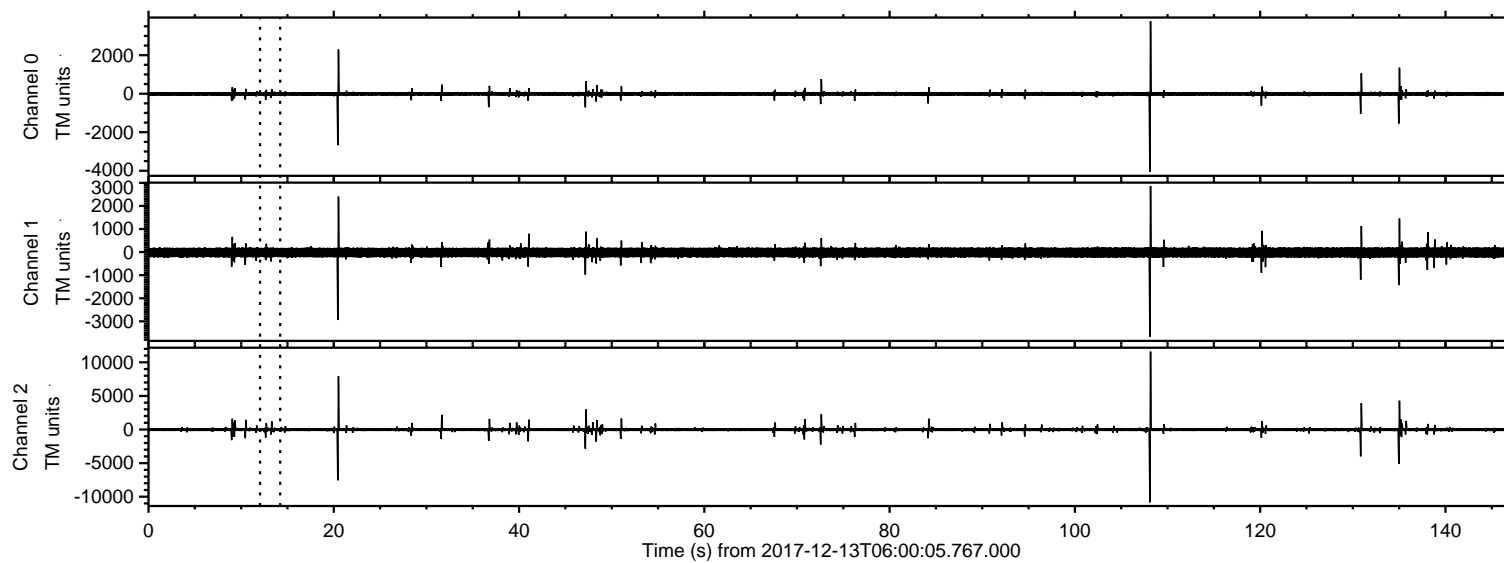


# ELMAVAN 3D WAVEFORMS (Measured data sampled at 50 kHz) 50998 packets of 144 samples from 2017-12-13T06:00:05.767.000.

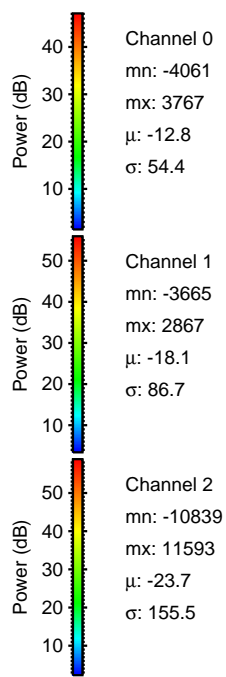
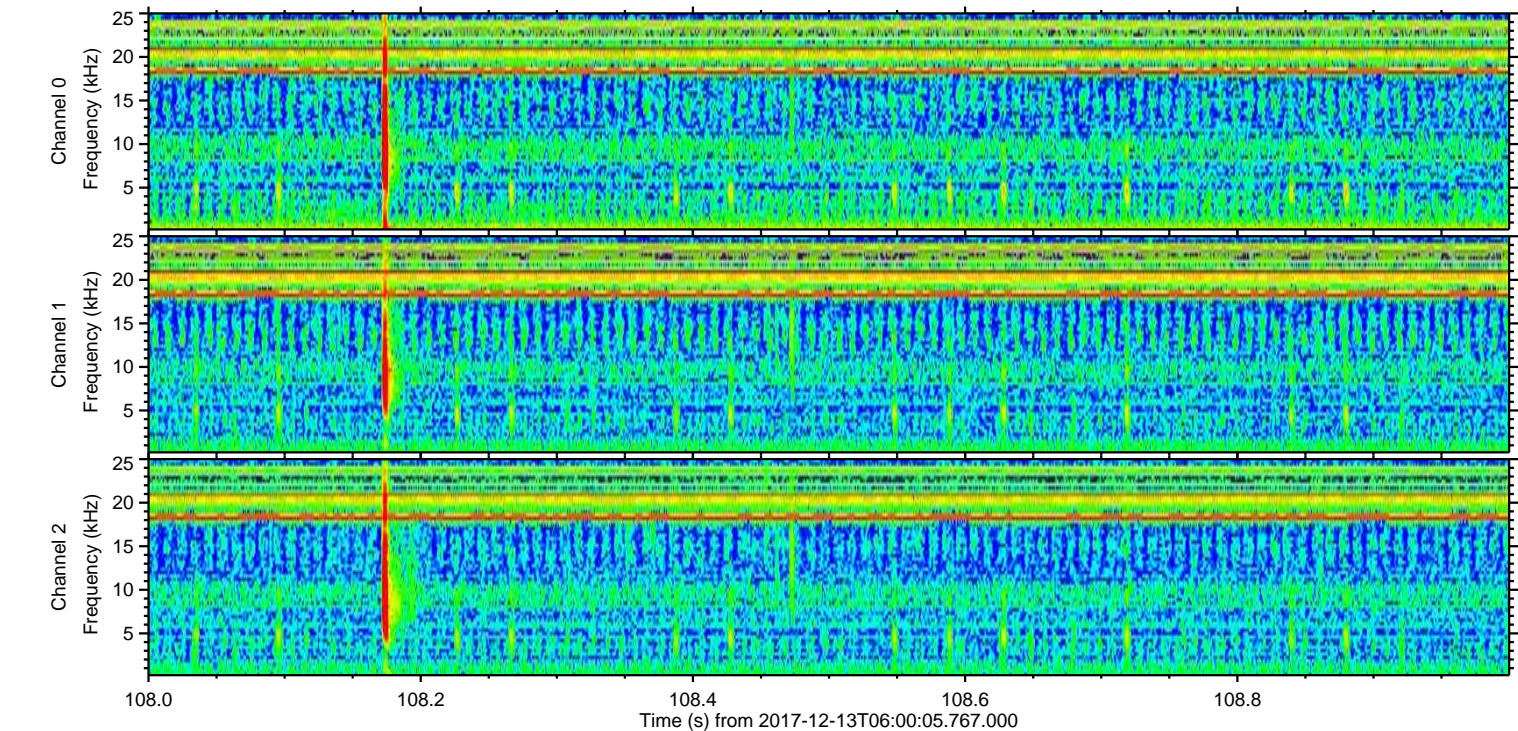
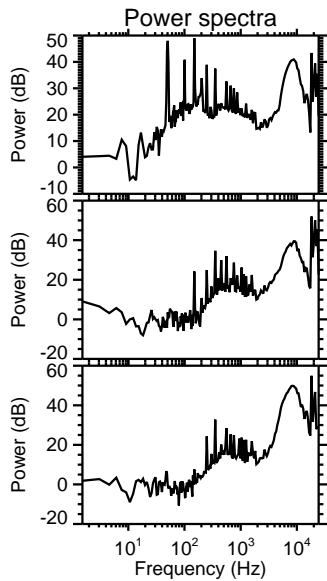
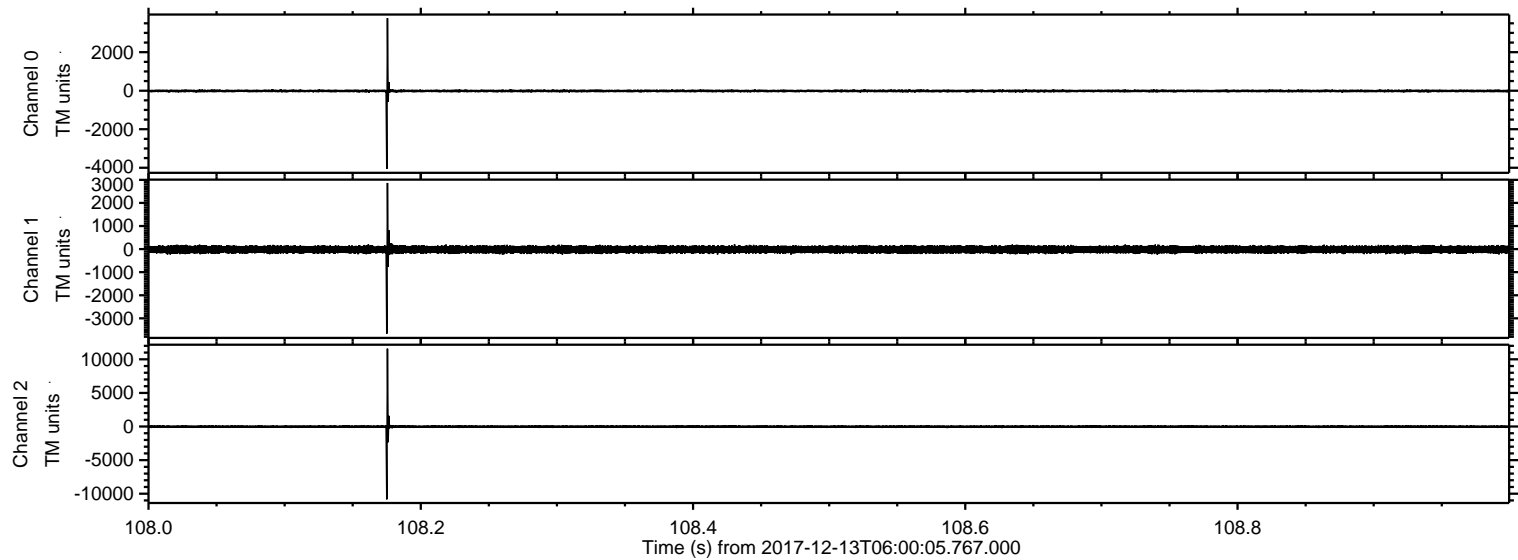
Processed Wed Dec 13 07:08:31 2017 by ELM ver.2012-10-06 from 001\_\_elm20171213\_060004\_\_dat00.bin





ELMAVAN 3D WAVEFORMS (Measured data sampled at 50 kHz) 50998 packets of 144 samples from 2017-12-13T06:00:05.767.000. Part 109/147

Processed Wed Dec 13 07:08:39 2017 by ELM ver.2012-10-06 from 001\_\_elm20171213\_060004\_\_dat00.bin



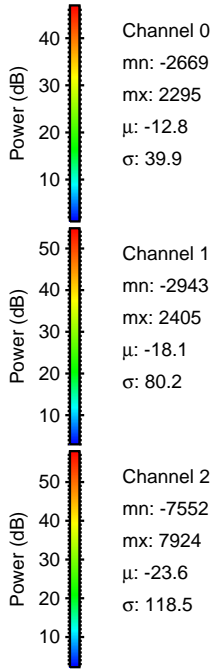
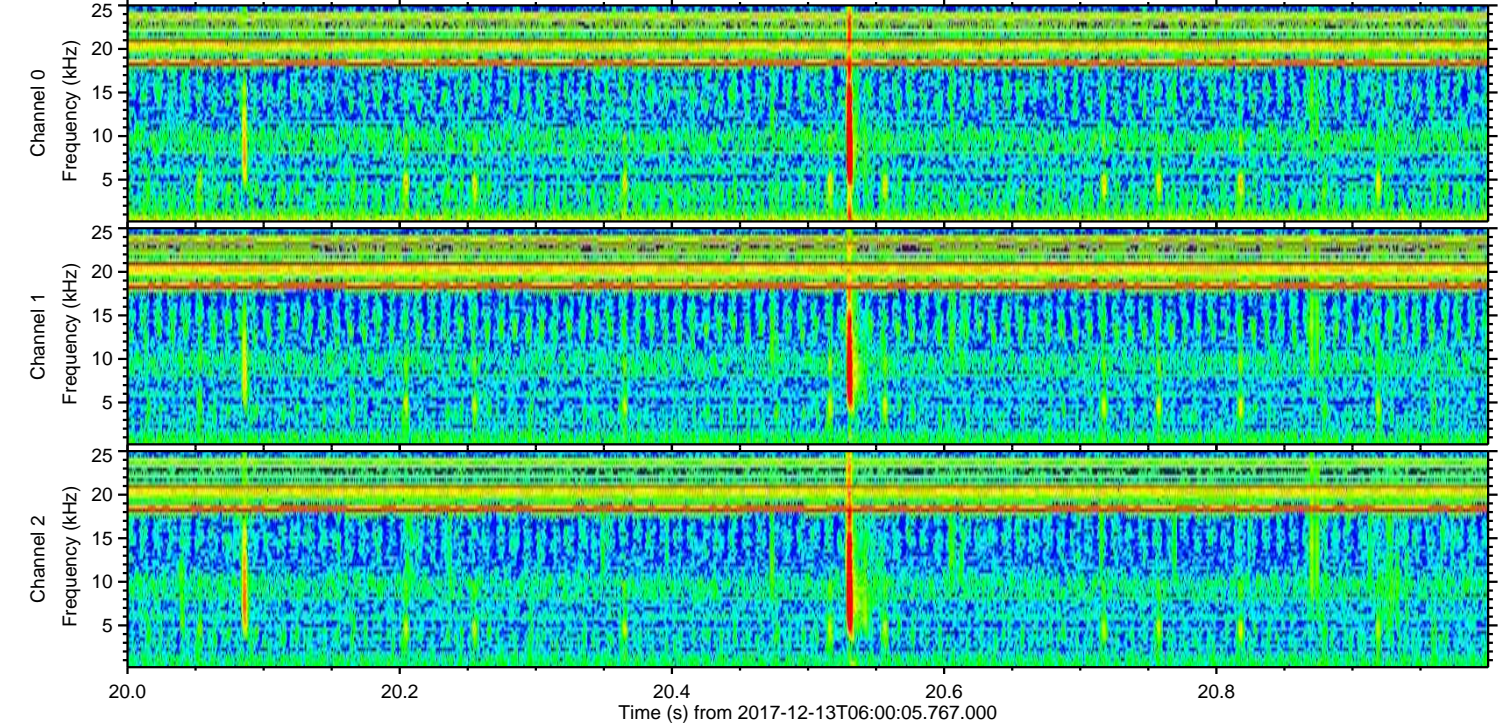
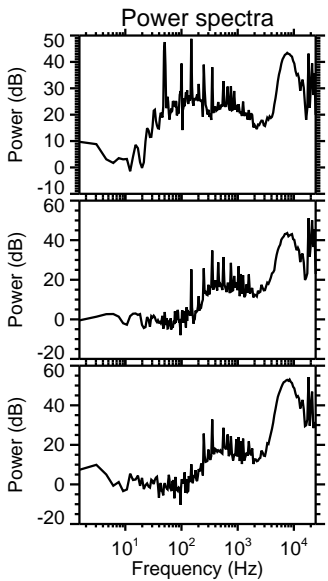
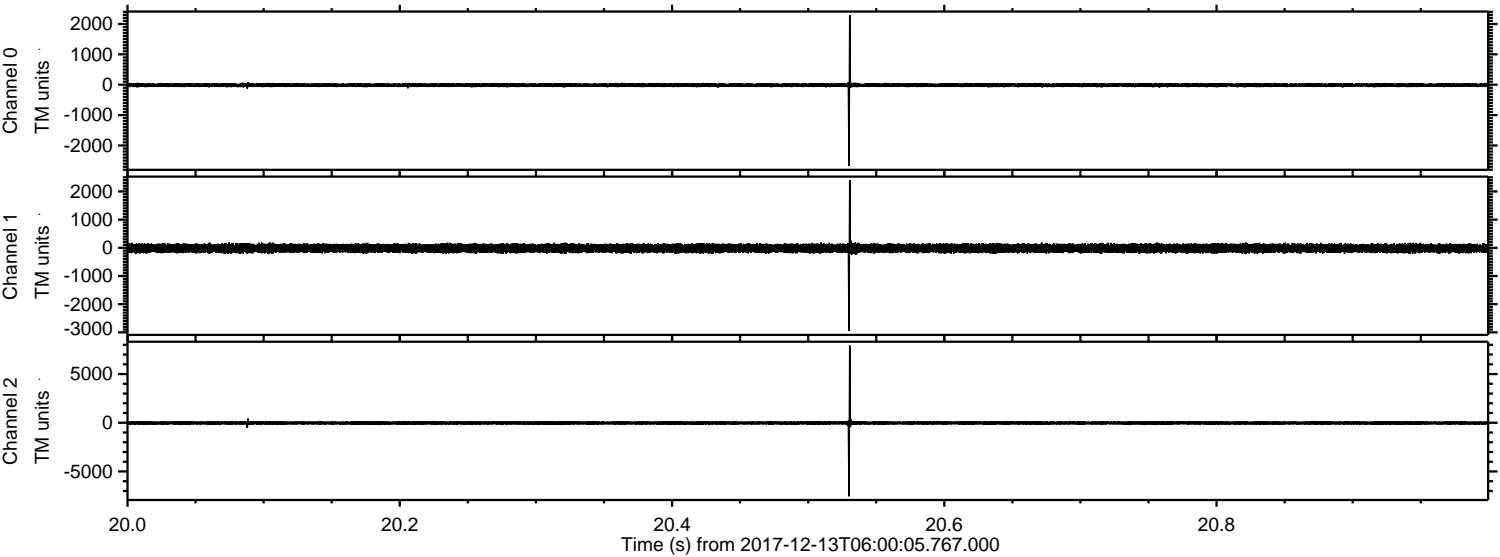
Channel 0  
mn: -4061  
mx: 3767  
 $\mu$ : -12.8  
 $\sigma$ : 54.4

Channel 1  
mn: -3665  
mx: 2867  
 $\mu$ : -18.1  
 $\sigma$ : 86.7

Channel 2  
mn: -10839  
mx: 11593  
 $\mu$ : -23.7  
 $\sigma$ : 155.5



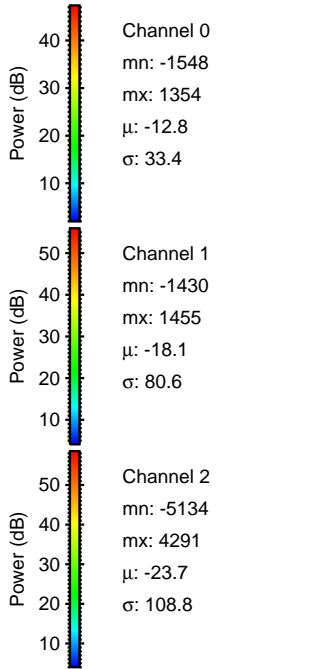
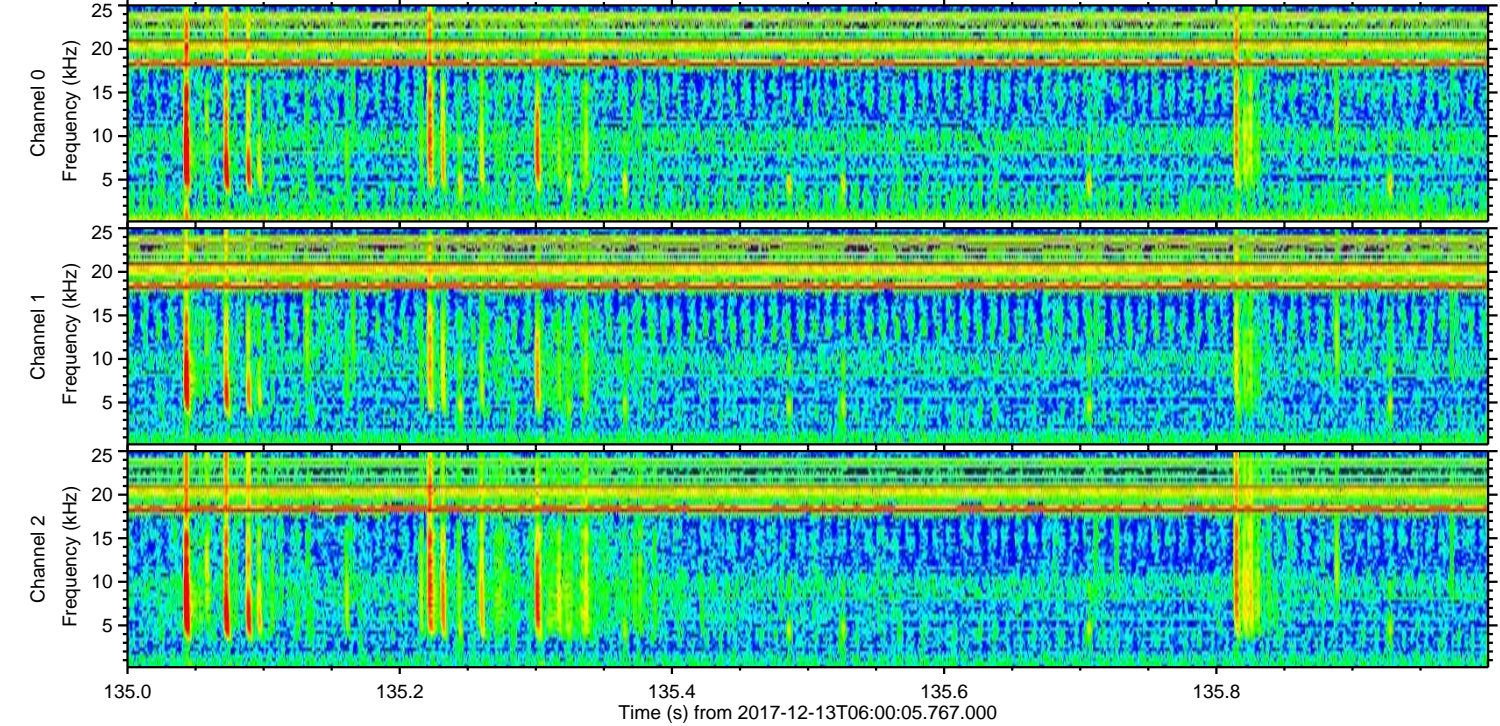
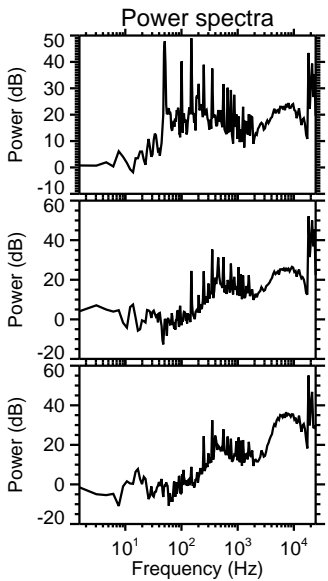
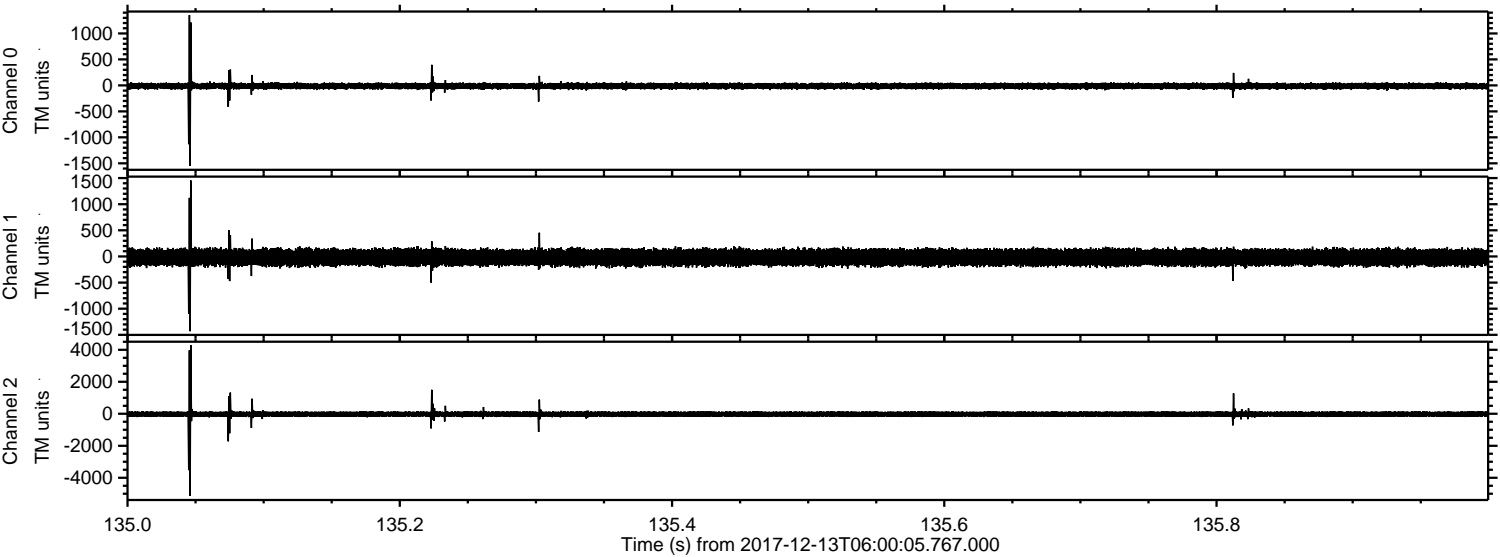
Processed Wed Dec 13 07:08:39 2017 by ELM ver.2012-10-06 from 001\_\_elm20171213\_060004\_\_dat00.bin





ELMAVAN 3D WAVEFORMS (Measured data sampled at 50 kHz) 50998 packets of 144 samples from 2017-12-13T06:00:05.767.000. Part 136/147

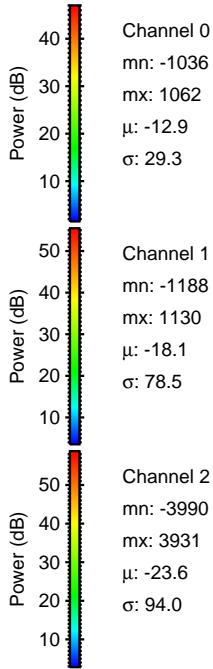
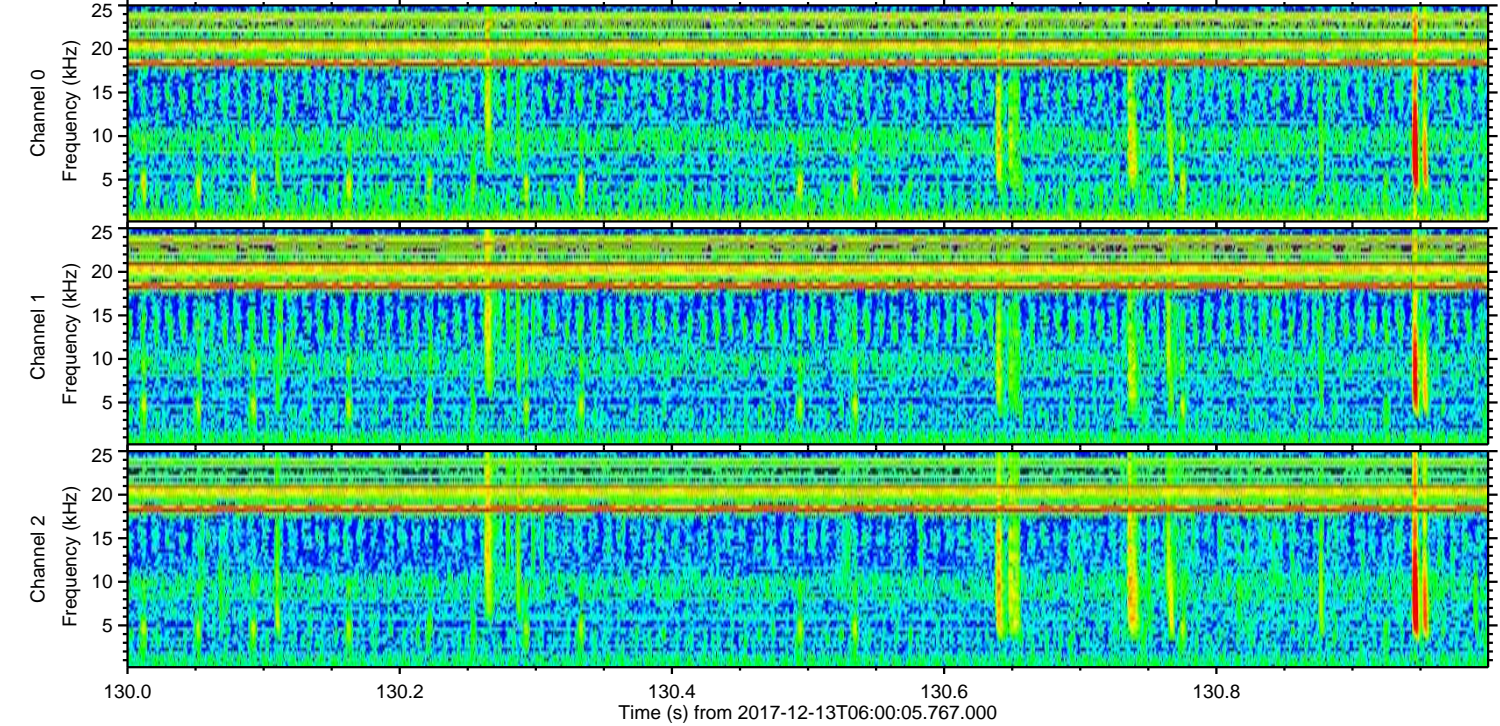
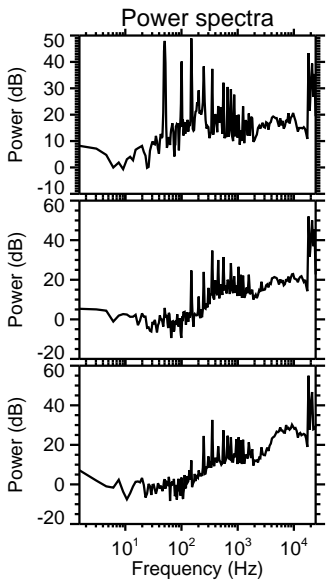
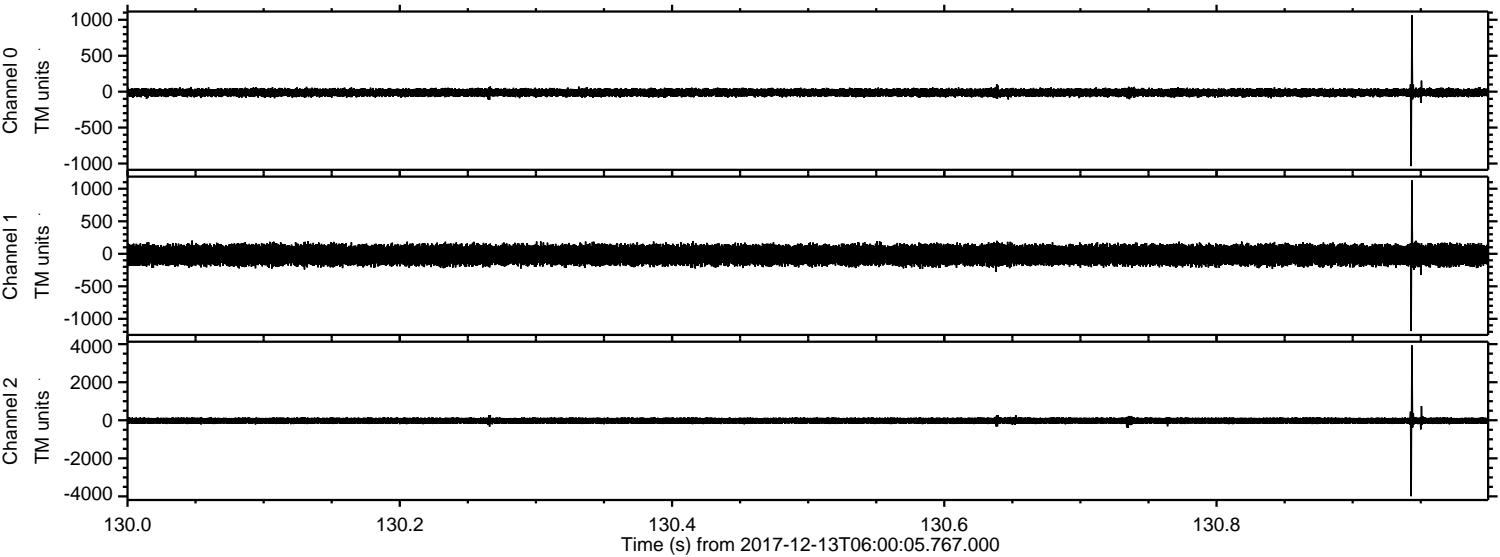
Processed Wed Dec 13 07:08:40 2017 by ELM ver.2012-10-06 from 001\_\_elm20171213\_060004\_\_dat00.bin





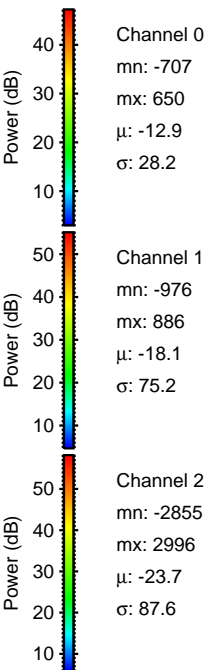
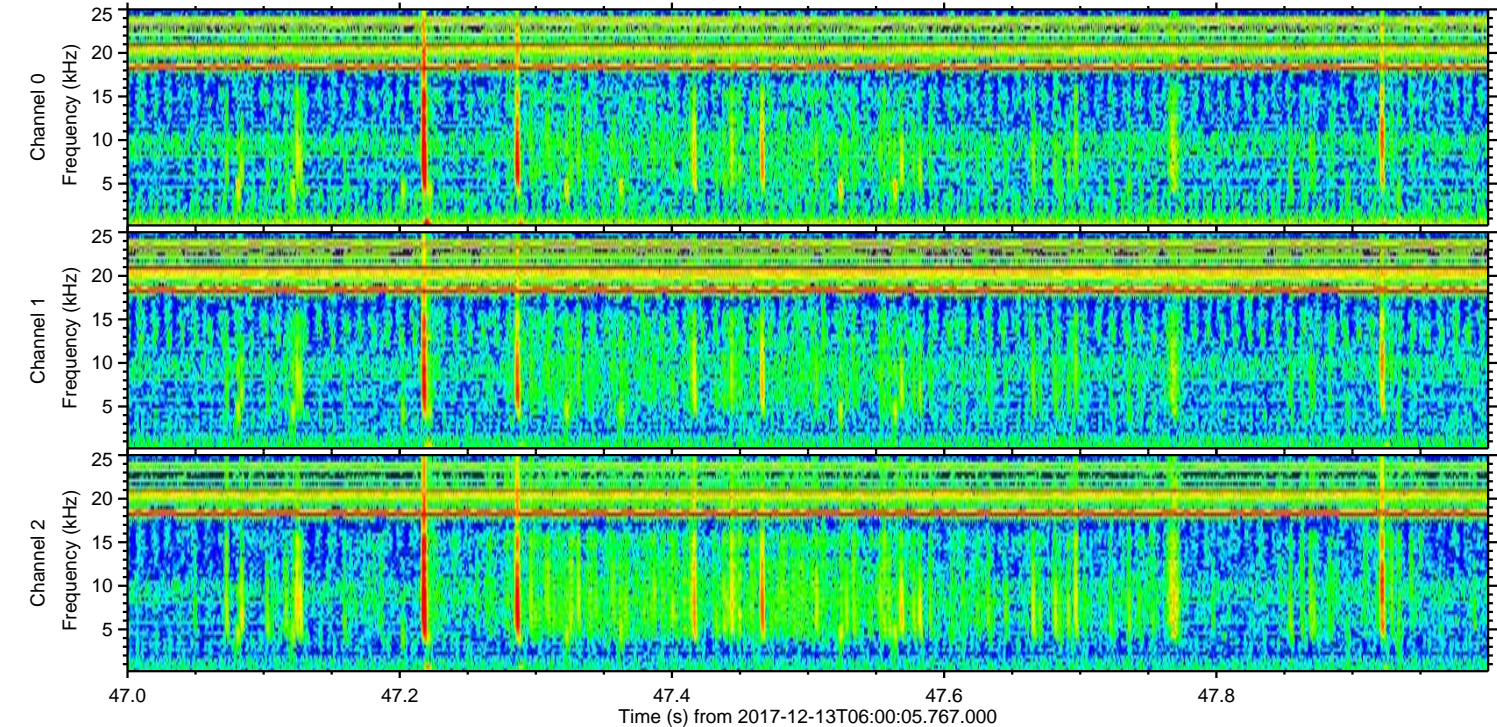
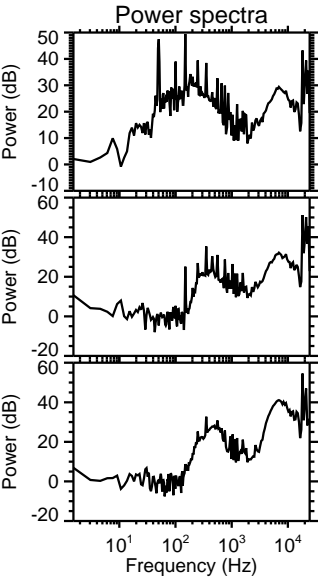
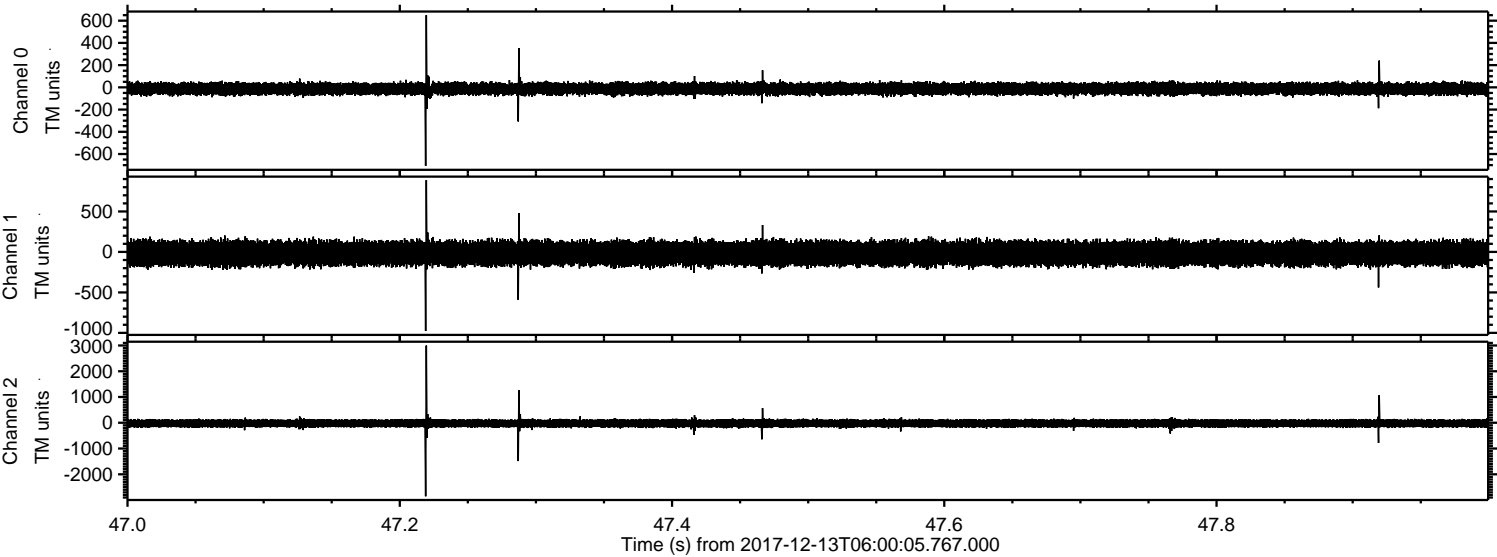
ELMAVAN 3D WAVEFORMS (Measured data sampled at 50 kHz) 50998 packets of 144 samples from 2017-12-13T06:00:05.767.000. Part 131/147

Processed Wed Dec 13 07:08:41 2017 by ELM ver.2012-10-06 from 001\_\_elm20171213\_060004\_\_dat00.bin



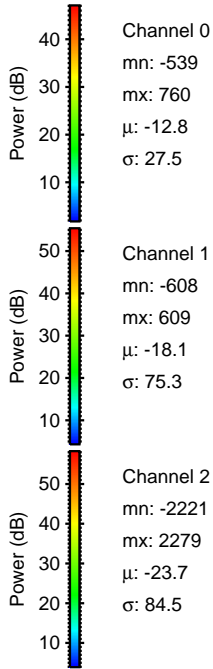
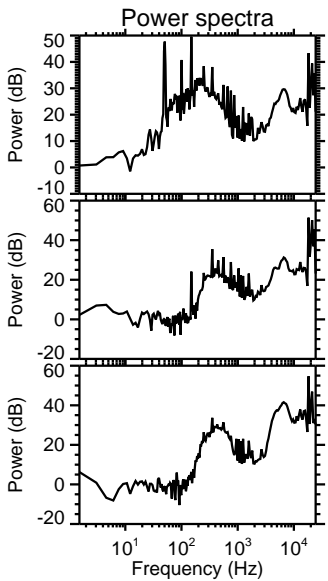
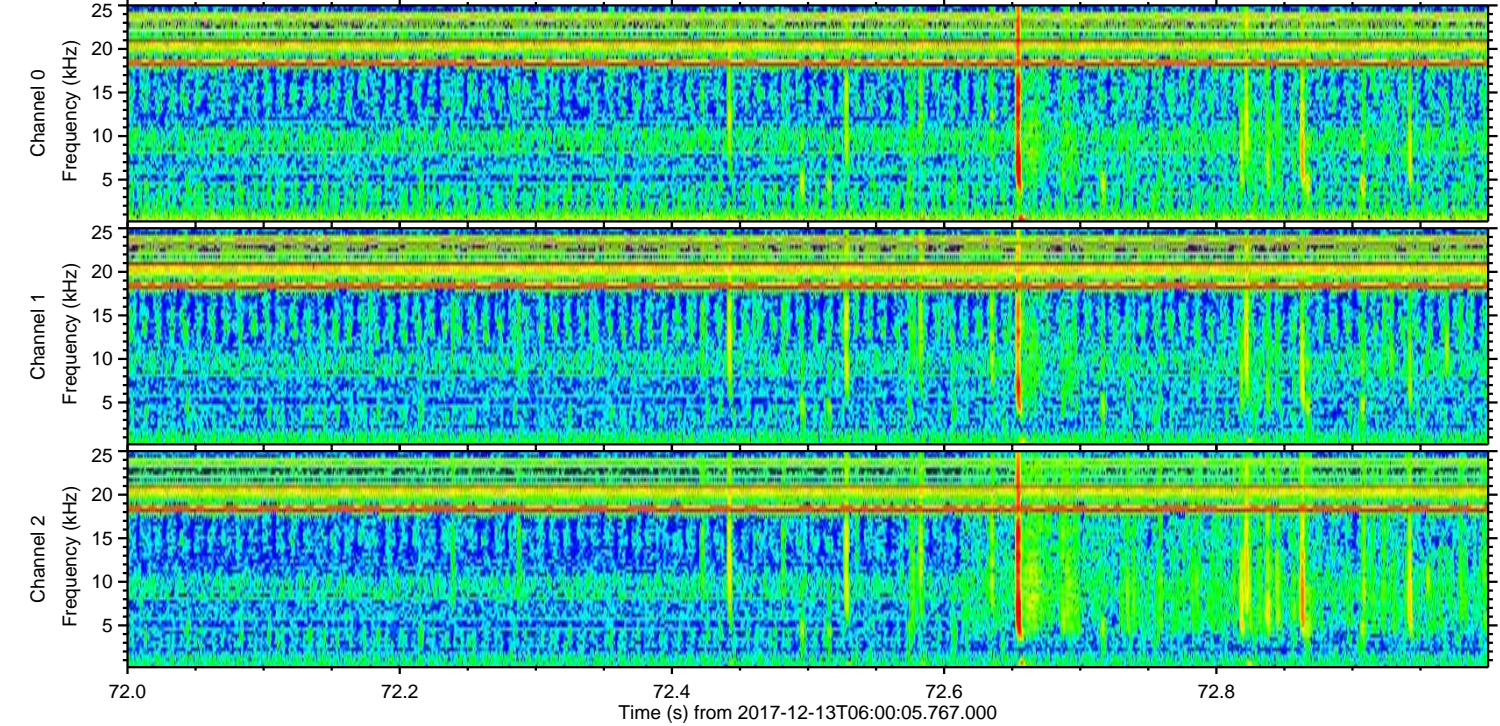
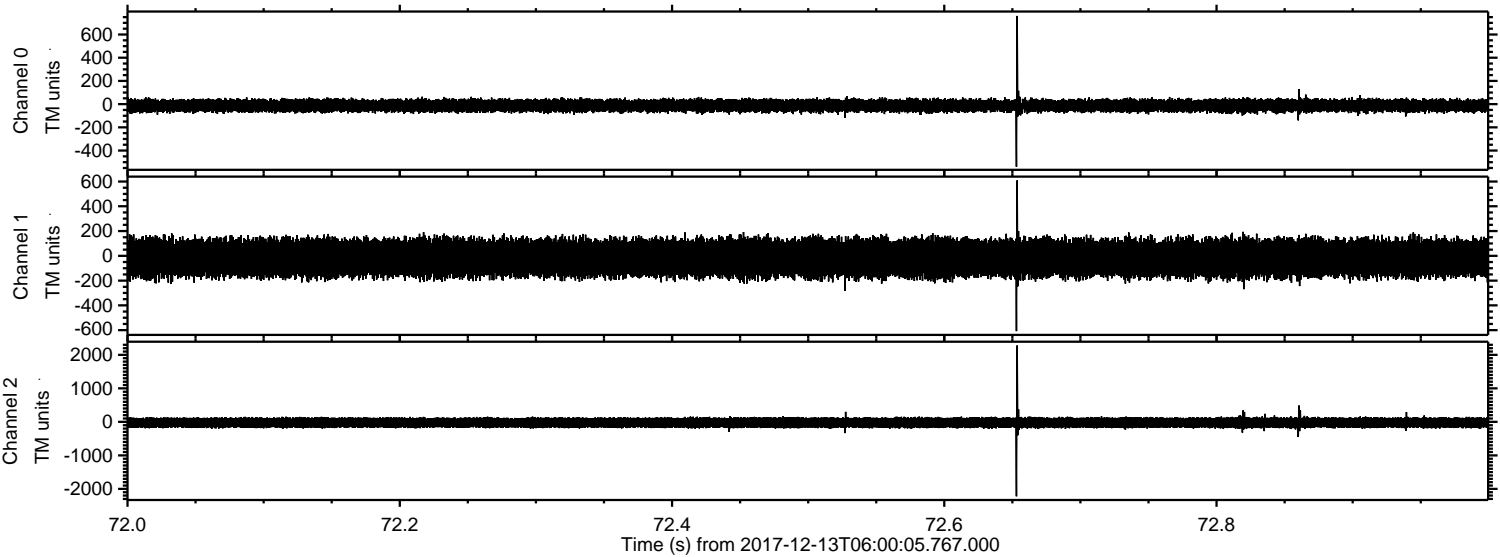


Processed Wed Dec 13 07:08:42 2017 by ELM ver.2012-10-06 from 001\_\_elm20171213\_060004\_\_dat00.bin





Processed Wed Dec 13 07:08:43 2017 by ELM ver.2012-10-06 from 001\_\_elm20171213\_060004\_\_dat00.bin



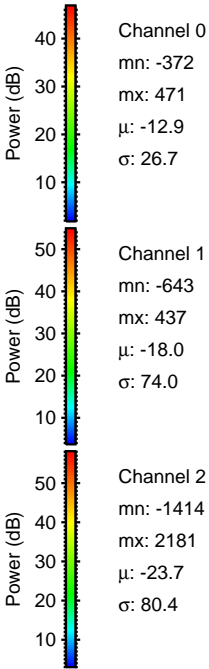
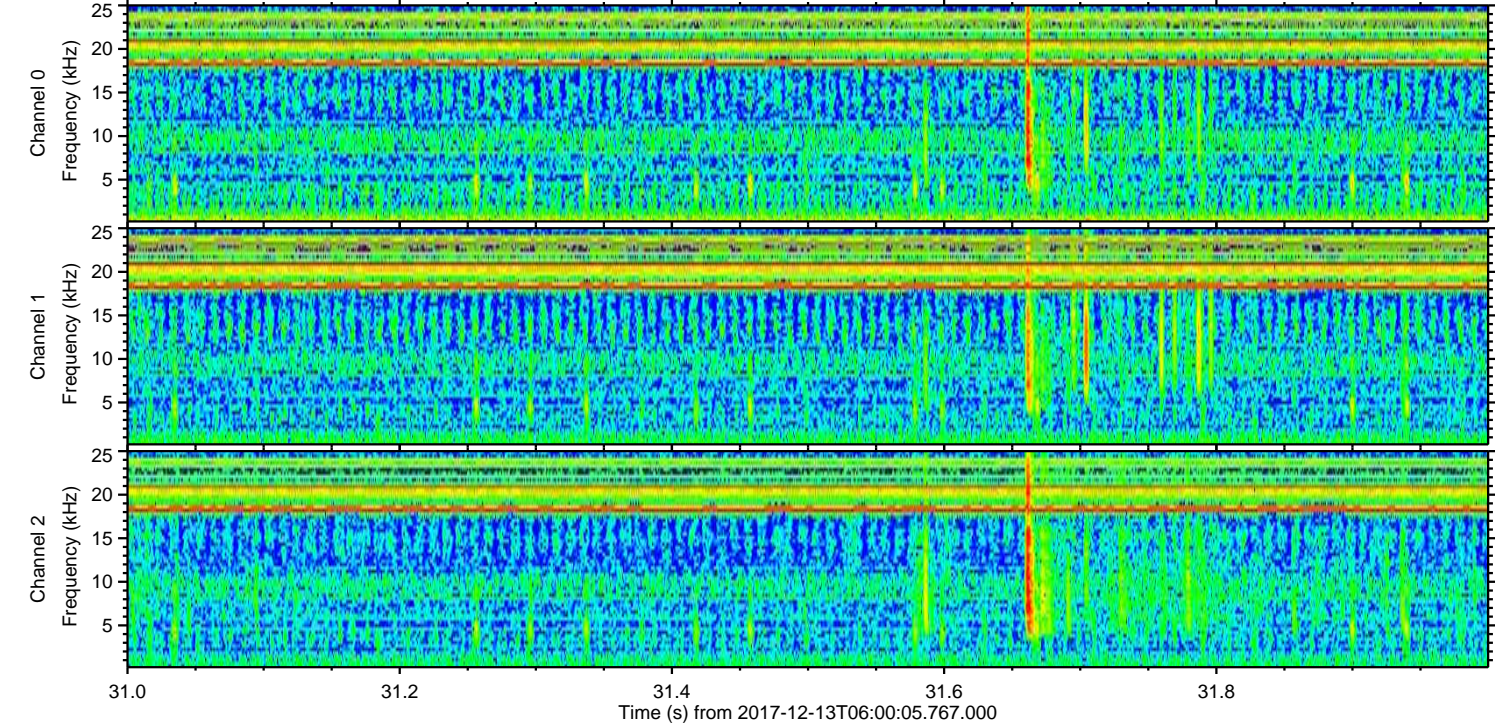
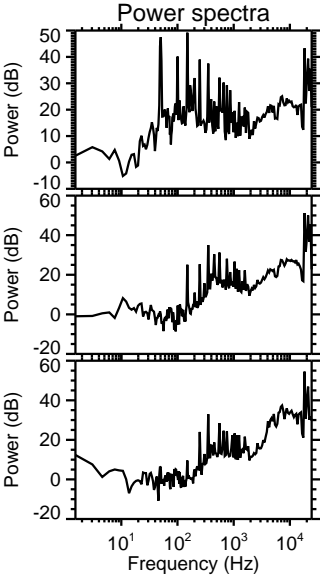
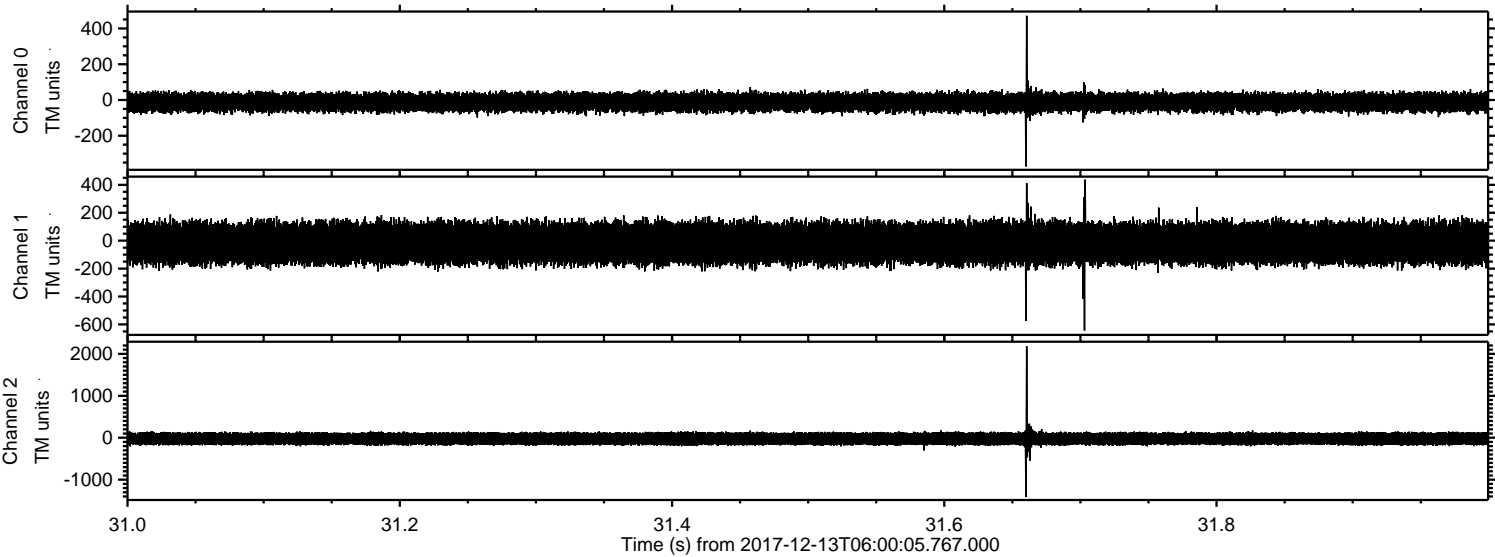
Channel 0  
mn: -539  
mx: 760  
 $\mu$ : -12.8  
 $\sigma$ : 27.5

Channel 1  
mn: -608  
mx: 609  
 $\mu$ : -18.1  
 $\sigma$ : 75.3

Channel 2  
mn: -2221  
mx: 2279  
 $\mu$ : -23.7  
 $\sigma$ : 84.5

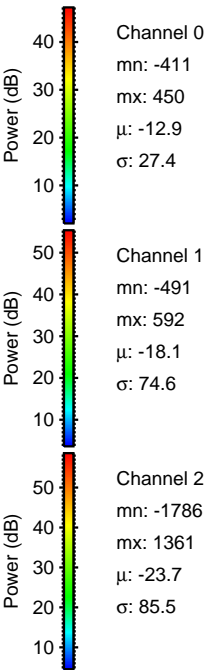
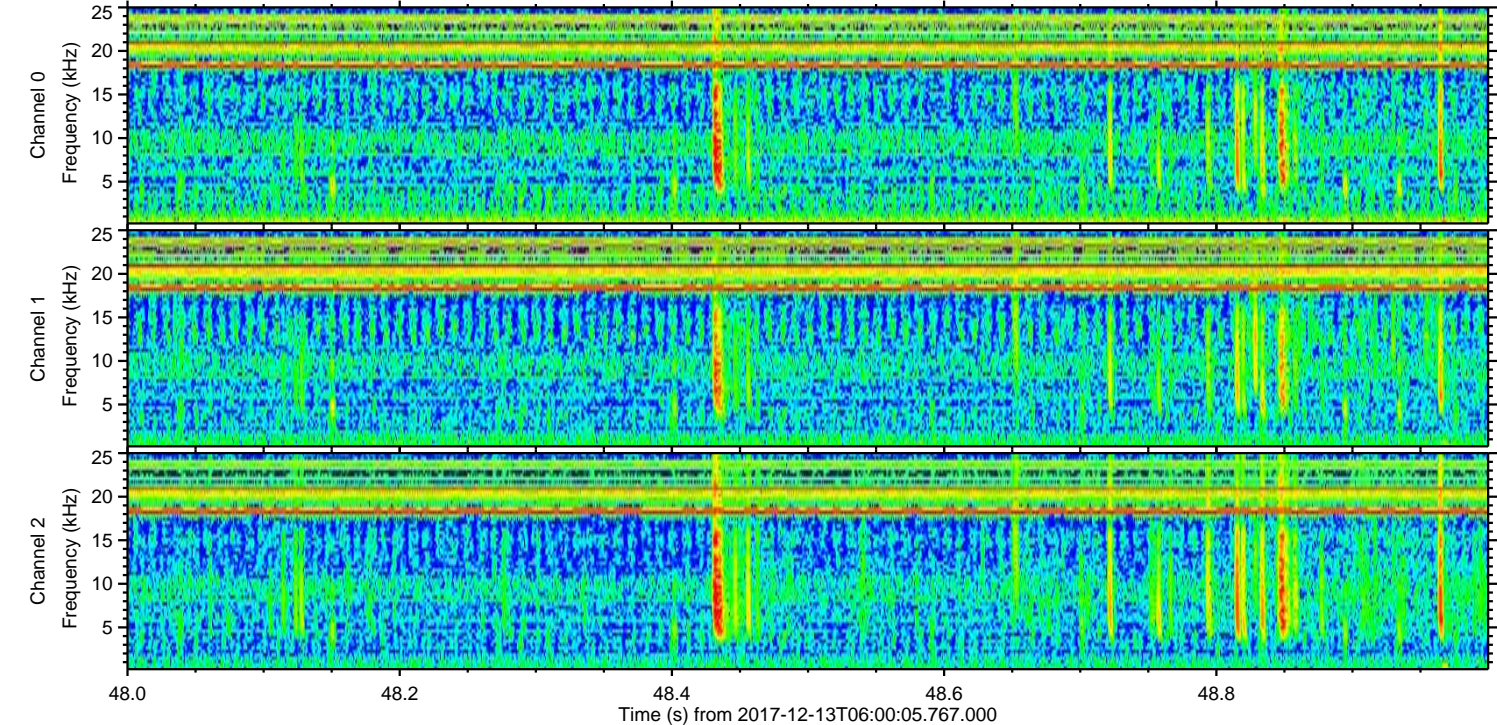
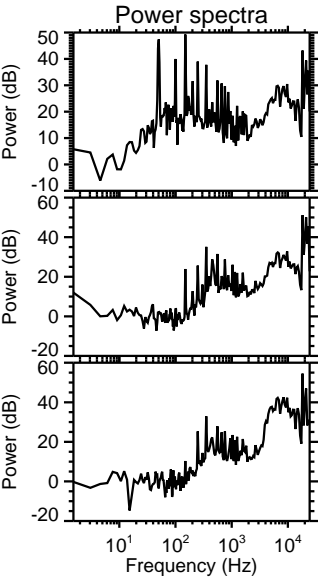
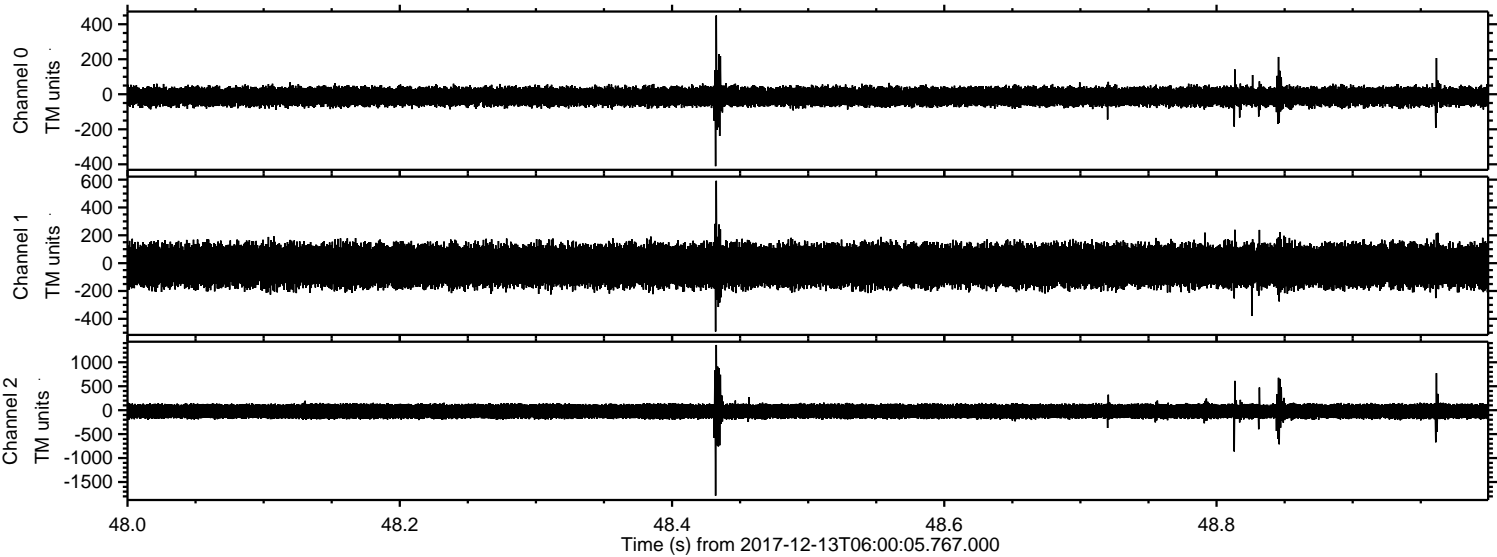


Processed Wed Dec 13 07:08:43 2017 by ELM ver.2012-10-06 from 001\_\_elm20171213\_060004\_\_dat00.bin



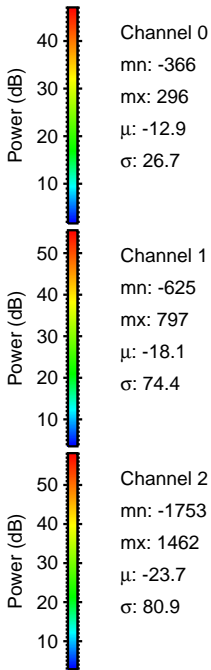
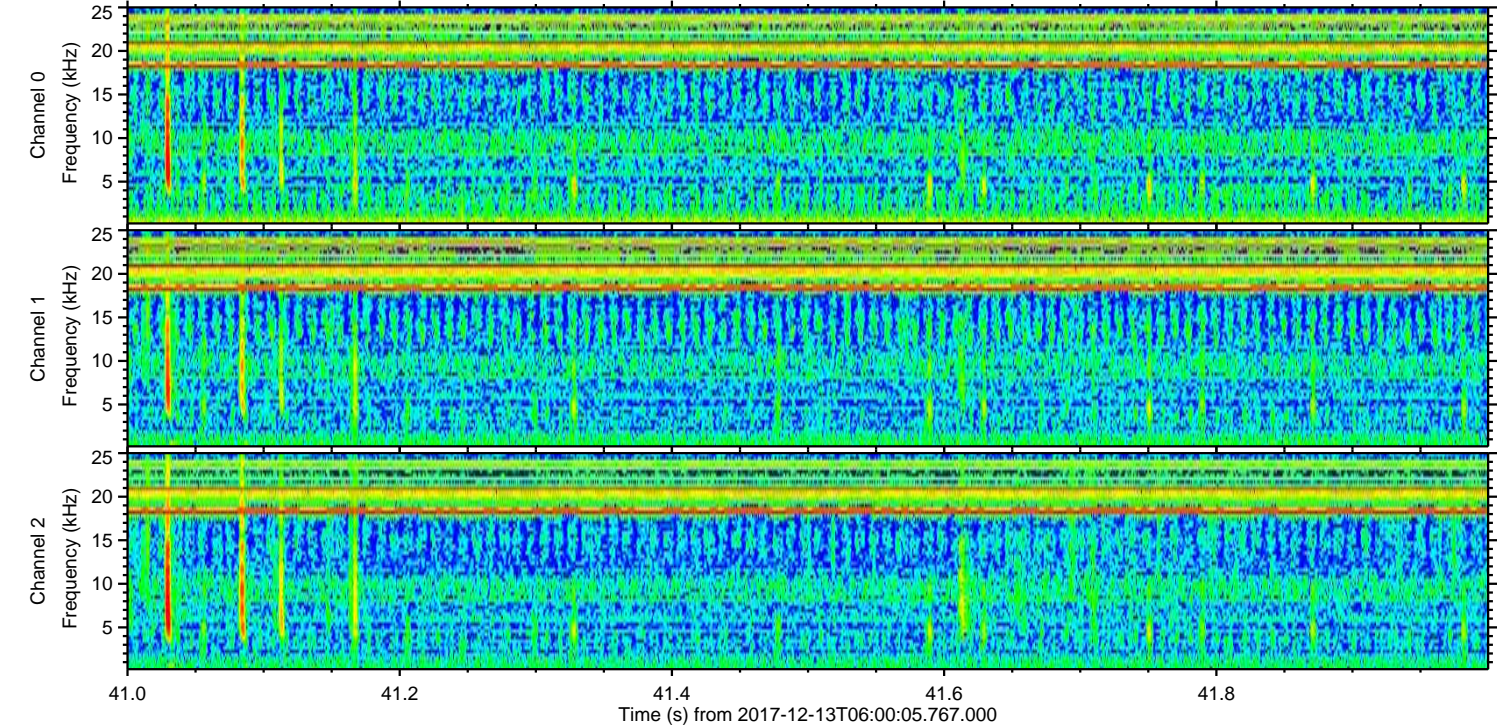
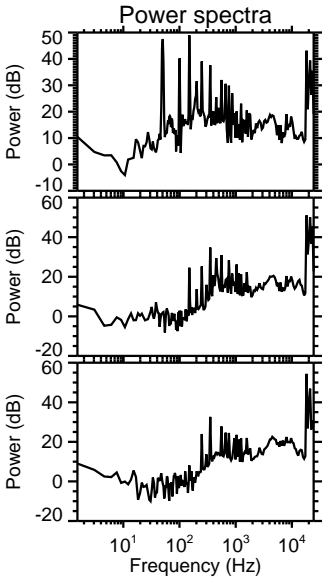
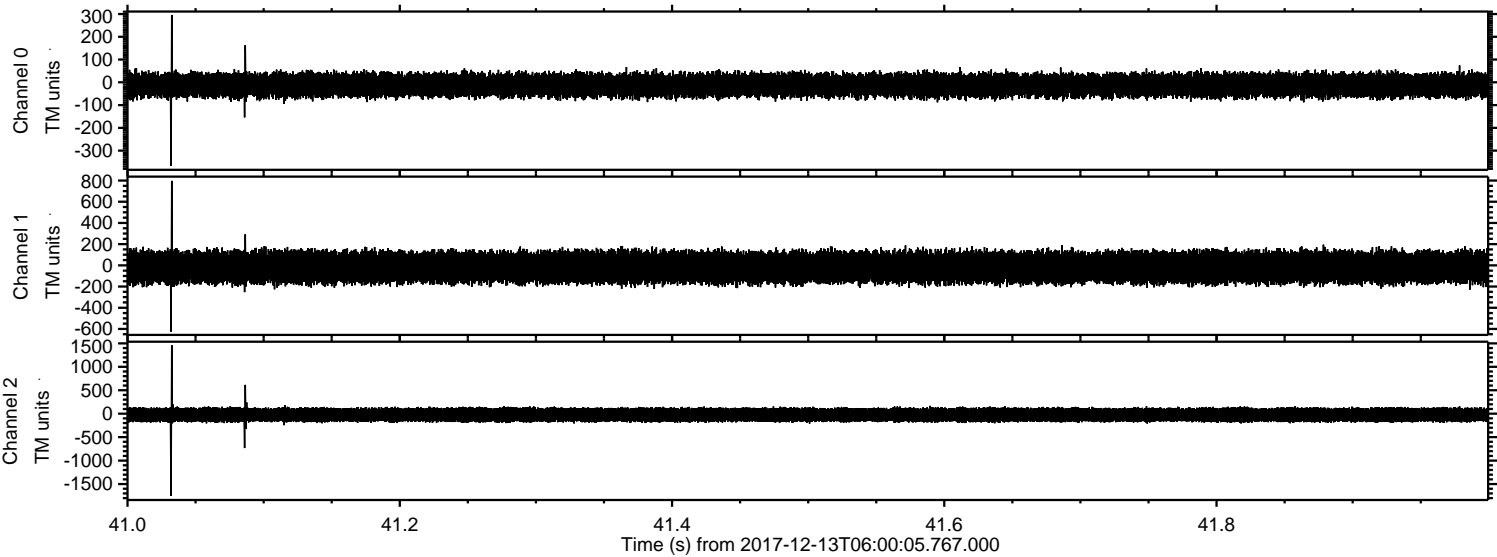


Processed Wed Dec 13 07:08:44 2017 by ELM ver.2012-10-06 from 001\_\_elm20171213\_060004\_\_dat00.bin





Processed Wed Dec 13 07:08:45 2017 by ELM ver.2012-10-06 from 001\_\_elm20171213\_060004\_\_dat00.bin





Processed Wed Dec 13 07:08:46 2017 by ELM ver.2012-10-06 from 001\_\_elm20171213\_060004\_\_dat00.bin

