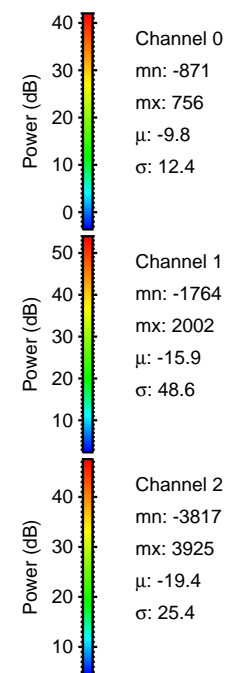
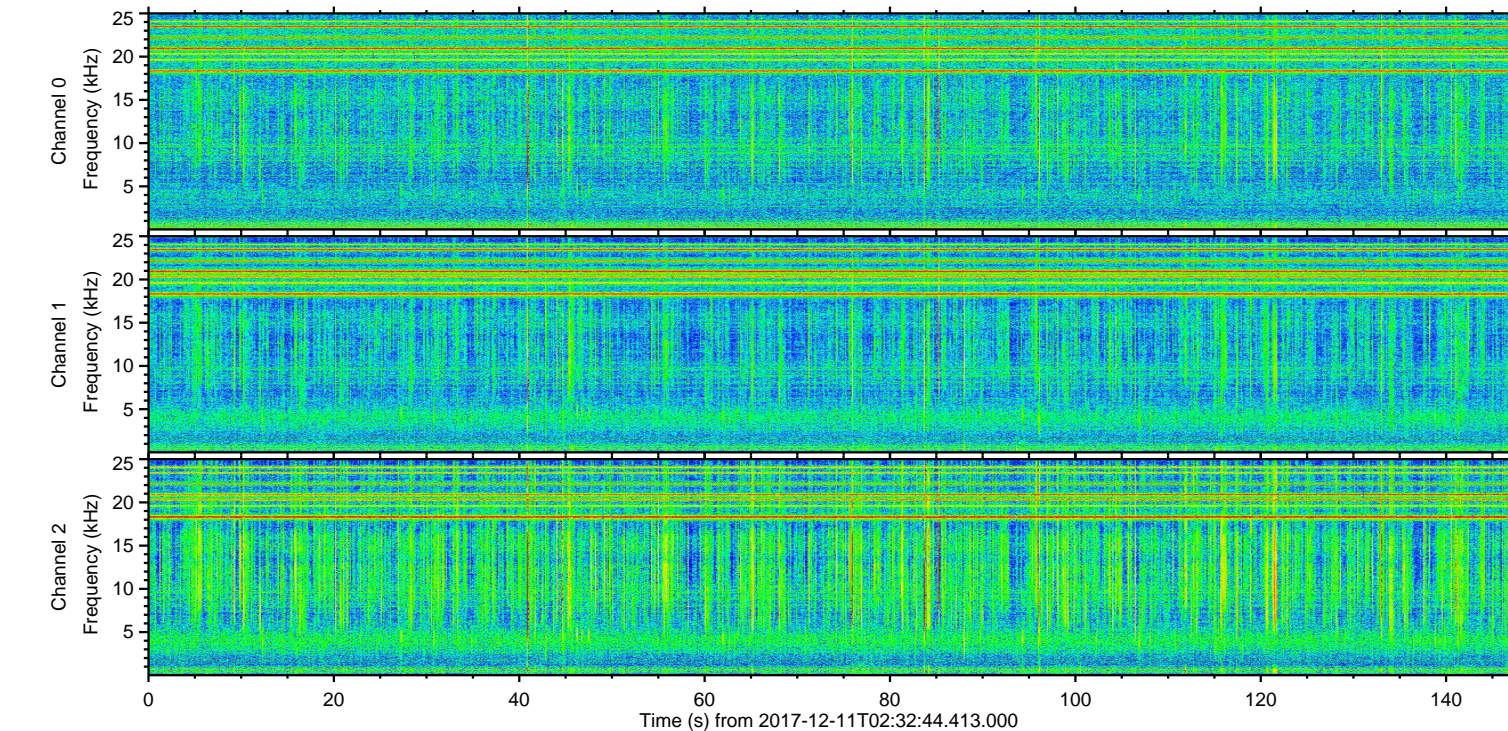
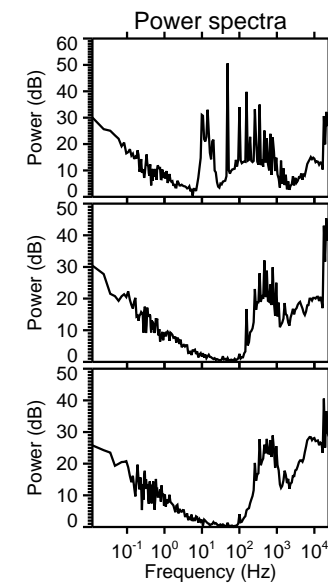
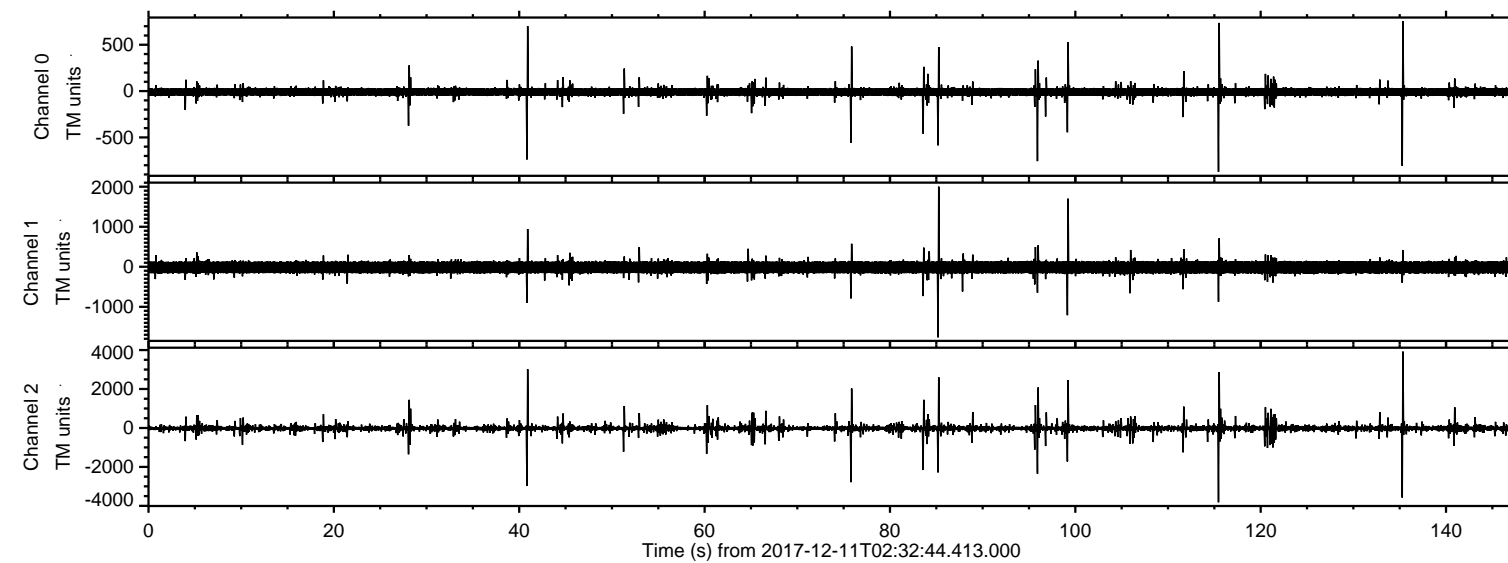


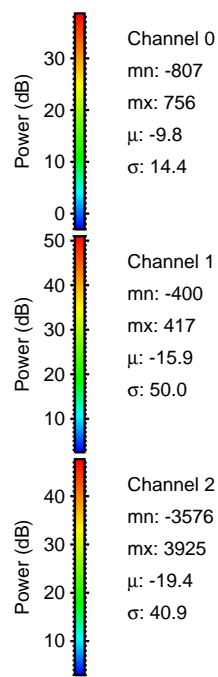
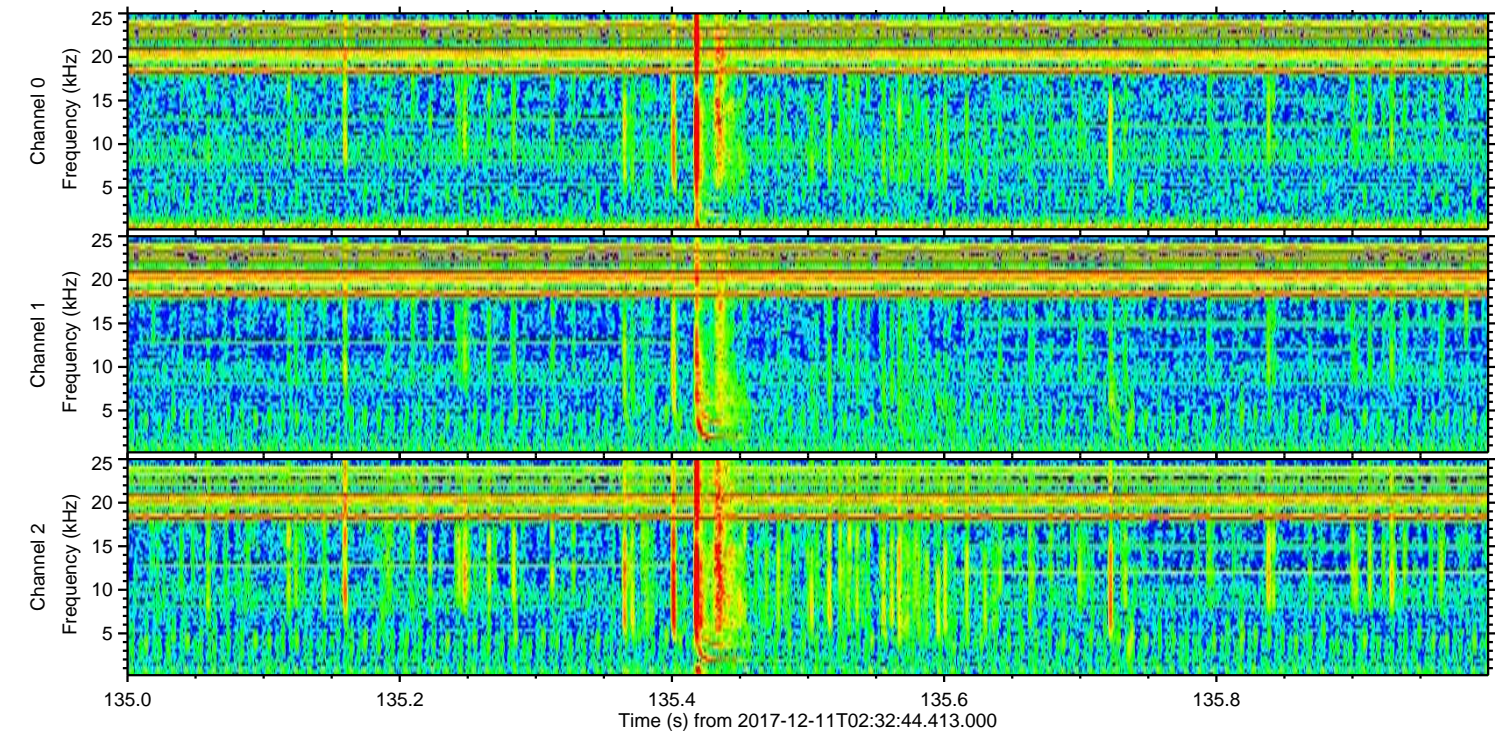
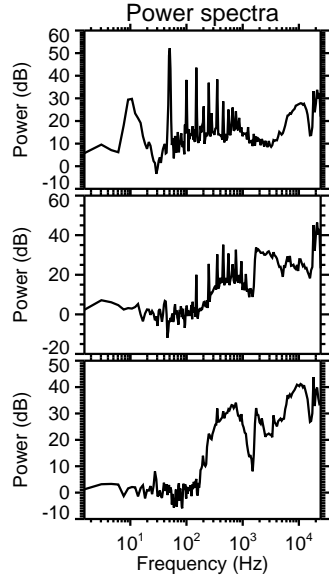
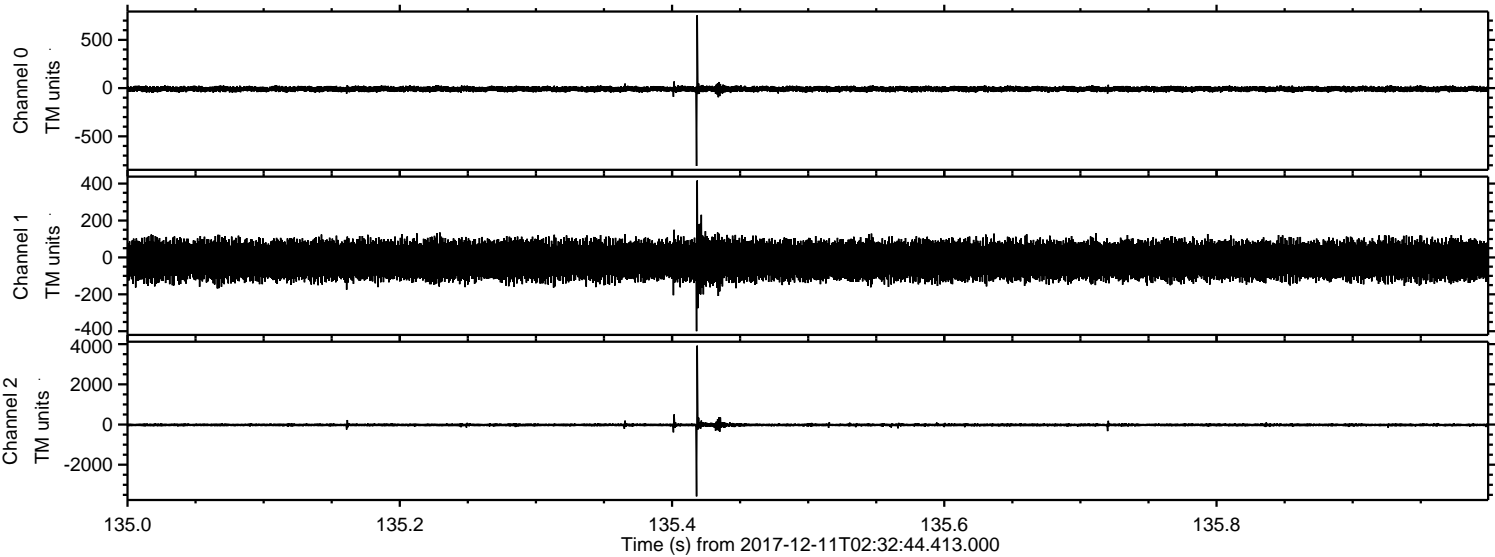
ELMAVAN 3D WAVEFORMS (Measured data sampled at 50 kHz) 51000 packets of 144 samples from 2017-12-11T02:32:44.413.000.

Processed Mon Dec 11 03:40:23 2017 by ELM ver.2012-10-06 from 001__elm20171211_023243__dat00.bin



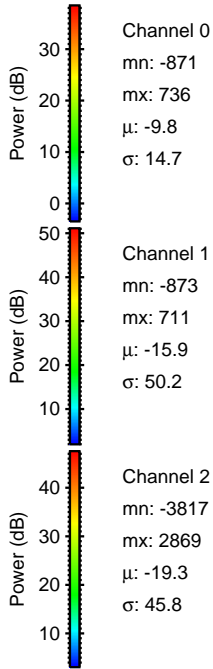
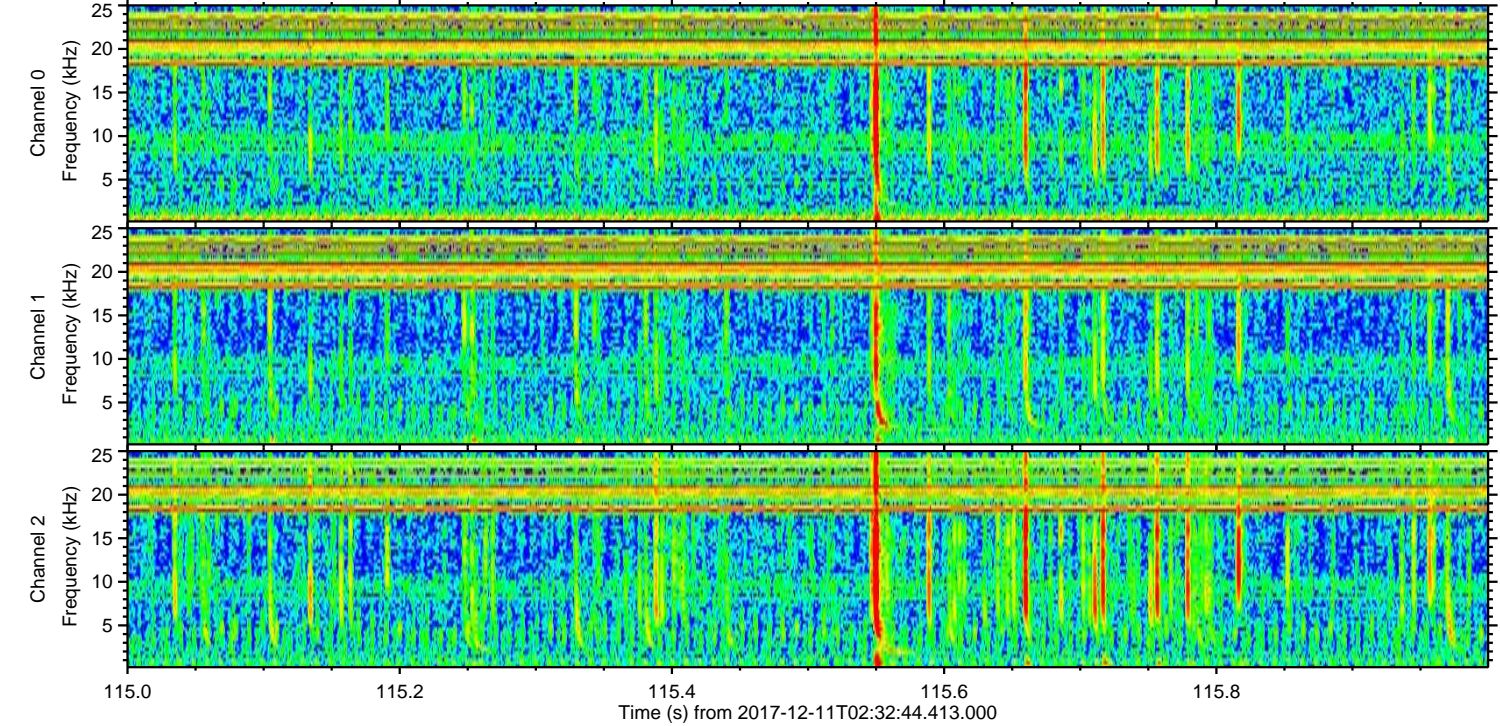
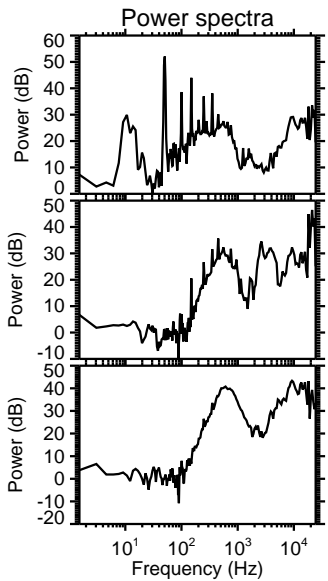
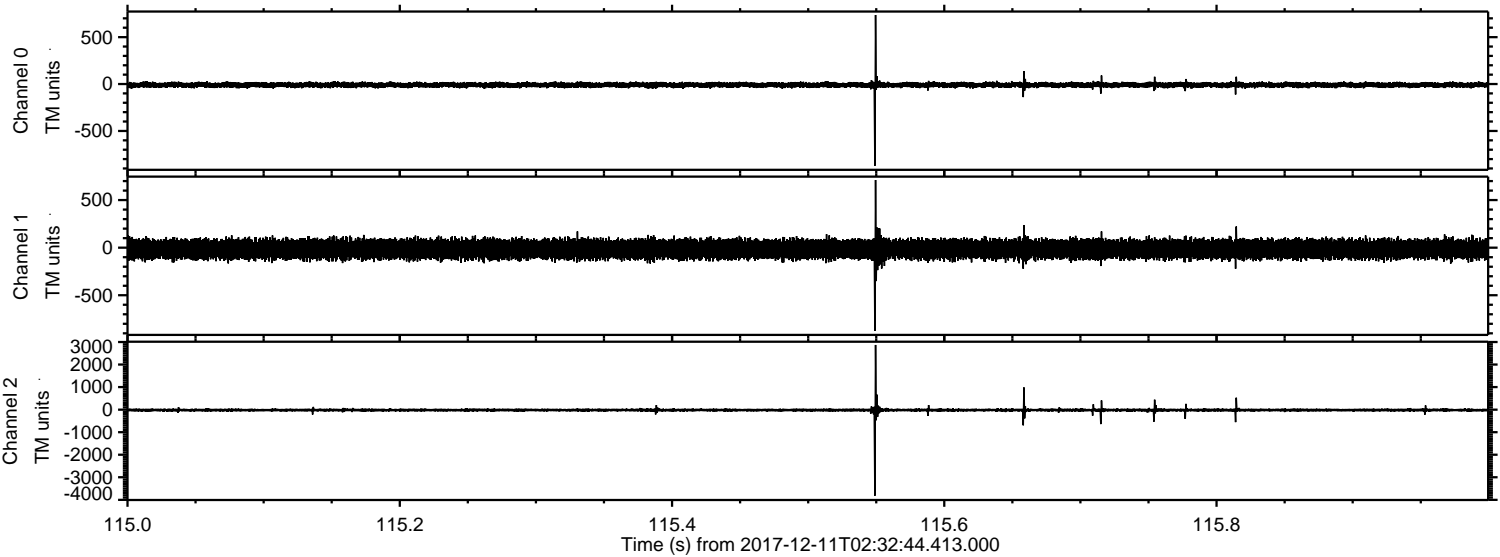
ELMAVAN 3D WAVEFORMS (Measured data sampled at 50 kHz) 51000 packets of 144 samples from 2017-12-11T02:32:44.413.000. Part 136/147

Processed Mon Dec 11 03:40:32 2017 by ELM ver.2012-10-06 from 001__elm20171211_023243__dat00.bin



ELMAVAN 3D WAVEFORMS (Measured data sampled at 50 kHz) 51000 packets of 144 samples from 2017-12-11T02:32:44.413.000. Part 116/147

Processed Mon Dec 11 03:40:32 2017 by ELM ver.2012-10-06 from 001__elm20171211_023243__dat00.bin



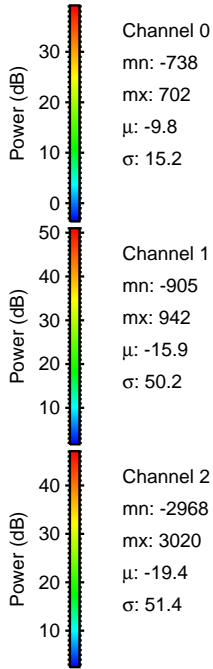
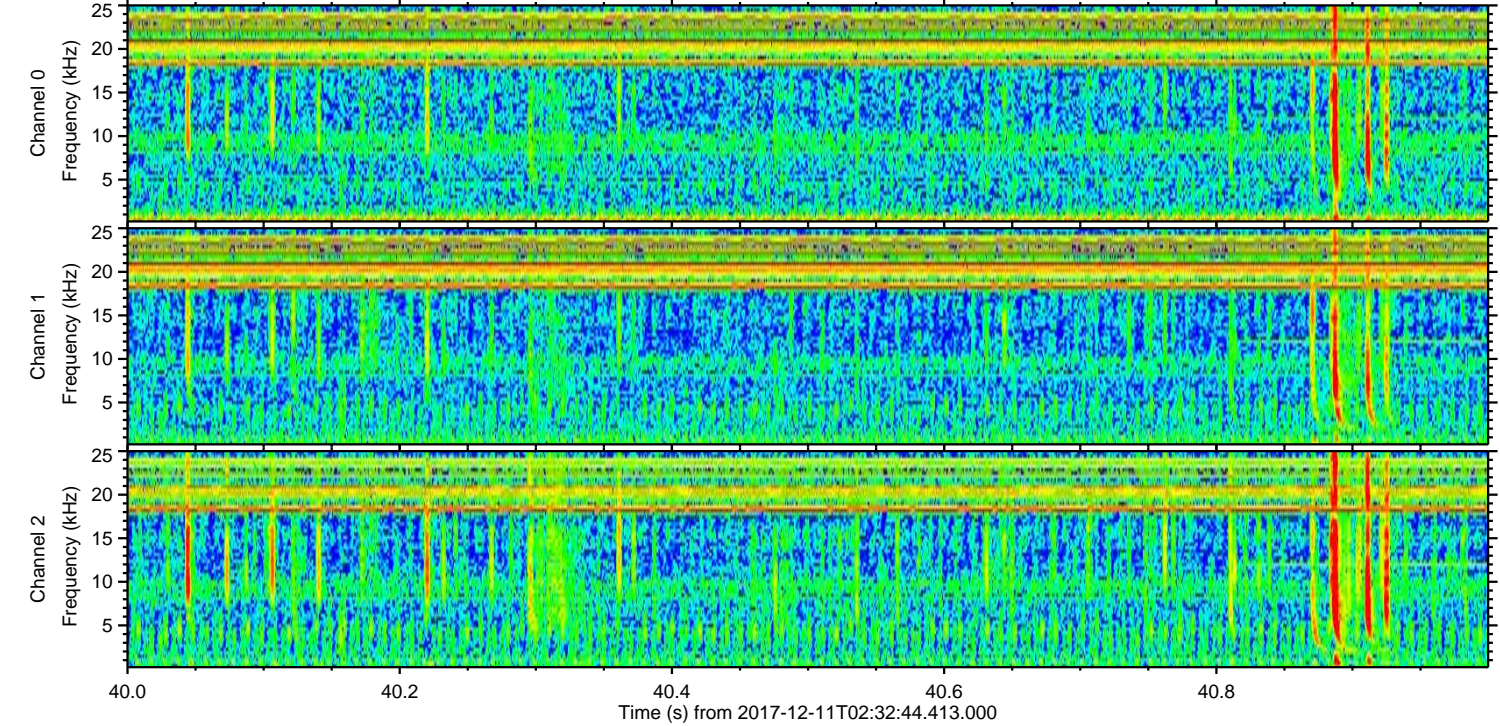
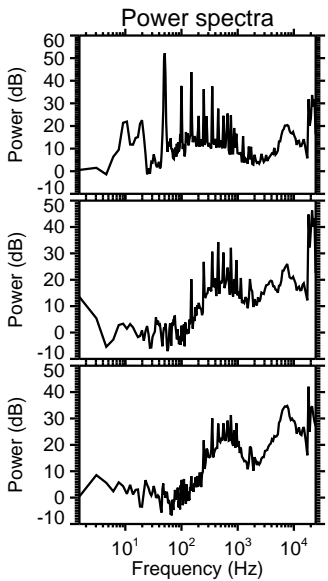
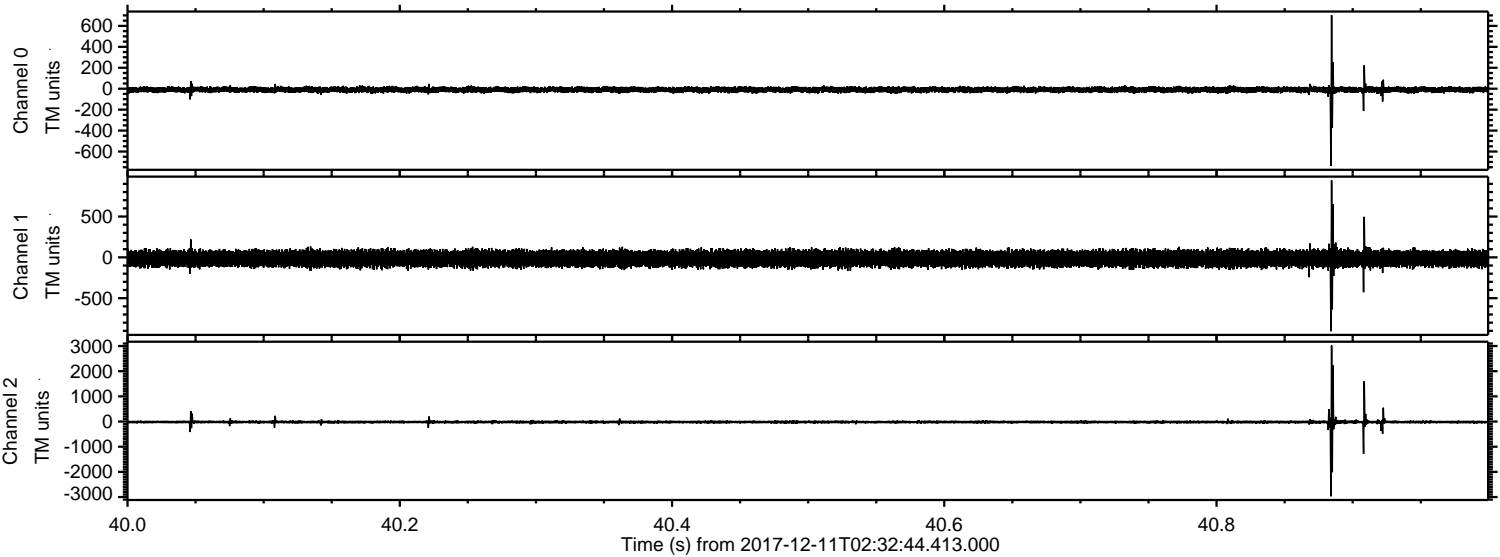
Channel 0
mn: -87.1
mx: 73.6
 μ : -9.8
 σ : 14.7

Channel 1
mn: -87.3
mx: 71.1
 μ : -15.9
 σ : 50.2

Channel 2
mn: -38.17
mx: 28.69
 μ : -19.3
 σ : 45.8

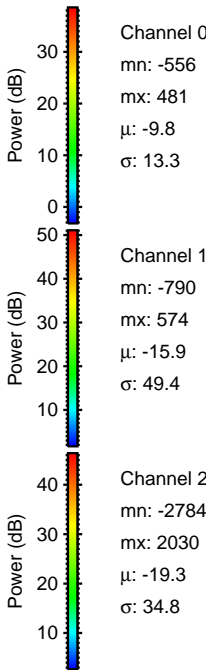
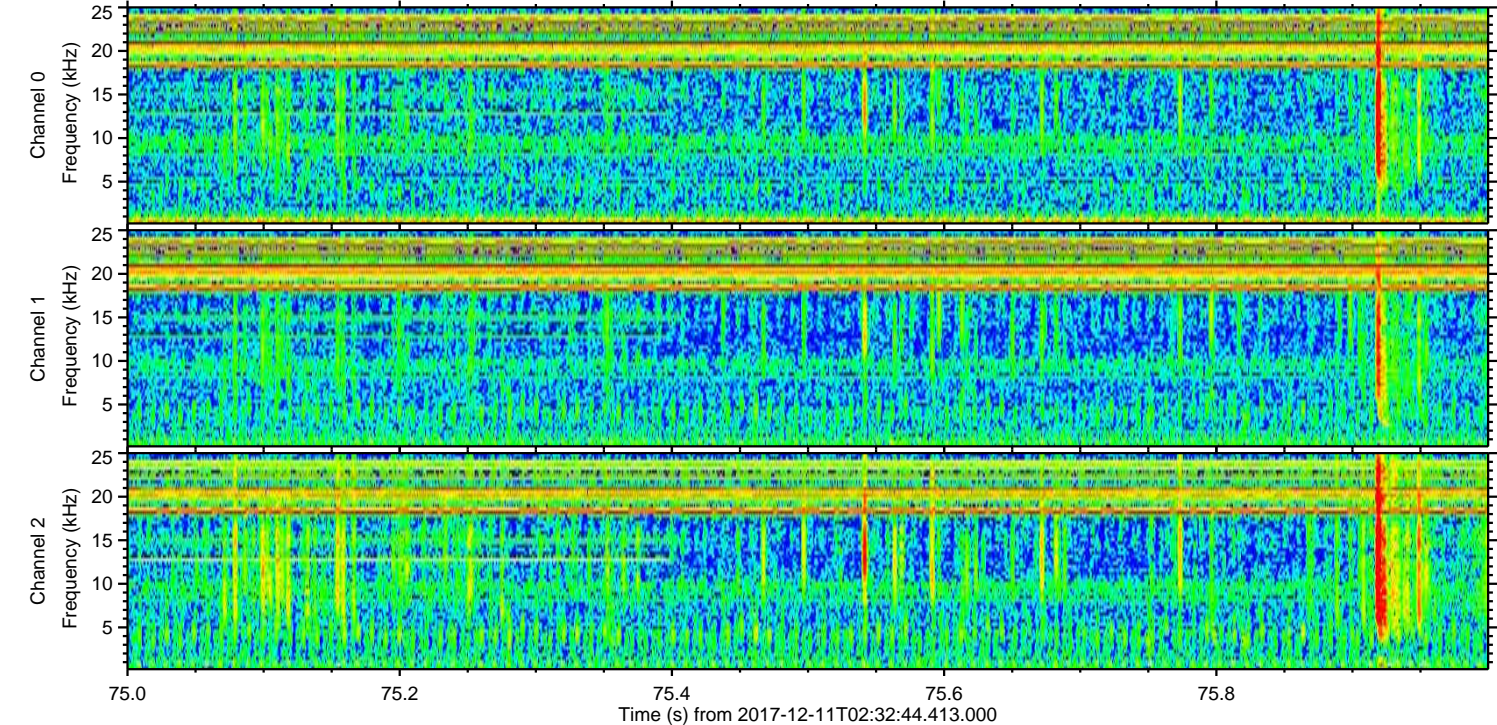
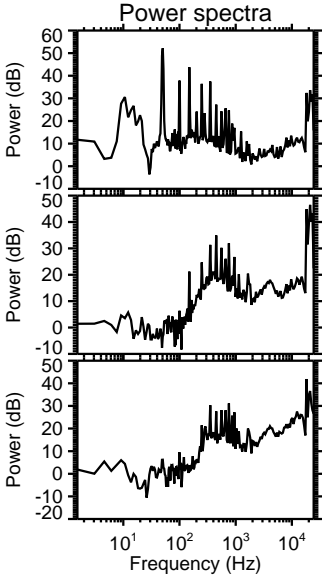
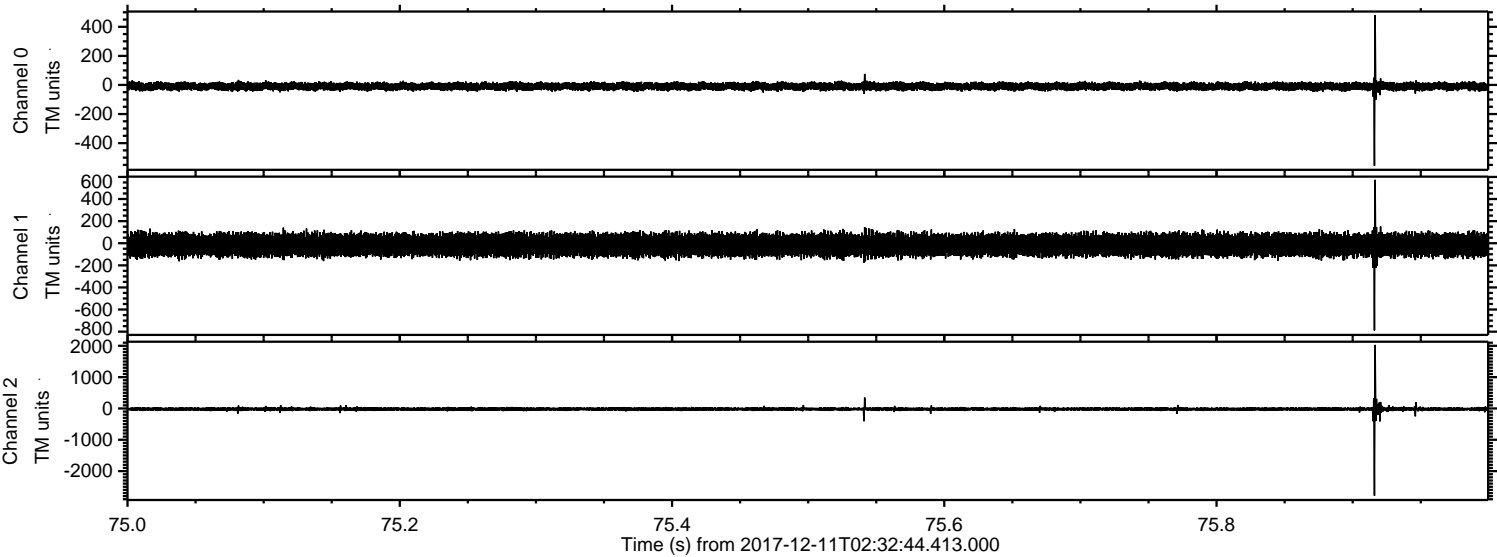
ELMAVAN 3D WAVEFORMS (Measured data sampled at 50 kHz) 51000 packets of 144 samples from 2017-12-11T02:32:44.413.000. Part 41/147

Processed Mon Dec 11 03:40:33 2017 by ELM ver.2012-10-06 from 001__elm20171211_023243__dat00.bin

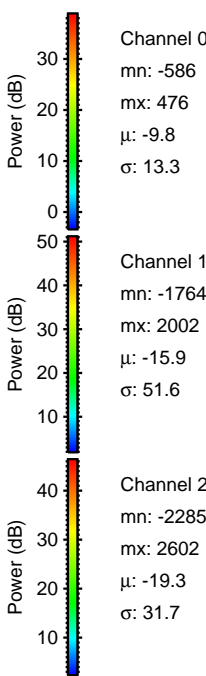
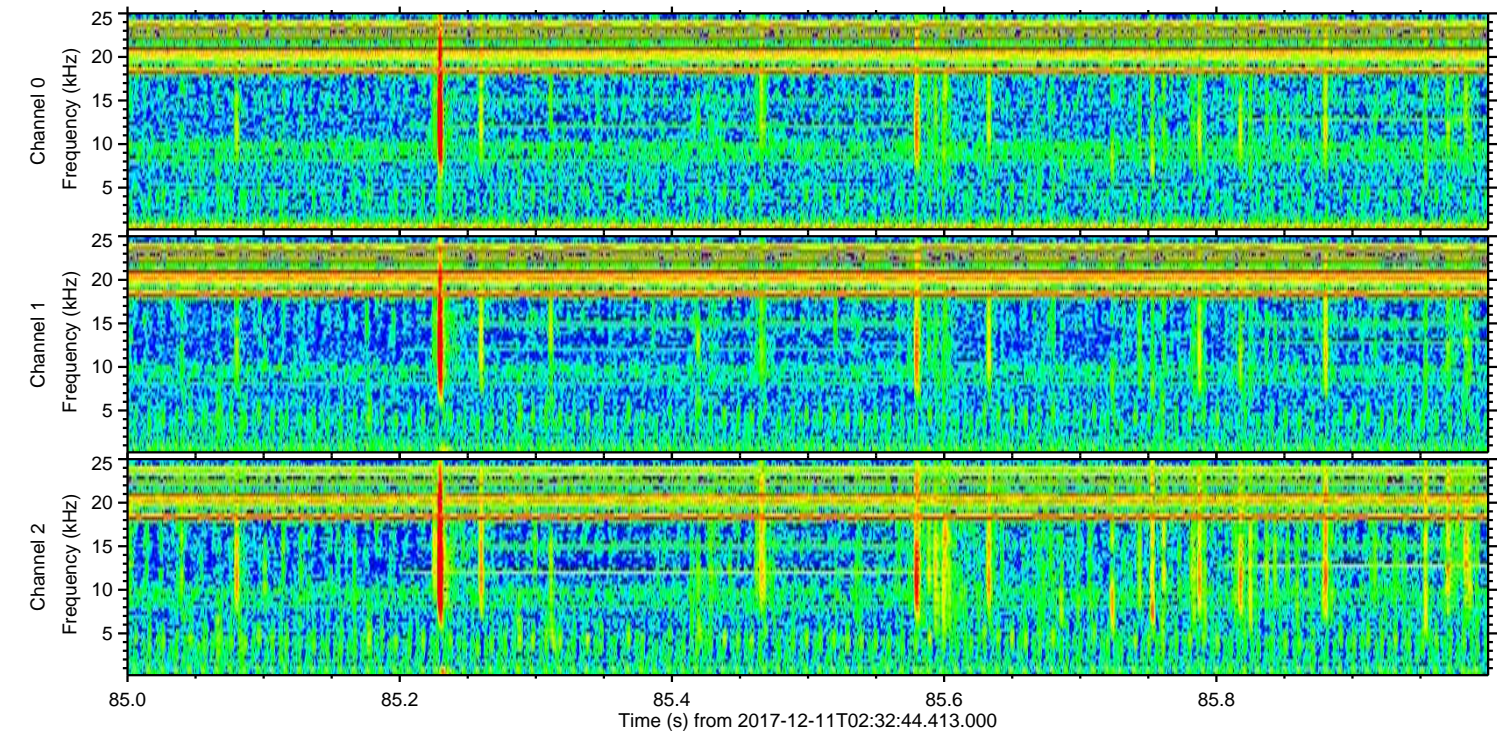
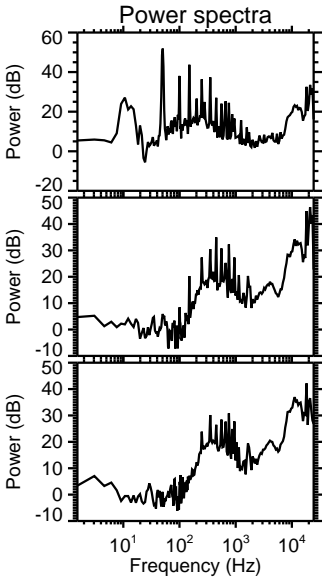
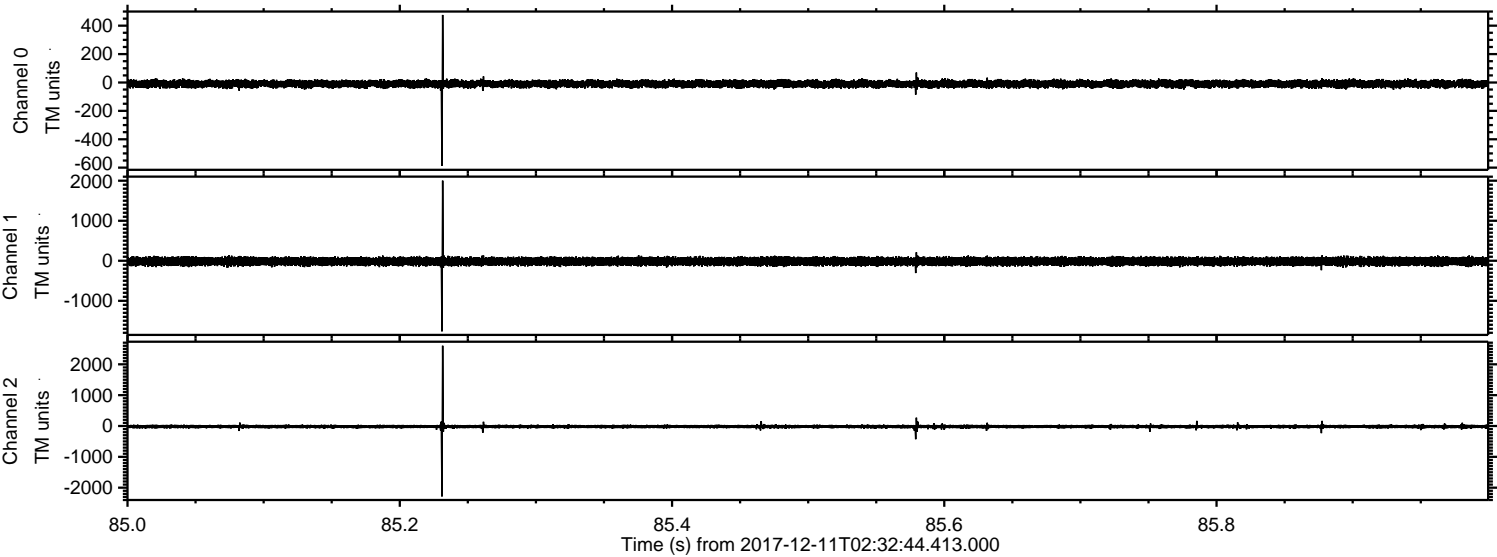


ELMAVAN 3D WAVEFORMS (Measured data sampled at 50 kHz) 51000 packets of 144 samples from 2017-12-11T02:32:44.413.000. Part 76/147

Processed Mon Dec 11 03:40:34 2017 by ELM ver.2012-10-06 from 001__elm20171211_023243__dat00.bin

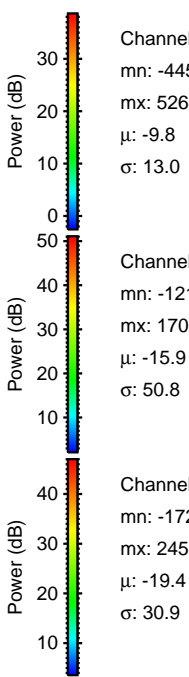
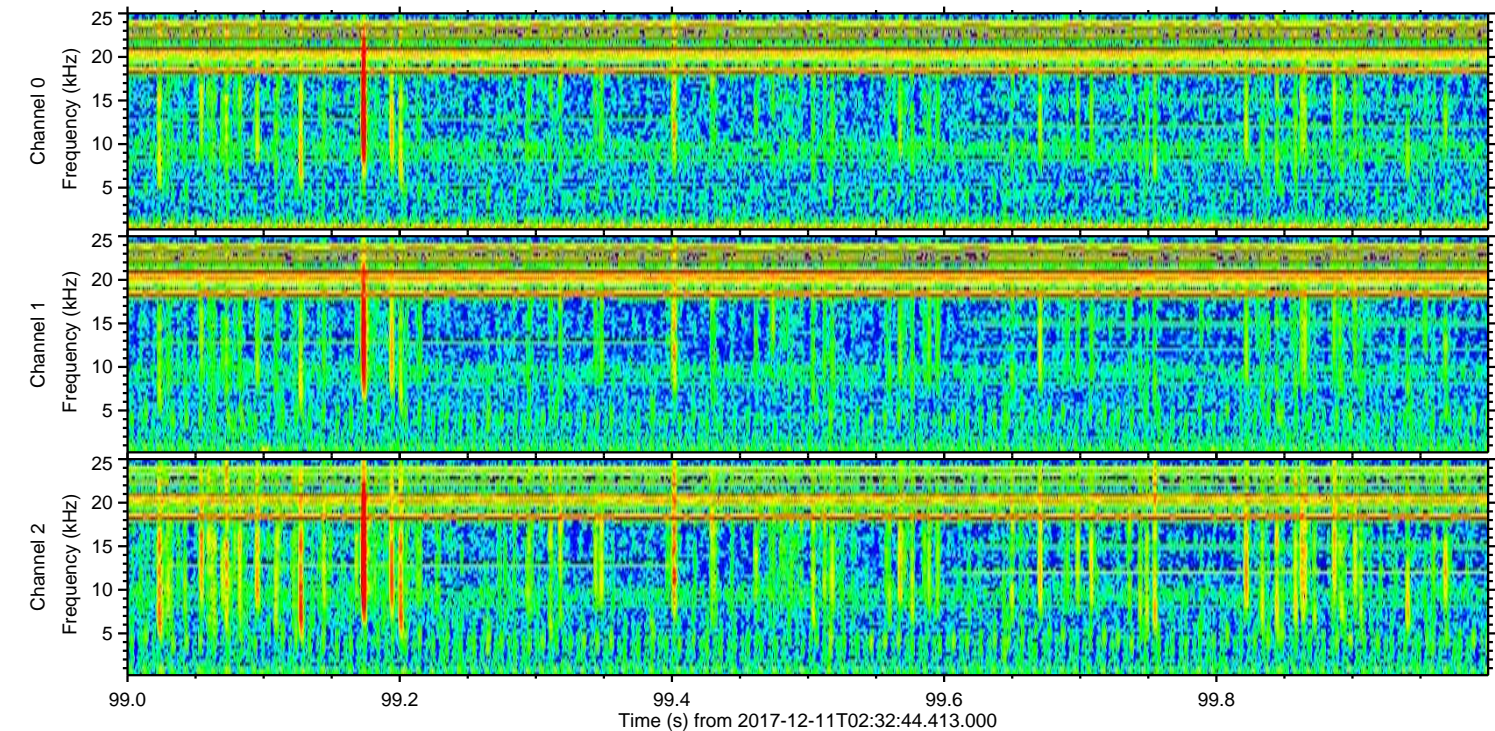
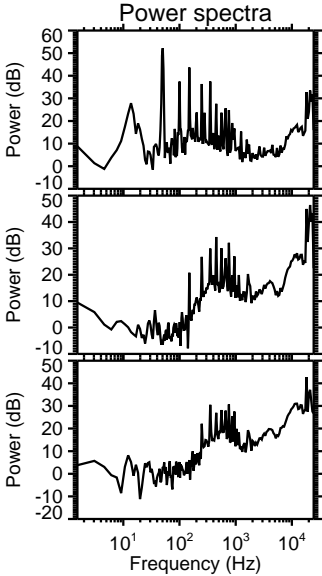
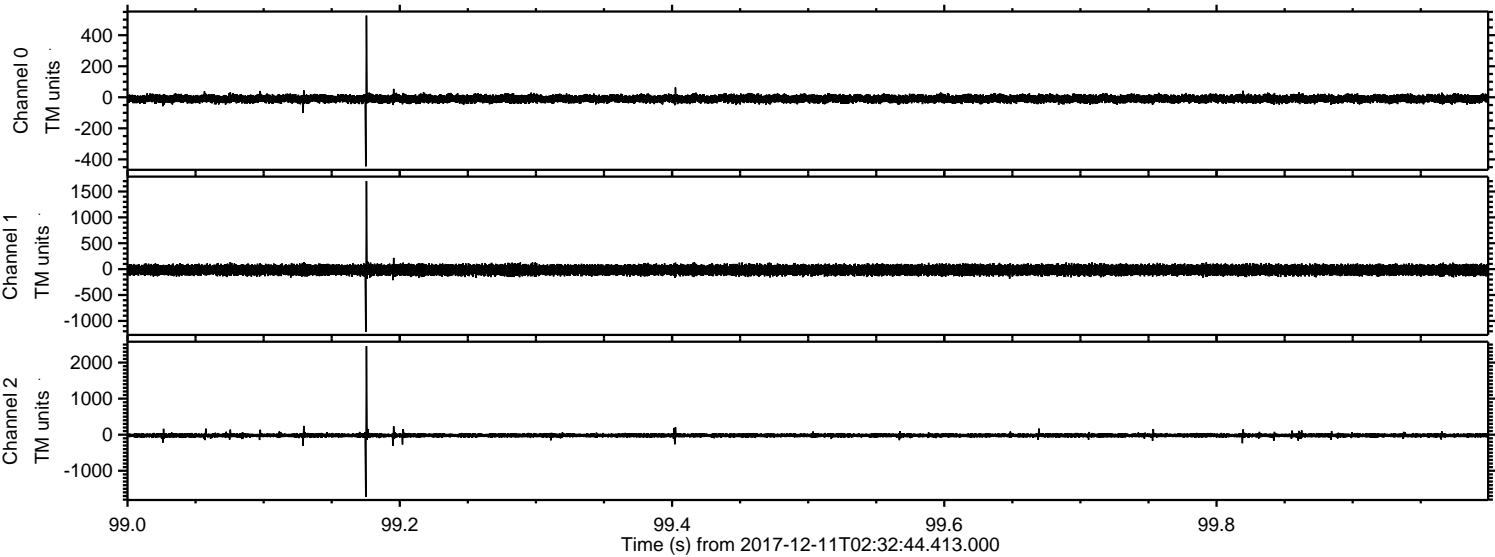


Processed Mon Dec 11 03:40:35 2017 by ELM ver.2012-10-06 from 001__elm20171211_023243__dat00.bin



ELMAVAN 3D WAVEFORMS (Measured data sampled at 50 kHz) 51000 packets of 144 samples from 2017-12-11T02:32:44.413.000. Part 100/147

Processed Mon Dec 11 03:40:35 2017 by ELM ver.2012-10-06 from 001__elm20171211_023243__dat00.bin

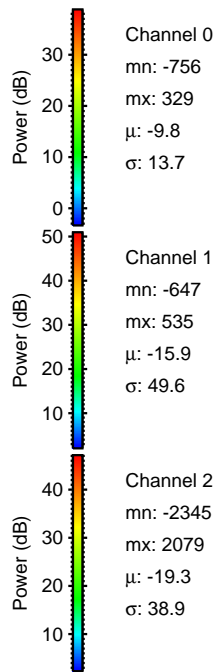
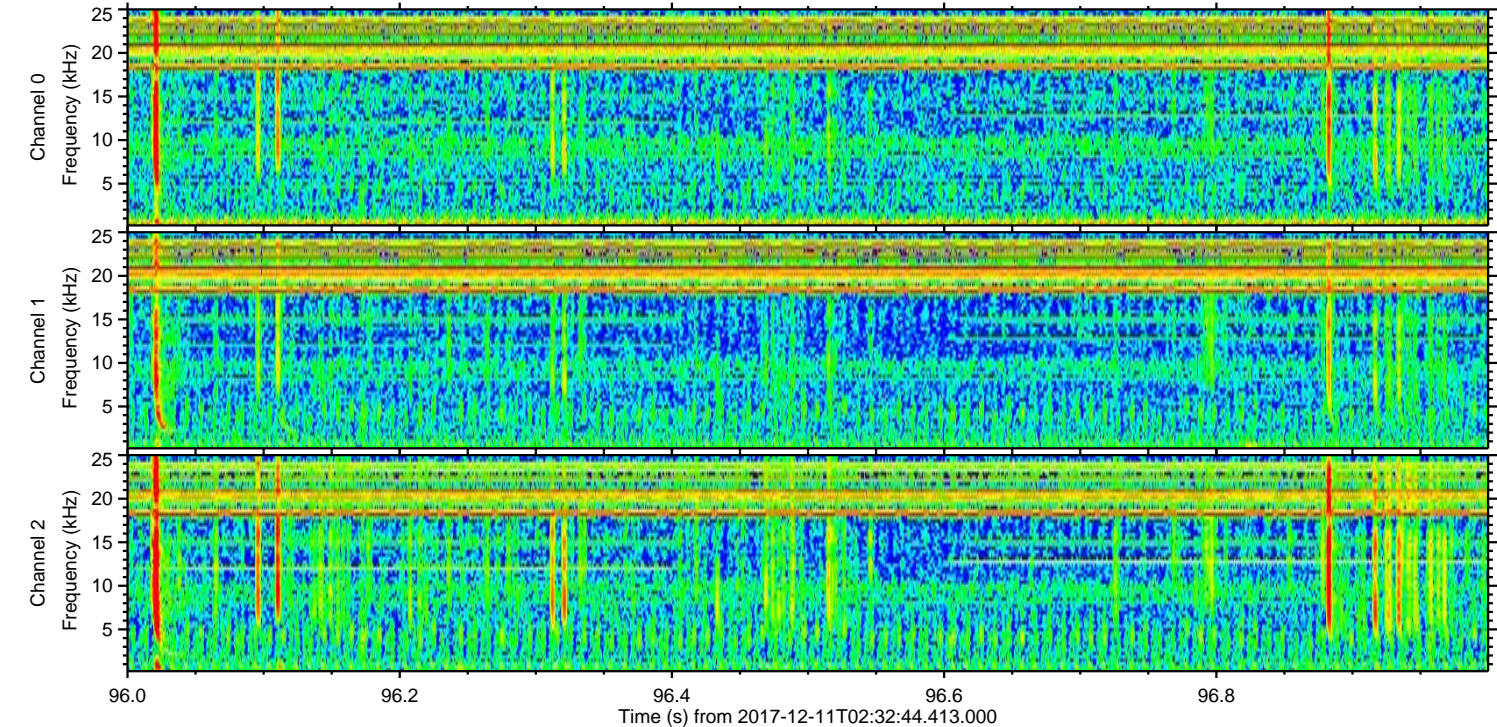
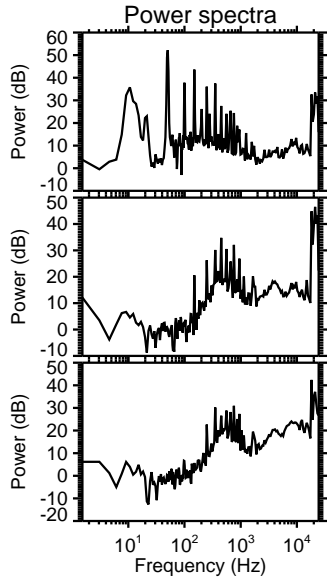
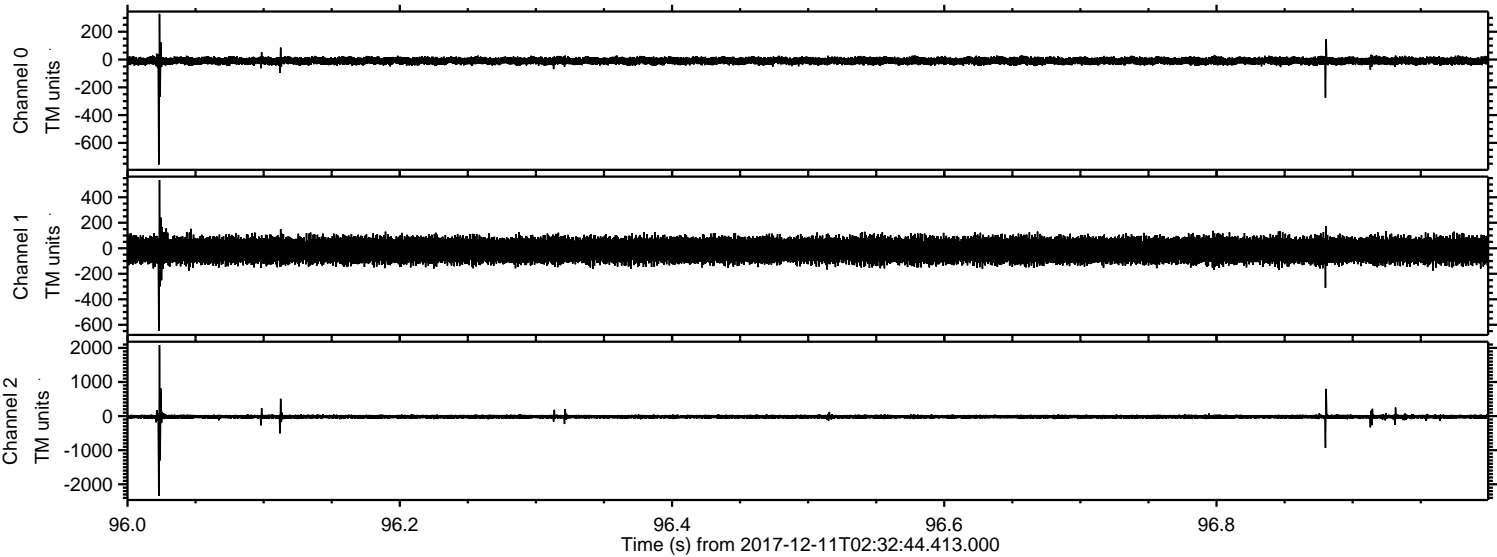


Channel 0
mn: -445
mx: 526
 μ : -9.8
 σ : 13.0

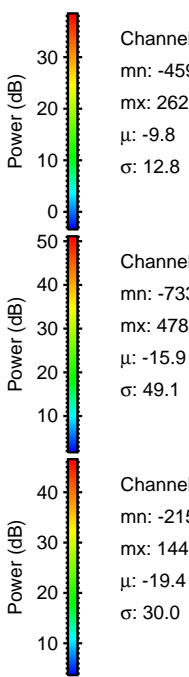
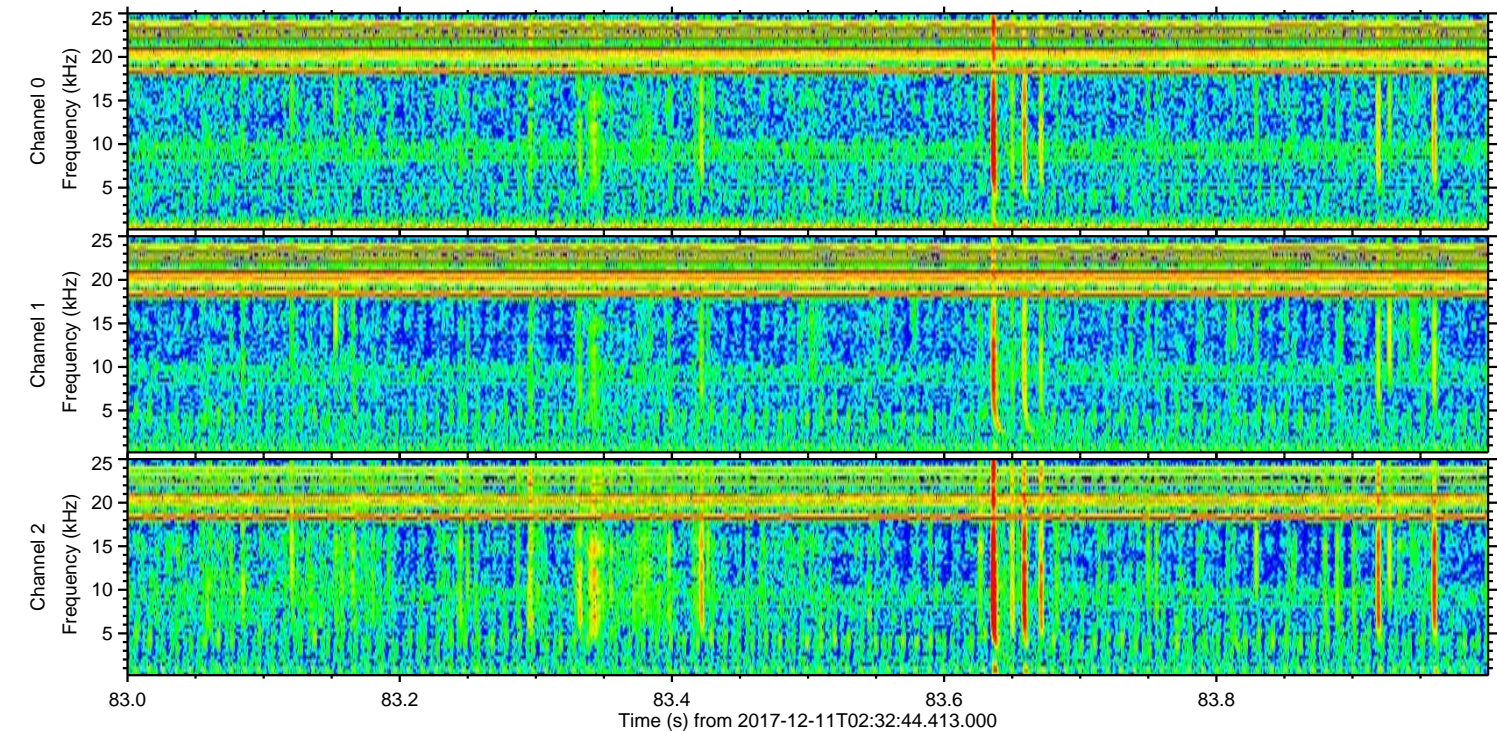
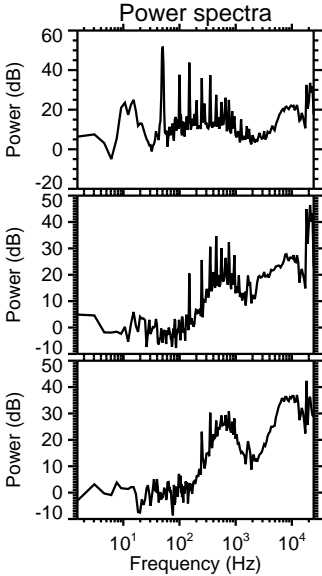
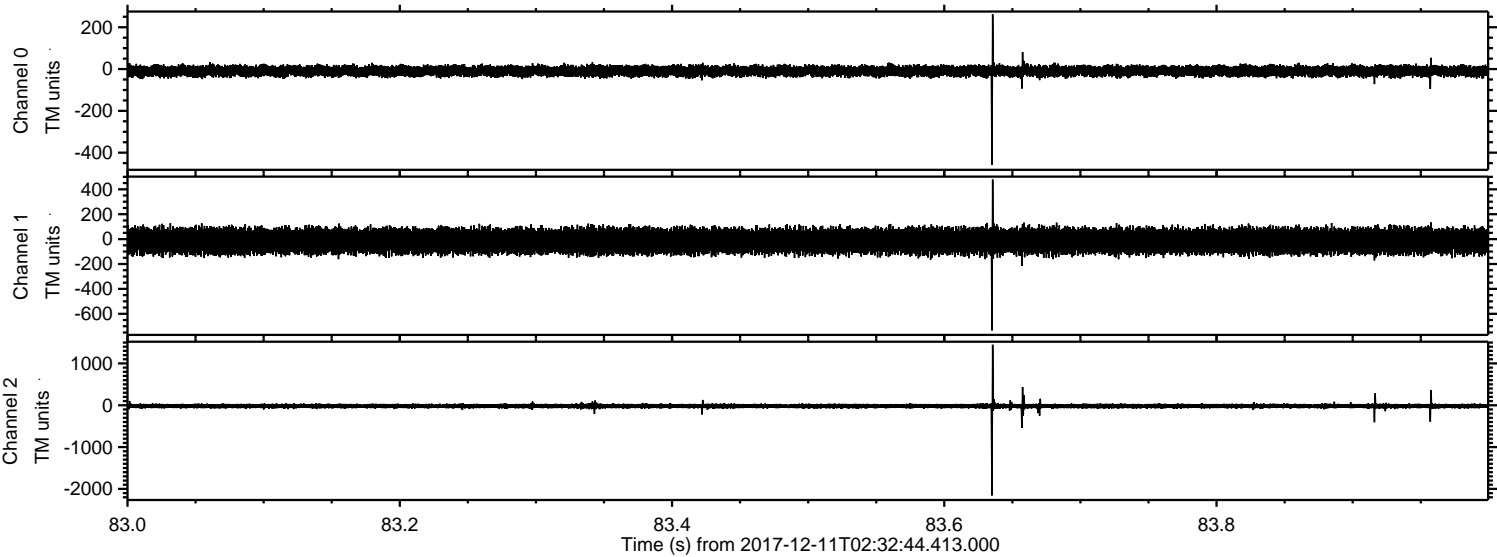
Channel 1
mn: -1210
mx: 1702
 μ : -15.9
 σ : 50.8

Channel 2
mn: -1725
mx: 2456
 μ : -19.4
 σ : 30.9

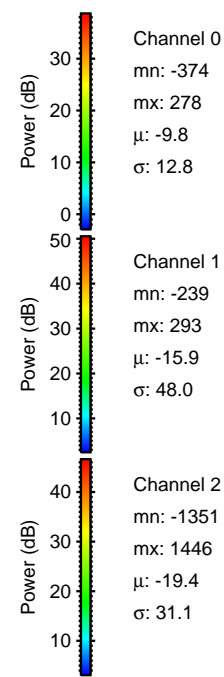
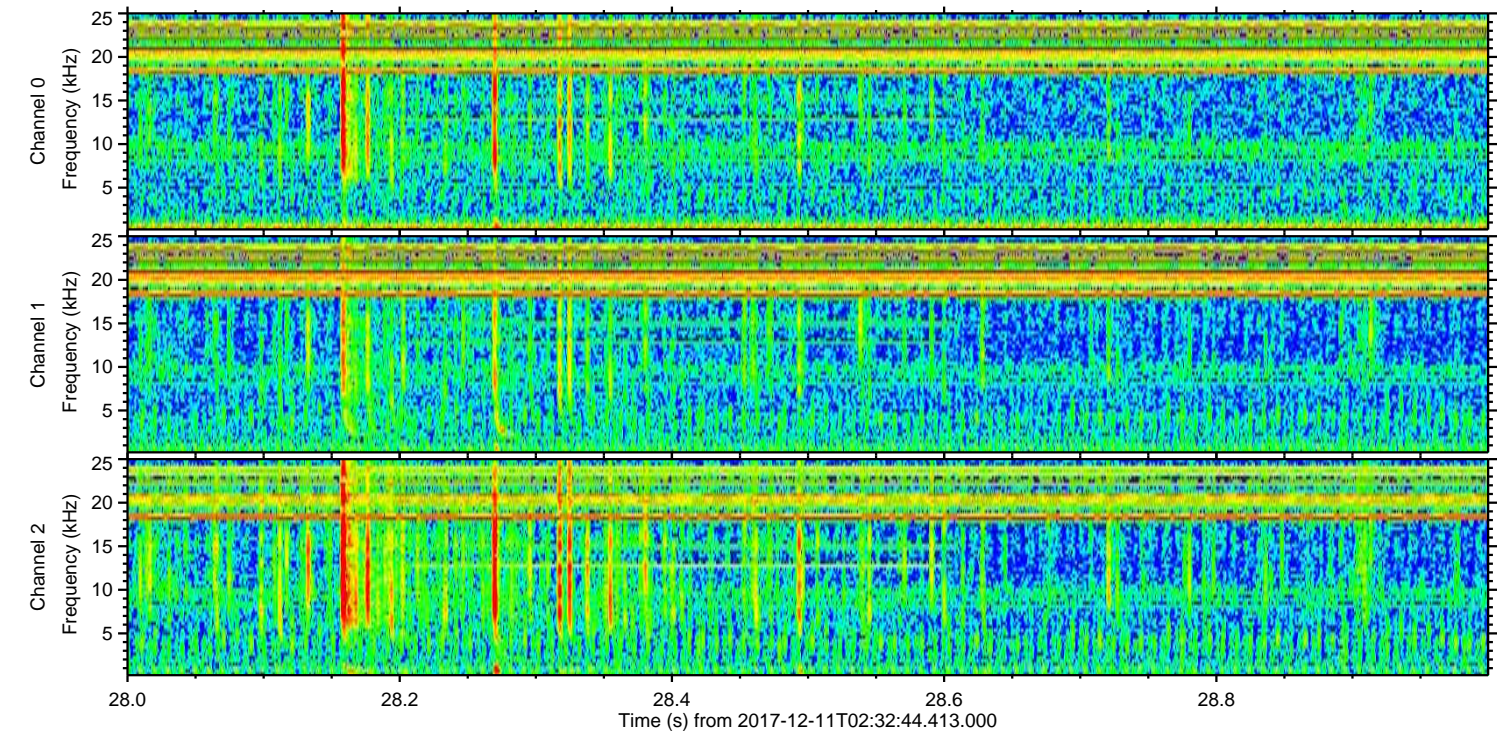
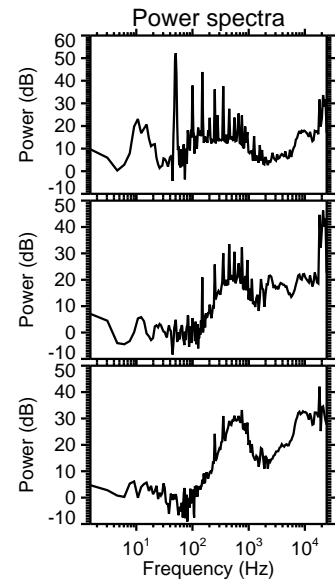
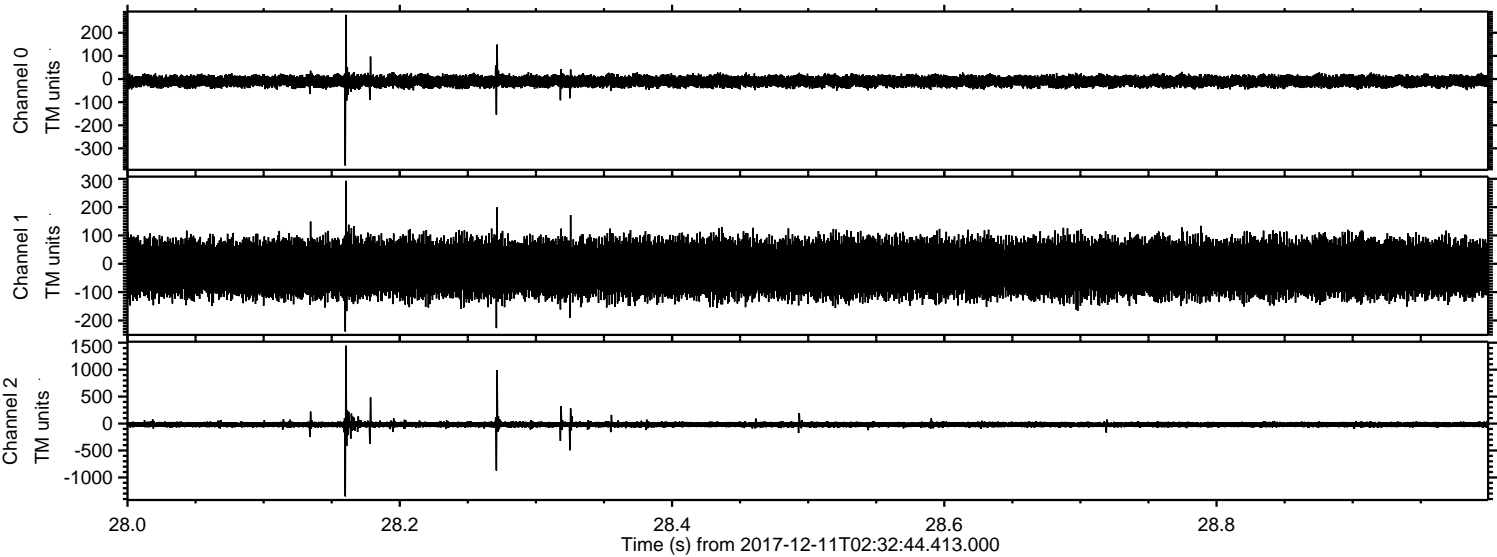
Processed Mon Dec 11 03:40:36 2017 by ELM ver.2012-10-06 from 001__elm20171211_023243__dat00.bin



Processed Mon Dec 11 03:40:37 2017 by ELM ver.2012-10-06 from 001__elm20171211_023243__dat00.bin



Processed Mon Dec 11 03:40:38 2017 by ELM ver.2012-10-06 from 001__elm20171211_023243__dat00.bin



Processed Mon Dec 11 03:40:39 2017 by ELM ver.2012-10-06 from 001__elm20171211_023243__dat00.bin

