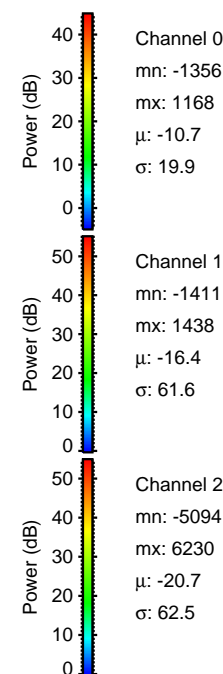
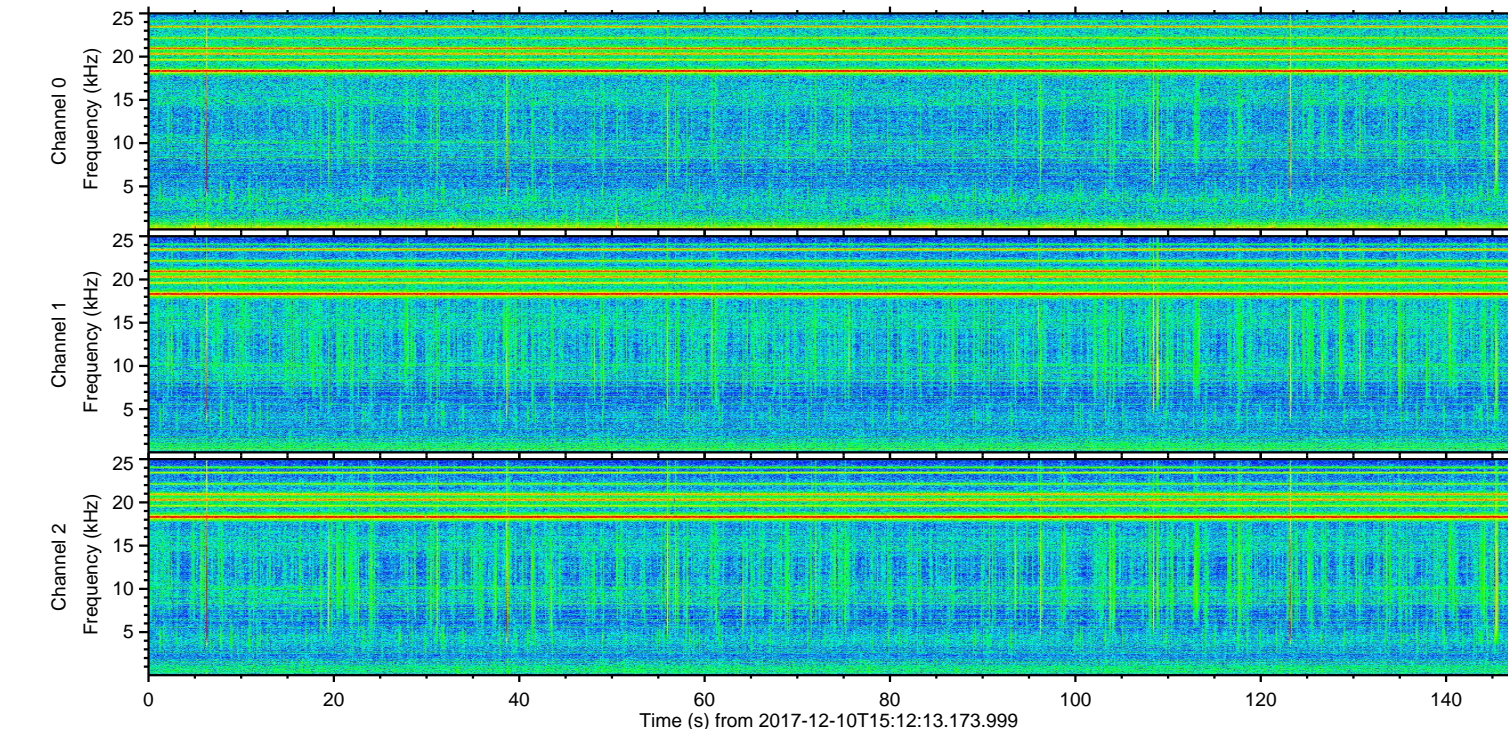
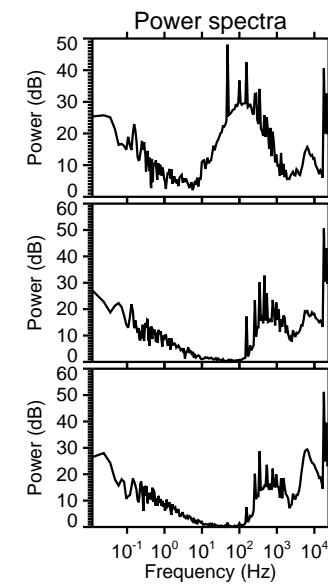
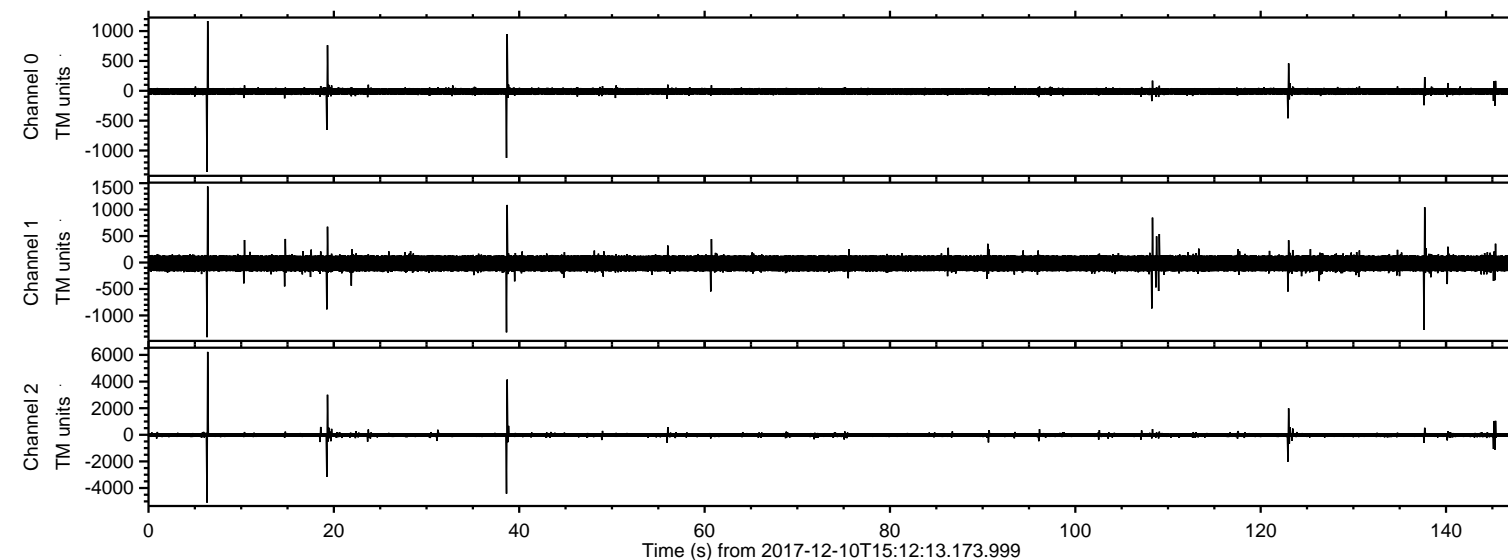
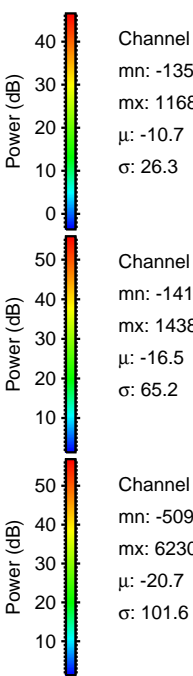
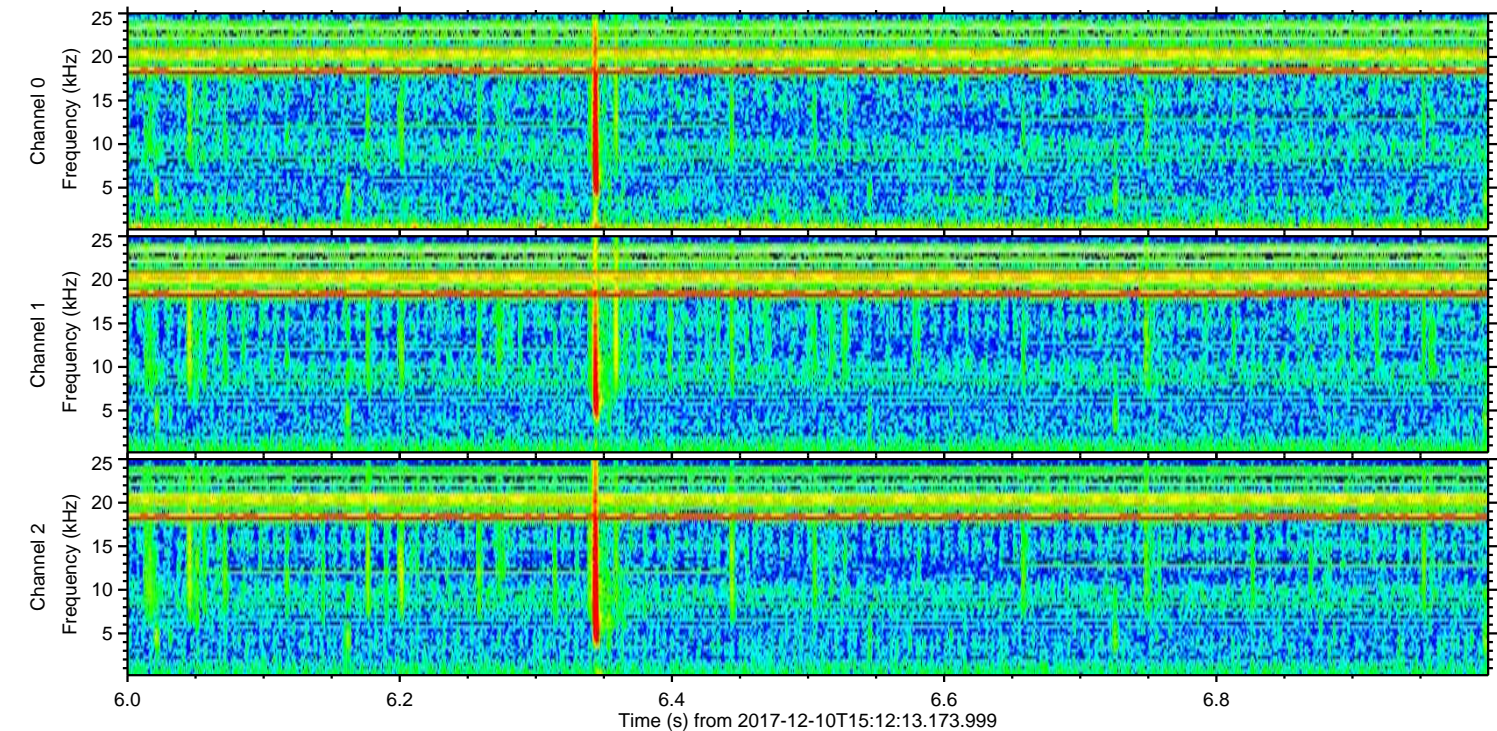
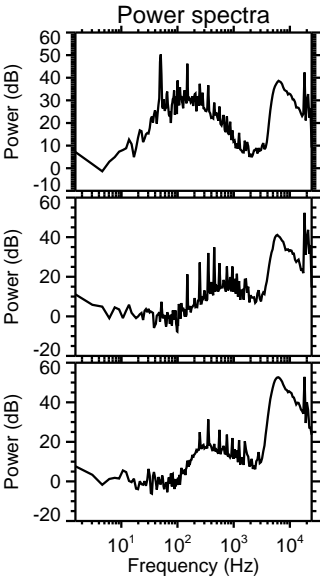
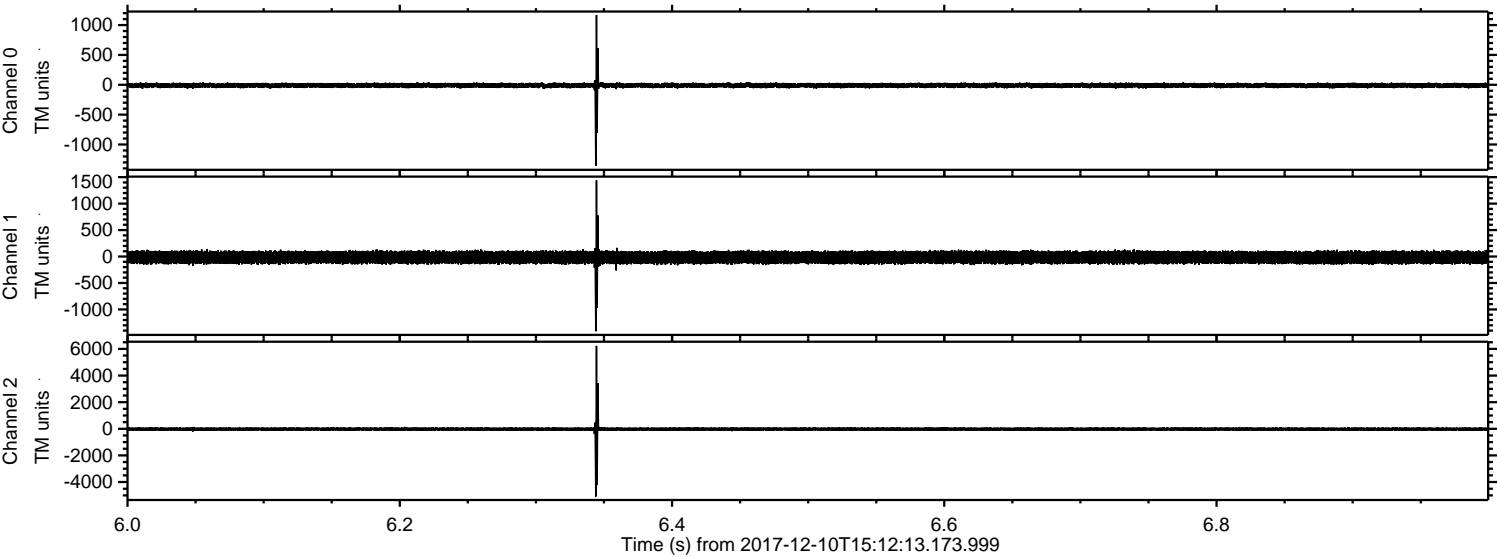


ELMAVAN 3D WAVEFORMS (Measured data sampled at 50 kHz) 51000 packets of 144 samples from 2017-12-10T15:12:13.173.999.

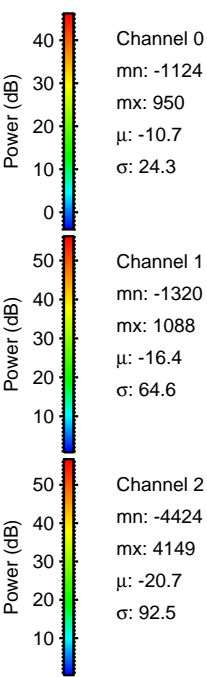
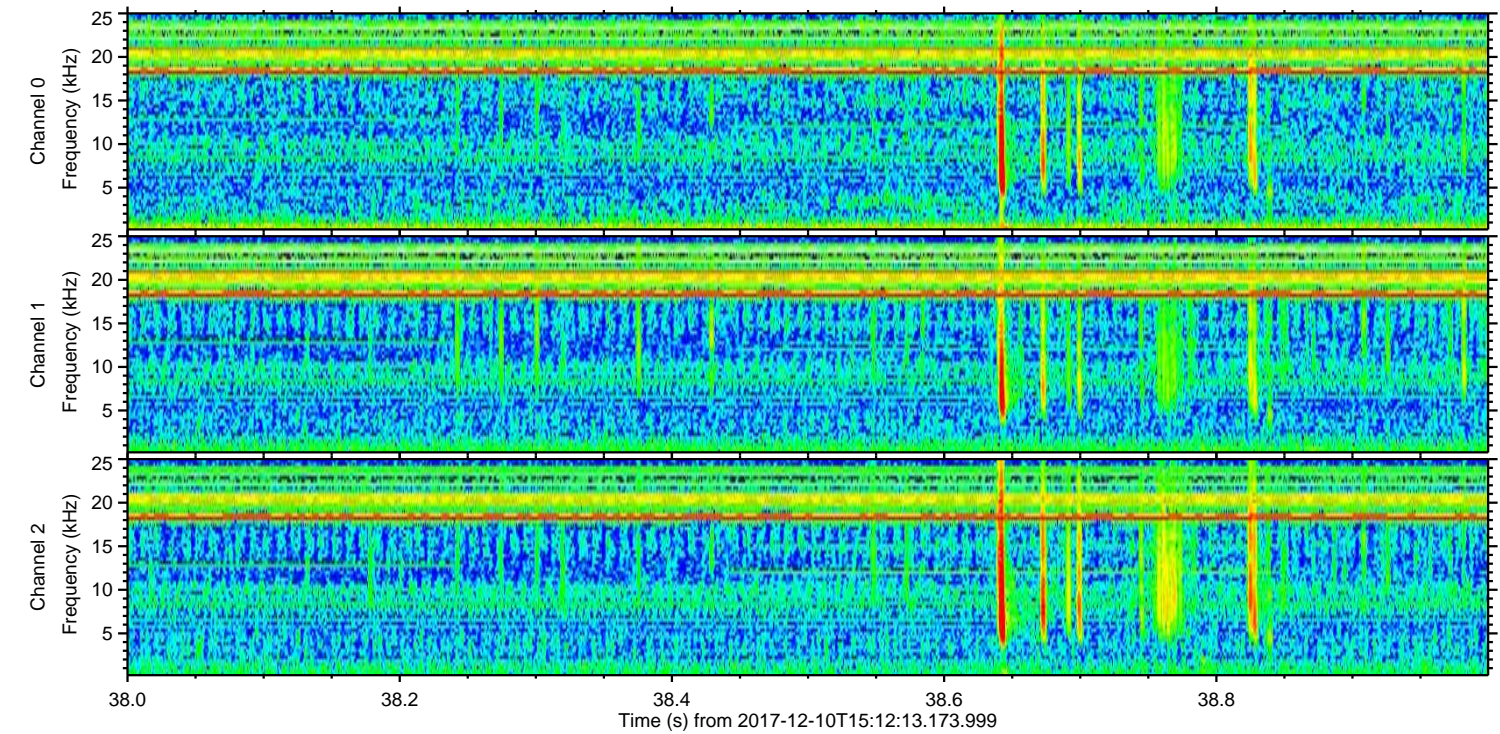
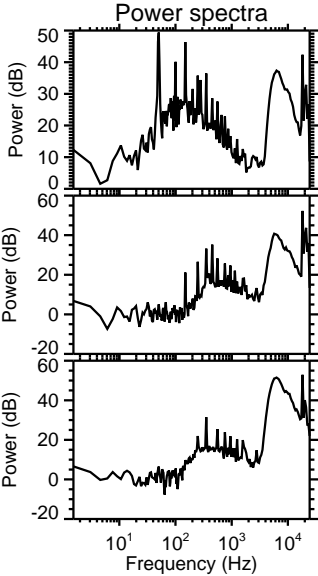
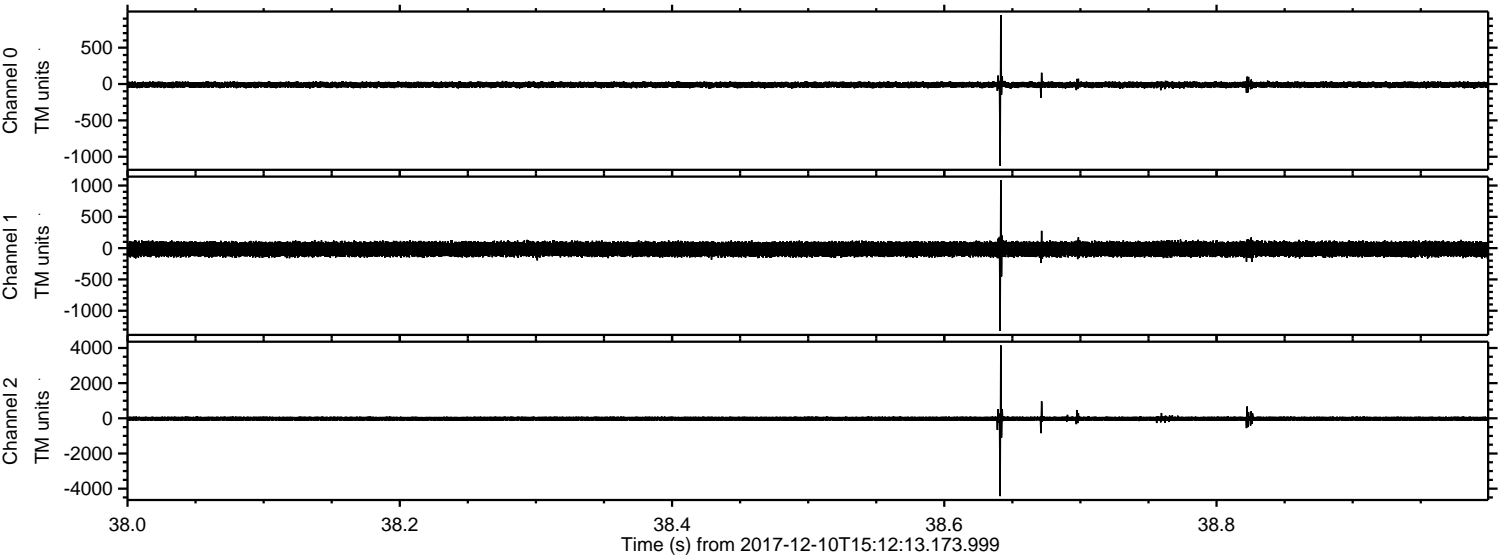
Processed Sun Dec 10 16:22:33 2017 by ELM ver.2012-10-06 from 001__elm20171210_151212__dat00.bin



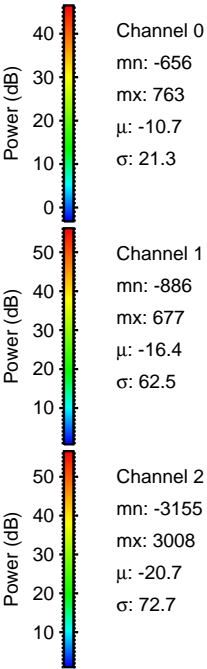
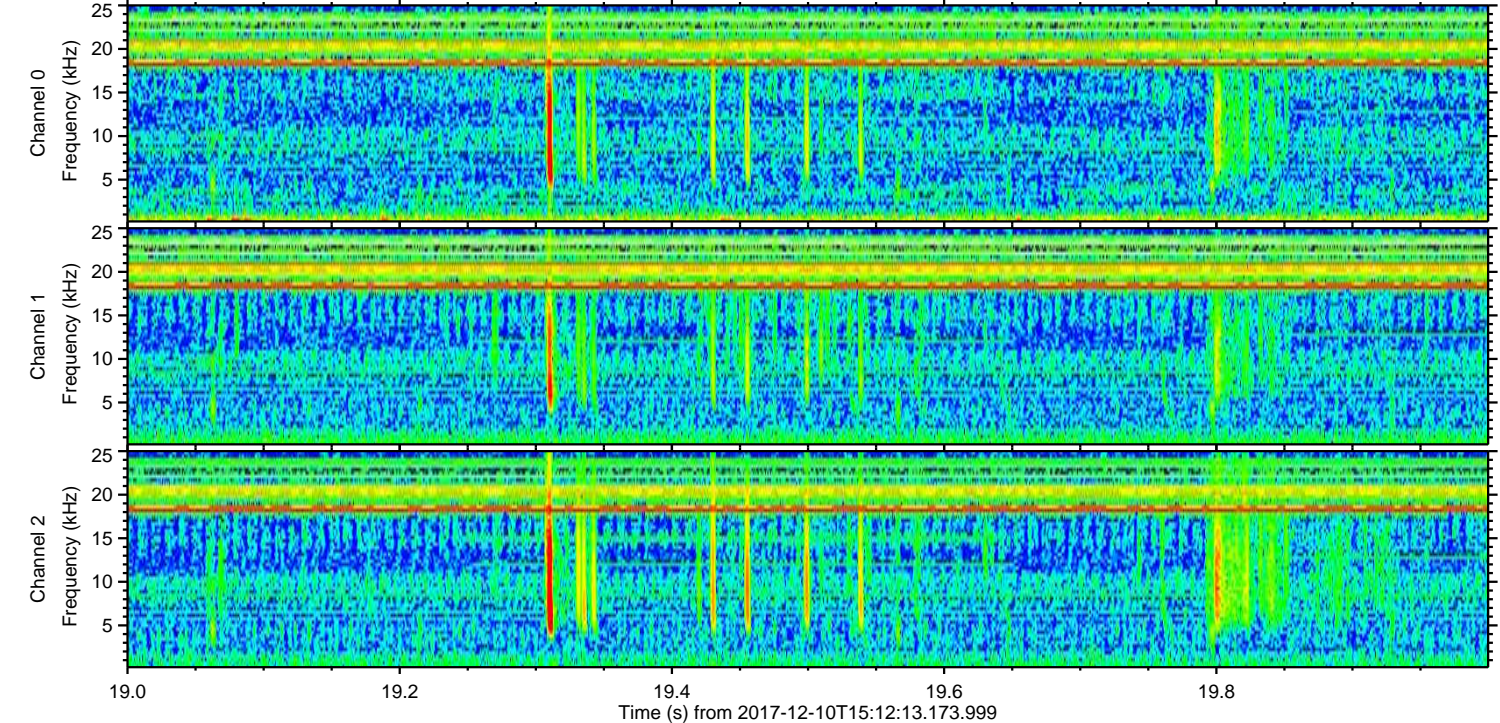
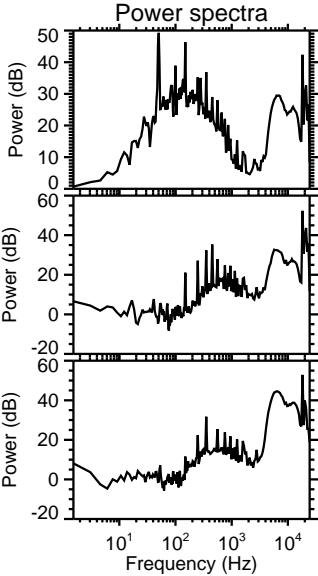
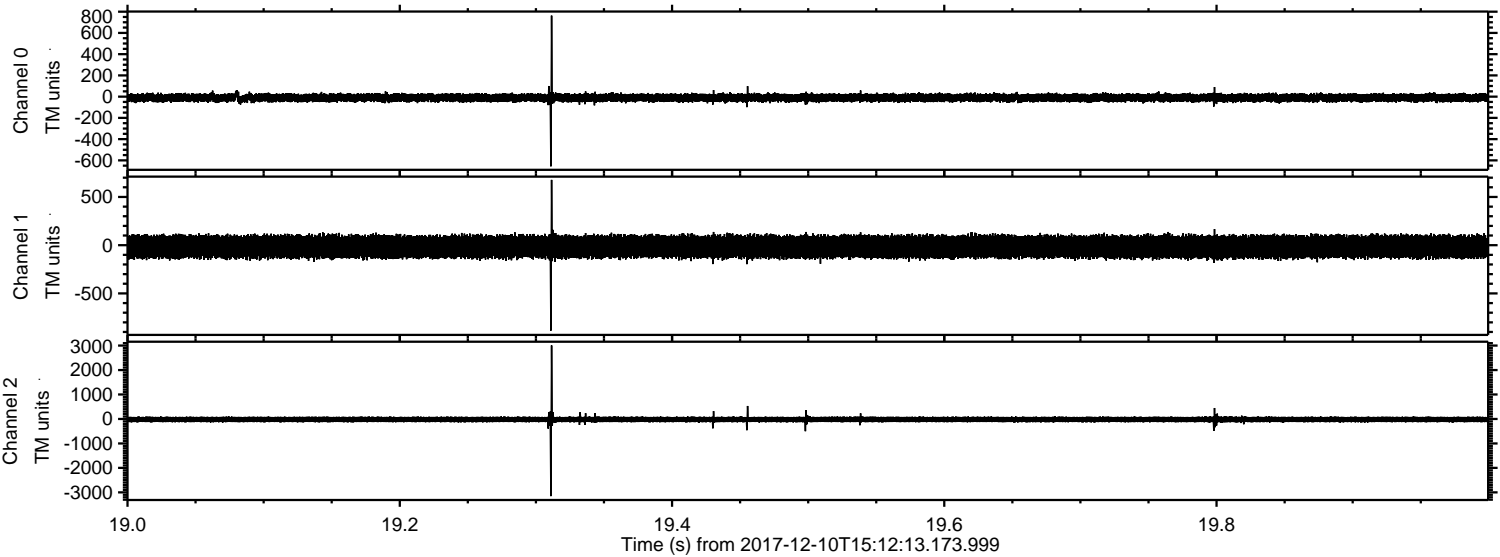
Processed Sun Dec 10 16:22:42 2017 by ELM ver.2012-10-06 from 001__elm20171210_151212__dat00.bin



Processed Sun Dec 10 16:22:43 2017 by ELM ver.2012-10-06 from 001__elm20171210_151212__dat00.bin



Processed Sun Dec 10 16:22:44 2017 by ELM ver.2012-10-06 from 001__elm20171210_151212__dat00.bin



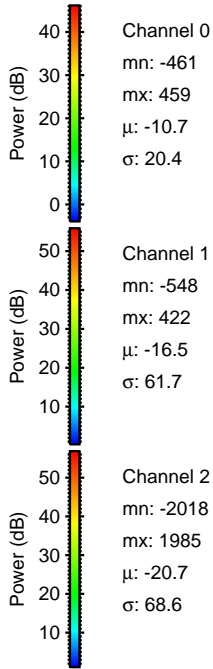
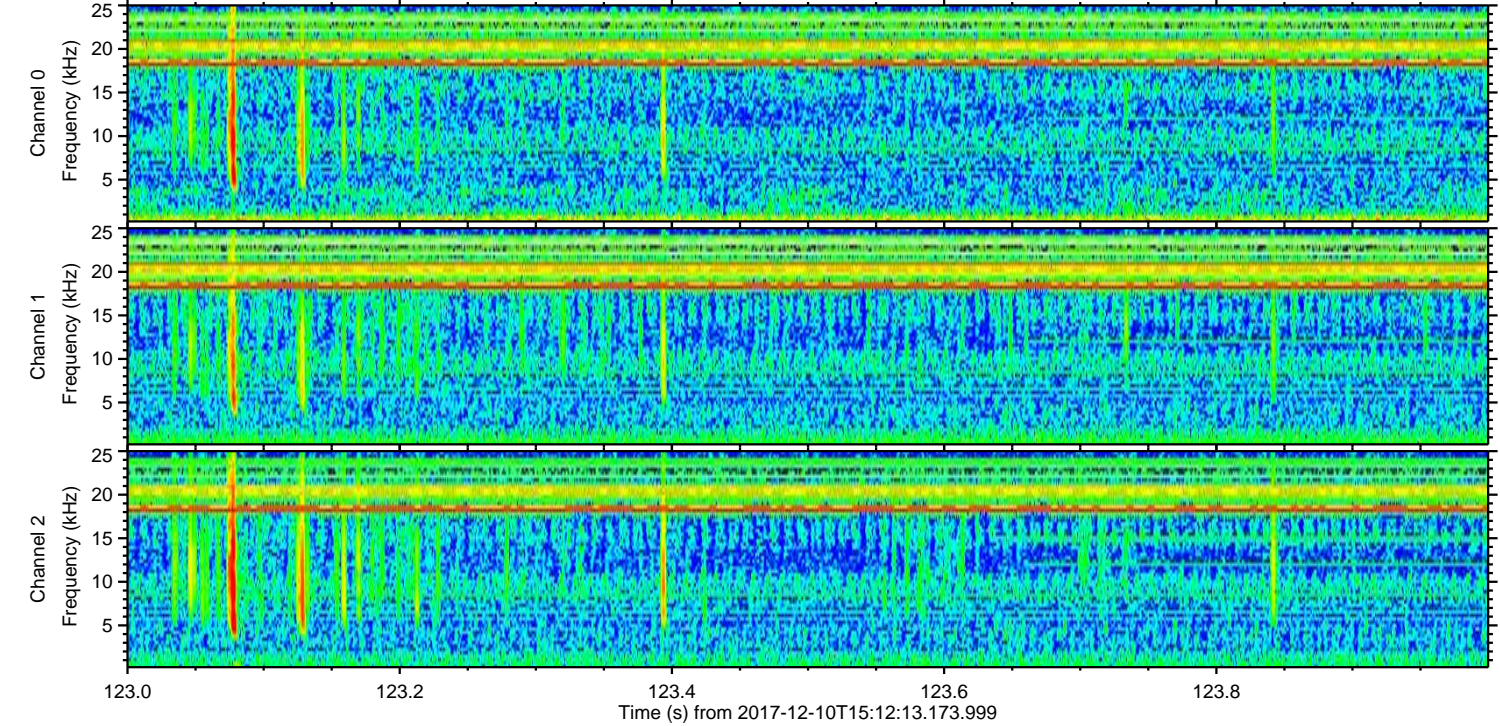
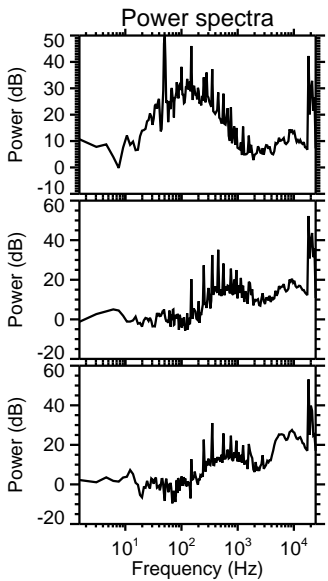
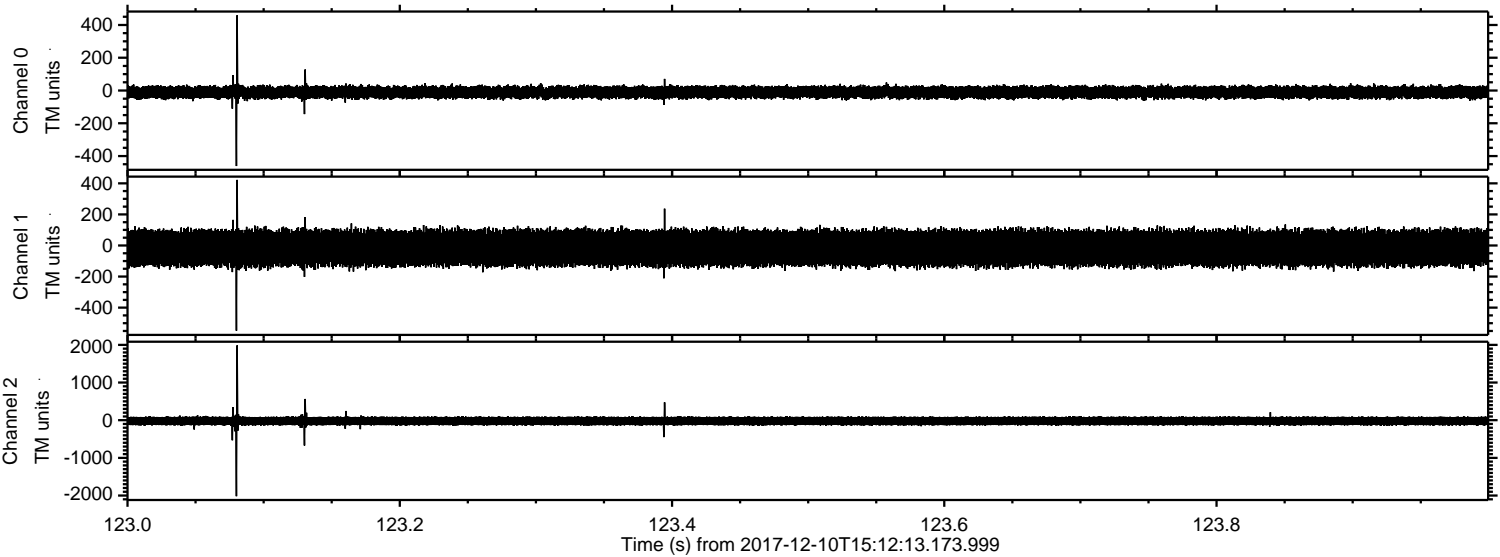
Channel 0
mn: -656
mx: 763
 μ : -10.7
 σ : 21.3

Channel 1
mn: -886
mx: 677
 μ : -16.4
 σ : 62.5

Channel 2
mn: -3155
mx: 3008
 μ : -20.7
 σ : 72.7

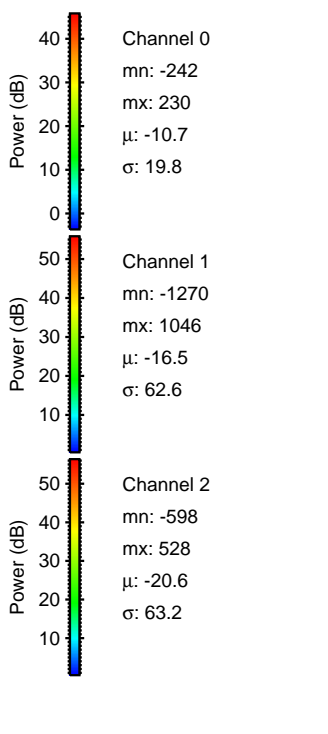
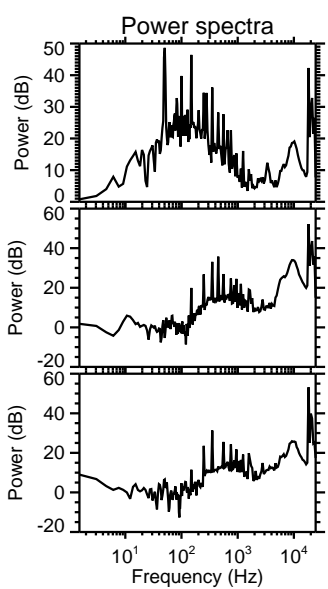
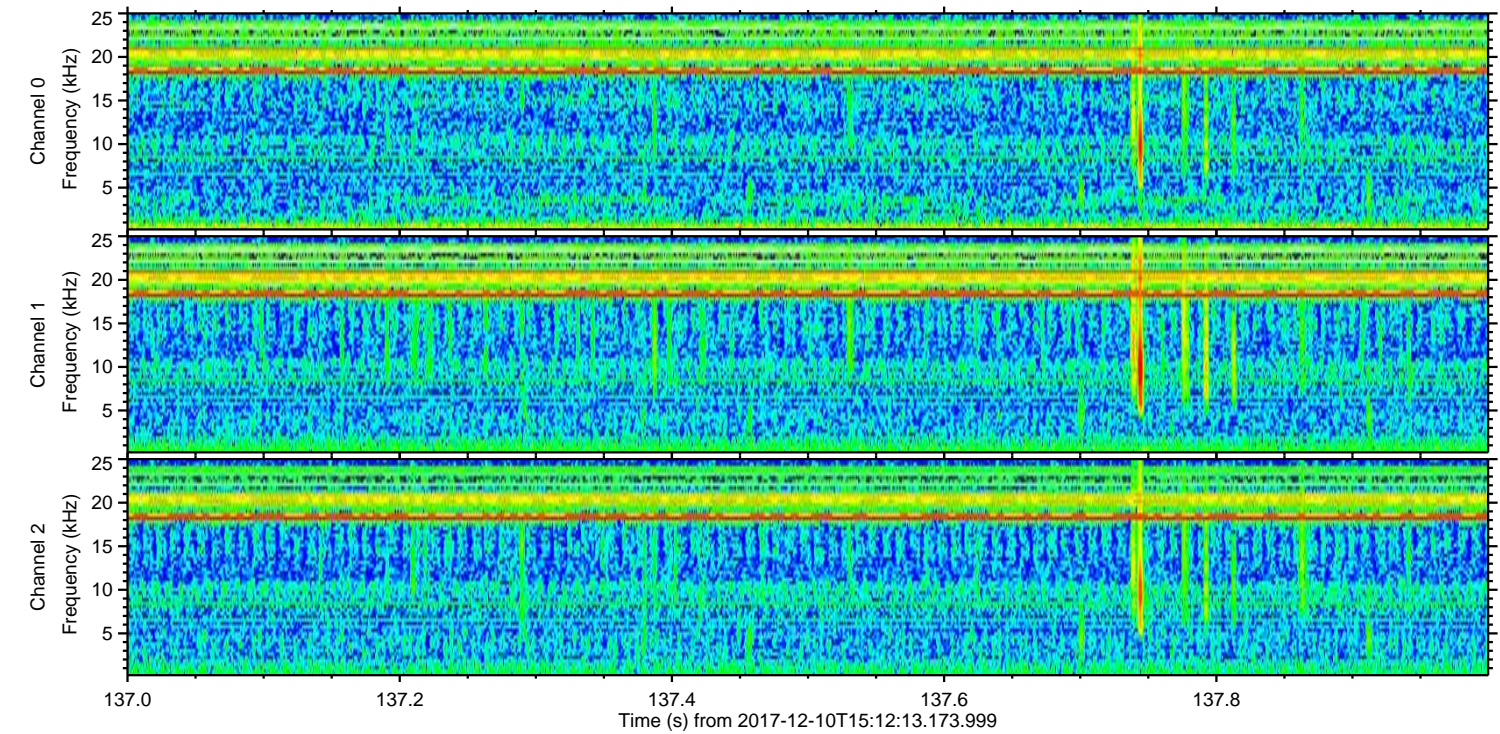
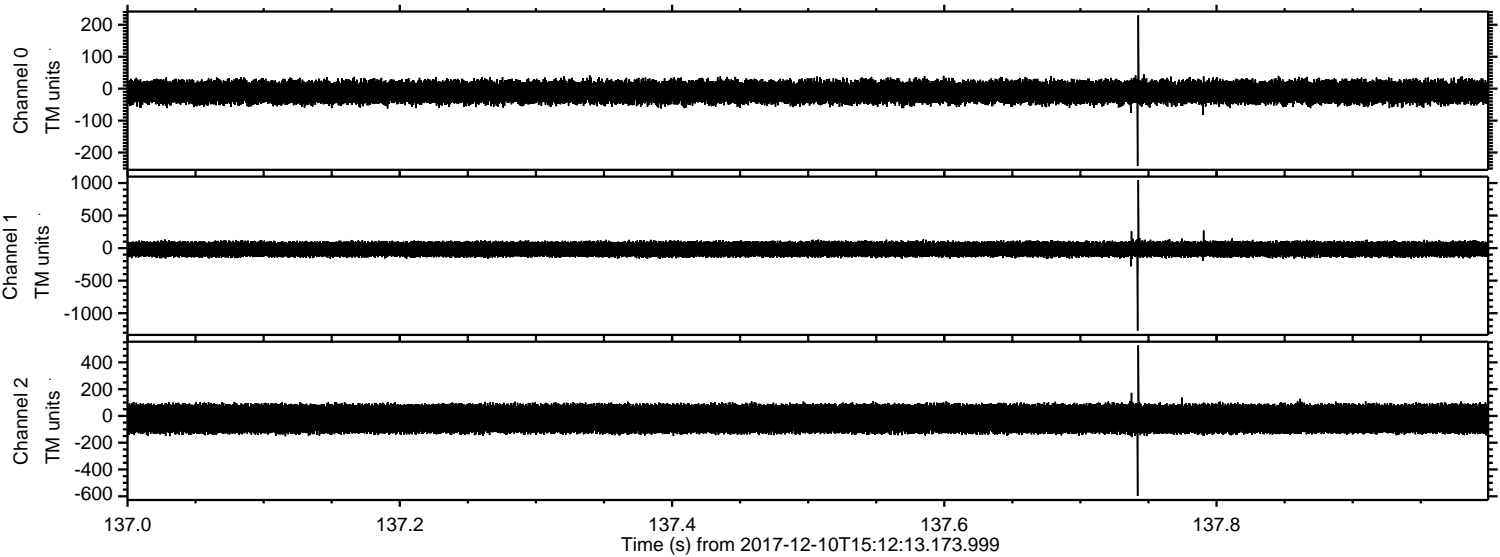
ELMAVAN 3D WAVEFORMS (Measured data sampled at 50 kHz) 51000 packets of 144 samples from 2017-12-10T15:12:13.173.999. Part 124/147

Processed Sun Dec 10 16:22:45 2017 by ELM ver.2012-10-06 from 001__elm20171210_151212__dat00.bin



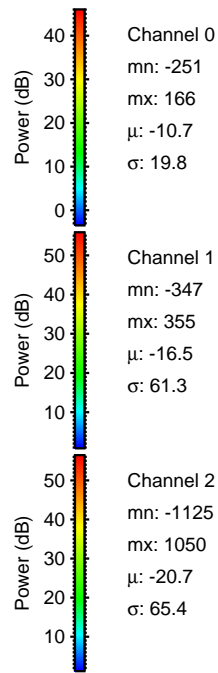
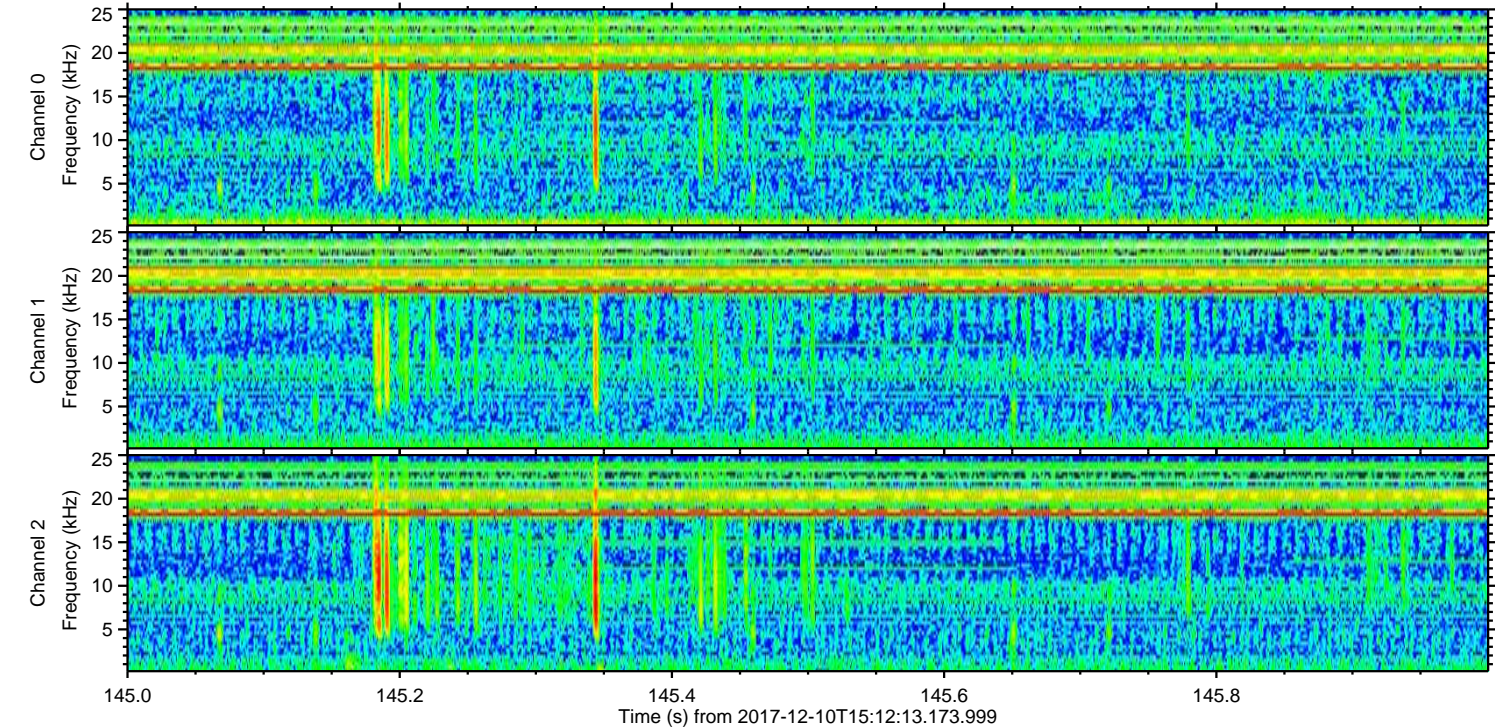
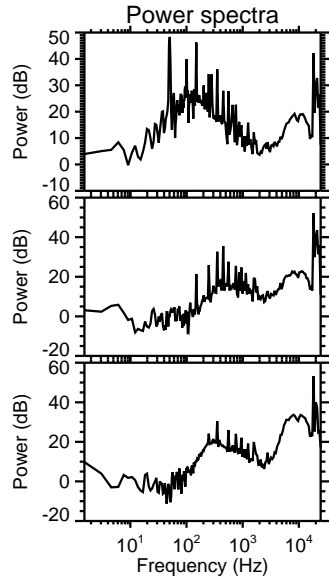
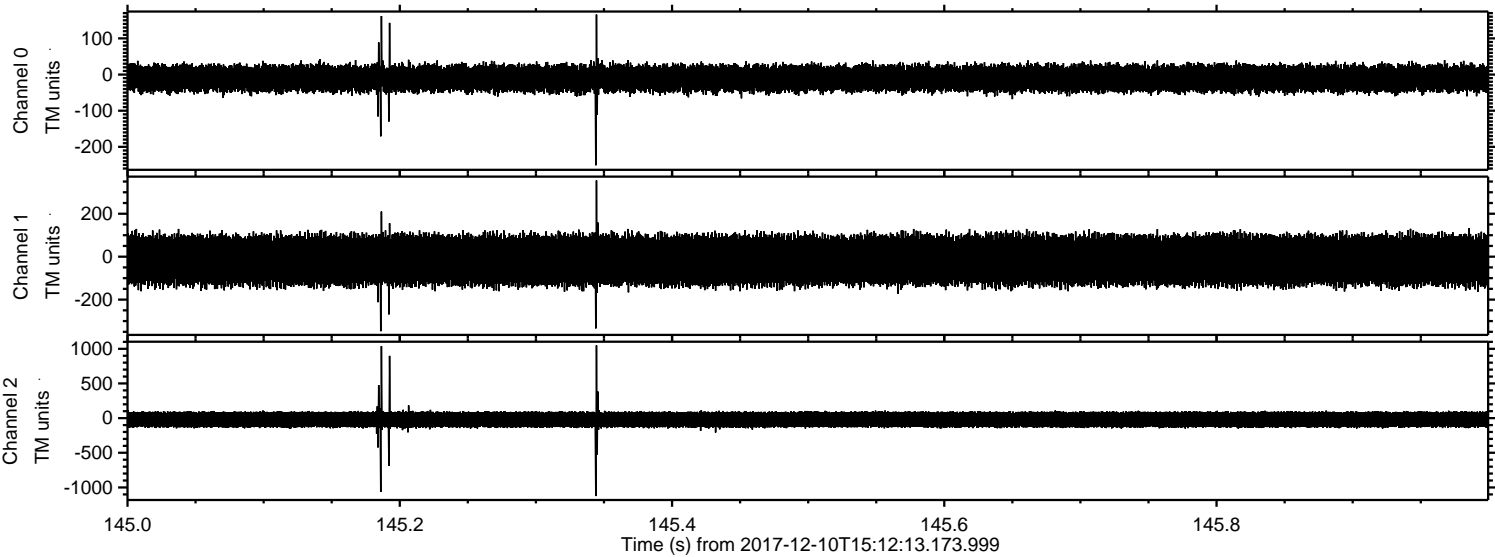
ELMAVAN 3D WAVEFORMS (Measured data sampled at 50 kHz) 51000 packets of 144 samples from 2017-12-10T15:12:13.173.999. Part 138/147

Processed Sun Dec 10 16:22:46 2017 by ELM ver.2012-10-06 from 001__elm20171210_151212__dat00.bin



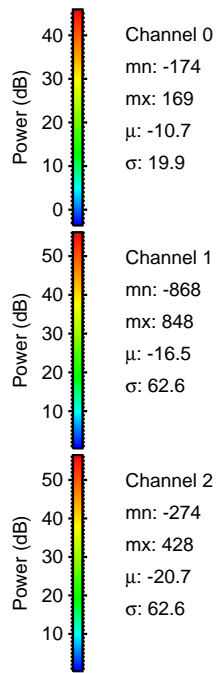
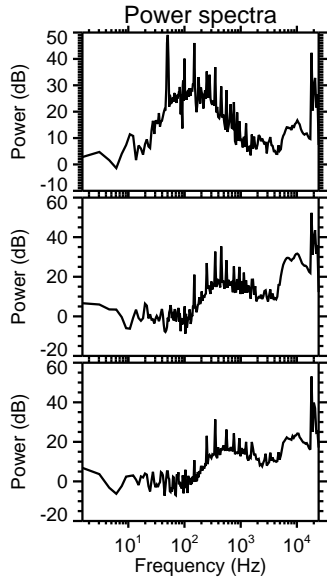
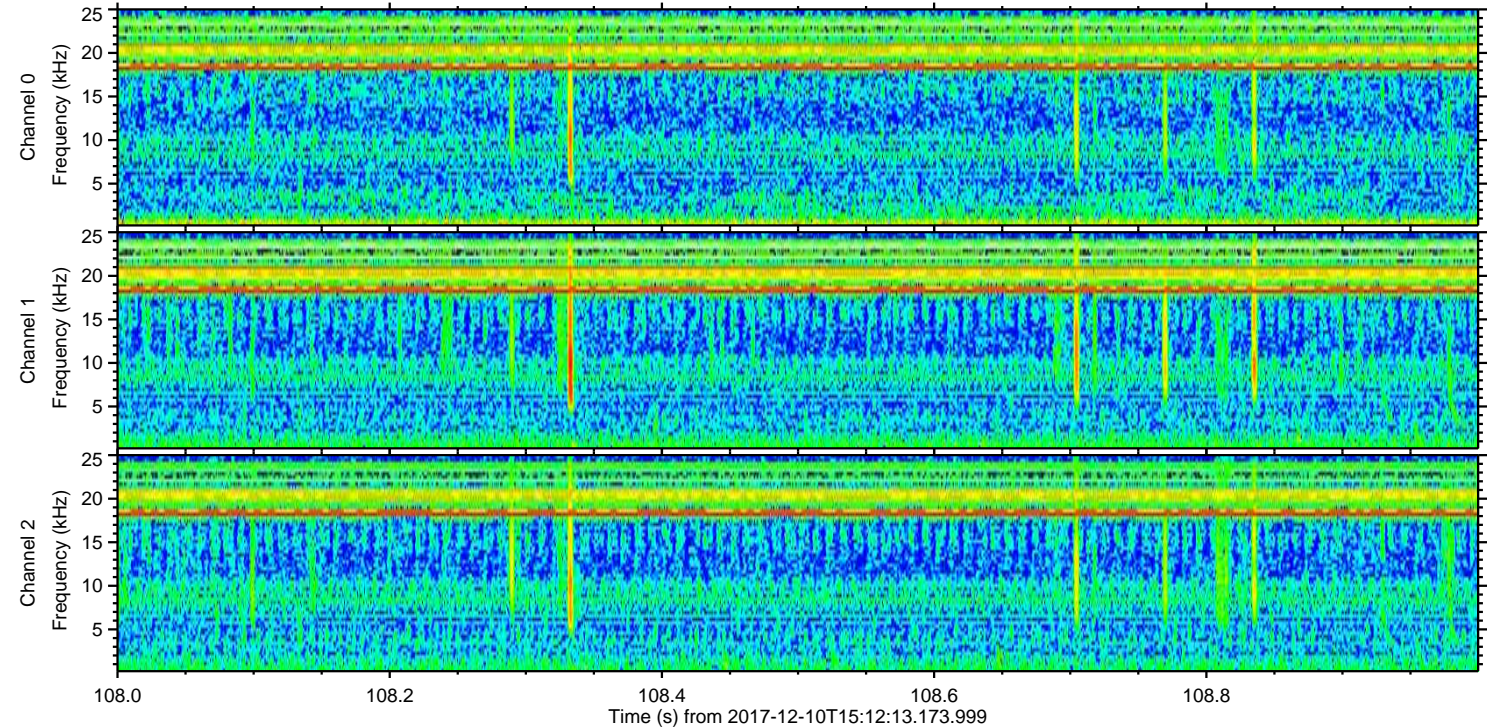
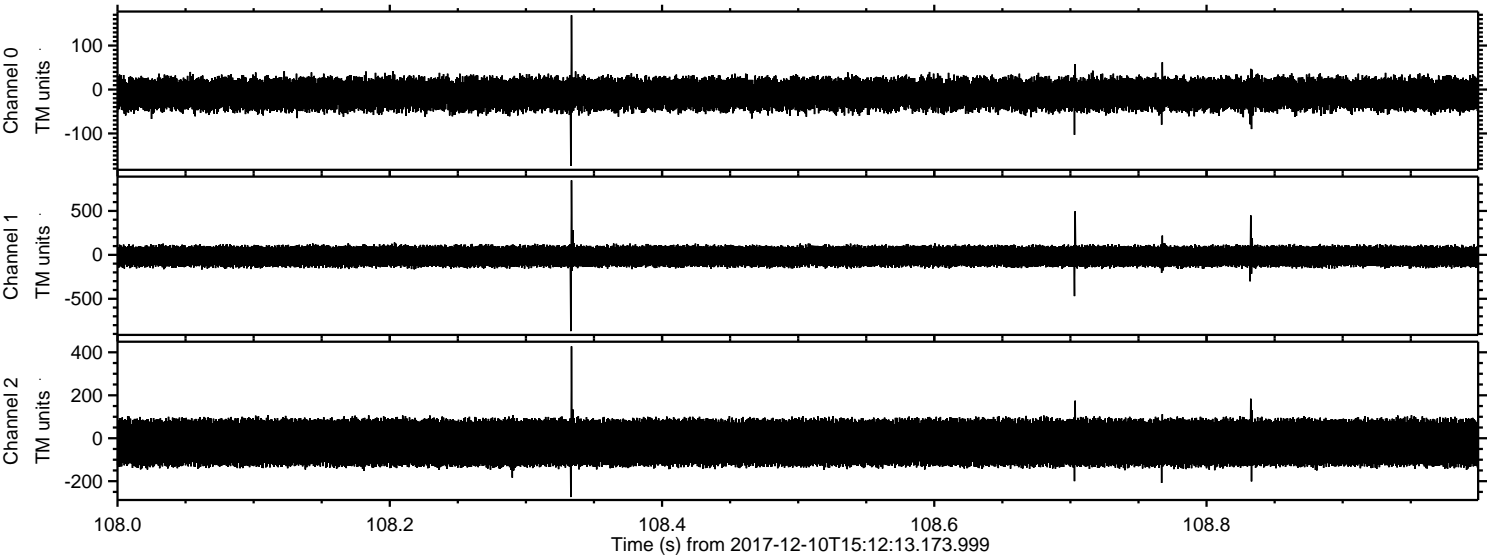
ELMAVAN 3D WAVEFORMS (Measured data sampled at 50 kHz) 51000 packets of 144 samples from 2017-12-10T15:12:13.173.999. Part 146/147

Processed Sun Dec 10 16:22:47 2017 by ELM ver.2012-10-06 from 001__elm20171210_151212__dat00.bin

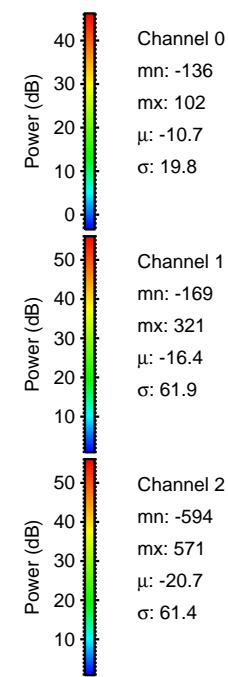
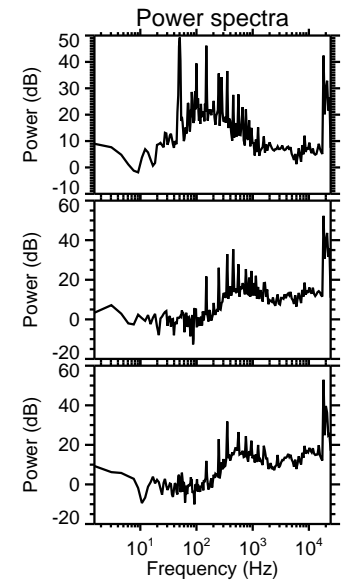
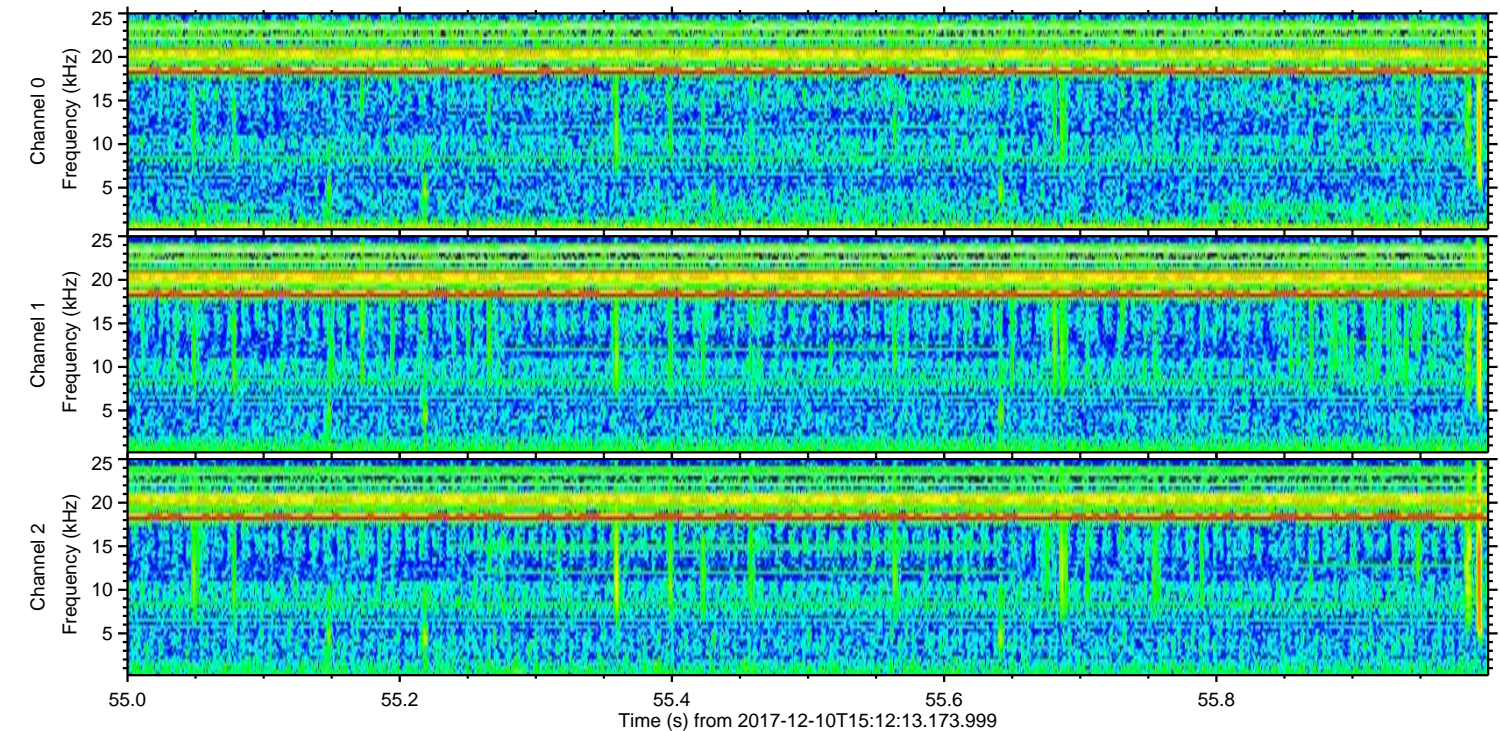
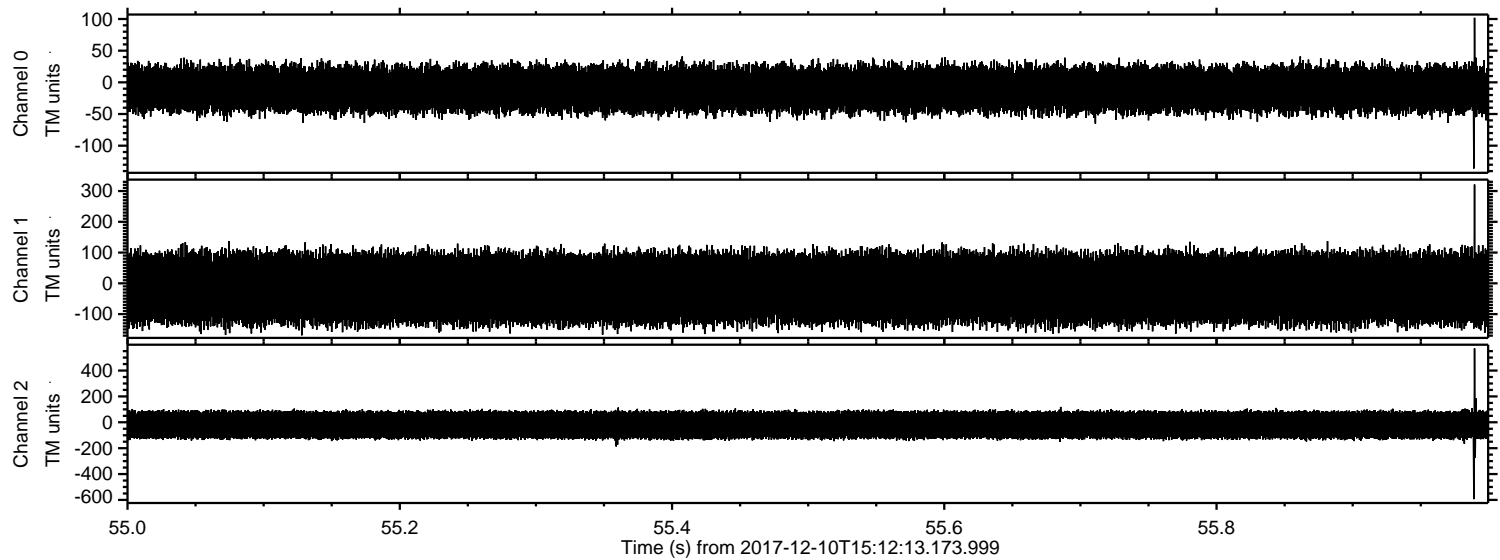


ELMAVAN 3D WAVEFORMS (Measured data sampled at 50 kHz) 51000 packets of 144 samples from 2017-12-10T15:12:13.173.999. Part 109/147

Processed Sun Dec 10 16:22:48 2017 by ELM ver.2012-10-06 from 001__elm20171210_151212__dat00.bin



Processed Sun Dec 10 16:22:48 2017 by ELM ver.2012-10-06 from 001__elm20171210_151212__dat00.bin

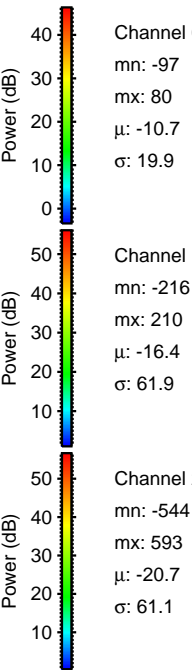
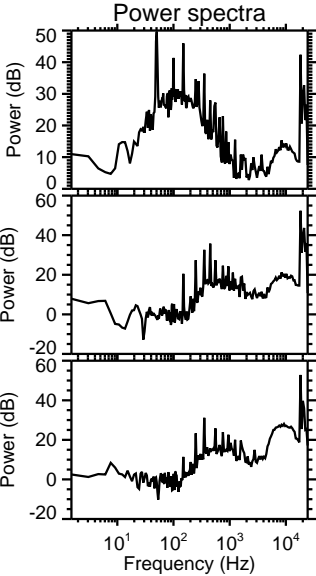
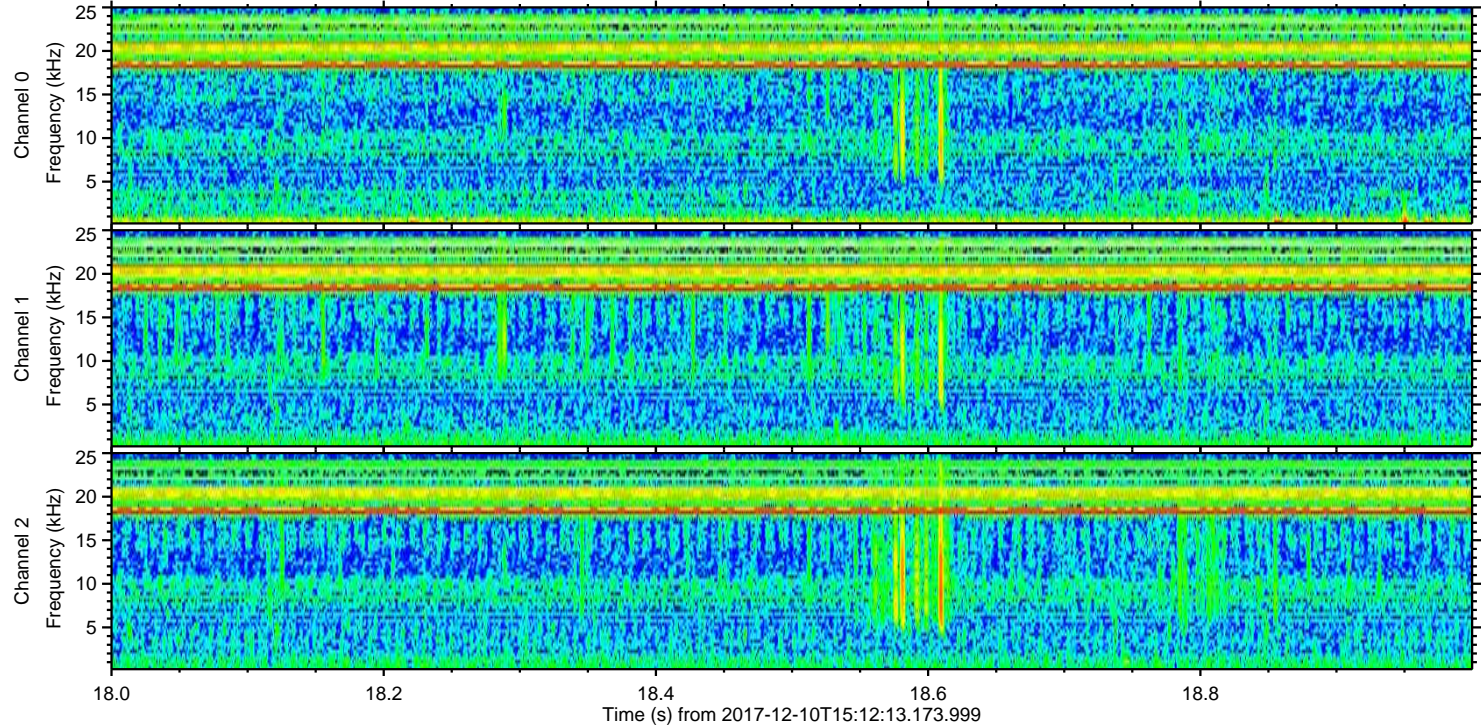
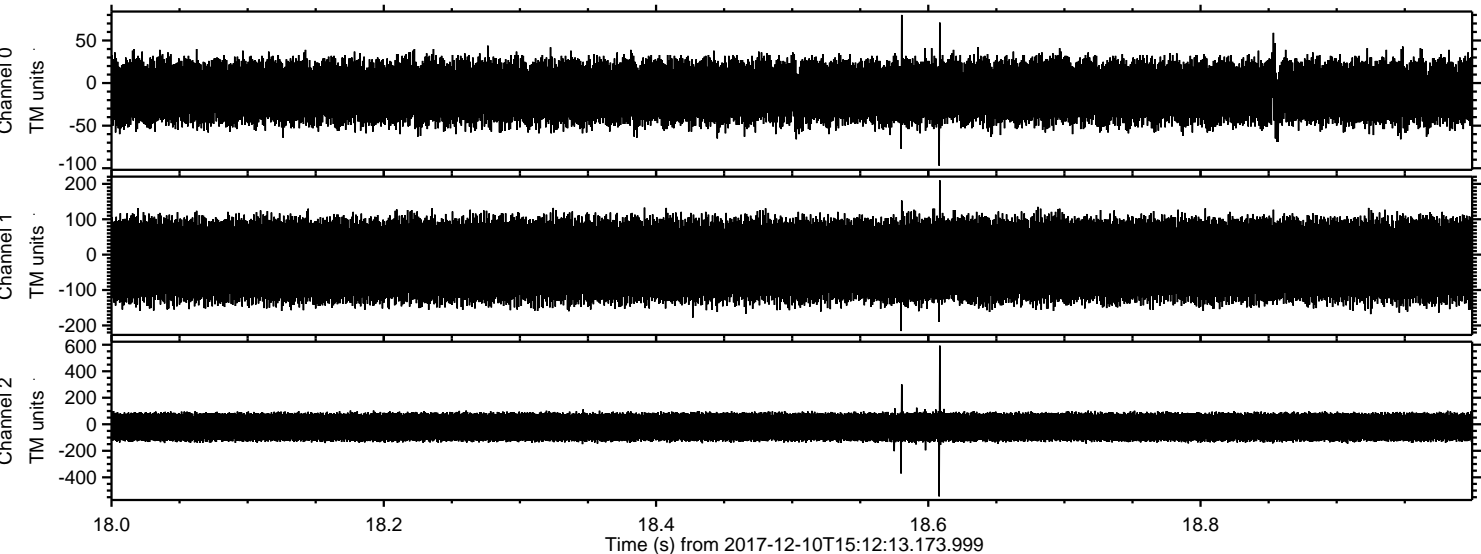


Channel 0
mn: -136
mx: 102
 μ : -10.7
 σ : 19.8

Channel 1
mn: -169
mx: 321
 μ : -16.4
 σ : 61.9

Channel 2
mn: -594
mx: 571
 μ : -20.7
 σ : 61.4

Processed Sun Dec 10 16:22:49 2017 by ELM ver.2012-10-06 from 001__elm20171210_151212__dat00.bin



Processed Sun Dec 10 16:22:50 2017 by ELM ver.2012-10-06 from 001__elm20171210_151212__dat00.bin

