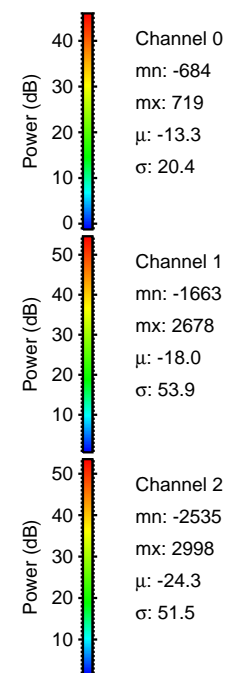
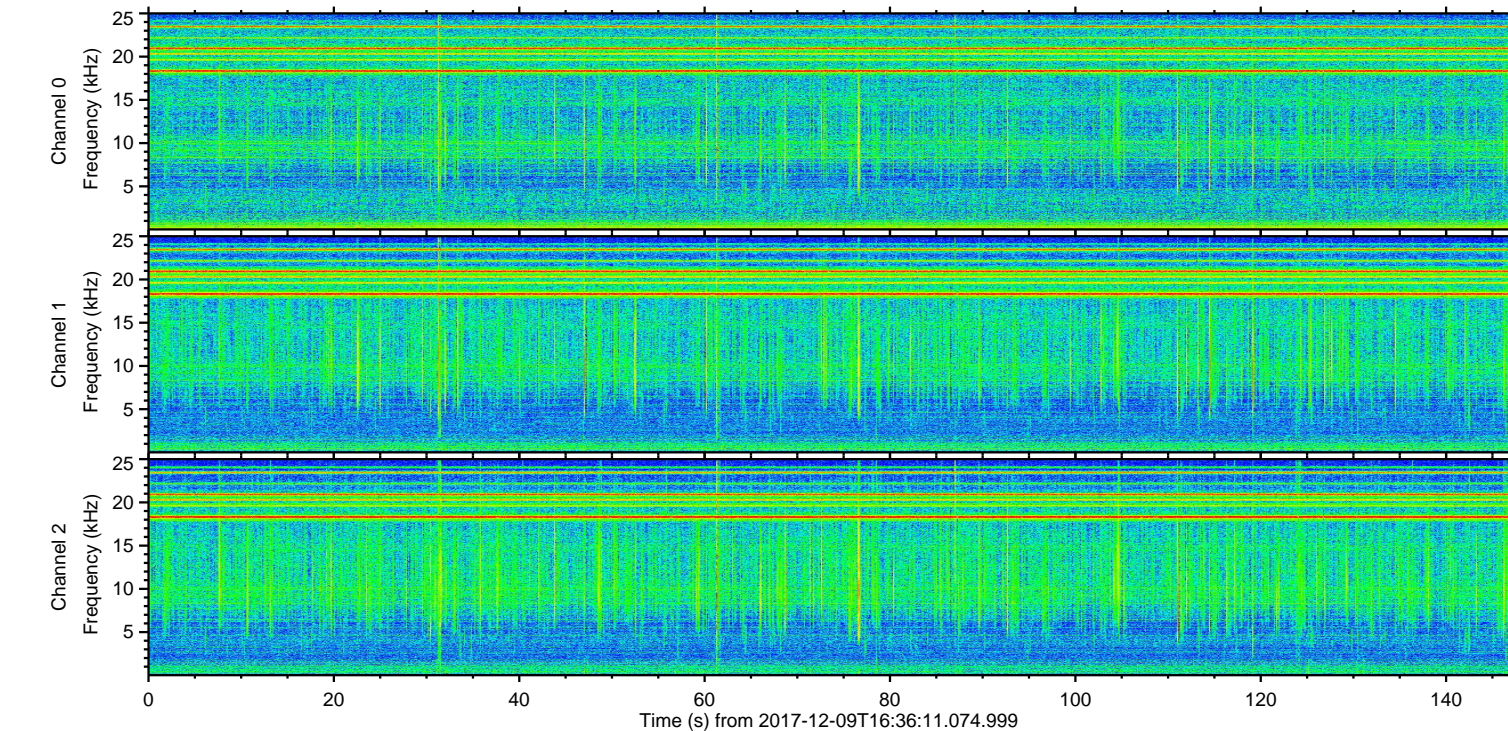
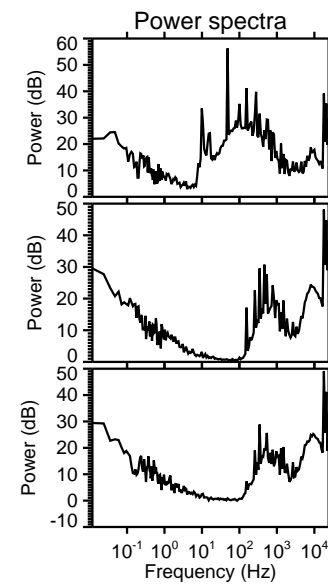
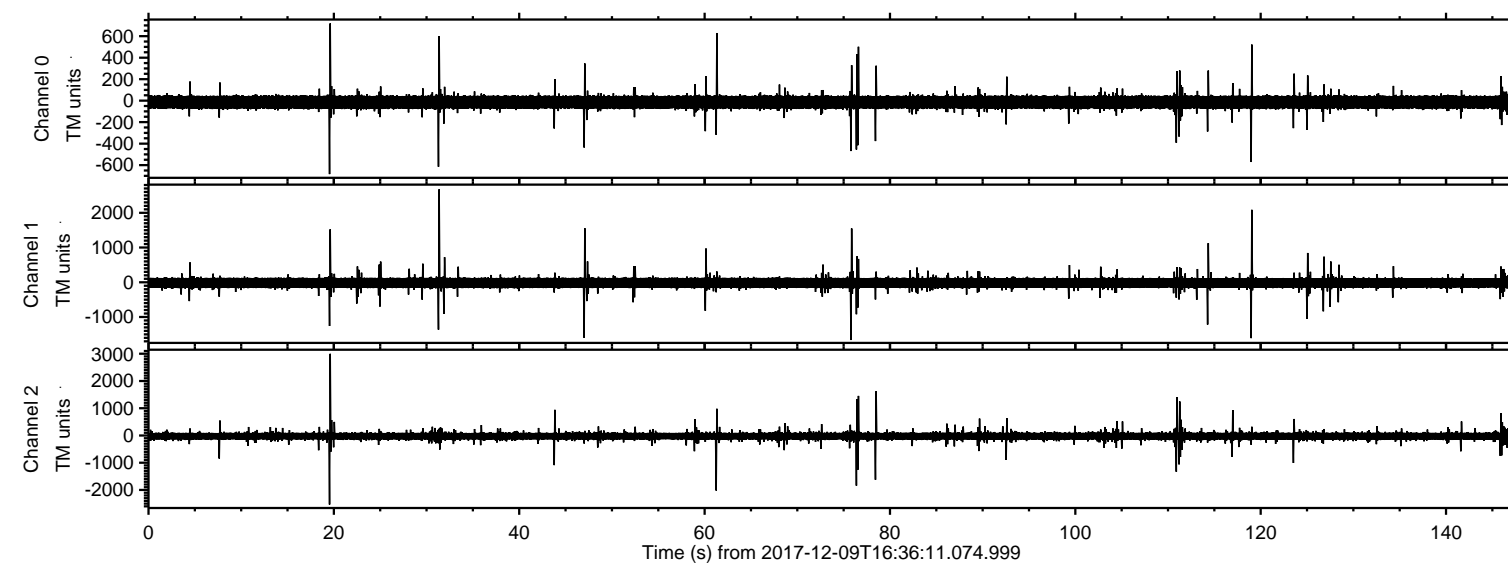


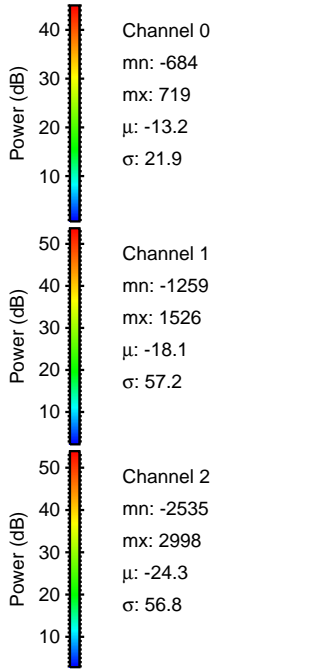
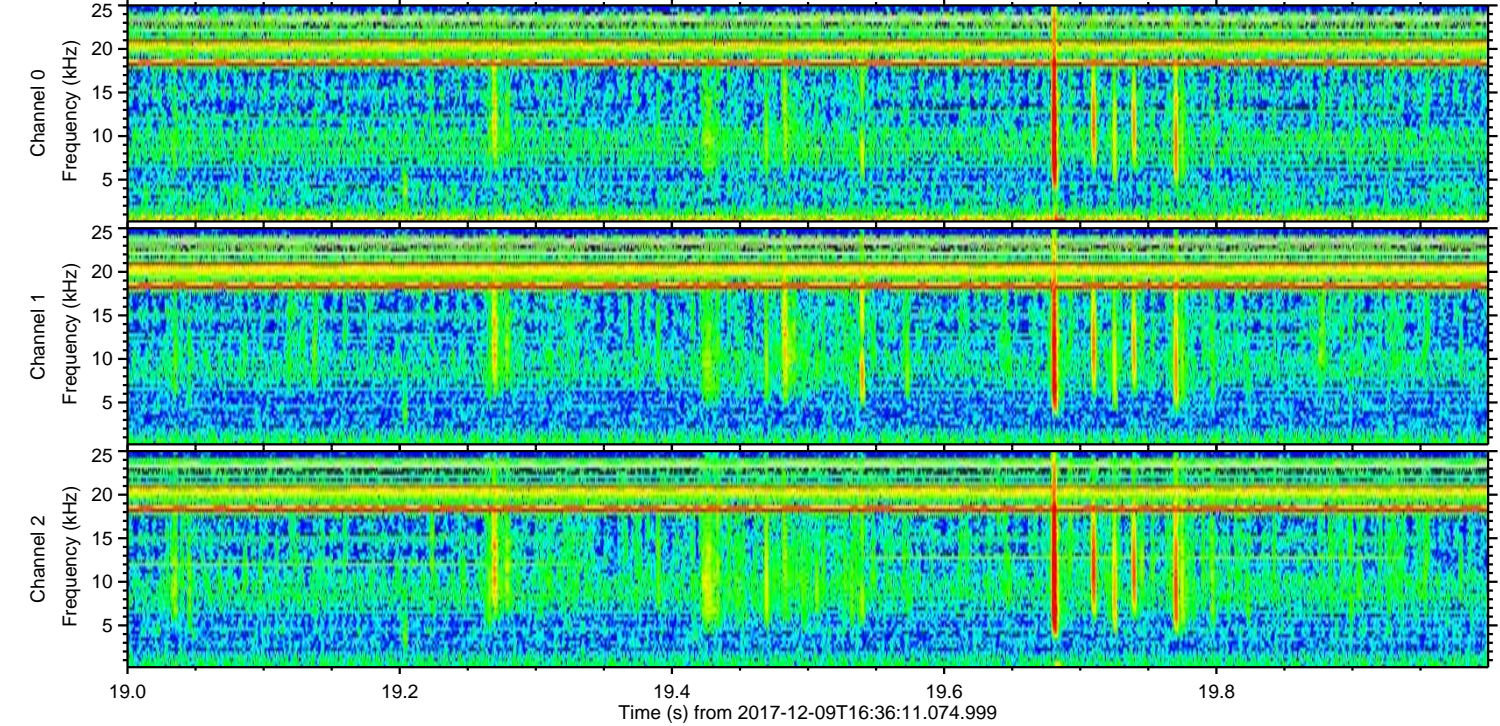
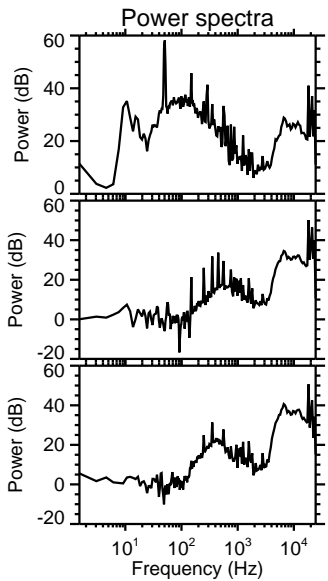
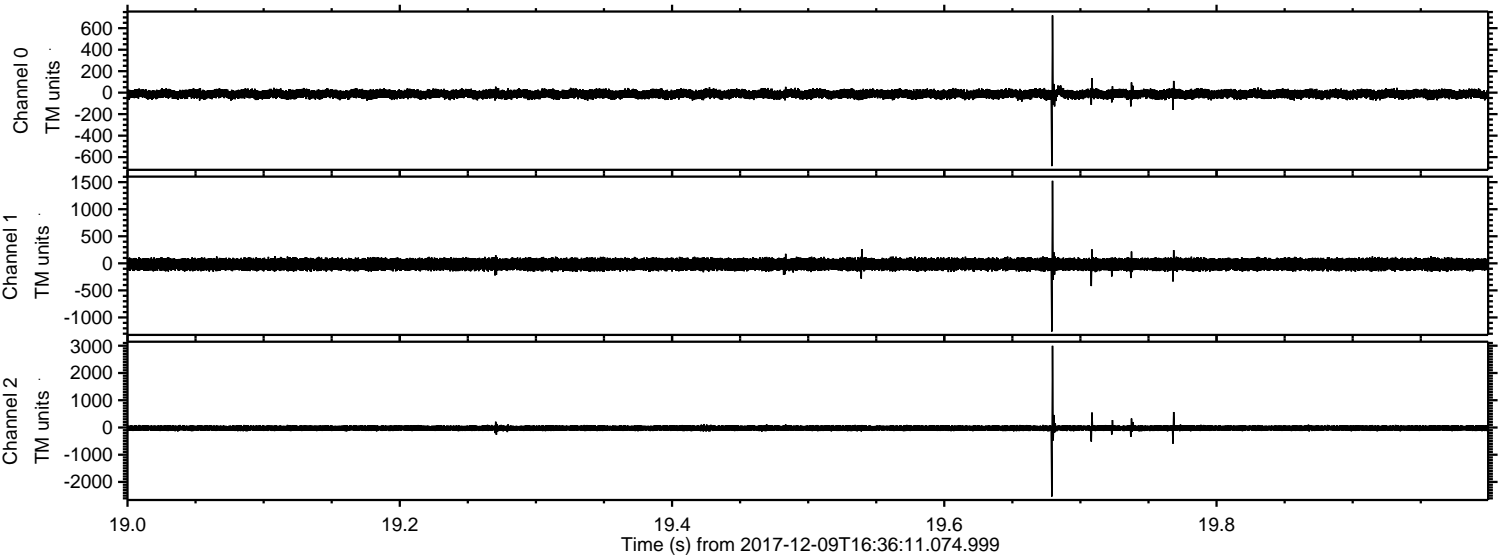
# ELMAVAN 3D WAVEFORMS (Measured data sampled at 50 kHz) 51000 packets of 144 samples from 2017-12-09T16:36:11.074.999.

Processed Sat Dec 9 17:44:00 2017 by ELM ver.2012-10-06 from 001\_\_elm20171209\_163610\_\_dat00.bin



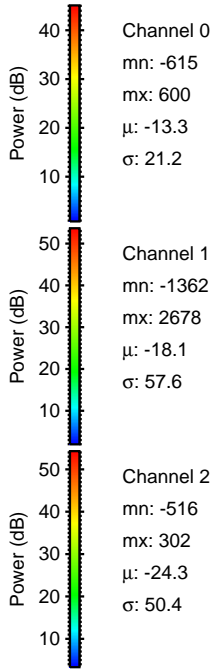
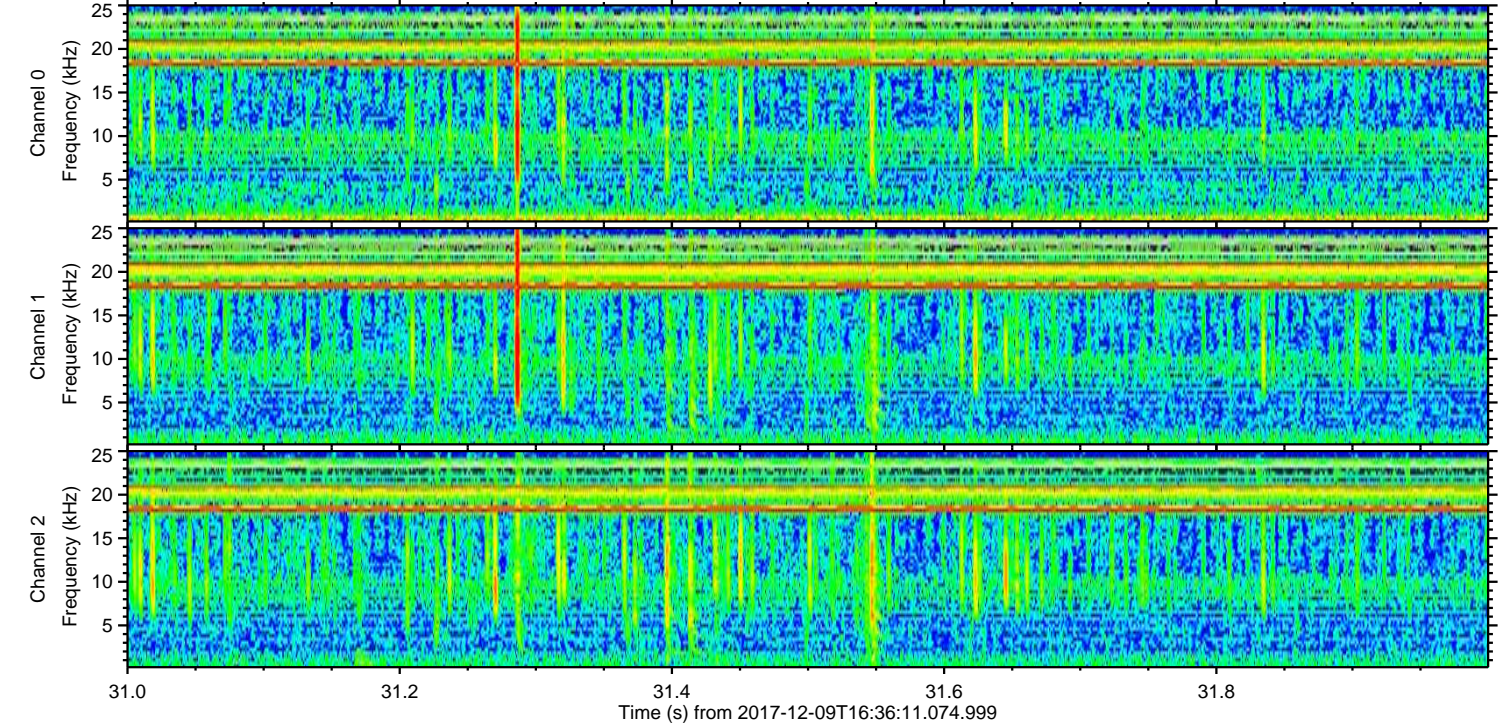
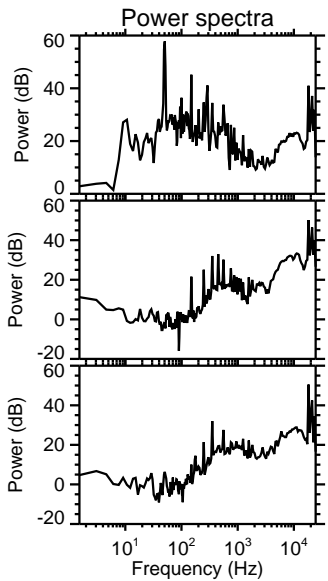
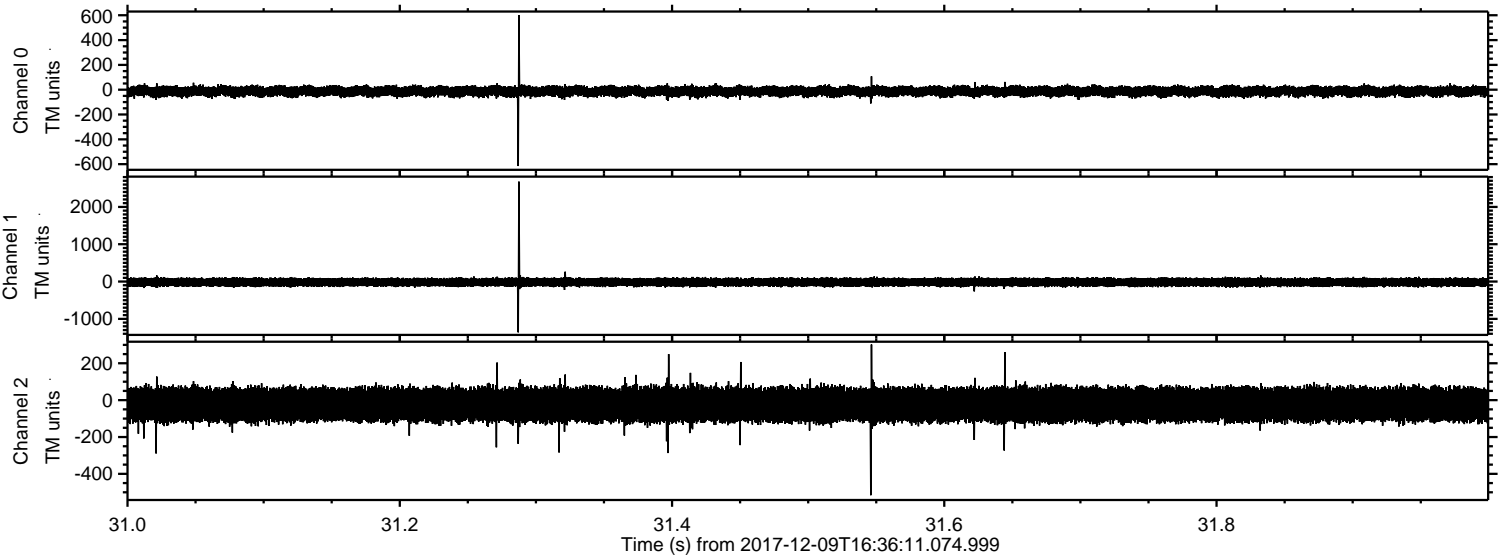


Processed Sat Dec 9 17:44:07 2017 by ELM ver.2012-10-06 from 001\_\_elm20171209\_163610\_\_dat00.bin





Processed Sat Dec 9 17:44:08 2017 by ELM ver.2012-10-06 from 001\_\_elm20171209\_163610\_\_dat00.bin



Channel 0  
mn: -615  
mx: 600  
 $\mu$ : -13.3  
 $\sigma$ : 21.2

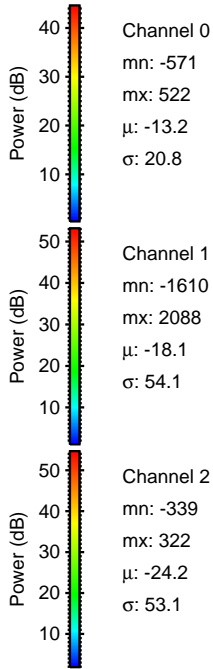
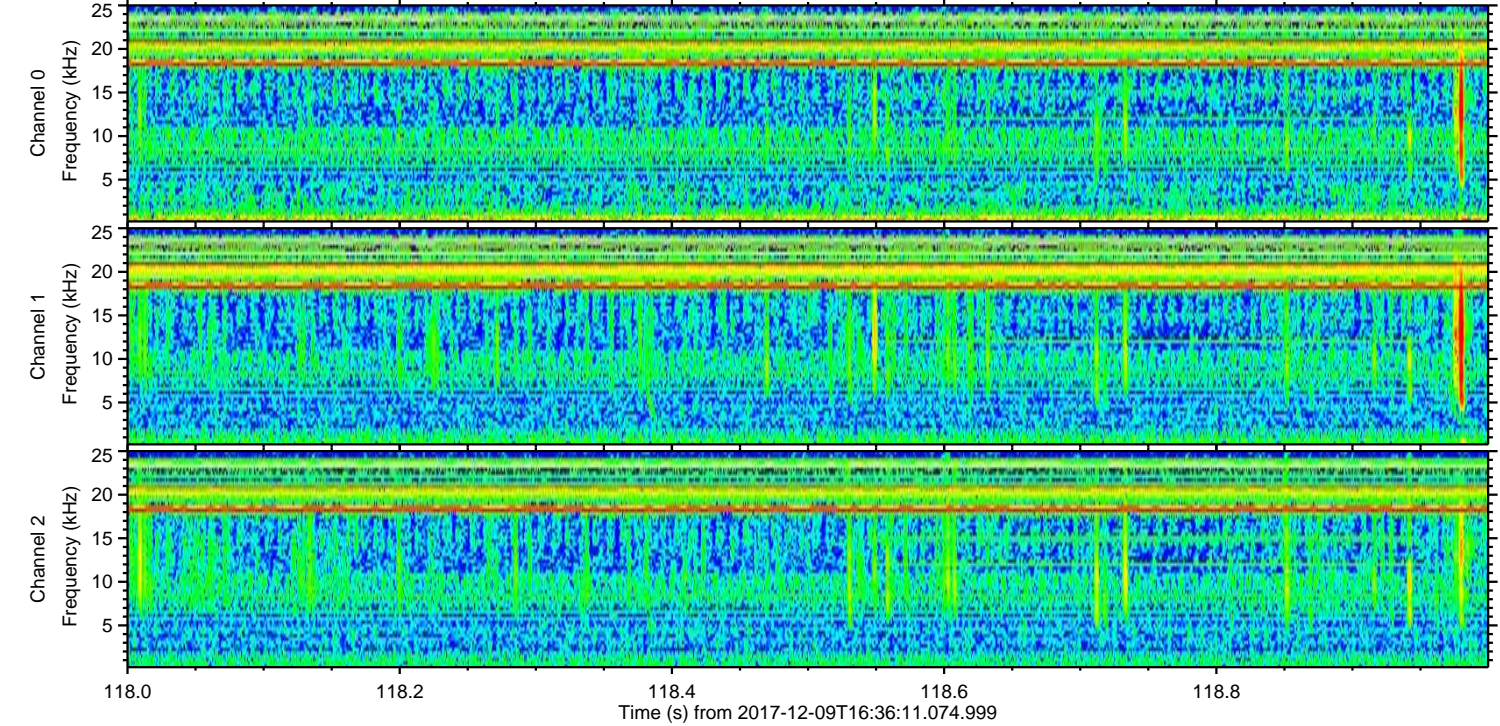
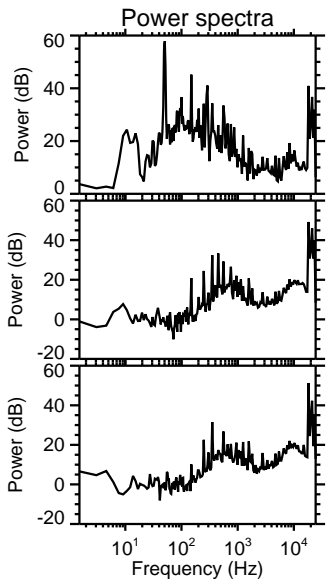
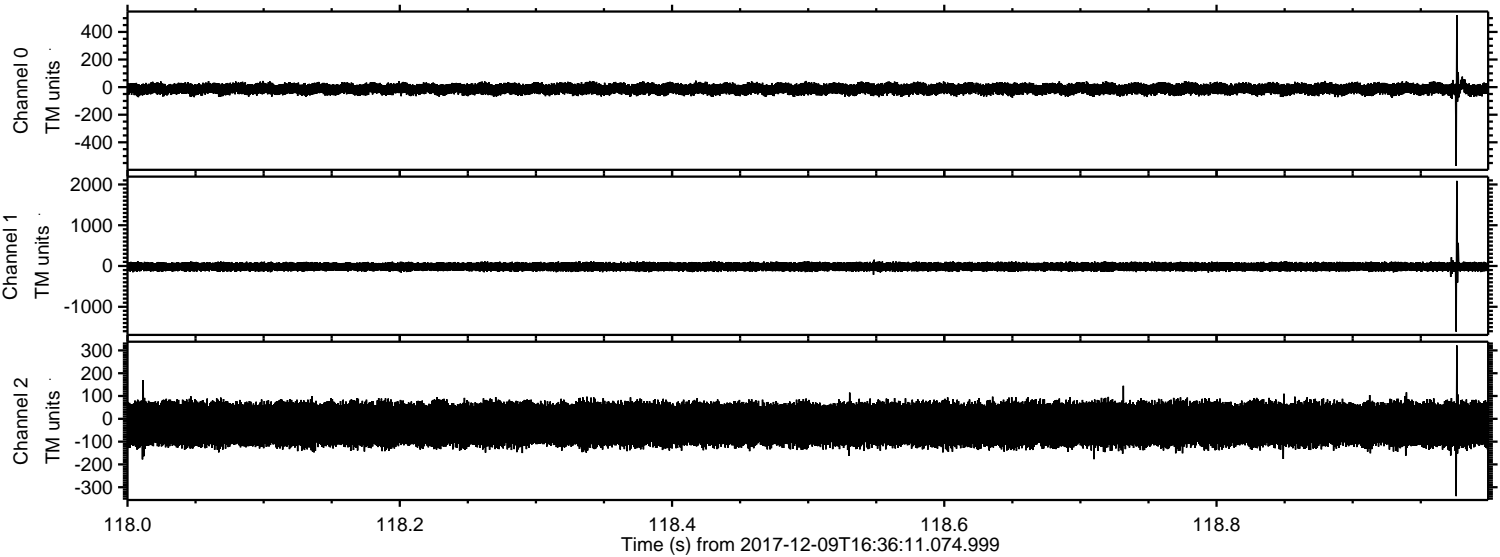
Channel 1  
mn: -1362  
mx: 2678  
 $\mu$ : -18.1  
 $\sigma$ : 57.6

Channel 2  
mn: -516  
mx: 302  
 $\mu$ : -24.3  
 $\sigma$ : 50.4



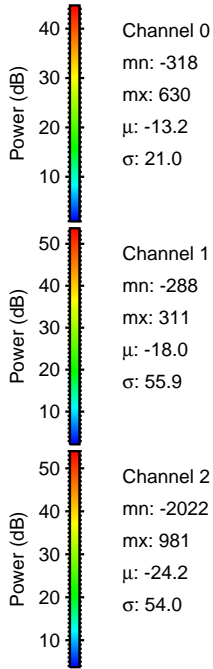
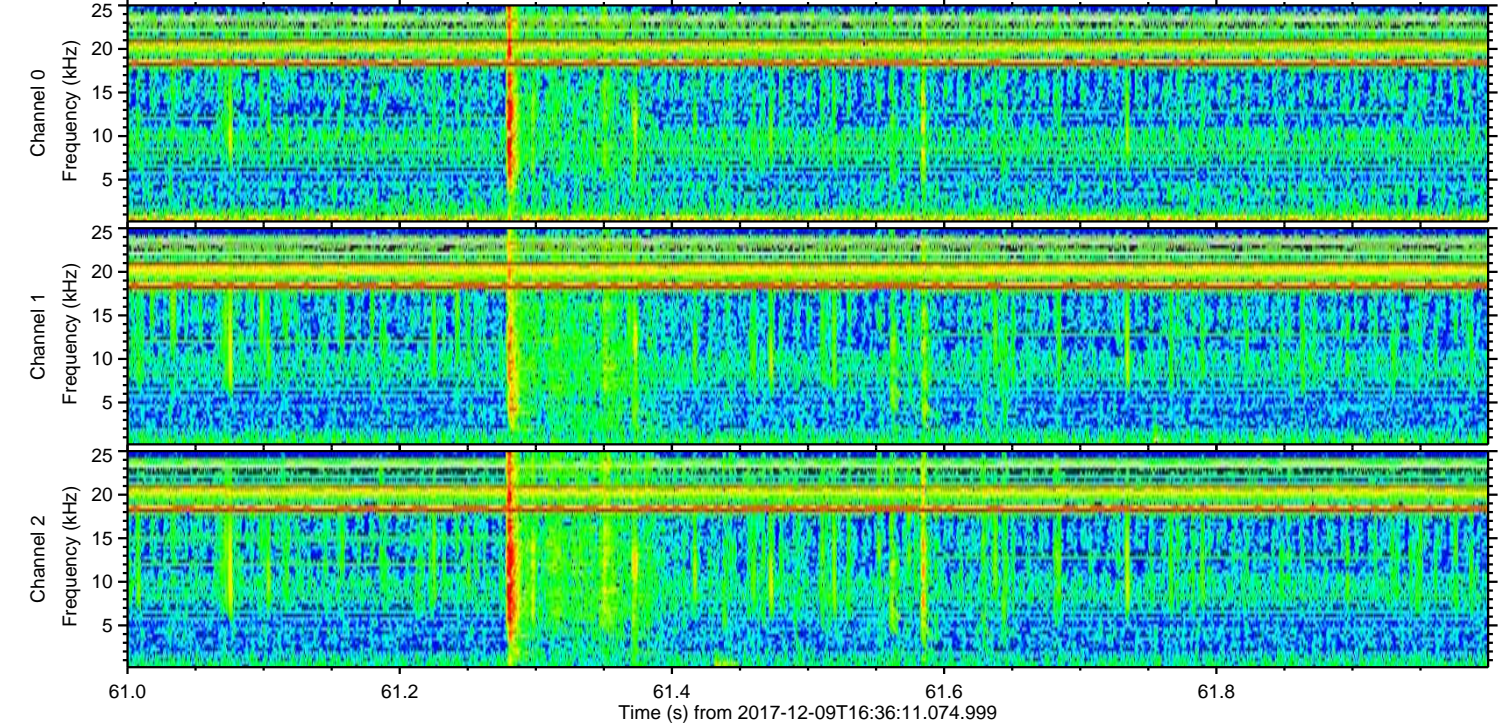
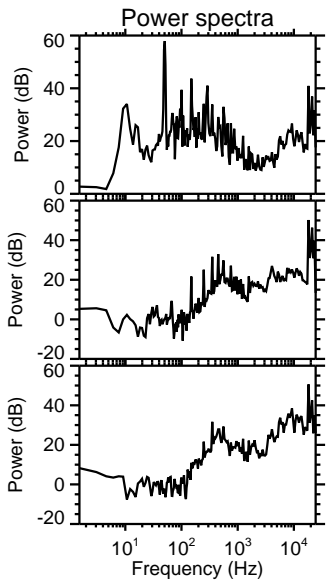
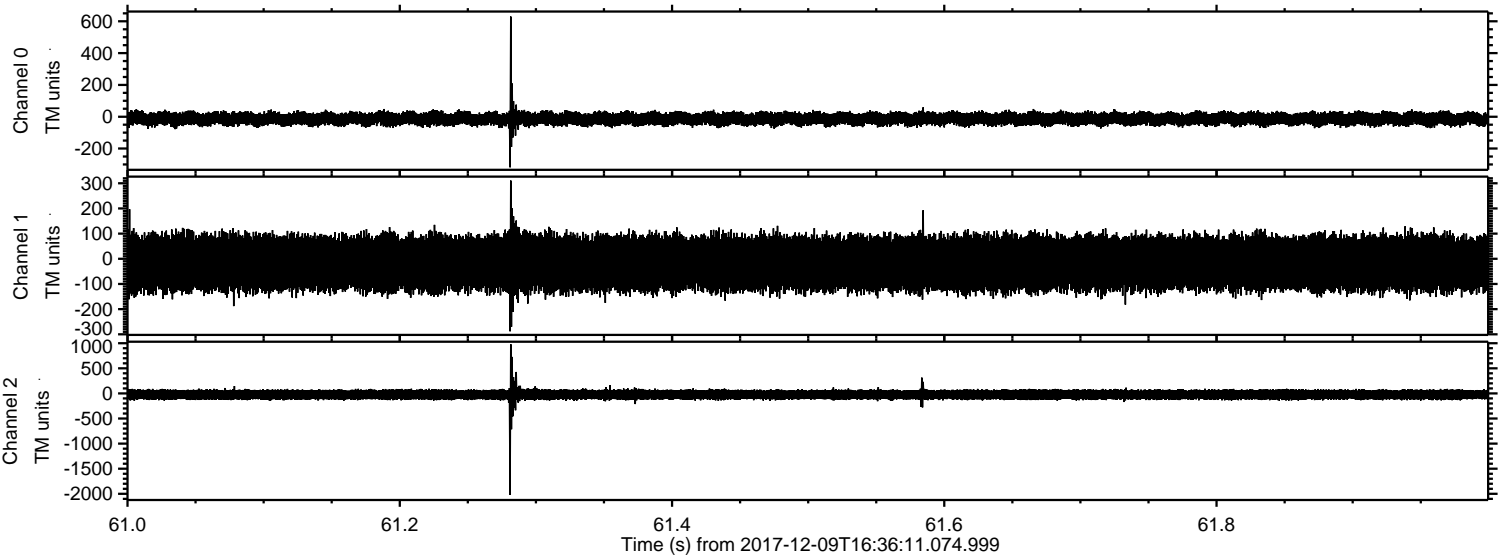
ELMAVAN 3D WAVEFORMS (Measured data sampled at 50 kHz) 51000 packets of 144 samples from 2017-12-09T16:36:11.074.999. Part 119/147

Processed Sat Dec 9 17:44:09 2017 by ELM ver.2012-10-06 from 001\_\_elm20171209\_163610\_\_dat00.bin





Processed Sat Dec 9 17:44:10 2017 by ELM ver.2012-10-06 from 001\_\_elm20171209\_163610\_\_dat00.bin



Channel 0  
mn: -318  
mx: 630  
 $\mu$ : -13.2  
 $\sigma$ : 21.0

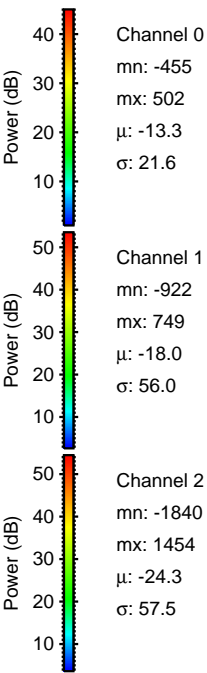
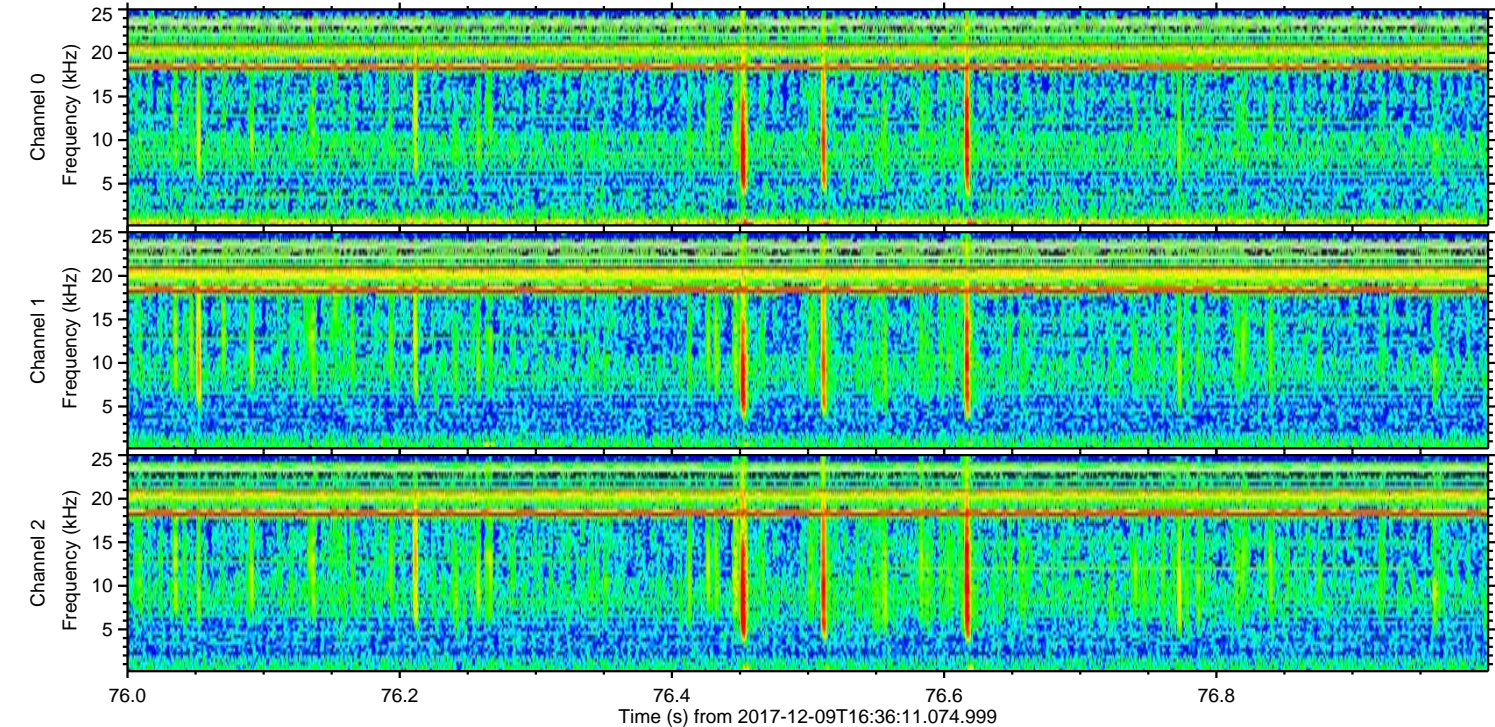
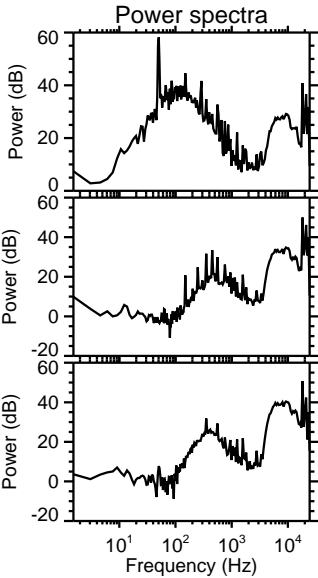
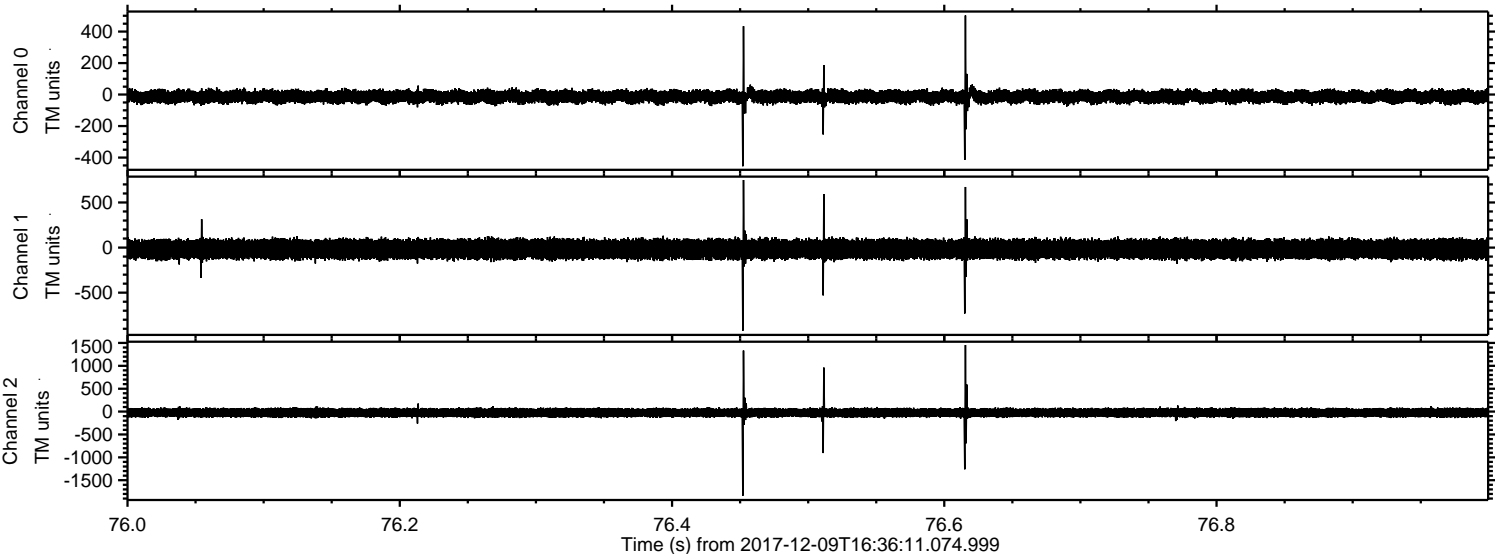
Channel 1  
mn: -288  
mx: 311  
 $\mu$ : -18.0  
 $\sigma$ : 55.9

Channel 2  
mn: -2022  
mx: 981  
 $\mu$ : -24.2  
 $\sigma$ : 54.0



ELMAVAN 3D WAVEFORMS (Measured data sampled at 50 kHz) 51000 packets of 144 samples from 2017-12-09T16:36:11.074.999. Part 77/147

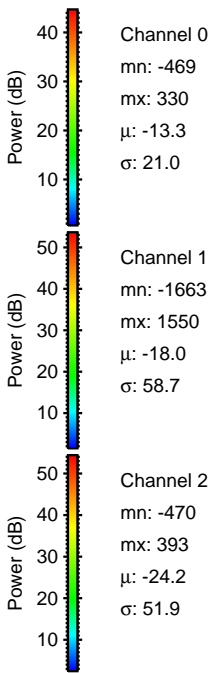
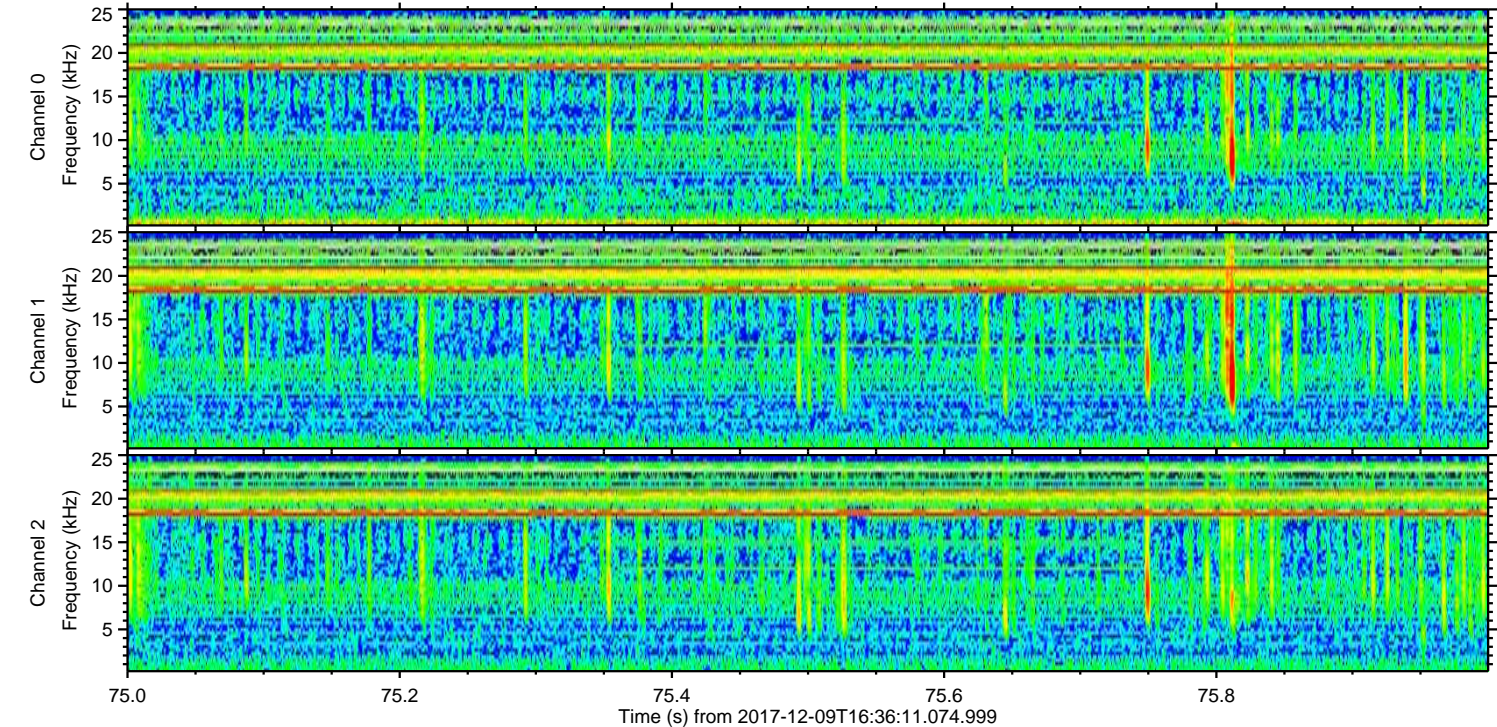
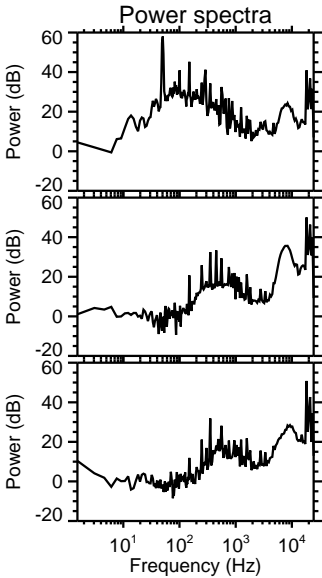
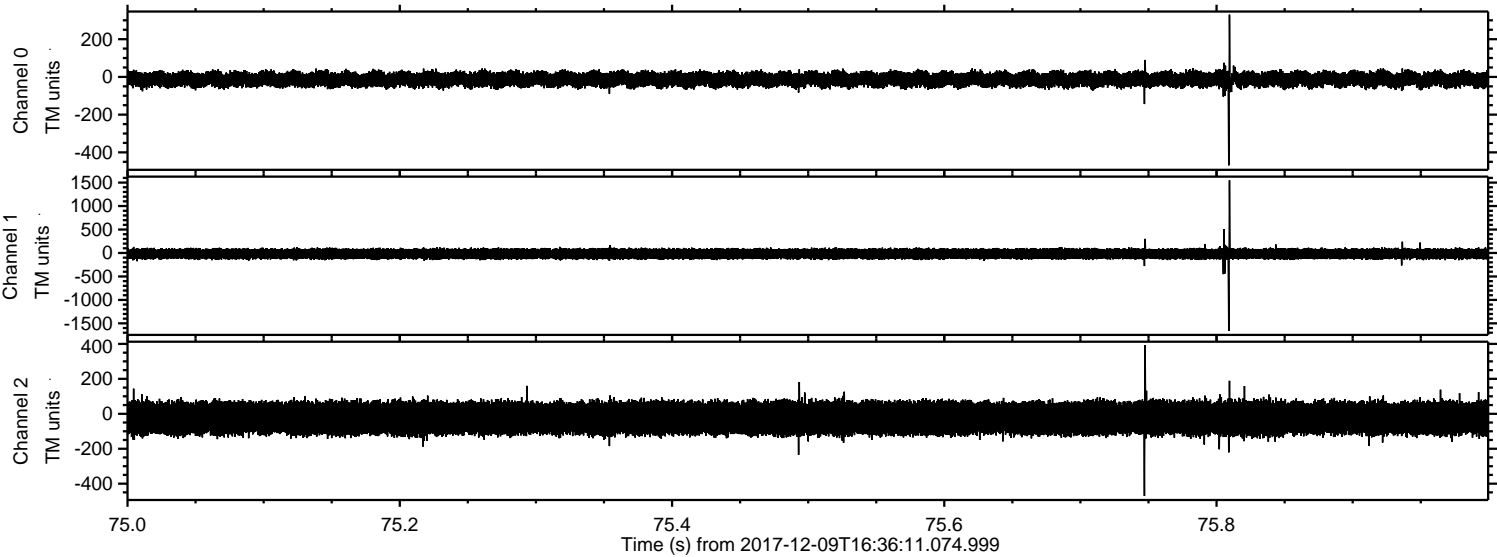
Processed Sat Dec 9 17:44:10 2017 by ELM ver.2012-10-06 from 001\_\_elm20171209\_163610\_\_dat00.bin





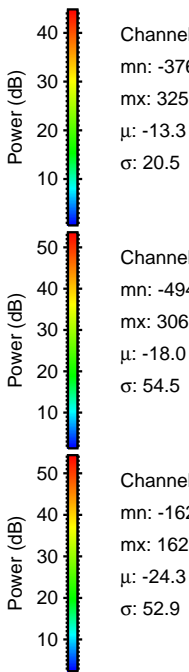
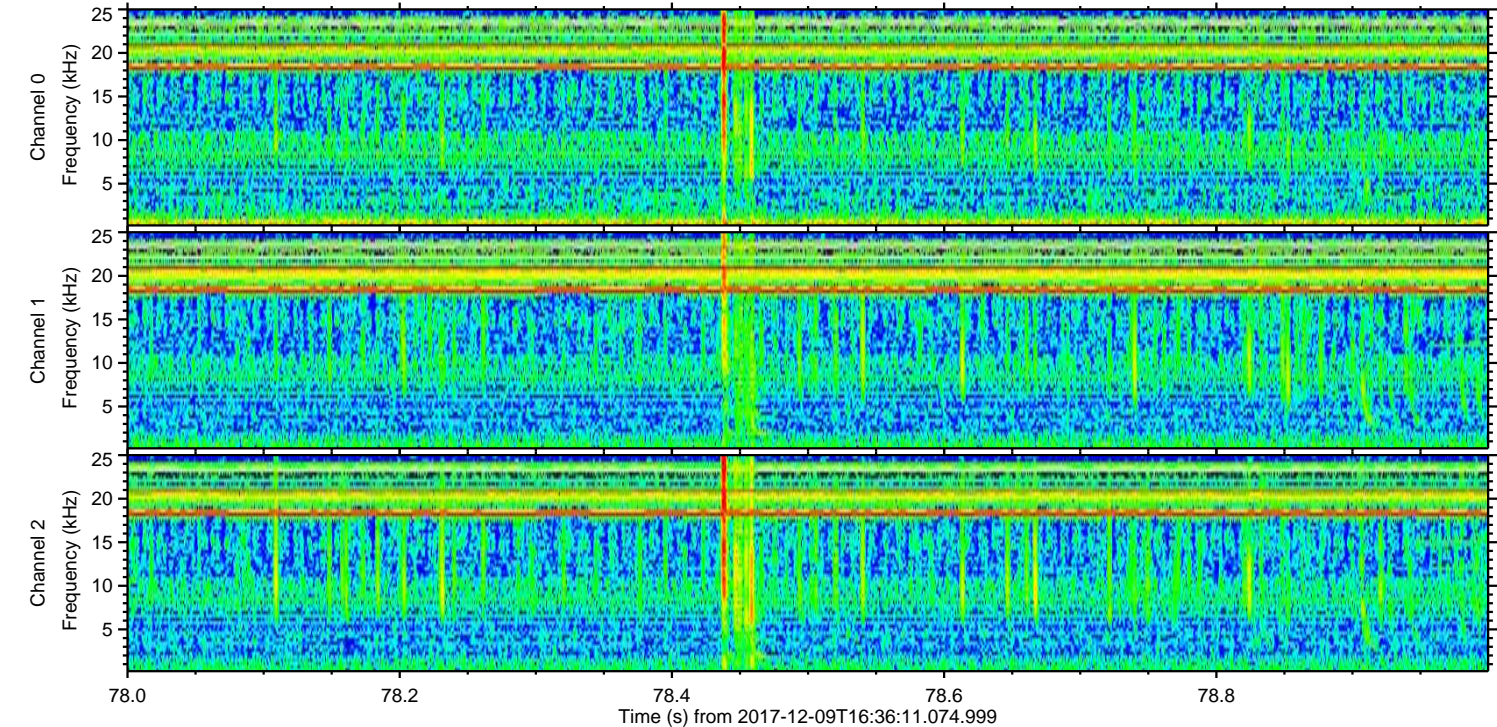
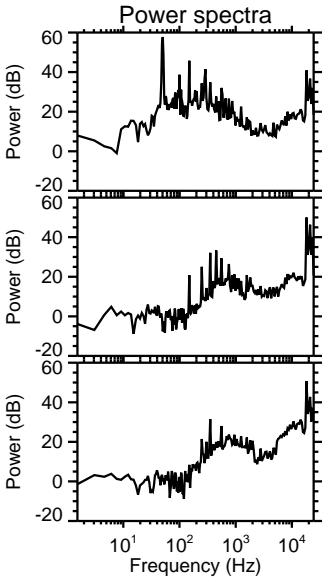
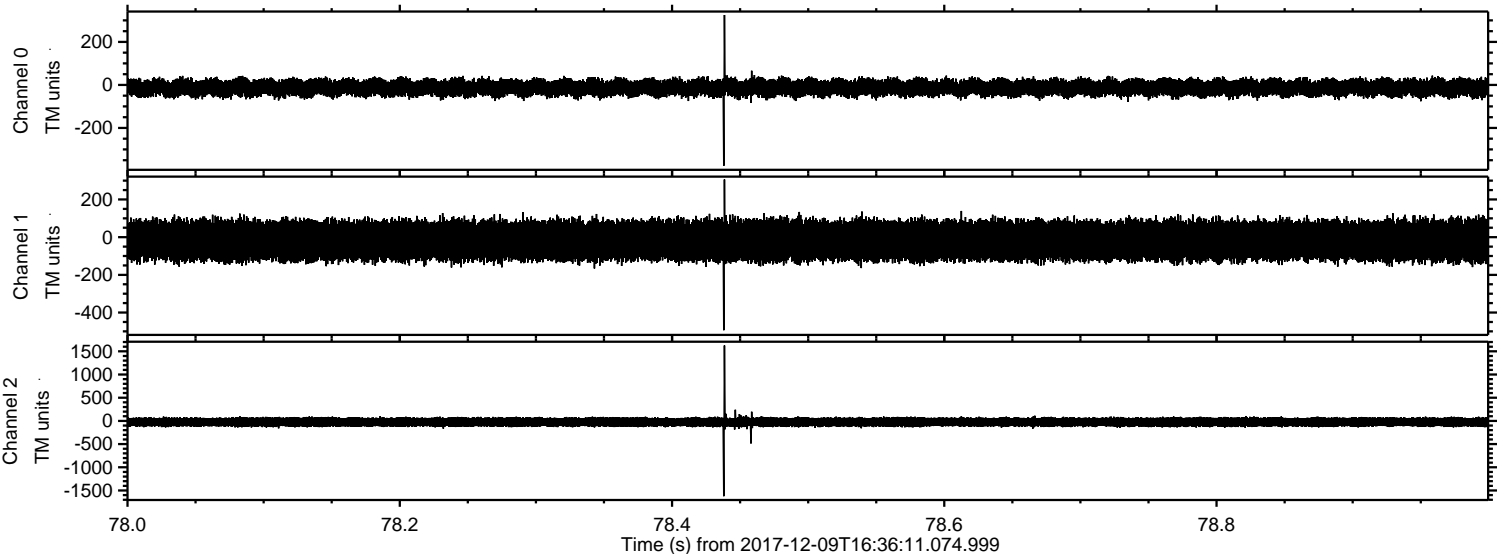
ELMAVAN 3D WAVEFORMS (Measured data sampled at 50 kHz) 51000 packets of 144 samples from 2017-12-09T16:36:11.074.999. Part 76/147

Processed Sat Dec 9 17:44:11 2017 by ELM ver.2012-10-06 from 001\_\_elm20171209\_163610\_\_dat00.bin





Processed Sat Dec 9 17:44:12 2017 by ELM ver.2012-10-06 from 001\_\_elm20171209\_163610\_\_dat00.bin



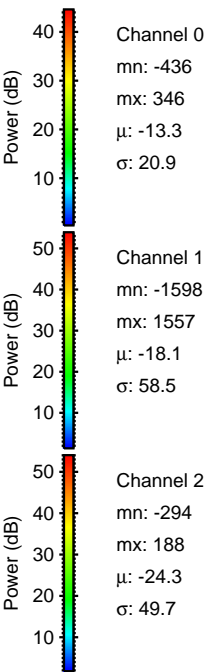
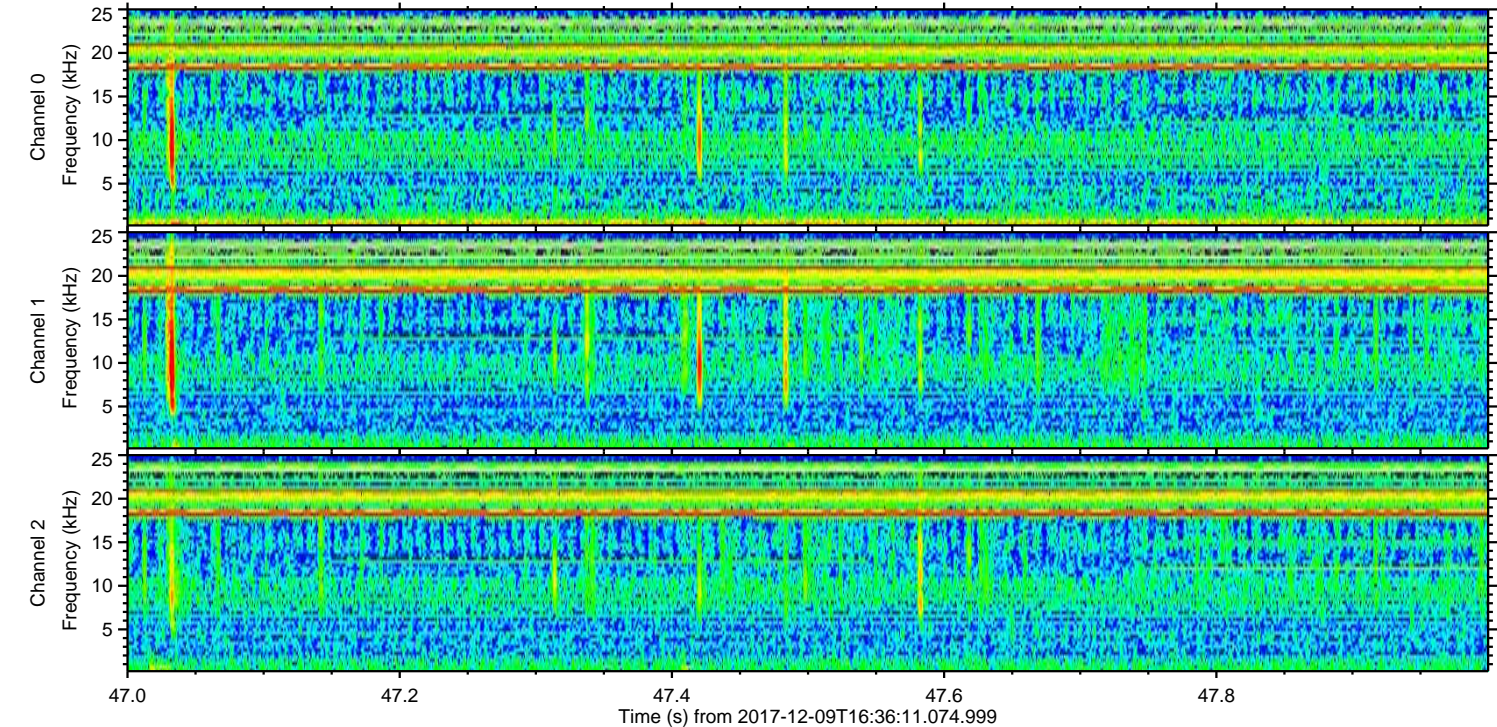
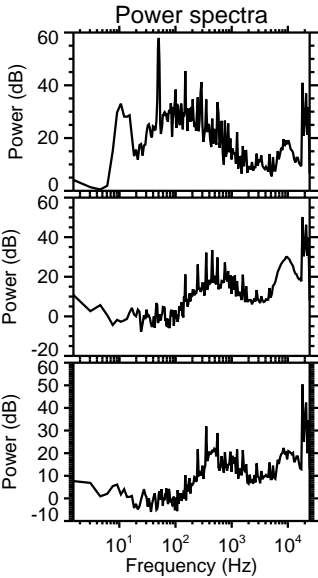
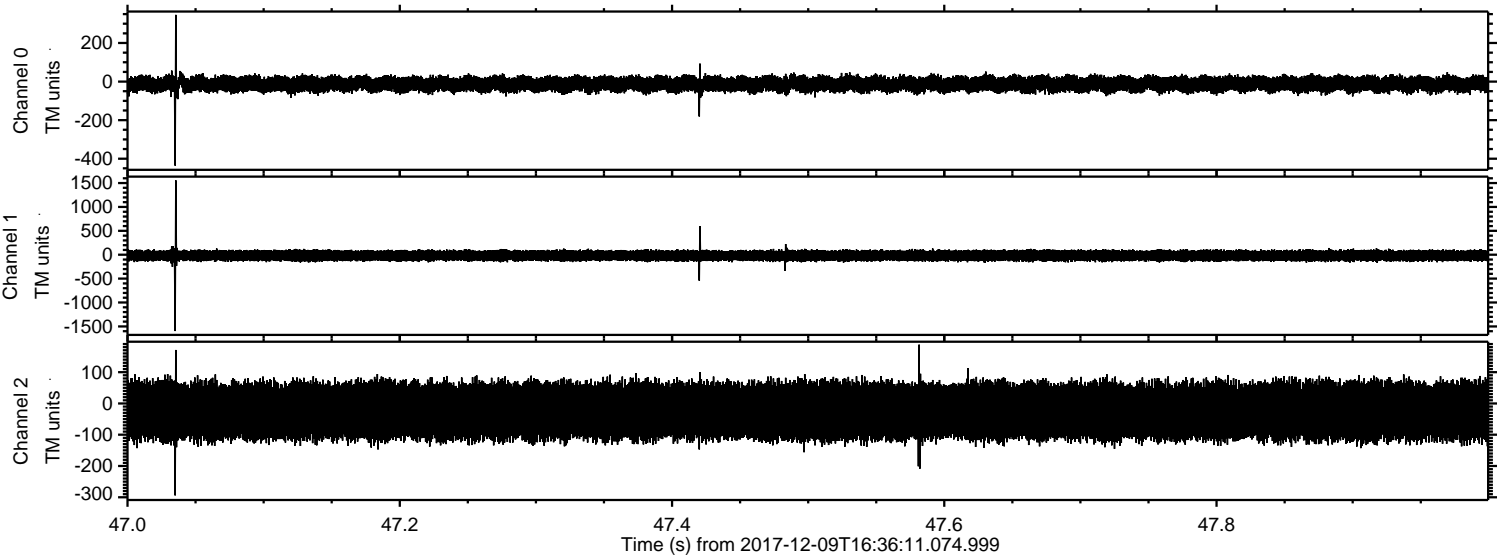
Channel 0  
mn: -376  
mx: 325  
 $\mu$ : -13.3  
 $\sigma$ : 20.5

Channel 1  
mn: -494  
mx: 306  
 $\mu$ : -18.0  
 $\sigma$ : 54.5

Channel 2  
mn: -1624  
mx: 1626  
 $\mu$ : -24.3  
 $\sigma$ : 52.9



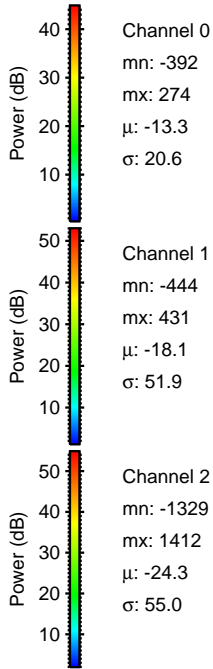
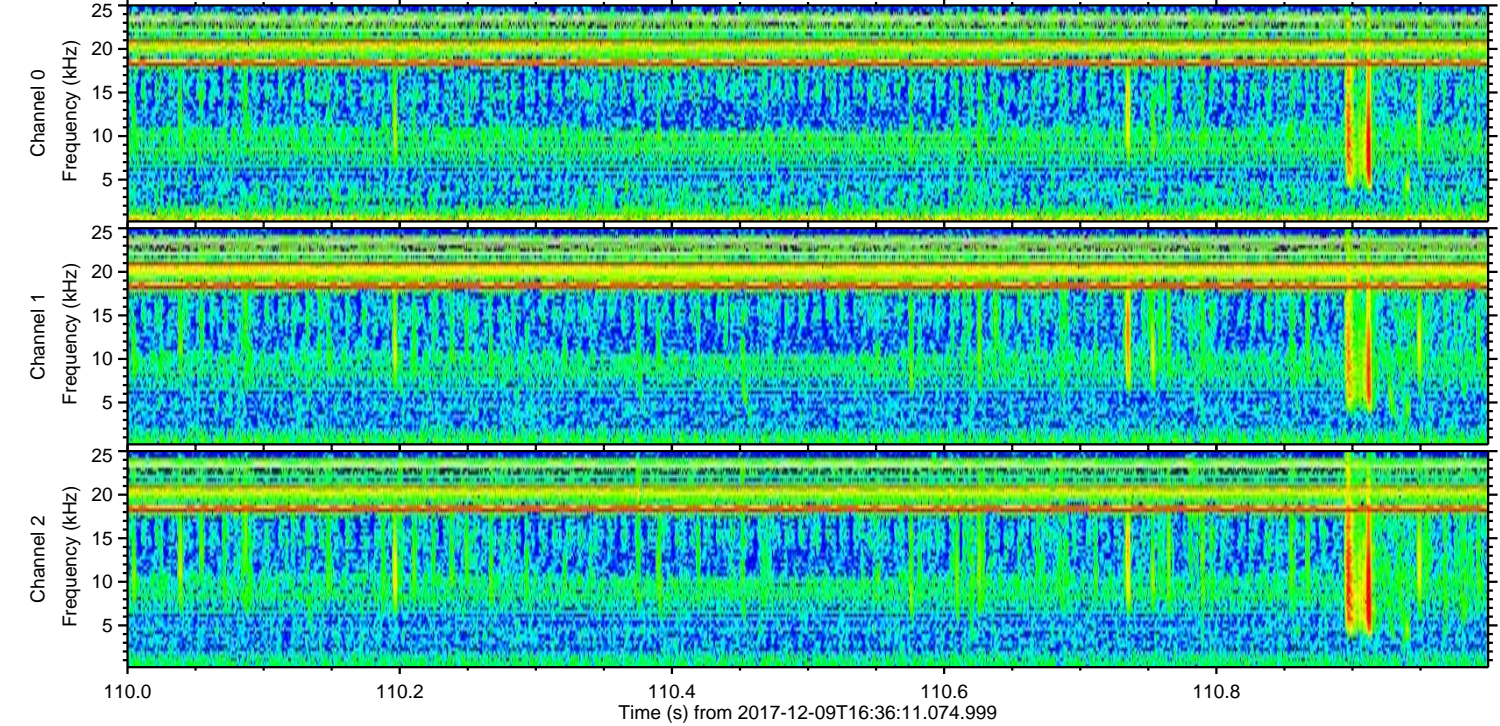
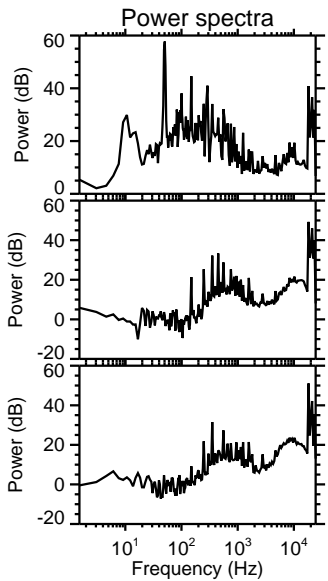
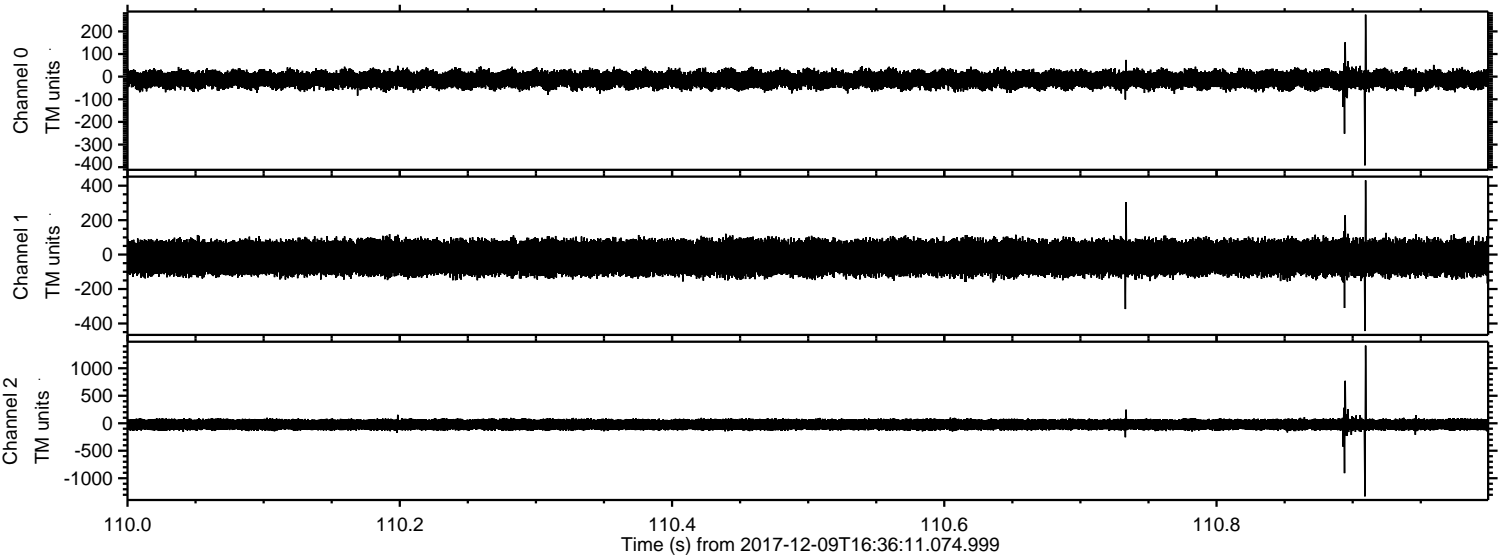
Processed Sat Dec 9 17:44:13 2017 by ELM ver.2012-10-06 from 001\_\_elm20171209\_163610\_\_dat00.bin





ELMAVAN 3D WAVEFORMS (Measured data sampled at 50 kHz) 51000 packets of 144 samples from 2017-12-09T16:36:11.074.999. Part 111/147

Processed Sat Dec 9 17:44:13 2017 by ELM ver.2012-10-06 from 001\_\_elm20171209\_163610\_\_dat00.bin





Processed Sat Dec 9 17:44:15 2017 by ELM ver.2012-10-06 from 001\_\_elm20171209\_163610\_\_dat00.bin

