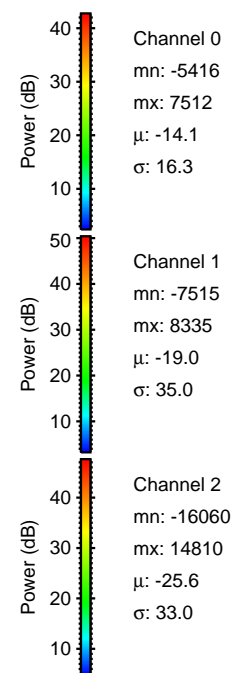
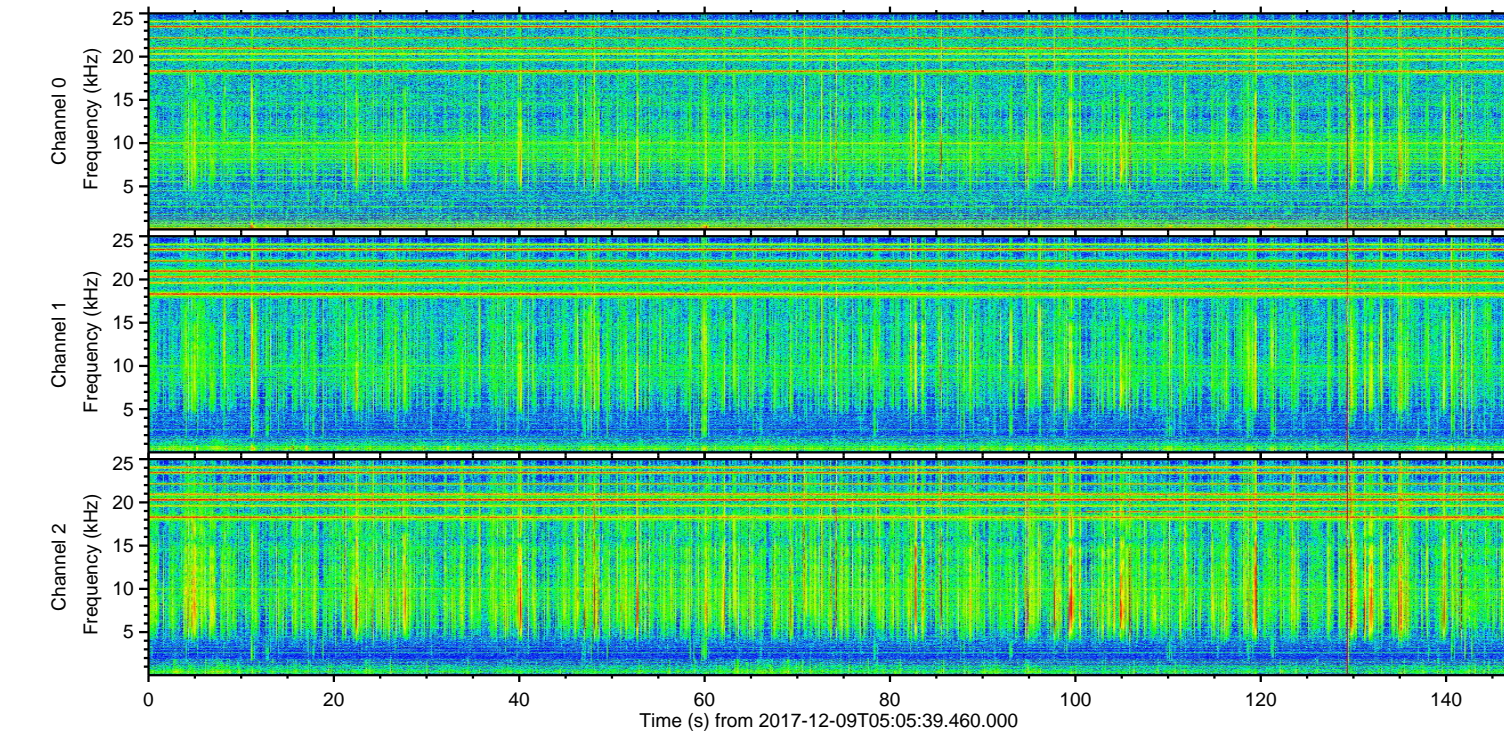
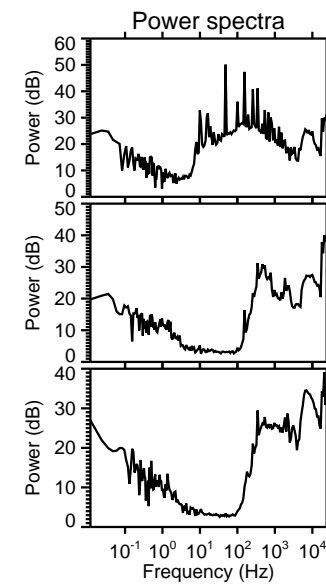
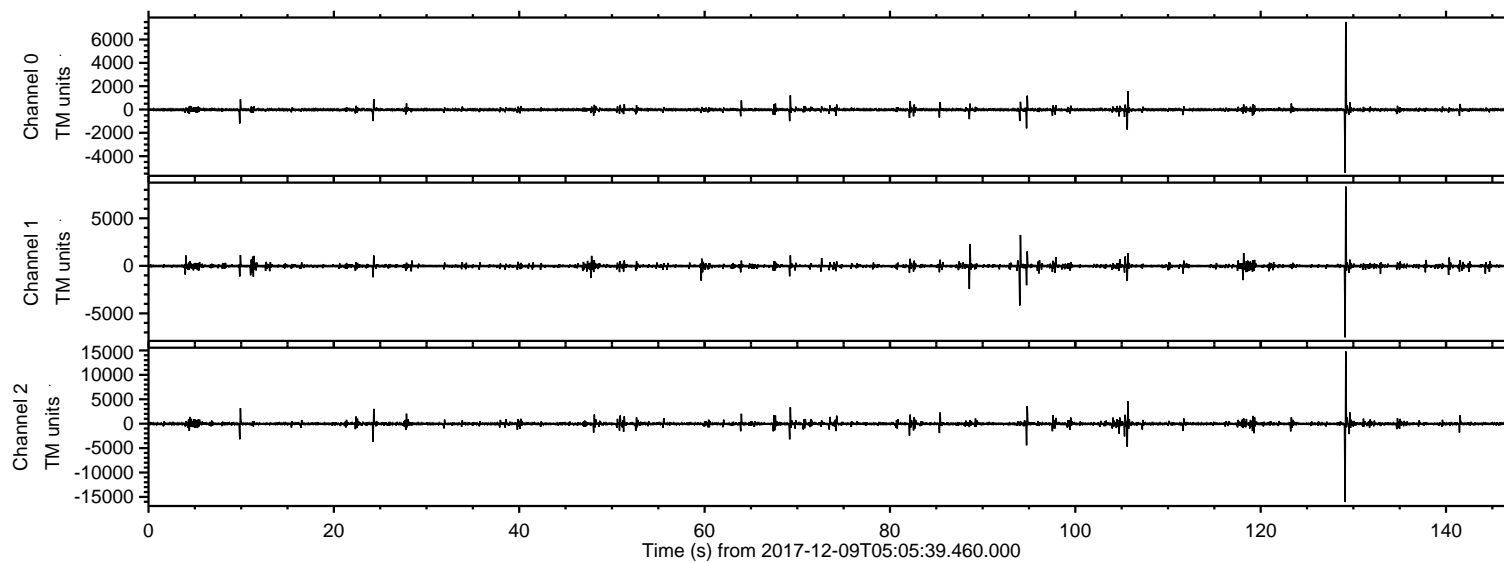


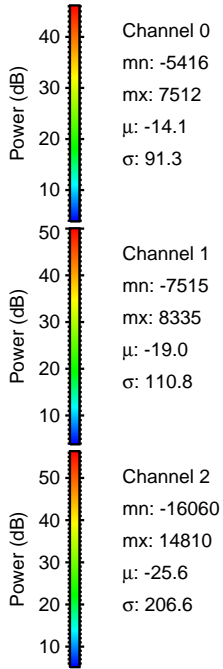
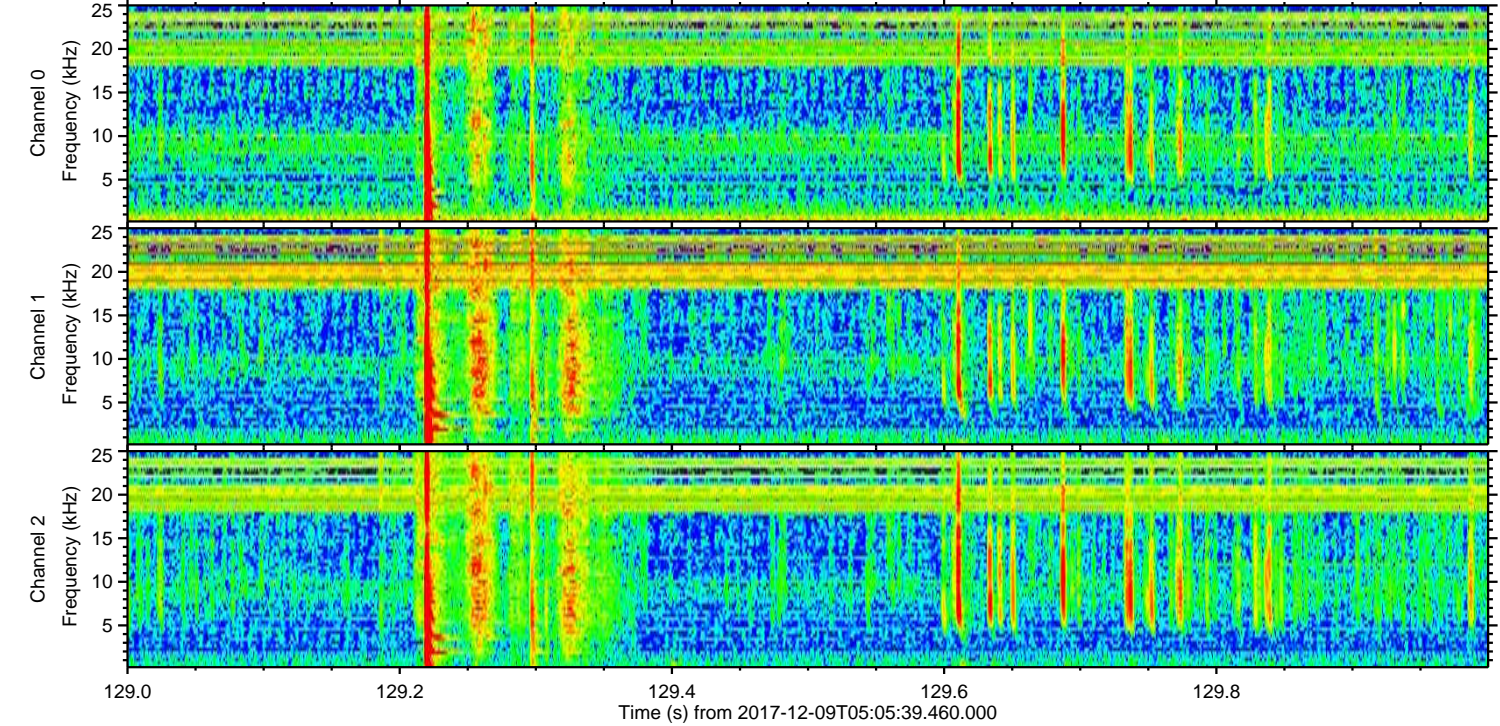
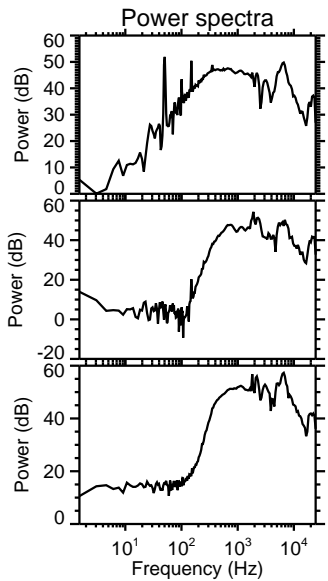
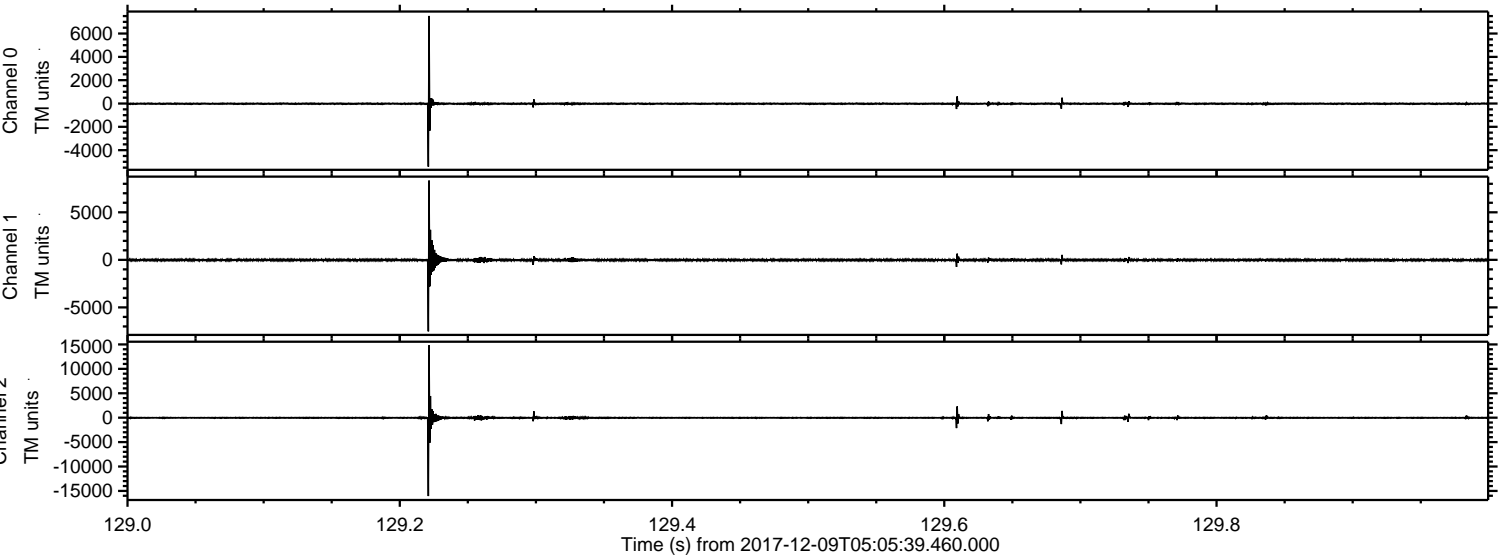
ELMAVAN 3D WAVEFORMS (Measured data sampled at 50 kHz) 51000 packets of 144 samples from 2017-12-09T05:05:39.460.000.

Processed Sat Dec 9 06:14:21 2017 by ELM ver.2012-10-06 from 001__elm20171209_050538__dat00.bin



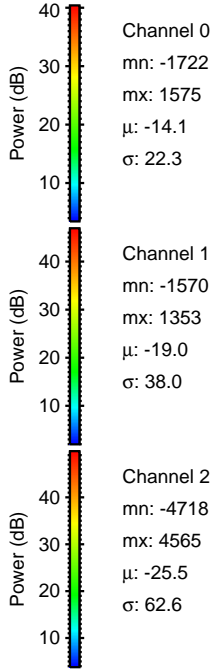
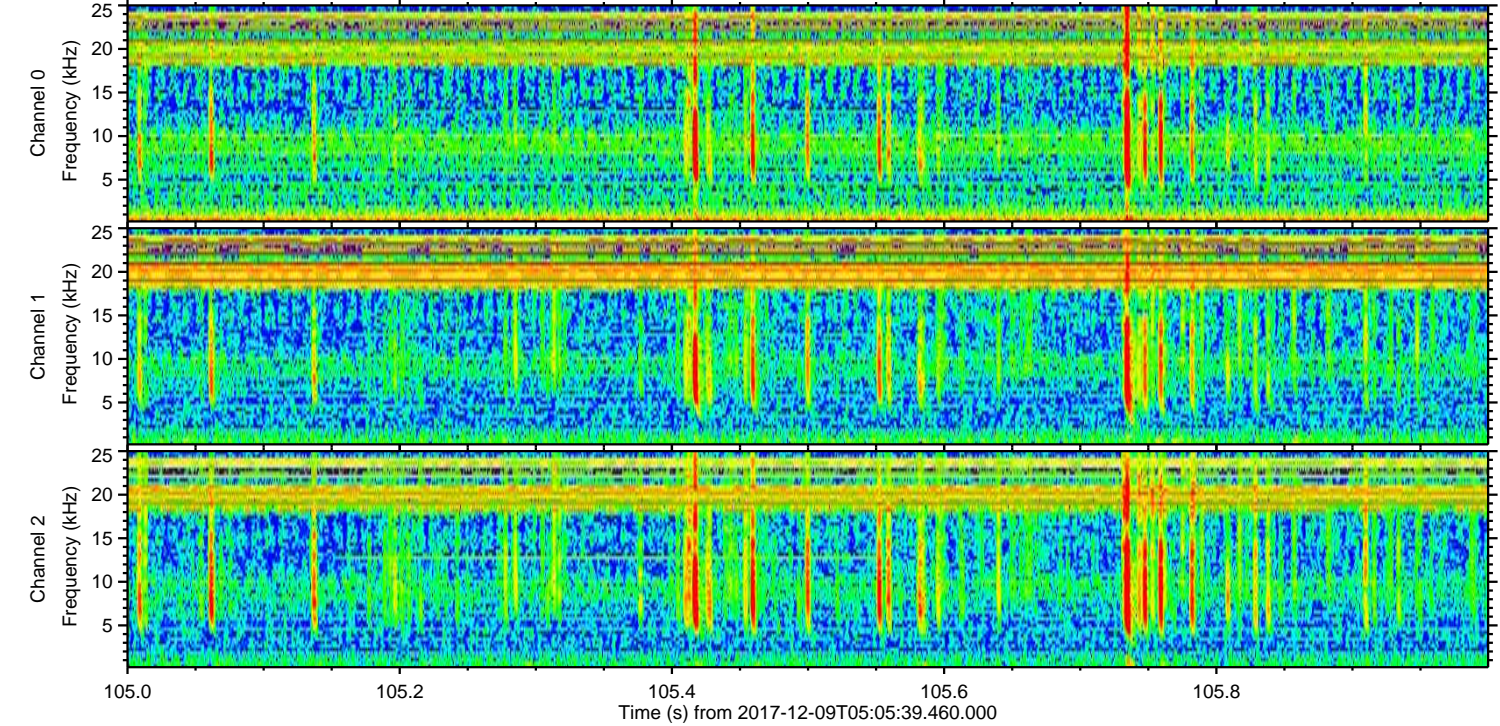
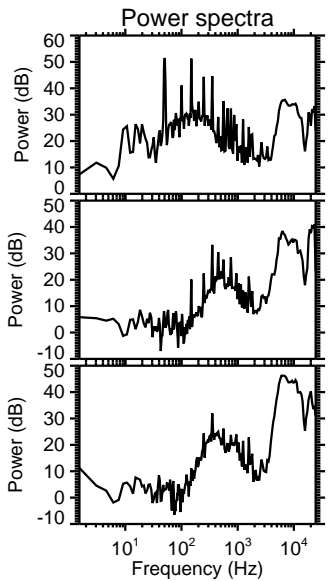
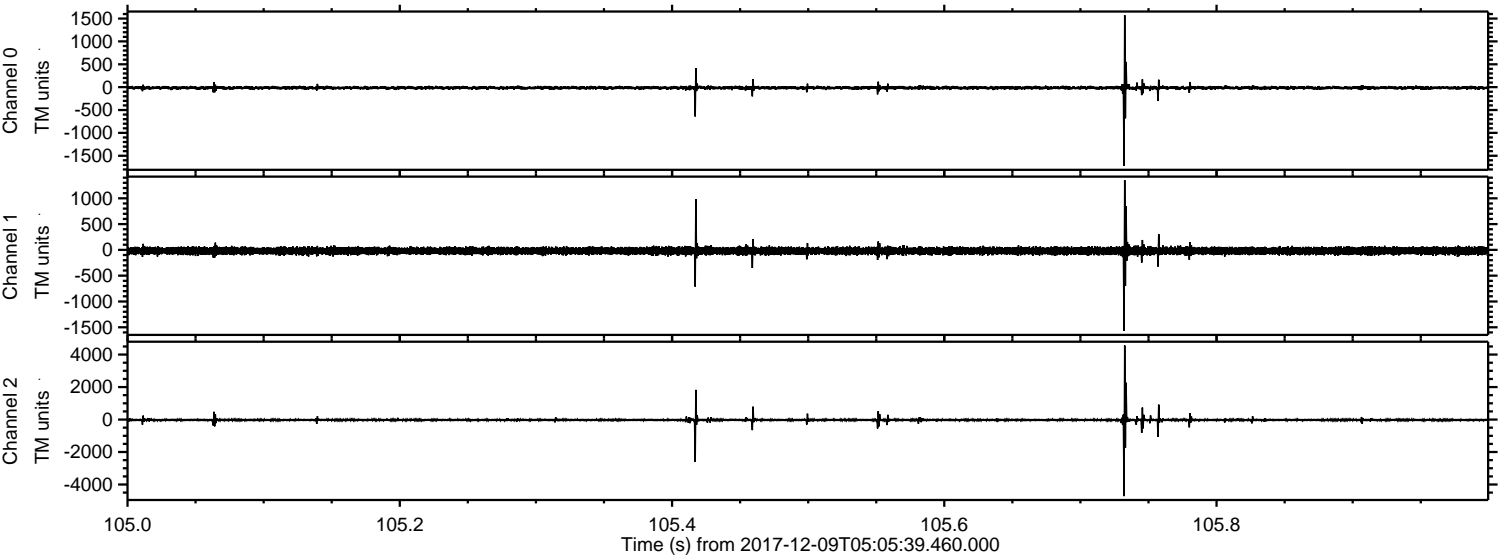
ELMAVAN 3D WAVEFORMS (Measured data sampled at 50 kHz) 51000 packets of 144 samples from 2017-12-09T05:05:39.460.000. Part 130/147

Processed Sat Dec 9 06:14:29 2017 by ELM ver.2012-10-06 from 001__elm20171209_050538__dat00.bin

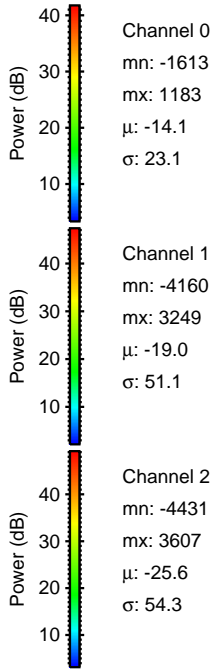
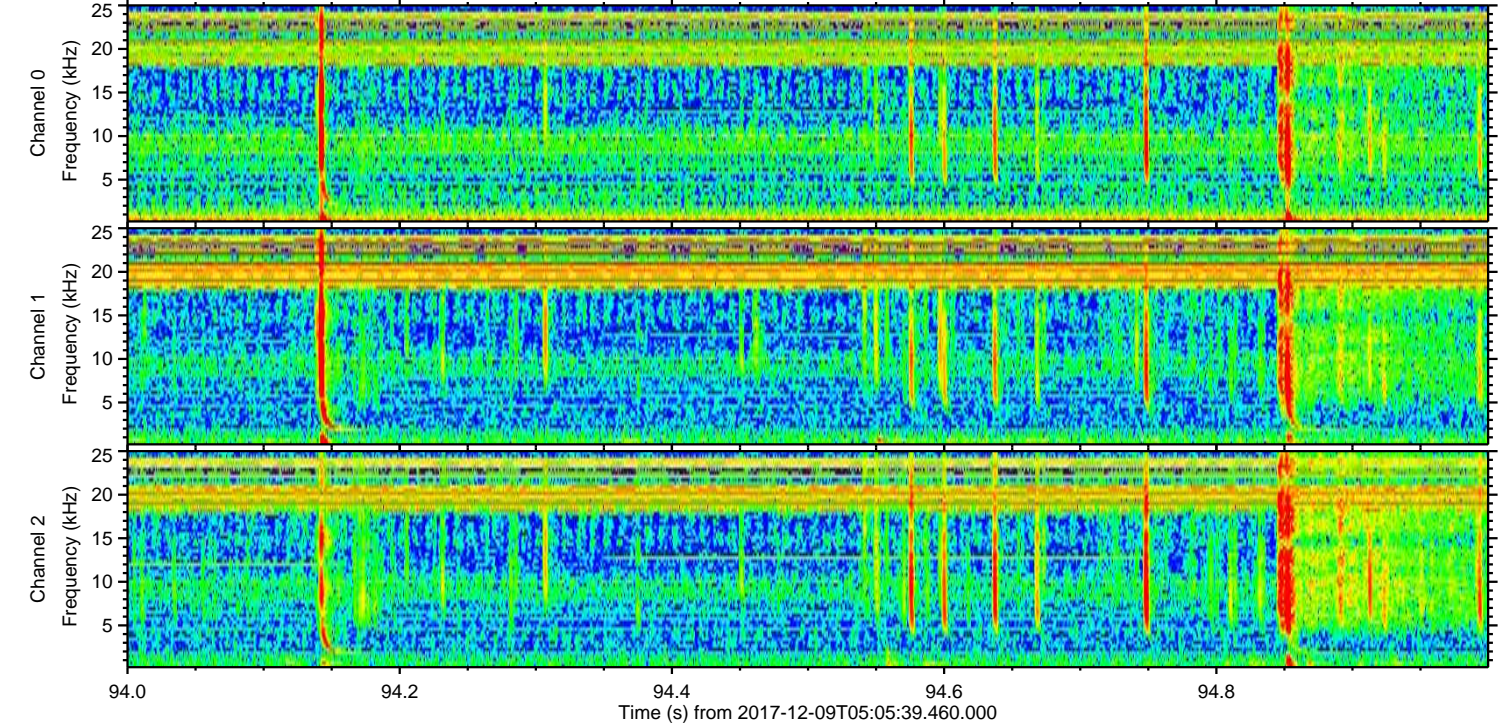
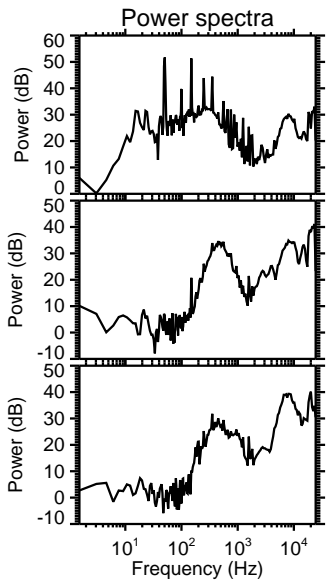
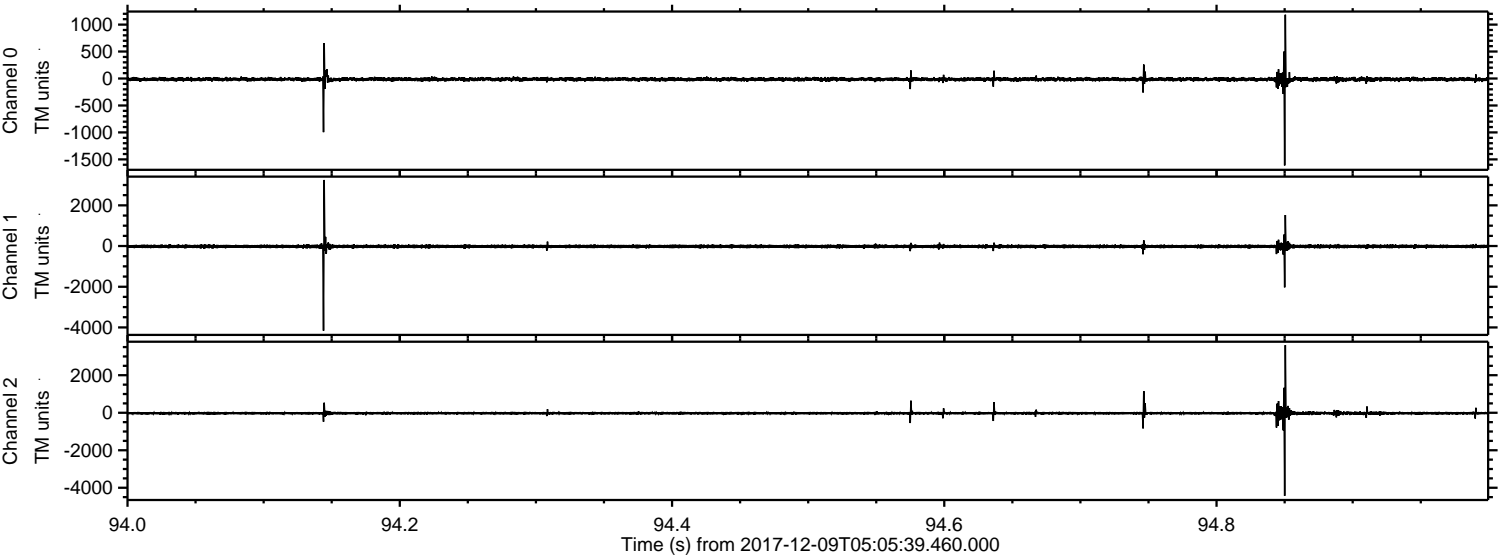


ELMAVAN 3D WAVEFORMS (Measured data sampled at 50 kHz) 51000 packets of 144 samples from 2017-12-09T05:05:39.460.000. Part 106/147

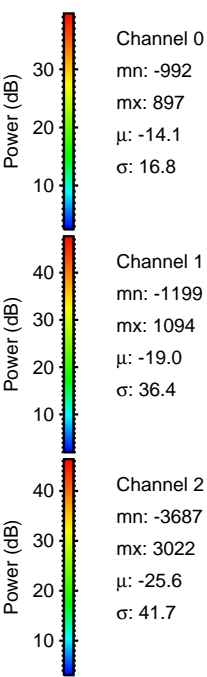
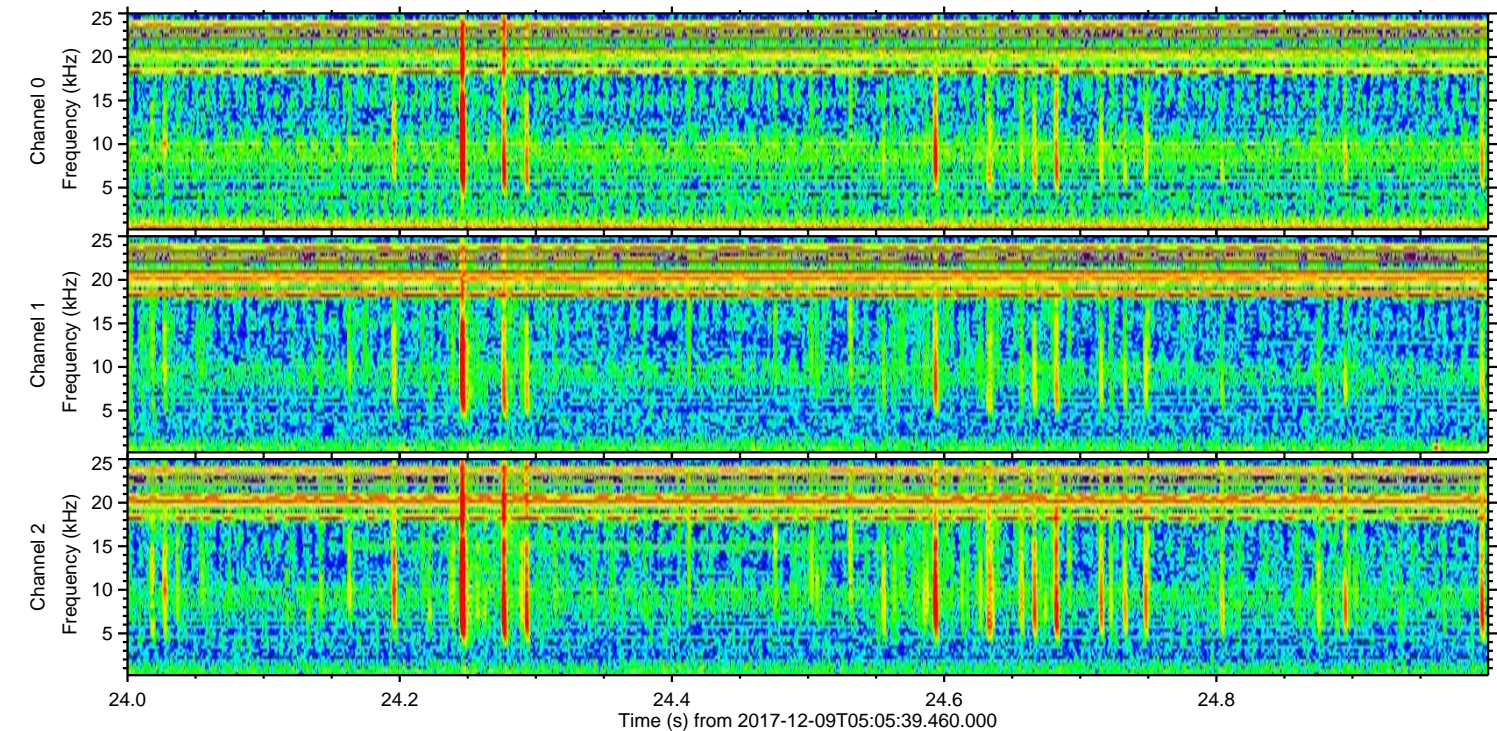
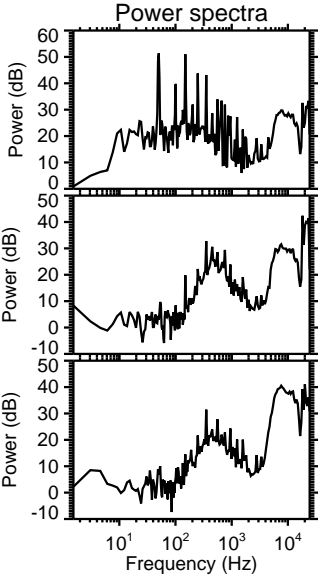
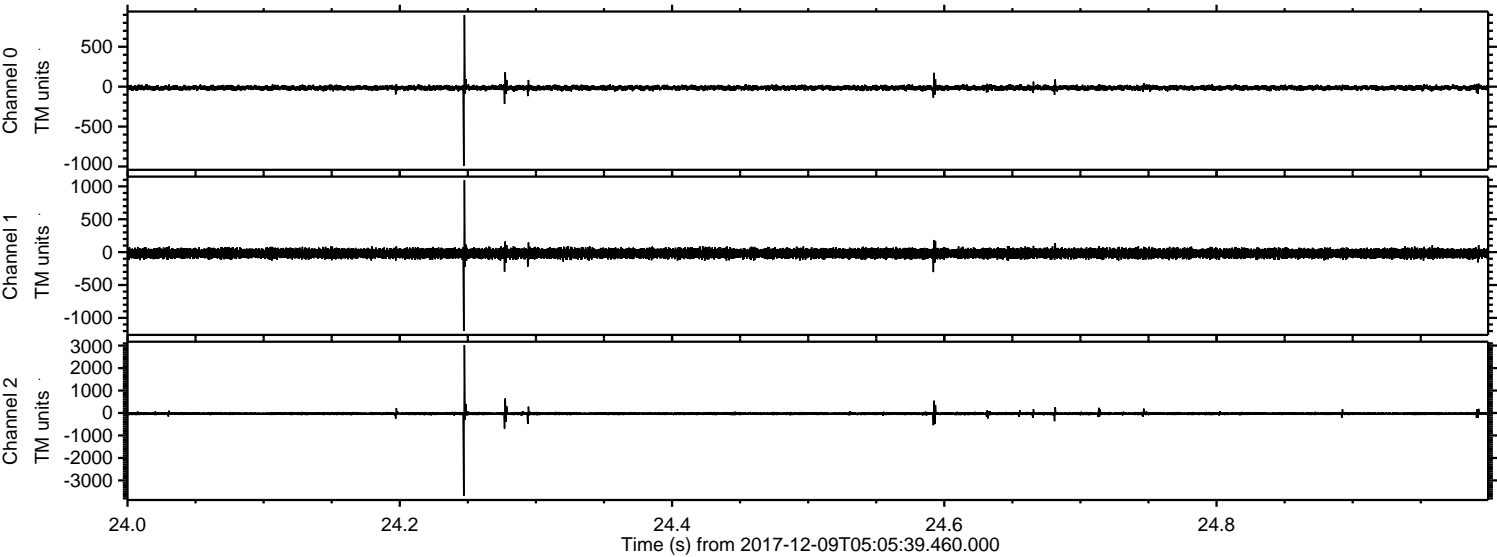
Processed Sat Dec 9 06:14:30 2017 by ELM ver.2012-10-06 from 001__elm20171209_050538__dat00.bin



Processed Sat Dec 9 06:14:31 2017 by ELM ver.2012-10-06 from 001__elm20171209_050538__dat00.bin

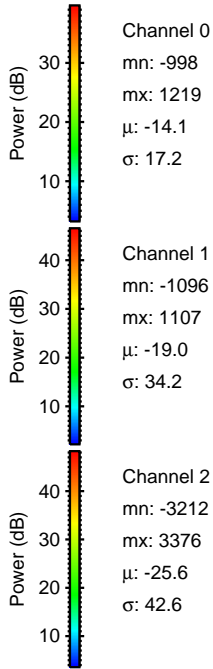
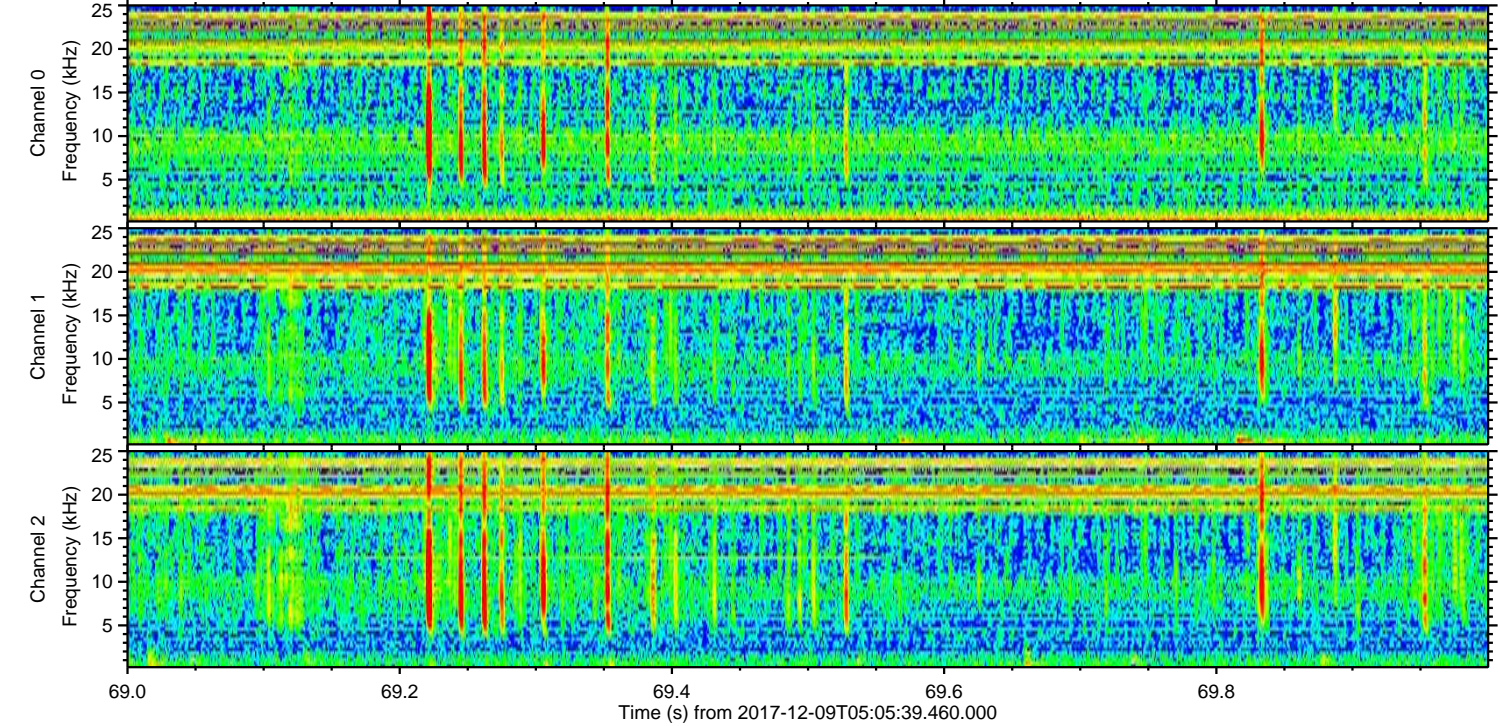
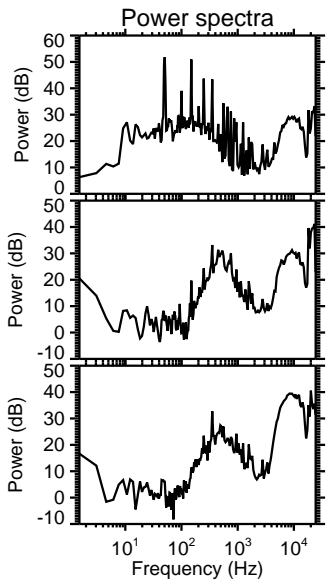
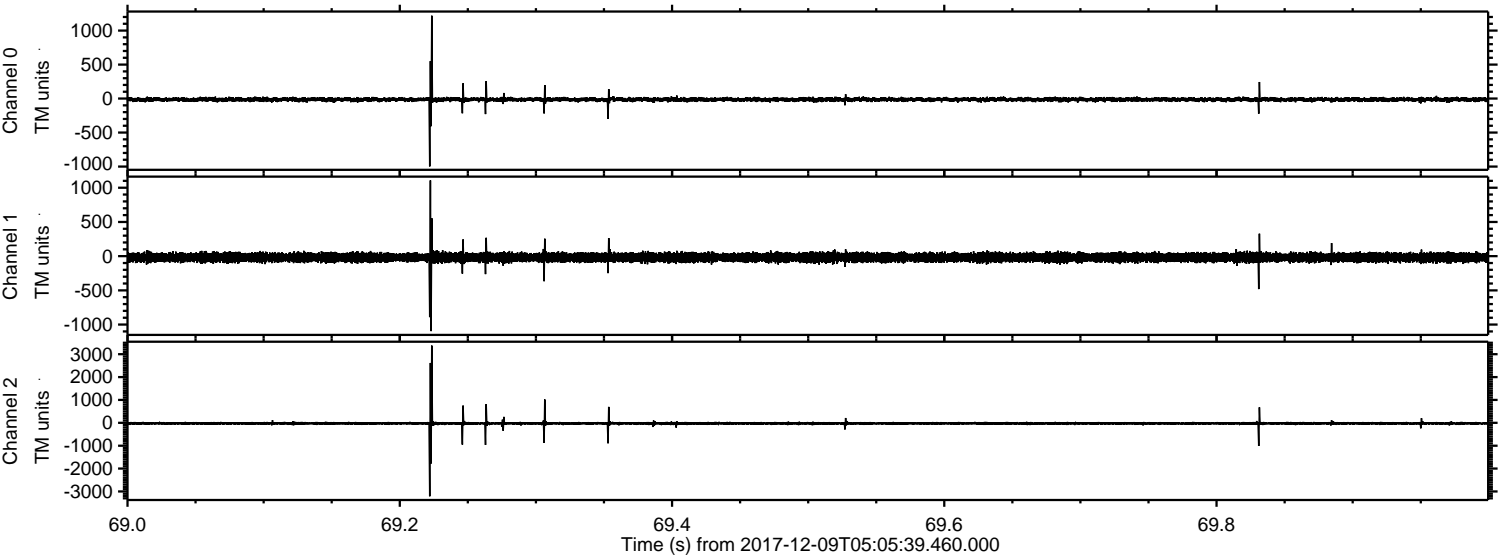


Processed Sat Dec 9 06:14:32 2017 by ELM ver.2012-10-06 from 001__elm20171209_050538__dat00.bin



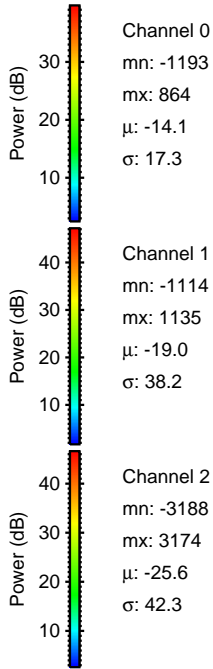
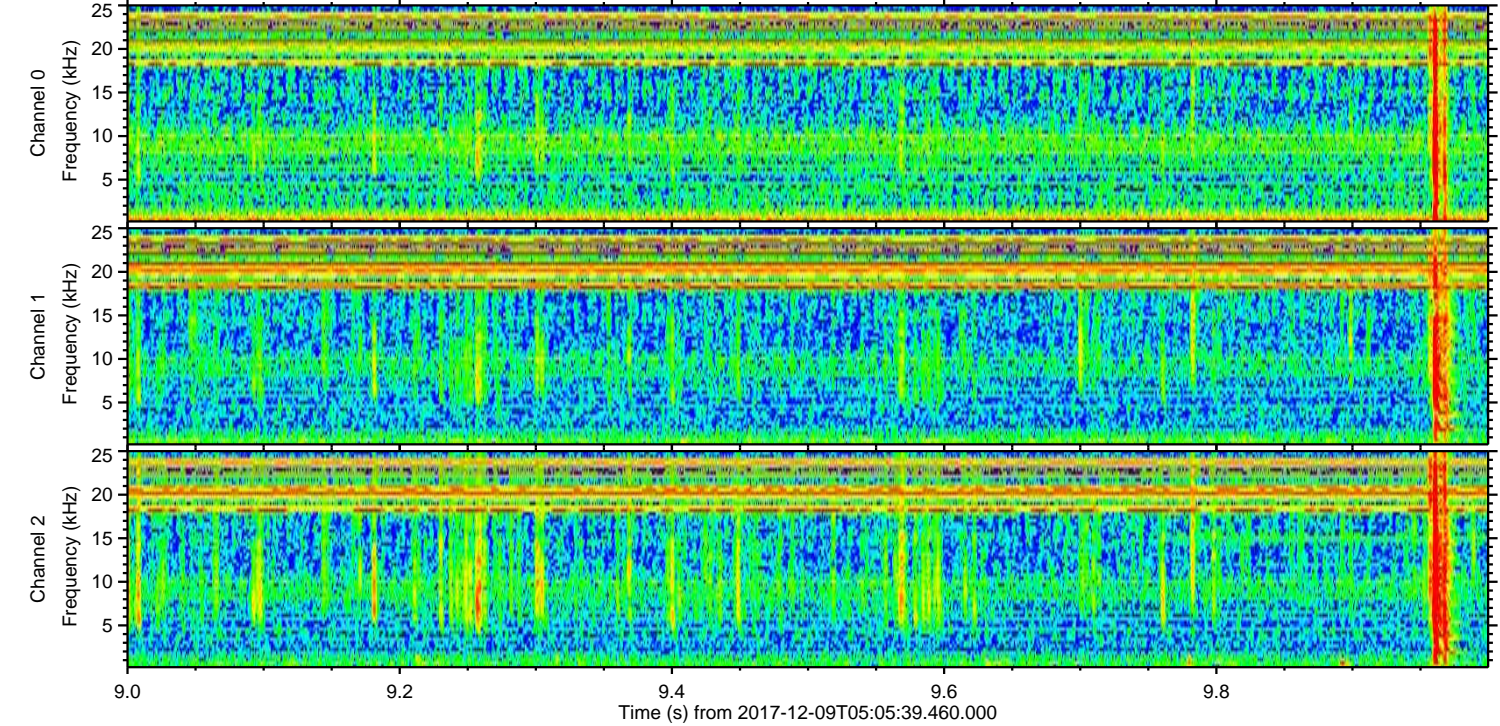
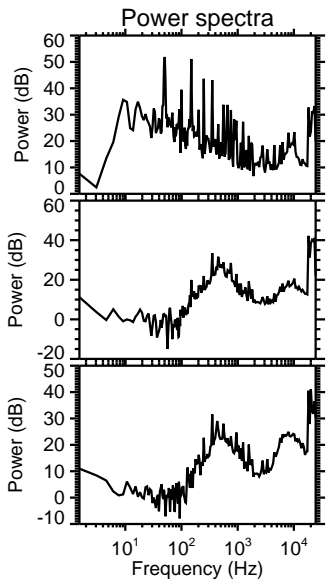
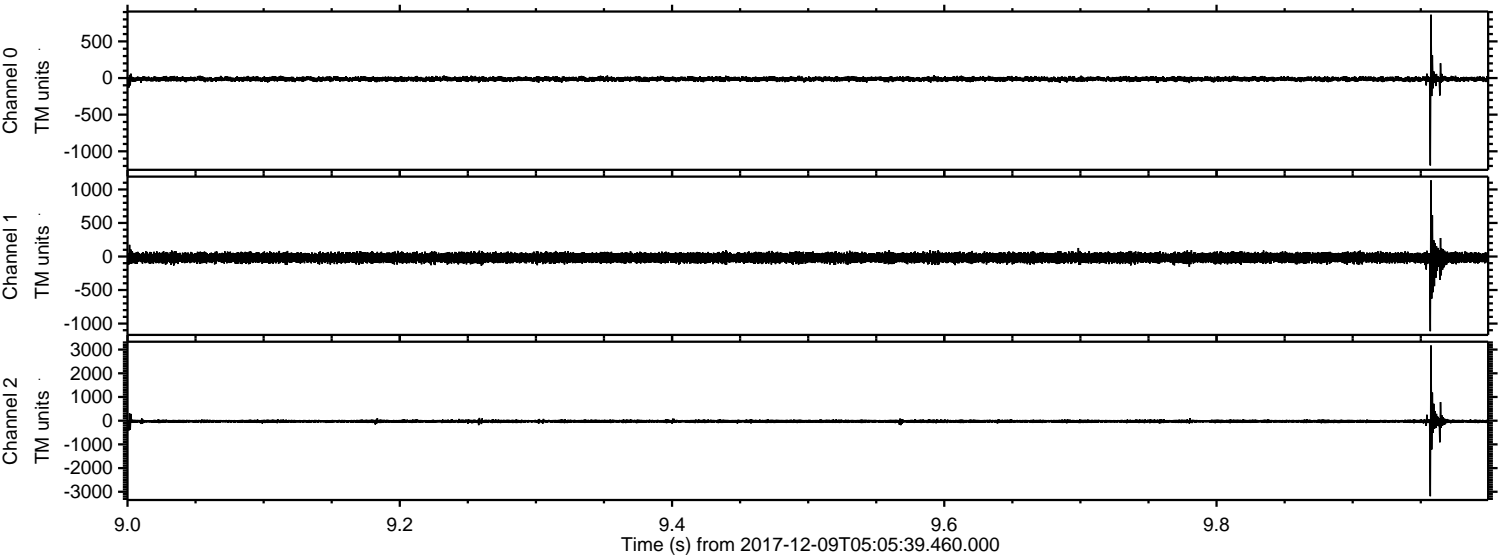
ELMAVAN 3D WAVEFORMS (Measured data sampled at 50 kHz) 51000 packets of 144 samples from 2017-12-09T05:05:39.460.000. Part 70/147

Processed Sat Dec 9 06:14:33 2017 by ELM ver.2012-10-06 from 001__elm20171209_050538__dat00.bin

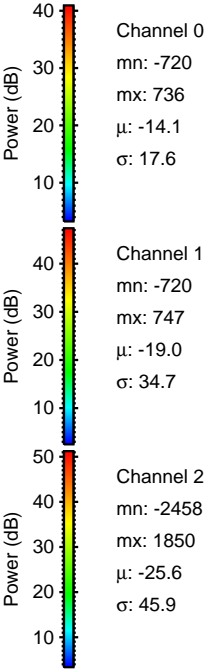
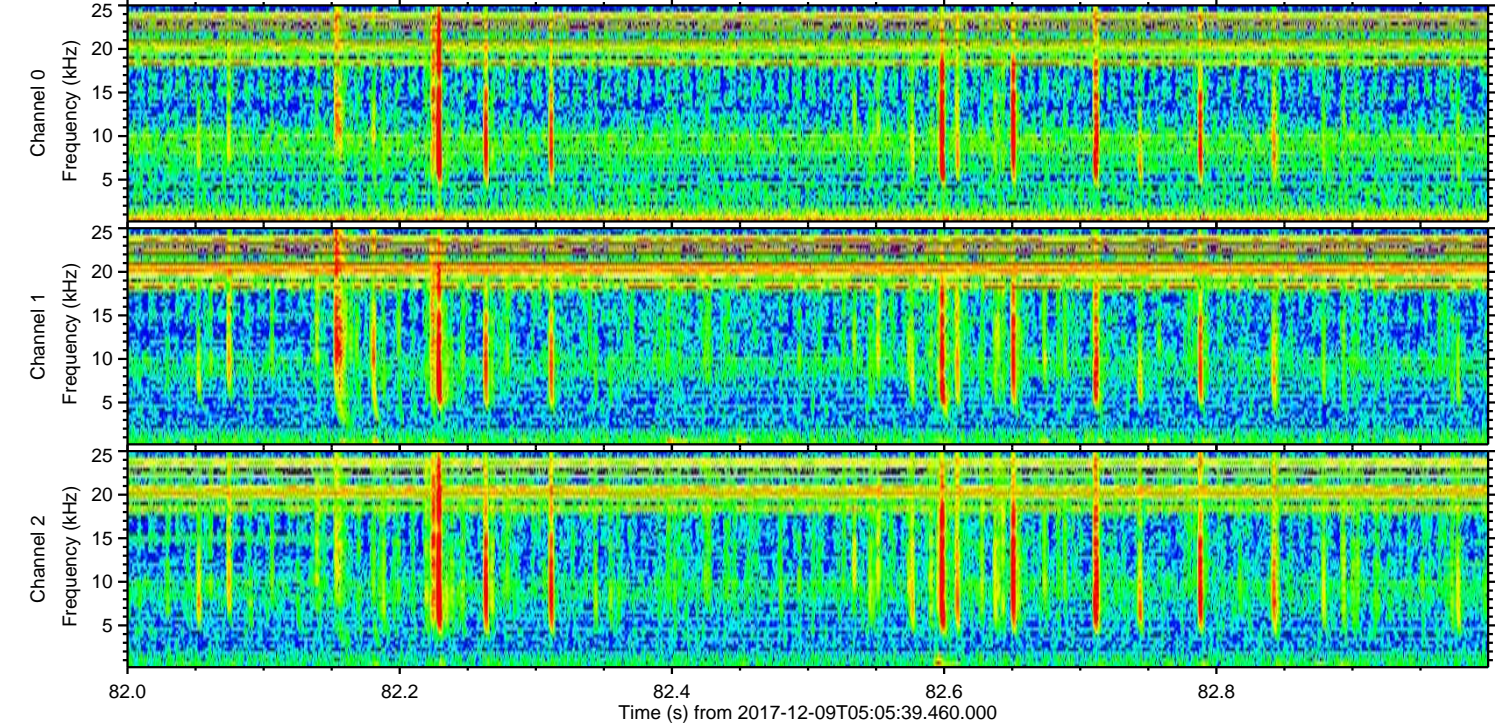
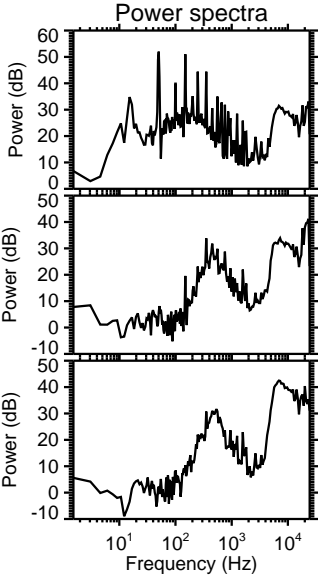
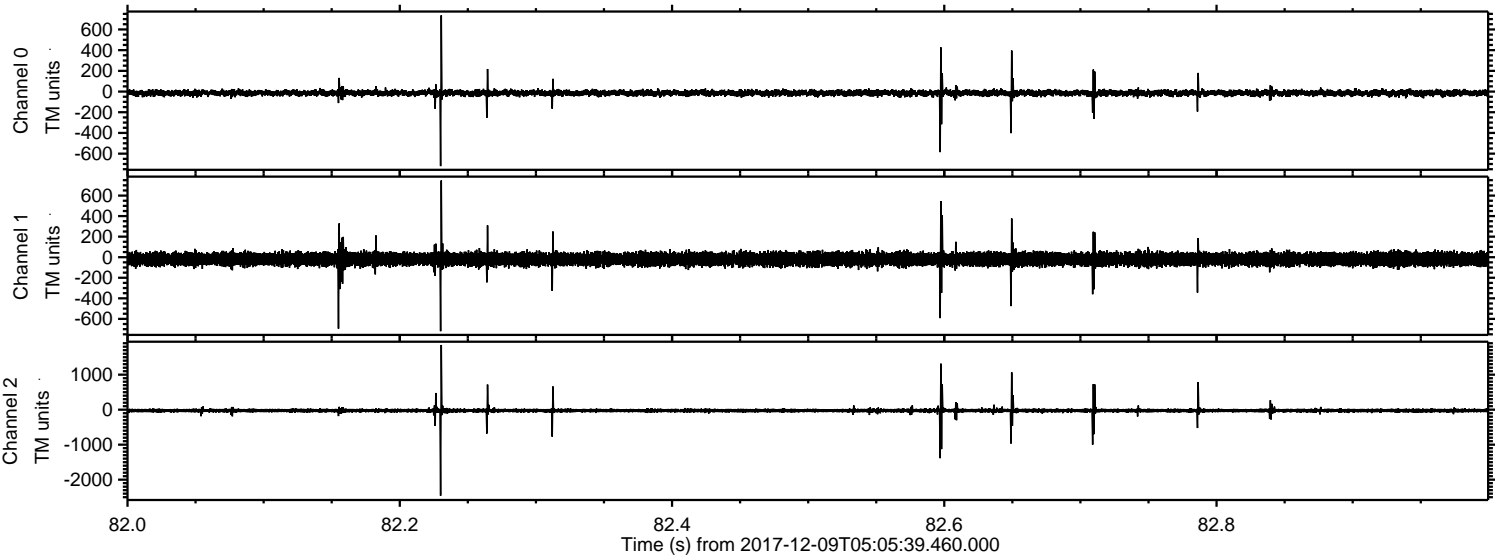


ELMAVAN 3D WAVEFORMS (Measured data sampled at 50 kHz) 51000 packets of 144 samples from 2017-12-09T05:05:39.460.000. Part 10/147

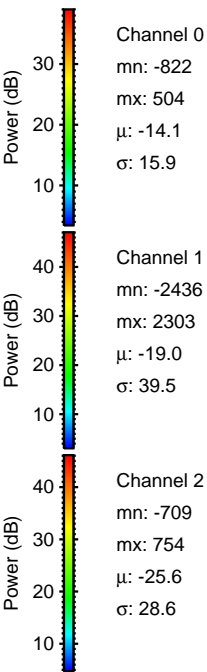
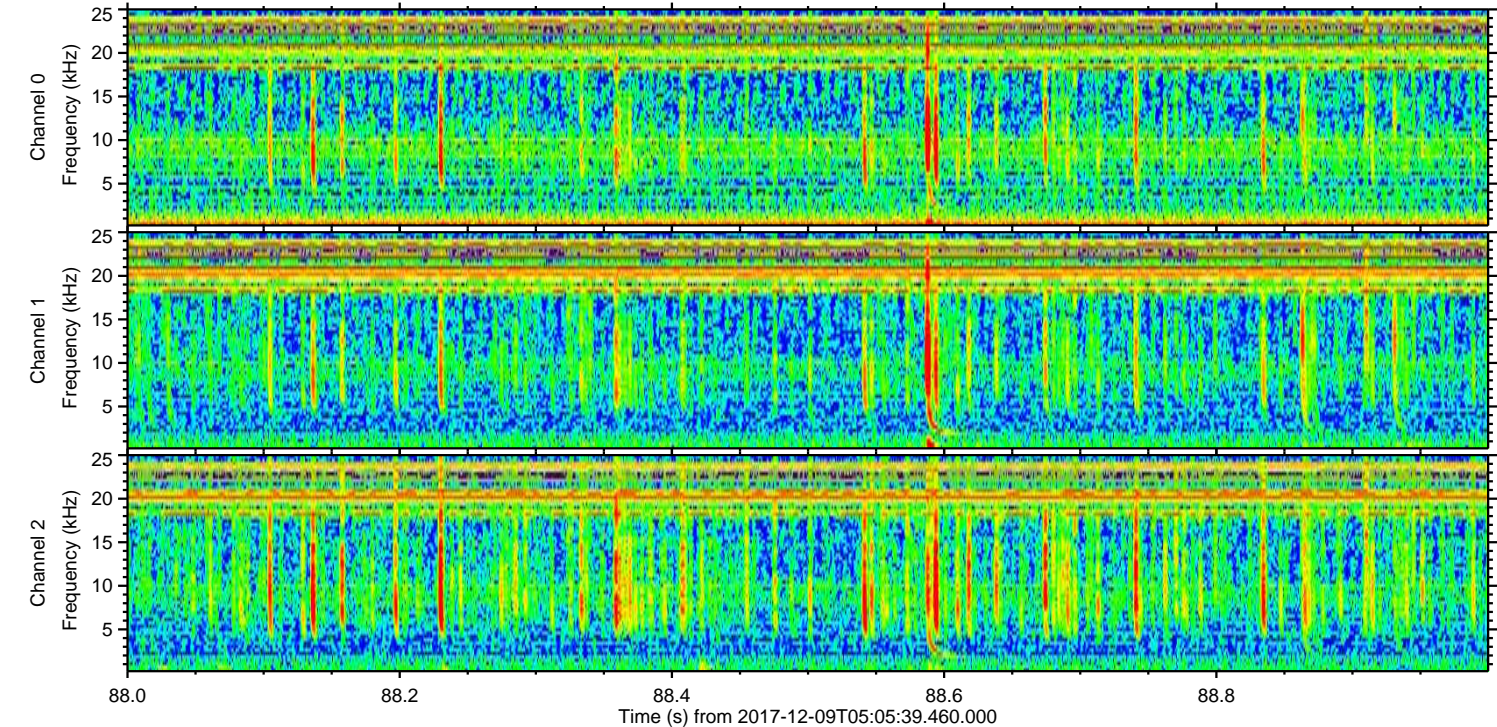
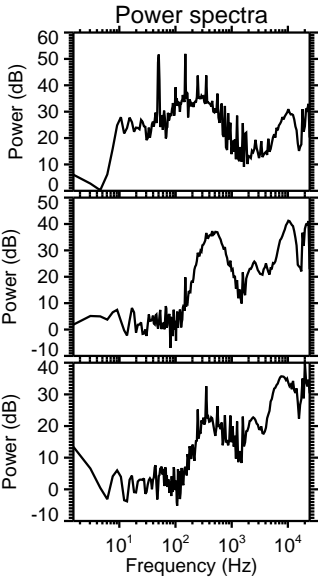
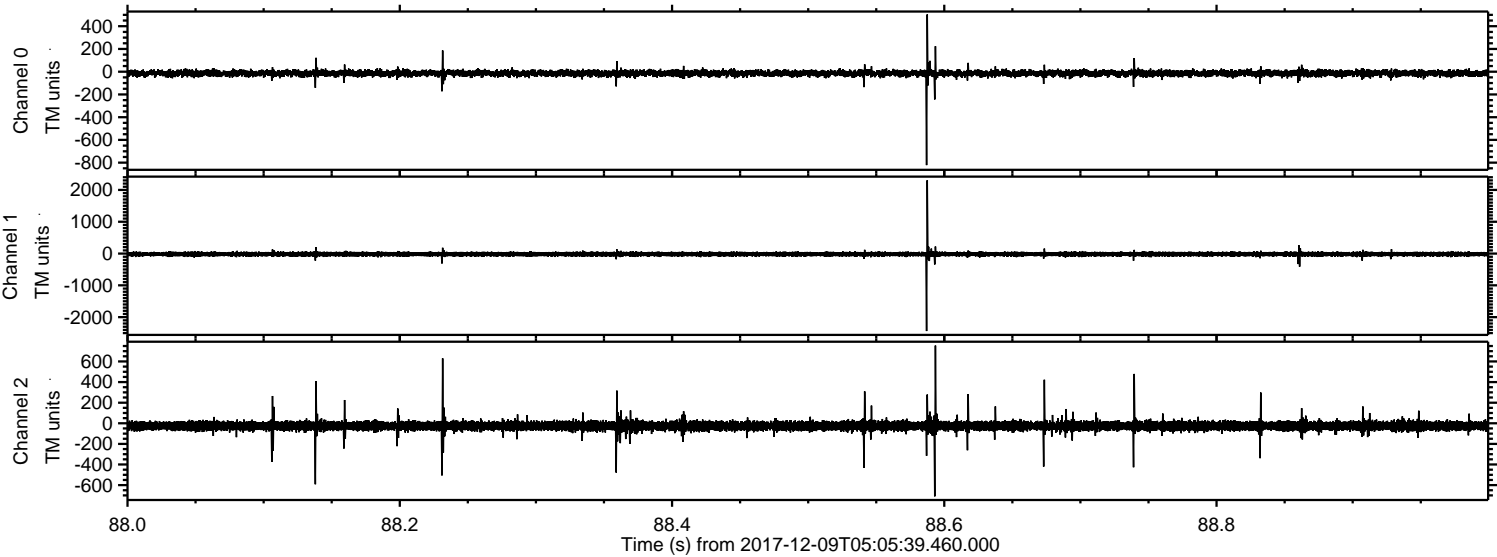
Processed Sat Dec 9 06:14:34 2017 by ELM ver.2012-10-06 from 001__elm20171209_050538__dat00.bin



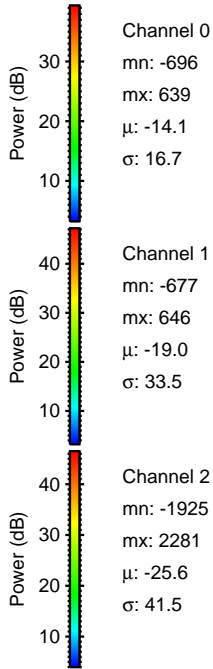
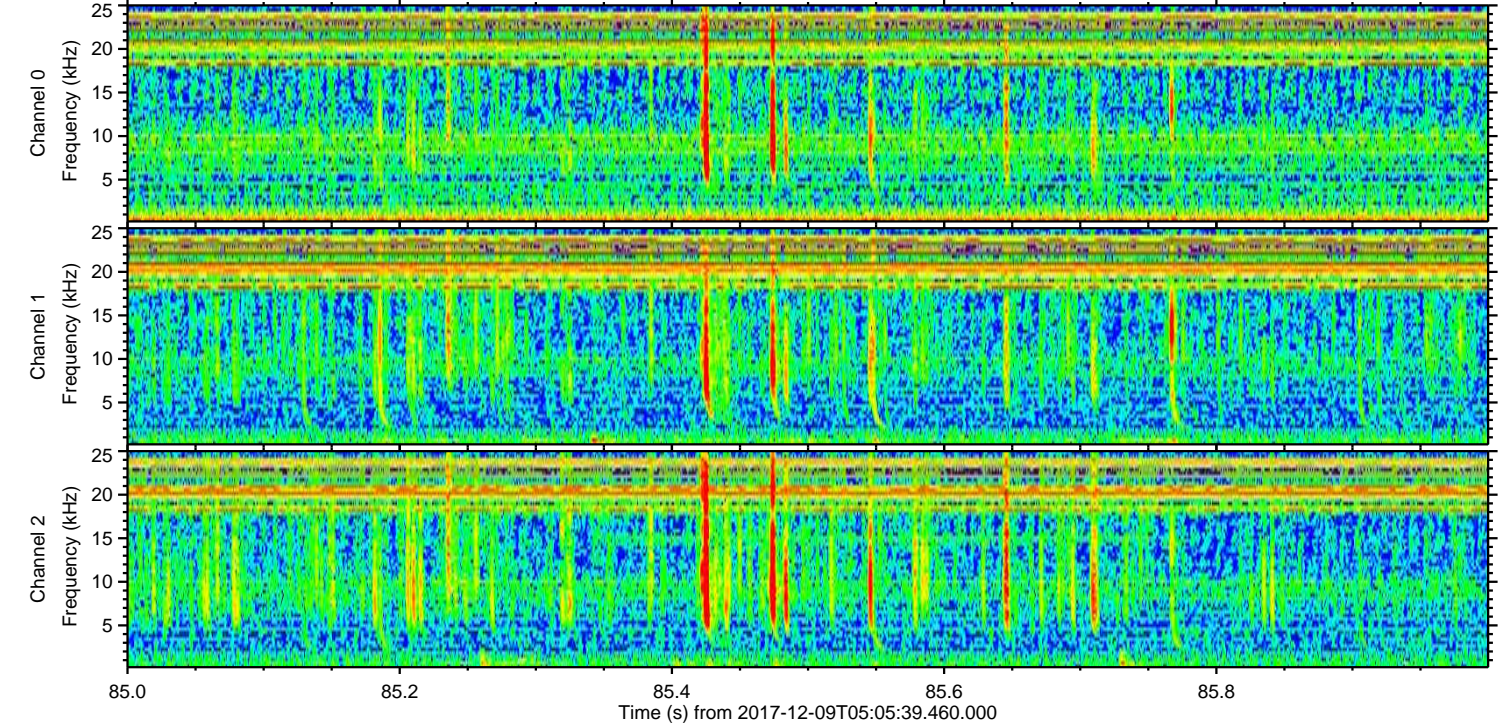
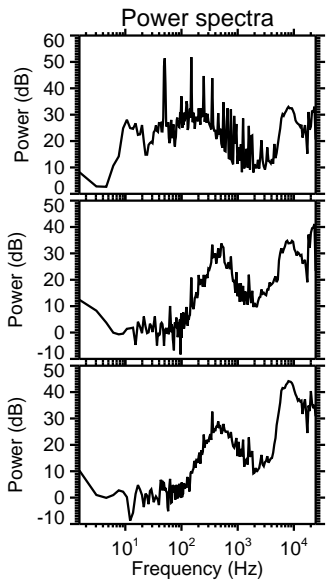
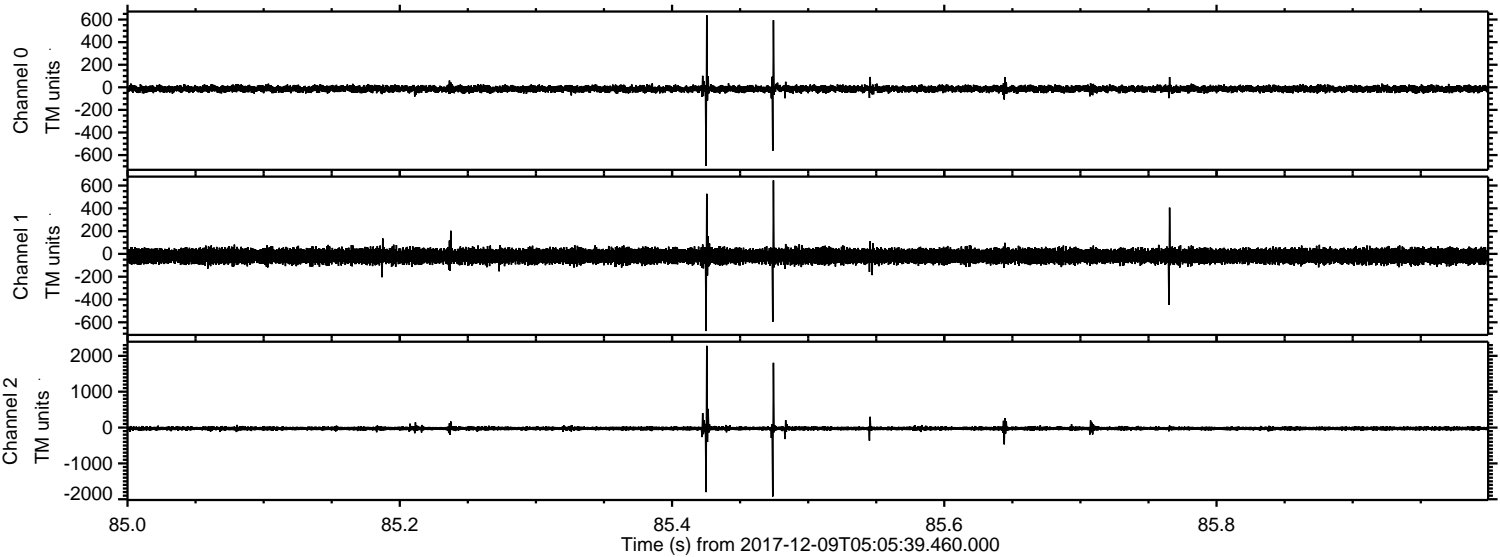
Processed Sat Dec 9 06:14:34 2017 by ELM ver.2012-10-06 from 001__elm20171209_050538__dat00.bin



Processed Sat Dec 9 06:14:35 2017 by ELM ver.2012-10-06 from 001__elm20171209_050538__dat00.bin



Processed Sat Dec 9 06:14:36 2017 by ELM ver.2012-10-06 from 001__elm20171209_050538__dat00.bin



Channel 0
mn: -696
mx: 639
 μ : -14.1
 σ : 16.7

Channel 1
mn: -677
mx: 646
 μ : -19.0
 σ : 33.5

Channel 2
mn: -1925
mx: 2281
 μ : -25.6
 σ : 41.5

