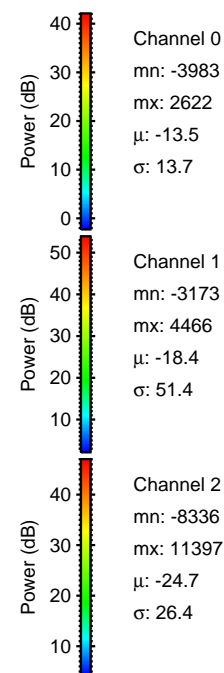
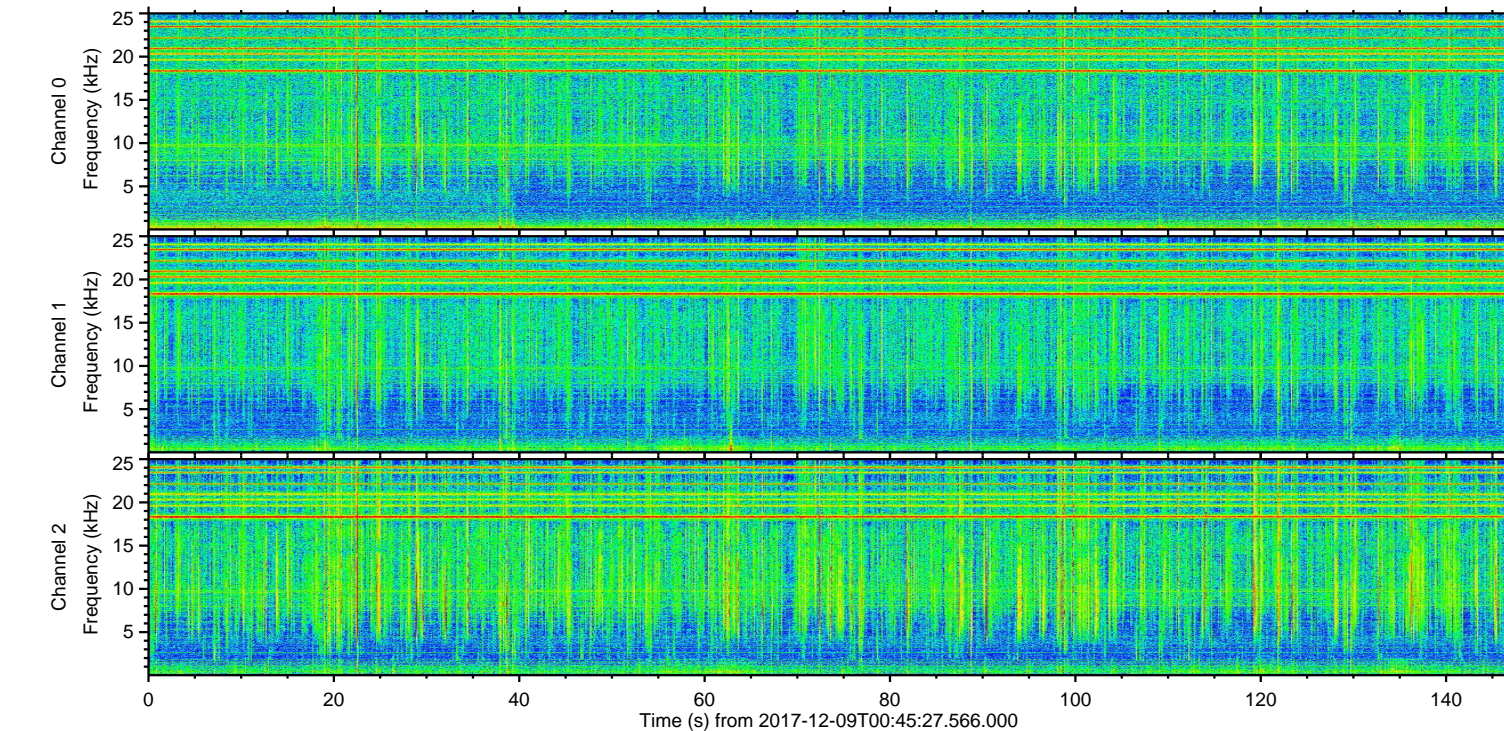
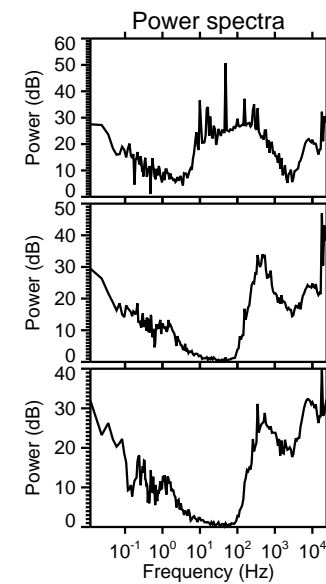
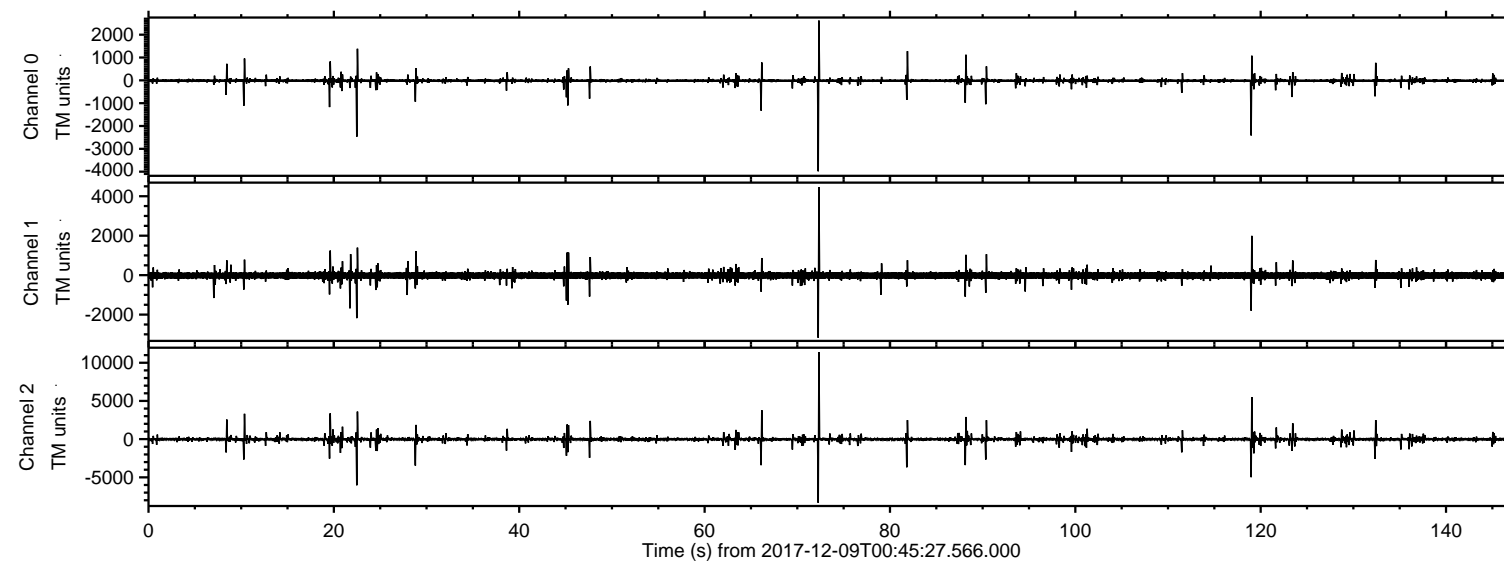


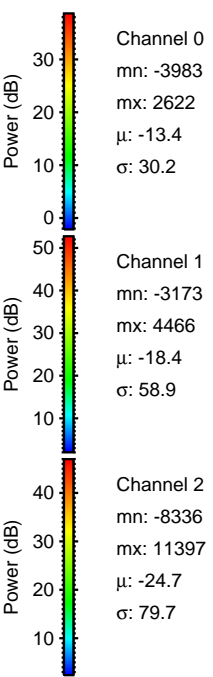
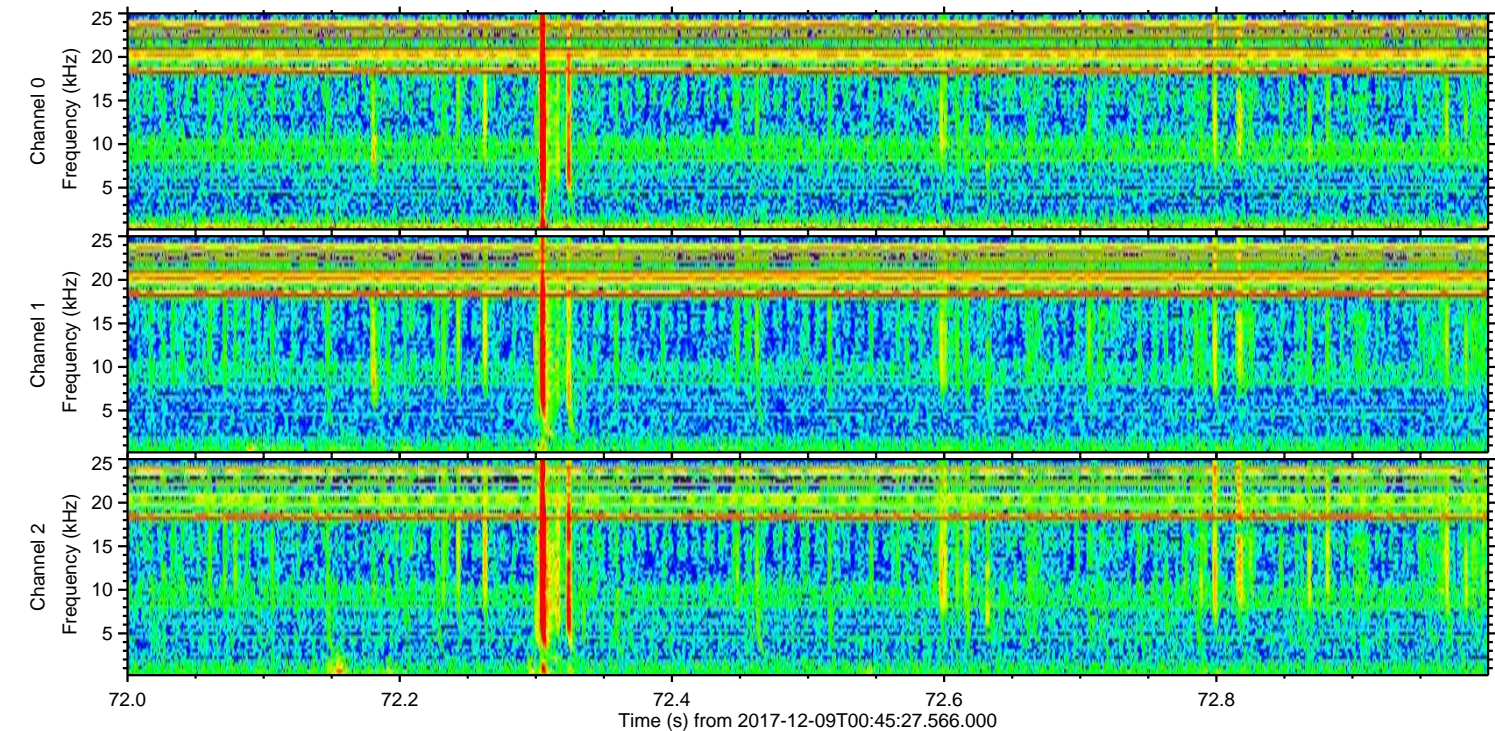
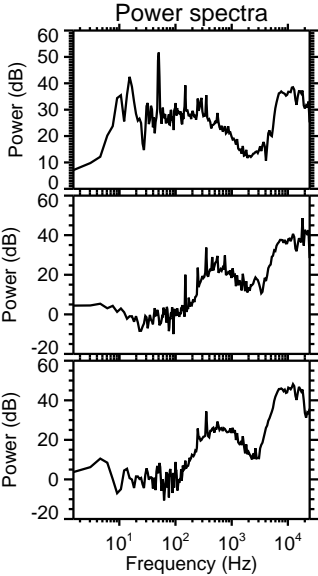
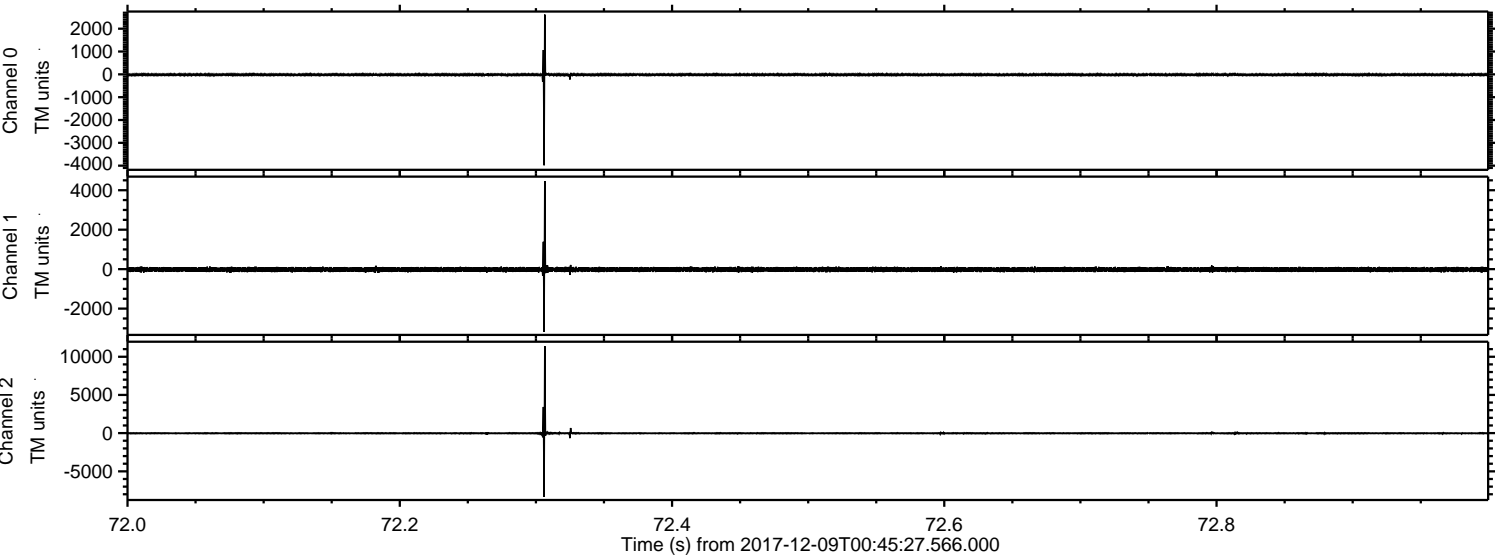
ELMAVAN 3D WAVEFORMS (Measured data sampled at 50 kHz) 51000 packets of 144 samples from 2017-12-09T00:45:27.566.000.

Processed Sat Dec 9 01:53:45 2017 by ELM ver.2012-10-06 from 001__elm20171209_004526__dat00.bin

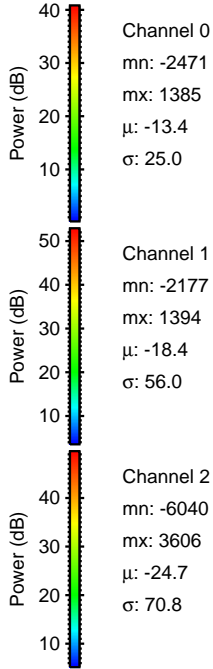
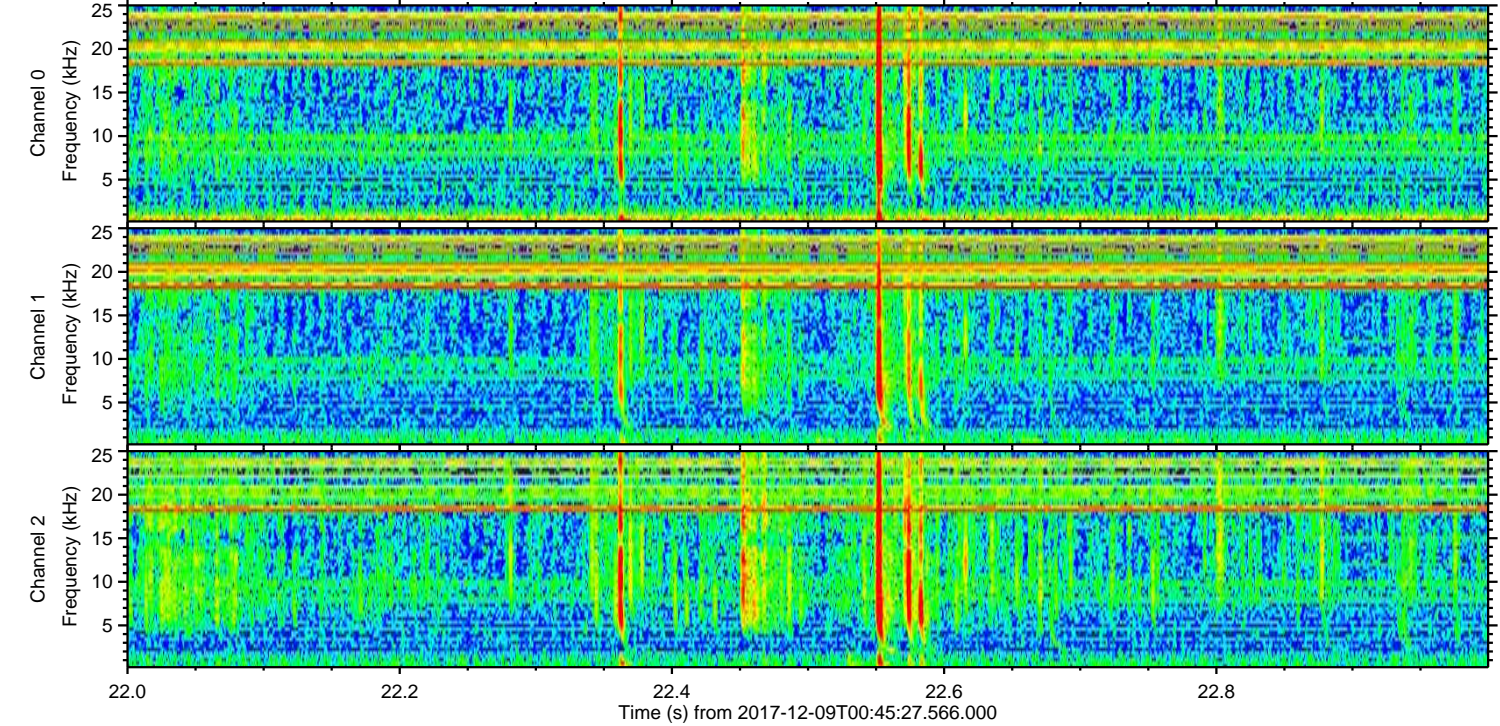
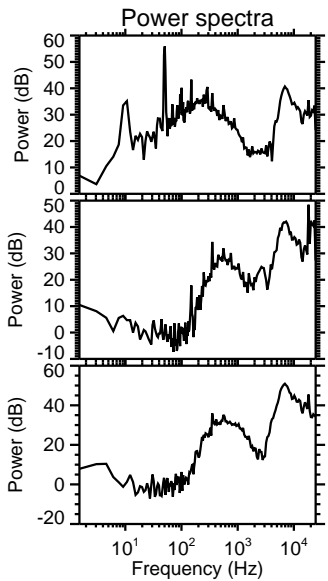
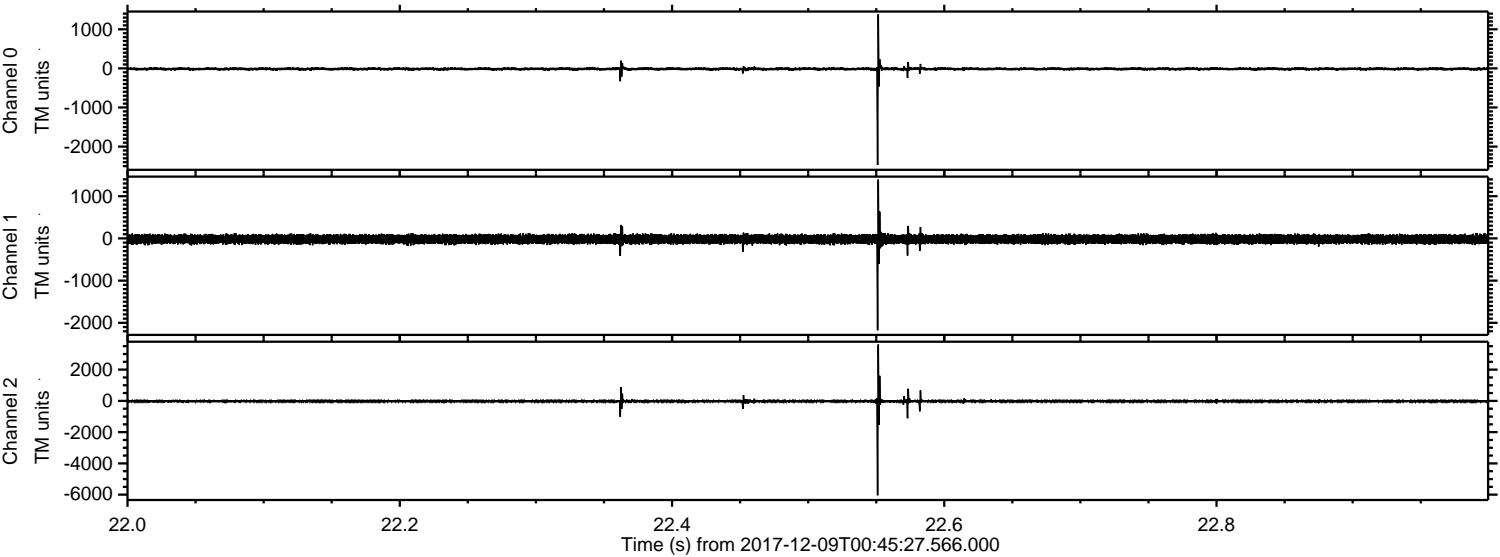


ELMAVAN 3D WAVEFORMS (Measured data sampled at 50 kHz) 51000 packets of 144 samples from 2017-12-09T00:45:27.566.000. Part 73/147

Processed Sat Dec 9 01:53:53 2017 by ELM ver.2012-10-06 from 001__elm20171209_004526__dat00.bin



Processed Sat Dec 9 01:53:54 2017 by ELM ver.2012-10-06 from 001__elm20171209_004526__dat00.bin



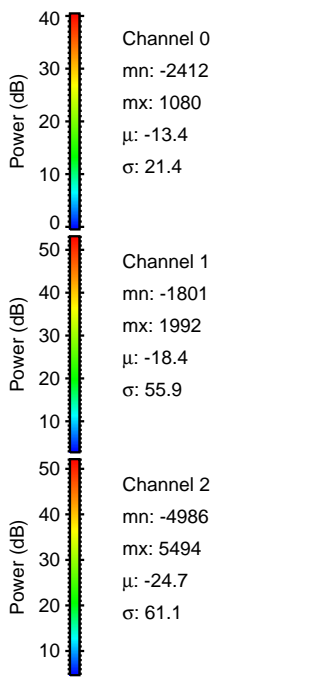
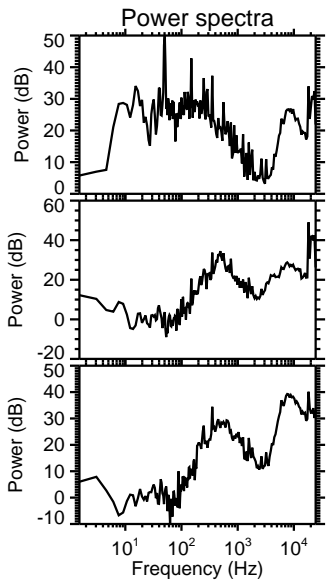
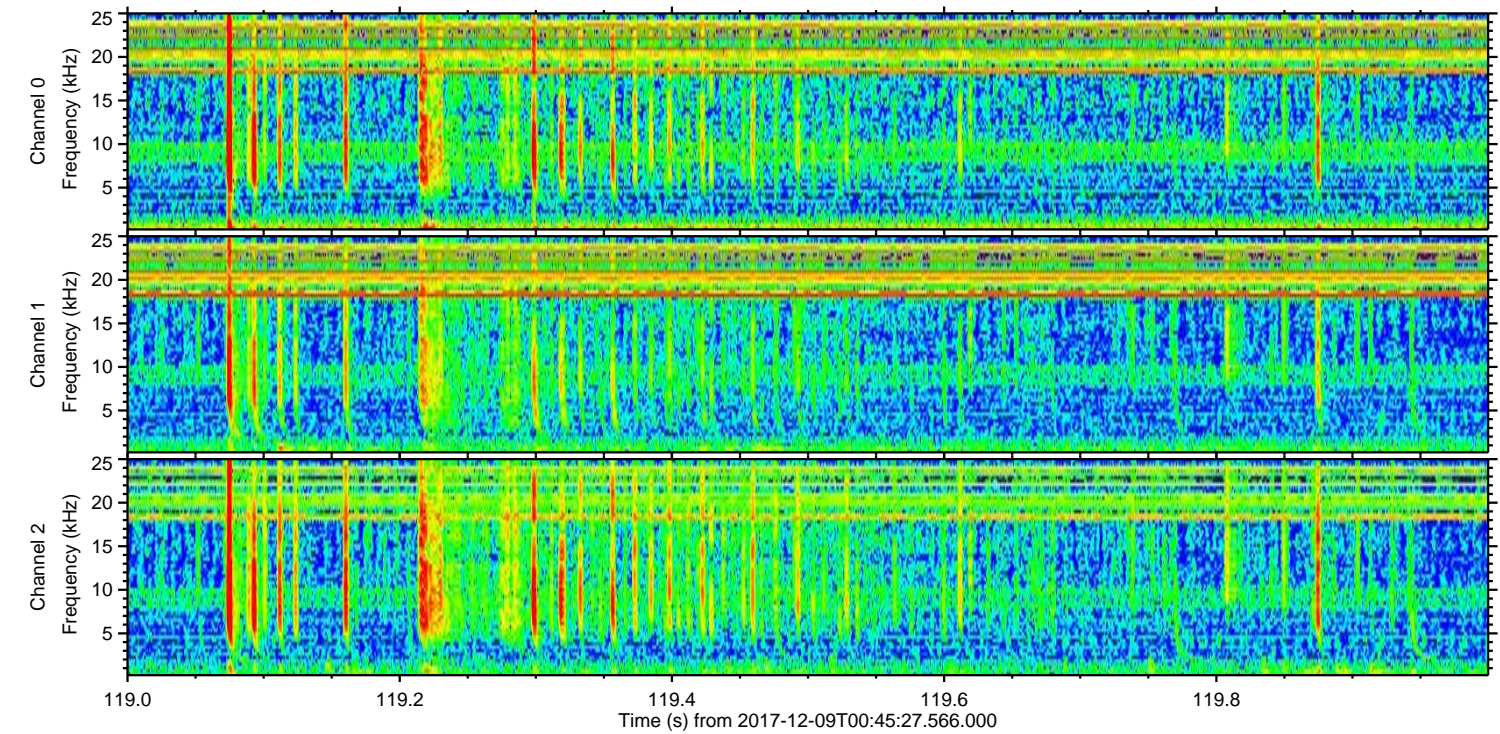
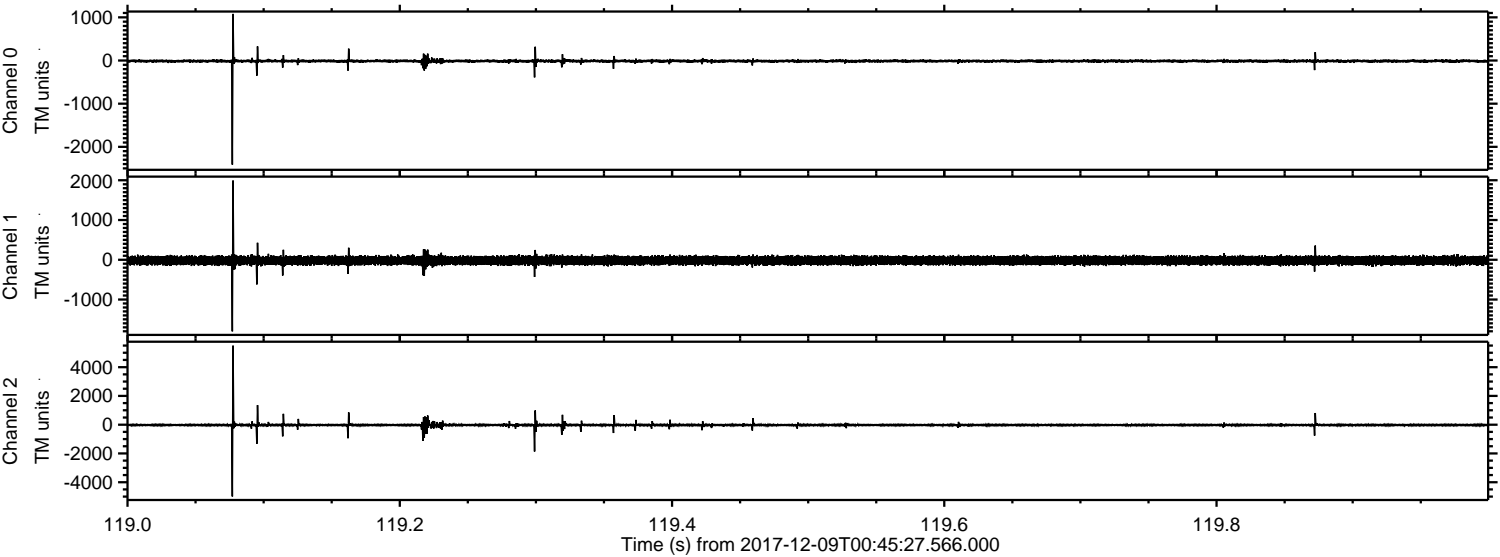
Channel 0
mn: -2471
mx: 1385
 μ : -13.4
 σ : 25.0

Channel 1
mn: -2177
mx: 1394
 μ : -18.4
 σ : 56.0

Channel 2
mn: -6040
mx: 3606
 μ : -24.7
 σ : 70.8

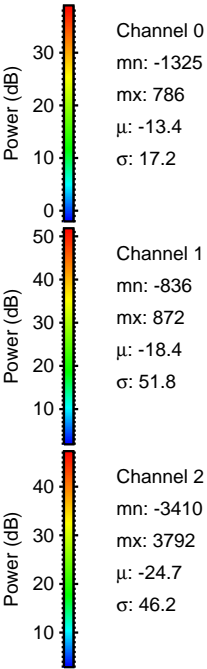
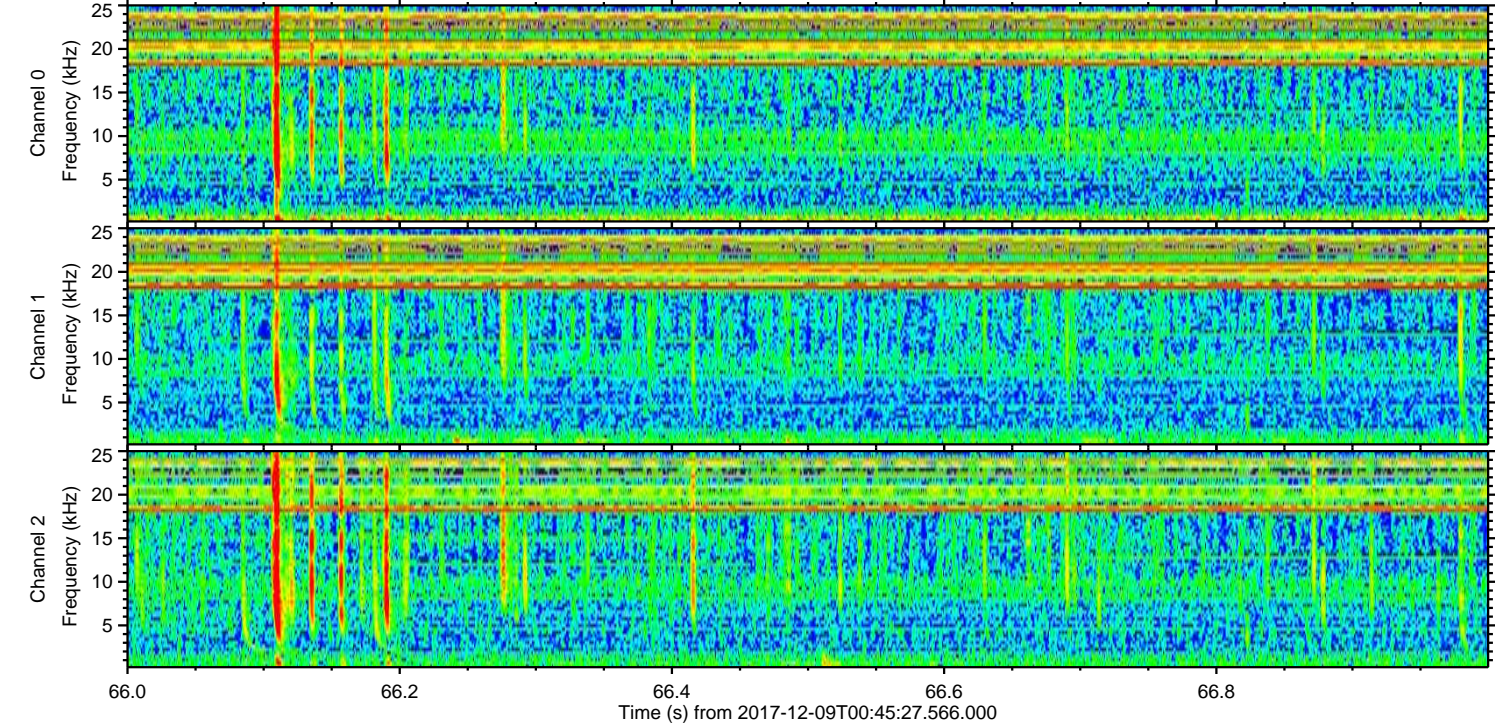
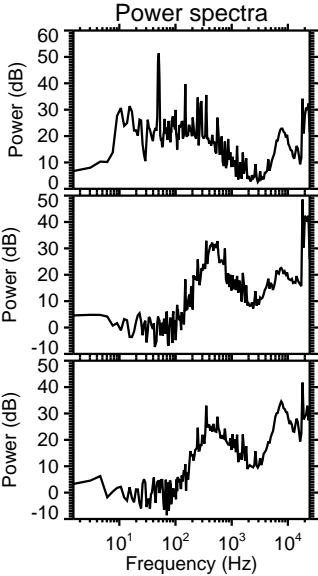
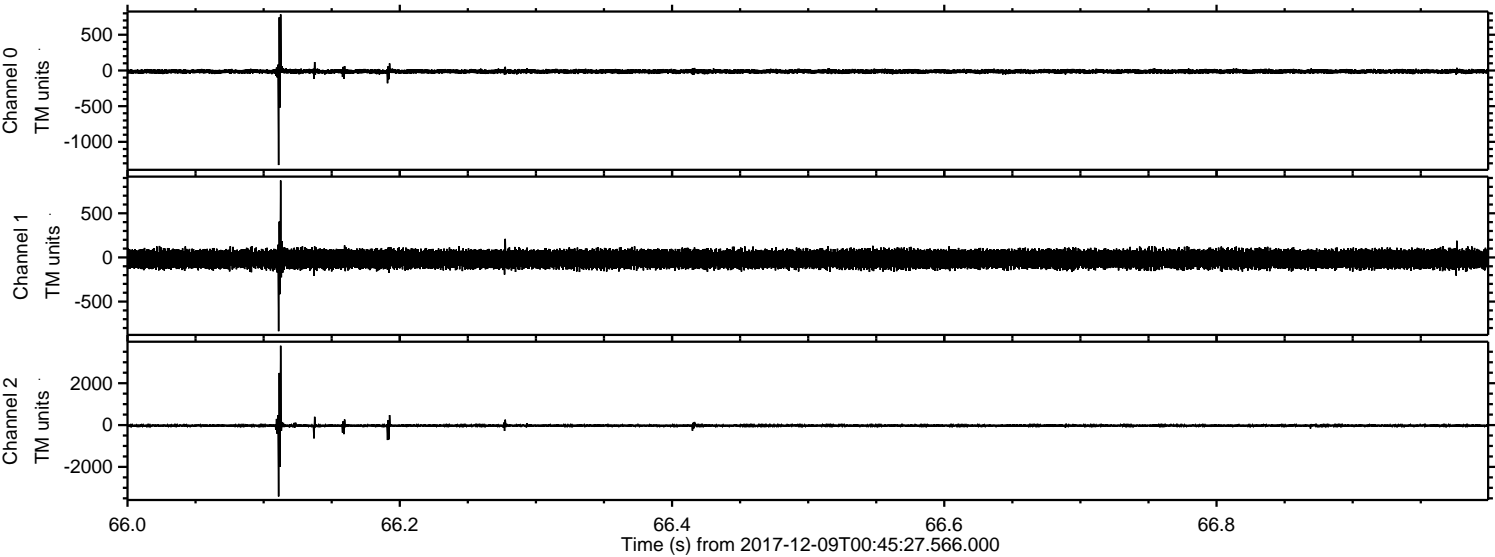
ELMAVAN 3D WAVEFORMS (Measured data sampled at 50 kHz) 51000 packets of 144 samples from 2017-12-09T00:45:27.566.000. Part 120/147

Processed Sat Dec 9 01:53:55 2017 by ELM ver.2012-10-06 from 001__elm20171209_004526__dat00.bin

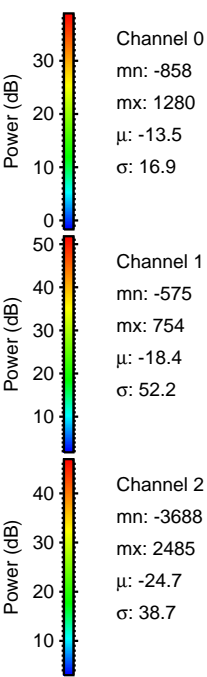
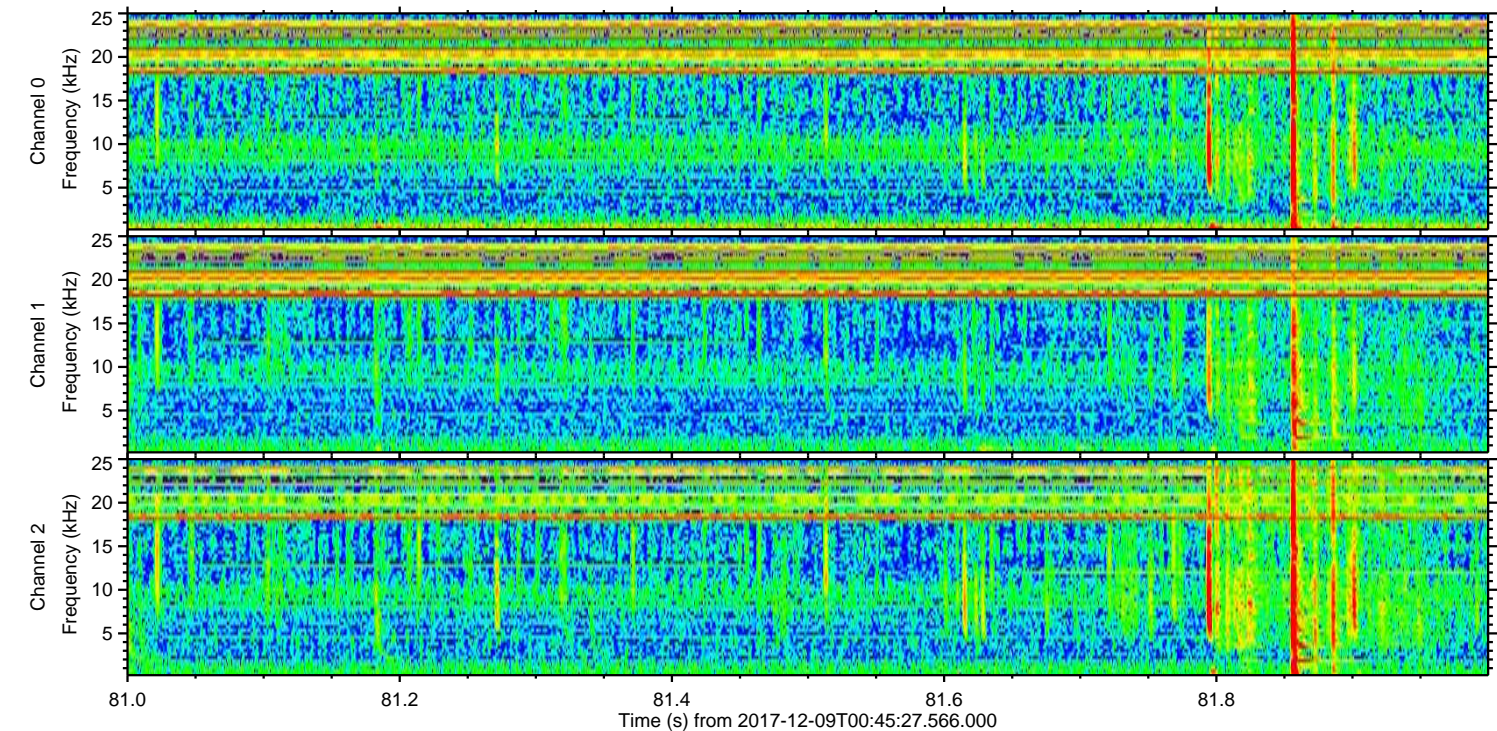
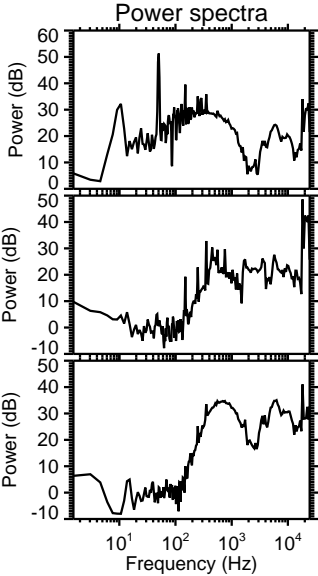
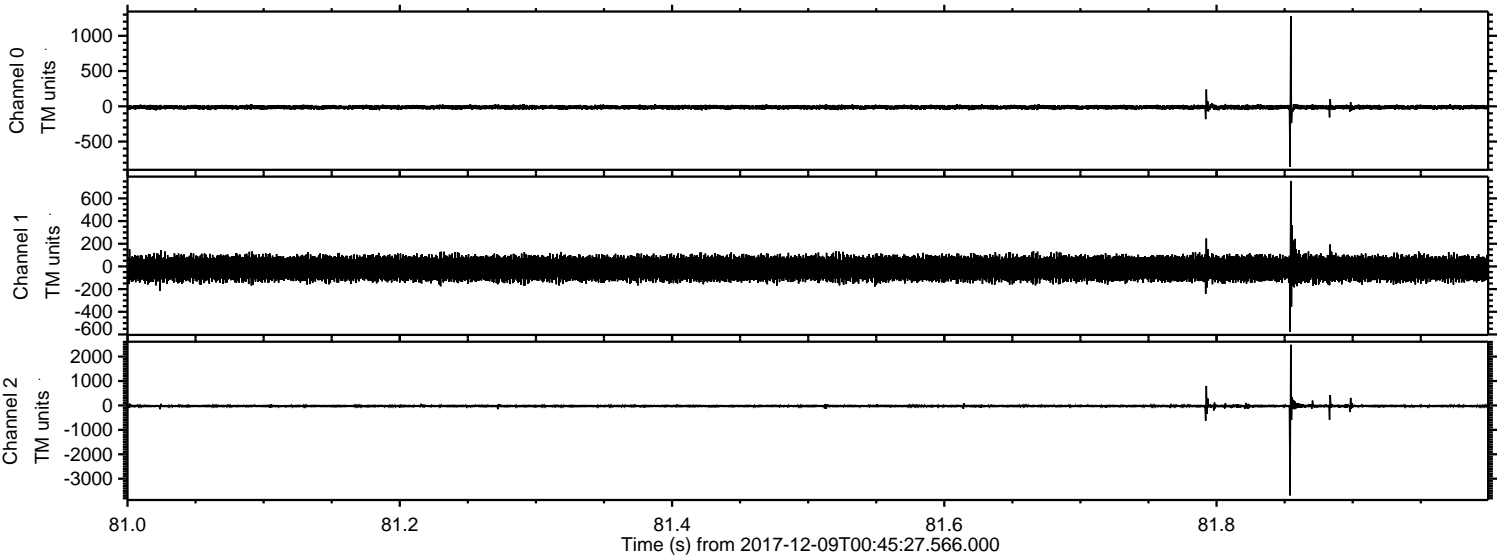


ELMAVAN 3D WAVEFORMS (Measured data sampled at 50 kHz) 51000 packets of 144 samples from 2017-12-09T00:45:27.566.000. Part 67/147

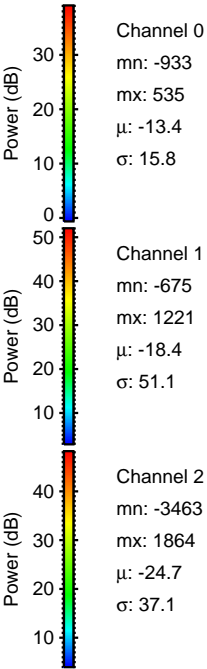
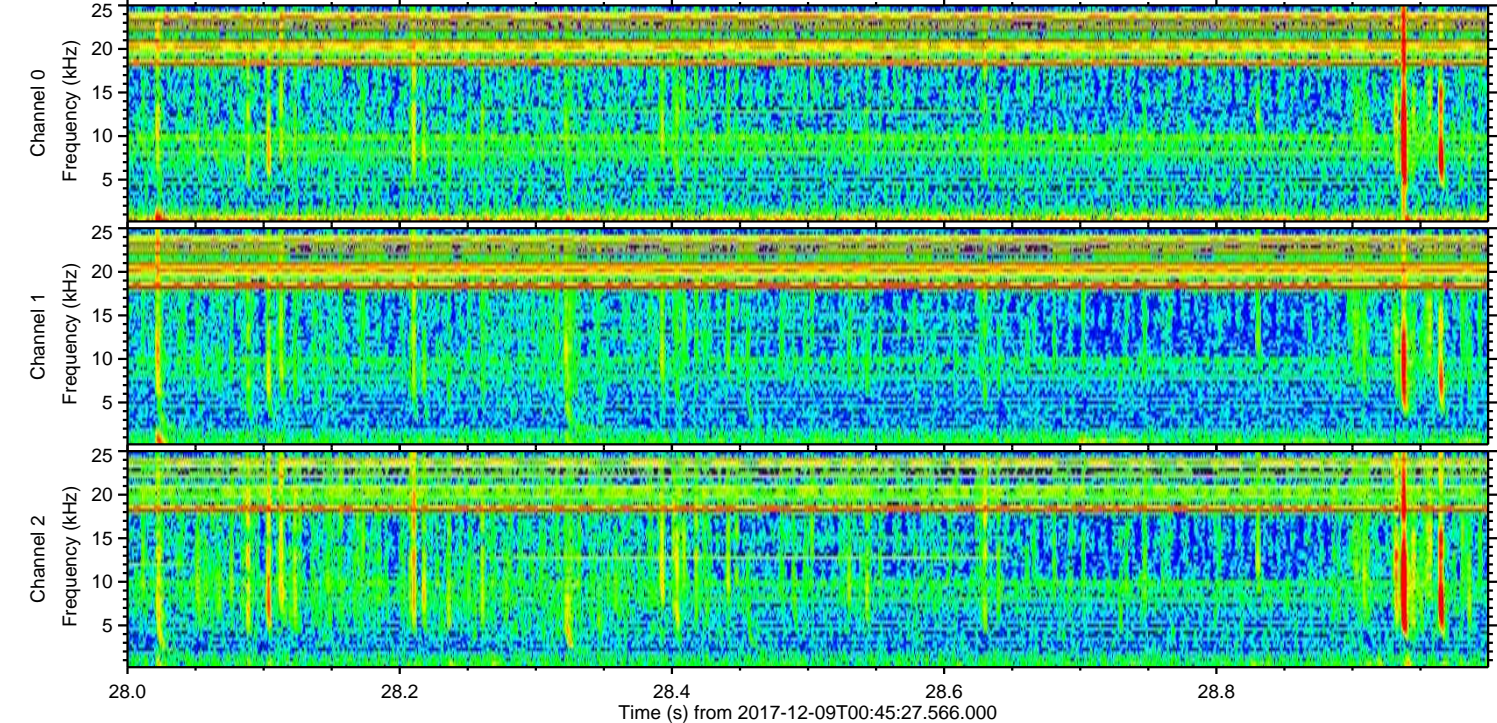
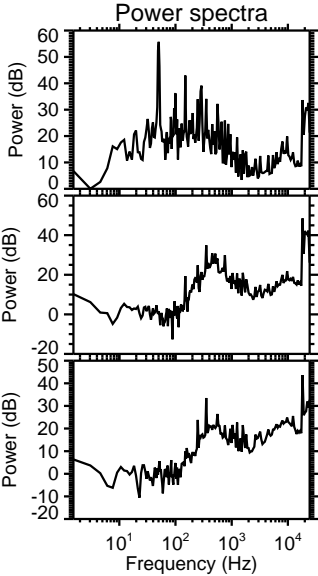
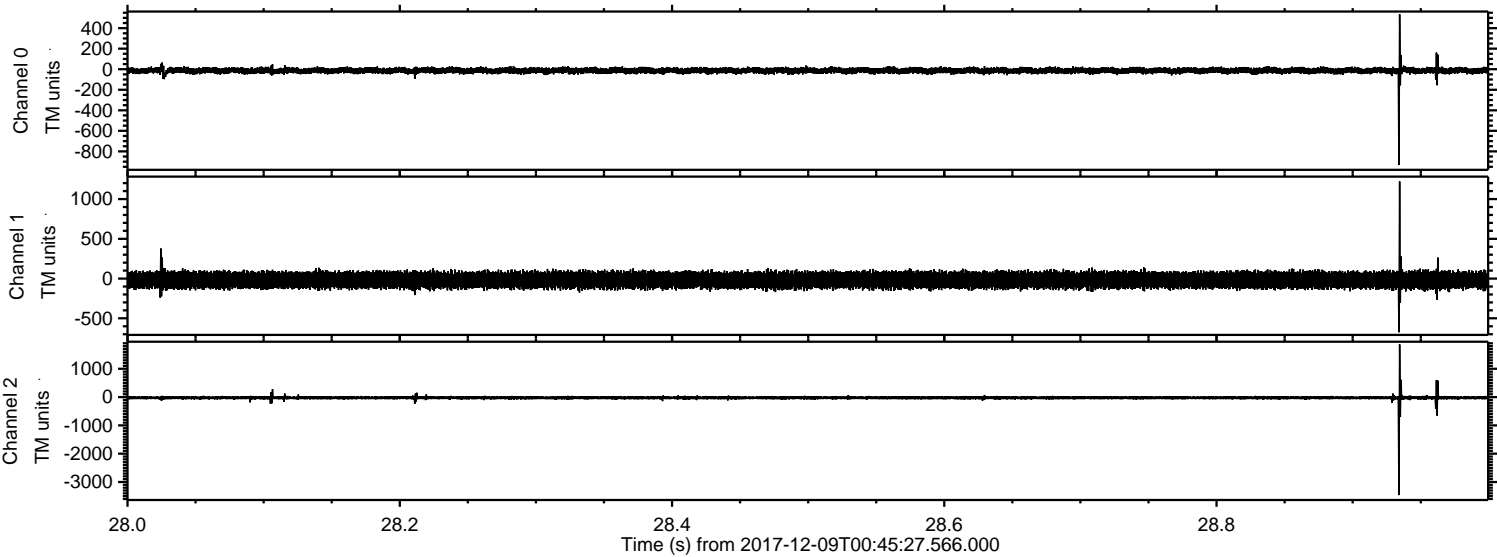
Processed Sat Dec 9 01:53:56 2017 by ELM ver.2012-10-06 from 001__elm20171209_004526__dat00.bin



Processed Sat Dec 9 01:53:57 2017 by ELM ver.2012-10-06 from 001__elm20171209_004526__dat00.bin

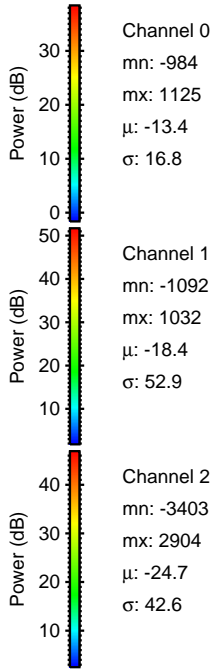
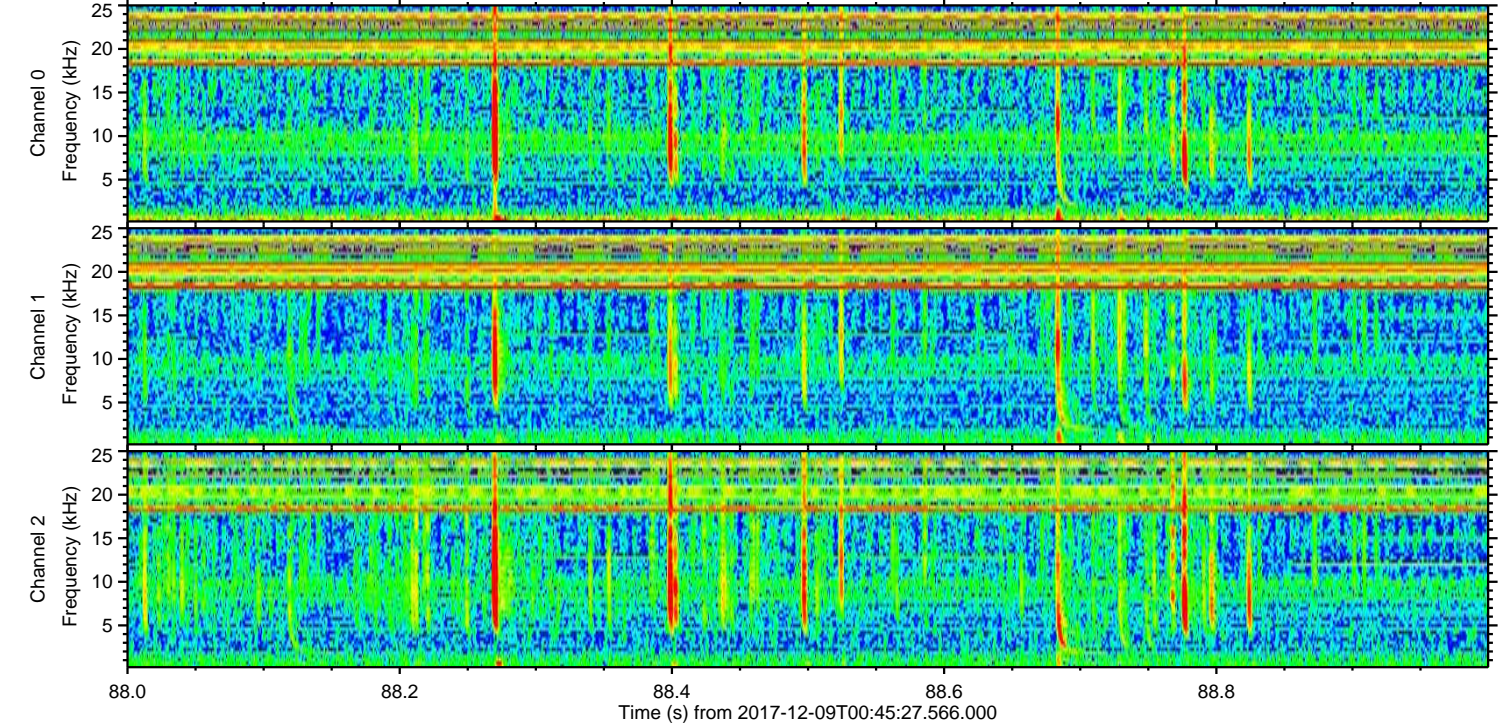
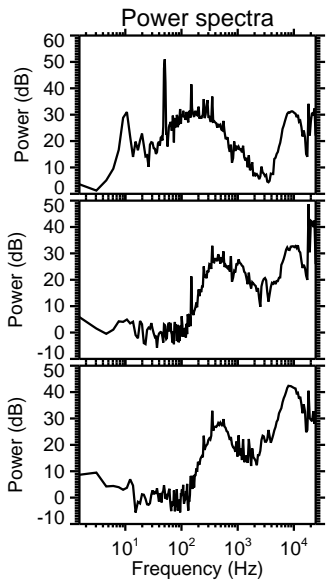
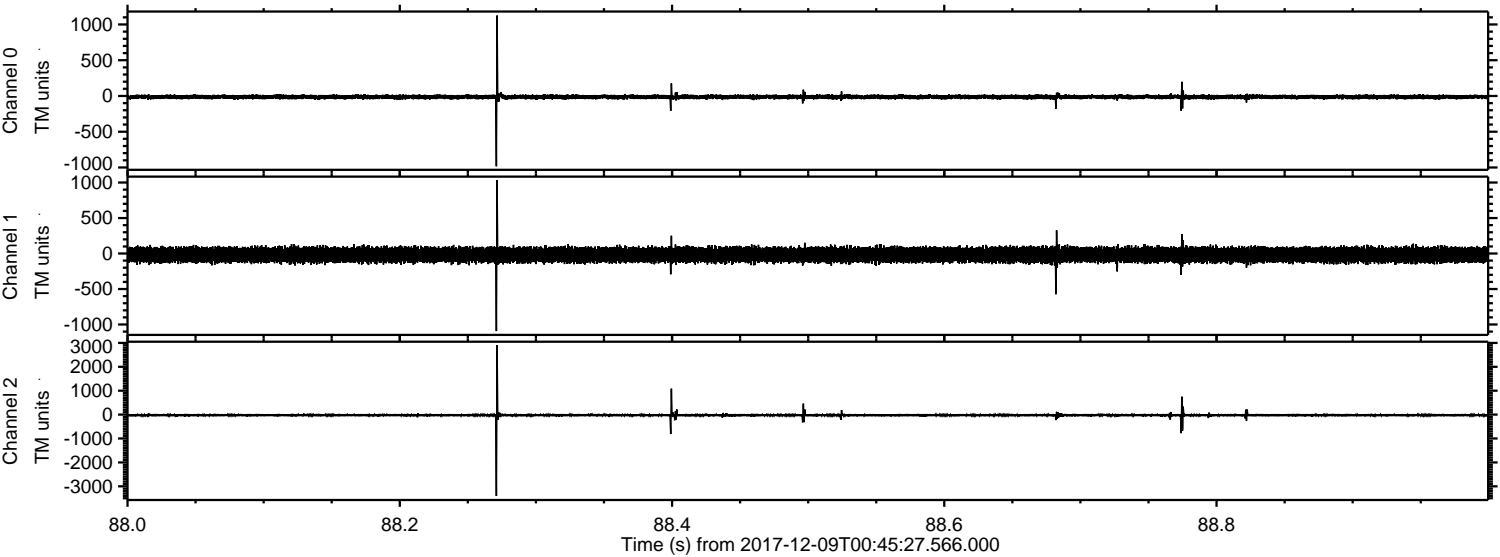


Processed Sat Dec 9 01:53:58 2017 by ELM ver.2012-10-06 from 001__elm20171209_004526__dat00.bin



ELMAVAN 3D WAVEFORMS (Measured data sampled at 50 kHz) 51000 packets of 144 samples from 2017-12-09T00:45:27.566.000. Part 89/147

Processed Sat Dec 9 01:54:00 2017 by ELM ver.2012-10-06 from 001__elm20171209_004526__dat00.bin

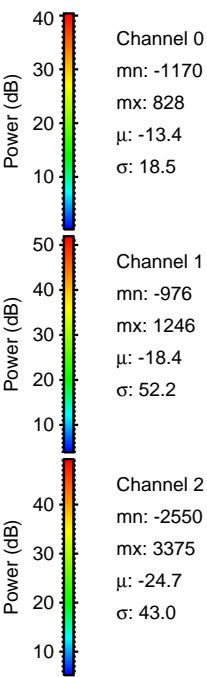
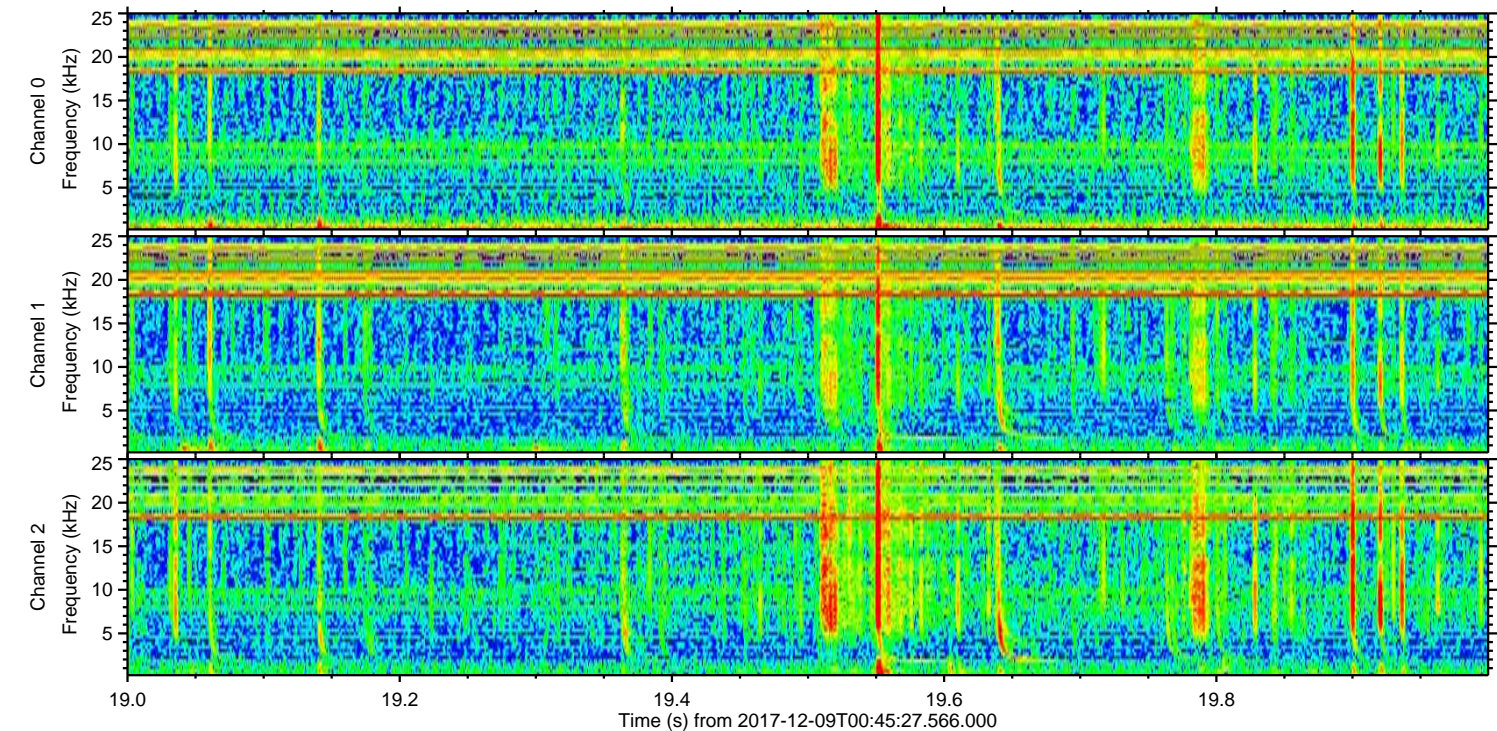
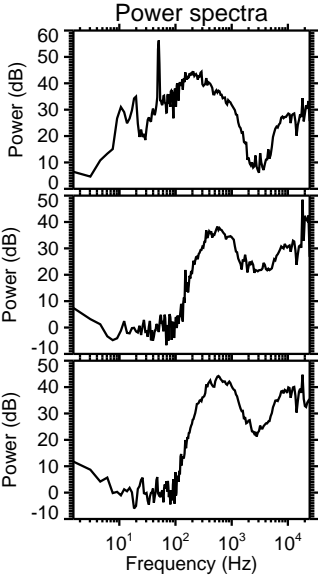
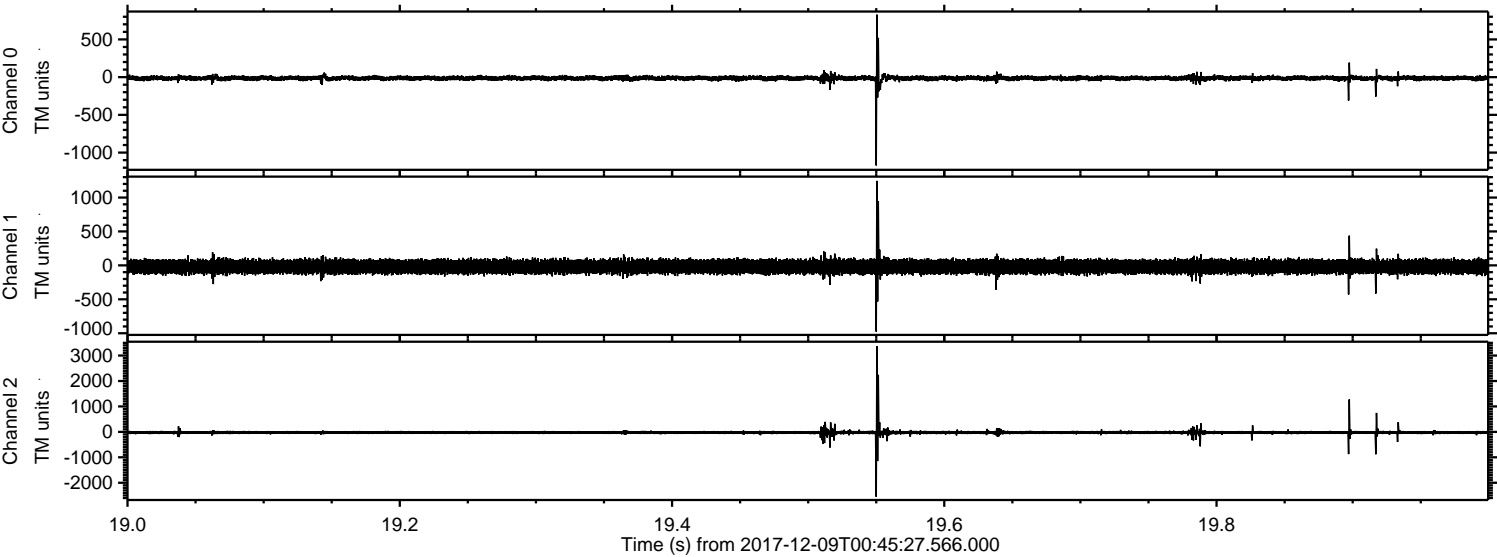


Channel 0
mn: -984
mx: 1125
 μ : -13.4
 σ : 16.8

Channel 1
mn: -1092
mx: 1032
 μ : -18.4
 σ : 52.9

Channel 2
mn: -3403
mx: 2904
 μ : -24.7
 σ : 42.6

Processed Sat Dec 9 01:54:01 2017 by ELM ver.2012-10-06 from 001__elm20171209_004526__dat00.bin

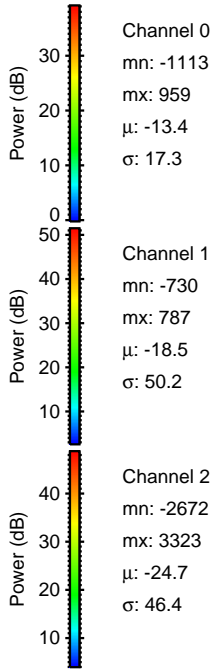
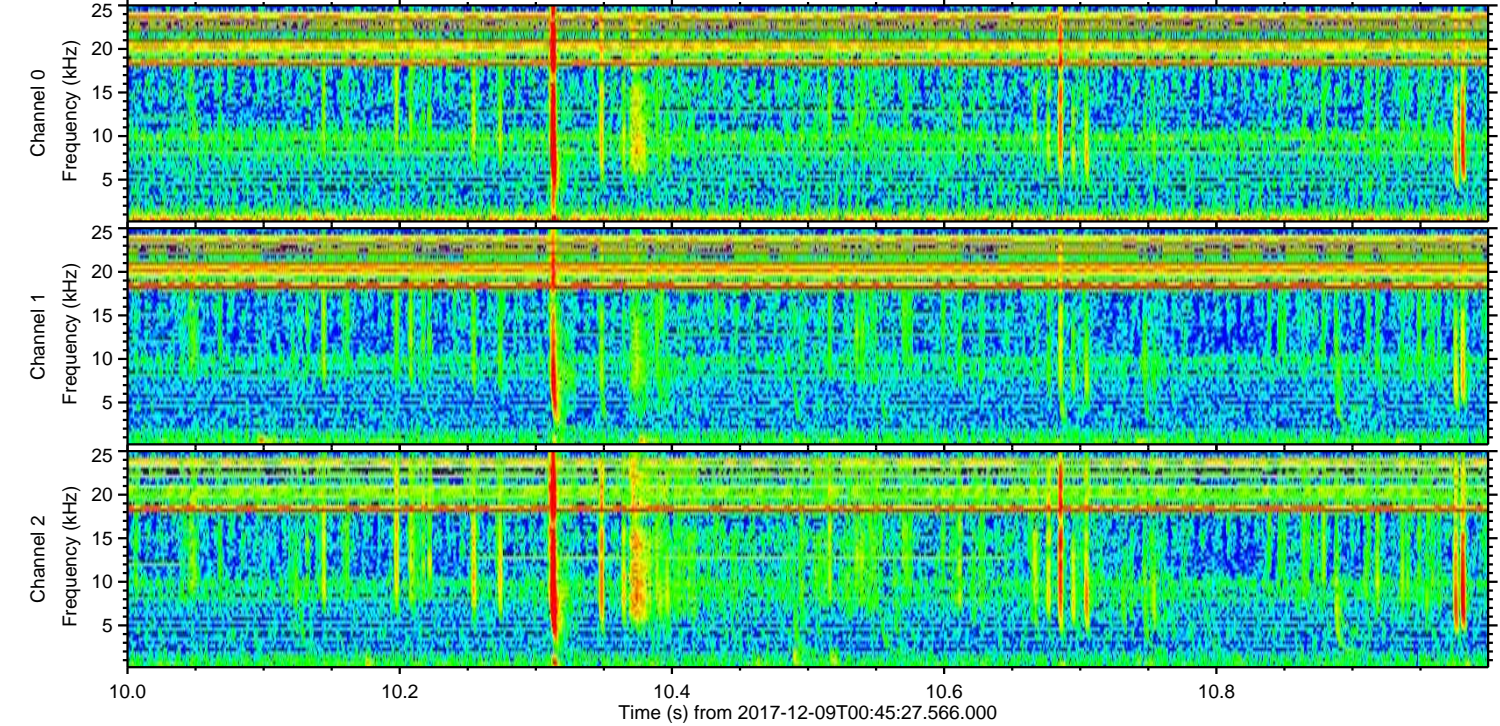
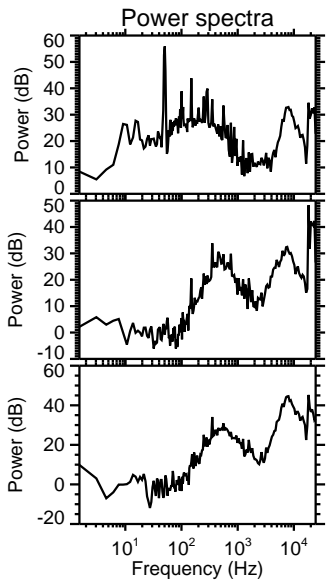
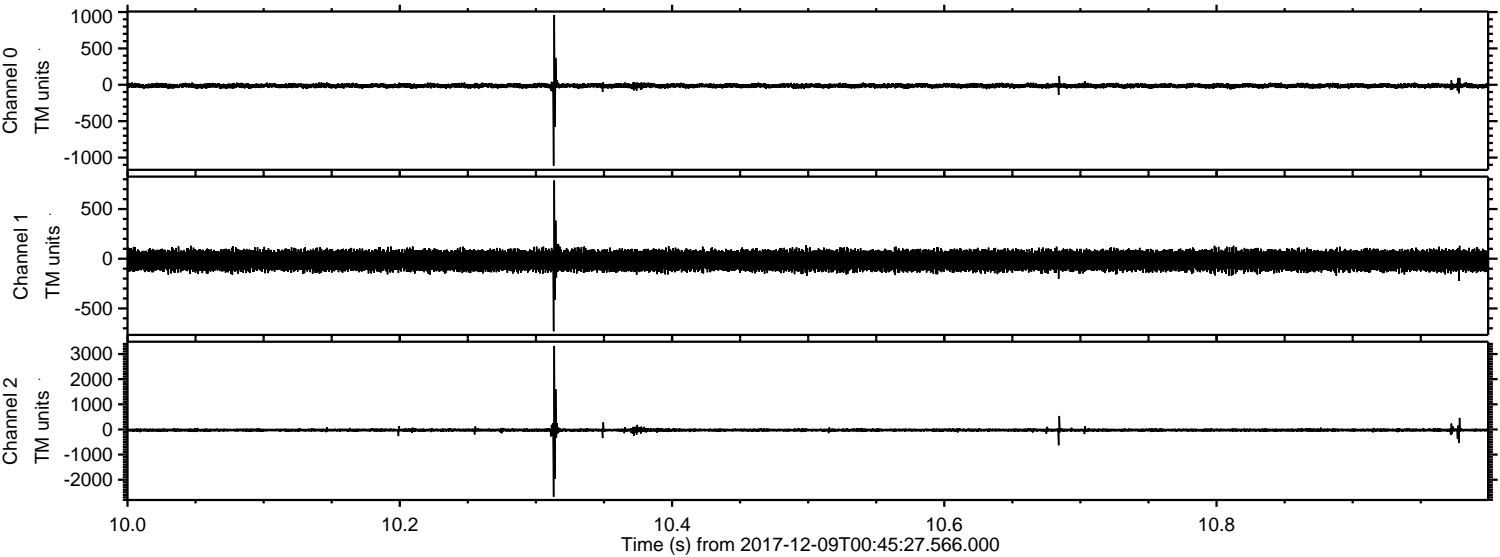


Channel 0
mn: -1170
mx: 828
 μ : -13.4
 σ : 18.5

Channel 1
mn: -976
mx: 1246
 μ : -18.4
 σ : 52.2

Channel 2
mn: -2550
mx: 3375
 μ : -24.7
 σ : 43.0

Processed Sat Dec 9 01:54:02 2017 by ELM ver.2012-10-06 from 001__elm20171209_004526__dat00.bin



Processed Sat Dec 9 01:54:04 2017 by ELM ver.2012-10-06 from 001__elm20171209_004526__dat00.bin

