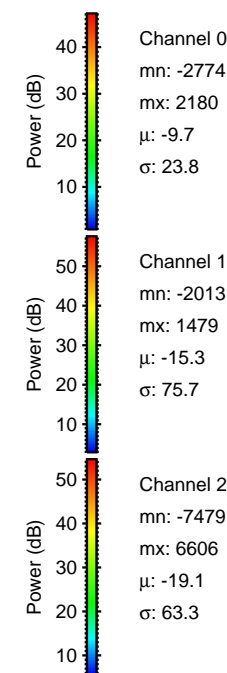
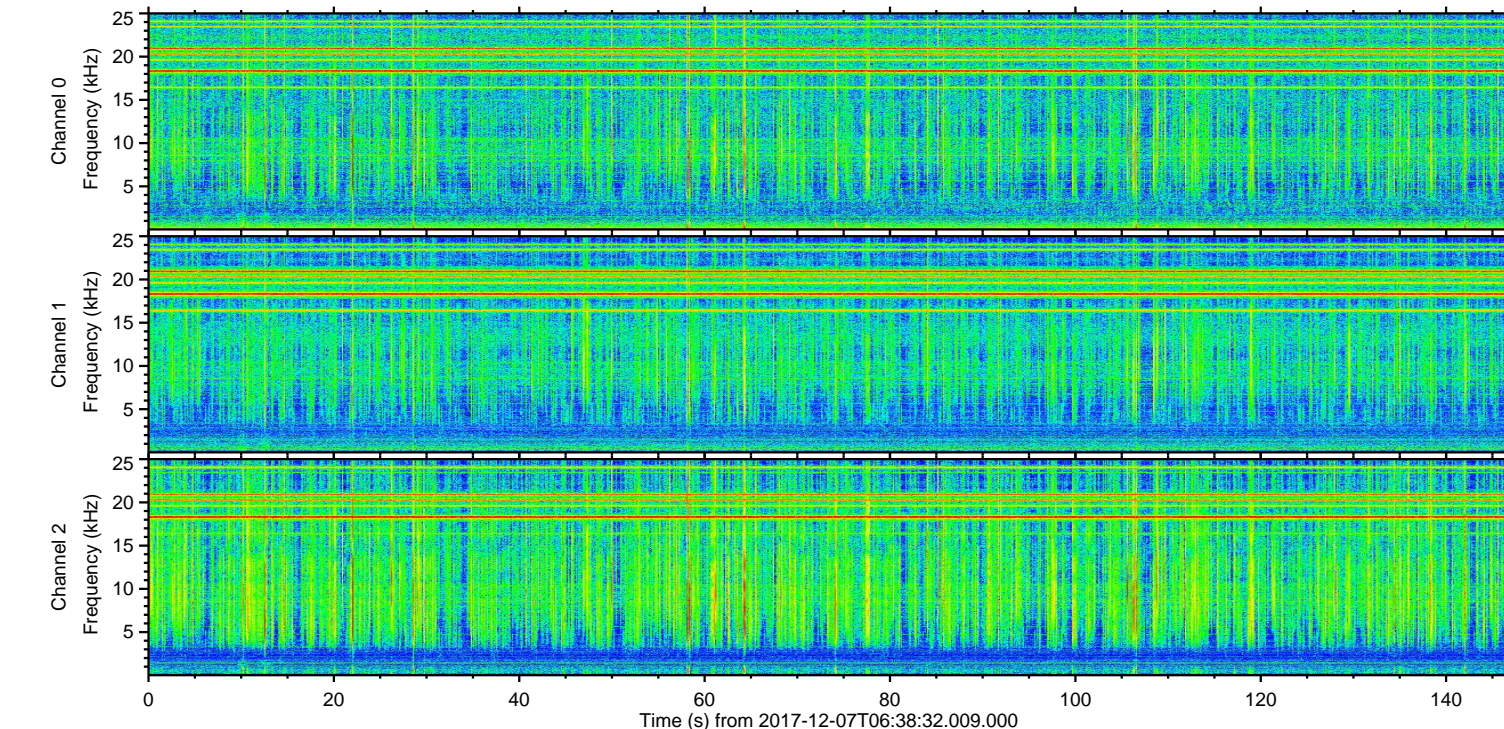
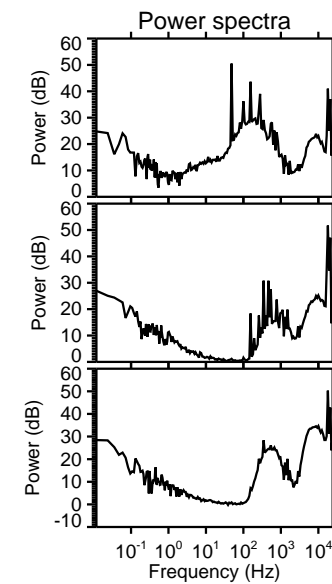
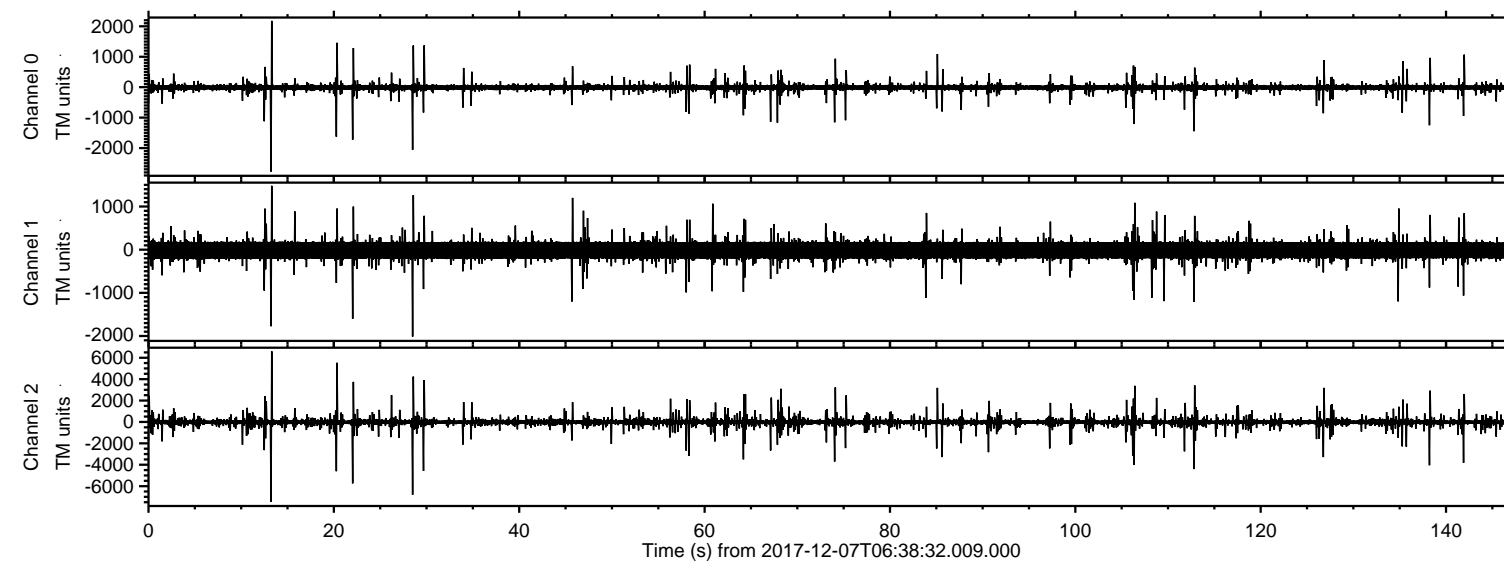
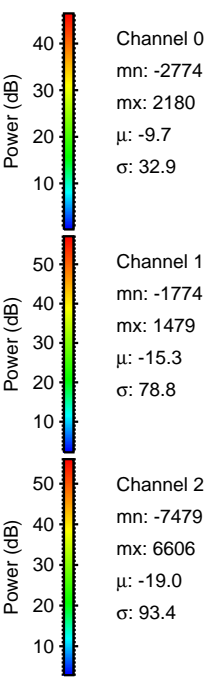
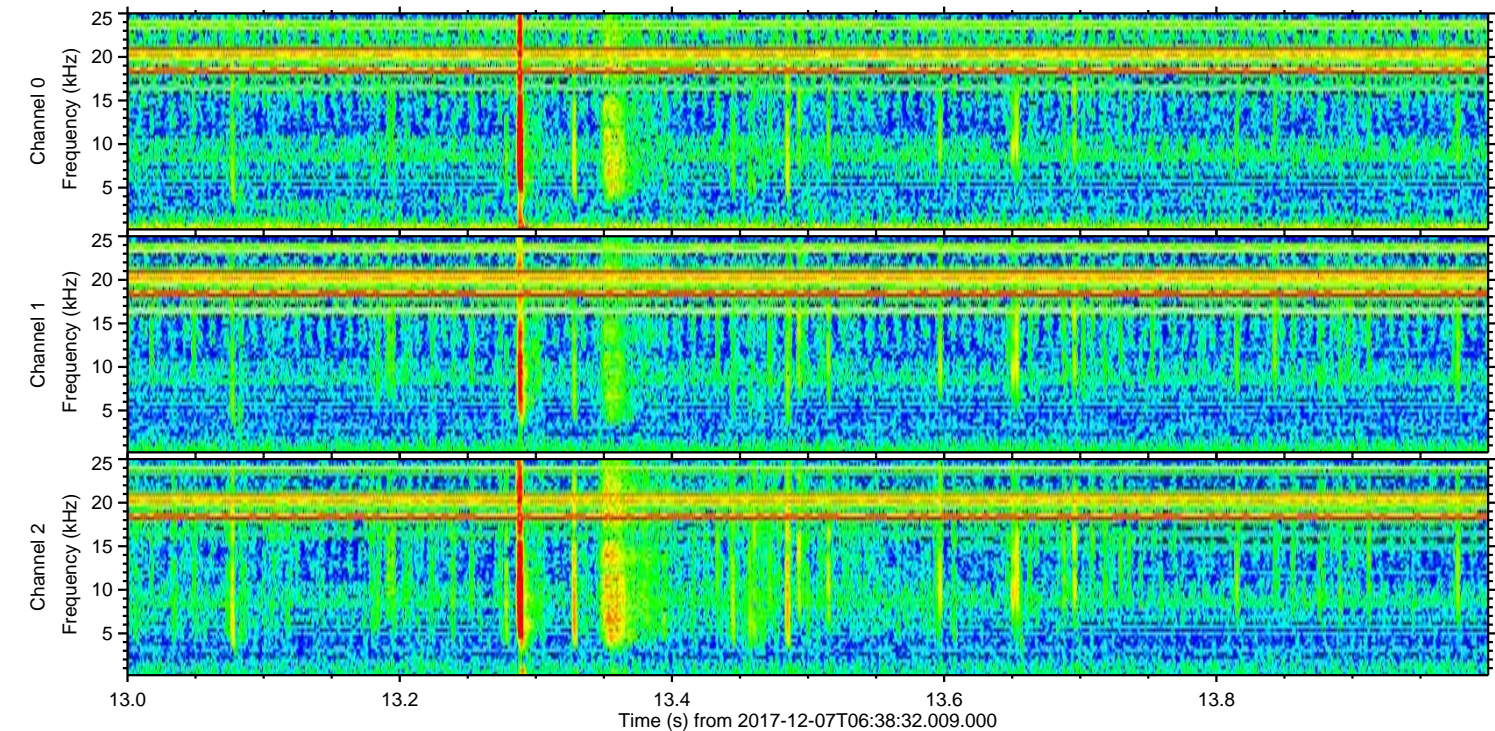
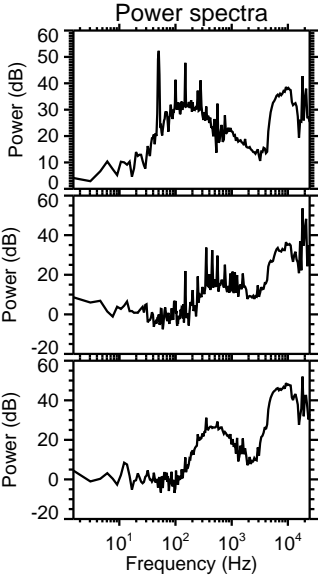
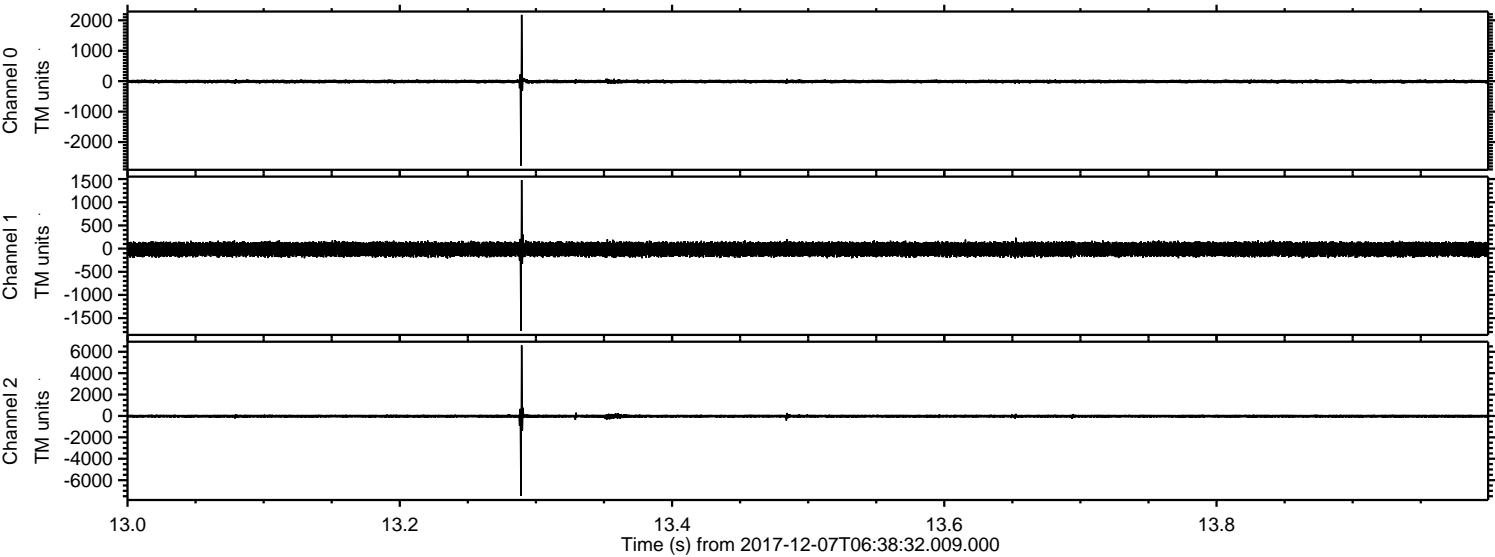


ELMAVAN 3D WAVEFORMS (Measured data sampled at 50 kHz) 51000 packets of 144 samples from 2017-12-07T06:38:32.009.000.

Processed Thu Dec 7 07:46:17 2017 by ELM ver.2012-10-06 from 001__elm20171207_063831__dat00.bin

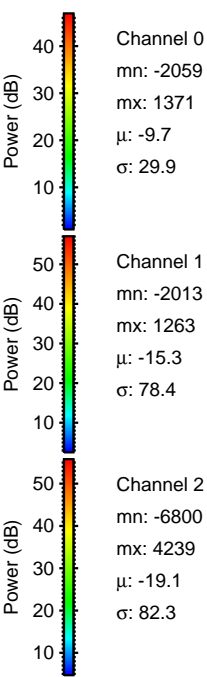
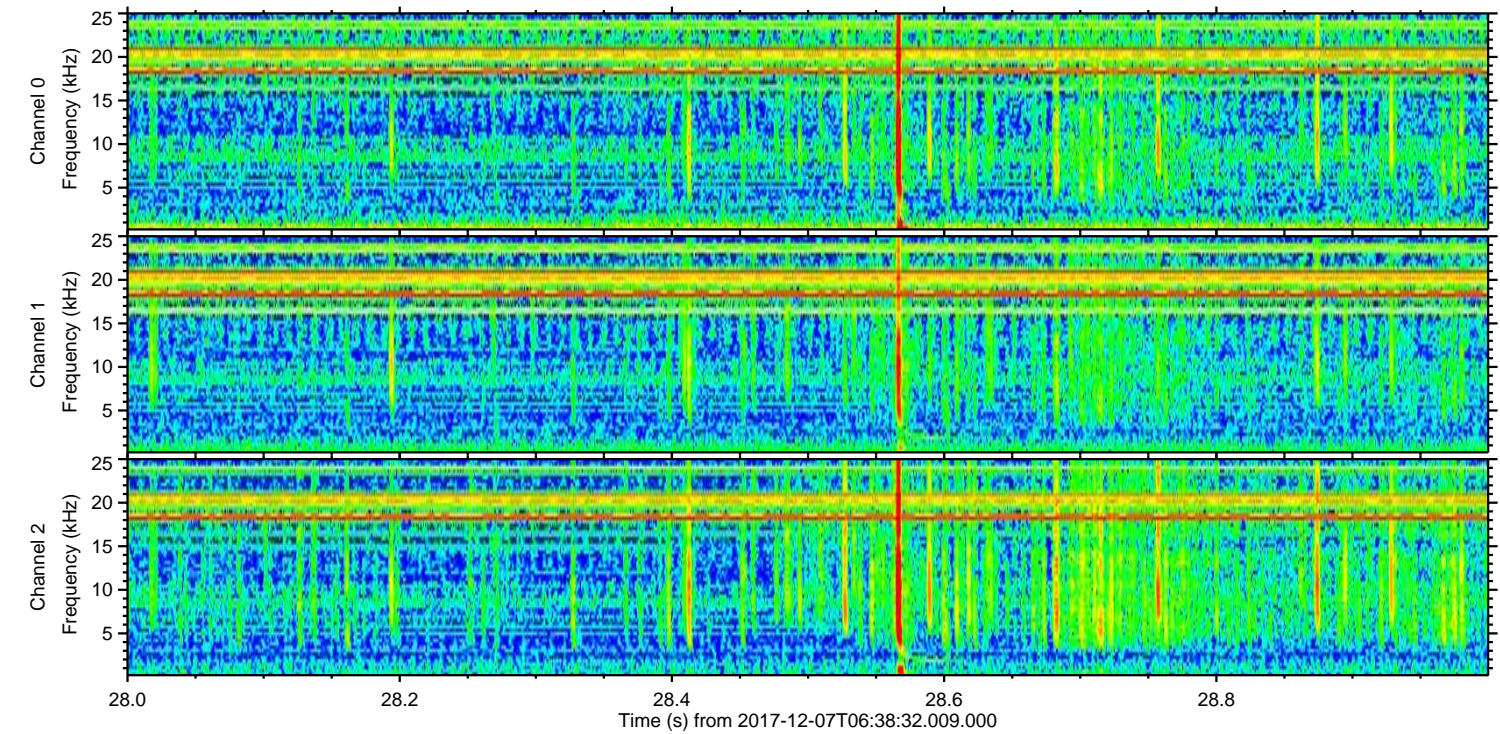
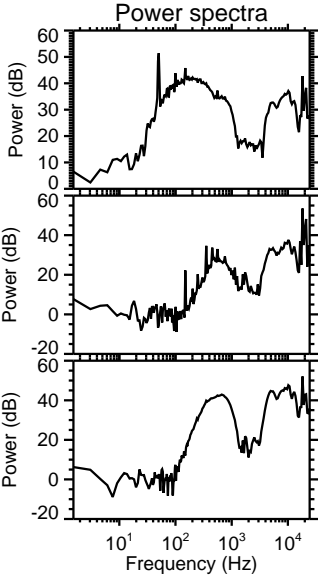
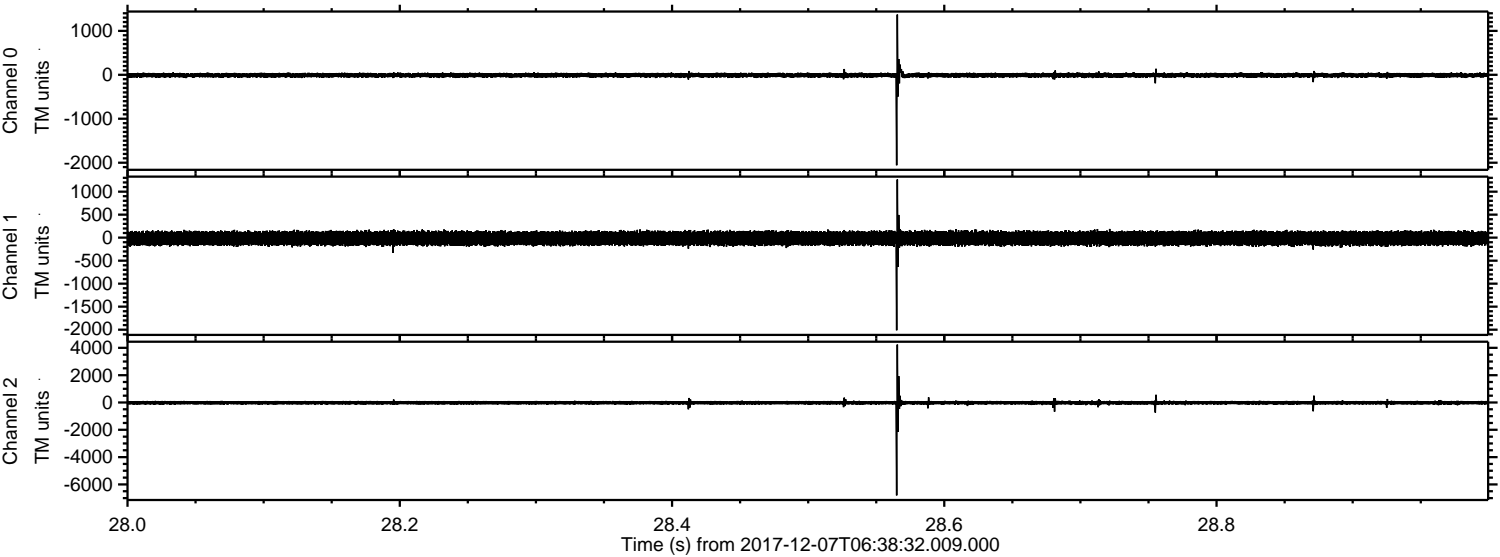


Processed Thu Dec 7 07:46:25 2017 by ELM ver.2012-10-06 from 001__elm20171207_063831__dat00.bin



ELMAVAN 3D WAVEFORMS (Measured data sampled at 50 kHz) 51000 packets of 144 samples from 2017-12-07T06:38:32.009.000. Part 29/147

Processed Thu Dec 7 07:46:25 2017 by ELM ver.2012-10-06 from 001__elm20171207_063831__dat00.bin



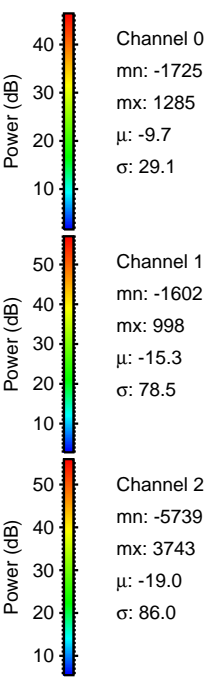
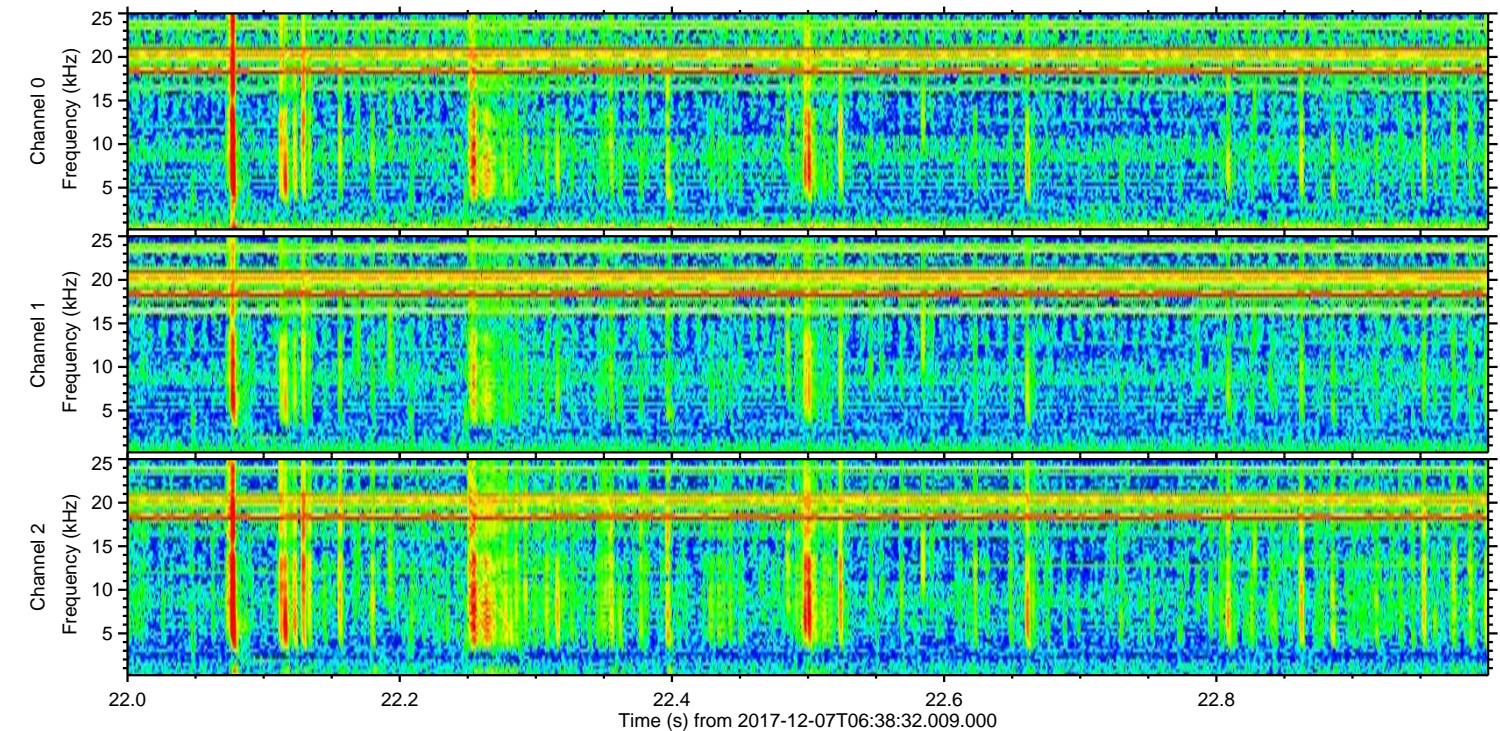
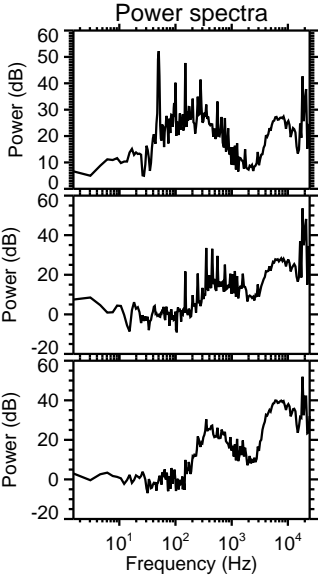
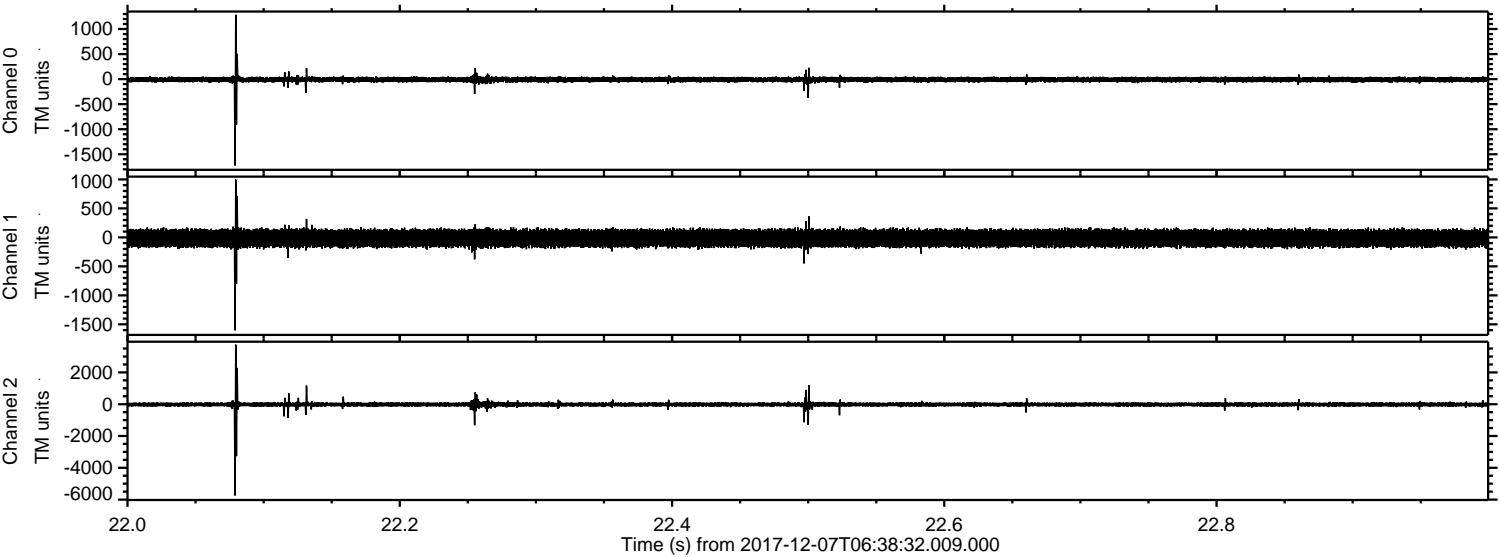
Channel 0
mn: -2059
mx: 1371
 μ : -9.7
 σ : 29.9

Channel 1
mn: -2013
mx: 1263
 μ : -15.3
 σ : 78.4

Channel 2
mn: -6800
mx: 4239
 μ : -19.1
 σ : 82.3

ELMAVAN 3D WAVEFORMS (Measured data sampled at 50 kHz) 51000 packets of 144 samples from 2017-12-07T06:38:32.009.000. Part 23/147

Processed Thu Dec 7 07:46:26 2017 by ELM ver.2012-10-06 from 001__elm20171207_063831__dat00.bin



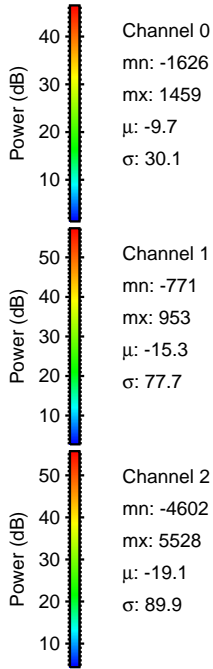
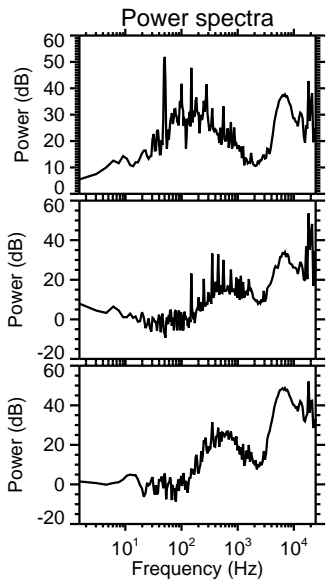
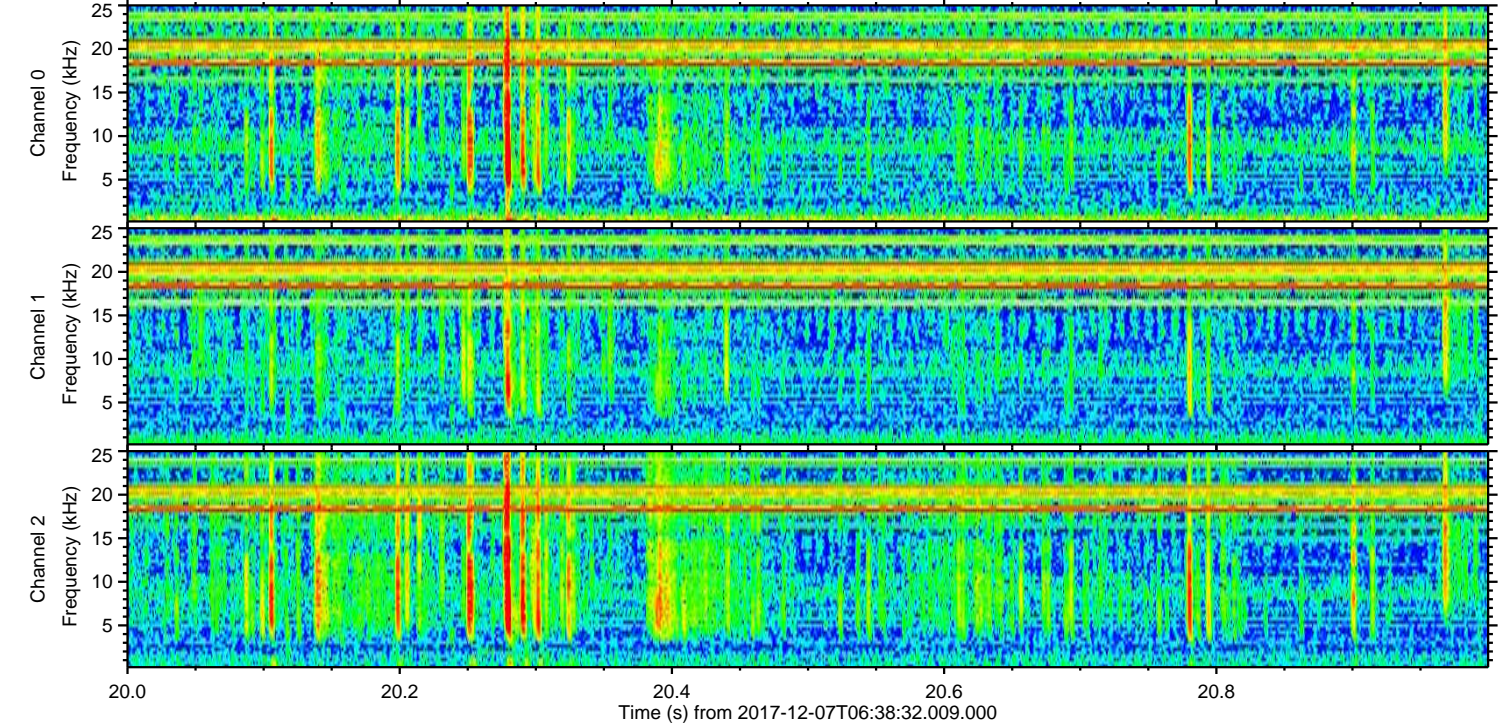
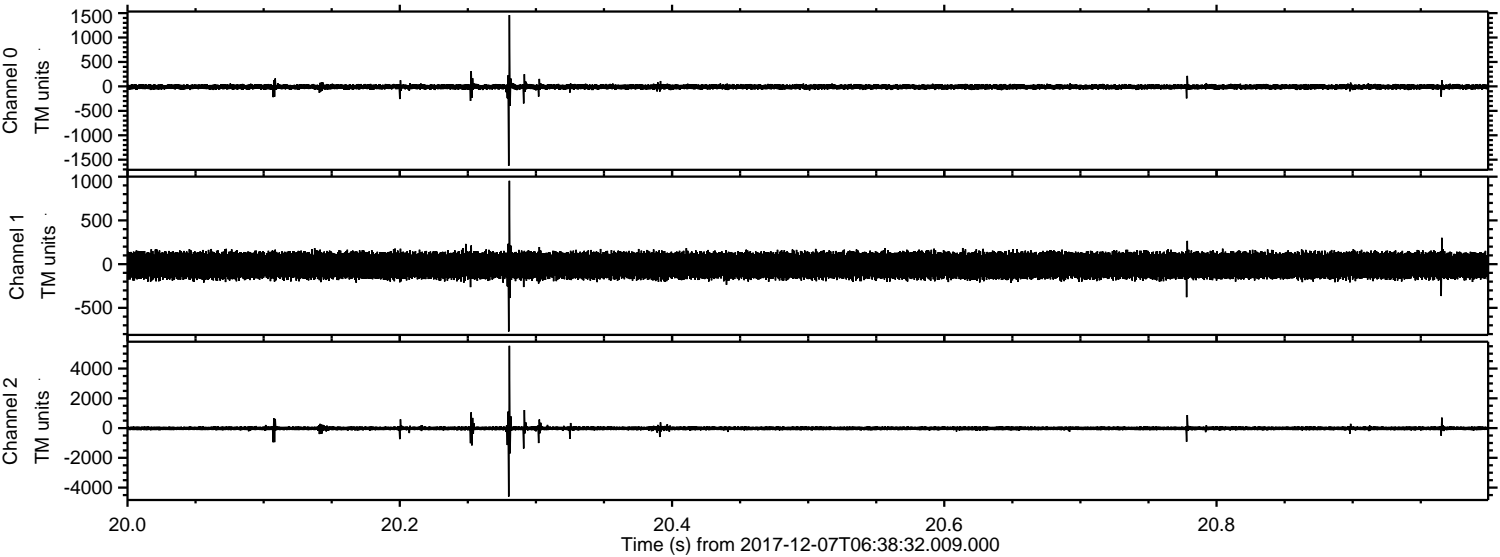
Channel 0
mn: -1725
mx: 1285
 μ : -9.7
 σ : 29.1

Channel 1
mn: -1602
mx: 998
 μ : -15.3
 σ : 78.5

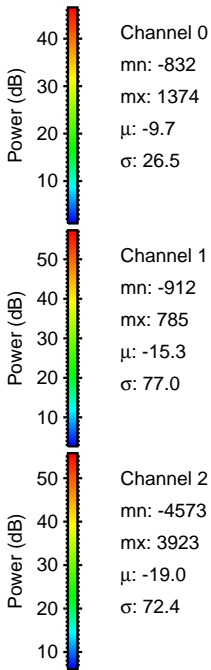
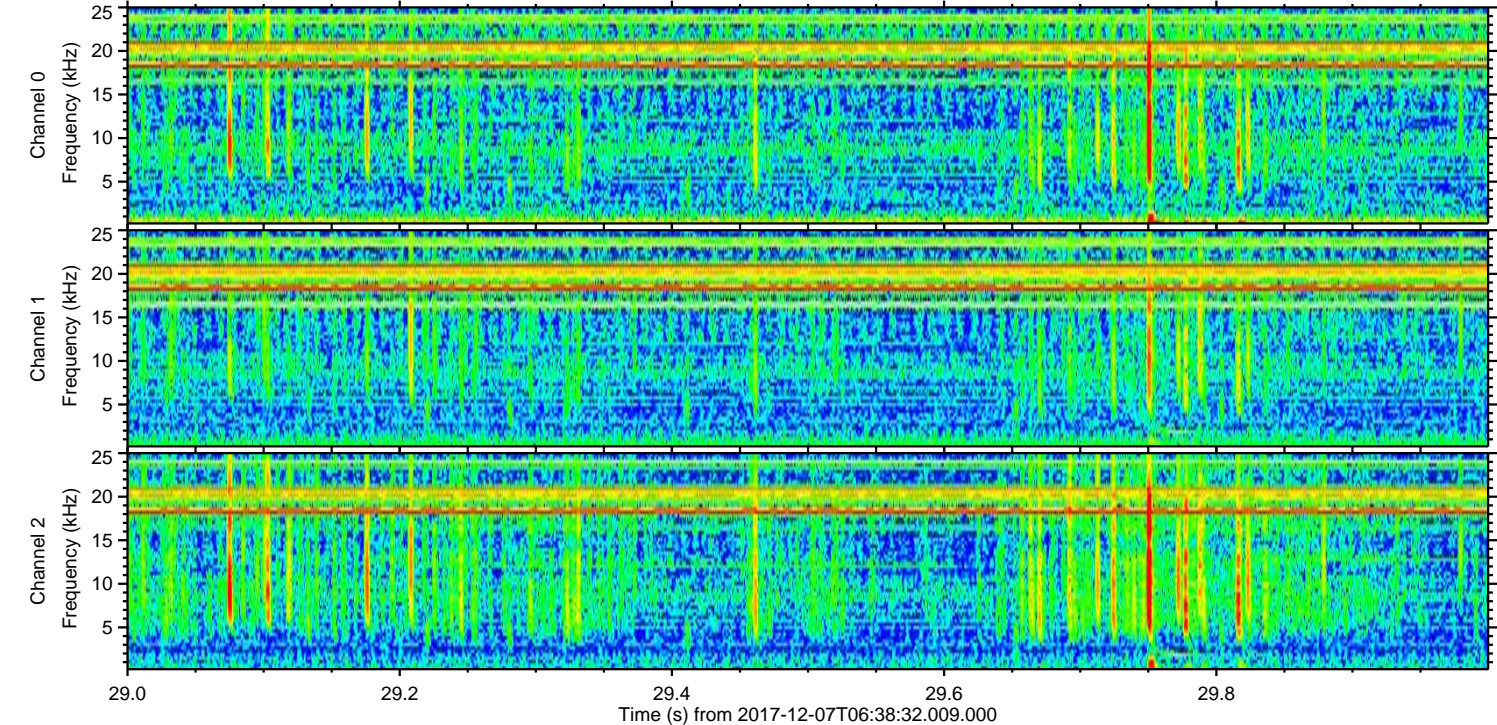
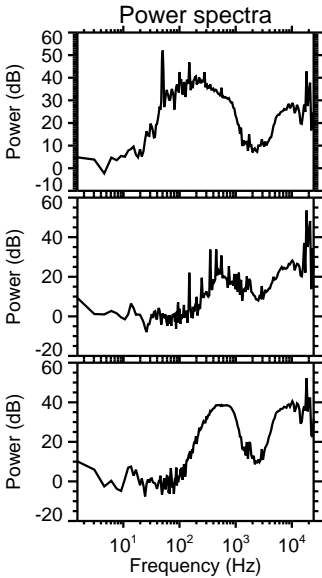
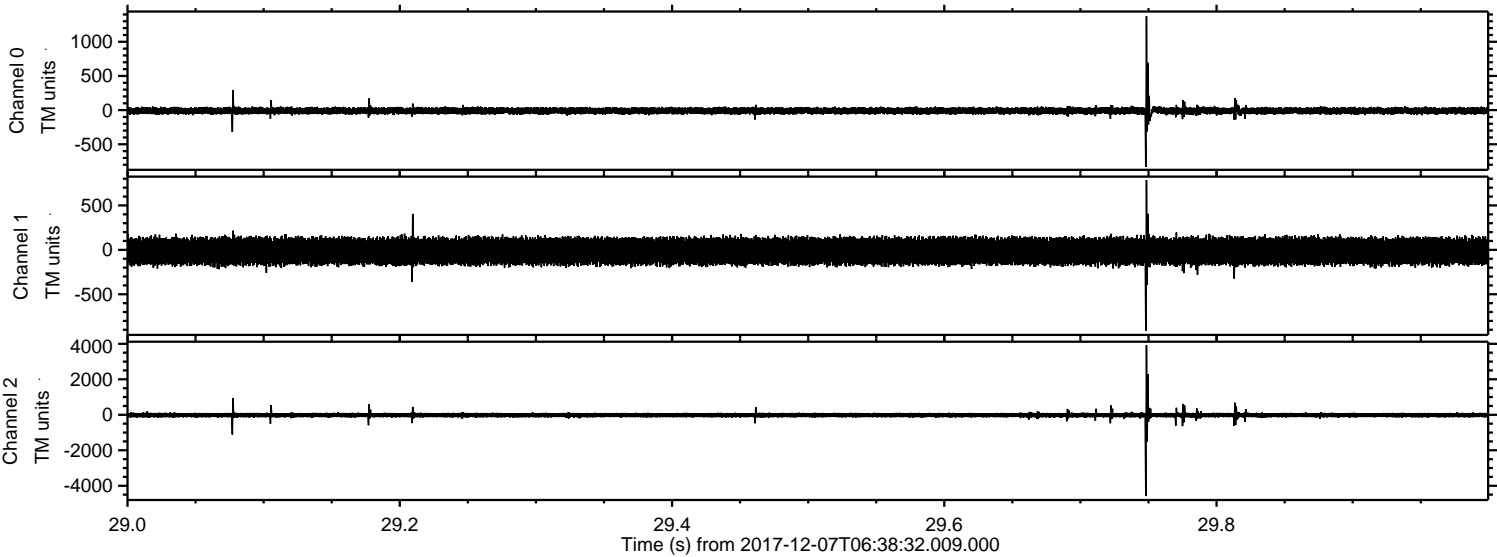
Channel 2
mn: -5739
mx: 3743
 μ : -19.0
 σ : 86.0

ELMAVAN 3D WAVEFORMS (Measured data sampled at 50 kHz) 51000 packets of 144 samples from 2017-12-07T06:38:32.009.000. Part 21/147

Processed Thu Dec 7 07:46:27 2017 by ELM ver.2012-10-06 from 001__elm20171207_063831__dat00.bin

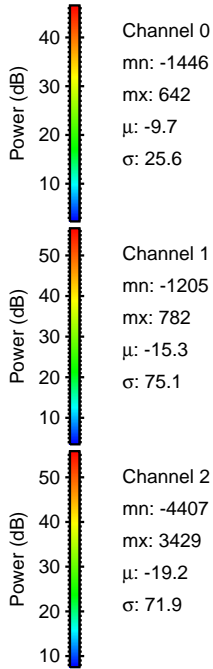
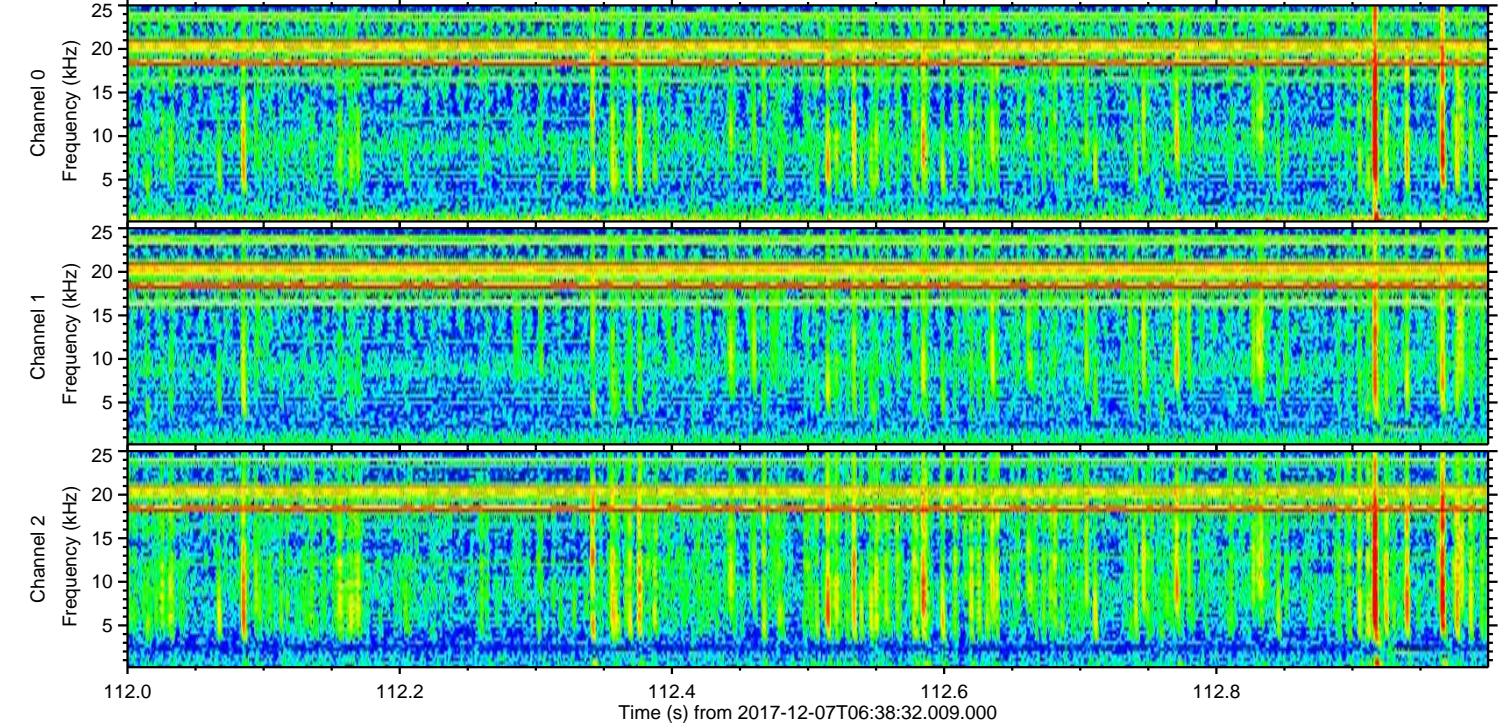
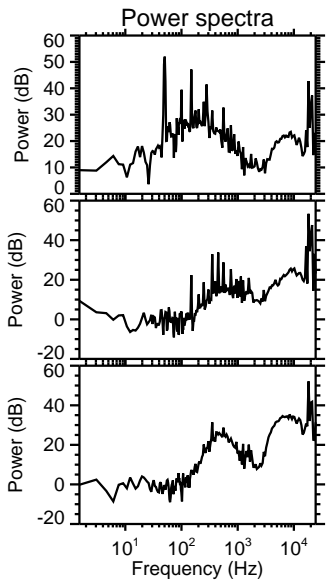
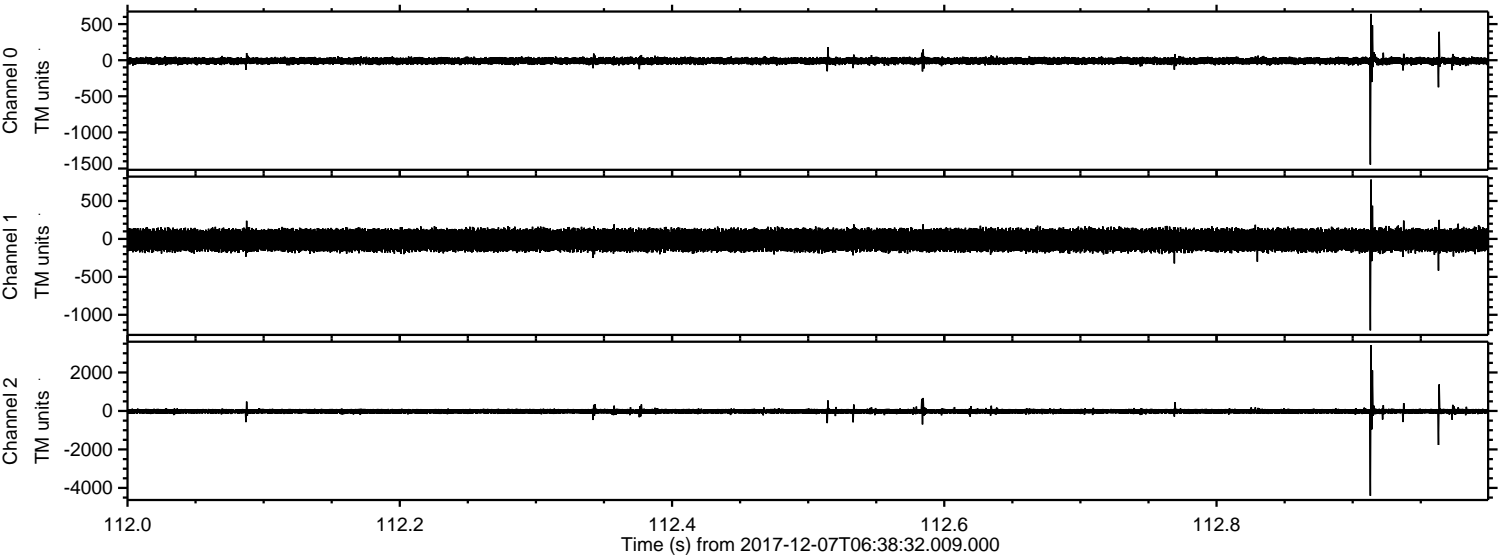


Processed Thu Dec 7 07:46:28 2017 by ELM ver.2012-10-06 from 001__elm20171207_063831__dat00.bin



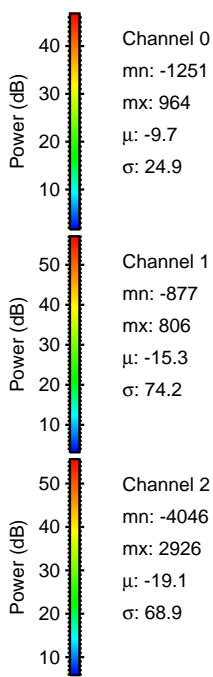
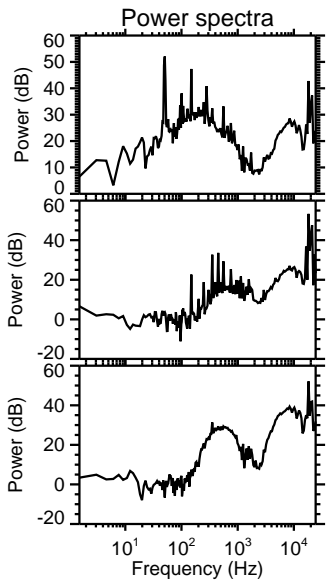
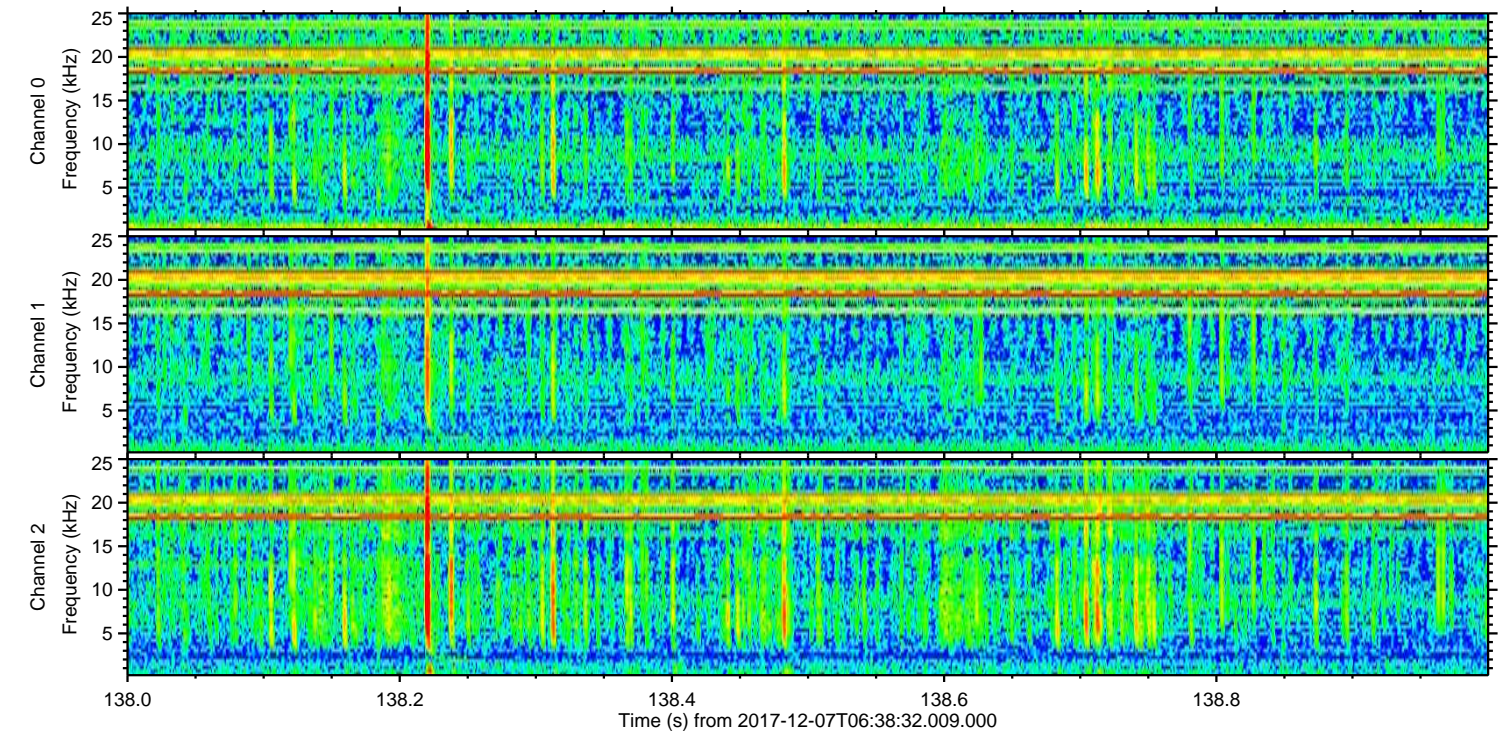
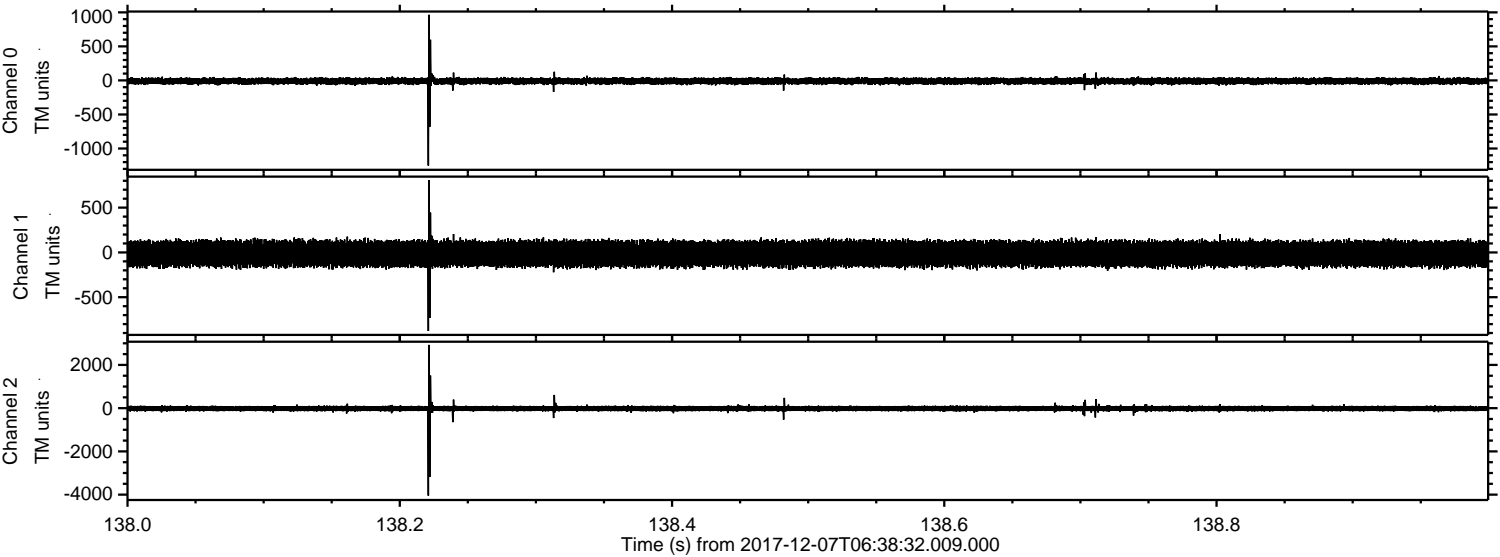
ELMAVAN 3D WAVEFORMS (Measured data sampled at 50 kHz) 51000 packets of 144 samples from 2017-12-07T06:38:32.009.000. Part 113/147

Processed Thu Dec 7 07:46:29 2017 by ELM ver.2012-10-06 from 001__elm20171207_063831__dat00.bin



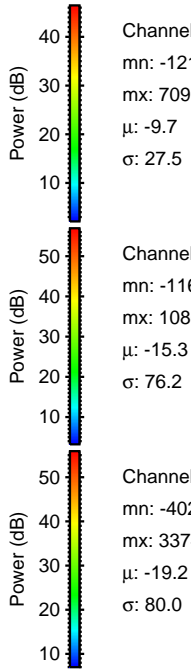
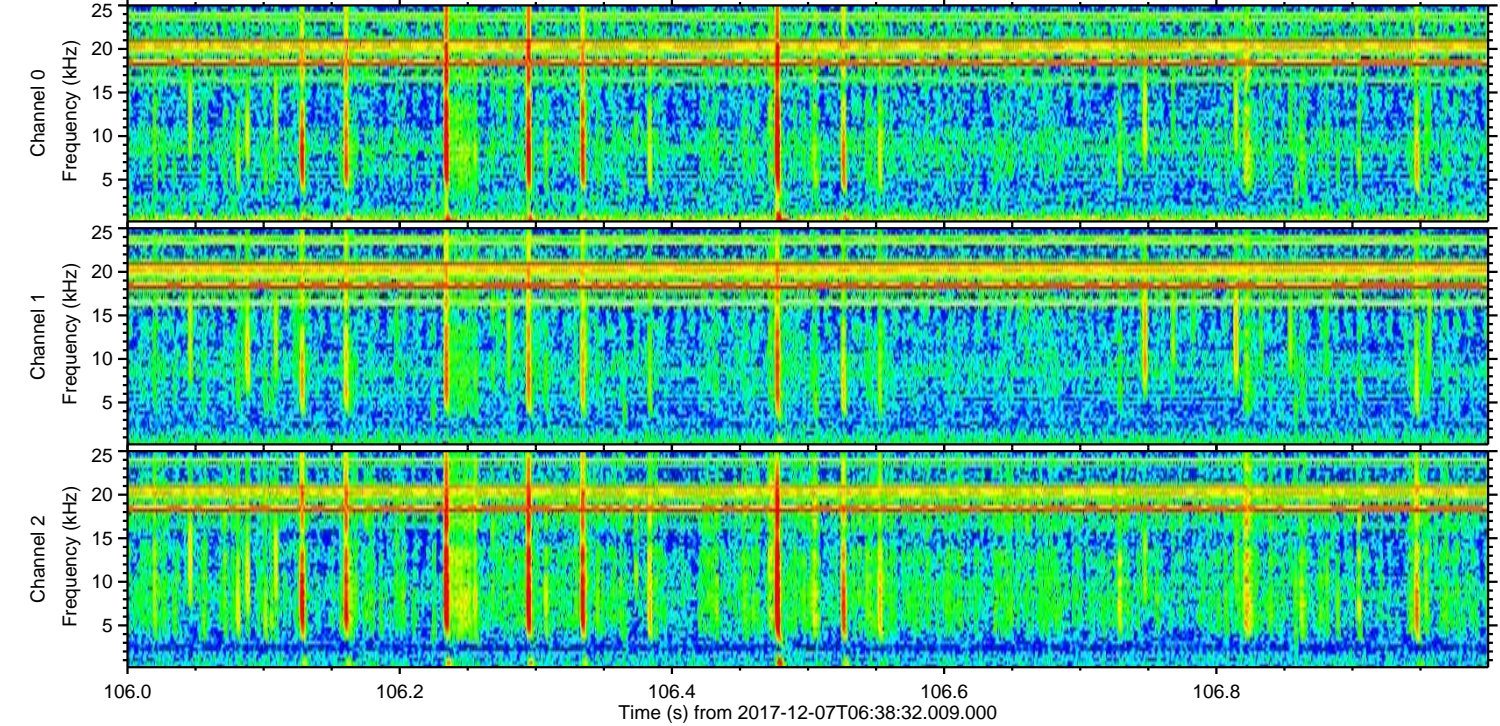
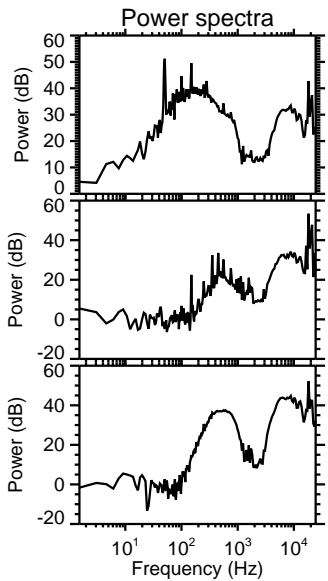
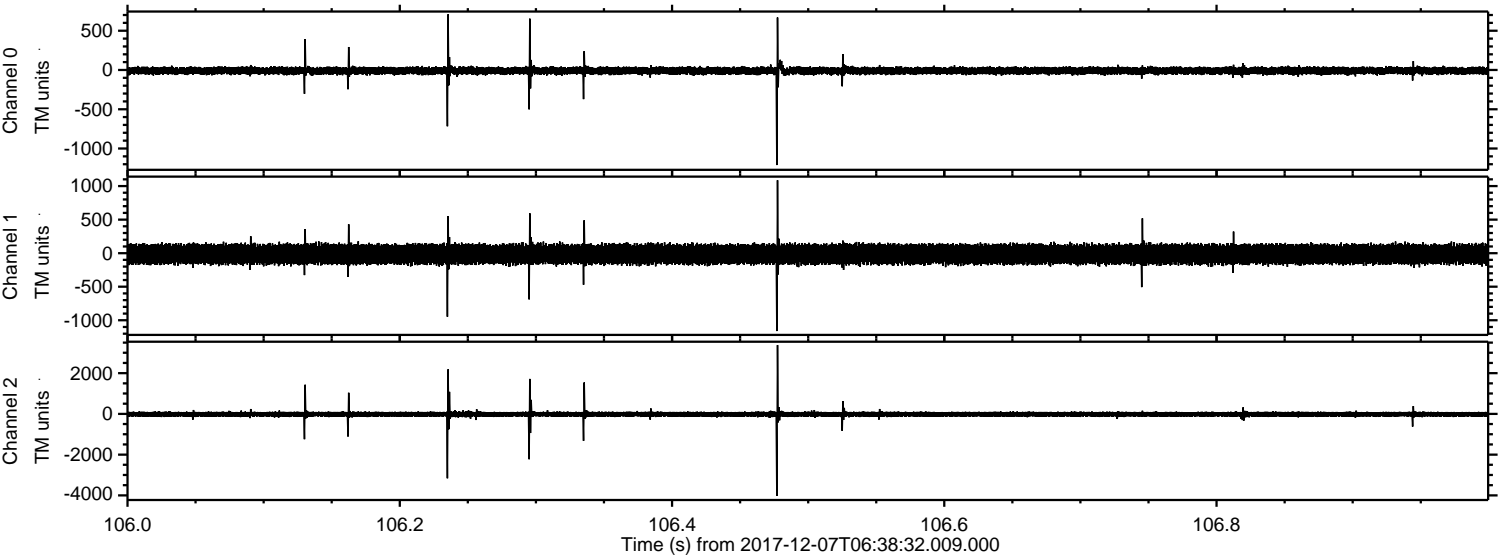
ELMAVAN 3D WAVEFORMS (Measured data sampled at 50 kHz) 51000 packets of 144 samples from 2017-12-07T06:38:32.009.000. Part 139/147

Processed Thu Dec 7 07:46:29 2017 by ELM ver.2012-10-06 from 001__elm20171207_063831__dat00.bin



ELMAVAN 3D WAVEFORMS (Measured data sampled at 50 kHz) 51000 packets of 144 samples from 2017-12-07T06:38:32.009.000. Part 107/147

Processed Thu Dec 7 07:46:30 2017 by ELM ver.2012-10-06 from 001__elm20171207_063831__dat00.bin



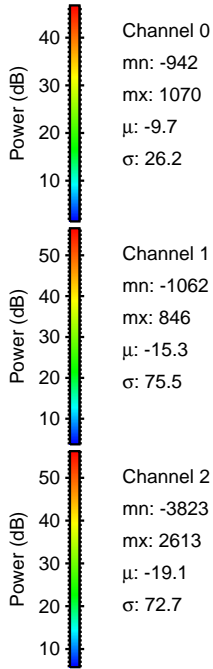
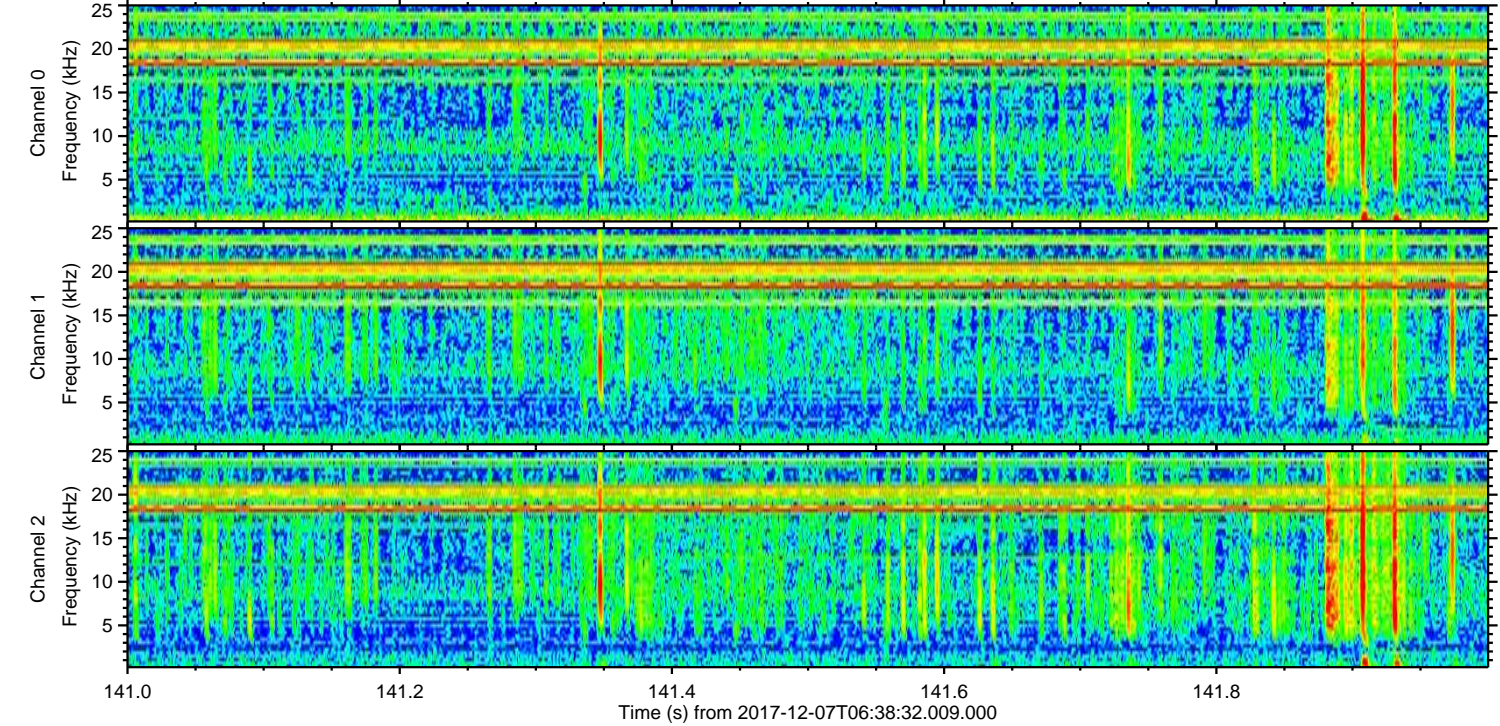
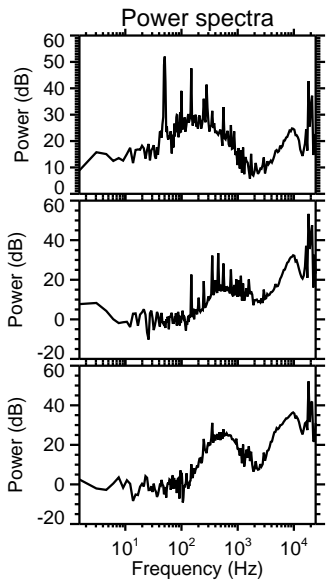
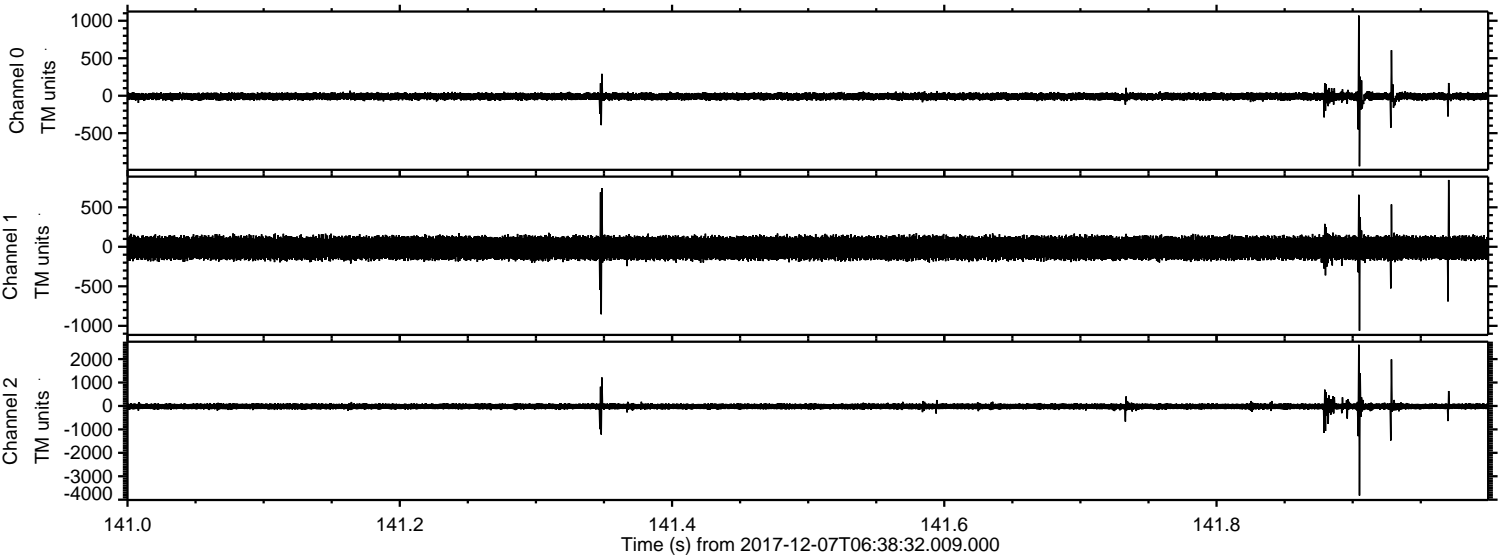
Channel 0
mn: -1211
mx: 709
 μ : -9.7
 σ : 27.5

Channel 1
mn: -1160
mx: 1086
 μ : -15.3
 σ : 76.2

Channel 2
mn: -4026
mx: 3374
 μ : -19.2
 σ : 80.0

ELMAVAN 3D WAVEFORMS (Measured data sampled at 50 kHz) 51000 packets of 144 samples from 2017-12-07T06:38:32.009.000. Part 142/147

Processed Thu Dec 7 07:46:31 2017 by ELM ver.2012-10-06 from 001__elm20171207_063831__dat00.bin



ELMAVAN 3D WAVEFORMS (Measured data sampled at 50 kHz) 51000 packets of 144 samples from 2017-12-07T06:38:32.009.000. Part 34/147

