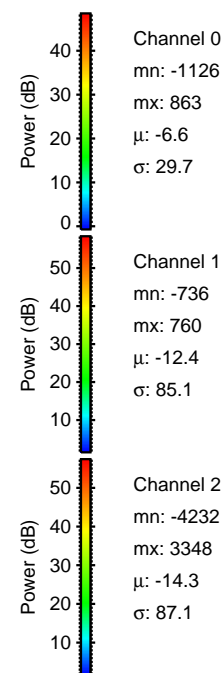
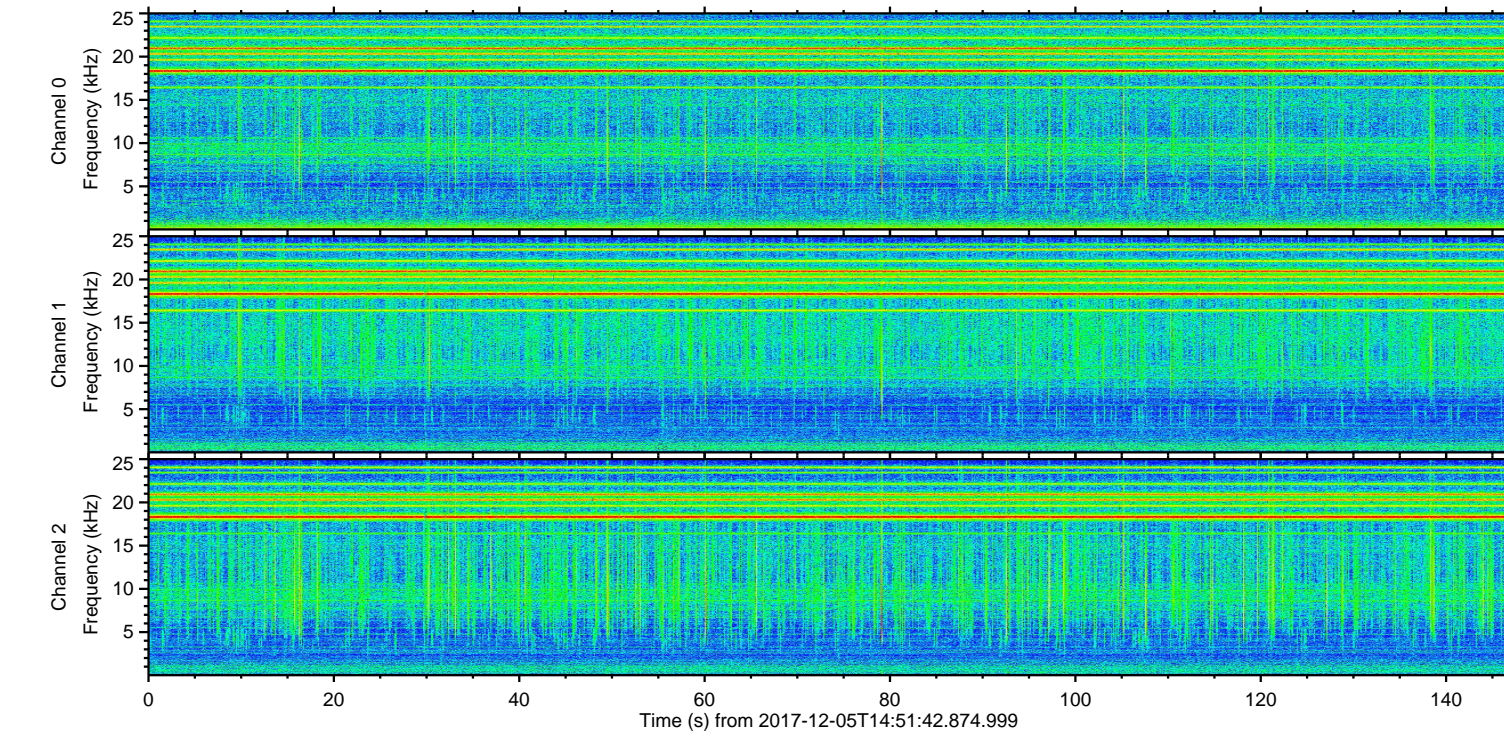
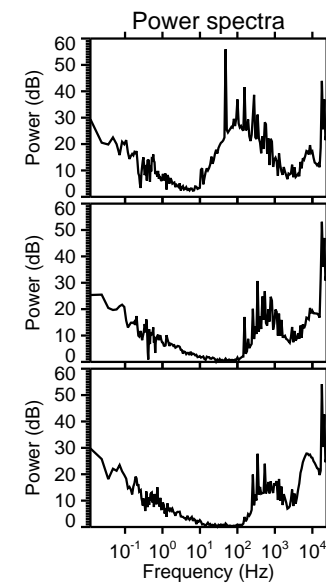
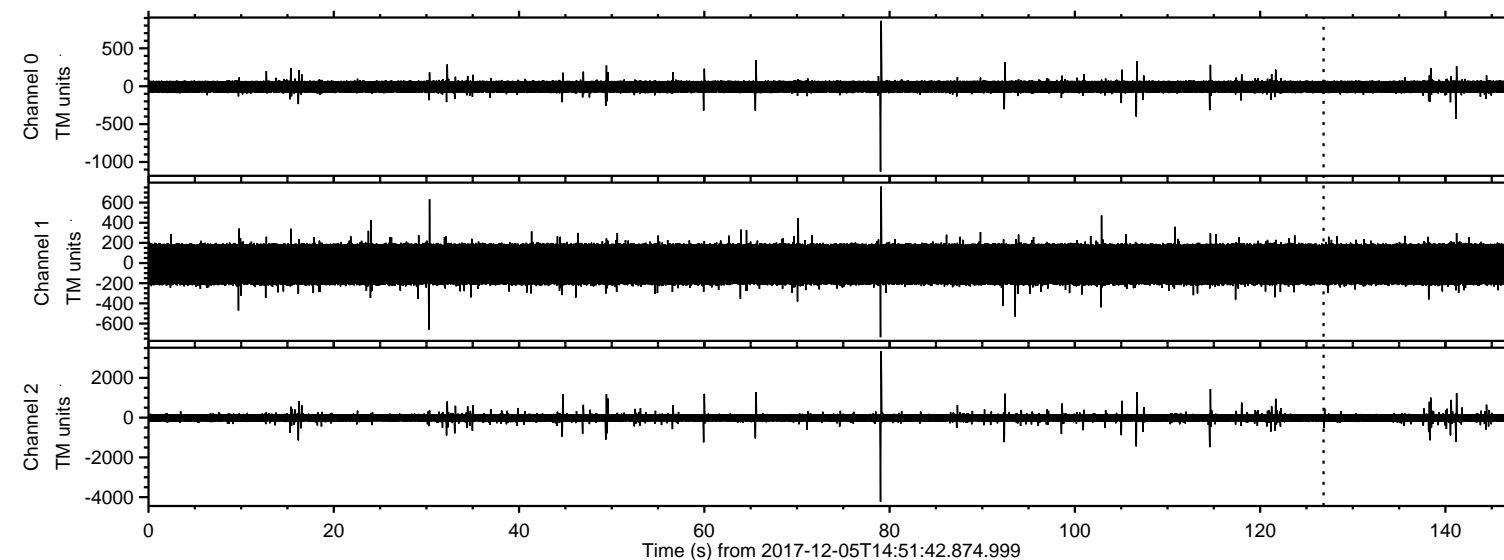


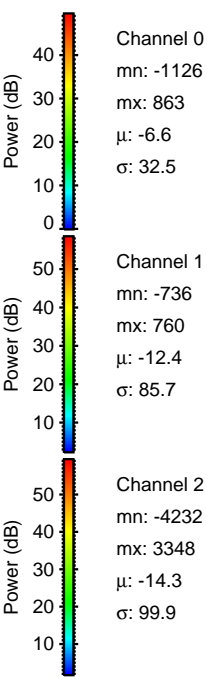
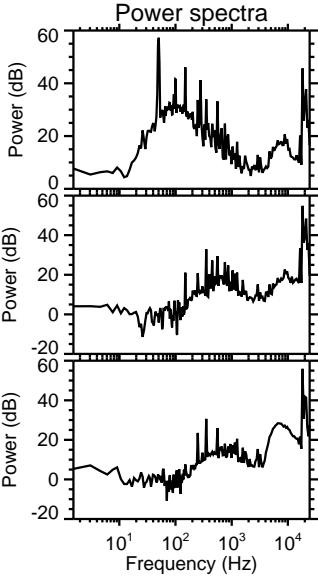
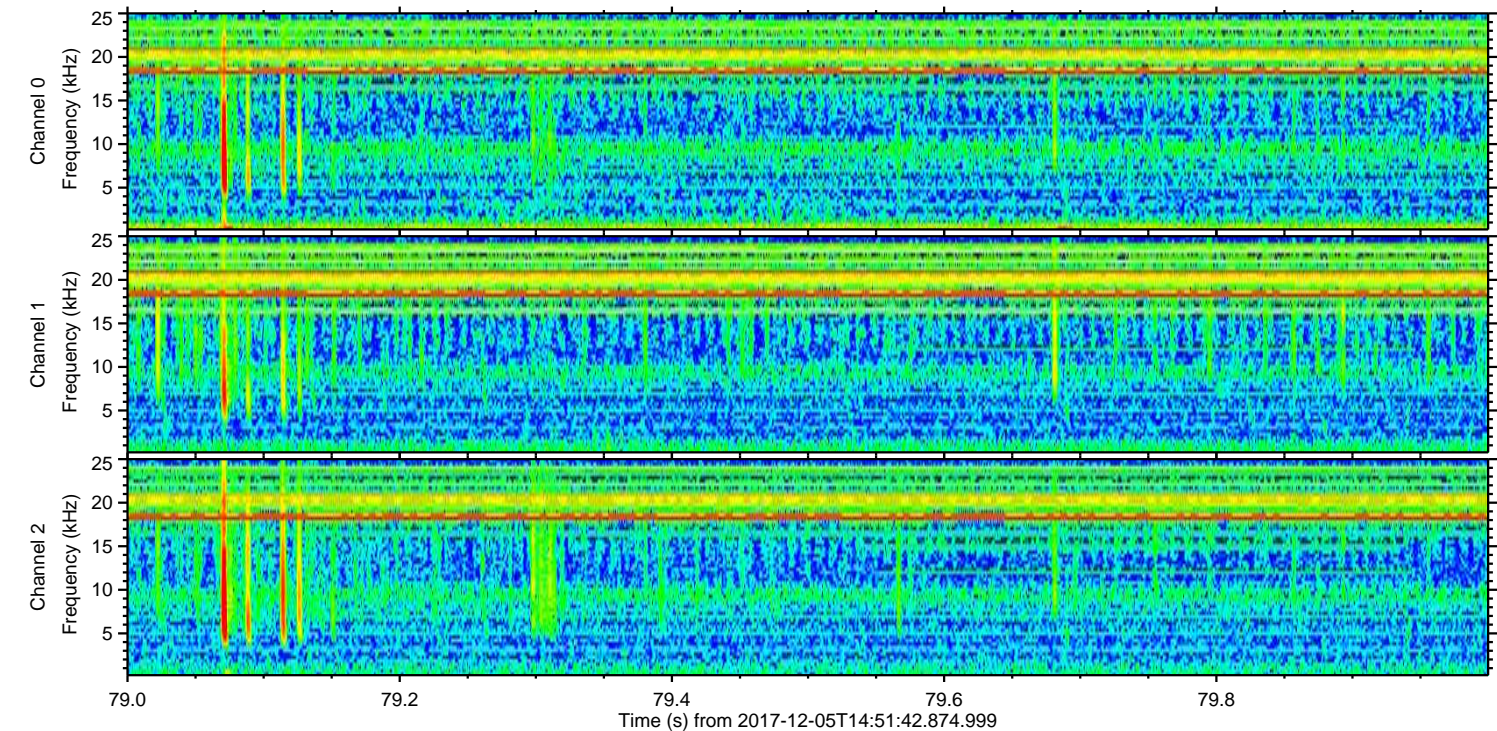
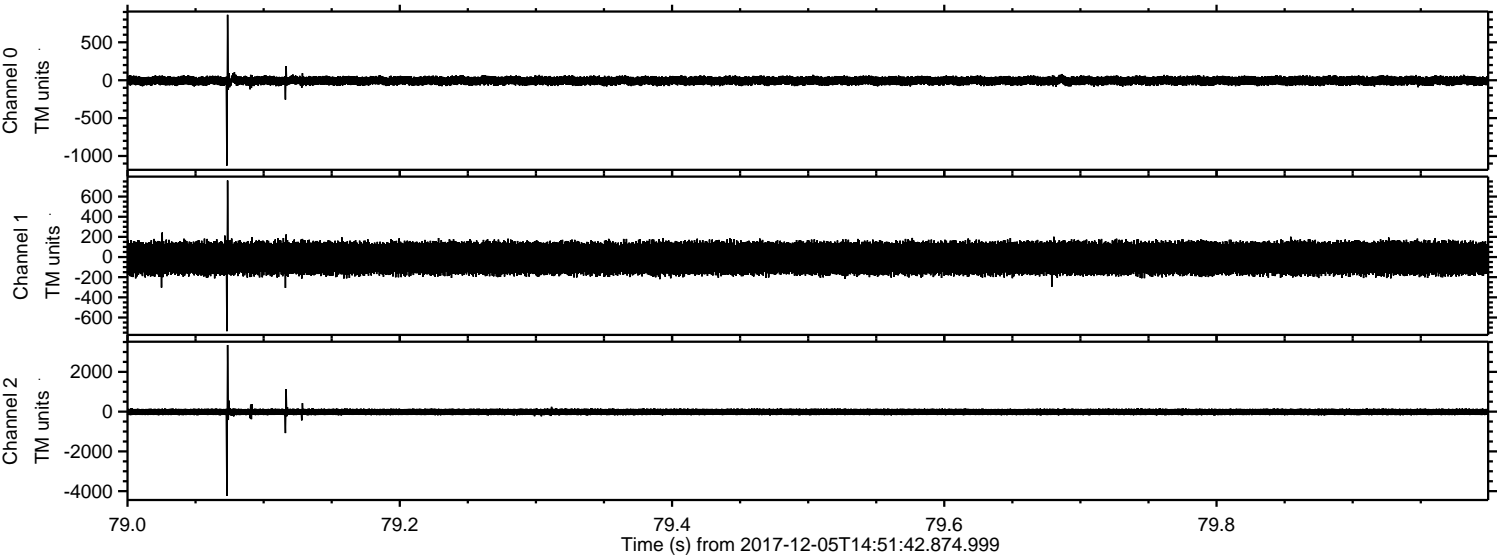
ELMAVAN 3D WAVEFORMS (Measured data sampled at 50 kHz) 50999 packets of 144 samples from 2017-12-05T14:51:42.874.999.

Processed Tue Dec 5 15:59:50 2017 by ELM ver.2012-10-06 from 001__elm20171205_145141__dat00.bin



ELMAVAN 3D WAVEFORMS (Measured data sampled at 50 kHz) 50999 packets of 144 samples from 2017-12-05T14:51:42.874.999. Part 80/147

Processed Tue Dec 5 15:59:57 2017 by ELM ver.2012-10-06 from 001__elm20171205_145141__dat00.bin



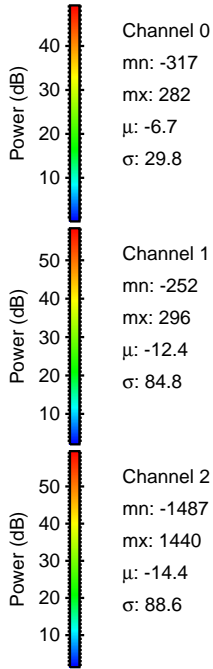
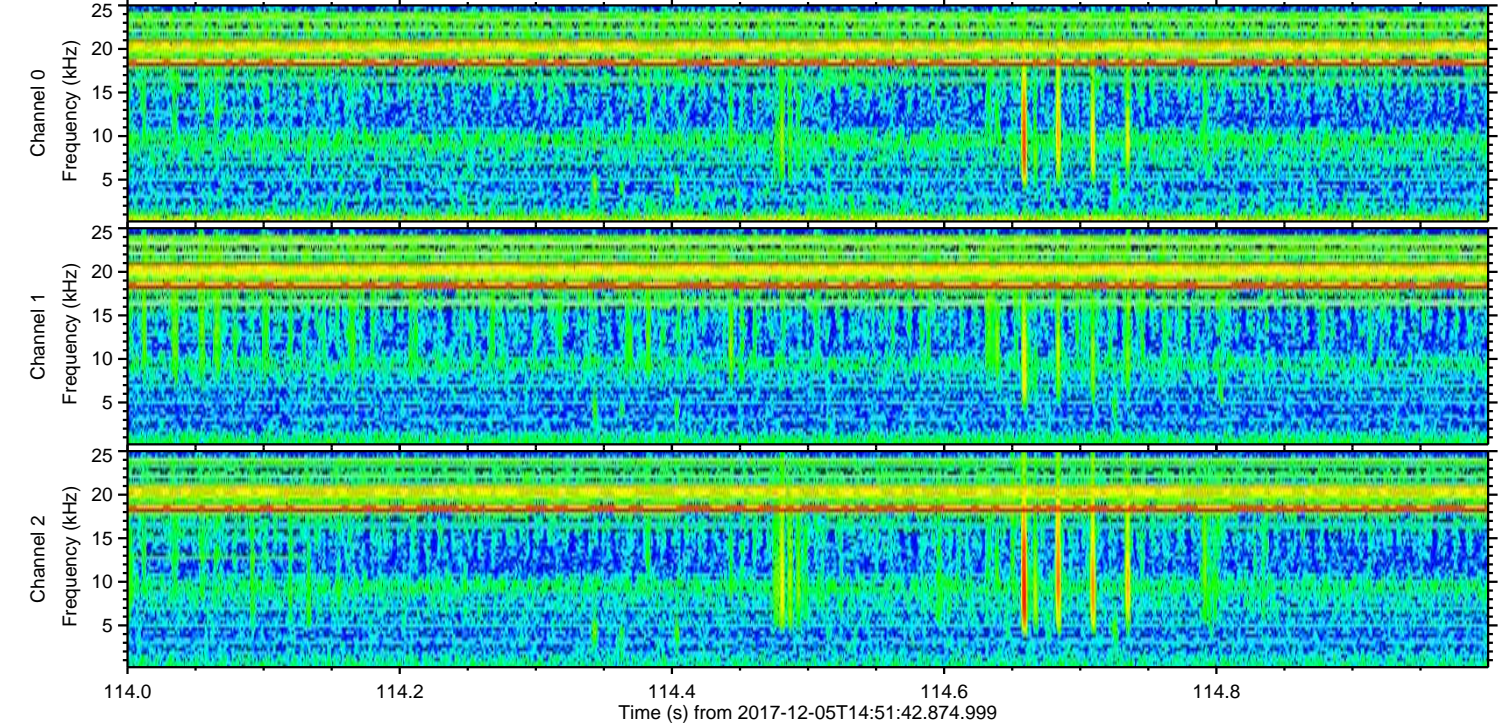
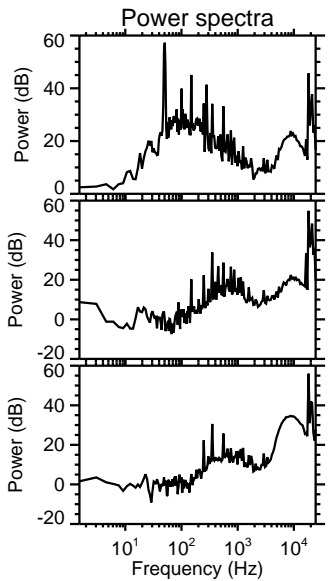
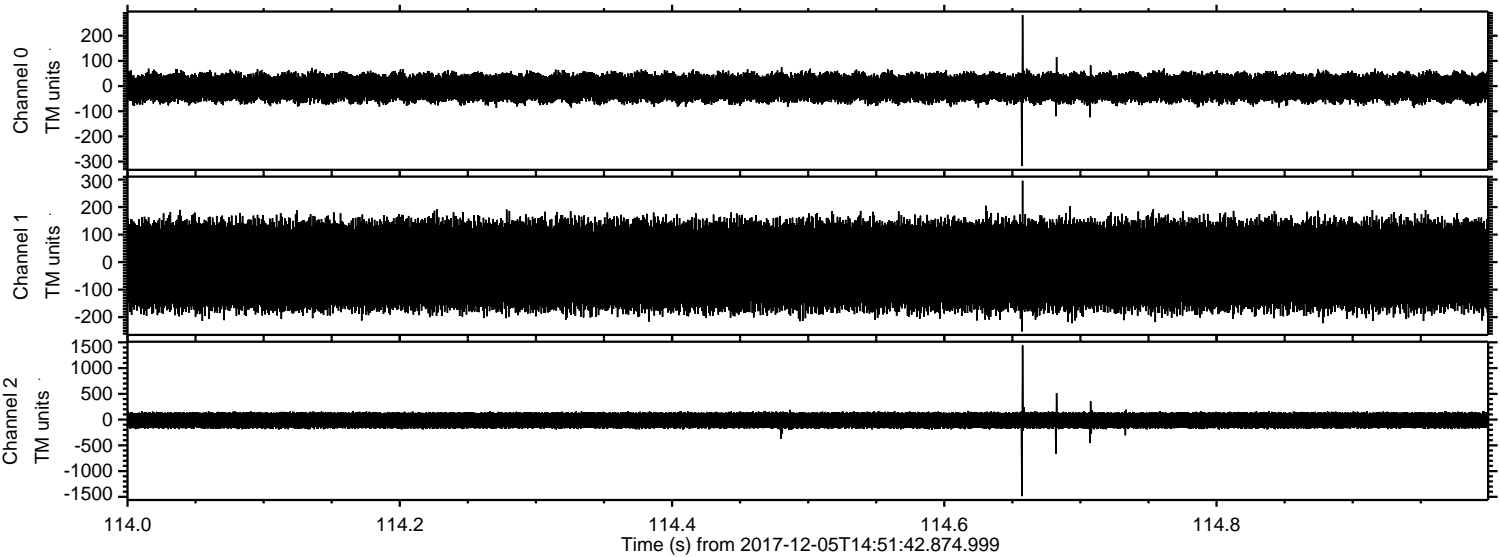
Channel 0
mn: -1126
mx: 863
 μ : -6.6
 σ : 32.5

Channel 1
mn: -736
mx: 760
 μ : -12.4
 σ : 85.7

Channel 2
mn: -4232
mx: 3348
 μ : -14.3
 σ : 99.9

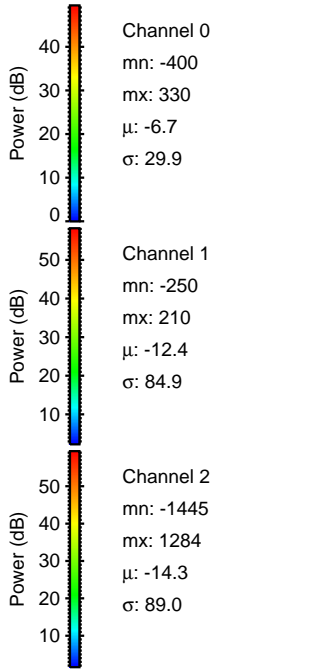
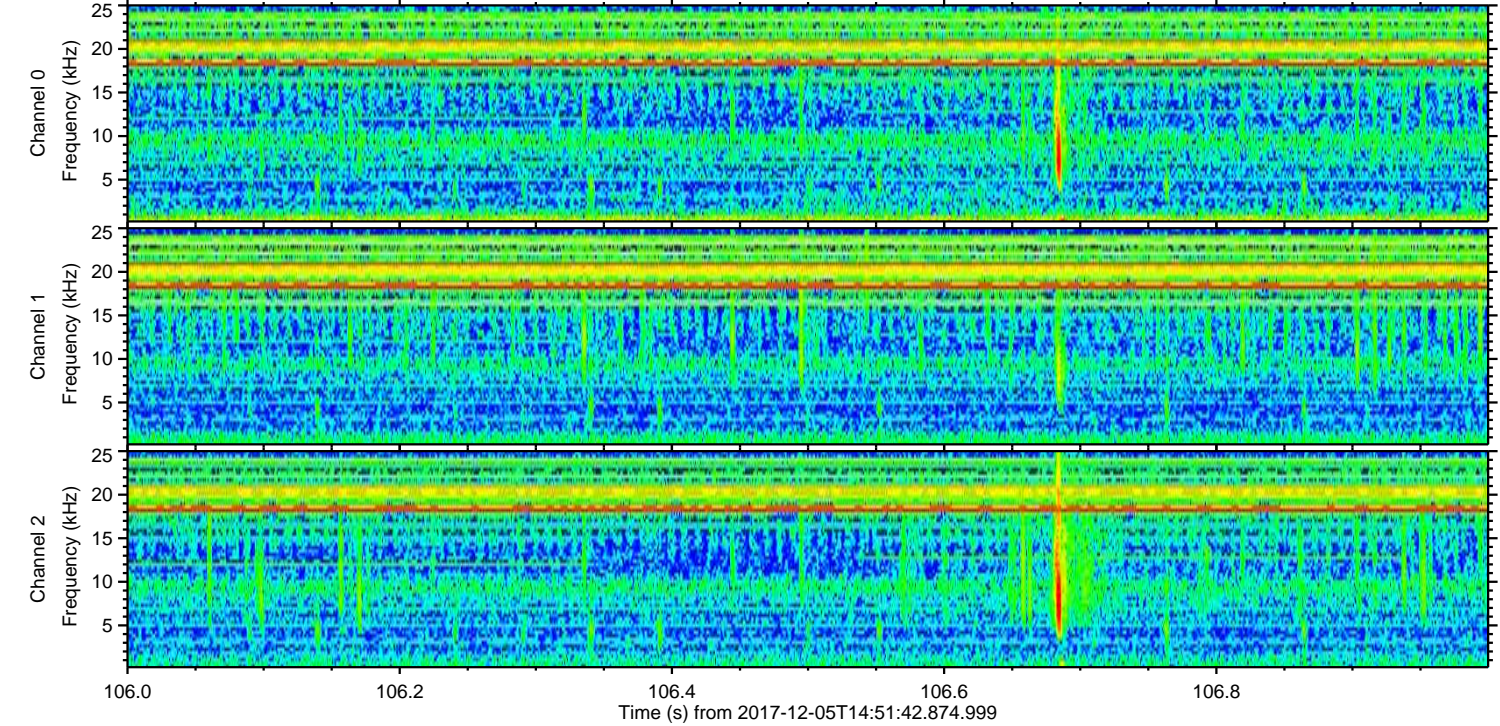
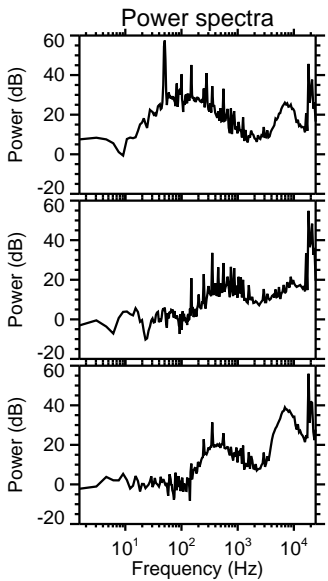
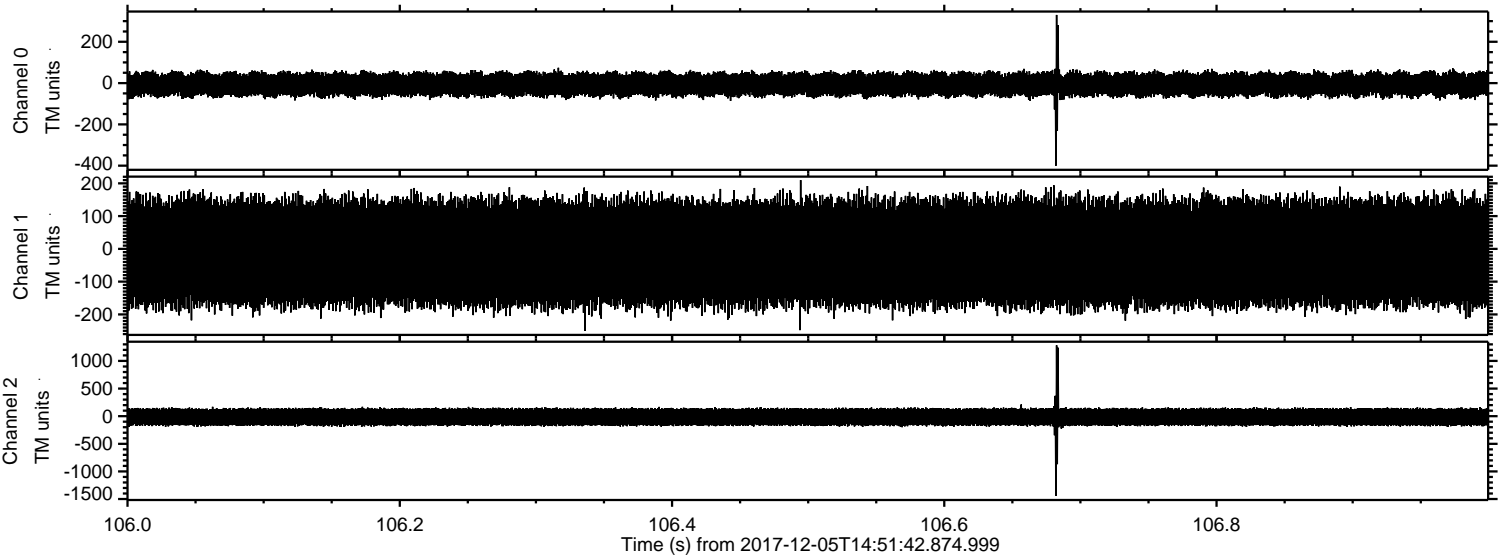
ELMAVAN 3D WAVEFORMS (Measured data sampled at 50 kHz) 50999 packets of 144 samples from 2017-12-05T14:51:42.874.999. Part 115/147

Processed Tue Dec 5 15:59:58 2017 by ELM ver.2012-10-06 from 001__elm20171205_145141__dat00.bin

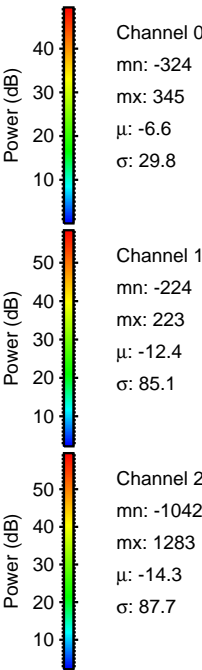
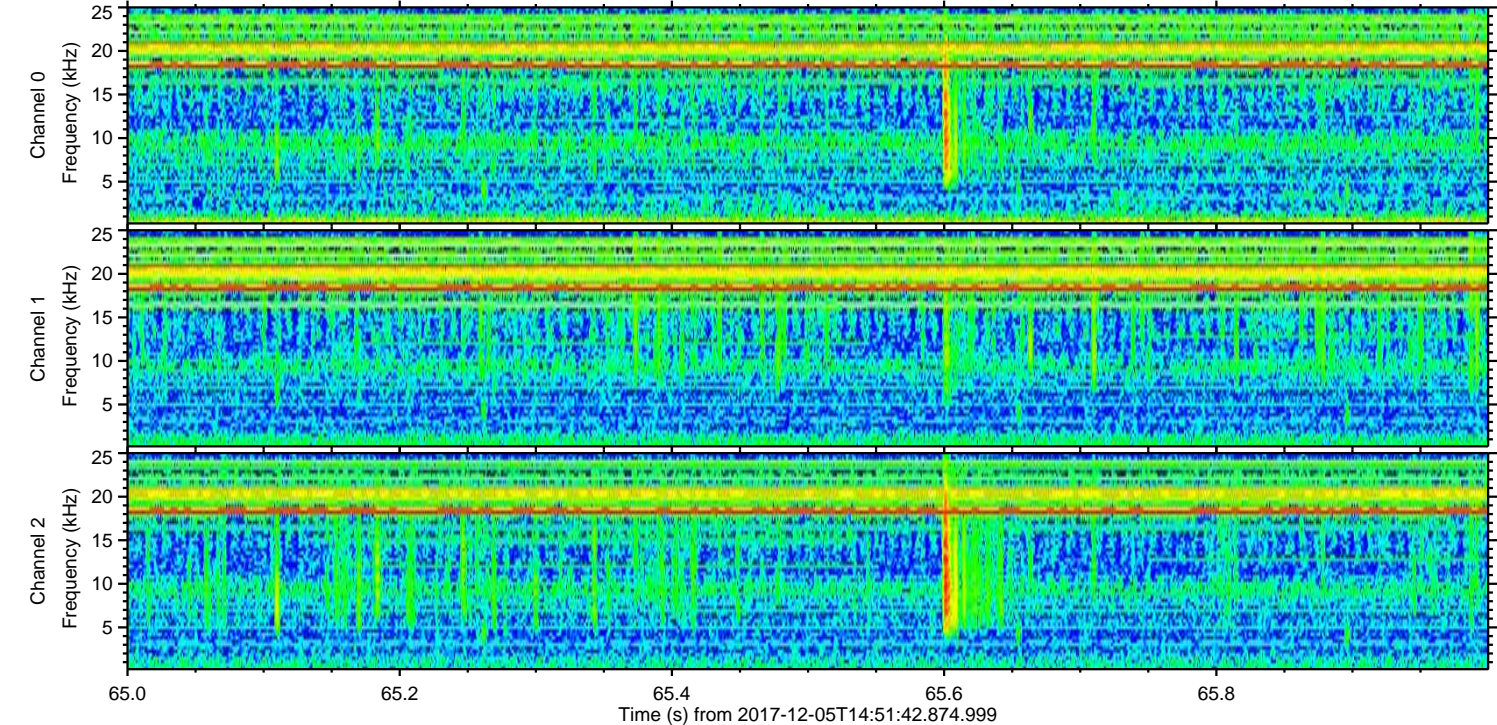
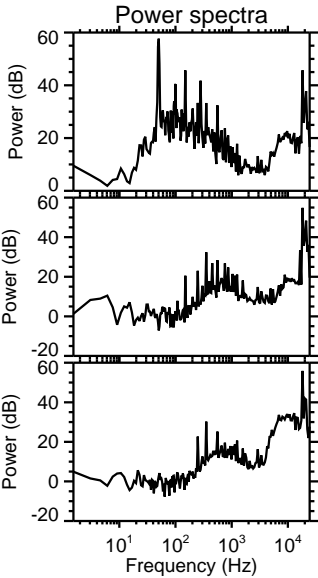
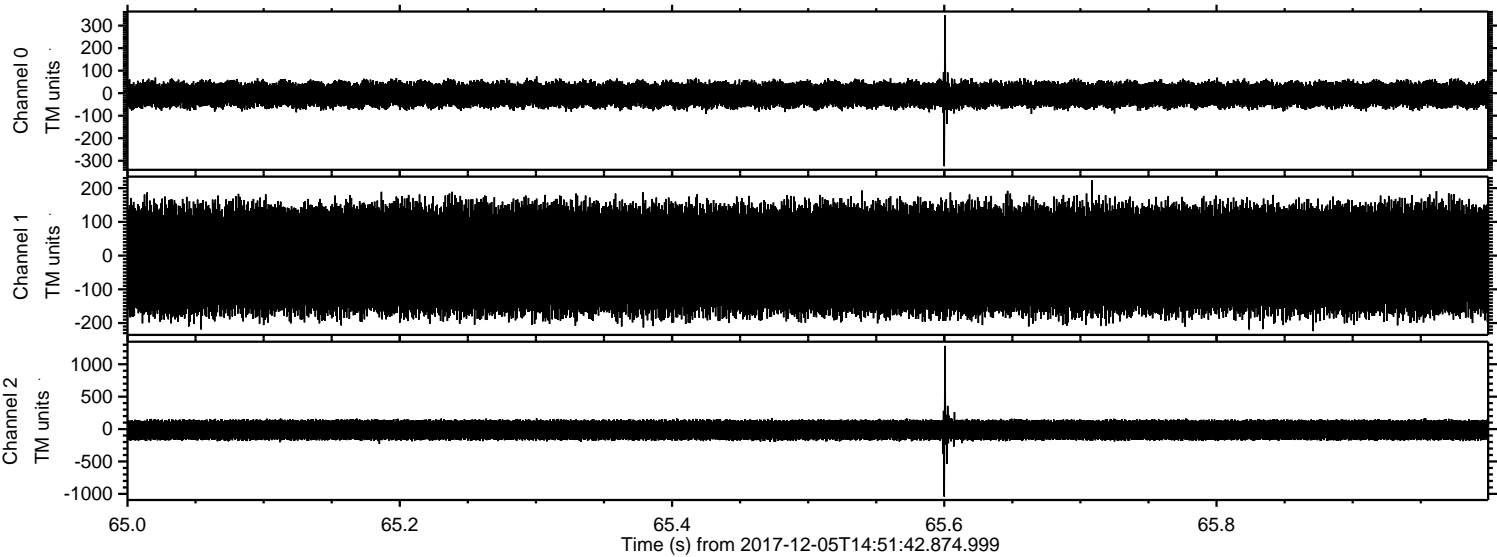


ELMAVAN 3D WAVEFORMS (Measured data sampled at 50 kHz) 50999 packets of 144 samples from 2017-12-05T14:51:42.874.999. Part 107/147

Processed Tue Dec 5 15:59:59 2017 by ELM ver.2012-10-06 from 001__elm20171205_145141__dat00.bin

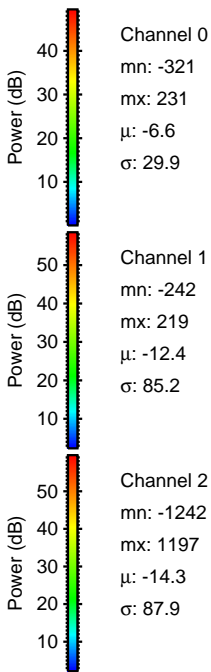
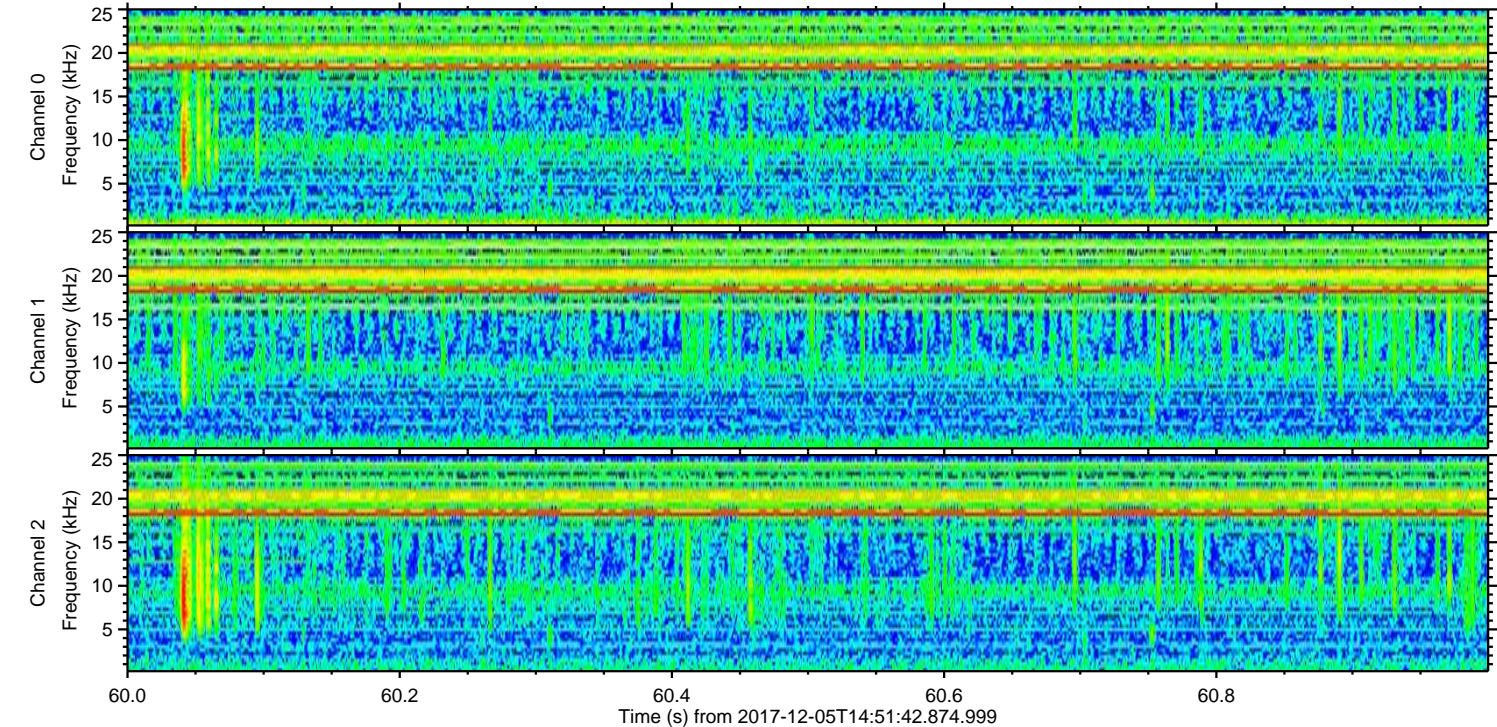
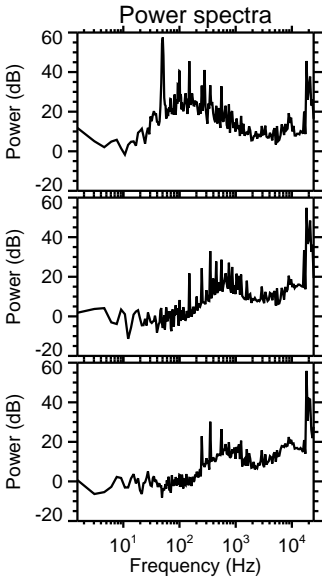
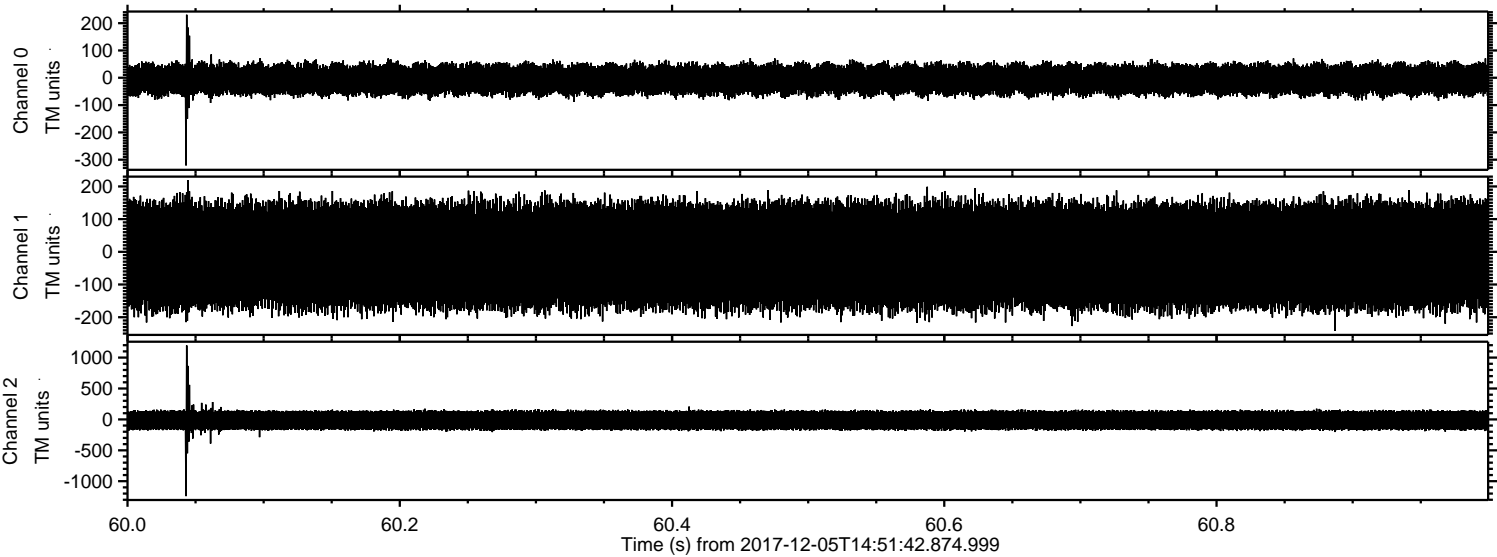


Processed Tue Dec 5 15:59:59 2017 by ELM ver.2012-10-06 from 001__elm20171205_145141__dat00.bin

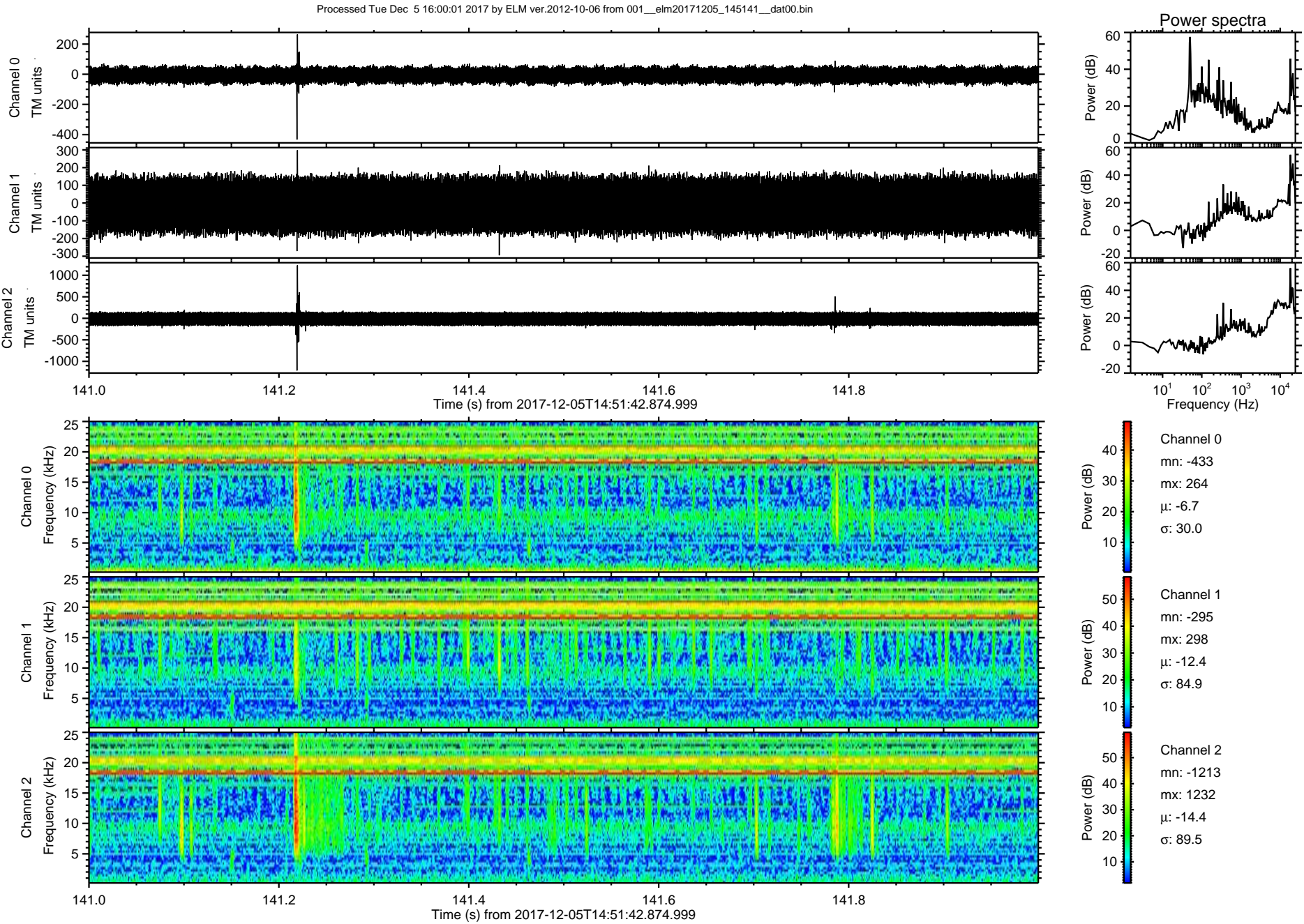


ELMAVAN 3D WAVEFORMS (Measured data sampled at 50 kHz) 50999 packets of 144 samples from 2017-12-05T14:51:42.874.999. Part 61/147

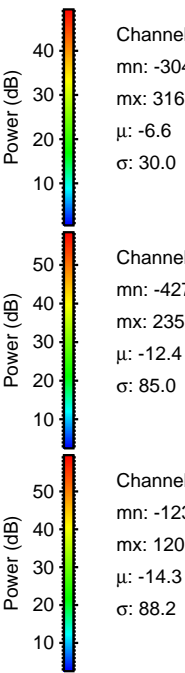
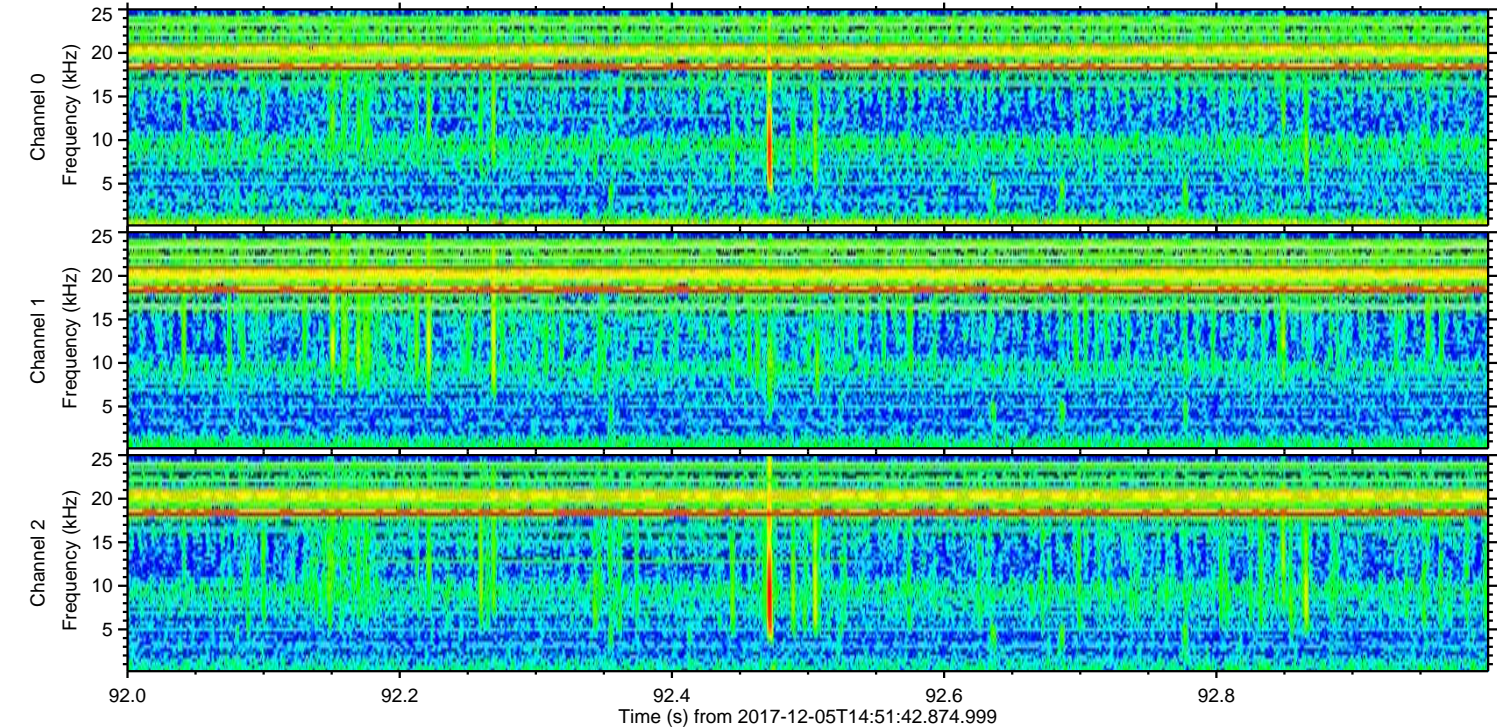
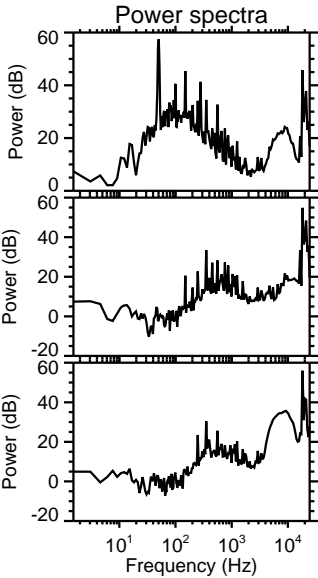
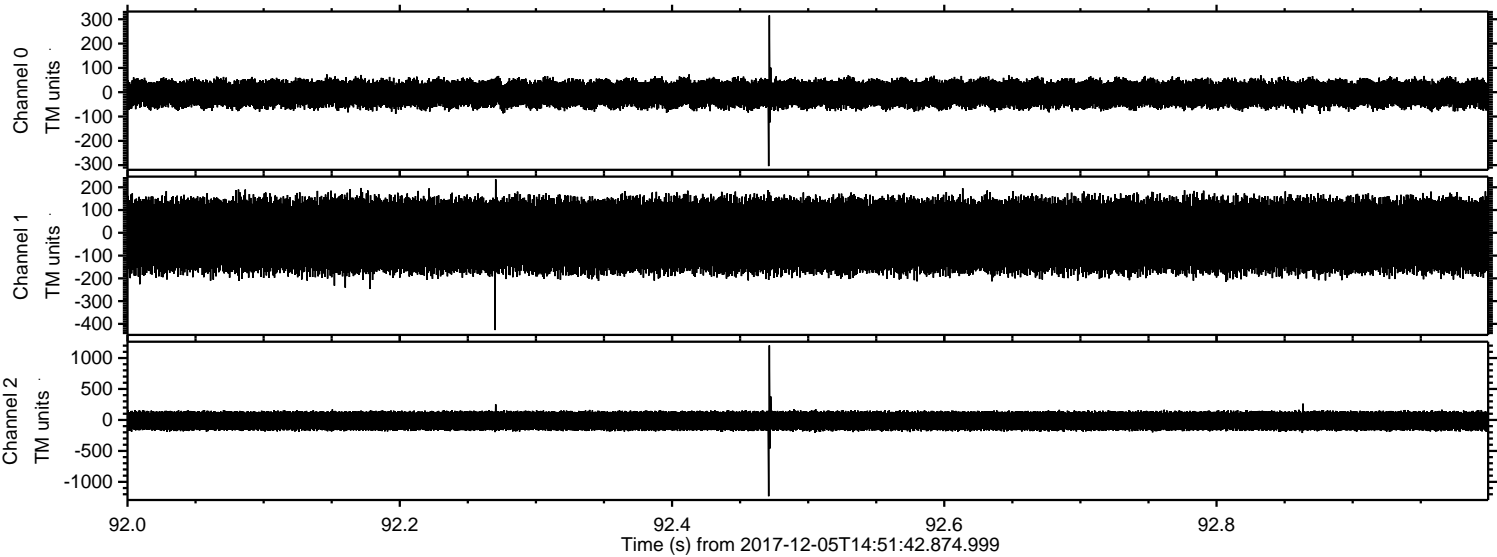
Processed Tue Dec 5 16:00:00 2017 by ELM ver.2012-10-06 from 001__elm20171205_145141__dat00.bin



ELMAVAN 3D WAVEFORMS (Measured data sampled at 50 kHz) 50999 packets of 144 samples from 2017-12-05T14:51:42.874.999. Part 142/147



Processed Tue Dec 5 16:00:02 2017 by ELM ver.2012-10-06 from 001__elm20171205_145141__dat00.bin

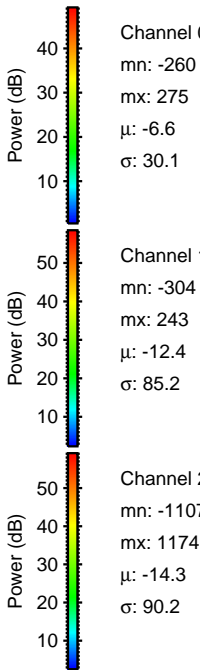
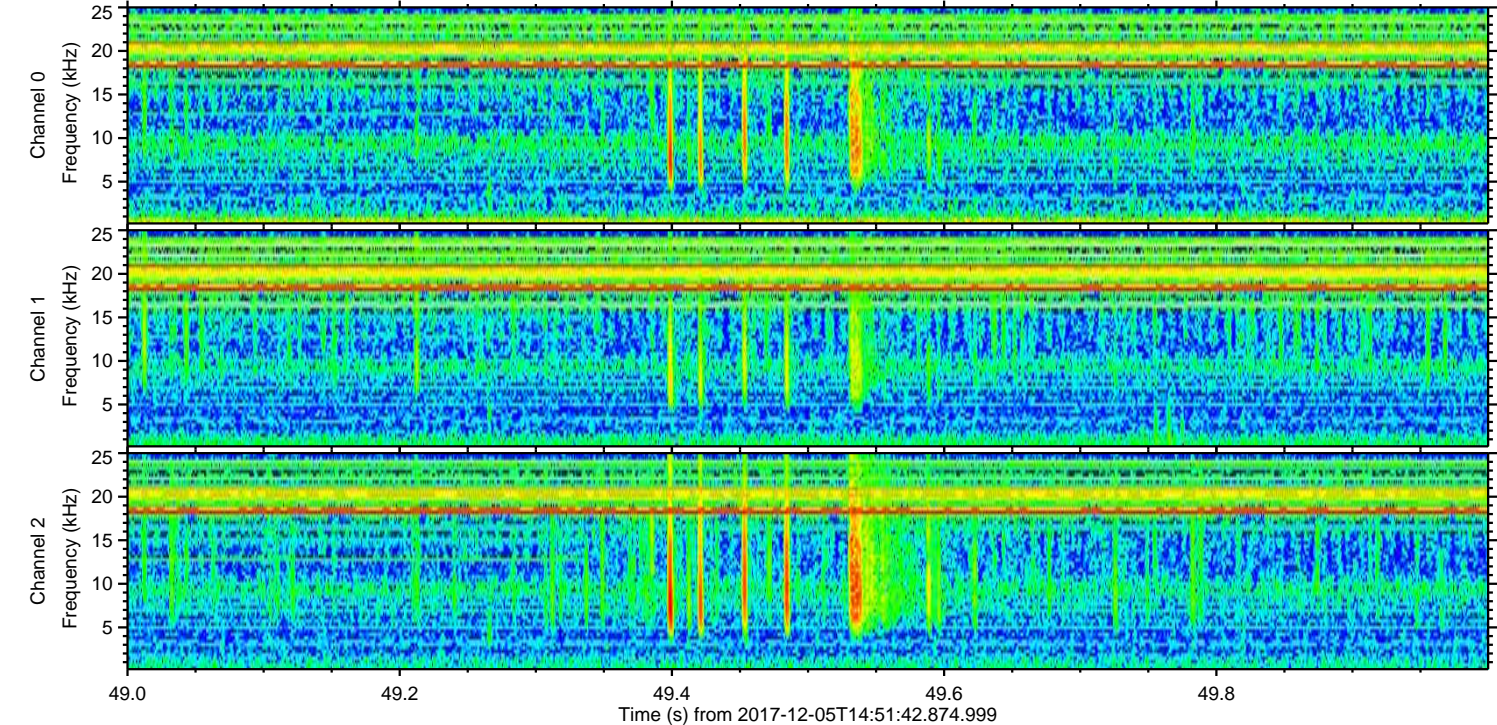
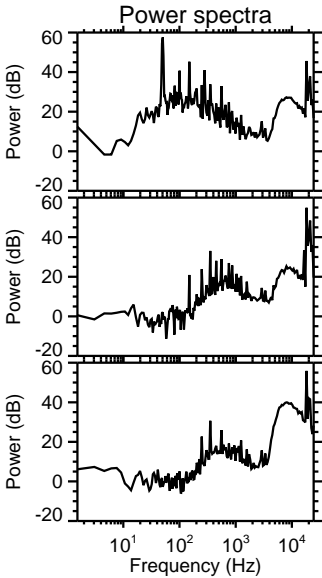
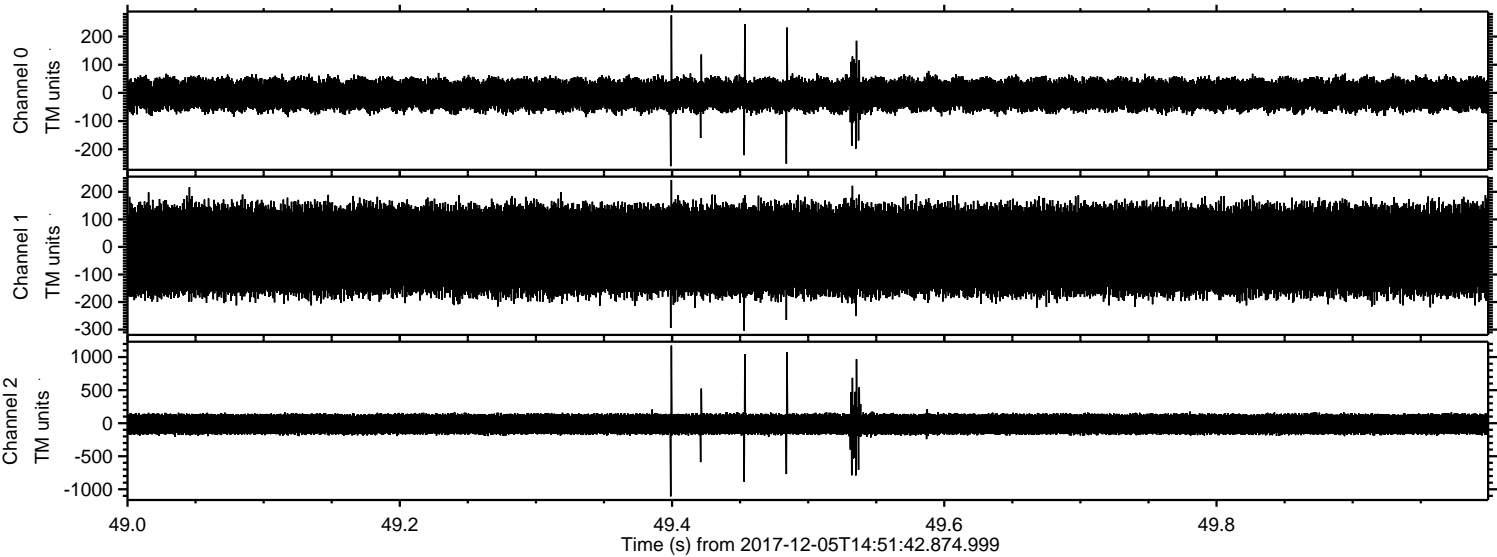


Channel 0
mn: -304
mx: 316
 μ : -6.6
 σ : 30.0

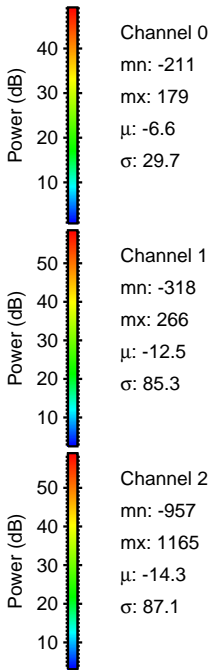
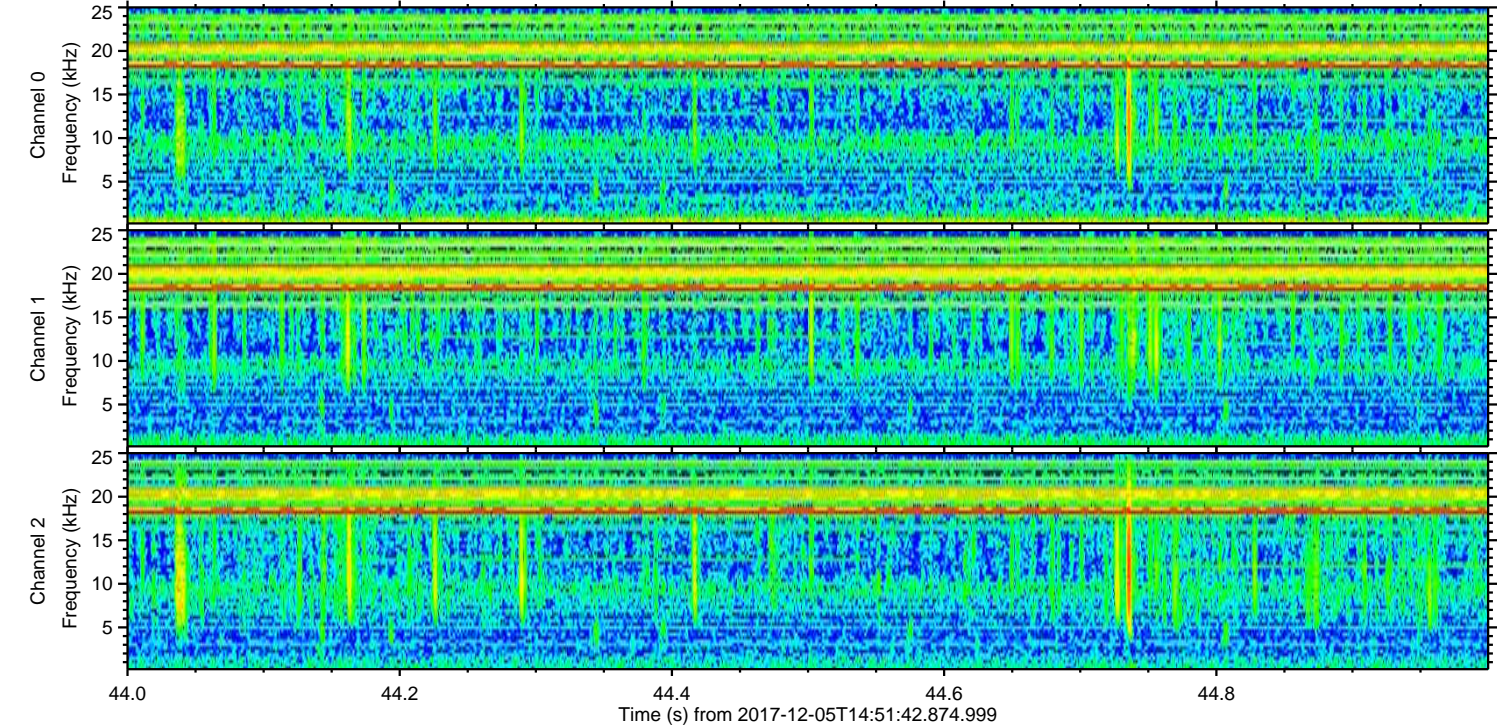
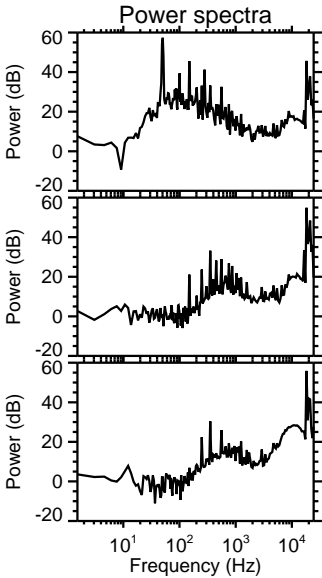
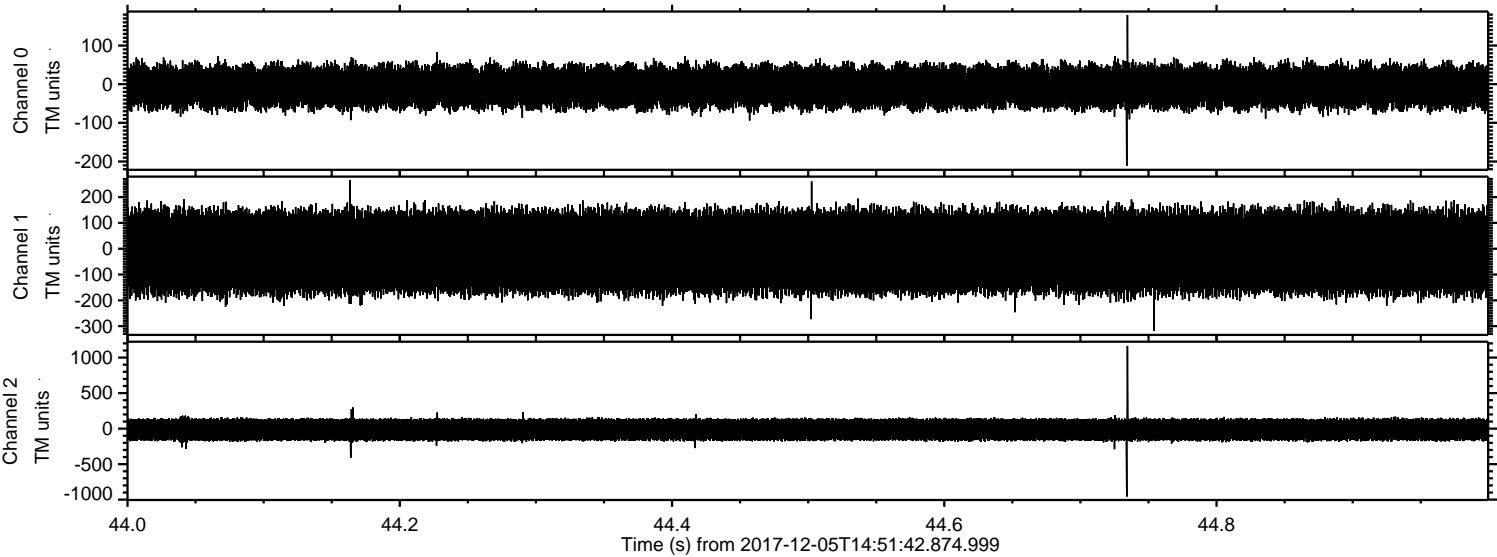
Channel 1
mn: -427
mx: 235
 μ : -12.4
 σ : 85.0

Channel 2
mn: -1231
mx: 1203
 μ : -14.3
 σ : 88.2

Processed Tue Dec 5 16:00:03 2017 by ELM ver.2012-10-06 from 001__elm20171205_145141__dat00.bin



Processed Tue Dec 5 16:00:04 2017 by ELM ver.2012-10-06 from 001__elm20171205_145141__dat00.bin



Processed Tue Dec 5 16:00:04 2017 by ELM ver.2012-10-06 from 001__elm20171205_145141__dat00.bin

