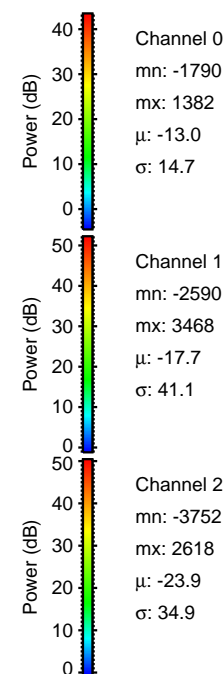
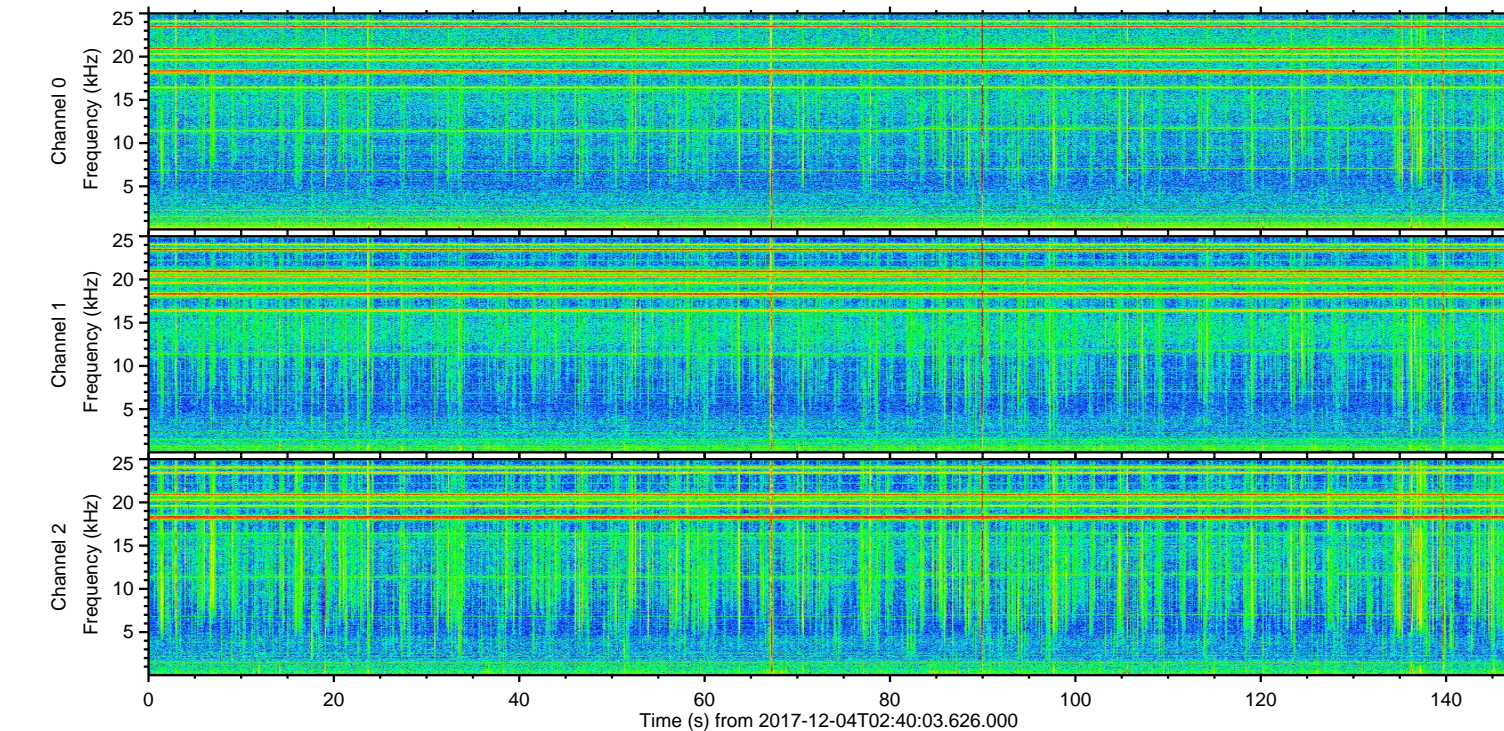
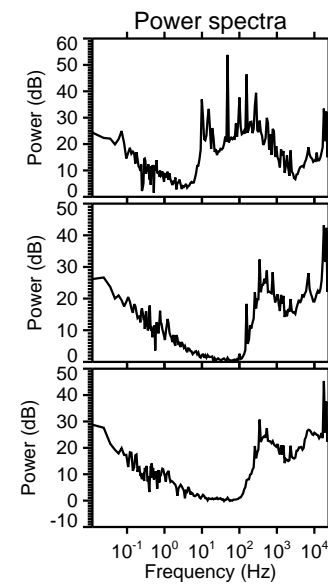
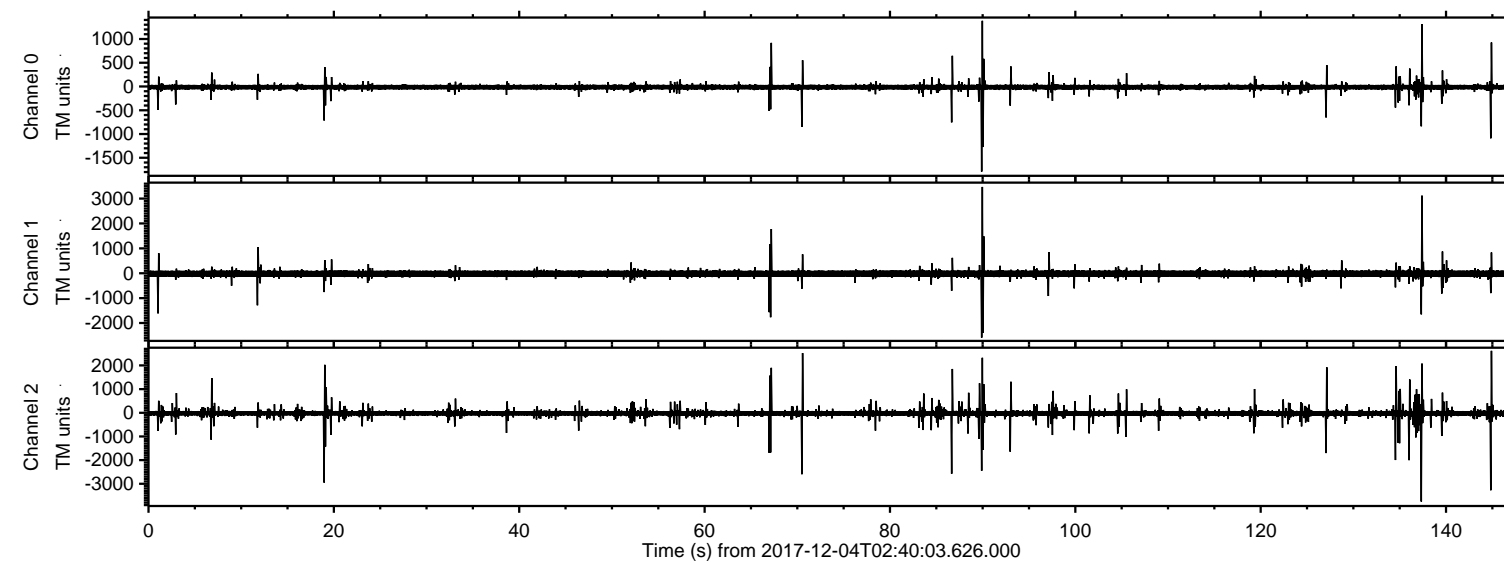


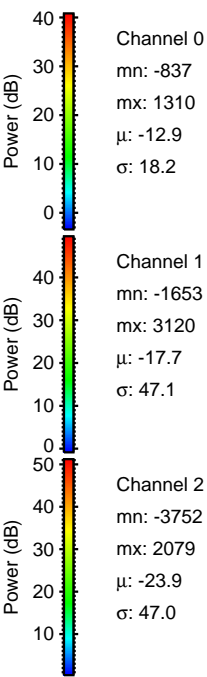
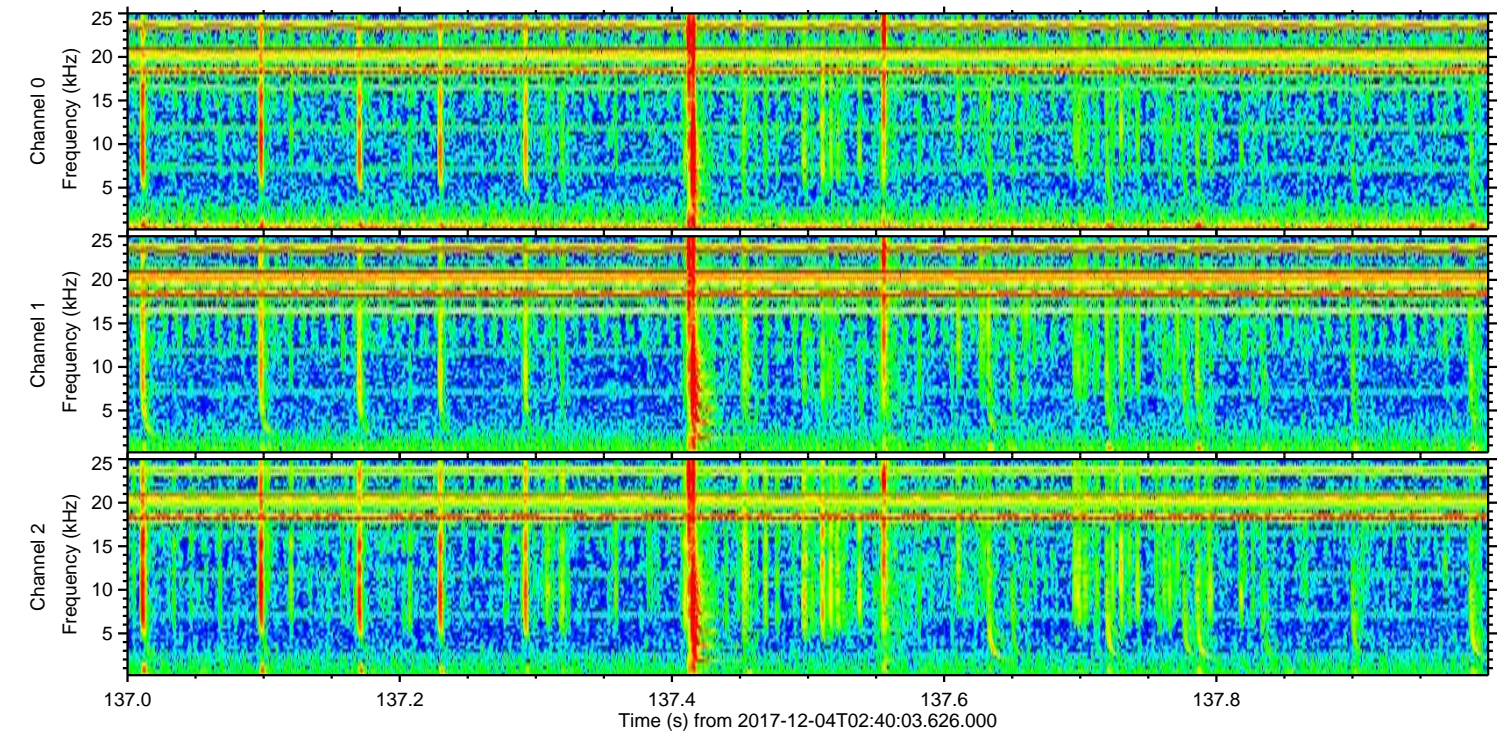
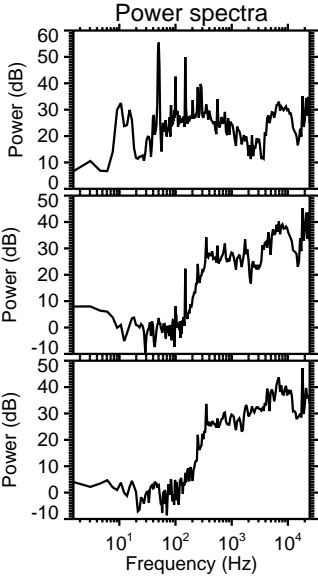
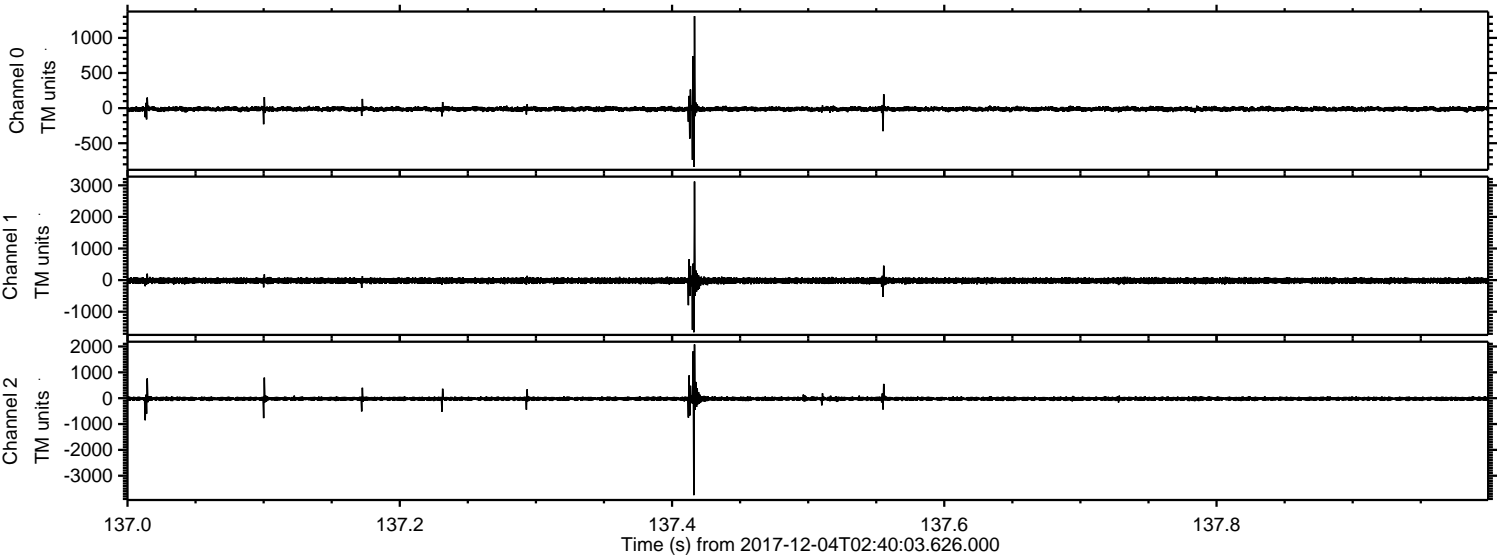
ELMAVAN 3D WAVEFORMS (Measured data sampled at 50 kHz) 51000 packets of 144 samples from 2017-12-04T02:40:03.626.000.

Processed Mon Dec 4 03:48:09 2017 by ELM ver.2012-10-06 from 001__elm20171204_024002__dat00.bin



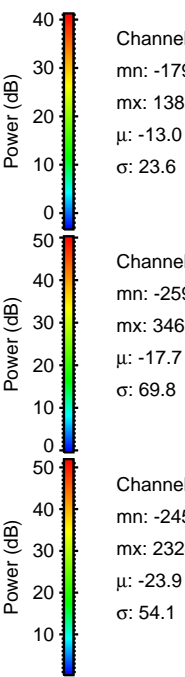
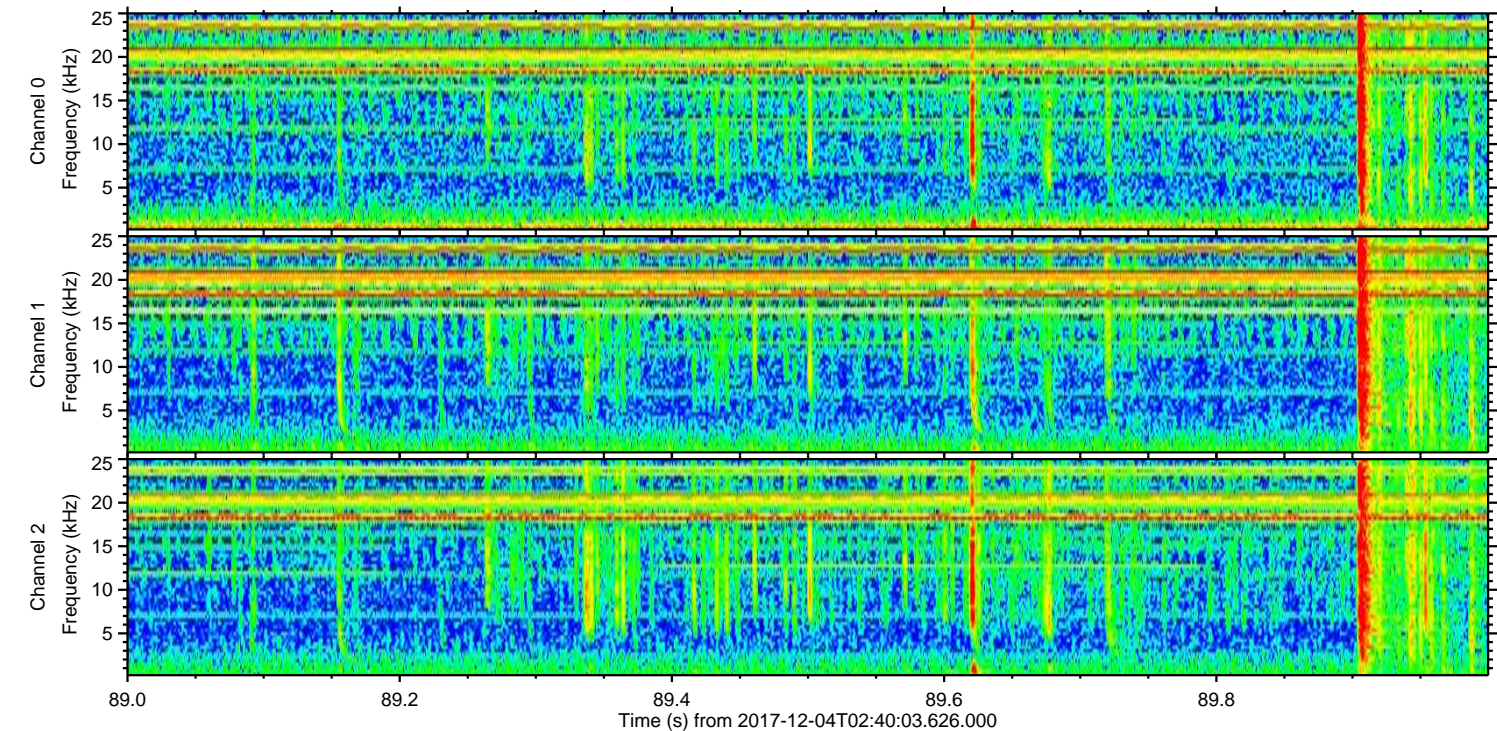
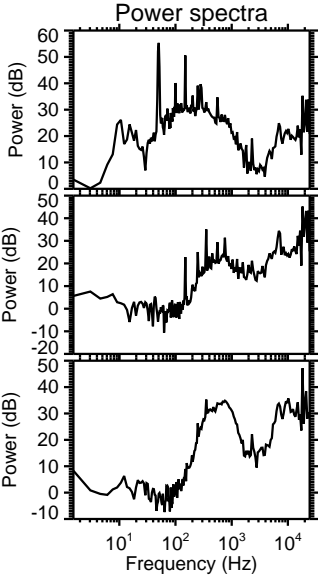
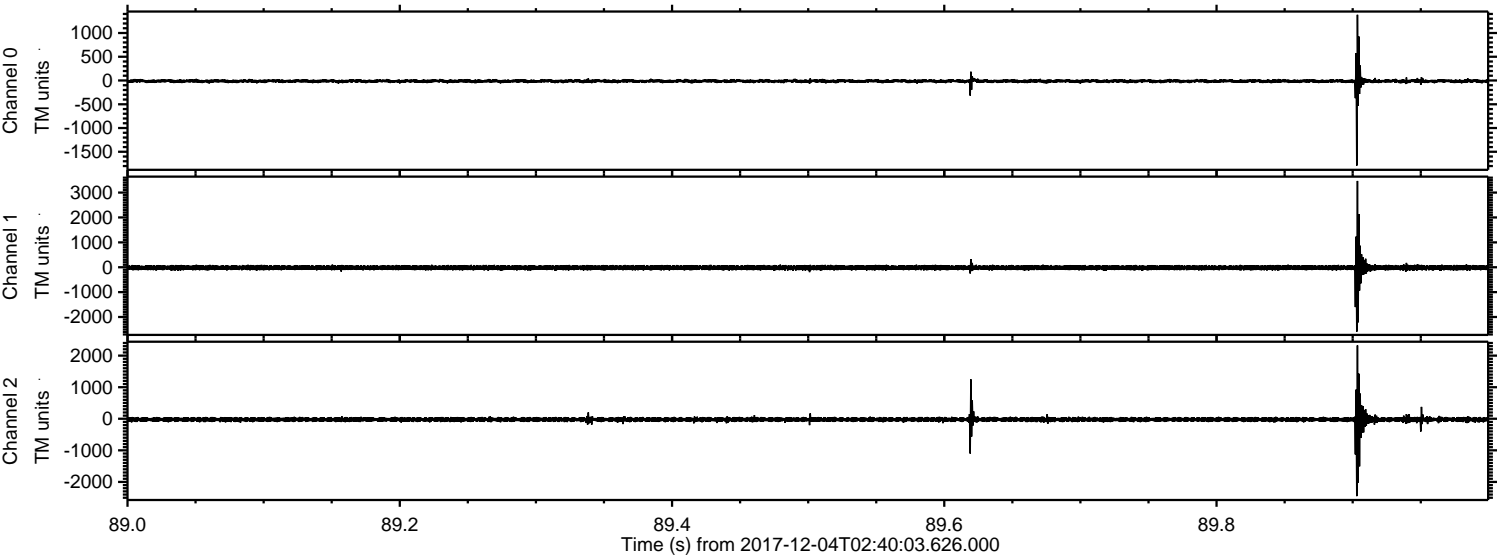
ELMAVAN 3D WAVEFORMS (Measured data sampled at 50 kHz) 51000 packets of 144 samples from 2017-12-04T02:40:03.626.000. Part 138/147

Processed Mon Dec 4 03:48:15 2017 by ELM ver.2012-10-06 from 001__elm20171204_024002__dat00.bin



ELMAVAN 3D WAVEFORMS (Measured data sampled at 50 kHz) 51000 packets of 144 samples from 2017-12-04T02:40:03.626.000. Part 90/147

Processed Mon Dec 4 03:48:15 2017 by ELM ver.2012-10-06 from 001__elm20171204_024002__dat00.bin



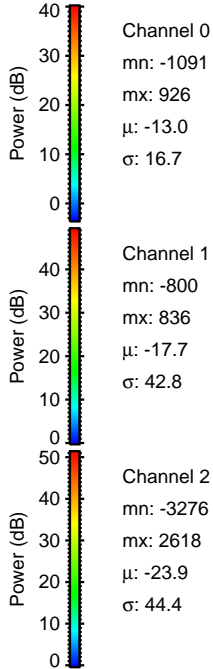
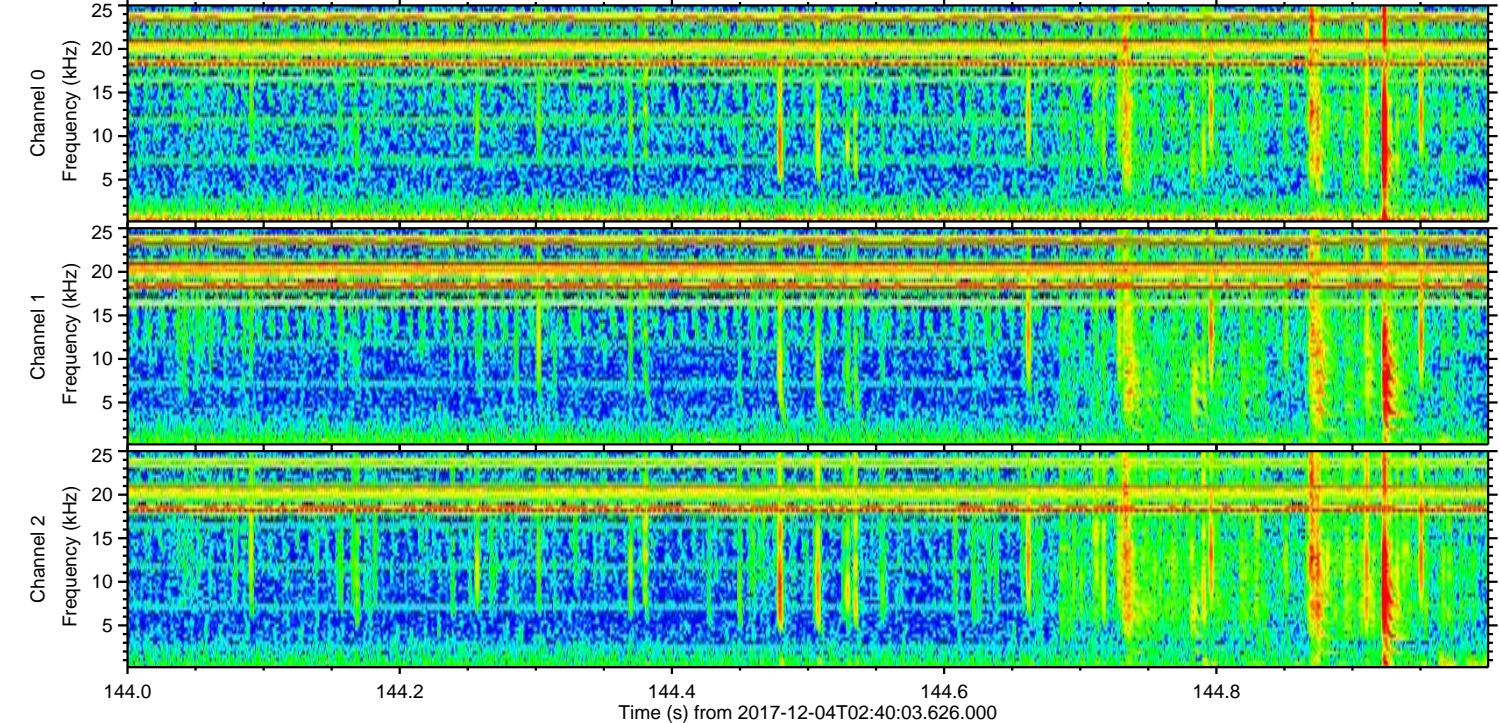
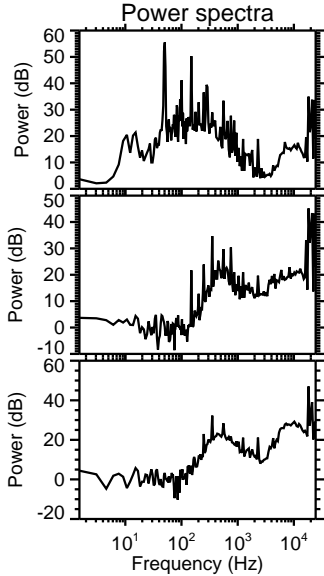
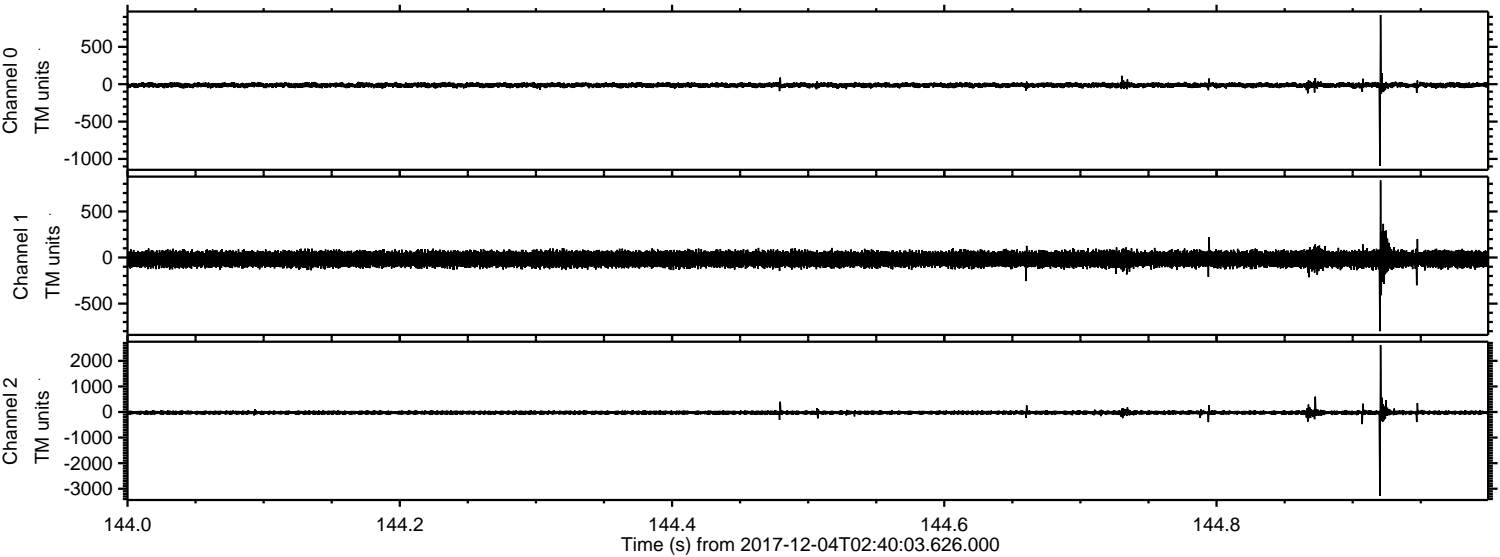
Channel 0
mn: -1790
mx: 1382
 μ : -13.0
 σ : 23.6

Channel 1
mn: -2590
mx: 3468
 μ : -17.7
 σ : 69.8

Channel 2
mn: -2450
mx: 2324
 μ : -23.9
 σ : 54.1

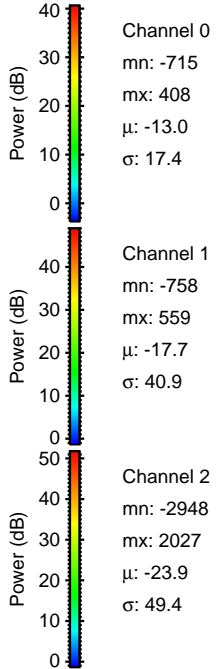
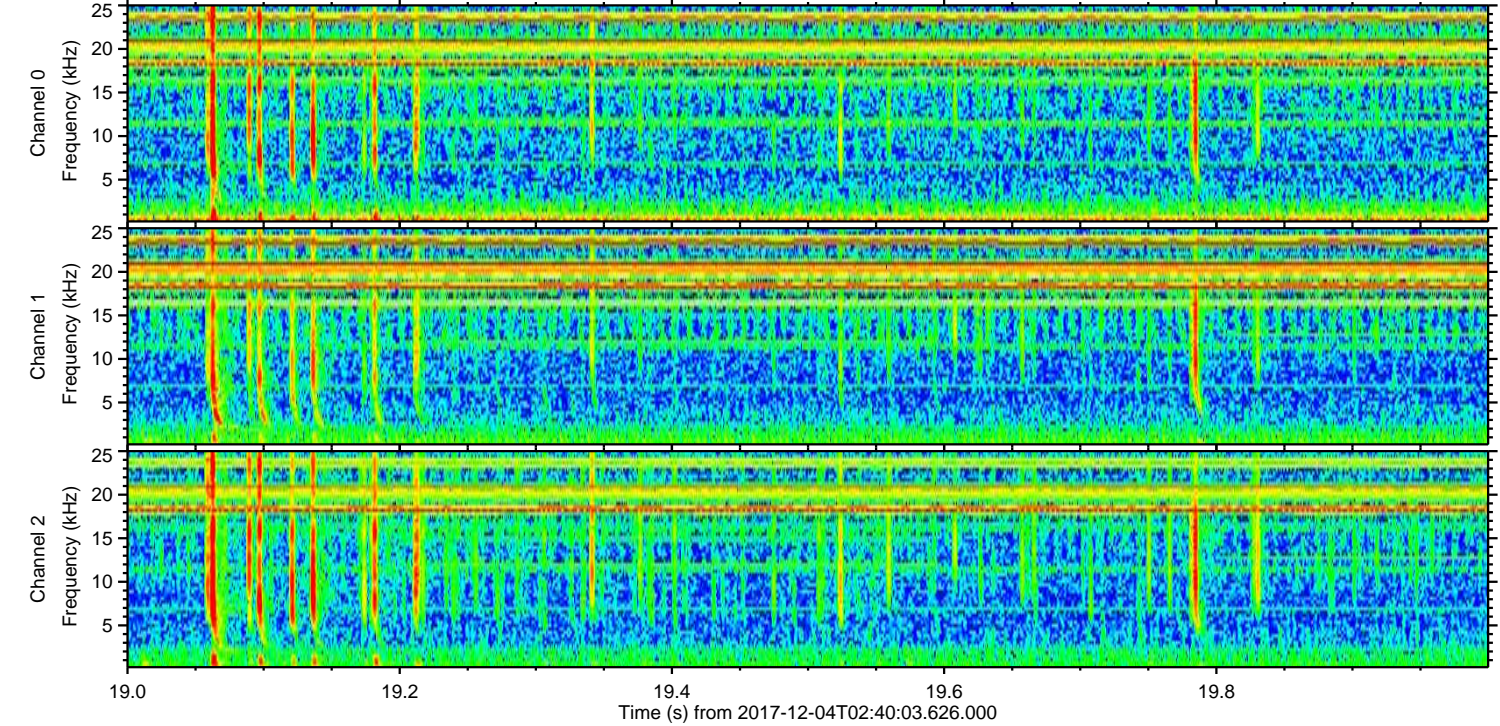
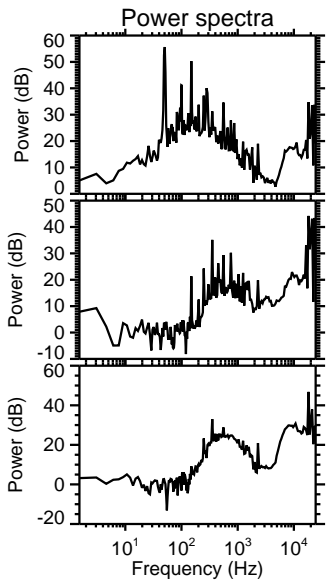
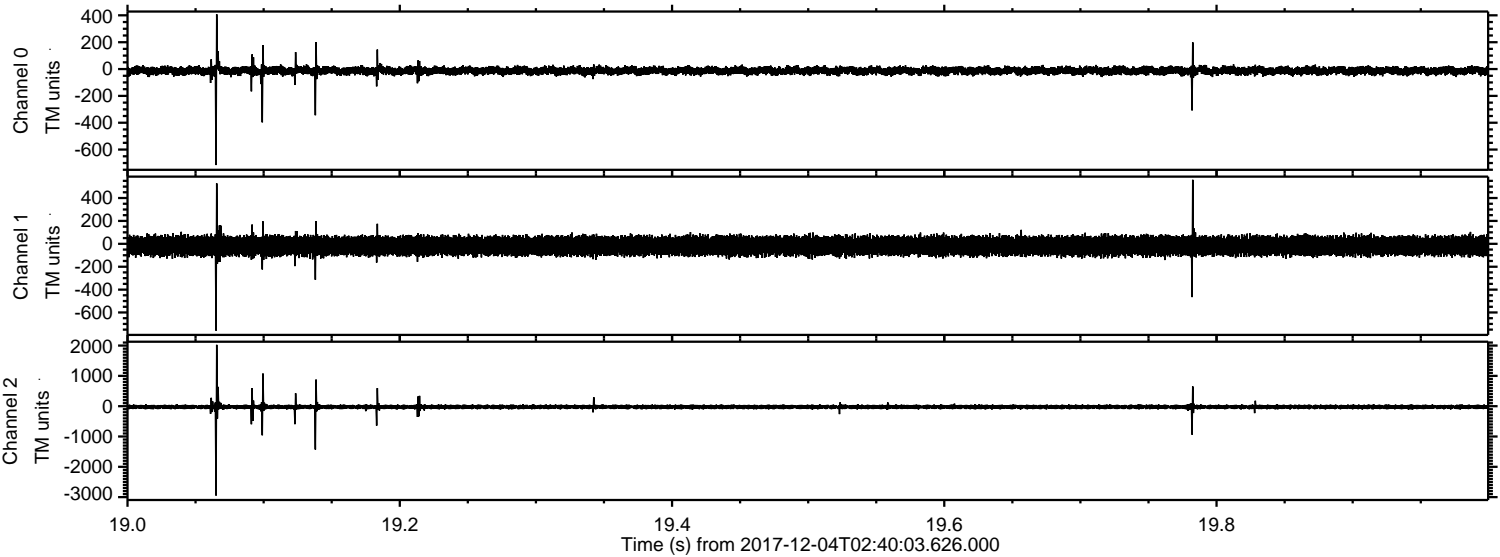
ELMAVAN 3D WAVEFORMS (Measured data sampled at 50 kHz) 51000 packets of 144 samples from 2017-12-04T02:40:03.626.000. Part 145/147

Processed Mon Dec 4 03:48:16 2017 by ELM ver.2012-10-06 from 001__elm20171204_024002__dat00.bin

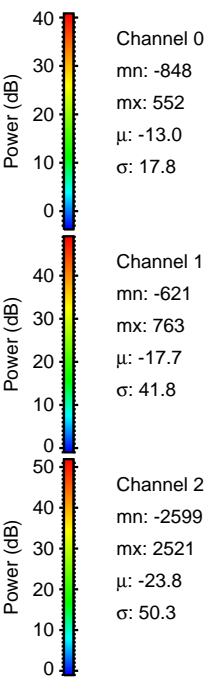
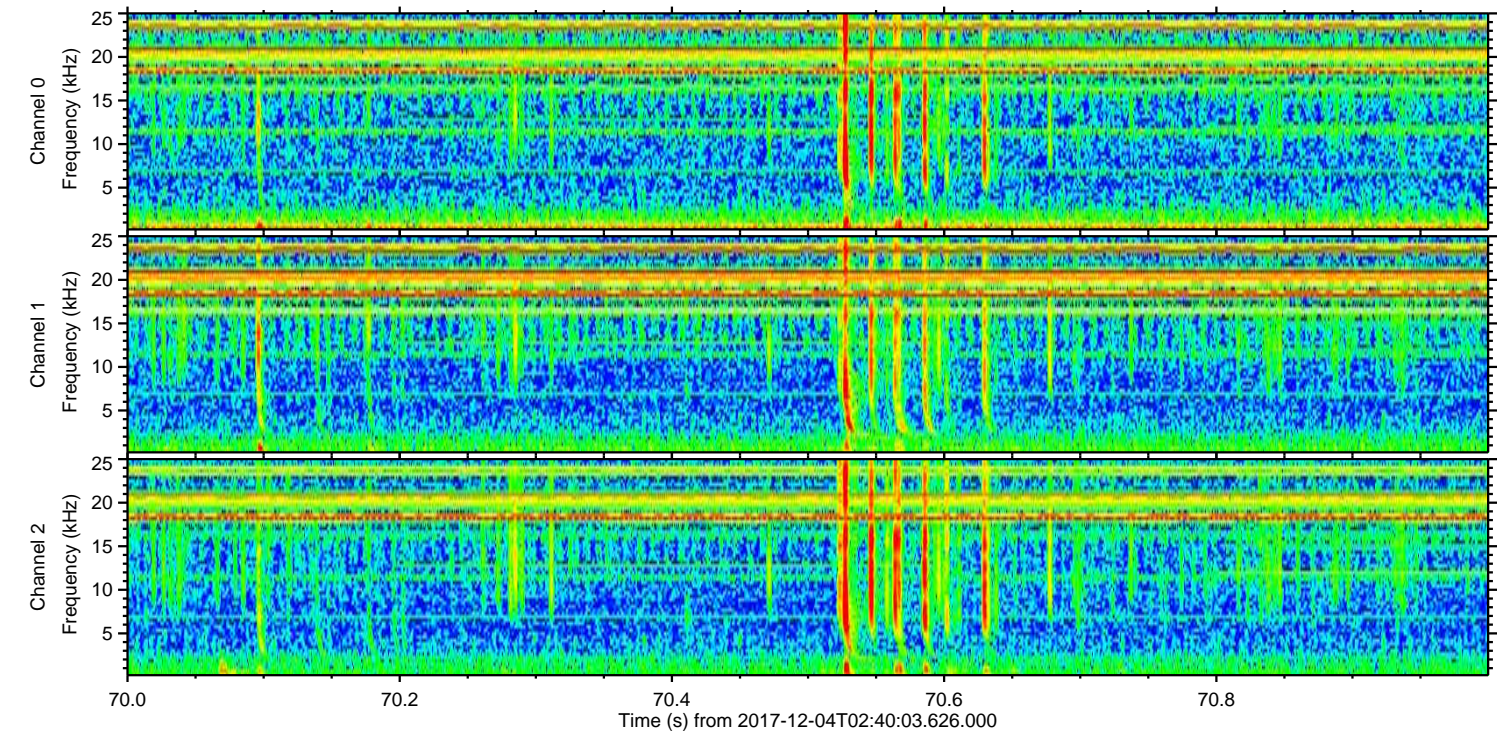
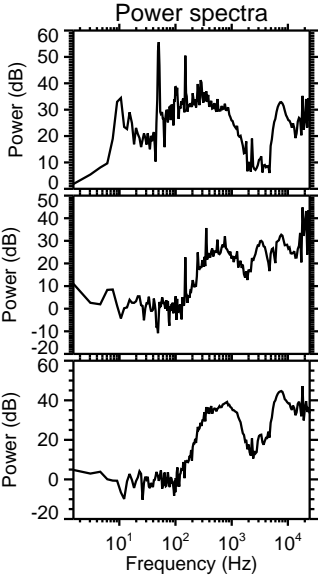
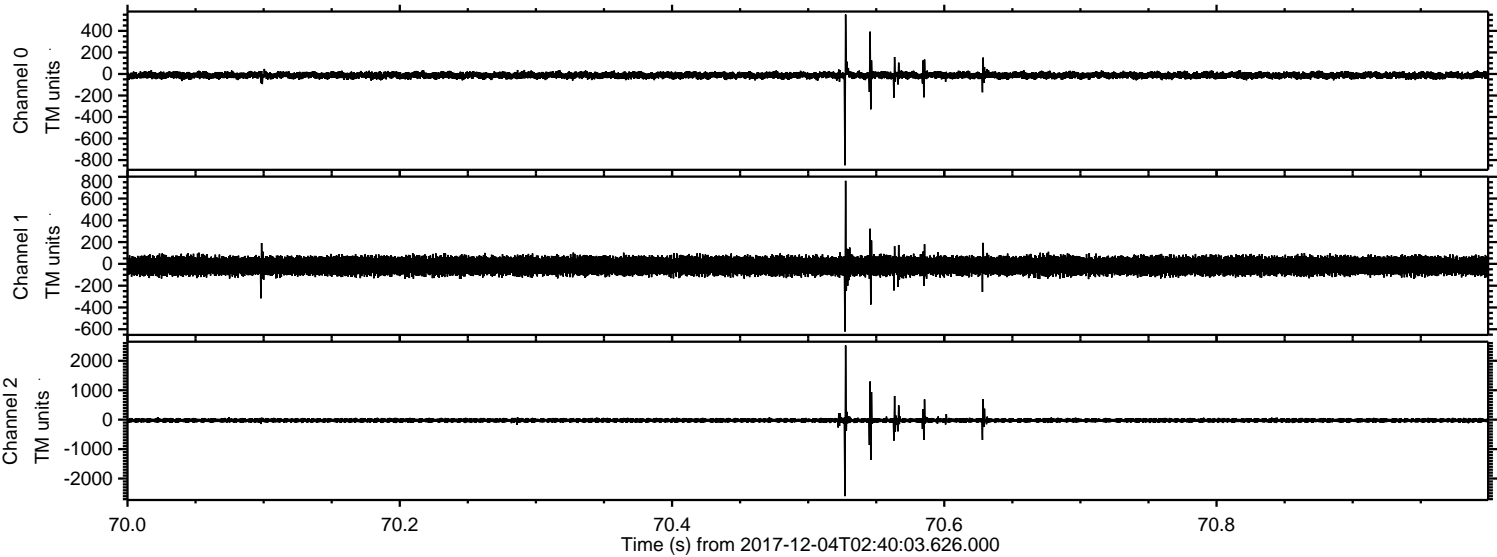


ELMAVAN 3D WAVEFORMS (Measured data sampled at 50 kHz) 51000 packets of 144 samples from 2017-12-04T02:40:03.626.000. Part 20/147

Processed Mon Dec 4 03:48:17 2017 by ELM ver.2012-10-06 from 001__elm20171204_024002__dat00.bin

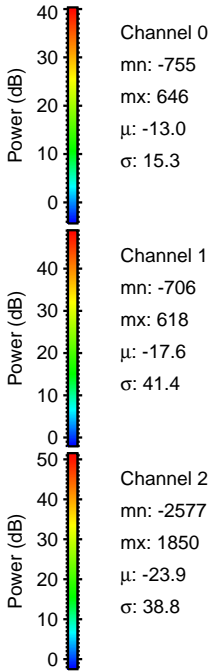
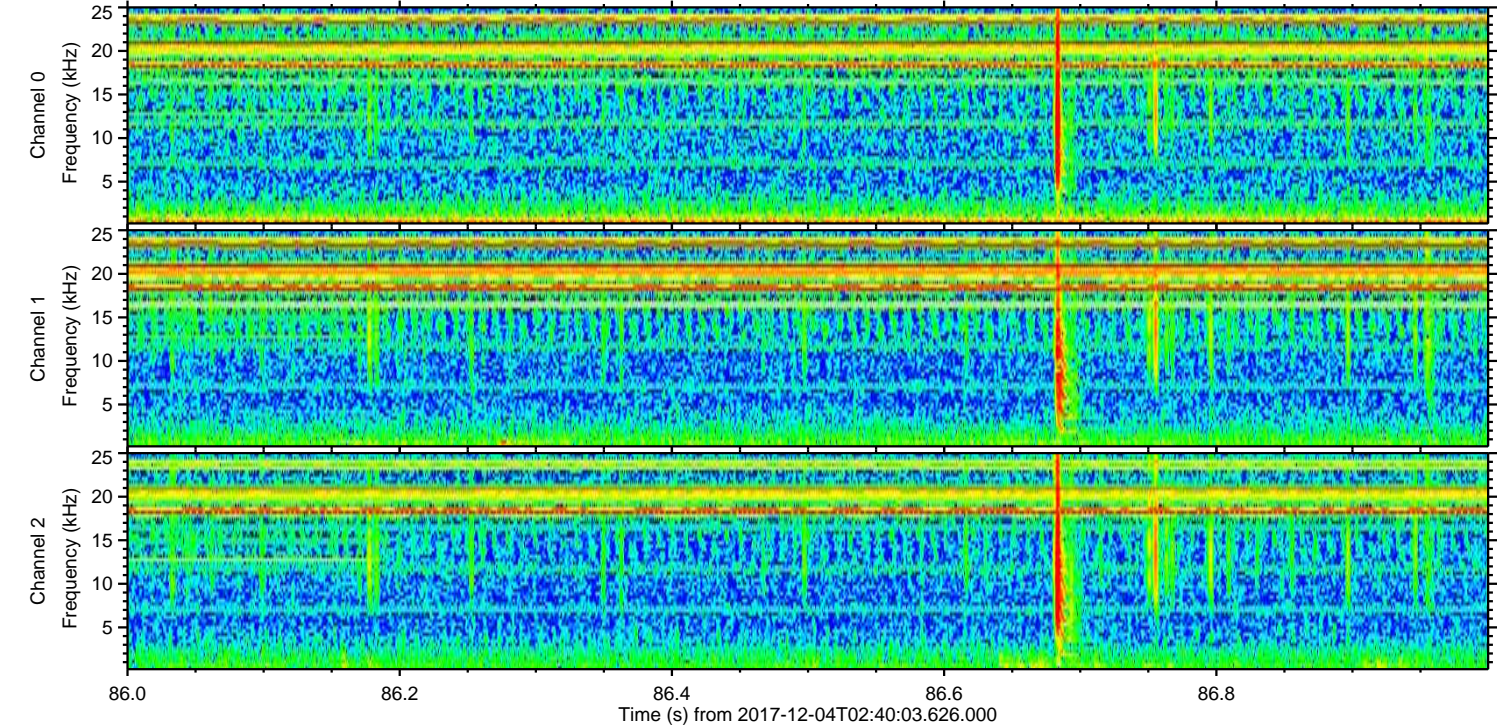
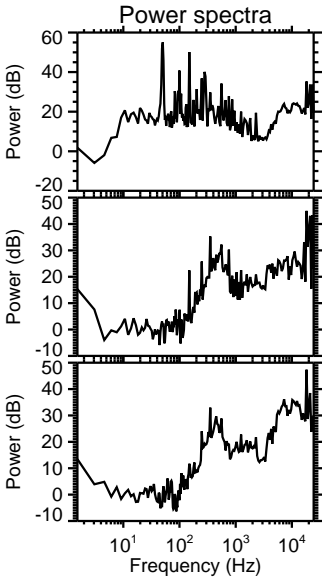
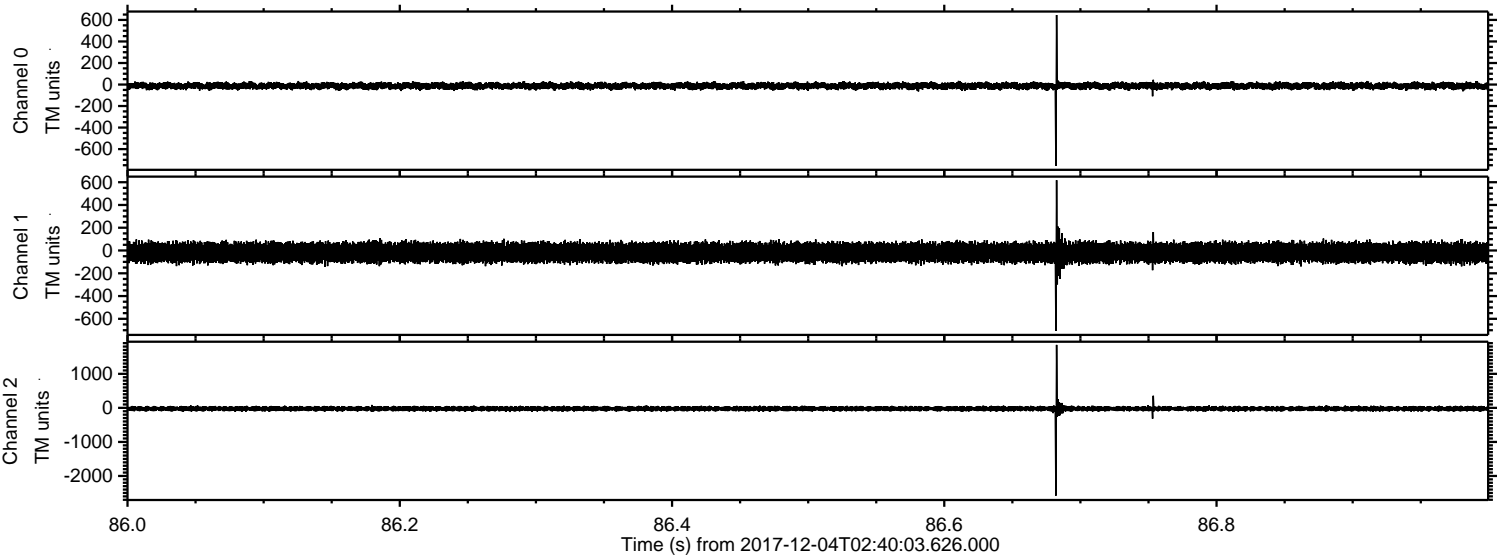


Processed Mon Dec 4 03:48:17 2017 by ELM ver.2012-10-06 from 001__elm20171204_024002__dat00.bin

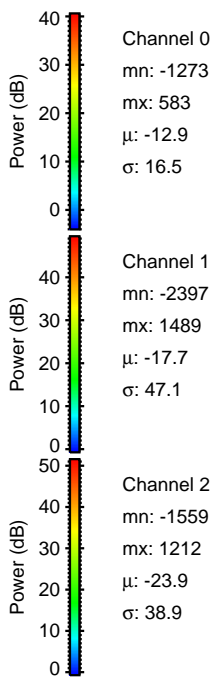
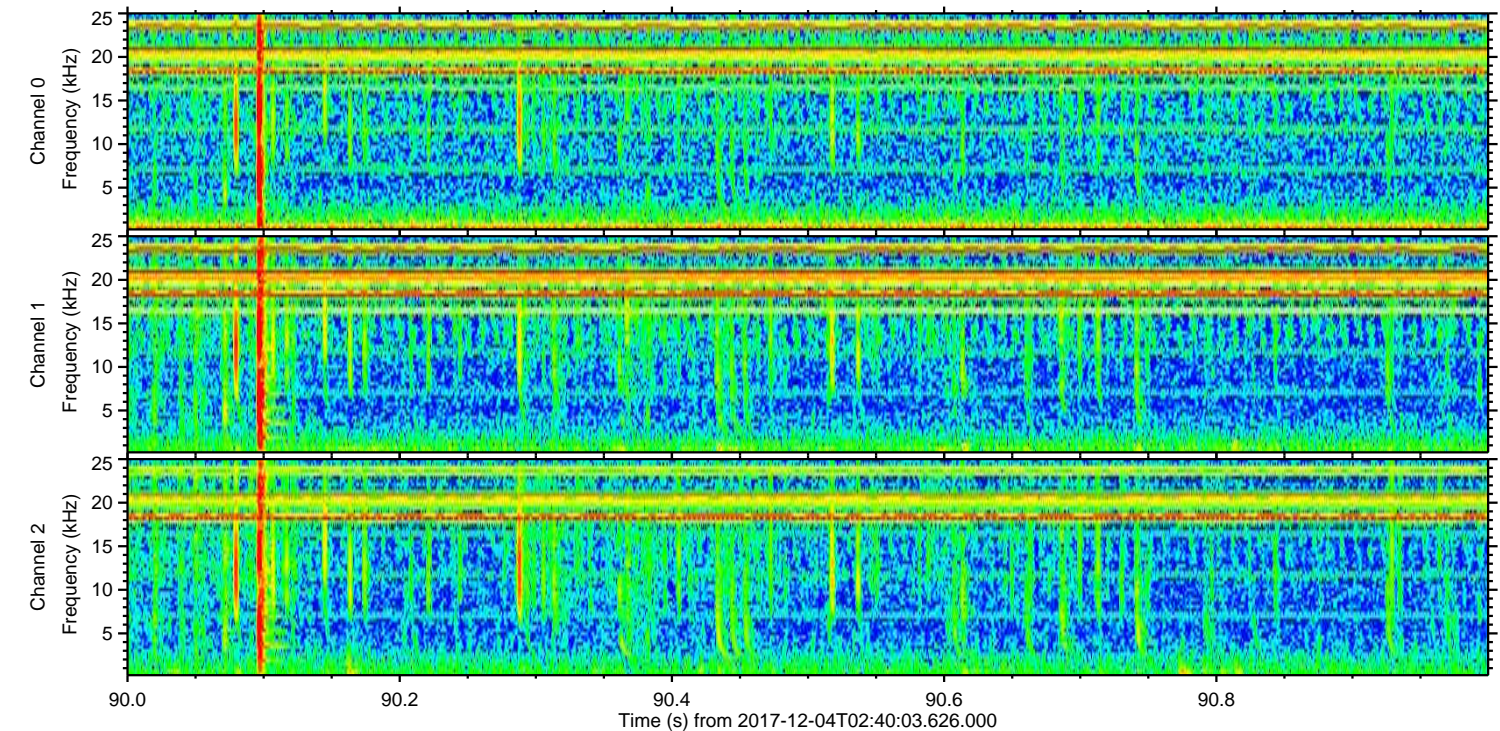
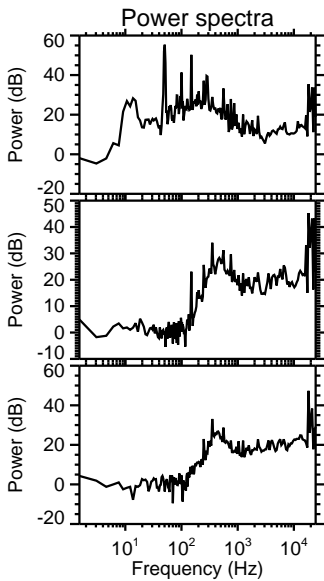
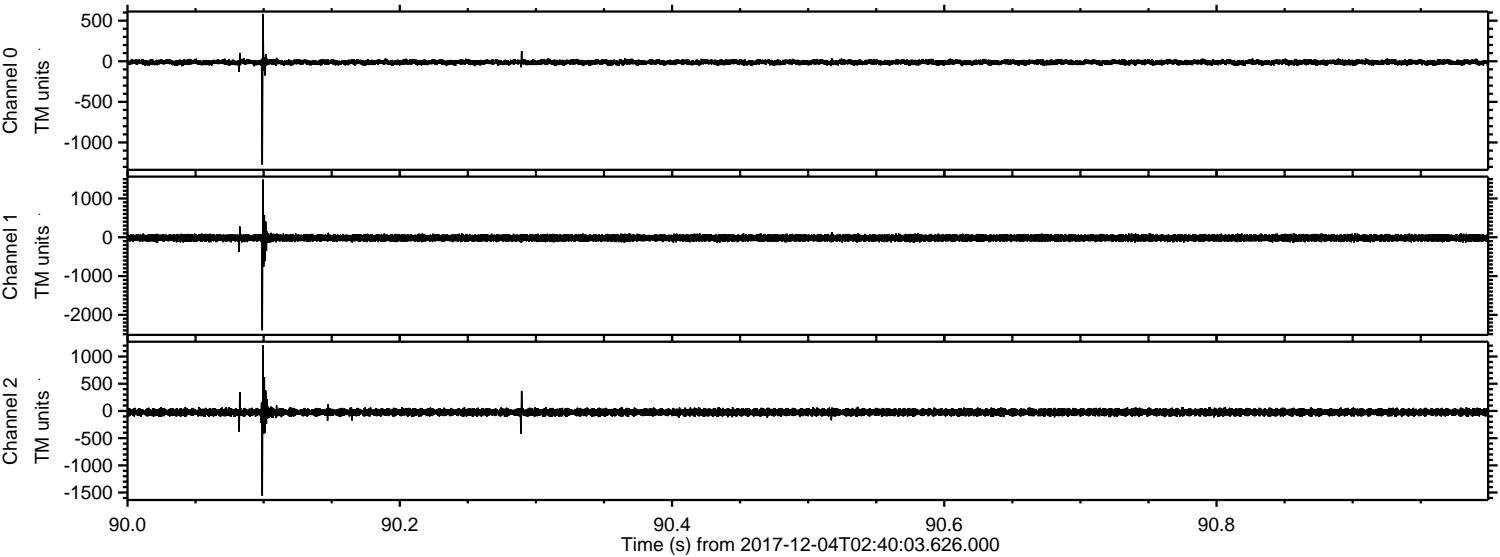


ELMAVAN 3D WAVEFORMS (Measured data sampled at 50 kHz) 51000 packets of 144 samples from 2017-12-04T02:40:03.626.000. Part 87/147

Processed Mon Dec 4 03:48:18 2017 by ELM ver.2012-10-06 from 001__elm20171204_024002__dat00.bin



Processed Mon Dec 4 03:48:19 2017 by ELM ver.2012-10-06 from 001__elm20171204_024002__dat00.bin



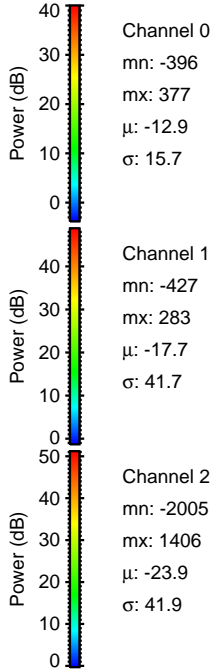
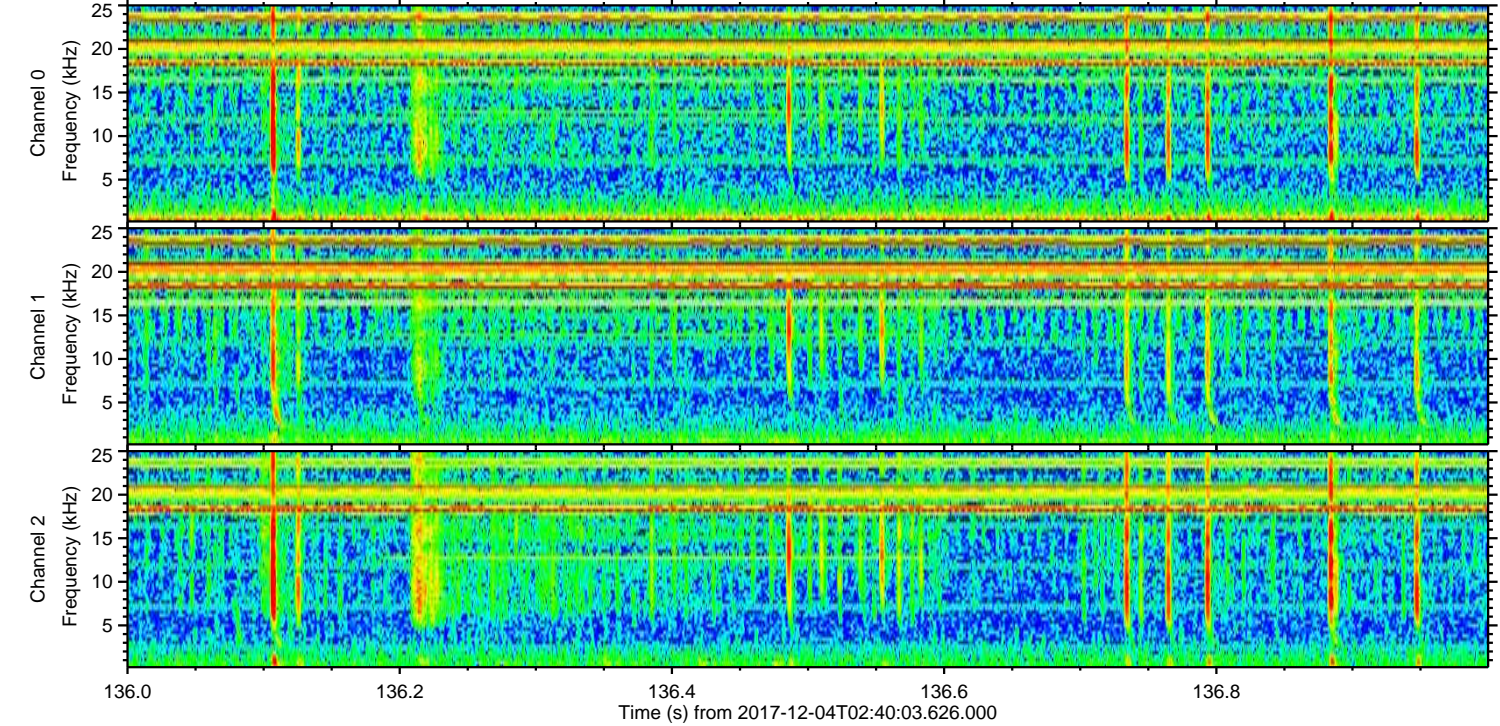
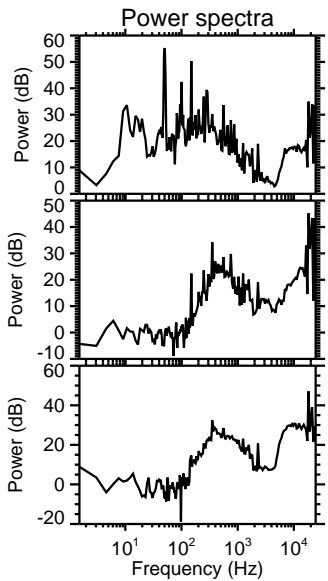
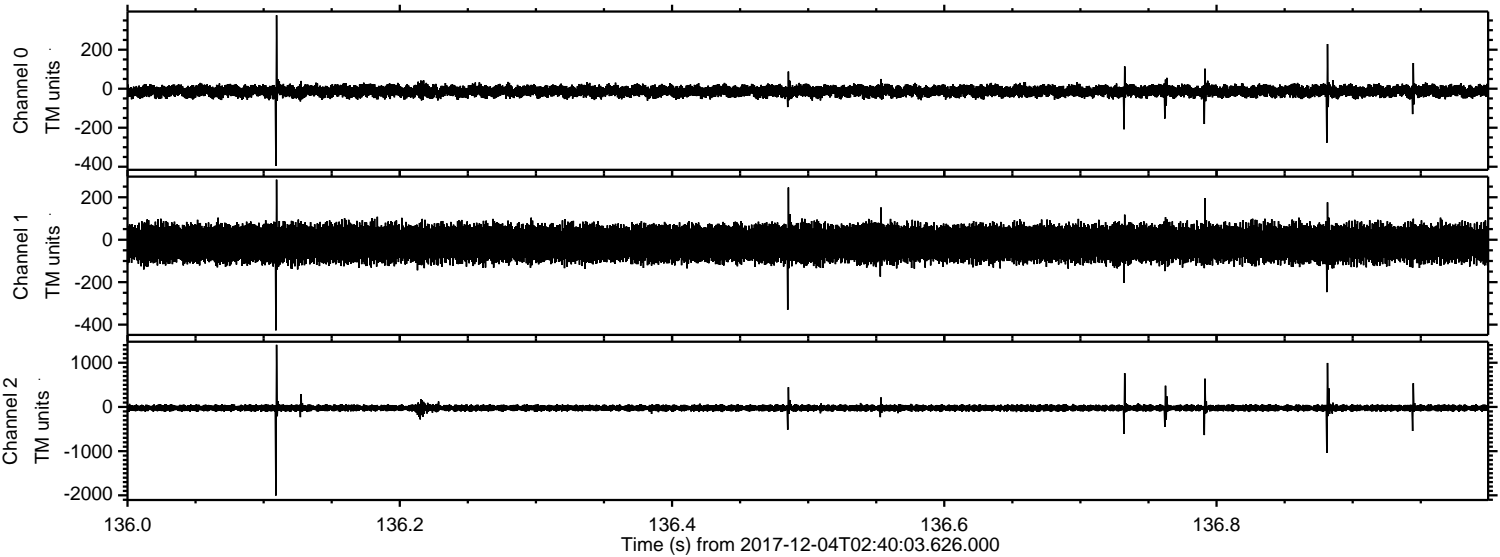
Channel 0
mn: -1273
mx: 583
 μ : -12.9
 σ : 16.5

Channel 1
mn: -2397
mx: 1489
 μ : -17.7
 σ : 47.1

Channel 2
mn: -1559
mx: 1212
 μ : -23.9
 σ : 38.9

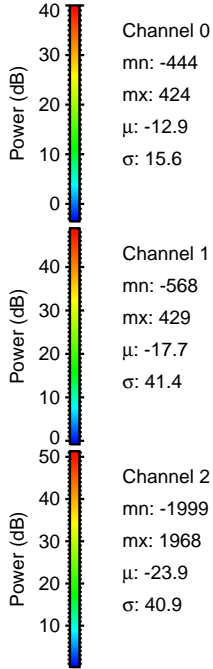
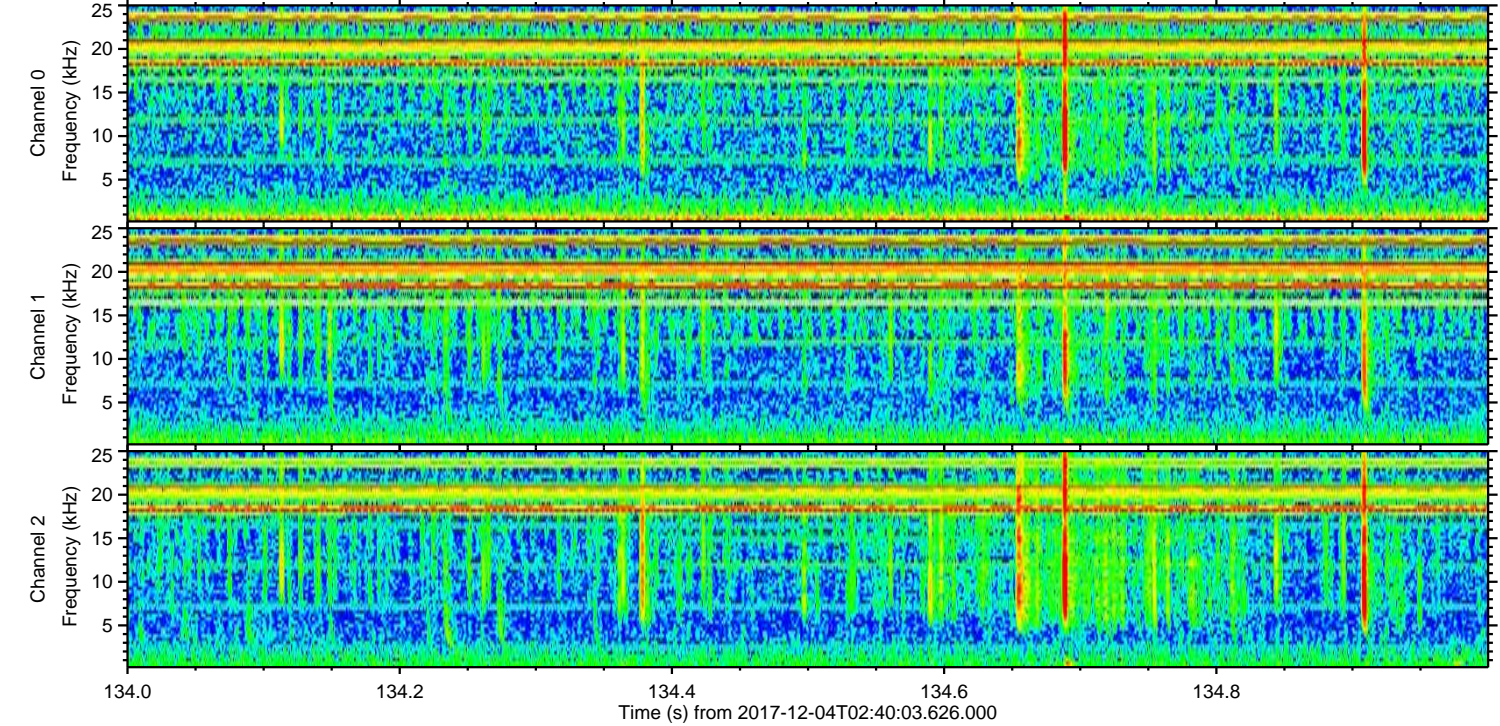
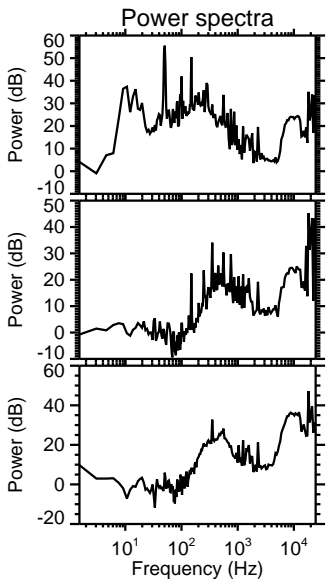
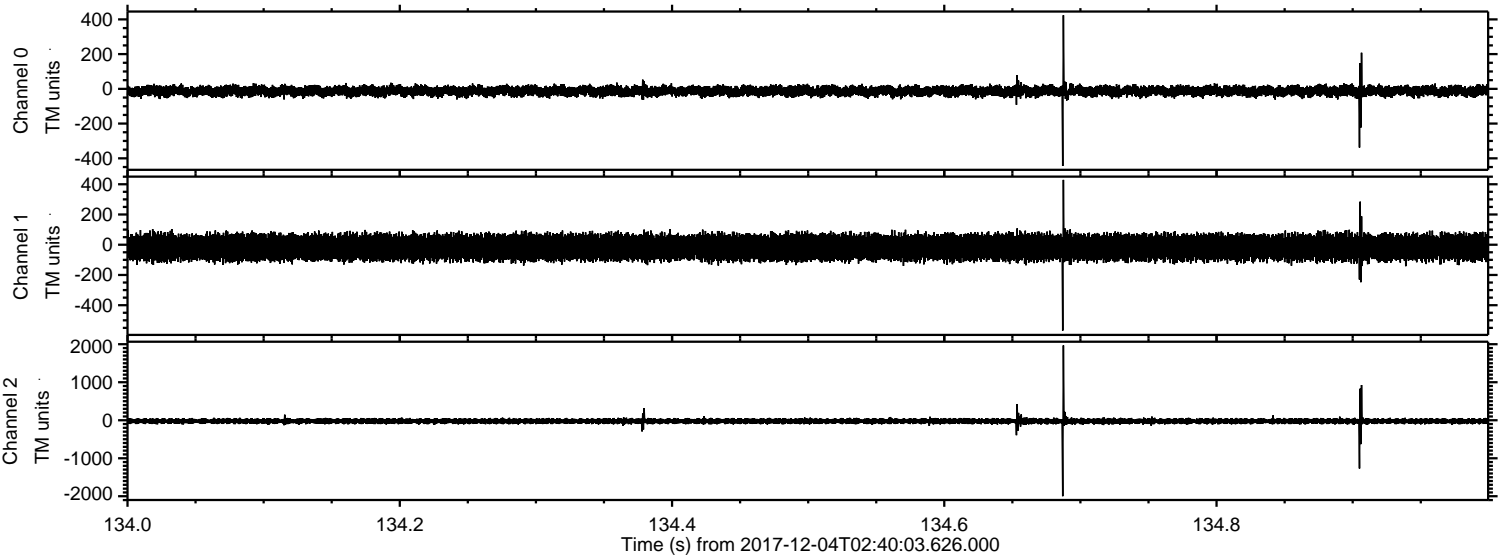
ELMAVAN 3D WAVEFORMS (Measured data sampled at 50 kHz) 51000 packets of 144 samples from 2017-12-04T02:40:03.626.000. Part 137/147

Processed Mon Dec 4 03:48:19 2017 by ELM ver.2012-10-06 from 001__elm20171204_024002__dat00.bin



ELMAVAN 3D WAVEFORMS (Measured data sampled at 50 kHz) 51000 packets of 144 samples from 2017-12-04T02:40:03.626.000. Part 135/147

Processed Mon Dec 4 03:48:20 2017 by ELM ver.2012-10-06 from 001__elm20171204_024002__dat00.bin



Processed Mon Dec 4 03:48:21 2017 by ELM ver.2012-10-06 from 001__elm20171204_024002__dat00.bin

