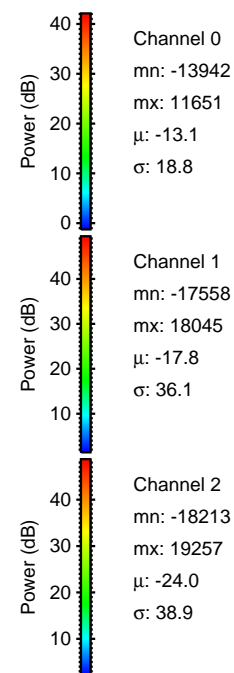
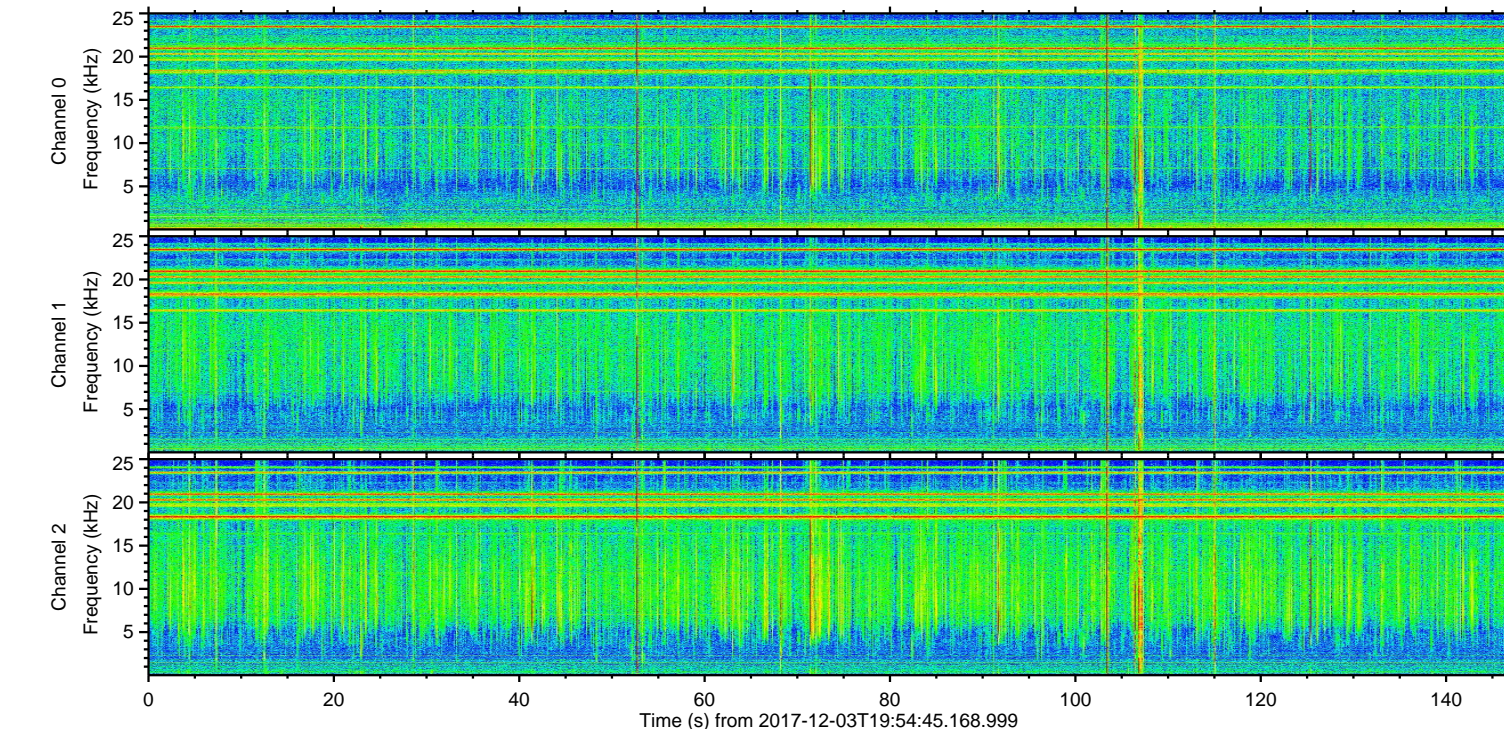
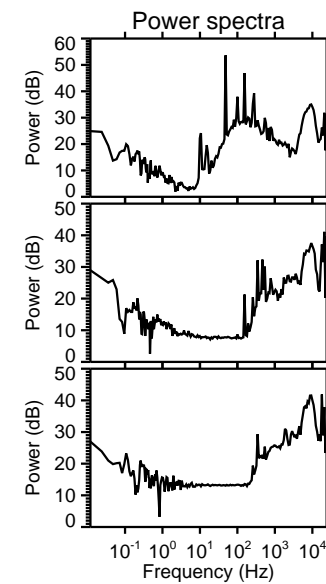
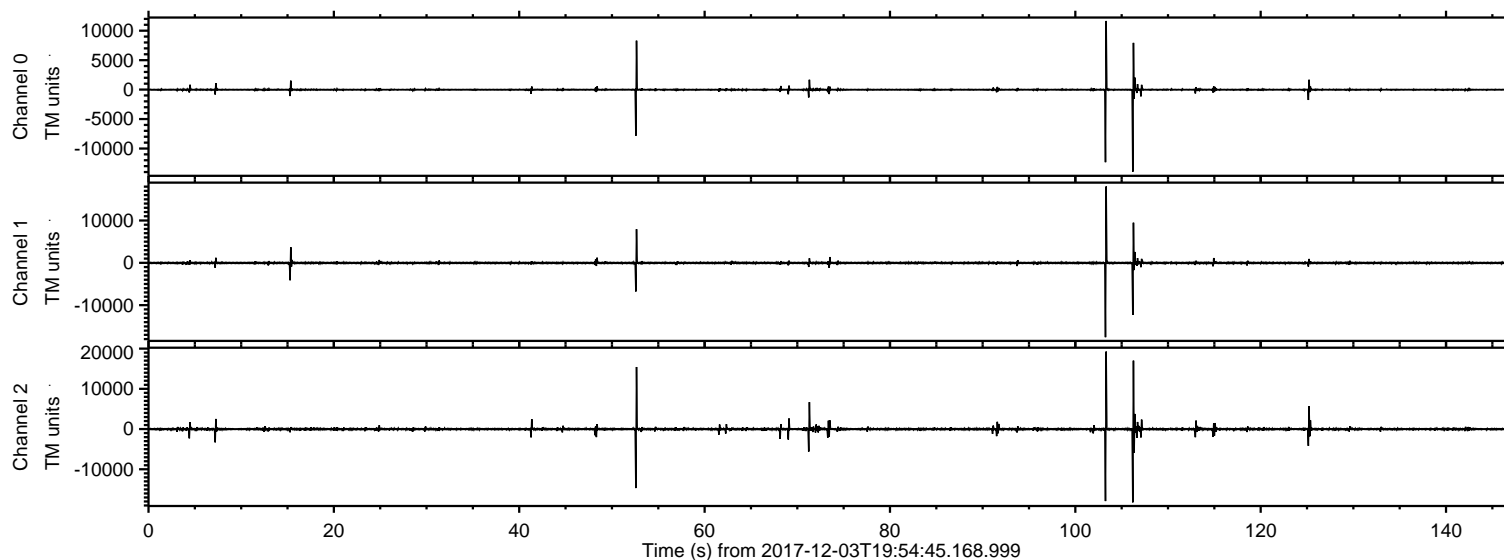


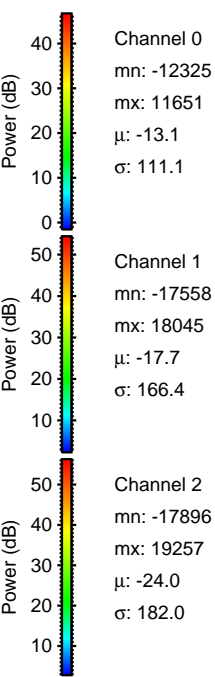
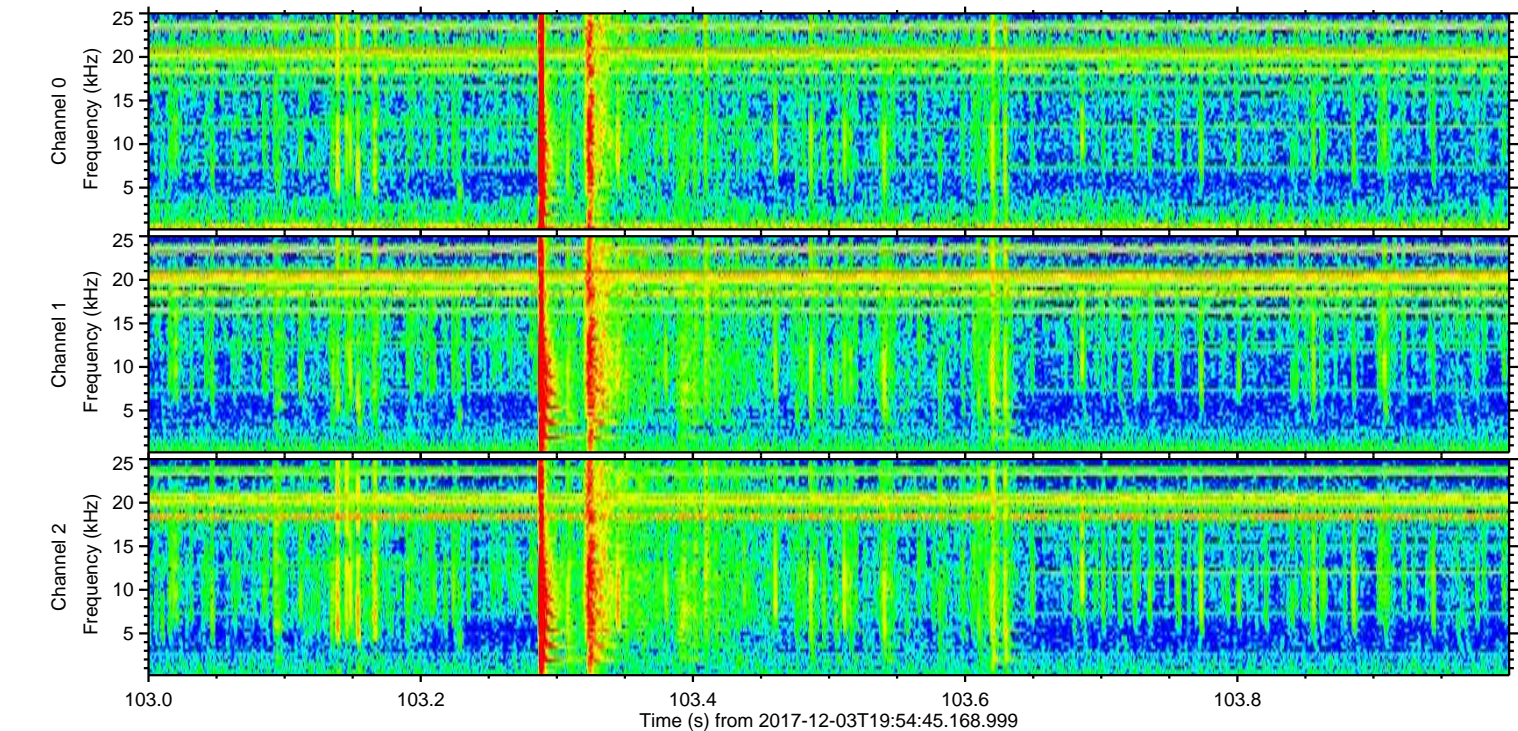
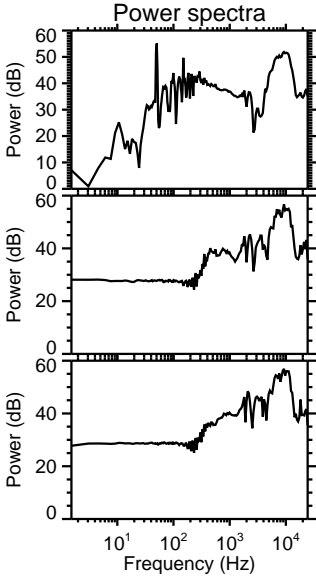
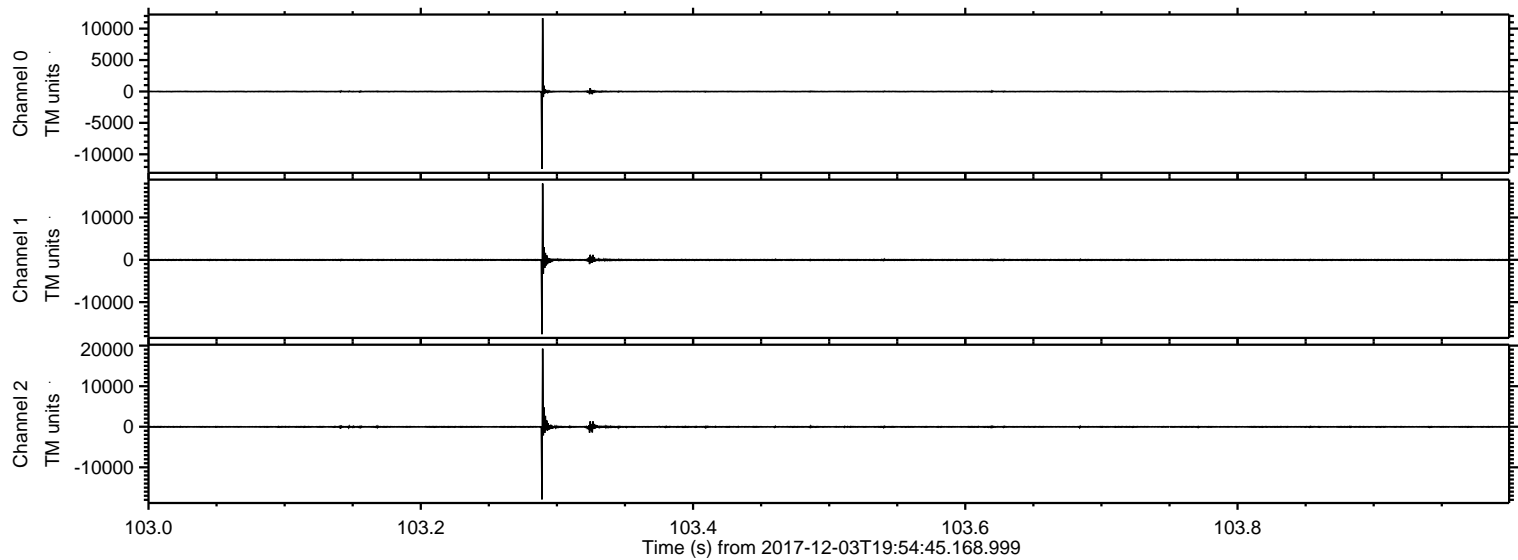
ELMAVAN 3D WAVEFORMS (Measured data sampled at 50 kHz) 51000 packets of 144 samples from 2017-12-03T19:54:45.168.999.

Processed Sun Dec 3 21:02:49 2017 by ELM ver.2012-10-06 from 001__elm20171203_195444__dat00.bin



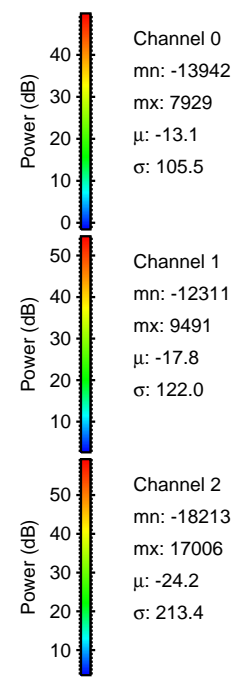
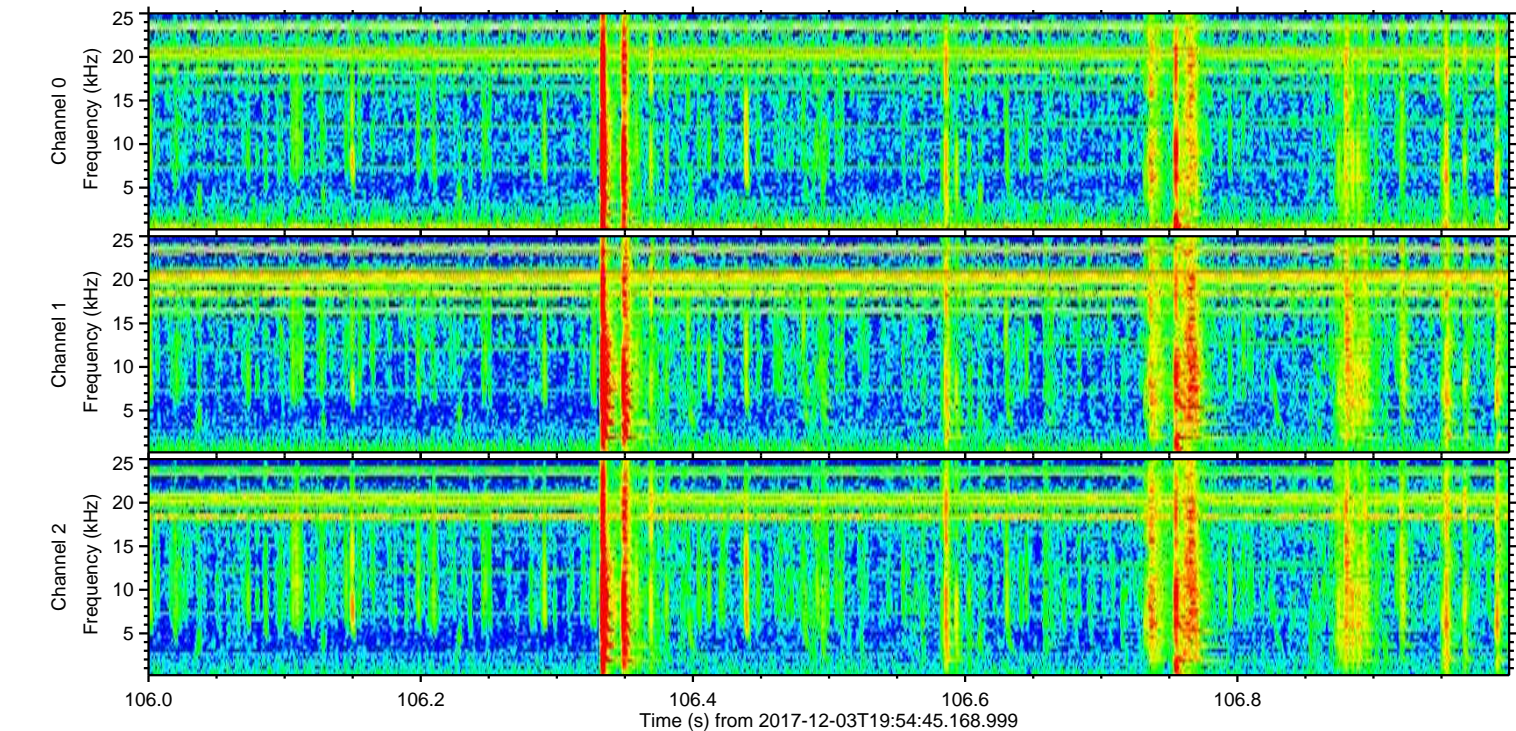
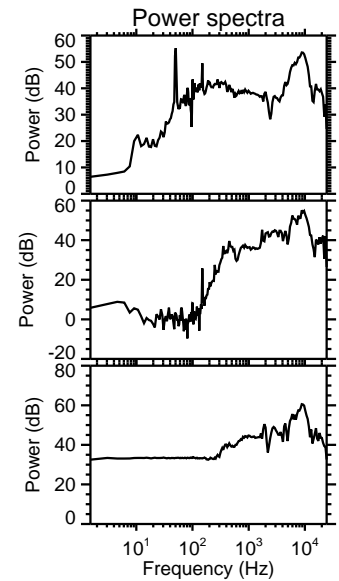
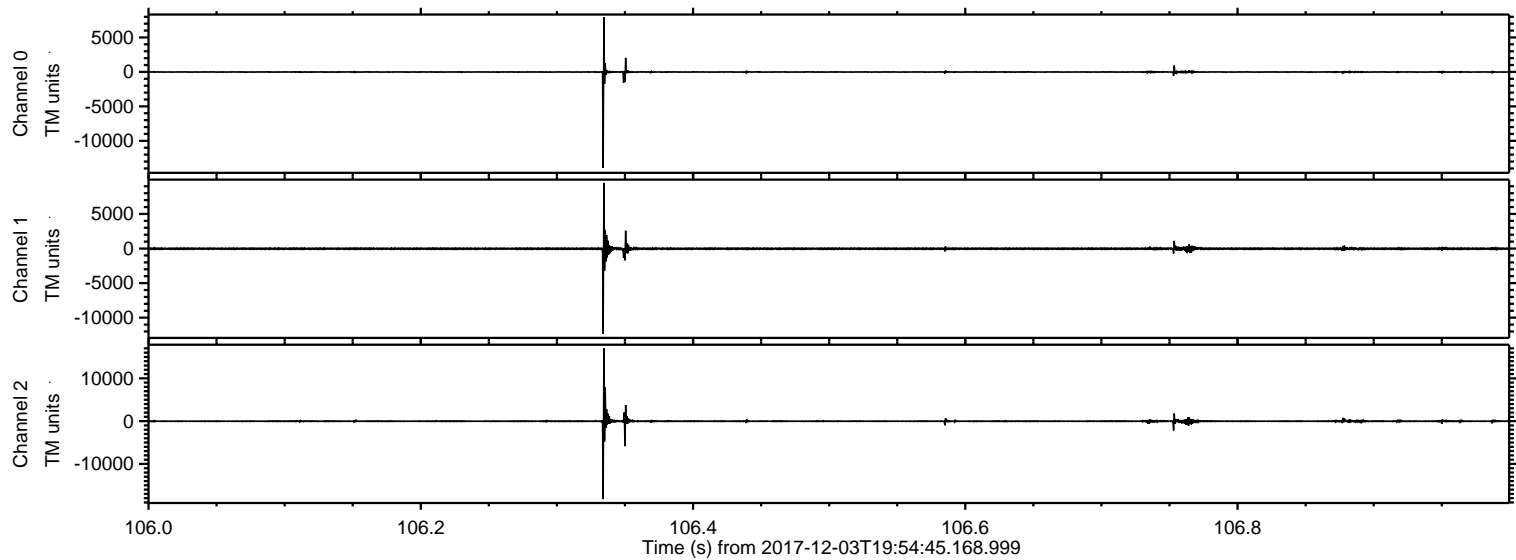
ELMAVAN 3D WAVEFORMS (Measured data sampled at 50 kHz) 51000 packets of 144 samples from 2017-12-03T19:54:45.168.999. Part 104/147

Processed Sun Dec 3 21:02:55 2017 by ELM ver.2012-10-06 from 001__elm20171203_195444__dat00.bin

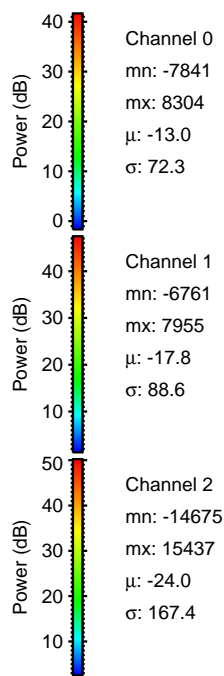
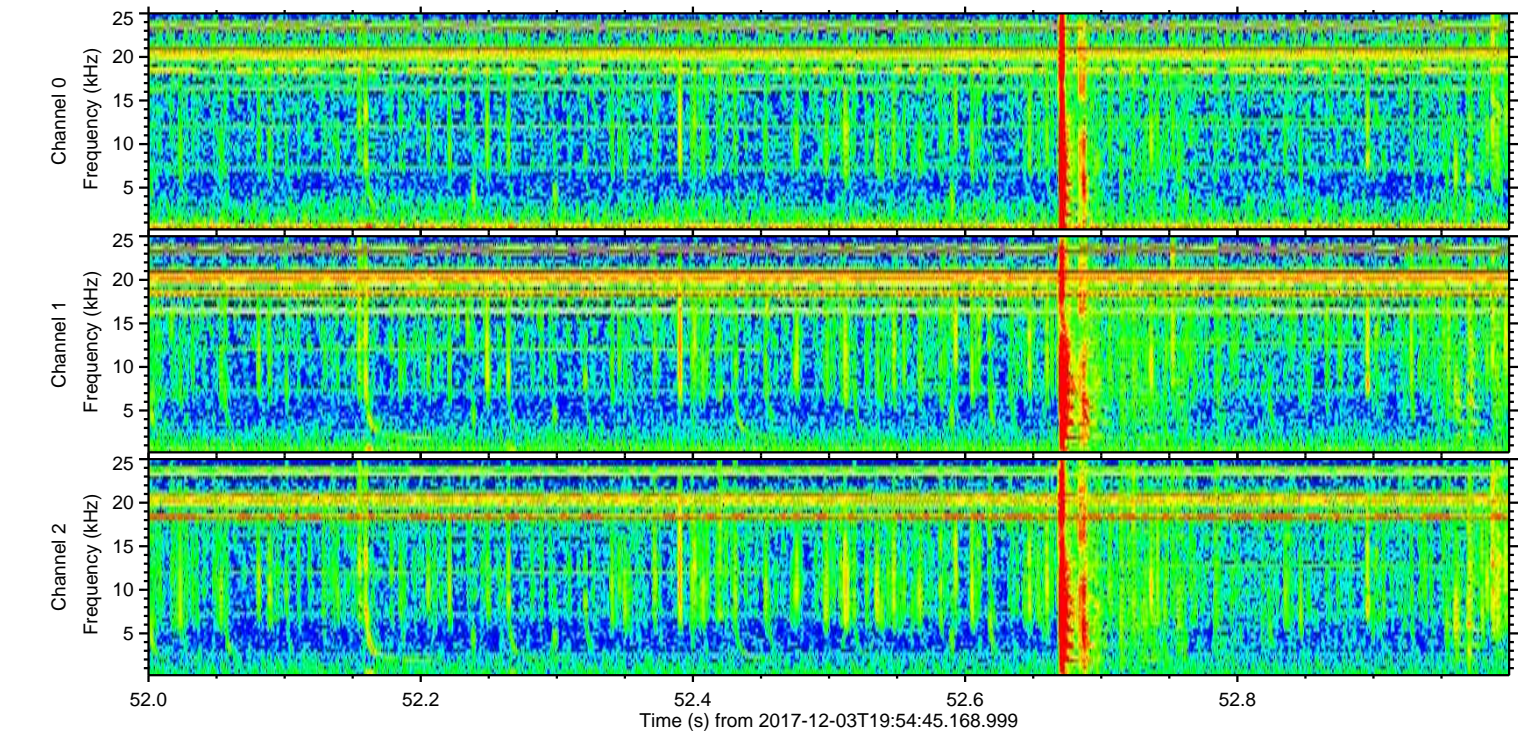
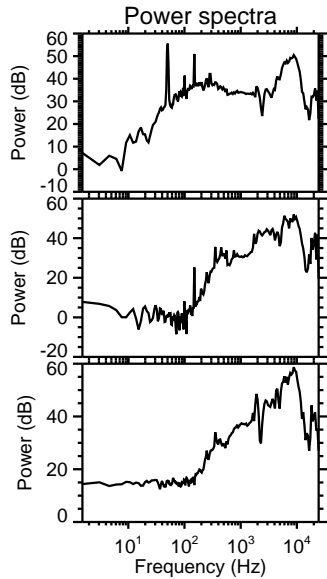
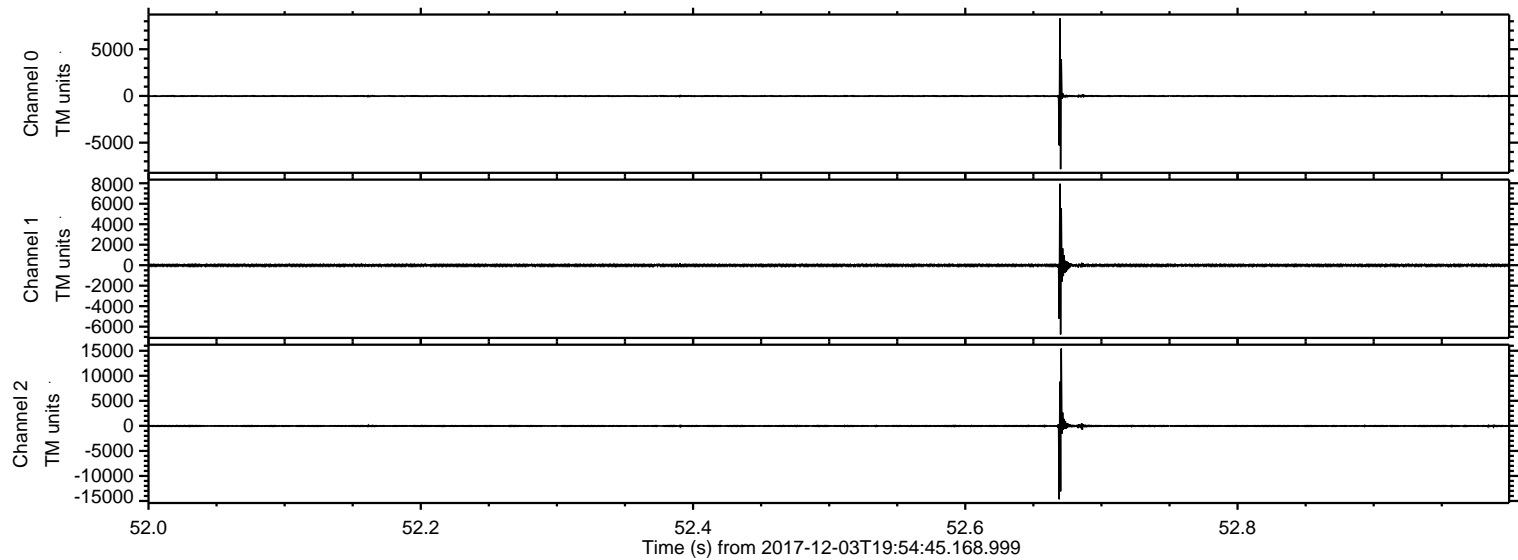


ELMAVAN 3D WAVEFORMS (Measured data sampled at 50 kHz) 51000 packets of 144 samples from 2017-12-03T19:54:45.168.999. Part 107/147

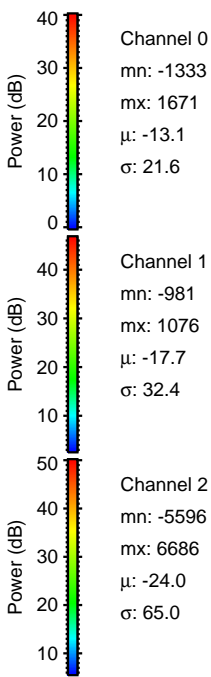
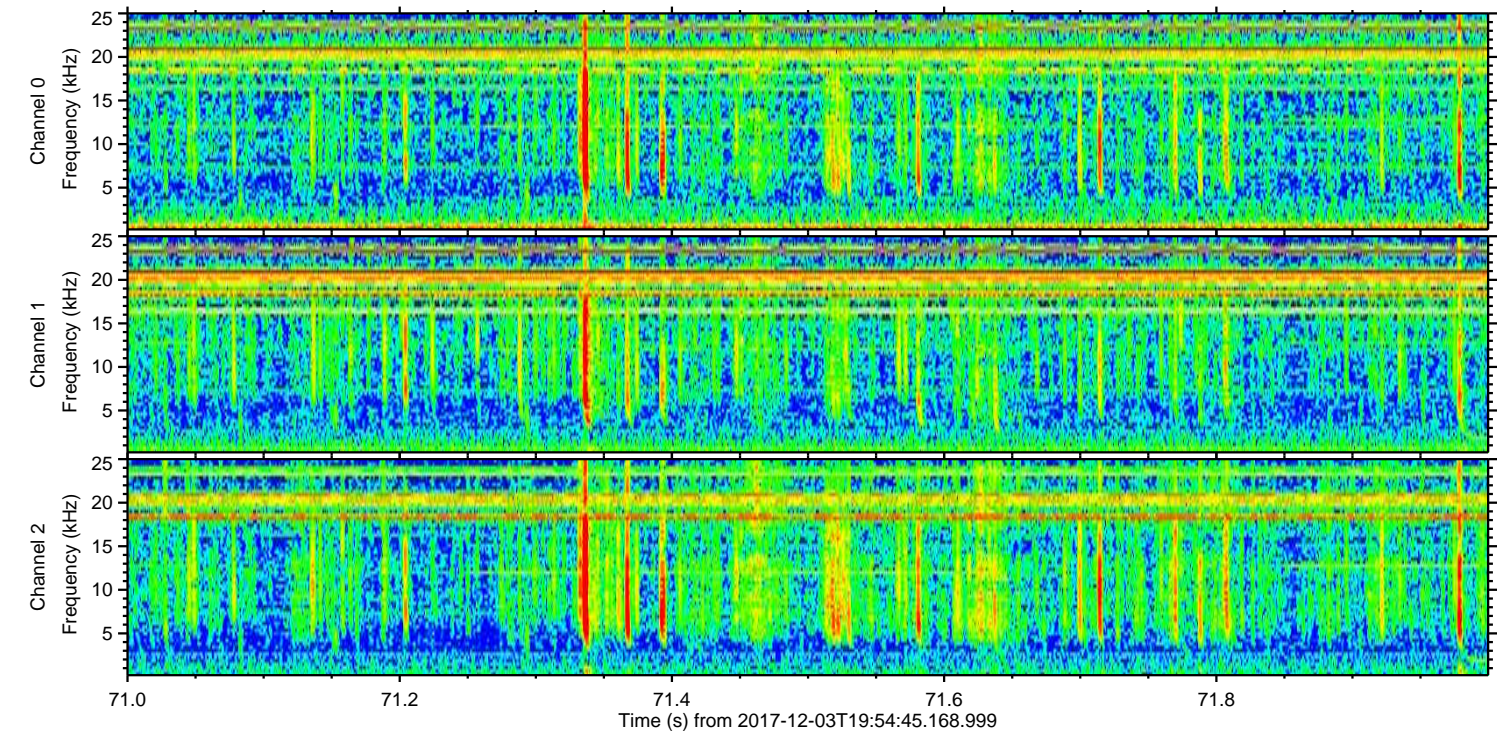
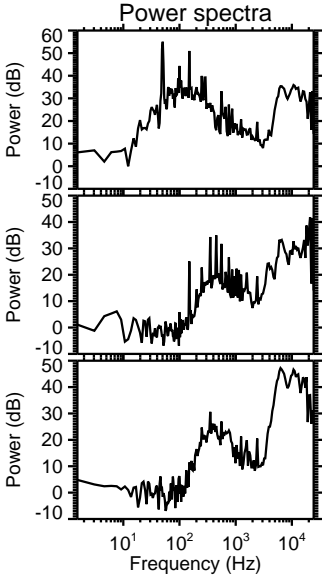
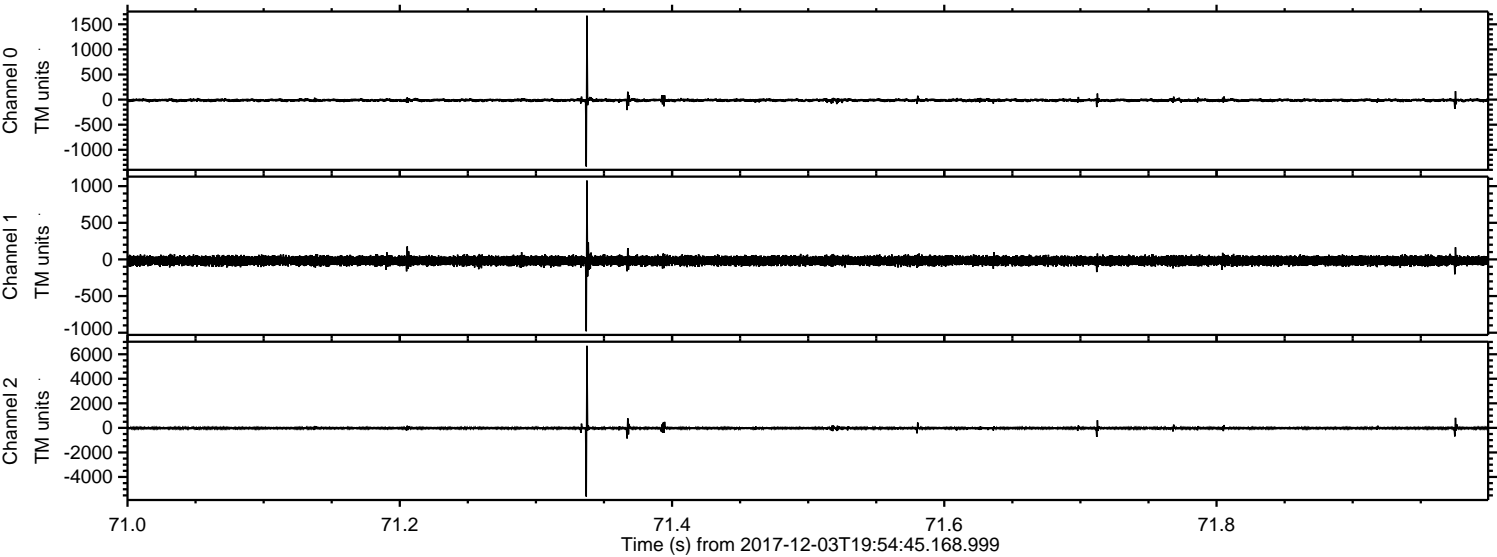
Processed Sun Dec 3 21:02:55 2017 by ELM ver.2012-10-06 from 001__elm20171203_195444__dat00.bin



Processed Sun Dec 3 21:02:56 2017 by ELM ver.2012-10-06 from 001__elm20171203_195444__dat00.bin

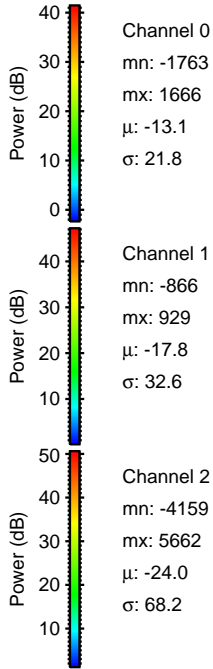
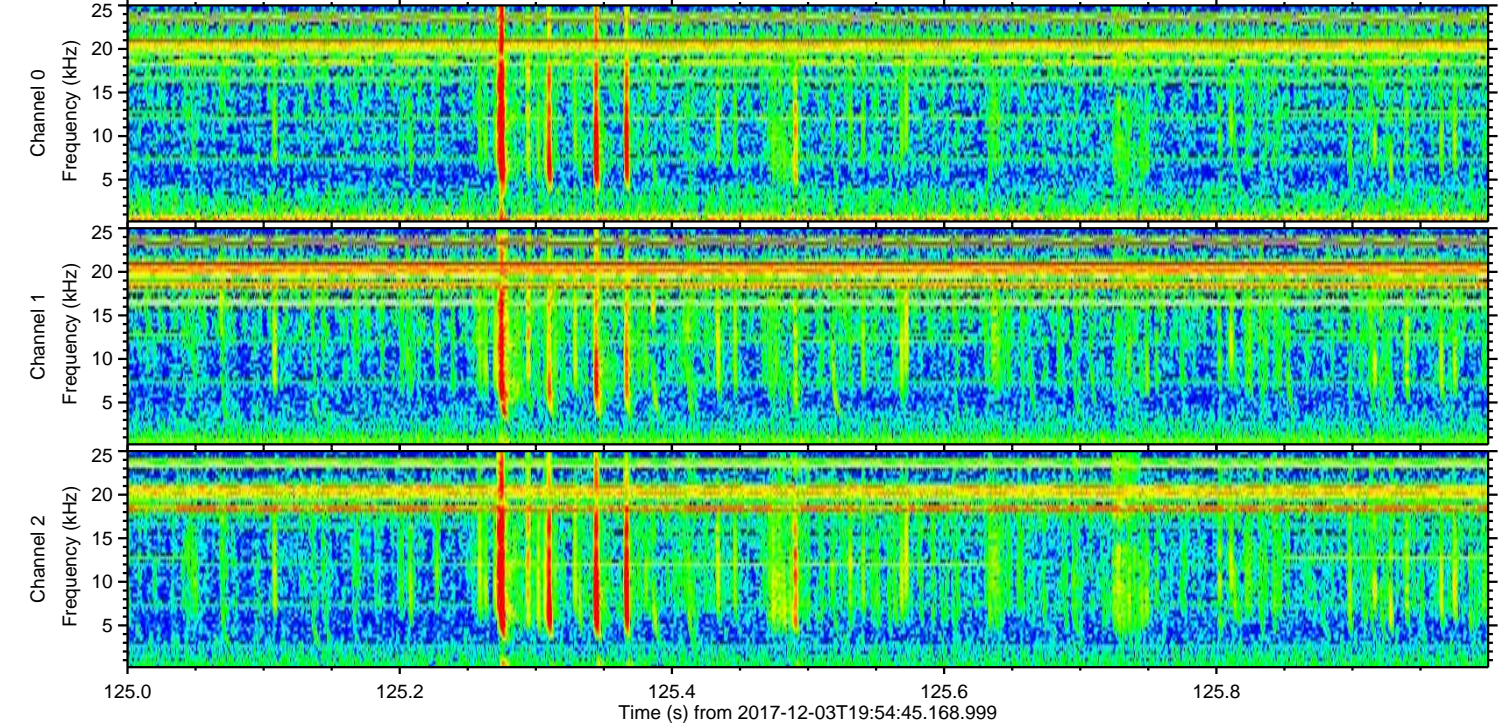
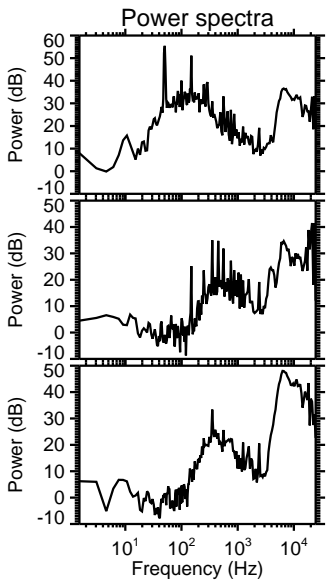
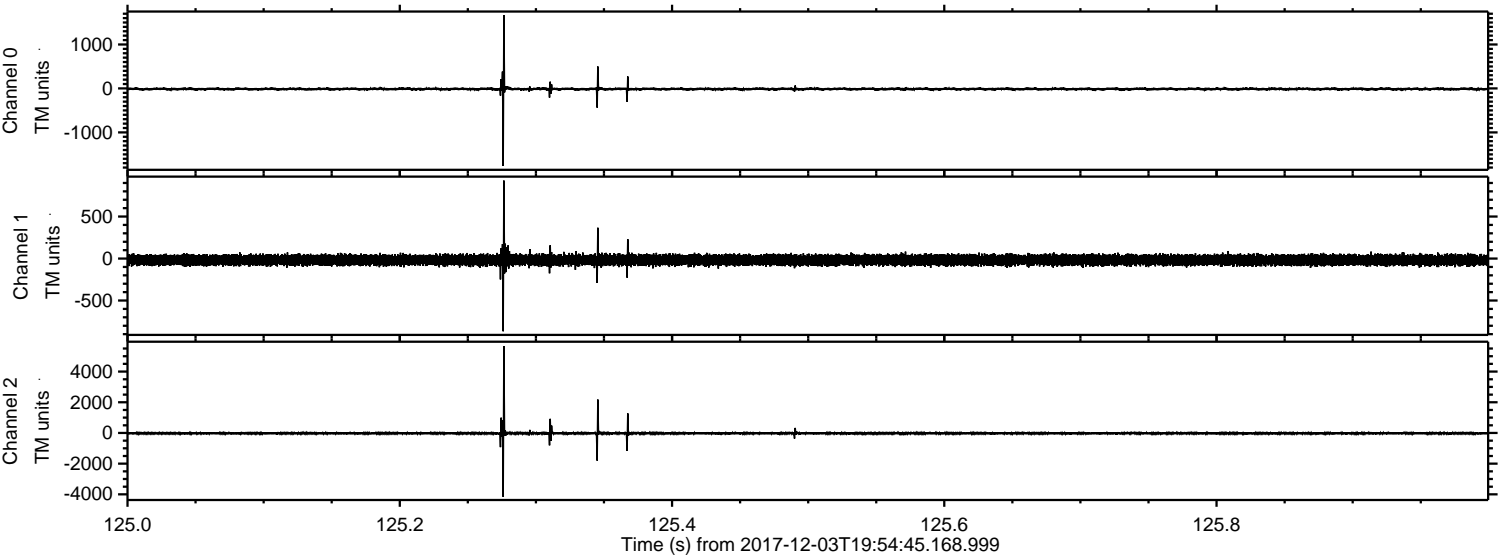


Processed Sun Dec 3 21:02:57 2017 by ELM ver.2012-10-06 from 001__elm20171203_195444__dat00.bin

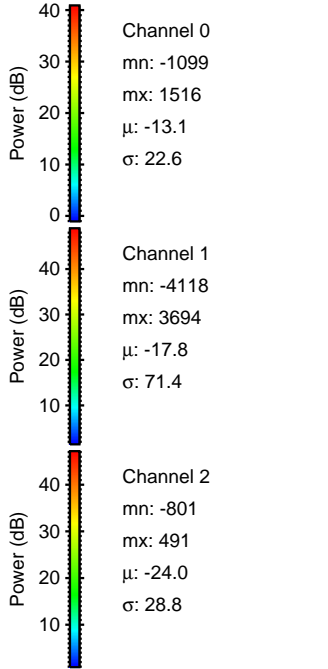
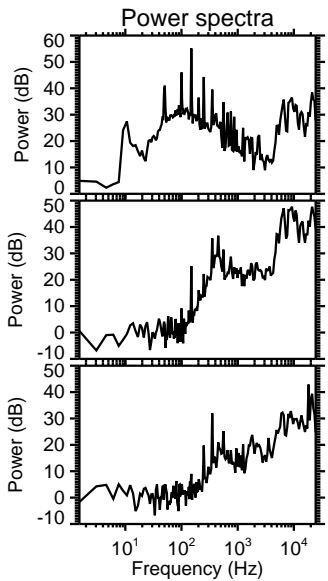
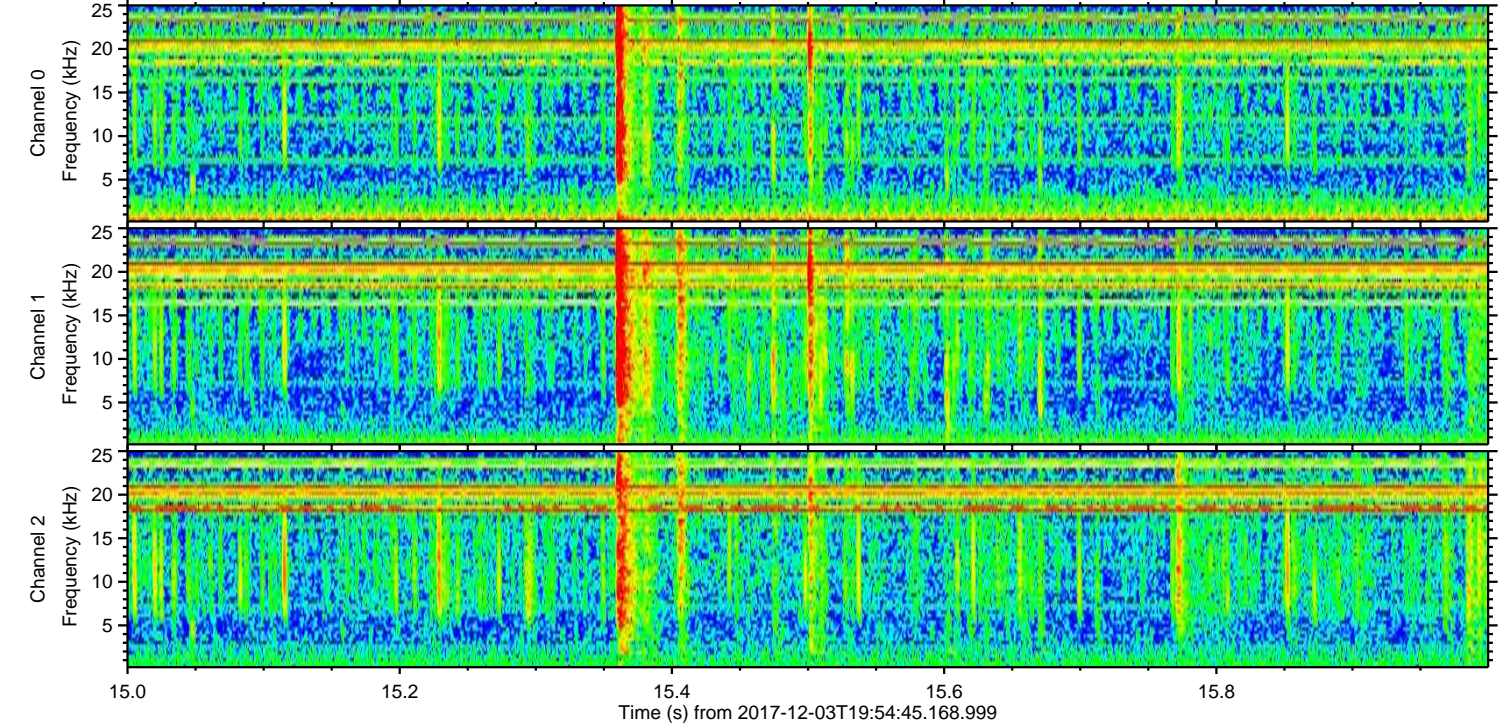
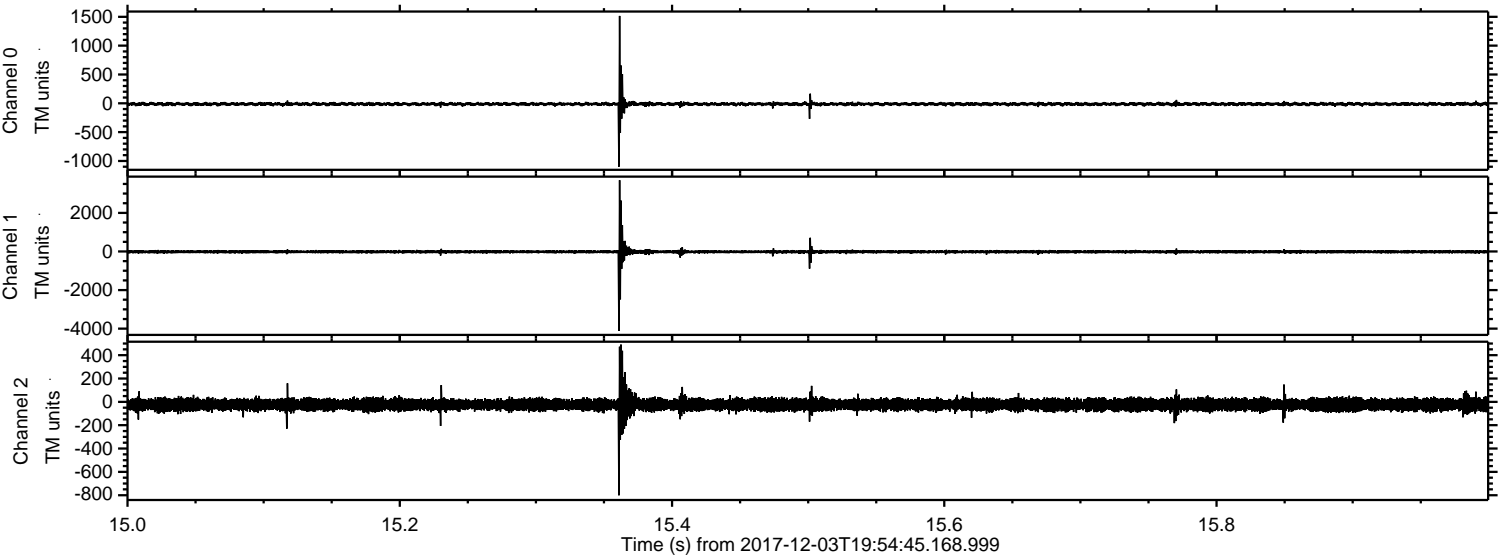


ELMAVAN 3D WAVEFORMS (Measured data sampled at 50 kHz) 51000 packets of 144 samples from 2017-12-03T19:54:45.168.999. Part 126/147

Processed Sun Dec 3 21:02:57 2017 by ELM ver.2012-10-06 from 001__elm20171203_195444__dat00.bin

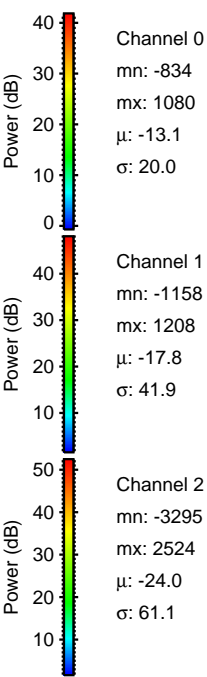
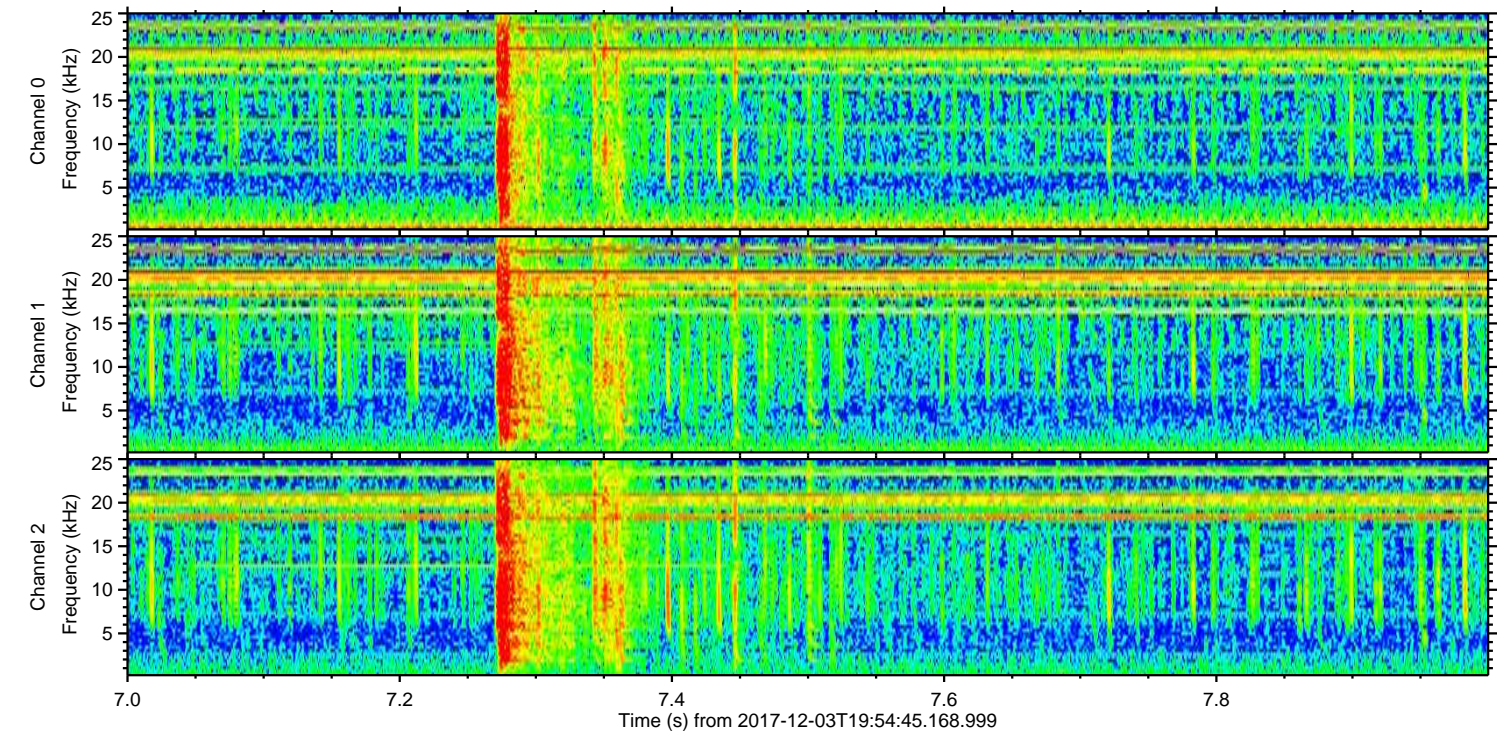
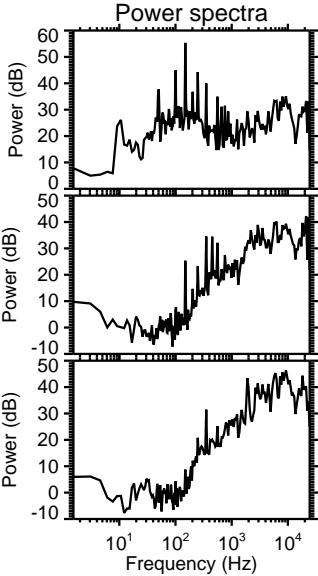
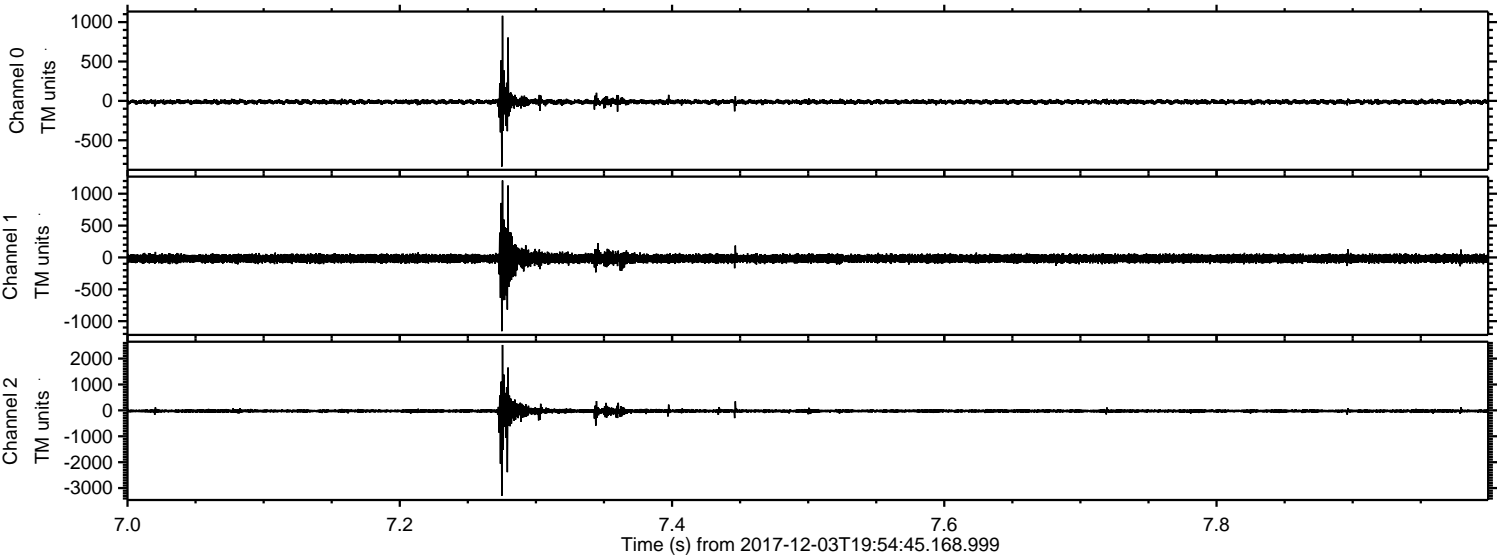


Processed Sun Dec 3 21:02:58 2017 by ELM ver.2012-10-06 from 001__elm20171203_195444__dat00.bin

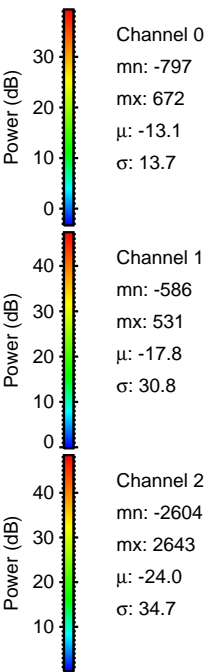
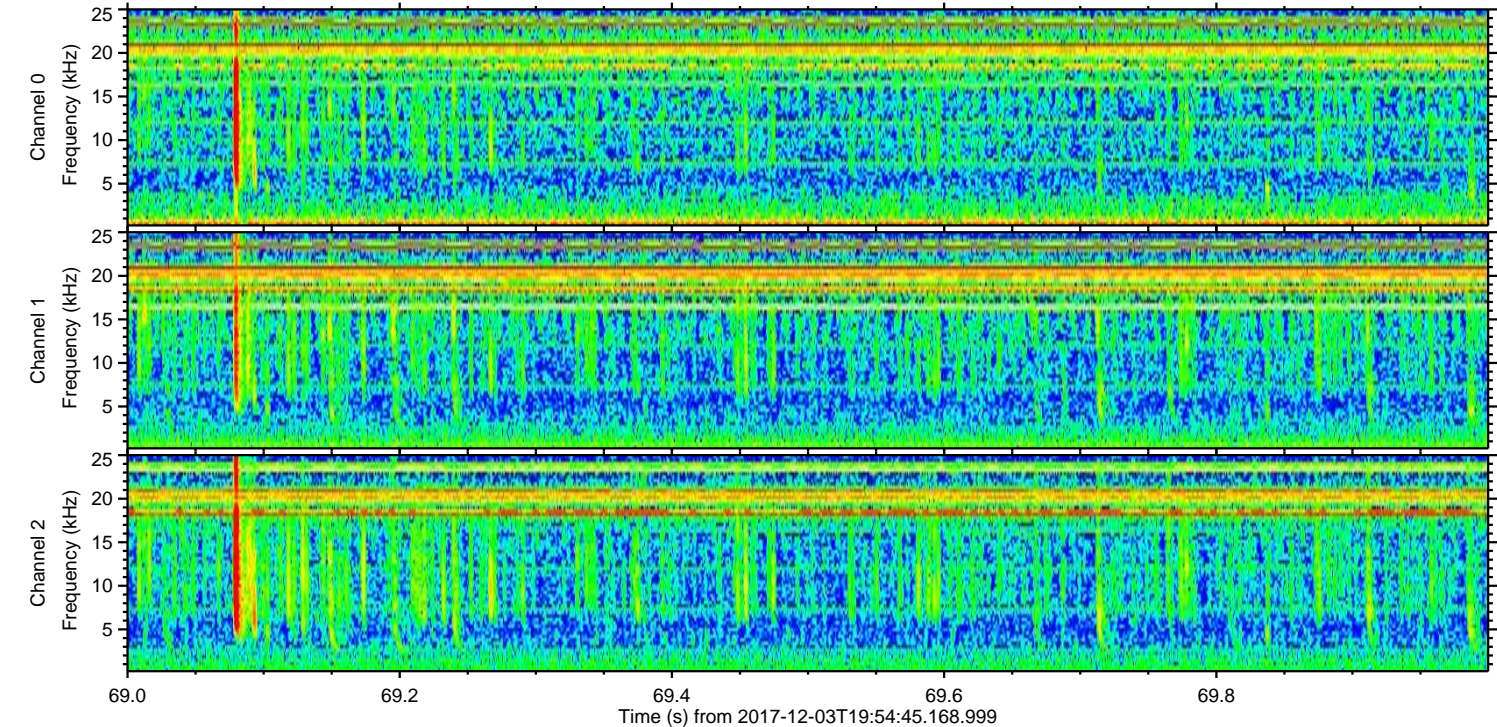
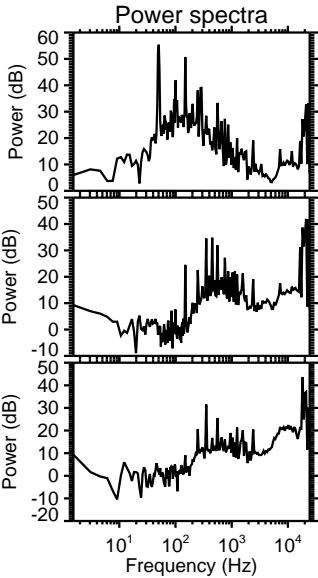
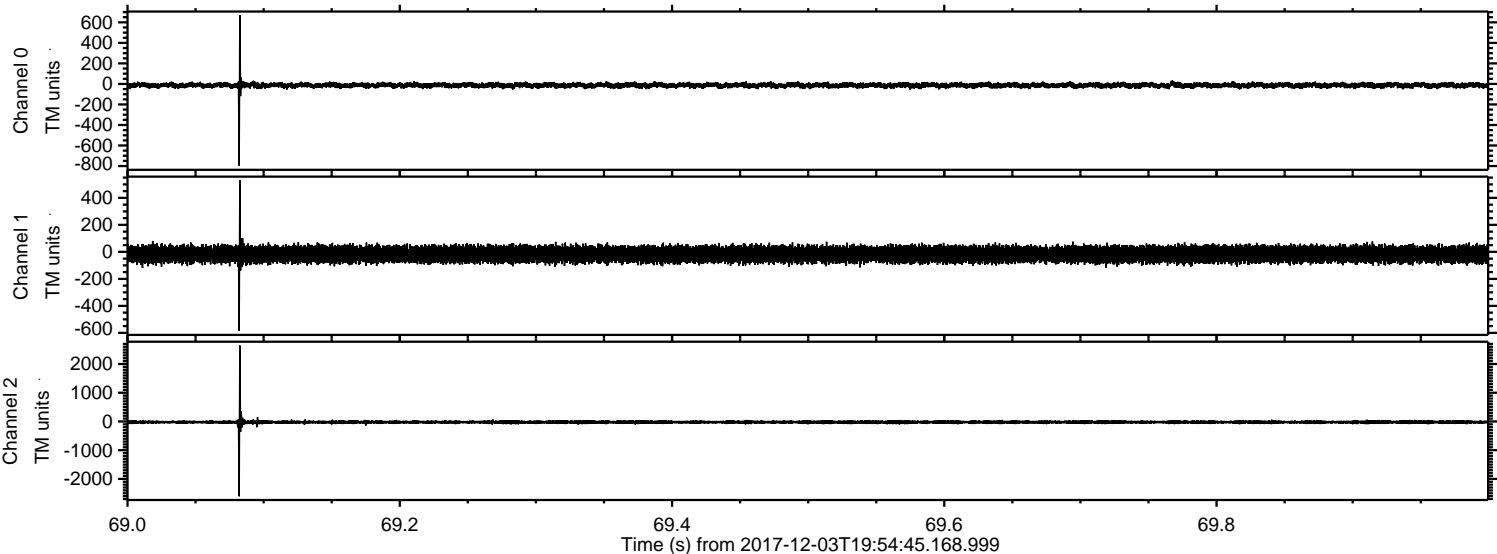


ELMAVAN 3D WAVEFORMS (Measured data sampled at 50 kHz) 51000 packets of 144 samples from 2017-12-03T19:54:45.168.999. Part 8/147

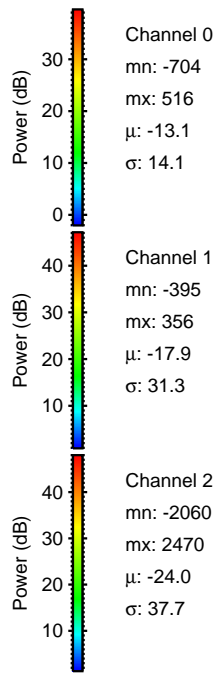
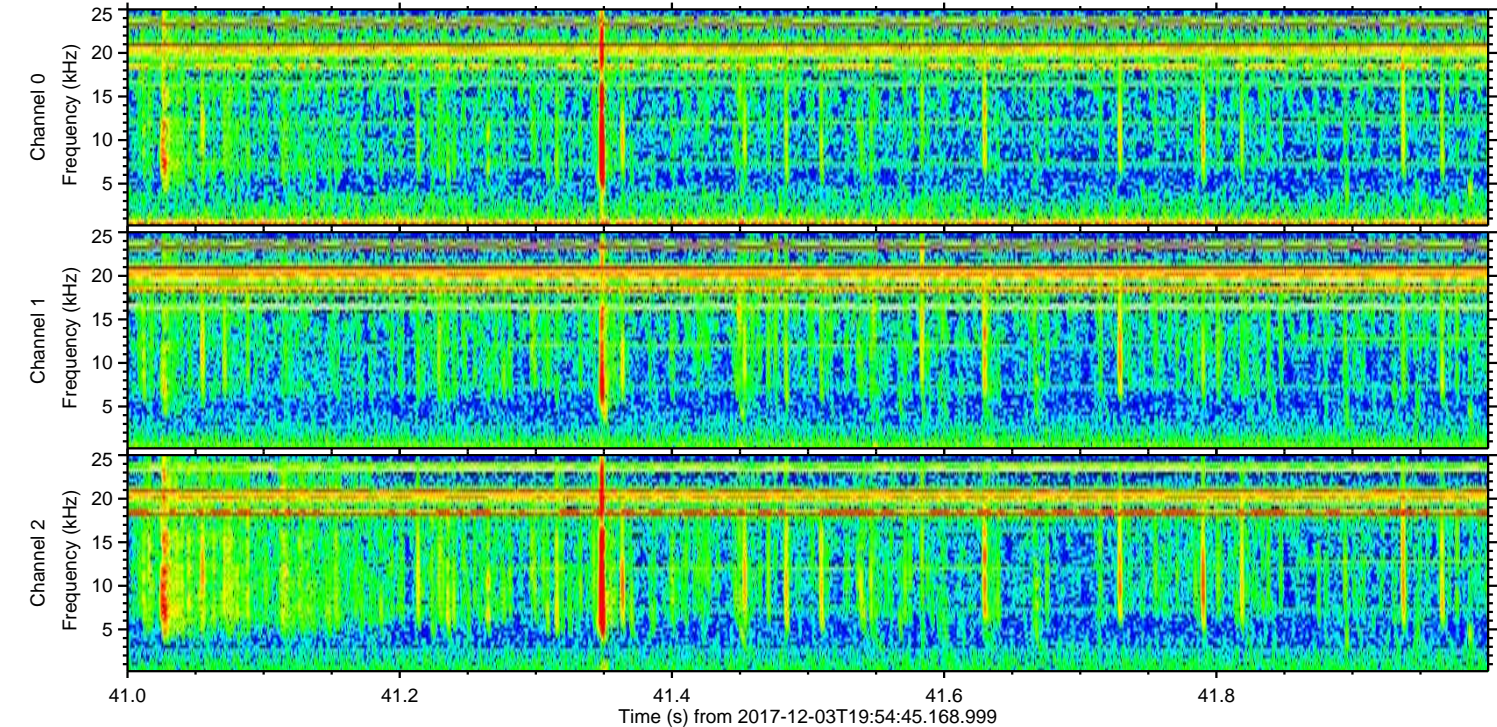
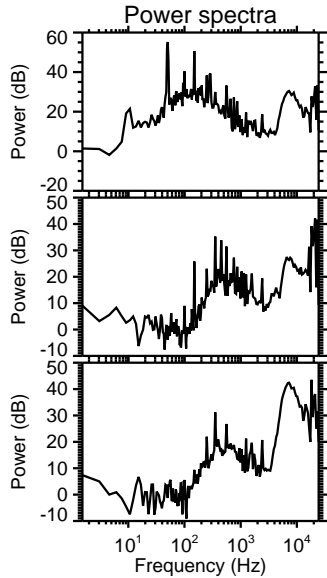
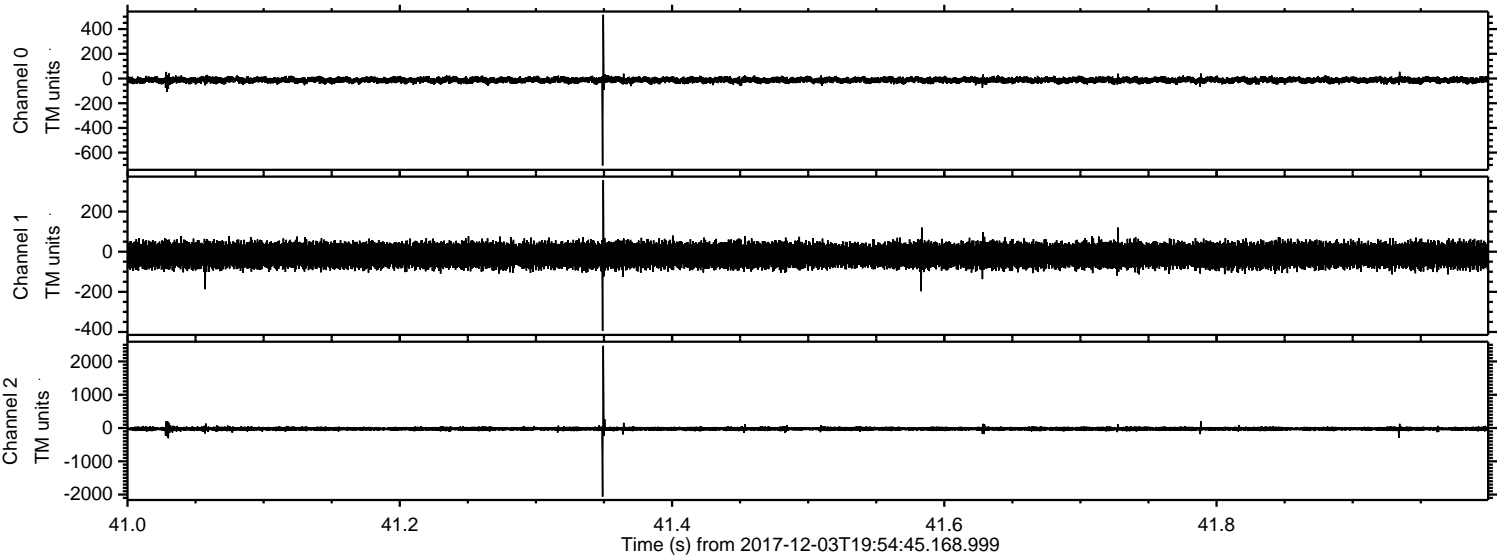
Processed Sun Dec 3 21:02:59 2017 by ELM ver.2012-10-06 from 001__elm20171203_195444__dat00.bin



Processed Sun Dec 3 21:02:59 2017 by ELM ver.2012-10-06 from 001__elm20171203_195444__dat00.bin



Processed Sun Dec 3 21:03:00 2017 by ELM ver.2012-10-06 from 001__elm20171203_195444__dat00.bin



Channel 0
mn: -704
mx: 516
 μ : -13.1
 σ : 14.1

Channel 1
mn: -395
mx: 356
 μ : -17.9
 σ : 31.3

Channel 2
mn: -2060
mx: 2470
 μ : -24.0
 σ : 37.7

