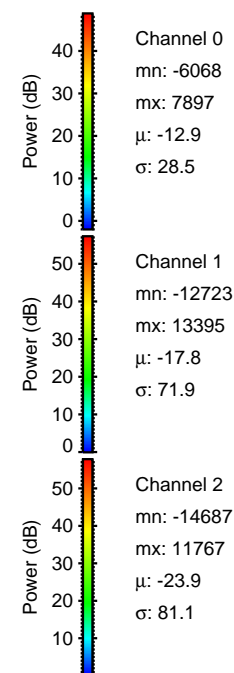
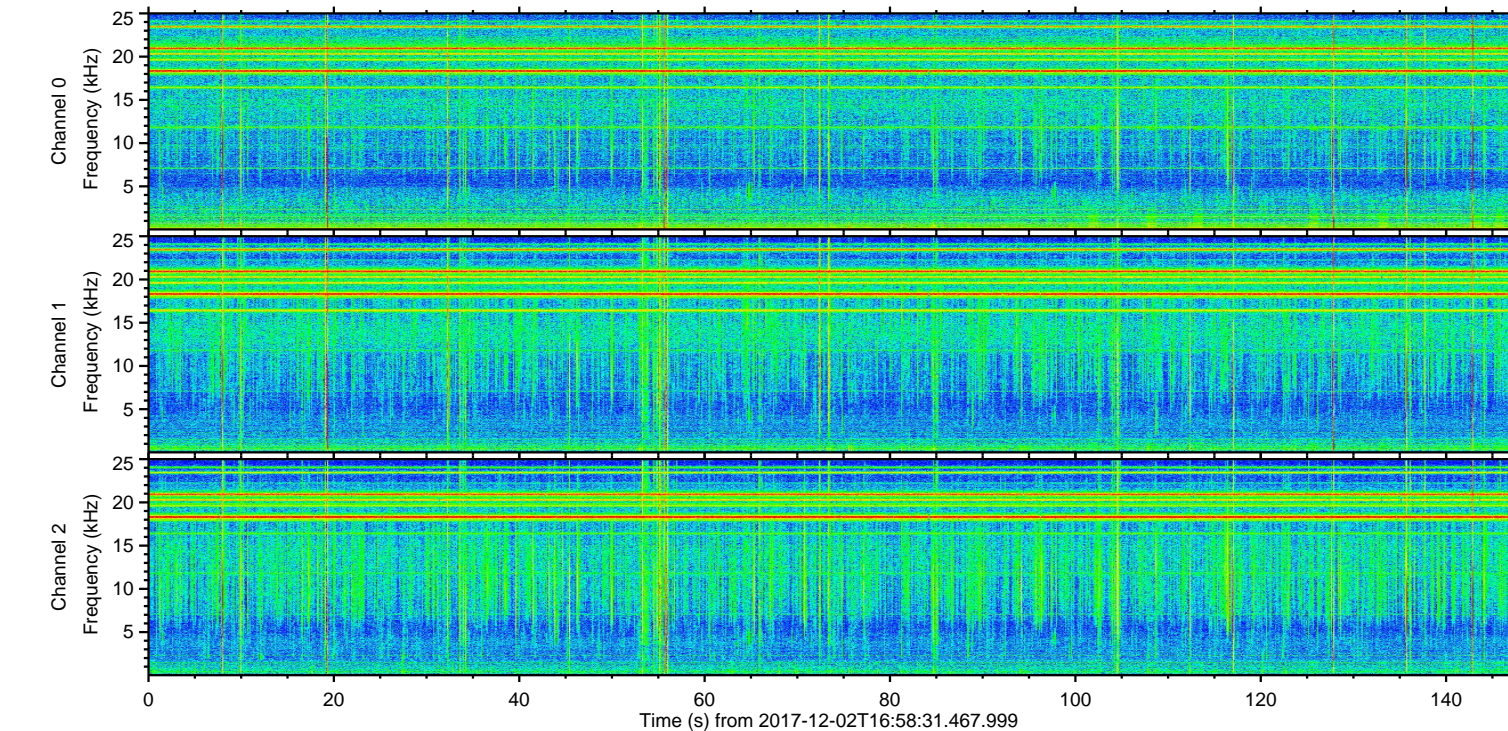
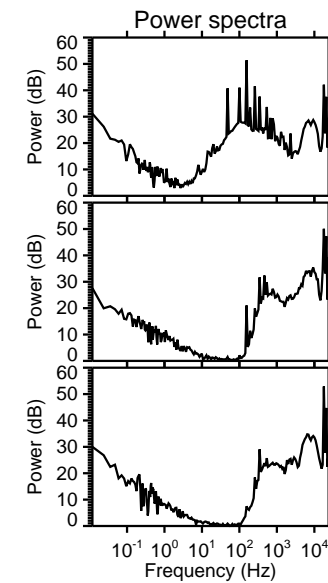
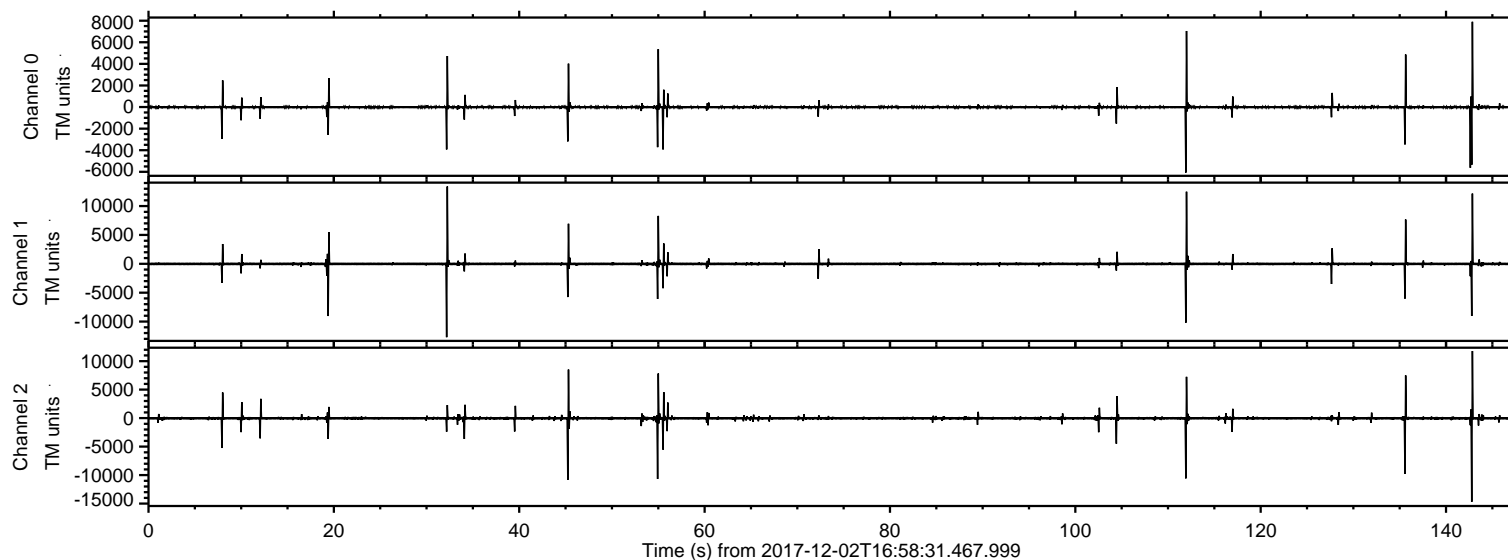


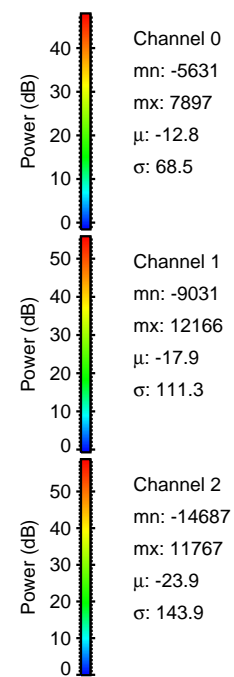
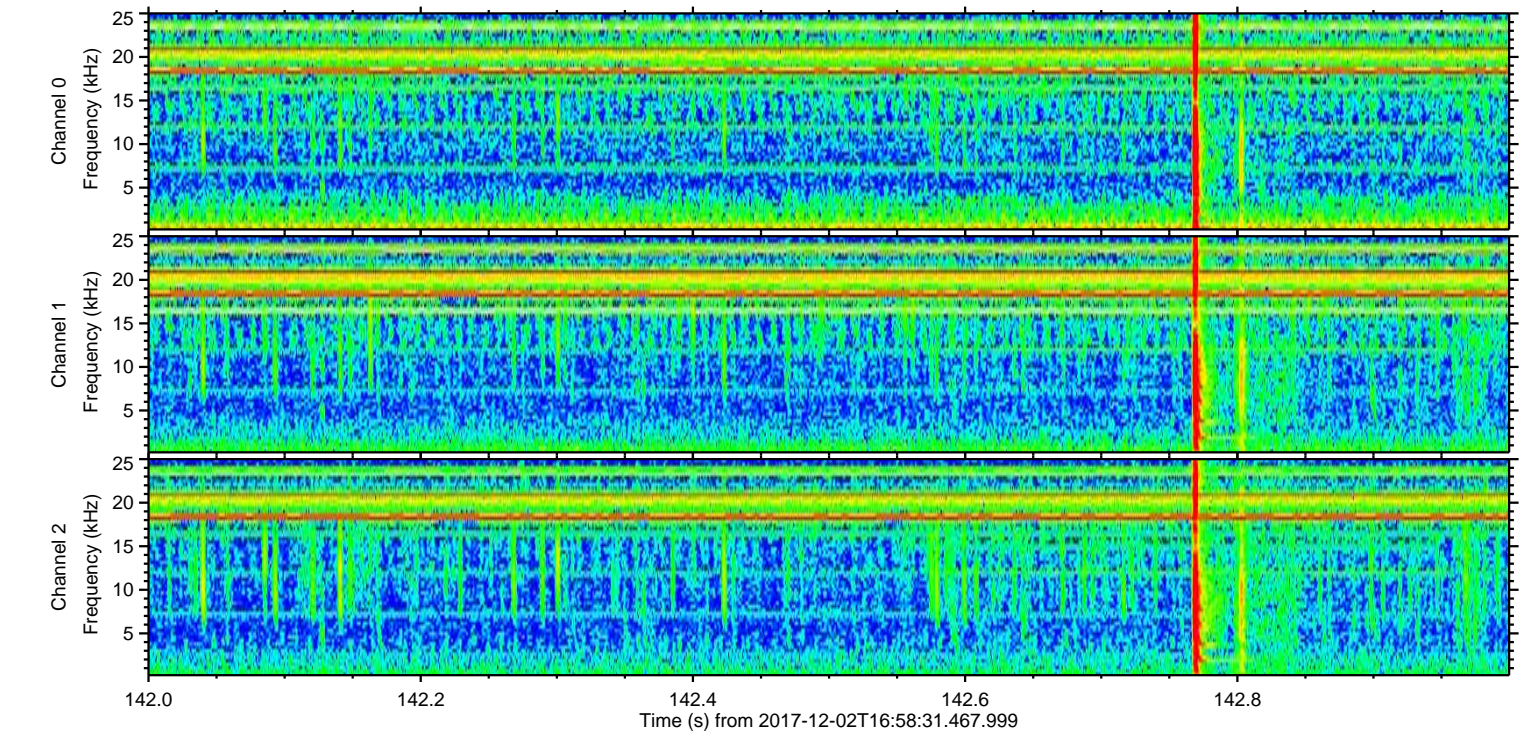
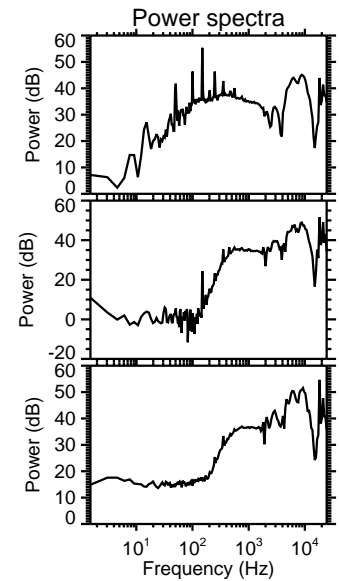
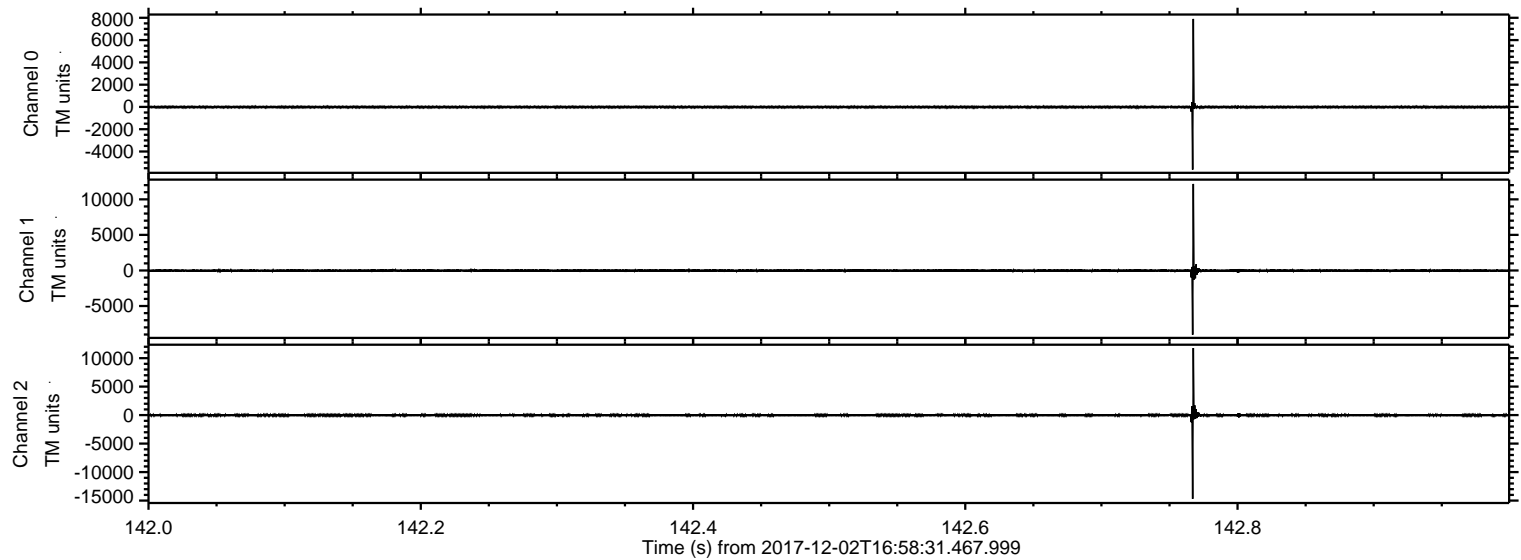
ELMAVAN 3D WAVEFORMS (Measured data sampled at 50 kHz) 51000 packets of 144 samples from 2017-12-02T16:58:31.467.999.

Processed Sat Dec 2 18:06:52 2017 by ELM ver.2012-10-06 from 001__elm20171202_165830__dat00.bin



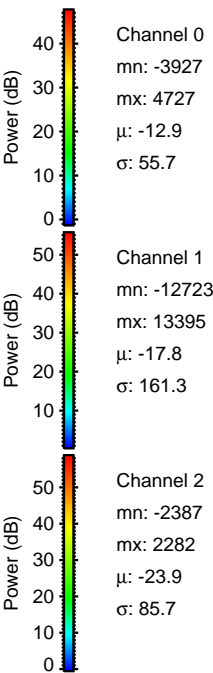
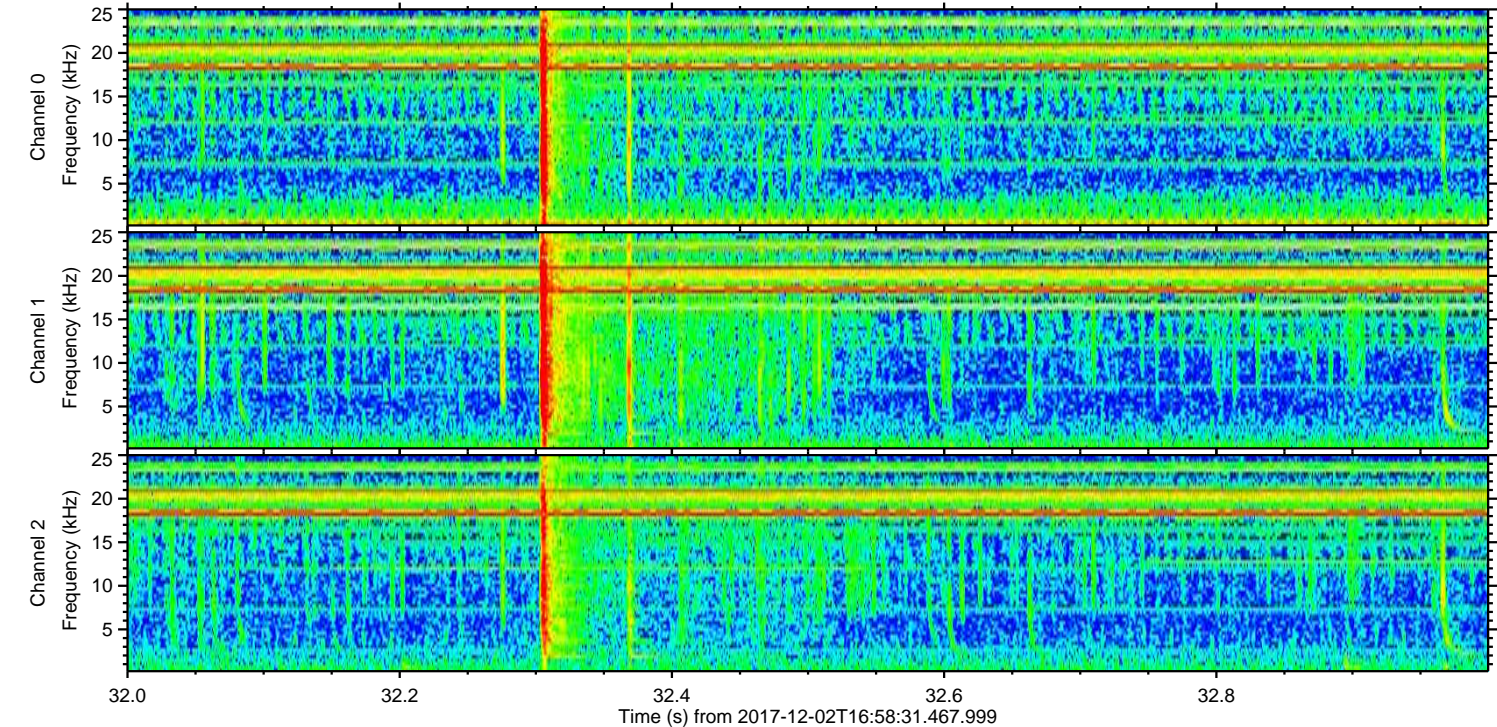
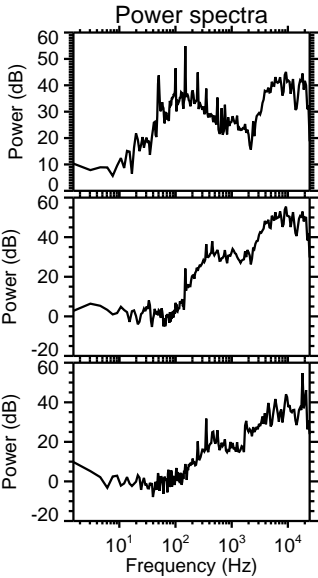
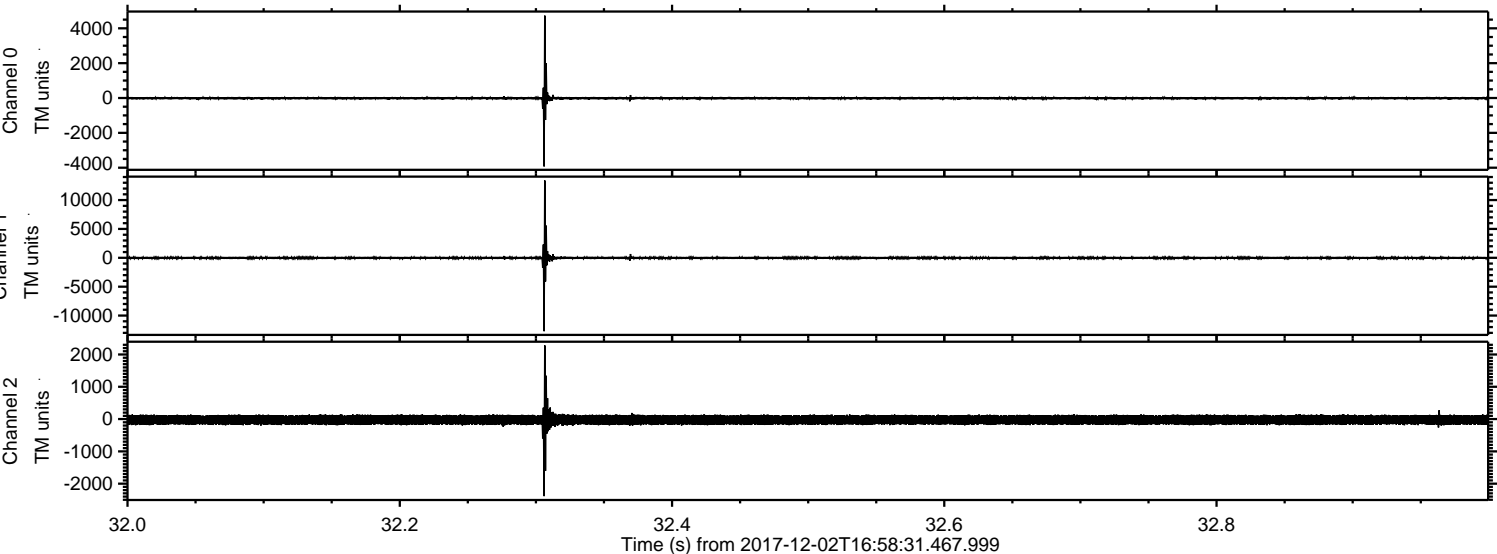
ELMAVAN 3D WAVEFORMS (Measured data sampled at 50 kHz) 51000 packets of 144 samples from 2017-12-02T16:58:31.467.999. Part 143/147

Processed Sat Dec 2 18:06:58 2017 by ELM ver.2012-10-06 from 001__elm20171202_165830__dat00.bin



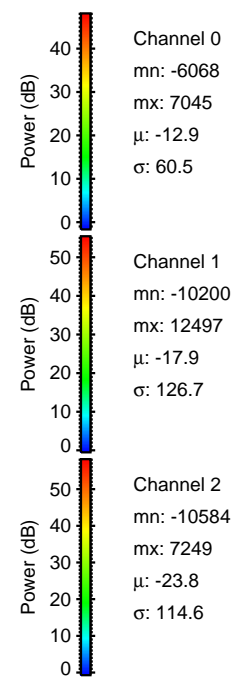
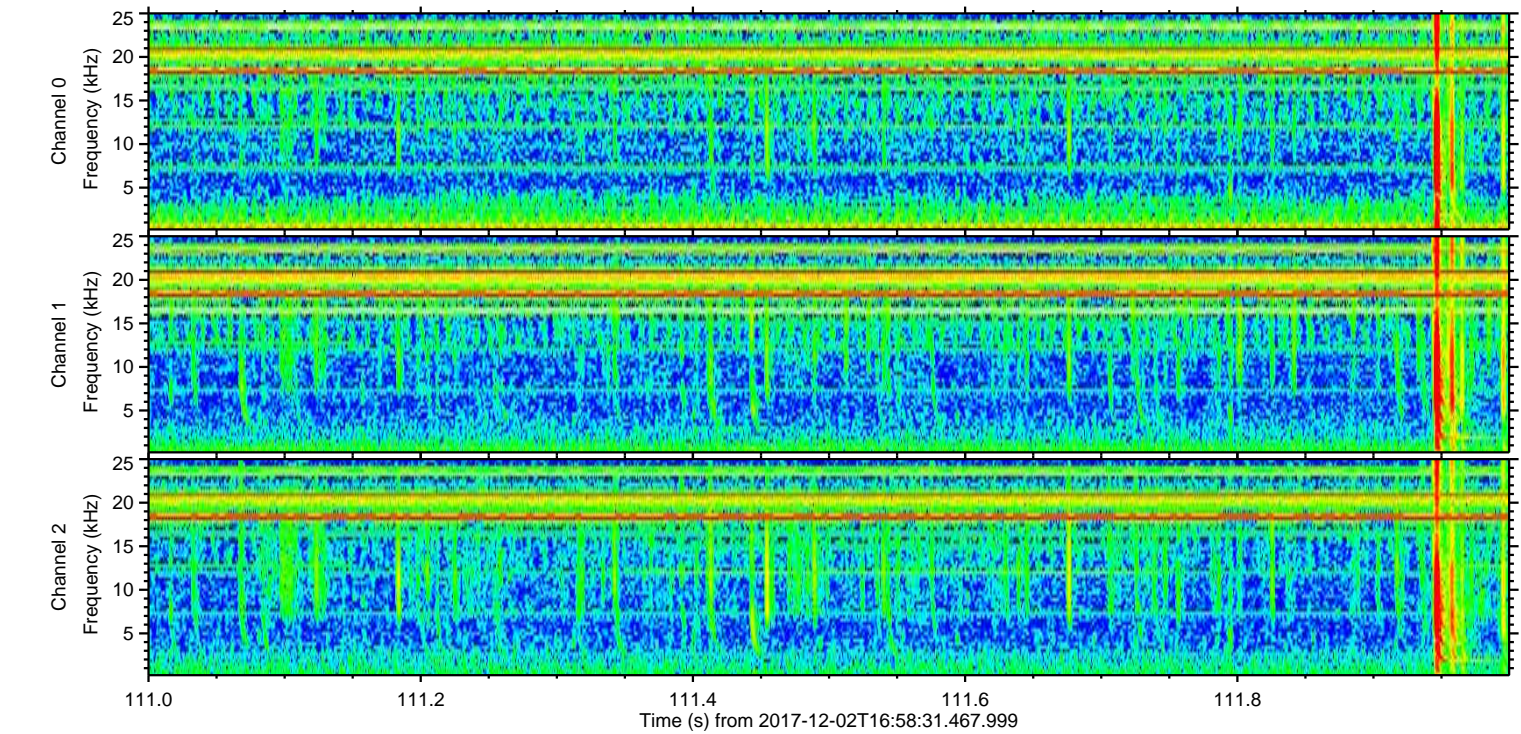
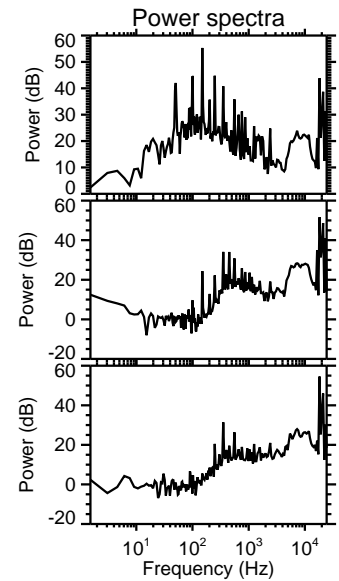
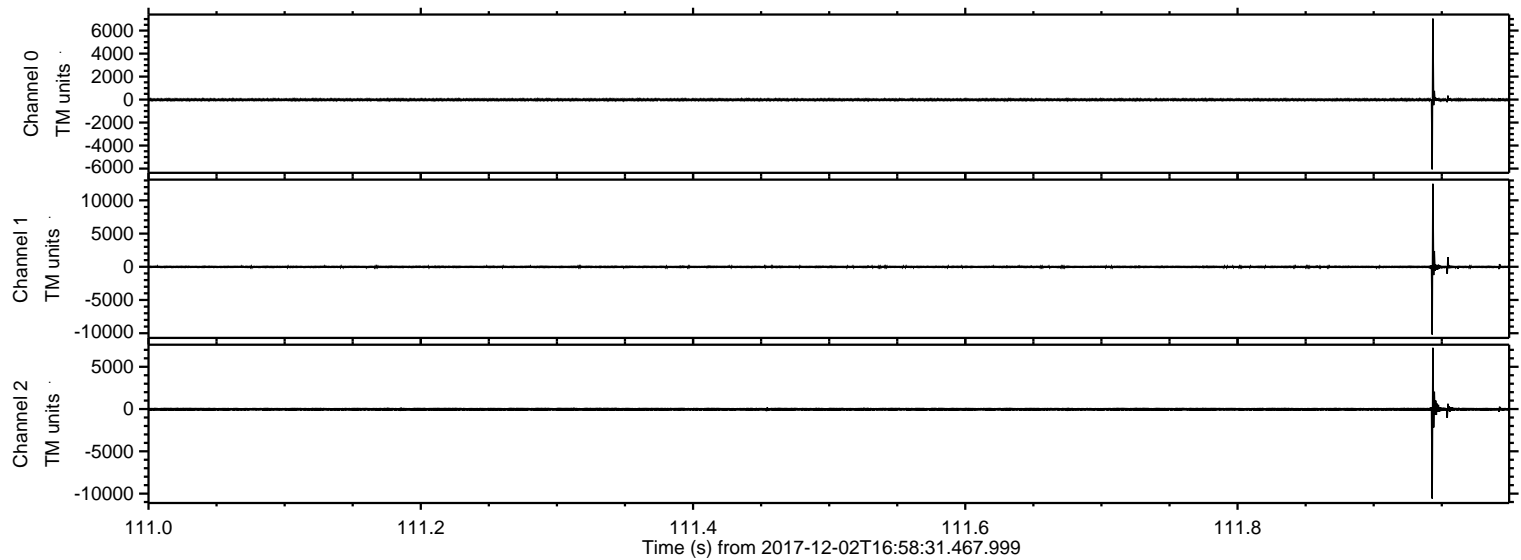
ELMAVAN 3D WAVEFORMS (Measured data sampled at 50 kHz) 51000 packets of 144 samples from 2017-12-02T16:58:31.467.999. Part 33/147

Processed Sat Dec 2 18:06:58 2017 by ELM ver.2012-10-06 from 001__elm20171202_165830__dat00.bin

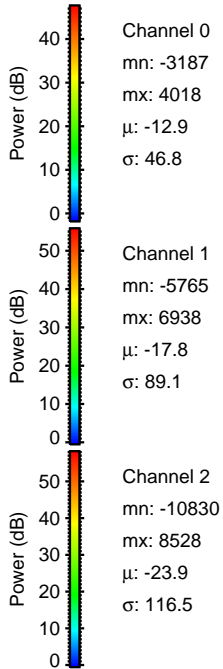
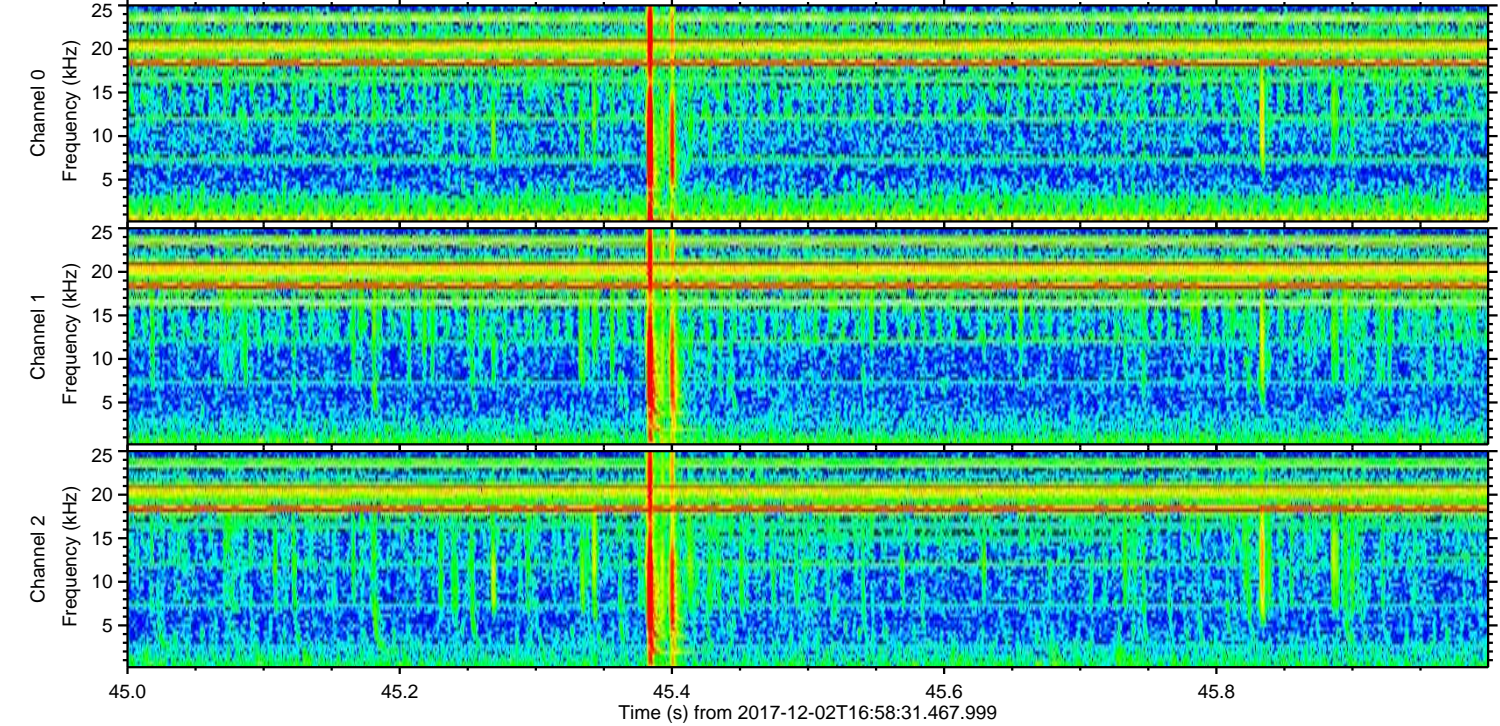
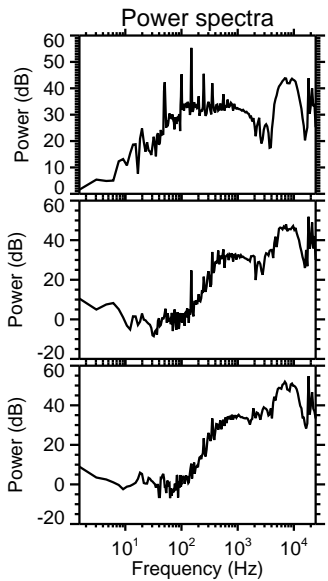
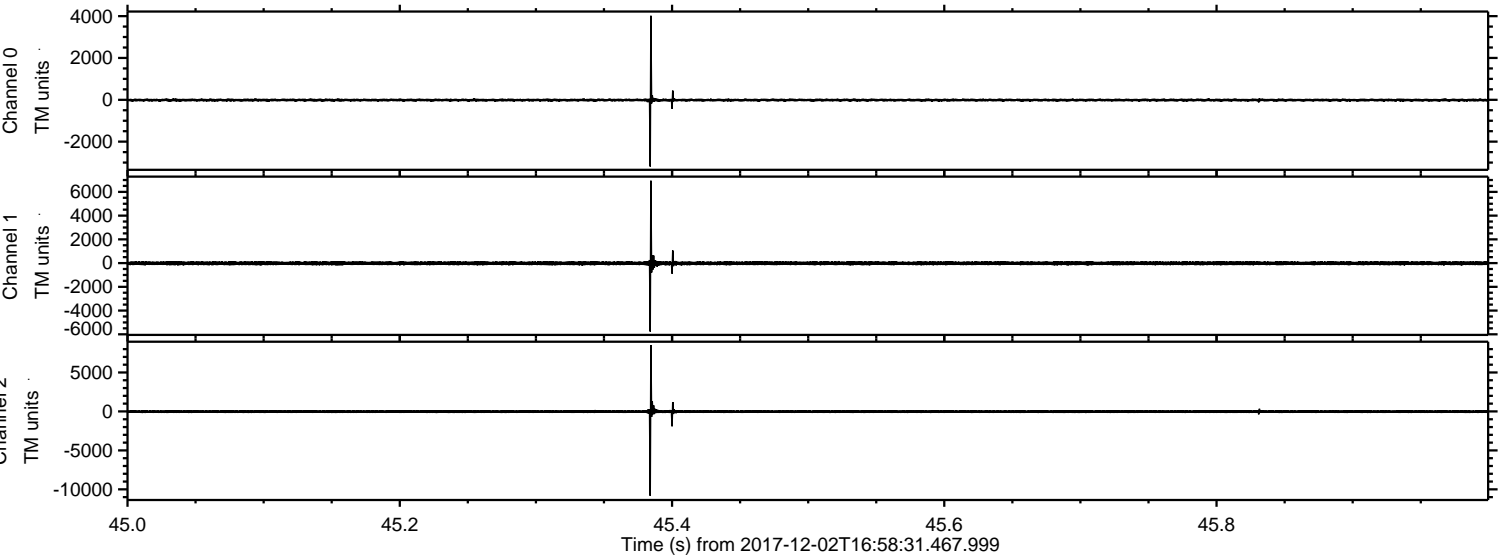


ELMAVAN 3D WAVEFORMS (Measured data sampled at 50 kHz) 51000 packets of 144 samples from 2017-12-02T16:58:31.467.999. Part 112/147

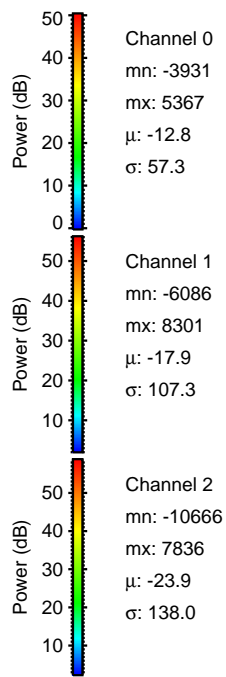
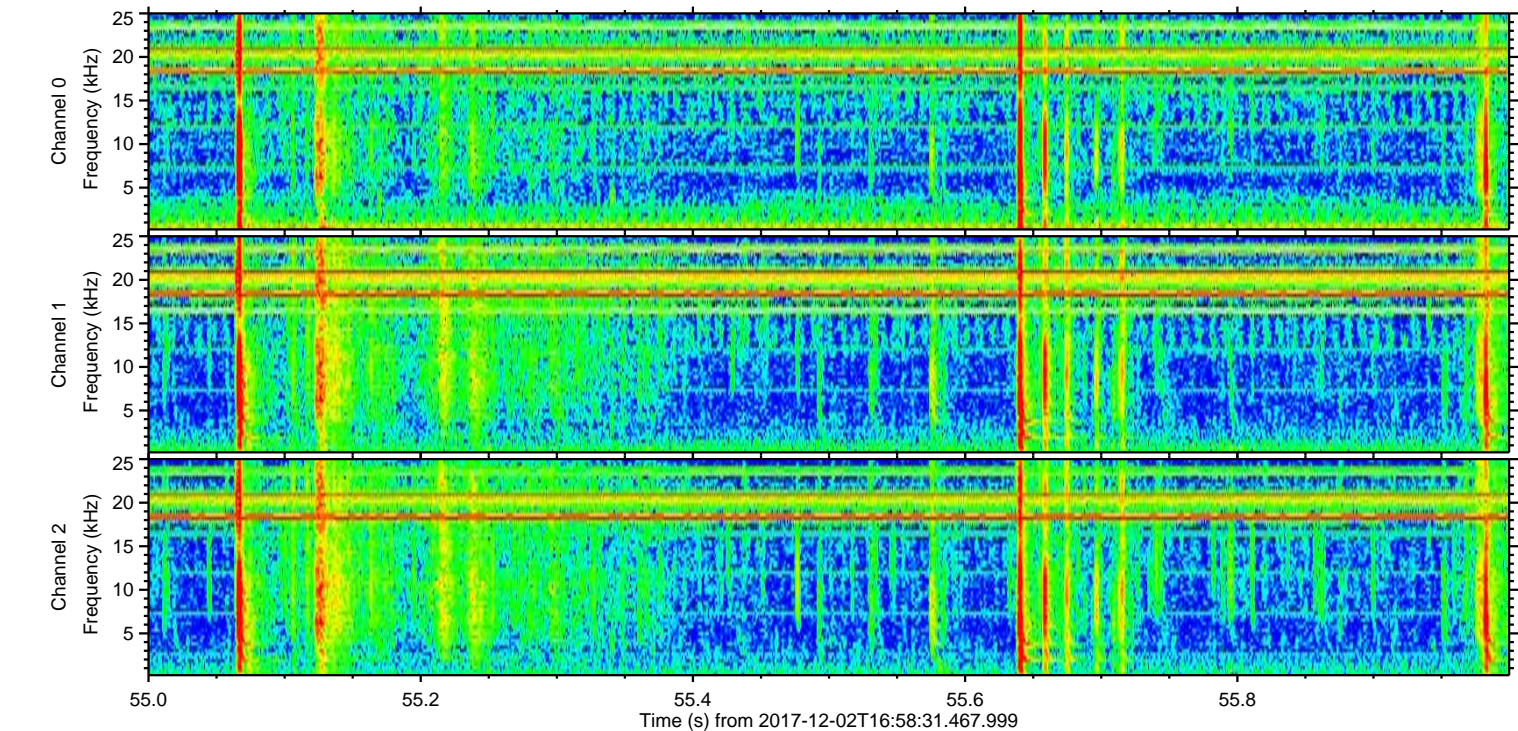
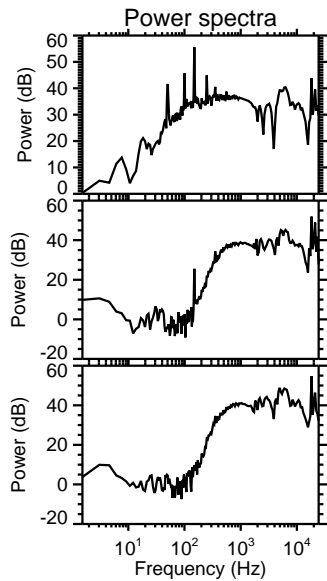
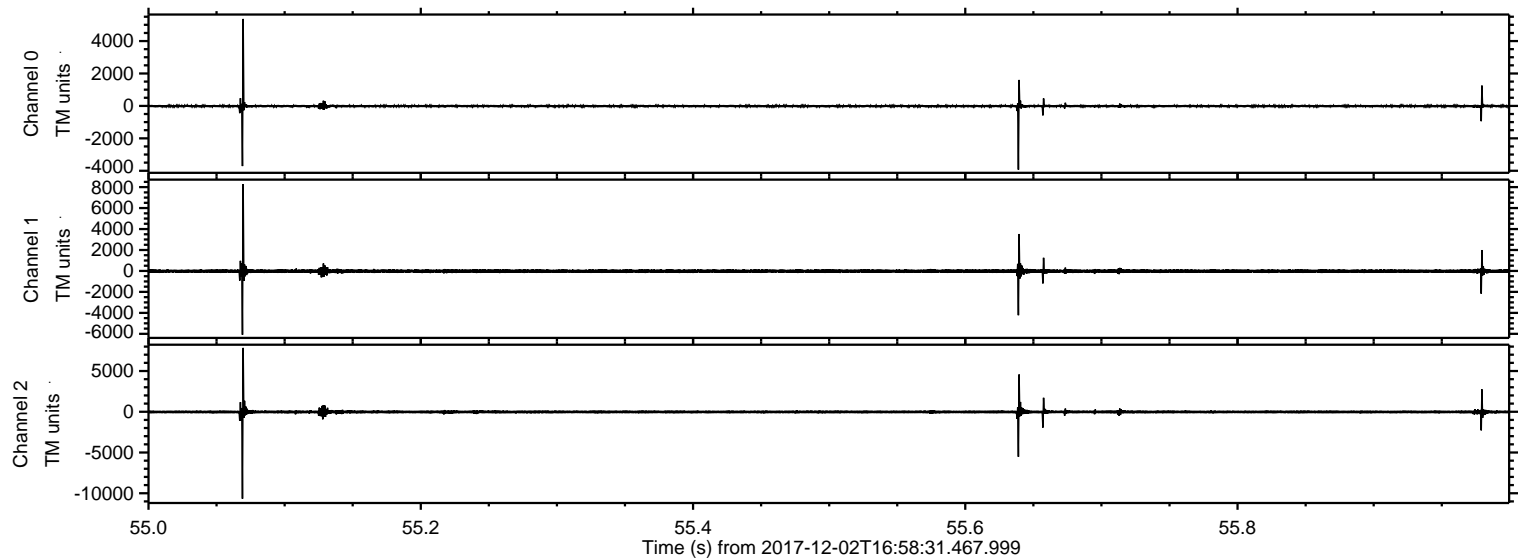
Processed Sat Dec 2 18:06:59 2017 by ELM ver.2012-10-06 from 001__elm20171202_165830__dat00.bin



Processed Sat Dec 2 18:07:00 2017 by ELM ver.2012-10-06 from 001__elm20171202_165830__dat00.bin

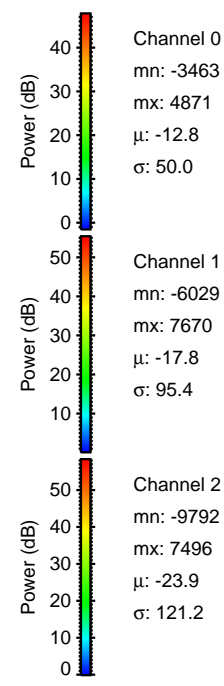
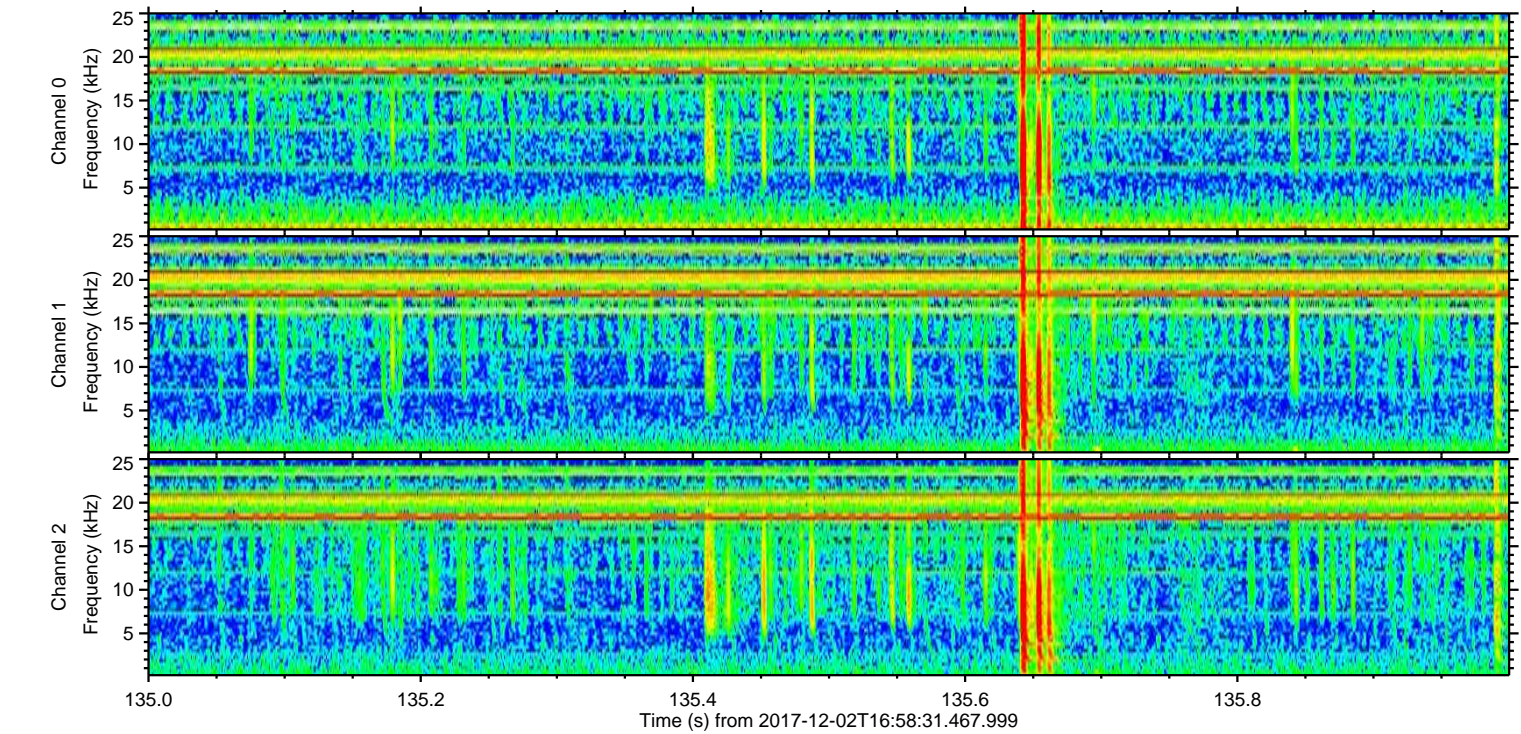
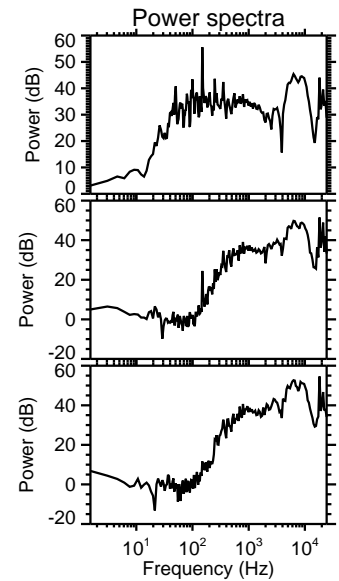
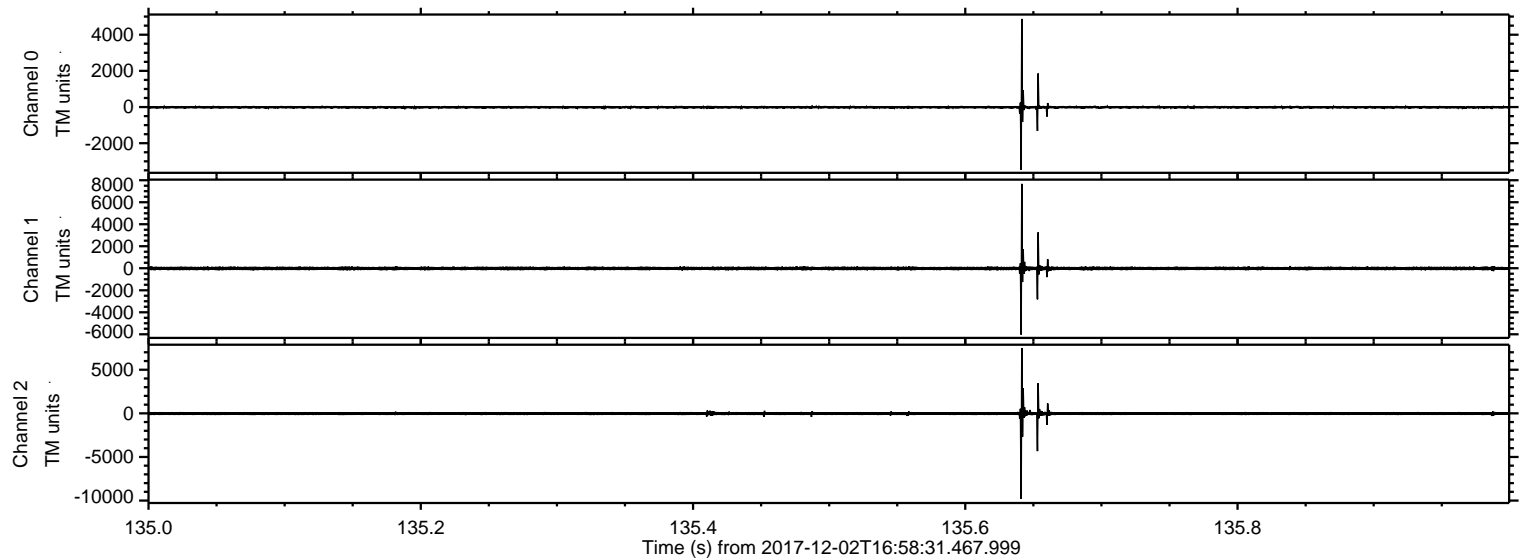


Processed Sat Dec 2 18:07:00 2017 by ELM ver.2012-10-06 from 001__elm20171202_165830__dat00.bin

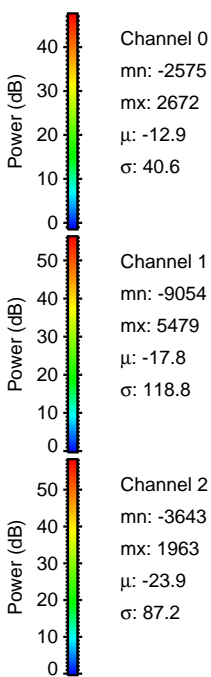
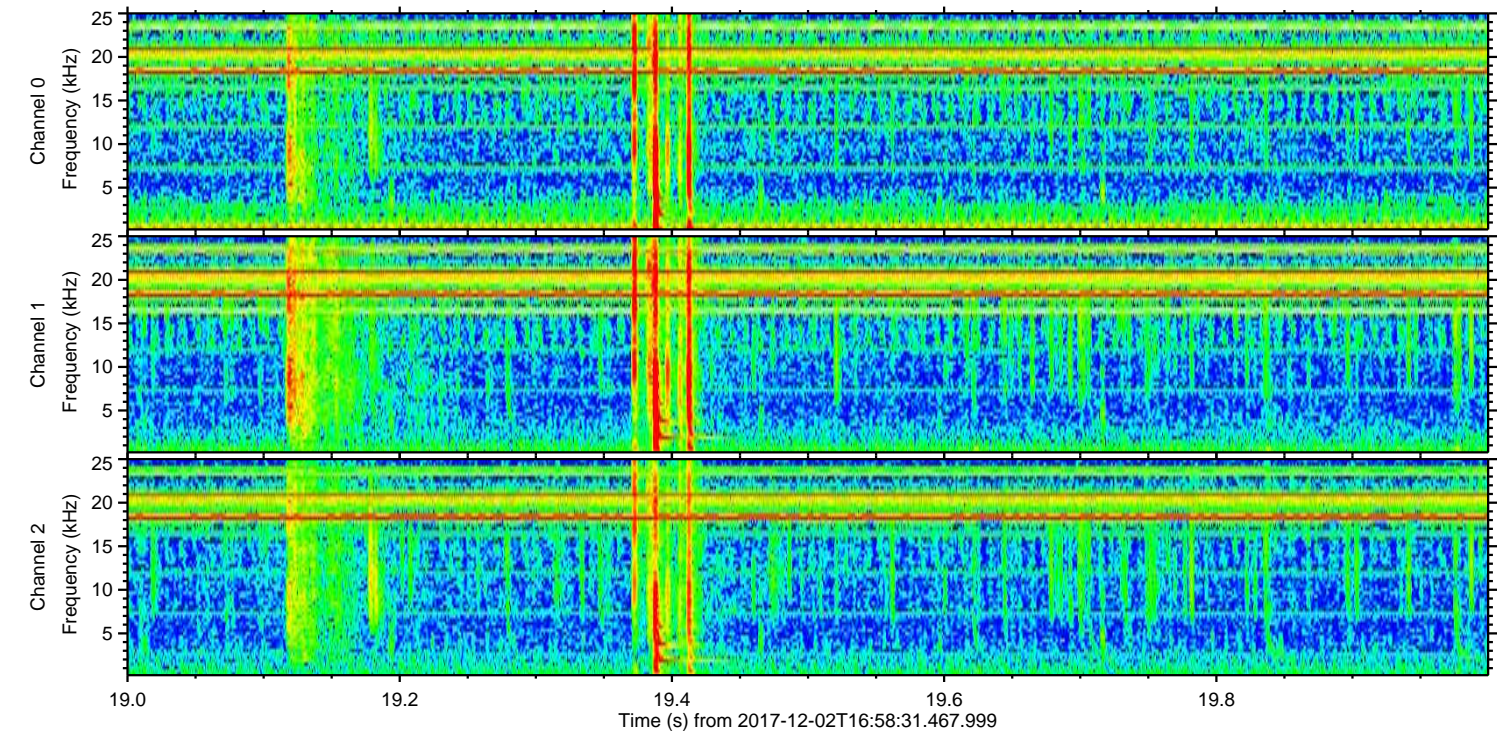
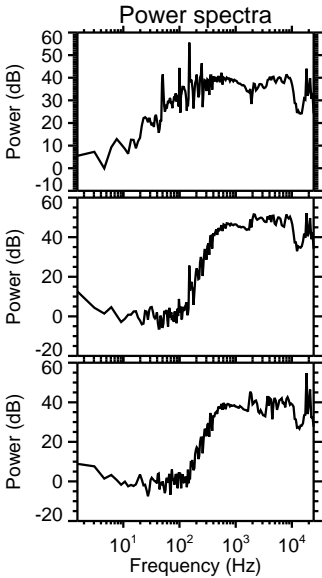
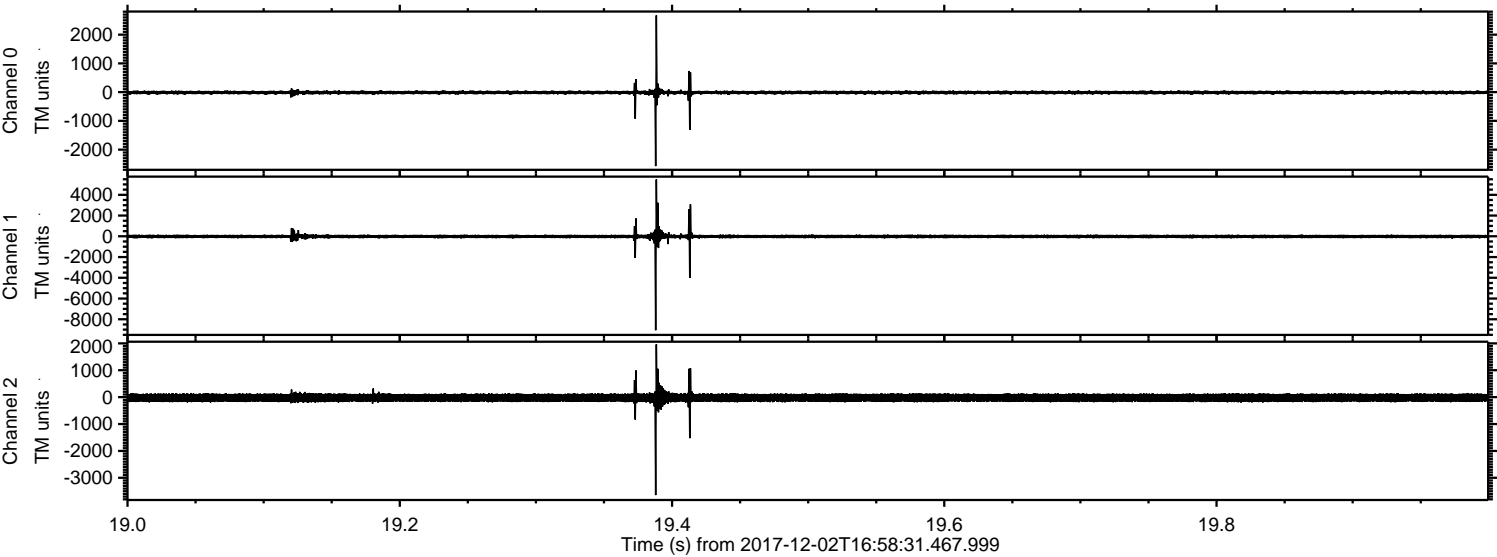


ELMAVAN 3D WAVEFORMS (Measured data sampled at 50 kHz) 51000 packets of 144 samples from 2017-12-02T16:58:31.467.999. Part 136/147

Processed Sat Dec 2 18:07:01 2017 by ELM ver.2012-10-06 from 001__elm20171202_165830__dat00.bin



Processed Sat Dec 2 18:07:02 2017 by ELM ver.2012-10-06 from 001__elm20171202_165830__dat00.bin

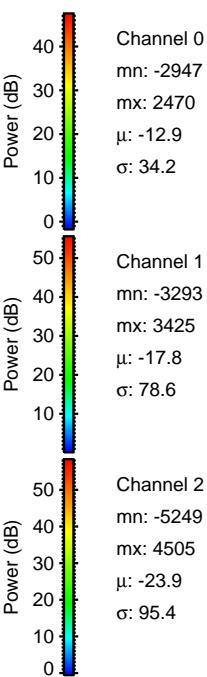
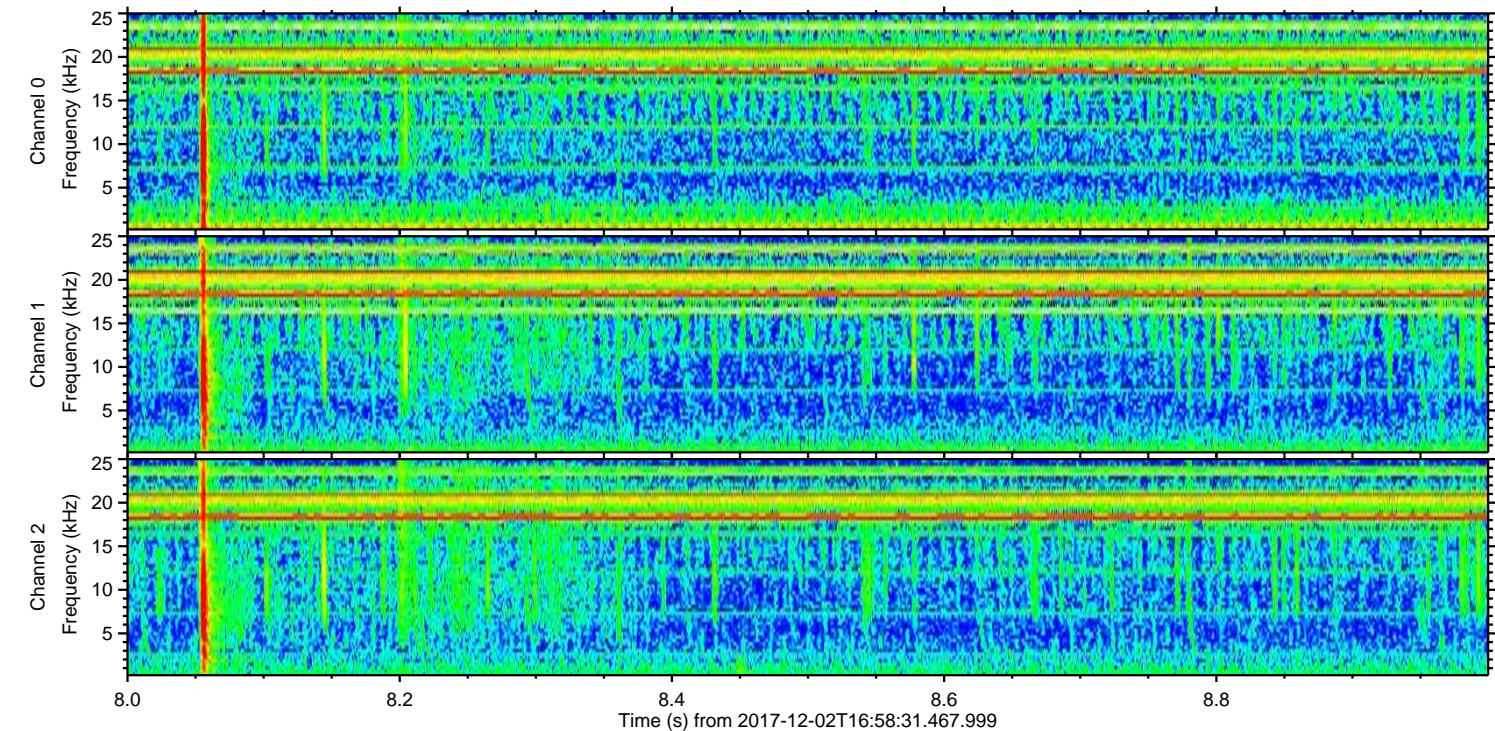
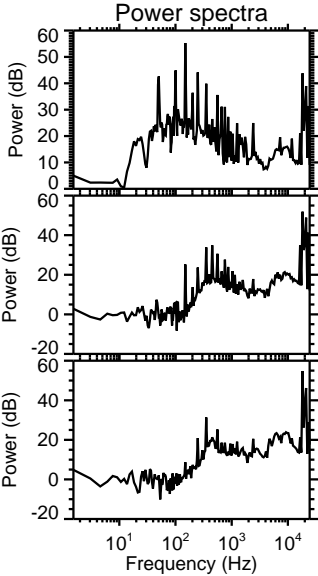
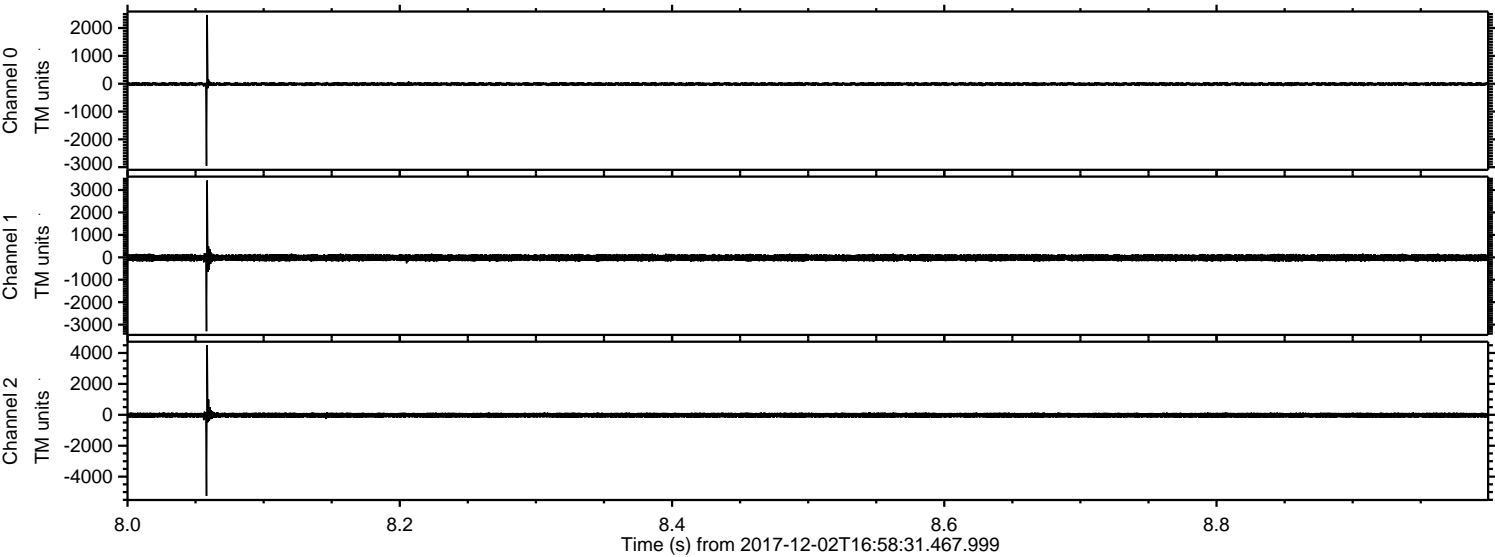


Channel 0
mn: -2575
mx: 2672
 μ : -12.9
 σ : 40.6

Channel 1
mn: -9054
mx: 5479
 μ : -17.8
 σ : 118.8

Channel 2
mn: -3643
mx: 1963
 μ : -23.9
 σ : 87.2

Processed Sat Dec 2 18:07:02 2017 by ELM ver.2012-10-06 from 001__elm20171202_165830__dat00.bin



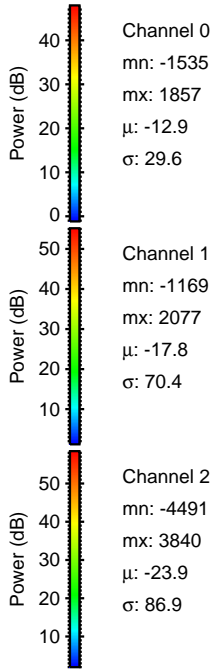
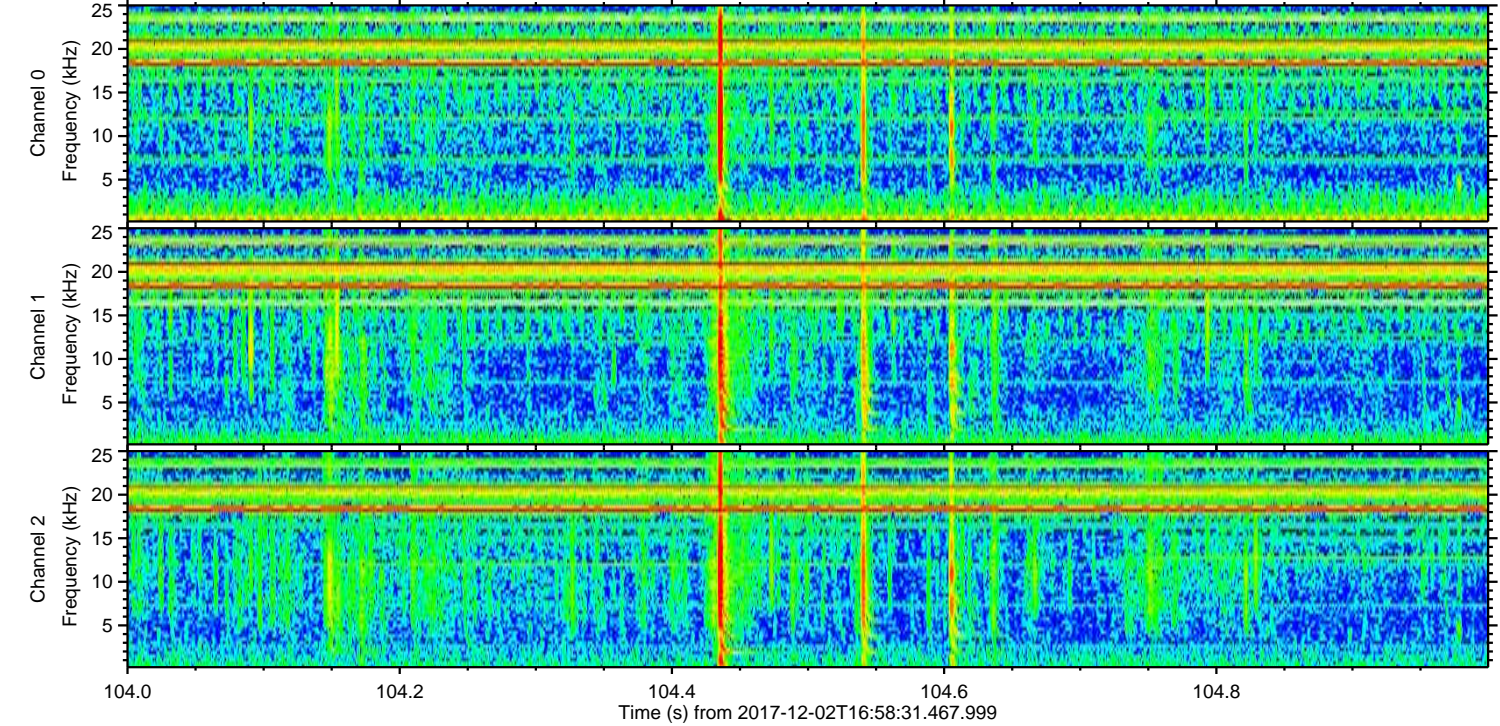
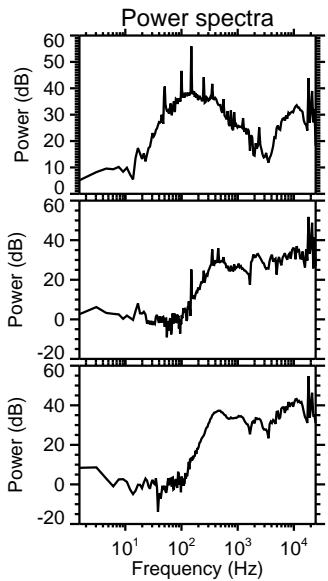
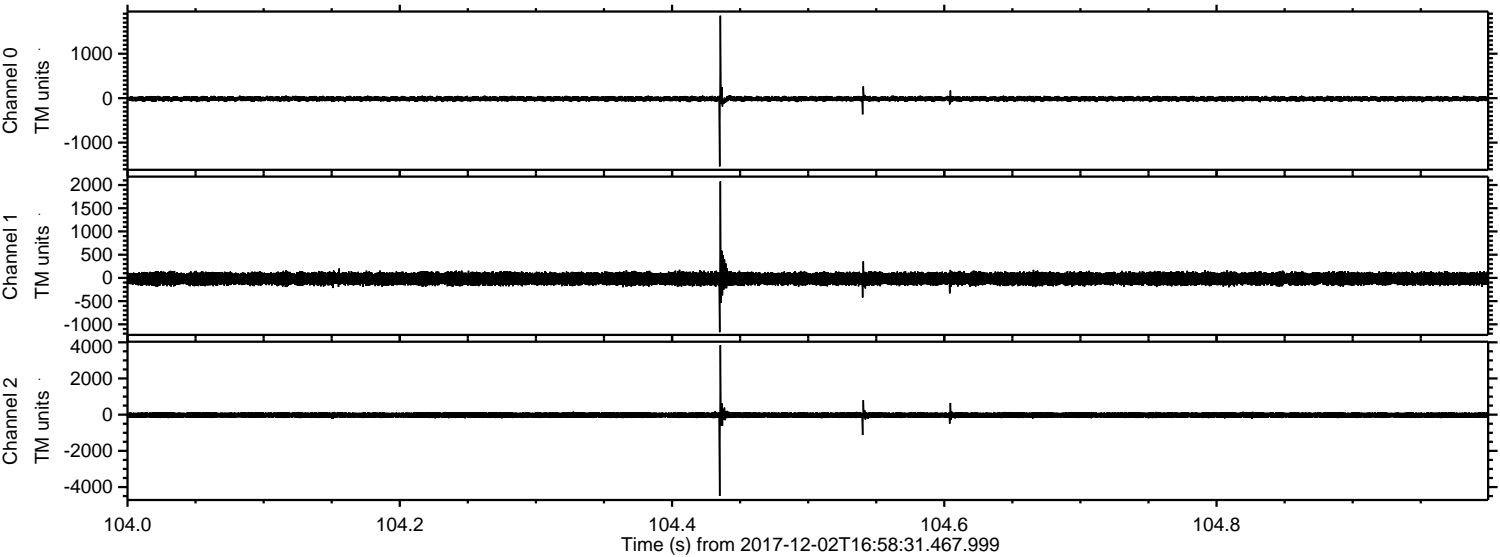
Channel 0
mn: -2947
mx: 2470
 μ : -12.9
 σ : 34.2

Channel 1
mn: -3293
mx: 3425
 μ : -17.8
 σ : 78.6

Channel 2
mn: -5249
mx: 4505
 μ : -23.9
 σ : 95.4

ELMAVAN 3D WAVEFORMS (Measured data sampled at 50 kHz) 51000 packets of 144 samples from 2017-12-02T16:58:31.467.999. Part 105/147

Processed Sat Dec 2 18:07:03 2017 by ELM ver.2012-10-06 from 001__elm20171202_165830__dat00.bin



Channel 0
mn: -1535
mx: 1857
 μ : -12.9
 σ : 29.6

Channel 1
mn: -1169
mx: 2077
 μ : -17.8
 σ : 70.4

Channel 2
mn: -4491
mx: 3840
 μ : -23.9
 σ : 86.9

ELMAVAN 3D WAVEFORMS (Measured data sampled at 50 kHz) 51000 packets of 144 samples from 2017-12-02T16:58:31.467.999. Part 137/147

