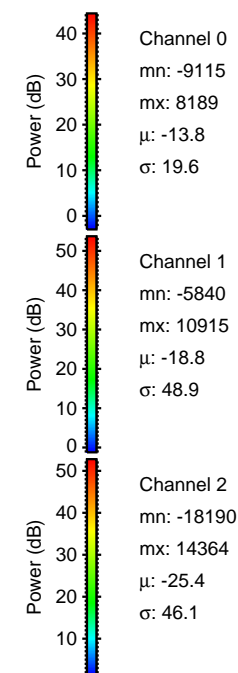
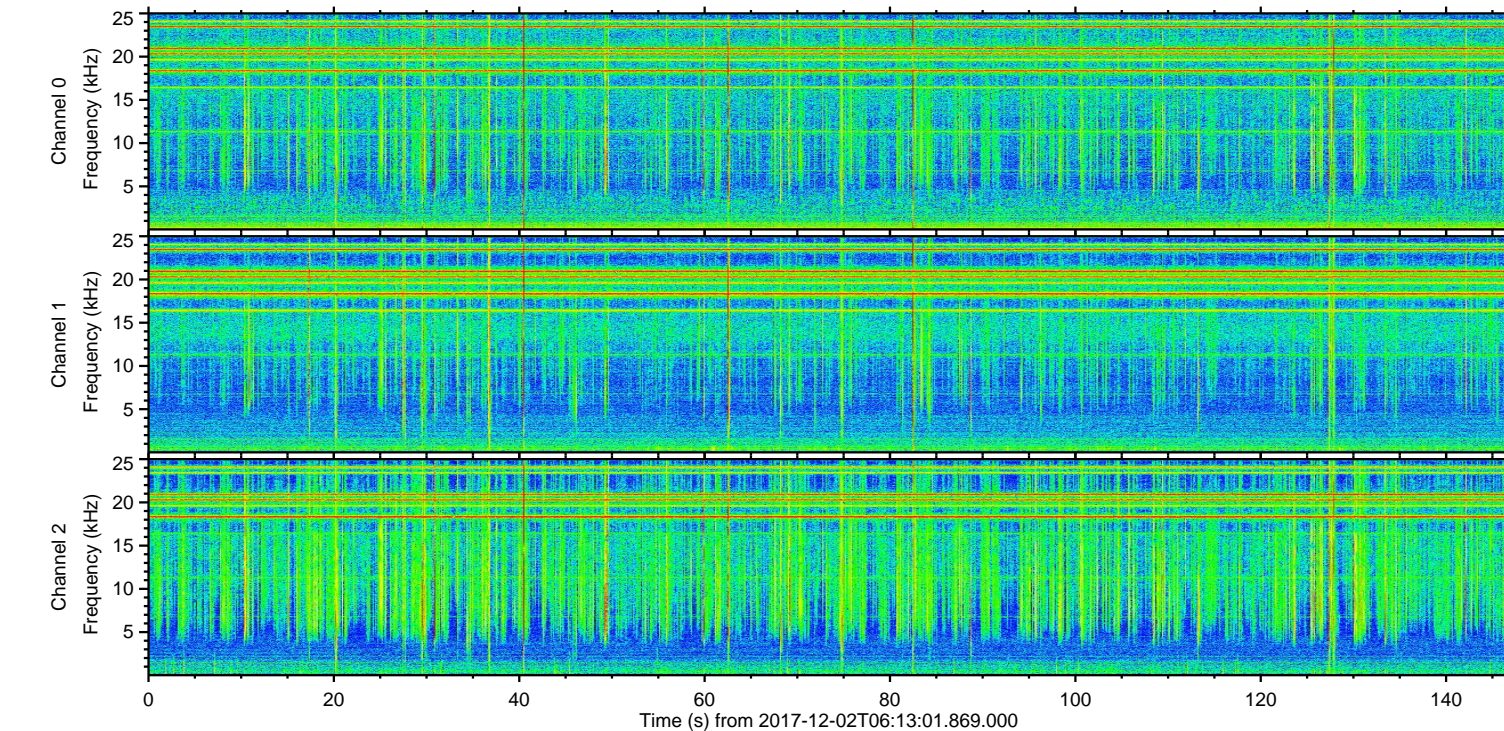
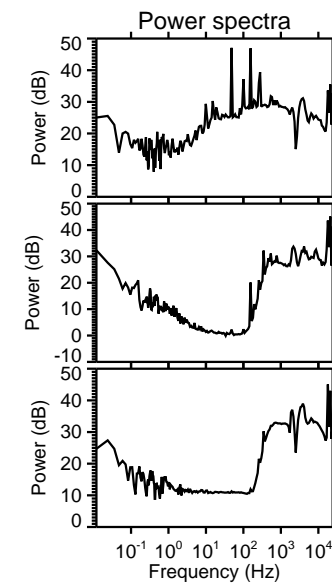
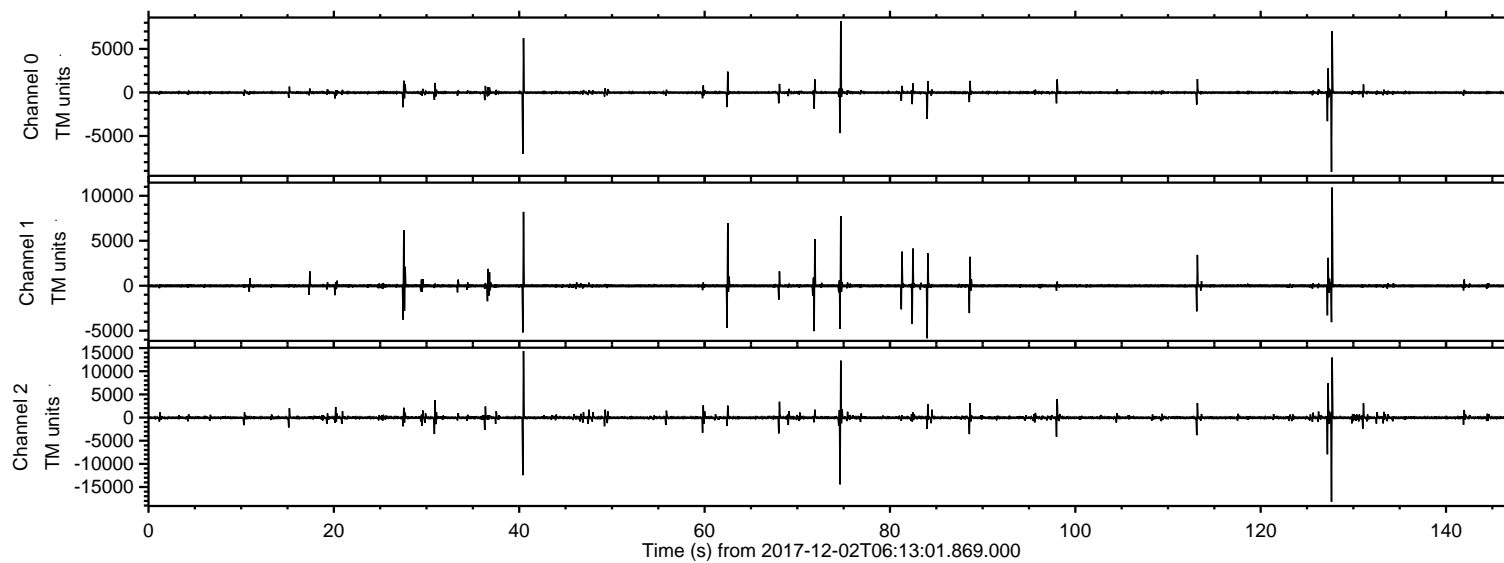


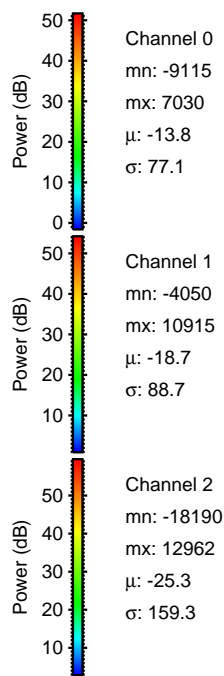
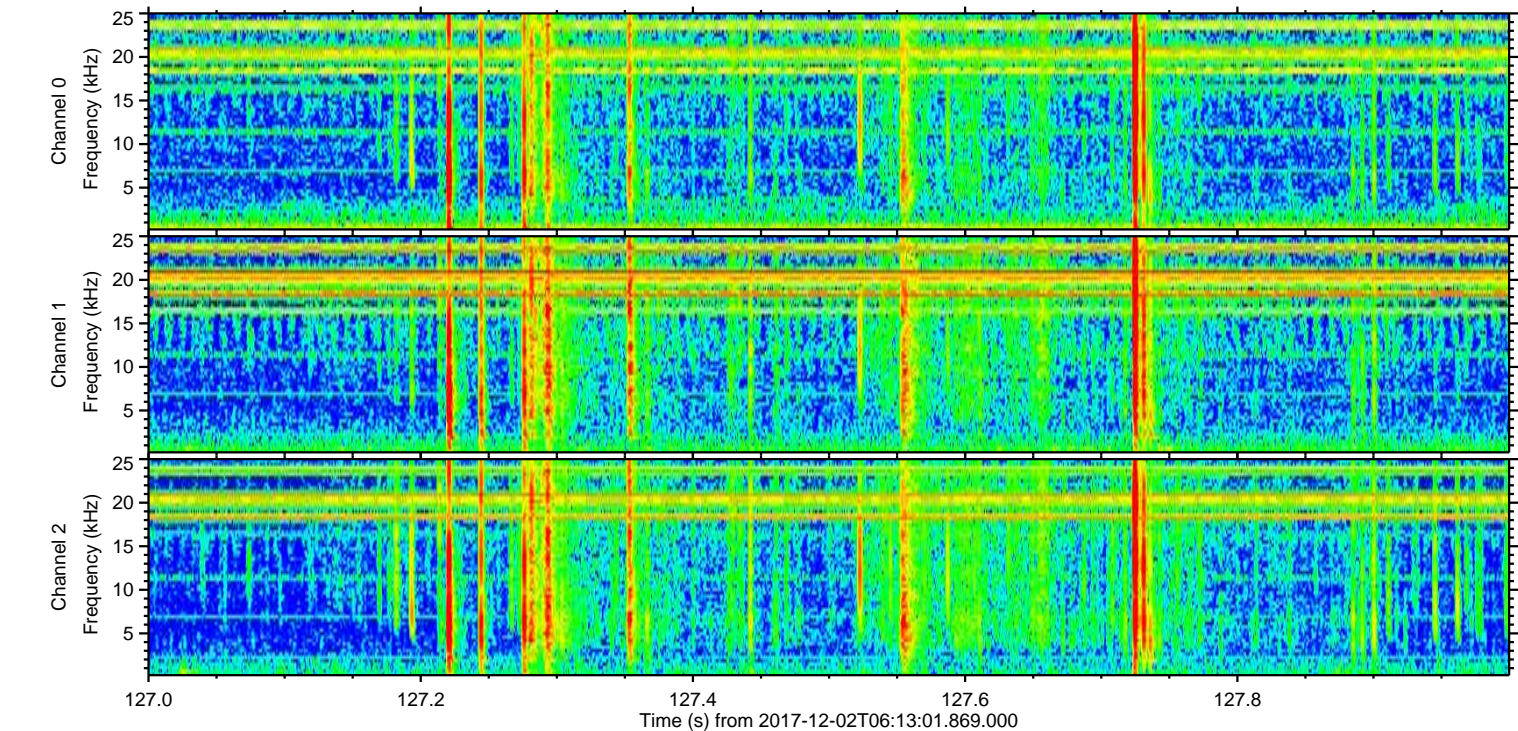
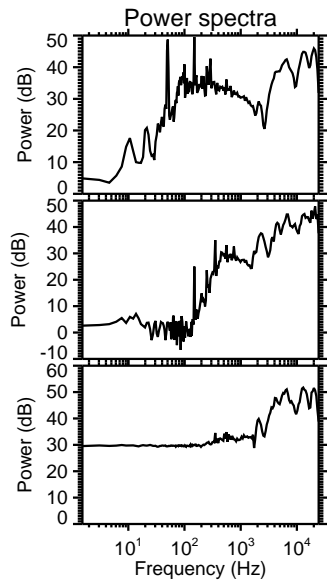
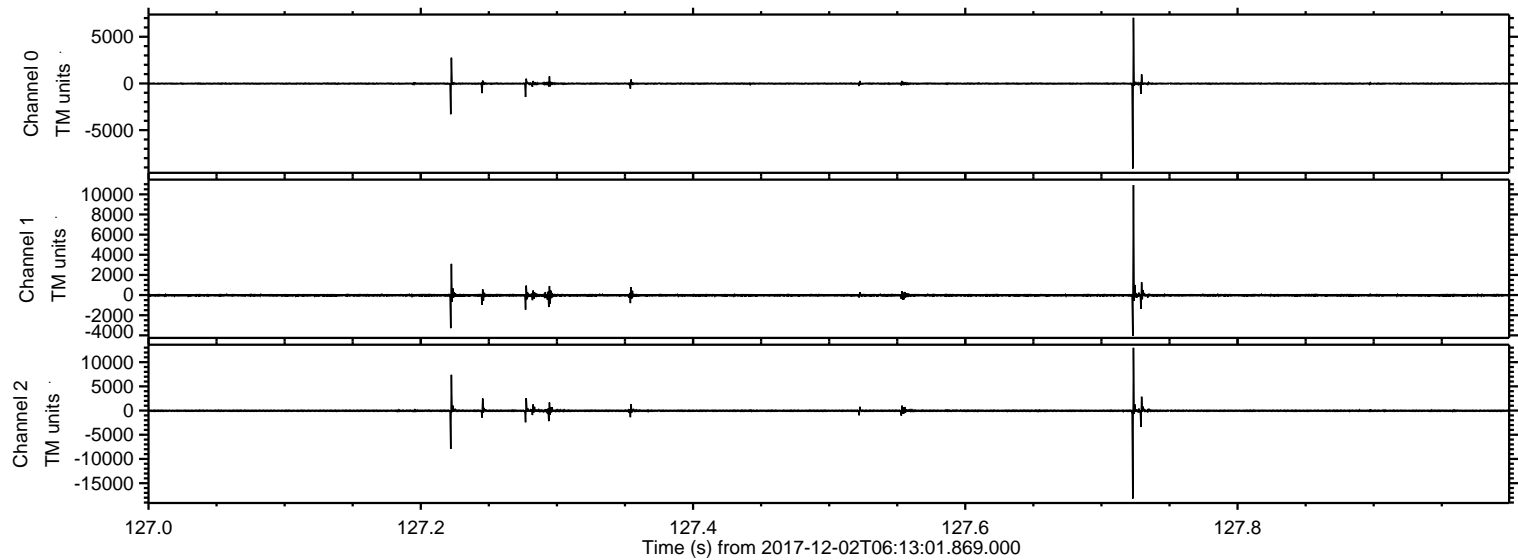
ELMAVAN 3D WAVEFORMS (Measured data sampled at 50 kHz) 51000 packets of 144 samples from 2017-12-02T06:13:01.869.000.

Processed Sat Dec 2 07:21:00 2017 by ELM ver.2012-10-06 from 001__elm20171202_061300__dat00.bin



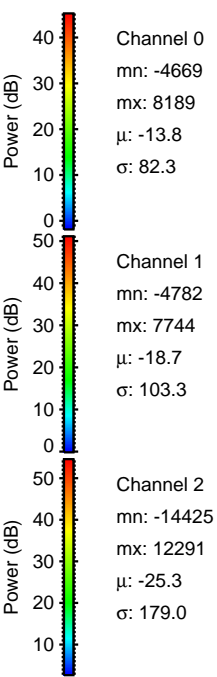
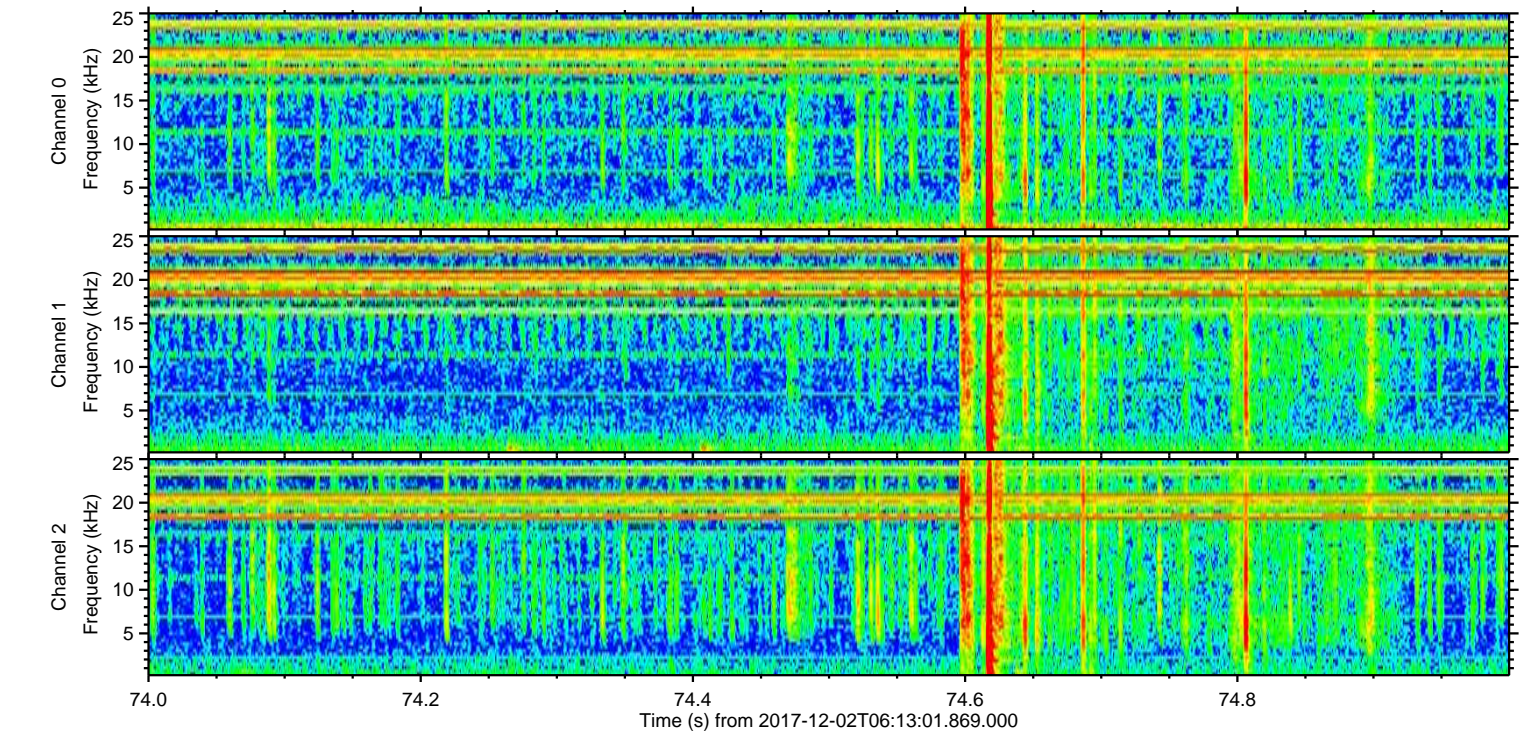
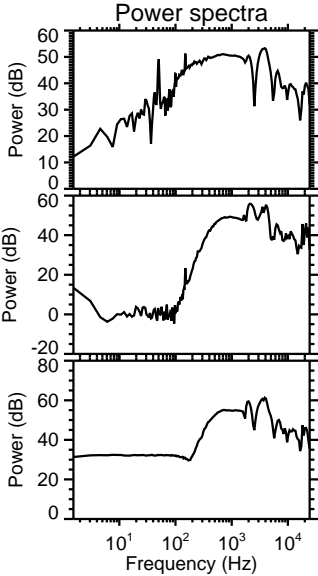
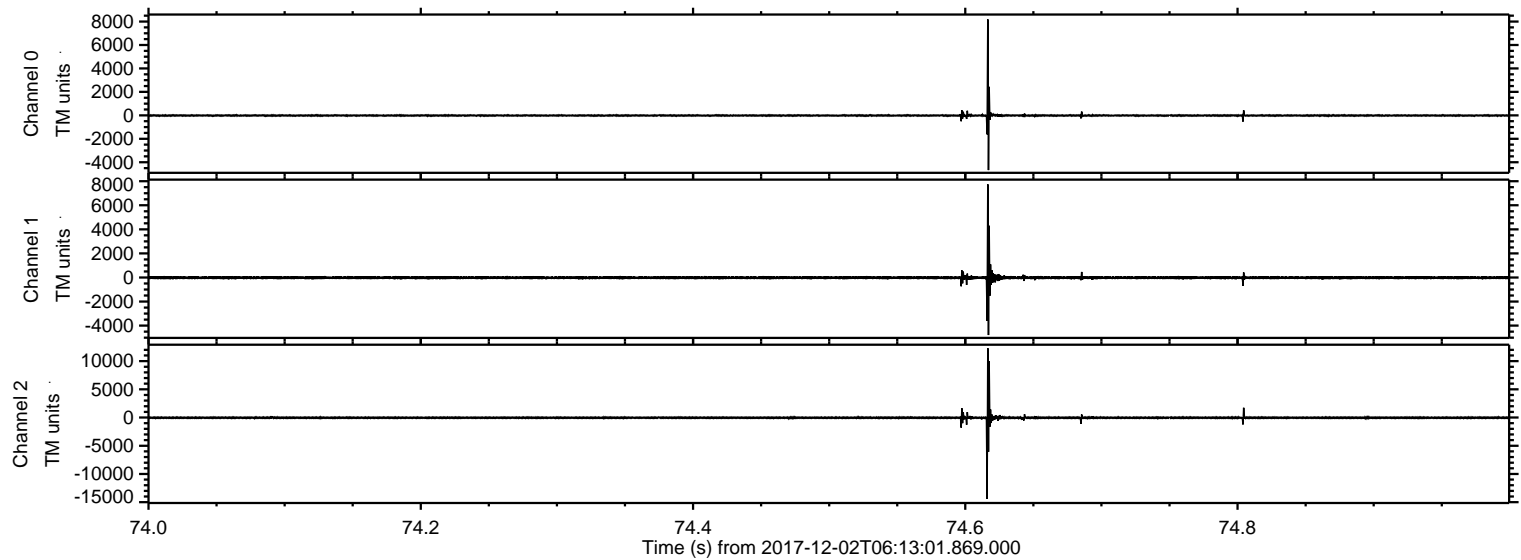
ELMAVAN 3D WAVEFORMS (Measured data sampled at 50 kHz) 51000 packets of 144 samples from 2017-12-02T06:13:01.869.000. Part 128/147

Processed Sat Dec 2 07:21:07 2017 by ELM ver.2012-10-06 from 001__elm20171202_061300__dat00.bin

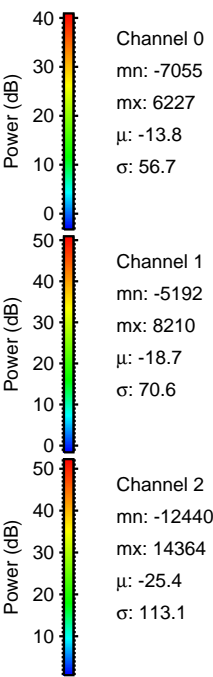
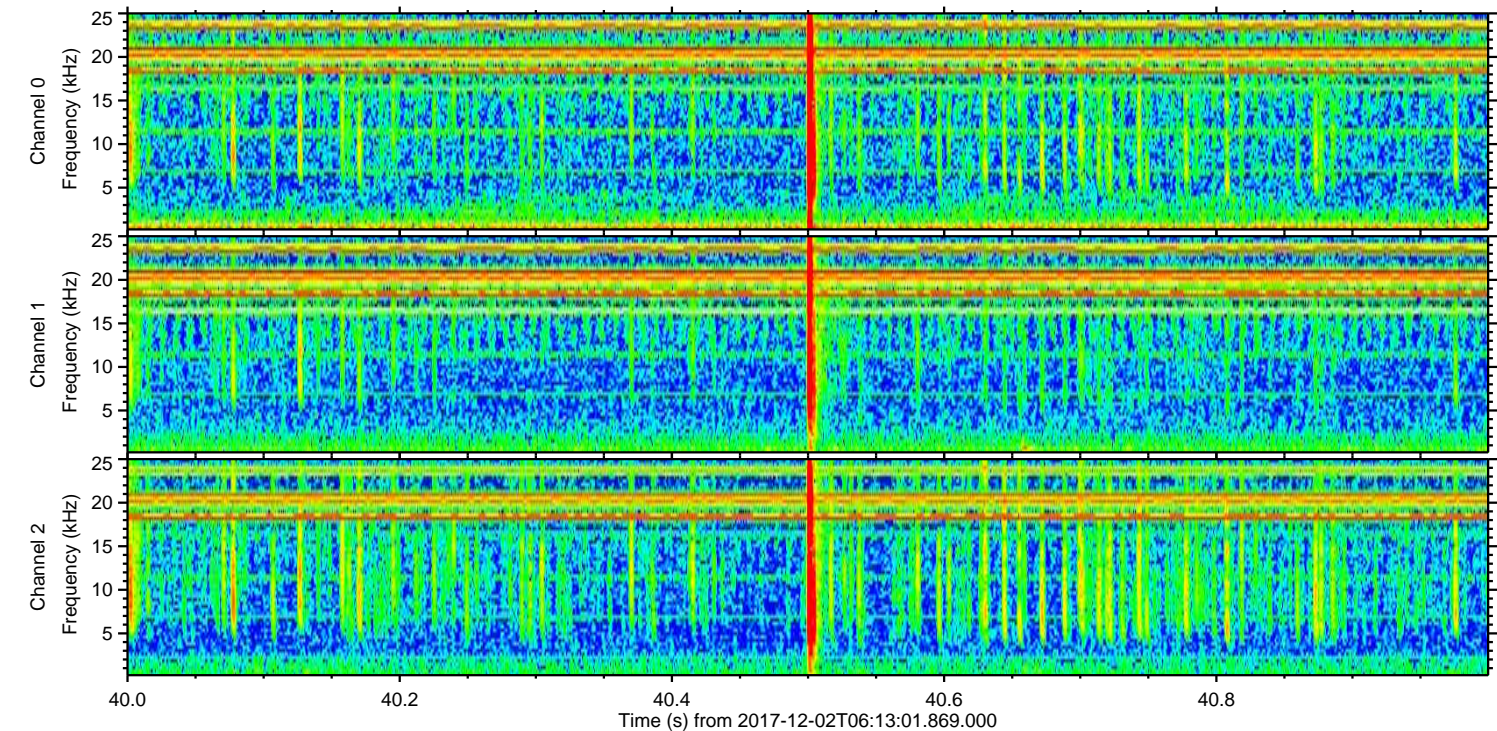
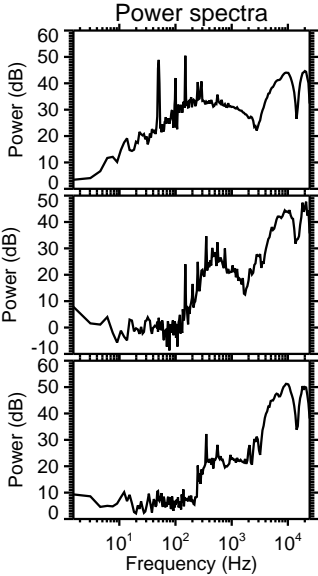
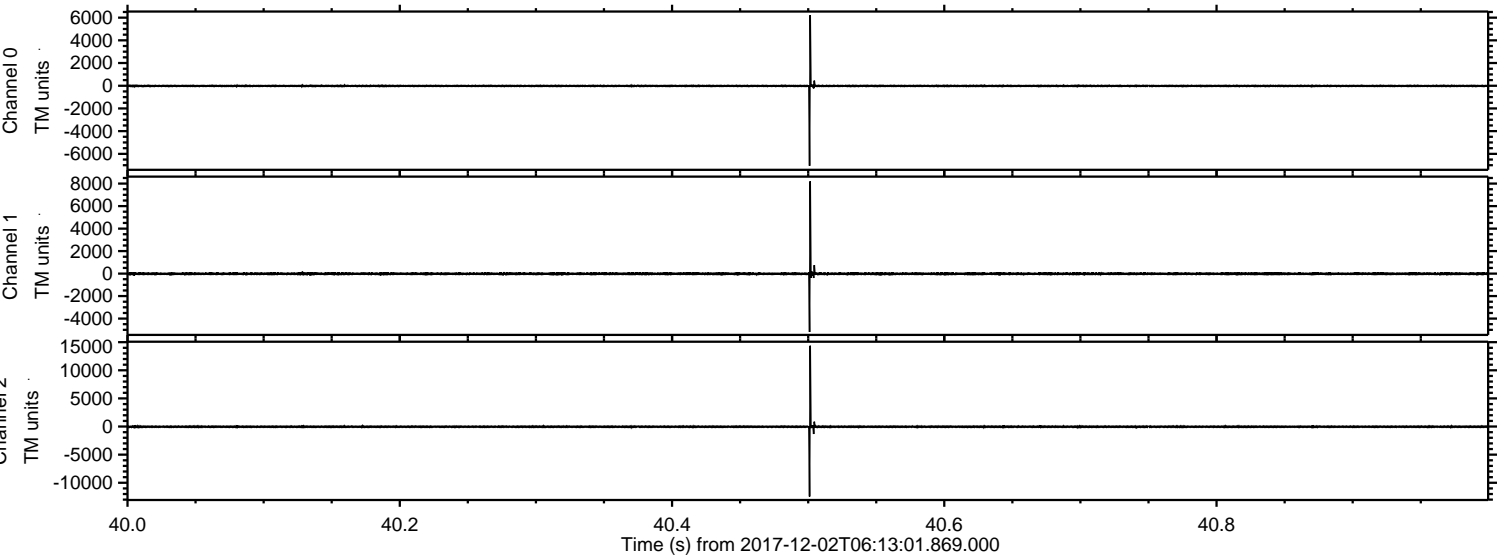


ELMAVAN 3D WAVEFORMS (Measured data sampled at 50 kHz) 51000 packets of 144 samples from 2017-12-02T06:13:01.869.000. Part 75/147

Processed Sat Dec 2 07:21:07 2017 by ELM ver.2012-10-06 from 001__elm20171202_061300__dat00.bin

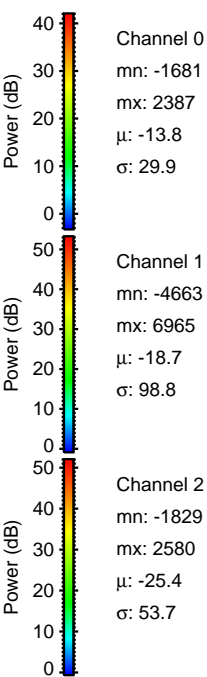
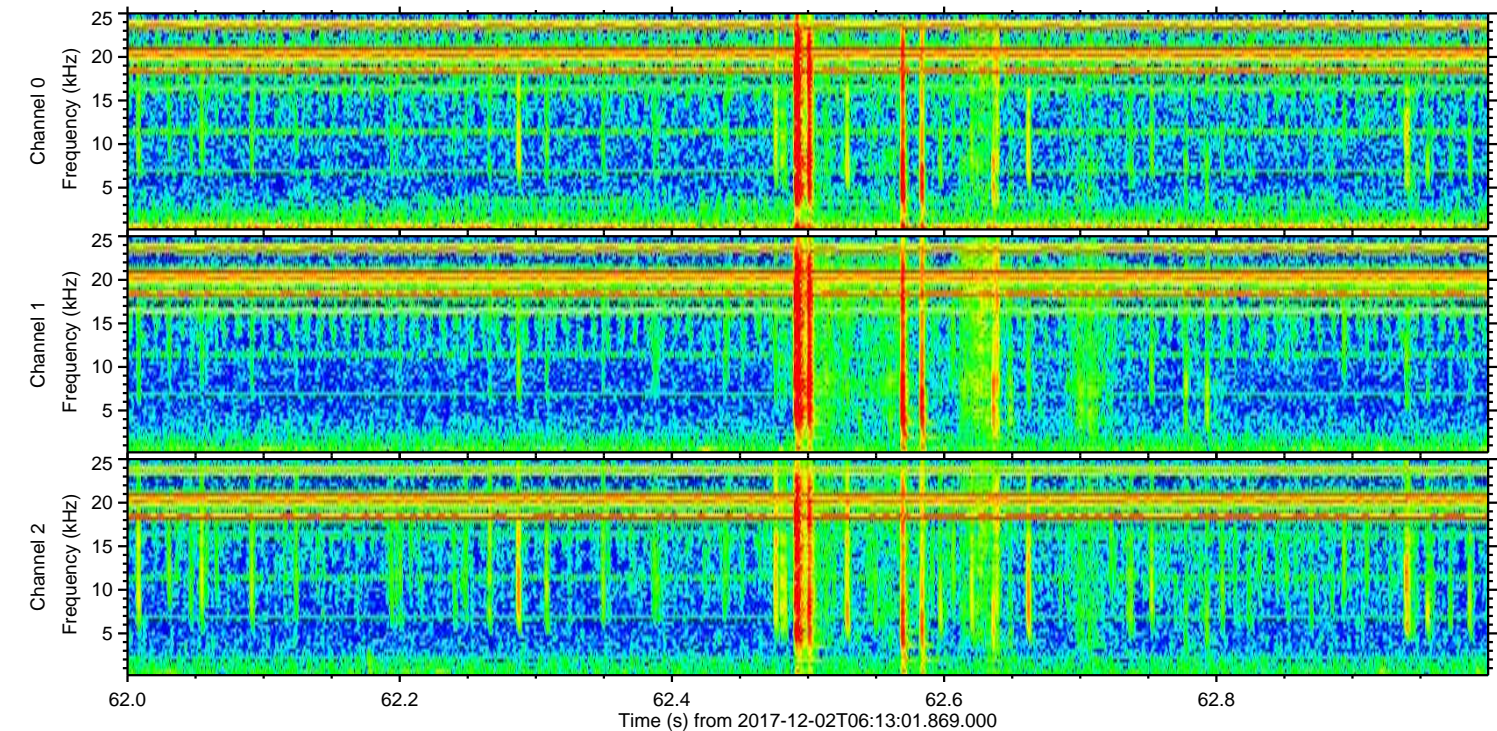
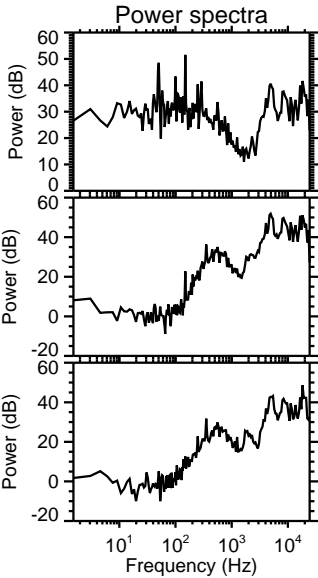
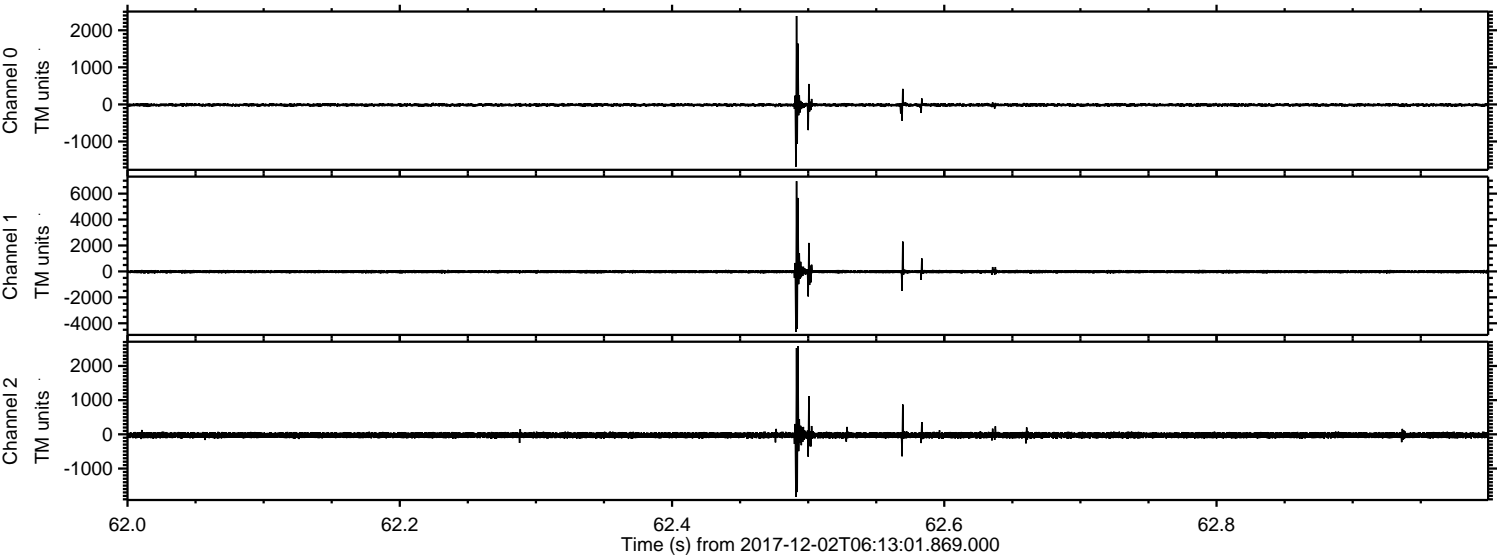


Processed Sat Dec 2 07:21:08 2017 by ELM ver.2012-10-06 from 001__elm20171202_061300__dat00.bin

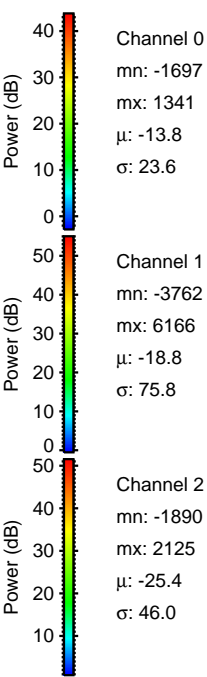
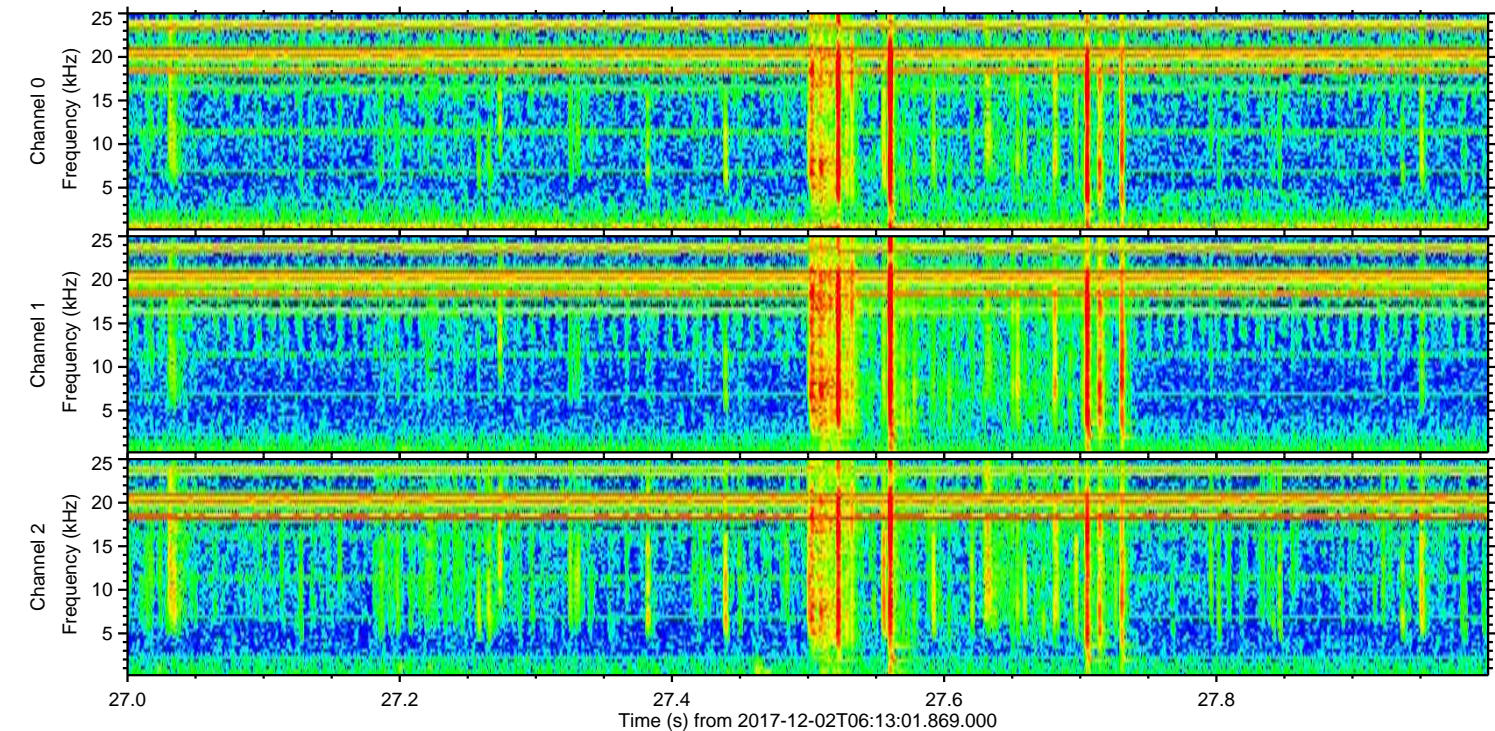
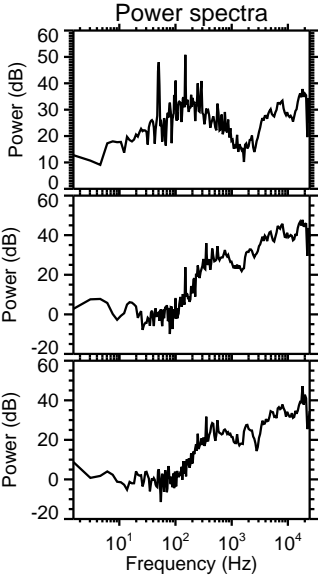
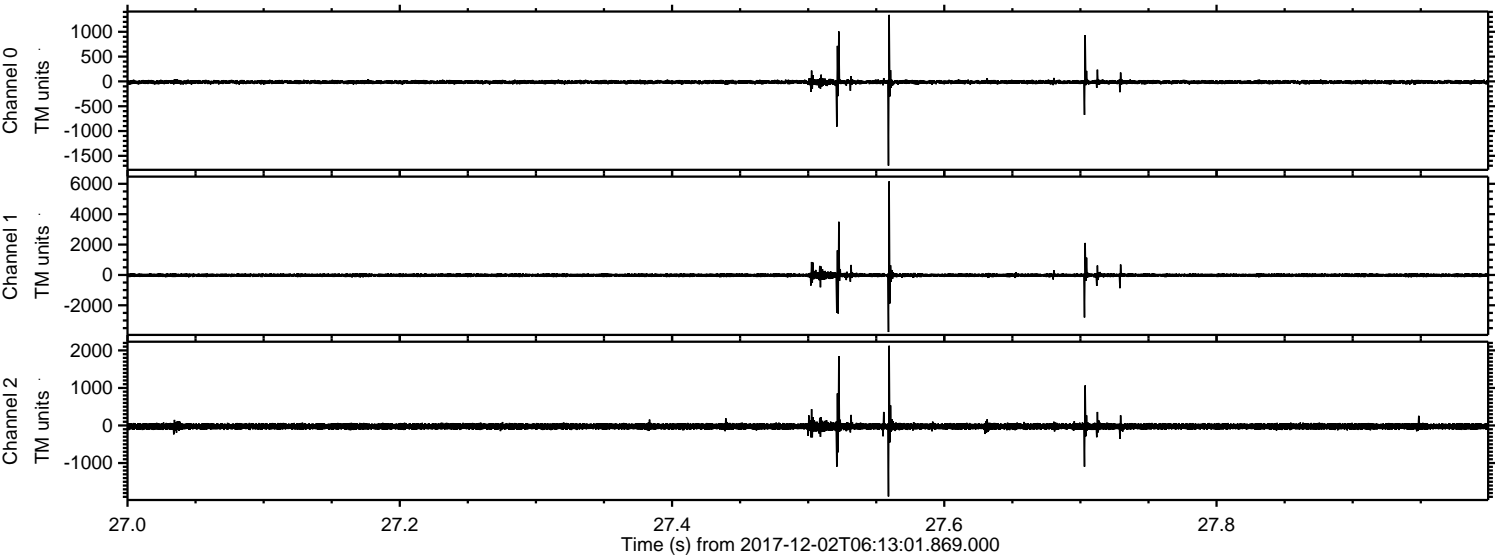


ELMAVAN 3D WAVEFORMS (Measured data sampled at 50 kHz) 51000 packets of 144 samples from 2017-12-02T06:13:01.869.000. Part 63/147

Processed Sat Dec 2 07:21:09 2017 by ELM ver.2012-10-06 from 001__elm20171202_061300__dat00.bin

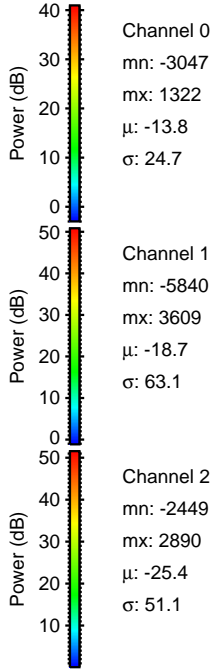
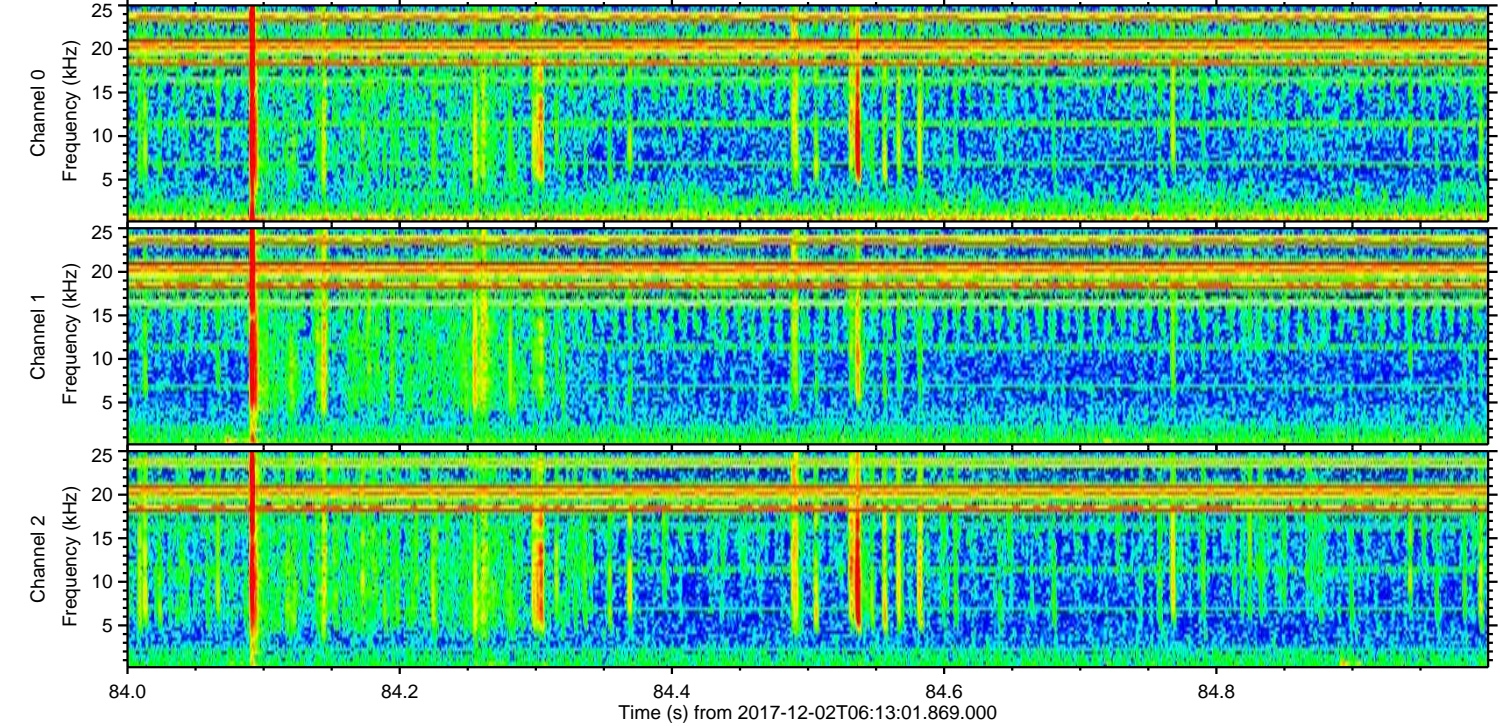
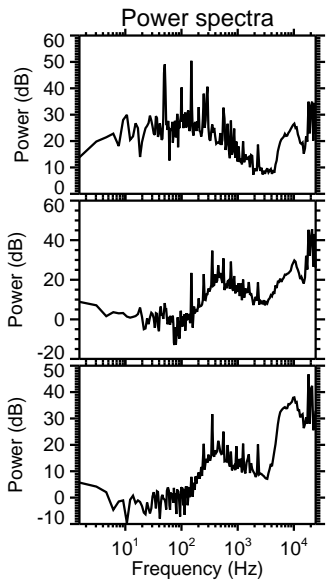
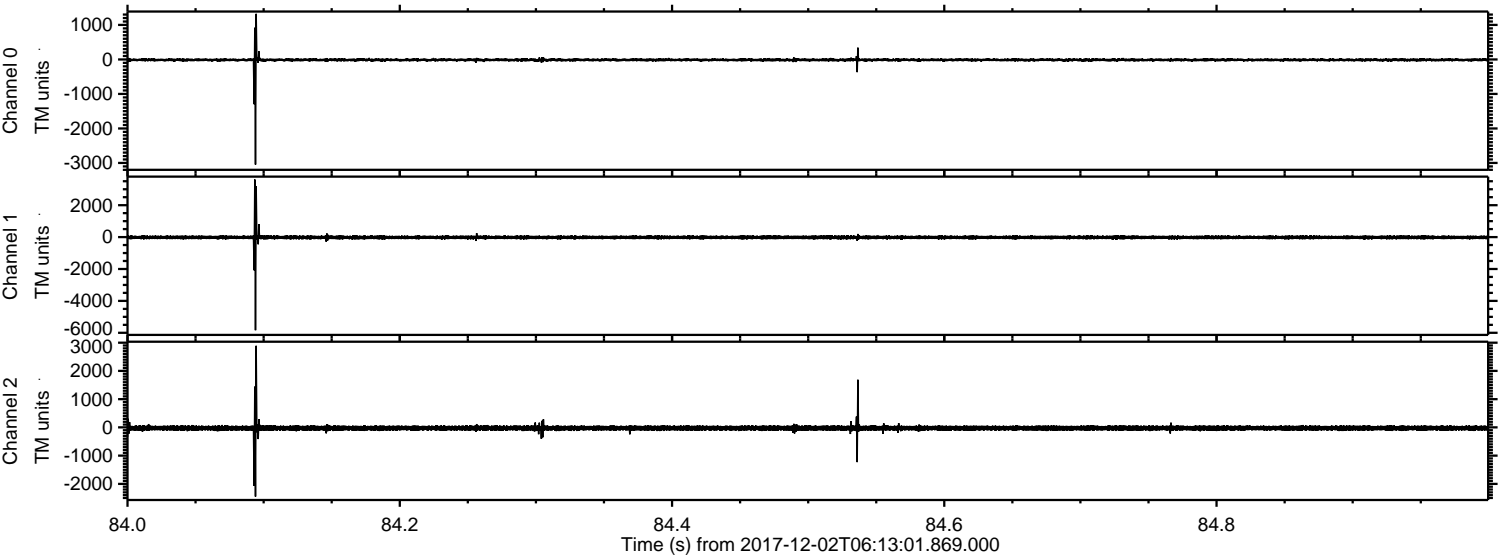


Processed Sat Dec 2 07:21:09 2017 by ELM ver.2012-10-06 from 001__elm20171202_061300__dat00.bin



ELMAVAN 3D WAVEFORMS (Measured data sampled at 50 kHz) 51000 packets of 144 samples from 2017-12-02T06:13:01.869.000. Part 85/147

Processed Sat Dec 2 07:21:10 2017 by ELM ver.2012-10-06 from 001__elm20171202_061300__dat00.bin

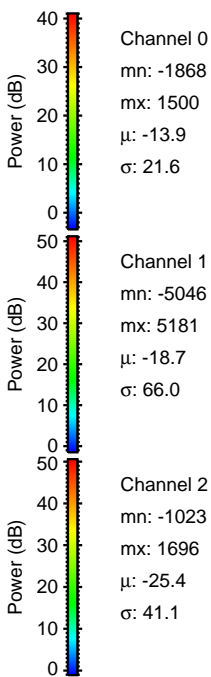
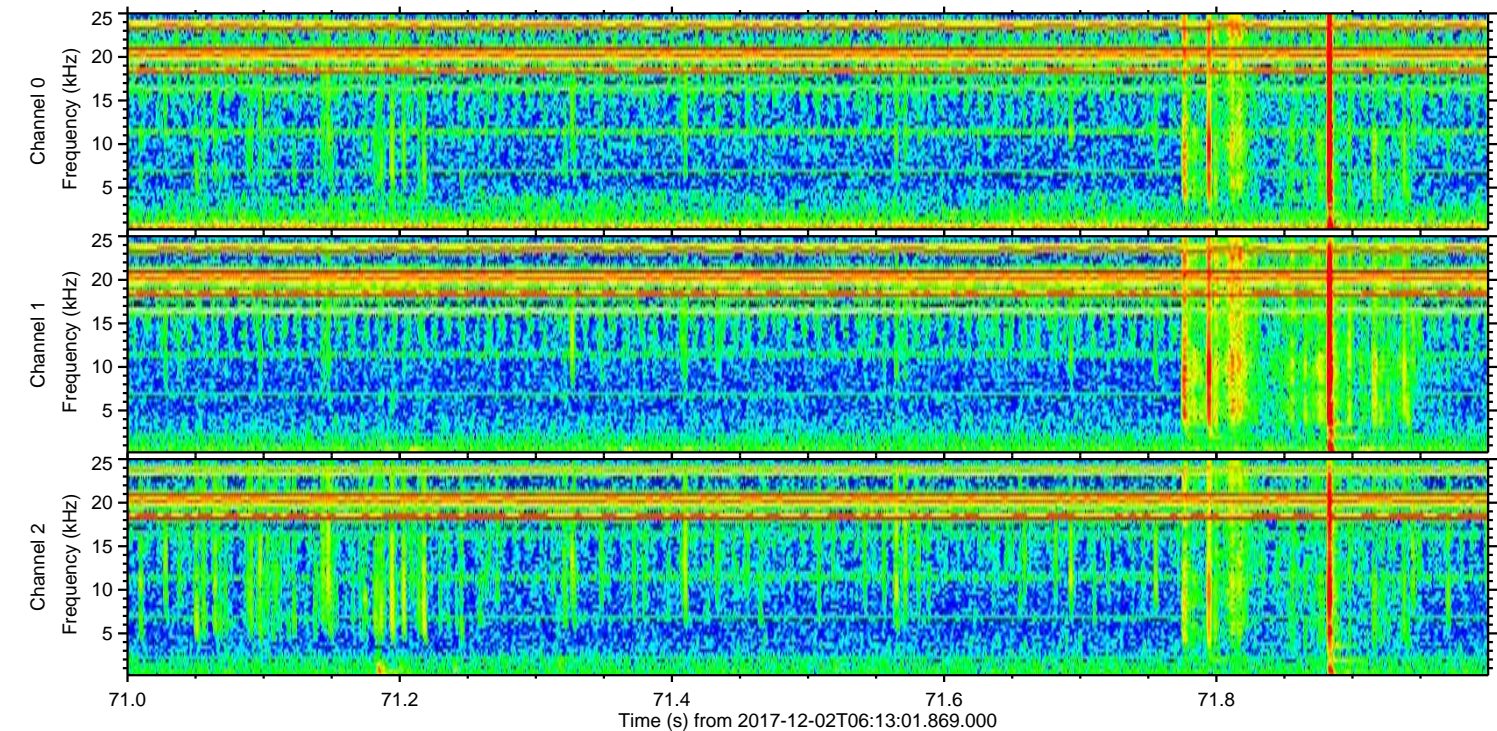
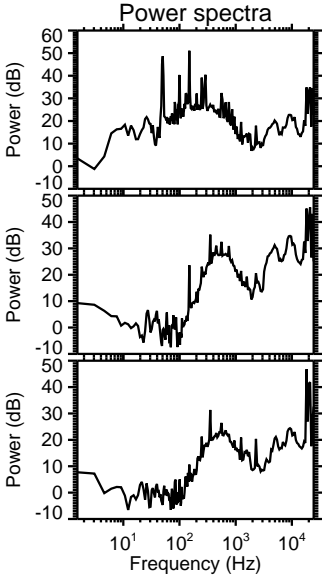
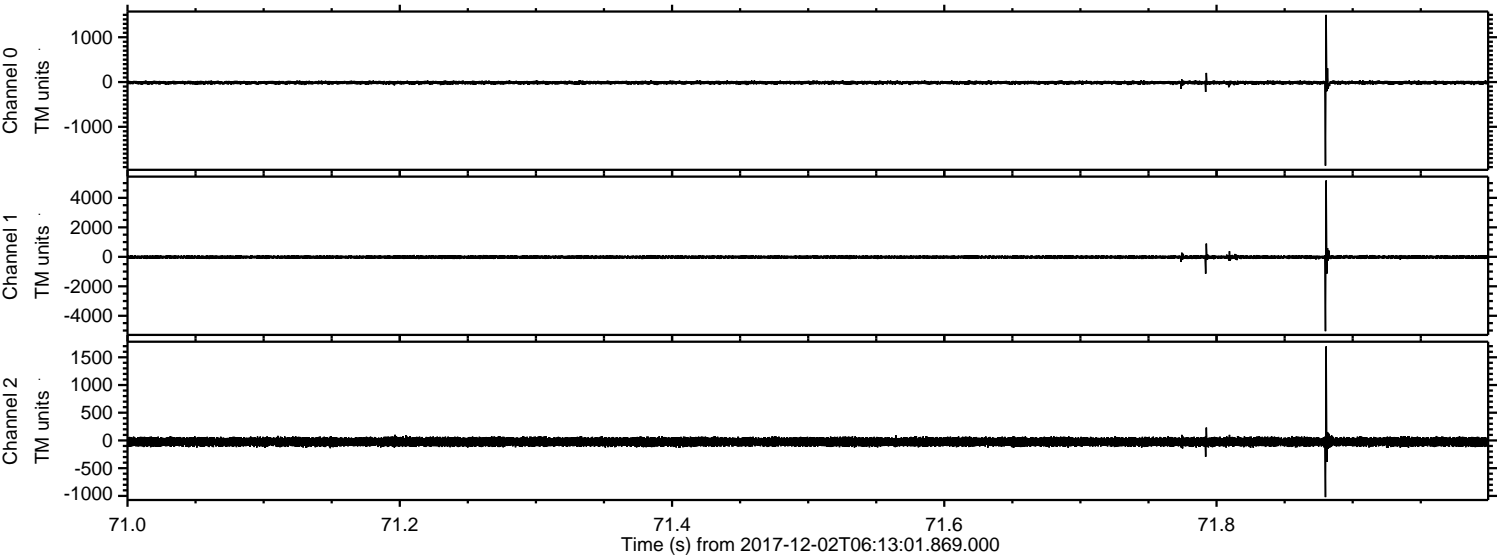


Channel 0
mn: -3047
mx: 1322
 μ : -13.8
 σ : 24.7

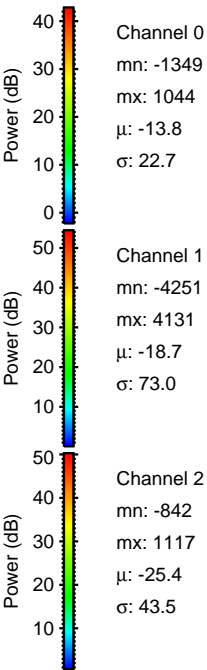
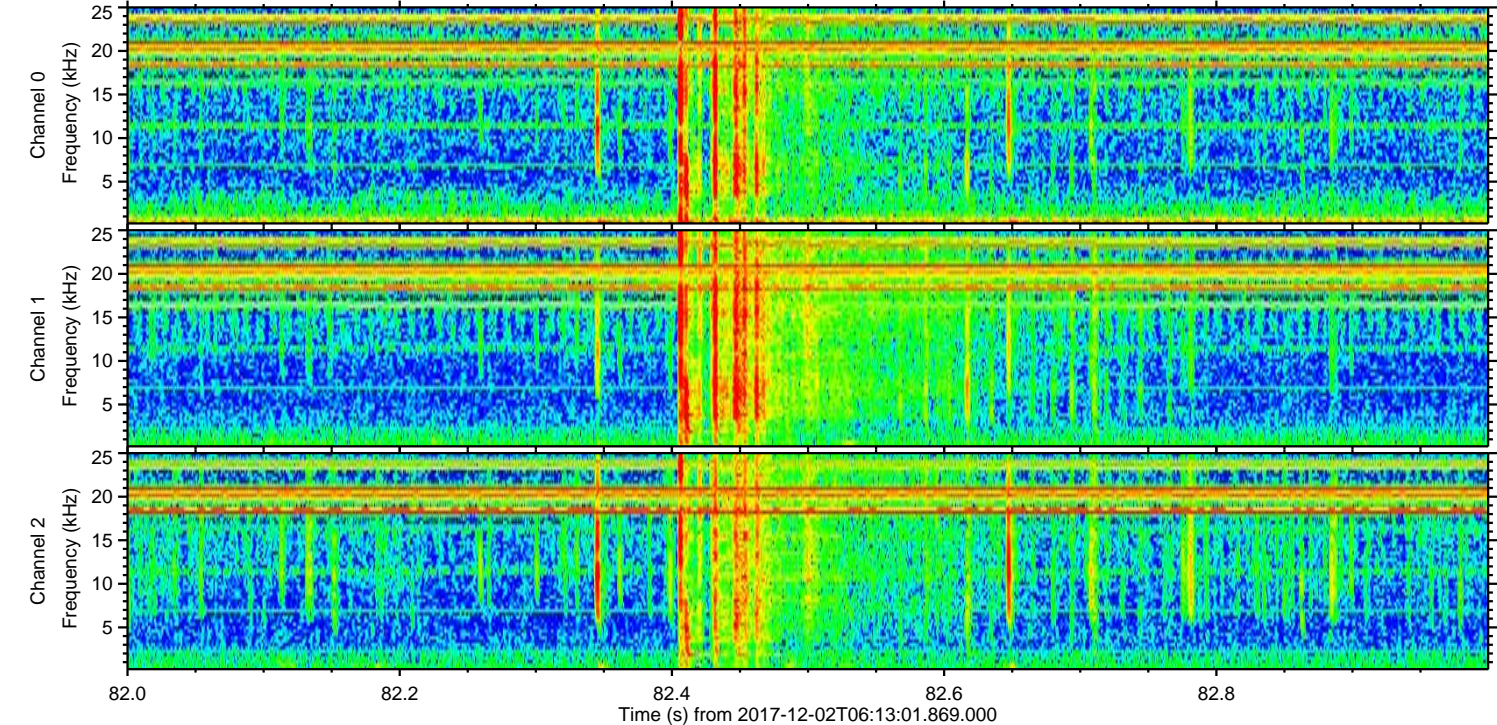
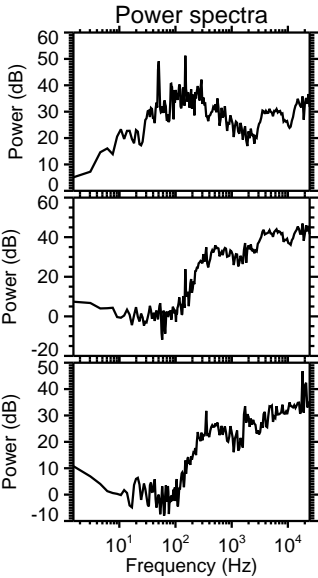
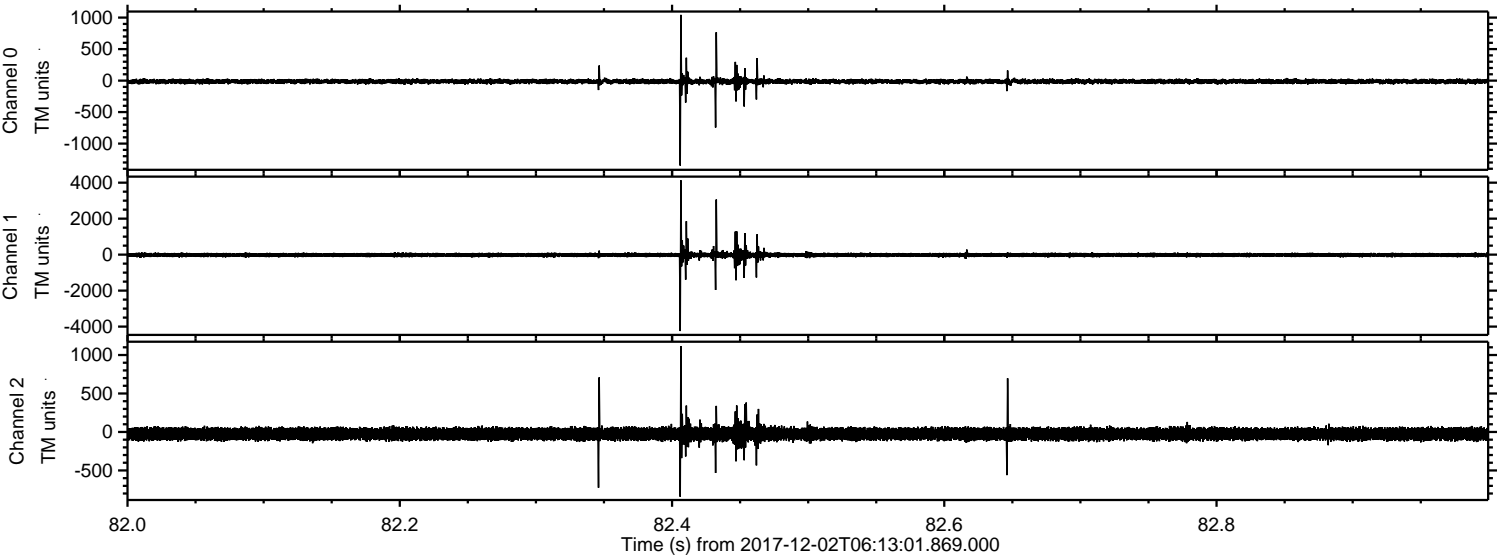
Channel 1
mn: -5840
mx: 3609
 μ : -18.7
 σ : 63.1

Channel 2
mn: -2449
mx: 2890
 μ : -25.4
 σ : 51.1

Processed Sat Dec 2 07:21:11 2017 by ELM ver.2012-10-06 from 001__elm20171202_061300__dat00.bin



Processed Sat Dec 2 07:21:11 2017 by ELM ver.2012-10-06 from 001__elm20171202_061300__dat00.bin



Processed Sat Dec 2 07:21:12 2017 by ELM ver.2012-10-06 from 001__elm20171202_061300__dat00.bin

