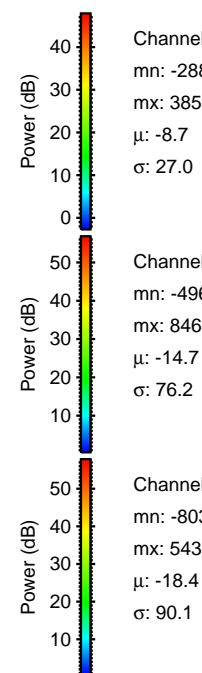
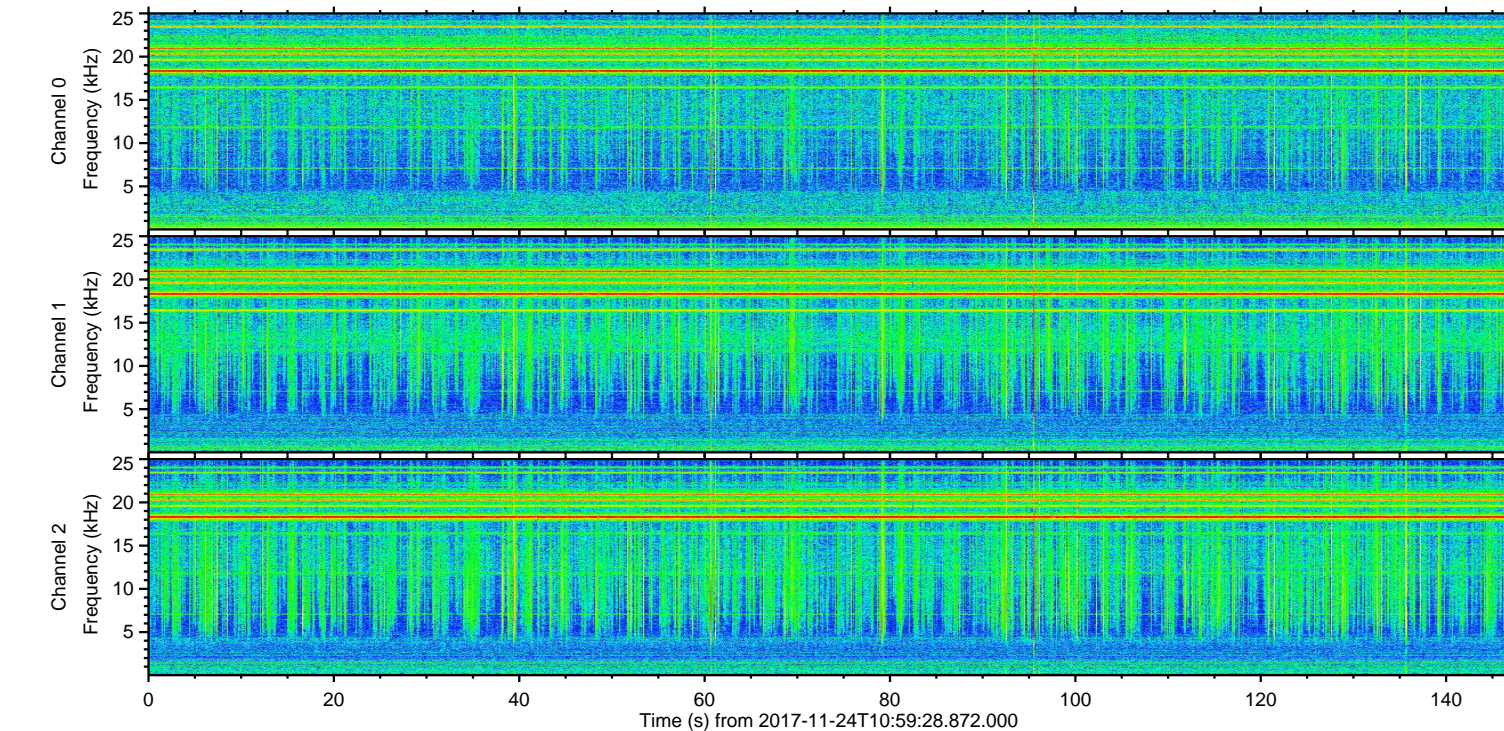
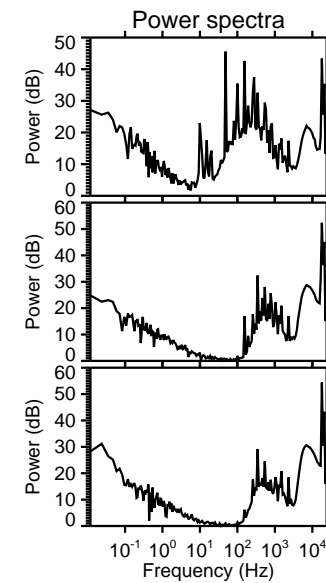
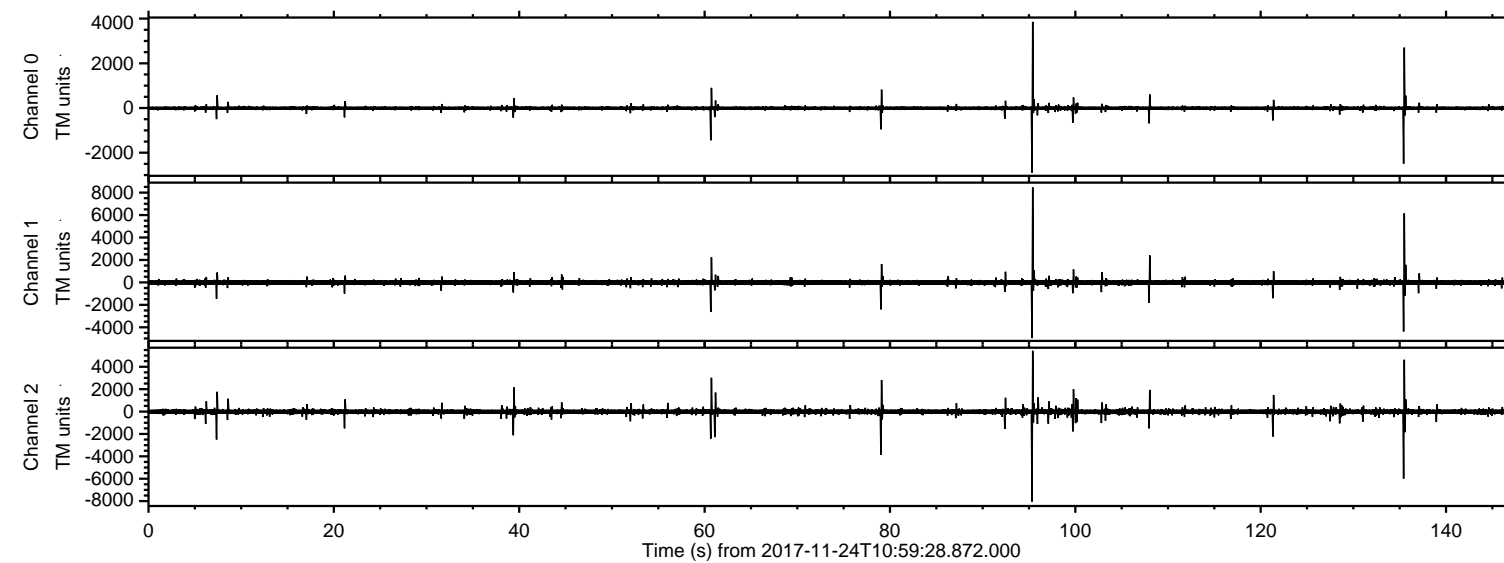


ELMAVAN 3D WAVEFORMS (Measured data sampled at 50 kHz) 51000 packets of 144 samples from 2017-11-24T10:59:28.872.000.

Processed Fri Nov 24 12:06:48 2017 by ELM ver.2012-10-06 from 001__elm20171124_105927__dat00.bin

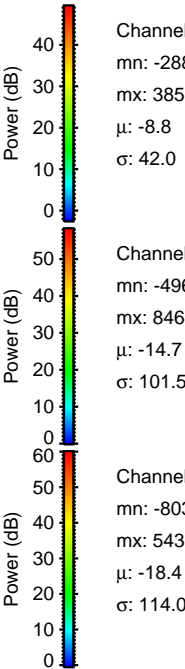
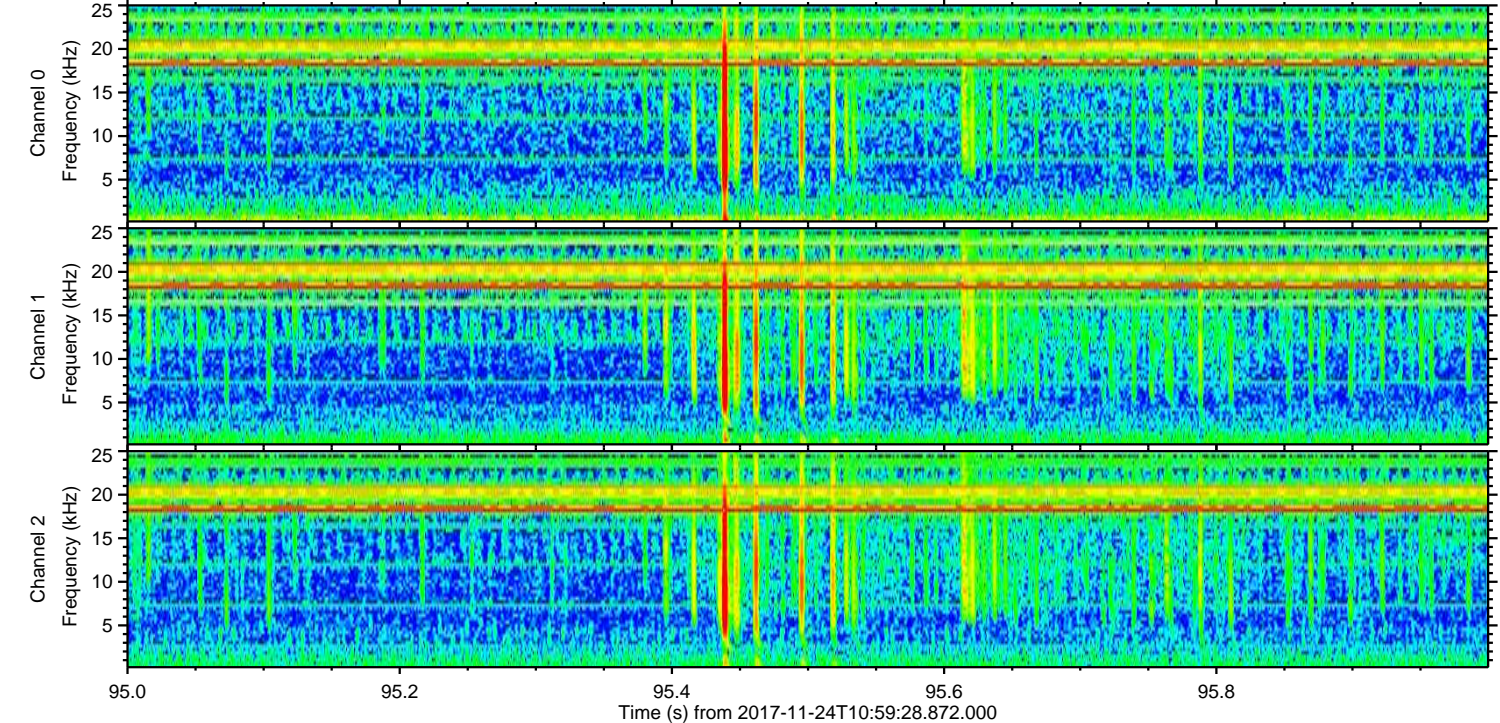
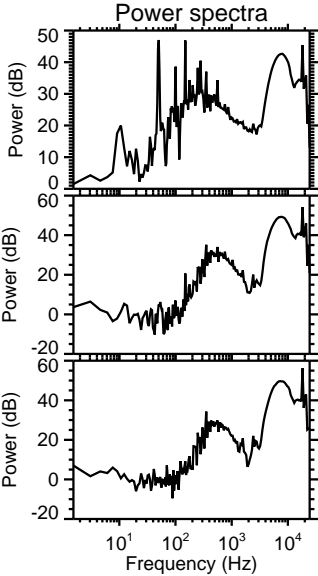
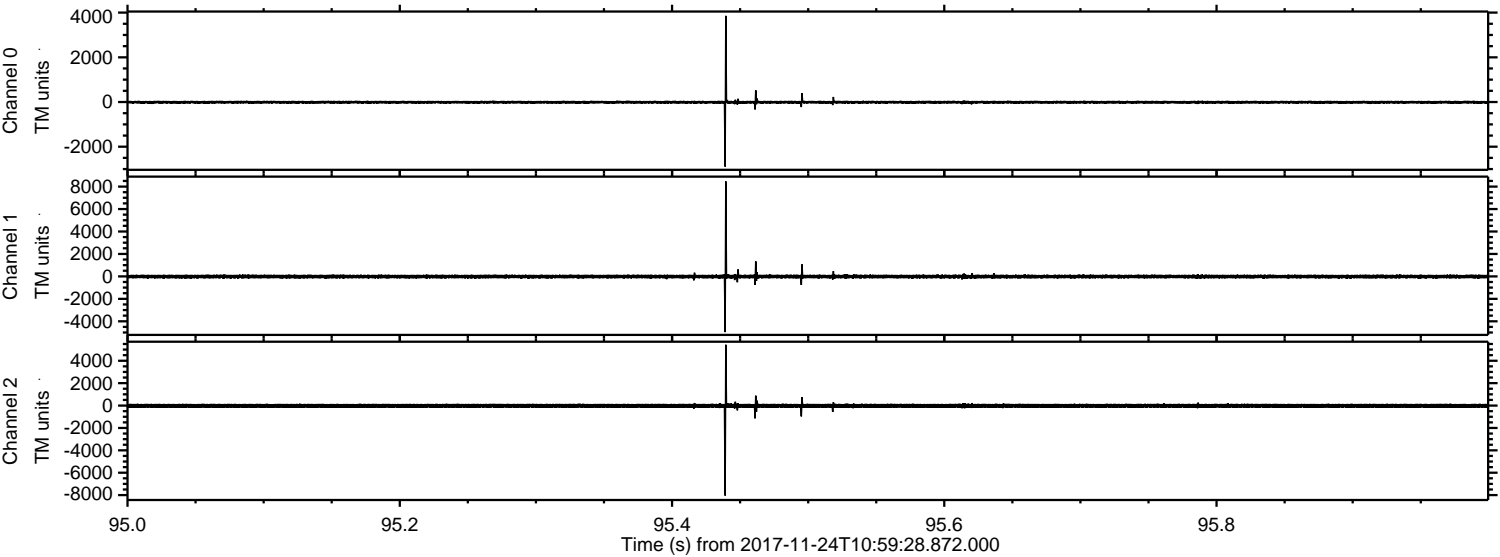


Channel 0
mn: -2889
mx: 3855
 μ : -8.7
 σ : 27.0

Channel 1
mn: -4966
mx: 8464
 μ : -14.7
 σ : 76.2

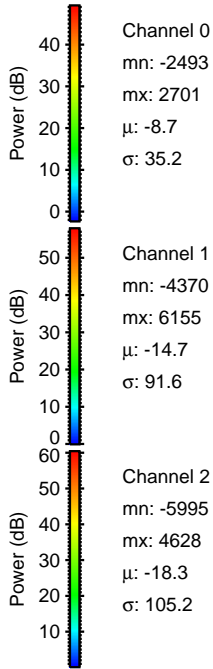
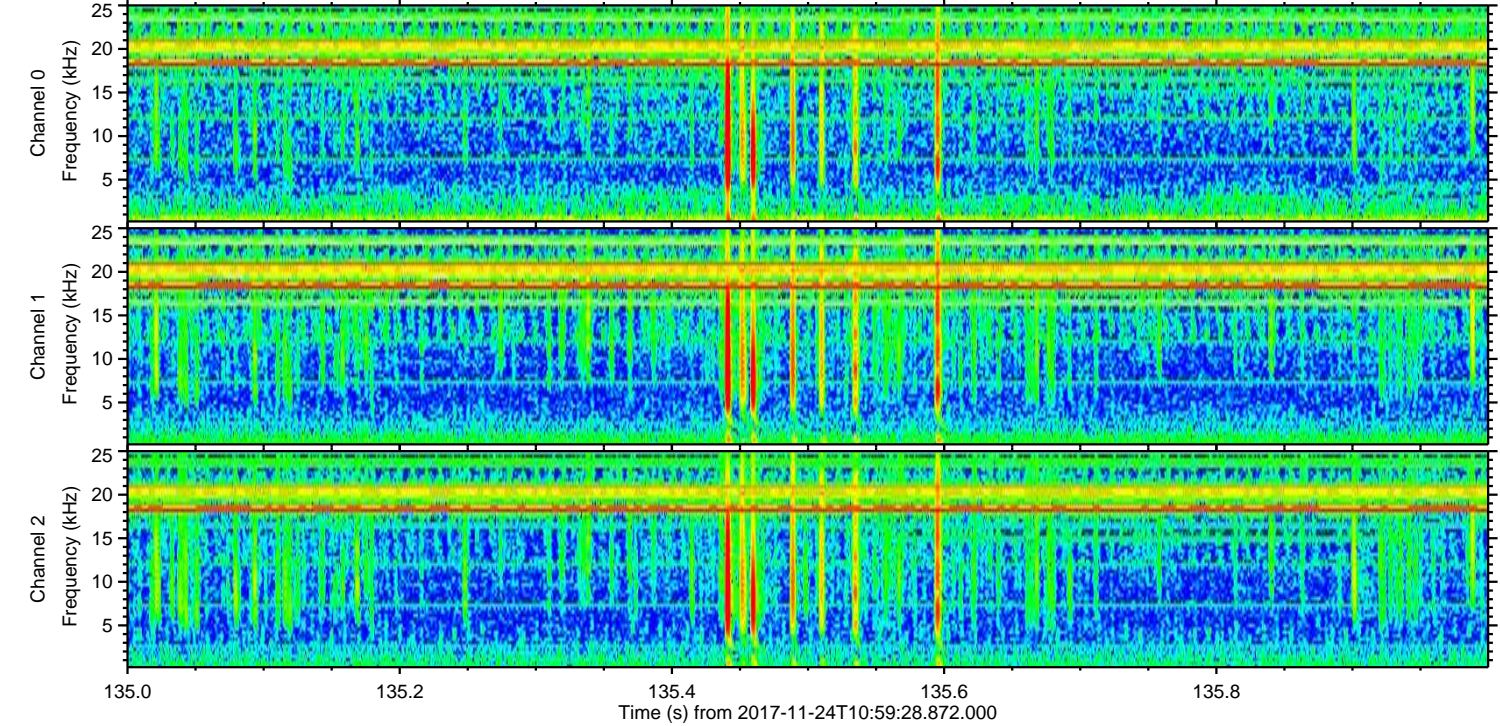
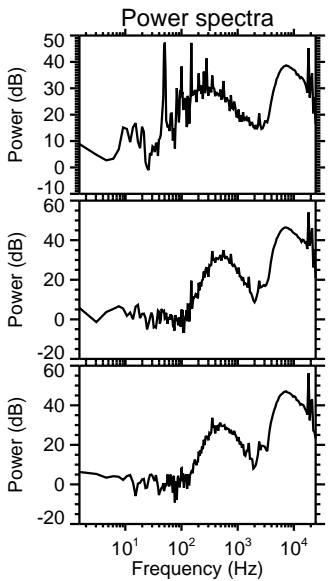
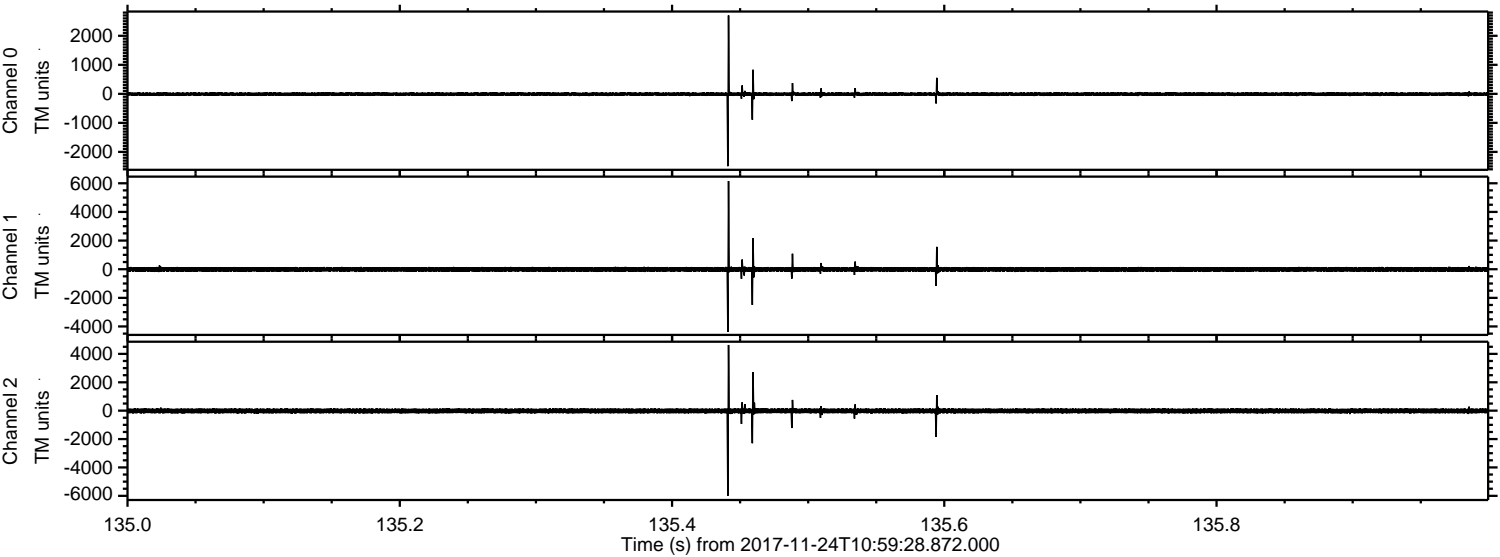
Channel 2
mn: -8034
mx: 5430
 μ : -18.4
 σ : 90.1

Processed Fri Nov 24 12:06:55 2017 by ELM ver.2012-10-06 from 001__elm20171124_105927__dat00.bin

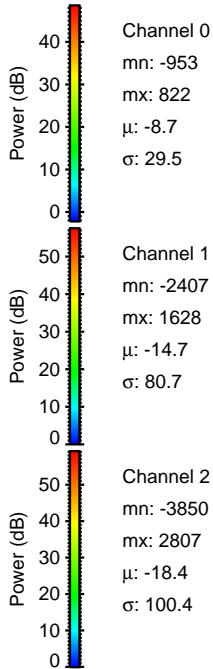
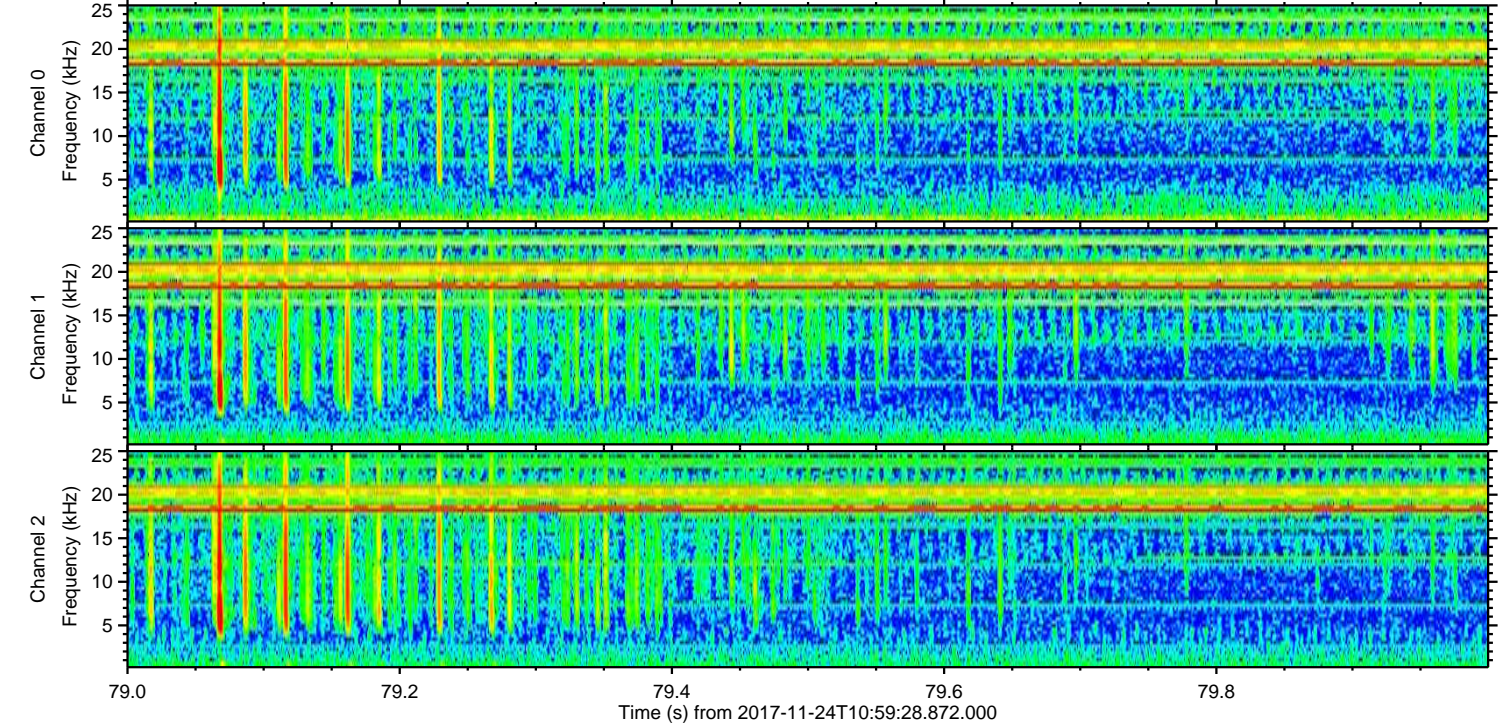
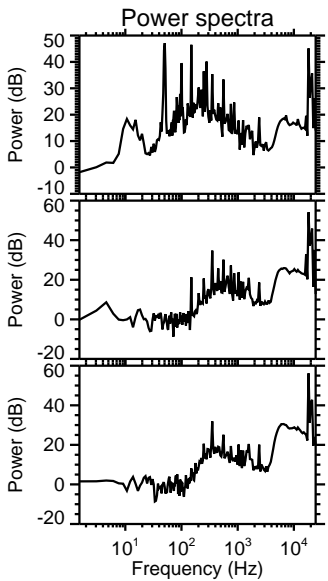
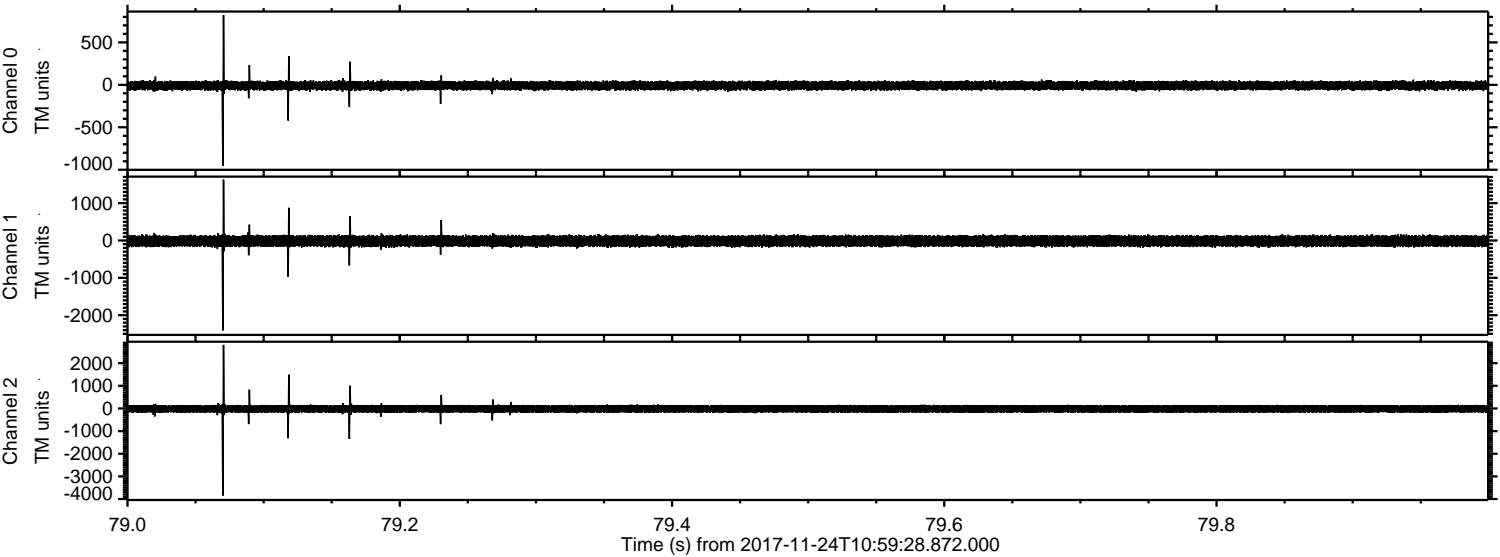


ELMAVAN 3D WAVEFORMS (Measured data sampled at 50 kHz) 51000 packets of 144 samples from 2017-11-24T10:59:28.872.000. Part 136/147

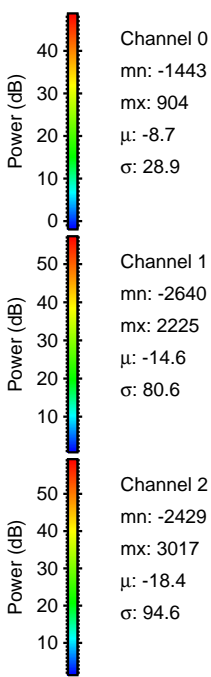
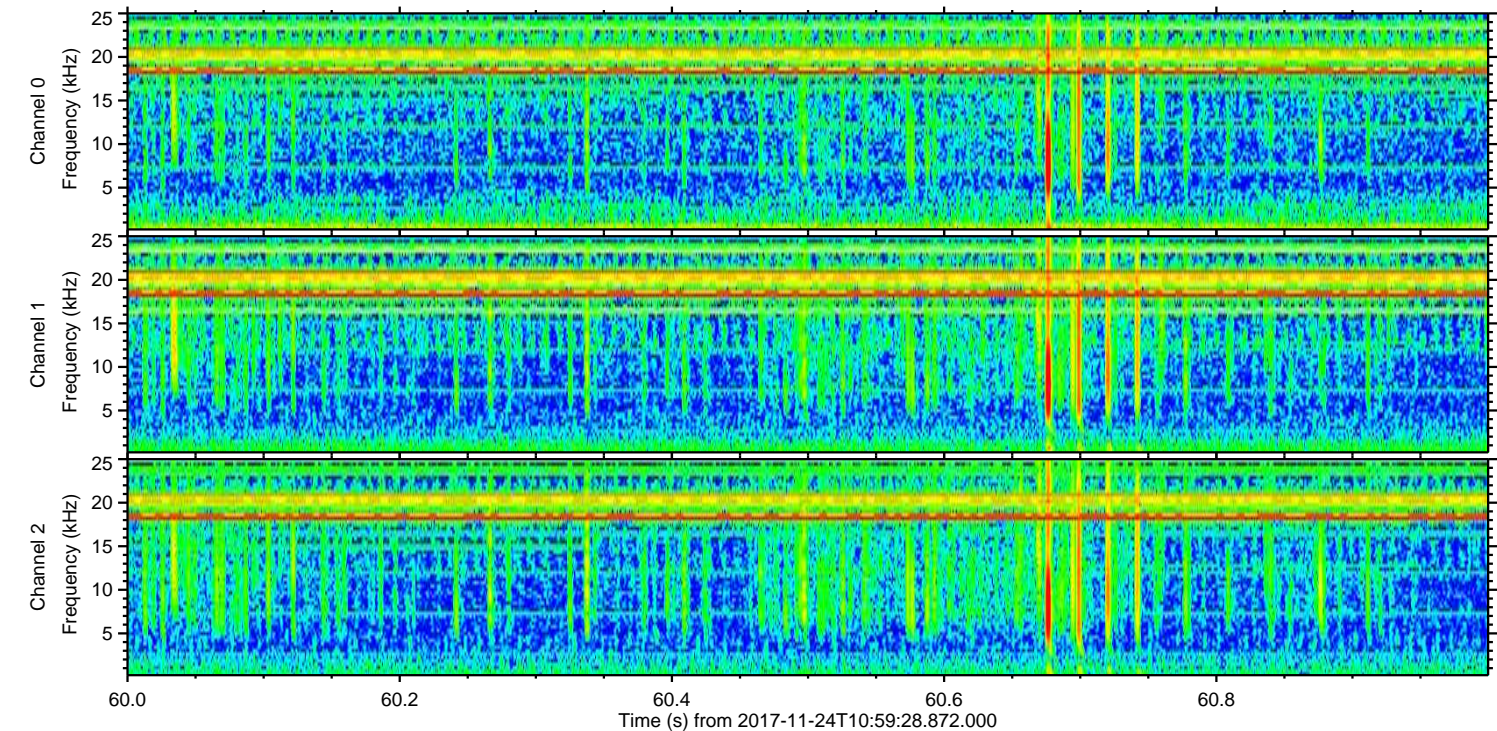
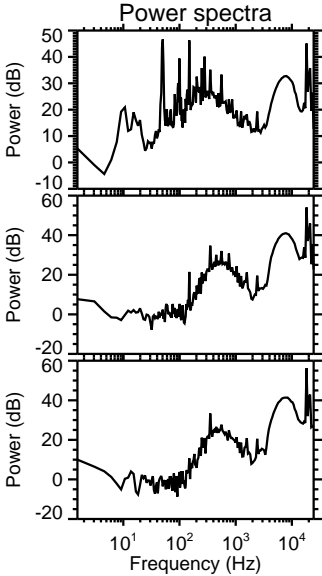
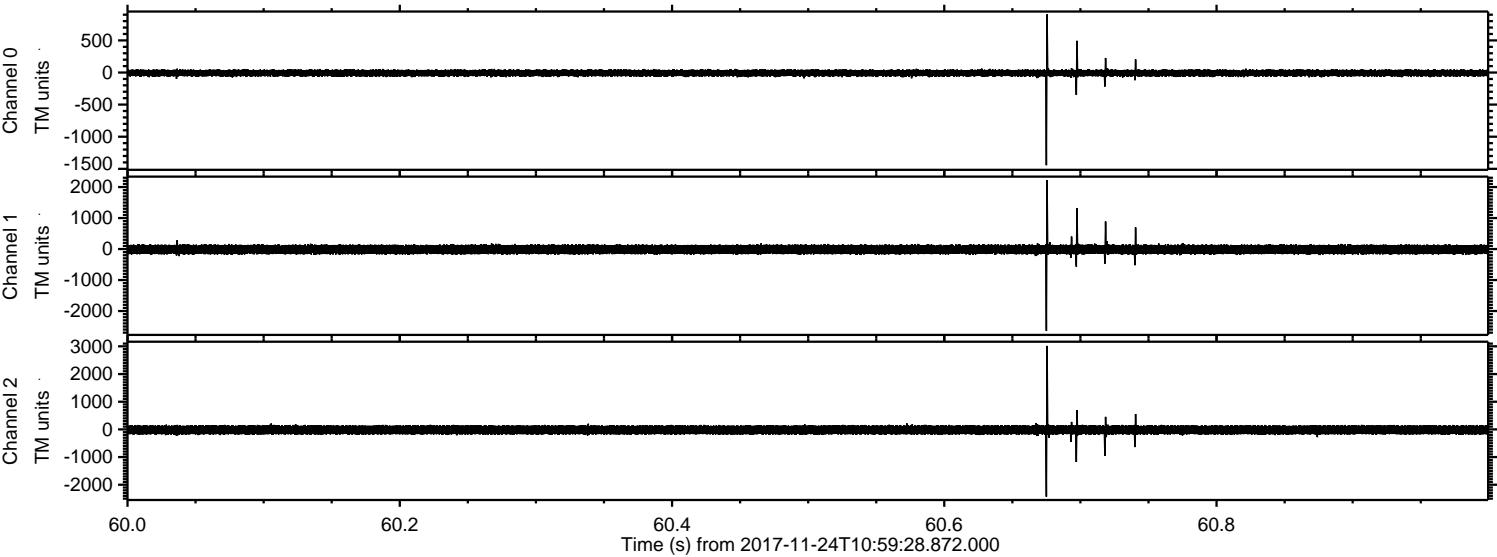
Processed Fri Nov 24 12:06:56 2017 by ELM ver.2012-10-06 from 001__elm20171124_105927__dat00.bin



Processed Fri Nov 24 12:06:56 2017 by ELM ver.2012-10-06 from 001__elm20171124_105927__dat00.bin



Processed Fri Nov 24 12:06:57 2017 by ELM ver.2012-10-06 from 001__elm20171124_105927__dat00.bin

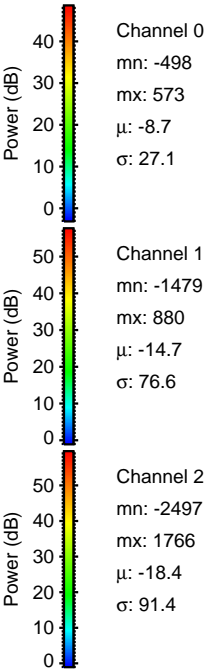
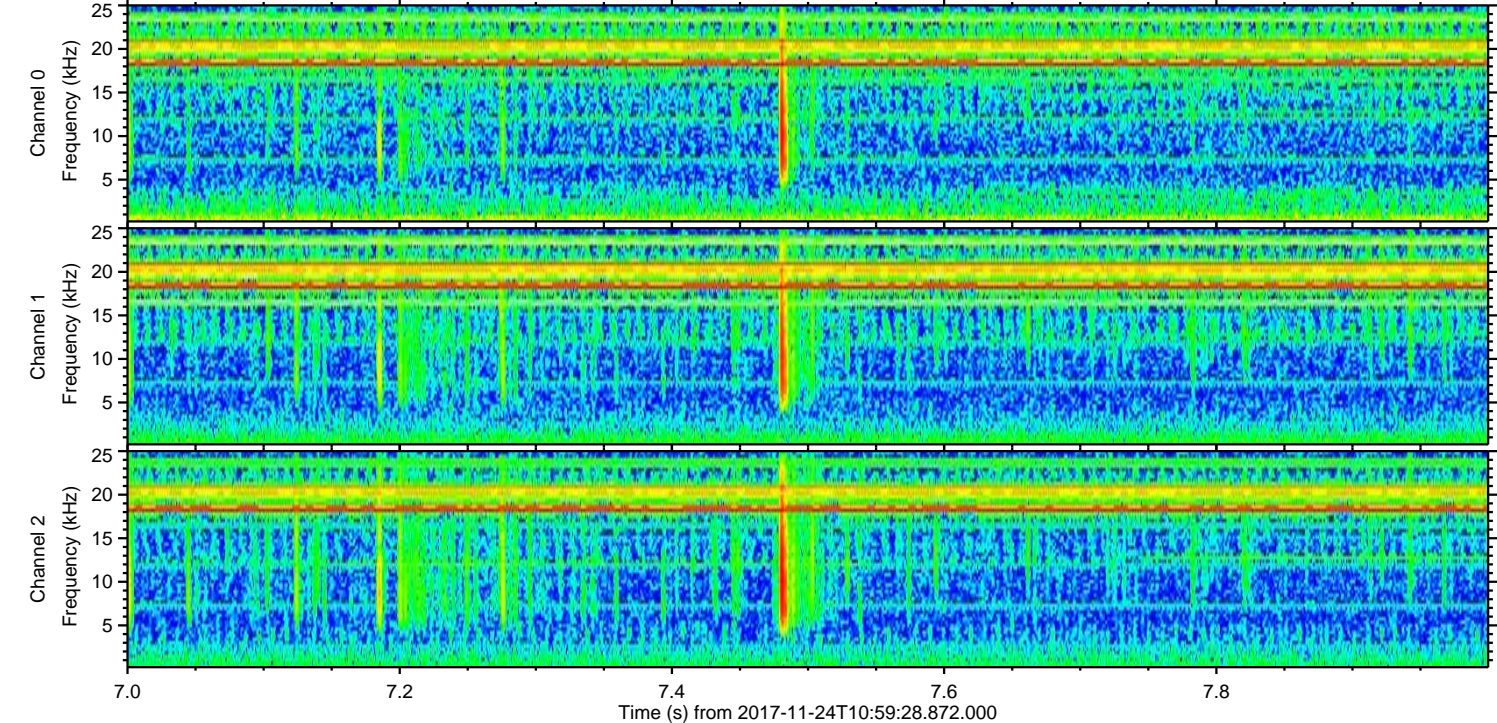
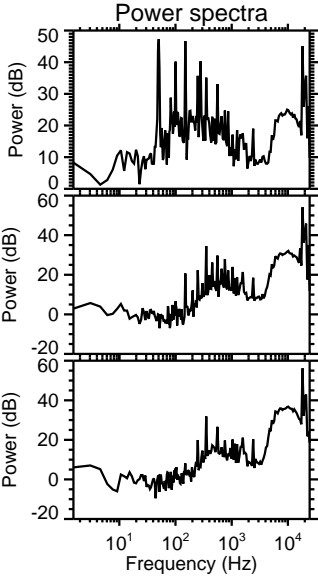
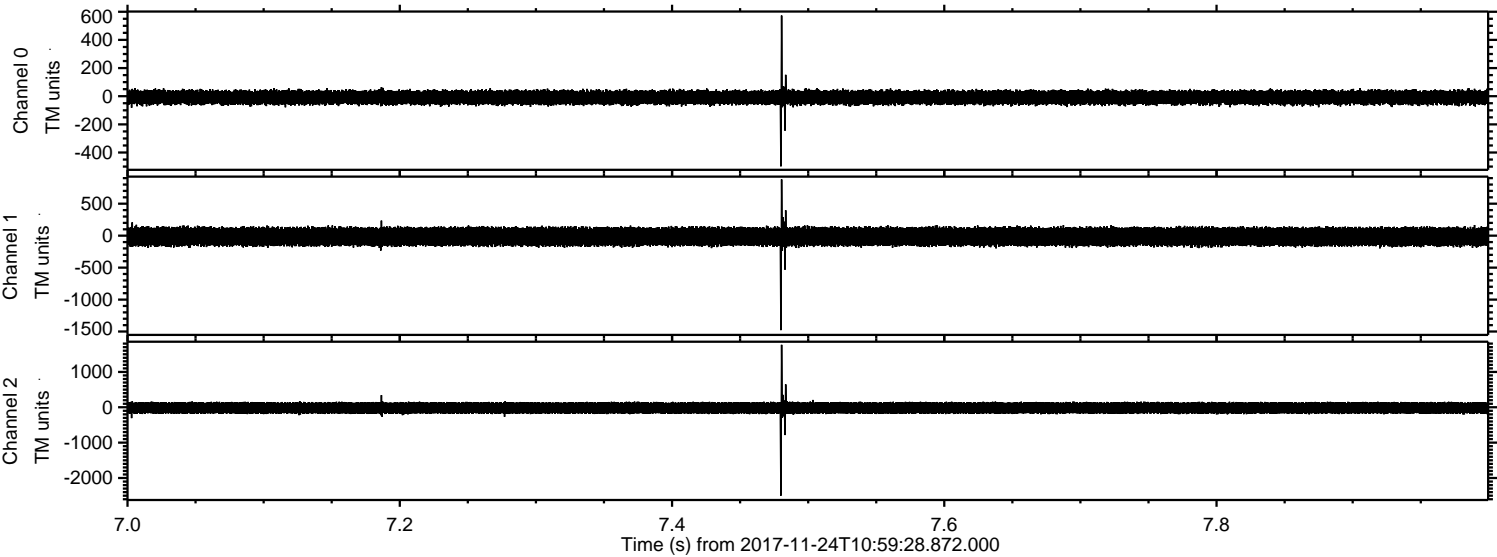


Channel 0
mn: -1443
mx: 904
 μ : -8.7
 σ : 28.9

Channel 1
mn: -2640
mx: 2225
 μ : -14.6
 σ : 80.6

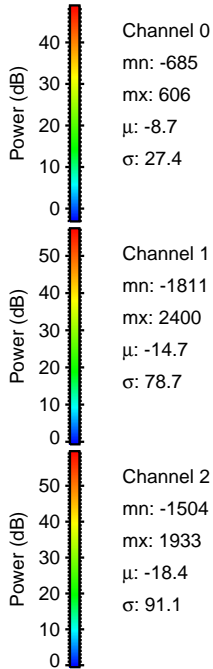
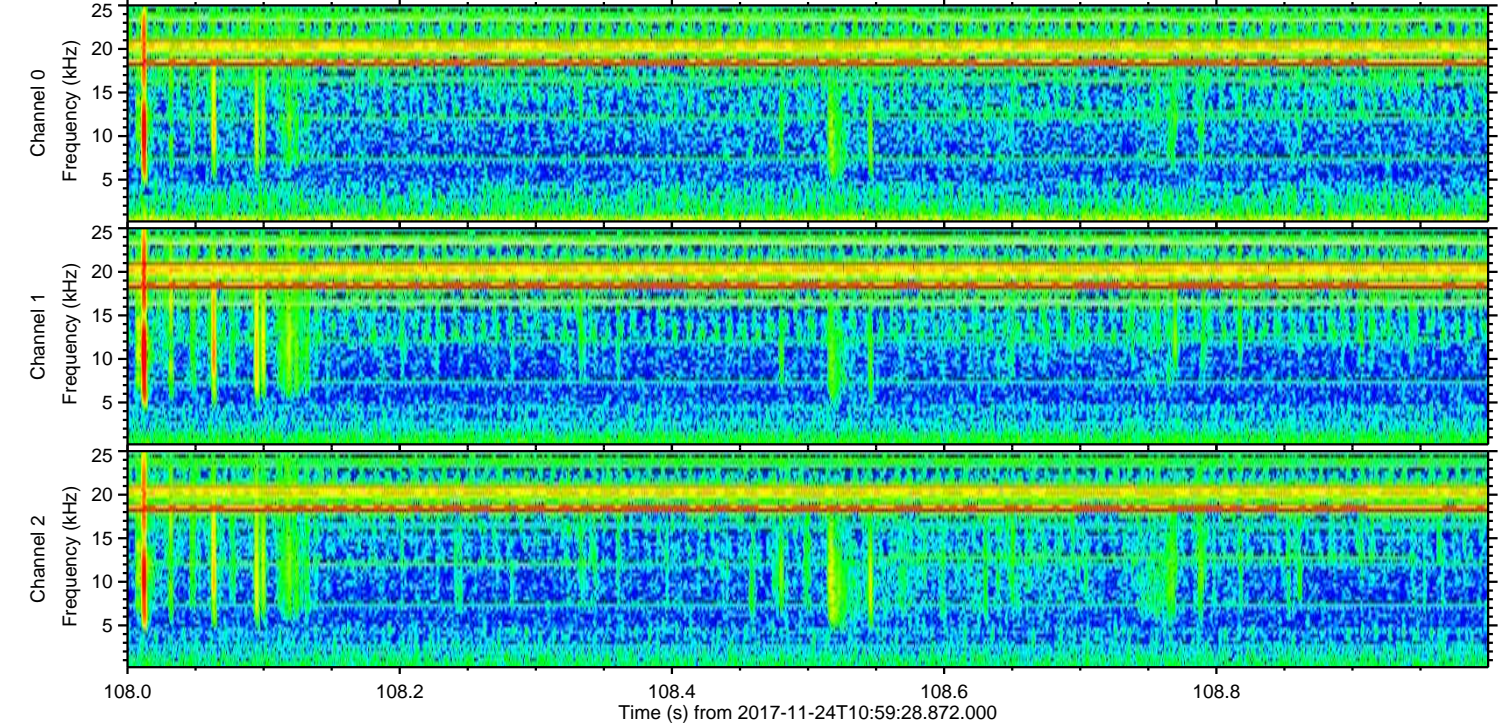
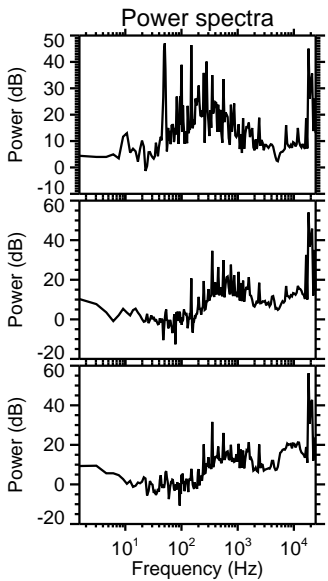
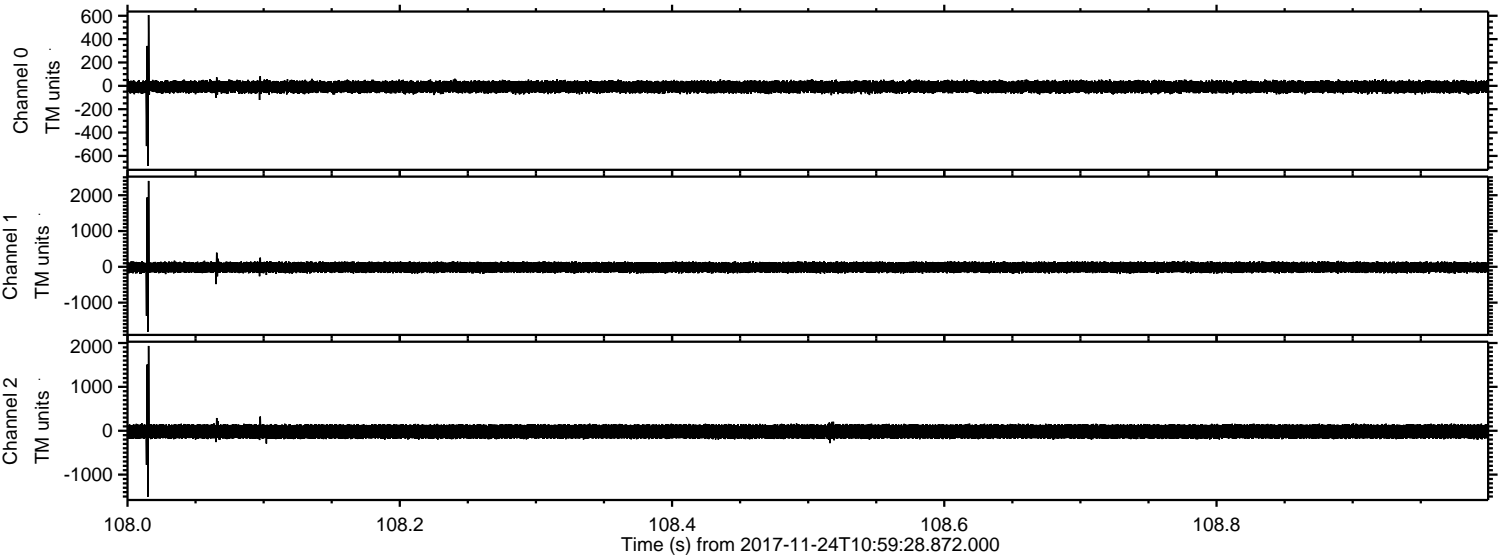
Channel 2
mn: -2429
mx: 3017
 μ : -18.4
 σ : 94.6

Processed Fri Nov 24 12:06:58 2017 by ELM ver.2012-10-06 from 001__elm20171124_105927__dat00.bin



ELMAVAN 3D WAVEFORMS (Measured data sampled at 50 kHz) 51000 packets of 144 samples from 2017-11-24T10:59:28.872.000. Part 109/147

Processed Fri Nov 24 12:06:59 2017 by ELM ver.2012-10-06 from 001__elm20171124_105927__dat00.bin

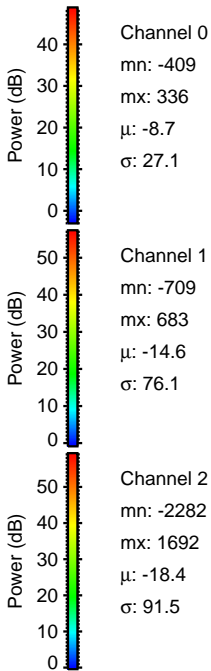
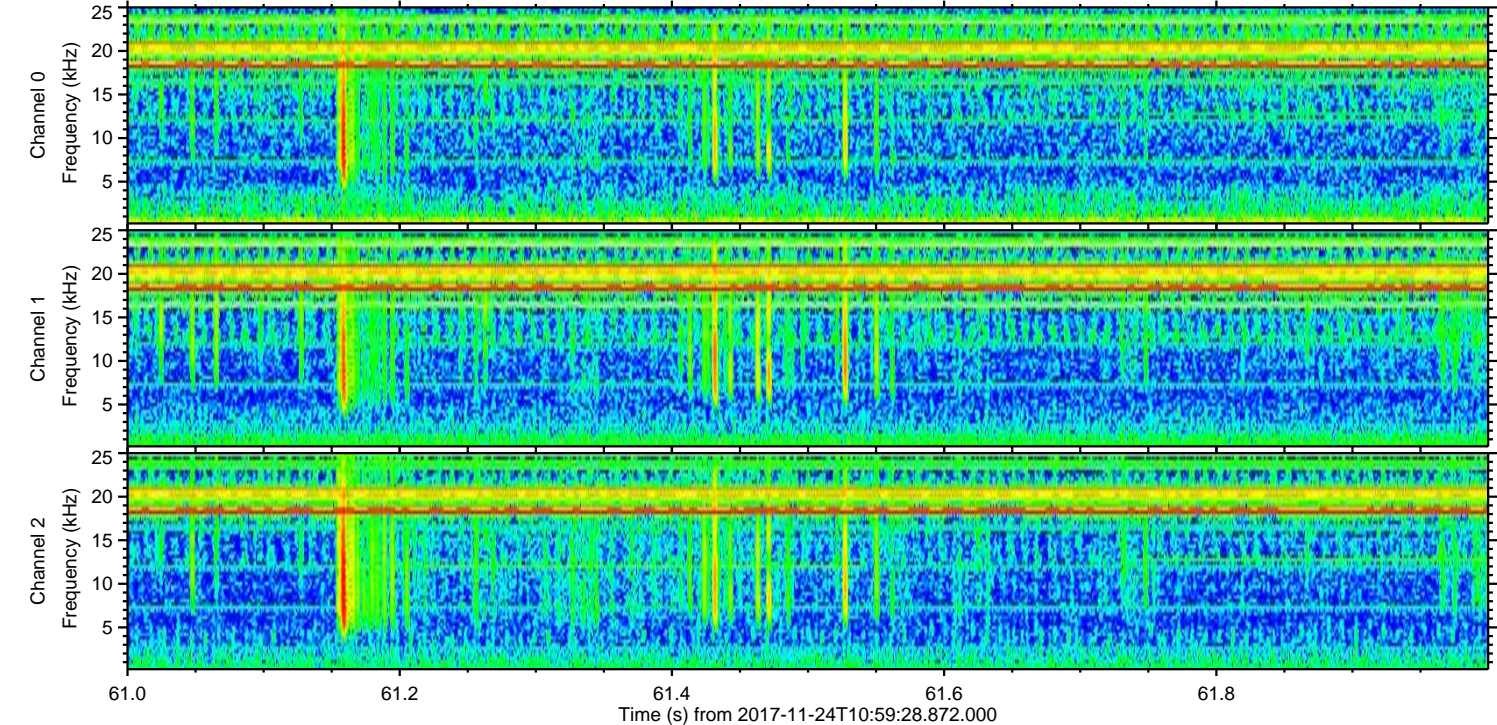
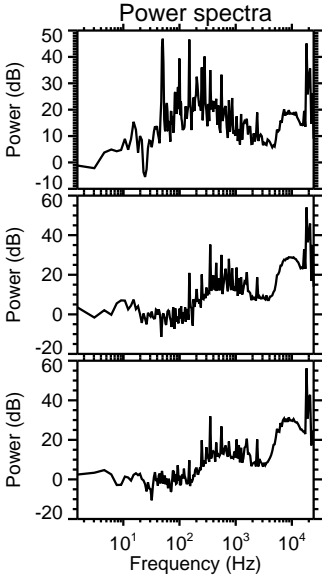
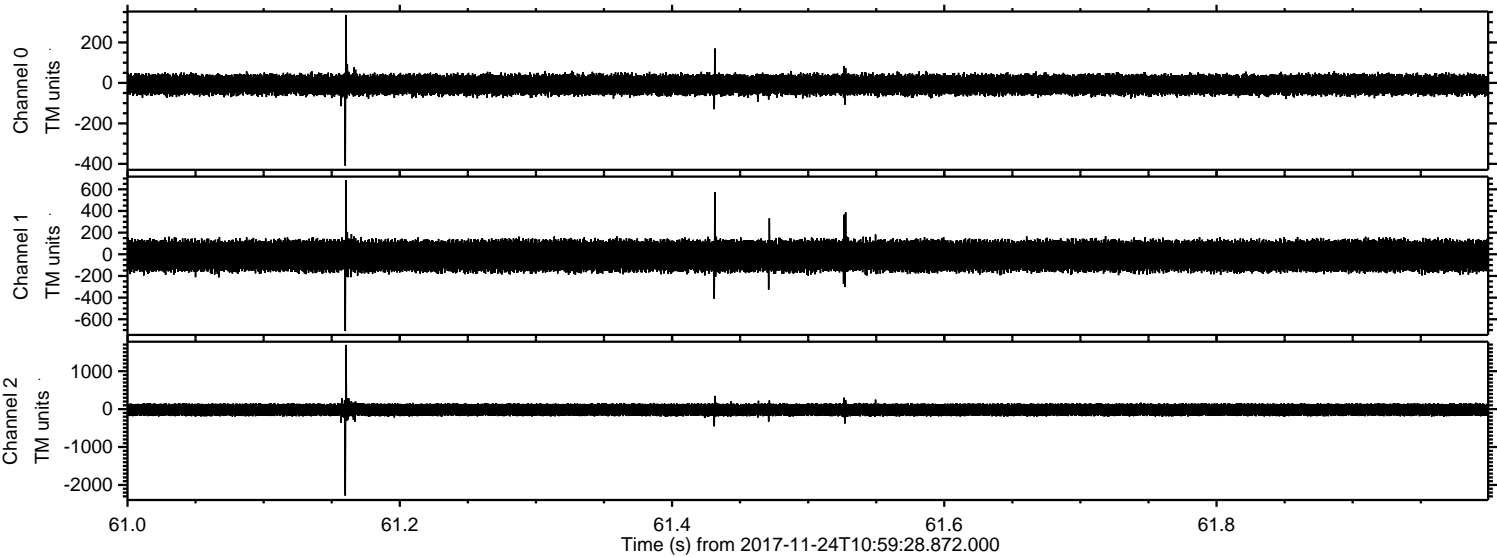


Channel 0
mn: -685
mx: 606
 μ : -8.7
 σ : 27.4

Channel 1
mn: -1811
mx: 2400
 μ : -14.7
 σ : 78.7

Channel 2
mn: -1504
mx: 1933
 μ : -18.4
 σ : 91.1

Processed Fri Nov 24 12:07:00 2017 by ELM ver.2012-10-06 from 001__elm20171124_105927__dat00.bin



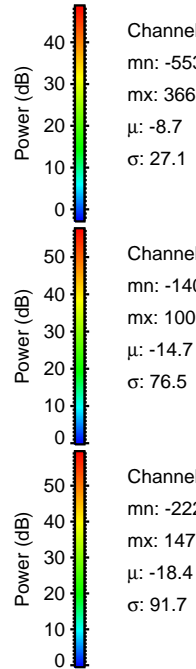
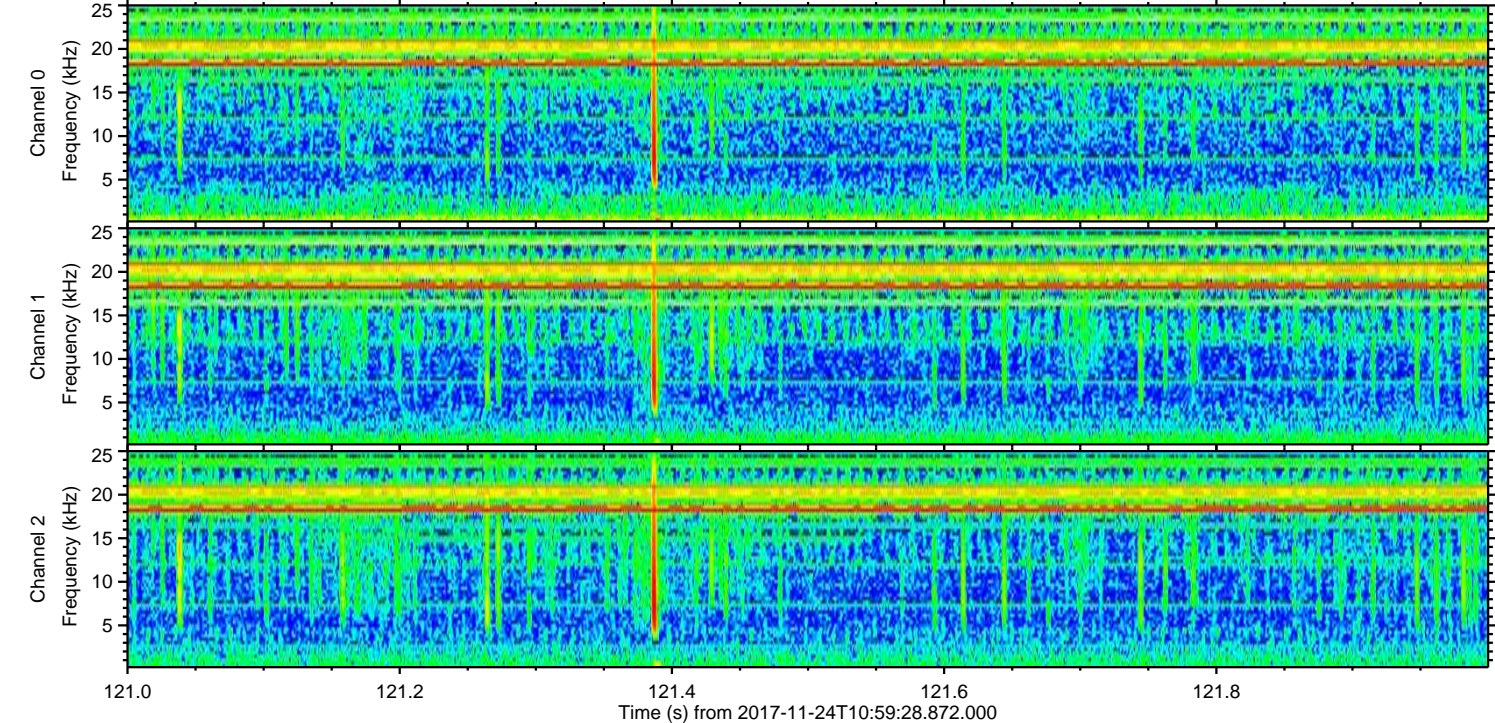
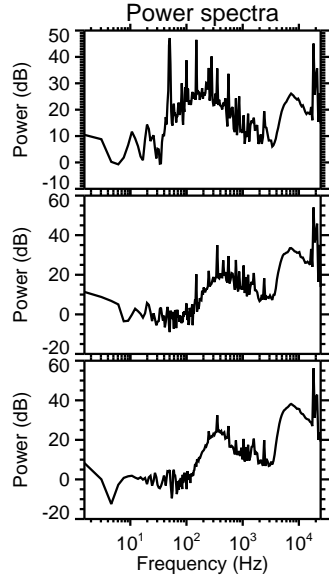
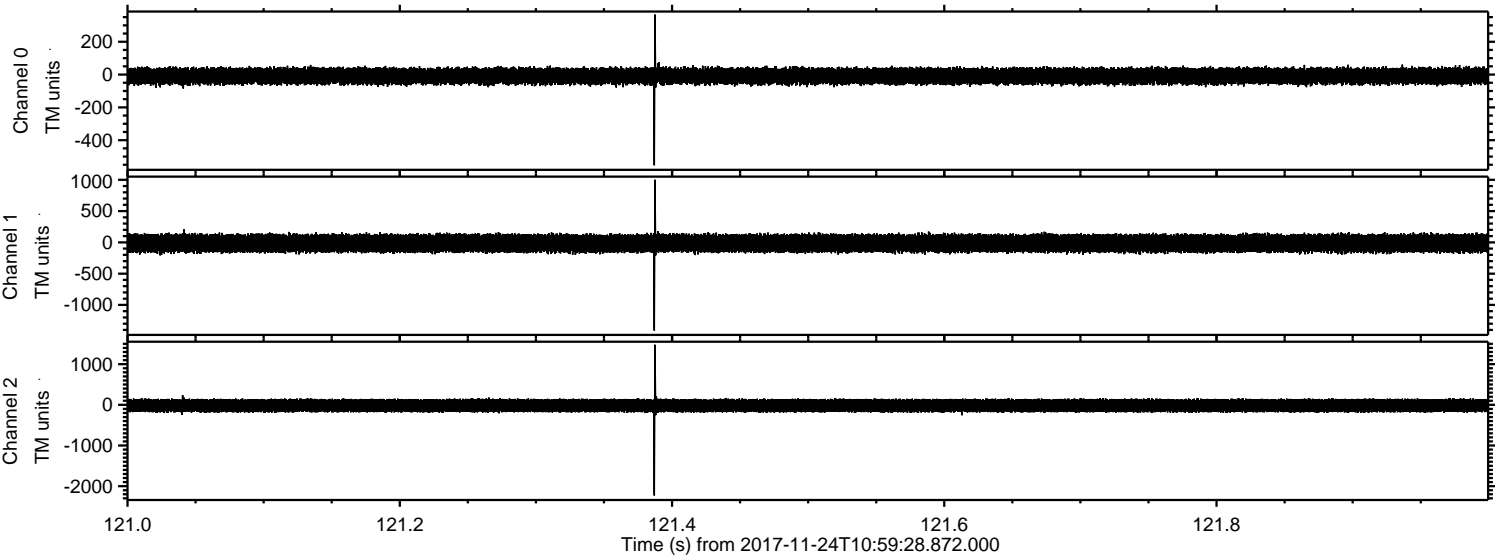
Channel 0
mn: -409
mx: 336
 μ : -8.7
 σ : 27.1

Channel 1
mn: -709
mx: 683
 μ : -14.6
 σ : 76.1

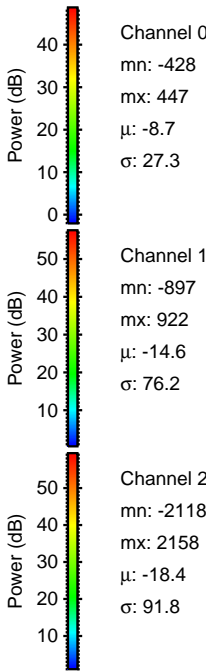
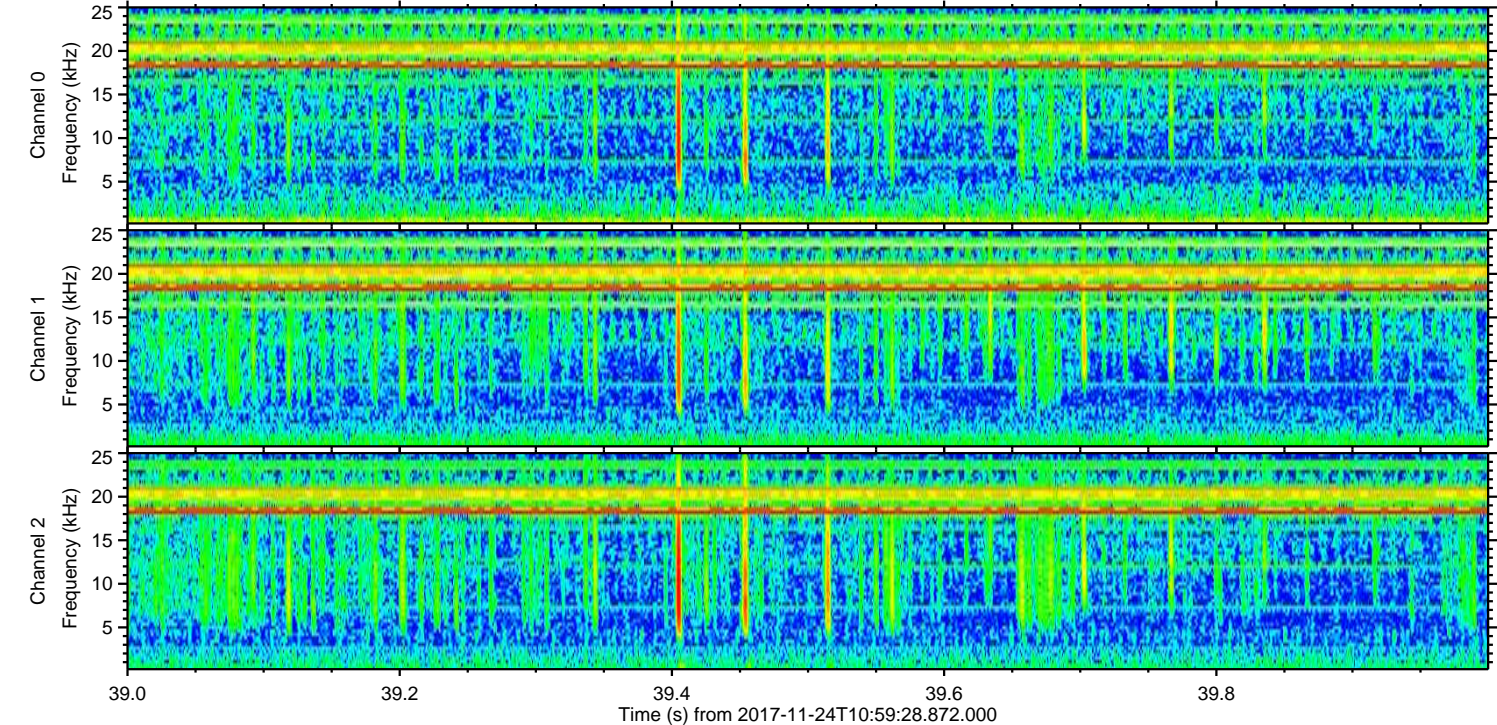
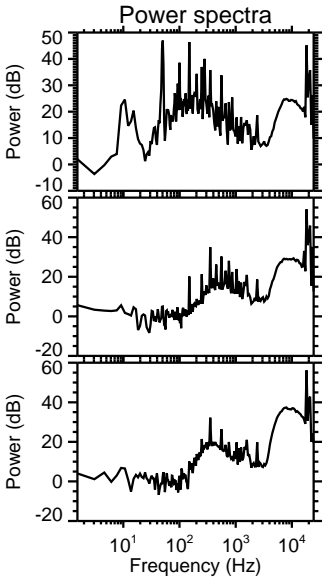
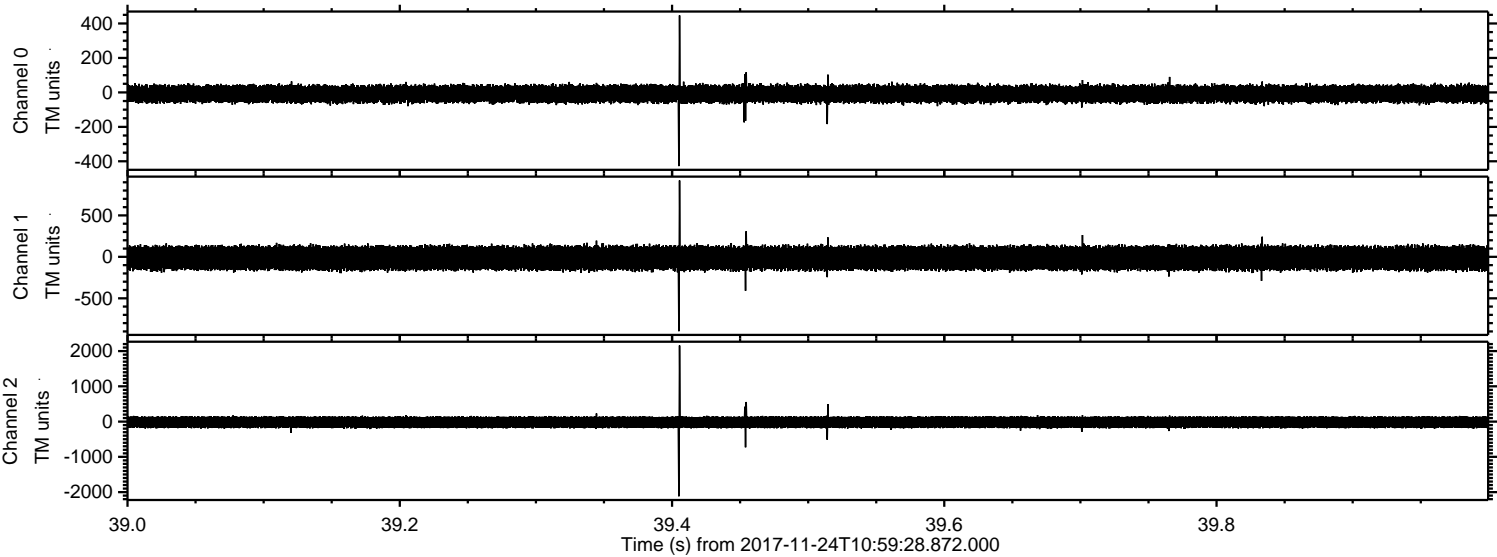
Channel 2
mn: -2282
mx: 1692
 μ : -18.4
 σ : 91.5

ELMAVAN 3D WAVEFORMS (Measured data sampled at 50 kHz) 51000 packets of 144 samples from 2017-11-24T10:59:28.872.000. Part 122/147

Processed Fri Nov 24 12:07:00 2017 by ELM ver.2012-10-06 from 001__elm20171124_105927__dat00.bin



Processed Fri Nov 24 12:07:01 2017 by ELM ver.2012-10-06 from 001__elm20171124_105927__dat00.bin



ELMAVAN 3D WAVEFORMS (Measured data sampled at 50 kHz) 51000 packets of 144 samples from 2017-11-24T10:59:28.872.000. Part 1/147

Processed Fri Nov 24 12:07:02 2017 by ELM ver.2012-10-06 from 001__elm20171124_105927__dat00.bin

