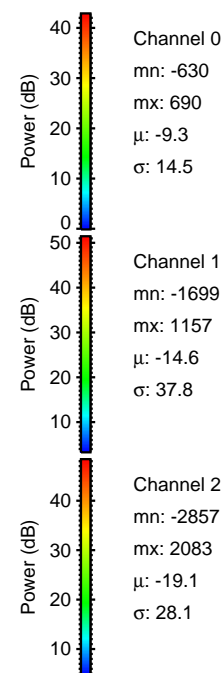
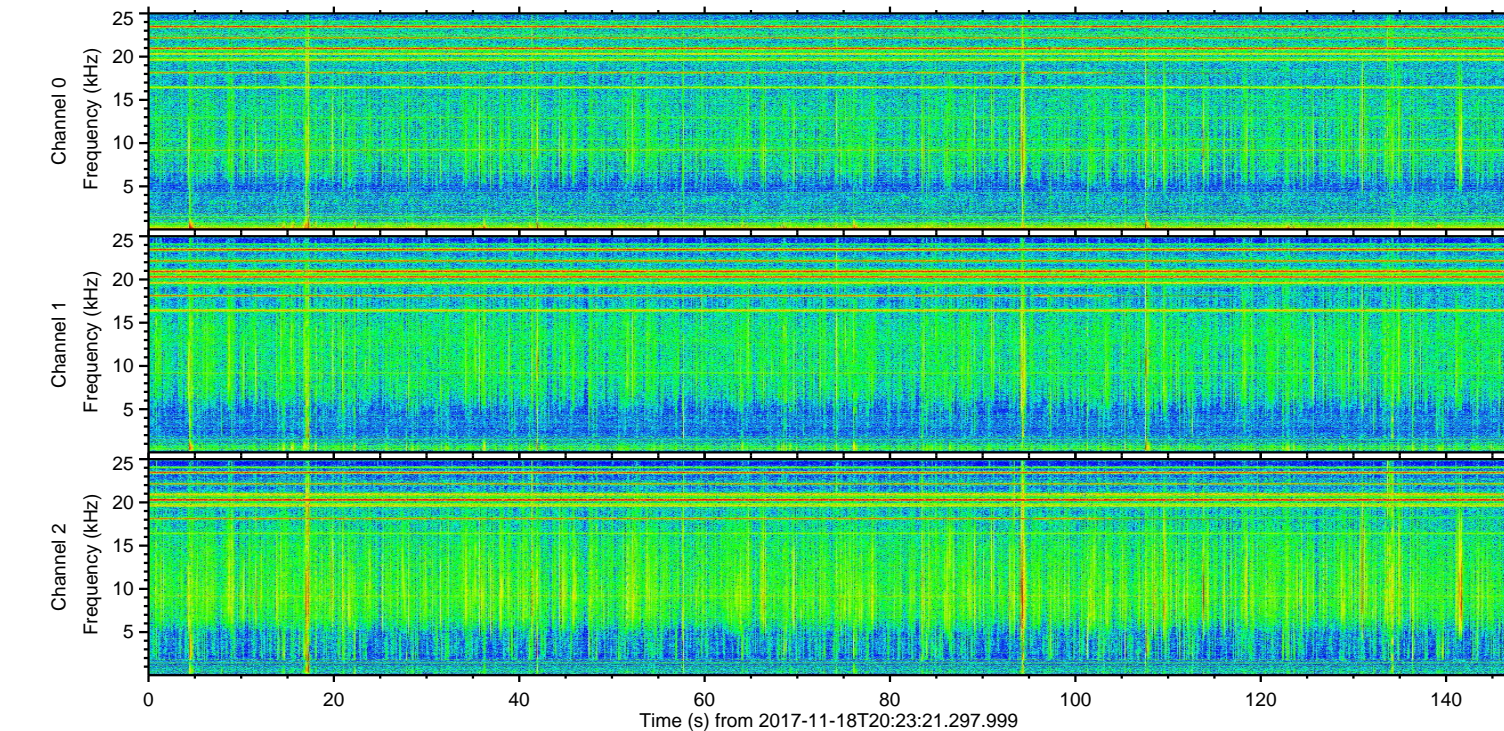
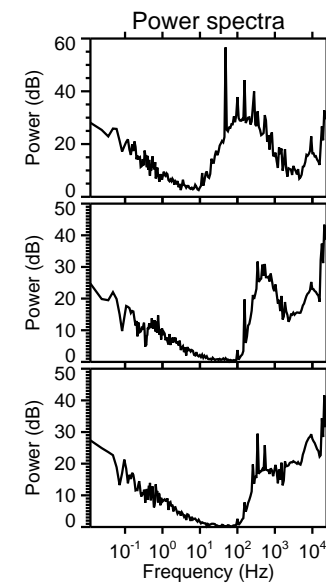
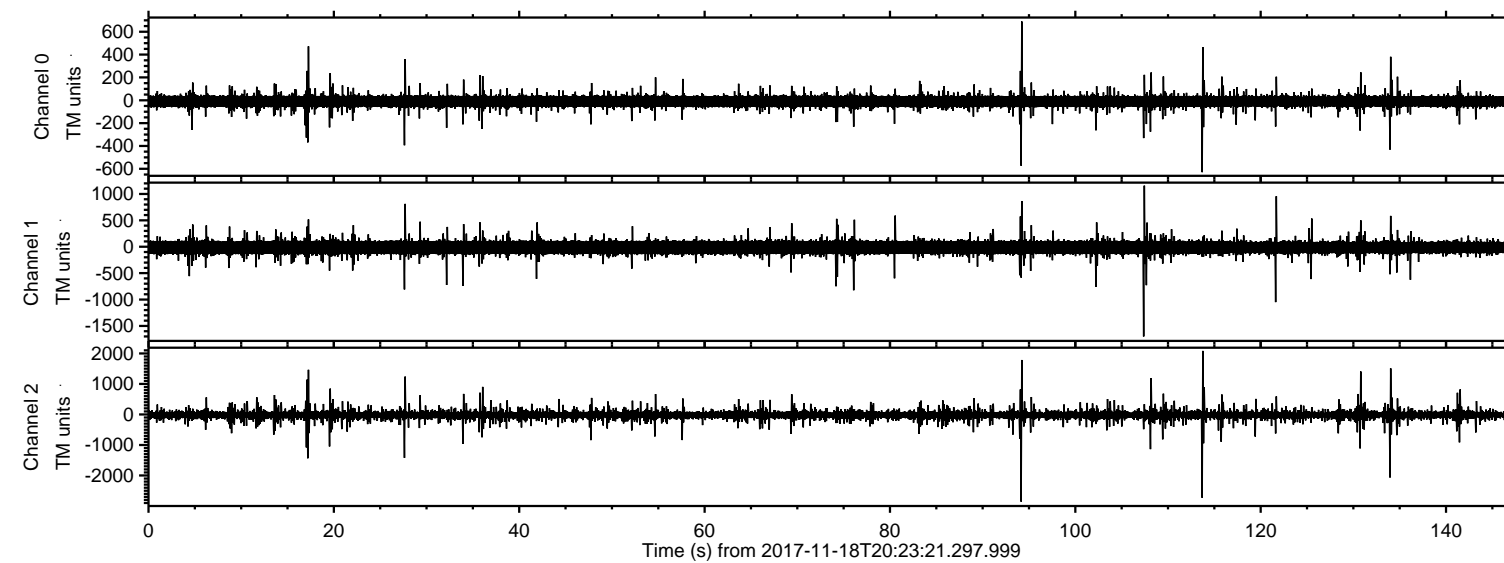


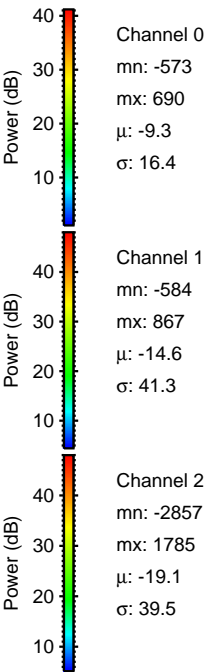
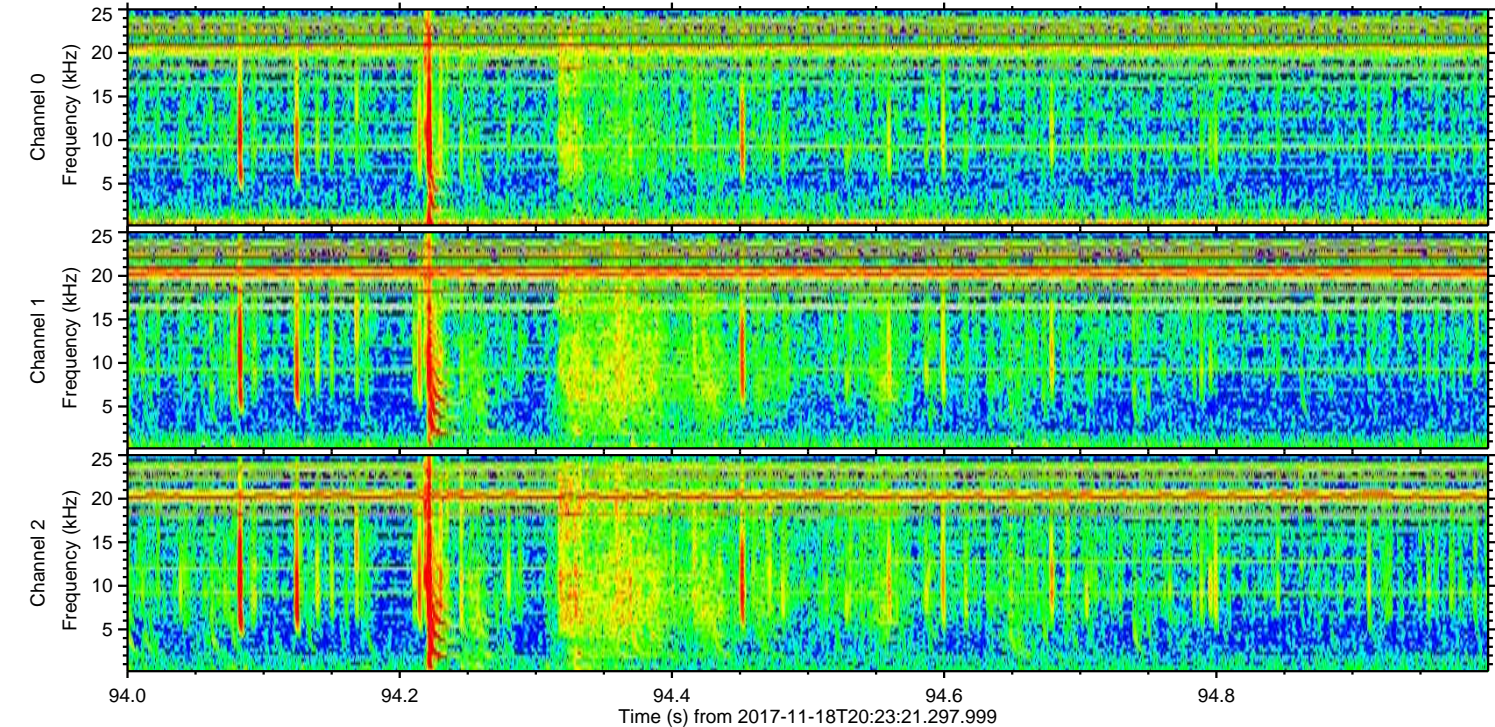
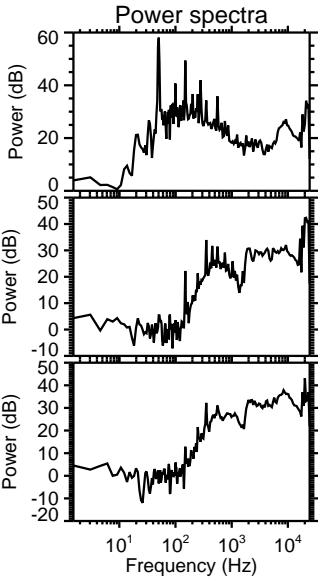
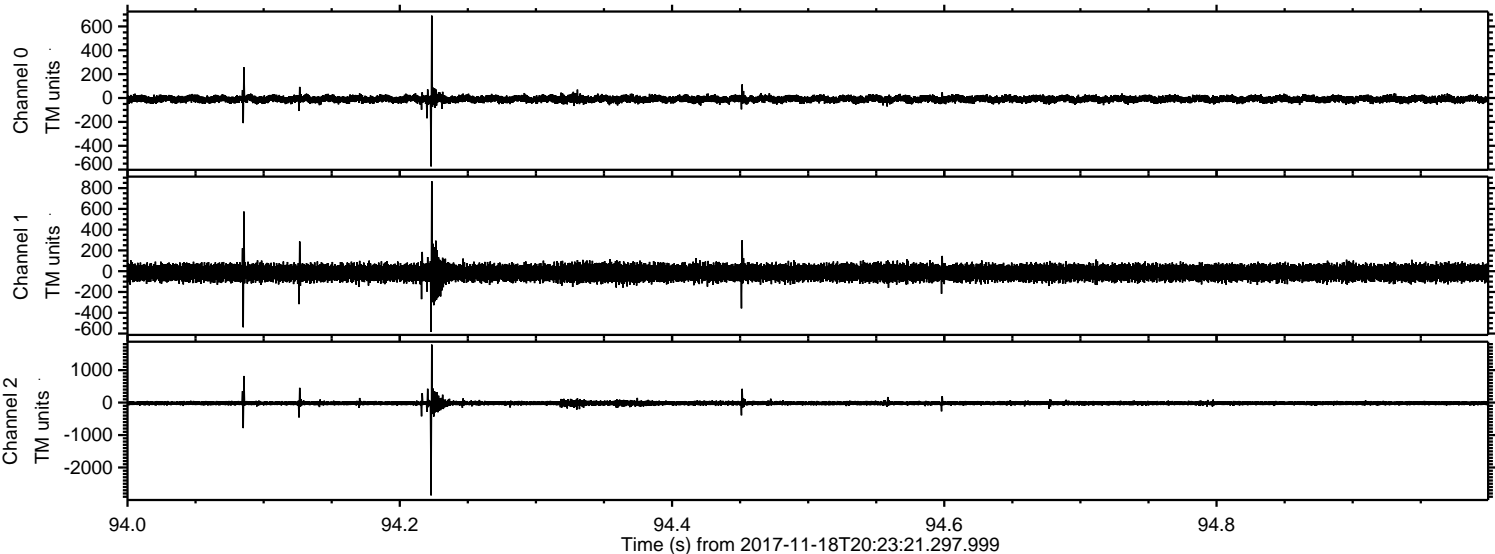
ELMAVAN 3D WAVEFORMS (Measured data sampled at 50 kHz) 51000 packets of 144 samples from 2017-11-18T20:23:21.297.999.

Processed Sat Nov 18 21:31:09 2017 by ELM ver.2012-10-06 from 001__elm20171118_202320__dat00.bin



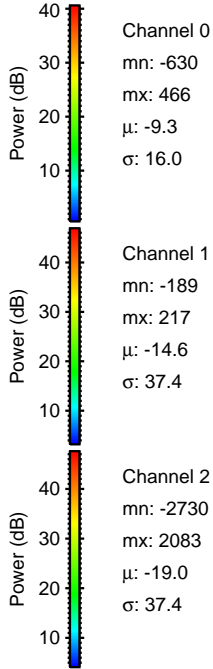
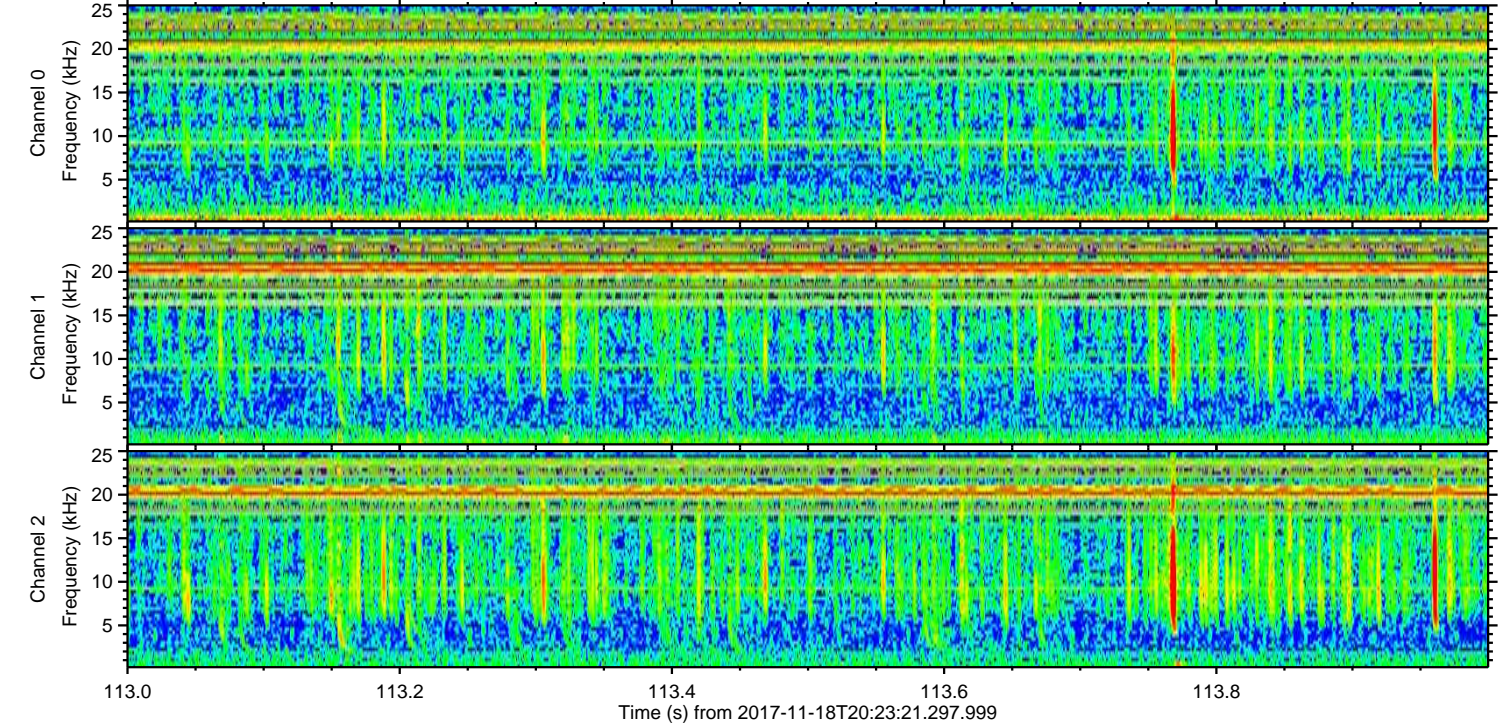
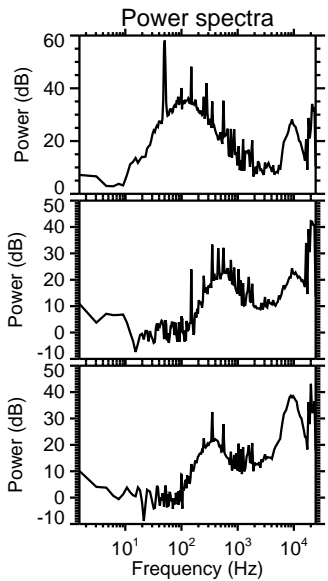
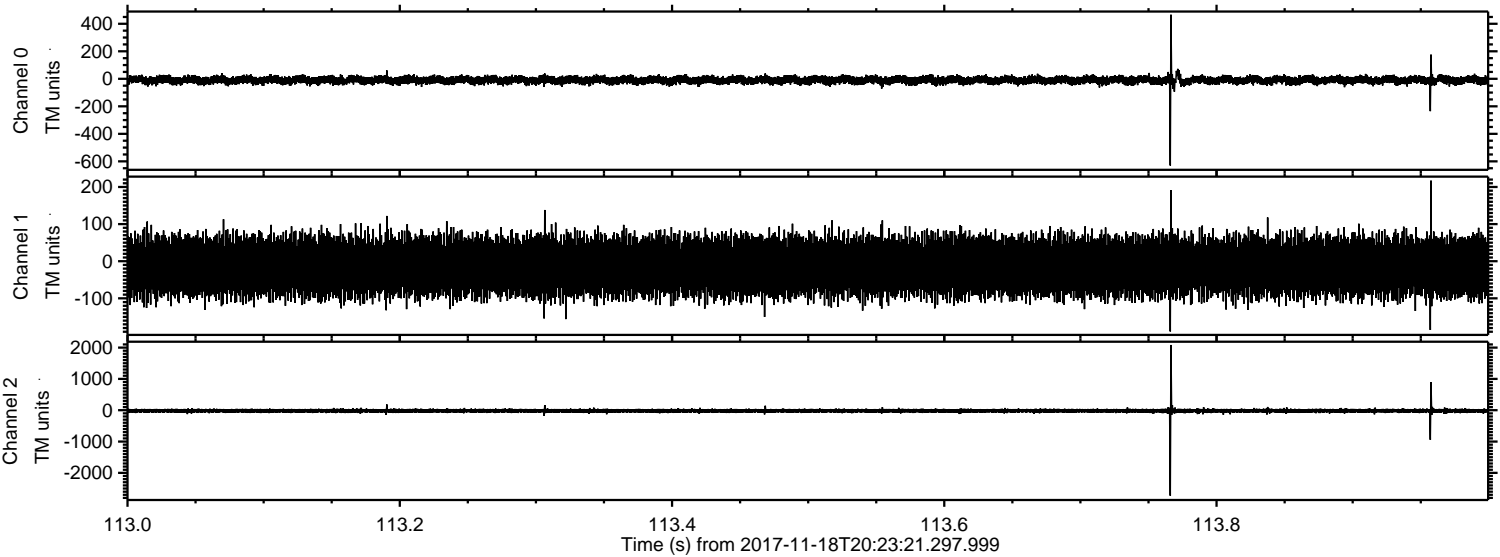
ELMAVAN 3D WAVEFORMS (Measured data sampled at 50 kHz) 51000 packets of 144 samples from 2017-11-18T20:23:21.297.999. Part 95/147

Processed Sat Nov 18 21:31:16 2017 by ELM ver.2012-10-06 from 001__elm20171118_202320__dat00.bin



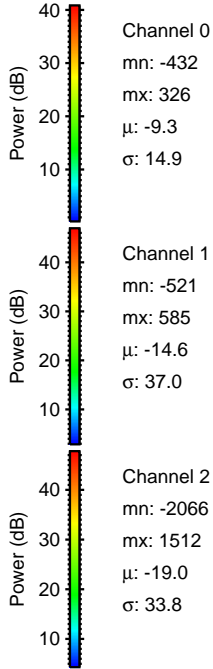
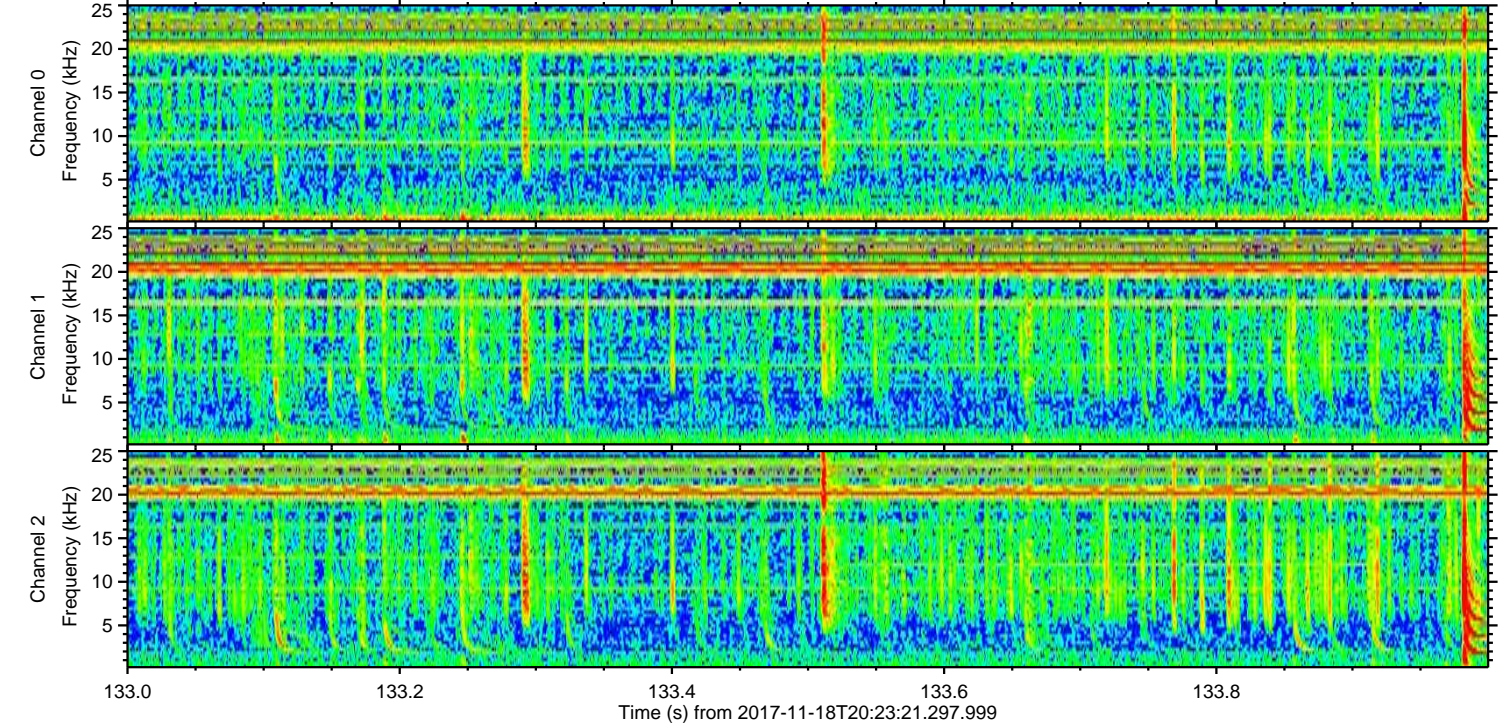
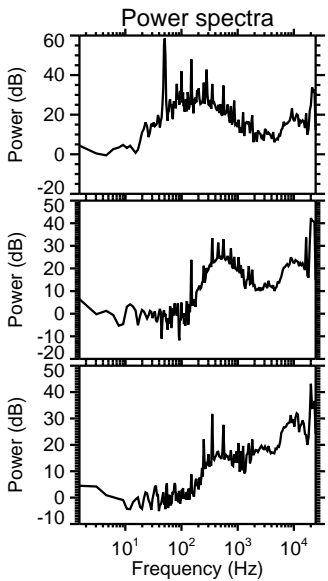
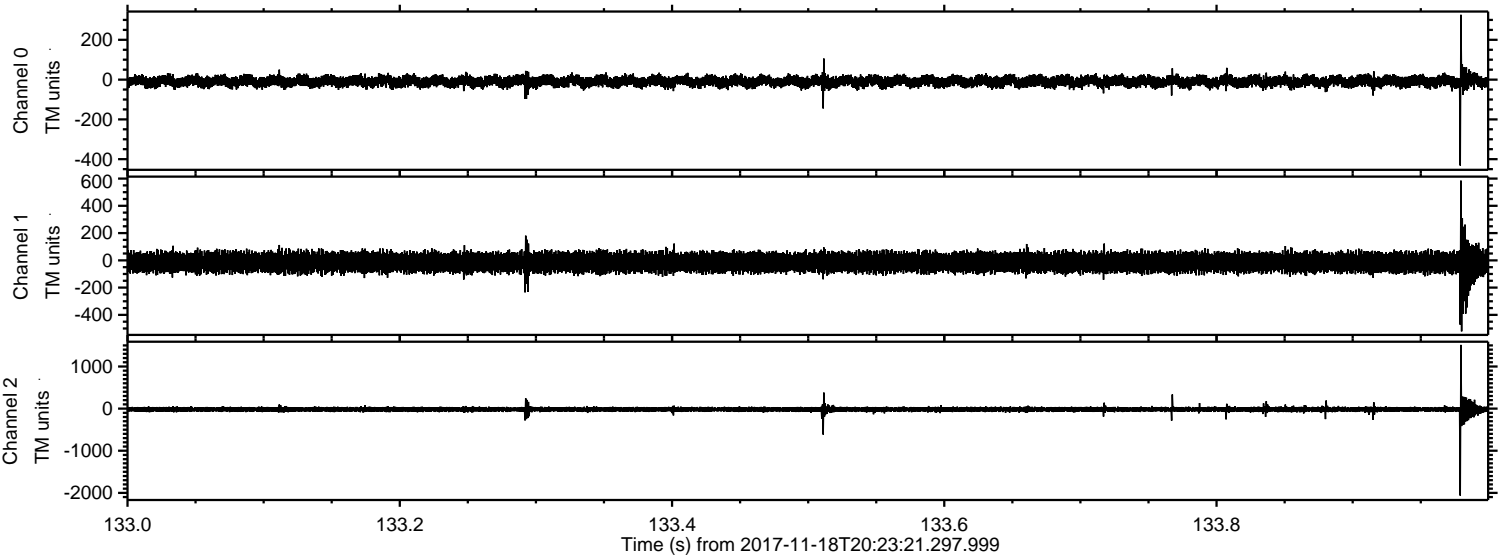
ELMAVAN 3D WAVEFORMS (Measured data sampled at 50 kHz) 51000 packets of 144 samples from 2017-11-18T20:23:21.297.999. Part 114/147

Processed Sat Nov 18 21:31:17 2017 by ELM ver.2012-10-06 from 001__elm20171118_202320__dat00.bin



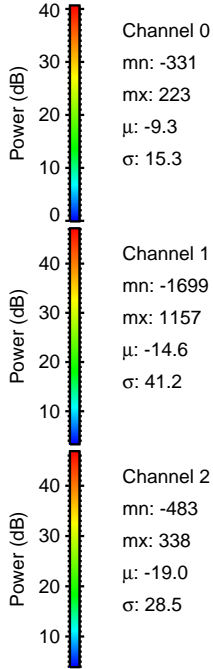
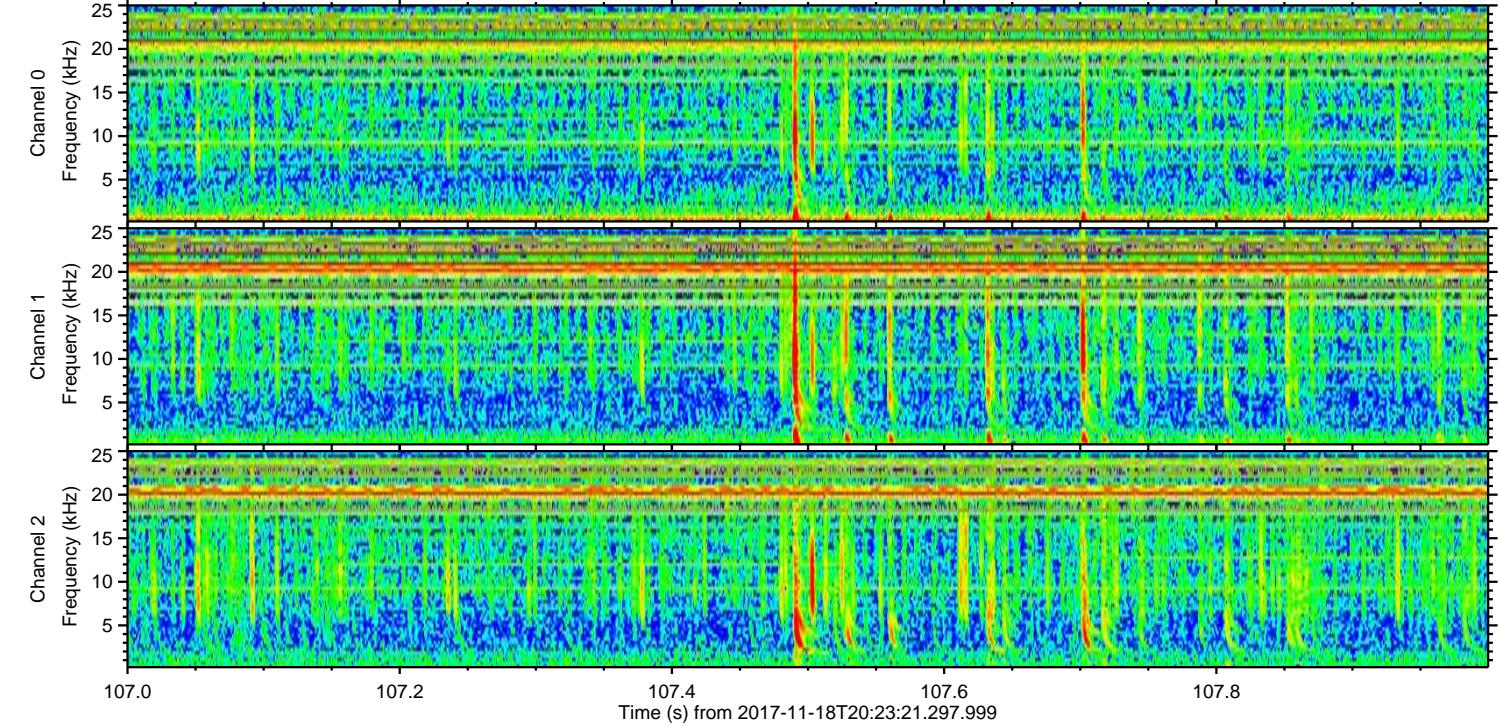
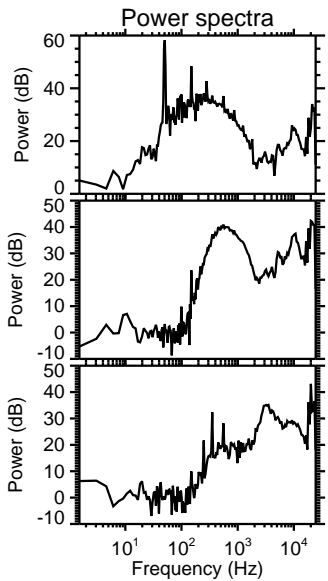
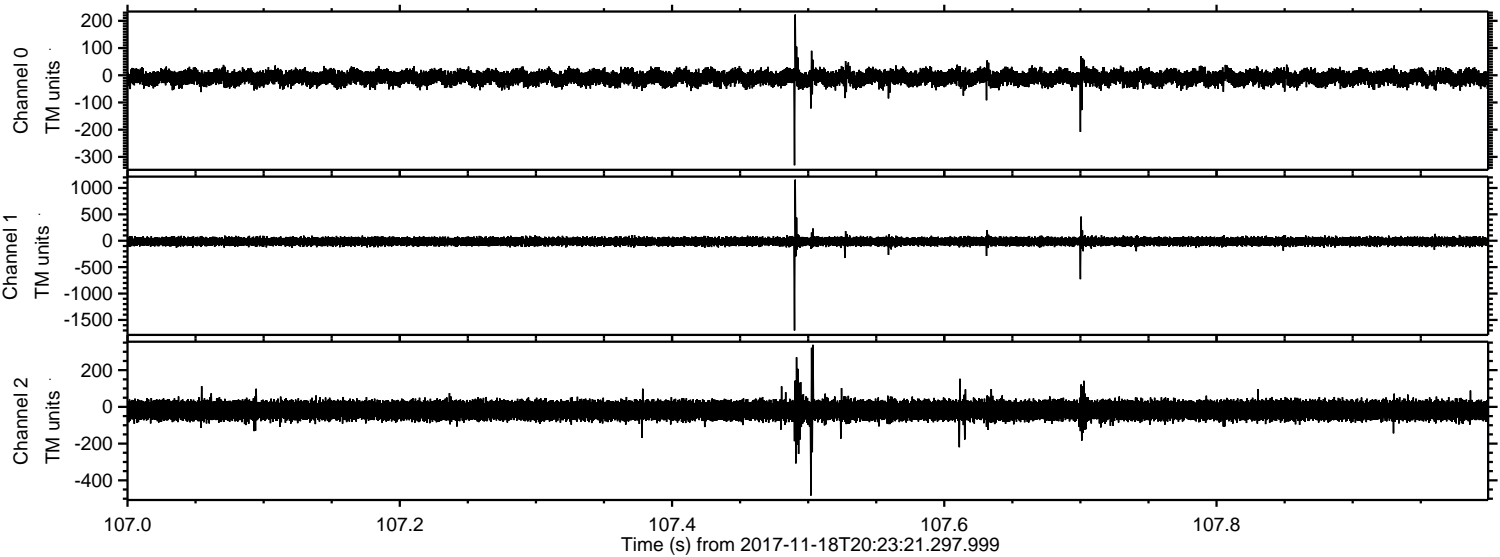
ELMAVAN 3D WAVEFORMS (Measured data sampled at 50 kHz) 51000 packets of 144 samples from 2017-11-18T20:23:21.297.999. Part 134/147

Processed Sat Nov 18 21:31:17 2017 by ELM ver.2012-10-06 from 001__elm20171118_202320__dat00.bin



ELMAVAN 3D WAVEFORMS (Measured data sampled at 50 kHz) 51000 packets of 144 samples from 2017-11-18T20:23:21.297.999. Part 108/147

Processed Sat Nov 18 21:31:18 2017 by ELM ver.2012-10-06 from 001__elm20171118_202320__dat00.bin



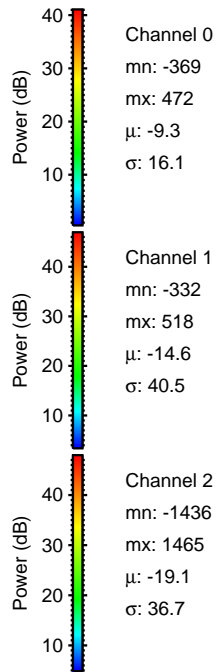
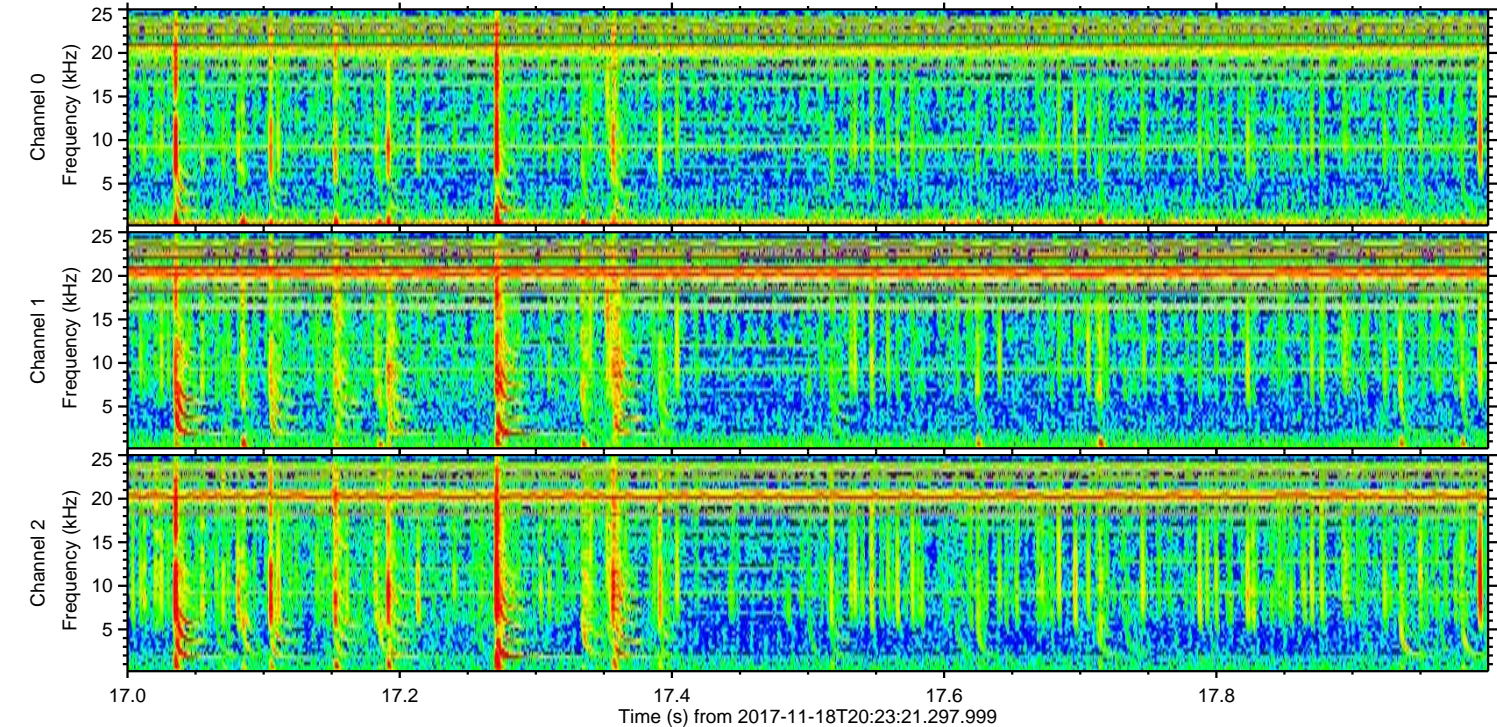
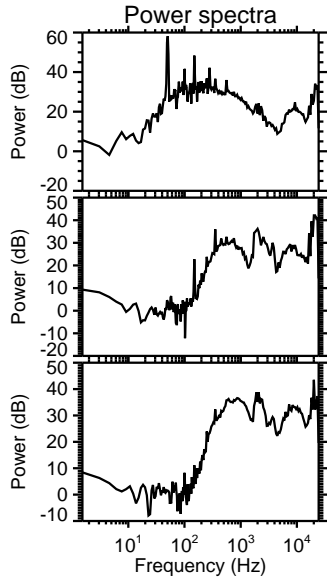
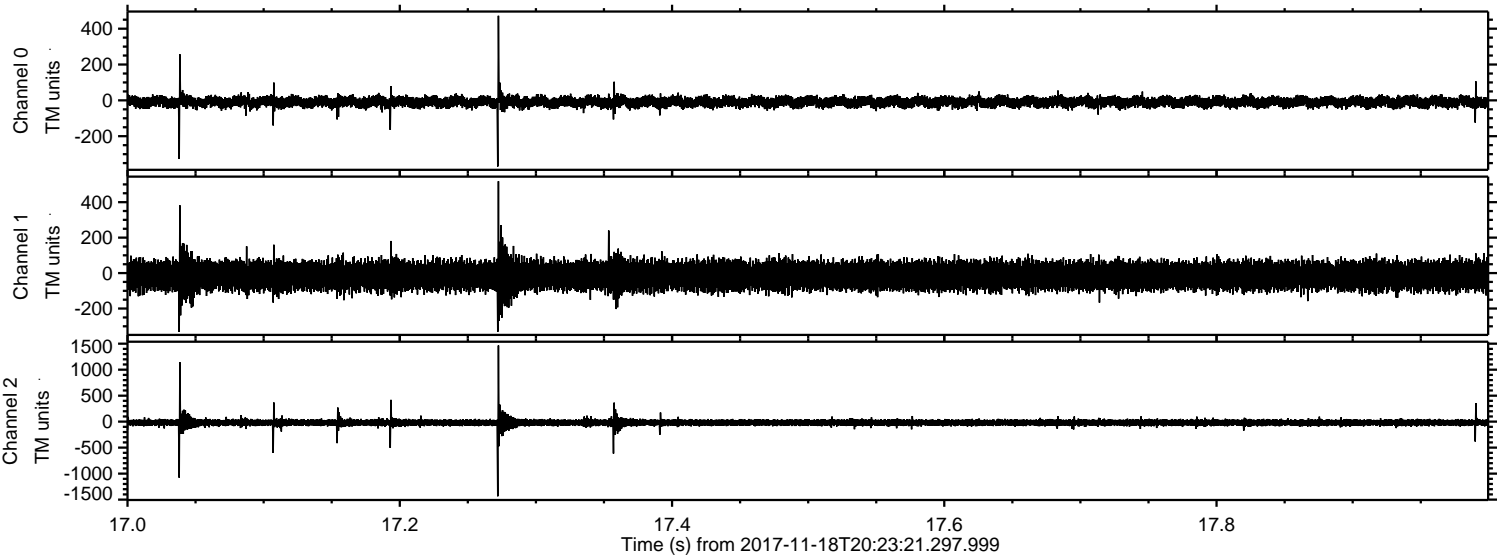
Channel 0
mn: -331
mx: 223
 μ : -9.3
 σ : 15.3

Channel 1
mn: -1699
mx: 1157
 μ : -14.6
 σ : 41.2

Channel 2
mn: -483
mx: 338
 μ : -19.0
 σ : 28.5

ELMAVAN 3D WAVEFORMS (Measured data sampled at 50 kHz) 51000 packets of 144 samples from 2017-11-18T20:23:21.297.999. Part 18/147

Processed Sat Nov 18 21:31:19 2017 by ELM ver.2012-10-06 from 001__elm20171118_202320__dat00.bin



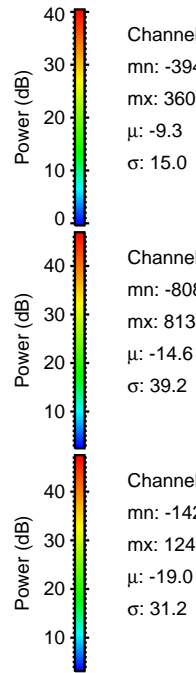
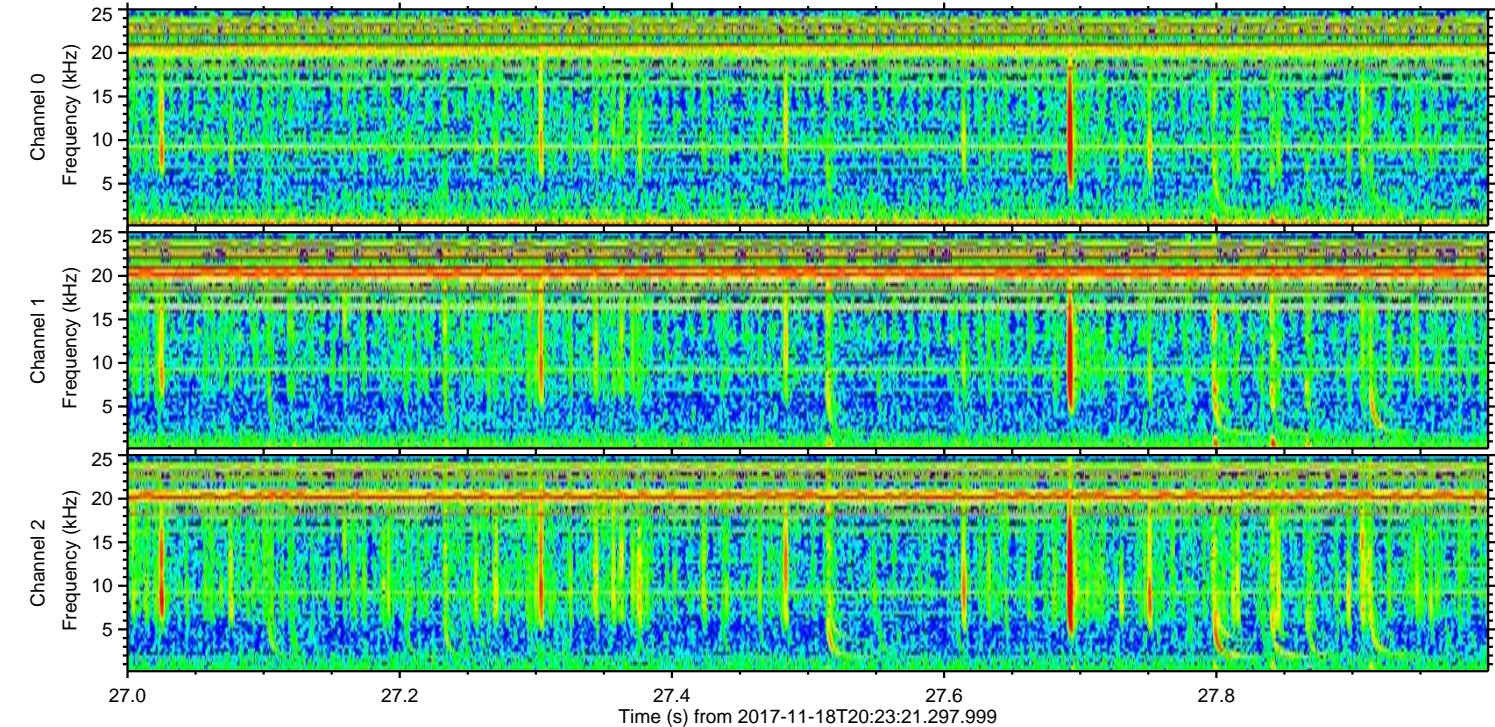
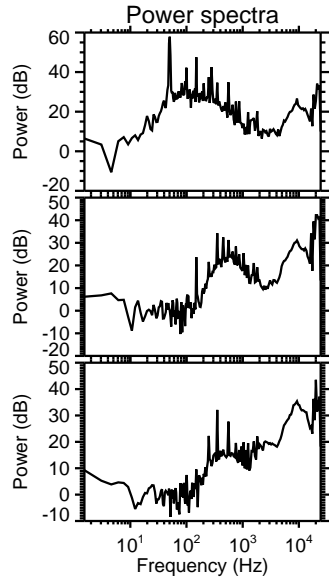
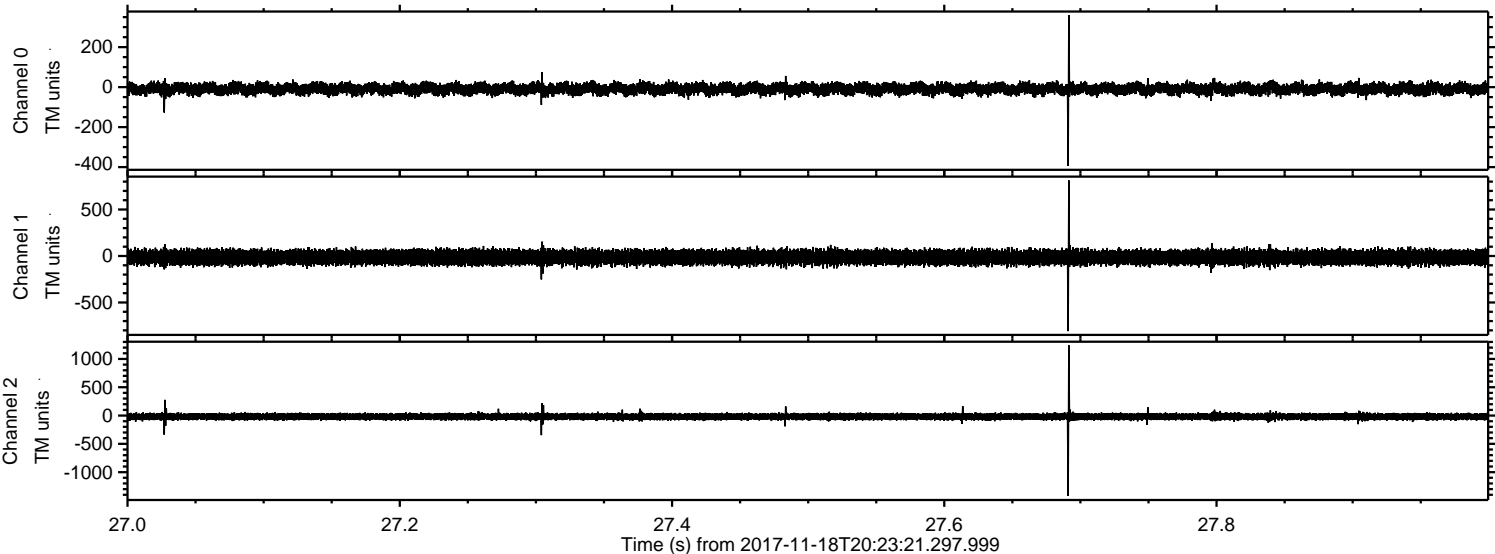
Channel 0
mn: -369
mx: 472
 μ : -9.3
 σ : 16.1

Channel 1
mn: -332
mx: 518
 μ : -14.6
 σ : 40.5

Channel 2
mn: -1436
mx: 1465
 μ : -19.1
 σ : 36.7

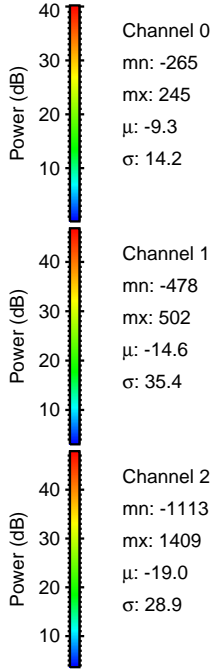
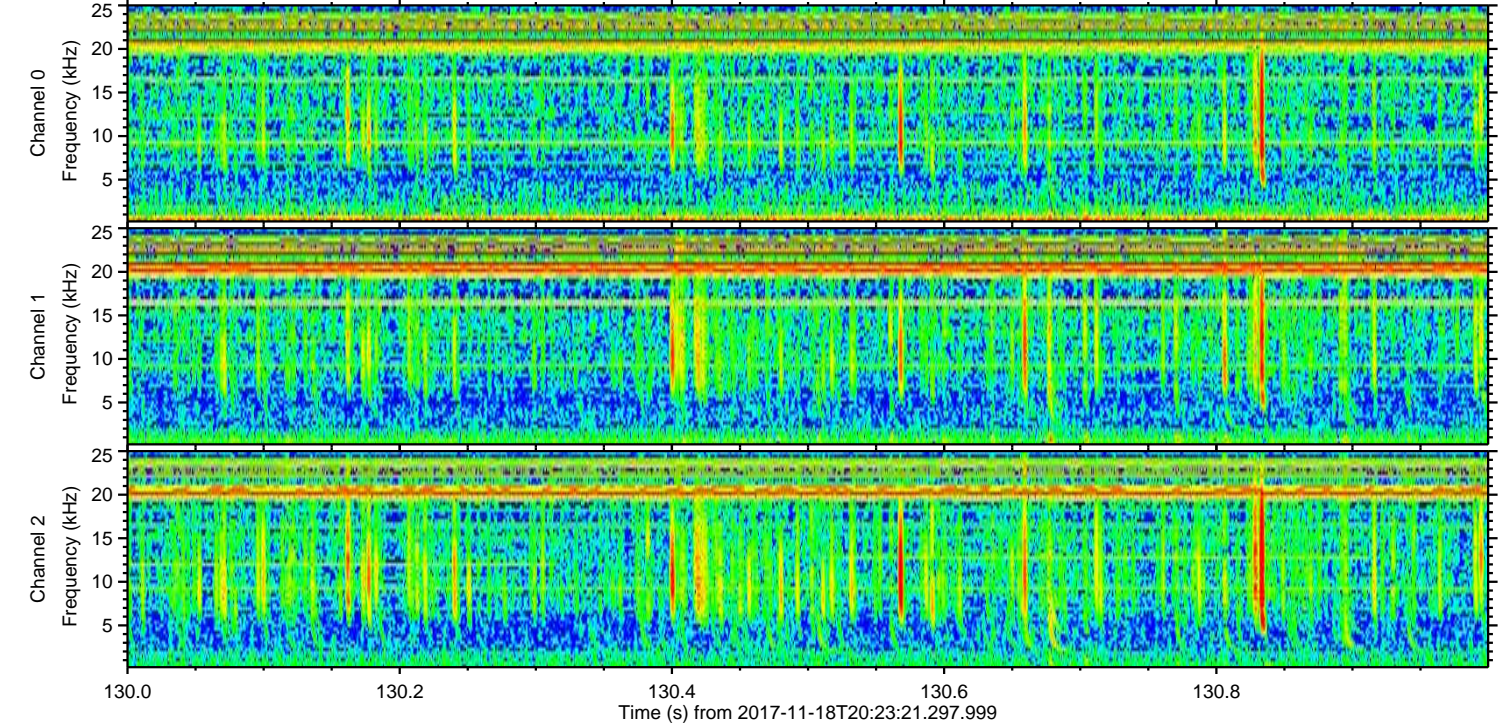
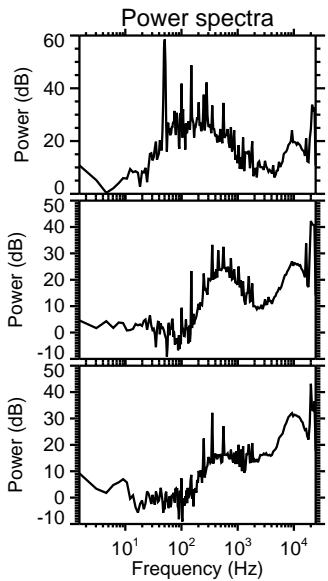
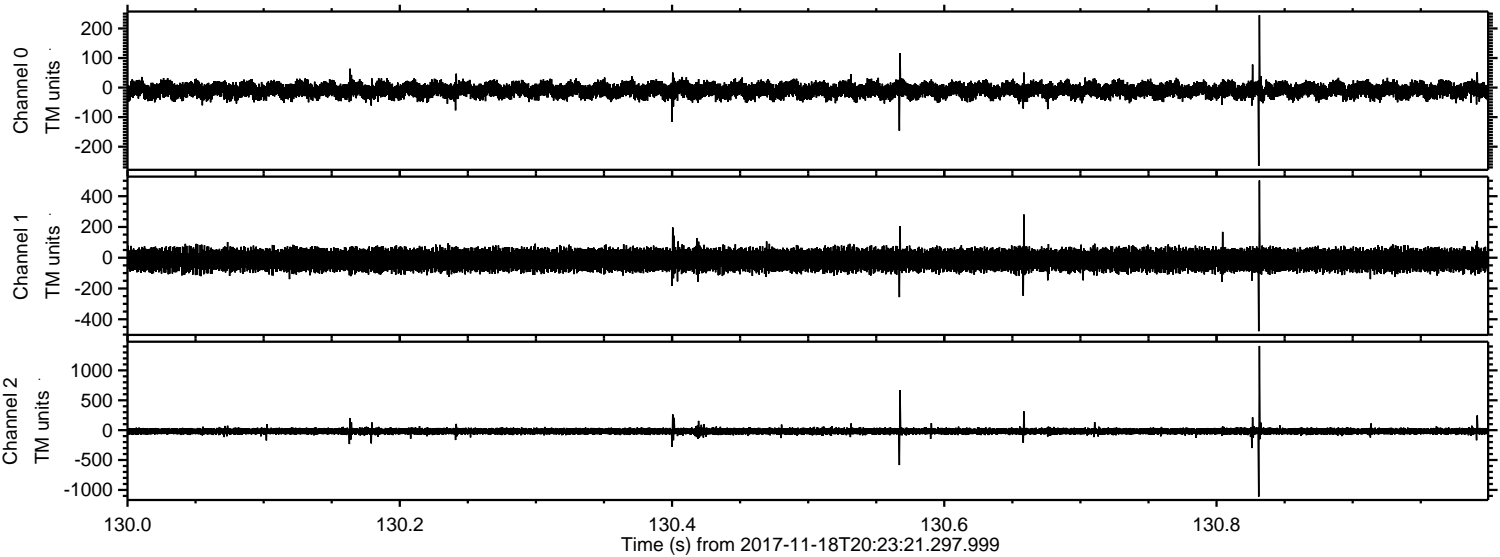
ELMAVAN 3D WAVEFORMS (Measured data sampled at 50 kHz) 51000 packets of 144 samples from 2017-11-18T20:23:21.297.999. Part 28/147

Processed Sat Nov 18 21:31:20 2017 by ELM ver.2012-10-06 from 001__elm20171118_202320__dat00.bin



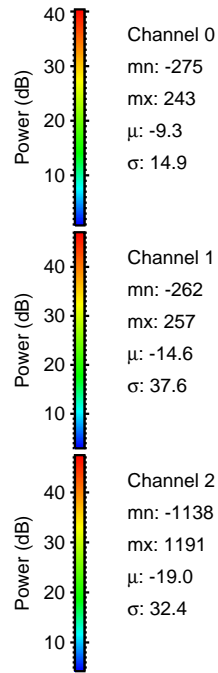
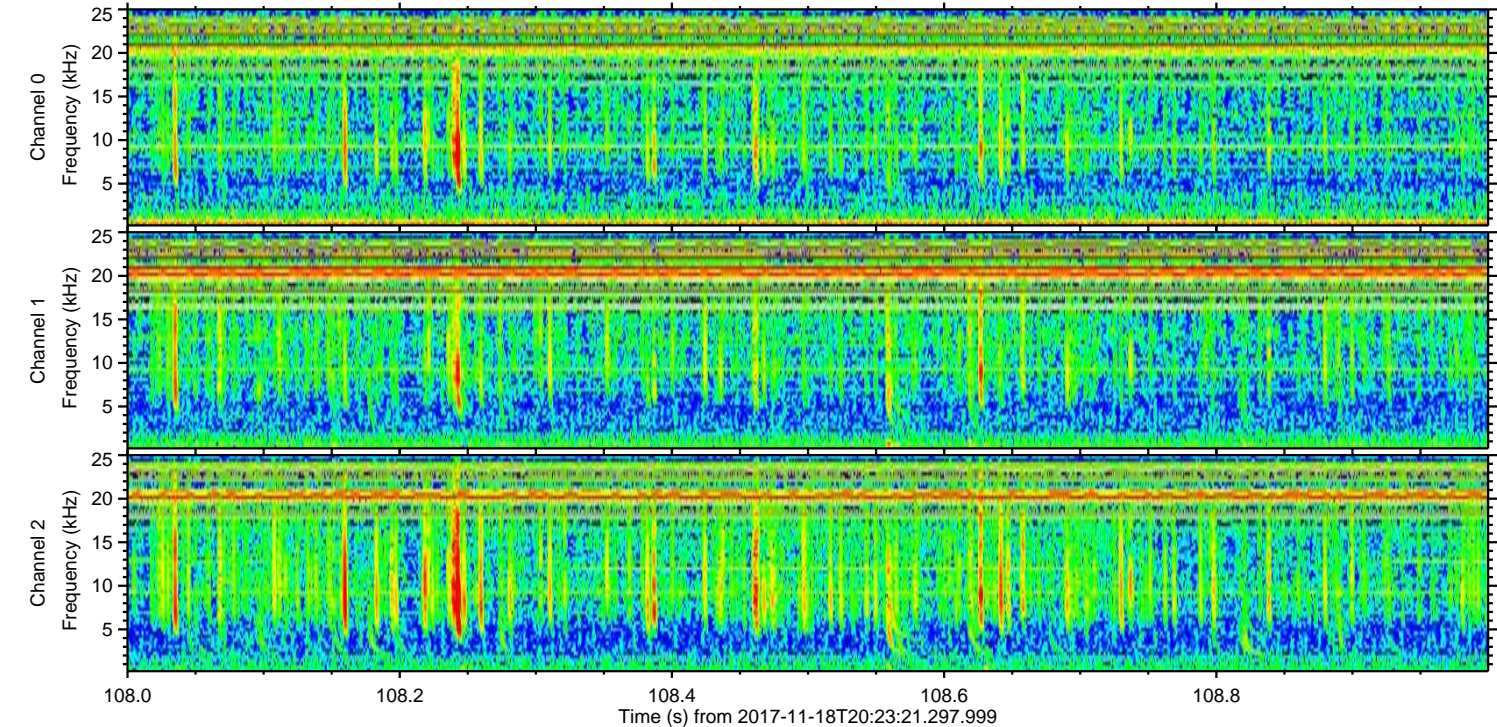
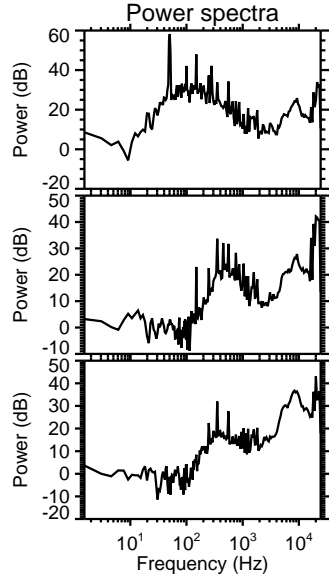
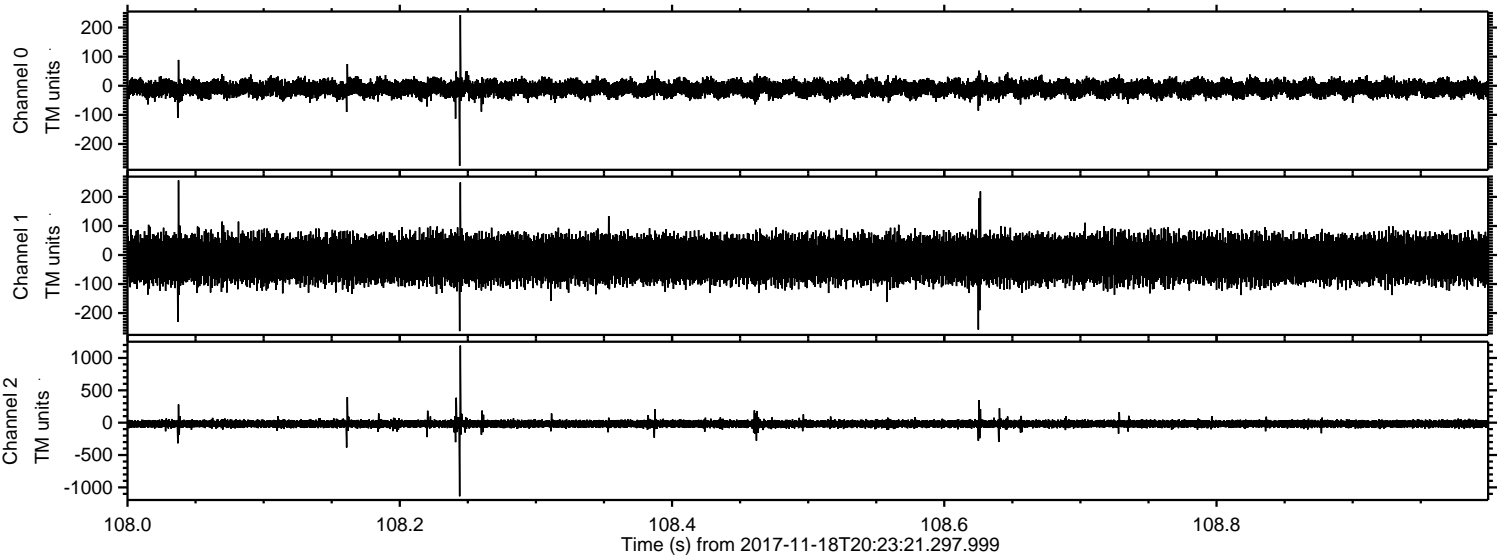
ELMAVAN 3D WAVEFORMS (Measured data sampled at 50 kHz) 51000 packets of 144 samples from 2017-11-18T20:23:21.297.999. Part 131/147

Processed Sat Nov 18 21:31:20 2017 by ELM ver.2012-10-06 from 001__elm20171118_202320__dat00.bin



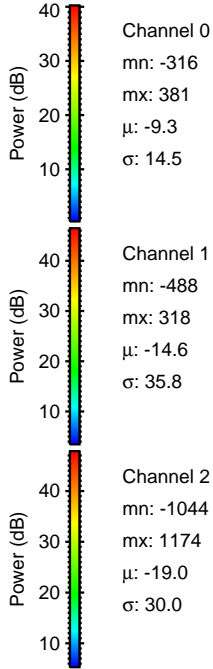
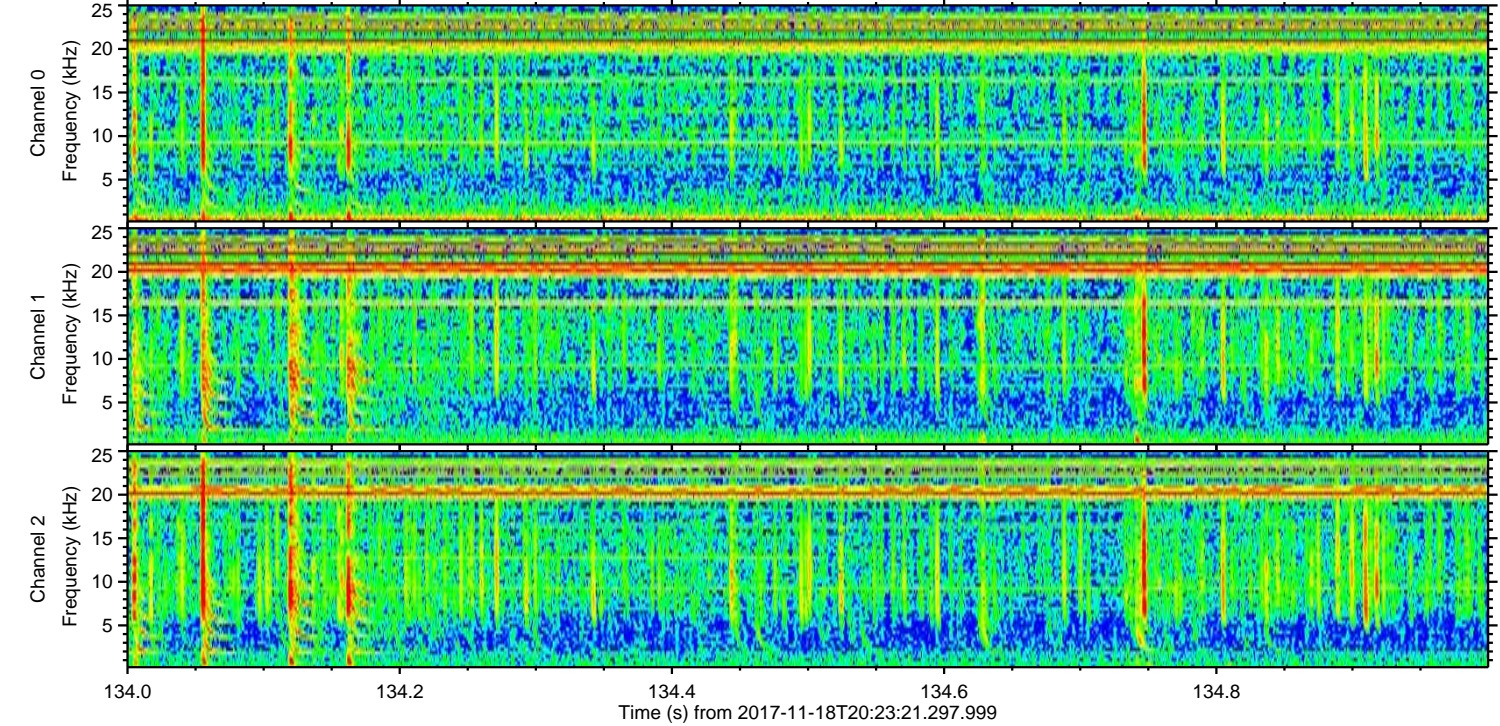
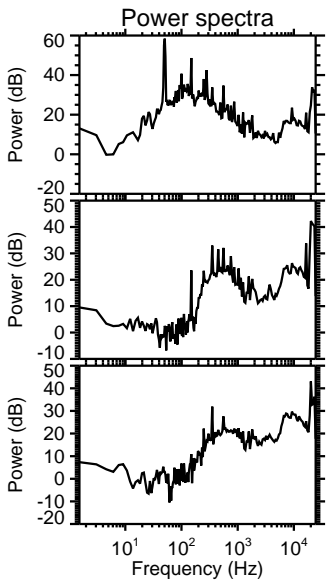
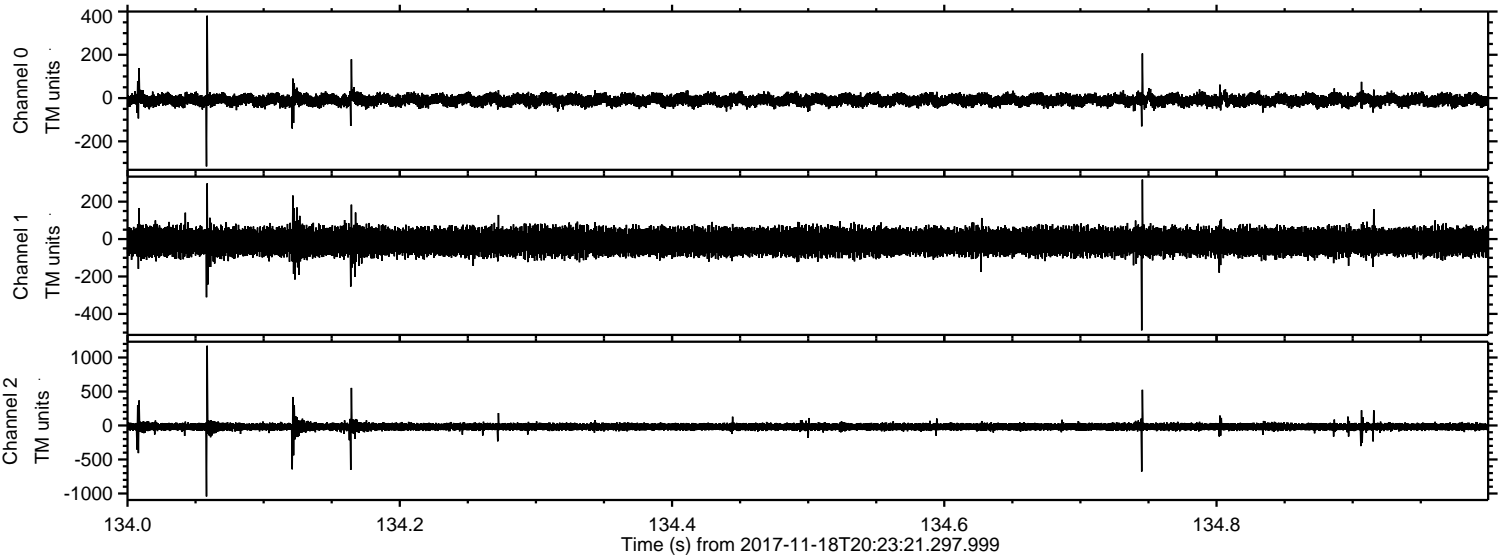
ELMAVAN 3D WAVEFORMS (Measured data sampled at 50 kHz) 51000 packets of 144 samples from 2017-11-18T20:23:21.297.999. Part 109/147

Processed Sat Nov 18 21:31:21 2017 by ELM ver.2012-10-06 from 001__elm20171118_202320__dat00.bin

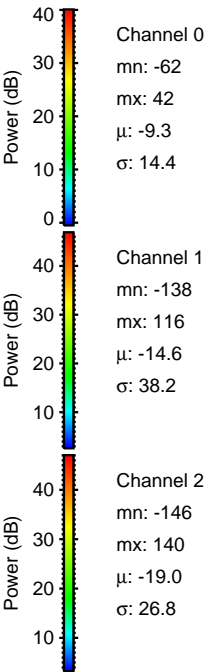
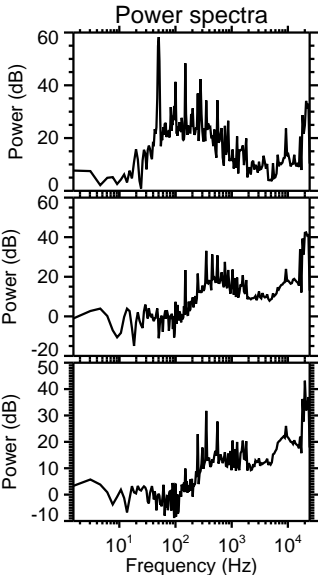
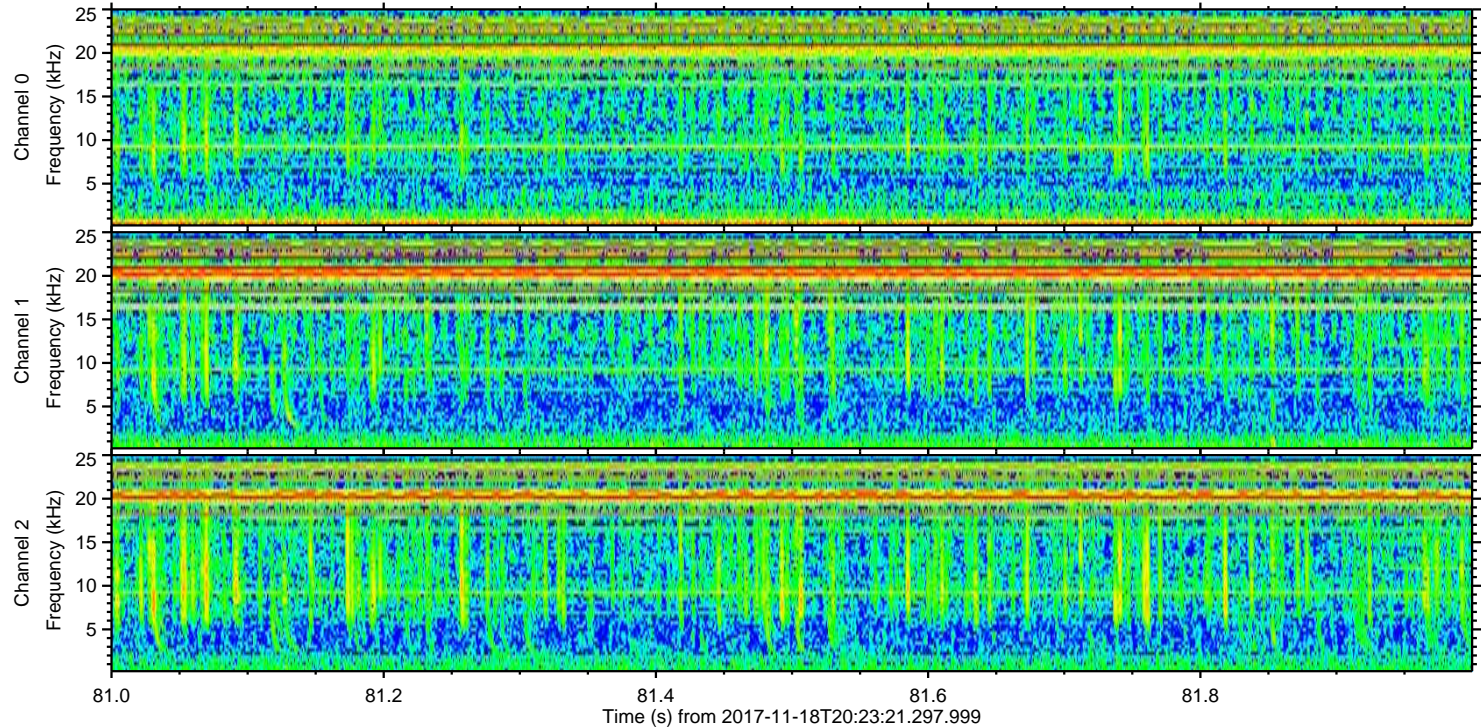
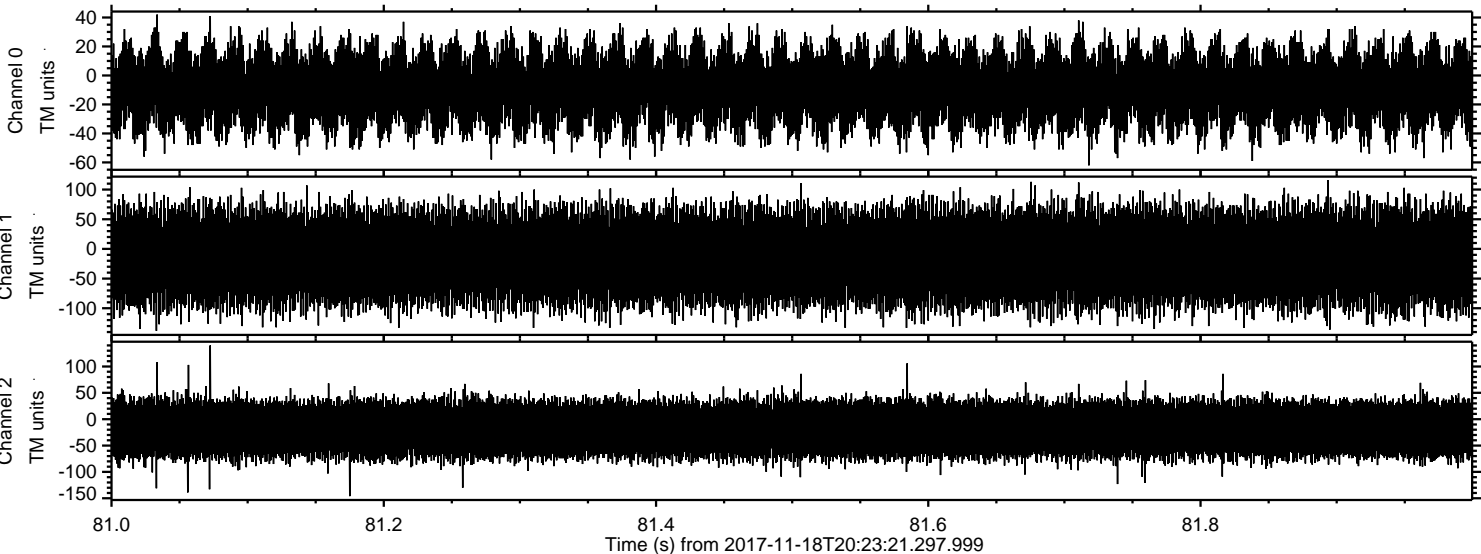


ELMAVAN 3D WAVEFORMS (Measured data sampled at 50 kHz) 51000 packets of 144 samples from 2017-11-18T20:23:21.297.999. Part 135/147

Processed Sat Nov 18 21:31:22 2017 by ELM ver.2012-10-06 from 001__elm20171118_202320__dat00.bin



Processed Sat Nov 18 21:31:22 2017 by ELM ver.2012-10-06 from 001__elm20171118_202320__dat00.bin



Channel 0
mn: -62
mx: 42
 μ : -9.3
 σ : 14.4

Channel 1
mn: -138
mx: 116
 μ : -14.6
 σ : 38.2

Channel 2
mn: -146
mx: 140
 μ : -19.0
 σ : 26.8