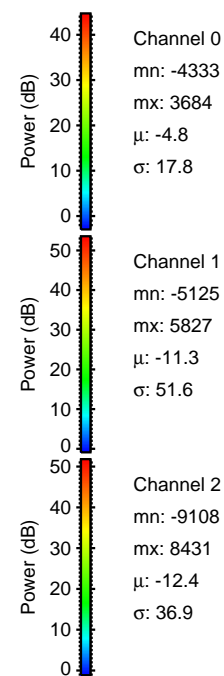
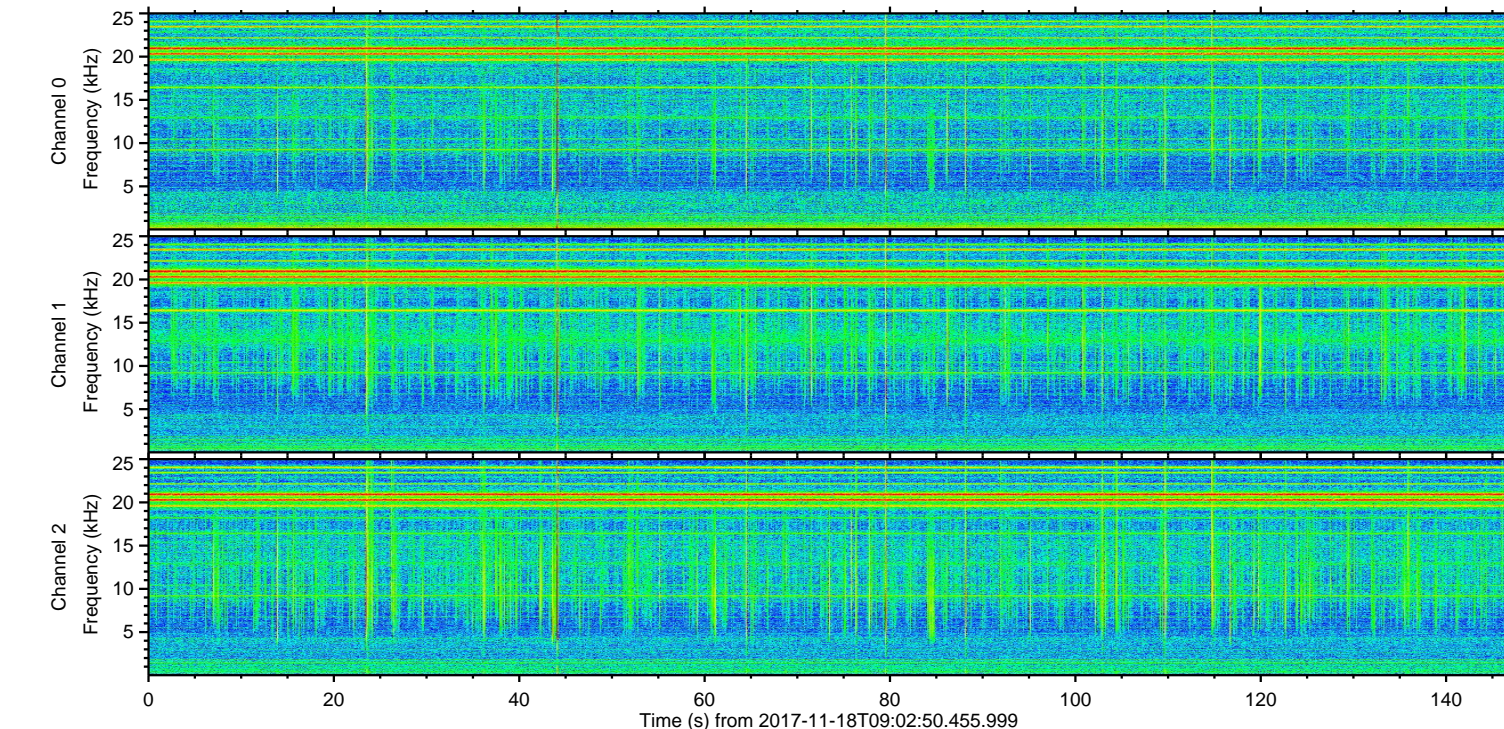
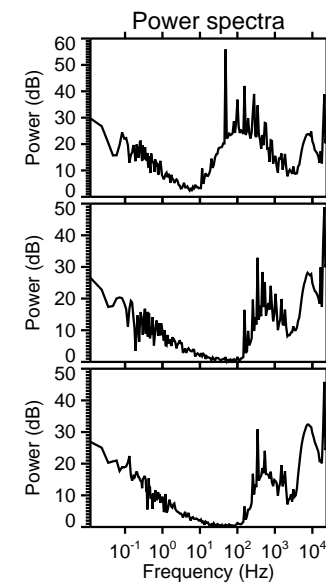
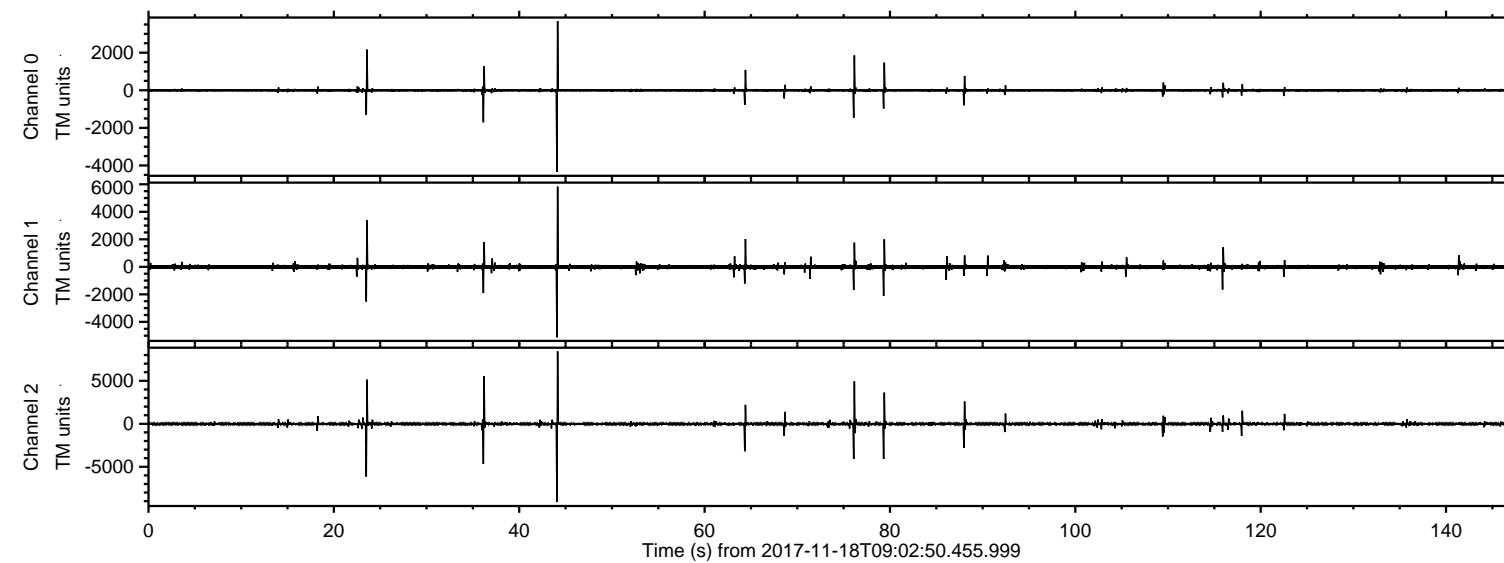


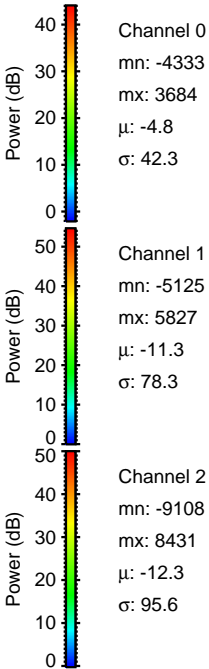
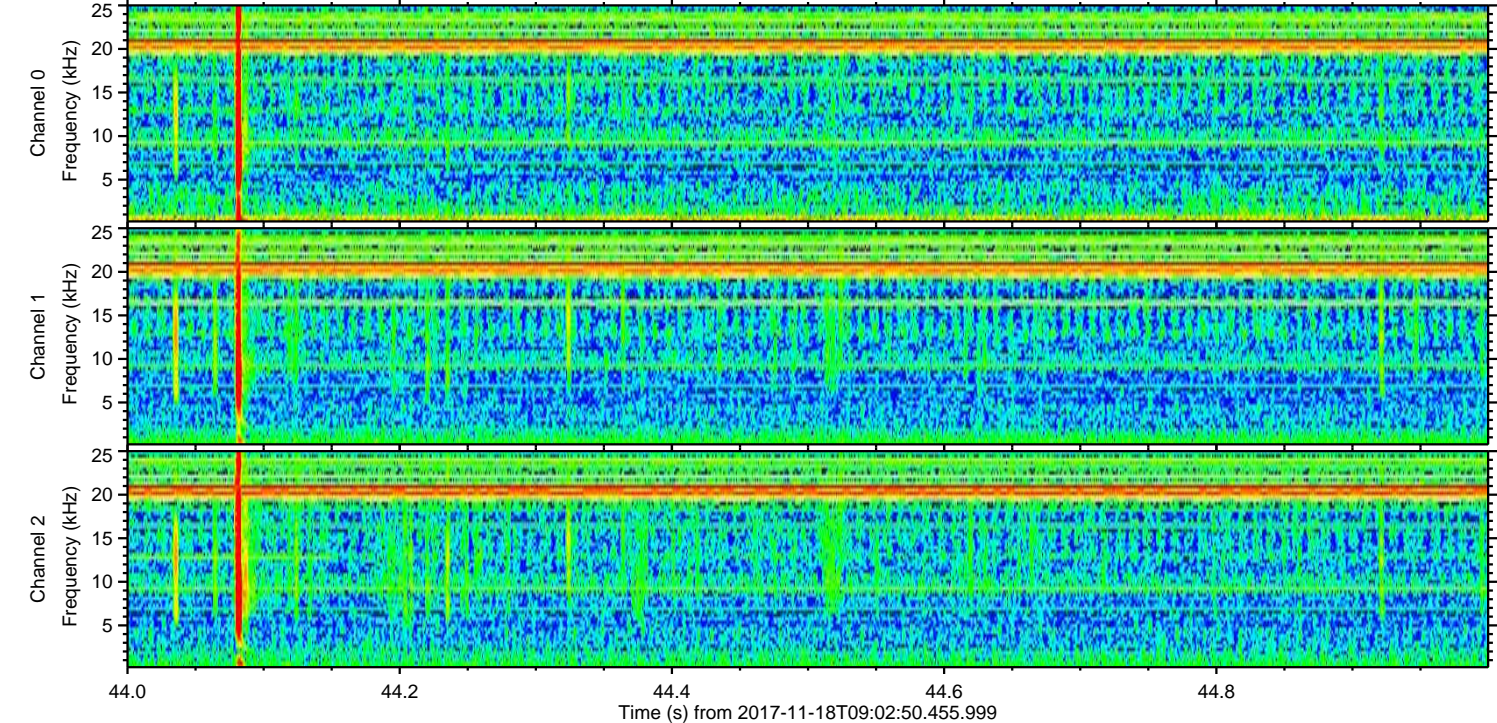
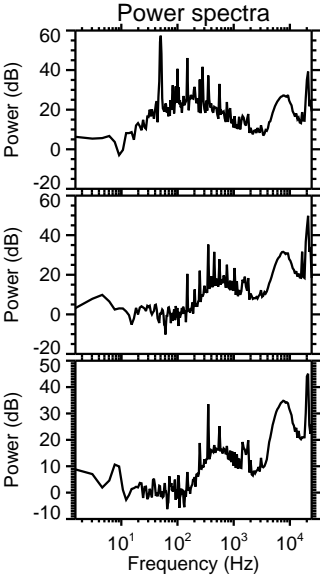
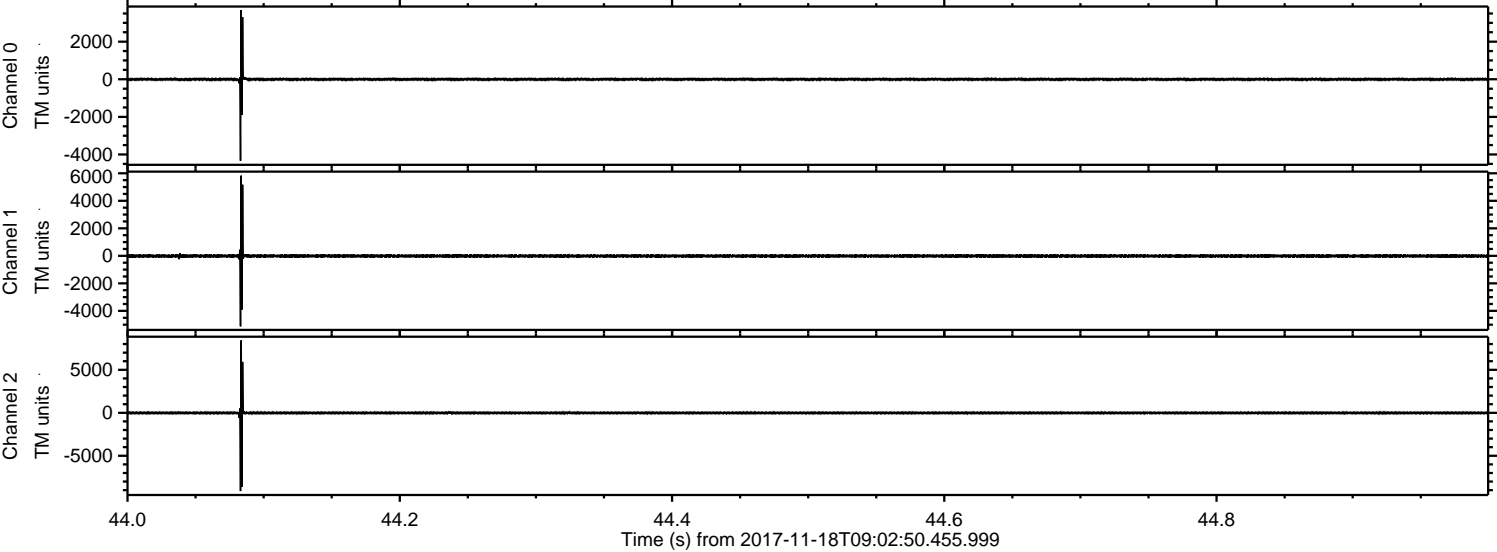
# ELMAVAN 3D WAVEFORMS (Measured data sampled at 50 kHz) 51000 packets of 144 samples from 2017-11-18T09:02:50.455.999.

Processed Sat Nov 18 10:10:54 2017 by ELM ver.2012-10-06 from 001\_\_elm20171118\_090249\_\_dat00.bin





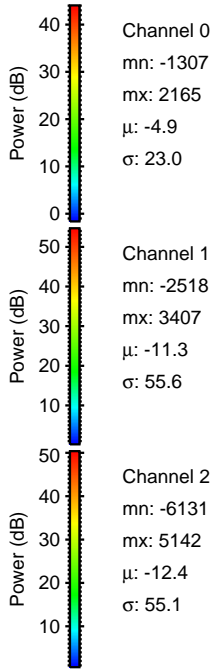
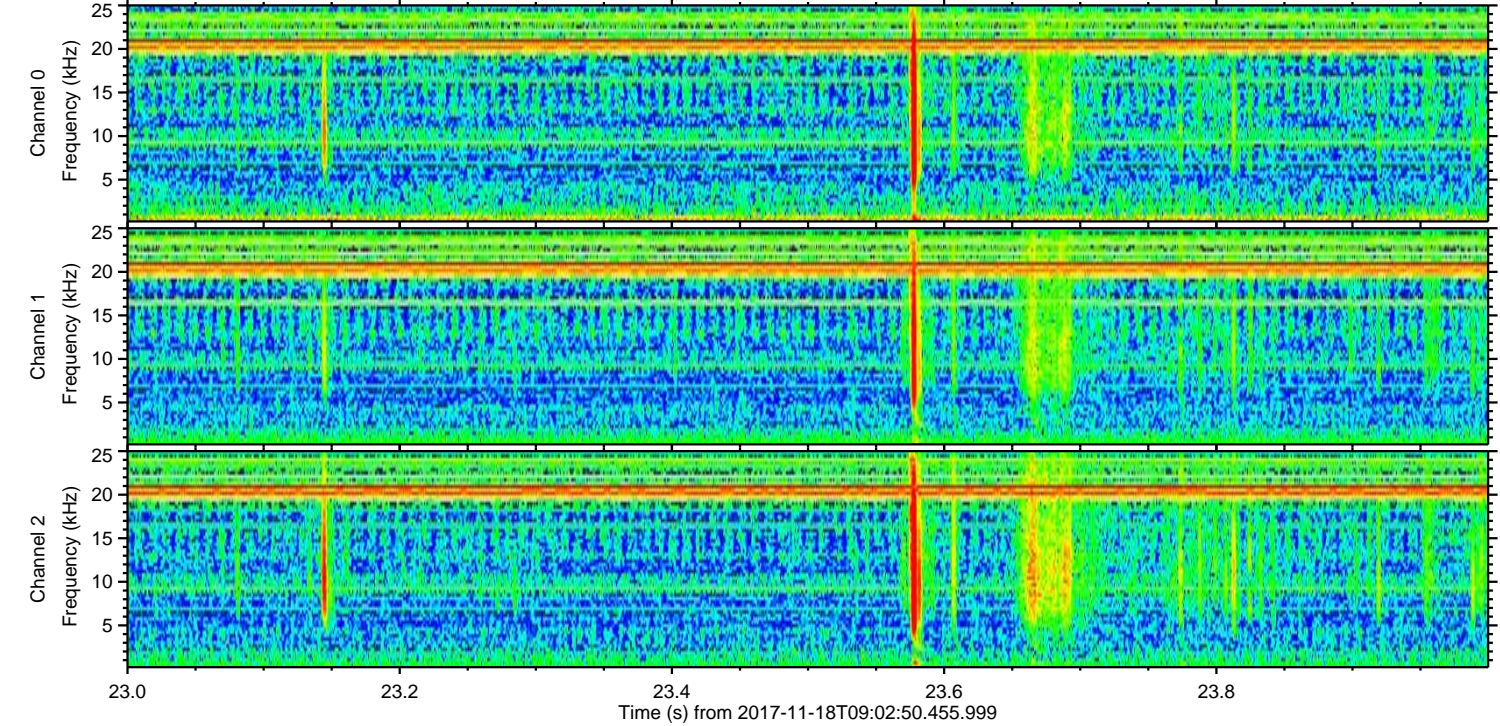
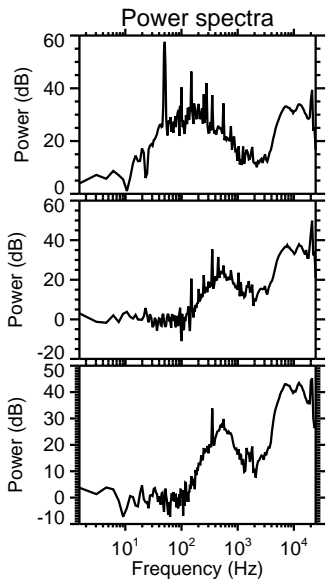
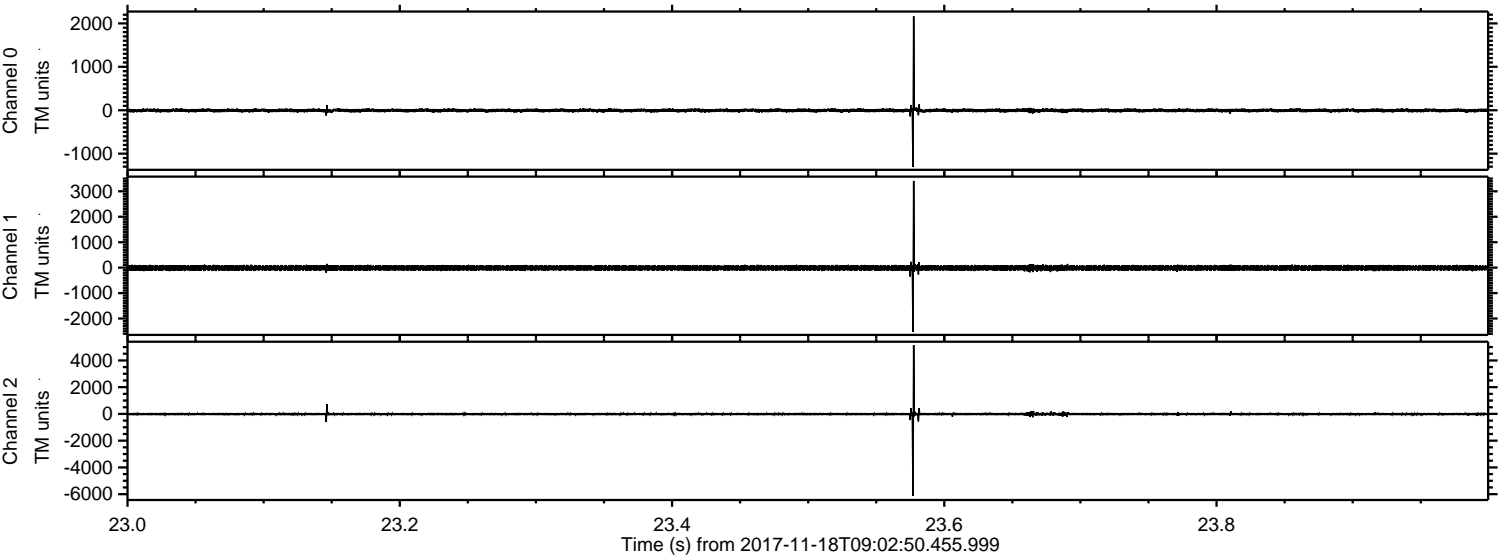
Processed Sat Nov 18 10:11:01 2017 by ELM ver.2012-10-06 from 001\_\_elm20171118\_090249\_\_dat00.bin





ELMAVAN 3D WAVEFORMS (Measured data sampled at 50 kHz) 51000 packets of 144 samples from 2017-11-18T09:02:50.455.999. Part 24/147

Processed Sat Nov 18 10:11:01 2017 by ELM ver.2012-10-06 from 001\_\_elm20171118\_090249\_\_dat00.bin



Channel 0  
mn: -1307  
mx: 2165  
 $\mu$ : -4.9  
 $\sigma$ : 23.0

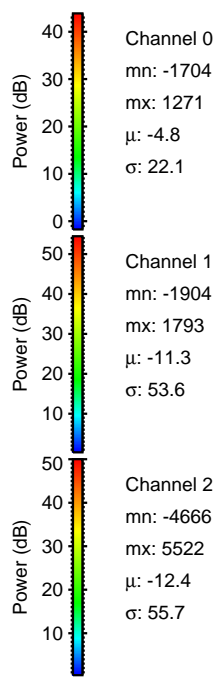
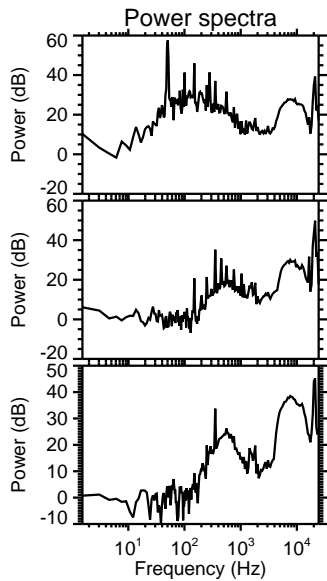
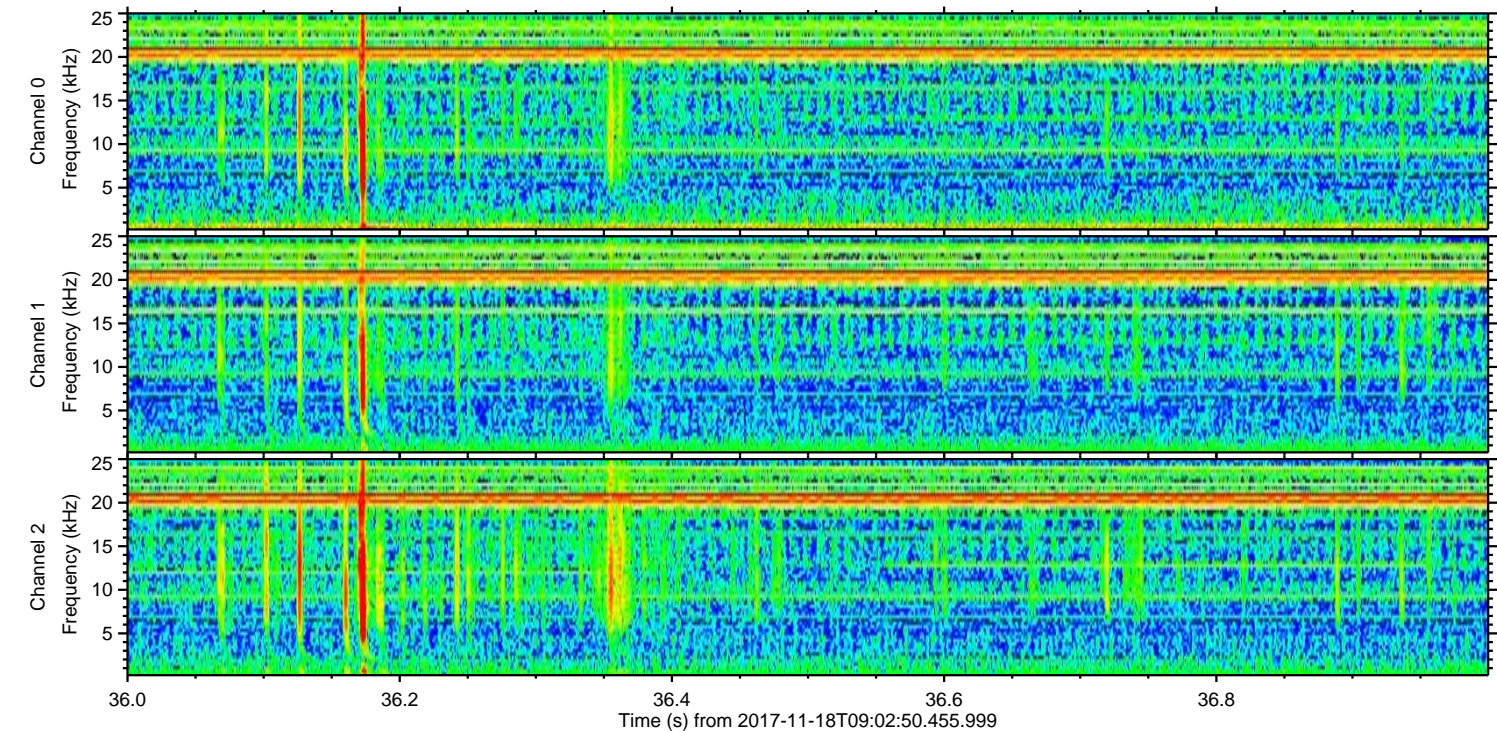
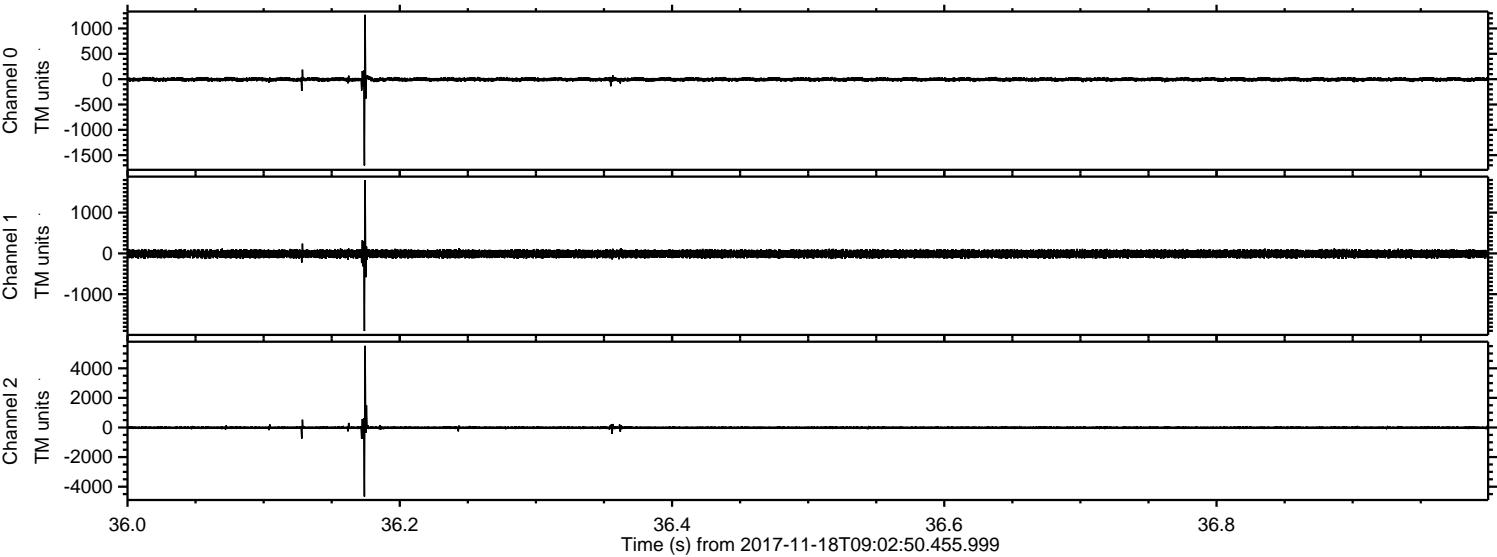
Channel 1  
mn: -2518  
mx: 3407  
 $\mu$ : -11.3  
 $\sigma$ : 55.6

Channel 2  
mn: -6131  
mx: 5142  
 $\mu$ : -12.4  
 $\sigma$ : 55.1



ELMAVAN 3D WAVEFORMS (Measured data sampled at 50 kHz) 51000 packets of 144 samples from 2017-11-18T09:02:50.455.999. Part 37/147

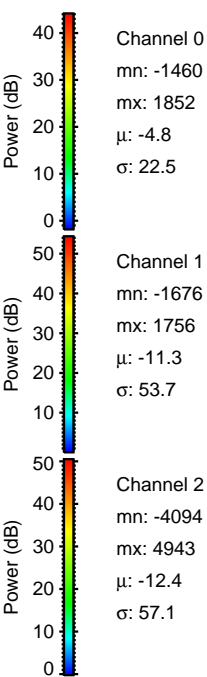
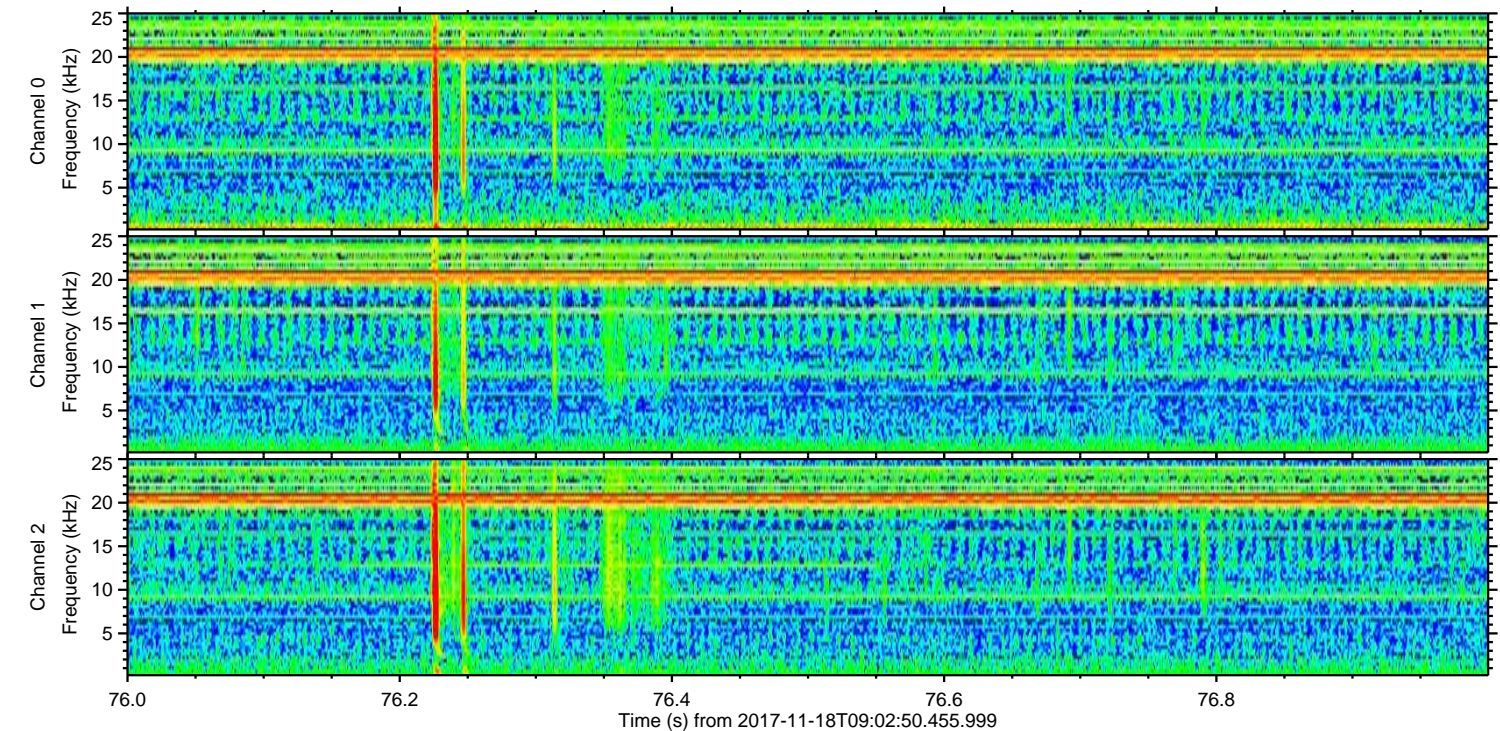
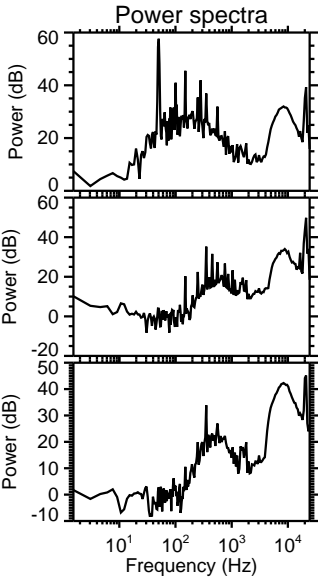
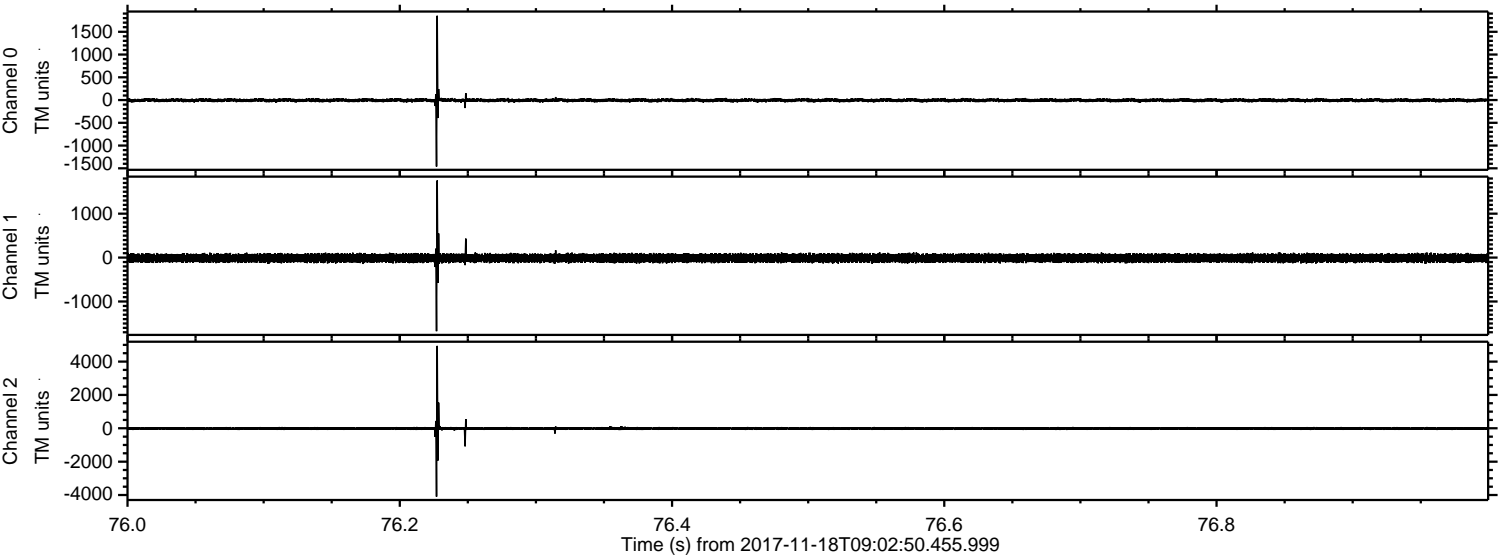
Processed Sat Nov 18 10:11:02 2017 by ELM ver.2012-10-06 from 001\_\_elm20171118\_090249\_\_dat00.bin





ELMAVAN 3D WAVEFORMS (Measured data sampled at 50 kHz) 51000 packets of 144 samples from 2017-11-18T09:02:50.455.999. Part 77/147

Processed Sat Nov 18 10:11:03 2017 by ELM ver.2012-10-06 from 001\_\_elm20171118\_090249\_\_dat00.bin



Channel 0  
mn: -1460  
mx: 1852  
 $\mu$ : -4.8  
 $\sigma$ : 22.5

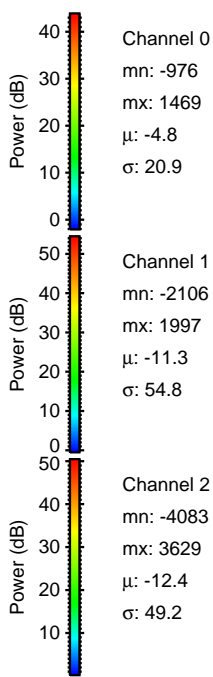
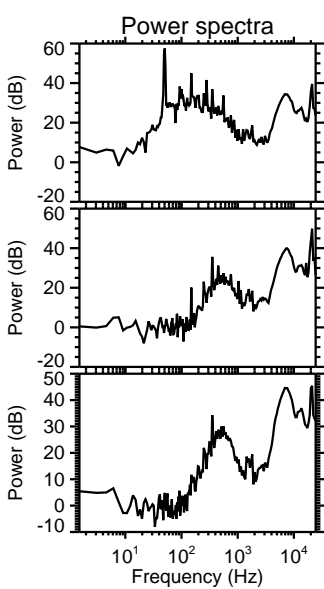
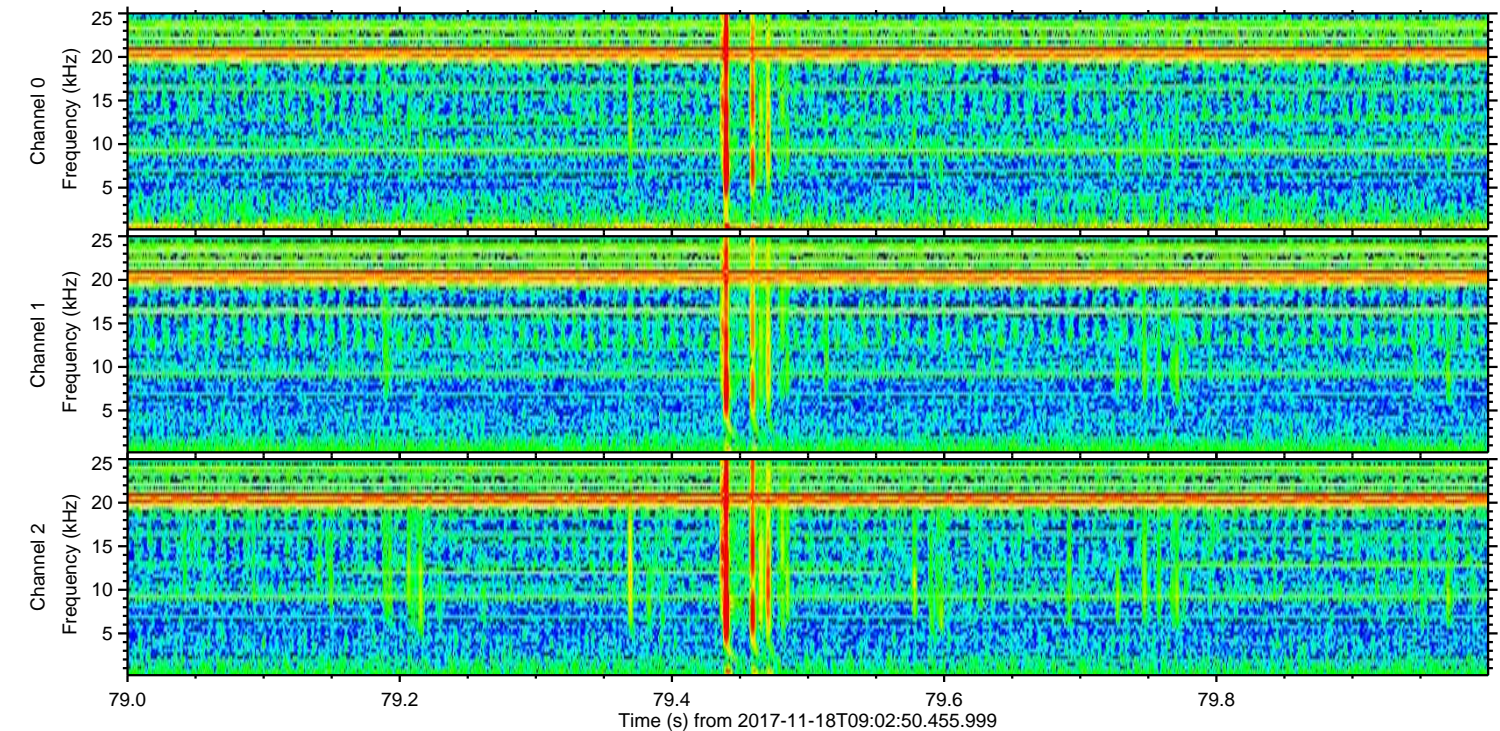
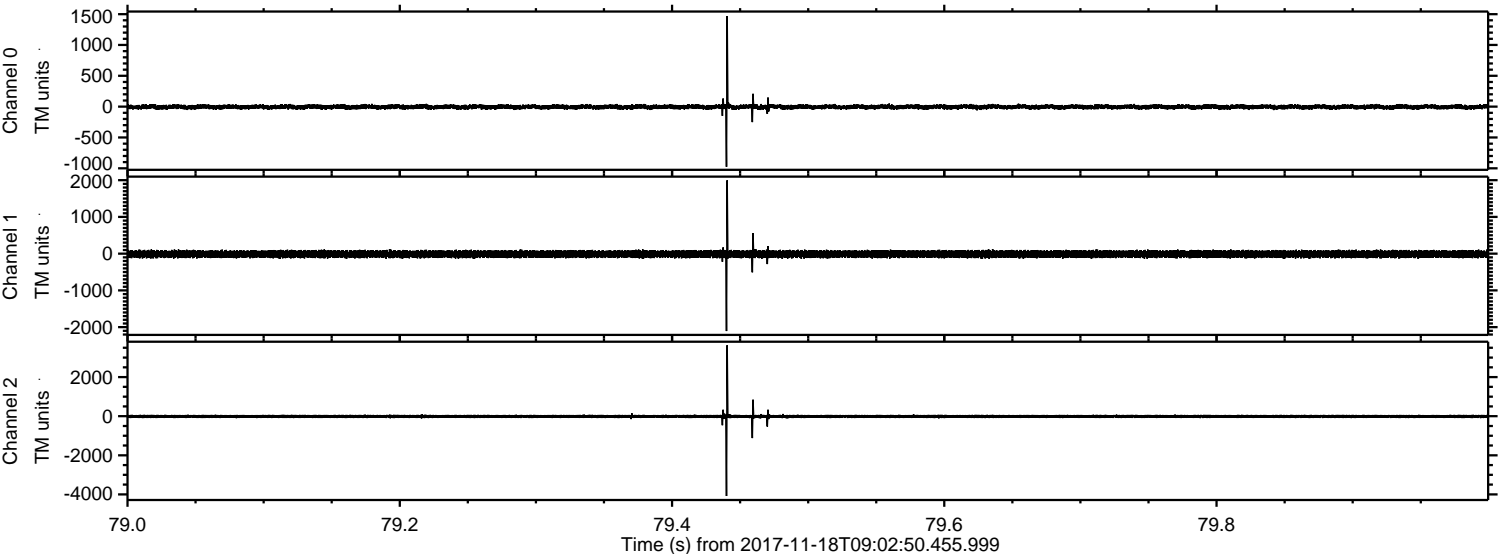
Channel 1  
mn: -1676  
mx: 1756  
 $\mu$ : -11.3  
 $\sigma$ : 53.7

Channel 2  
mn: -4094  
mx: 4943  
 $\mu$ : -12.4  
 $\sigma$ : 57.1



ELMAVAN 3D WAVEFORMS (Measured data sampled at 50 kHz) 51000 packets of 144 samples from 2017-11-18T09:02:50.455.999. Part 80/147

Processed Sat Nov 18 10:11:04 2017 by ELM ver.2012-10-06 from 001\_\_elm20171118\_090249\_\_dat00.bin



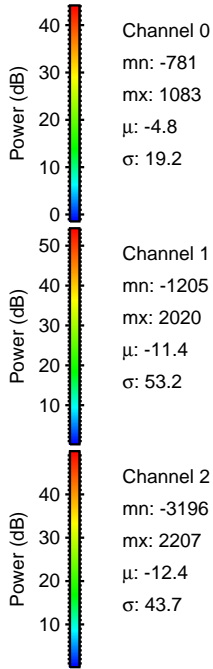
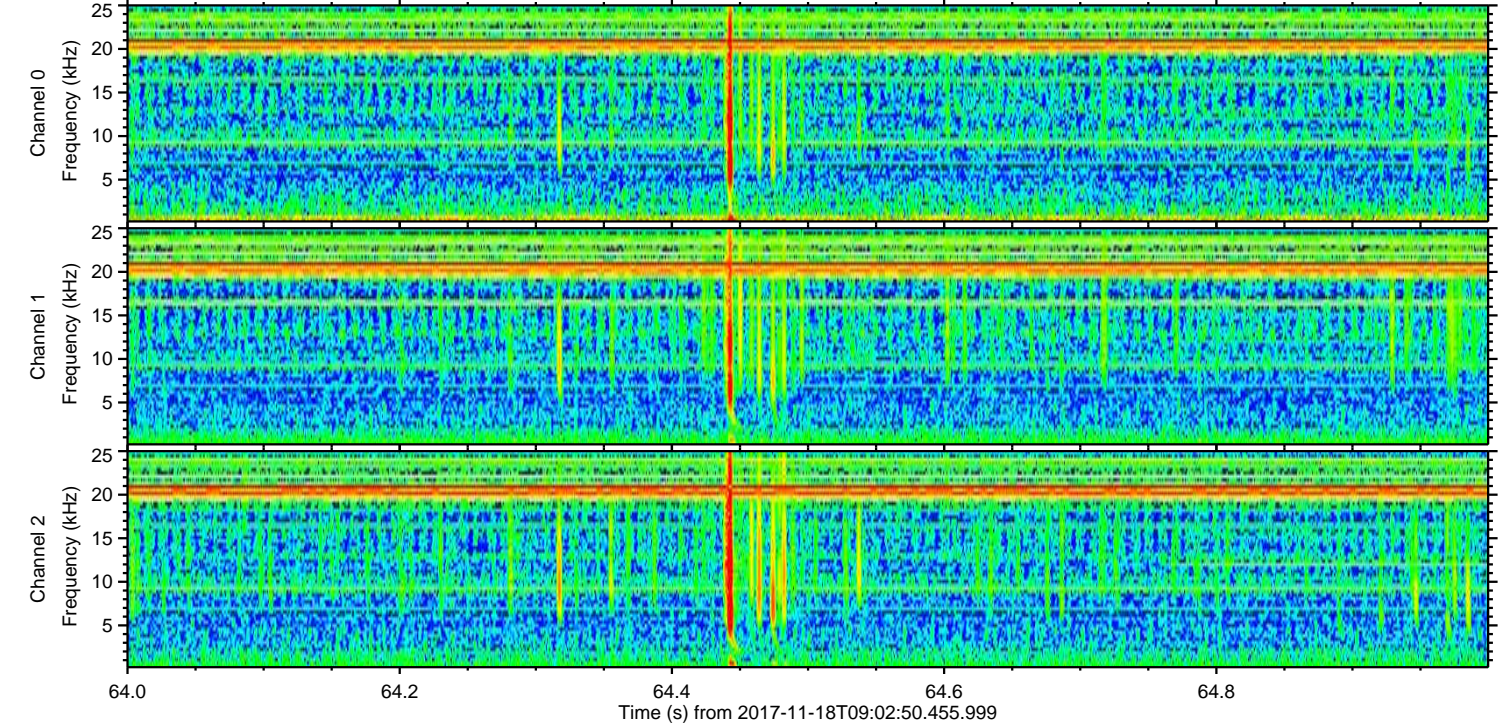
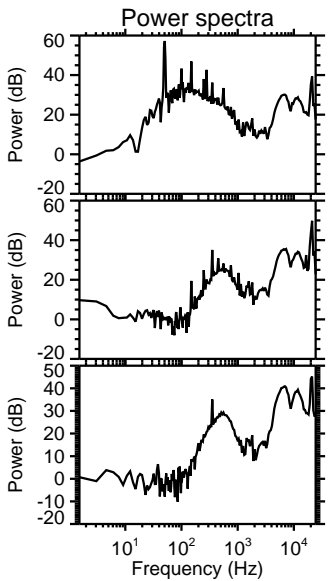
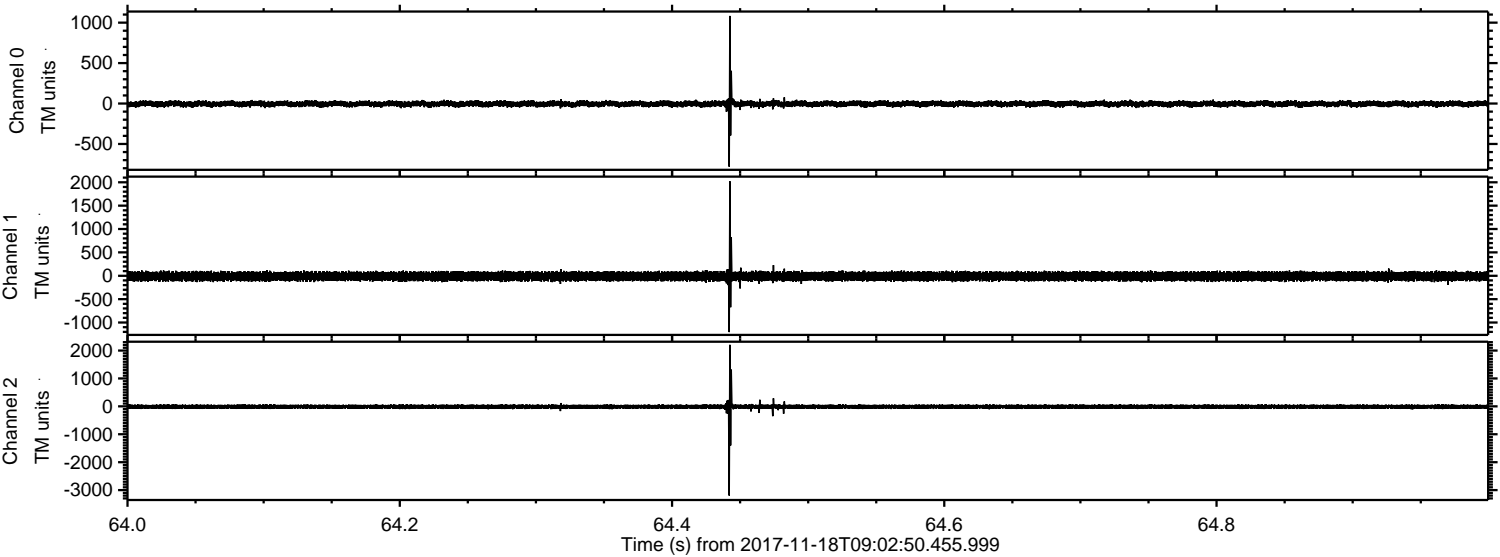
Channel 0  
mn: -976  
mx: 1469  
 $\mu$ : -4.8  
 $\sigma$ : 20.9

Channel 1  
mn: -2106  
mx: 1997  
 $\mu$ : -11.3  
 $\sigma$ : 54.8

Channel 2  
mn: -4083  
mx: 3629  
 $\mu$ : -12.4  
 $\sigma$ : 49.2



Processed Sat Nov 18 10:11:04 2017 by ELM ver.2012-10-06 from 001\_\_elm20171118\_090249\_\_dat00.bin



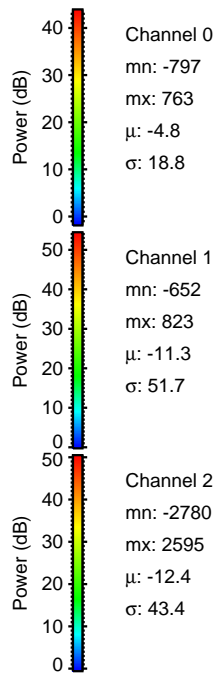
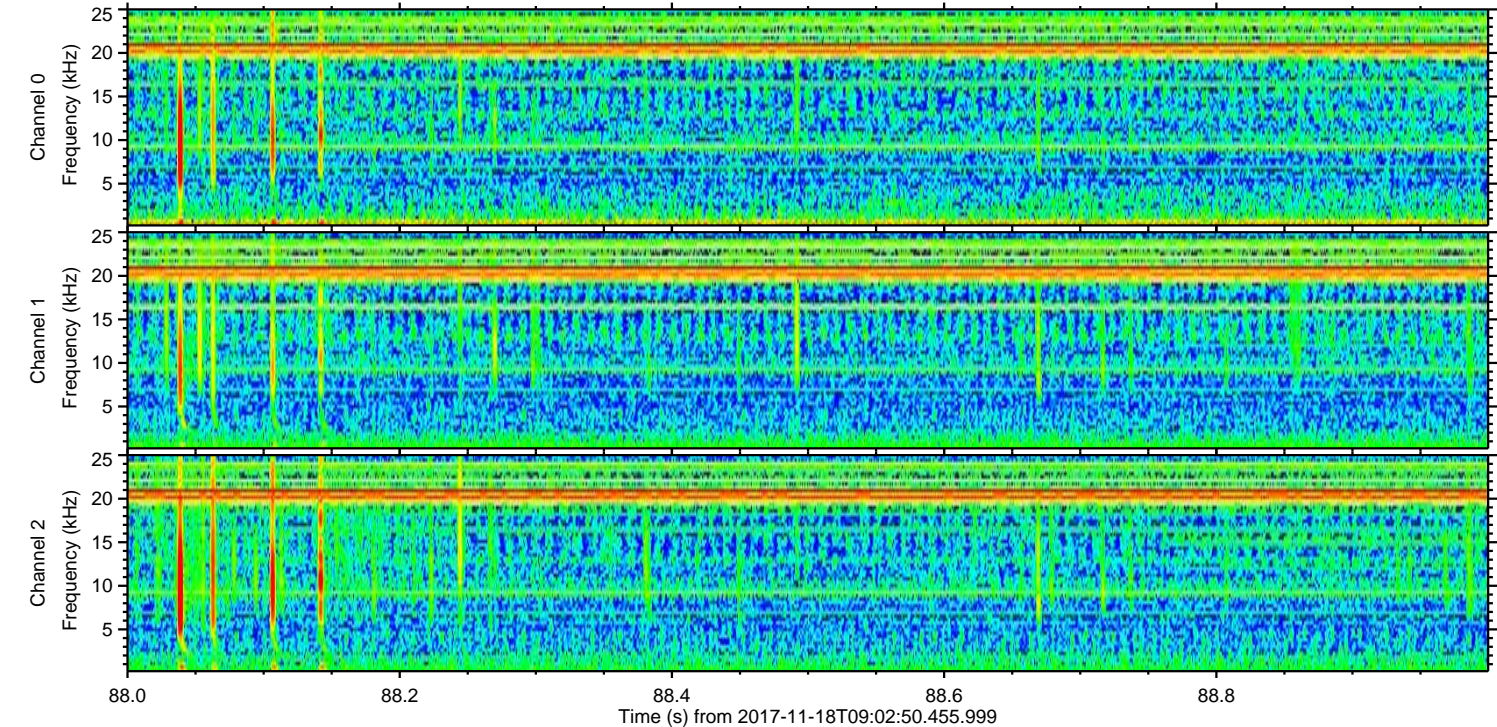
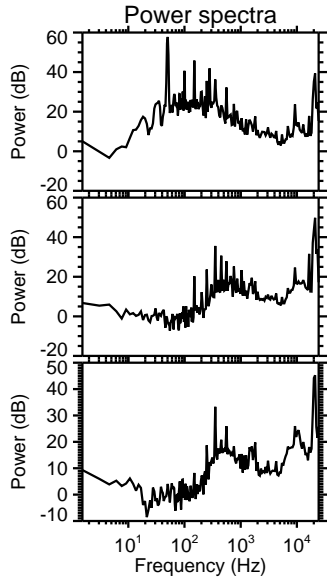
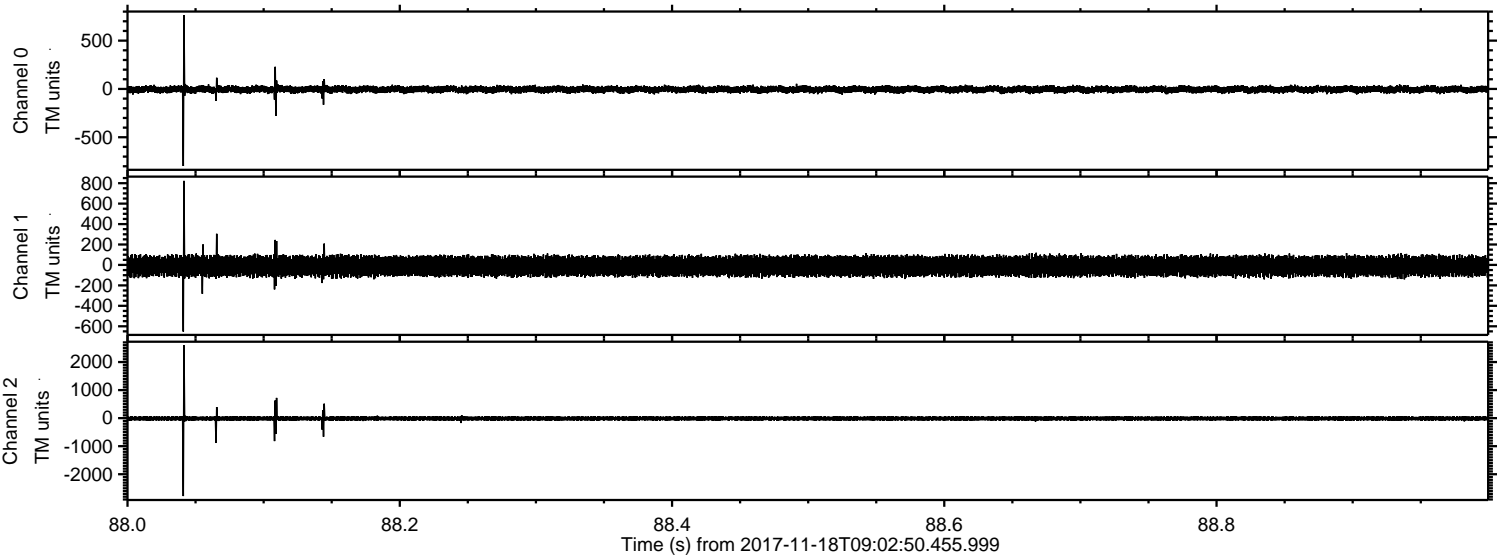
Channel 0  
mn: -781  
mx: 1083  
 $\mu$ : -4.8  
 $\sigma$ : 19.2

Channel 1  
mn: -1205  
mx: 2020  
 $\mu$ : -11.4  
 $\sigma$ : 53.2

Channel 2  
mn: -3196  
mx: 2207  
 $\mu$ : -12.4  
 $\sigma$ : 43.7



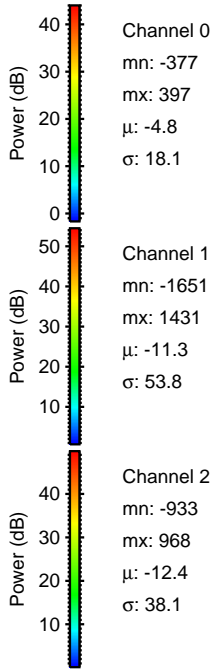
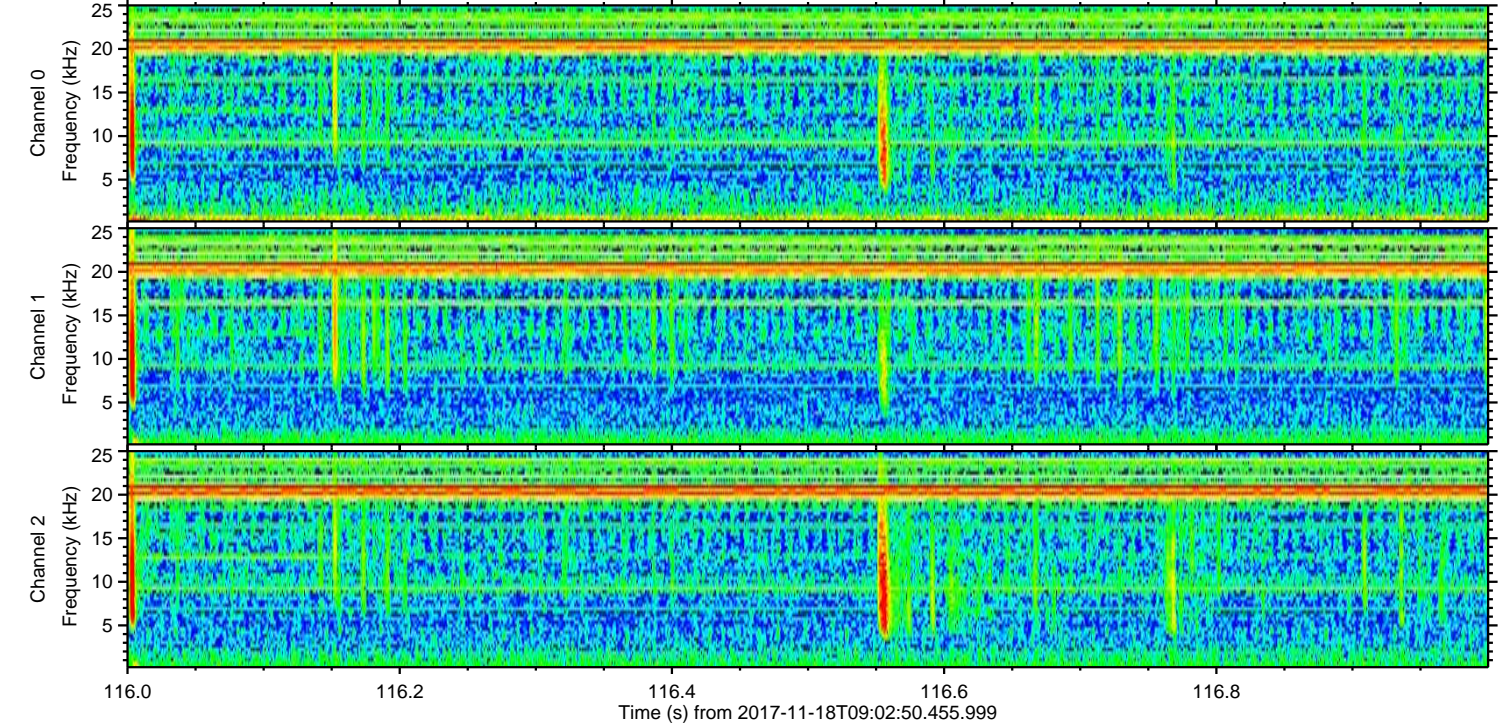
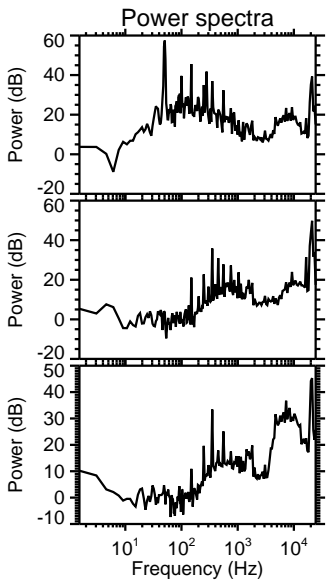
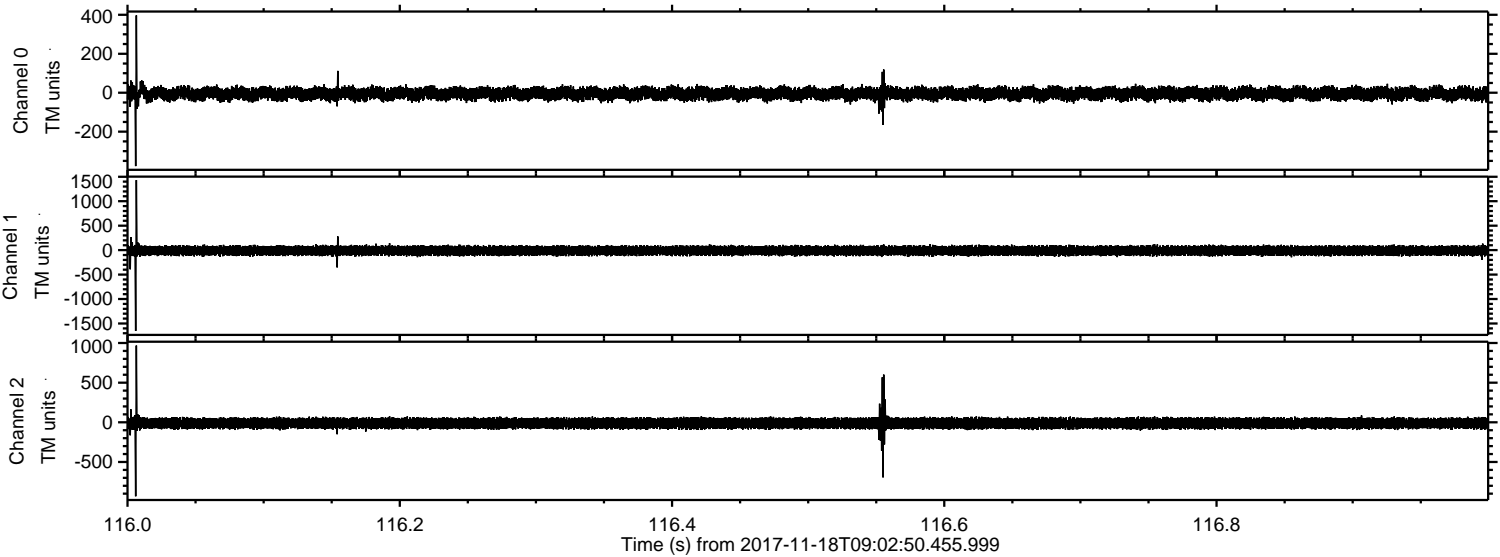
Processed Sat Nov 18 10:11:05 2017 by ELM ver.2012-10-06 from 001\_\_elm20171118\_090249\_\_dat00.bin





ELMAVAN 3D WAVEFORMS (Measured data sampled at 50 kHz) 51000 packets of 144 samples from 2017-11-18T09:02:50.455.999. Part 117/147

Processed Sat Nov 18 10:11:06 2017 by ELM ver.2012-10-06 from 001\_\_elm20171118\_090249\_\_dat00.bin



Channel 0  
mn: -377  
mx: 397  
 $\mu$ : -4.8  
 $\sigma$ : 18.1

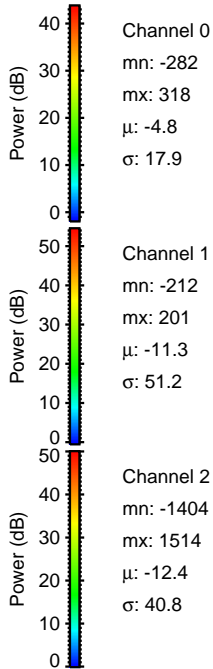
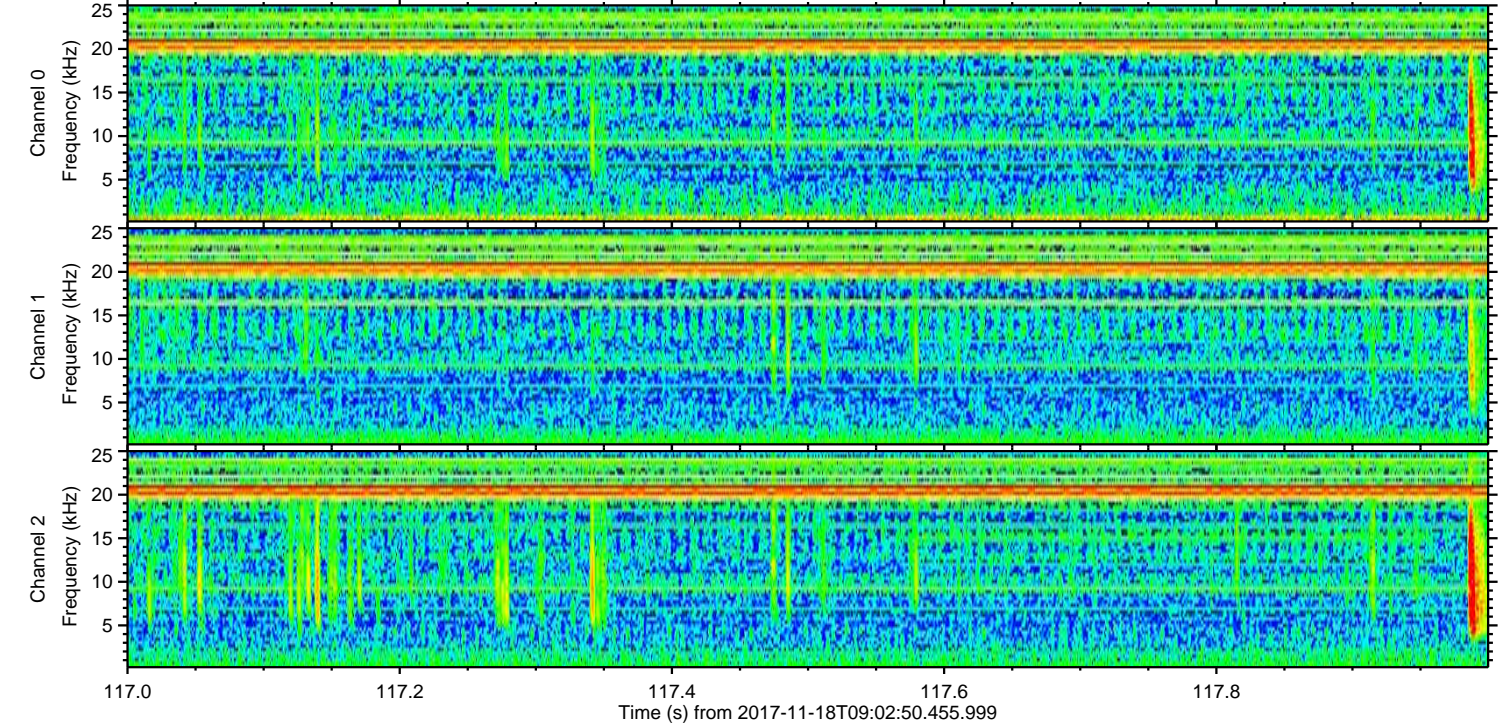
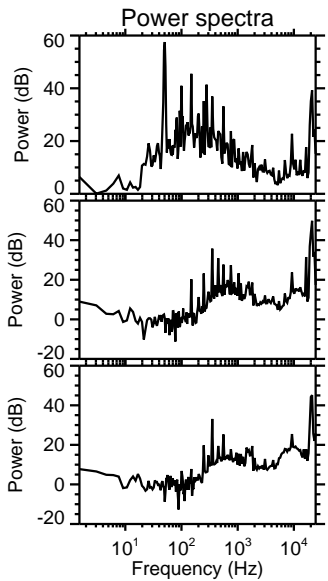
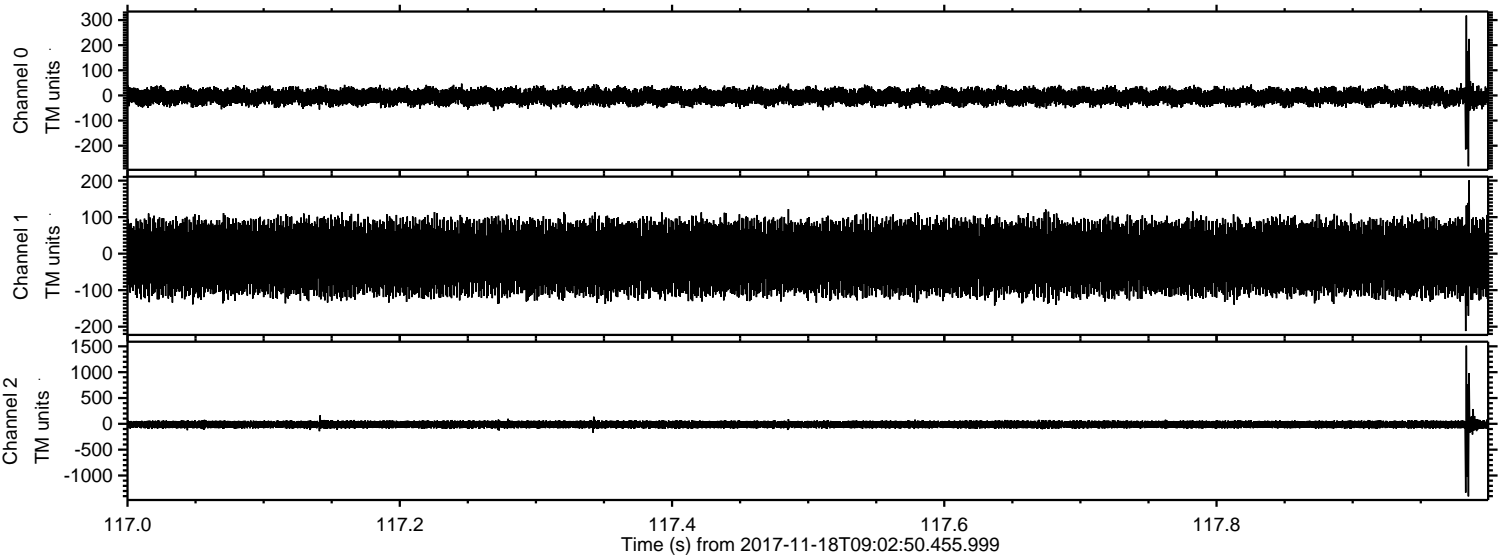
Channel 1  
mn: -1651  
mx: 1431  
 $\mu$ : -11.3  
 $\sigma$ : 53.8

Channel 2  
mn: -933  
mx: 968  
 $\mu$ : -12.4  
 $\sigma$ : 38.1



ELMAVAN 3D WAVEFORMS (Measured data sampled at 50 kHz) 51000 packets of 144 samples from 2017-11-18T09:02:50.455.999. Part 118/147

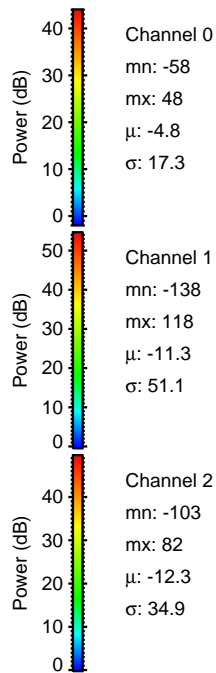
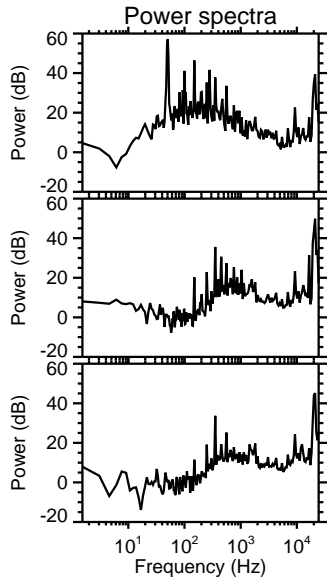
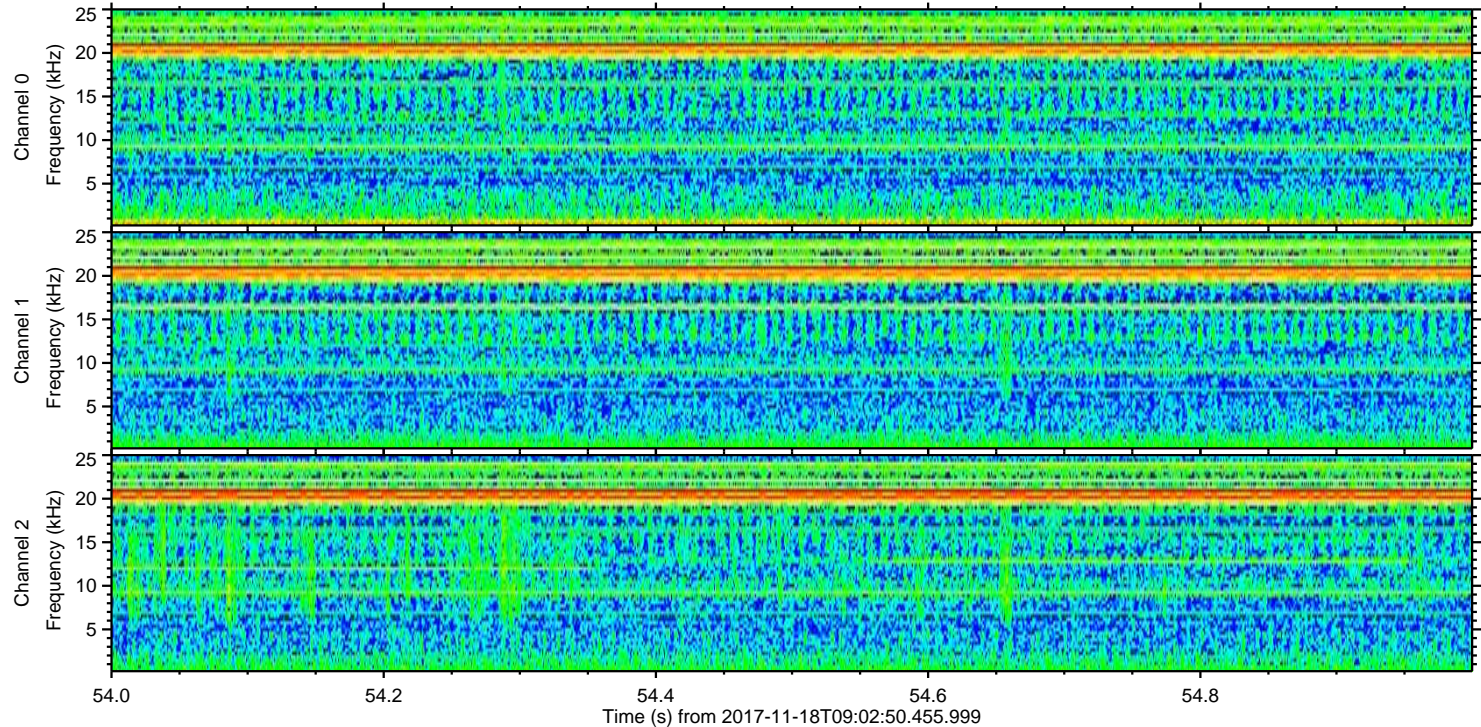
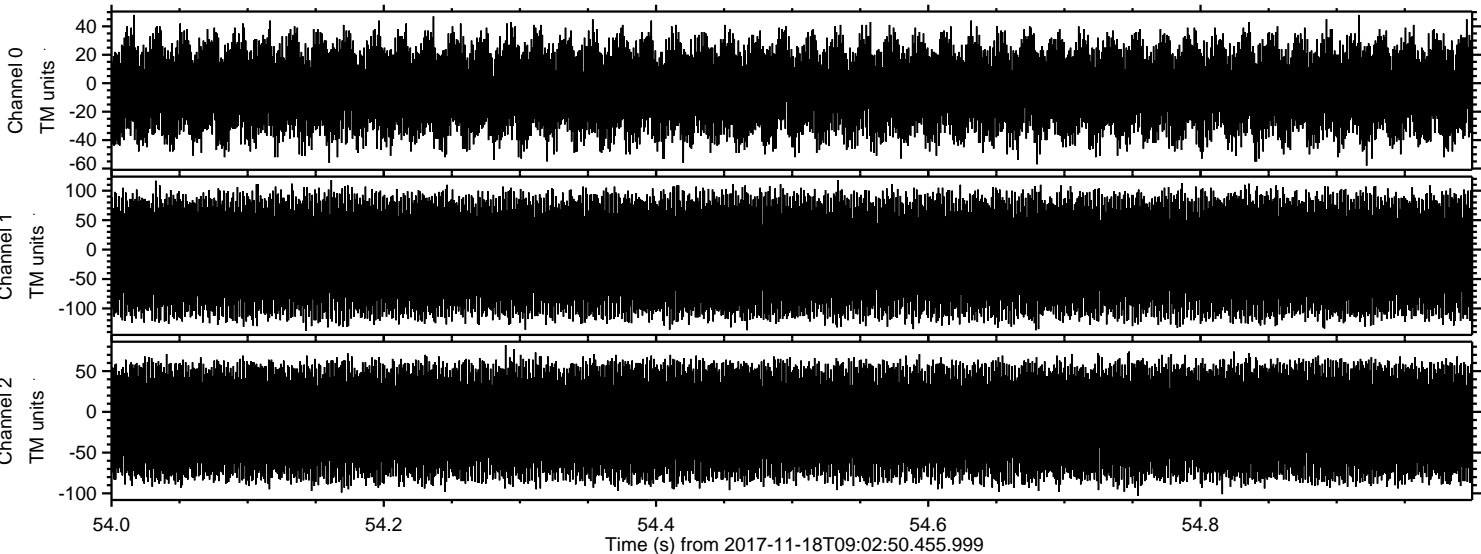
Processed Sat Nov 18 10:11:07 2017 by ELM ver.2012-10-06 from 001\_\_elm20171118\_090249\_\_dat00.bin





ELMAVAN 3D WAVEFORMS (Measured data sampled at 50 kHz) 51000 packets of 144 samples from 2017-11-18T09:02:50.455.999. Part 55/147

Processed Sat Nov 18 10:11:07 2017 by ELM ver.2012-10-06 from 001\_\_elm20171118\_090249\_\_dat00.bin



Channel 0  
mn: -58  
mx: 48  
 $\mu$ : -4.8  
 $\sigma$ : 17.3

Channel 1  
mn: -138  
mx: 118  
 $\mu$ : -11.3  
 $\sigma$ : 51.1

Channel 2  
mn: -103  
mx: 82  
 $\mu$ : -12.3  
 $\sigma$ : 34.9