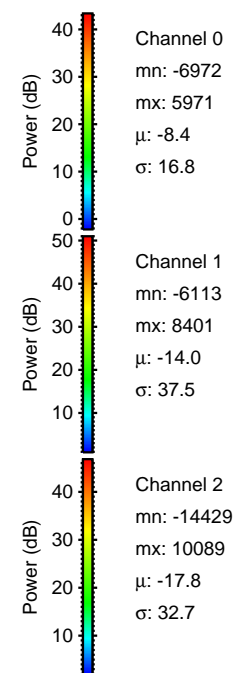
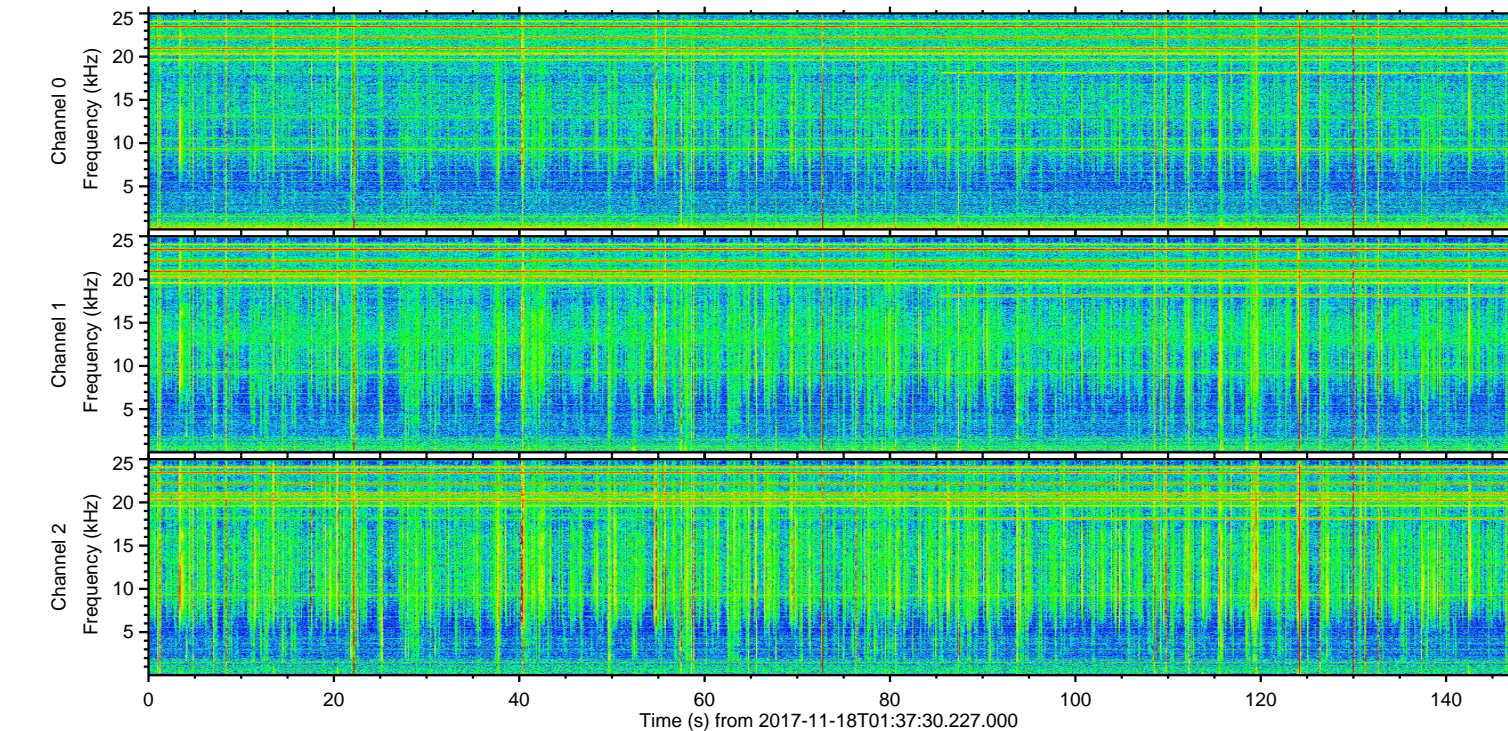
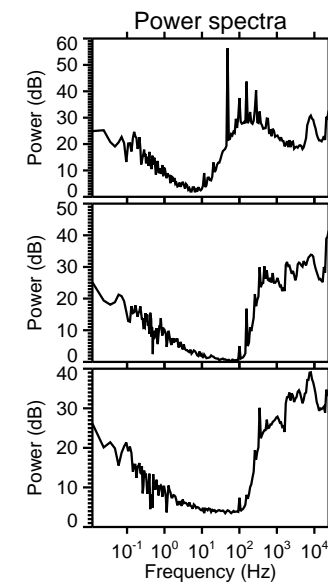
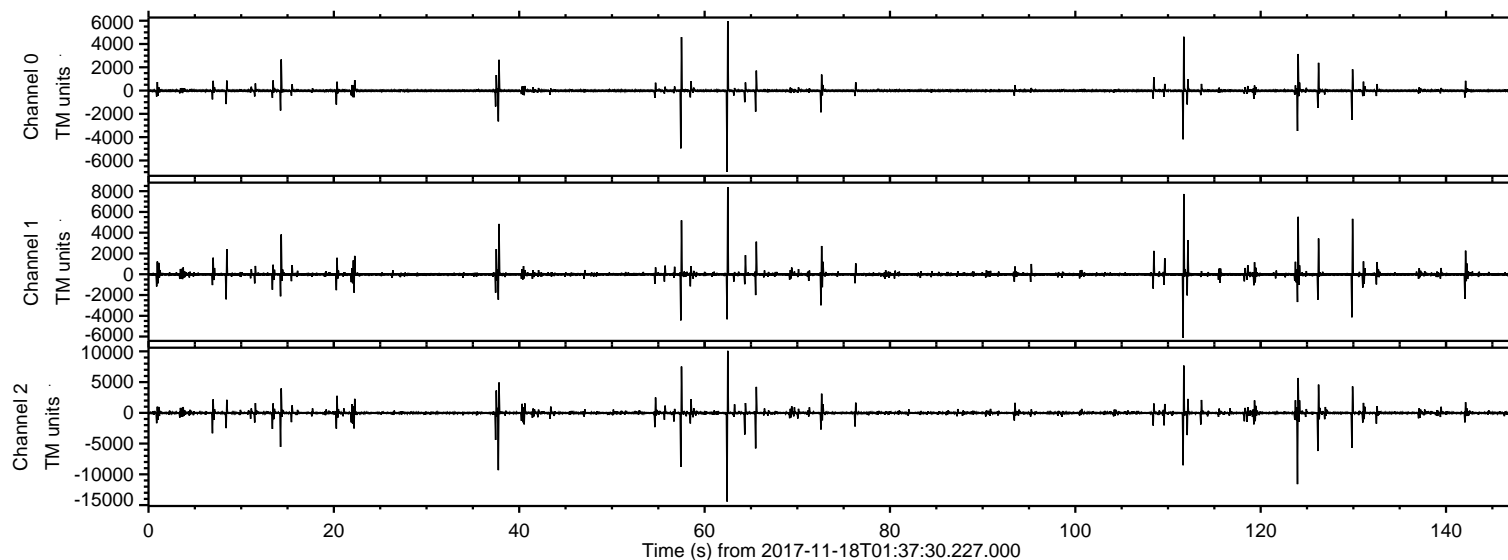


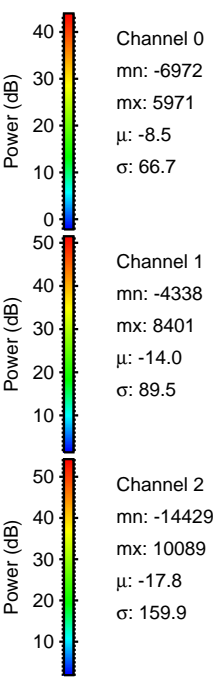
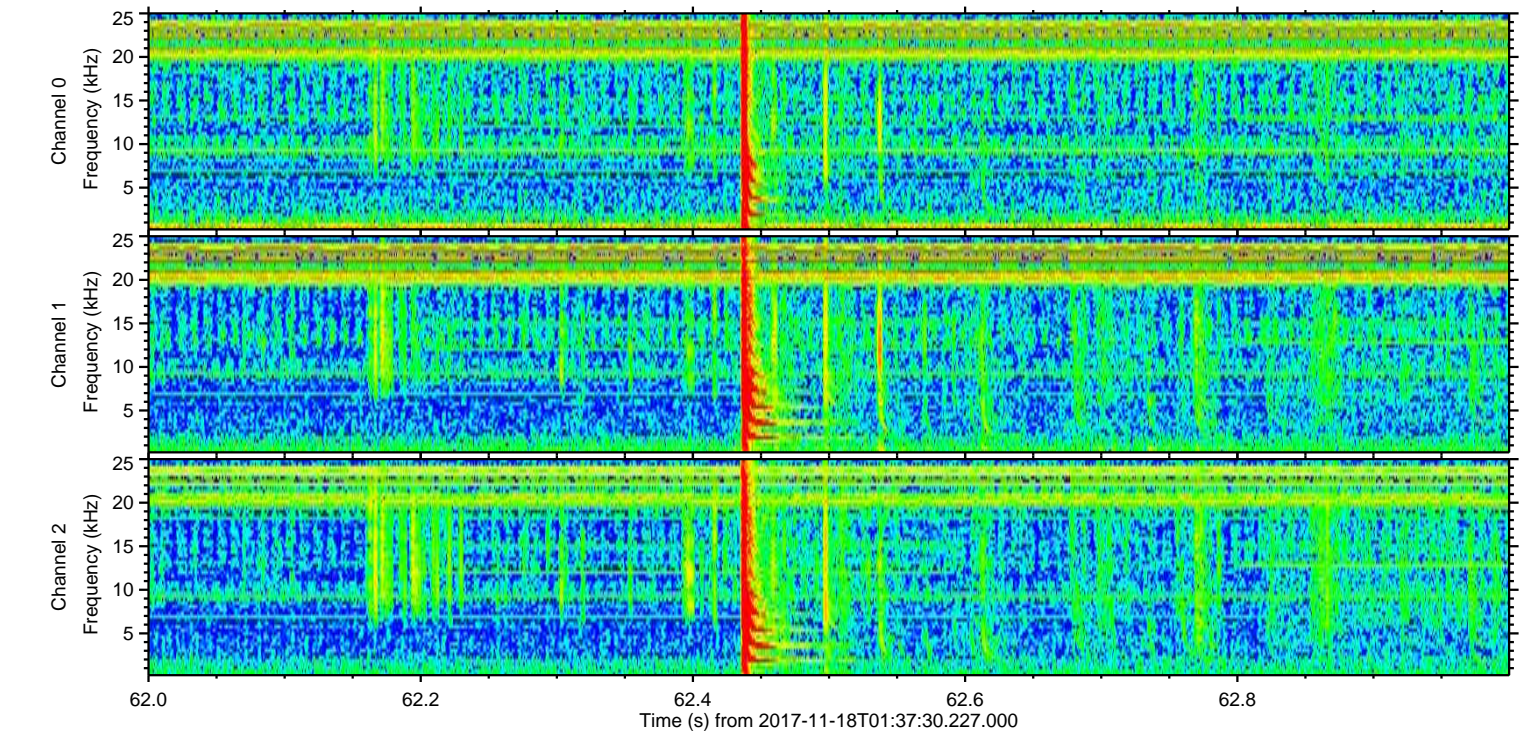
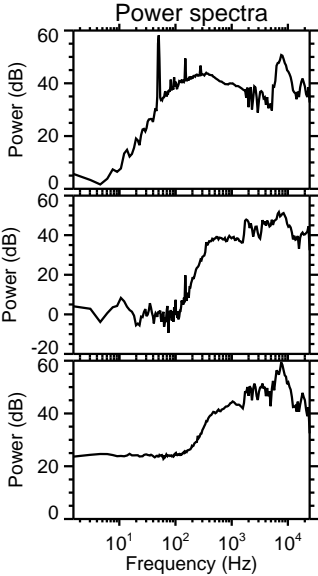
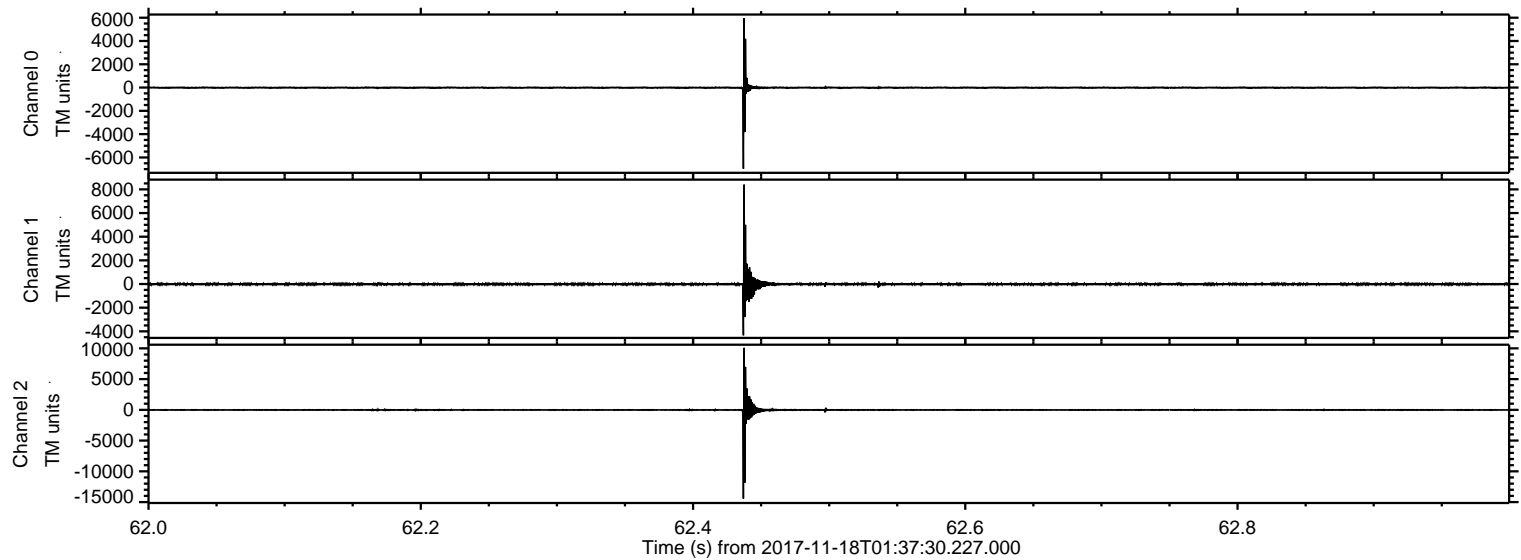
ELMAVAN 3D WAVEFORMS (Measured data sampled at 50 kHz) 51000 packets of 144 samples from 2017-11-18T01:37:30.227.000.

Processed Sat Nov 18 02:46:23 2017 by ELM ver.2012-10-06 from 001__elm20171118_013729__dat00.bin



ELMAVAN 3D WAVEFORMS (Measured data sampled at 50 kHz) 51000 packets of 144 samples from 2017-11-18T01:37:30.227.000. Part 63/147

Processed Sat Nov 18 02:46:30 2017 by ELM ver.2012-10-06 from 001__elm20171118_013729__dat00.bin



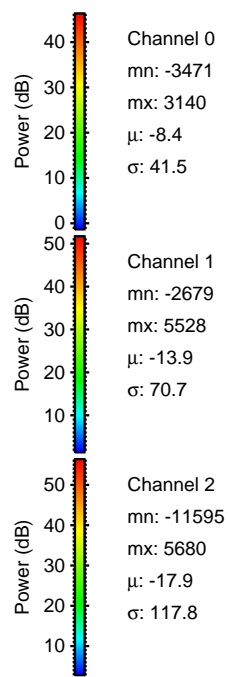
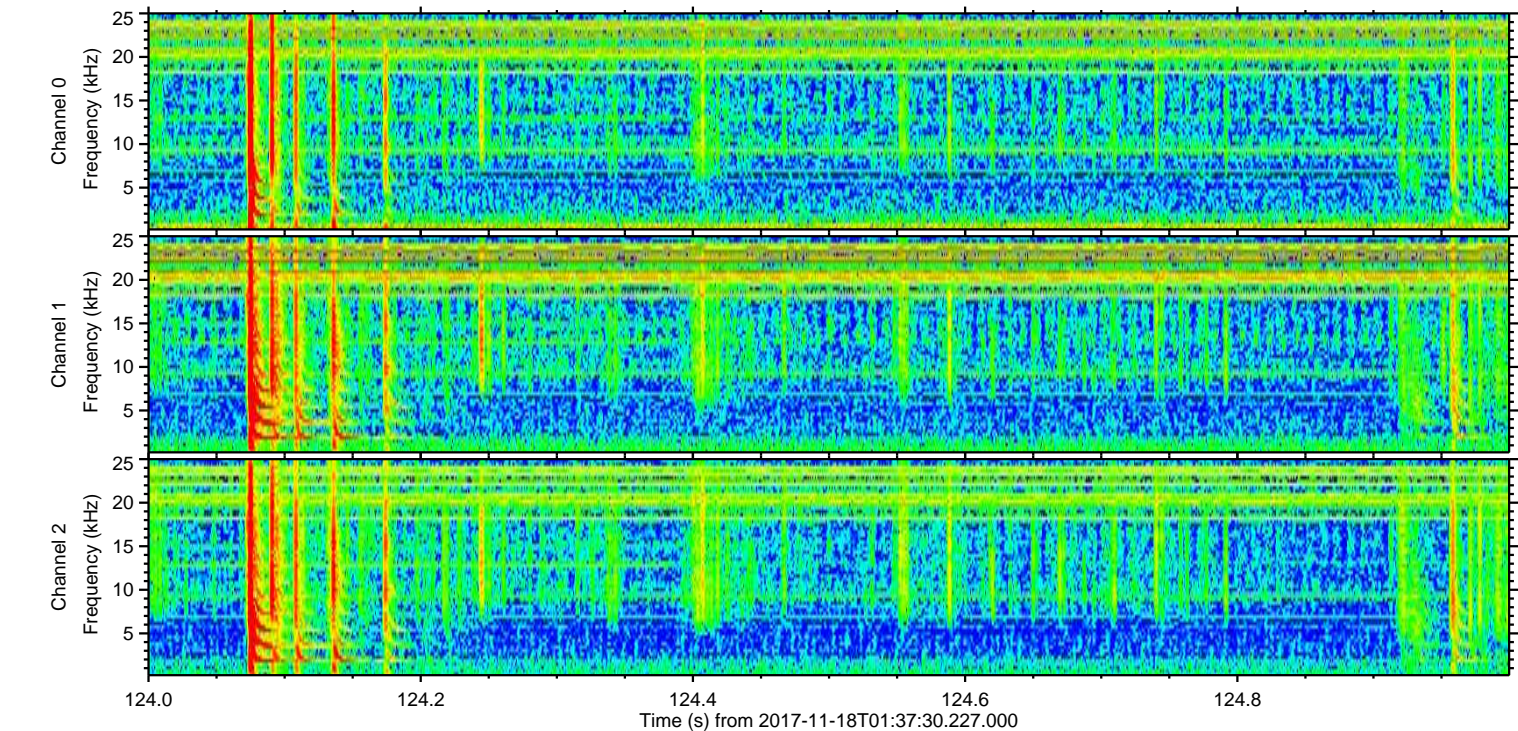
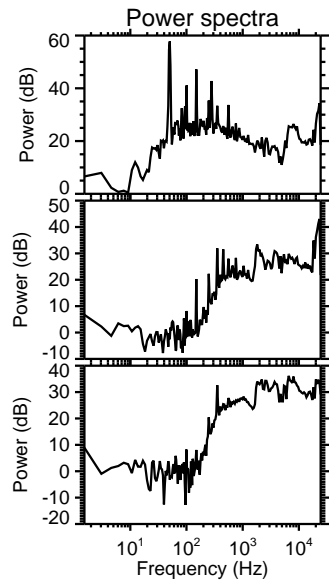
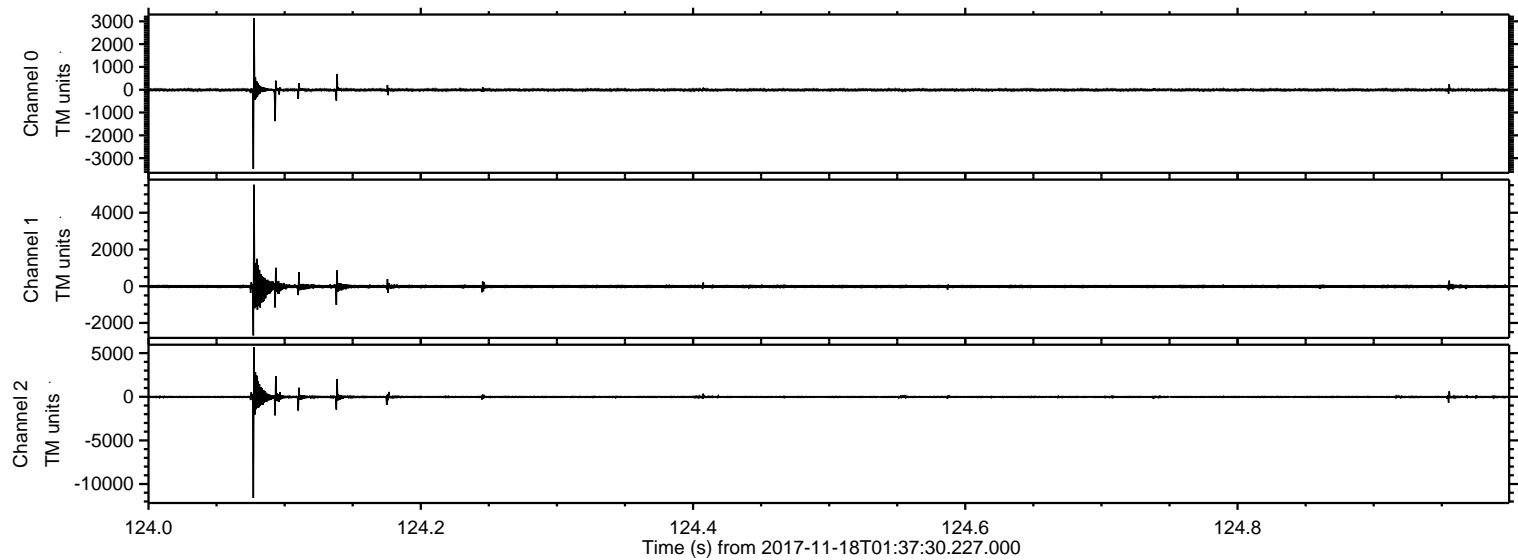
Channel 0
mn: -6972
mx: 5971
 μ : -8.5
 σ : 66.7

Channel 1
mn: -4338
mx: 8401
 μ : -14.0
 σ : 89.5

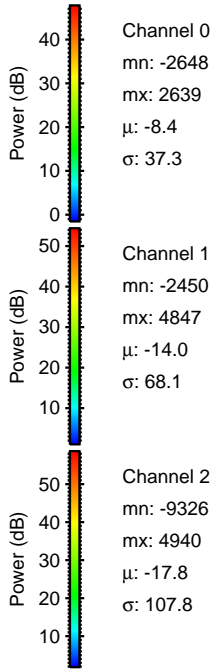
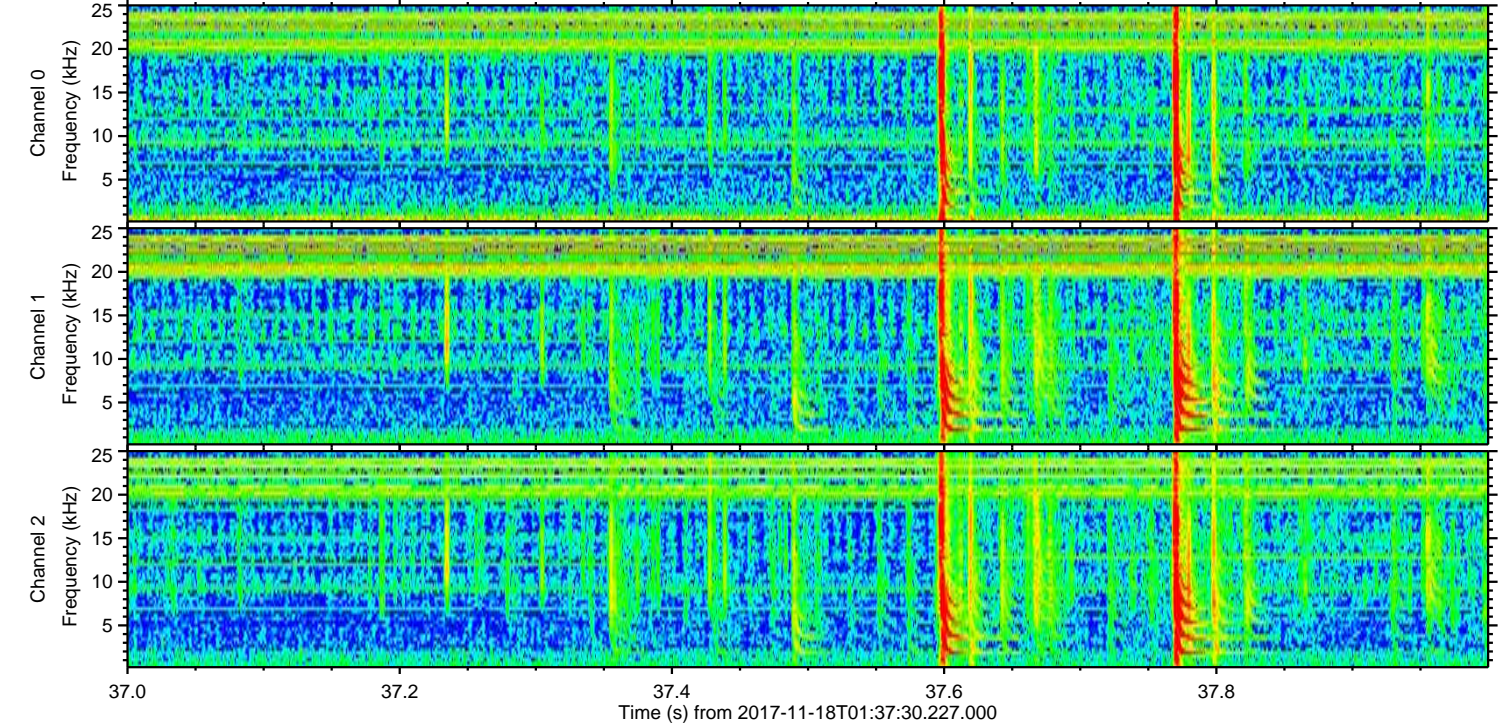
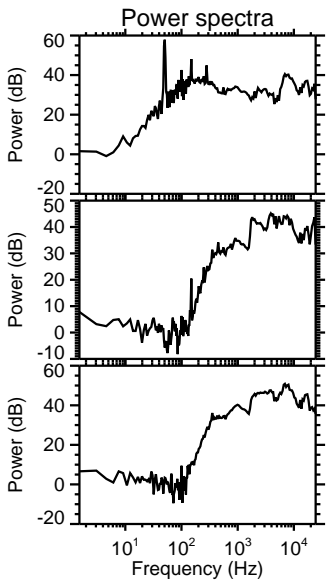
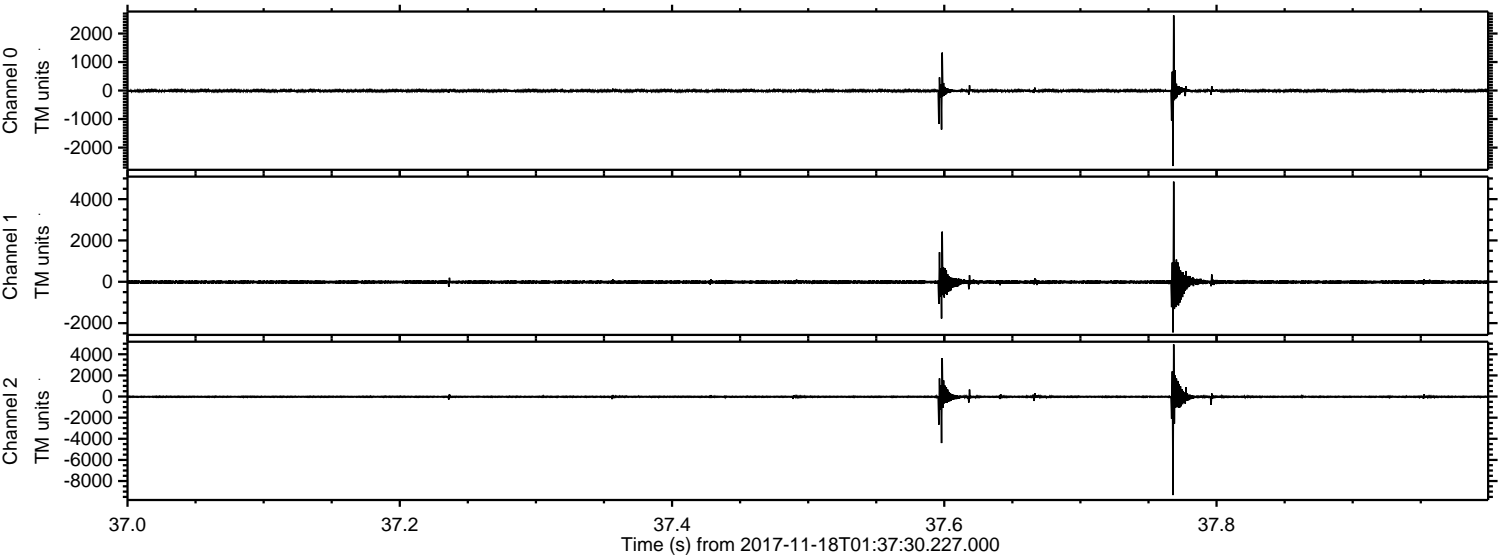
Channel 2
mn: -14429
mx: 10089
 μ : -17.8
 σ : 159.9

ELMAVAN 3D WAVEFORMS (Measured data sampled at 50 kHz) 51000 packets of 144 samples from 2017-11-18T01:37:30.227.000. Part 125/147

Processed Sat Nov 18 02:46:31 2017 by ELM ver.2012-10-06 from 001__elm20171118_013729__dat00.bin



Processed Sat Nov 18 02:46:31 2017 by ELM ver.2012-10-06 from 001__elm20171118_013729__dat00.bin

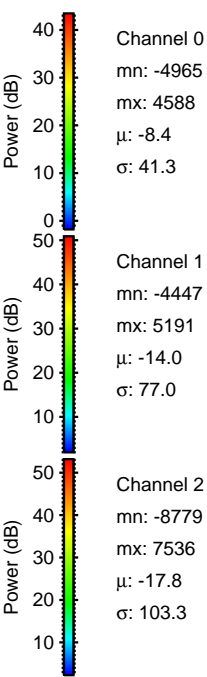
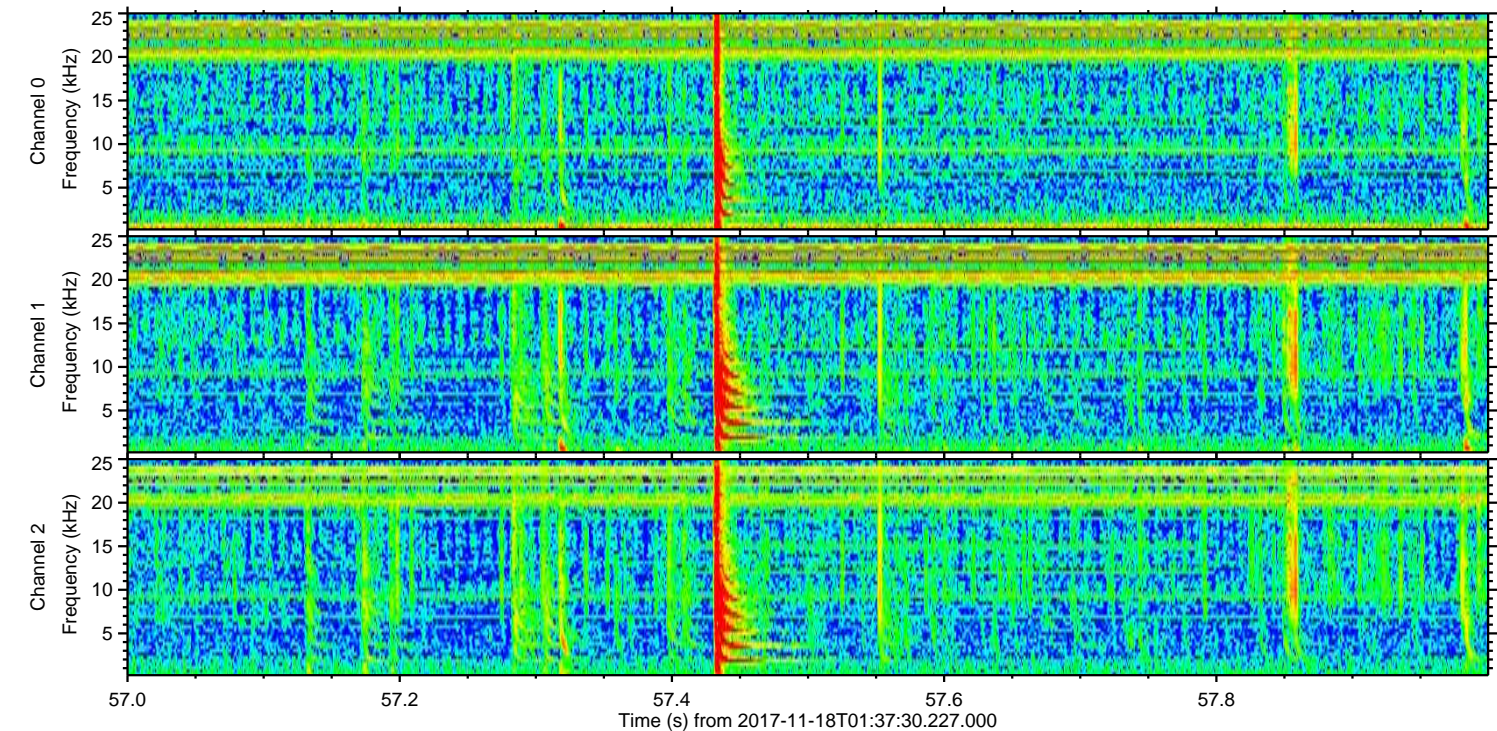
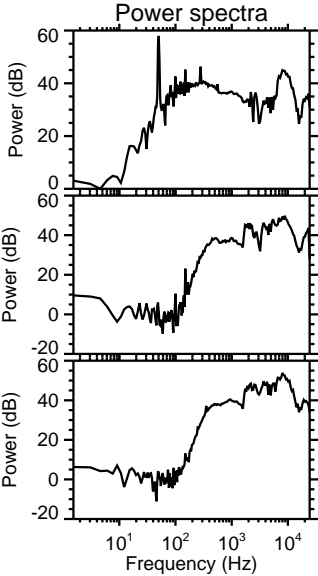
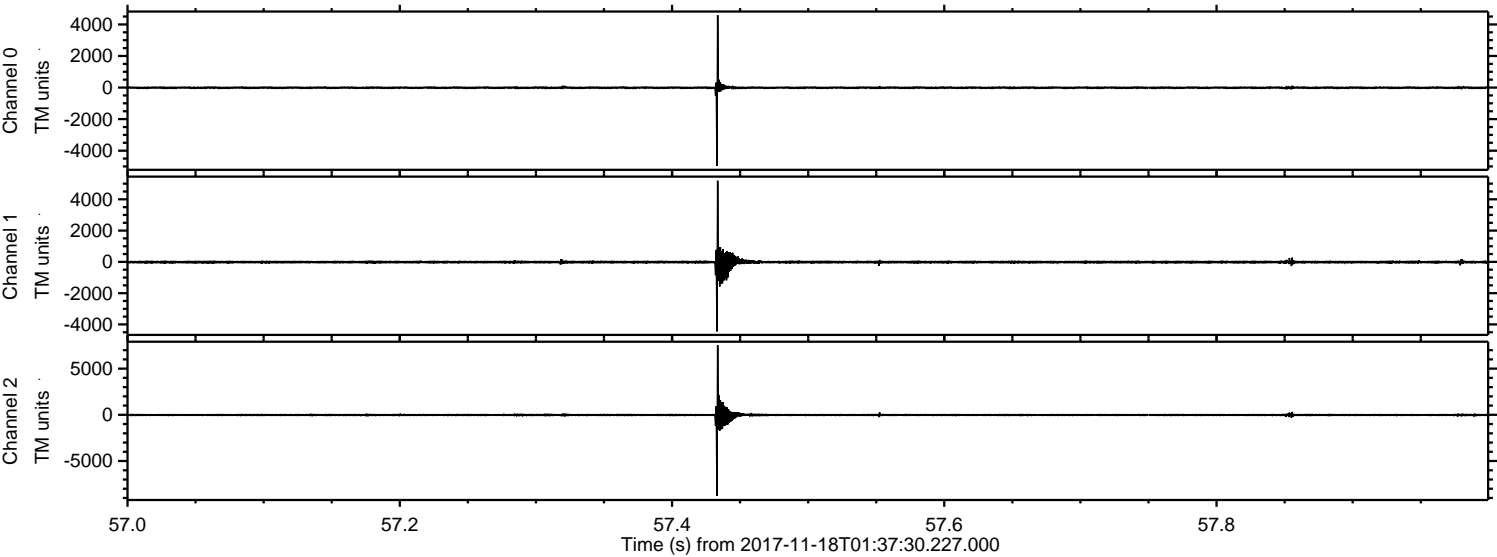


Channel 0
mn: -2648
mx: 2639
 μ : -8.4
 σ : 37.3

Channel 1
mn: -2450
mx: 4847
 μ : -14.0
 σ : 68.1

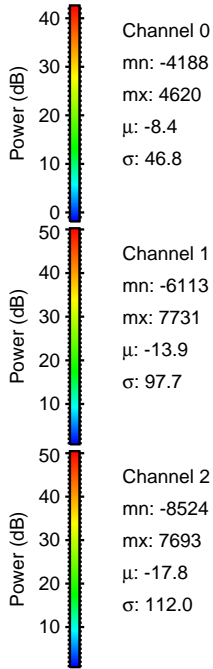
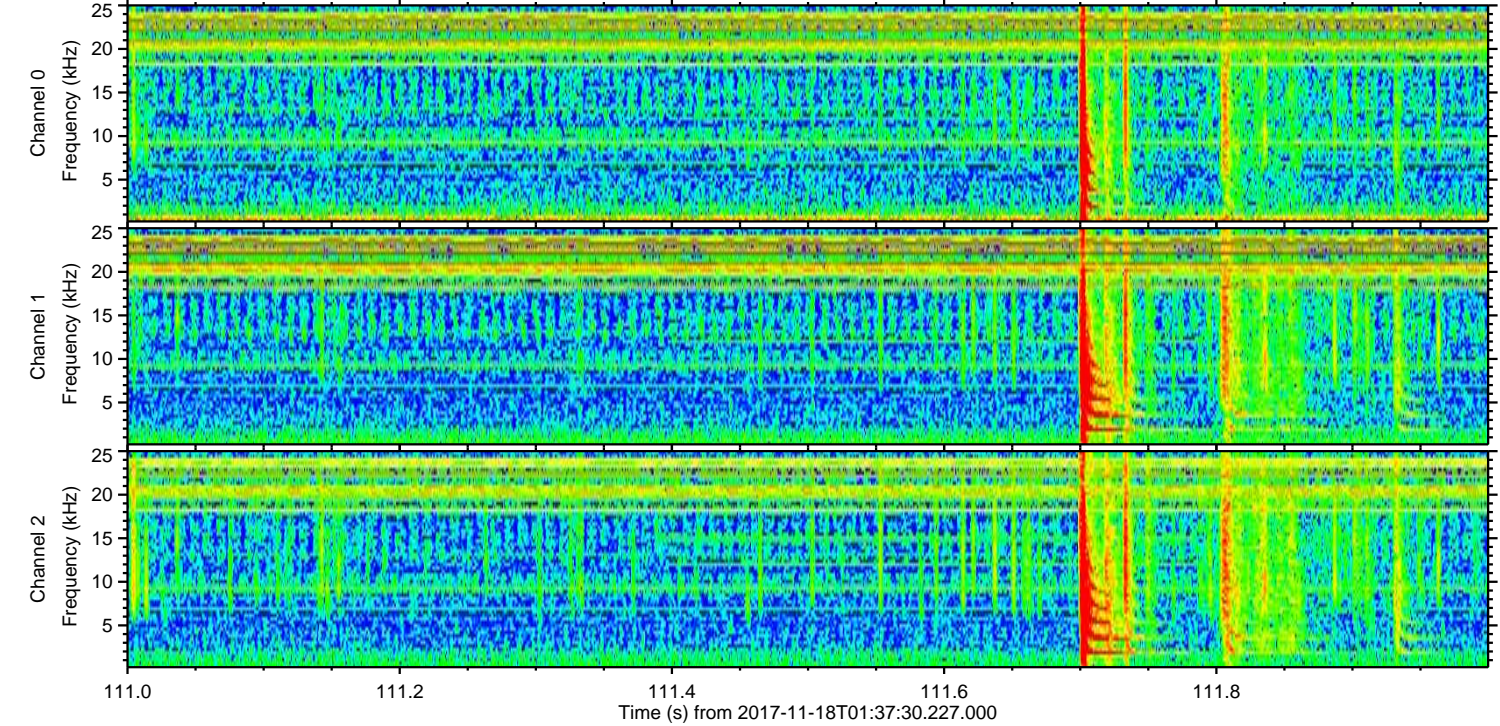
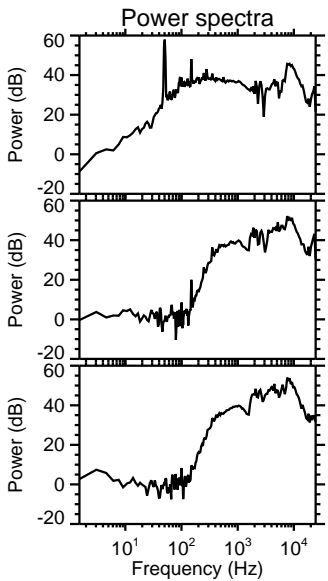
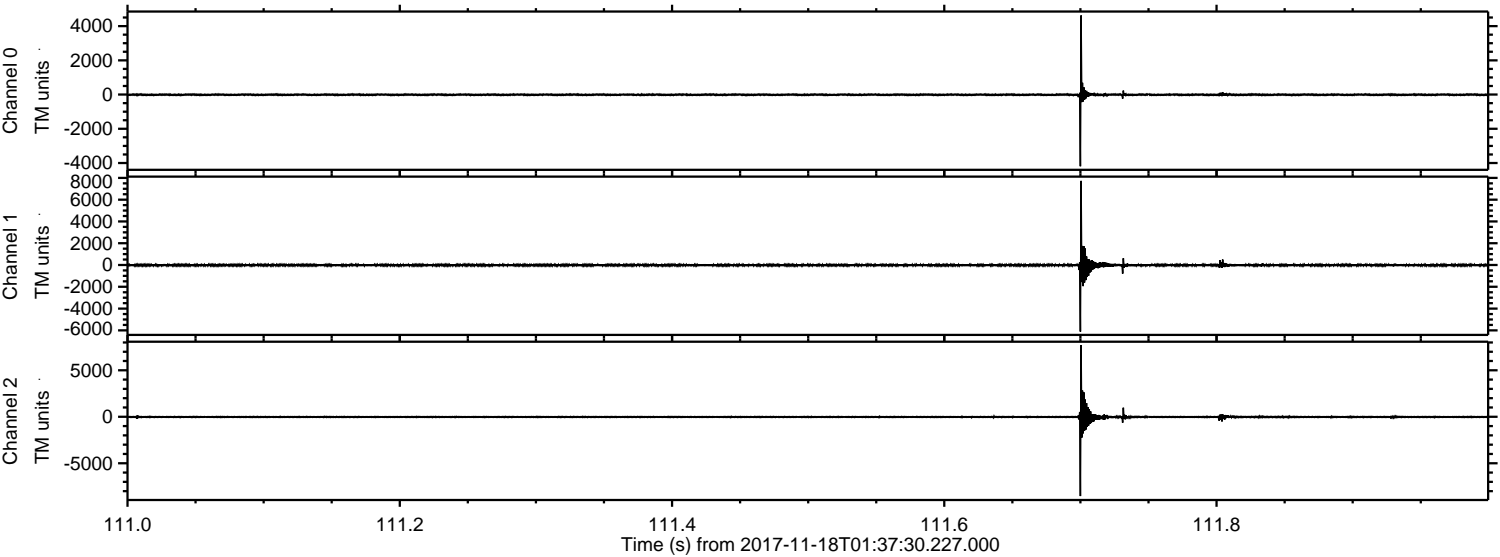
Channel 2
mn: -9326
mx: 4940
 μ : -17.8
 σ : 107.8

Processed Sat Nov 18 02:46:32 2017 by ELM ver.2012-10-06 from 001__elm20171118_013729__dat00.bin



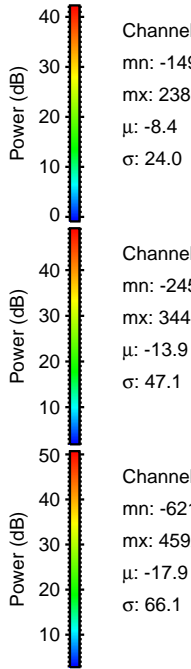
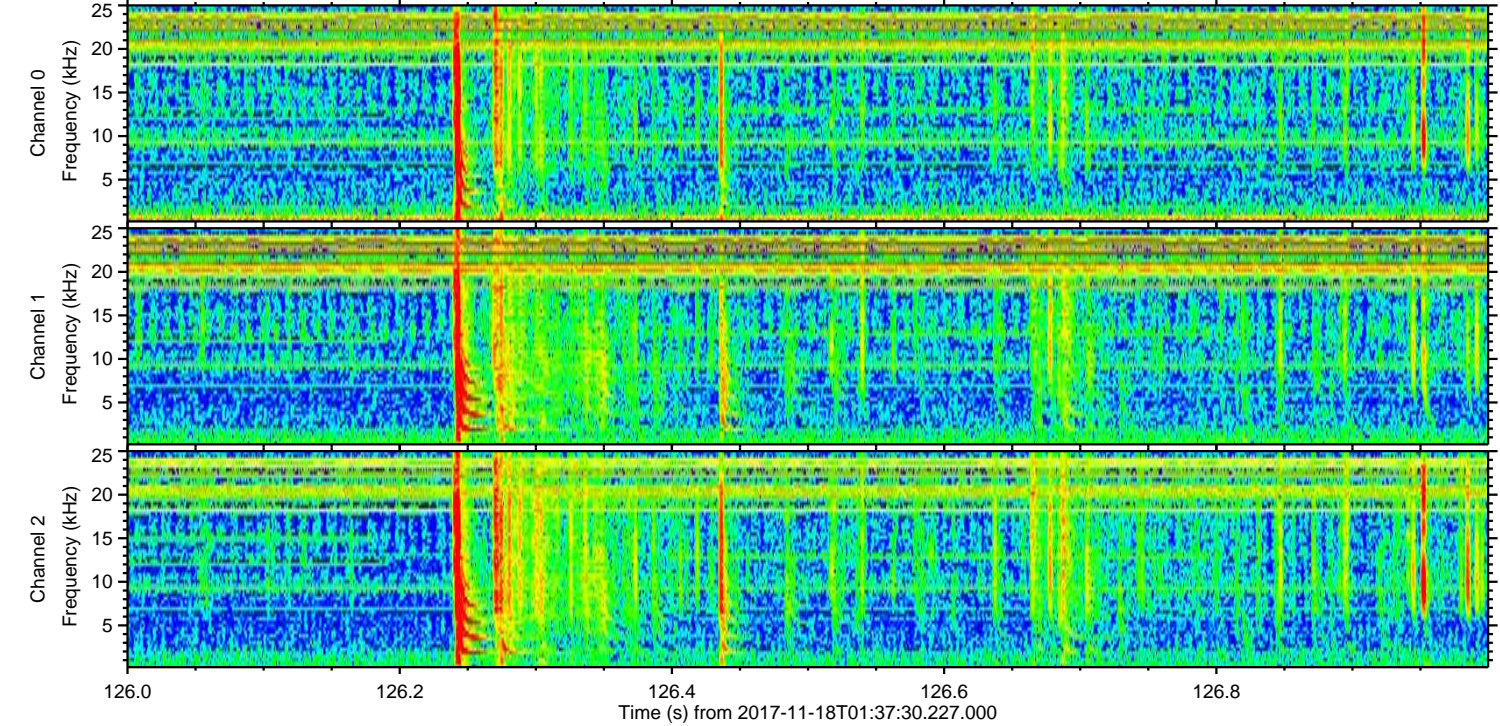
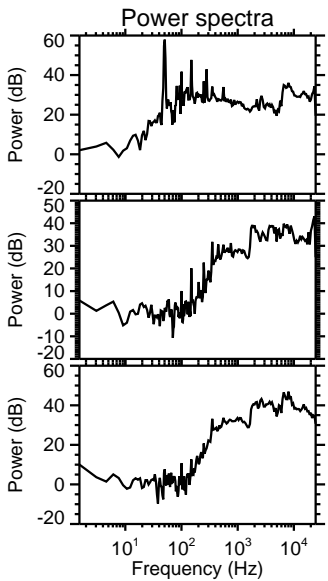
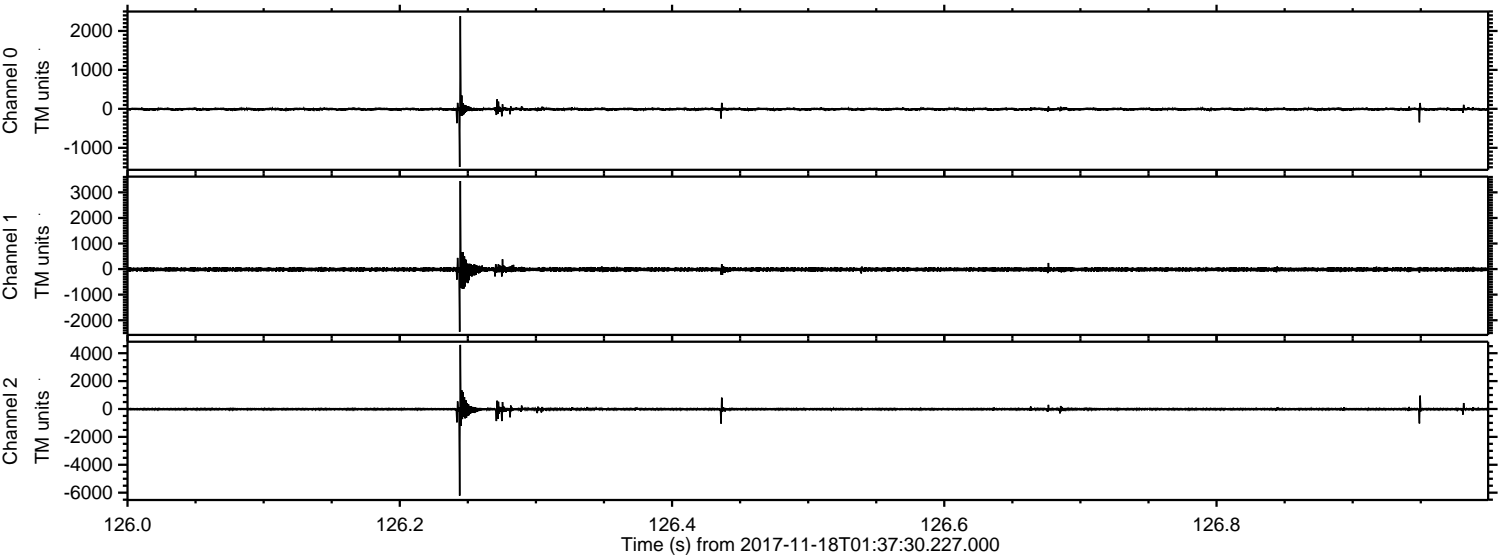
ELMAVAN 3D WAVEFORMS (Measured data sampled at 50 kHz) 51000 packets of 144 samples from 2017-11-18T01:37:30.227.000. Part 112/147

Processed Sat Nov 18 02:46:33 2017 by ELM ver.2012-10-06 from 001__elm20171118_013729__dat00.bin



ELMAVAN 3D WAVEFORMS (Measured data sampled at 50 kHz) 51000 packets of 144 samples from 2017-11-18T01:37:30.227.000. Part 127/147

Processed Sat Nov 18 02:46:34 2017 by ELM ver.2012-10-06 from 001__elm20171118_013729__dat00.bin

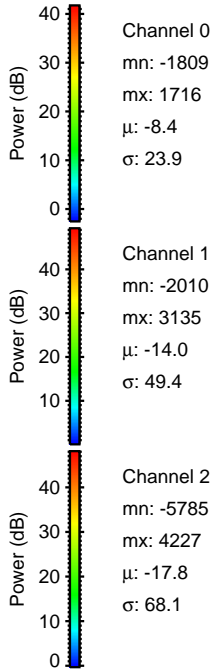
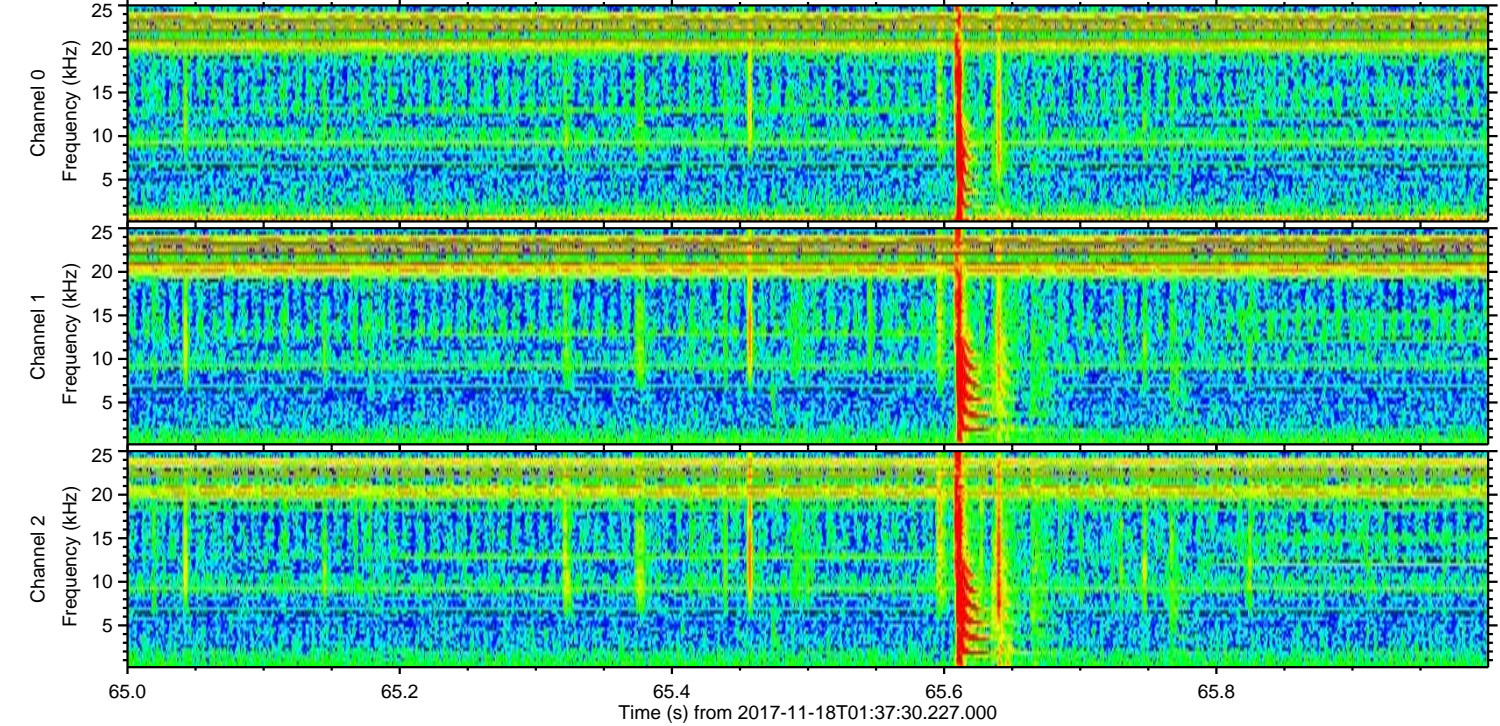
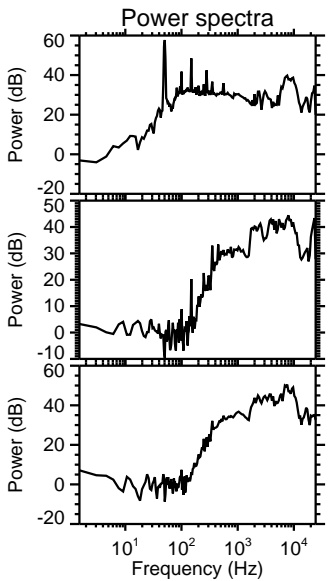
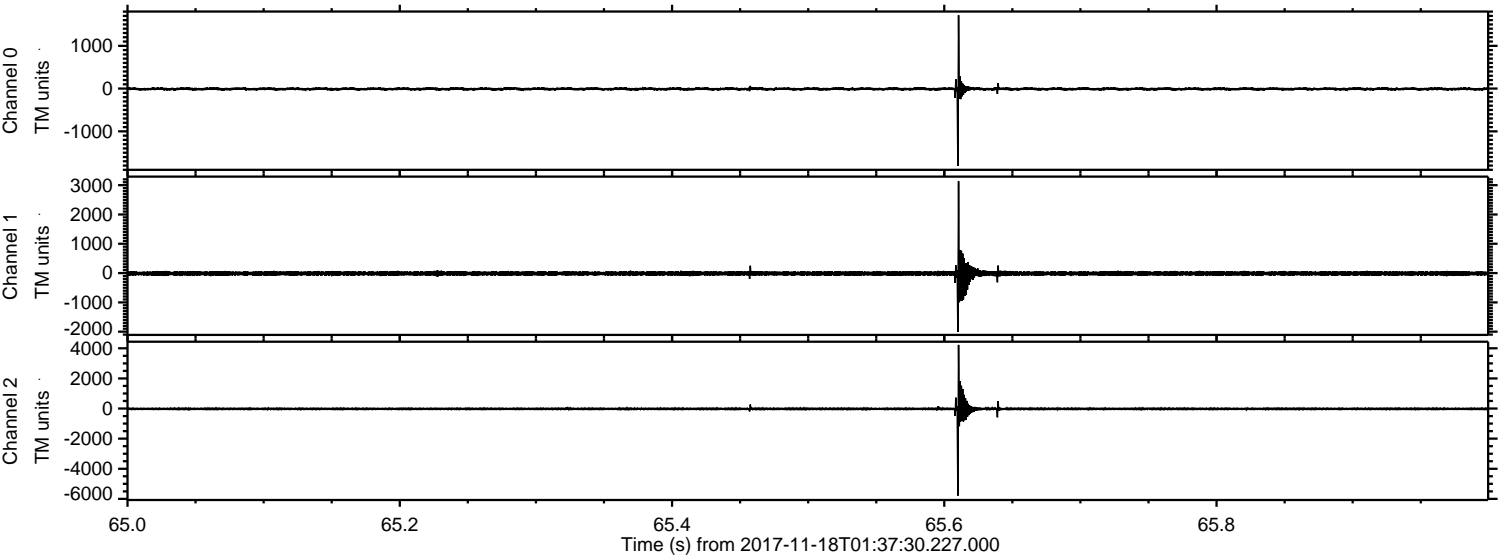


Channel 0
mn: -1491
mx: 2380
 μ : -8.4
 σ : 24.0

Channel 1
mn: -2452
mx: 3444
 μ : -13.9
 σ : 47.1

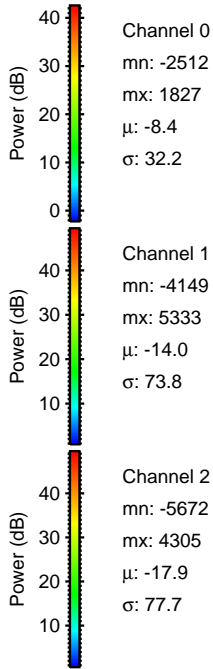
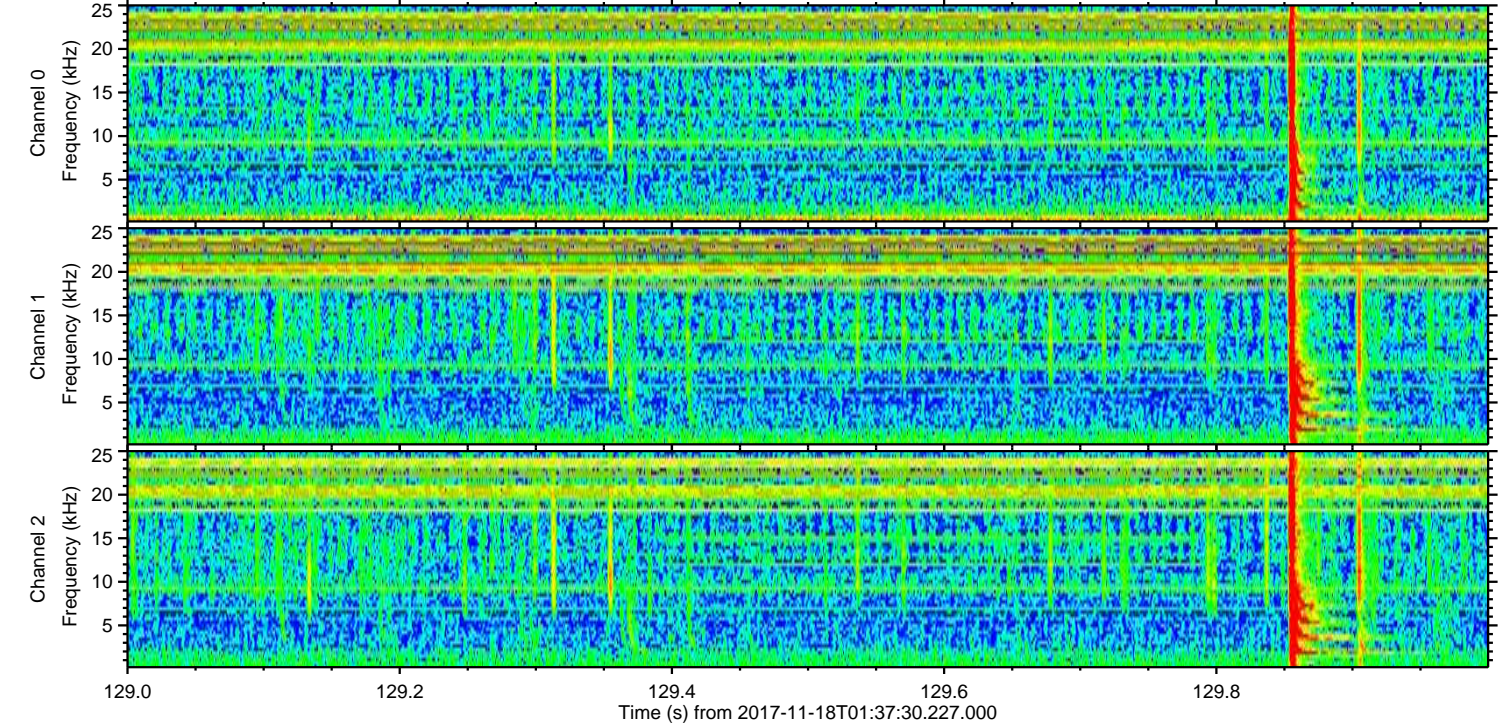
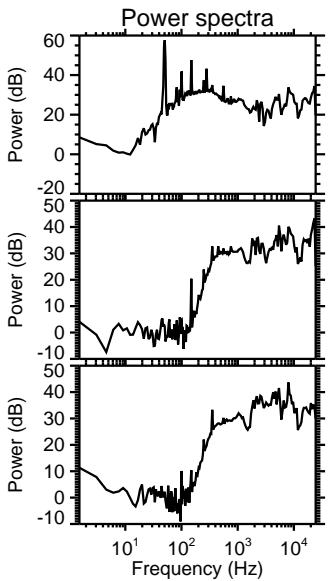
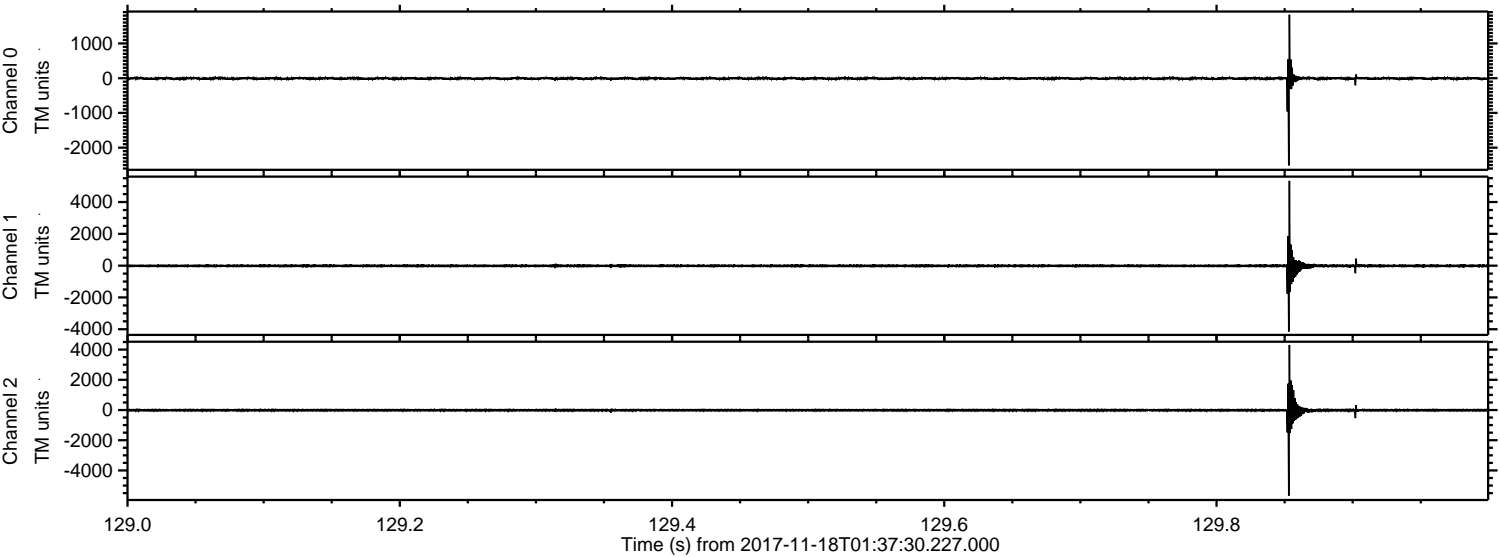
Channel 2
mn: -6213
mx: 4592
 μ : -17.9
 σ : 66.1

Processed Sat Nov 18 02:46:34 2017 by ELM ver.2012-10-06 from 001__elm20171118_013729__dat00.bin



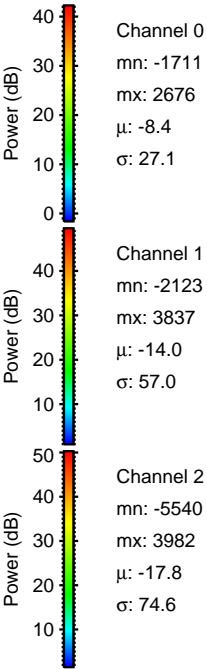
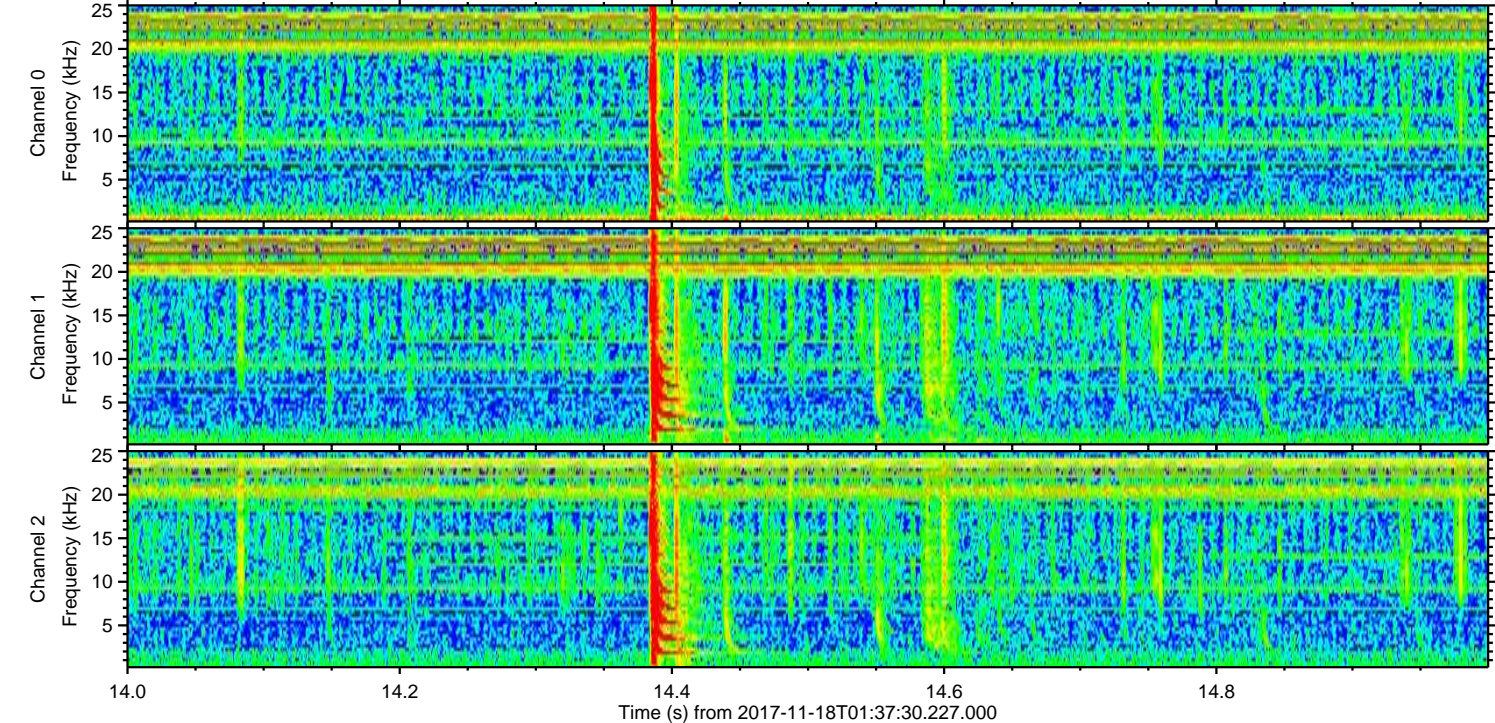
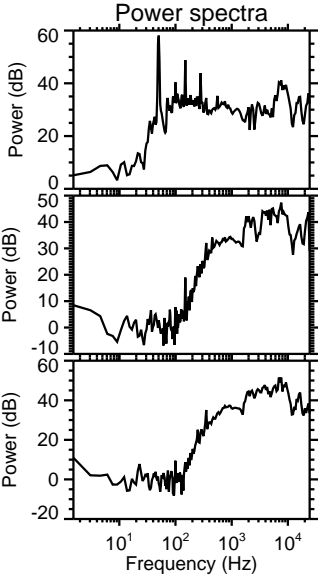
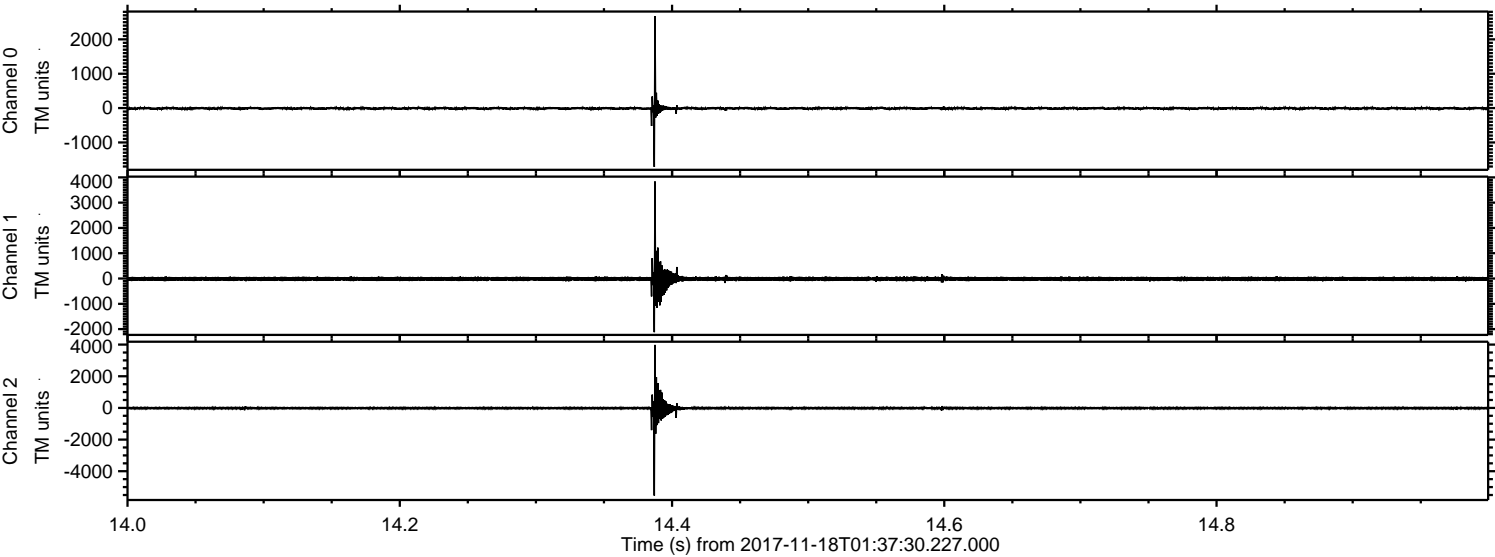
ELMAVAN 3D WAVEFORMS (Measured data sampled at 50 kHz) 51000 packets of 144 samples from 2017-11-18T01:37:30.227.000. Part 130/147

Processed Sat Nov 18 02:46:35 2017 by ELM ver.2012-10-06 from 001__elm20171118_013729__dat00.bin



ELMAVAN 3D WAVEFORMS (Measured data sampled at 50 kHz) 51000 packets of 144 samples from 2017-11-18T01:37:30.227.000. Part 15/147

Processed Sat Nov 18 02:46:36 2017 by ELM ver.2012-10-06 from 001__elm20171118_013729__dat00.bin



ELMAVAN 3D WAVEFORMS (Measured data sampled at 50 kHz) 51000 packets of 144 samples from 2017-11-18T01:37:30.227.000. Part 108/147

