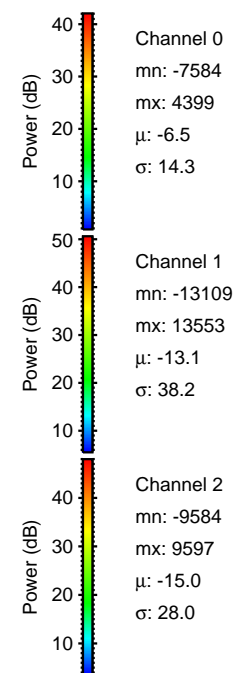
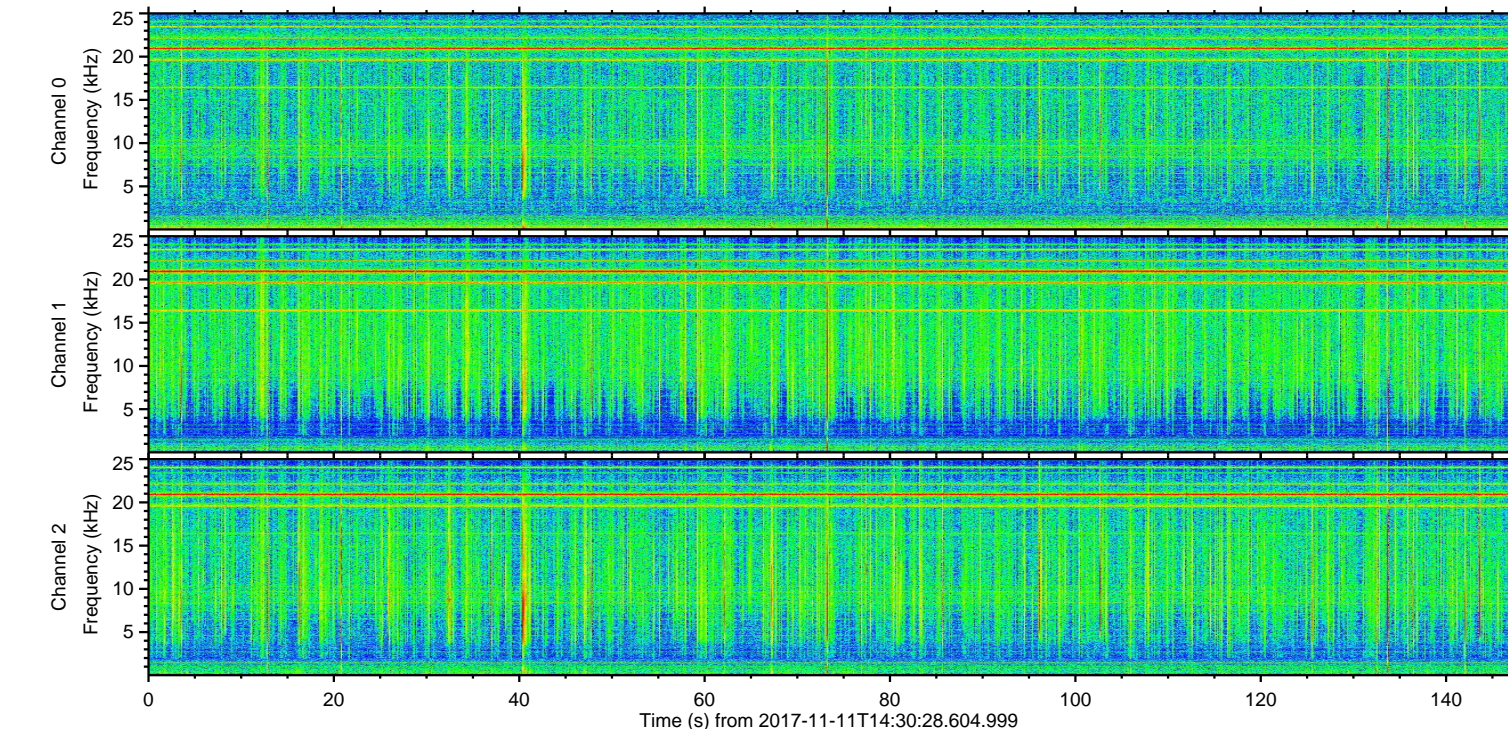
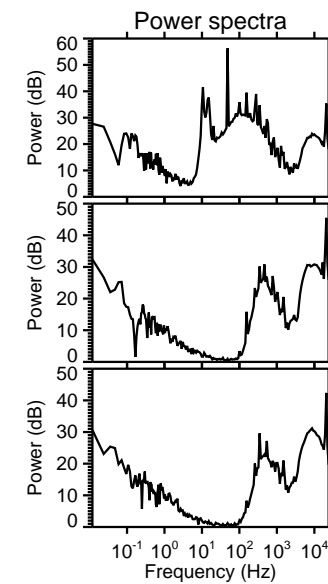
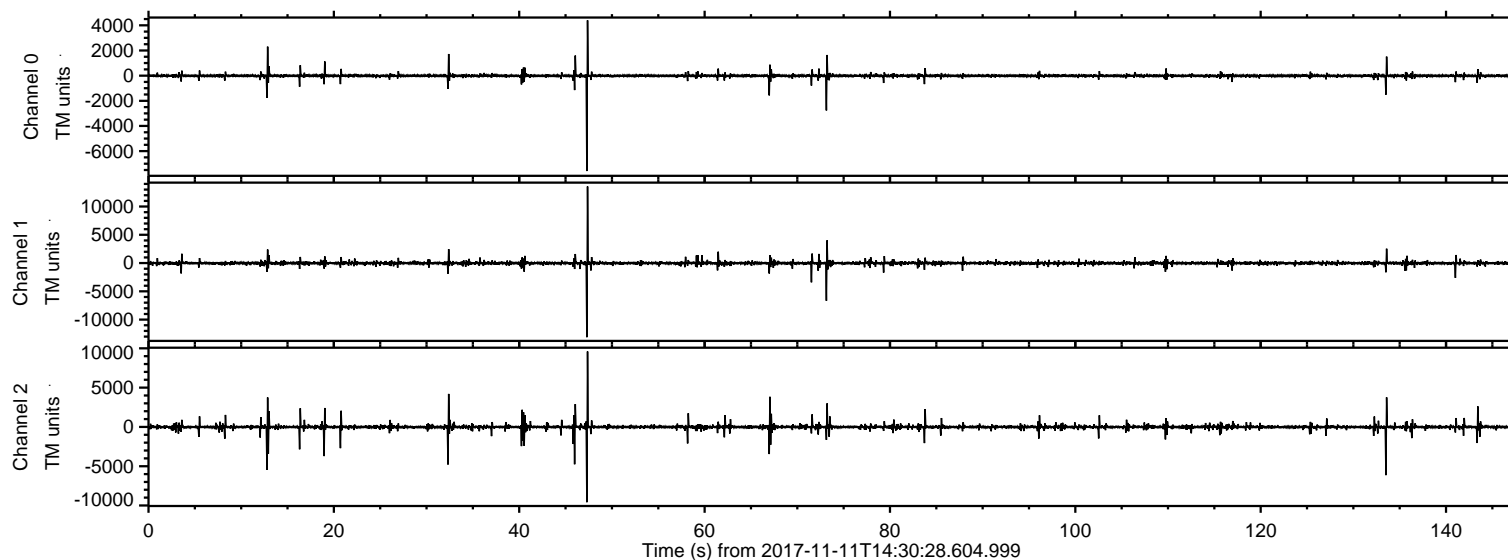


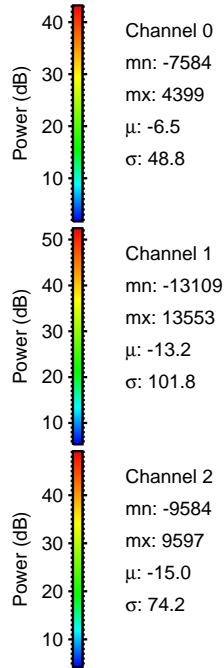
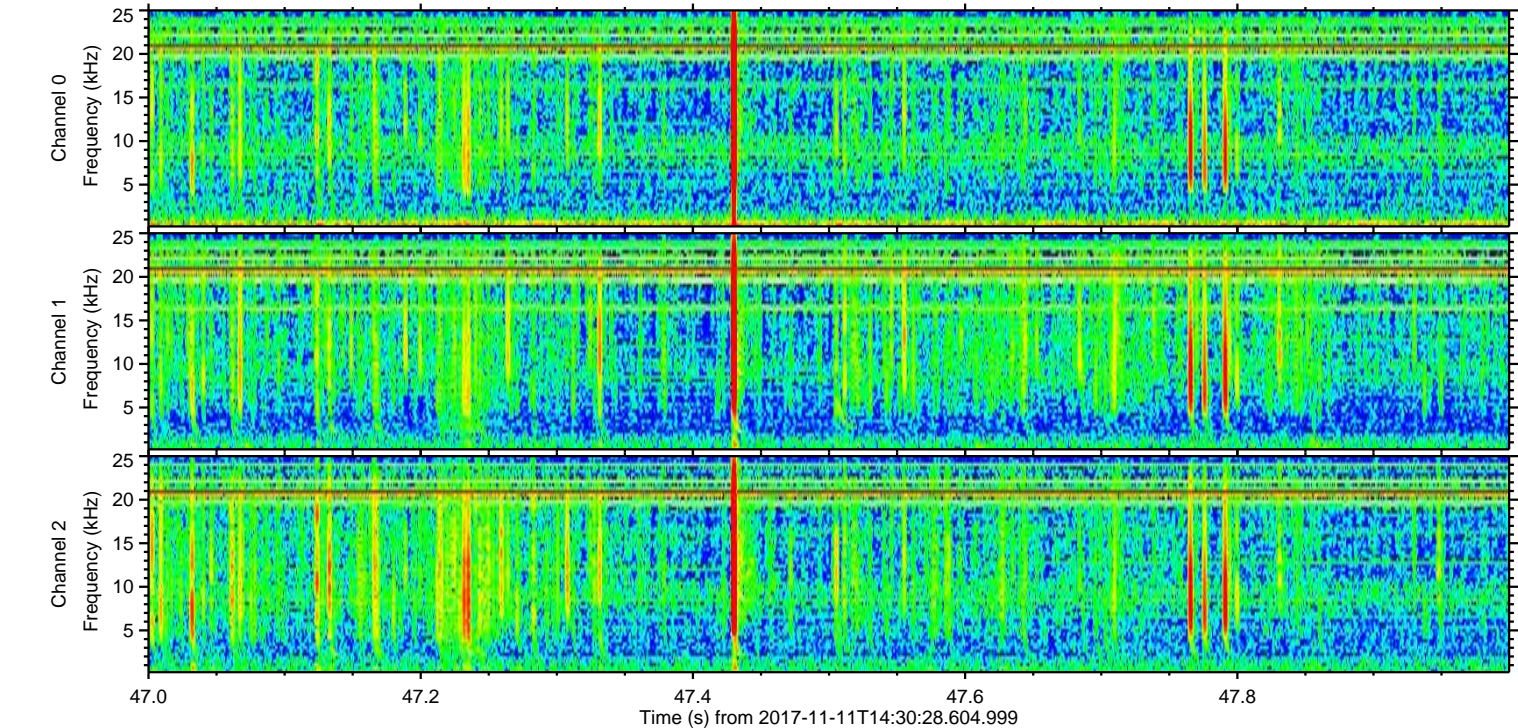
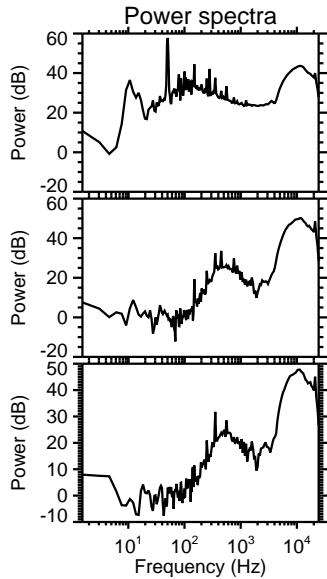
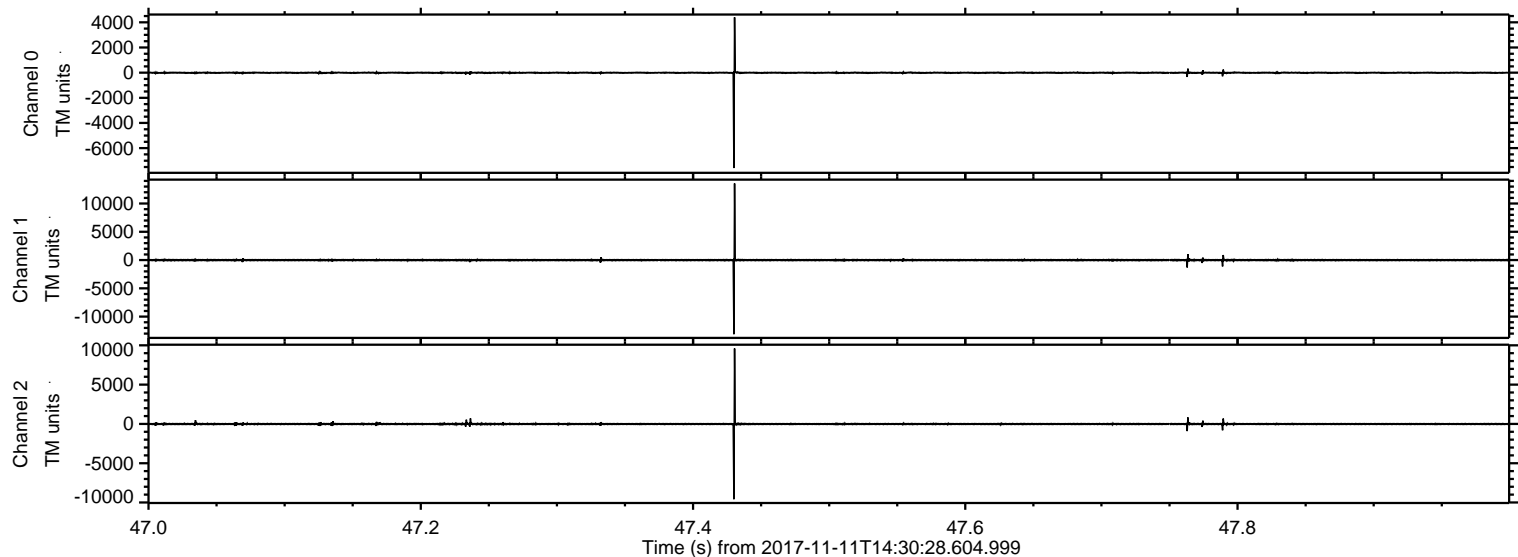
ELMAVAN 3D WAVEFORMS (Measured data sampled at 50 kHz) 51000 packets of 144 samples from 2017-11-11T14:30:28.604.999.

Processed Sat Nov 11 15:38:33 2017 by ELM ver.2012-10-06 from 001__elm20171111_143027__dat00.bin

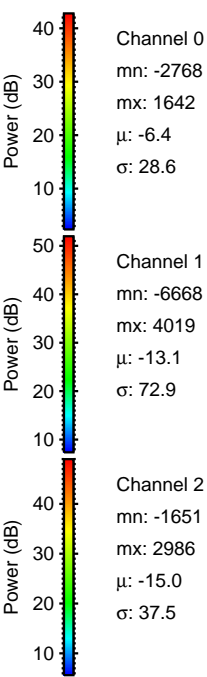
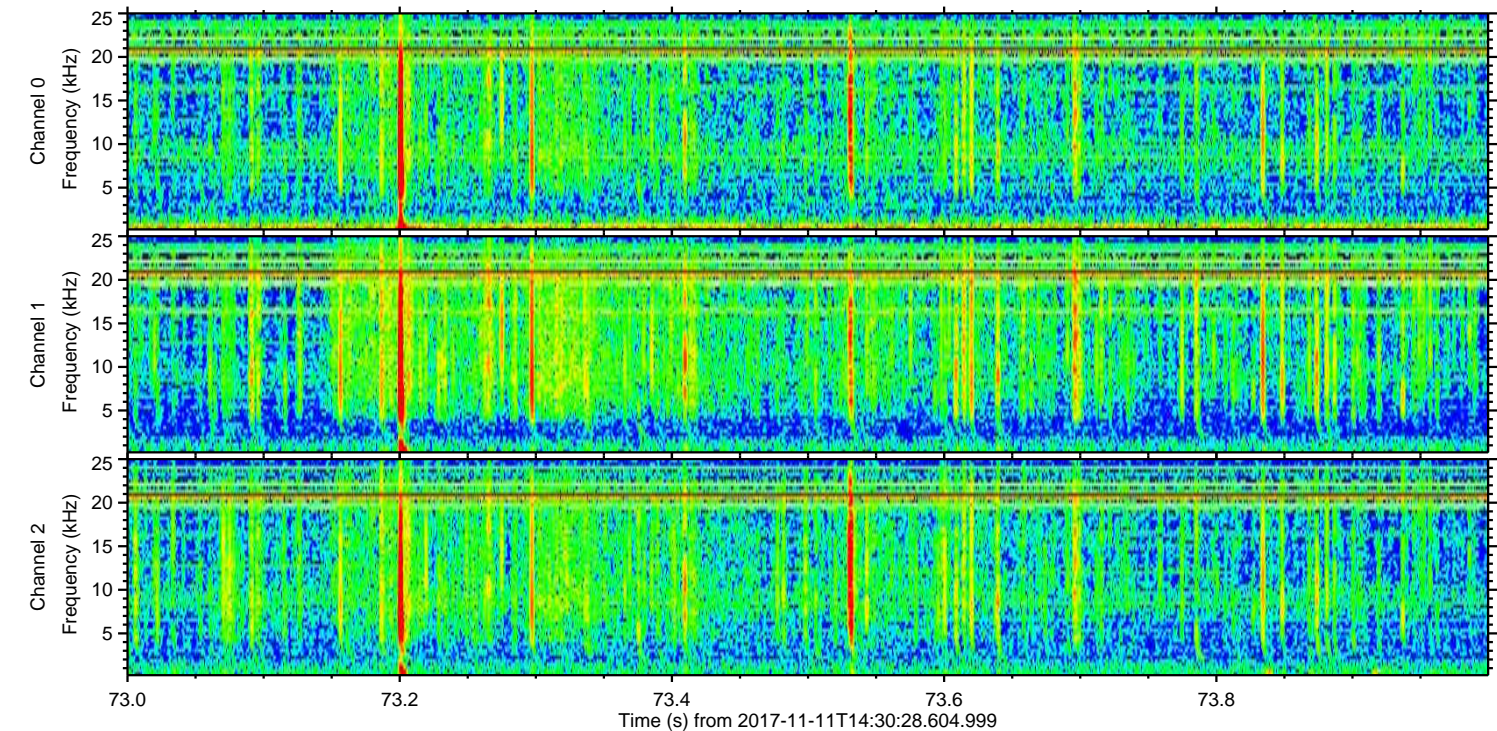
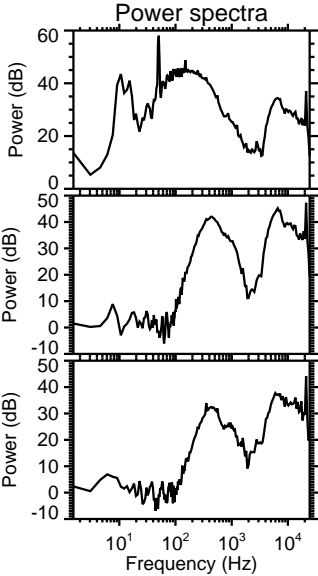
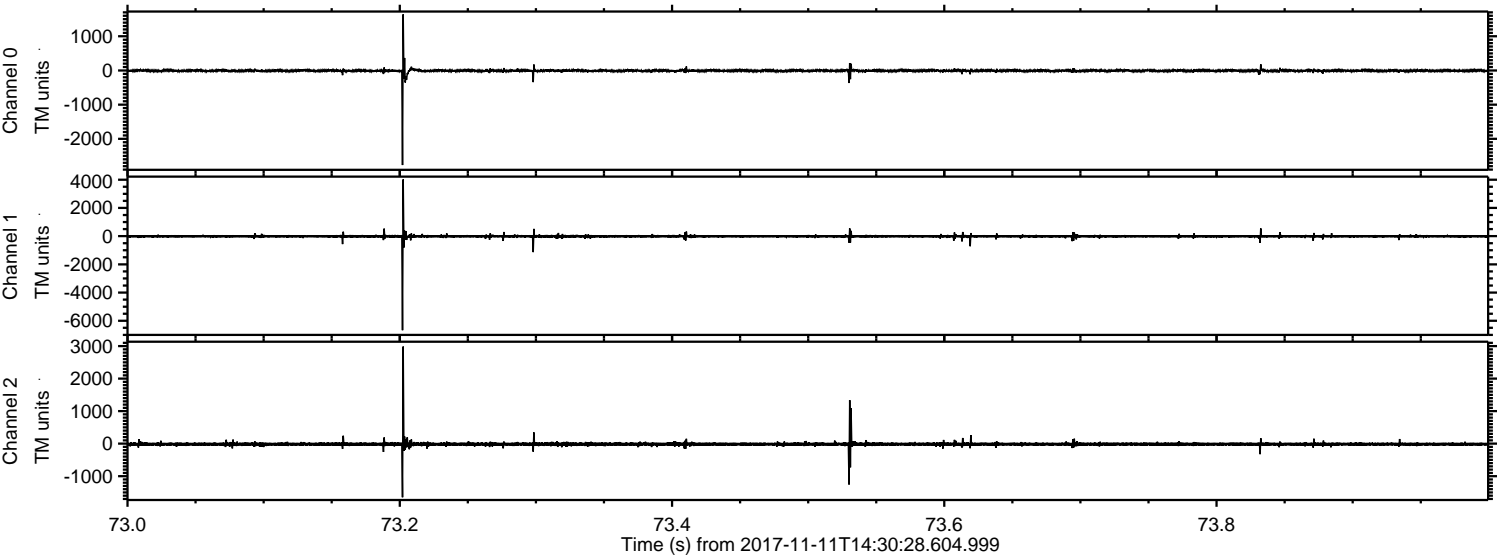


ELMAVAN 3D WAVEFORMS (Measured data sampled at 50 kHz) 51000 packets of 144 samples from 2017-11-11T14:30:28.604.999. Part 48/147

Processed Sat Nov 11 15:38:40 2017 by ELM ver.2012-10-06 from 001__elm20171111_143027__dat00.bin

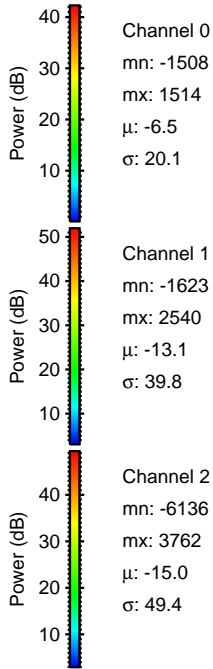
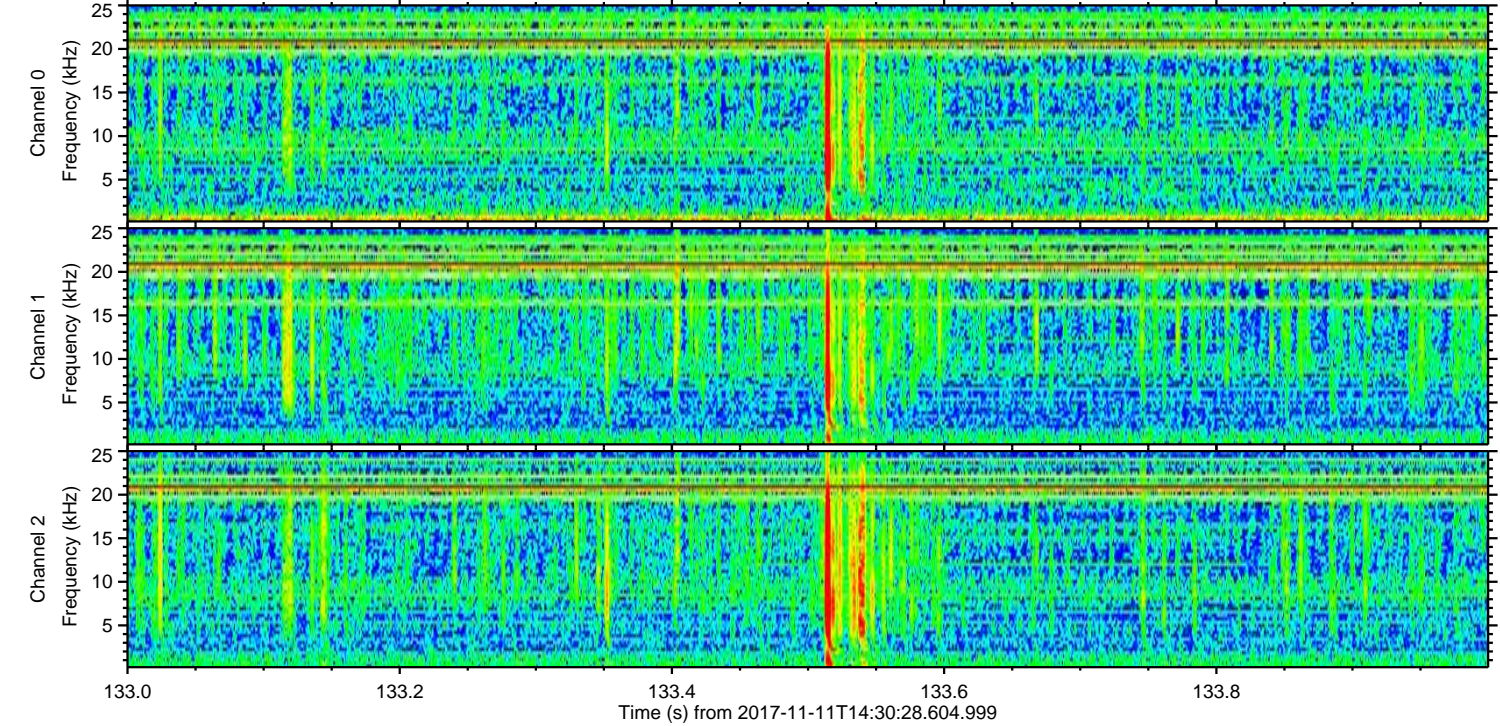
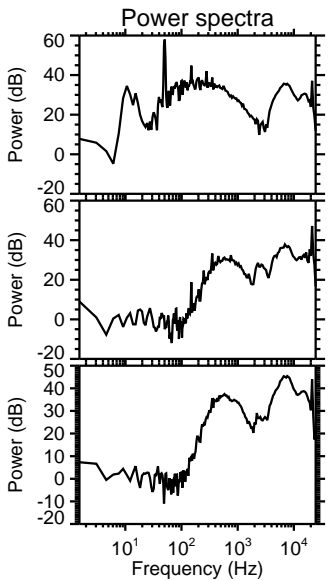
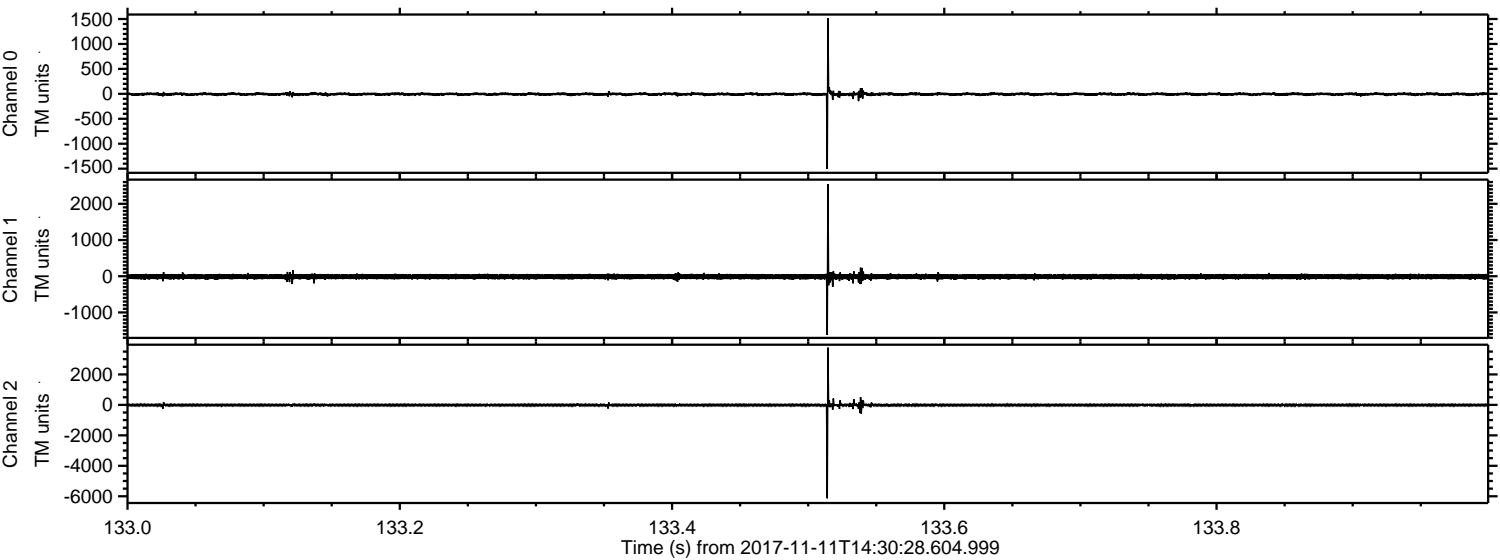


Processed Sat Nov 11 15:38:41 2017 by ELM ver.2012-10-06 from 001__elm20171111_143027__dat00.bin



ELMAVAN 3D WAVEFORMS (Measured data sampled at 50 kHz) 51000 packets of 144 samples from 2017-11-11T14:30:28.604.999. Part 134/147

Processed Sat Nov 11 15:38:41 2017 by ELM ver.2012-10-06 from 001__elm20171111_143027__dat00.bin



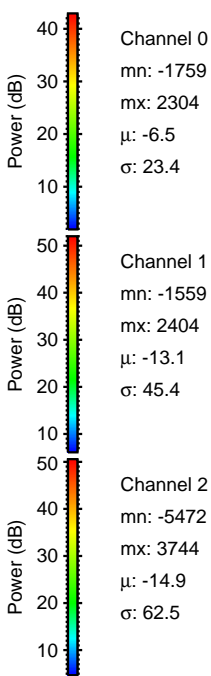
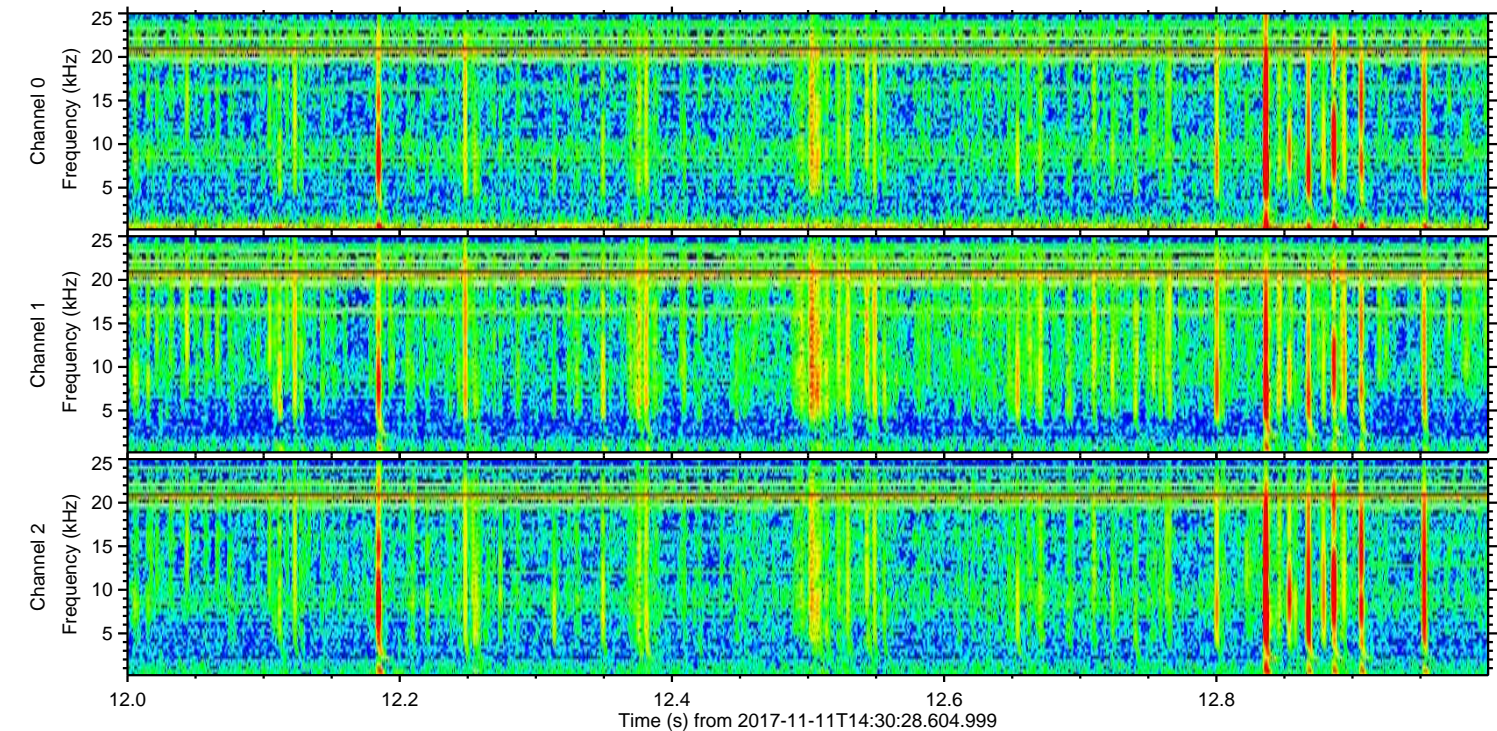
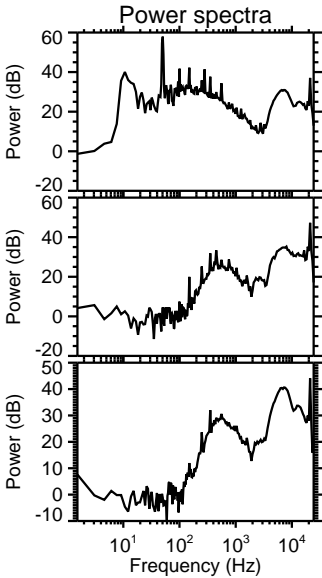
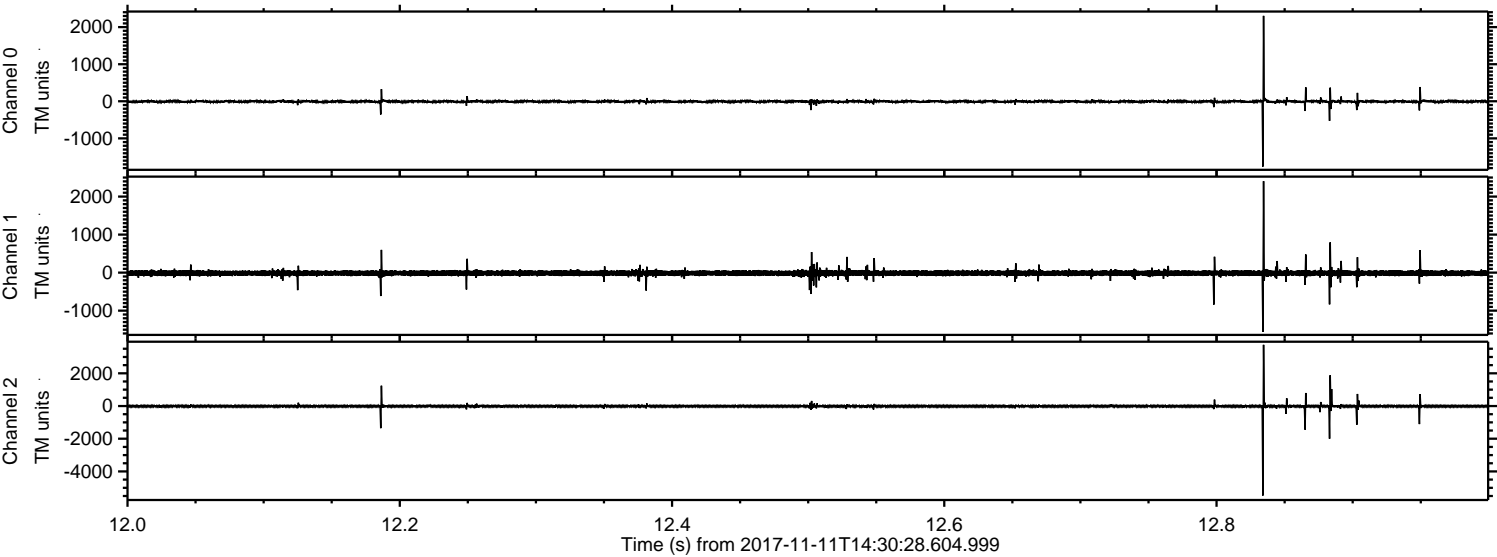
Channel 0
mn: -1508
mx: 1514
 μ : -6.5
 σ : 20.1

Channel 1
mn: -1623
mx: 2540
 μ : -13.1
 σ : 39.8

Channel 2
mn: -6136
mx: 3762
 μ : -15.0
 σ : 49.4

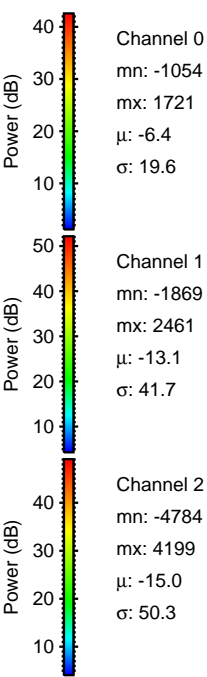
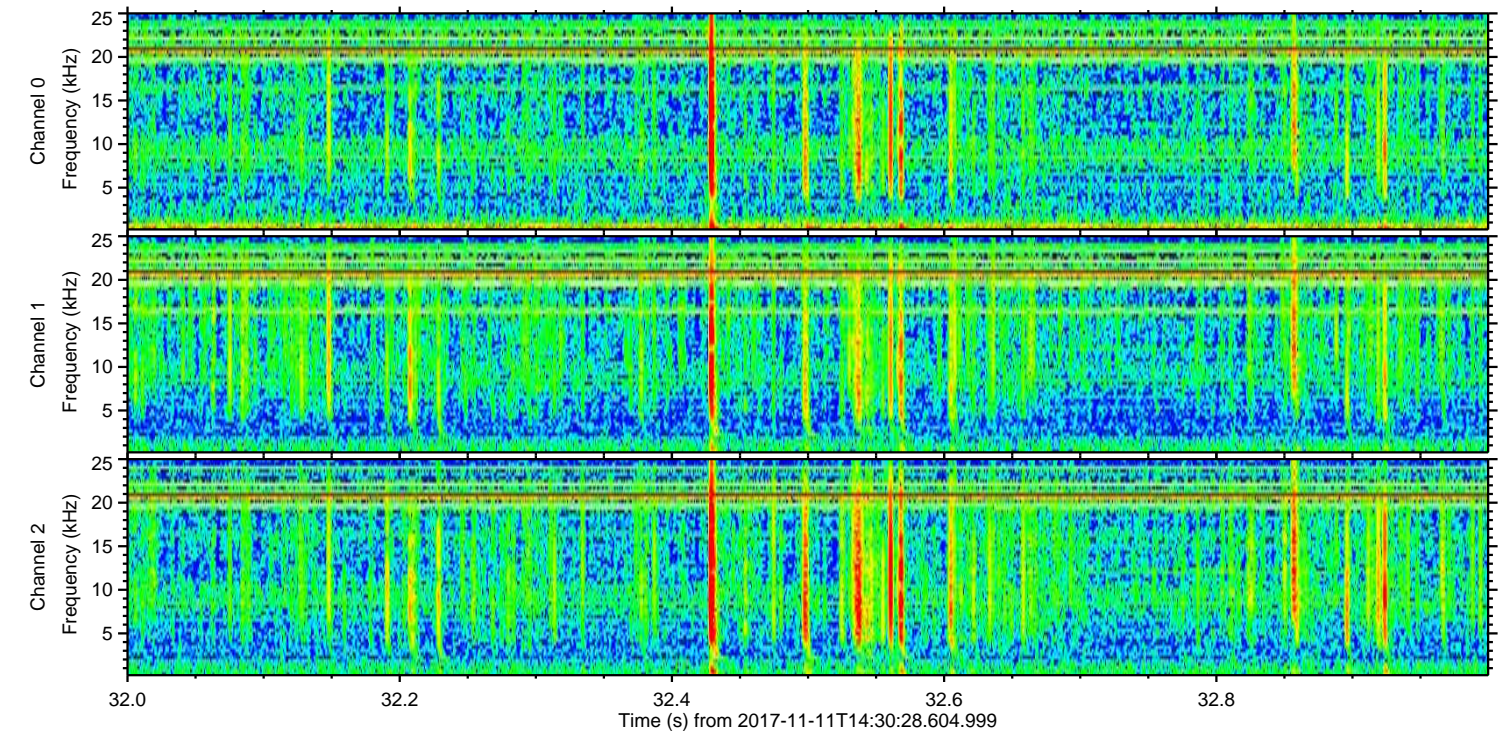
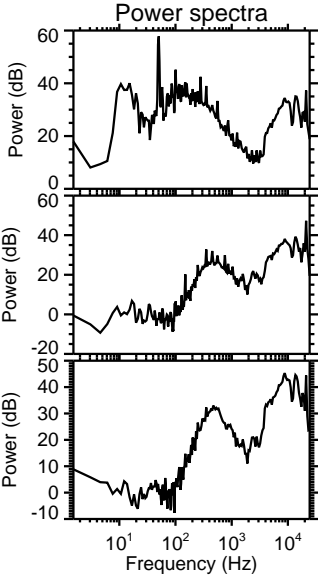
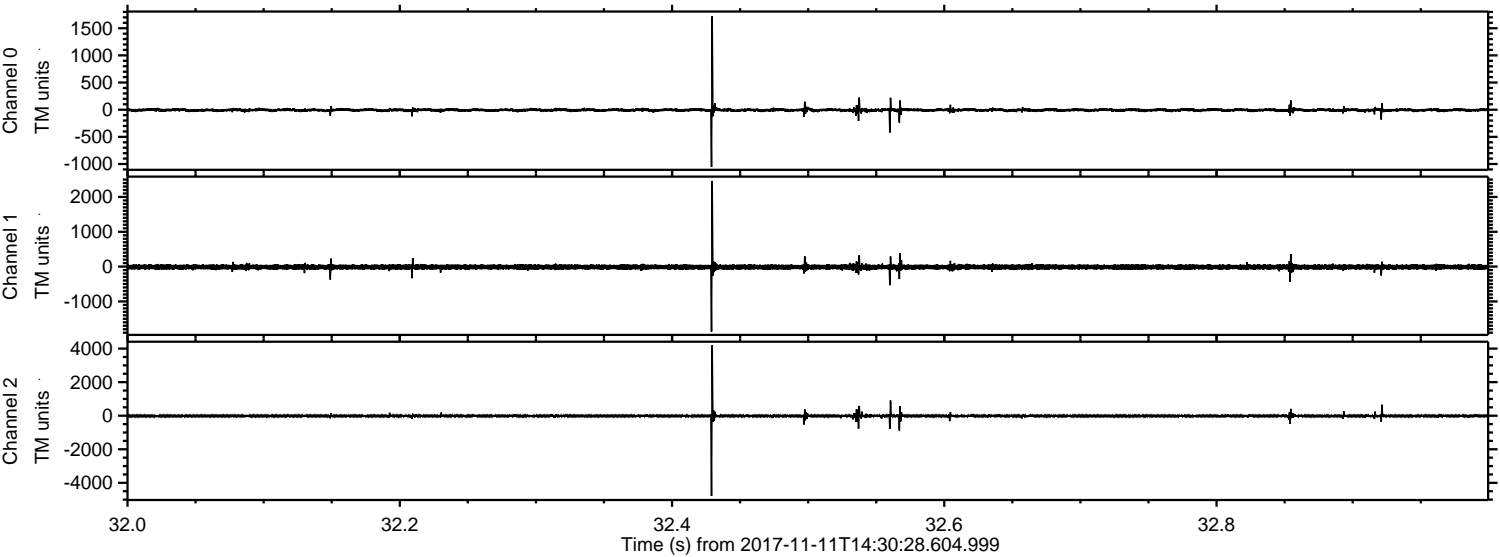
ELMAVAN 3D WAVEFORMS (Measured data sampled at 50 kHz) 51000 packets of 144 samples from 2017-11-11T14:30:28.604.999. Part 13/147

Processed Sat Nov 11 15:38:42 2017 by ELM ver.2012-10-06 from 001__elm20171111_143027__dat00.bin

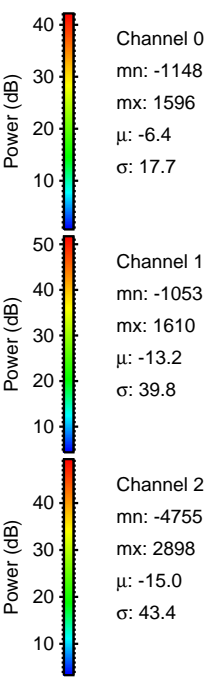
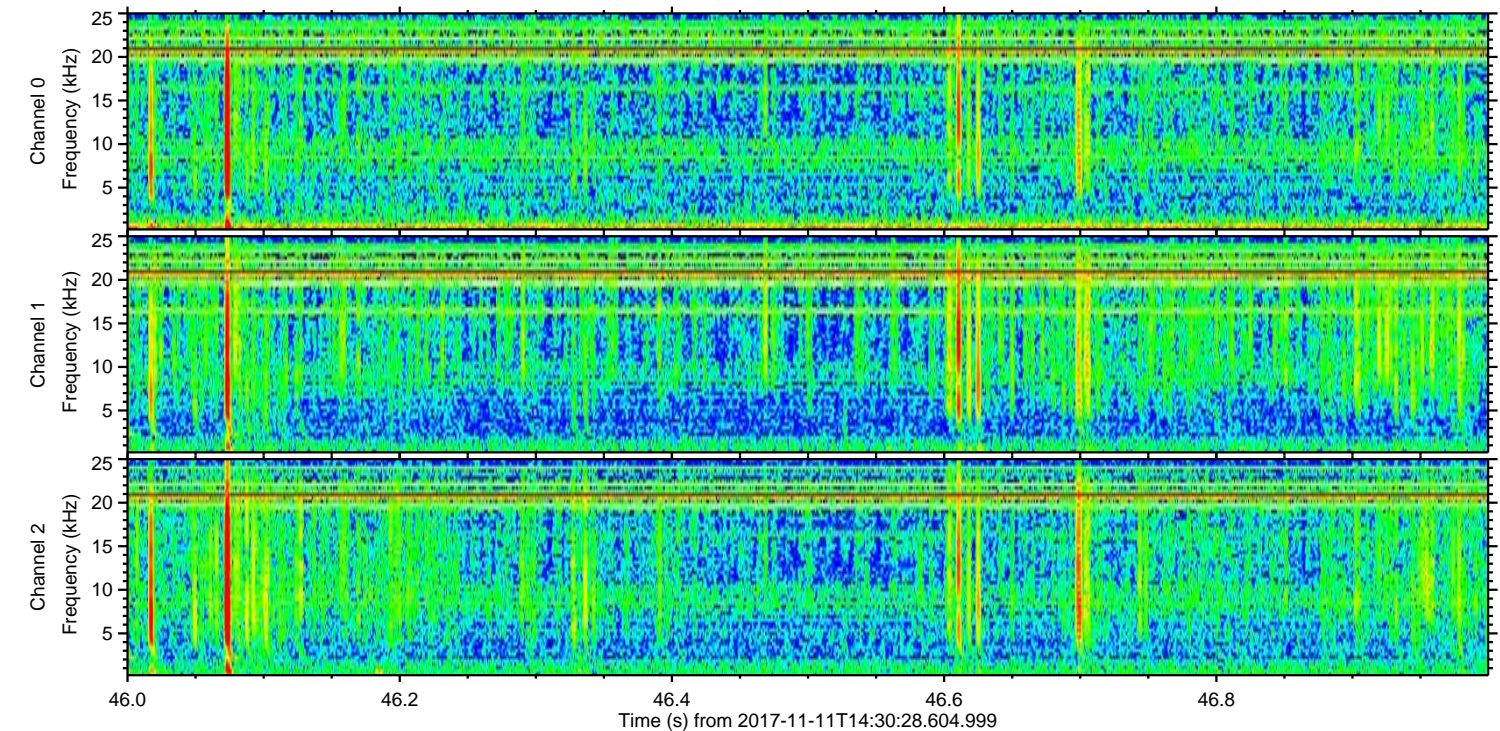
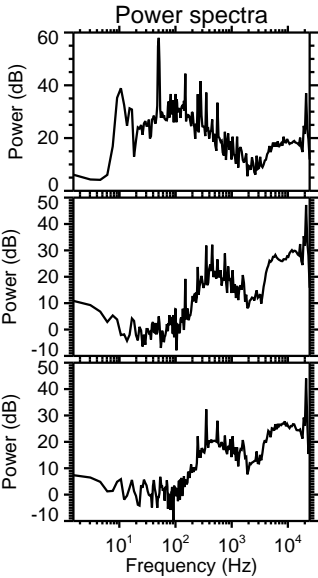
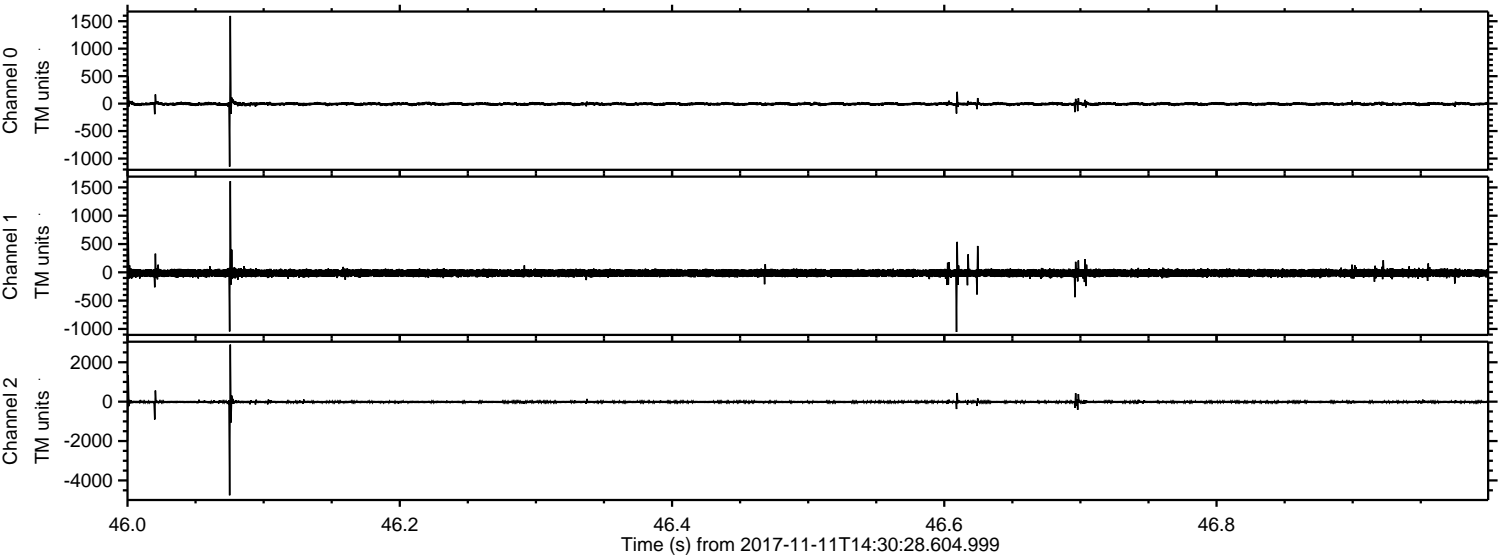


ELMAVAN 3D WAVEFORMS (Measured data sampled at 50 kHz) 51000 packets of 144 samples from 2017-11-11T14:30:28.604.999. Part 33/147

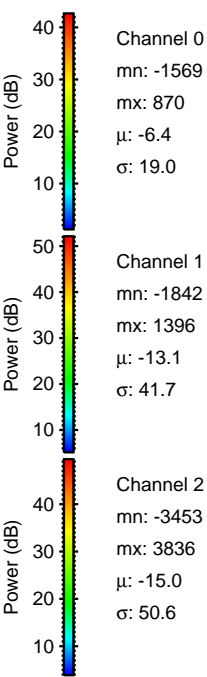
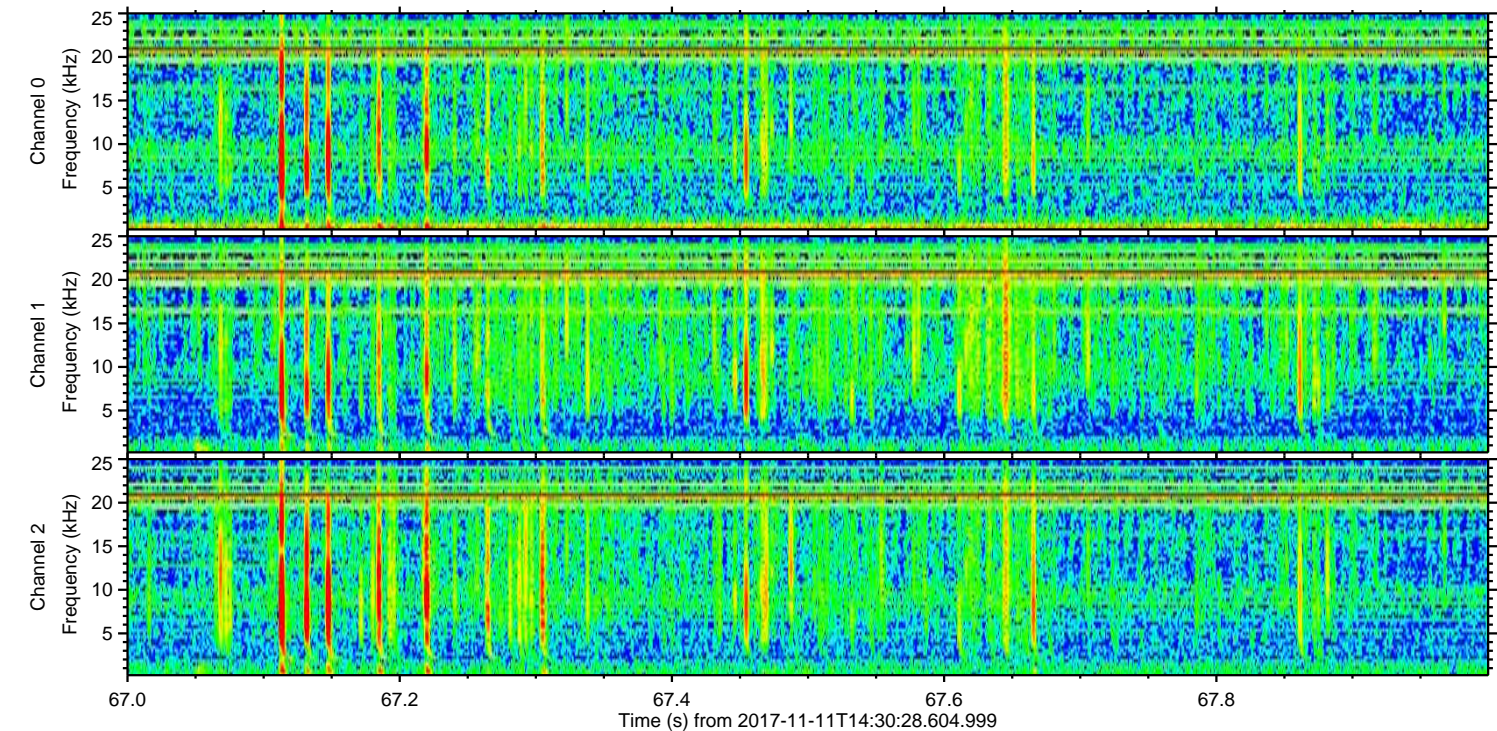
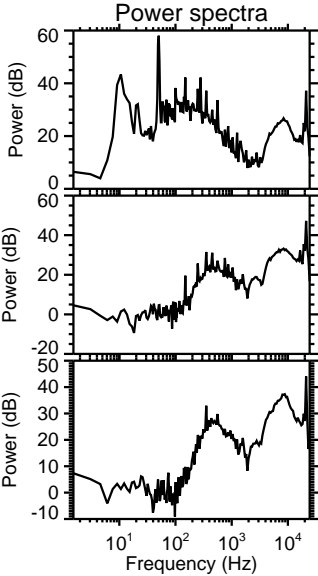
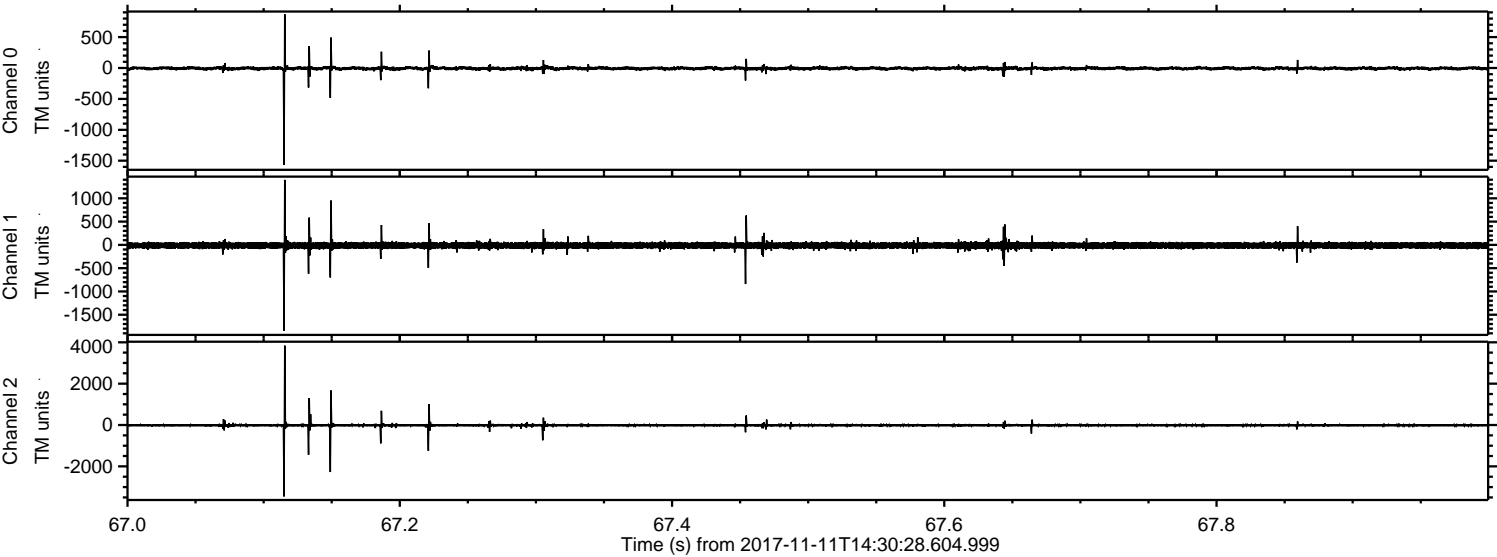
Processed Sat Nov 11 15:38:43 2017 by ELM ver.2012-10-06 from 001__elm20171111_143027__dat00.bin



Processed Sat Nov 11 15:38:43 2017 by ELM ver.2012-10-06 from 001__elm20171111_143027__dat00.bin



Processed Sat Nov 11 15:38:44 2017 by ELM ver.2012-10-06 from 001__elm20171111_143027__dat00.bin

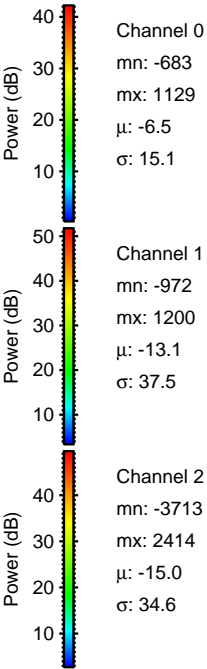
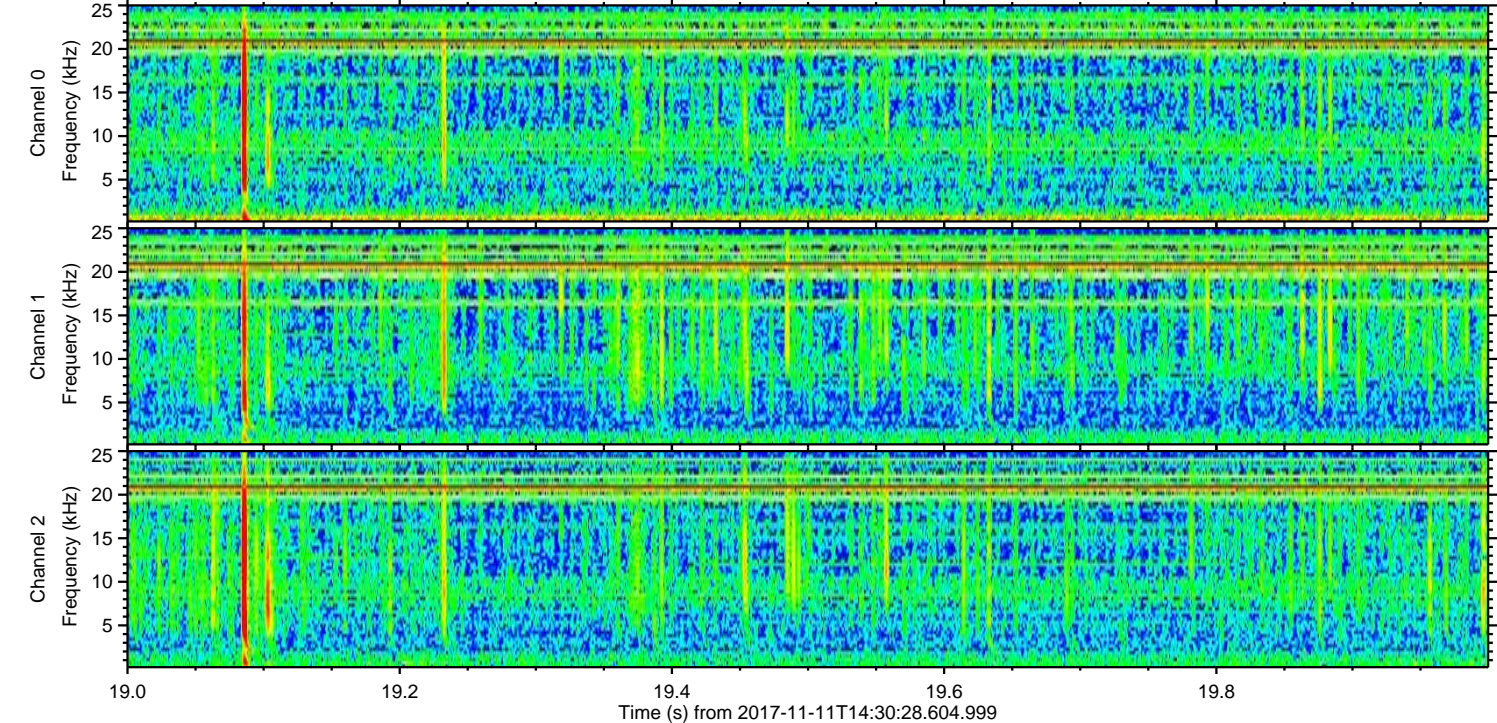
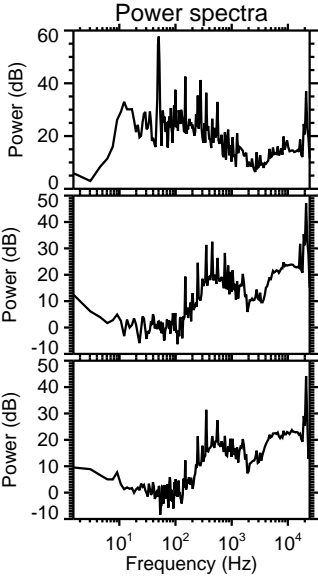
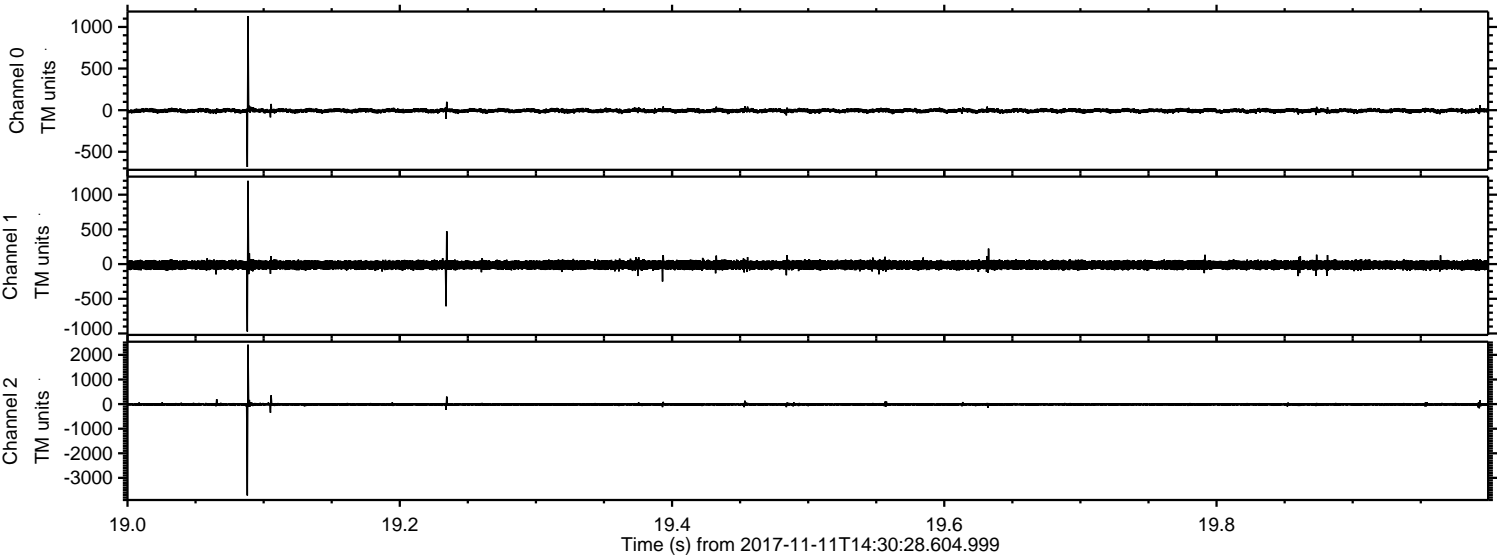


Channel 0
mn: -1569
mx: 870
 μ : -6.4
 σ : 19.0

Channel 1
mn: -1842
mx: 1396
 μ : -13.1
 σ : 41.7

Channel 2
mn: -3453
mx: 3836
 μ : -15.0
 σ : 50.6

Processed Sat Nov 11 15:38:45 2017 by ELM ver.2012-10-06 from 001__elm20171111_143027__dat00.bin

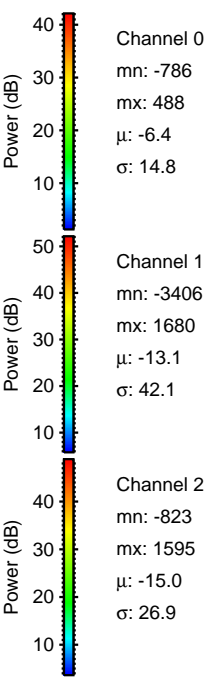
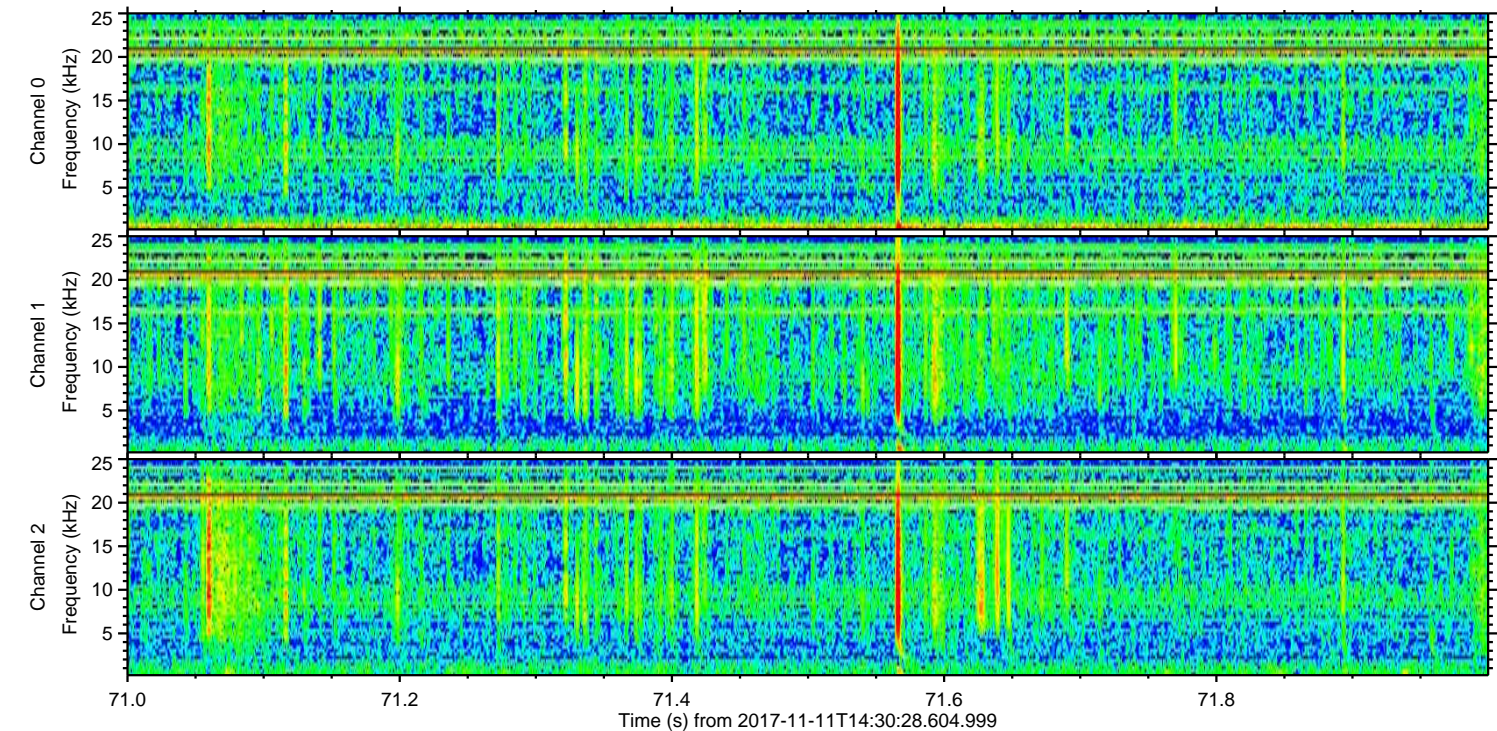
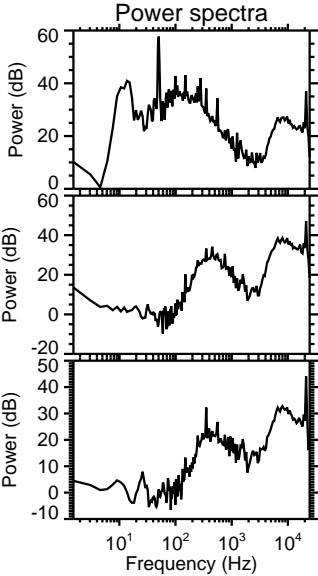
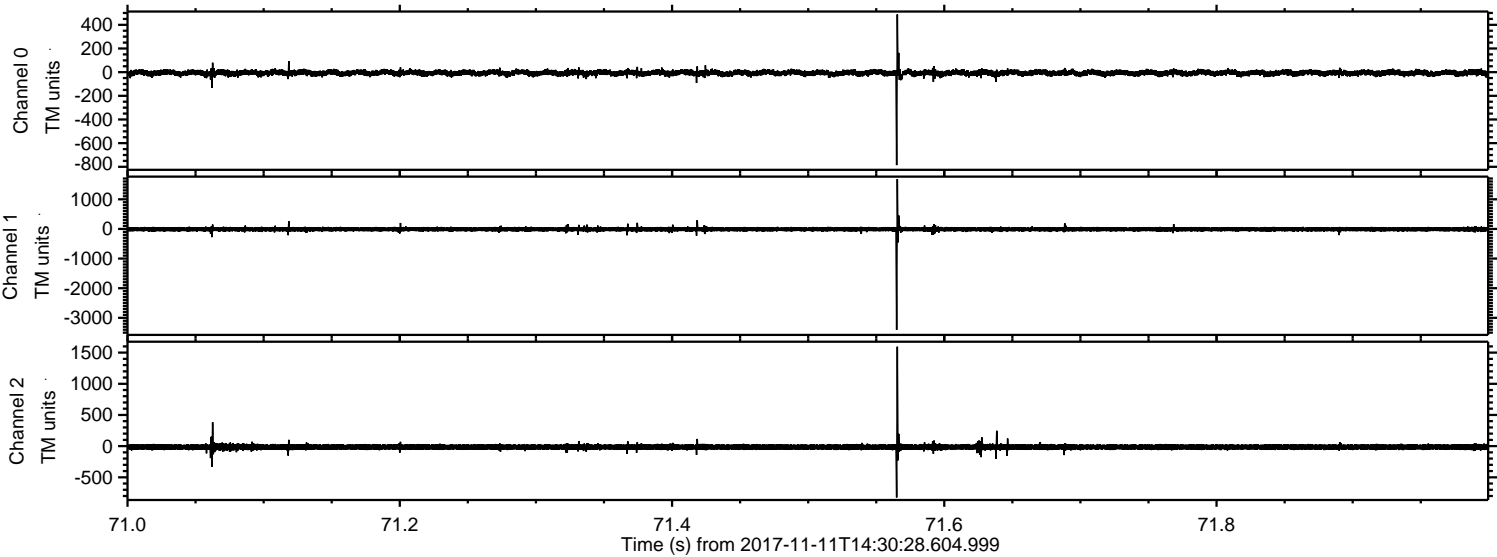


Channel 0
mn: -683
mx: 1129
 μ : -6.5
 σ : 15.1

Channel 1
mn: -972
mx: 1200
 μ : -13.1
 σ : 37.5

Channel 2
mn: -3713
mx: 2414
 μ : -15.0
 σ : 34.6

Processed Sat Nov 11 15:38:46 2017 by ELM ver.2012-10-06 from 001__elm20171111_143027__dat00.bin



Channel 0
mn: -786
mx: 488
 μ : -6.4
 σ : 14.8

Channel 1
mn: -3406
mx: 1680
 μ : -13.1
 σ : 42.1

Channel 2
mn: -823
mx: 1595
 μ : -15.0
 σ : 26.9

