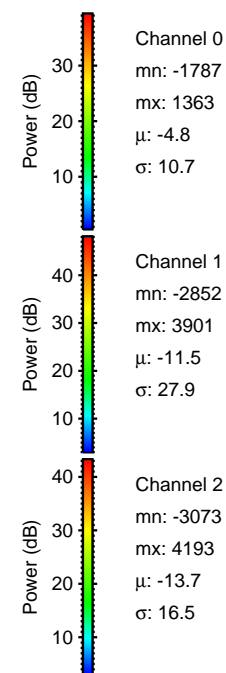
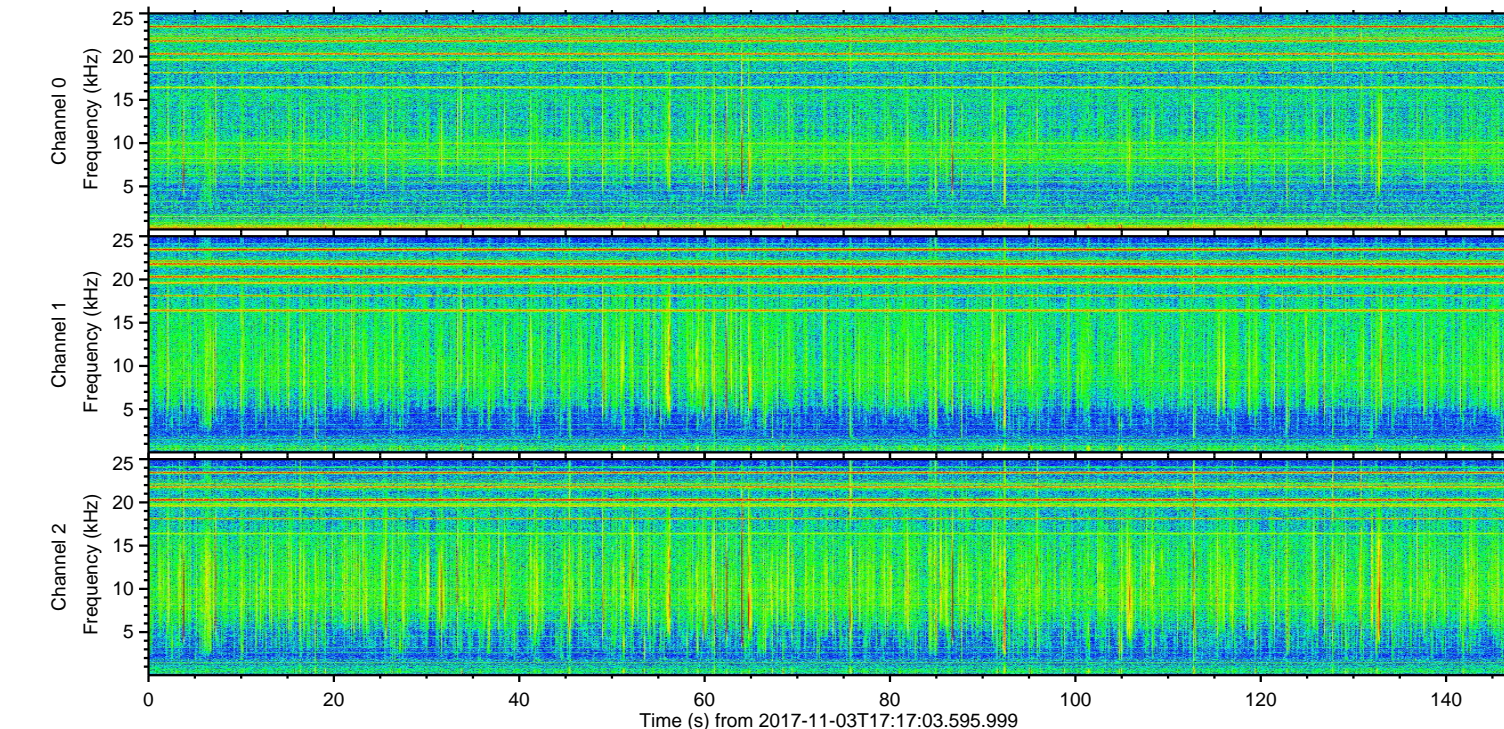
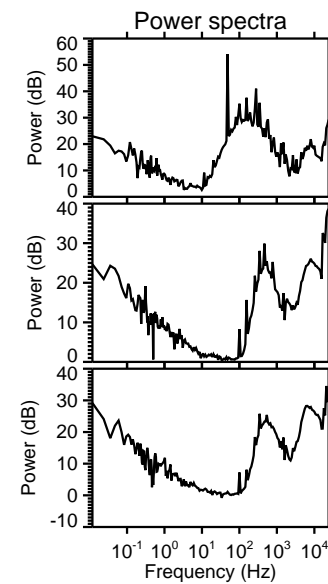
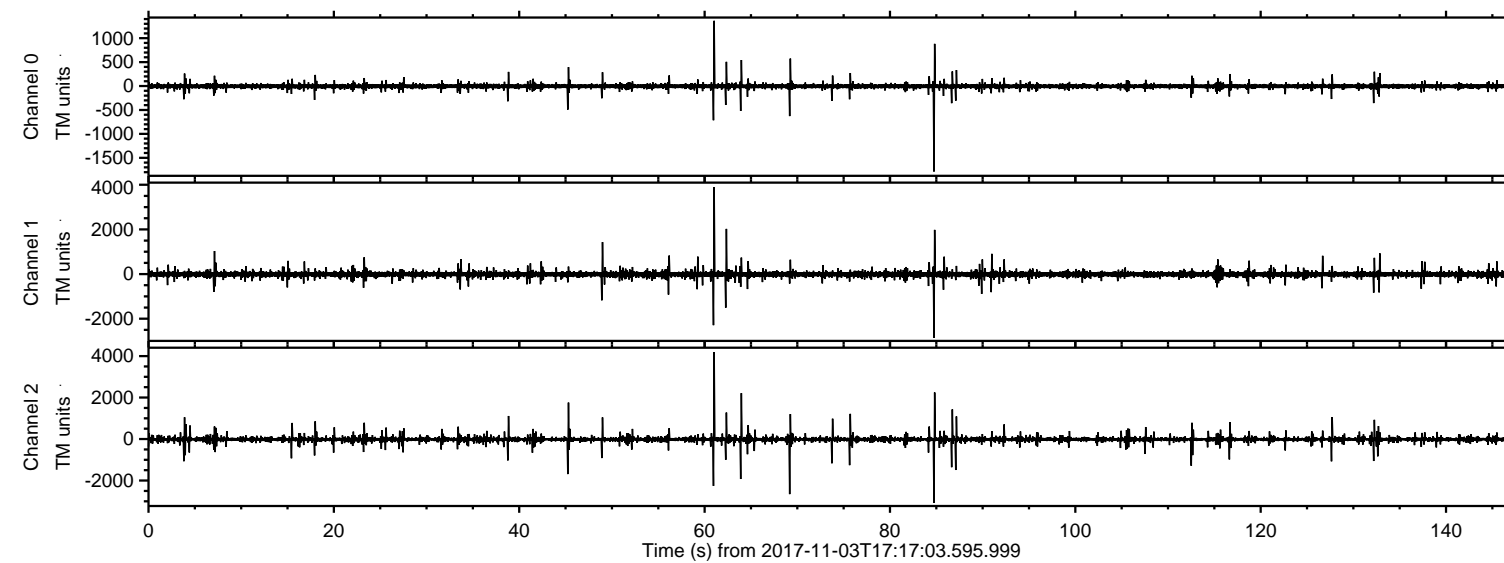


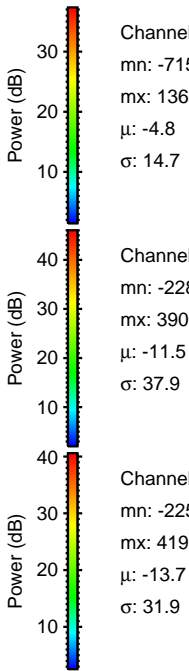
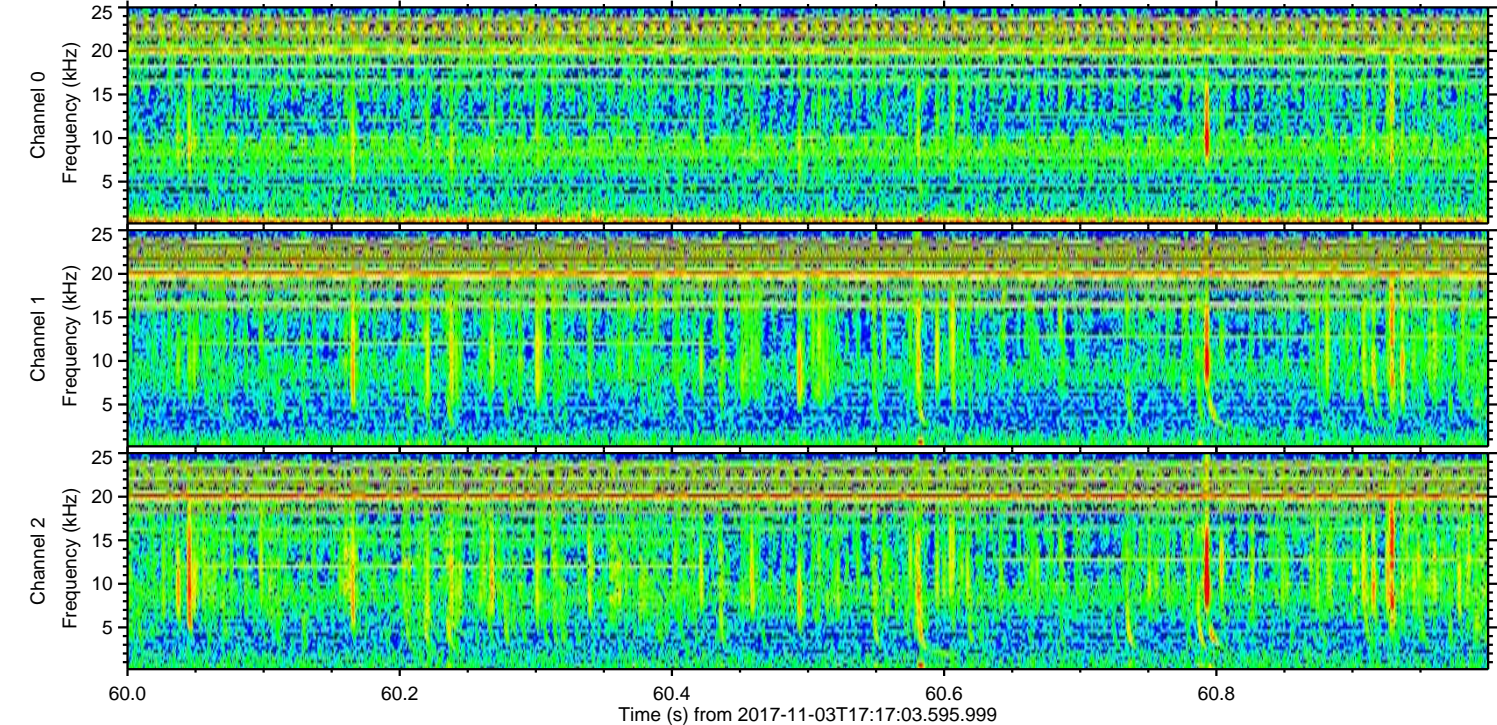
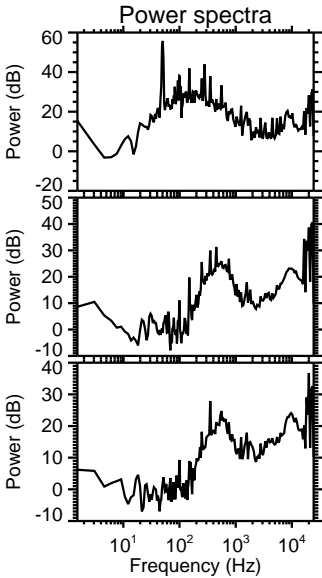
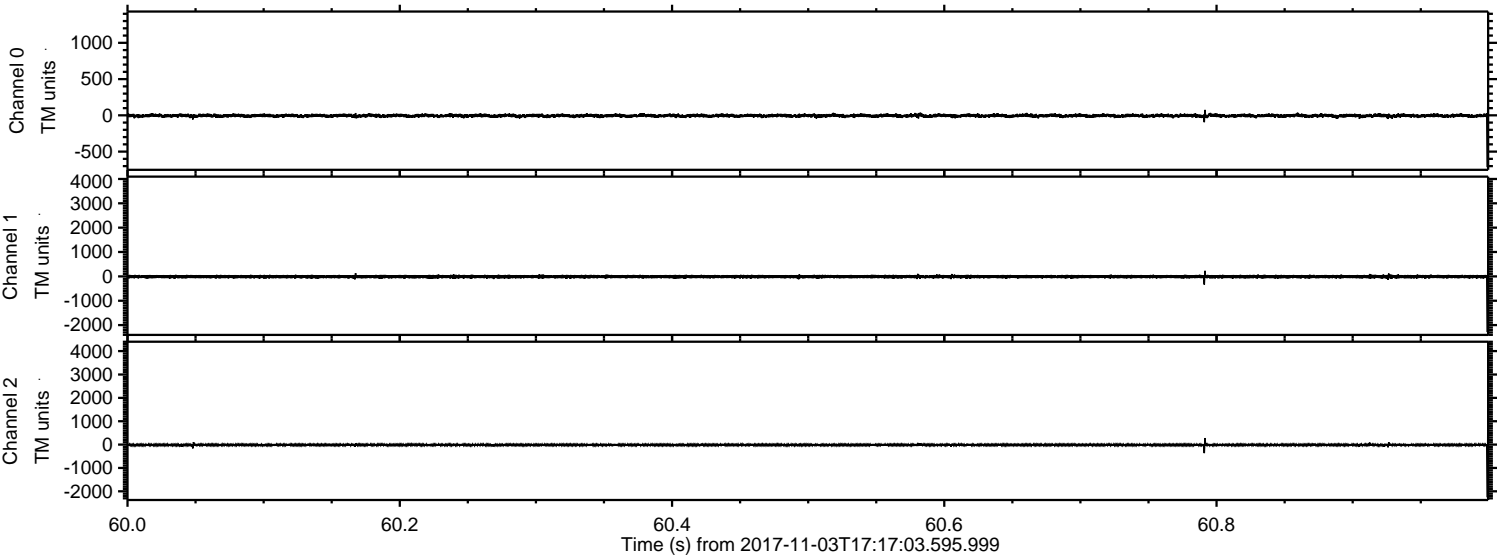
ELMAVAN 3D WAVEFORMS (Measured data sampled at 50 kHz) 51000 packets of 144 samples from 2017-11-03T17:17:03.595.999.

Processed Fri Nov 3 18:24:51 2017 by ELM ver.2012-10-06 from 001__elm20171103_171702__dat00.bin

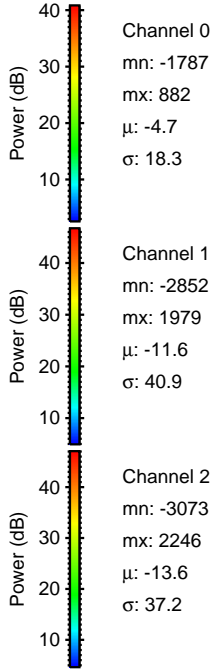
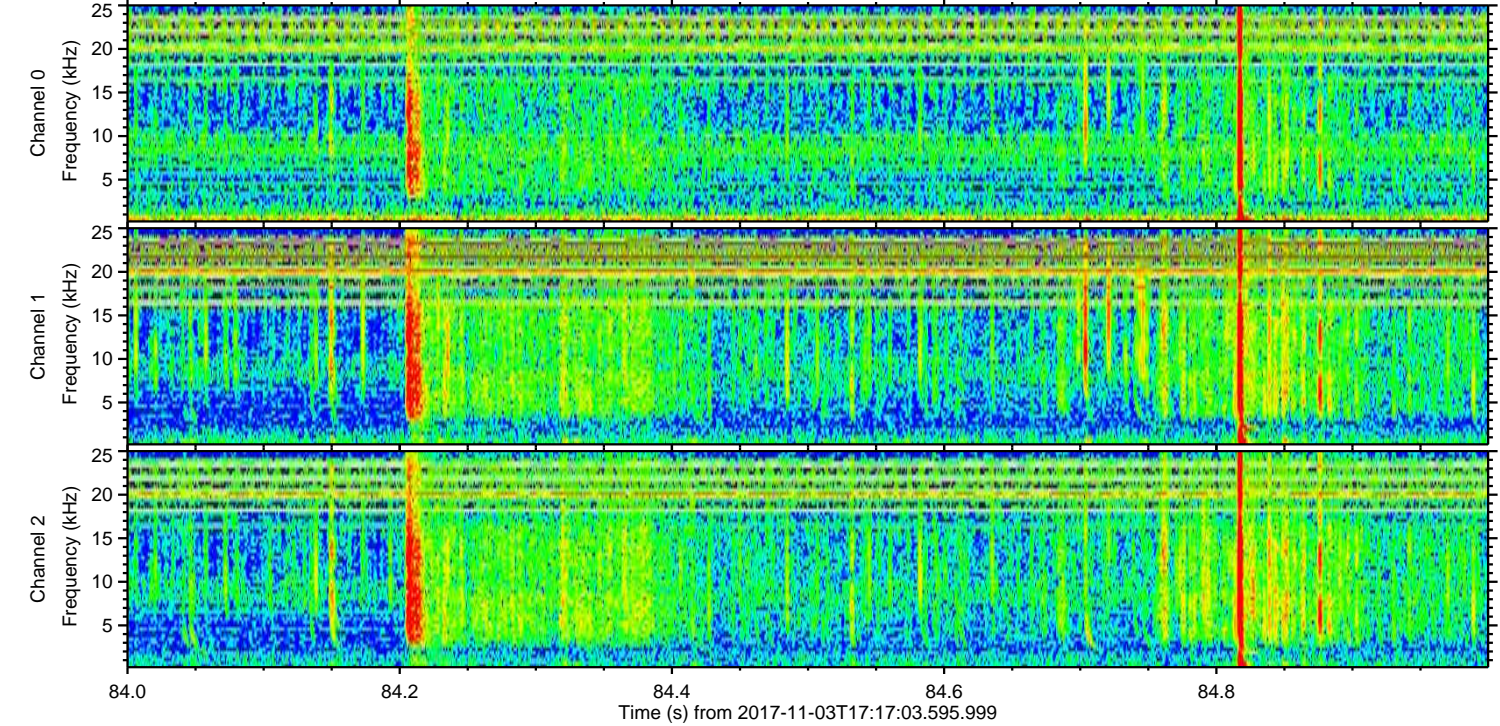
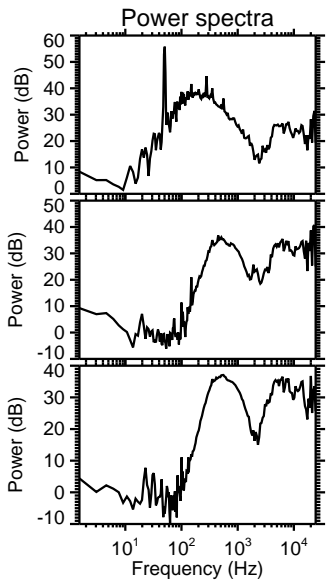
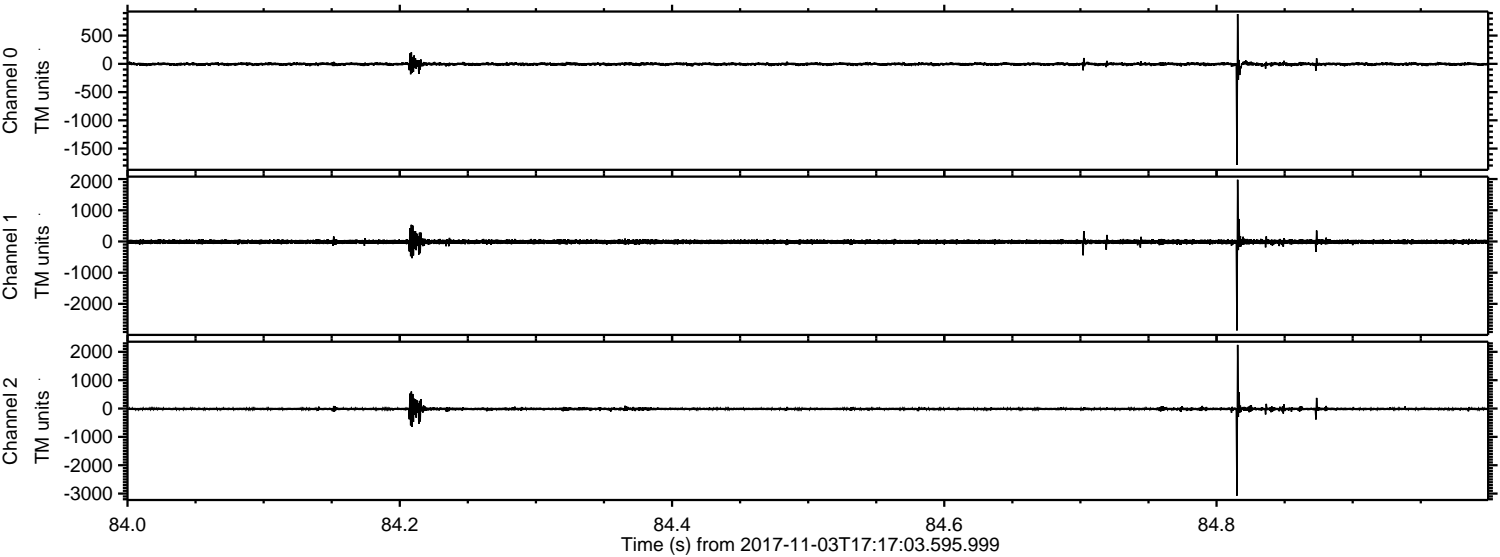


ELMAVAN 3D WAVEFORMS (Measured data sampled at 50 kHz) 51000 packets of 144 samples from 2017-11-03T17:17:03.595.999. Part 61/147

Processed Fri Nov 3 18:24:57 2017 by ELM ver.2012-10-06 from 001__elm20171103_171702__dat00.bin



Processed Fri Nov 3 18:24:58 2017 by ELM ver.2012-10-06 from 001__elm20171103_171702__dat00.bin

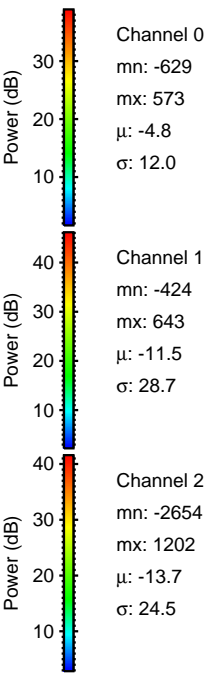
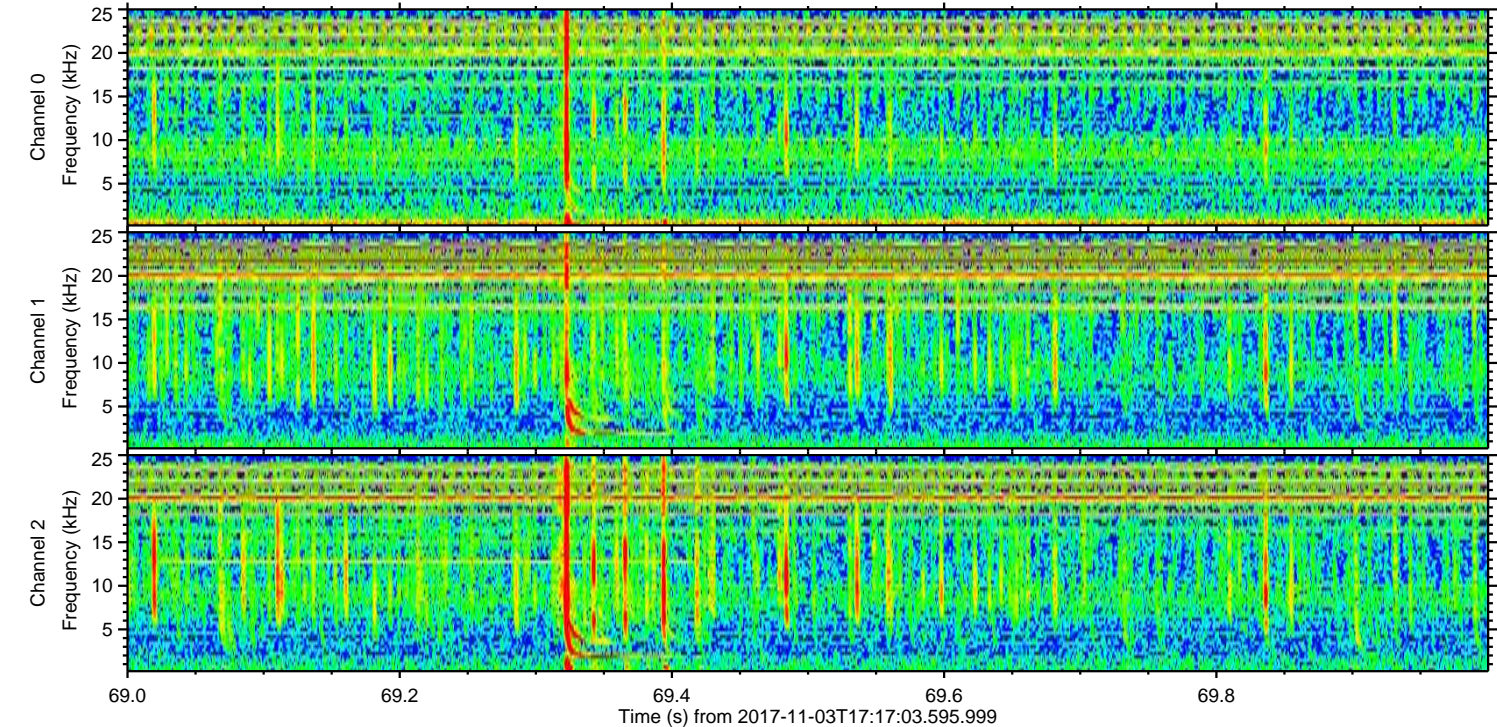
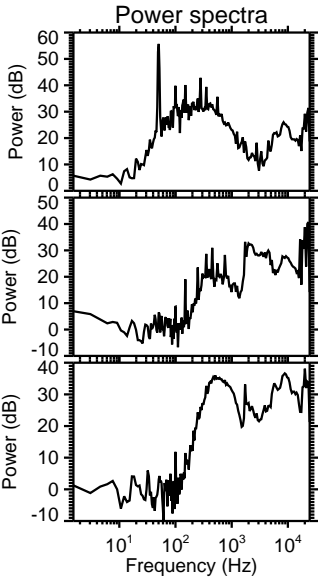
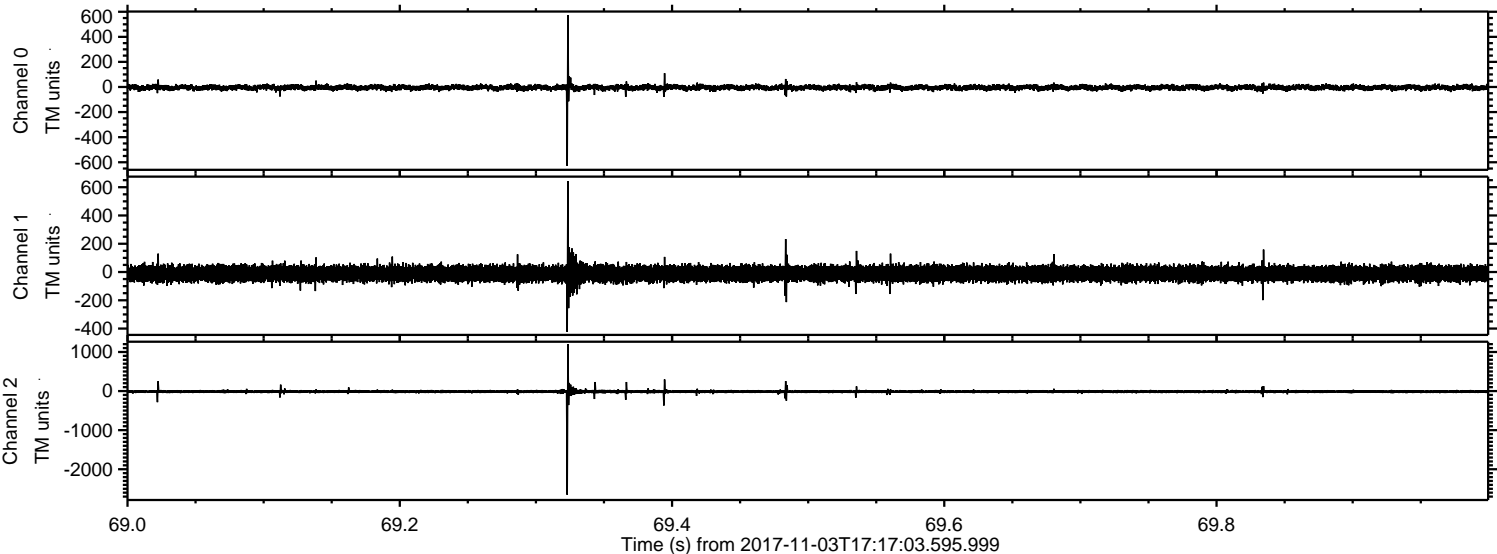


Channel 0
mn: -1787
mx: 882
 μ : -4.7
 σ : 18.3

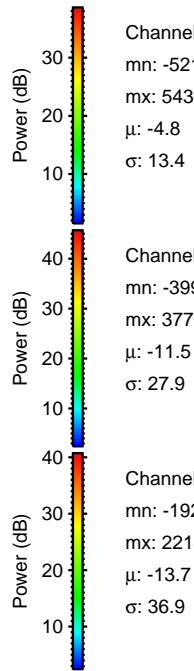
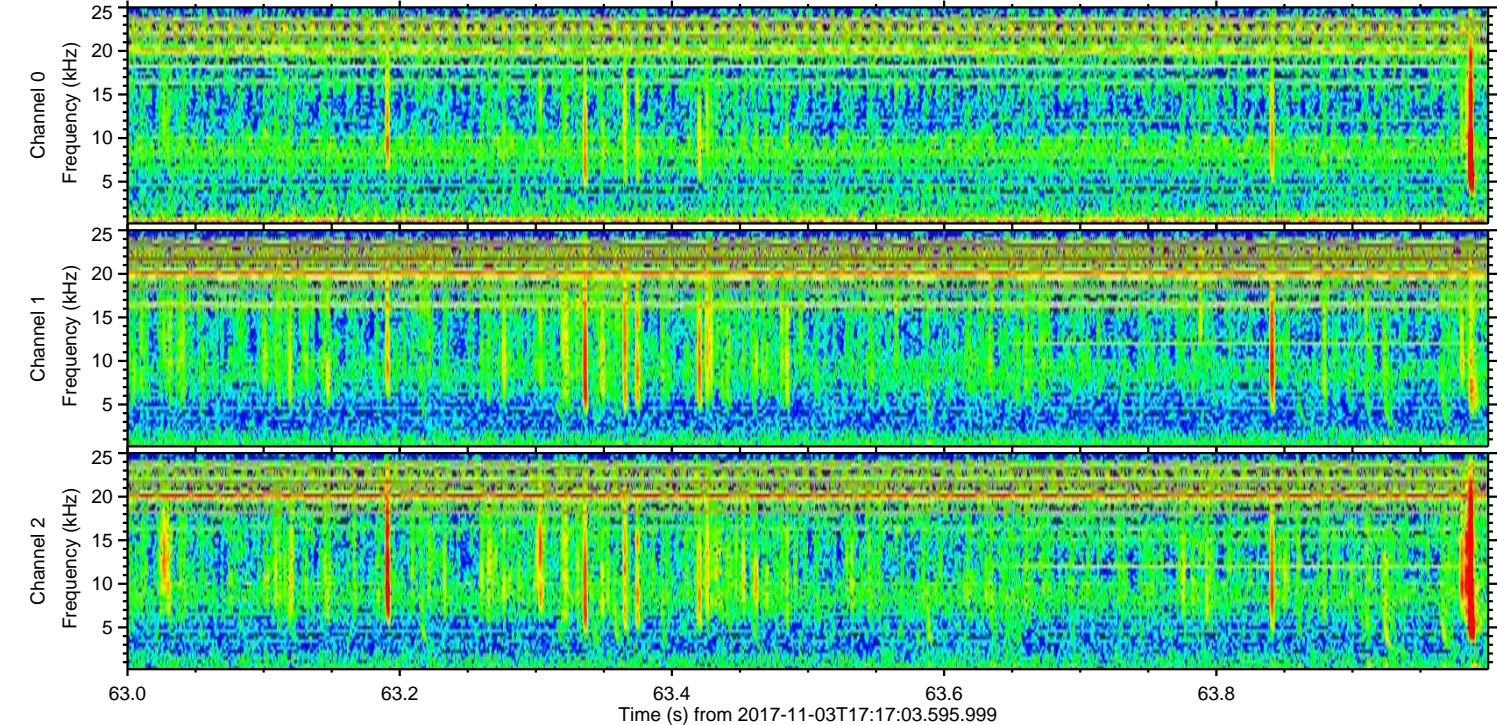
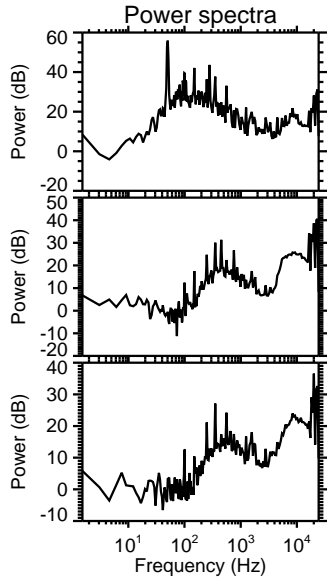
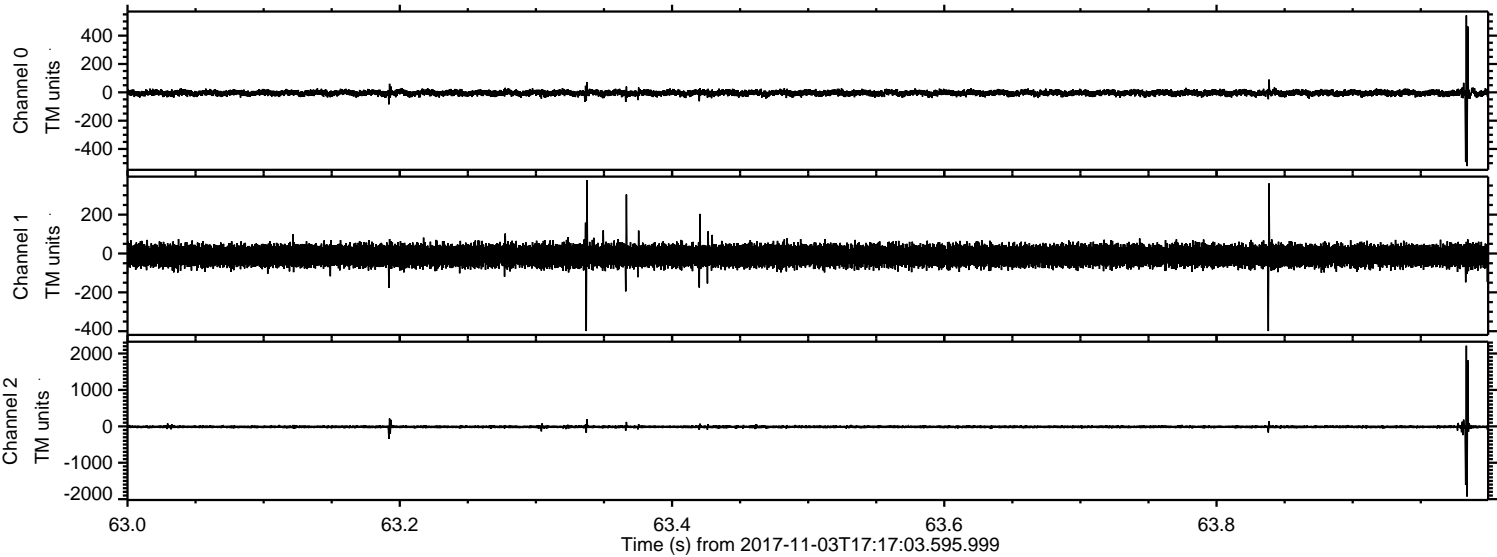
Channel 1
mn: -2852
mx: 1979
 μ : -11.6
 σ : 40.9

Channel 2
mn: -3073
mx: 2246
 μ : -13.6
 σ : 37.2

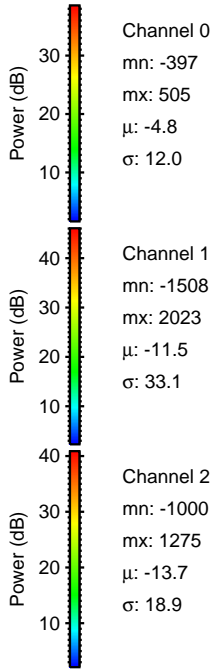
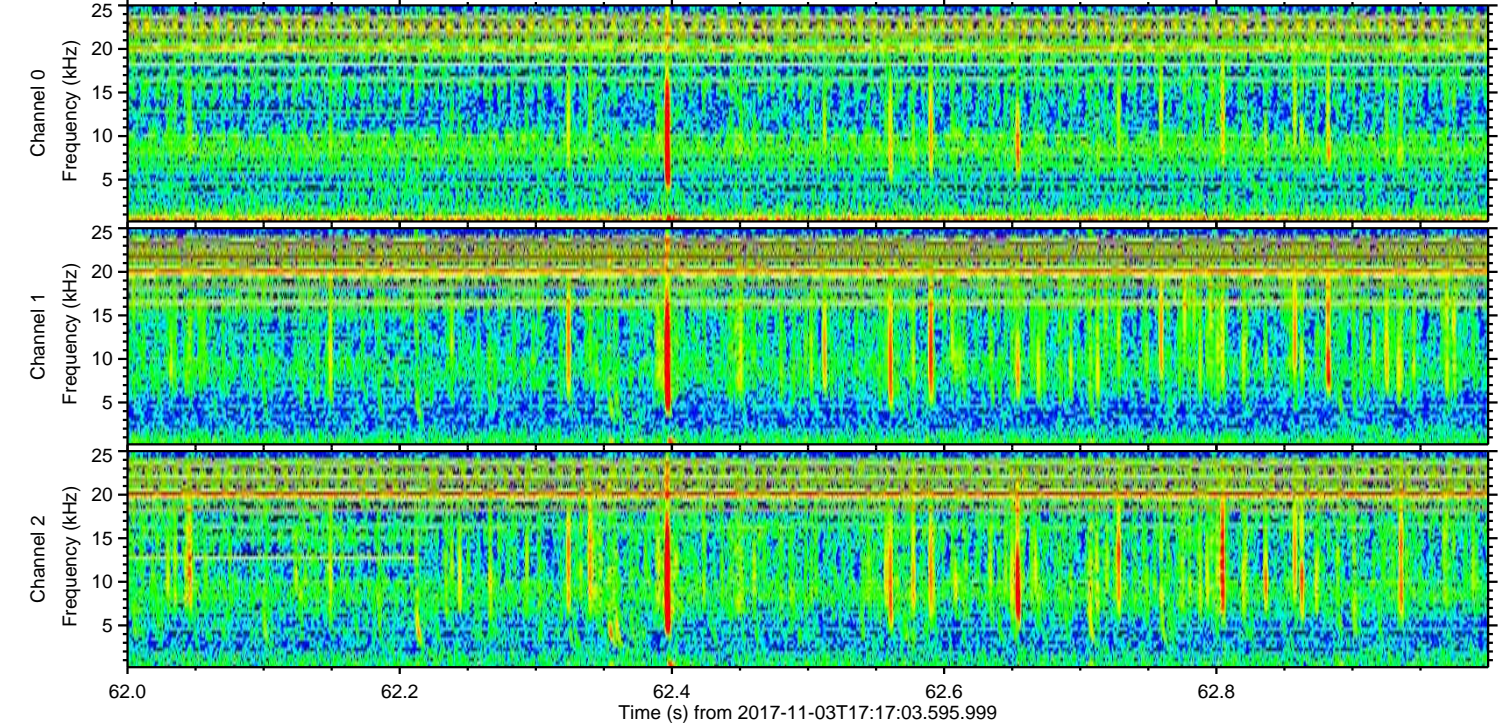
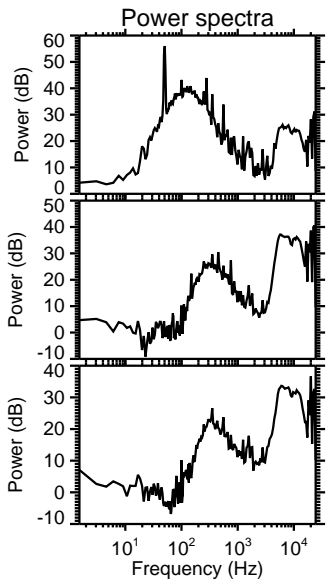
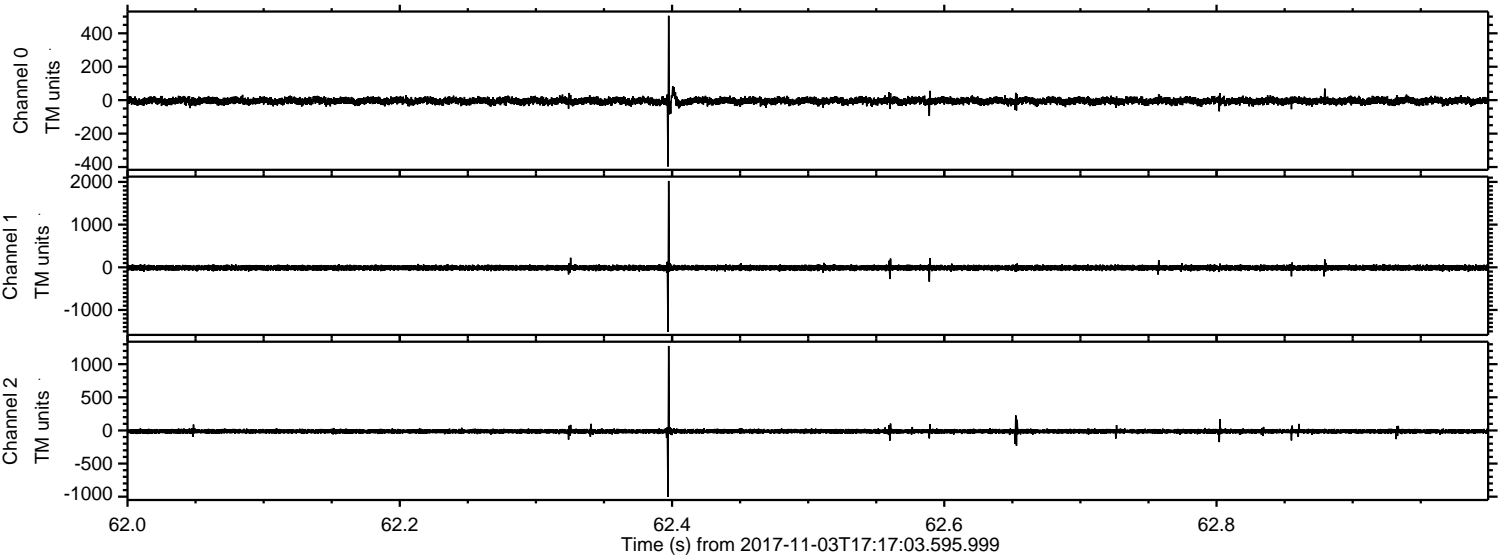
Processed Fri Nov 3 18:24:59 2017 by ELM ver.2012-10-06 from 001__elm20171103_171702__dat00.bin



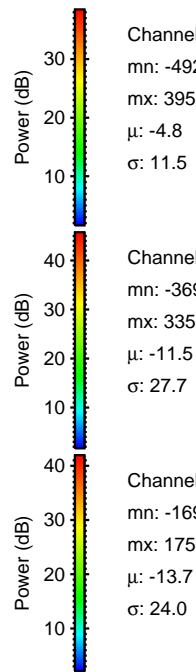
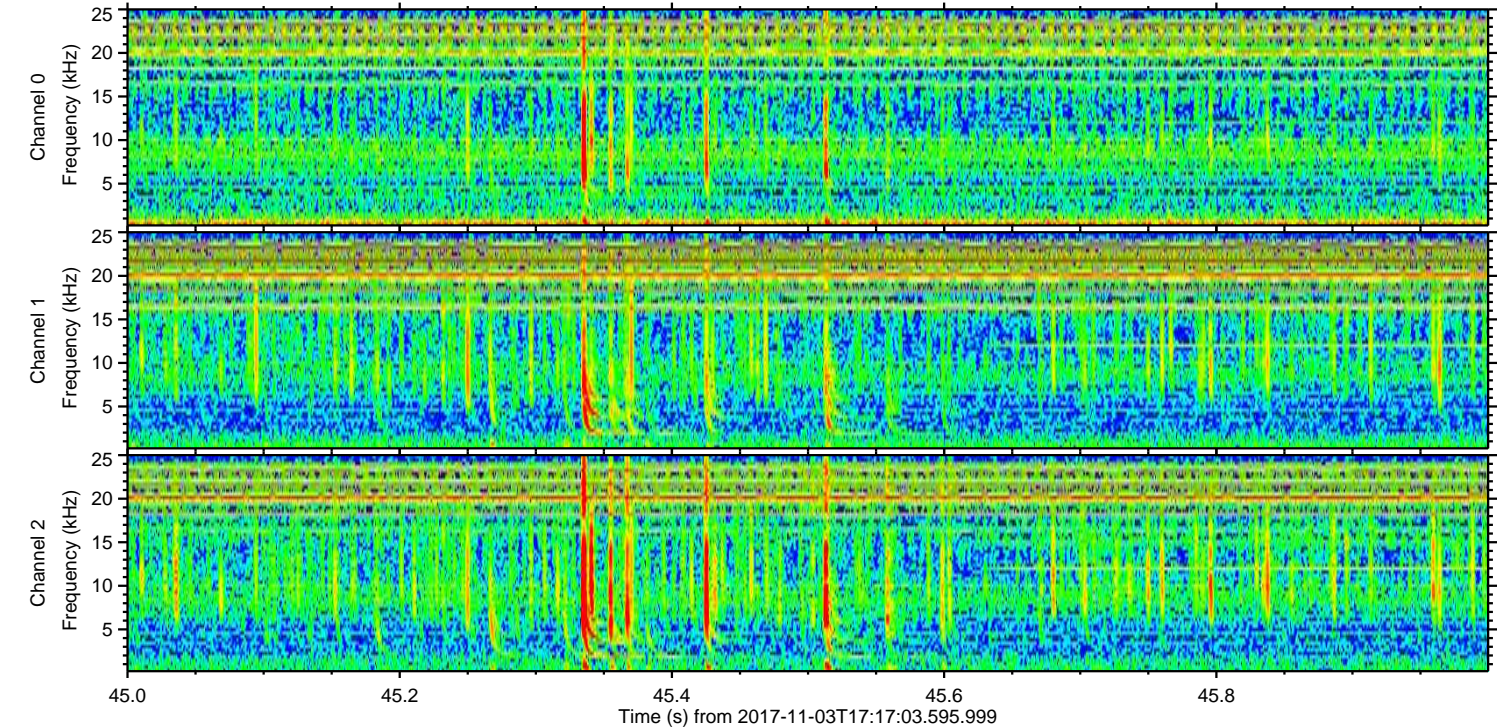
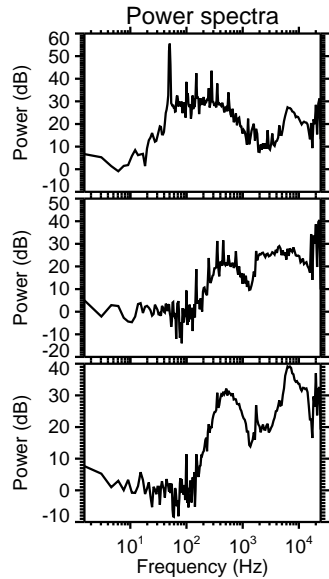
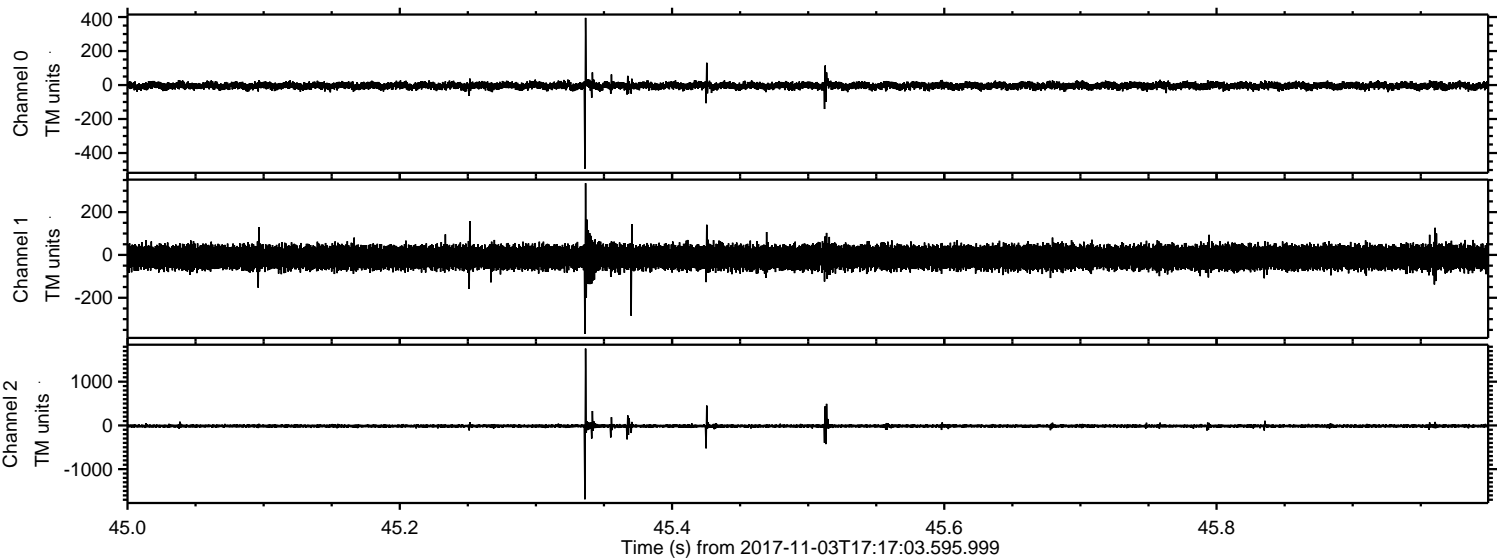
Processed Fri Nov 3 18:24:59 2017 by ELM ver.2012-10-06 from 001__elm20171103_171702__dat00.bin



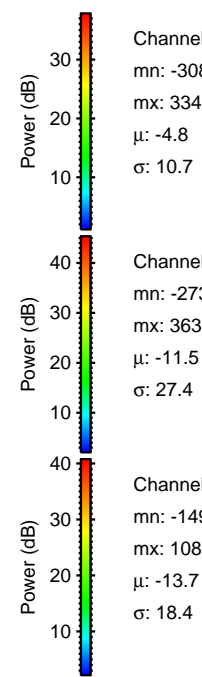
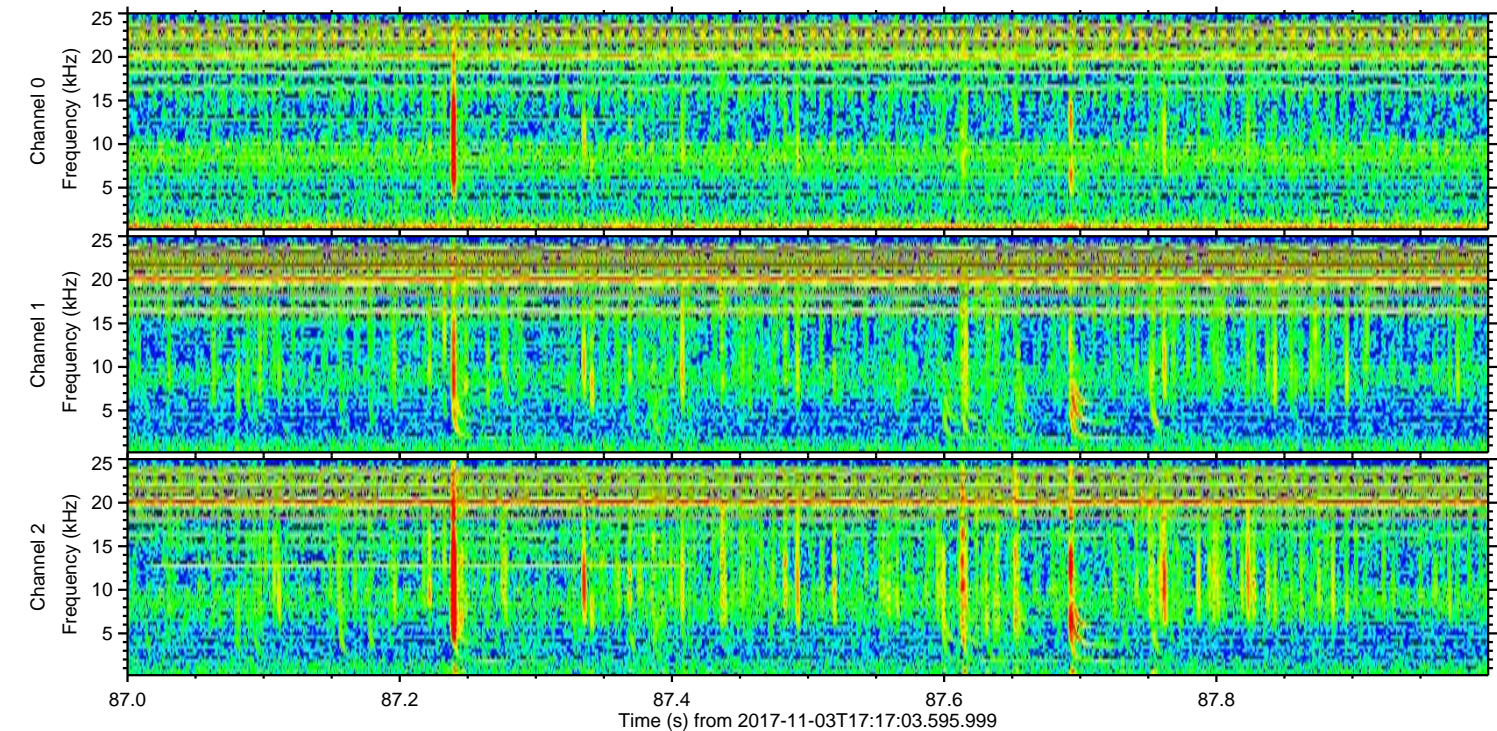
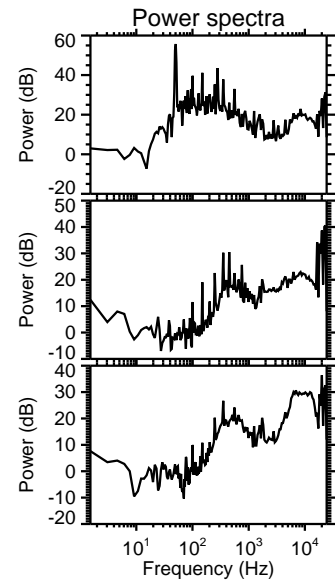
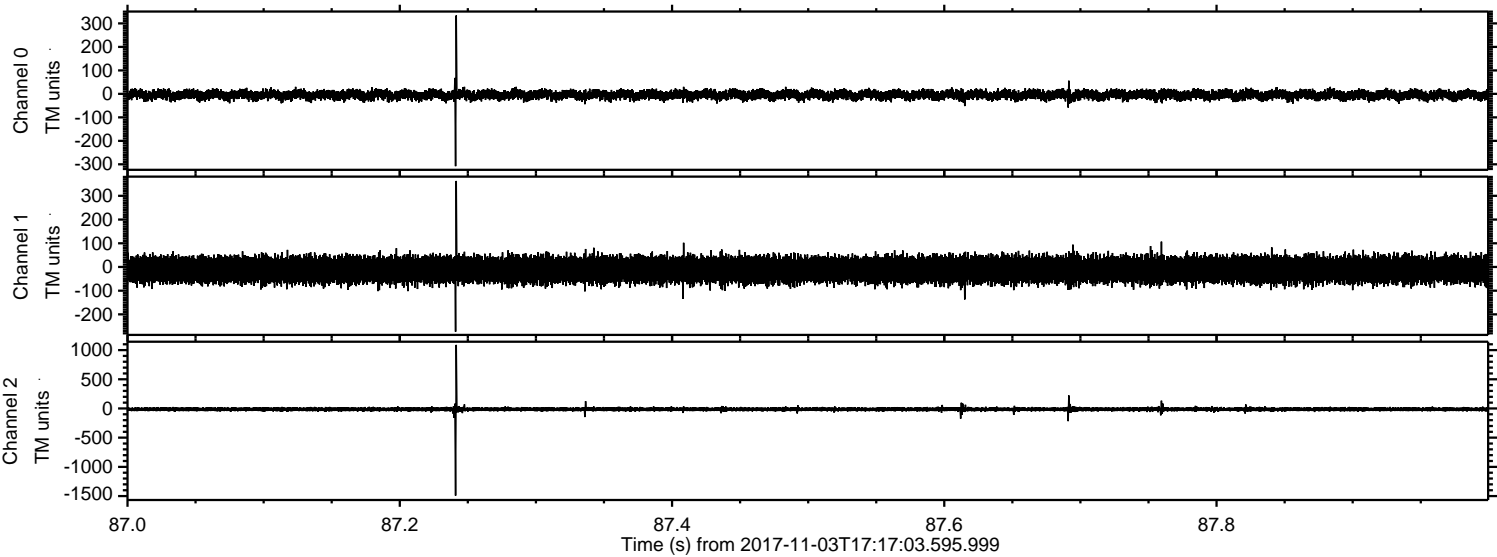
Processed Fri Nov 3 18:25:00 2017 by ELM ver.2012-10-06 from 001__elm20171103_171702__dat00.bin



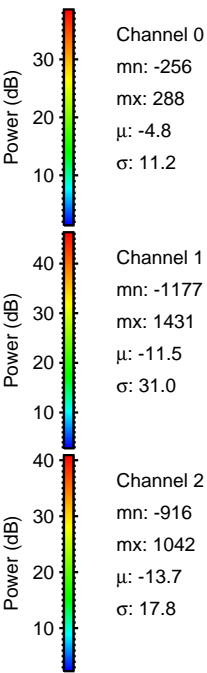
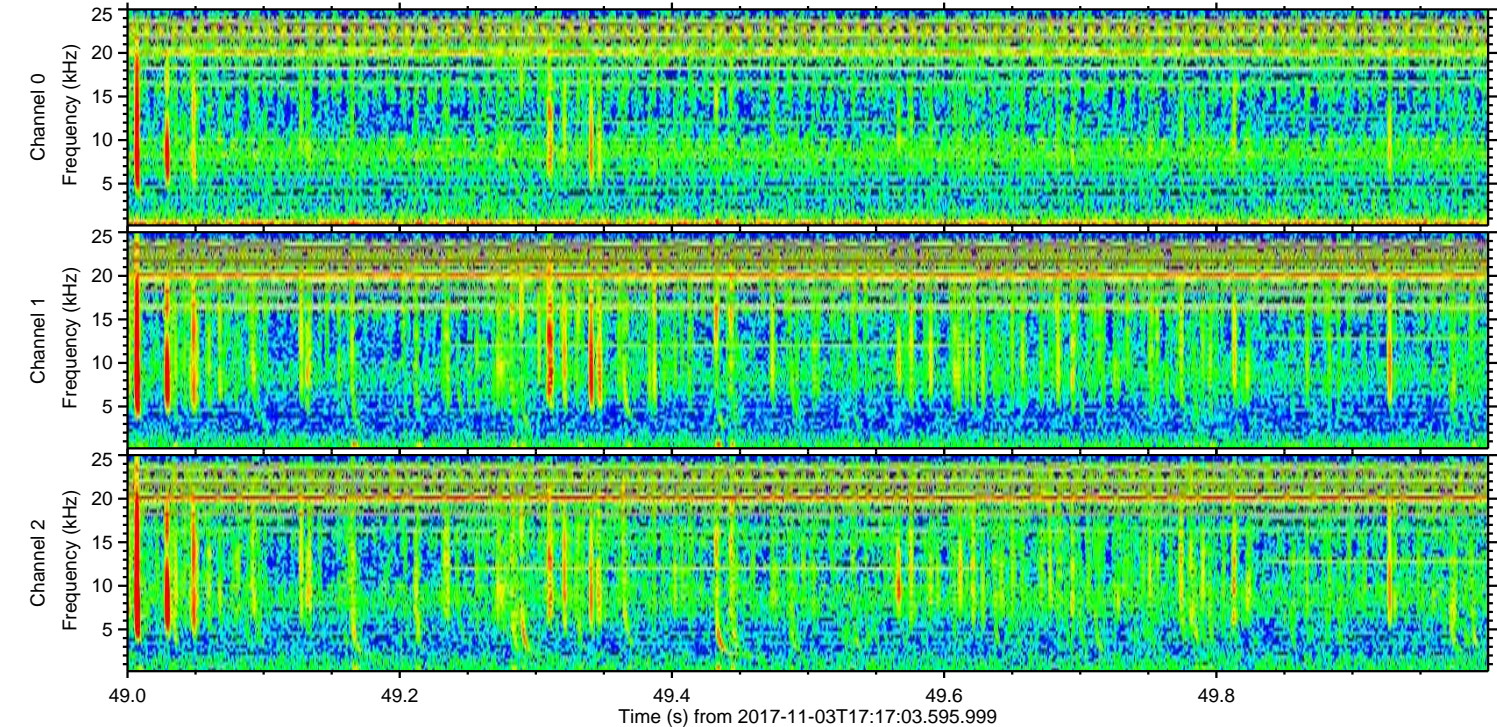
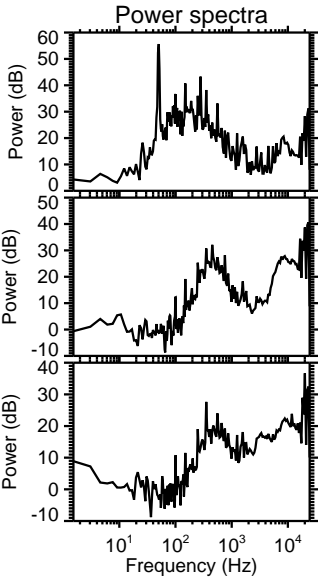
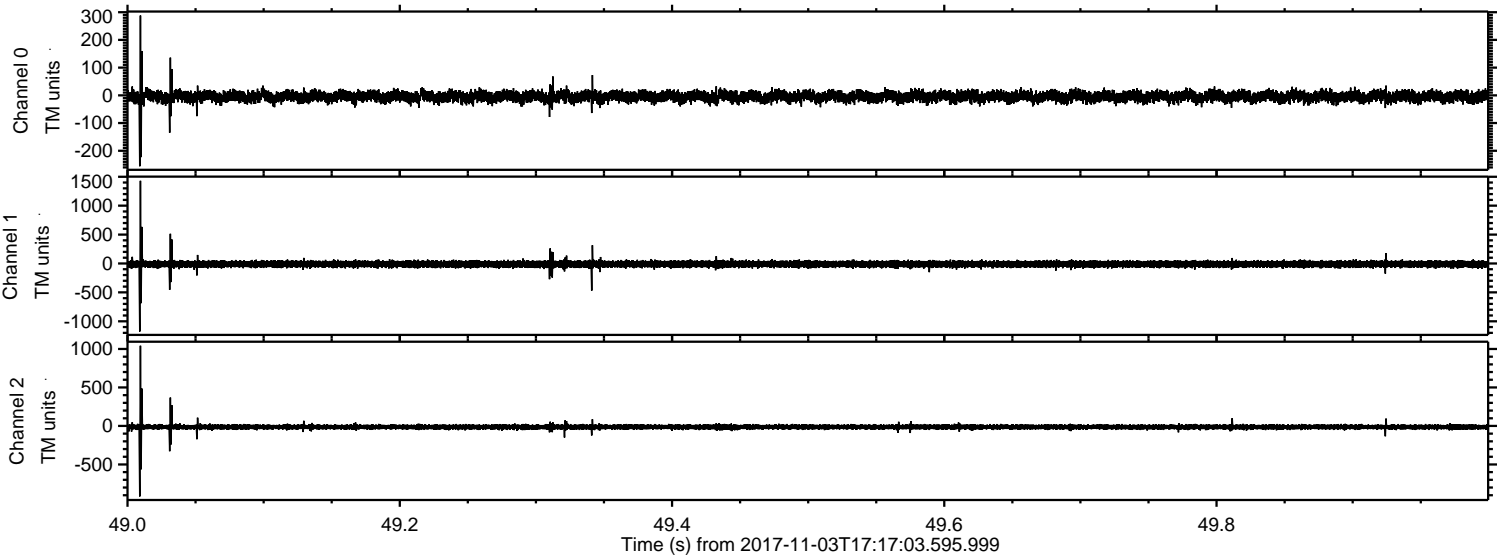
Processed Fri Nov 3 18:25:01 2017 by ELM ver.2012-10-06 from 001__elm20171103_171702__dat00.bin



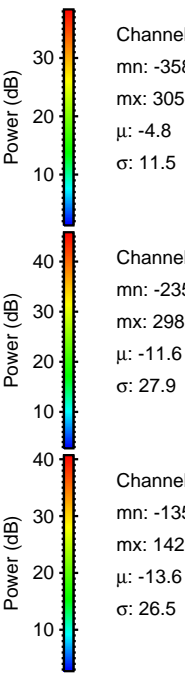
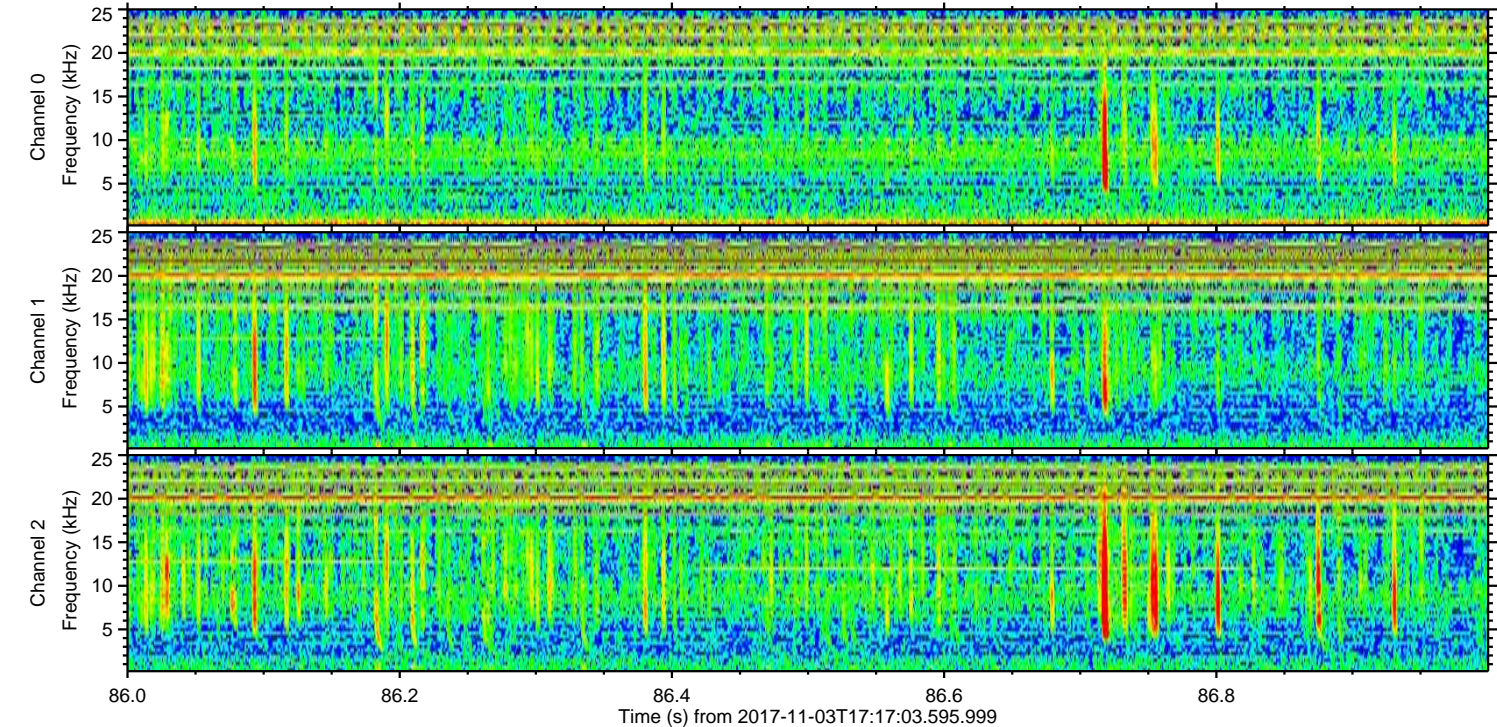
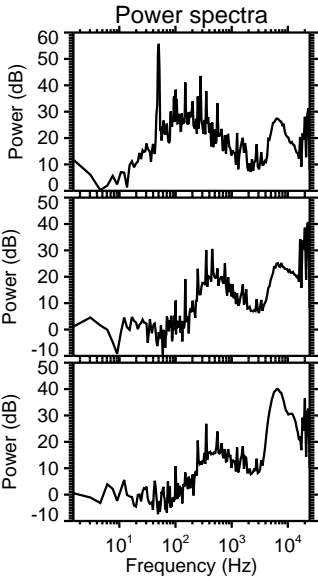
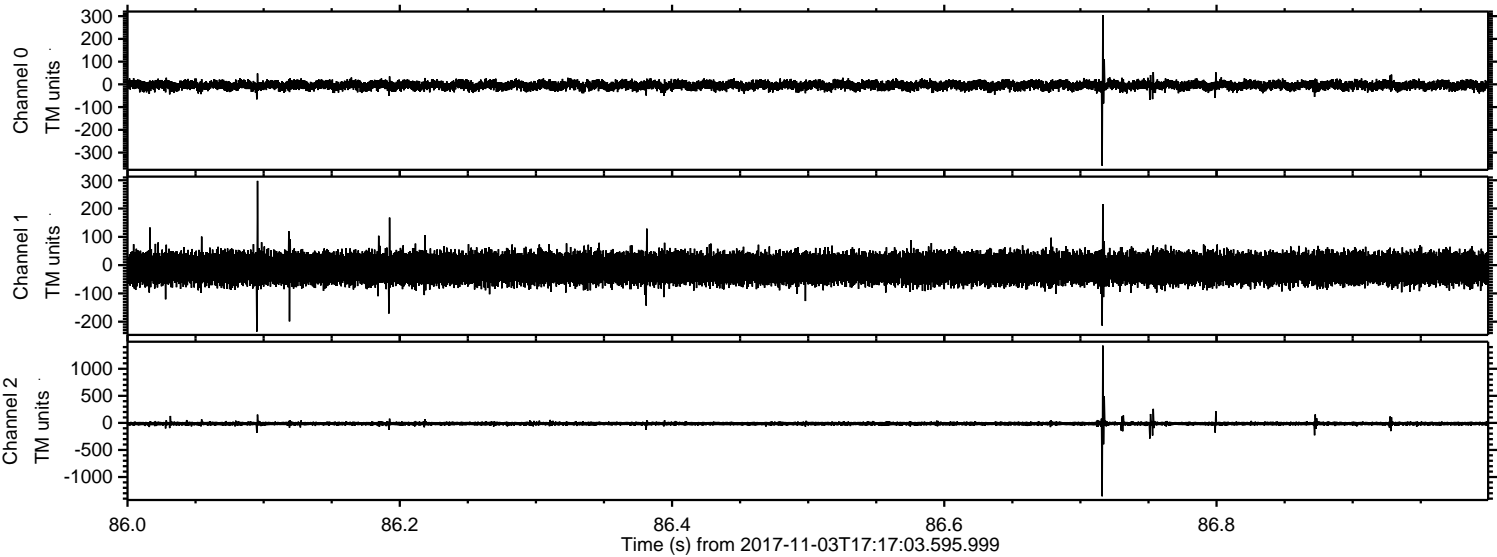
Processed Fri Nov 3 18:25:02 2017 by ELM ver.2012-10-06 from 001__elm20171103_171702__dat00.bin



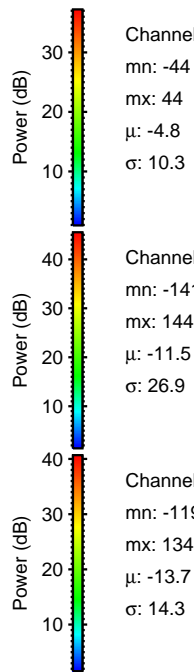
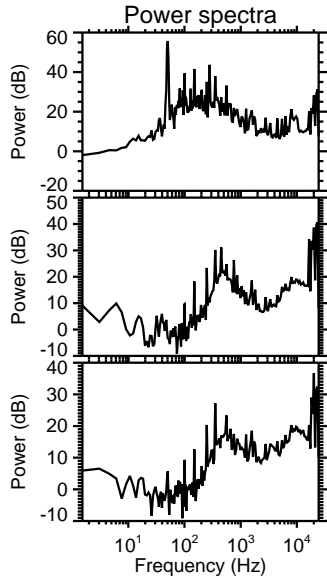
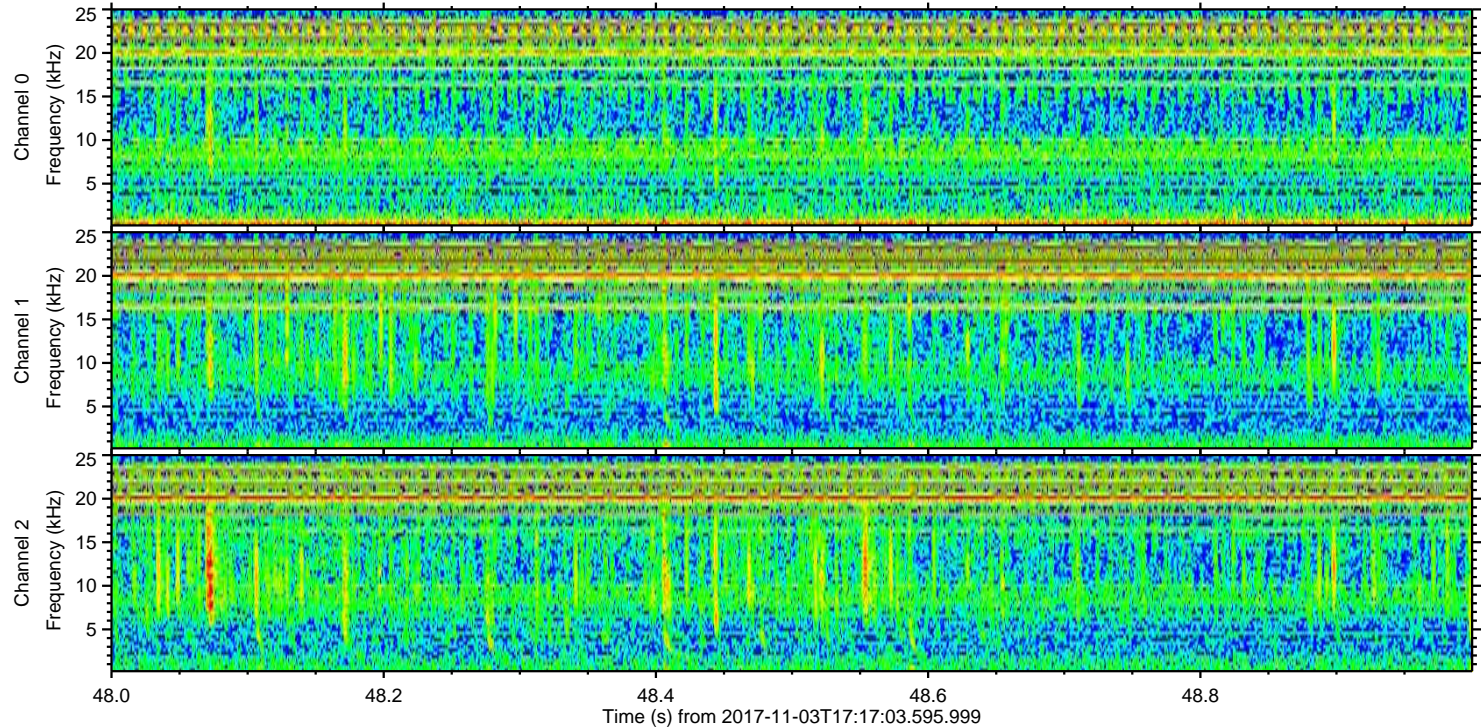
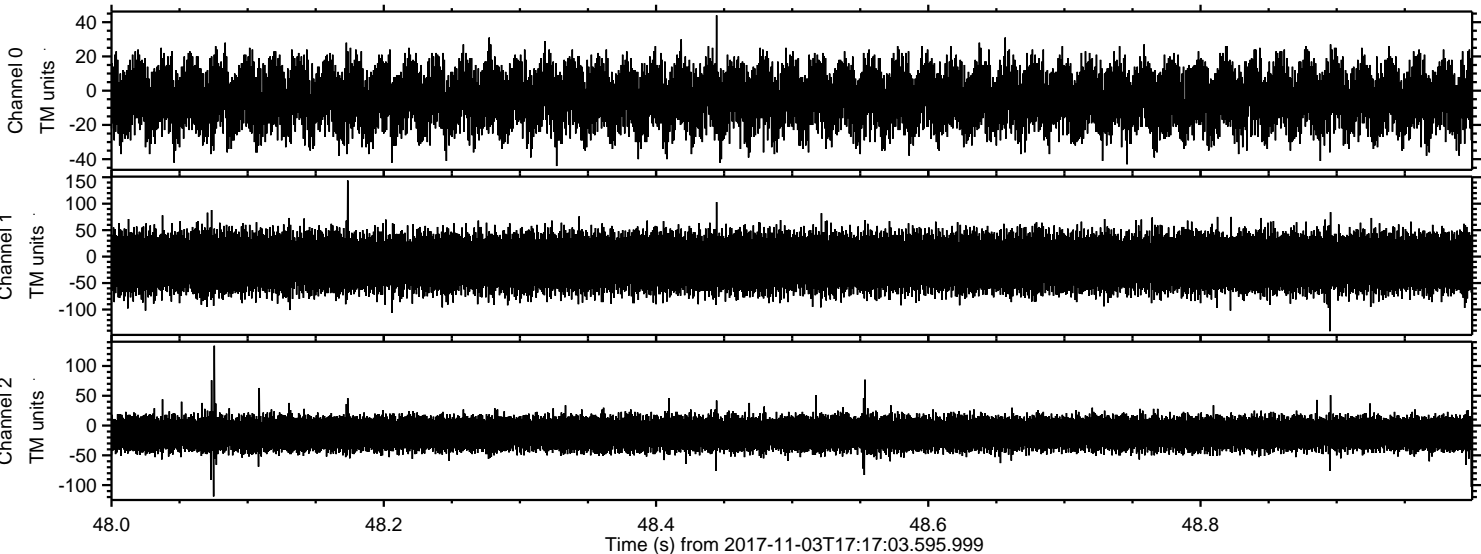
Processed Fri Nov 3 18:25:02 2017 by ELM ver.2012-10-06 from 001__elm20171103_171702__dat00.bin



Processed Fri Nov 3 18:25:03 2017 by ELM ver.2012-10-06 from 001__elm20171103_171702__dat00.bin



Processed Fri Nov 3 18:25:04 2017 by ELM ver.2012-10-06 from 001__elm20171103_171702__dat00.bin



Channel 0
mn: -44
mx: 44
 μ : -4.8
 σ : 10.3

Channel 1
mn: -141
mx: 144
 μ : -11.5
 σ : 26.9

Channel 2
mn: -119
mx: 134
 μ : -13.7
 σ : 14.3