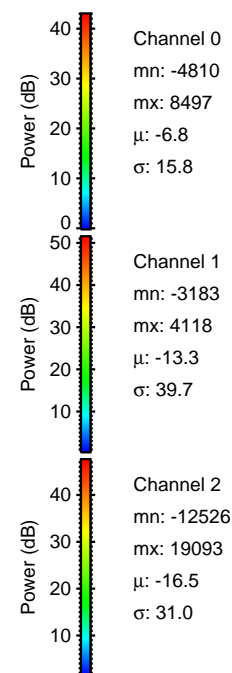
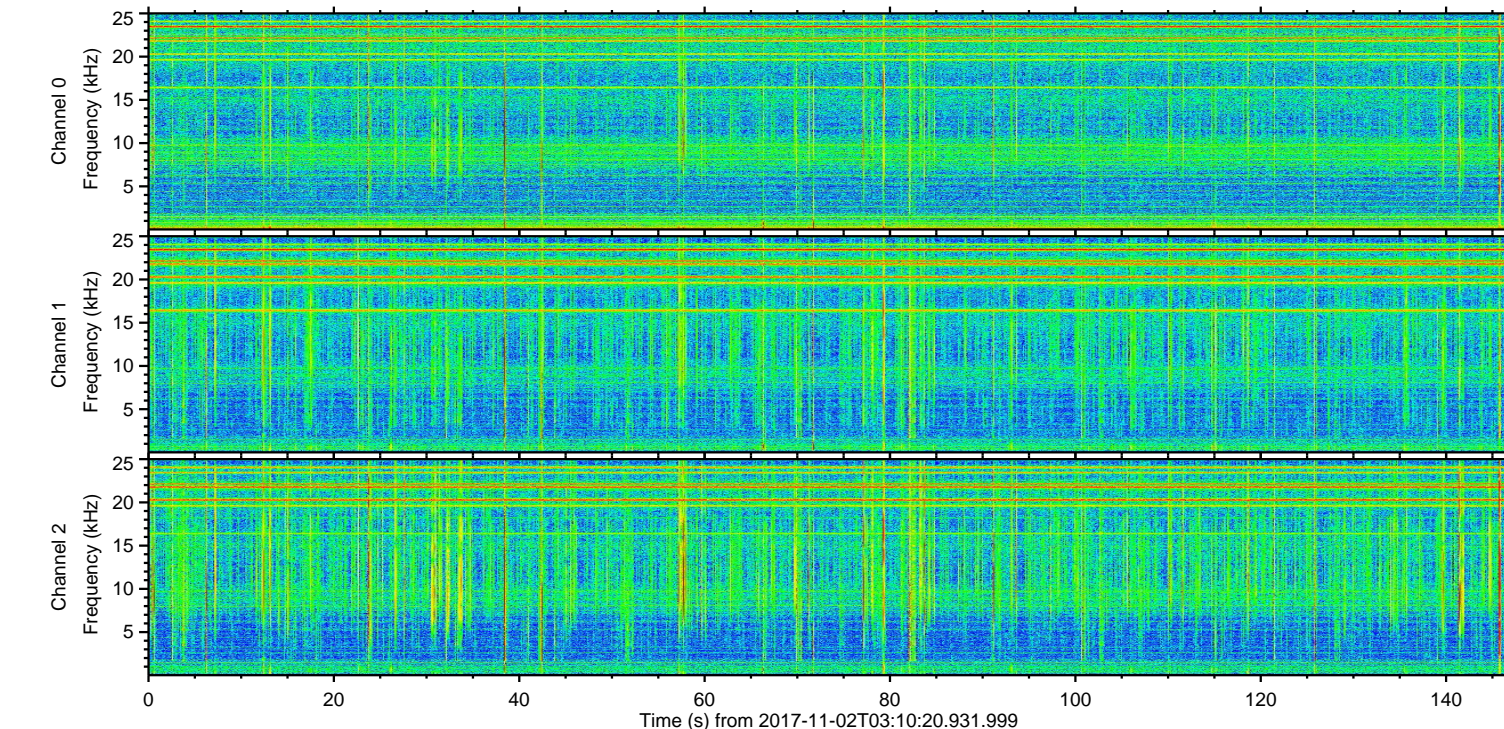
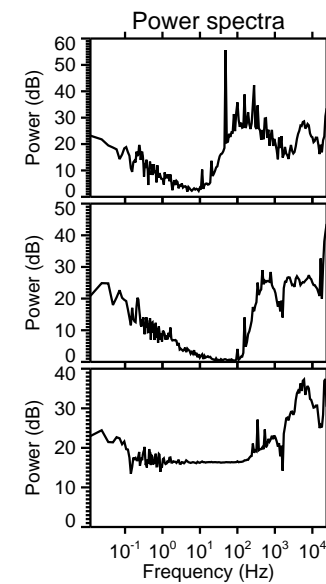
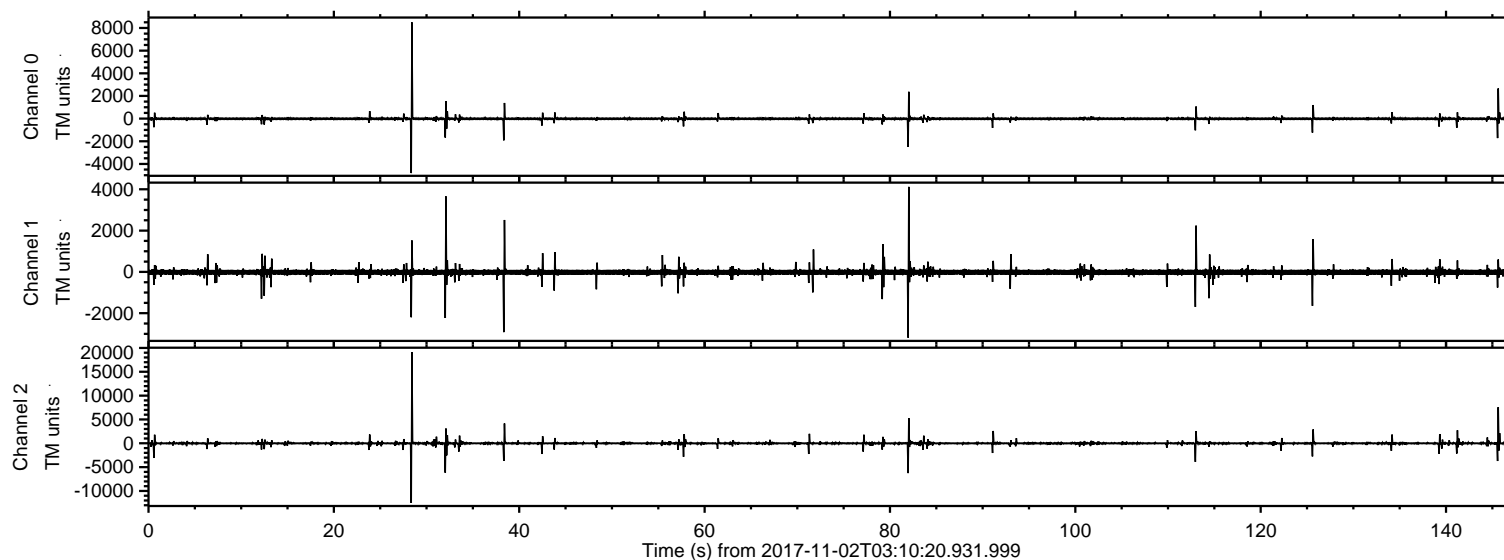
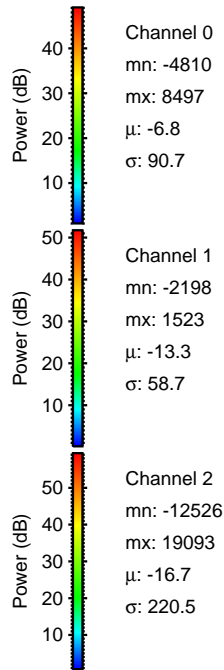
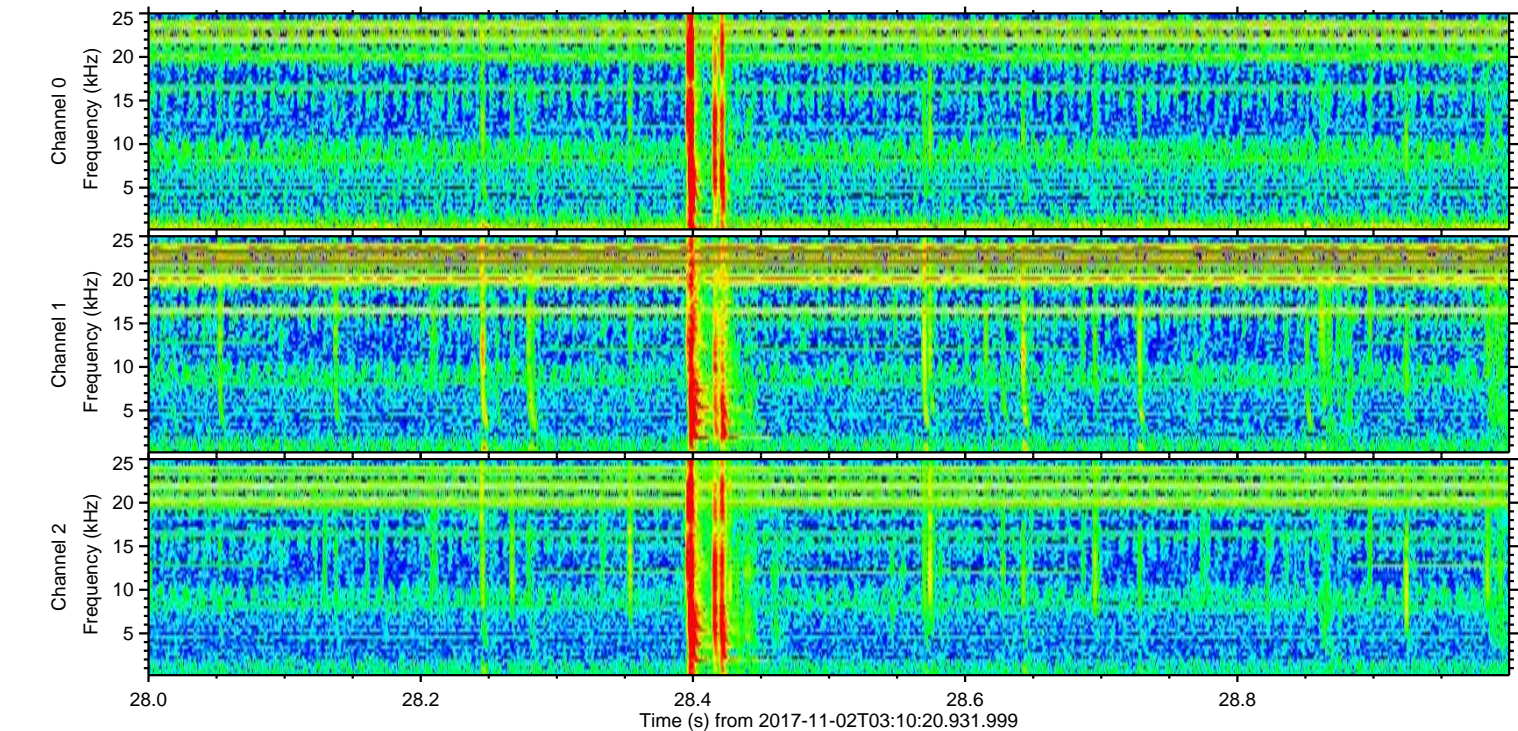
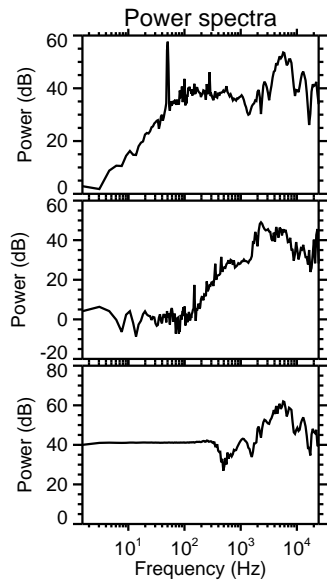
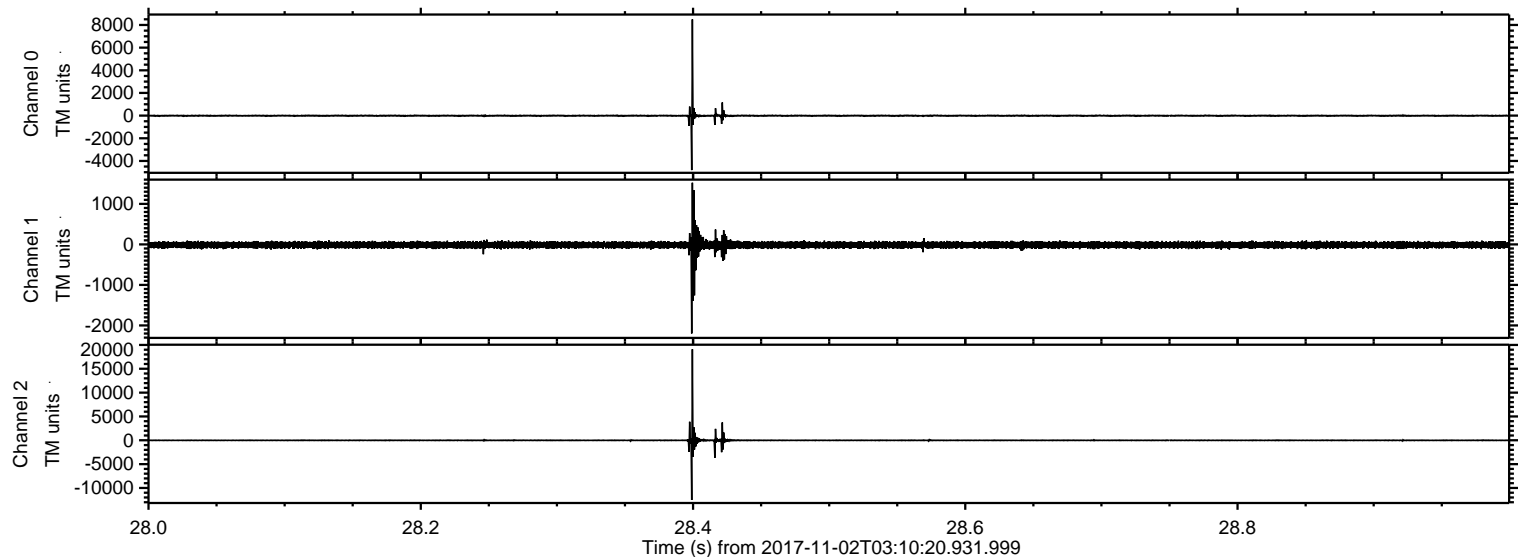


ELMAVAN 3D WAVEFORMS (Measured data sampled at 50 kHz) 51000 packets of 144 samples from 2017-11-02T03:10:20.931.999.

Processed Thu Nov 2 04:18:23 2017 by ELM ver.2012-10-06 from 001__elm201711102_031019__dat00.bin

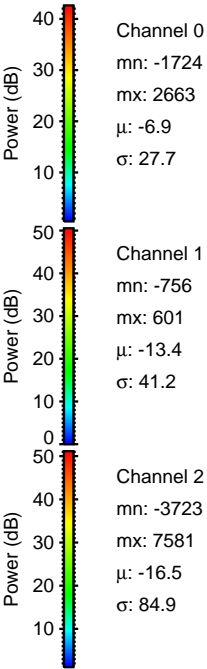
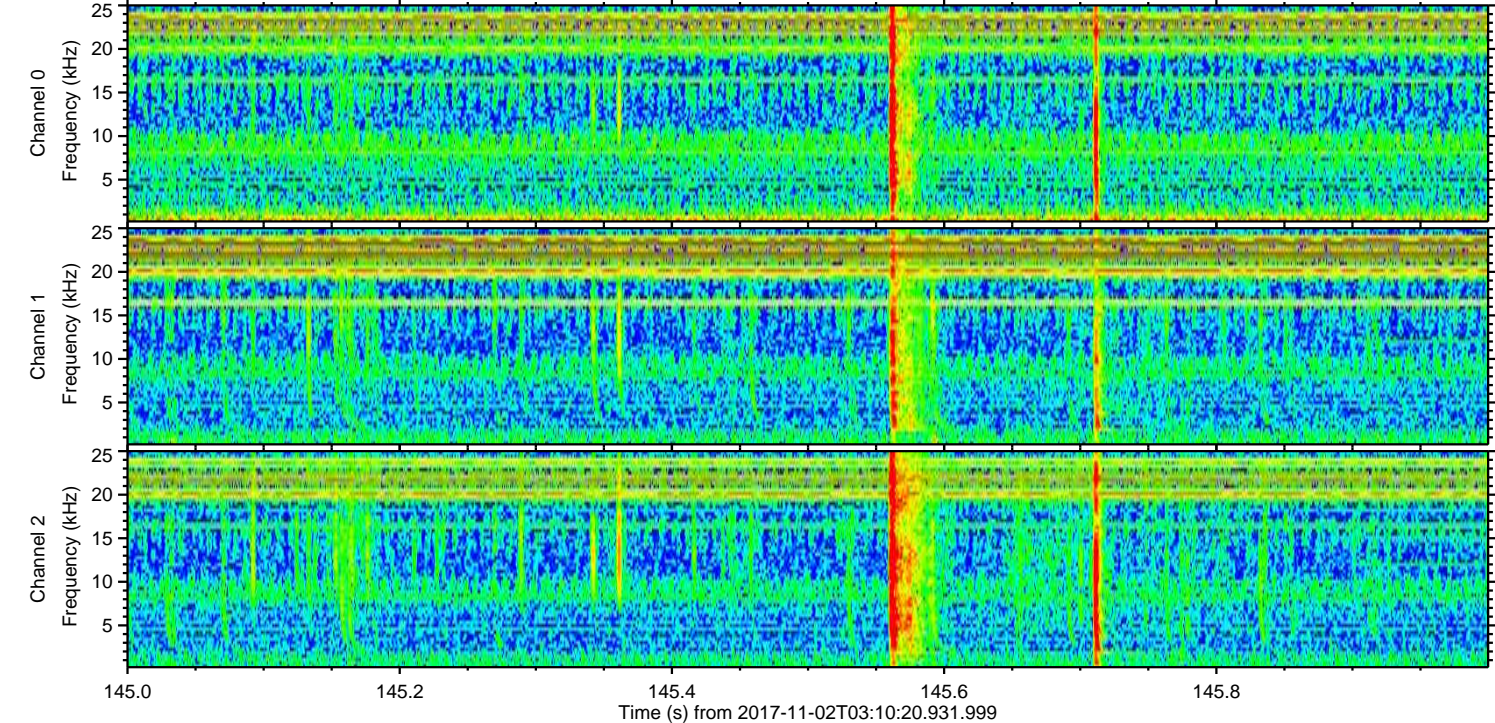
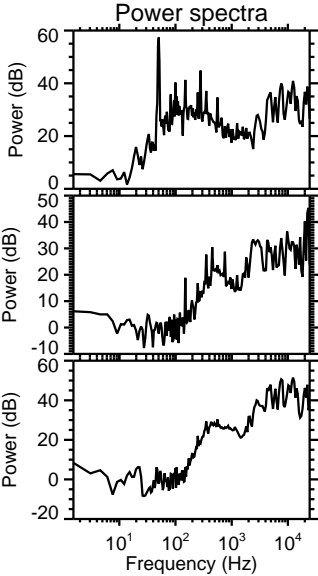
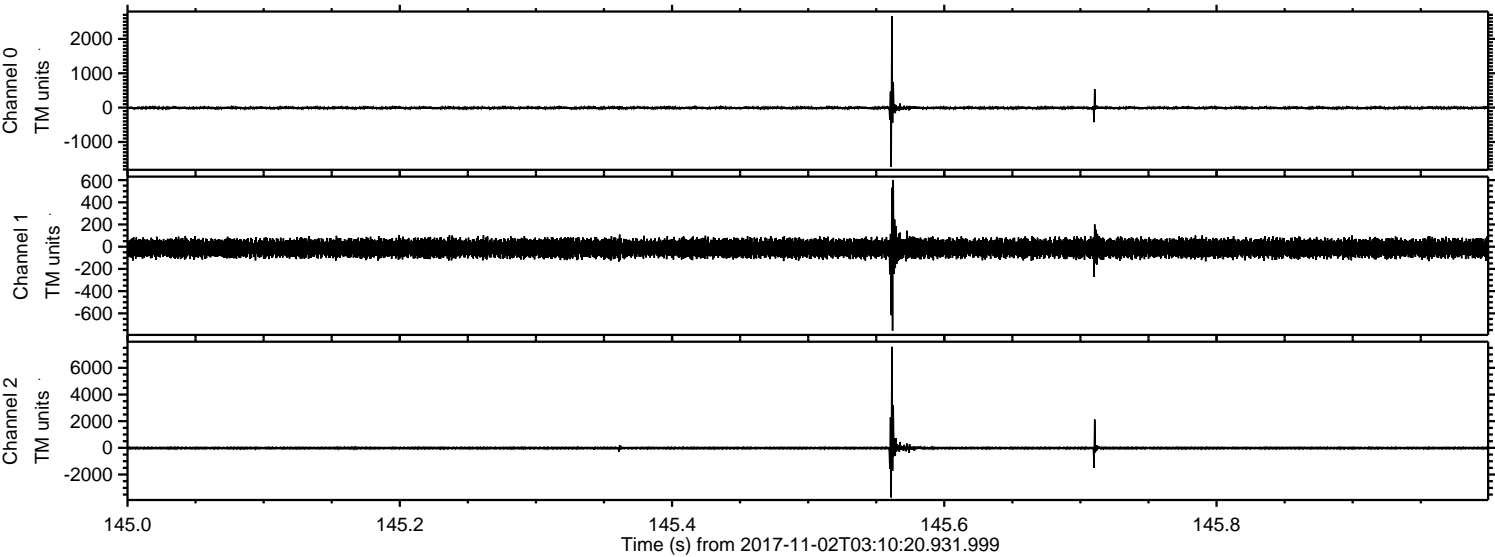


Processed Thu Nov 2 04:18:30 2017 by ELM ver.2012-10-06 from 001__elm20171102_031019__dat00.bin

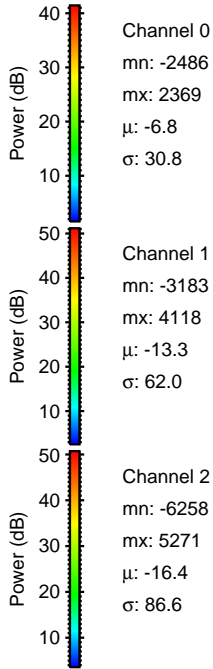
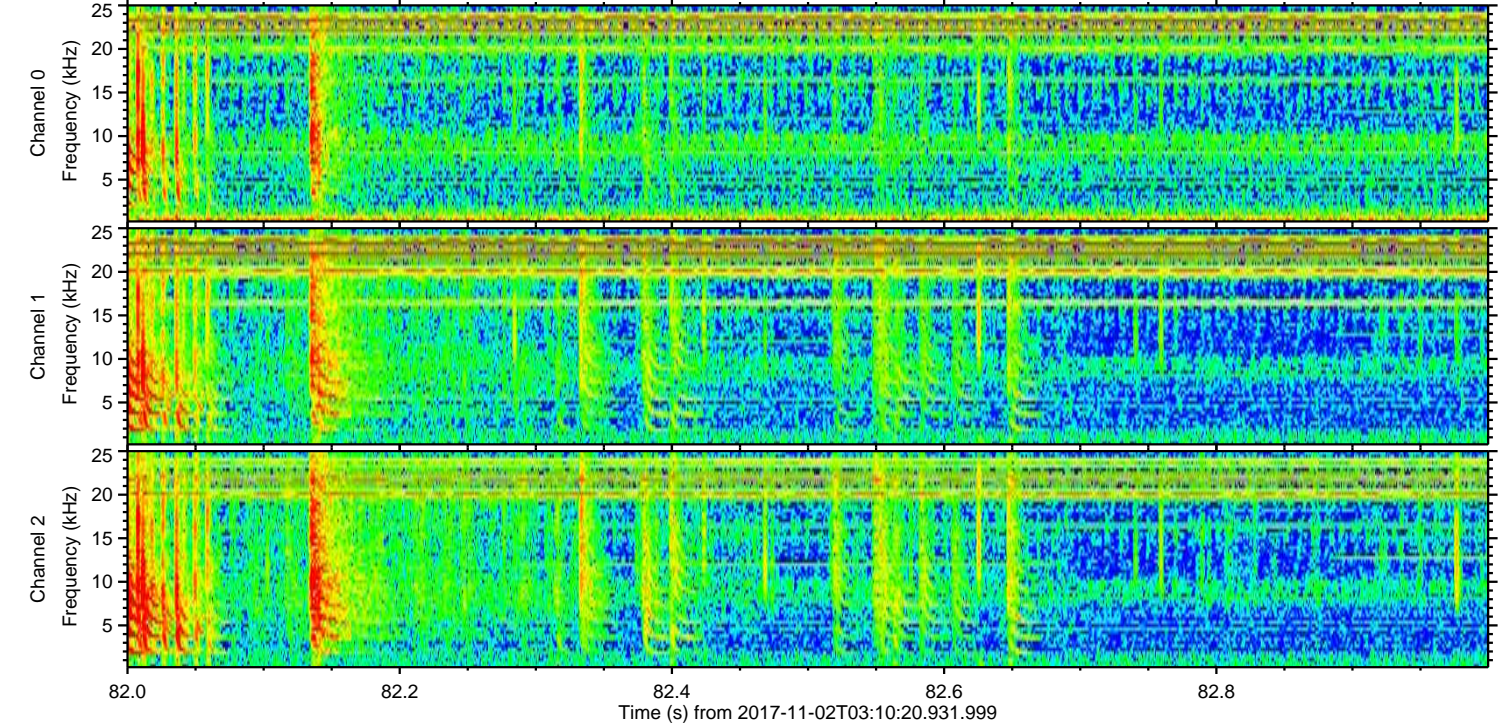
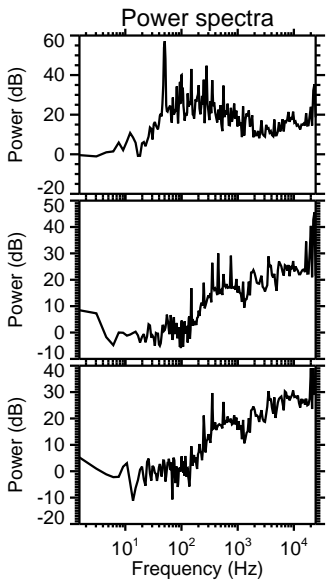
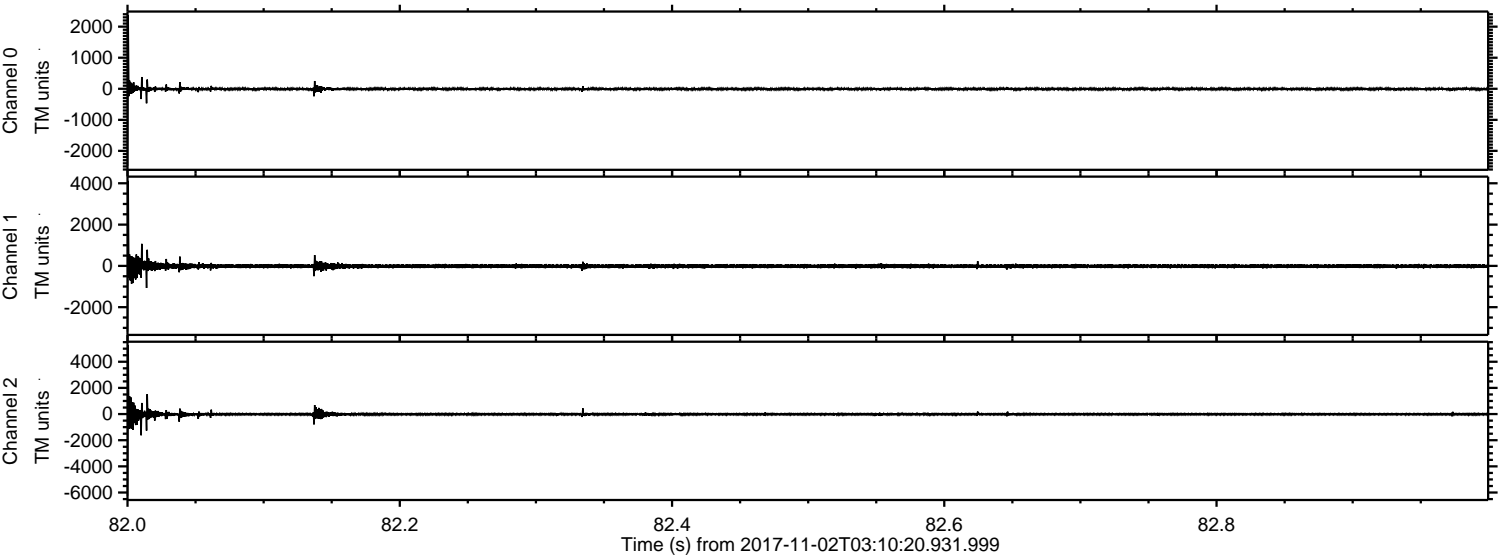


ELMAVAN 3D WAVEFORMS (Measured data sampled at 50 kHz) 51000 packets of 144 samples from 2017-11-02T03:10:20.931.999. Part 146/147

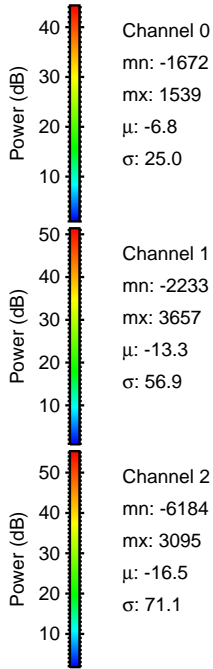
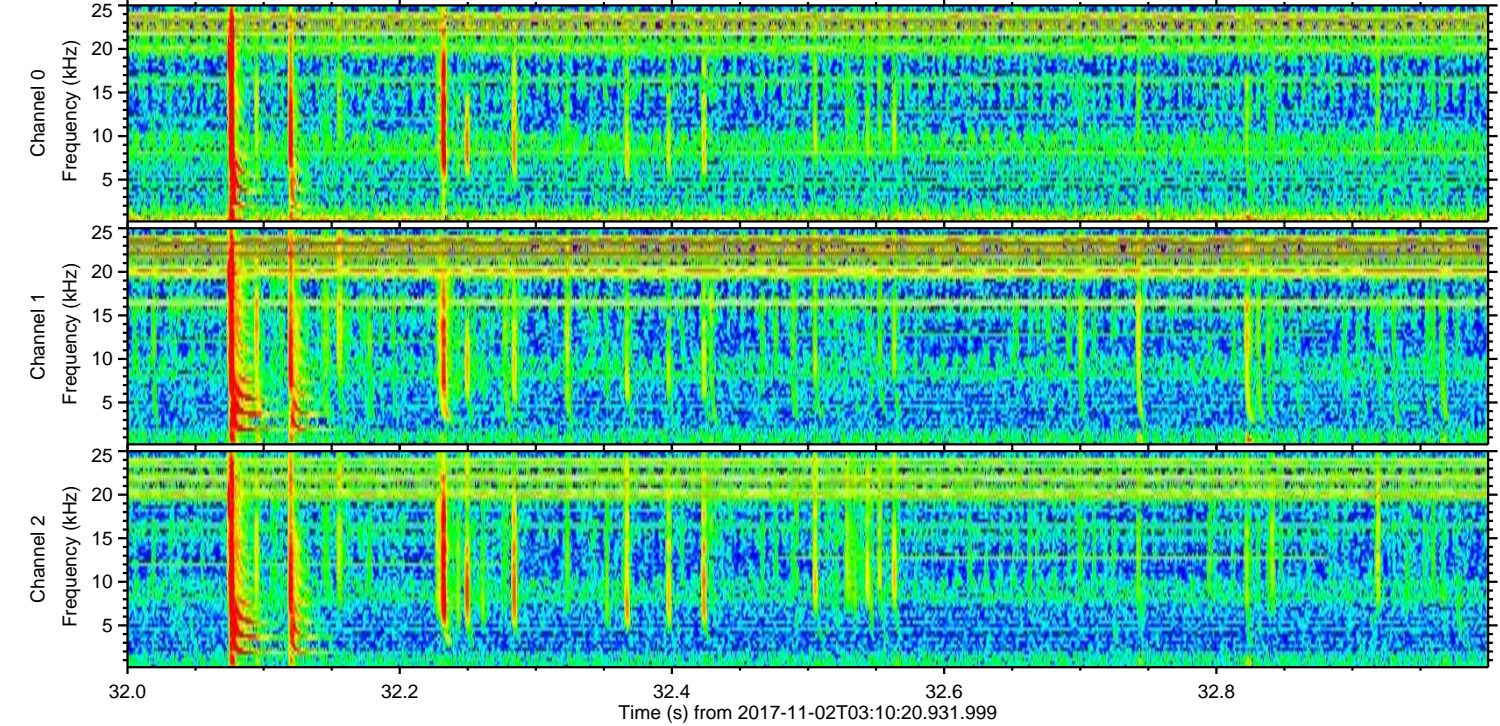
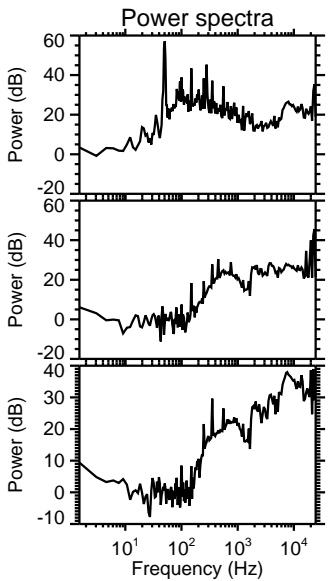
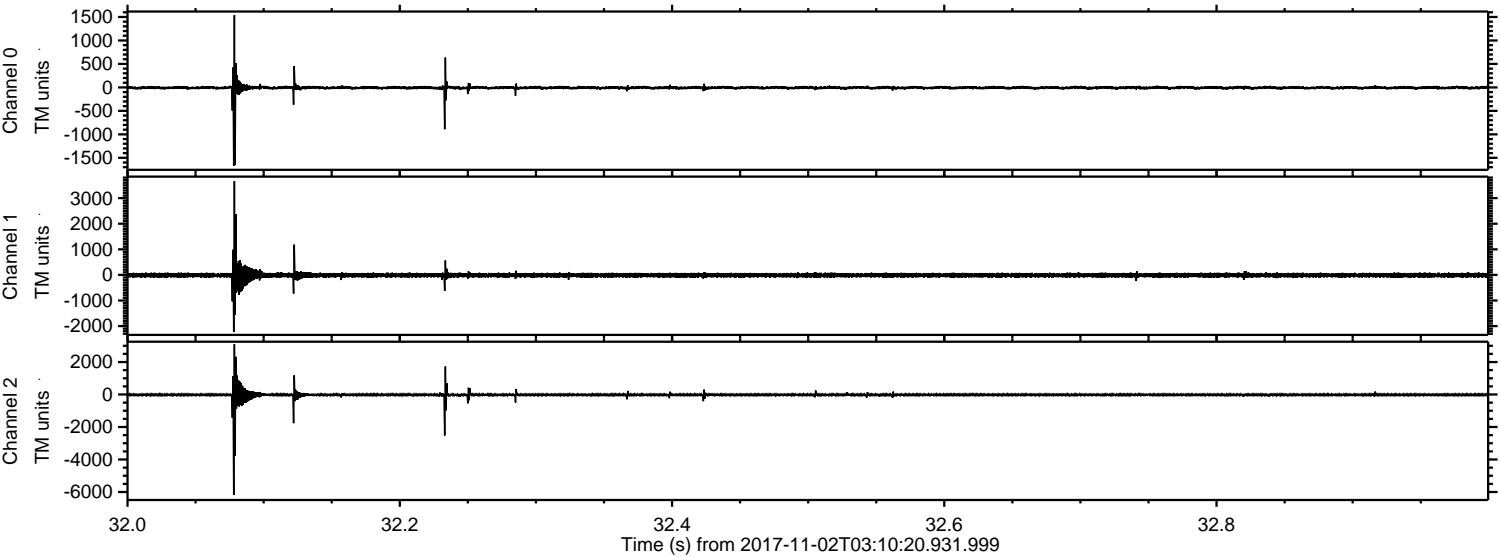
Processed Thu Nov 2 04:18:31 2017 by ELM ver.2012-10-06 from 001__elm20171102_031019__dat00.bin



Processed Thu Nov 2 04:18:31 2017 by ELM ver.2012-10-06 from 001__elm20171102_031019__dat00.bin



Processed Thu Nov 2 04:18:32 2017 by ELM ver.2012-10-06 from 001__elm20171102_031019__dat00.bin

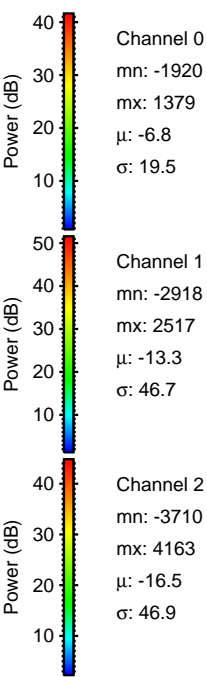
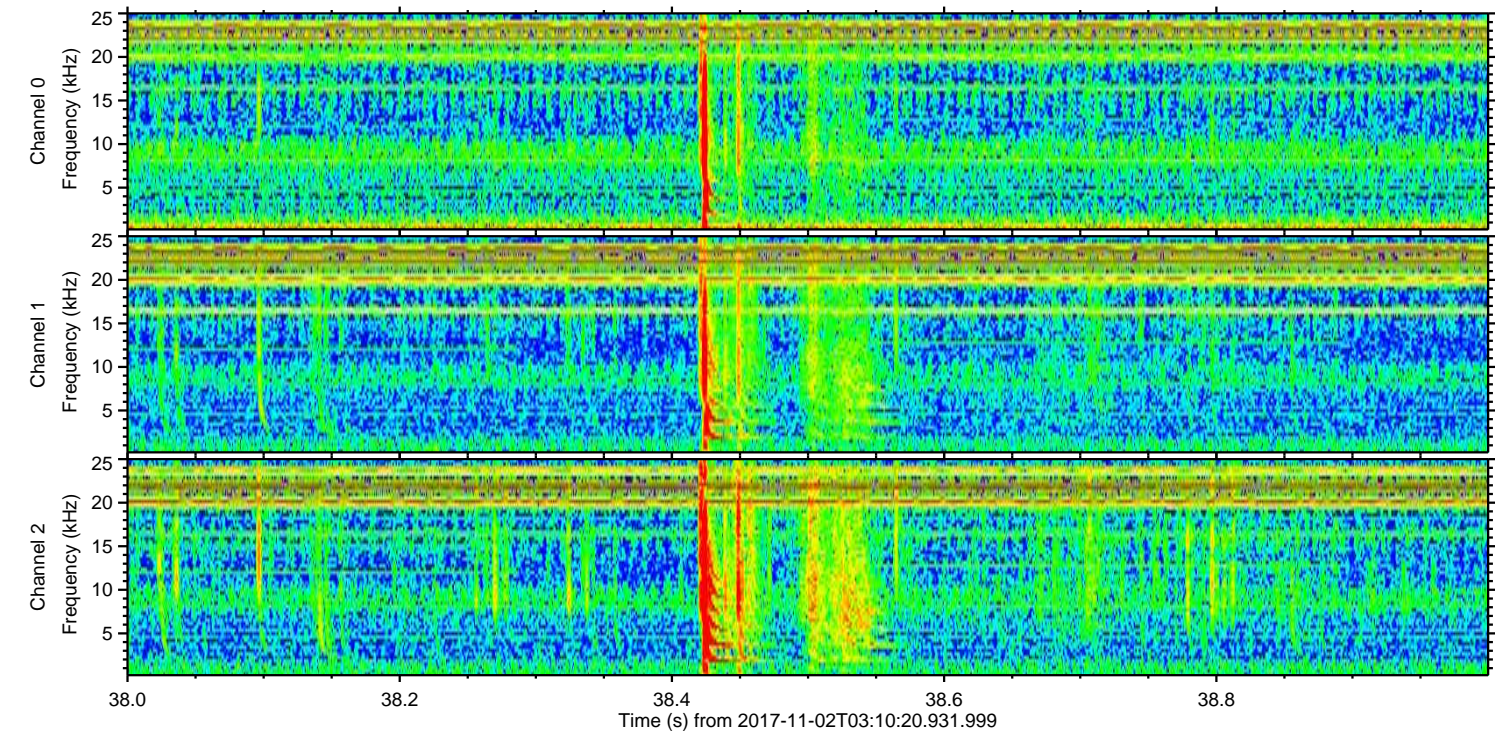
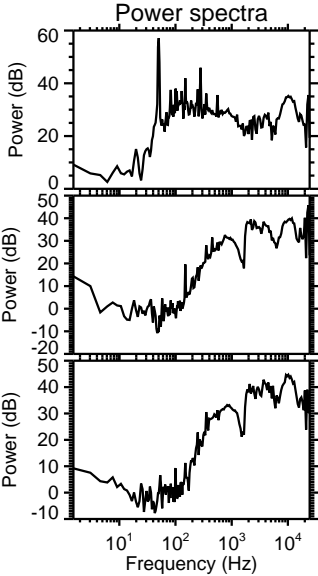
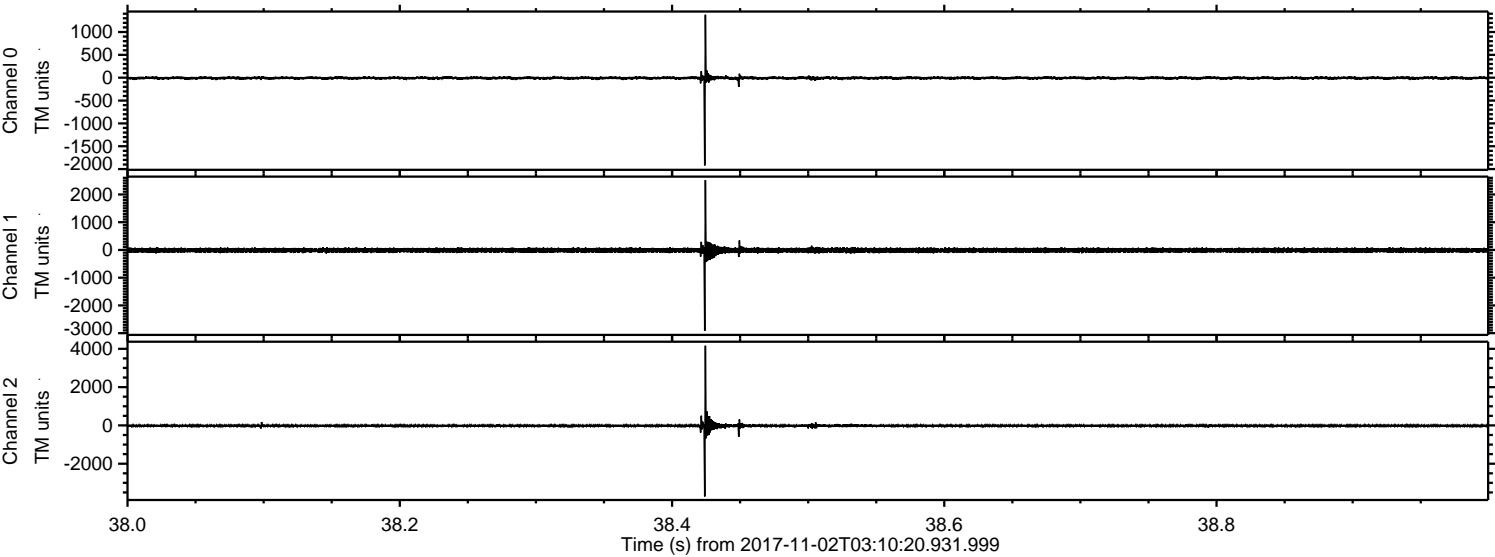


Channel 0
mn: -1672
mx: 1539
μ: -6.8
σ: 25.0

Channel 1
mn: -2233
mx: 3657
μ: -13.3
σ: 56.9

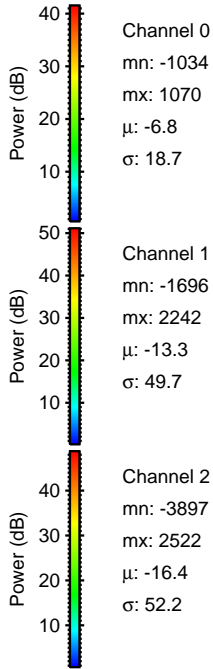
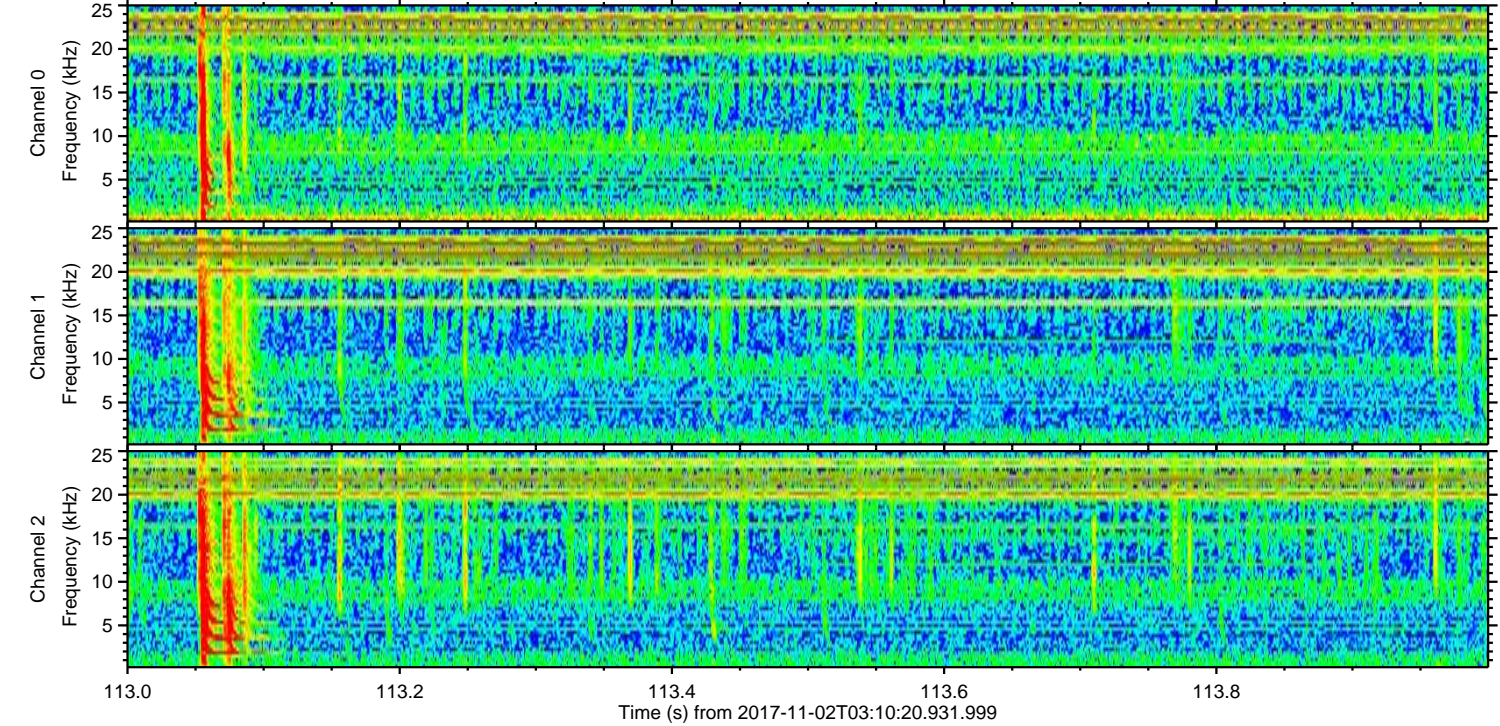
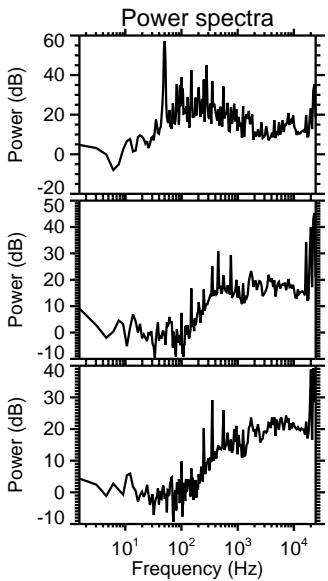
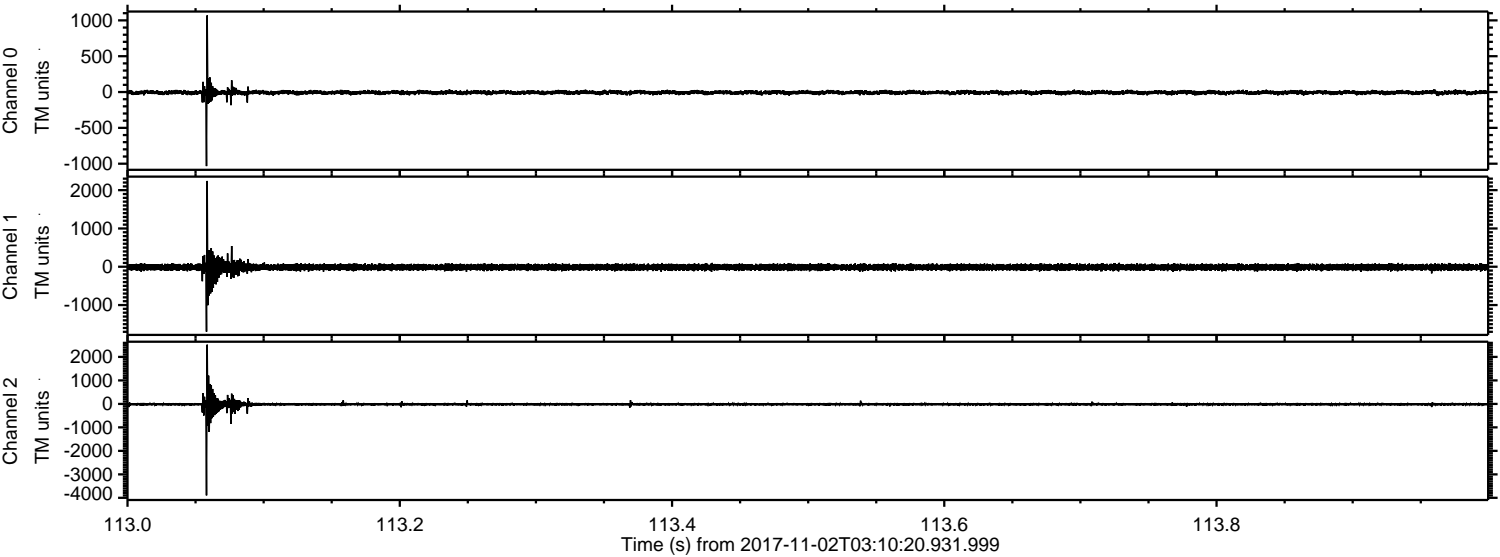
Channel 2
mn: -6184
mx: 3095
μ: -16.5
σ: 71.1

Processed Thu Nov 2 04:18:33 2017 by ELM ver.2012-10-06 from 001__elm20171102_031019__dat00.bin



ELMAVAN 3D WAVEFORMS (Measured data sampled at 50 kHz) 51000 packets of 144 samples from 2017-11-02T03:10:20.931.999. Part 114/147

Processed Thu Nov 2 04:18:34 2017 by ELM ver.2012-10-06 from 001__elm20171102_031019__dat00.bin



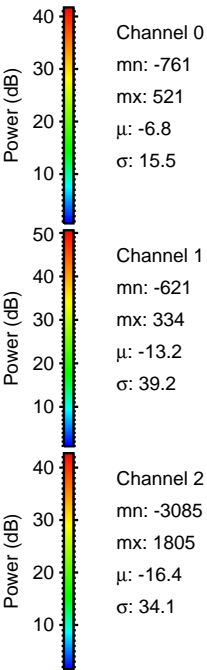
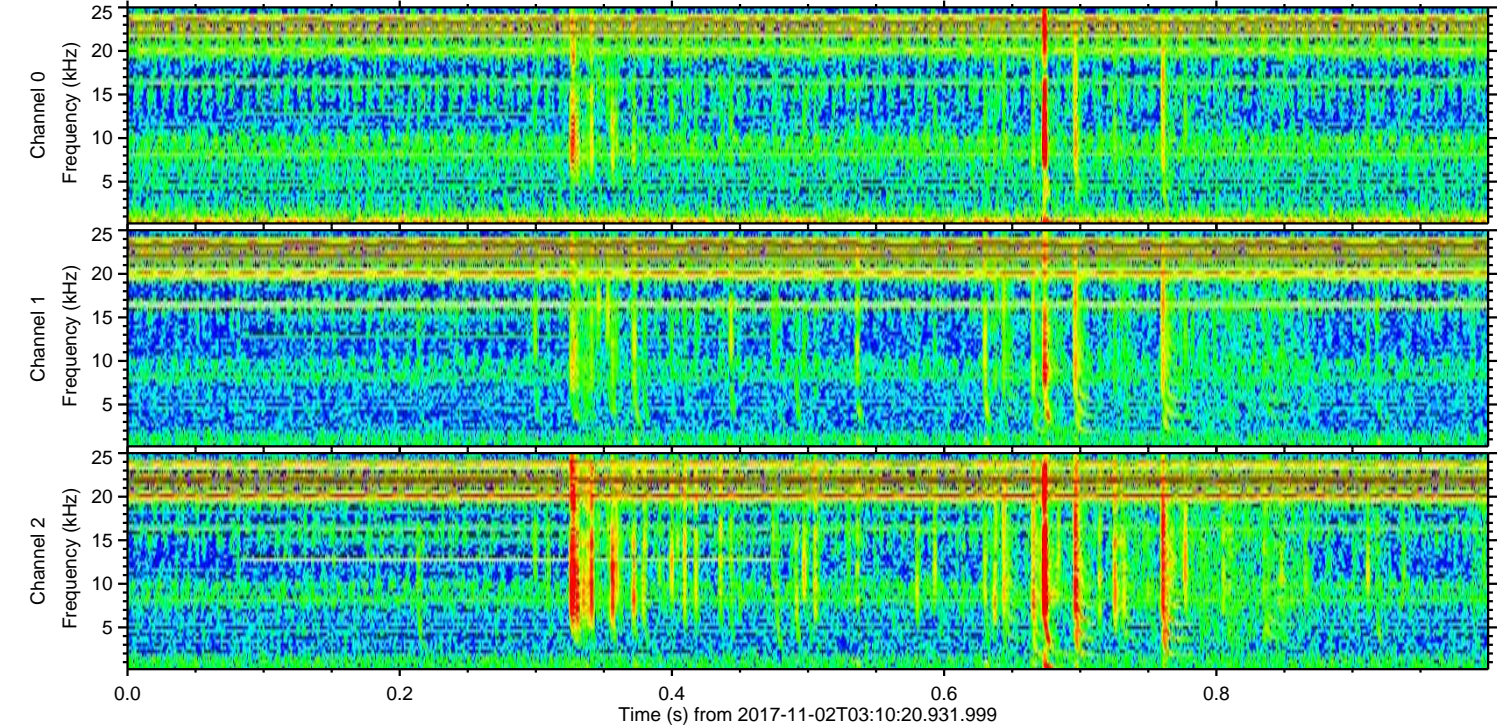
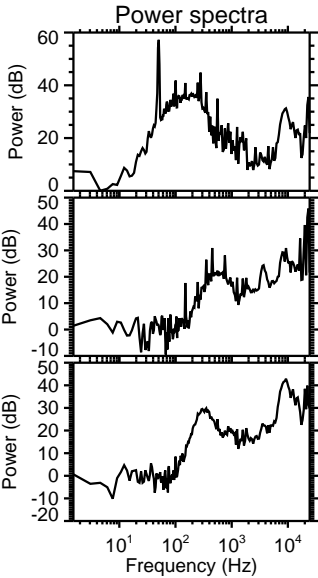
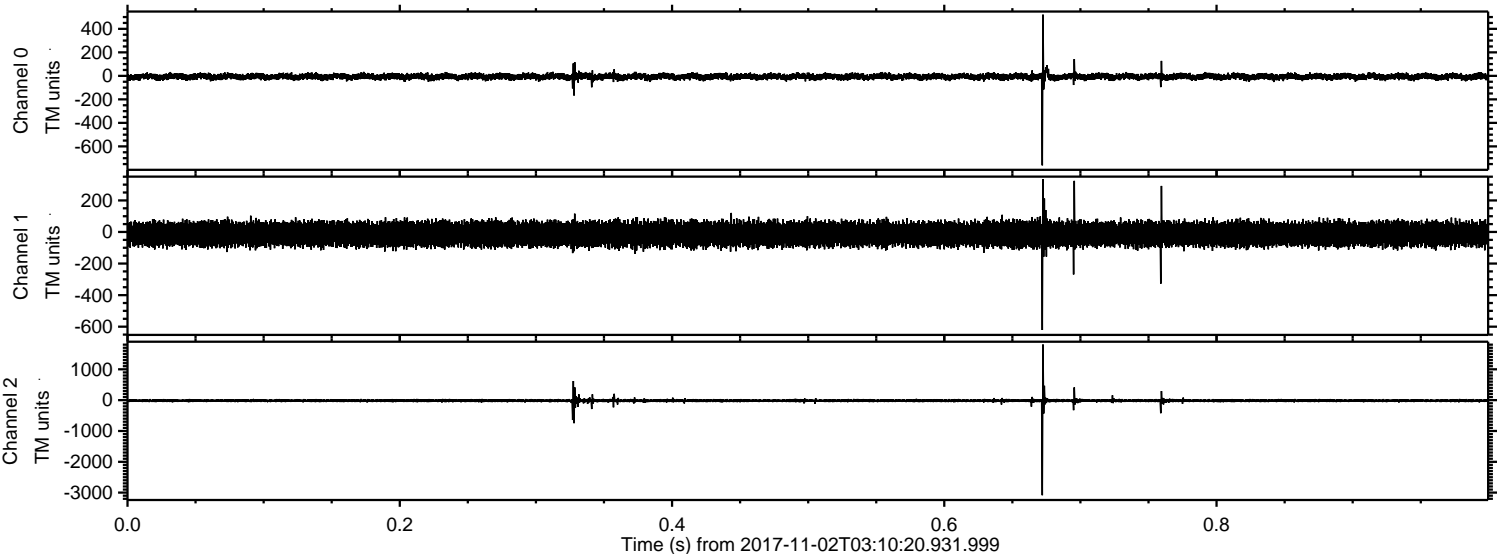
Channel 0
mn: -1034
mx: 1070
 μ : -6.8
 σ : 18.7

Channel 1
mn: -1696
mx: 2242
 μ : -13.3
 σ : 49.7

Channel 2
mn: -3897
mx: 2522
 μ : -16.4
 σ : 52.2

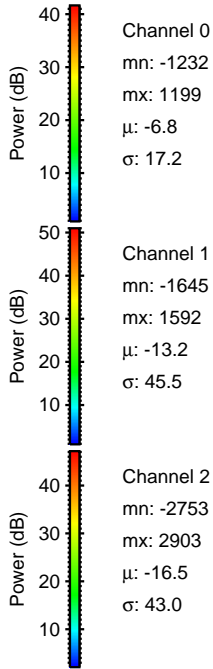
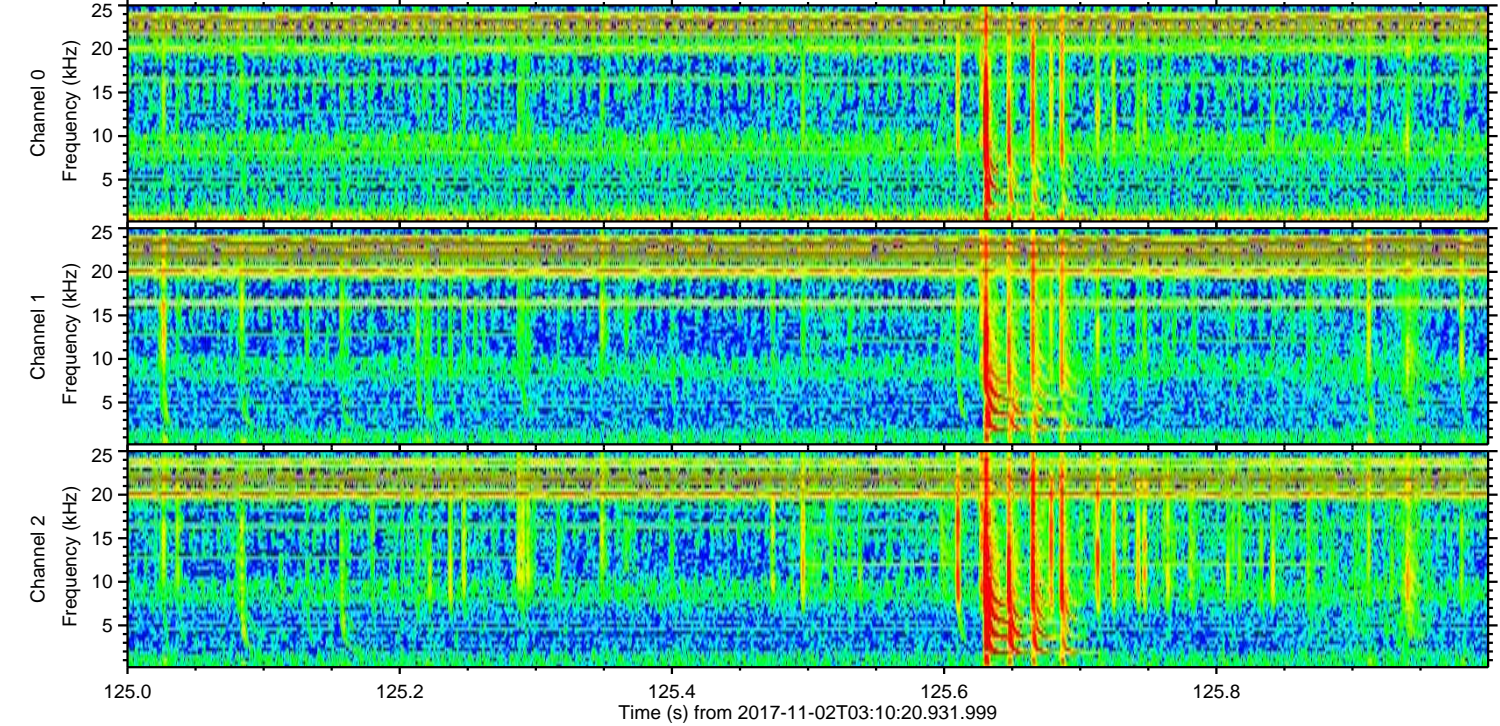
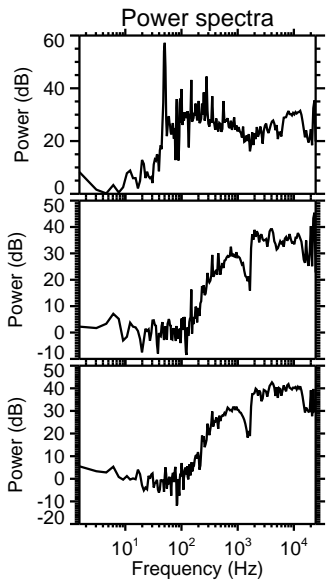
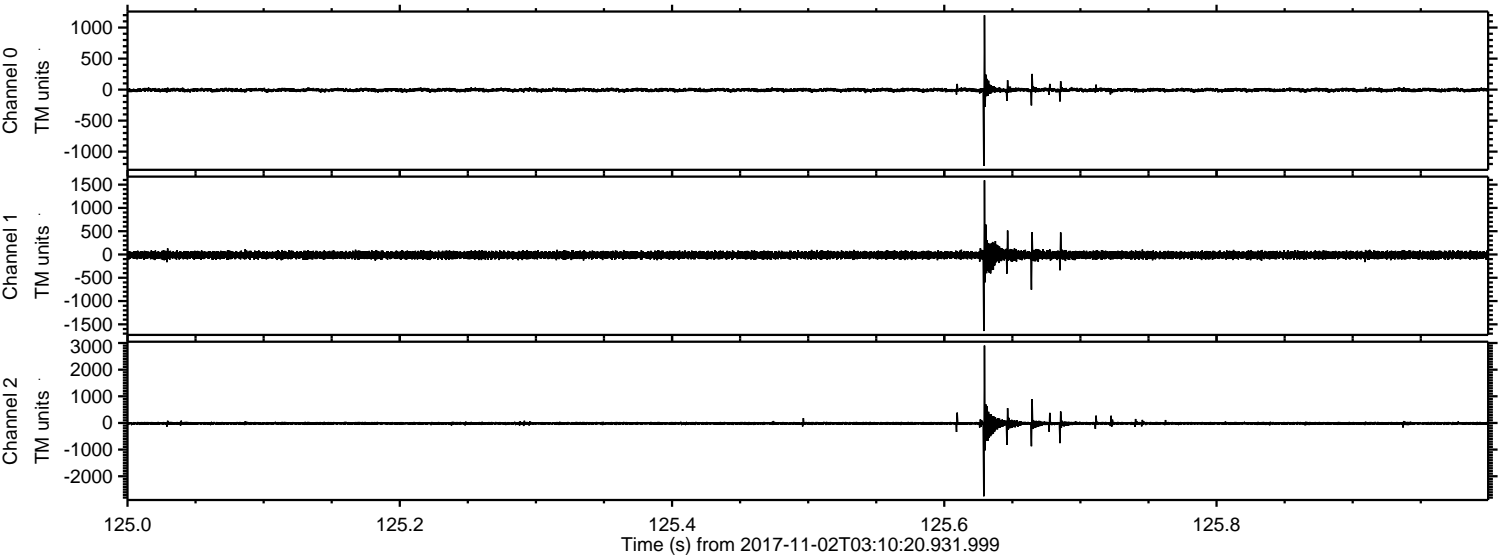
ELMAVAN 3D WAVEFORMS (Measured data sampled at 50 kHz) 51000 packets of 144 samples from 2017-11-02T03:10:20.931.999. Part 1/147

Processed Thu Nov 2 04:18:35 2017 by ELM ver.2012-10-06 from 001__elm20171102_031019__dat00.bin



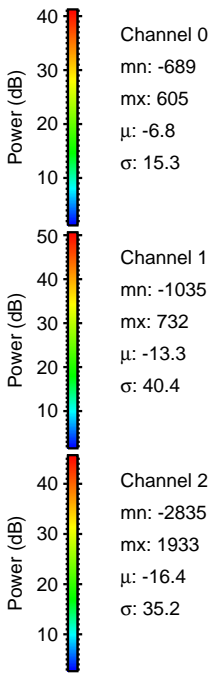
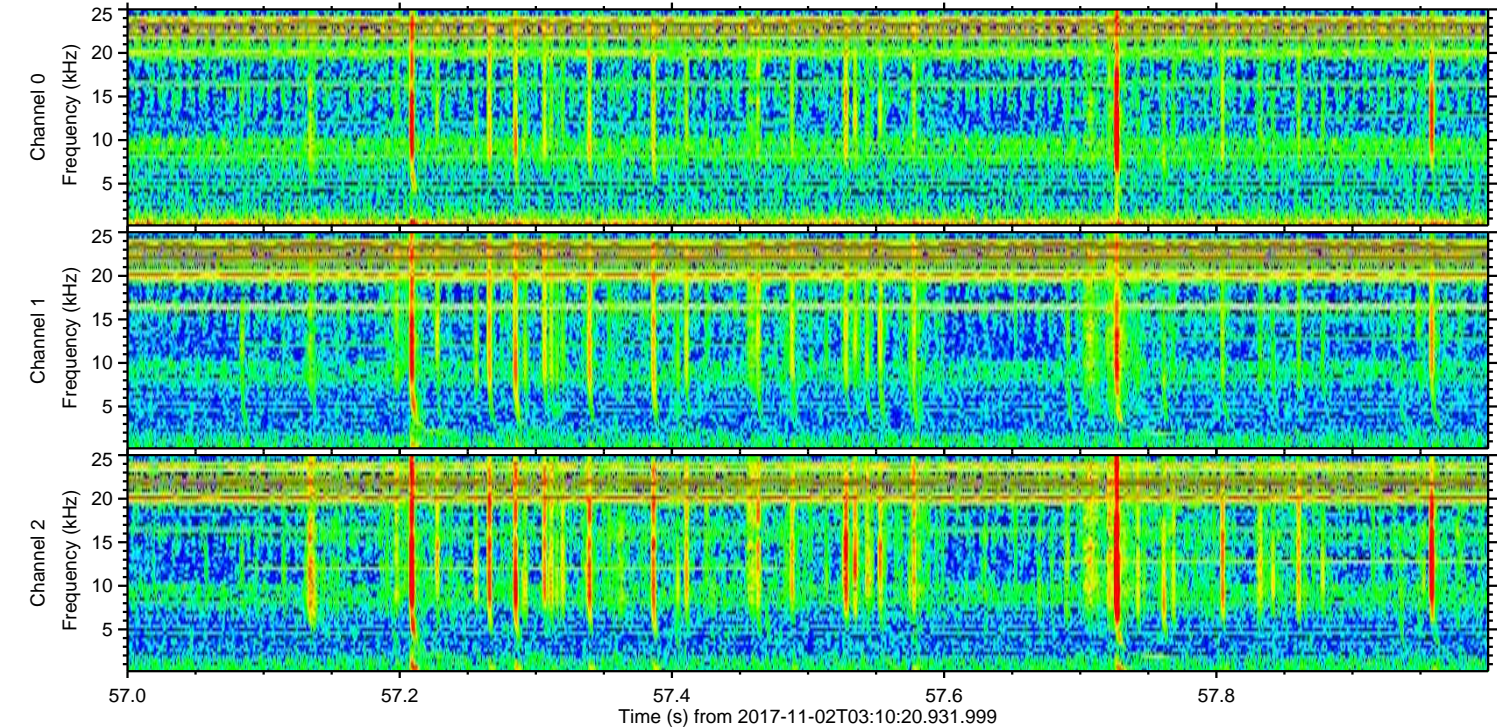
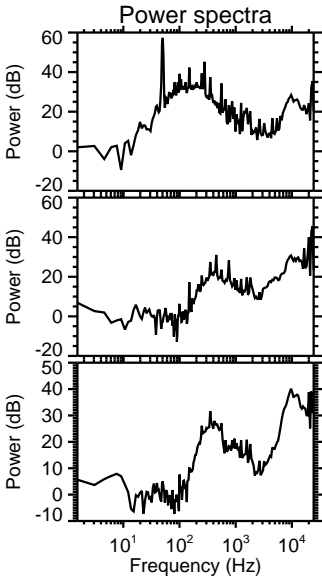
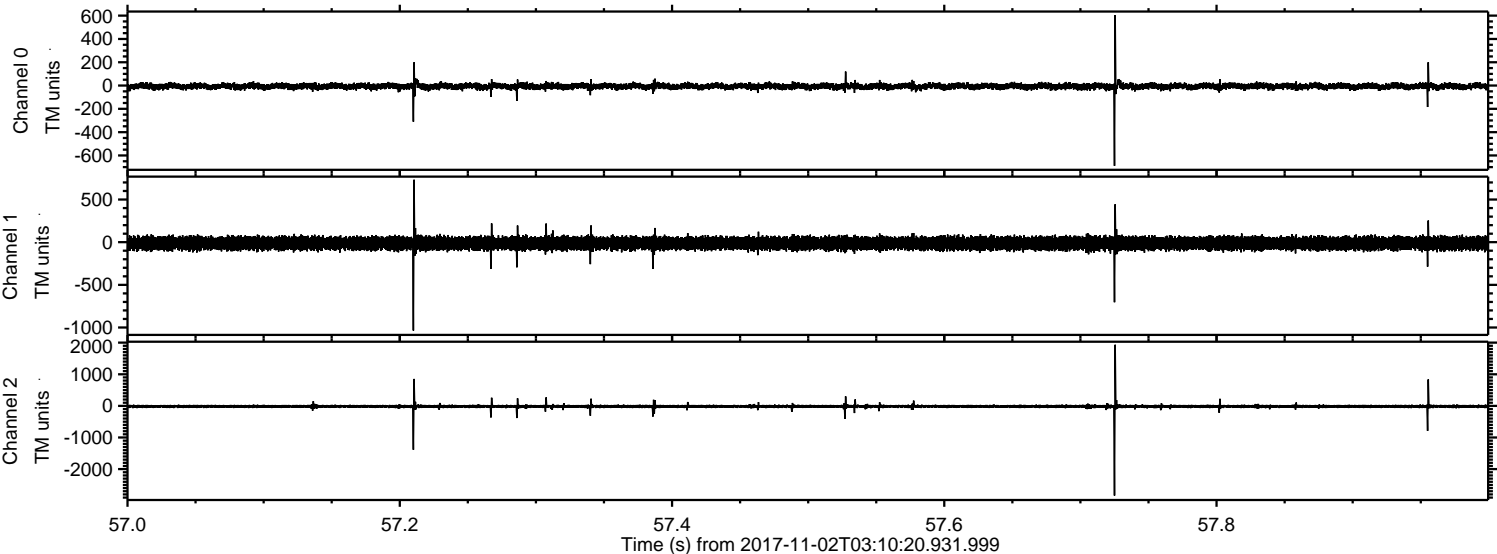
ELMAVAN 3D WAVEFORMS (Measured data sampled at 50 kHz) 51000 packets of 144 samples from 2017-11-02T03:10:20.931.999. Part 126/147

Processed Thu Nov 2 04:18:35 2017 by ELM ver.2012-10-06 from 001__elm20171102_031019__dat00.bin



ELMAVAN 3D WAVEFORMS (Measured data sampled at 50 kHz) 51000 packets of 144 samples from 2017-11-02T03:10:20.931.999. Part 58/147

Processed Thu Nov 2 04:18:36 2017 by ELM ver.2012-10-06 from 001__elm20171102_031019__dat00.bin



Channel 0
mn: -689
mx: 605
 μ : -6.8
 σ : 15.3

Channel 1
mn: -1035
mx: 732
 μ : -13.3
 σ : 40.4

Channel 2
mn: -2835
mx: 1933
 μ : -16.4
 σ : 35.2

Processed Thu Nov 2 04:18:37 2017 by ELM ver.2012-10-06 from 001__elm20171102_031019__dat00.bin

