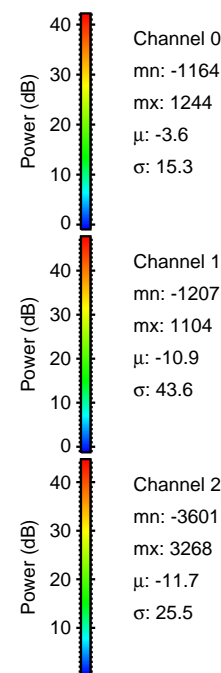
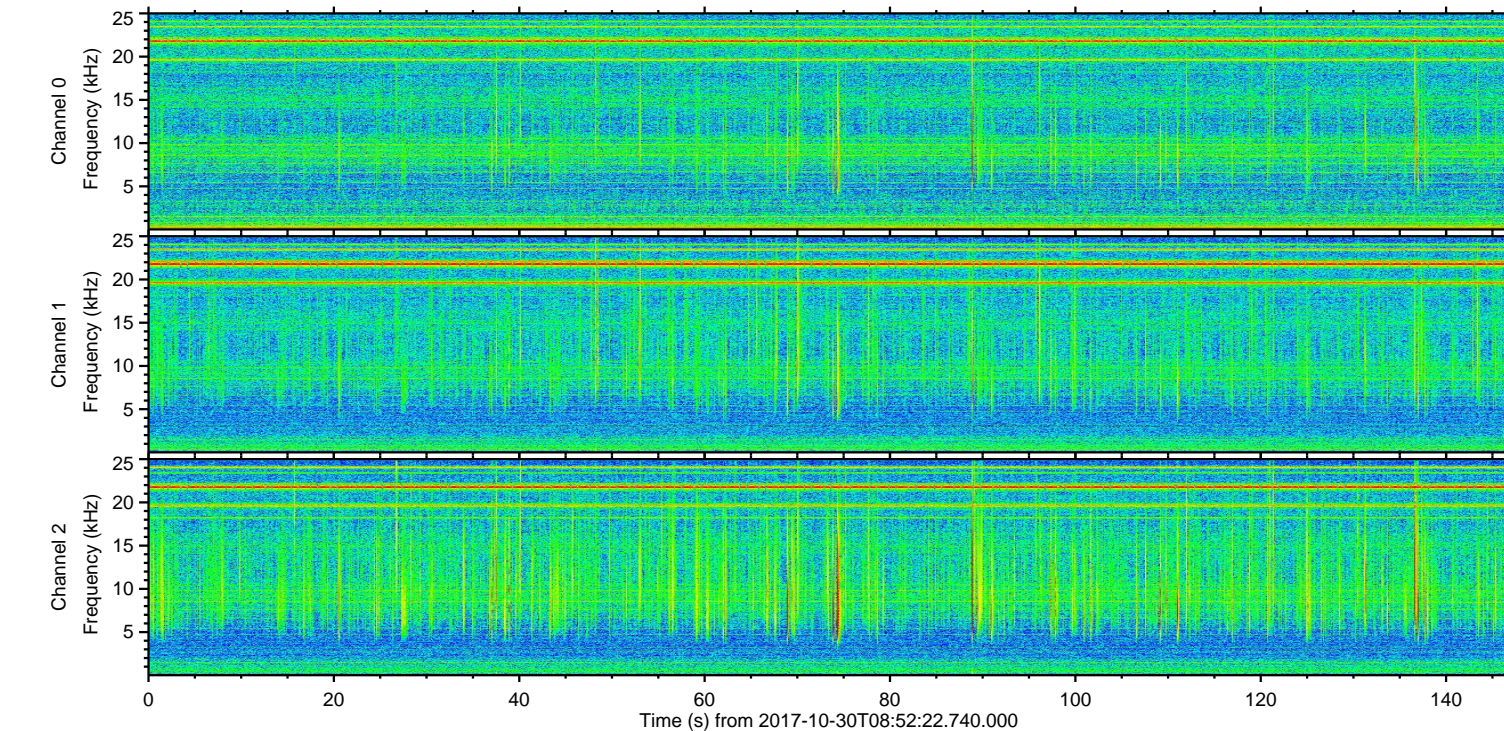
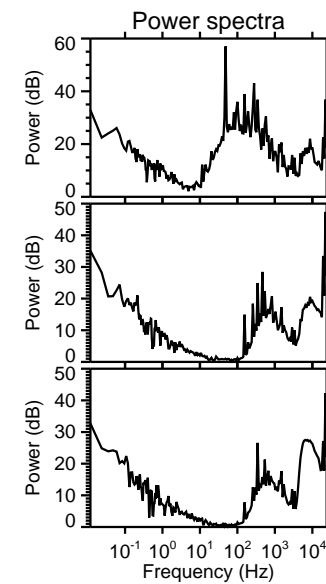
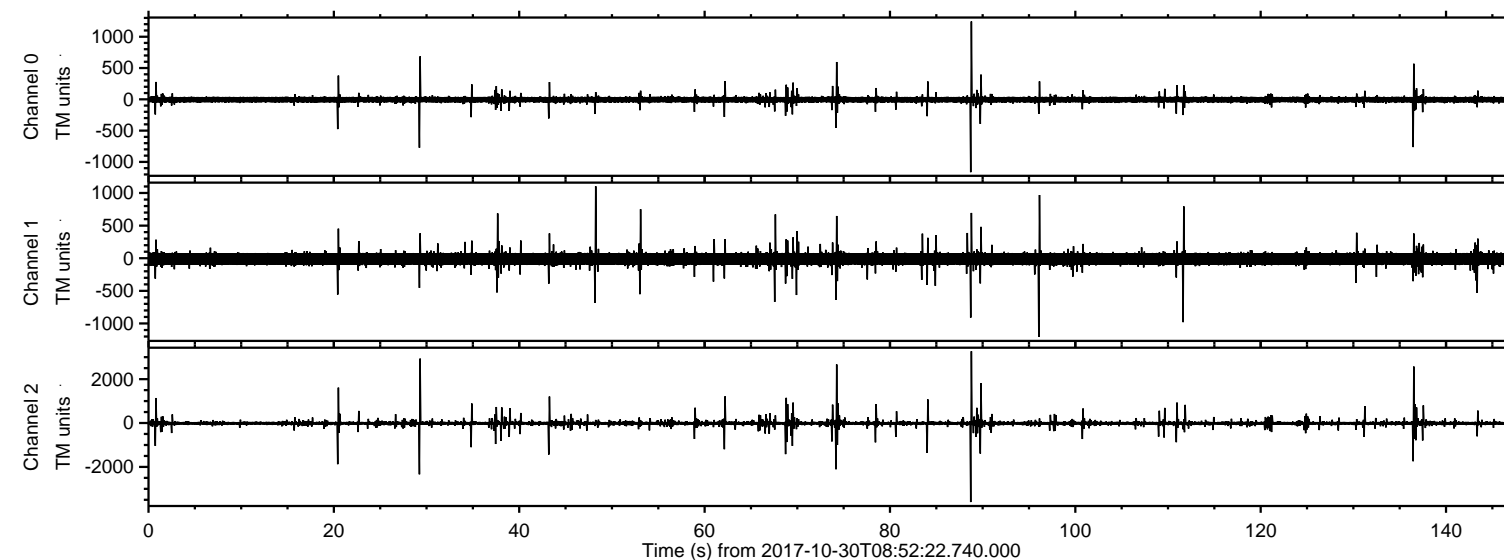
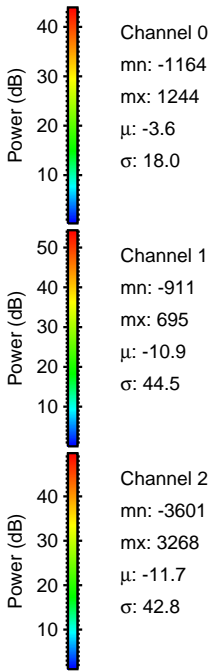
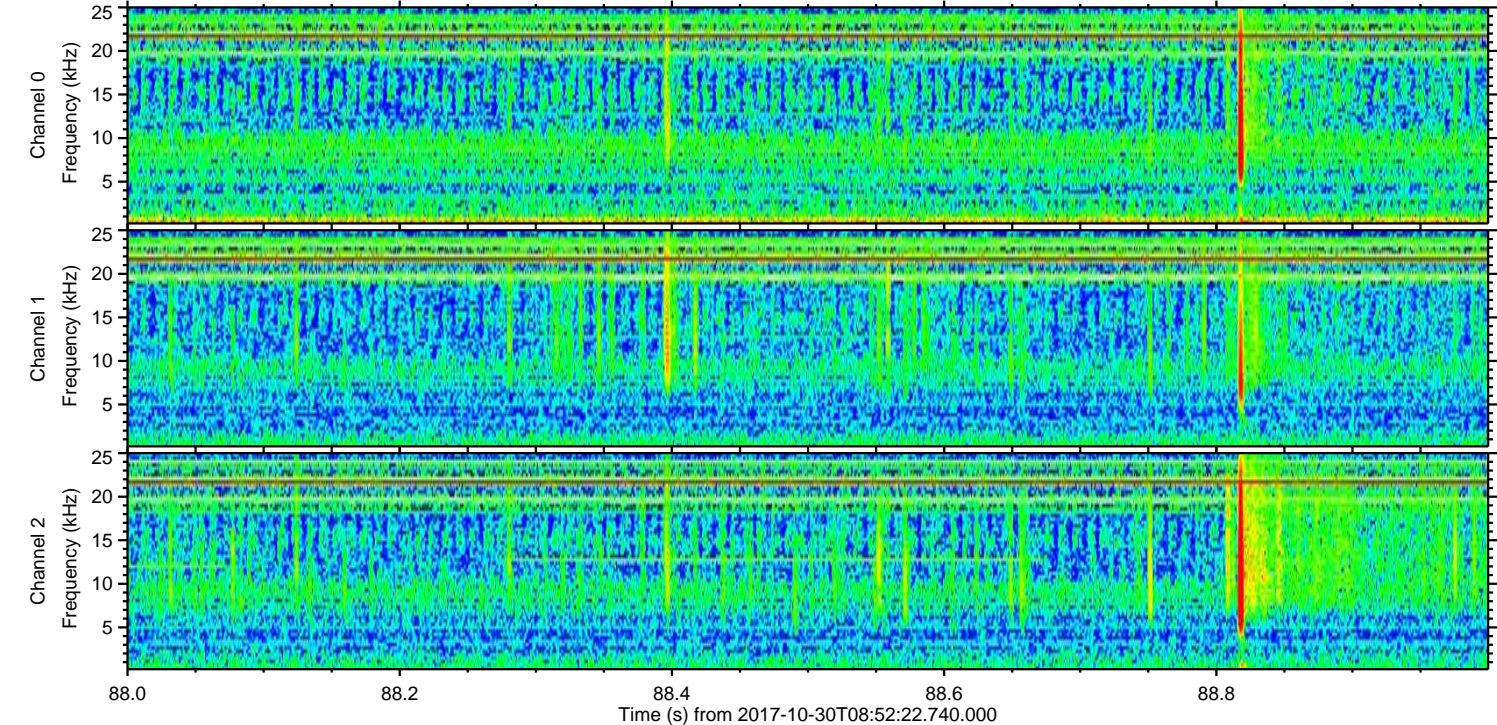
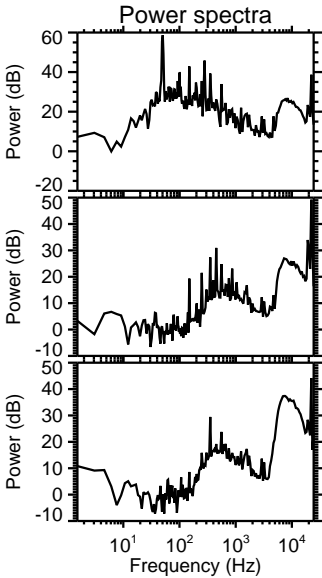
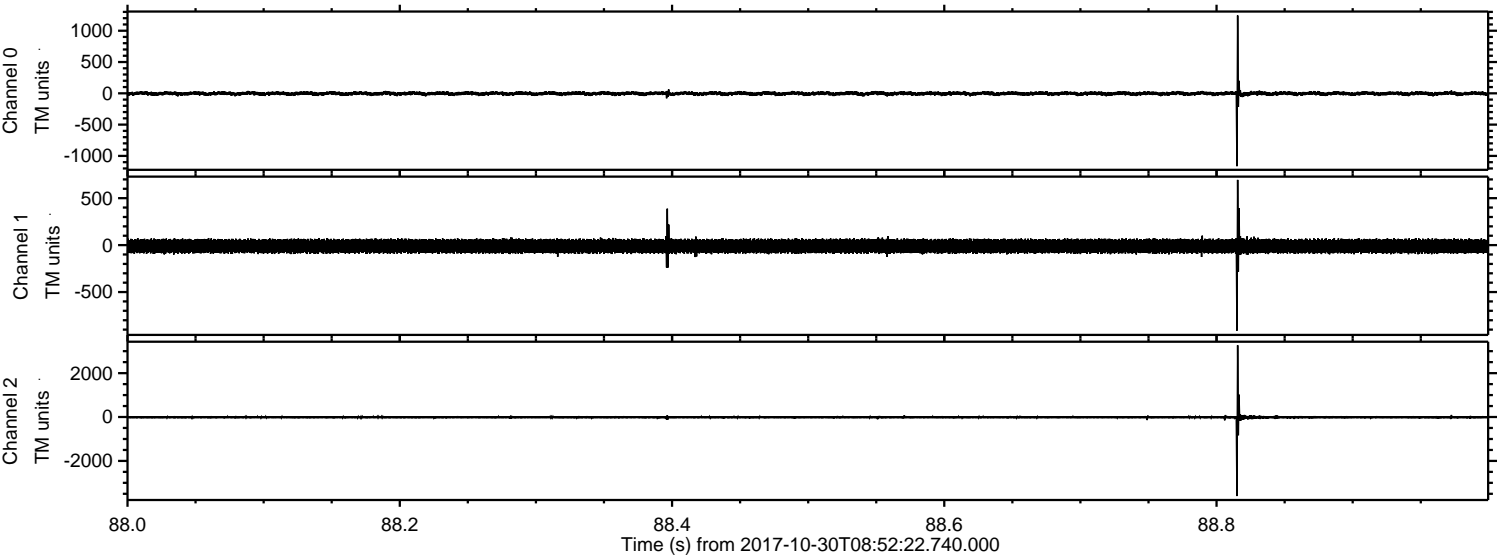


ELMAVAN 3D WAVEFORMS (Measured data sampled at 50 kHz) 51000 packets of 144 samples from 2017-10-30T08:52:22.740.000.

Processed Mon Oct 30 10:00:10 2017 by ELM ver.2012-10-06 from 001__elm20171030_085221__dat00.bin

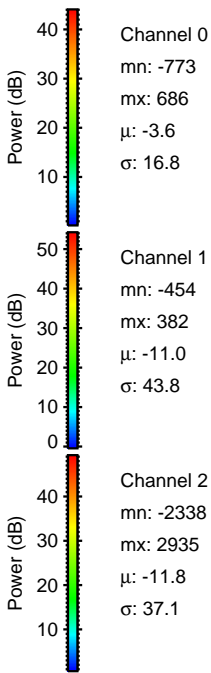
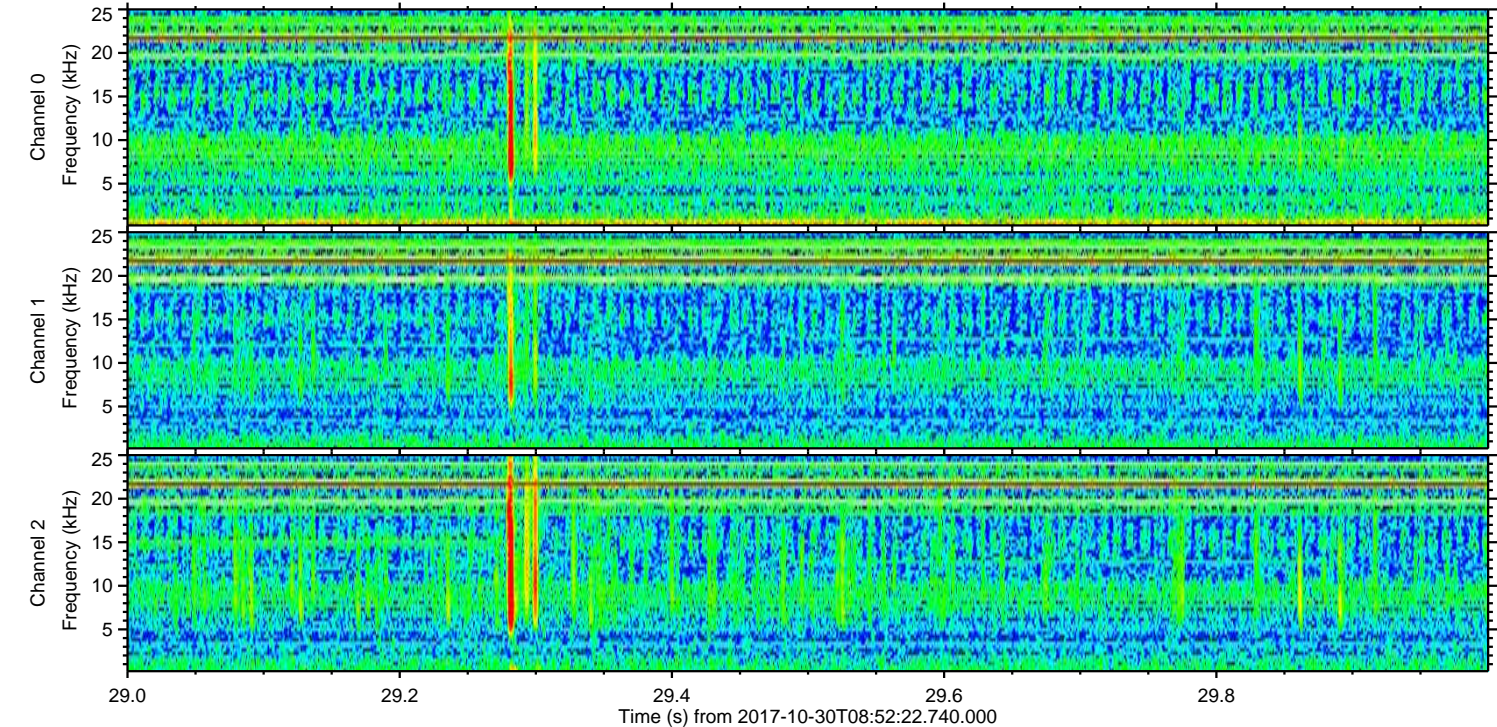
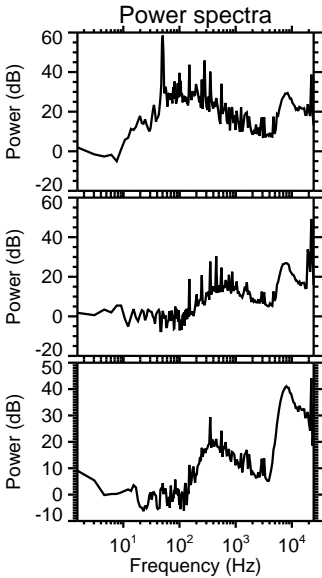
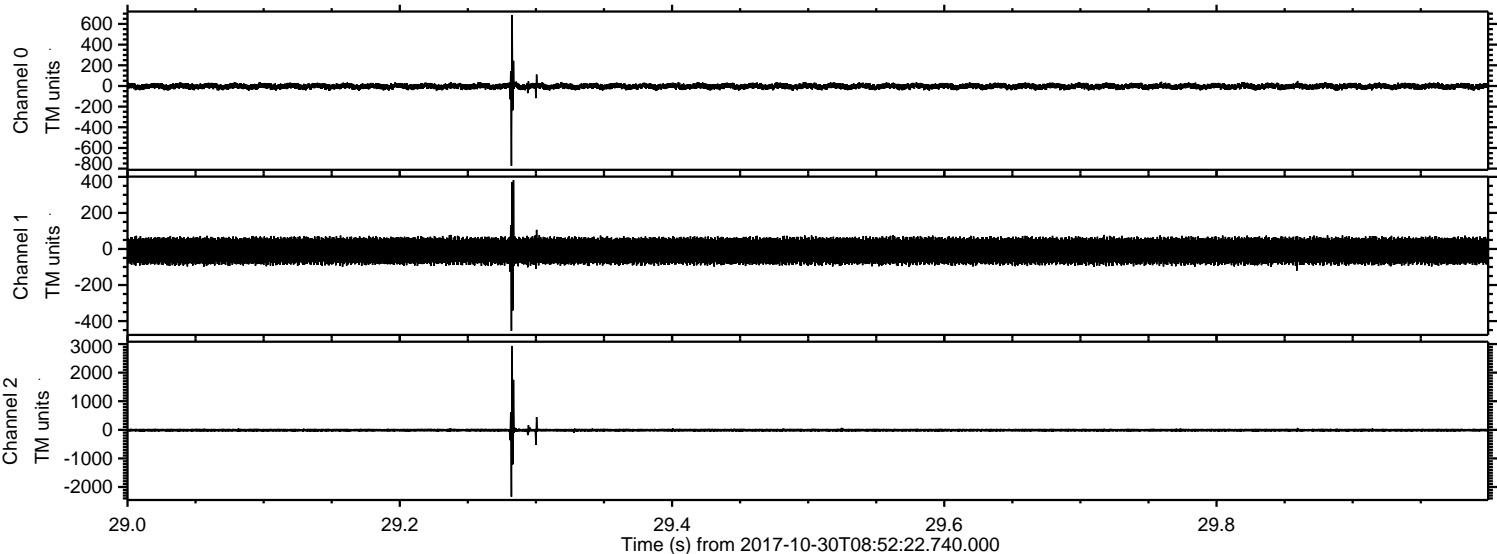


Processed Mon Oct 30 10:00:16 2017 by ELM ver.2012-10-06 from 001__elm20171030_085221__dat00.bin



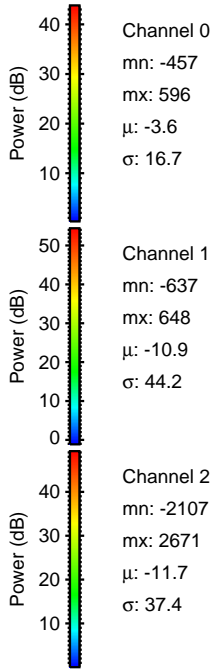
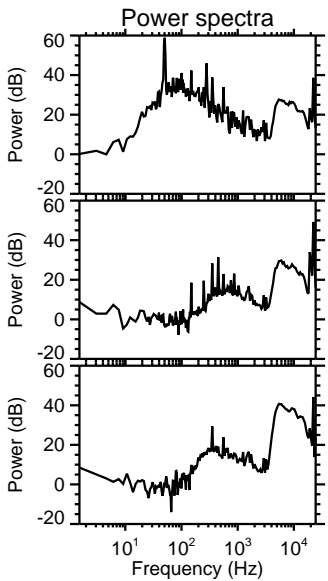
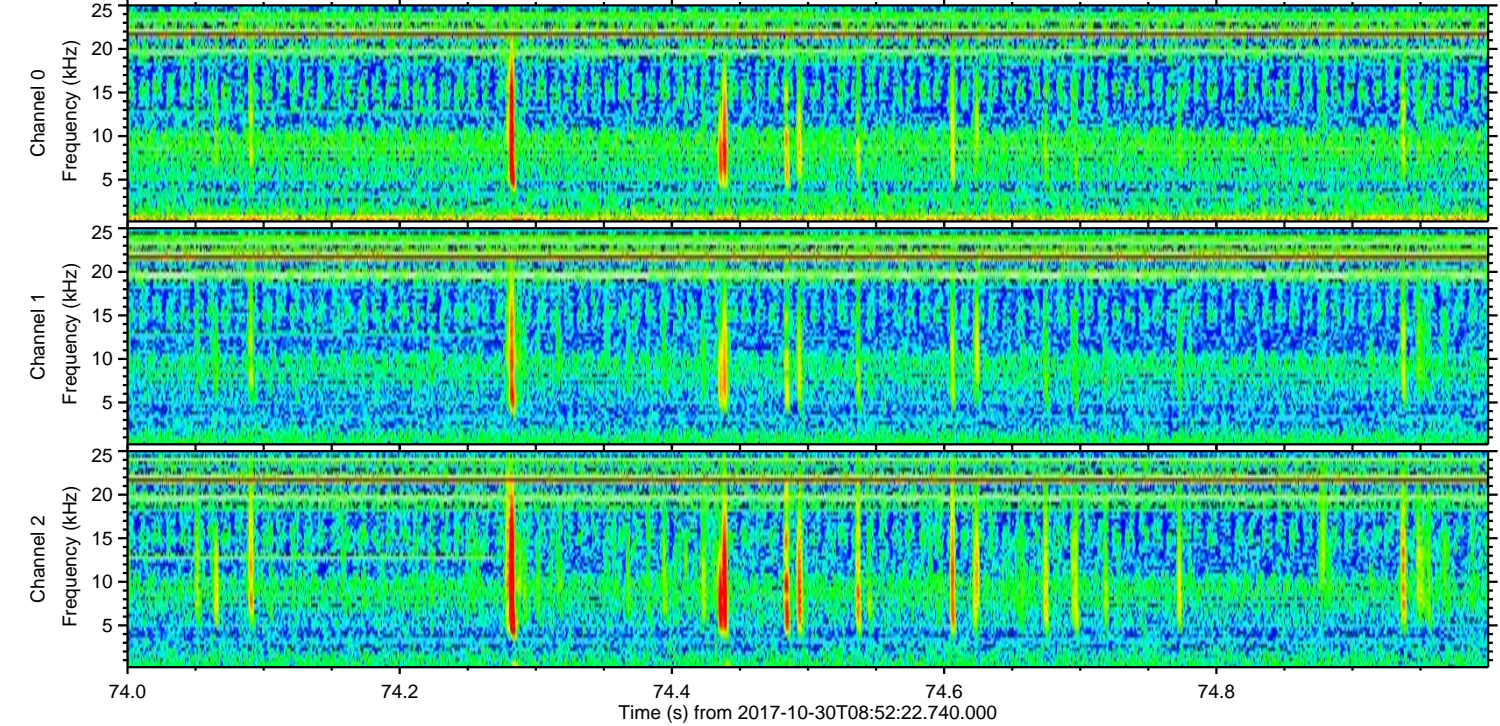
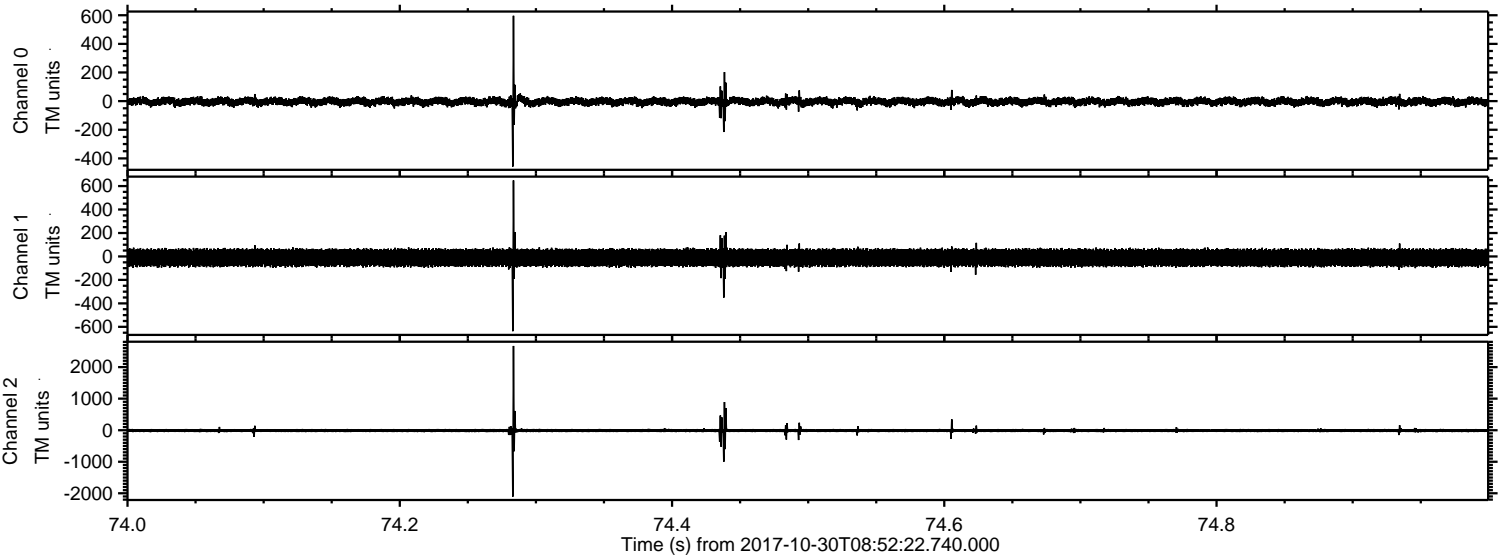
ELMAVAN 3D WAVEFORMS (Measured data sampled at 50 kHz) 51000 packets of 144 samples from 2017-10-30T08:52:22.740.000. Part 30/147

Processed Mon Oct 30 10:00:17 2017 by ELM ver.2012-10-06 from 001__elm20171030_085221__dat00.bin



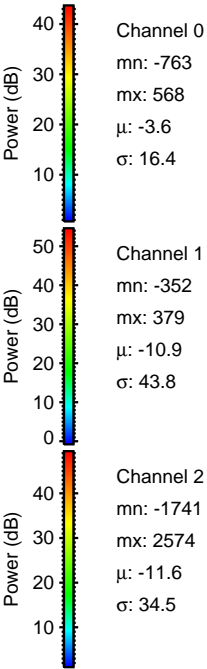
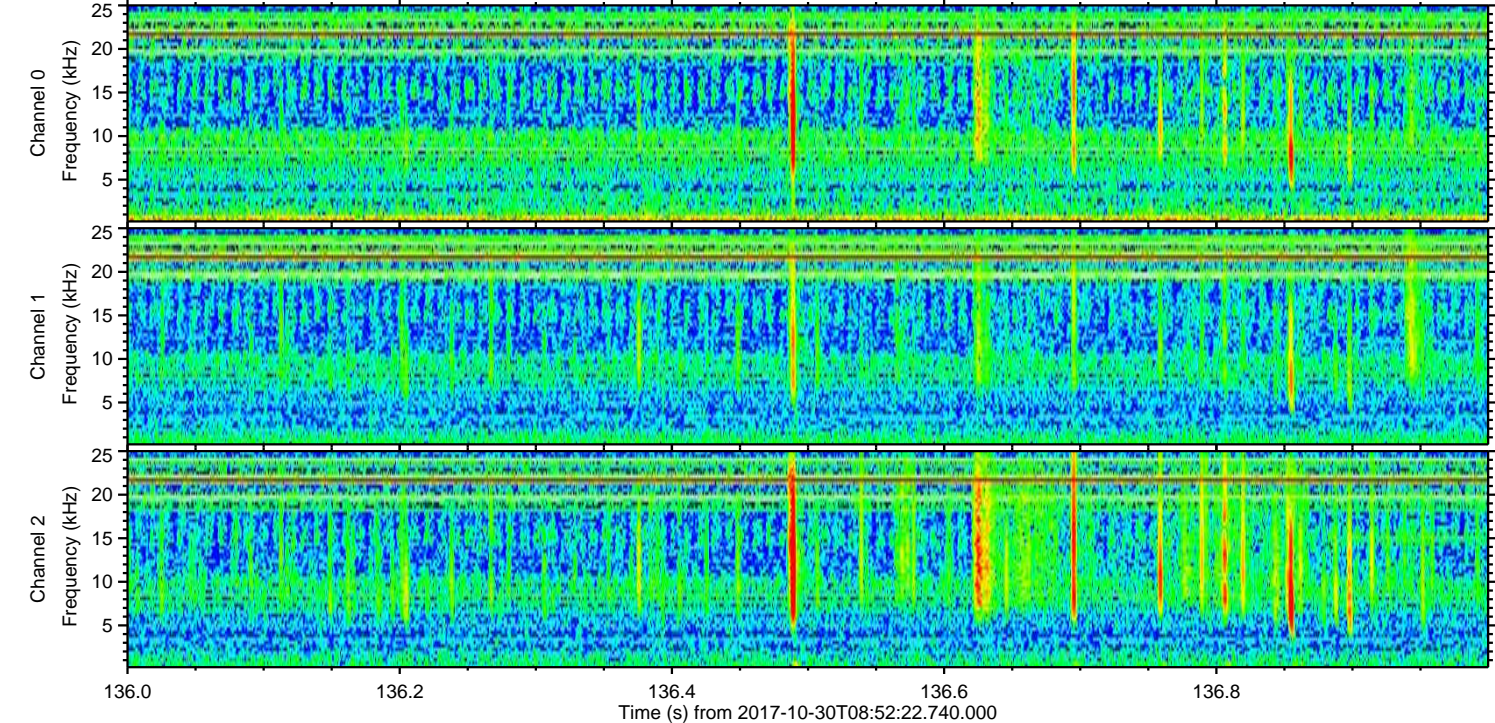
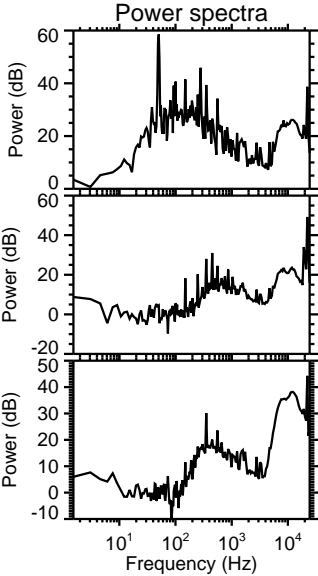
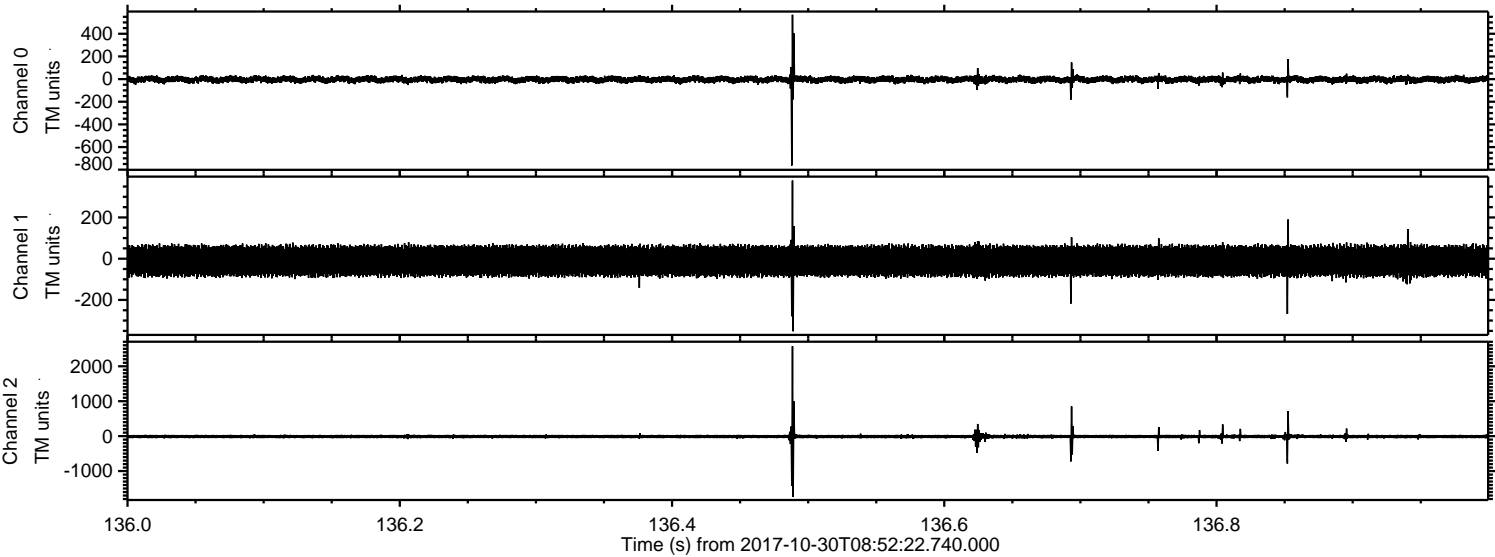
ELMAVAN 3D WAVEFORMS (Measured data sampled at 50 kHz) 51000 packets of 144 samples from 2017-10-30T08:52:22.740.000. Part 75/147

Processed Mon Oct 30 10:00:17 2017 by ELM ver.2012-10-06 from 001__elm20171030_085221__dat00.bin



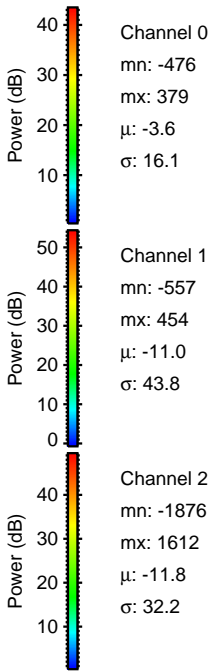
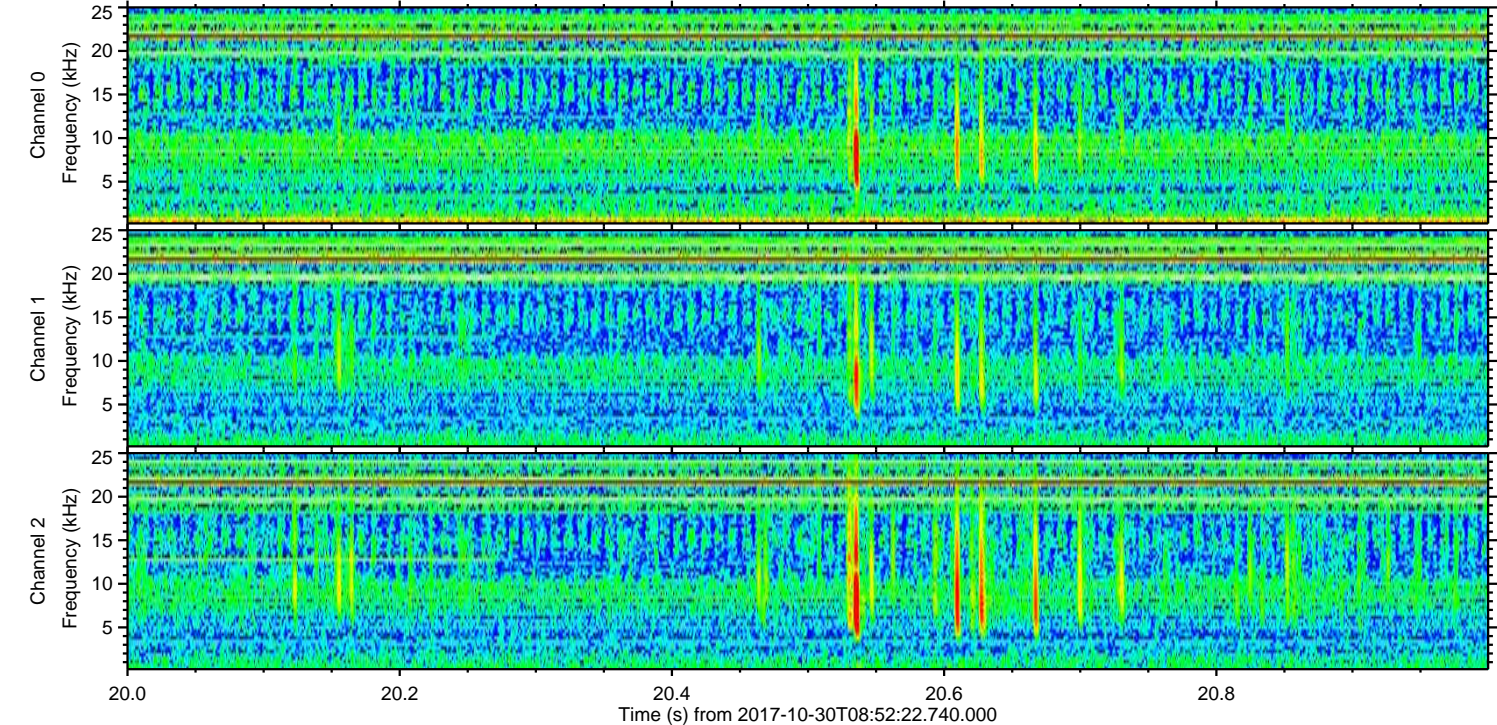
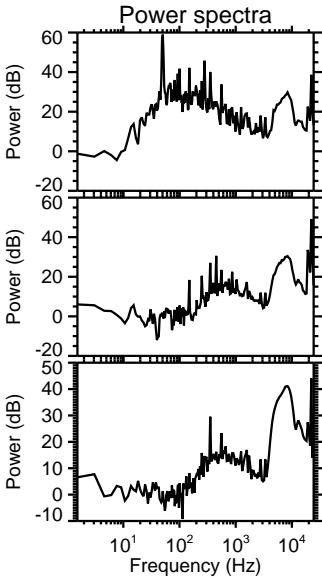
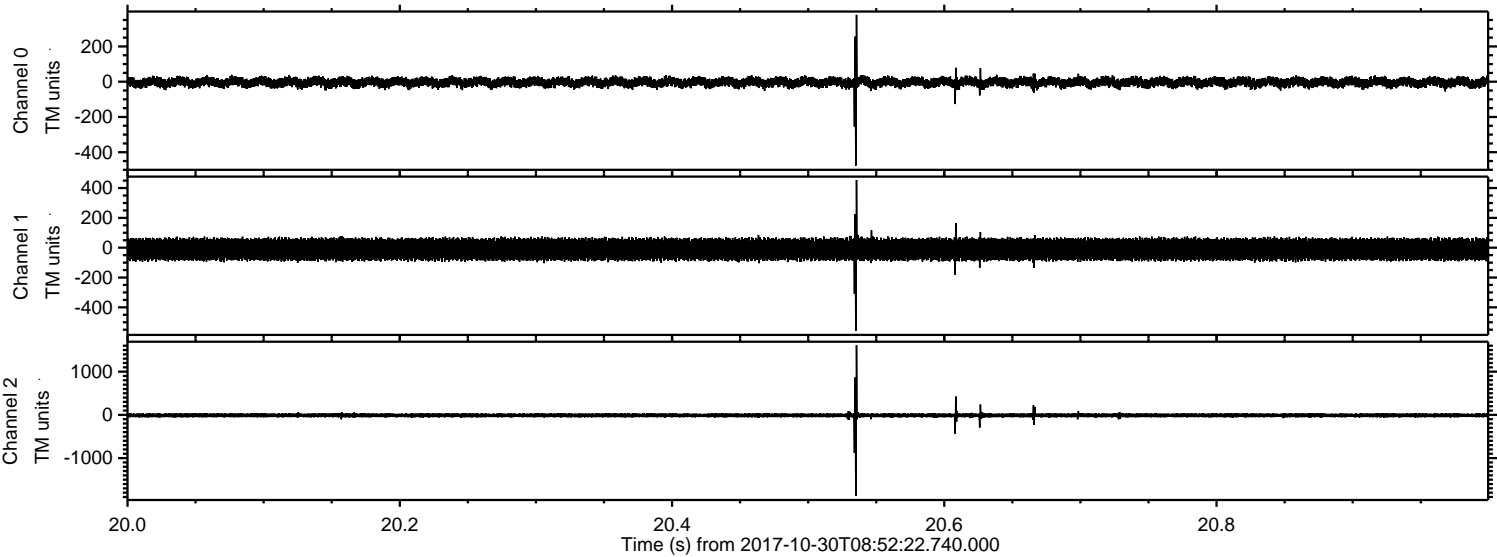
ELMAVAN 3D WAVEFORMS (Measured data sampled at 50 kHz) 51000 packets of 144 samples from 2017-10-30T08:52:22.740.000. Part 137/147

Processed Mon Oct 30 10:00:18 2017 by ELM ver.2012-10-06 from 001__elm20171030_085221__dat00.bin

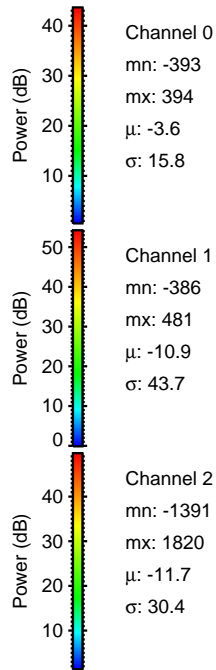
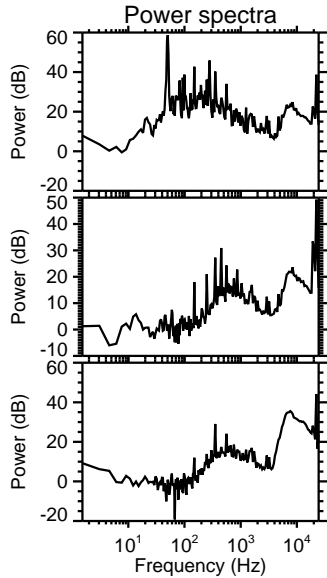
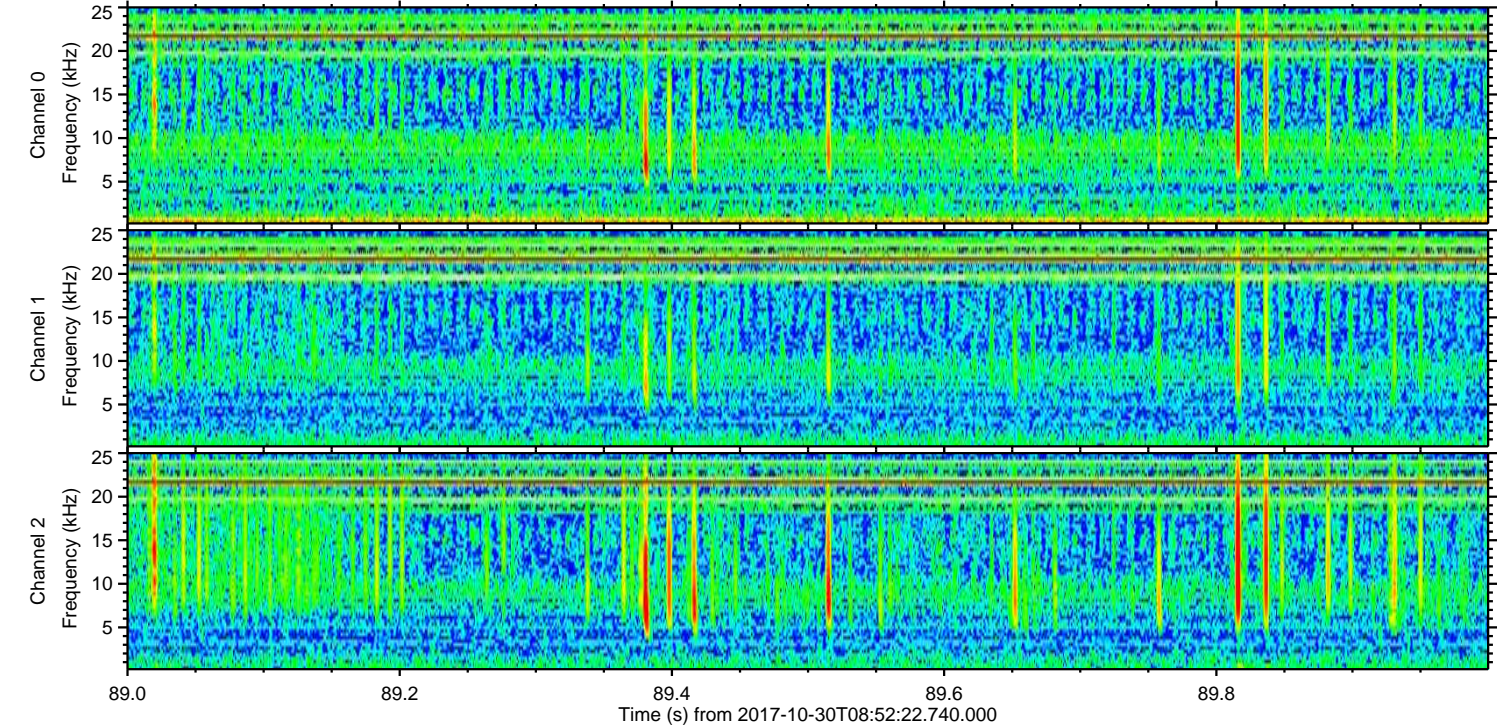
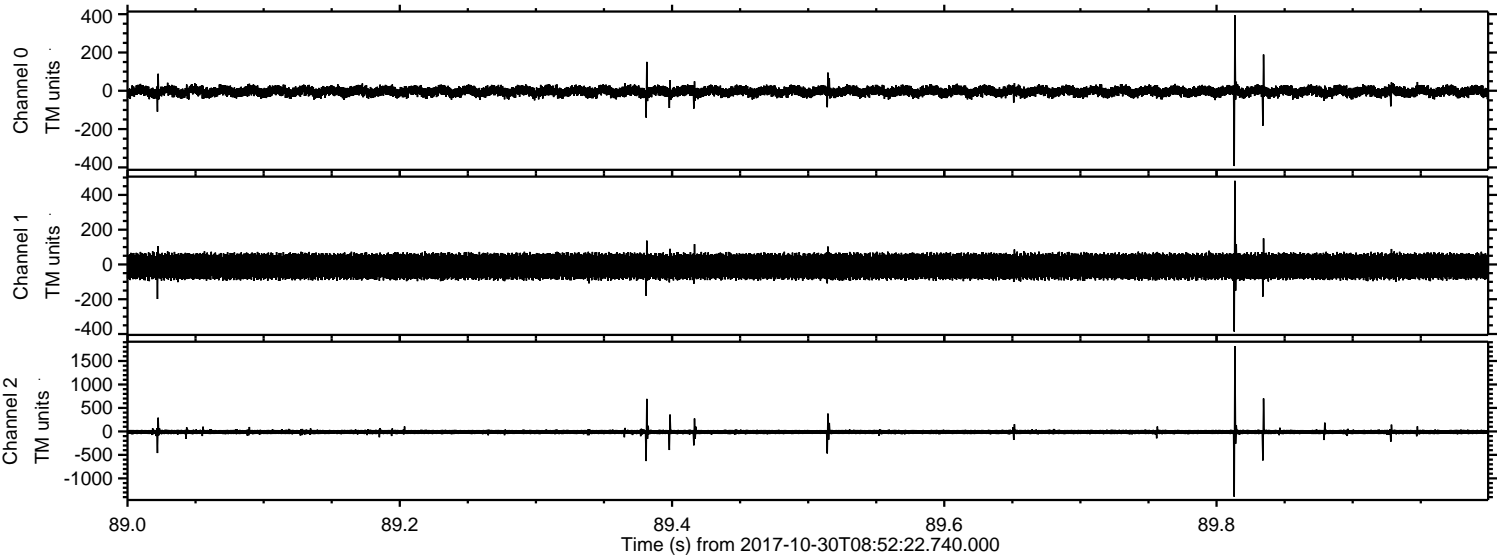


ELMAVAN 3D WAVEFORMS (Measured data sampled at 50 kHz) 51000 packets of 144 samples from 2017-10-30T08:52:22.740.000. Part 21/147

Processed Mon Oct 30 10:00:19 2017 by ELM ver.2012-10-06 from 001__elm20171030_085221__dat00.bin



Processed Mon Oct 30 10:00:19 2017 by ELM ver.2012-10-06 from 001__elm20171030_085221__dat00.bin



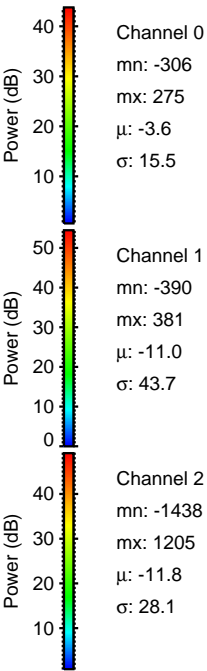
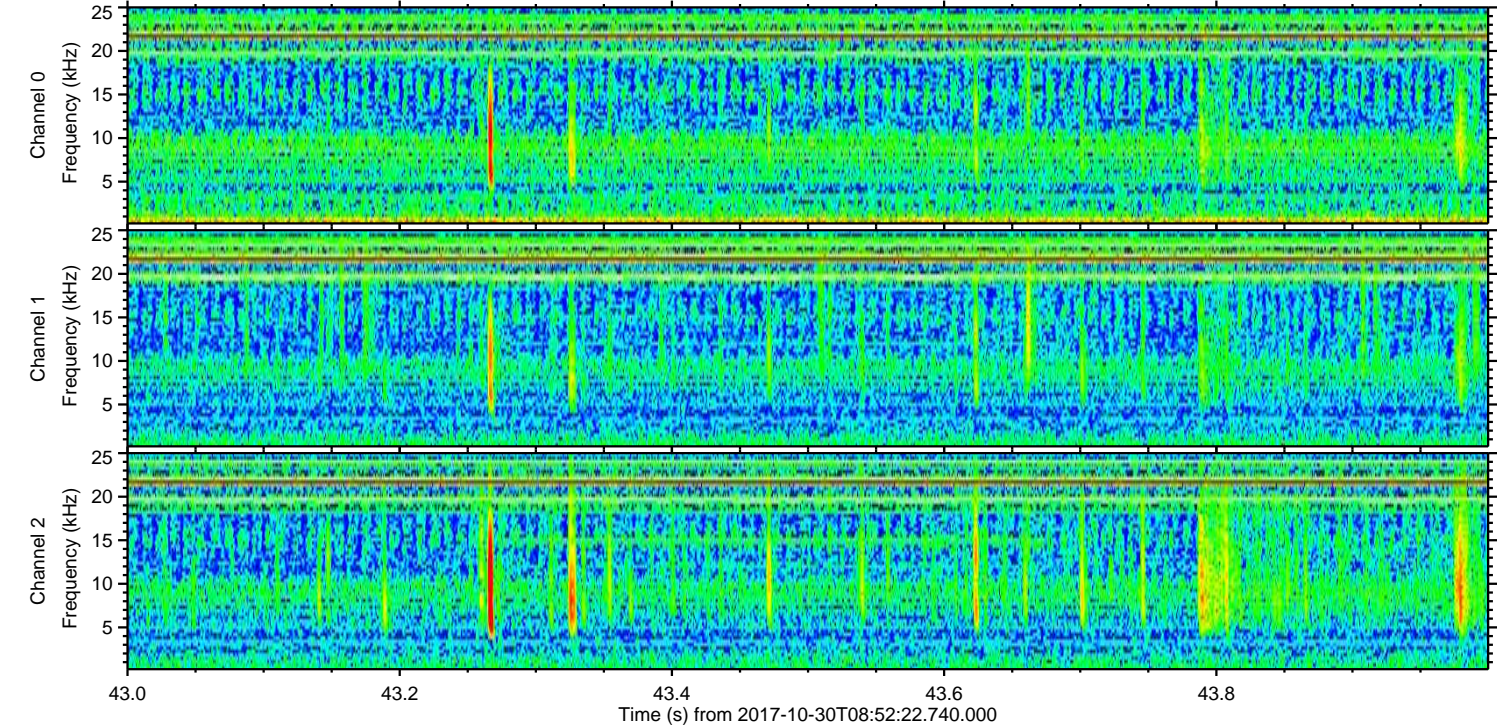
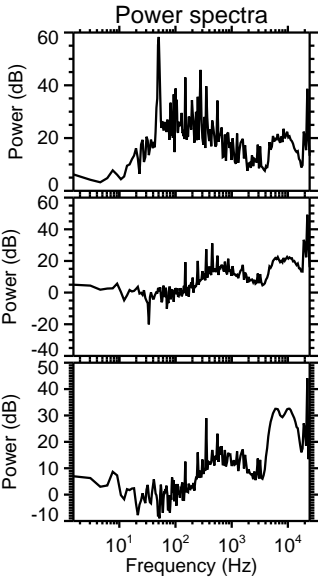
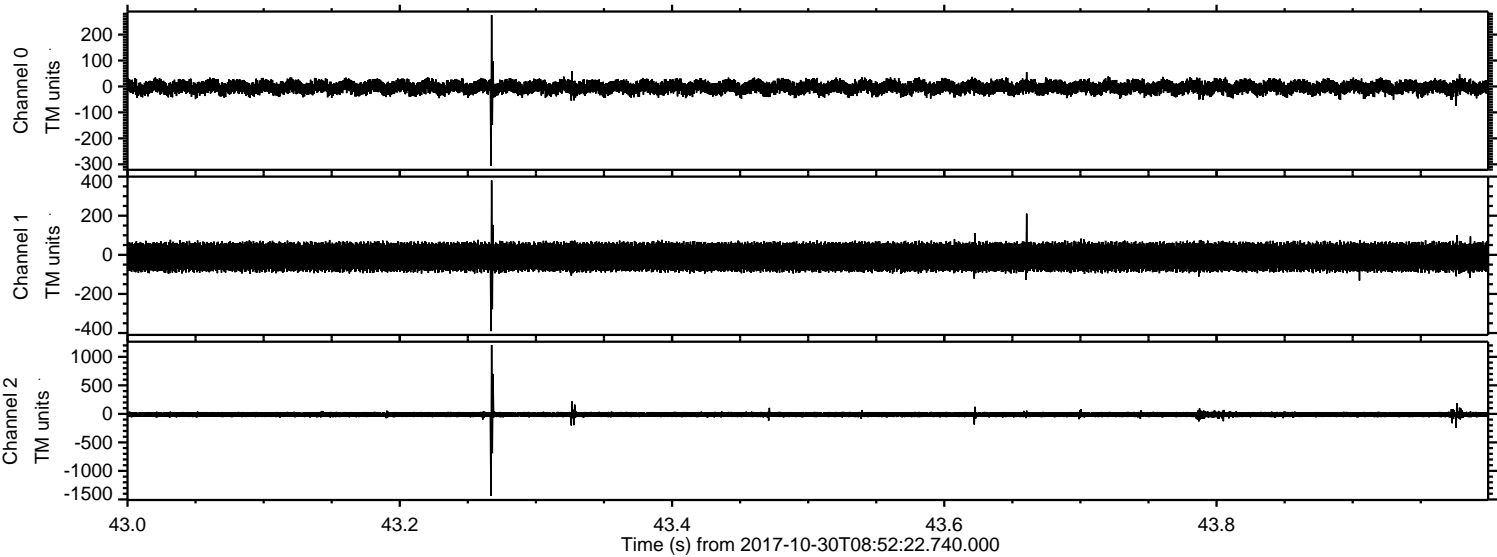
Power spectra

Channel 0
mn: -393
mx: 394
 μ : -3.6
 σ : 15.8

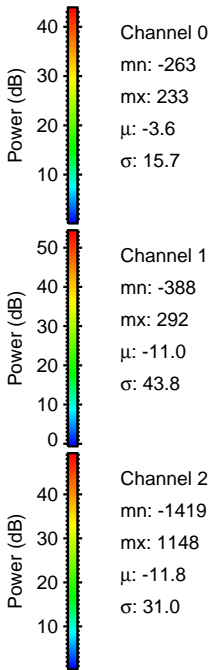
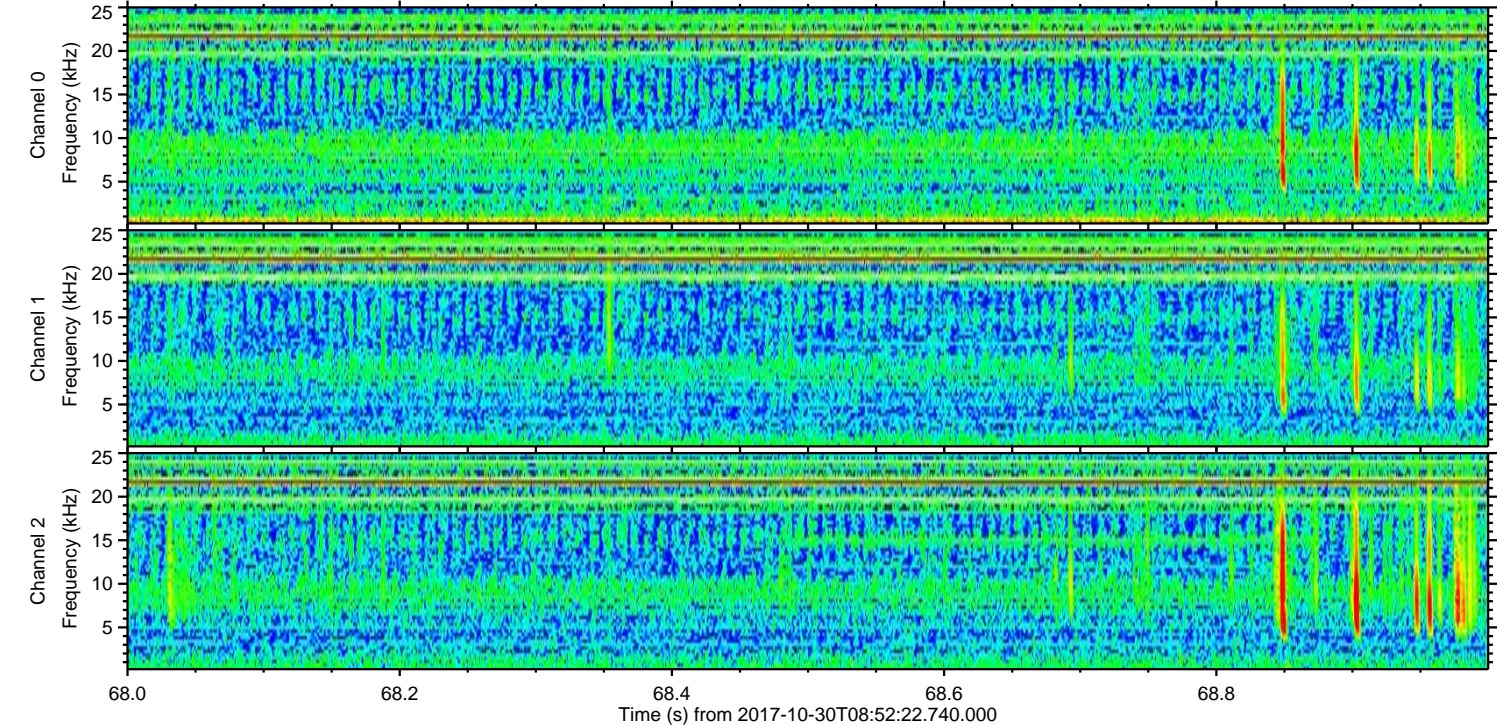
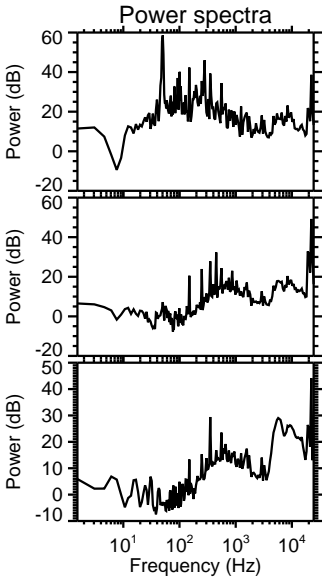
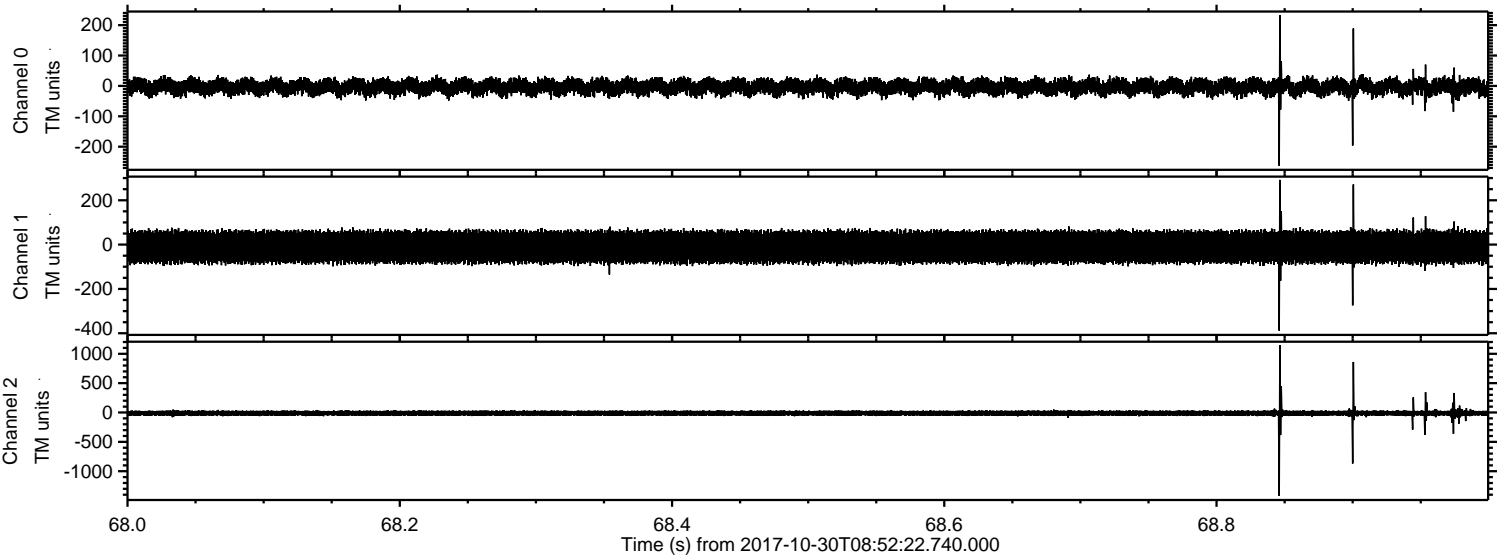
Channel 1
mn: -386
mx: 481
 μ : -10.9
 σ : 43.7

Channel 2
mn: -1391
mx: 1820
 μ : -11.7
 σ : 30.4

Processed Mon Oct 30 10:00:20 2017 by ELM ver.2012-10-06 from 001__elm20171030_085221__dat00.bin



Processed Mon Oct 30 10:00:21 2017 by ELM ver.2012-10-06 from 001__elm20171030_085221__dat00.bin



Processed Mon Oct 30 10:00:21 2017 by ELM ver.2012-10-06 from 001__elm20171030_085221__dat00.bin

