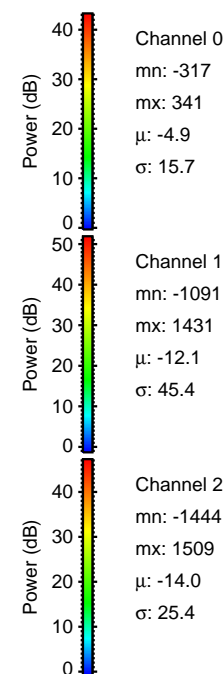
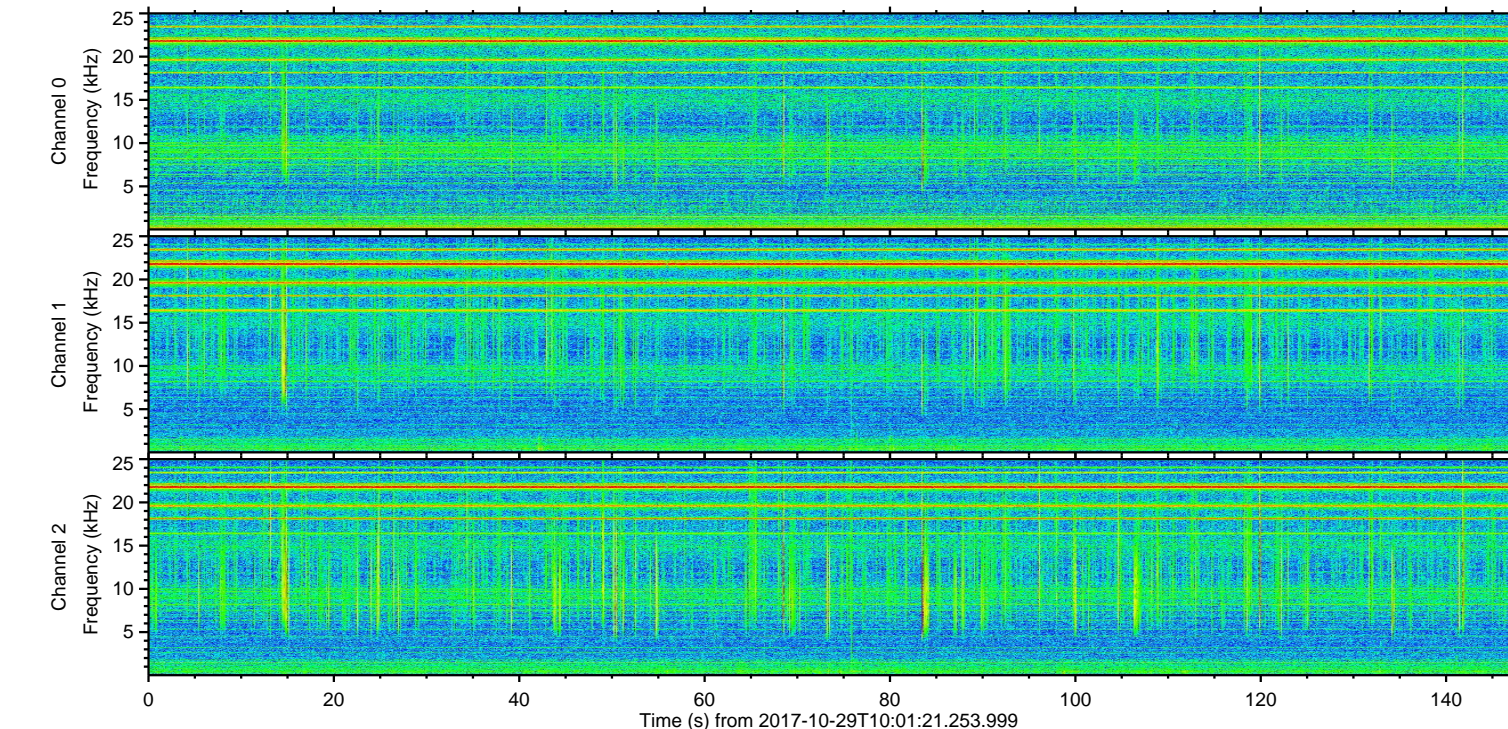
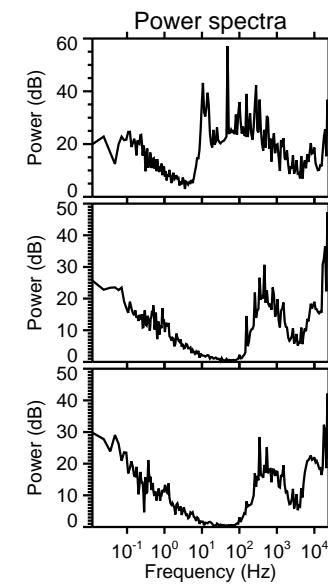
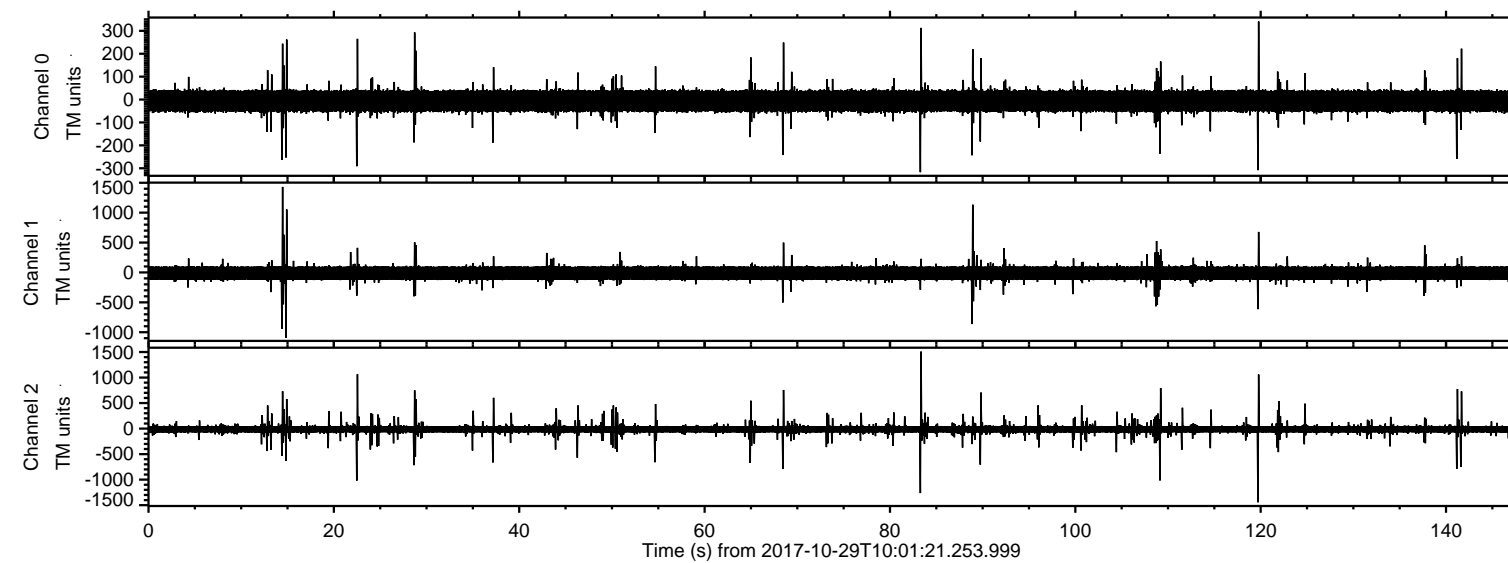


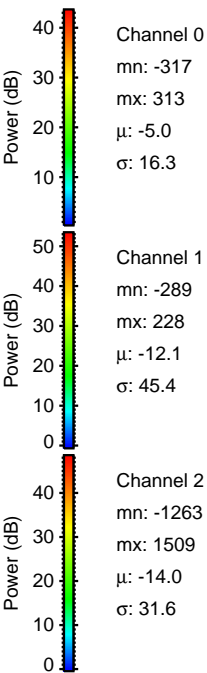
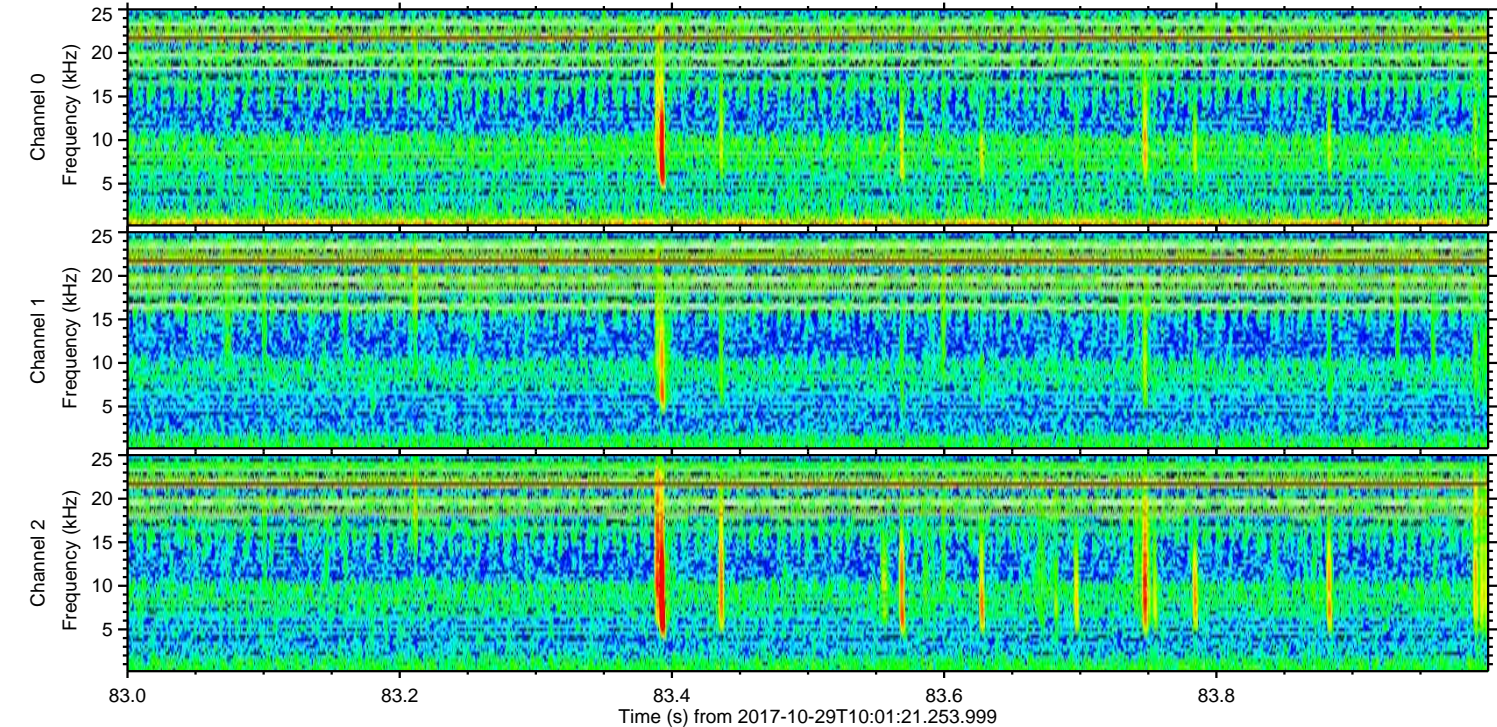
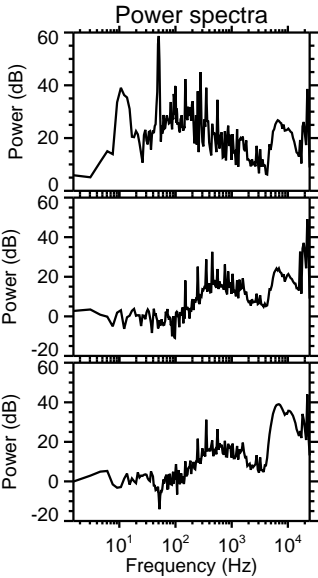
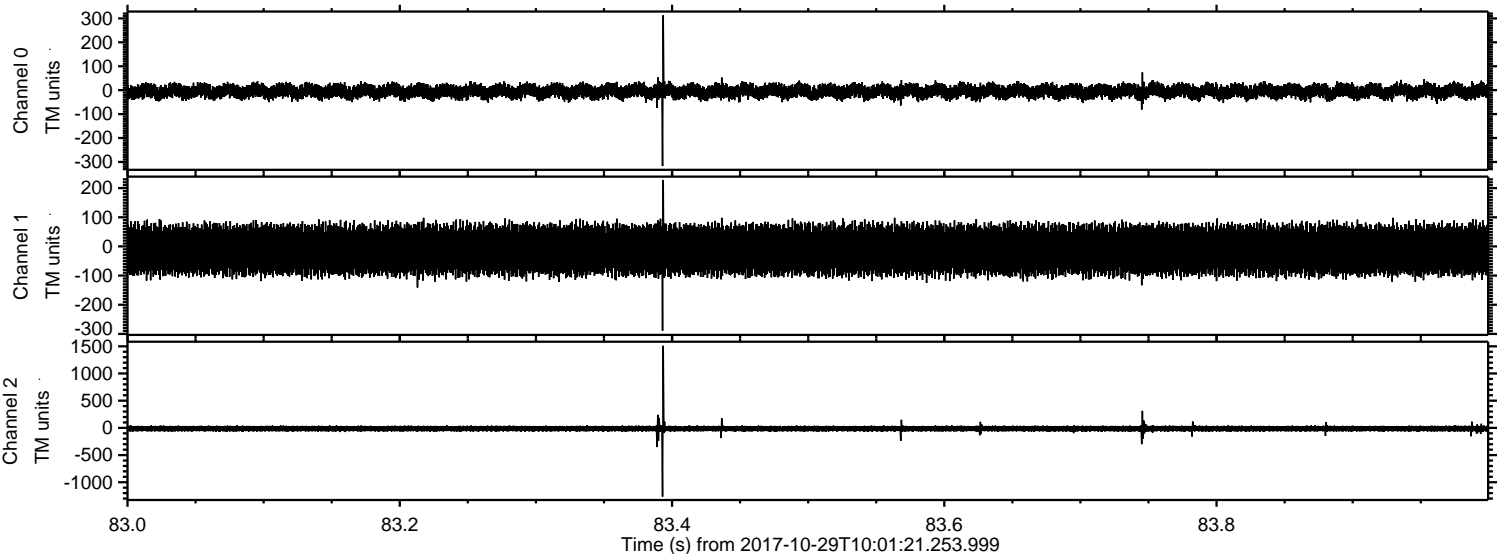
ELMAVAN 3D WAVEFORMS (Measured data sampled at 50 kHz) 51000 packets of 144 samples from 2017-10-29T10:01:21.253.999.

Processed Sun Oct 29 11:09:33 2017 by ELM ver.2012-10-06 from 001__elm20171029_100120__dat00.bin



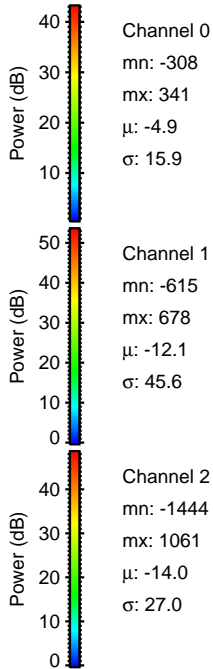
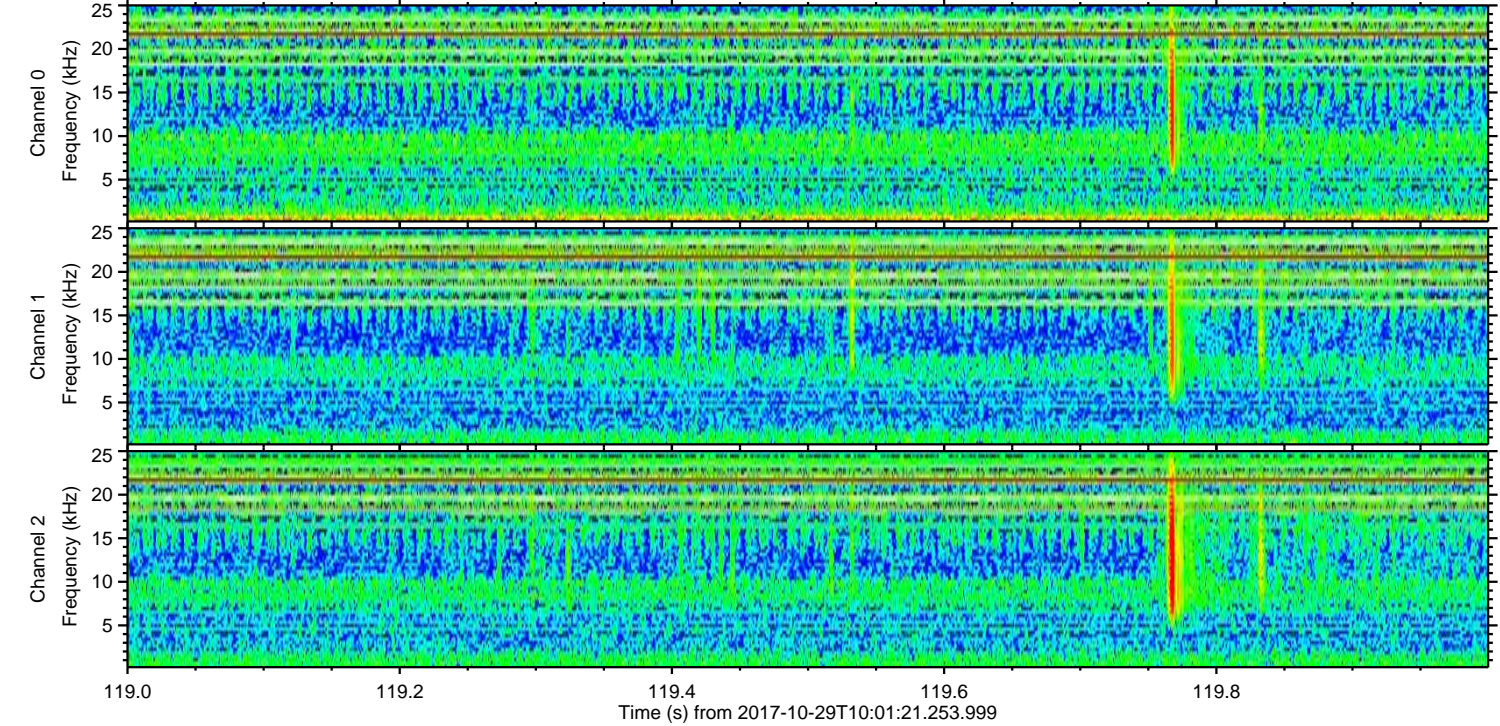
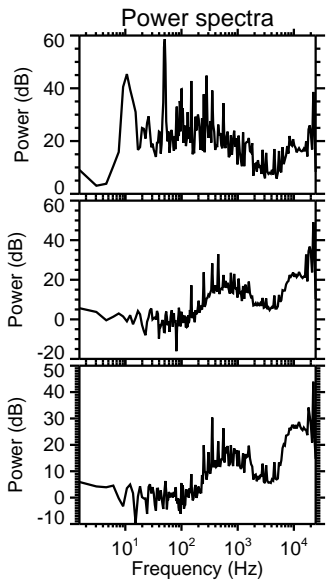
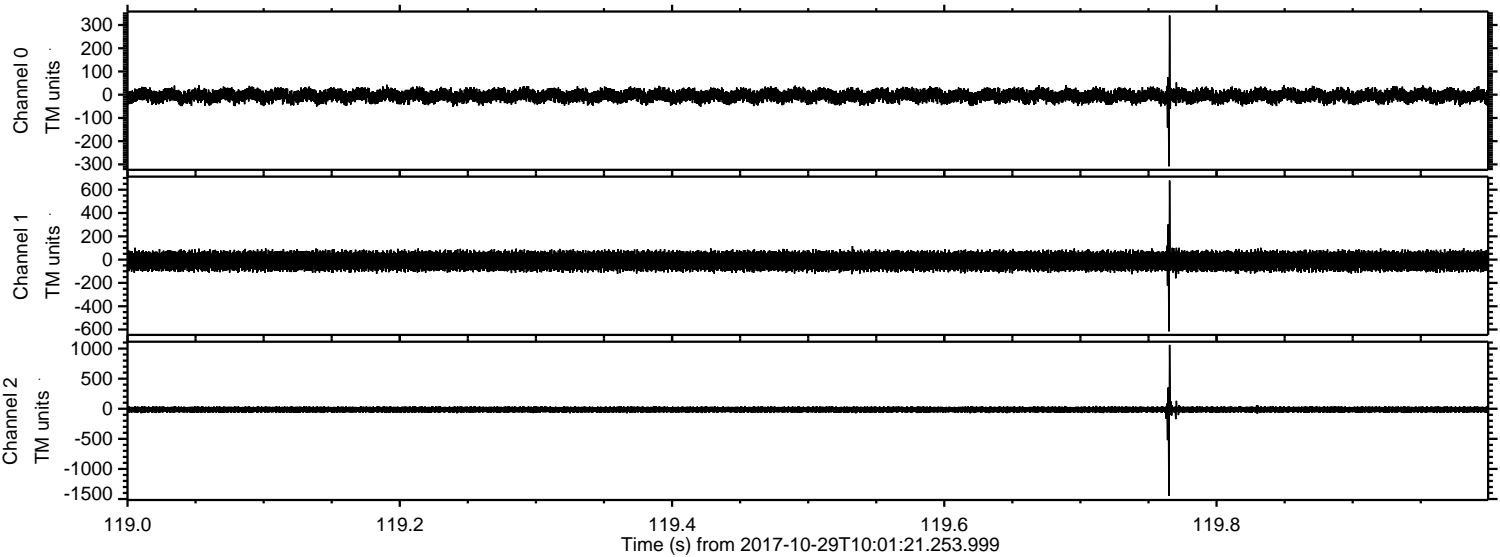
ELMAVAN 3D WAVEFORMS (Measured data sampled at 50 kHz) 51000 packets of 144 samples from 2017-10-29T10:01:21.253.999. Part 84/147

Processed Sun Oct 29 11:09:39 2017 by ELM ver.2012-10-06 from 001__elm20171029_100120__dat00.bin



ELMAVAN 3D WAVEFORMS (Measured data sampled at 50 kHz) 51000 packets of 144 samples from 2017-10-29T10:01:21.253.999. Part 120/147

Processed Sun Oct 29 11:09:40 2017 by ELM ver.2012-10-06 from 001__elm20171029_100120__dat00.bin



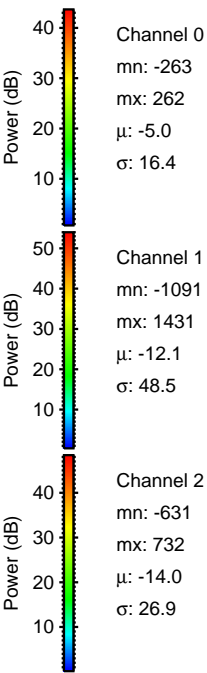
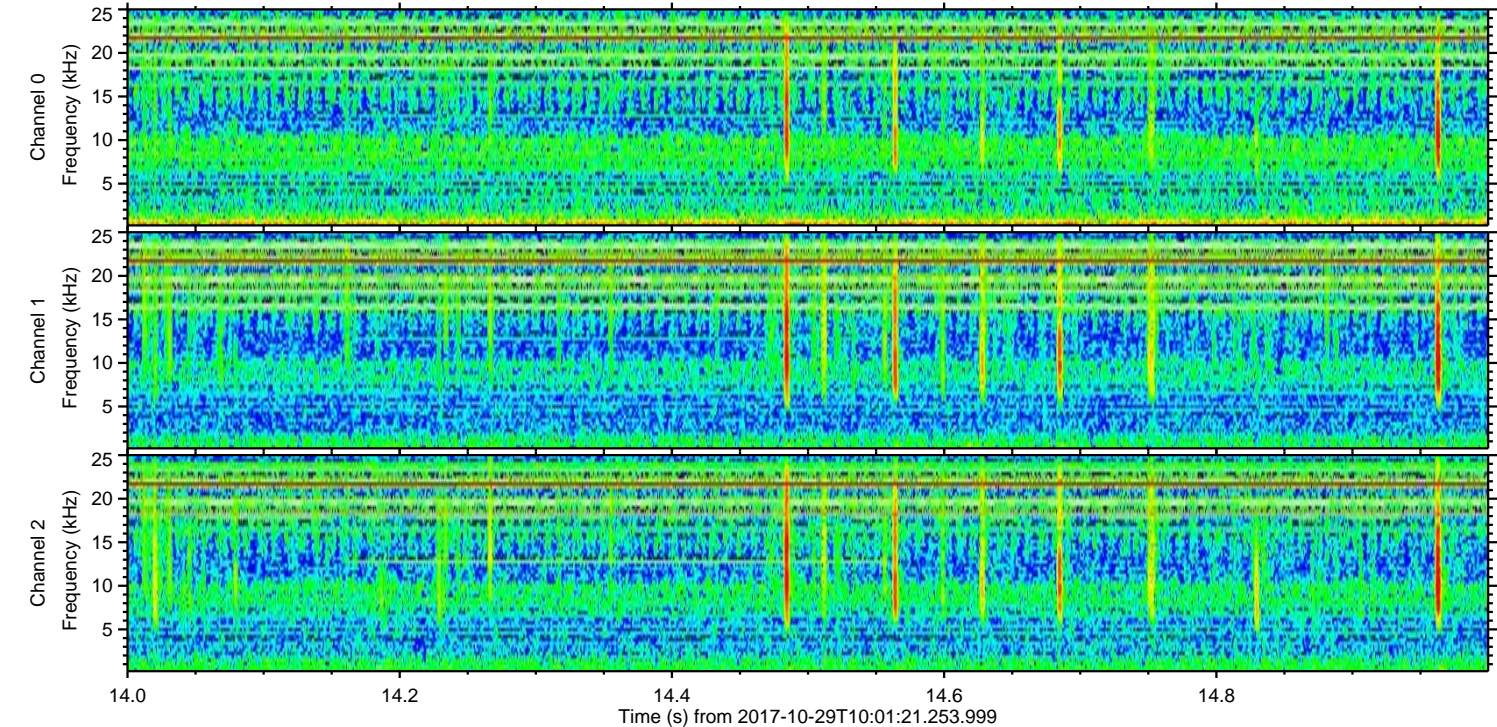
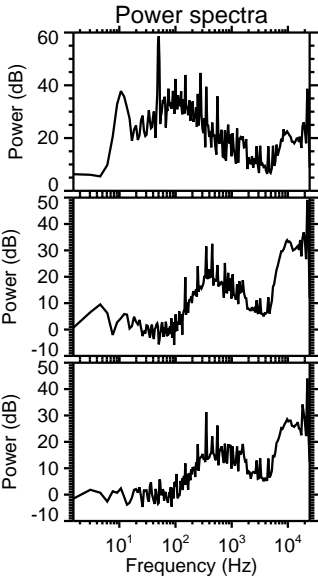
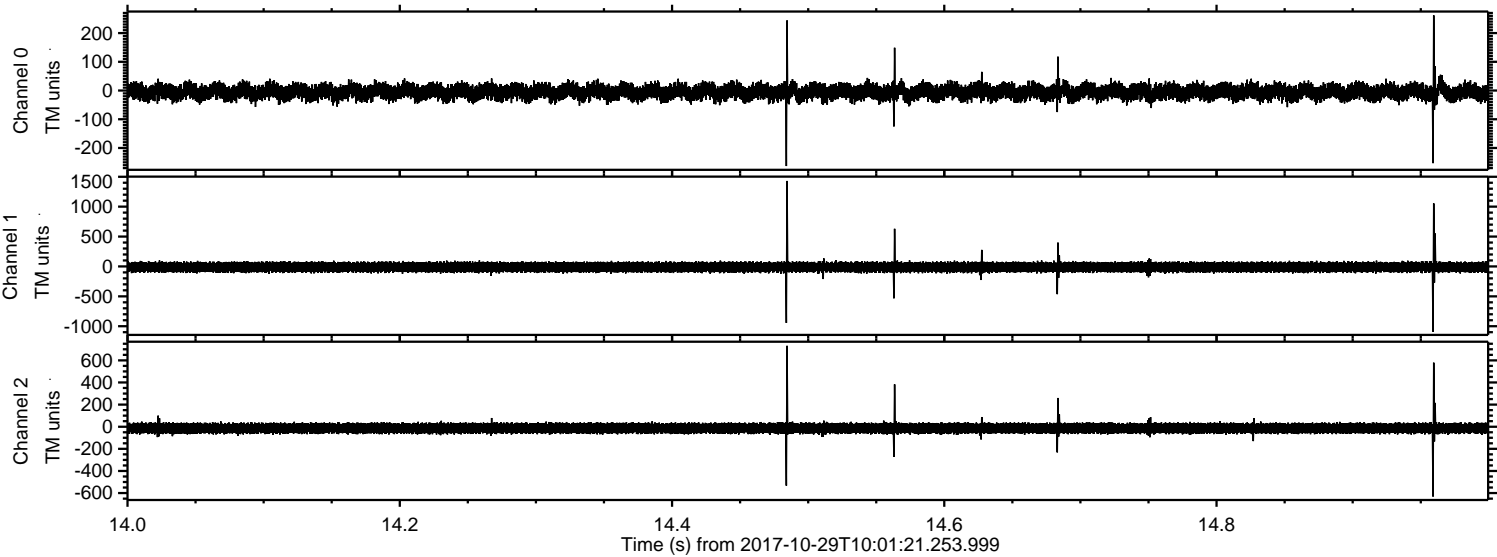
Channel 0
mn: -308
mx: 341
 μ : -4.9
 σ : 15.9

Channel 1
mn: -615
mx: 678
 μ : -12.1
 σ : 45.6

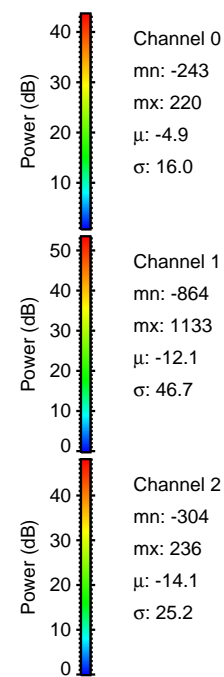
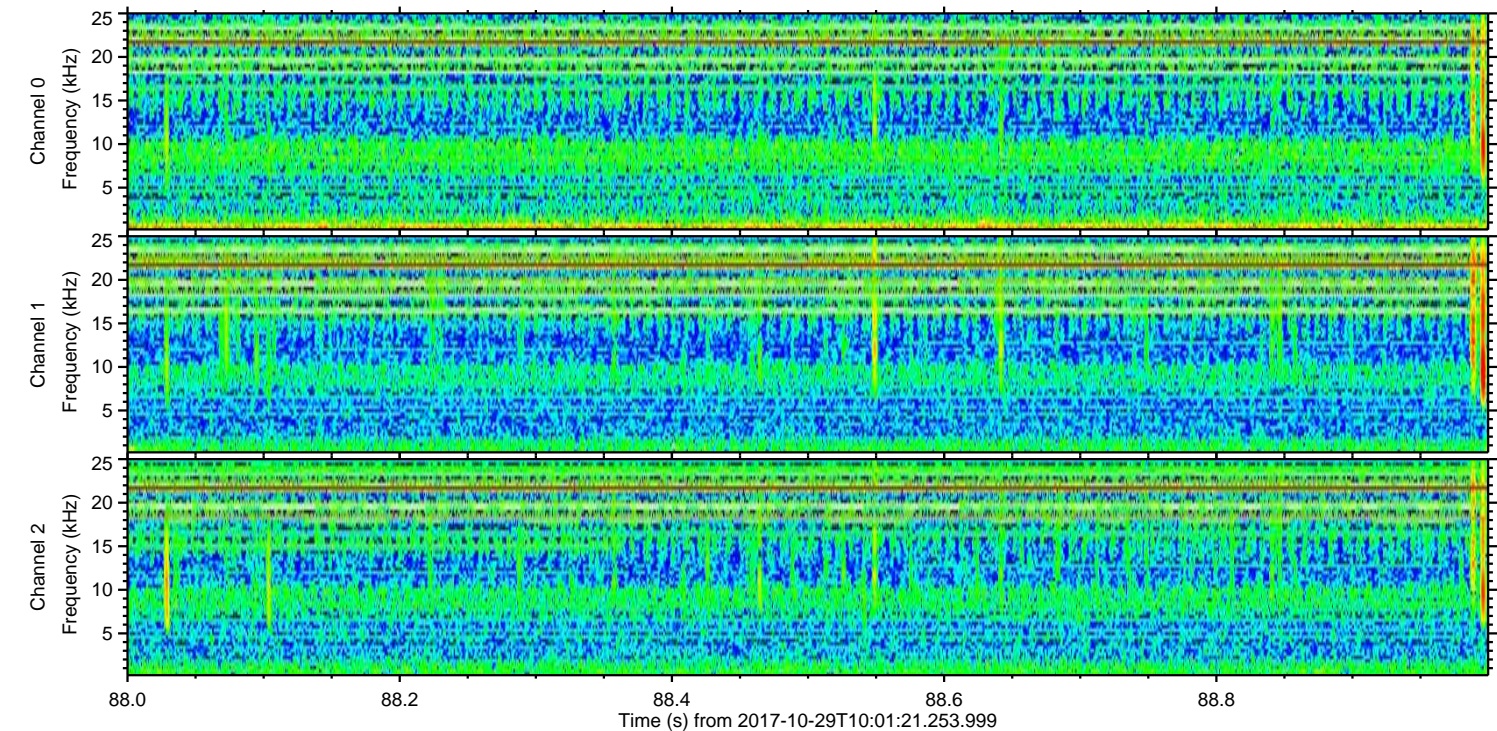
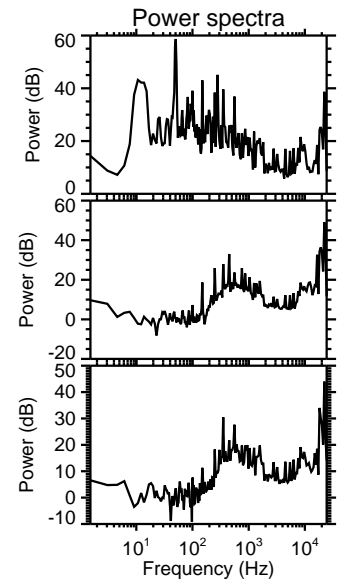
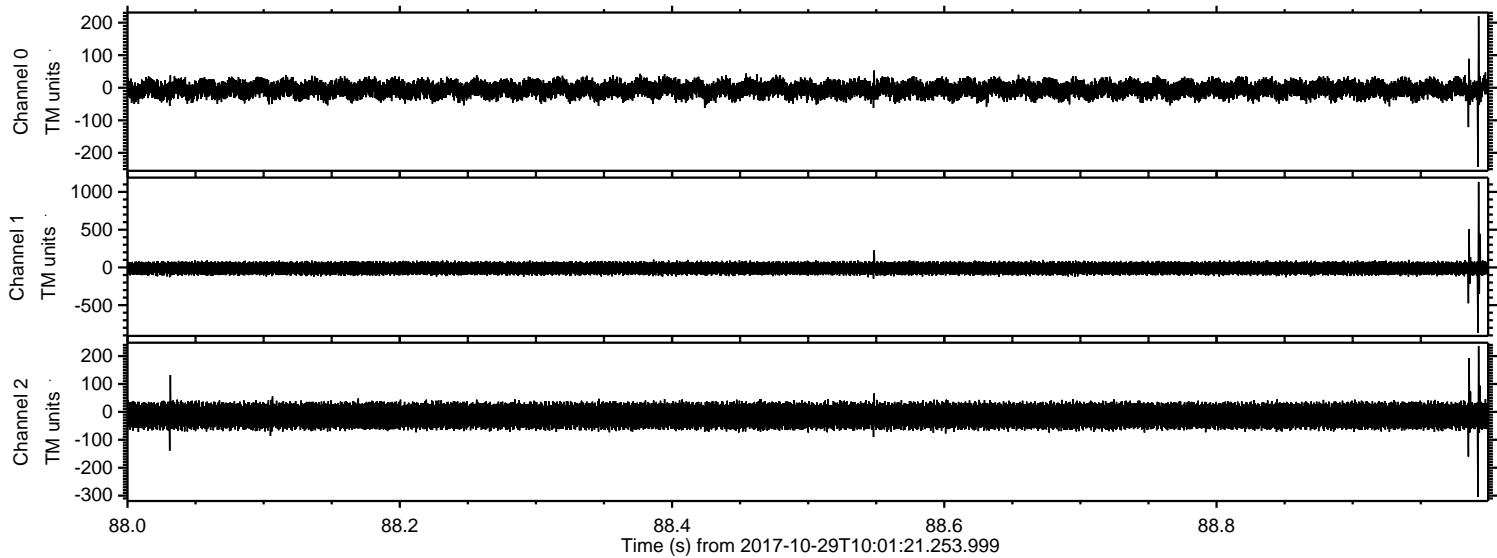
Channel 2
mn: -1444
mx: 1061
 μ : -14.0
 σ : 27.0

ELMAVAN 3D WAVEFORMS (Measured data sampled at 50 kHz) 51000 packets of 144 samples from 2017-10-29T10:01:21.253.999. Part 15/147

Processed Sun Oct 29 11:09:41 2017 by ELM ver.2012-10-06 from 001__elm20171029_100120__dat00.bin



Processed Sun Oct 29 11:09:41 2017 by ELM ver.2012-10-06 from 001__elm20171029_100120__dat00.bin



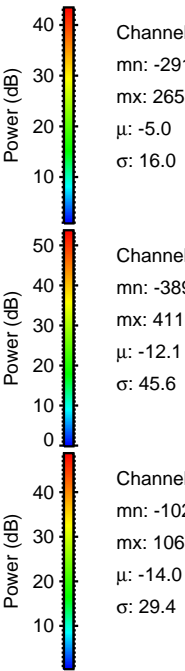
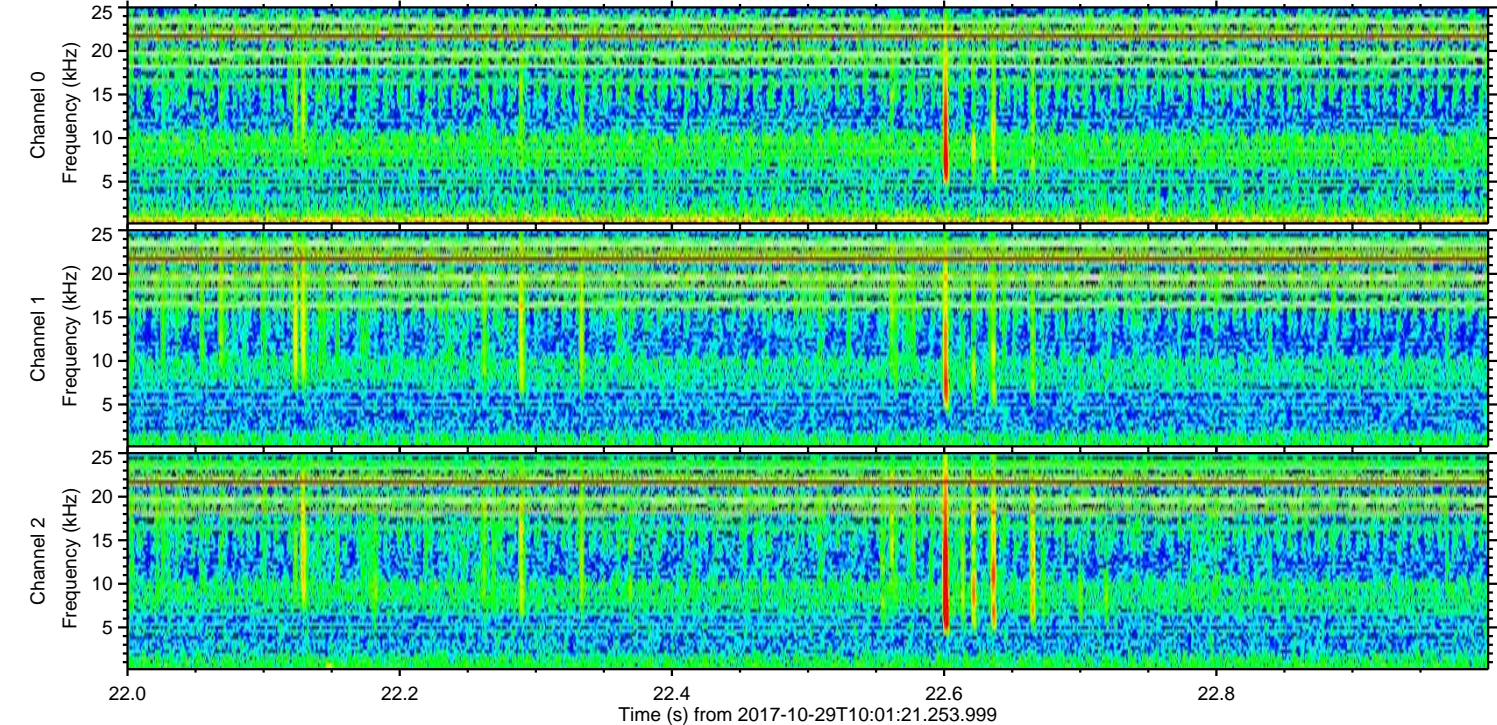
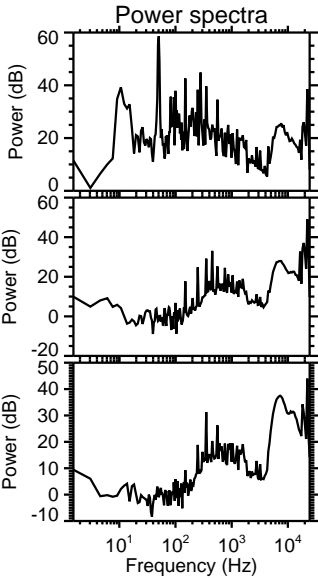
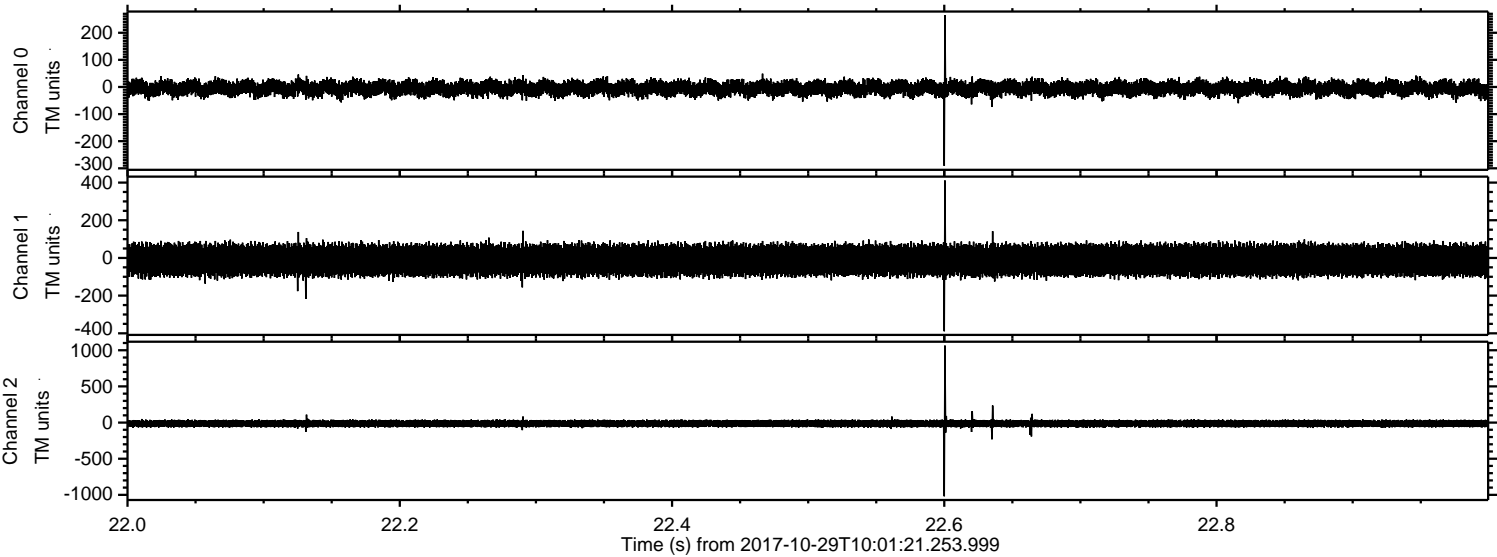
Channel 0
mn: -243
mx: 220
 μ : -4.9
 σ : 16.0

Channel 1
mn: -864
mx: 1133
 μ : -12.1
 σ : 46.7

Channel 2
mn: -304
mx: 236
 μ : -14.1
 σ : 25.2

ELMAVAN 3D WAVEFORMS (Measured data sampled at 50 kHz) 51000 packets of 144 samples from 2017-10-29T10:01:21.253.999. Part 23/147

Processed Sun Oct 29 11:09:42 2017 by ELM ver.2012-10-06 from 001__elm20171029_100120__dat00.bin



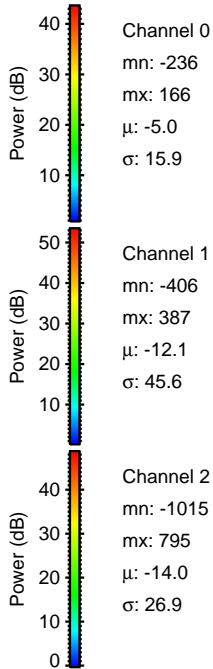
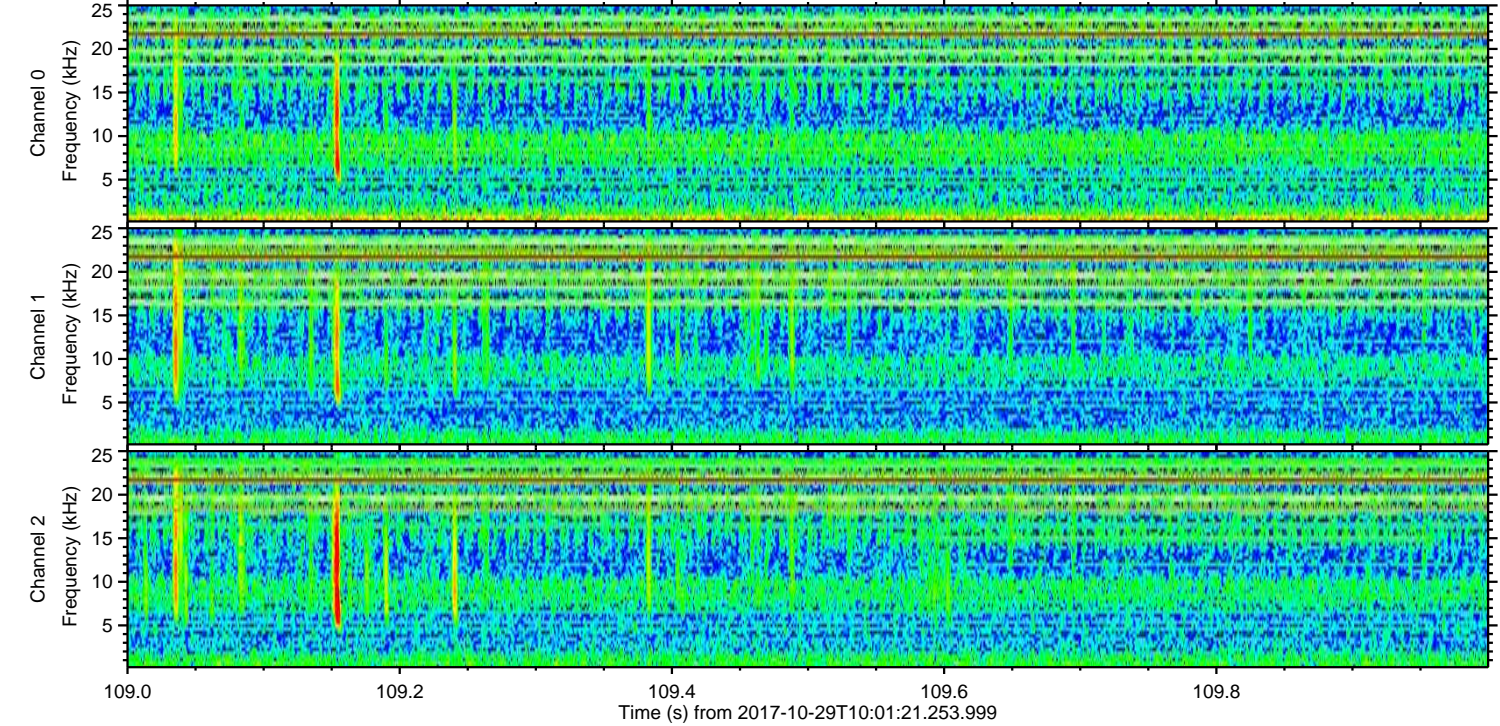
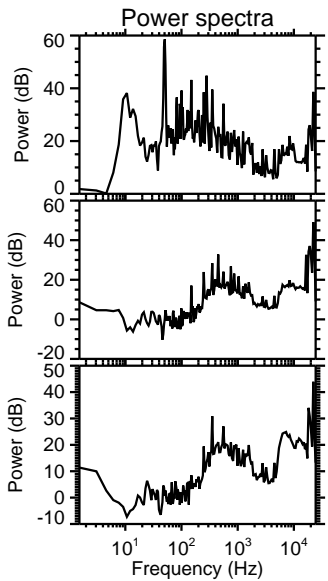
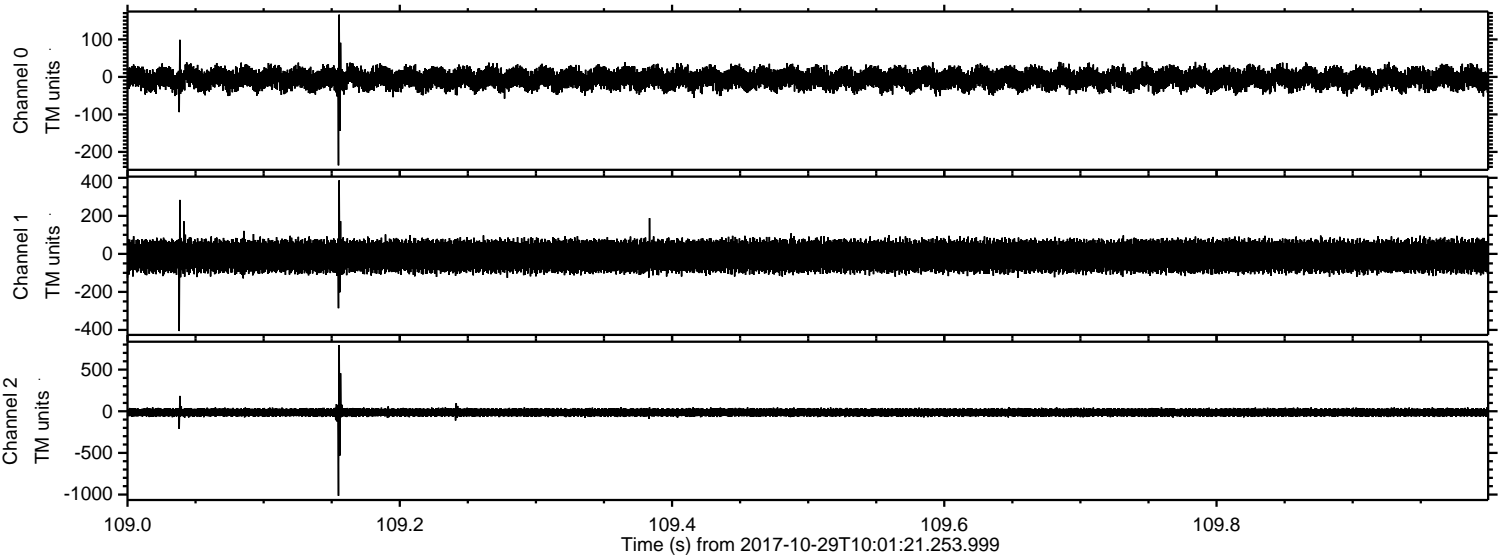
Channel 0
mn: -291
mx: 265
 μ : -5.0
 σ : 16.0

Channel 1
mn: -389
mx: 411
 μ : -12.1
 σ : 45.6

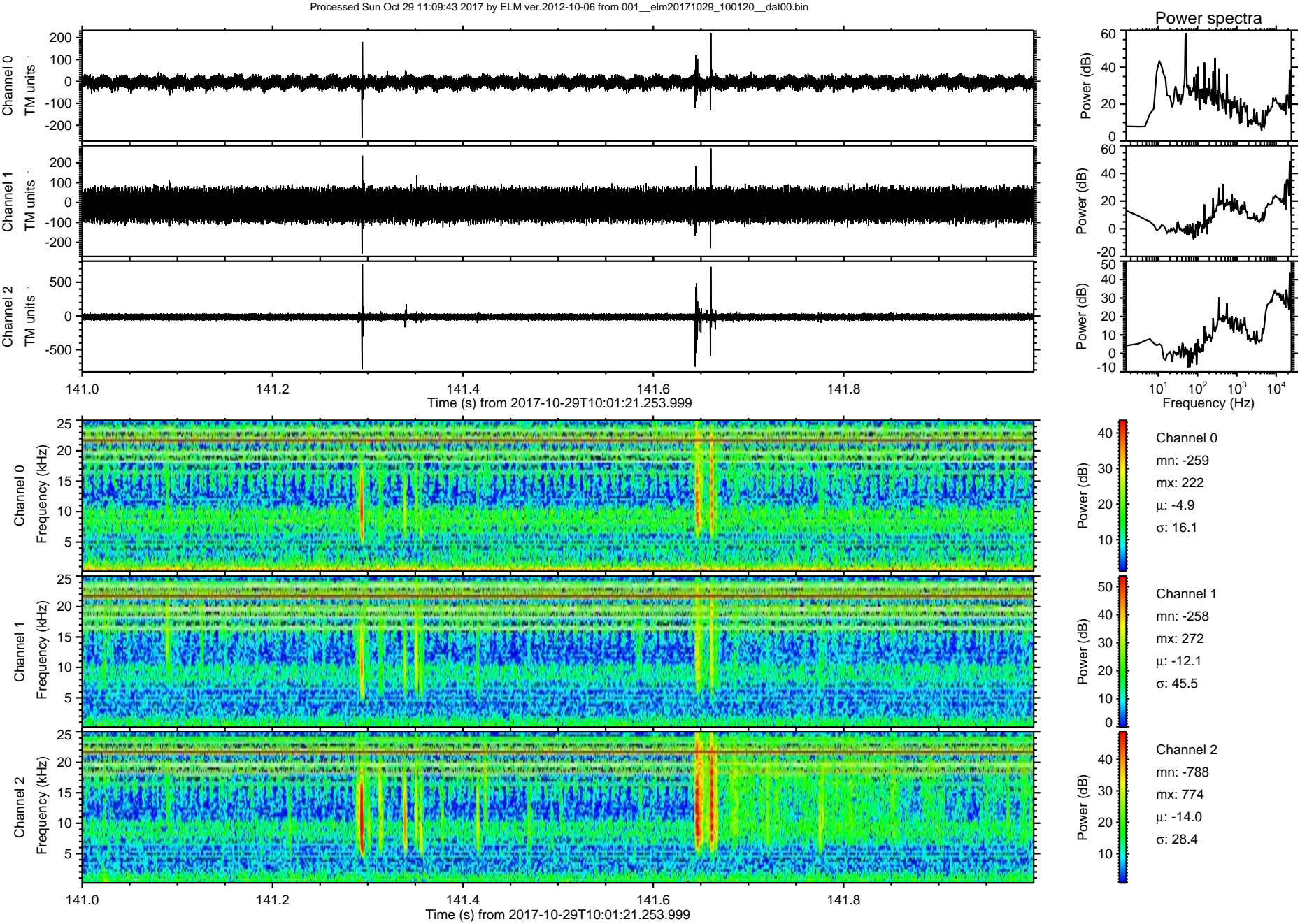
Channel 2
mn: -1020
mx: 1065
 μ : -14.0
 σ : 29.4

ELMAVAN 3D WAVEFORMS (Measured data sampled at 50 kHz) 51000 packets of 144 samples from 2017-10-29T10:01:21.253.999. Part 110/147

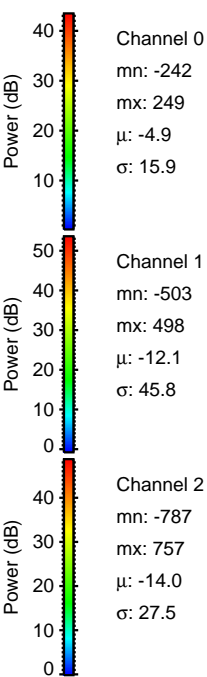
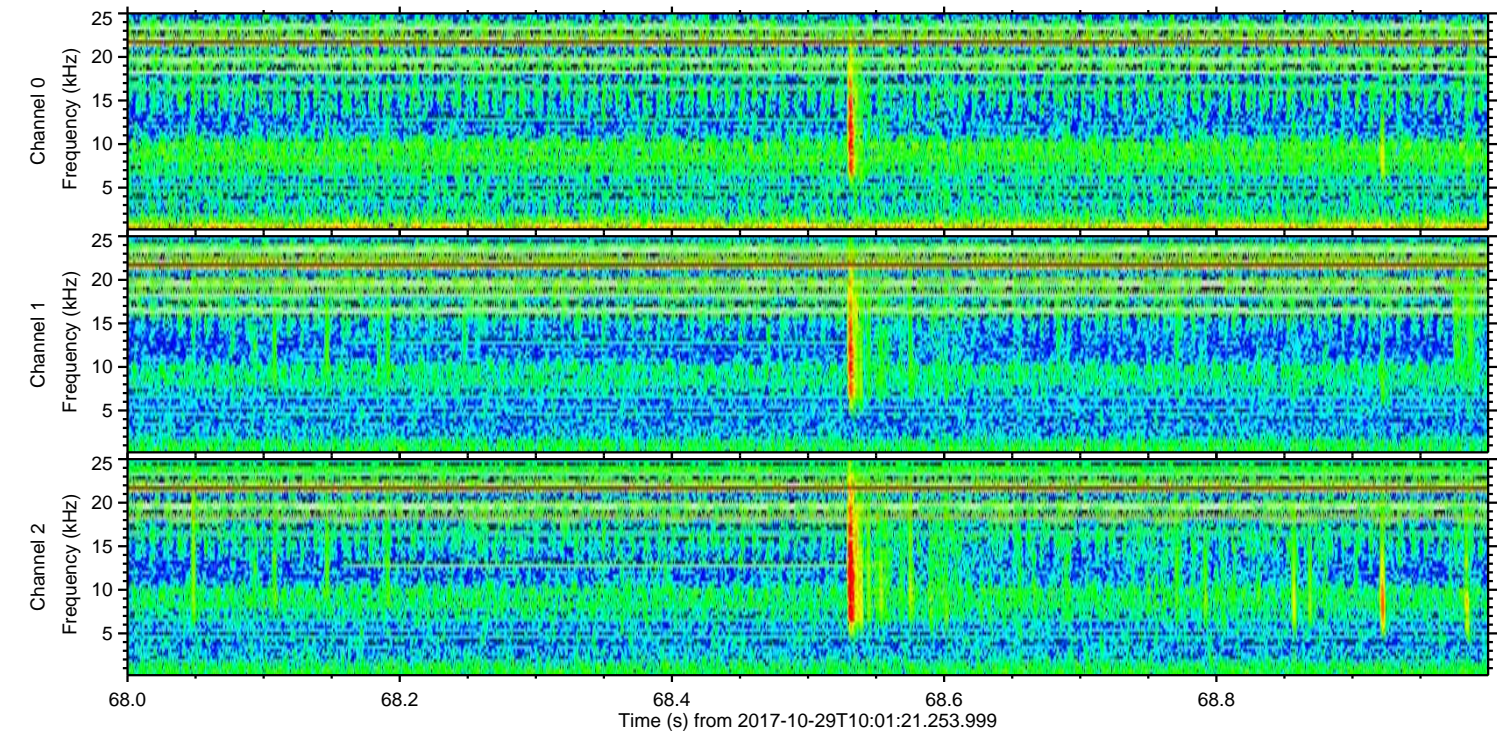
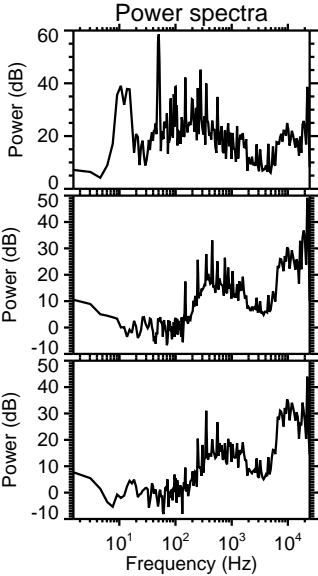
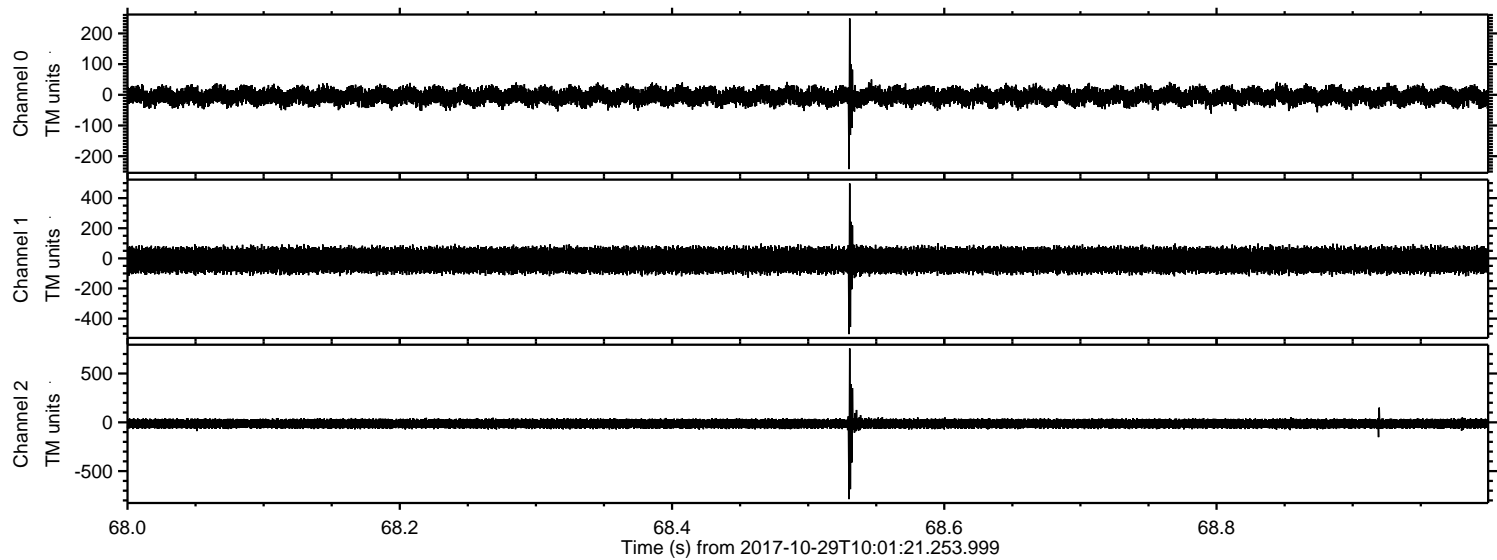
Processed Sun Oct 29 11:09:43 2017 by ELM ver.2012-10-06 from 001__elm20171029_100120__dat00.bin



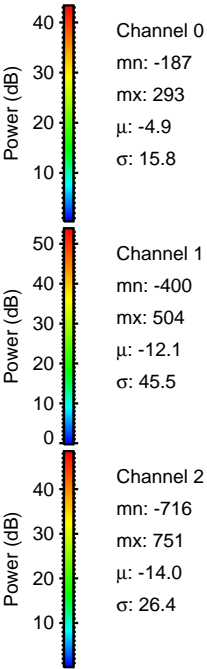
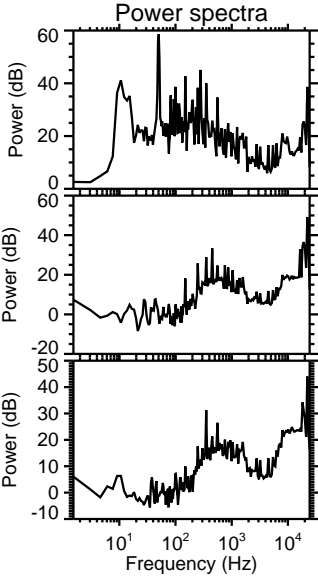
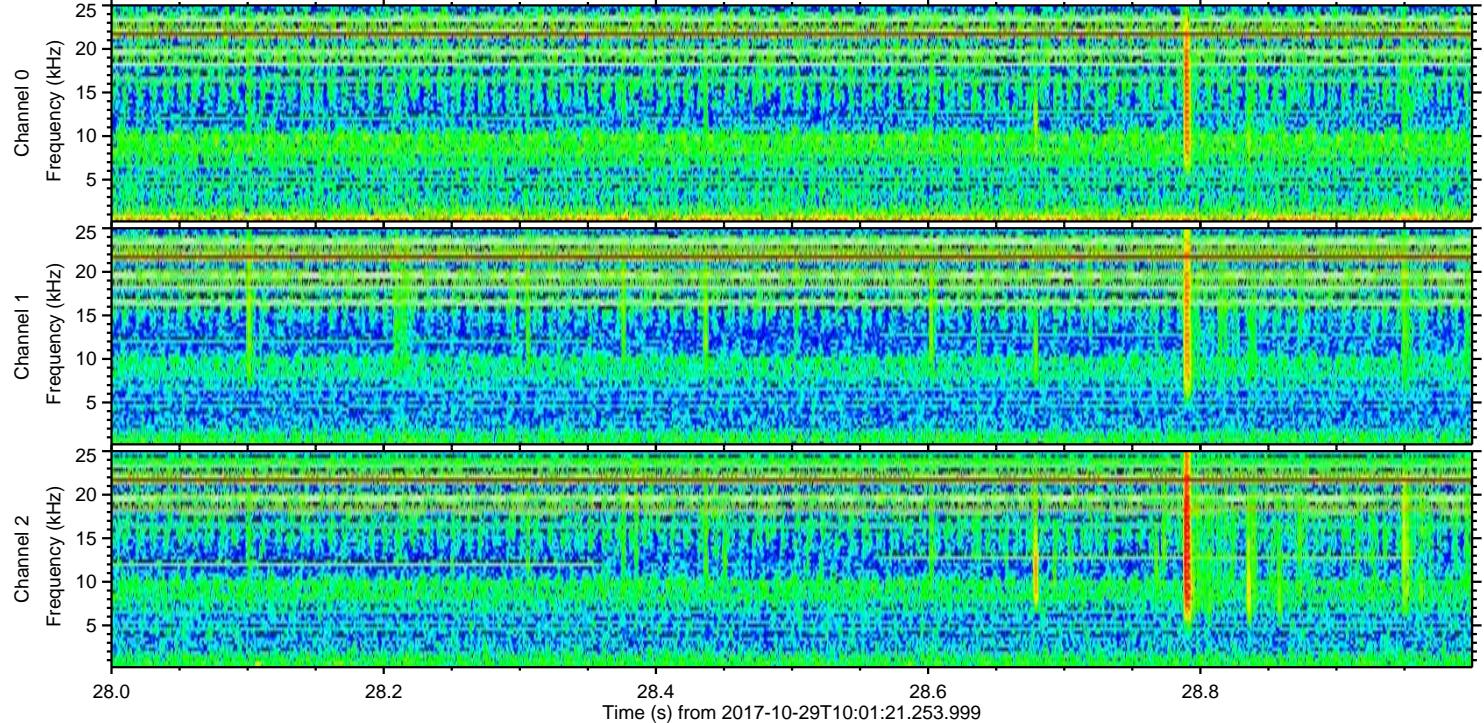
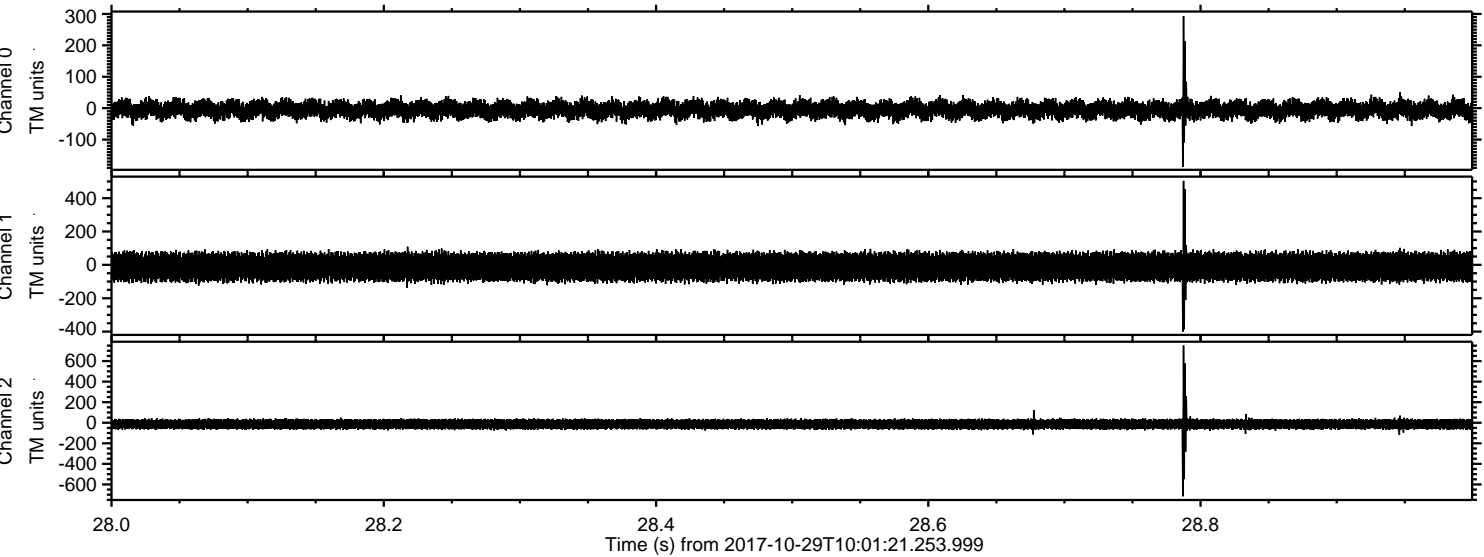
ELMAVAN 3D WAVEFORMS (Measured data sampled at 50 kHz) 51000 packets of 144 samples from 2017-10-29T10:01:21.253.999. Part 142/147



Processed Sun Oct 29 11:09:44 2017 by ELM ver.2012-10-06 from 001__elm20171029_100120__dat00.bin



Processed Sun Oct 29 11:09:45 2017 by ELM ver.2012-10-06 from 001__elm20171029_100120__dat00.bin



Channel 0
mn: -187
mx: 293
 μ : -4.9
 σ : 15.8

Channel 1
mn: -400
mx: 504
 μ : -12.1
 σ : 45.5

Channel 2
mn: -716
mx: 751
 μ : -14.0
 σ : 26.4

ELMAVAN 3D WAVEFORMS (Measured data sampled at 50 kHz) 51000 packets of 144 samples from 2017-10-29T10:01:21.253.999. Part 53/147

Processed Sun Oct 29 11:09:45 2017 by ELM ver.2012-10-06 from 001__elm20171029_100120__dat00.bin

