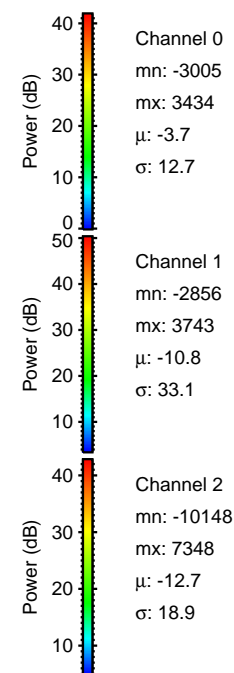
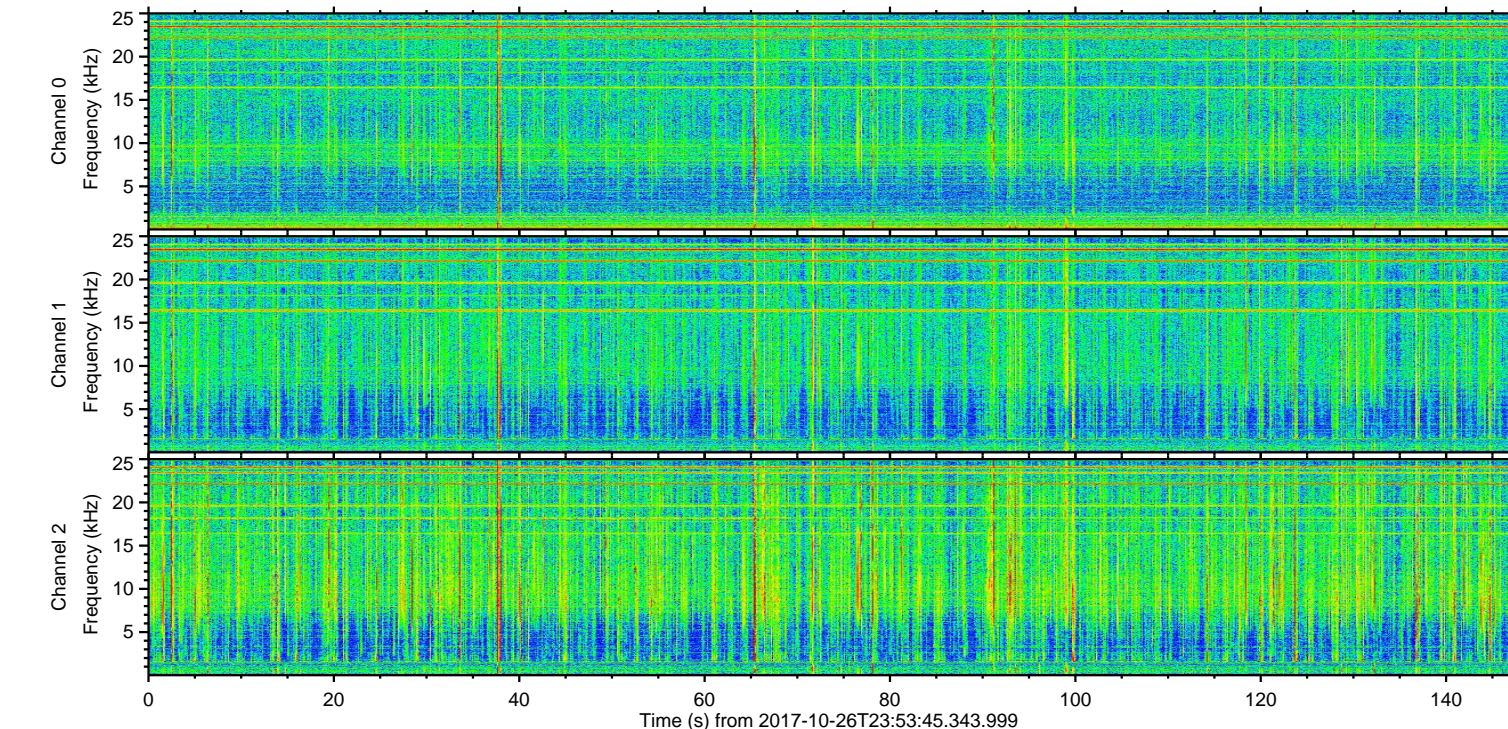
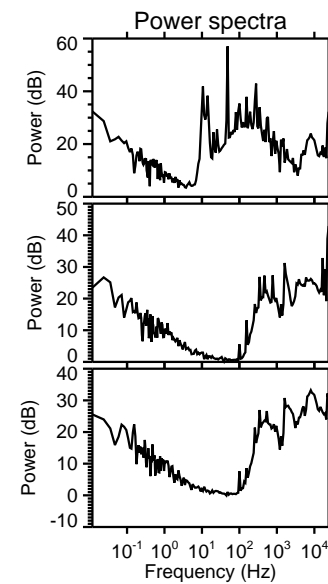
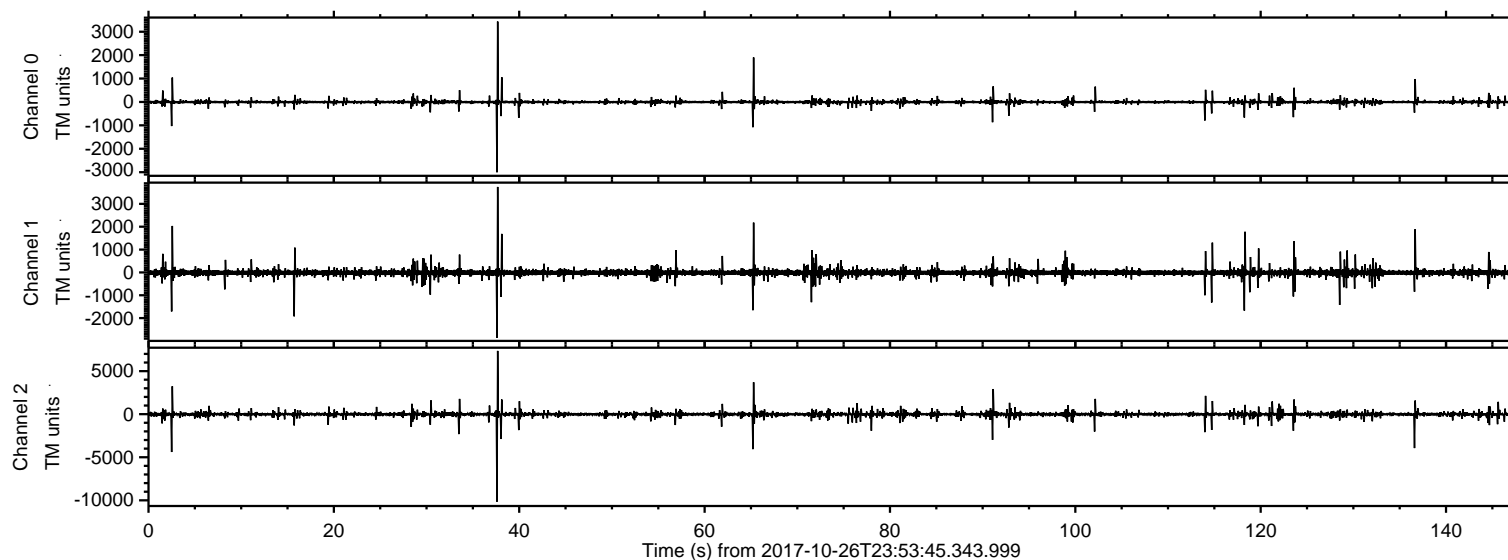


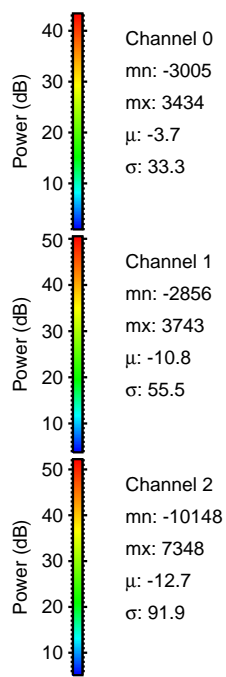
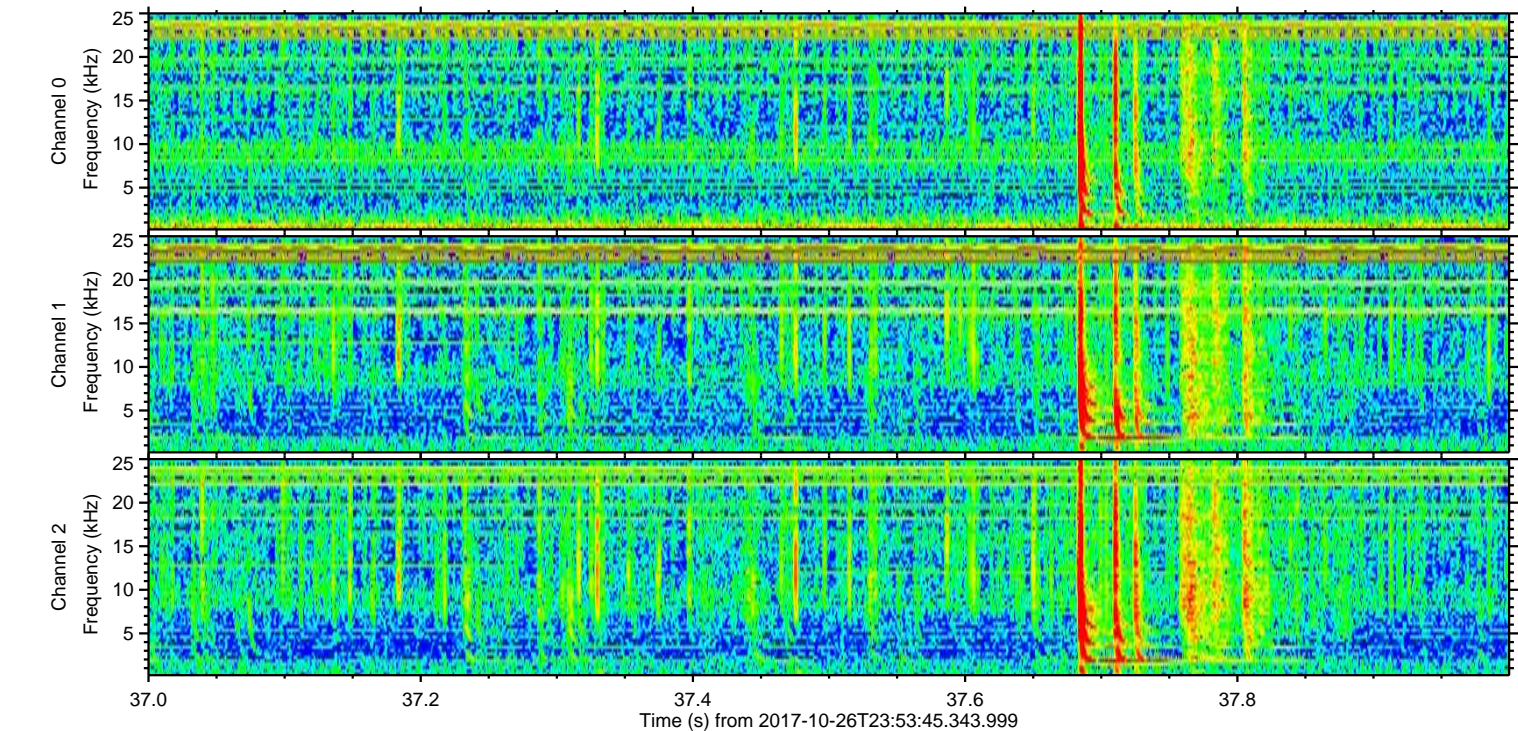
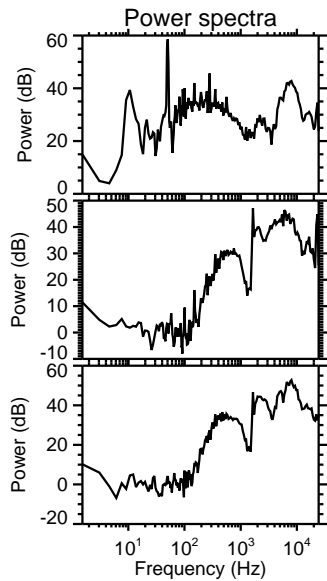
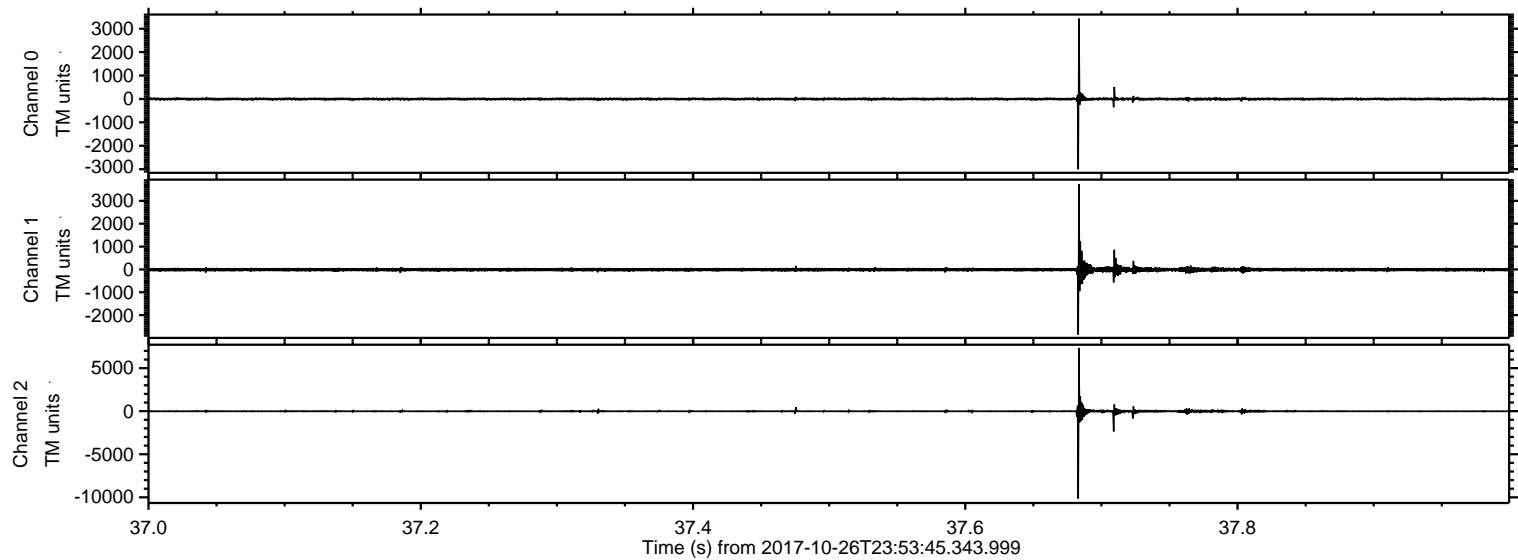
# ELMAVAN 3D WAVEFORMS (Measured data sampled at 50 kHz) 51000 packets of 144 samples from 2017-10-26T23:53:45.343.999.

Processed Fri Oct 27 02:01:36 2017 by ELM ver.2012-10-06 from 001\_\_elm20171026\_235344\_\_dat00.bin





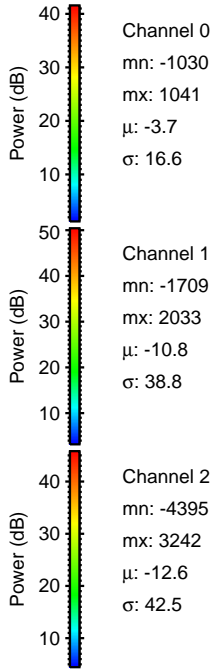
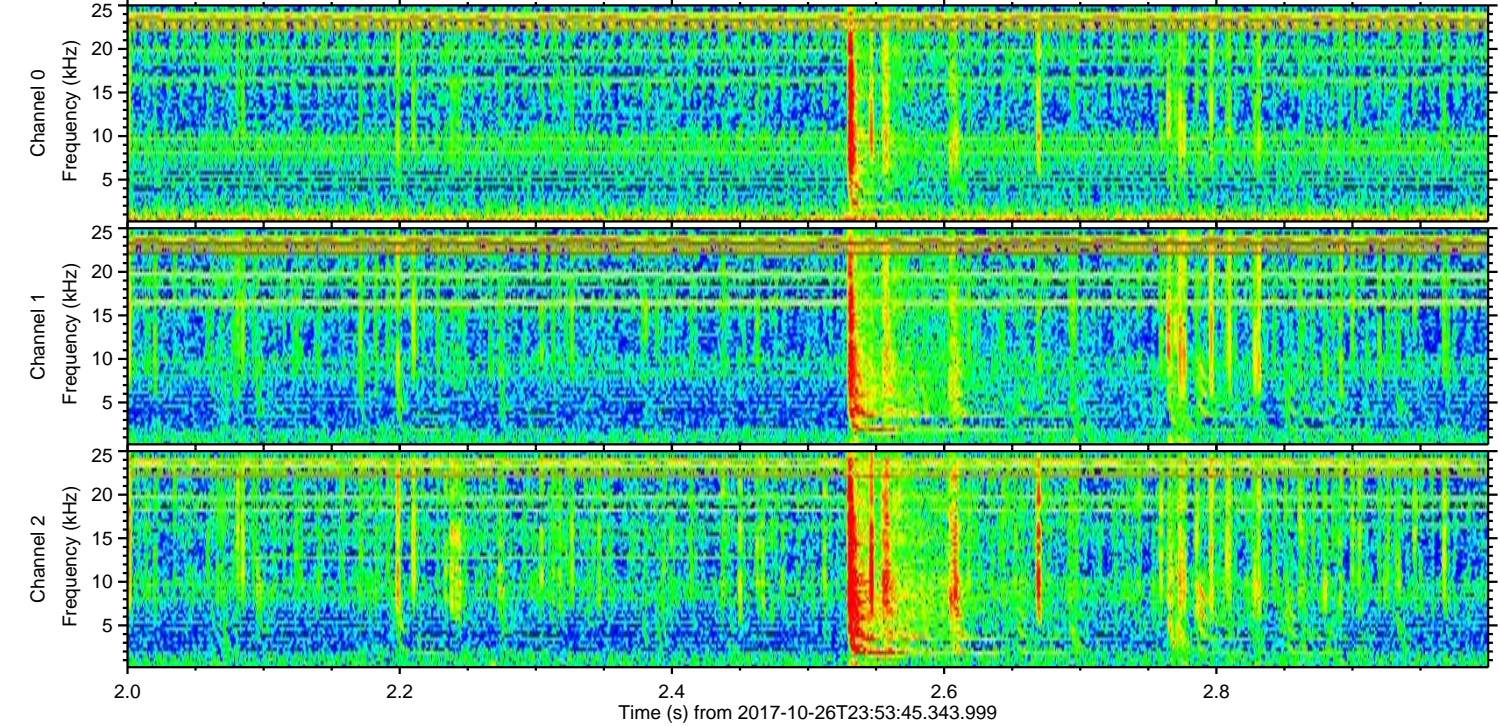
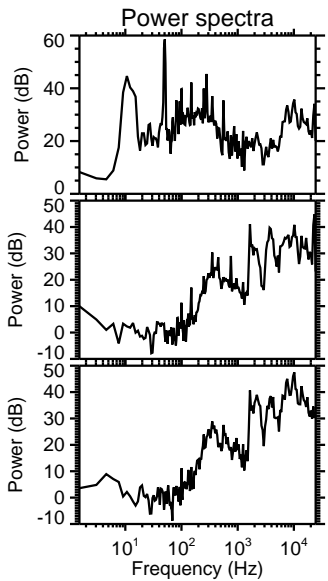
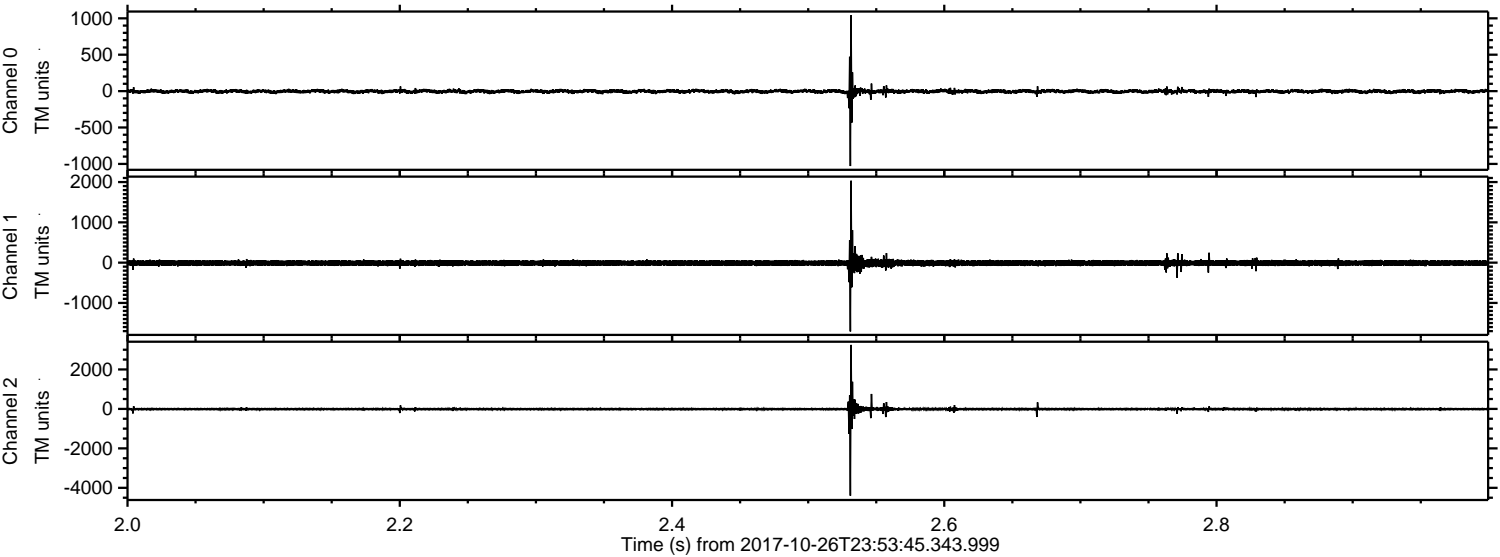
Processed Fri Oct 27 02:01:42 2017 by ELM ver.2012-10-06 from 001\_\_elm20171026\_235344\_\_dat00.bin





ELMAVAN 3D WAVEFORMS (Measured data sampled at 50 kHz) 51000 packets of 144 samples from 2017-10-26T23:53:45.343.999. Part 3/147

Processed Fri Oct 27 02:01:43 2017 by ELM ver.2012-10-06 from 001\_\_elm20171026\_235344\_\_dat00.bin



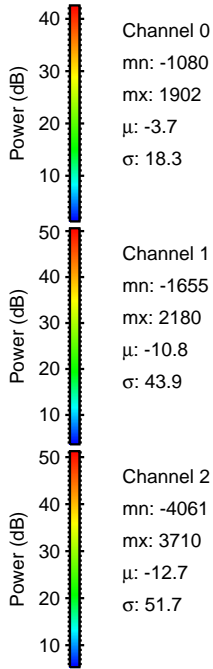
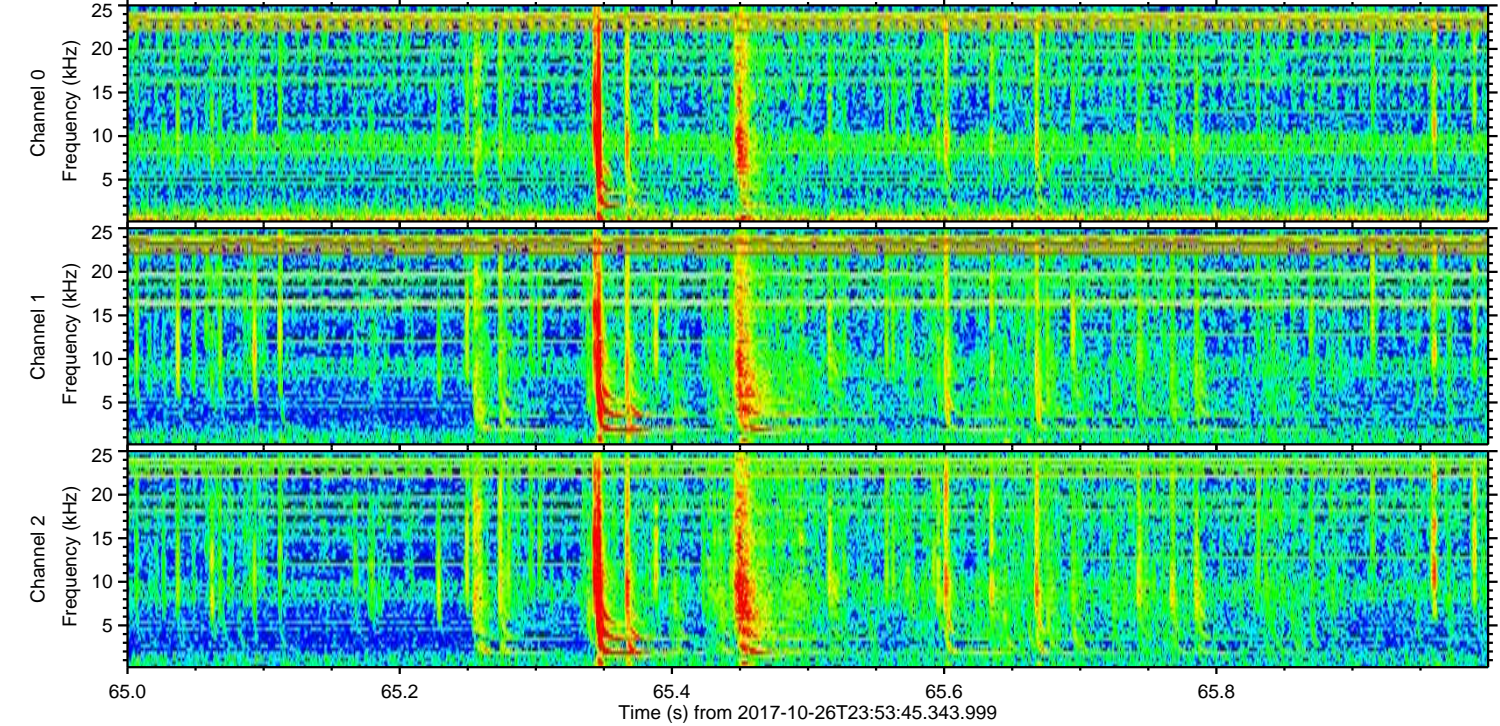
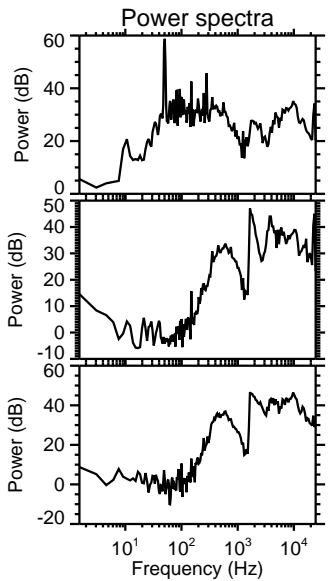
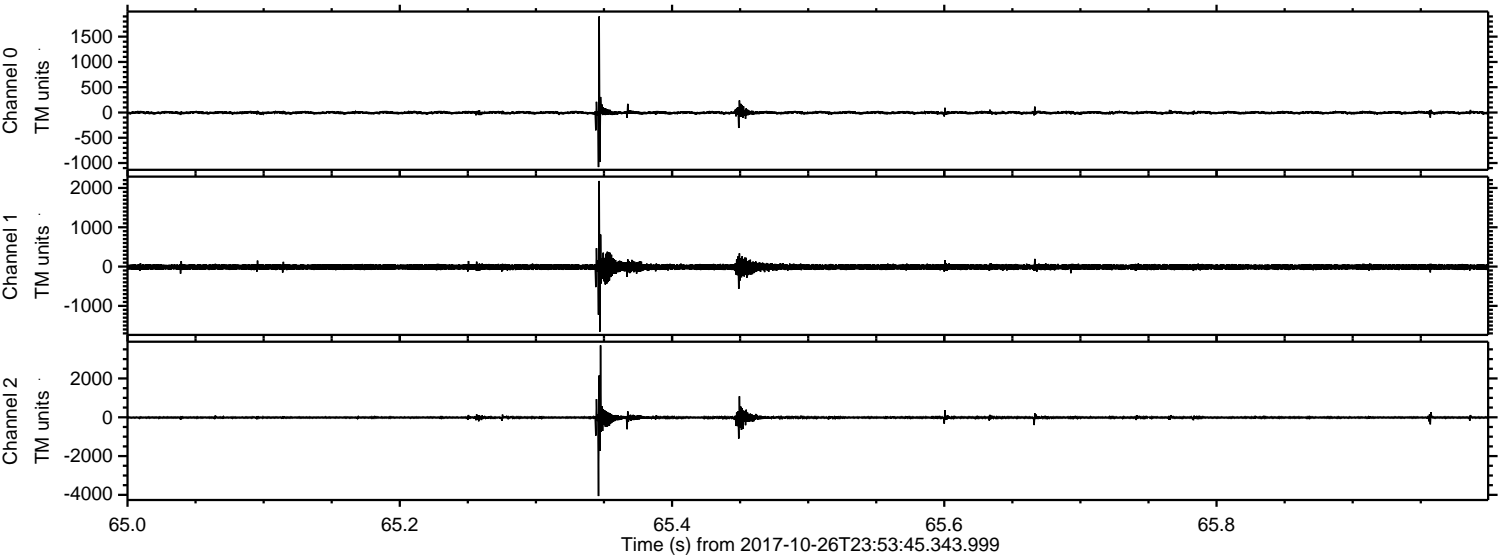
Channel 0  
mn: -1030  
mx: 1041  
 $\mu$ : -3.7  
 $\sigma$ : 16.6

Channel 1  
mn: -1709  
mx: 2033  
 $\mu$ : -10.8  
 $\sigma$ : 38.8

Channel 2  
mn: -4395  
mx: 3242  
 $\mu$ : -12.6  
 $\sigma$ : 42.5



Processed Fri Oct 27 02:01:44 2017 by ELM ver.2012-10-06 from 001\_\_elm20171026\_235344\_\_dat00.bin



Channel 0  
mn: -1080  
mx: 1902  
 $\mu$ : -3.7  
 $\sigma$ : 18.3

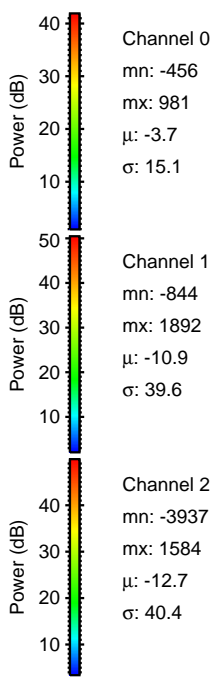
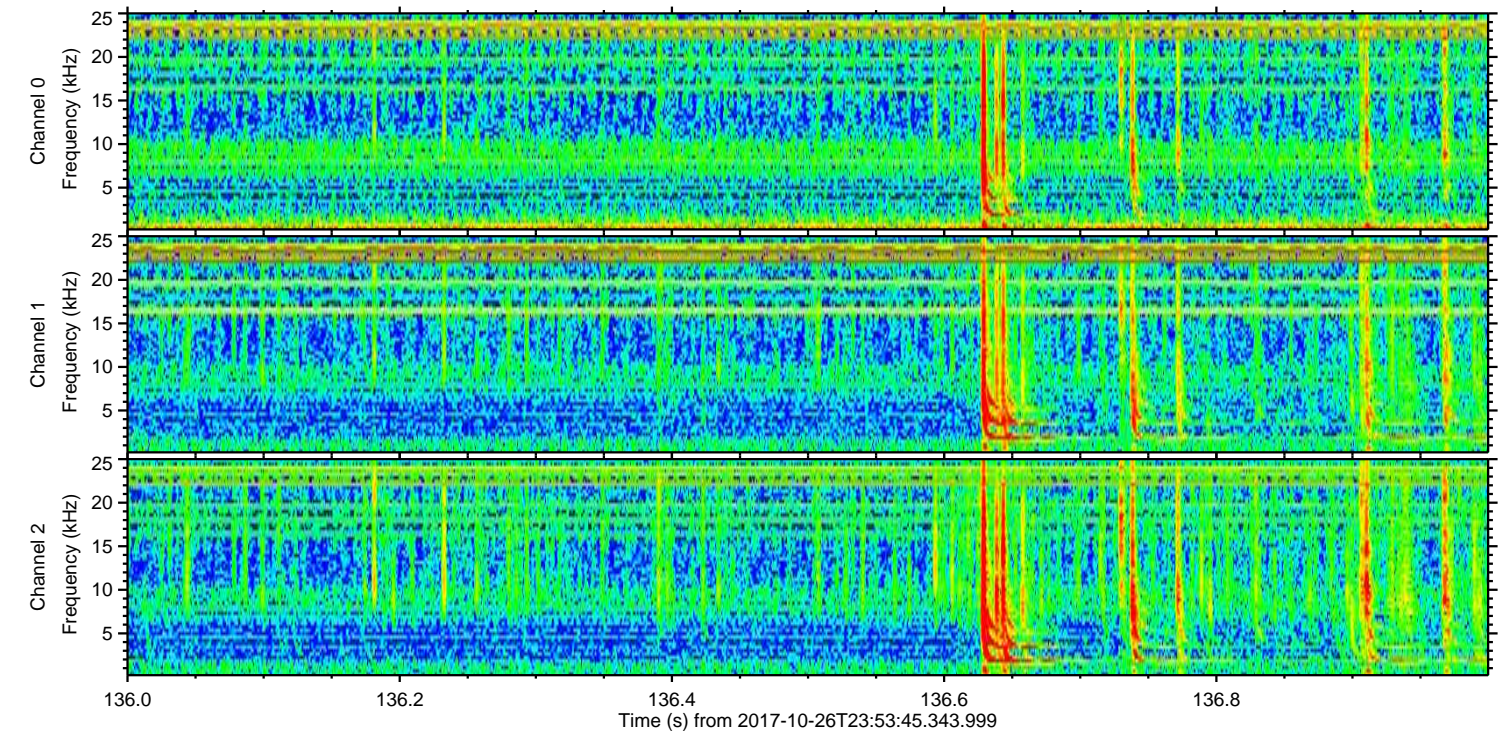
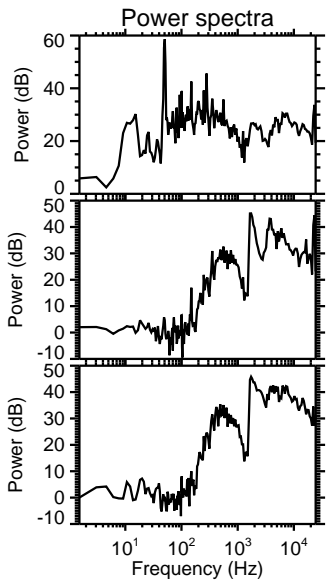
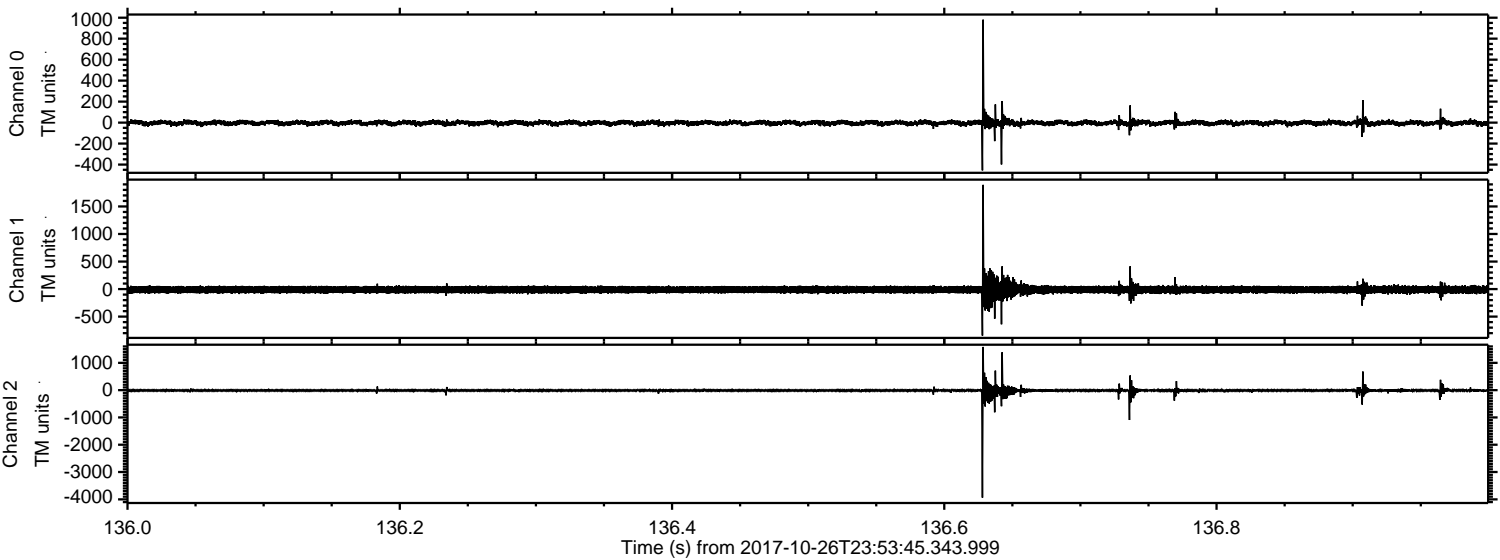
Channel 1  
mn: -1655  
mx: 2180  
 $\mu$ : -10.8  
 $\sigma$ : 43.9

Channel 2  
mn: -4061  
mx: 3710  
 $\mu$ : -12.7  
 $\sigma$ : 51.7



ELMAVAN 3D WAVEFORMS (Measured data sampled at 50 kHz) 51000 packets of 144 samples from 2017-10-26T23:53:45.343.999. Part 137/147

Processed Fri Oct 27 02:01:44 2017 by ELM ver.2012-10-06 from 001\_\_elm20171026\_235344\_\_dat00.bin



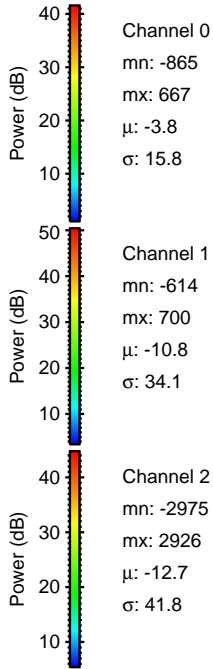
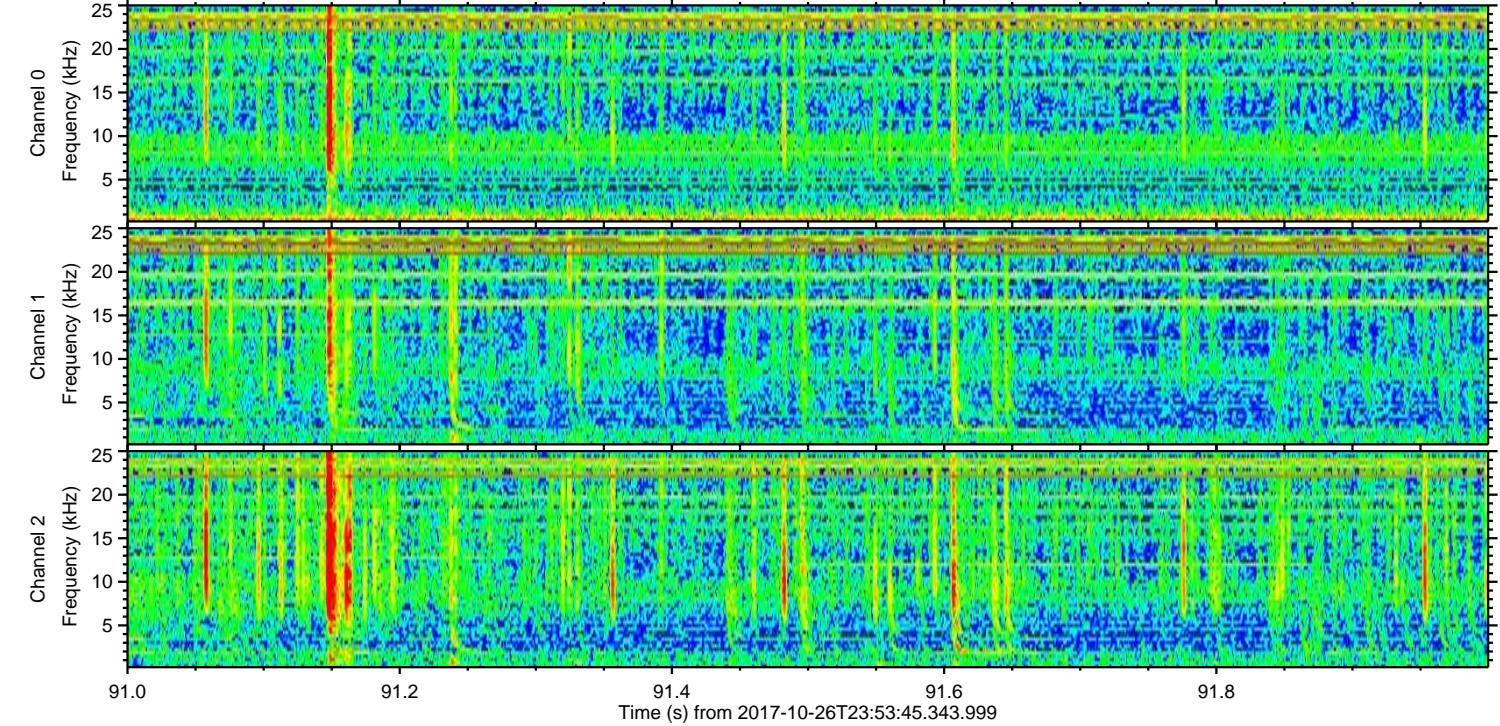
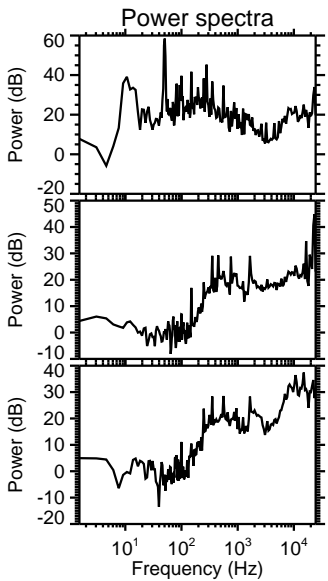
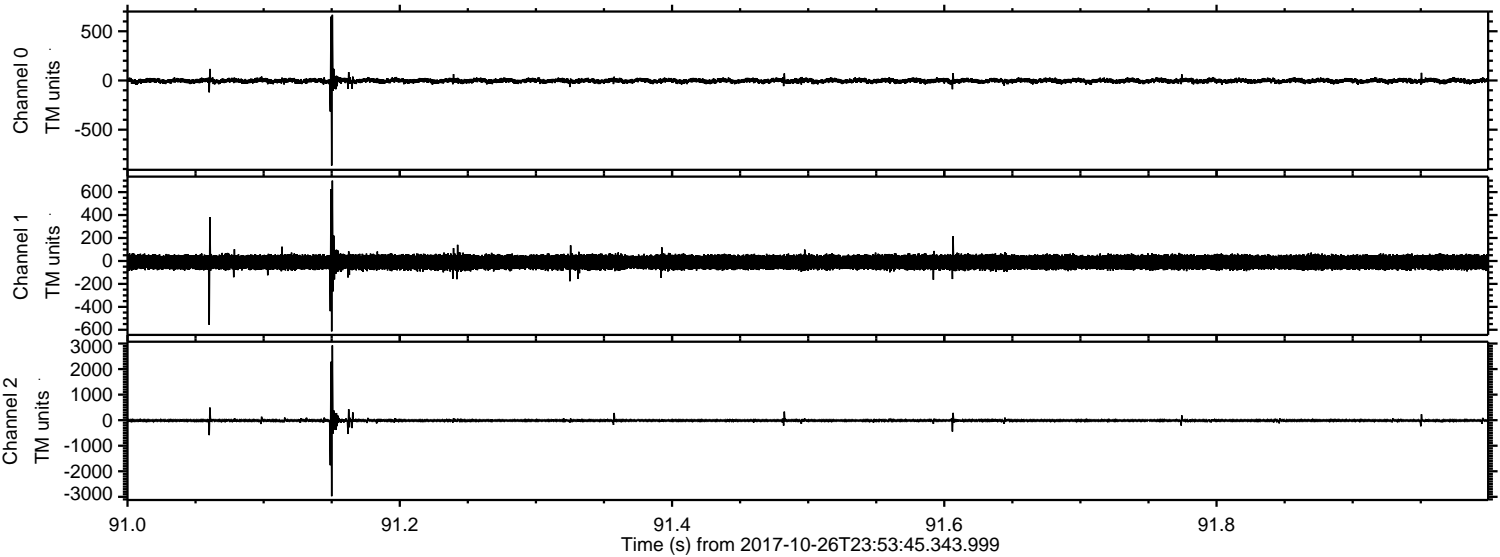
Channel 0  
mn: -456  
mx: 981  
 $\mu$ : -3.7  
 $\sigma$ : 15.1

Channel 1  
mn: -844  
mx: 1892  
 $\mu$ : -10.9  
 $\sigma$ : 39.6

Channel 2  
mn: -3937  
mx: 1584  
 $\mu$ : -12.7  
 $\sigma$ : 40.4

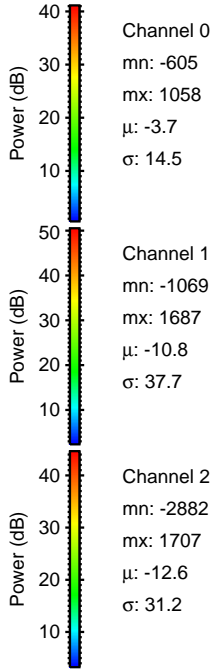
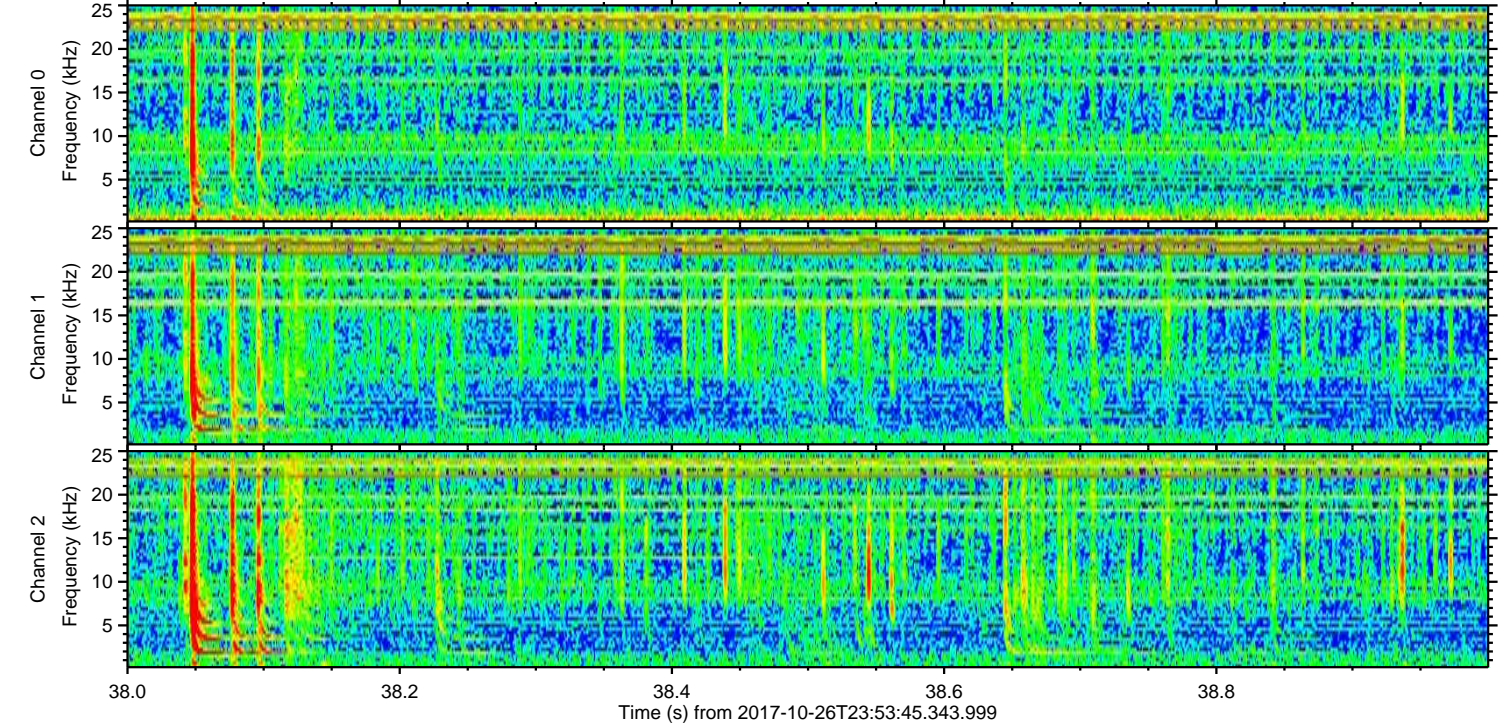
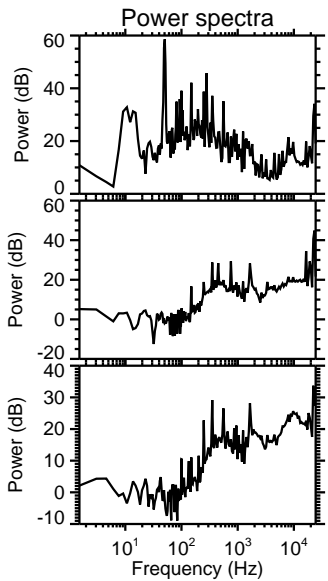
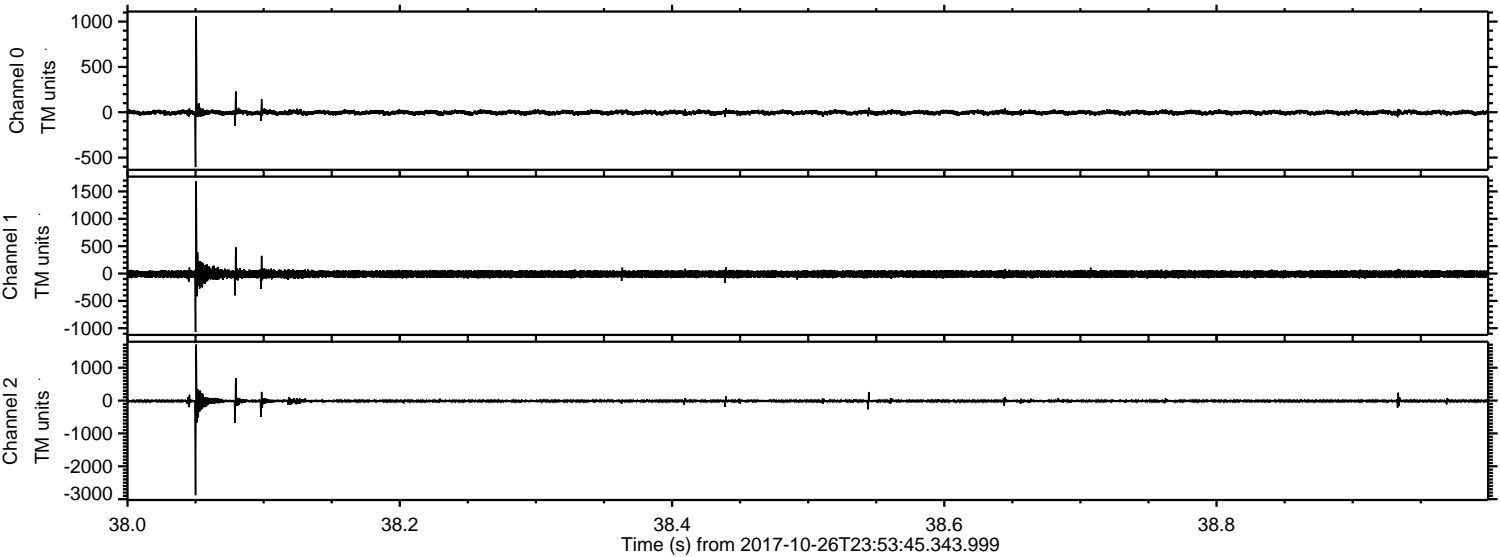


Processed Fri Oct 27 02:01:45 2017 by ELM ver.2012-10-06 from 001\_\_elm20171026\_235344\_\_dat00.bin



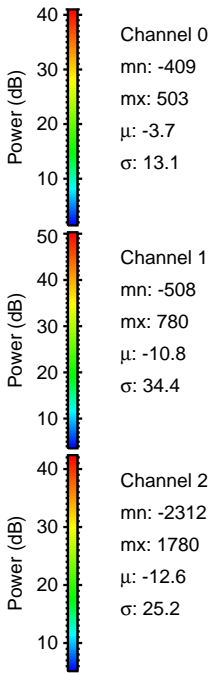
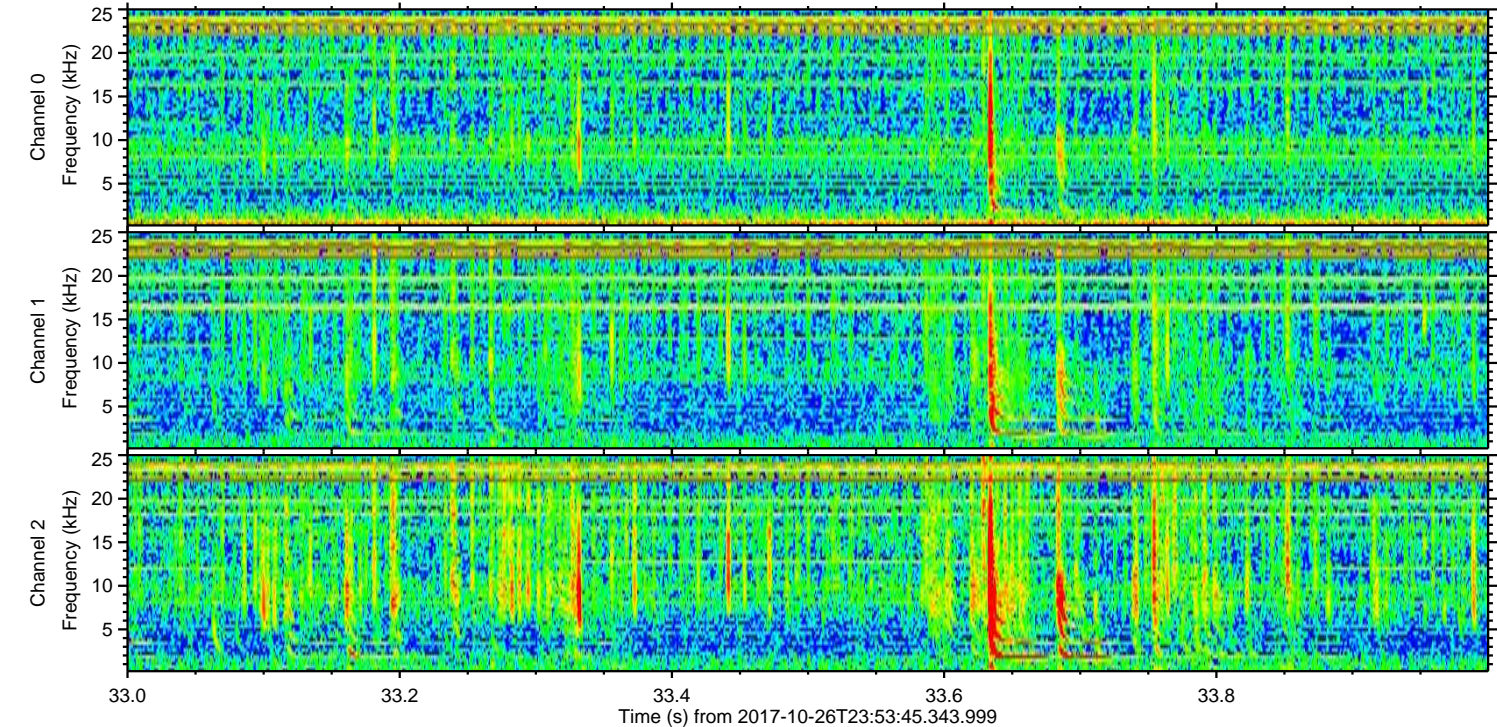
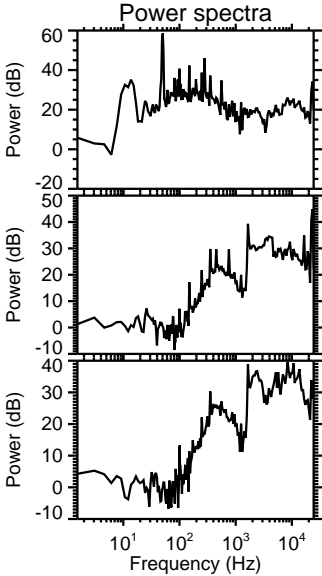
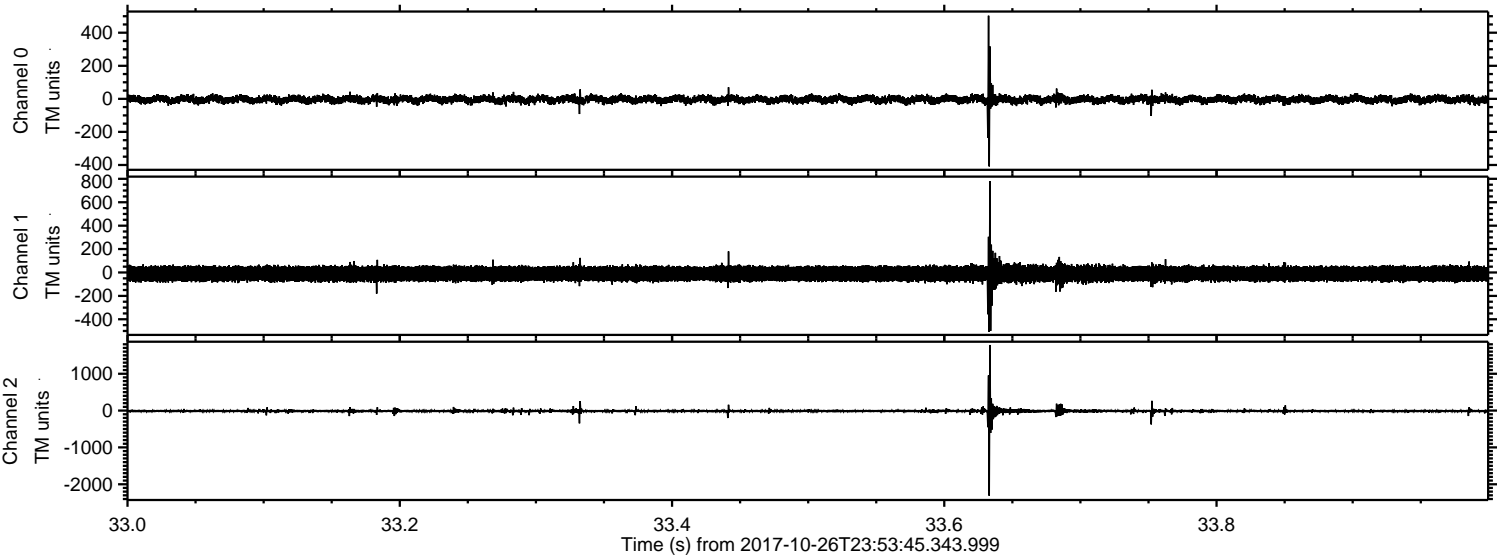


Processed Fri Oct 27 02:01:45 2017 by ELM ver.2012-10-06 from 001\_\_elm20171026\_235344\_\_dat00.bin





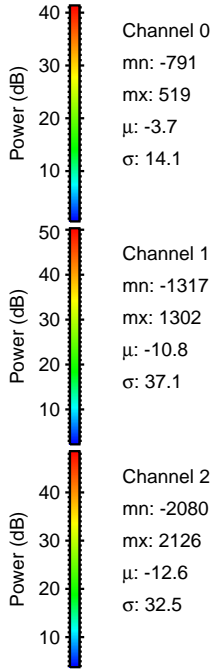
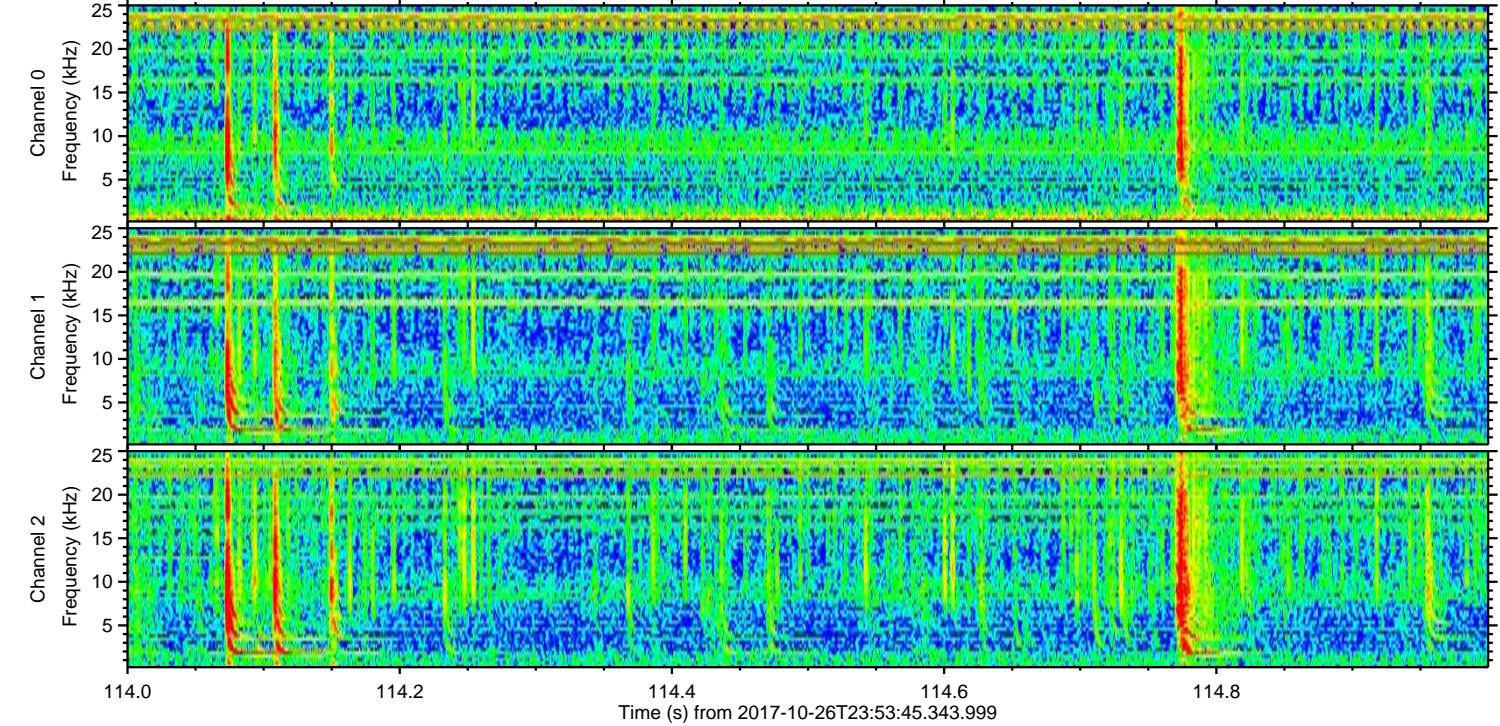
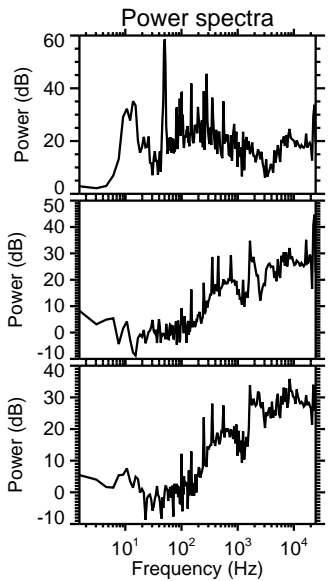
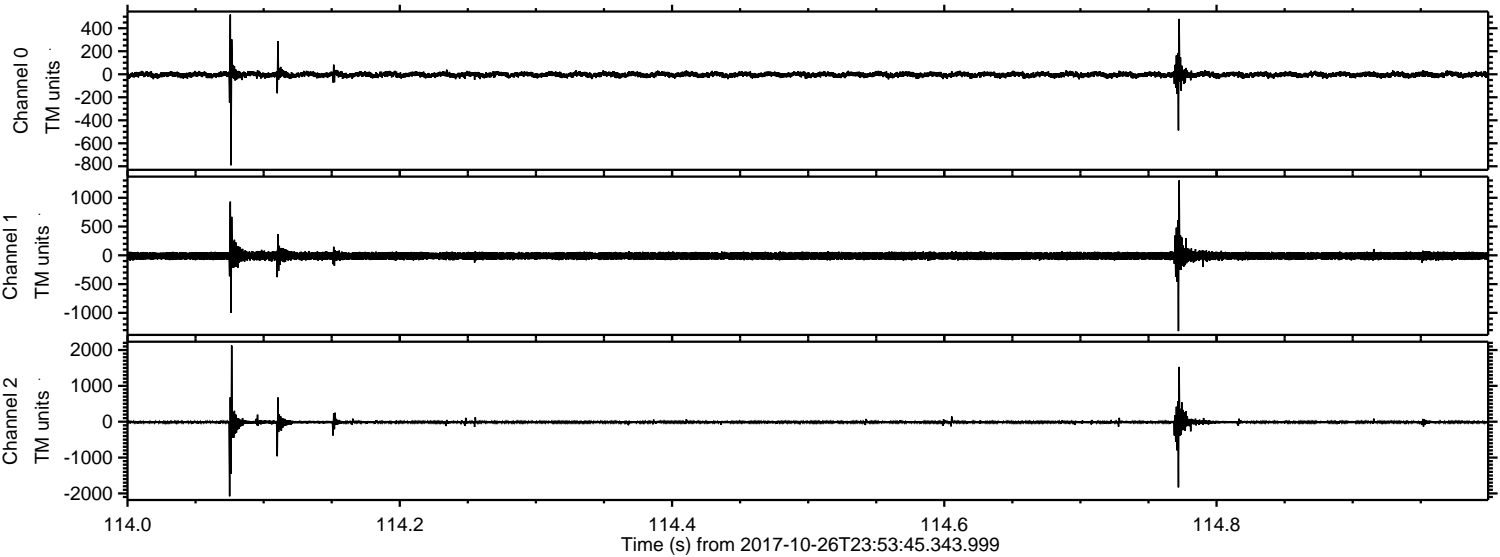
Processed Fri Oct 27 02:01:46 2017 by ELM ver.2012-10-06 from 001\_\_elm20171026\_235344\_\_dat00.bin





ELMAVAN 3D WAVEFORMS (Measured data sampled at 50 kHz) 51000 packets of 144 samples from 2017-10-26T23:53:45.343.999. Part 115/147

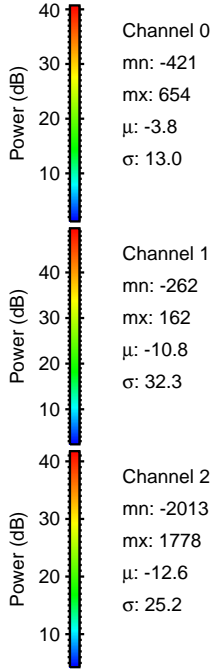
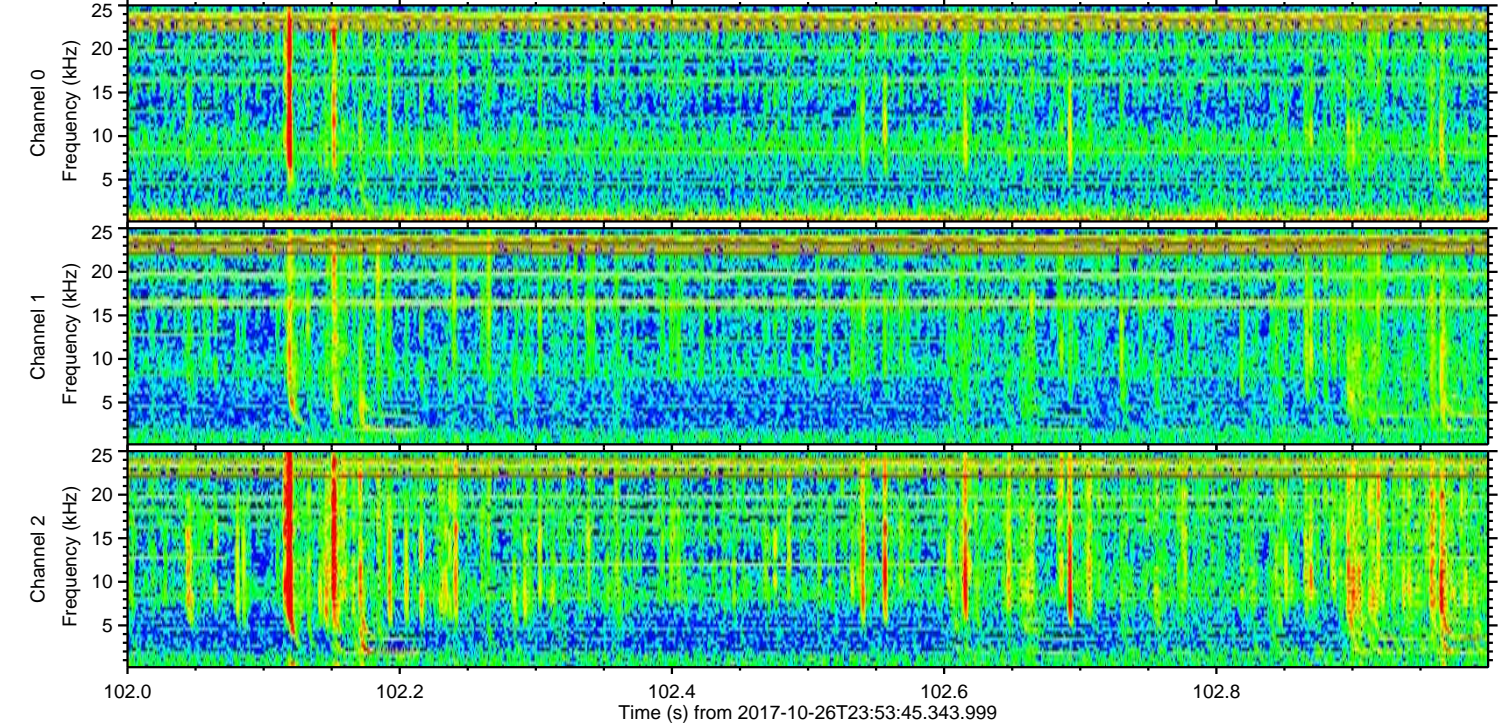
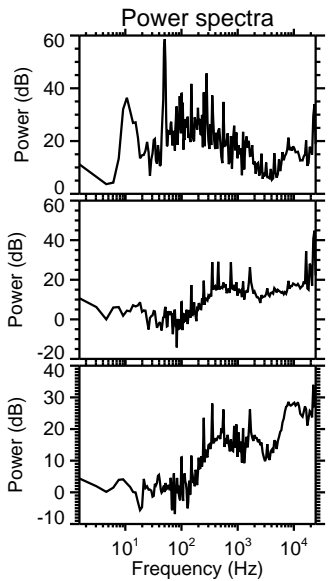
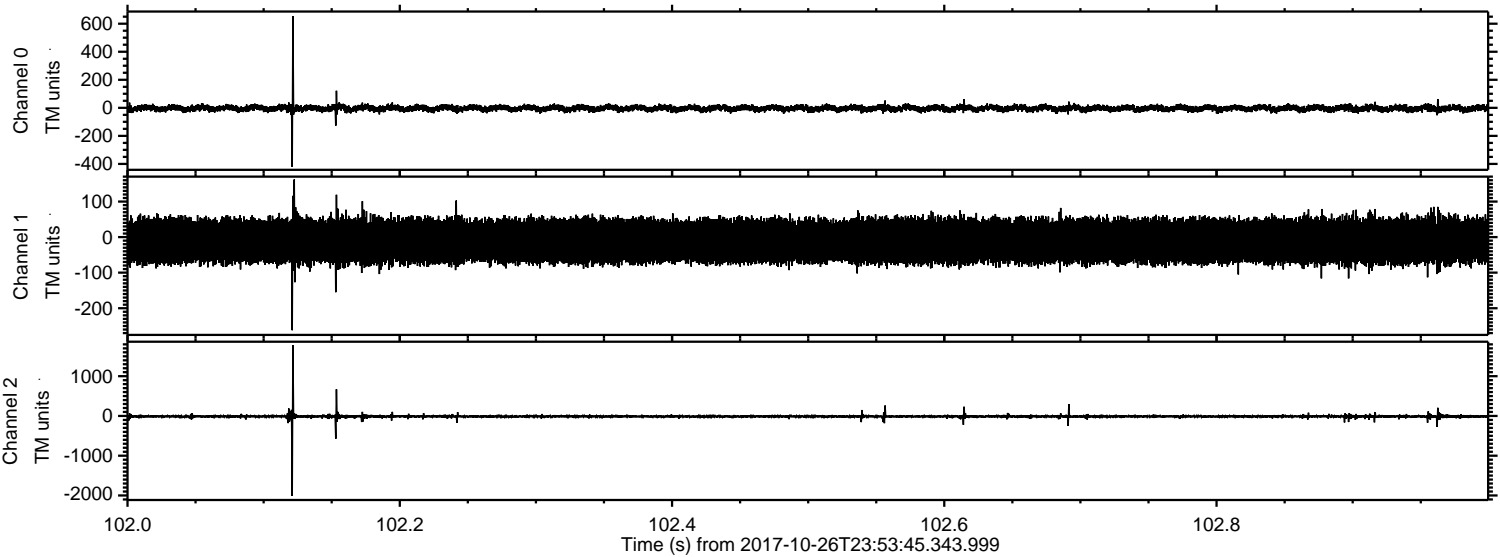
Processed Fri Oct 27 02:01:47 2017 by ELM ver.2012-10-06 from 001\_\_elm20171026\_235344\_\_dat00.bin





ELMAVAN 3D WAVEFORMS (Measured data sampled at 50 kHz) 51000 packets of 144 samples from 2017-10-26T23:53:45.343.999. Part 103/147

Processed Fri Oct 27 02:01:47 2017 by ELM ver.2012-10-06 from 001\_\_elm20171026\_235344\_\_dat00.bin





Processed Fri Oct 27 02:01:48 2017 by ELM ver.2012-10-06 from 001\_\_elm20171026\_235344\_\_dat00.bin

