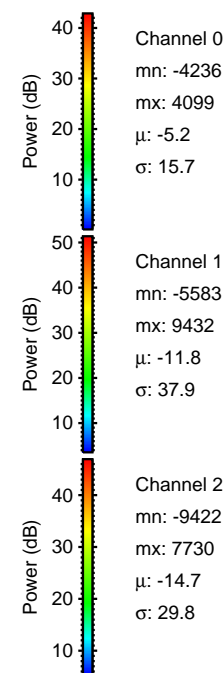
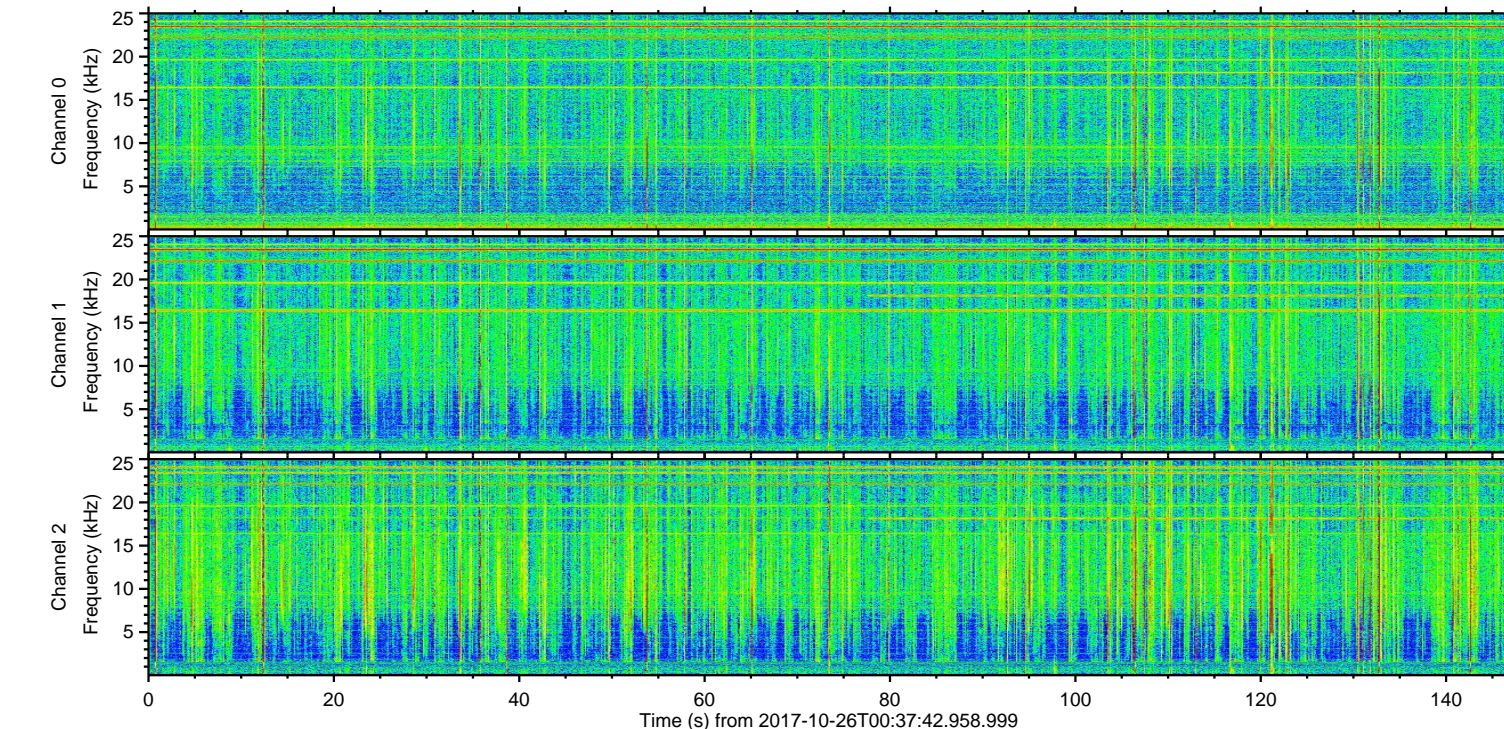
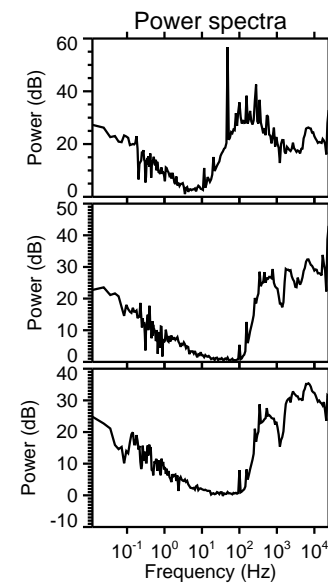
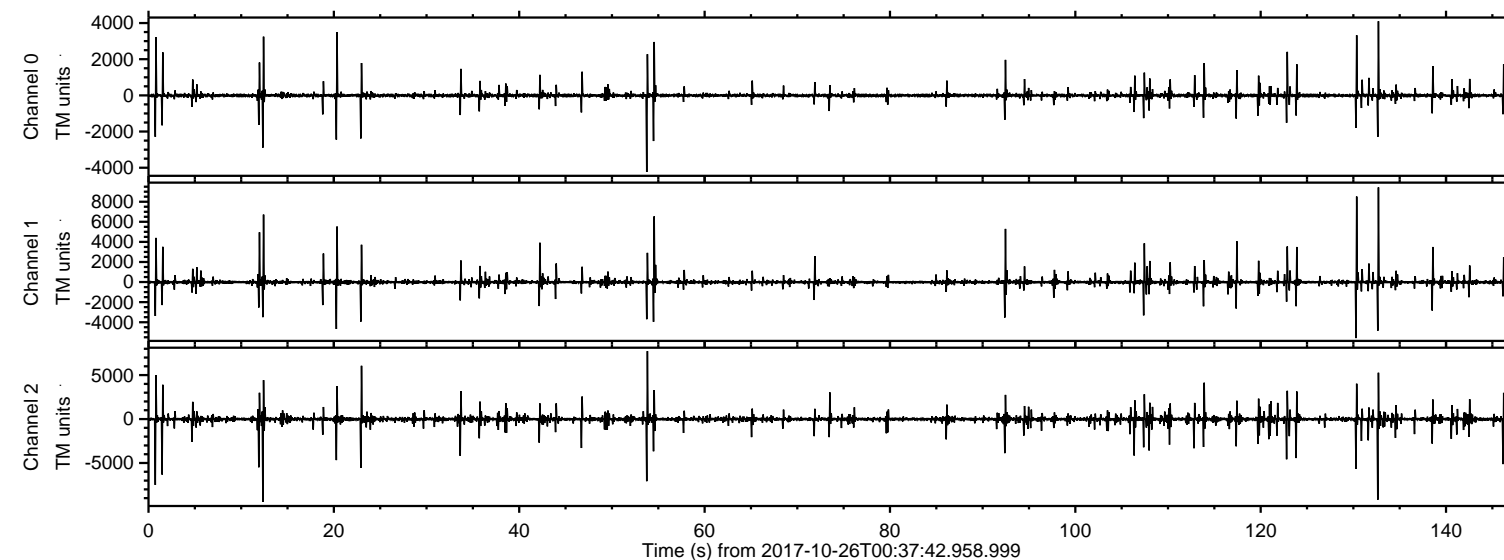


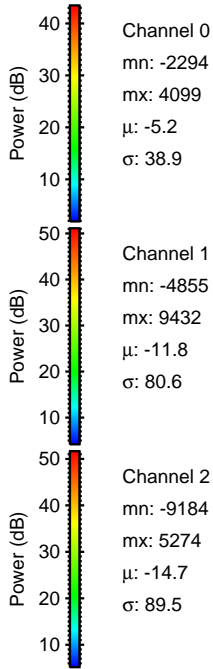
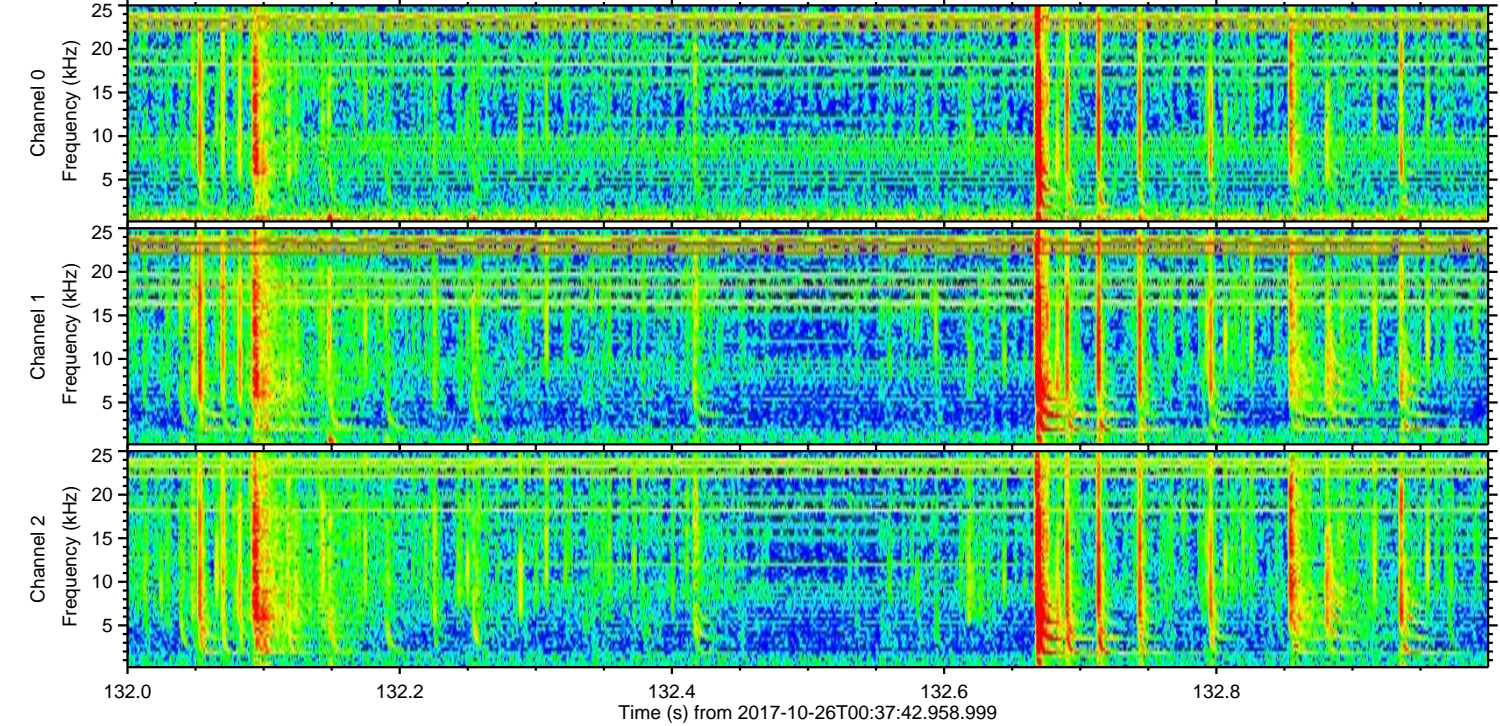
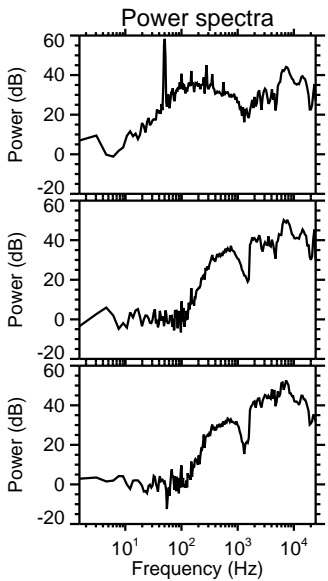
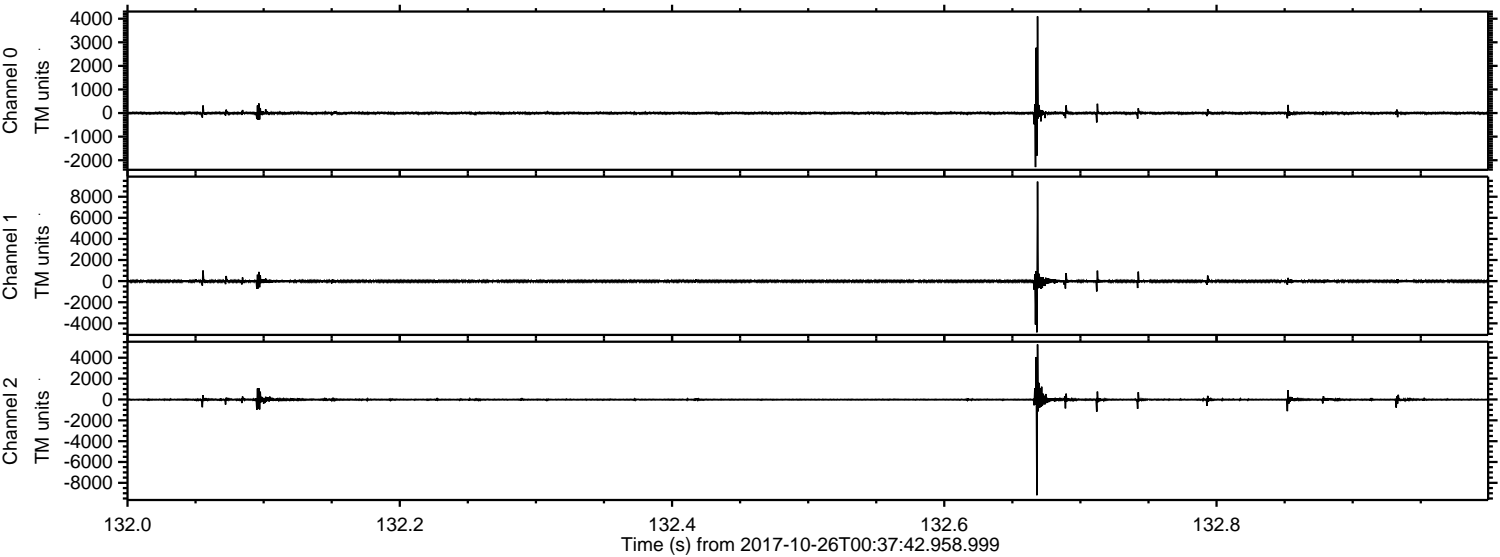
ELMAVAN 3D WAVEFORMS (Measured data sampled at 50 kHz) 51000 packets of 144 samples from 2017-10-26T00:37:42.958.999.

Processed Thu Oct 26 02:45:38 2017 by ELM ver.2012-10-06 from 001__elm20171026_003741__dat00.bin



ELMAVAN 3D WAVEFORMS (Measured data sampled at 50 kHz) 51000 packets of 144 samples from 2017-10-26T00:37:42.958.999. Part 133/147

Processed Thu Oct 26 02:45:44 2017 by ELM ver.2012-10-06 from 001__elm20171026_003741__dat00.bin



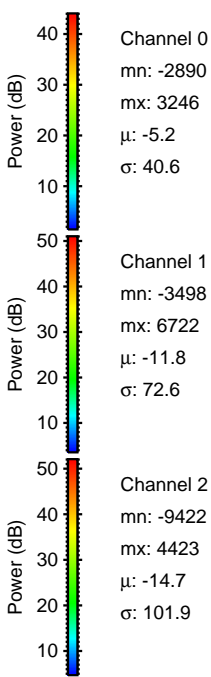
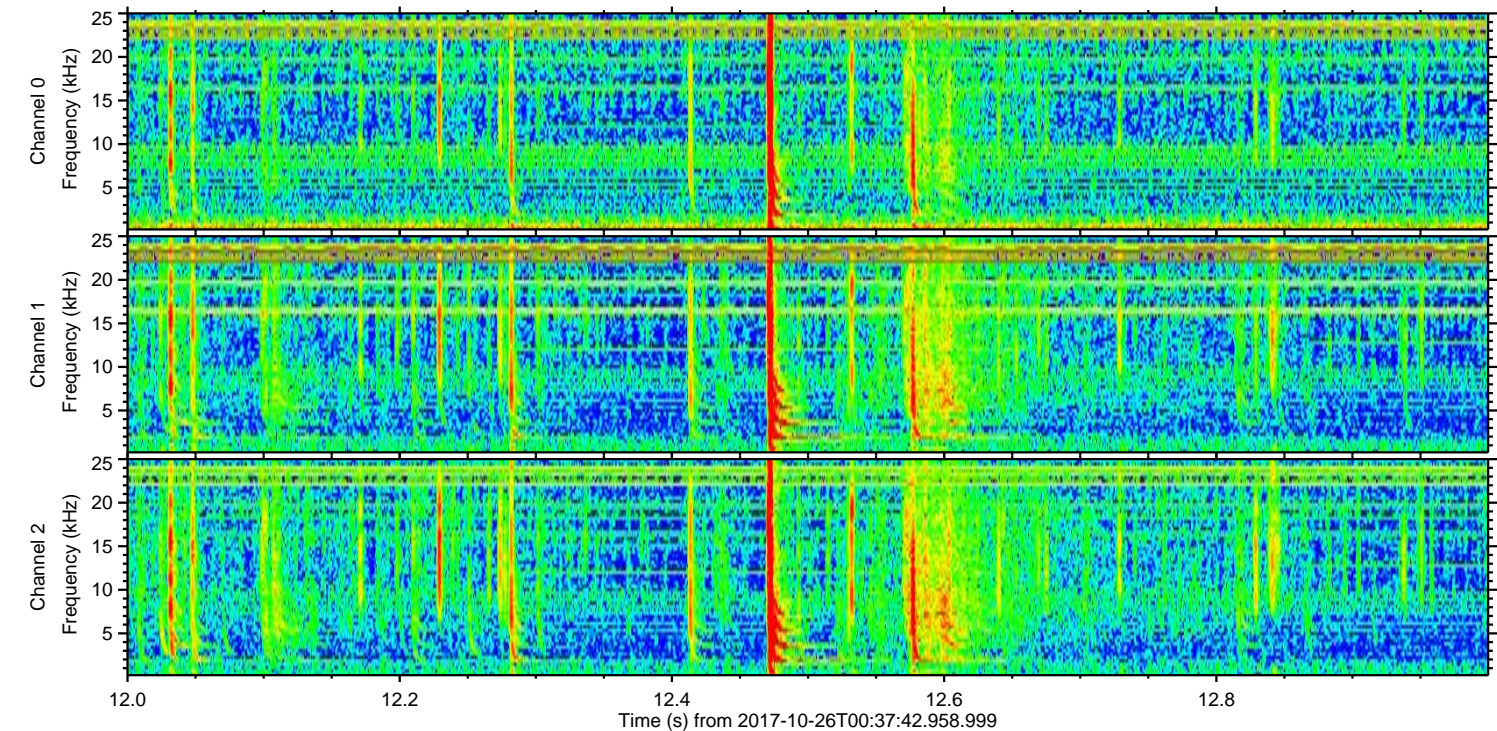
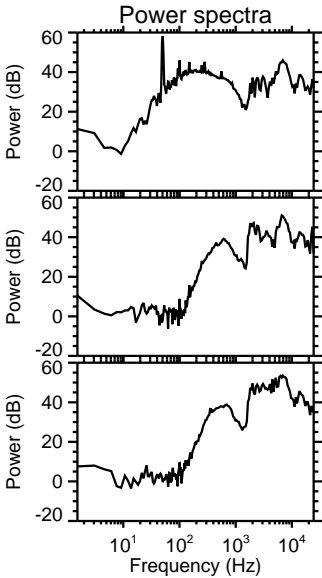
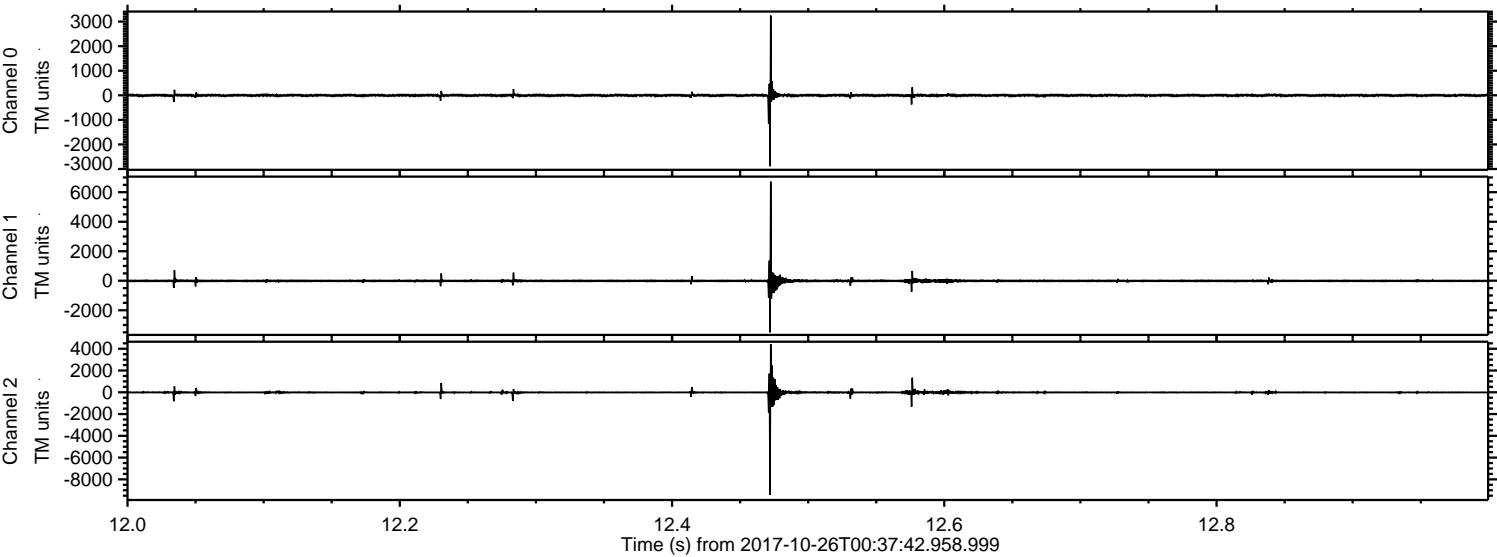
Channel 0
mn: -2294
mx: 4099
 μ : -5.2
 σ : 38.9

Channel 1
mn: -4855
mx: 9432
 μ : -11.8
 σ : 80.6

Channel 2
mn: -9184
mx: 5274
 μ : -14.7
 σ : 89.5

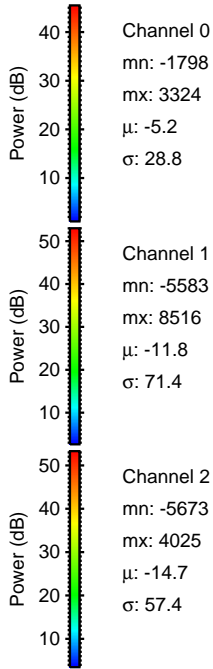
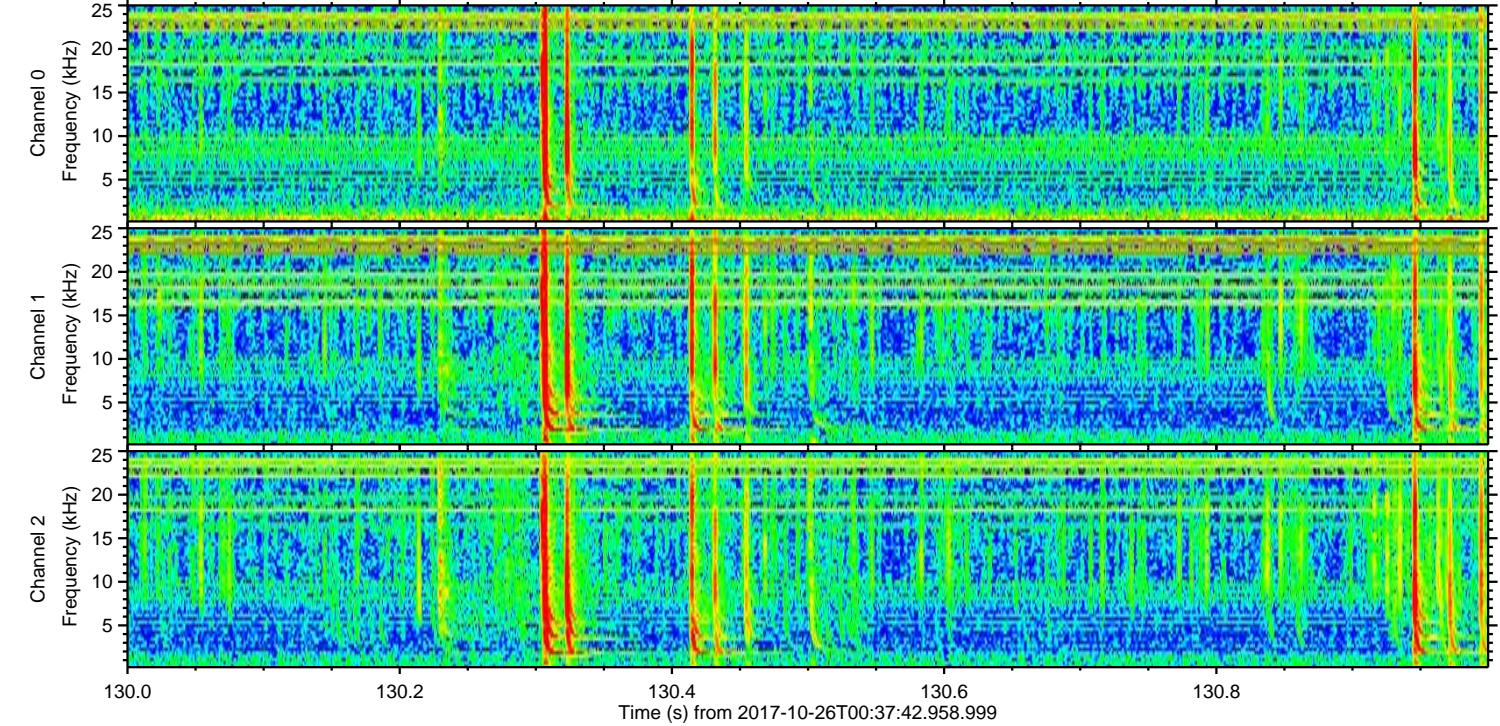
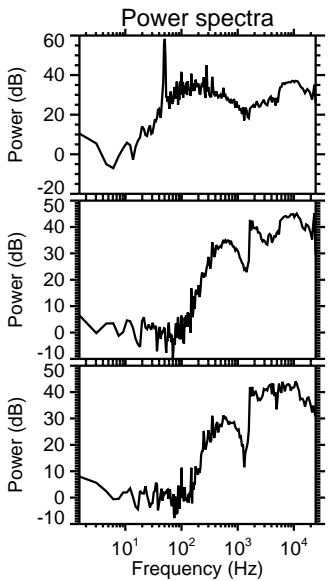
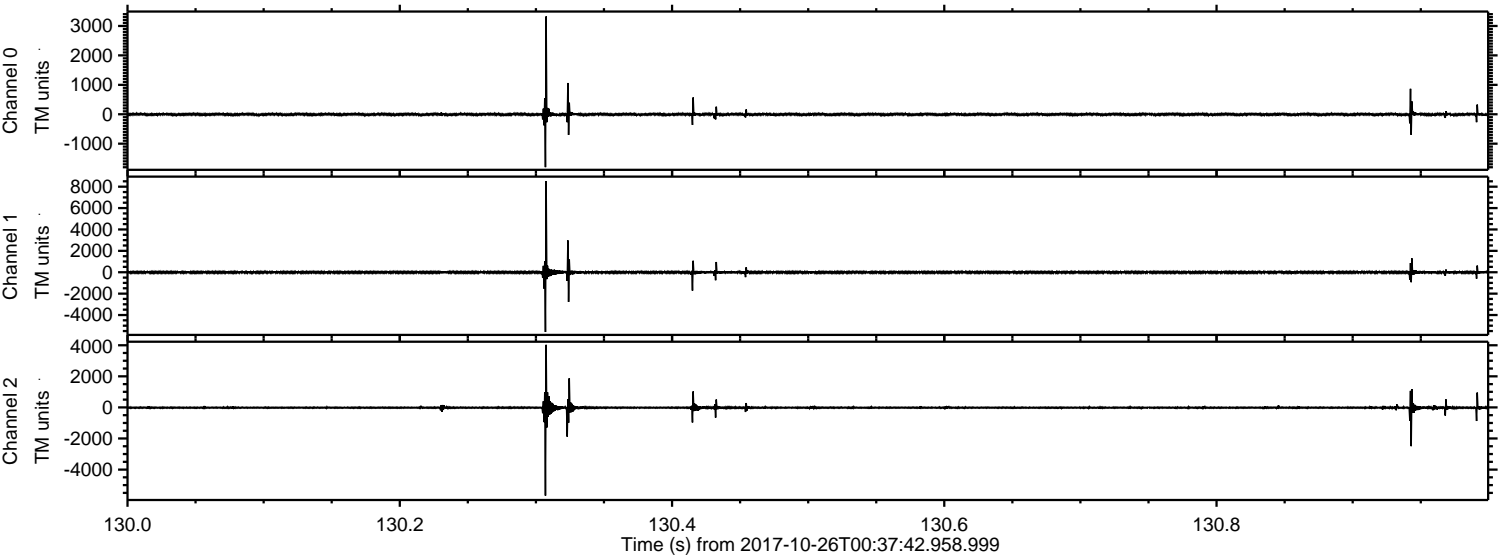
ELMAVAN 3D WAVEFORMS (Measured data sampled at 50 kHz) 51000 packets of 144 samples from 2017-10-26T00:37:42.958.999. Part 13/147

Processed Thu Oct 26 02:45:44 2017 by ELM ver.2012-10-06 from 001__elm20171026_003741__dat00.bin



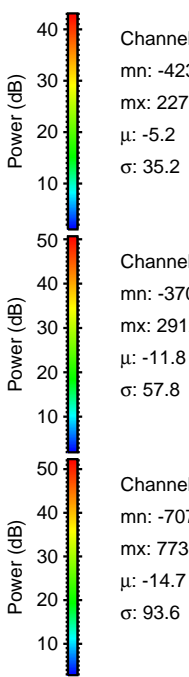
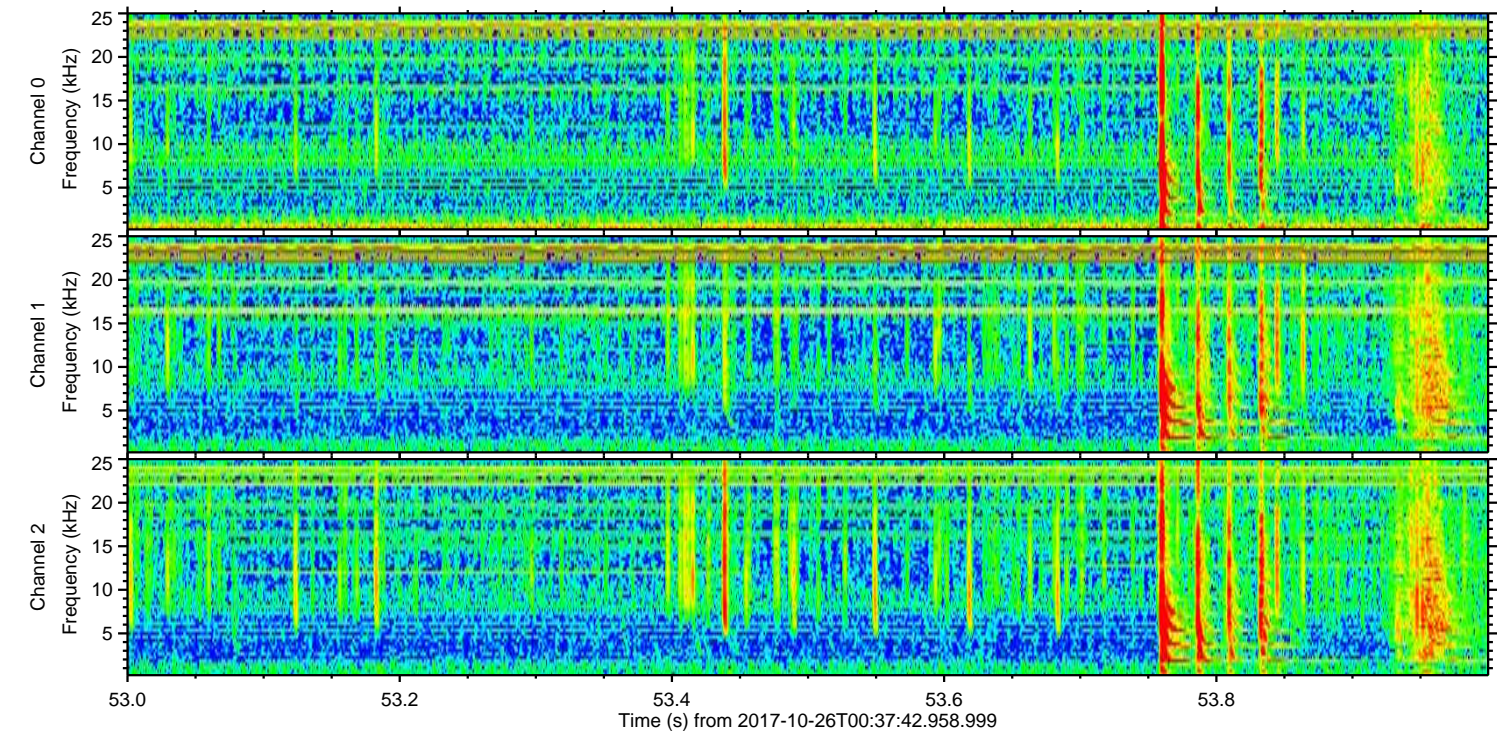
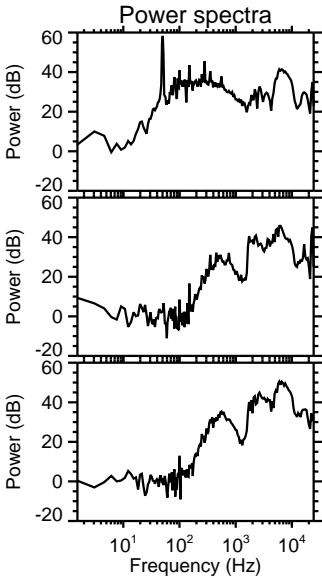
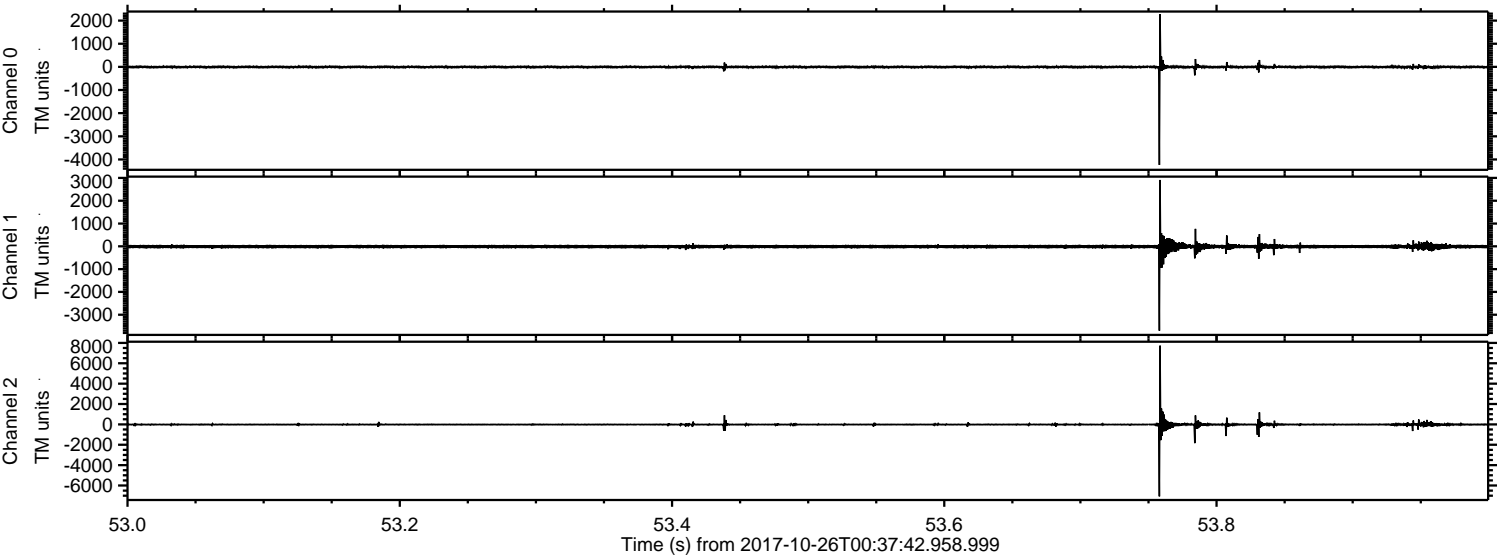
ELMAVAN 3D WAVEFORMS (Measured data sampled at 50 kHz) 51000 packets of 144 samples from 2017-10-26T00:37:42.958.999. Part 131/147

Processed Thu Oct 26 02:45:45 2017 by ELM ver.2012-10-06 from 001__elm20171026_003741__dat00.bin



ELMAVAN 3D WAVEFORMS (Measured data sampled at 50 kHz) 51000 packets of 144 samples from 2017-10-26T00:37:42.958.999. Part 54/147

Processed Thu Oct 26 02:45:46 2017 by ELM ver.2012-10-06 from 001__elm20171026_003741__dat00.bin



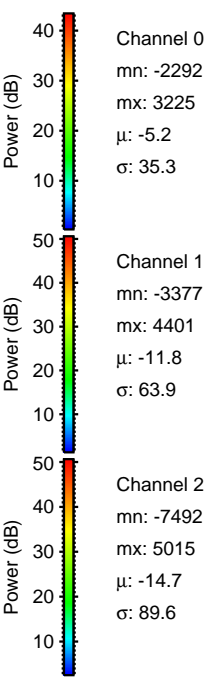
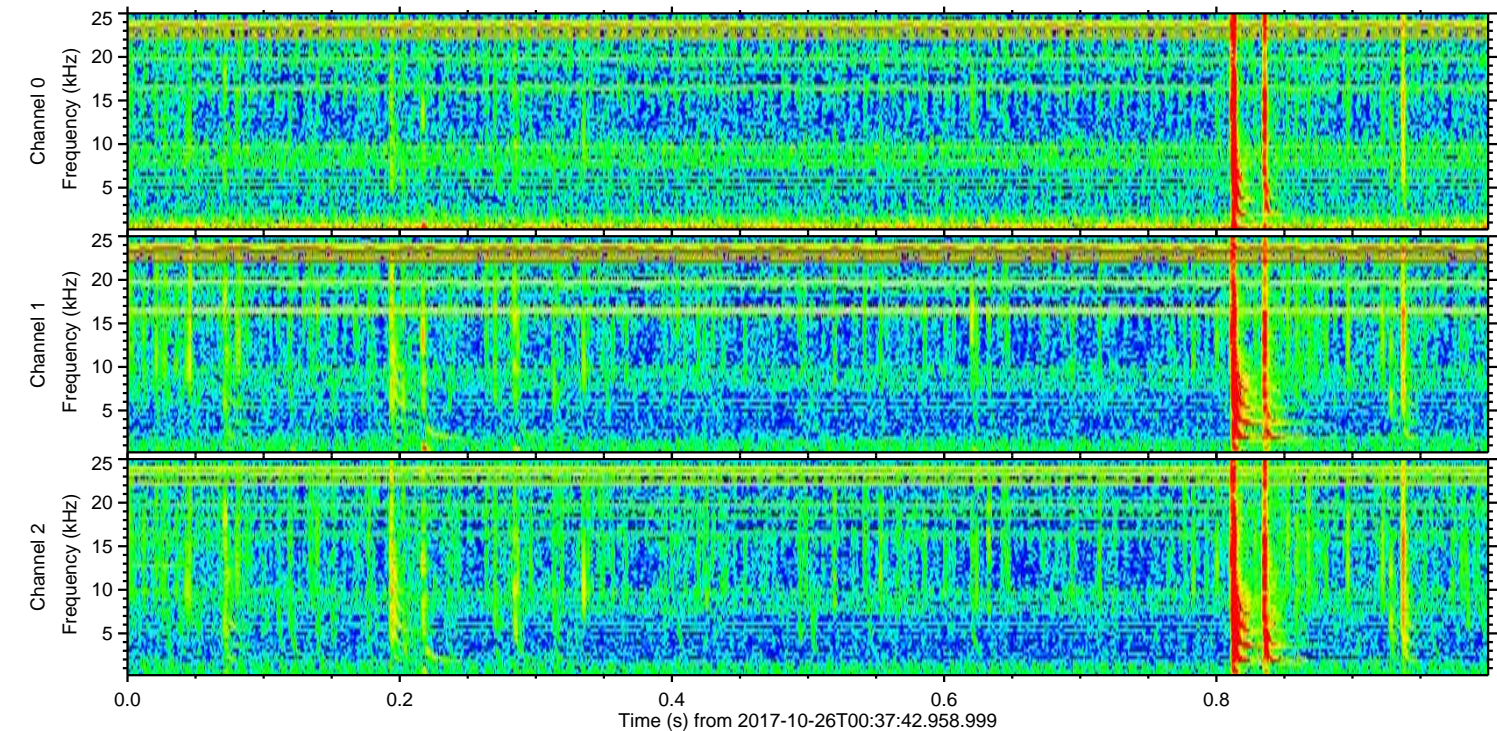
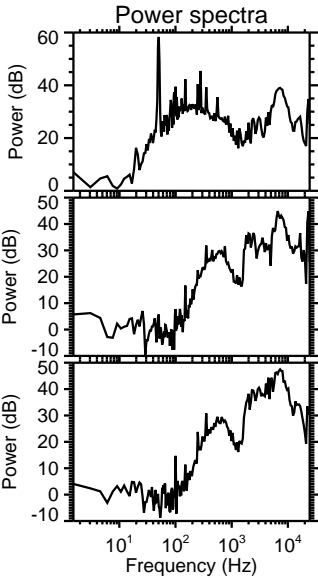
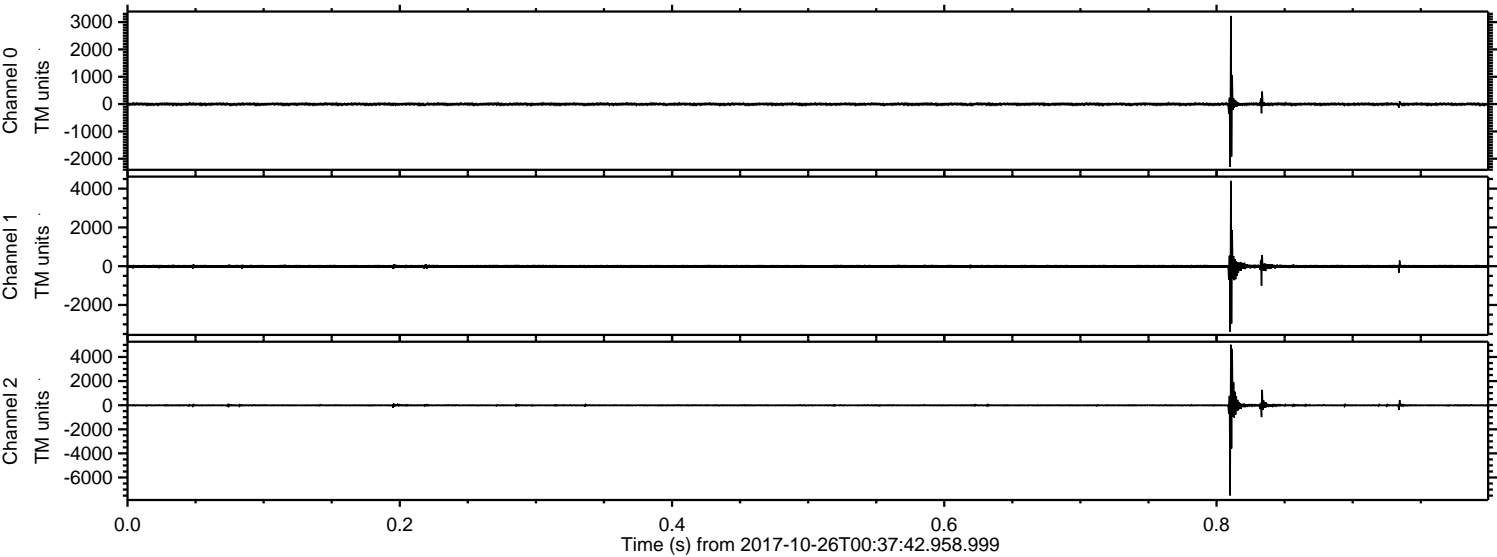
Channel 0
mn: -4236
mx: 2277
 μ : -5.2
 σ : 35.2

Channel 1
mn: -3701
mx: 2912
 μ : -11.8
 σ : 57.8

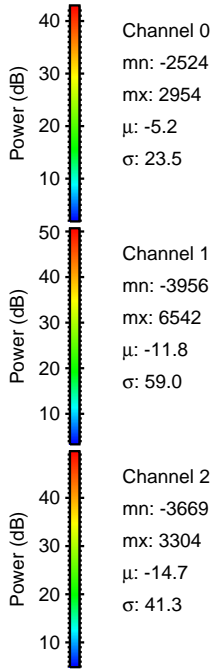
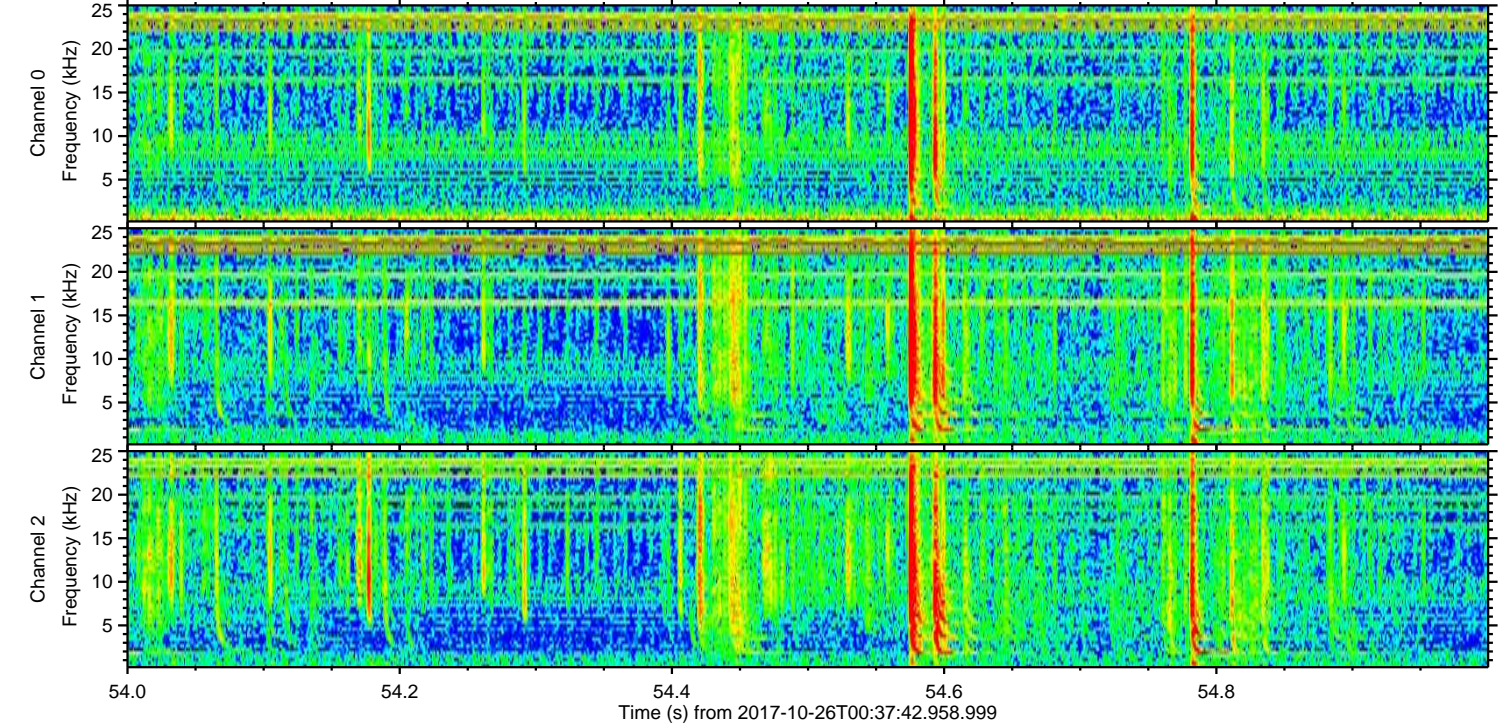
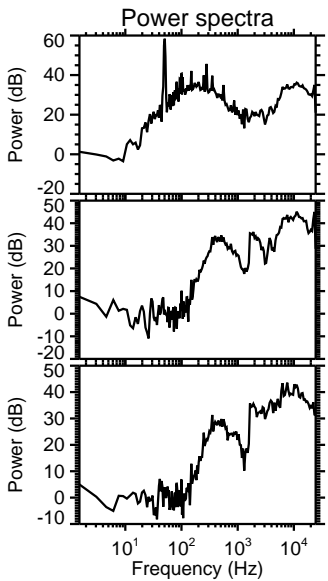
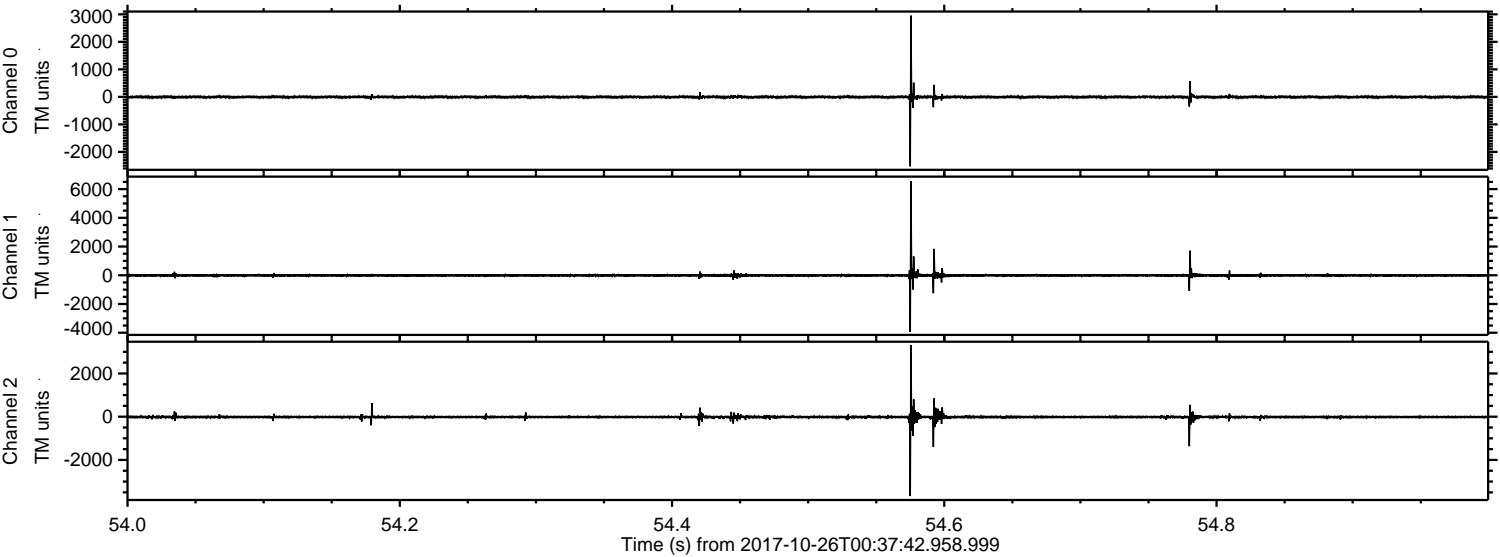
Channel 2
mn: -7070
mx: 7730
 μ : -14.7
 σ : 93.6

ELMAVAN 3D WAVEFORMS (Measured data sampled at 50 kHz) 51000 packets of 144 samples from 2017-10-26T00:37:42.958.999. Part 1/147

Processed Thu Oct 26 02:45:47 2017 by ELM ver.2012-10-06 from 001__elm20171026_003741__dat00.bin

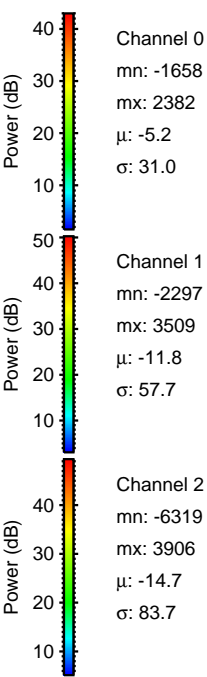
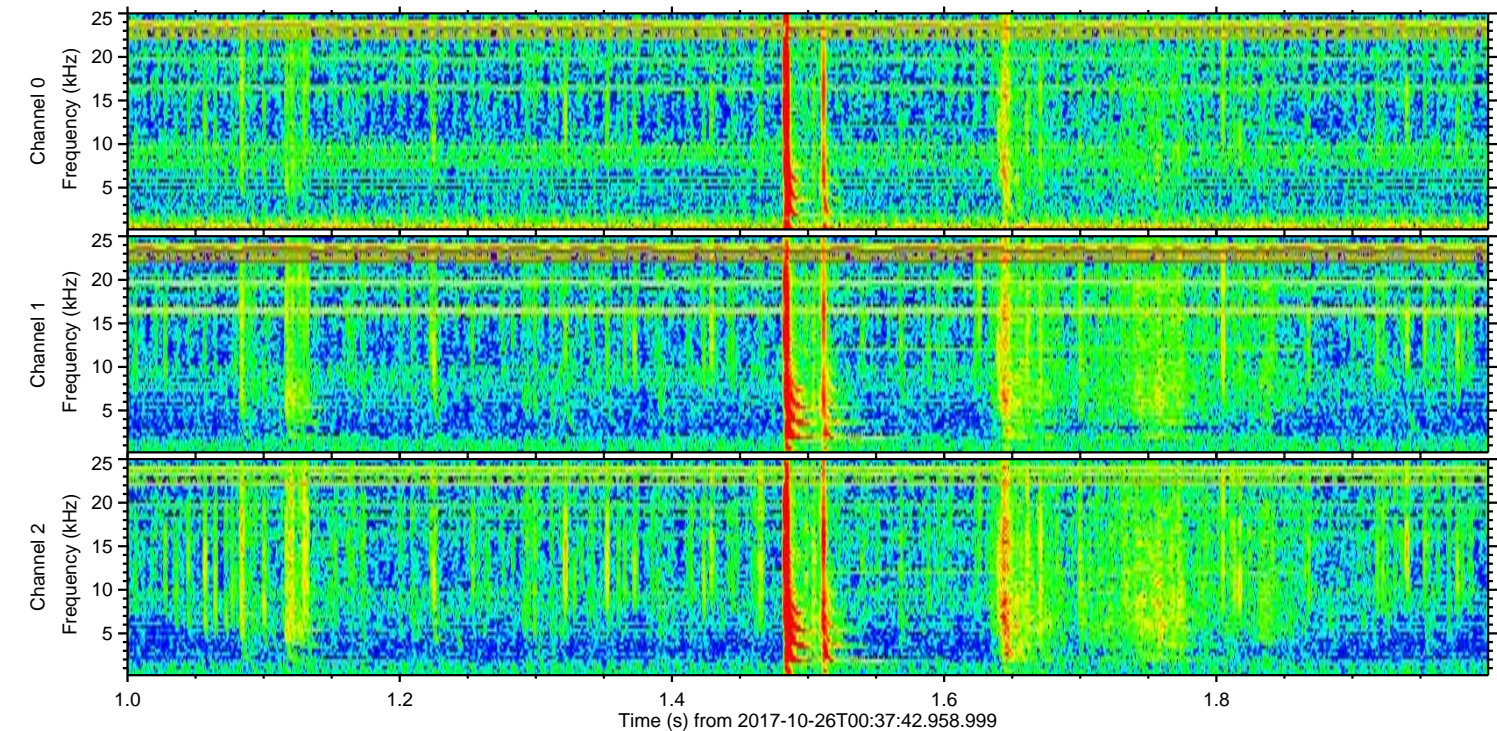
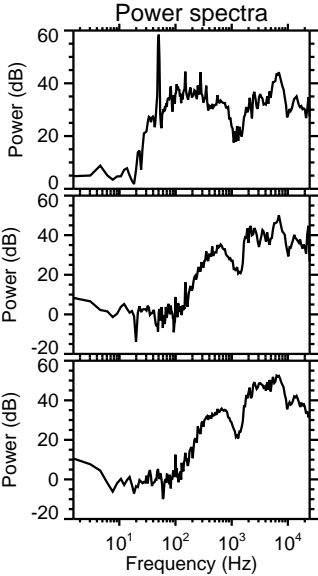
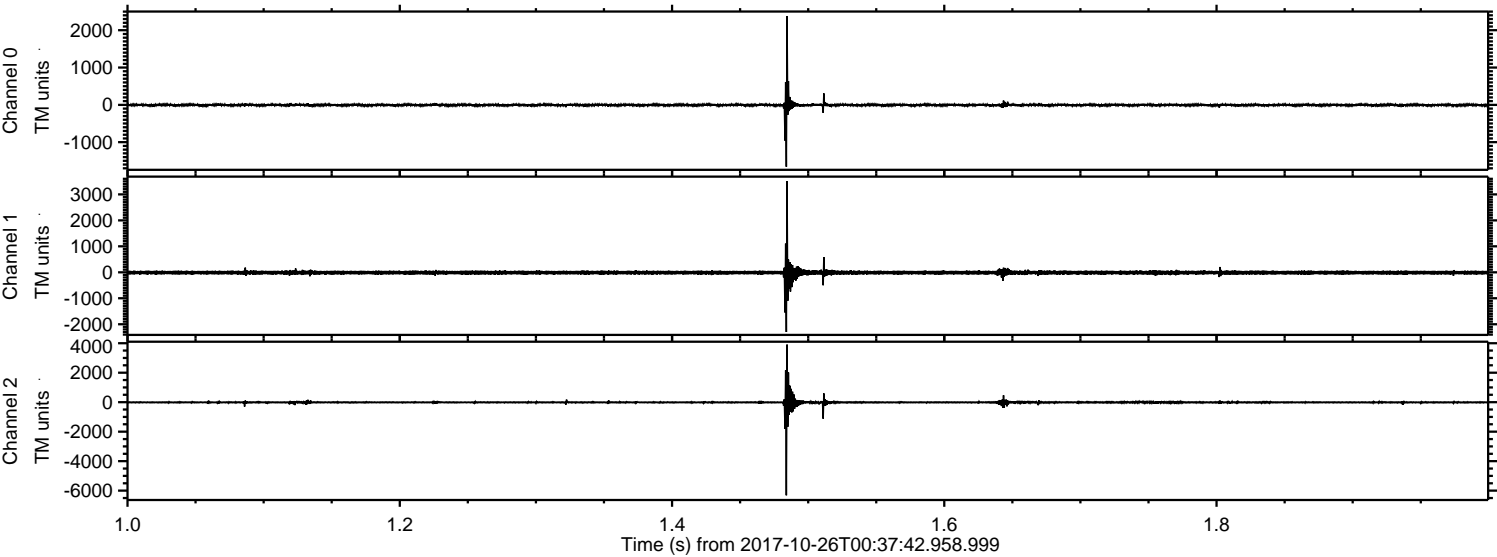


Processed Thu Oct 26 02:45:47 2017 by ELM ver.2012-10-06 from 001__elm20171026_003741__dat00.bin



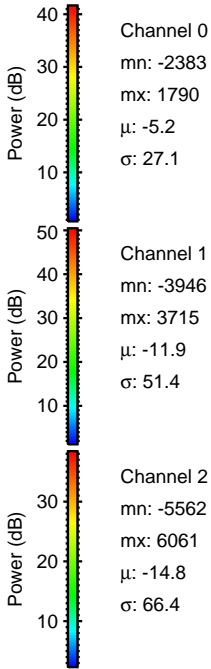
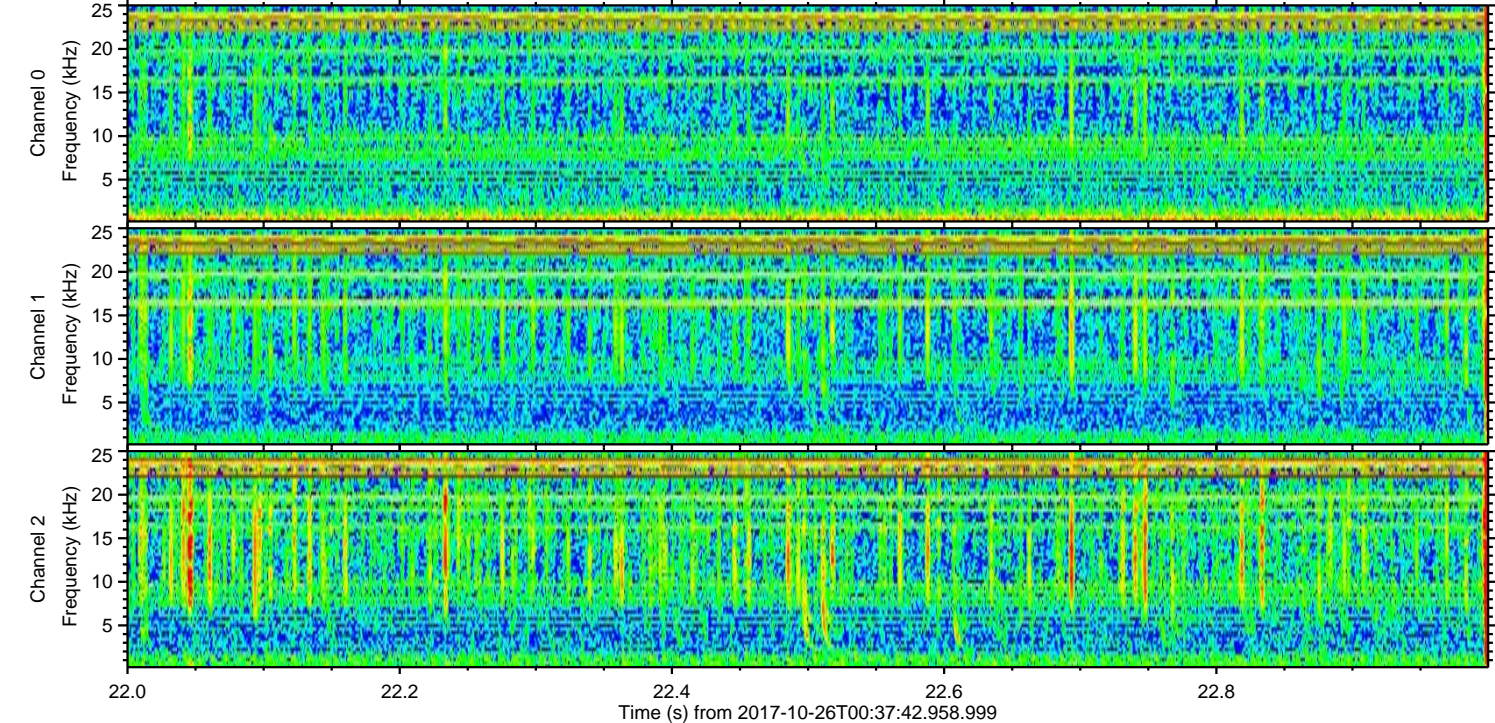
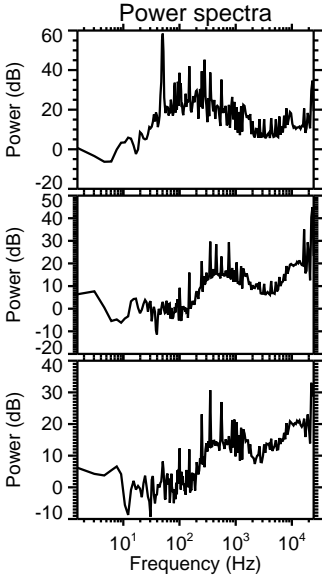
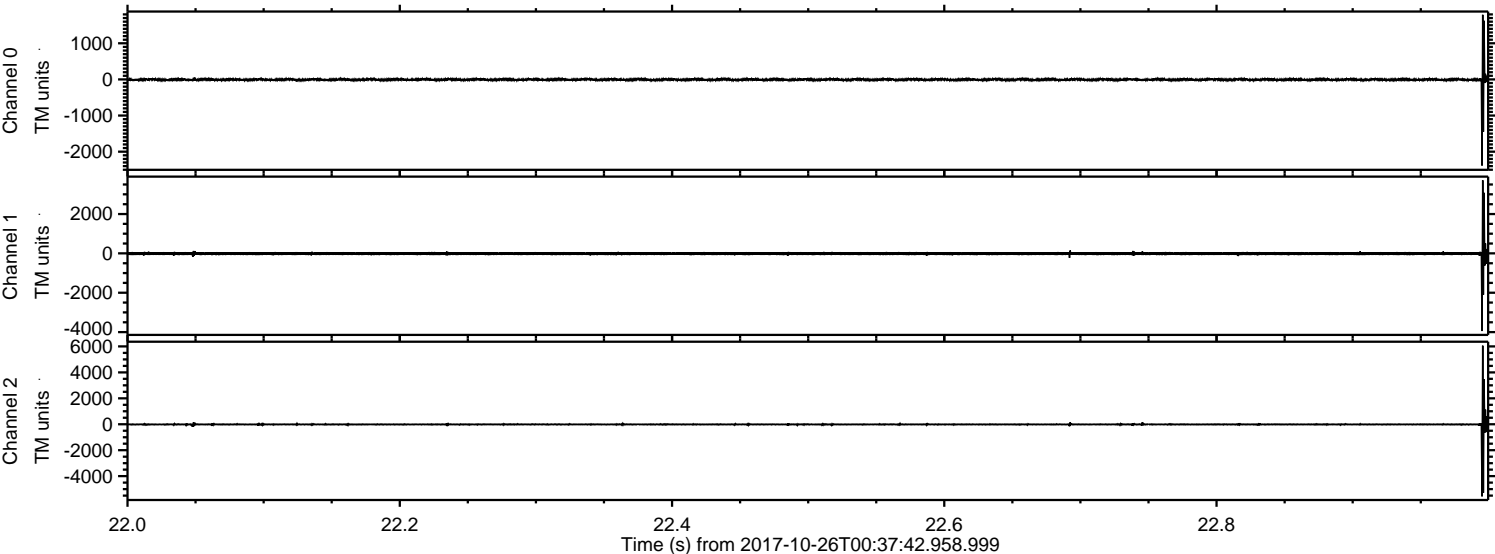
ELMAVAN 3D WAVEFORMS (Measured data sampled at 50 kHz) 51000 packets of 144 samples from 2017-10-26T00:37:42.958.999. Part 2/147

Processed Thu Oct 26 02:45:48 2017 by ELM ver.2012-10-06 from 001__elm20171026_003741__dat00.bin

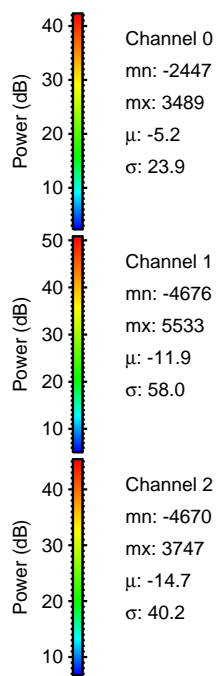
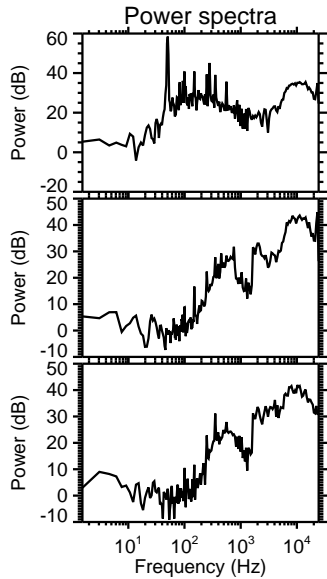
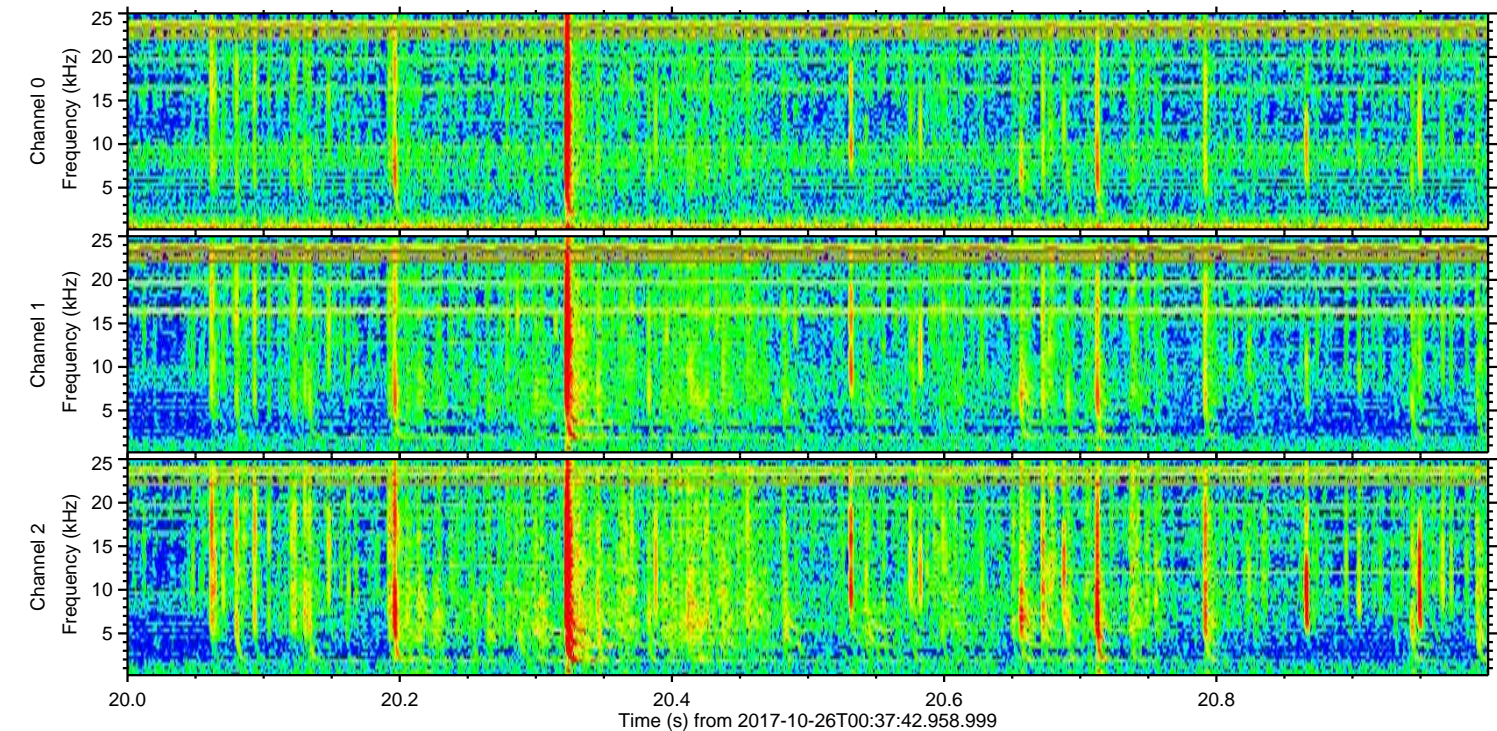
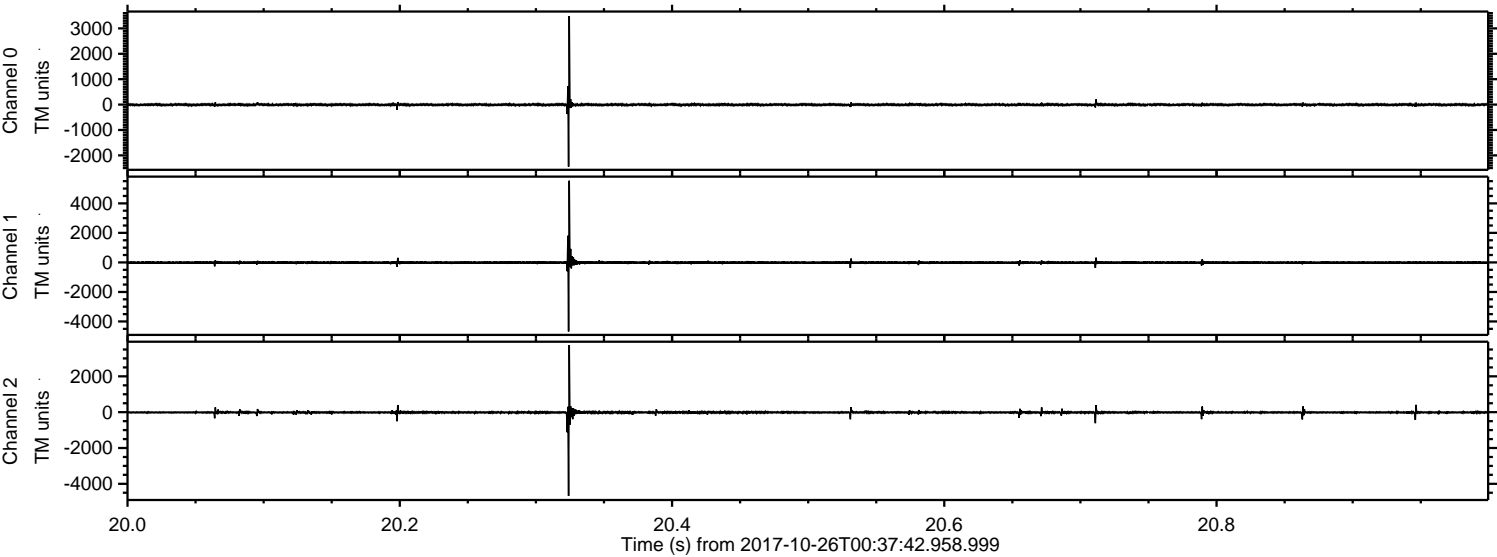


ELMAVAN 3D WAVEFORMS (Measured data sampled at 50 kHz) 51000 packets of 144 samples from 2017-10-26T00:37:42.958.999. Part 23/147

Processed Thu Oct 26 02:45:48 2017 by ELM ver.2012-10-06 from 001__elm20171026_003741__dat00.bin



Processed Thu Oct 26 02:45:49 2017 by ELM ver.2012-10-06 from 001__elm20171026_003741__dat00.bin



Power spectra

Channel 0
mn: -2447
mx: 3489
 μ : -5.2
 σ : 23.9

Channel 1
mn: -4676
mx: 5533
 μ : -11.9
 σ : 58.0

Channel 2
mn: -4670
mx: 3747
 μ : -14.7
 σ : 40.2

ELMAVAN 3D WAVEFORMS (Measured data sampled at 50 kHz) 51000 packets of 144 samples from 2017-10-26T00:37:42.958.999. Part 84/147

Processed Thu Oct 26 02:45:50 2017 by ELM ver.2012-10-06 from 001__elm20171026_003741__dat00.bin

