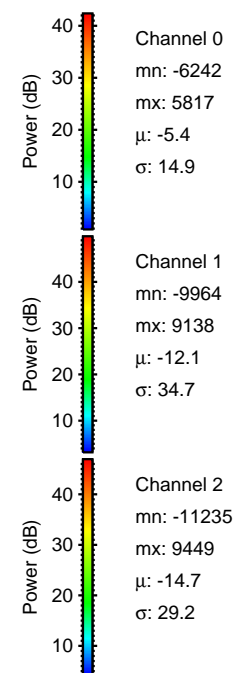
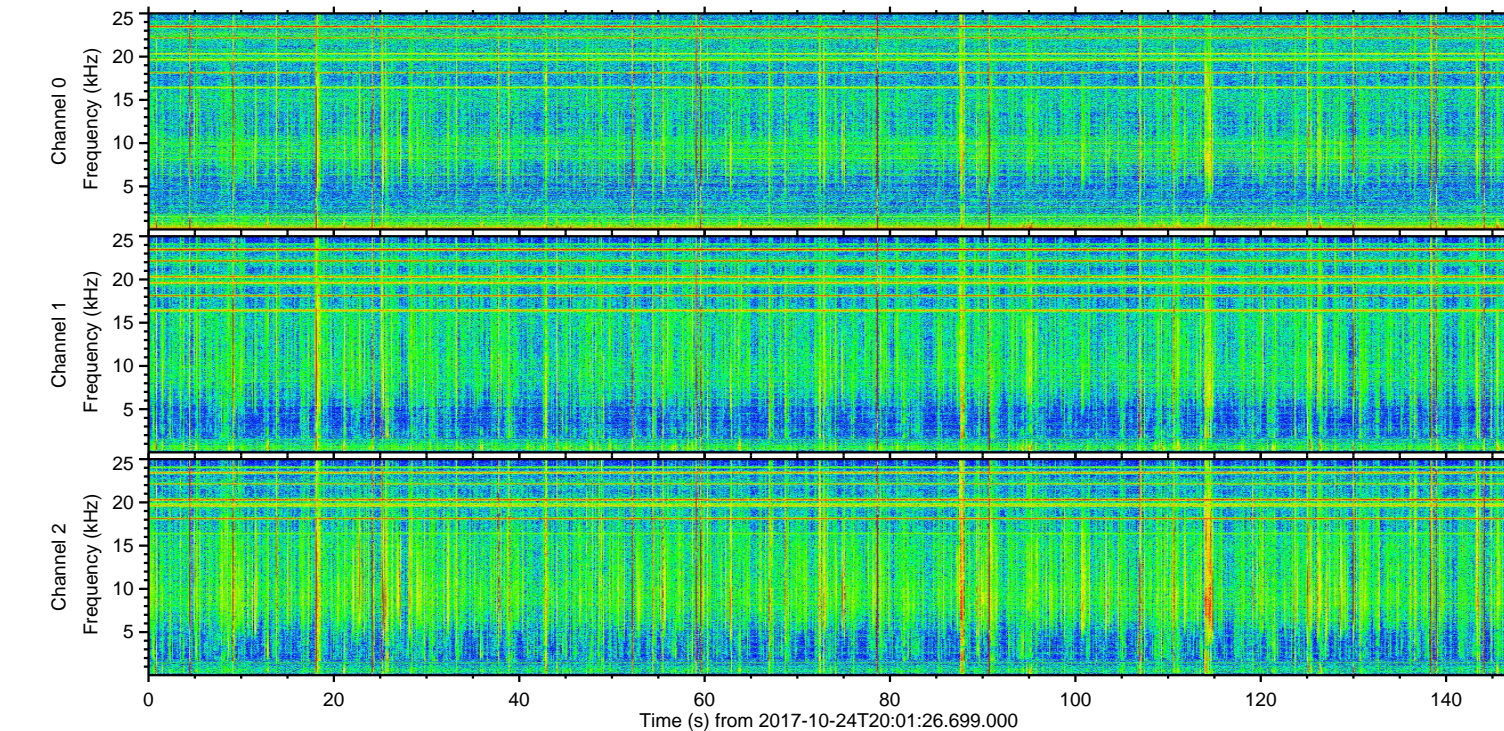
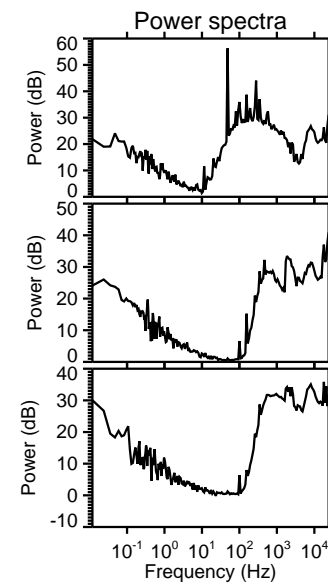
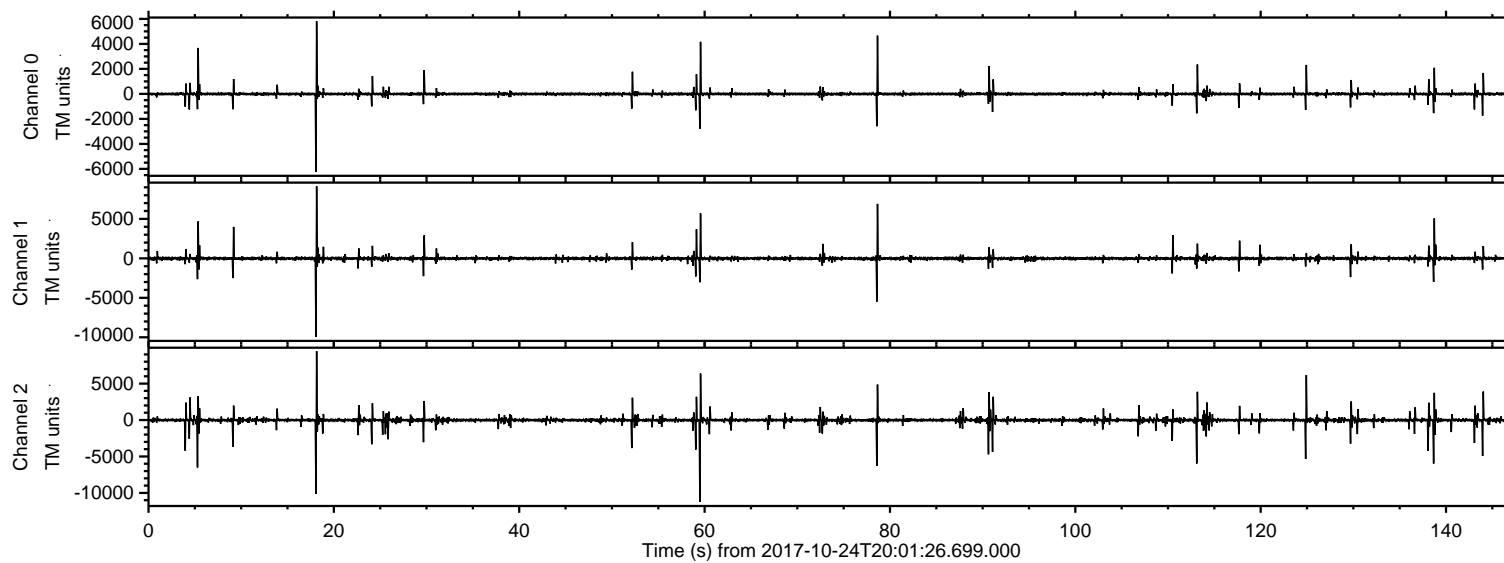


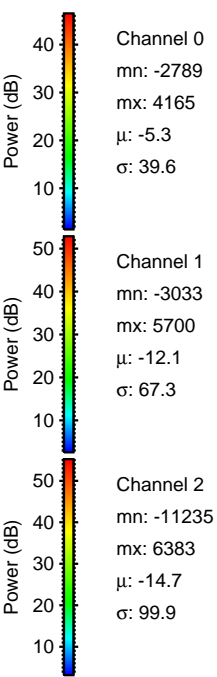
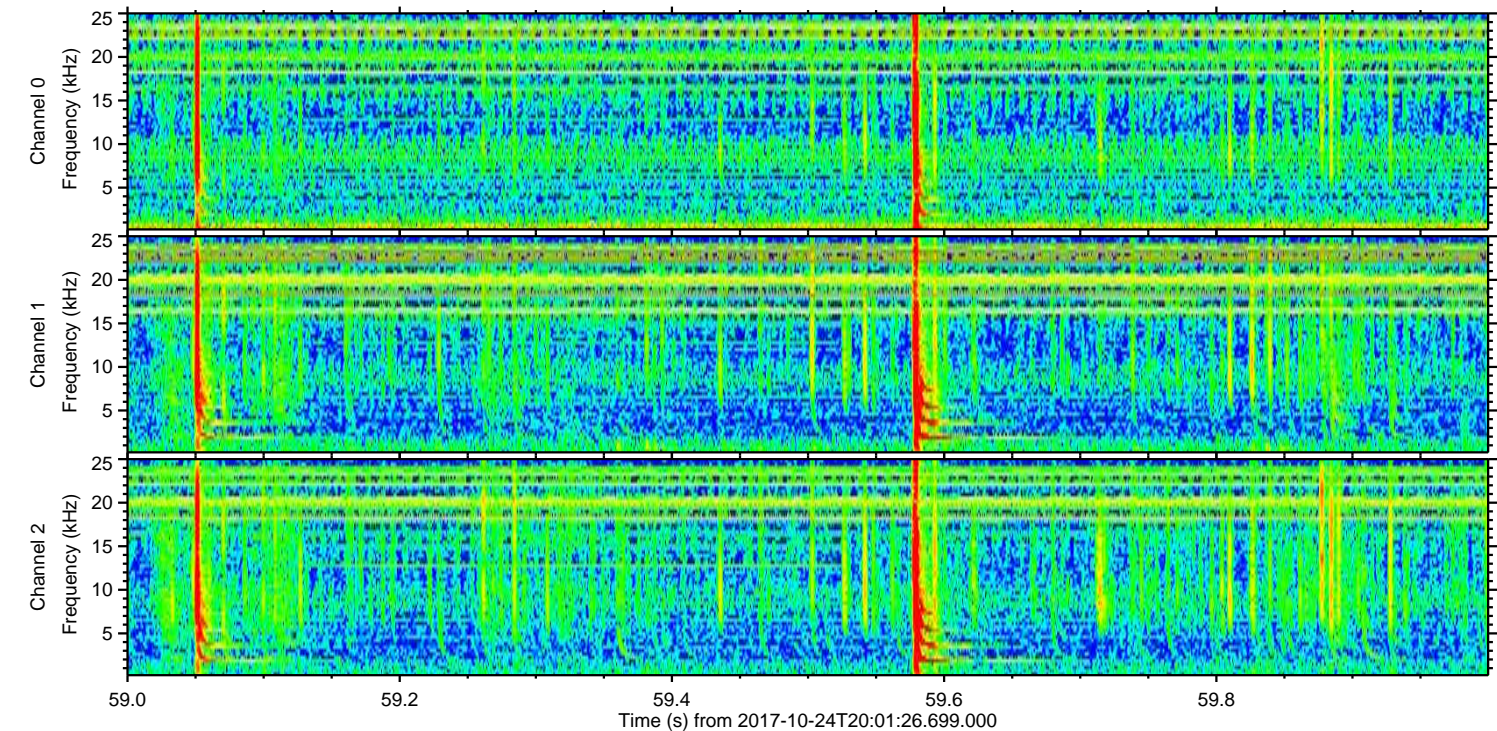
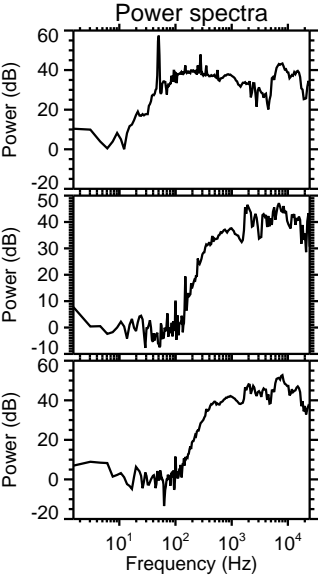
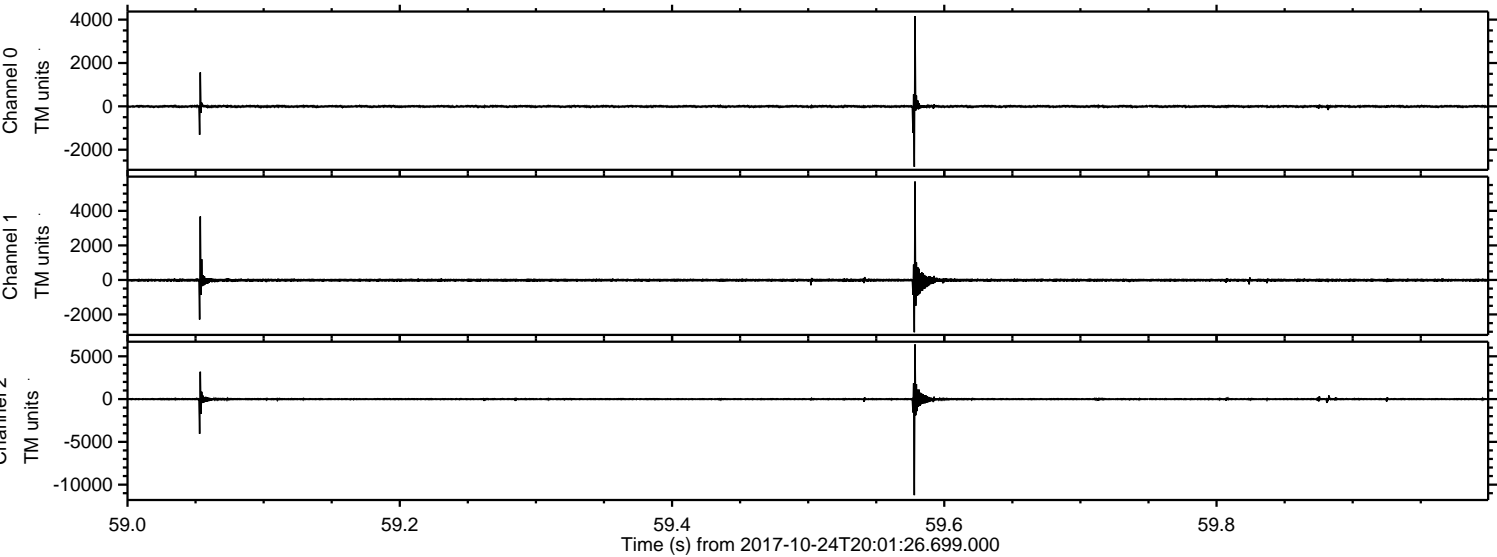
ELMAVAN 3D WAVEFORMS (Measured data sampled at 50 kHz) 51000 packets of 144 samples from 2017-10-24T20:01:26.699.000.

Processed Tue Oct 24 22:09:14 2017 by ELM ver.2012-10-06 from 001__elm20171024_200125__dat00.bin



ELMAVAN 3D WAVEFORMS (Measured data sampled at 50 kHz) 51000 packets of 144 samples from 2017-10-24T20:01:26.699.000. Part 60/147

Processed Tue Oct 24 22:09:20 2017 by ELM ver.2012-10-06 from 001__elm20171024_200125__dat00.bin



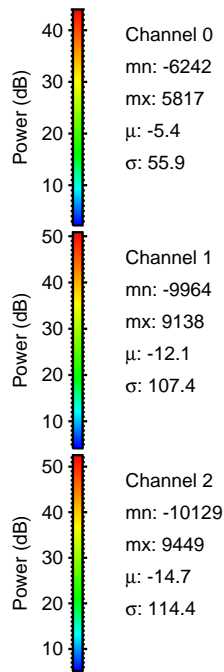
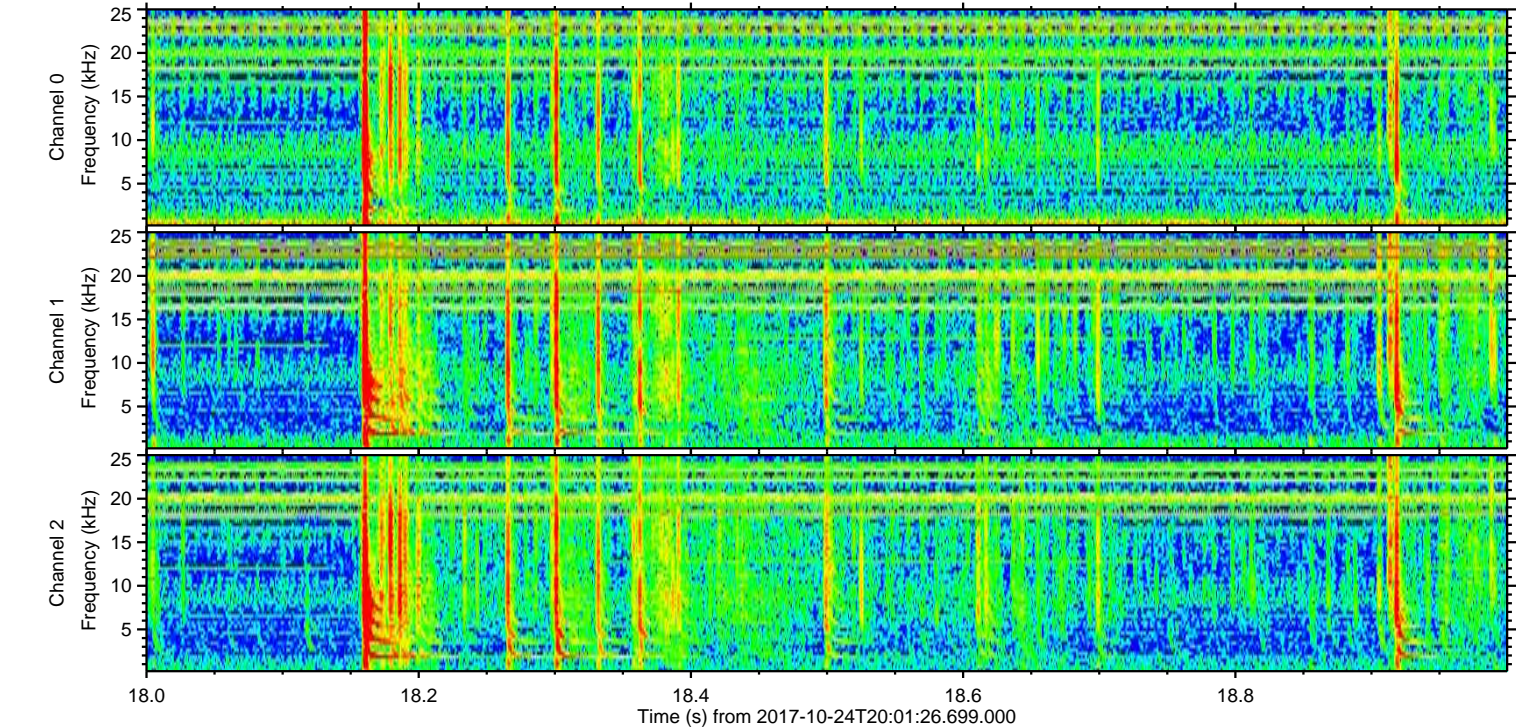
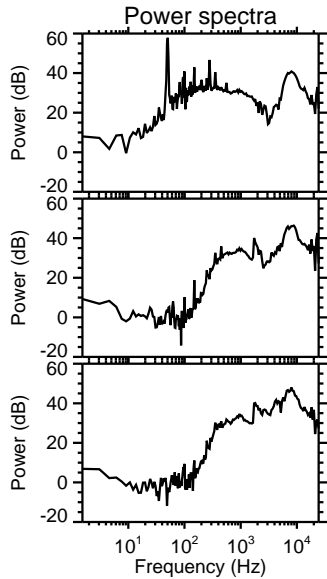
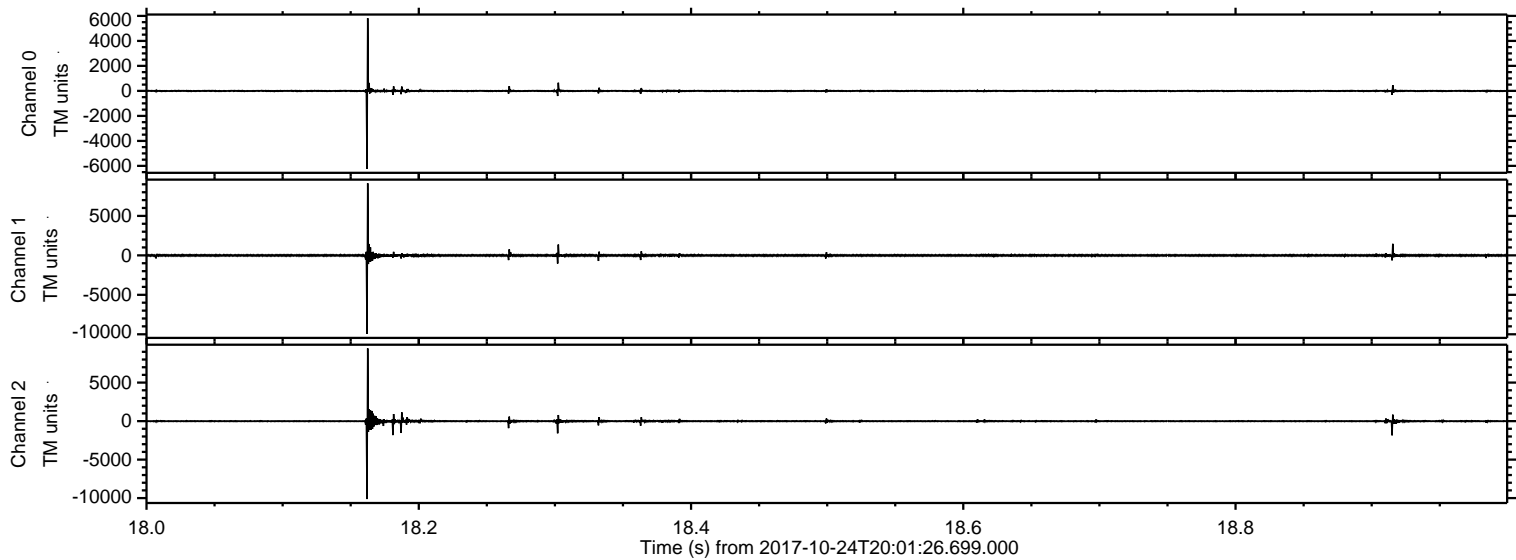
Channel 0
mn: -2789
mx: 4165
 μ : -5.3
 σ : 39.6

Channel 1
mn: -3033
mx: 5700
 μ : -12.1
 σ : 67.3

Channel 2
mn: -11235
mx: 6383
 μ : -14.7
 σ : 99.9

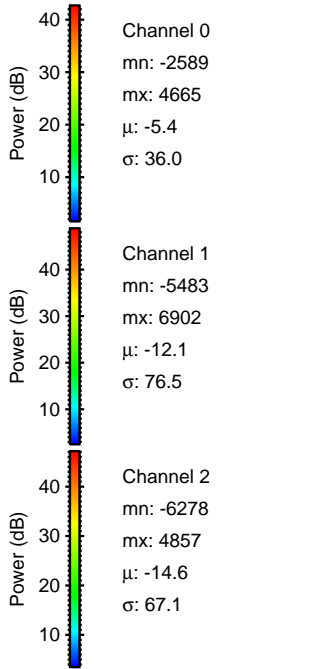
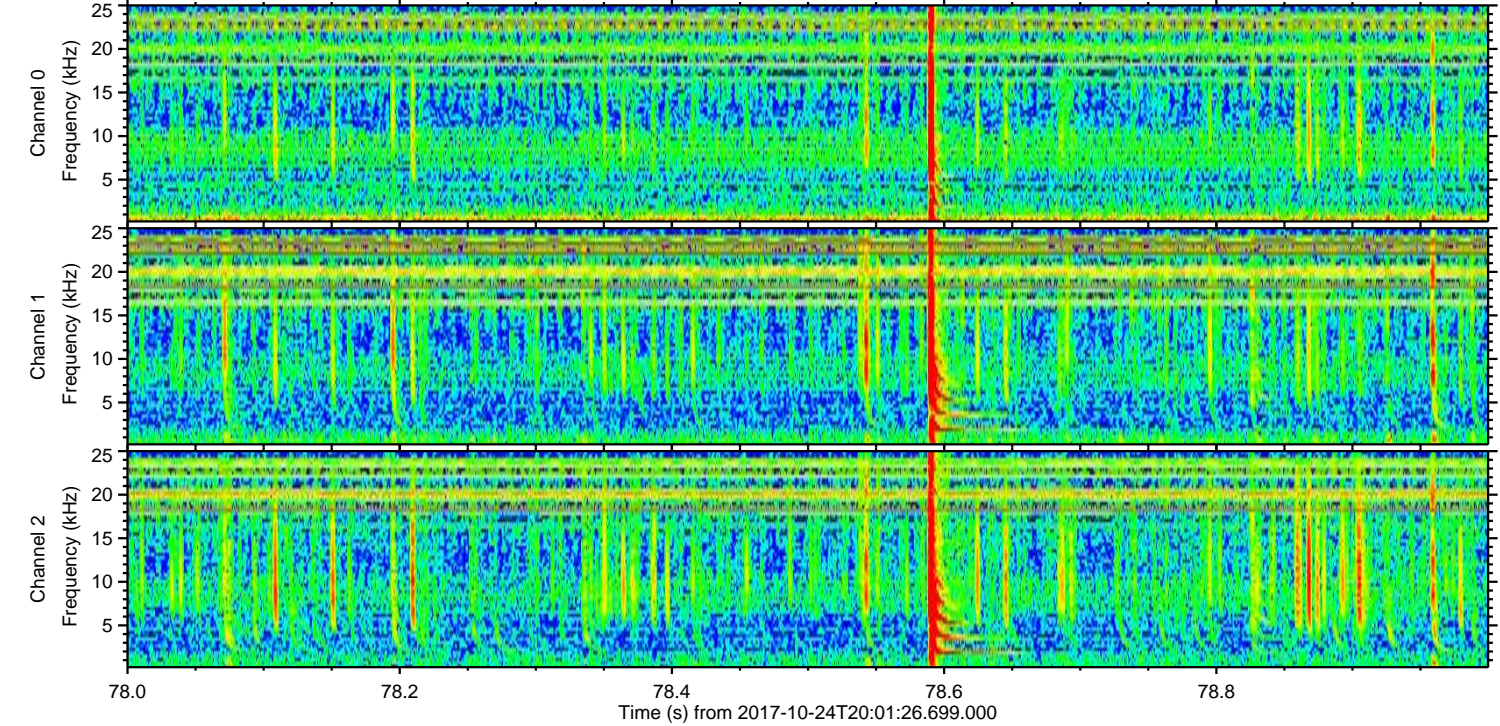
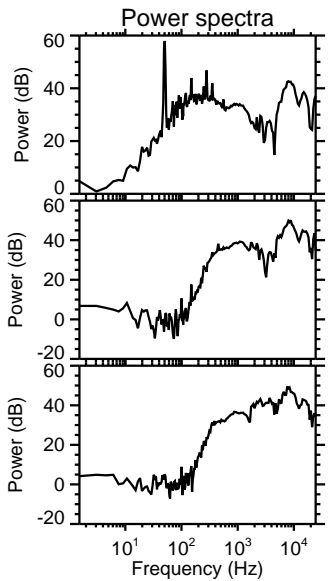
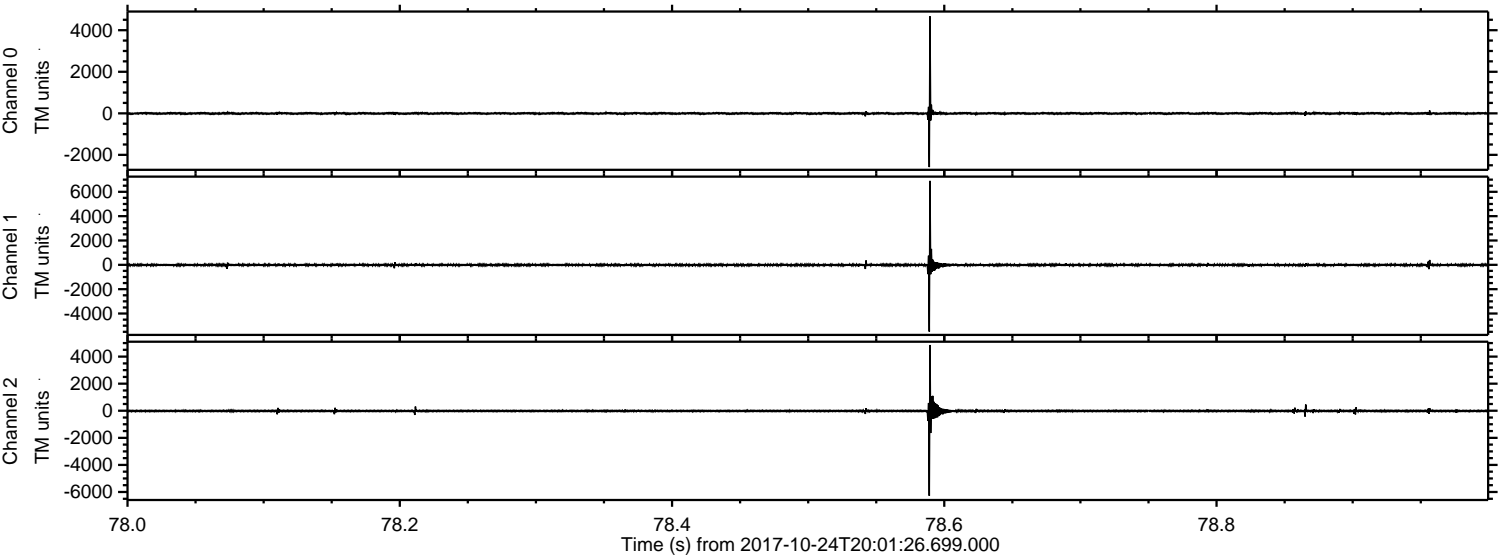
ELMAVAN 3D WAVEFORMS (Measured data sampled at 50 kHz) 51000 packets of 144 samples from 2017-10-24T20:01:26.699.000. Part 19/147

Processed Tue Oct 24 22:09:21 2017 by ELM ver.2012-10-06 from 001__elm20171024_200125__dat00.bin



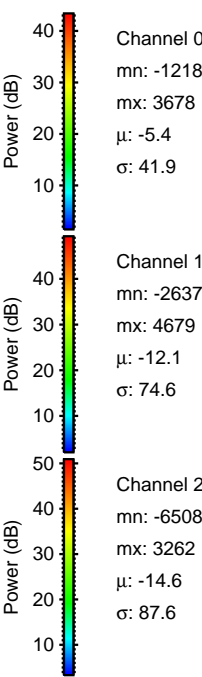
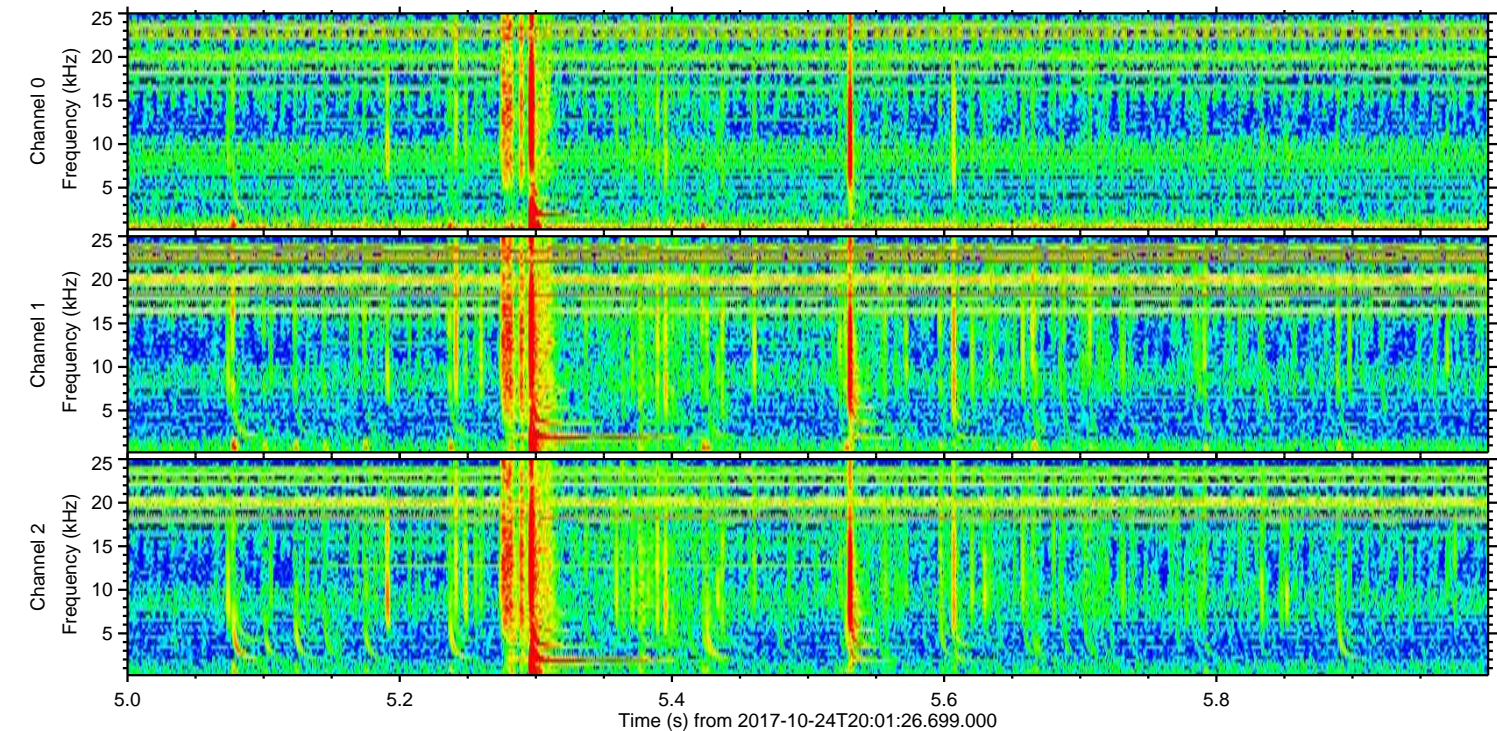
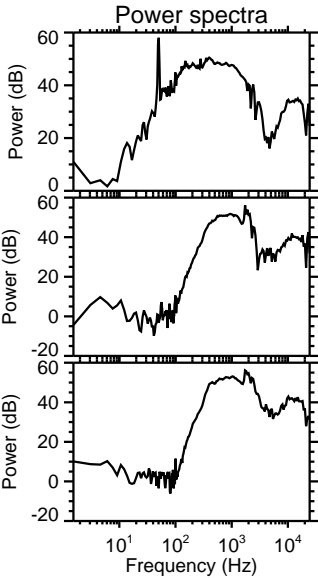
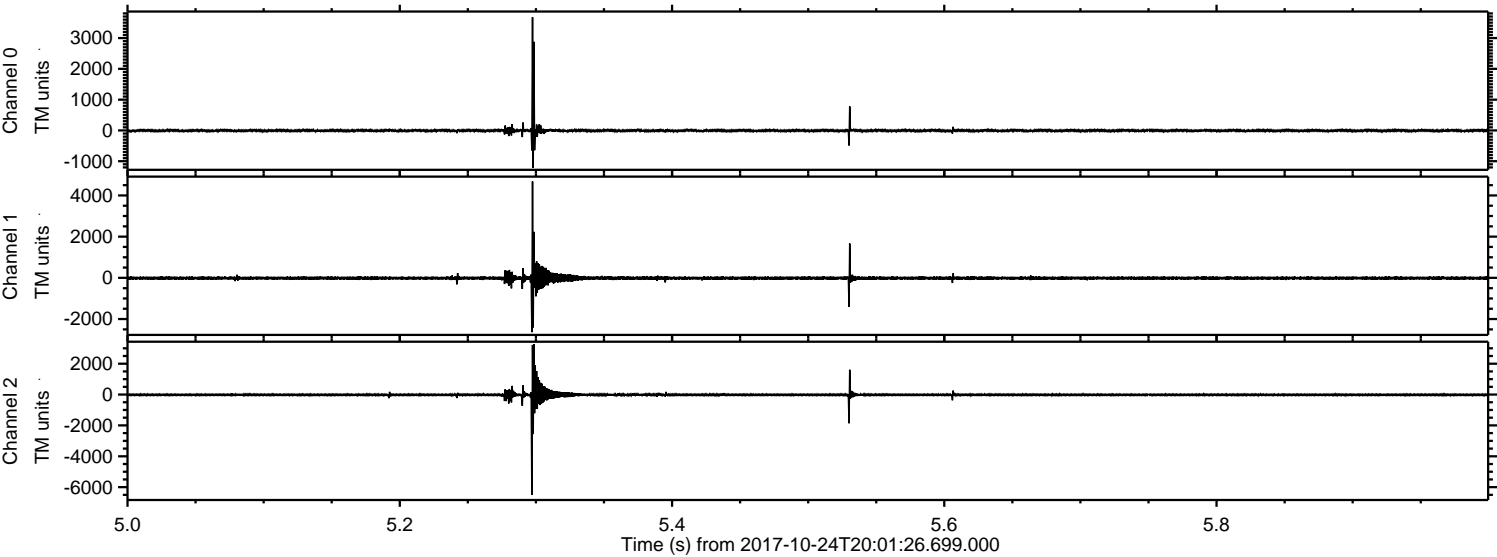
ELMAVAN 3D WAVEFORMS (Measured data sampled at 50 kHz) 51000 packets of 144 samples from 2017-10-24T20:01:26.699.000. Part 79/147

Processed Tue Oct 24 22:09:22 2017 by ELM ver.2012-10-06 from 001__elm20171024_200125__dat00.bin



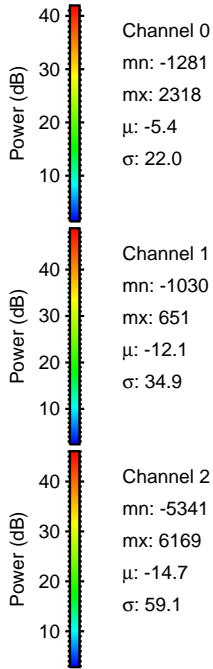
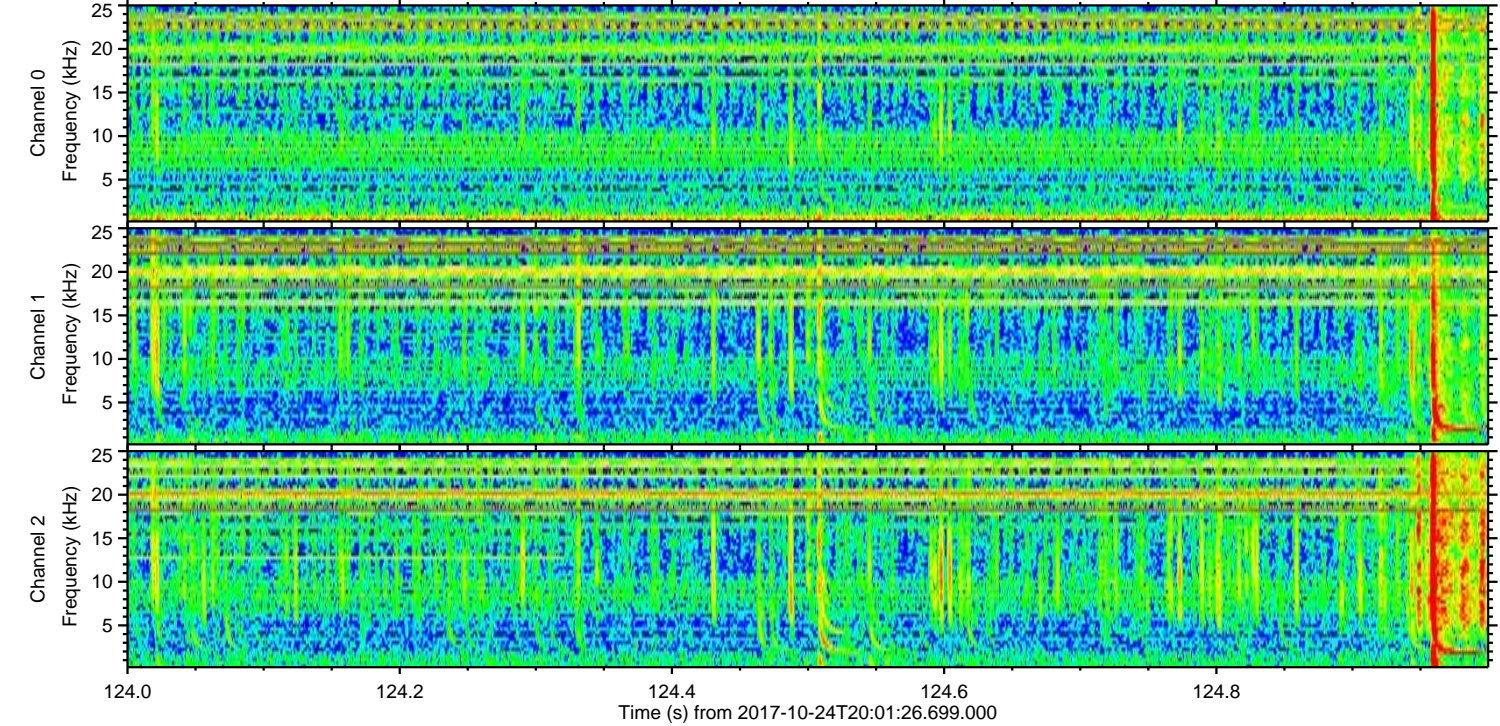
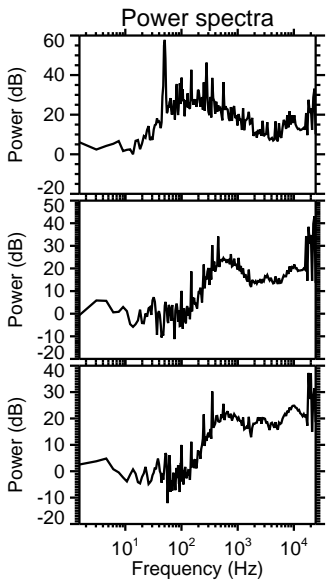
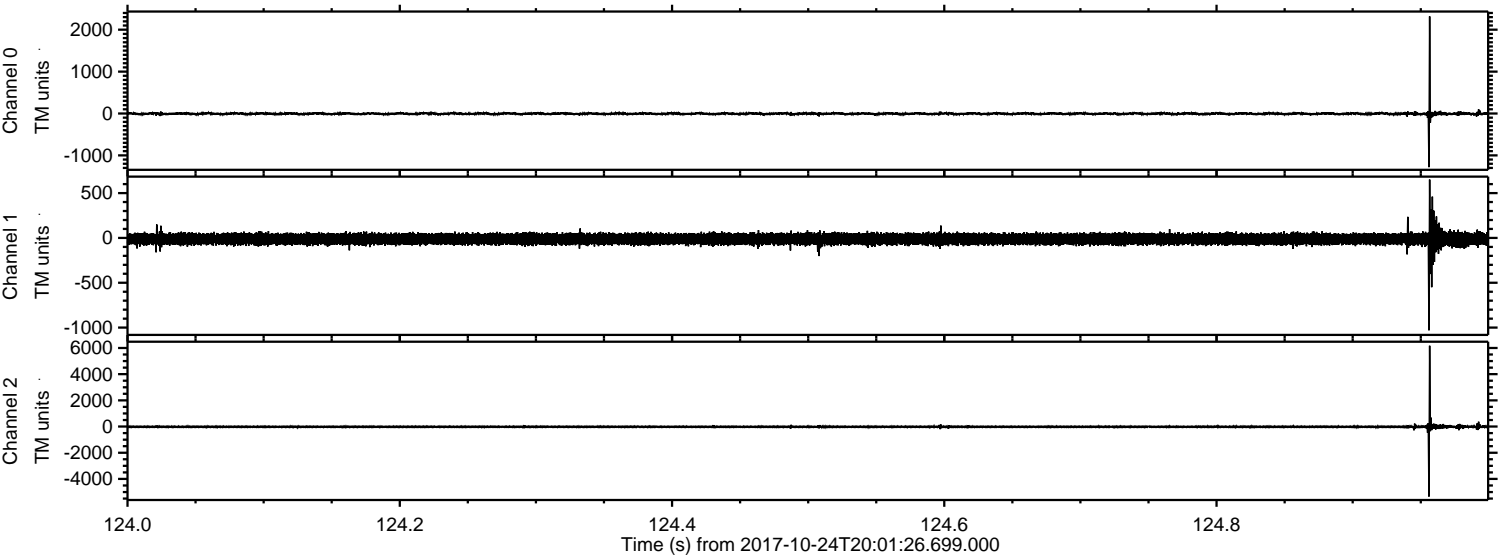
ELMAVAN 3D WAVEFORMS (Measured data sampled at 50 kHz) 51000 packets of 144 samples from 2017-10-24T20:01:26.699.000. Part 6/147

Processed Tue Oct 24 22:09:22 2017 by ELM ver.2012-10-06 from 001__elm20171024_200125__dat00.bin



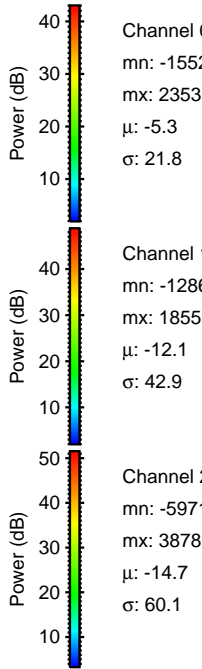
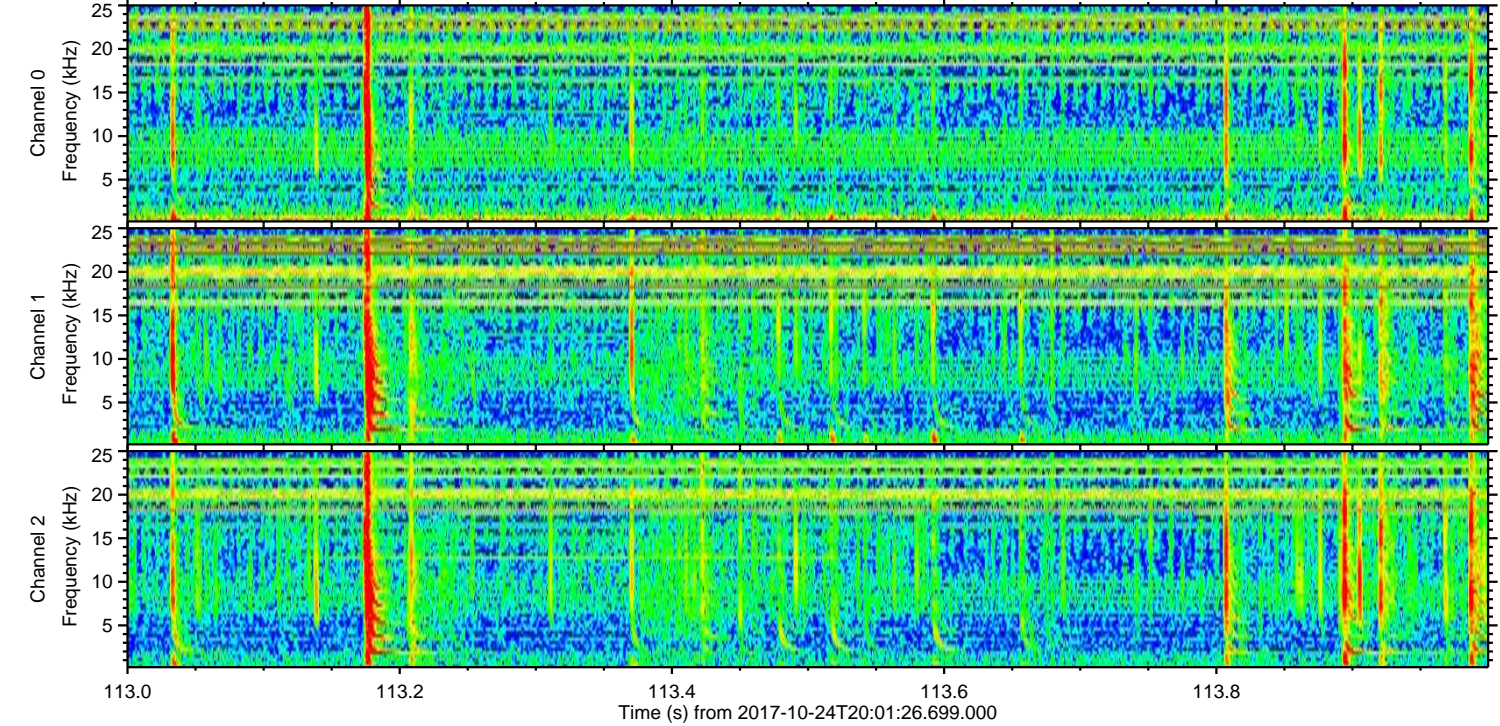
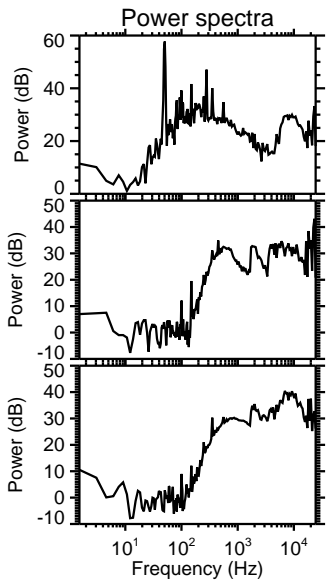
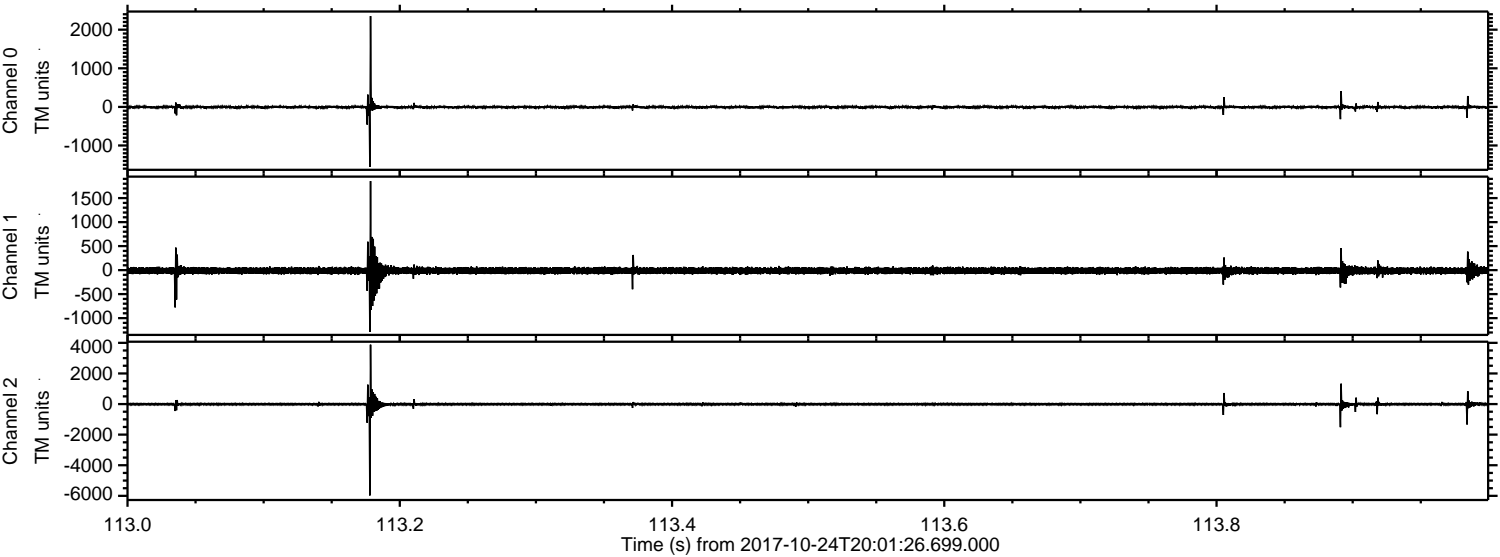
ELMAVAN 3D WAVEFORMS (Measured data sampled at 50 kHz) 51000 packets of 144 samples from 2017-10-24T20:01:26.699.000. Part 125/147

Processed Tue Oct 24 22:09:23 2017 by ELM ver.2012-10-06 from 001__elm20171024_200125__dat00.bin



ELMAVAN 3D WAVEFORMS (Measured data sampled at 50 kHz) 51000 packets of 144 samples from 2017-10-24T20:01:26.699.000. Part 114/147

Processed Tue Oct 24 22:09:23 2017 by ELM ver.2012-10-06 from 001__elm20171024_200125__dat00.bin



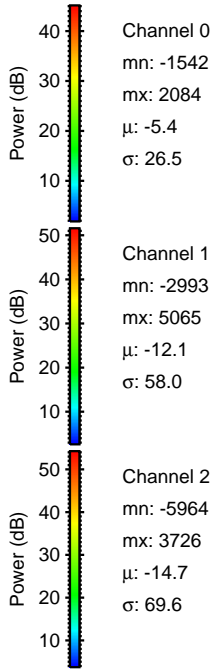
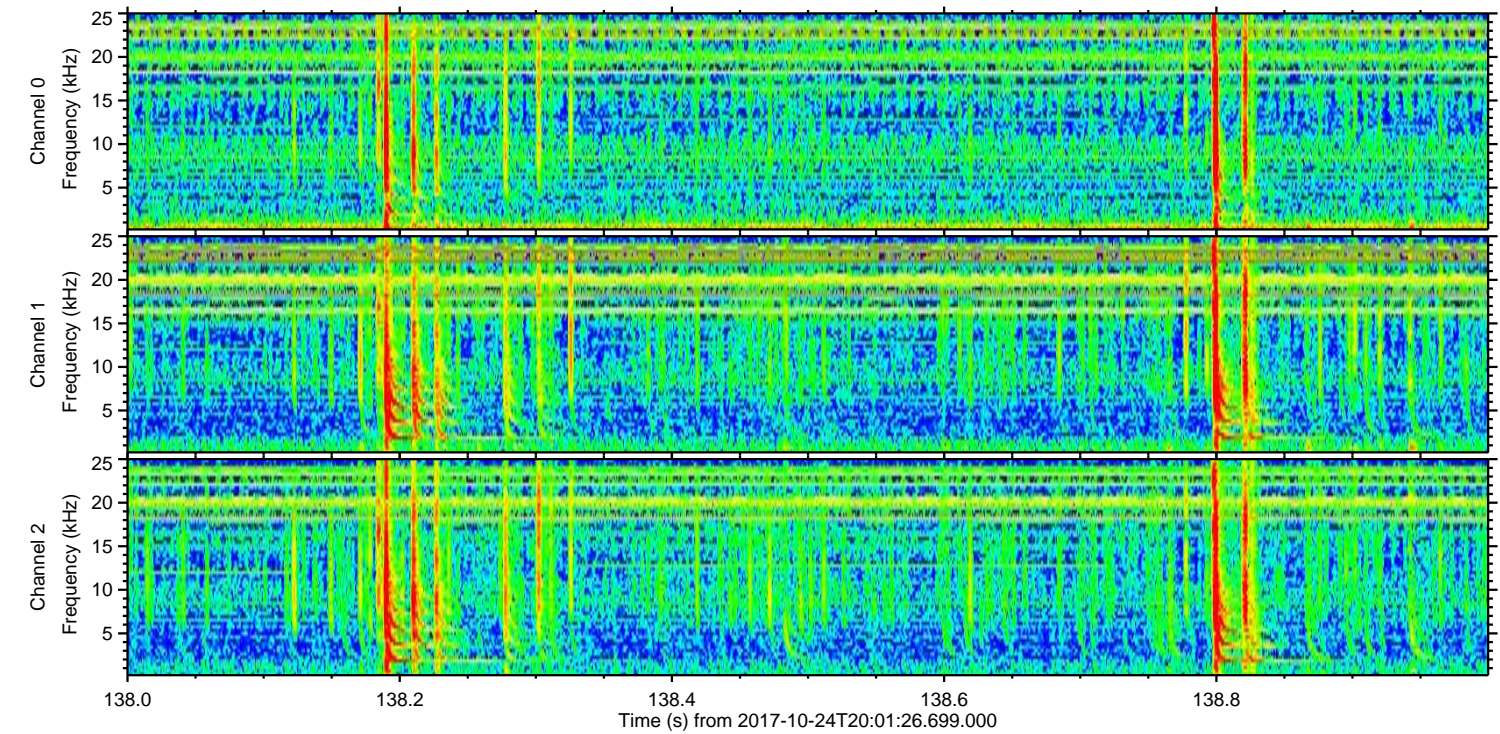
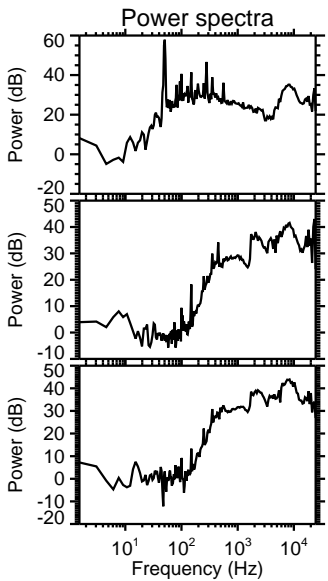
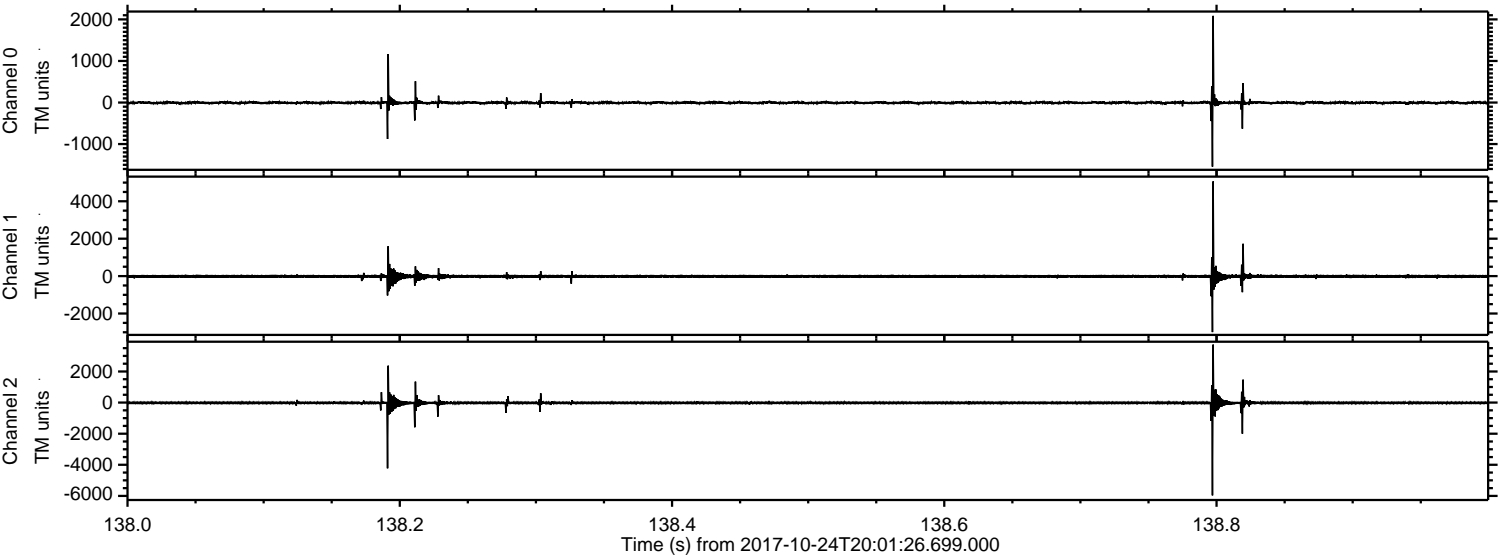
Channel 0
mn: -1552
mx: 2353
 μ : -5.3
 σ : 21.8

Channel 1
mn: -1286
mx: 1855
 μ : -12.1
 σ : 42.9

Channel 2
mn: -5971
mx: 3878
 μ : -14.7
 σ : 60.1

ELMAVAN 3D WAVEFORMS (Measured data sampled at 50 kHz) 51000 packets of 144 samples from 2017-10-24T20:01:26.699.000. Part 139/147

Processed Tue Oct 24 22:09:24 2017 by ELM ver.2012-10-06 from 001__elm20171024_200125__dat00.bin



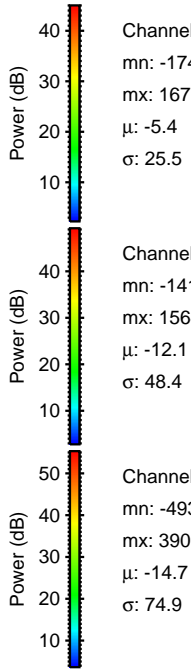
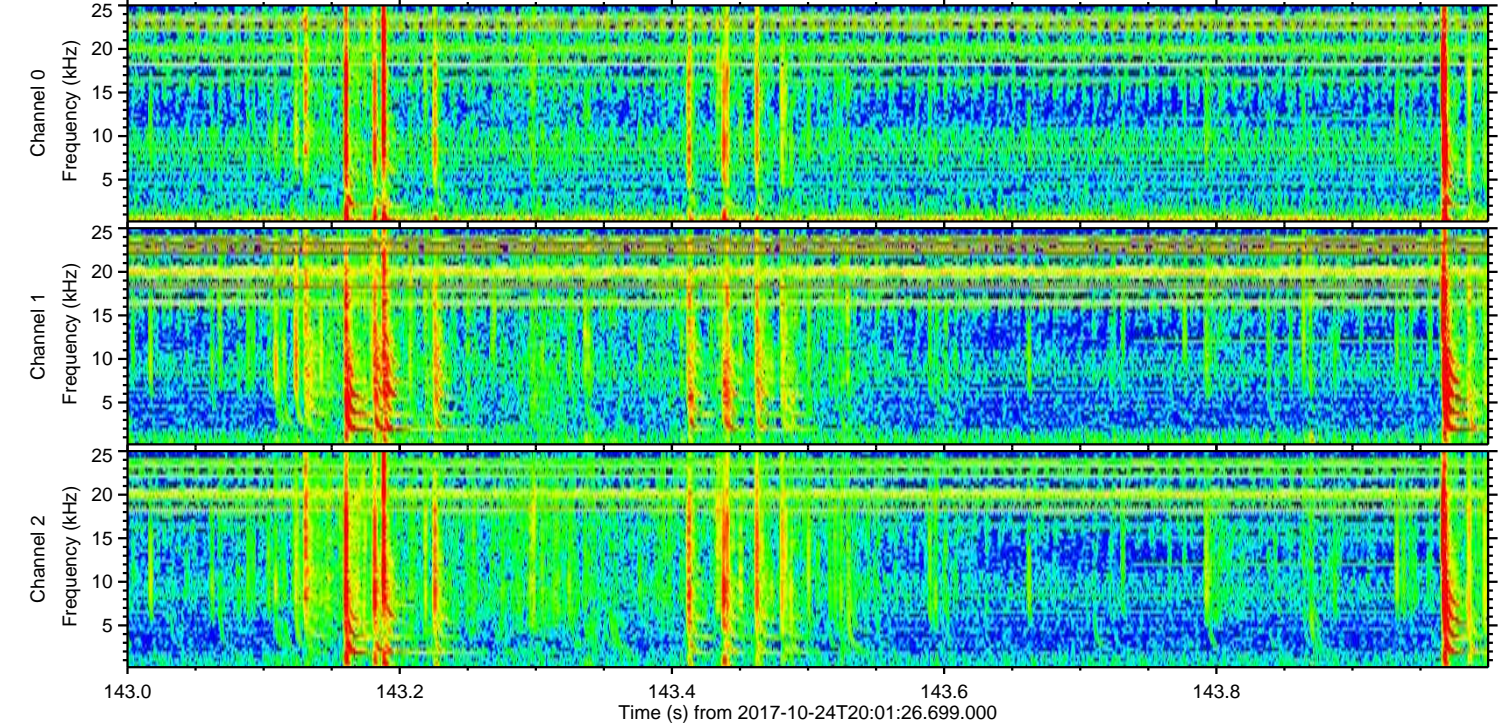
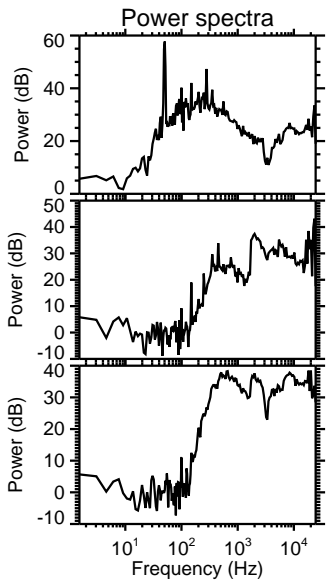
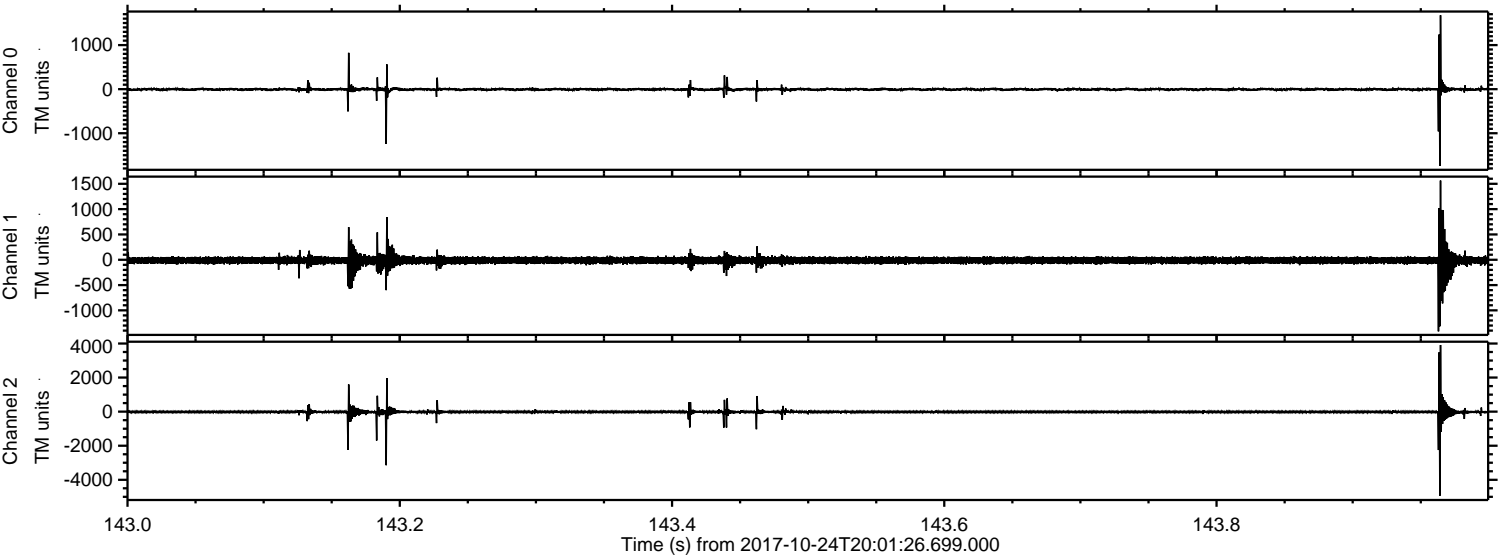
Channel 0
mn: -1542
mx: 2084
 μ : -5.4
 σ : 26.5

Channel 1
mn: -2993
mx: 5065
 μ : -12.1
 σ : 58.0

Channel 2
mn: -5964
mx: 3726
 μ : -14.7
 σ : 69.6

ELMAVAN 3D WAVEFORMS (Measured data sampled at 50 kHz) 51000 packets of 144 samples from 2017-10-24T20:01:26.699.000. Part 144/147

Processed Tue Oct 24 22:09:25 2017 by ELM ver.2012-10-06 from 001__elm20171024_200125__dat00.bin

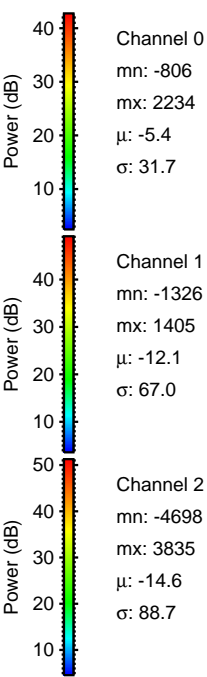
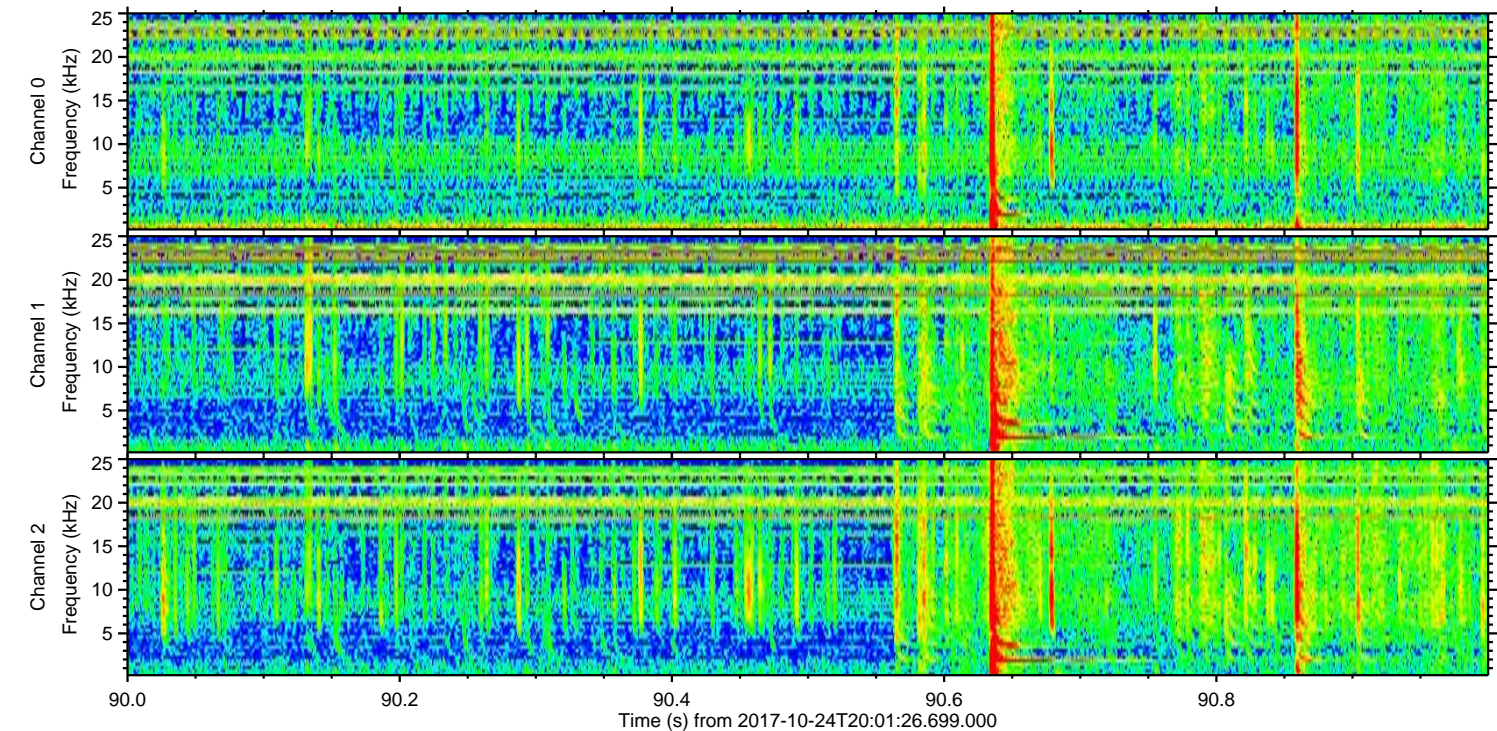
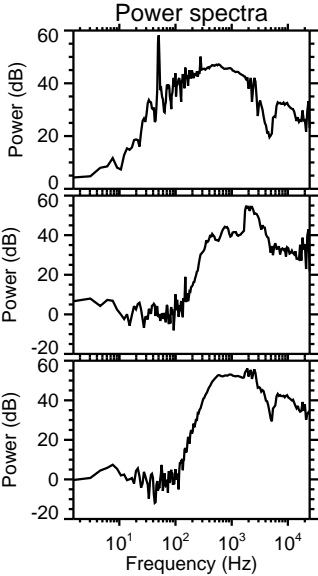
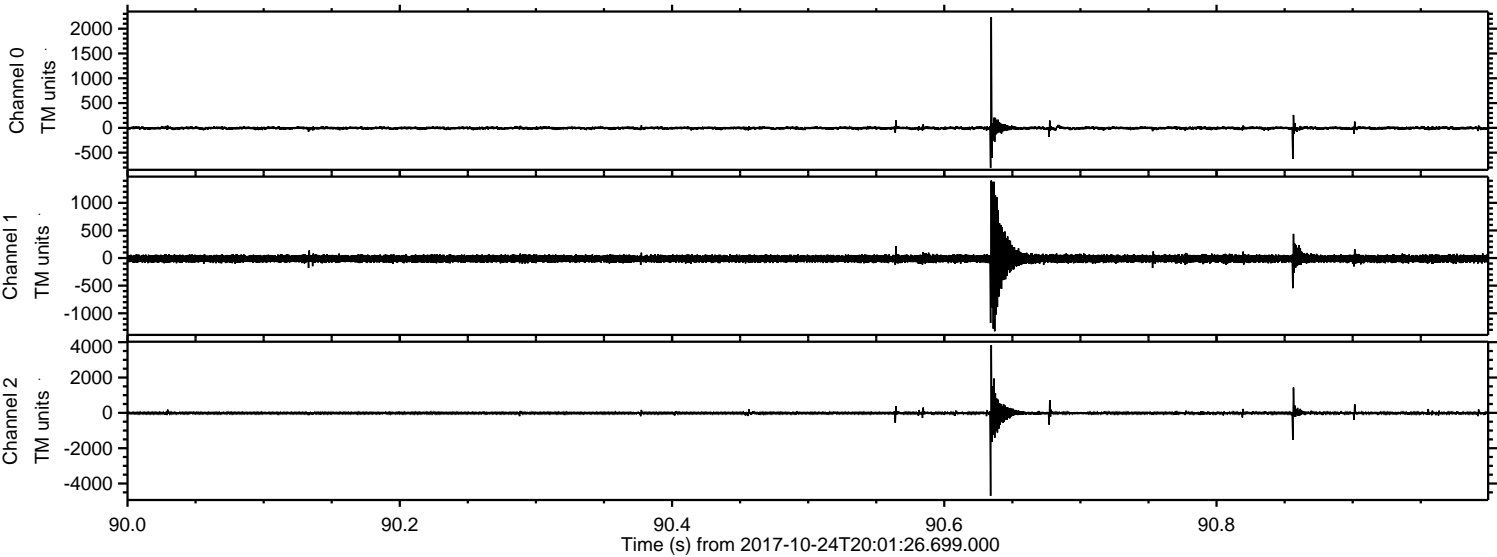


Channel 0
mn: -1743
mx: 1677
 μ : -5.4
 σ : 25.5

Channel 1
mn: -1414
mx: 1564
 μ : -12.1
 σ : 48.4

Channel 2
mn: -4939
mx: 3909
 μ : -14.7
 σ : 74.9

Processed Tue Oct 24 22:09:25 2017 by ELM ver.2012-10-06 from 001__elm20171024_200125__dat00.bin



Channel 0
mn: -806
mx: 2234
 μ : -5.4
 σ : 31.7

Channel 1
mn: -1326
mx: 1405
 μ : -12.1
 σ : 67.0

Channel 2
mn: -4698
mx: 3835
 μ : -14.6
 σ : 88.7

Processed Tue Oct 24 22:09:26 2017 by ELM ver.2012-10-06 from 001__elm20171024_200125__dat00.bin

