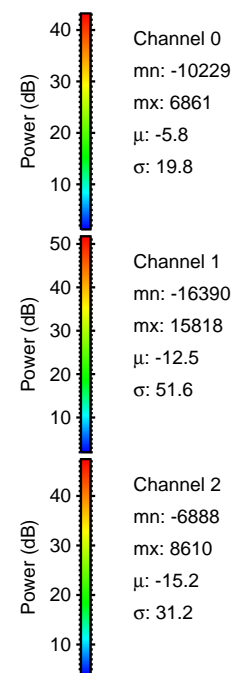
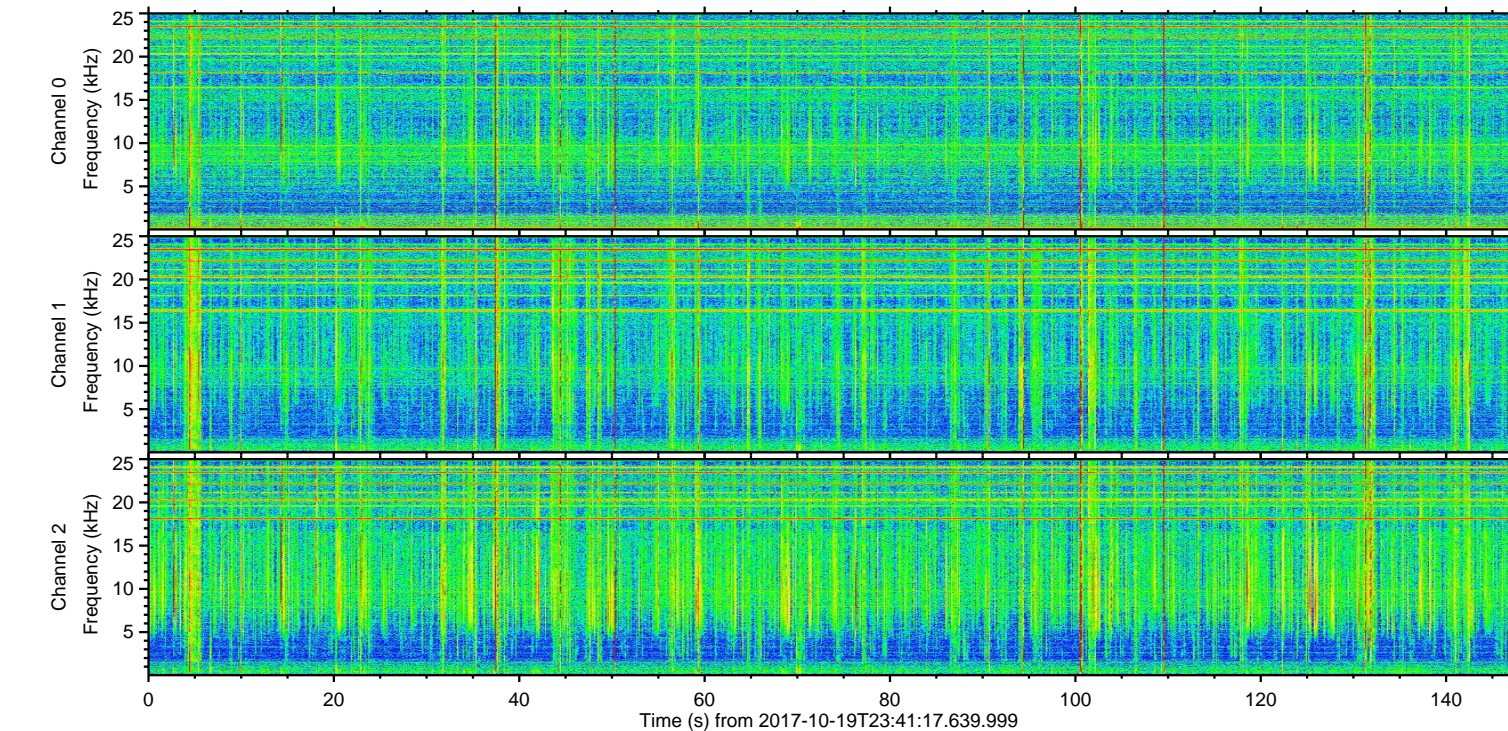
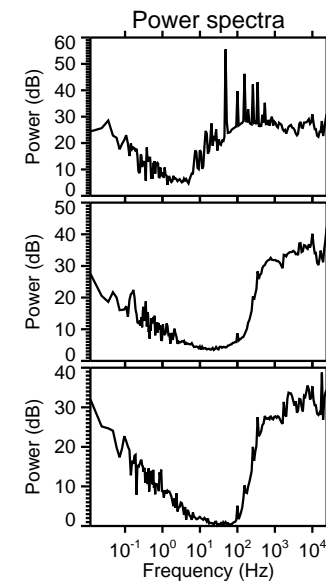
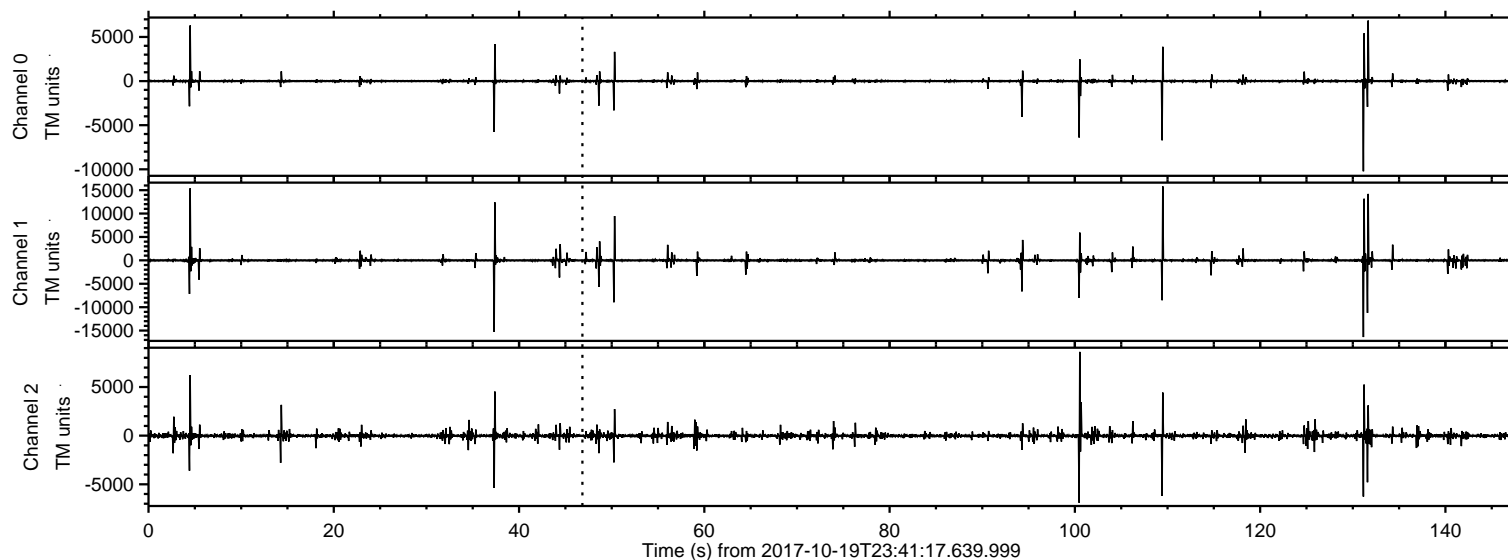


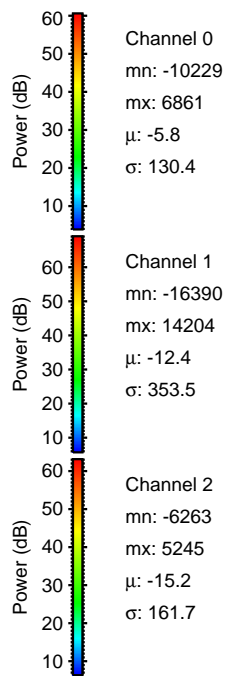
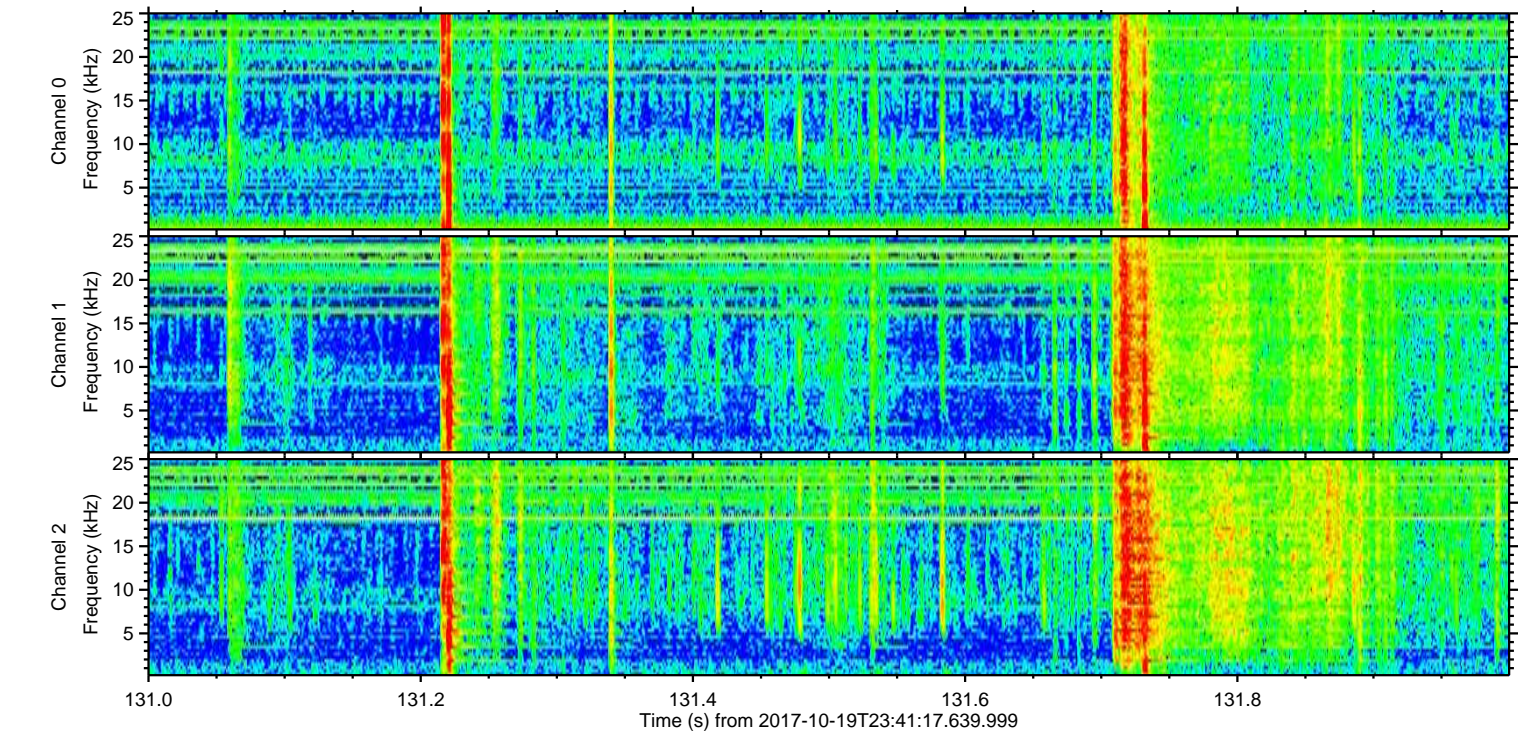
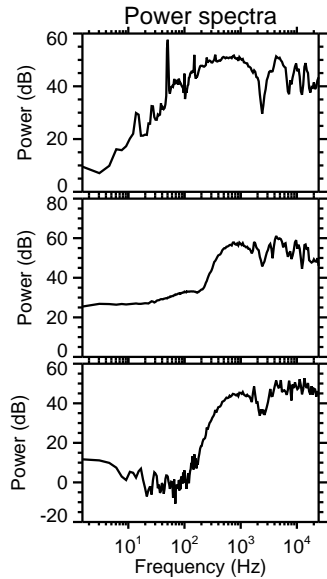
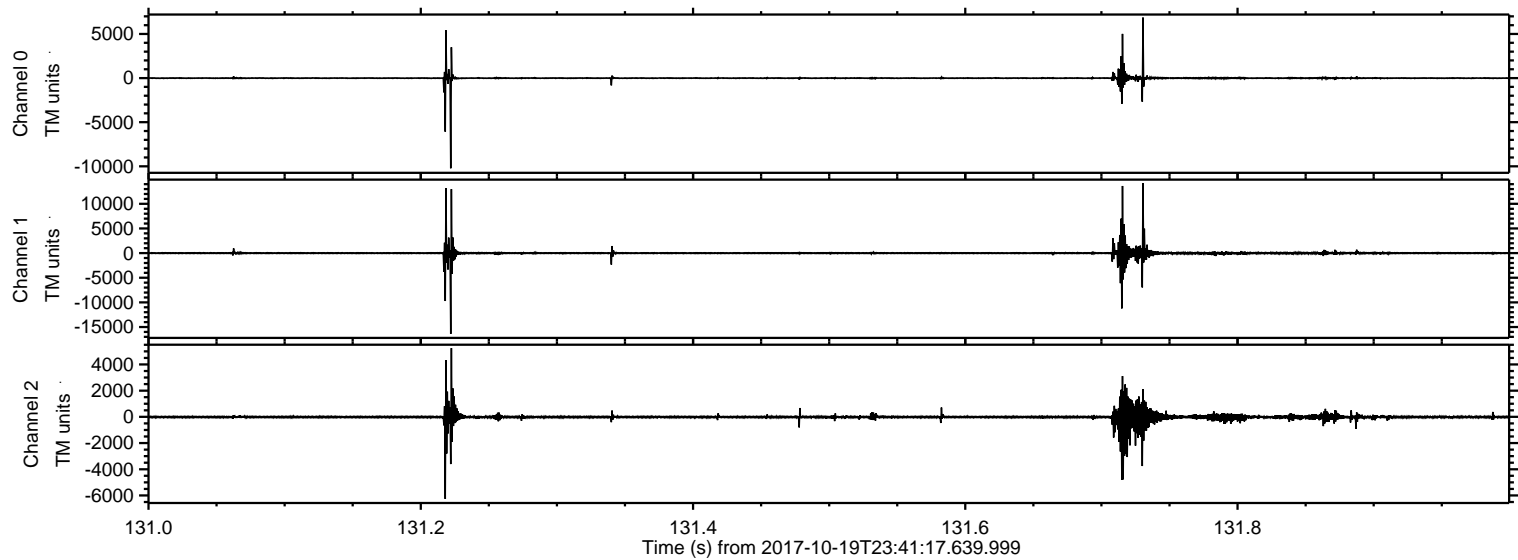
ELMAVAN 3D WAVEFORMS (Measured data sampled at 50 kHz) 50999 packets of 144 samples from 2017-10-19T23:41:17.639.999.

Processed Fri Oct 20 01:49:15 2017 by ELM ver.2012-10-06 from 001__elm20171019_234116__dat00.bin



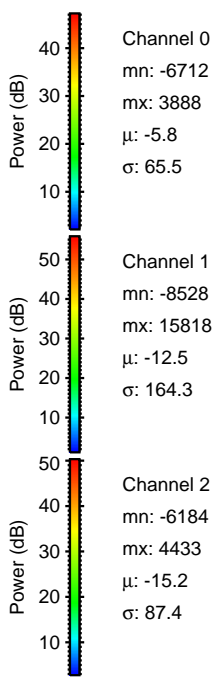
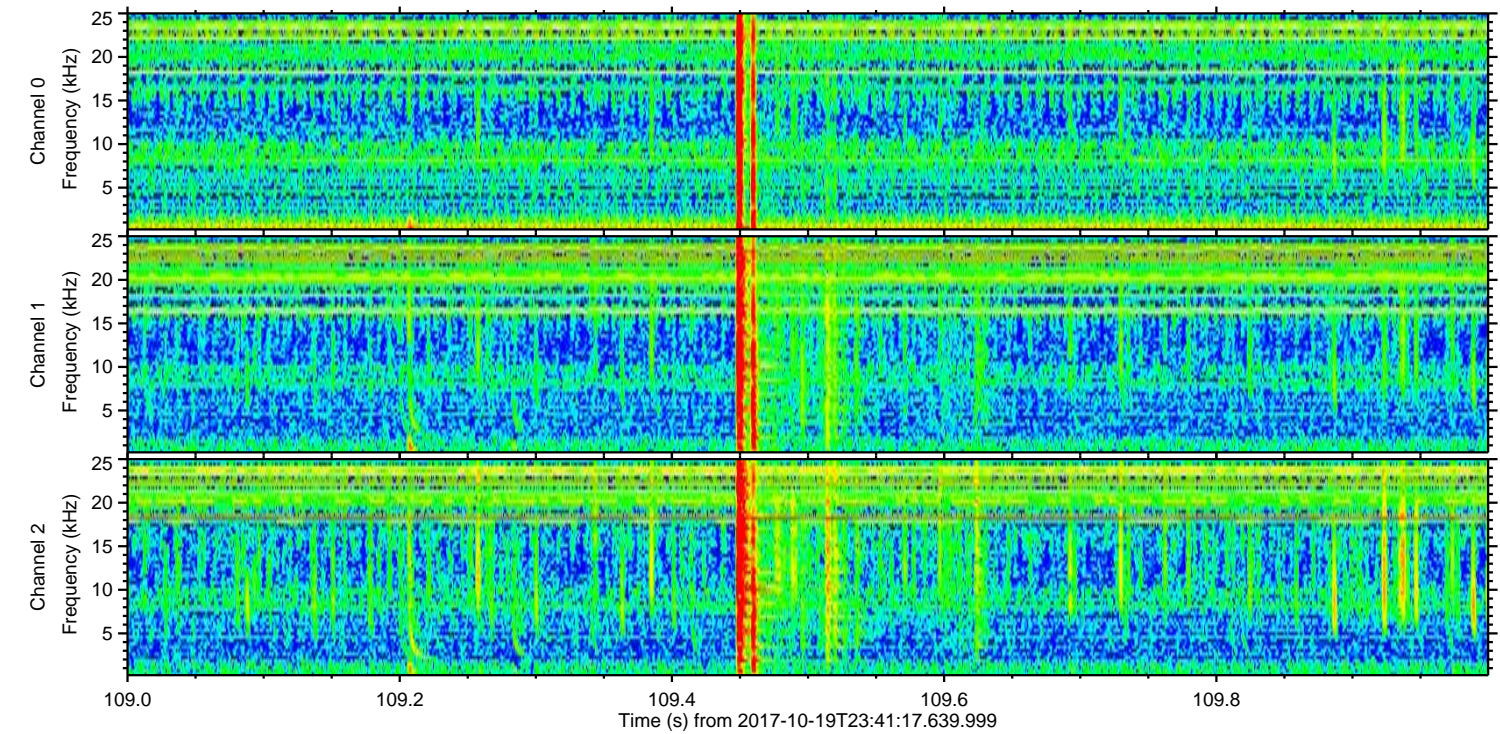
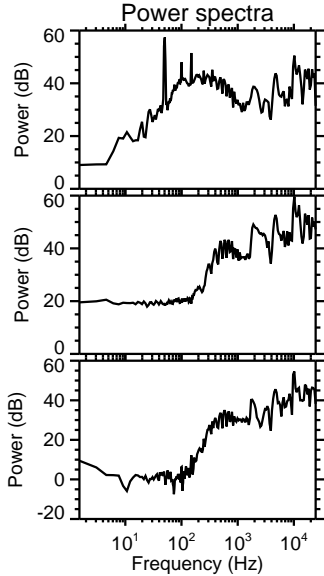
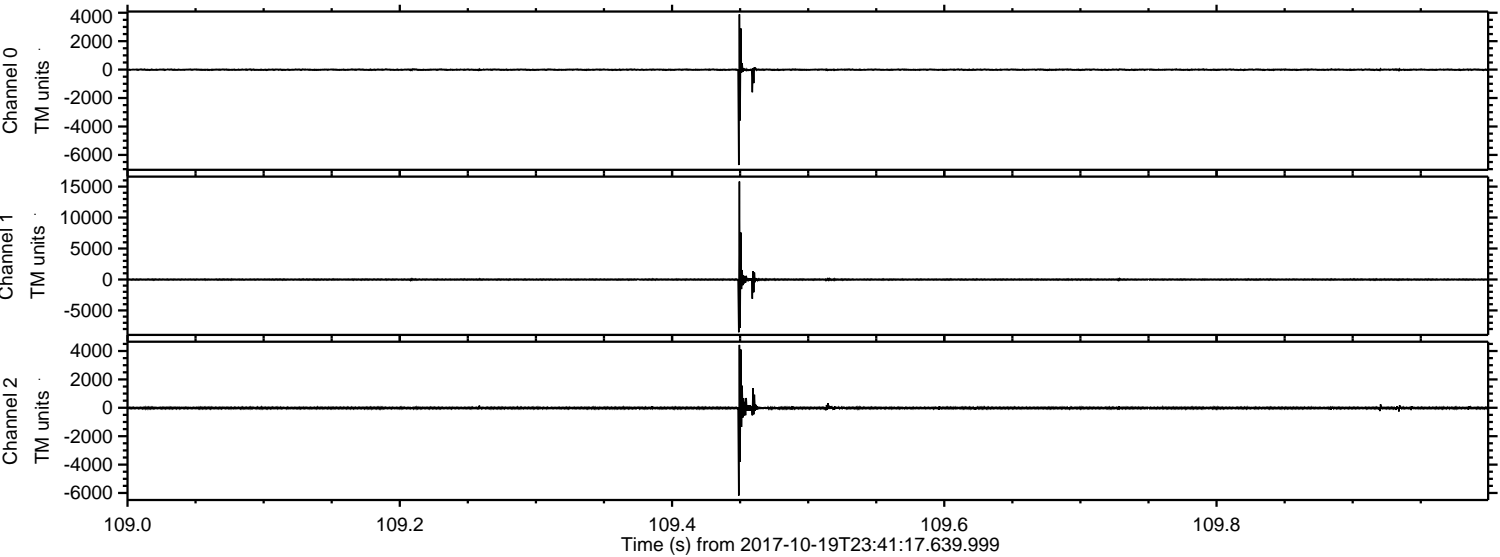
ELMAVAN 3D WAVEFORMS (Measured data sampled at 50 kHz) 50999 packets of 144 samples from 2017-10-19T23:41:17.639.999. Part 132/147

Processed Fri Oct 20 01:49:22 2017 by ELM ver.2012-10-06 from 001__elm20171019_234116__dat00.bin

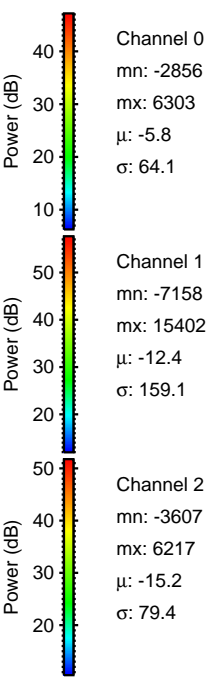
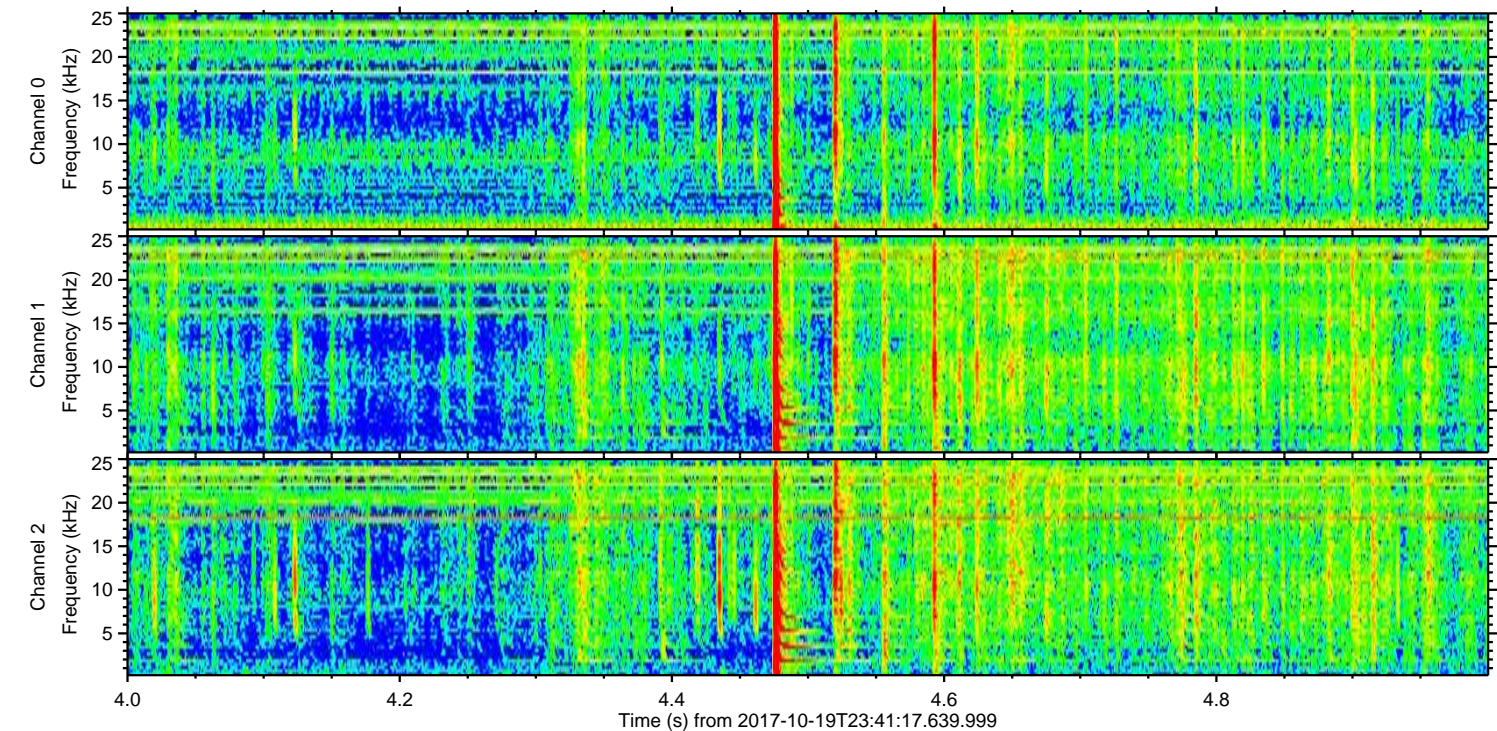
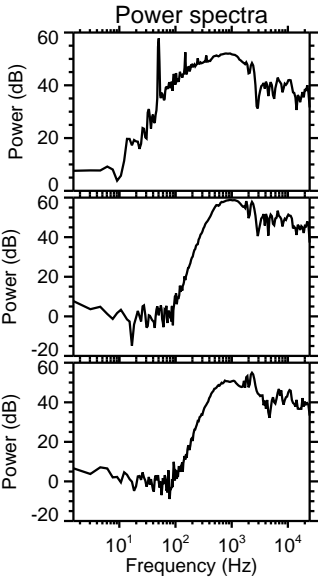
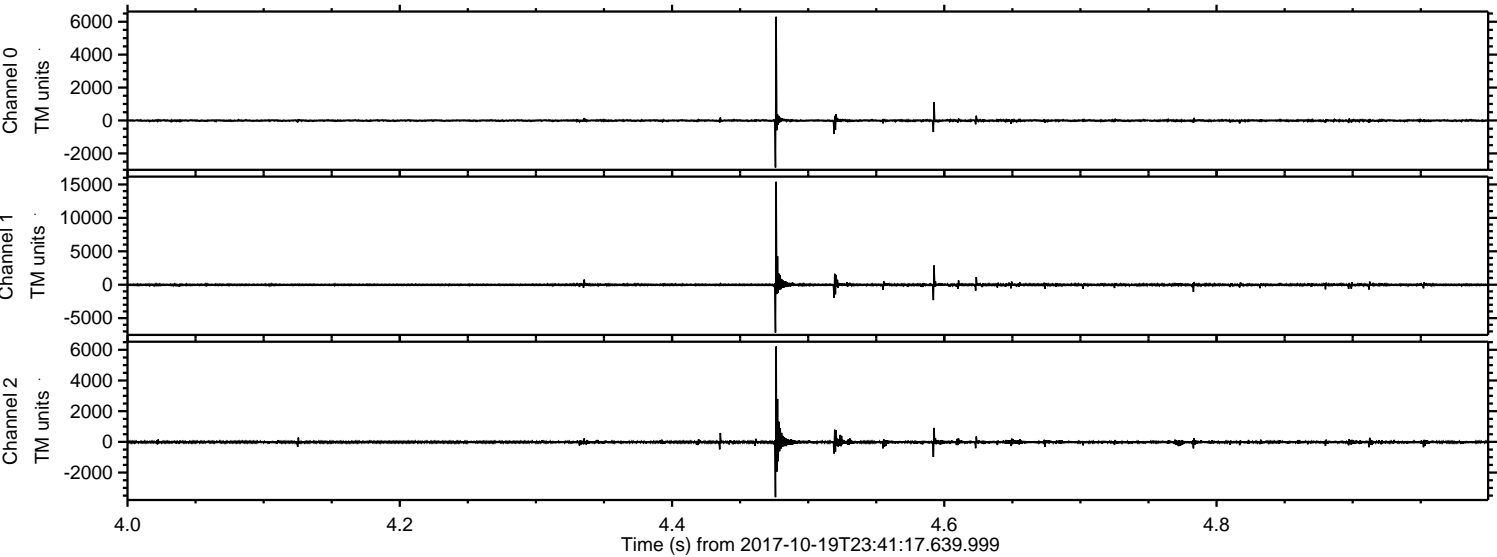


ELMAVAN 3D WAVEFORMS (Measured data sampled at 50 kHz) 50999 packets of 144 samples from 2017-10-19T23:41:17.639.999. Part 110/147

Processed Fri Oct 20 01:49:23 2017 by ELM ver.2012-10-06 from 001__elm20171019_234116__dat00.bin

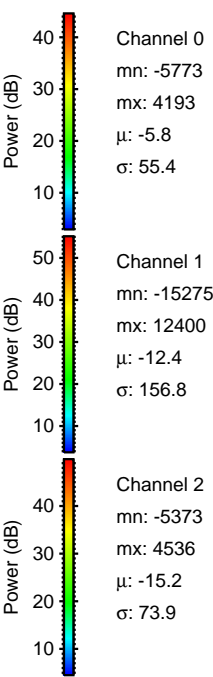
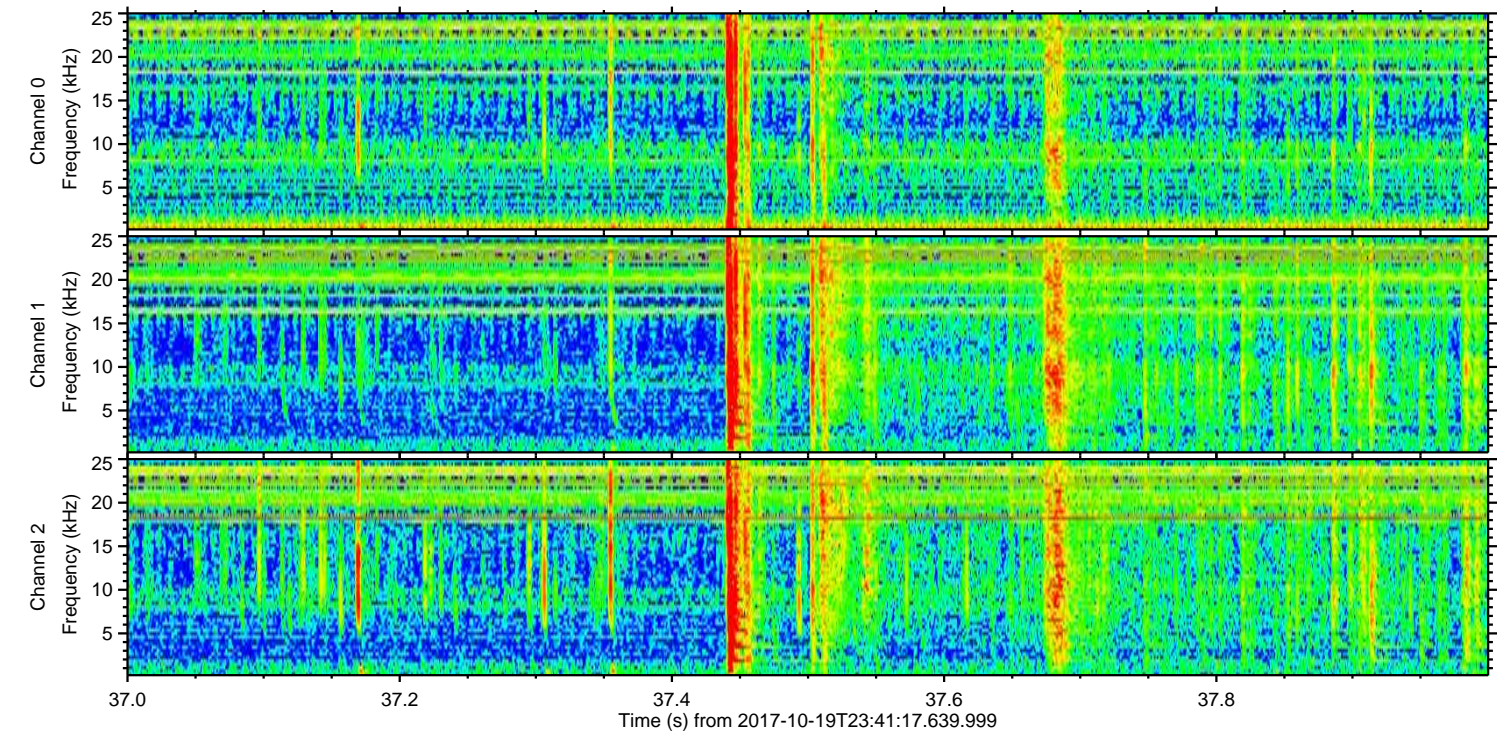
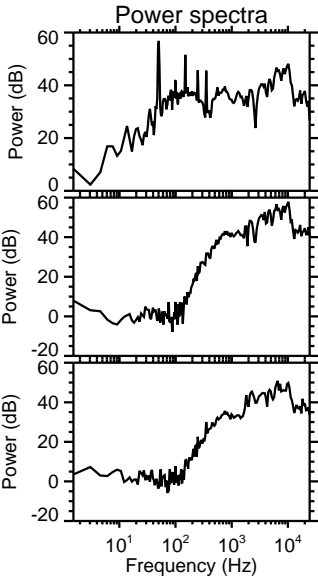
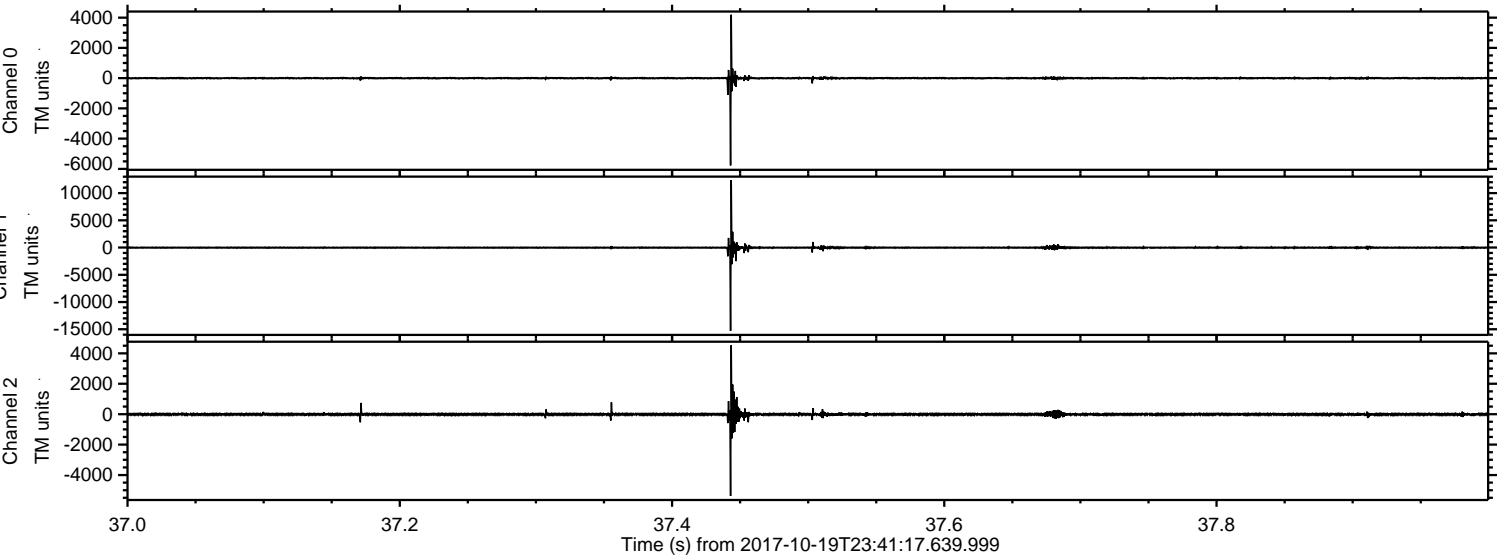


Processed Fri Oct 20 01:49:24 2017 by ELM ver.2012-10-06 from 001__elm20171019_234116__dat00.bin

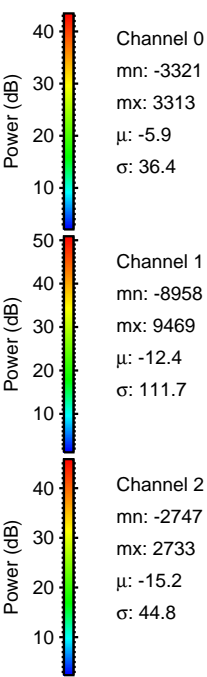
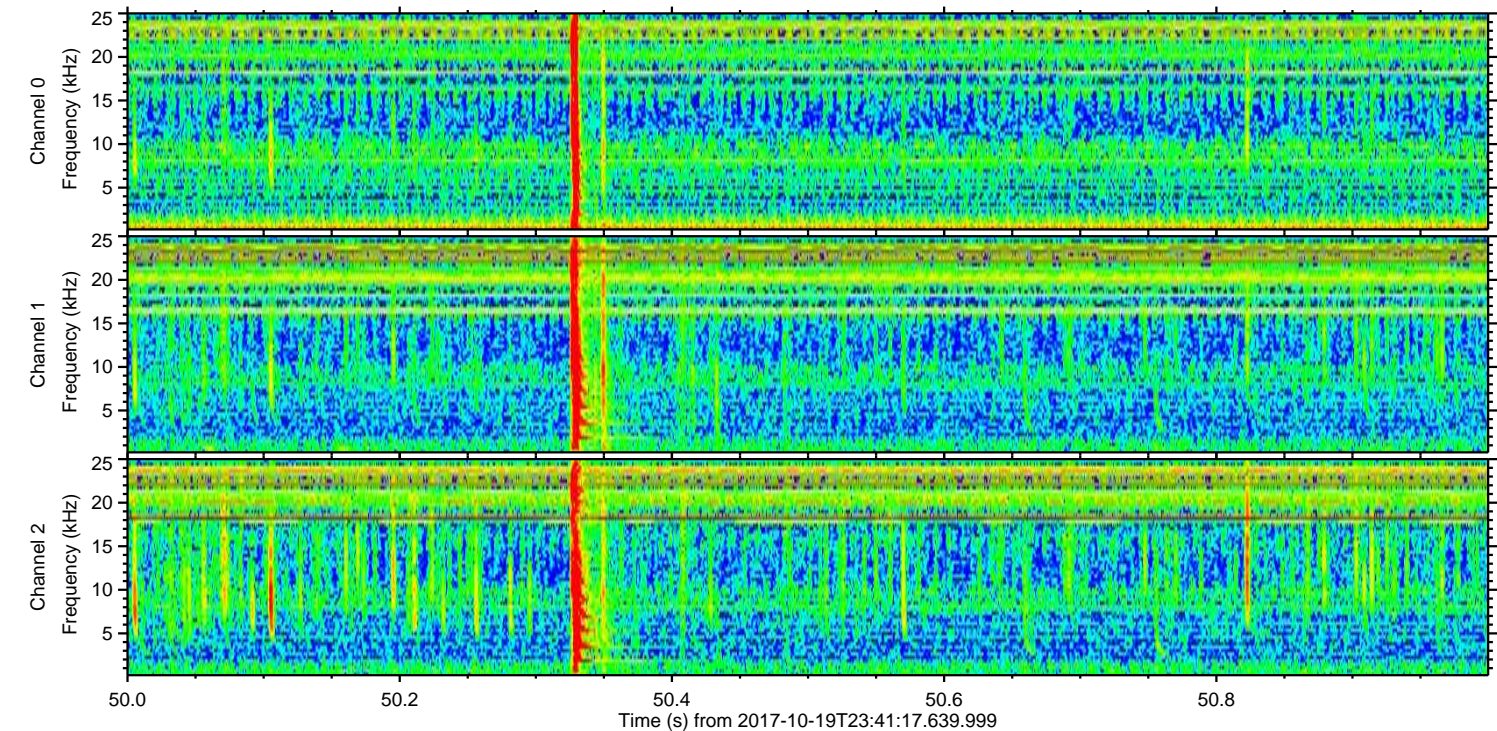
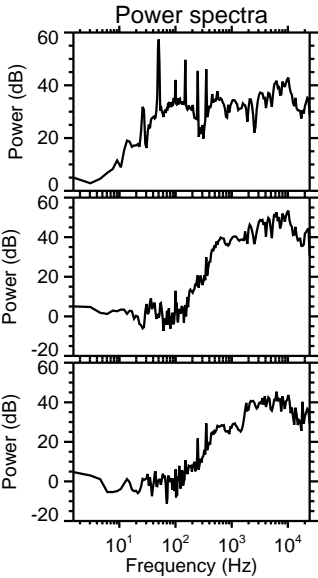
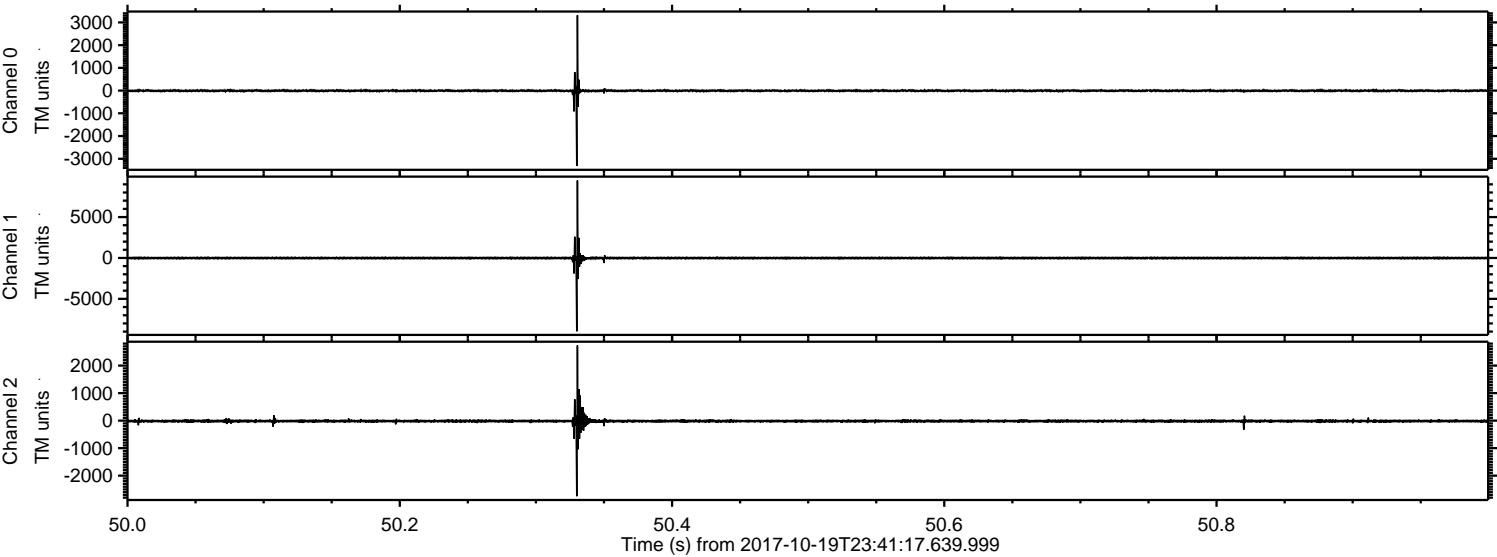


ELMAVAN 3D WAVEFORMS (Measured data sampled at 50 kHz) 50999 packets of 144 samples from 2017-10-19T23:41:17.639.999. Part 38/147

Processed Fri Oct 20 01:49:24 2017 by ELM ver.2012-10-06 from 001__elm20171019_234116__dat00.bin

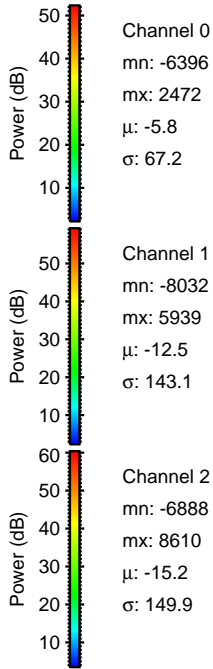
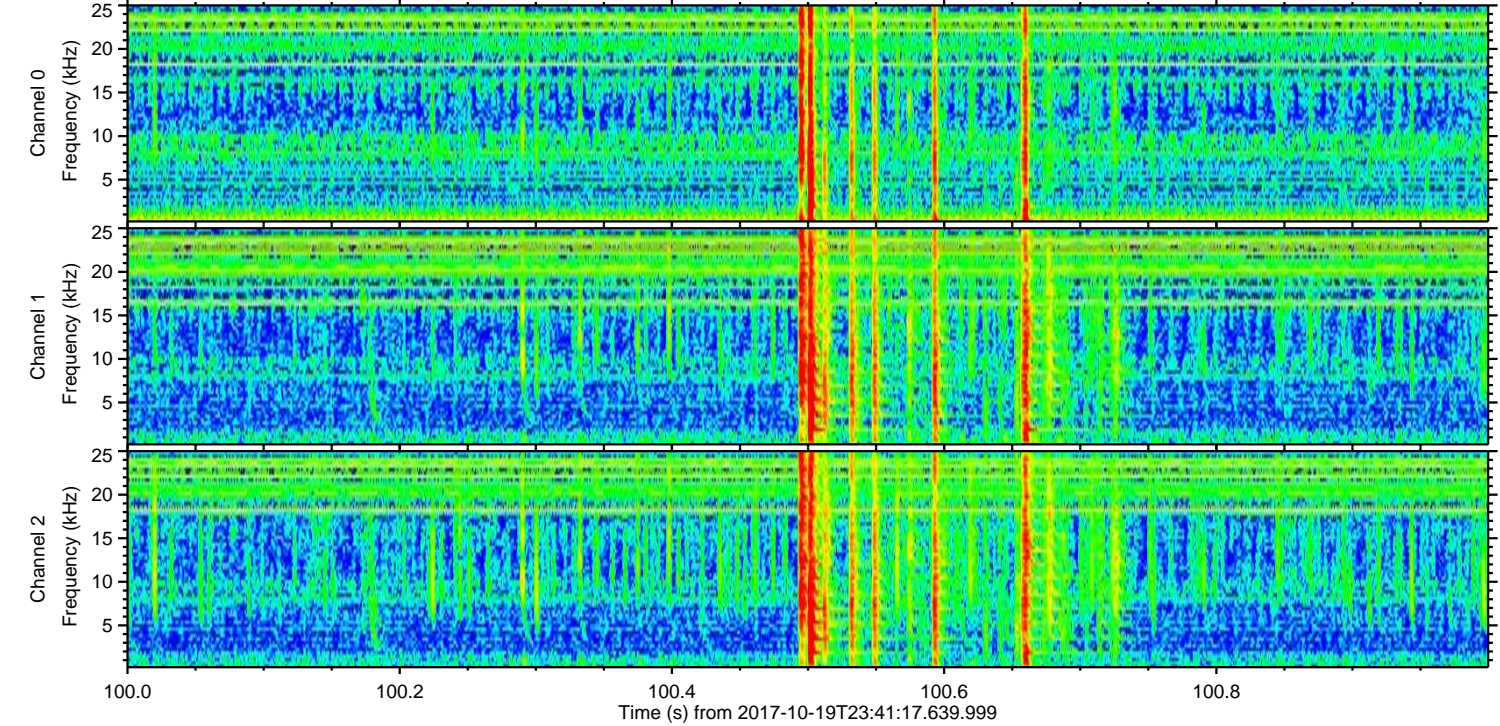
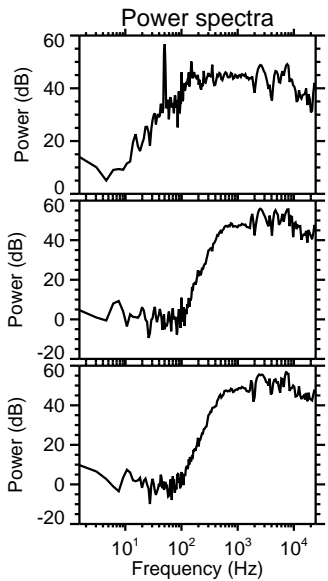
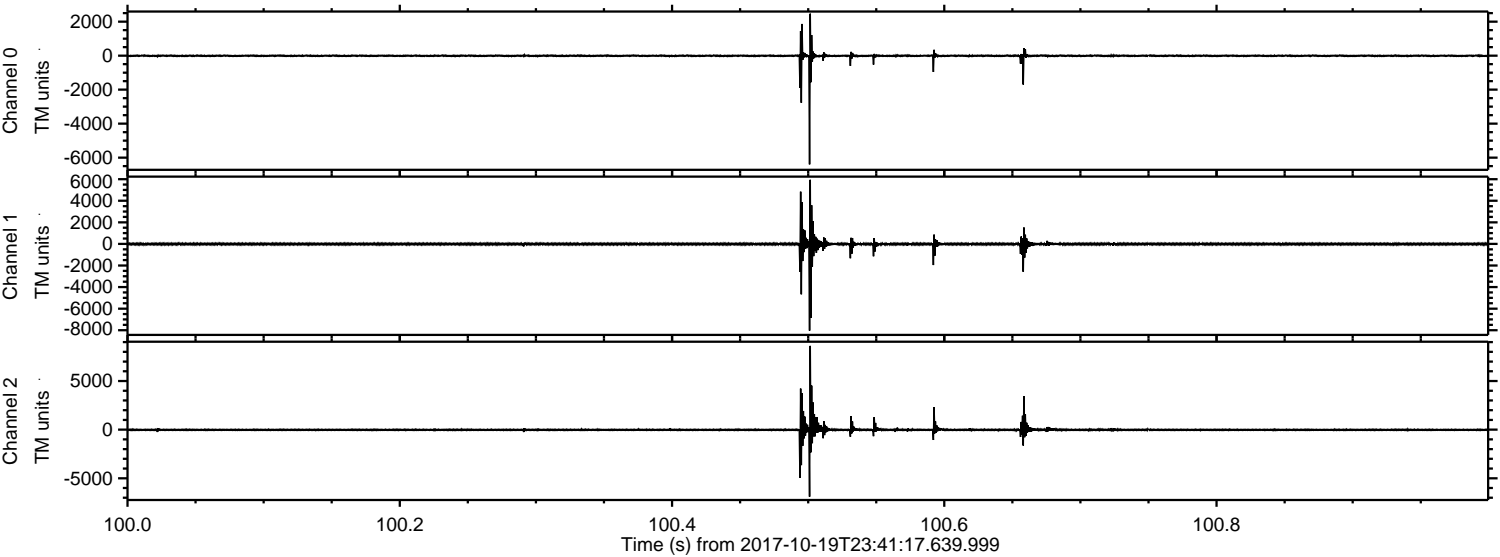


Processed Fri Oct 20 01:49:25 2017 by ELM ver.2012-10-06 from 001__elm20171019_234116__dat00.bin

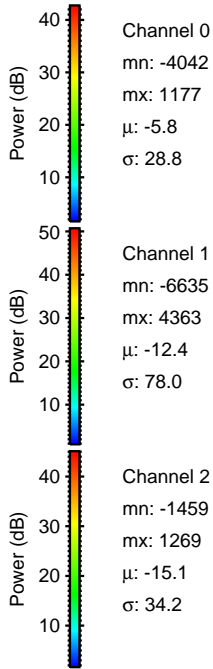
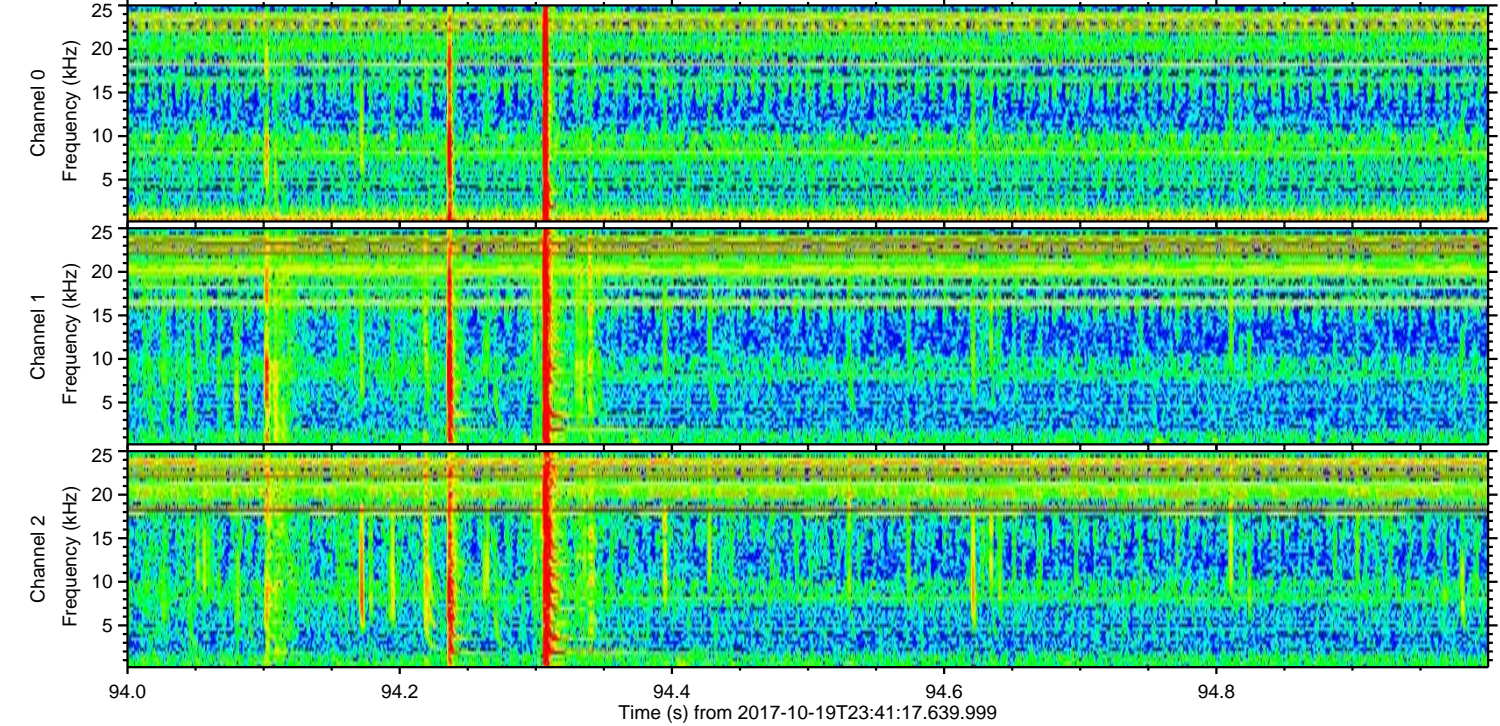
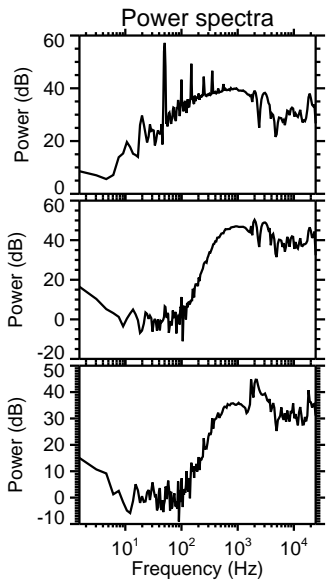
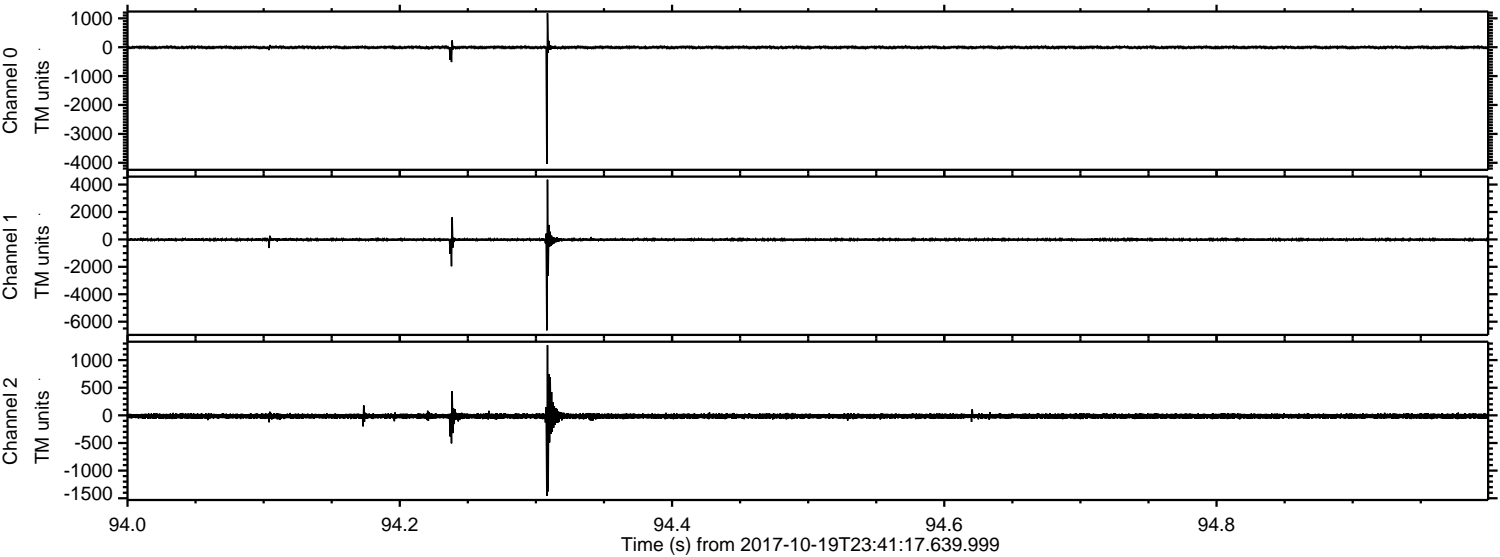


ELMAVAN 3D WAVEFORMS (Measured data sampled at 50 kHz) 50999 packets of 144 samples from 2017-10-19T23:41:17.639.999. Part 101/147

Processed Fri Oct 20 01:49:26 2017 by ELM ver.2012-10-06 from 001__elm20171019_234116__dat00.bin



Processed Fri Oct 20 01:49:27 2017 by ELM ver.2012-10-06 from 001__elm20171019_234116__dat00.bin

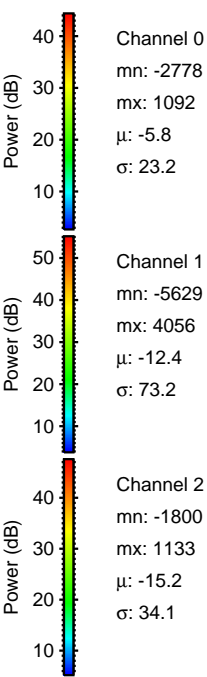
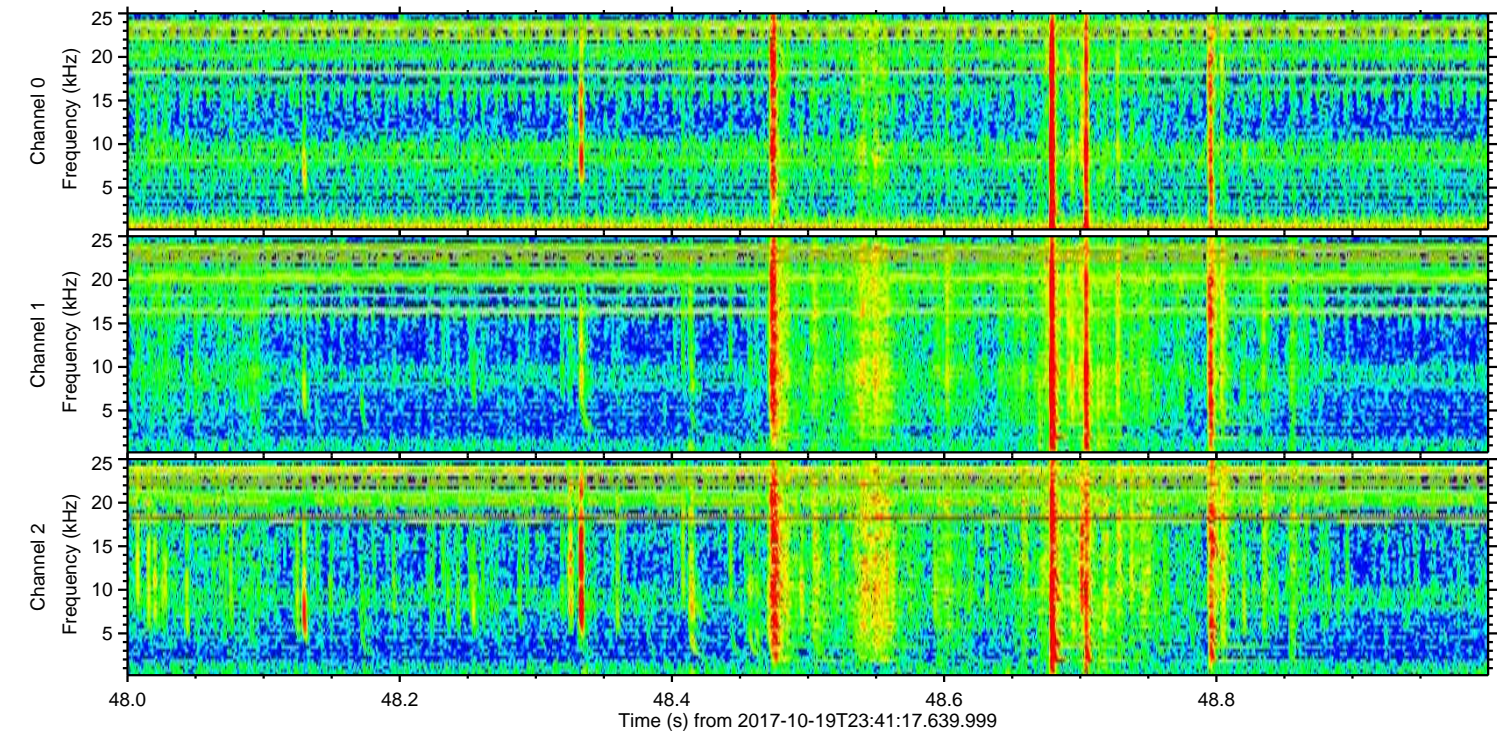
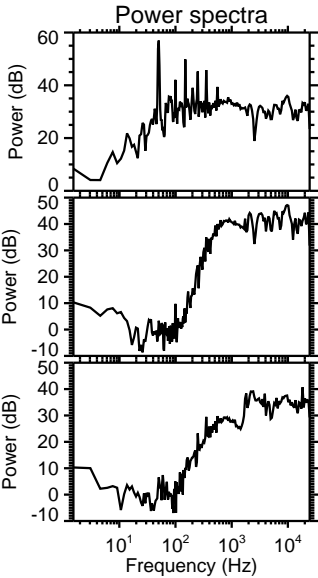
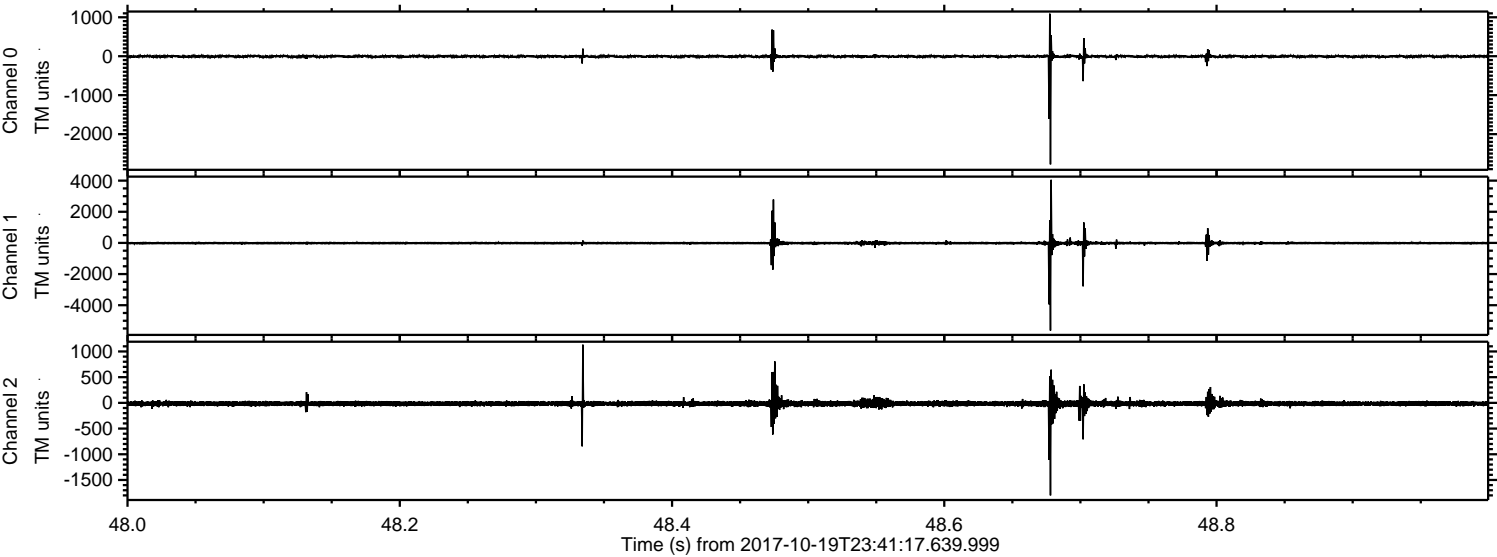


Channel 0
mn: -4042
mx: 1177
 μ : -5.8
 σ : 28.8

Channel 1
mn: -6635
mx: 4363
 μ : -12.4
 σ : 78.0

Channel 2
mn: -1459
mx: 1269
 μ : -15.1
 σ : 34.2

Processed Fri Oct 20 01:49:28 2017 by ELM ver.2012-10-06 from 001__elm20171019_234116__dat00.bin

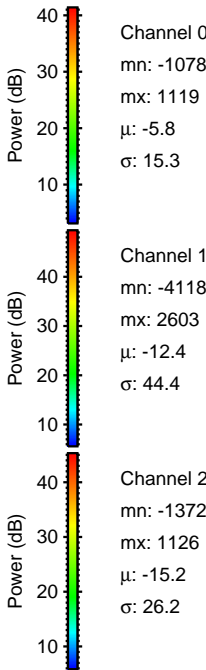
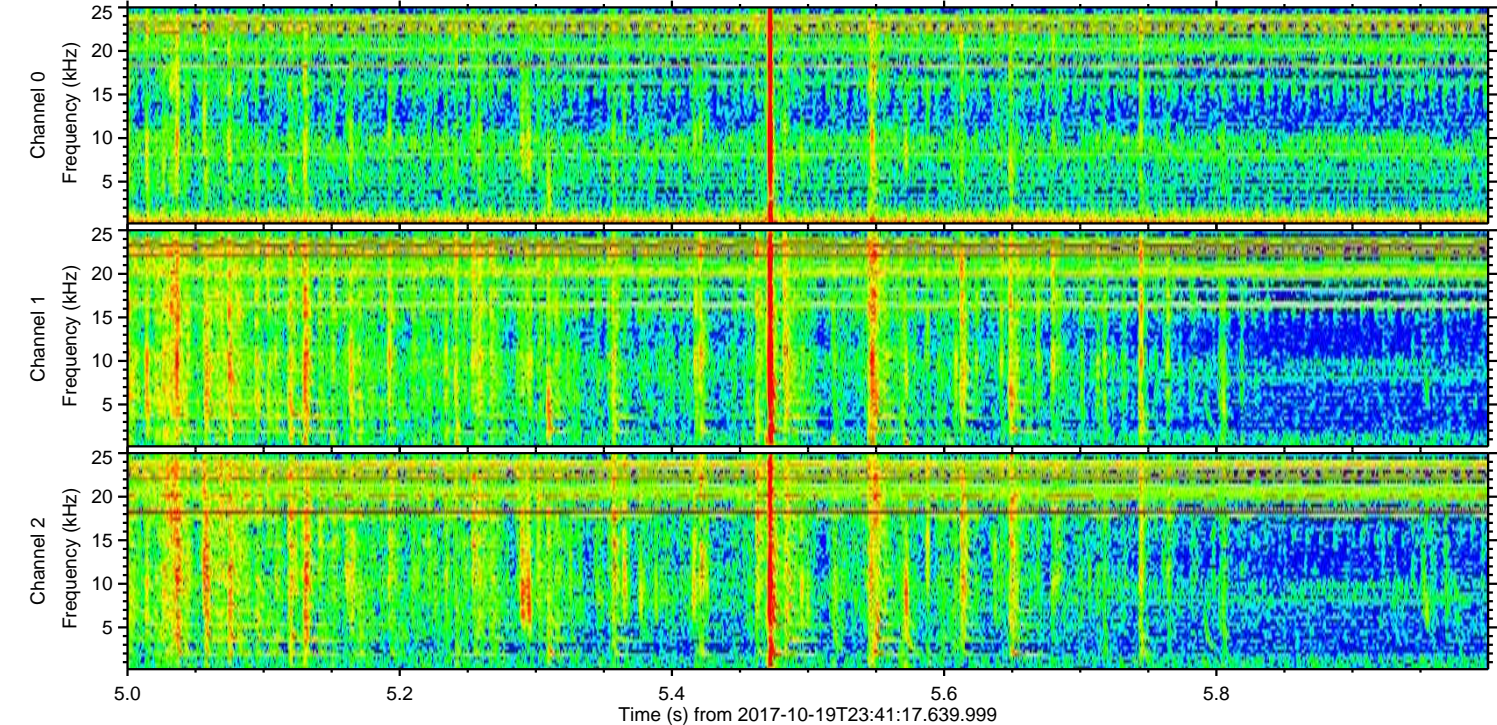
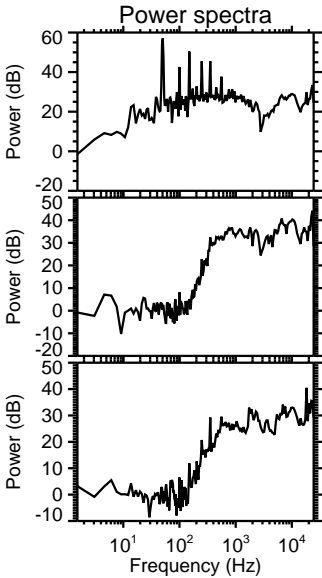
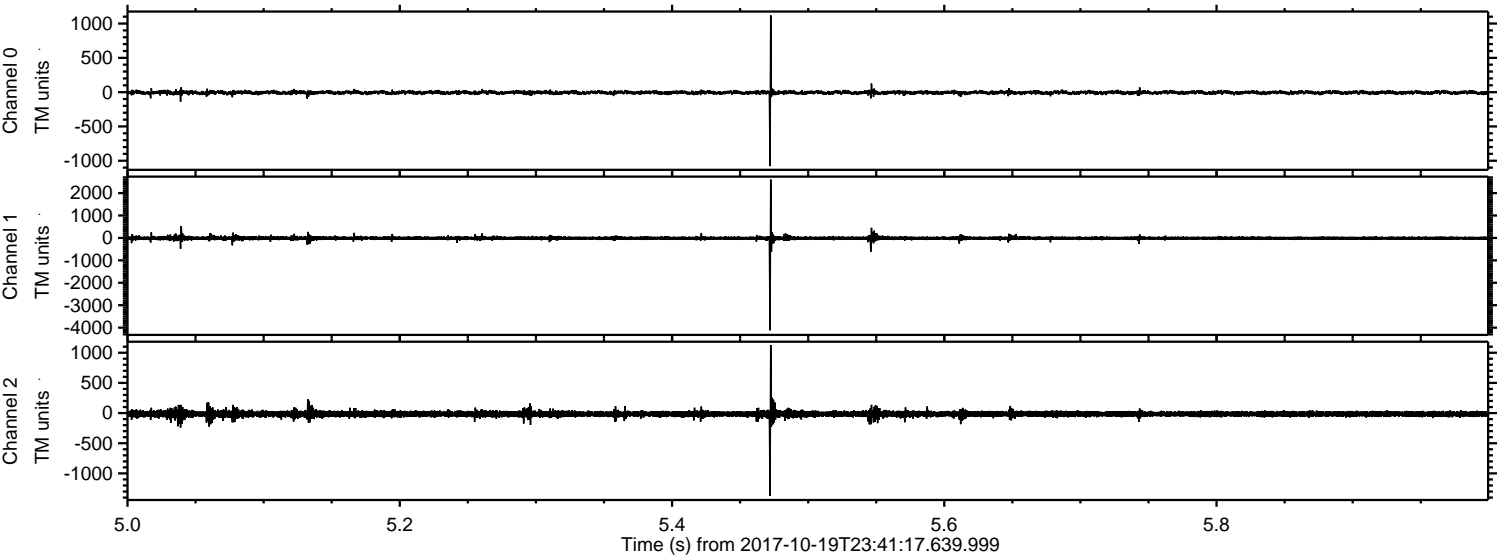


Channel 0
mn: -2778
mx: 1092
 μ : -5.8
 σ : 23.2

Channel 1
mn: -5629
mx: 4056
 μ : -12.4
 σ : 73.2

Channel 2
mn: -1800
mx: 1133
 μ : -15.2
 σ : 34.1

Processed Fri Oct 20 01:49:28 2017 by ELM ver.2012-10-06 from 001__elm20171019_234116__dat00.bin



Processed Fri Oct 20 01:49:29 2017 by ELM ver.2012-10-06 from 001__elm20171019_234116__dat00.bin

