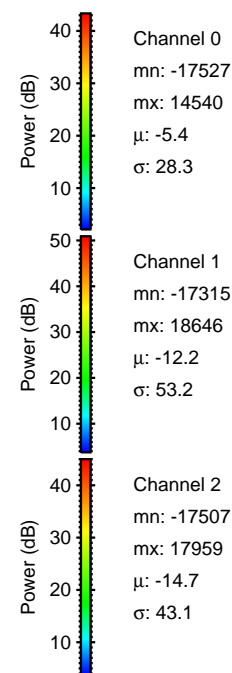
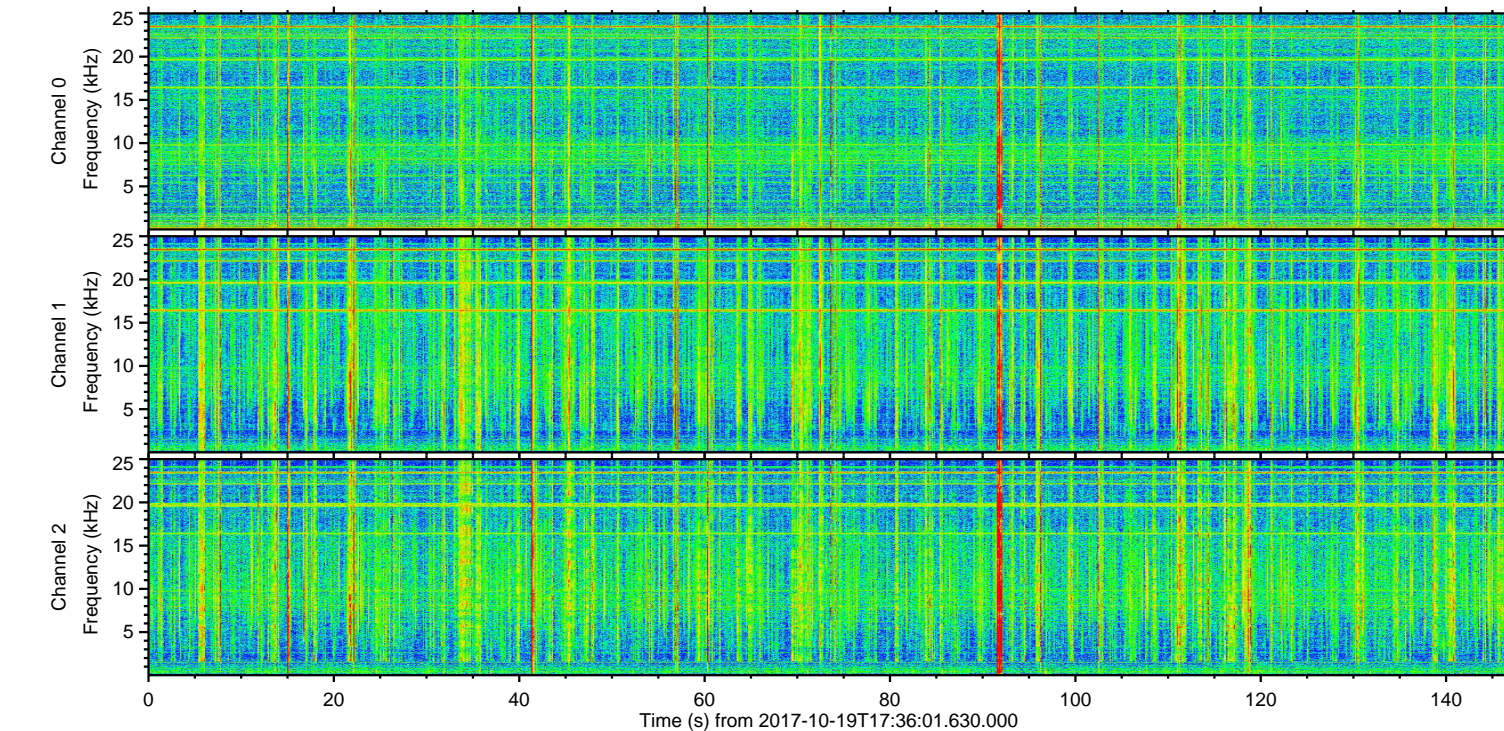
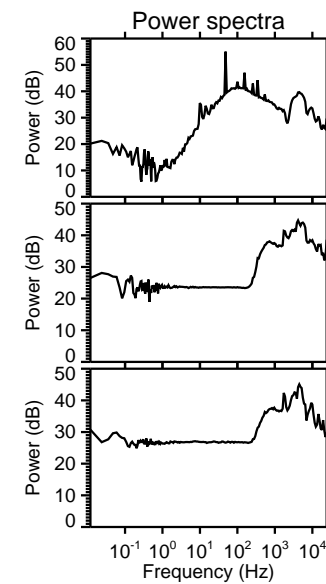
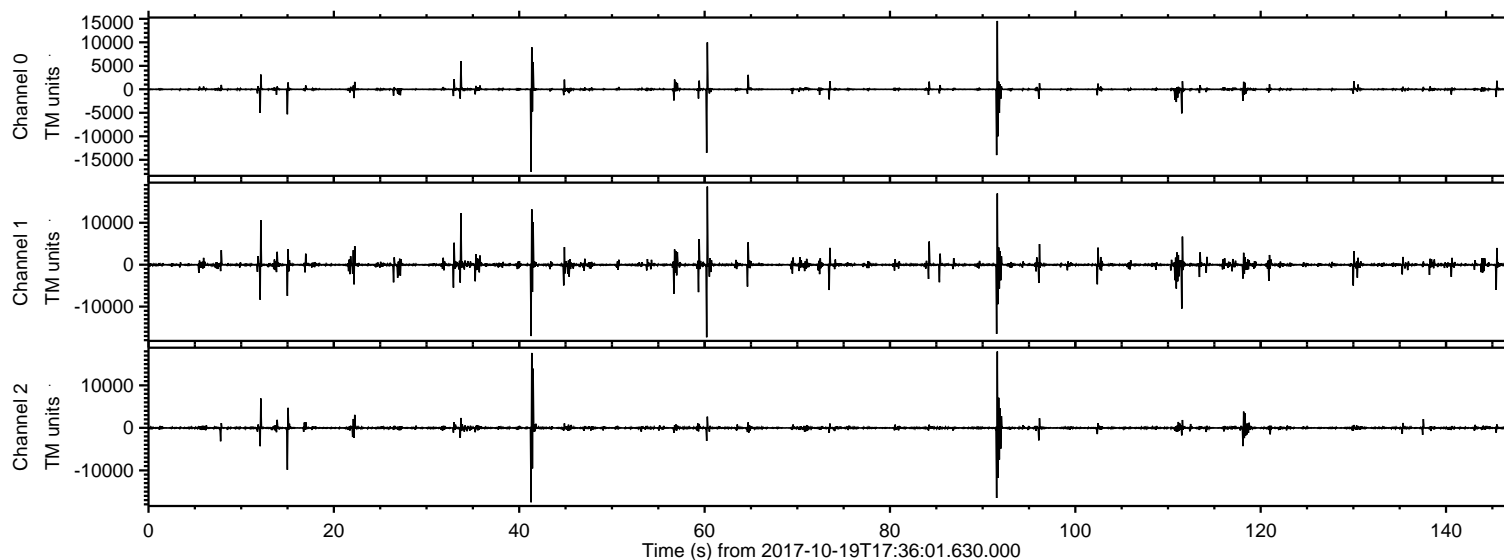
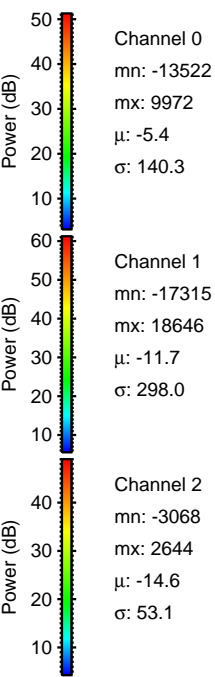
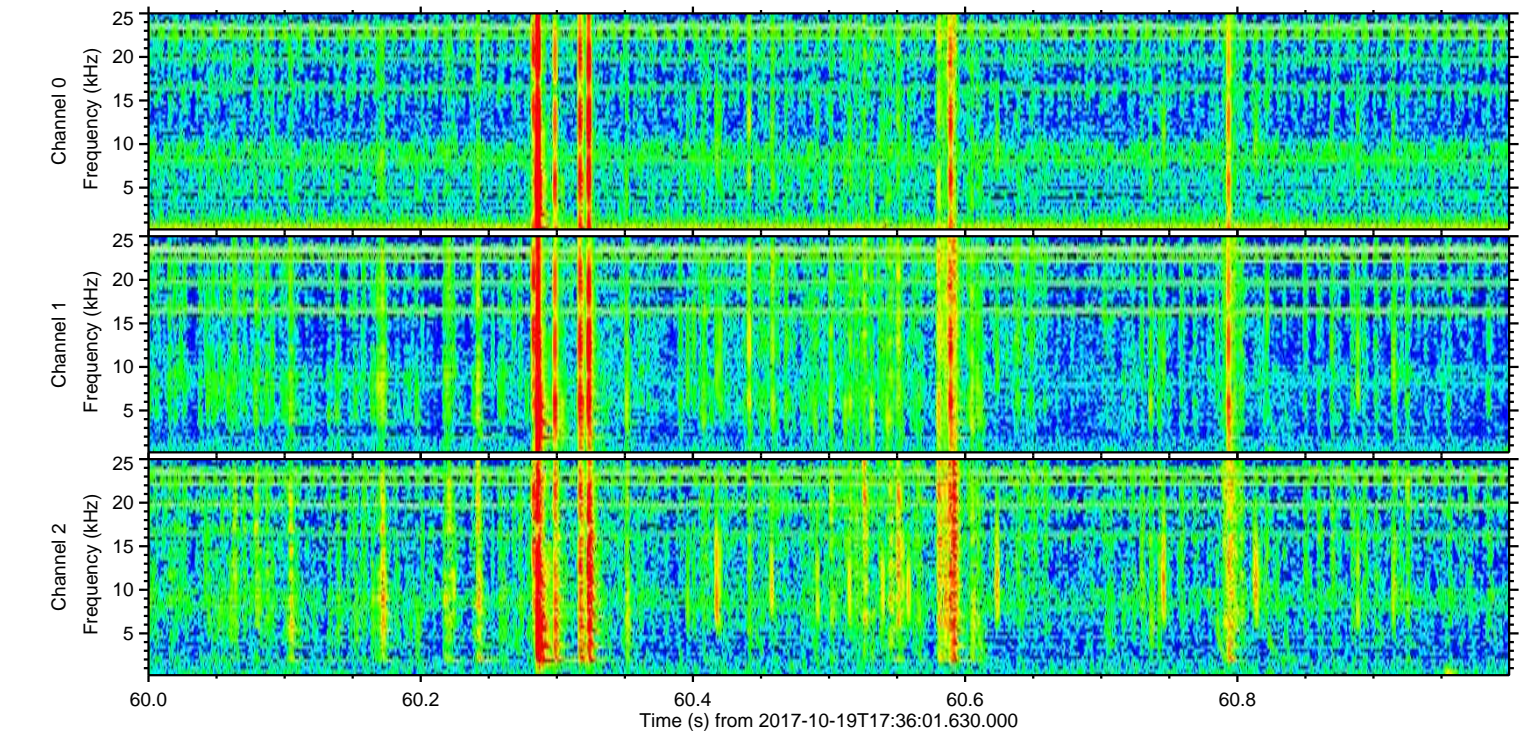
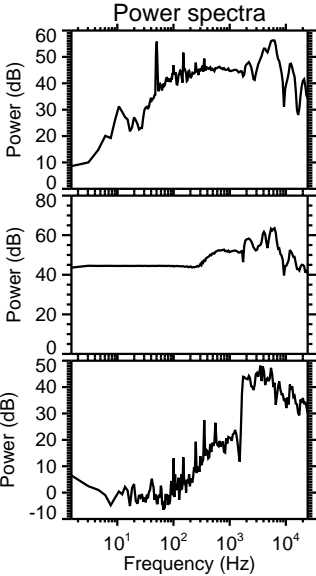
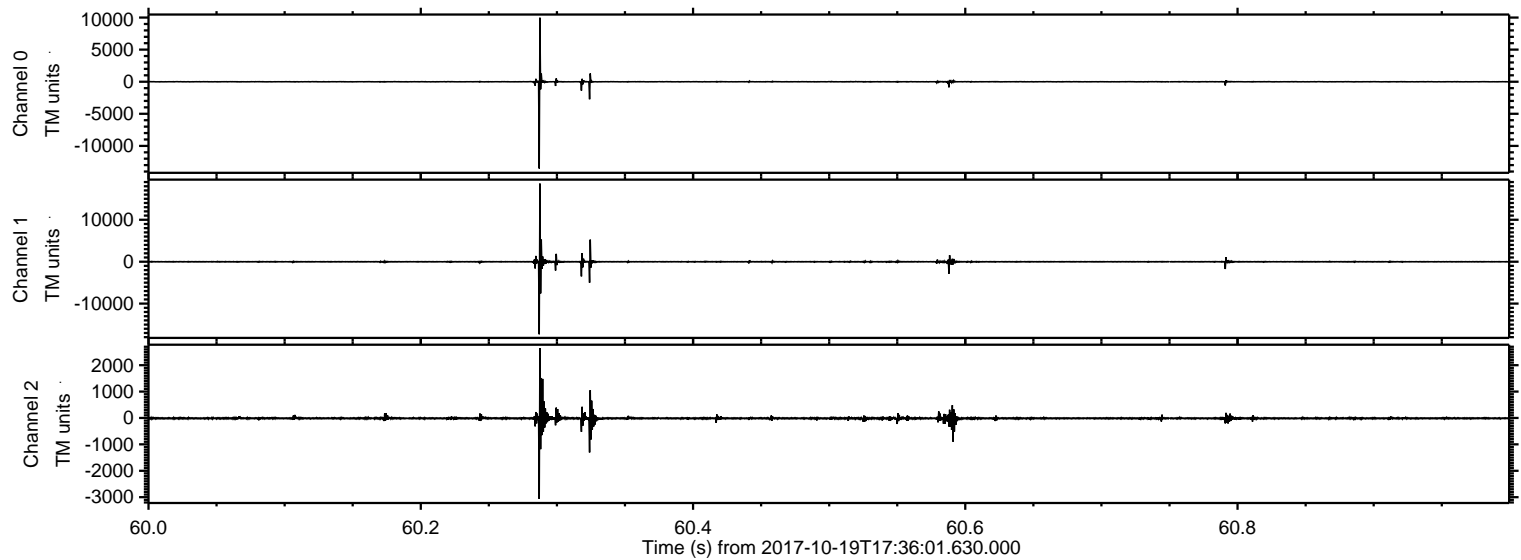


ELMAVAN 3D WAVEFORMS (Measured data sampled at 50 kHz) 51000 packets of 144 samples from 2017-10-19T17:36:01.630.000.

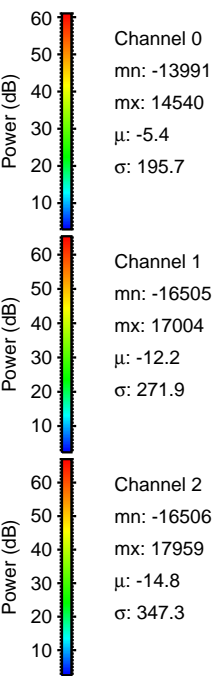
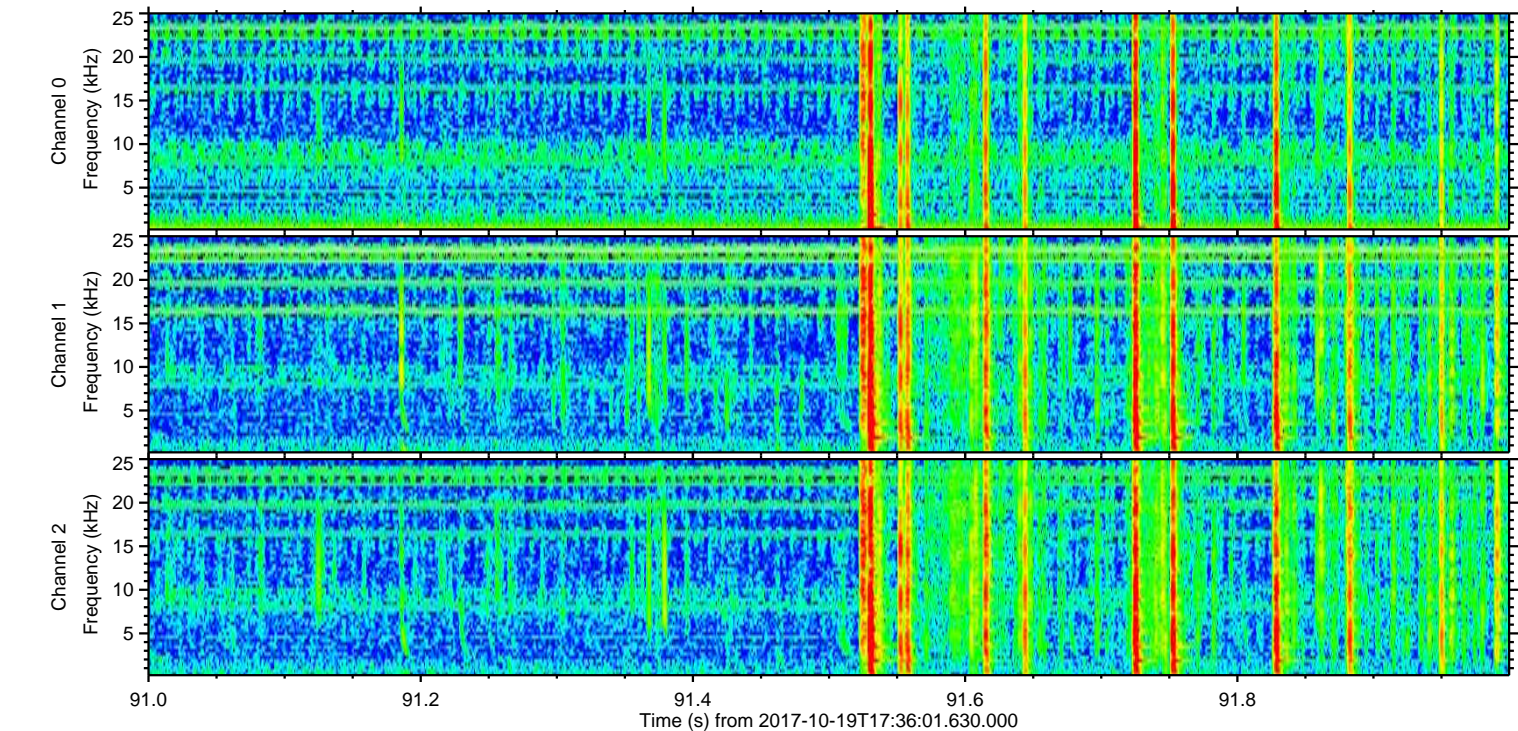
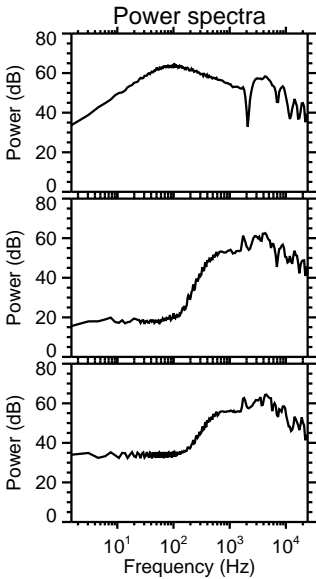
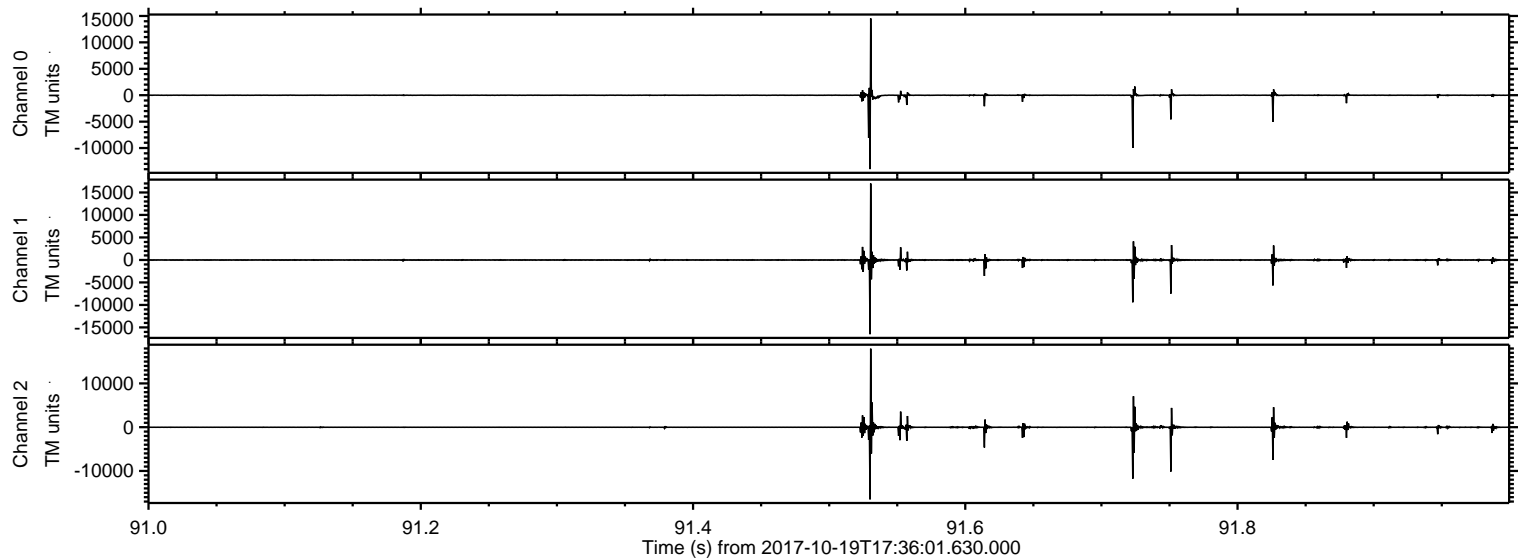
Processed Thu Oct 19 19:44:20 2017 by ELM ver.2012-10-06 from 001__elm20171019_173600__dat00.bin



Processed Thu Oct 19 19:44:28 2017 by ELM ver.2012-10-06 from 001__elm20171019_173600__dat00.bin

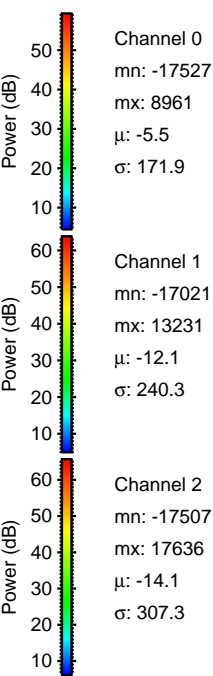
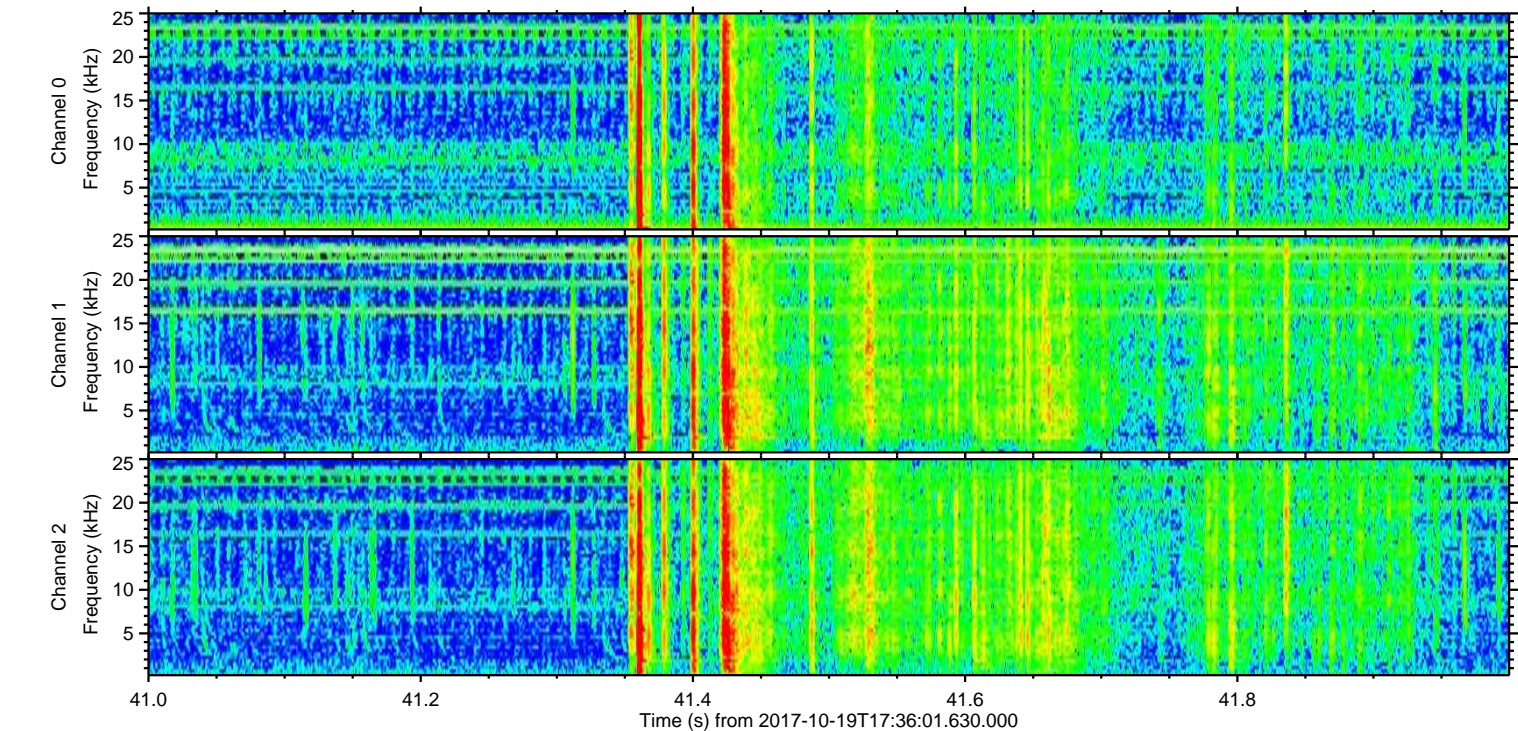
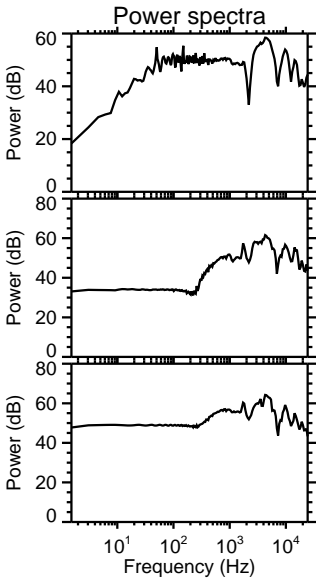
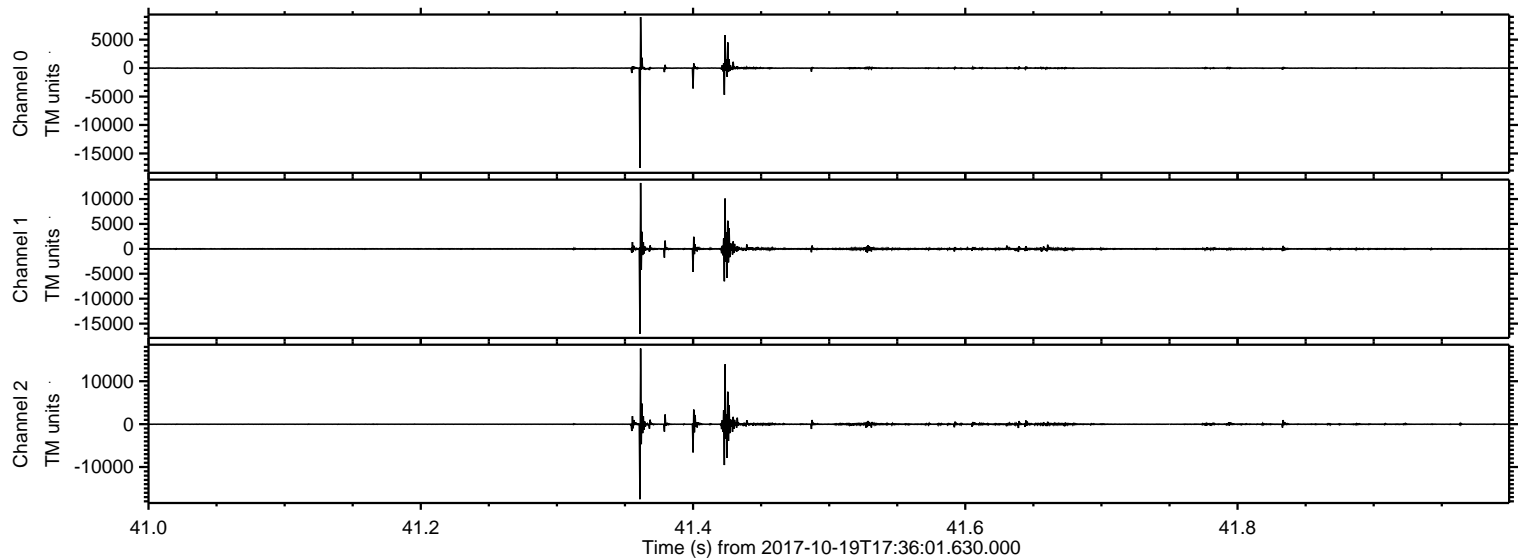


Processed Thu Oct 19 19:44:29 2017 by ELM ver.2012-10-06 from 001__elm20171019_173600__dat00.bin



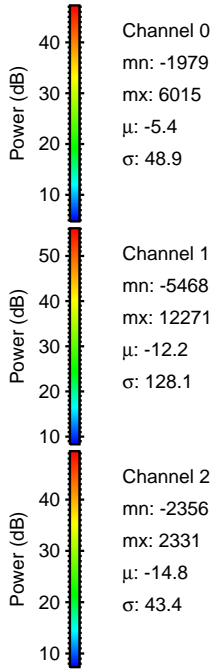
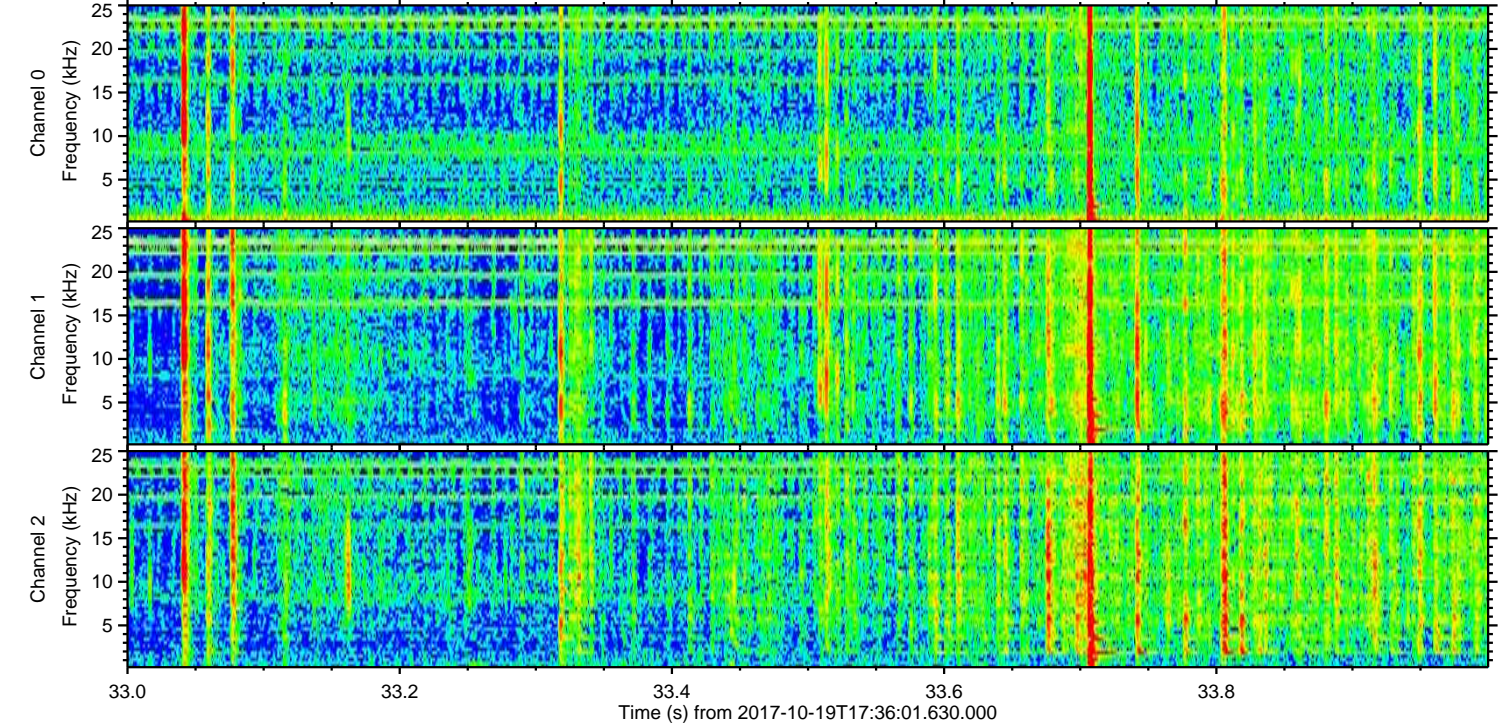
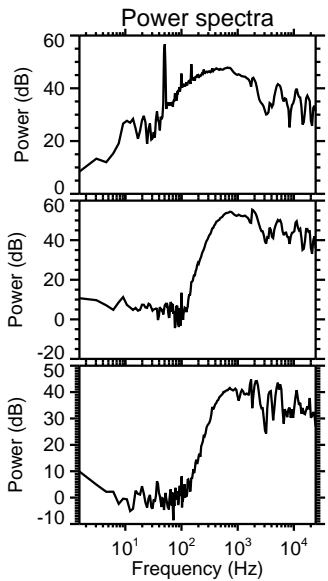
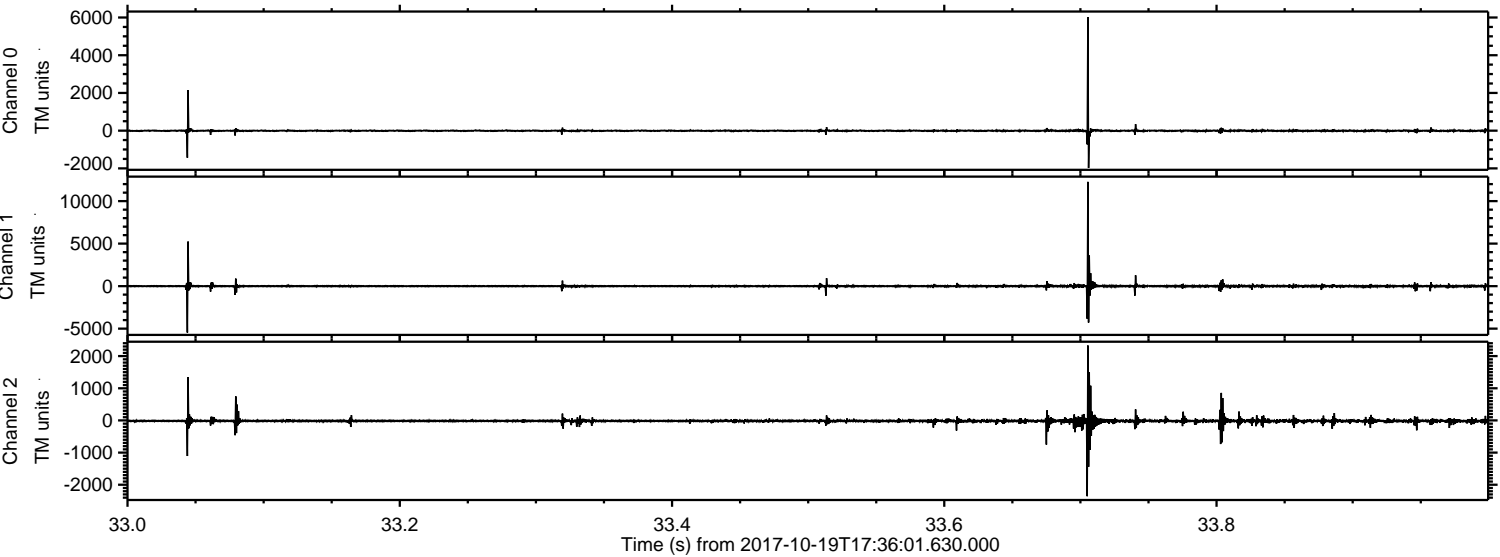
ELMAVAN 3D WAVEFORMS (Measured data sampled at 50 kHz) 51000 packets of 144 samples from 2017-10-19T17:36:01.630.000. Part 42/147

Processed Thu Oct 19 19:44:30 2017 by ELM ver.2012-10-06 from 001__elm20171019_173600__dat00.bin

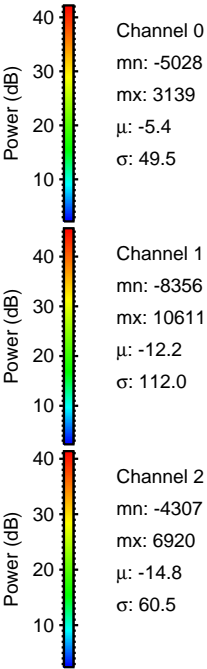
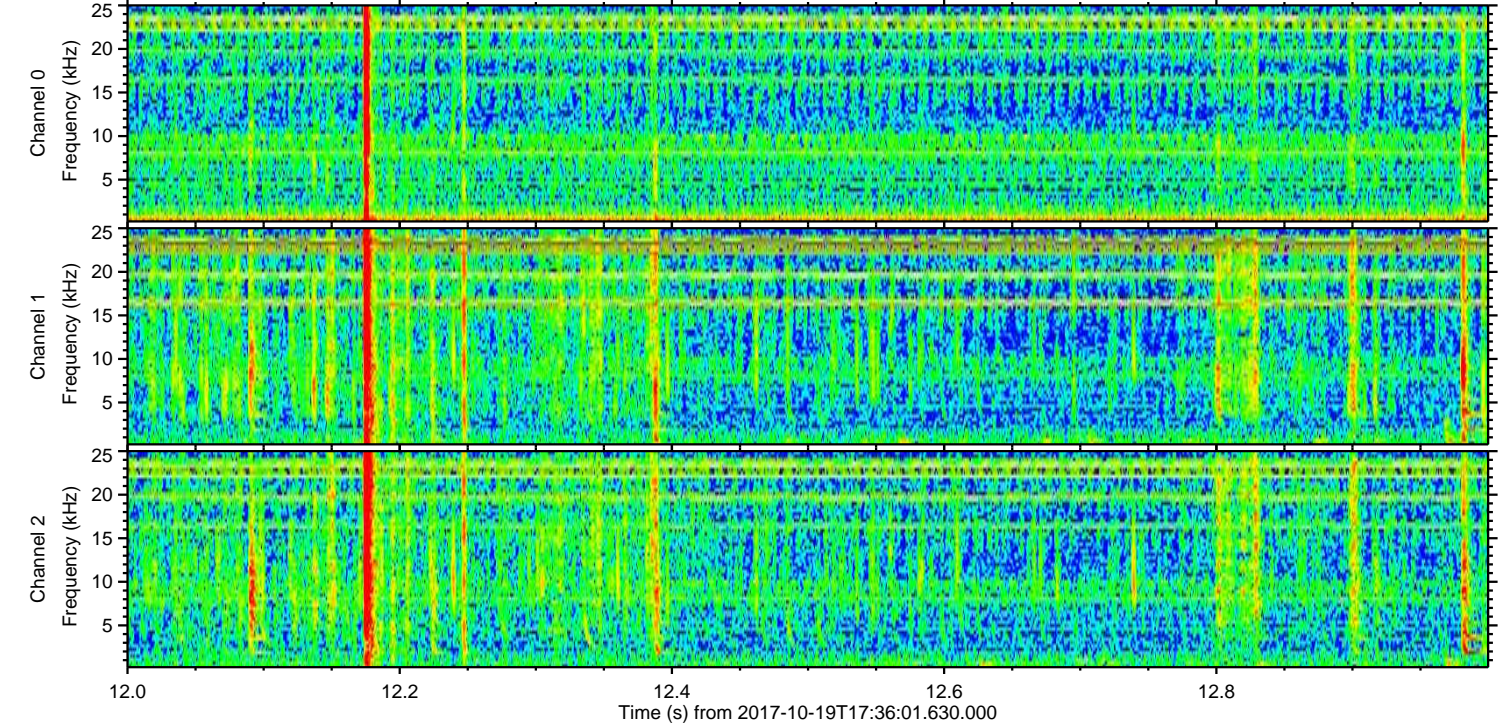
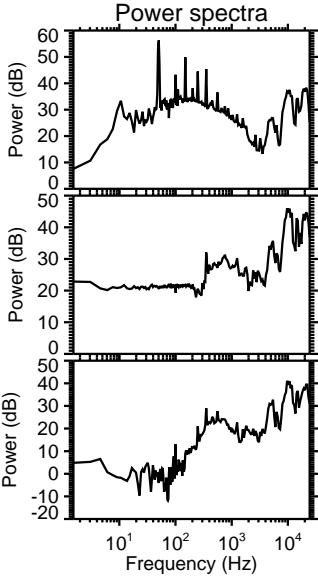
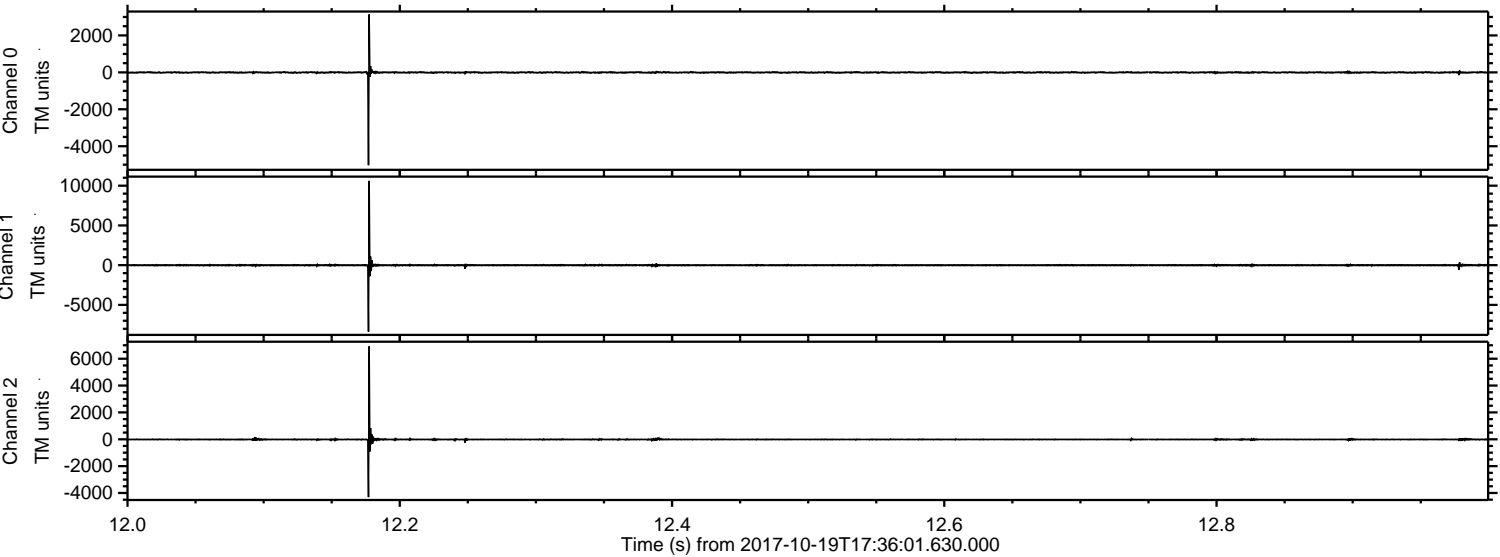


ELMAVAN 3D WAVEFORMS (Measured data sampled at 50 kHz) 51000 packets of 144 samples from 2017-10-19T17:36:01.630.000. Part 34/147

Processed Thu Oct 19 19:44:31 2017 by ELM ver.2012-10-06 from 001__elm20171019_173600__dat00.bin

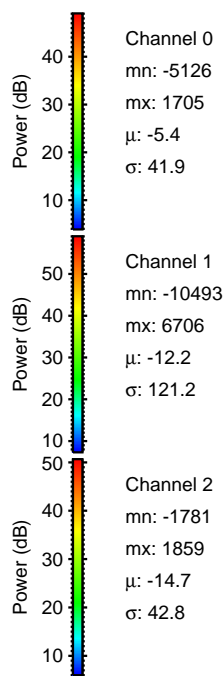
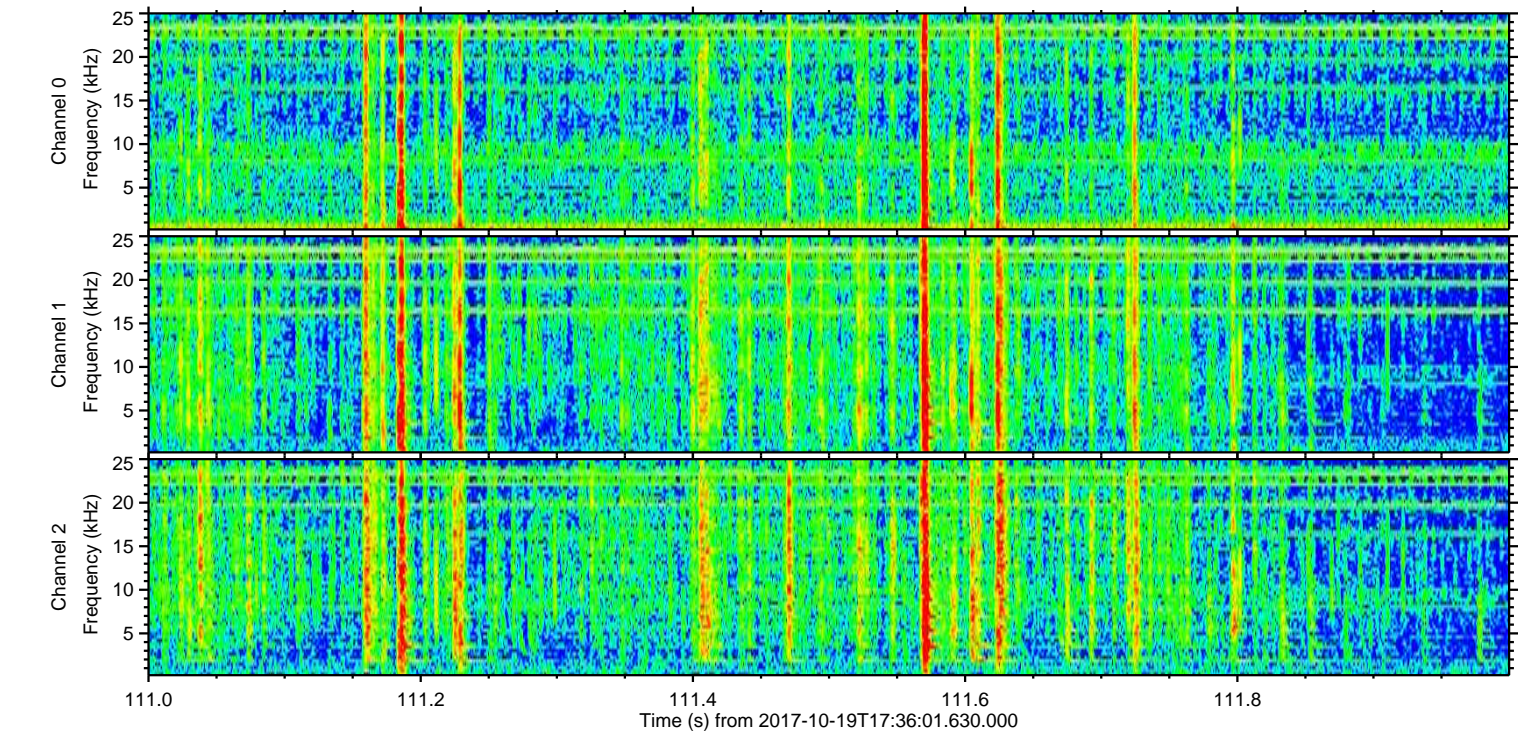
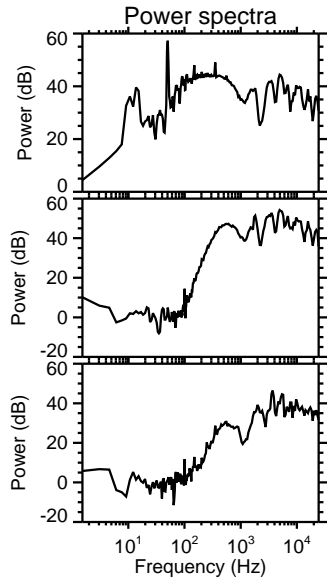
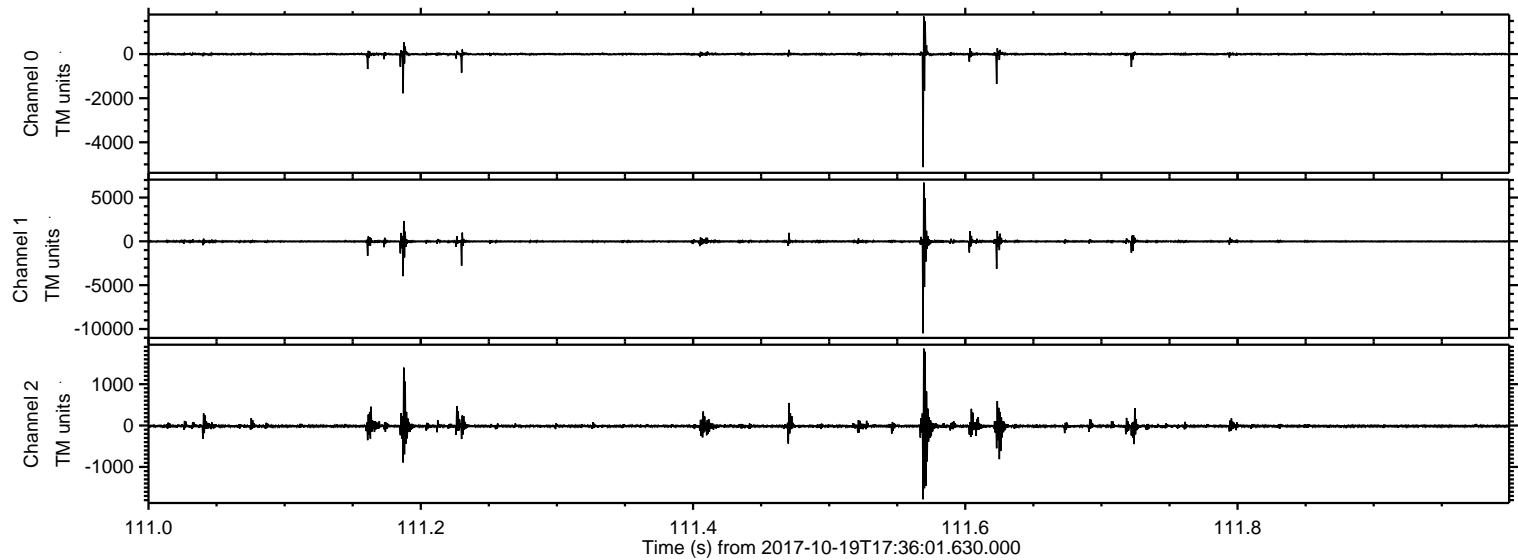


Processed Thu Oct 19 19:44:32 2017 by ELM ver.2012-10-06 from 001__elm20171019_173600__dat00.bin

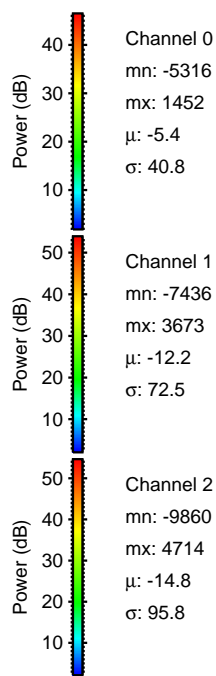
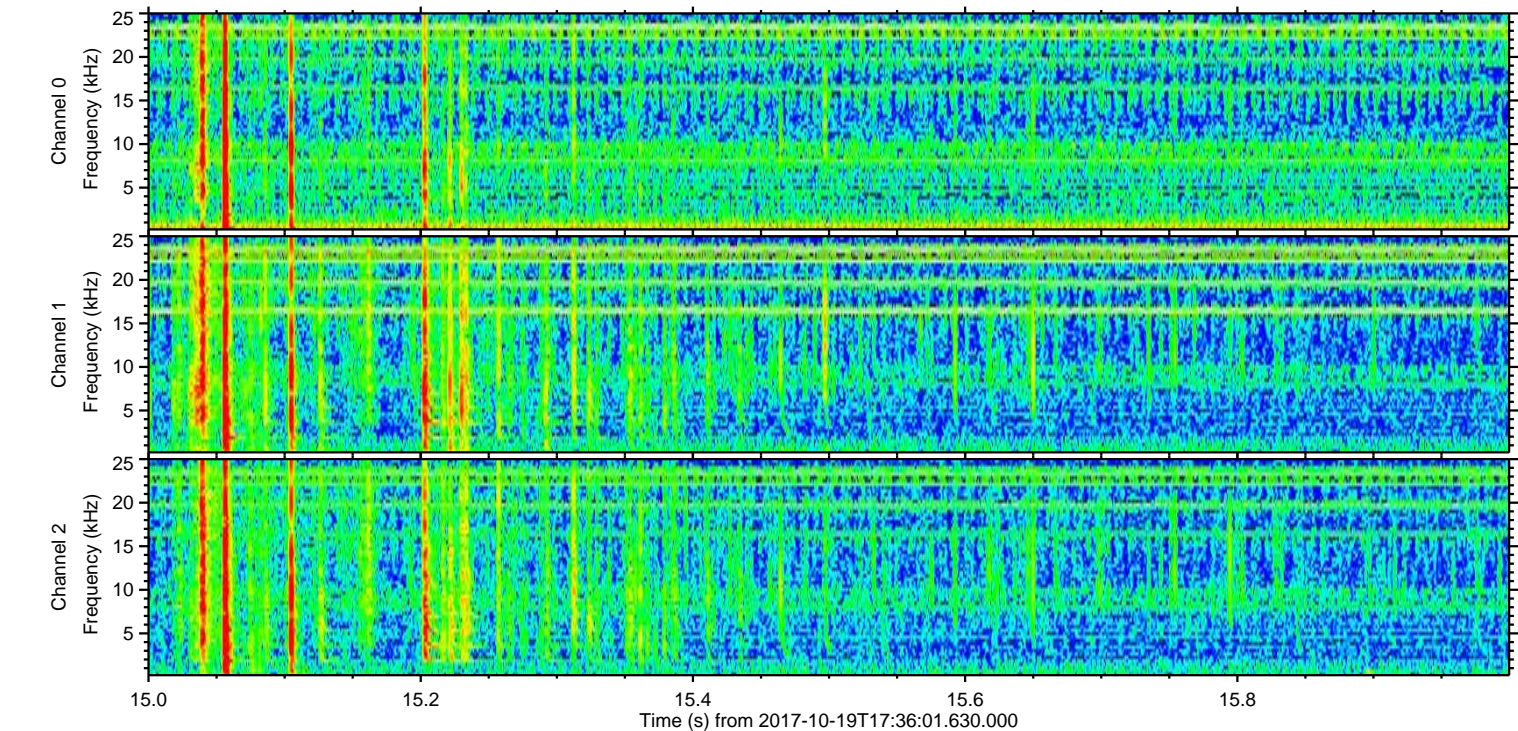
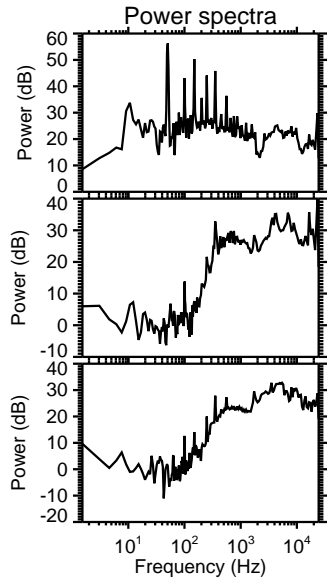
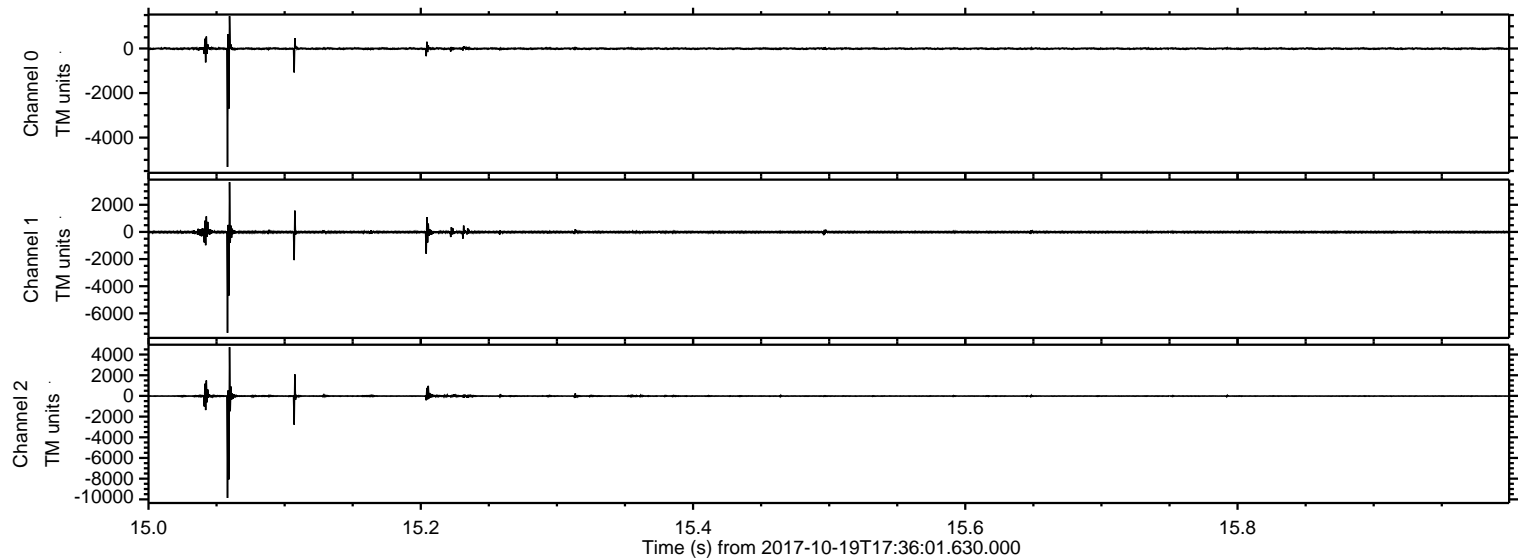


ELMAVAN 3D WAVEFORMS (Measured data sampled at 50 kHz) 51000 packets of 144 samples from 2017-10-19T17:36:01.630.000. Part 112/147

Processed Thu Oct 19 19:44:33 2017 by ELM ver.2012-10-06 from 001__elm20171019_173600__dat00.bin

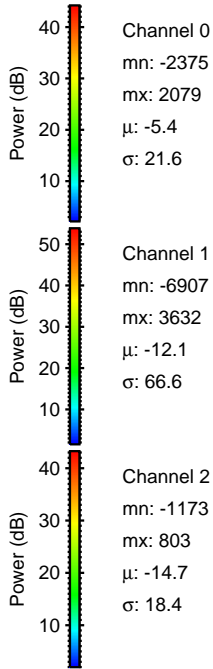
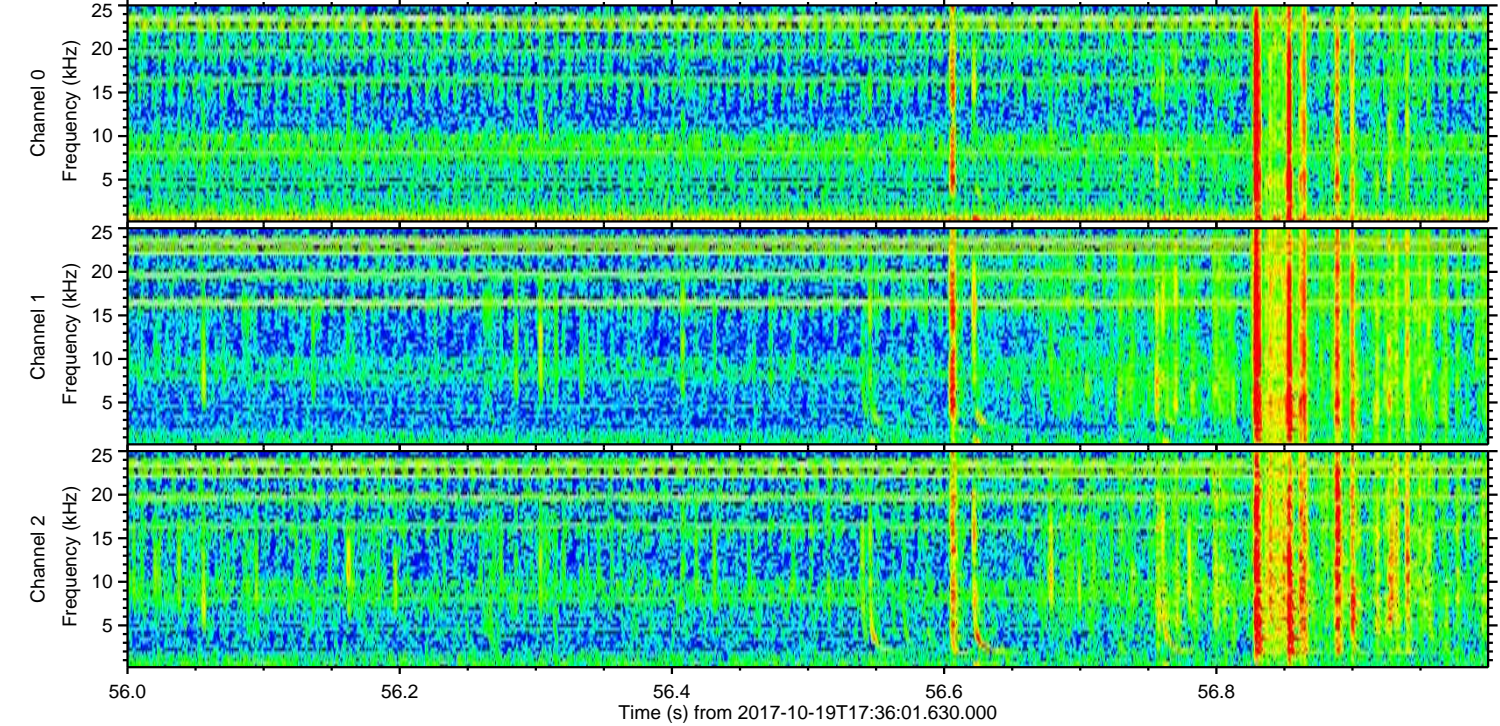
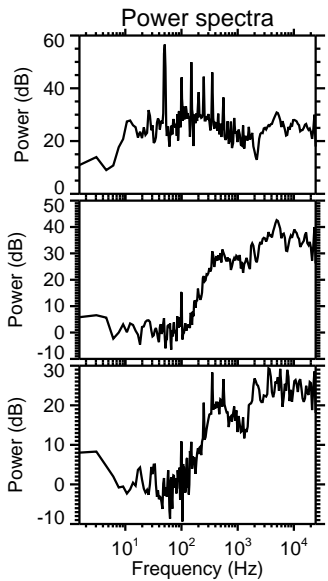
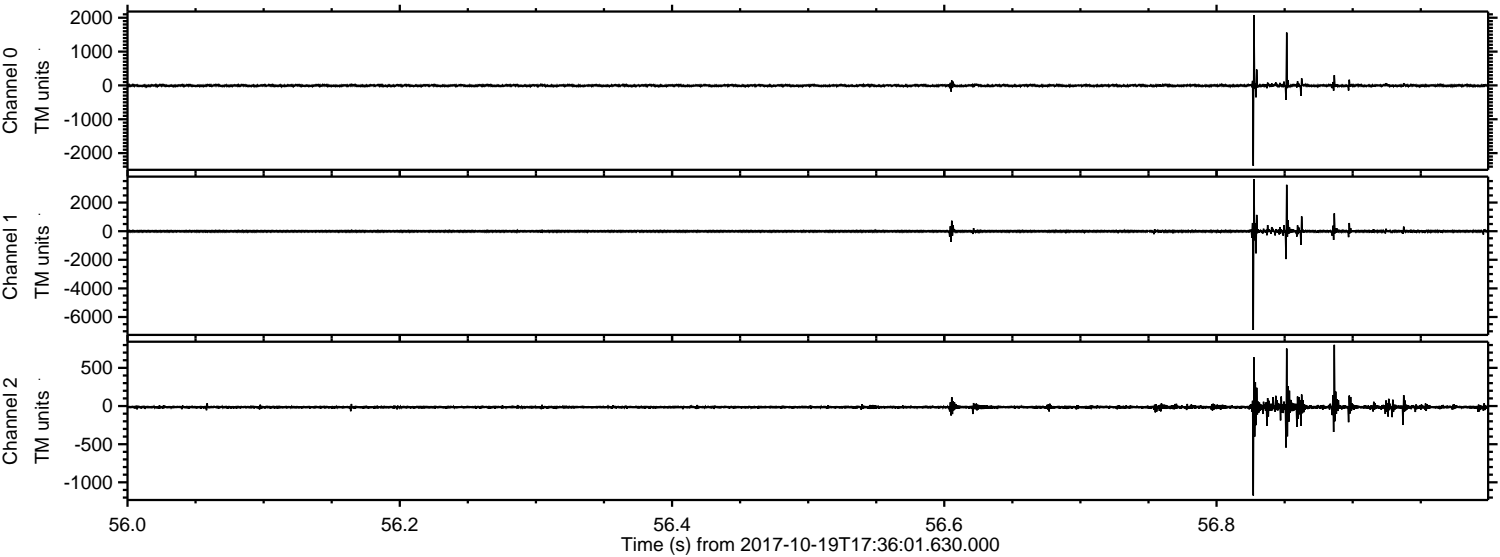


Processed Thu Oct 19 19:44:33 2017 by ELM ver.2012-10-06 from 001__elm20171019_173600__dat00.bin

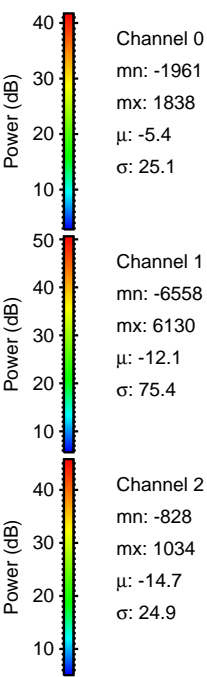
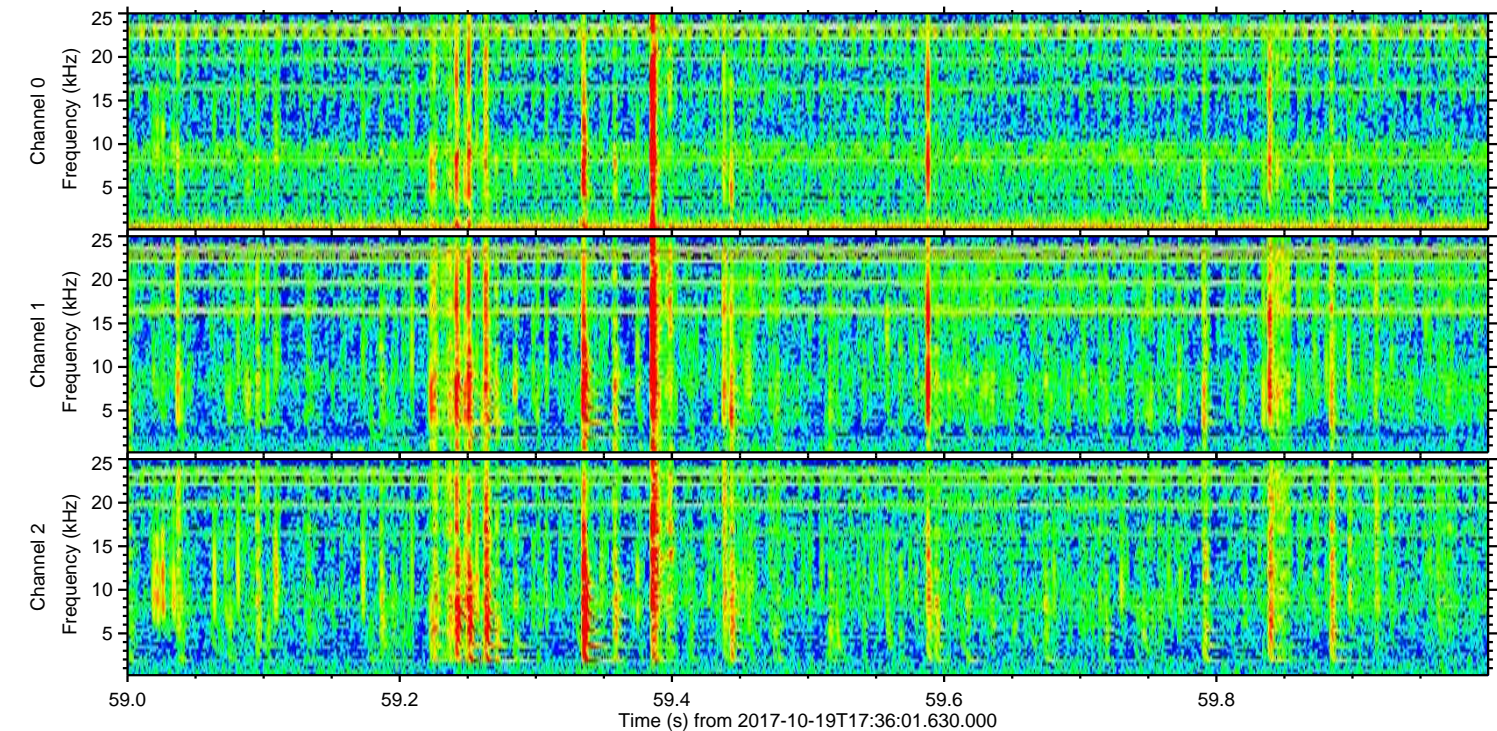
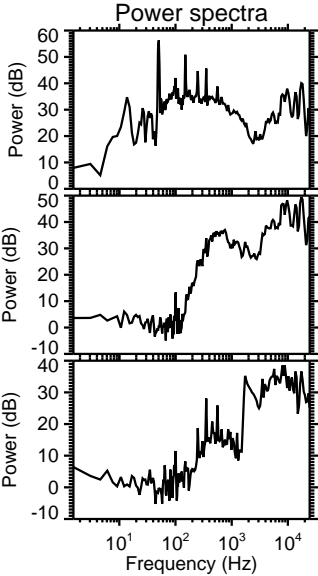
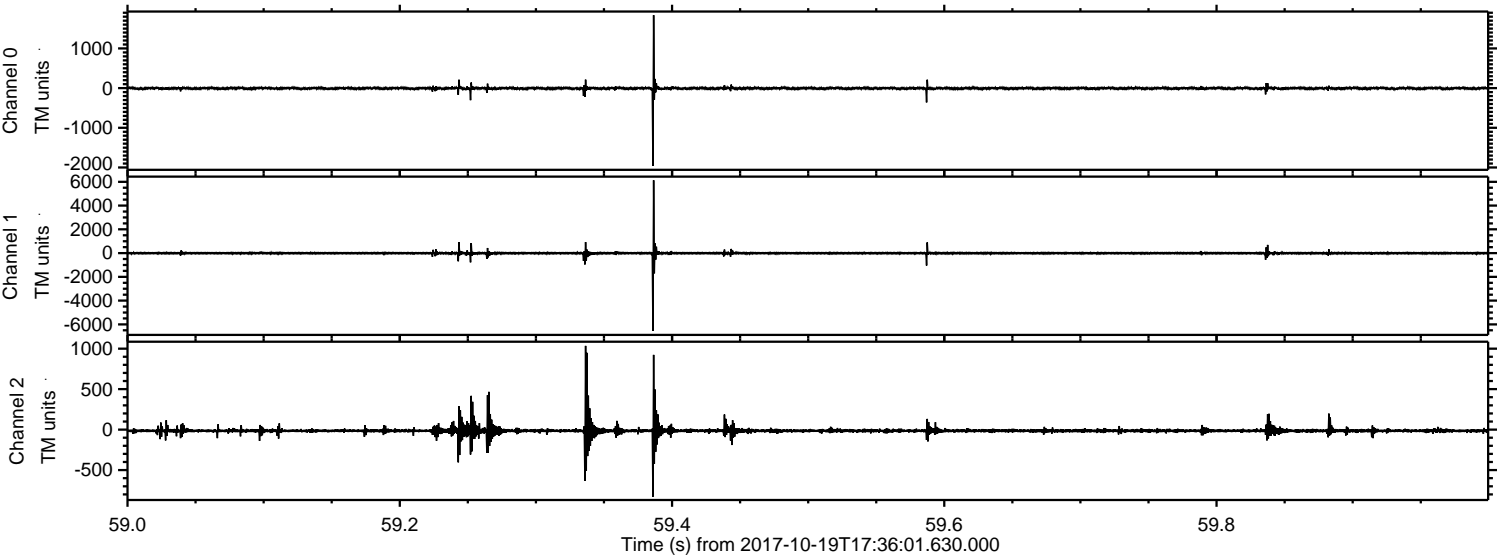


ELMAVAN 3D WAVEFORMS (Measured data sampled at 50 kHz) 51000 packets of 144 samples from 2017-10-19T17:36:01.630.000. Part 57/147

Processed Thu Oct 19 19:44:34 2017 by ELM ver.2012-10-06 from 001__elm20171019_173600__dat00.bin



Processed Thu Oct 19 19:44:35 2017 by ELM ver.2012-10-06 from 001__elm20171019_173600__dat00.bin



Channel 0
mn: -1961
mx: 1838
 μ : -5.4
 σ : 25.1

Channel 1
mn: -6558
mx: 6130
 μ : -12.1
 σ : 75.4

Channel 2
mn: -828
mx: 1034
 μ : -14.7
 σ : 24.9

Processed Thu Oct 19 19:44:36 2017 by ELM ver.2012-10-06 from 001__elm20171019_173600__dat00.bin

