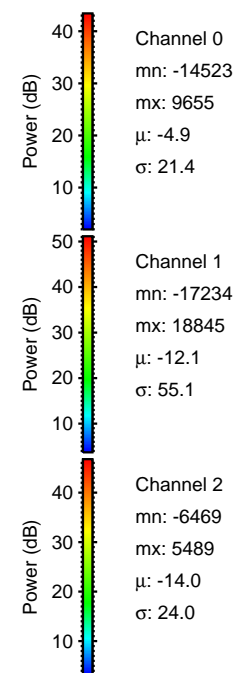
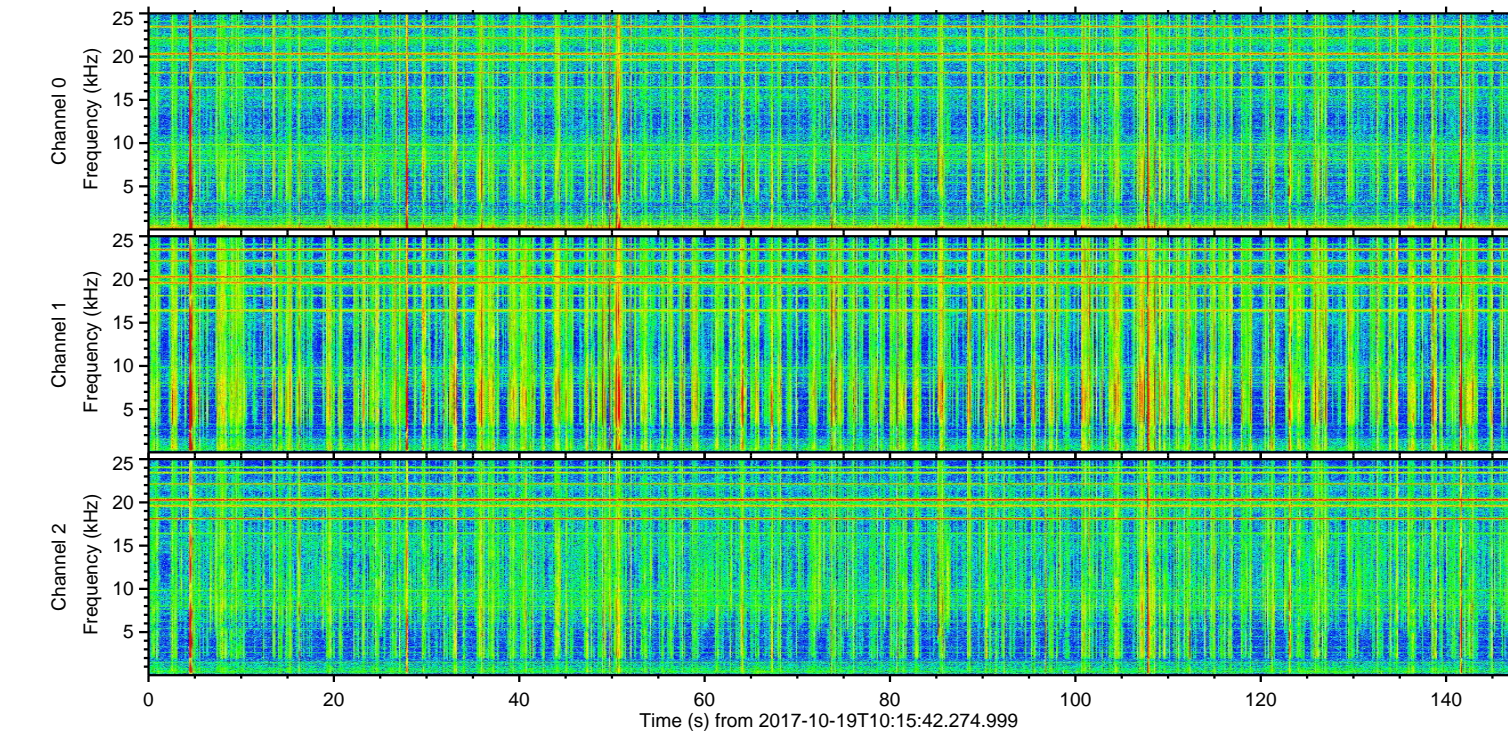
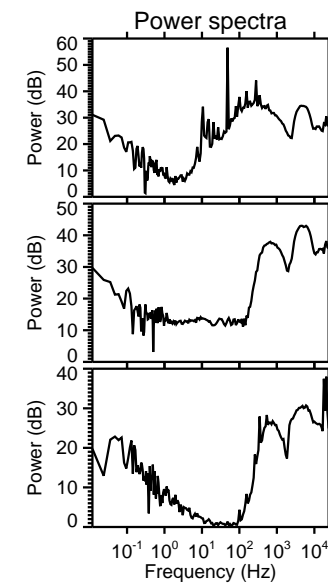
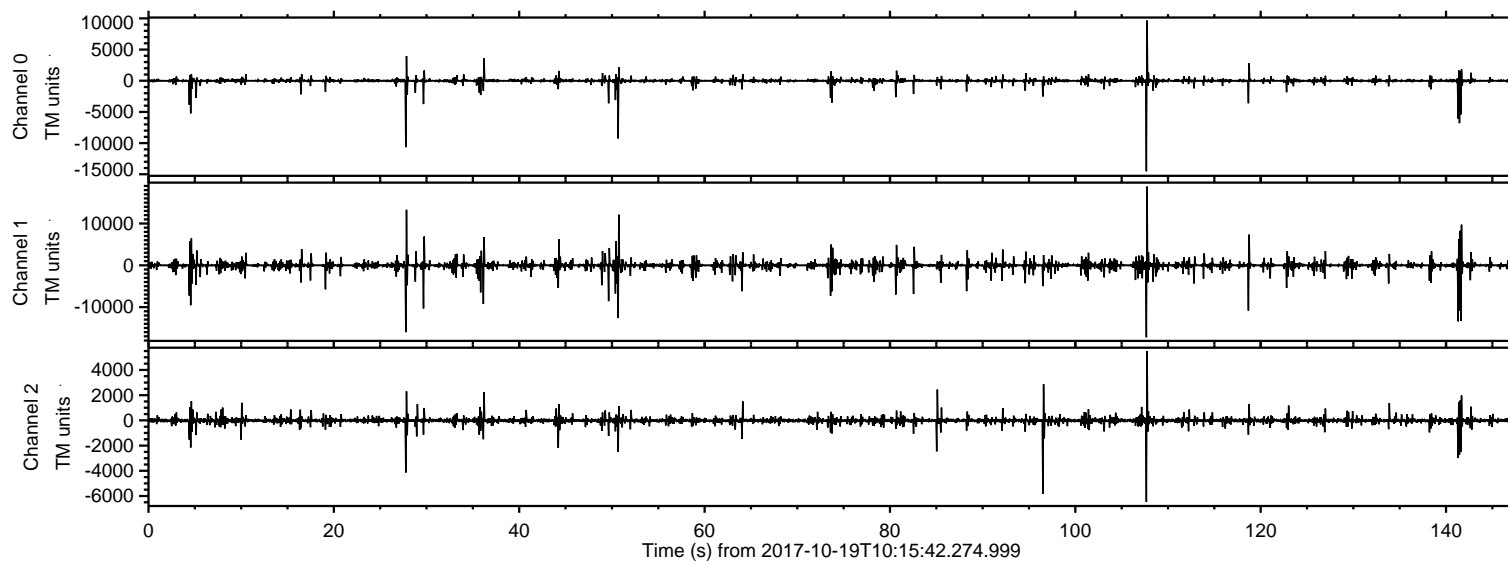


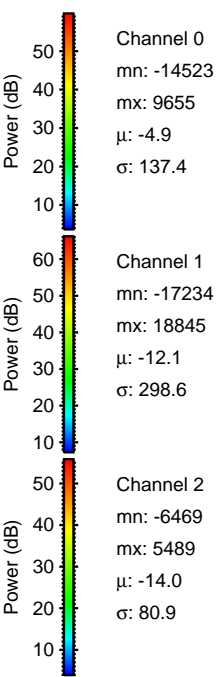
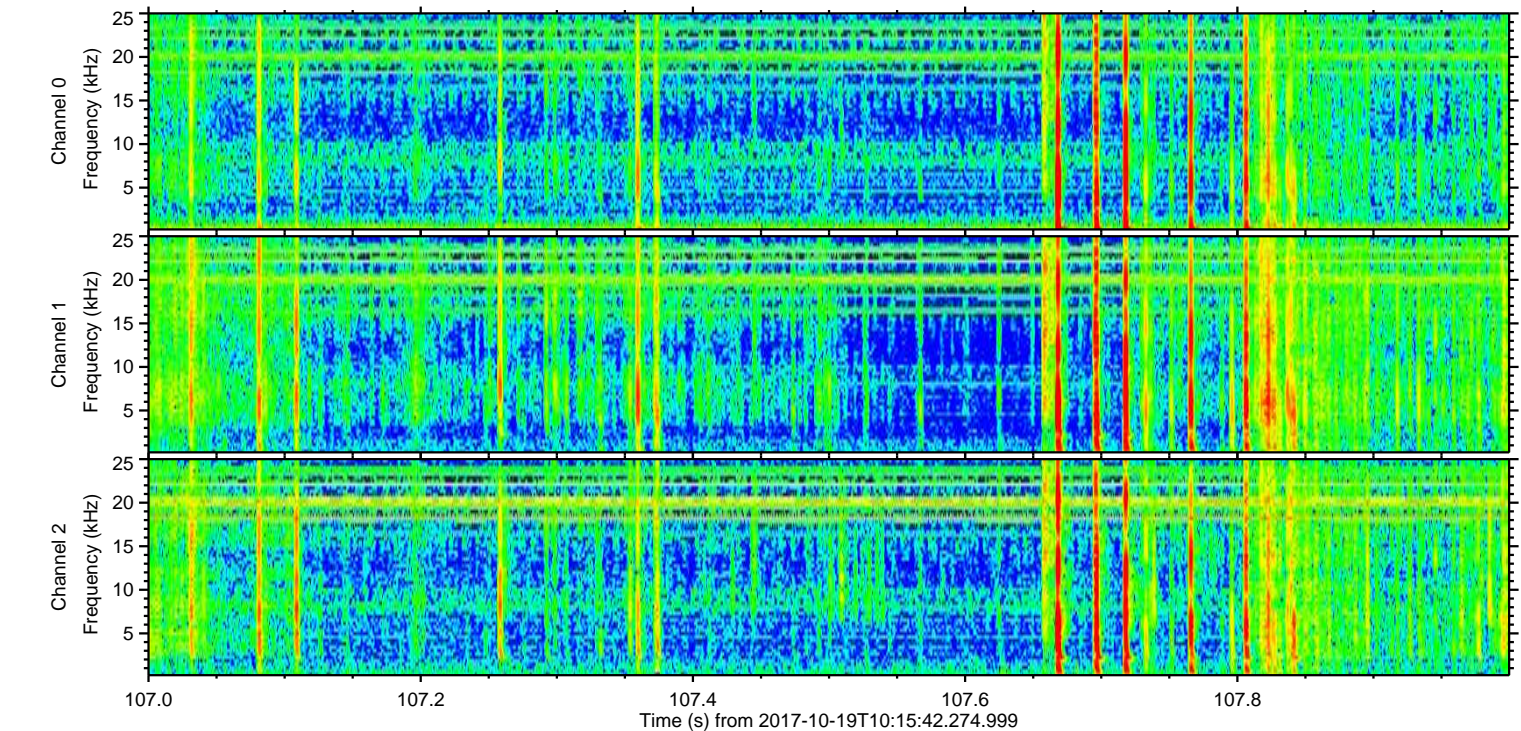
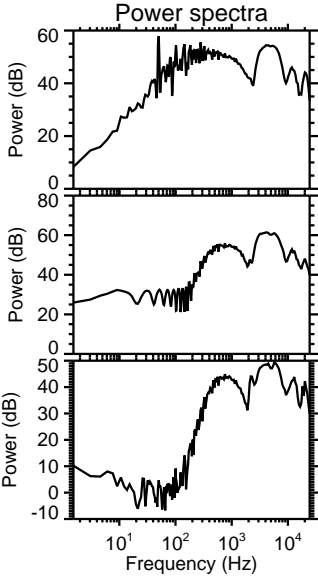
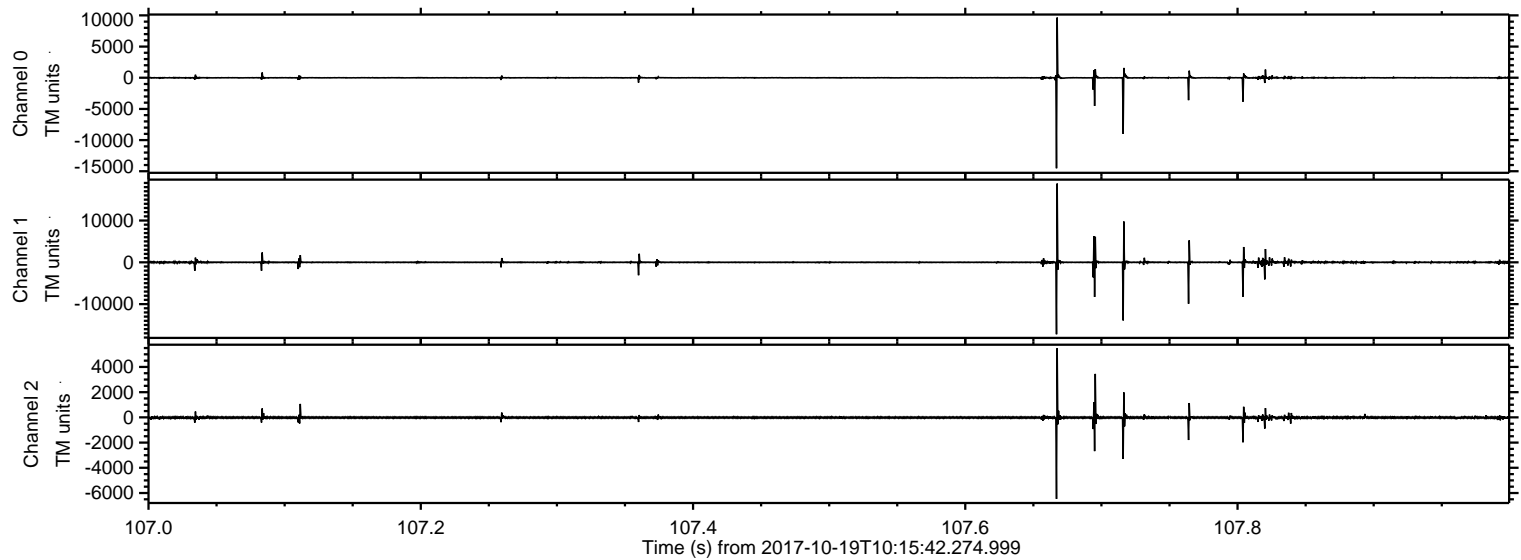
ELMAVAN 3D WAVEFORMS (Measured data sampled at 50 kHz) 51000 packets of 144 samples from 2017-10-19T10:15:42.274.999.

Processed Thu Oct 19 12:23:10 2017 by ELM ver.2012-10-06 from 001__elm20171019_101541__dat00.bin



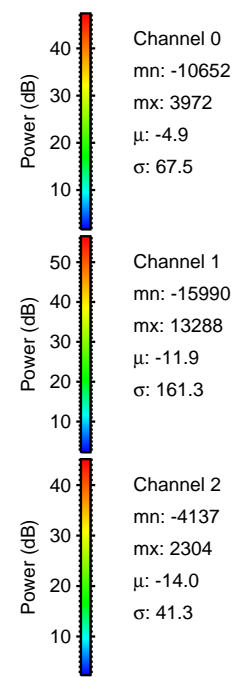
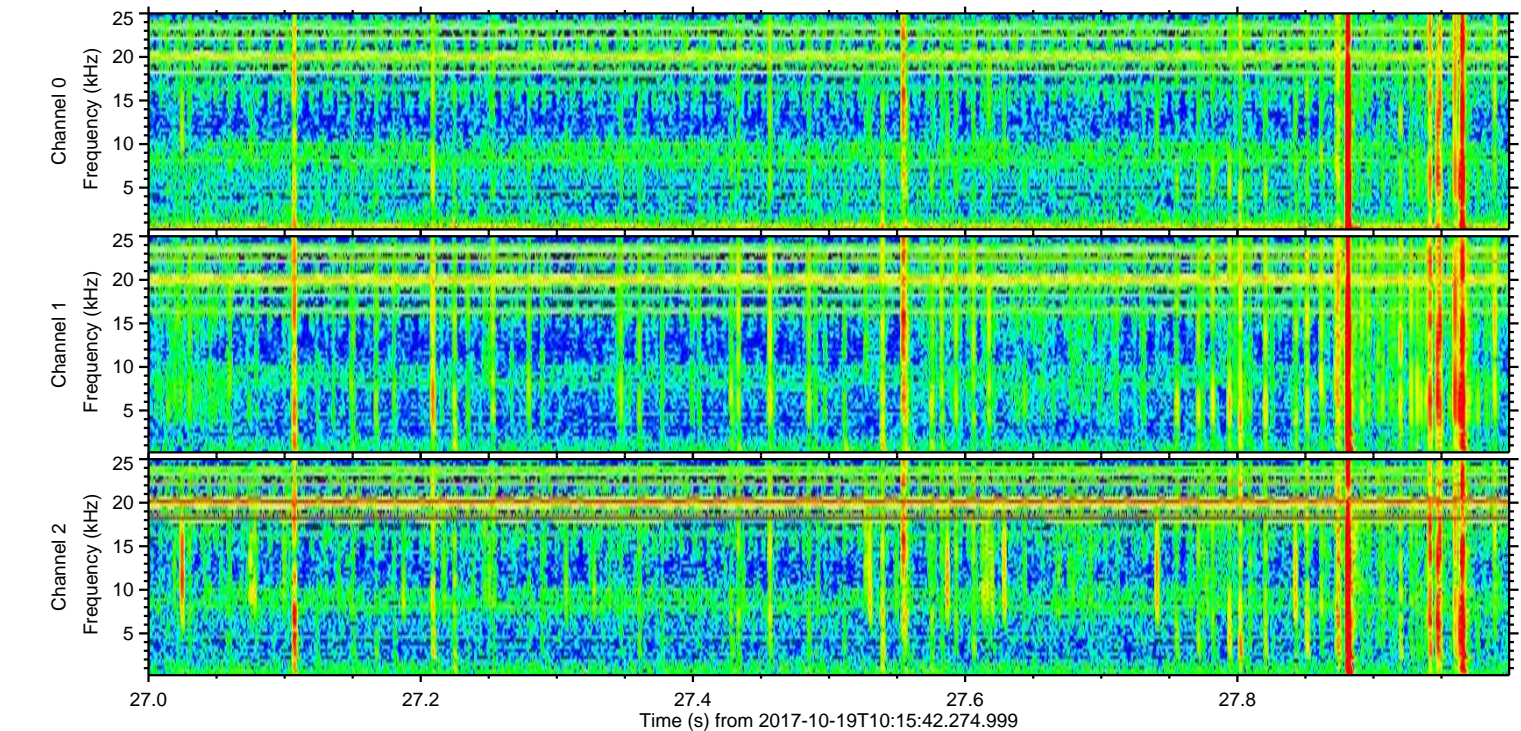
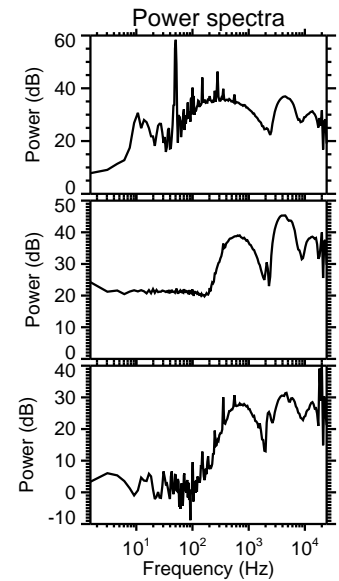
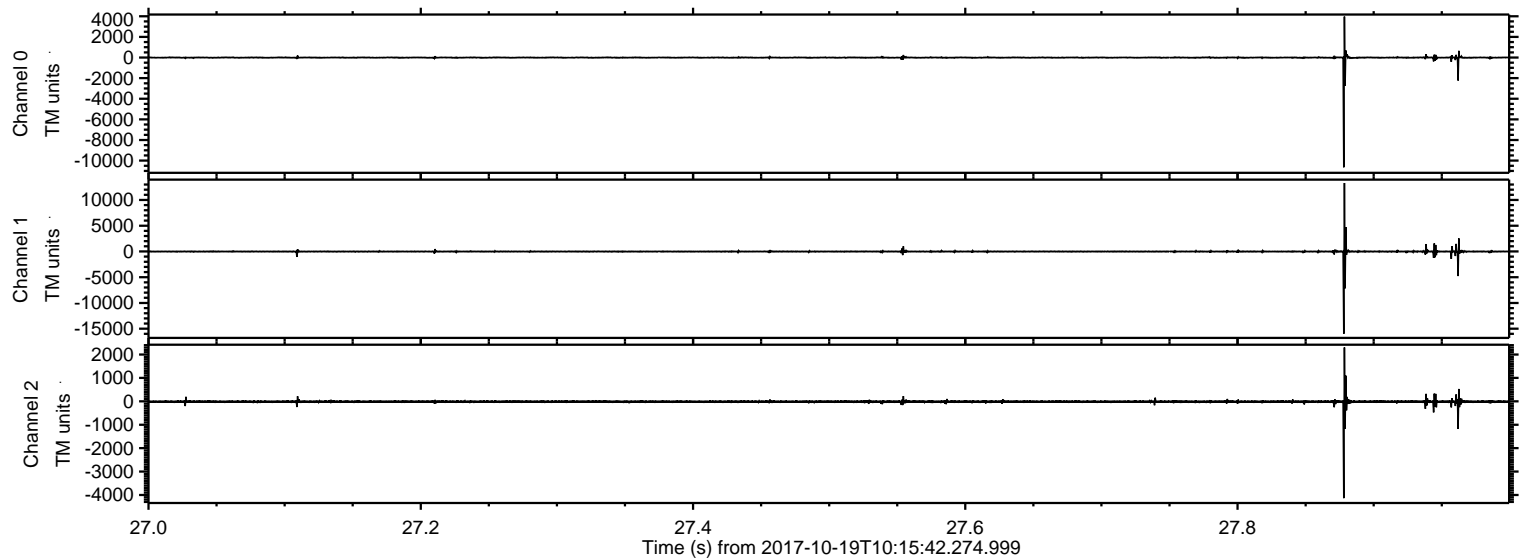
ELMAVAN 3D WAVEFORMS (Measured data sampled at 50 kHz) 51000 packets of 144 samples from 2017-10-19T10:15:42.274.999. Part 108/147

Processed Thu Oct 19 12:23:18 2017 by ELM ver.2012-10-06 from 001__elm20171019_101541__dat00.bin



ELMAVAN 3D WAVEFORMS (Measured data sampled at 50 kHz) 51000 packets of 144 samples from 2017-10-19T10:15:42.274.999. Part 28/147

Processed Thu Oct 19 12:23:19 2017 by ELM ver.2012-10-06 from 001__elm20171019_101541__dat00.bin



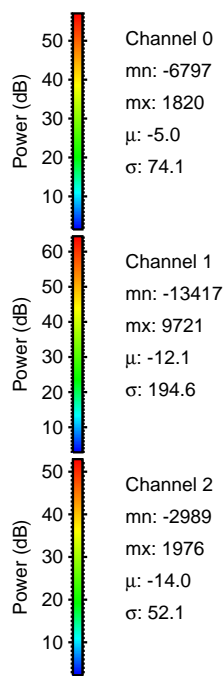
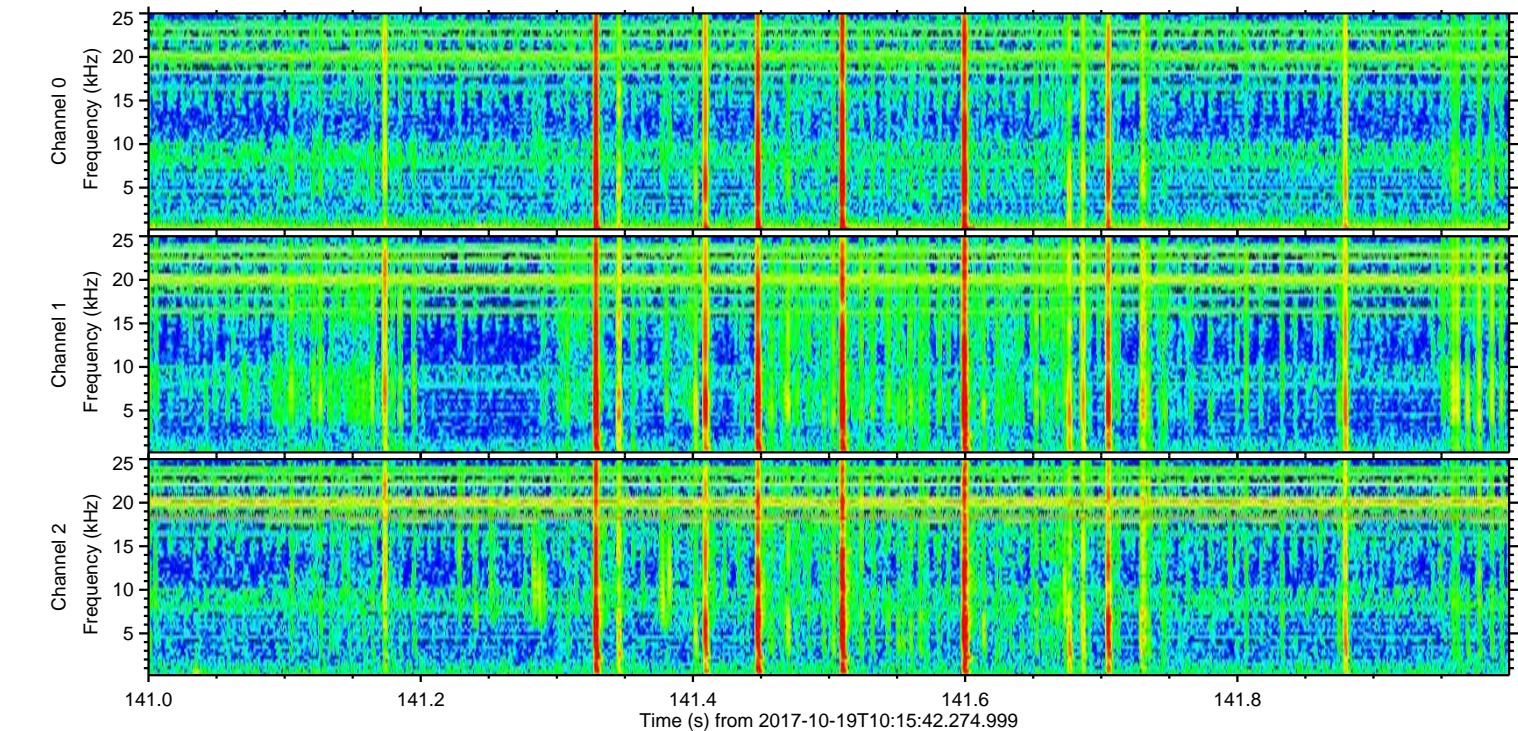
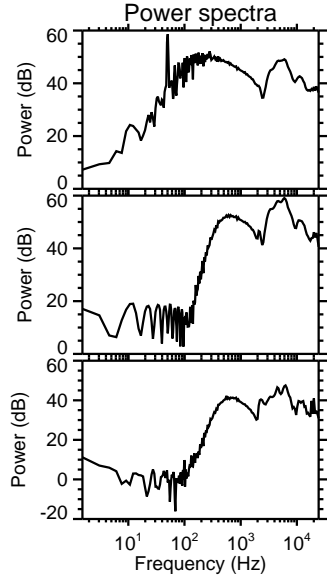
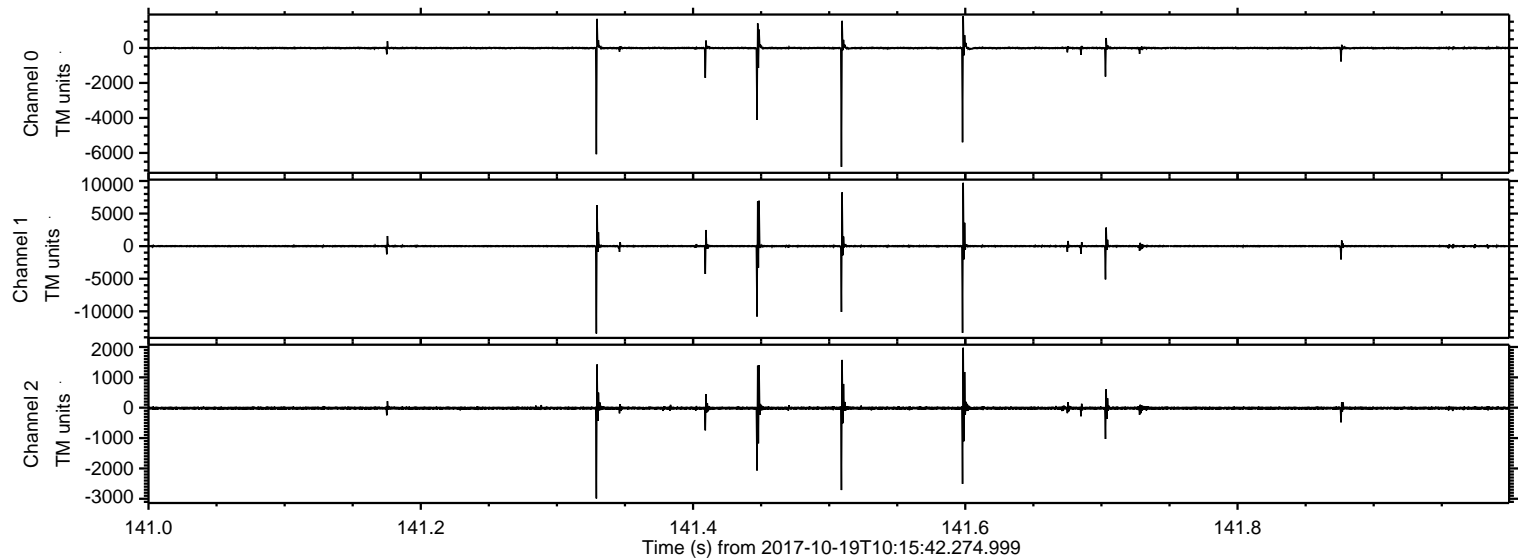
Channel 0
mn: -10652
mx: 3972
 μ : -4.9
 σ : 67.5

Channel 1
mn: -15990
mx: 13288
 μ : -11.9
 σ : 161.3

Channel 2
mn: -4137
mx: 2304
 μ : -14.0
 σ : 41.3

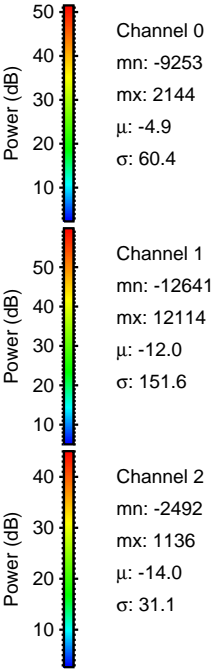
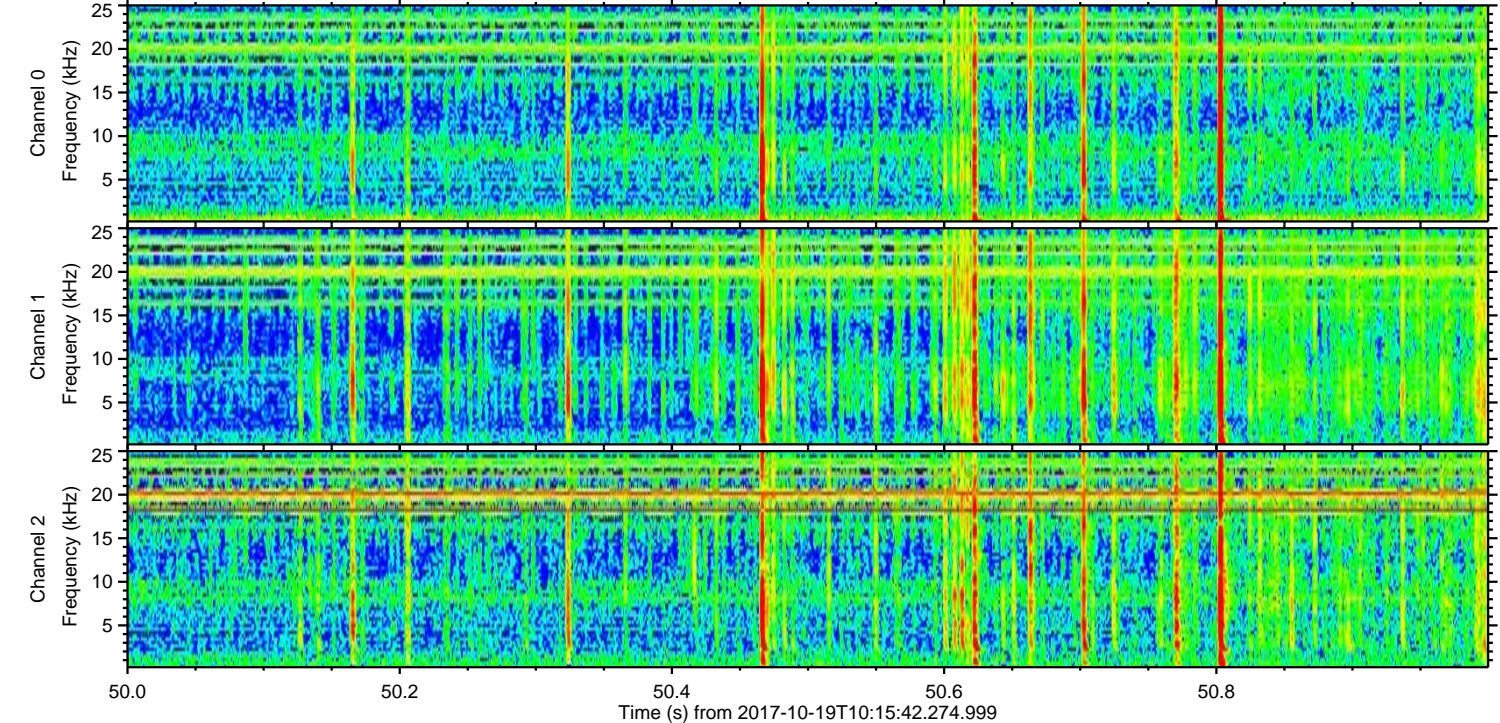
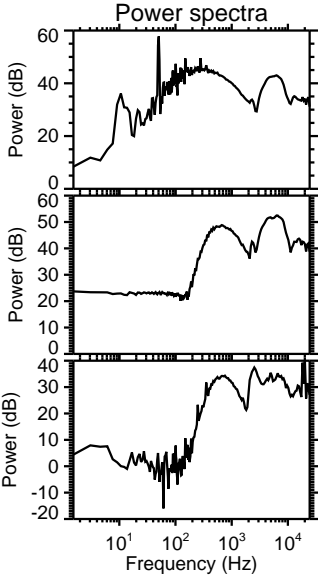
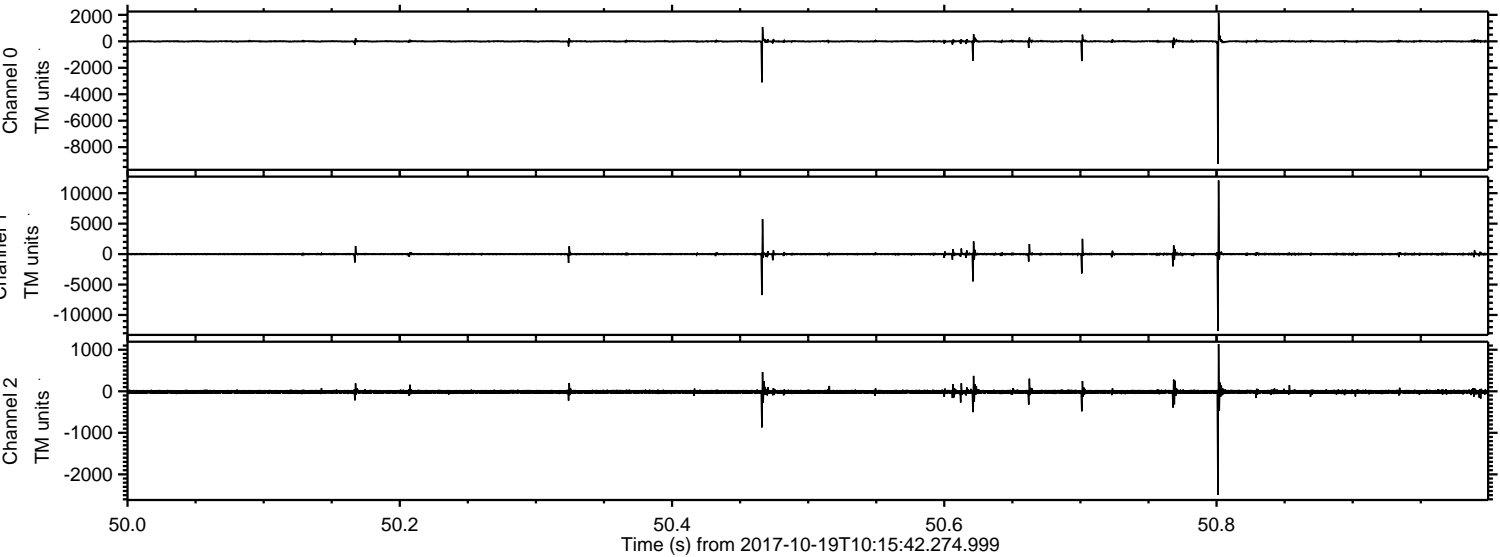
ELMAVAN 3D WAVEFORMS (Measured data sampled at 50 kHz) 51000 packets of 144 samples from 2017-10-19T10:15:42.274.999. Part 142/147

Processed Thu Oct 19 12:23:20 2017 by ELM ver.2012-10-06 from 001__elm20171019_101541__dat00.bin



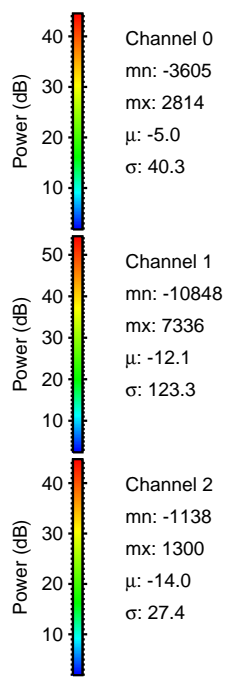
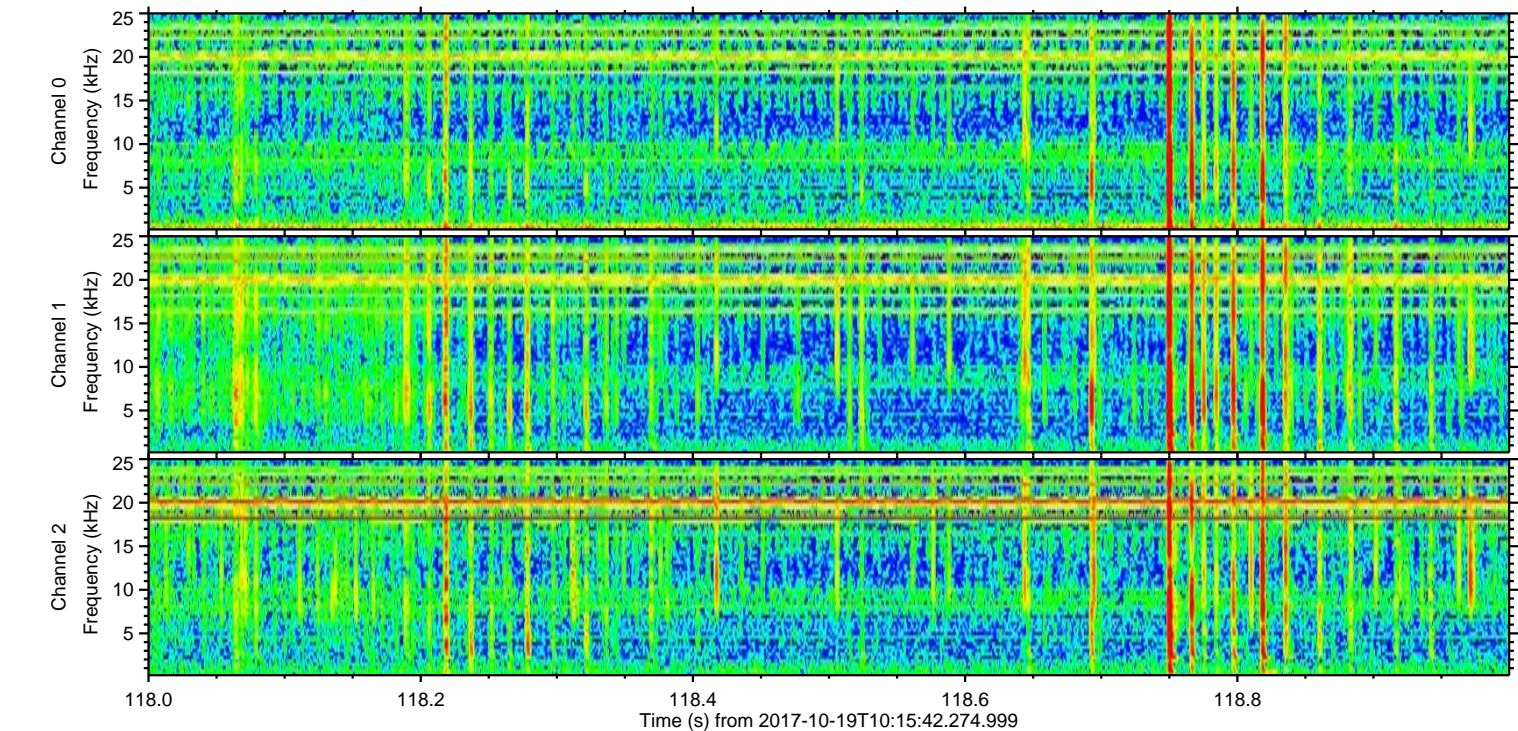
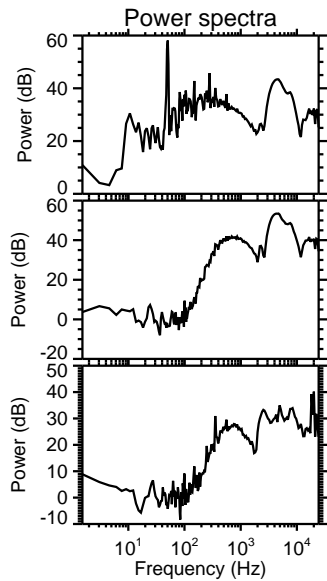
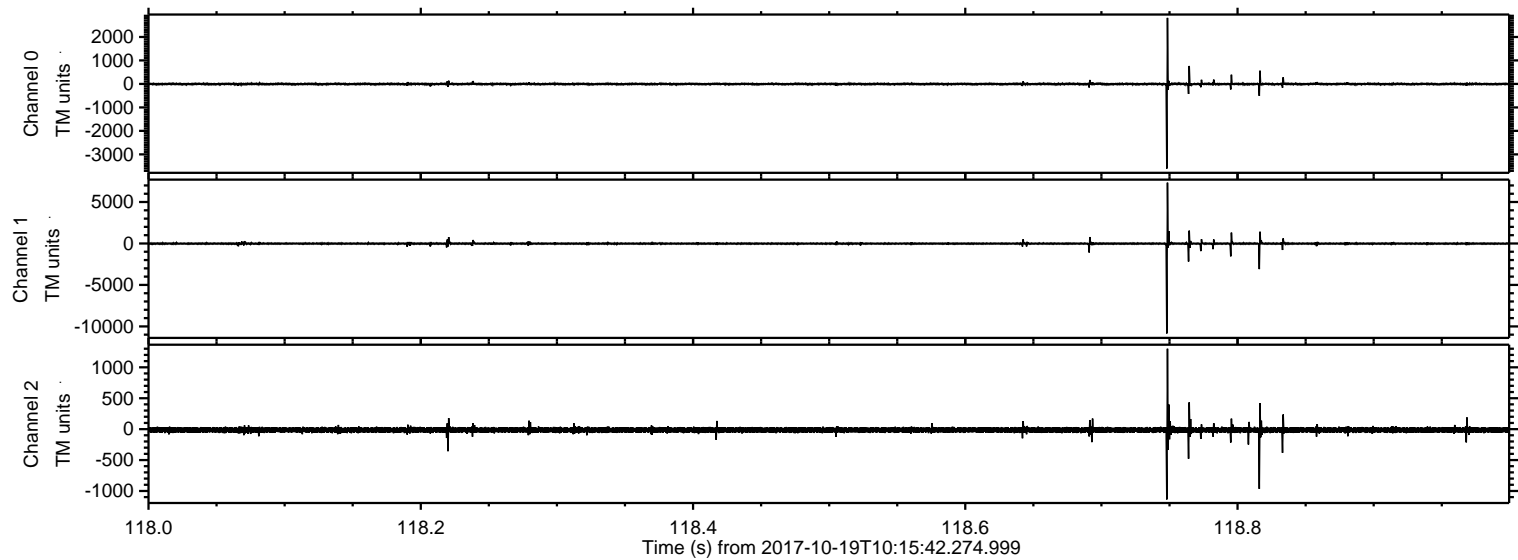
ELMAVAN 3D WAVEFORMS (Measured data sampled at 50 kHz) 51000 packets of 144 samples from 2017-10-19T10:15:42.274.999. Part 51/147

Processed Thu Oct 19 12:23:21 2017 by ELM ver.2012-10-06 from 001__elm20171019_101541__dat00.bin



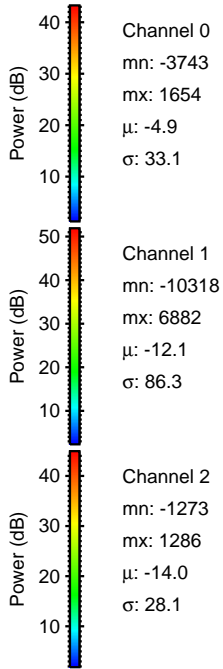
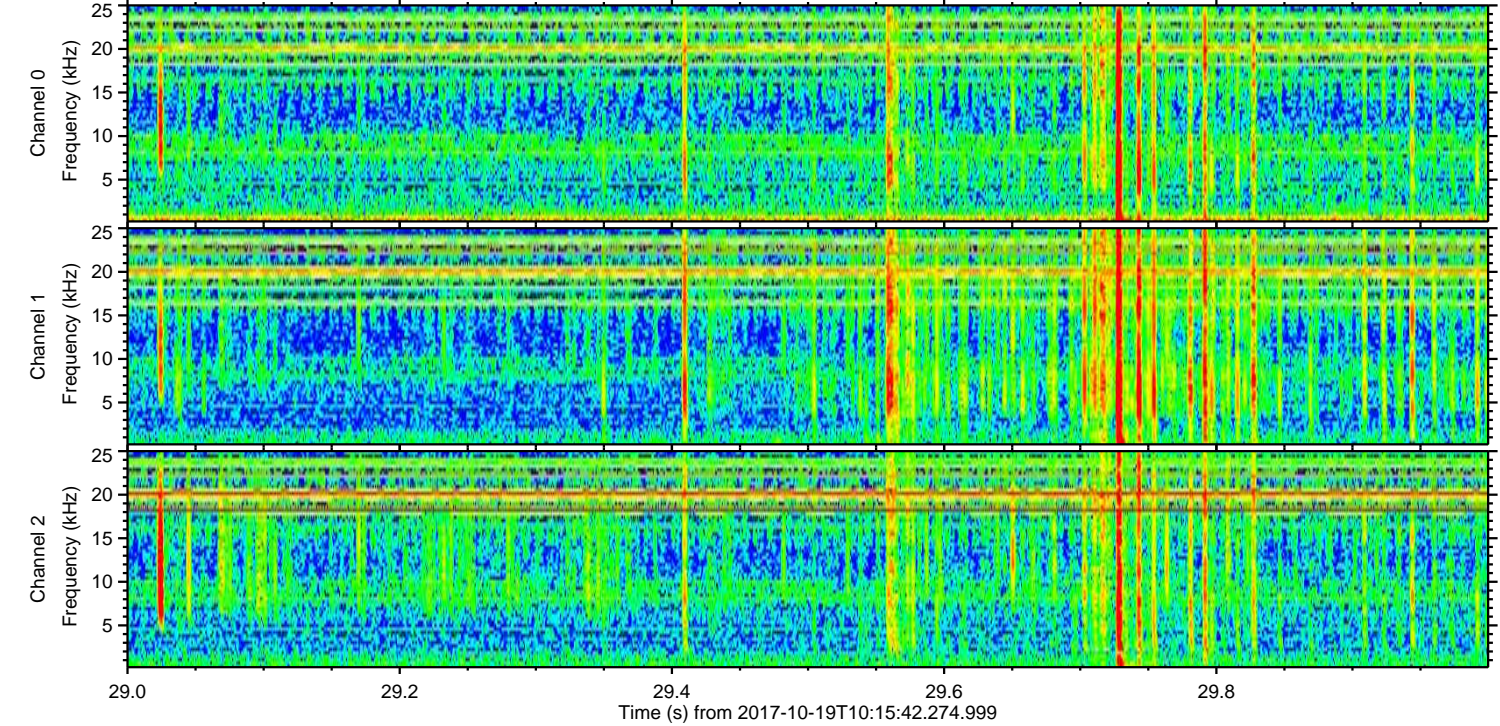
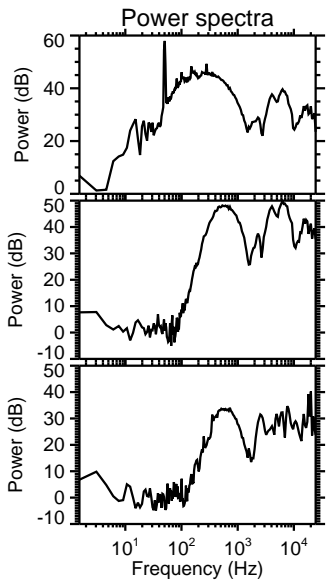
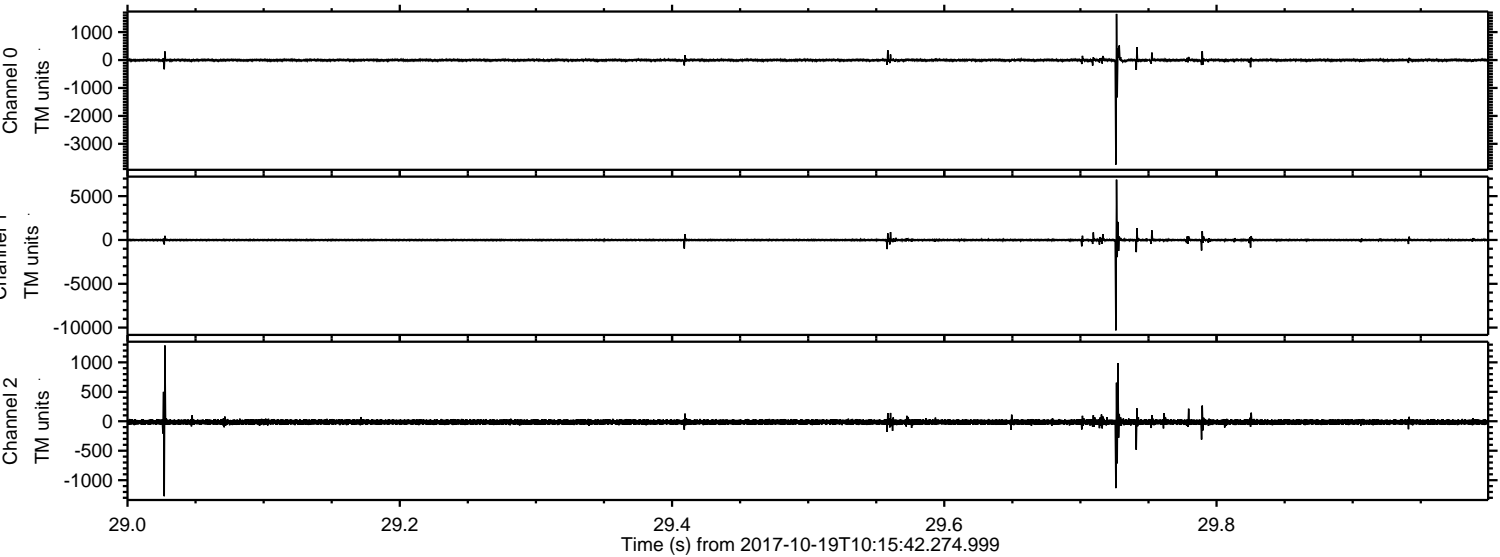
ELMAVAN 3D WAVEFORMS (Measured data sampled at 50 kHz) 51000 packets of 144 samples from 2017-10-19T10:15:42.274.999. Part 119/147

Processed Thu Oct 19 12:23:22 2017 by ELM ver.2012-10-06 from 001__elm20171019_101541__dat00.bin



ELMAVAN 3D WAVEFORMS (Measured data sampled at 50 kHz) 51000 packets of 144 samples from 2017-10-19T10:15:42.274.999. Part 30/147

Processed Thu Oct 19 12:23:23 2017 by ELM ver.2012-10-06 from 001__elm20171019_101541__dat00.bin



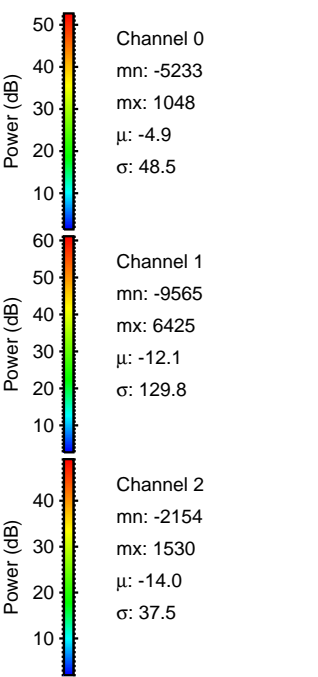
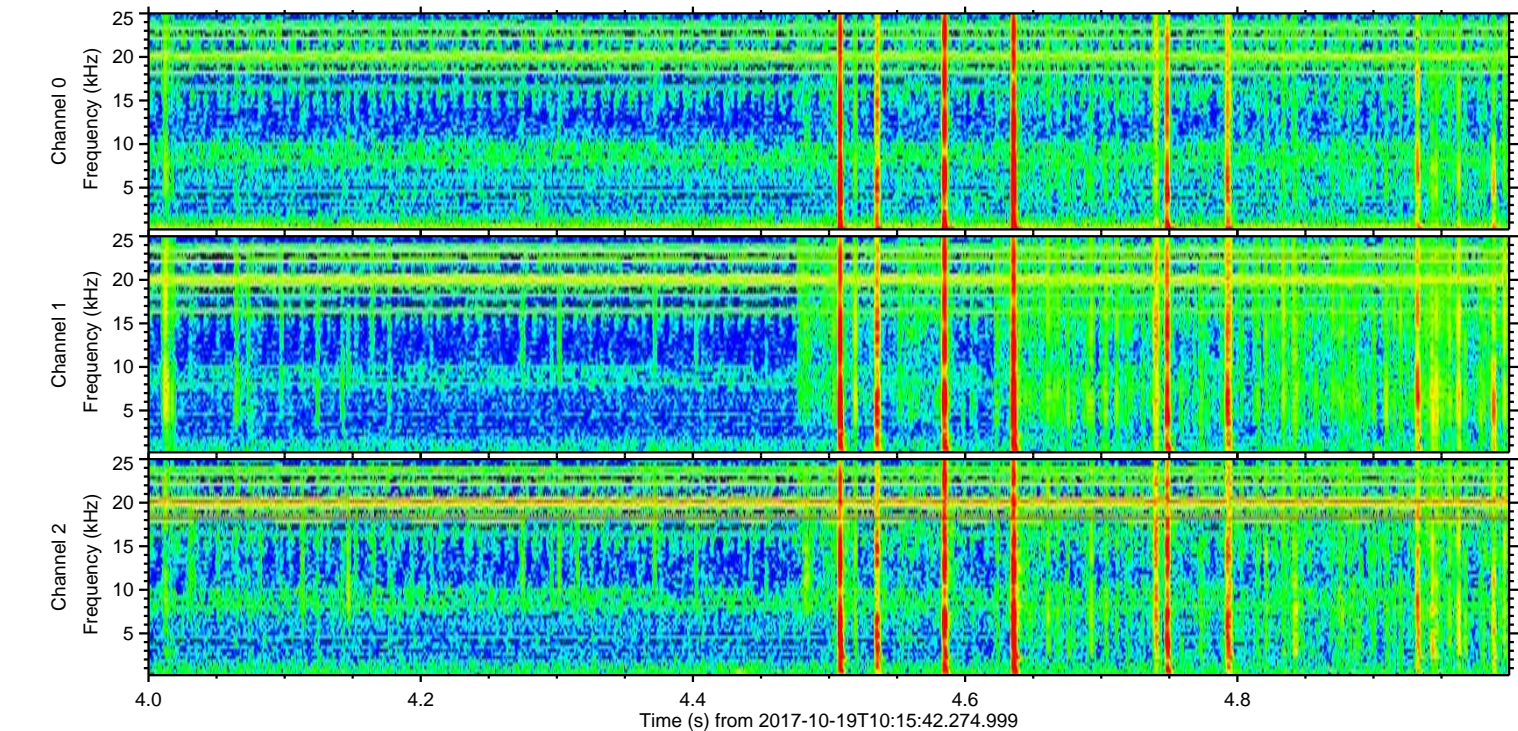
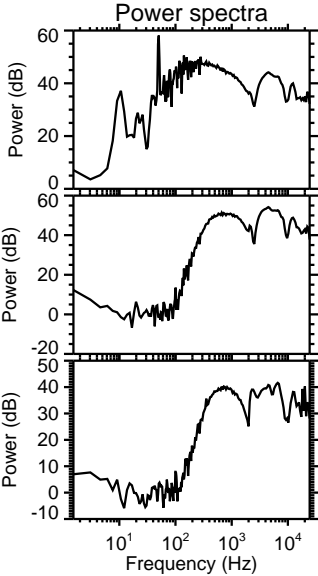
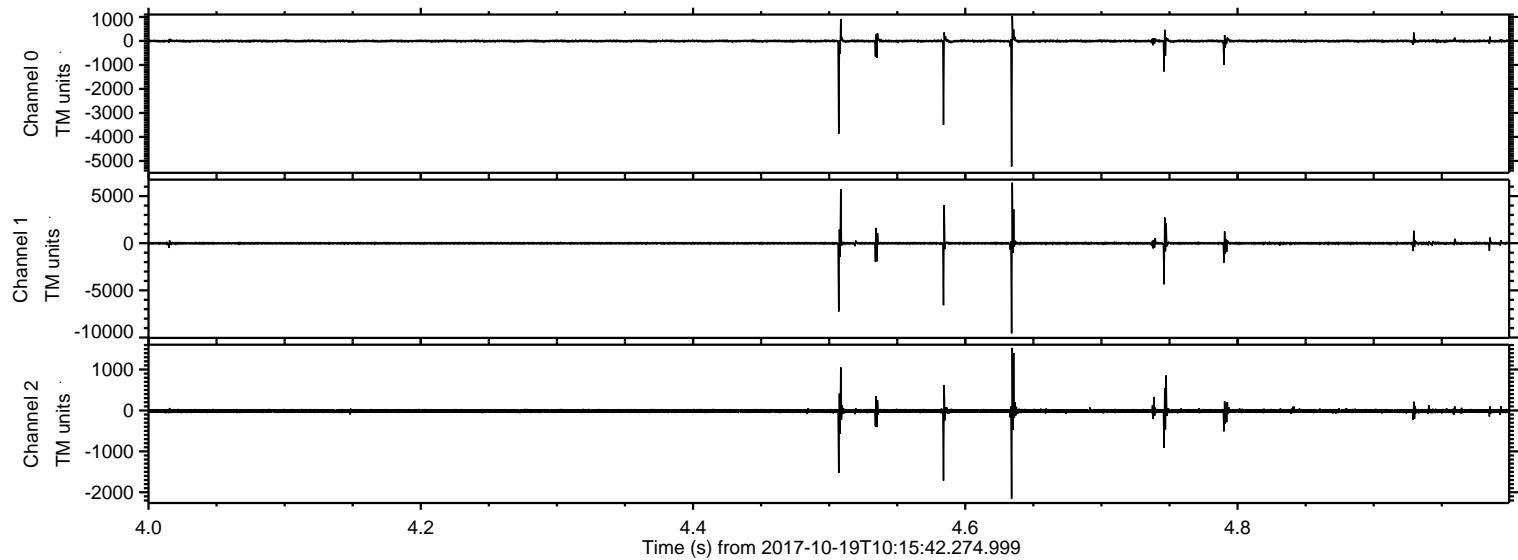
Channel 0
mn: -3743
mx: 1654
 μ : -4.9
 σ : 33.1

Channel 1
mn: -10318
mx: 6882
 μ : -12.1
 σ : 86.3

Channel 2
mn: -1273
mx: 1286
 μ : -14.0
 σ : 28.1

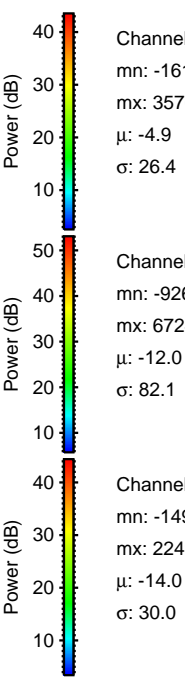
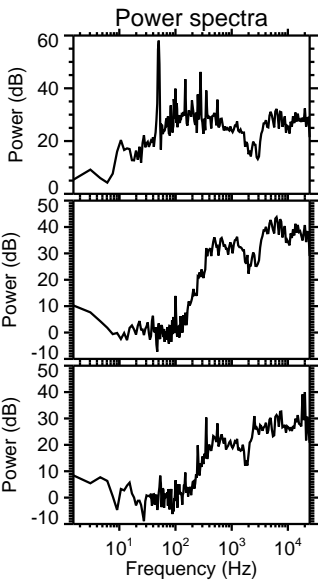
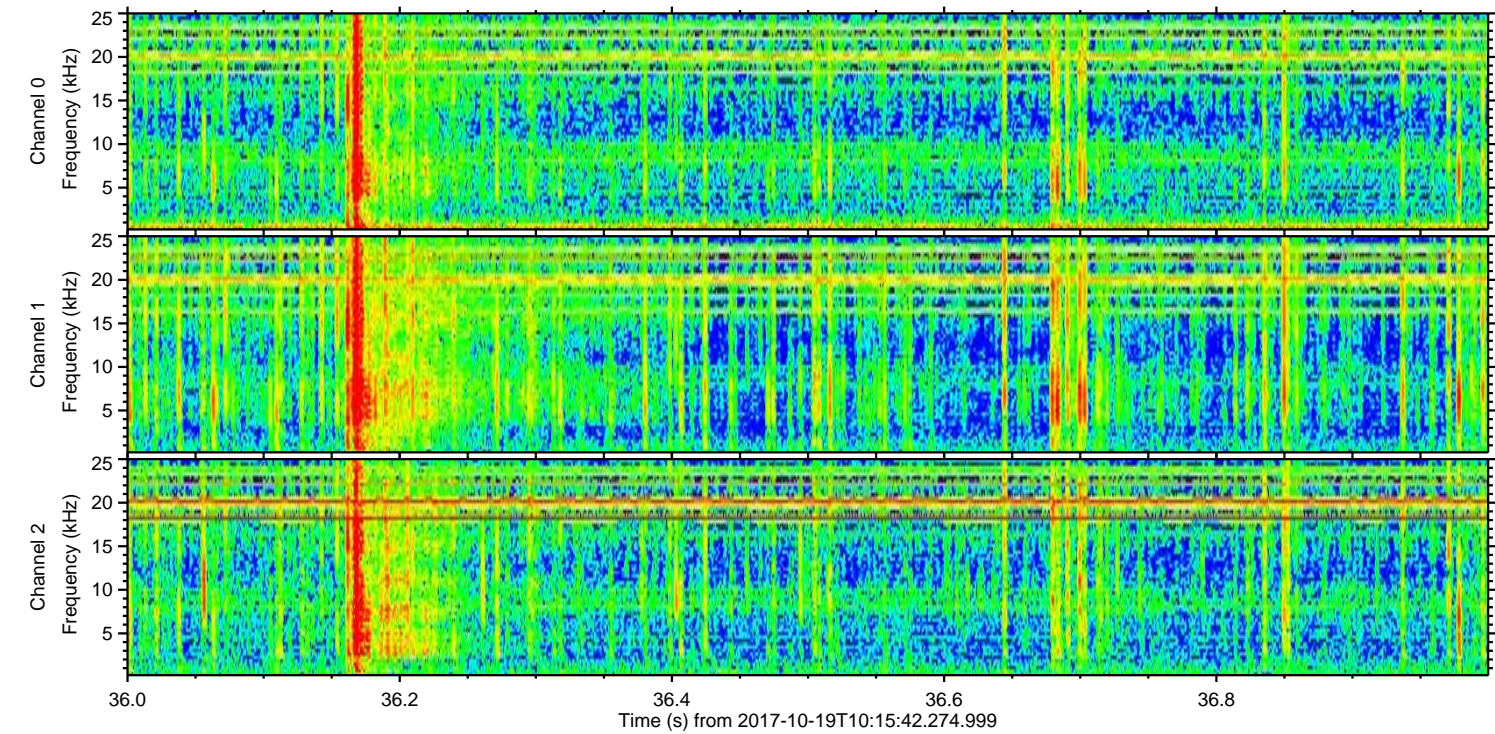
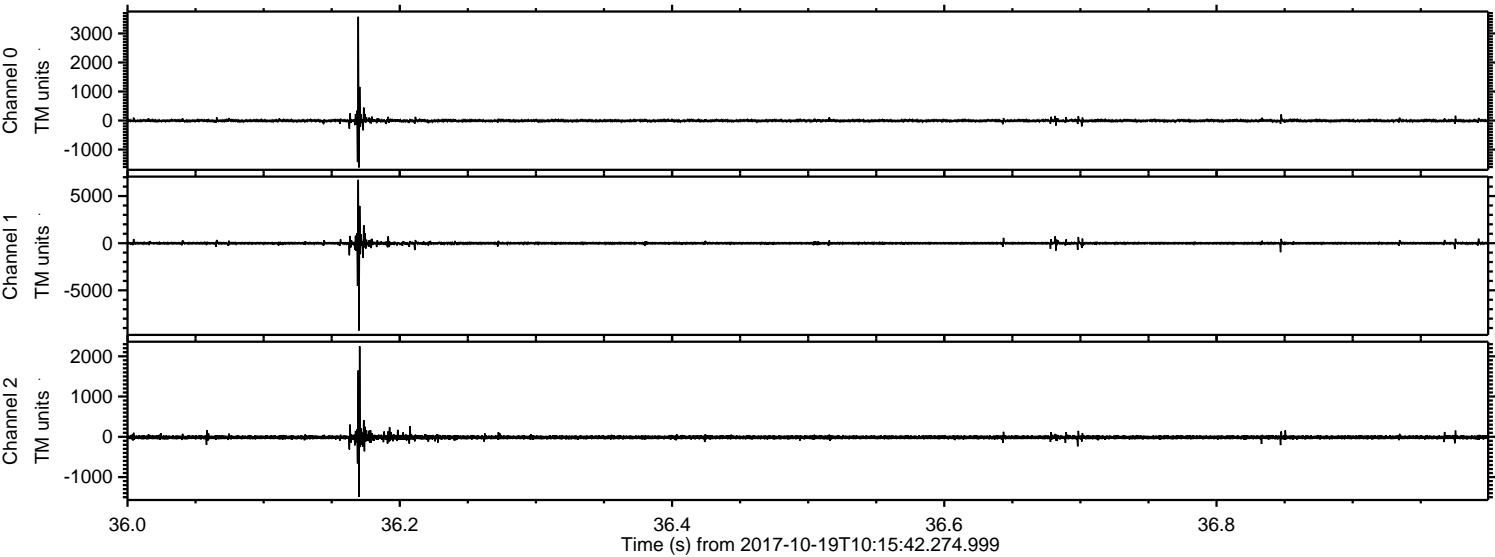
ELMAVAN 3D WAVEFORMS (Measured data sampled at 50 kHz) 51000 packets of 144 samples from 2017-10-19T10:15:42.274.999. Part 5/147

Processed Thu Oct 19 12:23:23 2017 by ELM ver.2012-10-06 from 001__elm20171019_101541__dat00.bin



ELMAVAN 3D WAVEFORMS (Measured data sampled at 50 kHz) 51000 packets of 144 samples from 2017-10-19T10:15:42.274.999. Part 37/147

Processed Thu Oct 19 12:23:24 2017 by ELM ver.2012-10-06 from 001__elm20171019_101541__dat00.bin

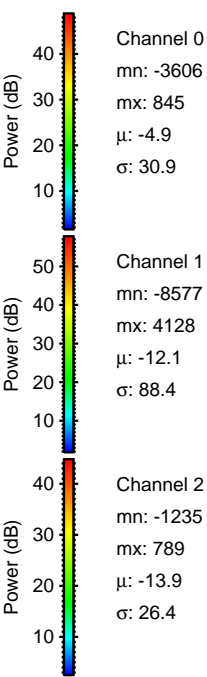
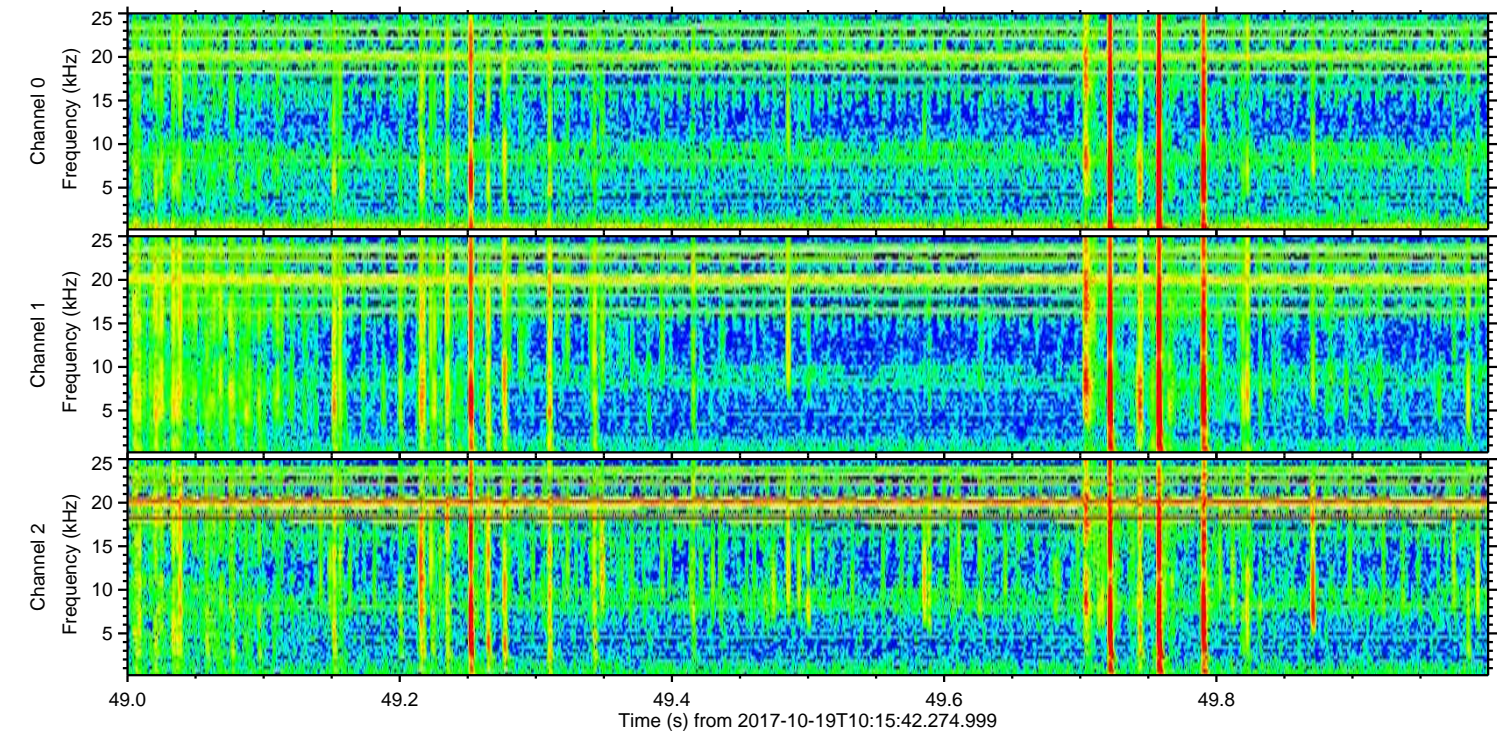
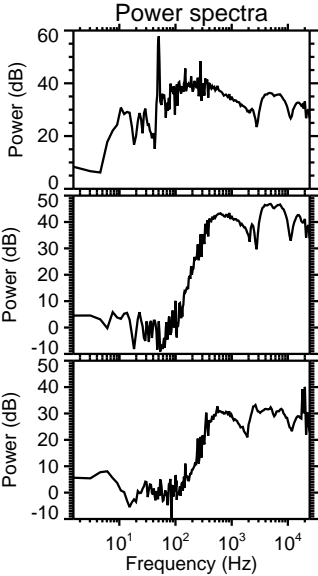
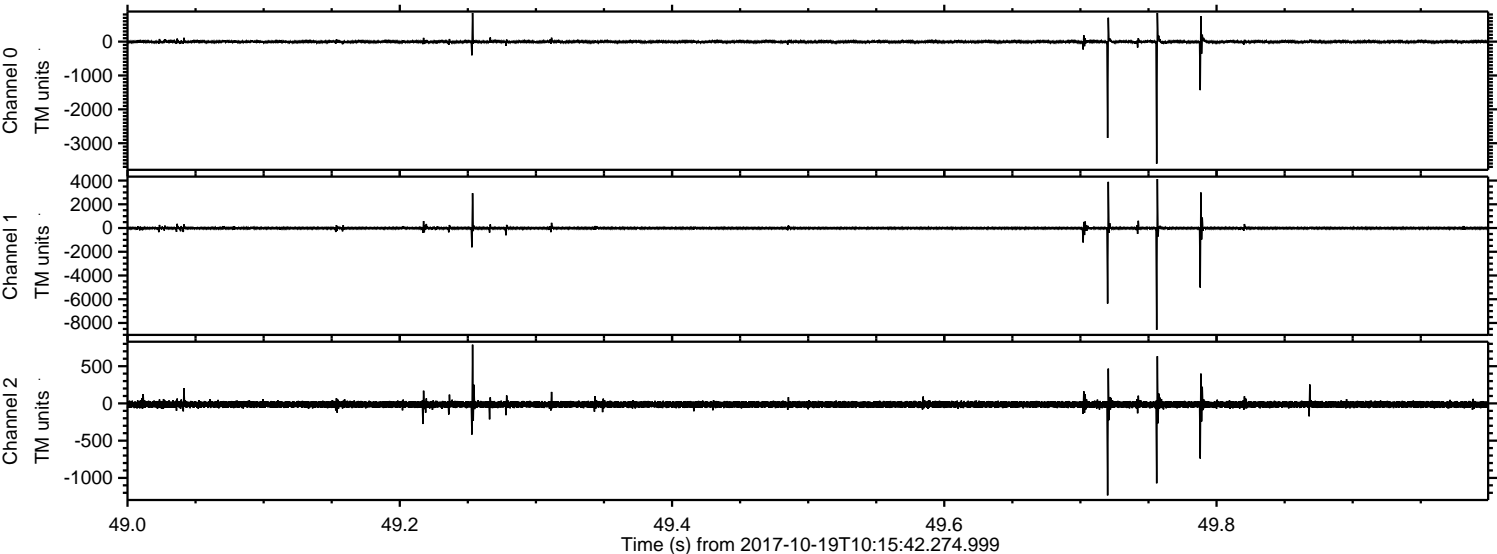


Channel 0
mn: -1616
mx: 3576
 μ : -4.9
 σ : 26.4

Channel 1
mn: -9264
mx: 6724
 μ : -12.0
 σ : 82.1

Channel 2
mn: -1495
mx: 2249
 μ : -14.0
 σ : 30.0

Processed Thu Oct 19 12:23:25 2017 by ELM ver.2012-10-06 from 001__elm20171019_101541__dat00.bin



Processed Thu Oct 19 12:23:26 2017 by ELM ver.2012-10-06 from 001__elm20171019_101541__dat00.bin

