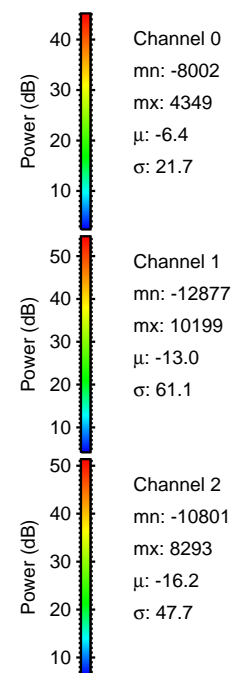
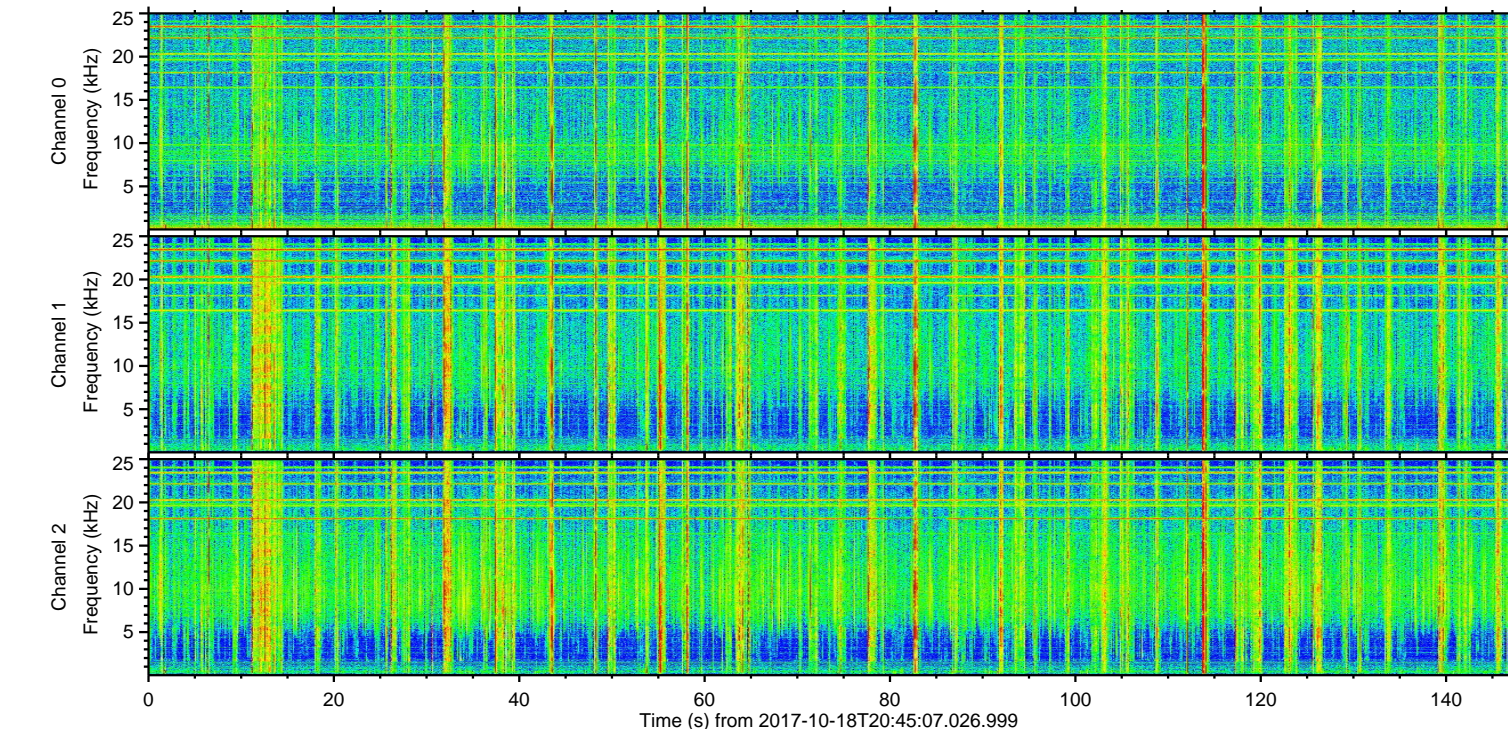
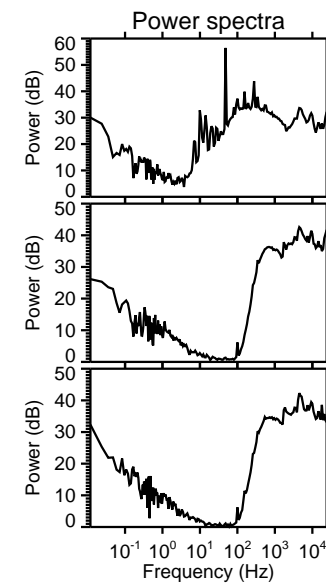
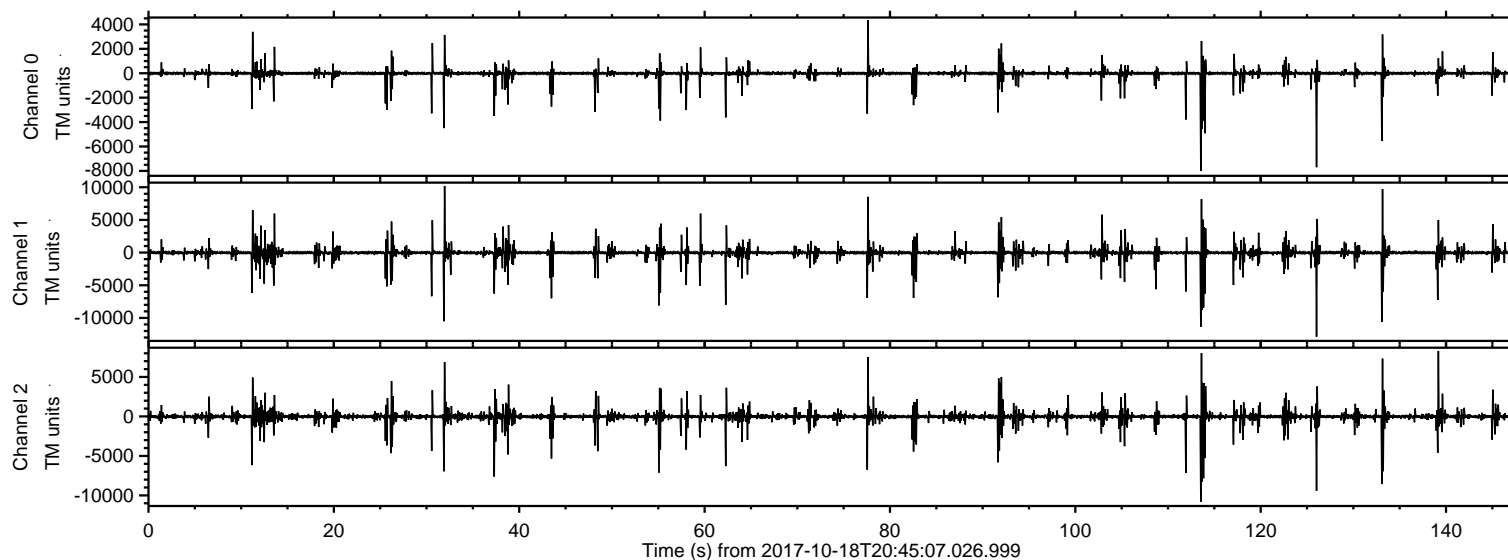


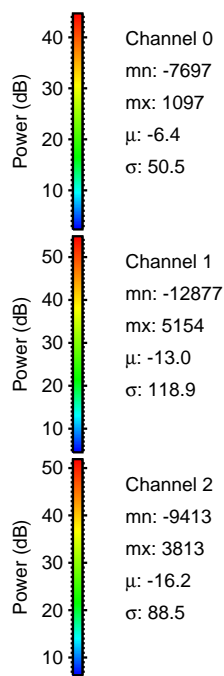
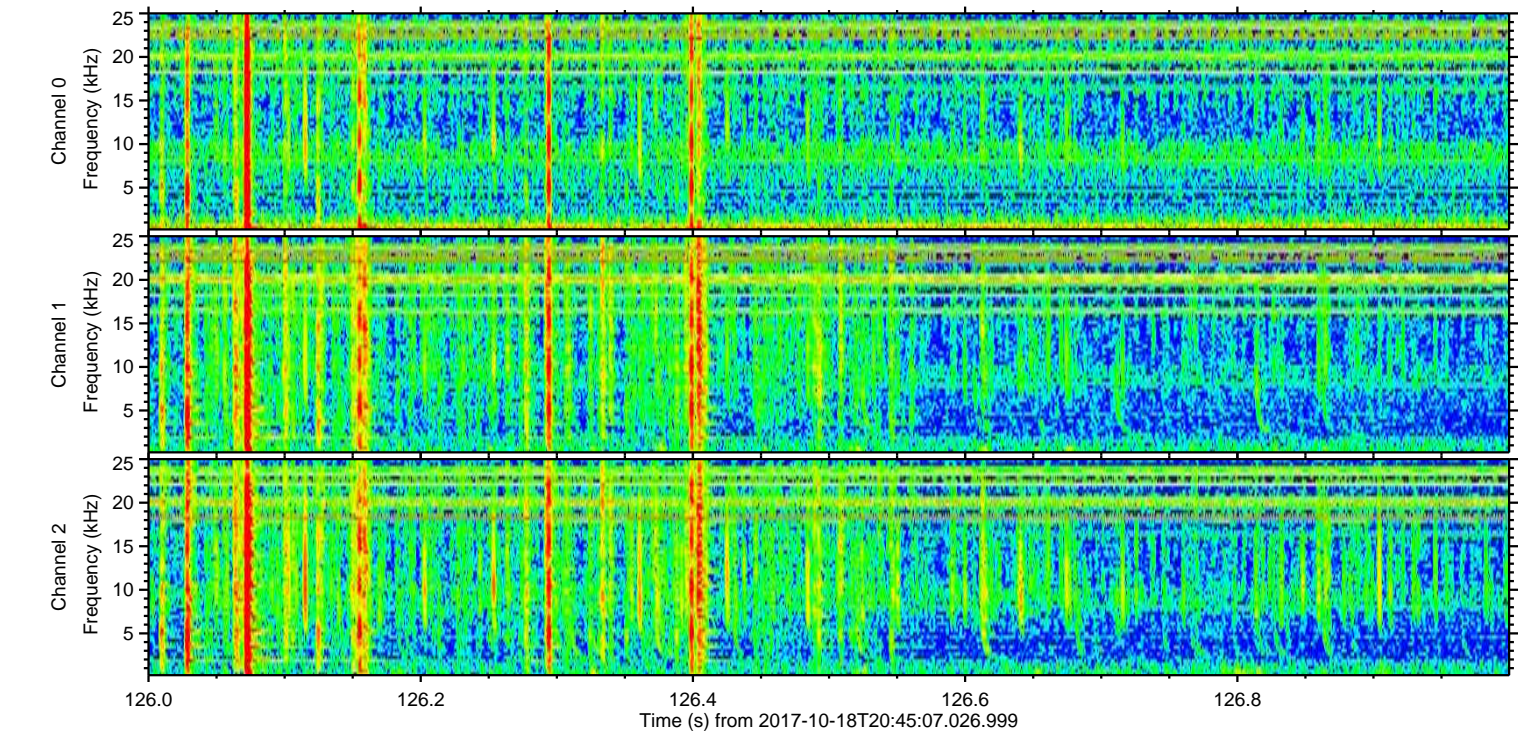
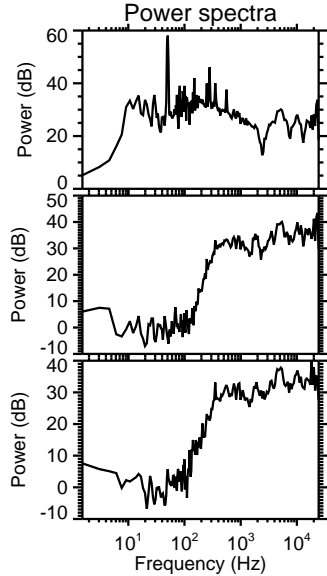
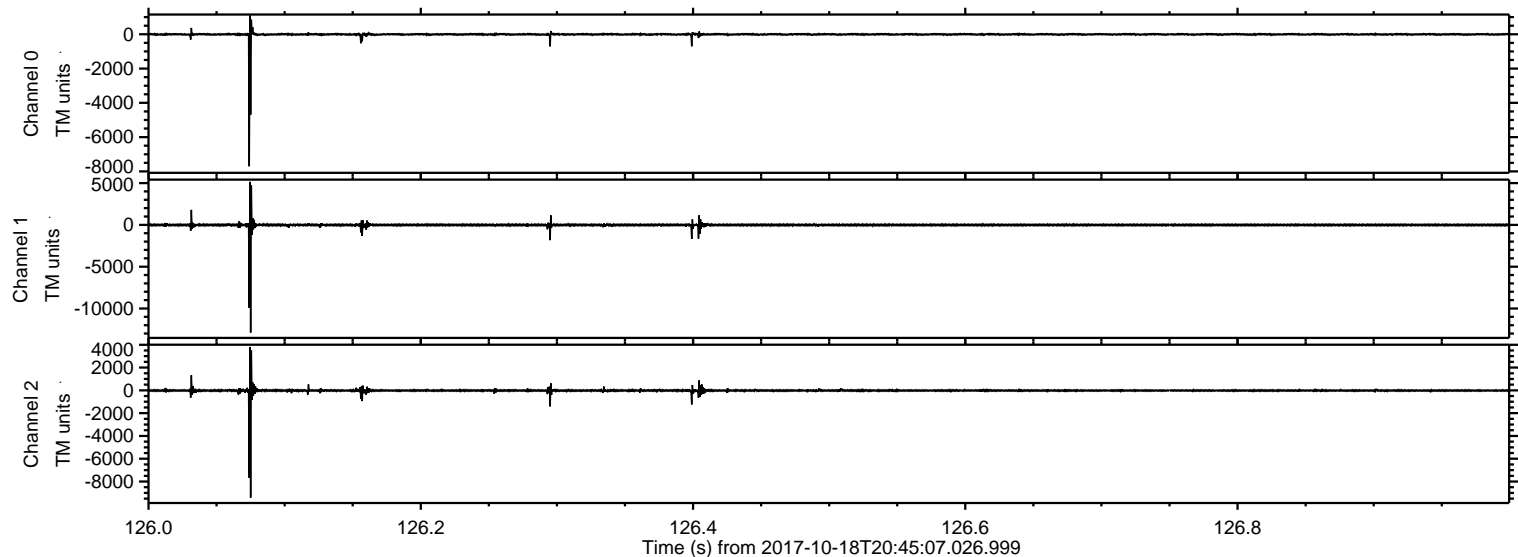
# ELMAVAN 3D WAVEFORMS (Measured data sampled at 50 kHz) 51000 packets of 144 samples from 2017-10-18T20:45:07.026.999.

Processed Wed Oct 18 22:52:36 2017 by ELM ver.2012-10-06 from 001\_\_elm20171018\_204506\_\_dat00.bin



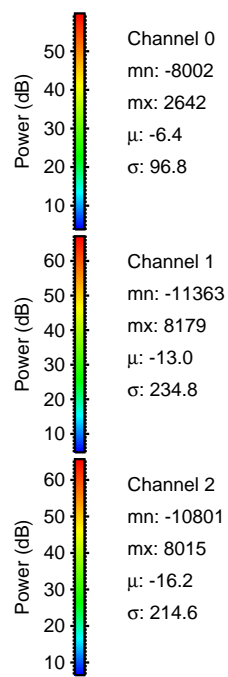
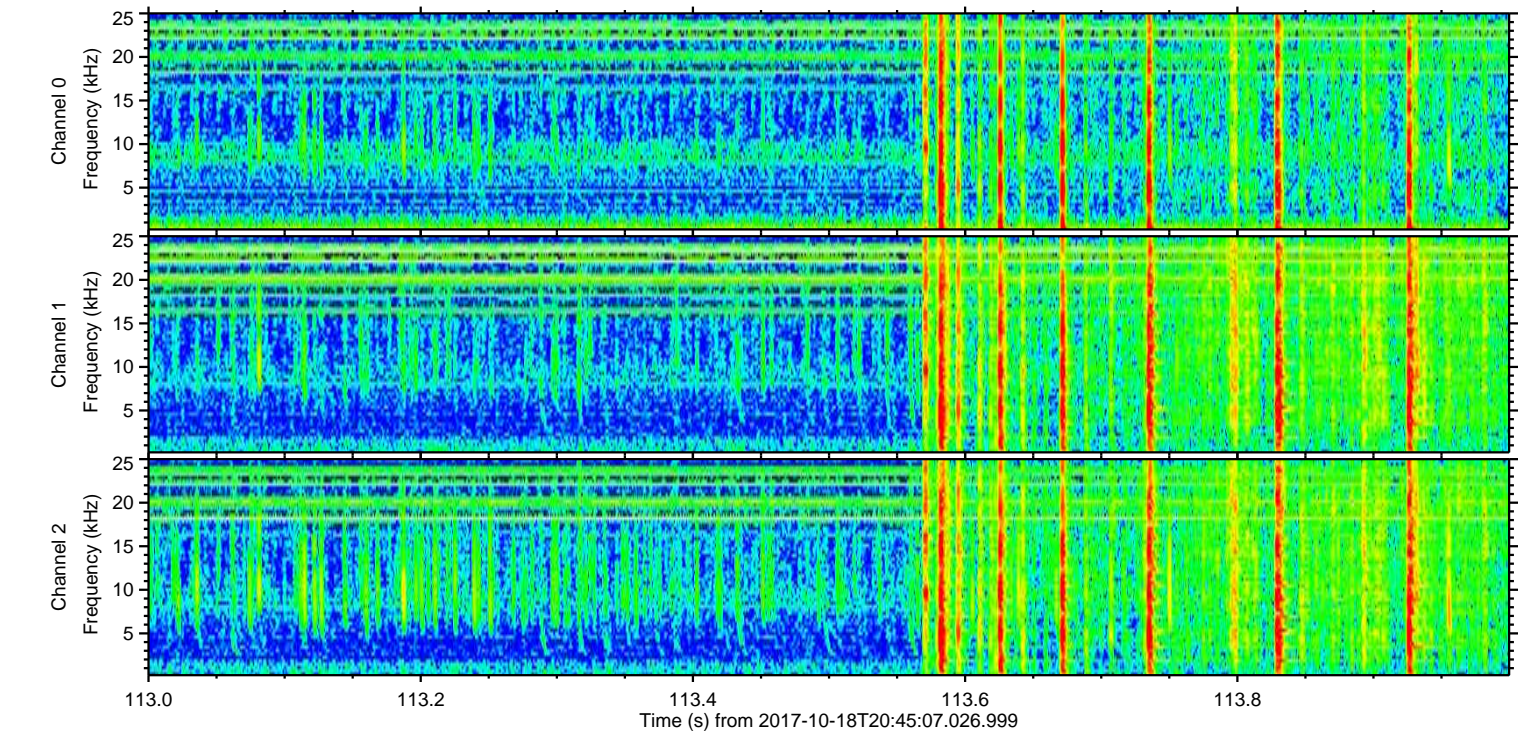
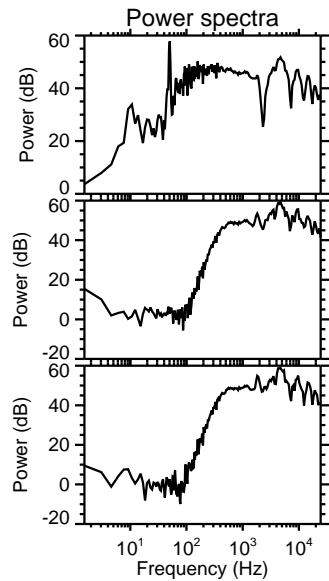
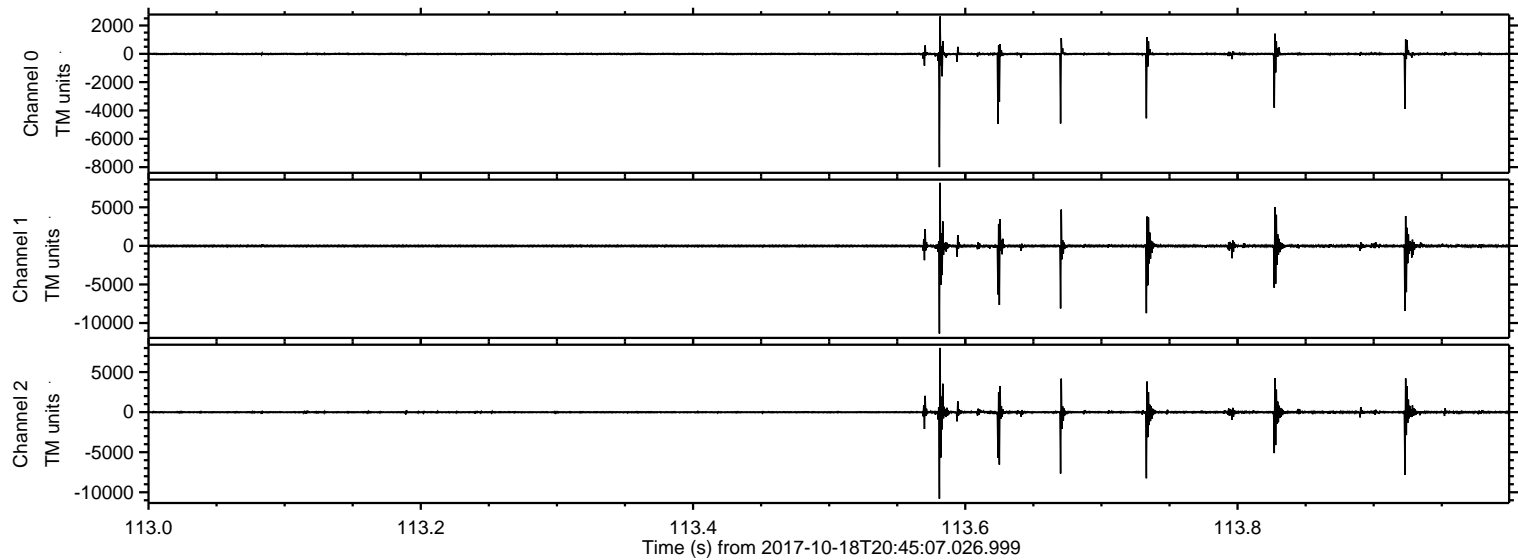
ELMAVAN 3D WAVEFORMS (Measured data sampled at 50 kHz) 51000 packets of 144 samples from 2017-10-18T20:45:07.026.999. Part 127/147

Processed Wed Oct 18 22:52:44 2017 by ELM ver.2012-10-06 from 001\_\_elm20171018\_204506\_\_dat00.bin



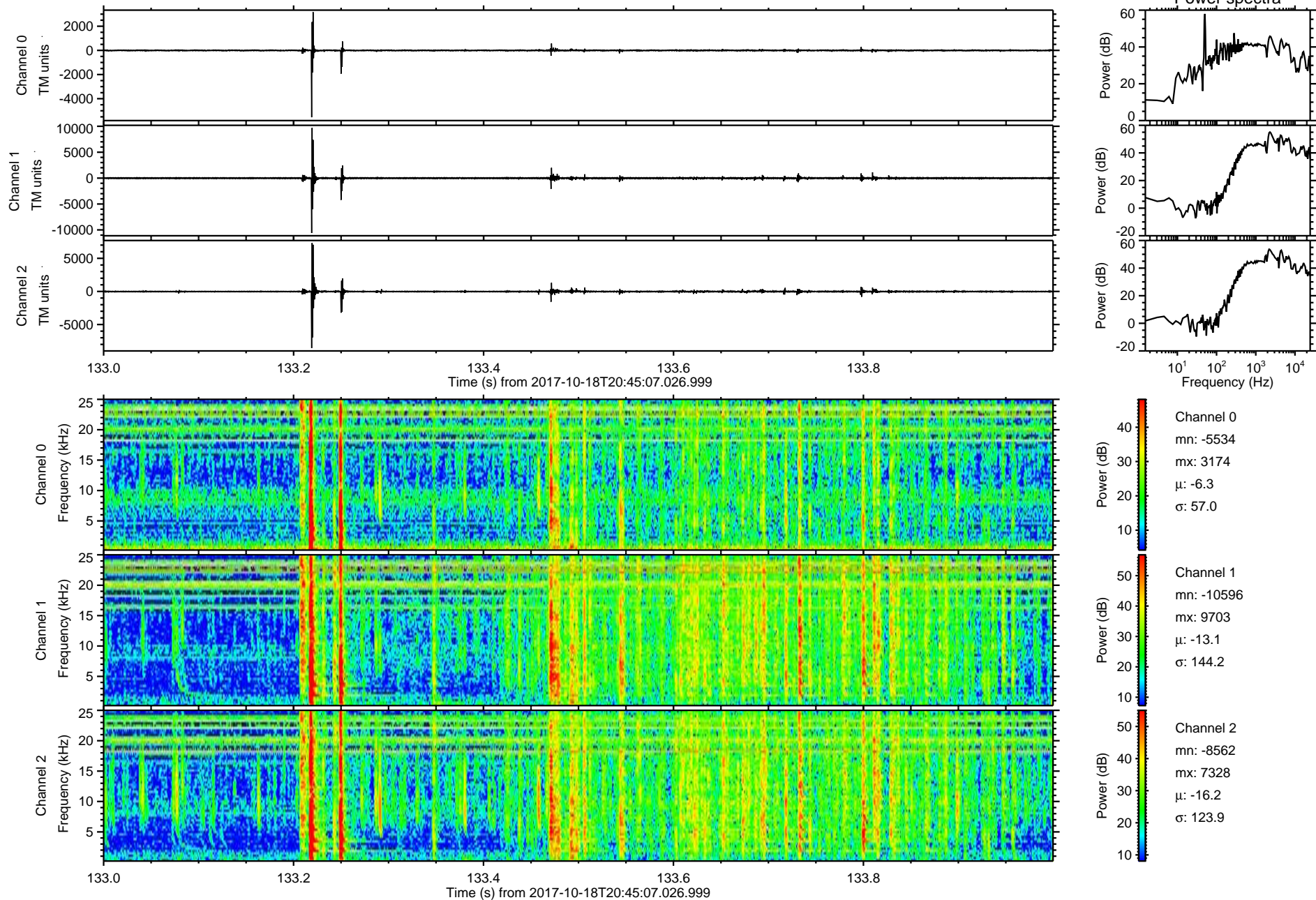
ELMAVAN 3D WAVEFORMS (Measured data sampled at 50 kHz) 51000 packets of 144 samples from 2017-10-18T20:45:07.026.999. Part 114/147

Processed Wed Oct 18 22:52:45 2017 by ELM ver.2012-10-06 from 001\_\_elm20171018\_204506\_\_dat00.bin

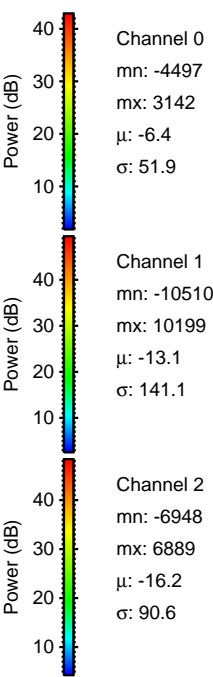
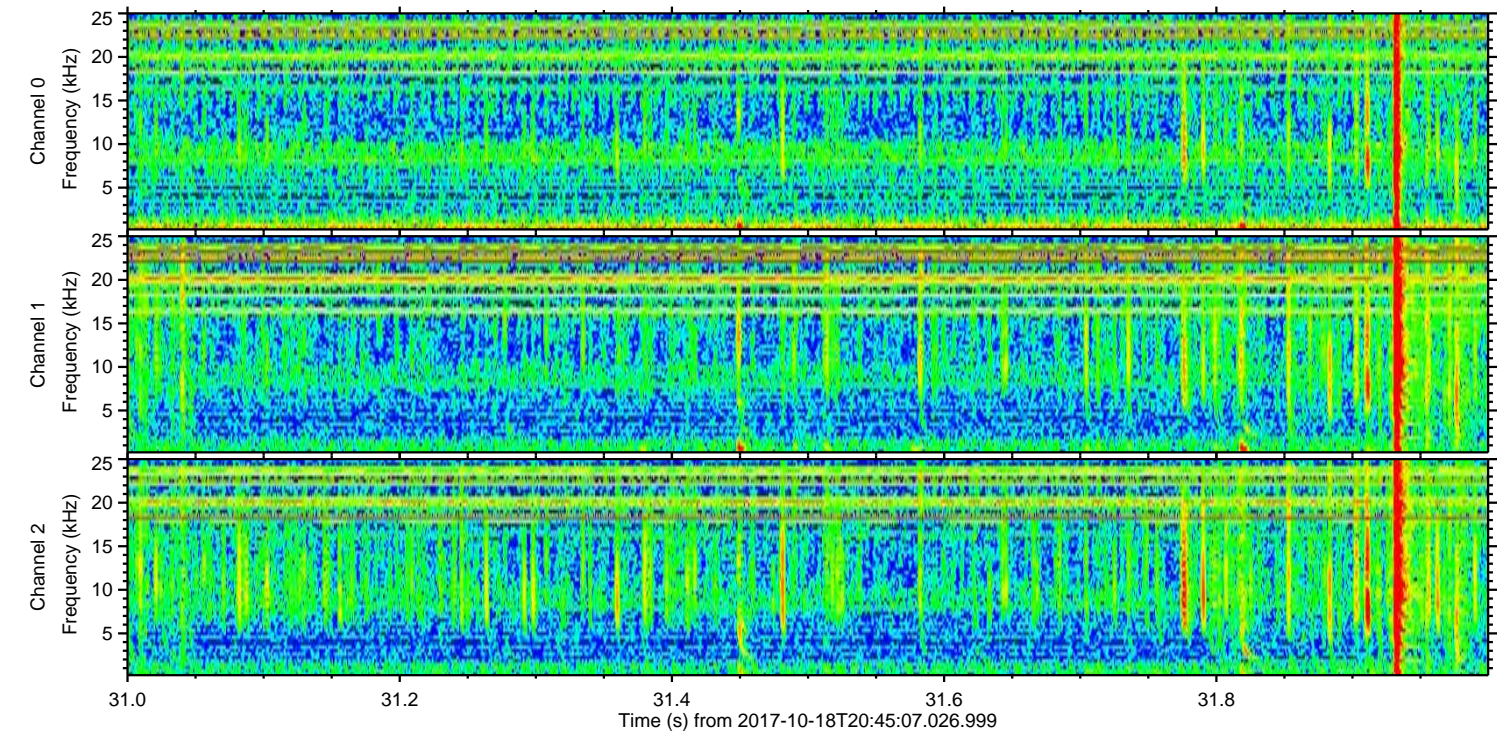
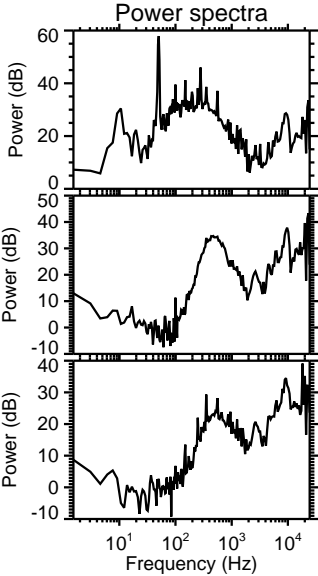
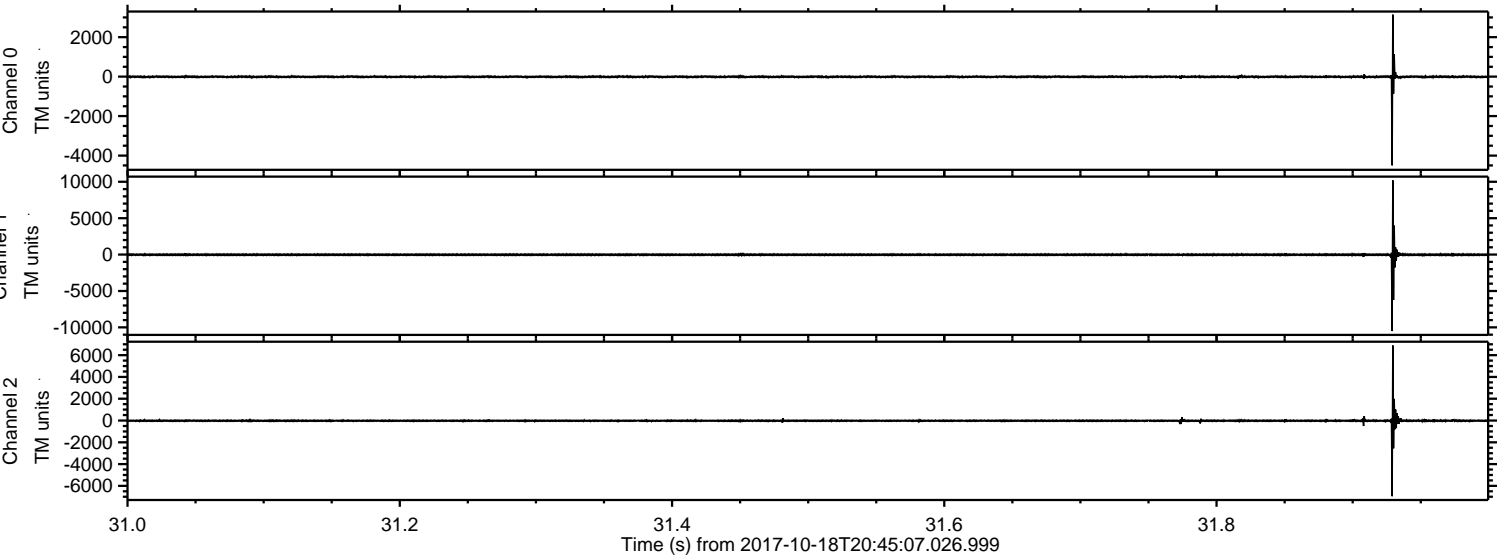


ELMAVAN 3D WAVEFORMS (Measured data sampled at 50 kHz) 51000 packets of 144 samples from 2017-10-18T20:45:07.026.999. Part 134/147

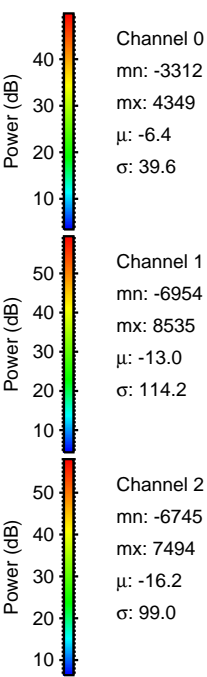
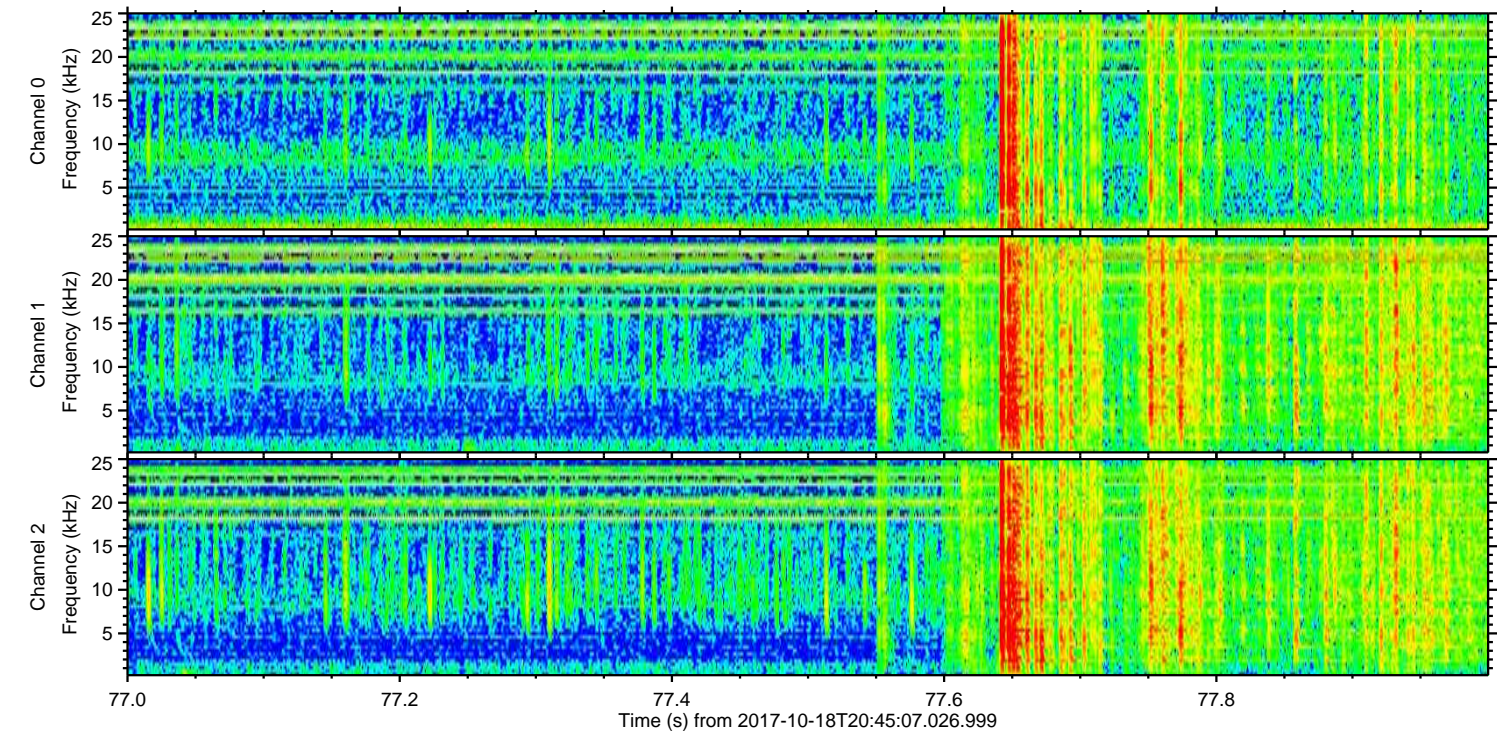
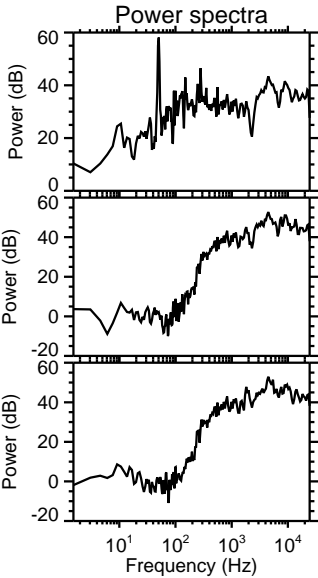
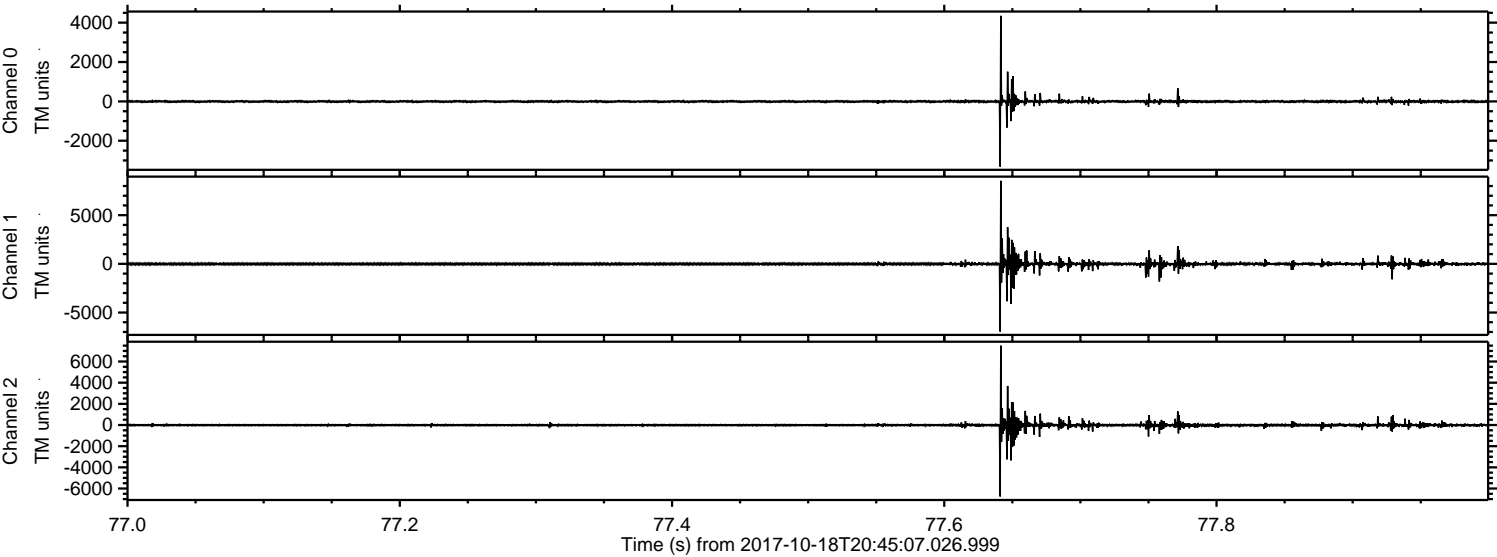
Processed Wed Oct 18 22:52:45 2017 by ELM ver.2012-10-06 from 001\_\_elm20171018\_204506\_\_dat00.bin



Processed Wed Oct 18 22:52:46 2017 by ELM ver.2012-10-06 from 001\_\_elm20171018\_204506\_\_dat00.bin

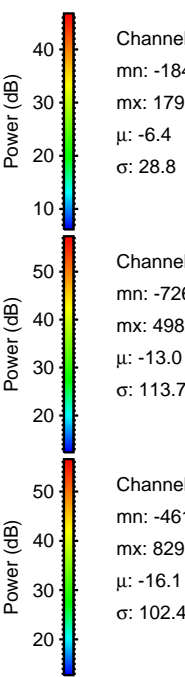
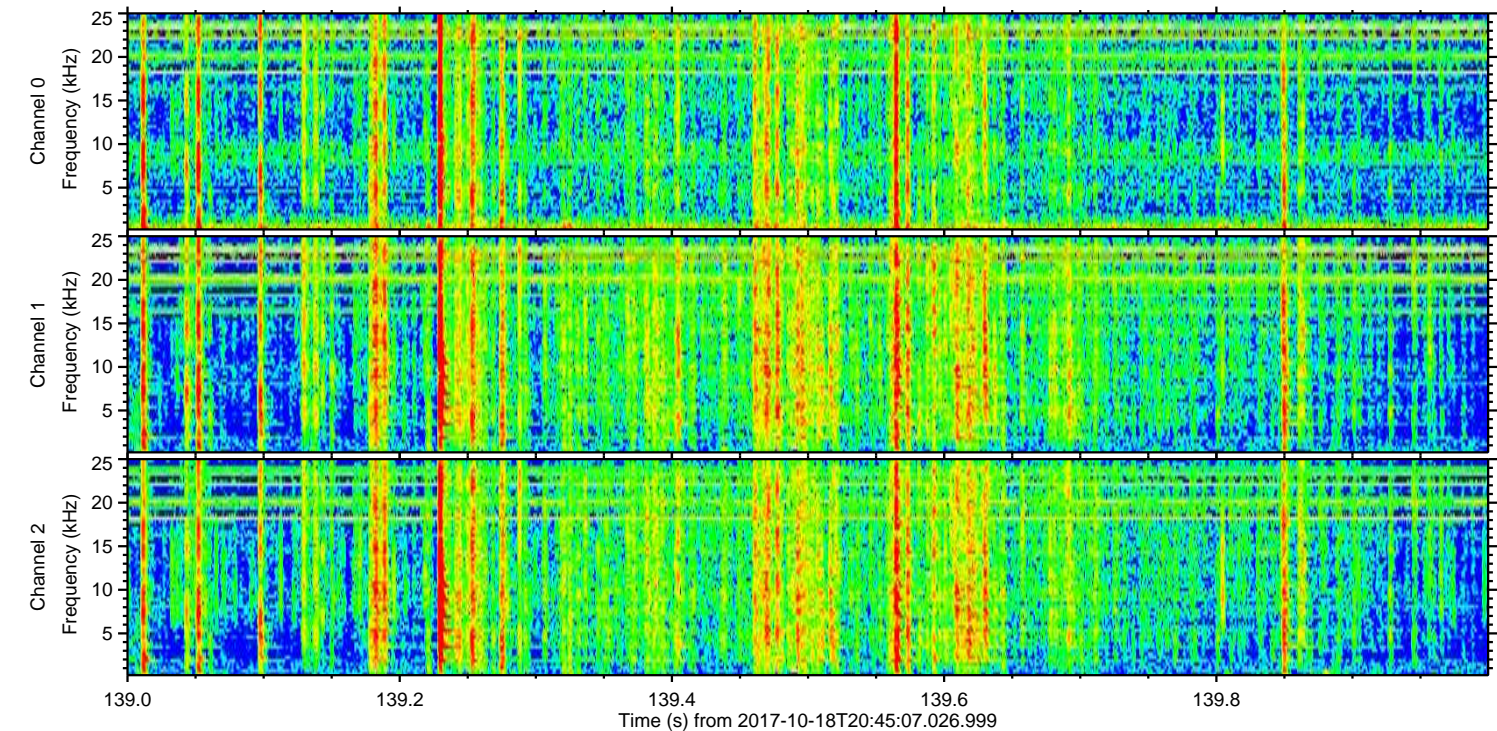
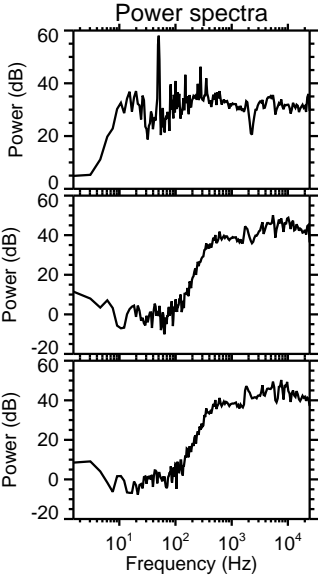
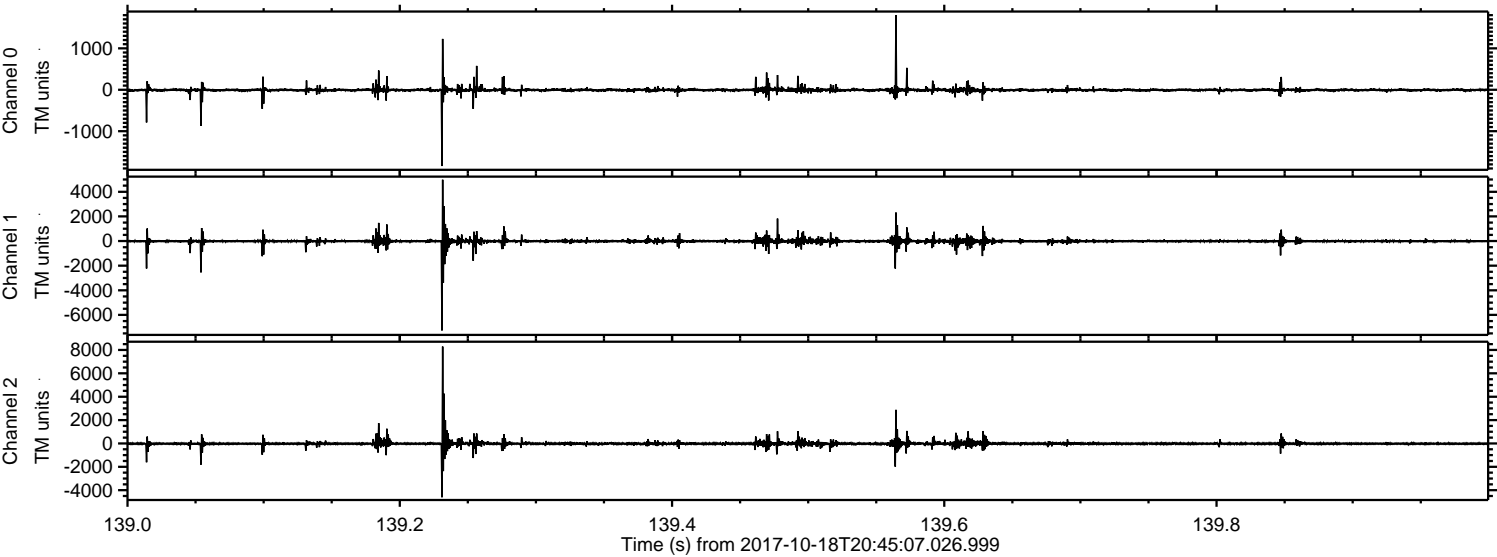


Processed Wed Oct 18 22:52:47 2017 by ELM ver.2012-10-06 from 001\_\_elm20171018\_204506\_\_dat00.bin



ELMAVAN 3D WAVEFORMS (Measured data sampled at 50 kHz) 51000 packets of 144 samples from 2017-10-18T20:45:07.026.999. Part 140/147

Processed Wed Oct 18 22:52:48 2017 by ELM ver.2012-10-06 from 001\_\_elm20171018\_204506\_\_dat00.bin

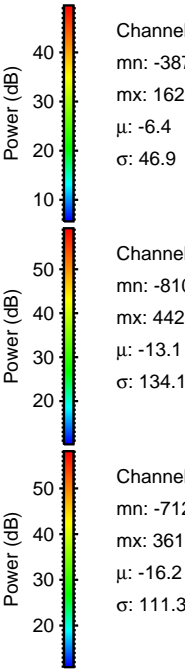
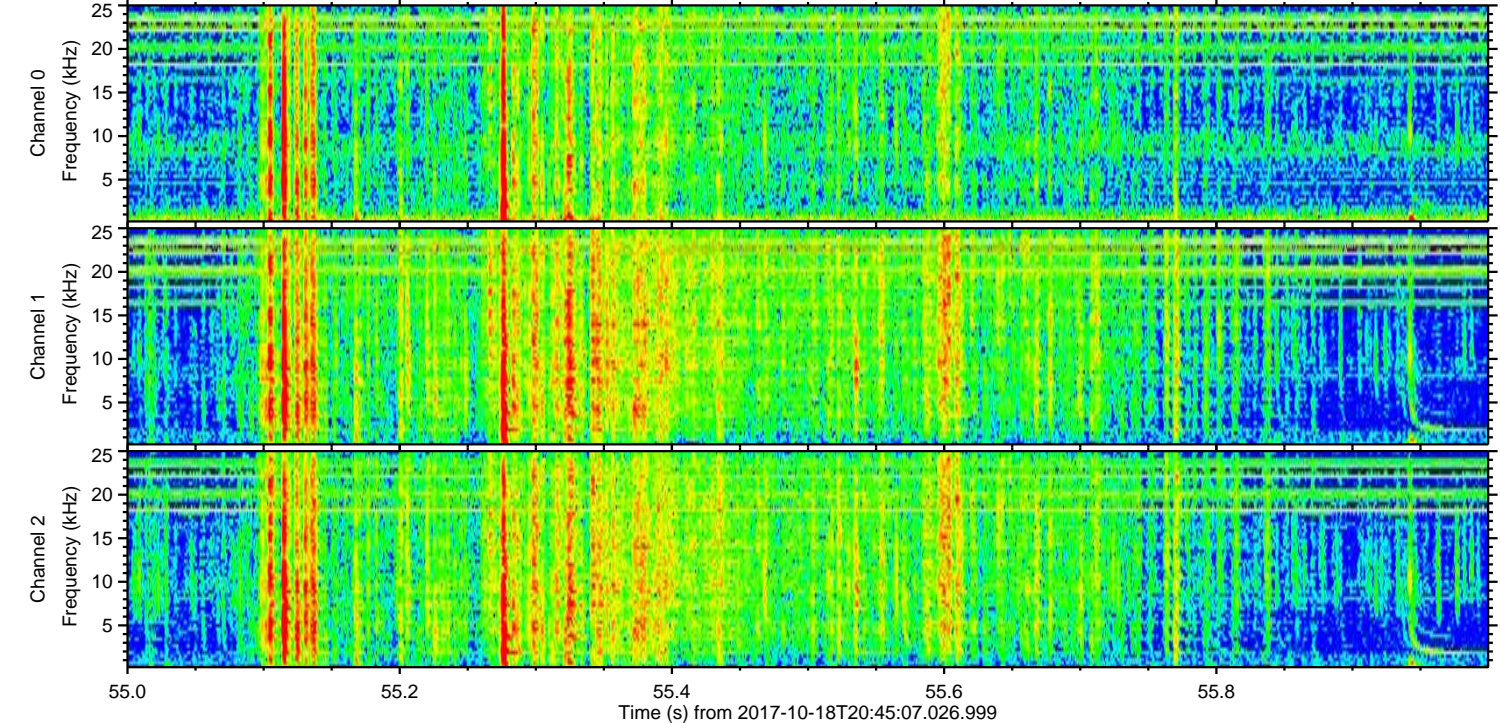
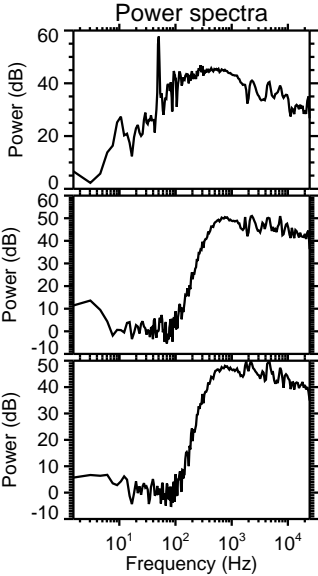
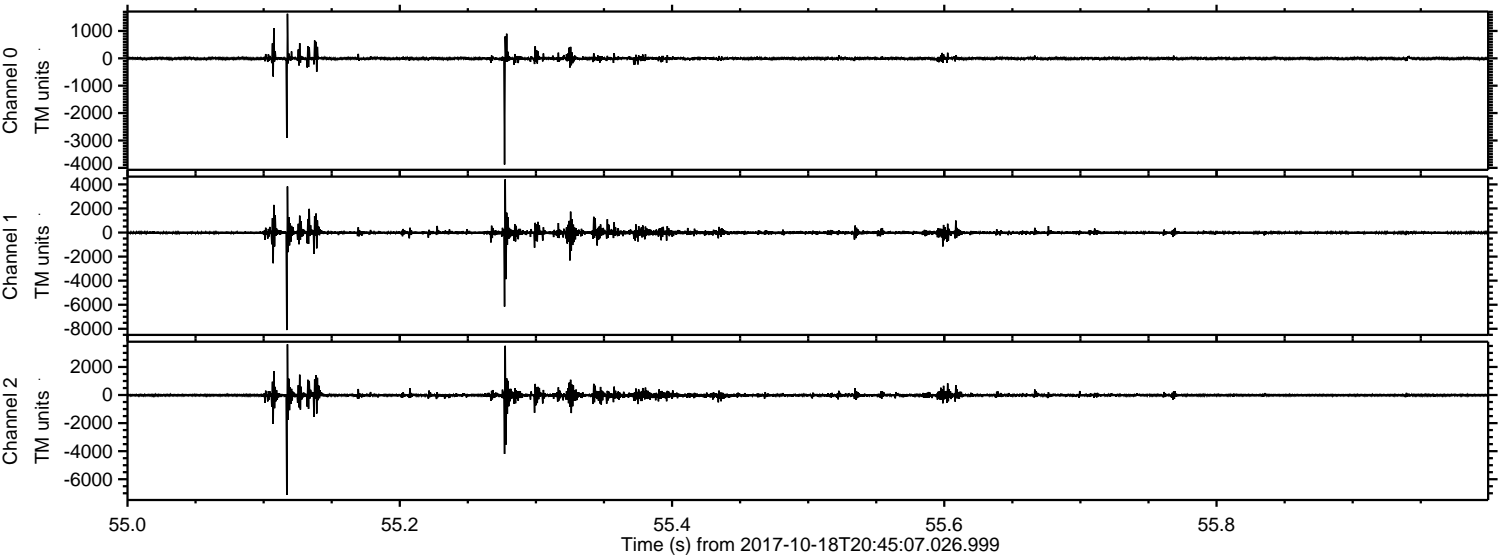


Channel 0  
mn: -1840  
mx: 1798  
 $\mu$ : -6.4  
 $\sigma$ : 28.8

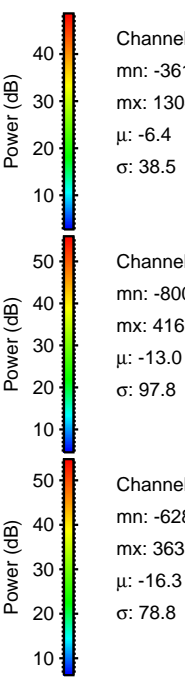
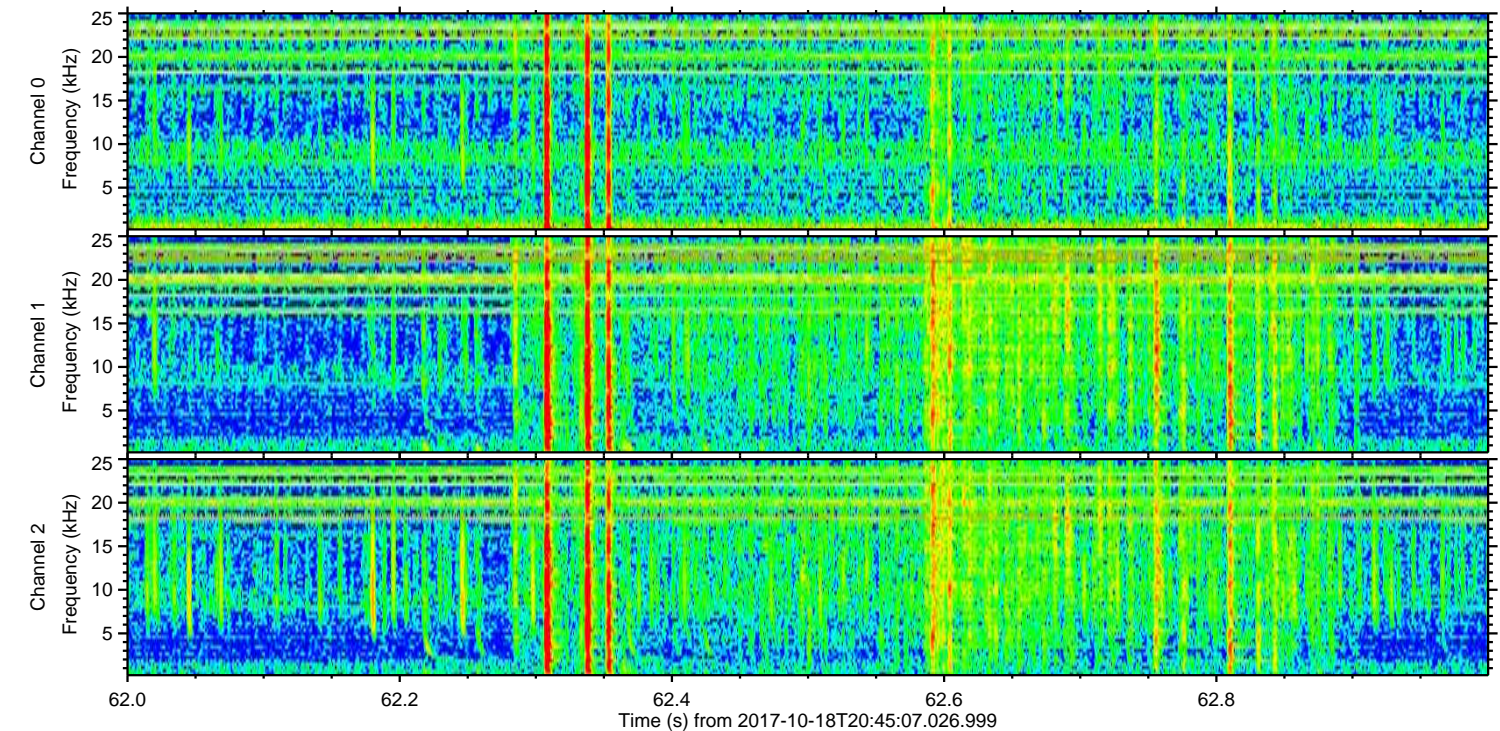
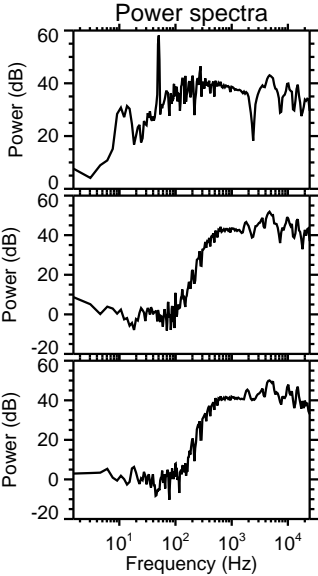
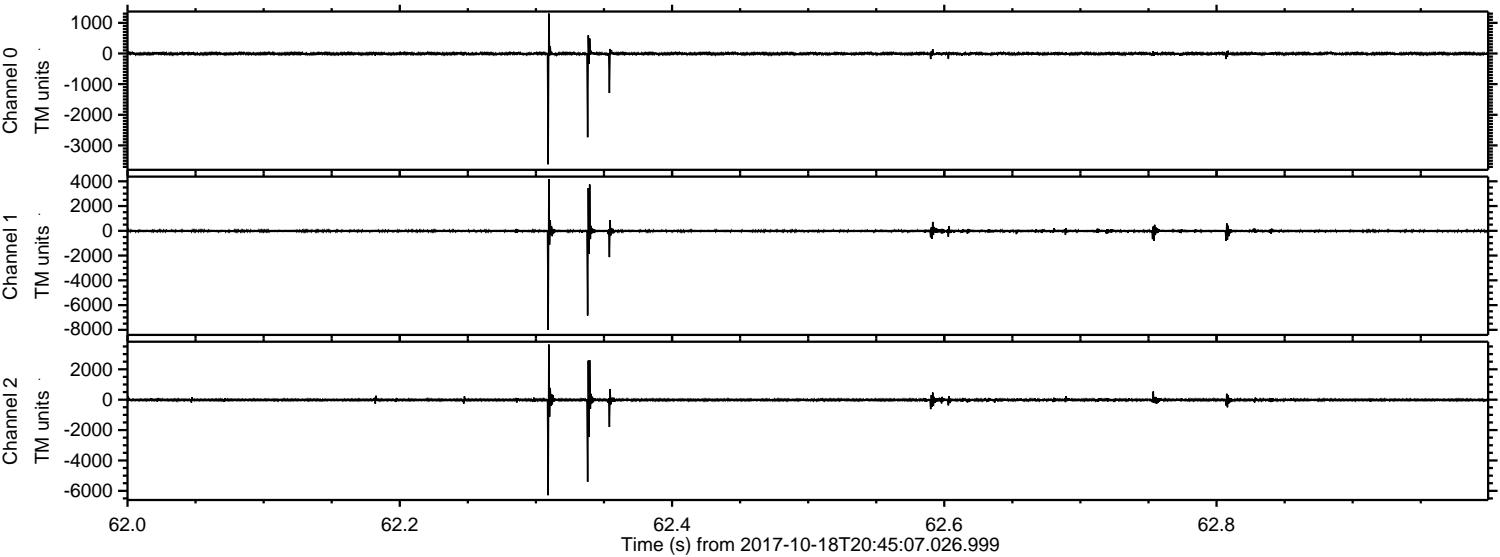
Channel 1  
mn: -7261  
mx: 4982  
 $\mu$ : -13.0  
 $\sigma$ : 113.7

Channel 2  
mn: -4610  
mx: 8293  
 $\mu$ : -16.1  
 $\sigma$ : 102.4

Processed Wed Oct 18 22:52:49 2017 by ELM ver.2012-10-06 from 001\_\_elm20171018\_204506\_\_dat00.bin



Processed Wed Oct 18 22:52:50 2017 by ELM ver.2012-10-06 from 001\_\_elm20171018\_204506\_\_dat00.bin

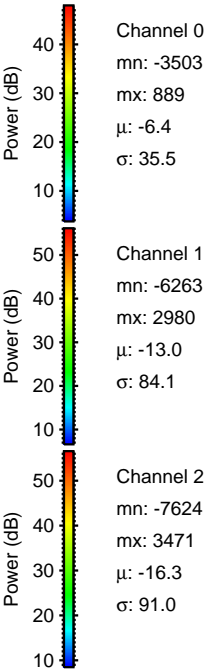
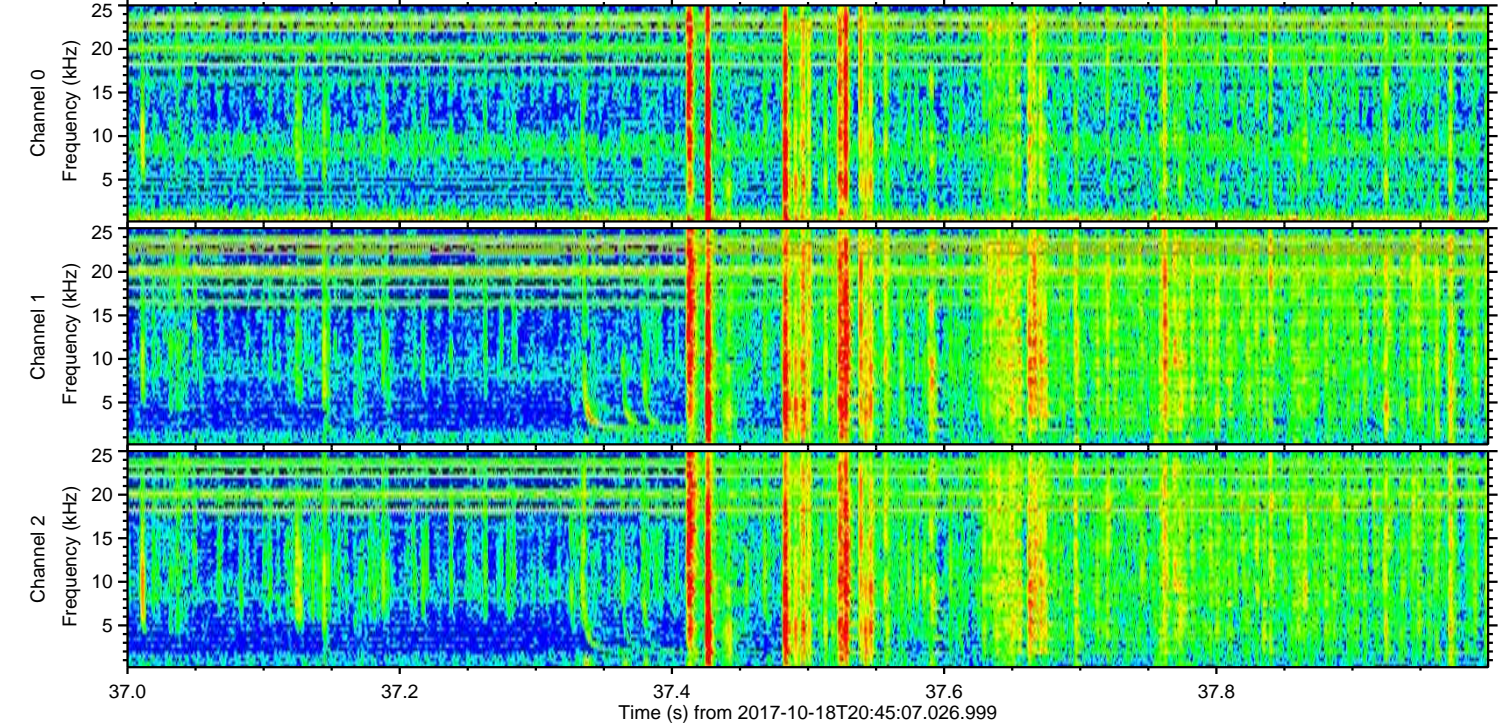
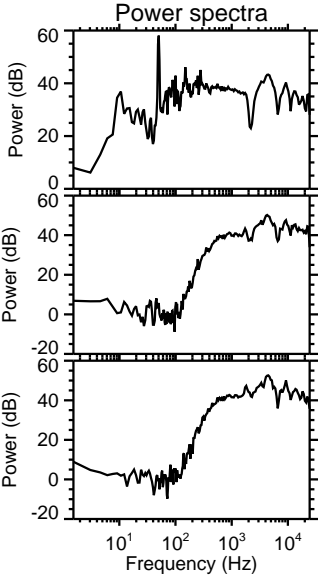
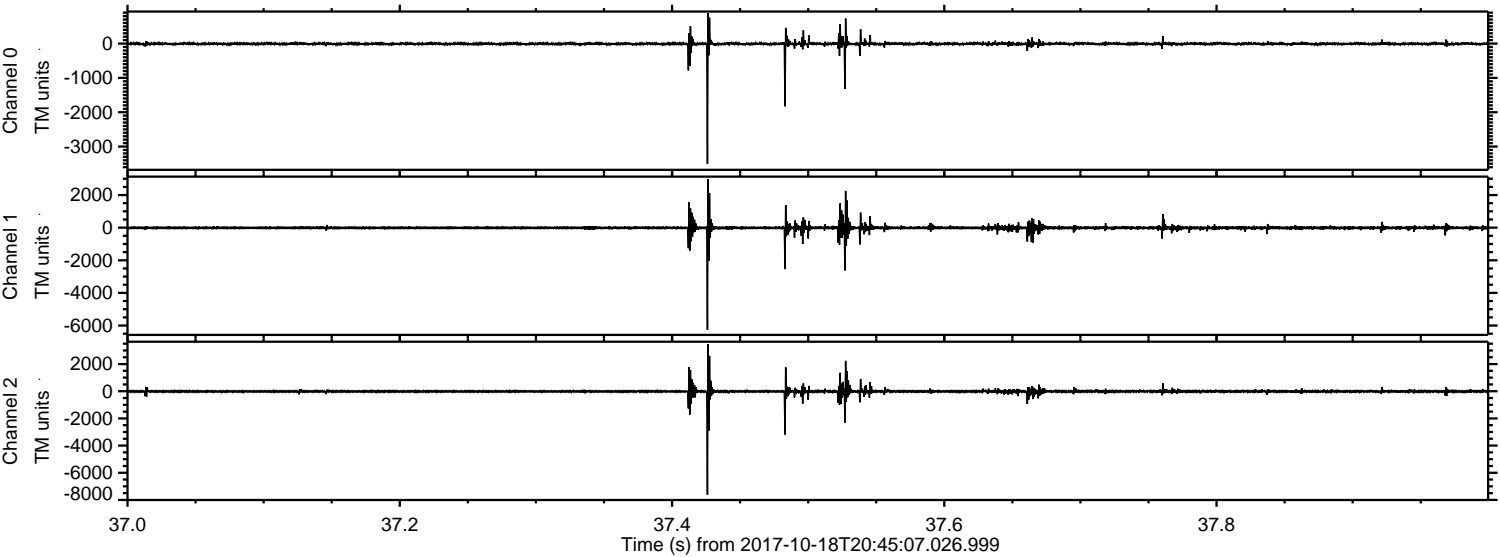


Channel 0  
mn: -3616  
mx: 1304  
 $\mu$ : -6.4  
 $\sigma$ : 38.5

Channel 1  
mn: -8007  
mx: 4168  
 $\mu$ : -13.0  
 $\sigma$ : 97.8

Channel 2  
mn: -6289  
mx: 3633  
 $\mu$ : -16.3  
 $\sigma$ : 78.8

Processed Wed Oct 18 22:52:50 2017 by ELM ver.2012-10-06 from 001\_\_elm20171018\_204506\_\_dat00.bin



ELMAVAN 3D WAVEFORMS (Measured data sampled at 50 kHz) 51000 packets of 144 samples from 2017-10-18T20:45:07.026.999. Part 82/147

Processed Wed Oct 18 22:52:51 2017 by ELM ver.2012-10-06 from 001\_\_elm20171018\_204506\_\_dat00.bin

