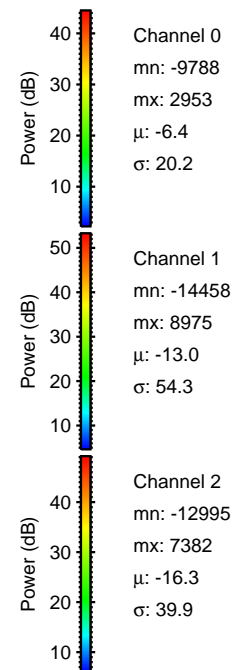
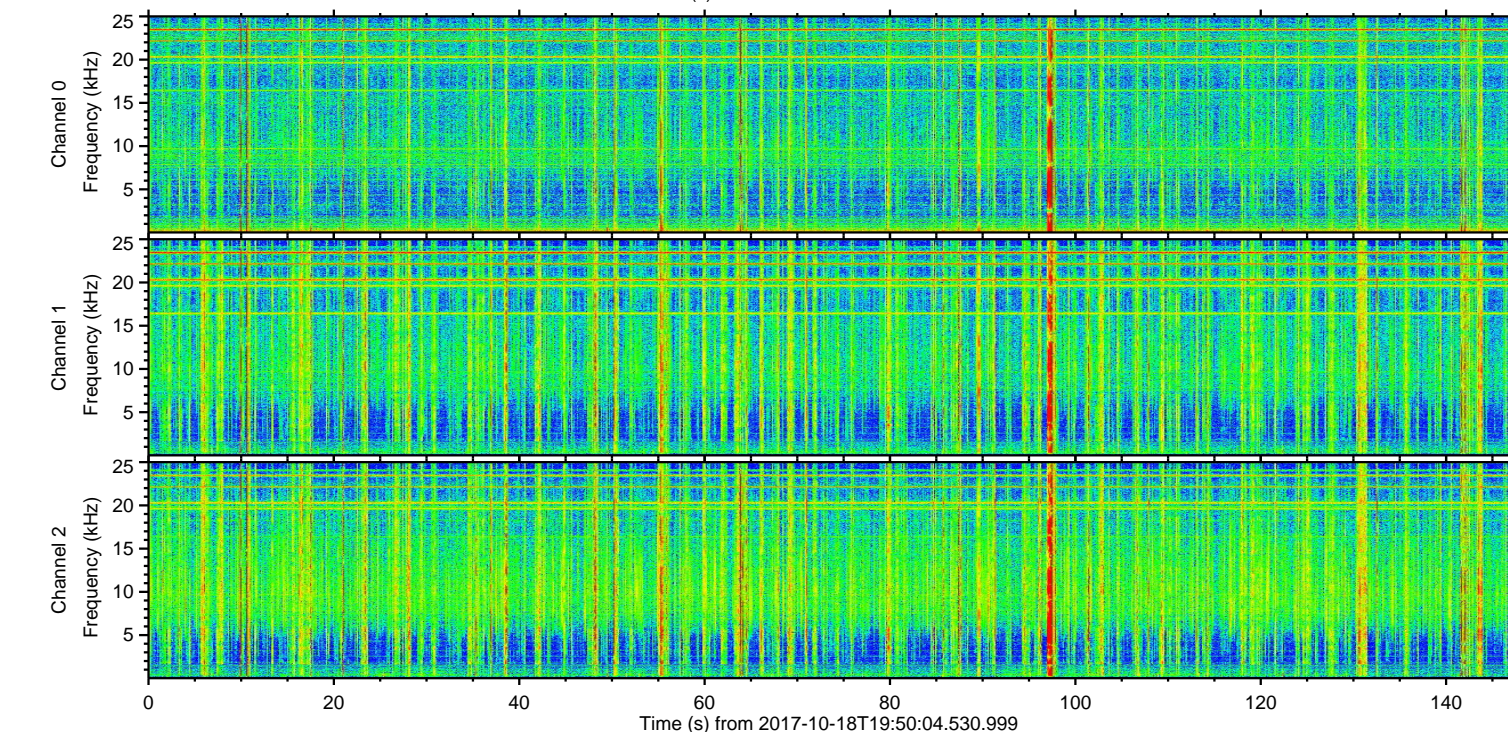
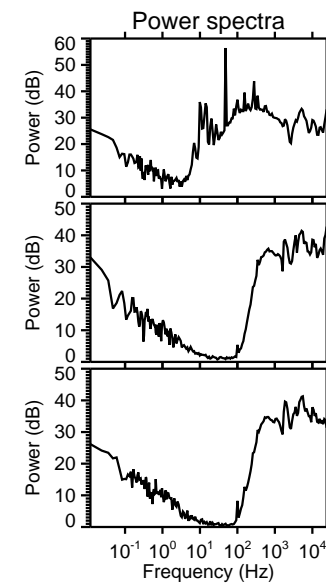
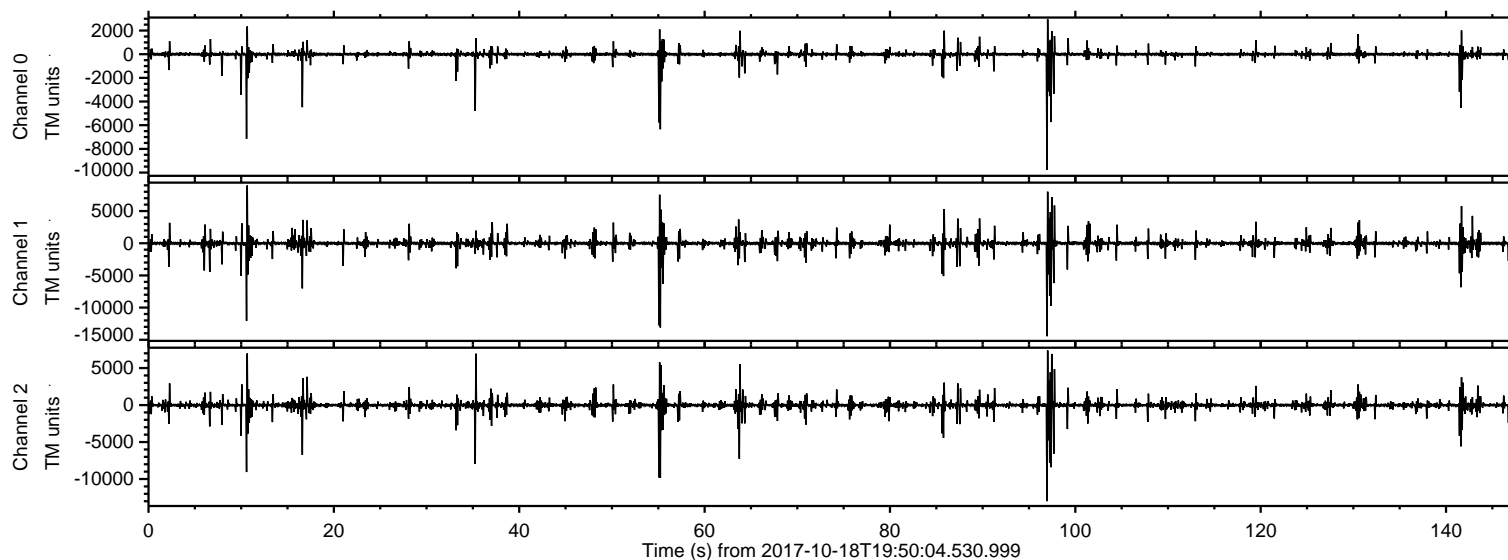
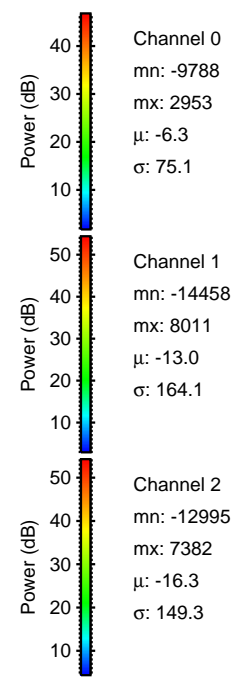
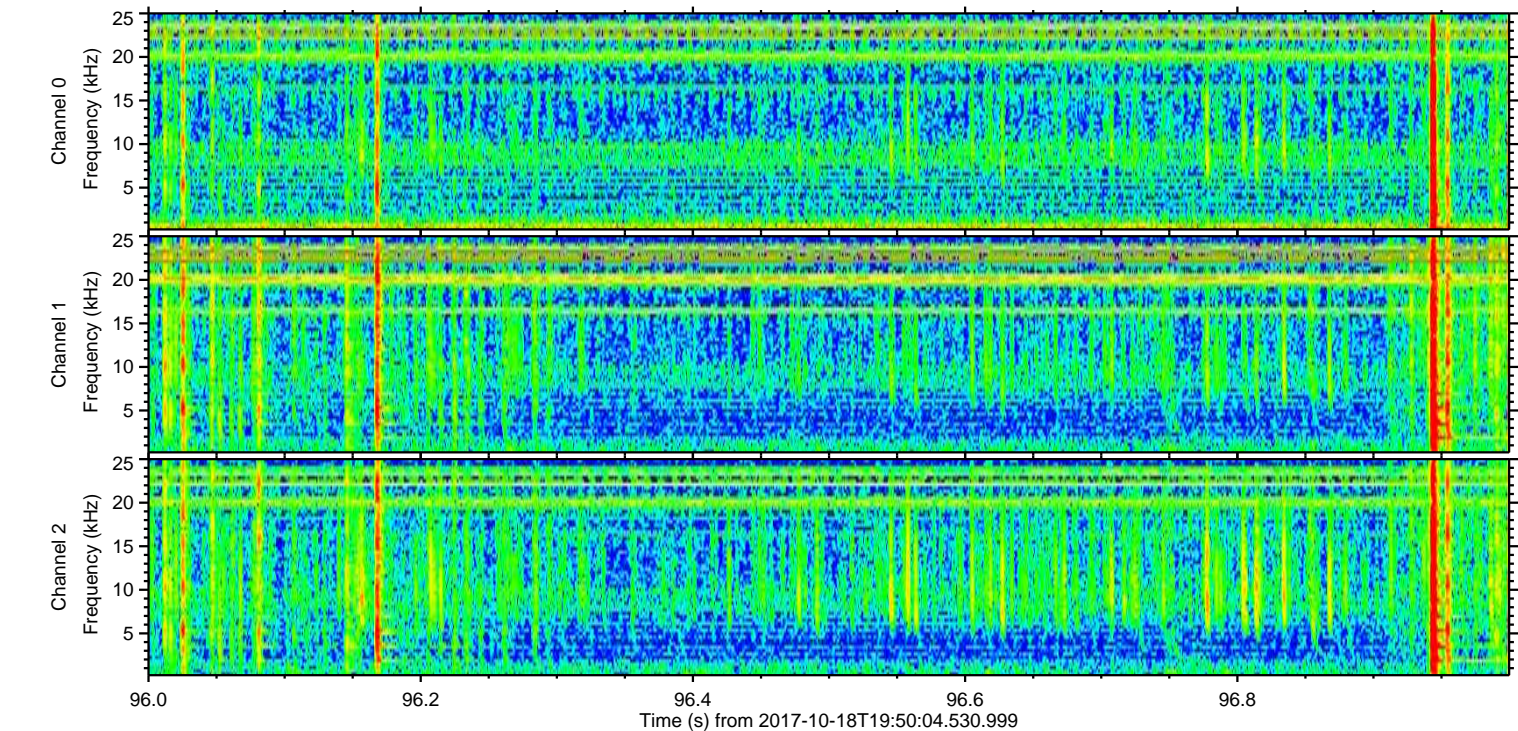
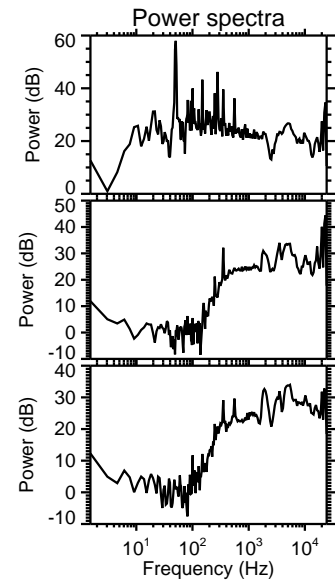
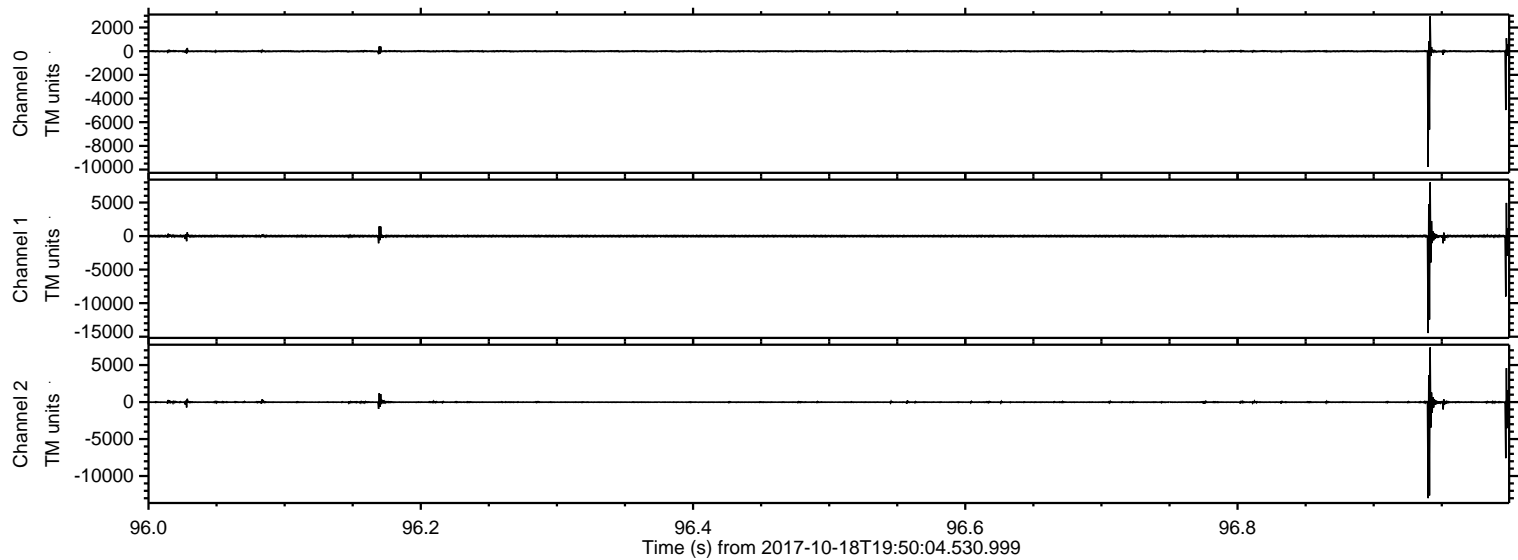


ELMAVAN 3D WAVEFORMS (Measured data sampled at 50 kHz) 51000 packets of 144 samples from 2017-10-18T19:50:04.530.999.

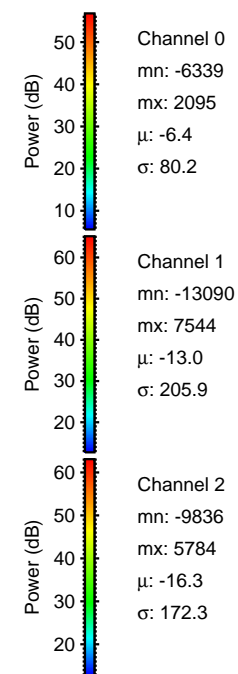
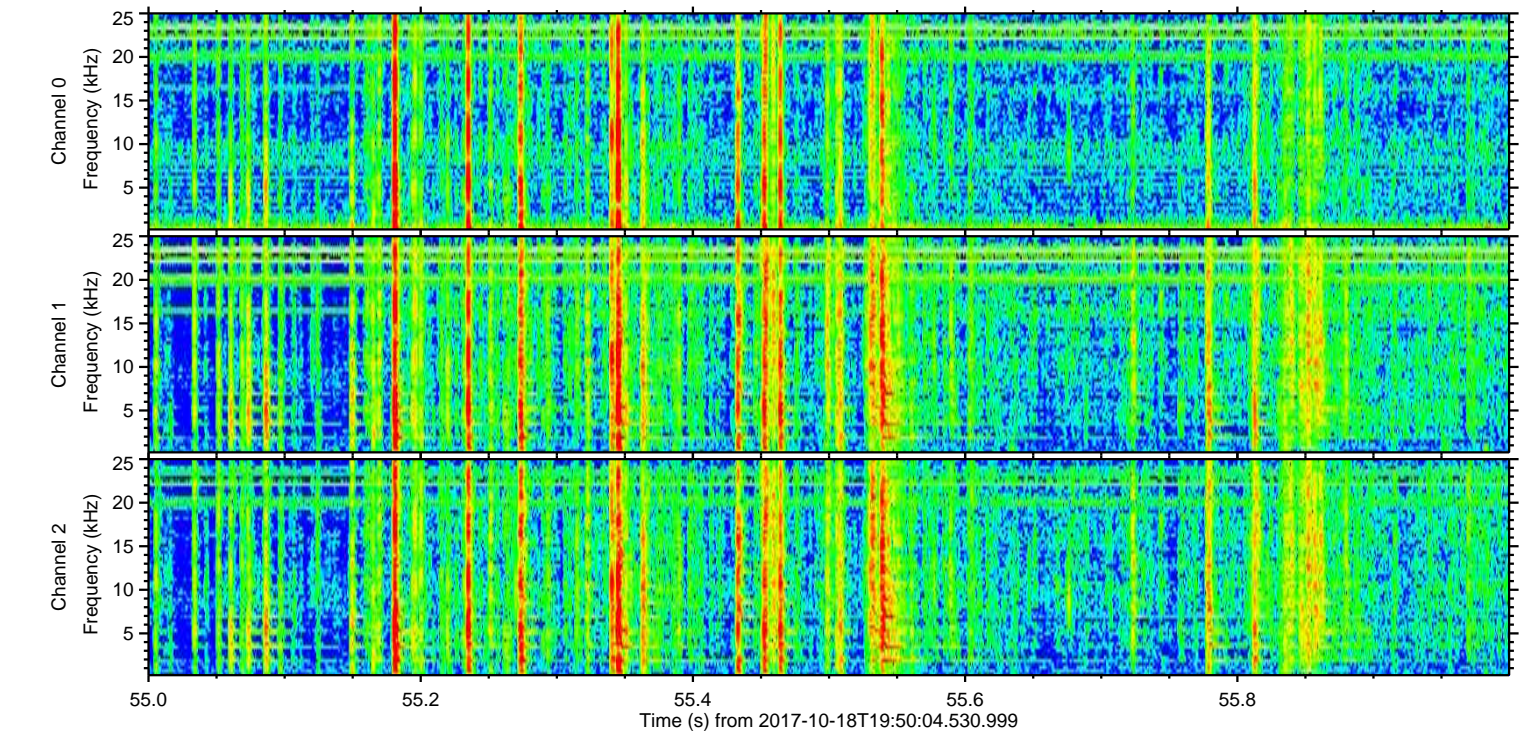
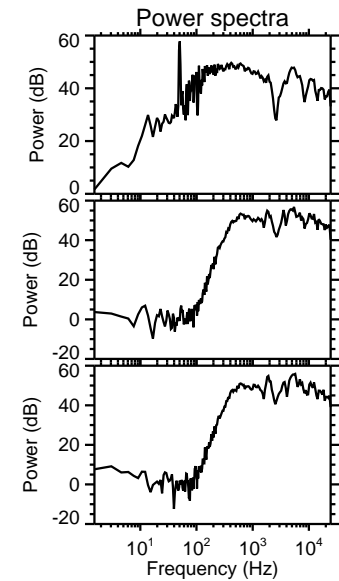
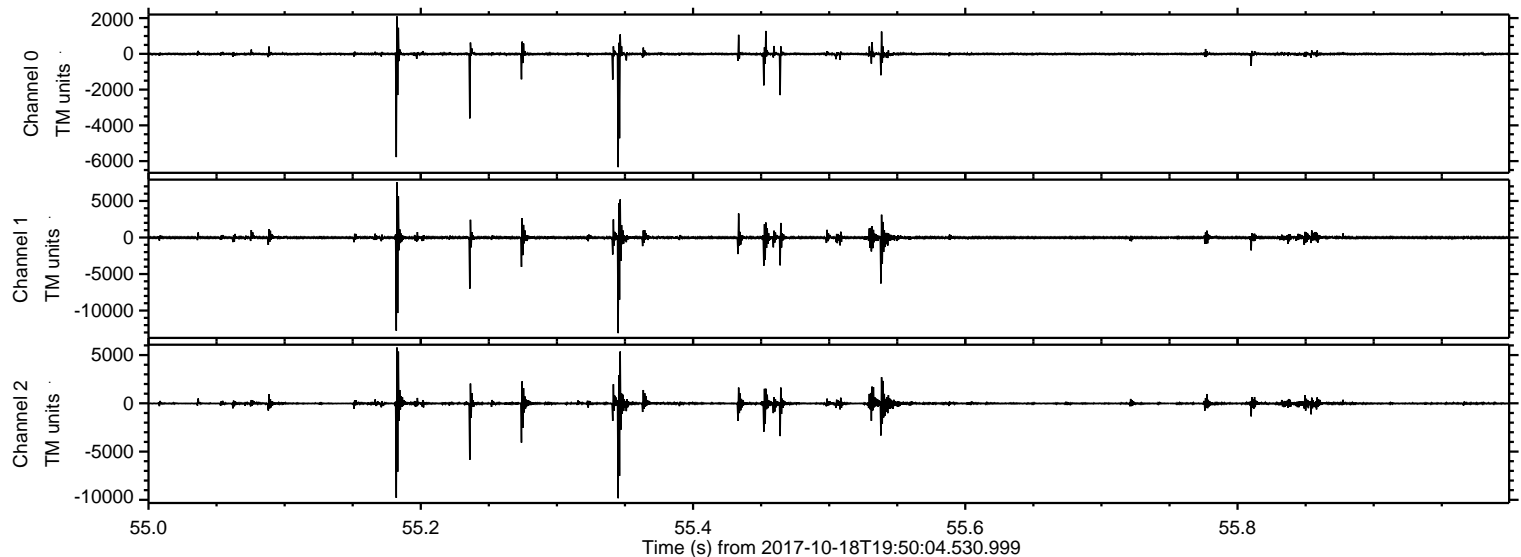
Processed Wed Oct 18 21:57:51 2017 by ELM ver.2012-10-06 from 001__elm20171018_195003__dat00.bin



Processed Wed Oct 18 21:57:58 2017 by ELM ver.2012-10-06 from 001__elm20171018_195003__dat00.bin

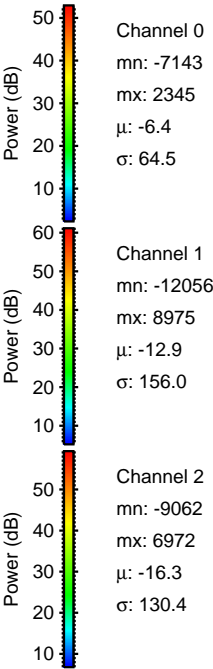
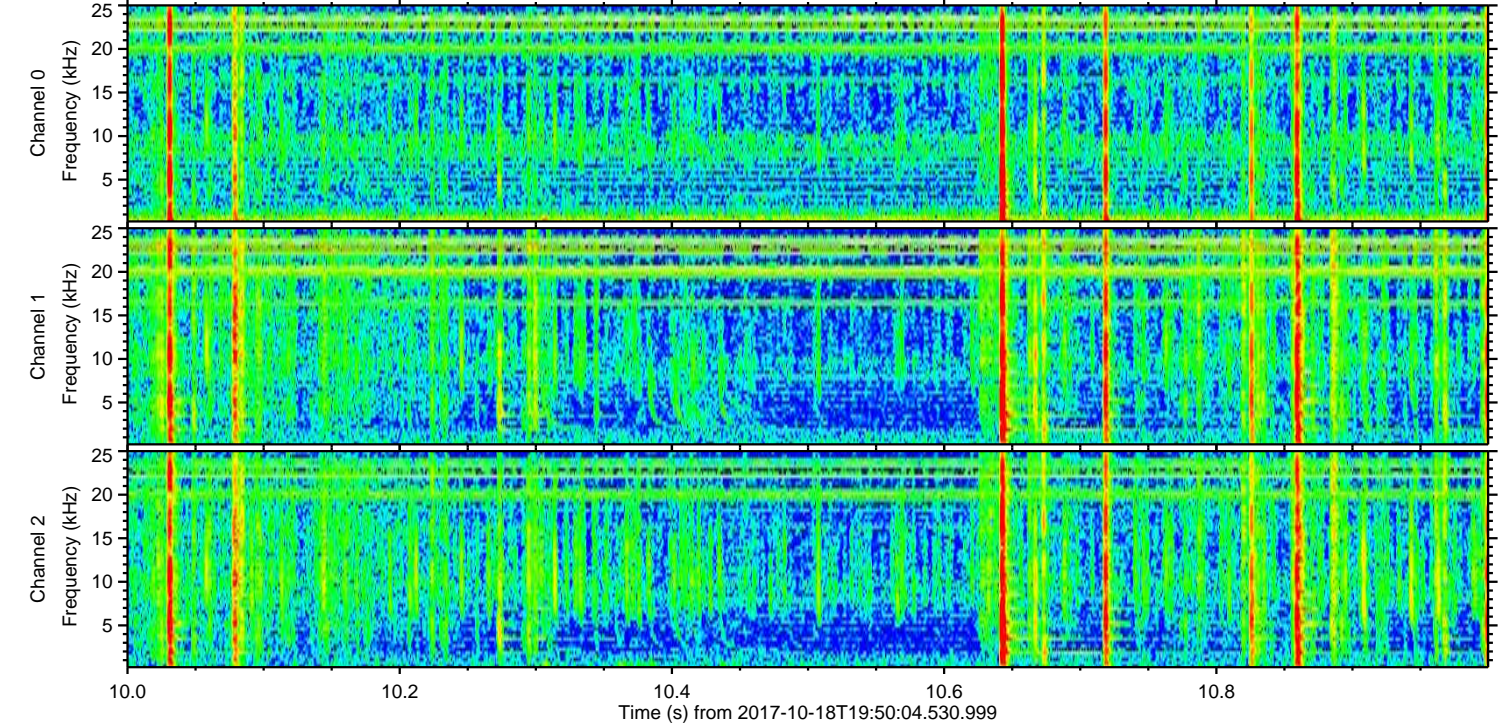
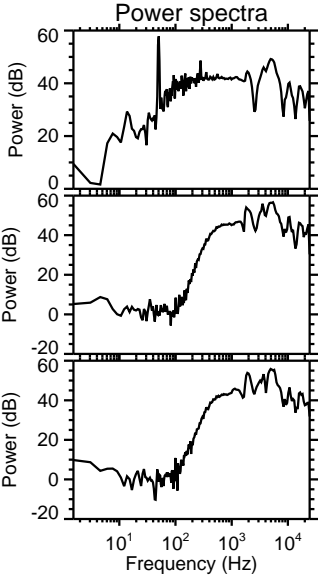
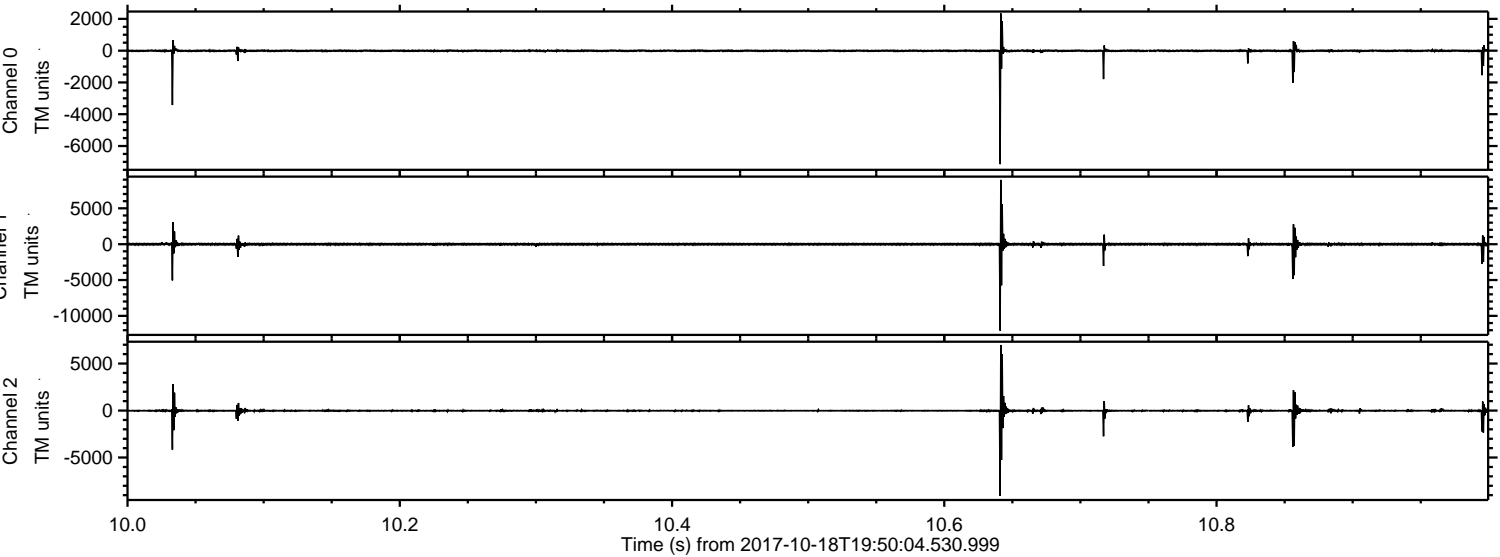


Processed Wed Oct 18 21:57:59 2017 by ELM ver.2012-10-06 from 001__elm20171018_195003__dat00.bin

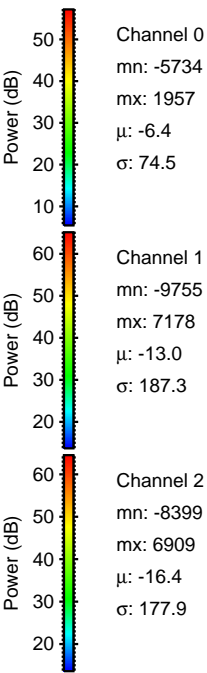
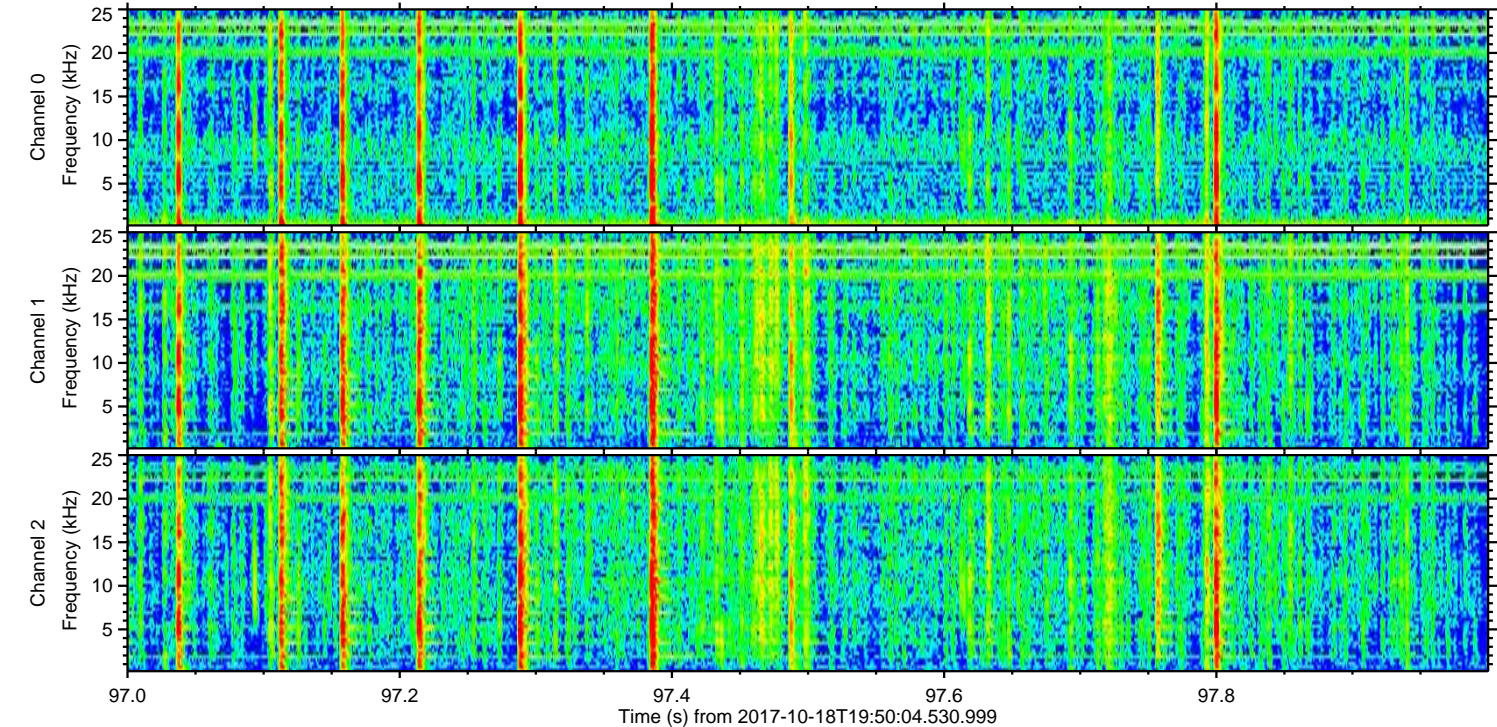
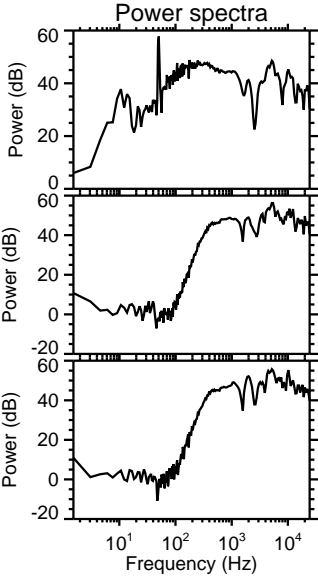
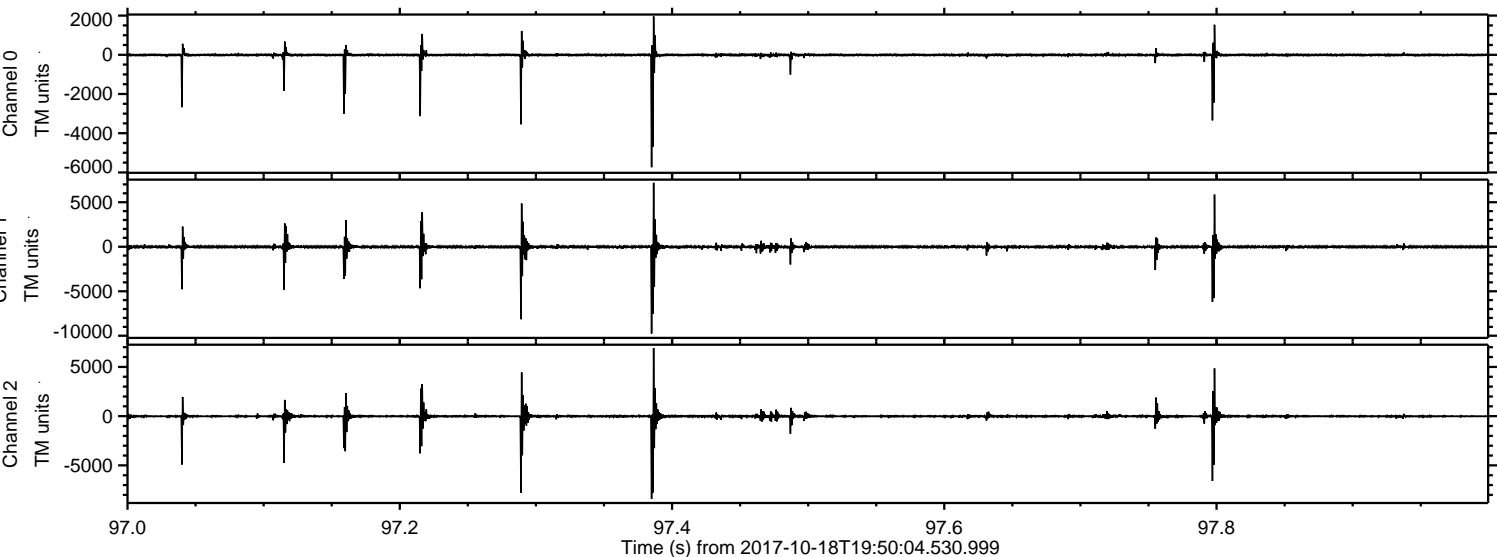


ELMAVAN 3D WAVEFORMS (Measured data sampled at 50 kHz) 51000 packets of 144 samples from 2017-10-18T19:50:04.530.999. Part 11/147

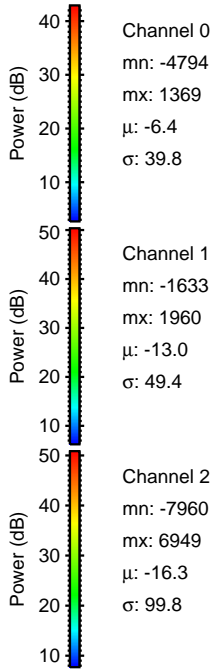
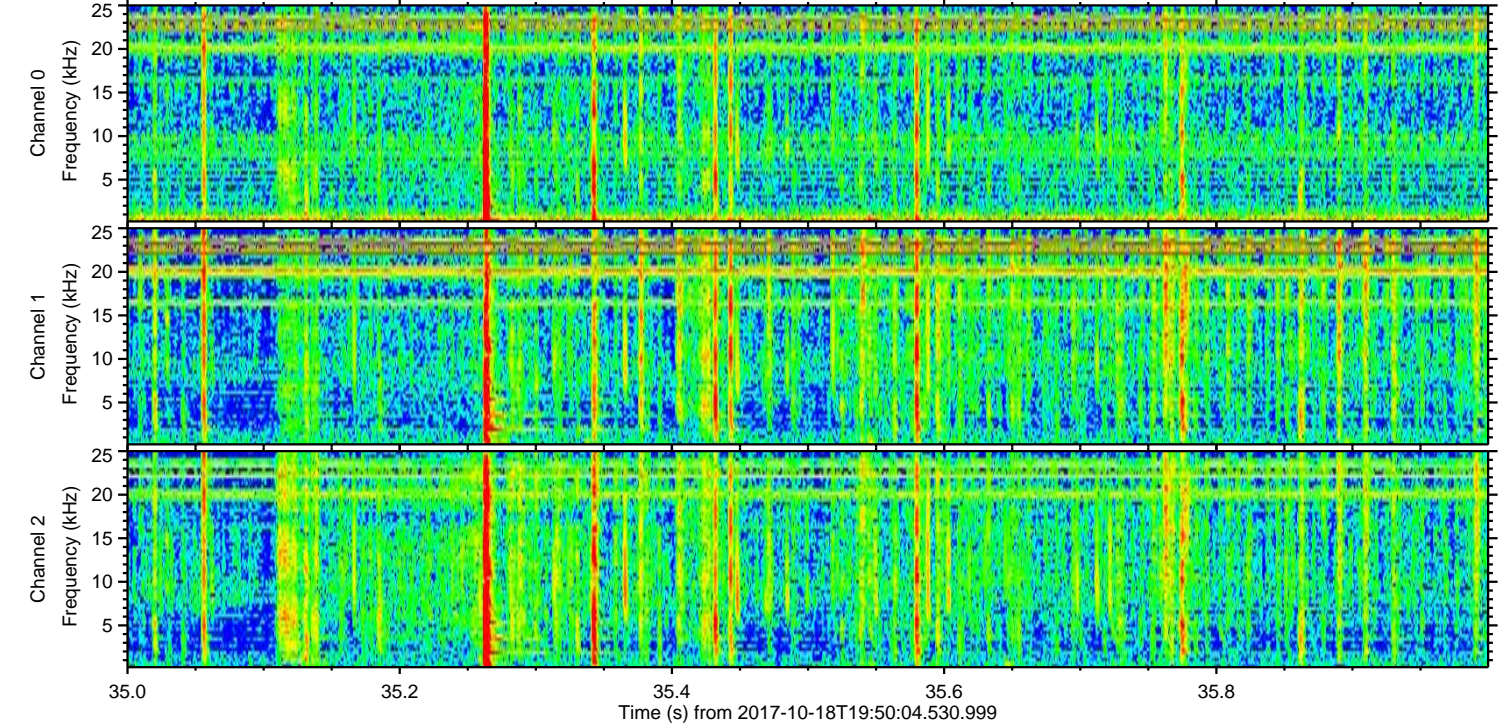
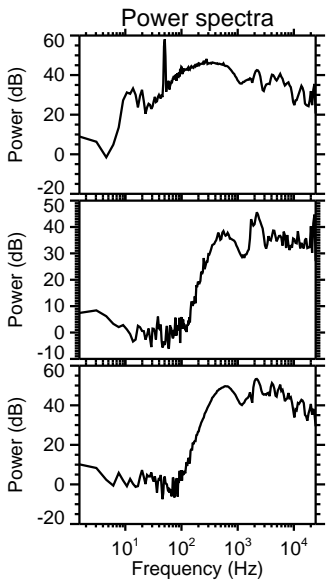
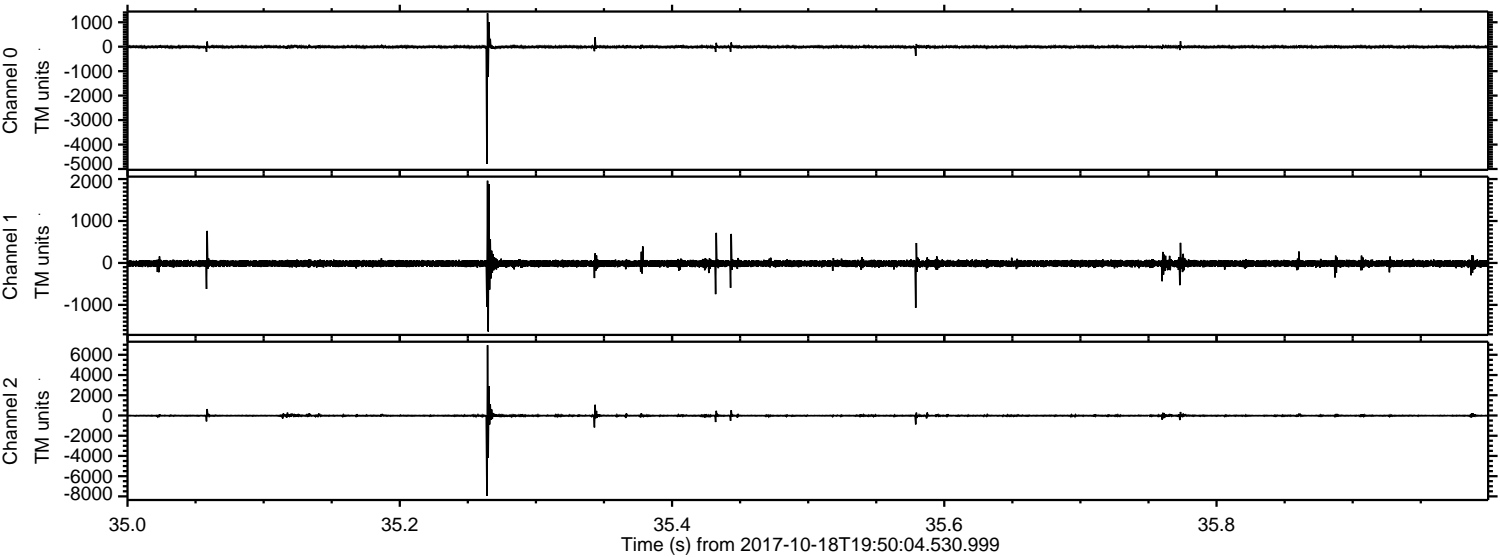
Processed Wed Oct 18 21:58:00 2017 by ELM ver.2012-10-06 from 001__elm20171018_195003__dat00.bin



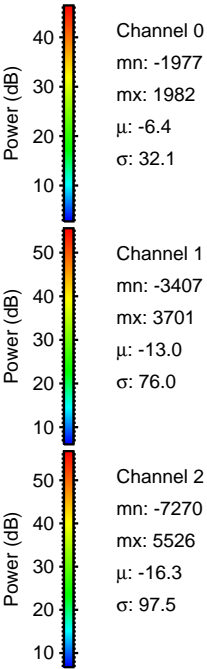
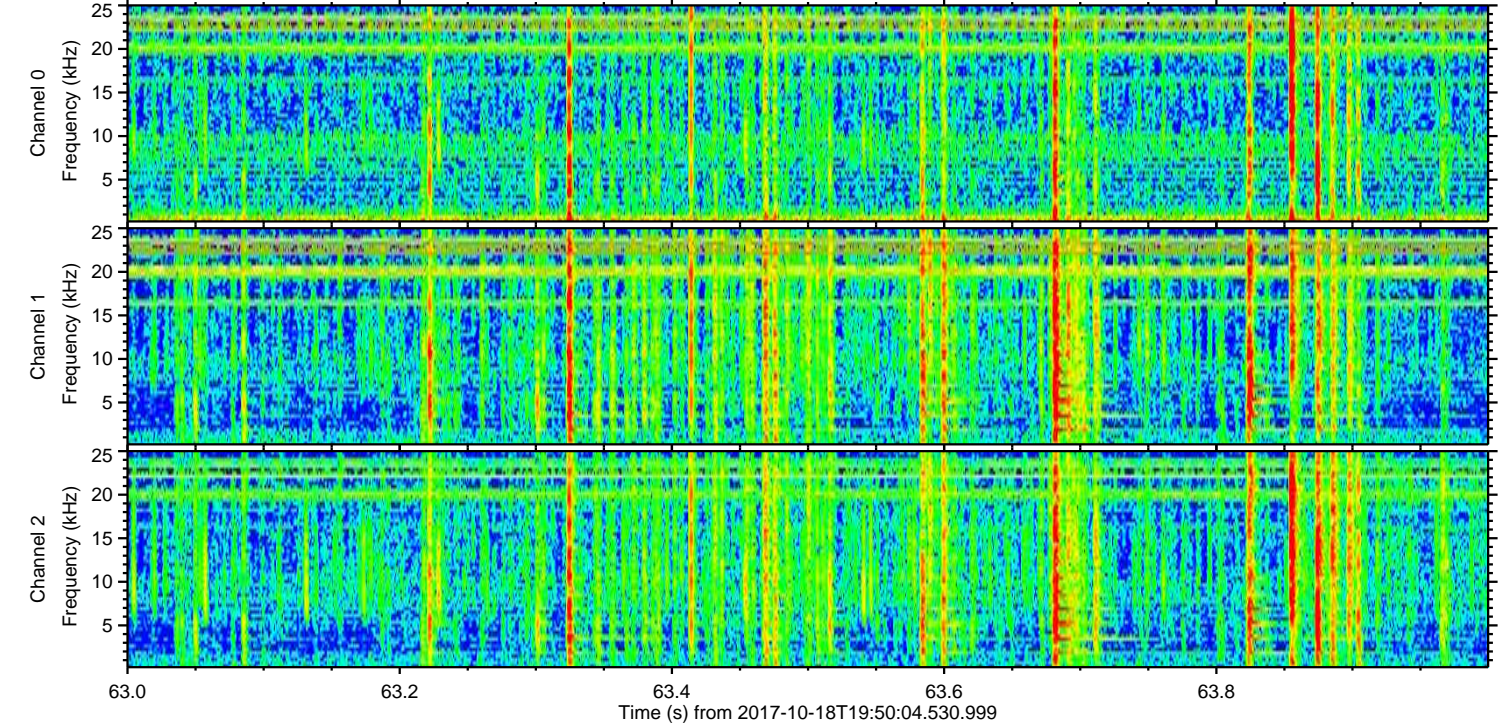
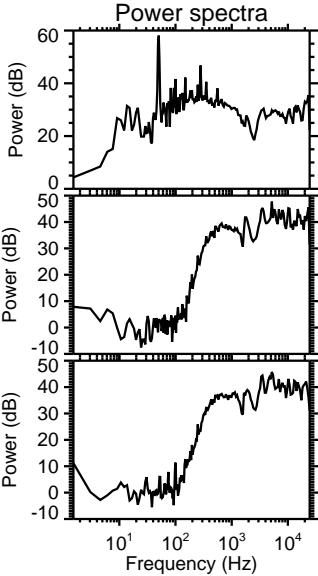
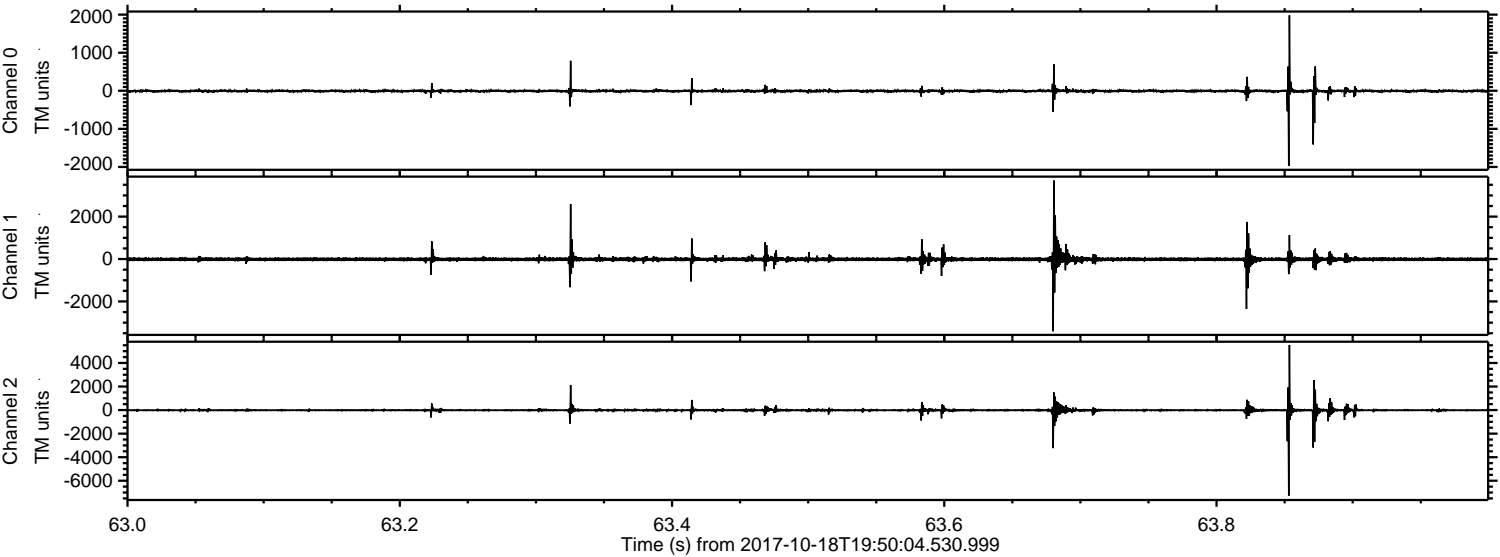
Processed Wed Oct 18 21:58:01 2017 by ELM ver.2012-10-06 from 001__elm20171018_195003__dat00.bin



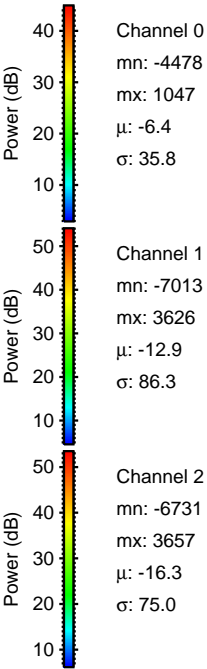
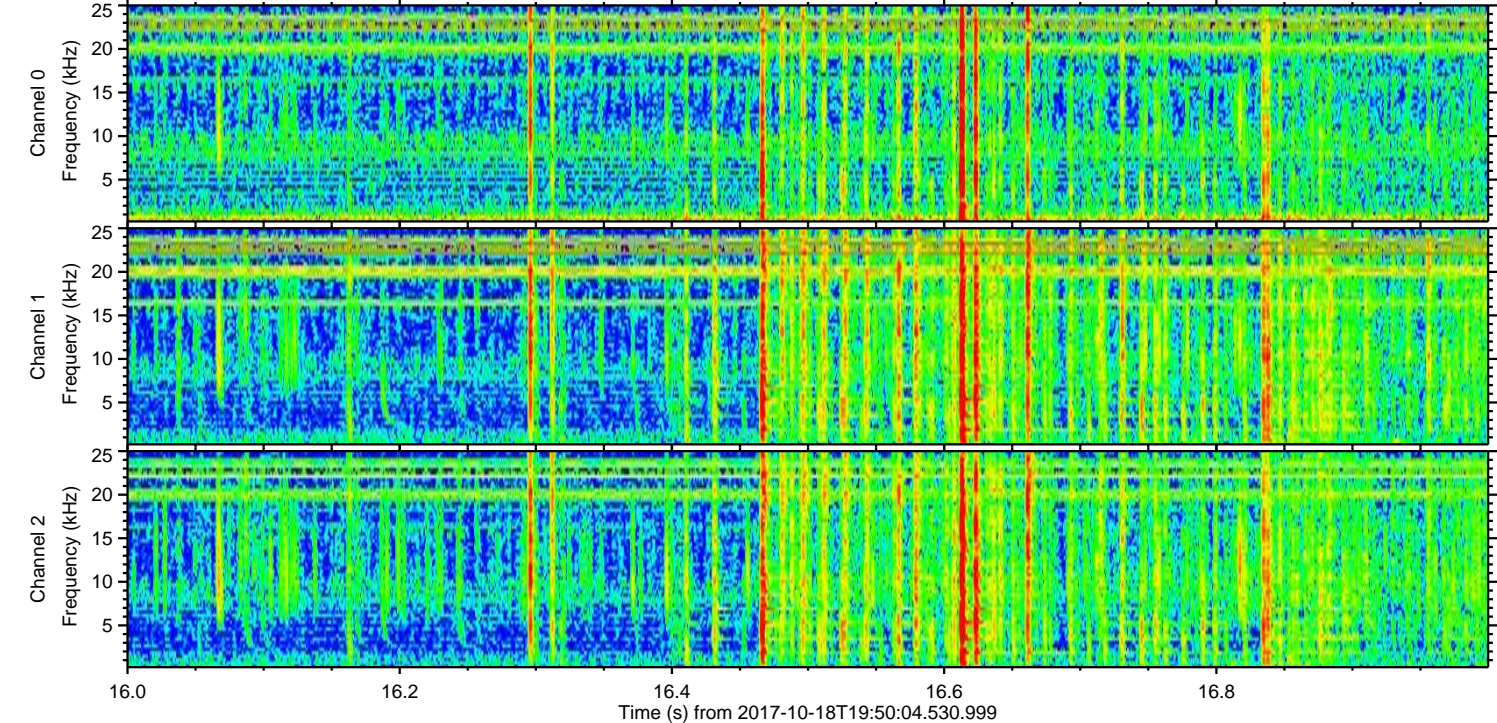
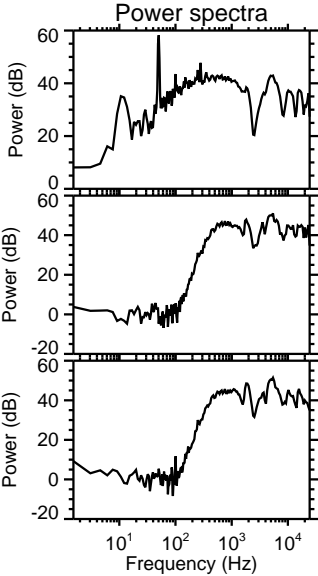
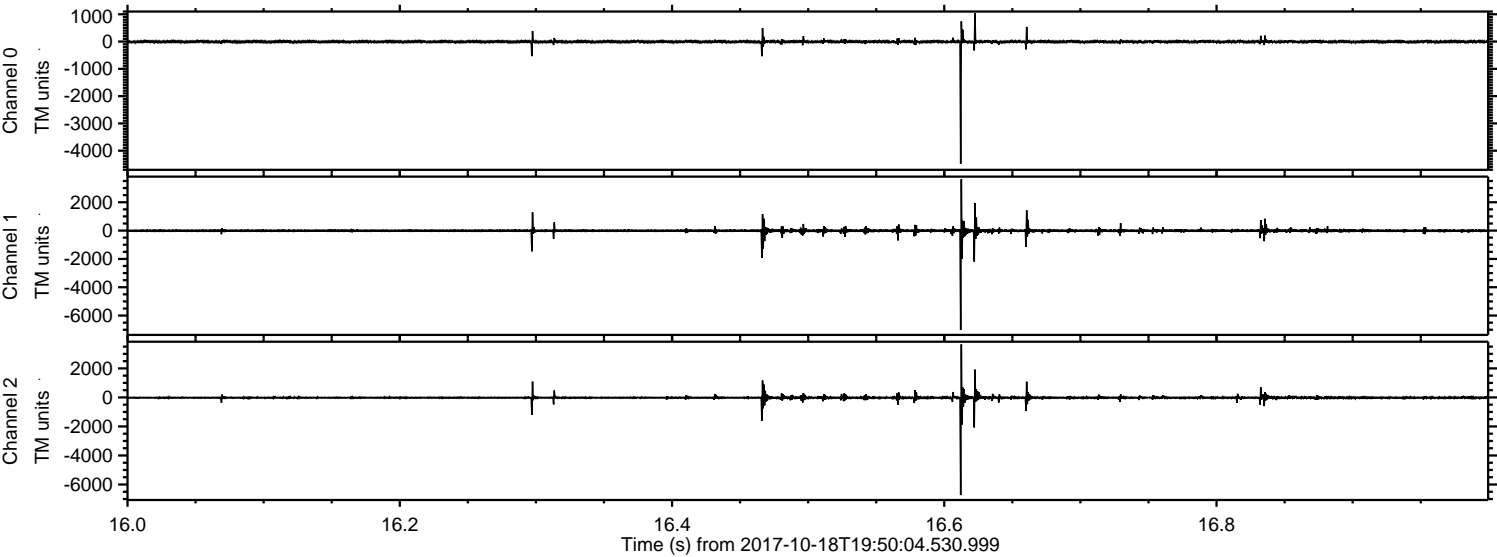
Processed Wed Oct 18 21:58:02 2017 by ELM ver.2012-10-06 from 001__elm20171018_195003__dat00.bin



Processed Wed Oct 18 21:58:03 2017 by ELM ver.2012-10-06 from 001__elm20171018_195003__dat00.bin

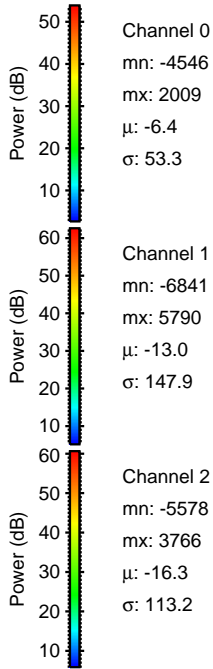
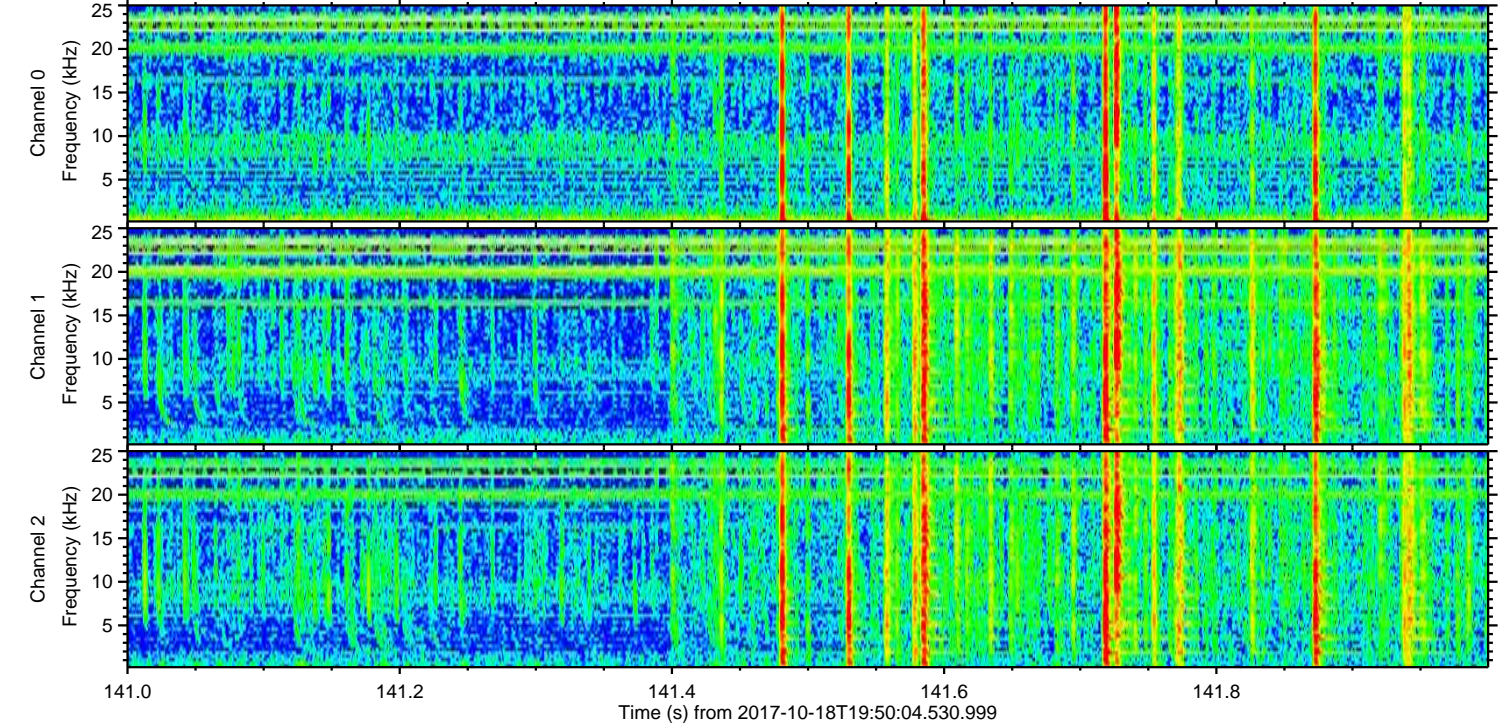
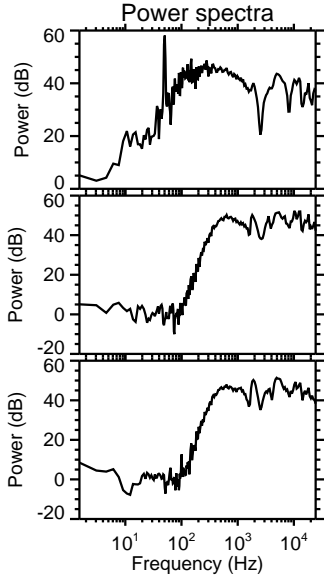
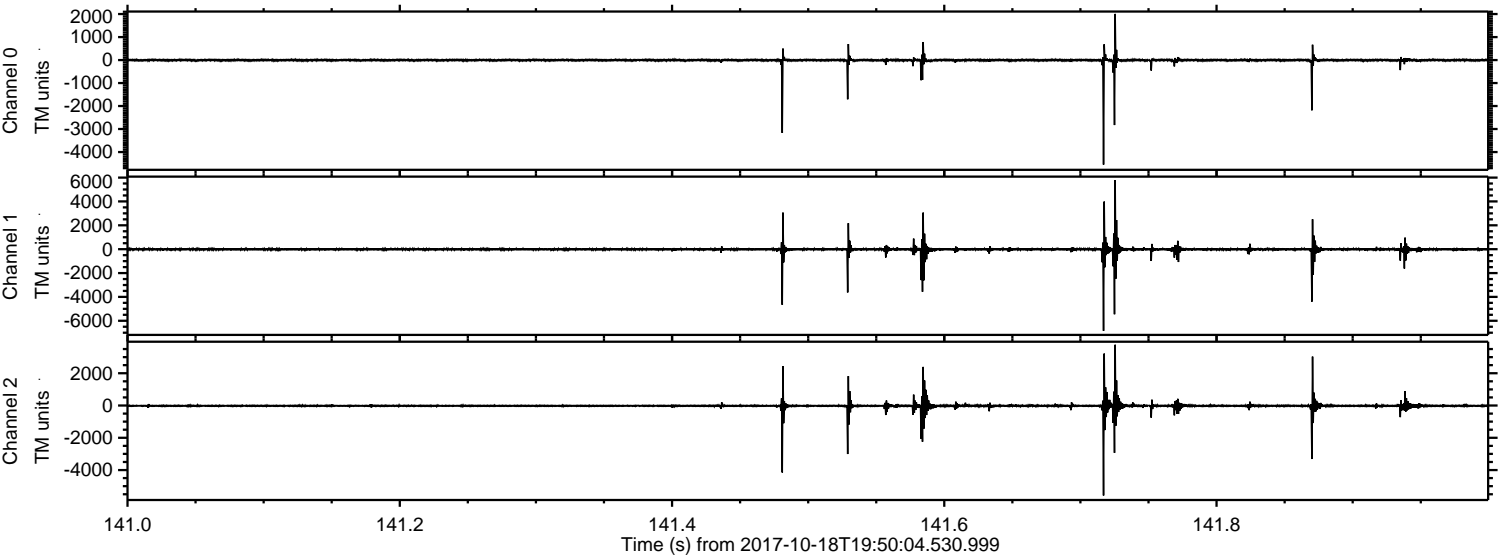


Processed Wed Oct 18 21:58:03 2017 by ELM ver.2012-10-06 from 001__elm20171018_195003__dat00.bin

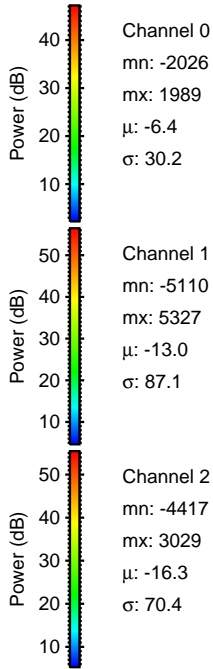
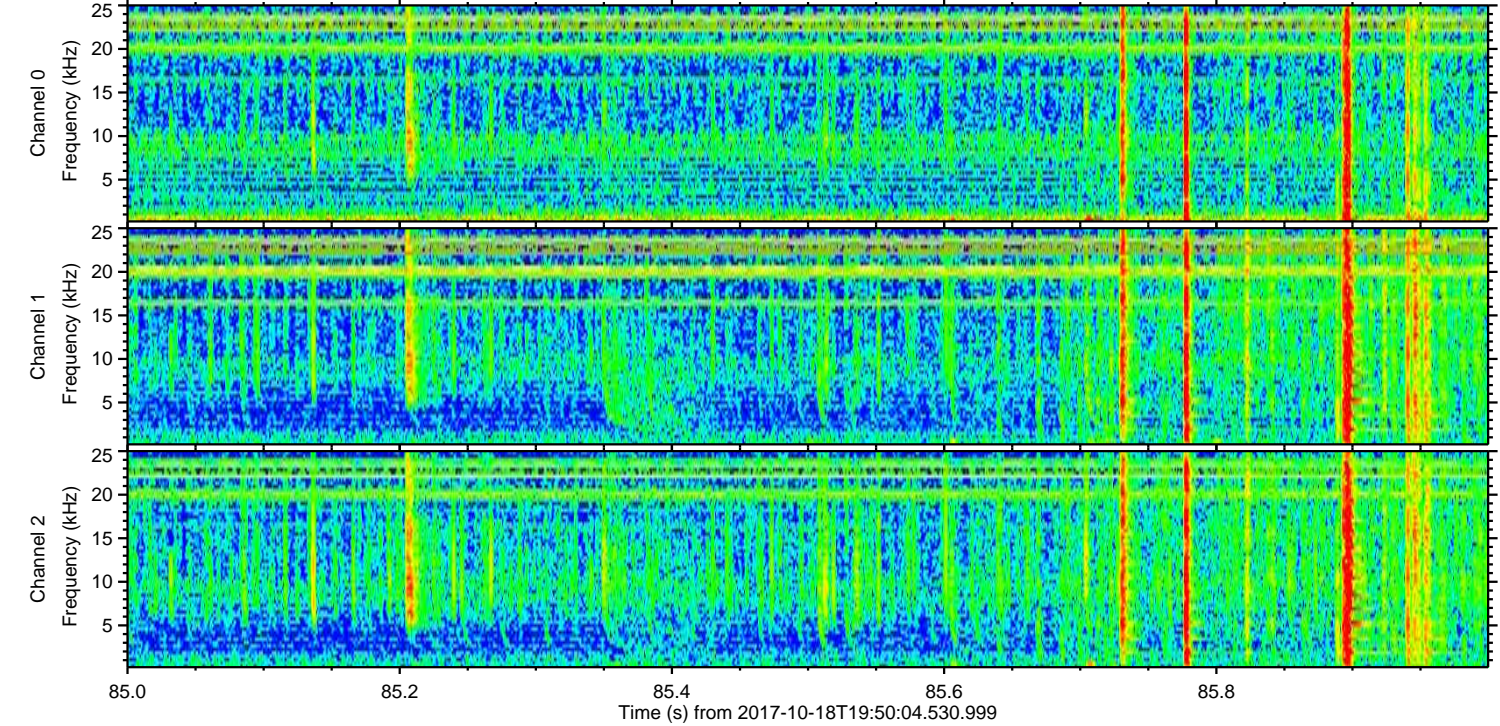
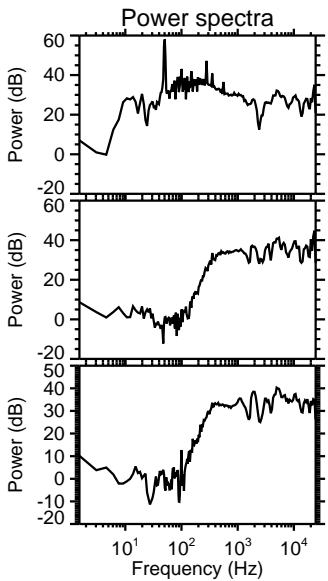
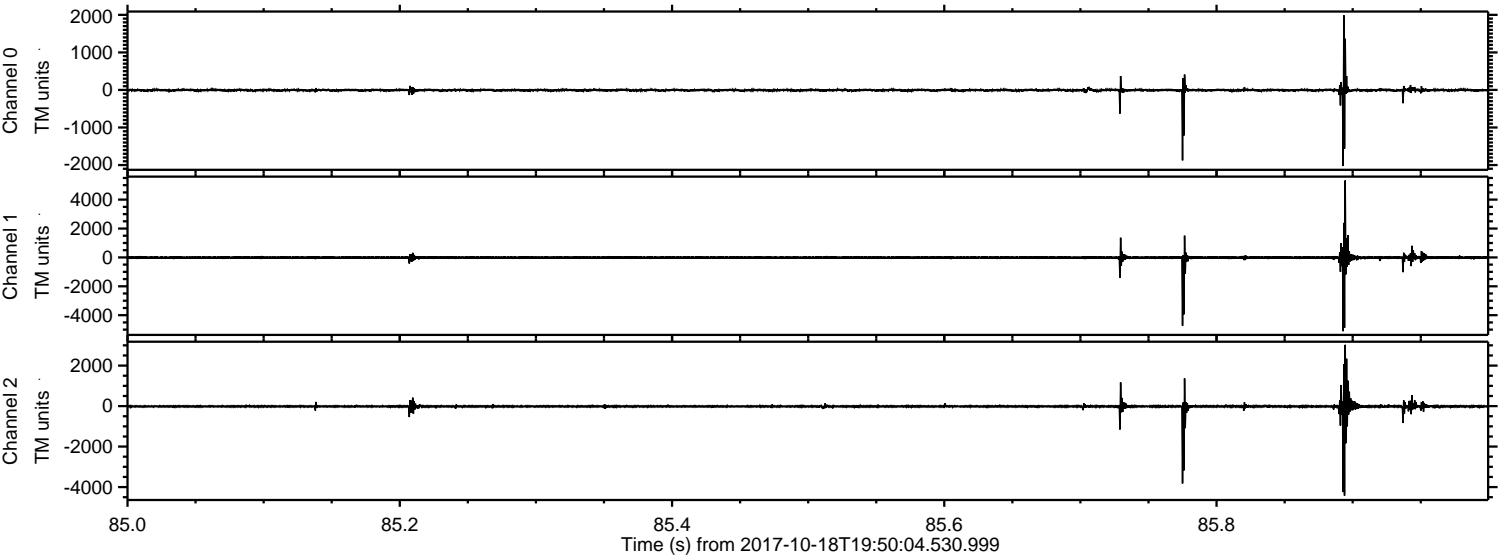


ELMAVAN 3D WAVEFORMS (Measured data sampled at 50 kHz) 51000 packets of 144 samples from 2017-10-18T19:50:04.530.999. Part 142/147

Processed Wed Oct 18 21:58:04 2017 by ELM ver.2012-10-06 from 001__elm20171018_195003__dat00.bin



Processed Wed Oct 18 21:58:05 2017 by ELM ver.2012-10-06 from 001__elm20171018_195003__dat00.bin



Channel 0
mn: -2026
mx: 1989
 μ : -6.4
 σ : 30.2

Channel 1
mn: -5110
mx: 5327
 μ : -13.0
 σ : 87.1

Channel 2
mn: -4417
mx: 3029
 μ : -16.3
 σ : 70.4

Processed Wed Oct 18 21:58:06 2017 by ELM ver.2012-10-06 from 001__elm20171018_195003__dat00.bin

