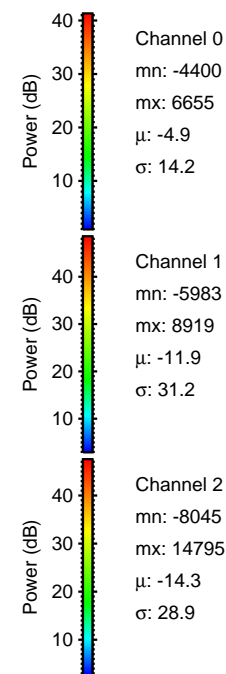
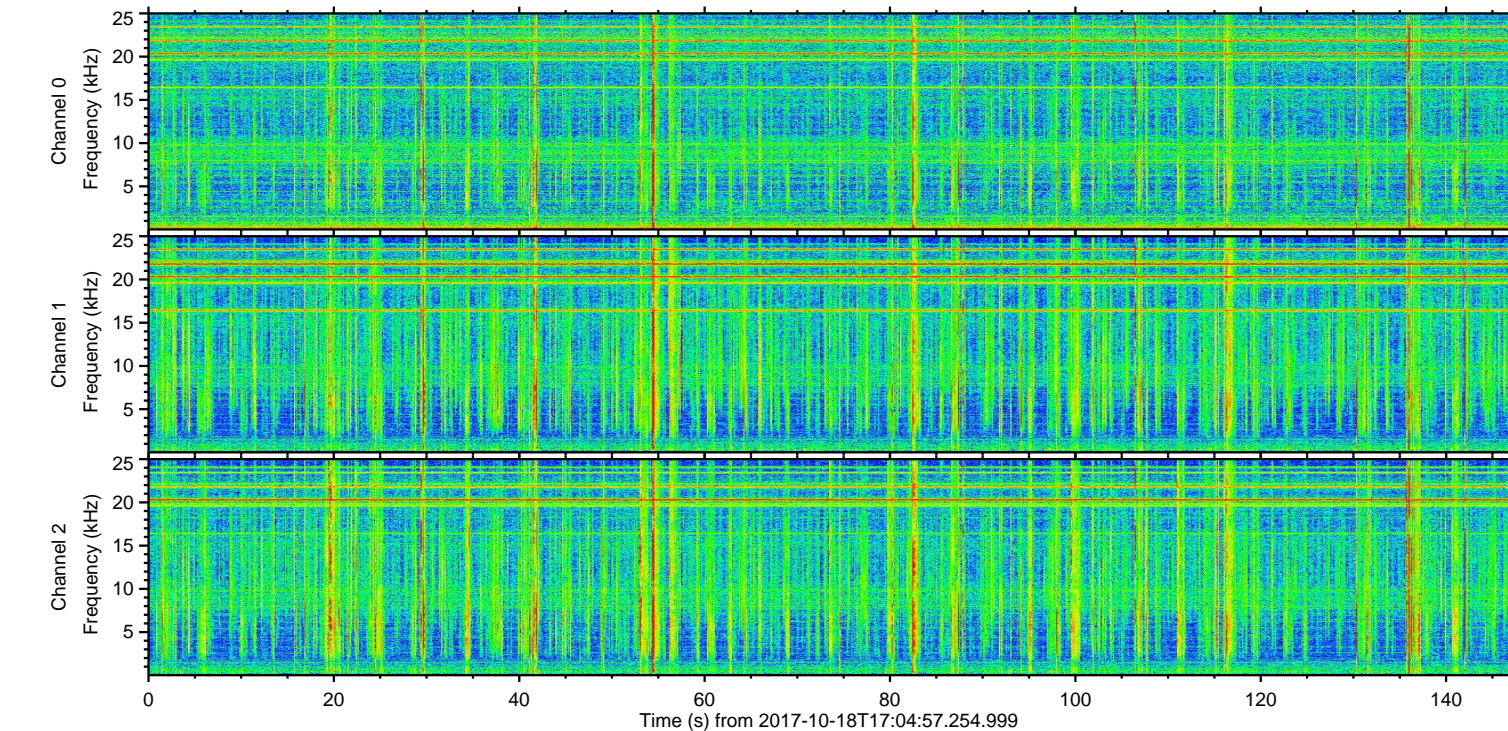
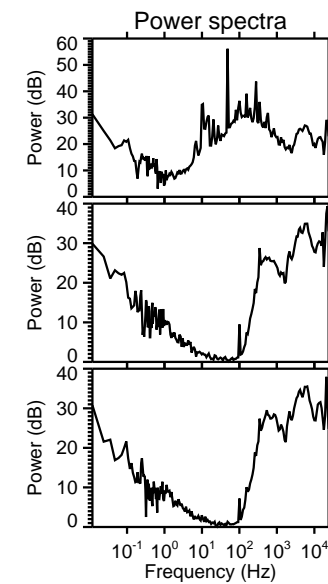
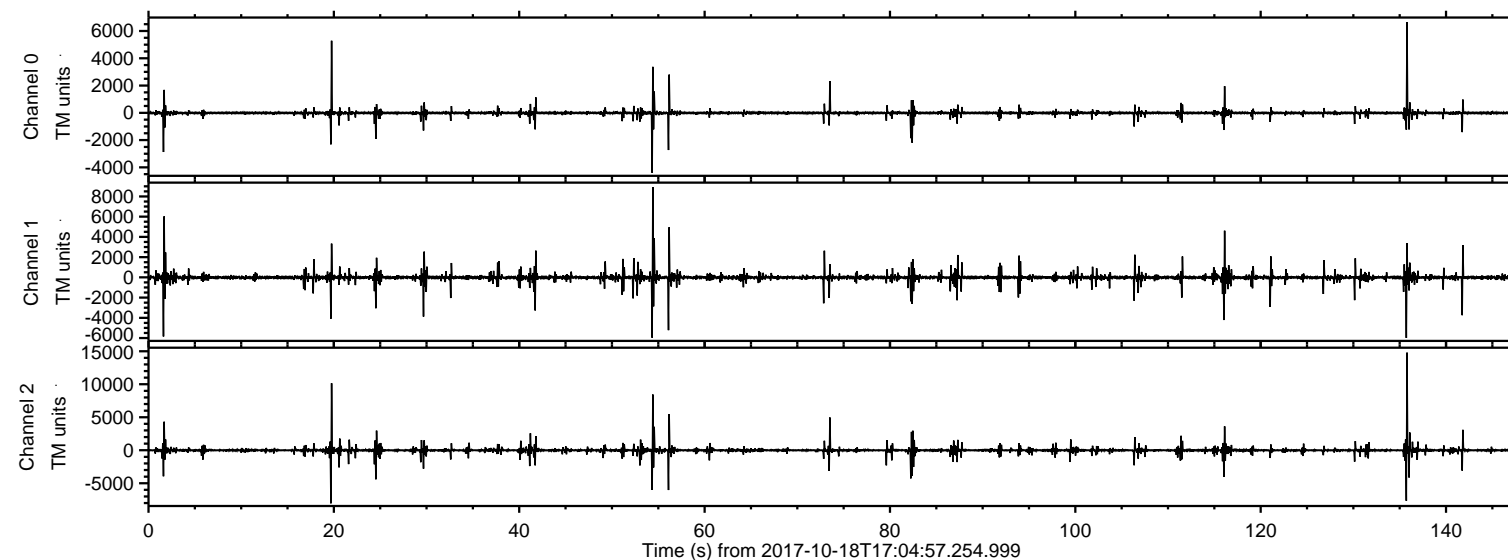


# ELMAVAN 3D WAVEFORMS (Measured data sampled at 50 kHz) 51000 packets of 144 samples from 2017-10-18T17:04:57.254.999.

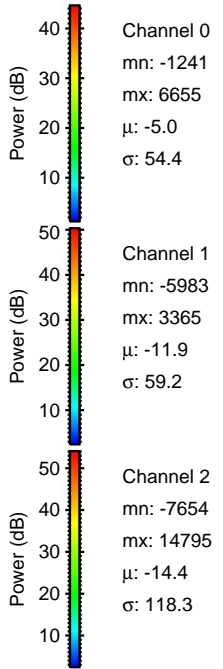
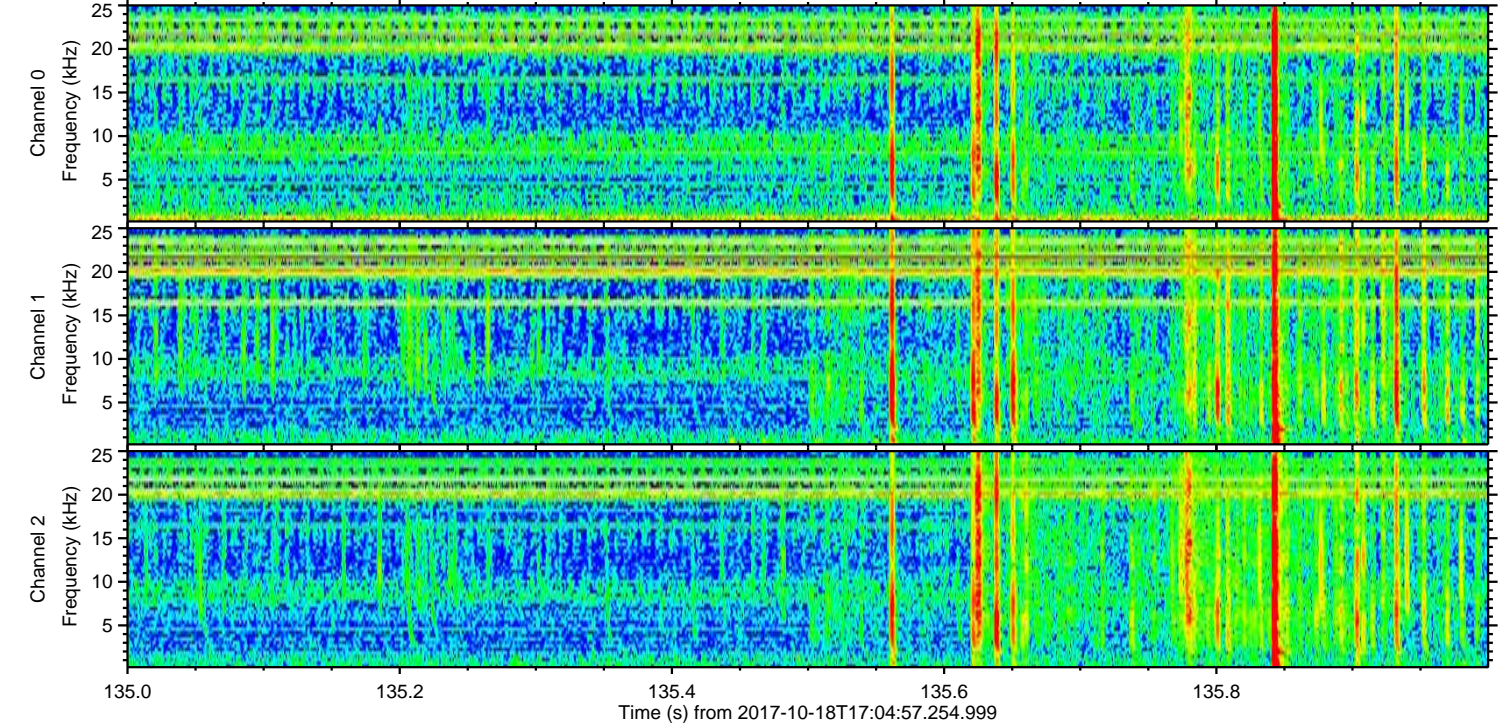
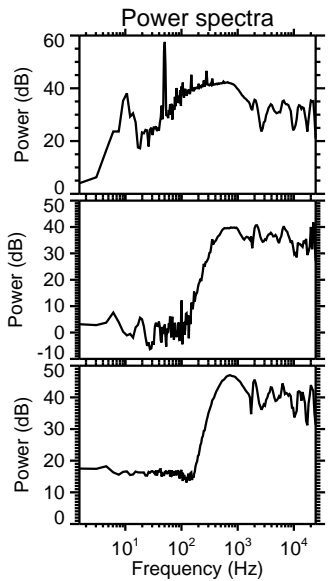
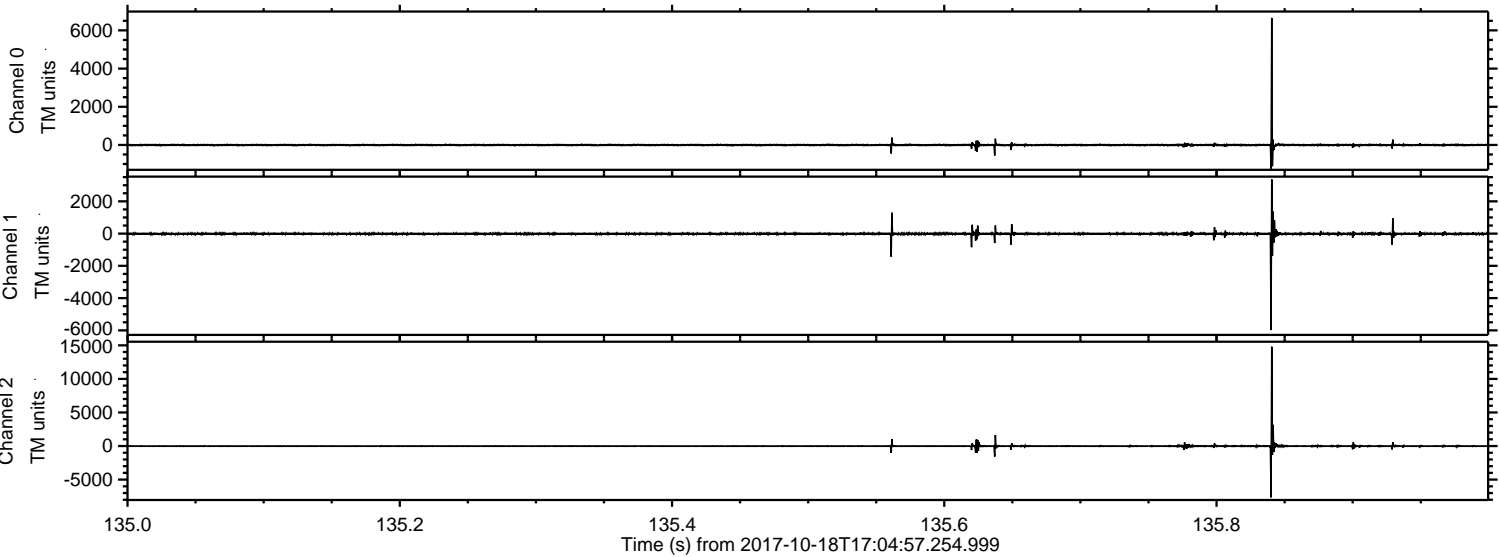
Processed Wed Oct 18 19:12:30 2017 by ELM ver.2012-10-06 from 001\_\_elm20171018\_170456\_\_dat00.bin





ELMAVAN 3D WAVEFORMS (Measured data sampled at 50 kHz) 51000 packets of 144 samples from 2017-10-18T17:04:57.254.999. Part 136/147

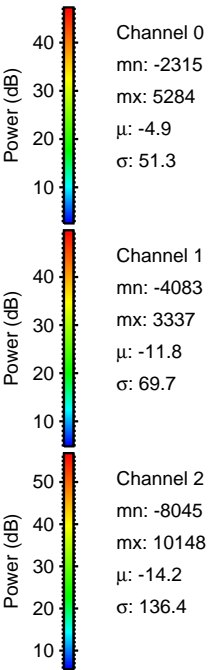
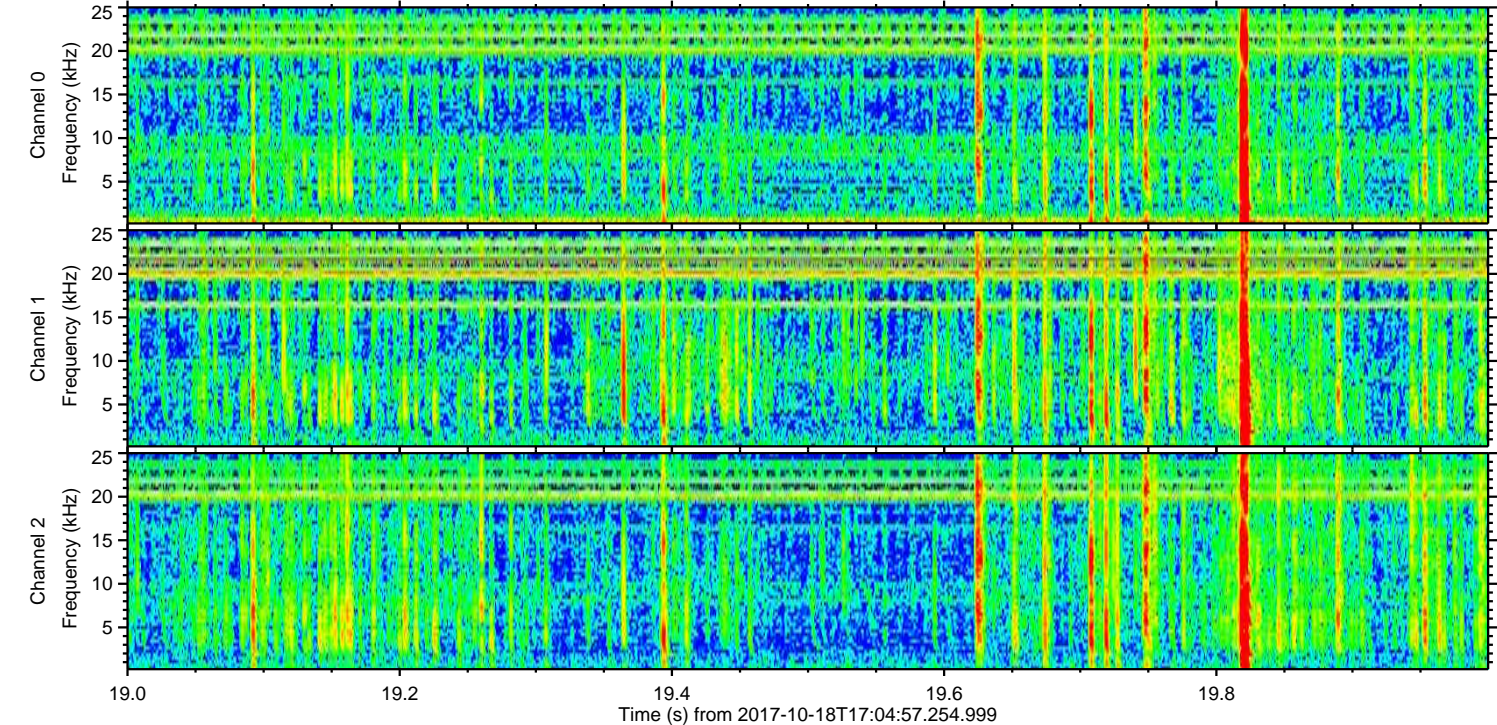
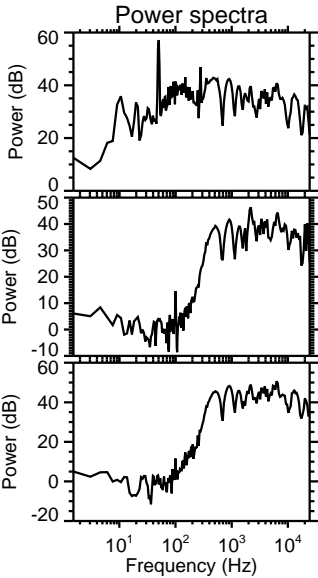
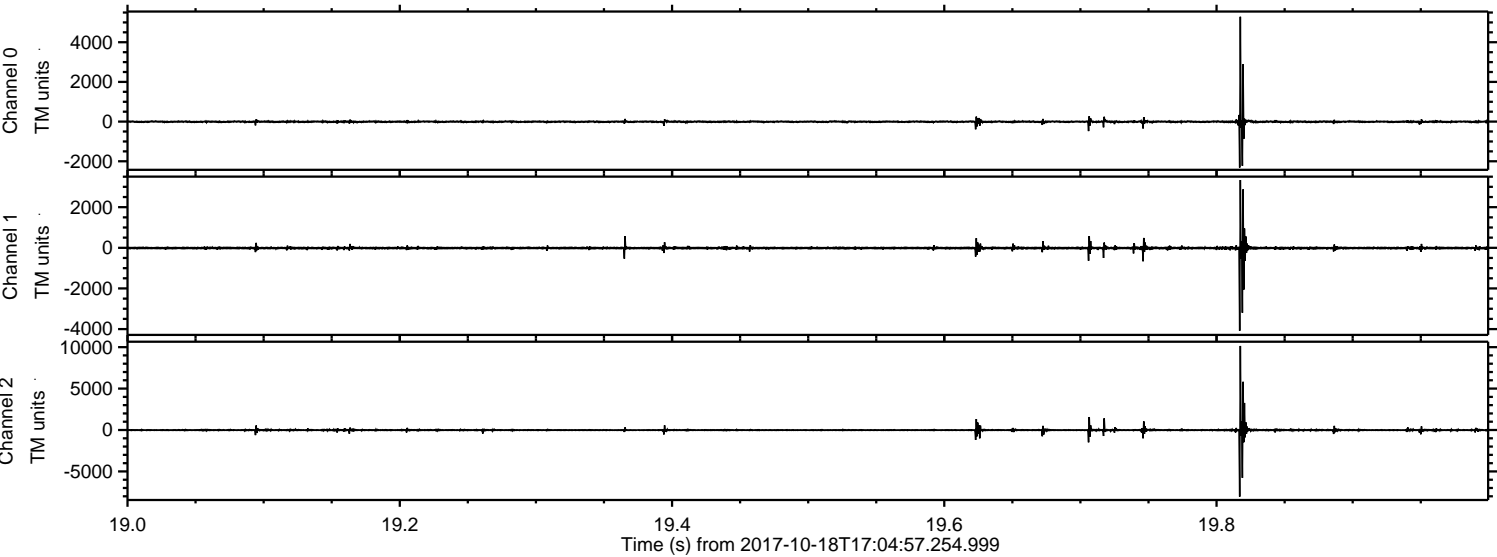
Processed Wed Oct 18 19:12:38 2017 by ELM ver.2012-10-06 from 001\_\_elm20171018\_170456\_\_dat00.bin





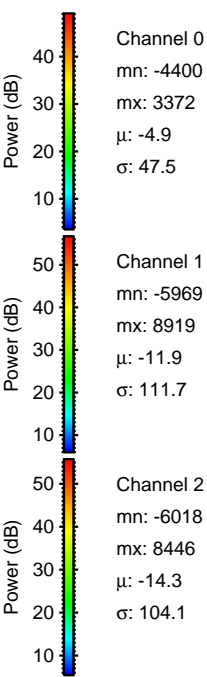
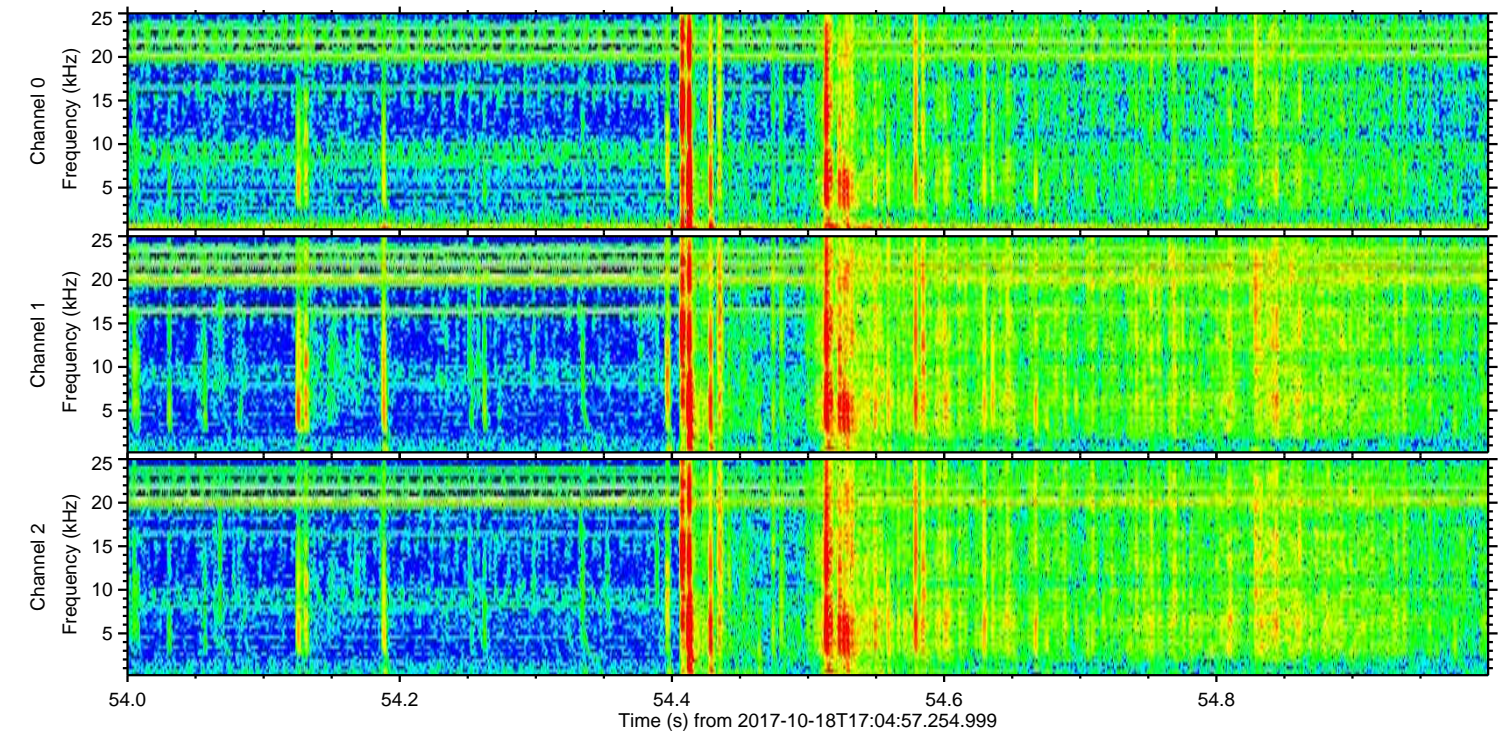
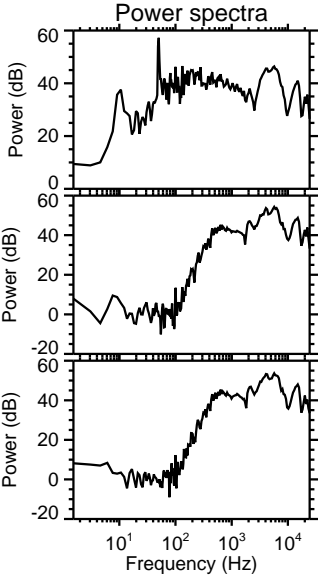
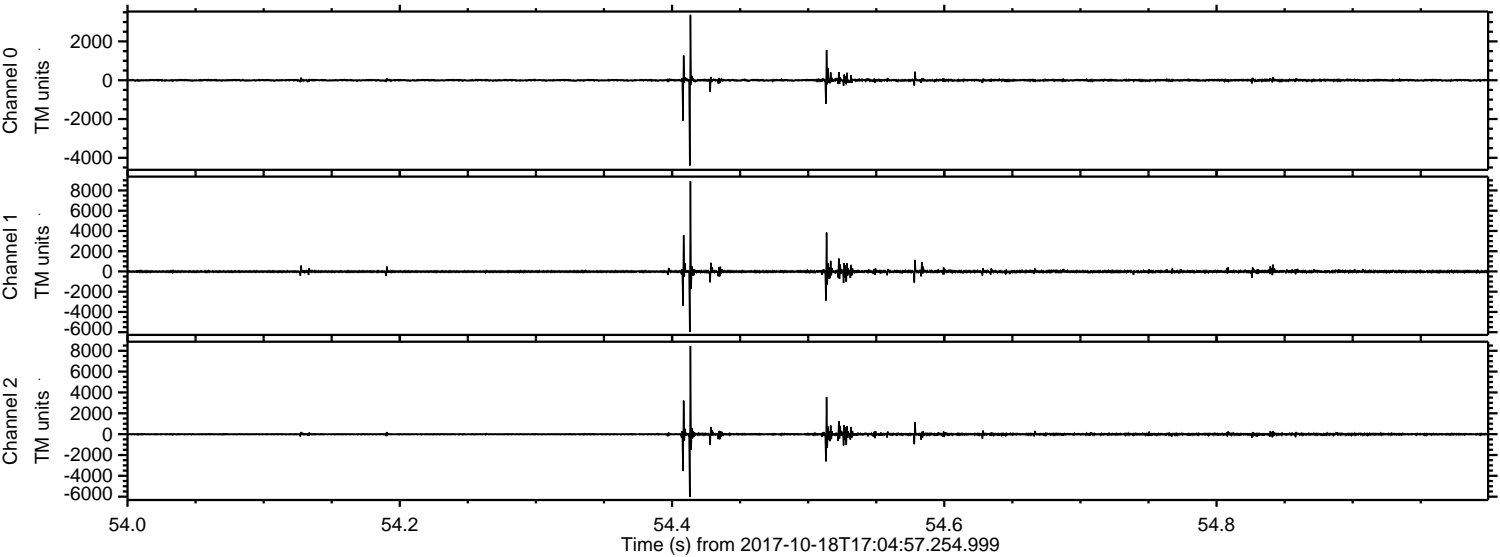
ELMAVAN 3D WAVEFORMS (Measured data sampled at 50 kHz) 51000 packets of 144 samples from 2017-10-18T17:04:57.254.999. Part 20/147

Processed Wed Oct 18 19:12:39 2017 by ELM ver.2012-10-06 from 001\_\_elm20171018\_170456\_\_dat00.bin





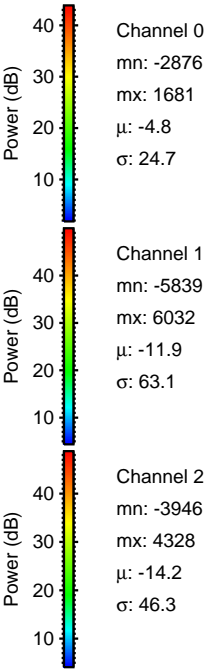
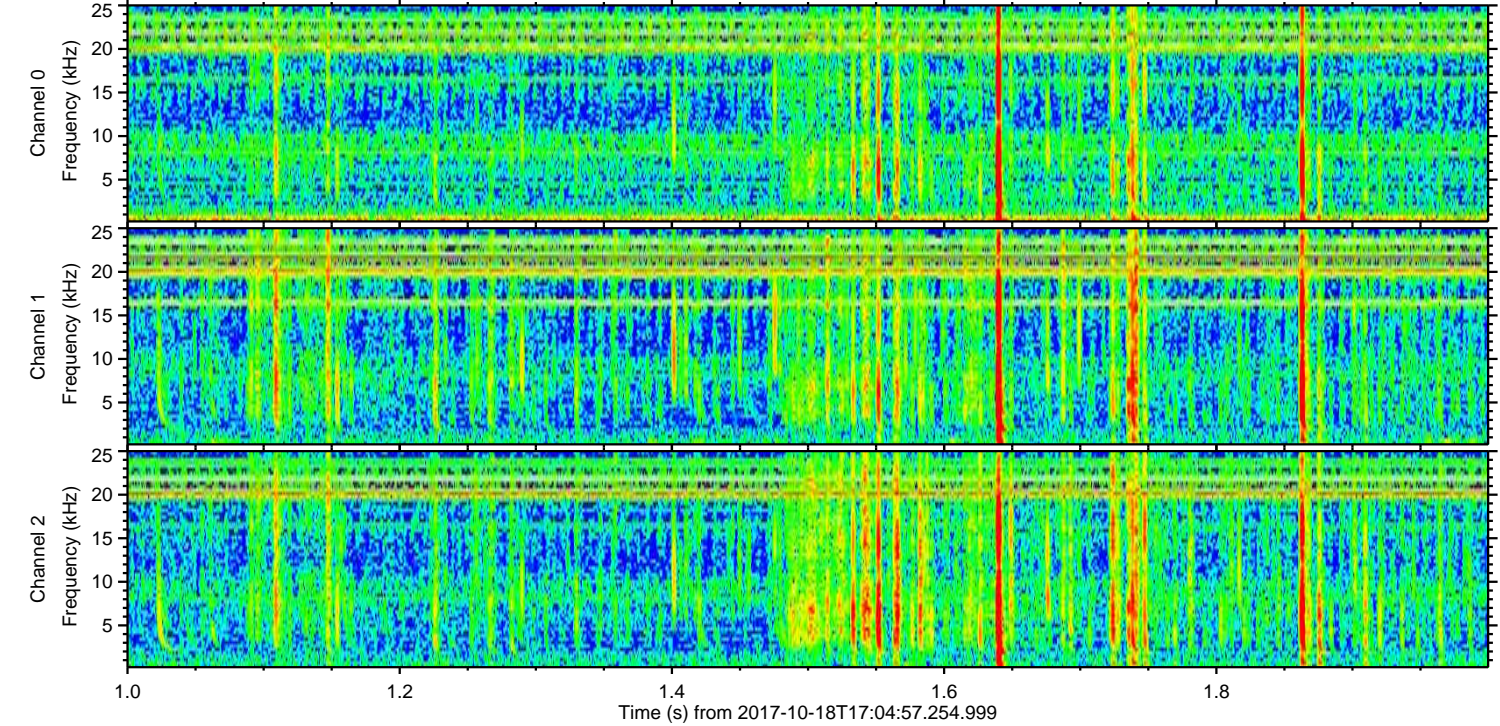
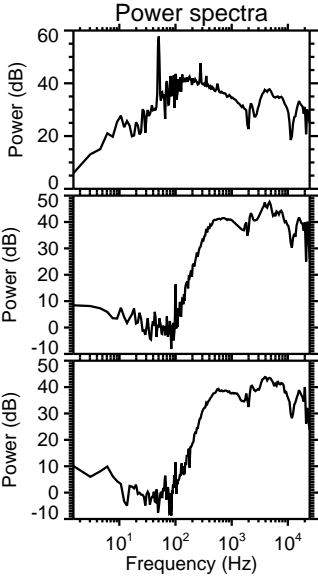
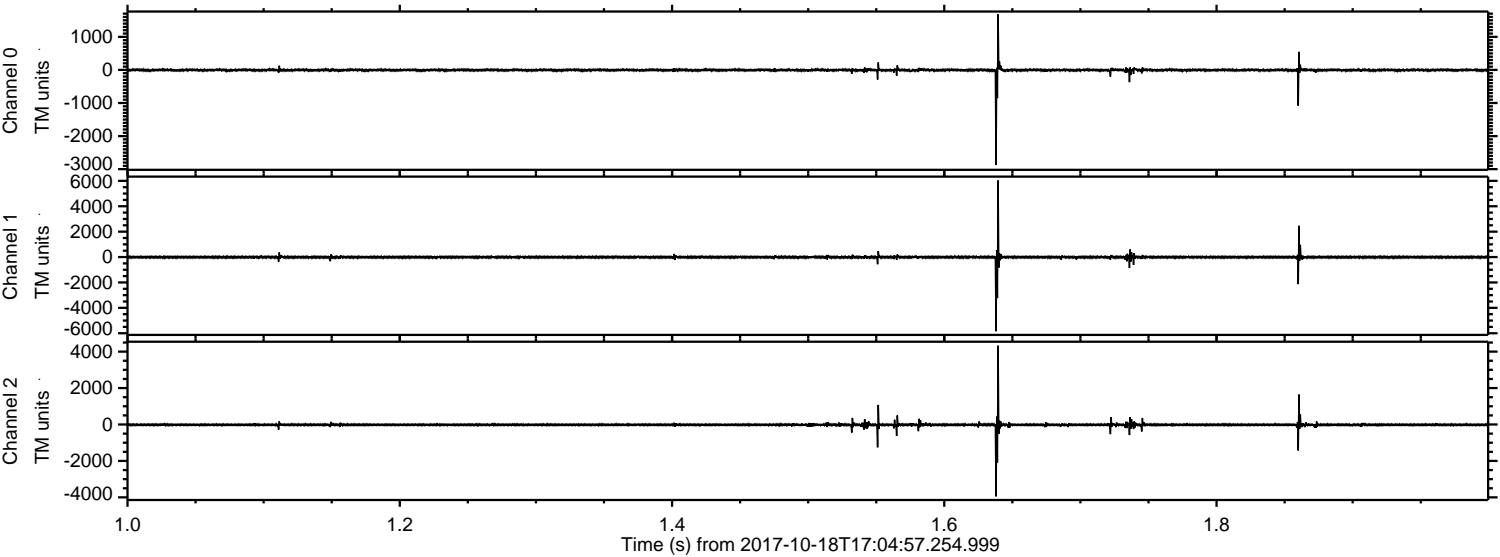
Processed Wed Oct 18 19:12:39 2017 by ELM ver.2012-10-06 from 001\_\_elm20171018\_170456\_\_dat00.bin





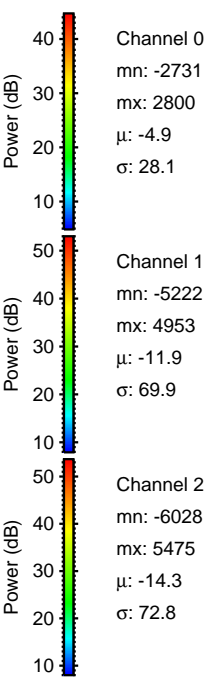
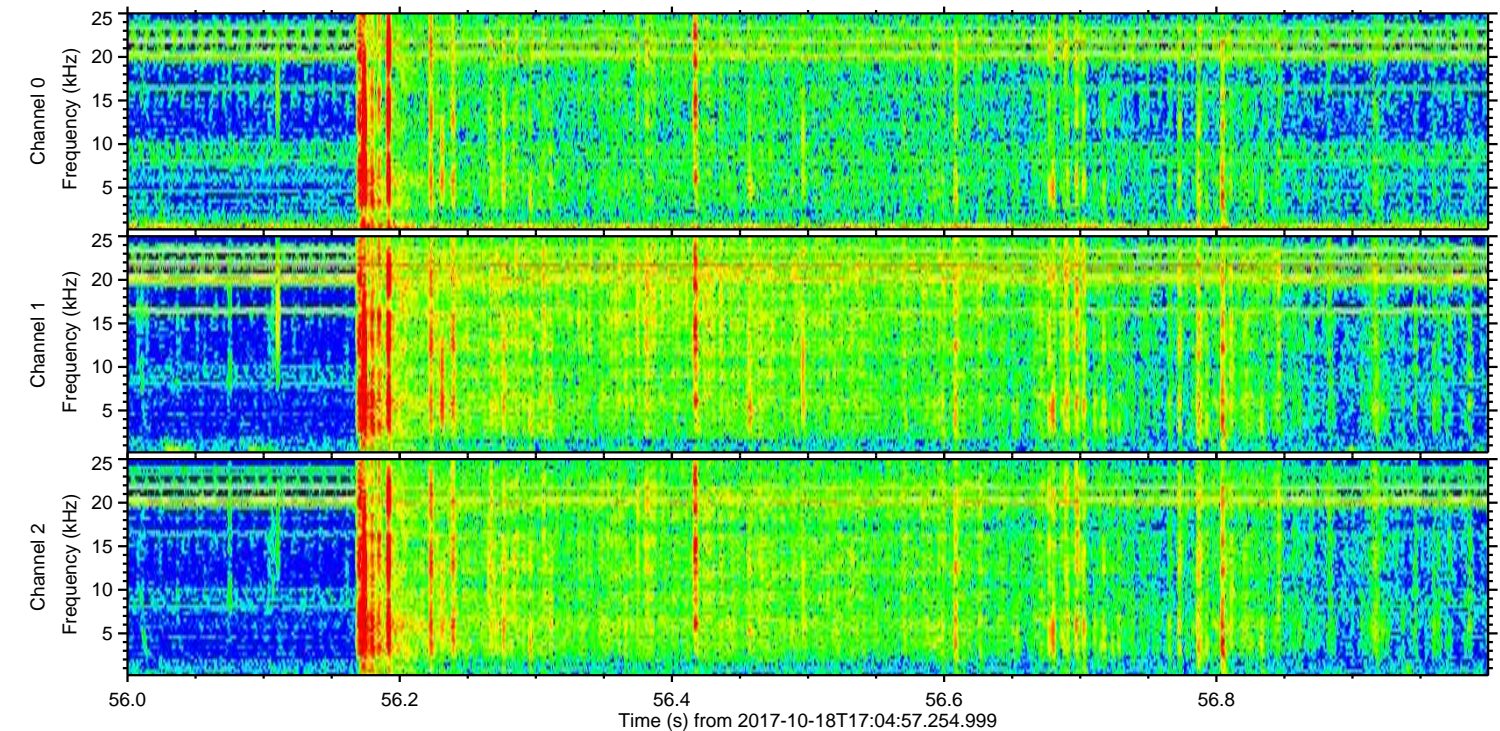
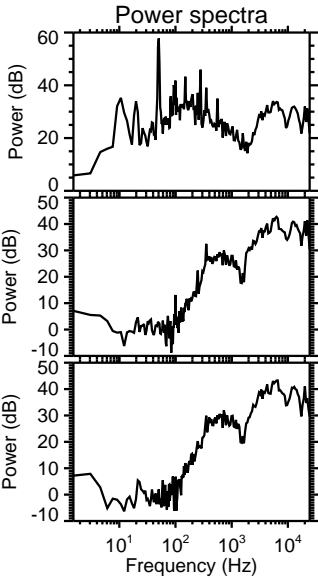
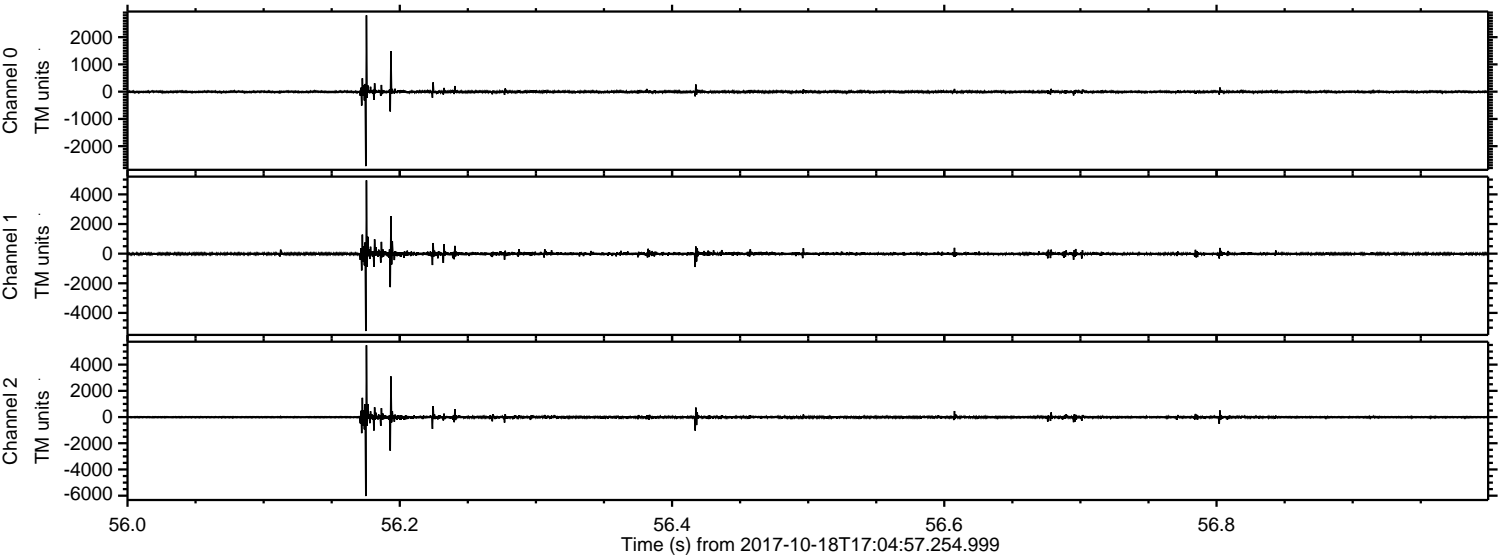
ELMAVAN 3D WAVEFORMS (Measured data sampled at 50 kHz) 51000 packets of 144 samples from 2017-10-18T17:04:57.254.999. Part 2/147

Processed Wed Oct 18 19:12:40 2017 by ELM ver.2012-10-06 from 001\_\_elm20171018\_170456\_\_dat00.bin



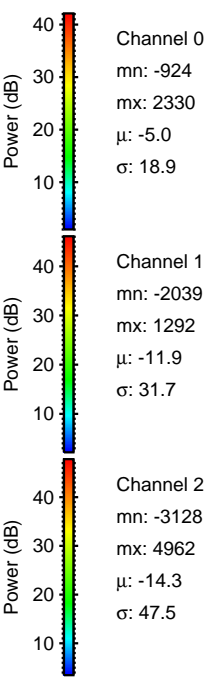
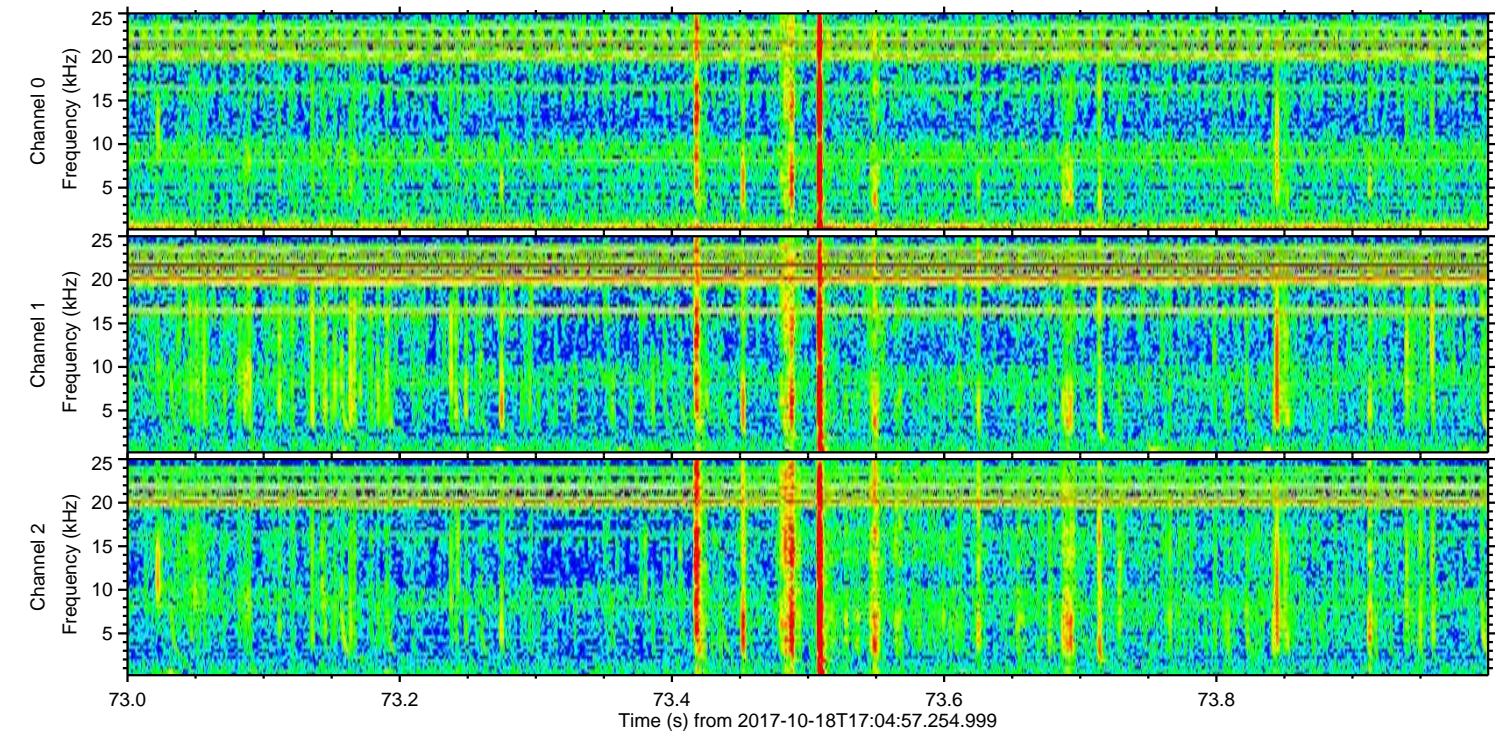
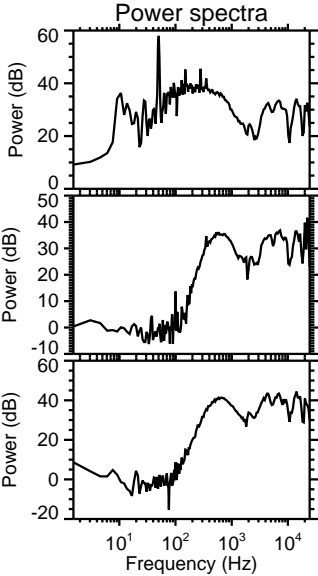
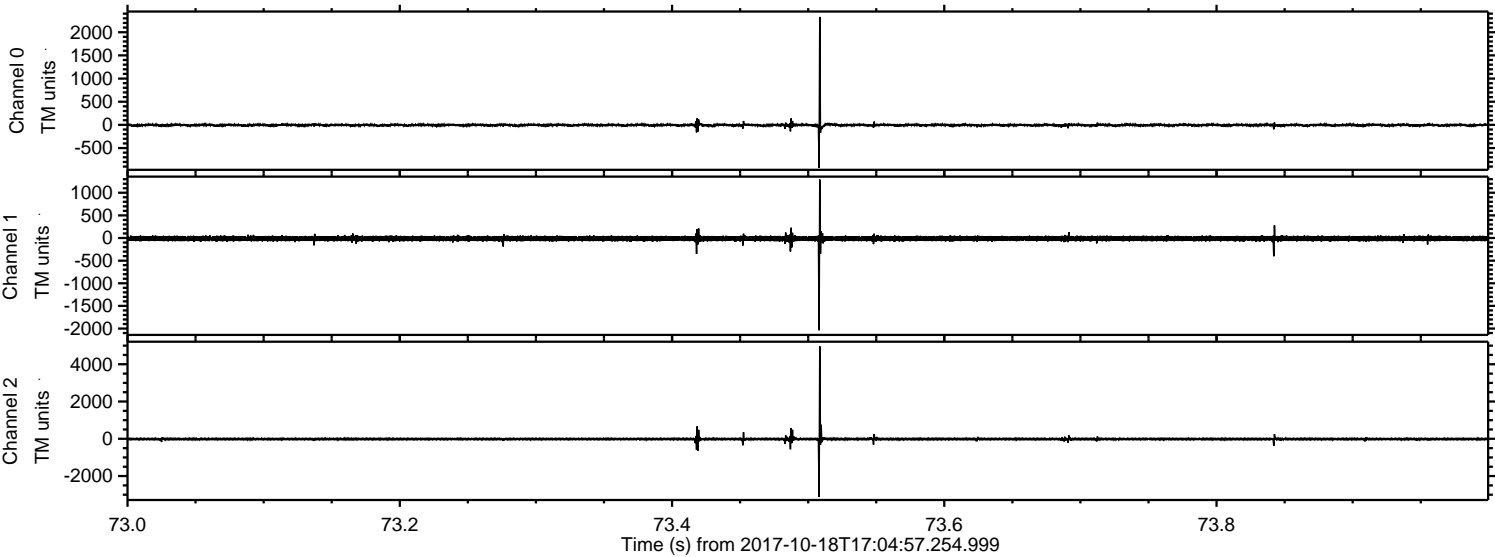


Processed Wed Oct 18 19:12:41 2017 by ELM ver.2012-10-06 from 001\_\_elm20171018\_170456\_\_dat00.bin





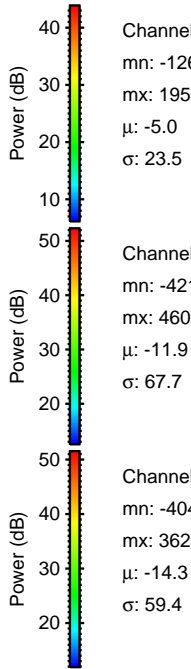
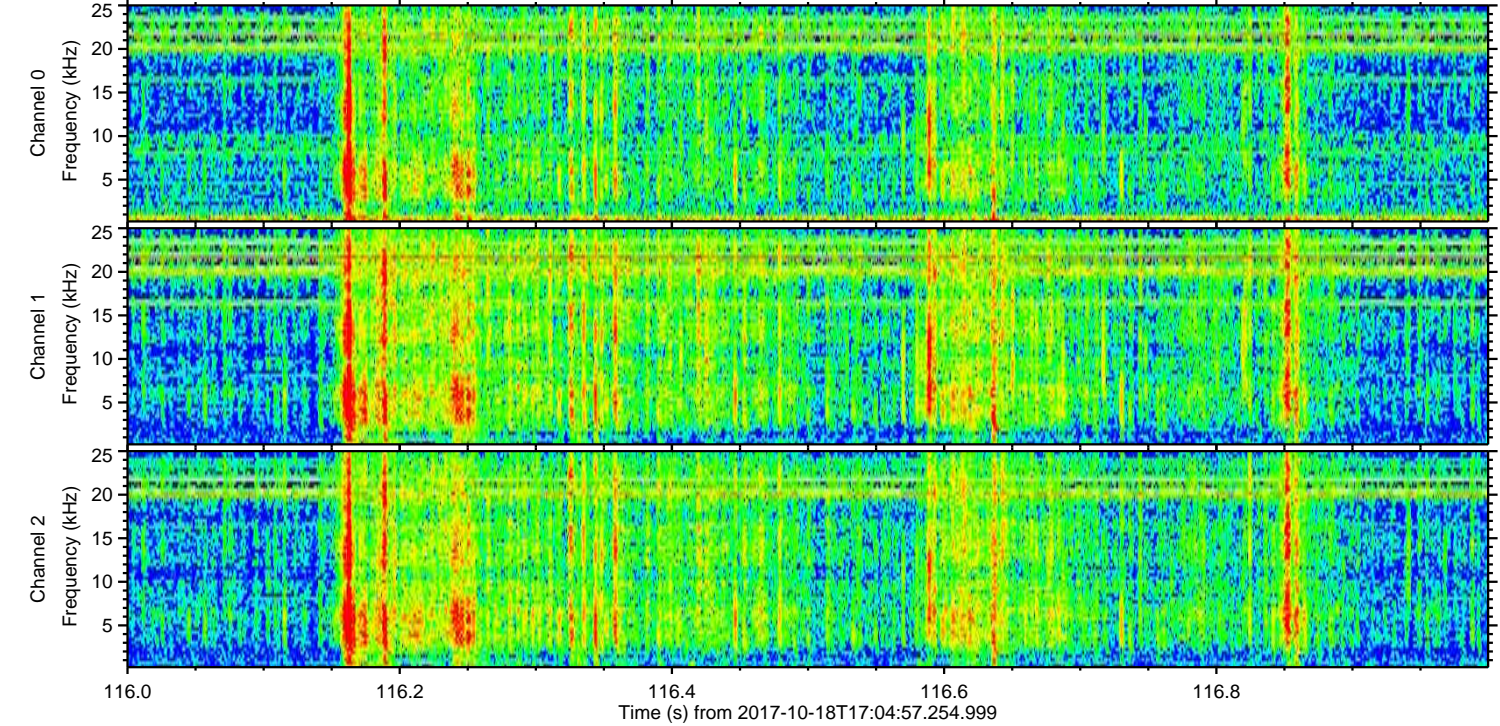
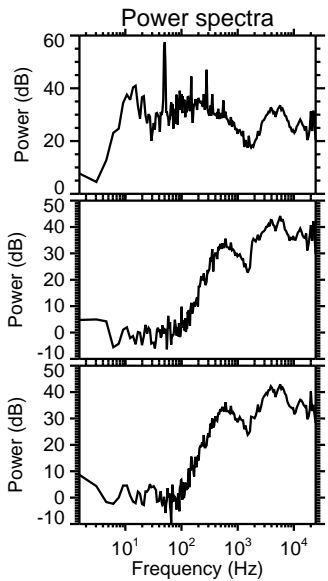
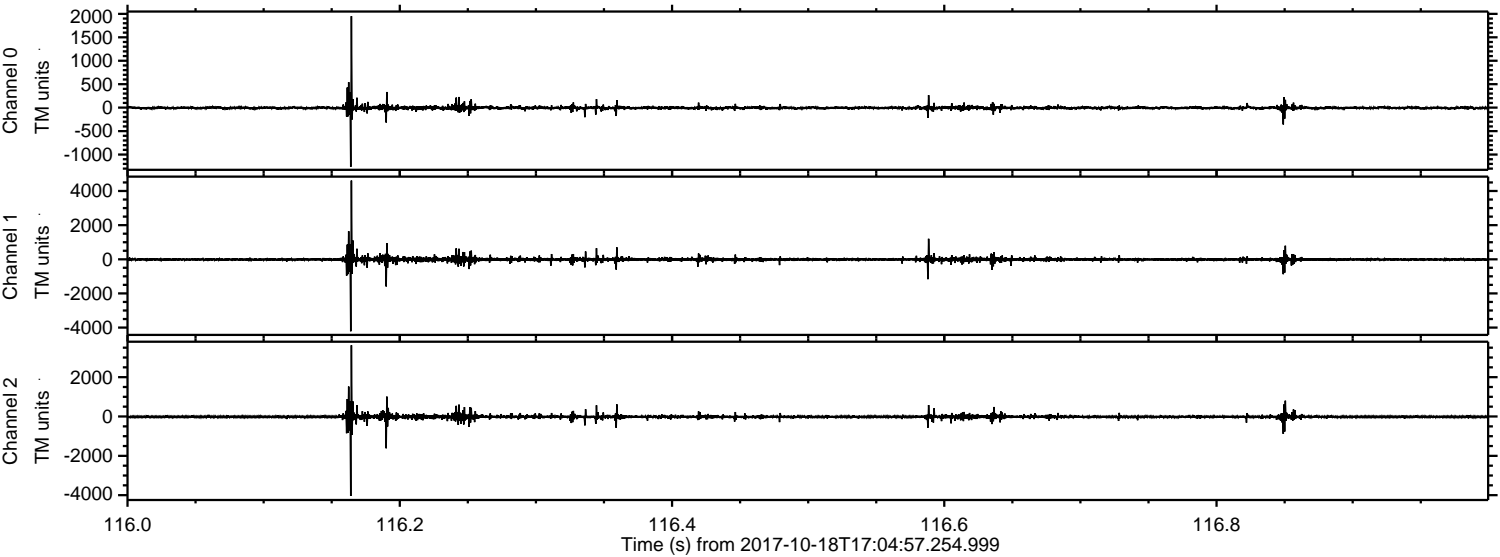
Processed Wed Oct 18 19:12:42 2017 by ELM ver.2012-10-06 from 001\_\_elm20171018\_170456\_\_dat00.bin





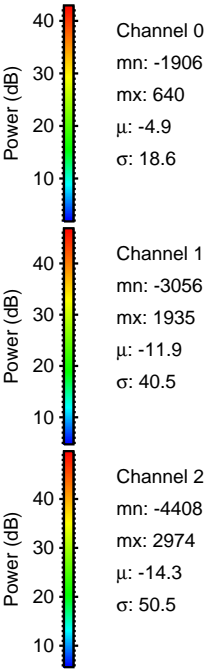
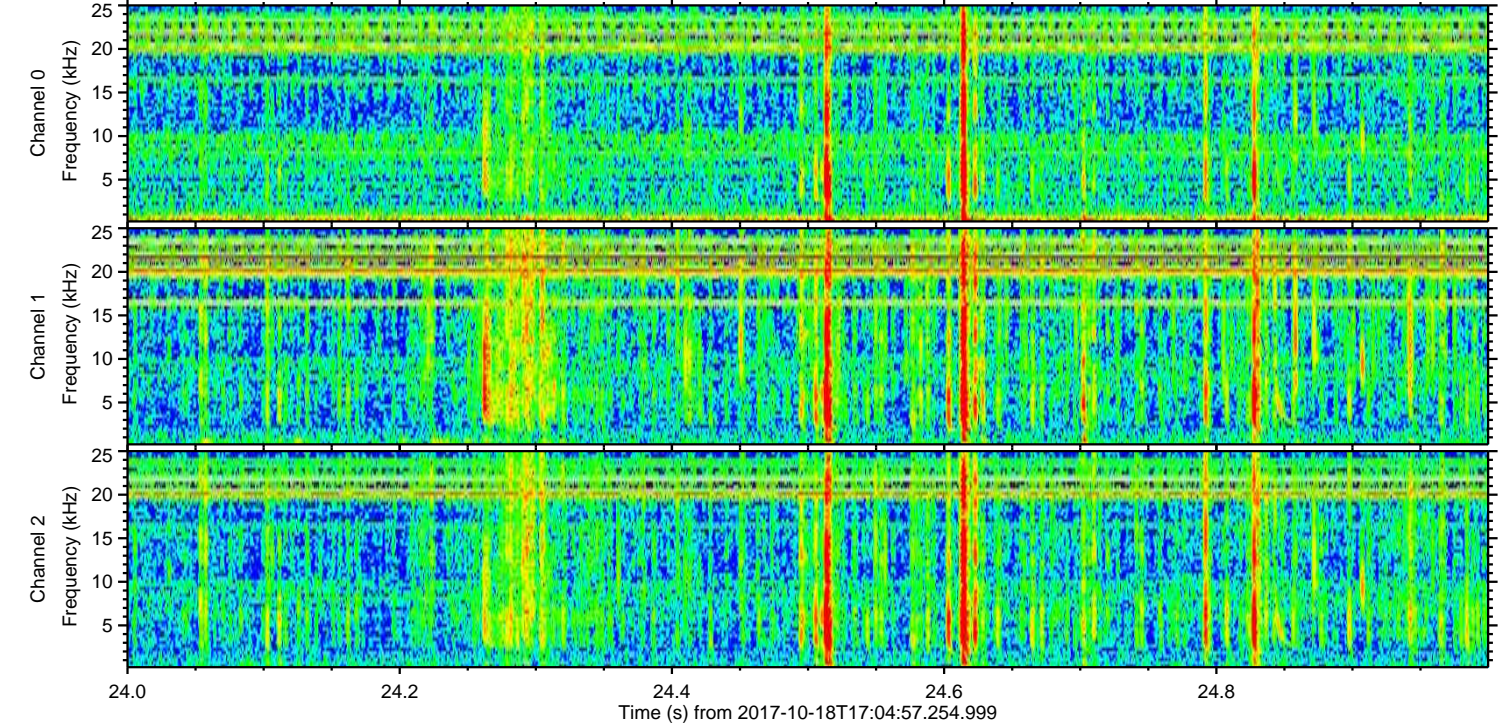
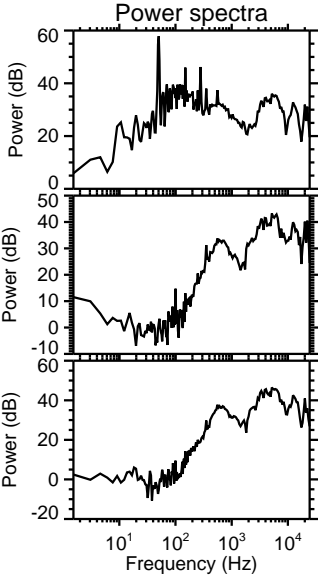
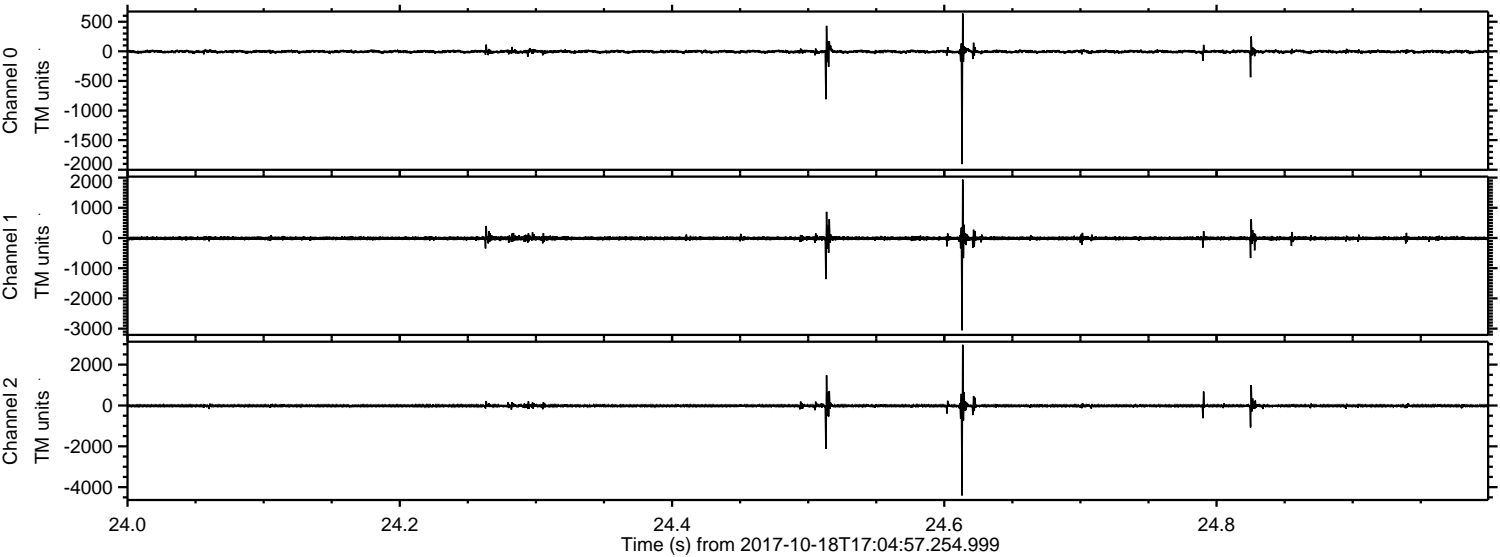
ELMAVAN 3D WAVEFORMS (Measured data sampled at 50 kHz) 51000 packets of 144 samples from 2017-10-18T17:04:57.254.999. Part 117/147

Processed Wed Oct 18 19:12:43 2017 by ELM ver.2012-10-06 from 001\_\_elm20171018\_170456\_\_dat00.bin



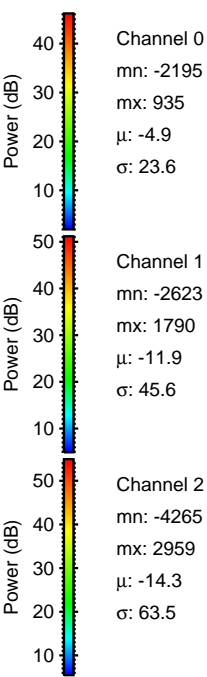
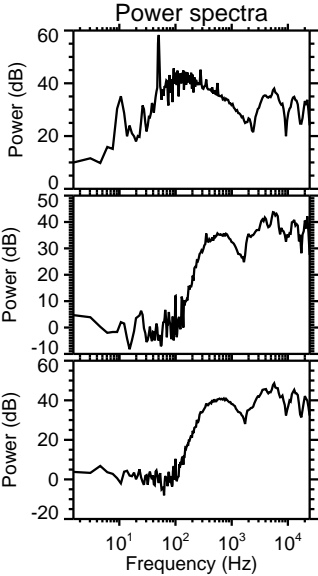
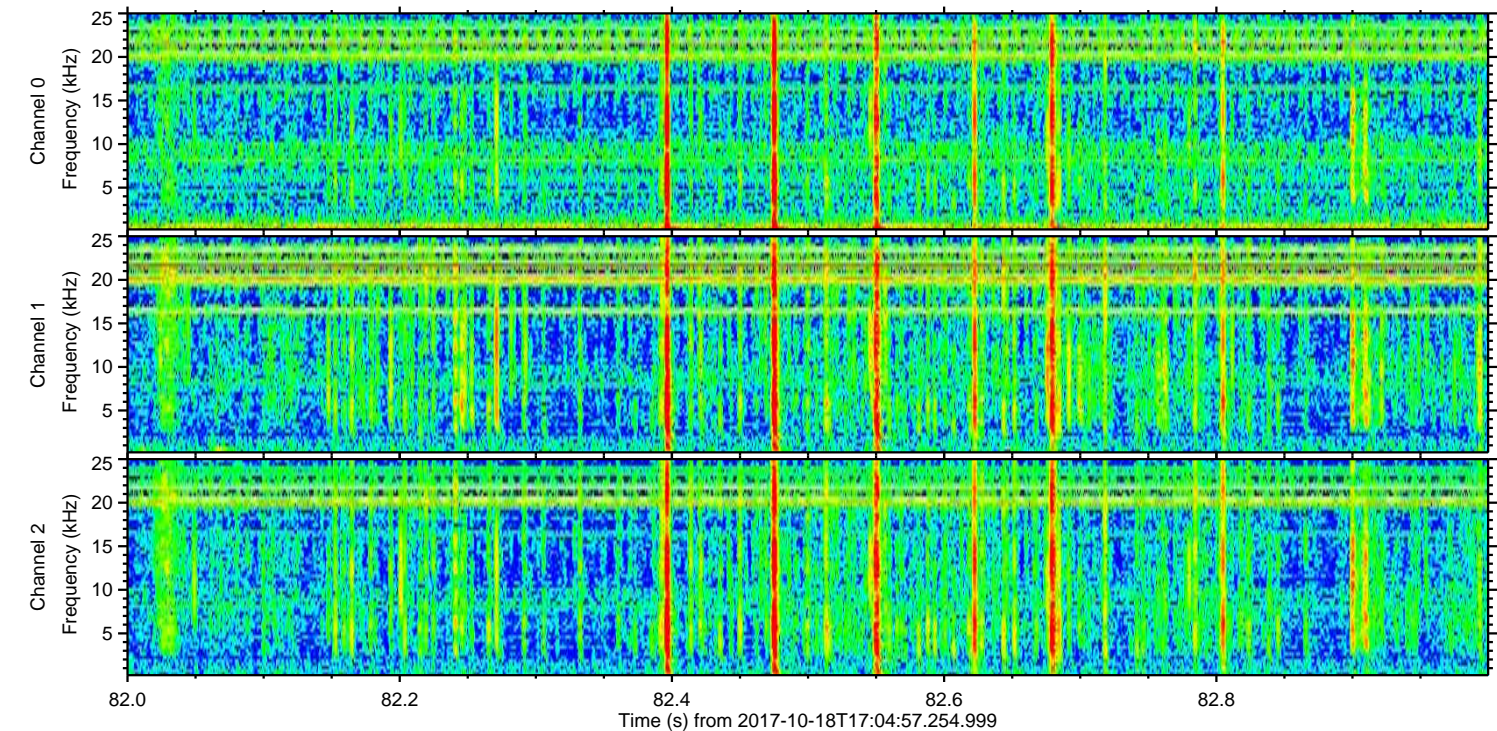
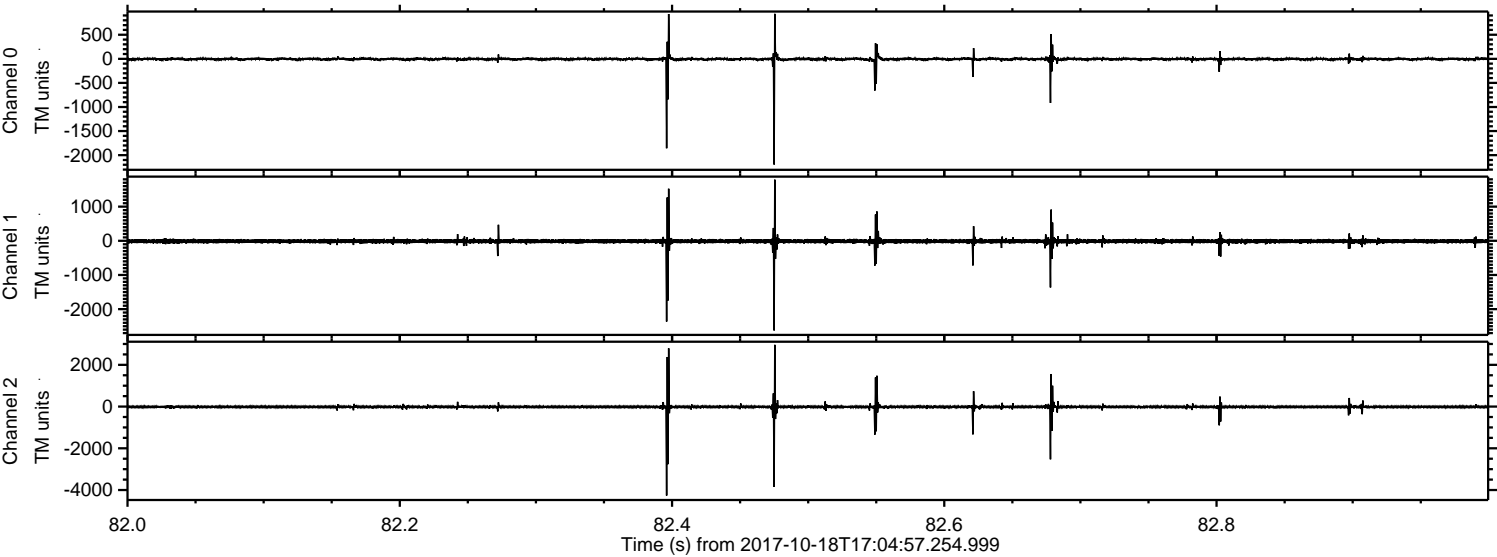


Processed Wed Oct 18 19:12:43 2017 by ELM ver.2012-10-06 from 001\_\_elm20171018\_170456\_\_dat00.bin





Processed Wed Oct 18 19:12:44 2017 by ELM ver.2012-10-06 from 001\_elm20171018\_170456\_\_dat00.bin



Channel 0  
mn: -2195  
mx: 935  
 $\mu$ : -4.9  
 $\sigma$ : 23.6

Channel 1  
mn: -2623  
mx: 1790  
 $\mu$ : -11.9  
 $\sigma$ : 45.6

Channel 2  
mn: -4265  
mx: 2959  
 $\mu$ : -14.3  
 $\sigma$ : 63.5



Processed Wed Oct 18 19:12:45 2017 by ELM ver.2012-10-06 from 001\_\_elm20171018\_170456\_\_dat00.bin

