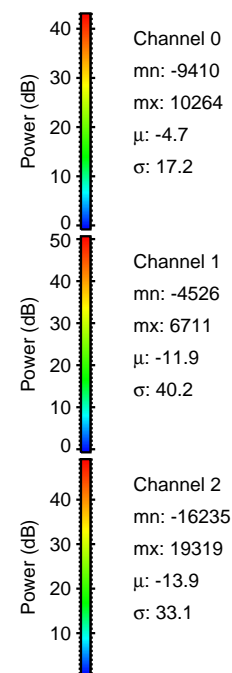
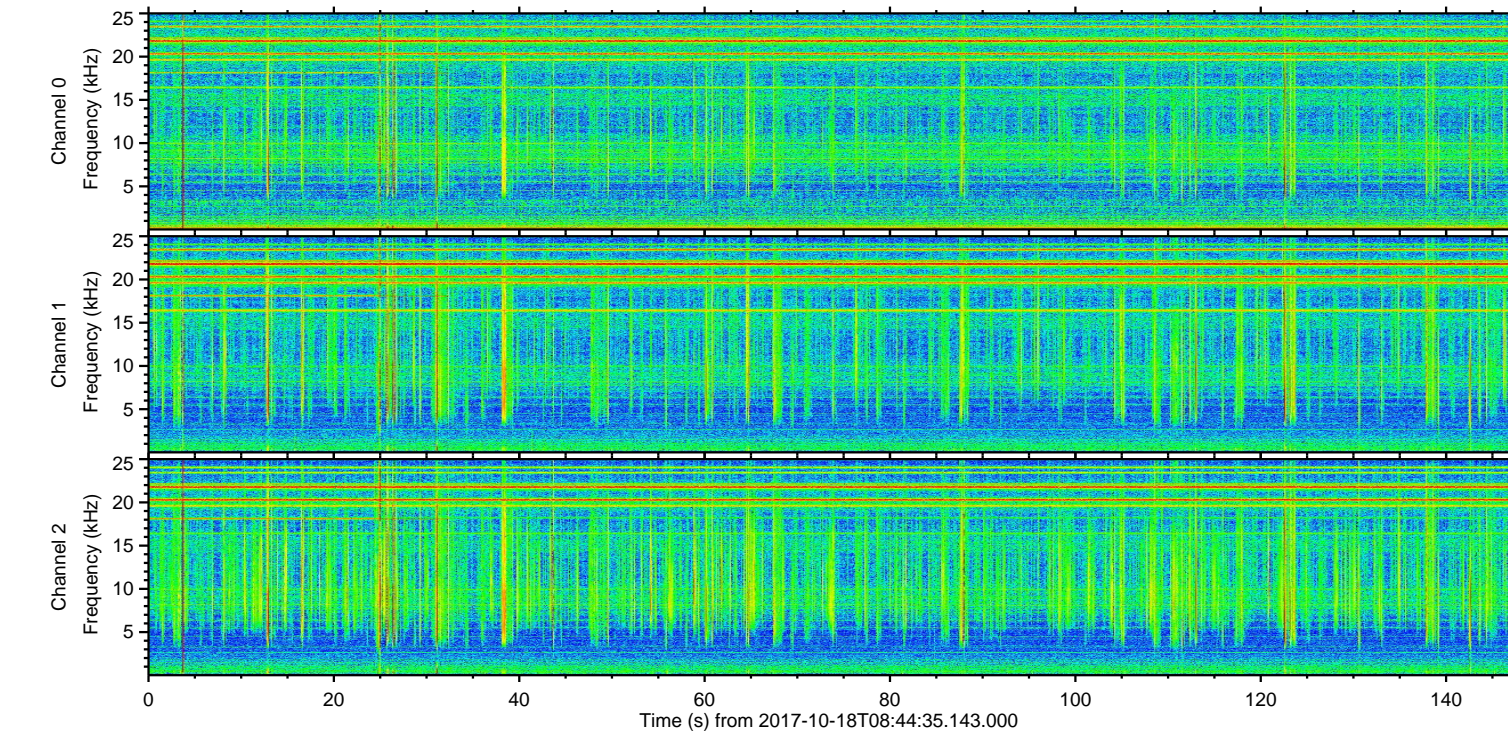
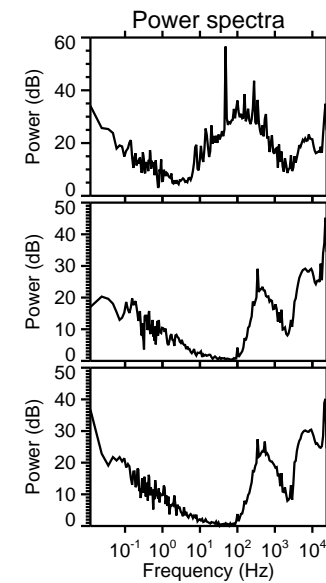
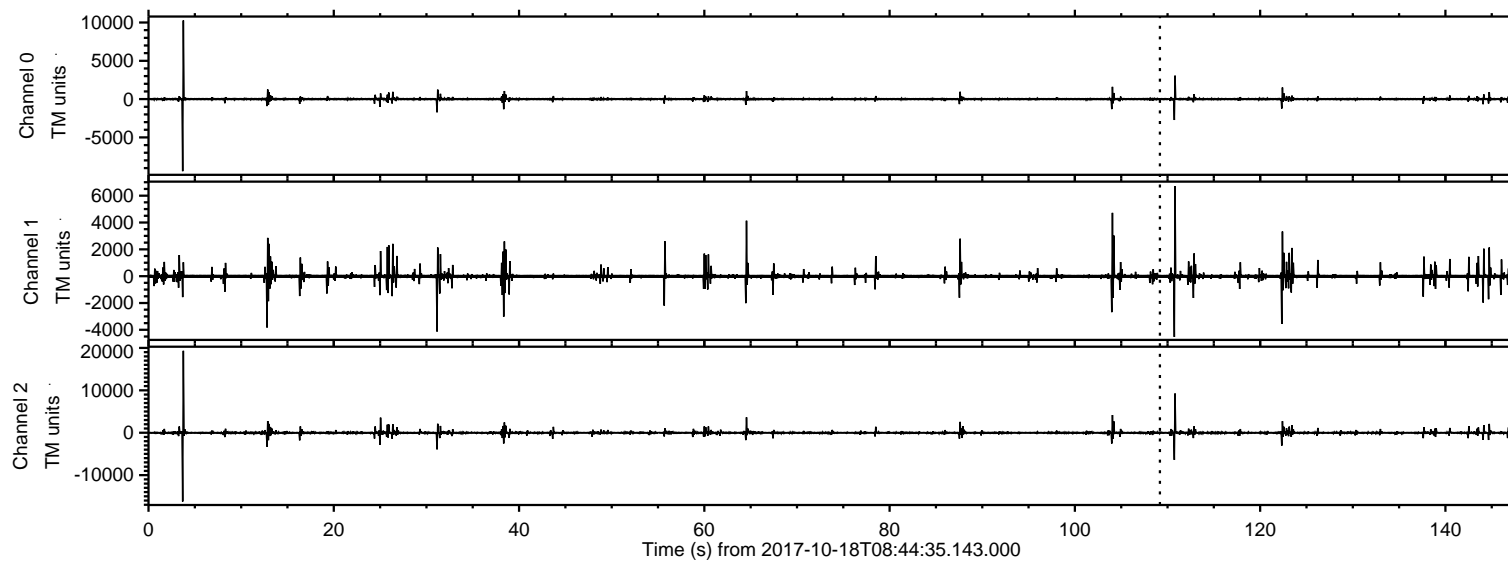


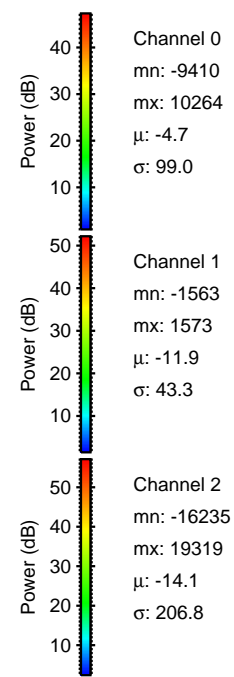
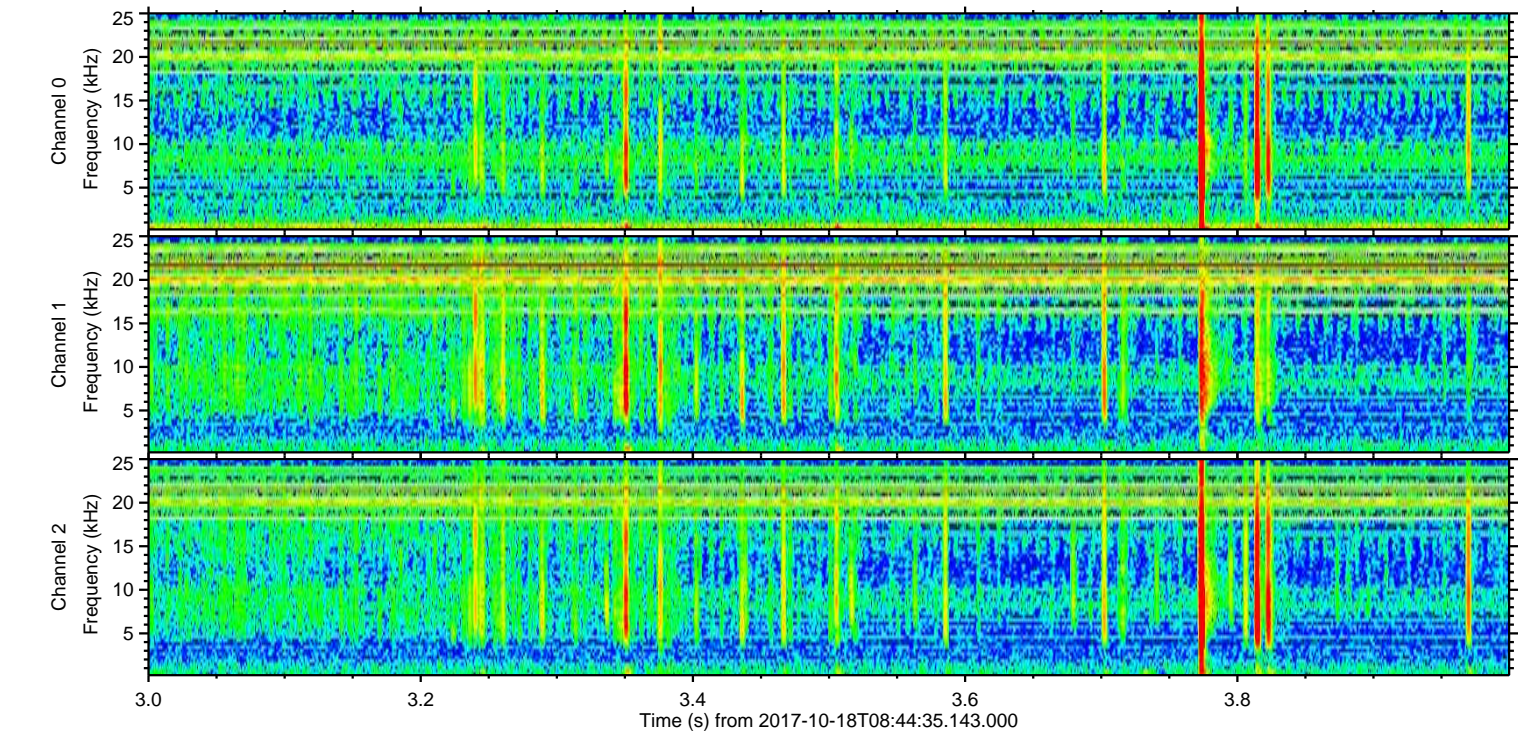
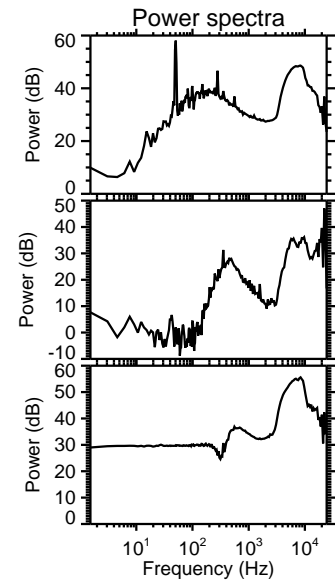
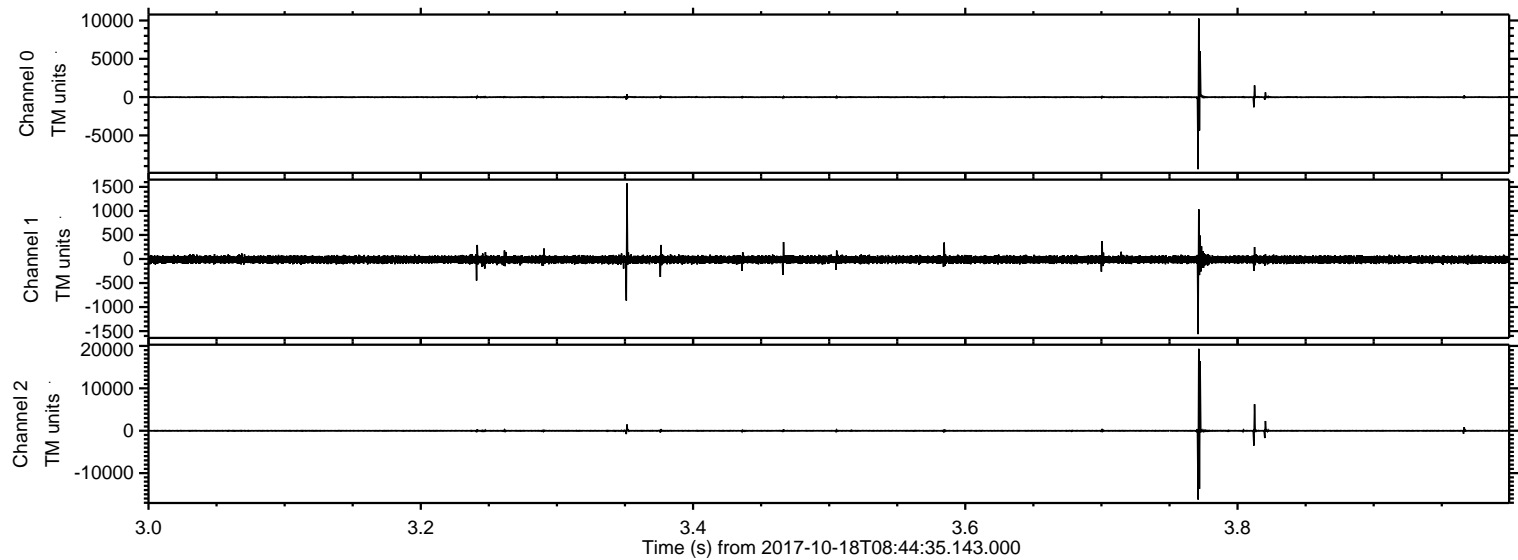
ELMAVAN 3D WAVEFORMS (Measured data sampled at 50 kHz) 50999 packets of 144 samples from 2017-10-18T08:44:35.143.000.

Processed Wed Oct 18 10:52:17 2017 by ELM ver.2012-10-06 from 001__elm20171018_084434__dat00.bin



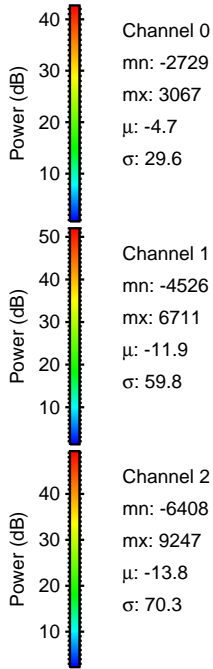
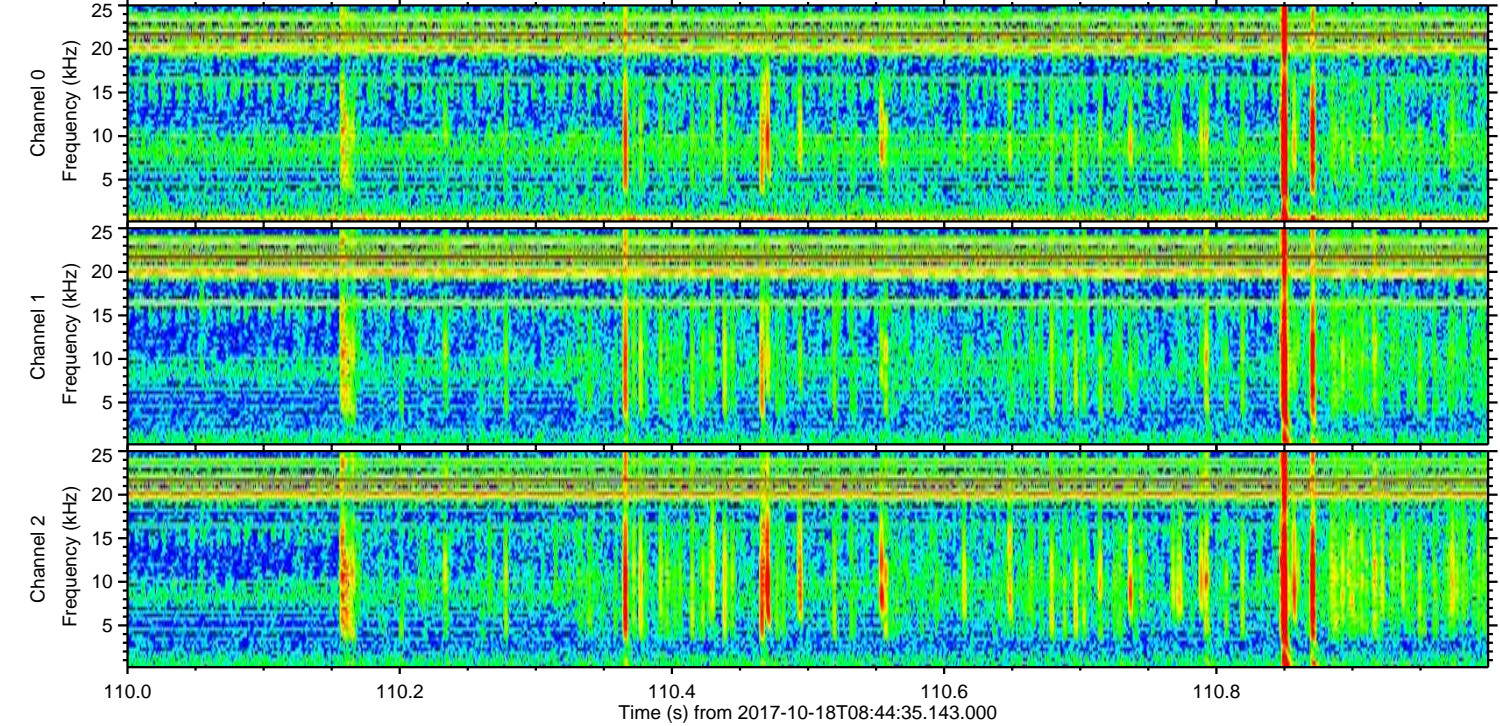
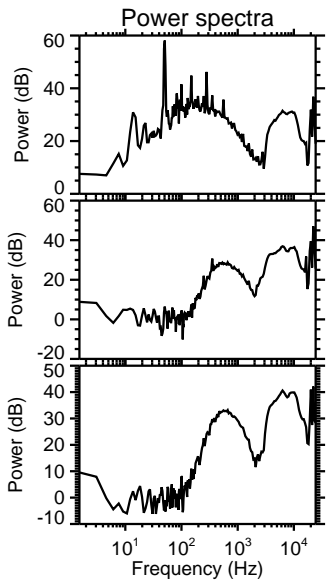
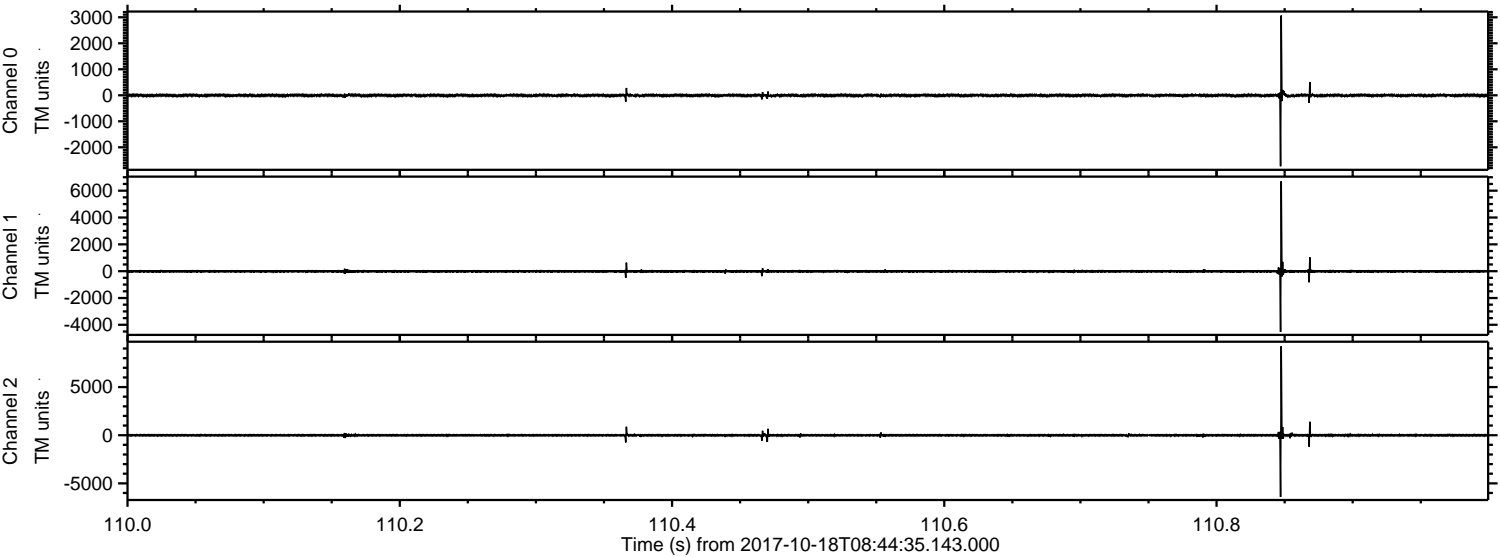
ELMAVAN 3D WAVEFORMS (Measured data sampled at 50 kHz) 50999 packets of 144 samples from 2017-10-18T08:44:35.143.000. Part 4/147

Processed Wed Oct 18 10:52:24 2017 by ELM ver.2012-10-06 from 001__elm20171018_084434__dat00.bin



ELMAVAN 3D WAVEFORMS (Measured data sampled at 50 kHz) 50999 packets of 144 samples from 2017-10-18T08:44:35.143.000. Part 111/147

Processed Wed Oct 18 10:52:25 2017 by ELM ver.2012-10-06 from 001__elm20171018_084434__dat00.bin



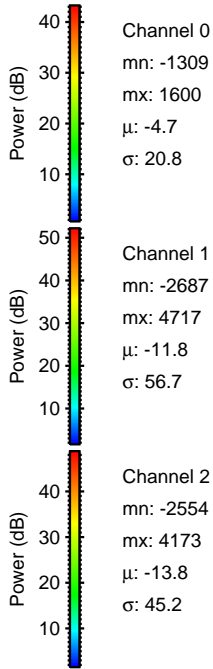
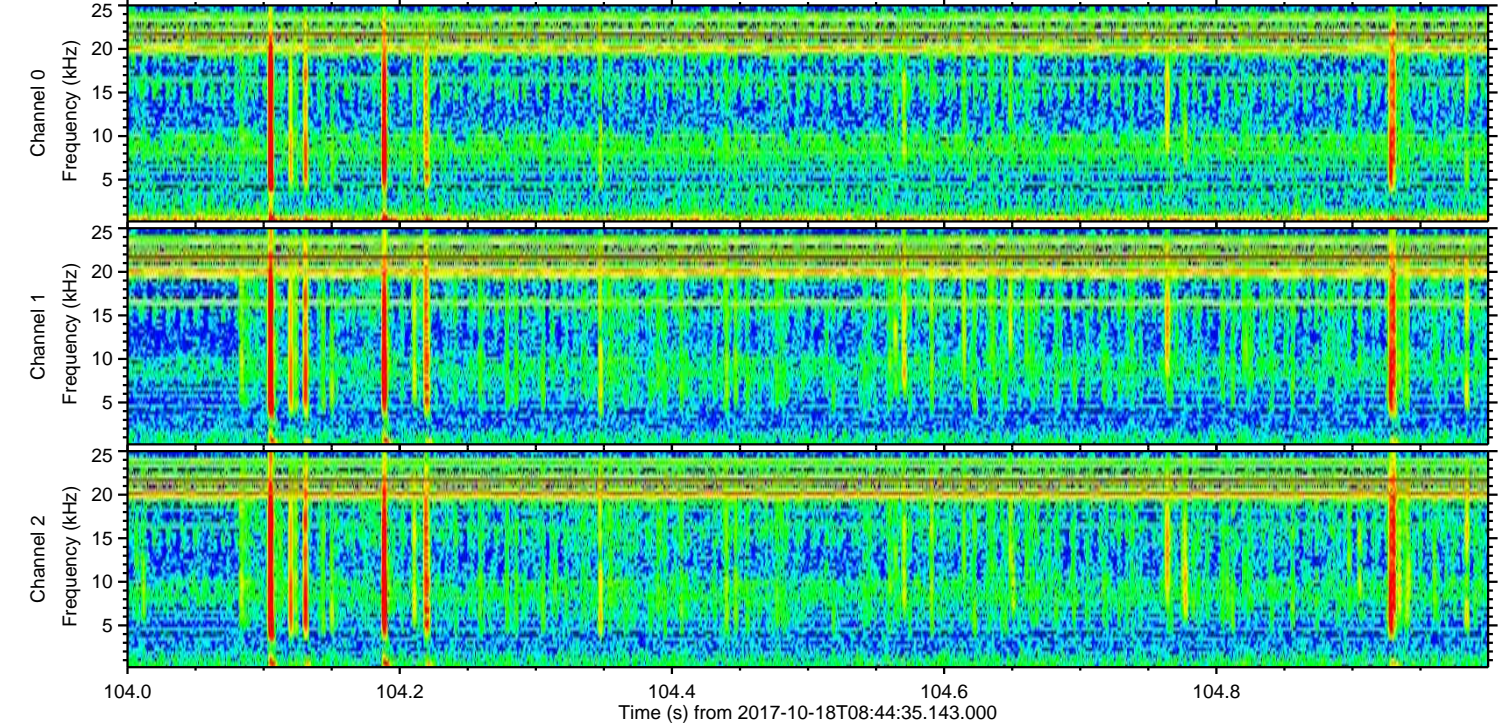
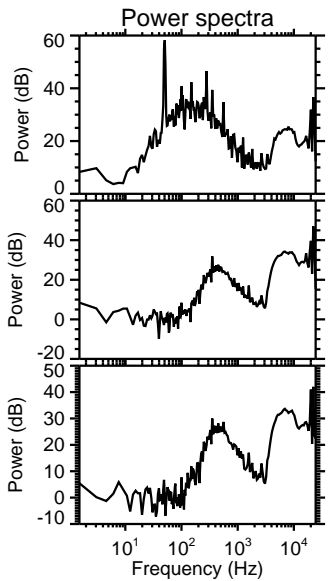
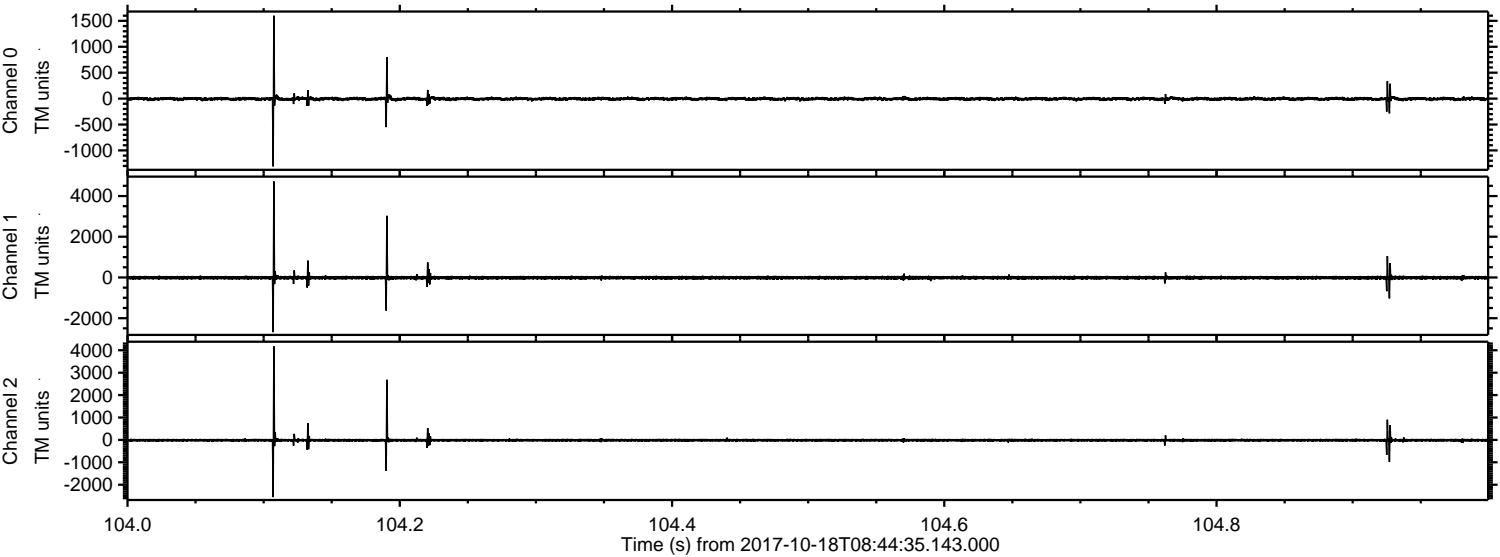
Channel 0
mn: -2729
mx: 3067
 μ : -4.7
 σ : 29.6

Channel 1
mn: -4526
mx: 6711
 μ : -11.9
 σ : 59.8

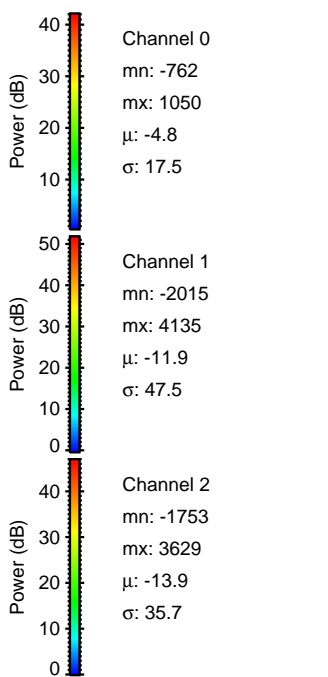
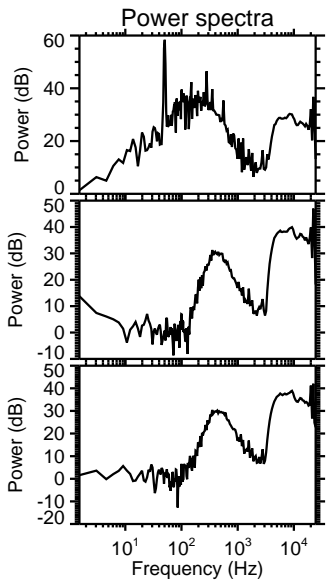
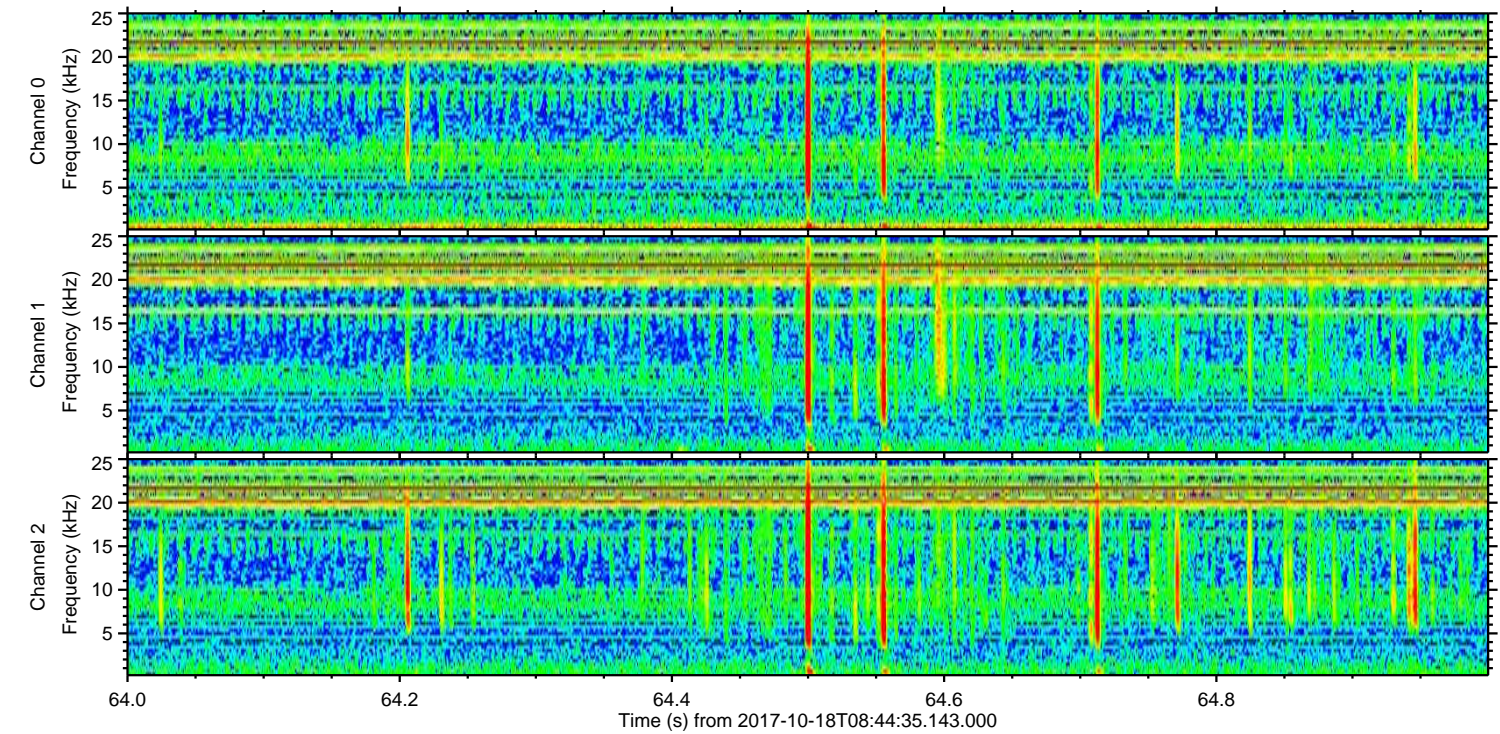
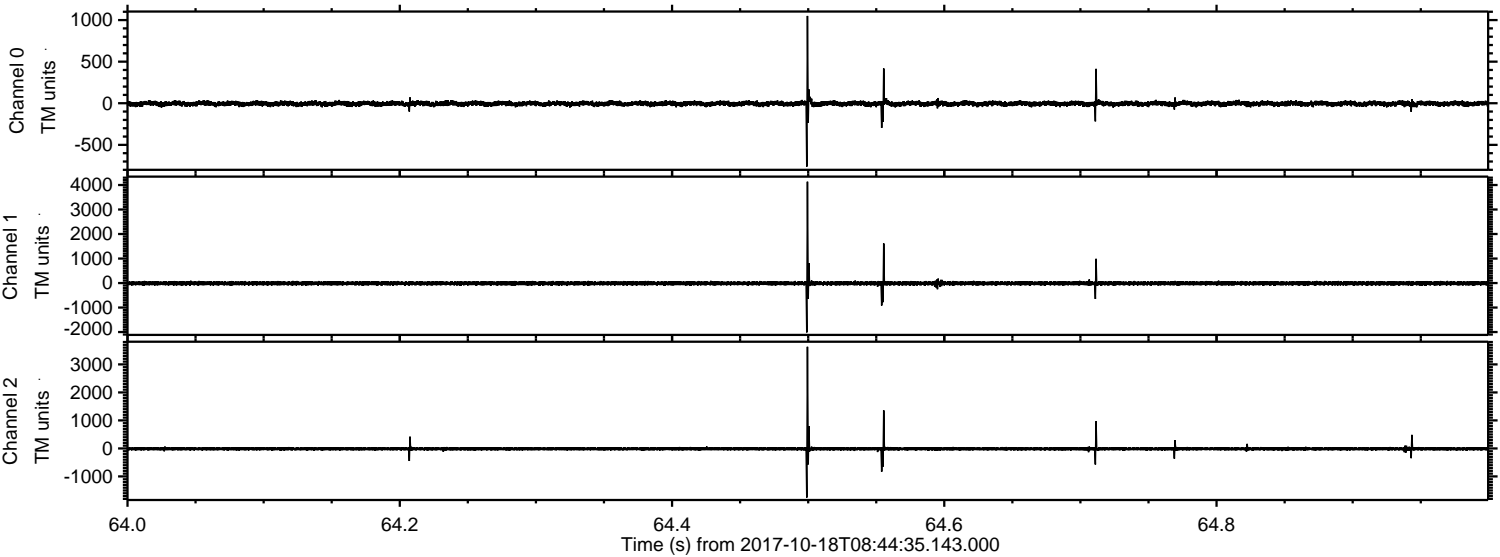
Channel 2
mn: -6408
mx: 9247
 μ : -13.8
 σ : 70.3

ELMAVAN 3D WAVEFORMS (Measured data sampled at 50 kHz) 50999 packets of 144 samples from 2017-10-18T08:44:35.143.000. Part 105/147

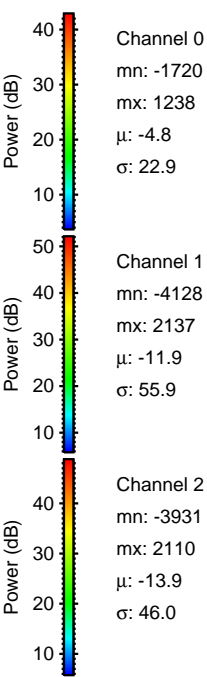
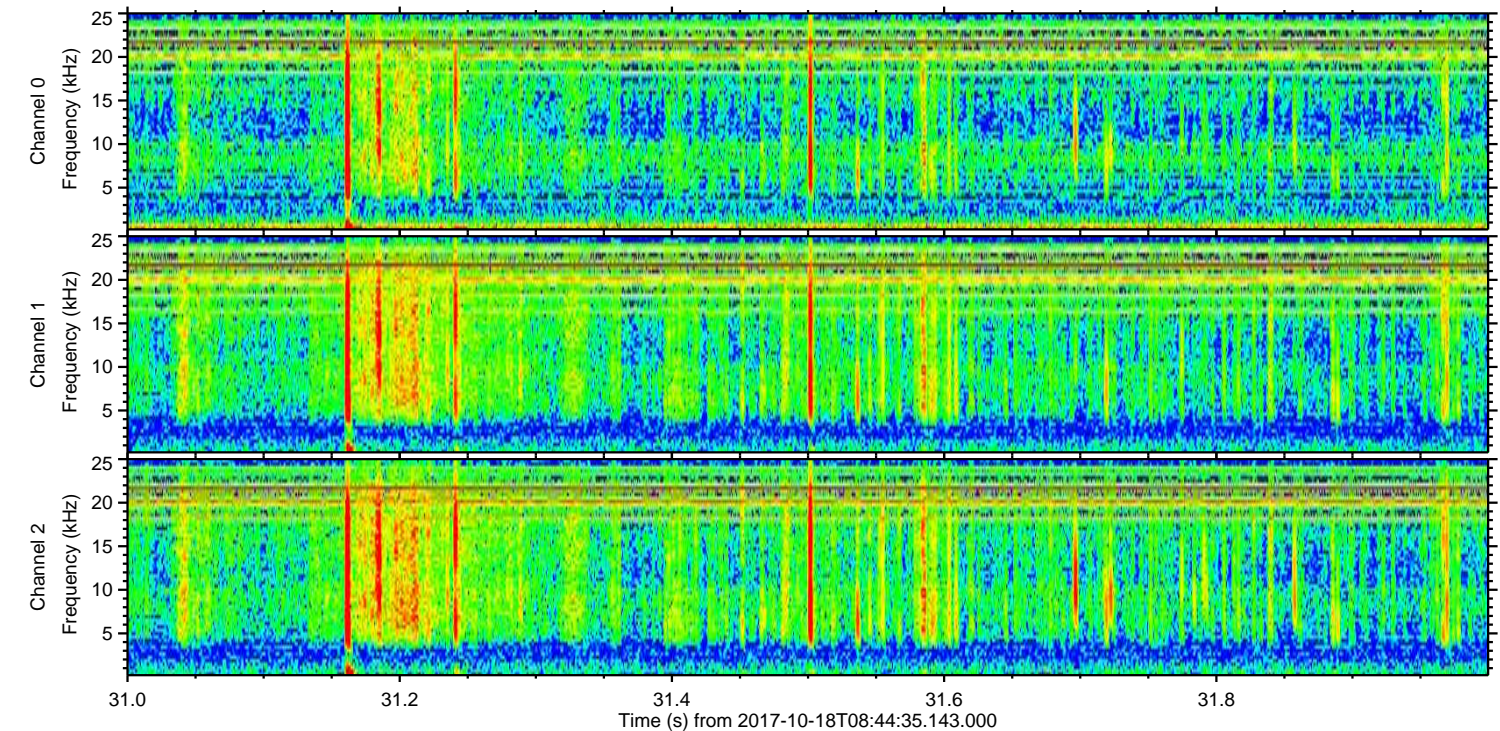
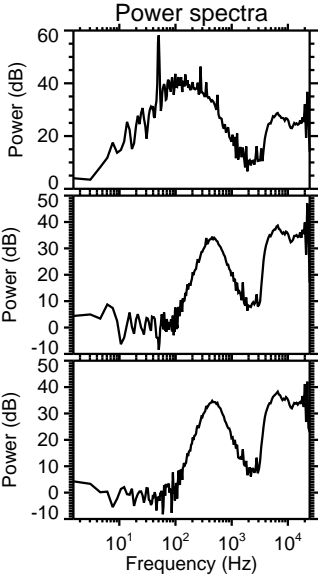
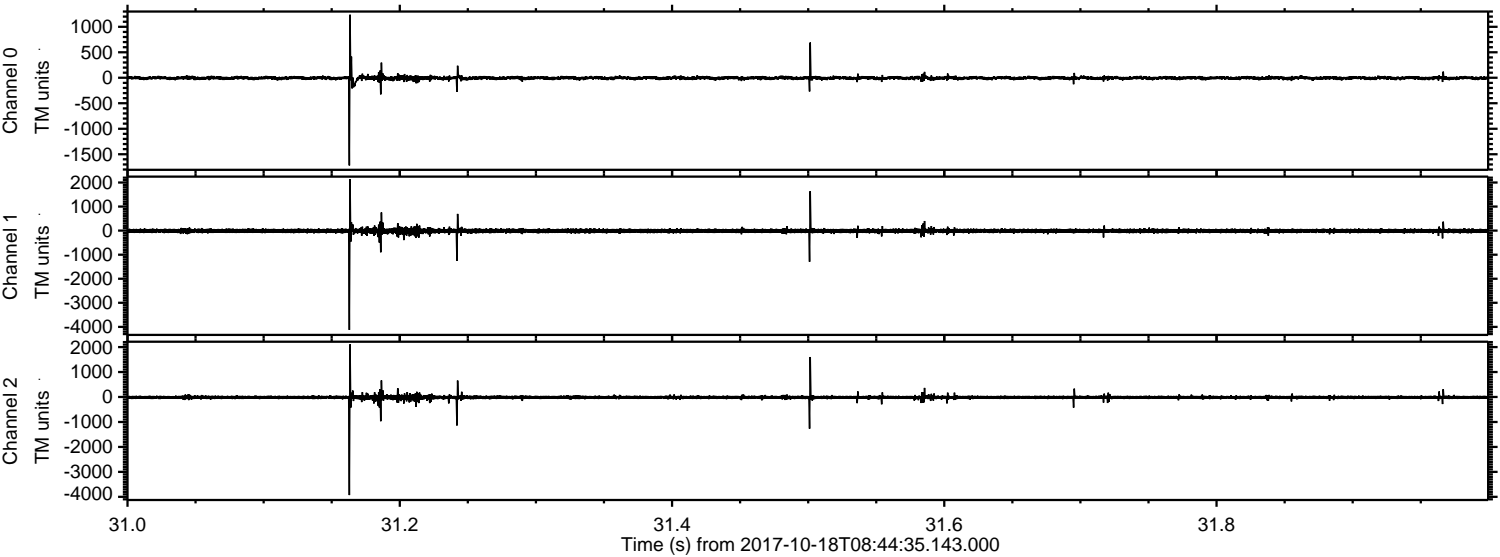
Processed Wed Oct 18 10:52:25 2017 by ELM ver.2012-10-06 from 001__elm20171018_084434__dat00.bin



Processed Wed Oct 18 10:52:26 2017 by ELM ver.2012-10-06 from 001__elm20171018_084434__dat00.bin



Processed Wed Oct 18 10:52:27 2017 by ELM ver.2012-10-06 from 001__elm20171018_084434__dat00.bin



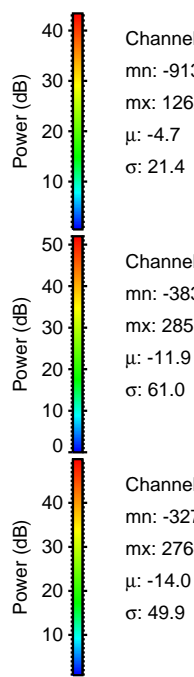
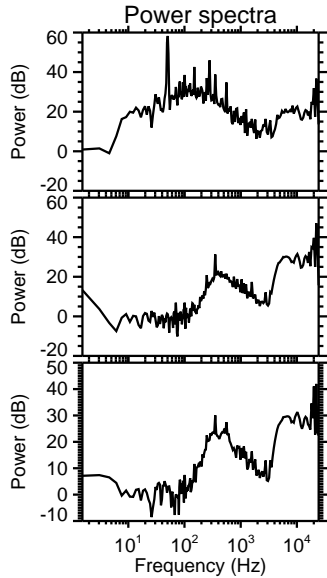
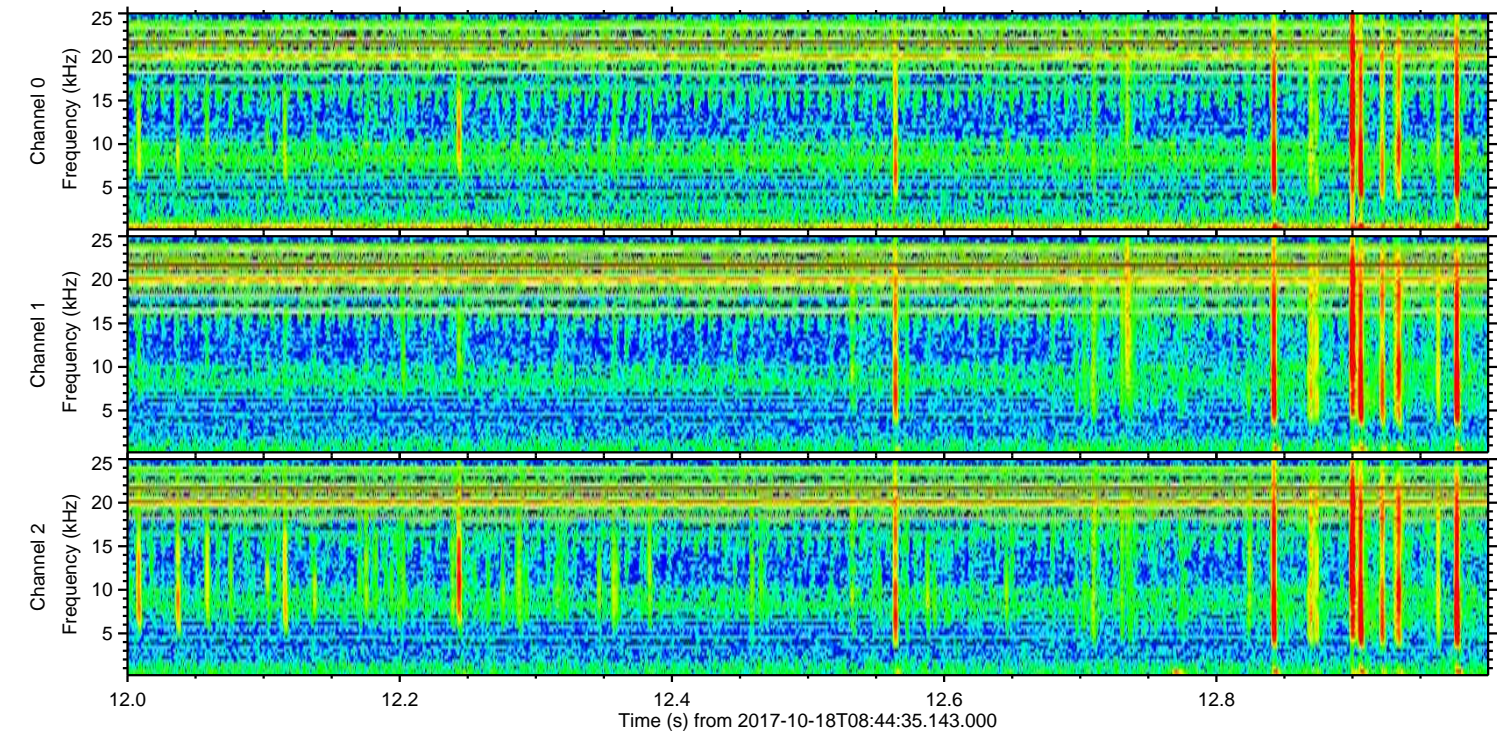
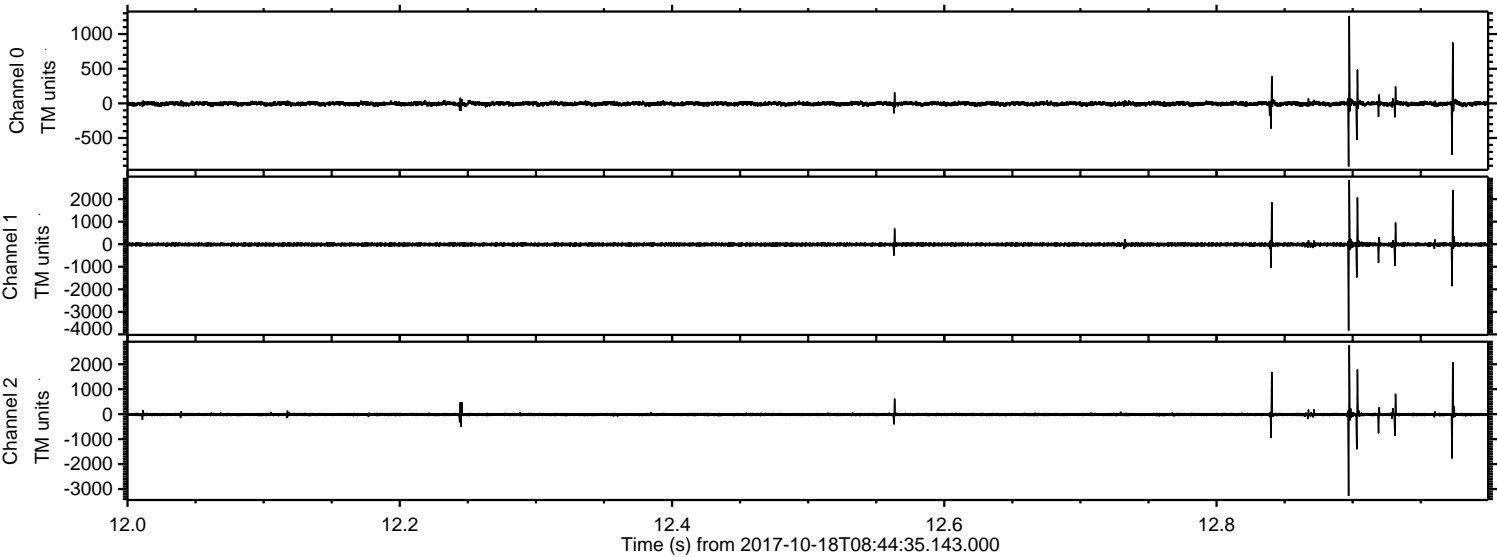
Channel 0
mn: -1720
mx: 1238
 μ : -4.8
 σ : 22.9

Channel 1
mn: -4128
mx: 2137
 μ : -11.9
 σ : 55.9

Channel 2
mn: -3931
mx: 2110
 μ : -13.9
 σ : 46.0

ELMAVAN 3D WAVEFORMS (Measured data sampled at 50 kHz) 50999 packets of 144 samples from 2017-10-18T08:44:35.143.000. Part 13/147

Processed Wed Oct 18 10:52:27 2017 by ELM ver.2012-10-06 from 001_elm20171018_084434__dat00.bin



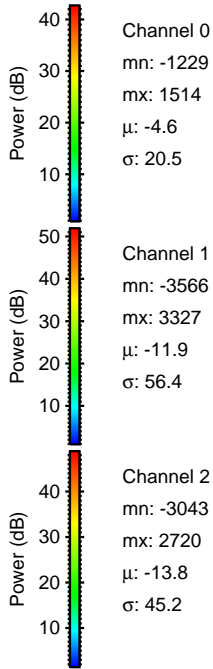
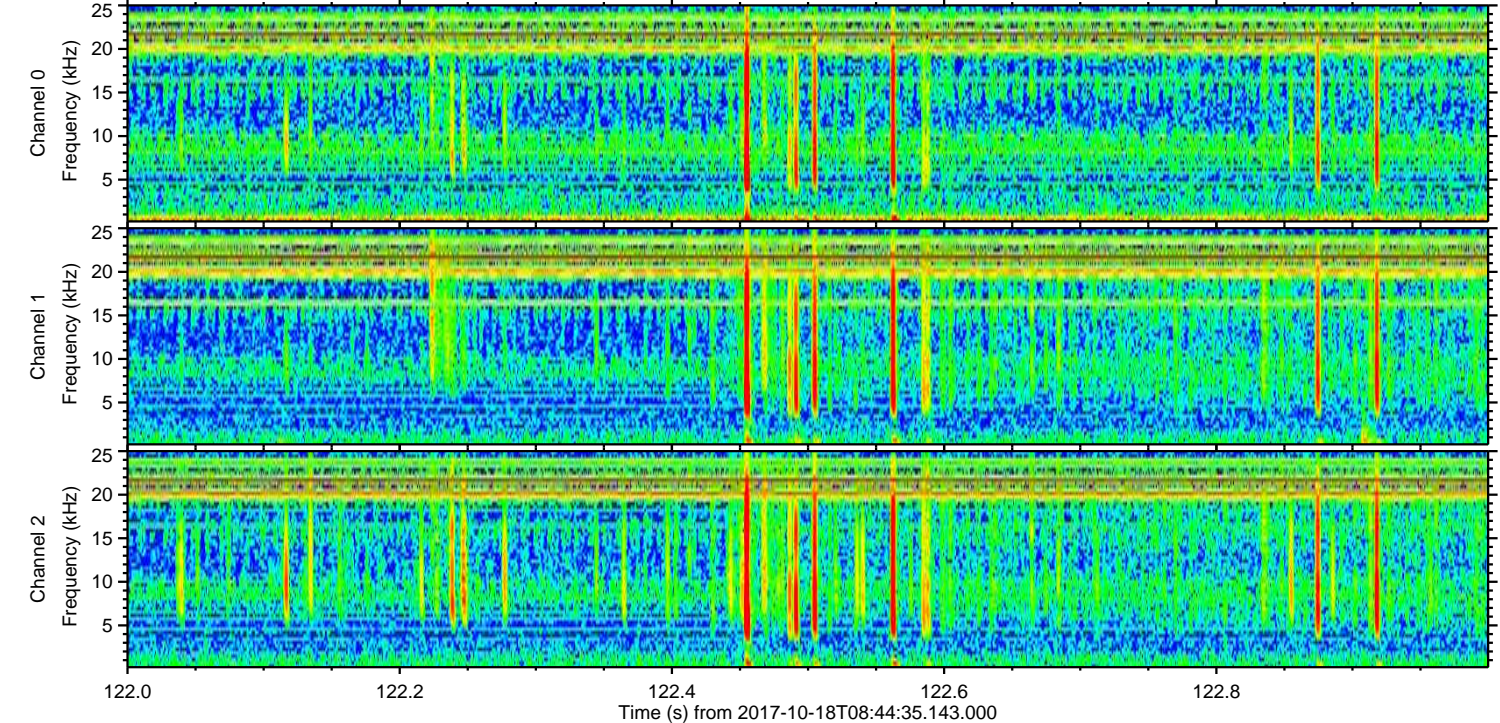
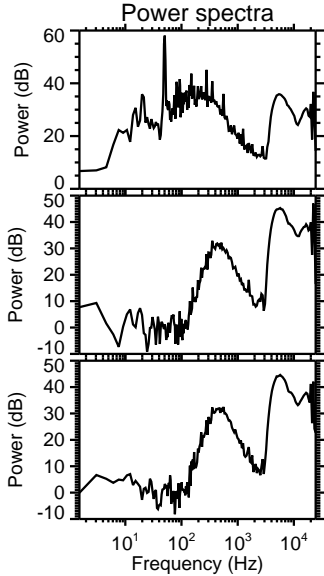
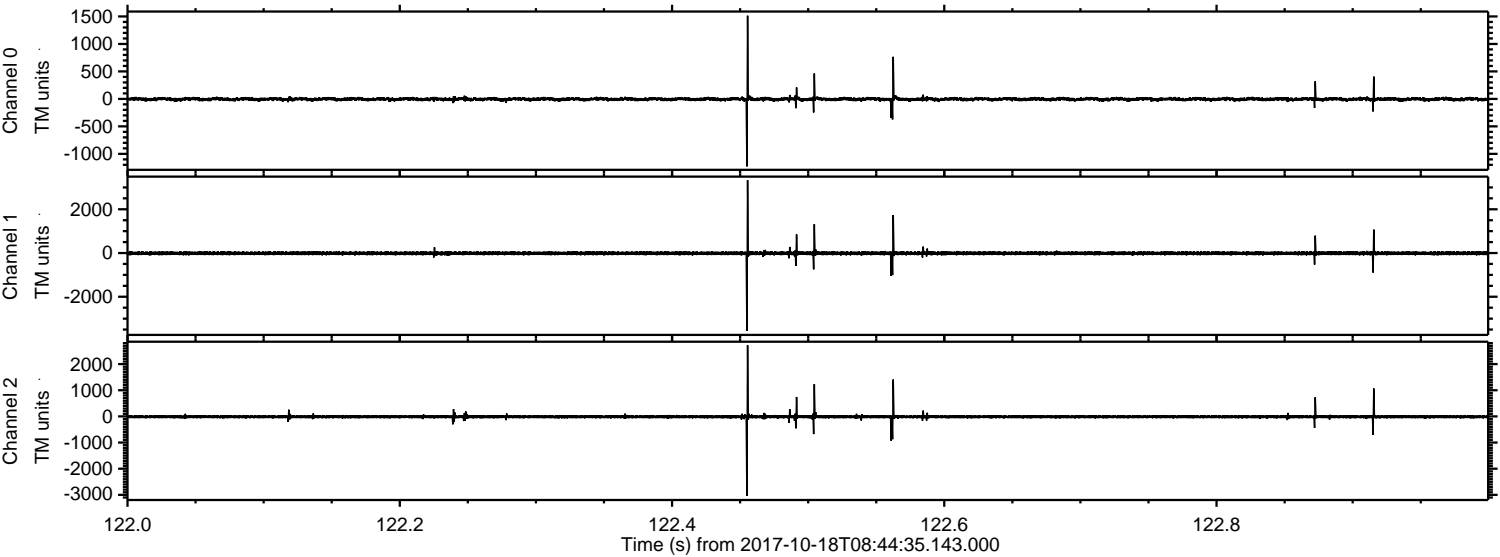
Channel 0
mn: -913
mx: 1262
 μ : -4.7
 σ : 21.4

Channel 1
mn: -3831
mx: 2855
 μ : -11.9
 σ : 61.0

Channel 2
mn: -3275
mx: 2764
 μ : -14.0
 σ : 49.9

ELMAVAN 3D WAVEFORMS (Measured data sampled at 50 kHz) 50999 packets of 144 samples from 2017-10-18T08:44:35.143.000. Part 123/147

Processed Wed Oct 18 10:52:28 2017 by ELM ver.2012-10-06 from 001__elm20171018_084434__dat00.bin

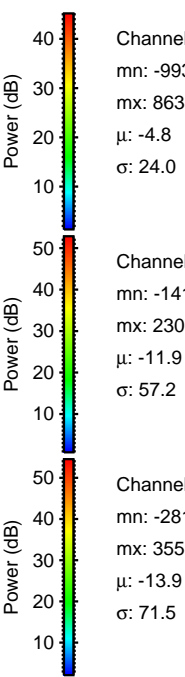
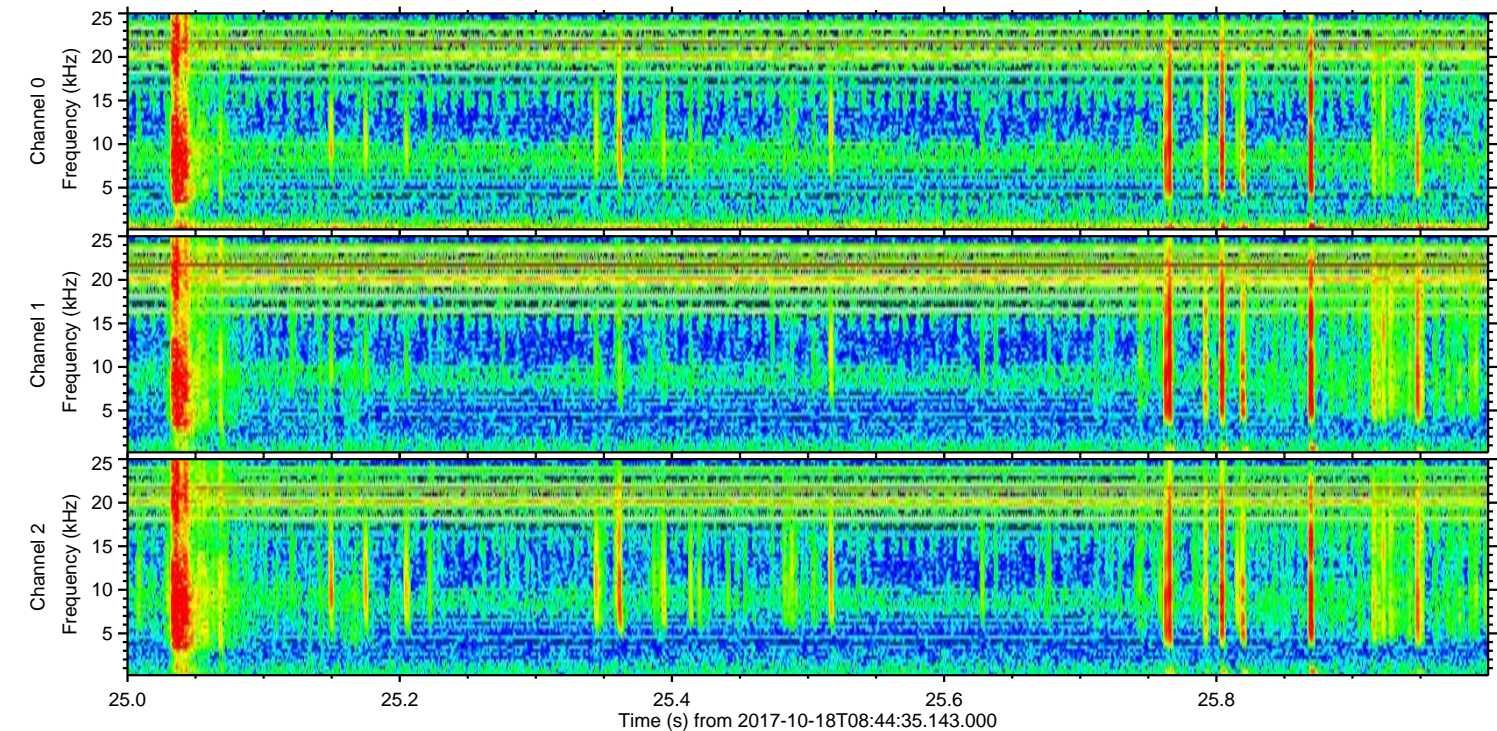
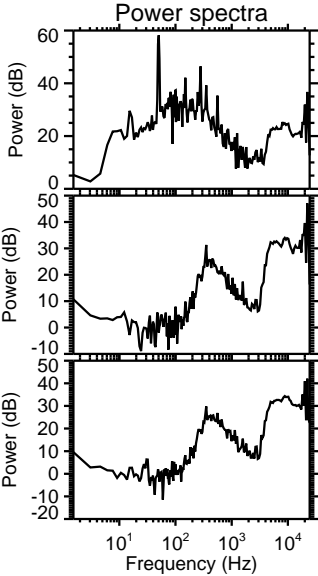
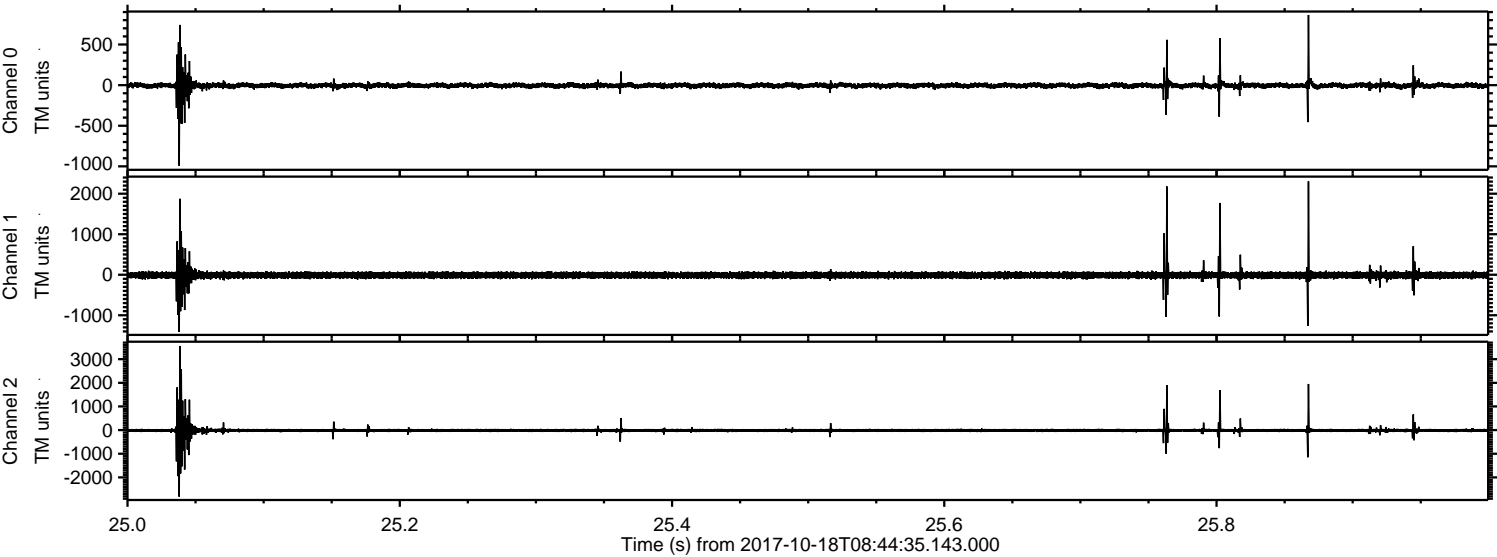


Channel 0
mn: -1229
mx: 1514
 μ : -4.6
 σ : 20.5

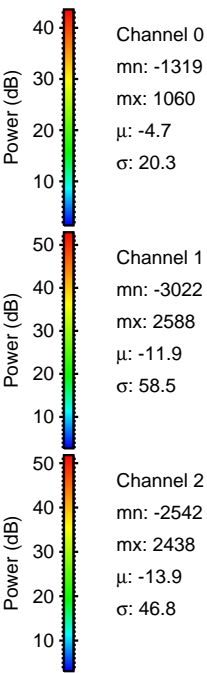
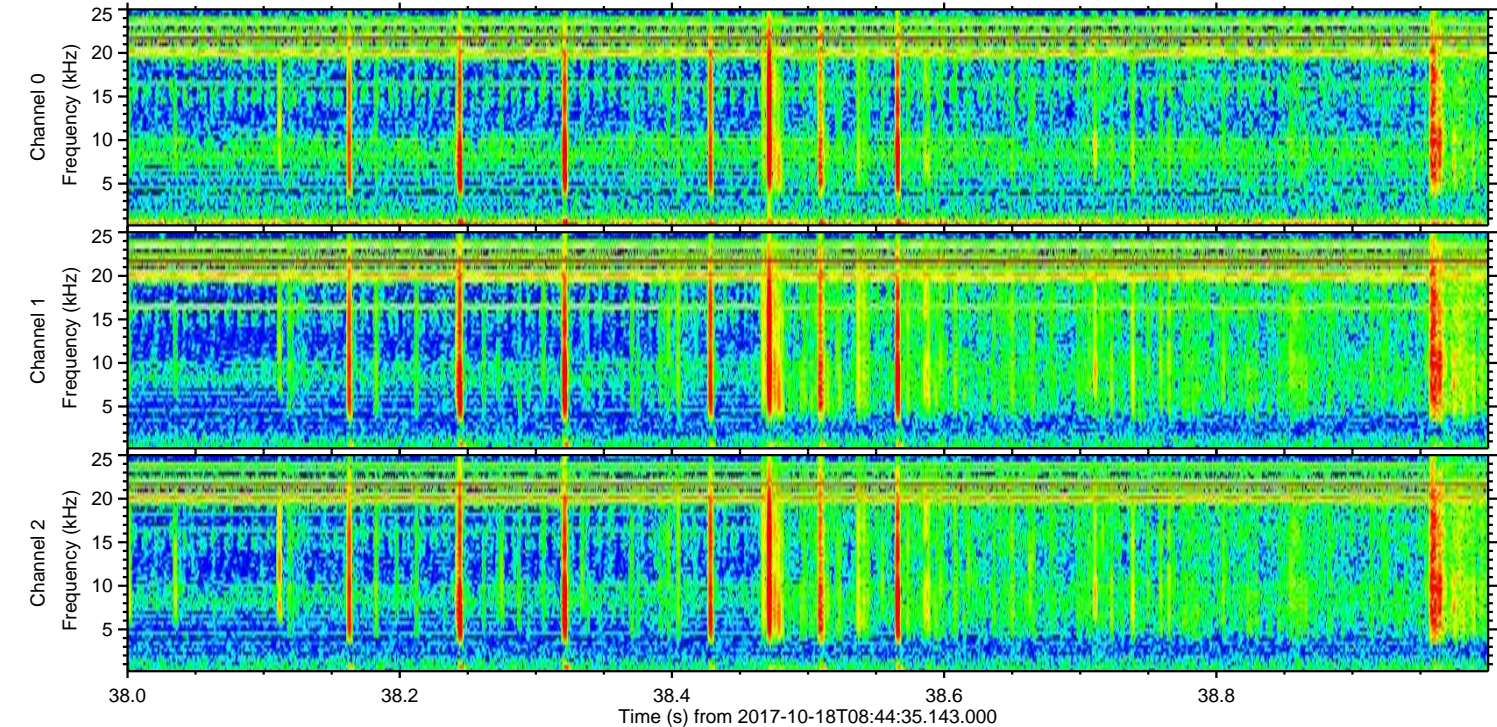
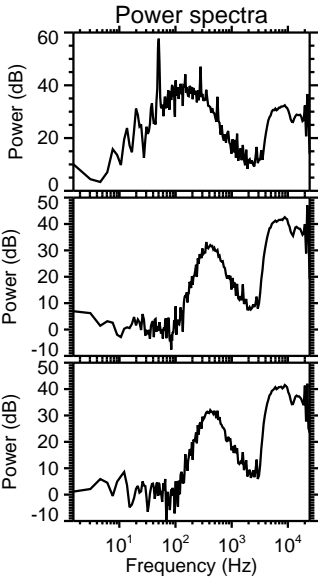
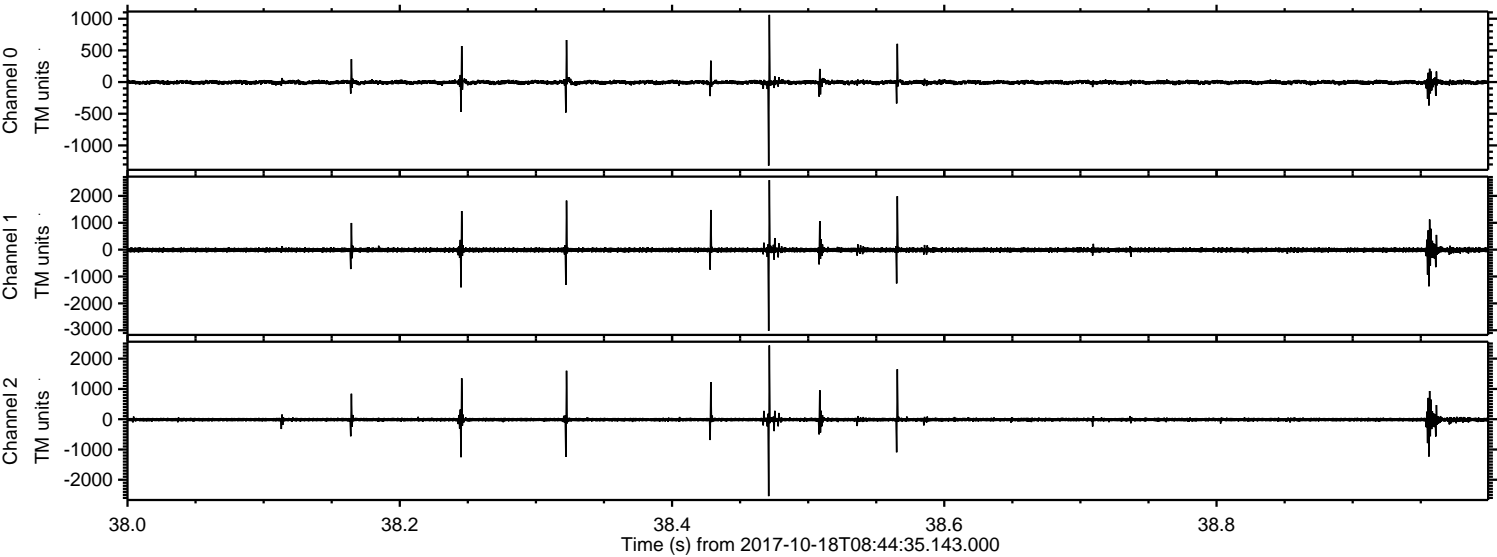
Channel 1
mn: -3566
mx: 3327
 μ : -11.9
 σ : 56.4

Channel 2
mn: -3043
mx: 2720
 μ : -13.8
 σ : 45.2

Processed Wed Oct 18 10:52:29 2017 by ELM ver.2012-10-06 from 001__elm20171018_084434__dat00.bin



Processed Wed Oct 18 10:52:29 2017 by ELM ver.2012-10-06 from 001__elm20171018_084434__dat00.bin



Processed Wed Oct 18 10:52:30 2017 by ELM ver.2012-10-06 from 001__elm20171018_084434__dat00.bin

