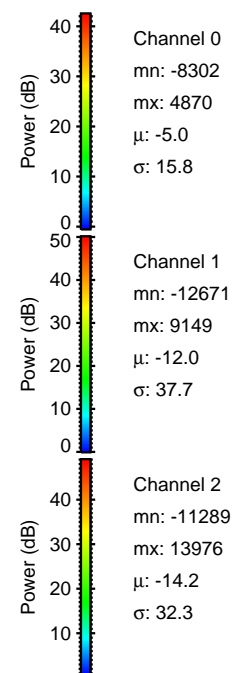
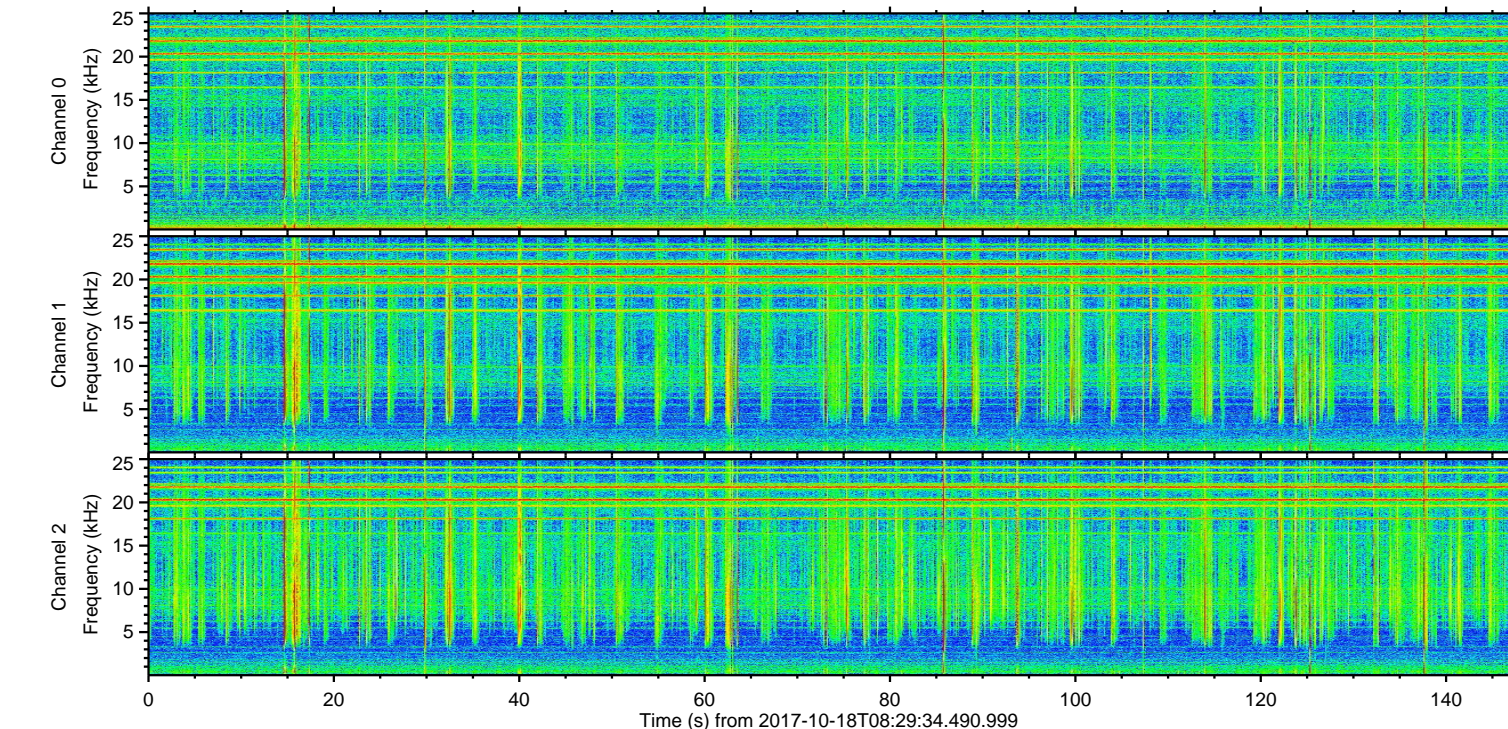
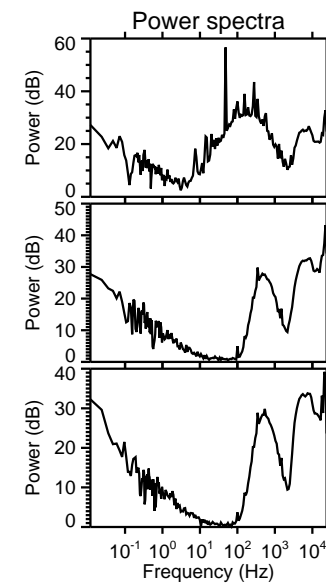
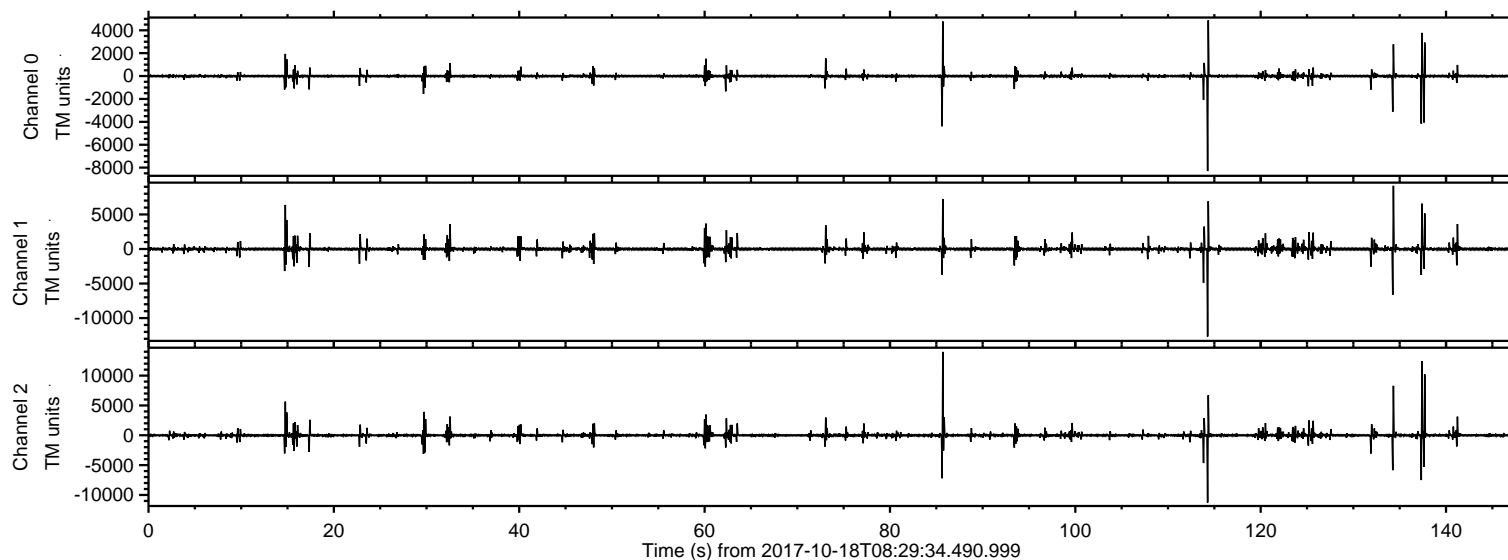


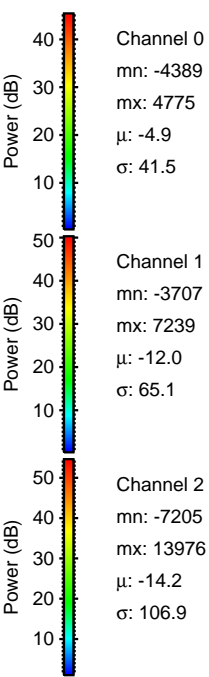
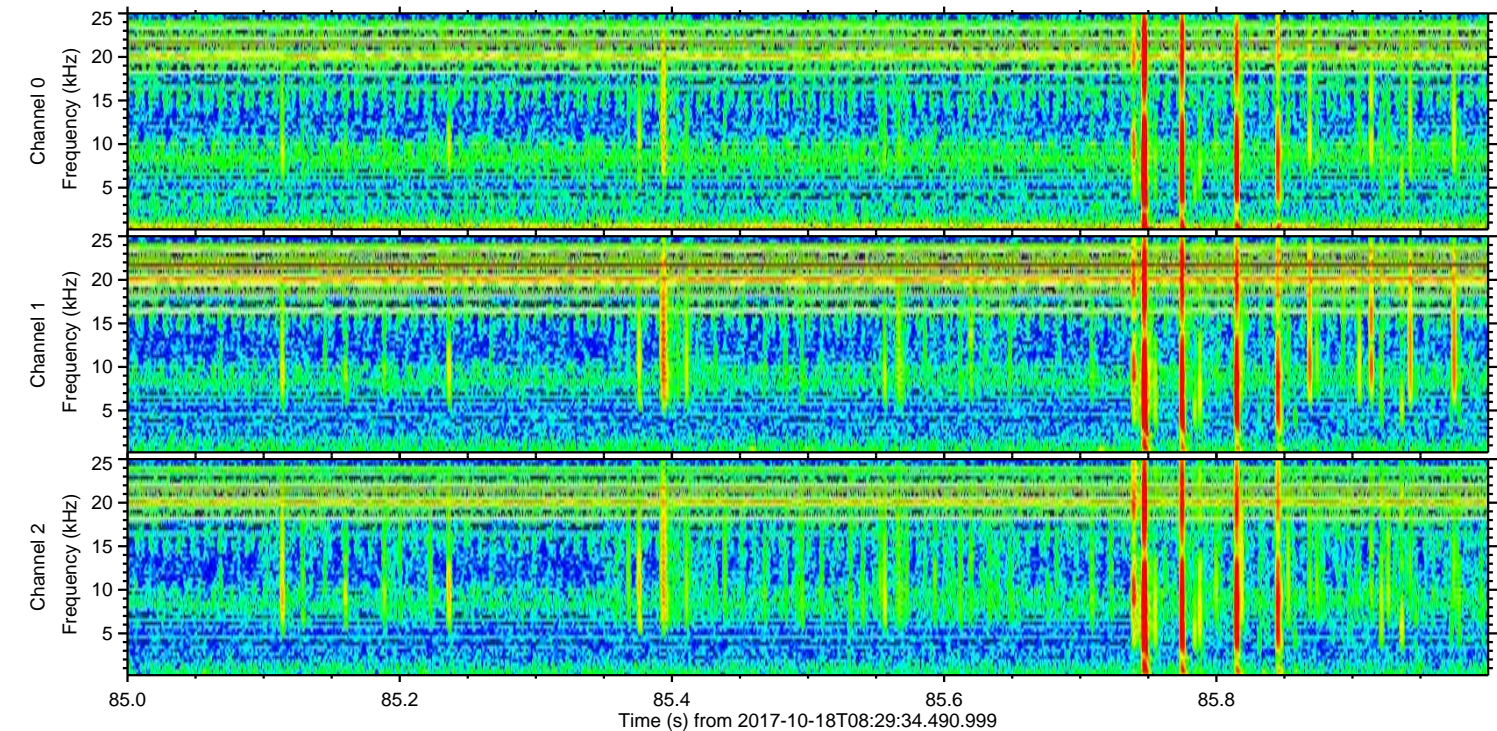
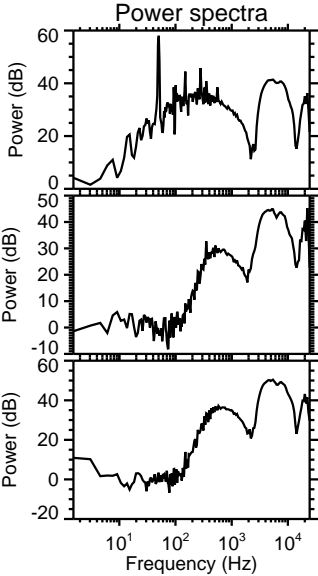
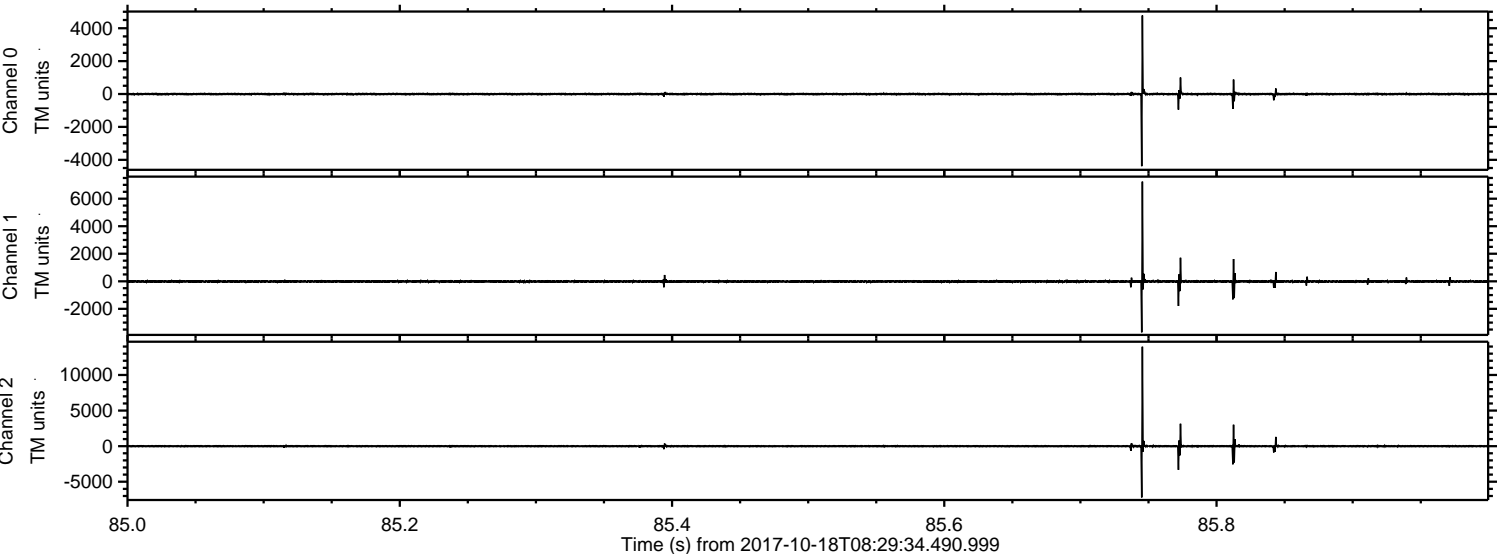
ELMAVAN 3D WAVEFORMS (Measured data sampled at 50 kHz) 51000 packets of 144 samples from 2017-10-18T08:29:34.490.999.

Processed Wed Oct 18 10:37:32 2017 by ELM ver.2012-10-06 from 001__elm20171018_082933__dat00.bin



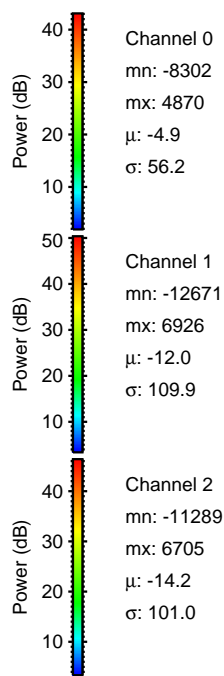
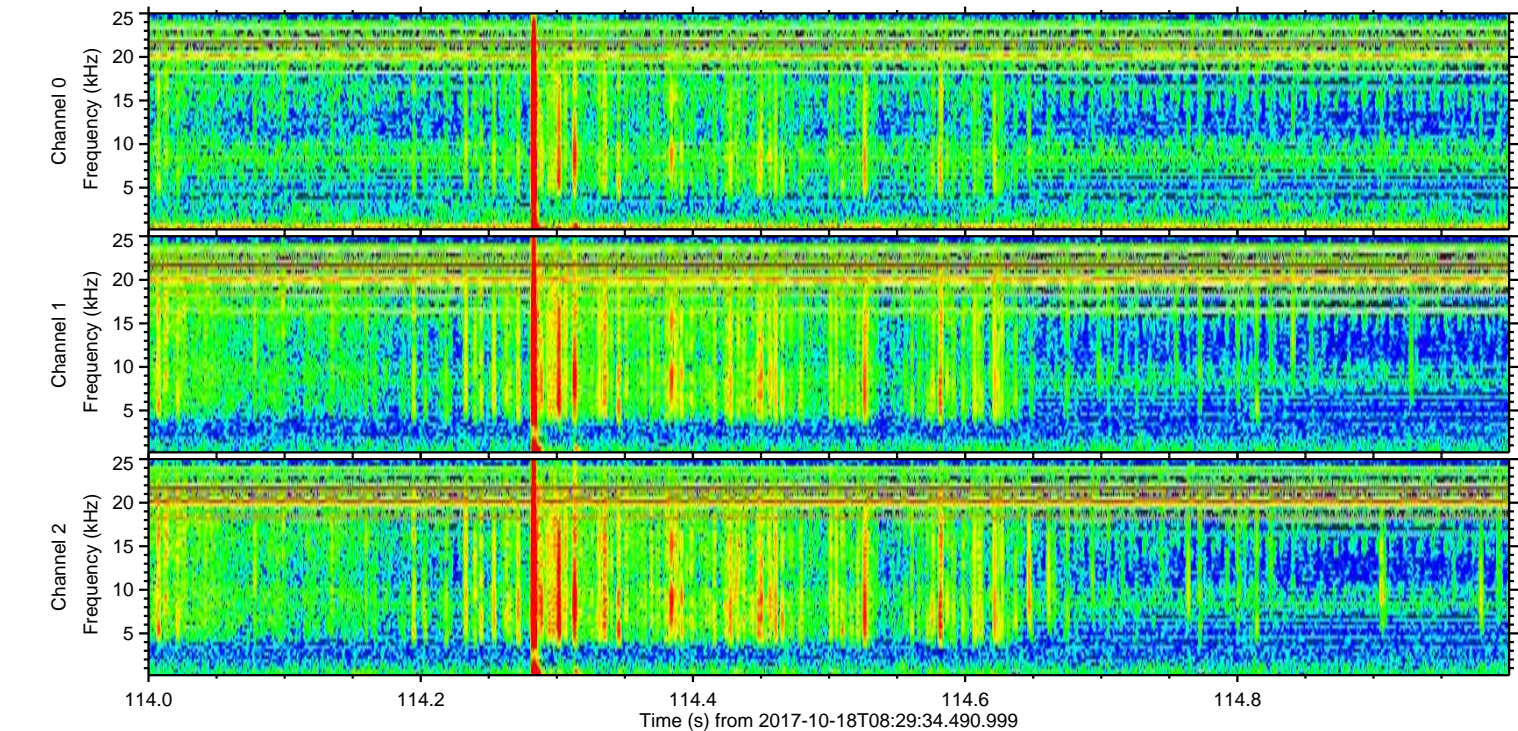
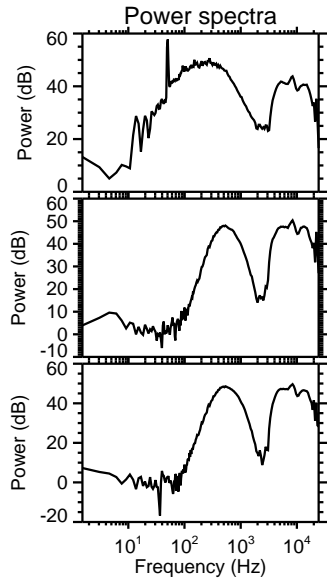
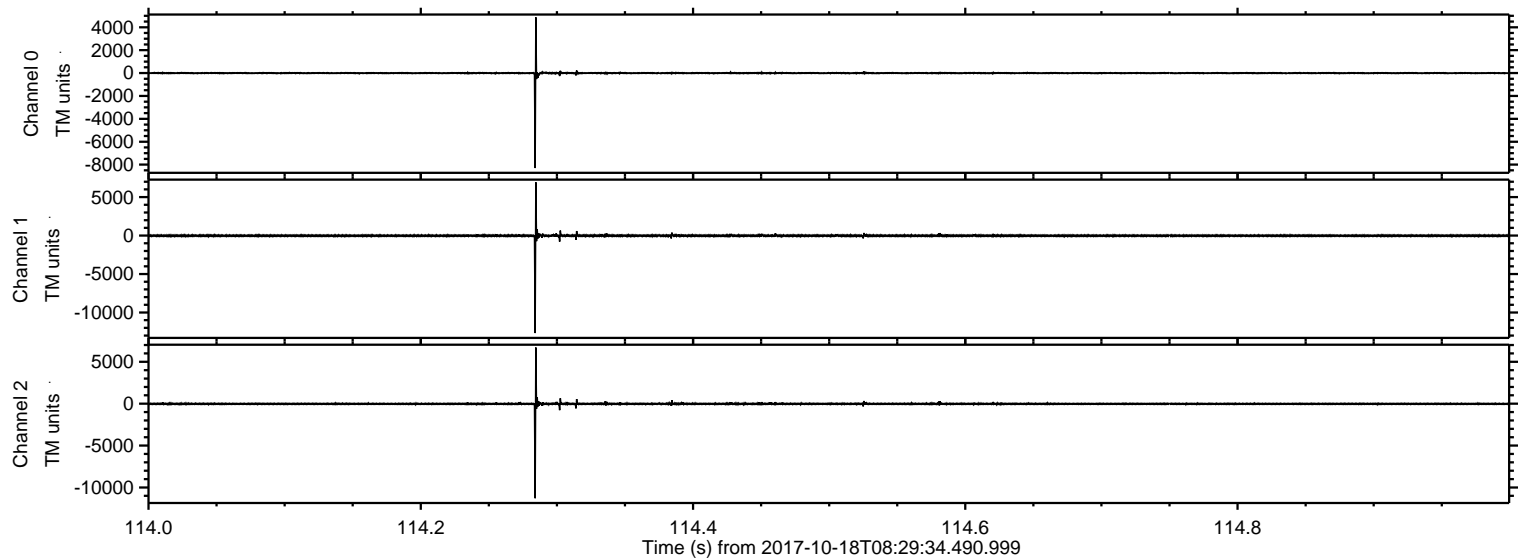
ELMAVAN 3D WAVEFORMS (Measured data sampled at 50 kHz) 51000 packets of 144 samples from 2017-10-18T08:29:34.490.999. Part 86/147

Processed Wed Oct 18 10:37:37 2017 by ELM ver.2012-10-06 from 001__elm20171018_082933__dat00.bin



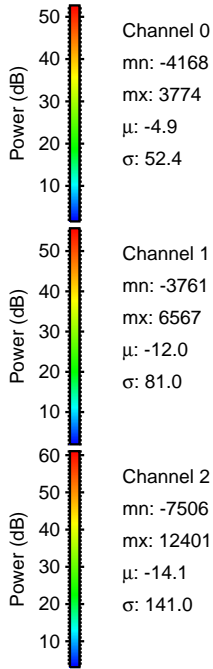
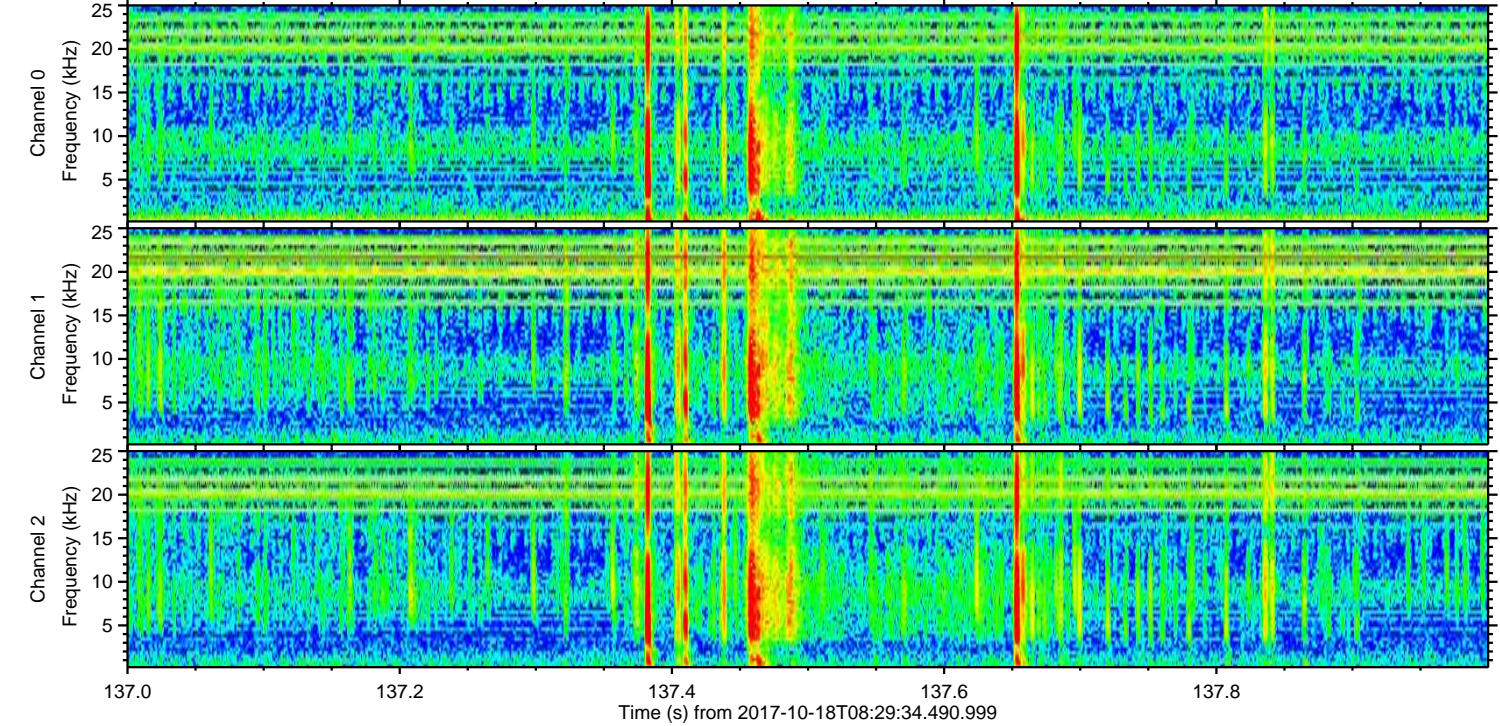
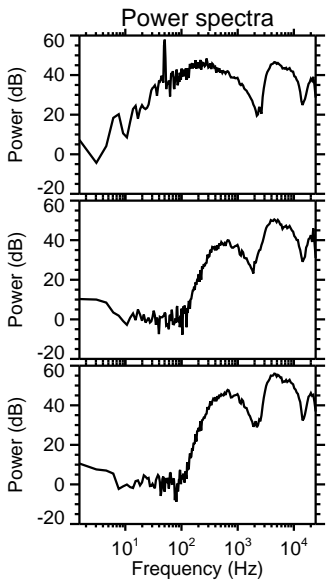
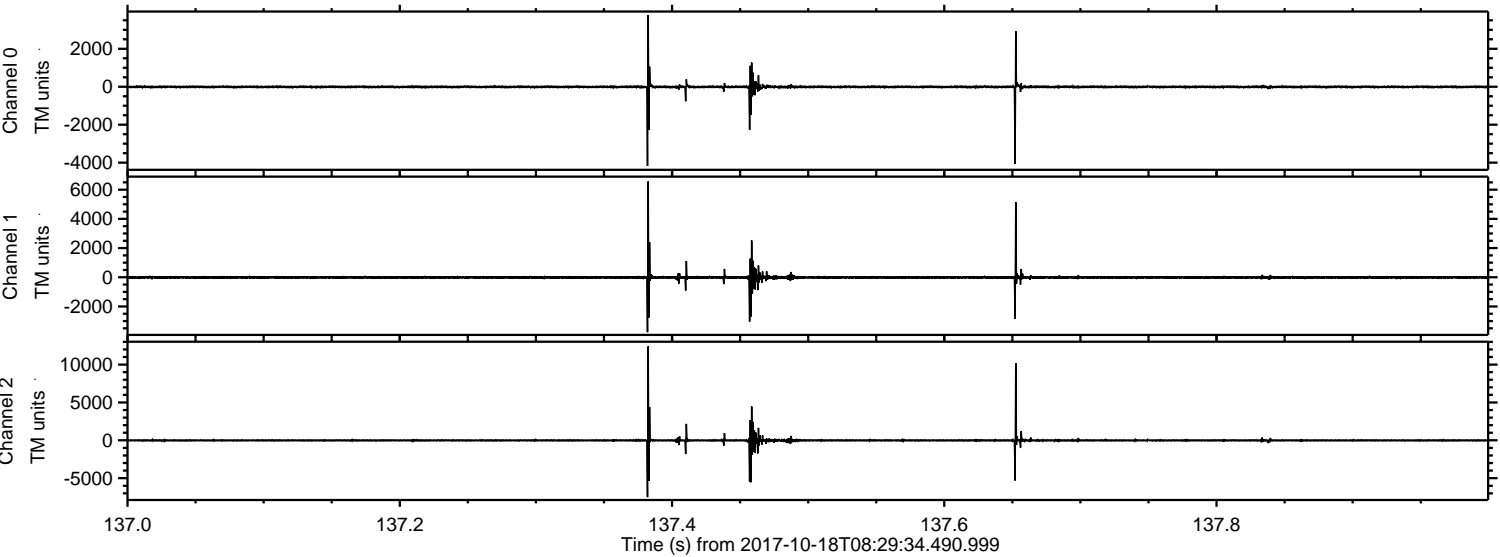
ELMAVAN 3D WAVEFORMS (Measured data sampled at 50 kHz) 51000 packets of 144 samples from 2017-10-18T08:29:34.490.999. Part 115/147

Processed Wed Oct 18 10:37:38 2017 by ELM ver.2012-10-06 from 001__elm20171018_082933__dat00.bin



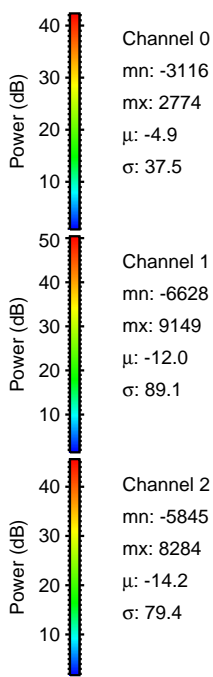
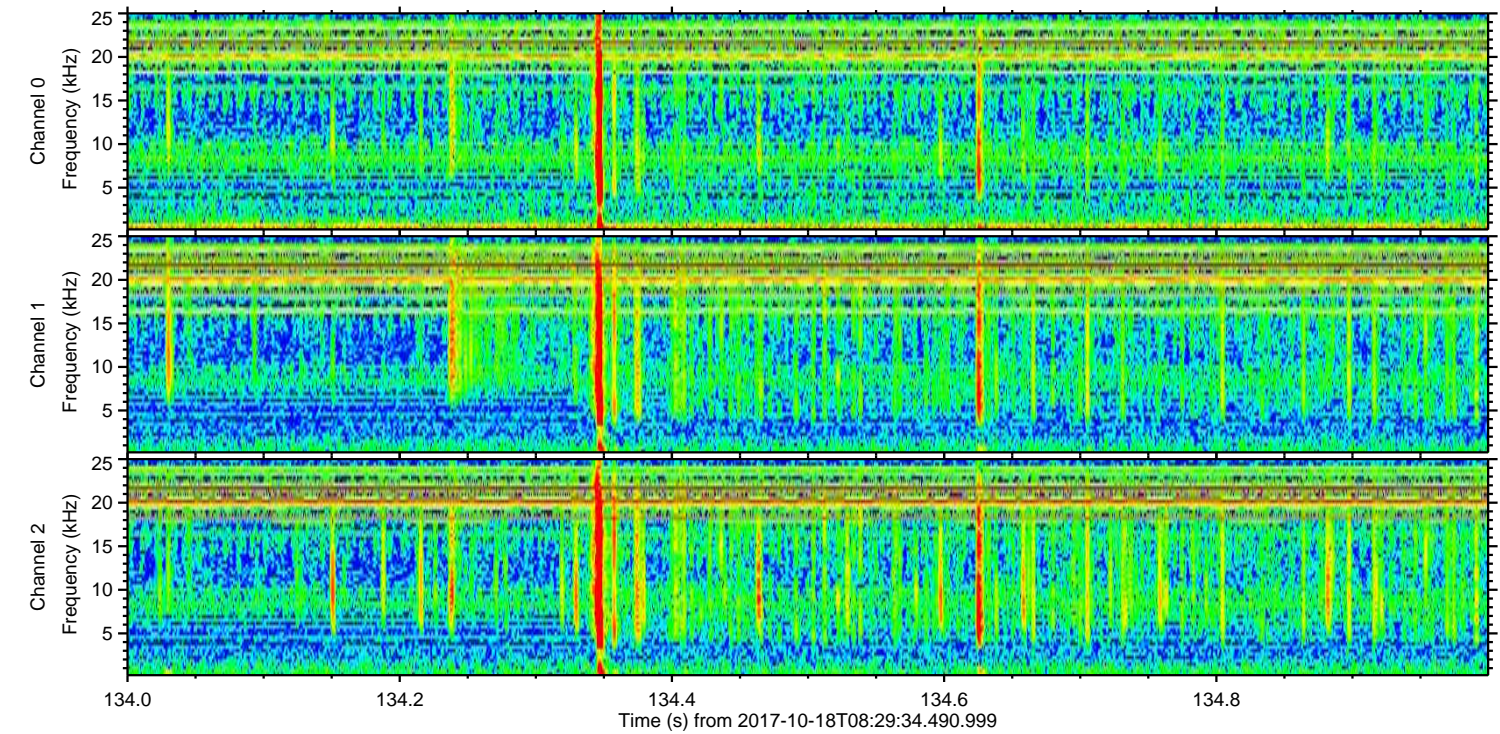
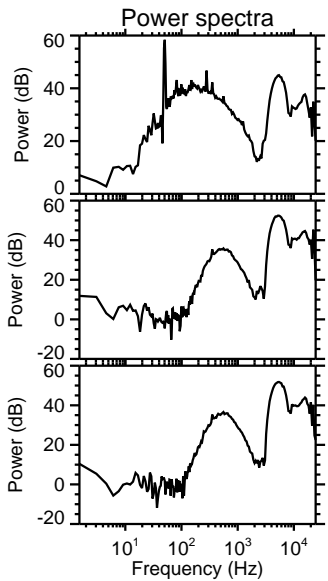
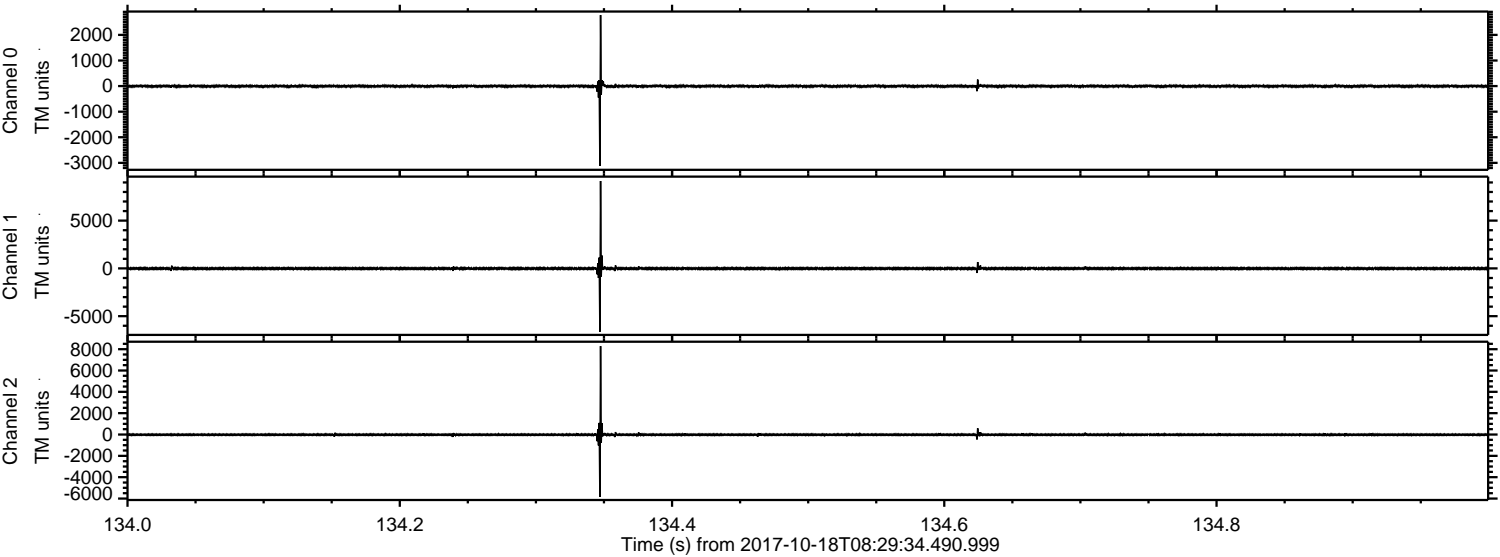
ELMAVAN 3D WAVEFORMS (Measured data sampled at 50 kHz) 51000 packets of 144 samples from 2017-10-18T08:29:34.490.999. Part 138/147

Processed Wed Oct 18 10:37:38 2017 by ELM ver.2012-10-06 from 001__elm20171018_082933__dat00.bin



ELMAVAN 3D WAVEFORMS (Measured data sampled at 50 kHz) 51000 packets of 144 samples from 2017-10-18T08:29:34.490.999. Part 135/147

Processed Wed Oct 18 10:37:39 2017 by ELM ver.2012-10-06 from 001__elm20171018_082933__dat00.bin



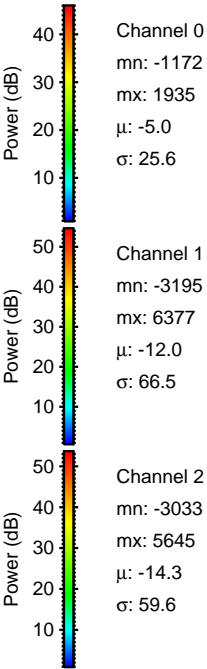
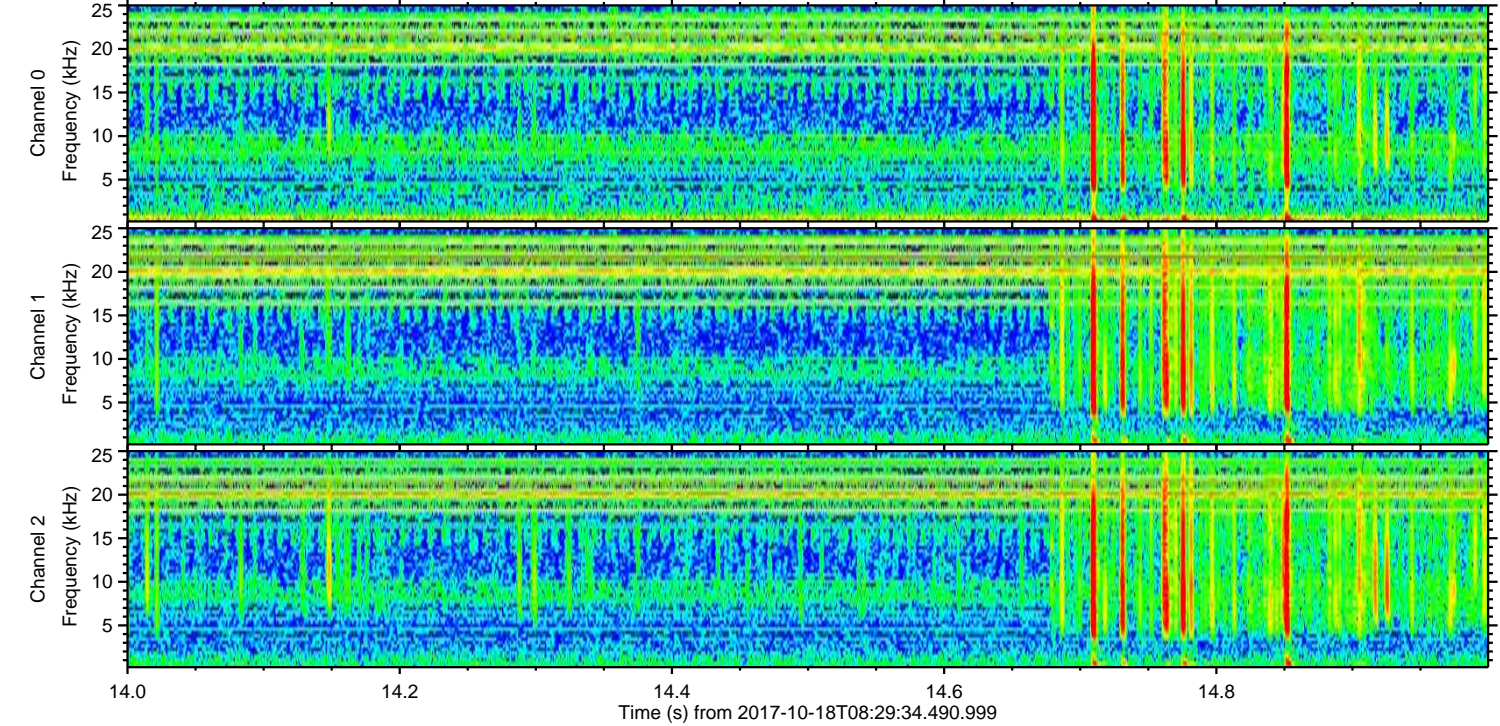
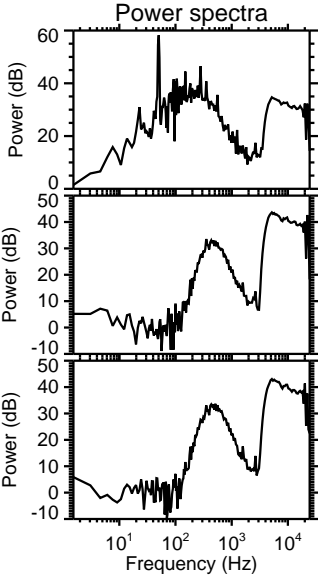
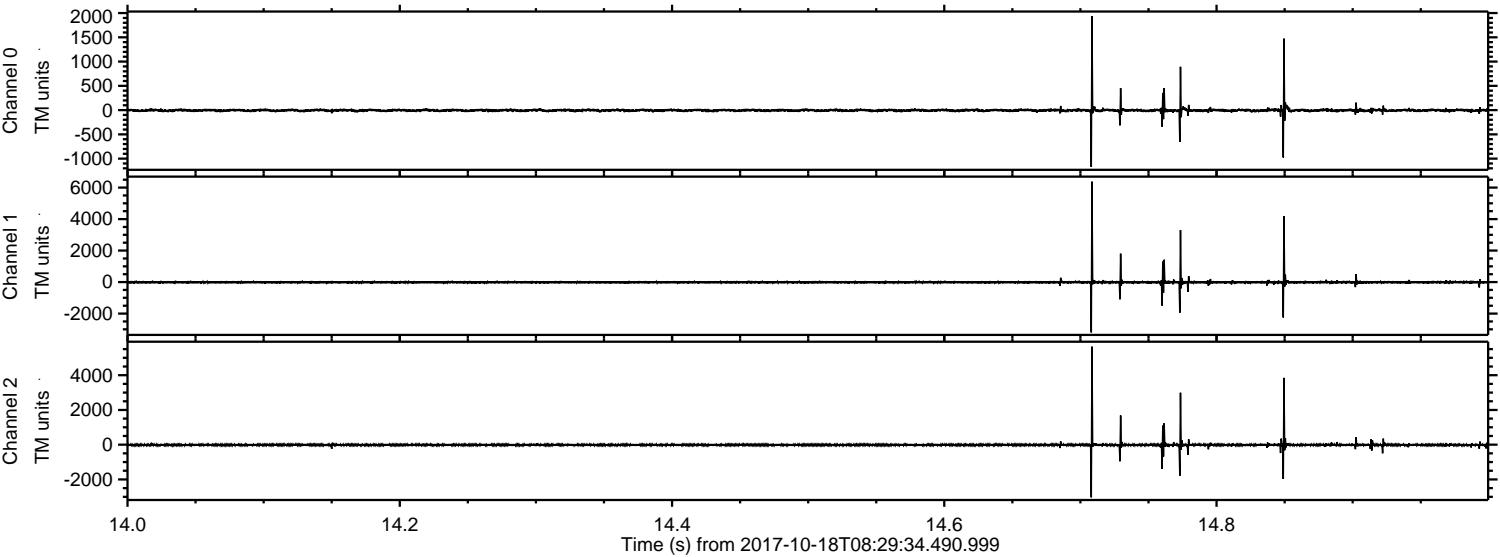
Channel 0
mn: -3116
mx: 2774
 μ : -4.9
 σ : 37.5

Channel 1
mn: -6628
mx: 9149
 μ : -12.0
 σ : 89.1

Channel 2
mn: -5845
mx: 8284
 μ : -14.2
 σ : 79.4

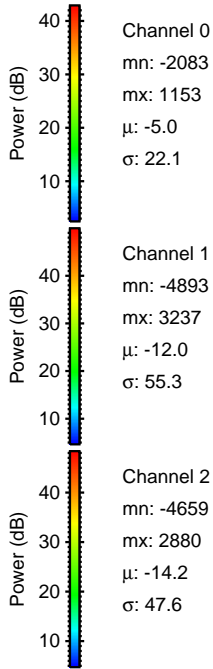
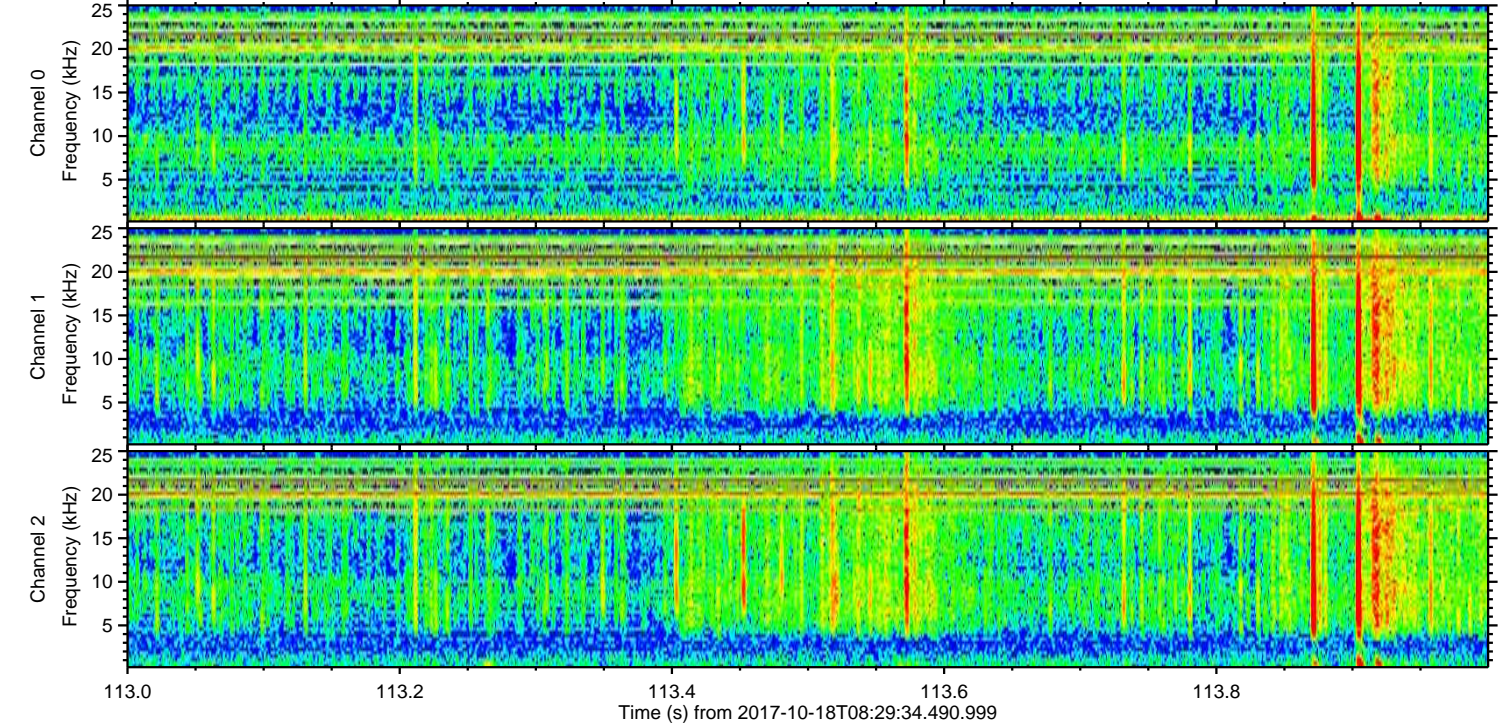
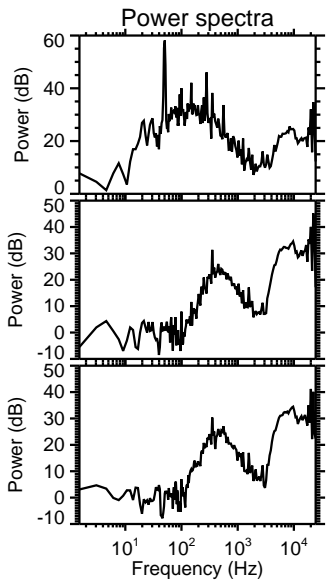
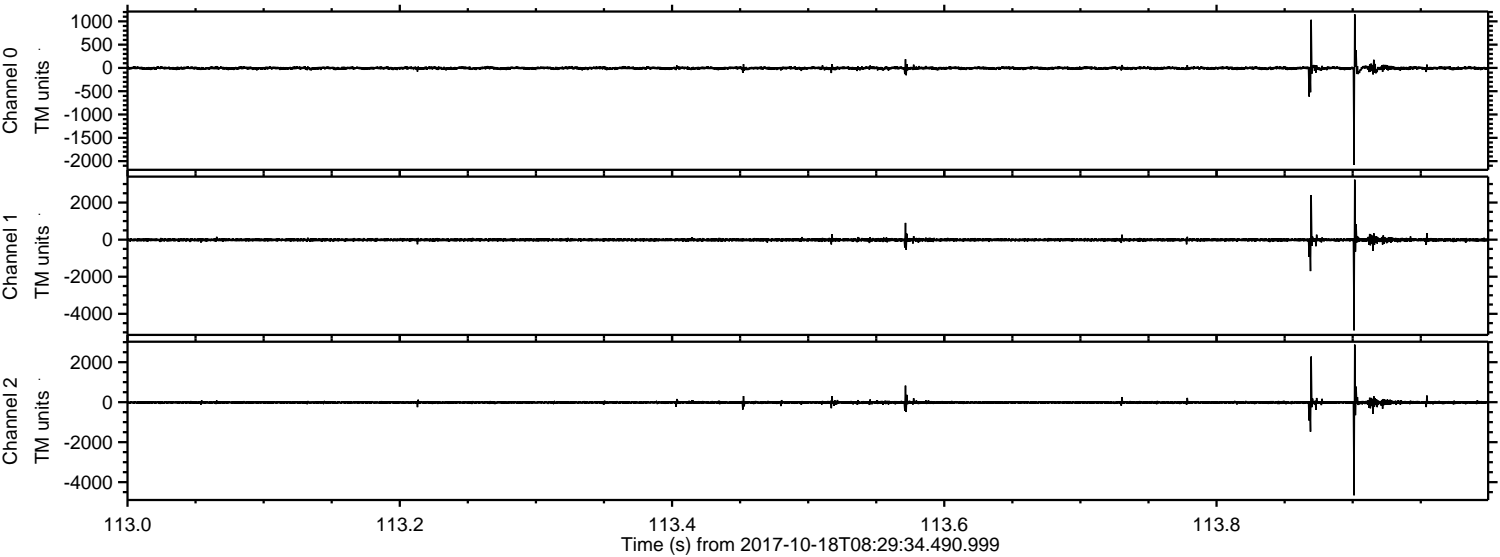
ELMAVAN 3D WAVEFORMS (Measured data sampled at 50 kHz) 51000 packets of 144 samples from 2017-10-18T08:29:34.490.999. Part 15/147

Processed Wed Oct 18 10:37:40 2017 by ELM ver.2012-10-06 from 001__elm20171018_082933__dat00.bin



ELMAVAN 3D WAVEFORMS (Measured data sampled at 50 kHz) 51000 packets of 144 samples from 2017-10-18T08:29:34.490.999. Part 114/147

Processed Wed Oct 18 10:37:40 2017 by ELM ver.2012-10-06 from 001__elm20171018_082933__dat00.bin



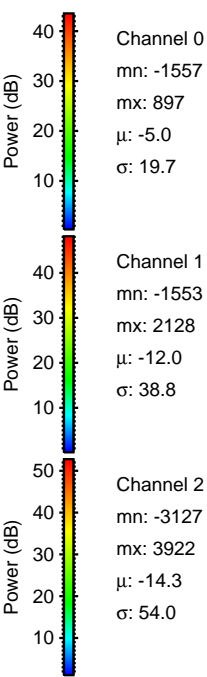
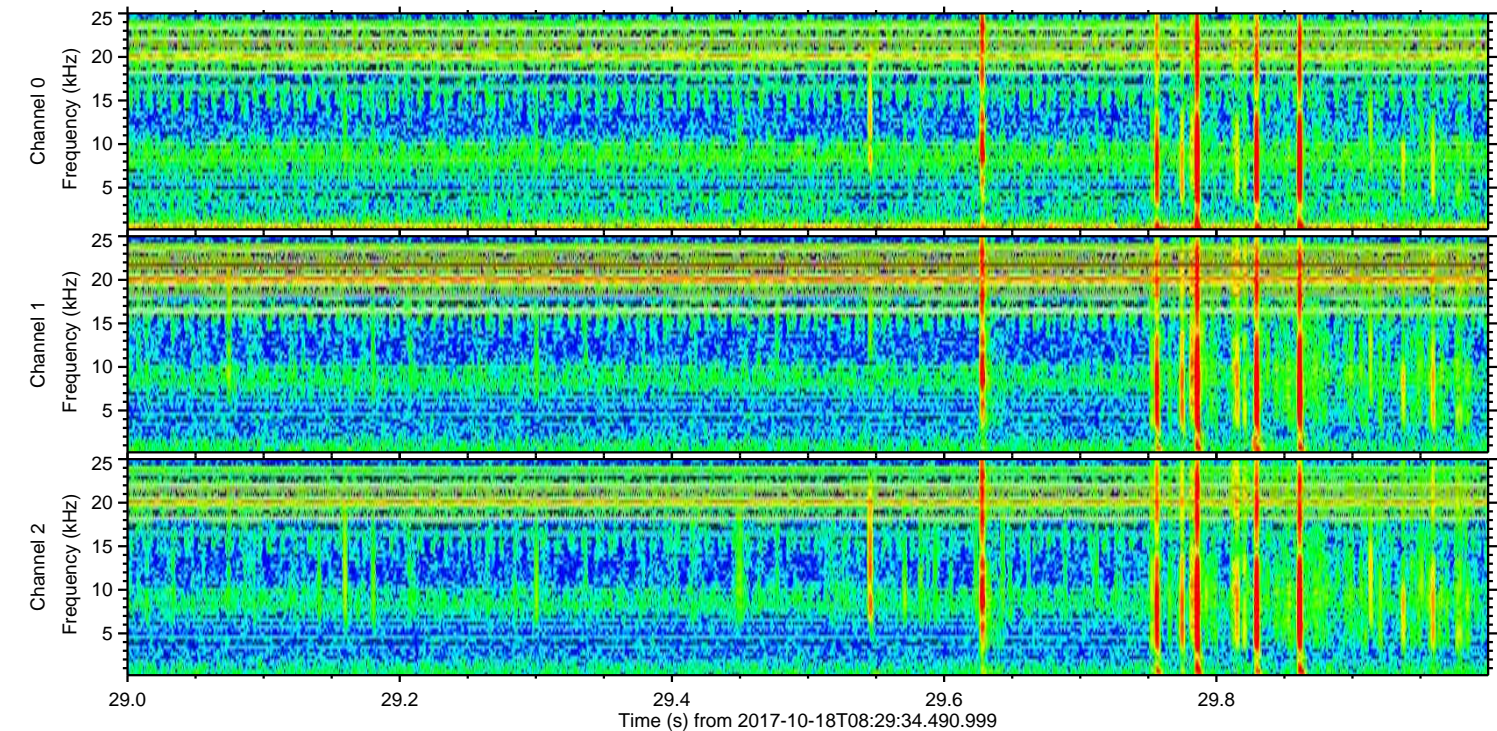
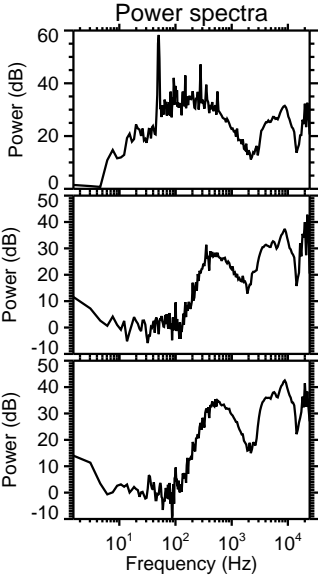
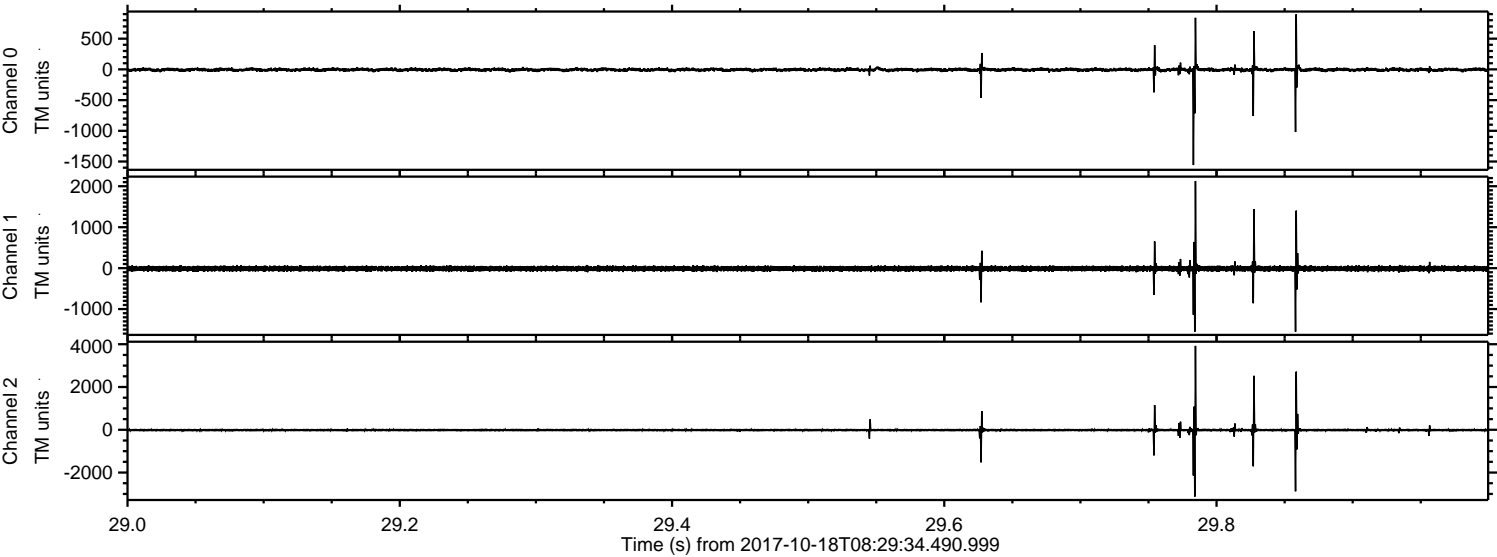
Channel 0
mn: -2083
mx: 1153
 μ : -5.0
 σ : 22.1

Channel 1
mn: -4893
mx: 3237
 μ : -12.0
 σ : 55.3

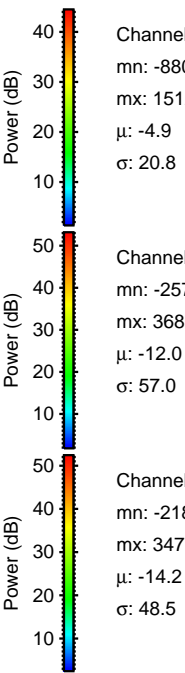
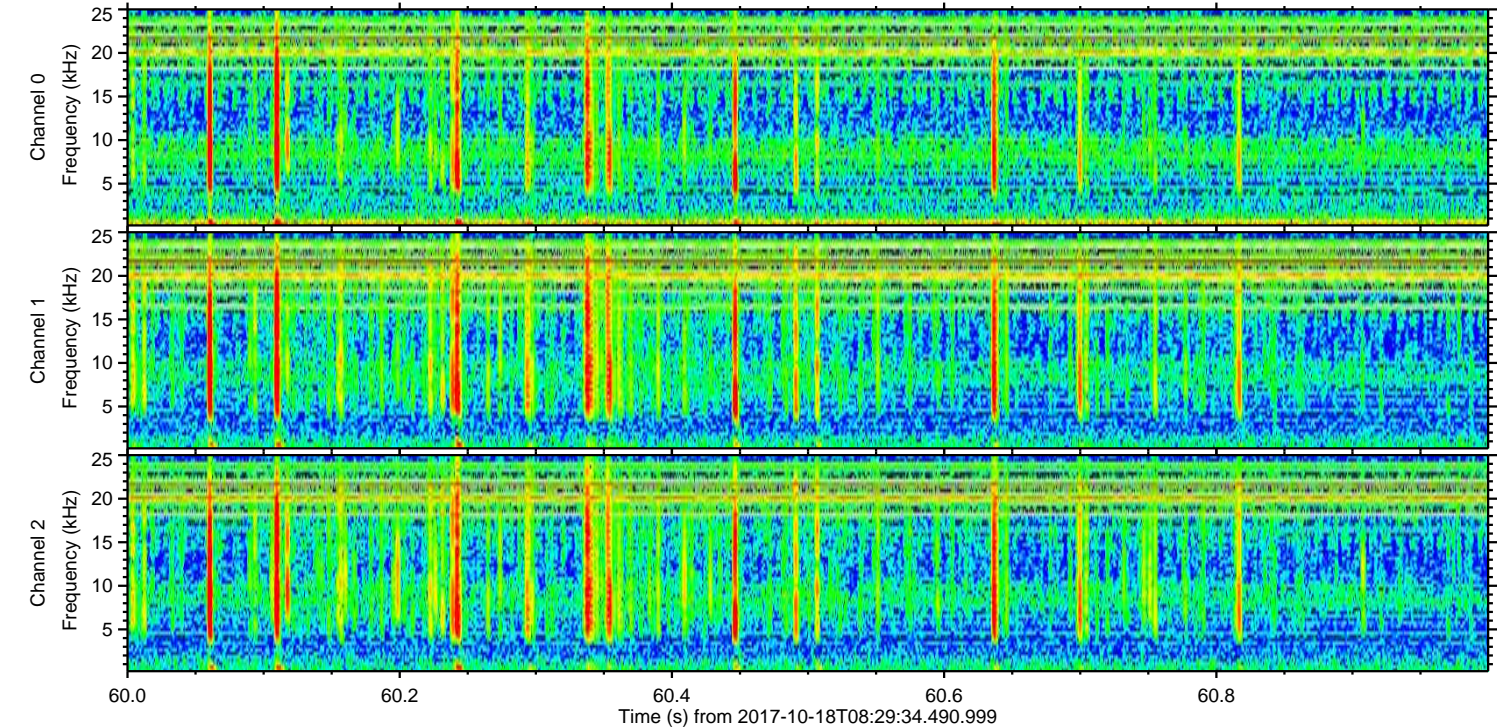
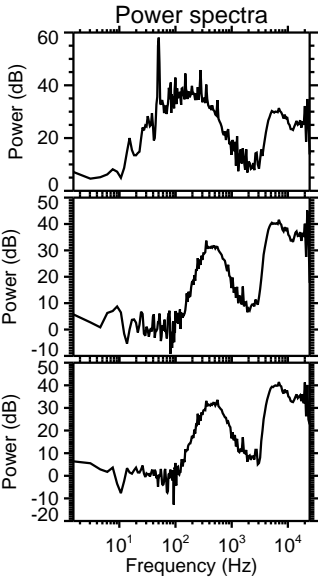
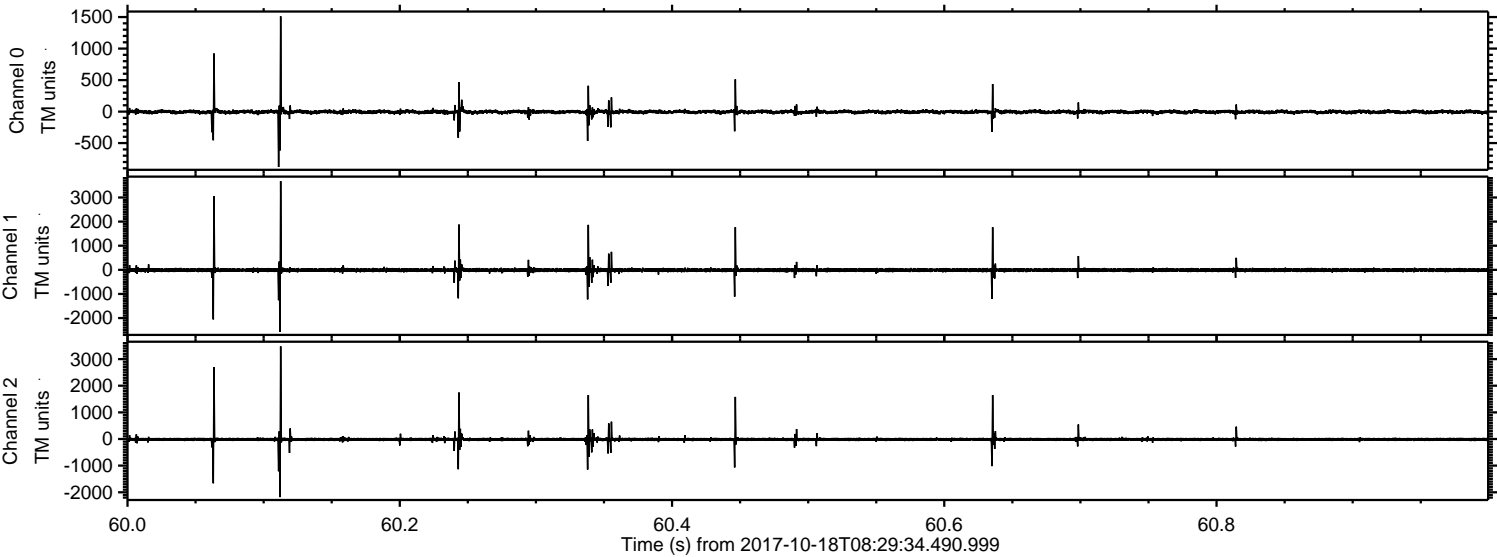
Channel 2
mn: -4659
mx: 2880
 μ : -14.2
 σ : 47.6

ELMAVAN 3D WAVEFORMS (Measured data sampled at 50 kHz) 51000 packets of 144 samples from 2017-10-18T08:29:34.490.999. Part 30/147

Processed Wed Oct 18 10:37:41 2017 by ELM ver.2012-10-06 from 001__elm20171018_082933__dat00.bin

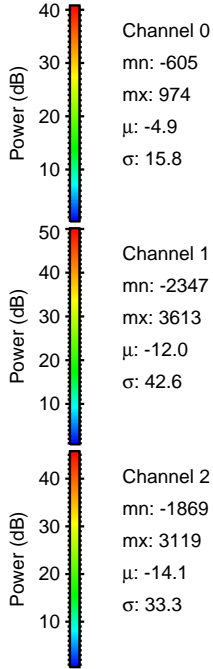
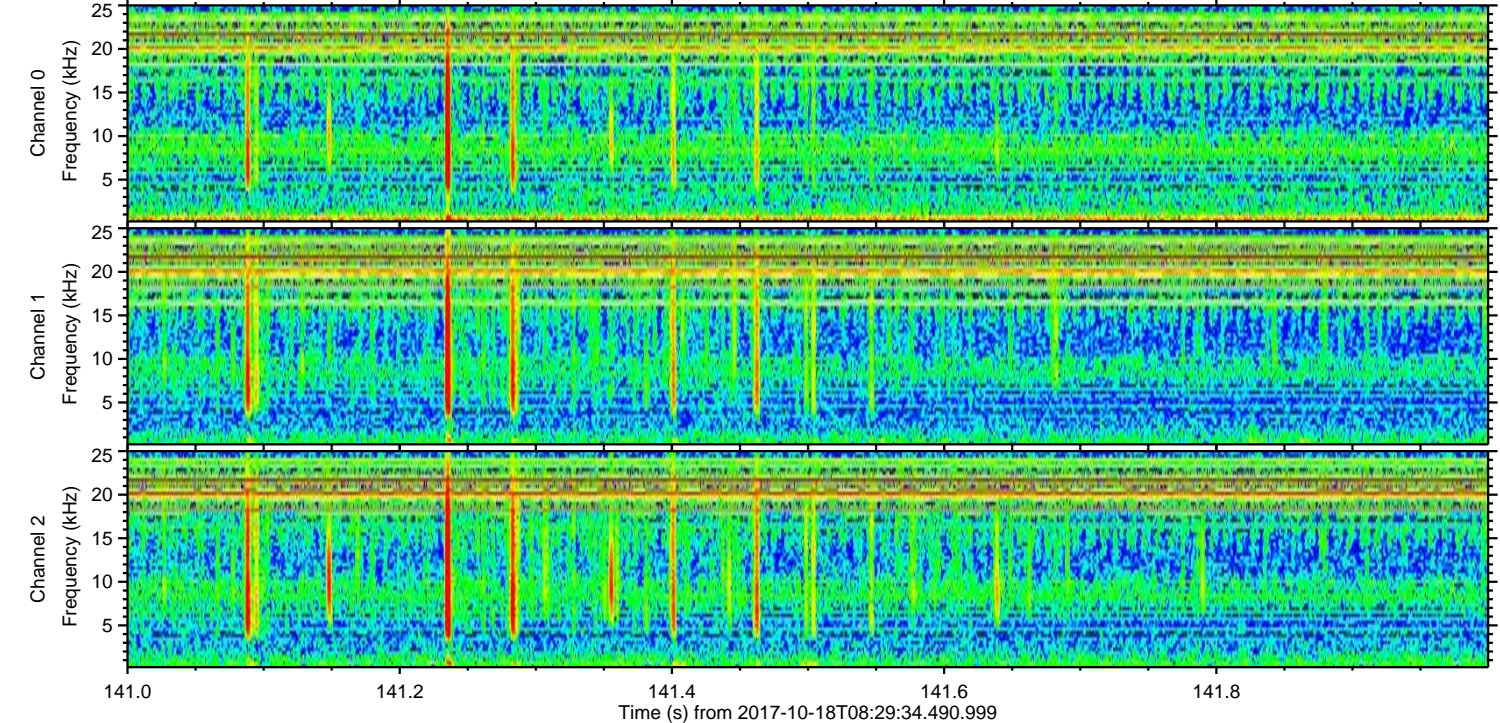
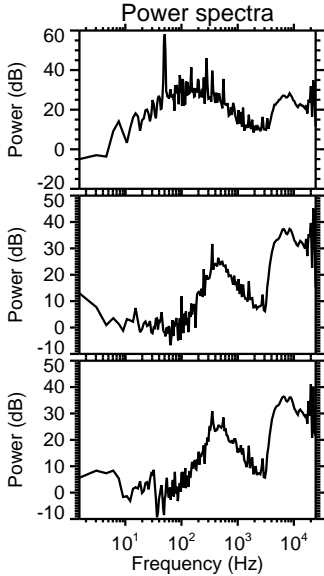
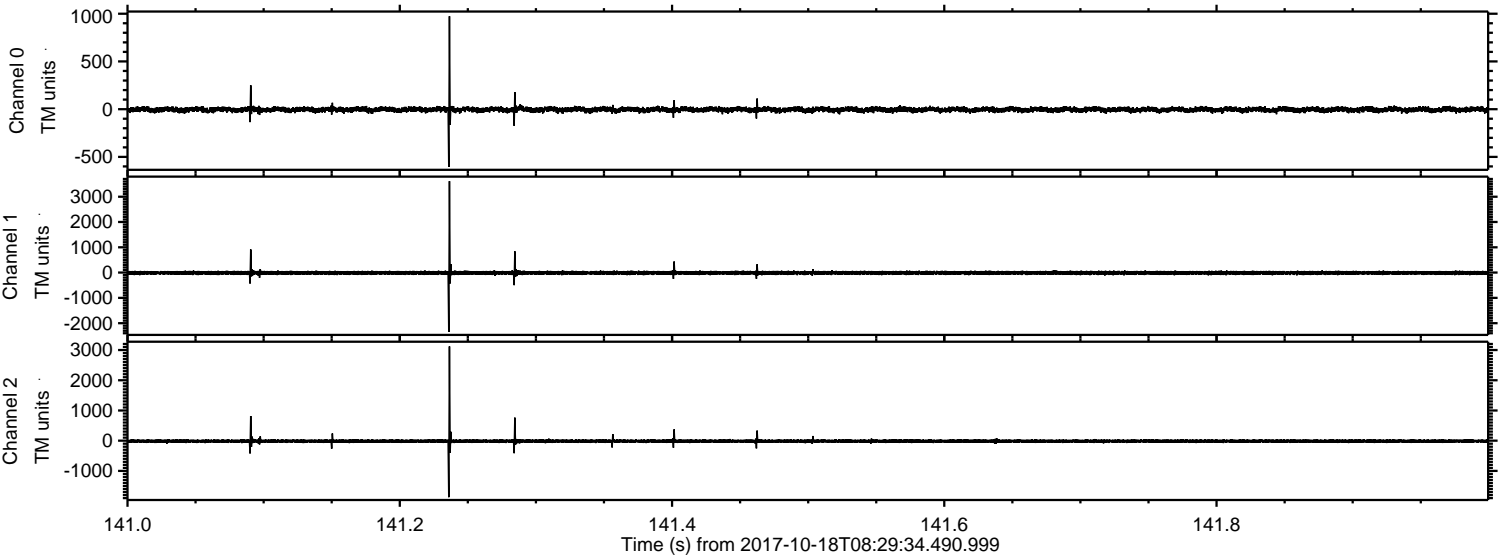


Processed Wed Oct 18 10:37:41 2017 by ELM ver.2012-10-06 from 001_elm20171018_082933__dat00.bin



ELMAVAN 3D WAVEFORMS (Measured data sampled at 50 kHz) 51000 packets of 144 samples from 2017-10-18T08:29:34.490.999. Part 142/147

Processed Wed Oct 18 10:37:42 2017 by ELM ver.2012-10-06 from 001__elm20171018_082933__dat00.bin



Processed Wed Oct 18 10:37:43 2017 by ELM ver.2012-10-06 from 001__elm20171018_082933__dat00.bin

