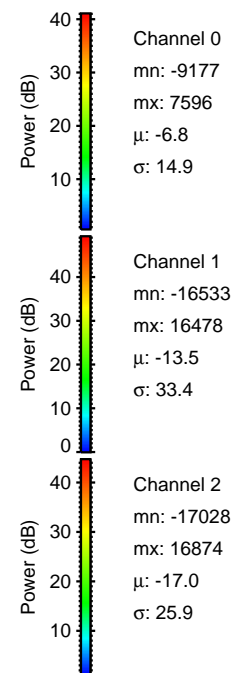
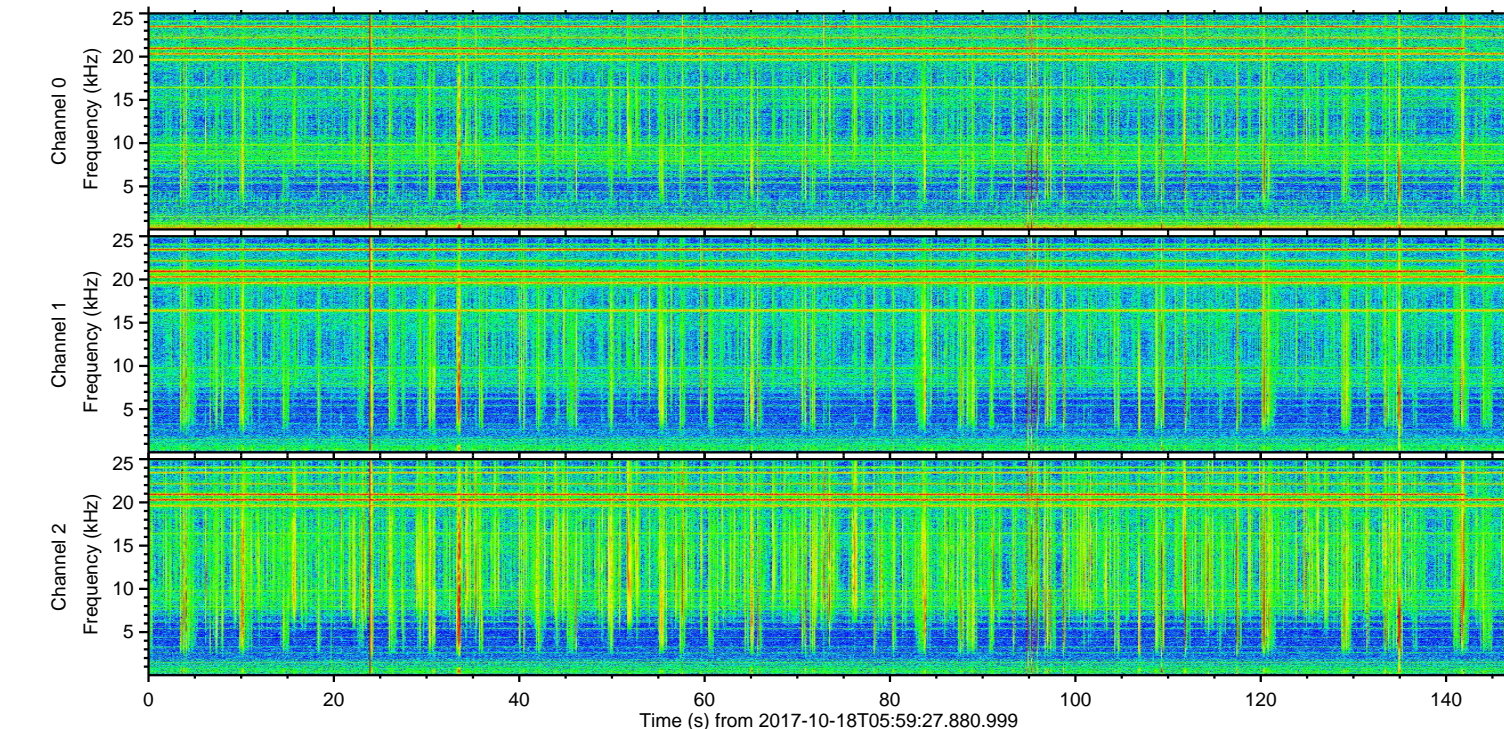
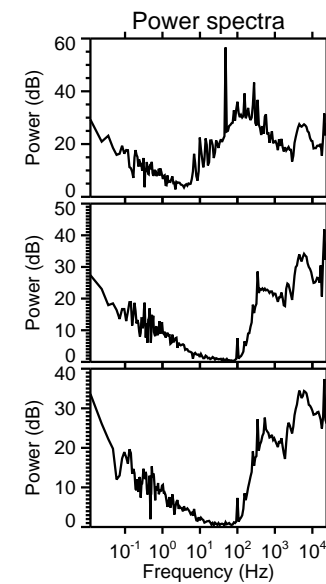
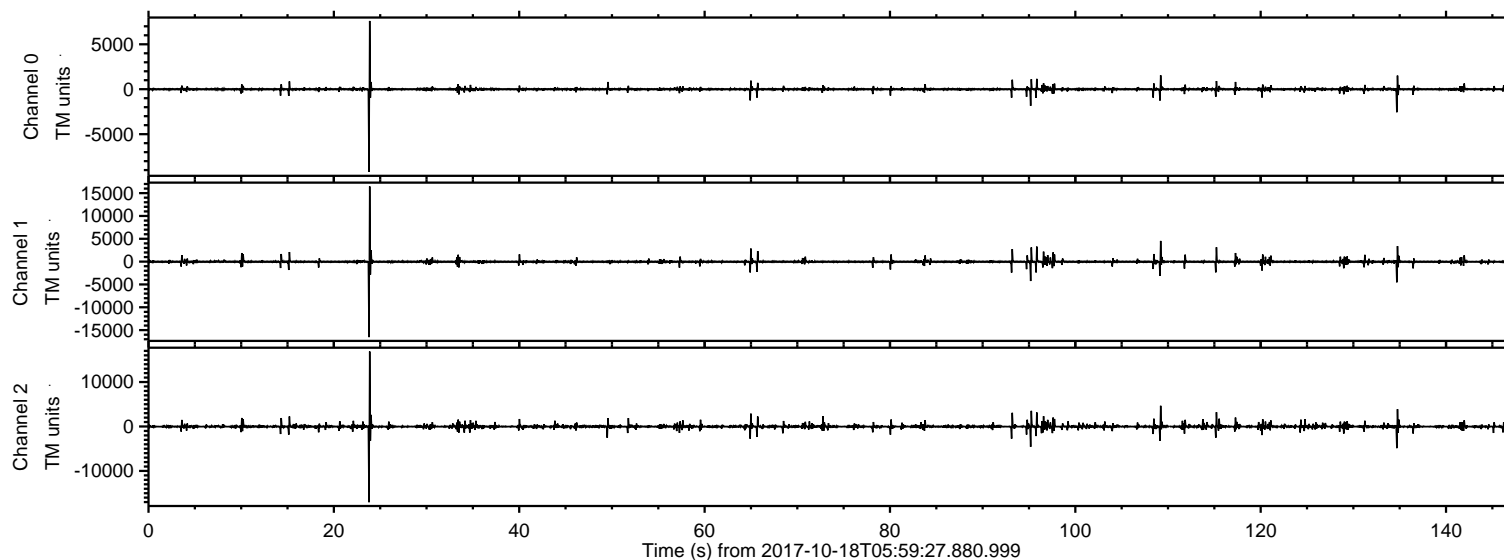
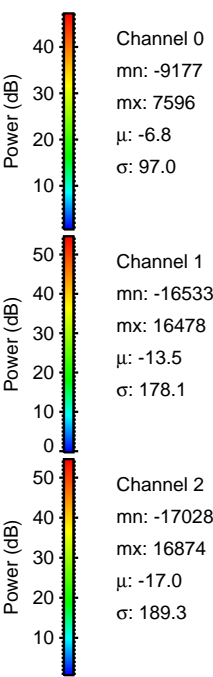
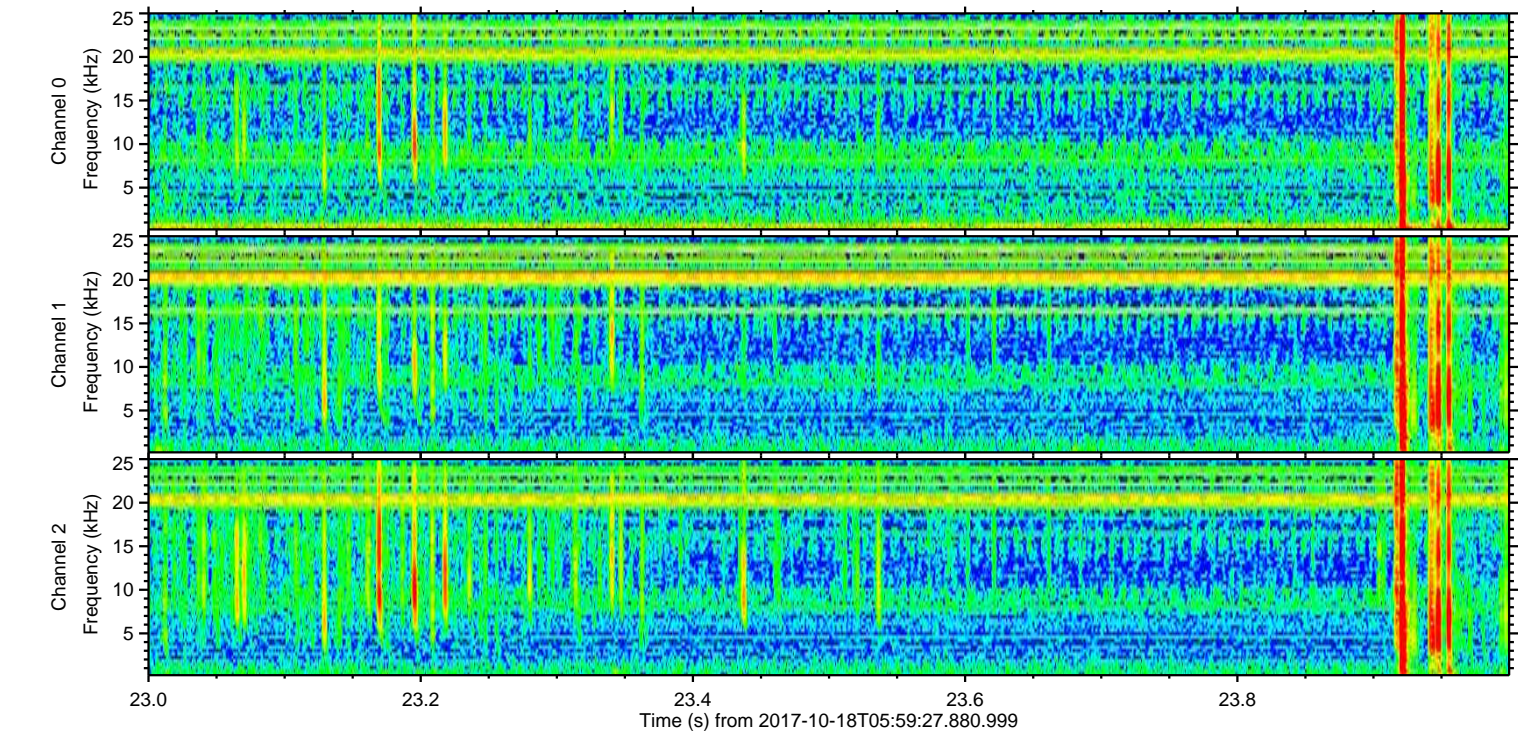
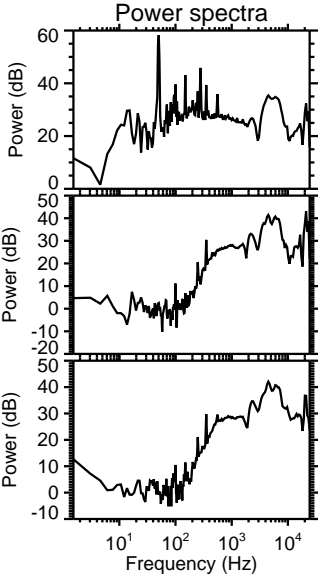
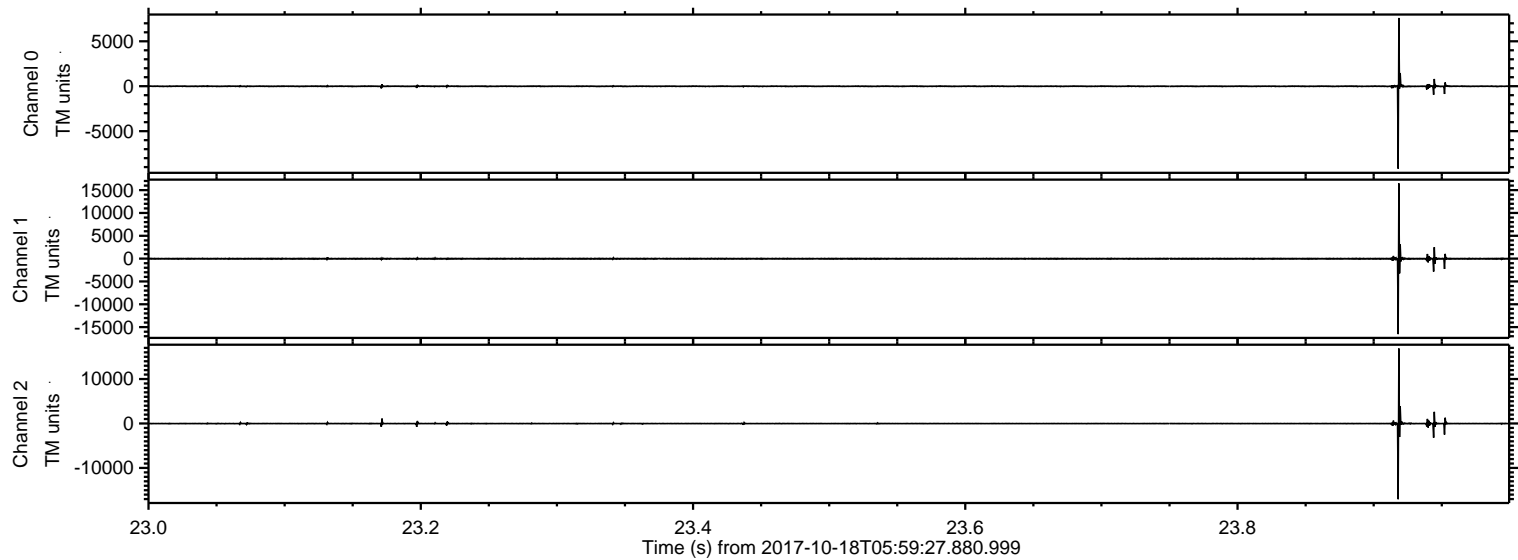


ELMAVAN 3D WAVEFORMS (Measured data sampled at 50 kHz) 51000 packets of 144 samples from 2017-10-18T05:59:27.880.999.

Processed Wed Oct 18 08:07:54 2017 by ELM ver.2012-10-06 from 001__elm20171018_055926__dat00.bin

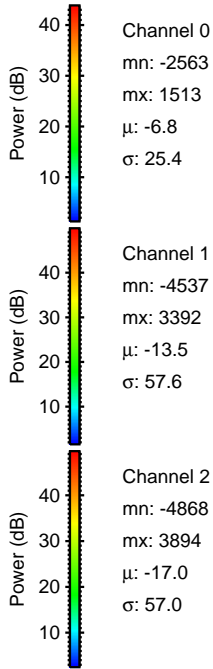
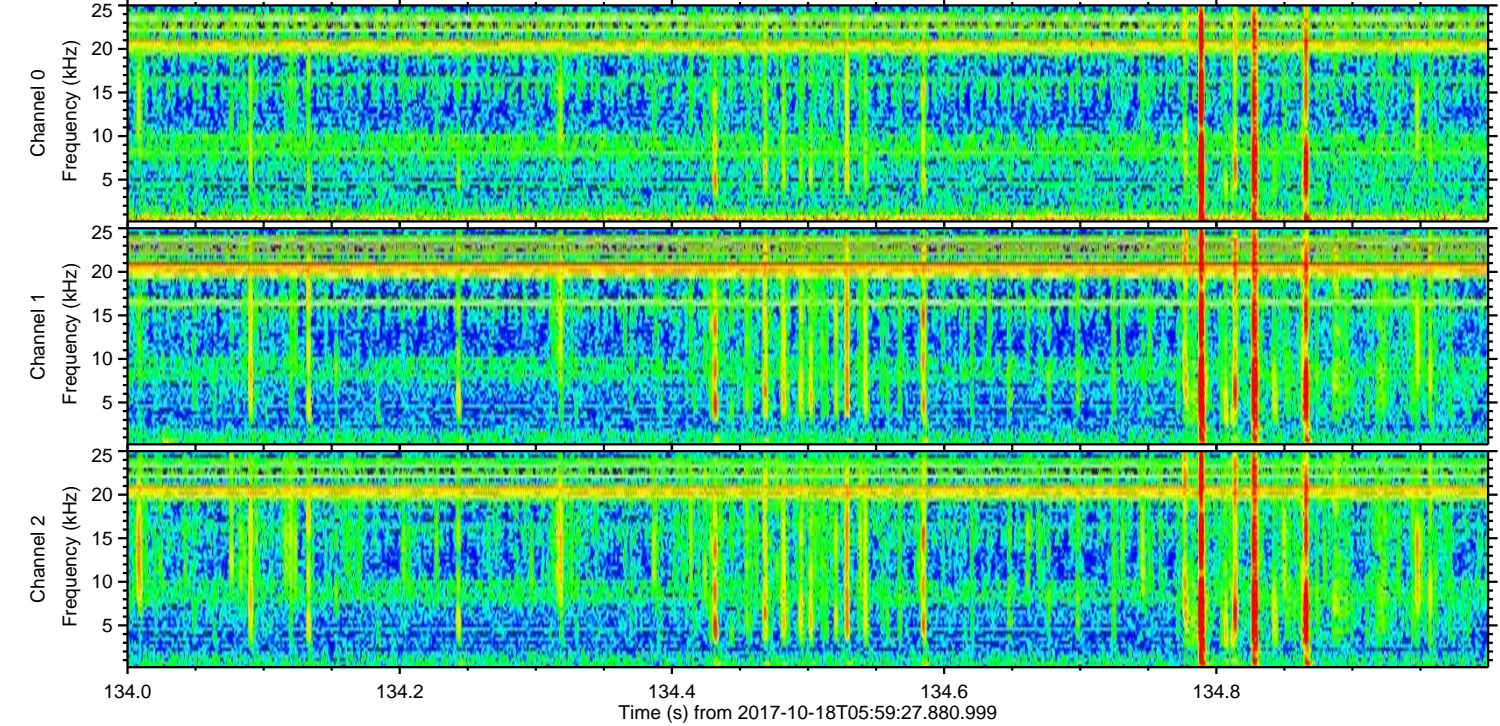
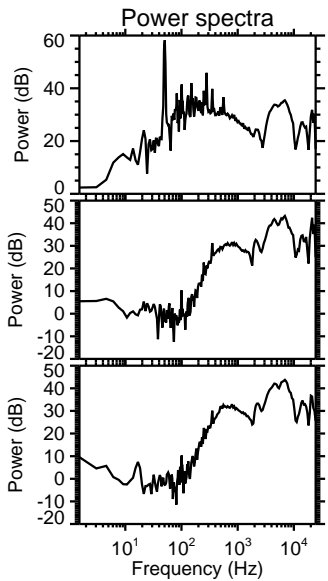
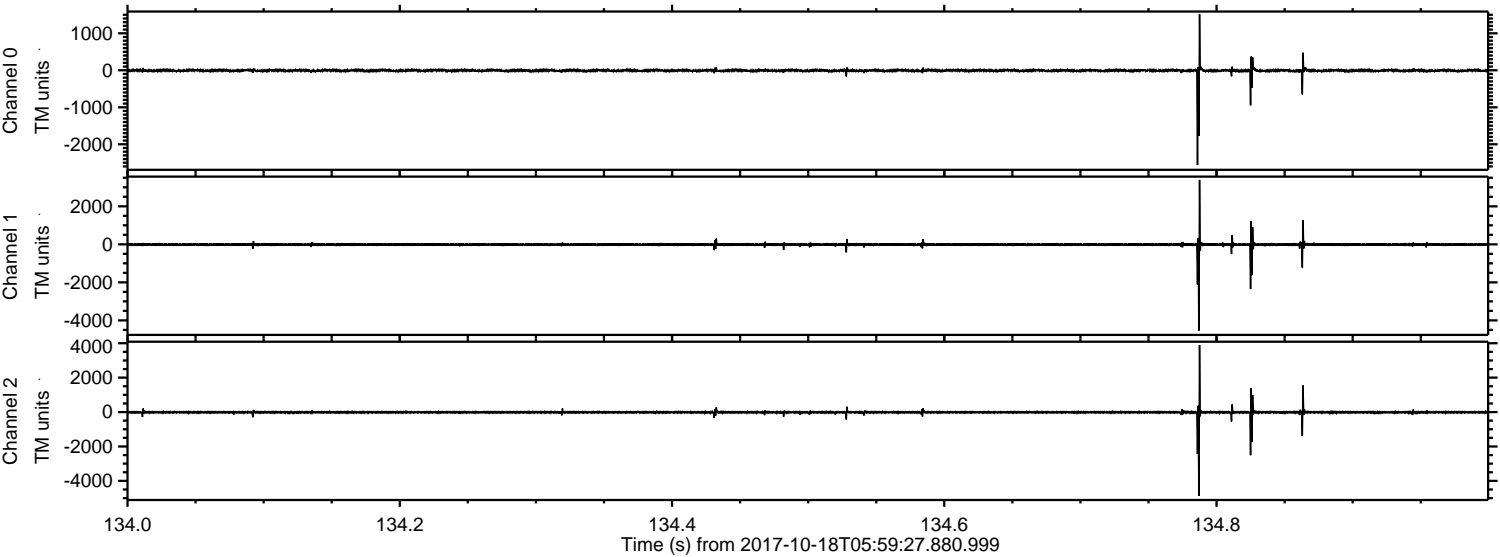


Processed Wed Oct 18 08:08:00 2017 by ELM ver.2012-10-06 from 001__elm20171018_055926__dat00.bin



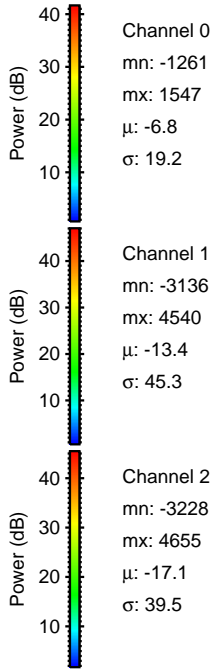
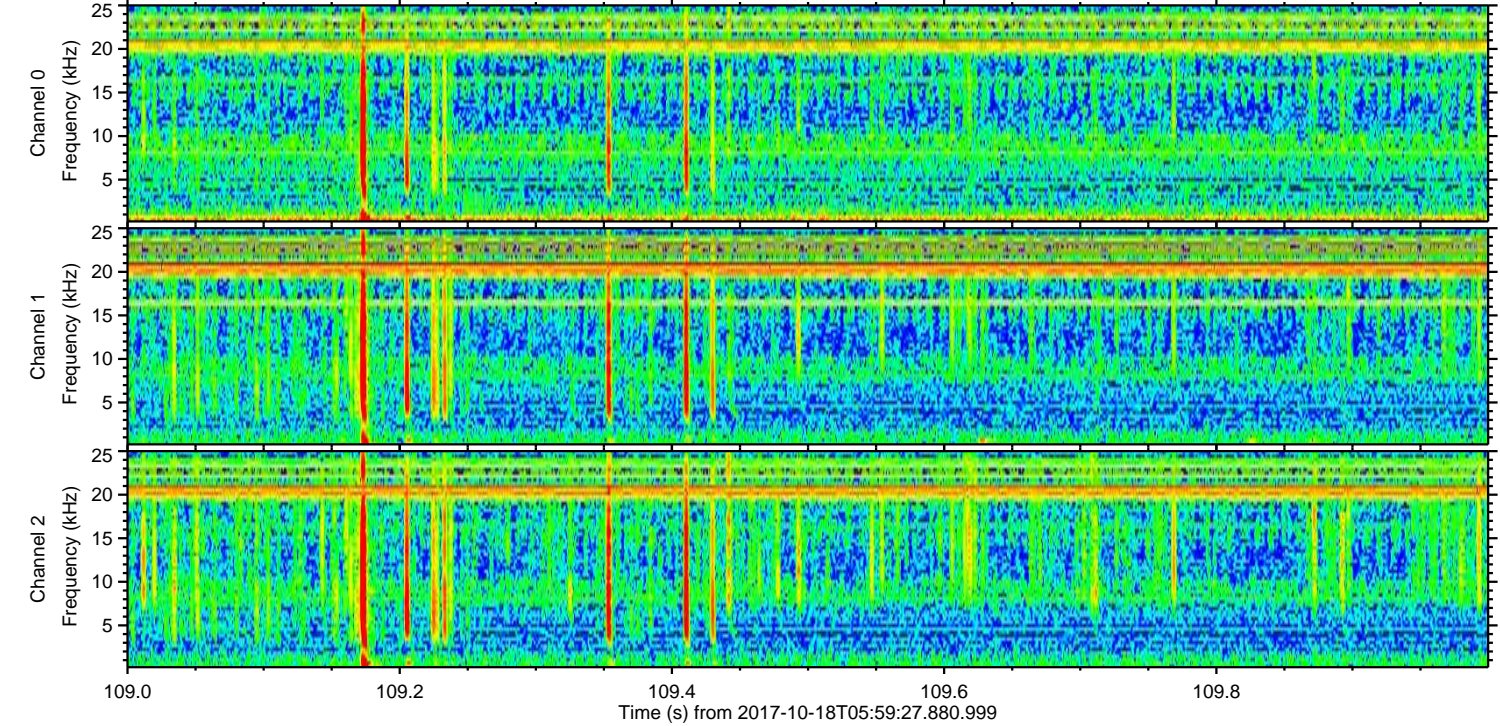
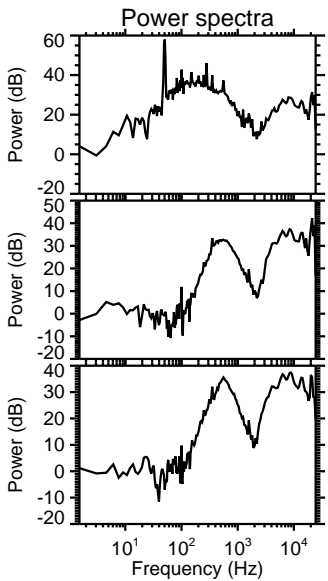
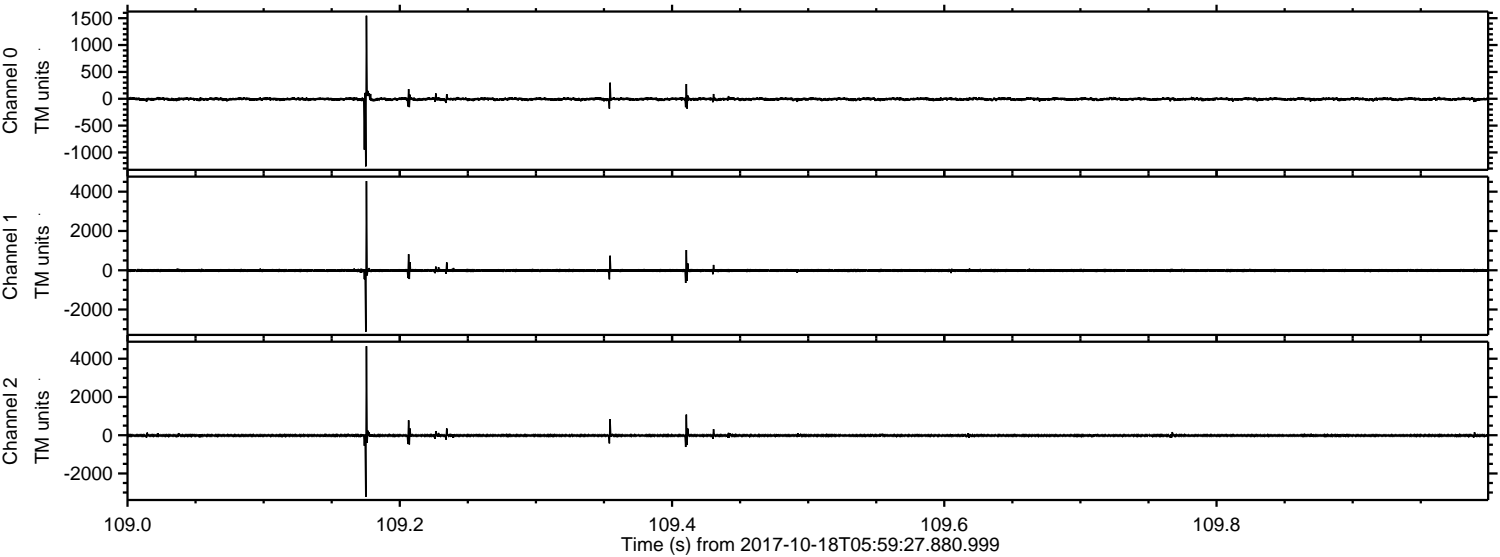
ELMAVAN 3D WAVEFORMS (Measured data sampled at 50 kHz) 51000 packets of 144 samples from 2017-10-18T05:59:27.880.999. Part 135/147

Processed Wed Oct 18 08:08:00 2017 by ELM ver.2012-10-06 from 001__elm20171018_055926__dat00.bin

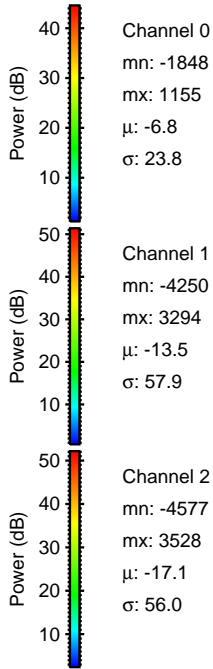
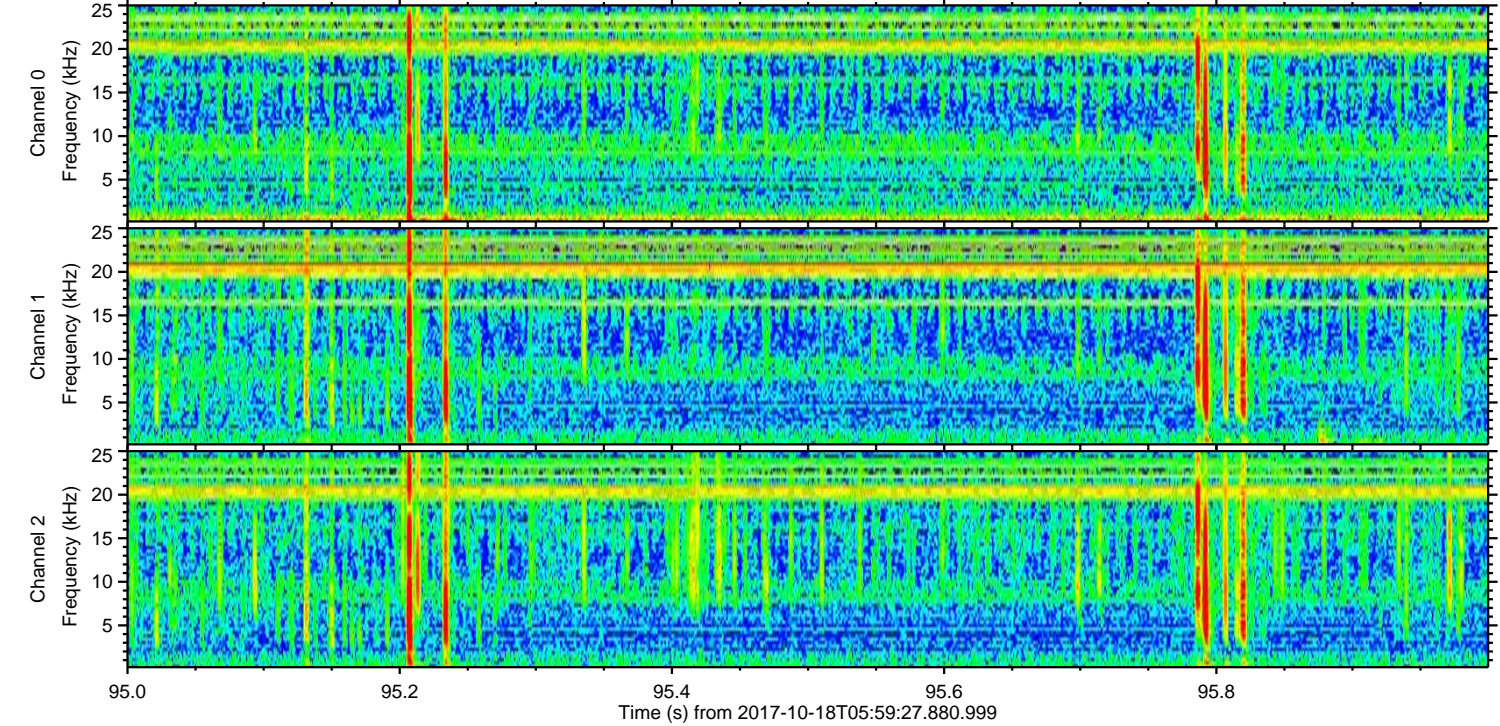
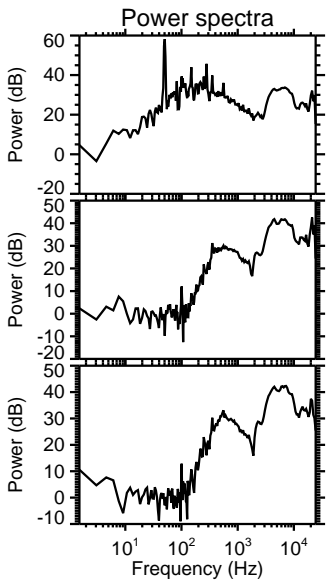
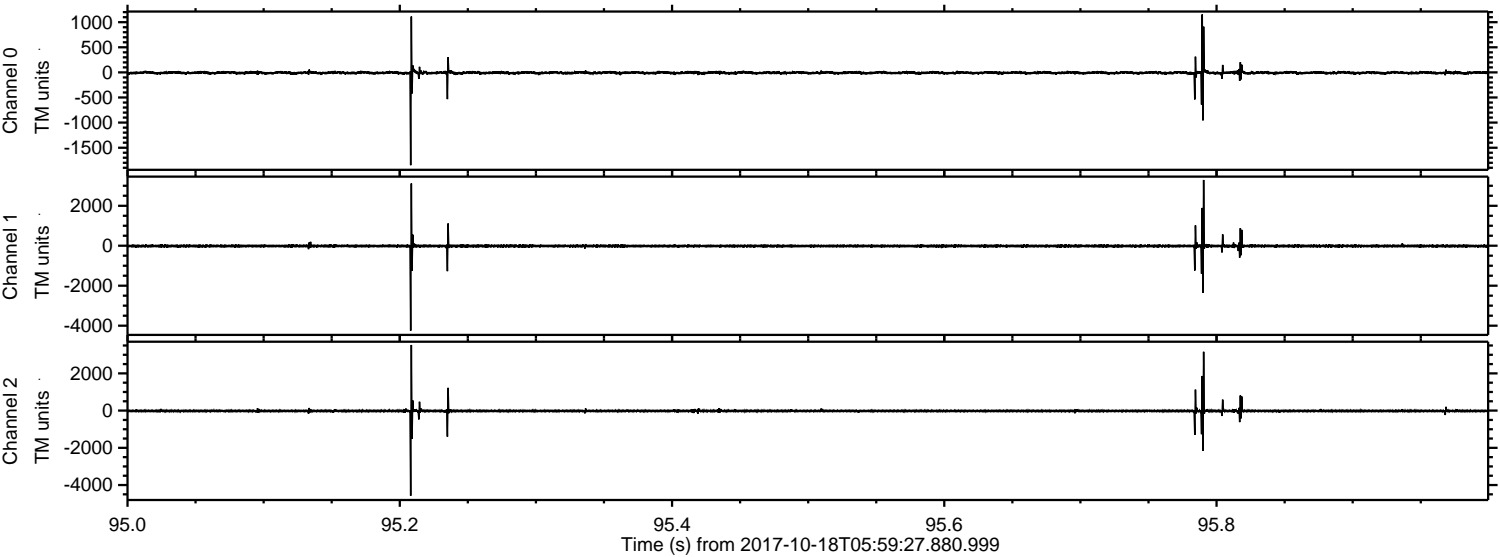


ELMAVAN 3D WAVEFORMS (Measured data sampled at 50 kHz) 51000 packets of 144 samples from 2017-10-18T05:59:27.880.999. Part 110/147

Processed Wed Oct 18 08:08:01 2017 by ELM ver.2012-10-06 from 001__elm20171018_055926__dat00.bin

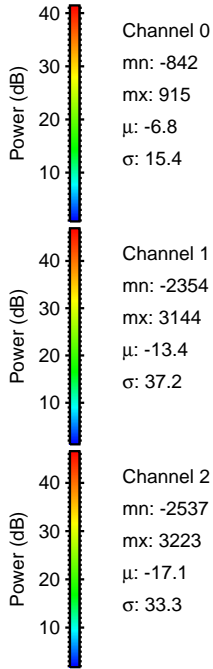
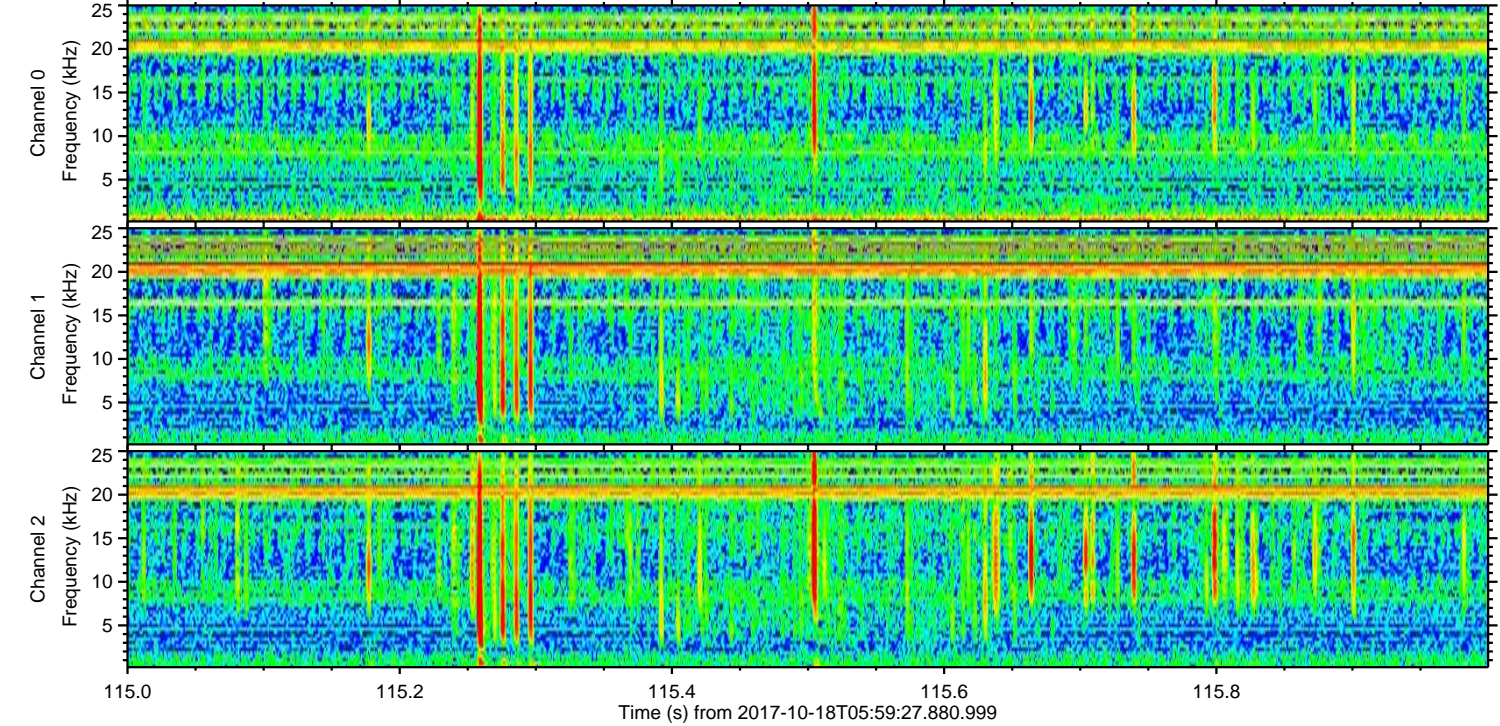
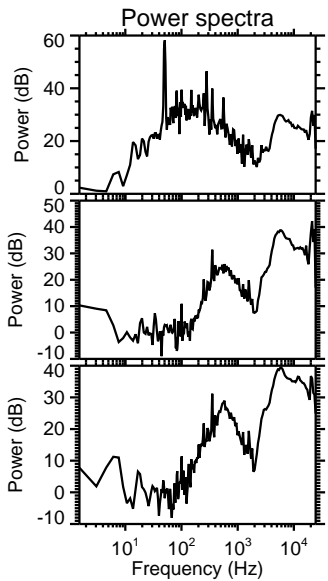
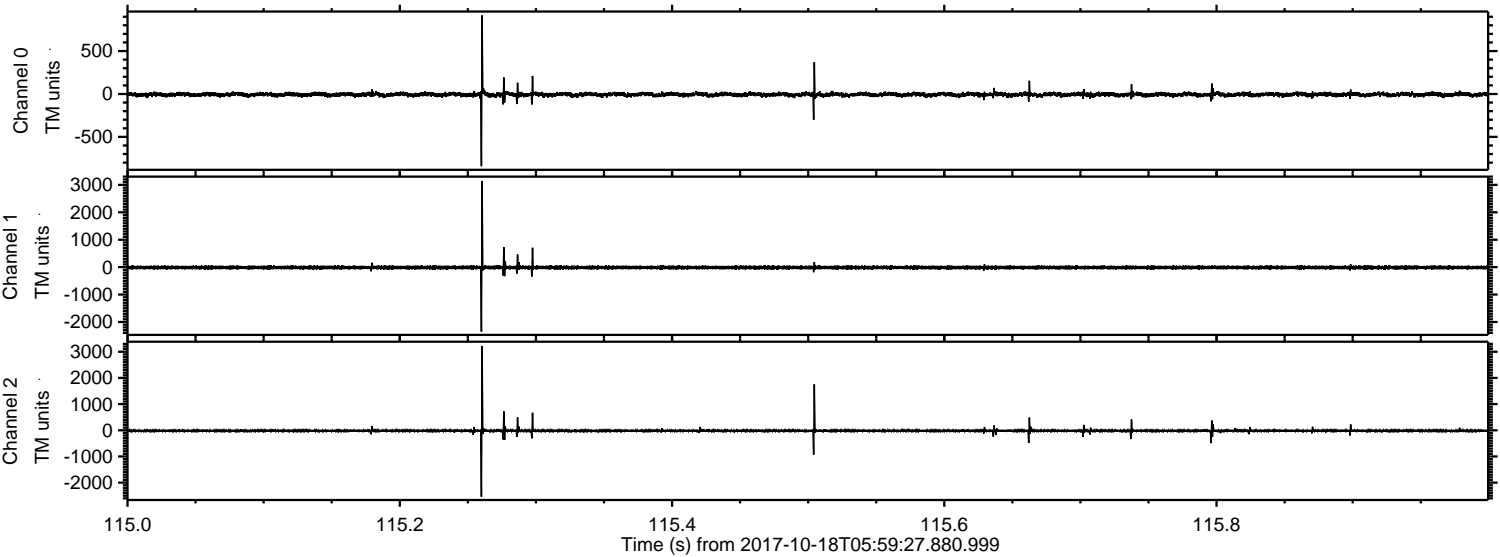


Processed Wed Oct 18 08:08:02 2017 by ELM ver.2012-10-06 from 001__elm20171018_055926__dat00.bin

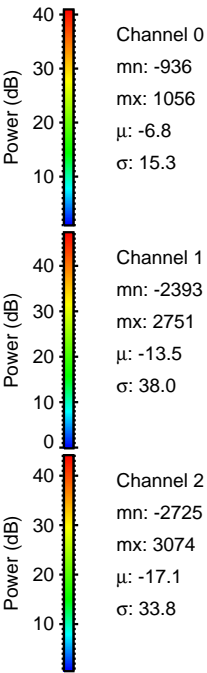
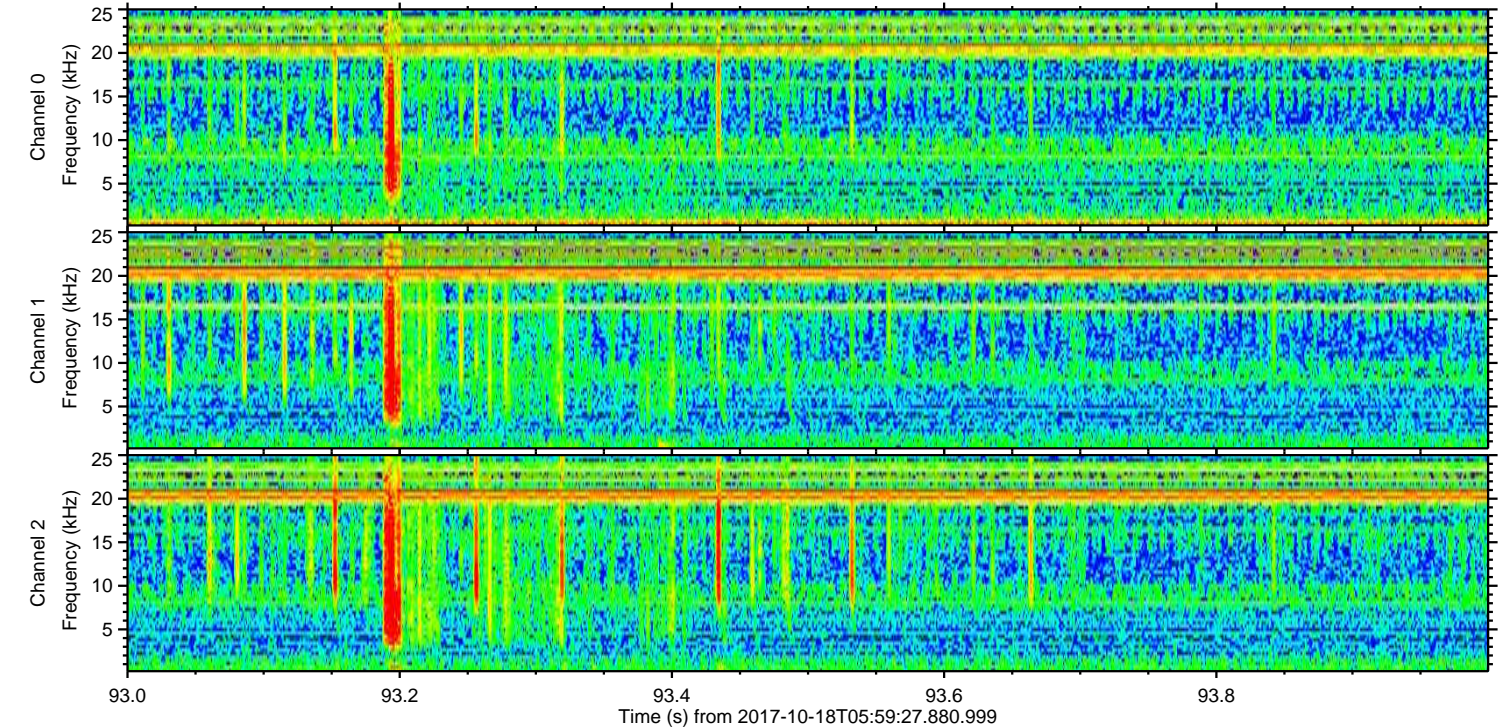
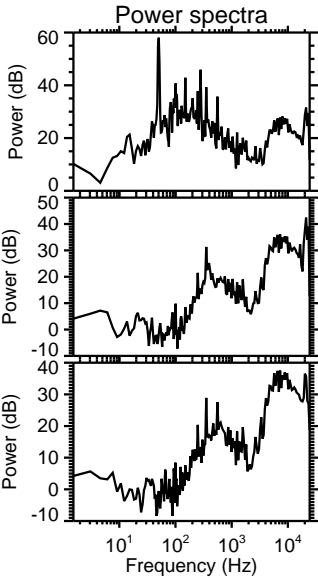
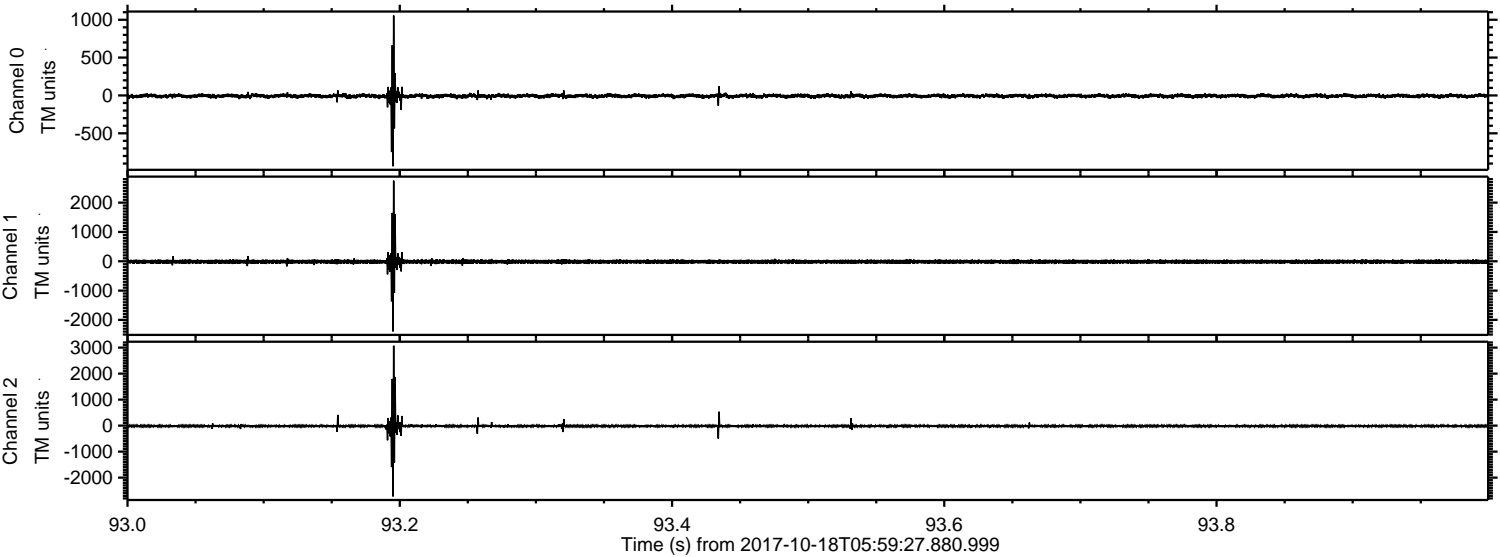


ELMAVAN 3D WAVEFORMS (Measured data sampled at 50 kHz) 51000 packets of 144 samples from 2017-10-18T05:59:27.880.999. Part 116/147

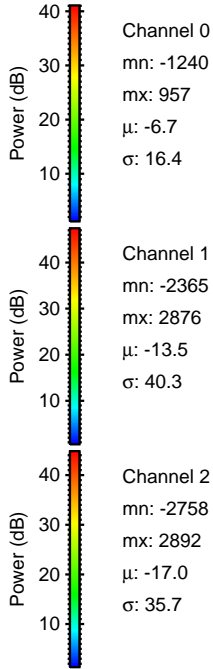
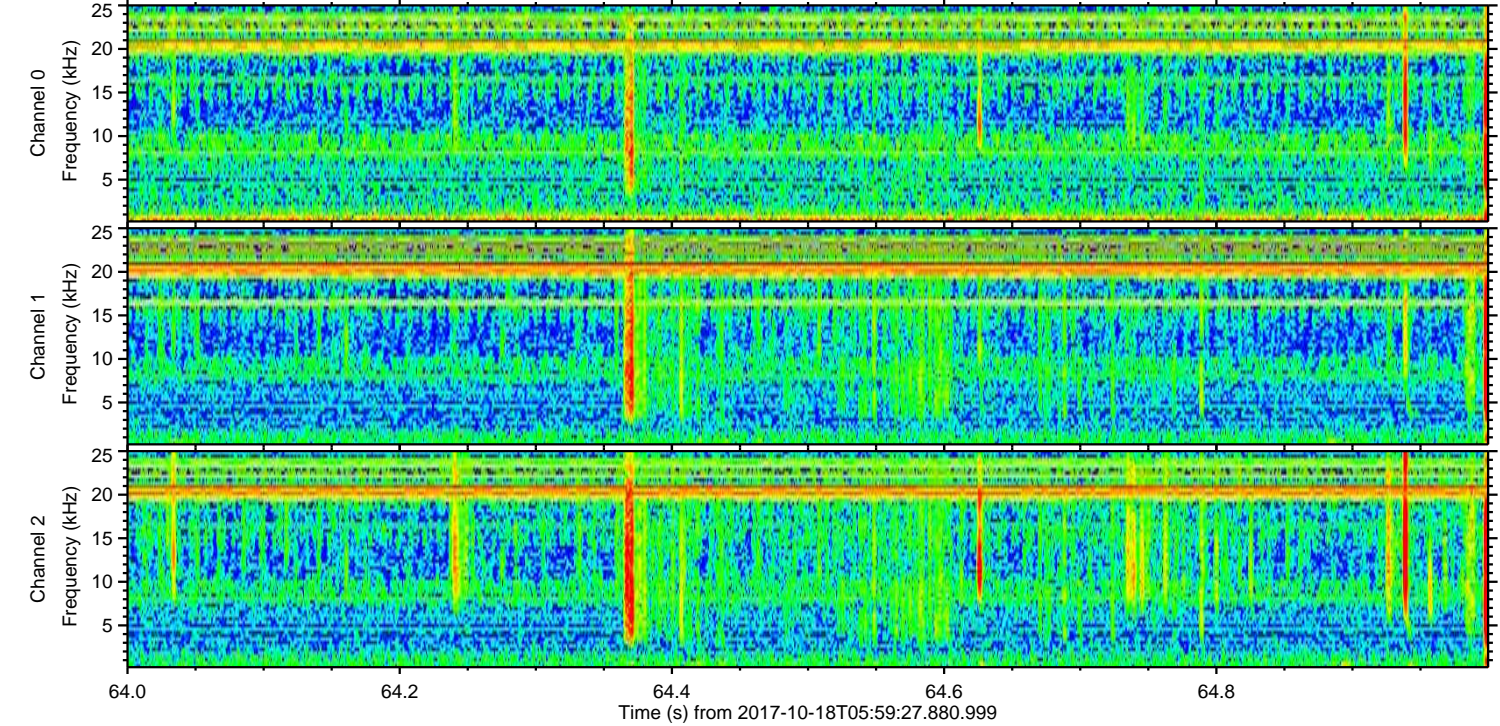
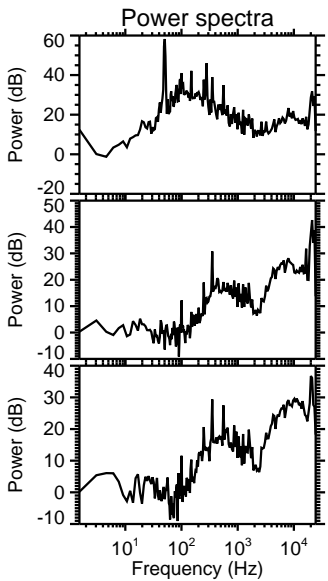
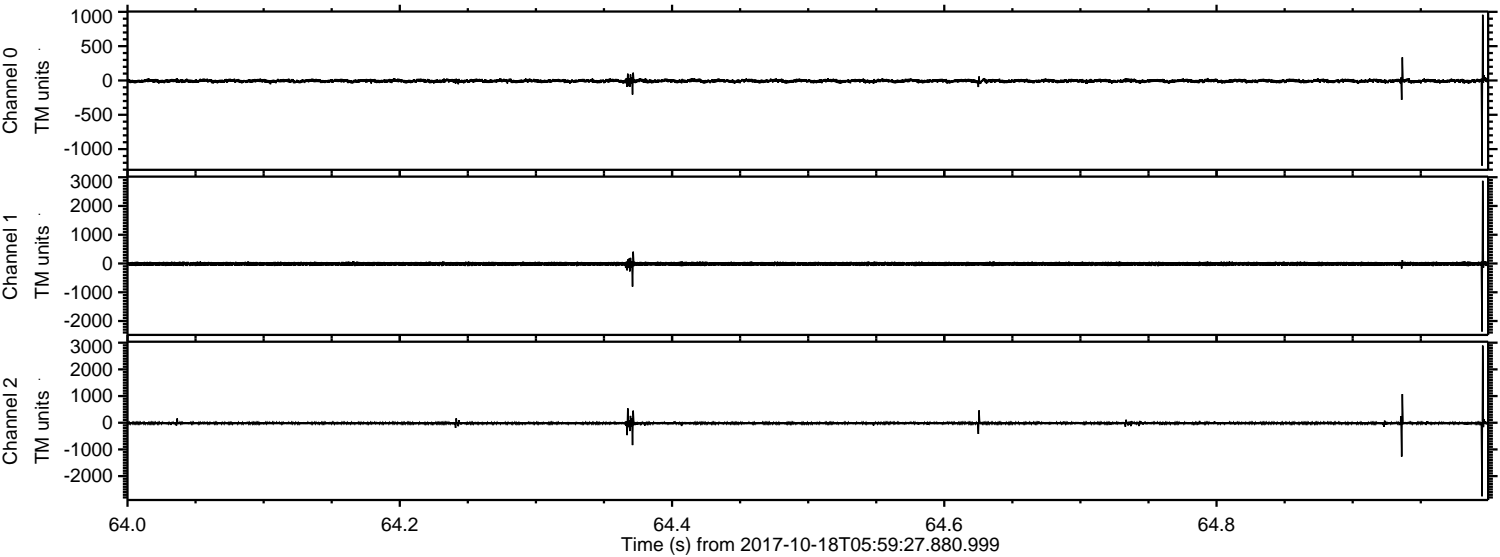
Processed Wed Oct 18 08:08:02 2017 by ELM ver.2012-10-06 from 001__elm20171018_055926__dat00.bin



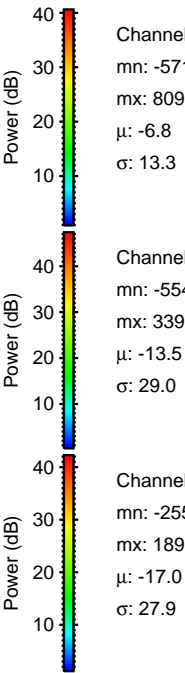
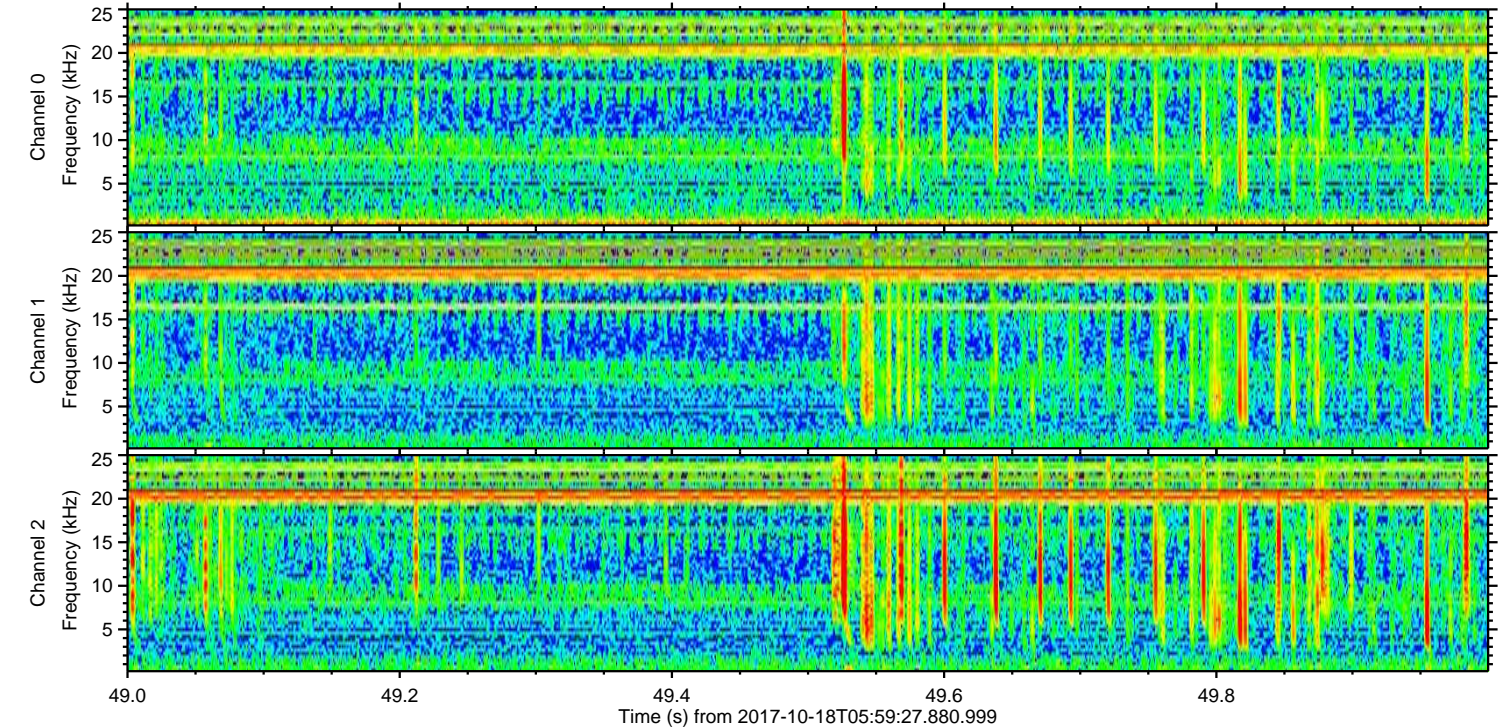
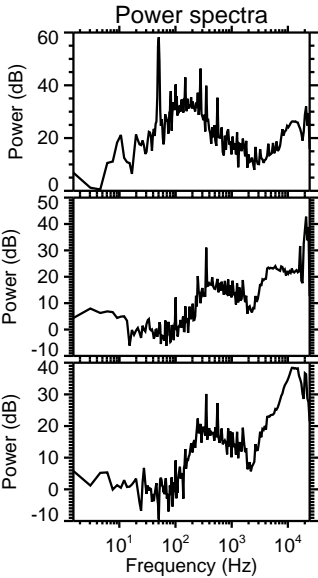
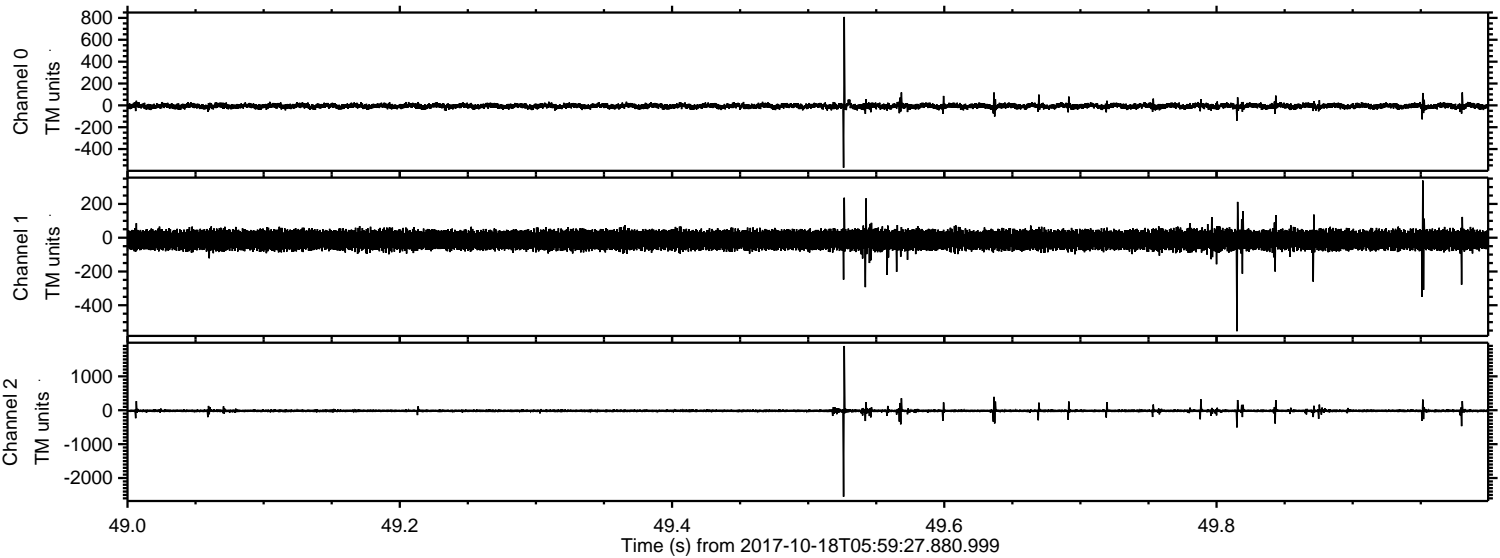
Processed Wed Oct 18 08:08:03 2017 by ELM ver.2012-10-06 from 001__elm20171018_055926__dat00.bin



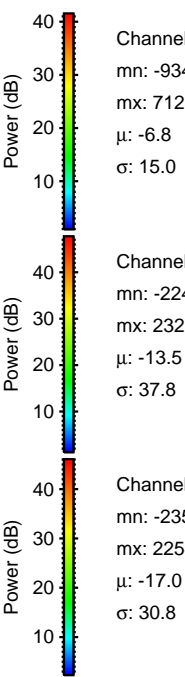
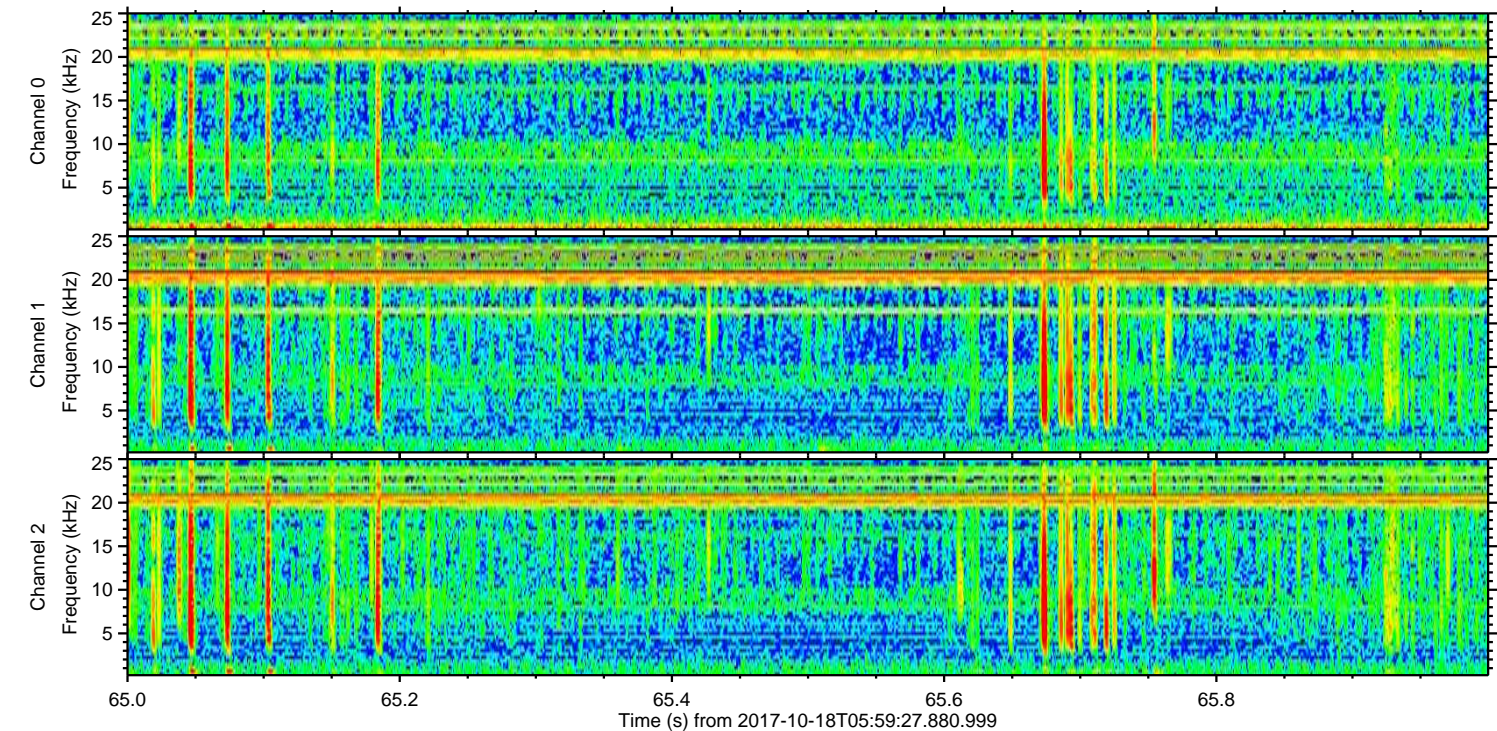
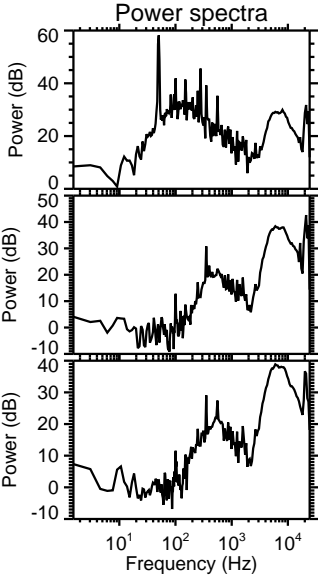
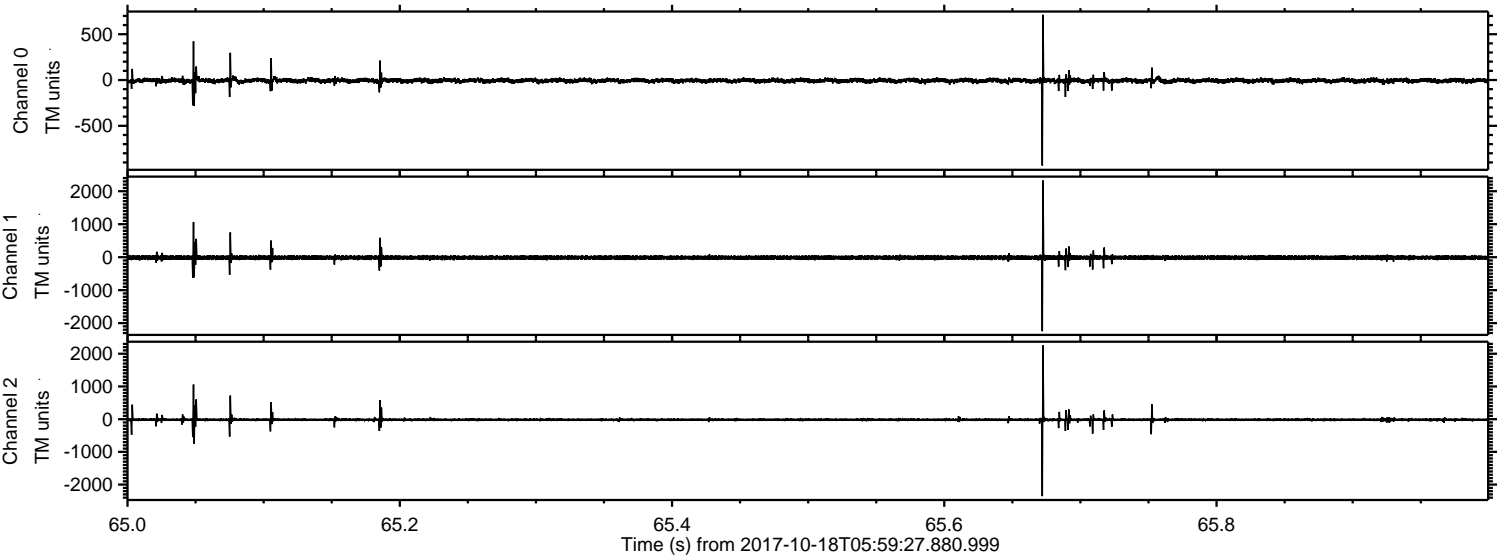
Processed Wed Oct 18 08:08:03 2017 by ELM ver.2012-10-06 from 001__elm20171018_055926__dat00.bin



Processed Wed Oct 18 08:08:04 2017 by ELM ver.2012-10-06 from 001__elm20171018_055926__dat00.bin



Processed Wed Oct 18 08:08:05 2017 by ELM ver.2012-10-06 from 001__elm20171018_055926__dat00.bin



Channel 0
mn: -934
mx: 712
 μ : -6.8
 σ : 15.0

Channel 1
mn: -2246
mx: 2327
 μ : -13.5
 σ : 37.8

Channel 2
mn: -2353
mx: 2254
 μ : -17.0
 σ : 30.8

Processed Wed Oct 18 08:08:05 2017 by ELM ver.2012-10-06 from 001__elm20171018_055926__dat00.bin

