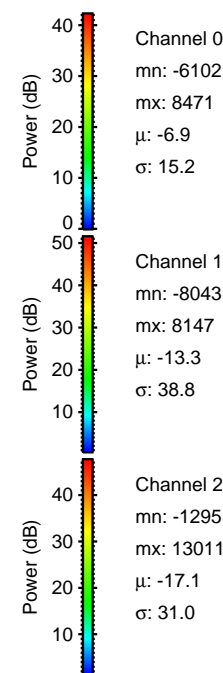
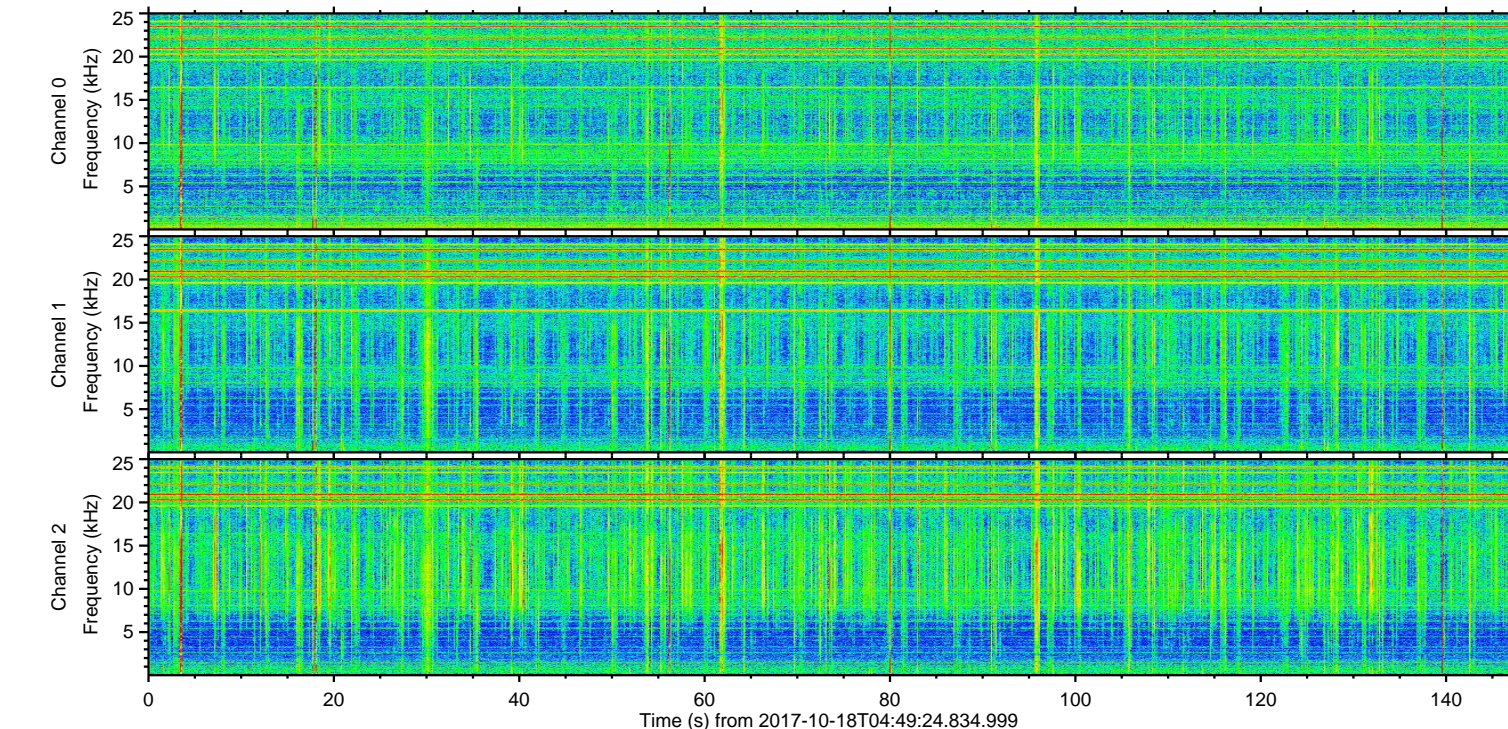
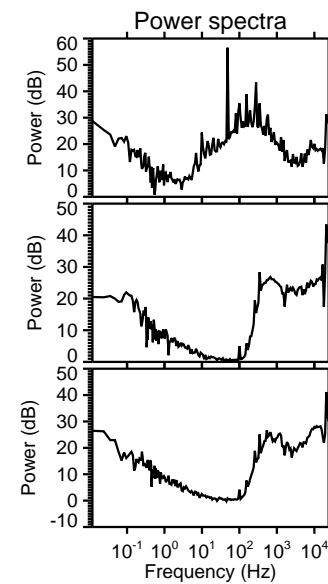
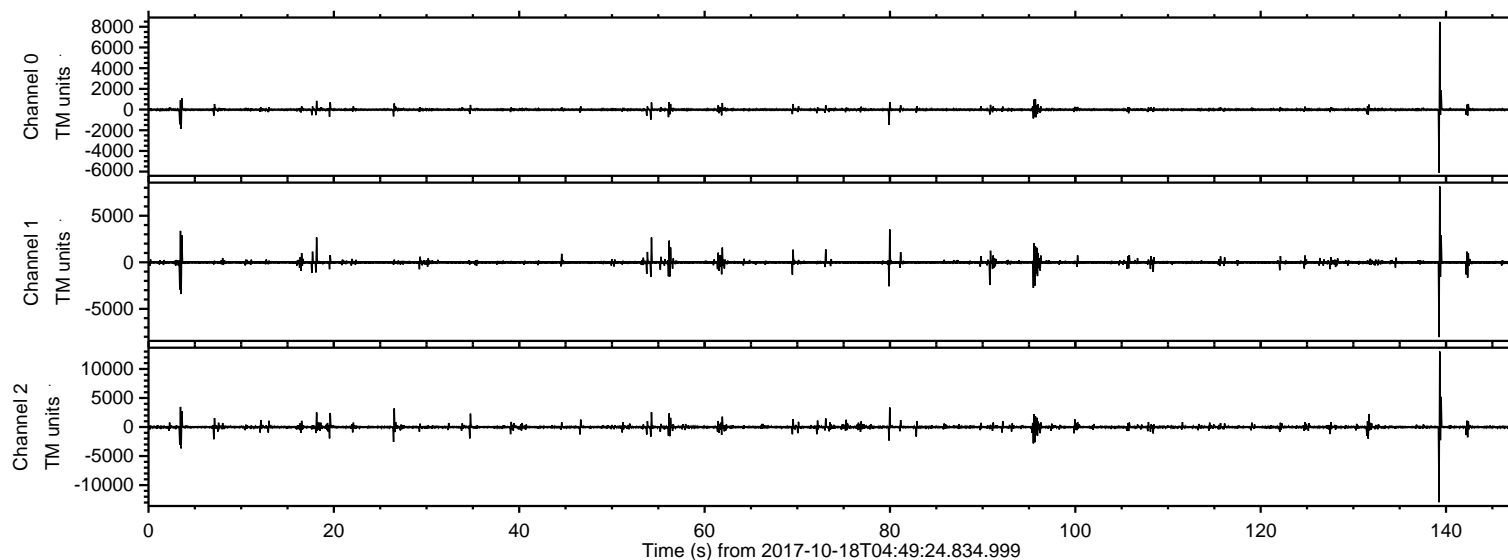


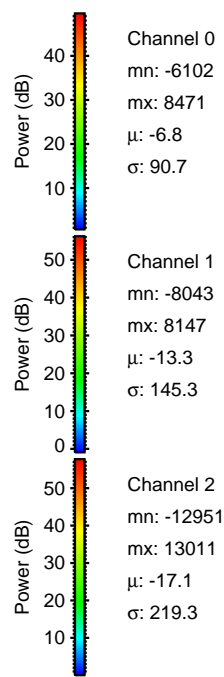
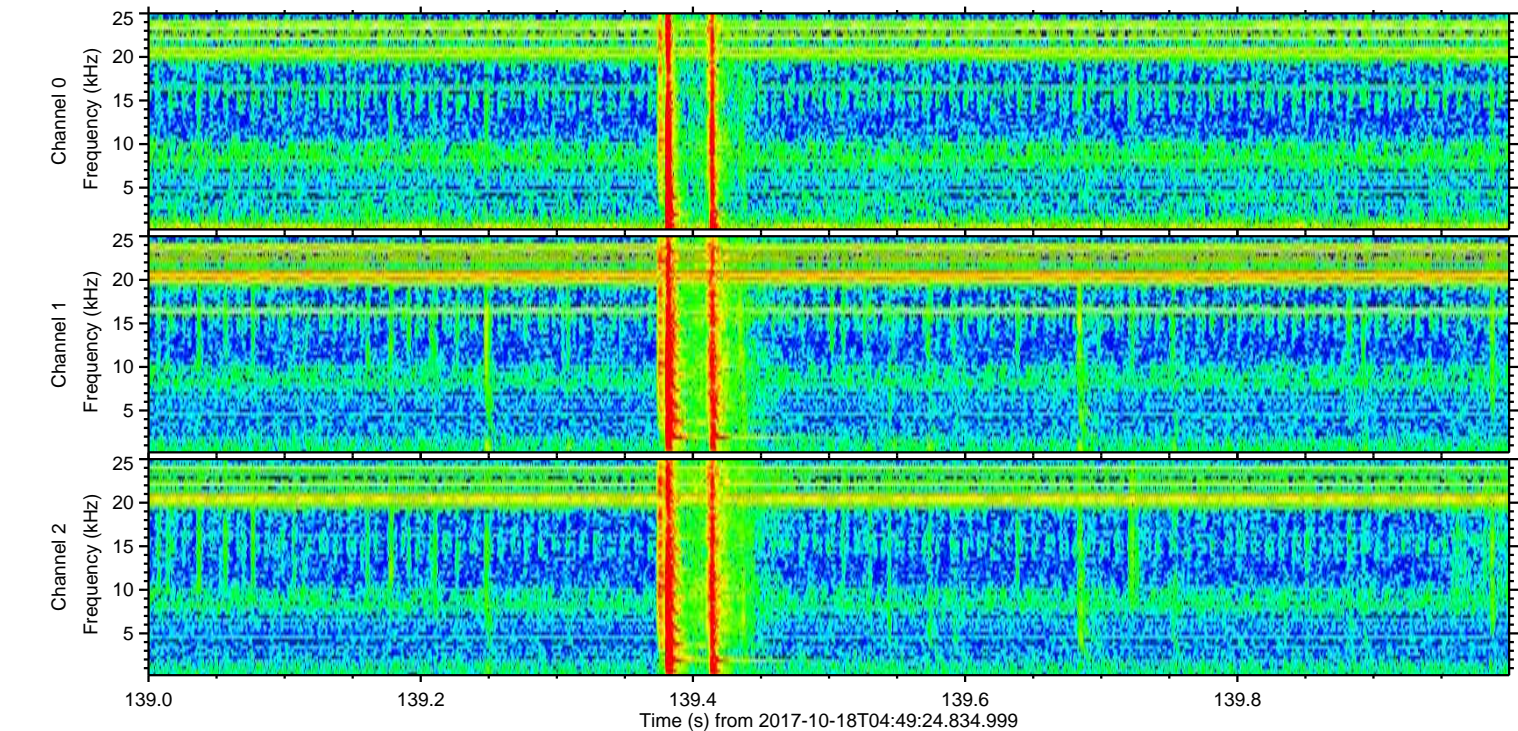
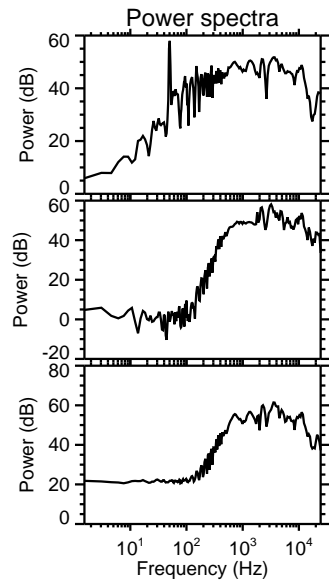
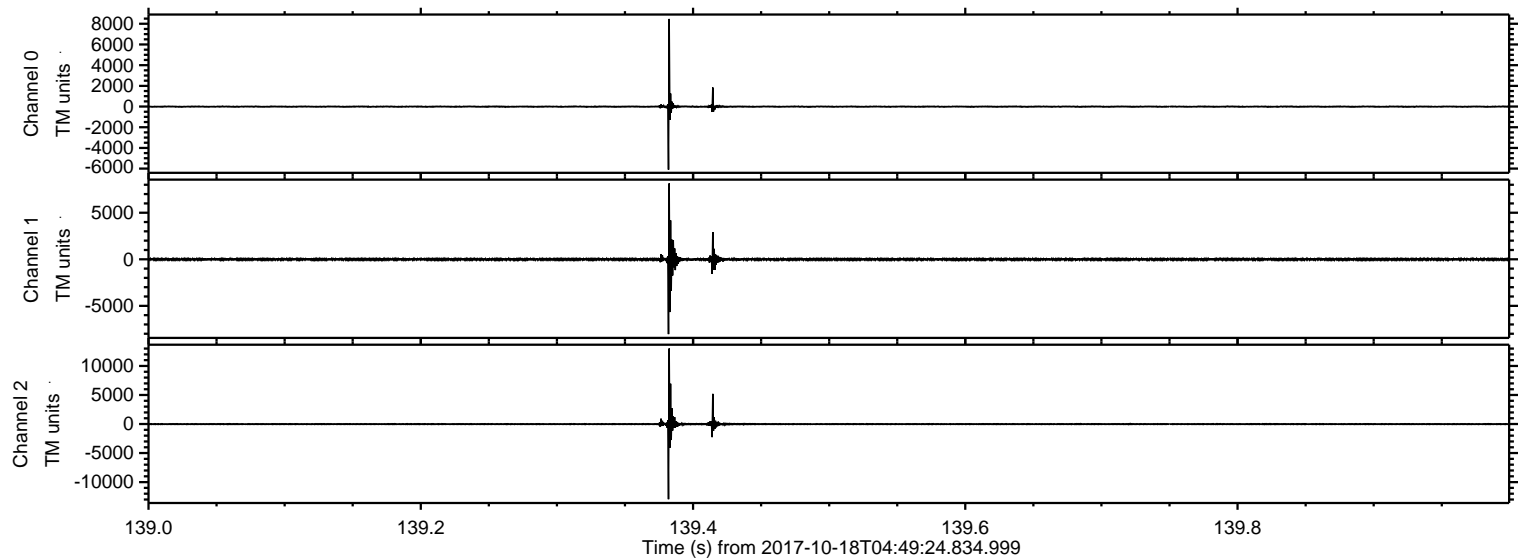
ELMAVAN 3D WAVEFORMS (Measured data sampled at 50 kHz) 51000 packets of 144 samples from 2017-10-18T04:49:24.834.999.

Processed Wed Oct 18 06:57:48 2017 by ELM ver.2012-10-06 from 001__elm20171018_044923__dat00.bin



ELMAVAN 3D WAVEFORMS (Measured data sampled at 50 kHz) 51000 packets of 144 samples from 2017-10-18T04:49:24.834.999. Part 140/147

Processed Wed Oct 18 06:57:54 2017 by ELM ver.2012-10-06 from 001__elm20171018_044923__dat00.bin

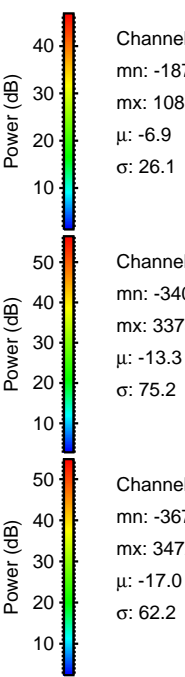
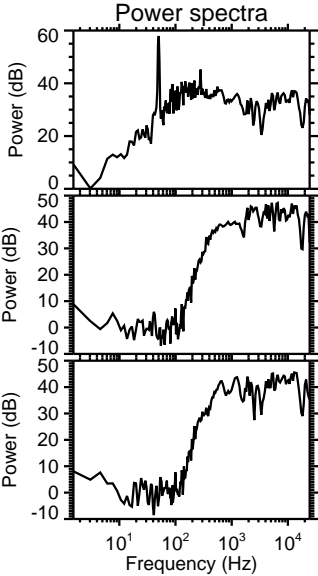
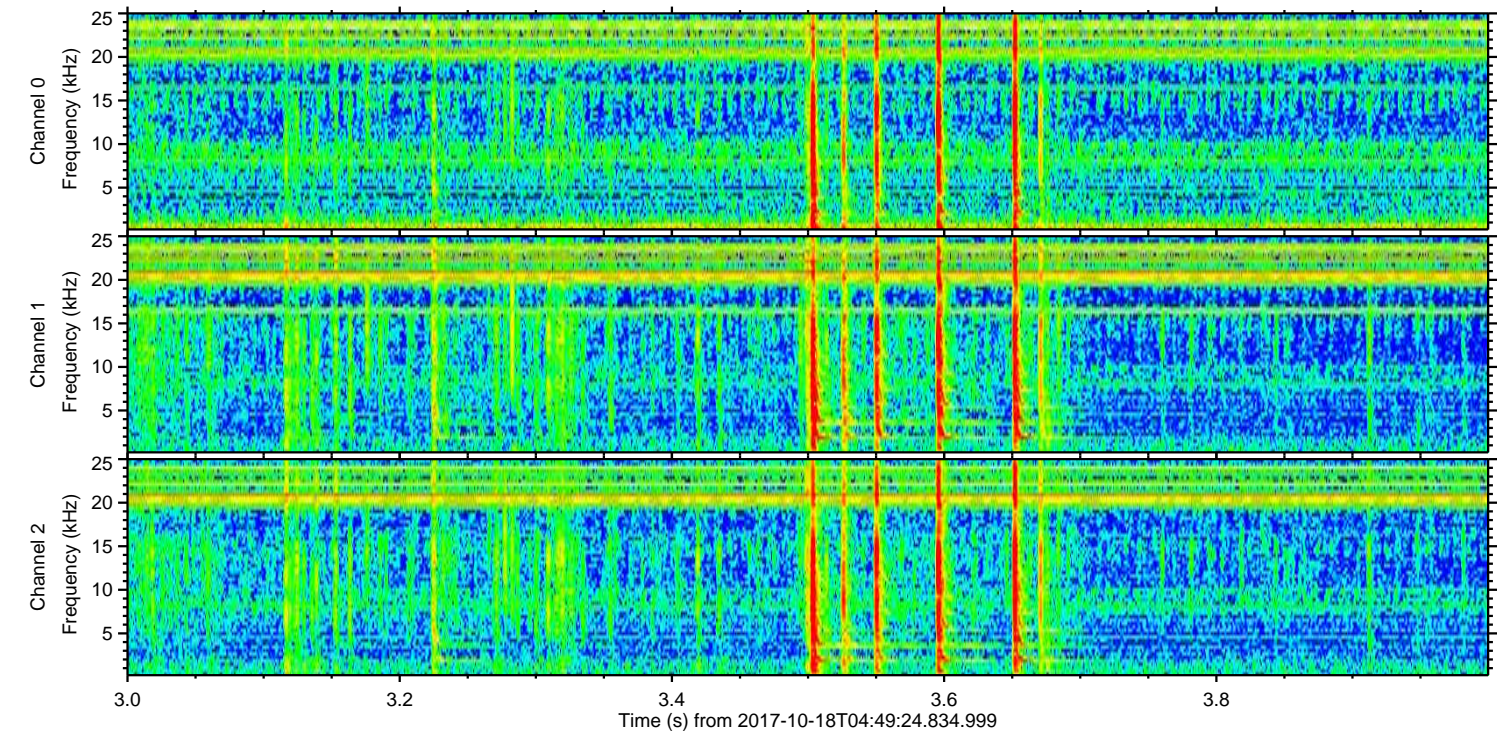
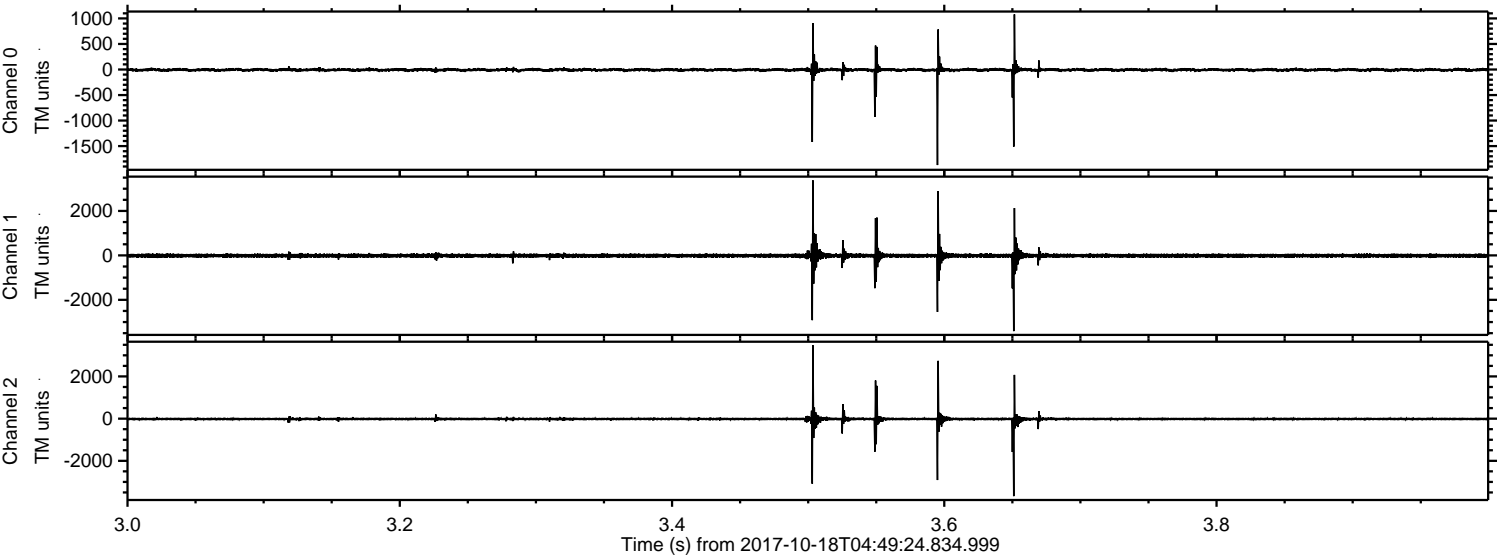


Channel 0
mn: -6102
mx: 8471
 μ : -6.8
 σ : 90.7

Channel 1
mn: -8043
mx: 8147
 μ : -13.3
 σ : 145.3

Channel 2
mn: -12951
mx: 13011
 μ : -17.1
 σ : 219.3

Processed Wed Oct 18 06:57:54 2017 by ELM ver.2012-10-06 from 001__elm20171018_044923__dat00.bin

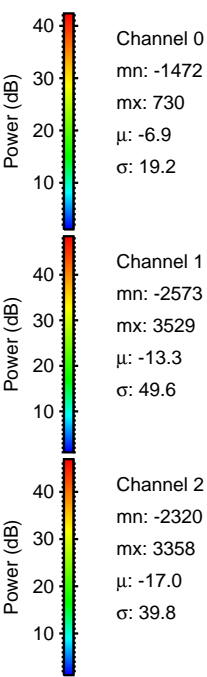
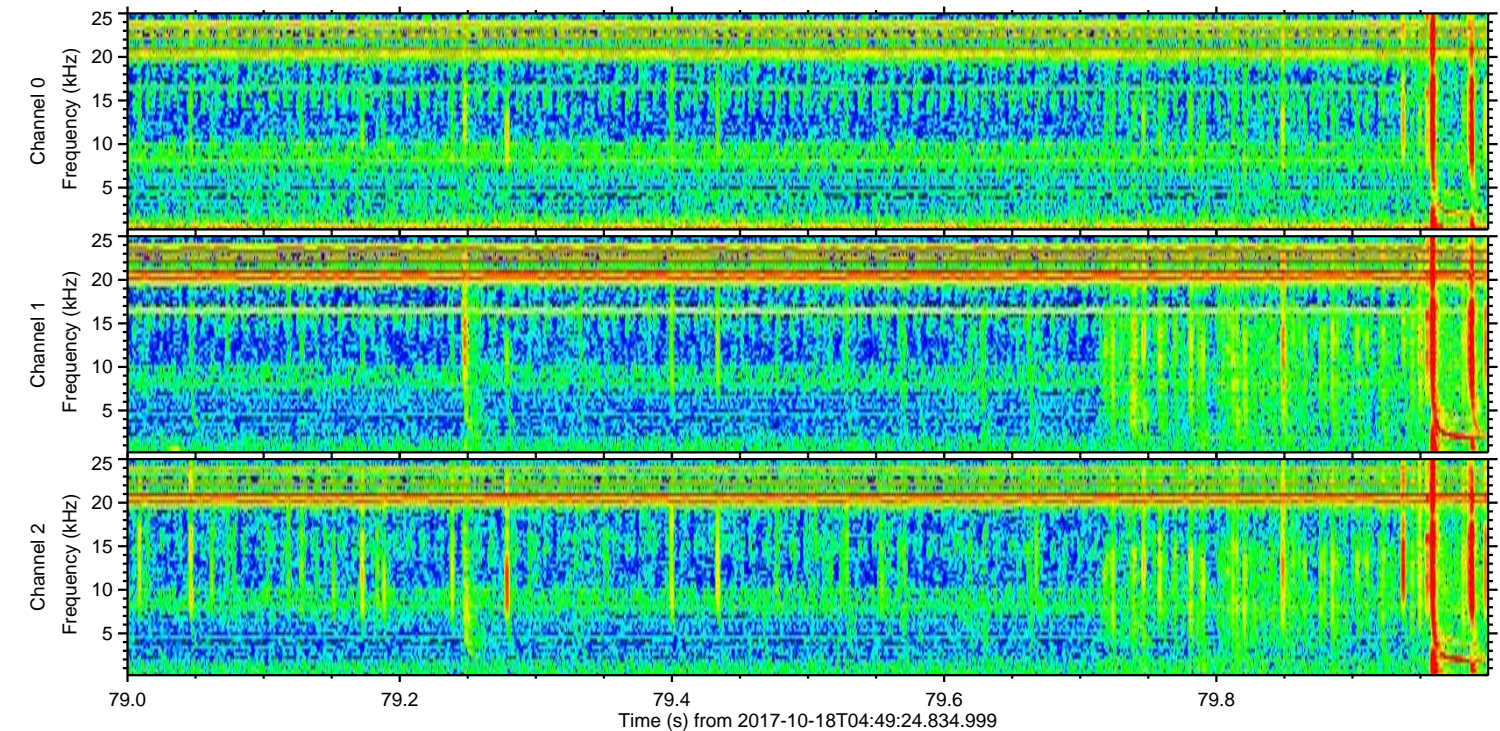
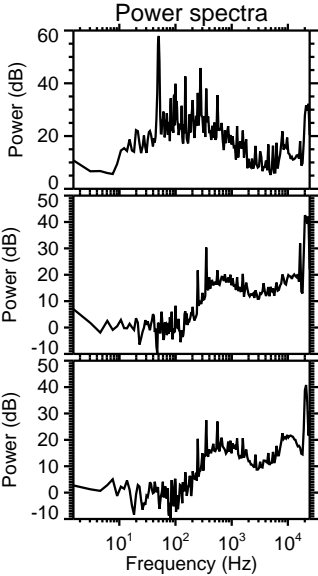
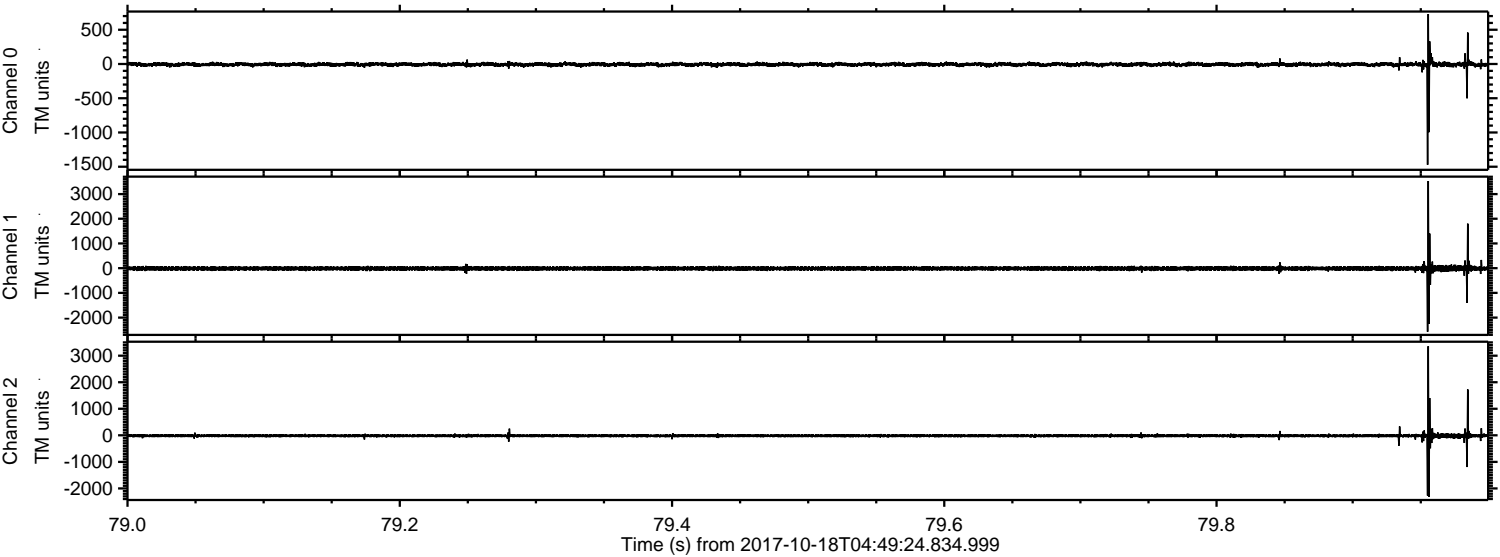


Channel 0
mn: -1871
mx: 1081
 μ : -6.9
 σ : 26.1

Channel 1
mn: -3408
mx: 3375
 μ : -13.3
 σ : 75.2

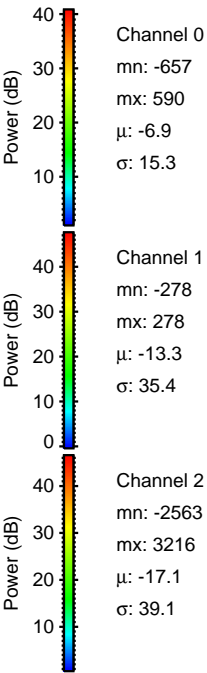
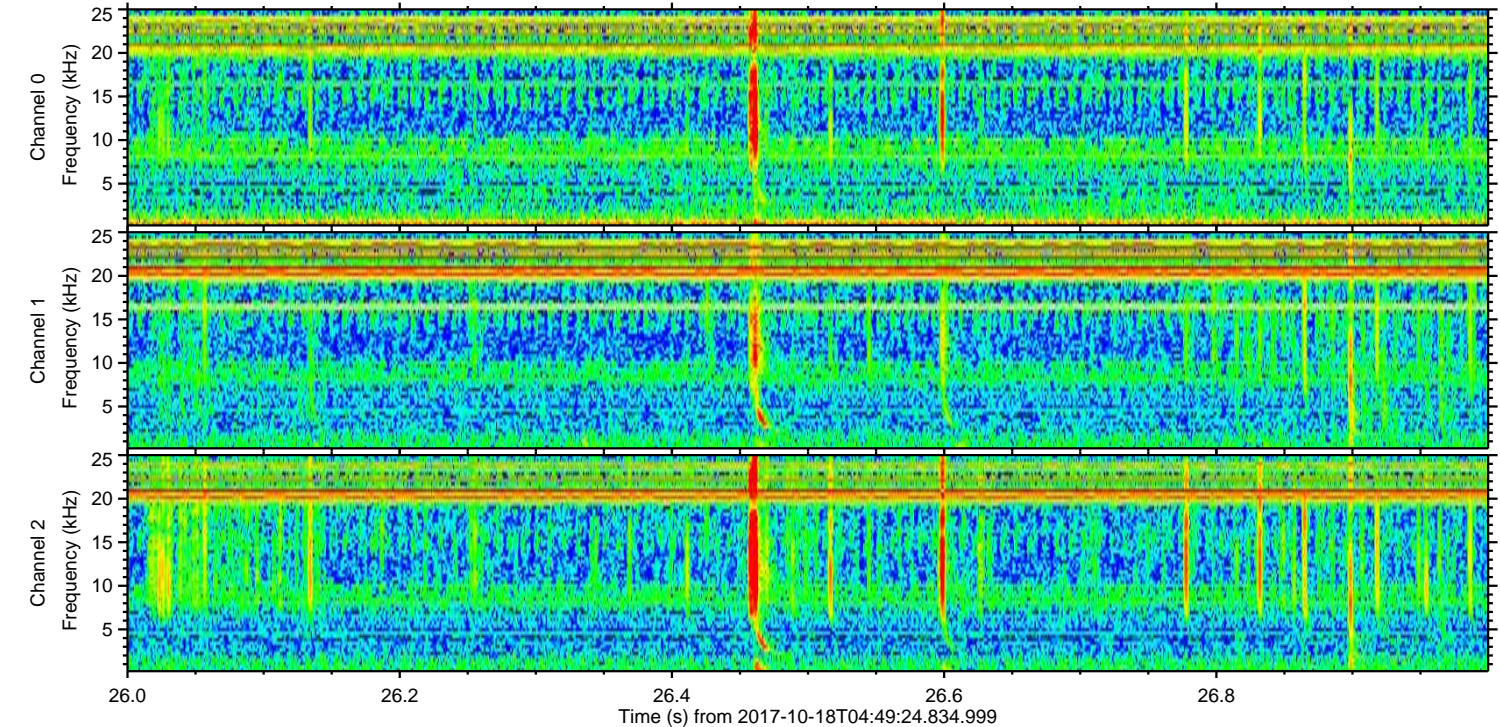
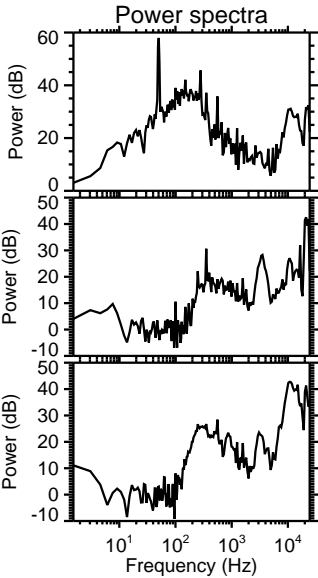
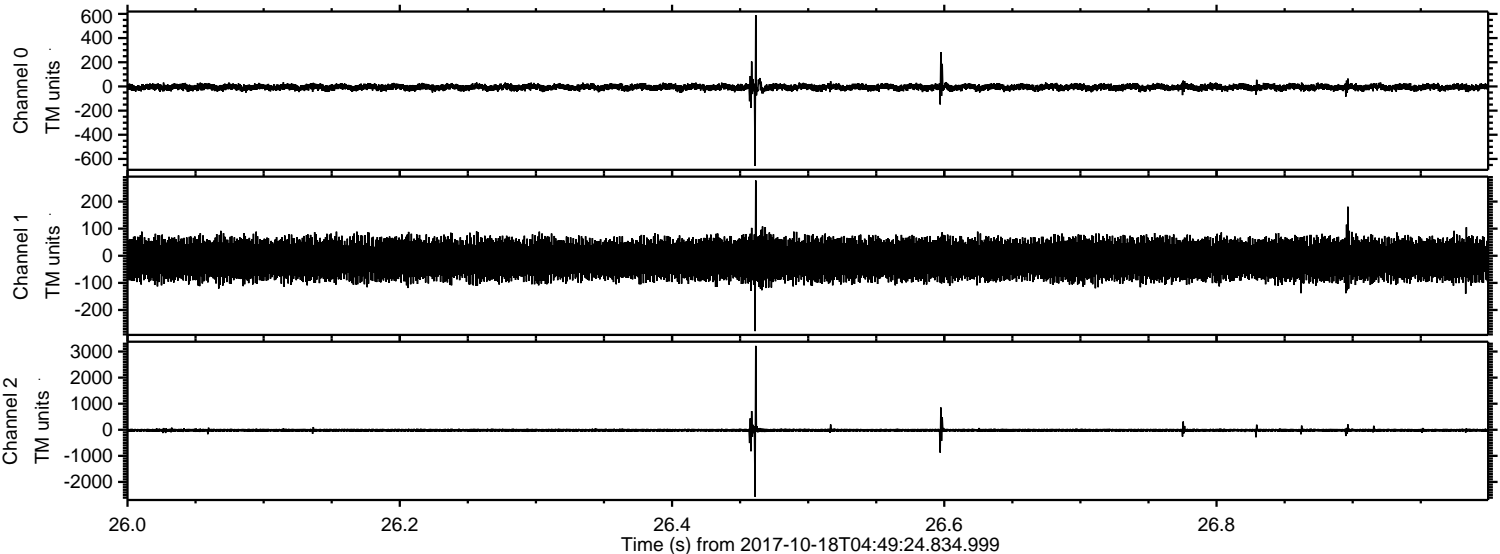
Channel 2
mn: -3673
mx: 3472
 μ : -17.0
 σ : 62.2

Processed Wed Oct 18 06:57:55 2017 by ELM ver.2012-10-06 from 001__elm20171018_044923__dat00.bin

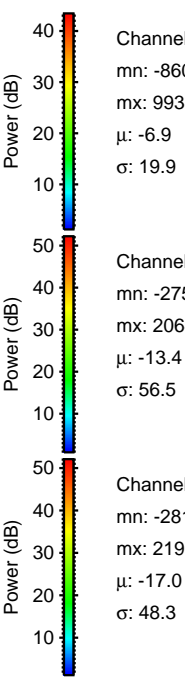
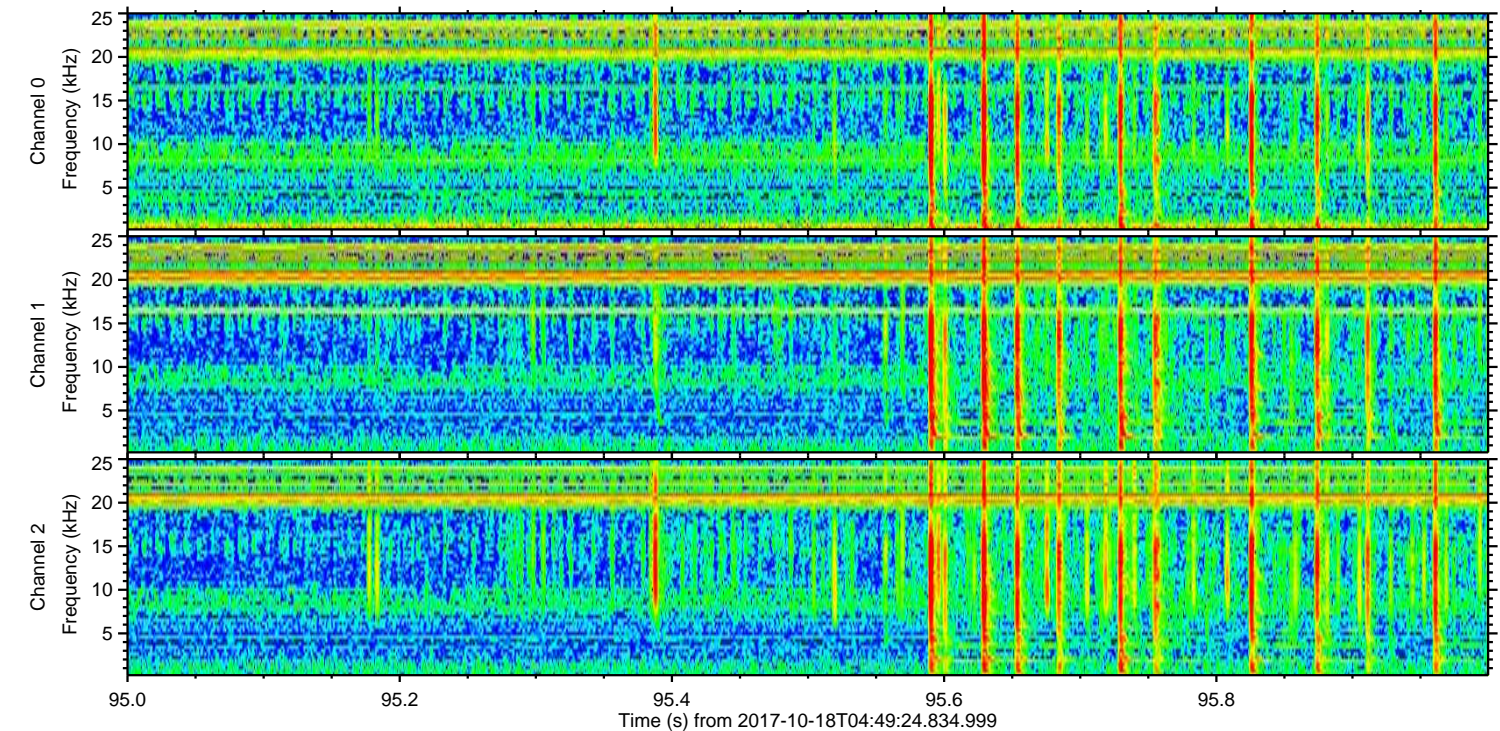
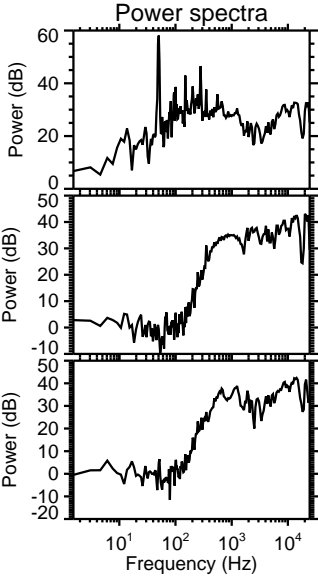
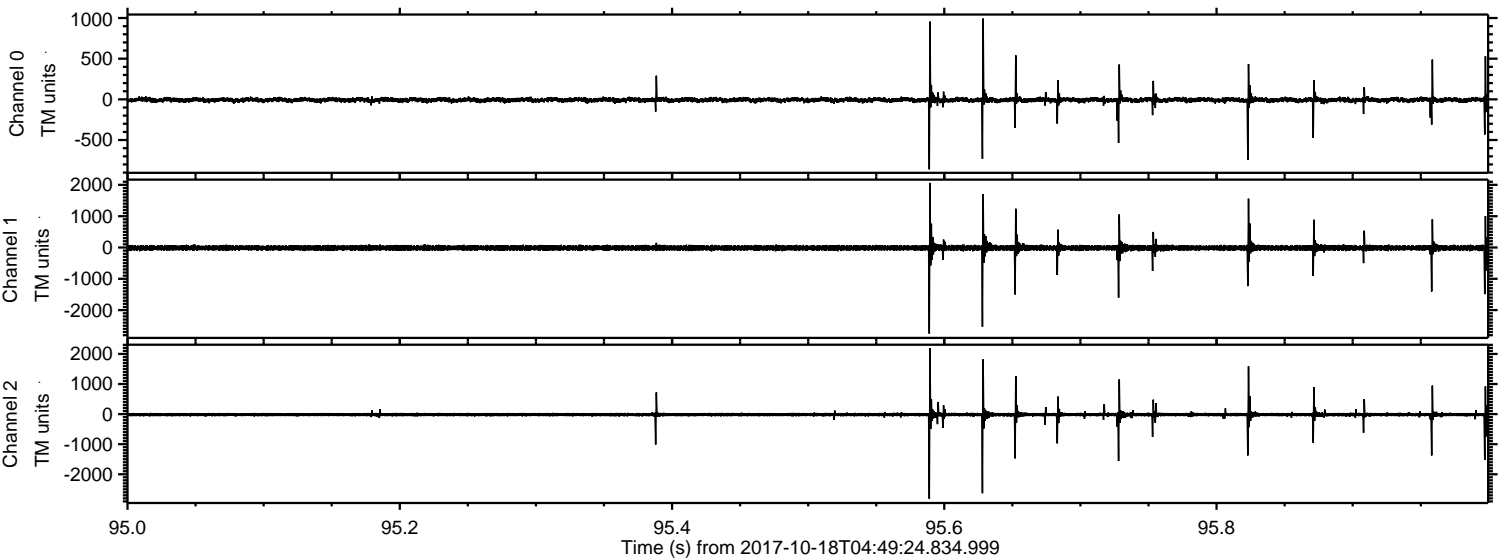


ELMAVAN 3D WAVEFORMS (Measured data sampled at 50 kHz) 51000 packets of 144 samples from 2017-10-18T04:49:24.834.999. Part 27/147

Processed Wed Oct 18 06:57:56 2017 by ELM ver.2012-10-06 from 001__elm20171018_044923__dat00.bin

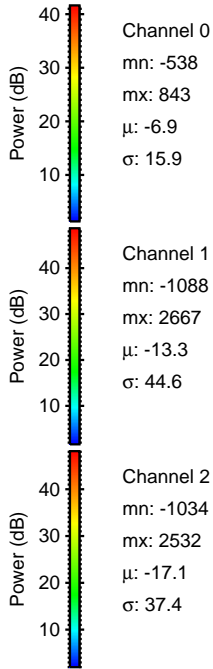
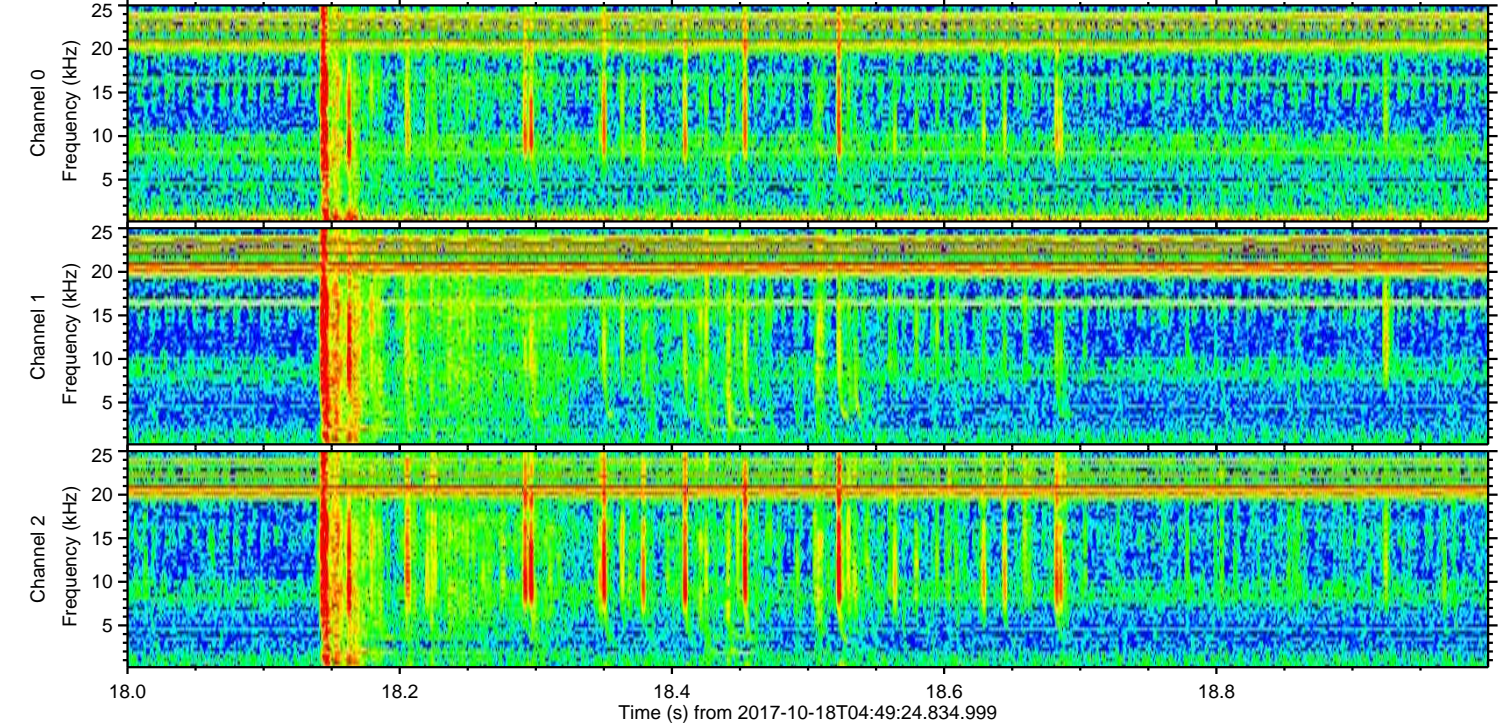
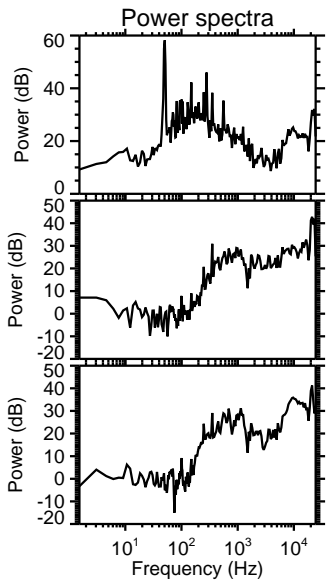
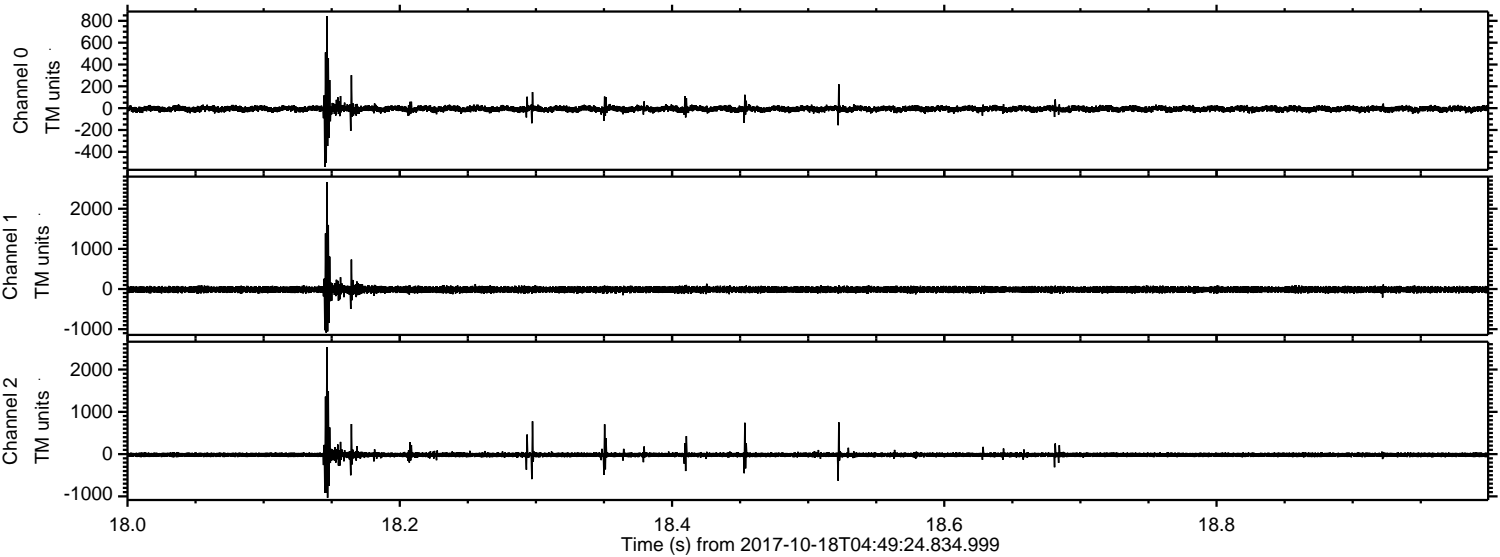


Processed Wed Oct 18 06:57:56 2017 by ELM ver.2012-10-06 from 001__elm20171018_044923__dat00.bin

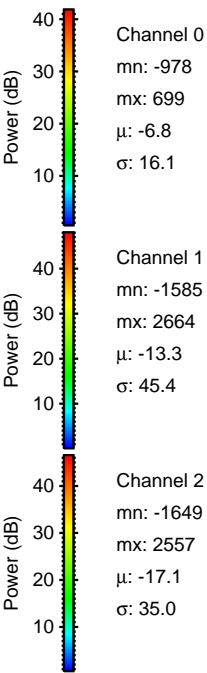
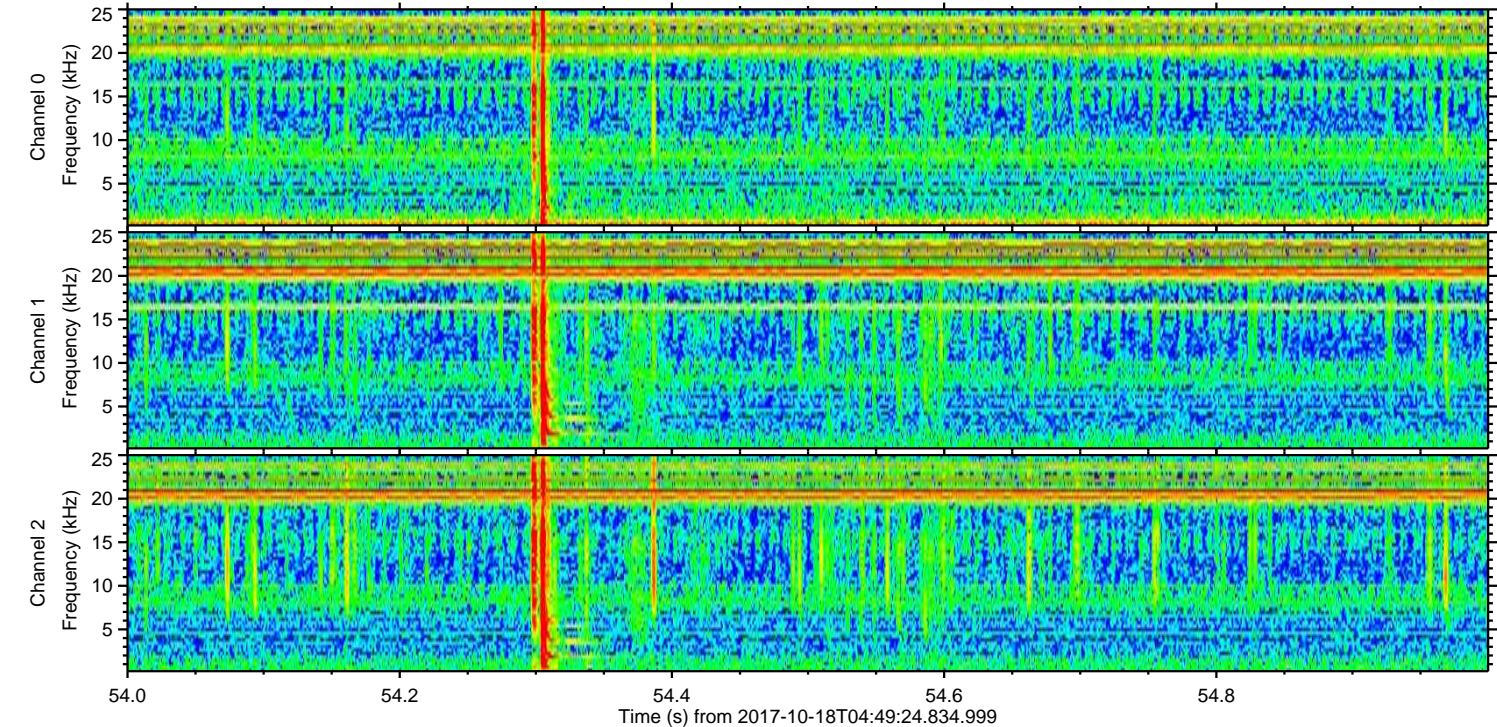
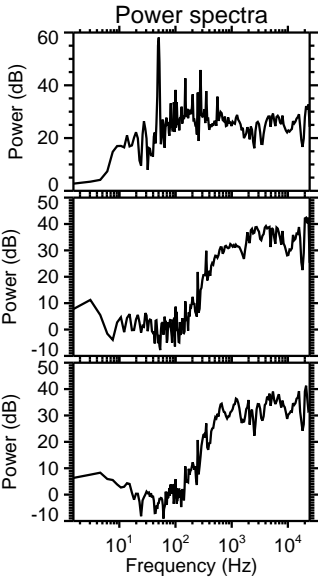
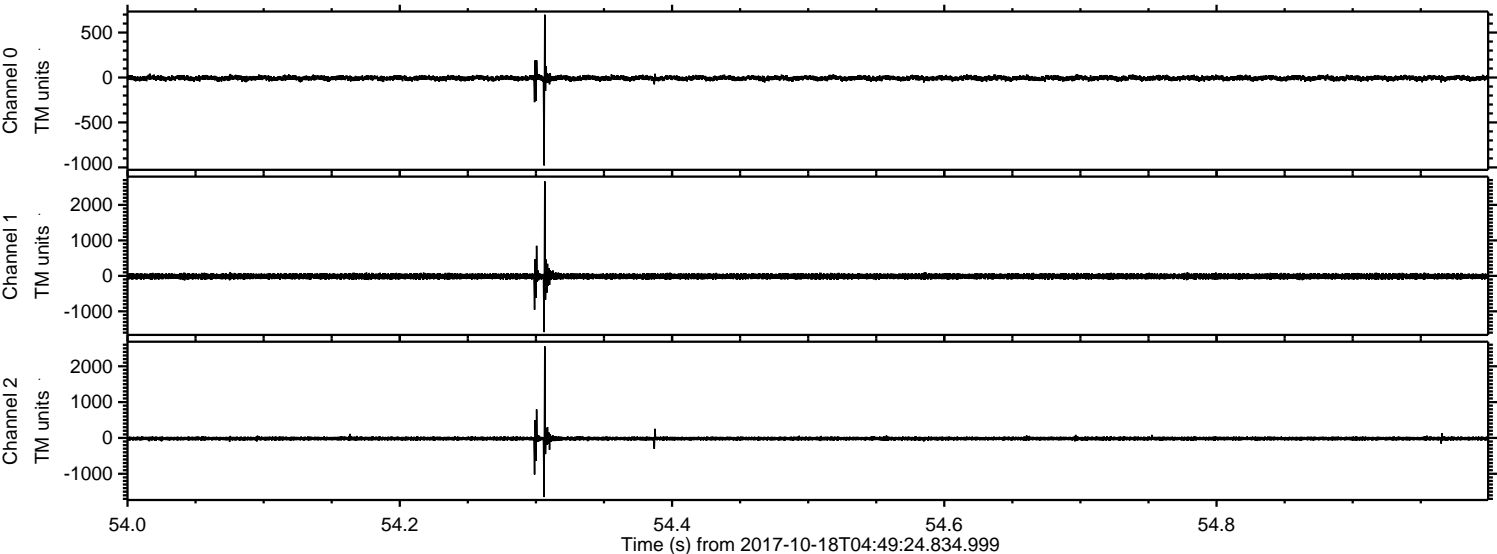


ELMAVAN 3D WAVEFORMS (Measured data sampled at 50 kHz) 51000 packets of 144 samples from 2017-10-18T04:49:24.834.999. Part 19/147

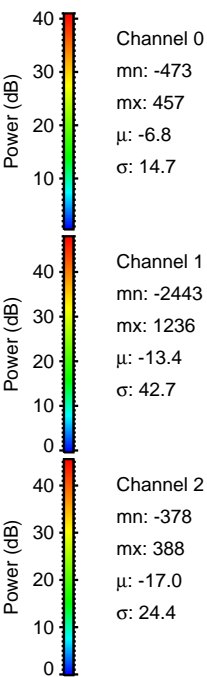
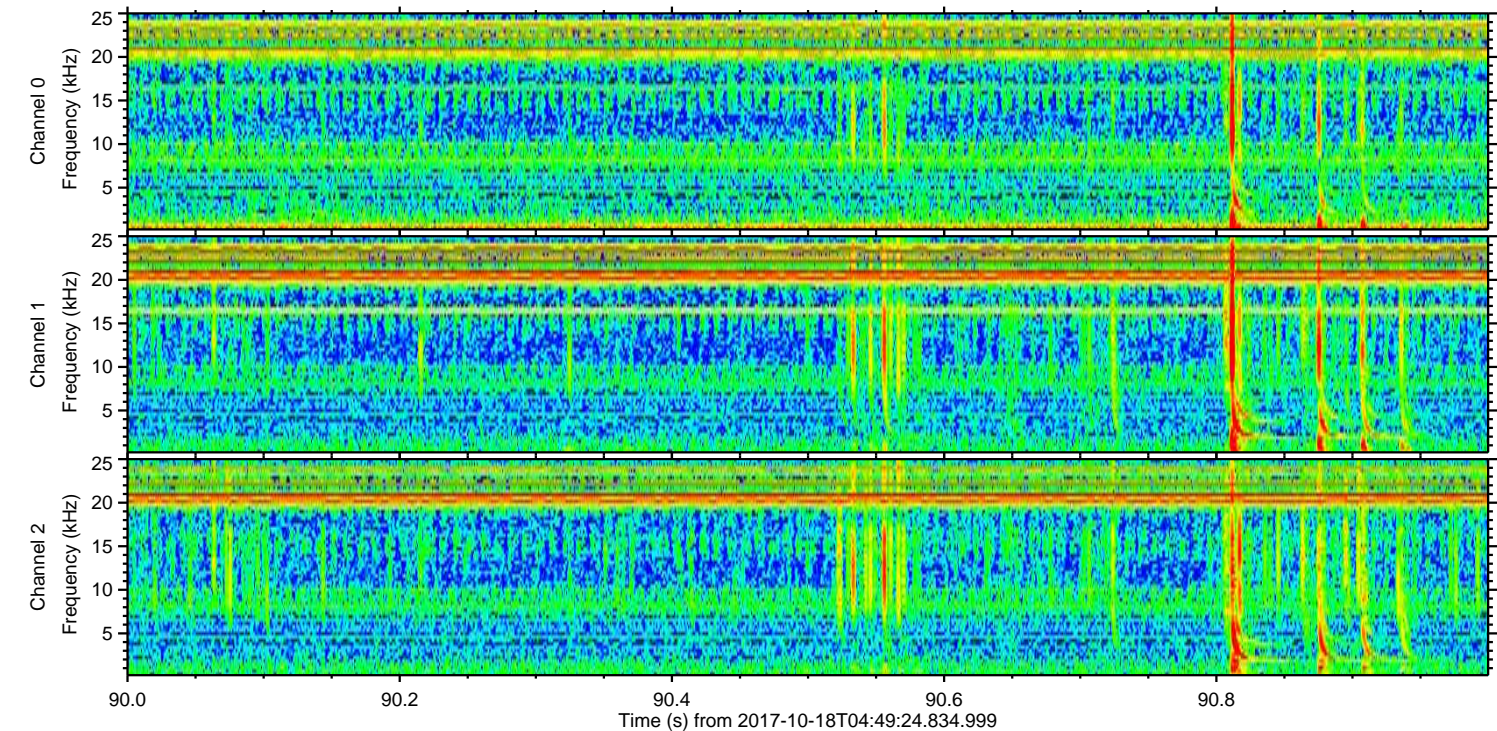
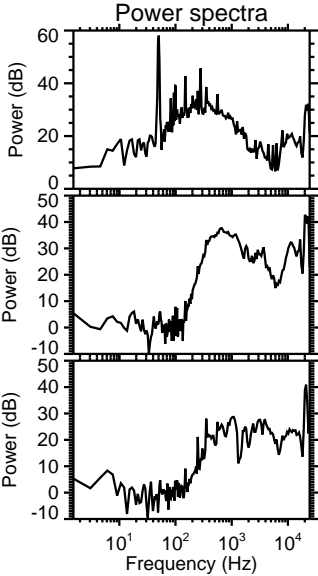
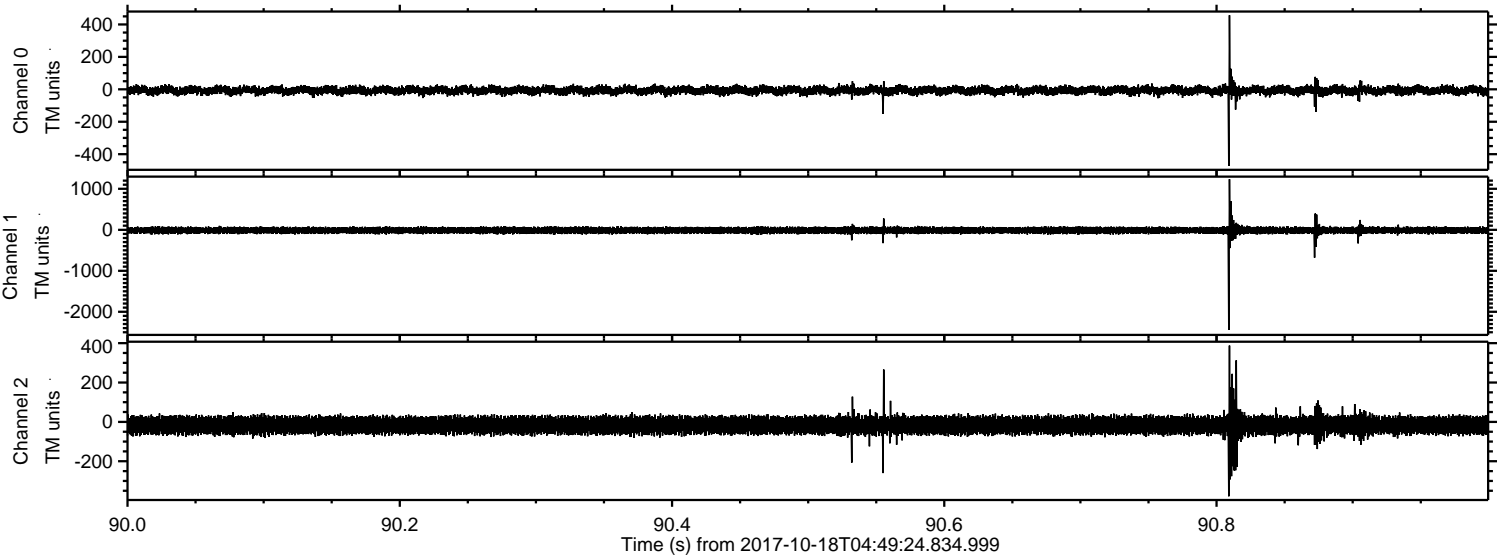
Processed Wed Oct 18 06:57:57 2017 by ELM ver.2012-10-06 from 001__elm20171018_044923__dat00.bin



Processed Wed Oct 18 06:57:58 2017 by ELM ver.2012-10-06 from 001__elm20171018_044923__dat00.bin



Processed Wed Oct 18 06:57:58 2017 by ELM ver.2012-10-06 from 001__elm20171018_044923__dat00.bin

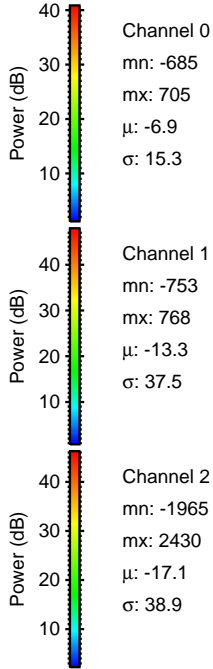
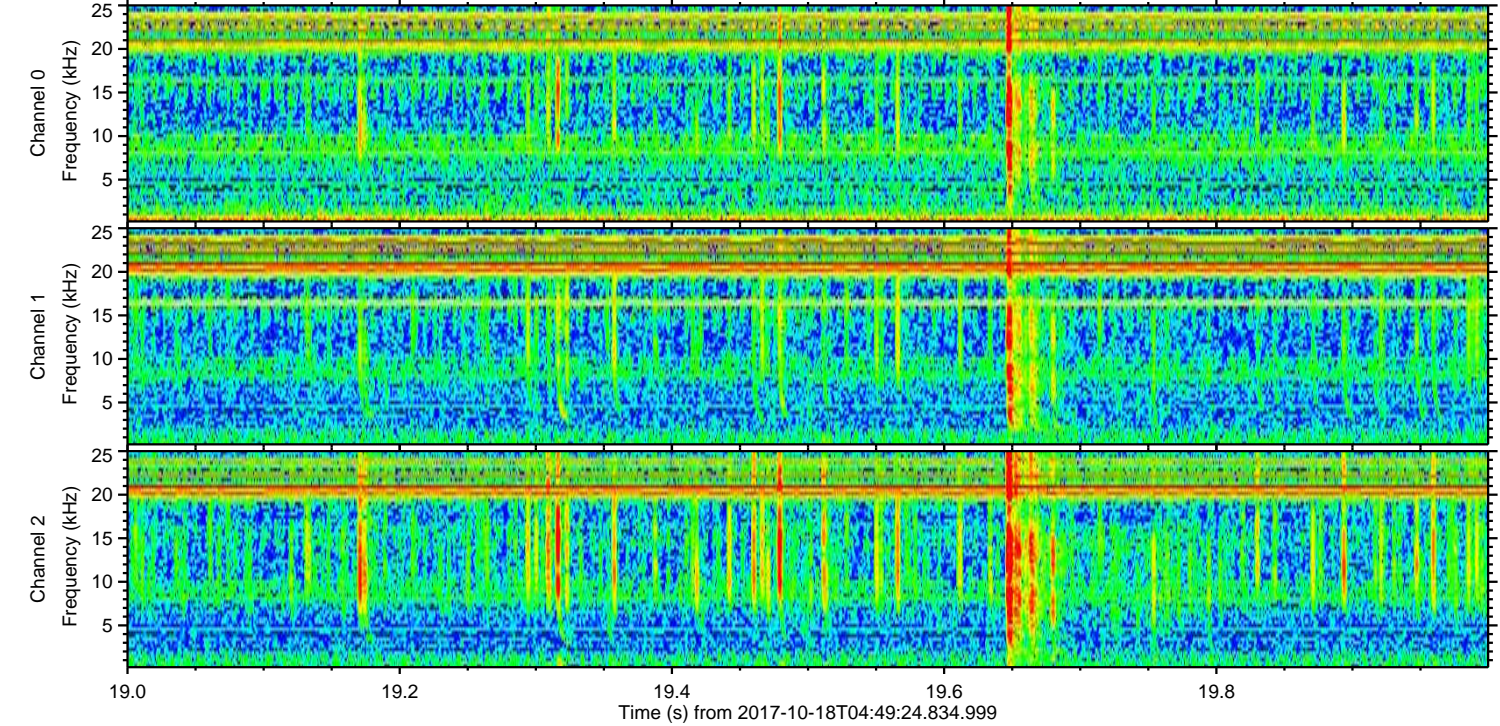
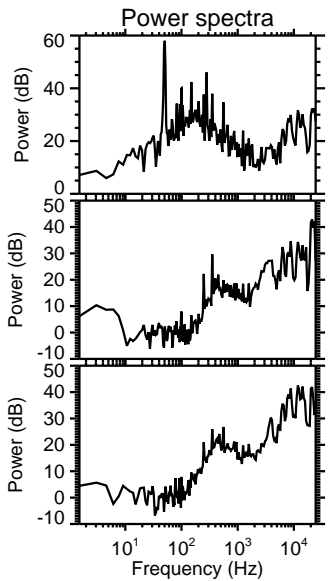
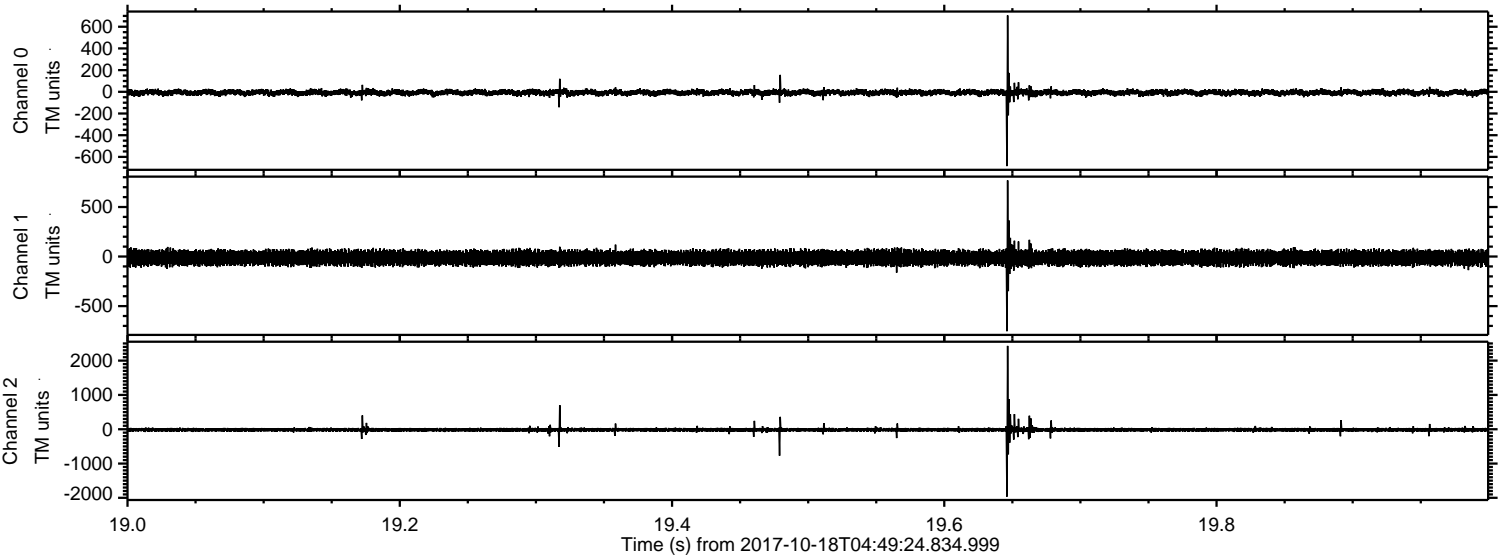


Channel 0
mn: -473
mx: 457
 μ : -6.8
 σ : 14.7

Channel 1
mn: -2443
mx: 1236
 μ : -13.4
 σ : 42.7

Channel 2
mn: -378
mx: 388
 μ : -17.0
 σ : 24.4

Processed Wed Oct 18 06:57:59 2017 by ELM ver.2012-10-06 from 001__elm20171018_044923__dat00.bin



Processed Wed Oct 18 06:57:59 2017 by ELM ver.2012-10-06 from 001__elm20171018_044923__dat00.bin

