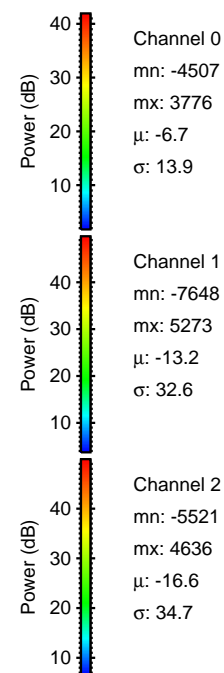
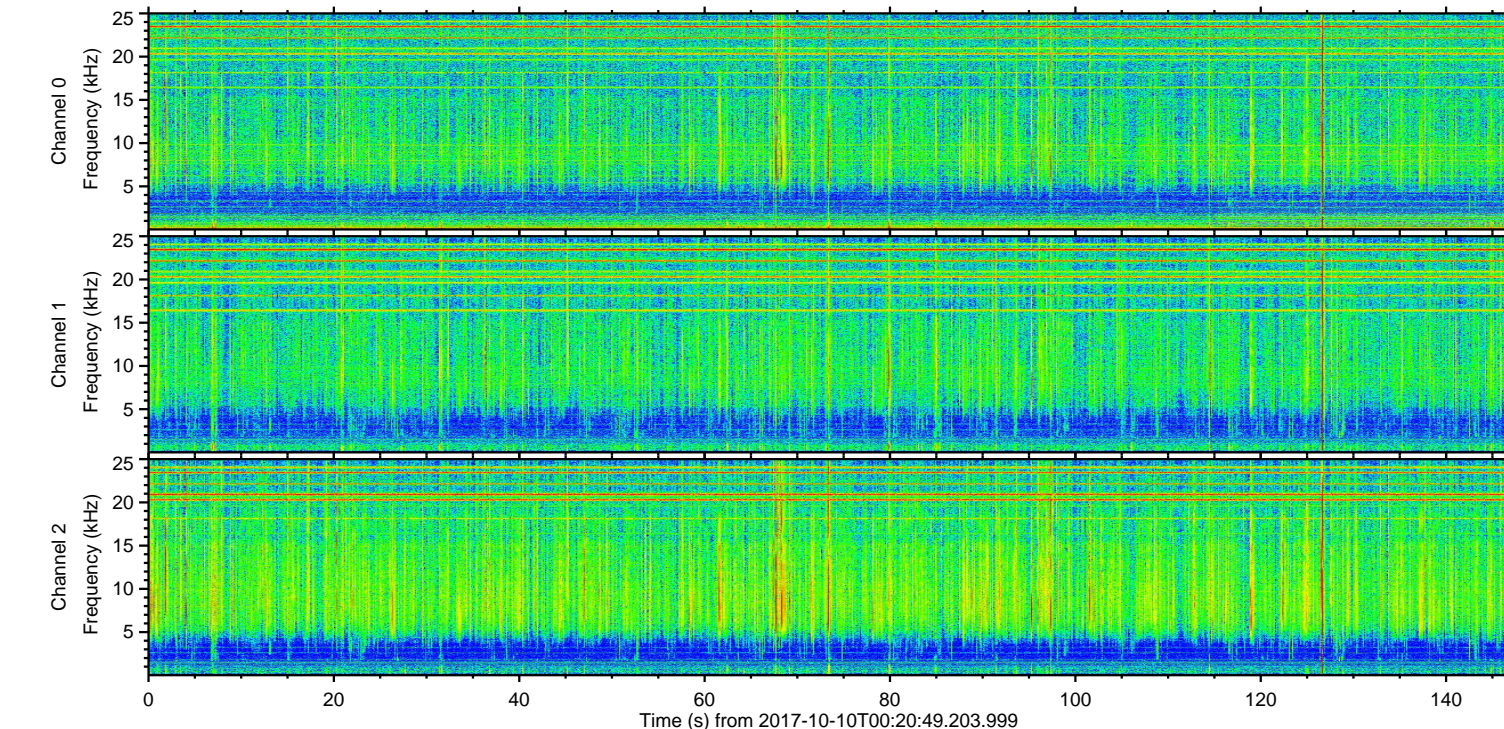
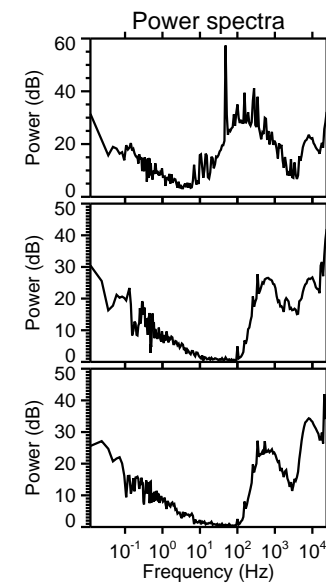
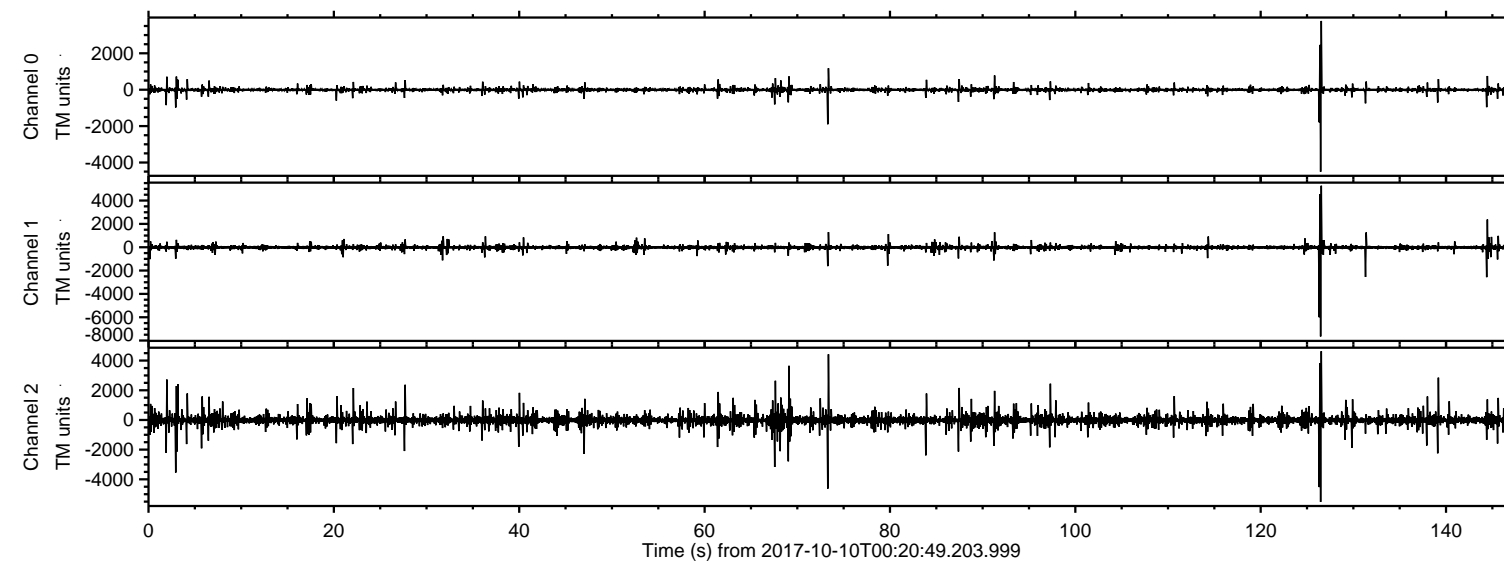


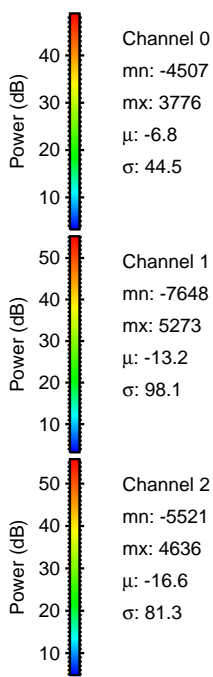
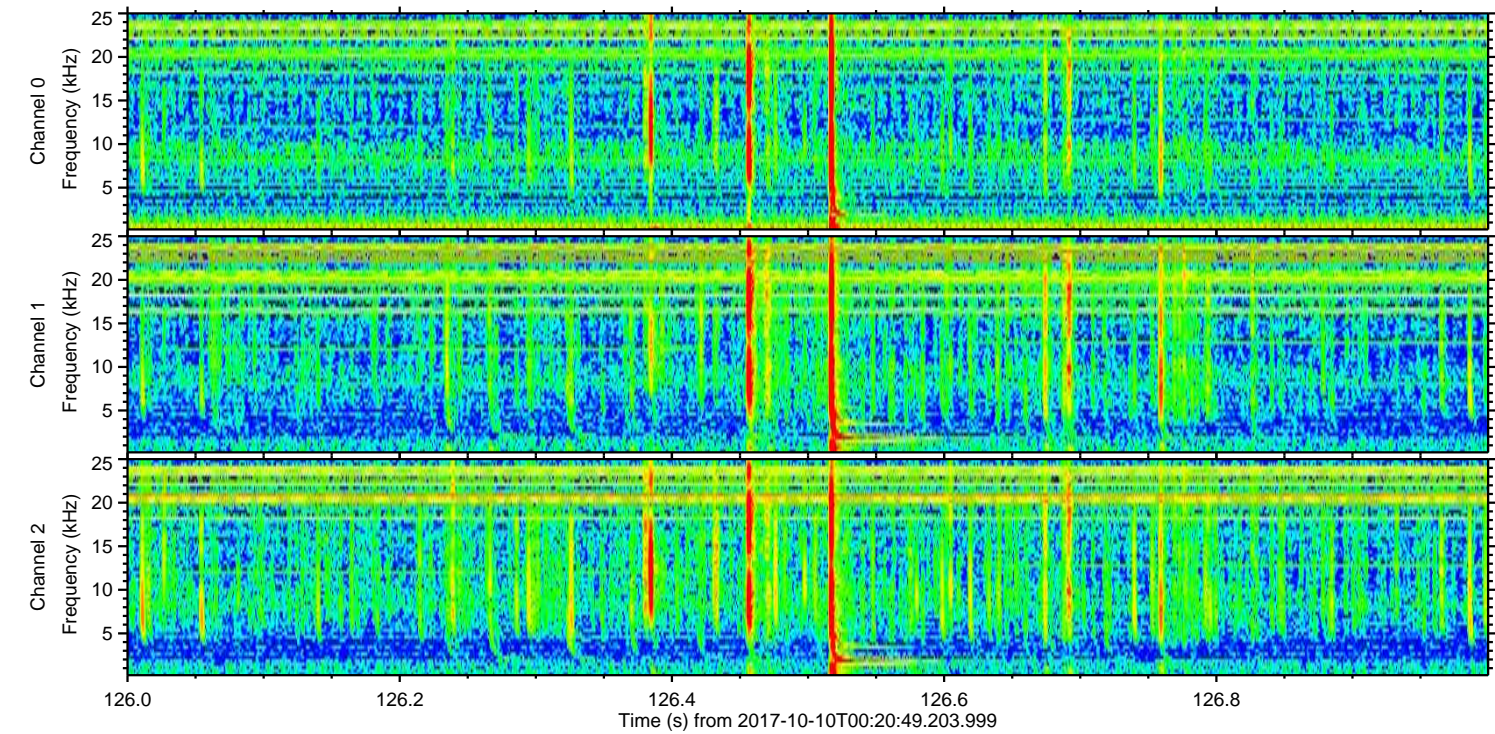
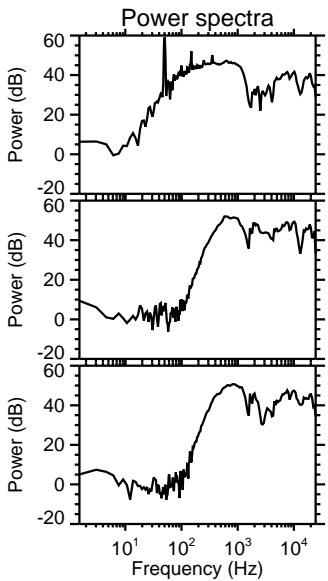
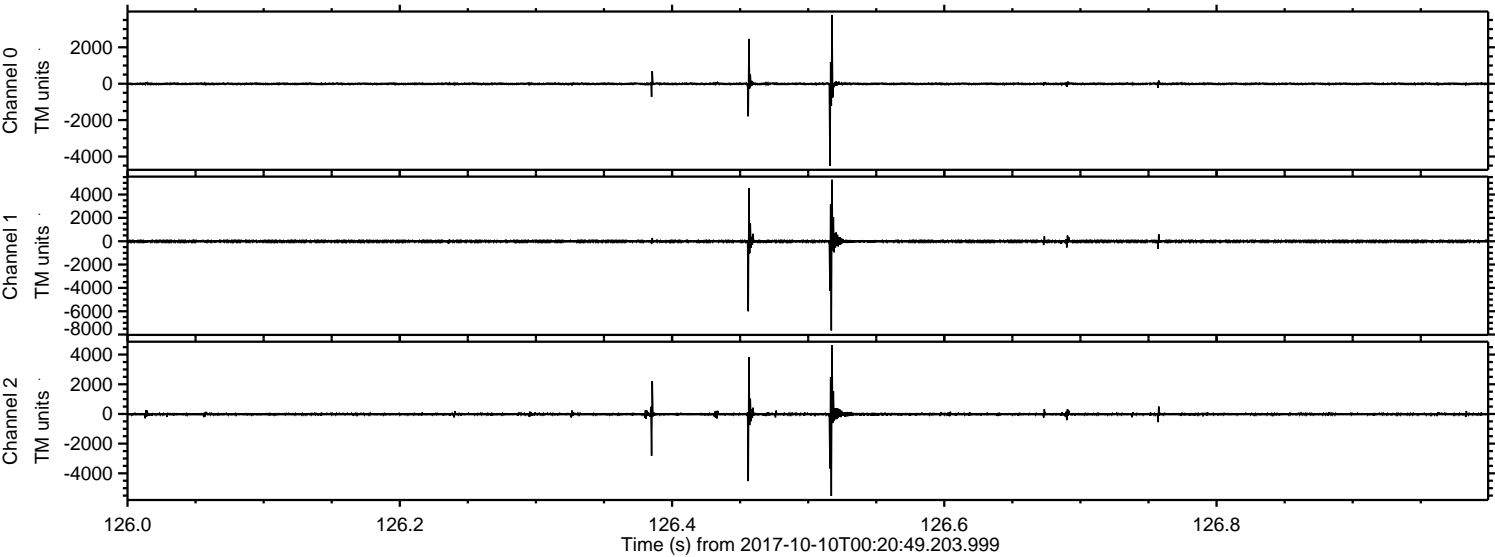
ELMAVAN 3D WAVEFORMS (Measured data sampled at 50 kHz) 51000 packets of 144 samples from 2017-10-10T00:20:49.203.999.

Processed Tue Oct 10 02:28:50 2017 by ELM ver.2012-10-06 from 001__elm20171010_002048__dat00.bin



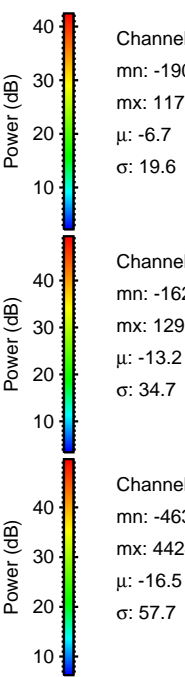
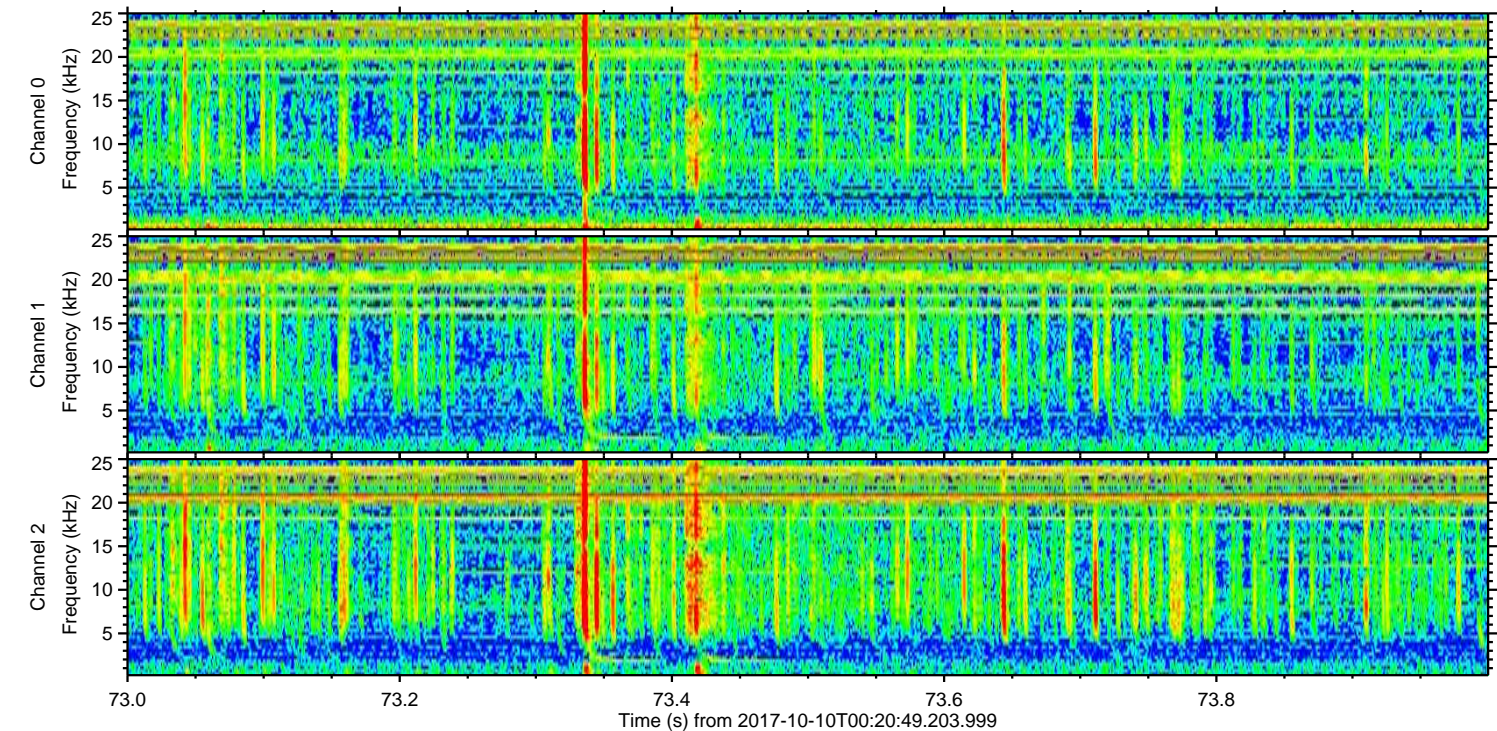
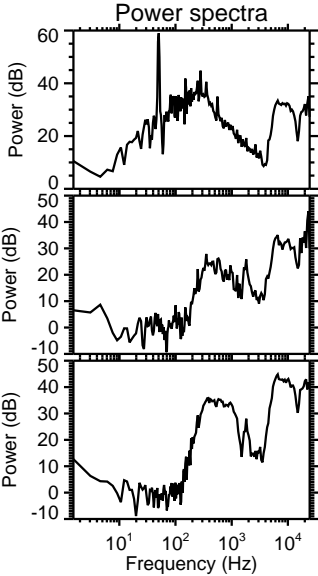
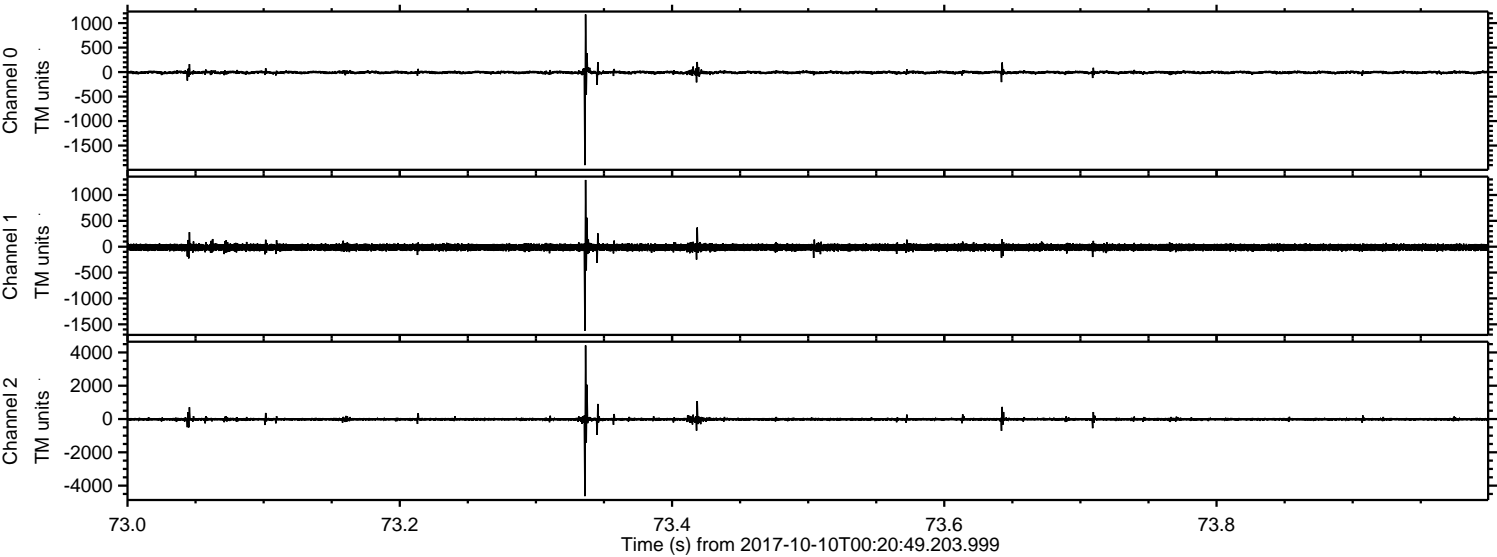
ELMAVAN 3D WAVEFORMS (Measured data sampled at 50 kHz) 51000 packets of 144 samples from 2017-10-10T00:20:49.203.999. Part 127/147

Processed Tue Oct 10 02:28:56 2017 by ELM ver.2012-10-06 from 001__elm20171010_002048__dat00.bin



ELMAVAN 3D WAVEFORMS (Measured data sampled at 50 kHz) 51000 packets of 144 samples from 2017-10-10T00:20:49.203.999. Part 74/147

Processed Tue Oct 10 02:28:57 2017 by ELM ver.2012-10-06 from 001__elm20171010_002048__dat00.bin



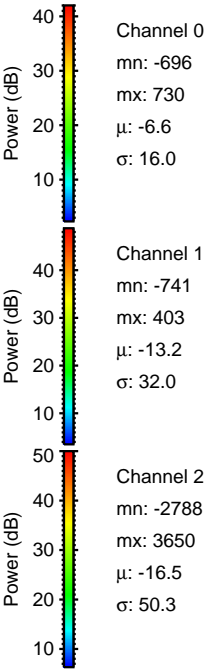
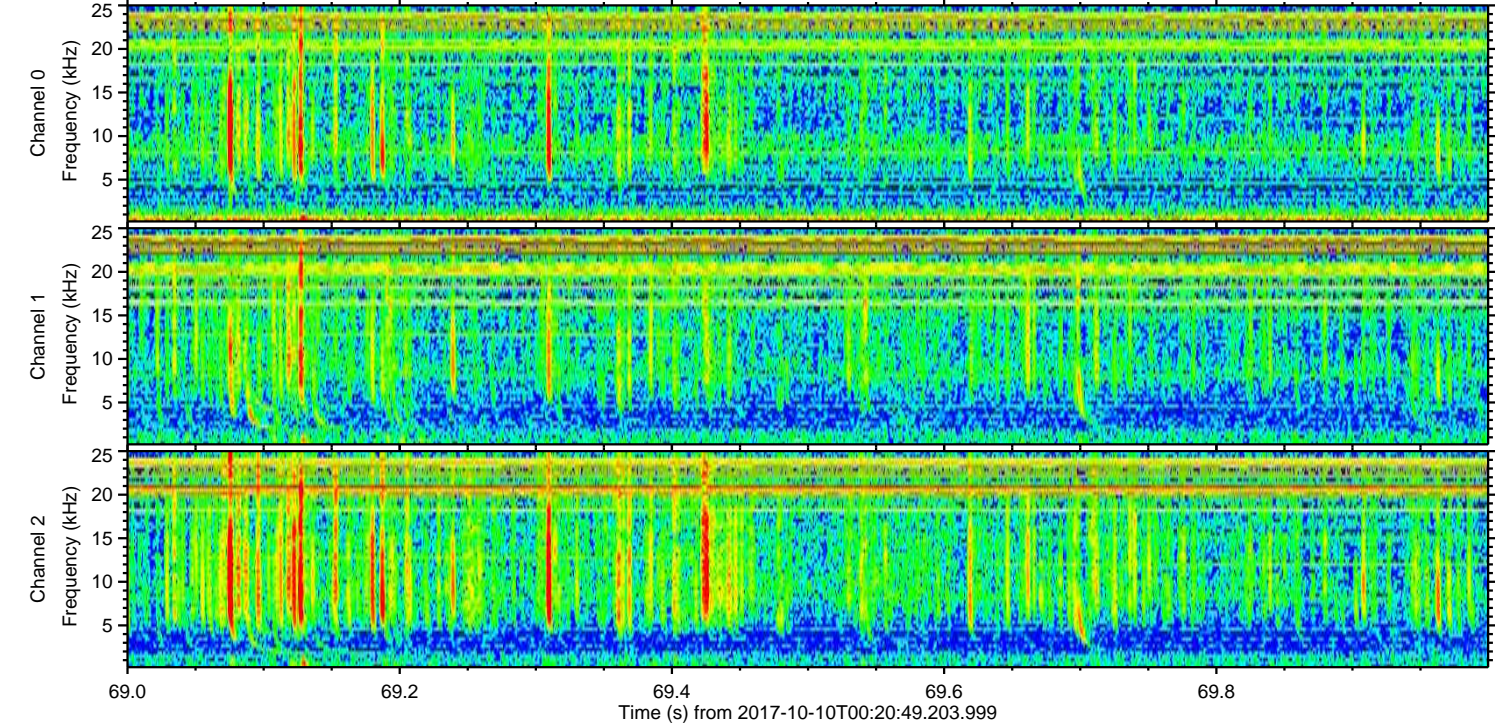
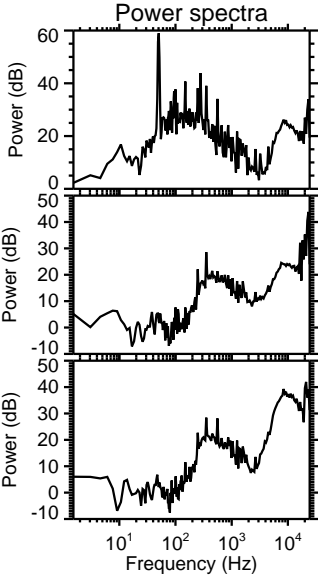
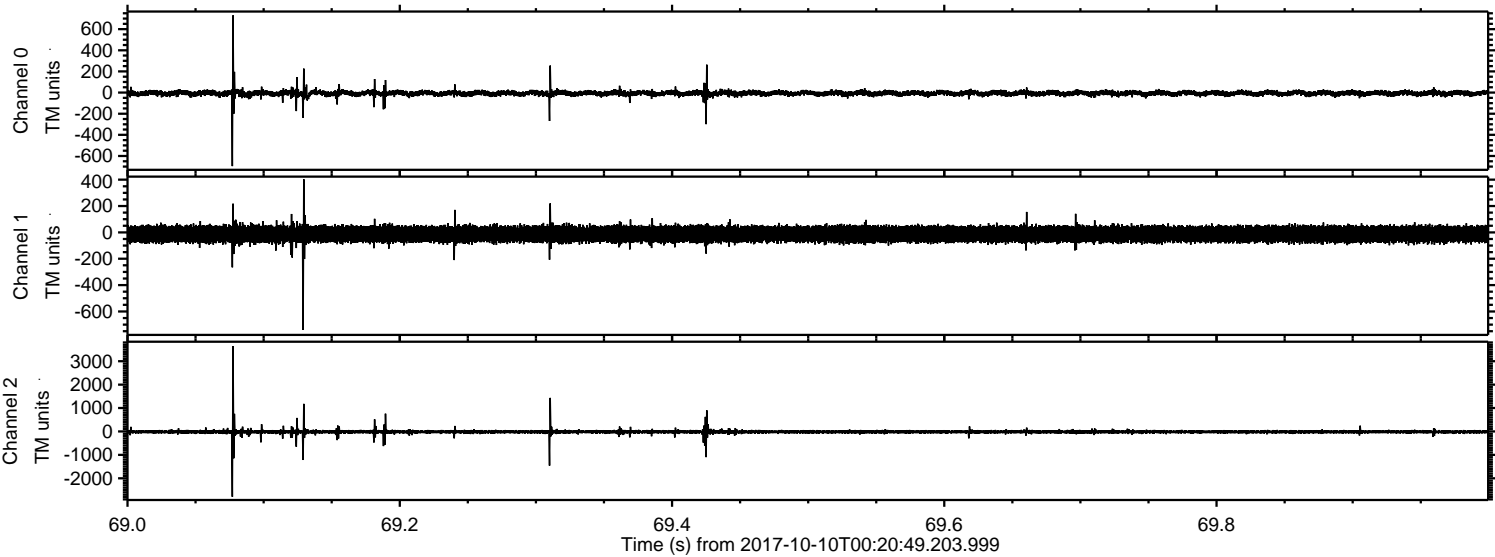
Channel 0
mn: -1900
mx: 1178
 μ : -6.7
 σ : 19.6

Channel 1
mn: -1624
mx: 1290
 μ : -13.2
 σ : 34.7

Channel 2
mn: -4633
mx: 4424
 μ : -16.5
 σ : 57.7

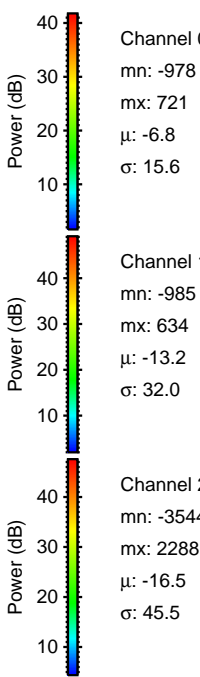
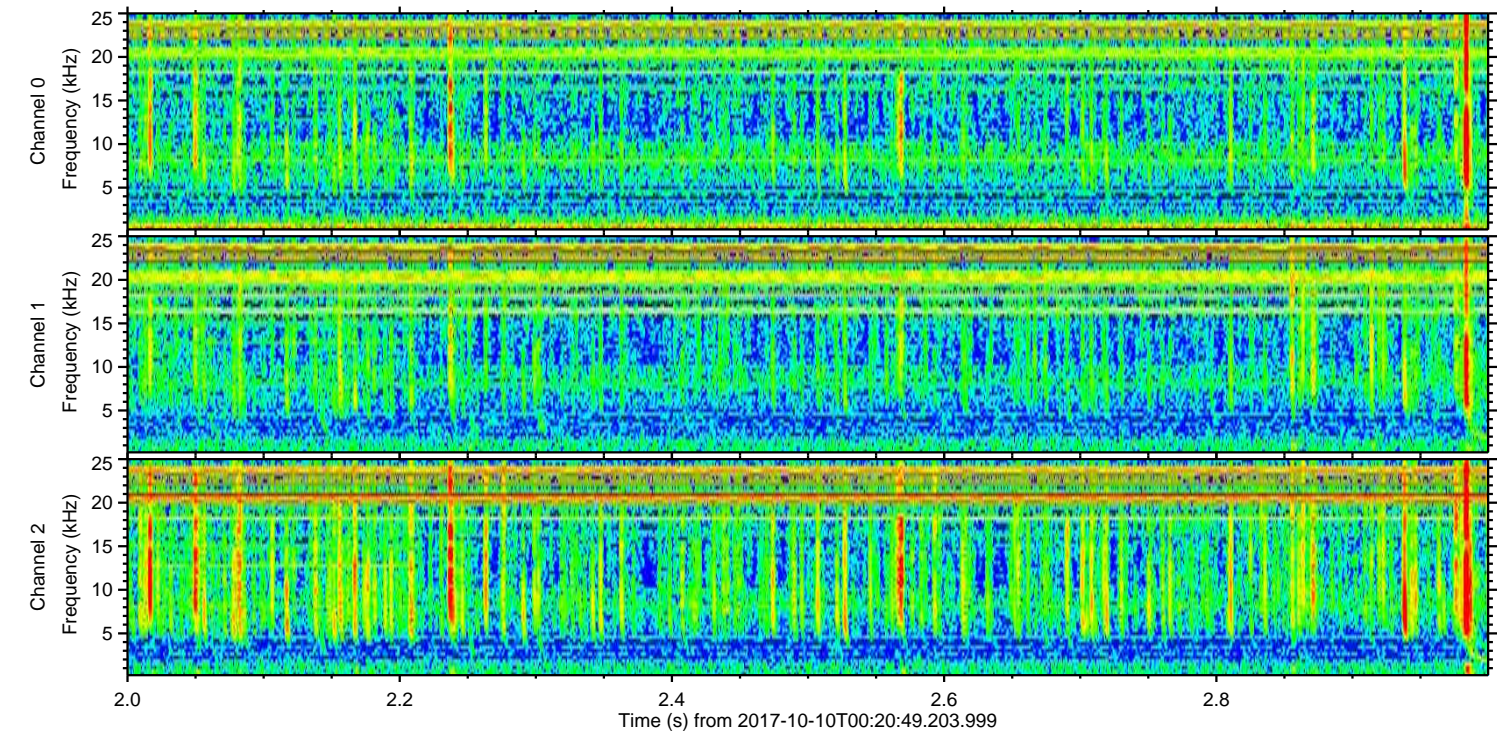
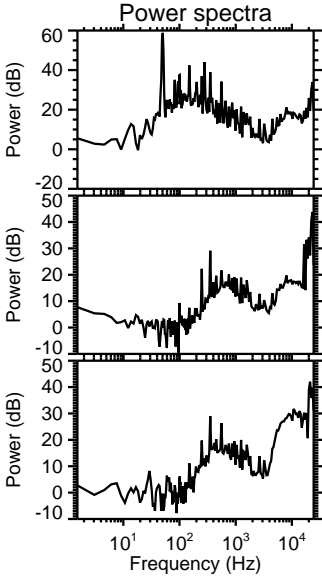
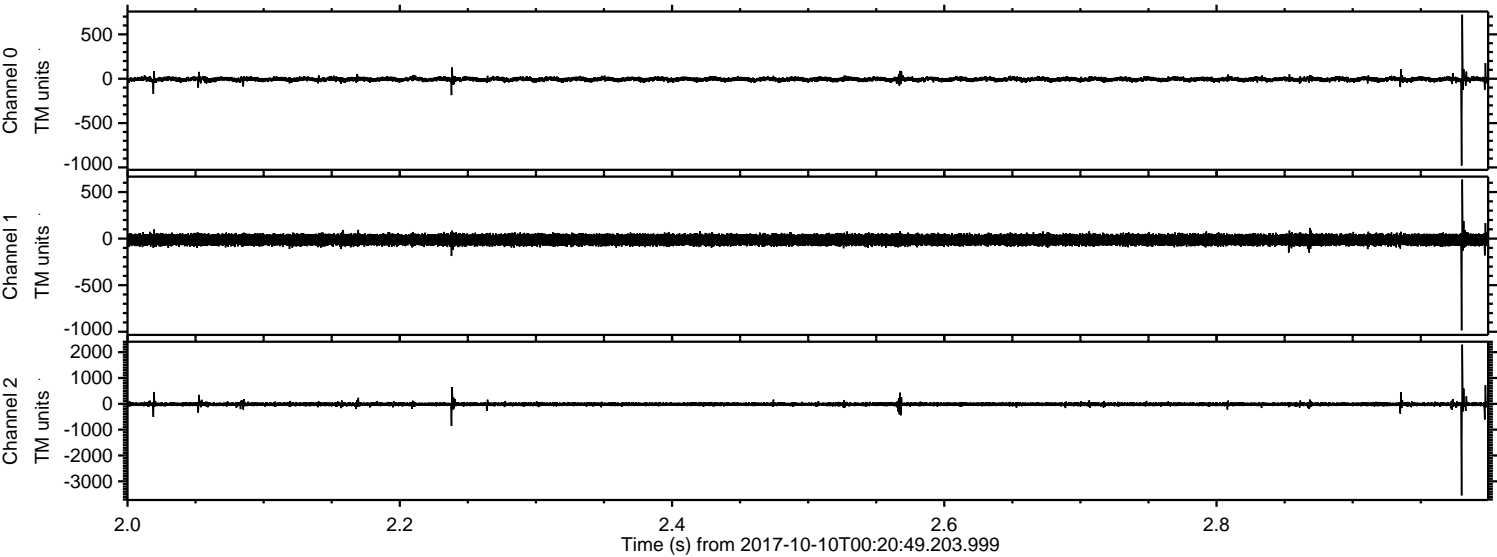
ELMAVAN 3D WAVEFORMS (Measured data sampled at 50 kHz) 51000 packets of 144 samples from 2017-10-10T00:20:49.203.999. Part 70/147

Processed Tue Oct 10 02:28:58 2017 by ELM ver.2012-10-06 from 001__elm20171010_002048__dat00.bin



ELMAVAN 3D WAVEFORMS (Measured data sampled at 50 kHz) 51000 packets of 144 samples from 2017-10-10T00:20:49.203.999. Part 3/147

Processed Tue Oct 10 02:28:59 2017 by ELM ver.2012-10-06 from 001__elm20171010_002048__dat00.bin



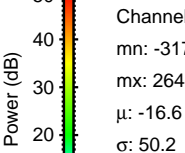
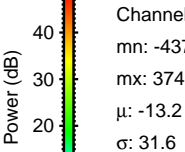
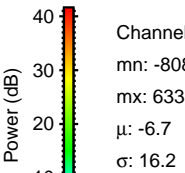
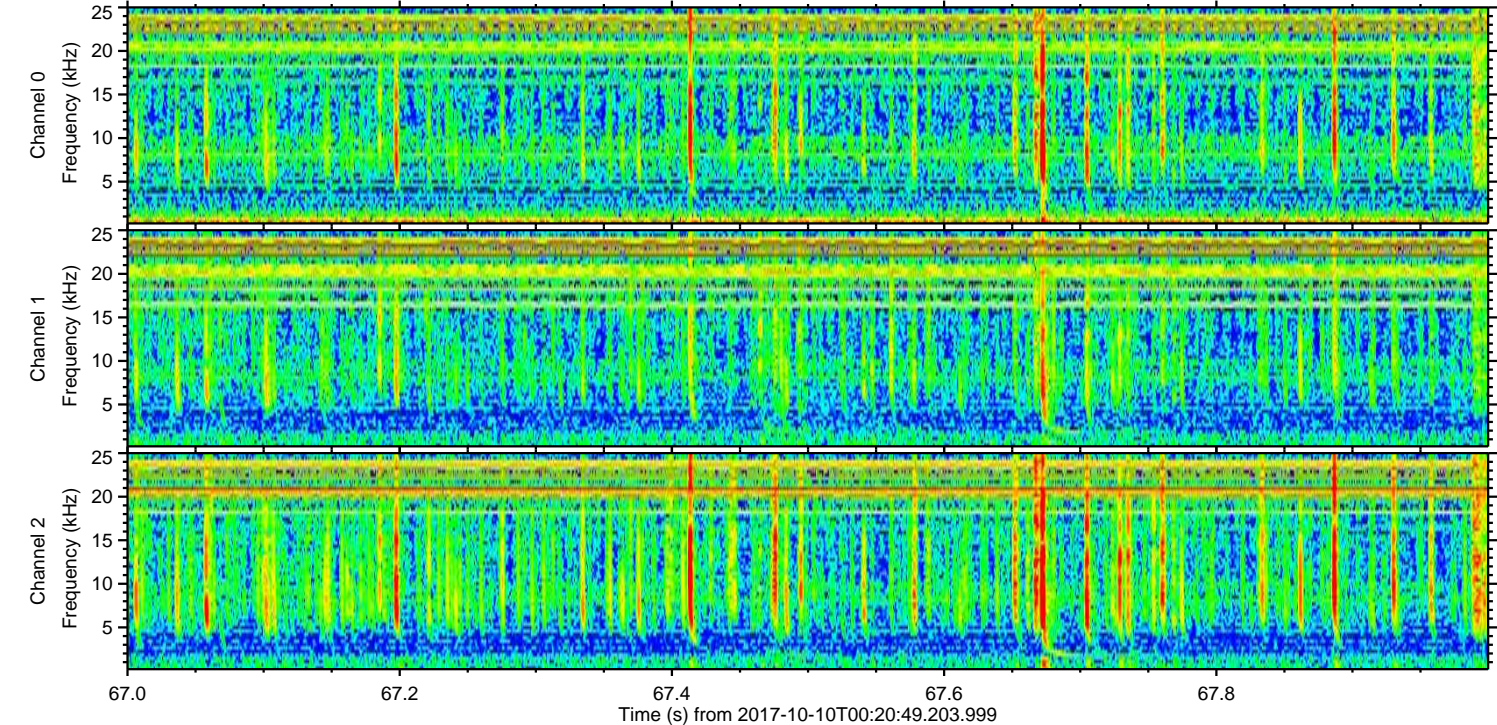
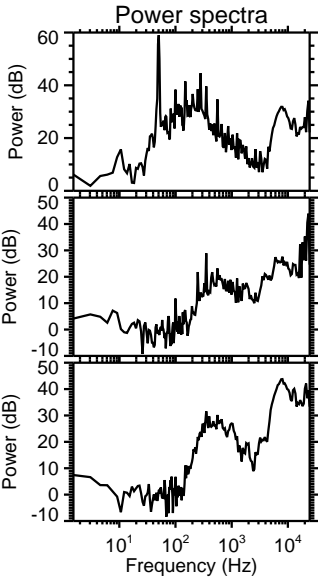
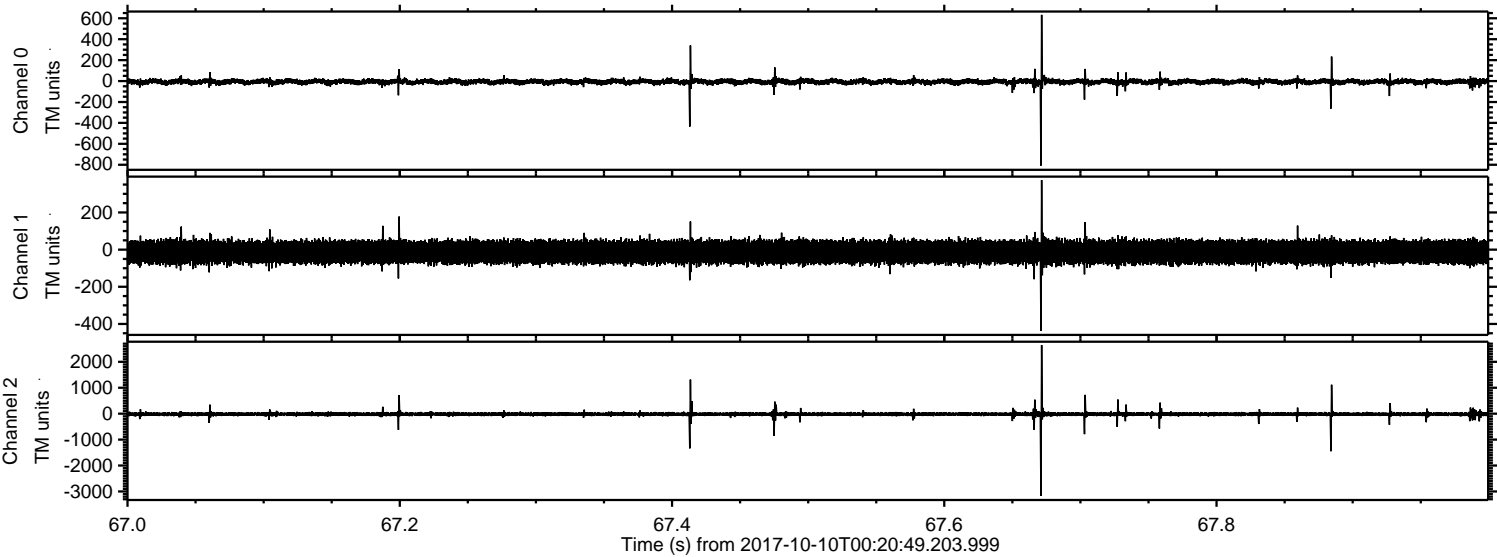
Channel 0
mn: -978
mx: 721
 μ : -6.8
 σ : 15.6

Channel 1
mn: -985
mx: 634
 μ : -13.2
 σ : 32.0

Channel 2
mn: -3544
mx: 2288
 μ : -16.5
 σ : 45.5

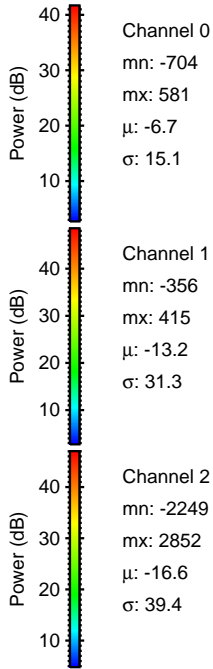
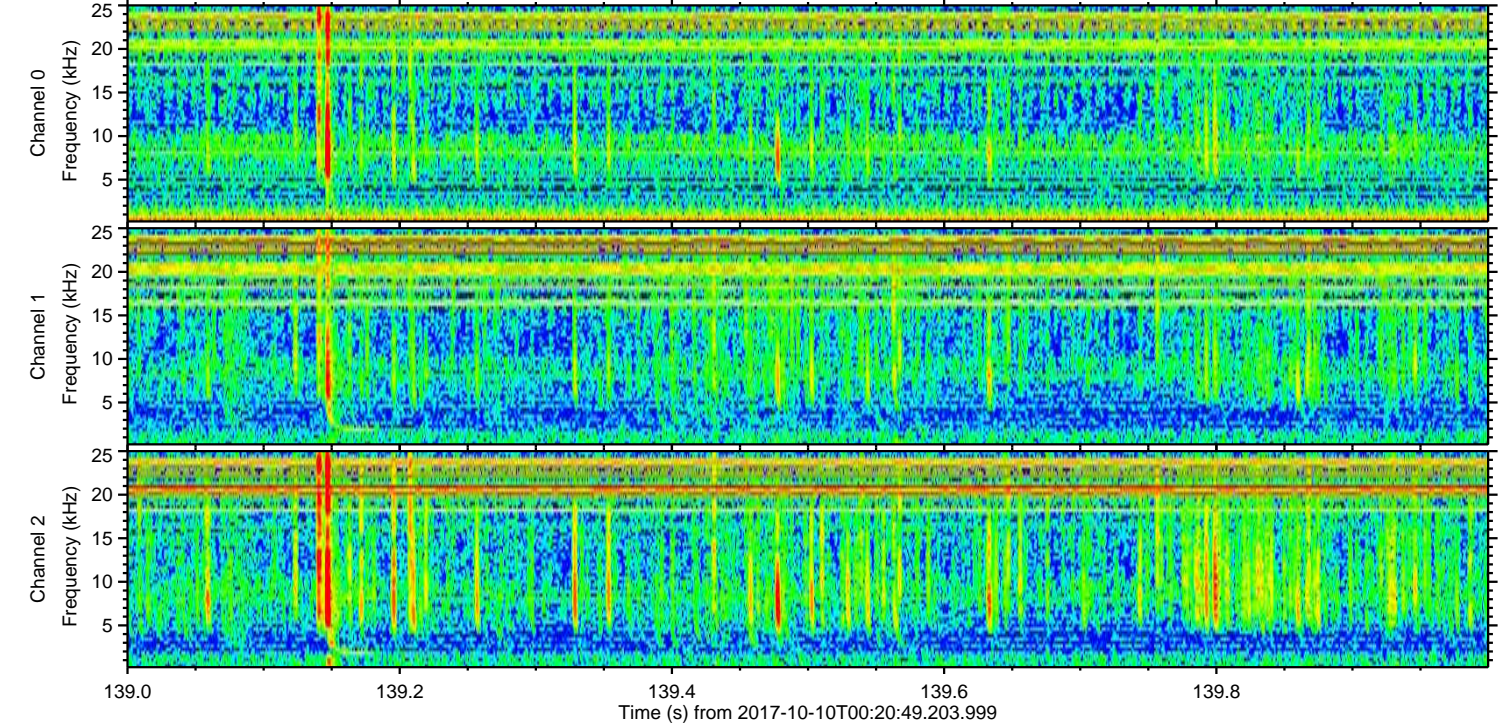
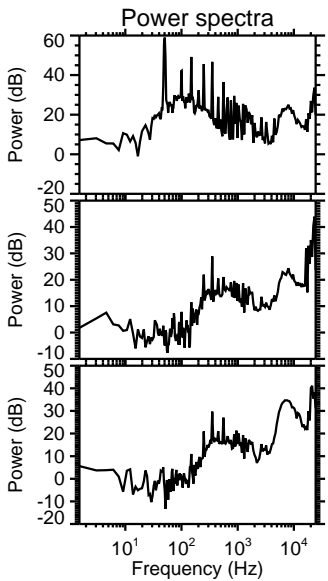
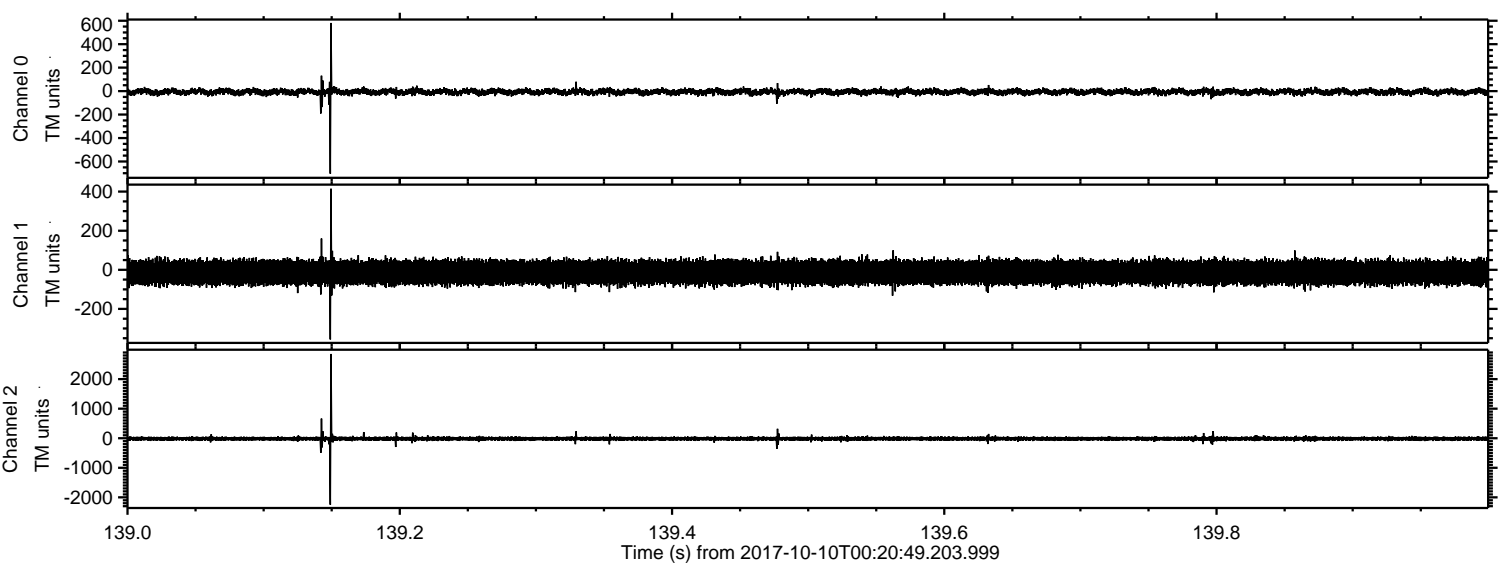
ELMAVAN 3D WAVEFORMS (Measured data sampled at 50 kHz) 51000 packets of 144 samples from 2017-10-10T00:20:49.203.999. Part 68/147

Processed Tue Oct 10 02:28:59 2017 by ELM ver.2012-10-06 from 001__elm20171010_002048__dat00.bin



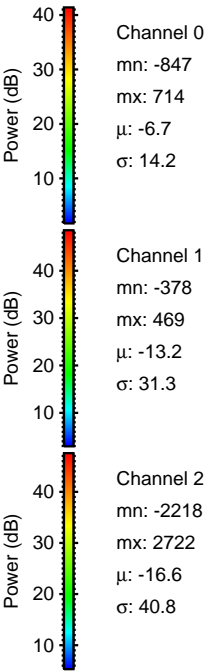
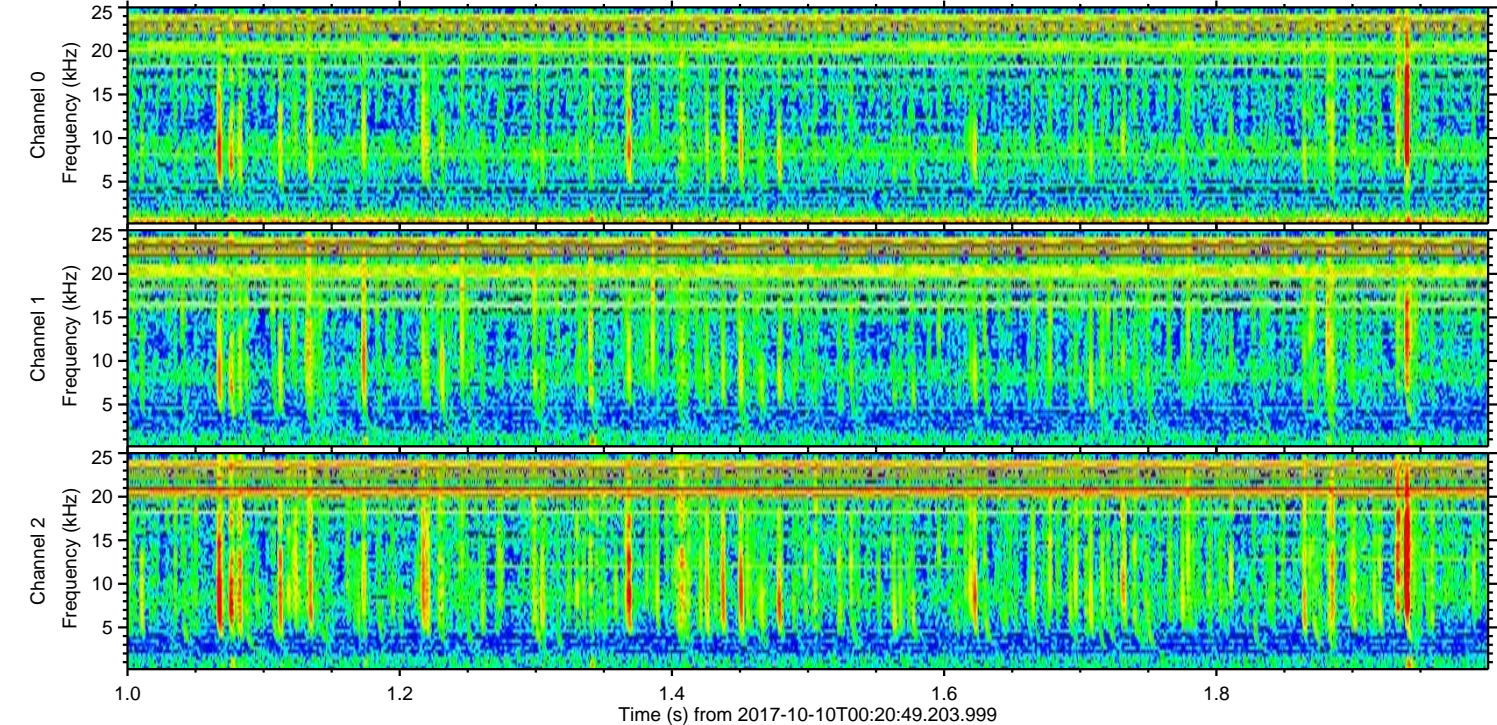
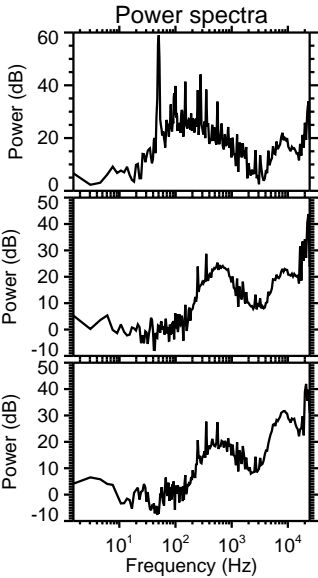
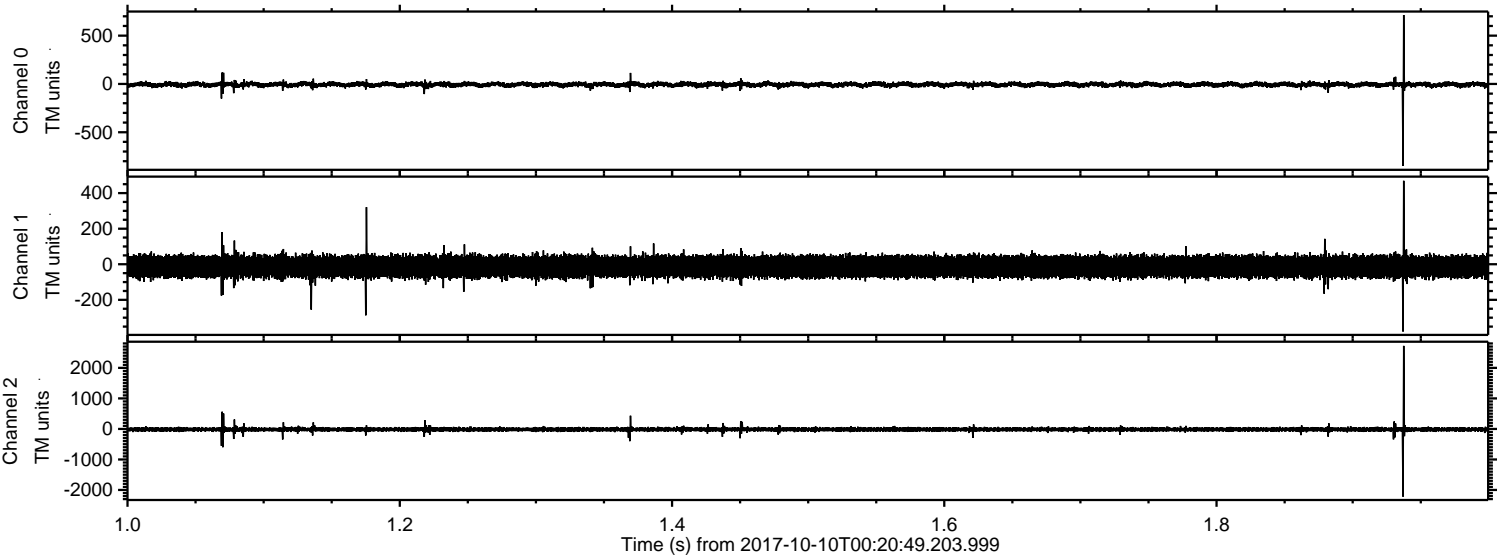
ELMAVAN 3D WAVEFORMS (Measured data sampled at 50 kHz) 51000 packets of 144 samples from 2017-10-10T00:20:49.203.999. Part 140/147

Processed Tue Oct 10 02:29:00 2017 by ELM ver.2012-10-06 from 001__elm20171010_002048__dat00.bin



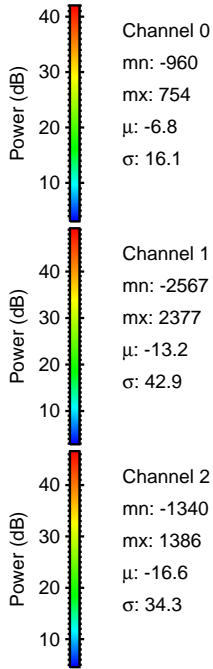
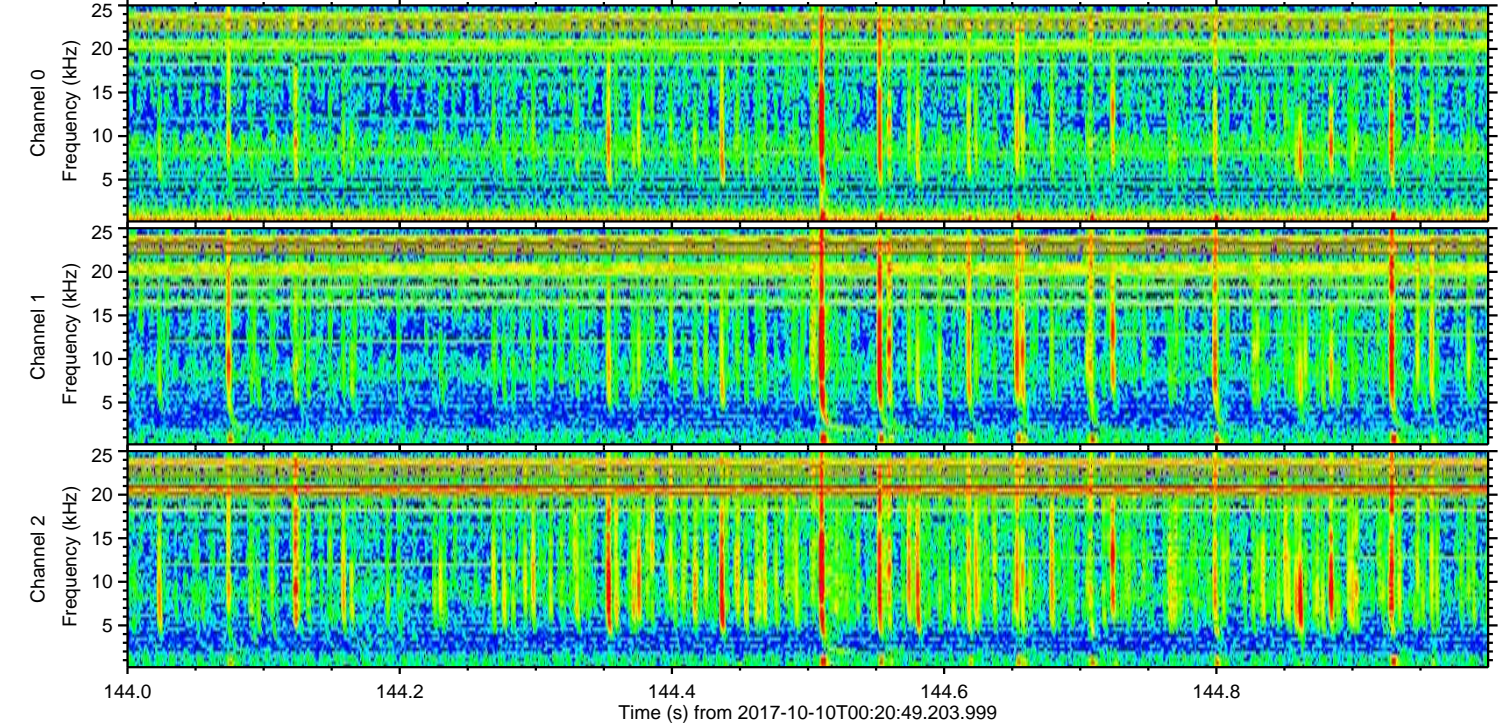
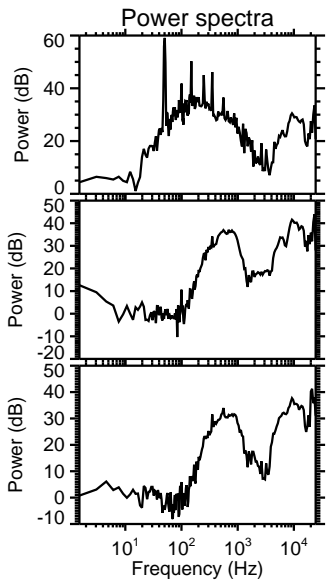
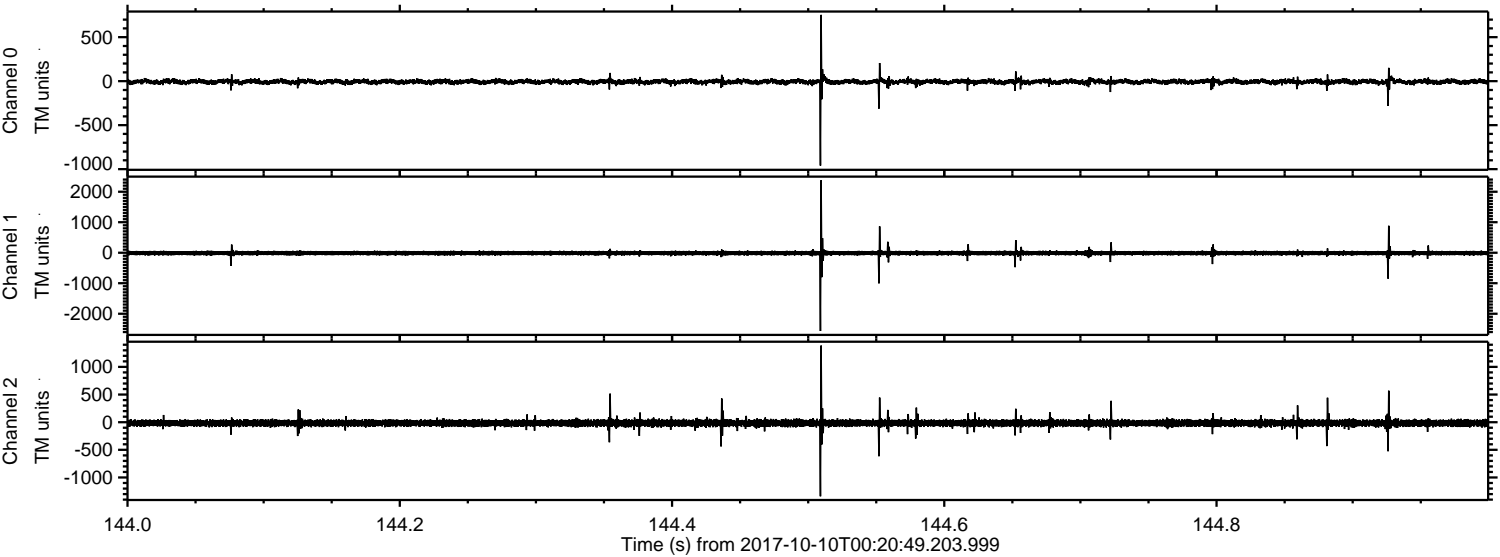
ELMAVAN 3D WAVEFORMS (Measured data sampled at 50 kHz) 51000 packets of 144 samples from 2017-10-10T00:20:49.203.999. Part 2/147

Processed Tue Oct 10 02:29:01 2017 by ELM ver.2012-10-06 from 001__elm20171010_002048__dat00.bin



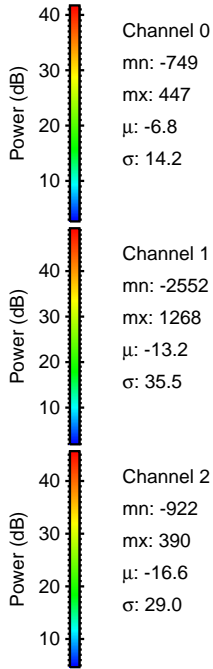
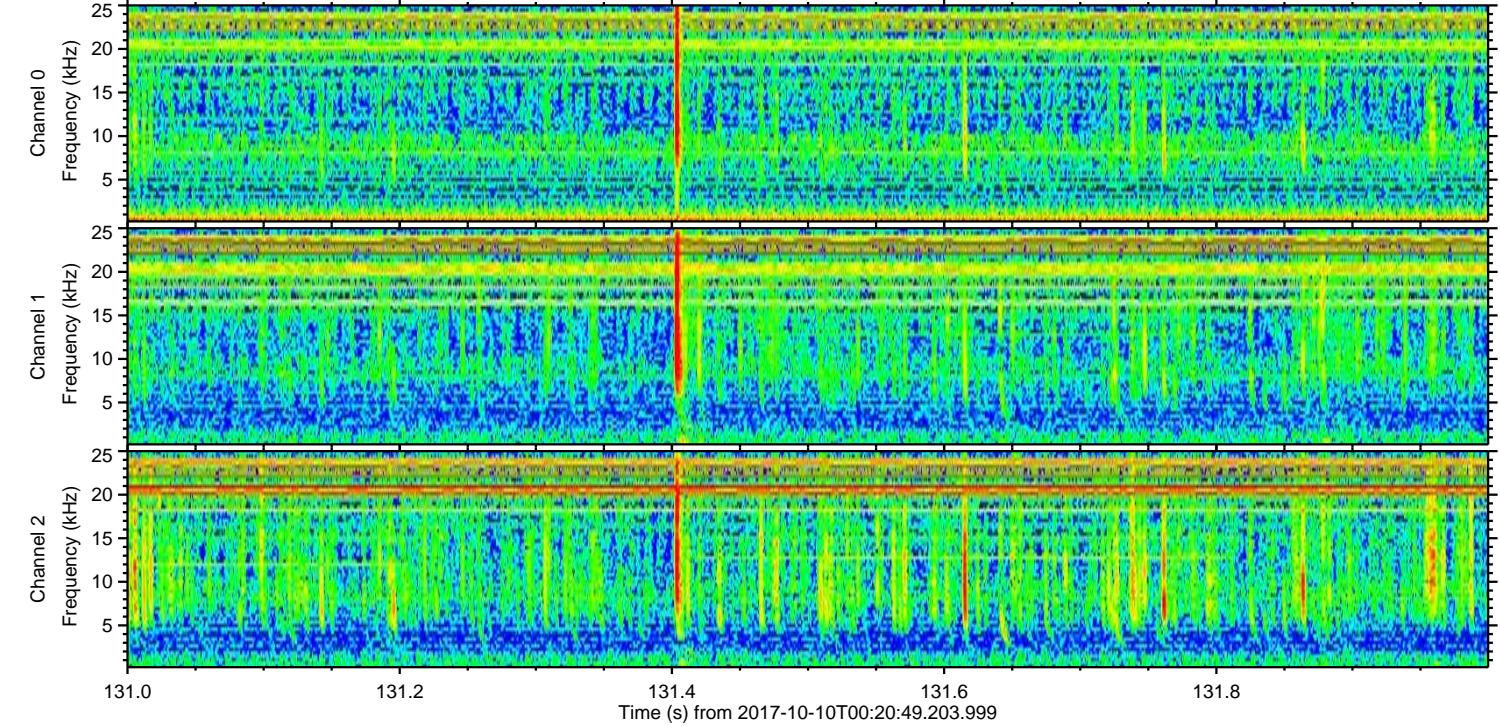
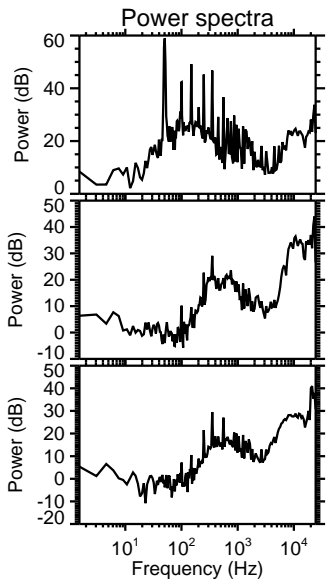
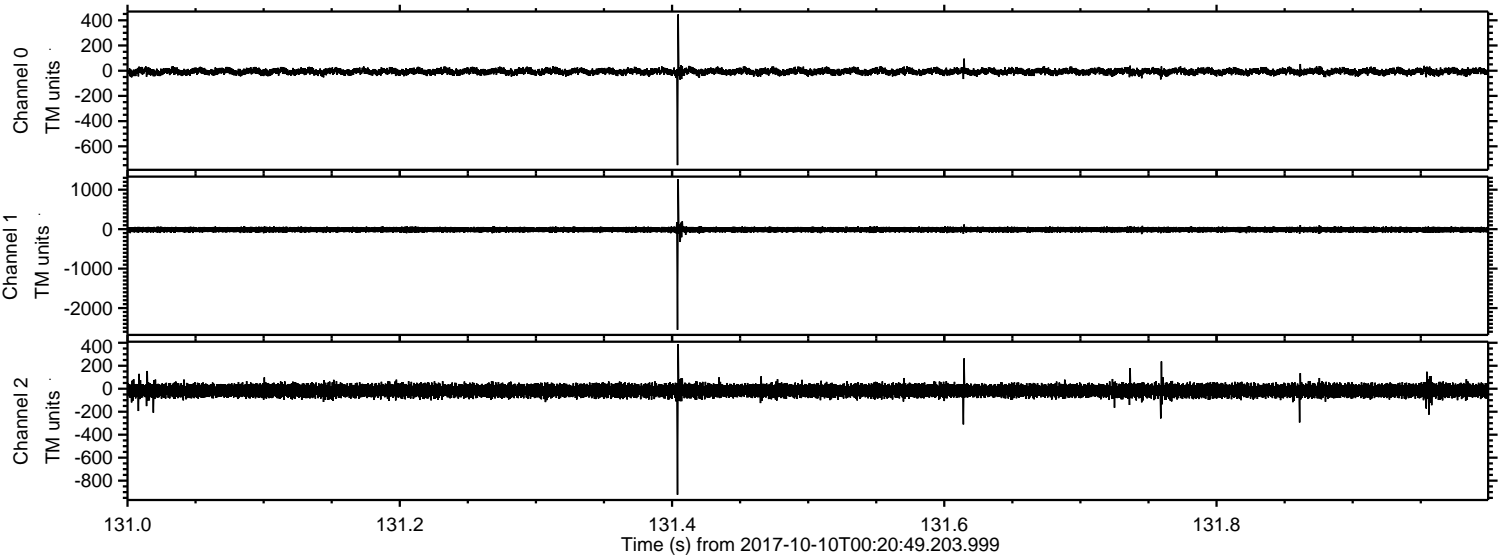
ELMAVAN 3D WAVEFORMS (Measured data sampled at 50 kHz) 51000 packets of 144 samples from 2017-10-10T00:20:49.203.999. Part 145/147

Processed Tue Oct 10 02:29:02 2017 by ELM ver.2012-10-06 from 001__elm20171010_002048__dat00.bin

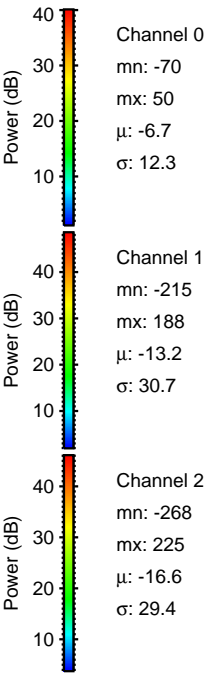
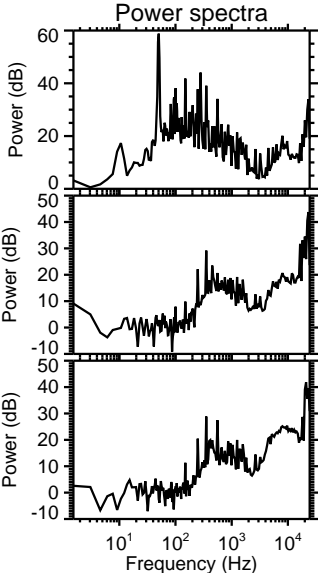
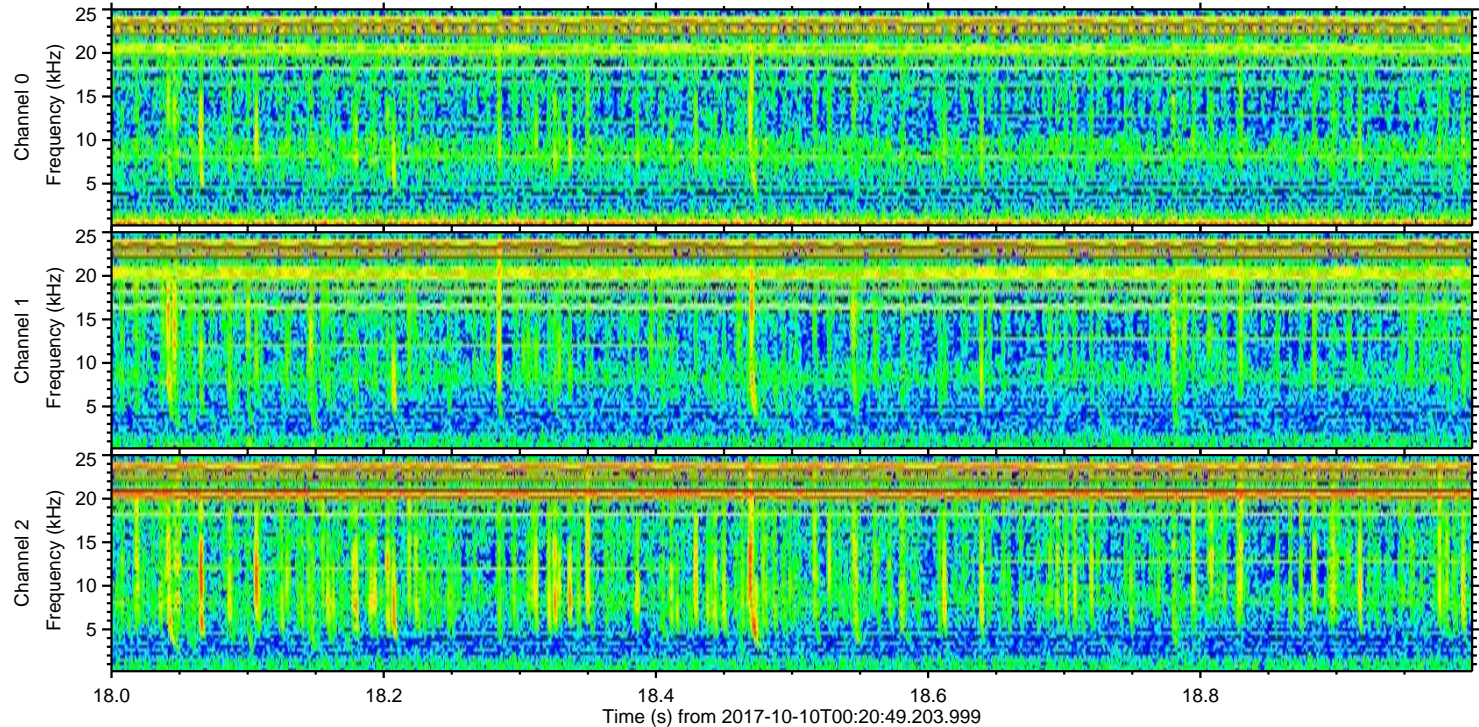
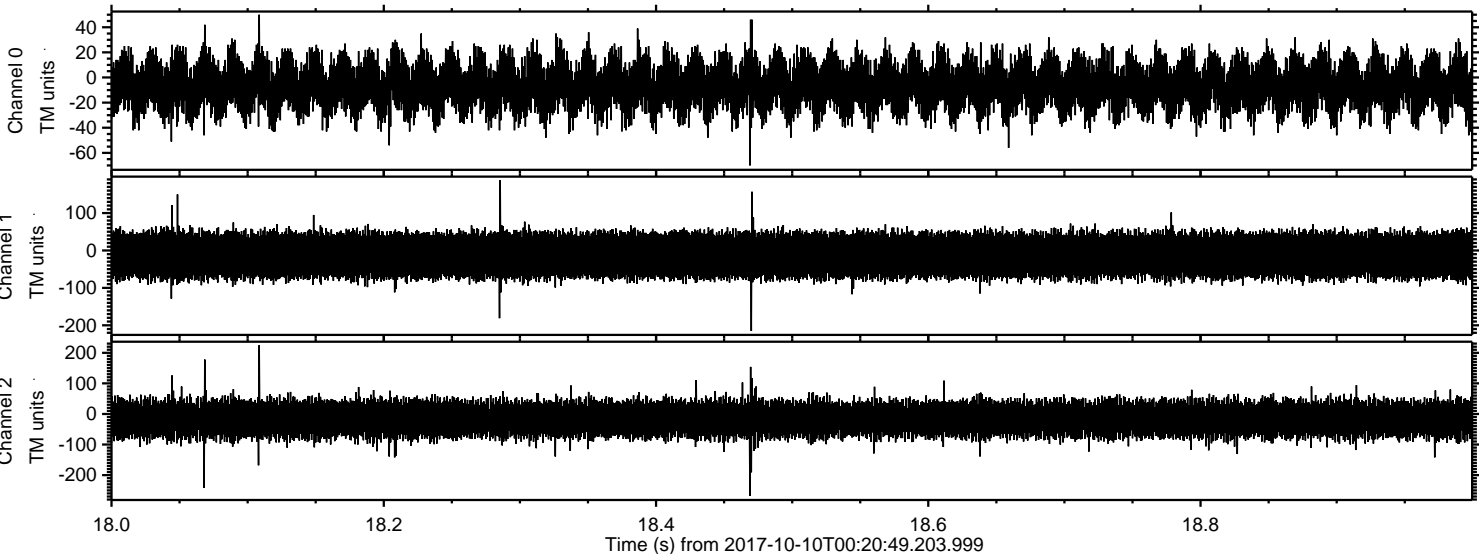


ELMAVAN 3D WAVEFORMS (Measured data sampled at 50 kHz) 51000 packets of 144 samples from 2017-10-10T00:20:49.203.999. Part 132/147

Processed Tue Oct 10 02:29:02 2017 by ELM ver.2012-10-06 from 001__elm20171010_002048__dat00.bin



Processed Tue Oct 10 02:29:03 2017 by ELM ver.2012-10-06 from 001__elm20171010_002048__dat00.bin



Channel 0
mn: -70
mx: 50
 μ : -6.7
 σ : 12.3

Channel 1
mn: -215
mx: 188
 μ : -13.2
 σ : 30.7

Channel 2
mn: -268
mx: 225
 μ : -16.6
 σ : 29.4