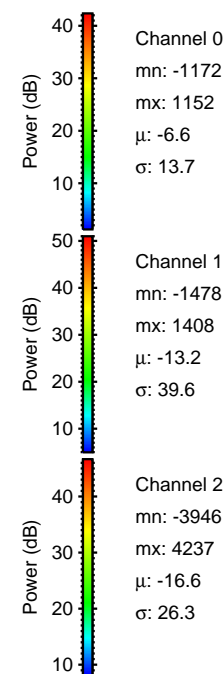
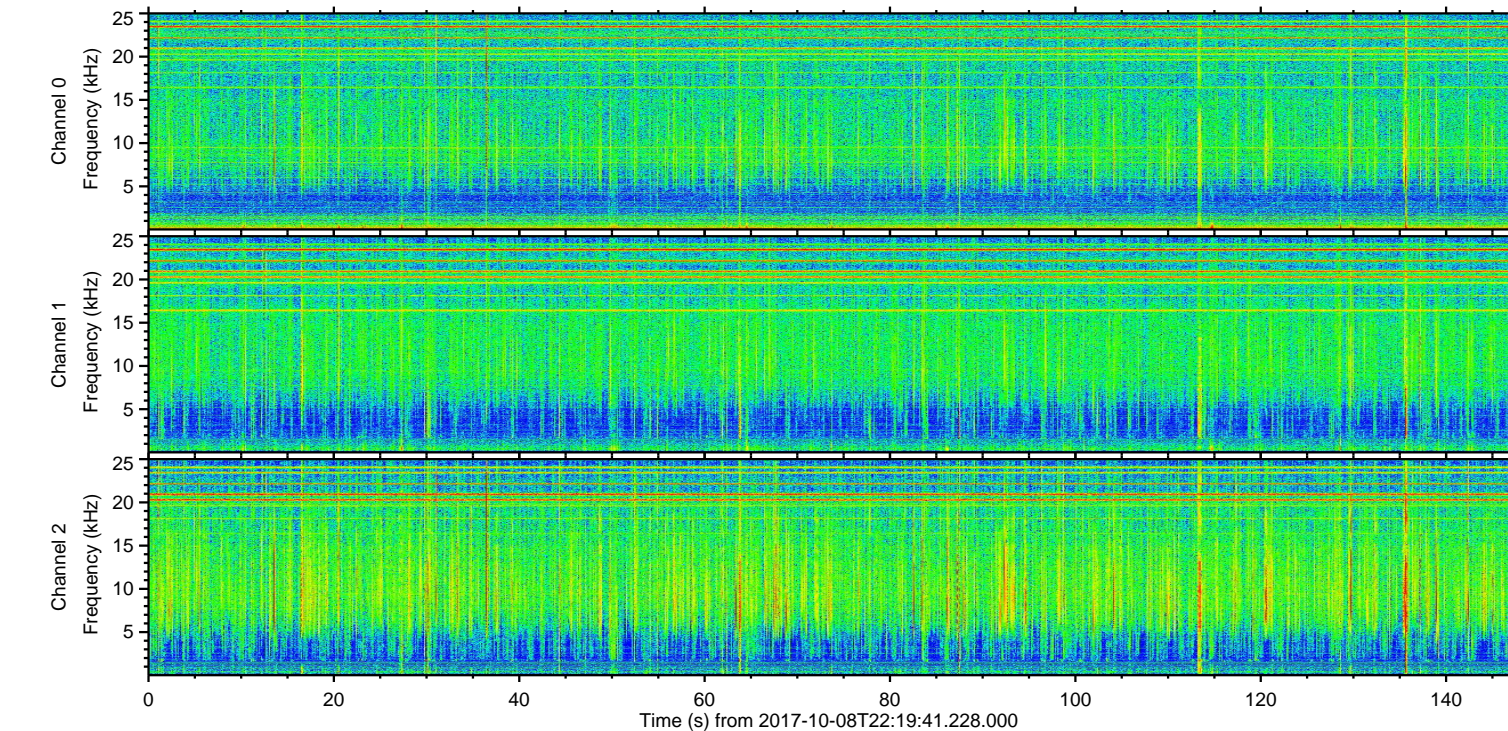
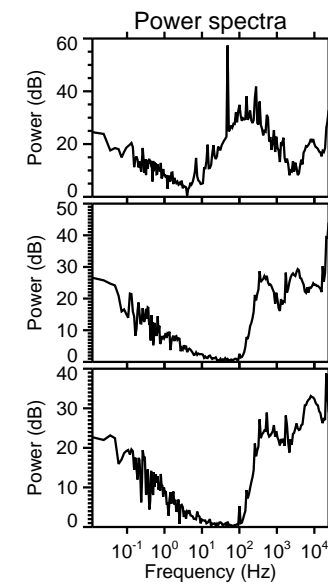
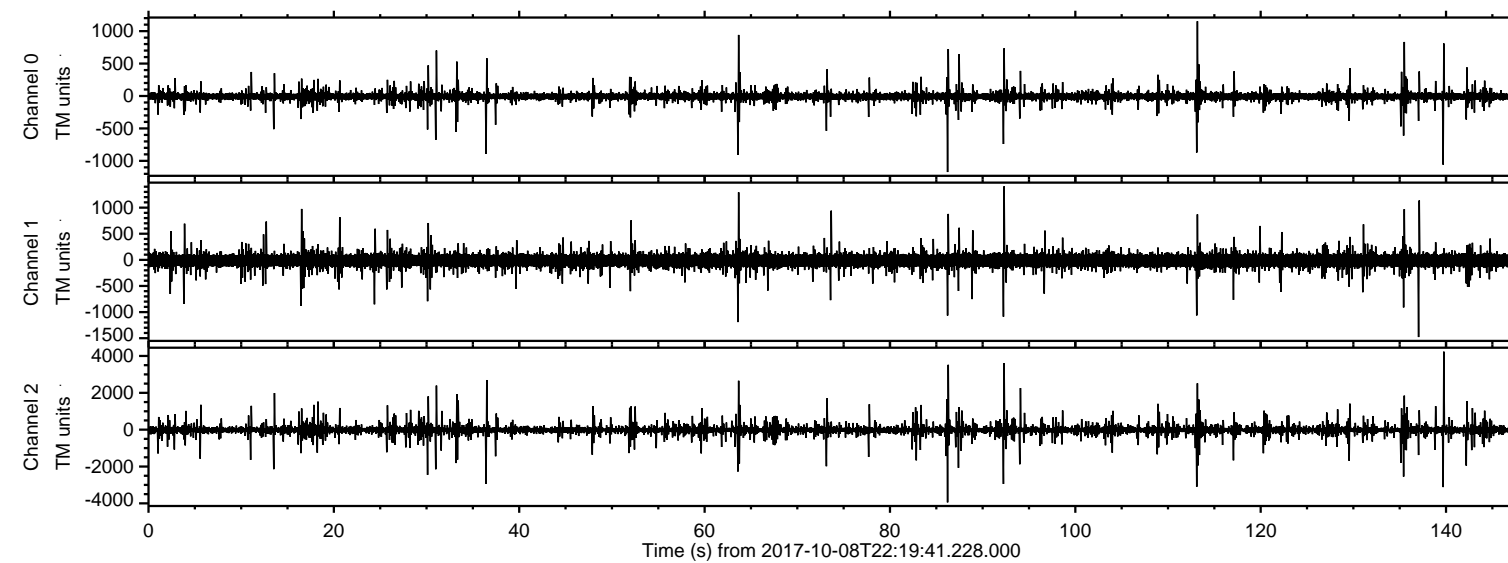


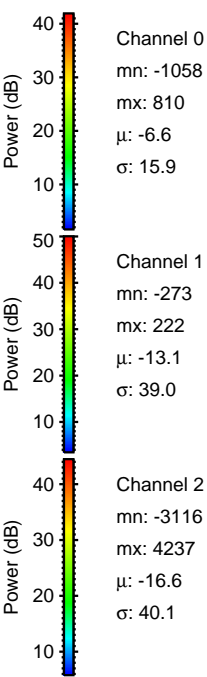
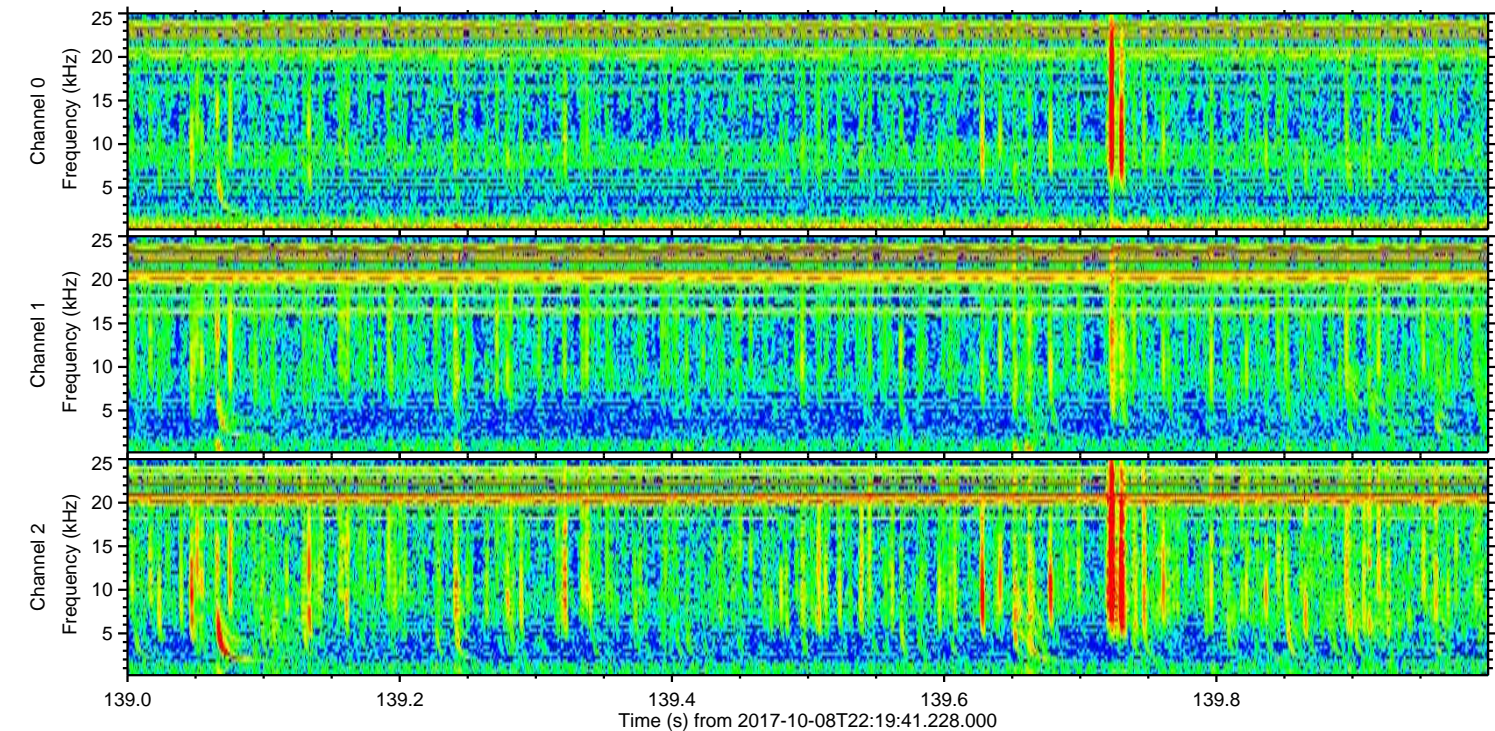
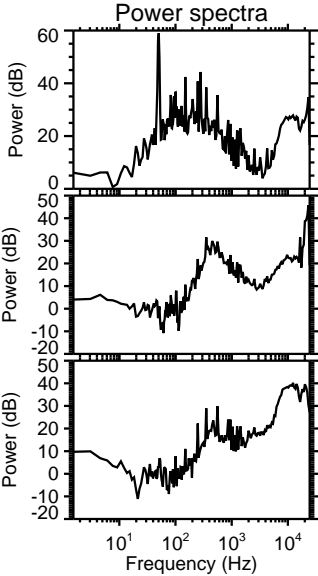
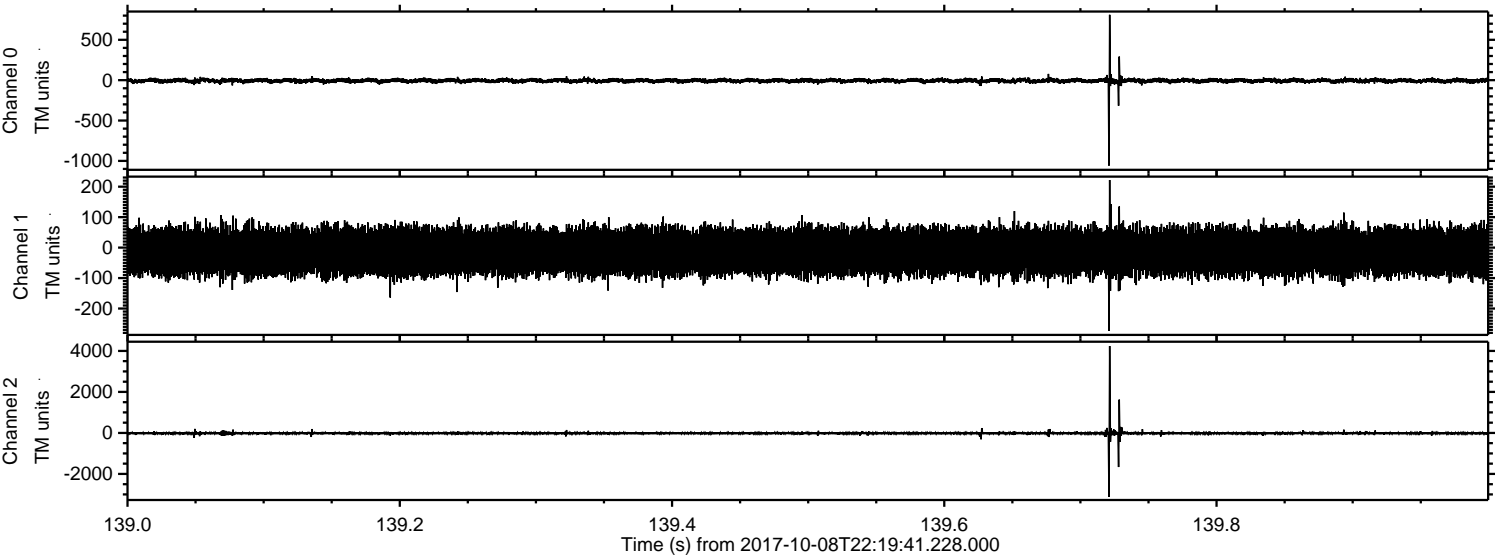
ELMAVAN 3D WAVEFORMS (Measured data sampled at 50 kHz) 51000 packets of 144 samples from 2017-10-08T22:19:41.228.000.

Processed Mon Oct 9 00:27:39 2017 by ELM ver.2012-10-06 from 001__elm20171008_221940__dat00.bin



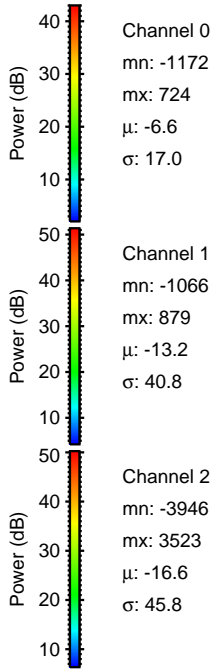
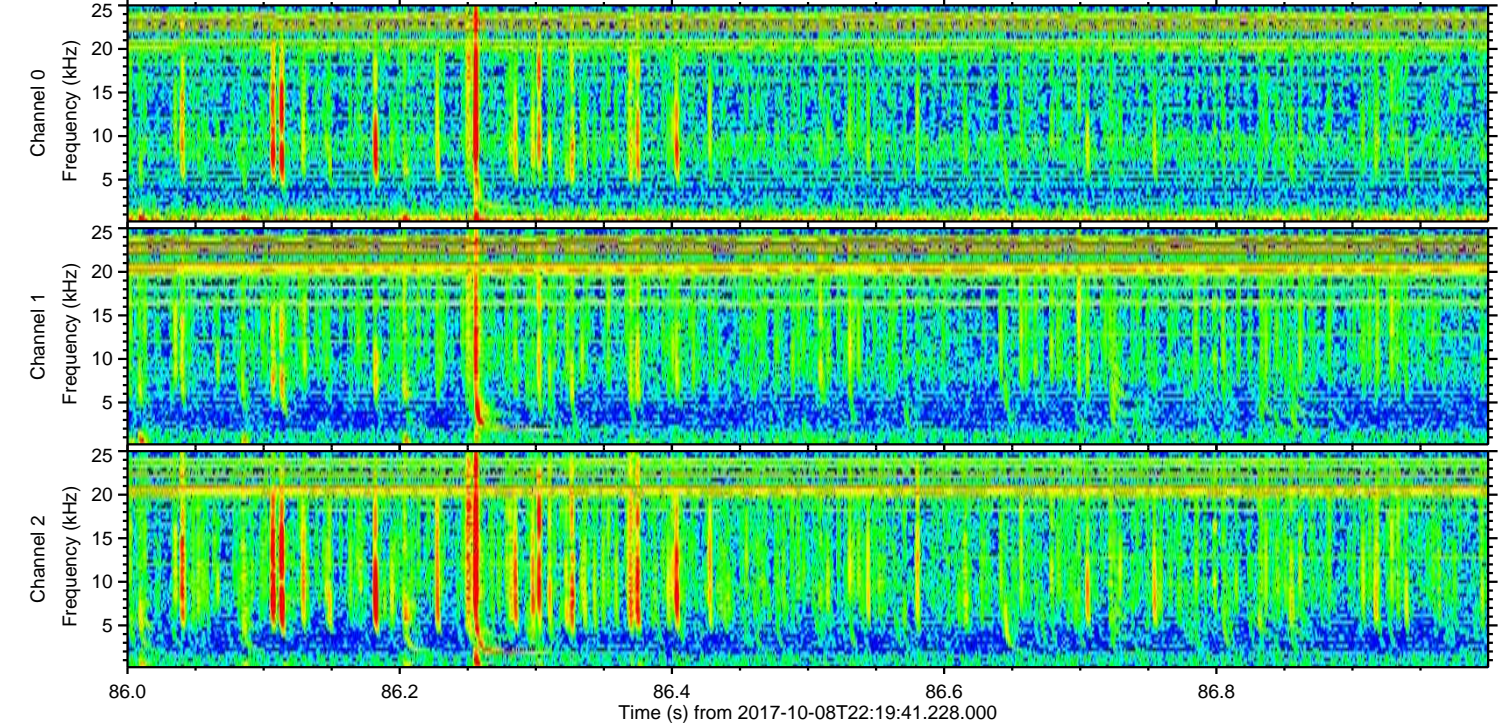
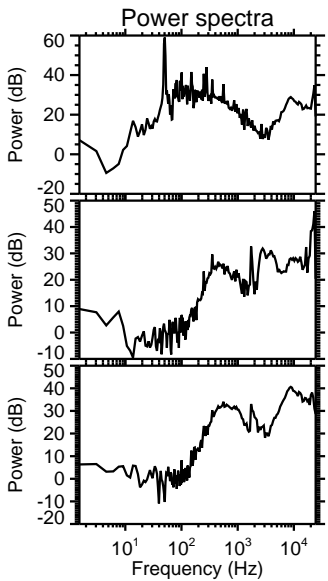
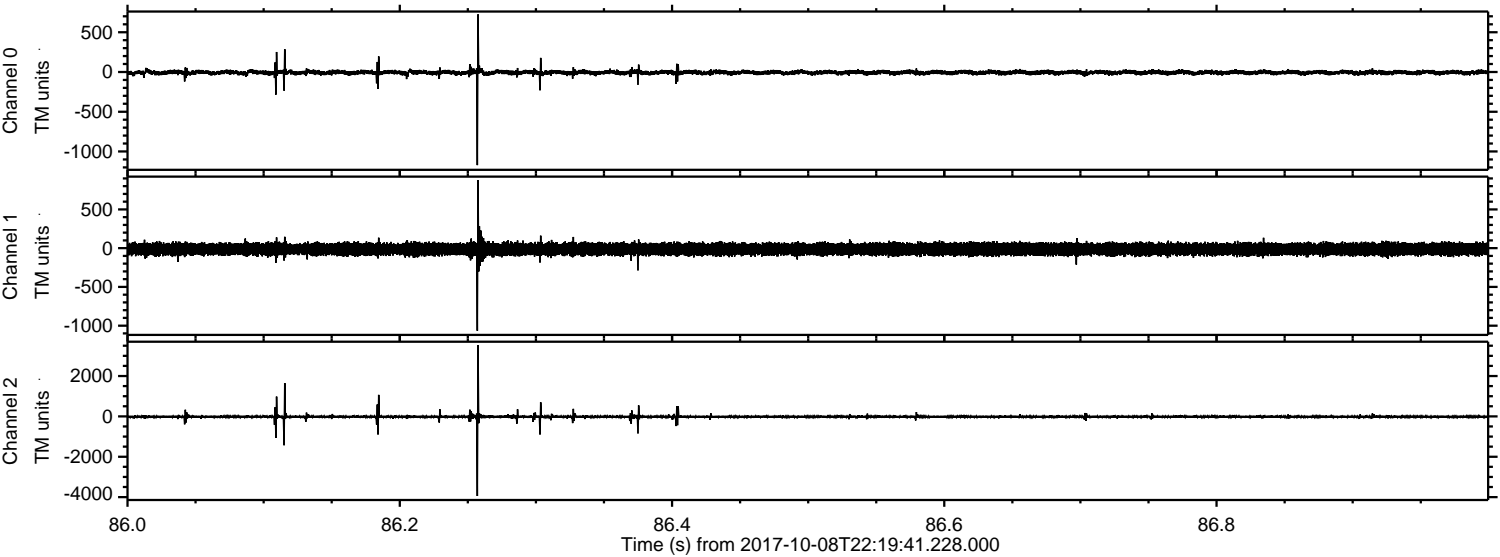
ELMAVAN 3D WAVEFORMS (Measured data sampled at 50 kHz) 51000 packets of 144 samples from 2017-10-08T22:19:41.228.000. Part 140/147

Processed Mon Oct 9 00:27:45 2017 by ELM ver.2012-10-06 from 001__elm20171008_221940__dat00.bin

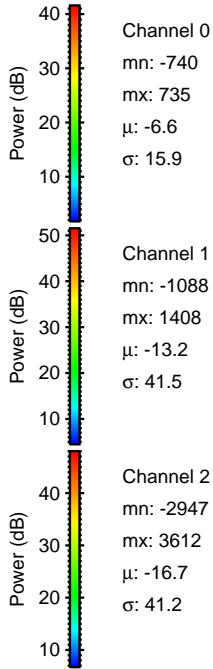
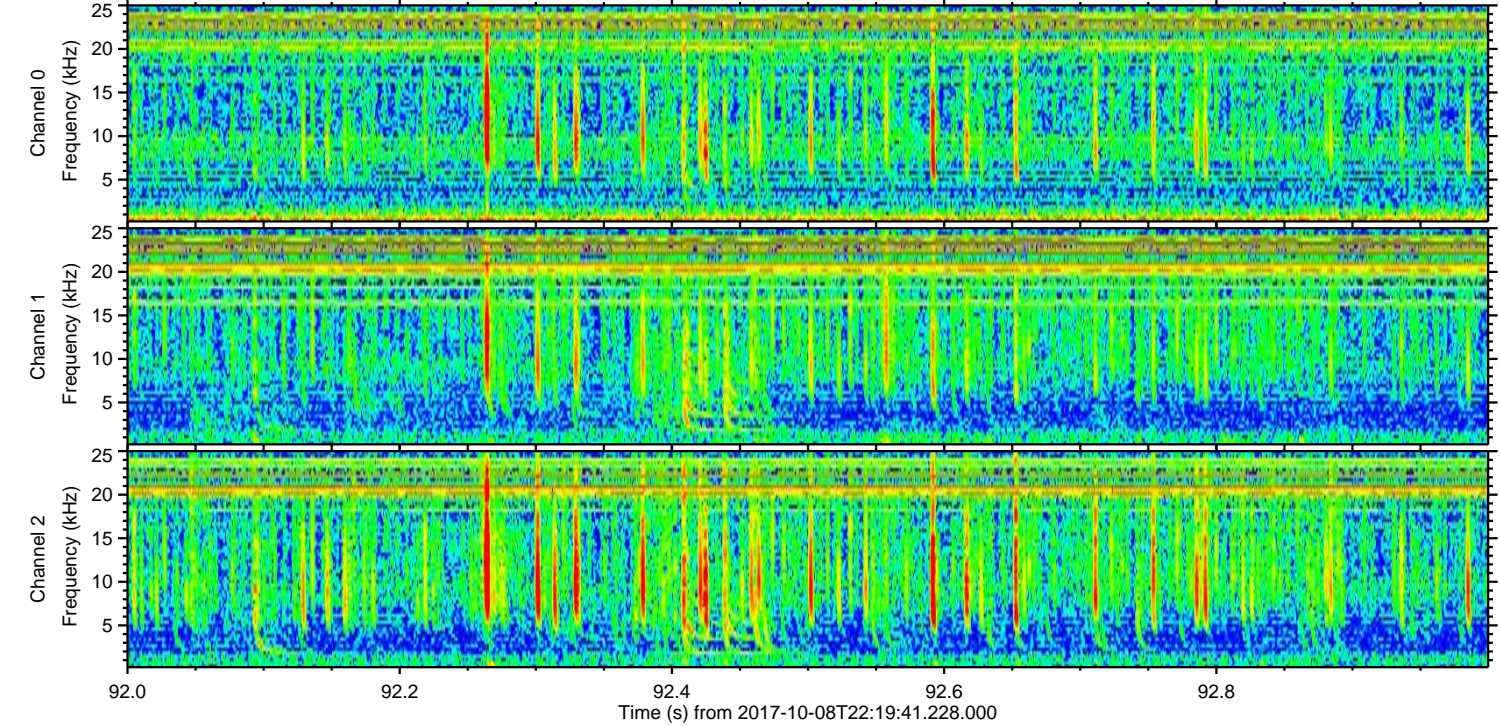
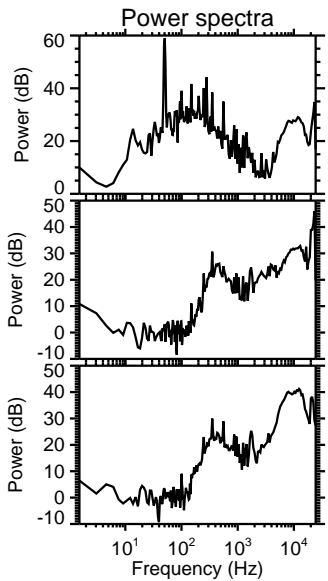
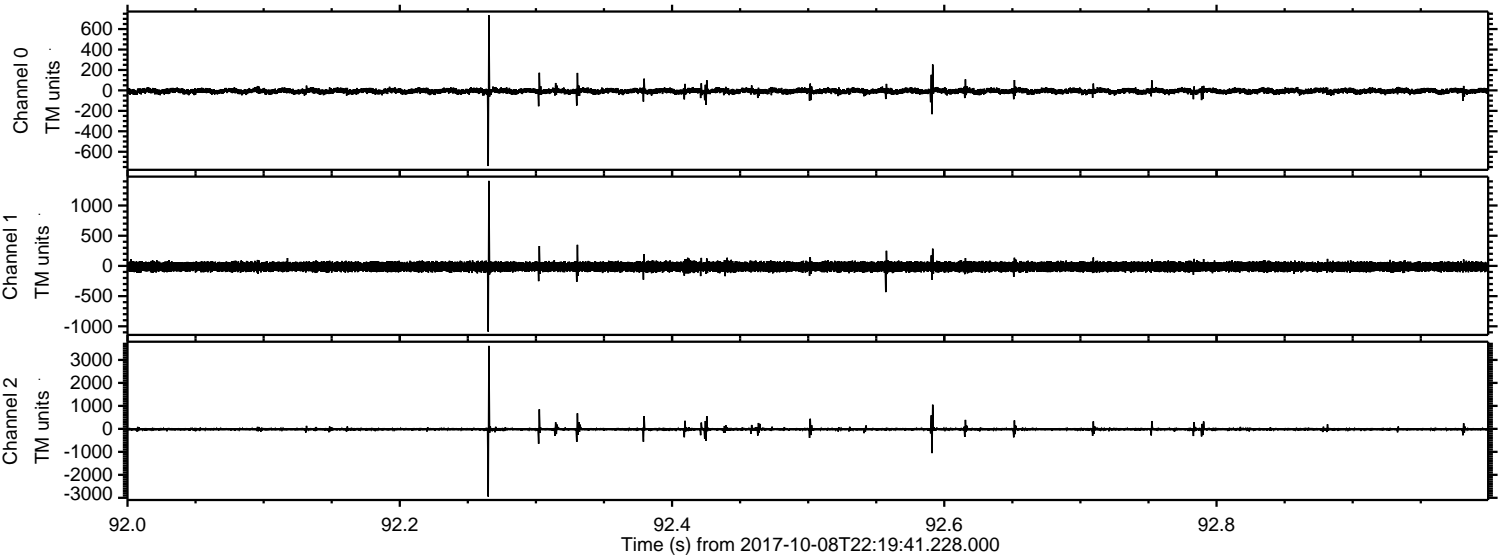


ELMAVAN 3D WAVEFORMS (Measured data sampled at 50 kHz) 51000 packets of 144 samples from 2017-10-08T22:19:41.228.000. Part 87/147

Processed Mon Oct 9 00:27:46 2017 by ELM ver.2012-10-06 from 001__elm20171008_221940__dat00.bin



Processed Mon Oct 9 00:27:47 2017 by ELM ver.2012-10-06 from 001__elm20171008_221940__dat00.bin



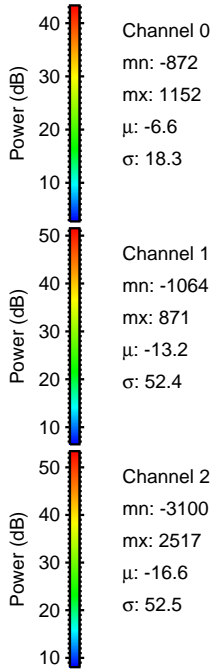
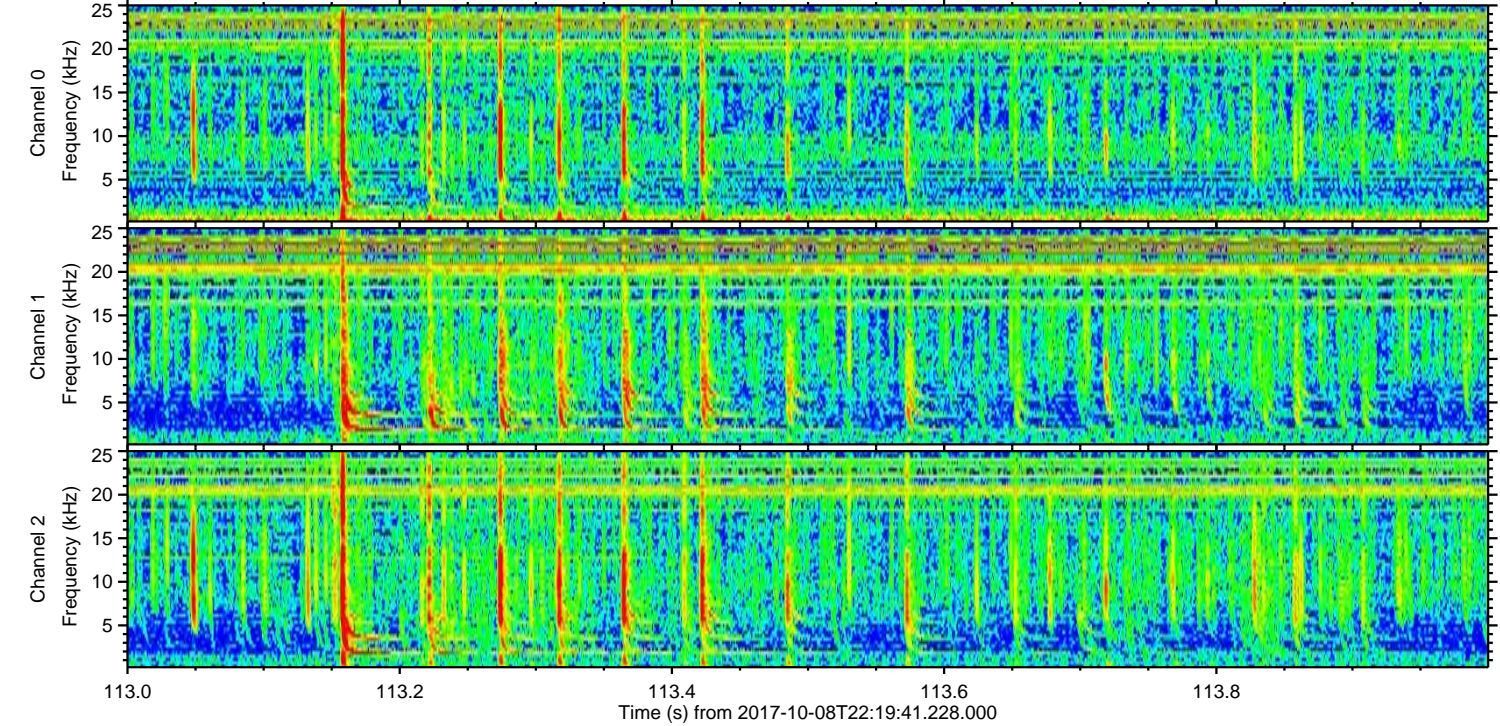
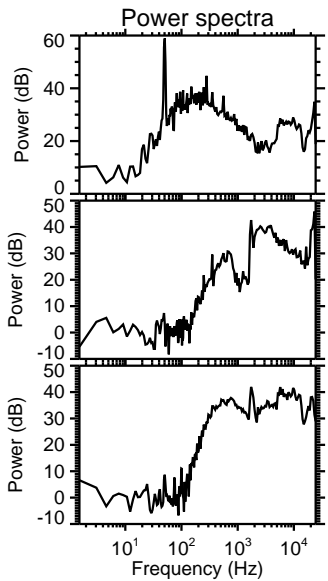
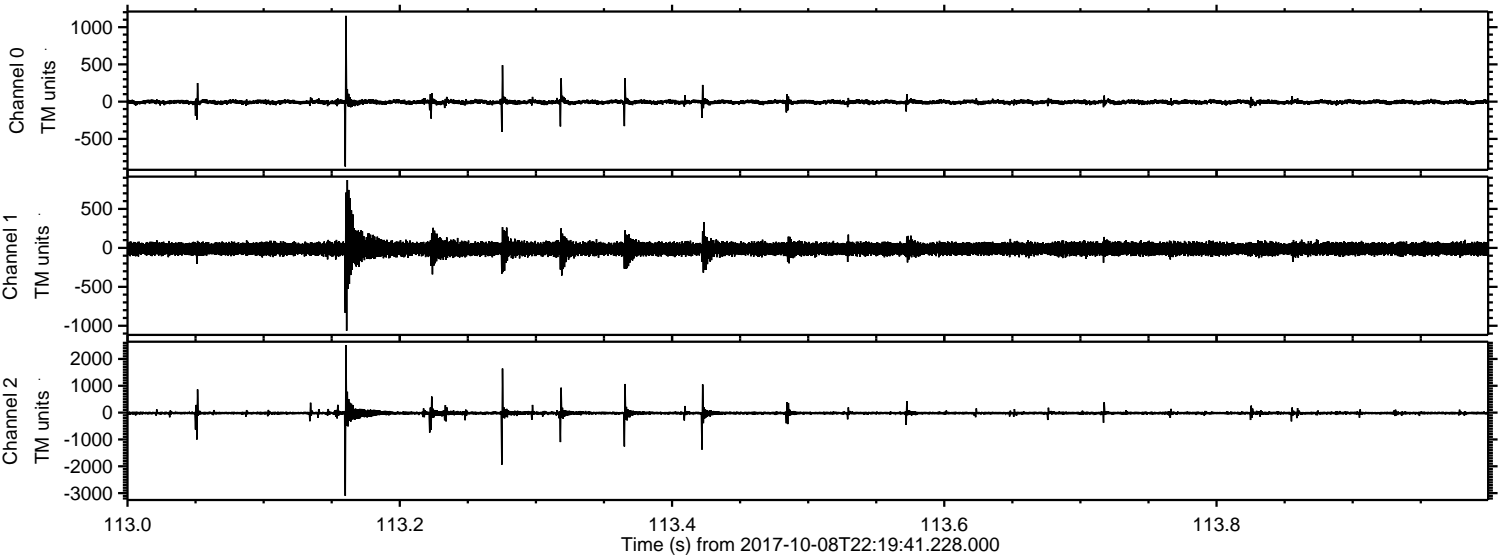
Channel 0
mn: -740
mx: 735
 μ : -6.6
 σ : 15.9

Channel 1
mn: -1088
mx: 1408
 μ : -13.2
 σ : 41.5

Channel 2
mn: -2947
mx: 3612
 μ : -16.7
 σ : 41.2

ELMAVAN 3D WAVEFORMS (Measured data sampled at 50 kHz) 51000 packets of 144 samples from 2017-10-08T22:19:41.228.000. Part 114/147

Processed Mon Oct 9 00:27:47 2017 by ELM ver.2012-10-06 from 001__elm20171008_221940__dat00.bin



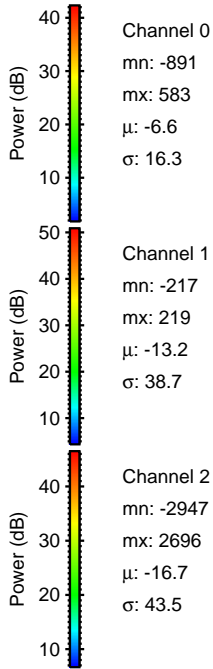
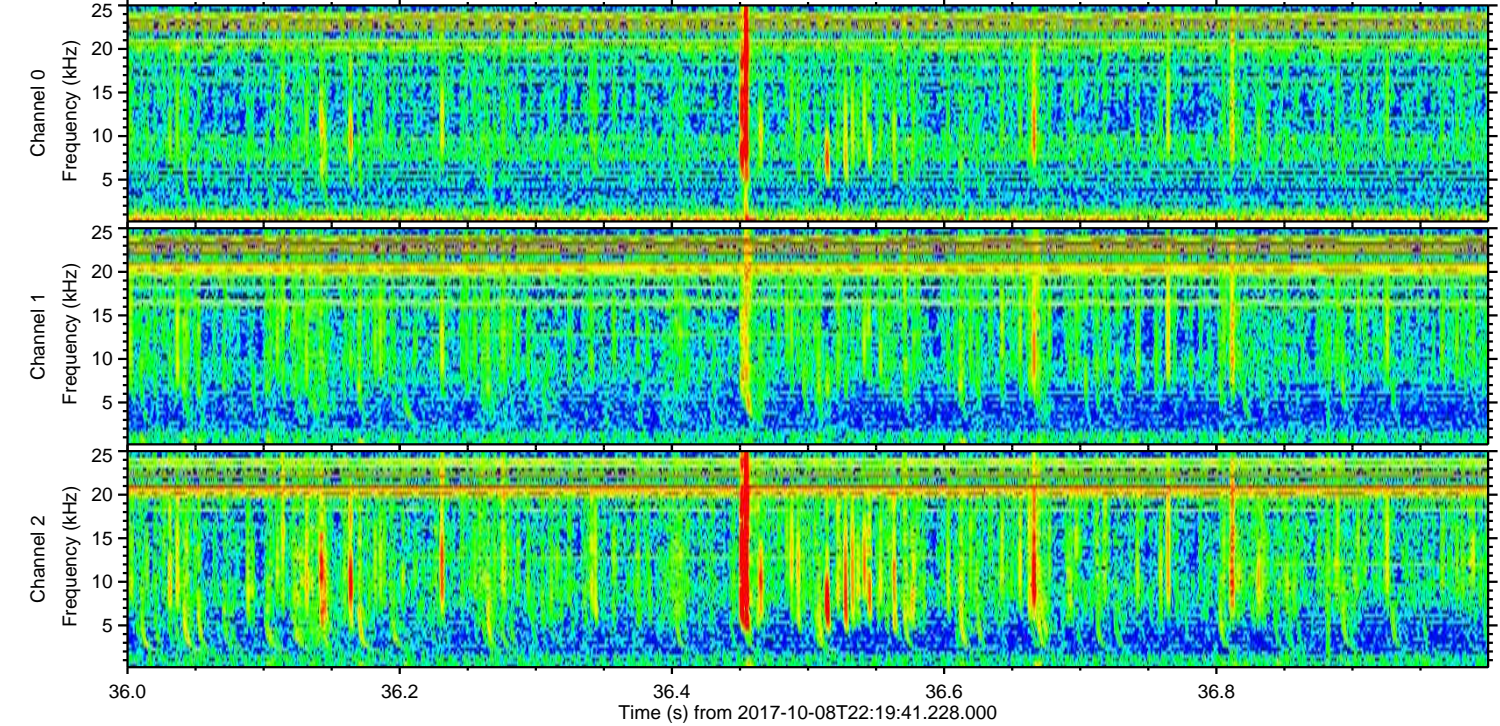
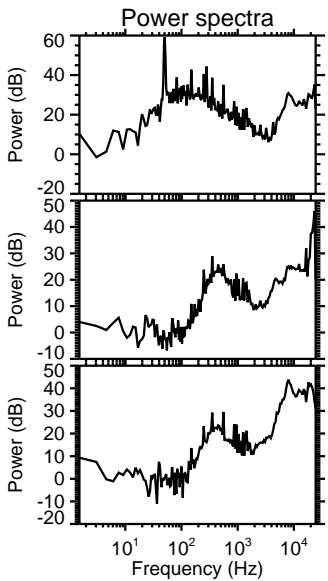
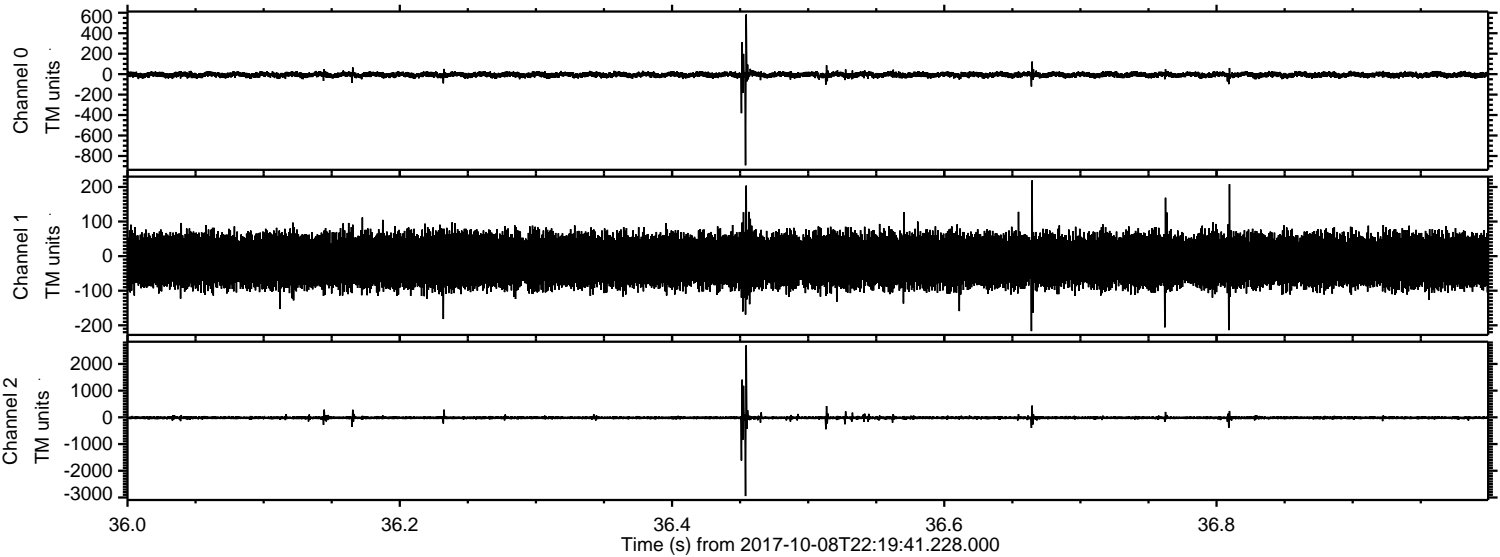
Channel 0
mn: -872
mx: 1152
 μ : -6.6
 σ : 18.3

Channel 1
mn: -1064
mx: 871
 μ : -13.2
 σ : 52.4

Channel 2
mn: -3100
mx: 2517
 μ : -16.6
 σ : 52.5

ELMAVAN 3D WAVEFORMS (Measured data sampled at 50 kHz) 51000 packets of 144 samples from 2017-10-08T22:19:41.228.000. Part 37/147

Processed Mon Oct 9 00:27:48 2017 by ELM ver.2012-10-06 from 001__elm20171008_221940__dat00.bin

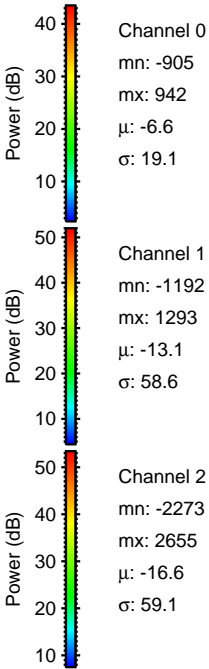
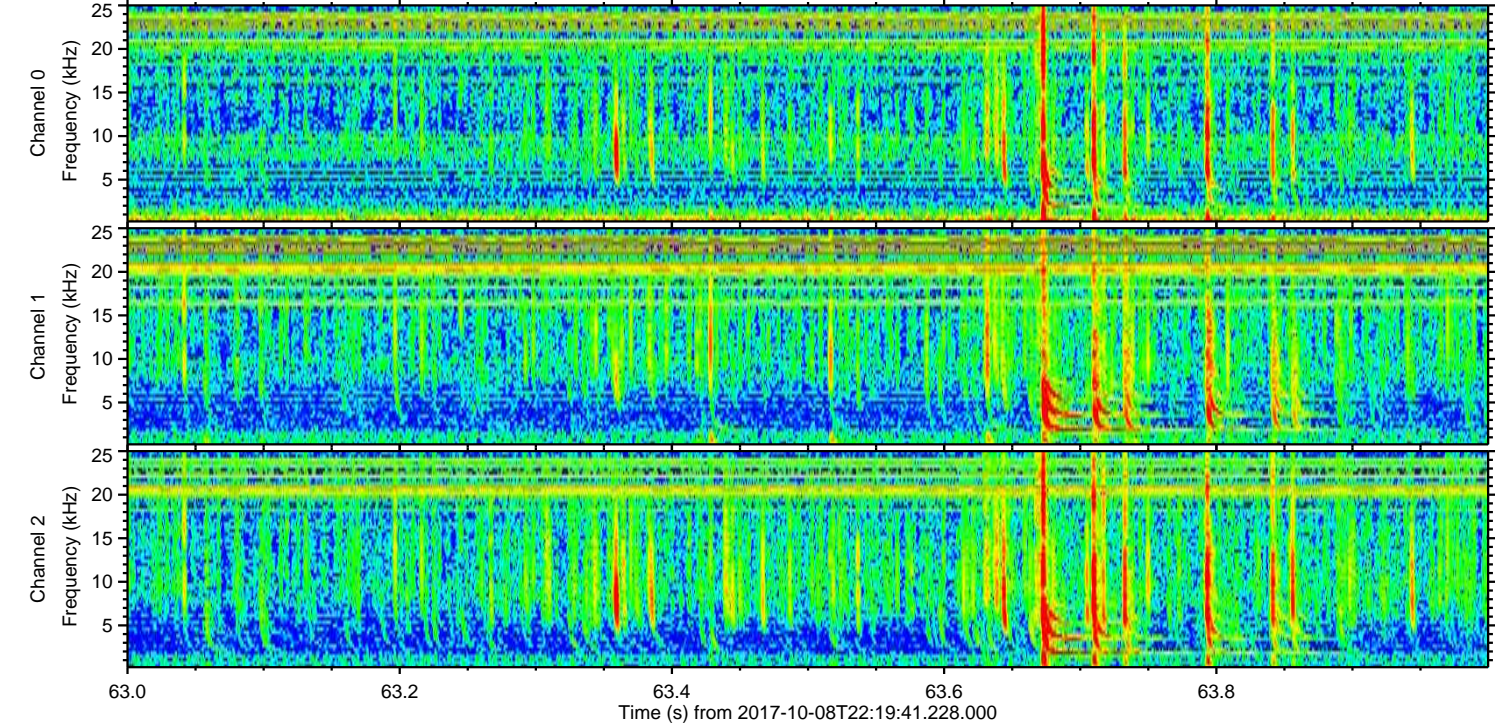
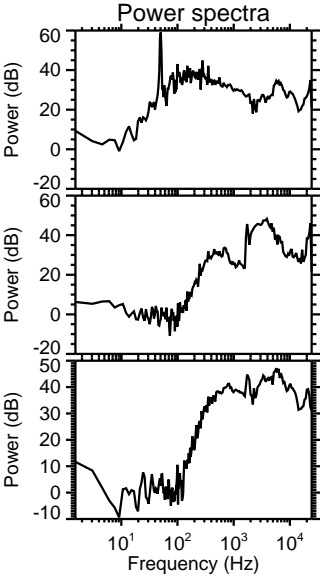
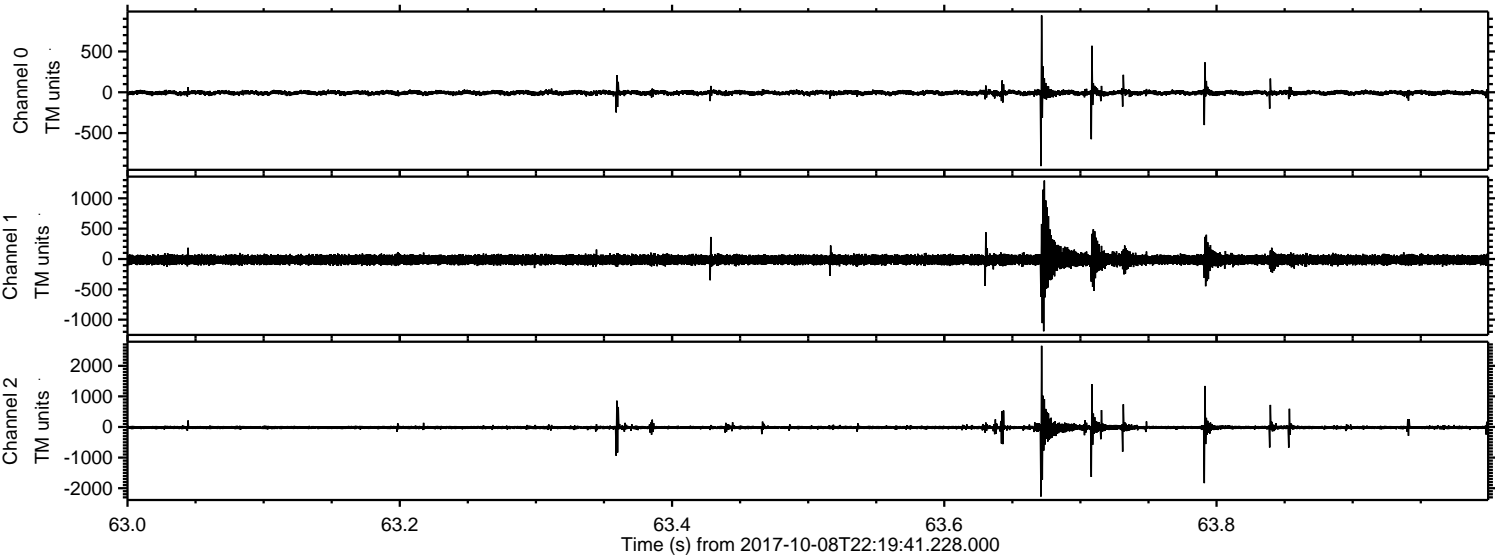


Channel 0
mn: -891
mx: 583
 μ : -6.6
 σ : 16.3

Channel 1
mn: -217
mx: 219
 μ : -13.2
 σ : 38.7

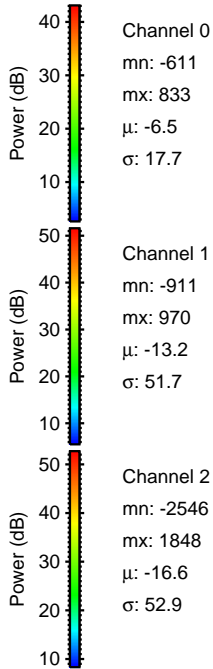
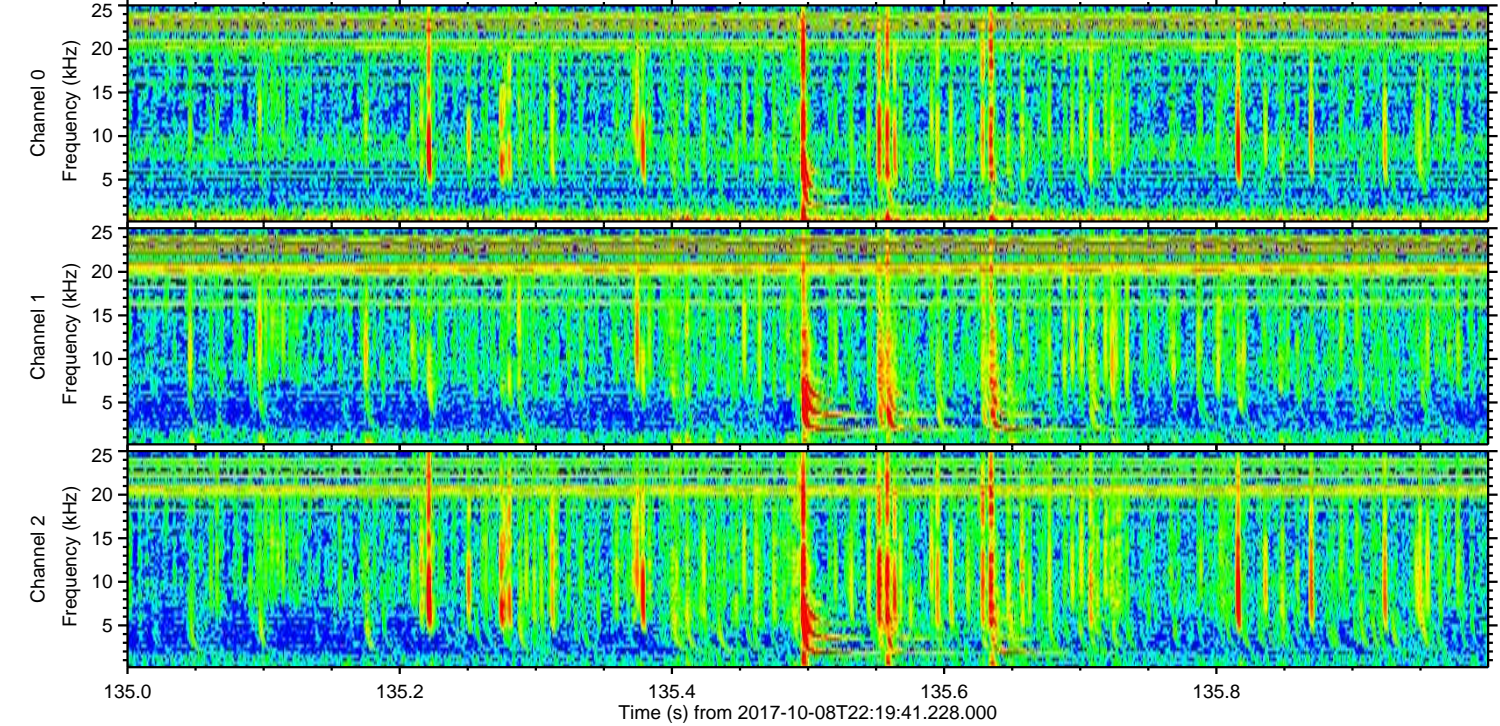
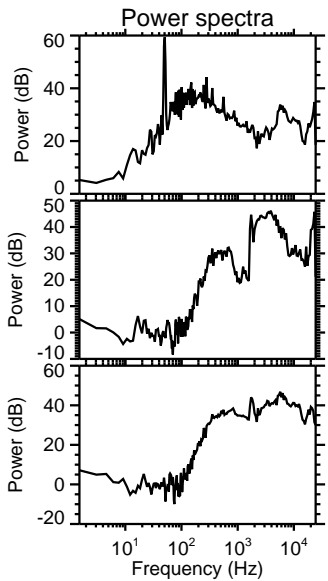
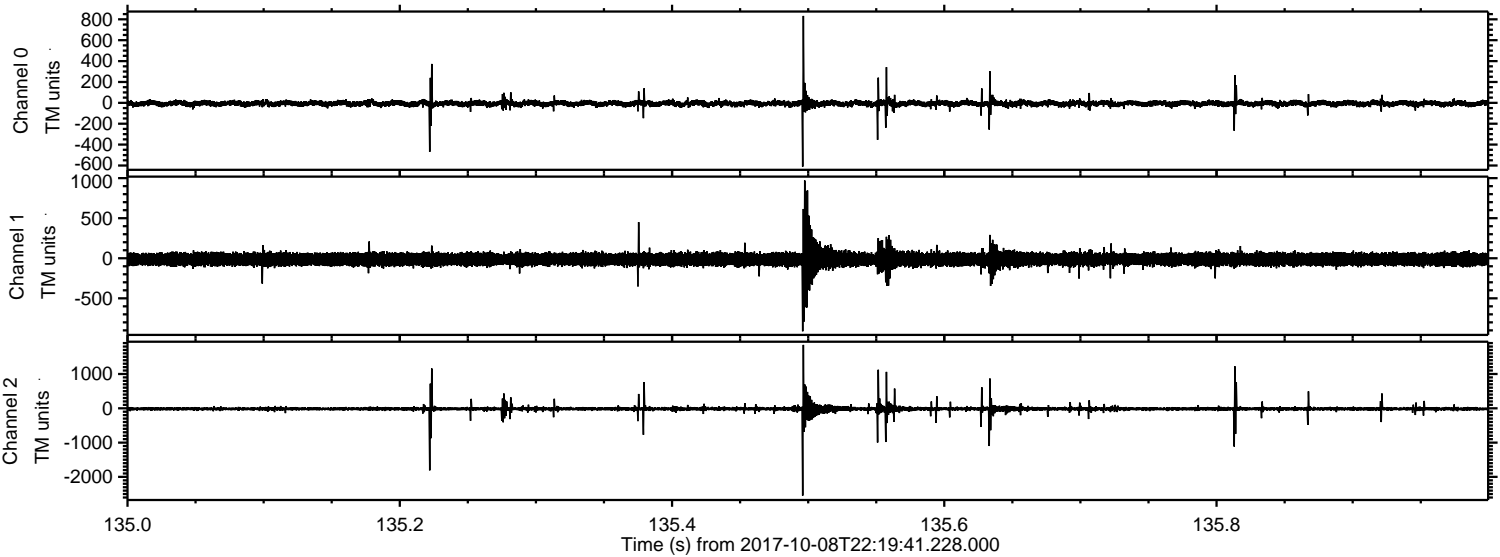
Channel 2
mn: -2947
mx: 2696
 μ : -16.7
 σ : 43.5

Processed Mon Oct 9 00:27:48 2017 by ELM ver.2012-10-06 from 001__elm20171008_221940__dat00.bin



ELMAVAN 3D WAVEFORMS (Measured data sampled at 50 kHz) 51000 packets of 144 samples from 2017-10-08T22:19:41.228.000. Part 136/147

Processed Mon Oct 9 00:27:49 2017 by ELM ver.2012-10-06 from 001__elm20171008_221940__dat00.bin



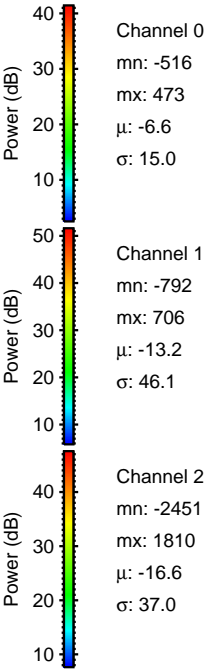
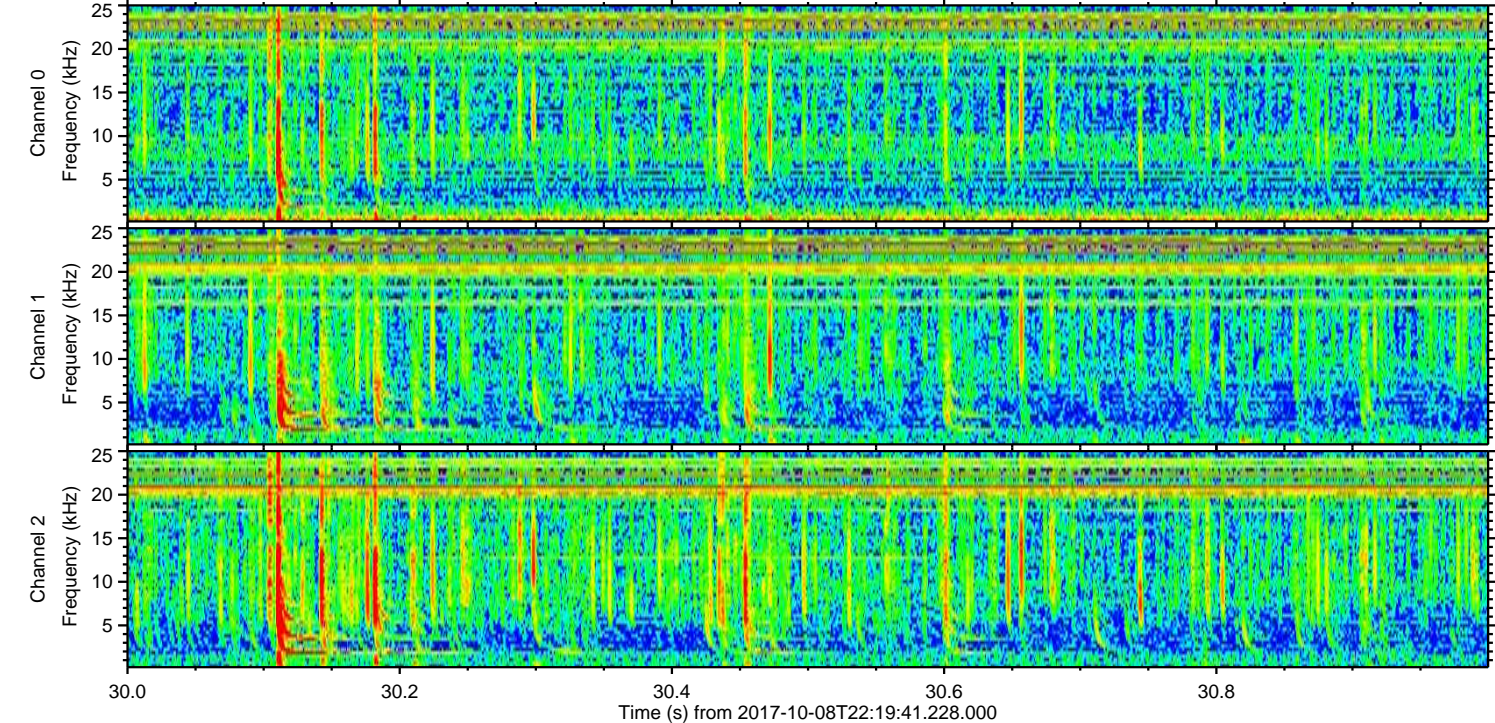
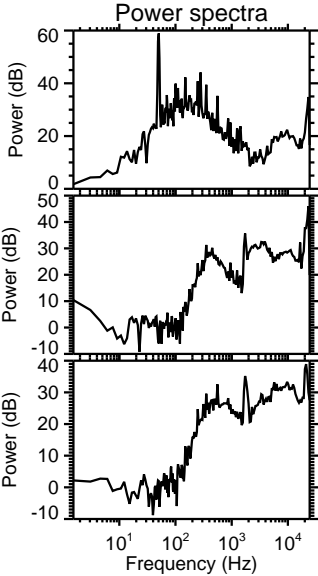
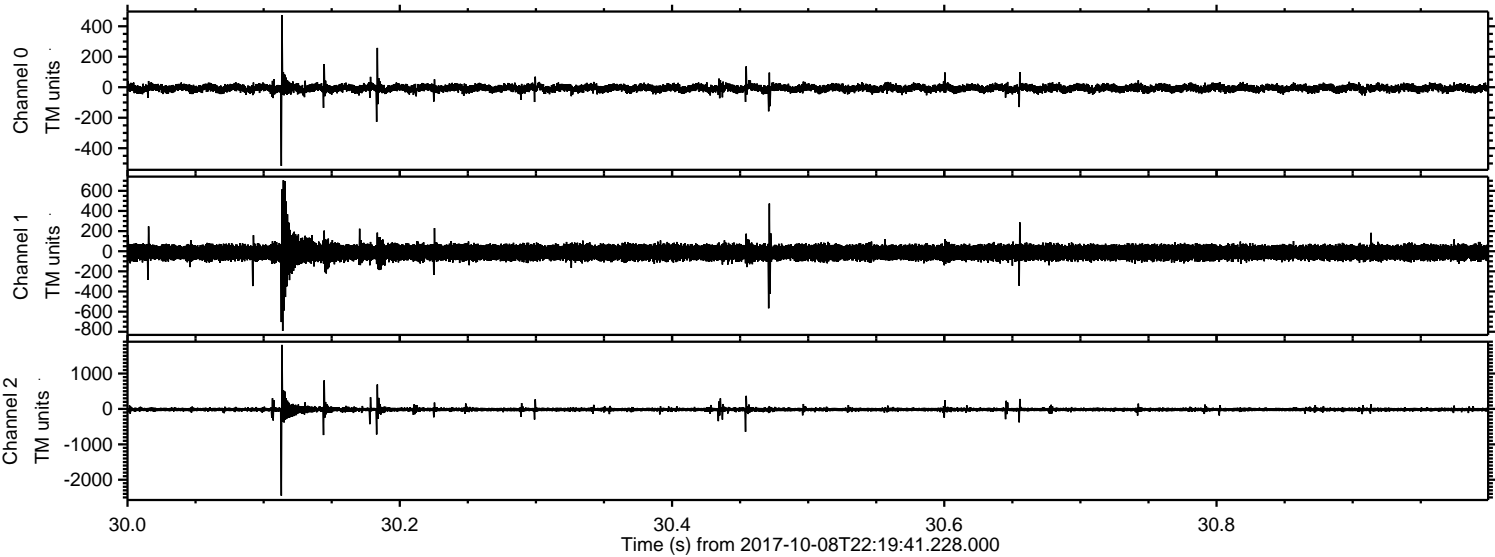
Channel 0
mn: -611
mx: 833
 μ : -6.5
 σ : 17.7

Channel 1
mn: -911
mx: 970
 μ : -13.2
 σ : 51.7

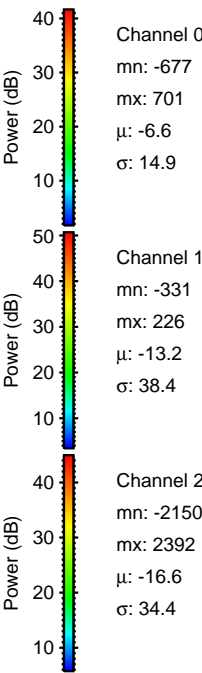
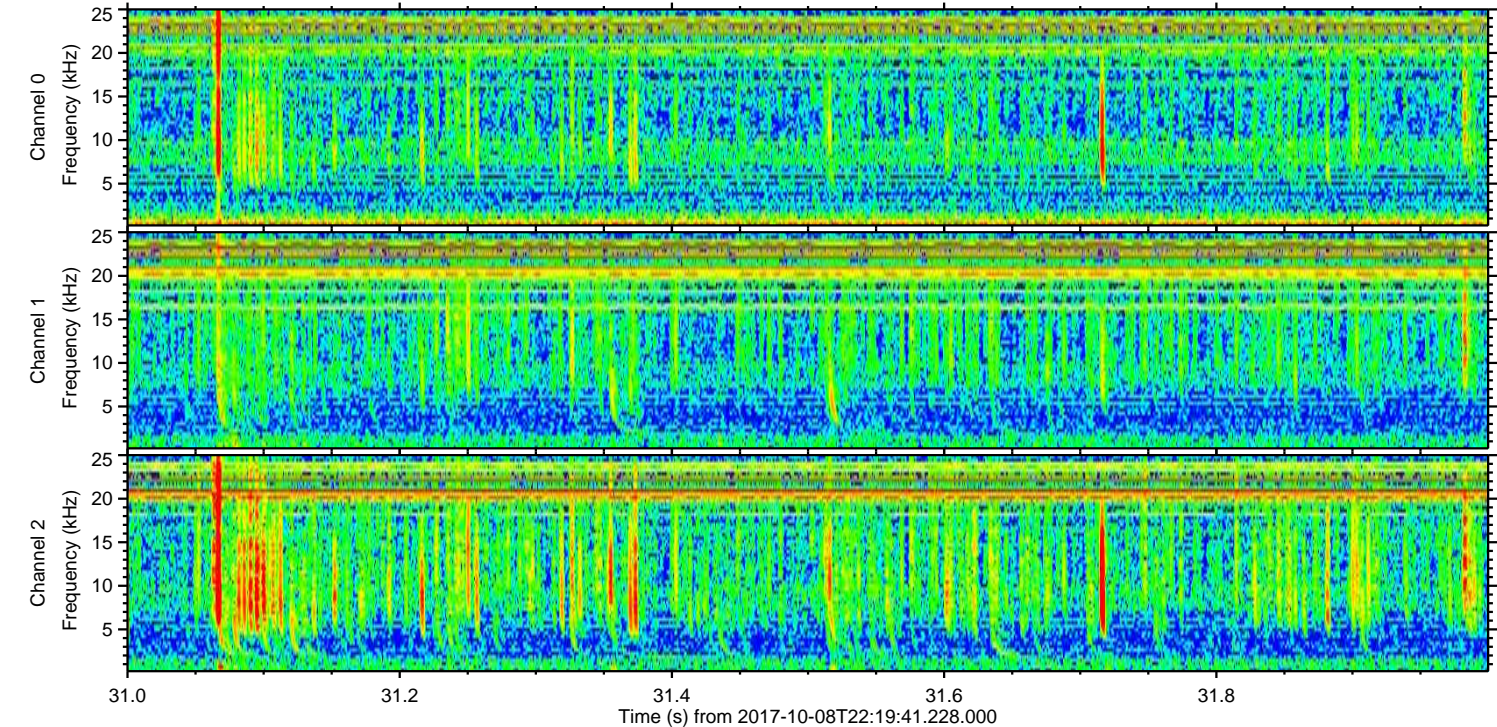
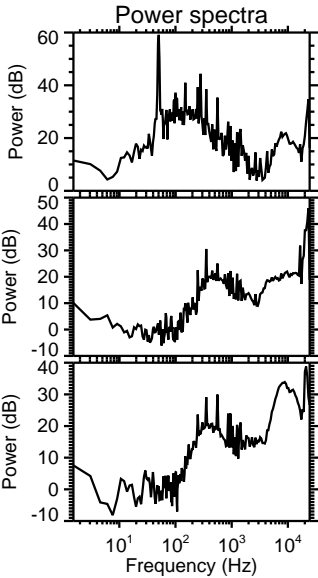
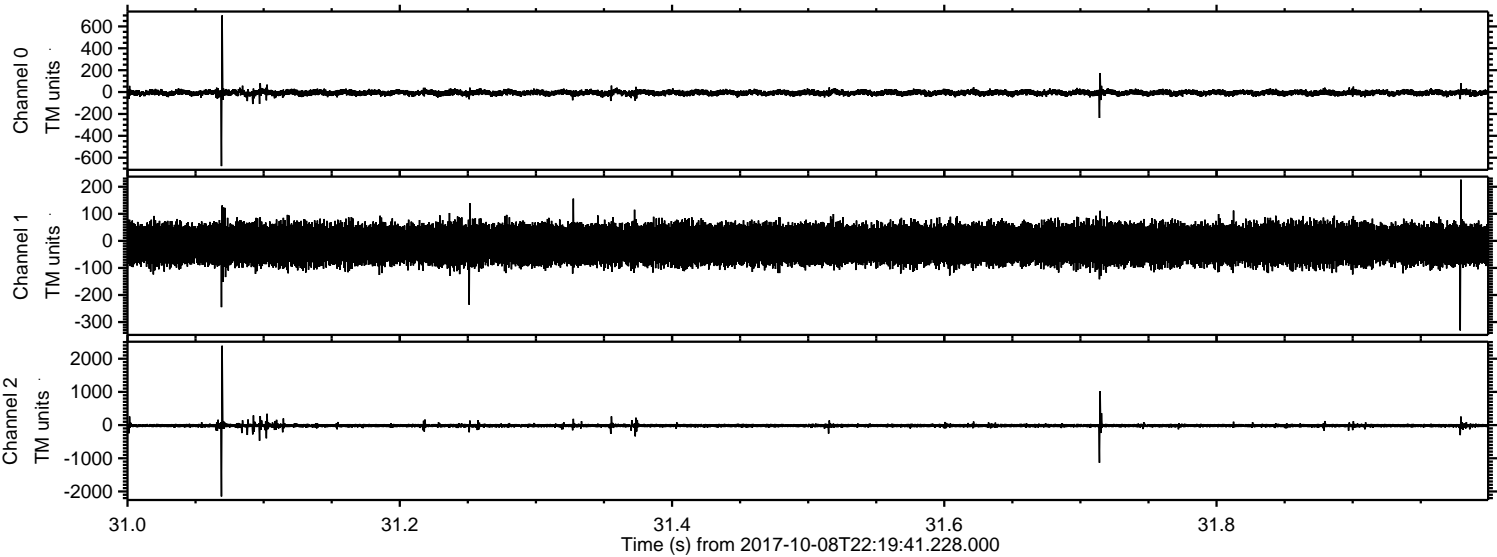
Channel 2
mn: -2546
mx: 1848
 μ : -16.6
 σ : 52.9

ELMAVAN 3D WAVEFORMS (Measured data sampled at 50 kHz) 51000 packets of 144 samples from 2017-10-08T22:19:41.228.000. Part 31/147

Processed Mon Oct 9 00:27:50 2017 by ELM ver.2012-10-06 from 001__elm20171008_221940__dat00.bin



Processed Mon Oct 9 00:27:50 2017 by ELM ver.2012-10-06 from 001__elm20171008_221940__dat00.bin



Processed Mon Oct 9 00:27:51 2017 by ELM ver.2012-10-06 from 001__elm20171008_221940__dat00.bin

