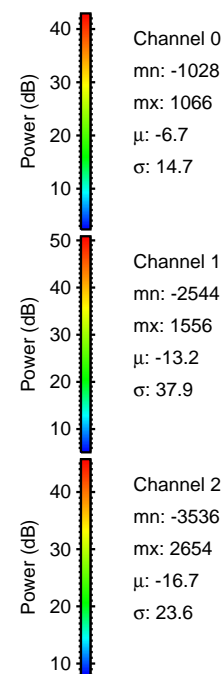
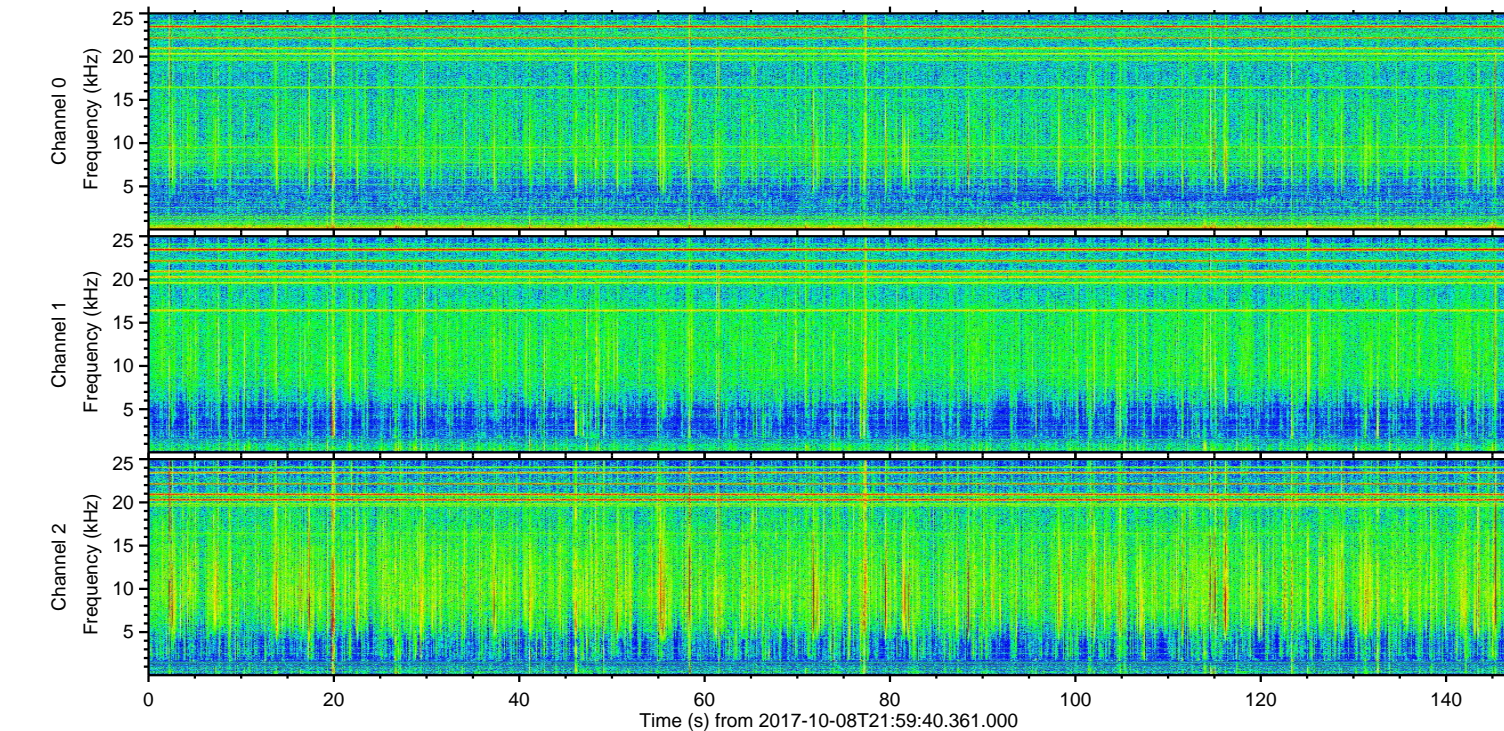
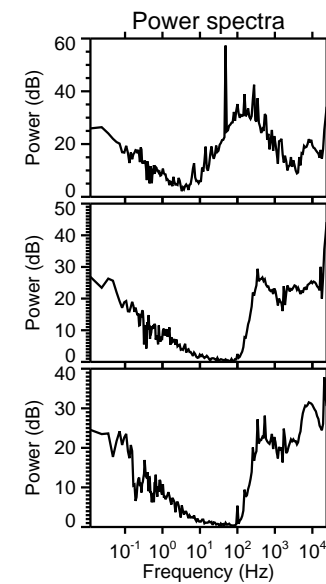
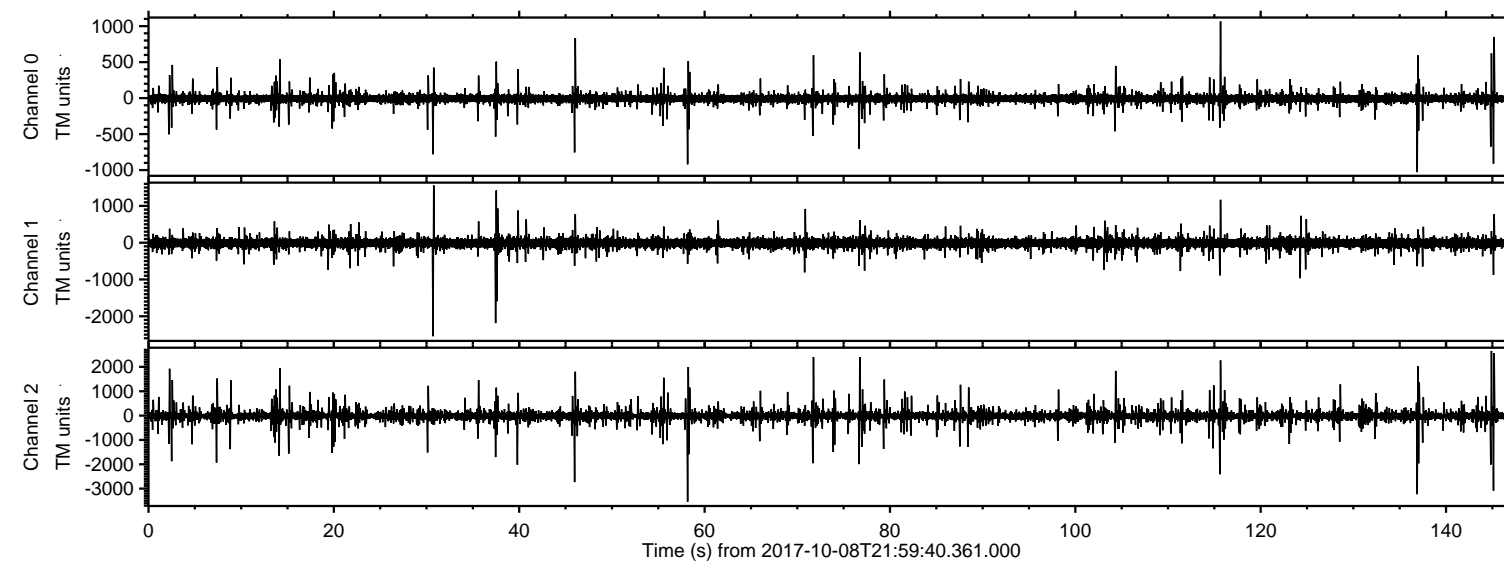
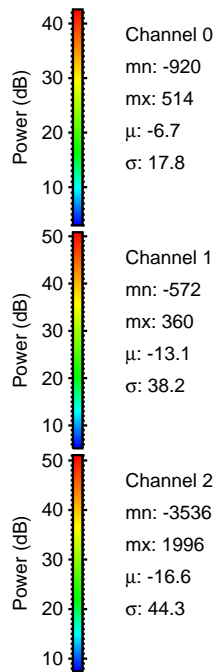
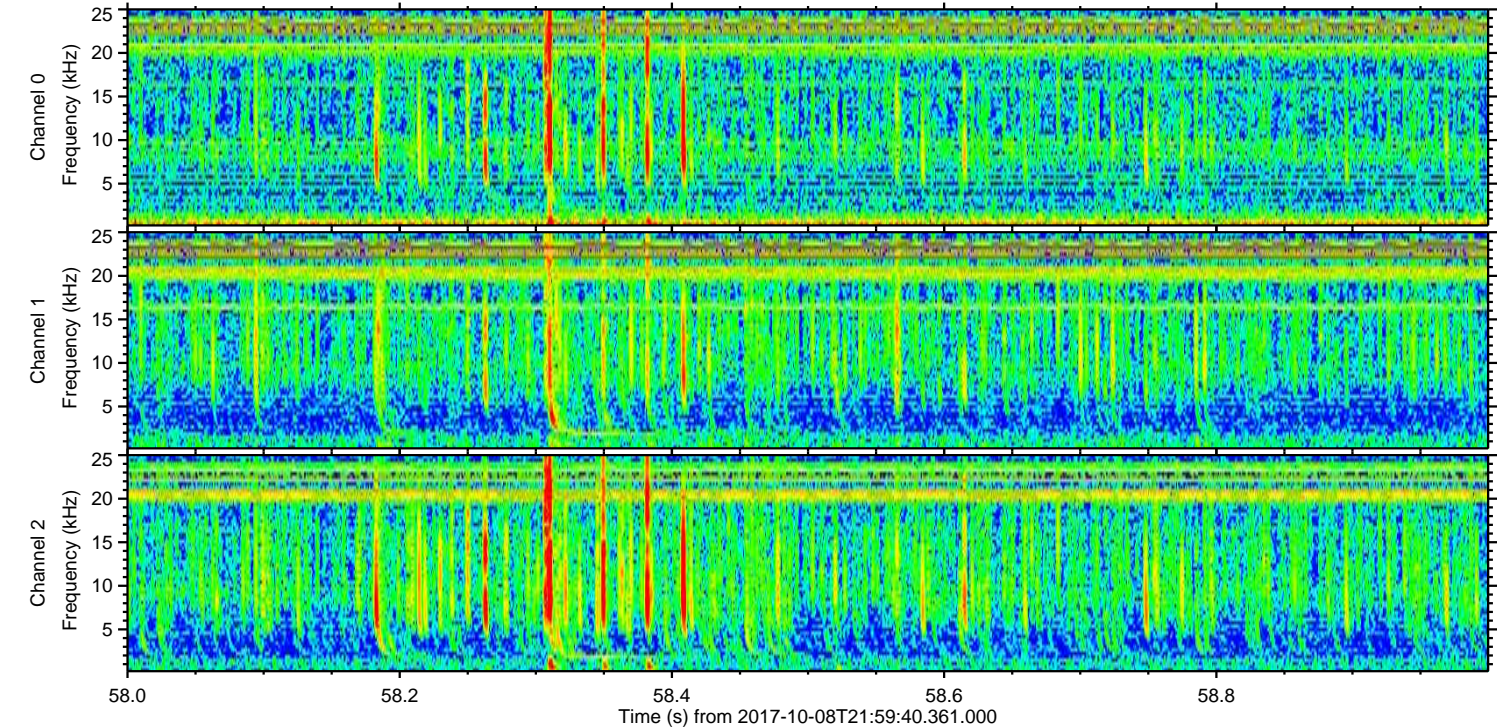
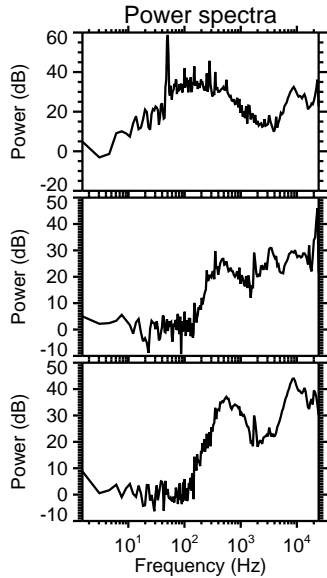
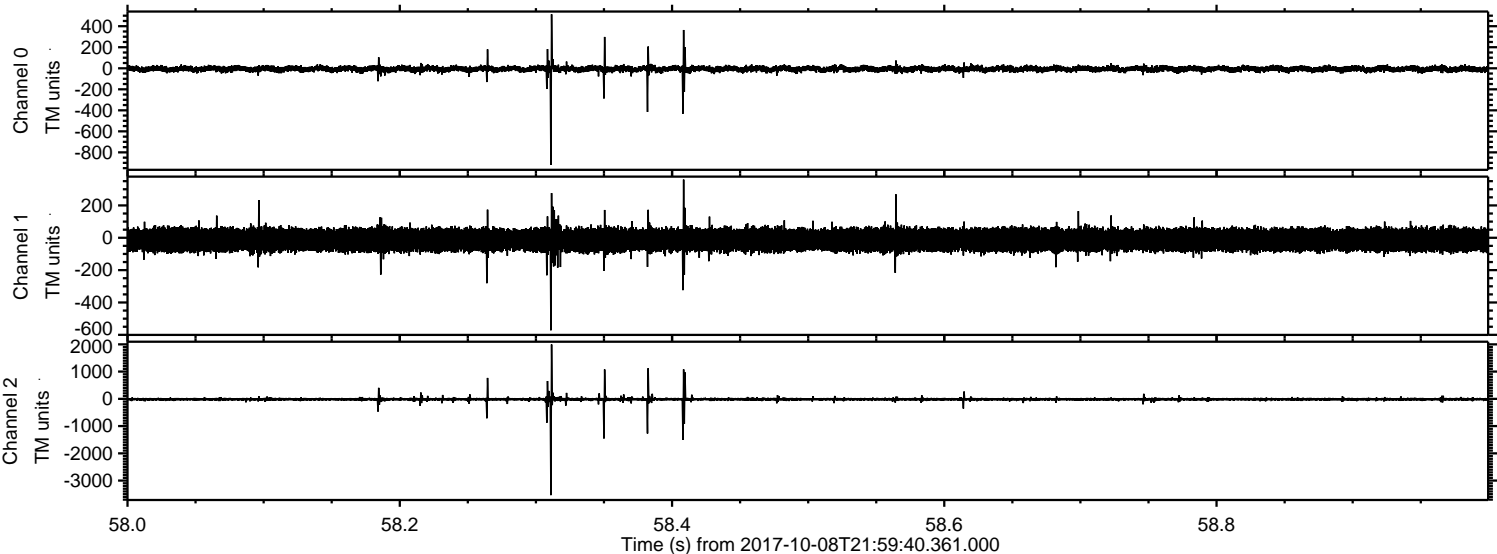


ELMAVAN 3D WAVEFORMS (Measured data sampled at 50 kHz) 51000 packets of 144 samples from 2017-10-08T21:59:40.361.000.

Processed Mon Oct 9 00:07:18 2017 by ELM ver.2012-10-06 from 001__elm20171008_215939__dat00.bin

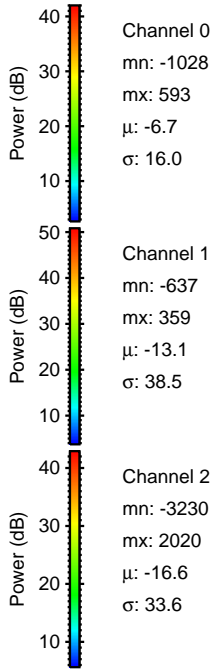
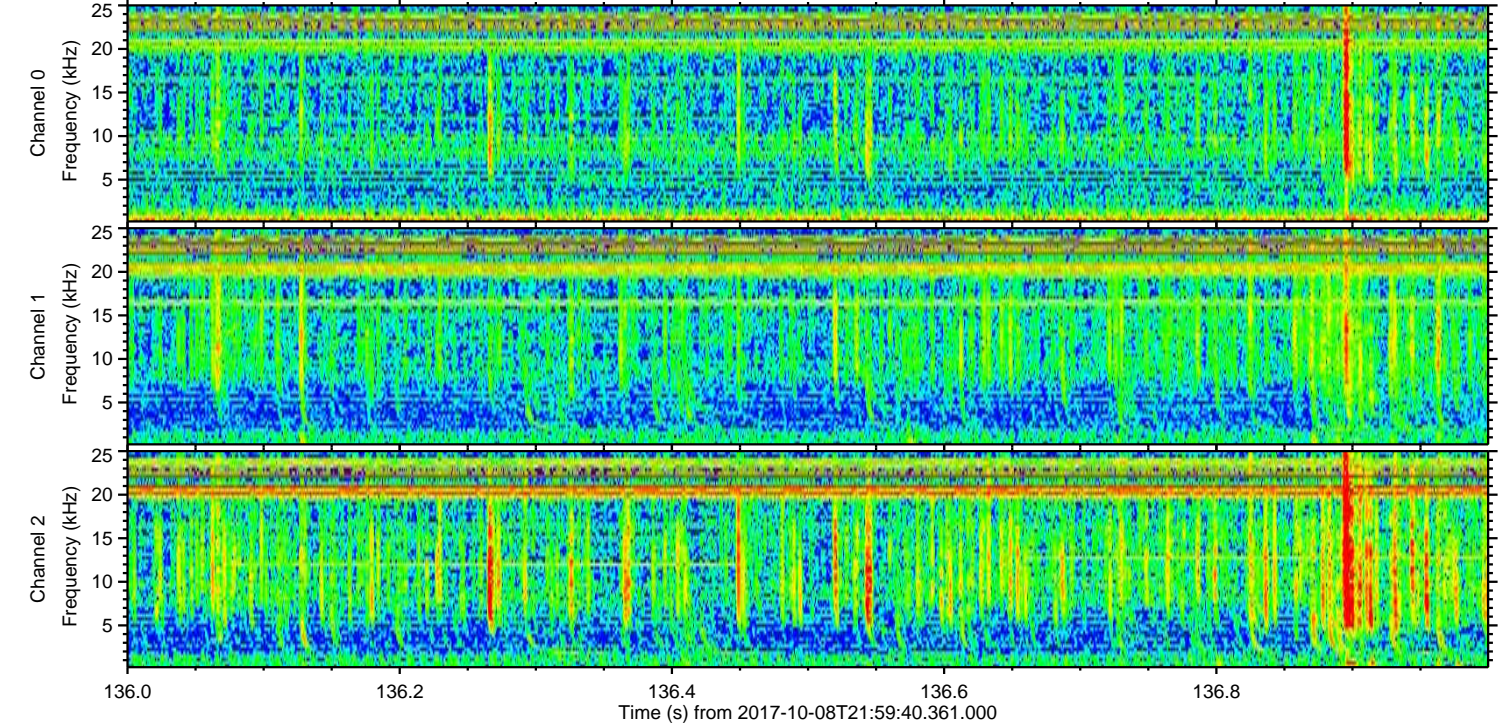
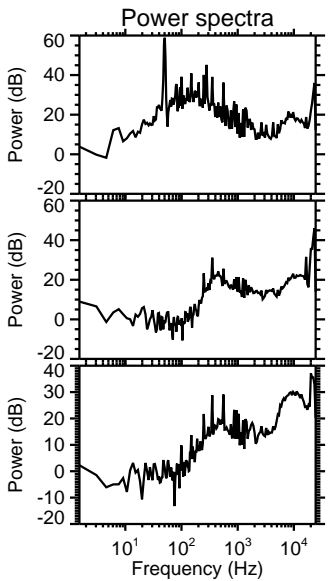
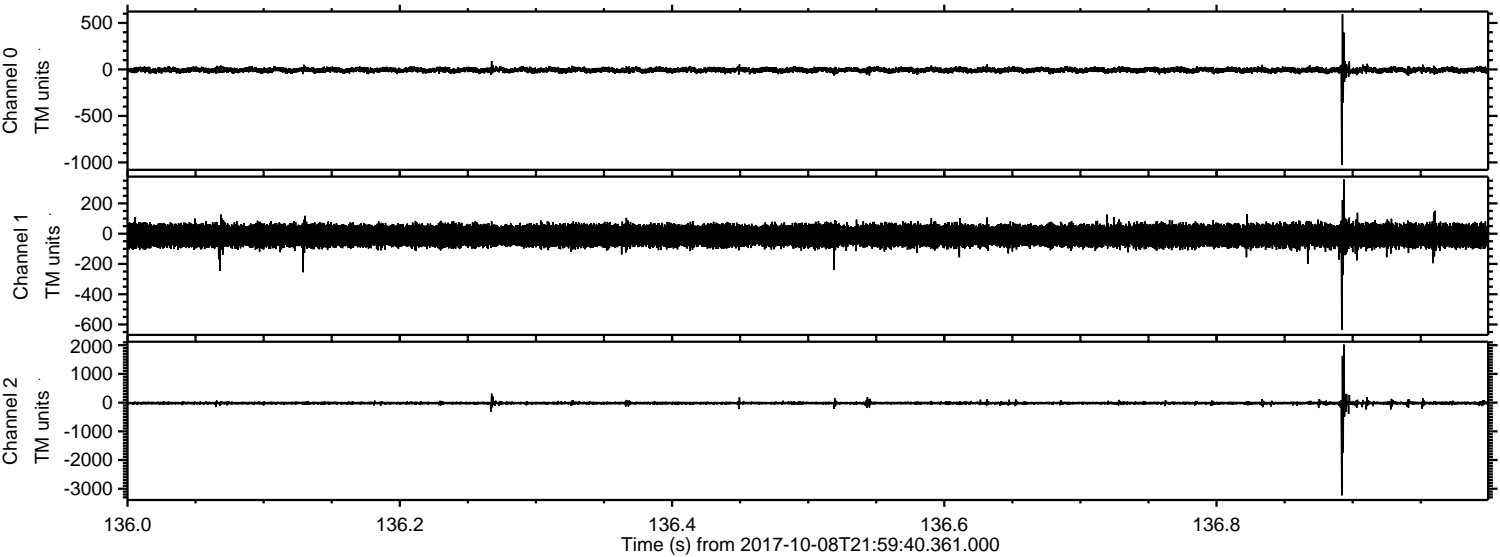


Processed Mon Oct 9 00:07:24 2017 by ELM ver.2012-10-06 from 001__elm20171008_215939__dat00.bin



ELMAVAN 3D WAVEFORMS (Measured data sampled at 50 kHz) 51000 packets of 144 samples from 2017-10-08T21:59:40.361.000. Part 137/147

Processed Mon Oct 9 00:07:25 2017 by ELM ver.2012-10-06 from 001__elm20171008_215939__dat00.bin



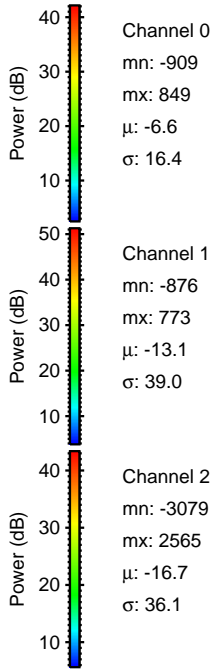
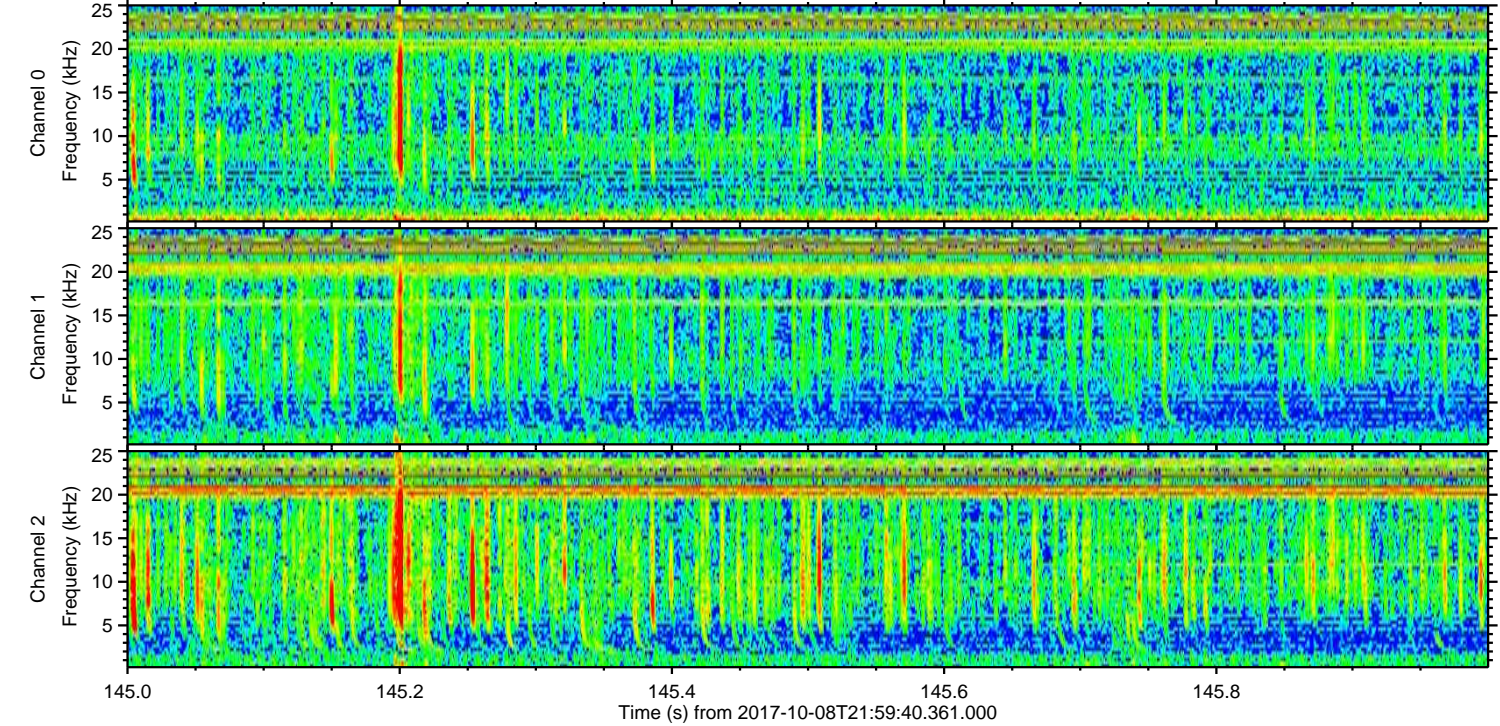
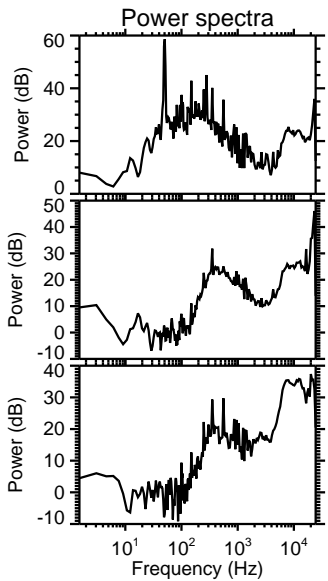
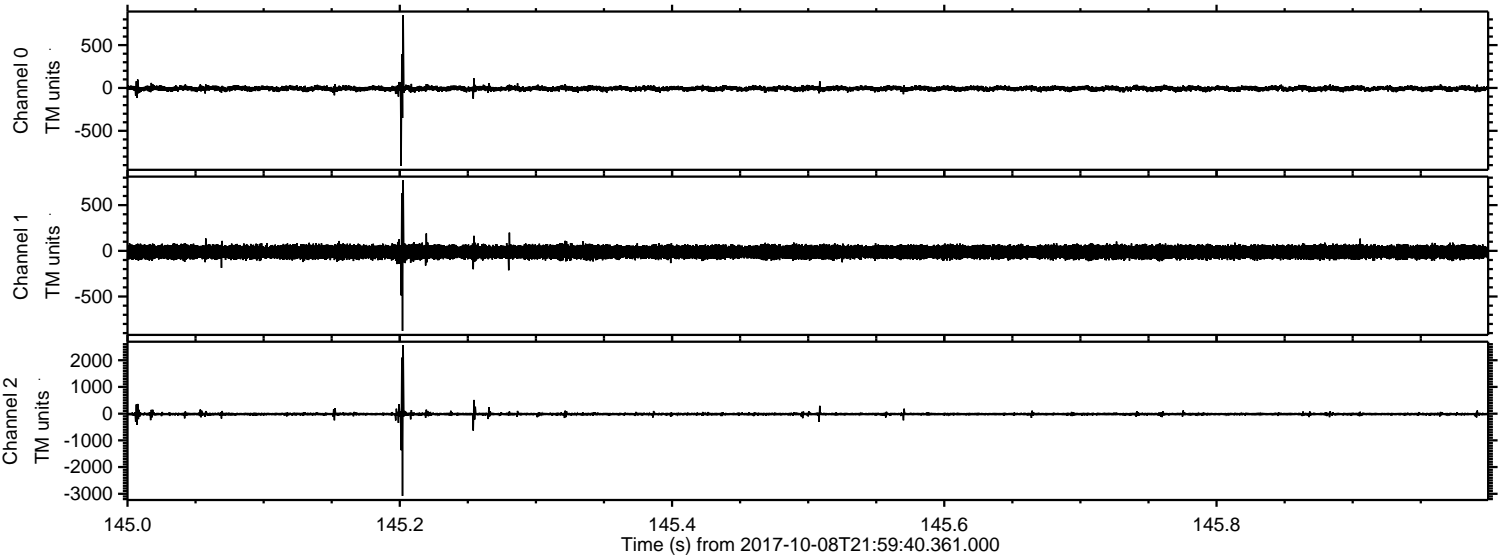
Channel 0
mn: -1028
mx: 593
 μ : -6.7
 σ : 16.0

Channel 1
mn: -637
mx: 359
 μ : -13.1
 σ : 38.5

Channel 2
mn: -3230
mx: 2020
 μ : -16.6
 σ : 33.6

ELMAVAN 3D WAVEFORMS (Measured data sampled at 50 kHz) 51000 packets of 144 samples from 2017-10-08T21:59:40.361.000. Part 146/147

Processed Mon Oct 9 00:07:26 2017 by ELM ver.2012-10-06 from 001__elm20171008_215939__dat00.bin



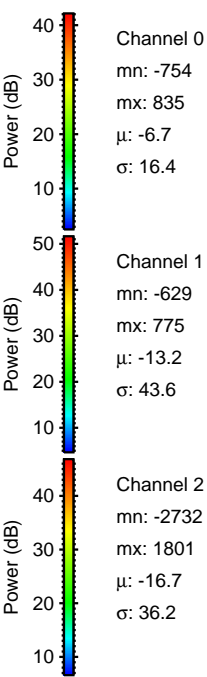
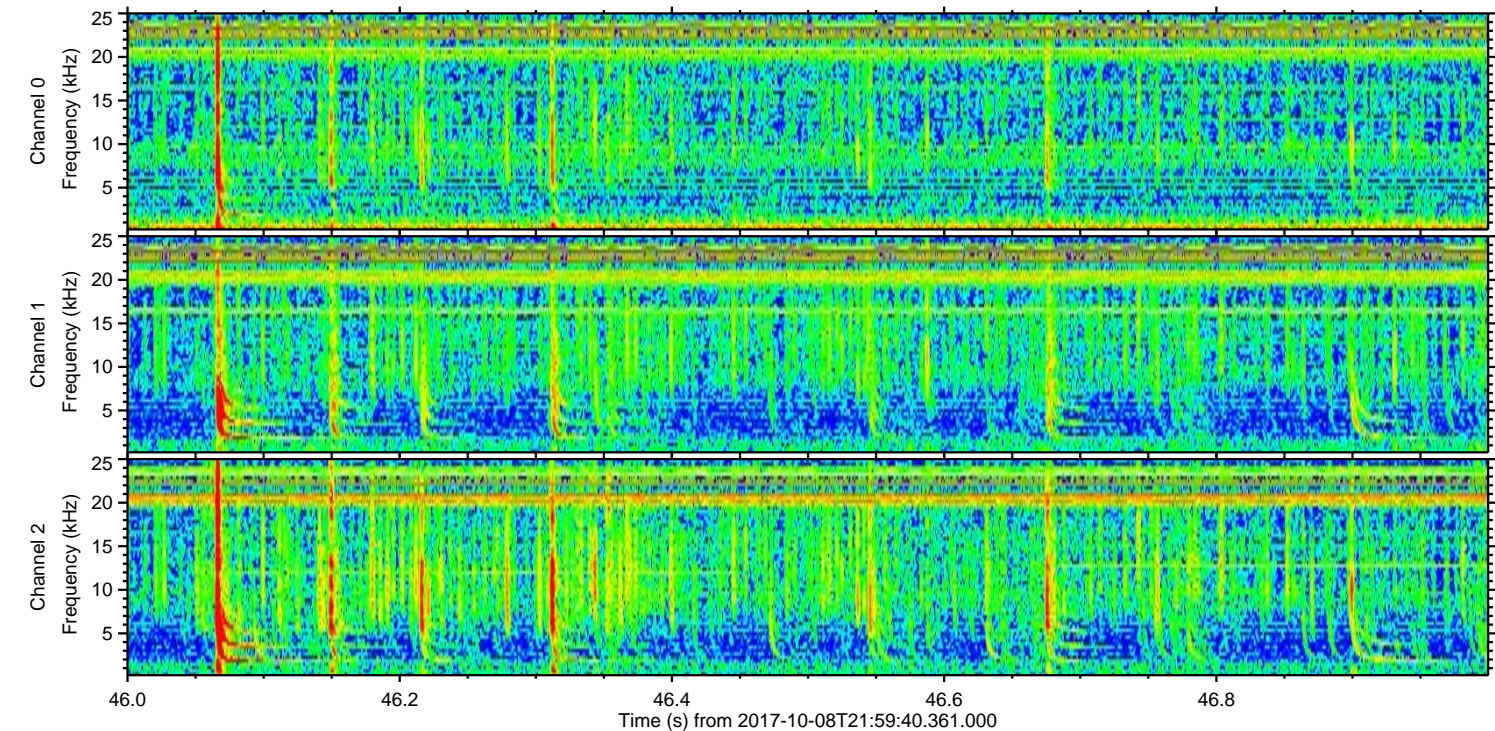
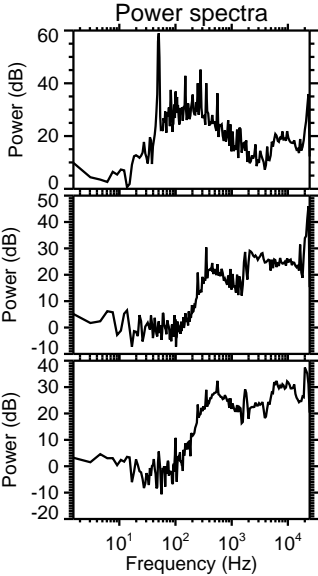
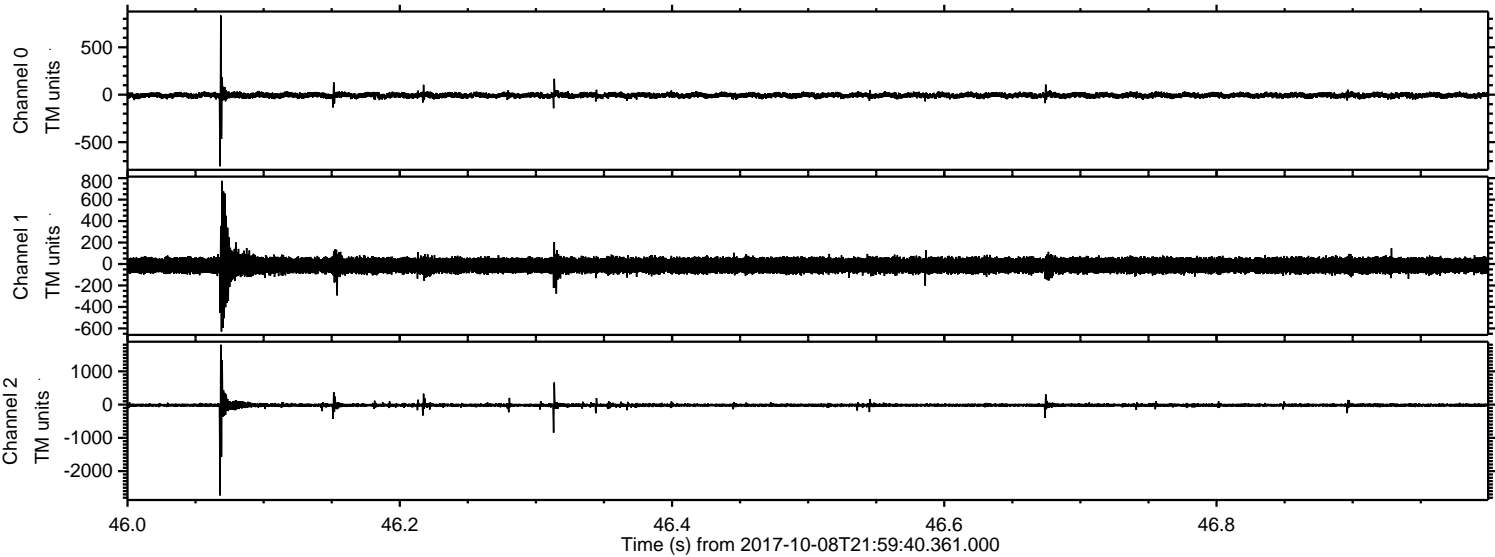
Channel 0
mn: -909
mx: 849
 μ : -6.6
 σ : 16.4

Channel 1
mn: -876
mx: 773
 μ : -13.1
 σ : 39.0

Channel 2
mn: -3079
mx: 2565
 μ : -16.7
 σ : 36.1

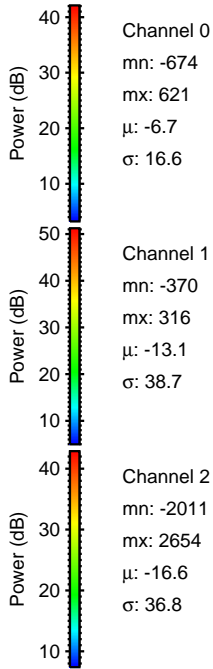
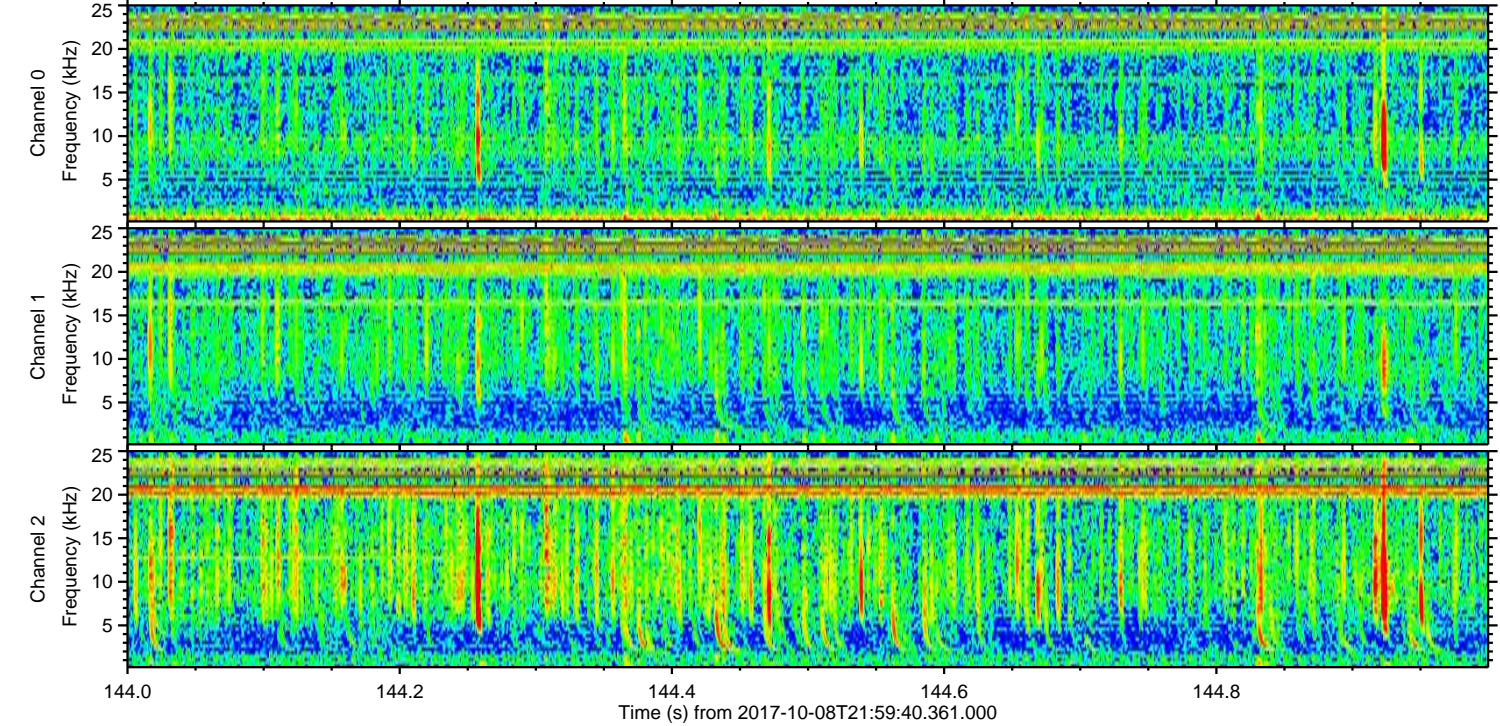
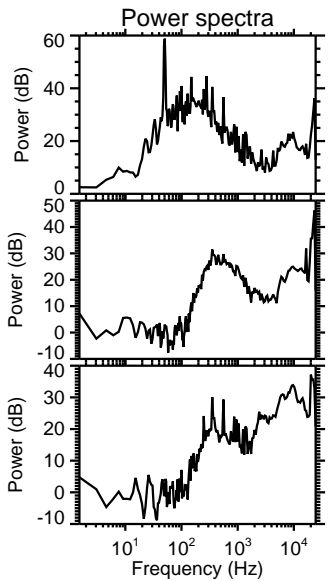
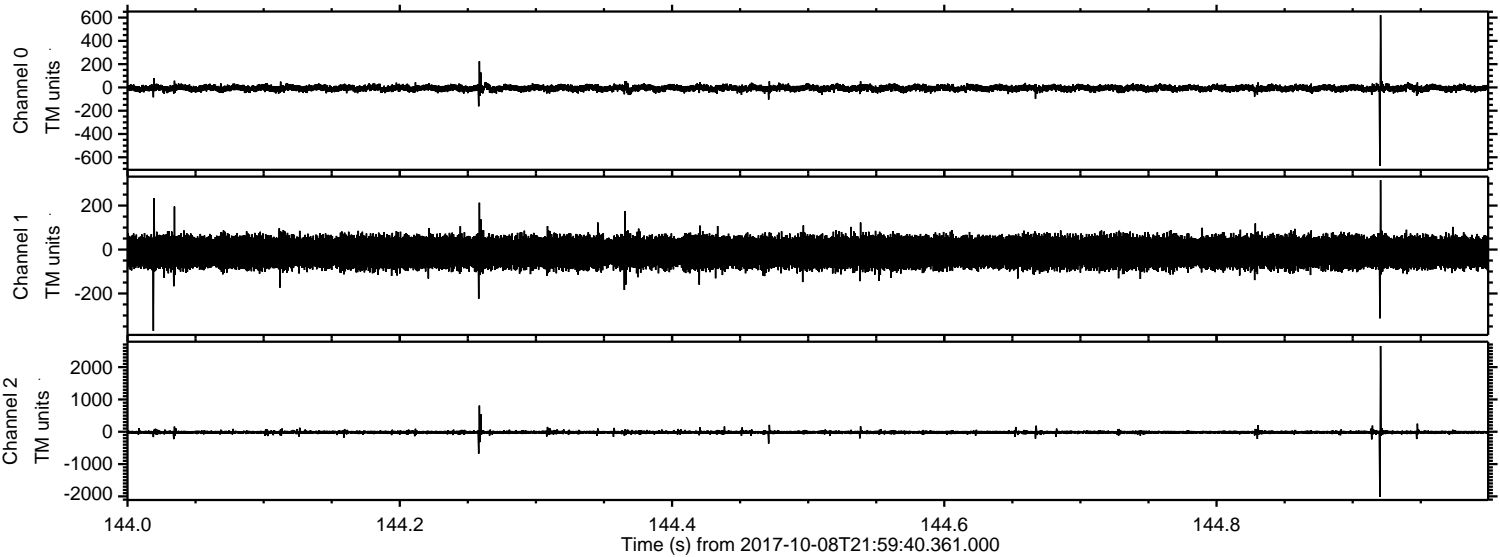
ELMAVAN 3D WAVEFORMS (Measured data sampled at 50 kHz) 51000 packets of 144 samples from 2017-10-08T21:59:40.361.000. Part 47/147

Processed Mon Oct 9 00:07:26 2017 by ELM ver.2012-10-06 from 001__elm20171008_215939__dat00.bin



ELMAVAN 3D WAVEFORMS (Measured data sampled at 50 kHz) 51000 packets of 144 samples from 2017-10-08T21:59:40.361.000. Part 145/147

Processed Mon Oct 9 00:07:27 2017 by ELM ver.2012-10-06 from 001__elm20171008_215939__dat00.bin

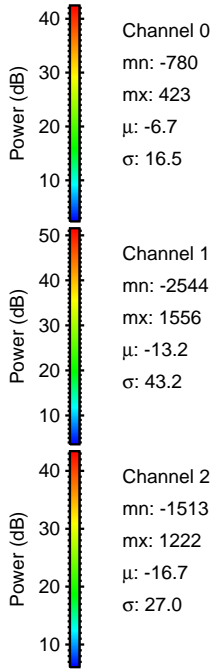
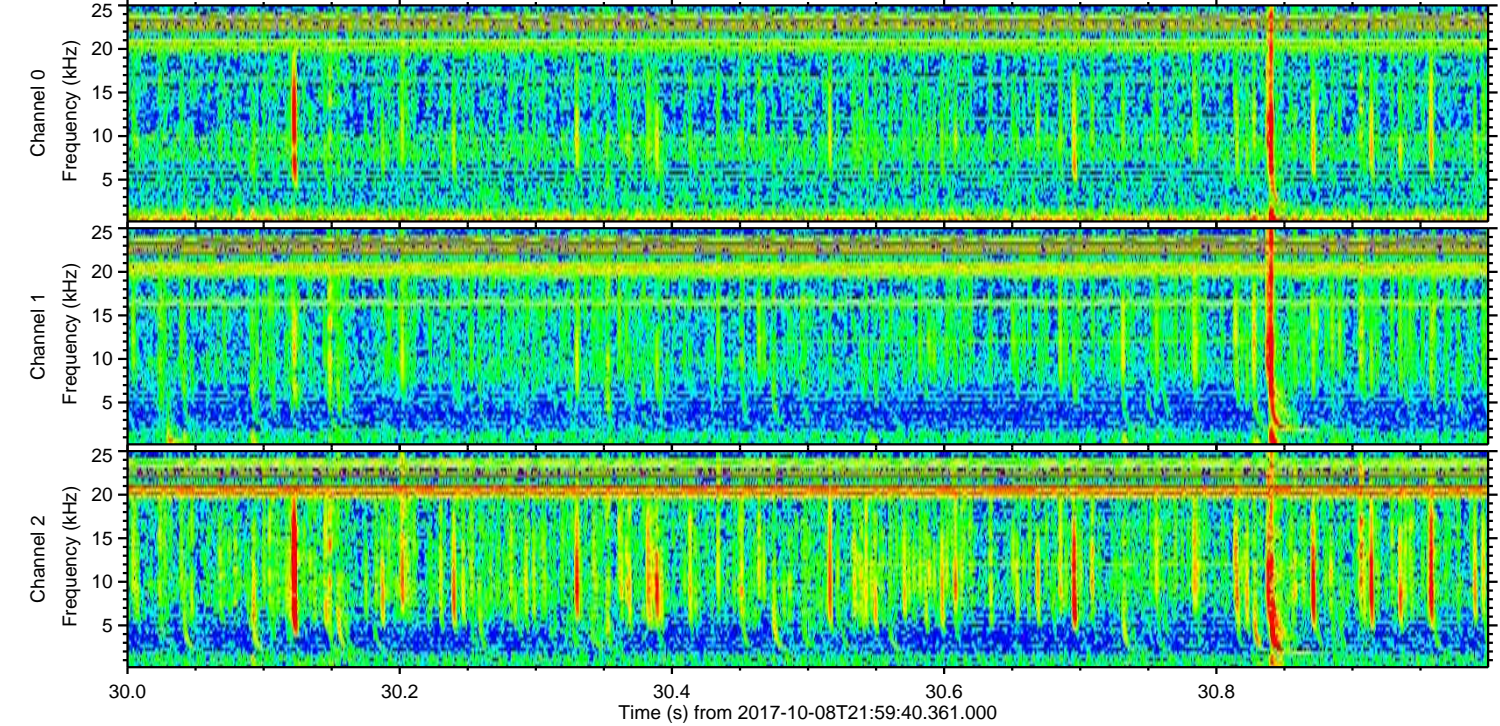
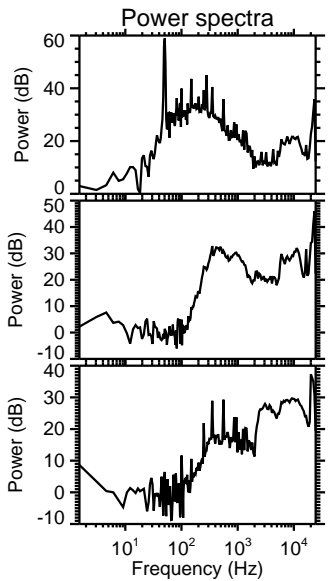
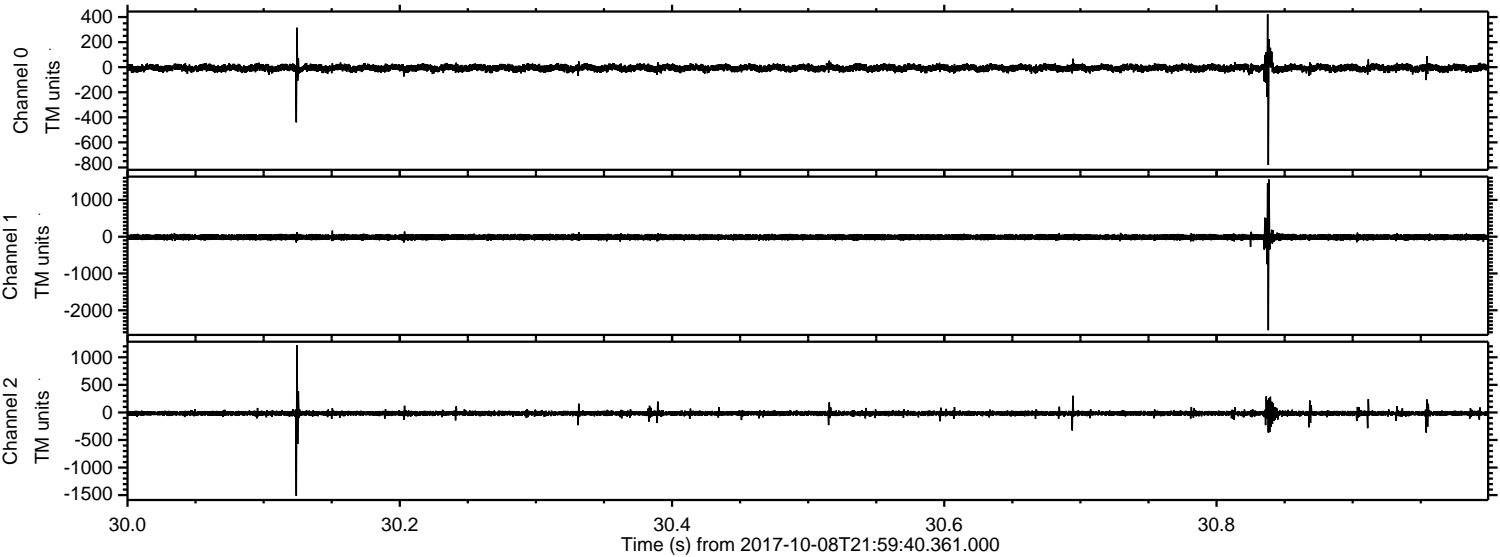


Channel 0
mn: -674
mx: 621
 μ : -6.7
 σ : 16.6

Channel 1
mn: -370
mx: 316
 μ : -13.1
 σ : 38.7

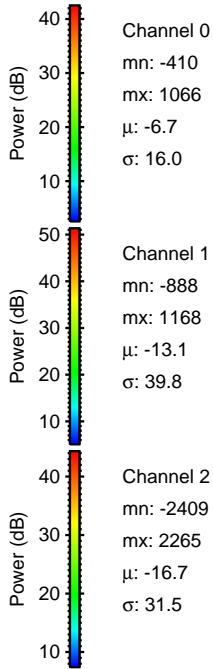
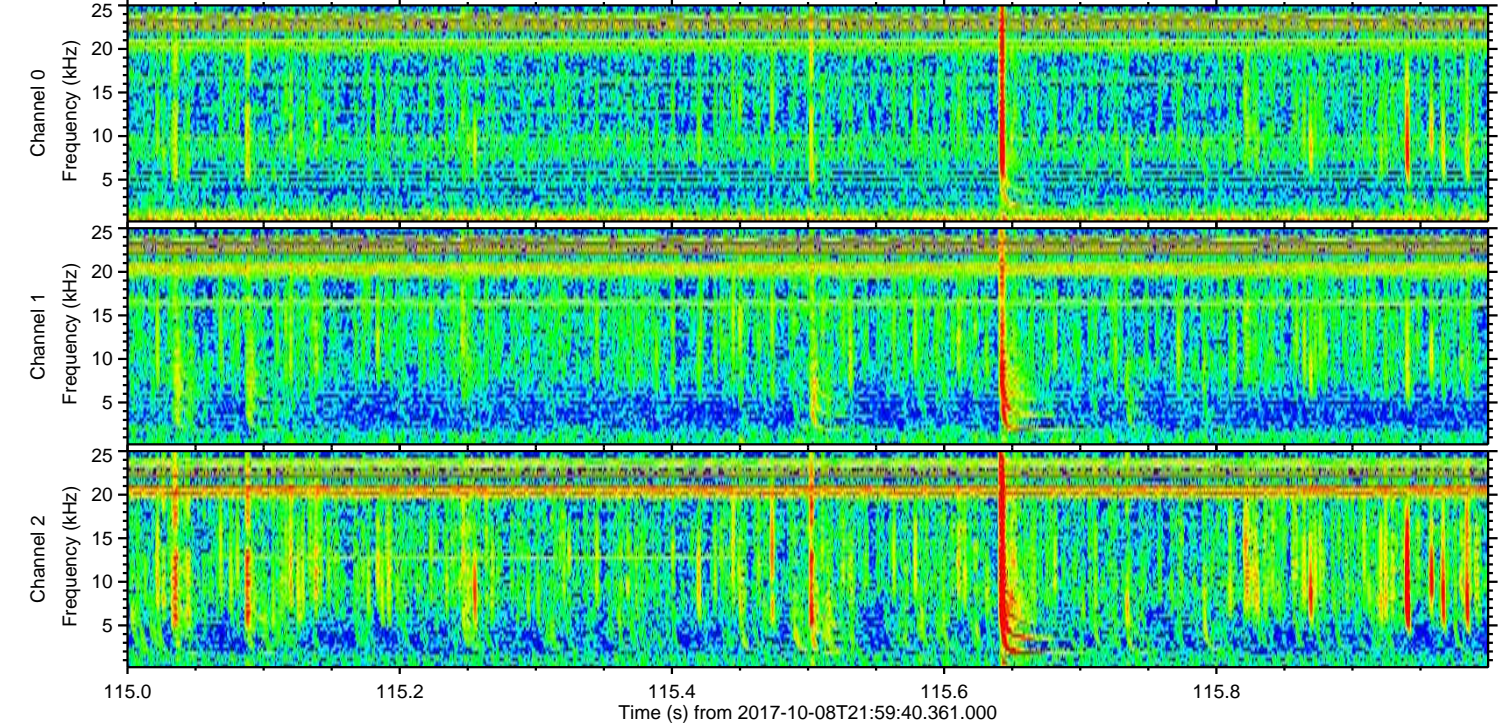
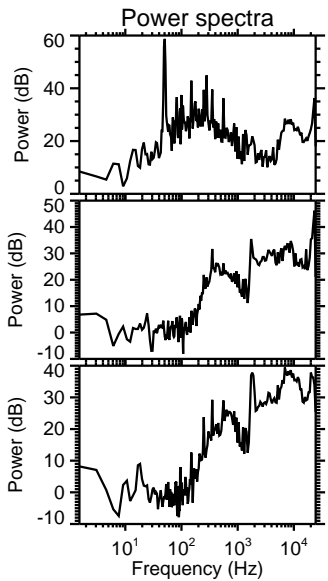
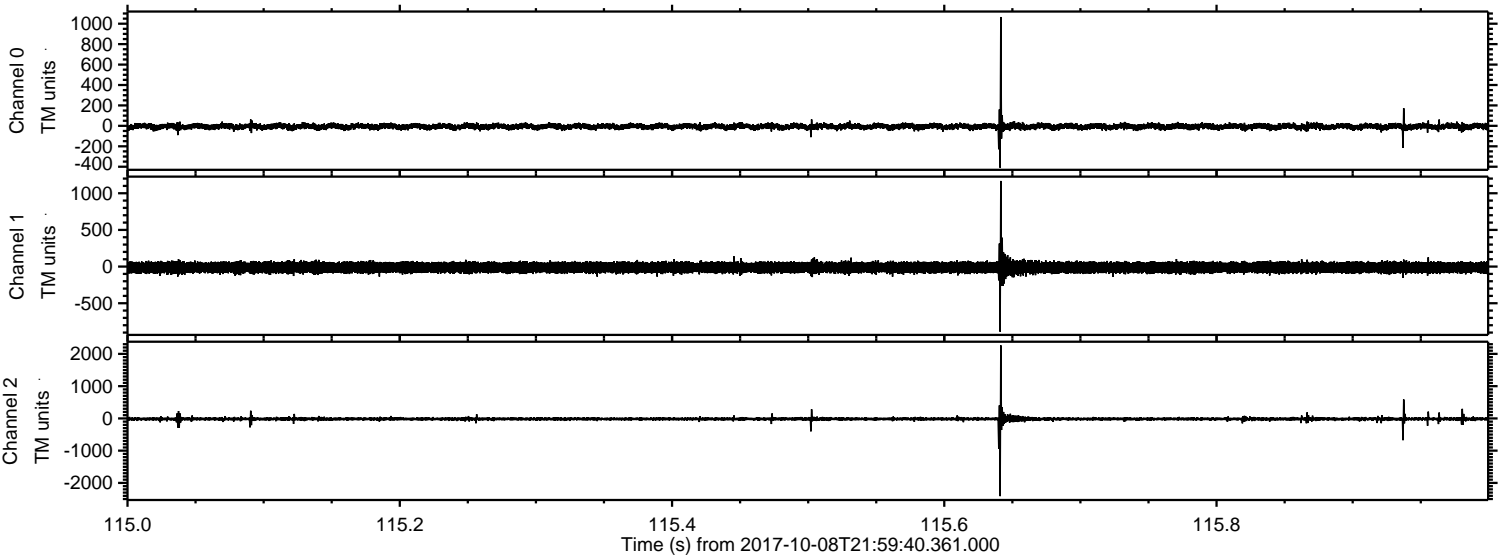
Channel 2
mn: -2011
mx: 2654
 μ : -16.6
 σ : 36.8

Processed Mon Oct 9 00:07:28 2017 by ELM ver.2012-10-06 from 001__elm20171008_215939__dat00.bin



ELMAVAN 3D WAVEFORMS (Measured data sampled at 50 kHz) 51000 packets of 144 samples from 2017-10-08T21:59:40.361.000. Part 116/147

Processed Mon Oct 9 00:07:28 2017 by ELM ver.2012-10-06 from 001__elm20171008_215939__dat00.bin



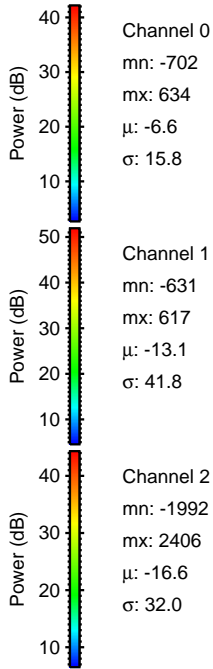
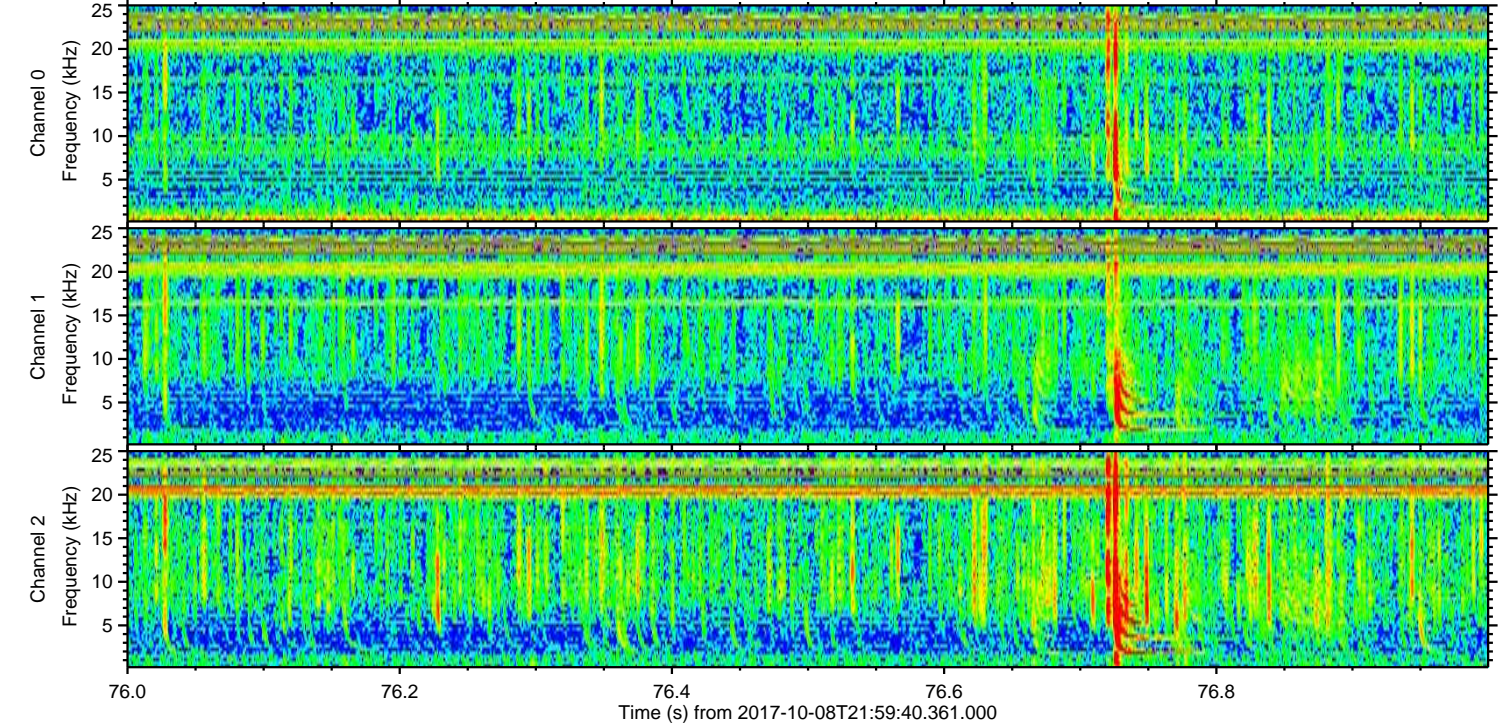
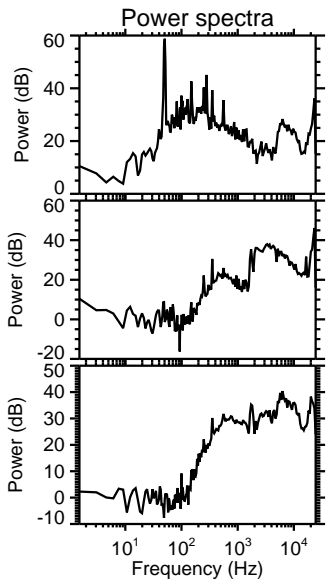
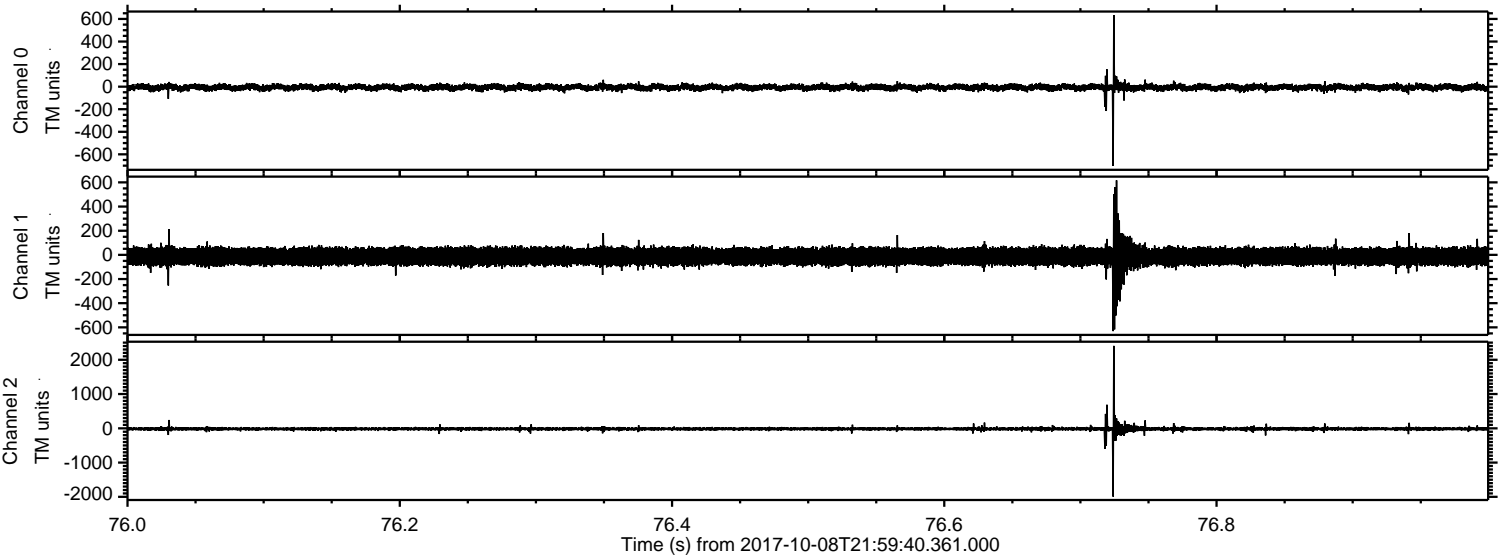
Channel 0
mn: -410
mx: 1066
 μ : -6.7
 σ : 16.0

Channel 1
mn: -888
mx: 1168
 μ : -13.1
 σ : 39.8

Channel 2
mn: -2409
mx: 2265
 μ : -16.7
 σ : 31.5

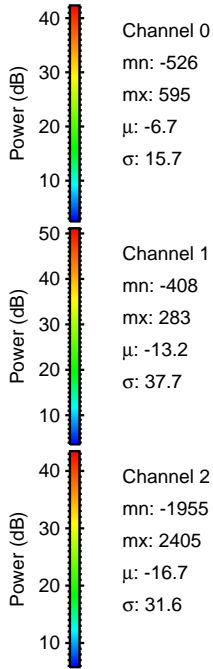
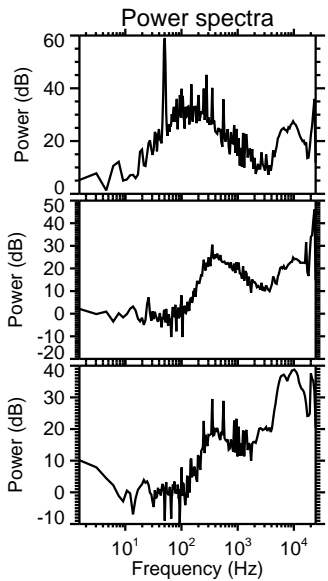
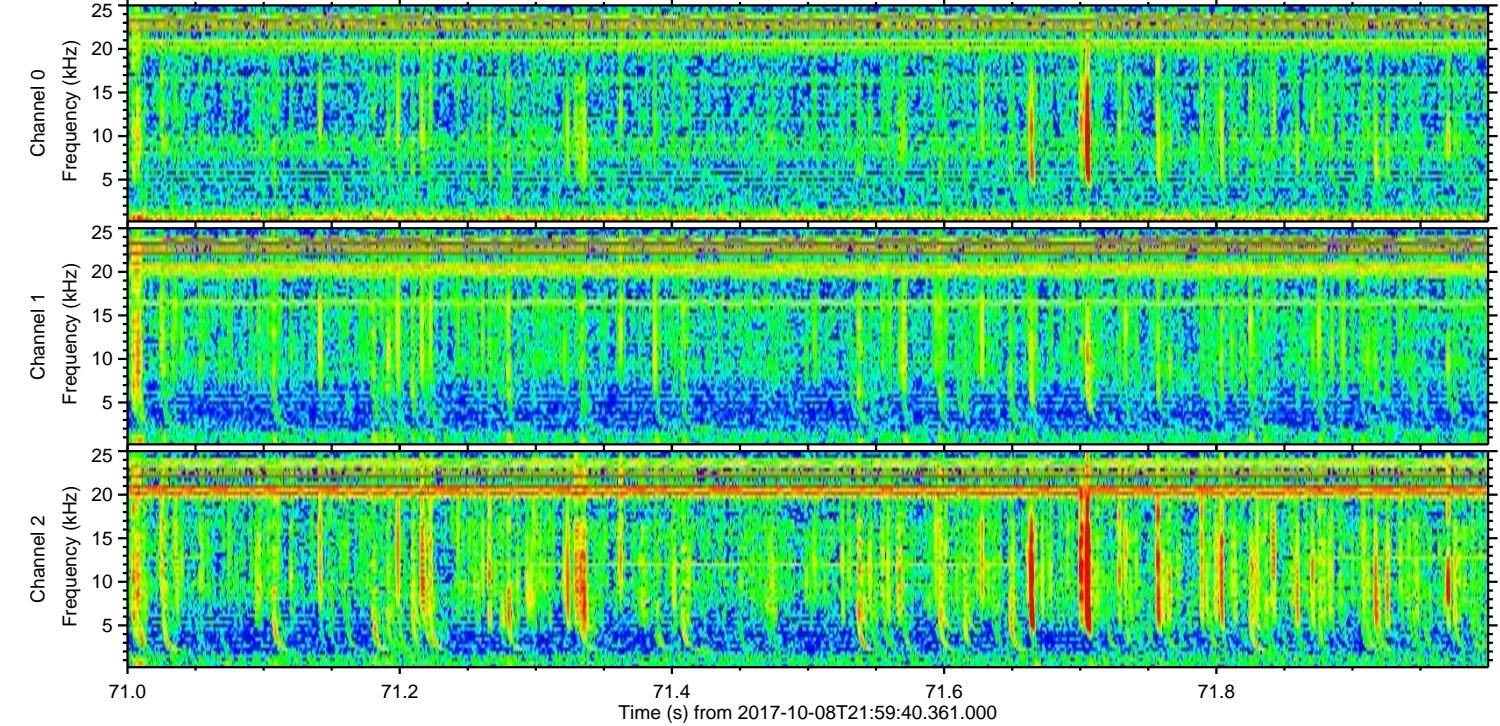
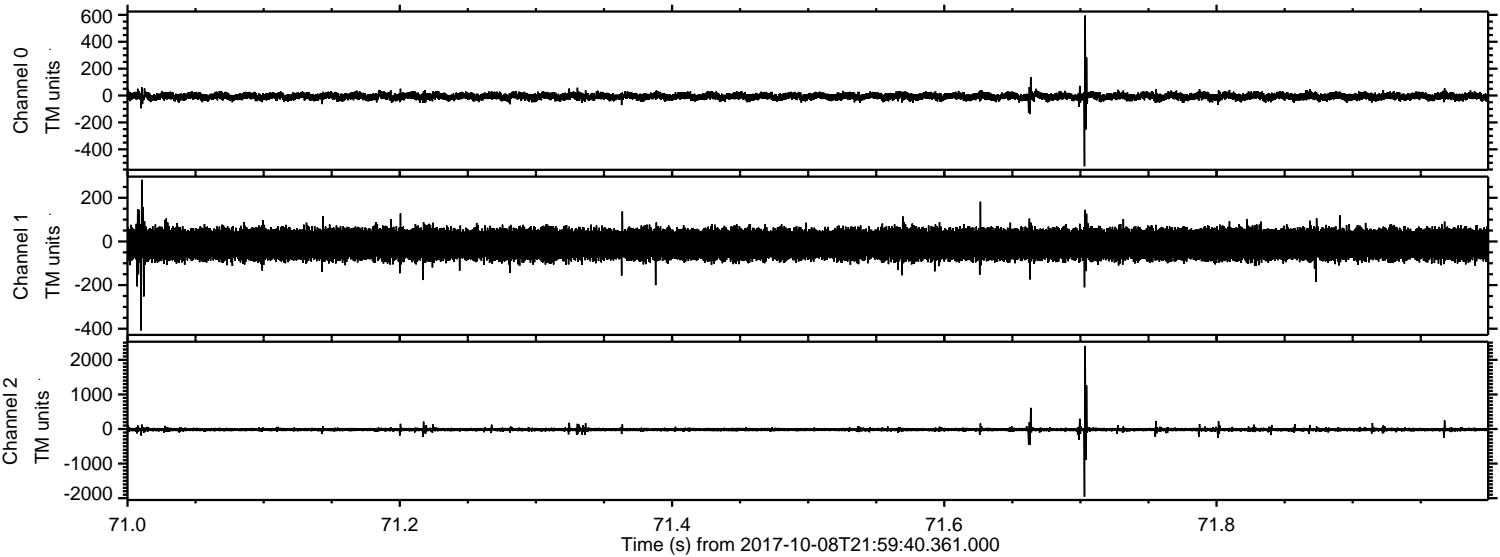
ELMAVAN 3D WAVEFORMS (Measured data sampled at 50 kHz) 51000 packets of 144 samples from 2017-10-08T21:59:40.361.000. Part 77/147

Processed Mon Oct 9 00:07:29 2017 by ELM ver.2012-10-06 from 001__elm20171008_215939__dat00.bin



ELMAVAN 3D WAVEFORMS (Measured data sampled at 50 kHz) 51000 packets of 144 samples from 2017-10-08T21:59:40.361.000. Part 72/147

Processed Mon Oct 9 00:07:30 2017 by ELM ver.2012-10-06 from 001__elm20171008_215939__dat00.bin



Processed Mon Oct 9 00:07:30 2017 by ELM ver.2012-10-06 from 001__elm20171008_215939__dat00.bin

