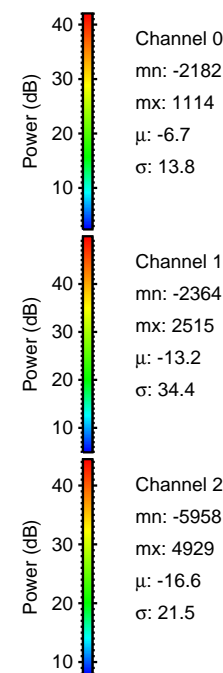
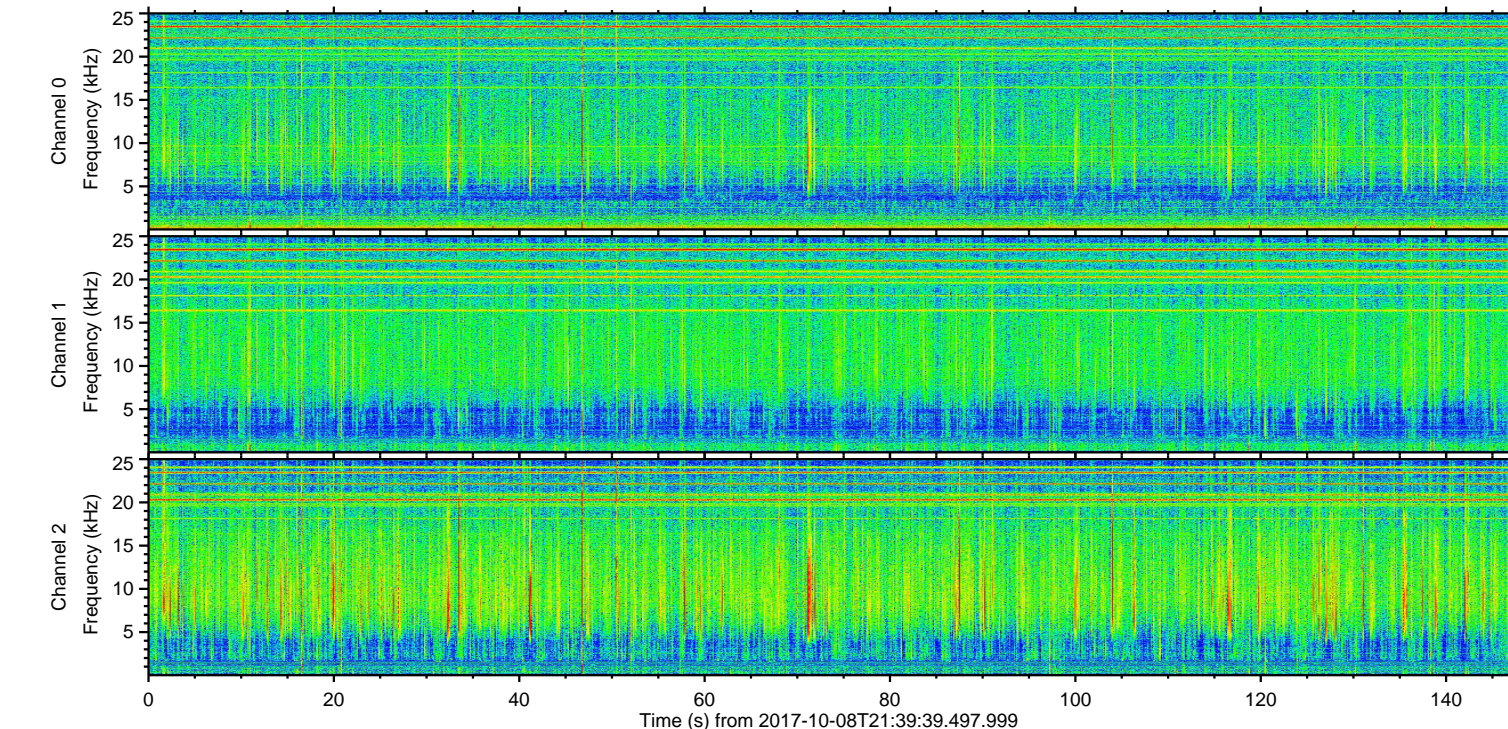
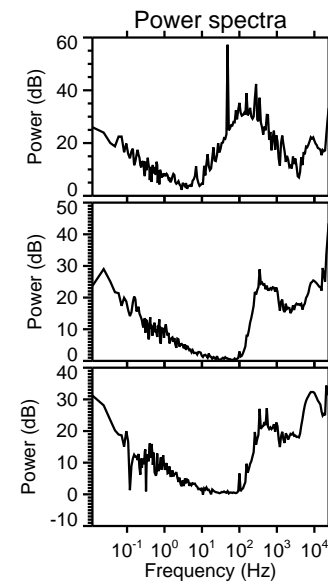
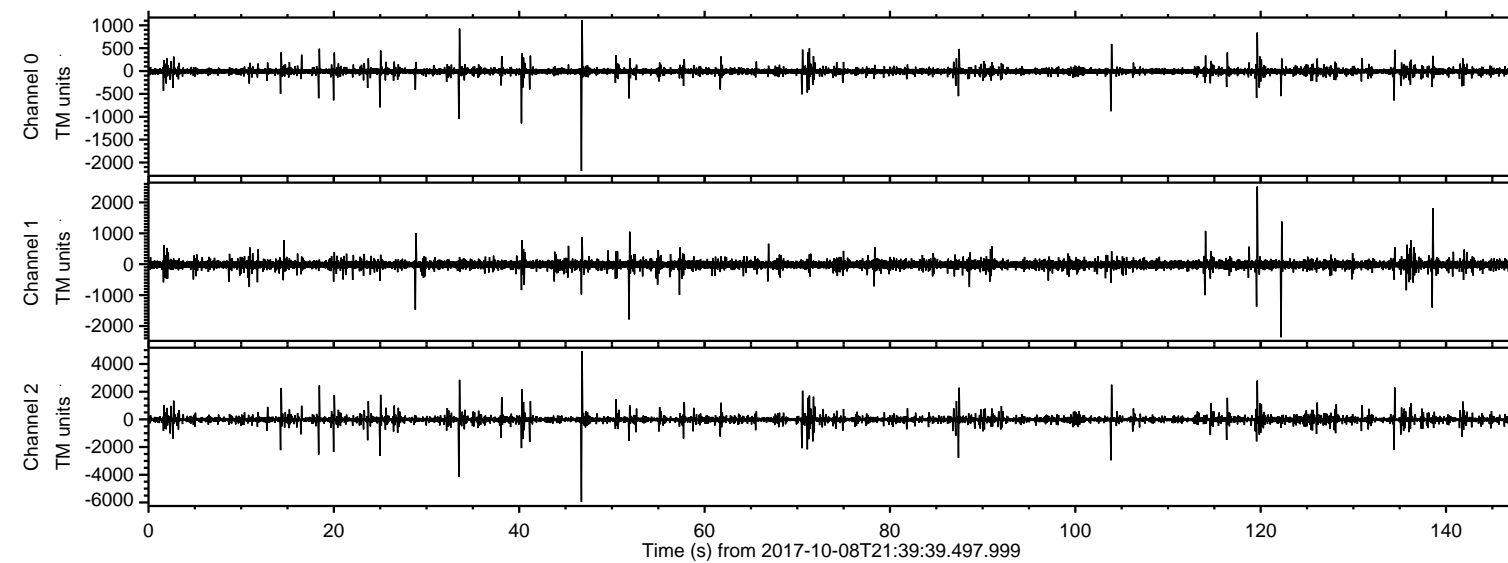


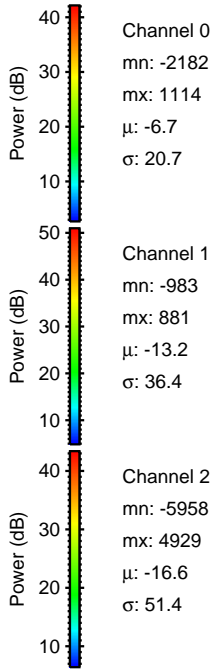
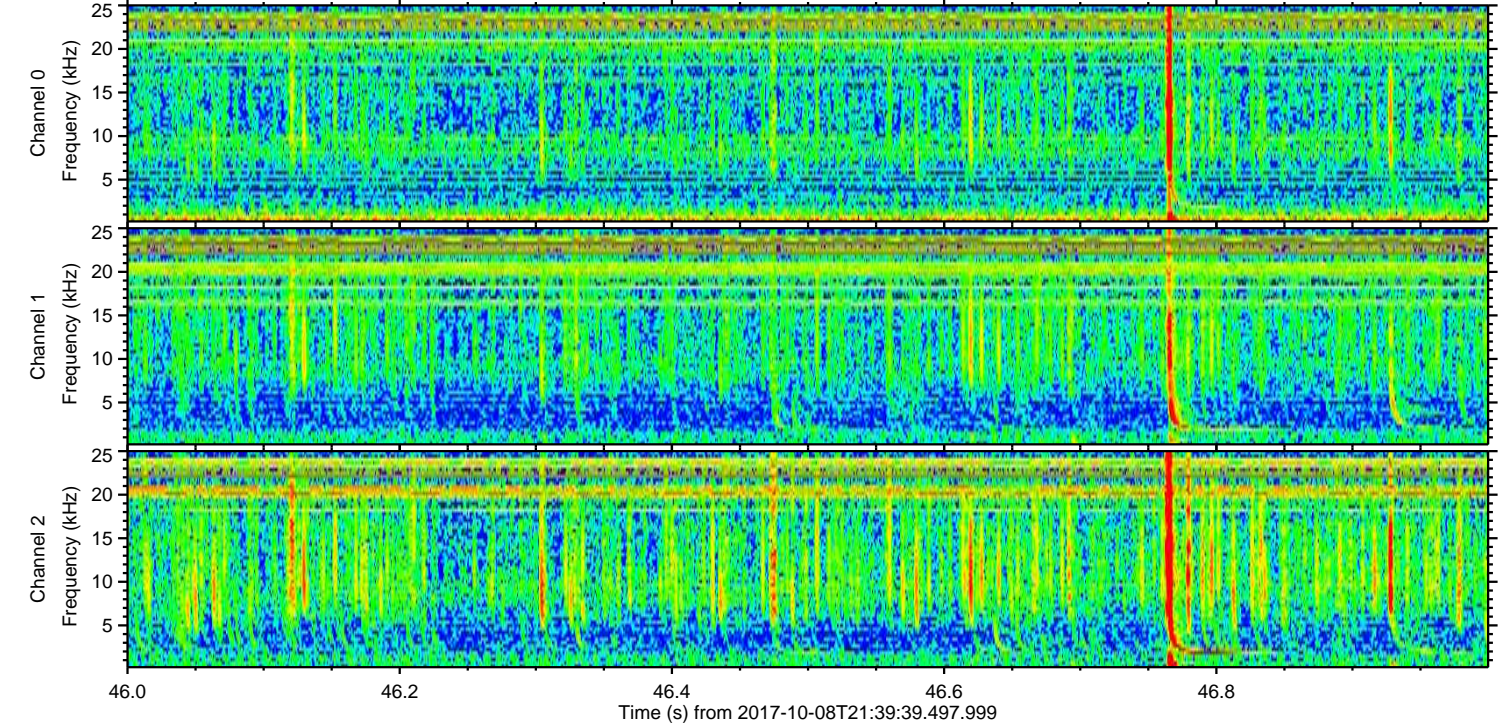
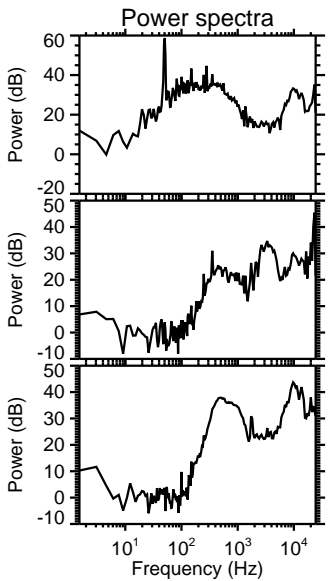
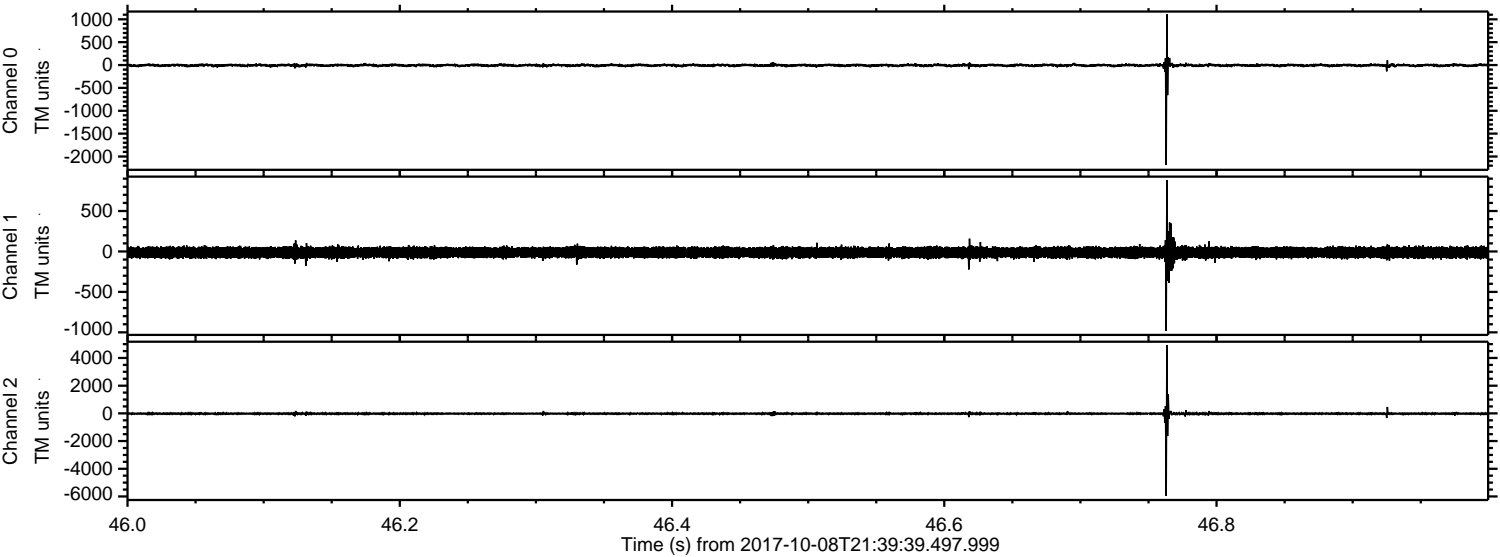
ELMAVAN 3D WAVEFORMS (Measured data sampled at 50 kHz) 51000 packets of 144 samples from 2017-10-08T21:39:39.497.999.

Processed Sun Oct 8 23:47:18 2017 by ELM ver.2012-10-06 from 001__elm20171008_213938__dat00.bin



ELMAVAN 3D WAVEFORMS (Measured data sampled at 50 kHz) 51000 packets of 144 samples from 2017-10-08T21:39:39.497.999. Part 47/147

Processed Sun Oct 8 23:47:24 2017 by ELM ver.2012-10-06 from 001__elm20171008_213938__dat00.bin



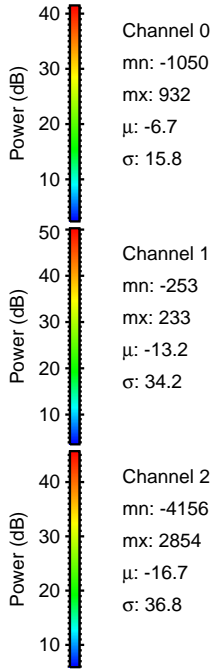
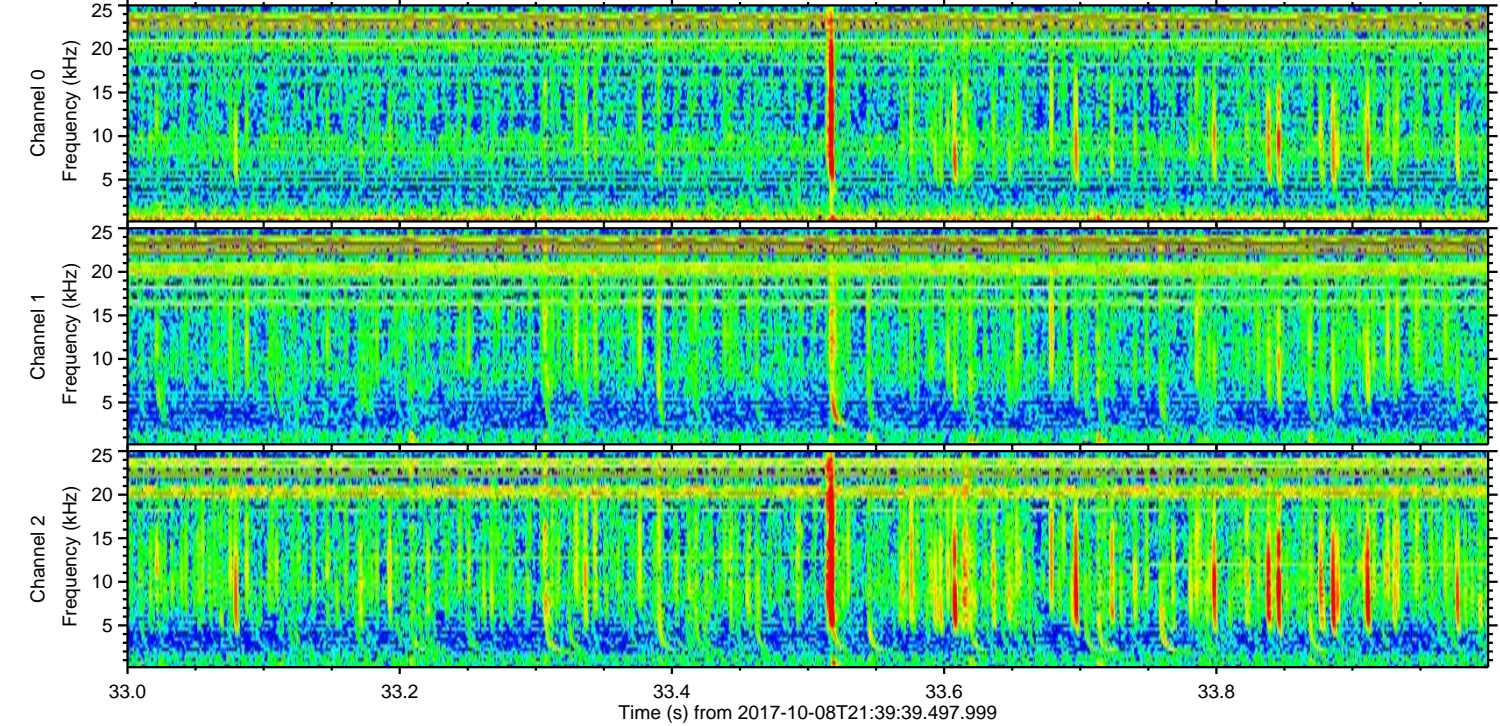
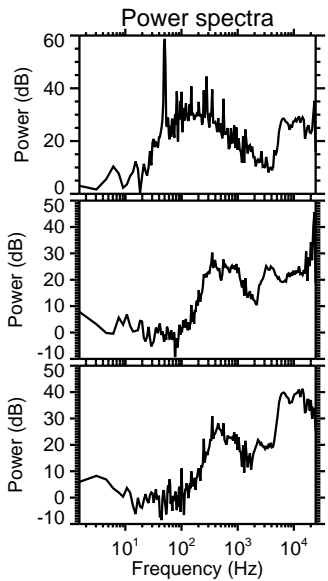
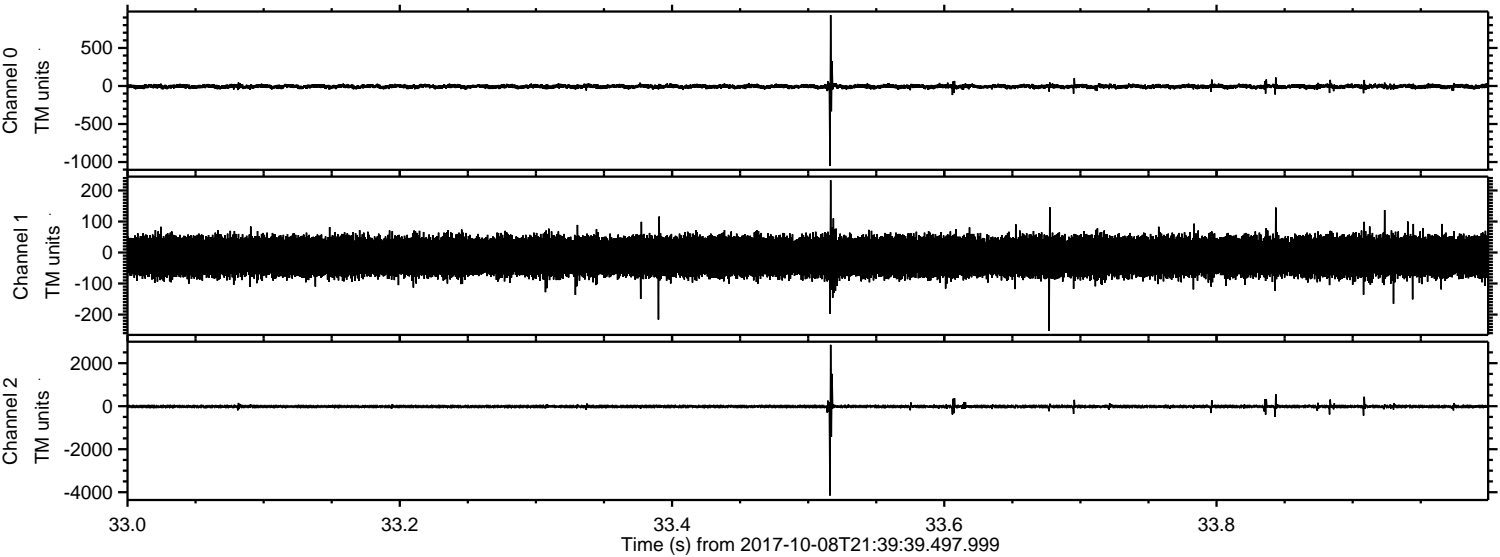
Channel 0
mn: -2182
mx: 1114
 μ : -6.7
 σ : 20.7

Channel 1
mn: -983
mx: 881
 μ : -13.2
 σ : 36.4

Channel 2
mn: -5958
mx: 4929
 μ : -16.6
 σ : 51.4

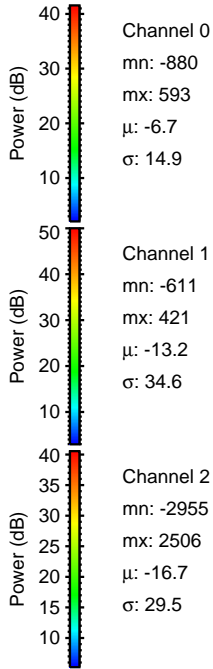
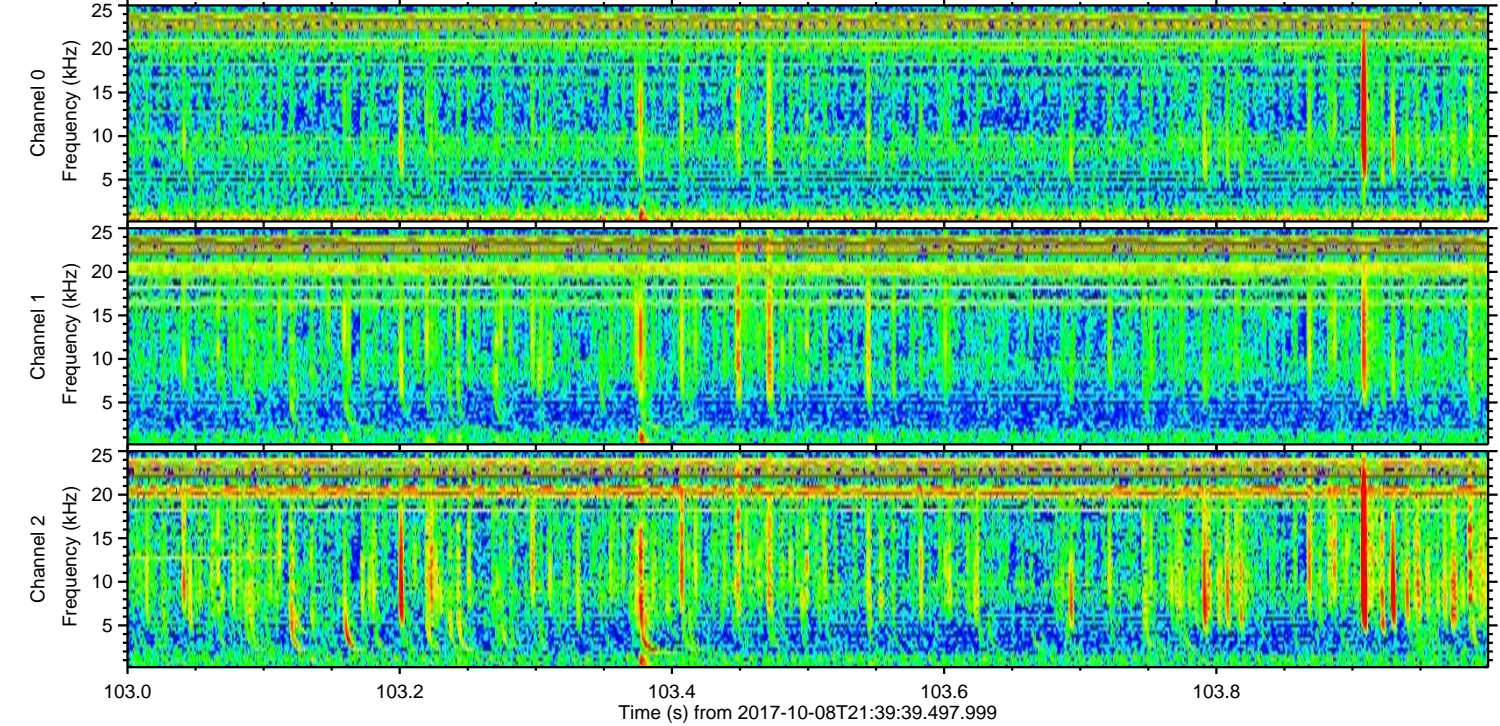
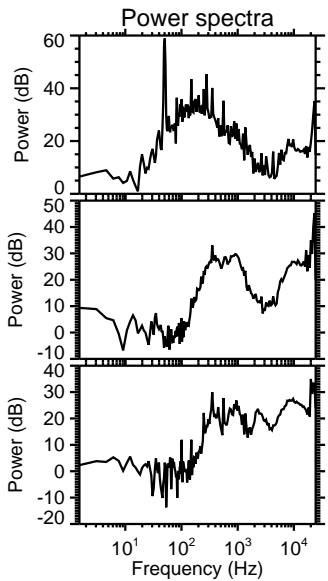
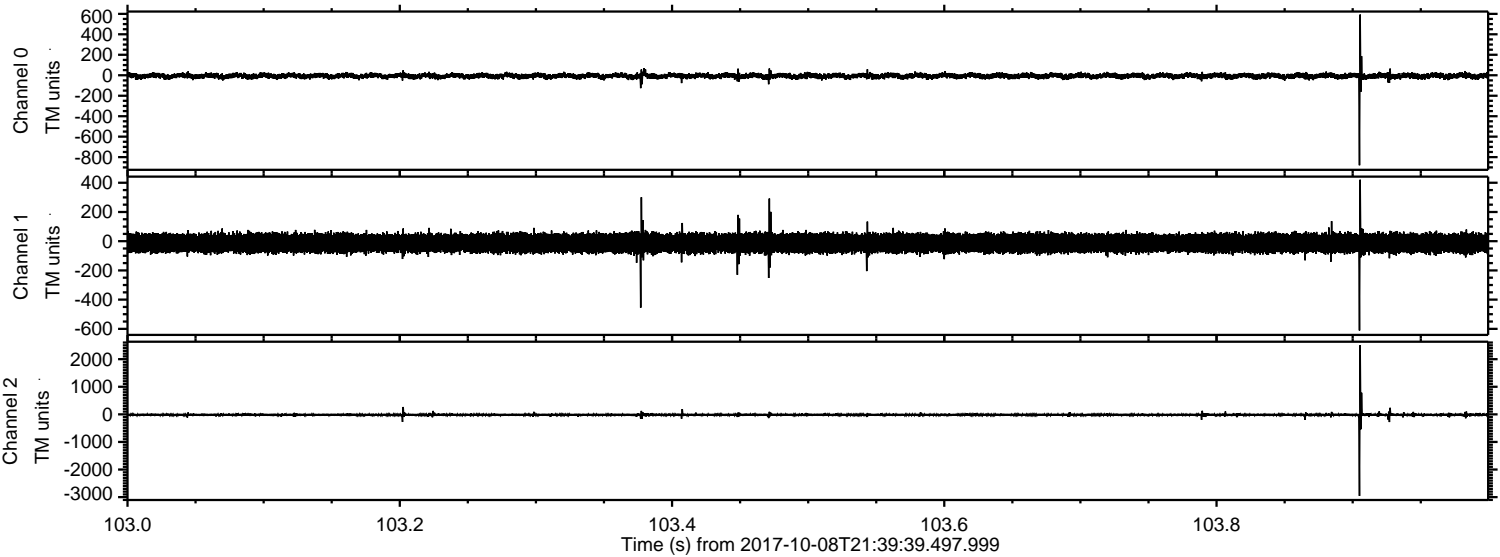
ELMAVAN 3D WAVEFORMS (Measured data sampled at 50 kHz) 51000 packets of 144 samples from 2017-10-08T21:39:39.497.999. Part 34/147

Processed Sun Oct 8 23:47:25 2017 by ELM ver.2012-10-06 from 001__elm20171008_213938__dat00.bin



ELMAVAN 3D WAVEFORMS (Measured data sampled at 50 kHz) 51000 packets of 144 samples from 2017-10-08T21:39:39.497.999. Part 104/147

Processed Sun Oct 8 23:47:26 2017 by ELM ver.2012-10-06 from 001__elm20171008_213938__dat00.bin



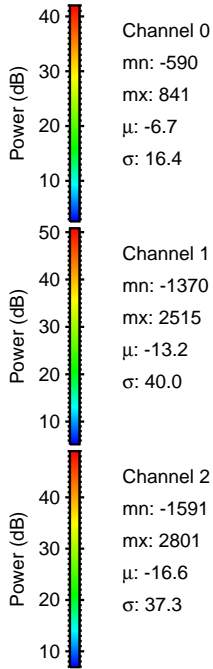
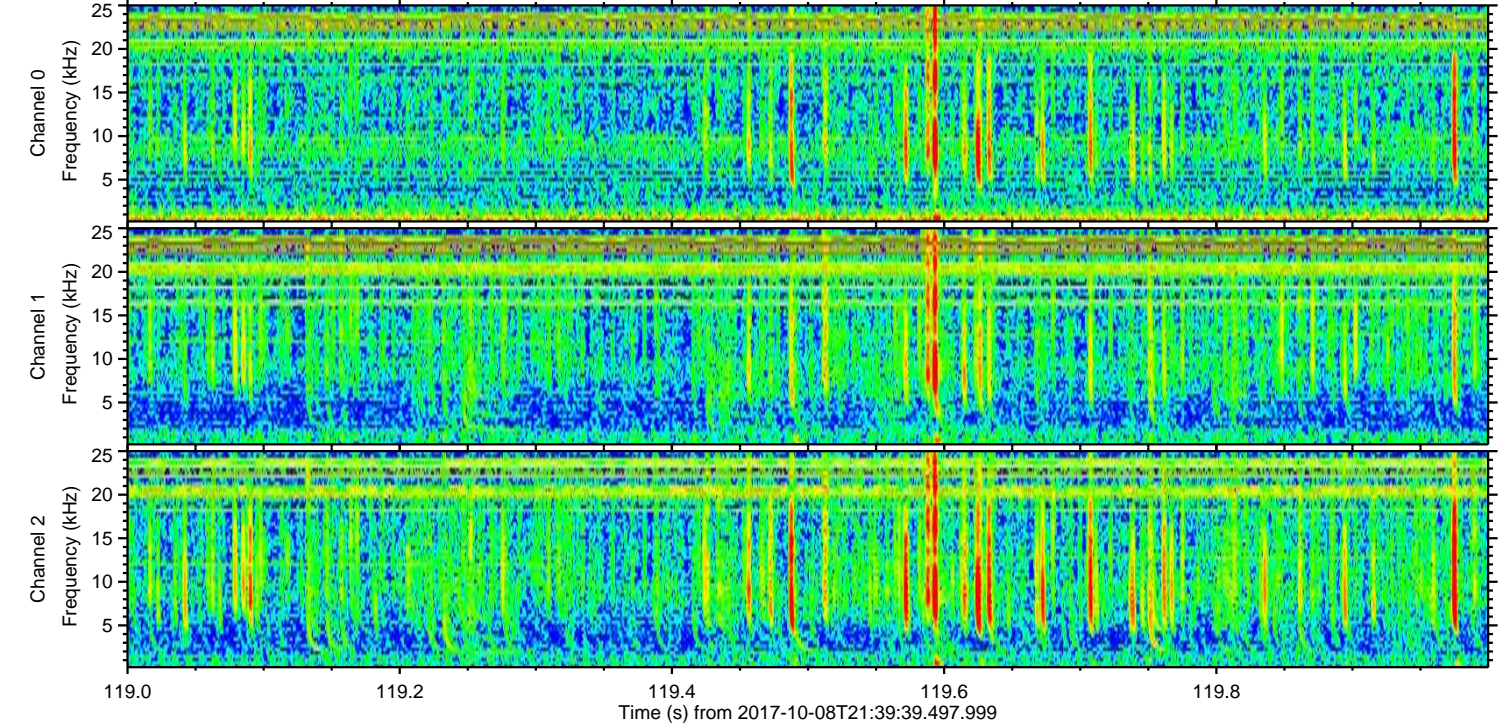
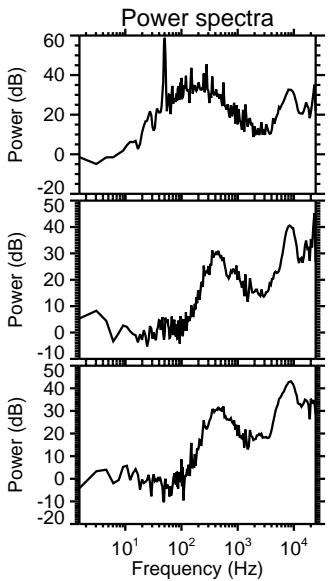
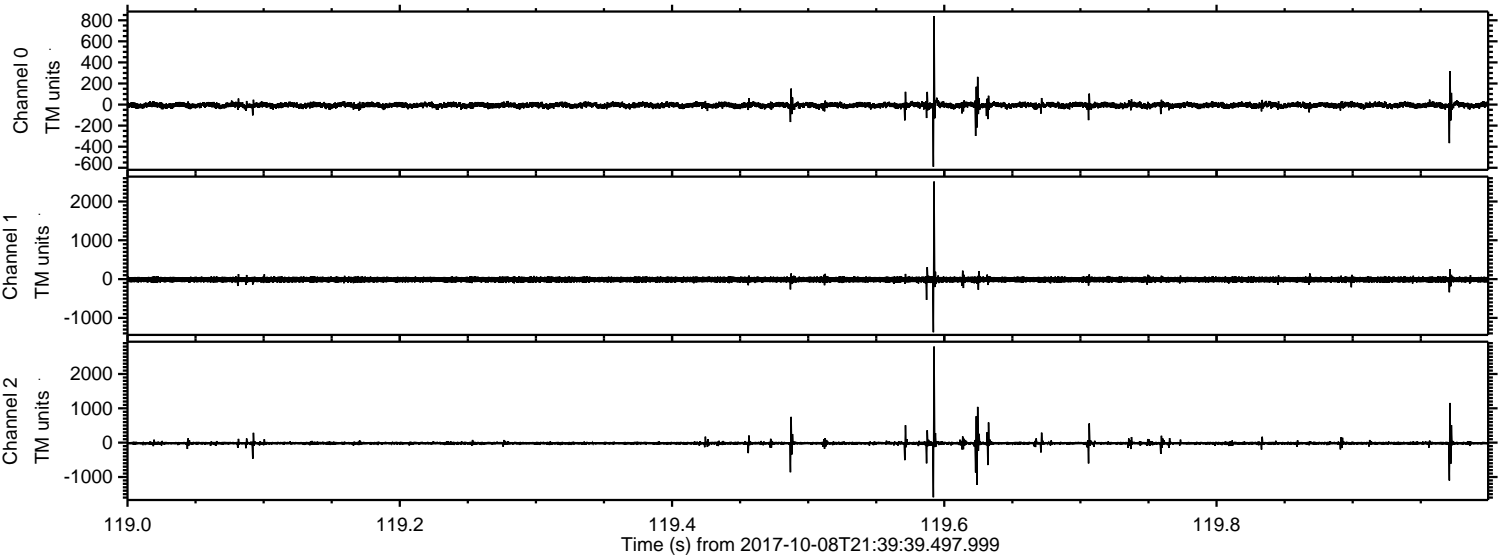
Channel 0
mn: -880
mx: 593
 μ : -6.7
 σ : 14.9

Channel 1
mn: -611
mx: 421
 μ : -13.2
 σ : 34.6

Channel 2
mn: -2955
mx: 2506
 μ : -16.7
 σ : 29.5

ELMAVAN 3D WAVEFORMS (Measured data sampled at 50 kHz) 51000 packets of 144 samples from 2017-10-08T21:39:39.497.999. Part 120/147

Processed Sun Oct 8 23:47:26 2017 by ELM ver.2012-10-06 from 001__elm20171008_213938__dat00.bin



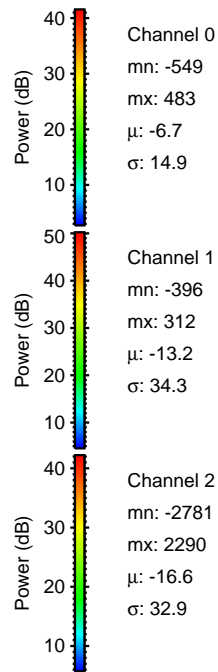
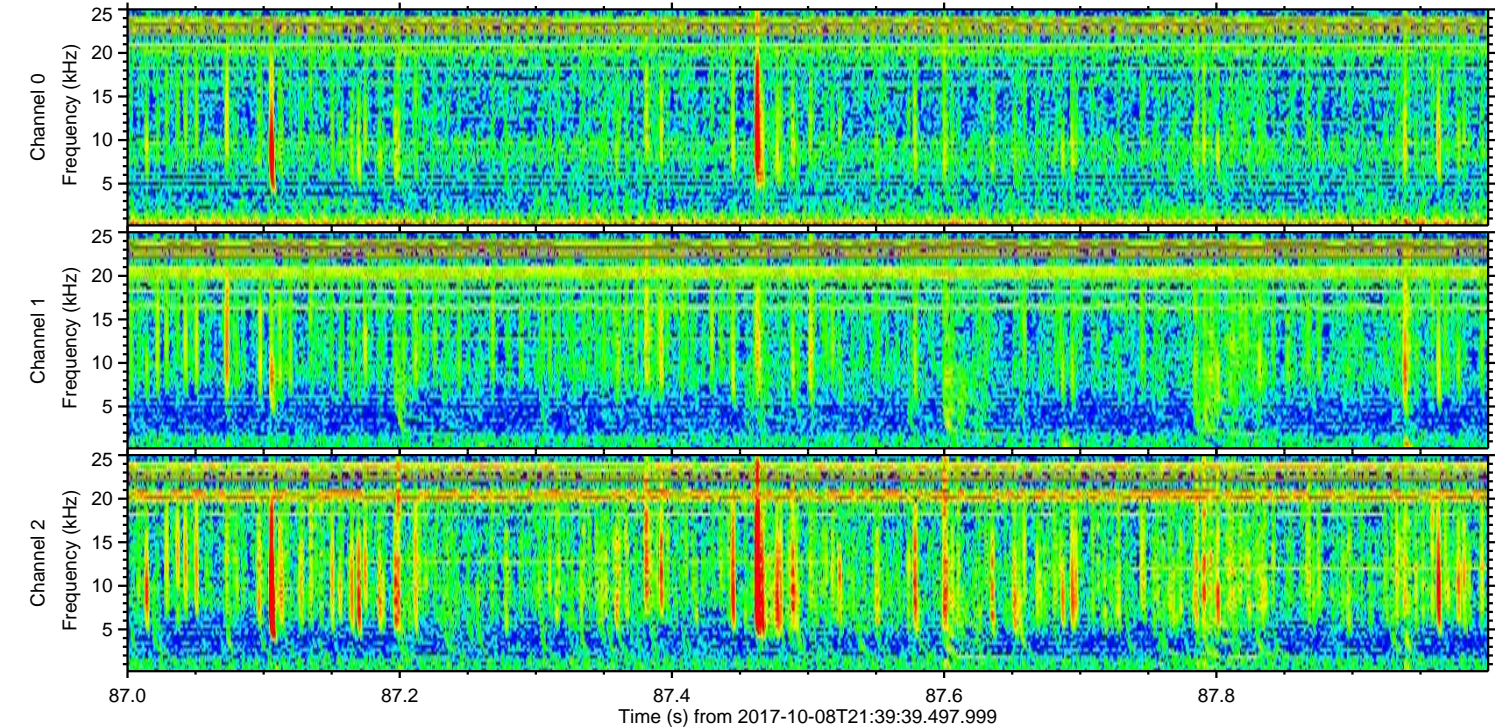
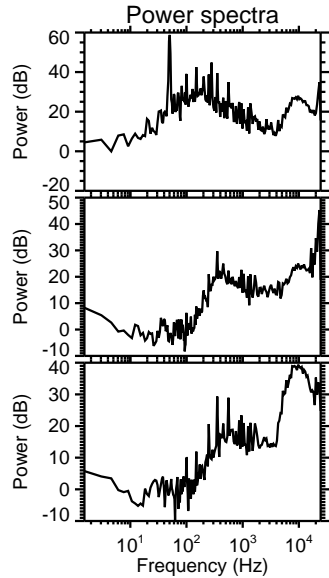
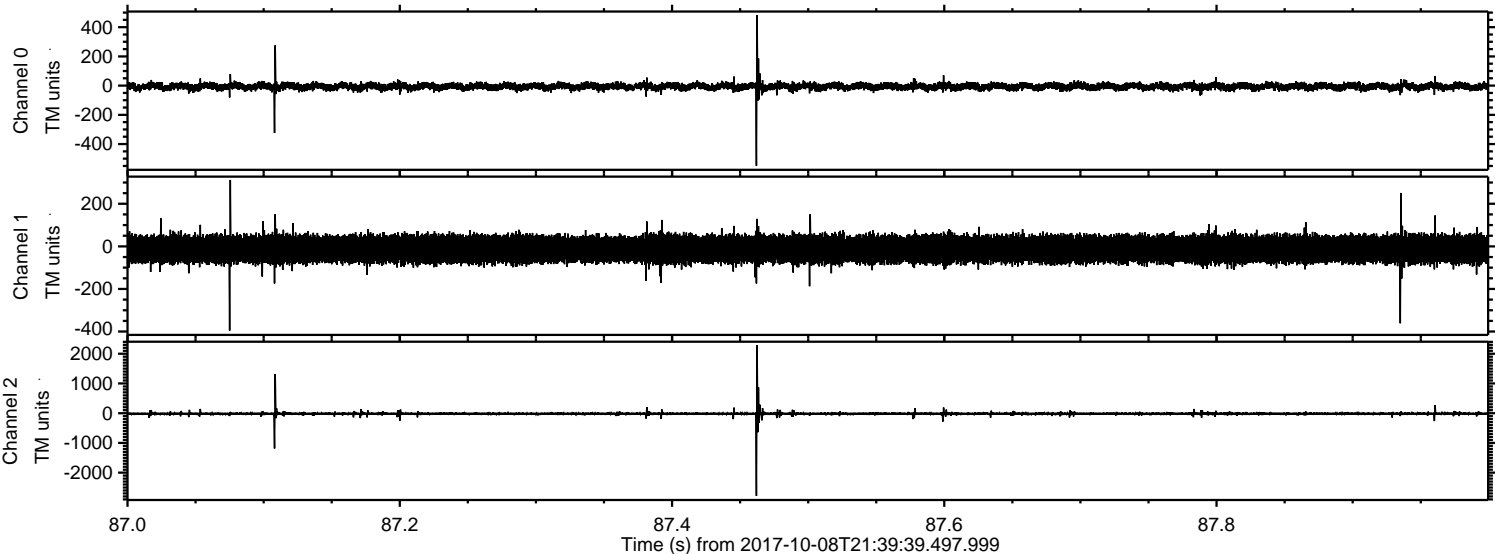
Channel 0
mn: -590
mx: 841
μ: -6.7
σ: 16.4

Channel 1
mn: -1370
mx: 2515
μ: -13.2
σ: 40.0

Channel 2
mn: -1591
mx: 2801
μ: -16.6
σ: 37.3

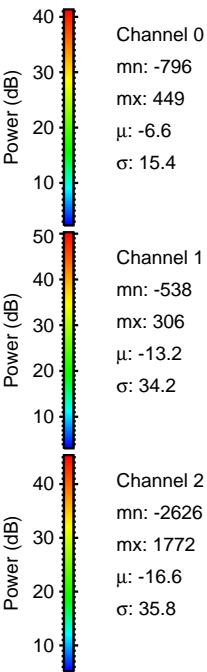
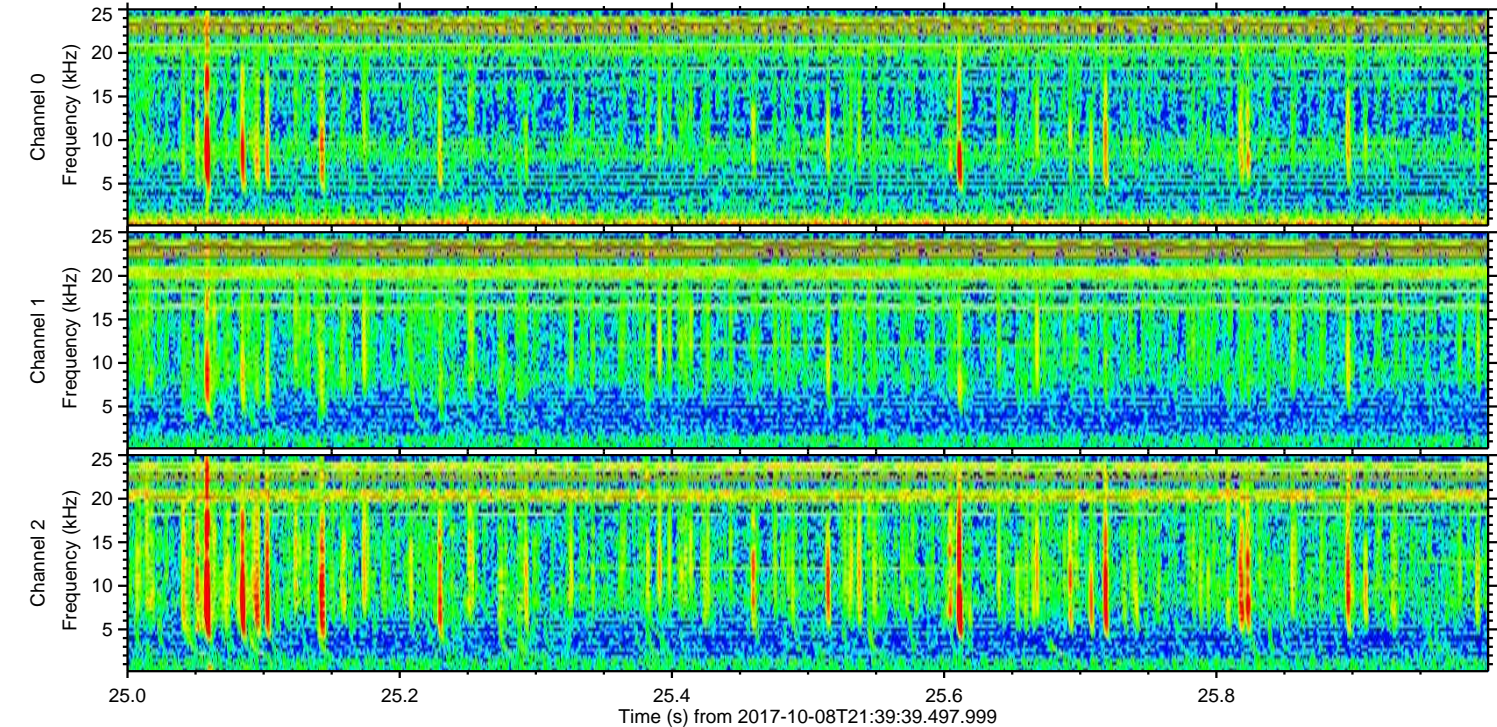
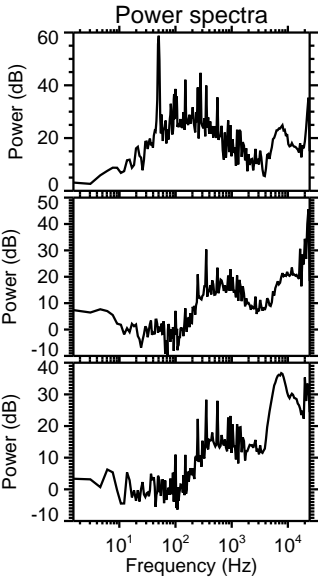
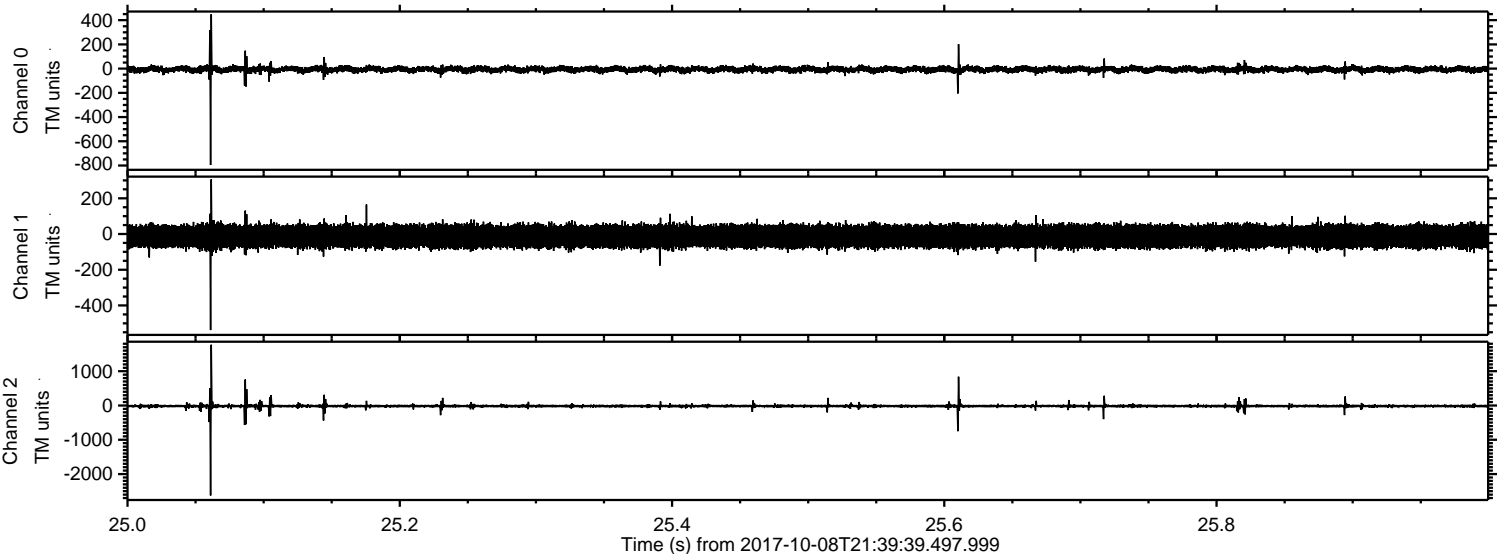
ELMAVAN 3D WAVEFORMS (Measured data sampled at 50 kHz) 51000 packets of 144 samples from 2017-10-08T21:39:39.497.999. Part 88/147

Processed Sun Oct 8 23:47:27 2017 by ELM ver.2012-10-06 from 001__elm20171008_213938__dat00.bin

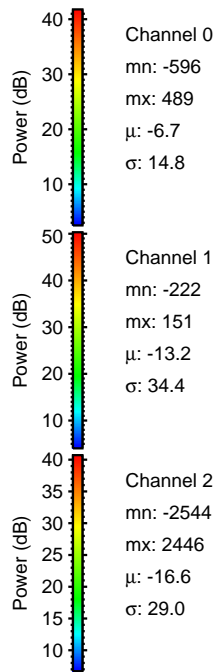
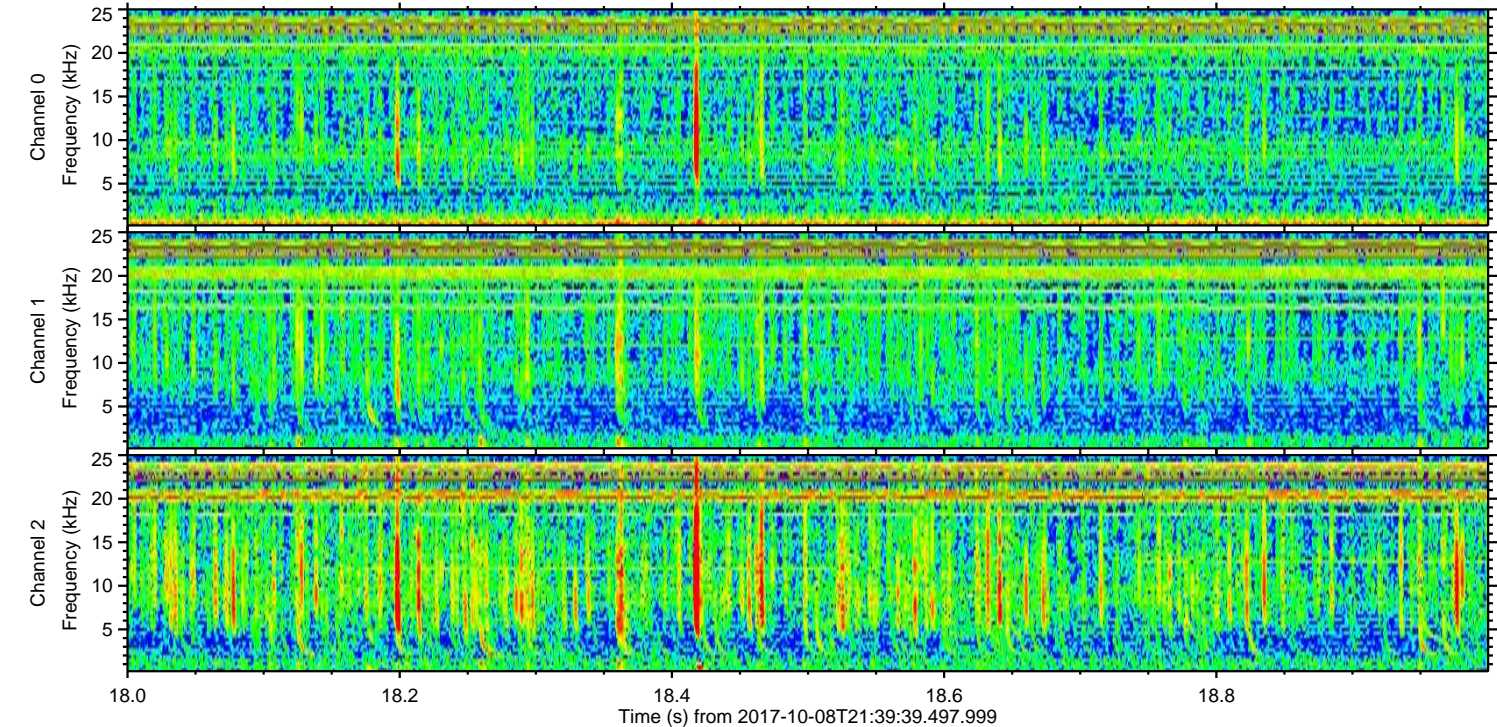
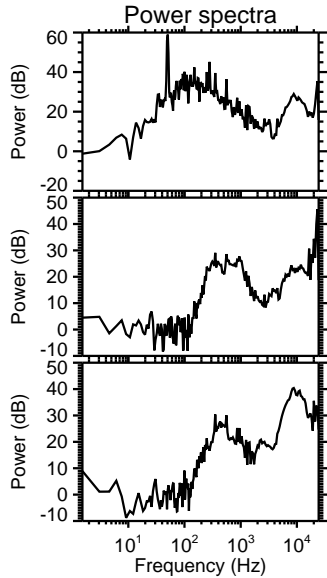
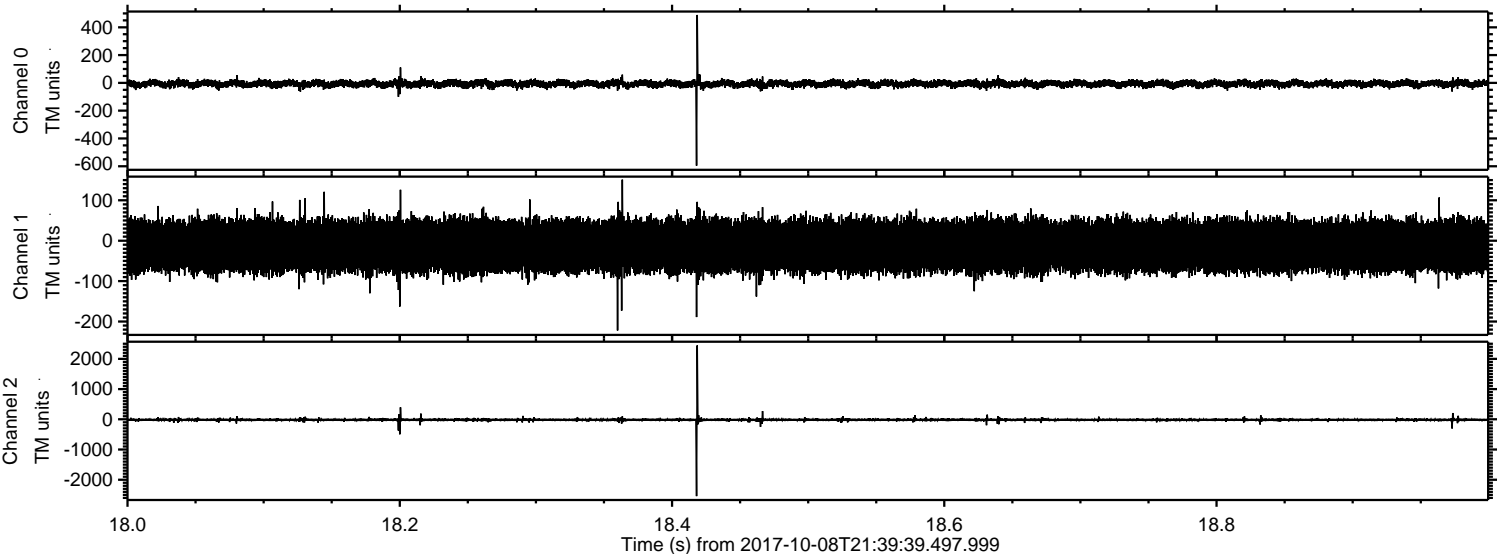


ELMAVAN 3D WAVEFORMS (Measured data sampled at 50 kHz) 51000 packets of 144 samples from 2017-10-08T21:39:39.497.999. Part 26/147

Processed Sun Oct 8 23:47:28 2017 by ELM ver.2012-10-06 from 001__elm20171008_213938__dat00.bin

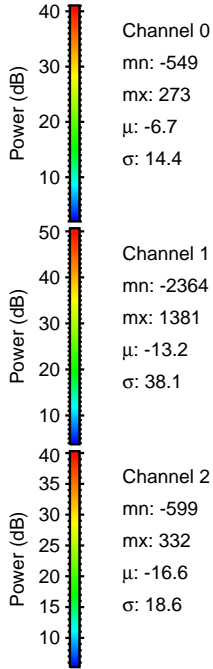
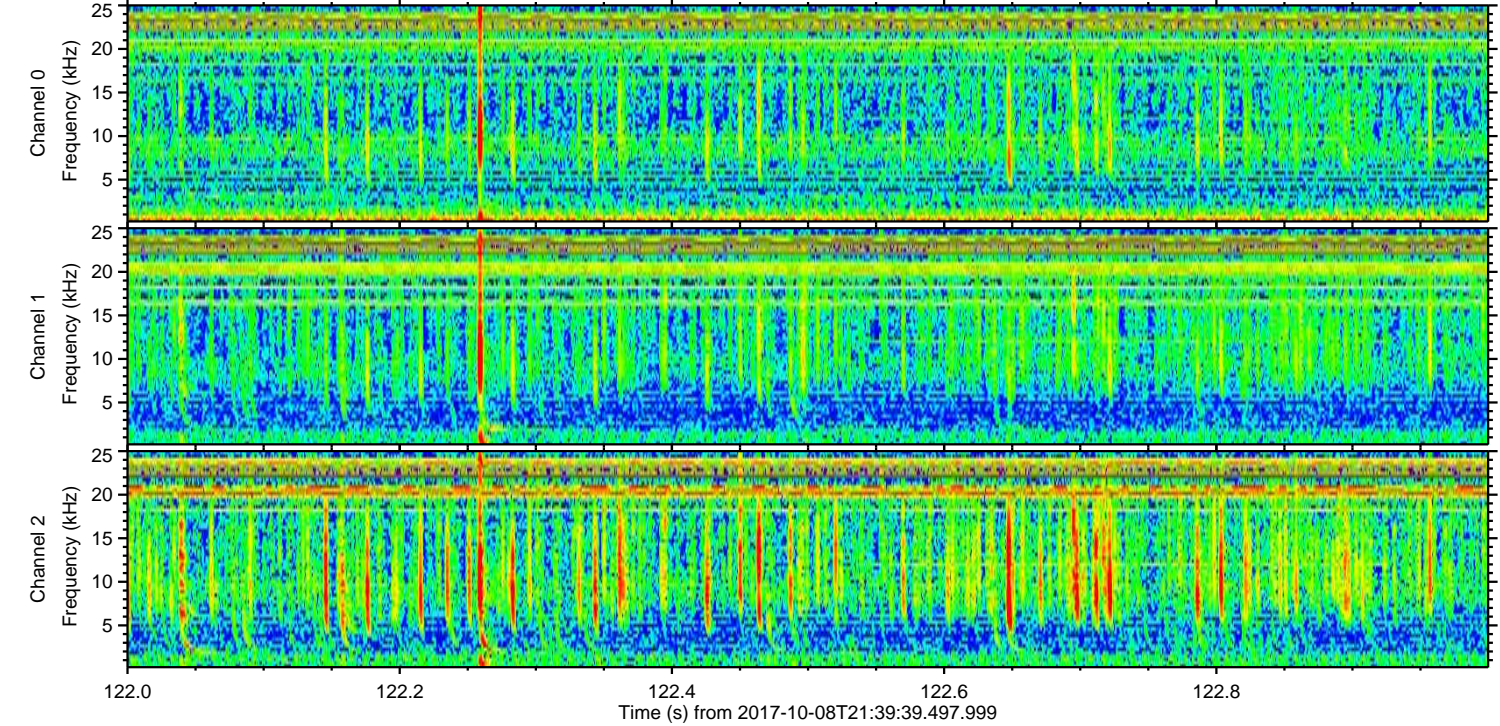
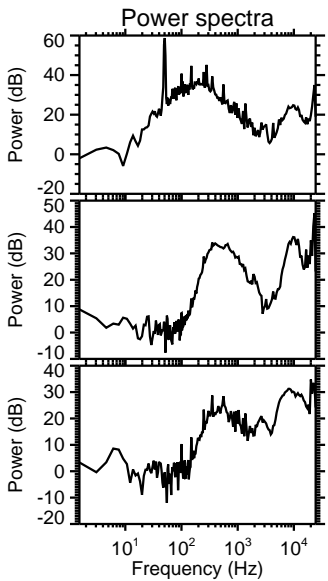
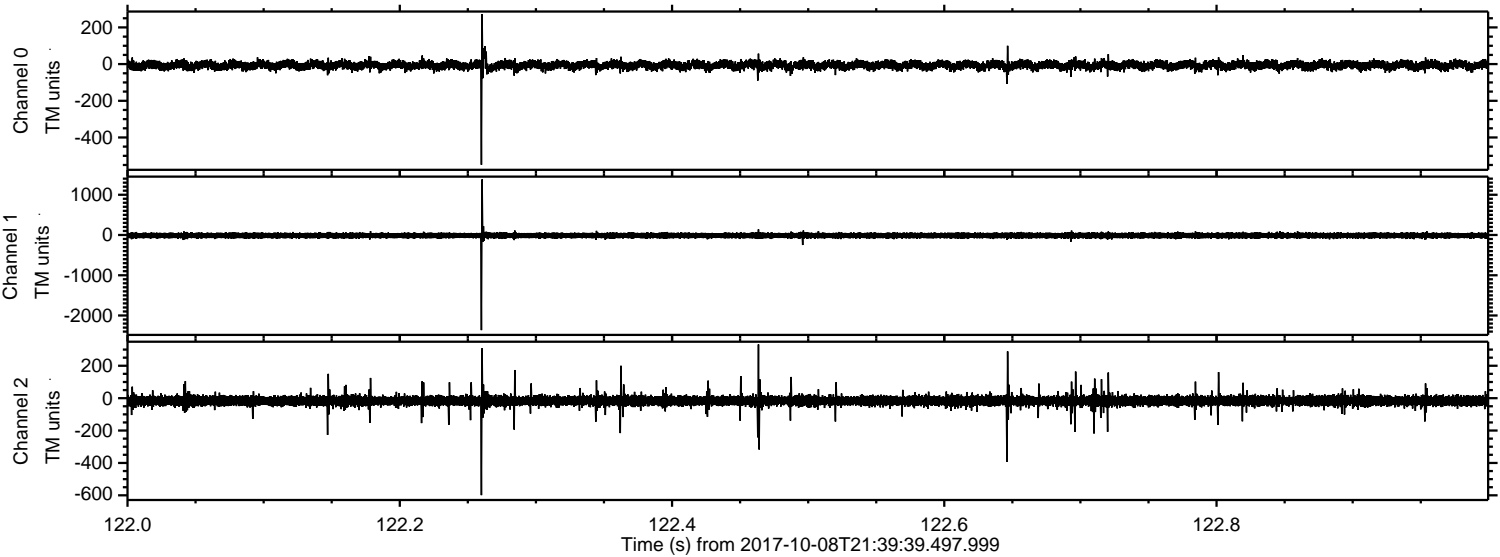


Processed Sun Oct 8 23:47:29 2017 by ELM ver.2012-10-06 from 001__elm20171008_213938__dat00.bin



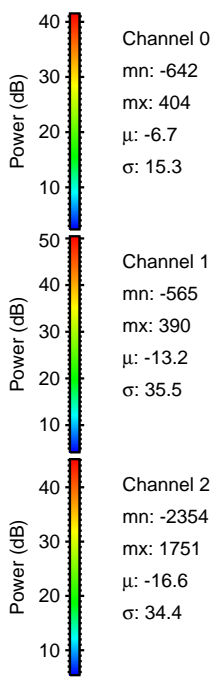
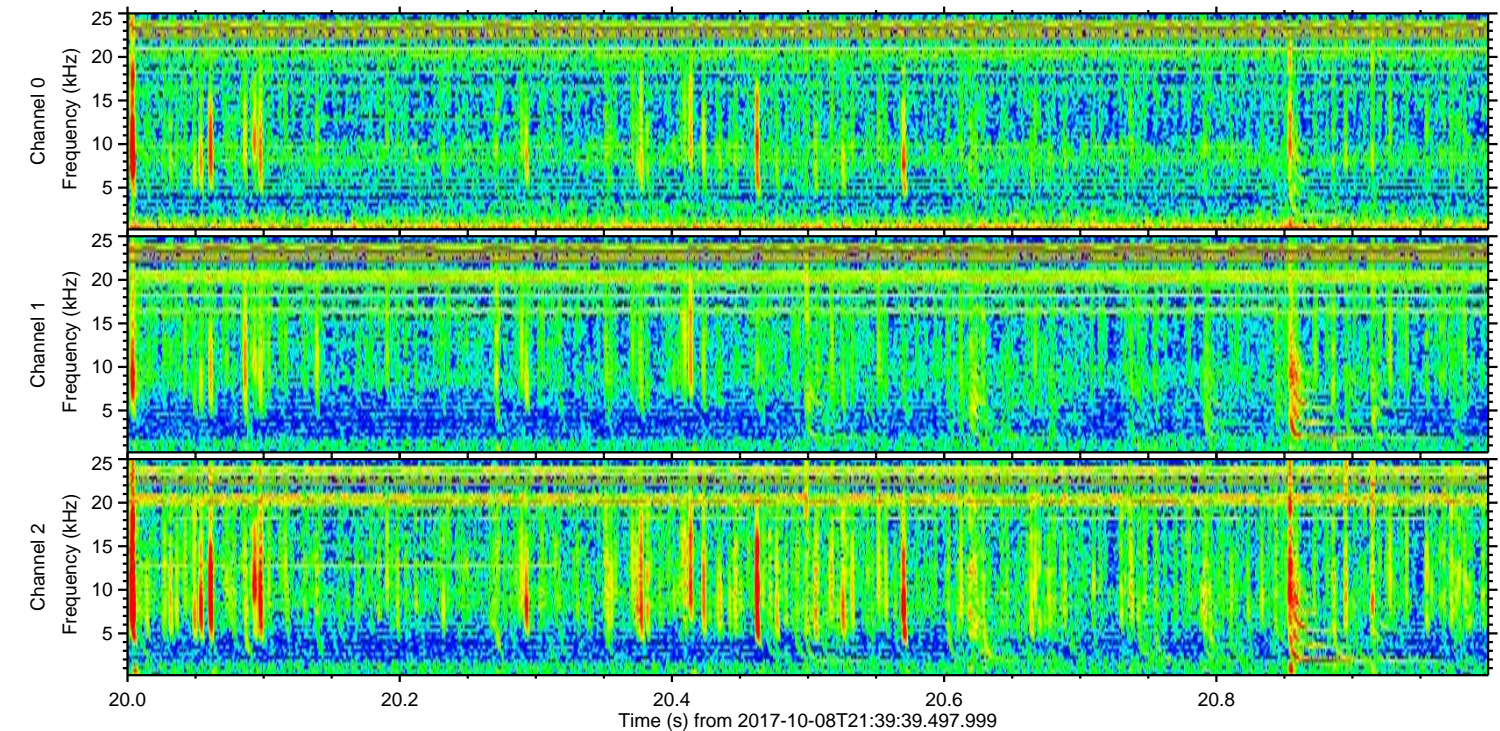
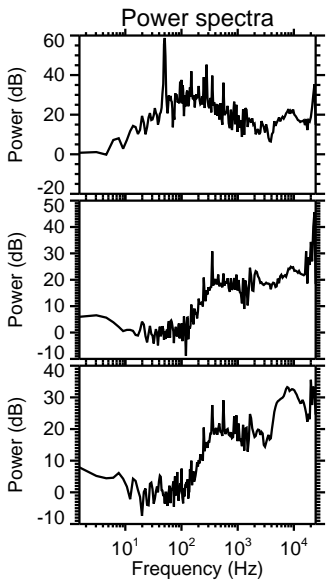
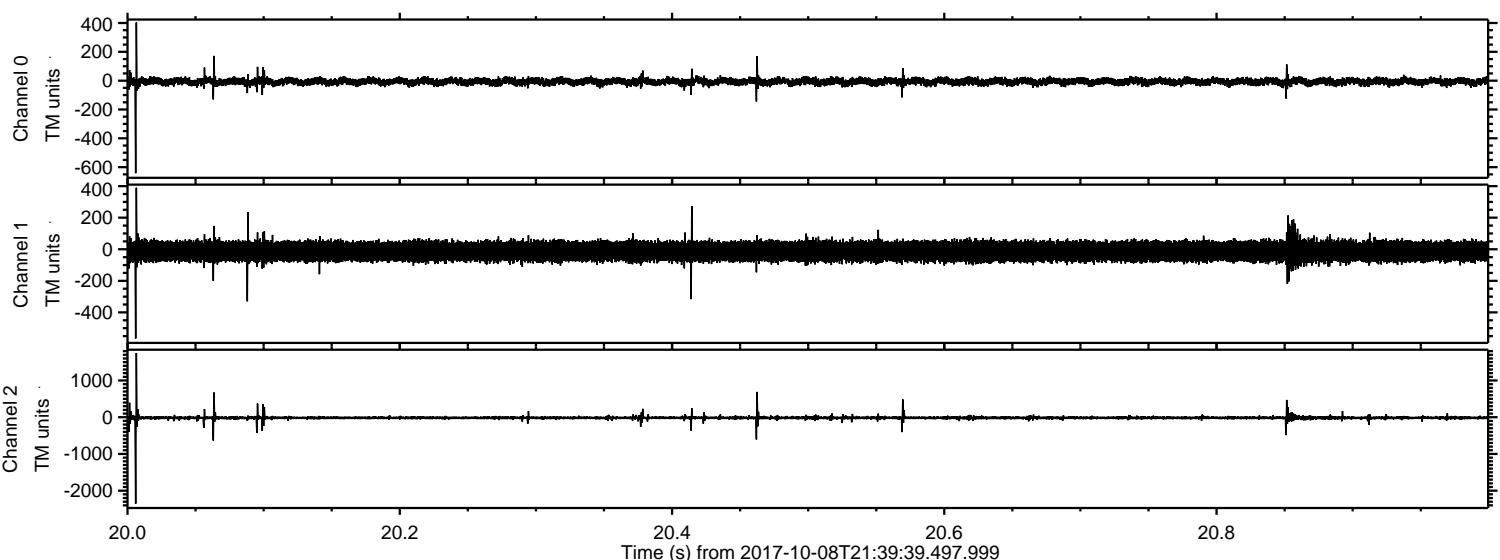
ELMAVAN 3D WAVEFORMS (Measured data sampled at 50 kHz) 51000 packets of 144 samples from 2017-10-08T21:39:39.497.999. Part 123/147

Processed Sun Oct 8 23:47:29 2017 by ELM ver.2012-10-06 from 001__elm20171008_213938__dat00.bin



ELMAVAN 3D WAVEFORMS (Measured data sampled at 50 kHz) 51000 packets of 144 samples from 2017-10-08T21:39:39.497.999. Part 21/147

Processed Sun Oct 8 23:47:30 2017 by ELM ver.2012-10-06 from 001__elm20171008_213938__dat00.bin



Channel 0
mn: -642
mx: 404
 μ : -6.7
 σ : 15.3

Channel 1
mn: -565
mx: 390
 μ : -13.2
 σ : 35.5

Channel 2
mn: -2354
mx: 1751
 μ : -16.6
 σ : 34.4

Processed Sun Oct 8 23:47:30 2017 by ELM ver.2012-10-06 from 001__elm20171008_213938__dat00.bin

